



8230. The dock
at Juan Mina, C.Z.,
Jan. 19, 1961



8231. Bee at the
dock at Juan Mina,
C.Z., Jan. 19, 1961.



8232. Dock at
Juan Mina, C.Z.
Jan. 19, 1961



8233. Leaving Juan
Mina, C.Z. Jan. 19, 1961.



8234. Loading the
truck at the Malaria
Control Service,
Corozal, C.Z.
Jan. 23, 1961



8235. Field gear
leaving Corozal, C.Z.
Jan. 23, 1961



8236. Our boat
transport, the L.C.M.
Pier 20, Balboa, C.Z.
Jan. 23, 1961.



8237. The L.C.M.,
Lil' Grunt, at Pier
20, Balboa, C.Z.
Jan. 23, 1961.



8238. Loading our field gear for the Darién trip on the Lil' Grunt.
Jan. 23, 1961.



8239. Name and registration of our transport.
Jan. 23, 1961.



8240. The Lil'
Grunt loaded with
our field gear leaves
for El Real.
Jan. 23, 1961.



8241. Our air
transport, an army
Otter at the El Real
airfield.
Jan. 26, 1961.



8242. The Lil'
Grunt at El Real,
Darién, Jan. 26, 1961.



8243. Loading one of
the helicopters at El
Real, Darién, Jan. 20,
1961.



8244. Helicopter at
El Real, Darién,
Jan. 26, 1961.



8245. Helicopter
at El Real, Darién,
Jan. 26, 1961.



8246. High tide at El
Real, Darién, Jan. 26,
1961.



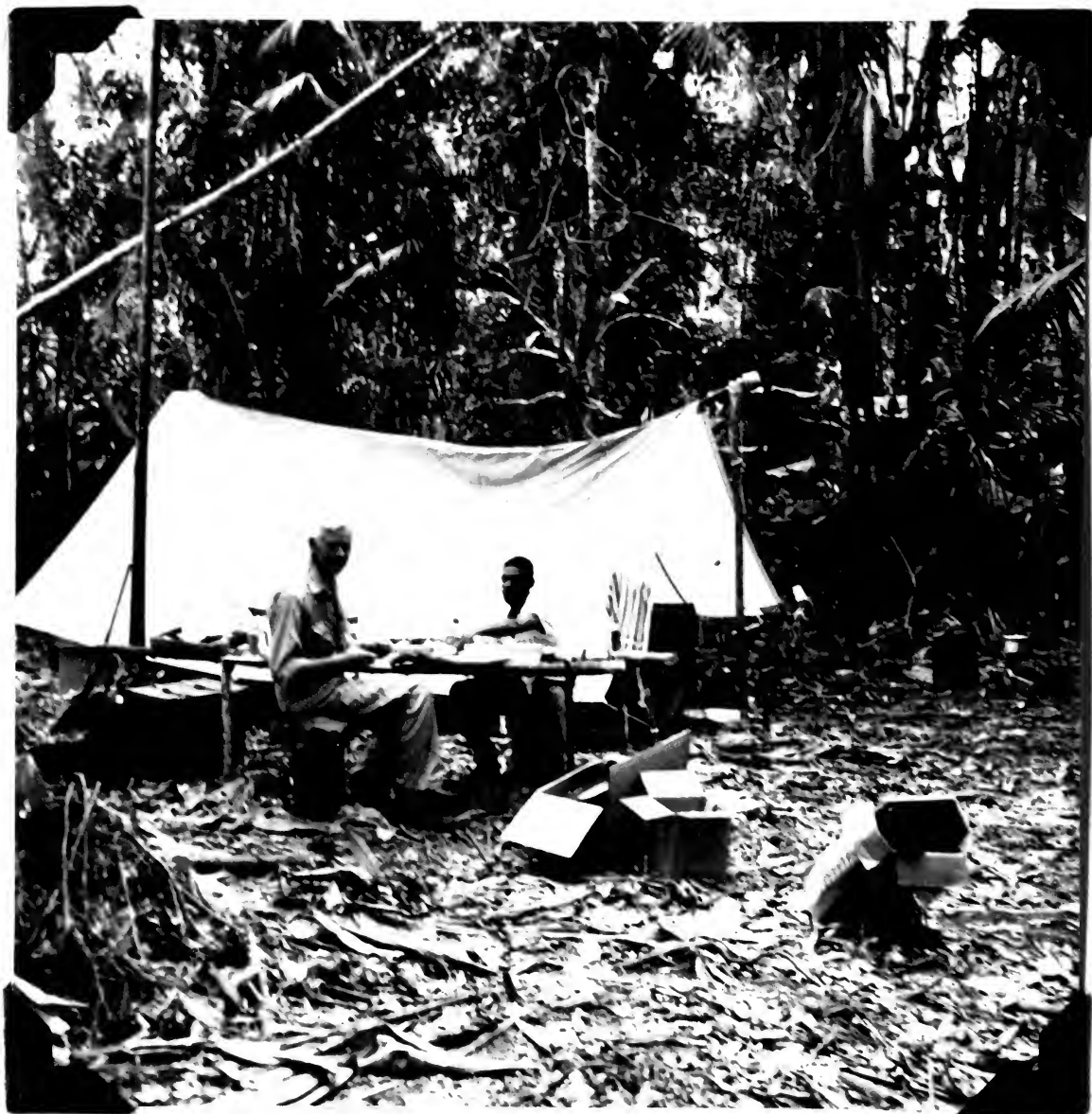
8247. House of Don
Pablo Othón at El Real,
Darién, Jan. 26, 1961.



8248. Helicopter at
our landing on Cerro
Pirre near the head of
Río Setegantí,
Jan. 27, 1961.



8249. Helicopter
comes in for a landing,
Cerro Pirre, Darién,
Jan. 27, 1961.



8250. A. Wetmore and
Rudolph Hinds, Cerro
Pirre Camp. Jan. 27, 1961.



8251. A. Quiñonez
and R. Hinds, Cerro Pirre
Camp, Jan. 27, 1961.



8252. Vicente Álvarez
and Dr. Conrad Yunkers,
Cerro Pirre Camp, Darién,
Feb. 6, 1961.



8253. C. M. Keenan,
Cerro Pirre Camp,
Darién, Feb. 6, 1961.



8254. Rudolph Hinds at
our work table, Cerro Pirre
Camp, Darién, Feb. 6, 1961.

8255. Marsh on Cerro
Pirre at 1500 feet;
Cerro Selegantí in
distance. Feb. 6, 1961.





8256. A. Wetmore at
the work table, Cerro
Pirre Camp, Feb. 6, 1961.

8257. Helicopter
at Cerro Pirre Camp,
Feb. 6, 1961.





8258. Helicopter at
Cerro Pirre Camp, Feb. 6,
1961.



8259. Helicopter
arriving at Cerro Pirre
Camp, Feb. 6, 1961.



8260. Loading a
Helicopter at the Cerro
Pirre Camp,
Feb. 6, 1961.

8261. Marsh at head of
Río Seteganté, Darién,
taken from helicopter.
Feb. 6, 1961.





8262. Cerro Pirre,
taken at 2700 feet
from a helicopter,
Feb. 6, 1961.



8263. El Real, Darién
on the Río Tuira,
Feb. 6, 1961.



8264. El Real, Darién
looking toward the Panama
Delhi Petrolera base from
Pablo Othón's house.
Feb. 7, 1961.



8265. El Real, with the
Lil' Grunt at left.
Feb. 7, 1961.



8266. El Real, Darién,
Feb. 7, 1961.



8267. El Real, Darién,
Feb. 7, 1961.



8268. El Real, Darién
Feb. 7, 1961.



8269. Low tide on the
Río Tuira at El Real.
Feb. 7, 1961.



8270. Cerro Pirre from
El Real.
Feb. 7, 1961.



8271. Don Pablo Othón,
El Real, Darién,
Feb. 7, 1961.



8272. The Lil' Grunt
leaves for return to
Balboa. El Real, Darién.
Feb. 7, 1961.



8273. Loading gear on the
army Otter, El Real, Darién,
Feb. 7, 1961.



8274. Hinds and Yunkers
board the Otter at El Real,
Feb. 7, 1961.



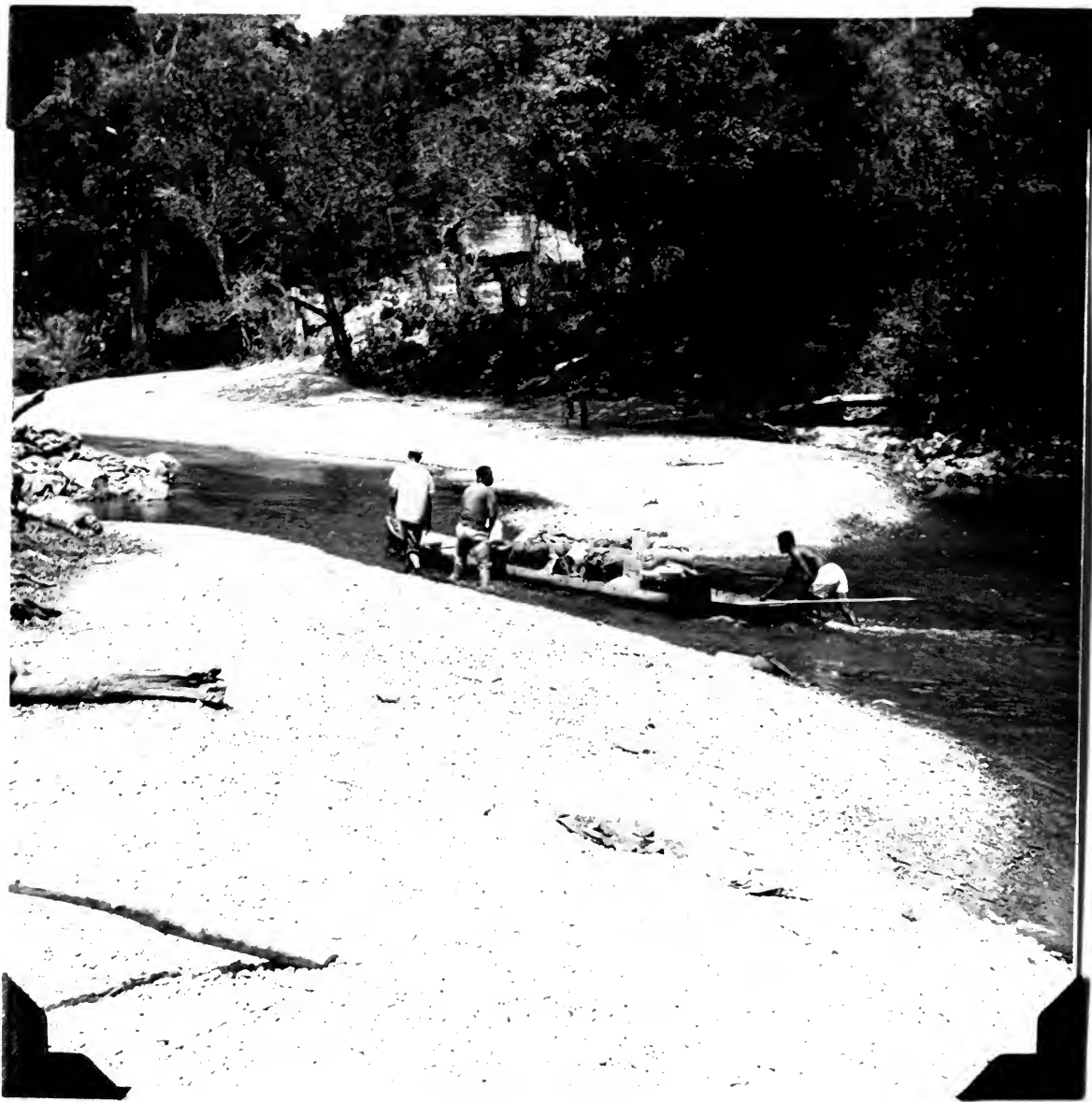
8275. Loading the
cayucos, La Vigía on
Madden Lake
Feb. 16, 1961.



8275a. Loading the
cayucos. La Vigía on
Madden Lake.
Feb. 16, 1961.



8276. Cerro Bruja from
Madden Lake,
Feb. 16, 1961.



8277. Ascending the
Río Boquerón.
Feb. 16, 1961.



8278. Ascending the
Río Boquerón.
Feb. 16, 1961.



8279. On the lower
Río Boquerón
Feb. 16, 1961.



8280. Rapias on the
lower Río Boquerón,
Feb. 16, 1961



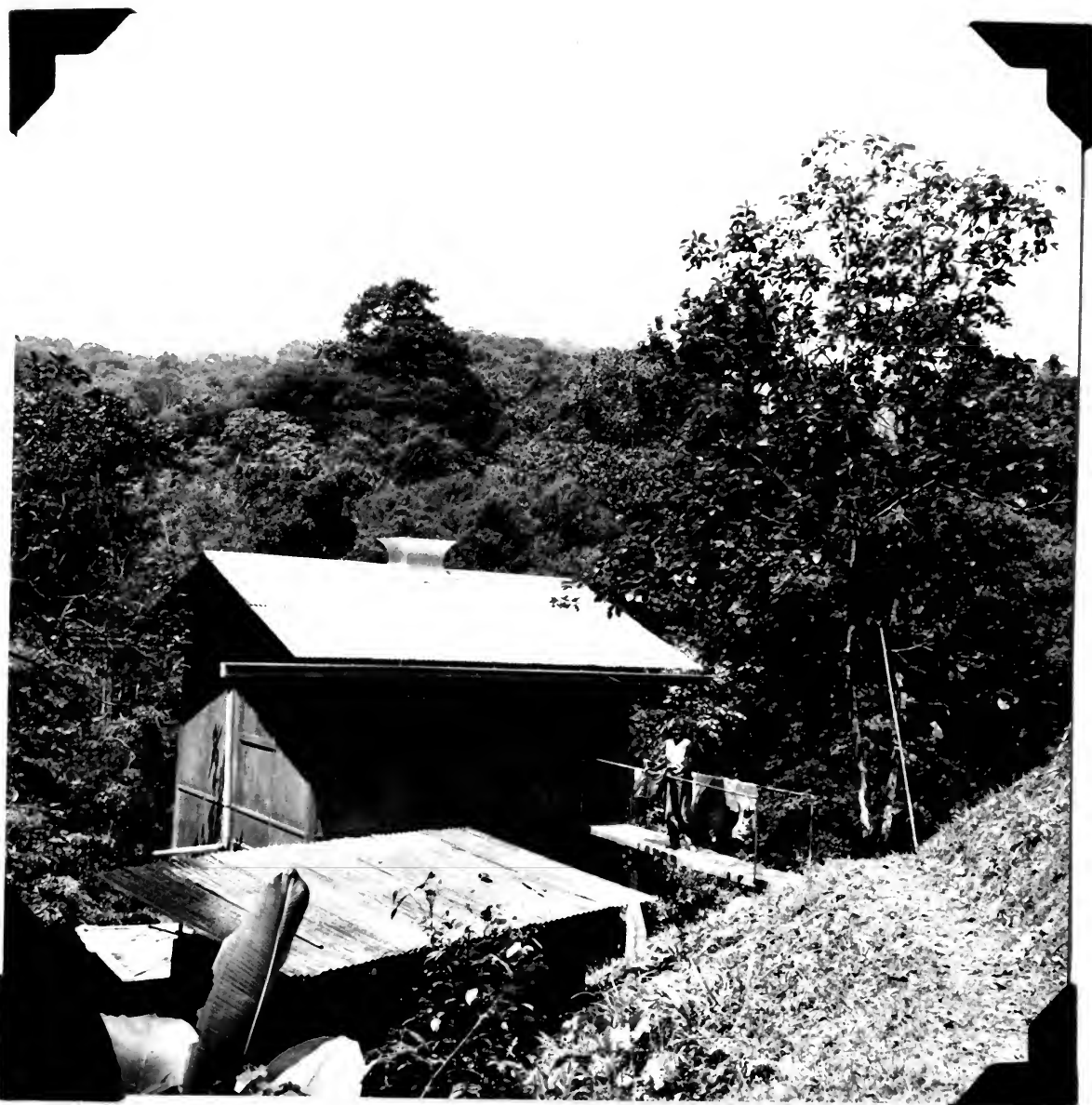
8281. Arrival at Peluca,
Panamá
Feb. 16, 1901.



8282. Salto on the Río
Bogueron above Peluca
Feb. 24, 1901.



8283. Charco on the
Rio Boqueron below the
Salto.
Feb. 24, 1961.



8284. Peluca Hydro-
graphic Station, Panamá,
Feb. 27, 1961.



8284a. Peluca Hydro-
graphic Station, Panamá,
Feb. 27, 1961.

8285. Bocas Hinds with
a specimen of Leucopternis
albicollis. Peluca,
Panama, Feb. 27, 1961.

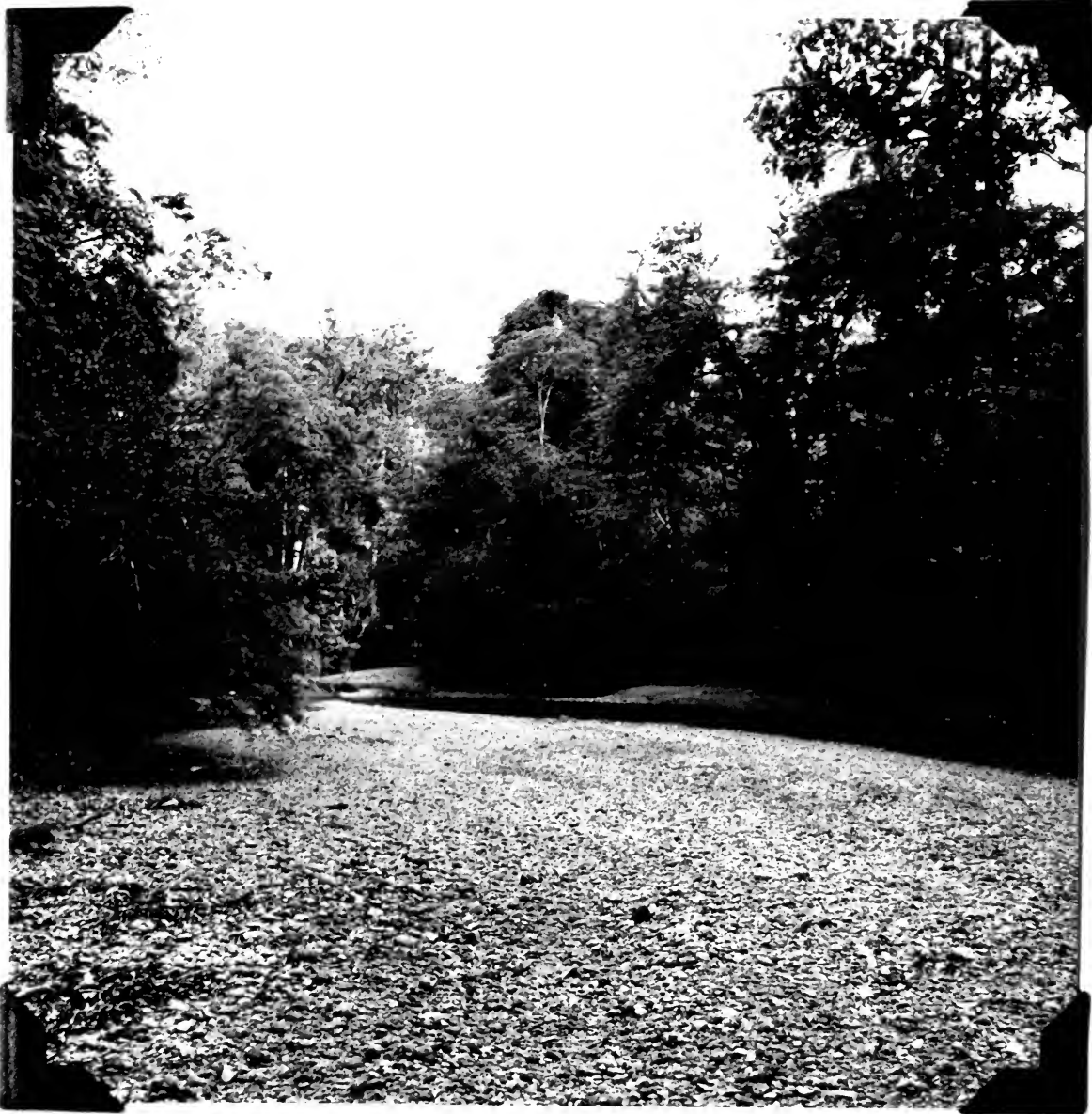




8286. A. Wetmore and
Bocas Hinds. Peluca,
Feb. 27, 1961.



8287. Río Boquerón near
Peluca, Panamá, Feb. 27,
1961.



8288. Río Boquerón
near Peluca, Panamá,
Feb. 27, 1961.



8289. Río Boquerón, near
Peluca, Panamá,
Feb. 27, 1961.



8290. Río Boquerón
near Peluca, Boquerón,
Panamá, Feb. 27, 1961.



8291. Installation for
stream flow measurement,
Peluce Hydrographic Station,
Panamá, Feb. 27, 1961.



8292. Peluca Hydrographic
Station, Panamá, Feb. 28,
1961.



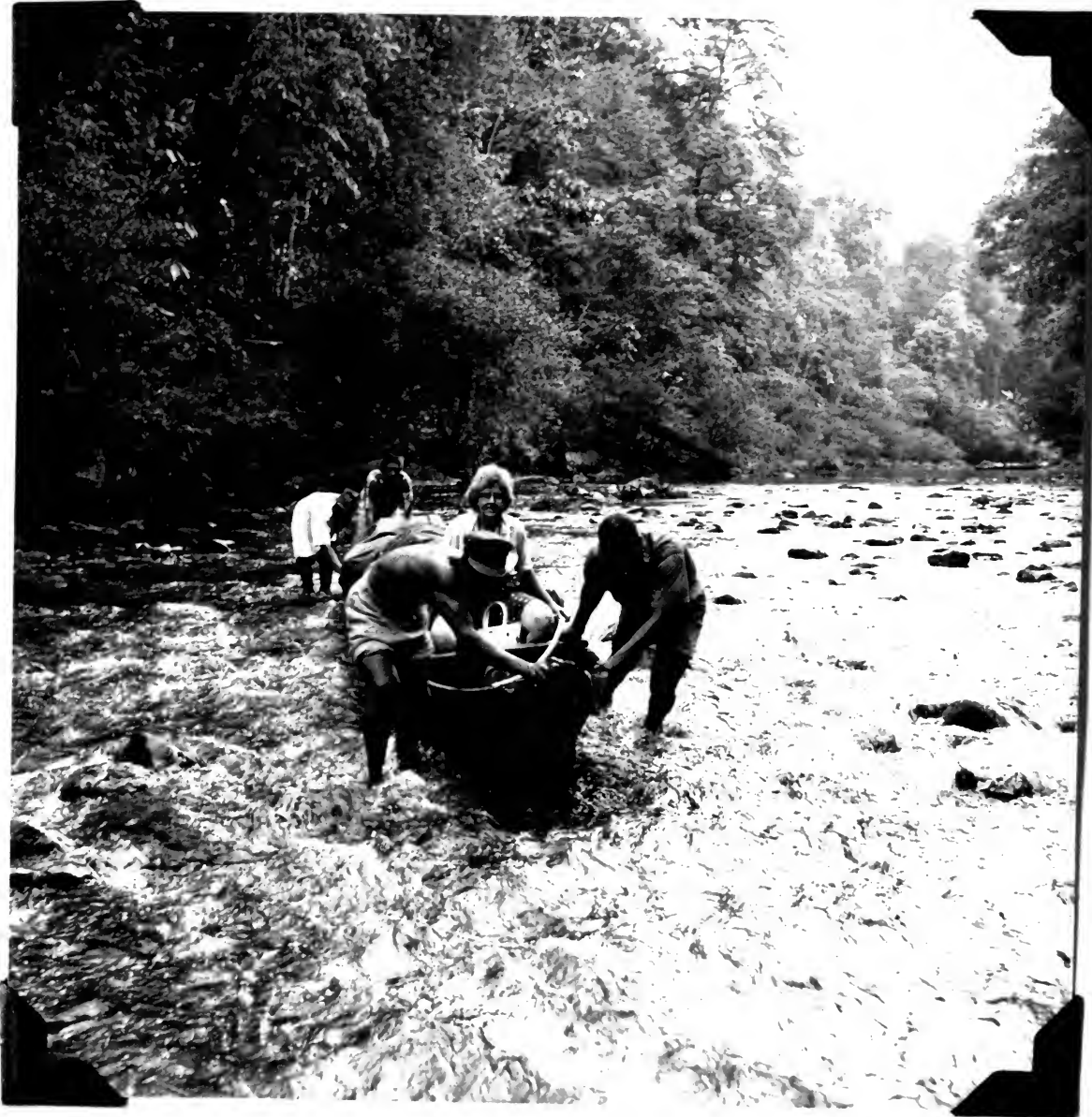
8293. Bea and the kitchen
at Peluca, Panamá,
Feb. 28, 1961.



8294. Leaving Peluca,
March 1, 1961.

8295. Peluca Hydrographic
Station, Panamá, March 1,
1961.





8296. Descending the
Río Boquerón.
March 1, 1961.



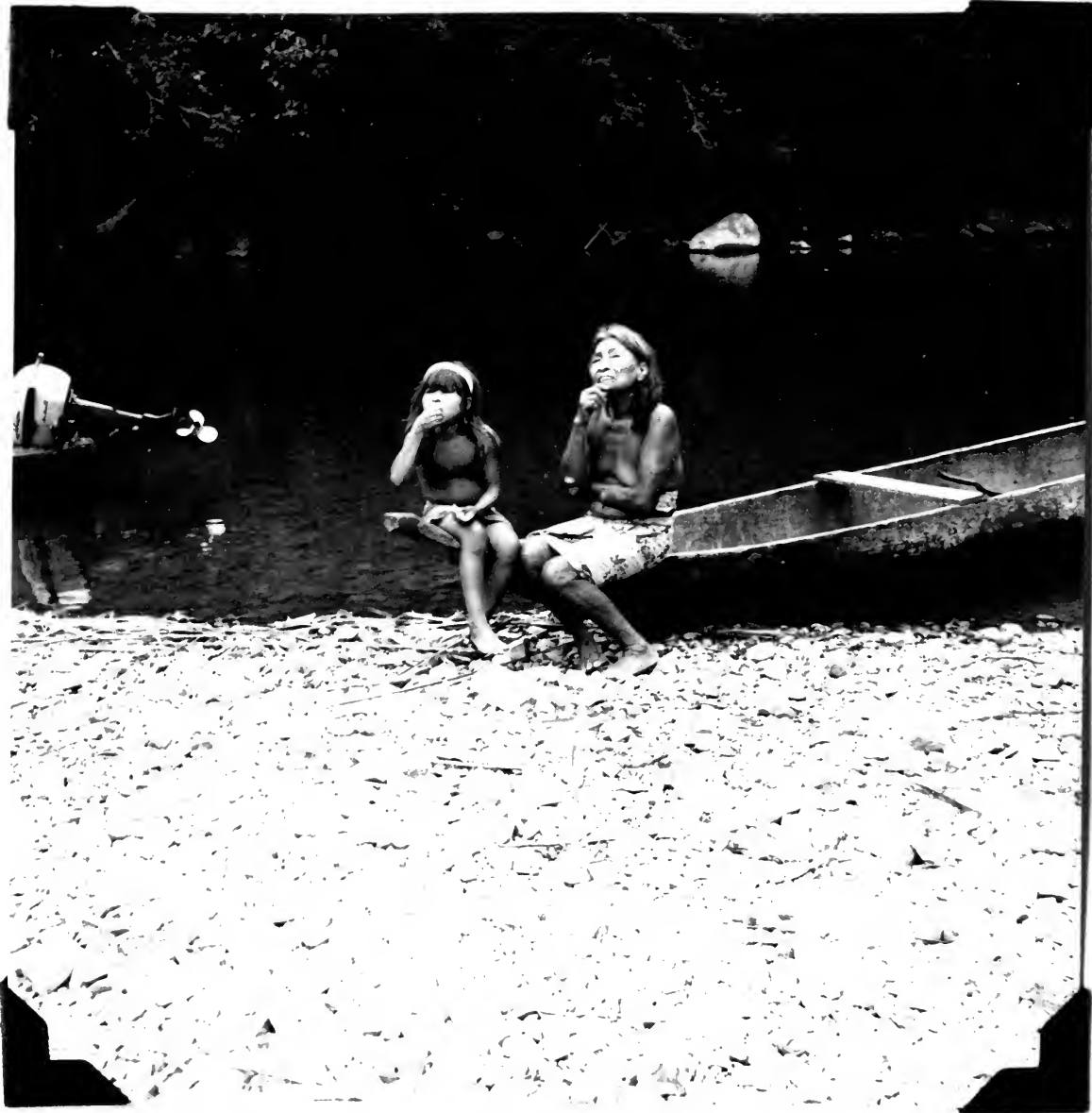
8297. Mouth of the
Río Pequení, Panamá,
March 1, 1961.



8298. Former Pequení
Police Station, now a
recreation retreat.
March 1, 1961.



8299. Lunch on the Río
Pequení. Luis, Henry van
Horn, Rudolf Hinds, Bea.
March 1, 1961.



8300. A Chocó grand-
mother on the Río Pequení.
March 1, 1961.



8301. Chocó Indians on
the Río Pequení.
March 1, 1961.



8302. On the Río
Pequení,
March 1, 1961.



8303. Candelaria Hydro-
graphic Station, Panamá,
March 1, 1961.



8304. Our work quarters
at Candelaria, March 2, 1961.



8305. Río Pequení at
Candelaria, Panamá,
March 2, 1961.



8306. Nest of
Ramphocelus icteronotus.
Candelaria, Panamá,
March 6, 1961.



8307. Nest and eggs of
Ramphocelus icteronotus.
Candelaria, Panamá.
March 6, 1961.



8308. Bea and the
kitchen. Candelaria,
Panamá,
March 6, 1961.



8309. Henry van Horn at
nest hole of Trogon rufus
tenellus, Candelaria,
March 10, 1961.



8310. Henry with eggs
of Trogon, Candelaria,
March 10, 1961.



8311. Nest and eggs of
Trogon rufus tenellus; with
stub lowered to ground, and
entrance partly opened.
Candelaria, March 10, 1961.



8311a. Nest and eggs
of Trogon rufus tenellus;
taken with stub lowered
to ground.
Candelaria, March 10, 1961.

8312. Near the mouth
of the Río Pequení, Panamá
March 13, 1961.





8313. Near the mouth
of the Río Pequení,
Panama. March 13, 1961.



8314. Río Pequení near the
mouth.
March 13, 1961.



8315. Adjusting cargo,
Río Pequení, Panamá
March 13, 1961.

8316. Village of Salamanca,
Panamá on an arm of Madden
Lake.
March 13, 1961.

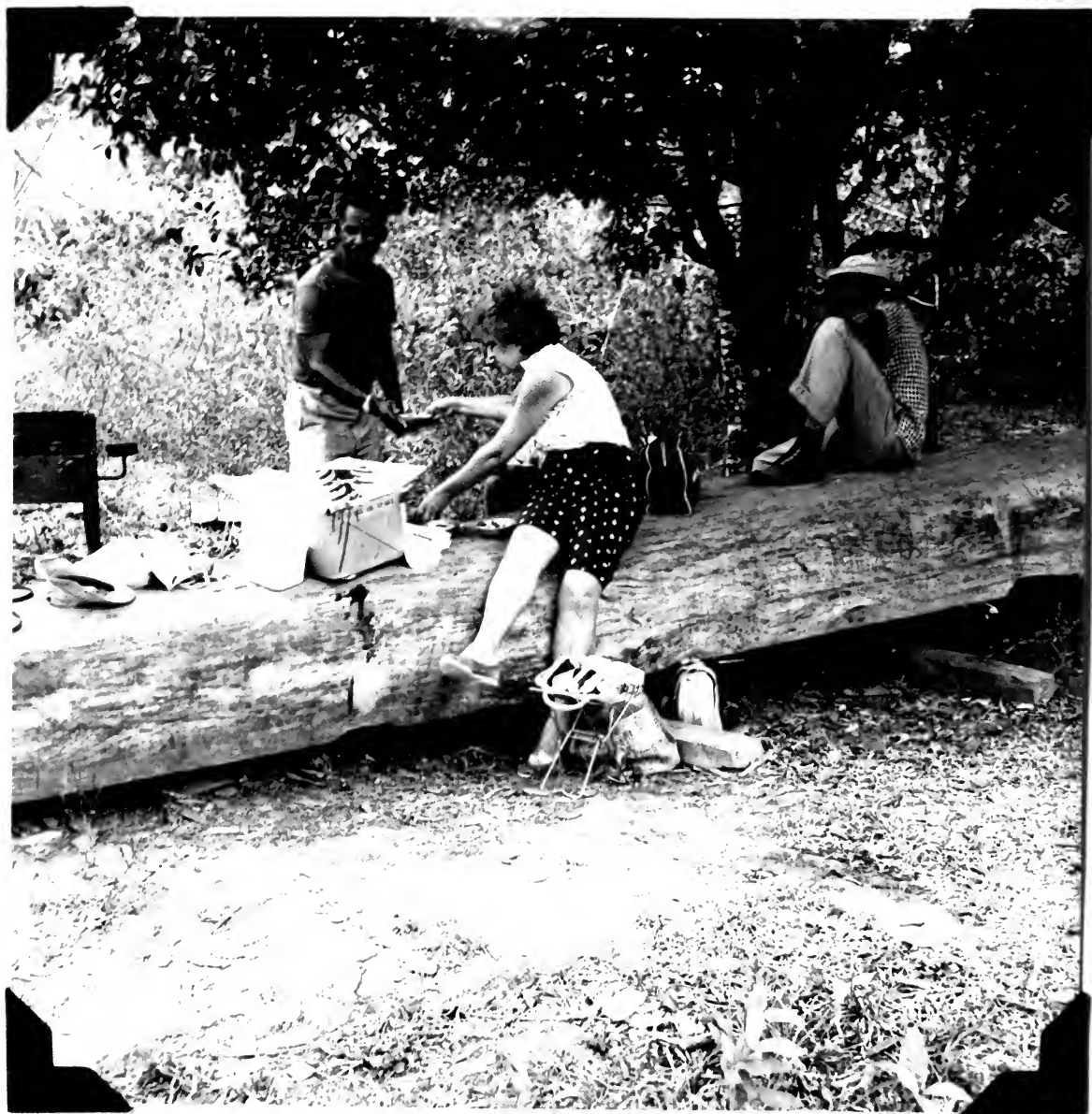




8317. Salamanca Hydro-
graphic Station on Madden
Lake, now abandoned, where
Griswold worked in 1936.
March 13, 1961.

8318. Landing place at
La Vigía, on an arm of
Madden Lake. March 13, 1961.





8319. Lunch at La Vigía.
March 13, 1961.



8320. Nest and eggs
of *Todirostrum cinereum*
finitimum.
La Jagua, Panamá,
March 20, 1961.



8321. Nest and eggs
of *Todirostrum cinereum*
finitimum. La Jagua,
Panamá,
March 20, 1961

8322. La Jagua Hunting
Club, Panamá,
March 20, 1961.





8323. Nest and eggs of
Thraupis virens.
La Jagua, Panamá,
March 21, 1961.



8324. *Cathartes*
burrovianus to show
caruncles on neck.
La Jagua, Panamá
March 24, 1961.



8325. Cathartes
burrovianus.
La Jagua, Panamá
March 24, 1961.



8326. Cathartes
burrovianus
La Jagua, Panamá,
March 24, 1961.



8327. Cathartes
burrovianus.
La Jagua, Panamá,
March 24, 1961.