



8450. Vicente and Negro, cooking a meal. Tigre Camp, Coclé.
March 1, 1962

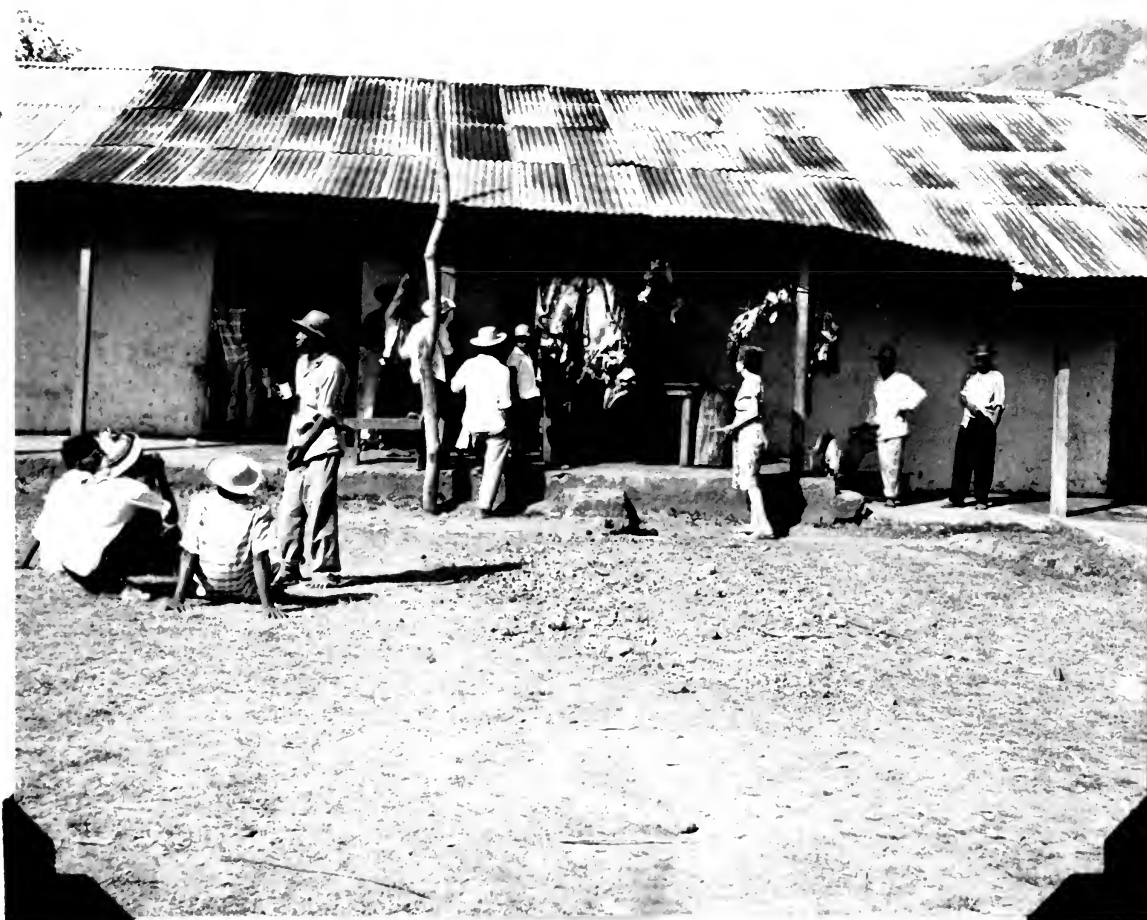


8451. Ramada prepared for a fiesta. El Copé, Coclé.
March 4, 1962.



8452. A truck from the lowlands
with fresh sea fish. El Copé,
Coclé.
March 4, 1962.

8453. Bea at the meat market.
El Copé, Coclé.
March 4, 1962.





8454. Our house at El Copé
Coclé
March 4, 1962



8455. The Palabarca children
El Copé, Coclé
March 4, 1962



8456. The Balabarca children,
El Copé, Coclé,
March 4, 1962



8457. The Balabarca children,
El Copé, Coclé,
March 4, 1962



8458. Musicians for the fiesta,
El Copé, Coclé.
March 4, 1962

8459. Negro Magellon and the baby
El Copé, Coclé
March 4, 1962



8460. El Copé, Coclé.
March 4, 1962



8461: Humberto Balabarca, Bea,
Cecilia Lutary de Balabarca,
El Copé, Coclé,
March 4, 1962





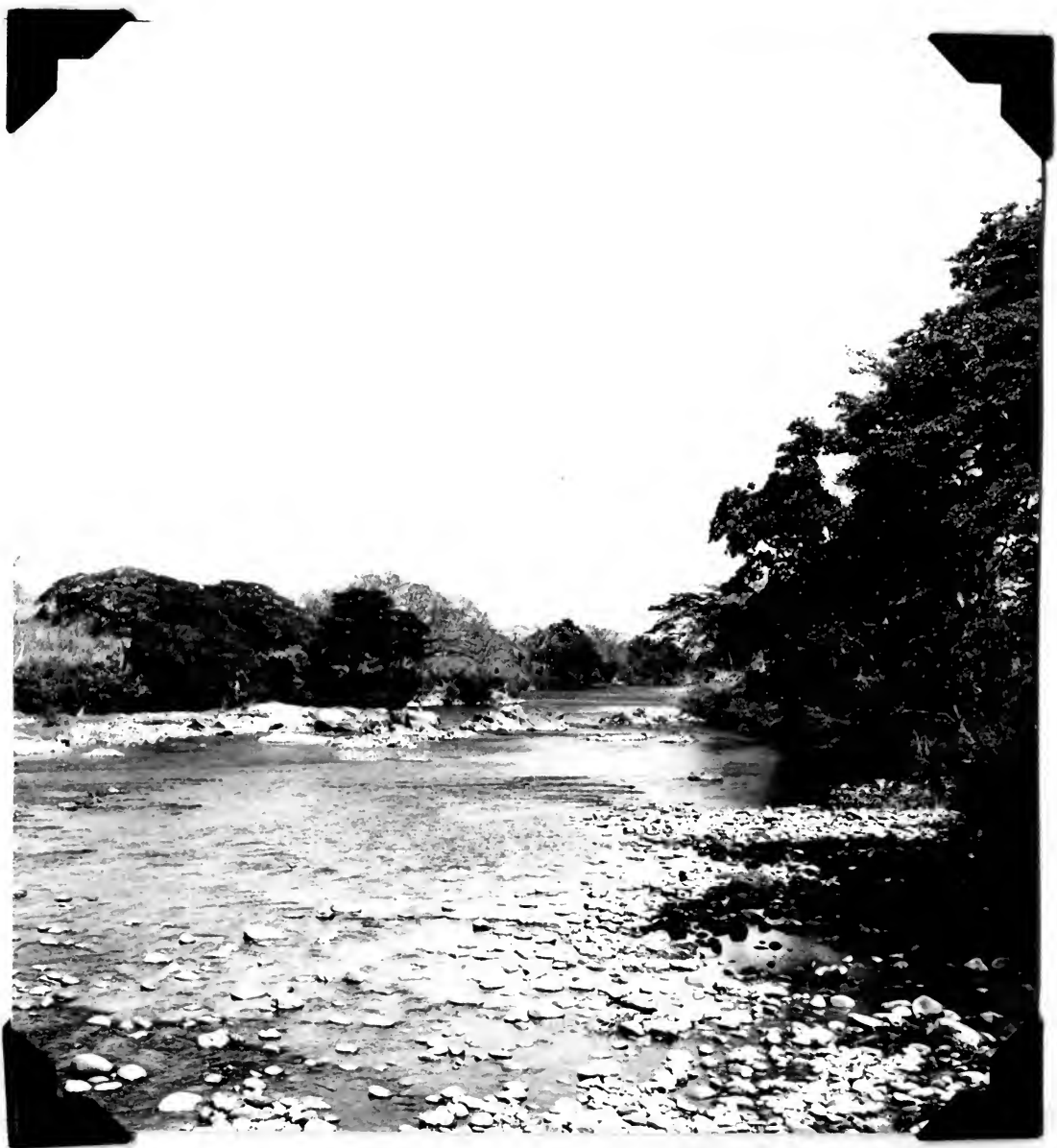
8462. The Río Grande below
El Potrero, Coclé.
March 8, 1962



8463. The Río Grande south of
El Potrero, Coclé
March 8, 1962



8464. The Río Grande south of
El Potrero, Coclé.
March 8, 1962.



8465. Río Grande south of El
Potrero, Coclé.
March 8, 1962.



8466. Street in El Potrero, Coclé.
March 8, 1962.

8467. Bocas at the town pump
that is our water supply. El
Potrero, Coclé.
March 8, 1962.





8468. Church in Río Grande, Coclé.
March 9, 1962.

8469. Where the savanna joins
the hills near Río Grande, Coclé.
March 9, 1962.





8470. Pico Guacamayo from above
Río Grande, Coclé.
March 9, 1962.

8471. Savanna near the settle-
ment of Coclé, Coclé, looking
toward the hills.
March 10, 1962.



8472. View of the savanna near
El Coco, Coclé.
March 10, 1962.



8473. Savanna near El Coco,
Coclé, in range of Sicalis l.
eisenmanni.
March 10, 1962.





8474. Savanna near El Coco, below
Penonomé, Coclé.
March 10, 1962.



8475. A marsh rush for thatch.
Near El Coco, Coclé.
March 10, 1962.



8476. Río Coclé from the highway.
Province of Coclé.
March 10, 1962.

8477. Río Coclé from the Inter-
national Highway, Province of
Coclé.
March 10, 1962.





8478. Our house in El Potrero,
Coclé.
March 10, 1962.

8479. Salt pans near Puerto
Aguadulce, Coclé.
March 13, 1962.



8480. Landing beach on Isla
Iguana, Los Santos.
March 17, 1962.



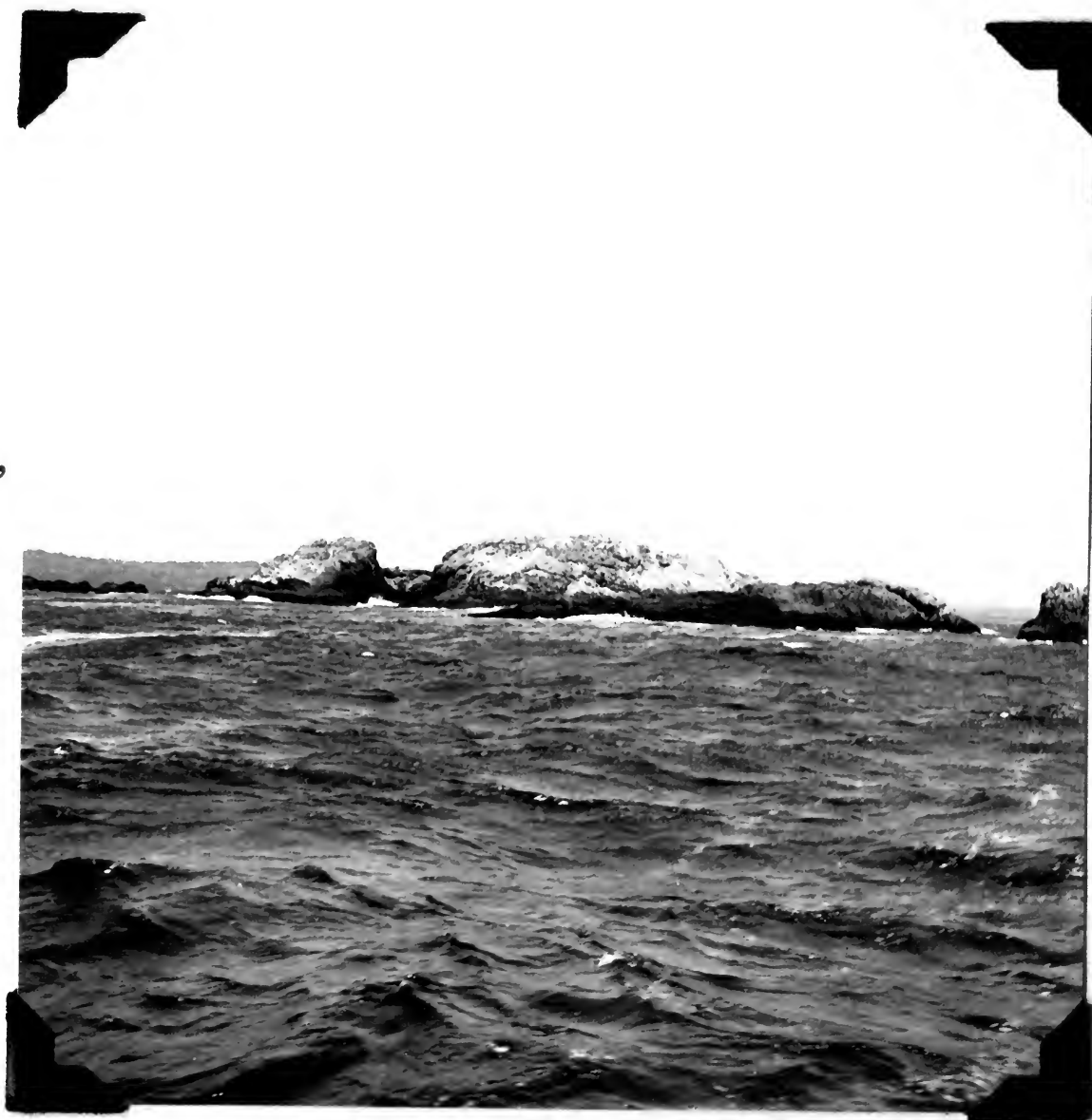
8481. Frigate-birds above
their nesting colony. Isla
Iguana, Los Santos.
March 17, 1962.





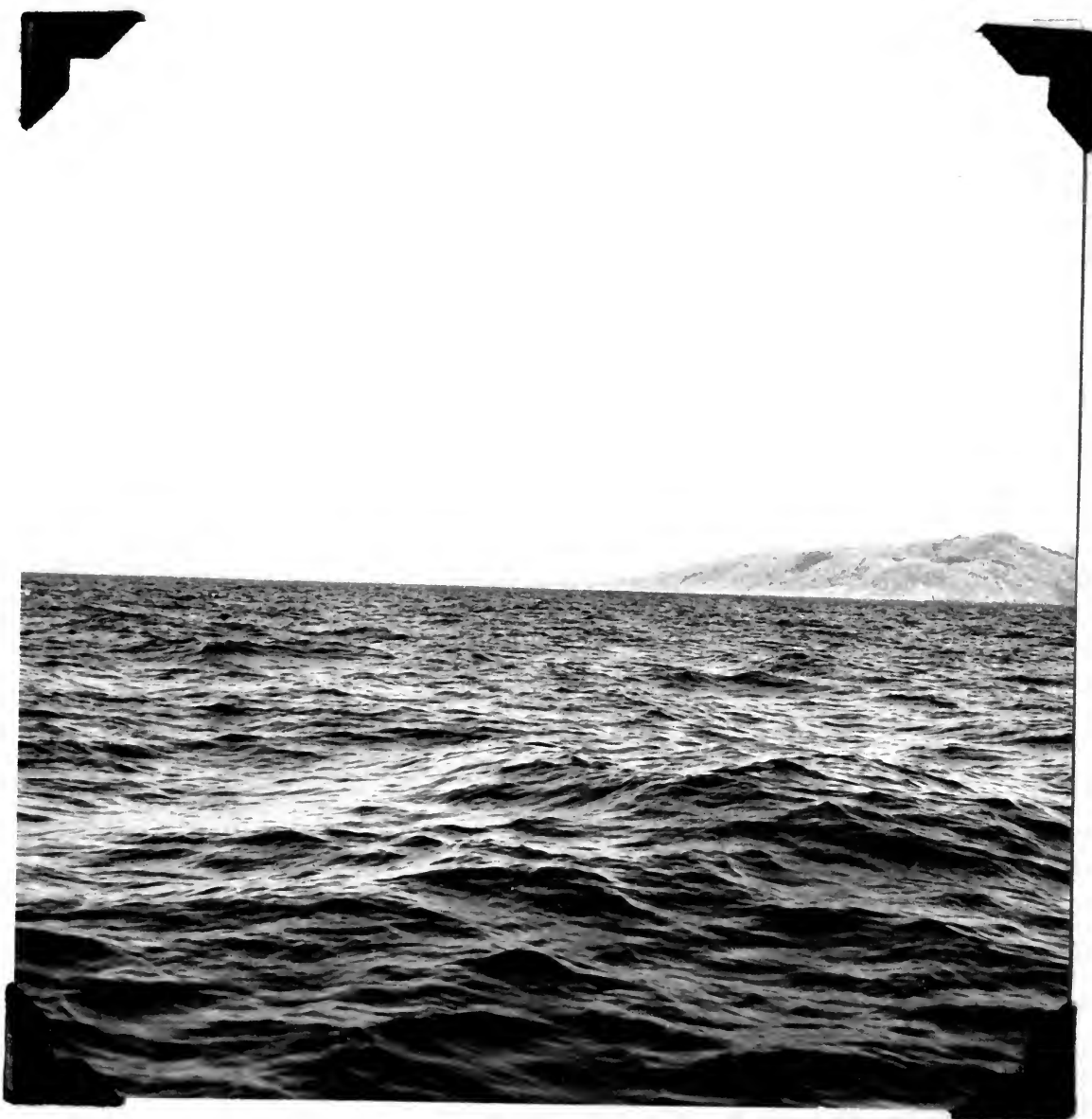
8482. Frigate-birds above their
nesting colony. Isla Iguana, Los
Santos.
March 17, 1962.

8483. Islas Frailes del Norte,
off Punta Mala, Los Santos.
March 18, 1962.



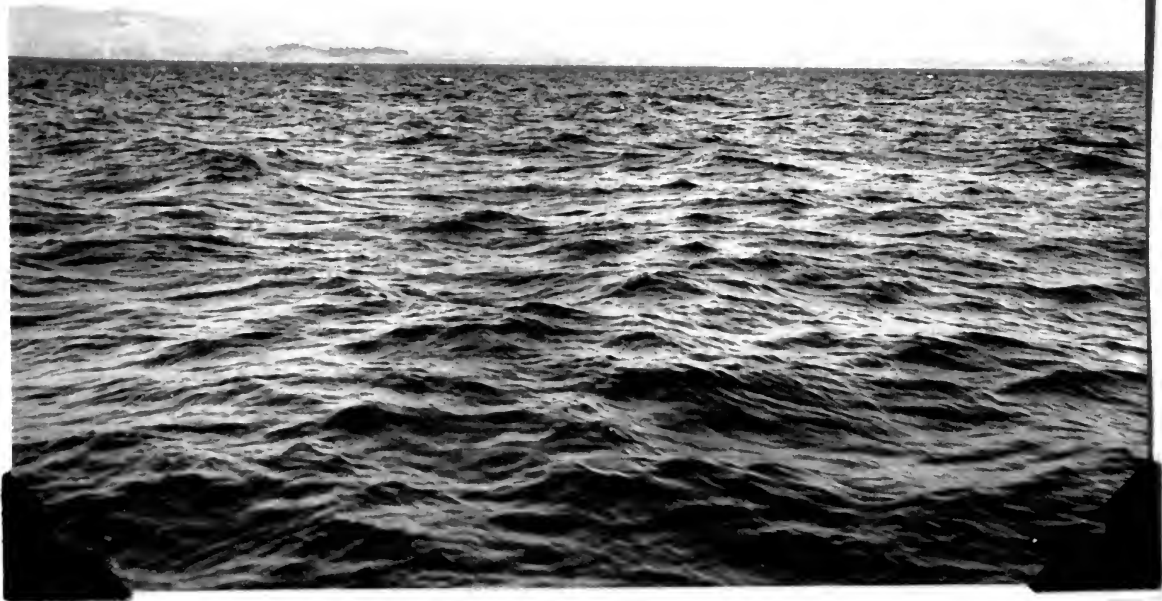


8484. Looking toward Cerro Hoya,
from off Ensenada Venado, Los
Santos.
March 19, 1962.



8485. Looking toward Cerro
Hoya, from off Punta Guánico,
Los Santos.
March 19, 1962.

8486. The valley of the Río
Guánico, Los Santos, from the sea.
March 19, 1962.



8487. The mountains from off
Morro de Puercos, Los Santos.
March 19, 1962.



8488. Looking inland from the
sea, west of Morro de Puercos, Los
Santos.
March 19, 1962.



8489. Interior mountains from
the sea, west of Morro de Puercos,
Los Santos.
March 19, 1962.



8490. The mountains from the sea
between Morro de Puercos and Punta
Mariato.
March 19, 1962.



8491. Shoreline and mountains
east of Punta Mariato, Veraguas.
March 19, 1962.





8492. Bay immediately east of
Punta Naranjas, Veraguas.
March 19, 1962.

8493. Eastern half of Isla
Cebaco, Veraguas.
March 20, 1962.



8494. Western half of Isla Cebaco,
Veraguas.
March 20, 1962.



8495. Western end of Isla
Cebaco, Veraguas.
March 20, 1962.



8496. Isla Gobernadora at left,
west end of Isla Cebaco at right.
March 20, 1962.



8497. Isla Canal de Afuera,
from the southeast.
March 20, 1962.





8498. Isla Canal de Afuera, from
the southeast.
March 20, 1962.

8499. Looking toward Bahía Honda,
on the mainland of Veraguas, from
near Isla Canal de Afuera.
March 20, 1962.





8500. Isla Afuerita at left,
Canal de Afuera at right. Smoke
is from candelas back of Bahía
Honda on the mainland.
March 21, 1962.

8501. Small beach on northern
side of Isla Canal de Afuera.
March 21, 1962.





8502. Landing beach on Isla
Afuerita.
March 21, 1962.



8503. Northwestern end of
Isla Canal de Afuera.
March 21, 1962.



8504. Northwestern end of Isla
Canal de Afuera.
March 21, 1962.

8505. Isla Afuerita from the
northwest.
March 22, 1962.





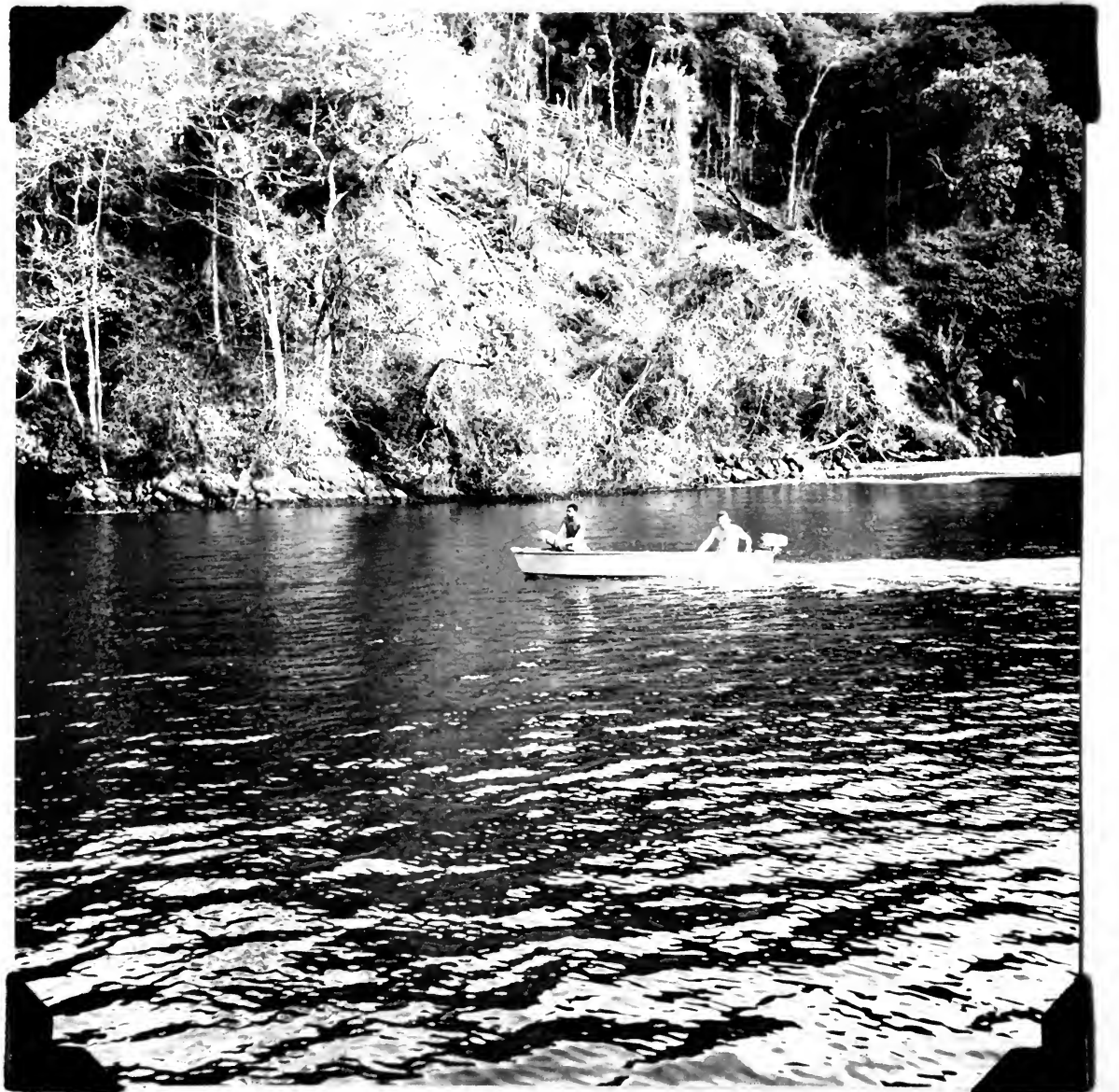
8506. Isla Brincanco in the
Islas Contreras.
March 23, 1962.



8507. Northern side of Isla
Brincanco.
March 22, 1962.



8508. Northeastern end of
Isla Brincanco.
March 23, 1962.



8509. Bocas and Bee Bailey,
Isla Brincanco.
March 23, 1962.



8510. Bee Bailey and Bocas
Hinds, Isla Brincanco.
March 23, 1962.

8511. Isla Uva in the Islas
Contreras, from the southwest.
March 25, 1962.





8512. Isla Ranchería with Isla
Coiba in the background.
March 25, 1962.



8513. Isla Canal de Afuera
and Isla Afuerita (at right)
from the northwest.
March 25, 1962.



8514. Isla Ranchería with Isla
Coibita at right; Isla Coiba
behind.
March 25, 1962.



8515. Isla Canal de Afuera
(left) and Isla Afuerita (right)
from the northwest.
March 25, 1962.



8516. Small beach on the
northern side of Isla Canal de
Afuera.
March 25, 1962.



8517. Rudolf (Bocas) Hinds
with coconuts. Isla Canal de
Afuera.
March 25, 1962.



8518. The tanker Gulfoba, of the Gulf Oil Company, under Capt. Robert Warner, off Bahía Honda, Veraguas. March 25, 1962.



8519. Small beach at north-eastern end of Isla Canal de Afuera. March 25, 1962.



8520. Eastern end of Isla Canal
de Afuera.
March 26, 1962.

8521. Eastern side of Isla
Canal de Afuera.
March 26, 1962.



8522. Isla Gobernadora; Isla
Cebaco at right.
March 26, 1962.



8523. Isla Gobernadora from
the southwest.
March 26, 1962.





8524. Isla Gobernadora from
the southwest; Isla Cebaco at
right.
March 26, 1962.



8525. The Barbara II flies
Explorers Club flag no. 117.
Caleta Cayman, Isla Cebaco.
March 28, 1962.



8526. The Barbara II, with
Explorers Club flag no. 117.
Caleta Cayman, Isla Cebaco.
March 28, 1962.

8527. Looking out from the bay
Caleta Cayman on the western end
of Isla Cebaco. Surf breaking
on the Pilar de Sal at extreme
left.
March 28, 1962.

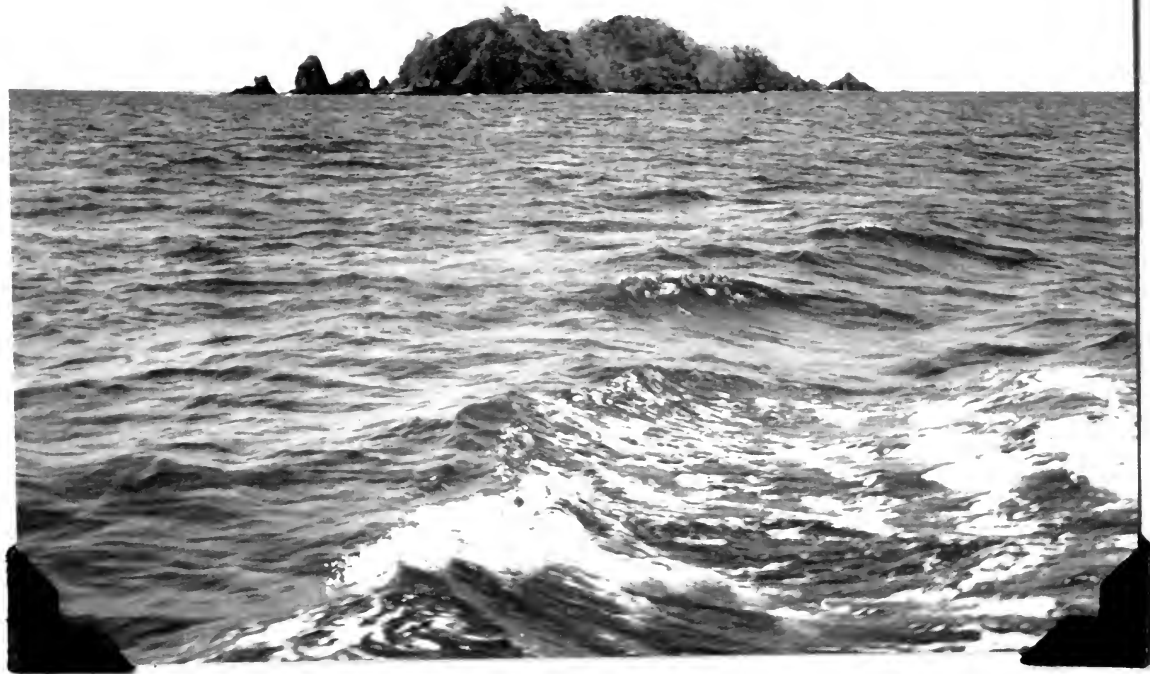




8528. Shore of Caleta Cayman,
Isla Cebaco.
March 28, 1962.



8529. Isla Naranjas off Punta
Naranjas, Veraguas.
March 29, 1962.



8530. Isla Naranjas, off Punta
Naranjas.
March 28, 1962.

8531. Isla Boná, from the south;
Isla Otoque behind at left.
March 31, 1962.





8532. Isla Boná.
April 1, 1962.



8533. Small farms on the slopes
of Isla Boná.
April 1, 1962.



8534. Northern shore of bay.
Isla Boná.
April 1, 1962.



8535. Northern shore of bay
on Isla Boná.
April 1, 1962.



8536. Shore of Isla Boná.
Trees filled with frigate-birds.
April 1, 1962.

8537. Western end of Isla
Otoque, from the south.
April 1, 1962.





8538. Eastern end of Isla
Otoque, from the south.
April 1, 1962.



8539. Isla Estiva.
April 1, 1962.



8540. Village of Oriente on
Isla Otoque.
April 1, 1962.

8541. Isla Chame, south
of Isla Taboga.
April 1, 1962.

