



1337. Procellaria aequinoctialis  
over wake of steamer. At sea off  
southern Brazil.  
June 19, 1920.



B.S. 21929. Procellaria  
aequinoctialis over wake of  
steamer. At sea, off southern  
Brazil.  
June 19, 1920.



(No Negative). P.C. Wilson,  
W. W. Davis, D. R. Mojo. S.S. Callao.  
June 19, 1920.

(No Negative). Davis, Wilson and  
Mojo. S.S. Callao.  
June, 1920.



B.S. 21932. Waterfront.  
Montevideo, Uruguay.  
June 20, 1920.

B.S. 21932-1/2. Low  
fortified hill from which  
Montevideo received its name.  
Montevideo, Uruguay.  
June 20, 1920.





1338. Street near park in  
Montevideo, Uruguay.  
June 20, 1920.



1339. Park in Montevideo,  
Uruguay.  
June 20, 1920.



1340. Park in Montevideo,  
Uruguay.  
June 20, 1920.

1341. A rose garden in  
Montevideo, Uruguay.  
June 20, 1920.



1342. Sleeping car - Coche  
Dormitorio - Ferrocarril  
Santa Fe.  
July 5, 1920.

B.S. 21933. Lagoon  
covered at shore with float-  
ing vegetation. La Sabana,  
Chaco, Argentina.  
July 5, 1920.





1343. Quebracho wood for use  
as fuel. La Sabana, Chaco,  
Argentina.  
July 5, 1920.



1344. Charadrai, a  
typical town in the newly  
settled section of the Chaco,  
Argentina.  
July 5, 1920.



B.S. 21936. Typical view in  
deforested section of the Chaco.  
Southern Chaco, Argentina.  
July 5, 1920.

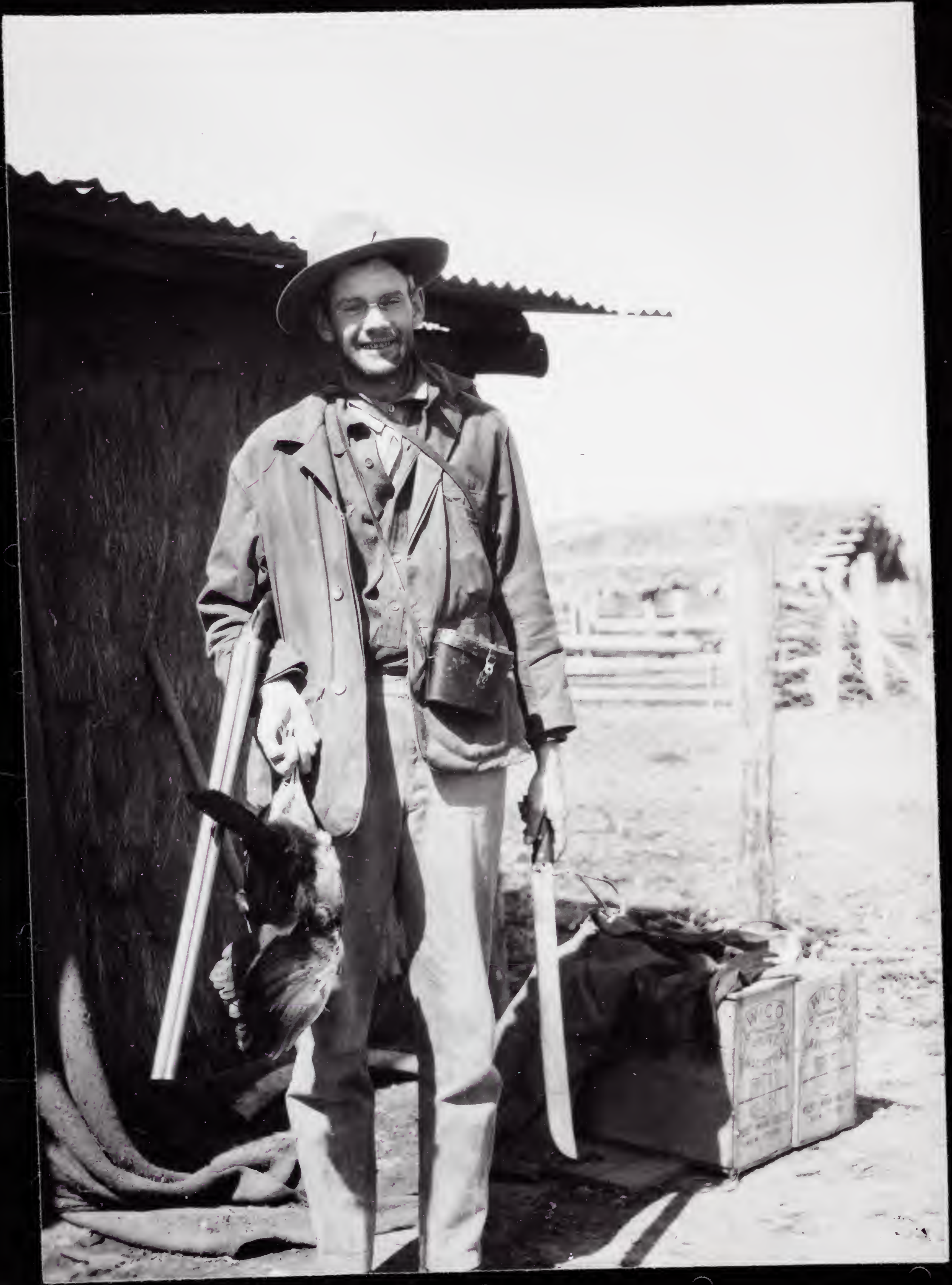
B.S. 21937. Sawmill.  
Southern Chaco, Argentina.  
July 5, 1920.



1345. Plaza in Resistencia, Chaco  
Argentina.  
July 6, 1920.

B.S. 21941. Partly dry  
lagoon bordered by saw grass  
with somewhat open margins.  
Resistencia, Chaco, Argentina.  
July 8, 1920.







B.S. 21942. Lagoon with  
vegetation covering entire shore-  
line. Resistencia, Chaco,  
Argentina.  
July 8, 1920.

B.S. 21943. Termite nest. Resistencia,  
Chaco, Argentina.  
July 8, 1920.



B.S. 21944. The Río Negro, a  
typical sluggish stream, near the  
Río Paraguay. Resistencia, Chaco  
Argentina.  
July 8, 1920.



1346. A peón rancho near Resistencia, Chaco. Walls of mud plastered on a frame of branches.

July 9, 1920.



1347. My quarters opening on the patio in the Hotel Europa, Resistencia, Chaco, Argentina.

July 9, 1920.

1348. Sr. Enrique Lynch Arribálzaga, Resistencia, Chaco, Argentina.

July 11, 1920.





1349. Sr. Enrique Lynch Arribálzaga,  
Resistencia, Chaco, Argentina.  
July 11, 1920.



1350. The train from  
Resistencia to Barranqueros  
on the Río Paraná. Resistencia,  
Chaco, Argentina.  
July 11, 1920.



B.S. 21951. Small opossum.  
Las Palmas, Chaco, Argentina.  
July 13, 1920.

B.S. 21953. Scrub forest.  
Las Palmas, Chaco, Argentina.  
July 13, 1920.



B.S. 21954. Large ant's nest.  
Las Palmas, Chaco, Argentina.  
July 13, 1920.

B.S. 21957. Shining cowbirds  
Molothrus bonariensis warming  
their feet on a cold winter's  
morning. Las Palmas, Chaco,  
Argentina.

July 13, 1920.





1351. Rancho of partly  
civilized Toba Indian, Las Palmas,  
Chaco, Argentina.  
July 13, 1920.



1352. Peones at a wayside  
boliche. Las Palmas, Chaco,  
Argentina.  
July 19, 1920.



B.S. 21958. The Riacho Quia  
(Dirty Creek) floating vegetation  
in distance. Las Palmas, Chaco  
Argentina.  
July 19, 1920.

1352a  
~~B.S. 21960.~~ Ferry across  
Riacho Quia. La Palmas,  
Chaco, Argentina.  
July 19, 1920.



B.S. 21961. A wayside boliche  
(combination store and drinking  
place). Las Palmas, Chaco,  
Argentina.  
July 19, 1920.

B.S. 21963. Open savanna  
in Chaco. Las Palmas, Chaco  
Argentina.  
July 19, 1920.





B.S. 21965. Cacti and scrubby forest. Las Palmas, Chaco, Argentina.  
July 19, 1920.



B.S. 21967. Border of grove on open savanna. Las Palmas, Chaco, Argentina.  
July 19, 1920.



B.S. 21968. A grass-thatched hut built of mud plastered on a frame of wood. Las Palmas, Chaco Argentina.  
July 19, 1920.

1353. House with roof of  
split palm trunks. Las Palmas,  
Chaco, Argentina.  
July 19, 1920.



1354. My quarters in the  
fonda at Las Palmas, Chaco  
Argentina.  
July 19, 1920.



1355. Toba Indians on a  
fishing expedition. Las Palmas,  
Chaco, Argentina.  
July 23, 1920.



1356. Toba Indians on a fishing expedition. Las Palmas, Chaco, Argentina.  
July 23, 1920.



1357. A Toba Indian family near Las Palmas, Chaco, Argentina.  
July 23, 1920.



B.S. 21973. Lagoon. Apparently solid foreground in reality is vegetation resting on mud and water 6 inches to 2 feet deep. Las Palmas, Chaco, Argentina.  
July 23, 1920.



B.S. 21974. A Toba Indian  
Family. Las Palmas, Chaco,  
Argentina.  
July 23, 1920.



B.S. 21976. Hut of Toba  
Indians. Las Palmas, Chaco,  
Argentina.  
July 23, 1920.

1358. Toba Indian hut near  
Las Palmas, Chaco, Argentina.  
July 23, 1920.





1359. A speaker exhorting peones on strike at the sugar mill and quebracho factory. Las Palmas, Chaco, Argentina.  
July 23, 1920.



1360. The fonda at Las Palmas, Chaco, Argentina.  
July 29, 1920.



1361. Sugar central and quebracho factory. Las Palmas, Chaco, Argentina.  
July 29, 1920.

1362. Guards at the  
factory. Las Palmas, Chaco,  
Argentina.  
July 29, 1920.



1363. Guards at the factory  
during a strike. Las Palmas,  
Chaco, Argentina.  
July 29, 1920.

1364. An elderly Toba takes  
his yerba mate. Las Palmas,  
Chaco, Argentina.  
July 29, 1920.





B.S. 21985. Orange market.  
Las Palmas, Chaco, Argentina.  
July 29, 1920.



B.S. 21987. Large ant hill.  
Las Palmas, Chaco, Argentina.  
July 30, 1920.



1365. An old river channel  
(an ox-bow loop) bordered by  
forest. Haunt of Jacanas. Las  
Palmas, Chaco, Argentina.  
July 30, 1920.

B.S. 21989. Bordering fringe  
of saw grass on an estero. Las  
Palmas, Chaco, Argentina.  
July 30, 1920.



B.S. 21990. Vegetation in  
an estero. Las Palmas, Chaco,  
Argentina.  
July 30, 1920.

B.S. 21991. A termite hill, opened by  
flickers. Las Palmas, Chaco, Argentina.  
July 30, 1920.





(No Negative). Crossing a  
Riacho. Las Palmas, Chaco,  
Argentina.  
July 20, 1920.



B.S. 21992. Ferry across  
deep riacho. Las Palmas, Chaco,  
Argentina.  
July 30, 1920.



B.S. 21993. A flycatcher  
Machetornis rixosa perched on a  
cow. Las Palmas, Chaco, Argentina.  
August 1, 1920.

B.S. 21994. Village of Toba  
Indians. Las Palmas, Chaco,  
Argentina.  
August 1, 1920.



B.S. 21997. Toba village.  
Las Palmas, Chaco, Argentina.  
August 1, 1920.

1366. A group of Toba Indians  
with their portable huts. Las  
Palmas, Chaco, Argentina.  
August 1, 1920.





1367. Temporary camp of Toba  
Indians. Las Palmas, Chaco,  
Argentina.  
August 1, 1920.



B.S. 21998. The Río Paraguay.  
Puerto Las Palmas, Chaco,  
Argentina.  
August 2, 1920.



B.S. 22000. Oranges from Paraguay.  
Puerto Las Palmas, Chaco, Argentina.  
August 2, 1920.



B.S. 22001. Río Paraguay.  
Puerto Las Palmas, Chaco,  
Argentina.  
August 2, 1920.



1368. Passengers crossing in  
small boats from Paraguay at Puerto  
Las Palmas, Chaco on the Paraná  
River.  
August 2, 1920.

B.S. 22002. Police boat  
carrying passengers and mail for  
Formosa. Puerto Las Palmas,  
Chaco, Argentina.  
August 2, 1920.





B.S. 22003. Mouth of Río de Oro  
on Río Paraguay below Puerto Bermejo,  
Argentina.  
August 2, 1920.



B.S. 22005. Río Paraguay  
near Humaitá, Paraguay. Argentina.  
August 2, 1920.



1369. The Formosa Hotel.  
Formosa, Formosa, Argentina.  
August 4, 1920.

1370. On the avenida de Majo,  
Formosa, Formosa, Argentina.  
August 4, 1920.



1371. On the avenida de Mayo,  
Formosa, Formosa, Argentina.  
August 4, 1920.

B.S. 22006. Residence and  
offices of Governor of Formosa.  
Formosa, Formosa, Argentina.  
August 4, 1920.





B.S. 22008. Río Paraguay with town of Alberdi, Paraguay on opposite shore. Formosa, Formosa, Argentina. August 4, 1920.



B.S. 22009. Kilómeter 182, or Fontana, Formosa, Argentina. August 6, 1920.



B.S. 22010. Palo Borracho or Sam-o-oo at left, Quebracho at right. Border of forest in Chaco. Riacho Pilaga, Formosa, Argentina. August 8, 1920.

B.S. 22011. Typical view of  
Chaco, across an open savanna  
toward forest. Riacho Pilaga,  
Formosa, Argentina.  
August 8, 1920.



B.S. 22012. Border of forest.  
Riacho Pilaga, Formosa, Argentina.  
August 8, 1920.

1372. Looking across a  
savanna to the border of forest.  
Riacho Pilaga, Kilómetro 182,  
Formosa, Argentina.  
August 8, 1920.





1373. A distant view of the  
Hacienda Linda Vista, Riacho  
Pilaga, Formosa, Argentina.  
August 8, 1920.



B.S. 22014-1/2. View in  
open Chaco. Riacho Pilaga,  
Formosa, Argentina.  
August 8, 1920.



B.S. 22016. Typical lagoon in  
Chaco with shores clogged by float-  
ing water hyacinth. Riacho Pilaga,  
Formosa, Argentina.  
August 10, 1920.

1374. Don Pedro Upitz and  
his work cattle. Hacienda  
Linda Vista, Riacho Pilaga,  
Formosa, Argentina.  
August 10, 1920.



B.S. 22017. Trail or picada  
through El Monte Inglés; spiny  
plant known as Caraguata in fore-  
ground. Riacho Pilaga, Formosa,  
Argentina.  
August 11, 1920.

1375. Hacienda Linda Vista,  
Riacho Pilaga, Formosa,  
Argentina.  
August 14, 1920.





B.S. 22019. Hacienda Linda Vista.  
Riacho Pilaga, Formosa, Argentina.  
August 14, 1920.

1376. Hacienda Linda Vista,  
Riacho Pilaga, Formosa,  
Argentina.  
August 14, 1920.



1377. Hacienda Linda Vista,  
with Don Pedro Upitz and the  
Señora at right. Lobo in fore-  
ground. Riacho Pilaga, Formosa.  
August 14, 1920.



B.S. 22021. Work quarters at  
Hacienda Linda Vista. Riacho  
Pilaga, Formosa, Argentina.  
August 14, 1920.



B.S. 22022. Alkaline flats  
bordering stream known as Riacho  
Pilaga. In summer this stream runs  
full. Riacho Pilaga, Formosa,  
Argentina.  
August 14, 1920.

B.S. 22023. The Riacho  
Pilaga at low water stage.  
Riacho Pilaga, Formosa, Argentina.  
August 14, 1920.







1378. Hauling the cachiveo made from the trunk of a palo borracho to the lagoon. Riacho Pilaga, Formosa, Argentina. August 14, 1920.

B.S. 22025. A. Wetmore, Riacho Pilaga, Formosa, Argentina. August 14, 1920.



B.S. 22026. Border of lagoon in Chaco, grown with rushes. Floating masses of water hyacinth in distance. Riacho Pilaga, Formosa, Argentina. August 16, 1920.



B.S. 22029. Work quarters of  
A. Wetmore at Hacienda Linda  
Vista. Riacho Pilagá, Formosa,  
Argentina.

August 16, 1920.



B.S. 22031. Crude boat called  
cachiveo at border of lagoon.  
Riacho Pilaga, Formosa, Argentina.  
August 17, 1920.

1379. My cachiveo at the lagoon. Made  
by Don Pedro Upitz in 4 hours work. Riacho  
Pilaga, Formosa, Argentina.  
August 17, 1920.





1380. Riacho Inglés, near the  
Hacienda Linda Vista, Formosa,  
Argentina.  
August 18, 1920.

1381. The Riacho Inglés, with  
alkaline deposits on shore, as  
seen in the dry season. Riacho  
Pilaga, Formosa, Argentina.  
August 18, 1920.



B.S. 22032. Alkaline bed of  
Riacho Inglés when water is low in  
winter. Riacho Pilaga, Formosa,  
Argentina.  
August 18, 1920.

B.S. 22034. Small opening,  
marshy in character, in forest  
known as El Monte Inglés.  
Riacho Pilaga, Formosa, Argentina.  
August 18, 1920.



B.S. 22036. Indians trading at  
Hacienda Linda Vista. All purchases  
made through an outside window to  
prevent robbery. Riacho Pilaga,  
Formosa, Argentina.  
August 18, 1920.

1382. Don Pedro and his  
partner Don Juan examine a  
Cleveland tractor and disk plow  
that they have just purchased.  
Hacienda Linda Vista, Riacho  
Pilaga, Formosa, Argentina.  
August 19, 1920.





B.S. 22038. Nest of Leñatero Anumbius anumbi  
in top of railroad semaphore. Kilómeter 182,  
Formosa, Argentina.  
August 21, 1920.



B.S. 22039. Ant hills in  
marshy ground. Kilómeter 100,  
Formosa, Argentina.  
August 21, 1920.



B.S. 22041. View in one of the  
palm grown marshes known as a palmar.  
Formosa, Formosa, Argentina.  
August 23, 1920.



S.I. 36513E  
~~B.S. 22042.~~ View in one of the  
palm grown swamps known as a  
palmar. Formosa, Formosa,  
Argentina.  
August 23, 1920.



B.S. 22043. Sluggish stream  
running through a palm grown  
swamp. Formosa, Formosa, Argentina.  
August 23, 1920.

B.S. 22044. A native bird  
trap set for seed-eaters.  
Formosa, Formosa, Argentina.  
August 24, 1920.





B.S. 22046. Near view of bird trap to show arrangement of triggers. Formosa, Formosa, Argentina. August 24, 1920.



1383. Near view of bird trap to show arrangement of set. Formosa, Formosa, Argentina. August 24, 1920.



1384. Chicken vendors. Formosa, Formosa, Argentina. August 26, 1920.

B.S. 22048. View of town from  
Río Paraguay. Formosa, Formosa,  
Argentina.  
August 26, 1920.



1385. A view in Alberdi,  
Paraguay.  
August 26, 1920.

1386. The foreground con-  
sists of aquatic vegetation con-  
cealing entirely the water of a  
lagoon. Alberdi, Paraguay.  
August 26, 1920.





1387. A street in Alberdi,  
Paraguay, at high noon.  
August 26, 1920.



B.S. 22049. Steamship  
office, indicated by flag.  
Alberdi, Paraguay.  
August 26, 1920.



B.S. 22050. A rambling street.  
Alberdi, Paraguay.  
August 26, 1920.

B.S. 22052. Arrival of  
steamer for Asunción. Alberdi,  
Paraguay.  
August 26, 1920.



B.S. 22055. Mouth of Río  
Pilcomayo. Paraguay.  
August 27, 1920.

1388. The Río Paraguay at  
Antioquera, Paraguay.  
August 29, 1920.





B.S. 22056. Hut built of palm  
trunks on bank of Río Paraguay.  
Antioquera, Paraguay.  
August 29, 1920.



B.S. 22057. Water front on Río  
Paraguay, Villa Concepción,  
Paraguay.  
August 30, 1920.



B.S. 22058. Flooded border of  
Río Paraguay. Puerto Pinasco,  
Paraguay.  
September 3, 1920.

B.S. 22059. Cerro Lorito  
on eastern bank of Río Paraguay  
opposite Puerto Pinasco, Paraguay.  
September 3, 1920.



B.S. 22061. Bank of Río Paraguay  
showing condition of high water with  
no available shore for sandpipers.  
Puerto Pinasco, Paraguay.  
September 3, 1920.

1389. Passenger coach on  
the ranch railroad running into  
the interior from the Río  
Paraguay at Puerto Pinasco,  
Paraguay.  
September 4, 1920.





1390. My horse Baldy, with  
the saddle loaded with birds.  
Kilómetro 80, west of Puerto  
Pinasco, Paraguay.  
September 10, 1920.



B.S. 22064. Deserted Indian  
tolda, Laguna Palmas, Kilómetro  
80, Puerto Pinasco, Paraguay.  
September 10, 1920.



B.S. 22066. Laguna Palmas, Kilómetro  
80, Puerto Pinasco, Paraguay.  
September 10, 1920.



B.S. 22067. View of  
Laguna Palmas, Kilómetro 80,  
Puerto Pinasco, Paraguay.  
September 10, 1920.



B.S. 22068. View in grove  
of palms. Kilómetro 80, Puerto  
Pinasco, Paraguay.  
September 10, 1920.

B.S. 22071. Angueté  
Indians gathering offal from  
a butchered cow. Kilómetro 80.  
Puerto Pinasco, Paraguay.  
September 14, 1920.





B.S. 22072. Ranch house at  
Kilómetro 80. Puerto Pinasco,  
Paraguay.  
September 14, 1920.



1391. Carl Hettman, at  
Kilómetro 80, west of Puerto  
Pinasco, Paraguay.  
September 14, 1920.



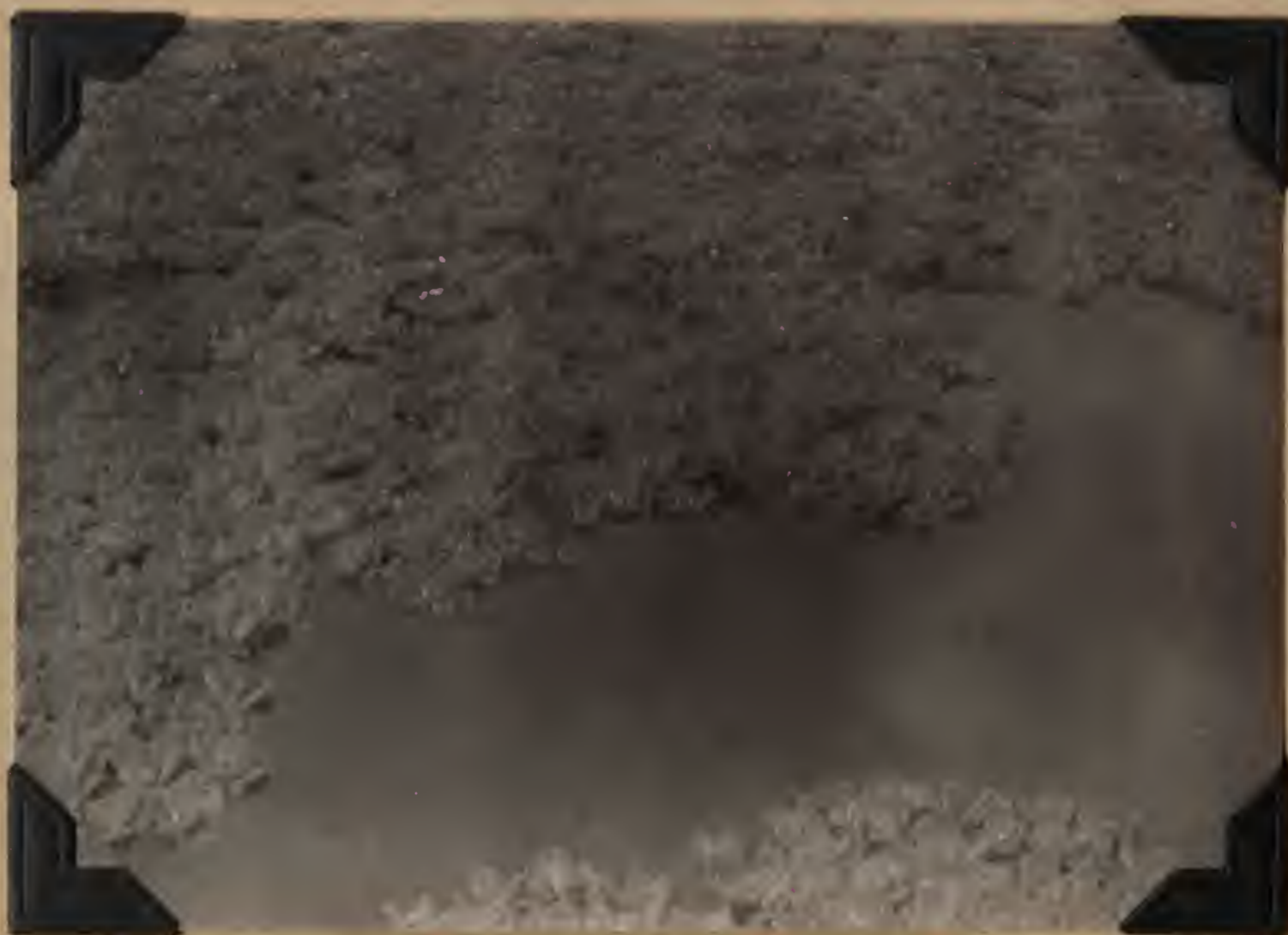
B.S. 22074. Open shore of  
lagoon at Kilómetro 80, suitable  
for shorebirds. Puerto Pinasco,  
Paraguay.  
September 14, 1920.

B.S. 22076. Lagoon filled with  
floating vegetation, Kilómetro 80.  
Puerto Pinasco, Paraguay.  
September 15, 1920.



B.S. 22077. Shore line of  
lagoon filled with floating  
vegetation. Kilómetro 80.  
Puerto Pinasco, Paraguay.  
September 15, 1920.

B.S. 22078. Growth of plant  
known as Llanten de Caballo that covers  
broad surfaces in lagoons. Kilómetro  
80, Puerto Pinasco, Paraguay.  
September 15, 1920.





B.S. 22082. Open savanna and forest in Chaco, Kilómetro 80. Puerto Pinasco, Paraguay. September 16, 1920.



B.S. 22084. Open shore of lagoon frequented by shorebirds. Kilómetro 80. Puerto Pinasco, Paraguay. September 18, 1920.



B.S. 22087. View of ranch houses at Kilómetro 80. Puerto Pinasco, Paraguay. September 18, 1920.

B.S. 22088. Border of Laguna Lata in the Indian country west of Kilómetro 110. Puerto Pinasco, Paraguay.

September 24, 1920.



B.S. 22090. Laguna Perdido west of Laguna Lata. Puerto Pinasco, Paraguay.

September 24, 1920.

B. S. 22095. Dry bed of Riacho Salado at Kilómetro 170. Puerto Pinasco, Paraguay.

September 24, 1920.





1392. A. Wetmore and Paraguayan boy near the Riacho Salado. Kilómetro 170, west of Puerto Pinasco Paraguay. September 24, 1920.



1393. A churrasco - charqui roasted on a stick - at the Riacho Salado. Carl Hettman at left. September 24, 1920.



1394. Rolling open country in Chaco at Kilómetro 170 west of Puerto Pinasco, Paraguay. September 24, 1920.

B.S. 22096. An alkaline pool in the Riacho Salado, Kilómetro 170. Puerto Pinasco, Paraguay.

September 24, 1920.



B.S. 22097. Open country with soil of dry sandy loam near Riacho Salado, Kilómetro 170. Puerto Pinasco, Paraguay.

September 24, 1920.

S.I. 36513F  
~~B.S. 22098.~~ Open country with soil of dry sandy loam near Riacho Salado, Kilómetro 170. Dry grass has been burned by Indians. Puerto Pinasco, Paraguay.

September 24, 1920.





B.S. 22099. Camp at Laguna Wall  
in territory of Lengua Indians,  
Kilómetro 200. Puerto Pinasco,  
Paraguay.

September 24, 1930.



1395. Lengua Indians in  
our camp at Laguna Wall,  
Kilómetro 200, west of Puerto  
Pinasco, Paraguay.

September 24, 1920.



B.S. 22106. Entrance of Indian  
trail in monte, Laguna wall,  
Kilómetro 200. Puerto Pinasco,  
Paraguay.

September 25, 1920.





B.S. 22108. Skinning birds in  
camp at Laguna Wall, Kilómetro 200.  
Puerto Pinasco, Paraguay.  
September 25, 1920.



1396. Carl Hettman talking to  
Lengua Indians in our camp at  
Laguna Wall. Kilómetro 200, west  
of Puerto Pinasco, Paraguay.  
September 25, 1920.

1397. Border of great monte  
of vinal at Laguna Wall. Kiló-  
metro 200, west of Puerto Pinasco,  
Paraguay.  
September 25, 1920.





1398. Vinal monte killed by fire. Laguna Wall, Kilómetro 200 west of Puerto Pinasco, Paraguay. September 25, 1920.



1399. A. Wetmore with Lengua Indians in our camp at Laguna Wall, Kilómetro 200, west of Puerto Pinasco, Paraguay. September 25, 1920.



1400. Laguna Wall at Kilómetro 200, west of Puerto Pinasco, Paraguay. September 25, 1920.

1401. Carl Hettman in camp  
at Laguna Wall, Kilómetro 200,  
west of Puerto Pinasco,  
Paraguay.

September 25, 1920.



1402. Rolling land in the Chaco  
at Kilómetro 200, west of Puerto  
Pinasco, Paraguay.

September 26, 1920.

1403. Open, slightly  
rolling country in the Chaco  
at Kilómetro 200, west of Puerto  
Pinasco, Paraguay.

September 26, 1920.





1404. Open country in the Chaco  
east of Riacho Salado. Kilómetro  
165, west of Puerto Pinasco,  
Paraguay.

September 26, 1920.



B.S. 22112. Open area east  
of Riacho Salado, Kilómetro 165.  
Puerto Pinasco, Paraguay.

September 26, 1920.



1405. View in a palmar,  
Kilómetro 130, west of Puerto  
Pinasco, Paraguay.

September 26, 1920.

B.S. 22115. Tolda of  
Angueté Indians near Laguna  
Lata. Puerto Pinasco, Paraguay.  
September 26, 1920.



1406. Angueté fishermen at  
Kilómetro 110, west of Puerto  
Pinasco, Paraguay.  
September 26, 1920.

1407. Angueté Indians in a  
cachiveo at Kilómetro 110, west  
of Puerto Pinasco, Paraguay.  
September 26, 1920.





1408. Carl Hettman, Frank Branson,  
Fred Hettman, F. Engen, with a  
typical ox-cart. Kilómetro 80,  
Puerto Pinasco, Paraguay.  
September 27, 1920.



B.S. 22118. A week-old rhea, Kilómetro  
80. Puerto Pinasco, Paraguay.  
September 27, 1920.



B.S. 22119. Marsh and canal,  
haunt of Trudeau's Tern, Sterna  
trudeaui. Dolores, Buenos Aires,  
Argentina.  
October 21, 1920.

S.I. 36513 C  
B.S. 22121. Marshes with town,  
of Dolores in background. Dolores,  
Buenos Aires, Argentina.  
October 21, 1920.



B.S. 22125. Nest and eggs of  
Anthus correndera exposed by re-  
moval of concealing herbage.  
Dolores, Buenos Aires, Argentina.  
October 21, 1920.

B.S. 22127. Small channel on  
low ground flooded by rain. A few  
greater and lesser yellowlegs and  
golden plover noted here. Conessa,  
Buenos Aires, Argentina.  
October 22, 1920.







1409. Changing from auto to coach, at Conessa, Buenos Aires, Argentina.

October 22, 1920.

B.S. 22128. A Brake, one means of pampas travel. Conessa, Buenos Aires, Argentina.

October 22, 1920.



✓ B.S. 22129. Tide channels or cangrejales at mouth of Río Ajó at low tide. Black spots are crabs. Good feeding grounds for shorebirds. Lavalle, Buenos Aires, Argentina.

October 25, 1920.

B.S. 22131. Tide channels or cangrejales, mouth of Río Ajó at low tide. Black spots are crabs. Good feeding grounds for shore-birds. Lavalle, Buenos Aires, Argentina.

October 25, 1920.



B.S. 22132. Flats grown with salicornia at mouth of Río Ajó. Lavalle, Buenos Aires, Argentina. October 25, 1920.

B.S. 22137. Cormorants Phalacrocorax v. vigua and gulls, Larus maculipennis at mouth of Río Ajó. Lavalle, Buenos Aires, Argentina.

October 25, 1920.





1410. Near the mouth of the Río  
Ajó, Lavalle, Buenos Aires,  
Argentina.  
October 25, 1920.



1411. Near the mouth of the  
Río Ajó, below Lavalle, Buenos  
Aires, Argentina.  
October 25, 1920.



1412. Fishing station near mouth  
of Río Ajó, below Lavalle, Buenos  
Aires, Argentina.  
October 25, 1920.

B.S. 22138. Shells of  
Ampullaria dropped at base of post  
by everglade kite. Lavalle,  
Buenos Aires, Argentina.  
October 29, 1920.



B.S. 22139. View of marsh or  
cañadon with Estancia Los Ynglésés  
in background. Lavalle, Buenos  
Aires, Argentina.  
October 29, 1920.

1413. Plantation of trees  
on the Estancia Los Ynglésés,  
Lavalle, Buenos Aires, Argentina.  
October 30, 1920.





B.S. 22140. Typical planted grove on eastern pampas. Estancia Los Ynglesés. Lavalle, Buenos Aires, Argentina.  
October 30, 1920.



B.S. 22141. Tala (Celtis tala) trees in monte at Estancia Los Ynglesés. Lavalle, Buenos Aires, Argentina.  
October 30, 1920.



B.S. 22142. Tala Celtis tala, Estancia Los Ynglesés. Lavalle, Buenos Aires, Argentina.  
October 30, 1920.

1414. A tala tree Celtis  
tala. Estancia Los Yngléses,  
Lavalle, Buenos Aires, Argentina.  
October 30, 1920.



1415. Old dunes grown with  
vegetation. Estancia Los Ynglésés,  
Lavalle, Buenos Aires, Argentina.  
October 30, 1920.

B.S. 22145. View of tala woods  
and Estancia Los Ynglésés. Lavalle,  
Buenos Aires, Argentina.  
October 30, 1920.





1416. Site of nest of Chingolo,  
Brachyospiza capensis argentina  
under plant in center. Estancia  
Los Ynglesés, Lavalle, Buenos  
Aires, Argentina.  
October 30, 1920.



B.S. 22147. Nest and eggs of  
Brachyospiza capensis argentina.  
Lavalle, Buenos Aires, Argentina.  
October 30, 1920.



S.I. 36513J  
~~B.S. 22148.~~ View across pampa  
from mirador at Estancia Los Ynglesés.  
Lavalle, Buenos Aires, Argentina.  
October 30, 1920.

B.S. 22149. Estancia Los  
Ynglesés (property of late Mr.  
Ernest Gibson, Ornithologist).  
Lavalle, Buenos Aires, Argentina.  
October 30, 1920.



1417. The main house at Estancia  
Los Ynglesés, former property of  
the ornithologist Ernest Gibson.  
Building for his bird skins and study  
at right. Lavalle, Buenos Aires,  
Argentina.  
October 30, 1920.

1418. At the Estancia Los  
Yngléses, Lavalle, Buenos Aires,  
Argentina.  
October 30, 1920.







1419. The main house at the Estancia Los Ynglesés, Lavallo, Buenos Aires, Argentina.  
October 30, 1920.



1420. At the Estancia Los Ynglesés, Lavallo, Buenos Aires, Argentina.  
October 30, 1920.



B.S. 22153. Sand dunes 15 miles south of Cabo San Antonio. Lavallo, Buenos Aires, Argentina.  
November 7, 1920.

B.S. 22154. Sand dunes 15  
miles south of Cabo San Antonio.  
Lavalle, Buenos Aires, Argentina.  
November 7, 1920.



B.S. 22155. Sand dunes 15 miles  
south of Cabo San Antonio. Lavalle,  
Buenos Aires, Argentina.  
November 7, 1920.

B.S. 22156. Ocean beach 15 mil  
below Cabo San Antonio. Lavalle,  
Buenos Aires, Argentina.  
November 7, 1920.





1421. Ocean beach 15 miles south  
of Cabo San Antonio, east coast of  
Prov. Buenos Aires, Argentina.  
November 7, 1920.



B.S. 22158. Sand dunes 15  
miles south of Cabo San Antonio.  
Lavalle, Buenos Aires, Argentina.  
November 8, 1920.



S.I. 36513 A  
~~B.S. 22159.~~ Sand dunes 15 miles  
south of Cabo San Antonio. Lavalle,  
Buenos Aires, Argentina.  
November 8, 1920.

B.S. 22160. Camp in dunes  
15 miles south of Cabo San Antonio.  
Lavalle, Buenos Aires, Argentina.  
November 8, 1920.



B.S. 22161. Camp in dunes,  
15 miles south of Cabo San Antonio.  
Lavalle, Buenos Aires, Argentina.  
November 8, 1920.

B.S. 22162. Collecting out-  
fit and sulky ready to leave  
camp, 15 miles south of Cabo  
Antonio. Lavalle, Buenos Aires,  
Argentina.  
November 8, 1920.





B.S. 22164. View in marsh or cañadon, Estancia Los Ynglesés. Lavalle, Buenos Aires, Argentina. November 10, 1920.



B.S. 22165. View in marsh or cañadon, Estancia Los Ynglesés. Lavalle, Buenos Aires, Argentina. November 10, 1920.



1422. View of extensive cañadon on Estancia Los Ynglesés, Lavalle, Buenos Aires, Argentina. November 10, 1920.

B.S. 22166. The ovenbird  
or hornero (Furnarius rufus)  
at nest. Estancia Los Ynglesés.  
Lavalle, Buenos Aires, Argentina.  
November 10, 1920.



B.S. 22167. View of monte at  
Estancia Los Ynglesés. Ombú trees  
at left. Lavalle, Buenos Aires,  
Argentina.  
November 10, 1920.

B.S. 22168. Ombú tree. Estancia Los  
Ynglesés. Lavalle, Buenos Aires,  
Argentina.  
November 10, 1920.





1423. B. S. Donaldson, Estancia Los  
Ynglesés, Lavalle, Buenos Aires, Argentina.  
November 10, 1920.



B.S. 22169. Nest of ovenbird  
or hornero (Furnarius rufus) on  
gate that is used daily. Lavalle,  
Buenos Aires, Argentina.  
November 11, 1920.



B.S. 22171. Tidal flats at mouth  
of Río Ajó. Lavalle, Buenos Aires,  
Argentina.  
November 15, 1920.

B.S. 22172. Mud flats exposed  
at low tide at mouth of Río Ajó.  
Lavalle, Buenos Aires, Argentina.  
November 15, 1920.



1424. Mouth of Río Ajó, below  
Lavalle, Buenos Aires, Argentina.  
November 15, 1920.



B.S. 22173. Alkaline flats  
at mouth of Río Ajó. Lavalle,  
Buenos Aires, Argentina.  
November 15, 1920.







B.S. 22174. Catholic church  
typical of those found universally  
in pampa towns. Lavalle, Buenos  
Aires, Argentina.  
November 15, 1920.



B.S. 22176. Changing horses on  
galera between Lavalle, and Buenos  
Aires, Province of Buenos Aires,  
Argentina.  
November 16, 1920.



1425. Travel in galera or stage  
coach between Lavalle and Santo  
Domingo, Prov. Buenos Aires,  
Argentina.  
November 16, 1920.

1426. Travel by galera  
or stage coach between Lavalle  
and Santo Domingo, Prov. Buenos  
Aires, Argentina. Nov. 16, 1920

