



1337. Procellaria aequinoctialis
over wake of steamer. At sea off
southern Brazil.
June 19, 1920.



B.S. 21929. Procellaria
aequinoctialis over wake of
steamer. At sea, off southern
Brazil.
June 19, 1920.



(No Negative). P.C. Wilson,
W. W. Davis, D. R. Mojo. S.S. Callao.
June 19, 1920.

(No Negative). Davis, Wilson and
Mojo. S.S. Callao.
June, 1920.



B.S. 21932. Waterfront.
Montevideo, Uruguay.
June 20, 1920.

B.S. 21932-1/2. Low
fortified hill from which
Montevideo received its name.
Montevideo, Uruguay.
June 20, 1920.





1338. Street near park in
Montevideo, Uruguay.
June 20, 1920.

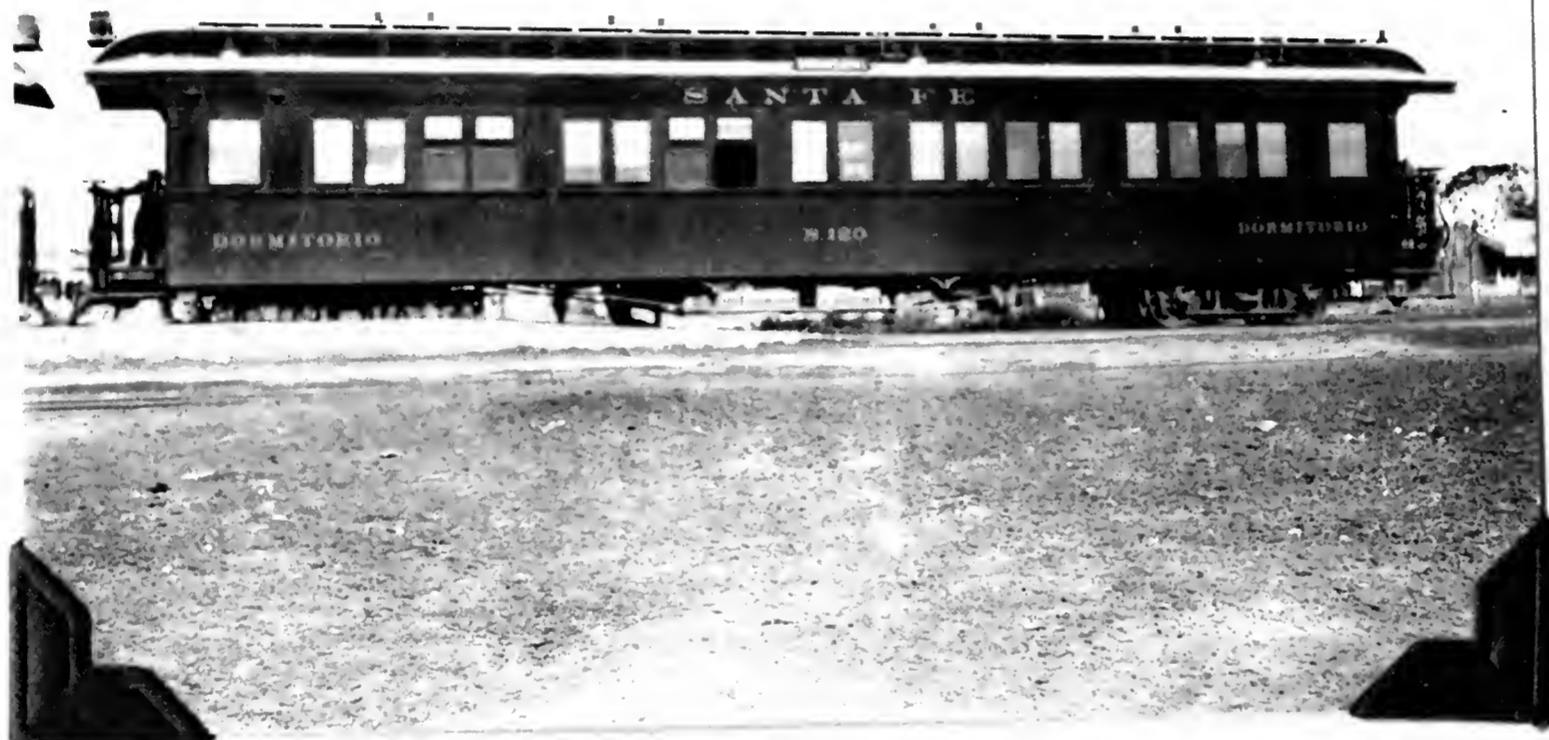
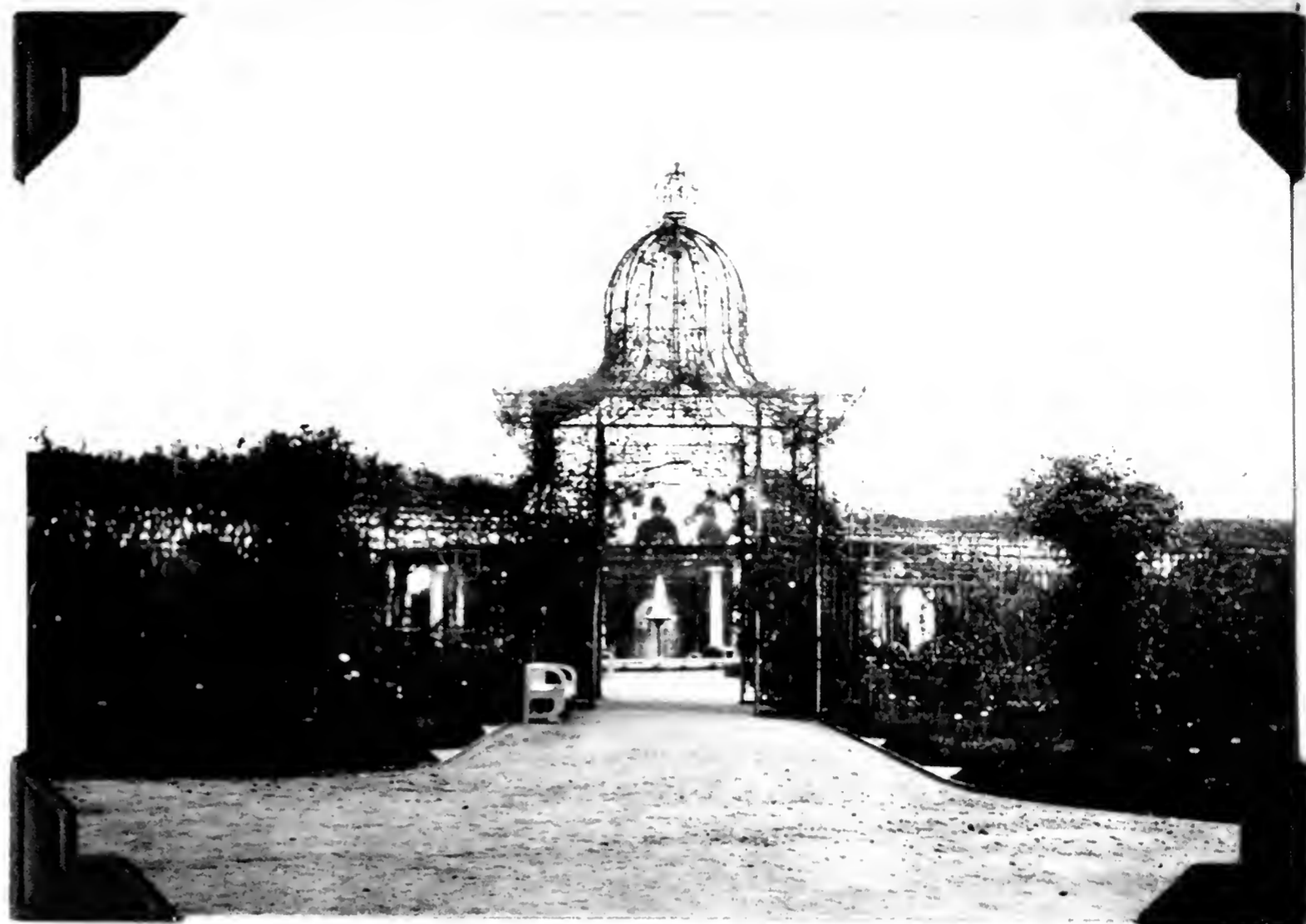


1339. Park in Montevideo,
Uruguay.
June 20, 1920.



1340. Park in Montevideo,
Uruguay.
June 20, 1920.

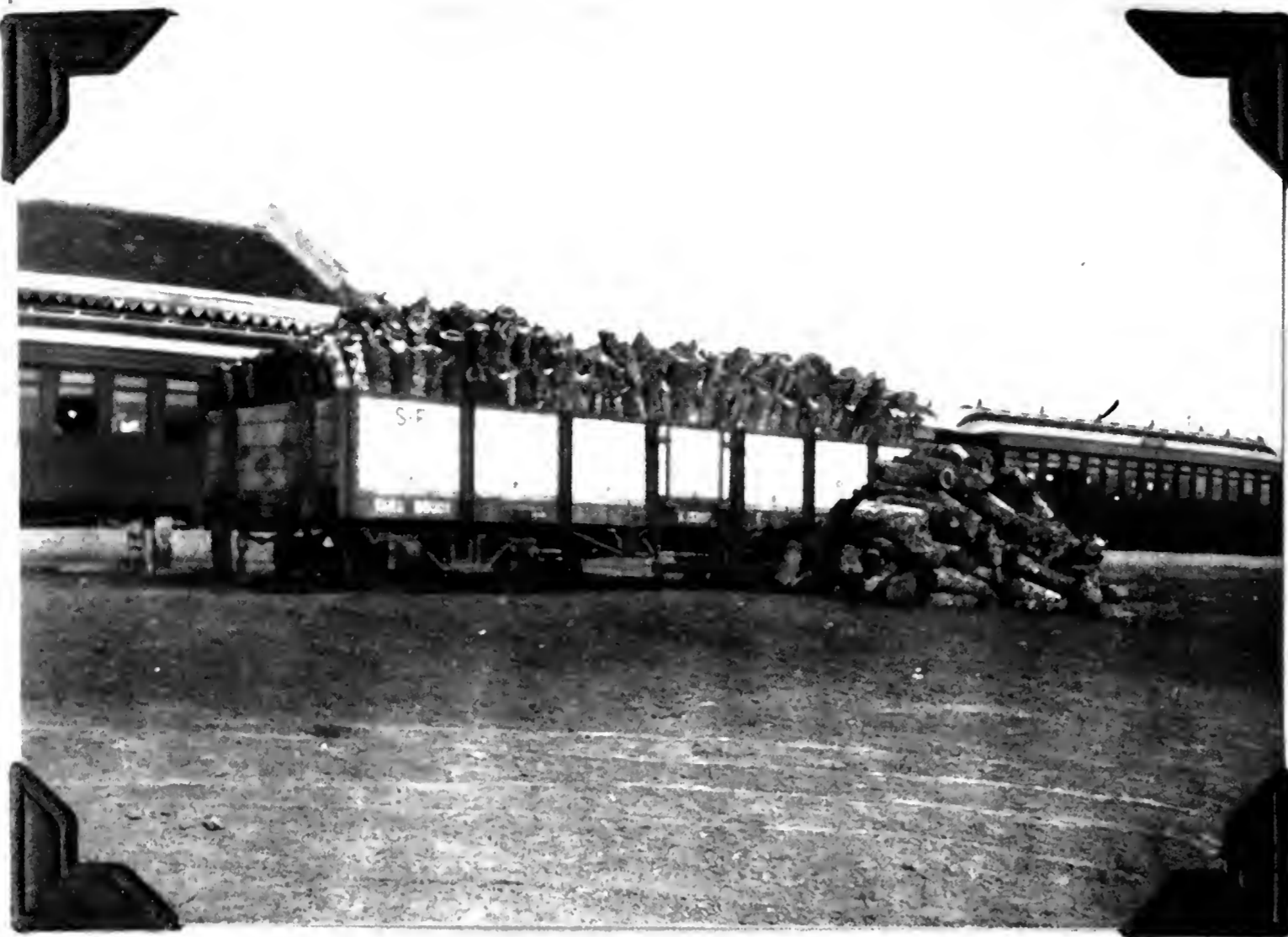
1341. A rose garden in
Montevideo, Uruguay.
June 20, 1920.



1342. Sleeping car - Coche
Dormitorio - Ferrocarril
Santa Fe.
July 5, 1920.

B.S. 21933. Lagoon
covered at shore with float-
ing vegetation. La Sabana,
Chaco, Argentina.
July 5, 1920.





1343. Quebracho wood for use
as fuel. La Sabana, Chaco,
Argentina.
July 5, 1920.

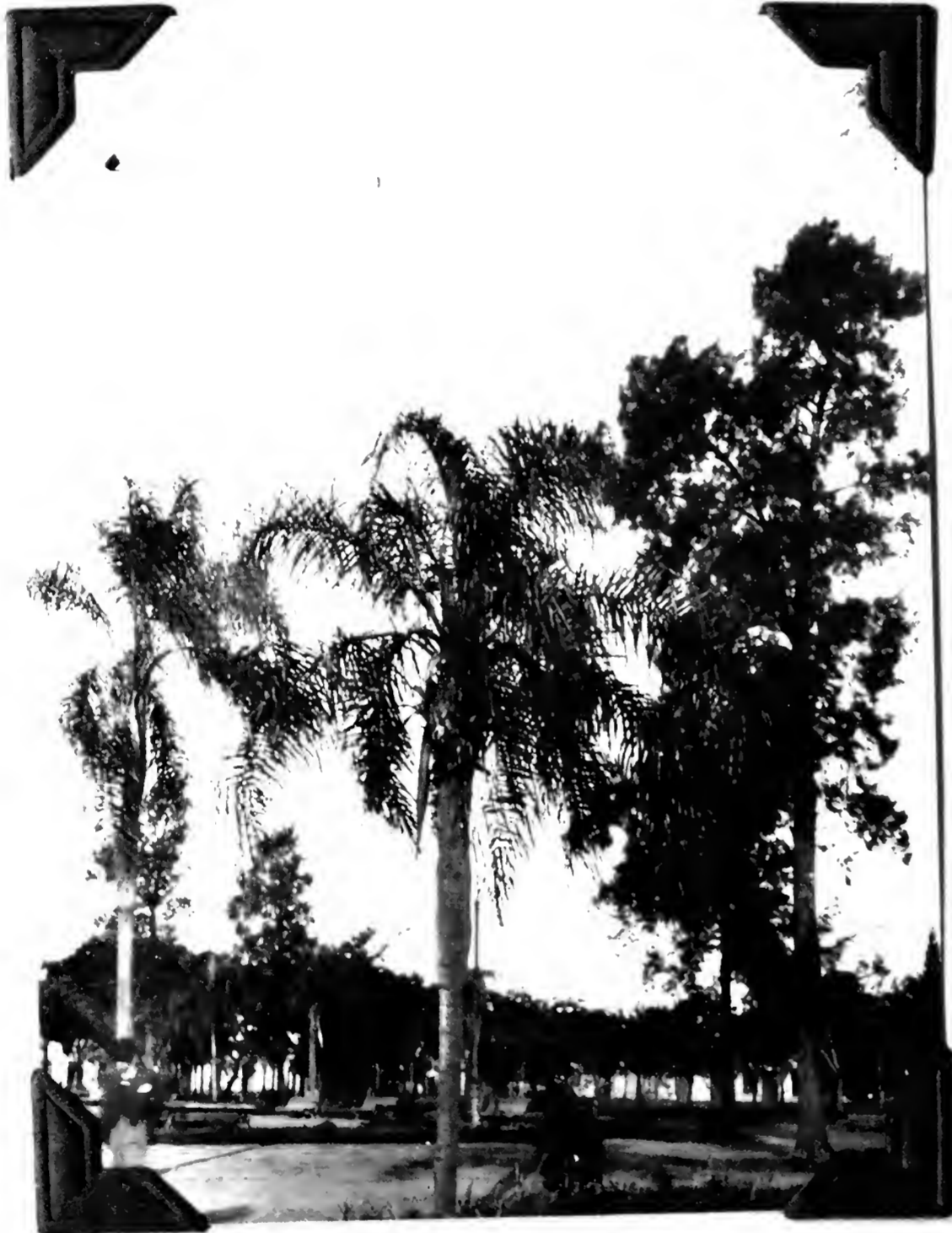


1344. Charadrai, a
typical town in the newly
settled section of the Chaco,
Argentina.
July 5, 1920.



B.S. 21936. Typical view in
deforested section of the Chaco.
Southern Chaco, Argentina.
July 5, 1920.

B.S. 21937. Sawmill.
Southern Chaco, Argentina.
July 5, 1920.



1345. Plaza in Resistencia, Chaco
Argentina.
July 6, 1920.

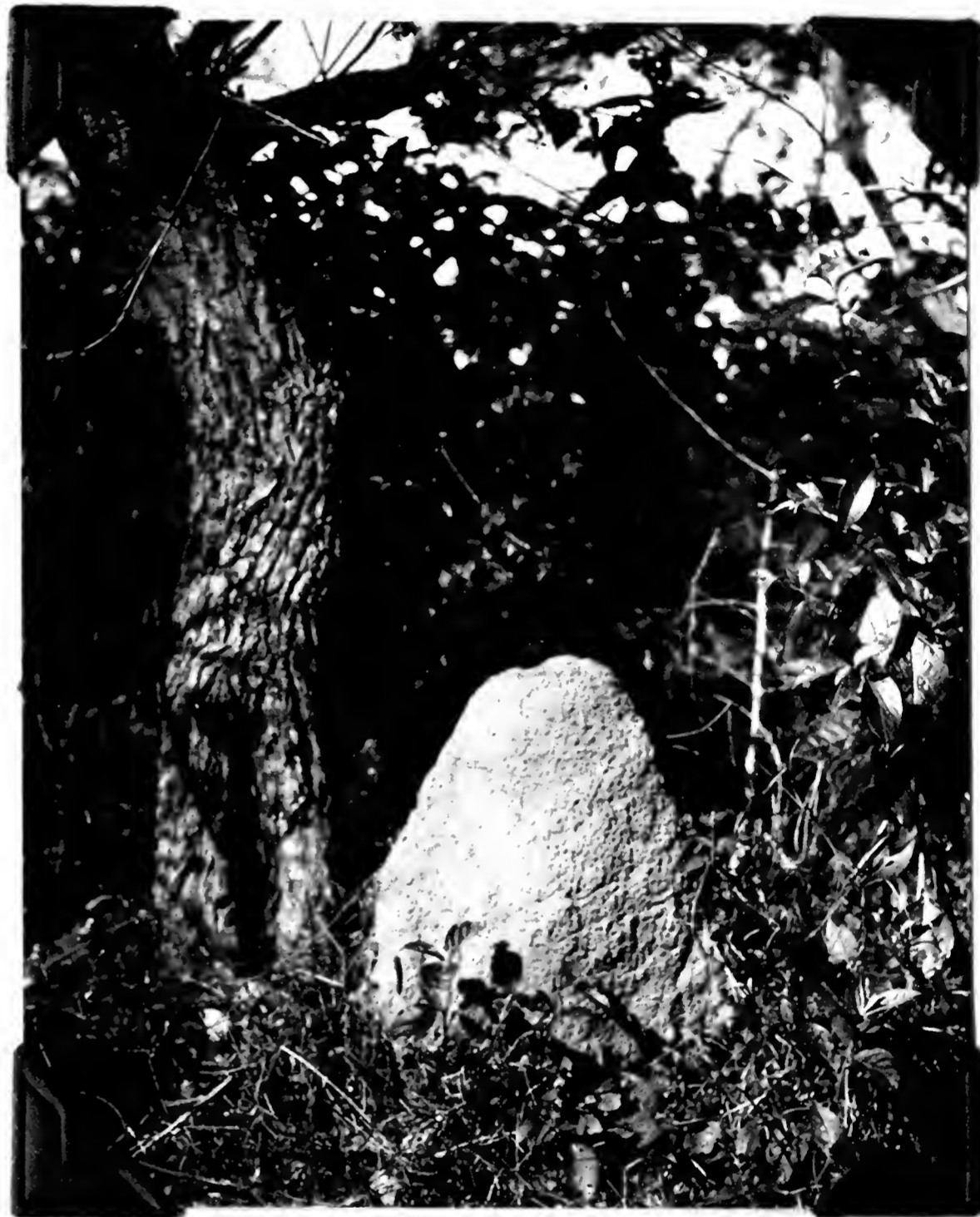
B.S. 21941. Partly dry
lagoon bordered by saw grass
with somewhat open margins.
Resistencia, Chaco, Argentina.
July 8, 1920.







B.S. 21942. Lagoon with
vegetation covering entire shore-
line. Resistencia, Chaco,
Argentina.
July 8, 1920.



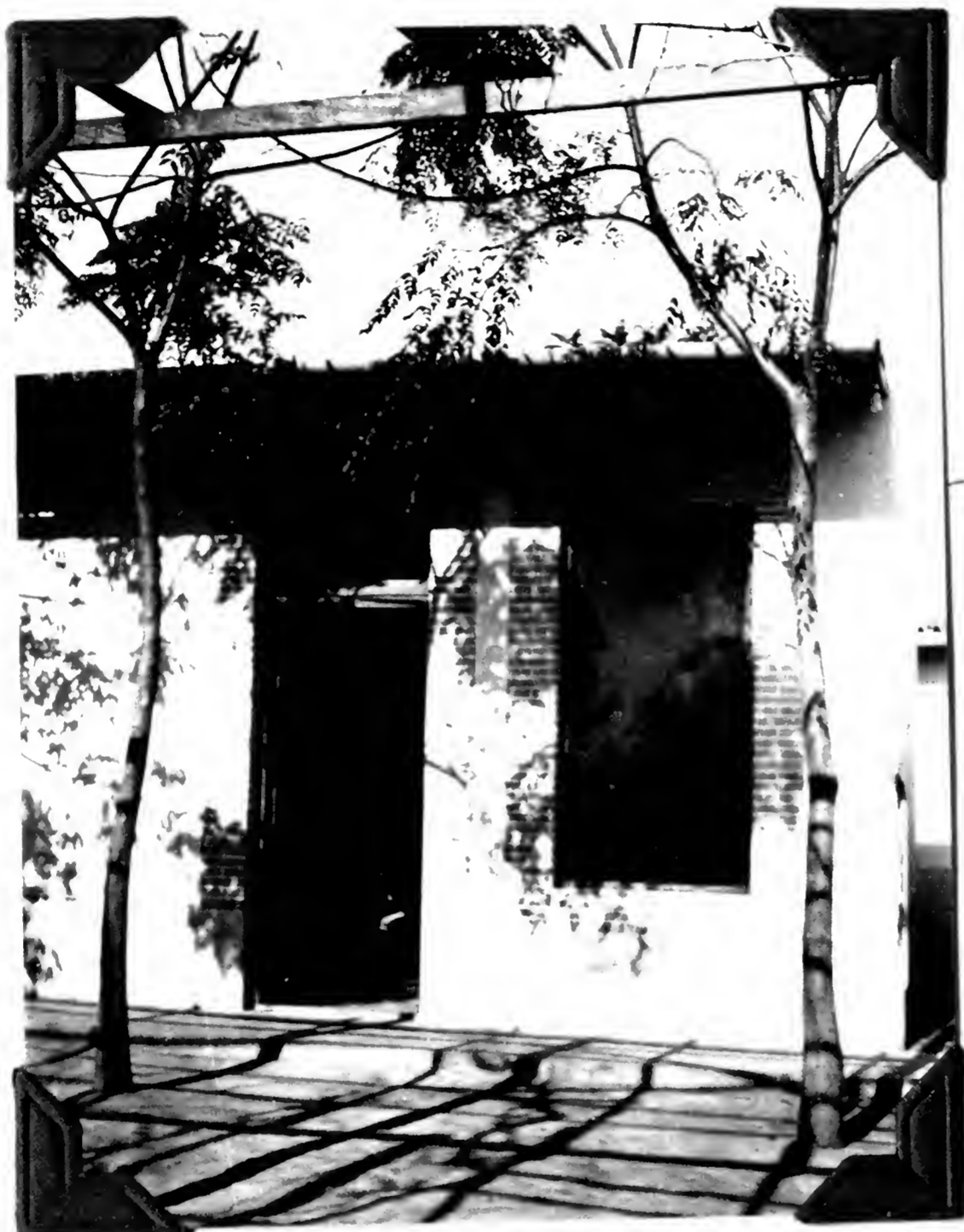
B.S. 21943. Termite nest. Resistencia,
Chaco, Argentina.
July 8, 1920.



B.S. 21944. The Río Negro, a
typical sluggish stream, near the
Río Paraguay. Resistencia, Chaco
Argentina.
July 8, 1920.

1346. A peón rancho near Resistencia, Chaco. Walls of mud plastered on a frame of branches.

July 9, 1920.



1347. My quarters opening on the patio in the Hotel Europa, Resistencia, Chaco, Argentina.

July 9, 1920.

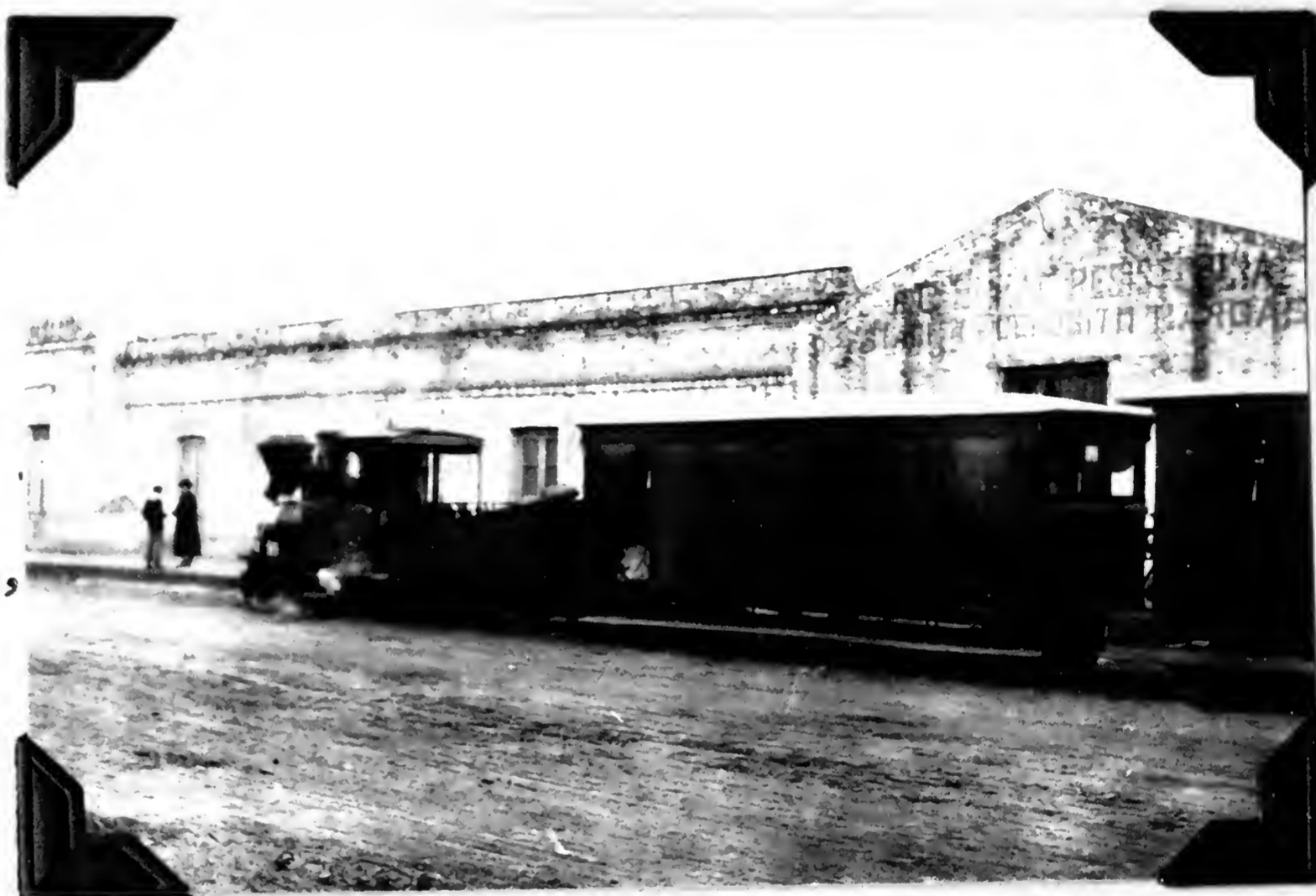
1348. Sr. Enrique Lynch Arribálzaga, Resistencia, Chaco, Argentina.

July 11, 1920.





1349. Sr. Enrique Lynch Arribálzaga,
Resistencia, Chaco, Argentina.
July 11, 1920.



1350. The train from
Resistencia to Barranqueros
on the Río Paraná. Resistencia,
Chaco, Argentina.
July 11, 1920.



B.S. 21951. Small opossum.
Las Palmas, Chaco, Argentina.
July 13, 1920.

B.S. 21953. Scrub forest.
Las Palmas, Chaco, Argentina.
July 13, 1920.



B.S. 21954. Large ant's nest.
Las Palmas, Chaco, Argentina.
July 13, 1920.

B.S. 21957. Shining cowbirds
Molothrus bonariensis warming
their feet on a cold winter's
morning. Las Palmas, Chaco,
Argentina.

July 13, 1920.





1351. Rancho of partly
civilized Toba Indian, Las Palmas,
Chaco, Argentina.
July 13, 1920.



1352. Peones at a wayside
boliche. Las Palmas, Chaco,
Argentina.
July 19, 1920.



B.S. 21958. The Riacho Quia
(Dirty Creek) floating vegetation
in distance. Las Palmas, Chaco
Argentina.
July 19, 1920.

1352a
~~B.S. 21960.~~ Ferry across
Riacho Quia. La Palmas,
Chaco, Argentina.
July 19, 1920.



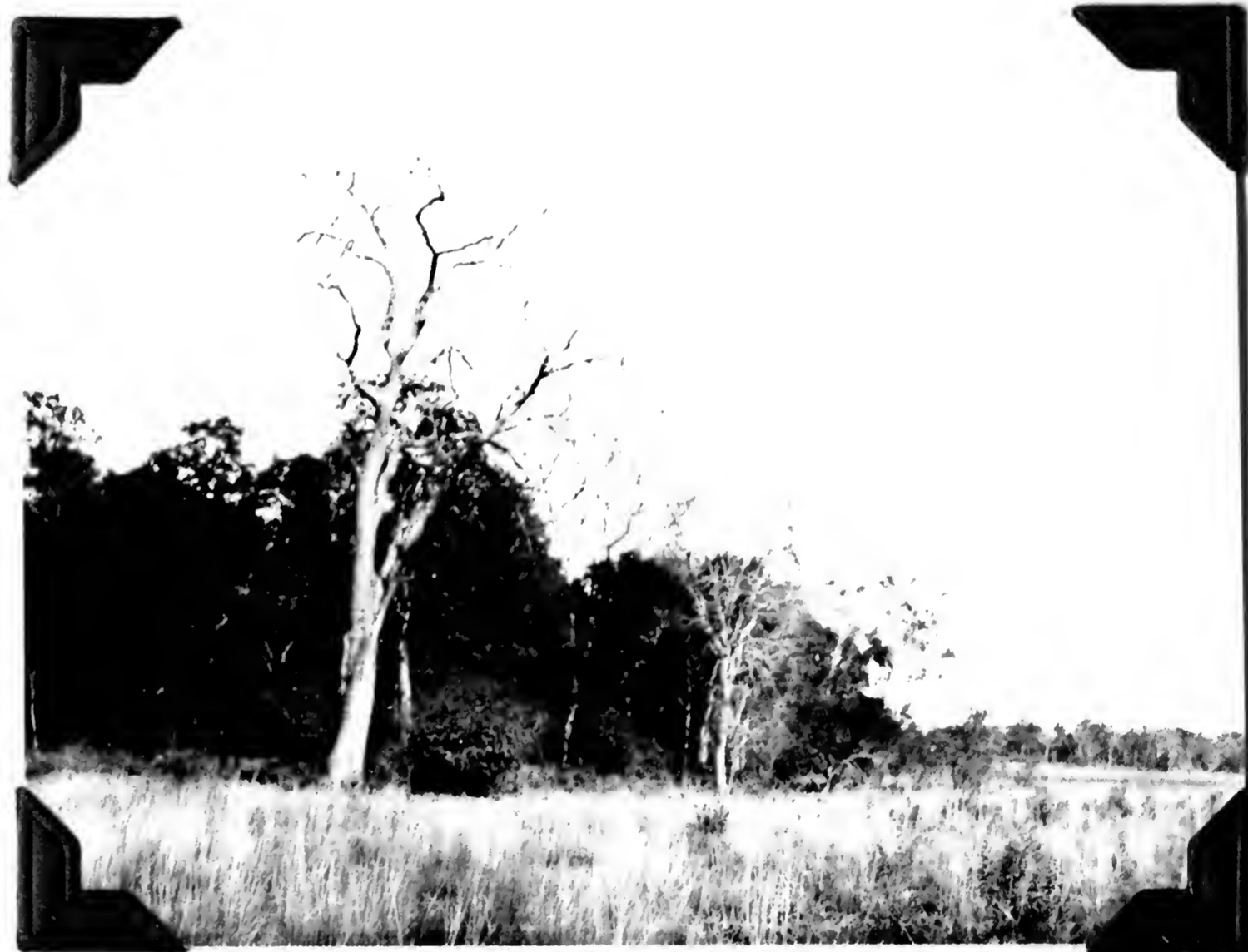
B.S. 21961. A wayside boliche
(combination store and drinking
place). Las Palmas, Chaco,
Argentina.
July 19, 1920.

B.S. 21963. Open savanna
in Chaco. Las Palmas, Chaco
Argentina.
July 19, 1920.





B.S. 21965. Cacti and scrubby forest. Las Palmas, Chaco, Argentina.
July 19, 1920.



B.S. 21967. Border of grove on open savanna. Las Palmas, Chaco, Argentina.
July 19, 1920.



B.S. 21968. A grass-thatched hut built of mud plastered on a frame of wood. Las Palmas, Chaco Argentina.
July 19, 1920.

1353. House with roof of
split palm trunks. Las Palmas,
Chaco, Argentina.
July 19, 1920.



1354. My quarters in the
fonda at Las Palmas, Chaco
Argentina.
July 19, 1920.



1355. Toba Indians on a
fishing expedition. Las Palmas,
Chaco, Argentina.
July 23, 1920.



1356. Toba Indians on a fishing expedition. Las Palmas, Chaco, Argentina.
July 23, 1920.



1357. A Toba Indian family near Las Palmas, Chaco, Argentina.
July 23, 1920.



B.S. 21973. Lagoon. Apparently solid foreground in reality is vegetation resting on mud and water 6 inches to 2 feet deep. Las Palmas, Chaco, Argentina.
July 23, 1920.

B.S. 21974. A Toba Indian
Family. Las Palmas, Chaco,
Argentina.
July 23, 1920.



B.S. 21976. Hut of Toba
Indians. Las Palmas, Chaco,
Argentina.
July 23, 1920.

1358. Toba Indian hut near
Las Palmas, Chaco, Argentina.
July 23, 1920.

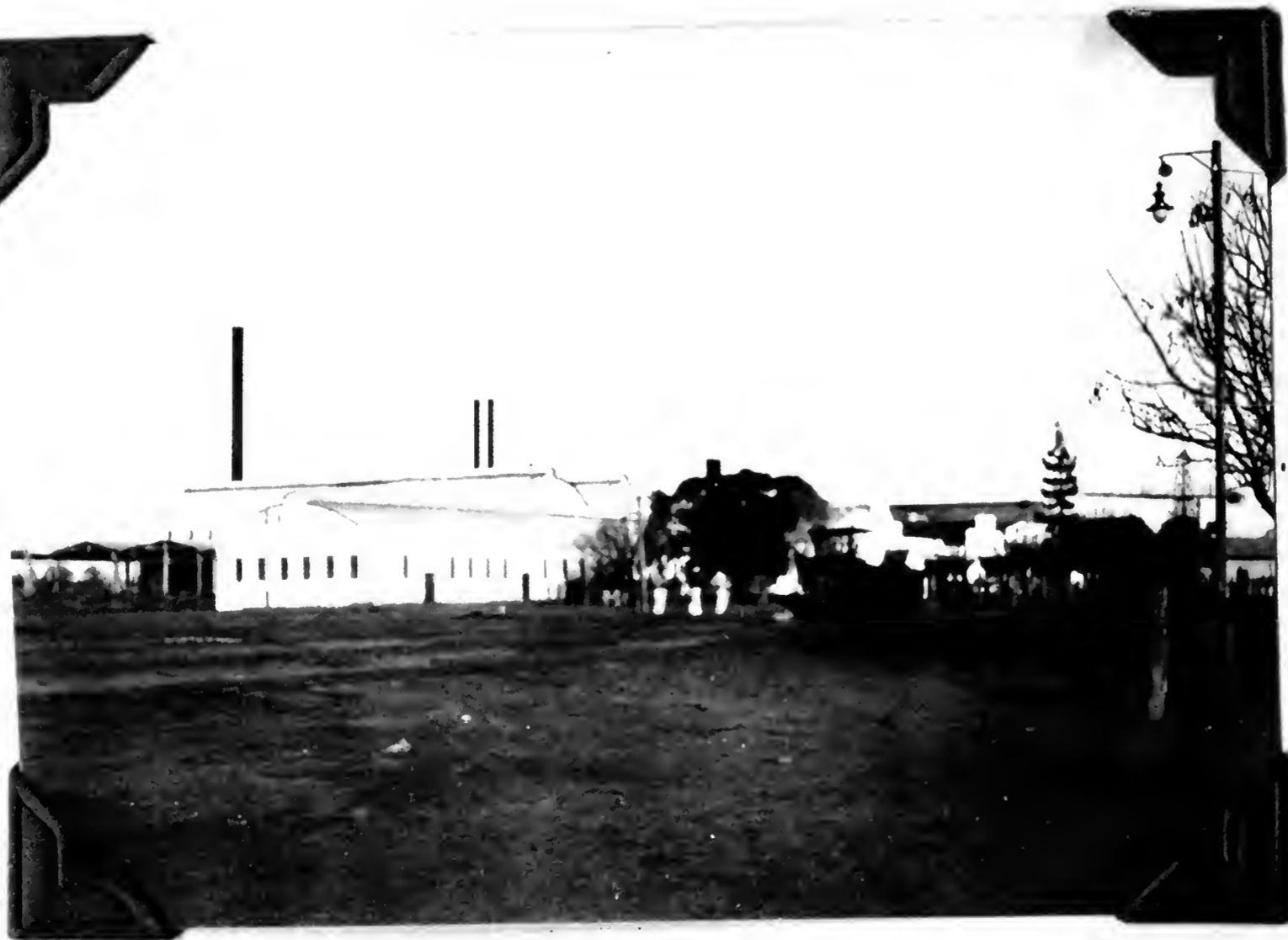




1359. A speaker exhorting peones
on strike at the sugar mill and
quebracho factory. Las Palmas,
Chaco, Argentina.
July 23, 1920.



1360. The fonda at Las Palmas,
Chaco, Argentina.
July 29, 1920.



1361. Sugar central and quebracho
factory. Las Palmas, Chaco, Argentina.
July 29, 1920.

1362. Guards at the
factory. Las Palmas, Chaco,
Argentina.
July 29, 1920.



1363. Guards at the factory
during a strike. Las Palmas,
Chaco, Argentina.
July 29, 1920.

1364. An elderly Toba takes
his yerba mate. Las Palmas,
Chaco, Argentina.
July 29, 1920.





B.S. 21985. Orange market.
Las Palmas, Chaco, Argentina.
July 29, 1920.



B.S. 21987. Large ant hill.
Las Palmas, Chaco, Argentina.
July 30, 1920.



1365. An old river channel
(an ox-bow loop) bordered by
forest. Haunt of Jacanas. Las
Palmas, Chaco, Argentina.
July 30, 1920.

B.S. 21989. Bordering fringe
of saw grass on an estero. Las
Palmas, Chaco, Argentina.
July 30, 1920.



B.S. 21990. Vegetation in
an estero. Las Palmas, Chaco,
Argentina.
July 30, 1920.

B.S. 21991. A termite hill, opened by
flickers. Las Palmas, Chaco, Argentina.
July 30, 1920.





(No Negative). Crossing a
Riacho. Las Palmas, Chaco,
Argentina.
July 20, 1920.



B.S. 21992. Ferry across
deep riacho. Las Palmas, Chaco,
Argentina.
July 30, 1920.



B.S. 21993. A flycatcher
Machetornis rixosa perched on a
cow. Las Palmas, Chaco, Argentina.
August 1, 1920.

B.S. 21994. Village of Toba
Indians. Las Palmas, Chaco,
Argentina.
August 1, 1920.



B.S. 21997. Toba village.
Las Palmas, Chaco, Argentina.
August 1, 1920.

1366. A group of Toba Indians
with their portable huts. Las
Palmas, Chaco, Argentina.
August 1, 1920.





1367. Temporary camp of Toba
Indians. Las Palmas, Chaco,
Argentina.
August 1, 1920.



B.S. 21998. The Río Paraguay.
Puerto Las Palmas, Chaco,
Argentina.
August 2, 1920.



B.S. 22000. Oranges from Paraguay.
Puerto Las Palmas, Chaco, Argentina.
August 2, 1920.

B.S. 22001. Río Paraguay.
Puerto Las Palmas, Chaco,
Argentina.
August 2, 1920.



1368. Passengers crossing in
small boats from Paraguay at Puerto
Las Palmas, Chaco on the Paraná
River.
August 2, 1920.

B.S. 22002. Police boat
carrying passengers and mail for
Formosa. Puerto Las Palmas,
Chaco, Argentina.
August 2, 1920.





B.S. 22003. Mouth of Río de Oro
on Río Paraguay below Puerto Bermejo,
Argentina.
August 2, 1920.



B.S. 22005. Río Paraguay
near Humaitá, Paraguay. Argentina.
August 2, 1920.



1369. The Formosa Hotel.
Formosa, Formosa, Argentina.
August 4, 1920.

1370. On the avenida de Mayo,
Formosa, Formosa, Argentina.
August 4, 1920.



1371. On the avenida de Mayo,
Formosa, Formosa, Argentina.
August 4, 1920.

B.S. 22006. Residence and
offices of Governor of Formosa.
Formosa, Formosa, Argentina.
August 4, 1920.





B.S. 22008. Río Paraguay with
town of Alberdi, Paraguay on opposite
shore. Formosa, Formosa, Argentina.
August 4, 1920.



B.S. 22009. Kilómeter 182, or.
Fontana, Formosa, Argentina.
August 6, 1920.



B.S. 22010. Palo Borracho or
Sam-o-oo at left, Quebracho at
right. Border of forest in Chaco.
Riacho Pilaga, Formosa, Argentina.
August 8, 1920.

B.S. 22011. Typical view of
Chaco, across an open savanna
toward forest. Riacho Pilaga,
Formosa, Argentina.
August 8, 1920.



B.S. 22012. Border of forest.
Riacho Pilaga, Formosa, Argentina.
August 8, 1920.

1372. Looking across a
savanna to the border of forest.
Riacho Pilaga, Kilómetro 182,
Formosa, Argentina.
August 8, 1920.

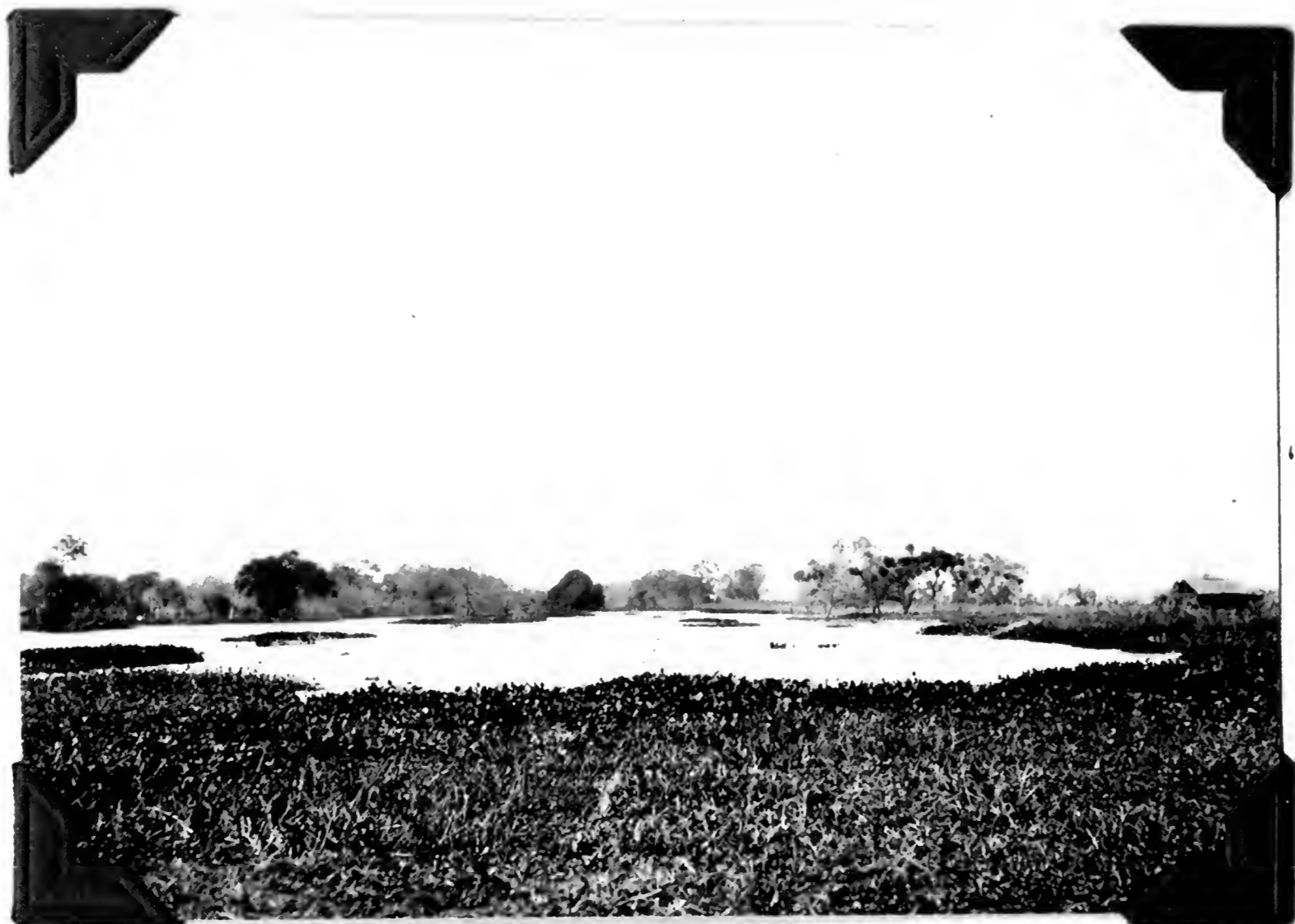




1373. A distant view of the
Hacienda Linda Vista, Riacho
Pilaga, Formosa, Argentina.
August 8, 1920.



B.S. 22014-1/2. View in
open Chaco. Riacho Pilaga,
Formosa, Argentina.
August 8, 1920.



B.S. 22016. Typical lagoon in
Chaco with shores clogged by float-
ing water hyacinth. Riacho Pilaga,
Formosa, Argentina.
August 10, 1920.

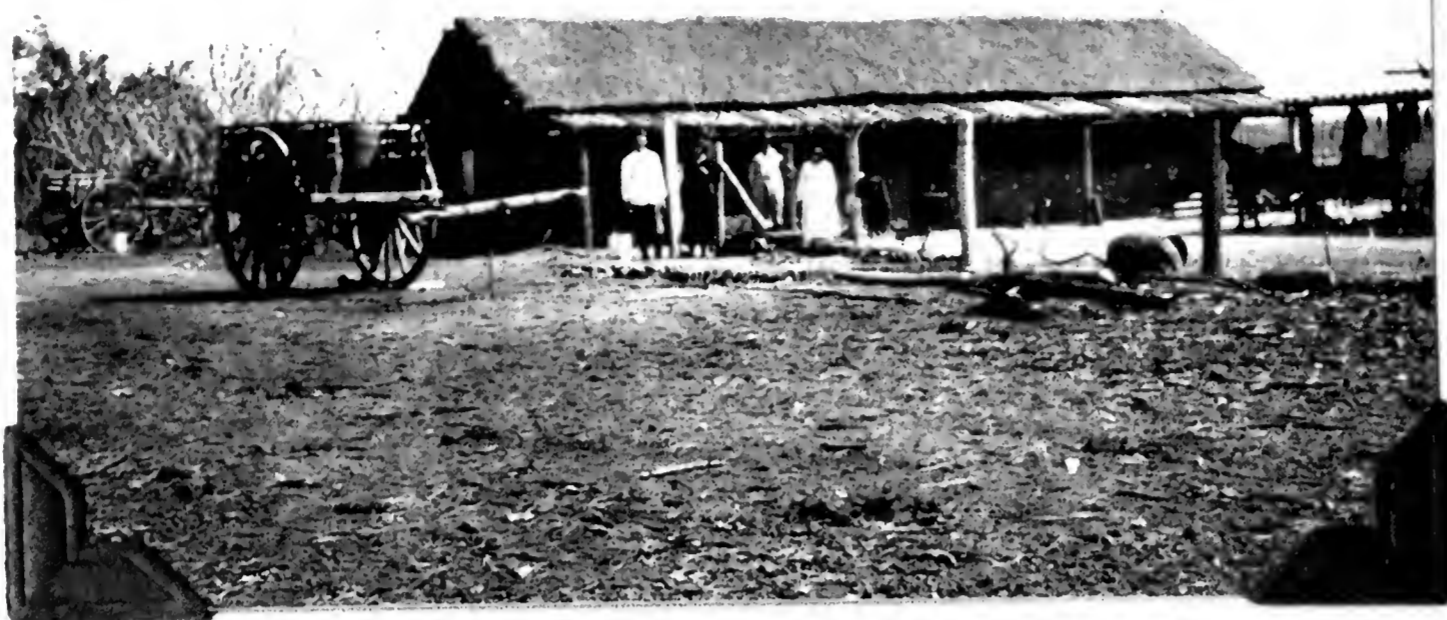
1374. Don Pedro Upitz and
his work cattle. Hacienda
Linda Vista, Riacho Pilaga,
Formosa, Argentina.
August 10, 1920.



B.S. 22017. Trail or picada
through El Monte Inglés; spiny
plant known as Caraguata in fore-
ground. Riacho Pilaga, Formosa,
Argentina.
August 11, 1920.

1375. Hacienda Linda Vista,
Riacho Pilaga, Formosa,
Argentina.
August 14, 1920.





B.S. 22019. Hacienda Linda Vista.
Riacho Pilaga, Formosa, Argentina.
August 14, 1920.

1376. Hacienda Linda Vista,
Riacho Pilaga, Formosa,
Argentina.
August 14, 1920.



1377. Hacienda Linda Vista,
with Don Pedro Upitz and the
Señora at right. Lobo in fore-
ground. Riacho Pilaga, Formosa.
August 14, 1920.

B.S. 22021. Work quarters at
Hacienda Linda Vista. Riacho
Pilaga, Formosa, Argentina.
August 14, 1920.



B.S. 22022. Alkaline flats
bordering stream known as Riacho
Pilaga. In summer this stream runs
full. Riacho Pilaga, Formosa,
Argentina.
August 14, 1920.

B.S. 22023. The Riacho
Pilaga at low water stage.
Riacho Pilaga, Formosa, Argentina.
August 14, 1920.







1378. Hauling the cachiveo made from the trunk of a palo borracho to the lagoon. Riacho Pilaga, Formosa, Argentina. August 14, 1920.

B.S. 22025. A. Wetmore, Riacho Pilaga, Formosa, Argentina. August 14, 1920.



B.S. 22026. Border of lagoon in Chaco, grown with rushes. Floating masses of water hyacinth in distance. Riacho Pilaga, Formosa, Argentina. August 16, 1920.



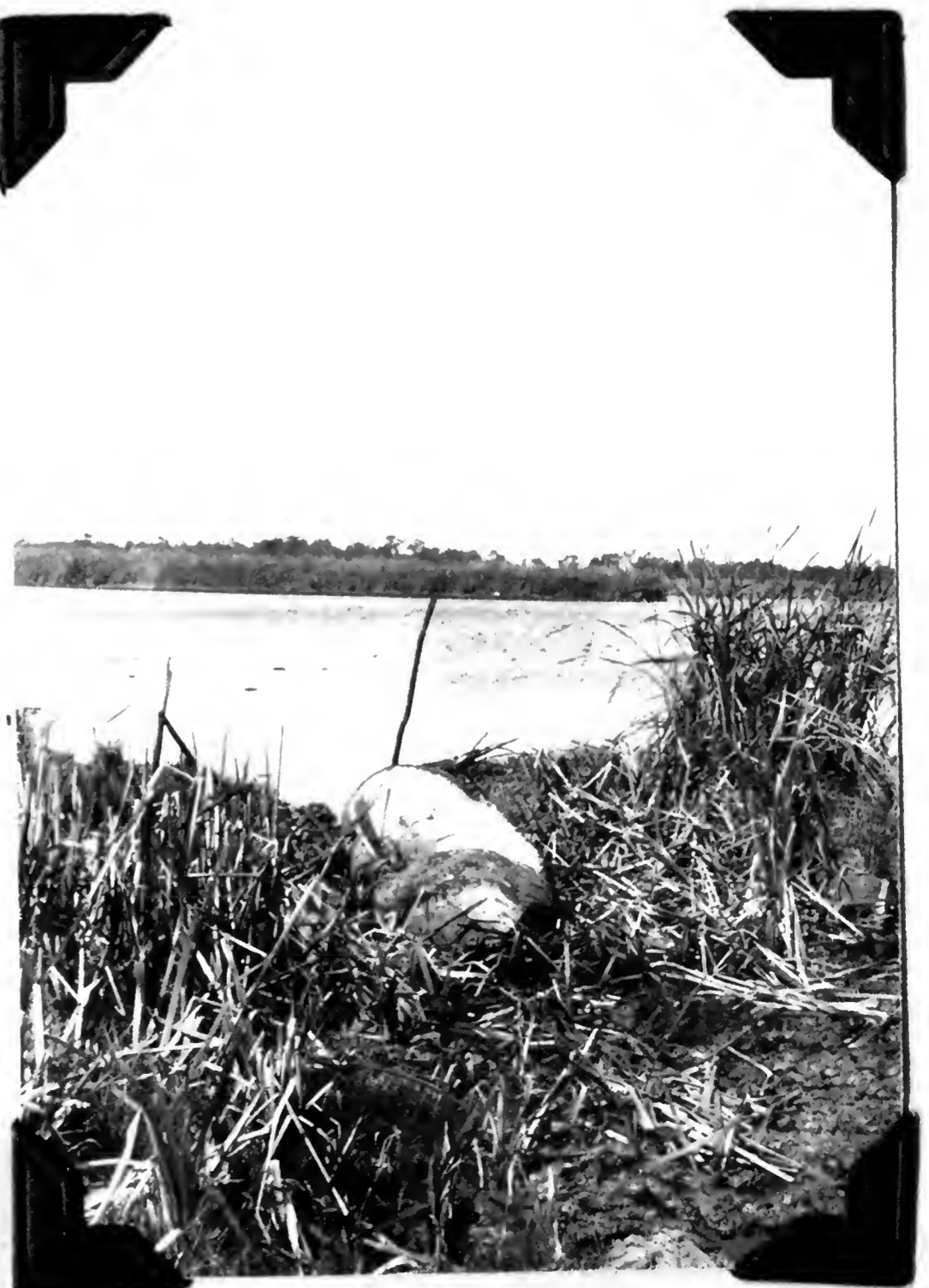
B.S. 22029. Work quarters of
A. Wetmore at Hacienda Linda
Vista. Riacho Pilaga, Formosa,
Argentina.

August 16, 1920.



B.S. 22031. Crude boat called
cachiveo at border of lagoon.
Riacho Pilaga, Formosa, Argentina.
August 17, 1920.

1379. My cachiveo at the lagoon. Made
by Don Pedro Upitz in 4 hours work. Riacho
Pilaga, Formosa, Argentina.
August 17, 1920.





1380. Riacho Inglés, near the
Hacienda Linda Vista, Formosa,
Argentina.
August 18, 1920.

1381. The Riacho Inglés, with
alkaline deposits on shore, as
seen in the dry season. Riacho
Pilaga, Formosa, Argentina.
August 18, 1920.



B.S. 22032. Alkaline bed of
Riacho Inglés when water is low in
winter. Riacho Pilaga, Formosa,
Argentina.
August 18, 1920.

B.S. 22034. Small opening,
marshy in character, in forest
known as El Monte Inglés.
Riacho Pilaga, Formosa, Argentina.
August 18, 1920.



B.S. 22036. Indians trading at
Hacienda Linda Vista. All purchases
made through an outside window to
prevent robbery. Riacho Pilaga,
Formosa, Argentina.
August 18, 1920.

1382. Don Pedro and his
partner Don Juan examine a
Cleveland tractor and disk plow
that they have just purchased.
Hacienda Linda Vista, Riacho
Pilaga, Formosa, Argentina.
August 19, 1920.





B.S. 22038. Nest of Leñatero Anumbius anumbi
in top of railroad semaphore. Kilómeter 182,
Formosa, Argentina.
August 21, 1920.



B.S. 22039. Ant hills in
marshy ground. Kilometer 100,
Formosa, Argentina.
August 21, 1920.



B.S. 22041. View in one of the
palm grown marshes known as a palmar.
Formosa, Formosa, Argentina.
August 23, 1920.

S.I. 36513E

~~B.S. 22042.~~ View in one of the
palm grown swamps known as a
palmar. Formosa, Formosa,
Argentina.

August 23, 1920.



B.S. 22043. Sluggish stream
running through a palm grown
swamp. Formosa, Formosa, Argentina.
August 23, 1920.

B.S. 22044. A native bird
trap set for seed-eaters.
Formosa, Formosa, Argentina.
August 24, 1920.





B.S. 22046. Near view of bird trap to show arrangement of triggers. Formosa, Formosa, Argentina. August 24, 1920.



1383. Near view of bird trap to show arrangement of set. Formosa, Formosa, Argentina. August 24, 1920.



1384. Chicken vendors. Formosa, Formosa, Argentina. August 26, 1920.

B.S. 22048. View of town from
Río Paraguay. Formosa, Formosa,
Argentina.
August 26, 1920.



1385. A view in Alberdi,
Paraguay.
August 26, 1920.

1386. The foreground con-
sists of aquatic vegetation con-
cealing entirely the water of a
lagoon. Alberdi, Paraguay.
August 26, 1920.





1387. A street in Alberdi,
Paraguay, at high noon.
August 26, 1920.



B.S. 22049. Steamship
office, indicated by flag.
Alberdi, Paraguay.
August 26, 1920.



B.S. 22050. A rambling street.
Alberdi, Paraguay.
August 26, 1920.

B.S. 22052. Arrival of
steamer for Asunción. Alberdi,
Paraguay.
August 26, 1920.



B.S. 22055. Mouth of Río
Pilcomayo. Paraguay.
August 27, 1920.

1388. The Río Paraguay at
Antioquera, Paraguay.
August 29, 1920.





B.S. 22056. Hut built of palm
trunks on bank of Río Paraguay.
Antioquera, Paraguay.
August 29, 1920.

B.S. 22057. Water front on Río
Paraguay, Villa Concepción,
Paraguay.
August 30, 1920.



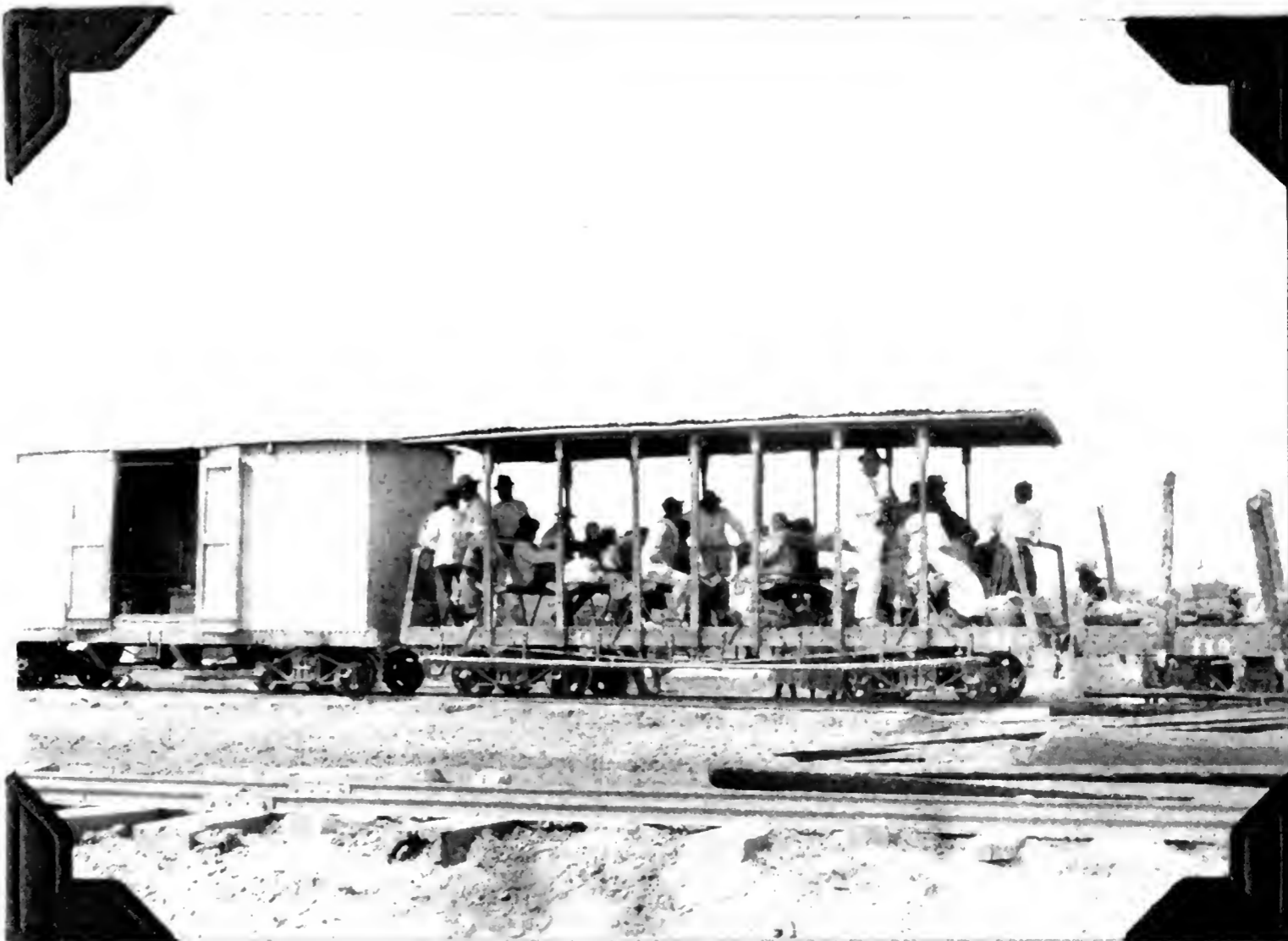
B.S. 22058. Flooded border of
Río Paraguay. Puerto Pinasco,
Paraguay.
September 3, 1920.

B.S. 22059. Cerro Lorito
on eastern bank of Río Paraguay
opposite Puerto Pinasco, Paraguay.
September 3, 1920.



B.S. 22061. Bank of Río Paraguay
showing condition of high water with
no available shore for sandpipers.
Puerto Pinasco, Paraguay.
September 3, 1920.

1389. Passenger coach on
the ranch railroad running into
the interior from the Río
Paraguay at Puerto Pinasco,
Paraguay.
September 4, 1920.





1390. My horse Baldy, with
the saddle loaded with birds.
Kilómetro 80, west of Puerto
Pinasco, Paraguay.
September 10, 1920.



B.S. 22064. Deserted Indian
tolda, Laguna Palmas, Kilómetro
80, Puerto Pinasco, Paraguay.
September 10, 1920.



B.S. 22066. Laguna Palmas, Kilómetro
80, Puerto Pinasco, Paraguay.
September 10, 1920.

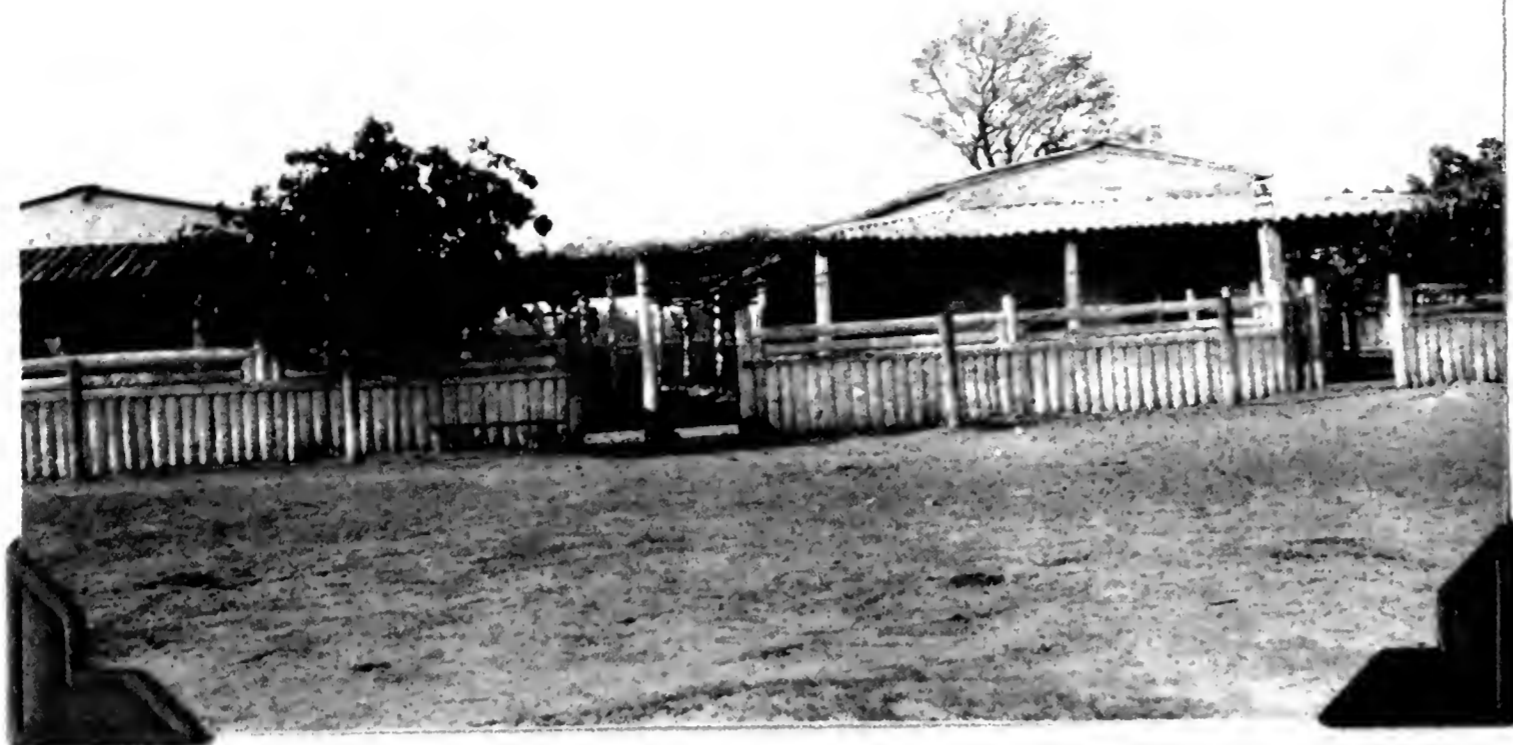
B.S. 22067. View of
Laguna Palmas, Kilómetro 80,
Puerto Pinasco, Paraguay.
September 10, 1920.



B.S. 22068. View in grove
of palms. Kilómetro 80, Puerto
Pinasco, Paraguay.
September 10, 1920.



B.S. 22071. Angueté
Indians gathering offal from
a butchered cow. Kilómetro 80.
Puerto Pinasco, Paraguay.
September 14, 1920.



B.S. 22072. Ranch house at
Kilómetro 80. Puerto Pinasco,
Paraguay.
September 14, 1920.



1391. Carl Hettman, at
Kilómetro 80, west of Puerto
Pinasco, Paraguay.
September 14, 1920.



B.S. 22074. Open shore of
lagoon at Kilómetro 80, suitable
for shorebirds. Puerto Pinasco,
Paraguay.
September 14, 1920.

B.S. 22076. Lagoon filled with
floating vegetation, Kilómetro 80.
Puerto Pinasco, Paraguay.
September 15, 1920.



B.S. 22077. Shore line of
lagoon filled with floating
vegetation. Kilómetro 80.
Puerto Pinasco, Paraguay.
September 15, 1920.

B.S. 22078. Growth of plant
known as Llantén de Caballo that covers
broad surfaces in lagoons. Kilómetro
80, Puerto Pinasco, Paraguay.
September 15, 1920.

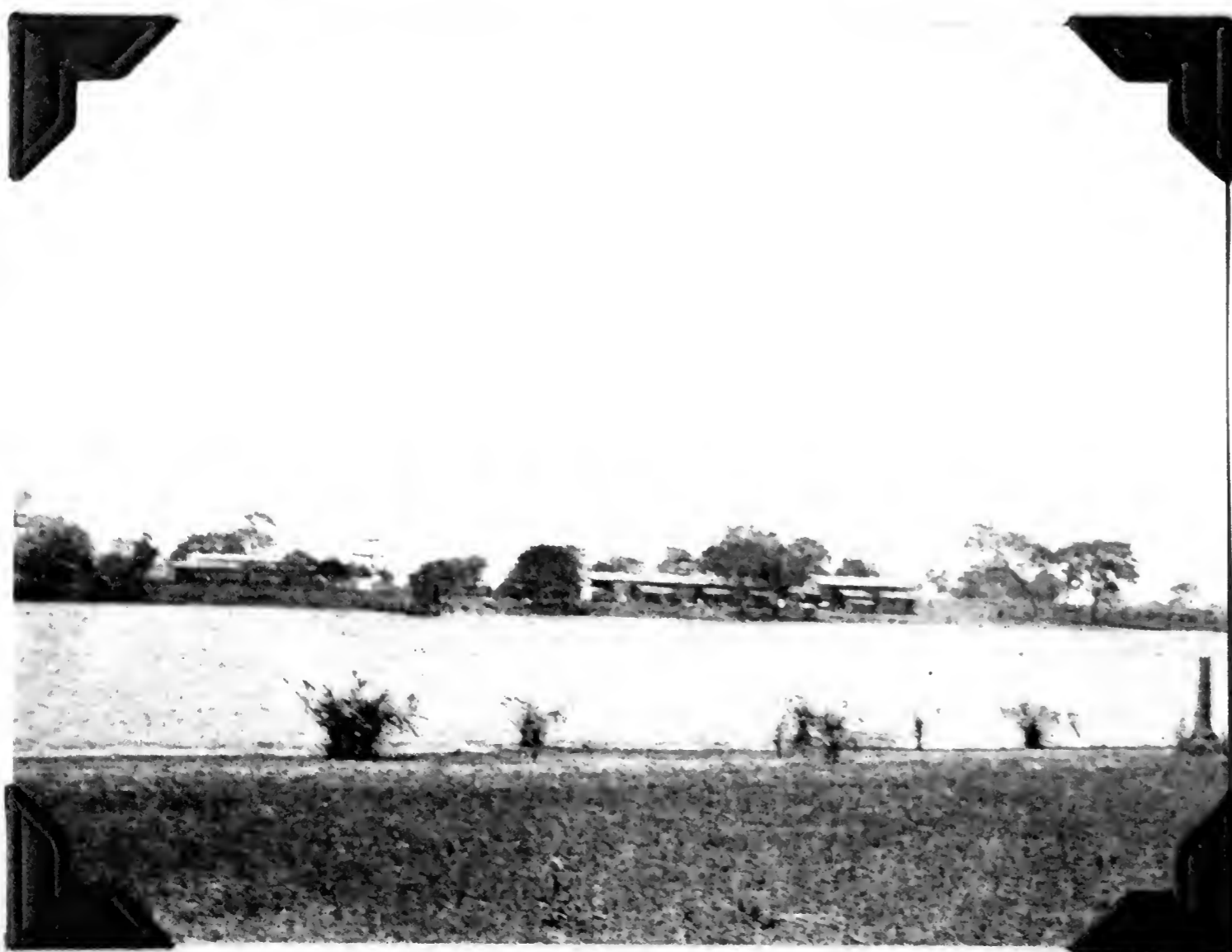




B.S. 22082. Open savanna and forest in Chaco, Kilómetro 80. Puerto Pinasco, Paraguay. September 16, 1920.



B.S. 22084. Open shore of lagoon frequented by shorebirds. Kilómetro 80. Puerto Pinasco, Paraguay. September 18, 1920.



B.S. 22087. View of ranch houses at Kilómetro 80. Puerto Pinasco, Paraguay. September 18, 1920.

B.S. 22088. Border of Laguna Lata in the Indian country west of Kilómetro 110. Puerto Pinasco, Paraguay.

September 24, 1920.



B.S. 22090. Laguna Perdido west of Laguna Lata. Puerto Pinasco, Paraguay.

September 24, 1920.

B. S. 22095. Dry bed of Riacho Salado at Kilómetro 170. Puerto Pinasco, Paraguay.

September 24, 1920.





1392. A. Wetmore and Paraguayan boy near the Riacho Salado. Kilómetro 170, west of Puerto Pinasco Paraguay. September 24, 1920.



1393. A churrasco - charqui roasted on a stick - at the Riacho Salado. Carl Hettman at left. September 24, 1920.



1394. Rolling open country in Chaco at Kilómetro 170 west of Puerto Pinasco, Paraguay. September 24, 1920.

B.S. 22096. An alkaline pool in the Riacho Salado, Kilómetro 170. Puerto Pinasco, Paraguay.

September 24, 1920.



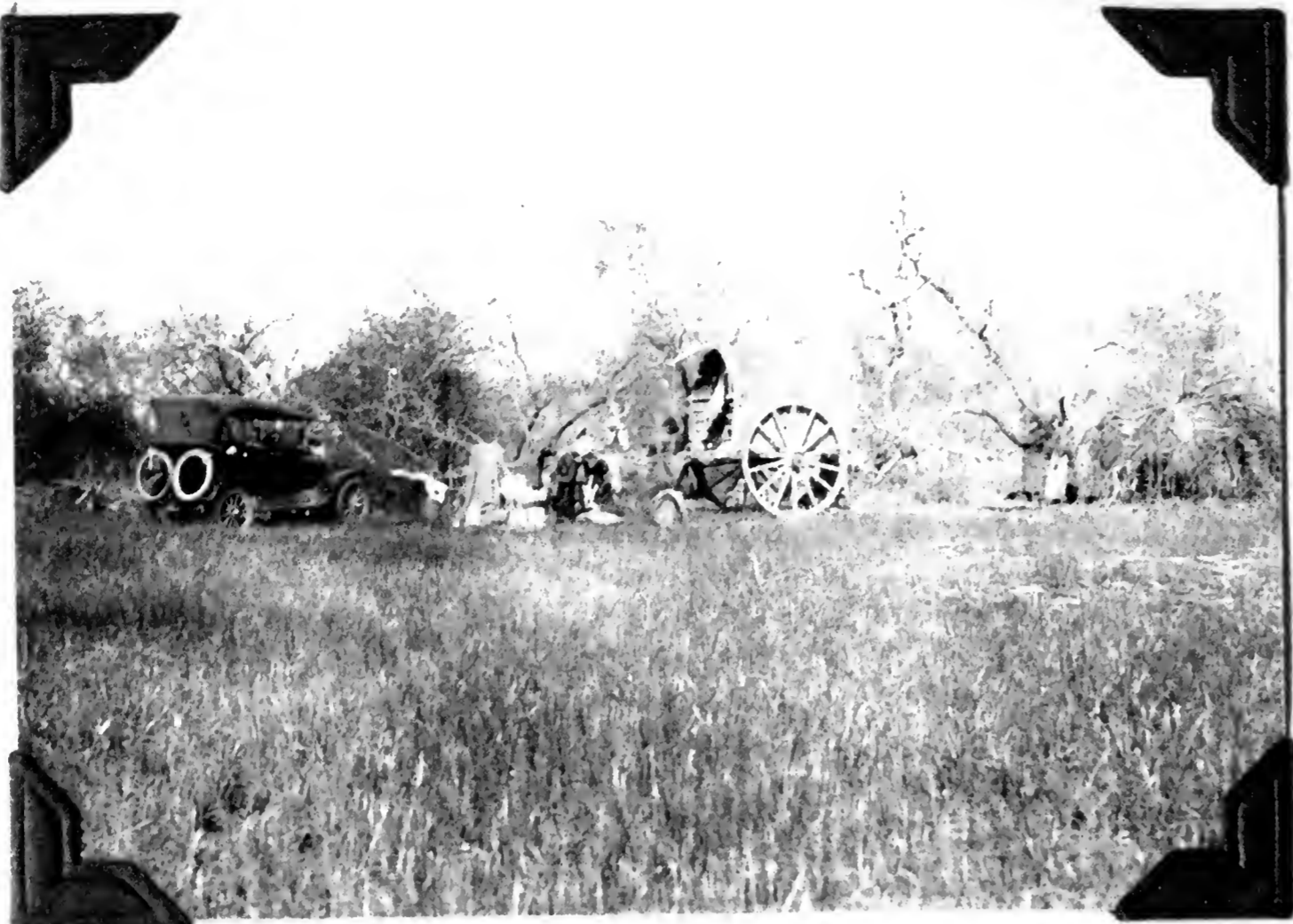
B.S. 22097. Open country with soil of dry sandy loam near Riacho Salado, Kilómetro 170. Puerto Pinasco, Paraguay.

September 24, 1920.

S.I. 36513F
~~B.S. 22098.~~ Open country with soil of dry sandy loam near Riacho Salado, Kilómetro 170. Dry grass has been burned by Indians. Puerto Pinasco, Paraguay.

September 24, 1920.





B.S. 22099. Camp at Laguna Wall
in territory of Lengua Indians,
Kilómetro 200. Puerto Pinasco,
Paraguay.
September 24, 1930.



1395. Lengua Indians in
our camp at Laguna Wall,
Kilómetro 200, west of Puerto
Pinasco, Paraguay.
September 24, 1920.



B.S. 22106. Entrance of Indian
trail in monte, Laguna wall,
Kilómetro 200. Puerto Pinasco,
Paraguay.
September 25, 1920.



B.S. 22108. Skinning birds in
camp at Laguna Wall, Kilómetro 200.
Puerto Pinasco, Paraguay.
September 25, 1920.



1396. Carl Hettman talking to
Lengua Indians in our camp at
Laguna Wall. Kilómetro 200, west
of Puerto Pinasco, Paraguay.
September 25, 1920.

1397. Border of great monte
of vinal at Laguna Wall. Kiló-
metro 200, west of Puerto Pinasco,
Paraguay.
September 25, 1920.





1398. Vinal monte killed by fire. Laguna Wall, Kilómetro 200 west of Puerto Pinasco, Paraguay. September 25, 1920.



1399. A. Wetmore with Lengua Indians in our camp at Laguna Wall, Kilómetro 200, west of Puerto Pinasco, Paraguay. September 25, 1920.



1400. Laguna Wall at Kilómetro 200, west of Puerto Pinasco, Paraguay. September 25, 1920.

1401. Carl Hettman in camp
at Laguna Wall, Kilómetro 200,
west of Puerto Pinasco,
Paraguay.

September 25, 1920.



1402. Rolling land in the Chaco
at Kilómetro 200, west of Puerto
Pinasco, Paraguay.

September 26, 1920.

1403. Open, slightly
rolling country in the Chaco
at Kilómetro 200, west of Puerto
Pinasco, Paraguay.

September 26, 1920.





1404. Open country in the Chaco
east of Riacho Salado. Kilómetro
165, west of Puerto Pinasco,
Paraguay.
September 26, 1920.



B.S. 22112. Open area east
of Riacho Salado, Kilómetro 165.
Puerto Pinasco, Paraguay.
September 26, 1920.



1405. View in a palmar,
Kilómetro 130, west of Puerto
Pinasco, Paraguay.
September 26, 1920.

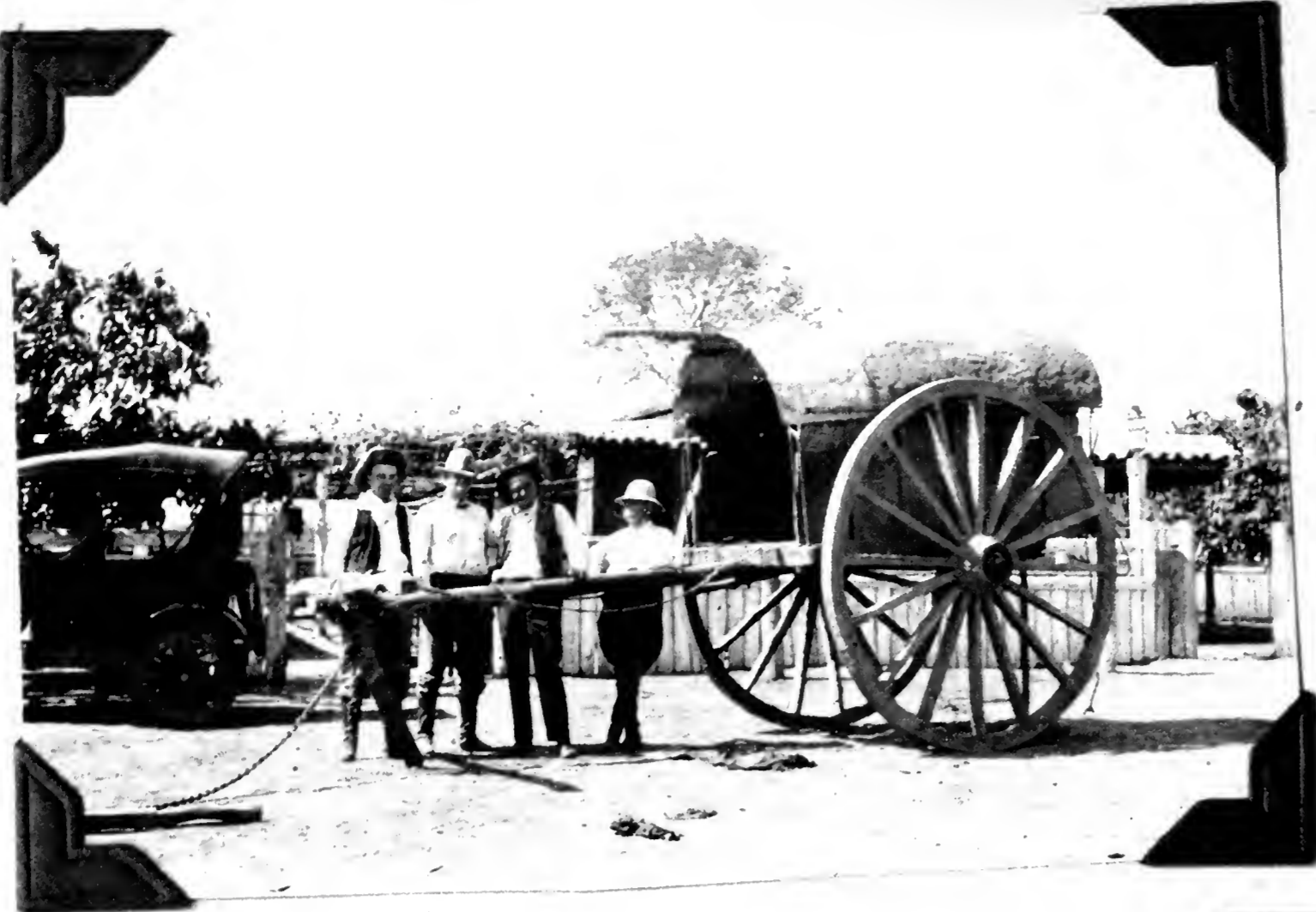
B.S. 22115. Tolda of
Angueté Indians near Laguna
Lata. Puerto Pinasco, Paraguay.
September 26, 1920.



1406. Angueté fishermen at
Kilómetro 110, west of Puerto
Pinasco, Paraguay.
September 26, 1920.

1407. Angueté Indians in a
cachiveo at Kilómetro 110, west
of Puerto Pinasco, Paraguay.
September 26, 1920.





1408. Carl Hettman, Frank Branson,
Fred Hettman, F. Engen, with a
typical ox-cart. Kilómetro 80,
Puerto Pinasco, Paraguay.
September 27, 1920.

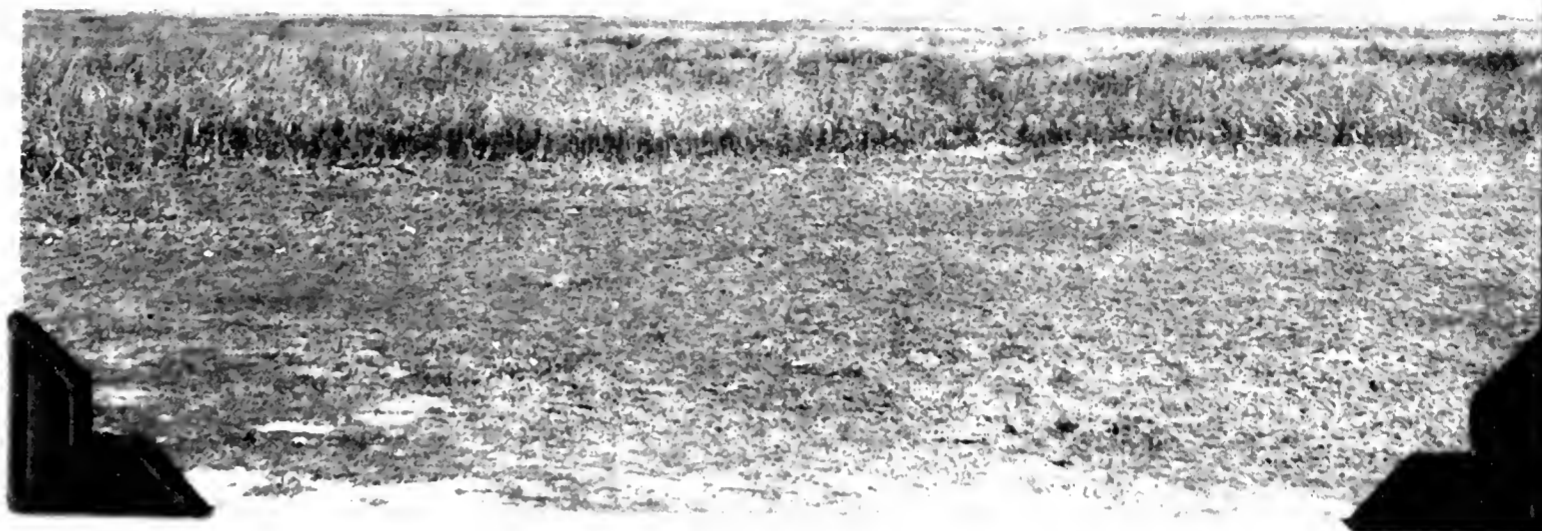


B.S. 22118. A week-old rhea, Kilómetro
80. Puerto Pinasco, Paraguay.
September 27, 1920.



B.S. 22119. Marsh and canal,
haunt of Trudeau's Tern, Sterna
trudeaui. Dolores, Buenos Aires,
Argentina.
October 21, 1920.

S.I. 36513 C
B.S. 22121. Marshes with town,
of Dolores in background. Dolores,
Buenos Aires, Argentina.
October 21, 1920.



B.S. 22125. Nest and eggs of
Anthus correndera exposed by re-
moval of concealing herbage.
Dolores, Buenos Aires, Argentina.
October 21, 1920.

B.S. 22127. Small channel on
low ground flooded by rain. A few
greater and lesser yellowlegs and
golden plover noted here. Conessa,
Buenos Aires, Argentina.
October 22, 1920.





1409. Changing from auto to coach, at Conessa, Buenos Aires, Argentina.

October 22, 1920.



B.S. 22128. A Brake, one means of pampas travel. Conessa, Buenos Aires, Argentina.

October 22, 1920.



B.S. 22129. Tide channels or cangrejales at mouth of Río Ajó at low tide. Black spots are crabs. Good feeding grounds for shorebirds. Lavalle, Buenos Aires, Argentina.

October 25, 1920.

B.S. 22131. Tide channels or cangrejales, mouth of Río Ajó at low tide. Black spots are crabs. Good feeding grounds for shore-birds. Lavalle, Buenos Aires, Argentina.

October 25, 1920.



B.S. 22132. Flats grown with salicornia at mouth of Río Ajó. Lavalle, Buenos Aires, Argentina. October 25, 1920.



B.S. 22137. Cormorants Phalacrocorax v. vigua and gulls, Larus maculipennis at mouth of Río Ajó. Lavalle, Buenos Aires, Argentina.

October 25, 1920.

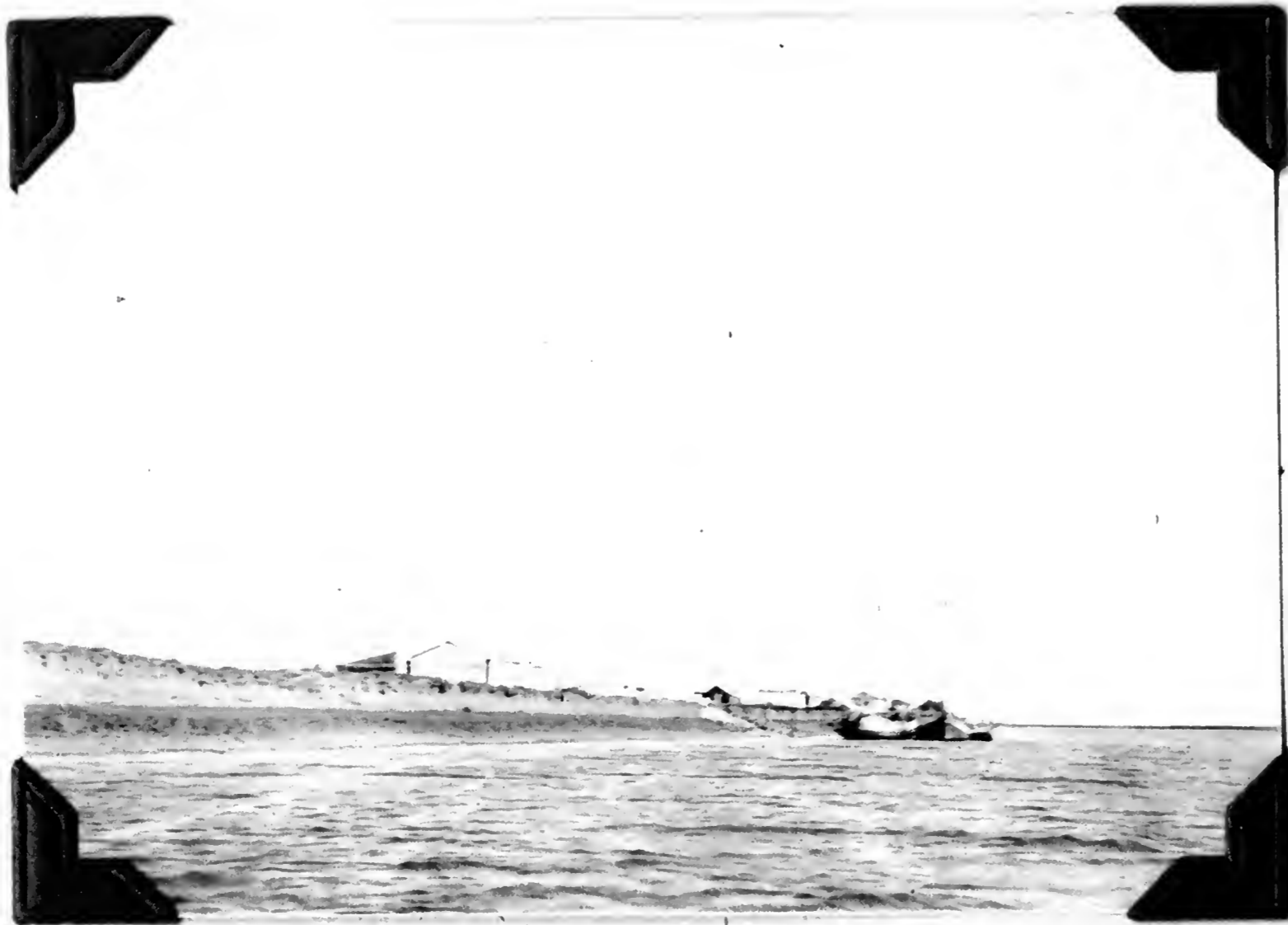




1410. Near the mouth of the Río Ajó, Lavalle, Buenos Aires, Argentina.
October 25, 1920.



1411. Near the mouth of the Río Ajó, below Lavalle, Buenos Aires, Argentina.
October 25, 1920.



1412. Fishing station near mouth of Río Ajó, below Lavalle, Buenos Aires, Argentina.
October 25, 1920.

B.S. 22138. Shells of
Ampullaria dropped at base of post
by everglade kite. Lavalle,
Buenos Aires, Argentina.
October 29, 1920.



B.S. 22139. View of marsh or
cañadon with Estancia Los Ynglésés
in background. Lavalle, Buenos
Aires, Argentina.
October 29, 1920.

1413. Plantation of trees
on the Estancia Los Ynglésés,
Lavalle, Buenos Aires, Argentina.
October 30, 1920.

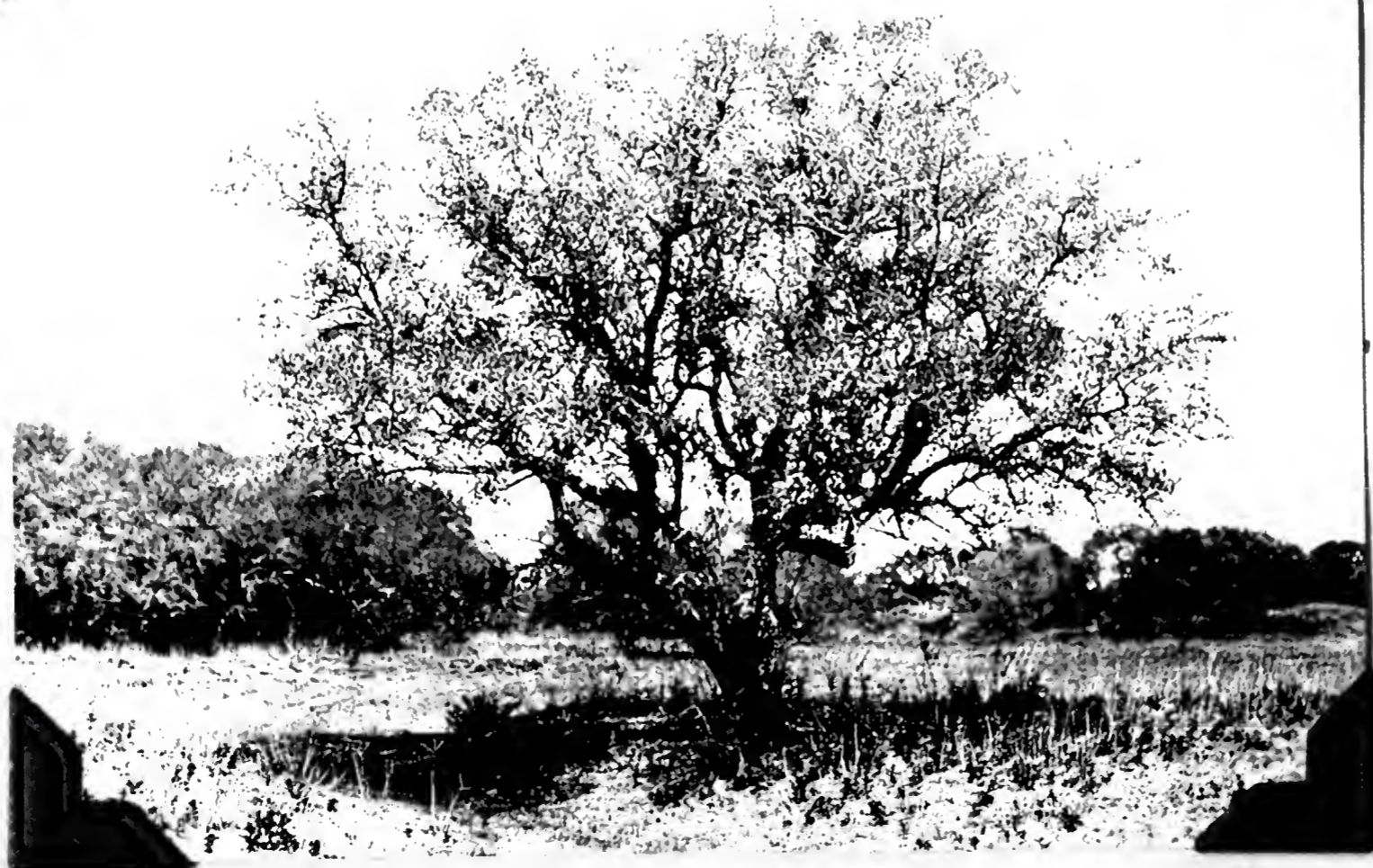




B.S. 22140. Typical planted grove on eastern pampas. Estancia Los Ynglesés. Lavalle, Buenos Aires, Argentina.
October 30, 1920.



B.S. 22141. Tala (Celtis tala) trees in monte at Estancia Los Ynglesés. Lavalle, Buenos Aires, Argentina.
October 30, 1920.



B.S. 22142. Tala Celtis tala, Estancia Los Ynglesés. Lavalle, Buenos Aires, Argentina.
October 30, 1920.

1414. A tala tree Celtis
tala. Estancia Los Yngléses,
Lavalle, Buenos Aires, Argentina.
October 30, 1920.



1415. Old dunes grown with
vegetation. Estancia Los Ynglésés,
Lavalle, Buenos Aires, Argentina.
October 30, 1920.

B.S. 22145. View of tala woods
and Estancia Los Ynglésés. Lavalle,
Buenos Aires, Argentina.
October 30, 1920.





1416. Site of nest of Chingolo,
Brachyospiza capensis argentina
under plant in center. Estancia
Los Ynglesés, Lavalle, Buenos
Aires, Argentina.
October 30, 1920.

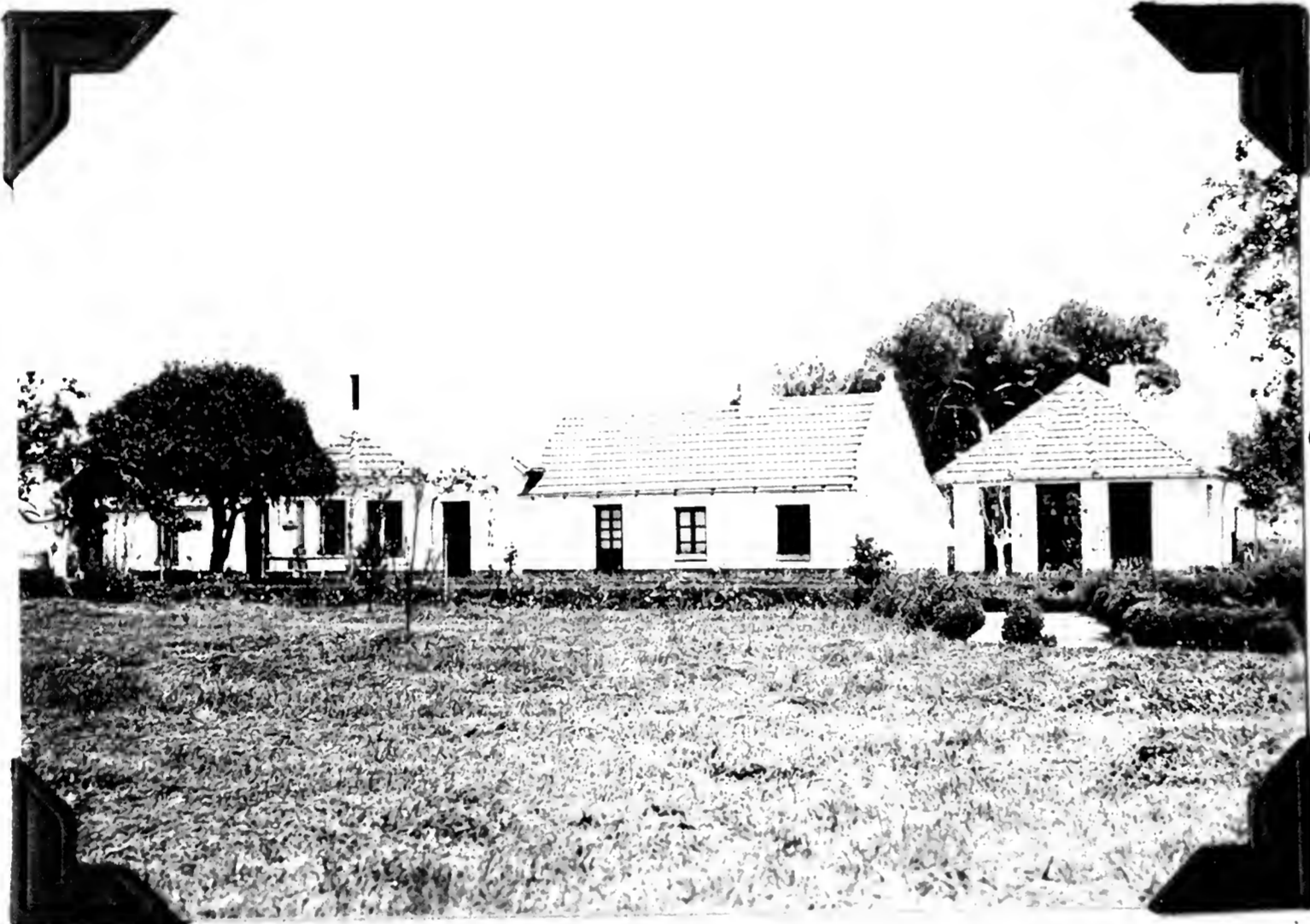


B.S. 22147. Nest and eggs of
Brachyospiza capensis argentina.
Lavalle, Buenos Aires, Argentina.
October 30, 1920.



S.I. 36513J
~~B.S. 22148.~~ View across pampa
from mirador at Estancia Los Ynglesés.
Lavalle, Buenos Aires, Argentina.
October 30, 1920.

B.S. 22149. Estancia Los Ynglésés (property of late Mr. Ernest Gibson, Ornithologist). Lavallo, Buenos Aires, Argentina. October 30, 1920.



1417. The main house at Estancia Los Ynglésés, former property of the ornithologist Ernest Gibson. Building for his bird skins and study at right. Lavallo, Buenos Aires, Argentina. October 30, 1920.

1418. At the Estancia Los Ynglésés, Lavallo, Buenos Aires, Argentina. October 30, 1920.

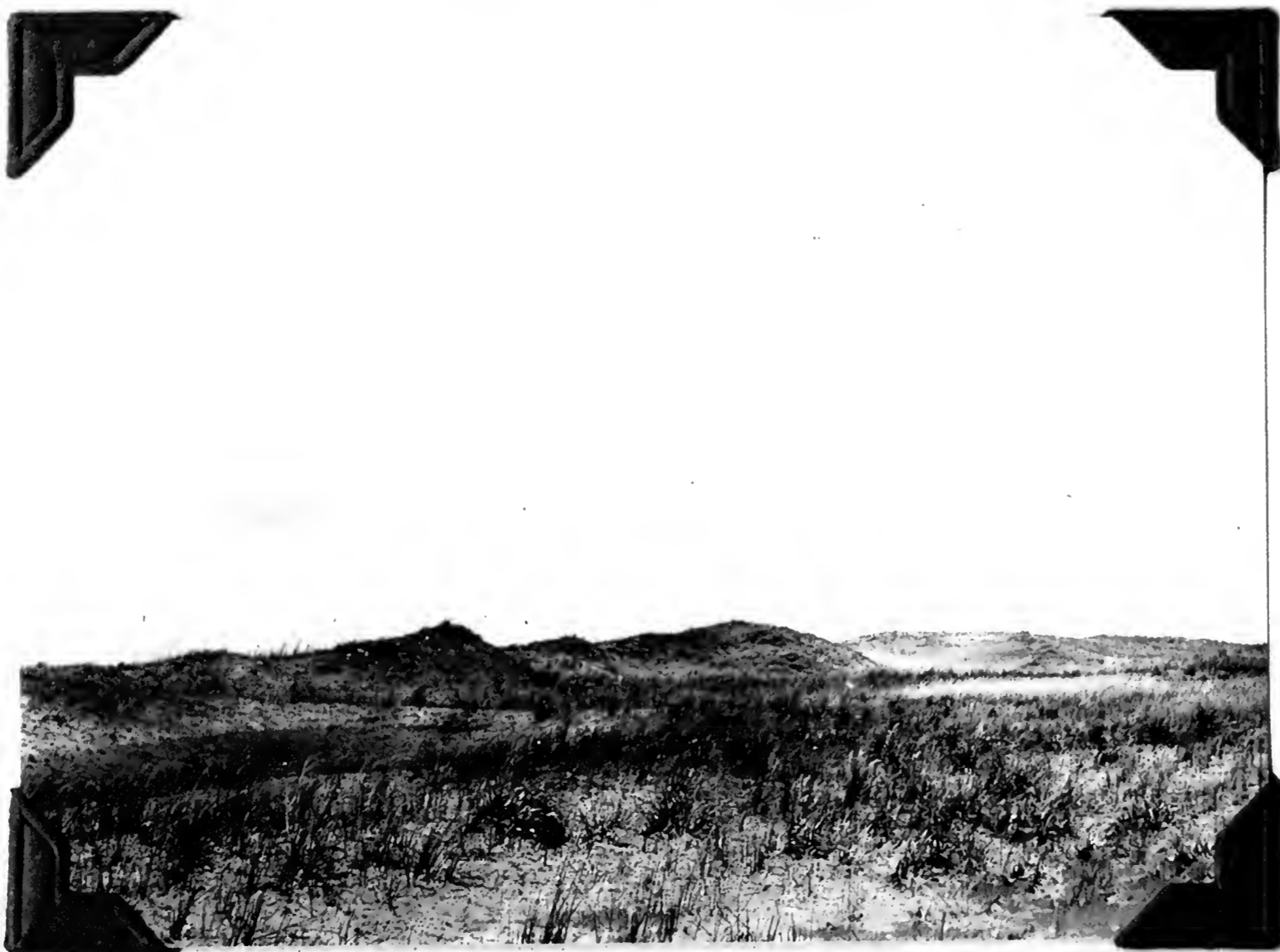




1419. The main house at the
Estancia Los Ynglesés, Lavalle,
Buenos Aires, Argentina.
October 30, 1920.



1420. At the Estancia Los
Ynglesés, Lavalle, Buenos Aires,
Argentina.
October 30, 1920.



B.S. 22153. Sand dunes 15 miles
south of Cabo San Antonio. Lavalle,
Buenos Aires, Argentina.
November 7, 1920.

B.S. 22154. Sand dunes 15
miles south of Cabo San Antonio.
Lavalle, Buenos Aires, Argentina.
November 7, 1920.



B.S. 22155. Sand dunes 15 miles
south of Cabo San Antonio. Lavalle,
Buenos Aires, Argentina.
November 7, 1920.

B.S. 22156. Ocean beach 15 mil
below Cabo San Antonio. Lavalle,
Buenos Aires, Argentina.
November 7, 1920.

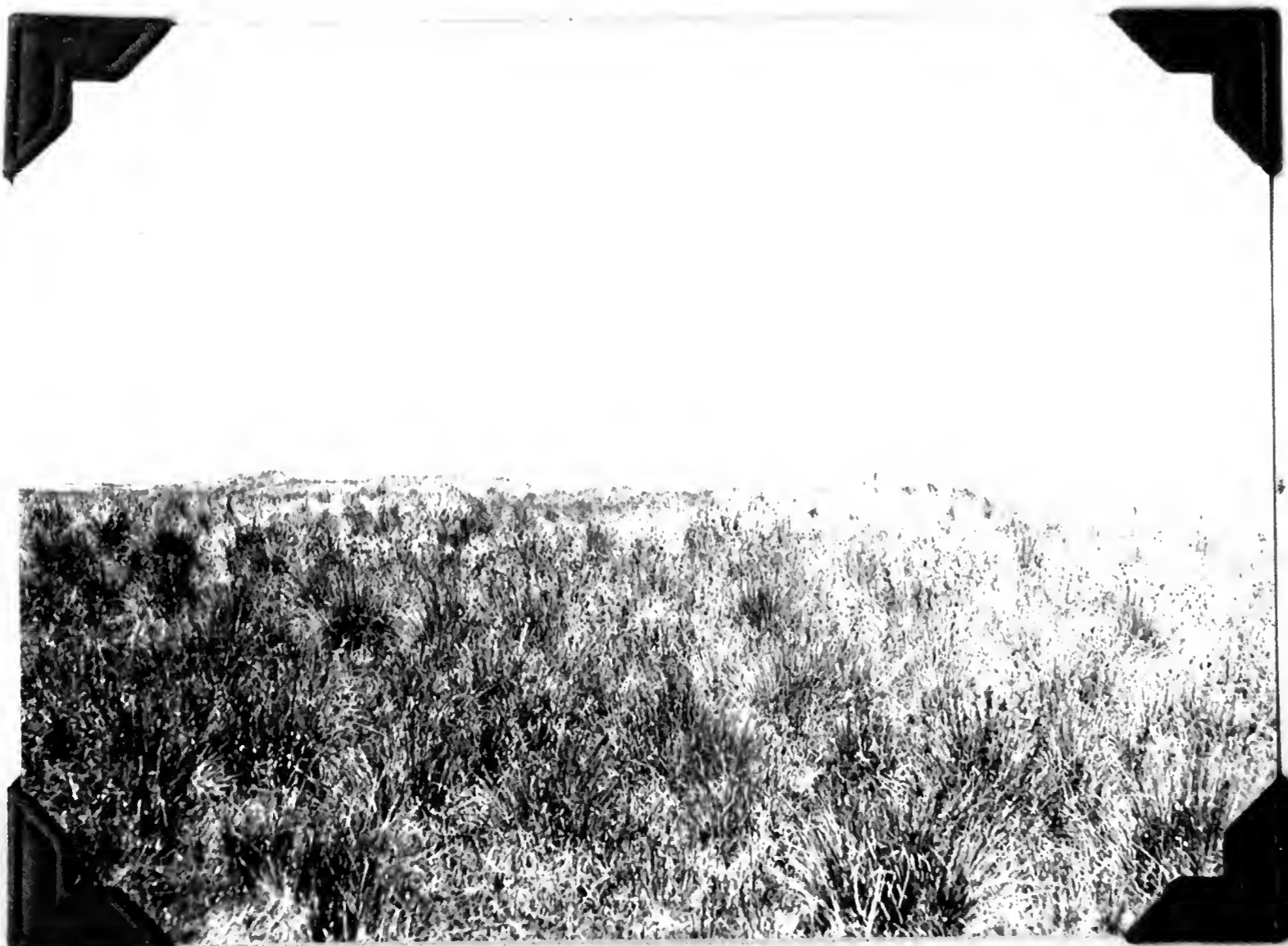




1421. Ocean beach 15 miles south
of Cabo San Antonio, east coast of
Prov. Buenos Aires, Argentina.
November 7, 1920.



B.S. 22158. Sand dunes 15
miles south of Cabo San Antonio.
Lavalle, Buenos Aires, Argentina.
November 8, 1920.



S.I. 36513 A
~~B.S. 22159.~~ Sand dunes 15 miles
south of Cabo San Antonio. Lavalle,
Buenos Aires, Argentina.
November 8, 1920.

B.S. 22160. Camp in dunes
15 miles south of Cabo San Antonio.
Lavalle, Buenos Aires, Argentina.
November 8, 1920.



B.S. 22161. Camp in dunes,
15 miles south of Cabo San Antonio.
Lavalle, Buenos Aires, Argentina.
November 8, 1920.

B.S. 22162. Collecting out-
fit and sulky ready to leave
camp, 15 miles south of Cabo
Antonio. Lavalle, Buenos Aires,
Argentina.
November 8, 1920.





B.S. 22164. View in marsh or
cañadon, Estancia Los Ynglesés.
Lavalle, Buenos Aires, Argentina.
November 10, 1920.



B.S. 22165. View in marsh
or cañadon, Estancia Los Ynglesés.
Lavalle, Buenos Aires, Argentina.
November 10, 1920.



1422. View of extensive cañadon
on Estancia Los Ynglesés, Lavalle,
Buenos Aires, Argentina.
November 10, 1920.

B.S. 22166. The ovenbird
or hornero (Furnarius rufus)
at nest. Estancia Los Ynglesés.
Lavalle, Buenos Aires, Argentina.
November 10, 1920.



B.S. 22167. View of monte at
Estancia Los Ynglesés. Ombú trees
at left. Lavalle, Buenos Aires,
Argentina.
November 10, 1920.

B.S. 22168. Ombú tree. Estancia Los
Ynglesés. Lavalle, Buenos Aires,
Argentina.
November 10, 1920.





1423. B. S. Donaldson, Estancia Los
Ynglesés, Lavalle, Buenos Aires, Argentina.
November 10, 1920.



B.S. 22169. Nest of ovenbird
or hornero (Furnarius rufus) on
gate that is used daily. Lavalle,
Buenos Aires, Argentina.
November 11, 1920.



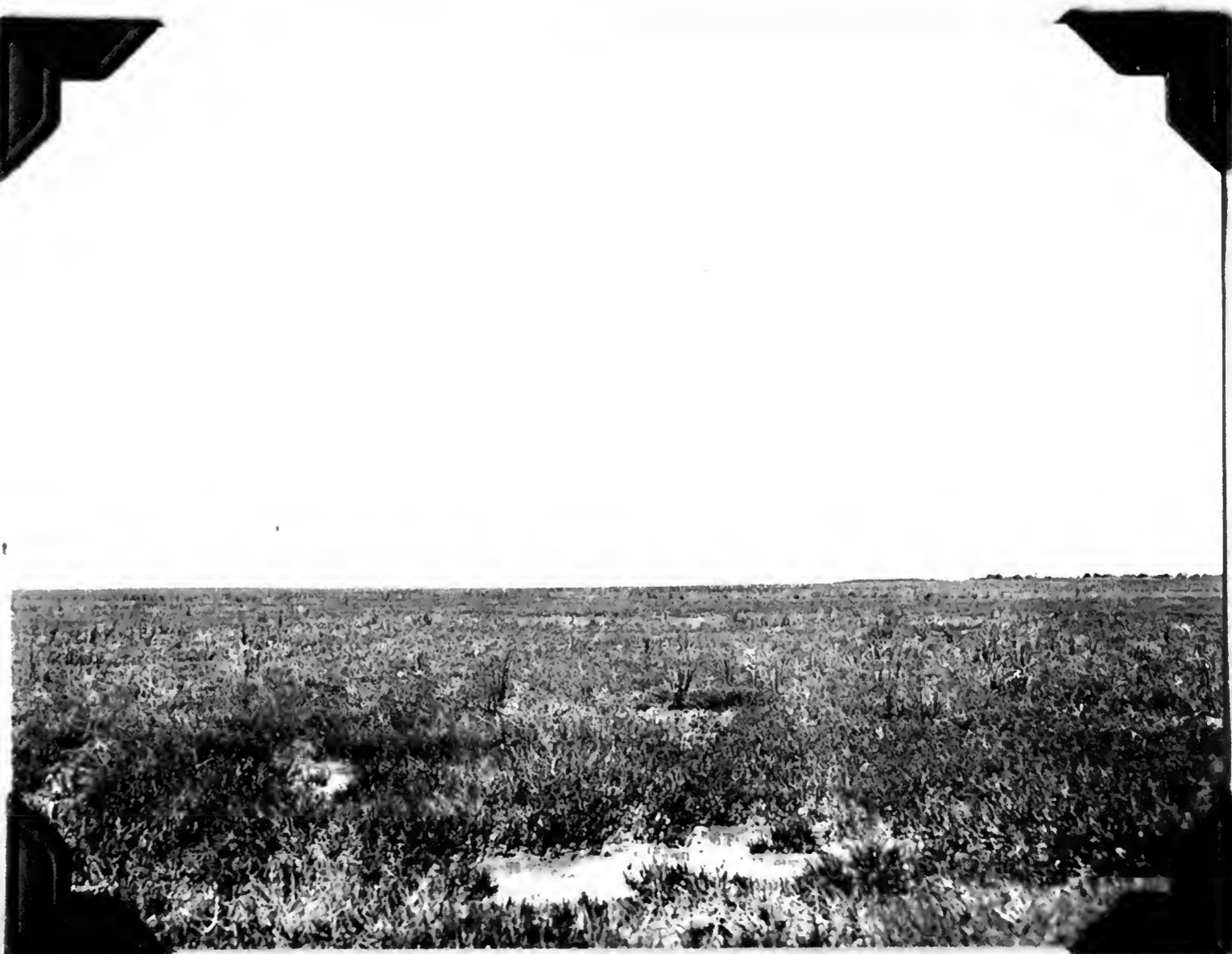
B.S. 22171. Tidal flats at mouth
of Río Ajó. Lavalle, Buenos Aires,
Argentina.
November 15, 1920.

B.S. 22172. Mud flats exposed
at low tide at mouth of Río Ajó.
Lavalle, Buenos Aires, Argentina.
November 15, 1920.



1424. Mouth of Río Ajó, below
Lavalle, Buenos Aires, Argentina.
November 15, 1920.

B.S. 22173. Alkaline flats
at mouth of Río Ajó. Lavalle,
Buenos Aires, Argentina.
November 15, 1920.





B.S. 22174. Catholic church
typical of those found universally
in pampa towns. Lavalle, Buenos
Aires, Argentina.
November 15, 1920.



B.S. 22176. Changing horses on
galera between Lavalle, and Buenos
Aires, Province of Buenos Aires,
Argentina.
November 16, 1920.



1425. Travel in galera or stage
coach between Lavalle and Santo
Domingto, Prov. Buenos Aires,
Argentina.
November 16, 1920.

1426. Travel by galera
or stage coach between Lavalle
and Santo Domingo, Prov. Buenos
Aires, Argentina. Nov. 16, 1920

