

**BARR'S**

GOLD MEDAL

**DAFFODILS**

**AUTUMN, 1917.**

Daffodil  
Peter Barr.

**BARR & SONS**

11, 12 & 13, King Street, Covent Garden, London.

Nurseries, Taplow, Buckinghamshire — Visitors Invited.

# GENERAL INDEX.

	PAGE		PAGE
Culture of Daffodils Outdoors	1	Leedsli Varieties	21
Notes on Naturalising in Grass, etc.	2	Triandrus & Triandrus Hybrids	23
Culture in Pots or Boxes	2	Cyclamineus	25
" " Bowls or Vases	3	Jonquilla & Jonquilla Hybrids	25
Collections of Daffodils	4	Tazetta & Tazetta Hybrids	26
Daffodils for Early Forcing	4	Poeticus—True Poets' Narcissl	27
Collections for Grass, etc.	5	Double Varieties	28
Mixtures " " "	6	Various Species and Hybrids, includ- ing Bulbocodium, Graecius, Juncifolius, and Viridiflorus	30
Unnamed Seedlings in Mixture	6	Useful Tools for Bulb Planting, etc.	31
Miniature Daffodils for Rock-Garden, etc.	6	Hybridising Tweezers, etc.	31
NEW SEEDLING DAFFODILS	7	Metal Labels for Daffodils	31
GENERAL LIST OF DAFFODILS—		Manures, Soils, Peat-fibre Mixture, and Bowls for Daffodils	32
Yellow and Sulphur Trumpets	10	Books on the Daffodil	32
White Trumpets	12	Coloured Daffodil Plates	33
Bicolor Trumpets	14	Special Notices and Terms of Busi- ness	33
Incomparabilis Varieties	15		
Barili Varieties	18		

## ALPHABETICAL INDEX OF DAFFODILS

### OFFERED IN THE FOLLOWING PAGES

PAGE	PAGE	PAGE	PAGE	PAGE
Admiral .. 26	Coral Queen .. 7	Hatfield Beauty .. 14	Minimus .. 11	St. George .. 20
Adonia .. 18	Corbutaria .. 30	Hecla .. 16	Minnie Hume .. 11	St. Gaf .. 9
Aglaia .. 21	Cornelia .. 10	Helios .. 8	Minor .. 11	St. Salmonetta .. 23
Agnes Barr .. 18	Cossack .. 19	Henri Vilmorin .. 12	Miss Willmott .. 19	Santa Maria .. 12
Agnes Harvey .. 14	Cresset .. 18	Henry Irving .. 11	Mohcan .. 19	Schly Isles White .. 26
Alabaster .. 7	Crocus .. 27	Herol .. 8	Monarch .. 13	Sea Bird .. 20
Albatross .. 18	Cyclamineus .. 25	Herrick .. 27	Monophyllus .. 30	Seagull .. 20
Albertina .. 21	Cynnet .. 14	Homer .. 17	Moschatus of Haworth .. 13	Seascape .. 9
Albus <i>(Fragrans)</i> .. 24	Cynosure .. 14	Homespun .. 16	Mrs. Buchanan .. 15	Sequin .. 20
Alice Knights .. 12	Czarina .. 21	Hoop Petticoat .. 30	Mrs. D. V. West .. 8	Seraphine .. 15
Alma .. 10	Dell .. 7	Horace .. 18	Mrs. G. H. Barr .. 13	Seville .. 9
Almira .. 27	Diana .. 21	Horatius .. 15	Mrs. H. D. Betheridge .. 18	Shrike .. 9
Alsaac .. 26	Dione .. 8	Horfield .. 14	Mrs. Langtry .. 12	Silver Moon .. 23
Amazon .. 21	Dosoris .. 16	Hyacinth .. 19	Mrs. Robert Sydenham .. 17	Sirdar .. 23
Anchorite .. 7	Double White Poeticus .. 29	Ibis .. 19	Music .. 8	Sir Galahad .. 23
Angel's Tears .. 24	Double Yellow Daffodil .. 28	Iceland .. 22	Nanus .. 12	Sir Lancelet .. 20
Anne Holloway .. 24	Dresden .. 27	Ideal .. 26	Obvalaris .. 12	Sir Watkin .. 17
Apricot .. 29	Dublin .. 29	Incognita .. 19	Occident .. 10	Snow King .. 28
Argent .. 29	Duchess of West- minster .. 21	Inglecombe .. 29	Odonus .. 25	Snowshoe .. 18
Ariadne .. 21	Duke of Bedford .. 21	Intermedium Sunset .. 27	<i>(Campanulæ)</i> rugulosus .. 25	Socrates .. 9
Aspasia .. 16	E. T. Cook .. 19	Irene .. 26	Campanelle .. 25	Sparkler .. 17
Astartente .. 18	Egna .. 14	Isis .. 19	Campanelle plenius .. 25	Steadfast .. 17
Barril Conspicuous .. 18	Eggs and Bacon .. 29	J. T. Bennett-Poe .. 24	Olympia .. 12	Stella superba .. 17
Beacon .. 18	Elaine .. 21	Janet Image .. 12	Orange .. 12	Strongbow .. 19
Bedouin .. 15	Elvira .. 26	Jasper .. 26	Orange Phoenix .. 19	Su plur Phoenix .. 29
Bernardino .. 15	Empress .. 11	Jaune à Merveille .. 26	Oriflamme .. 14	Sunbeam .. 20
Bianca .. 21	Empress .. 11	J. B. M. Camm .. 14	Ornatu .. 18	Sunrise .. 27
Biflorus .. 27	Eros .. 17	John Bala .. 19	Ornament .. 8	Sunset .. 20
Blackwell .. 15	Ethelburga .. 8	Jonquilla .. 23	Pallidus Præcox .. 15	Tazetta vars .. 26
Blazing Star .. 16	Excelsior .. 2	Juncifolius .. 30	Paper White .. 15	Telamonius plenius .. 28
Blood Orange .. 18	Fair Edith .. 16	Katherine Spurreil .. 22	Paulhan .. 9	Teuby Daffodil .. 12
Bridesmaid .. 21	Fair Maiden .. 19	King Alfred .. 11	Pedestal .. 17	Tennyson .. 28
Bulbocodium .. 33	Fairy Queen .. 22	Kioldyke .. 26	Peter Barr .. 13	The Bride .. 28
Burbridge type .. 19	Fairy Cross .. 19	Lady M. Boscawen .. 17	Pharaoh .. 18	The Gelta .. 9
Butter and Eggs .. 28	Firebrand .. 16	Lady M. Boscawen .. 17	Pheasant's Eye .. 25	Timon .. 17
Buttercup .. 25	Firebrake .. 16	Lent Lily .. 14	Philippe de Vilmorin .. 10	Torchlight .. 20
C. H. Curtis .. 7	Firelight .. 16	Lewis Carrol .. 8	Pilgrim .. 11	Tresora .. 20
Cadimon .. 10	Fleetwing .. 16	Little Nell .. 19	Poehar .. 8	Triandrus .. 24
Cesar .. 9	Frank Miles .. 16	Lohengrin .. 13	Poetarum .. 8	Tridymus .. 27
Calathinus .. 24	Furnace .. 19	Lord Kitchener .. 16	Poietar .. 2	Triumph .. 27
Calpurnia .. 14	Gadfly .. 18	Lord Roberts .. 11	Poivantinus Narcissus .. 26	Una .. 21
Campanelle Jonquill .. 25	Gardenia-flowered .. 19	Lovelessness .. 13	P. R. Barr .. 12	Undine .. 23
Candicatus .. 7	George Philip Hayden .. 11	Lucia .. 22	Primrose Phoenix .. 29	Van Waveren's Giant .. 12
Capax plenius .. 28	Glitter .. 19	Lucifer .. 17	Princeps .. 15	Van Zlon Double .. 27
Cardinal Wooley .. 18	Gloria Mundi .. 16	Lucretia .. 17	Princess Ida .. 13	Telamonius plenius .. 28
Cassandra .. 27	Gloriosus .. 16	Lycur .. 17	Princess Mary .. 17	Venus .. 23
Castrolna .. 12	Glory of Leiden .. 14	Lycidas .. 48	Princess Maud .. 21	Vesuvius .. 17
C. J. Backhouse .. 16	Glory of Noordwijk .. 14	M. M. de Oraaff .. 22	Pseudo-Narcissus .. 15	Victoria .. 15
Cernuus .. 12	Golden Chief .. 8	Mme. de Graaff .. 13	Pulchellus <i>(Triandrus)</i> .. 24	Virgil .. 38
" plenius .. 18	Golden Rose .. 29	Madme. de Camp .. 15	Queen of Spain .. 24	Viridiflorus .. 20
" pulcher .. 12	Golden Spur .. 16	Madonna .. 8	Queen of the North .. 23	Viscountess Falmouth .. 23
Challenger .. 7	Oracilia .. 30	Maggie May .. 22	Queen of the West .. 9	W. P. Minor .. 13
Chameleon .. 14	Grand Monarque .. 26	Maid of Athens .. 22	Radiant .. 20	Water Pimper .. 13
Chamois .. 17	Grand Soleil d'or .. 26	Major Spurreil .. 19	Red Beacon .. 9	White Pearl .. 23
Charm .. 18	Grass .. 18	Marie Louise .. 8	Red Chief .. 20	Weardale Perfection .. 15
Chieftain .. 16	Grown .. 7	Michael .. 11	Red Emperor .. 10	White Lady .. 23
Cingalee .. 24	Hamlet .. 11	Michael Angelo .. 17	Resolute .. 17	White Queen .. 25
Citrinus .. 30	Harold Finn .. 19	Mikado .. 11	Rev. D. R. Williamson .. 12	White Slave .. 23
Citrona .. 7		Minerva .. 18	Ringdove .. 9	White Standard .. 24
Cleopatra .. 10			Rosalind .. 20	Whitewell .. 23
Cloth of Gold .. 27			Roseella .. 10	Wildfire .. 9
Cluall .. 30			Royal Lady .. 20	White Scarlett .. 17
Codins and Cream .. 26			Royal Star .. 11	
Cœur de Lion .. 18			Ruby .. 9	
Conspicuous <i>(Fulvia)</i> .. 30			Rugulosus .. 12	Zenith .. 20
Constellation .. 16			Rubogous .. 25	Zlugara .. 9

# Barr's "Gold Medal" Daffodils

AWARDED

**Forty-five Gold Medals, Three Challenge Cups,  
AND THE R.H.S. STANDARD CUP FOR NEW SEEDLINGS  
1915 & 1916.**

**Also many First-class Certificates and other high awards.**

## CULTURE AND ADAPTATION OF THE DAFFODIL OUTDOORS.

**Soil and its Treatment.**—The Daffodil will thrive in any ordinary garden soil, but prefers a deep, rather moist sandy loam. When the soil is of a dry and sandy nature, it should be deeply dug, if possible a season previous to planting the bulbs, well-decayed cow manure being added, and a vegetable or annual crop grown on the ground. Before the bulbs are planted a sprinkling of quick-lime should be spread on the surface and dug in. If it is not convenient to first take off a crop of Vegetables or Annuals, then, in digging, mix with the soil crushed bones at the rate of  $1\frac{1}{2}$  oz. to the square yard. The ammoniacal properties of stable manure are injurious to the Daffodil; if used, therefore, it should be placed well below the bulb. On good retentive loamy soils a dressing of lime may be given every three years, with an annual dressing of Basic Slag, at the rate of  $7\frac{1}{2}$  oz. to the square yard.

FRESHLY DUG SOIL should be allowed to stand vacant two to three weeks before planting, to allow the ground to settle down, otherwise the freshly planted bulbs are sometimes drawn under considerably below their proper depth, and the bloom in consequence is apt to be weakened and retarded the first season.

THE BEST AND SAFEST MANURES TO USE are Crushed Bones, Dissolved Bones, Basic Slag, or Phytobroma applied at planting time, and mixed with the soil; the Crushed or Dissolved Bones at the rate of 6 cwt. to the acre, or 2 oz. to the square yard, and Basic Slag at the rate of 1 ton to the acre, or  $7\frac{1}{2}$  oz. to the square yard. We recommend for light soils Crushed Bones in preference to Basic Slag. On very poor and DRY SANDY SOILS we recommend in addition SULPHATE OF POTASH, to be sprinkled annually in the autumn over the surface of the ground, after planting, at the rate of 2 cwt. to the acre, or about  $\frac{3}{4}$  oz. to the square yard. The potash not only increases the depth of colour in the flowers, but also helps to hold moisture in the soil, an essential condition to the perfect development of the Daffodil. In the case of bulbs which have not been lifted we recommend a top dressing (well hoed in) of PHYTOBROMA or Dissolved Bones in November and again in January or early February, at the rate of 3 oz. to the square yard. *Price List of Manures will be found on page 32.*

IN EARLY SPRING, as soon as the Daffodils begin to show above ground, the surface soil should be well broken with a hoe, to sweeten it after the heavy winter rains; a handy tool for this purpose will be found offered on page 31. Where practicable it is advisable to cover the ground in November with some light covering material, such as peat-fibre, pulled heather, cut furze, or gorse, or even old pea sticks laid across the ground; stable manure is not a good mulch for Daffodils. The primary object of a mulch is to prevent the autumn rains hardening the crust of the ground and to break the severity of a sudden frost.

**Planting and Lifting.**—The best time to plant, to obtain the finest flowers, is early Autumn (as early as possible), *although bulbs may be put in as late as Christmas with fairly satisfactory results*; we have planted some Daffodils as late as the second week in February, and had some very good blooms in May. We recommend, however, *early* planting for best results. The bulbs may be left undisturbed for years in ordinary good loamy soils, but on poor or light soils they are better lifted every two years, as soon as the foliage has died down, replanting the best bulbs either immediately or as early as convenient. Never plant when the ground is wet and sticky. Do not put silver sand around the bulbs of Narcissi except in the case of the *Bulbocodium* varieties.

**DEPTH TO PLANT.**—The average depth to plant is from 2 to 3 inches, that is to say, a covering of 2 to 3 inches of soil. As the bulbs vary considerably in size, according to the relative varieties, the best rule to go by is the bulb itself, which should be *covered with soil once and a half its own depth*, measuring the bulb from the collar of its neck to its actual base. On light sandy soils the bulbs may be planted a trifle deeper than on heavy stiff soils, and in the North of England and in cold localities they should be put in a little deeper than in the warmer southern districts.



## Culture and Adaptation of the Daffodil Outdoors—*continued.*

**Grouping for Effect.**—To obtain the best effect, Daffodils should be planted in large groups of irregular outline, each group or clump to contain one variety only; avoid straight lines, circles, and symmetrical designs. Masses of Daffodils should always appear in the Hardy Flower border, where irregular and effective sweeps can be planted between the clumps of herbaceous plants which in their turn grow up and hide as well as shelter the Daffodil foliage while it is going to rest. In grouping Daffodils the season of flowering should be borne in mind, as the varieties bloom in succession from the end of February to the end of May, during which period, by a judicious selection, a constant succession of flowers can be maintained. *On page 10 we denote the rotation of blooming.*

**Naturalising Daffodils in Grass, Etc.**—All Daffodils may be planted in grass with perfect success. To produce the best effect, the three groups should be kept separate: thus the Star Narcissi should not be mixed with the Great Trumpets, nor Poet's Narcissi with the Star Narcissi. In planting, make the breaks large and bold, scattering the bulbs over the ground broadcast with the hand, and planting them where they fall. DAFFODILS never look more beautiful than when growing on grassy slopes or banks, and we strongly recommend our customers to avail themselves of such situations for naturalising Daffodils. In planting under trees, avoid places where the drip from the branches is greatest, also where the main roots of the trees come close to the surface.

**Method of Planting Daffodils in Grass.**—We recommend for this work our SPECIAL BULB PLANTER (*see page 31*). By the use of this implement the trouble of planting bulbs in grass is reduced to a minimum. It takes out a clean, circular piece of turf 2 to 2½ inches in diameter, and of sufficient depth. On making the second hole this piece of turf is released from the planter and lies ready on the ground to cover the bulb with. The soil is not in any way tightly pressed and made hard, which is the case when an ordinary dibber is used, and the appearance of the grass is not spoilt; in fact, after planting 10,000 bulbs with this tool on a greensward, one could hardly detect that the grass had been touched. If the ground is poor, a compost of fresh soil with an abundance of *Crushed Bones* (7 lbs. to a bushel) or *Phytobroma* (3 lbs. to bushel) should be made and a little of the compost dropped into each hole before placing in the bulb, a little more should be given as a covering, and then the sod of turf be replaced and pressed down. The bulbs will then be given a fair start in their new quarters.

**The Best Time for Planting in Grass** is with the advent of the autumn rains, when the ground is in a fairly moist condition.

## CUTTING DAFFODILS FOR HOUSE DECORATION AND EXHIBITION.

To obtain very fine blooms Daffodils should be cut in a young state, just when the bud is bursting, placed in water and allowed to expand in a greenhouse or sitting-room. The blooms opened in this way are larger and finer in texture and purer in colour than those which develop out of doors.

## CULTURE OF DAFFODILS IN POTS OR BOXES.

**TIME OF POTTING.**—Pot as early in autumn as possible to obtain the finest results and earliest blooms.

**THE BEST COMPOST** to pot Daffodils in is a mixture of two-thirds good fibrous loam, and one-third old decayed leaf soil, with a sprinkling of sharp silver sand, adding 1½ lbs. of bone meal or 1 lb. *Phytobroma* (*see page 31*) to every bushel of soil, which mix well together before using. In all cases the soil used should be fresh and sweet; *never pot in soil that is wet or sticky.* In order to destroy all injurious insect life it is a good plan to sterilise potting soil before adding the *Phytobroma* or bonemeal; we recommend for this purpose the **KONDIENE SOIL STERILISER**, price 45/- (full particulars on application), or small quantities of soil can be sterilised in a sack by pouring over it a large kettle of boiling water and then spreading out the soil to dry.

**THE POTS** should be carefully washed and allowed to dry before using; new pots should be well soaked. *Never pot in dirty or wet pots.*

**GOOD DRAINAGE** should be secured by placing three or more pieces of charcoal (in preference to broken crocks) over the drainage hole, covering the charcoal or crocks with a little rough fibre from the loam. When boxes are used, the slit at bottom of box should be covered with pieces of charcoal, a good layer of rough fibrous loam or leaf soil placed at bottom of box to ensure perfect drainage.

**COVERING THE BULBS.**—The larger bulbs need not be quite covered with soil, the level of which should be half an inch below the rim of the pot to allow of watering when the bulbs are in growth. Bulbs of the miniature species should be covered with half an inch of soil.

**AFTER POTTING**, stand the pots or boxes outside in the open, on a firm bottom such as a bed of ashes or a gravel path to prevent the entrance of worms. They should then be surrounded and completely covered with Peat-fibre, or old decayed leaf soil (ashes are dangerous, as being often very poisonous), the top of the pots being 2 inches below the surface of the covering material. This will secure a natural and moist condition to the bulbs and encourage root action. So long as the pots remain buried they will require no watering.

**Culture of Daffodils in Pots or Boxes—continued.**

THE POTS SHOULD REMAIN PLUNGED for a period of not less than twelve weeks, after which first-early sorts (marked 1 in catalogue), such as EXCELSIOR, GOLDEN SPUR, HENRY IRVING, KING ALFRED, OEVALLARIS, etc., may be transferred to a greenhouse where the night temperature does not exceed 55° and that of the day 60°. A higher temperature should not be given if well-developed blooms are expected. If the pots are taken into a sitting-room they should be kept during the day in a sunny window and at all times protected from draughts and gas heat. Later-flowering Daffodils (marked in catalogue 2, 3, and 4) should be brought into warmth later and in succession, thus sorts marked 4 should not be removed from the plunging bed until February or March. **No Daffodils will bear hard forcing or bottom heat.** After the bulbs are out of the plunging bed, give the plants as much light and air as possible, and once a week a very little weak liquid manure water until they come into bloom.

Of the stronger growing sorts use three bulbs for a 4½ to 6-inch pot; of the miniature kinds, such as Minimus, Nanus, Minor, Cyclamineus, Triandrus, Juncifolius, and Bulbocodiums, use twelve to eighteen bulbs for a 4½ to 6-inch pot. These small-flowered dwarf-growing species are most charming in pots or little shallow pans. The following may be had in bloom in January:—Minimus, Minor, Nanus, and Cyclamineus, and these may be mingled with Scilla sibirica and Chionodoxas, as both bloom at the same period and produce a charming contrast. The White Hoop Petticoat Narcissus should be potted in almost pure sand kept well moist, and if placed at once in a cold frame after potting may be had in bloom by Christmas.

If Daffodils are wanted in quantity for cutting early in the season, plant thickly in boxes, giving same culture as recommended above for growing in pots. *See varieties for early forcing, page 4.*



*Narcissus Poetaz Elvira growing in Barr's Fertilised Fibre in a bowl.*

### CULTURE OF DAFFODILS IN BOWLS In Barr's New Peat-fibre Mixture.

A charming effect can be obtained by growing Daffodils in fancy vases or bowls, with or without drainage holes, by using our Peat-fibre Mixture, which is light, clean, and nice to handle, and *remains sweet*; it is preferable to soil where Daffodils and other bulbs are grown in bowls and vases.

**Culture.**—Fill the vase or bowl with the Fibre Mixture up to within a little below the rim, and plant the bulbs in the same manner as with ordinary potting soil, just covering them; the mixture may be shaken down into place after planting and lightly watered, but should not be pressed down tightly, or the bulbs will be forced upwards when root growth commences.

After planting, either of the following plans may be adopted:—

(a) The bowls or vases may be placed outdoors and covered entirely with Peat-fibre, leaving them thus for 10 to 12 weeks, when the bulbs will have made some top growth.

(b) Or the bowls may be plunged in a cold frame, airy cellar, or out-house instead of outdoors; with this treatment, however, it will be necessary to occasionally give water.

(c) A third plan is to place the bowls after potting in a dark or moderately dark *airy* place, cool but not too cold; they must not be placed in a close cupboard or the bulbs will certainly suffer.

In the case of bowls plunged outdoors there will be no need to give any attention in the way of watering, etc., as they will, of course, have abundance of moisture from the autumn rains.

Where, however, the bulbs are not exposed to the rain, the bowls should be examined once or twice a week, care being taken that the fibre mixture is kept uniformly damp; but for the first week or two after planting water should be given very sparingly, sufficient only to keep the fibre damp enough to encourage root action. As soon as the bulbs are well rooted, water should be given more freely, the fibre mixture being then kept quite moist; if the mixture is allowed at any time to become dry, even for a day, the buds will go blind; should by any chance too much water have been given, the bowls may be drained by carefully tipping them on their side. If obtainable rain water is the best to use.

When the bulbs have made some top growth the bowls should be removed to the sunny window of a sitting room, where they will get the morning sun, or be kept in a cool greenhouse close to the glass, it being necessary that they should be given sufficient light and air to prevent the foliage from becoming drawn. Draughts and gas heat must be carefully avoided.

No bottom heat should be given, and a temperature of 55° to 60° by day and 50° to 55° by night is sufficient to obtain good blooms; the bulbs resent too warm a temperature.

**Collections of Daffodils for Bowl Culture, page 4. Bowls and Peat-fibre Mixture, page 32.**

## COLLECTIONS OF DAFFODILS

FOR FLOWER BORDERS AND POT CULTURE.

### Barr's 21/- Collection of Daffodils for Flower Borders.

The following varieties are all beautiful in the flower border, and the selection embracing early and late varieties gives a good succession of bloom. They are all suitable for pot-culture and will give an equally fine display in the greenhouse or sitting-room.

ALL STRONGEST SELECTED BULBS.

6 Emperor	6 Incomp. Firelight	6 Leedsil M. M. De Graaff
6 Golden Spur	6 " Frank Miles	6 " Mrs. Langtry
6 Obvallaris	6 " Lucifer	6 " Salmonetta
6 Princess Ida	6 " Sir Watkin	6 Poetaz Elvira
6 Bicolor Empress	6 Barril Albatross	6 Poeticus poetarum
6 " Victoria	6 " conspicuus	6 " Minerva
6 " J. B. M. Camm	6 " Mascotte	6 Codlins and Cream (double)
6 " Mdme. Plemp	6 " Seagull	6 Eggs and Bacon (double)
6 Incomp. Constellation	6 Leedsil Janet Image	

3 Bulbs each of the above 26 varieties for 10/6

### Barr's 42/- Collection of Daffodils for Pot Culture.

*For Special Cultural Directions see pages 2 and 3.*

The following Daffodils can be specially recommended for pot culture, and by gentle forcing a succession of bloom may be had through February and March, the selection containing early and later flowering varieties. If after flowering they are turned out of pots and carefully planted out (the ground being well watered previously, should it be dry) they will mostly flower well outdoors the following season.

ALL STRONGEST SELECTED BULBS.

6 Emperor	6 Bicolor Mdme. Plemp	6 Leedsil Fairy Queen
6 Excelsior	6 Incomp. Fireflame	6 " Janet Image
6 Glory of Lelden	6 " Lucifer	6 " Maid of Athens
6 Henry Irving	6 " Sir Watkin	6 Poetaz Elvira
6 Obvallaris	6 " Strongbow	6 " Ideal
6 Lady Audrey	6 Barril Albatross	6 Poeticus Cassandra
6 Madame de Graaff	6 " Firebrand	6 " Herriek
6 Princess Ida	6 " Mascotte	6 Codlins and Cream (double)
6 Bicolor Cygnet	6 " Seagull	6 Campanelle Jonquill, selected strain
6 " Empress	6 Leedsil Duchess of Westminster	
6 " J. B. M. Camm		

3 Bulbs each of the above 30 varieties for 21/-

3 Bulbs each of 15 varieties selected from above, 10/6

SPECIAL COLLECTIONS OF DAFFODILS for Pot Culture or Borders made up to any value to meet Customers' requirements.

### Barr's 20/- Collection of Daffodils for Bowl Culture.

Suitable for growing in bowls in our Peat-fibre Mixture. *For Cultural Directions see page 3.*

ALL STRONGEST SELECTED BULBS.

6 Emperor	6 Bicolor Victoria	6 Leedsil Fairy Queen
6 Golden Spur	6 Incomp. Frank Miles	6 " White Lady
6 Henry Irving	6 " Lucifer	6 Odorus Campanelle
6 Obvallaris	6 " Sir Watkin	6 Poetaz Elvira
6 Madame de Graaff	6 Barril Firebrand	6 " Aspasla
6 Bicolor J. B. M. Camm	6 " Seagull	6 Poeticus Cassandra
6 " Empress		6 Tazetta White Pearl


3 Bulbs each of the above 20 varieties for 10/6

*Special Collections for Bowl Culture made up to any value to meet customer's requirements.*

### DAFFODILS RECOMMENDED FOR EARLY FORCING.

The following varieties being naturally early sorts may be easily had in bloom during January and February. *For cultural directions see pages 2 and 3.*

	PAGE		PAGE		PAGE
Cornelia (Yellow Trumpet)	10	Cygnet (Bicolor Trumpet)	14	Aspasla (Poetaz)	26
Excelsior	11	Duke of Bedford (Bicolor Trumpet)	14	Elvira	26
Golden Spur	11	Horsfieldii	14	Ideal	26
King Alfred	11	Victoria	15	Irene	26
Obvallaris	12	Blackwell (Incomparabilis)	15	Triumph	27
Alice Knights (White Trumpet)	12	Sir Watkin	17	Ornatus (Poeticus)	28
Princess Ida	13	Firebrand (Barril)	19	Telamonius plenus (Double)	28


 In addition to the above we recommend all the Polyanthus Narcissi offered on page 26.

## INEXPENSIVE DAFFODILS

Recommended for Naturalising in Woodlands, Shrubberies, Orchards, and in Grass, etc., and to plant for cutting.

*All strong flowering bulbs.*

1000 In 10 fine showy sorts (Trumpets, Peerless, and Poets), 60/-; In 20 fine sorts, 70/-  
 500 In 10 " " " " " " 32/-; In 20 " " " " 36/-  
 100 In 10 " " " " " " 7/-; In 20 " " " " 8/-

 Full descriptions of the following Daffodils will be found in body of catalogue.

### TRUMPET DAFFODILS. (See pages 10 to 17.)

	per 100	per 1000		per 100	per 1000
	s. d.	s. d.		s. d.	s. d.
Emperor .....	10 6	95 0	Madame Plemp ( <i>Bicolor</i> ) .....	15 0	—
Empress ( <i>Bicolor</i> ) .....	12 6	110 0	Maximus .....	12 6	—
Excelsior .....	12 6	—	Obyvallaris ( <i>Tenby Daffodil</i> ) .....	9 0	85 0
Golden Spur .....	10 6	—	P. R. Barr .....	10 6	—
Grandis ( <i>Bicolor</i> ) .....	8 6	—	Princeps ( <i>Bicolor</i> ) .....	5 0	45 0
Henry Irving .....	9 6	—	Princess Ida .....	12 6	—
Horsfieldil ( <i>Bicolor</i> ) .....	8 6	75 0	Rugilobus .....	5 6	50 0
J. B. M. Camm ( <i>Bicolor</i> ) .....	10 6	—	Victoria ( <i>Bicolor</i> ) .....	12 6	—
Lent Lily ( <i>Pseudo-Narcissus</i> ) ...	3 0	27 6	W. P. Milner .....	21 0	—

### CHALICE-CUP DAFFODILS, or Star Narcissi. (See pages 15 to 23.)

	per 100	per 1000		per 100	per 1000
	s. d.	s. d.		s. d.	s. d.
INCOMPARABILIS Cynosure...	6 6	60 0	BARRII Firebrand .....	30 0	—
„ Frank Miles .....	10 6	—	„ John Bain .....	12 6	—
„ Gwyther .....	8 6	80 0	„ Oriflamme .....	10 6	—
„ Sir Watkin .....	10 6	100 0	„ Seagull .....	15 0	—
„ Stella Superba .....	12 6	—	„ Sequin .....	8 6	—
„ Yesuvius .....	12 6	—	LEEDSII Amabilis .....	8 6	—
BARRII Agnes Barr .....	10 6	—	„ M. M. de Graaff .....	10 6	—
„ Albatross .....	17 6	—	„ Minnie Hume .....	8 6	—
„ Burbidgei Type .....	4 6	42 0	„ Mrs. Langtry .....	7 6	70 0
„ Conspicuous .....	4 6	42 0			

QUEEN OF SPAIN, one of the best for Grass. (See page 24.) .....per 100, 23/-

ODORUS Campanelle (Sweet-scented French Campanelle Jonquil) per 100, 7/-; per 1,000, 65/-

„ rugulosus ..... „ 6/-; „ 55/-

### NEW BUNCH-FLOWERED DAFFODILS. (See page 26.)

POETAZ Aspasia.....per 100, 15/- | POETAZ Ideal ..... per 100, 25/-  
 „ Elvira ..... „ 15/- | „ Irene ..... „ 25/-

### TRUE POETS' NARCISSI. (See page 27.)

POETICUS Old Pheasant's Eye .....per 100, 2/6; per 1000, 22/6

„ Ornatus ..... „ 4/6; „ 42/-

„ Poetarum ..... „ 6/-; „ 55/-

### DOUBLE DAFFODILS. (See pages 28 and 29.)

TELAMONIUS Plenus (Double Yellow Trumpet Daffodil) .....per 100, 10/-; per 1000, 95/-


INCOMPARABILIS Golden Rose (*Double rose-flowered yellow*) ..... „ 10/6; „ —

„ Eggs and Bacon (*Double rose-flowered white and orange*) ..... „ 12/6; „ —

„ Codlins and Cream (*Double rose-flowered sulphur-white*) ..... „ 12/6; „ —

POETICUS Double Gardenia-flowered..... „ 4/6; „ 42/-

NARCISSUS BIFLORUS, Primrose Peerless Daffodil. (Page 27.) „ 5/6; „ —

 For Inexpensive Mixtures of Daffodils for naturalising and large plantings, see page 6



## Barr's Inexpensive Mixtures of Daffodils.

To Naturalise in Shrubberies, Orchards, on Grassy Slopes, etc., and for cutting.

- Single Trumpet Daffodils, Mixed**, for naturalisation .....per 1000, 60/- ; per 100, 6/6
- Single Chalice-cup or Star Narcissi, Mixed** (Incomparabilis, Leedsil, and Barrii varieties), for naturalisation in grass, etc. The grand effect of these light graceful Daffodils, when naturalised, must be seen to be realised. Their value as cut flowers for bouquets and vases cannot be over-estimated.....per 1000, 42/- ; per 100, 4/6
- White Poet's Narcissi, in Mixture**, comprising varieties of early and late *Poeticus*, for naturalisation in grass, etc. For cutting, the flowers are greatly prized ...per 1000, 35/- ; per 100, 4/-
- Mixed Daffodils of Many Sorts, for naturalisation**, including Trumpet, Chalice-cup, and Poet's Narcissi, a splendid mixture of Daffodils of all kinds suitable for large plantings in Grass, Woodlands, etc. ....per 1000, 42/- ; per 100, 4/6

## Unnamed Seedling Daffodils.

The following Trumpet and Poet's Seedling Daffodils can be recommended for the Flower Border ; they are seedlings bred from high-class varieties, but which we have not considered quite good enough to name. Many distinct varieties will be found amongst them.

- New Yellow Trumpet Daffodils**, Seedlings of *King Alfred, Lord Roberts, Monarch, Cicopatra*, etc., per doz. 8/6
- New White and Cream Trumpet Daffodils**, Seedlings of *Peter Barr, Loveliness, Madame de Graaff, Weardale Perfection*, etc., per doz. 8/6
- New Bicolor Trumpet Daffodils**, Seedlings of best *Bicolor Trumpets*, per doz. 8/6
- New Poet's Narcissi**, Seedlings of best large-flowered *Poeticus Narcissi*, per 100, 21/- ; per doz. 3/-
- Mixed Unnamed Seedlings**, all attractive, and suitable for the Flower Border or to naturalise per 100, 32/6 ; per doz. 4/6

## Miniature Daffodils for the "Rock Garden."

The following are charming little subjects for rockwork, where their dainty flowers are seen to perfection. They should be left undisturbed for years, and, if happy, will soon establish themselves and afford a lovely picture in early spring. All the *Bulbocodiums* (except *monophyllum*) and *Cyclamineus* like moisture, and should therefore be planted at the foot of the rockery. *Bulbocodium monophyllum* flourishes in a warm dry sheltered situation, planted in almost pure sand ; when coming into bloom give water freely. *Triandrus albus* (*Angel's Tears*) and *Juncifolius* delight in partial shade and a light gritty soil, and should be given a well-drained position. In the case of these Miniature Daffodils, the ground may be carpeted with close-growing surface-rooting plants, such as *Arenaria cespitosa, Thymus serpyllum* vars., *T. lanuginosus, Herniaria glabra, Mossy Saxifragas*, etc. ; these plants provide a natural protection for these little bulbs, besides keeping their dainty blooms from being splashed and soiled in rainy weather. We prefer, however, seeing these little gems peeping out of grass, and can supply seed of suitable fine dwarf grasses for sowing in September after planting the bulbs ; this sowing will give a fine green carpet by the following spring when the Narcissi bloom.

Full descriptions of the following Miniature Daffodils will be found in body of Catalogue.

	per doz.	each		per doz.	each
	s. d.	s. d.		s. d.	s. d.
<b>Hoop Petticoat Daffodils</b>			<b>Nanus</b> ( <i>page 12</i> ) .....	4 6	0 5
( <i>Bulbocodium</i> , <i>page 30</i> )—			<b>Moschatus</b> ( <i>page 13</i> ) .....	5 6	0 6
Large Sulphur .....	1 9	0 2	<b>W. P. Milner</b> ( <i>page 13</i> ) .....	3 0	0 4
White .....	5 6	0 6	<b>Triandrus</b> ( <i>page 24</i> )—		
Early Yellow .....	3 0	0 4	<i>albus</i> .....	5 6	0 6
Large Yellow ( <i>conspicuous</i> ) ...	6 6	0 7	<i>calathinus</i> .....	—	3 6
<b>Canaliculatus</b> ( <i>page 7</i> ) .....	5 6	0 6	<i>pulchellus</i> .....	—	2 6
<b>Minimus</b> ( <i>page 11</i> ) .....	7 6	0 8	<b>Juncifolius</b> ( <i>page 30</i> ) .....	4 6	0 5
<b>Minor</b> ( <i>page 11</i> ), <i>extra strong bulbs</i>	25 0	2 3			

6 Bulbs each of 10 Miniature Daffodils, 24/-  
 3 " " " 10 " " 12/6



# Barr's New Seedling Daffodils

The following list of Daffodils comprises some of the finest novelties, and includes **New Seedlings of our own raising** and many of the best raised by other hybridists—the Rev. G. H. Engleheart, the late Rev. G. P. Haydon, Mr. E. M. Crosfield, Mr. J. C. Williams, Mr. P. D. Williams, Mrs. Backhouse, Mr. Henry Backhouse, Mr. Cave, Mr. Philip Worsley, and Mr. Dawson. We would specially draw attention to the following grand exhibition kinds: **Anchorite, Caedmon, Cæsar, Challenger, Coral Queen, Dell, Elgiva, Empire, Golden Chief, Jasper, Lewis Carrol, Red Beacon, Ringdove, Ruby, Sheba, St. Olaf, Socrates, Timon, and Mrs. D. V. West**—all of great beauty.

In 1910 we purchased from Mr. Charles Dawson (who has given up growing Daffodils) his "**Rosemorran**" Daffodil Seedlings, containing many beautiful varieties, and at the same time took over his charming Cornish garden for the purpose of raising and rearing new seedlings.

We have been awarded for New Seedlings the Engleheart Challenge Cup by the Royal Horticultural Society as First Prize for Twelve Best Seedling Daffodils not in commerce, the Walter Ware Challenge Cup for the Best New Triandrus Hybrids (Midland Daffodil Society), and the Standard Cup (R. H. S.) for 12 New Seedlings.

The relative qualities as we judge them are indicated by xx, xxx, xxxx, the highest quality flower being given the most marks. The figures after the names indicate the relative period of flowering, (1) being earliest, (6) being latest.

	each.
	£ s. d.
<b>Alabaster</b> (Triandrus Hybrid), xxxx, <i>new</i> 1912, a very beautiful chalice-cupped hybrid, flowers snowy white with large elegant cup and broad perianth, tall .....	0 12 6
<b>Anchorite</b> (Barrii) (5), xxxx, <i>new</i> 1914, a grand exhibition flower, having broad long snowy white perianth of great substance and large spreading crown of a delicate lemon-yellow, prettily frilled at margin and having a dark green eye, a very cool-looking chaste flower, ht. 19 in. ....	1 1 0
<b>Caedmon</b> (Poeticus) (4), xxxx, <i>new</i> 1914, one of the most striking and beautiful of all the Poet Narcissi, flower very large with broad snowy white perianth of great substance, and a very bold centre broadly rimmed dark red and having a rich green eye. AWARDED FIRST-CLASS CERTIFICATE R.H.S. April 21st, 1915, as a show flower, also an AWARD OF MERIT MIDLAND DAFFODIL SOCIETY 1915, and FIRST-CLASS CERTIFICATE NORTH OF ENGLAND HORT. SOCIETY 1915 .....	1 1 0
<b>Cæsar</b> (Poeticus) (6), xxxx, <i>new</i> 1911, a remarkably fine flower of perfect form, measuring slightly over 3 inches across, with very broad rounded solid white perianth, the petals all of equal size and well imbricated; large lemon-yellow eye edged dark madder-red; flowers erect and borne on long stout stems, ht. 16 in. ....	0 10 6
<b>Canaliculatus</b> (Tazetta), a dainty little species having narrow erect bluish green foliage and bearing heads of 3 to 4 flowers with white reflexing perianth and globular golden cup, sweetly scented; valuable for rock-wrk, ht. 6 in. ....per doz. 5/6	0 0 6
<b>Challenger</b> (Barrii) (5), xxxx, <i>new</i> 1910, a magnificent flower measuring more than 3 in. across, of fine form, solid Poeticus-white perianth and much expanded crown measuring about 1 inch across, soft canopy with a striking broad margin of brilliant fiery red .....	3 3 0
<b>Citriona</b> (Incomparabilis) (4), xxx, <i>new</i> 1912, a beautifully formed flower, soft citron-yellow, almost a self, a charming variety, ht. 18 in.....per doz. 25/-	0 2 3
<b>Coral Queen</b> (Barrii) (4), xxxx, <i>new</i> 1914, a very lovely flower, perianth white, crown well expanded, of a delicate citron colour with broad margin of pale coral-buff, very distinct, ht. 16 in. ....per doz. 42/-	0 3 9
<b>Croesus</b> (Giant Incomparabilis), xxxx, a very fine flower of great substance with large rounded and imbricated pale primrose perianth and a wide expanded crown of deep red. AWARD OF MERIT BIRMINGHAM, 1911. FIRST-CLASS CERTIFICATE R.H.S. 1912.....	2 5 0
<b>Dell</b> (Barrii) (5), xxxx, <i>new</i> 1914, a very refined flower with broad rounded white perianth well imbricated, and a bright lemon eriuclled cup having a green centre. A first-class exhibition variety, ht. 16 in.....per doz. 42/-	0 3 9

Barr's New Seedling Daffodils—*continued.*

	each.
	£ s. d.
<b>Dione</b> (Triandrus Hybrid) (4), xxxx, <i>new</i> 1912, a very lovely and refined flower measuring $3\frac{1}{2}$ inches across, snowy white throughout, crown expanded, of beautiful symmetry, prettily fluted, ht. 14 in. ....	1 10 0
<b>Edna</b> (Poeticus) (4), xxx, <i>new</i> 1913, a bright attractive variety, rounded flower of perfect symmetry measuring $2\frac{1}{2}$ inches across, having a broad white perianth and bright yellow eye conspicuously margined deep glowing scarlet, sturdy grower, ht. 18 in. ....	0 0 8
<b>Elgiva</b> (Barrii) (3), xxxx, <i>new</i> 1914, a very attractive and distinct variety with cream-coloured spoon-shaped perianth and very large spreading crown, deep apricot-orange, prettily fluted, ht. 18 in. ....	0 5 6
<b>Empire</b> (Giant Leedsii) (3), xxxx, <i>new</i> 1911, one of the finest of this class, and a very noble and beautiful flower of highest type; perianth white, very large, broad, and imbricated, crown very large, lemon shading to white, slightly expanded at mouth, and exquisitely frilled, foliage broad and blue-grey, ht. 16 in. AWARDED FIRST-CLASS CERTIFICATE BIRMINGHAM, 1907 .....	1 1 0
<b>Ethelburga</b> (Poeticus) (6), xxx, <i>new</i> 1913, a large and beautiful flower measuring $3\frac{1}{4}$ inches across, very broad ample snowy white perianth, well imbricated, and a lemon-yellow eye toning down to green, with a very conspicuous deep margin of dark madder-red, ht. 18 in. ....	per doz. 10/6 0 1 0
<b>Golden Chief</b> (Trumpet Daffodil) (1), xxxx, <i>new</i> 1914, the largest of all yellow Trumpet Daffodils and a grand exhibition variety; the flowers are of great substance and immense size measuring $4\frac{1}{2}$ inches or more across with a trumpet 2 inches long, having a bold open mouth regularly flanged and measuring $2\frac{1}{2}$ inches across, colour a uniform deep golden-yellow, a vigorous grower, ht. 20 in. ....	6 6 0
<b>Helios</b> (Giant Incomparabilis) (1), xxxx, <i>new</i> 1912, a large handsome flower of fine form measuring 4 inches across, with broad imbricated soft yellow perianth and a large trumpet-shaped crown with open frilled mouth, very deep golden with a faint coppery tinge, ht. 18 in. AWARD OF MERIT R.H.S. 1912 .....	2 5 0
<b>Herod</b> (Trumpet Daffodil) (4), xxx, a very fine flower of good bearing, perianth creamy white, very broad, and lying smooth and flat, trumpet clear yellow, large and elegant, with broad open fluted mouth, ht. 18 in. ....	0 5 6
<b>Jasper</b> (Barrii) (4), xxx, a most striking and beautiful flower with a remarkably rich coloured crown, perianth of fine form, very pale primrose, crown large and flat, of a rich fiery red, ht. 15 in. ....	0 10 6
<b>Lewis Carroll</b> (Poeticus) (5), xxxx, <i>new</i> 1911, flower very large and of good bearing, measuring nearly $3\frac{1}{2}$ inches across, with broad, rounded perianth, slightly campanulate, and canary-yellow eye conspicuously edged dark madder-red, ht. 18 in. ....	2 2 0
<b>Madonna</b> (Triandrus Hybrid), xxxx, <i>new</i> 1912, a remarkably beautiful chalice-cupped hybrid, solid white with large open fluted crown and slightly reflexed perianth, very chaste...	1 5 0
<b>Marie Louise</b> (Barrii) (5), xxxx, <i>new</i> 1911, a very lovely striking flower with white perianth and large fluted globular cup of an intense scarlet throughout, ht. 18 in. ....	0 12 6
<b>Memory</b> (Poeticus) (3), xxx, <i>new</i> 1912, a remarkably pretty variety having very round flowers of perfect form and finish, perianth broad and solid white, eye margined fiery red and having a greenish centre, ht. 18 in. ....	0 15 0
<b>Mrs. D. V. West</b> (Trumpet Daffodil), xxxx, <i>new</i> 1915, a beautiful Daffodil raised by Mr. D. V. West, of Victoria, Australia; the flower is of elegant form, slightly drooping, and chaste in colour, measuring 4 inches across, with broad white well-imbricated perianth and a long trumpet opening delicate primrose developing to a creamy white with channelled mouth and slightly frilled edge, ht. 18 in. ....	7 10 0
<b>Music</b> (Giant Leedsii), xxxx, <i>new</i> 1915, a very beautiful and distinct flower measuring nearly 4 inches across, with white perianth and a broad open short cup, pure white shading down to ivory and green at centre, ht. 19 in. ....	0 10 6
<b>Ornament</b> (Barrii) (4), xxx, <i>new</i> 1913, a very showy and beautiful flower with broad soft primrose perianth, crown elegantly fluted and coloured throughout fiery scarlet, colour lasting well, good foreer, ht. 14 in. ....	per doz. 48/- 0 4 6

**Barr's New Seedling Daffodils—continued.**

	each.
	£ s d
<b>Paulhan</b> (Barrii) (4), xxx, <i>new</i> 1913, a very charming bright-looking flower, measuring 3 inches across, perianth white, crown $\frac{3}{4}$ inch across, of a clear lemon colour conspicuously edged fiery orange-red, ht. 12 in. ....	0 15 0
<b>Queen of the West</b> (Trumpet Daffodil) (3), xxx, a grand variety, bearing very large flowers of a uniform lemon-yellow with trumpet elegantly recurved and frilled at brim, a tall strong grower. FIRST-CLASS CERTIFICATE R.H.S. and BIRMINGHAM .....	0 15 0
<b>Red Beacon</b> (Barrii) (4), xxx, <i>new</i> 1910, a lovely flower which immediately attracts one by its brilliantly coloured cup; the perianth is ivory-white, broad and of great substance, slightly shaded sulphur at base, cup prettily fluted and of the most intense fiery orange-red, ht. 15 in. AWARDED FIRST-CLASS CERTIFICATE NORTH OF ENGLAND HORTICULTURAL SOCIETY, 1915.....	0 10 6
<b>Ringdove</b> (Poeticus) (6), xxx, <i>new</i> 1914, the most perfectly formed flower of all the Poeticus tribe and very chaste; the perianth is snowy white, very rounded, perfectly smooth, and of solid waxy texture, while the centre is heavily margined red. A perfect show flower, retaining its form up to the last, ht. 18 in. ....	10 10 0
<b>Royal Lady</b> (Leedsii) (6), xxx, <i>new</i> 1914, perianth pure white and well imbricated, cup soft pale lemon prettily serrated at margin, a tall strong grower and effective border variety.....per doz.	21/- 0 2 0
<b>Ruby</b> (Barrii), xxx, <i>new</i> 1911, flower of medium size and perfect rounded form, with broad imbricated perianth and a pretty flat fiery red cup, ht. 18 in. AWARD OF MERIT TRURO, 1912 .....	per doz. 60/- 0 5 6
<b>St. Olaf</b> (Leedsii) (3), xxx, <i>new</i> 1913, a flower of remarkable beauty, measuring $3\frac{3}{4}$ inches across, with very broad rounded white perianth, well imbricated, and a wide flattened crown, prettily fluted, measuring $1\frac{1}{4}$ inches across, colour cream delicately margined sulphur and with sulphur-shaded centre, ht. 20 in. AWARD OF MERIT R.H.S., April 15th, 1913. <i>Illustrated in "The Garden," April 26th, 1913, and the "Gardeners' Chronicle," May 17th, 1913.</i> This seedling likes a fairly moist soil .....	per doz. 60/- 0 5 6
<b>Seascape</b> (Leedsii) (4), xxx, <i>new</i> 1913, a very attractive flower of a cool shade of colour with snow-white spoon-shaped perianth slightly recurving, globular pale citron cup prettily fluted and with green centre, ht. 16 in. ....	per doz. 36/- 0 3 6
<b>Seville</b> (Incomparabilis) (3), xxx, <i>new</i> 1911, a remarkably striking and beautiful flower, with a large circular snowy white perianth slightly reflexed and well imbricated, crown flat and prettily fluted, larger than a half-crown piece, of a rich deep Seville-orange colour, ht. 18 in. AWARD OF MERIT R.H.S., 1912 .....	5 5 0
<b>Sheba</b> (Barrii) (5), xxx, <i>new</i> 1911, a flower of the highest quality, with large snowy white spreading perianth and a remarkable striking centre of dark fiery crimson, very beautiful, ht. 18 in. AWARD OF MERIT BIRMINGHAM, 1911, where it attracted a great deal of attention	2 2 0
<b>Socrates</b> (Poeticus) (5), xxx, <i>new</i> 1910, the deepest edged Poeticus at the Birmingham Show, 1910, a very striking and noble flower, measuring over 3 in. across with very solid white broad perianth, well-imbricated, centre canary with a remarkably deep margin of dark madder-scarlet, ht. 15 in. AWARD OF MERIT R.H.S. and BIRMINGHAM.....	0 7 6
<b>The Geisha</b> (Barrii) (3), xxx, <i>new</i> 1914, a very distinct and pretty variety with broad silvery pure white perianth and a broad globular crown very deeply flanged, apricot shading to lemon with white and lemon markings at margin, ht. 16 in. ....	0 10 6
<b>Timon</b> (Poeticus) (6), xxx, <i>new</i> 1910, a grand flower, large, of good substance, with very broad imbricated solid white smooth perianth, centre primrose shading to green, and conspicuously margined dark cinnabar red, sturdy grower, ht. 17 in. ....	per doz. 60/- 0 5 6
<b>Wildfire</b> (Barrii) (5), xxx, <i>new</i> 1911, a very distinct and pretty flower, perianth sulphur shaded cream, crown fiery brick-red shading down to a green centre, ht. 14 in.; p. doz.	48/- 0 4 6
<b>Zingara</b> (Barrii) (4), xxx, <i>new</i> 1913, a very large bold flower of bright showy appearance, measuring $3\frac{1}{2}$ in. in diameter, having a white perianth prettily shaded sulphur at base, and a spreading brilliant yellow crown very conspicuously margined fiery scarlet, sturdy robust grower, ht. 22 in. AWARD OF MERIT R.H.S. as a decorative flower .....	per doz. 10/6 0 1 0

# Barr's General List of Daffodils.

For Alphabetical Index, see p. 2 of Cover. New Seedling Varieties, p. 7.

**Classification.**—In the following pages we have practically adopted the 1910 classification of the R.H.S. Narcissus Committee which we hope will be of assistance to exhibitors of Daffodils and to amateurs who desire to make a selection of distinct types. As will be seen, 10 distinct divisions have been made together with a section (Div. XI.) at the end to take in a few unclassified species and hybrids. With each division we have given its distinguishing character.

**Time of Flowering.**—The relative period of flowering of the different varieties **out of doors** we have denoted by means of numbers after the names, (1) being the earliest, (6) being the latest.

**Height.**—In most cases we give also the heights in inches as recorded at our Nurseries.

**Quality of Flower.**—Each season we go carefully over our Daffodil collection with a view to recording the quality of each variety. This we indicate by x, xx, xxx, and xxxx, giving the most marks to those we judge to be the finest. We trust this record may be found useful to amateurs in making their selections.

**Cultural Marks.**—\* The varieties marked thus \* thrive best under the shade of deciduous trees, naturalised in grass in shady nooks, or on grassy slopes facing north.

† indicates those kinds which should be selected where Daffodils are grown in pots or for exhibition; they are, however, in most cases also splendid border varieties.

§ indicates those Daffodils which, besides being fine border plants, make a pretty effect when naturalised in grass; they are all strong growers and free bloomers.

## DIVISION I.—TRUMPET DAFFODILS.

DISTINGUISHING CHARACTER.—TRUMPET OR CROWN AS LONG AS OR LONGER THAN THE PERIANTH SEGMENTS.

### (A) YELLOW AND SULPHUR-COLOURED TRUMPET DAFFODILS.



LORD ROBERTS.

Example of a Flower in Division I.

With Yellow, Lemon or Sulphur-coloured Trumpets, Perianth of same shade or lighter (but not white).

†**Alma** (1) xxx, a seedling from *Maximus*, <sup>per doz. each.</sup> s. d. s. d. and of same elegant form, colour nearly a self, soft canary-yellow, trumpet very large with bold open mouth, deeply flanged, perianth gracefully twisted, flower measuring to 4½ in. across; likes a deep moist soil, ht. 22 in. .... 15 0...1 6

†**C. H. Curtis** (3), xxx, a handsome variety with large flower of fine form having a deep primrose perianth, broad and smooth, and a bold golden-yellow trumpet with expanded brim, ht. 16 in. .... 25 0...2 3

†**Cleopatra** (4), xxxx, raised at our Nurseries, a magnificent variety, flower large and of perfect form and colour; very broad yellow imbricated perianth and long bold deep yellow trumpet, ht. 15 in. AWARD OF MERIT R.H.S. AND AT BIRMINGHAM. In April 1915, it was awarded at Birmingham the Second Prize for the FINEST YELLOW TRUMPET DAFFODIL in the show ..... 60 0...5 6

§†**Cornelia** (3), xxx, flower large, of a soft canary-yellow with expanded trumpet and broad smooth perianth, ht. 18 in.; it makes a good pot plant and is a splendid bedder. AWARD OF MERIT R.H.S., 1905 ..... 15 0...1 6



YELLOW TRUMPET DAFFODILS—*continued.*

	per doz.	each,	
	s.	d.	s. d.
§† <b>Emperor</b> (3), xx, perianth deep primrose, trumpet rich full yellow; should be largely grown in flower-beds and borders and naturalised in grass; it is an excellent market flower and forces well, ht. 21 in. .... <i>Strong bulbs</i> , per 1000, 95/-; per 100, 10/6	1	6...	0 2
§† <b>Excelsior</b> (1), xx, an improved <b>Golden Spur</b> , of a richer and deeper yellow colour; a handsome flower and good early forcer, ht. 18 in. .... per 100, 12/6	1	9...	0 2
† <b>George Philip Haydon</b> (3), xxx, a large and refined flower, perianth primrose, broad and of fine texture, trumpet bold, canary-yellow with large open mouth boldly fluted and flanged, ht. 18 in. ....	36	0...	3 6
† <b>Glorious of Leiden</b> (3), xx, a very bold Giant Trumpet Daffodil, the flowers staring one full in the face, trumpet rich full yellow, perianth pale yellow, sometimes with deeper yellow markings, ht. 14 in. AWARDED FIRST-CLASS CERTIFICATE R.H.S., 1887	7	6...	0 8
† <b>Golden Chief</b> . See <i>New Seedling Daffodils</i> , page 8			each £6 6s.
§† <b>Golden Spur</b> (1), xx, <i>native of the Netherlands</i> , perianth large and spreading, trumpet large and distinctly lobed, deep rich self-yellow; an early forcer and a handsome Daffodil for borders and grass, ht. 18 in. .... <i>Good strong bulbs</i> , per 100, 10/6	1	6..0	2
"    " <i>Extra large bulbs</i> , each giving two or three blooms	2	3..0	3
† <b>Hamlet</b> (2), xxx, <i>raised at our Nurseries</i> , a very handsome flower after the style of <i>Emperor</i> ; and having a large broad flat primrose perianth and a well-formed bold yellow trumpet, ht. 18 in. See <i>coloured plate in "The Garden," August 19th, 1911</i> .....	10	6...	1 0
§† <b>Henry Irving</b> (1), xx, <i>a native of the Netherlands</i> , broad spreading yellow perianth, large yellow trumpet, very handsome, excellent for forcing, also for cultivation in grass or borders, ht. 18 in. .... per 100, 9/6	1	4..0	2
† <b>King Alfred</b> (1), xxx, a remarkably handsome Daffodil which we can strongly recommend; flowers of large size, great substance, and refined finish; colour a uniform intense rich golden; trumpet large and of elegant form, with open deeply frilled mouth; very tall vigorous grower and free bloomer; foliage of a handsome bluish shade, ht. 24 in. It forces early and is greatly prized as a cut flower for vases. FIRST-CLASS CERTIFICATE R.H.S., and R.B.S. LONDON, 1899	10	6...	1 0
† <b>Lord Roberts</b> (3), xxx, a grand Trumpet Daffodil, <i>raised at our Nurseries</i> ; flowers of enormous size, golden-yellow, with broad massive perianth and noble trumpet; tall grower and free bloomer, with strong constitution, height 23 in. AWARDED FIRST-CLASS CERTIFICATES by the R.H.S., MIDLAND DAFFODIL SOCIETY, CORNWALL DAFFODIL SOCIETY 1901, and DEVON DAFFODIL SOCIETY 1905. See <i>Illustration</i> , page 10	15	0...	1 6
§† <b>Maximus</b> (2), xxx, a very beautiful and graceful flower of a uniform rich deep golden-yellow, perianth elegantly twisted, ht. 18 in.; it is one of the richest coloured yellow Trumpet Daffodils, but is rather a shy bloomer; nevertheless it should have a place in all gardens where it can be given a deep moist soil. It can also be recommended for early forcing in pots	1	9..0	2
† <b>Michael</b> (3), xxx, <i>n.w. 1910</i> , one of the most beautiful and refined of <i>Giant Yellow Trumpet Daffodils</i> , flowers of a clear soft yellow, with a broad, slightly campanulate perianth of great substance, trumpet of <b>King Alfred</b> form, of solid texture, plant of fine erect habit, ht. 19 in. AWARD OF MERIT R.H.S. 1916			— 12 6
§† <b>Mikado</b> (1), xx, a showy flower, golden-yellow, with graceful twisted perianth, and very large trumpet having wide open mouth, deeply flanged at brim, ht. 16 in.; a rather shy bloomer	3	6..0	4
† <b>Minor, true</b> (1), a most graceful and charming very early-flowering miniature Daffodil of <i>Maximus</i> form, flowers with full yellow perianth gracefully twisted, and the miniature trumpet elegantly flanged at mouth, ht. 6 in.; valuable for edgings and rock-work, <i>now very scarce</i>	18	0...	1 9
"    "    "    " <i>Extra large bulbs</i>	25	0...	2 3
† <b>Minimus, true</b> (1), the smallest and dwarfest Trumpet Daffodil, flowers rich full yellow; height about 3 inches, flowering outdoors in February; a dainty little gem for edgings, nooks on rockwork, or to naturalise in grass, and for pot culture. It thrives in warm sandy soils. In 1887, during a tour in Spain, the late Mr. Peter Barr found this charming miniature Daffodil growing freely amongst gorse, with a south aspect. <i>We usually collect a few of this little Daffodil annually in Spain, but owing to the war are now unable to do so. We have therefore to rely this season upon a few homegrown bulbs grown in our Cornish garden</i>	7	6..0	8

YELLOW TRUMPET DAFFODILS—*continued.*

		per doz. each.	s.	d.	s.	d.
† <b>Monarch</b> (3), xxx, raised at our Nurseries, a noble flower, and one of the most refined of all the Giant Golden Trumpets; perianth and trumpet rich full yellow and very large, of perfect form and fine substance, growth strong and sturdy, ht. 20 in. ....	30	0	..	2	9	
* <b>Nanus, true</b> (1), rich full yellow, very dwarf and early, a gem for edgings and naturalising on grassy banks, etc., ht 6 in.; now very scarce. <i>Lobularis is generally sold for it, but is very different in many ways</i> .....per 100, 35/-	4	6	..	0	5	
† <b>Obvallaris (Tenby Daffodil)</b> (1), xx, this very distinct variety has all the fine qualities that delight a connoisseur, perianth and trumpet full yellow, <i>very early</i> ; it is best grown in partial shade, and is a fine variety for naturalising in grass; ht 12 in. A good early forcer ..... <i>Strong bulbs, per 1000, 85/-; per 100, 9/-</i>	1	4	..	0	2	
§† <b>Olympia</b> (3), xxx, a good showy variety with bright yellow perianth and a bold deep yellow trumpet of enormous size, ht. 21 in. AWARD OF MERIT FOR POT CULTURE R.H.S., 1914 .....	30	0	..	2	9	
§† <b>P. R. Barr</b> (4), xx, perianth primrose, trumpet rich full yellow of fine quality and form, sturdy grower and free bloomer, ht. 16 in.; we strongly recommend it for cutting and to plant largely in flower-beds and borders, and in grass, etc. ....per 100, 10/6	1	6	..	0	2	
† <b>Queen of the West.</b> See <i>New Seedling Daffodils, page 9</i> .....	—	15			0	
† <b>Rev. D. R. Williamson</b> (3), xxx, raised at our Nurseries, clear rich yellow with long handsome trumpet, a bold and noble flower, ht. 19 in. ....	15	0	..	1	6	
§ <b>Rugilobus</b> (2), x, primrose perianth and yellow trumpet, in the way of Emperor, but smaller and earlier, useful for bedding, ht. 15 in. ....per 1000, 50/-; per 100, 5/6	0	10	..	—		
§ <b>Santa Maria</b> (1), xxx, found by the late Mr. Peter Barr in Spain, rich deep golden-yellow, perianth elegantly twisted, a distinct and charming early flower, recommended for naturalising in grass, woodlands, etc., ht. 14 in. ....	3	6	..	0	4	
† <b>Van Waveren's Giant</b> (3), xxx, a giant Trumpet Daffodil, flowers of immense size, perianth primrose and of rather campanulate form, trumpet bright yellow with very large open mouth, flanged at brim, ht. 18 in. ....	30	0	..	2	9	

(B) WHITE TRUMPET DAFFODILS.

Varieties with White Perianth and White or nearly White Trumpet.

Most of the Daffodils in this section thrive best in fibrous virgin loam, mixed with well-decayed leaf-soil; generally speaking they dislike manure; where, however, the soil is very poor, bone-meal or basic slag may be used (for full directions, see page 1). *The varieties marked thus\* thrive best in the shade of deciduous trees, naturalised in shady grassy nooks, or on grassy slopes facing north.*



LADY AUDREY.

† <b>Alice Knights</b> (1), xxx, raised at our Nurseries, the earliest of white Trumpet Daffodils and a beautiful flower; perianth white, trumpet creamy white of elegant form with prettily frilled open mouth; the whole flower is of great substance and lasts well, whether cut or on the plant; ht. 14 in. AWARD OF MERIT R.H.S. 1915, as a pot plant .....	15	0	..	1	6	
† <b>Catrina</b> (4), xxx, perianth broad and smooth, creamy white and slightly campanulate, trumpet cream shaded white, bold and very elegant with open mouth elegantly frilled at brim, beautiful, ht. 18 in. ....	—	10			6	
† <b>Cernuus true</b> (1), xx, perianth and trumpet silvery white and of the same length, a beautiful early-flowering variety; best grown in shade or grass, ht. 10 in. ....	7	6	..	0	8	
* <b>Cernuus Pulcher true</b> (2), xx, perianth silvery white, with primrose trumpet, passing to white, very graceful, ht. 16 in. ....	7	6	..	0	8	
† <b>Henri Vilmorin</b> (3), xxx, a most beautiful white Trumpet Daffodil of refined texture and form; trumpet long and of great substance, perianth spreading and of <i>Empress</i> shape, flower 4½ in. across, ht. 15 in. AWARD OF MERIT R.H.S. 1904.....	36	0	..	3	6	

WHITE TRUMPET DAFFODILS—*continued.*

	per doz. each.
	s. d. s. d.
† <b>Lady Audrey</b> (5), xxx, raised at our Nurseries, a flower of great beauty, white perianth slightly campanulate and long straight bold trumpet widening at mouth, cream-coloured passing off white, a fine free-flowering garden plant, ht. 15 in. AWARD OF MERIT BIRMINGHAM 1902. See <i>Illustration, page 12</i> .....per 100, 32/6	4 6...0 5
† <b>Loveliness</b> (4), xxxx, a flower of remarkable beauty, with bold stiff snowy white perianth, broad and smooth, and a very elegant white trumpet, expanding at mouth, ht. 14 in. AWARD OF MERIT BIRMINGHAM and TRURO .....	15 0...1 6
† <b>Madame de Graaff</b> (4), xxx, a beautiful and graceful variety which must always take a prominent position among the pale-coloured trumpet Daffodils. The perianth is pure white while the trumpet opens a soft primrose shade passing off almost white, ht. 16 in. It makes a charming pot-plant and will bear gentle forcing; always a favourite variety at Daffodil Exhibitions. FIRST-CLASS CERTIFICATE R.H.S. 1887 per 100, 37/6	5 0...0 6
* <b>Moschatus of Haworth</b> (The Snowy White Daffodil of the Spanish Pyrenees) (1), variable in size of flower. A charming dwarf variety, and a gem to naturalise in grass, delighting in partial shade and on grassy slopes facing north, ht. 6 in. <i>Owing to the war we have been unable to collect in the Spanish Pyrenees our usual supply. We have, however, a few homegrown bulbs which we now offer</i> .....	5 6...0 6
<b>Mrs. D. V. West.</b> See <i>New Seedling Daffodils, page 8</i> .....each £7 10s.	— ... —
† <b>Mrs. George H. Barr</b> (4), xxxx, a very lovely Daffodil of chaste form and highest quality, perianth snowy white and slightly campanulate, elegant white trumpet well open at mouth; a flower of great substance and smoothness, ht. 16 in. AWARDS OF MERIT R.H.S., LONDON, MIDLAND DAFFODIL SOCIETY, and CORNWALL DAFFODIL SOCIETY 1903 .....	48 0...4 6
† <b>Mrs. H. D. Betteridge</b> (4), xxx, a very refined and beautiful snowy white flower, perianth well formed, broad and imbricated, with a distinct fluting on surface, trumpet of model form with elegantly flanged and fluted brim, ht. 16 in. ....	10 6...1 0
† <b>Mrs. Robert Sydenham</b> (4), xxx, pure white broad perianth of great substance, trumpet pure white and beautifully frilled at mouth, very elegant, ht. 14 in. AWARD OF MERIT R.H.S. ....	— ...5 6
* <b>Pallidus Præcox</b> (1), xxx, a native of the Pyrenees, variable in size and shade, from pale straw-colour to creamy white, very early and beautiful, ht. 12 in. <u>We have been unable to get any bulbs collected this year owing to the war</u> .....	— ... —
† <b>Peter Barr</b> (3), xxxx, a grand variety, raised at our Nurseries, flower large and bold, of beautiful symmetry and fine substance, with pure white campanulate perianth and large handsome ivory-white trumpet of elegant outline. It is a strong grower and free bloomer, with handsome deep bluish green foliage, ht. 15 in. Awarded FIRST-CLASS CERTIFICATE R.H.S. 1902 and CORNWALL DAFFODIL SOCIETY 1903. AWARDS OF MERIT DEVON DAFFODIL SOCIETY, R.B.S., LONDON 1904, and at HUNTINGDON 1906	48 0...4 6
† <b>Philippe de Vilmorin</b> (5), xxx, a large and elegant flower with white perianth and long bold cream-coloured trumpet; a good free grower with bluish green foliage, ht. 14 in. This variety is growing freely in the rock garden of the Royal Horticultural Society at Wisley, where in Spring it elicits the admiration of all visitors	— ...5 6
§† <b>Princess Ida</b> (1), xx, white perianth, elegant white trumpet, with brim flanged and edged yellow; a charming variety either for border or pot culture; an excellent forcer, ht. 16 in. ....per 100, 12/6	1 9...0 2
§ <b>W. P. Milner</b> (2), xx, a charming free-flowering variety, with dainty sulphur-coloured flowers; a valuable Daffodil for filling small beds or for edgings and rockwork, also very effective in grass, ht. 11 in. When forced it is remarkably pretty, the flowers coming a pure white. AWARD OF MERIT FOR ROCK GARDEN R.H.S. 1914 .....per 100, 21/-	3 0...0 4

**Barr's New Peat-fibre, Shell and Charcoal Mixture.**

The best medium for growing bulbs in Vases, Bowls, Jardinets, etc., 3/6 per bushel; 1/- per peck.

*For Full Cultural Directions, see page 3. For suitable Bowls, see page 32.*

(C) BICOLOR TRUMPET DAFFODILS.

With White or Whitish Perianth and a Yellow, Lemon, or Pale Primrose Trumpet.



WEARDALE PERFECTION.

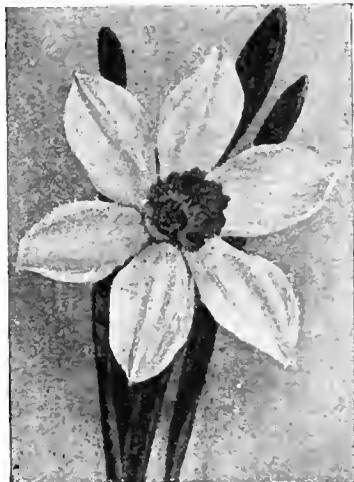
AWARDS OF MERIT R.H.S., LONDON, MIDLAND DAFFODIL SOCIETY, and ROYAL BOTANIC SOCIETY, 1902

	* <b>Apricot</b> (3), xx, an attractive variety with white perianth and a long straight trumpet which opens soft primrose passing to a rosy apricot-buff, and has a pleasing violet fragrance, ht. 16 in. AWARD OF MERIT R.H.S., 1898	per doz. each.	s.	d.	s.	d.
	† <b>Calpurnia</b> (3), xx, raised at our Nurseries, white campanulate perianth, and long straight elegant trumpet of a soft primrose shade, very beautiful, ht. 17 in.	15	0...	1	6	
	† <b>Chameleon</b> , new 1911, a beautiful and unique little Daffodil of "Apricot" breed, perianth delicate pale primrose shading down to blush-white, erect, slightly twisted and pointed, trumpet pale shell-pink shading to sulphur; quite a new break of colour, which may be valuable to the hybridist, ht. 14 in.	5	6...	0	6	
						each £1 1s.
	† <b>Cygnets</b> (4), xxx, bold white perianth, broad and elegantly twisted, long bold trumpet of a soft lemon-yellow, elegantly rolled back at mouth, very beautiful. A tall free grower with fine blue-green foliage, ht. 18 in.	5	6...	0	6	
						per 100, 40/-
	† <b>Duke of Bedford</b> (2), xxx, a magnificent flower, measuring 4½ inches across; perianth pure white, broad and of great size, trumpet clear soft yellow. very large and of fine substance and form, measuring 2¼ inches across at the mouth; it flowers very early, opening before <i>Horsfieldii</i> , and has a pleasing fragrance, ht. 18 in. Awarded FIRST-CLASS CERTIFICATES at BIRMINGHAM, MANCHESTER, and EDINBURGH, 1899.	21	0...	2	0	
	§† <b>Empress</b> (3), xx, perianth white and of great substance, trumpet rich yellow, foliage blue-green; valued for beds, borders, and planting in grass, also most valuable for cutting, ht. 20 in.	1	9..	0	2	
	" " " Extra strong bulbs "	2	3...	0	3	
	† <b>E. T. Cook</b> (4), xxx, a fine flower with bold broad white perianth and a rich deep chrome-yellow trumpet, ht. 18 in.	10	6...	1	0	
	† <b>Glory of Noordwijk</b> (2), xxx, a large handsome flower with creamy white perianth and bold bright yellow trumpet open at mouth and elegantly flanged, ht. 18 in. AWARD OF MERIT R.H.S., 1902.	15	0...	1	6	
	§† <b>Grandis (Grande)</b> (5), xx, finely imbricated pure white massive perianth, long straight yellow trumpet of great substance, late-flowering; valuable for succession, ht. 12 in.	1	3...	0	2	
	† <b>Gwendolin</b> (3), xxx, white perianth and long straight cream-coloured trumpet, large noble flower, strong free grower, ht. 18 in. Specially recommended for growing in pots, as when the flowers are opened under glass they are almost pure white and of refined and beautiful form	15	0...	1	6	
	† <b>Hatfield Beauty</b> (3), xxx, a bold and showy flower, perianth cream-coloured, trumpet bright canary-yellow with expanded and elegantly flanged brim, ht. 16 in.	7	6...	0	8	
	<b>Herod.</b> See <i>New Seedling Daffodils</i> , page 8	—	...	5	6	
	§† <b>Horsfieldii</b> (2), xx, an old favourite Daffodil with handsome flowers, perianth white, trumpet full yellow, a very effective bedder, ht. 14 in.	1	3...	—		
	" " Extra strong selected bulbs "	1	4...	0	2	
	† <b>J. B. M. Camm</b> (3), xxx, a refined flower of beautiful symmetry; perianth white and of great substance, trumpet rich deep cream of elegant form, a fine bedder, ht. 12 in. AWARDED FIRST-CLASS CERTIFICATE R.H.S., 1881	1	6...	0	2	
	* <b>Lent Lily</b> (2), x, perianth whitish, trumpet yellow, ht. 9 in.; only suitable for naturalising in grass, woodlands, etc.; being collected bulbs, only a proportion will bloom the first season	0	6...	—		



BICOLOR TRUMPET DAFFODILS—*continued.*

		per doz.	each,	
		s.	d.	s. d
§† <b>Madame Plomp</b> (4), xx, a bold erect showy flower with large white twisted perianth and very long golden-yellow trumpet, a strong grower, ht. 16 in. ; a valuable variety for cutting. AWARD OF MERIT R.H.S.....	per 100, 15/-	2	3...0	3
§ <b>Mrs. Buchanan</b> (1), xx, perianth cream, campanulate and slightly twisted, trumpet soft primrose with prettily flanged open mouth ; flower of a very distinct and delicate shade, and one of the first bicolor trumpets to open, ht. 16 in. ....	per 100, 32/6	4	6...0	5
† <b>Pharaoh</b> (4), xxx, large flower, perianth creamy white, broad and handsome large bold creamy-yellow trumpet, well expanded at mouth, and elegantly crinkled, ht. 14 in. AWARD OF MERIT, BIRMINGHAM .....		10	6...1	0
§ <b>Princeps</b> (1), x, perianth sulphur-white, trumpet yellow, a fine Daffodil for naturalising in woodlands, grass, etc., ht. 16 in. <i>Extra strong bulbs</i> , per 1000, 45/- ; per 100, 5/-		0	9... —	
* <b>Pseudo-Narcissus.</b> See <i>Lent Lily</i> .				
† <b>Seraphine</b> (2), xxx, raised at our Nurseries, flower of immense size, perianth creamy white, broad, and with elegant twist, trumpet very large and bold, of a soft delicate lemon, with broadly crimped open mouth, very beautiful, ht. 18 in. ....		—	15	0
† <b>Victoria</b> (1), xx, flowers large, erect, and of fine form with creamy white broad perianth of good quality, trumpet clear rich yellow, large, broad, and of great substance, flanged and frilled at mouth. It forces freely and under glass the perianth is snowy white, ht. 16 in. AWARD OF MERIT R.H.S., 1897.....	<i>Strong bulbs</i> , per 100, 12/6	1	9...0	2
† <b>Weardale Perfection</b> (4), xxx, this fine Daffodil still ranks high among the <b>Giant Trumpets</b> as a flower of refined beauty ; it has a large white perianth, and a soft primrose trumpet, of immense size, ht. 24 in. It makes a good pot-plant and may be gently forced. AWARDED A FIRST-CLASS CERTIFICATE R.H.S., 1894, and PREMIER PRIZE by the MIDLAND DAFFODIL SOCIETY. Blooms of this Daffodil have been exhibited measuring 5 inches across .....		25	0...2	3



INCOMPARABILIS LUCIFER.

DIV. II.—INCOMPARABILIS.

Large Chalice-Cupped Daffodils or Star Narcissi.

DISTINGUISHING CHARACTERS.—CUP OR CROWN MEASURING FROM ONE-THIRD TO NEARLY THE LENGTH OF THE PERIANTH SEGMENTS.

All the varieties have yellow or white perianth and yellow or red-stained cups.

These beautiful **Star Narcissi** commence flowering in March, and furnish a succession of bloom throughout April. All are of elegant beauty, and as cut flowers are extensively used for furnishing vases and table bouquets. For this purpose they should be grown in quantity in boxes and forced for early bloom (see page 2). They make charming pot plants, while in beds and borders they are very showy and naturalised in grass they produce a graceful effect. We illustrate *Lucifer* as an example of a flower in this Division.

§† <b>Bedouin</b> (4), xxx, large white broad spreading perianth, cup large and expanded, glowing fiery orange-scarlet, elegantly fluted and crinkled at brim ; strong free grower, ht. 22 in. ; a fine pot plant. 1ST-CL. CERT. EDINBURGH. AWARD OF MERIT LIVERPOOL. AWARD OF MERIT FOR GARDEN DECORATION AND CUTTING R.H.S. 1914. WON FIRST PRIZE AT HUNTINGDON, APRIL 1914, as being the finest flower in the show .....	per doz. each. s. d. s. d	36	0...3	6
† <b>Bernardino</b> (3), xxx, a very beautiful flower, with large broad creamy perianth and a very large pale cup, prettily fluted and heavily stained deep orange-apricot, a good free grower, ht. 22 in. AWARD OF MERIT HAARLEM, 1915 .....		—	...	7 6
§† <b>Blackwell</b> (1), xxx, <i>earliest of Chalice-cupped Daffodils</i> ; perianth primrose-yellow, cup straight, deeply fluted, yellow heavily stained fiery orange-scarlet, bold handsome flower lasting long in condition, ht. 24 in. ; excellent for gentle forcing .....		9	6...0	10

NARCISSUS INCOMPARABILIS—*continued.*

	per doz. each.		
	s.	d.	s. d
† <b>Blazing Star</b> (4), xxx, flower very large, perianth rich yellow, crown large and spreading, rich golden with deep margin of fiery red; a wonderfully effective flower, ht. 24 in. ....	36	0...	3 6
† <b>Chieftain</b> (1), xxx, raised at our Nurseries, a fine large flower with broad imbricated cream-coloured perianth, and a large soft lemon expanded cup elegantly frilled at margin, distinct and beautiful, ht. 18 in. ....	7	6...	0 8
† <b>Citriona.</b> See <i>New Seedling Daffodils, page 7</i> .....	25	0...	2 3
§ <b>C. J. Backhouse</b> (2), xx, a showy variety, perianth yellow, of medium size, with a long cup of a rich orange-red, ht. 20 in. ....per 100, 12/6	1	9...	0 2
§† <b>Constellation</b> (3), xx, flower large, perianth white, cup bright yellow, prettily crimped at brim and margined orange, valuable for cutting, ht. 20 in. ....per 100, 10/6	1	6...	0 2
† <b>Cræsus.</b> See <i>New Seedling Daffodils, page 7</i> .....	each £2 5s.		
§ <b>Cynosure</b> (3), x, primrose perianth changing to white, cup stained orange-red, large showy flower, free grower, good to naturalise, ht. 18 in. ....per 1000, 60/-; per 100, 6/6	1	0...	—
† <b>Dosoris</b> (4), xxx, a lovely flower, with broad white perianth and a very large flattened crown of a fiery salmon-scarlet throughout, very fine, ht. 12 in. ....	60	0...	5 6
† <b>Fair Edith</b> (4), xxx, perianth solid white with primrose shading at base, broad and imbricated, three petals inclined to slightly reflex, crown straight and fluted, bright yellow tinged orange at brim, beautiful, ht. 15 in. ....	36	0...	3 6
§ <b>Fireflame</b> (1), xxx, a valuable and remarkably showy early variety, perianth rich yellow, crown straight and elegantly fluted, of a fiery orange-scarlet; very showy either in borders or as a cut flower, ht. 12 in. ....per 100, 21/-	3	0...	0 4
§ <b>Firelight</b> (1), xx, a very bright-coloured bedding variety, resembling <i>Ladybird</i> , flowers of medium size with bright yellow perianth and straight golden-yellow crown prettily fluted and suffused a brilliant orange-red, ht. 14 in. ....per 100, 15/-	2	3...	0 3
† <b>Fleetwing</b> (3), xxx, large flower of beautiful form and fine substance, perianth pure white, crown primrose-yellow .....	—	...	5 6
§† <b>Frank Miles</b> (3), xx, flower soft clear yellow, with gracefully twisted perianth, a charming Daffodil for naturalising in grass and exceedingly effective in masses; much prized for cutting, ht. 22 in. ....per 100, 10/6	1	6...	0 2
† <b>Gadfly</b> (3), xxx, a remarkably striking flower with white perianth slightly reflexing and shaded a delicate sulphur at base, and a large flat eye measuring 1 inch across of a deep fiery scarlet, shading to golden-buff at centre, ht. 14 in. ....	—	...	7 6
§† <b>Gloria Mundi</b> (3), xxx, a handsome flower, with fine bold clear rich yellow perianth, large open crown very heavily stained rich orange-scarlet, ht. 19 in. A noble flower either for the flower garden or for cutting. FIRST-CLASS CERTIFICATES R.H.S. and MIDLAND DAFFODIL SOCIETY, 1887 .....	7	6...	0 8
† <b>Great Warley</b> (4), xxx, a remarkably striking flower after the style of <i>Narcissus Lady Margaret Boscawen</i> , but very much larger, perianth white, broad and massive, crown clear yellow, measuring 1½ inches across, ht. 18 in. FIRST-CLASS CERTIFICATES R.H.S. and BIRMINGHAM, 1904 .....	—	...	6 6
§ <b>Gwyther</b> (3), xx, large yellow perianth, large cup suffused orange, a showy flower, very decorative in borders and for cutting, ht. 17 in. ....per 1000, 80/-; per 100, 8/6	1	3..	0 2
§† <b>Hecla</b> (2), xxx, broad white perianth, cup large and open of a deep glowing red; a fine showy flower resembling <i>Lucifer</i> , but earlier, ht. 18 in. ....	5	6...	0 6
† <b>Helios.</b> See <i>New Seedling Daffodils, page 8</i> .....	each £2 5s.		
† <b>Homespun</b> (3), xxx, a refined flower of great substance, with large rounded light yellow perianth, well imbricated, and a large rich yellow frilled crown, ht. 16 in. Awarded several prizes .....	21	0...	2 0
† <b>Horatius</b> (4), xxx, a great improvement on <i>N. Lady Margaret Boscawen</i> , perianth white, flat and imbricated, crown clear yellow, large and bold, broadly fluted at brim; of fine bearing, ht. 18 in. ....each £1 1s.			
§ <b>Ladybird</b> (3), xx, a charming showy little Daffodil, and most valuable for bedding, flower with twisted perianth of brilliant yellow and frilled crown, fiery scarlet, shading down to gold, ht. 14 in. ....per 100, 25/-	3	6...	0 4

NARCISSUS INCOMPARABILIS—*continued.*

	per doz.	each.
	s. d.	s. d.
† <b>Lady Margaret Boscawen</b> (3), xxx, flowers of great size with a snowy white broad perianth and a large bold expanded golden-yellow crown, ht. 19 in. FIRST-CLASS CERTIFICATE R.I.I.S., 1898.....	21	0...2 0
§† <b>Lucifer</b> (3), xxx, a very striking and showy flower, perianth white, cup an intense glowing orange-red, colour lasting well in the sun, strong grower and free bloomer, ht. 17 in. FIRST-CLASS CERTIFICATES R.I.I.S. LONDON and MIDLAND DAFFODIL SOCIETY, BIRMINGHAM, 1901.....per 100, 21/-	3	0...0 4
§† <b>Lulworth</b> (4), xx, white perianth, cup bright orange-red, showy, ht. 14 in., ,, 15/-	2	3...0 3
† <b>Michael Angelo</b> (3), xxx, a lovely flower, measuring 4 inches across, with very broad white perianth and large open spreading crown, canary-yellow prettily frilled, having a striking border of fiery scarlet, ht. 18 in. ....	—	10 6
<b>Pedestal</b> (4), xxx, a grand large flower of great substance, perianth creamy white, very broad, flat, and imbricated, crown rich yellow, long and straight, of fine erect bearing, ht. 16 in. AWARD OF MERIT R.I.I.S. 1912 .....	—	...7 6
† <b>Pilgrim</b> (3), xxx, large pointed broad perianth, opening primrose and passing to creamy white, cup lemon, prettily crinkled; a refined flower, 17 in. ....	—	...2 6
§† <b>Princess Mary</b> (3), xx, broad and spreading creamy perianth, and large expanded cup suffused orange, flower of good form, ht. 16 in. AWARDED FIRST-CLASS CERTIFICATE R.I.I.S., 1884.....per 100, 15/-	2	3...0 3
§† <b>Resolute</b> (4), xxx, fine bold flower, perianth broad and of a creamy yellow, crown long and straight, clear yellow, strong grower and free bloomer, handsome bedding variety, ht. 13 in. ....	2	6...0 3
† <b>Seville.</b> See <i>New Seedling Daffodils</i> , page 9.....each £5 5s.		
§† <b>Sir Watkin</b> (2), xxx, handsome bold flower, perianth primrose, cup yellow, very slightly tinged orange, ht. 21 in.; valuable for bedding, or planting in grass; it forces well, and is greatly prized for cutting.....per 1000, 100/-; per 100, 10/6	1	6...0 2
§† <b>Sparkler</b> (2), xxx, a very large and showy decorative flower, measuring 4 in. across, perianth rich yellow, crown very large, fiery orange-scarlet shading down to gold, strong robust grower, ht. 18 in. AWARD OF MERIT R.I.I.S., 1916, for <i>Cutting and as a Market Flower</i> .....	21	0...2 0
† <b>Steadfast</b> (5), xxx, flower of fine substance, with well-imbricated white perianth and cylindrical rich yellow crown, bold and handsome, ht. 14 in. ....	4	6...0 5
§ <b>Stella Superba</b> (3), xx, a bold showy flower, far superior to <i>Stella</i> , with large clear white sprading perianth and a showy yellow cup; excellent for bedding, naturalising and cutting, ht. 20 in. ....per 100, 12/6	1	9...0 2
§† <b>Strongbow</b> (4), xxx, broad snowy white perianth and large expanded rich yellow crown of great substance; a sturdy plant with broad thick foliage, ht. 11 in. AWARD OF MERIT R.I.I.S., and BIRMINGHAM 1903 .....	3	6...0 4
§ <b>Vesuvius</b> (4), xx, sulphury white perianth, cup stained glowing orange-red, a bright showy flower; a valuable Daffodil for grass, free grower and profuse bloomer, ht. 15 in. per 100, 12/6	1	9...0 2
† <b>Whitewell</b> (4), xxx, flower large and of fine form, with broad, rounded, creamy perianth of good substance, and a large expanded chromic-orange crown 1½ in. across and prettily fluted, ht. 18 in. AWARD OF MERIT HAARLEM, 1915 .....	15	0...1 6
§ <b>Will Scarlett</b> (6), we consider this variety worth xxx for the remarkable fiery orange-red colouring of its large cup, which opens widely at mouth and is elegantly crimped, perianth creamy; a striking flower, ht. 15 in. FIRST-CLASS CERT. R.I.I.S. 1898, as a decorative flower.....	21	0...2 0

**SPECIAL NOTICE.**

As there will be no French or Dutch Hyacinths available this season in consequence of war restrictions, we would specially draw our customers' attention to the suitability of Daffodils and Narcissi for maintaining a supply of flowers indoors during the winter months. In addition to the Early Polyanthus Narcissi offered on page 26, which give bloom from December, there are the Early Flowering Daffodils (all suitable for gentle forcing), a list of which is given on page 4.



BARRII SEAGULL,  
Example of a Flower in Division III.

## DIVISION III.—BARRII.

### Short-Cupped Daffodils, or Star Narcissi. (Including those hitherto classed as Burbidgei.)

DISTINGUISHING CHARACTER.—CUP OR CROWN MEASURING LESS THAN ONE-THIRD THE LENGTH OF THE PERIANTH SEGMENTS.

All the varieties have yellow or white perianth and yellow or red-stained cups.

For a long time trouble was being experienced in the placing of certain new seedlings under the **Barrii** and **Burbidgei** sections, as the two divisions ran so much into one another. The revising committee therefore decided to make only one section of them, retaining the name **Barrii**.

The chaste beauty of these shorter-cupped Narcissi is the more highly appreciated when the cut flowers are seen arranged in vases. The brilliancy of colouring in the cups of some, and the dainty elegance of others, render them all more or less valuable exhibition flowers. The cheaper kinds we can strongly recommend for beds and borders, and for naturalising in grass, woodlands, wild gardens, etc.

		per doz.	each.
		s.	d. s. d.
† <b>Adonia</b> (6), xxx, perianth cream, broad and elegantly formed, cup fiery orange-scarlet, prettily fluted; the colour is very lasting, ht. 17 in. ....		21	0...2 0
§ <b>Agnes Barr</b> (4), x, perianth creamy white, cup soft yellow, a very delicately coloured refined flower, ht. 16 in. ....	per 100, 10/6	1	6...0 2
† <b>Albatross</b> (5), xxx, large flower, perianth white, cup pale citron-yellow, frilled and edged orange-red, beautiful, a free grower and fine for cutting, ht. 24 in. FIRST-CLASS CERTIFICATE R.I.I.S. 1894 .....	per 100, 17/6	2	6...0 3
† <b>Anchorite</b> . See <i>New Seedling Daffodils</i> , page 7 .....	each £1 1s.		
† <b>Astrardente</b> (5), xx, a beautiful flower with white perianth and large flattish crown, apricot-orange edged fiery scarlet, ht. 12 in. AWARD OF MERIT R.I.I.S. and BIRMINGHAM 1903.....		10	6...1 0
§† <b>Barbara Holmes</b> , see <b>Lady Godiva</b> .			
† <b>Beacon</b> (5), xx, broad circular creamy white perianth, cup fiery red, striking and beautiful, ht. 12 in. FIRST-CLASS CERTIFICATE R.I.I.S. 1897 .....		10	6...1 0
† <b>Blood Orange</b> (4), xx, a well-shaped broad creamy perianth, cup brilliant orange-red, very showy, ht. 18 in. ....	per 100, 21/-	3	0...0 4
<b>Branston</b> , this resembles too closely <b>Lady Godiva</b> to be offered as a distinct variety.			
§ <b>Burbidgei</b> -type (3), x, small Poeticus-like flower with clear white perianth, cup small, primrose suffused and margined with cinnabar-red, useful for naturalising, ht. 13 in. ....	per 1000, 42/-; per 100, 4/6	0	8... —
† <b>Cardinal Wolsey</b> (4), xxx, <i>new</i> 1910, a lovely flower with broad snowy white perianth, slightly reflexing and a very flat large fluted crown of a brilliant orange-apricot colour, good free grower, ht. 18 in. ....		—	— 5 6
† <b>Challenger</b> . See <i>New Seedling Daffodils</i> , page 7 .....	each £3 3s.		
† <b>Charm</b> (4), xxx, flower large with snowy white perianth, cup large and flattish of a glowing fiery red throughout; an attractive showy flower, ht. 17 in. ....		30	0...2 9
† <b>Cœur de Lion</b> (4), xxx, a brilliantly coloured flower of good form, perianth delicate primrose, cup fiery deep orange-red right down to the base, remarkably striking, ht. 16 in. Coloured plate in "The Garden," Aug. 19th, 1911 .....	per 100, 55/-	7	6...0 8
§† <b>Conspicuous</b> (4), xxx, a flower of great beauty and refinement, and a favourite with all, broad spreading yellow perianth, broad short cup, conspicuously edged bright orange-scarlet, ht. 20 in., a very lasting flower, free bloomer, prized for cutting. FIRST-CLASS CERTIFICATE R.I.I.S. ....	per 1000, 42/-; per 100, 4/6	0	8... —
"                    " <i>Very large bulbs,</i> "                    55/-;                    "                    6/-		0	10... —
† <b>Coral Queen</b> . See <i>New Seedling Daffodils</i> , page 7.....		42	0...3 9
† <b>Cossack</b> (4), xxx, a beautiful and striking flower with broad white solid perianth slightly reflexing, cup large and spreading and of intense dark orange-red; a grand exhibition variety, ht. 18 in. ....		60	0...5 6



NARCISSUS BARRII—*continued.*

		per doz.	each,
		s.	d. s. d.
† <b>Cresset</b> (4), xx, round broad white perianth and a flattened golden cup heavily margined vivid scarlet, showy, ht. 15 in. AWARD OF MERIT R.H.S. 1902	.....	3	6...0 4
† <b>Dell.</b> See <i>New Seedling Daffodils</i> , page 7	.....	42	0...3 9
† <b>Elgiva.</b> See <i>New Seedling Daffodils</i> , page 8	.....	—	...5 6
† <b>Eros</b> (4), xxx, new 1909, flower large and of fine quality, measuring 3½ inches across with very broad imbricated creamy white perianth, and large flat crown fiery scarlet shading to golden-orange, prettily fluted, ht. 20 in. See <i>coloured plate in "The Garden," Sept. 24th, 1910</i>	.....	—	...7 6
† <b>Fair Maiden</b> (4), xxx, flower large and after the style of <i>Seagull</i> , but of better form, perianth pure white very broad and imbricated, crown open and elegantly fluted, yellow with orange-buff margin, a beautiful flower, strong free bloomer, fine for cutting, ht. 22 in.	.....	per 100, 48/-	6 6...0 7
† <b>Fiery Cross</b> (3), xxx, perianth cream-coloured, broad and slightly reflexed, crown wide and expanded, elegantly fluted, brilliant yellow, with heavy margin of bright fiery red; striking and beautiful, ht. 18 in.	.....	7	6...0 8
§† <b>Firebrand</b> (3), xx, a small but very brilliantly coloured flower, perianth creamy white shaded lemon at base, cup prettily fluted and of an intense fiery red, ht. 17 in. It makes a charming decorative pot plant and will bear gentle early forcing. A valuable cut flower and very effective in grass.	.....per 100, 30/-	4	3...0 5
† <b>Furnace</b> (2), xxx, flower large, perianth pale canary, cup expanded, elegantly fluted and frilled and of the most brilliant deep fiery red with crimson tinge, ht. 12 in.	.....	—	15 0
§† <b>Glitter</b> (5), xx, a rounded flower of firm substance, with rich yellow broad perianth, cup heavily edged brilliant orange-red, showy and a good bedder, ht. 14 in. AWARD OF MERIT BIRMINGHAM 1907	.....per 100, 12/6	1	9...0 2
† <b>Harold Finn</b> (4), xxx, a beautiful flower, measuring 3¼ in. across, pure white perianth and brilliant dark scarlet cup, ht. 20 in.	.....	36	0...3 6
§† <b>Hyacinth</b> (5), xx, snowy white perianth and spreading cup of a delicate lemon colour, very pretty and deliciously fragrant, ht. 16 in. AWARD OF MERIT BIRMINGHAM 1903	.....per 100, 15/-	2	3...0 3
† <b>Incognita</b> (4), xxx, a beautiful flower, large flat white perianth and large flattened frilled crown, bright yellow margined apricot-orange, ht. 16 in.	.....	7	6...0 8
† <b>Isis</b> (4), xxx, a handsome flower of model form, measuring 3¼ in. across, perianth pale primrose, very solid, round and imbricated, cup prettily fluted soft yellow with striking edge of dark madder-scarlet	.....	84	0...7 6
† <b>Jasper.</b> See <i>New Seedling Daffodils</i> , page 8	.....	—	10 6
§ <b>John Bain</b> (2), x, with solid white perianth and small clear citron cup, ht. 15 in.; very effective when massed in flower beds and borders, or naturalised in grass	...per 100, 12/6	1	9...0 2
§† <b>Lady Godiva</b> ( <i>syn. Barbara Holmes</i> ) (4), xxx, a pretty sport from <i>Barrii conspicuus</i> , perianth white, cup broad and short, yellow conspicuously edged bright orange-scarlet, ht. 20 in. AWARD OF MERIT R.H.S. 1903	.....per 100, 15/-	2	3...0 3
† <b>Little Nell</b> (6), xxx, new 1912, a pretty small flower of elegant form, with creamy perianth and small fluted lemon crown margined gold, ht. 18 in.	.....	36	0...3 6
† <b>Lohengrin</b> (5), xxx, fine flower with remarkably broad white large rounded perianth, crown canary-yellow, expanded and deeply fluted; very beautiful, ht. 19 in.	.....	25	0...2 3
† <b>Major Spurrell</b> (5), xxx, large flower with broad snowy white perianth and expanded crown yellow deeply edged brilliant dark orange-red, striking and beautiful, ht. 12 in. AWARD OF MERIT R.H.S. 1901	.....	25	0...2 3
† <b>Marie Louise.</b> See <i>New Seedling Daffodils</i> , page 8	.....	—	12 6
§ <b>Mascotte</b> (4), xx, perianth white, broad and slightly reflexing, cup yellow broadly bordered orange-scarlet, attractive, ht. 14 in.	.....per 100, 12/6	1	9...0 2
† <b>Miss Willmott</b> (4), xxx, new 1911, large massive flower measuring 3½ in. across, perianth white, of good form, crown large, lemon-yellow edged bright orange-red; a vigorous grower and good forcer. FIRST-CLASS CERTIFICATE R.H.S. 1911	.....	—	15 0
§† <b>Mohican</b> (2), xxx, a sister seedling to <i>Sunrise</i> , which it somewhat resembles, perianth white, with yellow radiating from the base, cup suffused almost throughout fiery orange-scarlet, very bright and attractive, strong grower, free bloomer, ht. 19 in. AWARD OF MERIT R.H.S. 1903; the flowers should be cut young to preserve the colour	.....	8	6...0 9

NARCISSUS BARRII—*continued.*

		per doz.	each.
		s.	d s. d
† <b>Occident</b> (5), xxx, a flower of model form, perianth delicate canary and very flat, cup fiery orange right down to the base, ht. 16 in. AWARD OF MERIT R.H.S. 1903 .....	per 100, 25/-	3	6...0 4
† <b>Oriflamme</b> (3), xx, perianth creamy white, cup fiery scarlet, bright and showy. AWARD OF MERIT R.H.S. 1898, and Birmingham, ht. 18 in. ....	per 100, 10/6	1	6...0 2
<b>Ornament.</b> See <i>New Seedling Daffodils</i> , page 8 .....		48	0...4 6
<b>Paulhan.</b> See <i>New Seedling Daffodils</i> , page 9 .....		—	15 0
† <b>Radiant</b> (5), xxx, a striking and beautiful flower with large broad snowy white perianth, large open spreading crown with deep golden and green centre very broadly margined intense dark fiery red; a grand exhibition variety, ht. 15 in. ....		25	0...2 3
† <b>Red Beacon.</b> See <i>New Seedling Daffodils</i> , page 9 .....		—	10 6
§† <b>Red Chief</b> (4), xxx, an attractive flower, perianth pure white, broad and well imbricated, crown flattish with broad margin of fiery orange-red and prettily fringed at edge, ht. 15 in. AWARD OF MERIT, BIRMINGHAM, 1909 .....		15	0...1 6
† <b>Red Emperor</b> (4), xxx, perianth creamy white slightly reflexing, cup a flattened disc, remarkably large, prettily fluted, and of a fiery salmon-orange throughout, ht. 15 in. ...		48	0...4 6
§† <b>Rosalind</b> (5), xxx, perianth broad and solid white, slightly inclined to reflex, cup bright yellow deeply edged fiery scarlet, handsome, ht. 13 in. ....	per 100, 40/-	5	6...0 6
§† <b>Rosella</b> (4), xx, perianth creamy white, broad and imbricated, crown flattish and of a salmon-scarlet throughout, showy, often twin-flowered, ht. 17 in. ....	per 100, 15/-	2	3...0 3
§† <b>Royal Star</b> (4), xxx, a very showy flower, measuring 4½ in. across, perianth cream shaded sulphur, and developing to white, crown very large and flat, prettily fluted, opening a brilliant orange shaded yellow but soon developing to a most striking fiery orange-red colour; a good lasting flower, free-bloomer, good for grass and cutting, ht. 18 in. ....	per 100, 55/-	7	6...0 8
† <b>Ruby.</b> See <i>New Seedling Daffodils</i> , page 9 .....		60	0...5 6
† <b>St. George</b> (5), xxx, a very lovely exhibition flower with broad rounded ivory-white perianth and a striking <i>Picticus</i> eye, full of colour, ht. 15 in. ....		8	6...0 9
§† <b>Sea Bird</b> (5), xxx, a distinct and beautiful flower with large white perianth and orange-yellow cup, prettily fluted and having a dark green eye, ht. 15 in. ....		7	6...0 8
§† <b>Seagull</b> (3), xxx, a charming flower, large pure white perianth, cup canary edged apricot, fine for cutting, a strong free grower, with blue-green foliage, ht. 25 in. ....	per 100, 15/-	2	3...0 3
§† <b>Sequin</b> (5), xx, solid white perianth and bright yellow crown flattened against the perianth like a golden coin, ht. 12 in. ....	per 100, 8/6	1	3...0 2
† <b>Sheba.</b> See <i>New Seedling Daffodils</i> , page 9.....			each £2 2s.
† <b>Sir Lancelot</b> (5), xxx, a lovely flower of good size with white broad perianth, cup expanded, of a bright canary yellow, fluted, and with prettily cut brim, edged rich madder-scarlet, ht. 16 in. ....		15	0...1 6
† <b>Sunbeam</b> (3), xx, a very pretty flower of <i>Sunrise</i> type, measuring 3 inches across, well-formed creamy perianth with slight shading of sulphur towards base, pretty flattish cup of brilliant orange-red, ht. 15 in. AWARD OF MERIT BIRMINGHAM 1901	per 100, 25/-	3	6...0 4
§† <b>Sunrise</b> (2), xxx, very distinct and beautiful, perianth white with a broad primrose bar down the centre of each petal, crown expanded and elegantly fluted, bright orange-yellow with fiery scarlet margin, ht. 18 in. FIRST-CLASS CERTIFICATE BIRMINGHAM, 1910. AWARD OF MERIT FOR CUTTING R.H.S. 1914 .....		84	0...7 6
<b>The Geisha.</b> See <i>New Seedling Daffodils</i> , page 9 .....		—	10 6
† <b>Torchlight</b> (4), xxx, perianth pale primrose, broad and imbricated, crown bold and open, golden-orange shaded fiery scarlet, flower of good form, very attractive, ht. 14 in.	per 100, 55/-	7	6...0 8
† <b>Toreador</b> (4), xxx, perianth ivory-white, well formed, smooth and firm, crown flat, orange with broad margin of brilliant scarlet, very striking and handsome, ht. 14 in. ....		60	0...5 6
† <b>Vivid</b> (4), xx, ivory-white perianth, cup glowing orange-red; a showy and striking flower, ht. 15 in. ....	per 100, 12/6	1	9...0 2
† <b>Wildfire.</b> See <i>New Seedling Daffodils</i> , page 9.....		48	0...4 6
† <b>Zenith</b> (4), xxx, perianth creamy white, broad, imbricated and slightly reflexed, cup large and flattish, canary-yellow prettily frilled fiery scarlet, ht. 18 in. AWARD OF MERIT R.H.S. ....		10	6...1 0
<b>Zingara.</b> See <i>New Seedling Daffodils</i> , page 9 .....		10	6...1 0



LEEDSII ARIADNE.  
Example of a Flower in Div. IV.

DIVISION IV.—LEEDSII.

Eucharis-flowered or Silver-White  
Fragrant Star Narcissi.

Comprising all Star Narcissi (large chalice-cupped and short-cupped) which have pure white or silvery white perianth segments and cup or crown white, cream, buff-orange, apricot or pale citron.

In the working out of the new classification, the revising committee felt that it would be unwise to break up this section and distribute it among the Incomparabilis and Barrii forms, seeing how distinct a "colour" section it was, and how well known to all Daffodil growers.

These chaste and beautiful Daffodils are highly prized for indoor decoration, while to cut for bouquets their fragrant flowers are greatly in demand. Plant 3 or 5 bulbs in a 5-inch pot. In flower beds and borders they are most charming, while naturalised in grass they produce a lovely effect.

	per doz.	each
	s. d.	s. d.
§† <b>Aglaia</b> (6), xxx, new 1912, an elegant flower, perianth white, cup pale primrose with sulphur centre, margin fluted, very late bloomer, ht. 19 in. ....	21	0..2 0
§† <b>Albertina</b> (6), xxx, new 1914, an elegant flower with pure white perianth and short fluted cup of a delicate primrose, ht. 20 in. ....	15	0..1 6
§ <b>Amabilis</b> (3), xx, silvery white with long cup, sometimes tinged apricot, a very elegant flower, ht. 13 in. ....per 100, 8/6	1	3..0 2
† <b>Amazon</b> (4), xxx, flower of fine form and substance, often coming two on a stem, perianth white, cup canary, foliage blue-green; a good pot variety and valuable for cutting, ht. 20 in. ....per 100, 15/-	2	3..0 3
§† <b>Ariadne</b> (3), xxx, a flower of refined beauty and the admiration of all who have seen it; perianth white, cup ivory-white, very large, saucer-shaped, wide and spreading, prettily frilled at margin, lasting long in bloom, a lovely bedder, ht. 16 in. AWARD OF MERIT at Birmingham, Truro, Plymouth, and R.I.S., London, 1904 .....per 100, 21/-	3	0..0 4
† <b>Bianca</b> (5), xxx, a very refined cool flower, of beautiful form and pure colour, broad white perianth, cup clear lemon, globular and prettily fluted; of good lasting quality, ht. 17 in. ....per 100, 30/-	4	0..0 5
§† <b>Bridesmaid</b> (3), xxx, perianth pure white and campanulate, cup white, slightly margined pale primrose, of globular form and prettily crinkled at brim, very beautiful, ht. 20 in.; a fine variety for pots, borders, or cutting. AWARD OF MERIT R.I.S., 1903 .....per 100, 15/-	2	3..0 3
<b>Chamois</b> (4), xxx, new 1913, a very elegant and beautiful flower measuring 3½ inches across, perianth pure white, elegantly twisted, crown open and fluted, shaded salmon on a white ground with a pale green centre, ht. 15 in. ....	27	6..2 6
† <b>Czarina</b> (4), xxx, one of the largest of the Giant Leedsii, flower of immense size, measuring 5 in. across, broad white perianth elegantly twisted and very large delicate citron crown 1½ in. long with bold open mouth, very handsome; robust grower, ht. 18 in. ....	84	0..7 6
† <b>Diana</b> (3), xxx, broad white perianth inclined slightly to reflex, very large expanded crown of a pretty lemon shade, elegantly flanged and crimped at margin, flower large and beautiful, lasting long in condition, ht. 14 in. AWARD OF MERIT R.I.S., 1900...	7	6..0 8
§† <b>Duchess of Westminster</b> (4), xx, spreading pure white tapering perianth and long soft canary cup, tinged orange on first expanding, and passing off almost white, a finely formed flower, foliage glaucous blue-green; charming when naturalised in grass, ht. 18 in. FIRST-CLASS CERTIFICATE R.I.S. ....per 100, 42/-	5	6..0 6
§† <b>Elaine</b> , xxx, perianth broad and silvery white, cup silvery white, small, globular and elegantly fluted, beautiful, ht. 17 in. FIRST-CLASS CERT. R.I.S., 1901 .....per 100, 42/-	4	6..0 5
§† <b>Empire</b> . See New Seedling Daffodils, page 8. ....each £1 1s.		
† <b>Eoster</b> (4), xxx, a refined little flower of perfect form, with a white flat perianth and a pretty globular lemon cup, ht. 12 in. AWARD OF MERIT R.I.S. 1906.....	10	6..1 0

NARCISSUS LEEDSII—continued.

	per doz.	each.	s.	d.	s.	d.
‡ <b>Evangeline</b> (4), xxx, flower large, of fine form with broad white perianth smooth and firm, and large citron-yellow open cup, free bloomer and fine for cutting, ht 20 in. AWARD OF MERIT R.H.S. 1913. AWARD OF MERIT FOR CUTTING, BIRMINGHAM, 1914...	10	6...	1	0		
‡ <b>Fairy Queen</b> (2), xxx, perianth pure white, straight creamy white cup, prettily fluted, an exquisite flower of elaste beauty, valuable for cutting; for bedding it is of great value, the flowers standing out well above the handsome blue-green foliage, while it always makes a charming pot plant, ht. 19 in. See coloured plate in "The Garden," August 19th, 1911 .....	1	9...	0	2		
‡ <b>Icepeak</b> (5), xxx, new 1911, a very dainty and beautiful flower of perfect symmetry, having a broad, smooth, snowy white perianth, and a small cream globular cup with green centre, ht. 21 in. ....	25	0...	2	3		
‡ <b>Janet Image</b> (3), xx, raised at our Nurseries, a refined and beautiful flower, with white perianth and large straight lemon crown, ht 16 in. AWARD OF MERIT R.H.S., Truro, and Birmingham, 1903 .....	4	6...	0	5		
‡ <b>Katherine Spurrell</b> (4), xxx, broad campanulate white perianth of good substance and a delicate canary-coloured cup, ht. 16 in. ; beautiful as a cut flower, and lasting well in water .....	2	6...	0	3		
‡ <b>Lord Kitchener</b> (3), xxx, a very handsome Giant Leedsii, flower of great size with very broad flat pure white perianth of firm substance, crown very large of a delicate pale primrose, well open at mouth and elegantly crimped at brim, ht. 18 in. AWARD OF MERIT R.H.S. 1905 .....	—	...	5	6		
‡ <b>Lucia</b> (4), xxx, after the style of <b>Katherine Spurrell</b> , but finer, the flower measuring 4 inches across, perianth white, cup citron, prettily fluted, very elaste, ht. 18 in. ....	4	6...	0	5		
‡ <b>Maggie May</b> (4), xx, white perianth and large pale citron cup passing to white, beautifully frilled, a good cut flower, ht. 22 in. AWARDED FIRST-CLASS CERTIFICATES, 1899 and 1901 .....	7	6...	0	8		
‡ <b>Maid of Athens</b> (4), xxx, a very graceful flower, measuring 3 inches across, perianth white, well imbricated and slightly scalloped, cup globular, sulphur-white with a pretty buff-yellow margin, foliage blue-green, fine for cutting, ht. 18 in. ; valuable for pots and gentle forcing .....	2	3...	0	3		
‡ <b>Maria Magdalene de Graaff</b> (4), xx, broad white perianth and expanded primrose cup, often heavily suffused a rich orange or terra-cotta shade; usually two-flowered, ht. 17 in. ....	1	6...	0	2		



LEEDSII MERMAID

‡**Mermaid** (2), xxx, a great improvement on *White Queen*, flower erect, larger and more beautiful, and plant much taller, with handsome blue-green foliage; perianth white, large and well imbricated, crown very large and bold, elegantly flanged at mouth, opening pale creamy primrose and passing off almost white, ht. 20 in. ; a lovely exhibition flower. See coloured plate in "The Garden," August 19th, 1911 .....

‡**Minnie Hume** (3), xx, white perianth, cup large and spreading, passing from lemon to white, ht. 16 in. ....per 100, 8/6

‡**Mrs. Langtry** (4), xx, perianth white and broad, cup opening a pale primrose and passing off white, in some seasons elegantly margined canary-yellow, beautiful; a remarkably free bloomer, each bulb generally producing several flower stems, ht. 18 in. per 1000, 70/-; per 100, 7/6

**Music.** See *New Seedling Daffodils*, page 8 — 10 6

‡ <b>Polestar</b> (5), xx, reflexing white perianth, large expanded flat crown, of a soft pale canary colour, prettily fluted, late flowering; recommended for naturalising in grass and woodlands, ht. 13 in. ....per 100, 12/6	1	9...	0	2		
‡ <b>Princess Maud</b> (3), xx, short, broad, rather campanulate white perianth, large globular primrose-coloured crown. AWARD OF MERIT R.H.S. 1901 .....	7	6...	0	8		



NARCISSUS LEEDSII—continued.

	per doz. each.
	s. d. s. d.
† <b>Queen of the North</b> (3), xxx, flower large with very broad white perianth, cup lemon, prettily fluted; of highest quality and colour very pure, valuable for cutting, strong free grower, ht. 18 in. ....	36 0..3 6
‡ <b>Royal Lady.</b> See <i>New Seedling Daffodils</i> , page 9 .....	21 0..2 0
‡ <b>Salmonetta</b> (4), xx, perianth white, cup prettily fluted and of a beautiful apricot shade passing off peach, a distinct and charming colour; free bloomer and prized for cutting, ht. 16 in. AWARD OF MERIT, BIRMINGHAM 1903..... per 100, 12/6	1 9..0 2
<b>Seascape.</b> See <i>New Seedling Daffodils</i> , page 9 .....	36 0..3 6
† <b>Silver Moon</b> (6), xxx, raised at our Nurseries, flower of medium size with rounded and very broad perianth slightly twisted, cup pure white prettily crimped, ht. 18 in.....	7 6..0 8
† <b>Sirdar</b> (3), xxx, a grand flower with broad imbricated silvery white perianth and large bold straight crown of a delicate cream colour, deeply fluted and elegantly frilled at mouth, ht. 19 in. ....	— ...6 6
† <b>Sir Galahad</b> (4), xxx, a beautiful flower measuring over 4 inches across, perianth pure white, rounded, broad and imbricated, crown soft lemon-primrose, large, open and spreading, deeply flanged and frilled at mouth, ht. 15 in. See <i>Coloured Plate in "The Garden," July 30th, 1910</i> .....	— ...7 6
† <b>St. Olaf.</b> See <i>New Seedling Daffodils</i> , page 9 .....	60 0..5 6
‡ <b>Una</b> (4), xxx, flower large with long creamy white perianth, and long straight crown, of a bright citron tinged apricot; a vigorous grower and free bloomer, valuable for cutting, ht. 18 in. ....	2 6..0 3
‡ <b>Undine</b> (4), xxx, a remarkably beautiful nodding flower, snowy white campanulate perianth, crown creamy white, straight and deeply fluted, foliage pretty blue-green, ht. 13 in. ....	7 6..0 8
† <b>Venus</b> (3), xxx, a very beautiful chaste flower of refined form, perianth white, broad and solid, crown large, delicate pale lemon passing to white, ht. 14 in. AWARD OF MERIT, TRURO, 1913 .....	60 0..5 6
<b>Viscountess Falmouth</b> (1), xx, an elegant flower with pure white perianth and a long straight elegant crown, ht. 17 in. ....per 100, 21/-	3 0..0 4
‡ <b>Waterwitch</b> (3), xx, a very graceful pendulous white flower, with pretty globular cup; especially valuable for naturalising on grassy slopes, where the flowers are seen to advantage, ht. 17 in. ....	2 6..0 3
‡ <b>White Lady</b> (4), xxx, an exquisite flower, with a broad white perianth of perfect form, and a dainty cup prettily crinkled of a beautiful pale canary shade; a very free bloomer, fine for cutting, ht. 23 in. AWARD OF MERIT R.H.S. 1898 ...per 100, 25/-	3 6..0 4
† <b>White Queen</b> (3), xxx, a very refined flower with large broad pure white perianth and large bold straight cup, pale citron passing to white, with an exquisitely frilled edge; ht. 17 in. AWARDED FIRST-CLASS CERTIFICATE R.H.S. ....	15 0..1 6
‡ <b>White Slave</b> (3), xxx, a handsome well-balanced flower, measuring 3½ in. across, perianth snowy white, very broad and imbricated, cup spreading, pale citron shaded white, elegantly fluted and frilled, erect grower, free bloomer and good for cutting, ht. 18 in.....	15 0..1 6



TRIANDRUS ALBUS ON ROCKWORK.

## DIV. V.—TRIANDRUS AND TRIANDRUS HYBRIDS.

Under this division are placed *Triandrus* varieties and all hybrids obviously containing *Triandrus* blood, such as *Queen of Spain* (a wild *Triandrus* Hybrid), *Agnes Harvey*, *J. T. Bennett-Poë*, *Madonna*, etc.

The introduction of *Triandrus* blood in hybridising has resulted in such a very distinct group of hybrids that the Classification Committee of the R.H.S. deemed it advisable to make one section of them. For grace and beauty they are unsurpassed. We recommend them being given a situation partly shaded by trees, and if a little very fine dwarf grass seed is sown amongst them, the beauty of their flowers is enhanced. Once planted they may remain undisturbed for years.

**NARCISSUS TRIANDRUS.**

**The Cyclamen-flowered Daffodils with reflexing perianth.**

THE DAIN'TY LITTLE "ANGEL'S TEARS" DAFFODIL (*Triandrus albus*) was found by the late Mr. Peter Barr on the mountains of Portugal and Spain, growing in very hard, firm, fine gritty soil, sometimes in the narrowest fissures of granite and slatestone rocks. All in this section make lovely little pot plants (three or more bulbs in a pot), and grown thus should be given cold frame culture. Established on rockwork they form a picture full of grace and beauty. *They prefer shade, a gritty soil, and a well-drained position.*

- †**Triandrus albus** (3), an exquisitely beautiful little species, appropriately called the "Angel's Tears" Daffodil, of slender growth, and produces a cluster of elegant little creamy white flowers with globular cup and perianth reflexing as in the Cyclamen, ht. 7 in. *We usually have a small supply of this little Daffodil collected each year for us, but owing to the war we have been unable to obtain any this year. We have therefore to rely upon the few home-grown bulbs we have* ..... per doz. each. s. d. s. d. 5 6...0 6
- †**Triandrus calathinus** (3). One of the most beautiful little Daffodils in existence. The flowers, which are produced in drooping clusters of two or three, are snowy white, and more than twice the size of *Triandrus albus*, with long goblet-shaped crown prettily fluted; the foliage has a curious habit of curling over, ht. 7 in. For pot culture and rockwork it is a perfect gem. The late Mr. Peter Barr collected this rare Daffodil some years ago on one of the Glénan Isles, the collecting being attended with a good deal of risk. Unfortunately it is no longer to be found there, the sea having washed away all trace of it, but we have been able to successfully raise it from seed ..... — ...3 6
- †**Triandrus pulchellus** (4), producing elegant clusters of flowers like *Triandrus concolor*, but the perianth is primrose and the cup white, a very scarce and beautiful little Daffodil, ht. 9 in. .... — ...2 6

**NARCISSUS TRIANDRUS HYBRIDS.**

Of these QUEEN OF SPAIN is a natural hybrid of *Triandrus albus* and a *wild trumpet Daffodil*. The other varieties have all been produced by using *Triandrus albus* or *calathinus* pollen on trumpet and other Daffodils. They form a distinct class, having flowers more or less drooping, of elegant form and graceful habit, clearly showing their *Triandrus* parentage.



NARCISSUS QUEEN OF SPAIN.

- §†**Queen of Spain** (3), xxx, found by the late Mr. Peter Barr in Spain. One of the most beautiful, distinct, and graceful Daffodils in cultivation, and unsurpassed either for bedding, pot or vase culture, or for naturalising in woodlands, etc. The flowers vary slightly in size, but all are of a uniform soft, delicate, clear yellow, with a gracefully reflexing perianth, trumpet of distinct and elegant form, ht. 12 in. Naturalised in grass under trees, this Daffodil forms a delightful feature in the garden. It also adapts itself readily to bowl culture in the Peat-fibre mixture, and grown thus affords an artistic decoration for the sitting-room. *Having been unable to collect any of this Daffodil in its native habitat this year owing to the war, we have to fall back upon the few home-grown bulbs we have* ...per 100, 25/- per doz. each s. d. s. d. 3 6...0 4
- †**Agnes Harvey** (4), xxx, a beautiful chalice-cupped hybrid, perianth snow-white, cup of exquisite form, pure white sometimes flushed soft apricot, one to three blooms on a stem, slightly drooping, very beautiful, ht. 13 in. AWARD OF MERIT R.H.S. 1902 ..... 25 0...2 3
- †**Alabaster**. See *New Seedling Daffodils*, page 7 ..... — 12 6
- §†**Anne Holloway** (4), xxx, delicate lemon-yellow trumpet-shaped flowers, very elegant 21 0...2 0
- §†**Cingalee** (4), xxx, large flower measuring 4½ in. across, with long starry cream perianth and elegant goblet-shaped crown of a delicate soft primrose ..... — ...5 6
- §†**Dione**. See *New Seedling Daffodils*, page 8 .....each £1 10s.
- §†**J. T. Bennett-Poë** (3), xx, a pretty hybrid, with cream-coloured perianth and bold straight primrose trumpet of elegant outline, ht. 15 in. AWARD OF MERIT R.H.S. 1904..... 7 6...0 8
- †**Madonna**. See *New Seedling Daffodils*, page 8 .....each £1 5s.

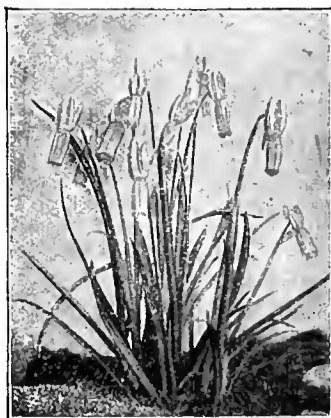
**Unnamed Triandrus Hybrids.**

Mostly seedlings of *Triandrus calathinus* and choice *Trumpet* and *Chalice-cupped varieties*. All of elegant habit, graceful and beautiful.

		per doz.	each
		s.	d. s. d
<b>Selected Primrose and Yellow Trumpet-shaped Varieties</b> , mostly the result of crossing <i>Narcissus triandrus Calathinus</i> on to <i>Monarch</i> , <i>Lord Roberts</i> , and other good yellow trumpets .....	15	0...1	6
„ <b>White Trumpet-shaped Varieties</b> , mostly the result of crossing <i>Narcissus triandrus Calathinus</i> on to <i>Loveliness</i> , <i>Mrs. George H. Barr</i> , and other good white trumpets.....	15	0...1	6
„ <b>Chalice-cupped Varieties</b> , the result of crossing <i>Narcissus triandrus Calathinus</i> on to <i>Poeticus</i> and <i>Leedsii</i> varieties.....	15	0...1	6

**DIVISION VI.—CYCLAMINEUS.**

**Cyclamineus (1), the Yellow Cyclamen-flowered Daffodil.**



NARCISSUS CYCLAMINEUS ESTABLISHED ON ROCKWORK.

This beautiful little Daffodil was re-introduced into cultivation in 1887 by A. W. Tait, Esq., of Oporto, after being lost sight of for 200 to 300 years. It is the earliest of all Daffodils and is a charming elegant little flower of very distinct form; the trumpet is rich yellow, straight and tube-like, elegantly serrated at mouth, while the perianth is reflexed as in a Cyclamen. A valuable little species for pot-culture, edgings, rockwork, and to naturalise in grass and shady nooks, or at the water's edge; it delights in a dampish sandy peat soil, ht. 6 in., **FIRST-CLASS CERTIFICATE R.H.S.** *The war having prevented our collecting a supply of this little Daffodil this year, we have only a few home-grown bulbs to offer* .....per 100, 55/- 7 6...0 8

**DIV. VII.—JONQUILLA AND JONQUIL HYBRIDS.**

Under this division are placed the *Single Jonquil* and all *Daffodil hybrids* where the characteristics of the *Jonquil* parent dominate, such as *Odorus*, etc.

		per doz.	each
		s.	d. s. d
† <b>JONQUILLA</b> (The <i>Single Sweet Jonquil</i> ) (5), xxx, of light elegant growth, bearing out of doors in May charming clusters of numerous small rich yellow flowers of delicious scent, much prized for cutting, ht. 13 in. It produces a pleasing effect when grown in pots or bowls for indoor decoration. Owing to no French bulbs coming over this season, Jonquils are scarce, as very few are grown in this country. Those we offer are from our Cornish garden .....	per 100, 21/-	3	0...0 4

*For the Double Jonquil, see page 29.*

† <b>Buttercup</b> (4), xxxx, a cross between <i>Emperor</i> and <i>Jonquilla</i> , flower of very distinct handsome form, borne on a long stem; colour rich Buttercup-yellow, almost a self, with broad stiff perianth very slightly reflexing and of same length as the trumpet, which is straight and of great substance; the flower has a delicate Jonquil perfume, ht. 21 in. <b>AWARD OF MERIT R.H.S. 1908</b> .....	—	...7	6
--	---	------	---

§ <b>Odorus Campanelle</b> ( <i>Campanelle Jonquil</i> ) (2), xx, native of France, having an elegant rush-like foliage and clusters of bright yellow fragrant flowers, ht. 18 in.; valuable for border decoration and early forcing in pots	per 1000, 65/- ; per 100, 7/-	1	0... —
--	-------------------------------	---	--------

§† „ <b>rugulosus, true</b> (2), xx, bearing rich yellow fragrant flowers (two to four on a stem) with broad imbricated perianth and straight wrinkled cup, foliage erect and rush-like, a fine showy variety, very effective when massed in beds and borders, and valuable for cutting, ht. 18 in.			
<i>Specially Selected Stock</i> , each bulb producing two to three flower spikes.....	per 1000, 55/- ; per 100, 6/-	0	10... —

## DIVISION VIII.—TAZETTA & TAZETTA HYBRIDS.

Under this Division are placed the Polyanthus or Bunch-flowered Narcissi, Poetaz Narcissi, Tridymus, and various Tazetta Hybrids.

### POLYANTHUS OR BUNCH-FLOWERED NARCISSI.

When grown outdoors in beds or borders, a little protection should be given during winter by means of a light covering of straw litter or cut heather.

*All extra strong bulbs suitable for forcing.*

		per doz. each.	
		s. d.	s. d.
<b>Gloriosus</b> , perianth white, cup glowing orange, very showy and early, largely used for early forcing .....	per 100, 15/-	2 3	0 3
<b>Grand Monarque</b> , large broad white perianth, cup primrose-yellow... ..	„ 15/-	2 3	0 3
<b>Grand Soleil d'Or</b> , perianth golden, cup deep brilliant orange, <i>early</i> and very showy; by early forcing it may be brought into bloom by January .....	per 100, 15/-	2 3	0 3
<b>Paper White</b> , bearing trusses of snowy white flowers; <i>most valuable for early forcing</i> . Very scarce this season owing to the usual supplies not coming in from France.			
	<i>Guernsey grown bulbs</i> , per 100, 15/-	2 3	0 3
<b>“Scilly Isles” White</b> , perianth white, cup creamy white; this variety may be forced into bloom by February. A good variety to take the place of the <b>Paper White</b>			
<b>Narcissus</b> .....	per 100, 9/6	1 4	0 2
	<i>Extra strong bulbs</i> , „ 12/6	1 9	0 2
<b>White Pearl</b> , bearing trusses of large flowers with white perianth and pure citron cup which passes to white. Excellent for early forcing .....	per 100 10/6	1 6	0 2

### NARCISSUS POETAZ—NEW HYBRID POLYANTHUS NARCISSI.

New hybrids of *Poeticus Ornatus* × Best Forms of Polyanthus Narcissi.



POETAZ ELVIRA.

A fine new race of Daffodils, resulting from a cross between *Poeticus ornatus* and the finest varieties of *Polyanthus* or *Bunch-flowered Narcissi*, the *Poeticus* being the seed-bearing parent. The plants are tall and vigorous growers, bearing heads of large well-formed flowers, deliciously fragrant; they are much finer and more showy than the old Polyanthus Narcissi, and have the advantage of being much hardier. In pots or the flower border they are very decorative, while the flowers are highly prized for cutting.

		per doz. each.	
		s. d.	s. d.
‡ <b>Admiration</b> (3), xxx, <i>new</i> 1914, the showiest of the Poetaz varieties and very decorative either for pots or border; it produces a head of large well-formed flowers, primrose with flattish bright red-orange cup, delicately scented, ht. 18 in. AWARD OF MERIT FOR GARDEN DECORATION R.H.S. 1914 .....	15	0	1 6
‡ <b>Alsace</b> (2), xxx, bearing a fine head of bloom, perianth pure white, cup yellow margined orange, very attractive .....	21	0	3 0
‡ <b>Aspasia</b> (3), xxx, producing four to five large bold flowers on a stem, with broad solid white perianth and golden cup, very prettily fluted, ht. 21 in. ....	per 100, 15/-	2 3	0 3
‡ <b>Elvira</b> (3), xxx, bearing on long, graceful stems heads of 3 to 4 large flowers with broad solid white petals of great substance and a bright yellow cup edged orange, delicately fragrant, ht. 24 in. AWARD OF MERIT R.H.S. ....	per 100, 15/-	2 3	0 3
‡ <b>Ideal</b> (4), xxx, a pretty showy variety bearing four to six flowers on a stem, perianth white, cup brilliant orange, height 21 in. ....	per 100, 25/-	3 6	0 4
‡ <b>Irene</b> (4), xxx, bearing a head of five to six large flowers with soft pale primrose perianth and deep golden cup prettily fluted, ht. 21 in. ....	per 100, 25/-	3 6	0 4
‡ <b>Jaune à Merveille</b> (4), xxx, a handsome variety, four to six flowers on a stem, with large broad soft primrose perianth and bright yellow cup, thinly edged orange, of good form, ht. 21 in. ....	per 100, 42/-	5 6	0 6
‡ <b>Klondyke</b> (4), xxx, a fine showy variety with primrose-yellow perianth and golden fluted cup, five to seven large flowers on a stem .....	per 100, 48/-	6 6	0 7



NARCISSUS POETAZ—continued.

per doz. each.  
s. d. s. d.

- ‡**Triumph** (3), xxx, bearing about three very large flowers on a stem, perianth broad and snowy white, cup golden-yellow prettily fluted, ht. 16 in. ....per 100, 32/6 4 6...0 5
- Mixed Poetaz Varieties** for planting in woodlands, shrubberies, etc., per 100, 15/- 2 3...0 3

VARIOUS TAZETTA HYBRIDS.

- ‡**TRIDYMUS Cloth of Gold** (3), xxx, a very striking and decorative bedding variety lasting long in condition, each stem bearing three to five sweetly scented flowers of the richest golden-yellow; a robust grower and free bloomer, valuable as a cut flower, ht. 14 in. .... 7 6...0 8
- ‡**BIFLORUS** (5), xx, a wild natural hybrid, pure white perianth, yellow crown, a useful late-flowering Daffodil to naturalise, ht. 15 in. ....per 100, 5/6 0 10... —
- CANALICULATUS.** See *New Seedling Daffodils*, page 7 ..... 5 6...0 6
- ‡**INTERMEDIUS "SUNSET"** (3), xxx, canary-yellow perianth and large glowing orange-red cup, 4 to 5 flowers on a stem, remarkably showy, ht. 16 in. AWARD OF MERIT R.H.S. .... 4 6...0 5

DIVISION IX.—POETICUS—True Poet's Narcissi.

These "Poet's" Daffodils or Narcissi all have snowy white perianth segments or petals, and a small flattened eye or crown, yellow or lemon edged more or less deeply with scarlet or crimson, and sometimes almost all scarlet. All are more or less sweetly scented.



POETICUS HERRICK.

The earlier flowering varieties afford a very beautiful decoration indoors when grown in pots (5 bulbs in a pot) or forced. As border plants and naturalised in grass by themselves the Poet's Narcissi produce a lovely effect.

☛ Early planting and liberal culture is specially recommended for these Poet's Daffodils. To obtain tall stems and fine large flowers they should be grown in a rich deep soil not too dry. The varieties having very highly coloured crowns should be cut young to preserve the fine colouring.

- ‡**Almira** (*syn.* King Edward VII.) (5), xx, a large-flowered variety with broad round white perianth of good substance, eye margined deep red, ht. 15 in. ....per 100, 21/- 3 0...0 4

†**Caedmon.** See *New Seedling Daffodils*, page 7 .....each £1 1s.

†**Cæsar.** See *New Seedling Daffodils*, page 7 — 10 6

- ‡**Cassandra** (5), xxx, a noble flower of fine form and substance, with broad clear white perianth and a small eye deeply rimmed dark red; habit tall and vigorous, ht. 17 in. A fine border variety and valuable for early forcing. AWARD OF MERIT R.H.S., 1899 .....per 100, 25/- 3 6...0 4
- †**Dresden** (5), xxx, new 1910, a refined and beautiful Poeticus of good bearing, with well-imblicated snowy white perianth, and a very flat eye of fiery scarlet, very attractive, ht. 17 in. See *coloured plate in "The Garden," September 24th, 1910* ..... 36 0...3 6
- ‡**Edna.** See *New Seedling Daffodils*, page 8 ..... 7 6...0 8
- ‡**Epic** (5), xxx, very large flower measuring three inches across, with broad solid snow-white perianth, eye canary, picotee-edge of madder-crimson, handsome, ht. 20 in. AWARD OF MERIT BIRMINGHAM ..... 5 6...0 6
- ‡**Ethelburga.** See *New Seedling Daffodils*, page 8 ..... 10 6...1 0
- ‡**Herrick** (5), xxx, large bold flower of good substance and fine bearing, with broad slightly reflexing snowy white perianth and large flat eye deeply rimmed dark scarlet, free grower, fine for cutting, ht. 17 in. A good early forcer. AWARD OF MERIT R.H.S., 1901 .....per 100, 21/- 3 0...0 4
- ‡**Homer** (4), xxx, a beautiful large broad-petalled *Poeticus*, with orange eye broadly margined deep crimson, free grower, ht. 14 in. FIRST-CLASS CERTIFICATE R.H.S., 1898 7 6...0 8

NARCISSUS POETICUS—*continued.*

		per doz.	each
		s. d.	s. d.
† <b>Horace</b> (4), xxx, broad solid snowy white rounded perianth, and large eye almost entirely blood-scarlet, very beautiful, ht. 21 in. AWARD OF MERIT FOR GARDEN AND CUTTING, R.H.S. 1914 .....		6 6..0	7
† <b>Ibis</b> (5), xxx, perianth snowy white, broad and solid, slightly reflexing, eye deeply edged blood-scarlet, very fine, ht. 20 in. ....		21 0..2	0
† <b>Lewis Carrol.</b> See <i>New Seedling Daffodils, page 8</i> .....		each £2 2s.	
† <b>Lycidas</b> (4), xx, flower of fine form and substance, perianth snowy white, eye scarlet with thin edge of madder-red, robust grower, ht. 20 in. ....		7 6..0	8
† <b>Memory.</b> See <i>New Seedling Daffodils, page 8</i> .....		— 15	0
† <b>Minerva</b> (6), xxx, <i>new</i> 1910, a cool-looking flower, very distinct and shapely, with round symmetrical solid white perianth slightly reflexing, and a large round pale chrome-coloured eye rimmed cinnabar-red, plant of fine bearing, ht. 20 in....per 100, 21/-		3 0..0	4
‡ <b>Old Pheasant's Eye (Poeticus recurvus)</b> (6), xx, perianth pure white and reflexing, eye margined deep orange-red, very fragrant, ht. 15 in.; a valuable variety for massing in woods, grass, etc. .... <i>Extra strong bulbs</i> , per 1000, 30/-; per 100, 3/6		0 6..	—
"    "    " <i>Good selected bulbs for naturalisation</i> "    22/6;    "    2/6		0 5..	—
† <b>Oracle</b> (5), xxx, a model rounded flower, perianth broad, snowy white, of good substance, cup dark fiery red shading to a buff-orange, very attractive, ht. 22 in. ....		36 0..3	6
† <b>Ornatus</b> (4), xx, <i>native of France</i> , perianth pure white, broad and well formed, eye margined with scarlet, ht. 13 in.; it forces freely and is also recommended for massing in grass, flower borders, etc. ....per 1000, 42/-; per 100, 4/6		0 8..	—
"    "    " <i>Very large bulbs</i> "    55/-;    "    6/-		0 10..	—
‡ <b>Poëtarum</b> (5), xx, perianth pure white, eye bright orange-scarlet, very effective, ht. 14 in. ....per 1000, 55/-; per 100, 6/-		0 10..	—
"    "    " <i>Very large bulbs</i> "    70/-;    "    7/6		1 3..	—
† <b>Ringdove.</b> See <i>New Seedling Daffodils, page 9</i> .....		each £10 10s.	
† <b>Snow King</b> ( <i>syn. Christina Rossetti</i> ) (6), xxx, flowers large, with smooth round perianth, very beautiful, ht. 18 in. AWARD OF MERIT AND FIRST PRIZE IN POETS' CLASS, Birmingham, April 28th, 1910 .....		— 10	6
† <b>Snowshoe</b> (6), xxx, a beautiful and showy flower of large size, with a solid white ample perianth which is broad, slightly reflexed and with an elegant waved outline, centre very bright canary-yellow shading to green and with a striking margin of crimson, ht. 19 in. AWARD OF MERIT R.H.S. ....		— ...6	6
† <b>Socrates.</b> See <i>New Seedling Daffodils, page 9</i> .....		— ...7	6
† <b>Tennyson</b> (4), xxx, a beautiful cool-looking flower, large and of fine form, with broad flat smooth rounded petals, cup large, lemon-yellow edged dark madder-red, ht. 22 in. ....		— ...6	6
† <b>The Bride</b> (6), xxx, <i>raised at our Nurseries</i> , broad snowy white perianth of great substance, and small brilliant red eye; a chaste flower of perfect form, ht. 16 in. ....		5 6..0	6
† <b>Timon.</b> See <i>New Seedling Daffodils, page 9</i> .....		60 0..5	6
† <b>Virgil</b> (4), xxx, flowers large and of fine symmetry with broad pure white imbricated perianth and eye deeply suffused dark red, ht. 18 in. AWARD OF MERIT R.H.S., 1900		7 6..0	8
† <b>White Standard</b> (5), xxx, a fine large flower of good substance measuring nearly 3½ inches across, with broad snowy white perianth and a bold striking eye conspicuously margined blood-scarlet, ht. 15 in. ....per 100, 25/-		3 6..0	4

For the Double White Gardenia-flowered Poeticus, see page 29.

DIVISION X.—DOUBLE VARIETIES.

(A) DOUBLE TRUMPET DAFFODILS.

All the Double Trumpet Daffodils thrive admirably when planted in grassland and allowed to remain undisturbed. They are seen to great advantage when planted in clumps in permanent borders, and as pot-plants they are very attractive (several bulbs in a pot).

		per doz.	each
		s. d.	s. d.
† <b>Capax Plenus</b> ( <i>syn. Eystettensis</i> ), Queen Anne's Double Daffodil (1), xxx, <i>native of Ireland</i> , beautiful soft pale lemon-coloured flowers, consisting of six rows of petals, symmetrically arranged over each other in the form of a star, ht. 7 in. ....		7 6..0	8
† <b>Telamonius Plenus</b> (Wilmer's Great Double Golden-yellow Daffodil) (2), xx, <i>the large Old Double Yellow Trumpet Daffodil</i> ; valuable for grouping in beds and borders, also for forcing..... <b>Strong flowering bulbs</b> , per 1000, 95/-; per 100, 10/-		1 6..0	2
"    " <i>A fine selected strain, very large bulbs</i> "    140/-;    "    15/-		2 3..0	3

**(B) DOUBLE INCOMPARABILIS NARCISSI.**

**The Double Rose-flowered Daffodils.**

The large massive flowers of these are greatly prized for bouquets and vases, mixing well with other flowers and foliage in decoration. As pot plants (3 to 6 bulbs in a pot) they are very charming, while in beds, borders, or naturalised they make a most effective display.



DOUBLE NARCISSUS, ARGENT.

- |    |   |                |
|----|---|----------------|
|    |   | per doz. each. |
|    |   | s. d. s. d.    |
| §† | <b>Argent</b> (3), xxx, a beautiful cross between <i>Telamonius plenus</i> and <i>Poeticus ornatus</i> , bearing very beautiful and elegant star-shaped semi-double flowers of erect bearing with creamy white petals and yellow centre, ht. 18 in. It may be forced early in pots .....per 100, 10/6 | 1 6...0 2      |
| §† | <b>Butter and Eggs.</b> See <b>Golden Rose</b> (an improved form of the old Butter and Eggs)  |                |
| §† | <b>Codlins and Cream</b> ( <i>syn. Sulphur Phoenix</i> ) (3), xxx, large double white rose-shaped flowers with sulphur centre, very chaste and beautiful; much prized for bouquets, vases, etc., ht. 18 in. ....per 100, 12/6   | 1 9...0 2      |
| †  | <b>Dubloon</b> (3), xx, a hybrid of <i>Telamonius plenus</i> and <i>Poeticus ornatus</i> , bearing elegant bright yellow double flowers with darker centre, of fine erect habit, ht. 18 in. ....per 100, 10/6   | 1 6...0 2      |
| †  | <b>Eggs and Bacon (Orange Phoenix)</b> (2), xx, large double rose-shaped flowers, white with rich reddish orange centre, ht. 17 in.   |                |
|    | <i>Extra Fine Strain</i> , per 100, 12/6  | 1 9...0 2      |
| §† | <b>Golden Rose</b> ( <i>syn. Pallidus Plenus</i> ) (2), xxx, an improved form of the old <b>Butter and Eggs Daffodil</b> , flowers very large and round, rich light yellow with orange-golden centre, very double, handsome and showy, ht. 17 in. ....per 100, 10/6                                   | 1 6...0 2      |
| †  | <b>Inglescombe</b> (4), xxx, bearing very large fully double flowers of a buttery primrose-yellow, with broad rounded petals .....  | — ...8 6       |
| §† | <b>Primrose Phoenix</b> (4), xxx, a valuable addition to this section of Double Daffodils; the large double rose-shaped flowers are of a beautiful soft lemon shade; much prized for vases, ht. 20 in. AWARD OF MERIT R.H.S. 1902.....  | 21 0...2 0     |

**(C) DOUBLE SWEET-SCENTED JONQUILS.**

- § **Jonquilla flore-pleno** (The Old Double Sweet Jonquil) (6), producing in May clusters of rich golden-yellow small double flowers of delightful fragrance; a favourite flower for pots and cutting. *Owing to no French bulbs coming over this season, Jonquils are scarce, as very few are grown in this country. Those we offer are from our Cornish garden* .....per 100, 35/-
- \* **Odorus Campanelle plenus** (The Tall Double Campanelle Jonquil) (3), xx, a very charming variety, bearing heads of fragrant double yellow flowers of elegant form, on tall graceful stems, ht. 15 in. This is much easier to grow than the **Queen Anne's Double Jonquil**, which has now almost disappeared from cultivation
- per 100, 10/6 1 6...0 2

**(D) DOUBLE POETICUS NARCISSUS.**

**The Gardenia-flowered Sweet-scented Narcissus.**

- § **Double White Poeticus** (6), xxx, large double snowy white *sweet-scented* Gardenia-like blossoms, much prized for cutting, ht. 15 in. To obtain fine handsome flowers this Narcissus should be planted early in a good deep cool soil not too dry
- per 1000, 42/-; per 100, 4/6 0 8... —

**Barr's Sweet-scented Double Chinese Pæonies.**

These Pæonies with their reddish foliage in Spring produce a charming effect when associated with Daffodils. For full Descriptive List see Barr's Hardy Plant Catalogue.

DIVISION XI.—VARIOUS SPECIES AND HYBRIDS.

Distinet forms which cannot be classed under any of the foregoing divisions.

**BULBOCODIUM (CORBULARIA).**

**The Hoop Petticoat, or Medusa's Trumpet Daffodils.**

For rockwork, edgings and small beds, these beautiful little Daffodils are most charming, while if several bulbs are planted in pots or pans, they are greatly prized for indoor decoration.



WHITE HOOP PETTICOAT  
(Half natural size).

†**Large Sulphur Hoop Petticoat** (*Bulbocodium citrinus*) (3), xx, native of the Pyrenees, very beautiful pale citron-yellow, ht. 6 to 8 in.; delights in a dampish sandy peat soil. The collected bulbs, which have to be lifted while in growth, will not all bloom the first season; they should therefore be left undisturbed to establish themselves. For bowl and pot culture we recommend the cultivated bulbs. *The war preventing, our collecting a supply of this little Daffodil in Spain this year, we have only a few homegrown bulbs to offer.*.....per 100, 12/6

	per doz.	each
I	9...0	2

†**White Hoop Petticoat** (*Bulbocodium monophyllum* or *Clusii*) (1), native of N. Africa, winter-flowering, snowy white flowers of exquisite beauty produced in winter; grow in pots, in frames, or at the foot of hot dry walls, and as soon as signs of growth are seen, give water freely, ht. 6 in. *Having been prevented, owing to the war, from obtaining a supply of collected bulbs from Algeria this season, we have to rely upon a few homegrown bulbs which we are fortunate in having*

5	6...0	6
---	-------	---



EARLY YELLOW HOOP PETTICOAT  
ON ROCKWORK.

†**Early-flowering Yellow Hoop Petticoat** (2), found in Spain by the late Mr. Peter Barr, rich golden-yellow, very beautiful, flowering outdoors from February, ht. 6 in.; delights in a dampish sandy peat soil. A fair proportion of the bulbs should bloom the first season .....per 100, 17/6

2	6...0	3
---	-------	---

†**Large Yellow Hoop Petticoat (true)** (*Bulbocodium conspicuum*) (4), rich golden-yellow, ht. 6 in.; prefers a dampish sandy peat soil. A fair proportion of the bulbs flower the first year. *Now very scarce* .....

6	6...0	7
---	-------	---

§**GRACILIS** (7), xx, an elegant rush-leaved Daffodil, 3- to 5-flowered, pure yellow, *sweet-scented*, the last of the family to bloom, opening about end of May, ht. 14 in.....

3	6...0	4
---	-------	---

†**JUNCIFOLIUS** (The Miniature Rush-leaved Daffodil) (4), xxx, a charming and elegant little species for pots or for select spots on rockwork; it has small graceful rich yellow flowers, about the size of a buttercup, with a perfectly flat little crown, ht. 3 to 4 in., flowers delicately fragrant, *a native of the Pyrenees* .....Cultivated bulbs

4	6...0	5
---	-------	---

**VIRIDIFLORUS** (The Green Narcissus), a rare species, native of Morocco and Gibraltar Rock, bearing in November on a tall slender stem two to four little star-shaped green flowers, which are deliciously vanilla-scented. It should be grown in pots in a cold greenhouse.....

—	...3	6
---	------	---

**BARR'S SPECIAL SEED FOR GRASS PATHS AND BORDERS.**

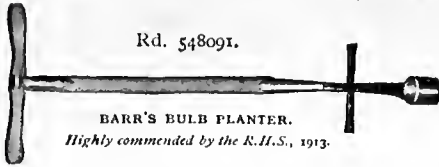
A charming feature in well-laid-out Spring gardens are **close velvety grass walks**. They are soft to walk upon, restful to the eye, and provide a delightful contrast to the colours in the flower border. Broad bands of green grass separating the gravel path from the flower border are a great improvement to a garden. Sow in September, per lb. 2/9.

**Barr's Lawn Grasses for September Sowing.**—Lawns should be renovated in September, after the wear and tear of Summer. Special Lawn Grass circular, with prices and full particulars, post free.



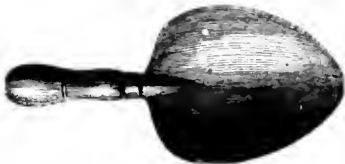
**USEFUL TOOLS FOR BULB PLANTING, ETC.**

**Barr's Special Bulb Planter** (Regd. 548091), specially designed for planting Daffodils and other bulbs in grass. This tool cuts and lifts a clean circular piece of turf which is released from the cup when the second hole is made, and lies ready at hand to fill in the holes when the bulbs have been put in, it being only necessary to remove a little of the soil from the bottom of the sod. A time must be chosen for planting when the ground has become softened after early autumn rains and not when in a hard and baked condition, as it is then impossible to use this or indeed any other tool with success. By the use of BARR'S SPECIAL BULB PLANTER a large quantity of bulbs may be planted in a very short time, and without the least disturbance of the sward. The length of the tool is 38 inches over all, weight about 3½ lbs. The cup is manufactured from high-class hardened steel and always carries a keen cutting edge.



Supplied in 3 sizes of cup:—To cut out a circular hole 2, 2½, or 2¾ inches diameter, each 15/-. We shall send the medium size (2½ in.) if no instructions to the contrary are given.

**Barr's Special Bulb Dibber**, specially designed for dibbling bulbs into borders, etc.; steel shod, with strong iron tread and cross wooden handle; a good strong heavy tool, weight about 6¾ lbs., length 36 inches over all. 12/6 each.



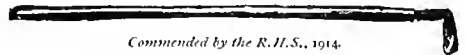
**Barr's Special Bulb Trowel**, made of best steel, specially designed for lifting and planting bulbs, etc. It will be found of great value for general garden purposes, and far in advance of the old-fashioned trowel. 2/9 each.

**Garden Trowel**, ordinary pattern, solid cast steel, all bright, very finest quality, 5 in., 2/-; 6 in., 2/3; 7 in., 2/6 each.

**Hand Fork**, (*Saynor*) of finest quality, solid steel, with three 4½-inch solid flat prongs and 5-inch handle; a very superior tool. 2/3 each.

” ” ” 12 in. handle, 2/9.

**New Pattern Daffodil Hoe**, a very useful tool for breaking the surface soil in the Flower Border during dry weather, and especially in early spring when Daffodils are just showing; also a useful weeding tool. With 3 ft. handle (41 inches over all, and weight under 1 lb.) 3/- each, with short handle (12½ inches), 2/- each.



Commended by the R.H.S., 1914.

**The Caxton Cultivator** (*Commended by the R.H.S., 1914*), invaluable for breaking surface soil in Spring and Summer, 3-prong, with 4 ft. handle, 5/- each.

**The Cuma Cultivator**, similar to The Caxton, but with smaller prongs and a 21-inch handle, 2/6 each.

**Hybridising Tweezers**, suitable for easily removing pollen from Daffodil flowers, per pair, 3/-.

**BARR'S SPECIAL METAL LABEL FOR DAFFODILS, Etc.**



With raised letters and stout wire shank, about 9 inches long. We specially recommend this for beds and borders. Per doz. 4/.

£s The above price includes the stamping of any name required.

This label is made only to order. The time taken to execute an order is generally from 2 to 3 weeks.

**BARR'S PHYTOBROMA FOR BULBS, Etc.**

The best Manure for Daffodils, Hyacinths, Tulips, etc., and for Flower Borders generally. It should be mixed with the soil below the bulbs at planting time at the rate of 2 to 3 ozs. to the square yard, and in Spring, when the bulbs are showing above ground, a top-dressing may be given of 3 oz. to the square yard. For Pots, mix *Phytobroma* with the soil, to be used at the rate of 1 lb. to the bushel, and in Spring, when growth is showing, top-dress once a fortnight, using a small teaspoonful and well mixing with surface soil.

Nett Prices—2 lb. tin, 1s.; in bags—7 lb., 2s. 9d.; 14 lb., 5s. 6d.; 28 lb., 8s. 6d.; 56 lb., 15s.; 1 cwt. 28s.

Prepaid Orders for 28 lb. and upwards sent Carriage Paid to any station in Great Britain or to any port on the Irish Coast.

## MANURES, SOILS, FIBRE, VASES & BOWLS FOR DAFFODILS.

**Barr's Phytobroma**, the best Manure for Daffodils, Hyacinths, Tulips, etc., and for Flower Borders generally. 2 lb. 1/-; 7 lb. 2/9; 14 lb. 5/6; 28 lb. 8/6; 56 lb. 15/-; 1 cwt. 28/-.

**Basic Slag**, finest quality, per cwt. 12/6; per 56 lb. 6/6; per 28 lb. 3/6; per 14 lb. 2/-.

**Bone Meal** (*Genuine Fine Crushed Bones*), best quality, per cwt. 21/-; per 7 lb. 1/9.

**Pure Dissolved Bones**, best quality, per cwt. 21/-; 7 lb. 1/9.

**Sulphate of Potash** (*now very scarce*), per 14 lb. 7/-; per 7 lb. 3/9.

**Lime, Fine Ground**, for garden use, per bushel, 3/9.

**Barr's Mixed Potting Soil**, containing a suitable quantity of Phytobroma, 2/6 per bushel.

**Barr's New Peat-fibre, Shell, and Charcoal Mixture**, ready mixed for use, a specially prepared mixture suitable for growing bulbs in vases, bowls, jardinetts, etc. (*for cultural directions, etc., see page 3*). 3/6 per bushel; 1/- per peck.

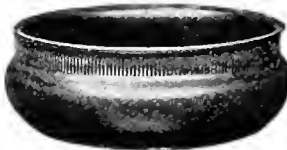
**Peat-fibre**, recommended in preference to Cocoa-Fibre for plunging bowls, pots, etc., and as a winter mulch to bulb-beds, etc., per bushel, 1/6.

**Small Pebbles and Charcoal**, 6d. per quart; 3/6 per peck.

**Charcoal** (*fine twig*), per peck 1/-; per bushel 3/6.

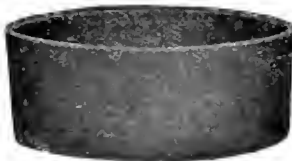
**Bulb Bowls.**—We have had special little vases made for us by Messrs. Doulton for growing Daffodils and other spring bulbs in our Peat-Fibre and Charcoal Mixture. They are of elegant shape, of neutral art green and drab shades, and without drainage holes, thus saving the use of saucers; useful for growing not only Daffodils in, but also Tulips, Hyacinths, Crocuses, early Scillas, Snowdrops, Chionodoxas, and Lily of the Valley, also the charming winter-flowering Irises—*reticulata*, etc., either for table decoration or the greenhouse. During summer these bowls are very useful for holding cut flowers, etc. All Daffodils which may be grown in pots may also be grown in these fancy bowls, and in the foregoing pages we have indicated thus † those kinds most suitable for the purpose.

Doulton Ware,  
glazed, green.



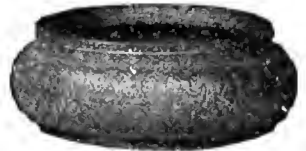
2½ in. diam., -/9 each.      4 in. diam., 1/3 each.  
5½ in. diam., 2/- each.

No. 74  
Oval Dark  
Green Glazed  
Ware.



7¼ in. by 3¼ in., 1/3 each.  
9 in. by 6 in., 2/6 each.

Doulton Ware,  
unglazed, neu-  
tral drab shade.



2½ in. diam., -/9 each.      4 in. diam., 1/3 each.  
5½ in. diam., 2/- each.

No. 229.  
"Delph," blue  
and white  
earthenware.



6½ in. diam., 1/3 each.  
8½ in. ,, 2/6 ,,  
9 in. ,, 3/- ,,

## BOOKS ON THE DAFFODIL.

**The Book of the Daffodil** (by Rev. S. E. Bourne), containing valuable information on the cultivation of the Daffodil gained by the results of the author's own personal experience, 2/6; post free, 2/9.

**Daffodils** (by Rev. Joseph Jacob), a well-got-up useful book on the Daffodil, with 8 coloured plates, 1/6; post free, 1/9.

**Narcissus, its History and Culture** (by F. W. Burbidge), an interesting work giving the history of the Daffodil to date of publication—1875, with 48 coloured plates, £1 10s.; post free, £1 10s. 6d.

**The R.H.S. Daffodil Year Book for 1915.** } Full of interesting matter for { 2/6; post free, 2/11.  
" " " for 1914. } Daffodil lovers. { 2/6; " 2/11.  
" " " for 1913 (*out of print, now very scarce*), 10/6; post free, 10/11.

# Special Notices and Terms of Business.

## FREE CARRIAGE OF BULBS.

**All Orders for Bulbs to value of 20s.** and upwards sent **Carriage Paid** to any Railway Station in the United Kingdom.

**Prepaid Orders for Bulbs to value 10s.** and upwards sent **Carriage Paid** to any Railway Station in the United Kingdom.

**5% Cash Discount on Bulb Orders of 20s. and upwards.**—1s. in the £ discount is allowed for Cash with Order (*with the exception of the special Collections offered on pages 4 and 5, which are strictly nett*), and this may be deducted by the Customer when remitting or if this is not done, a liberal equivalent in goods will be added to the Order. The same discount may also be deducted from all Bulb Accounts of 20s. and upwards when paid within 14 days from date of invoice (*excepting Collections offered on pages 4 and 5, which are nett*).

**Terms of Credit.**—Our books are made up half-yearly, when all accounts are due nett.

**Remittances.**—Money Orders and Postal Orders should be made payable at Bedford Street Post Office; these and all Cheques should be crossed "London County and Westminster Bank." Small amounts may be remitted in Postage Stamps, or Coin in a Registered Letter.

**Packages.**—Boxes, Bags, etc., are charged at cost price, but these may be deducted from our account if returned Carriage Paid within a fortnight. *Returned empties should have the sender's name on the address label for identification, and an advice sent by post, stating date of despatch and name of Railway Co.*

**Nurseries at Taplow, Bucks.**—Visitors are invited during Spring to see our magnificent Collections of Daffodils and Tulips in bloom. The Nurseries are adjoining the main line of the Great Western Railway, and are entered from the Bath Road within quite a short distance of **Taplow Station**. Cab Rank at Taplow Station.

**Naming Daffodils.**—Cut specimens of Daffodils we undertake to name correctly, at the charge of 4d. each, 3s. per dozen, to cover attendant expenses. Address all cut specimens to be named, accompanied by a remittance, to our Nurseries, Taplow, Bucks.

**Catalogues.**—Our **Seed Guide** is published in January. **Descriptive Catalogue of Bulbs and Tubers for Winter and Spring Planting** in January, **Hardy Plant Catalogue** 1st of March, **Daffodil and General Bulb Catalogues** in August. We are always pleased to forward any of these Catalogues, free of charge, to friends of our Customers on receipt of a line requesting us to do so.

**Gardeners.**—We keep a special Register of Gardeners in want of situations, and shall be pleased to put such in communication with any of our Customers requiring Head Gardeners.

## DAFFODIL COLOURED PLATES.

These Daffodil Plates can be had at the following charges:—

- (1) Group of *Barrii conspicuus*, *Queen of Spain*, *Glory of Leiden*, and *Victoria*. 3d.
- (2) " " *Teach*, *Maggie May*, *Gloria Mundi* and *Poeticus Cassandra*. 3d.
- (3) " " *Barrii conspicuus*, *Triandrus albus*, *Mrs. Langtry*, *J. B. M. Camm*, *Queen of Spain*, *Cyclamineus* and *Minimus*. 3d.
- (4) " " *Queen of Spain*. 3d.
- (5) " " *Sir Watkin*. 3d.
- (6) " " *Madame de Graaff* and *Apricot*. 3d.
- (7) " " *Weardale Perfection*, *Monarch*, and *Lulworth*. 3d.
- (8) " " *Peter Barr*, *Weardale Perfection*, and *Monarch*. 3d.
- (9) " " *Bedouin*, *Fireflame*, and *Sunrise*. 3d.
- (10) " " *Queen of the North*, *Czarina*, and *Seraphine*. 3d.
- (11) " " *Lord Roberts*, *Loveliness*, and *Calpurnia*. 3d.
- (12) " " *Hoop Petticoat Yellow* and *Sulphur*. 3d.
- (13) " " *Circlet*, *Armored*, *Southern Star*, and *Felicity*. 3d.
- (14) " " *Dresden*, *Socrates*, *Eros*, and *Messina*. 3d.
- (15) " " *Michael Angelo*, *Sir Galahad*, and *Michael*. 3d.
- (16) " " *King Alfred*, *Mrs. Buchanan*, *Blue Knights*, and *Sir Galahad*. 3d.
- (17) " " *Dresden*, *St. Olaf*, *Chanouis*, and *Red Emperor*. 3d.
- (18) " " *Snow King*, *Czarina*, *Challenger*, *Rev. D. R. Williamson*, *Masterpiece*, *Warley Scavlet*, *Triandrus Hybrid*, *Peter Barr*, *Lord Roberts*, *Fire Queen* (this coloured plate is reproduced from a photograph of one of our exhibition stands). 3d.
- (19) Miniature coloured Illustrations of *Weardale Perfection*, *Lord Roberts*, *Seagull*, *Mohican*, *Duke of Bedford*, *Cavir de Lion*, *Gloria Mundi*, *Lycidas*, *Ariadne*, *King Alfred*, *Salmonella*, *Alice Knights*, *Fairy Queen*, *Frimrose Phoenix*, *Red Beacon*, *Henipo*, *Herrick*, and *Argent*. 6d.

A COMPLETE SET OF THE ABOVE 19 PLATES SENT, POST PAID, FOR 4s. 6d.

**HIGHEST AWARDS FOR DAFFODILS**  
**FORTY-FIVE GOLD MEDALS, THREE CHALLENGE CUPS,**  
**Two R.H.S. Standard Cups and many First-Class Certificates.**



**GOLD MEDAL.**

Royal Horticultural Society, London.  
 April 27th, 1915, April 18th, 1916,  
 and April 24th, 1917.



**GOLD MEDAL.**

Midland Daffodil Society, Birmingham.  
 April 21st, 1915,  
 and April 28th, 1916.



**GOLD MEDAL.**

North of England Hort. Socy.,  
 Leeds.  
 April 29th, 1915.



**THE ENGLEHEART THIRTY GUINEA CHALLENGE CUP.**

Awarded to us at the R.H.S. Daffodil Show London, April 13th, 1915,  
 for the 12 finest New Seedling Daffodils not yet in commerce.

**THE WALTER WARE CHALLENGE CUP**

was also awarded to us at the Midland Daffodil Show, April 27th, 1915,  
 for the best 18 Narcissus Triandrus Hybrids.

**BARR & SONS**

*(Peter R. Barr, James William Barr, George Hewlings Barr),*

**11, 12 & 13 King Street, Covent Garden, London, W.C.2.**