



June 2009

The Bay Leaf

California Native Plant Society • East Bay Chapter • Alameda & Contra Costa Counties
www.ebcnps.org

CALENDAR OF EVENTS

Field Trips (see page 3)

Saturday-Sunday, June 13-14, 10:00 am, field trip to Donner Pass area

Native Here (see page 2)

Native Here open for business & volunteer help, Fridays 9 am to 12 pm, Saturdays 10 am to 2 pm, and Tuesdays 12 pm to 3 pm

Huckleberry Regional Preserve, French broom removal (see page 3)

Saturday, June 13, 9:30 am

No membership meeting until September (see below).

Board Meeting

Wednesday, June 24, 6:00 pm, Delia Taylor's house at 1851 Catalina Ave, Berkeley, 94707. Bring food to share.

CONSERVATION ANALYST APPEAL SCHEDULED FOR FALL

For the past four years, EBCNPS has organized a fundraising drive for the East Bay Chapter Conservation Analyst Position. Each year, largely through donations, EBCNPS has successfully collected enough money to pay our Analyst. Thanks to all of you who generously participated in this effort.

We are again preparing for our East Bay Conservation Analyst Position fundraiser and we have decided to send our chapter's appeal in September. (A Spring/Summer appeal would conflict with the CNPS Statewide appeal.)

Please watch for this important chapter appeal in September. Plan to help keep the EBCNPS Conservation Analyst Position funded for another crucial year of land use decisions affect-

ing native flora in Alameda and Contra Costa counties. Of course, we are glad to accept donations at any time during the year.

Click on www.ebcnps.org, go to "Conservation" and read about the many complex projects undertaken by the EBCNPS Conservation Analyst and Conservation Committee in their efforts to further our mission "to increase understanding and appreciation of California's native plants and to conserve them and their natural habitats through education, science, advocacy, horticulture and land stewardship."

Carol Castro

MEMBERSHIP MEETINGS ON SUMMER RECESS

East Bay CNPS membership meetings will be on summer recess until September 23, 2009. Watch future issues of the *Bay Leaf* and the chapter website for announcements of our programs for September and beyond.

Here's a little summary of how the East Bay Chapter CNPS membership meetings work:

Membership meetings are free of charge and open to both members and non-members. We schedule meetings for the fourth Wednesday evening of the month in January-May and September-November, with a slight adjustment in the schedule to avoid Thanksgiving week. The meetings take place at the Orinda Public Library most months and at the University of California Botanical Garden at Berkeley in May. Each meeting announcement in the *Bay Leaf* and on the chapter website gives complete information about the topic, speaker, and location.

Meetings begin at 7:30 p.m. with very brief chapter announcements. The main event is an hour-long slide presentation on a subject broad enough to be of interest to many CNPS members. Following the presentation, members are invited to stay and enjoy refreshments.

I always welcome suggestions from members for future presentation topics or speakers, and some of our best programs have come from members' suggestions. Please feel free to contact me with your ideas. I look forward to seeing you at future meetings.

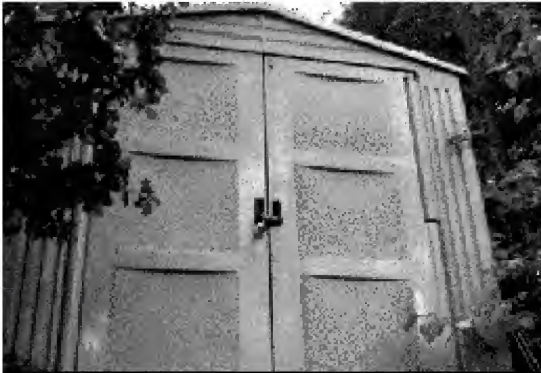
Sue Rosenthal, Programs Chair
rosacalifornica@earthlink.net
510-496-6016

NATIVE HERE

Support our chapter's activities by shopping at Native Here

We had a very busy weekend at the Native Plant Sale Extravaganza for the Bringing Back the Natives Garden Tour. Thanks to our volunteers who helped customers select and buy plants. The book sales were rained out, but come browse on Saturdays through the summer at our great selection of books at the nursery. All purchases from the nursery benefit the chapter. You don't have to wait for the Fair to buy books and plants!

Volunteers at work



Using the jack from Dave's truck, Dave Caniglia and John Danielsen were able to level the chapter's storage shed so that the doors will close again. Membership and Plant Fair supplies are again safe from weather and mice. (Photos by Janice Bray.)

Nature observations at the nursery

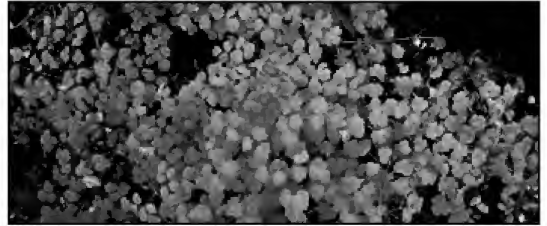
Spring was nesting time for the birds. A scrub jay built a stick nest on top of the middle of the framework of the umbrella next to one of our potting tables. Nice rain-proof location, but every time John wanted to pot up, the bird would squawk in protest. Unfortunately some predator, possibly a squirrel, raided the nest and ate the eggs. The jays had to start over in another location.

Other nest builders were bushtits, tiny gray birds that build pendulous nests that look like hanging dirty socks. The birds

teetered upside down on the ends of our umbrellas, teasing loose threads from the umbrellas, then taking them over to their nest in a small coast live oak.

Featured Plant for June 2009

Our featured plant this month is *Thalictrum fendleri*, meadow rue (shown above in a photo by Janice Bray). This delicate



woodland herbaceous perennial has composite leaves and white flowers. It is a great filler at the edge of shrubs or tree shade. It goes dormant in the winter. This month only buy 1 and get the second one for \$1.

Our previously featured plants, *Cornus sericea*, *Oemleria cerasiformis* (October, 2008), *Quercus agrifolia* (November, 2008), *Physocarpus capitatus*, *Aesculus californica* and *Cupressus sargentii* (January, 2009), *Ribes divaricatum* (February 2009), *Ranunculus californicus* (March 2009), and *Lonicera involucrata* (April 2009) all remain available.

Irises have been put in storage for the summer. They'll become available again around the time of the Plant Fair. They do not transplant very successfully in the summer.

Volunteer opportunities for Plant Fair 2009 and Native Here year-round

- Join us on our seed collecting trips on Thursdays. Meet at the bottom gate of the nursery at 9 am. For further information check the calendar of the chapter website www.ebcnps.org, e-mail nativehere@ebcnps.org, or call Charli at 510 525-9076 before 8:30 am weekdays.
- Help us have healthy plants for the October 10-11 Plant Fair by volunteering 2 hours each week (or the weeks you can) watering a section. It's a wonderful, contemplative task in a lovely setting. Of course, it doesn't need to be done on rainy days!
- Tuesday afternoons until 3 are a great time to come get involved in Plant Fair planning and growing plants. Help is still needed with vendors, inviting other organizations to participate, planning refreshments for the volunteers, as well as all the jobs the days of the Fair. Selling plants at the Fair is much easier for volunteers who have been coming to the nursery regularly because they are familiar with the stock.

Charli Danielsen

FIELD TRIP

Saturday-Sunday, June 13-14, 10:00 am, field trip to Donner Pass area

Join Larry Abers and Britt Thorsnes for two days of moderate to lightly strenuous hikes exploring early blooming wildflowers of the volcanic ridge tops in an area that was highlighted in Larry's presentation in the Wayne Roderick lecture series this past winter. We expect to see *Fritillaria atropurpurea*, *Allium obtusum*, *A. platycaule*, *Phoenicaulis cheiranthioides*, *Astragalus whitneyi*, *A. bolanderi*, *Lewisia nevadensis*, *Sedum roseum*, et al. There are great views, we will cross snow patches, and maybe startle a black bear! Bring sunhats, sunscreen, sunglasses, sturdy walking shoes, water and lunch. Be prepared for a wide range of temperatures. The closest camping is at Eagle Lake USFS campground and there is lodging and meals available in Soda Springs and Truckee. Saturday's hike will go to mid/late afternoon. Sunday's hike will go to mid/late afternoon. RSVP as space may be limited. Call Larry at 510-799-6234, or you can send an e-mail to bthorsnes@earthlink.net. Please provide

RESTORATION

Saturday, June 13, 9:30 am, Huckleberry Regional Preserve in north Oakland, off of Skyline Boulevard

We will continue removing French broom (*Genista monspessulana*) and new sprouts of poison hemlock that are trying to colonize areas where broom was pulled late last year. The surrounding area of the park has a relatively undisturbed flora, and we have already noticed some native species struggling back into place, including *Solanum umbelliferum* (blue witch), plus regrowth of coast live oak and California bay saplings. You can get a better description of plant species at the preserve if you go to www.calflora.org and click on the "What Grows Here" feature and follow the prompts.

The work site starts only a couple of meters from the Bay Crest trail, but we recommend volunteers wear work gloves and shoes or boots appropriate for work on a fairly steep slope. Some tools can be provided by East Bay Regional Park District; it is best to reply by email and let us know if volunteers are interested in attending and how many, so we can provide tools. Also be sure to say if you will need a loaner

Tall Nettles

*Tall nettles cover up, as they have done
These many springs, the rusty harrow, the plough
Long worn out, and the roller made of stone:
Only the elm butt tops the nettles now.*

*This corner of the farmyard I like most:
As well as any bloom upon a flower
I like the dust on the nettles, never lost
Except to prove the sweetness of a shower.*

Edward Thomas (1978-1917)

us with your name, the number of people in your group, and your contact information (phone number or e-mail.)

Directions: For Saturday, meet at the trailhead the Peter Grubb hut at 10:00 am. From I-80 north exit at the Boreal off-ramp; cross under the freeway and follow the pavement to where it ends at the trailhead (about 1/4 mile). Park on the roadside and meet at the gate.

For Sunday, meet at the Pacific Crest trailhead at 10:00 am. From I-80 north exit at Soda Springs and follow the old highway 40 to the crest. Take the small gravelish road to the right (south) going "behind" the Nordic Center. Park where you can, and it may be easier to park near the "front" if there are a lot of hikers. Look for the Pacific Crest Trail signs. Meet at the trailhead.

Janet Gawthrop

pair of work gloves. Or, if you have your own tools, gloves, and work shoes, just show up at the Bay Crest trailhead at the intersection of Pinehurst and Skyline in north Oakland.

Directions: From Highway 13, take the Moraga/Thornhill exit, and follow Moraga from the traffic light at the end of the exit. Go straight on southbound Moraga as it parallels Highway 13. Turn left at the intersection of Moraga and Snake, and follow Snake east (uphill). After only about 1 block, turn hard left at the intersection of Snake and Shepherd Canyon. (If you miss the turn and see Shepherd Canyon Park on your right, turn around and go back to Snake.) Follow Snake uphill to its end at the intersection with Skyline, roughly 2.6 miles. Turn left onto Skyline and follow it a short distance past the newly repaved section to the Huckleberry parking lot, which is the meeting spot.

There will be additional work parties at Huckleberry Preserve on July 11 and August 8.

Janet Gawthrop

This Is My Letter To The World

*This is my letter to the world,
That never wrote to me,—
The simple news that Nature told,
With tender majesty.
Her message is committed
To hands I cannot see;
For love of her, sweet countrymen,
Judge tenderly of me!*

Emily Dickinson

BRISTLECONE PINE CHAPTER FIELD TRIP

The Bristlecone Chapter of the California Native Plant Society will host its second Sierra Summer Sojourn, a weekend of field trips, programs and conversation on July 17-19, at White Mountain Research Station Crooked Creek facility. A choice of four field trips on Saturday and on Sunday focusing on native blooms, bristlecones, butterflies, and alpine ecology will be offered, along with two evening programs on alpine ecology

and the bristlecones. There is an option to spend one or two nights at the Crooked Creek facility, located in the bristlecones at 10,200 ft. More information about the weekend and a registration form can be found on the Bristlecone Chapter website at www.bristleconecnps.org. Please join us for a fun and flower-filled weekend. Early registration is advised.

OAKLAND MUSEUM WILDFLOWER SHOW



The 2009 Oakland Museum's annual Wildflower Show was co-sponsored by the East Bay Chapter of CNPS, the UC Botanical Garden and the Jepson Herbarium. Many EBCNPS members were involved. Four teams of collectors journeyed through selected counties in the central foothill and Sierra regions to collect multi-shaped, multi-sized, varied, fascinating, curious, beautiful, weird, and definitely native flora. The flowers were identified, arranged, labeled and put on display within the Sequoia exhibit of the museum. The show was opened to the public Friday, May 1st through Sunday, May 3rd, and EBCNPS volunteers interacted with the show

visitors by giving presentations, greeting visitors, answering questions, as well as offering memberships, books, and other information relating to California's native plants.

For many years the annual Oakland Museum Wildflower Show has allowed EBCNPS to recruit new members, for which we are very grateful. Please join me in welcoming these new members who signed up during this year's Wildflower Show: Patte Bishop, Carole A. Fitzgerald, Juliane Monroe, Glen Schneider and family, John A. Tuttle and Doug Drummond, Dolphin Waletsky and Li-Hsia Wang.

Carol Castro

Photo of *Carpenteria californica* flower arrangement by Delia Taylor

CNPS PLANT SCIENCE TRAINING WORKSHOPS

June 9-11, Introduction to the second edition of *A Manual of California Vegetation*

Primary Instructors and authors: Todd Keeler Wolf, John O. Sawyer, Julie Evans

Location: A 3-day transect across the central Sierra Nevada, from the foothills to the eastern Sierra. We will begin at Calaveras Big Trees and end at Grover Hot Springs Valley, near Markleeville. See <http://www.scenic4.org/map.html>

Course Description: The authors will debut the greatly expanded second edition of *A Manual of California Vegetation*. They will provide an overview of additions and changes to the manual, including new vegetation types recognized or redefined across many habitats. You will learn how to use the new manual, in the field as we traverse a variety of vegetation types in the Sierra Nevada, as well as its uses for conservation and management. Cost: Members \$445, Non-members \$470

June 23-24(25) Great Rivers of California: the American River (3rd day in Desolation Wilderness is optional)

Primary Instructors: Robert Holland and Virginia Dains

Location: Headwaters, mid-elevation and valley sections of the American River.

Course Description: Azonal vegetation is shaped by processes other than regional biota and climate. Riparian vegetation

is shaped by the agency of flowing water, both during high flows (when the habitat is sculpted) and during low flows (providing late summer irrigation). This class will focus on how stream dynamics and sediment transport structure riparian habitats, taught from a floating classroom. The first day we will float from Fair Oaks to Goethe Park on the lower American River, observing how the current affects our boats, the river's substrate, and the vegetation along a low-gradient valley stream. The second day we will repeat the process upstream, floating the South Fork American from Coloma to Lotus, a steepland stream with all together different riparian vegetation. Licensed, professional guides will captain our rafts both days. For an optional (and limited) over-night, third leg we will goat pack into the American's headwaters in Desolation Valley, where riparian vegetation manifests the additional complication of persistent winter snowpack. The emphasis throughout the class will be more on the processes that shape the vegetation and less on binomial nomenclature. Cost for June 23-24: Members \$425, Non-members \$450; additional cost for June 25 \$175/200.

August 12-14th, Vegetation Rapid Assessment:

Primary Instructors: Todd Keeler Wolf, Julie Evans, Jennifer Buck, and Josie Crawford

Location: Donner Summit

See July / August *Bayleaf*.



Fremont
& Main
Library

present

Alternatives to Lawns



Photos: Deva Luna, Stephanie Morris

A talk by **Deva Luna**
Sustainable Landscape Designer

Tired of your lawn, but don't know what to put in instead? Come to this talk and be inspired to create a beautiful yard – without mowing or fertilizing! See a variety of no-lawn landscaping styles and ideas, get professional landscaping tips, and practical how-to notes on lawn removal. Professional landscape designer Deva Luna works for EarthCare Landscaping, and has been teaching gardening for 12 years. She loves to help people remove lawns, increase habitat and save water!

Wednesday, June 3, 2009, 7-9 p.m.

Fremont Main Library, 2400 Stevenson Blvd. Fremont • 510.745.1400
Free admission • www.cnps-scv.org • aclibrary.org/branches/frm/

MEMBERSHIP NEWS

Chapter Jobs Bulletin

The East Bay chapter is in urgent need of a dedicated Outreach person. This person would be in charge of getting volunteers to cover all of our requested tabling events throughout the year and possibly finding other venues we could share. All materials, tables, chairs, canopies, flyers etc. are readily available at our Native Here Nursery. A current membership list would be supplied as a resource for seeking volunteers. Please contact elainejx@att.net or any Board member.

Membership Notes

Meet Larry Abers and Britt Thorsnes.



Britt and Larry at the Native Here/EBCNPS Plant Fair (photo by Delia Taylor)

I (Larry) grew up in Moraga and discovered at an early age that I loved nature. Because my parents were not the “outdoor type” I joined the Boy Scouts to learn about nature first hand. I received a BA in zoology at UC Santa Barbara and eventually matriculated to general contracting, operating my own one-man business for over 25 years. I settled in Rodeo. My interest in nature and photography was sparked when I attended a wildflower show at the Oakland Museum 20 years ago. At the show I learned about a group of people who were passionate for wildflowers, the California Native Plant Society. I joined right then! Since then I have been involved in many CNPS activities including plant sales, field trips and work parties. I enjoyed attending the Wayne Roderick Lectures at the Regional Parks Botanic Garden for many years, becoming a guest lecturer 8 years ago.

I (Britt) grew up in Berkeley & El Sobrante. I found my interest in horticulture along with my father, an architect, who grew many strange and interesting plants. After working several years as a solar installer I began studying horticulture at Merritt College. I consider myself a lifelong student as I continue to attend field courses, lectures and classes.

I have worked for the East Bay Regional Park District (EBRPD) for over 20 yrs, as park ranger, firefighter and gardener. I spent 10 years honing my skills with California natives at the Regional Parks Botanic Garden. Presently, I am the horticulturist for several EBRPD gardens including the one at the Brazil Building in Tilden Park. In addition, I do some consulting. I am a long time member of CNPS and have enjoyed becoming more involved—helping with plants sales, the wildflower show and other events.

Larry and I met on a CNPS field trip to Crystal Springs Reservoir in 2002. Our paths crossed several times over the next couple of years, mostly at the Botanic Garden. We finally decided our interests overlapped so much we should botanize together. Since then we have traveled to many fabulous places together—in the US and South Africa. We attend many CNPS activities, especially field trips. We have begun leading field trips together. In addition to local trips we enjoy the southwest deserts, the Pacific northwest, including the Klamath Mountains and southern Oregon, and of course, all elevations of the Sierra Nevada. We have met many, many wonderful and interesting people through our relationship with CNPS and look forward to many more enriching experiences.

Think Globally, Volunteer Locally

Walnut Creek June Event—Help table at the Heritage Day at Borges Ranch in Walnut Creek on Saturday, June 13th, from 11 am to 4 pm or any part of that time. Contact Elaine Jackson at 925-372-0687 or email elainejx@att.net.

Pleasanton—July 1-19, Alameda County Fairgrounds is inviting us to join their Volunteer Fair Ambassador Program by volunteering at the 2009 Annual Fair. For more information contact Lana Johnson, ljohnson@alamedacountyfair.com 925-426-7610

Martinez—Native Plant Garden and Strentzel Meadow located at the John Muir Historical Site in Martinez, ongoing weeding, planting, & learning about our local environment. Contact Elaine Jackson at 925-372-0687 or email elainejx@att.net.

Mt. Diablo State Park—Looking for volunteers to help restore Mitchell Canyon’s upper Mitchell Creek. It is mostly weeding blackberry and periwinkle, some planting in wet season and irrigation when dry. Work is physically demanding, ongoing every Wednesday 8 am-2 pm and the 3rd Saturday of each month 9 am-3 pm. Contact Dave Caniglia at cani@mindspring.com or 925-287-9733

Pleasant Hill—Volunteers are always welcome at the Pleasant Hill Adult Education Center Garden. Contact Monika Olsen at 925-937-1530 or email phecgarden@prodigy.net or go online to <http://phig.webs.com>.

Walnut Creek—Native demonstration garden on The Iron Horse Trail in Walnut Creek near the Walnut Creek Intermedi-ate. Contact Judy Adler, jadlermtnmama@sbcglobal.net.

Do you have or know of a local event coming up in your neighborhood that would be a good location for CNPS to have a display table? You can host it. Come on up to our Native Here Nursery (during business hours) and pick up supplies to pass out. Call us with any questions.

New Members

Please join us in welcoming those who joined in the March/April time frame: Kathryn Bartiau, Arthur Berlowitz, Rachel DiFranco, Katherine Gavzy, Karyn Johnson, Teresa Lesko,

Marlou Maus, Laurinda Ochoa, Kathleen Olson, Russell Saxton, Catherine Sherraden, Barbara Starrett, Cathy Simpson, Christine Steers, Laurie Umeh, Anna Weinstein, Donna Whitmarsh.

Many thanks to all of you who have renewed your membership throughout the year. May you enjoy many more years with the East Bay Chapter of CNPS.

Elaine Jackson and Carol Castro

AUTO-MEMBERSHIP RENEWAL OPTION

Did you know that you can renew your CNPS membership online using a credit card? As an option, you can set it up to renew automatically year after year. It is quick, easy, conve-

nient, and reduces the cost of mailing renewal notices. Go to www.cnps.org and click on the **Join** button.

Join the
California Native Plant Society
... and receive a
FREE Wildflower Poster*

Limited
Time
Offer:
(while supplies last)

Your choice of:

Wildflowers of
the Coast Wildflowers of
the Redwood Forest Wildflowers of
the Desert

**Fill out a form today
or visit www.cnps.org**

* New members only at the \$45 level or higher

Help Wanted:

T-shirts

Would you like to design a beautiful t-shirt for our chapter? Our logo is the *Bay Leaf*, as in the heading of our newsletter.

Poster distributor

Want to get marketing experience? We have beautiful posters to sell, but no one to market them. This will look good on your resume!

Contact Delia if interested. deliataylor@mac.com, 510-527-3912

CNPS is now on Facebook! Put the link below in your

browser and take a look:

<http://tinyurl.com/om7o2y>

Chapter Directory

Officers

President and Chapter Council Delegate

Delia Barnes Taylor
510-527-3912
deliataylor@mac.com

Vice President

Carol Castro
510-352-2382
carollbcastro@hotmail.com

Recording Secretary

Barbara Leitner
925-253-8300
bleitner@pacbell.net

Corresponding Secretary

Janet Gawthrop
janetgawthrop47@gmail.com

Treasurer

Holly Forbes
hforbes@berkeley.edu
h 510-234-2913
w 510-643-8040

Assistant Treasurer (not an officer)

David Margolies
510-654-0283
dm@franz.com

Committees

Bayleaf Newsletter

Bay Leaf Editor and Webmaster

Joe Willingham, Chair
510-841-4681
pepe1066@comcast.net
Bay Leaf Assistant Editor
David Margolies
510-654-0283
dm@franz.com
Mailing
Holly Forbes

Conservation

Laura Baker, Chair
510-849-1409
lbake66@aol.com
Conservation analyst
Lech Naumovich
conservation@ebcnps.org

Field Trips

Janet Gawthrop, Chair

Funds Development

Carol Castro, Chair
Grant Management
Sally de Becker
510-841-6613
sallydebecker@comcast.net

Horticulture Planning

Sue Rosenthal, Chair
510-496-6016
rosacalifornica@earthlink.net

Information Infrastructure

Peter Rauch, Chair
peterar@berkeley.edu

Membership

Elaine Jackson, Carol Castro
Co-Chairs
Volunteer coordinator
Delia Taylor
volunteer@ebcnps.org

Programs

Sue Rosenthal, Chair

Publicity

Dinah Russell, Chair
510-528-0547
maphappy@sonic.net

Rare Plants

Heath Bartosh, Chair
925-957-0069
hbartosh@nomadecology.com

Unusual Plants

Dianne Lake, Chair
510-741-8066
diannelake@yahoo.com

Vegetation

Erin McDermott, Chair
erinmcd2004@yahoo.com

EBCNPS Sponsoring Activities

Book & Poster Sales

Joanne Orenge
greentheglobe@juno.com

Grant Awards

Sandy McCoy
sandymccoy@mindspring.com

Native Here Nursery

510-549-0211
Manager—Charli Danielsen
nativehere@ebcnps.org
Sales—Margot Cunningham
bunchgrassmarg@gmail.com
Seed Collection—Gregg
Weber
510-223-3310

Plant Fair

Gudrun Kleist
510-222-2320
gkleist@sbcglobal.net
and Charli Danielsen
Coordinators

Restoration Projects

Leaders:
Huckleberry—Janet
Gawthrop
Point Isabel—Tom and Jane
Kelly
510-704-8628 (w)
510-684-6484 (c)
kyotousa@sbcglobal.net
Strawberry Creek—Tom and
Jane Kelly

*Officers and Committee
Chairs serve on the Board.*

*Committees are formed
based on chapter needs and
the interests of volunteers.
Proposals for committees
and projects are welcome
and will be considered by
the Board.*

Membership Application

Name _____

Address _____

Zip _____ Telephone _____

I wish to affiliate with:

___ East Bay Chapter (Alameda and Contra Costa Counties)

___ Other _____

E-mail

Membership category:

- ___ Individual, \$45
- ___ Family, Library, Group or International, \$75
- ___ Plant Lover, \$100.00
- ___ Plant lover, \$100
- ___ Patron, \$300
- ___ Benefactor, \$600
- ___ Mariposa Lily, \$1500
- ___ Limited Income or student, \$25.00
- ___ Other _____

Mail application and check to: California Native Plant Society, 2707 K Street, Suite 1, Sacramento CA 95816

**California Native Plant Society
East Bay Chapter
P.O. Box 5597, Elmwood Station
Berkeley CA 94705**

**Nonprofit Org.
U.S. Postage
Paid
Oakland, CA
Permit No. 2018**

**Time Value
June 2009 issue**