



Gift of

J. Horace McFarland Co.

Harrisburg, Penna.

May 1957



Maman Cochet Roses, see page 34

OFFICE COPY 1910
Trees

and

Plants

for the

House

and

Garden



The

Berryhill Nursery

Harrisburg, Pa.



Our Office

Of Interest To You

An Intense Love for growing plants, an idle but very fertile piece of land near our home and a severe need in our community for good nursery stock prompted the beginning of our business. Our aim was to meet the needs of our own nearby vicinity with properly grown trees, shrubs and plants adapted to our soil and climate. Each order, whether large or small, is treated with the same intelligent care as if it were the only order to be looked after.

This unusual, intelligent attention in the handling of Hardy Nursery Stock was so much appreciated by our friends that we were urged to offer them the same facilities in **plants for home and conservatory decoration**. We are pleased, therefore, in being able to offer this very carefully selected list of plants to those interested. It offers a suitable plant for every purpose for the lawn, garden, orchard or home, and our customers can secure in one shipment from the same place an entire order.

Our Offices, Greenhouses and Show Grounds, covering several acres, are very accessibly located along South Thirteenth Street below Berryhill. We welcome visitors at all times, Sundays excepted. Take Oberlin or Steelton via Nineteenth Street cars, which pass by Thirteenth and Berryhill Streets within seven minutes after leaving the Square. Our nursery farm is located five miles northeast of the city. Here we have over one hundred acres rapidly being planted with nursery stock.

Our people are thorough, intelligent plantsmen. Both our Nursery and Greenhouse foremen have been trained in the famous Kew Gardens in England, and have had extensive experience in the fruit and ornamental nurseries of Germany and France. Others of our force have had extensive experience on many of the large estates of this country.

Tree Moving, Spraying, Pruning and General Garden Work. We are prepared to send men to do all sorts of expert work of this character, and to undertake the continuous care of lawns, gardens, etc., within nearby access to Harrisburg.

Shipping Season for nursery stock begins about March 1 and continues until May 15. The fall shipping begins about September 1 and continues until the ground freezes. Evergreens, with balls, can be safely moved through almost the entire year, and we are prepared to supply roses and vines from pots at all times. House plants, such as Palms, etc., can be shipped throughout the entire year. Seasonable blooming plants as noted under each item.

Shipments are made by mail, express and freight. Small plants can often be sent by mail. Larger plants, shrubs, etc., should travel by express, and unless otherwise instructed we ship charges collect. A discount of 20 per cent is allowed by the express companies on nursery stock. Large, heavy shipments travel safely by freight. When no definite instructions are given we use our best judgment.

Order Early. Our rule is to fill orders in the rotation received. Order early and insure your stock coming from the largest selection and reaching you at the earliest moment for planting.

Substitution. We warrant our stock true to name and will replace any that may prove otherwise. Late in the season we may be sold out of some varieties and sizes, and unless otherwise ordered we will take the liberty of substituting similar varieties.

Prices. The prices quoted herein are for stock delivered to nearby points or to freight or express companies free of charge. Where crating or baling is necessary, a slight charge is made to cover actual cost. Our responsibility ceases on delivering shipments to the carrying company.

Terms. Cash with order. Except to persons known to us or sending satisfactory reference. Address all orders to

THE BERRYHILL NURSERY,

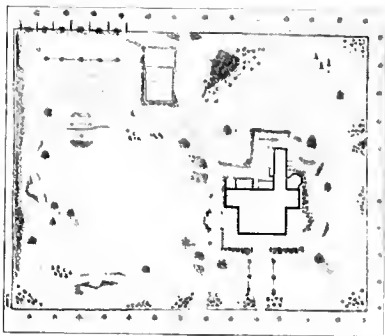
Long Distance Telephone

Harrisburg, Pennsylvania



OUR LANDSCAPE DEPARTMENT

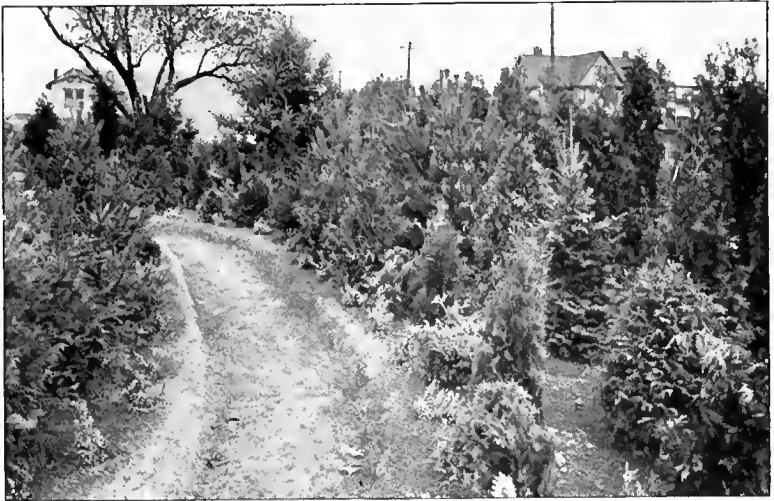
To all those contemplating the proper development of their grounds we offer the services of our Landscape Department. Many well-meaning people make the mistake of occasionally buying a few shrubs or trees and having them planted in their grounds regardless of any definite plan. Our charge for making a concrete scheme for the entire planting can be saved many times, if taken advantage of in the beginning. With a definite plan in view, the customer can then work it out, either as a whole or in part. The same careful attention is given to the customer who has a small city lot to plant that we give to the larger estates, country clubs, cemeteries, factories, etc. We can help you to make your lawn a real picture; to place your vegetable, fruit and cut-flower garden in the proper place; to screen out unsightly places; in short, to get the most pleasure out of a given area, and with the use of our large trees and shrubs to get the effect at once. Either send us a sketch, giving dimensions, and photographs, or communicate with us and we will arrange for a visit.



Plan for a city lot.



Residence of Mr. E. J. Stackpole, Harrisburg; the grounds planned and planted by us. Photographed first year after planting.



Evergreen planting on our grounds.

EVERGREEN TREES

Like old and true friends, the Evergreens are always the same, summer and winter, and no planting is complete without a touch, at least, of their continuous companionship. As specimens on the lawn, for massing or windbreaks and hedges, some of the fine varieties here offered cannot be surpassed.

Arborvitae • Thuja

American (*Thuja occidentalis*). A handsome upright tree with flat, green foliage, forming a feathery pyramid 10 to 12 feet high.

18-24 in., for edge- Each	10	100	
ing.....	So 50	\$4 00	\$25 00
2-3 ft.....	75	6 00	50 00
3-4 ft.....	1 25	10 00	90 00
4-5 ft.....	2 00	17 50	150 00
5-6 ft.....	3 00	28 00	
6-7 ft., heavy....	4 00	37 50	
7-8 ft., heavy....	4 50	42 50	

Peabody's Golden (*T. occidentalis aurea*). Has handsome yellow-tipped foliage. Contrasts beautifully with dark Evergreens. Grows 15 to 18 feet high.

18-24 in.....	Each	10	
	\$1 00	\$0 00	\$0 00
3-4 ft.....	2 50	22 50	
5-6 ft.....	4 50	42 50	
8-10 ft., specimens heavy	\$8 to	\$15 ea.	

Globe (*T. occidentalis globosa*). A low growing compact bright green ball. Grows 4 to 6 feet high. Each 10

12-18 in.....	\$1 25	\$10 00
18-24 in.....	2 25	20 00

Pyramidal (*T. occidentalis pyramidalis*). Narrow, compact column of bright green foliage. Height 15 to 18 feet. Each 10

3 3/4 ft.....	\$1 50	\$12 50
4-5 ft.....	2 50	22 50
6-8 ft.....	5 00	

Vervæne's (*T. vervæana*). A dense bush 8 to 9 feet high, with yellowish foliage. Each 10

3-4 ft.....	\$3 00	\$27 50
5-6 ft.....	4 50	

Oriental (*Biota orientalis*). A small Evergreen with flat foliage. Grows 12 to 18 feet. Each 10

2-3 ft.....	\$1 00	\$7 50
3-4 ft.....	2 00	17 50
5-6 ft.....	3 00	

Cedar · Cedrus

Silver (*Cedrus Atlantica glauca*). Fine, open, pyramidal tree, foliage much like Blue Spruce. Grows 50 to 60 feet high.

	Each	10	
3-4 ft.....	\$2 00	\$17 50	
5-6 ft.....	4 50	42 50	

Indian (*C. Deodara*). Drooping, graceful branches. Pyramidal habit. Grows 50 to 60 feet high.

	Each	
2-3 ft.....	\$3 50	

Cypress · Retinospora

Beautiful low-growing evergreens, dainty, feathery foliage. Necessary in every scheme of landscape planting; they are particularly valuable in small places for window-boxes, tubs, etc.

Thread-branched (*Retinospora filifera*). Broad and bushy, with dark green, drooping foliage. Grows about 15 feet high.

	Each	10
2½-3 ft.....	\$2 50	\$22 50
3-4 ft.....	4 00	

Dwarf Japanese (*R. obtusa nana*). Dark green, crinkly edged foliage. Dwarf, slow-growing; very fine. Grows about 10 feet high.

	Each	10
1-1½ ft.....	\$1 75	\$15 00
1½-2 ft.....	2 50	

Pea-fruited (*R. pisifera*). Feathery foliage; dark olive-green, silvery beneath. Grows 15 feet high.

	Each	10
2-3 ft.....	\$2 50	\$22 50
3-4 ft.....	3 00	
4-5 ft.....	4 50	
5-6 ft., heavy	\$5 to 8 00	

Golden Pea-fruited (*R. pisifera aurea*). A fine contrast. Golden feathery foliage. Grows 15 feet high.

	Each	10
2-3 ft.....	\$2 50	\$22 50
3-4 ft.....	3 00	
4-5 ft.....	4 50	
5-6 ft., heavy	\$5 to 8 00	

Plumed (*R. plumosa*). Plume-like green foliage. Fine alone, in groups or in window-boxes. Grows 20 feet high.

	Each	10
2-3 ft.....	\$2 00	\$17 50
3-4 ft.....	4 00	37 50
4-5 ft.....	5 00	47 50
5-6 ft.....	7 50	
6-7 ft.....	\$8-10 00	
7-8 ft.....	\$10-15 00	

Golden plumed (*R. plumosa aurea*). Resembles the preceding. Golden foliage; one of the best and most useful evergreens. Grows 20 feet high.

	Each	10
2-3 ft.....	\$2 00	\$17 50
3-4 ft.....	4 00	37 50
4-5 ft.....	5 00	47 50
5-6 ft.....	7 50	
6-8 ft.....	\$8-10 00	
8-10 ft.....	\$10-15 00	

Silver (*R. squarrosa*). Contrasts well with either of the above. Rich, light blue foliage. Grows 15 feet high.

	Each	10
2-3 ft.....	\$2 50	\$22 50
3-4 ft.....	3 50	



Blue Spruce (*Picea pungens glauca*)
See page 5.

Firs · Abies

These are possibly the best known of the evergreens, and are distinguished from the spruces by having their "needles" arranged flat on the branches.

Balsam (*Abies balsamea*). Rapid grower to 70 feet high, with green and very fragrant foliage. Each 10

2½-3 ft.....	\$1 25	\$10 00
3-4 ft.....	2 00	17 50
4-5 ft.....	3 00	27 50
5-6 ft.....	3 50	

White (*A. concolor*). Grand as a specimen; color much like Blue Spruce. Grows 35 feet high, with a spread of 20 feet. Each

3-4 ft.....	\$5 00
-------------	--------

Nordmann's (*A. Nordmanniana*). One of the most satisfactory of all evergreens, forming a dense, shapely pyramidal tree, 40 feet high.

	Each	10
2-3 ft.....	\$3 00	\$27 50
3-4 ft.....	4 00	
4-5 ft.....	\$5-8 00	

Silver (*A. picca* or *pectinata*). Fine-shaped tree, 50 feet high. The silvery white on the under side of the foliage gives it distinction not possessed by the others. Each 10

2½-3 ft.....	\$1 00	\$7 50
3-4 ft.....	1 50	12 50
4-5 ft.....	2 50	22 50
6-8 ft.....	\$4-8 00	

Hemlock · Tsuga

American (*T. Canadensis*). One of the handsomest native evergreens, growing into tall, bushy trees 50 to 60 feet, with beautiful, feathery foliage and gracefully drooping branches. Fine for hedges, windbreaks and mass planting. Each 10 100

2-3 ft.....	\$1 25	\$10 00	\$90 00
3-4 ft.....	2 00	17 50	150 00
4-5 ft.....	2 50	22 50	
5-6 ft.....	3 50		
8-10 ft., fine	\$6-15 00		

Juniper · Juniperus

Interesting evergreens of various forms, some of which are valuable in formal gardening and for cemetery planting.

Canadian (*Juniperus Canadensis*). Spreading and dwarf; light green foliage. Each 10

1-1½ ft.....	\$1 50	\$12 50
1½-2 ft.....	2 00	17 50

Douglas' Golden (*J. Canadensis aurea*). Very dwarf, showy; golden green. Grows to 2 feet. Each 10

1-1½ ft.....	\$1 00	\$7 50
1½-2 ft.....	2 00	17 50

Irish (*J. communis Hibernica*). Slender, conical tree, light green foliage. Fine for groups or small yards. Grows 6 to 8 feet. Each 10

1-2 ft.....	\$0 75	\$6 00
3½-4 ft.....	2 50	22 50

Golden Japanese (*J. Japonica aurea*). Rich golden foliage, very distinct and desirable. Grows 3 to 4 feet. Each 10

1-2 ft.....	\$1 50	\$12 50
2½-3 ft.....	3 50	

Red Cedar (*J. Virginiana*). Fine native, pyramidal tree, excellent for tall screen. Grows to 100 feet. Each 10

3-4 ft.....	\$2 50	\$20 00
5-8 ft.....	\$4-8 00	

Pines · Pinus

Austrian (*Pinus Austriaca*). Robust, round tree, 40 to 60 feet high, long, stiff "needles." Each 10

3-4 ft.....	\$2 50	\$21 50
4-5 ft.....	5 00	

Mugho (*P. mughus*). Habit is dwarf, seldom growing more than 4 to 5 feet high, dome-shaped. Fine as a specimen on the lawn or terrace. Each

1½ ft.....	\$2 50
------------	--------

White (*P. Strobus*). Fine native, quick-growing ornamental tree, 80 to 100 feet high, with a broad, spreading head. Each 10

2-3 ft.....	\$1 25	\$10 00
3-4 ft.....	2 00	17 50
4-5 ft.....	3 00	27 50

Scotch (*P. sylvestris*). Fine for massing, or as a specimen when quick effect is desired. Grows 50 to 70 feet high, with spreading head and short, bluish green foliage. Each 10

2-3 ft.....	\$1 50	\$13 00
3-4 ft.....	2 50	
4-5 ft.....	3 50	
5-6 ft.....	4 00	
6-8 ft.....	\$5-8 00	

Pines, continued

Umbrella (*Sciadopitys verticillata*).

A unique Japanese evergreen with long, stiff "needles" in whorls. Grows 25 to 30 feet high. Each 2-2½ ft. \$3 50

Spruce · Picea

These are among the best known of all evergreens, with needle-like foliage of various shades of green and blue.

White (*Picea alba*). The finest and longest-lived Spruce. Grows 60 to 70 feet high. Each 10

2-3 ft. \$1 50 \$13 00
 3-4 ft. 2 50
 4-5 ft. 3 50

Norway (*P. excelsa*). Fine for wind-breaks, specimens or hedging. Grows 40 to 50 feet high. Each 10 100

2-3 ft. \$0 75 \$6 00 \$50 00
 3-4 ft. 1 50 13 00 100 00
 4-5 ft. 2 50 22 50
 5-6 ft. 4 00

6-8 ft., fine specimens, \$5 to \$10 each.

Blue (*P. pungens glauca*). Pyramidal habit; foliage light blue. Fine in groups or as a specimen. Grows 35 to 40 feet high. Each 10

1½-2 ft. \$2 00 \$17 50
 2-2½ ft. 3 00
 2½-3 ft. 4 00
 5-8 ft., fine. \$10-20 00

Yew · Taxus

English (*Taxus Baccata*). A compact growing tree of low habit, which can be clipped into fantastic shapes. Grows 30 to 40 feet. Each 10

2-2½ ft. \$2 00 \$17 50
 2½-3 ft. 2 50 22 00
 3-3½ ft. 3 50

Golden English (*T. Baccata aurea*). Has bright yellow foliage and grows taller than the green sort. Grows 40 to 50 feet. Each

2½ ft. \$2 00
 3 ft. 3 50

Irish (*T. baccata var. fastigiata*). A dense, shrubby tree with short, dark, shining foliage and bright scarlet fruit. Grows 8 to 10 feet. Each 10

1½ ft. \$2 00 \$17 50

False (*Cephalotaxus drupacea*). A dwarf, bushy tree with stiff branches and larger foliage than the other Yews. It bears brown, plum-like fruit. Each

1-1½ ft. \$2 00
 3-4 ft. 3 50

Japanese (*Podocarpus Japonica*). A narrow, upright tree somewhat like the Irish Yew, with dark green, shining foliage. One of the hardiest, and grows rapidly, attaining at maturity a height of 40 feet. Each

2-2½ ft. \$2 50



Tubbed and potted evergreens—valuable for porch or formal decorations.



Laurel (*Kalmia latifolia*).

EVERGREEN SHRUBS

Like the Evergreen Trees, the Evergreen Shrubs are a very valuable class of plants. As an edging for a mass planting of evergreen trees or a solid mass planting of themselves, they are equally good. The old fashioned Box trees, Laurel and Rhododendrons, are among the most noted of the class. On the last named two plants we shall be pleased to quote attractive prices on large lots.

ANDROMEDA floribunda (Mountain Fetter Bush). Fine low-growing shrub producing tiny lily-of-the-valley-like flowers in early spring. Most effective in masses planted closely.

	Each	10	
1-1½ ft.	\$1 50	\$13 50
1½-2 ft.	2 00	18 00

A. Japonica (Japanese Fetter Bush). Habit similar to above. Flowers early and does well in shady places.

	Each	10	
2-15 in.	\$1 50	\$13 50

AZALEA Amoena (Hardy Evergreen Azalea). A low, bushy shrub with leaves similar to the common boxwood. Whole plant is covered in spring with brilliant scarlet-purple flowers, remaining on for two or four weeks. A fine plant for low hedges or along the border of shrubbery plantings.

	Each	10	
10-15 in.	\$75	\$1 00
15-18 in.	1 50	13 50
1-1½ ft., broad.	2 00	17 50
2-2½ ft., very fine	2 50	

BUXUS sempervirens (Common Box-wood). Large shrub of slow, dense growth. Stands trimming into any artificial shape. Excellent for window or porch box effects. Each 10

1-1½ ft.	100,	\$50.	\$0 75	\$6 00
1½-2 ft.	1 00		7 50	
2-2½ ft.	1 50		13 50	
2½-3 ft.	2 50		23 00	
3-3½ ft.	4 50			

B. sempervirens pyramidalis (Pyramidal Boxwood). The above trimmed into beautiful pyramidal shape. Very desirable for formal effects and as a porch decoration.

	Each	10
2½-3 ft.	\$3 00	\$25 00
3-3½ ft.	4 50	40 00
3½-4 ft.	6 00	
4-5 ft.	7 50	

B. sempervirens, Standards (Standard Boxwood). The same grown with a single stem and round ball on the top.

	Each	10
2 ft. stems, 18 in. heads	\$2 50
2½ ft. stems, 20-22 in. heads	...	3 50
2½ ft. stems, 22-26 in. heads	...	7 00

B. sempervirens, var. suffruticosa (Dwarf Box Edging). The common box of the old-fashioned garden. Used largely for edging walks and low hedges.

	10	100
4-5 in.	1,000,	\$50. \$1 00 \$7 50
5-7 in.	1,000,	\$80. 1 50 13 50

COTONEASTER microphylla (Small leaved Cotoneaster). Low shrub with beautiful glossy foliage; white flowers in late spring, later followed with bright red berries.

	Each	10
12 in.	\$0 75	\$6 00

EUONYMUS Japonica (Japan Euonymus). Beautiful evergreen shrub of dense, upright habit, holding its brilliant green leaves throughout the winter.

	Each	10
1½-2 ft.	\$0 50	\$4 00

E. Japonica, var. aurea (Golden-leaved Japan Euonymus). Form of the above with golden-yellow variegated foliage.

	Each	10
1-1½ ft.	\$0 50	\$4 00

GARLAND FLOWER (*Daphne Cucurum*). A very dainty, dwarf spreading shrub. Extremely fragrant; small dark green leaves.

	Each	10
8-12 in.	\$1 00	\$7 50

HOLLY, Japanese (*Ilex crenata*). Dense, compact shrub. Will permit of trimming into various shapes.

	Each	10
1½-2 ft.	\$1 50	\$13 00
2-2½ ft.	2 50	

LAUREL Mountain (*Kalmia latifolia*). One of the best evergreen shrubs known. Broad, dark glossy leaves and masses of rose-pink flowers in great profusion in early spring. We have a fine stock of this very desirable plant.

	Each	10
1½-2 ft.	\$1 00	\$7 50
2-2½ ft.	1 50	13 50
2½-3 ft.	2 00	17 50

LEUCOTHOE Gatesbaei (Gatesby's Leucothoe). Very graceful, dwarf, spreading shrub with long, drooping branches. Leaves shiny green, much used at Christmas. Flowers creamy white.

	Each	10
1-1½ ft.	\$0 75	\$6 00



Azalea amoena.

MAHONIA aquifolium (Holly-leaved). Handsome shrub with dark green, shiny, toothed leaves. Flowers yellow in dense clusters; very effective when the blue-black berries appear late in the summer. Each 10

1-1½ ft.....	So	50	\$1	00
1½-2 ft.....		75	6	00
2-3 ft.....	1	25	10	00

M. Japonica (Japanese Mahonia). Similar to above with larger and more showy foliage. Possibly the best of the family. Each 10

1-1½ ft.....	So	75	So	00
1½-2 ft.....	1	50	13	50



Rhododendron.

Rhododendrons

The most effective and showiest of all shrubs. Beautiful all the year as a foliage plant, and grand when covered with many-colored, showy flowers in June and July. Plants are taken up with a large ball of earth and can be moved nearly the entire year. If the bed is properly made in the beginning, little attention is necessary thereafter.

Rhododendron album elegans. White, large flowers.

R. album grandiflorum. Blush-white; very large truss.

R., Betsy Parsons. Reddish purple

R. Everestianum. Rosy lilac, spotted and fringed; the best of the hybrids.

R., H. W. Sargent. Scarlet.

R. Parson's Gloriosum. Clear rose; free flowering.

R. purpureum grandiflorum. Purple, very large flowers.

R. roseum elegans. Rose; very fine.

R., True Catawbiense. Flowers rosy-purple. Native in the southern mountains.

Prices, Catawbiense Hybrids:

	Each	10	100
1½ to 2 ft	\$1	50	\$12 50 \$100 00
2 to 2½ ft	2	50	22 50

R. maximum (Great Laurel). Native of our mountains. Blooms later than the hybrids. Write for prices on larger quantities and sizes, as we can supply car lots at prices that will interest.

	Each	10
1½-2 ft.....	\$1	25 \$10 00
2-2½ ft.....	2	00 17 50
2½-3 ft.....	3	50

R. myrtifolium (Myrtle-leaved). Dwarf, compact shrub. Flowers pink. The best of the dwarf Rhododendrons. Each 10

1-1½ ft.....	\$2	00 \$17 50
--------------	-----	------------

R. punctatum. The earliest to flower. Rose, spotted with yellow-green; very desirable. Each 10

1-1½ ft.....	\$1	50 \$13 50
--------------	-----	------------

We are prepared to quote special price on car-load lots of *Kalmia* and *Rhododendron maximum*, the two most desirable evergreen shrubs for large mass planting. See special uses of evergreens for hedges and winter window-boxes on pages 11 and 62.





Hydrangea Paniculata Grandiflora



Hedge of California Privet (*Ligustrum ovalifolium*).

HEDGE PLANTS · LIVE FENCES

The proper selection and planting of a hedge settles the matter of the boundary line for all time. Not only is this treatment more beautiful, but it is far less expensive, needs no painting and very little repairing. We suggest below a list of the best plants for hedge fences, and give the **approximate** cost per hundred feet, using average-sized plants. Smaller plants would require more, larger less; the total cost would be approximately the same. Prices of the separate plants can be found under the listing elsewhere in this catalogue.

	Evergreens	Unit 100 ft. No. plants	Cost per 100 ft.
American Arborvite (page 2). 3 to 4 ft.	55	\$45 00
Azalea amœna (page 6). 18 to 24 in.	55	00 00
Boxwood (page 7). 12 to 18 in.	135	05 00
Hemlock (page 4). 2 to 3 ft.	40	45 00
Japanese Holly (page 7). 1½ to 2 ft.	75	80 00
Norway Spruce (page 5). 3 to 4 ft.	50	50 00

Deciduous

Bush Honeysuckle (page 25). 3 to 4 ft.	35	10 50
*California Privet (page 29). 2 to 2½ ft.	200	14 00
Common Barberry (page 22). 2 to 2½ ft.	130	35 50
Japanese Barberry (page 22). 1 to 1½ ft.	130	23 40
Purple Barberry (page 22). 2 to 2½ ft.	100	25 00
Golden Bell (page 24). 2 to 3 ft.	70	14 00
Hydrangea paniculata grandiflora (page 25). 2 to 3 ft.	80	16 00
Prostrate Privet (page 29). 1½ to 2 ft.	80	16 00
Rosa rugosa (page 34). 2 to 2½ ft.	100	20 00
Rose of Sharon (page 29). 4 to 5 ft.	40	20 00
Snowball (page 30). 3 to 4 ft.	70	28 00

*Double row, alternating the plants



Avenue of American Elms. See page 13.

DECIDUOUS TREES

Deciduous trees, or those which drop their foliage in the fall, are a necessity in every form of planting, whether it be large or small. There is such a variety in size, shape, foliage and habit that it is possible to obtain deciduous trees for every purpose. Many of them bear handsome flowers and some are noted for their various colors of foliage. Some show their chief beauty in spring, while others require the early frosts to bring their beauty to full perfection.

Ailanthus

Tree of Heaven (*Alianthus glandulosa*). A beautiful tropical-like tree. One of the fastest growing, attaining a height of 60 to 80 feet, with long sprays of foliage much like sumac. It thrives in smoky places and in soils in which no other tree will grow.

	Each	10
8-10 ft.....	\$1	25 \$10 00

Alder · Alnus

European or Black (*Alnus glutinosa*). A handsome, low-growing, pyramidal tree. It is a wonderfully fast grower, seldom exceeding 30 feet, and particularly valuable for damp situations.

	Each	10
6-8 ft.....	\$1	00 \$8 00

Angelica Tree · Aralia

Japanese (*Aralia Japonica*). A gorgeous flowering tree, with handsome, divided foliage and showy trusses of white flowers in July. Grows to 40 feet high and is distinctly ornamental at all times.

	Each	10
6-8 ft.....	\$1	00 \$8 00

Hercules' Club (*A. spinosa*). A distinctive, unique tree with broad, beautifully cut leaves and huge clusters of small, white flowers in July. The branches are covered with great spines, which give it its common name. The Aralias are among the most desirable plants in a mass planting of deciduous shrubs and trees, and especially good in a screen planting.

	Each	10
5-6 ft.....	\$0	75 \$6 00

Ash - Fraxinus

White (*Fraxinus Americana*). The tallest and most impressive of the Ash family, growing to a height of 40 to 60 feet, with a straight trunk, smooth gray bark and glossy. Valuable for lawn or street planting. Each 10

8-10 ft.....	\$1 25	\$10 00
10-12 ft.....	1 50	12 50
12-14 ft.....	2 50	23 00

Mountain Ash Sorbus or Pyrus

American (*Sorbus Americana*). Decidedly ornamental, low-growing tree, with handsome, compound leaves and flat clusters of white flowers, followed by bright scarlet fruit. Each 10

6-8 ft.....	\$1 25	\$10 00
-------------	--------	---------

European (*S. aucuparia*). Sometimes called Roman tree. A small, round-topped tree, growing very dense with compound foliage and great clusters of bright red berries in fall. Fine for small places. Each 10

6-8 ft.....	\$1 25	\$10 00
-------------	--------	---------

Beech - Fagus

American (*Fagus ferruginea*). A noble tree with silvery bark and beautifully rounded head. It grows 40 to 60 feet high. Each 10

5-6 ft.....	\$2 50	\$23 00
-------------	--------	---------

European (*F. sylvatica*). More compact in growth than the American, with larger foliage. Fine for lawn decoration and for screens, as its foliage clings almost all winter. Each 10

4-5 ft.....	\$1 00	\$7 50
5-6 ft.....	1 75	15 00

Weeping (*F. sylvatica pendula*). A drooping form of the Beech, growing 35 feet high, with long, pendulous branches and deep green foliage. Handsome and graceful. Each 10

4-5 ft.....	\$2 25	\$20 00
5-6 ft.....	3 00	

Purple, or Copper (*F. purpurea*). One of the handsomest of lawn trees, 40 to 60 feet high. Its foliage changes from deep purple in spring to crimson and then to purplish green in fall. Each 10

4-5 ft.....	\$1 50	\$12 50
5-6 ft.....	2 50	

Birch - Betula

European White (*Betula alba*). A handsome lawn tree, 60 to 80 feet high, with white bark and spreading branches, which droop with age. Each 10

6-8 ft.....	\$1 00	\$7 50
8-10 ft.....	1 25	10 00
10-12 ft., 1 3/4-2 in. cal. 2 00		
12-14 ft., 2-2 1/2 in. cal. 2 50		

Weeping Cut-leaved White (*B. alba laciniata pendula*). The handsomest and most artistic lawn tree grown, with silvery white bark and large, drooping branches, and delicately cut foliage. Grows only 30 feet high, and is particularly fine for small places. Under favorable conditions this makes a most unique street or avenue tree. Each 10

6-8 ft.....	\$1 25	\$10 00
8-10 ft.....	1 75	

Sweet (*B. lenta*). The tree which supplies the aromatic Birch bark. The spreading branches droop at the tips. Each 10

6-8 ft.....	\$1 00	\$8 00
-------------	--------	--------

Yellow (*B. lutea*). A magnificent, stately tree, 100 feet high, with silvery gray bark and handsome foliage. Each 10

6-8 ft.....	\$1 00	\$8 00
8-10 ft.....	1 50	

Catalpa or Indian Bean
Bunge's (*Catalpa Bungei*). A dwarf tree with large overlapping leaves, generally trained to bush or standard forms for formal planting, or planted in tubs for terrace decoration. Each

Standard, 5-6 ft. stems; 2 ft. head.....	\$2 50
Standard, 5-6 ft. stems; 3-4 ft. head.....	4 50

Western (*C. speciosa*). A handsome flowering tree with large, heart-shaped leaves, growing 60 to 80 feet high, and bearing in July immense panicles of white, purple spotted flowers, followed by long beans in clusters. Very desirable as a specimen tree, and if rightly handled makes a most pleasing street or avenue planting. Each 10

6-8 ft.....	\$1 00	\$8 00
8-10 ft.....	1 50	13 50

Dogwood flowers (*Cornus florida*).

Cherry · *Cerasus*

European Bird (*Cerasus padus*). Mostly grown in shrub form, or small tree, with drooping clusters of small, white flowers, followed by purplish black fruit. Each 10

4-5 ft. \$0 75 \$6 00

Wild Black (*C. serotina*). A medium sized tree bearing small, white flowers followed by black cherries. Each 10

8-10 ft. \$1 00 \$8 00

10-12 ft. 1 50

Double Red-flowering (*C. Sieboldi rubra plena*). One of the trees which makes Japan so picturesque. About 30 feet high, bearing masses of double, red cherry blossoms. Each 10

4-5 ft. \$1 50 \$13 50

Chestnut · *Castanea*

American (*Castanea Americana*). Mostly grown for its nuts, but forms a handsome shade tree 60 to 80 feet high. Foliage turns golden yellow in fall. Each 10

6-8 ft. \$1 25 \$10 00

8-10 ft. 1 50 13 50

10-12 ft. 1 75

Japanese (*Castanea Japonica*). A smaller tree than the American, and more decorative, with a close round top and glossy, green, toothed foliage. The nuts are larger but not so sweet as the American. Each 10

4-5 ft. \$1 00 \$8 00

Paragon (*C. Vesca*). Smaller growing than the others bearing large edible nuts in abundance and good quality. Each 10

4-5 ft. \$1 50 \$13 50

Cork Tree · *Phellodendron*

Chinese (*Phellodendron Amurense*). A giant Japanese tree with corky bark and compound dark green foliage and black fruit with a turpentine odor. Each 10

6-8 ft. \$1 00 \$8 00

8-10 ft. 1 50

Flowering Crab · *Pyrus*

(See also Shrubs)

Siberian (*Pyrus baccata*). Rather low-growing tree with spreading branches and great clusters of white flowers. Each 10

4-5 ft. \$0 75 \$6 00

5-6 ft. 1 00 8 50

Sweet-scented (*P. Coronaria*). Small tree with spiny branches, and foliage which turns bronzy in fall. Bears a wondrous profusion of sweet-scented, rosy pink flowers. Each 10

3-4 ft. \$0 50 \$4 00

4-5 ft. 75 6 50

Flowering Crab (*P. floribunda*). A Japanese tree, rather small, bearing an immense profusion of rose-red flowers. The handsomest flowering tree known. Each 10

4-5 ft. \$1 00 \$8 00

Bechtel's Double-flowering (*P. Ioensis*). Tall shrubby tree bearing when quite young great quantities of double pink flowers. Each 10

3-4 ft. \$1 00 \$8 50

Double Rose-flowering (*P. spectabilis alba flore pleno*). Bears double flowers, bright rose and very lasting. Fine for cutting. Each 10

3-4 ft. \$1 00 \$8 00

4-5 ft. 1 50

Dogwood • Cornus

(See also Shrubs)

White (*Cornus florida*). The well-known Dogwood of the forests. Small and bushy, bearing great numbers of four-petaled, flat, white flowers.

	Each	10
4-5 ft.....	\$1 00	\$8 00
5-6 ft.....	1 25	10 00
6-8 ft.....	1 75	

Red-flowering (*C. florida flore rubro*). A handsome flowering tree, with bright pink blossoms. Fine for contrast with the white.

	Each	10
3-3½ ft.....	\$1 75	\$15 00
3½-4 ft.....	2 00	

Weeping (*C. florida pendula*). A form of the Dogwood with pendulous branches and white flowers.

	Each	
4-5 ft.....	\$2 50	
5-6 ft.....	3 50	

Elm • Ulmus

American (*Ulmus Americano*). One of the stately and most dignified of trees growing in vase form 80 to 100 feet high. A fine street tree.

	Each	10
8-10 ft., per 100, \$65..	\$1 00	\$7 50
10-12 ft., 1½-2 in. cal. . .	1 50	13 50
12-14 ft., 2-2½ in. cal. . .	2 00	17 50
12-14 ft., 2½-3 in. cal. . .	2 50	22 50
14-16 ft., 3-4 in. cal. . .	\$3-6 00	

English (*U. Campestris*). A large tree with spreading branches and round-topped crown. One of the finest shade trees.

	Each	10
8-10 ft.....	\$1 50	\$13 50

Camperdown Weeping (*U. pendula*). An artistic graceful weeping tree with long, drooping branches, and deep green, rough foliage.

	Each	10
5-6 ft.....	\$1 50	\$13 50

Empress Tree

Paulownia imperialis

A magnificent, decorative tree with immense leaves. When young can be cut back each year, causing the leaves to grow to enormous size and are beautifully crinkled.

	Each	10
4-6 ft.....	\$1 25	\$10 00

Gingko, or Maidenhair Tree

Salisburia biloba

A quaint, handsome tree with odd-shaped, leathery foliage, resembling in shape that of the Maidenhair Fern. One of the most decorative trees, growing 50 to 60 feet.

	Each	10
8-10 ft.....	\$1 50	\$13 50
10-12 ft.....	2 25	

Golden Chain

Cytisus Laburnum

One of the most graceful and beautiful of flowering trees, growing to medium height, and bearing long sprays of yellow flowers; similar to Wistaria blossoms.

	Each	10
3-4 ft.....	\$0 50	\$4 00
4-5 ft.....	75	6 00

Hornbeam • Carpinus

American (*Carpinus Americana*).

A distinctive, ornamental tree with smooth gray bark and bluish foliage, which turns to brilliant colors in fall. Grows 60 to 80 feet.

	Each	10
4-6 ft.....	\$1 25	\$10 00
6-8 ft.....	2 00	

Horse-Chestnut • AEsculus

European (*Aesculus Hippocastanum*).

One of the finest and most dignified of all flowering trees. Grows 80 to 100 feet high. Unequaled for dense shade.

	Each	10	100
6-8 ft.....	\$1 50	\$12 50	\$110 00
8-10 ft., 2 in. cal. 2 00	17 50	160 00	
10-12 ft., 2½ in. cal.....	2 75	25 00	

Red-flowering (*A. rubicunda*). A medium-sized tree with dense foliage and upright panicles of pink or red flowers.

	Each	10
8-10 ft., 2 in. cal.....	\$2 50	\$22 50

Kadsura Tree

Cercidiphyllum Japonicum

A beautiful Japanese tree, pyramidal in shape. Foliage, purple in spring and scarlet in fall. Grows to medium height and is very dense.

	Each	10
5-7 ft.....	\$1 50	\$13 50

Larch · Larix

European (*Larix Europaea*). A most graceful deciduous tree, with soft green needle foliage in tufts. Grows 60 to 80 feet high. Each 10
 5-6 ft. \$1 00 \$8 00
 6-8 ft. \$1 50 13 50

Linden · Tilia

American (*Tilia Americana*). A noble tree of fine proportions, growing 80 to 100 feet tall in good soil. Has large, heart-shaped foliage and bears creamy-white flowers. Each 10
 8-10 ft. . . . 100. \$1 50 \$12 50
 10-12 ft., 1½-2 in. 2 00 17 50
 10-12 ft., 2-2¾ in. 2 50
 12-14 ft., 3-3½ in. \$4-8 00
 20-25 ft., 4-5 in.

European (*T. Europaea*). One of the finest avenue trees, 80 to 100 feet high, with heart-shaped leaves and white flowers. Each 10
 8-10 ft. \$1 50 \$13 50
 10-12 ft., 2-2½ in. 2 50

Locust · Robinia

Black (*Robinia pseudacacia*). An exceedingly decorative tree with graceful sprays of compound foliage and bearing clusters of fragrant wistaria-like flowers. Each 10
 8-10 ft. \$1 50 \$13 50

Honey (*Gleditsia tricanthos*). A rather large, graceful tree, with drooping branches. It bears strong spines and makes a strong hedge if planted closely and trimmed. Each 10
 6-8 ft. \$1 00 \$8 00

Maple · Acer

Silver (*Acer dasycarpum*). One of the best known of the maples, with handsomely cut foliage, bright green above and silvery white beneath. Grows to 120 feet high. Each 10
 10-12 ft. \$1 25 \$10 00
 12-14 ft., 2-2½ in. 2 00 17 50

Wier's Cut-leaved Silver (*A. dasycarpum*, *Wierii laciniatum*). One of the most ornamental of drooping trees, with lazy, pendulous branches and handsomely cleft foliage. Each 10
 8-10 ft. \$1 00 \$8 00
 10-12 ft. 1 50
 12-14 ft., 2-2½ in. 3 00

Ash-leaved (*Acer negundo*). A splendid large tree, 60 to 80 feet high, with compound foliage like the Ash. Fine for street planting. Each 10
 8-10 ft. \$1 00 \$8 00
 10-12 ft., 2-2½ in. 1 50

Striped (*A. Pennsylvanicum*). A decorative tree with handsomely striped bark. It grows 30 to 40 feet high, and has broad, lobed foliage. Each 10
 6-8 ft. \$1 50 \$13 50

Norway (*A. platanoides*). One of the finest maples and distinctly ornamental wherever planted. Has broad, handsomely lobed foliage and grows 70 to 90 feet high. Particularly fine as a street tree. Each 10 100
 8-10 ft. \$1 00 \$8 00 \$75 00
 10-12 ft., 1½-2 in. 1 75 15 00 135 00
 12-14 ft., 2-2½ in. 2 50 22 50 200 00
 12-14 ft., 2½-3 in. 3 00 27 50
 14-16 ft., 3-3½ in. 4 00 37 50
 20-25 ft., 5-7 in., spec., \$40 to \$75 ca.

Schwedler's Purple (*A. platanoides, purpurea*). An exceedingly handsome lawn tree, tall and majestic, with changing foliage from purple in spring to green in summer and purple and brown in autumn. Each
 8-10 ft. \$2 50
 10-12 ft., 2-2½ in. 4 00

Sycamore (*A. Pseudo-platanus*). A large, massive tree with coarsely toothed foliage, deep green above and whitish beneath. Grows to 70 feet. Each 10
 8-10 ft. \$1 50 \$13 00
 10-12 ft., 1½-2½ in. 2 00
 12-14 ft., 2½-2¾ in. 2 50

Red, or Scarlet (*A. rubrum*). One of the handsomest of the maples, growing only to medium height, with bright red flowers in early spring and gorgeous foliage in the fall. Each 10
 8-10 ft. \$1 50 \$13 50
 10-12 ft., 2-2½ in. 2 00
 12-14 ft., 2½-3 in. \$2 50-5 00

Sugar (*A. saccharum*). A particularly fine lawn or street tree, 80 to 100 feet high, with handsomely cut, dark green foliage which changes to brilliant yellow and red in autumn. The maple sugar tree. Each 10 100
 8-10 ft. \$1 00 \$8 00 \$60 00
 10-12 ft., 1¼-1½ in. 1 25 10 00 75 00
 12-14 ft., 2-2½ in. 2 50 20 00

Maple, continued

Mountain (*Acer spicatum*). A small tree or large shrub, with bright red twigs in winter and gorgeously colored foliage in autumn. Each 10

3-4 ft. \$0 75 \$6 00
4-5 ft. 1 00 8 00

Tartarian (*A. Tataricum Ginnala*). A rather low-growing tree with a close, round head, and broad, oval foliage. Each 10

3-4 ft. \$0 75 \$6 00
4-5 ft. 1 00 8 00
6-8 ft. 1 50

Japanese Maples

The Japanese Maples are mostly grown as large shrubs.

Plain Japanese (*Acer polymorphum*). A dense-growing, small tree with most beautifully lobed foliage with cut edges. Each 10

2-3 ft. \$1 00 \$8 00
3-4 ft. 1 75 15 00

Blood-leaved Japan (*A. polymorphum atropurpureum*). Has magnificently colored and cut foliage which gleams like fire all summer. Each 10

1½-2 ft. \$2 00 \$18 00
2-2½ ft. 3 00

Weeping Cut-leaf Blood-leaved (*A. polymorphum atropurpureum dissectum*). A gracefully drooping form which has the appearance of a brilliant fountain of red. Each 10

1½-2 ft. \$2 00 \$18 00
2½-3 ft. \$3 50-8 00

Golden (*A. polymorphum aureum*). Has broad, golden yellow foliage with serrated edges. Each 10

1½-2 ft. \$2 00 \$18 00

Cut-leaf Weeping (*A. polymorphum dissectum*). Forms a graceful fountain of living green on the lawn, with its deeply cleft bright green leaves. Each 10

1½ ft. \$2 50

Magnolia - Native Sorts

Cucumber tree (*Magnolia acuminata*). Fine pyramidal tree, 60 to 80 feet high, bearing large, greenish yellow flowers and later showy red fruit. Excellent for lawn or avenue. Each 10

5-6 ft. \$1 25 \$10 00

Swamp Magnolia (*Magnolia glauca*). Slender, shrub-like tree producing fragrant, creamy-white flowers in early summer. Fruit dark red. Each 10

2-3 ft. \$1 50 \$13 50

Pure White Magnolia (*M. conspicua*). Small tree noted for fine, large foliage and pure white flowers measuring about 6 inches across; very showy. Each 10

2½-3 ft. \$2 50

Japanese Magnolia (*M. Kobus*). Pyramidal tree sending out its flowers before the leaves appear. Each 10

2-3 ft. \$1 50

Soulange's Magnolia (*M. Soulangeana*). A large, tree-like shrub. Flowers early, rose-pink; fragrant. Each 10

3-4 ft. \$2 50 \$23 00
4-5 ft. 3 50

5-7 ft. \$5-8 00

Hall's Japanese Magnolia (*M. stellata*). A large shrub, in early spring covered with white, star-like flowers. Each 10

2 ft. \$2 50 \$23 00
3-4 ft. \$4-8 00



Norway Maple. See page 14

Mulberry - Morus

Red Russian (*Morus alba*, var. *Tatarica rubra*). Fast growing, spreading tree, bearing very sweet edible fruit one to two inches long. Each 10

6-8 ft. \$0 75 \$6 00

Teas' Weeping (*M. alba*, var. *Tatarica pendula*). A weeping form of the above grafted on straight stems. Bears edible fruit and is much noted as an ornamental tree. Grows 10 to 15 feet, spreading and graceful.

Each 10
3-4 ft., 2-yr. heads. \$2 00 \$15 00

5-7 ft., 3-yr. heads. 3 00

Nettle Tree - Celtis occidentalis

A handsome tree forming a beautiful crown, which makes it a very desirable shade tree. Colors beautiful yellow in fall. Grows 30-35 feet high.

Each 10
7-8 ft. \$1 50 \$13 50

Oak - Quercus

Perhaps the hardest and longest-lived trees known. The oak thrives well in most any soil, and if properly planted and cared for in the early days, many of the varieties will make rapid growth.

White (*Quercus alba*). Majestic tree growing to 100 feet high. Leaves large, bright green, later turning to rich purple. Each 10

6-8 ft. \$1 50 \$13 00

8-10 ft. 2 25

Swamp White (*Q. bicolor*). One of the best; medium height, growing to 75 feet. Dark green foliage turning brown in the fall. Each 10

6-8 ft. \$1 50 \$13 00

8-10 ft. 2 25

Scarlet (*Q. coccinea*). One of the most symmetrical. Leaves bright red when young, turning to bright green and later bright scarlet. Gorgeous for autumn effect. Grows to a height of 80 feet. Each 10

6-8 ft. \$1 50 \$13 00

8-10 ft. \$2 25

Laurel (*Q. imbricaria*). Grows to a height of 100 feet, round topped and branches slightly drooping. Foliage turns orange-yellow in the fall. Each 10

6-8 ft. \$2 50

Mossy Cup (*Quercus macrocarpa*).

Very massive, spreading tree, growing to 80 to 120 feet. Each 10

6-8 ft. \$1 25 \$10 00

8-10 ft. 2 00

10-12 ft. 2 75

Pin (*Q. palustris*). One of the most useful, shapely and graceful of the oaks, growing to 80 to 100 feet. Equally good for lawn or street planting. Foliage turns brilliant scarlet in the fall. Each 10

6-8 ft. \$1 00 \$8 00

8-10 ft., 1 $\frac{1}{4}$ -1 $\frac{3}{4}$ in. 1 50 13 50

10-12 ft., 1 $\frac{3}{4}$ -2 $\frac{1}{4}$ in. 2 00 17 50

12-14 ft., 2 $\frac{1}{4}$ -2 $\frac{1}{2}$ in. 2 50

14-18 ft., 3-4 in. \$5-8 00

20-25 ft., 5-7 in. \$25-50 00

Red (*Q. rubra*). Large, handsome tree, round topped. Grows to 80 feet. One of the fastest growing. Acorns very large. Each 10

6-8 ft. \$1 50 \$13 00

8-10 ft. 2 00

Black (*Q. velutina*, var. *tinctoria*).

Tall and shapely tree, growing 80 to 100 feet. Does well in dry soil. Foliage dull red in fall. Each 10

6-8 ft. \$1 25 \$10 00

8-10 ft. 1 75

Peach, Flowering - Persica

Double White-flowering (*Persica*, var. *alba plena*). Beautiful little tree noted for its clusters of white flowers in early spring. Each 10

4-5 ft. \$1 00 \$8 00

Double Red-flowering (*P. vulgaris*, var. *sanguinea plena*). Similar to above, with red blossoms. Each 10

4-5 ft. \$1 00 \$8 00

Persimmon

Diospyros Virginica

Very attractive when covered with its pale orange fruit in the fall. Grows to about 50 feet. Each 10

6-8 ft. \$1 00 \$8 00

Plane - Plantanus

Buttonwood (*Platanus occidentalis*). Broad-topped, massive tree, growing to 150 feet. Noted for its white or gray bark. Each 10 100

8-10 ft. \$1 00 \$8 50 \$70 00

10-12 ft., 1 $\frac{3}{4}$ -2 in. 1 50 13 50 100 00

Plane, continued

Oriental (*Platanus orientalis*). Beautiful, round-headed tree, growing to a height of 80 feet. Picturesque white bark. One of the best street trees known. Rapid grower and makes a nice bushy head when very young.

	Each	10	100
6-8 ft.....	\$1 00	\$8 00	\$60 00
8-10 ft.....	1 25	11 50	90 00
10-12 ft., 1 $\frac{1}{4}$ -1 $\frac{1}{2}$ in.	50	13 00	120 00
12-14 ft., 2-2 $\frac{1}{2}$ in.	3 00		

Poplar · Populus

Carolina (*Populus Carolinensis*). Very rapid-growing, symmetrical tree, reaching a height of 50 to 80 feet. Excellent as a screen or windbreak for quick effects.

	Each	10	100
8-10 ft.....	\$0 75	\$6 00	\$45 00
10-12 ft., 1 $\frac{1}{4}$ -1 $\frac{3}{4}$ in	1 00	8 00	70 00
12-14 ft., 1 $\frac{1}{2}$ -2 in.	1 25	10 00	80 00

Lombardy (*P. nigra*, var. *fastigiata*). Tall, stately, picturesque tree, reaching a height of 75 to 100 feet. Very rapid grower. Excellent for a quick tall screen or for formal plantings.

	Each	10	100
8-10 ft.....	\$1 00	\$7 50	\$55 00
10-12 ft., 1 $\frac{1}{2}$ -2 in.	1 25	10 00	80 00

Red Bud · *Cercis Canadensis*

Small, shrub-like tree growing to about 20 to 25 feet. In early spring. It is covered with a wealth of bright pink flowers.

	Each	10	
3-4 ft.	100, \$30..	\$0 50	\$4 00
4-5 ft.....		75	6 00
5-6 ft.....	1 00		8 00
6-8 ft.....	1 50		

Sophora

Japanese (*Sophora Japonica*). Beautiful tree, growing to a height of 30 feet. Creamy white flowers appear in midsummer.

	Each	10
3-4 ft.....	\$1 00	\$8 50

Weeping (*S. Japonica*, var. *pendula*). A weeping form of the above. Very desirable for its long drooping branches.

	Each	10
6-8 ft.....	\$3 00	

Sorrel Tree

Oxydendrum arboreum

One of the finest ornamental trees, growing to a height of 30 to 50 feet, and coloring beautiful crimson in the fall.

	Each	10
2-3 ft.....	\$1 00	\$9 00



Avenue of Maples. See page 16.

Sour Gum • *Nyssa sylvatica*

A native, doing well in most any soil and growing to a height of 50 to 75 feet. Brilliant scarlet in the fall.

	Each	10
3-4 ft.....	\$1 00	\$8 00

Sweet Gum • Liquidambar

Beautiful tree growing to 75 to 100 feet. Star-shaped leaves color to deep crimson in the fall.

	Each	10
6-8 ft.....	\$2 00	

Sumac • Rhus

Smooth (*Rhus glabra*). Fine for mass planting, forming a low, broad head. Fruit crimson.

	Each	10
4-5 ft.....	\$0 50	\$4 00
5-6 ft.....	75	6 00

Cut-leaved (*R. glabra*, var. *laciniata*). Cut leaved form of the above. Very graceful. A rich red in the autumn.

	Each	10
1-2 ft.....	\$0 75	\$6 00

Staghorn (*R. typhina*). Another tall, shrub-like tree. Likes dry soil, and colors most brilliantly in the fall.

	Each	10
5-6 ft.....	\$0 50	\$4 00
6-8 ft.....	75	6 00

Thorn • Crataegus

Scarlet (*Crataegus coccinea*). Small tree, producing pinkish white flowers in early spring, followed by scarlet fruit in the fall.

	Each	10
4-5 ft.....	\$1 00	\$8 00

Cockspur (*C. Crus-galli*). Small, shrubby tree, thorny branches. Orange-colored fruit in the fall.

	Each	10
4-6 ft.....	\$1 00	\$8 00

English Hawthorn (*C. Oxyacantha*). Medium height tree with spreading branches very thorny. White flowers; scarlet fruit.

	Each	10
3-4 ft.....	\$0 50	\$4 00

Paul's Double Scarlet (*C. Oxyacantha*, var. *coccinea flore pleno*). Spreading tree with small, double, crimson flowers borne in clusters.

	Each	10
4-6 ft.....	\$1 00	\$8 00

Tulip Tree***Liriodendron Tulipifera***

A beautiful symmetrical tree growing to 100 to 125 feet. Smooth bark, and noted for its fine tulip-like flowers, which are very fragrant.

	Each	10
6-8 ft.....	\$1 00	\$8 00
8-10 ft.....	1 50	13 50
10-12 ft.....	2 00	

Walnut • Juglans

Black (*Juglans nigra*). Very picturesque, open-headed tree, growing to 60 to 90 feet. Well known for its edible fruit.

	Each	10
6-8 ft.....	\$1 00	\$8 00
8-10 ft.....	1 50	13 50

Japan (*J. Sieboldiana*). Shrubby tree, thin-shelled nuts and much quicker in bearing than the Black.

	Each	10
5-8 ft.....	\$1 00	\$8 00

Willow • Salix

Weeping (*Salix Babylonica*). The well known weeping willow, growing to a height of 60 to 90 feet. Particularly fine near water.

	Each	10
8-10 ft.....	\$1 00	\$7 50
10-12 ft.....	1 50	13 00

Pussy (*S. caprea*). Shrubby tree, growing to medium height. Noted for its fuzzy catkins appearing in early spring before the leaves.

	Each	10
3-4 ft.....	\$0 35	\$3 00
4-5 ft.....	50	4 50
5-7 ft.....	75	
7-10 ft.....	\$1-2 00	

Laurel Leaf (*S. pentandra*). Very beautiful, upright grower to a height of 50 feet. Foliage much like the mountain laurel.

	Each	10
5-6 ft.....	\$1 00	\$8 00
6-8 ft.....	1 50	13 50

Yellow-wood***Cladrastis tinctoria***

One of the most ornamental, round-headed trees, growing to 40 to 50 feet. When covered with its white flowers it is one of the sweetest scented trees, attracting the bees in great numbers.

	Each	10
8-10 ft.....	\$1 50	\$13 50



Spiræa Arguta See page 31.

DECIDUOUS SHRUBS

No yard is complete without one or more beautiful flowering shrubs, and we would urge a more extensive planting of this class of ornamentals covering such a wide range in flower and foliage, habit of growth and season of blossoming. Requiring but small space, they can be used on lawns to fill vacancies, where large trees could not be harmoniously grown, breaking the monotony of the landscape by grouping and distributing singly according to size of grounds and scenic effect.

ABELIA rupestris (Hybrid Abelia).
A dainty shrub blooming continuously from early summer until frost.

	Each	10	100
1-1½ ft.....	So	50	\$4 50 \$25 00
2-2½ ft.....	1 00	7 50	50 00

ALMOND, Flowering (*Prunus Japonica*). Early blooming. Flowers double, white or rose. Each 10

3-4 ft.....	So	75	\$5 00
-------------	----	----	--------

ARALIA Pentaphylla. Graceful, dark-leaved, thorny shrub. Fine as a defensive hedge plant.

	Each	10	100
3-4 ft.....	So	35	\$3 00 \$20 00
4-6 ft., heavy.....	50	4 00	30 00

Amelanchier

Amelanchier Canadensis (Shad Bush). Shrub-like tree. White flowers. First of spring. Each 10

2-3 ft.....	So	35	\$3 00
5-6 ft.....	75		

A. Botryapium (Service Berry). A fine shrub for mass effects in partial shade and poor soil. Each 10

2-2½ ft.....	So	35	\$3 00
3-4 ft.....	50	4 00	

We will supply 5 shrubs at the 100 rate, 25 at the 100 rate.

Azalea

Azalea Amoena (See Evergreen Shrubs page 6).

A. arborescens (Fragrant White Azalea). Very fragrant, white, rose-tinted flowers. Each 10

12-15 in., bushy.....\$1 00 \$8 50
1½-2 ft., bushy..... 2 00 18 50

A. calendulacea (Flame Azalea). Gorgeous in color, continuing a long time in bloom. Each 10

12-15 in.....\$1 00 \$8 50
18-24 in., heavy..... 1 50 13 50
2-2½ ft., heavy..... 2 50

A. Canadensis (Rhodora). Purple and rose flowers. Each 10

12-15 in.....\$1 00 \$8 50
1½-2 ft., heavy..... 2 00 18 50

A. nudiflora (Pinkster Flower). Pinkish white. Sometimes called wild honeysuckle. Each 10

12-15 in.....\$0 75 \$6 00
1½-2 ft., heavy..... 1 50 13 50
2-2½ ft..... 2 50

A. Vaseyi (Southern Azalea). Flowers pink or rose, appearing before the leaves. Each 10

12-15 in.....\$1 00 \$8 00
1½-2 ft..... 1 50 13 50
2½-3 ft..... 2 50

A. viscosa (White Azalea). Flowers pure white, appearing late in the spring. Each 10

12-15 in.....\$1 00 \$8 00
1½-2 ft..... 1 50 13 50

A. mollis (Japanese Azalea). All colors and a very profuse bloomer. Each 10

15-18 in.....\$1 00 \$8 00
1½-2 ft..... 1 25 10 00
2-2½ ft..... 2 00

A. Pontica (Ghent). Flowers not quite so large as Mollis, but a great variety of colors. Each 10

1½-2 ft.....\$1 25 \$10 00
2-3 ft., fine..... 2 50

BACCHARIS halimifolia (Groundsel Shrub). Rapid grower in any soil. Very showy when in seed. Each 10

4-5 ft.....\$0 75 \$6 00
5-7 ft..... 1 00

Barberry

Barberry, Japanese (*Berberis Thunbergi*). Indispensable little shrub that adjusts itself to any planting, any

soil or exposure. One of the best hedge plants known, and equally good as a specimen.

	Each	10	100	1,000
12-18 in.	\$0 25	\$2 00	\$15 00	\$120 00
1½-2 ft.	30	2 50	18 00	150 00
2-2½ ft.	40	3 00	25 00	200 00
2½-3 ft.	1 00	8 50		

Common (*B. vulgaris*). A more exact grower than Thunbergi. Also an excellent hedge plant.

	Each	10	100	1,000
2-2½ ft.	\$0 35	\$3 00	\$25 00	\$200 00
2½-3 ft.	60	5 00	40 00	

Purple-leaved (*B. vulgaris*, var. *purpurea*). Similar to common Barberry in habit, but has dark purple foliage.

	Each	10	100	1,000
1½-2 ft.	\$0 25	\$2 00	\$15 00	\$120 00
2-2½ ft.	35	3 00	25 00	200 00
2½-3 ft.	60	5 00	40 00	

BUCKTHORN (*Rhamnus cathartica*). Strong-growing shrub, very striking in winter when covered with black berries. A good hedge plant.

	Each	10	100
3-4 ft.	\$0 35	\$3 00	\$20 00
4-5 ft.	50	4 00	
5-7 ft., heavy specimens.	75	5 00	

BUTTON BUSH (*Cephalanthus occidentalis*). Well known shrub. Fine for massing. Adapted to moist places.

	Each	10	100
3-3½ ft.	\$0 35	\$3 00	\$25 00
4-5 ft.	50	4 00	

CALLICARPA purpurea (Beauty Fruit). Gracefully branched, filled with small pink flowers. Its greatest beauty is at the fruiting season.

	Each	10	100
2-3 ft.	\$0 50	\$4 50	\$30 00

CARAGANA arborescens (Siberian Pea). Flowers golden. Foliage like the locust. Each 10

	Each	10	100
2½-3 ft.	\$0 25	\$2 00	\$17 00
3½-4 ft.	50	4 00	

CEANOTHUS Americana (Jersey Tea). A fine foliage plant. Small white flowers. Each 10

	Each	10	100
1½-2 ft.	\$0 25	\$2 00	\$17 00
2½-3 ft.	50	4 00	

COLUTEA arborescens (Bladder Senna). Pea-like yellow and orange flowers.

	Each	10	
2-3 ft.....	So	35	\$3 00
3-3½ ft.....		50	4 00
4-5 ft.....		75	6 00

COTONEASTER Simonsii. Dwarf habit. Foliage almost evergreen.

	Each	10	
2-2½ ft.....	So	35	\$3 00
3-4 ft.....		50	4 00

Currant

Currant, Golden (*Ribes aureum*). Showy golden yellow flowers attracting many bees and butterflies.

	Each	10	100
3-4 ft.....	So	35	\$3 00 \$17 50
4-5 ft.....		50	4 00 20 00

Red-flowered (*R. sanguineum*). Upright shrub. Red twigs and rose-red flowers borne in long racemes.

	Each	10	100
2-2½ ft.....	So	35	\$3 00 \$17 50
3-4 ft.....		50	4 00

Deutzia

Deutzia candidissima (Double White). Panicles of double white flowers.

	Each	10	100
3-4 ft.....	So	35	\$3 00 \$17 50
4-5 ft.....		50	4 00
5-6 ft., heavy ...		75	5 00

D. Pride of Rochester. Very robust shrub. Large white flowers. Possibly the best of the tall-growing upright Deutzias.

	Each	10	100
3-4 ft.....	So	35	\$3 00 \$17 50
4-5 ft.....		50	4 00

D. gracilis (Dwarf Deutzia). Single white flowers; spreading habit. Does well in shady places. Well named the graceful Deutzia, its long drooping flower branches make a most beautiful table decoration.

	Each	10	100
12-18 in.....	So	35	\$3 00 \$15 00

D. Lemoinei (Lemoine's Deutzia). Much the same as Gracilis, but with larger flowers.

	Each	10	
1½-2 ft.....	So	35	\$3 00
2-2½ ft.....		50	4 00



Barberry (*Berberis Thunbergi*), equally good as a specimen or for a hedge.

Dogwood · Cornus

Shrub Forms

Red-twigged (*Cornus alba*). Crimson bark. Fine in mass for winter effect.

	Each	10	100
2-2½ ft.....	So	25	\$2 00 \$15 00
2½-3 ft.....		35	3 00
3-4 ft., heavy....		75	6 00

Cornelian Cherry (*C. Mas.*). Flowers yellow. Scarlet berries in the autumn.

	Each	10	
2-3 ft.....	So	35	\$3 00
3-4 ft.....		50	4 00
4½-5 ft.....		75	6 00
5-7 ft., fine.....		1 00	7 50

Panicled (*C. Panicalata*). Clusters of small white flowers. White berries in autumn. Does well in damp or rocky ground.

	Each	10	
1½-2½ ft.....	So	35	\$3 00
3-4 ft.....		50	4 00
4-6 ft.....		75	5 00

European Osier (*C. sanguinea*). Much like *C. alba* with darker red bark.

	Each	10	100
2-3 ft.....	So	35	\$2 50 \$20 00
3-4 ft.....		50	3 50
4-5 ft.....		65	4 50

Silky Cornel (*C. sericea*). Leaves covered with silky down. Light blue fruit in autumn.

	Each	10	100
2-3 ft.....	So	25	\$2 00 \$17 50
3-4 ft.....		35	3 00
4-5 ft.....		50	4 00
5-6 ft.....		75	6 00

Golden-barked (*C. stolonijera*, var. *aurea*). Bright yellow bark. Fine in mass with other varieties.

	Each	10	100
2½-3 ft.....	So	50	\$3 50 \$25 00
3-3½ ft.....		75	6 00

Elder

American (*Sambucus Canadensis*). Common Elder. White flat-topped flowers. Edible berries.

	Each	10	
2-3 ft.....	So	25	\$2 00
4-5 ft.....		40	3 00

Golden (*S. nigra*, var. *aurea*). Golden leaves and stem. A fine contrasting shrub.

	Each	10	
2½-3 ft.....	So	35	\$3 00
3-4 ft.....		50	4 00

Cut-leaved (*Sambucus nigra*, var. *laciniata*). Cut-leaved form of the common elder. Very fine.

	Each	10	
2½-3 ft.....	So	35	\$3 00

Red-berried (*S. racemosa*). An early bloom and weighted with large clusters of red fruit.

	Each	10	
2-3 ft.....	So	35	\$3 00
5-7 ft., heavy.....		1 00	

Euonymus

Cork-barked (*Euonymus alatus*). Noted for its scarlet foliage and bright red berries in the autumn.

	Each	10
2-3 ft.....	\$1 00	\$9 00

Spindle Tree (*E. Eurapaus*). Very attractive when covered with its scarlet seed-pods in the fall.

	Each	10	
3-4 ft.....	So	35	\$3 00
4-5 ft.....		50	4 00
5-7 ft.....		75	5 00

EXOCHORDA grandiflora (Pearl Bush). Strong grower. Pure white flowers cover the entire plant in May.

	Each	10	
3-4 ft.....	So	50	\$4 00
5-7 ft.....		1 00	

GENISTA scoparius (Scotch Broom). A unique plant. Yellow flowers in great profusion.

	Each	10
4-5 ft.....	\$1 00	\$7 50

Golden Bell

Golden Bell (*Forsythia Fortunei*). Vigorous, upright shrub. Very early yellow flowers.

	Each	10	100
2½ ft.....	So	35	\$2 50 \$20 00
3-4 ft.....		50	4 00
4-5 ft., fine.....		75	6 00
5-6 ft., specimens		1 00	

Drooping Golden Bell (*F. suspensa*). Graceful, drooping branches. Bright yellow flowers in great profusion.

	Each	10	
2-3 ft.....	So	35	\$3 00
3-4 ft.....		50	4 00
4-5 ft.....		75	6 00

Dark Green (*F. viridissima*). More erect than above. Flowers similar.

	Each	10	
2-3 ft.....	So	35	\$3 00
3-4 ft.....		50	4 00
4-5 ft.....		75	6 00
5-6 ft.....		1 00	8 00



Hydrangea paniculata grandiflora.

Hazelnut

Hazelnut (*Corylus Americana*). A beautiful shrub. Edible fruit in the fall.

Each	10
3-4 ft.....	\$0 50 \$4 00
4-5 ft.....	1 00 8 00

Purple Hazel (*C. maxima*, var. *purpurea*). One of the best purple shrubs known and holds its color through the summer and fall.

Each	10
2-3 ft.....	\$0 50 \$4 00

Honeysuckle • Lonicera

Bush Forms

Chinese Fragrant (*Lonicera fragrantissima*). Flowers pink. One of the earliest to bloom.

Each	10
2-3 ft.....	\$0 35 \$3 00
3-4 ft.....	50 4 00

Tartarian (*L. Tatarica*). Flowers white, pink and red; bright red berries in fall.

Each	100
3-4 ft.....	\$0 50 \$3 50 \$30 00
4-5 ft.....	75 6 00

HORSE-CHESTNUT, Dwarf (*Aesculus parviflora*). Dwarf spreading shrub. Blooms in July when blooming shrubs are few.

Each	10
1½-2 ft.....	\$1 25 \$10 00

HUCKLEBERRY, Swamp (*Vaccinium corymbosum*). Tall growing; very ornamental. Flowers on leafless

stems, later covered with blue-black berries.

Each	10
1-1½ ft.....	\$0 50 \$4 00

Hydrangea

Hydrangea arborescens (Wild Hydrangea). Native Hydrangea. White flowers. Does well in shady places.

Each	10	100
1-2 ft.....	\$0 35 \$2 50 \$20 00	
4-5 ft.....	75 6 00 50 00	

H. Hortensis, var. **Otaska**. (Japanese Hydrangea). Blooms June to October. Large showy flowers blue or pink.

Each	10
3 yr. plants.....	\$0 60 \$5 00

H. paniculata (Panicked Hydrangea). White flowers in loose, open clusters.

Each	10
2-3 ft.....	\$0 35 \$2 50
4-5 ft., bushy.....	50 4 00
5-7 ft.....	75 6 00

H. paniculata grandiflora. (Large-flowered Hydrangea). Always a favorite. Large white flowers.

Each	10	100
2½-3 ft.....	\$0 35 \$3 00 \$20 00	
3-3½ ft.....	50 4 00 30 00	
3½-4 ft.....	75 6 00	

4-6 ft., very strong 1 00 7 50

H. quercifolia (Oak-leaved Hydrangea). One of the best and little known. Foliage like the oak.

Each	10
1½-2 ft.....	\$0 50 \$4 00
2-3 ft.....	75 6 00

Hypericum

Hypericum aureum (Large-flowered St. John's Wort). Dwarf, dense shrub. Yellow flowers coming when little else is in bloom. Each 10

18-24 in. So 35 \$3 00

H. Moserianum hybridum (Golden Flower). Low creeping shrub. Golden yellow flowers. Each 10

12 in. So 35 \$3 00

ILEX verticillata (Winter Berry). Beautiful foliage and especially attractive in winter when covered with red berries. Each 10

1½-2 ft. So 30 \$2 50

2-2½ ft. 5 4 00

3-3½ ft. 60 5 00

Jasminum

Jasminum nudiflorum (Yellow Jasmine). Bright yellow flowers the first days of spring; needs slight protection in winter. Each 10

2-2½ ft. So 35 \$3 00

J. officinale (Hardy White Jasmine). White flowers in midsummer. Also needs slight protection. Each 10

2-2½ ft. So 35 \$3 00

Kerria

Kerria Japonica, var. fl. pl. (Globe Flower). Orange-yellow flowers appearing sparingly throughout the summer. Each 10

2-2½ ft. So 50 \$4 00

3-3½ ft. 75 6 00

K., White (*Rhodotypos kerrioides*). White flowers an inch across. Shining black berries in winter. Each 10

2½-3 ft. So 35 \$3 00

3½-4 ft. 50 4 00

4-5 ft. 75 6 00

Lilac

Common Lilac (*Syringa vulgaris*).

The well known favorite, growing 12 to 15 feet high. Each 10 100

2-3 ft. So 35 \$3 00 \$25 00

3-3½ ft. 50 4 00

3½-4 ft. 75 6 00

4-6 ft. \$1.50-3 00

White Persian (*S. Persica*, var. *alba*) Flowers lilac and very fragrant, borne on drooping branches. Each 10

3-4 ft. So 50 \$4 00

4-5 ft. 75 6 00

Japanese (*Syringa Japonica*). Tall shrub or tree. White flowers a foot wide. Each 10

4-5 ft. \$1 00

Double White (*S. Mad. Lemoine*). One of the handsomest double white. Each 10

2-2½ ft. So 50 \$4 00

2½-3 ft. 75 6 00

3-4 ft. 1 25 10 00

Single White (*S. Marie Legraye*). Possibly the best single white. Very fine. Each 10

2-2½ ft. So 50 \$4 00

2½-3 ft. 75 6 00

3½-4 ft. 1 25

Single Red (*S. Souvenir de Ludwig Spath*). Dark purple single flowers. Each 10

1½-2 ft. So 50 \$4 00

2½-3 ft. 75 6 00

3½-4 ft. 1 25

MYRICA gale (Bayberry). Fine for low musing. Leathery foliage. Each 10 100

1-1½ ft. So 35 \$3 00 \$20 00

2-3 ft. 50 4 00

Mock Orange

Mock Orange (*Philadelphus coronarius*). White flowers. The old favorite. Each 10 100

2-3 ft. So 35 \$3 00 \$20 00

3-4 ft. 50 4 00

4-5 ft. 75 6 00

Large-flowered (*P. grandiflorus*). Flowers fragrant and very large. A beautiful spreading shrub. Each 10 100

2-2½ ft. So 35 \$3 00 \$25 00

3-4 ft. 50 4 00

4-5 ft. 75 6 00

5-6 ft., fine. 1 00

Oleaster

Oleaster (*Elaeagnus angustifolia*) Yellow flowers and fruit. Silvery foliage; fragrant. Each 10

3-4 ft. So 25 \$2 00

4-5 ft. 35 3 00

5-7 ft. 50

Japanese (*E. longipes*). Very showy when covered with brilliant red fruits. Each 10

2½-3 ft. So 50 \$4 00

3-4 ft. 75 6 00

4-5 ft. 1 00



Single Plant of Hybrid Rhododendron.



Plum

Purple-leaved (*Prunus Pissardi*). Small tree; bluish pink flowers.

	Each	10	
4-5 ft.....	So	75	\$5 00
6-8 ft.....		1 25	

Double-flowering (*P. triloba*). Very ornamental. Double pink flowers.

	Each	10	
3-4 ft.....	So	50	\$4 00

POTENTILLA fruticosa (Shrubby Cinquefoil). Bright yellow flowers blooming all summer. Does well in any soil.

	Each	10	
1-2 ft.....	So	35	\$3 00
2½-3 ft.....		50	4 00

Privet

Amoor (*Ligustrum Amurense*). Hardier than the California. Erect habit. Fine as a specimen shrub.

	Each	10	
2-3 ft.....	So	30	\$2 50
3-4 ft.....		50	4 00
6-8 ft.....		1 50	12 50

Regel's (*L. Iboia*, var. *Regelianum*). The drooping, graceful privet. Fine for the low hedges or as specimens or on embankments.

California (*L. ovalifolium*). The common, well-known privet. Fine as a hedge plant, permitting of any kind of treatment in trimming.

	Each	10	100	1,000
1-2 ft....	So	20	\$0 75	\$5 50 \$30 00
2-2½ ft...		25	1 00	7 00 40 00
2½-3 ft...		35	1 25	9 00 50 00
3-4 ft....		50	3 50	15 00 75 00
4-6 ft....		75	6 00	35 00

Pyrus

Pyrus arbutifolia (Chokeberry). Small white flowers, followed by red berries and crimson foliage in the fall.

	Each	10	
2-3 ft.....	So	35	\$3 00
3½-4 ft.....		50	4 00

P. Japonica (Japan Quince). Early, brilliant scarlet flowers. Also a good hedge plant.

	Each	10	
1-1½ ft.....	So	35	\$3 00
1½-2 ft.....		50	4 00

Rose of Sharon

Hibiscus syriacus

Jeanne d'Arc. Flowers pure white and double.

	Each	10	100
2-3 ft.....	So	35	\$3 00 \$20 00
3-4 ft.....		50	4 00
4-5 ft.....		75	6 00

Purple (*Hibiscus purpureus*). Single purple flowers. Excellent as a screen or hedge.

	Each	10	100
2-3 ft.....	So	35	\$3 00 \$20 00
3-4 ft.....		50	4 00
4-5 ft.....		75	6 00 40 00

ROBINIA hispida (Rose Acacia). Rose-pink flowers. Locust-like foliage.

	Each	10	
2-3 ft.....	So	50	\$4 00
3-4 ft.....		1 25	10 00

RUBUS odoratus (Flowering Raspberry). Bright pink flowers, followed by large red berries. Beautiful foliage.

	Each	10	
2-3 ft.....	So	35	\$3 00
3-4 ft.....		50	4 00

SEA BUCKTHORN (*Hippophae rhamnoides*). A fine tree-like shrub most handsome in fruit and does well in any soil.

	Each	10	
2-2½ ft.....	So	35	\$3 00



Regel's Privet (*Ligustrum Regelianum*).



Rose of Sharon. See page 29.

SILVER BELL (*Halesia tetraptera*). Early, fragrant white flowers borne on long drooping branches. Upright habit. Each 10
 3½-4 ft. So 50 \$4 50
 4-5 ft. 1 00 0 00

Snowball • Viburnum

White Rod (*Viburnum cassinoides*). Flat-topped yellowish white flowers. Later dark blue berries.

	Each	10	100
1½-2 ft.	So 35	\$2 50	\$20 00
2-2½ ft.	50	3 50	
2½-3 ft.	75	5 00	

Arrow-wood (*V. dentatum*). An upright symmetrical shrub. Flowers similar to *V. cassinoides*. Blue-black berries. Each 10

3½-4 ft.	So 75	\$6 00
------------------	-------	--------

Wayfaring Tree (*V. Lantana*). Flowers white in thick, flat-topped clusters. Bright red berries changing to black. Each 10

2-3 ft.	So 35	\$3 00
3-4 ft.	50	4 00
4-5 ft.	75	6 00

High Bush Cranberry (*V. Opulus*). Upright, spreading shrub. Very showy

when covered with vivid red berries in winter. Each 10

1½-2½ ft.	So 35	\$3 00
2½-3 ft.	50	4 00
3-4 ft.	75	6 00
4-5 ft.	1 00	7 50
5-6 ft., very fine.	1 50	12 50

Single Japanese Snowball (*V. tomentosum*). White flowers in flat clusters, followed by black berries.

	Each	10	100
2½-3 ft.	So 35	\$3 00	\$25 00
3-4 ft.	40	3 50	30 00
4-5 ft.	50	4 00	

Japan Snowball (*V. tomentosum*, var. *plicatum*). Smaller white snowballs in great abundance.

	Each	10	100
2-3 ft.	So 50	\$1 00	\$25 00
3-1 ft.	75	6 00	40 00
4-5 ft.	1 00	7 50	

Black Haw (*V. prunifolium*). Bushy spreading shrub. Fine as a specimen.

	Each	10	100
2-2½ ft.	So 35	\$3 00	
3-3½ ft.	50	4 00	
3½-4 ft.	75	5 00	
4-5 ft.	1 00		

Siebold's (*V. Sieboldi*). White flowers borne in pyramidal clusters.

	Each	10	100
2-2½ ft.	So 50	\$4 00	
3-3½ ft.	75	6 00	
3½-4 ft.	1 00	8 50	

Snowberry

Snowberry (*Symphoricarpos race mosus*). Inconspicuous white flowers followed by abundance of white berries borne on long drooping stems.

	Each	10	100
1½-2 ft.	So 25	\$2 00	
2-2½ ft.	35	3 00	
2½-3 ft., bushy.	50	4 00	

Coral Berry (*S. vulgaris*). Similar to above, but with purplish red berries. Each 10

2-3 ft.	So 35	\$3 00
3-3½ ft.	50	4 00

SPICE BUSH (*Benzoïn odoriferum*). Small yellow flowers, very early followed by red berries. Very showy.

	Each	10	100
2½-3 ft.	So 35	\$3 00	
3-4 ft.	50	4 00	
4-5 ft.	75	6 00	

Spiraea

Spiraea arguta (Hybrid Snow Garland). Small white flowers borne on long graceful branches. Very showy.

	Each	10	
1½-2 ft.....	So	35	\$3 00
2½-3 ft.....		50	4 00

S. Billardi (Billard's Spiraea). Erect branches tipped with bright pink cone-like flowers on the terminals.

	Each	10	
3-3½ ft.....	So	35	\$3 00
4-5 ft.....		50	4 00

S. Bumalda, var. **Anthony Waterer** (Crimson Spiraea). Habit of the above, but handsomer and flowers richer and brighter, in flat heads.

	Each	10	
1½-2 ft.....	So	35	\$3 00
2-2½ ft.....		50	4 00

S. callosa, var. **alba** (Fortune's White Spiraea). White flowers in flat clusters, blooming all summer.

	Each	10	
1½-2 ft.....	So	35	\$3 00
2-2½ ft.....		50	4 00

S. opulifolia (Ninebark). Strong growing shrub. White flowers in flat clusters.

	Each	10	
2-3 ft.....	So	35	\$3 00
3-4 ft.....		50	4 00
4-5 ft.....		75	6 00
6-8 ft., fine	1 00		7 50

S. prunifolia flore pleno (Bridal Wreath). One of the grandest. In early spring it is laden with snowy white flowers.

	Each	10	
2-3 ft.....	So	35	\$3 00
3-4 ft.....		50	4 00

S. Van Houttei (Van Houtte's Bridal Wreath). The commonest and possibly the most favorite of the spiraeas. Very graceful.

	Each	10	100
2-2½ ft.....	So	35	\$3 00 \$25 00
2½-3 ft.....		50	4 00
3-3½ ft.....		60	5 00
4-5 ft.....		75	6 00
5-6 ft.....	1 00		7 50

S., Blue (*Caryopteris Mastacanthus*). Low-growing shrub. Flowers blue, coming very late.

	Each	10	
2-2½ ft.....	So	35	

STAPHYLEA Colchica (Bladder Nut). White flowers in panicles. Later very curious seed-pods.

	Each	10	
2-3 ft.....	So	50	\$4 00
3-4 ft.....		75	6 00
4-5 ft.....	1 00		7 50

STEPHANANDRA flexuosa (Stephanandra). Creamy white flowers in early summer. A very handsome shrub.

	Each	10	
2-2½ ft.....	So	35	\$3 00
2½-3 ft.....		50	4 00
3-4 ft.....		75	6 00

STYRAX Japonica (Japanese Storax). Flowers snow-white in many drooping racemes. Fine as a lawn specimen.

	Each	10	
2-2½ ft.....	So	50	\$4 00

SWEET PEPPER BUSH (*Clethra alnifolia*). Flowers creamy white on upright stems; very fragrant, are fine for cutting. An excellent shrub.

	Each	10	
2-2½ ft.....	So	35	\$3 00
2½-3 ft.....		50	4 00
3-3½ ft.....		75	6 00



Bush Honeysuckle. See page 25.



Spiraea Van Houttei. See page 31.

SWEET SHRUB (*Calycanthus floridus*). The old-fashioned sweet shrub. Chocolate-like flowers; very fragrant.

	Each	10	
2-2½ ft.....	So	35	\$3 00
3-4 ft.....		50	4 00

Sumac

Fragrant (*Rhus aromatica*). Low spreading shrub. Sweet foliage.

	Each	10	
2-2½ ft.....	So	50	\$4 00
2½-3 ft.....		75	6 00
3-3½ ft.....	I	00	7 50

Smoke Tree (*R. Cotinus*). Very well known tree-like shrub. Feathery flower-stems.

	Each	10	
2-3 ft.....	So	35	\$3 00
3-4 ft.....		50	4 00
5-7 ft.....		75	6 00

Tamarix

Tamarix Africana (Early-flowering Tamarisk). Delicate light pink flowers, very early. Foliage feathery sea-green.

	Each	10	
2½-3 ft.....	So	35	\$3 00
3-4 ft.....		50	4 00
4-5 ft.....		75	5 00
5-7 ft.....	I	00	7 50

T. Gallica (French Tamarisk). Similar to above, but later in blooming and lighter green foliage.

	Each	10	
2-3 ft.....	So	35	\$3 00
3-4 ft.....		50	4 00

WHITE FRINGE (*Chionanthus Virginica*). Loose, drooping panicles of white flowers coming before the foliage.

	Each	10	
2-2½ ft.....	So	50	\$4 00
2½-3 ft.....		75	6 00
3-4 ft.....	I	00	7 50

Weigela

The Weigelas afford masses of showy blooms late in the spring, and later make most beautiful and graceful foliage effects. Flowers nearly all colors and borne on long, drooping branches.

	Each	10	
Rose-colored. 2½-3 ft..	So	35	\$3 00
3-4 ft.....		50	4 00

Hybrida. Great variety of colors.

2-2½ ft.....		35	3 00
4-5 ft.....		50	4 00
5-6 ft.....		75	6 00

Eva Rathke (Carmine-red).

2-2½ ft.....		35	3 00
2½-3 ft.....		50	4 00
4-5 ft.....		75	6 00

WITCH HAZEL (*Hamamelis Virginiana*). Small, odd yellow flowers.

The last to bloom, coming late in the autumn, about the time the leaves fall.

	Each	10	
2-2½ ft.....	So	35	\$3 00
3-4 ft.....		50	4 00
4-5 ft.....		75	6 00
5-6 ft.....	I	00	7 50

We will supply 5 shrubs at the 10 rate; 25 at the 100 rate; 250 at the 1,000 rate. Our shrubs are well grown, frequently transplanted and our soil produces fibrous roots. It costs us more to handle them this way, but it's worth it to you if you want results without disappointment.



You can have a bed of Roses like this the first year by planting our strong stock.

ROSES

No garden or lawn is complete without them, and no flower so royally repays for its care. With these varieties in our own garden we have cut quantities of bloom from the middle of May until late in November.

In most varieties we have potted stock, so that shipment can be made safely at any season. We offer all varieties in three grades.

MEANING OF ABBREVIATIONS

H. P., Hybrid Perpetual; T., Tea; B., Bourbon; H. T., Hybrid Tea; A., Austrian; R. H., Rugosa Hybrid; Wich., Wichuriana; H. C., Hardy Climbing; H. C. Pr., Hardy Climbing Prairie; R., Rambler.

Prices, except where noted,

	Each	10
Strong field-grown plants.....	\$o 35	\$3 00
Extra-strong field-grown plants.....	50	4 50
Selected 3-year plants.....	75	6 50

RED AND CRIMSON ROSES

Alfred Colomb. H. P. Large, fragrant; useful for general cultivation.

Captain Hayward. H. P. Very large; vigorous, free bloomer.

General Jacqueminot. H. P. Large and extremely effective; fragrant.

Gruss an Teplitz. H. T. Very fragrant; ever-bloomer. One of the best bedding Roses introduced. From these plants you can cut flowers from June 1 until frost.

Liberty. H. T. Beautiful buds. Fine for house culture and cut-flowers.

Marshall P. Wilder. H. P. Vigorous; very fragrant.

Pierre Notting. T. Large, pointed buds; highly scented.

Ulrich Brunner. H. P. Hardy; vigorous; ever-bloomer; highly fragrant; most effective in masses.

Fisher Holmes. H. P. Flowers extra large and full; very sweet. Constant bloomer.

Hugh Dickson. H. P. Very large; full; free and continuous bloomer.

Prince Camille de Rohan. Large; moderately full. Splendid rose. H. P.



Gruss an Teplitz. See page 33.

PINK ROSES

Anne de Diesbach. H. P. Large double flowers, hardy.

Baroness Rothschild. H. P. Very symmetrical, without fragrance. Excellent bedder.

Bon Silene. T. Large, beautiful buds; highly scented; free bloomer.

Captain Christy. H. P. Medium; double flowers; almost everblooming.

Clio. H. P. Vigorous grower; flowers in clusters; one of the best.

Hermosa. B. Large; blooms in fine clusters. Excellent bedder.

Jeanette Heller. T. Strong bloomer delicate, beautiful.

Killarney. H. T. Large buds, long and pointed; profuse bloomer.

Konigin Carola. H. T. Enormously large; good for cutting.

La France. H. T. Constant bloomer; sweetest and most useful rose.

Mad. Gabriel Luizet. H. P. Very large, cup-shaped; somewhat fragrant.

Mad. Abel Chatenay. H. P. Perpetual bloomer; vigorous; excellent.

Mad. Caroline Testout. H. T. Large and double; very sweet; good bedder.

Magna Charta. H. P. Large; fragrant; excellent variety. One of the best.

Maman Cochet. T. Large, full; vigorous; free bloomer; handsome.

Mrs. John Laing. H. P. Large; fine form; produced on strong stem.

Paul Neyron. H. P. Largest variety in cultivation; free bloomer. Excellent cut.

Prince of Bulgaria. H. T. Bright green foliage; flowers large and full.

Souv. de la Malmaison. B. Large; very full; rich foliage; splendid Rose.

Souv. du President Carnot. H. T. Exquisite color; full, double flowers.

YELLOW ROSES

Franciska Kruger. T. Strong and vigorous; fine bedder; constant bloomer. Very good.

Persian Yellow. A. Small, nearly full; strong, shrub-like grower.

Soleil d'Or. A. Large, full, fragrant; golden flowers.

WHITE ROSES

Frau Karl Druschki. H. P. Very large; beautiful; best yet produced.

Kaiserin Augusta Victoria. H. T. Extra fine; very large; very fragrant.

Maman Cochet. T. One of the best for open ground culture. Large; vigorous; handsome.

Margaret Dickson. H. P. Magnificent form; fragrant; fine variety.

RUGOSA ROSES · Japanese Roses

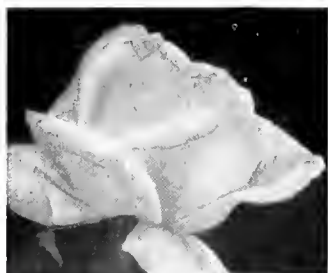
Blanc Double de Coubert. R. H. Double, pure white flowers; fragrant.

Rugosa alba. Single, pure white; highly scented. Fine for hedge or borders.

Rugosa rubra. Single, bright rosy crimson; beautiful fruit. Excellent for hedges and borders.

Price of Rugosas, 2 to 2½ ft., 35 cts. each, \$3 for 10, \$20 per 100; 2½ to 3 ft., 50 cts. each, \$4 for 10, \$25 per 100.

SPECIAL "GET ACQUAINTED" ROSE OFFER.—As an initial order to show the quality of our Rose plants, we offer to supply, our selection from the above lists, 2 Reds, 2 Pinks, 1 Yellow and 1 White, all fine strong plants for \$1.50.



Frau Karl Druschki.

CLIMBING ROSES

Albert Barbier. Bright yellow; clusters; fragrant, beautiful; waxy foliage.

Baltimore Belle. H. C. P. Pale blush; compact and fine.

Climbing Soupert. H. C. Strong grower; flowers white in clusters.

Crimson Rambler. R. Glowing crimson; many and well-flowered clusters.

Dawson. H. C. Deep pink; vigorous; hardy; good clusters; fragrant.

Dorothy Perkins. Wich. Pink, very double; sweetly scented. Very good.

Hiawatha. Wich. Crimson; single; excellent bloomer; very good.

Lady Gay. Wich. Beautiful rose-pink; free bloomer. One of the best.

Leuchtstern. H. C. Single, large clusters; bright rose with white eye.

Marechal Niel. C. Large, double; profuse bloomer; golden; very fragrant.

Microphylla. H. C. White; flowers double and sweet. Shrub habit.

Multiflora. H. C. White; single, sweetly scented. Shrub habit.

Psyche. H. C. Rosy pink; large, fine clusters.

Reine Marie Henriette. H. C. Crimson; large and double; in clusters.

Seven Sisters (Greville). H. C. White to crimson; flowers in large clusters.

Setigera. H. C. Pr. Deep rose; large, single flowers.

Tausendschon. H. C. Pink, turning to bright rose; sweet; in clusters.

White Rambler. R. White; profuse; very fragrant; compact clusters.

Wichuraiana (Memorial Rose). Wich. Single, pure white; low-trailing species with beautiful foliage.

Wm. C. Egan. Wich. Rosy pink; large; double; fragrant; very good.

Gardenia. Wich. Very fragrant; creamy yellow.

MISCELLANEOUS ROSES

Baby Rambler. Dwarf Crimson Rambler. Everblooming; fine bedder.

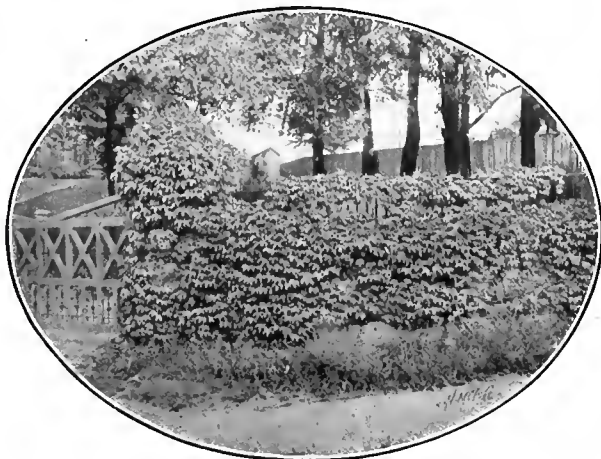
Common Moss. Pale rose; beautiful buds; great favorite. Vigorous.

Blanche Moreau Moss. White, large, sweet; excellent for cemetery.

Rosa rubiginosa (Common Sweet Briar). Pink; noted for fragrant foliage.



Lady Gay—the best of all Ramblers.



Ampelopsis Veitchi, or Boston Ivy.

VINES, CLIMBING AND TRAILING PLANTS

For shading porches, covering embankments, covering the ground under trees or shrubbery, or as screens, shutting out unsightly places, vines are invaluable. They can always be kept within bounds and are exceedingly decorative. We grow nearly all varieties in pots which enables their being transplanted at any season. All are strong vigorous plants fully worth the price.

ACTINIDIA polygama (Japanese Vine). Each 10	CELASTRUS scandens (False Bittersweet). Each 10
From pots.....\$0 50 \$3 50	2-3 ft., field-grown..\$0 35 \$3 00
AKEBIA quinata.	CLEMATIS Henryi. White; large.
From pots..... 50 3 50	C. Jackmani. Violet-purple; large.
AMPELOPSIS quinquefolia (Virginia Creeper). Each 10	C. Jackmani, var. alba. White; large.
From pots.....\$0 35 \$3 00	Each 10
3-yr., field-grown.... 25 2 00	From pots.....\$0 50 \$4 00
A. Veitchi (Japan or Boston Ivy). Each 10	C. paniculata (Japanese Clematis). Each 10
From pots.....\$0 35 \$3 00	From pots.....\$0 50 \$4 00
2-yr., field-grown.... 100 \$15.. 25 2 00	2-yr., field-grown.... 100 \$15.. 30 2 50
ARISTOLOCHIA Sipho (Dutchman's Pipe). Each 10	DOLICHOS Japonicus (Kudzu Vine). Each 10
From pots.....\$0 75 \$6 00	From pots.....\$0 50 \$4 00
BIGNONIA radicans (Scarlet Trumpet Vine). Each 10	EUONYMUS radicans (Climbing Euonymus Evergreen). Each 10
From pots.....\$0 35 \$3 00	1 ft., field-grown ... 100 \$10.. \$0 25 \$2 00
2-3 ft., field grown .. 25 2 00	1½-2 ft., field-grown 100 \$15.. 35 2 50

HEDERA Helix (English Ivy).

	Each	10	
From pots, 100	\$15.	So 25	\$2 00
From pots, large...	50		4 00

LONICERA Japonica Halliana (Honeysuckle).

	Each	10	
From pots.....	So 35		\$3 00
3-yr., field-grown...	35		3 00

L. Japonica, var. aurea reticulata (Golden-leaved Honeysuckle).

	Each	10	
From pots.....	So 35		\$3 00

PERIPLLOCA Græca (Silk Vine).

	Each	10	
Field-grown.....	So 35		\$3 00
From pots.....	50		4 00

VITIS heterophylla, var. variegata (Variegated Grape)

	Each	10	
From pots.....	So 75		\$6 00

WISTARIA Chinensis (Chinese Wistaria).

	Each	10	
2-3 ft., field-grown..	So 75		\$6 00
4-6 ft., heavy.	\$1.50		to 3 50

W. Chinensis, var. alba (White Wistaria).

	Each		
Field-grown, strong..	\$1.50		to \$3.50

W. multijuga (Japanese Wistaria).

	Each	10	
2-3 ft., field-grown..	So 75		\$6 00
4-6 ft., field-grown.	\$1.50		to \$2.50 ca.



Aristolochia Sipho (Dutchman's Pipe)
and Hardy Ferns

HARDY FERNS

The joy of the woods is the ferns. Many damp, shaded locations about the home grounds are well adapted for the planting of hardy ferns, and when once established they are a joy forever.

25 cts. each, \$2 for 10, \$15 per 100. Mixed varieties, our selection, 15 cts. each \$1 for 10, \$9 per 100.

ADIANTUM pedatum (Maidenhair Fern). 1 to 2 ft. Moist, shaded positions.

ASPIDIUM acrostichoides (Christmas Fern). 1 to 2 ft. Evergreen. Dry or moist soils in shady places.

A. marginale. Evergreen. 1 to 2 ft. Shaded positions, dry or moist soils.

DICKSONIA punctilobula (Boulder Fern). 2 to 3 ft. For open positions, forms large plantations.

OSMUNDA cinnamomea (Cinnamon Fern). 2 to 5 ft. For open or shaded positions, in wet soils.

WOODSIA obtusa. 6 to 12 in. Shady places, in moist soil.

Note that we grow nearly all varieties of vines in pots so that we can make delivery most any time during the season without shock to the plant. For quick covering it is well to plant an annual vine also (see page 55, *Cobaea Scandens*), while the permanent vine is coming on.



Herbaceous border with Sweet William in the foreground

HARDY HERBACEOUS PLANTS

This includes all the fine old-fashioned plants that grew in grandmother's garden, and some new ones just as beautiful. The plants die to the ground each fall but the roots remain alive, and the pleasure of welcoming the old friends each year is always enjoyed.

Plants followed with "S." are suitable for swampy places; "Sh." for shady locations; "R." for rockeries; "D." for dry soil conditions and "C." for cutting.

PRICES

Except where otherwise noted any of the following plants will be supplied in strong clumps at the following prices: Single plants 25 cts., 10 for \$2, 100 for \$15; 5 plants at the 10 rate, 25 at the 100 rate. Write for special prices on large quantities and special selections.

ACHILLEA millefolium roseum. C.	Color	Blooming season	Height
Parnica, The Pearl. C.	15c. each... Pink	July-Sept.	1½ ft.
	15c. each... White	All summer	2 ft.
ACONITUM napellus. (Monk's Hood)			
Sh. C. Pale blue	June, July	3 ft.
AGROSTEMMA coronaria (Mullein)			
Pink) 15c. each... Crimson	June-Aug.	2½-3 ft.
Flos-Jovis (Rose Campion) 15c. ea. Deep pink	June-Aug.	12 in.
ALSTROMERIA chinensis (Peruvian Lily)	Rosy-white	July-Sept.	2 ft.
ALTHÆA rosea (Hollyhock). R. All colors	July	4-6 ft.
ALYSSUM saxatile compactum (Golden Tuft).	R. Yellow	May, June	1 ft.
ANCHUSA Italica (Alkanet) Blue	May, June	3-4 ft.
Italica, var. Dropmore. 50c. each... Blue	June, July	3-4 ft.

ANEMONE.	Color	Blooming season	Height
<i>Japonica</i> (Windflower) Sh. C.....	Red	Sept.	2-3 ft.
<i>Japonica</i> , var. <i>alba</i> . Sh. C.	White	Fall	2-3 ft.
<i>Japonica</i> , var. <i>Queen Charlotte</i> . Sh. C.	Rose	Fall	2-3 ft.
<i>Japonica</i> , var. <i>Whirlwind</i> . Sh. C.	White	Fall	2-3 ft.
<i>Pennsylvanicum</i>	White	June, July	1-2 ft.
<i>Pulsatilla</i> (Pasque Flower). Sh.....	Violet-purple	May	9 in.
ANTHEMIS tinctoria (Chamomile). C.	Golden-ycl.	June-Sept.	2 ft.
AQUILEGIA . R., Sh., D.			
<i>Canadensis</i> (Common Columbine)....	Scarlet, yel.	May-July	1-2 ft.
<i>chrysantha</i>	Golden-ycl.	May-Aug.	3 ft.
<i>cœrulea</i> (Rocky Mountain Columbine) Blue		May, July	18 in.
<i>Skinneri</i>	Light green	June-Sept.	
ARABIS alpina (Rock Cress). R., D.	White	April, May	4 in.
ARMERIA maritima , var. <i>alba</i> . (Thrift)			
R.....	White	Summer	9 in.
ARTEMISIA abrotanum (Old Man).....	Silvery-white		2 ft.
ASCLEPIAS incarnata (Silkweed). D.	Pink	July, Aug.	3-4 ft.
<i>tuberosa</i> (Butterfly Weed). D.....	Orange	July, Aug.	3 ft.
ASTER alpinus (Alpine Aster). R.	Purple	June, July	9 in.
<i>Novæ Angliæ</i> (Michaelmas Daisy). C. Purple		Sept., Oct.	4 ft.
ASTILBE Japonica (Spirea).....	White	June	1½ ft.
AUBRIETIA Græca (Rock Cress). R.	Purple	Spring	4 in.
BELLIS perennis (English Daisy).....			
15c. each.	White, Pink	May	6-8 in.
BOCCONIA cordata (Plume Poppy)....	White	July, Aug.	5 ft.
BOLTONIA asterioides (False Chamomile). C.	White	Aug., Sept.	4 ft.
CAMPANULA Carpatica (Harebell). R.	Blue	June-Sept.	9 in.
<i>Carpatica</i> , var. <i>alba</i> . Sh.....	White	June-Sept.	9 in.
<i>Media</i> (Canterbury Bell). Sh.....	Blue	June, July	1-2 ft.
<i>Media alba</i> . Sh.....	White	June, July	1-2 ft.
<i>Media Calycanthema</i> (Cup and Saucer)			
Sh.....	Blue	May, June	1-2 ft.
<i>persicifolia</i> (Peach Bells). Sh.....	Blue	June, July	18 in.
<i>persicifolia alba</i> . Sh.....	White	June, July	18 in.
<i>pyramidalis</i> (Chimney Bellflower). Sh. Blue		Aug., Sept.	2 ft.
<i>pyramidalis alba</i> . Sh.....	White	Sept.	4-5 ft.
CHRYSANTHEMUM . C.			
<i>leucanthemum hybridum</i> (Shasta Daisies).....	35c. each. White	All summer	2 ft.
<i>leucanthemum maximum</i>	White	July-Oct.	2 ft.
Hardy Fall Varieties —			
<i>Pompon</i>	All colors	Sept., Oct.	2 ft.
<i>Single</i>	All colors	Sept., Oct.	2 ft.
<i>Anemone-flowered</i>	All colors	Sept., Oct.	2 ft.
CEPHALARIA Tatarica	Yellow	July, Aug.	6 ft.
COREOPSIS lanceolata (Tickseed). C., R.			
15c. each.	Yellow	June-Oct.	2 ft.
<i>rosea</i> . C., R.....	Rose	July, Aug.	6-9 in.
CENTAUREA montana (Perennial Cornflower). C.	Purple	June, July	1½ ft.
CERASTIUM tomentosum (Snow-in-Summer). R., D.	White	June, July	6 in.



Shasta Daisy. See page 39.

CHELONE <i>Lyoni</i> (Turtlehead). Sh., S. Color	Blooming season	Height
35c. each	Rose-purple Aug., Sept	2 ft.
CIMICIFUGA <i>racemosa</i> (Snakeroot). S. White	July	3-5 ft
CLEMATIS <i>Davidiana</i> (Bush Clematis) . Blue	Aug., Sept.	3 ft.
<i>recta</i> White	June-Aug.	2-3 ft.
CONVALLARIA <i>majalis</i> (Lily-of-the-Valley). C., Sh..... White	May, June	6-9 in.
CORONILLA <i>varia</i> (Crown Vetch). R. . Pink	June-Oct.	1-2 ft.
DELPHINIUM . C.		
<i>Chinense</i> (Larkspur)..... Blue	July-Sept.	1½ ft.
<i>Chinense</i> , var. <i>album</i> White	July-Sept.	1½ ft.
<i>elatum</i> (Bee Larkspur)..... Blue	June-Aug.	4 ft.
<i>formosum</i> (Larkspur)..... Blue	June-Sept.	4 ft.
DIANTHUS <i>barbatus</i> (Sweet William). C.		
15c. each. Mixed	May-July	1½ ft.
<i>plumarius</i> (Hardy Pinks)..... Mixed	May, June	1 ft.
DICENTRA <i>spectabilis</i> (Bleeding Heart). Pink	May, June	2-3 ft
DICTAMNUS <i>fraxinella</i> (Gas Plant)....		
35c. each. Purple	June	3 ft.
<i>fraxinella</i> , var. <i>alba</i> 35c. each. White	June	3 ft.
DIGITALIS <i>purpurea</i> (Common Foxglove)		
C, Sh..... Mixed	June, July	4-5 ft

	Color	Blooming season	Height
DORONICUM plantagineum , var. excelsum (Leopard's Bane). C., 35c. each.	Yellow	April-June	2 ft.
ECHINACEA purpurea (Purple Cone-flower). S.	Rosy-purple	July-Sept.	3 ft.
ECHINOPS Ritro (Globe Thistle).	Blue	July, Aug.	3-4 ft.
ERIGERON speciosus (Fleabane). S.	Violet-blue	June-Aug.	1½-2 ft.
ERYNGIUM amethystinum (Sea Holly) 35c. each.	Ameth.-blue	July-Sept.	2 ft.
EUPATORIUM ageratoides (White Snake-root). C.	White	Sept., Oct.	3 ft.
EUPHORBIA corollata (Spurge).	White	July-Sept.	1½ ft.
FEVERFEW , Little Gem.	White	June-Oct.	15 in.
FUNKIA subcordata , var. grandiflora (Plantain Lily. C., Sh.	White	Sept.	2 ft.
undulata , var. media picta variegata , Sh.	Lilac	July, Aug.	1 ft.
GAILLARDIA grandiflora compacta . C. R.	Various	July-Sept.	1½ ft.
GALTONIA candicans (Summer Hyacinth) D., C.	White	Aug., Sept.	3-5 ft.
GERANIUM sanguineum (Crane'sbill). R.	Red	June-Sept.	1½ ft.
GEUM coccineum (Avens).	Scarlet	June, July	1½ ft.
GILLENIA trifoliata (Bowman's Root) 35c. each.	Rose, White	July	3 ft.
GYPSOPHILA paniculata (Baby's Breath). C., R.	White	July	2-3 ft.
HELENIUM Hoopesi (Sneezewort). C.	Orange	All summer	2 ft.
HELIANTHUS . C.			
giganteus (Perennial Sunflower)	Yellow	Aug.-Oct.	6-10 ft.
Maximiliani	Yellow	Sept.	6-8 ft.
mollis	Yellow	Sept. Oct.	4 ft.
HELIOPSIS Pitcheriana (Orange Sunflower). C.	Yellow	June-Oct.	3 ft.
HELLEBORUS niger (Christmas Rose) 35c. each.	White	March	6 in.
HEMEROCALLIS flava (Day Lily). C., R., Sh.	Yellow	June	2 ft.
HEPATICA triloba (Liverleaf). R., Sh.	White, Blue	April	6 in.
HESPERIS Matronalis (Rocket Flower) C.	White, Pink	June, July	3-4 ft.
HEUCHERA sanguinea (Alum Root). R.	Coral-red	June-Sept.	18 in.
HIBISCUS Moscheutos , var. (Crimson Eye Mallow). S., Sh.	White	July-Sept.	5 ft.
HYPERICUM Moserianum (St. John's Wort).	Yellow	All summer	1-1½ ft.
IBERIS sempervirens (Candytuft). R.	White	April, May	6 in.
INCARVILLEA Delavayi (Hardy Gloxinia)	Rose	Aug.	18 in.
IRIS Germanica (German Iris). R., C. Named Varieties.	All colors	May	1½-2½ ft.
Kämpferi (Japanese Iris). C., S.	All colors	June, July	2½-4 ft.
Pseudacorus . C., S.	Yellow	June	2-3 ft.

IRIS, continued	Color	Blooming season	Height
<i>pumila nova</i>	Mixed	May	8-10 in.
<i>Sibirica</i> . C., S.....	Blue	May, June	1½ ft.
<i>Susiana</i>	Black	May	2 ft.
KNIPHOFIA Pfitzerii (Flame Flower)....	Scarlet	July-Oct.	3-4 ft.
LATHYRUS latifolius, var. albus (Hardy White Pea).....	White	Summer	Climbing
LAVANDULA spica (Lavender). D. ...	Lavender	July, Aug.	15-18 in.
LIATRIS graminifolia (Blazing Star). D. Rosy-purple		Aug., Sept.	2 ft.
LILIUM auratum (Gold-banded Lily)...	White-spot.	July-Sept.	3-5 ft.
Candidum (Annunciation Lily). C. ...	White	June	3-5 ft.
Canadense (Meadow Lily). C.....	Yellow	July	2-4 ft.
Elegans . C.....	Yellow, Red	May, June	1-2 ft.
Philadelphicum (Wood Lily).....	Orange-scar.	July, Aug.	2-4 ft.
speciosum, var. roseum (Japan Lily). C. Rosy-white		July, Aug.	2-4 ft.
tigrinum (Tiger Lily). C.....	Salmon-red	Aug.	3-4 ft.
LINUM perenne (Perennial Flax).....	Blue	June-Sept.	18 in.
LOBELIA cardinalis (Cardinal Flower). C., S., Sh.....	Scarlet	Aug., Sept.	2-3 ft.
LUPINUS perennis (Lupine).....	Blue, White	June, July	3 ft.
polyphyllus roseus . C.	Rose	April-June	2-3 ft.
LYCHNIS Chalcedonica (London Pride). Sh.....	Vermilion	July-Sept.	2-3 ft.
Haageana (Maltese Cross). D.	Orange-Scar.	June, July	1½ ft.
LYSIMACHIA nummularia (Moneywort). S.....	Yellow	June-Aug.	Creeping
MENTHA piperita (Peppermint). S. 15c. each..	Blue	All summer	1 ft.
MERTENSIA Virginica . Sh., R.....	Blue	May	1-2 ft.
MONARDA didyma (Oswego Tea). S., Sh.Scarlet		Aug., Sept.	2½ ft.
MYOSOTIS palustris (Forget-me-not). S., Sh.	Blue	May, June	Spreading
OENOTHERA fruticosa, var. Youngi (Young's Primrose). C.....	Lemon	June	1½-2 ft.
Missouriensis (Large Evening Primrose) R.....	Yellow	June, July	1 ft.
speciosa (White Primrose) R.....	White	June, July	1½ ft.
PÆONIA Chinensis , Heavy Clumps (See prices below). C.....	Mixed		
Chinensis, Single Varieties (See prices below). C.....	Mixed		
Heavy clumps, named, 50 cts. to \$1 each, \$4 to \$7 for 10.			
Divided roots, named, 25 cts. to 50 cts. each, \$2 to \$4 for 10.			
Mixed varieties, 20 cts. each, \$1.50 for 10.			
Mountan (Tree Peony).....	\$1 each..	May, June	
officinalis, var. rubra plena . Double. C. 50c. each..	Crimson	April	
tenuifolia . Single. C.....	50c. each..	April	
PAPAVER nudicaule (Iceland Poppy). R. Mixed		All summer	1 ft.
orientale (Oriental Poppy).....	Orange-star.	June	2 ft.
PENTSTEMON grandiflorus (Beard Tongue) R.....	Purplish blue	June-Aug.	2-2½ ft.



Sunflowers (*Helianthus mollis*) See page 41.



Gaillardia See page 41.



Coreopsis. See page 30.



Stokesia cyanea, Stokes' Aster. See page 45.



Rudbeckia Newmanni. See page 45.



Oriental Poppy (*Papaver orientale*). See page 42.



Japan Iris. See page 41.

		Blooming season	Height
PHLOX <i>divaricata</i> (Wild Sweet William). Color			
C., R.	Lavender	May, June	1 ft.
<i>decussata</i> (Perennial Phlox). C.	All colors		
<i>subulata</i> (Mountain Pink). R.	Rose	May, June	Creeping
<i>subulata</i> , var. <i>alba</i> . R.	White	May, June	Creeping
PHYSOSTEGIA <i>Virginica</i> (False Dragon-head). S., C.	Deep rose	August	3 ft.
PLATYCODON <i>grandiflorum</i> (Balloon-flower). Sh., S.	Blue	July	1½ ft.
POLEMONIUM <i>cæruleum</i> (Jacob's Ladder). Sh.	Deep blue	July	1½ ft.
POTENTILLA <i>hybrida</i> (Cinquefoil).	All colors	July-Oct.	1-1½ ft.
PRIMULA <i>veris</i> (Polyanthus). Sh.	Yel., Or., Crim.	May	6-9 in.
PYRETHRUM <i>roseum</i> . C.	Pink	June, July	1½-2 ft.
<i>roseum</i> fl. pl.	35c. each. Double Pink	June, July	1½-2 ft.
RANUNCULUS <i>acris</i> fl. pl. (Yellow Bachelor's Button). R., S.	Yellow	June	2 ft.
RUDECKIA <i>laciniata</i> , var., Golden Glow . C.	Yellow	July-Sept.	8 ft.
<i>Newmanni</i> (Black-eyed Susan). C.	Yellow	Aug., Sept.	1½ ft.
<i>nitida</i> (Cone-flower). C.	Yellow	Aug., Sept.	5 ft.
SALVIA <i>argentea</i> (Sage). R.	White	June	2 ft.
SAPONARIA <i>officinalis</i> (Bouncing Bet). Sh.	15c. each. Pink	July-Sept.	2-2½ ft.
SAXIFRAGA <i>cordifolia</i> (Rockfoil). R.	Rosy-purple	April-June	15 in.
SCABIOSA <i>Caucasica</i> (Mourning Bride). C.	35c. each. Lav.-blue	June	15-18 in.
SEDUM <i>acre</i> (Golden Moss). Sh., R.	Yellow	May, June	Spreading
<i>spectabile</i> (Brilliant Stonecrop). Sh., R.	Rose	Sept.-Oct.	12-15 in.
SENECIO <i>pulcher</i> (Groundsel).	Rosy purple	July-Oct.	1½-2 ft.
SHORTIA <i>galacifolia</i> (Shortia). S., S.	35c. each. White	Summer	6 in.
SILENE <i>Pennsylvanicum</i> (Wild Pink). R.	Rose or White	April, May	9 in.
SMILACINA <i>racemosa</i> (False Solomon's Seal). Sh.	White	April	1½ ft.
SOLIDAGO <i>Canadensis</i> (Goldenrod). C.	Yellow	July-Sept.	4-5 ft.
SPIRÆA <i>aruncus</i> (Goat's Beard). C., S.	35c. each. White	June, July	4-5 ft.
<i>filipendula</i> fl. pl. C., S.	White	June, July	2 ft.
<i>palmata</i> . C., S., Sh.	Deep crimson	June, July	2 ft.
STATICE <i>latifolia</i> (Great Sea Lavender). R.	Deep blue	July, Aug.	2 ft.
STOKESIA <i>cyanea</i> (Stoke's Aster). R., C.	Lavender	July-Oct.	10-12 in.
THALICTRUM <i>adiantifolium</i> (Meadow Rue). Sh., R.	Yellow	June	18 in.
THYMUS <i>citriodora aurea</i> (Thyme). R.	Yellow	May-Sept.	5 in.
TRADESCANTIA <i>Virginiana</i> (Spider-wort). Sh., S.	Purple	June, July	2 ft.
TRILLIUM <i>erectum</i> (Wake Robin). Sh., S.	Purple	March, April	9-12 in.
<i>grandiflorum</i> (Wool Lily). Sh., S.	White	March, April	9-12 in.
TROLLIUS <i>Europæus</i> (Globe-flower). S.	Yellow	May-Aug.	2 ft.
VALERIANA <i>coccinea</i> (Valerian).	Reddish	June-Oct.	2 ft.

	Color	Blooming season	Height
VERBASCUM <i>Olympicum</i> (Mullein).....	Yellow.	July-Sept.	6 ft
VERONICA <i>incana</i> (Speedwell). R.....	Violet	July, Sept.	12-18 in
<i>longifolia</i> , var. <i>subsessilis</i> . C.....	Blue	Aug.-Nov.	1½-2 ft.
VINCA <i>minor</i> (Periwinkle). Sh.....	Blue	May	Spreading
VIOLA <i>cornuta</i> (Tufted Pansy). C.....	White, yellow	May, June	5 in.
<i>odorata</i> (Violet). C.....	Blue	April, May	3 in.
YUCCA <i>filamentosa</i> (Adam's Needle) ..	Creamy-white	June, July	4-6 ft.



Ornamental Grasses. Beautiful, hardy and inexpensive.

REEDS AND GRASSES

The grasses are all strong, vigorous growers and lend variety to any planting. Many of them send up their flowers late in the summer or fall and retain them long into the winter.

ARUNDO DONAX (Giant Reed).	Each	10	
Clumps, 12-15 ft.....	So	50	\$3 50
BAMBUSA Metake (Hardy Bamboo).	Each	10	
Almost evergreen.	Each	10	
5-6 ft.....	So	50	\$3 50
ERIANTHUS Ravennæ (Ravenna Grass).	Each	10	
8-10 ft.....	So	50	\$3 50
EULALIA Japonica (False Pampas).	Each	10	
So	25	\$2 00	
E. Japonica variegata (Striped Eulalia).	Each	10	
8-10 ft.....	So	35	\$3 00
E. Japonica gracillima.	Each	10	
5-7 ft.....	So	35	\$3 00
Eulalia Japonica Zebrina (Zebra Grass).	Each	10	
5-7 ft.....	So	35	\$3 00
FESTUCA glauca (Blue Fescue Grass)	Each	10	
1-1½ ft.....	So	25	\$2 00
GYNERIUM argenteum (Pampas Grass).	Each	10	
7-8 ft.....	So	25	\$2 00
PHALARIS arundinacea , var. <i>variegata</i> (Ribbon Grass).	Each	10	
2½-3 ft.....	So	25	\$2 00
UNIOLA latifolia (Spike Grass).	Each	10	
2½-3 ft.....	So	25	\$2 00

ROOTS AND BULBS

Gladioli

No flower has been so improved in the hands of the hybridizer as the Gladiolus. We offer the best new hybrids grown by Arthur Cowee. Wonderful size and colors of bloom; opens fully as well in water as on the plant; long season of bloom. As beautiful as an orchid and far less troublesome. Plant bulbs as soon as the frost is out of the ground.

Mixed reds, scarlets	10	50	100
and crimson	50	\$1 75	\$3 00
Mixed white, light and yellow	75	2 25	4 00
Mixed, rare blue and black	85	3 00	5 00

Dahlias

Within the last year or two there has been a wonderful revival of interest in the Dahlia. This, to a great extent, is due to the introduction of the dwarf, profuse-blooming varieties that a few years ago were unheard of. We offer a collection of the best Cactus and Decorative Dahlias in red, white, yellow, pink, variegated and all intermediate shades.

Price, strong roots to bloom this summer, 20 cts. each, \$2 per doz., \$12 per 100, except where otherwise noted.

Cactus Dahlias

Dainty. Lemon-yellow at base; tipped rose-pink; fine.

Etna. Lilac; veined violet.

Eva. Purest white; very free bloomer.

Flamingo. Clear flame color; fine and free bloomer.

Floradora. A wine-crimson; one of the best.

Iceberg. Ivory-white; fine form.

J. H. Jackson. This is the best dark Cactus yet out, almost black.

Kriemhilde. Pleasing shade of pink, white center. 35 cts. each.

Mortimer. Rich terra-cotta. One of the best.

Prince of the Yellows. Soft shade of yellow; free bloomer.

Star Fish. Clear scarlet; bold flower.

Winsome. Pure cream-white, incurved, Cactus.

Decorative Dahlias

Grand Duke Alexis. Pure white, edged lavender; large. 35 cts. each.

Lemon Giant. Pure lemon; large.

Mme. Helene Charvet. Pure white; large; very fine for church decorations.

Mme. A. Lumiere. Pure white with violet-red tips; very attractive.

Mrs. Roosevelt. Delicate silvery rose. 35 cts. each.

Pompon Dahlias

Alewine. Delicate pink; fine.

Beatrice. Light pink, tipped lavender; free.

Fashion. Bright orange.

Oriole. Bright yellow; very fine.

Single Dahlias

Twentieth Century All colors.



Gladioli

FRUIT DEPARTMENT

Great care has been taken in the selection of our list of fruits, and we heartily recommend the varieties given as being well adapted to this section and soil conditions. Every home grounds should have some fruits, and we call special attention to our **Dwarf Apples and Pears** as being suitable for the smallest city lot, and the fact that the fruit can be picked so early after planting.

We grow many other varieties not here given, and shall be pleased to quote special prices on large quantities.

Apples		
	Each	10
Strong vigorous trees	\$o 50	\$3 50
Extra selected trees	75	6 00

Early

Red Astrachan. Crimson, streaked with yellow; juicy. July.

Early Harvest. Yellow, tender; fine flavor. July.

Summer Rambo. Green, striped with red, subacid. Early Sept.

Yellow Transparent. Pale yellow; tender and juicy. Early July.

Autumn

Duchess of Oldenburgh. Streaked red and yellow; tender and juicy. Sept.

Fall Pippin. Large; yellow; rich and delicious aromatic. Oct., Nov.

Gravenstein. Large; yellow, striped with red; juicy; subacid. Sept., Oct.

Maiden's Blush. Medium; pale yellow; tender; subacid. Aug., Sept.

Pound Sweet. Large; greenish white; sweet; good cooking. Oct.

Smokehouse. Crisp and juicy. Good eating. Sept.-Feb.

Winter

Bismarck. Yellow; flesh tender; juicy and rich. Dec.

Baldwin. Large; deep red; productive. Dec.-March.

Bellefleur. Large; yellow, with red cheek; juicy; good eating. Dec.-Feb.

Ben Davis. Bright red; juicy; productive. Dec.-March.

Greening Rhode Island. Large; dark green; rich and juicy. Nov.-Feb.

Grimes Golden. Fine-grained and rich flavor; subacid. Jan.-Apr.

Northern Spy. Pale yellow, striped with red. Good keeper; subacid. Dec.-June.

Rambo. Medium. Yellowish white, streaked dull red; tender. Oct.-Dec.

Russet, Golden (Sheepnose). Medium, russet; juicy; tender. Dec.-Mar.

Smith's Cider. Late-keeping red; prolific bearer. Dec.-Mar.

Stayman's Winesap. Larger and more prolific than Winesap. Dec.-May.

York Imperial. Large, red apple of agreeable flavor. Nov.-Feb.



Dwarf Apple the second year after you buy it. Just the tree for the small city lot.

DWARF APPLES

50 to \$1 each, \$3.50 to \$8 for 10

Adapted to city yards and confined areas. Fruit is identical in quality to the standard varieties, and the trees begin bearing the second year after planting, reaching full maturity in about five years. We offer the following varieties:

Baldwin	Yellow Transparent
Bismarck	Northern Spy.
Fallawater	Wealthy

CRAB APPLES

50 cts. each, \$3.50 for 10

Hyslop. Beautiful in flower; large dark crimson fruit. Oct.

Red Siberian. Small round fruit; yellow, scarlet cheek. Sept., Oct.

Martha. Yellow, shaded red; prolific bearer. Oct., Nov.

Transcendent. Large; yellow and red; productive. Sept.

Yellow Siberian. Small, golden yellow. Sept.

Apricots

Strong, selected, 50 cts. each, \$4 for 10

Harris. Large; golden yellow fruits. Early July.

Moorpark. Fruit large, orange-red cheek, darker than Harris. Aug.

Nicholas. Agreeable flavor; prolific bearer. July.

Cherries

	Each	10
First size.....	\$0 75	\$6 00
Extra strong	1 00	8 50

Sour · Dukés and Morellos

Early Richmond. Very productive. Fine pie and cooking fruit. June.

English Morello. Large; dark red; juicy; acid flavor. July.

May Duke. Popular and desirable variety; light red. June.

Late Duke. Large; light red; late and very fine.

Montmorency. Large; red, tart fruit; very prolific and desirable. July.

Sweet · Hearts and Bigarreus

Black Eagle. Black; tender and highly flavored. July.



Napoleon Bigarreau Cherries.

Black Tartarian. Big, dark red or black fruit. Good flavor. June.

Governor Wood. Large white Cherry, shaded red; delicious. June.

Napoleon Bigarreau. Large white fruit with red cheeks; productive. July.

Windsor. Large; liver-colored; flesh firm; excellent quality. July.

Yellow Spanish. Yellow with red cheeks; very productive. June.

Peaches

	Each	10
Strong, selected	\$0 35	\$2 50
Extra selected	50	3 50

Belle of Georgia. Freestone; white; excellent flavor. Middle Aug.

Champion. Firm; freestone; rich, sweet and juicy. Aug.

Iron Mountain. Freestone; large; sweet, juicy. Oct.

Morris White. Firm; medium; sweet juicy. August.

Mountain Rose. Medium; nearly red; sweet; productive. Aug.

Peaches, continued

Oldmixon Free. Large; yellowish white; freestone; productive. Sept.

Stump the World. Large freestone; juicy; excellent quality. Sept.

Crawford's Early. Large, juicy, sweet, rich flavor. Aug., Sept.

Crawford's Late. Freestone; large; good quality; prolific. Last Sept.

Elberta. Large; freestone; rich; sweet; juicy; preserving and eating. Sept.

Fitzgerald. Large; subacid; juicy; agreeable. Late Aug.

Salway. Large; juicy, rich and fine flavor. Early Oct.

Triumph. Almost freestone; large; juicy. Early July.

Wheatland. Large; juicy; sweet; fine quality. Early Sept.

Pears

	Each	10
First size	\$0 50	\$3 50
Extra strong	75	6 00

Summer

Bartlett. Popular variety; large yellow fruit; prolific bearer. Sept.

Clapp's Favorite. Large; fruit fine-grained and good for eating. Sept.



Mountain Rose Peach.

Autumn

Seckel. Small brown Pear; very sweet and juicy. Sept., Oct.

Sheldon. Large russet; rich, juicy; fine flavor. Oct.

Worden-Seckel. Resembles Seckel; equally good and large. Sept., Oct.

Winter

Kieffer. Vigorous and productive; large. Oct., Nov.

Lawrence. Very juicy, sweet and aromatic. Medium. Dec.

DWARF PEARS

Highly valuable for limited spaces, producing productively first-class fruit the second or third year after planting.

50 to \$1 each, \$3.50 to \$8 for 10

Bartlett	Kieffer
Clapp's Favorite	Lawrence
Duchesse d'Angouleme	Seckel

Plums

	Each	10
First size	\$0 75	\$6 00
Extra strong	1 00	7 50

European

Bradshaw. Large red; valuable for market. Aug.

Imperial Gage. Good size; freestone; sweet, juicy. Middle Aug.

Lombard. Violet - red; agreeable flavor; vigorous. Late Aug.

Yellow Gage. Medium-sized; yellow, rich and juicy. Aug.

Japanese

Abundance. Large red; sweet and rich. Good cooking and eating. Aug.

Burbank. Large; purple; flesh sweet, rich and yellow. Aug.

Satsuma. Good quality; vigorous; purple and red. Aug.

Red June. Early; large; clingstone; juicy; subacid; June.

Wickson. Dark red; good size; sugary; excellent. Sept.

Quinces

50 to 75 cts. each, \$4 to \$6 for 10

Champion. Large; productive; good cooking; good keeper. Oct.

Orange. Large; handsome fruit of good quality. Sept.

Rea's Mammoth. Large; productive Oct.

SMALL FRUITS

Blackberries

50 cts. for 10, \$3 per 100

Eldorado. Sweet; melting and rich; good bearer.

Erie. Early, hardy and productive. Large, sweet fruit.

Logan (Raspberry - Blackberry). Dark red; mild, agreeable flavor.

Lucretia (Dewberry). Low trailing, firm, large, sweet fruit.

Rathbun. Heavy bearer; extra large; good quality.

Snyder. Medium size; sweet and good. Very productive.

Ward. Rich, sweet and tender, no hard core. Good market variety.

Wilson's Early. Popular and excellent variety; very early; sweet.

Raspberries

Strong plants, 75 cts. for 10, \$4 per 100

Red

Clarke. Large, fine, highly flavored; productive.

Columbian. Large, strong grower and productive.

Cuthbert. Medium to large; very fine; good quality.

Loudon. Large, quality similar to Cuthbert.

Marlboro. Best early red for North; hardy and productive.

Black

Cumberland. Large; good quality; productive.

Gregg. Large, juicy, rich; flavor subacid. Abundant bearer.

Yellow

Golden Queen. Similar to Cuthbert.

Currants

15 and 25 cts. each, \$1 and \$2 for 10

Red

Cherry. Large, scarlet; excellent quality; productive.

Fay's Prolific. Large; deep red. Good commercial variety.

Perfection. Larger than Fay's; very prolific.



Catawba Grape. See page 52.

White

White Grape. Sweet, large, excellent for table. Very productive.

Black

Lee's Prolific. Bunch medium; fruit large. Unsurpassed for jellies.

Gooseberries

Red

Red Jacket. Very fine; good size. 25 cts. each, \$2 for 10, \$15 per 100.

Houghton. Enormous crops of fine fruit; free from mildew. 25 cts. each, \$2 for 10, \$15 per 100.

Industry. Dark red, excellent sort; very productive. 20 cts. each, \$1.75 for 10, \$12 per 100.

Green

Downing. Very large; excellent for domestic use. 20 cts. each, \$1.50 for 10, \$10 per 100.

Smith's Improved. Sweet, very productive. 20 cts. each, \$1.50 for 10, \$10 per 100.

Grapes

2-year, 25c. each, \$2 for 10; extra heavy, 50 cts. each, \$4 for 10

Black

Campbell's Early. Large bunches; good quality, very satisfactory.

Concord. Large bunches, especially good fruiter. Well known.

Moore's Early. Earlier than Concord, but similar. Fruit larger.

Worden. Bunch large and compact; large fruit. Bears early.

Red

Agawam. Large, sweet and desirable.

Brighton. Fine tasting; excellent quality.

Catawba. Nice berry, unusually sweet, aromatic flavor.

Delaware. Small, compact bunches of delicious fruit.

White

Niagara. Large, compact bunches; sweet delicious flavor.

Winchell. Medium; early; excellent flavor.

Strawberries

Runners, \$2 per 100, \$7.50 per 1,000. Potted, \$3 to \$4 per 100.

Potted plants ready in early spring, Runners about August 1.

Early

Climax. Large, uniform in shape; good color; excellent flavor.

Success. Very large; bright scarlet; fine flavor; rich and sweet.

Midsummer

Brandywine. Large, firm, aromatic, juicy; luscious flavor.

Clyde. Very fruitful; small; bright red.

Marshall. Large; productive; especially good for house use.

McKinley. Large; firm; sweet and desirable.

Sharpless. Popular; productive, large; good grower; good marketer.

Wm. Belt. Fruit conical.

Late

Gandy. Popular; desirable quality; rather productive.

Nick Ohmer. Fine sort with large berries of delicious flavor.

Asparagus

Strong 2-year plants, \$1.50 per 100, \$7.50 per 1,000

Barr's Mammoth. Large, green variety; a strong grower and good marketer.

Columbian Mammoth. Vigorous grower of excellent quality; white shoots.

Conover's Colossal. Mammoth shoots of quick and vigorous growth. Standard variety.

Rhubarb, or Pie Plant

Best varieties, \$1.50 per 10, \$10 per 100.



Brandywine Strawberries.

DECORATIVE, FLOWERING AND FOLIAGE PLANTS

Comprising a very carefully selected list of plants, suitable for house and conservatory decoration, vases, window-boxes and bedding uses.



Aspidistra.

Abutilon • Japanese Lantern Plant

Souvenir de Bonn. Bright green leaves, margined white. Long stemmed, lantern-like flowers of golden yellow. 15 cts. ea., \$1.50 per doz.

AGAPANTHUS umbellatus (Blue African Lily). A splendid ornamental plant, producing a profusion of large clusters of bright blue flowers. When planted in large pots or tubs, there is no finer plant for lawn, terrace or piazza. Young plants, 50 cts. each; specimen plants in tubs, \$3 to \$5 each.

AGERATUM, Blue Perfection (Ladies' Toothbrush). Fine for bedding. 25 cts. each, \$2.25 per doz.

AMARYLLIS Hybrids. Flower-spikes from 18 inches to 3 feet, bearing enormous trumpet-shaped flowers, varying in the richest glowing colors. Fine plants, \$1 to \$3 each.

ARALIA Sieboldii. One of the most desirable foliage plants; free grower. 50 cts. to \$1 each.

ARDISIA crenulata (Christmas Berry). A Japanese plant of great

value with leathery foliage; producing heavy clusters of bright red berries. 50 cts. to \$1 each.

Araucaria • Norfolk Island Pine

Araucaria excelsa. A most popular house plant; does well in a cool room or sun parlor. 75 cts. to \$3 each.

A. excelsa glauca. A bluish green form of the above and very handsome. Fine robust plants, \$1.50 to \$3.50 each.

ARTILLERY PLANT (Pilea). This is a very useful and interesting little, bedding plant. 10 cts. each, \$1 per doz.

Aspidistra

Aspidistra lurida. Fine broad, dark green leaves, grows robustly and freely under almost any condition. 75 cts. to \$2 each.

A. lurida variegata. Foliage striped with white; a very charming form of the above. \$1 to \$2.50 each.



Abutilon.



Tuberous Begonias.

Asparagus

Asparagus plumosus. Graceful, climbing Asparagus; beautiful bright green, feathery foliage. Strong plants, 25 cts. each.

A. plumosus nanus. A compact form of the above. 25 cts. each.

A. Sprengeri. Invaluable as a decorative plant for hanging-baskets, pots, window-boxes, etc. Pots, 25 cts. each; three in a pan, 75 cts. to \$1 each; in hanging-baskets, from \$1 to \$5 each.

AUCUBA Japonica (Japan Golden-leaved Laurel). An evergreen plant with dark green, laurel-like foliage, freely spotted or blotched with light yellow. Berries appear in abundance and turn red about Christmas. Strong plants, 75 cts. to \$2.50 each.

AZALEAS, Indica and Pontica. Of this well-known favorite we have the best varieties and all colors; ready in bloom from Christmas until after Easter. 75 cts. to \$5 each.

Begonias

Begonias, Tuberous. Single and double, with flowers from 4 to 6 inches in diameter, ranging in colors from the purest white to the most delicate tints of pink, yellow, orange and on to intense scarlet and rich crimson. Strong pot-grown plants, 25 cts. each, \$2.50 per doz.

B. semperflorens gracilis (Ever-blooming Wax Begonia). Flowers of pink, red and white. Fine for bedding. 15 to 25 cts. each. Extra sizes, 50 cts. to \$1 each.

B., Gloire de Lorraine. The best winter-flowering Begonia in existence. Literally covered all winter and spring with dainty pink flowers. An ideal plant for the Christmas. Fine plants, 50 cts. to \$1 each. Large pans, \$2 to \$4 each.

B., Rex and Fancy-leaved. They include a great variety of the most beautiful decorative foliage plants in this line. All colors and forms. Fine plants, 10 cts. to \$1 each.

BOUGAINVILLEA glabra, var. Sanderiana. A most useful, flowering plant with dazzling rosy crimson flowers in amazing profusion and lasting long in perfection. Strong plants, \$1.50 each.

Calla (Richardia)

Calla Æthiopica. The old-fashioned white, large-flowering calla lily. 50 and 75 cts. each.

C., albo-maculata (Spotted Calla). Flowers yellowish, leaves covered with transparent white spots. 35 and 50 cts. each.

CANNAS. This fine bedding plant also makes a first-class pot plant. Our collection has been very carefully selected and includes all the newer and best varieties. All colors in mixture or separate. 15 to 35c. each, \$1.50 to \$3.50 per doz., \$10 to \$30 per 100.

CAMELLIA Japonica A most attractive plant, with dark evergreen, glossy foliage and gorgeous red flowers. \$1 to \$2 each.

CAREX Japonica variegata. Very graceful and ornamental Japanese pygmy grass, extremely useful in house and jardinière gardening. 15 cts. each., \$1.50 per doz.

Century Plants · Agave

Agave Americana. A very ornamental plant of easy culture. 25 cts. to \$3 in pots; \$3 to \$20 in tubs.

A. lutea marginata. A variegated form of the above. 25 cts. to \$3 in pots, \$3 to \$20 in tubs.

Chrysanthemums

We have in cultivation all the latest and choicest, large-flowering varieties. Fine pot-grown plants from 25 cts. to \$3 each.

C., Single-flowering Varieties. Very pretty pot plants 25 cts. to \$1.50 each.

C. frutescens (Paris Daisy). A very fine pot plant for Easter. Also fine for window-boxes and bedding. White flowers, yellow centers. Vigorous plants, 25 cts. each.

C., Etoile d'Or. A golden yellow variety of the same. 25 cts. each.

C., Alexandra. The pure white semi-double flowers are from 2½ to 3 inches in diameter, and very handsome. Also useful as a bedding plant. 25 cts. each.

Cineraria

Cineraria hybrida. Very charming, well-known plants with great abundance of flowers in all shades of color.

C. stellata. A most graceful variety with large, spreading panicles of starry flowers. Strong plants, 35 to 75 cts. each.

CLIVIA miniata (Imantophyllum). A pretty lily-like plant with orange-red flowers during the spring and summer months, borne in dense clusters from 10 to 20 flowers each. Strong plants, 75 cts to \$1.50 each.

COBÆA scandens (Cup-and-Saucer Vine). A very rapid climber with pretty cup-and-saucer-shaped flowers. 20 cts. each, \$2 per doz.

COLEUS (Flame Nettle). A decorative, richly colored foliage plant; equally good as a pot plant or for window-boxes, urns and in the open. Bedding plants, 15 cts. each, \$10 per 100; large pot plants, 25 cts. each, \$2.50 per doz.

CROTONS. For beauty of form and richness of coloring this charming plant cannot be excelled. It likes a warm, moist atmosphere. Strong plants, 50 cts. to \$1 each.

CUPHEA platycentra (Cigar Plant). An old-fashioned favorite plant for baskets, vases and bedding. 10 cts. each, \$1 per doz.

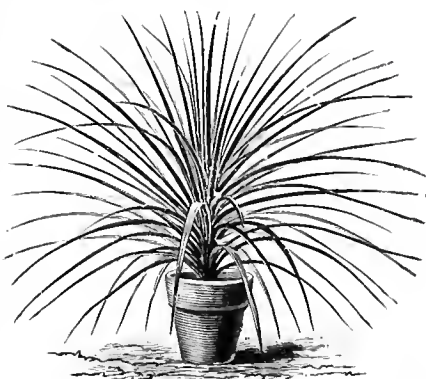
CYCLAMEN persicum giganteum. A popular, winter-flowering plant of great beauty, producing in succession a profusion of sweet-scented flowers, shading from the purest white to dainty pink and crimson-red. The foliage is very ornamental. Fine plants, 35 cts. to \$1 each.

Dracaena · Dragon Plant

Indivisa. A beautiful, ornamental plant, indispensable for vases and house decorations. 25 to 50 cts. each.

Massangeana. Broad, glossy green foliage, with a beautiful golden yellow variegation through the center of the leaves; makes a bold specimen. Strong plants, \$2 each.

ELEPHANT'S EAR (*Caladium esculentum*). One of the most effective plants for large pots, or planting upon the lawn, growing to 5 feet high and producing enormous leaves. 15 to 20 cts. each.



Dracaena.



Boston Fern.

Euonymus

Euonymus Japonicus. A beautiful evergreen, Japanese plant of medium size, with broad, dark green, glossy foliage. Potted plants, 25 to 50 cts. ea.

E. Japonica aurea variegata. The same kind of leaves, bordered with golden yellow. Potted plants, 25 to 50 cts. each.

Ferns

Adiantum cuneatum (Maidenhair Fern). One of the most graceful ferns. 15, 50 and 75 cts. each.

Cyrtomium falcatum (Holly Fern). The leathery and glossy dark green leaves are similar to those of the holly. 20 and 50 cts. each.

Nephrolepis Amerpohli (New Lace Fern). An exquisite and dainty fern. 25 cts. to \$1 each.

N. Bostoniensis (Boston Fern). The most popular house fern on account of its graceful, robust habit and splendid durability. Vigorous plants, 25 cts. to \$2 each; specimen plants in pans or tubs \$3 to \$6 each.

N. Piersoni. A pretty variety of the above. 25 and 50 cts. each.

N. Scottii. This variety is very compact, the fronds being much shorter than those of the old-fashioned Boston Fern. 25 to 50 cts. each.

Nephrolepis superbissima, Latest Introduction. A very unique and distinct novelty. Its distinguishing characteristics are its dark green foliage and dense growth. Fronds very heavily imbricated. 40 cts. to \$1 each.

N. Whitmani. Commonly known as the Ostrich Plume Fern, with finely divided feathery fronds, very attractive. 25 cts. to \$1.50 each.

Small Table Ferns. In all the choicest varieties for fern dishes. Vigorous plants, in 2½-inch pots, 10 cts. each, \$1 per doz.

FITTONIA argyryneura. Vivid green with net work of silvery white veins; very handsome. 20 cts. each.

FRANCOA ramosa (Bridal Wreath). An attractive plant with vigorous green foliage, and elegant sprays of pure white flowers. 25 to 75 cts. each.

FUCHSIA. Well-known favorite for pot culture or bedding out and hanging baskets. 10 to 25 cts. each.

Geraniums

We have the best standard, single, semi double and double varieties of these popular and favorite plants. Equally good for pot growing or for beds in the open lawn. Strong plants, any color, 15 cts. each, \$1.25 per doz.

Ivy-leaved. Useful for window-boxes and hanging-baskets. 15 and 25 cts. each.

Rose. Old fashioned, very fragrant young plants. 10 cts. each.

Variegated-leaved. Fine for pot and carpet bedding. 20 cts. each.

GREVILLEA robusta (Silk Oak). This is a hardy, graceful, decorative, indoor plant with fern-like leaves. 2½-in. pots, 10 cts. each, \$1 per doz.; larger plants, 25 to 75 cts. each.

HUMULUS Japonicus variegatus. This prettily variegated Japanese hop is one of the most rapid-growing vines in cultivation. Strong plants, 15c. ea.

HYACINTHS, TULIPS, etc. They include Hyacinths, Roman Hyacinths, Tulips, and Narcissus, of the very best varieties. We have them early in bloom. Ready in pots December to Easter. The prices range between 15 cts. and \$1.50 each, in a pot or large pan of 6 or more bulbs.

HYDRANGEA hortensis Otaksa. A very desirable, highly ornamental Japanese plant, with green shining foliage, and producing large heads of pink and blue flowers. 50 cts. to \$1 each. Specimen plants in green tubs, \$2 to \$5 each.

Impatiens · Zanzibar Balsam

Impatiens Sultani. Flowers of brilliant rosy scarlet colors. Valuable as pot plants and for the open border.

I., Holstii Hybrids. New hybrids from Africa with flowers of all shades of red and pink. Excellent border. Fine plants, 15 to 35 cts. each.

ISOLEPIS gracilis. This little graceful plant with grass like, green, drooping foliage is useful as a pot or for vases, baskets, etc. 15 and 25 cts. each.

IVY, Parlor (*Mikania scandens*). A hardy trailing plant, especially useful for hanging-baskets and window-boxes. 10 and 25 cts. each, \$1 and \$2.50 per doz.

JAPANESE LILY-OF-THE-VALLEY (*Ophiopogon Jaburan variegatus*). Variegated foliage, useful as a pot plant. 50 cts. each.

JERUSALEM CHERRY (*Solanum capsicastrum*). A very ornamental pot plant for winter decoration, bearing bright scarlet berries. A fine Christmas plant. 35 to 75 cts. each.

LANTANA delicatissima (Weeping Lantana). A pretty, trailing variety, suitable for pots, as well as for baskets, window-boxes, etc. Flowers delicate rosy-lavender; free bloomer. 10 and 25 cts. each, \$1 and \$2.50 per doz.

LEMON ponderosa. Beautiful as an ornamental and useful as an ordinary lemon. One fruit equal to five common lemons. Fine fruiting plants, \$2.50 to \$5 each.

LILY-OF-THE-VALLEY (*Convallaria majalis*). Of this well-known, beautiful and fragrant flower we have large quantities during the winter and early spring. Also a superior cut flower. Fine pots, 35 to 75 cts. each, and large pans, \$1 to \$4.

LYCOPODIUM (Moss). Pretty moss-like plant for fern dishes and jardinières; it likes plenty of moisture. 10 cts. each, \$1 per doz.

MARANTA. In varieties. Remarkable for their richness and beauty of their foliage of the most distinguished variegation. 25 cts. to \$1.50 each.

MOON VINE (*Ipomoea grandiflora*). At night and during dull days the plants are covered with large, pure white, fragrant flowers. Rapid grower. 15 cts. each, \$1.50 per doz.

MOSS (*Selaginella Watsoniana*). Very pretty moss, green, with silvery white tips; useful in connection with ferns in fern dishes, jardinières, etc. 15 cts. each, \$1.50 per doz.

MYRTLE (*Myrtus communis*). A handsome plant with small, shining, fragrant leaves. Young plants, 25 cts. each.

NICOTINE PLANT (*Nicotiana Sanderae Hybrida*). A splendid plant, very fragrant and great variety of colors. For pot culture and bedding out. 10 to 25 cts. each.

OTAHEITE ORANGE (*Citrus aurantium*, var. *Otattense*). One of the most ornamental dwarf, pot plants. Fragrant pink flowers and beautiful orange-red edible fruits, about one-half the size of ordinary orange 75 cts. to \$2 each.



Lily-of-the-Valley

Palms

The royalty among plants. No home decoration of plants is complete without them. The varieties we offer are the hardiest, and the most graceful plants for home culture.

Areca lutescens. Bright glossy, green foliage and rich golden yellow stems make this one of the most beautiful Palms in cultivation. Each

18-20 in. high, 5-in. pots. So 75
1½-2 ft. high, 6-in. pots. 1 25
2-3 ft. high, 7-in. pots. 4 50

Kentia Belmoreana. This variety is of dwarf, spreading habit, with beautiful, rich, dark green foliage. One of the best palms for the house because it stands the dust and dry atmosphere. Each

16-18 in. high, 3 in. pots. So 35
18-20 in. high, 4-in. pots. 65
1½-2 ft. high, 5-in. pots. 1 25
2-2½ ft. high, 6-in. pots. 2 25
2½-3 ft. high, 7-in. pots. 4 50
Specimen plants, 8 to 15 feet high, in tubs, \$8, \$10 to \$30 each.

K. Forsteriana. Similar to the above named variety, but of stronger growth and with heavier, broader foliage. Each

16-18 in. high, 3 in. pots. So 35
18-20 in. high, 4-in. pots. 65
1½-2 ft. high, 5-in. pots. 1 25
2-2½ ft. high, 6-in. pots. 2 25
2½-3 ft. high, 7-in. pots. 4 50
Specimen plants, 8 to 15 ft. high, in tubs, \$8, \$10 to \$30 each.

Latania Borbonica (Chinese Fan Palm). This very popular fan-leaved Palm is one of the hardiest. 18-20 in. high, 6-in. pots, \$1; 2 ft. high, 8-in. pots, \$2.50. Specimen plants in fine green tubs, from \$8 upwards.

Phœnix Rœbelenii. An elegant, vigorous growing plant with graceful, recurving leaves. It is the most beautiful of the Phœnix class and as hardy as a Kentia. 3 in. pots, nicely characterized, 75 cts. each; 4-in. pots, nicely characterized, \$1.25 each.

Passiflora · Passion Flower

Attractive climbers, covering large spaces in very short time; most beautiful and interesting flowers in great profusion.

Passiflora, Constance Elliot. Pure white.

P., Incarnata. White, tinted lilac, light purple corona.

P. Pfordtii. The best of all; rich shade of blue, suffused with rose. 35 cts. to \$1 each.

Petunias

For house culture, window boxes, baskets and for bedding few plants equal the Petunia in effectiveness. They commence flowering early and continue a sheet of bloom throughout the whole season. Easily cultivated; only require a good soil and sunny position. Young plants, 10 cts. each, \$1 per doz.; large plants, 25 cts. each.

P., Double Varieties. Our double Petunias are of the very best strain. 20 cts. each, \$2 per doz.

PHALANGIUM (Chlorophytum). A very handsome pot plant with graceful, long, variegated leaves. 10 to 25 cts. each.

PLUMBAGO. capensis alba. A handsome plant for the house or out-of-door in summer, producing clusters of light blue flowers. A creamy white variety. 35 cts. to \$1 each.

Primrose · Primula

Primula sinensis fimbriata. Chinese Primulas are great favorites and among the most beautiful flowering plants of the winter and spring season. Fine blooming plants, 15 and 25 cts. each.

P. obconica grandiflora. A profuse bloomer bearing on long stems, heads containing 10 to 15 flowers; varies in color from pale lilac to rose. 15 and 25 cts. each; large plants, 50 cts. each.

PRUNUS triloba. When forced at Easter time and covered with an abundance of double pink flowers this plant certainly makes a striking appearance. \$1 and \$1.50 each.

RHODODENDRONS. These popular evergreens also make splendid forcing plants. Blooming plants ready Feb. to Easter. \$2, \$3 and \$5 each.

Rubber Plant · Ficus

Ficus elastica. One of the best and favorite plants for house decoration. Fine plants, 50 cts. to \$2.50 each.

F. pandurata. The most distinct Rubber Plant ever introduced. Its gigantic, leathery, rich, dark green leaves make it a fascinating house plant. \$1.50 to \$5 each.

F. repens. Evergreen climber for the greenhouse, also fine for baskets, etc. 10 cts. each.

SCREW PINE (*Pandanus Veitchi*). One of the most decorative plants for the house. Its long, graceful curving leaves are broadly striped with creamy white on a green ground. Beautiful plants, \$1 to \$5.

SENSITIVE PLANT (*Mimosa pudica*). A curious and interesting plant with pinkish white flowers. The leaves close and droop when touched or shaken. 25 cts. each.

SNAP DRAGON (*Antirrhinum grandiflorum*). A fine race having very large flowers borne in profusion. Strong plants, 25c. each, \$2.50 per doz.

SPIRÆA Japonica, Gladstone (As-tilbe). A fine forcing plant with large white panicles of flowers. Easter time. 50 cts. to \$1.50 each.

SWEET ALYSSUM (*Alyssum maritimum*). A great favorite among bedding plants; also useful for window-boxes, etc.; sweet-scented. 10 cts. each, \$1 per doz.

TRADESCANTIA tricolor. This is a green and prettily variegated variety of this extremely useful vine. 10 and 15 cts. each.

TRANSVAAL DAISY, Jamesonii Hybrids (*Gerbera*). The wonderful new hybrids of the Scarlet Daisy of

the Cape include a range of brilliantly colored marguerite-like flowers, shading through all colors. Makes an excellent pot plant, as the flowers succeed each other for a long period; also fine for bedding and as a cut flower. 50 cts. each

UMBRELLA PLANT (*Cyperus alternifolius*). An attractive, well-known plant for home or outdoor decoration; also for aquarium and damp places. 15 cts. to \$1 each.

VINCA variegata. This pretty green and white variegated vine is a great favorite everywhere and useful in many ways. 15 cts. each, \$1.50 per doz.

WALLFLOWER (*Cheiranthus*) A well-known, deliciously fragrant, half-hardy perennial, blooming early in the spring or in fall, with spikes of beautiful flowers. 25 cts. each.



Palm, *Kentia Belmoreana*. See page 58.

EASTER PLANTS.

From February until Spring our greenhouses are a beautiful sight, filled with Easter and spring blooming plants. Visitors are always welcome, or we will be glad to give prompt attention to telephone or telegraph orders. See Special Easter plants as noted above under Araucaria, Aucuba, Azaleas, Begonias, Cineraria, Crotons, Cyclamen, Hyacinths, Tulips, Narcissus, Lily-of-the-Valley, Primroses, *Prunus triloba*, Rhododendrons, Screw Pines, *Spiræa Gladstone*, etc. Our stock of Easter lilies will be very fine this year, ready about the third week in March.



A garden of Asters.

ANNUAL PLANTS

Ready to set out the first days of spring

Last year we offered a limited quantity of annual plants which had been started in the greenhouse early. The supply was soon exhausted and our customers wanted more. This year we are determined to have enough, and have planned for a much larger stock. All grown in pots or flats and easy to transplant. You can have blooming plants from these while your neighbor is just getting started. Ready for shipment May 1.

Price, 25 cts. per doz., \$1.50 per 100. One dozen each of the entire collection of 10 varieties for \$1

ASTERS. All types and colors. Plant 15 inches apart, firm the soil well and water in dry weather.

BALSAMS. Mixed colors. Fine in a bed. Plant 12 to 18 inches apart in rich soil.

VERBENAS. Fine for beds, borders or window-boxes. Blooms all summer. Plant 12 to 15 inches apart each way.

FOUR O'CLOCKS. Handsome shrub-like plant. Does well in a shady place. Plant 18 to 20 inches apart.

SWEET PEAS. Mixed colors. Grown in paper pots. You plant pot and all, thus avoiding disappointment.

ZINNIAS. Bloom all summer. All colors. Fine for cutting and always plenty to cut.

PINKS. The old fashioned garden kind. Great range of color. Plant 8 to 12 inches apart in well-manured soil.

COCKSCOMB. Very odd. Blooms from midsummer until frost. Plant 10 to 12 inches apart in rich soil.

NASTURTIUMS. Both dwarf and tall-growing sorts. In paper pots. All colors.

COSMOS. Grown from these plants you can have them in bloom in September. Plant 2 to 3 feet apart in sandy or poor soil in a sunny location.

Bedding Plants

GERANIUMS. Best colors (in pots). 10 to 15 cts. each, \$1 to \$1.50 per doz.

HELIOTROPE. Very fragrant (in pots). 10 cts. each, \$1 per doz.

LOBELIA. White and blue. Fine for edging. 10 cts. each, \$1 per doz.

L., Kathleen Mallard. The new, double-flowering Lobelia. 15 cts. each, \$1.50 per doz.

PANSIES. Best, large-flowering sorts. Strong clumps. 5 cts. each, 50 cts. per doz.



Ceranium.

PETUNIAS. Fine in mass, single. 10 cts. each, \$1 per doz.

SCARLET SAGE. Fine plants (in pots). 10 and 20 cts. each, \$8 and \$15 per 100.

Cannas

DWARF, 3 to 4 feet

- Brandywine. Brilliant red. 25 cts.
- Mont Blanc. White, fine. 40 cts.
- King Humbert. Orange-scarlet. 40c.
- Niagara. Crimson gold. 20 cts.
- Duke of Marlboro. Crimson. 15 cts.
- Martha Washington. Rose-pink. 20 cts.
- Venus. Yellow border. 35 cts.

TALL, 5 to 7 feet

- New York. Carmine. 55 cts.
- Wyoming. Orange. 40 cts.
- Gladiator. Spotted yellow-red. 25c.
- Giant Crimson. Crimson. 15 cts.

Prices our selection, unnamed varieties, \$1.50 per doz., \$15 per 100. All the above are for strong growing plants.

TOMATO PLANTS

Fine, bushy, thrifty plants from pots, ready to jump right in and grow.

20 cts per doz., \$1.50 per 100

- Earliana. Very early.
- Early June. New earliest.
- Ponderosa. Very large, early.
- Perfection. Early; very productive.



Tomato Plant.

PLANTS SUITABLE FOR WINDOW BOXES, BASKETS, URNS, ETC.

Well arranged window- and porch-boxes add greatly in making homelike surroundings and many people in these days of small city lots are compelled to do all their gardening in boxes. The following list of plants are best suited for this purpose and are fine large plants ready for early delivery and immediate effect:

AGERATUM (Ladies' Toothbrush). 10 cts. each, \$1 per doz.

ABUTILON. Very pretty, especially for window-boxes. 10 cts. each, \$1 per doz.

BEGONIAS. All the *Semperlorens* varieties are most useful in this line. 10 cts. each, \$1 per doz., \$7.50 per 100.

COCKSCOMB (*Celosia*). Very popular. 25 cts. per doz., \$1.50 per 100.

CIGAR PLANT (*Cuphea*). Old-fashioned and very decorative. 10 cts. each., \$1 per doz.



Scarlet Sage. See pages 61 and 63.



Lantanas. See page 63.

COLEUS. Well known, beautiful foliage effect. 10 cts. each, \$1 per doz.

DRACAENA indivisa. Most effective in baskets and urns. 25 cts. each, \$2.50 per doz.

EUONYMUS Japonicus. Very pretty evergreen, suitable for shady places. 25 cts. each, \$2.50 per doz.

FORGET-ME-NOT. Elegant window-box plant for the spring planting. 10 cts. each, \$1 per doz.

FUCHSIA. Old favorite, but we offer beautiful new varieties. 10 cts. each, \$1 per doz.

GERANIUMS. Pure white, pink and red; also Ivy-leaved, Variegated-leaved and Rose Geraniums. 15 cts. each, \$1.50 per doz.

GROUND IVY (*Glechoma hederacea*). Very prettily variegated vine; fast grower. 10 cts. each, \$1 per doz.

HELIOTROPE. Beautiful in color (lilac) and fragrant. 10 cts. each, \$1 per doz.

LOBELIAS. Very effective, especially the vining variety. 5 cts. each 50 cts. per doz.

LANTANAS. Great favorites everywhere; the weeping Lantana is a novelty and most effective in baskets, etc. 10 cts. each, \$1 per doz.

NASTURTIUMS. Best varieties; all colors. 25 cts. per doz.

PARLOR IVY (*Mikania scandens*). Rapid-growing vine, hardy and beautiful. 10 cts. each, \$1 per doz.

PARIS DAISY (*Chrysanthemum frutescens*). The hardiest of window-box plants; numerous, pretty white or yellow daisies. 10 cts. each, \$1 per doz.; 25 cts. each, \$2.50 per doz.

PETUNIAS. Everblooming favorites; finest selection. Double-flowering, 20 cts. each, \$2 per doz.; single-flowering, 10 cts. each, \$1 per doz.



Pansy.

PANSIES. Old favorites and fine for spring effect. 5 cts. each, 50 cts. per doz.

SCARLET SAGE. For fall coloring. 10 cts. each, \$1 per doz.

SWEET ALYSSUM. Always in bloom and very fragrant. 10 cts. each, \$1 per doz.

VERBENA. Great profusion of color. 25 cts. per doz.

VINCA variegata. Elegant green and white variegated vine; fast grower. 10 cts. each, \$1 per doz.

For Winter Effects

DWARF BOXWOOD. 10 to 12 inches, 50 cts. each, \$4 for 10; 12 to 18 inches, 75 cts. each, \$6 for 10.

ARBORVITÆ. 12 to 18 inches, 30 cts. each, \$2.50 for 10; 18 to 24 inches, 50 cts. each, \$4 for 10.

PLUMED CYPRESS. 10 to 18 inches, 50 cts. each, \$4 for 10; 18 to 24 inches, \$1 each, \$8 for 10.

Grass Seed Mixtures

Per qt. 25 cts., 2 qts. 45 cts., pk. \$1.25, bus. \$4.

Special Mixture for shady locations.
Per qt. 35 cts., 4 qts. \$1.25, pk. \$2, bus. \$6.



Hanging basket.

CUT-FLOWER DEPARTMENT

We have recently increased our facilities in this department, and are now prepared to deliver or ship reasonable cut-flowers at short notice. Prices vary with the season, and it is frequently better for the customer to name the amount to be expended and the occasion for which the flowers are to be used, and leave the selection to us. No orders accepted for a shipment for less than \$1.

ROSES. Almost the year round. \$1.75 to \$10 per doz.

CARNATIONS. Oct. to June. \$1 to \$2 per doz.

ASTERS. June to Sept. 25 cts. to \$1 per doz.

CHRYSANTHEMUMS. Oct. to Jan. 50 cts. to \$4 per doz.

CALLA LILIES. Dec. to June. \$2.50 to \$3 per doz.

GLADIOLI. Aug. to Oct. 60 cts. to \$1.50 per doz.

DAFFODILS. Dec. to May. 50 cts. to \$1 per doz.

PAPER-WHITE NARCISSUS. Nov. to Easter. 50 cts. to \$1 per doz.

ROMAN HYACINTHS. Dec. to Easter. 50 cts. to \$1 per doz.

LILY-OF-THE-VALLEY. Sept. to June. 75 cts. to \$1.50 per doz.

VIOLETS. Nov. to Easter. \$1.50 to \$3 per 100.

Any of the above made into bouquets with sufficient ferns for ordinary purposes free of charge. Should an extra amount be needed, it can be obtained at the following prices:

Asparagus Sprays. 10 cts. each, strings, \$1.

Ferns. 15 cts. per doz., fancy, 25 cts. per doz.

Smilax. 25 to 30 cts. per string.

Wedding Flowers, Special Decorations, Etc.

Should you wish something in church or home decorations, give us a trial. With our experience and equipment we can furnish your decorations better and cheaper than you can put them up yourself.

When ordering flowers for a wedding, it is always best to give as much time as possible, as wedding flowers are usually arranged to carry out some special plan and are not always carried in stock.

Material to be used varies with the season. Southern wild smilax and smilax strings are always available and appropriate. Prices on application according to the size of the decoration.

Brides' Bouquets

The most popular kinds are the large, round bouquet of white roses with a shower of lily-of-the-valley, made with a profusion of asparagus, and narrow chiffon or silk ribbon. Small, \$6 to \$7.50; medium, \$8 to \$10; large, \$12 to \$15.

Same bouquet in solid lily-of-the-valley instead of roses. Small, \$8 to \$10; medium, \$10 to \$12; large, \$15 to \$18.

Arm Bouquet for Brides. Made with white roses and asparagus. \$3, \$5, \$7.50.

Arm Bouquet of Chrysanthemums. \$3, \$5, \$7.50.

Arm Bouquet of Carnations. \$2, \$4, \$6.

Bridesmaid Bouquets are the same as the Brides' Arm Bouquets, except that they are usually of pink or some other color than white.

Boxes of Assorted Flowers. \$1, \$2, \$3, \$4, \$5 and upward, as wanted. Sent to any address with your card enclosed, if so ordered.

Bouquets and Baskets for weddings, school commencements, presents, receptions, etc. \$1.50 to \$10.

Hand and Table Bouquets. Small, \$1 to \$1.50.

Gents' Buttonhole Bouquets. 10 to 25 cts. each, \$1 to \$2 per doz., \$5 to \$12 per 100.

Ladies' Corsage Bouquets. Choice flowers, gracefully arranged. 50 cts. to \$3 each. Special rate in quantities.

Fancy Basket of Cut-flowers. Small to medium, \$1.50 to \$3; medium to large, \$3.50 to \$5; extra fine, \$6.50 to \$10 and upward to order. Special table designs, etc., at reasonable rates.

Flowers for Funerals

In ordering funeral flowers on short notice, please bear in mind that it will be to your advantage to give us as much time as possible—the more time we have the more care we can bestow on the work. If we know the time of the funeral it is often a great help to us in selecting the most suitable flowers as to durability, etc.

Any size or style can be furnished at short notice. Below are named the kinds mostly used, and are the leading standard and new designs.

Sprays or Bunches of Choice Roses Tied with Ribbon. Small, \$3 to \$4; medium, \$4 to \$5; large, \$6 to \$8; extra large, \$9 to \$12.

Sprays or Bunches of White Lilies. Small size, \$4 to \$5; medium, \$6 to \$8; large, \$8 to \$10; extra large, \$12 to \$15.

Sprays of Carnations. \$2, \$3, \$4, \$5, \$6, to \$8 and larger, if needed.

Sprays of Roses and Carnations. Combined, \$3, \$4, \$5, \$6, \$8, \$10, to any size needed.

Fresh Sago Palm Leaves, with sprays or loose, 75 cts., \$1 to \$1.50 each; extra, according to size.

Anchors. \$2.50, \$3, \$4, \$5, \$6.50, \$8, \$10.

Broken Column. A very tasty design, ranging from 24 to 60 inches in height. Flowers are worked on to the design in a spiral form. \$15, \$25, \$35, \$50.

Cross. \$3, \$4, \$5, \$7.50, \$10, \$15, \$20.

Crescent Wreath. \$4, \$7.50, \$10.

Cross and Crown. On base. \$10, \$15.

Faith, Hope and Charity. Anchor, cross and heart on base. A very beautiful and appropriate design. \$10, \$15.

Gates Ajar. The most showy of all designs and one which is widely used. Even the smallest sizes make an excellent show. \$15, \$20, \$25, \$35, \$50.

Heart, Open Center. \$3, \$5, \$7.50, \$10, \$15.

Harp. A very pretty piece, having a striking effect; with gilded or purple strings. Flat or on a base. \$4, \$5, \$7.50, \$10, \$15, \$25.

Lyre. A beautiful piece, similar to the harp in effect, but different in make-up; gilded strings. A very

popular design. Flat on or base. \$4, \$5, \$7.50, \$10.

Masonic Emblem, Square and Compass in Wreath. \$10, \$15.

Open Book. \$15, \$20, \$25.

Odd Fellows Design, Three Links. \$10, \$15.

Shield, on base. \$10, \$15, \$25.

Sickle. \$3, \$5, \$7.50.

Sickle and Sheaf of Wheat. \$5, \$7.50, \$10.

Sheaf of Wheat. \$1, \$2, \$3, \$5.

Sheaf of Wheat with Cycas leaves and Sprays of Flowers. \$5, \$7.50.

Wreaths. The universal favorite. \$3, \$5, \$7.50, \$10, \$12.50, \$15, \$25.

White Doves. Natural, stuffed, used on many designs and for numerous other purposes. Per quality, \$2, \$2.50 and \$3 each.

Preserved Cycas Wreaths. These will keep for several months in good condition when placed on a grave. \$2, \$3, \$5.



A spray of Carnations and greens costing \$3 to \$5 according to season.



GARDEN FURNITURE AND PLANT TUBS

So great has been the demand for our garden furniture and plant tubs that we have installed our own plant for their manufacture, and we are now prepared to supply various designs of furniture, tubs and window and plant boxes. We will also make special designs to fit unusual need, on request. These pieces are all hand made, of best cypress lumber, and put together to last for years and stand all sorts of exposure. Natural finish or painted green or white as desired.

Garden Furniture

	Each
Round seat, 8 ft.	\$20 00
Heavy seat, square, 3 ft.	12 00
Light seat, square, 3 ft.	9 00
Heavy chair, square.	7 50
Light chair, square.	6 50
Heavy table, square, 3 x 3 ft.	10 00
Light table, square, 30 x 30 in.	8 00
Taborette, square, 15 x 15 in.	3 50
Tennis seat, square.	9 00

Self-watering Flower Boxes

Made of heavy galvanized iron with water reservoir in the bottom with tube extending to top of the soil.

No.	Length	Width	Depth	Each
No. 1	23 in.	9 $\frac{1}{2}$ in.	8 in.	\$1 60
No. 4	29 in.	9 $\frac{1}{2}$ in.	8 in.	2 05
No. 7	35 in.	9 $\frac{1}{2}$ in.	8 in.	2 50
No. 10	41 in.	9 $\frac{1}{2}$ in.	8 in.	3 00

Window Boxes, Rustic

Length	Width	Depth	Each
30 in.	8 in.	8 in.	\$2 50
36 in.	9 in.	9 in.	2 75
48 in.	10 in.	10 in.	3 00

Window Boxes, Plain

Plain window-boxes (painted green or white).

Length	Width	Depth	Each
30 in.	8 in.	8 in.	\$1 50
36 in.	9 in.	9 in.	1 75
48 in.	10 in.	10 in.	2 00

Square Tree and Plant Tubs

	Each
14 x 14 in.	\$3 50
16 x 16 in.	4 00
20 x 20 in.	5 50
24 x 24 in.	6 50

Round Cedar Tubs

No.	Outside diam.	Length of stave outside	Each
No. 8	12 in.	10 in.	\$1 75
No. 7	15 in.	12 in.	2 00
No. 6	16 $\frac{1}{2}$ in.	13 in.	2 25
No. 5	18 in.	14 in.	2 75
No. 4	19 $\frac{1}{2}$ in.	16 in.	3 00
No. 3	21 in.	18 in.	4 00
No. 2	23 in.	20 in.	4 50
No. 1	25 in.	22 in.	5 00
No. 0	27 in.	24 in.	5 50

Index of Departments

	PAGE
Annual Plants.....	60, 61
Cut-Flowers.....	64, 65
Deciduous Shrubs.....	21-32
Deciduous Trees.....	12-20
Decorations.....	64
Easter Plants.....	59
Evergreen Shrubs.....	6-8
Evergreen Trees.....	2-5

	PAGE
Ferns.....	37, 56
Fruits.....	48-52
Garden Furniture.....	66
Grass Seed Mixtures.....	63
Hedge Plants.....	11
Herbaceous Plants.....	38-46
House Plants.....	53-59
Palms.....	58

	PAGE
Plant Tubs.....	66
Reeds and Grasses.....	46
Roots and Bulbs.....	47
Roses.....	32-35
Tomato Plants.....	61
Vines.....	36, 37
Window Boxes.....	66
Window Plants.....	62, 63

General Index

	PAGE
Abelia.....	21
Abies.....	4
Abutilon.....	53, 62
Acer.....	16, 17
Achillea.....	38
Actinidia.....	36
Æsculus.....	15, 25
Agapanthus.....	53
Ageratum.....	53, 62
Agrostemma.....	38
Akebia.....	36
Alder.....	12
Almond, Flowering.....	21
Alnus.....	12
Althæa.....	38
Alyssum.....	38, 59-63
Amaryllis.....	53
Amelanchier.....	21
Anchusa.....	38
Andromeda.....	6
Anemone.....	39
Antheus.....	39
Arabis.....	39
Aralia.....	12, 21, 53
Arctœmia.....	53
Arborvitæ.....	2, 63
Aristolochia.....	36
Artemisia.....	39
Arundo.....	46
Ash.....	13
Asparagus.....	52, 54
Aspidistra.....	53
Aspidium.....	37
Aster.....	39, 60, 61
Astilbe.....	39, 59
Aucuba.....	54
Azalea.....	6, 22, 54
Baccharis.....	22
Bachelor's Button.....	45
Balsams.....	60
Bambusa.....	46
Bayberry.....	26
Beech.....	13
Begonias.....	54, 62
Benzoïn.....	30
Berberis.....	11, 22
Betula.....	13
Bignonia.....	36
Biota.....	2
Birch.....	13
Bittersweet.....	36
Bocconia.....	39
Boltonia.....	39

	PAGE
Boxwood.....	7, 63
Buckthorn.....	22
Buxus.....	7
Caladium.....	55
Calla.....	54
Callicarpa.....	22
Calyceanthus.....	32
Camellia.....	51
Campanula.....	39
Candytuft.....	41
Cannas.....	54-61
Canterbury Bell.....	39
Caragana.....	22
Cardinal Flower.....	42
Carex.....	54
Carpinus.....	15
Caryopteris.....	31
Castanea.....	14
Catalpa.....	13
Ceanothus.....	22
Cedar.....	3
Celastrus.....	36
Celtis.....	18
Centaurea.....	39
Century Plants.....	55
Cephalanthus.....	22
Cephalaria.....	39
Cephalotaxus.....	5
Cerastium.....	39
Cerasus.....	14
Cercidiphyllum.....	15
Cercis.....	19
Chœnomile.....	39
Chelone.....	40
Chestnut.....	14
Chionanthus.....	32
Chrysanthemums.....	39, 55, 63
Cimicifuga.....	40
Cineraria.....	55
Cinquefoil.....	29, 45
Cleodrasis.....	20
Clematis.....	36, 40
Clethra.....	31
Clivia.....	55
Cobara.....	55
Cockscomb.....	62
Colens.....	55, 62
Columbine.....	39
Colutea.....	23
Convallaria.....	49, 57
Coreopsis.....	39
Cornus.....	15, 24
Corouilla.....	40

	PAGE
Corylus.....	25
Cosmos.....	61
Cotoneaster.....	7, 23
Cratægus.....	20
Crotons.....	55
Cyclamen.....	55
Cypress.....	3, 39, 63
Cyrtomium.....	56
Cytisus.....	15
Dahlia.....	47
Daphne.....	7
Delphinium.....	40
Deutzia.....	23
Dianthus.....	40
Dicentra.....	40
Dictamnus.....	40
Digitalis.....	40
Dogwood.....	15, 24
Doronicum.....	11
Dracæna.....	55, 62
Echinacea.....	11
Echinops.....	41
Elder.....	24
Eleagnus.....	26
Elephant's Ear.....	55
Elm.....	15
Erianthus.....	46
Erigeron.....	41
Eryngium.....	41
Euonymus.....	7, 24, 56, 62
Eupatorium.....	41
Euphorbia.....	41
Exochorda.....	24
Fagus.....	13
Festuca.....	46
Ficus.....	59
Firs.....	4
Fittonia.....	56
Flax.....	42
Forget-me-not.....	12, 62
Forsythia.....	24
Four O'clocks.....	60
Foxglove.....	40
Francoa.....	56
Fraxinus.....	13
Fuchsia.....	56, 62
Funkia.....	41
Gaillardia.....	41
Galtonia.....	41
Gerania.....	21
Geraniums.....	41, 56, 61, 62
Gerbera.....	59
Geum.....	41

	PAGE		PAGE		PAGE
Gillenia	41	Lychnis	42	Richardia	54
Ginkgo	15	Lycopodium	57	Robinia	16, 29
Gladioli	47	Lysimachia	42	Rose of Sharon	29
Glechoma	63	Magnolia	17	Rudbeckia	45
Gleditschia	16	Mahonia	7	Salisburia	15
Gloxinia	41	Maple	16, 17	Salix	20
Grevillea	56	Maranta	57	Sambucus	24
Gynerium	46	Mentha	42	Saxifraga	45
Gypsophila	41	Mertensia	42	Scabiosa	45
Halesia	30	Mikania	57, 63	Scarlet Sage	45, 61, 63
Hamamelis	32	Mimosa	59	Sciadopitys	5
Hedera	37	Mock Orange	26	Sedum	45
Helenium	41	Monarda	42	Selaginella	57
Heliopsis	41	Moon Vine	57	Sensitive Plant	59
Heliopsis	41	Morus	18	Shortia	45
Heliopsis	61, 63	Mulberry	18	Smilacina	45
Helleborus	41	Myosotis	42	Snapdragon	59, 61
Hemerocallis	41	Myrica	26	Snowball	30
Hepatica	41	Myrtle	57	Snowberry	30
Hemlock	4	Narcissus	56	Solanum	57
Hesperis	41	Nasturtium	61, 63	Solidago	45
Heuchera	41	Nicotiana	57	Sophora	19
Hibiscus	29, 41	Nyssia	20	Sorbus	13
Hippophae	29	Oak	18	Sour Gum	20
Holly	7	Oenothera	42	Spiraea	31, 39, 45, 59
Hollyhock	38	Oleaster	26	Spruce	5
Honeysuckle	25, 37	Oxydendrum	19	Staphylea	31
Hornbeam	15	Paeonia	42	Statice	45
Horse-Chestnut	15, 25	Pandanus	59	Stephanandra	31
Humulus	56	Pansies	49, 61, 63	Stokesia	45
Hyacinths	56	Passiflora	58	Storax	31
Hydrangea	25, 57	Paulownia	15	Styrax	31
Hypericum	26, 41	Pentstemon	42	Sunac	20, 32
Iberis	41	Peppermint	42	Sunflower	41
Hex	7, 26	Periploca	37	Sweet Gum	20
Impatiens	57	Periwinkle	46	Symphoricarpos	30
Incarvillea	41	Persica	18	Syringa	20
Ipomoea	57	Persimmon	18	Tamarix	32
Iris	41, 42	Petunias	58, 61, 63	Taxus	5
Isolepis	57	Phalangium	58	Thalictrum	45
Ivy	36, 37, 57, 63	Phellodendron	14	Thrift	39
Jasminum	26	Philadelphus	26	Thuya	2
Juglans	20	Pilox	45	Thyme	45
Juniper	4	Picca	5	Tilia	16
Kadsura Tree	15	Pines	4, 53	Tradescantia	45, 50
Kalmia	7	Planc. Oriental	18, 19	Trillium	15
Kerria	26	Platycodon	45	Trollius	48
Kniphofia	42	Plumbago	58	Trumpet Vine	36
Lantana	57, 63	Po-locarpus	5	Ysuga	4
Larix	16	Polemonium	45	Tulips	59
Larkspur	46	Polyanthus	45	Tulip Tree	20
Latania	58	Poplar	19	Turtlehead	40
Lathyrus	42	Poppy	42	Ulmus	15
Laurel	7, 54	Potentilla	29, 45	Umbrella Plant	59
Lavender	42, 45	Primula	45, 58	Vaccinium	25
Lencothoe	7	Privet	11, 29	Verbascum	46
Liatris	42	Prunus	21, 29, 58	Viburnum	30
Lign-strum	11, 29	Pyrethrum	45	Vinea	46, 59, 63
Lilac	26	Pyrus	13, 14, 29	Wallflower	59
Lilium	42, 53	Quercus	18	Walnut	20
Lily-of-the-Valley	40, 57	Ranunculus	45	Weigela	32
Linden	16	Retinospora	3	White Fringe	32
Liquidambar	20	Rhamnus	23	Willow	20
Liriodendron	20	Rhododendron	8, 58	Wistaria	37
Lobelia	42, 61, 63	Rhodotyus	26	Witch Hazel	32
Locust	16	Rhubarb	52	Yew	5
Lonicera	25, 37	Rhus	20, 32	Yucca	46
Lupinus	42	Ribes	23		

Two Great "Get Acquainted"

Collections

No. 1.—JAPANESE COLLECTION OF ORNAMENTALS

All standard popular plants that will do well in most any soil conditions, need little care, and sufficient to make a good showing in an average-sized city front yard.

- 2 Clumps Japanese Iris. Strong.
- 2 Japanese Peonies. Large size.
- 1 Japanese Rose. 1½ feet high.
- 1 Japanese Maple. 12 to 18 inches high.
- 1 Japanese Barberry. 1 foot high.
- 1 Clump Japanese Grass. Large.

All of the above thrifty, strong plants, carefully packed and shipped, express paid, for only \$2 cash with order.

No. 2—SMALL AREA FRUIT COLLECTION

That back or side yard can be made far more beautiful and infinitely more interesting with a few trees and berries. This collection is suggested especially for the small yard, and with the introduction of **Dwarf Fruit Trees** in apples and pears, fruit can be picked from the trees the second year after planting. They produce the same quality of fruit as the ordinary tree, but the habit of growth has been so changed by grafting that the trees never attain a height of more than ten feet.

- 2 Dwarf Apples. Early and late varieties.
- 1 Dwarf Pear. Standard variety.
- 2 Standard Peach, Early and Late varieties.
- 1 White Grape. 2-year old.
- 1 Red Grape. 2-year old.
- 2 Red Currant. 2-year old.

All of the above in good, strong, satisfactory stock, not the tree-agent kind, carefully packed and shipped by prepaid express, for only \$3.50, cash with order.

The Two Great Collections for \$5. Order Quick!

Trees and Plants for the House and Garden



The Berryhill Nursery Harrisburg, Pa.



Residence of Mr. A. G. Knisely, Front and Maclay Streets, Harrisburg, Pa.
The entire place planned and planted by us and photographed
the first spring after planting