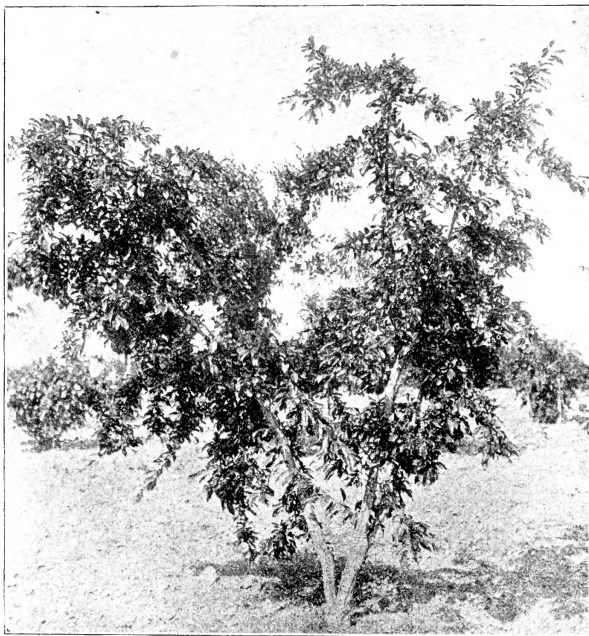


T H E 1 9 0 1
SUPPLEMENT TO
NEW CREATIONS
~ IN ~
Fruits and Flowers



The Original "Burbank" Plum Tree, now sixteen years of age. It has never failed to produce a full crop of good fruit. This picture was taken just after the first thinning and the ground under the tree is covered two deep with the plums. All the millions of Burbank plum trees in the world came from this tree, which takes its present form from the severe cutting for buds and grafts which it experienced in its youth.

"Half the flora of the world still contains the riddle of the Sphinx. Three thousand years of study and experiment have merely brought a handful of species of plants into successful cultivation, while the vast majority hold their secret for future generations to solve. In the economy of nature they only work out their purpose half-heartedly, and often to the detriment of those who are placed as guardians over them. They are still the wild, sour grapes of the primitive forest, or the bitter, acid fruits of the thorn-apple tree."—Lippincott's.

Burbank's Experiment Farms

LUTHER BURBANK

Office and Residence,
204 Santa Rosa Avenue

SANTA ROSA, Sonoma County
California, U. S. A.

GEO. NICE & SONS, INC., L. A.



"No man living or dead has done so much to make scientific plant breeding a reality. He lives today the chief inspiration and example of those who by artificial aid to natural law would hasten the coming of ideal excellence."—"The Fruitman."

"It is pleasant to turn from the distracting and corrupting influences of politics and current affairs, to the work of a genuine benefactor of the race, such as Luther Burbank of Santa Rosa, who is contributing to the welfare of the world to a degree impossible to estimate. Outside of Edison's laboratory, there is no place in America of interest equal to Burbank's experimental gardens."—"Santa Cruz Surf."

"The creations of the horticultural wizard are so wonderful that even science has to be convinced. An amusing incident in the visit of the Associated Agricultural Colleges and Experiment Stations of America to the Sebastopol grounds gives a fair illustration. When the party had traversed but a small portion of the grounds and tested but a few of the fruits therein, one of the professors called a halt, requesting from his brethren their brief attention. Calling upon Mr. Burbank to step forward so that all might the better view him, the producer of the wonders, he delivered the following: 'Gentlemen: In the presence of you all I wish to make known that one of my objects in coming to this coast was to expose Mr. Burbank's fraud. I have read that man's catalogue annually, and I have long considered him about the biggest liar in the United States. I now retract all that, and declare that Mr. Burbank has never told one-half of the marvels that he might. Gentlemen, hats off to the wizard before you.' The motion needed no second."—"Santa Rosa Republican."

"What Nature will do for us running loaded trains of profit in our direction, cannot be guessed until we turn the switch. The finest fruits the world ever saw are en route. They are moving manward among the mighty certainties of the future. Who will set the switch and deftly sidetrack them in our yards? While fruit men were testing grapes in America with dubious prospects, Mr. Bull of Concord shifted the rails and brought to our very doors the fabulous fruitage of the Orient. Gideon of Minnesota blindly grabbed the lever at a happy moment, and switched into the homes of the northwest uncounted carloads of the Wealthy. Budd switched onto our northwestern spur the Hibernian, and with it hope for the apple grower of Manitoba. Burbank, with the foresight of a seer and a skill beyond precedent, seems able to realize all our dreams of perfection by running the finished forms of fruit and flower of the whole earth into the great central depot of the United States. And there are others listening for the roar of the coming trains, and trying with might and main to shift the rails. If you want any part in the twentieth century jubilee, take hold with a will and help switch onto our sidetrack the train of success."—"The Fruitman."

EDUCATION AND SELECTION are the two greatest forces used in the production of all these fruits and flowers. Not knowing the facts, and because some of them happen to be crossed, people often jump at the conclusion that they are summarily produced by crossing, with about as little science or ceremony as a wizard would appear to do it with his magic wand.

VISITORS to our grounds are not allowed, as no possible benefit can accrue and we have no time to spare.

Applications for SAMPLE FRUITS cannot generally be complied with, as a small army of specially trained men would be required during the priceless hours of the ripening season, when the habits, peculiarities and probable comparative value of the many thousands of new fruits must be promptly, carefully, and very rapidly attended to.

ORDER EARLY AS POSSIBLE. Spring commences in California with February, and everything herein described must be carefully kept back by cold storage to supply Eastern and Foreign customers; we have arrangements, however, for keeping GRAFTING WOOD in the most perfect condition all through the season.

We hold all the stock of these novelties in existence; none of them can be obtained elsewhere on earth.

Everything described in this list will be *prepaid by mail or express* anywhere in the United States, Canada or Mexico.

NO RESTRICTIONS whatever; multiply and distribute *as fast as possible*.

TERMS INVARIABLY CASH; no time to keep books.

ALL THE CUTS USED IN THIS CATALOGUE ARE EXACT NATURAL SIZES, UNLESS OTHERWISE NOTED.

In consideration of careful handling and prompt delivery, I rather prefer that shipments go forward by Wells, Fargo & Co.'s Express. That company furnishes special rates; never above and in many instances much lower than U. S. mail rates. I also prefer that remittances be made (when possible) by express money orders, making same payable to my order, if not convenient then by bank draft, registered letter or Postoffice money orders.

TO CORRESPONDENTS

Kindly be as brief as possible. Ask no questions which you think can be answered elsewhere. With all the modern conveniences of graphophones, typewriters, &c., it is at times impossible to keep up.

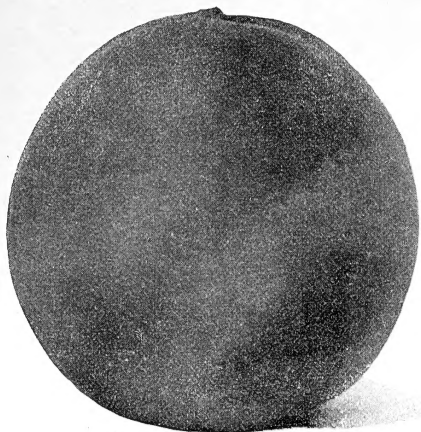
Always write your questions on a postal card with spaces for reply, and whenever possible arrange the question so that it can be answered by yes or no. If a reply is desired which requires more space than a postal card affords, always enclose five dollars.

"Value for value is the rule that must finally obtain in all transactions, and it is the man who gives full value for what he receives who wins permanent prosperity."—W. Atlee Burpee.

"The best way to benefit the poor is to increase Nature's productions of the necessaries of life."

New
Crossbred Peach, "Opulent"

THE surpassing value of the Muir—Wager class of peaches for hardiness, regular bearing, unusually small stone and firm, yellow, sugary flesh has made them very popular and the White Nectarine with its rare beauty, large size and rich, acid flesh, has never been surpassed.



We thought a good combination of these two should produce a fruit for home use of surpassing excellence. Ten years have proved the value of the inspiration, and the best result of this work is the "OPULENT" peach, now offered for the first time.

The form and size are shown in the cut. Skin, creamy white, slightly downy and usually about half covered with crimson dots and blushes.

Flesh, light straw color throughout, fine texture, quite firm, yet unusually juicy and

with a most exquisite commingling of the Muir peach sweetness and the acid of the White Nectarine, producing what may be called "a high vinous flavor." The very best of judges East, West, North and South say the fragrance and flavor is not possessed by any other peach, and no one can be induced to eat other peaches when "OPULENT" is at hand.

The stone is unusually small and parts perfectly from the flesh.

The fruit ripens here July 20th, just before Early Crawford. The tree is a good strong grower and bears more regularly than almost any other, except the Muir Wager class. After a thorough test of several years, not only by Californians, but by representatives of many Eastern colleges and Experiment Stations, I am thoroughly convinced that "OPULENT" should be grown by everybody. It is the first peach ever introduced from my grounds, and the best one I have ever yet produced.

Price, June bud trees: Each, \$2; five, \$8; ten, \$15.

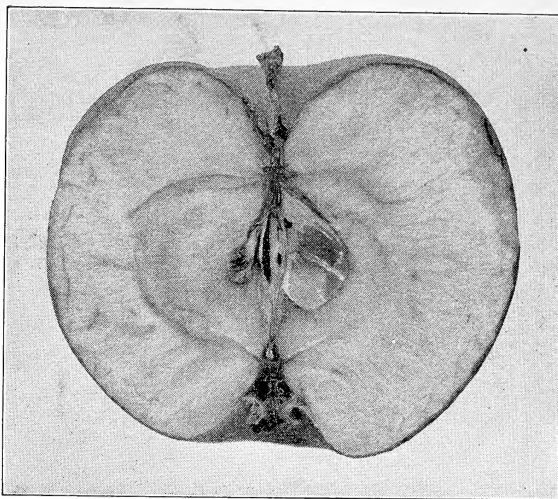
We do not fill this Catalogue with testimonials of the value of these new Fruits and Flowers, though we have enough to fill one twenty times as large.

The best way to judge of the value of any novelty is to look to its source, and the Fruits and Flowers which have been bred and educated on Burbank's Experiment Farms and now growing all around the world are the very best testimony which can be given. Nor do we send out seeds and grafts for trial, for when a fruit or flower is well tested it is already introduced and there would be no occasion for publishing these "New Creations."

"The demand for novelties is constantly increasing, and at no previous time have results in this direction met with so ready appreciation.

"The diversification and extension of fruit and vegetable industries into new regions creates a demand for varieties adapted to various conditions.

"As the conditions are numberless, the field for improvement seems almost inexhaustible. No branch of horticulture or agriculture promises more important and remunerative results than may be attained by intelligent plant breeding."—"New England Florist."



New Apple, Winterstein

IT has often been said that if the Gravenstein lasted through the season no other apple need be raised. Other apples do not sell readily during the Gravenstein season. Its seedlings, however, very rarely even approach in any manner its combination of good qualities, and the one which I now offer is not in some respects as good, but is much better in others, it is therefore introduced after severe tests, fully believing that it will prove a great acquisition in many places, not all, for no fruit, so far, has ever been known which would.

One of its most valuable points is that it ripens, with Baldwin and Rhode Island Greening, several weeks after Gravenstein; but in addition to this it is a much more prolific bearer, never failing to produce heavy crops and at the same time makes a growth fully as strong as Gravenstein.

The general form and average size of the fruit is well represented by the above cut which was made by the "Rural New Yorker" from a specimen sent to Mr. E. S. Carman two years ago. I cannot more faithfully describe it than to quote his impressions of it as given in the "Rural New Yorker" at the time:

A Promising New Apple.

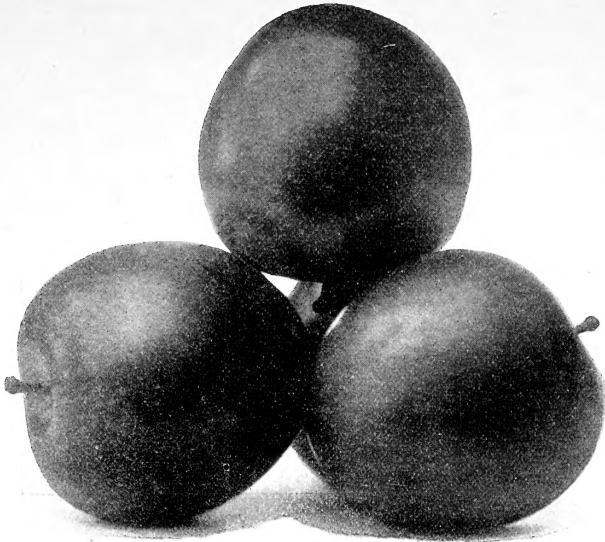
"We are wondering whether the horticultural and pomological work that Luther Burbank, of Santa Rosa, Cal., has done, is doing and may do, will ever be adequately appreciated. One thing is certain, viz.: that the work he has already done is by no means appreciated. His latest success, and it seems to the writer, one of his most valuable successes, is an apple—a seedling of Gravenstein, a specimen of which he sent to us, and which we received October 27th. We wrote as follows under date of October 17th:

"By this mail I send you a medium sample of my new Gravenstein seedling, six weeks later than its parent, ripening exactly with the Baldwin and Rhode Island Greening. The tree is a grand grower, and as productive as an apple can possibly be. I think the quality, tenderness and texture remarkable."

"The apple, a half section of which is shown at Fig. 357, was slightly shriveled when it was received. The flesh is yellowish, exceedingly tender, spicy, rich, sub-acid. It has a flavor all its own, and we do think, taking it all and all, that we have never eaten an apple that more nearly approaches all that we need ever hope to get in an apple. In appearance and coloring, we may say in a word that it resembles the Ben Davis.

"How well this new-comer will thrive away from its native home, only years of trial can demonstrate. What it is in its native home Mr. Burbank has told us in a few words, and he is one who studiously avoids undue praise for his 'new creations.'"

This is the first apple of my own origination which has ever been sent out, though apples, plums, berries and various seeds and flowers have sometimes been offered under my name without consulting the party most likely to be interested in the matter. Grafting wood, per foot, \$1; three feet, \$2; five feet, \$3; ten feet, \$5.



New Plum, "First"

(No. 31,288 of 1899 New Creation)

SECOND generation combination cross of Hawkeye, Hammer, Milton, Wyant, Wayland and Burbank. In introducing this new plum I confidently make the statement that it is the EARLIEST OF ALL PLUMS: ripening here June 15th, fully three weeks earlier than Red June; and also that it is the largest, handsomest and most productive of all very early plums.

It is too soft and ripens too suddenly for shipping to distant markets, but its extreme earliness, large size and good quality make a combination of very unusual value. It blooms late and ripens in an incredibly short time after blooming, while fruit is scarce and all markets absolutely bare of plums; even the little Cherry plum makes its appearance a week or more later. The fruit is of good medium size—as represented above—pale amber, faint blush on the sunny side, half transparent. Flesh same color, moderately firm, sweet, juicy and good, especially so when just at the right stage of ripeness. Tree of medium growth, never fails to produce all it can hold.

It should prove very hardy, and for home use and near markets will be the most useful of all very early plums. A well-known California fruit grower offered Four Hundred Dollars (its weight in silver) for the small tree of "FIRST" three years ago. Grafting wood, per foot, \$5; three feet, \$9; five feet, \$12; ten feet, \$20.

"In connection with these experiments a remarkable condition exists and that is the reverence the small boy has for Burbank fruit. No heart is strong enough to escape temptation, yet there is no necessity for enforcing precautions."—"Santa Rosa Republican."

"Mr. Burbank refers to his productions in the plant world as 'New Creations,' which they are. He has created some plants which, were they found wild, would be termed new species; perhaps new genera. He has opened the eyes of every intelligent horticulturist and botanist to possibilities hardly dreamed of before he presented his interesting work. Such a man is entitled to great respect from his fellow-men, and I should like to see a good and substantial monument erected to him in the nation's capital, for his 'Creations' are a blessing to all mankind."—Prof. S. B. Green, Minn. Agricultural College.

New Plum "Combination"

AN extremely handsome, large, early, light crimson plum of the very best quality, ripening here July 12th, before most of the earliest plums and about as early as Climax. Four years out of five it was pronounced by well known plum growers the best plum they had ever tasted. The test was



severe, as I had more than twenty-five thousand varieties bearing fruit, including nearly all the most popular standards of the past. One season, however, the fruit came in second in quality, probably from the fact that the trees had been shorn of nearly every bud for propagating purposes. The trees, both old and young, are about the best and most symmetrical growers among the plums, making an early, rapid growth, ripening the wood perfectly hard to the tips early in the season, indicating unusual hardness. The bark, leaves and fruit are all unique. Bark, dark

russet bronze. The unusually large, broad, glossy, coriaceous leaves are bronze crimson in the spring and fall.

Early, regular and abundant bearer of large, nearly globular fruit of uniform size. Flesh, straw color, extremely sweet, with a very pronounced pineapple flavor. Stone, small and nearly free when fully ripe, and if the best judges may be trusted, "*COMBINATION*" fruit has never been equaled in quality.

"*COMBINATION*" trees resemble no other trees in cultivation and are certain to please everybody. Grafting wood, per foot, \$5; three feet, \$9; five feet, \$12; ten feet, \$20.

New Asparagus "Quality"

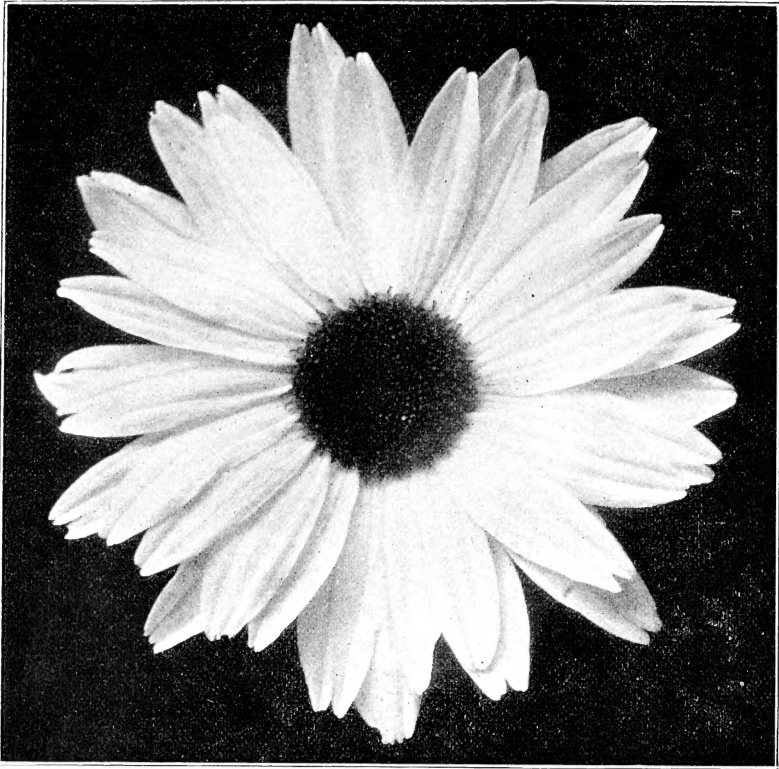
MANY years ago, while experimenting for the improvement of Asparagus, one plant was observed which produced an unusual number of shoots of a light yellowish green color. Other plants often produced larger shoots, but none on the place nearly as many in number or as much in weight. When cooked it was found to have a rich flavor, unlike and very much superior to any other Asparagus.

Numerous seedlings have been raised from it, and though a certain per cent., as with all other varieties, vary from the original, yet as a large proportion resemble the parent plant in productiveness and especially in quality, this unusual strain is now offered. For home use it is unequalled.

Small yearling plants, per doz., 50c; per hundred, \$3.

Seed, per packet, 25c; per ounce, \$1.00.

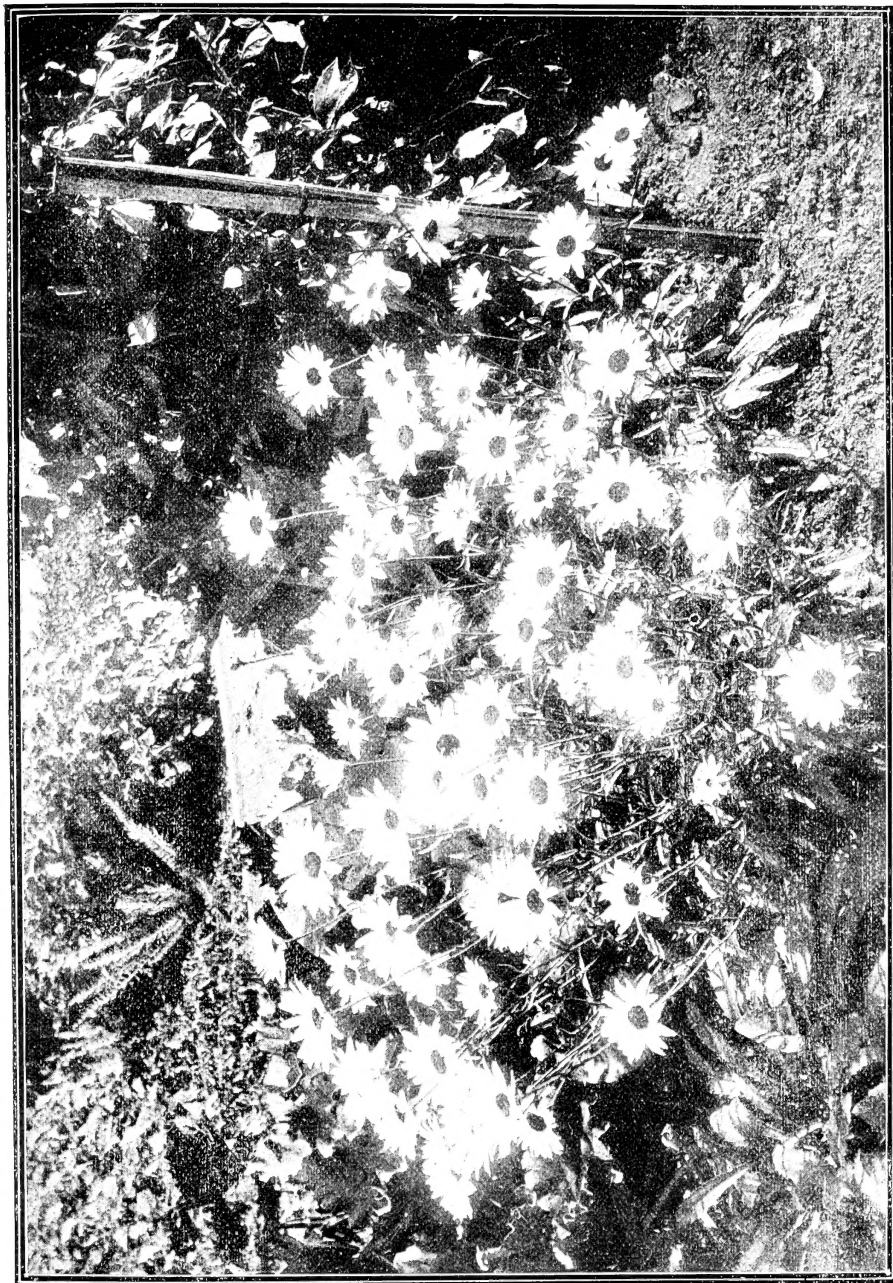
"Under the heading, 'The Prunus Simoni Plum,' in 'The Rural New Yorker' of July 29, page 544, second column, you say: 'We are wondering why crosses with it and the native and Japan plums have not been made.' In Burbank's Catalogue of New Creations, page 4, 1898, you will find that he has been experimenting twelve years in this line, and offers the results of such crosses both there and in the 1899 catalogue."—H. L. Fairchild, Nichols, Conn.



The Latest Floral Wonder "SHASTA DAISIES." (*Chrysanthemum Leucanthemum Hybridum*)

DURING the past few years when "Shasta Daisies" were being bred and educated up to their present state more admiration has been bestowed upon them by visitors than upon any other flowering plant growing on my grounds, and with good reason, for today no other flower can compare in extent of usefulness. Their first qualification is hardness. They can be grown out of doors by everybody where it is not cold enough to kill oak trees. Second, they are perennial, blooming better and more abundantly each season. Third, they can be multiplied rapidly by simple division and they are not particular as to soil. Fourth, they bloom for several months—in California nearly all the year. Fifth, the flowers are extremely large and graceful—averaging about a foot—often more—in circumference, with three or more rows of petals of the purest glistening whiteness, on single, strong, stiff, wiry stems, nearly two feet in length. This peculiar grace and remarkable whiteness cannot, of course, be shown on paper. These "Shasta Daisies" should not be confounded with the coarse *Chrysanthemum lacustre* of the Catalogues or the common "American field daisy."

The "Shasta Daisies" have been produced by first combining the weedy, but free flowering American species with the rather large, but coarse, European species and the Japanese species (*Nipponicum*), after which rigid selection through a series of years produced the present wonderfully useful and beautiful strain. "Shasta" is only the first of the new type, some of which were for the first time exhibited in the window of a prominent San Francisco florist. Crowds of people visited the establishment to inquire about the latest floral wonder. The blooms when cut remain perfectly fresh and in good condition for two weeks or more. Think, if you can, what other flower possesses all the above qualities. Many new and graceful forms have lately appeared among the "Shasta Daisies" and well marked colors are now appearing in a flower which was never before seen except in white. Some are almost perpetual bloomers and lately some perfectly double ones have appeared.



The "Shasta" Daisy at Home

We offer "Shasta" only this season, do not ask for any of the others, unless you may desire to purchase the complete stock and control of some of them. The others will be introduced as soon as sufficient plants to supply customers can be produced. Ready after March 1st. Price, each, \$1; five, \$3; ten, \$5.

"Let not the thoughtless imagine for an instant that this magnificent product of floriculture (the "Shasta" Daisy) is the result of brief effort on the part of the producer or merely the work of chance. The product is the result of years of constant effort, nor is that effort now withdrawn."—*"Santa Rosa Republican."*

New Verbena, Elegance

A STRONG, sweet perfume is the latest and most highly prized addition ever made to the Verbena. Its first appearance was in "*Mayflower*," which graduated from my grounds six years ago, after a long and careful education. It is now known and grown all over the world.

The new verbena "*ELEGANCE*" surpasses even "*Mayflower*" in fragrance. The plant is vigorous, compact and a perpetual bloomer. The clusters are nearly three inches across and unusually graceful and abundant. Each single floret will cover a silver 25-cent piece; but best of all "*ELEGANCE*" is the *first of a new type* in color plan, having a white center extending fully half across the breadth of the flower, with outer shadings of lavender purple and is as fragrant as a rose. Strong plants, each, 50c; six, \$1.50; ten, \$2.

Tigridia Grandiflora, New Hybrids

"Mexican Tiger or Shell Flower"

IT is amazing that such a beautiful and easily grown bulbous plant should have been so long overlooked by hybridizers. Until these hybrids were produced the Tigridia was known in a few colors only, even less than the originals of the Gladiolus, and with flowers only four or five inches in diameter.

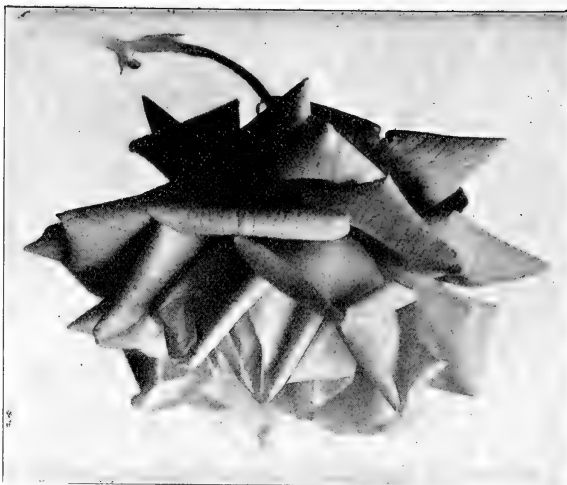
Among these vigorous giant hybrids, flowers over six inches across may be seen in red, white, yellow, orange, rose, crimson and gold, with shades and color combinations never seen among them before, and as they are as easily grown from seed as the Gladioli and bloom the second season, a new field of delightful work has been opened for enthusiastic flower lovers.

They are now placed in your hands for still higher development, as we have too many other plants on hand to allow further experiment with this, one of the most charming of all bulbous plants and now thoroughly crossed so that even grander new ones may be obtained by growing from the seed of these crossbred varieties. The Tigridia thrives best in a sandy soil, and should be treated in all respects like the Gladiolus.

Bulbs, per ten, 75c; per hundred, \$5; per thousand, \$40. No seed for sale this season.



"If Mr. Burbank had created nothing except the Burbank potato he would have been one of the greatest benefactors to mankind, and his yearly additions to improved varieties of fruits, vegetables and flowers mark him as one of the most wonderful and beneficent men of the nineteenth century."—*"San Jose Mercury."*



New Rose, "Coquito"

THE "Burbank" Rose which Mr. W. Atlee Burpee of Philadelphia purchased of me has proved to be perfectly hardy at Philadelphia and much further north, and is acknowledged to be the most constant bloomer of any hardy rose known. "*Santa Rosa*," introduced from my own grounds two years ago, though not yet as widely known, has the same record. Both were Bon Silene Hermosa crosses. "*Coquito*" is another of the same class with larger blossoms and flowers of less pronounced rosy crimson. "*Coquito*" starts to bloom soon after the cutting is rooted and attends strictly to business, whenever the weather permits, blooming in California nearly the whole year. Color clear, deep rose. The foliage of all these new roses remains clean, fresh, glossy and healthy when nearly all others are injured by mildew and various other fungous diseases. One year old bushes from open ground, each, \$1; five, \$3; ten, \$5.

"Burbank Rose.—This is without exception the freest flowering rose in cultivation. The plants begin to bloom when only a few inches high, and flower most profusely all through the spring and summer until stopped by heavy frost late in the autumn. The flowers are double, of fine form, nearly three inches across. The color is a deep rose pink, shading to a beautiful soft rose at the center. The petals are well incurved, so that the center is hidden. In September and October the outer petals change to a deep, rich carmine. The Burbank is perfectly hardy and will stand our most severe weather. This is a great point in its favor. It is strong and vigorous, with neat, rich green foliage, not liable to mould or spot. The plant is of symmetrical form, and does not make sparse open growth out of doors, as do so many other choice varieties. Each plant becomes a well-rounded bush that is most effective when grown at some little distance from other plants."—"Ladies' World."

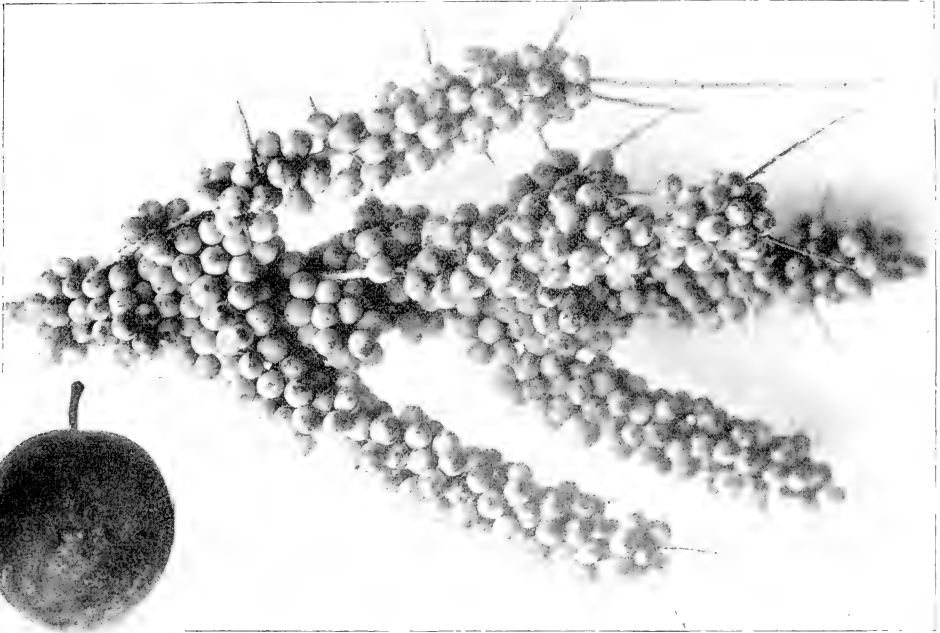
"The financial gains following the results of Mr. Burbank's experiments and labors are enormous until we pause to calculate the time, work and money expended."

"The consummate skill, the enduring patience, and the immense expenditure of time and money necessary to accomplish what he does is rarely imagined, and perhaps never fully appreciated."—"North American Horticulturist."

PART SECOND

WHOLESALE ONLY

Nothing mentioned on this and the succeeding pages is for sale at retail this season. Not a tree, bud or graft of any of them can be had this season except by the purchase of the whole stock. Enterprising Fruit-growers and Nurserymen will understand the value of the full control of these newest of the new fruits of which none like them are in existence.



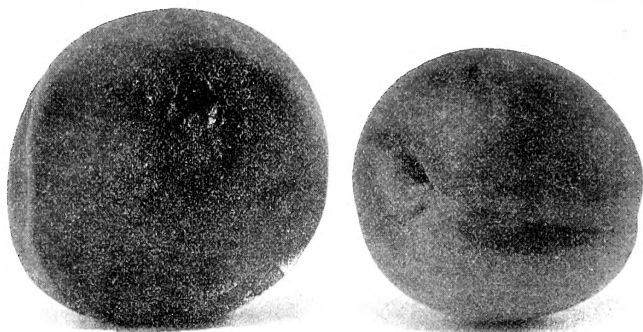
IMPROVED BEACH PLUM.

YOU might suppose the above cut represented a Huckleberry branch which had attempted to carry an unusual load, but no! it is a branch three and one-half feet long (reduced about seven times) of our Improved Beach Plum (*Prunus maritima*), a full size fruit being shown at the lower left-hand corner, and one of the original, wild Beach plums below. The Improved Beach plum is larger than Wayland. The Beach plum is as hardy as about anything that grows and as productive every season as any fruit which mother earth produces, growing on dwarf, compact, bush-like trees. It has heretofore been known as a small, dull colored, bitter fruit fit to eat only when cooked. Our new one grows on a compact, handsome tree enlarged in all respects and the fruit is a beautiful deep purple, dotted white, with a white bloom and is rich and delicious to eat fresh from the tree, not having a trace of the original bitter taste. Flesh deep yellow, freestone, stone of the same size and appearance of a cherry stone. Fruit ripens with the common Beach plum. The trees bloom at the very end of the blooming season, later than any other plum. The Beach plum has long been known to horticulturists to possess rare possibilities and now you have it developed beyond the dreams of the most enthusiastic fruit growers, who will plant them in the warm belt, in the frost belt, in the fertile belt, in the barren belt and produce an abundance of plums where plums would not grow before.

Price for the whole stock and control, \$1,000. Grafting wood will be sold this season at \$100 per foot, if the whole stock is not purchased by February 15th. No wood delivered until that date.



Common Beach Plum



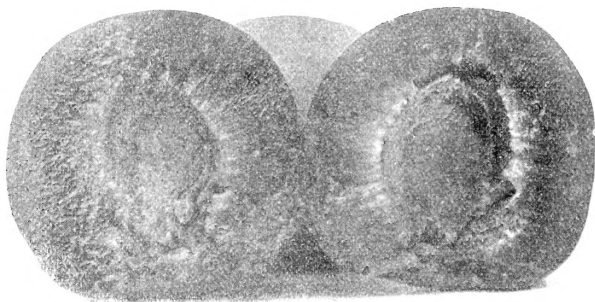
The "Plumcot"

COULD any one imagine a better combination than the Japanese plums and the common Apricots? The combination has been made and our new *Plumcots* are as distinct as if a new fruit had been handed down from another planet.

The general form of most of them is shown above, an opened one below showing the seed and the freestone character of some of the varieties, the one shown above has yellow flesh, some of them have deepest crimson, pink, or white flesh, and are both free and clingstones. All have the general form of an apricot and the same general outside appearance, but often more highly colored than either a plum or an apricot with a skin unique-soft, slightly silky downy with a shadowy bloom. Seed more often resembling a plum pit, but often vice versa. The rich flavors of these fruits are a revelation of new fruit possibilities and are not duplicated by any fruit growing on this planet.

The tree is not quite perfected in some respects, therefore none of them will be introduced until these improvements can be made.

Not for sale this season.



"Your "America" plum is the wonder of my orchard this summer; the foot of grafting wood purchased in 1898 was budded into small Chickasaw stocks, they made good heads next season, 1899, and bore large, extra fine fruit, and again this season bore enormously, two and a half to six bushels per tree and were considered by the hundreds of good judges of fruit who have been here to see them the finest plums they ever saw, they ripen here June 25th to July 20th. I am deeply interested in plums and while all others of the Japanese type rotted very badly and were full of worms, yet among these huge plums there were no defective ones. "America" thrives on hot, dry or heavy clay soil and on high or low lands. It is the plum to set out for profit."—R. Bates, Jackson, S. C.



Stoneless Plums and Prunes

SINCE the plum was first grown nothing more wonderful in its history has occurred than the production of these stoneless fruits, a cut of one of which is shown above. It is a prune; having the general appearance of the common California prune, but growing much larger, not yet educated up to the production of sufficient sugar, but this is only a very small matter compared with results already obtained. The cut above shows one of the new fruits which produces a seed, but no stone. We have a newer one, large, early, sweet and delicious, which bears neither seed or stone. The trees are remarkably vigorous and handsome with silky, downy wood, prominent buds and large, roundish leaves.

Not for sale this season.



"But at any price he is likely to receive for these potent little sticks he will net but an infinitesimal fraction of the millions which this new fruit will eventually profit the world."

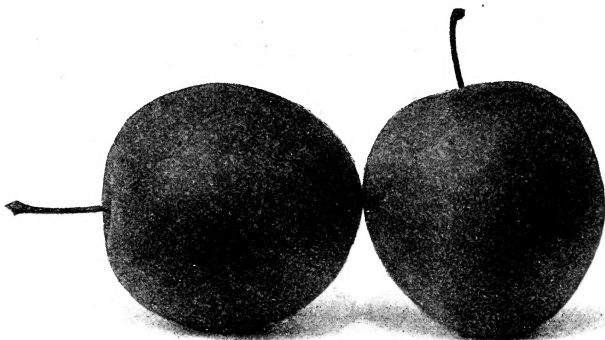
"Of the Burbank plums too much cannot be said of the size and beauty and nothing whatever may be said of the taste, for twenty thousand varieties of the same fruit have twenty thousand different tastes, and for lusciousness they are beyond description."—"Santa Rosa Republican."

"The hybrid crabs are a strange and interesting lot. The apple business has been strangely neglected by plant breeders; but some day you or some one else will get the string started and unroll a line of wonders such as is now about to revolutionize the plum business. I was also interested in your "Ironclad" plum."—F. A. Waugh, Burlington, Vt.

"After careful trial we recommend it (Calla "Fragrance") as the sweetest and most beautiful Dwarf Calla lily we have ever seen."—Conard & Jones Co., West Grove, Penn.

"Luther Burbank, that remarkably successful hybridizer, is turning his attention to the production of hardy varieties for the northern States; and it is certainly gratifying to see what fine fruits he is securing."—Prof. F. A. Waugh in "Country Gentleman."

"To discover truth is the best happiness of an individual; to communicate it, the greatest blessing he can bestow upon society."—Townsend.



THIS cut represents a new, second generation combination cross of Hawkeye, Hammer, Milton, Wyant, Wayland and Satsuma. The branches of this variety droop like the Russian Weeping mulberry. The wood is firm, wiry, dark blue—almost black with numerous white dots. The fruit which hangs in amazing profusion on the branches, wreathing them in plums to the ground, is unusually handsome and of the finest quality. The flesh is crimson, pit exceedingly small, skin deep purplish crimson, nearly half covered with large white dots with a white bloom. This promises to be one of the best of the hardy hybrid plums. Price for stock and complete control, \$800. No wood for sale this season.

Your Japan hybrid plums seem, much to my surprise, to be fully as hardy here—100 miles north of Boston—as the Domesticas, and I shall plant an orchard of 1000 of them in the spring.”—F. L. Temple, Westminster, Vt.

“On further examination of the American—Satsuma cross I am greatly impressed with it. It is something entirely new—a real novelty. The Americana characters are very striking, in leaf, form of fruit, markings, flavor, stone, etc. But the flesh and texture of the fruit are evidently Satsuma. The stem is anomalous. The whole thing is worthy further study; and I believe the plum cranks would be well pleased to have you introduce this variety next year, if only for the purpose of further breeding experiments. Nevertheless the fine color, and the evidently superior shipping quality of the fruit would make it a candidate for favor as an early shipping fruit. It would probably be superior for canning also. I would rather have scions of this variety for test in Vermont than anything you have yet produced, excepting Wickson and Climax. Don't pass this variety by too hastily. It may not be the sort of a plum that you consider the ideal for California, but it has too much promise for other parts of the country, so far as any one may judge from one or two specimens.”—F. A. Waugh, Burlington, Vt.”

“The mystery of mysteries is how a new flower or fruit is created. Nothing seems simpler while Luther Burbank tells you in his clear, choice language and with his singularly boyish smile, of the agencies and methods he employs to accomplish his miracles. But fancy any one copying his directions and then attempting to produce therefrom an apple or a plum, a rose or a lily, such as never before came to perfection under the sun.”—H. R. P. T. for S. F. “Call.”

On the beautiful Statue of Victory in the Missouri Botanical Gardens is the following inscription: “The victory of science over ignorance. Ignorance is the curse of God. Knowledge the wing wherewith we fly to heaven.”



Photograph of a cluster of one of more than ten thousand hybrid lilies produced on my grounds and mentioned in *New Creations* for 1894. The best have been selected and are now being propagated as fast as possible. One of the inferior ones, but a good lily was unfortunately sent out two years ago as "the Burbank Lily" without consulting the party most interested in the name.