

BUTTERFLIES

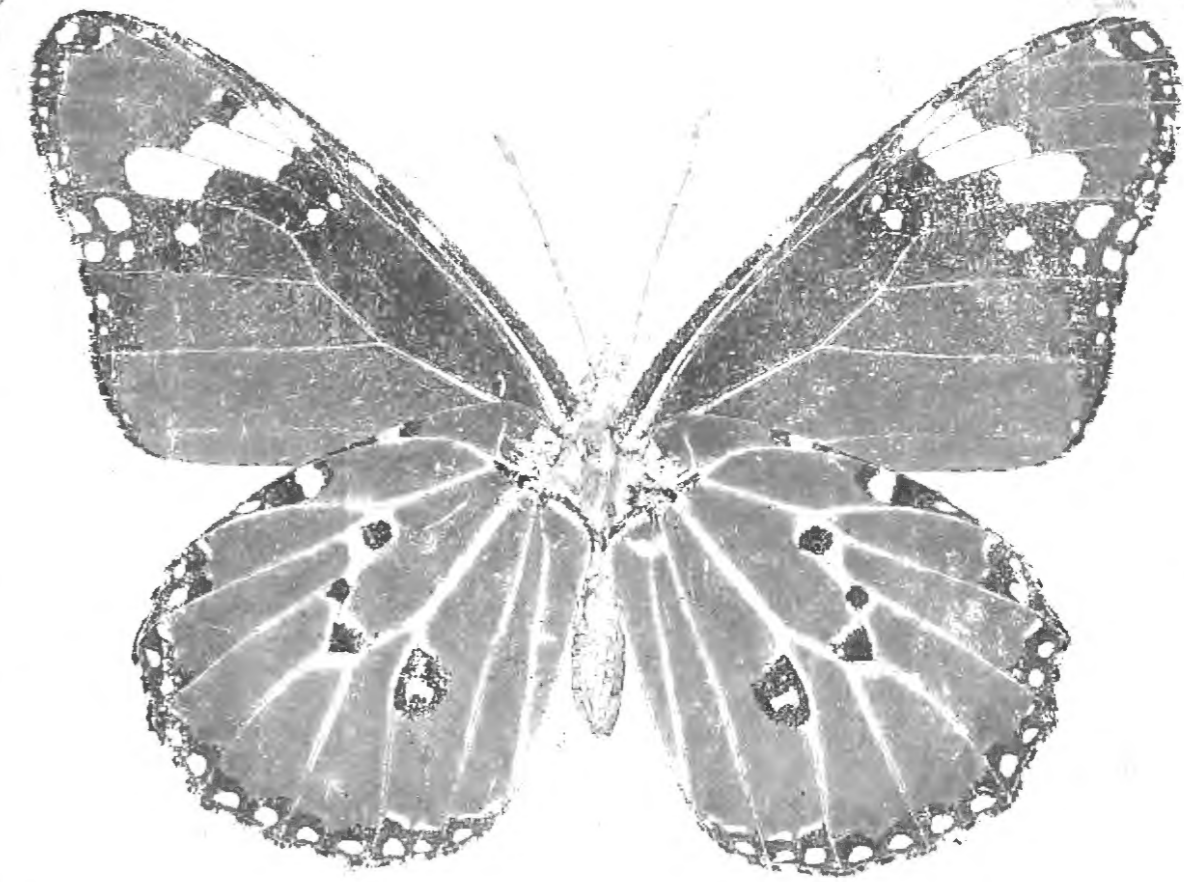
collected in

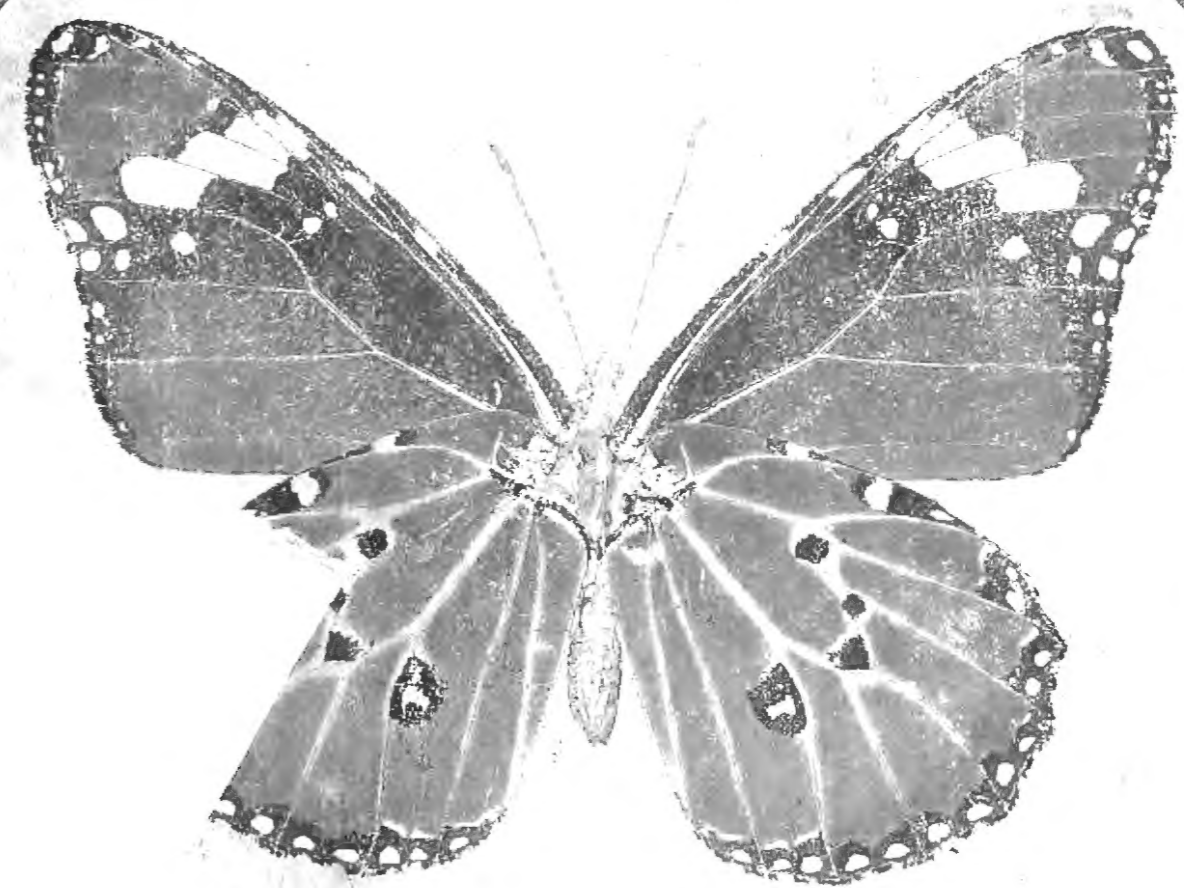
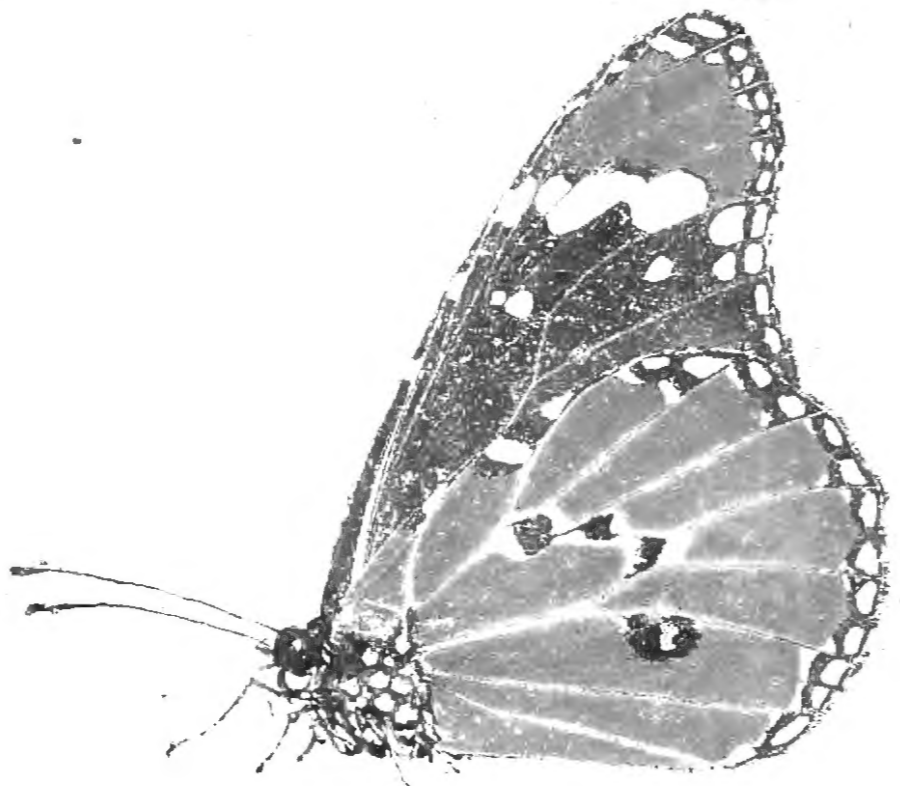
the

Shire Valley, East Africa

HM.

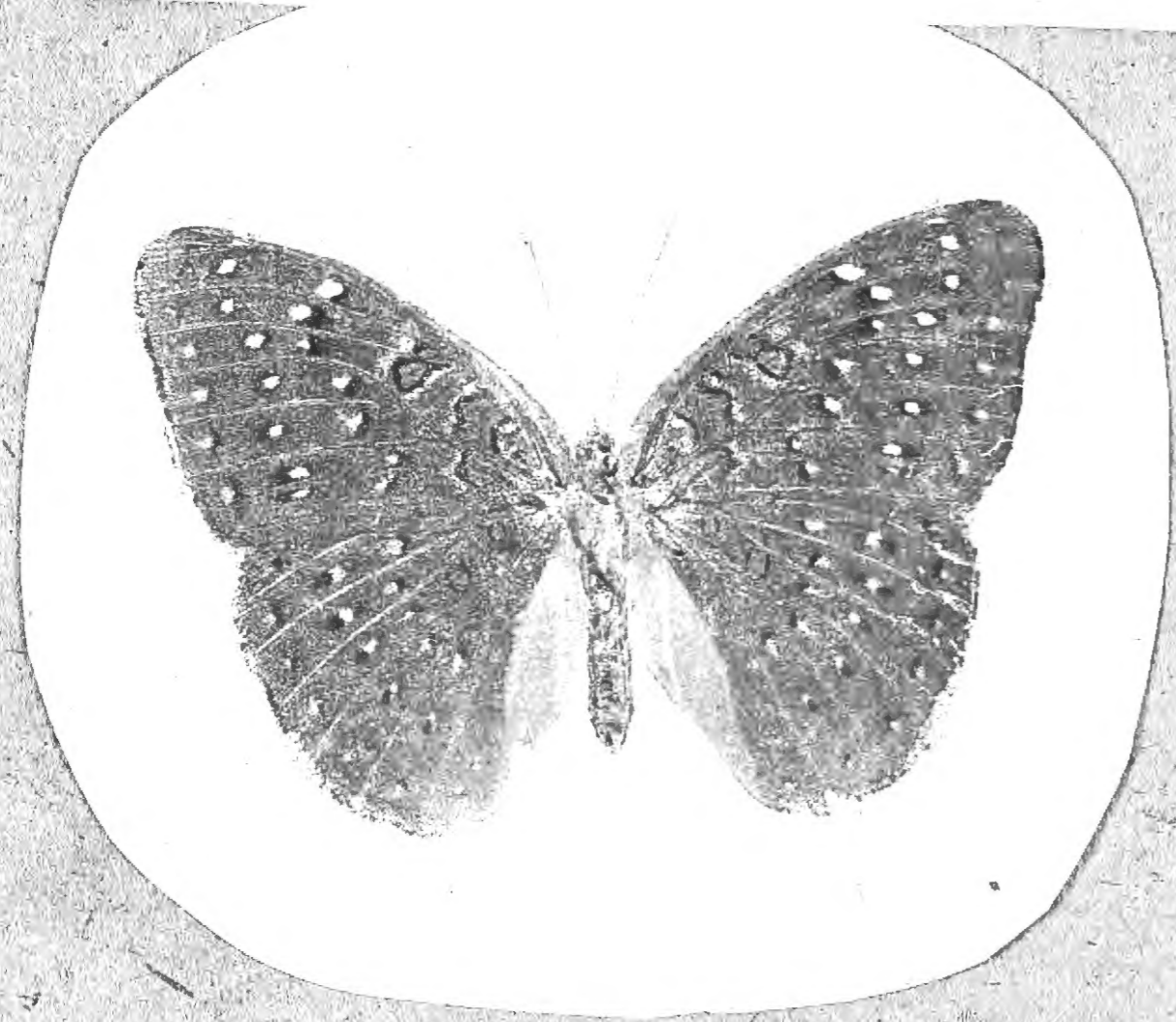
Common



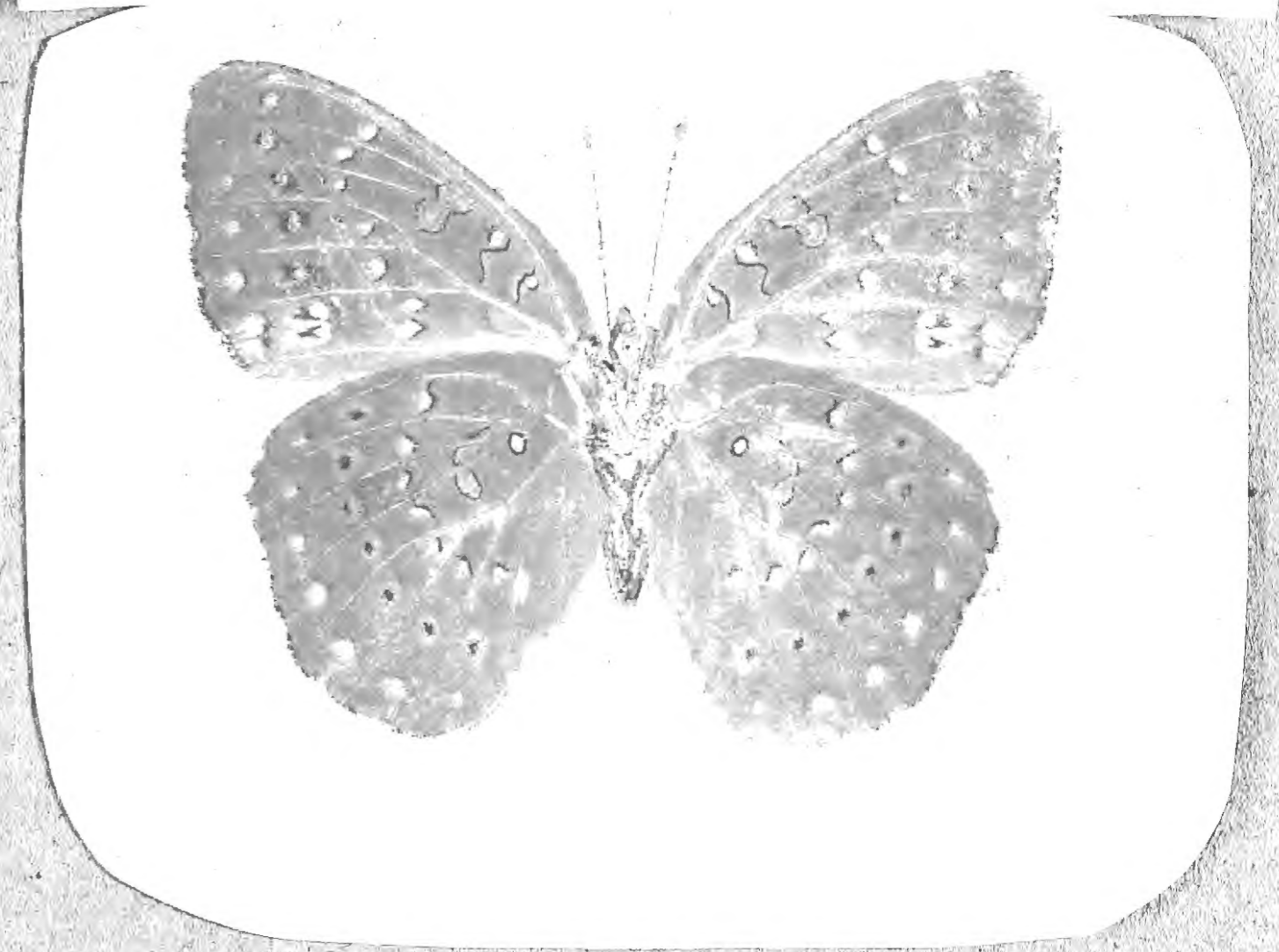


atrium melargis

Common always
on paths



Common always
on paths

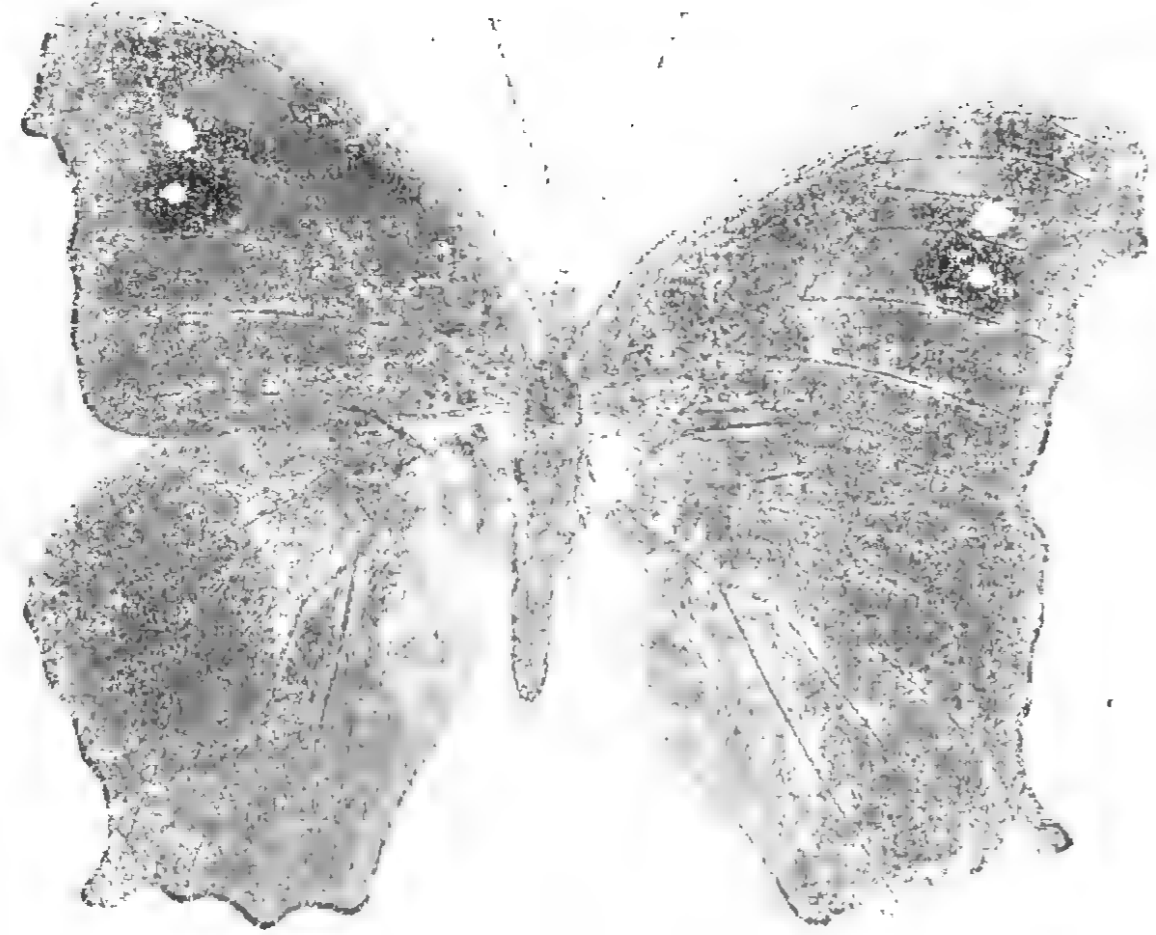






in shade

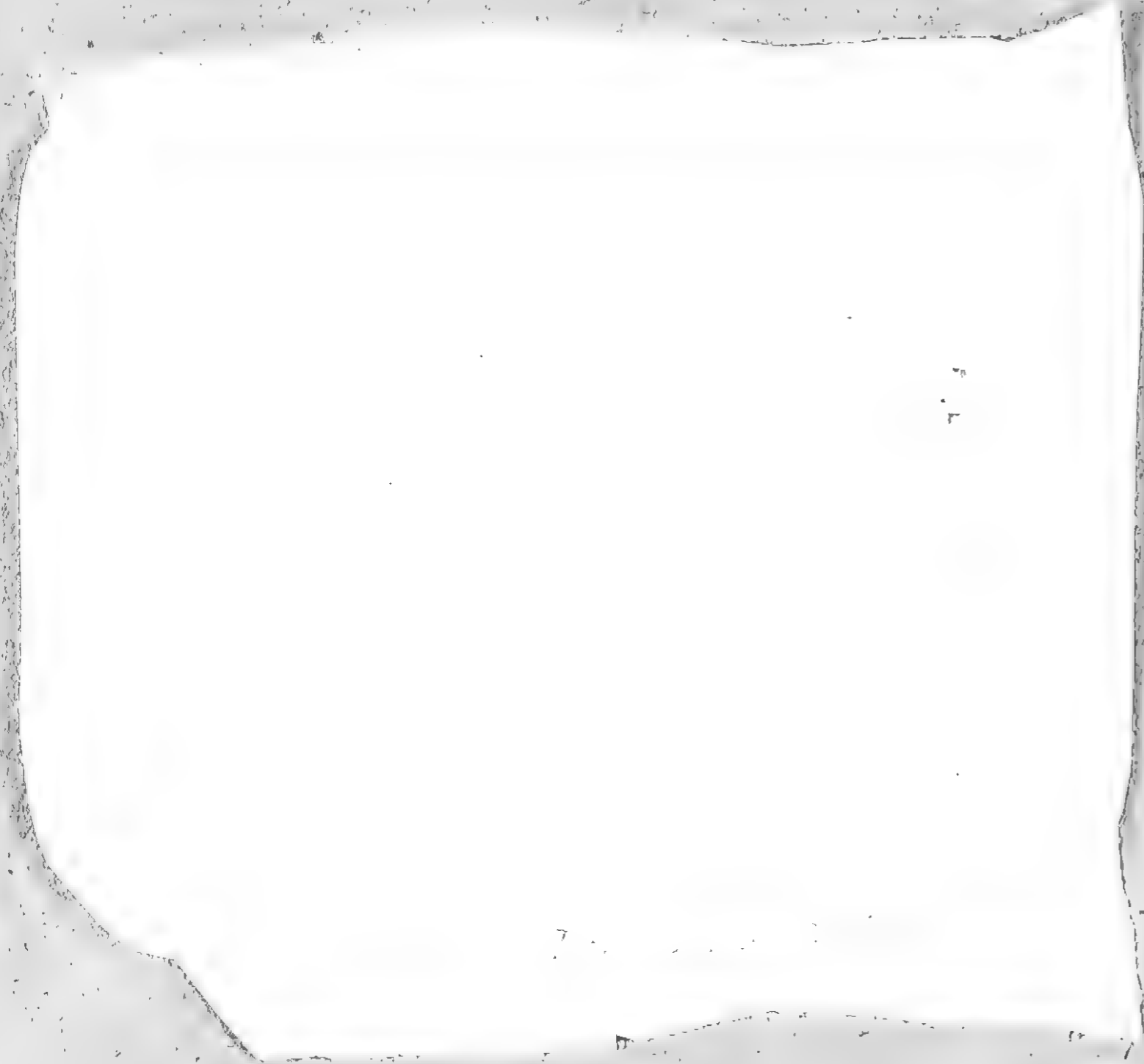




in shade







Common







Common



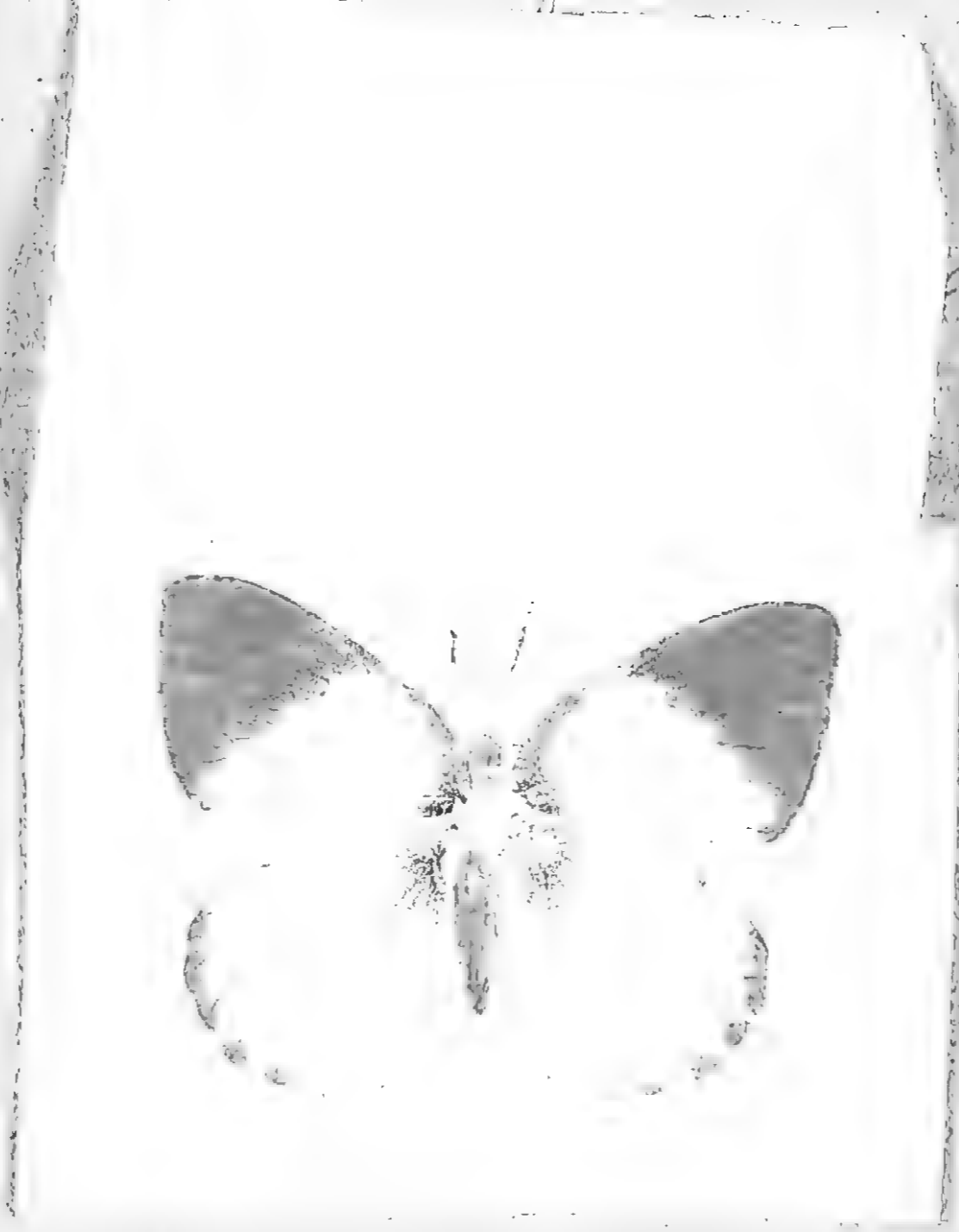


a large variety of different
sizes





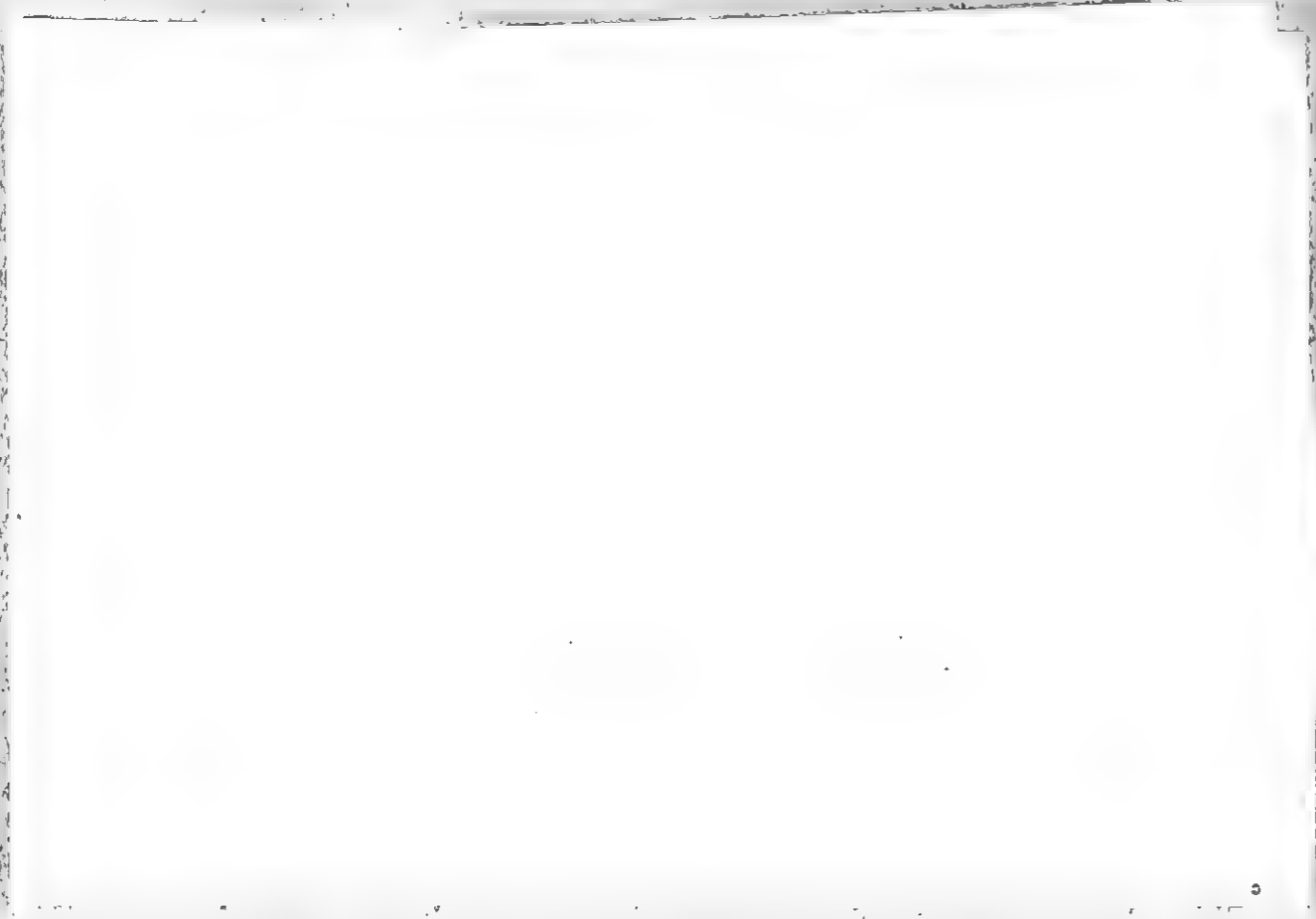
different



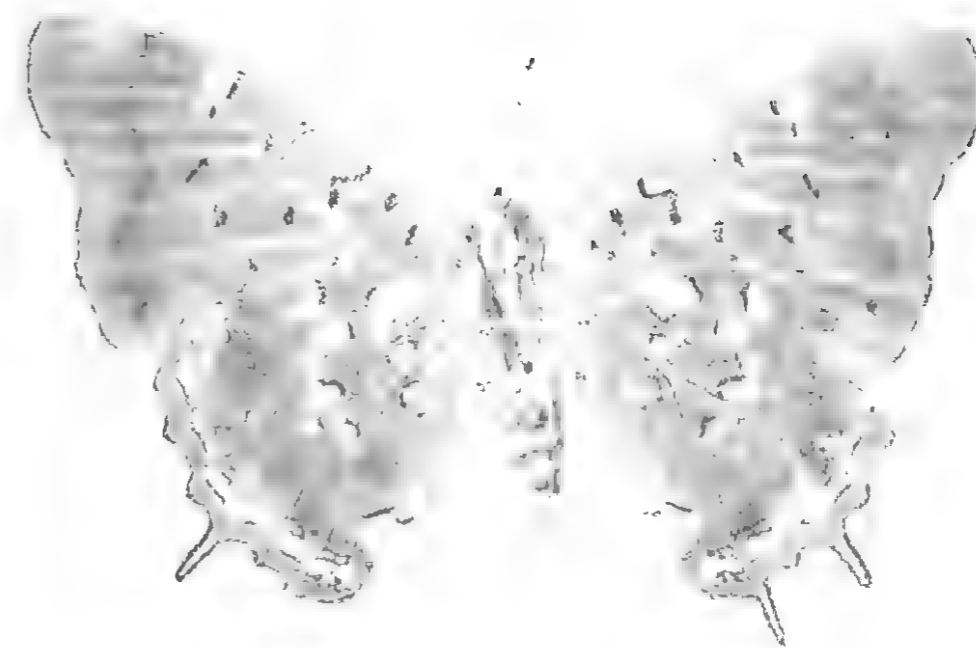
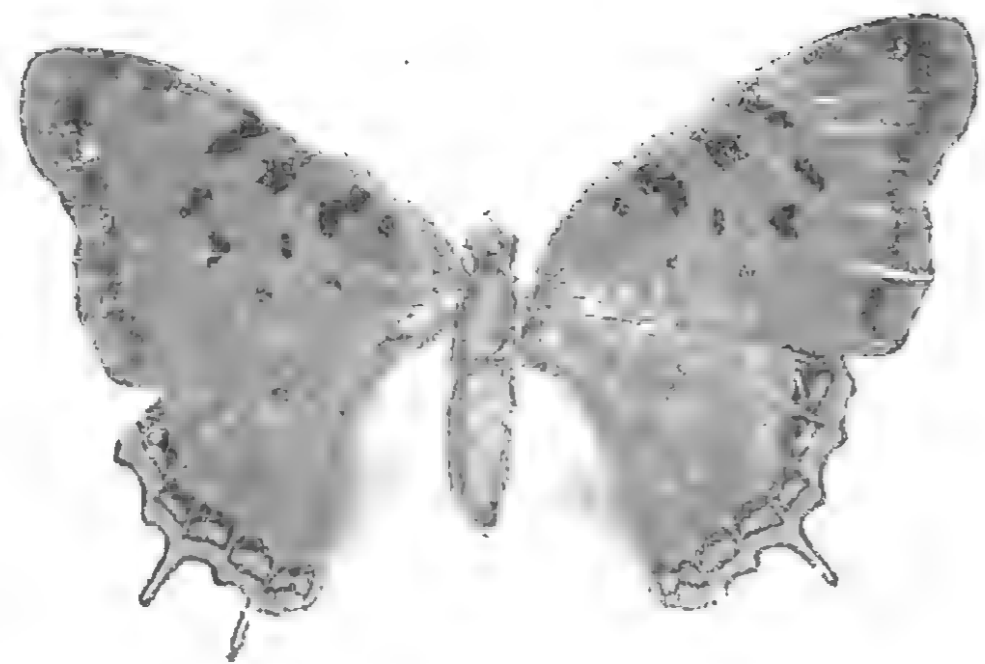












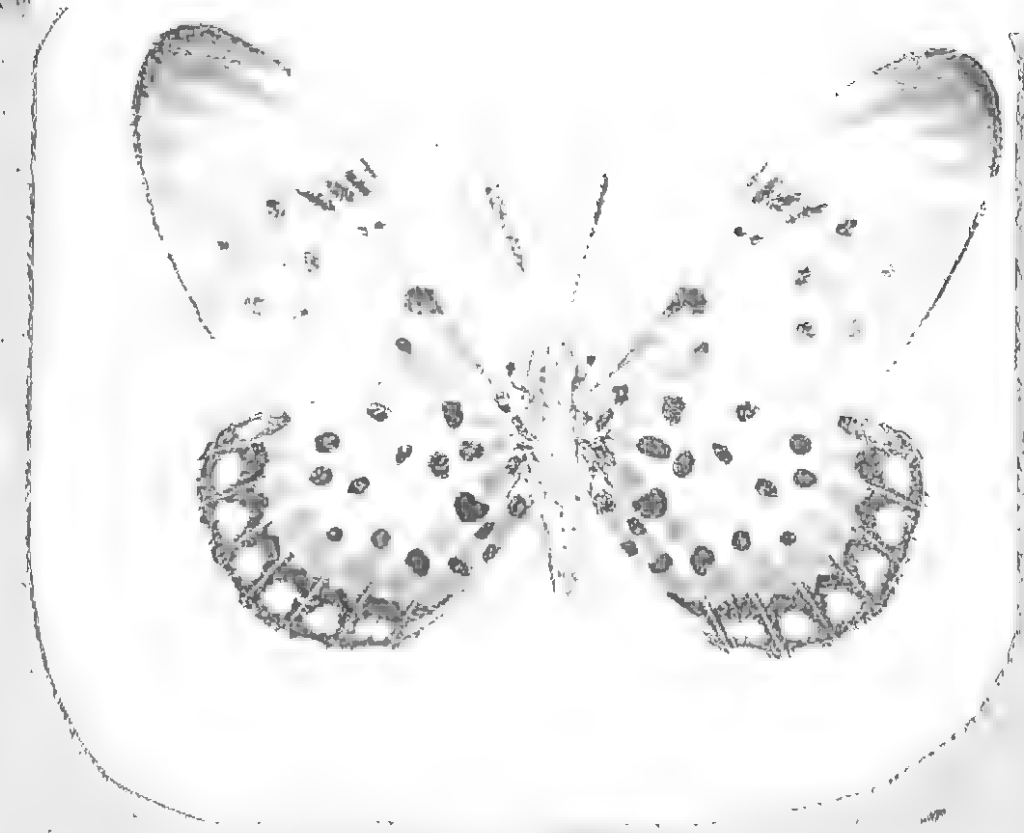


Common



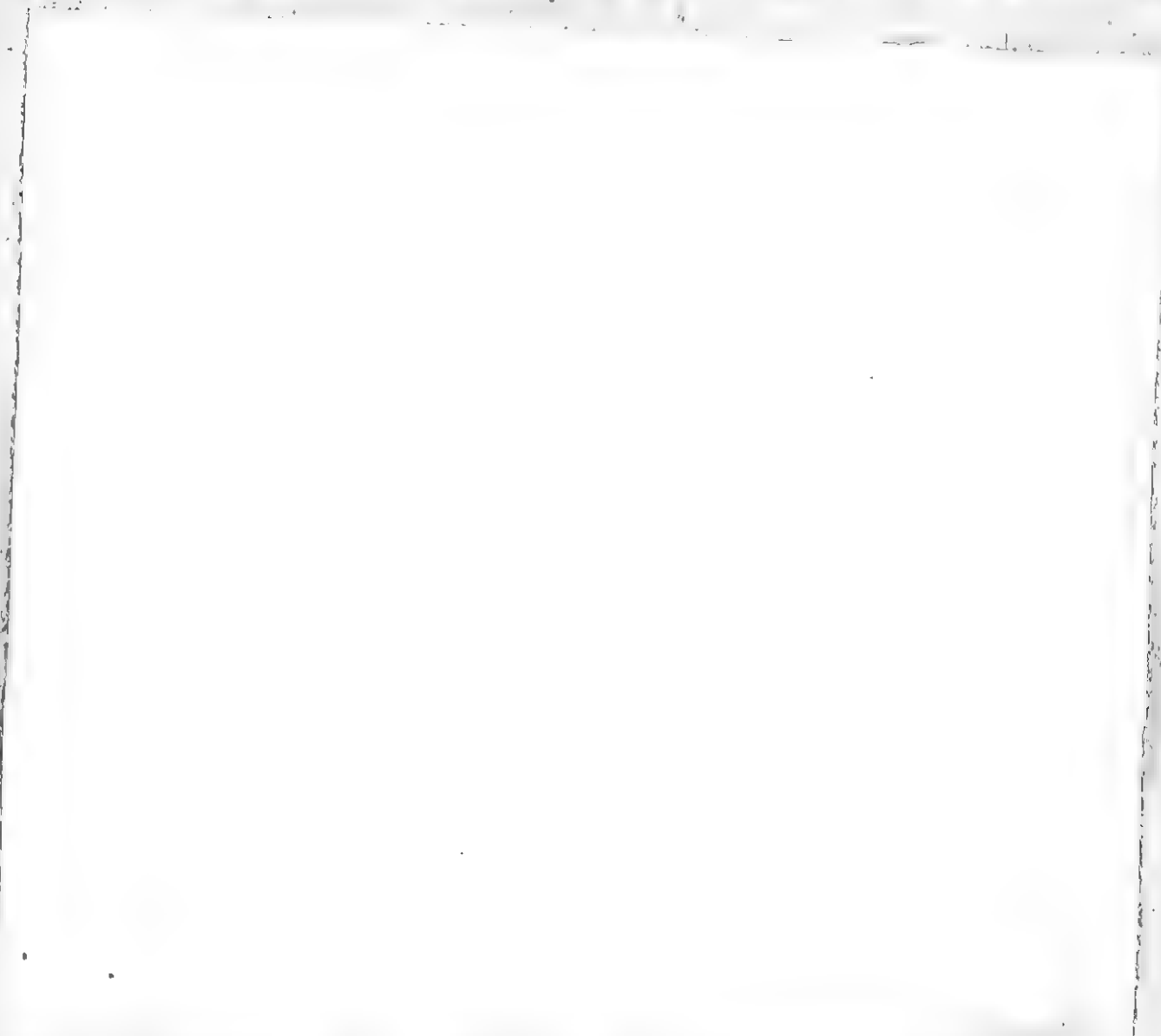


Common





*Swift of flight
always on trees, everywhere*







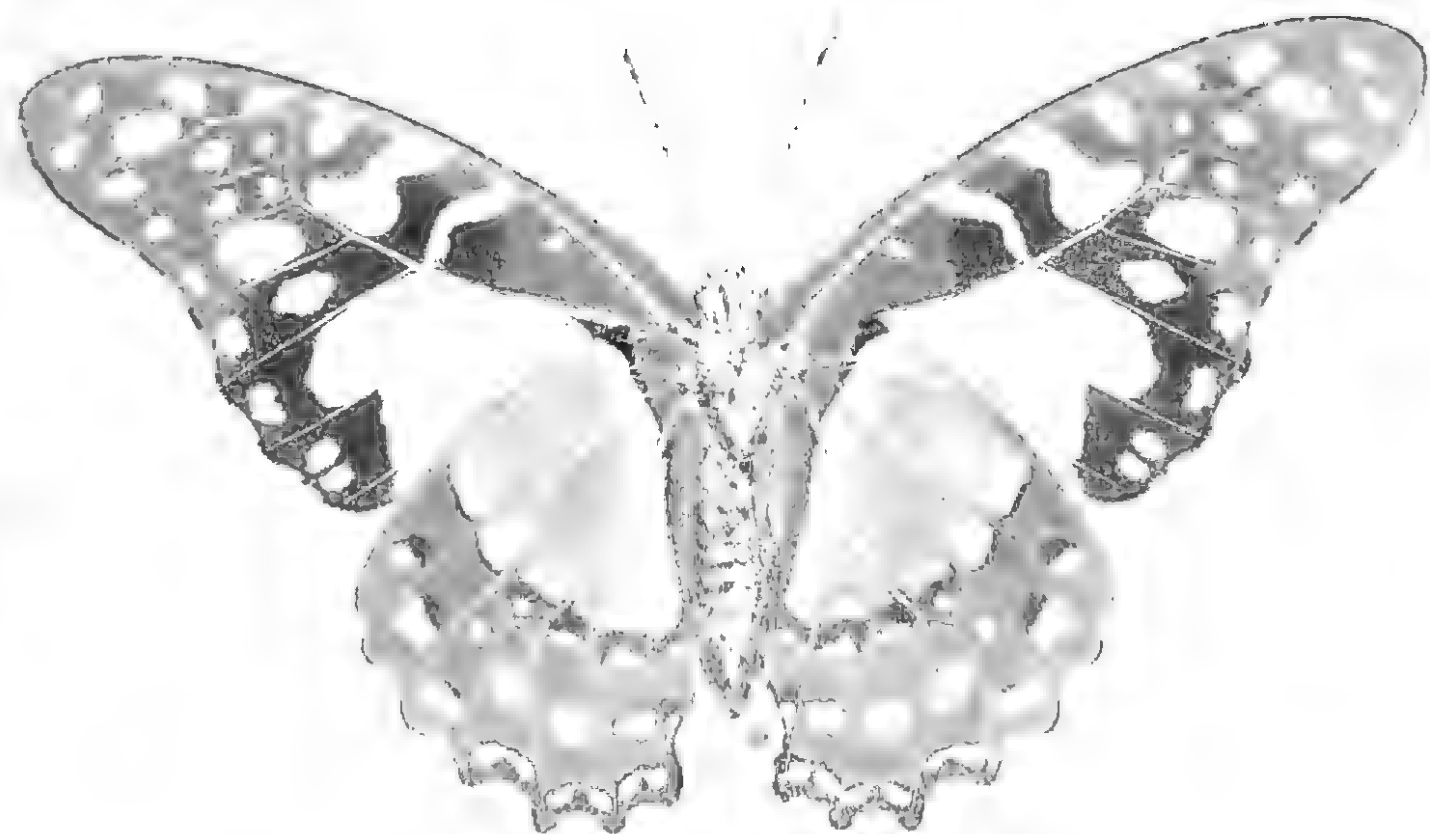


also known as hill country





Known





"Cleopatra" very rapid in flight
Caterpillars green, 4 spots on head
like La Coronet.

Cleopatra



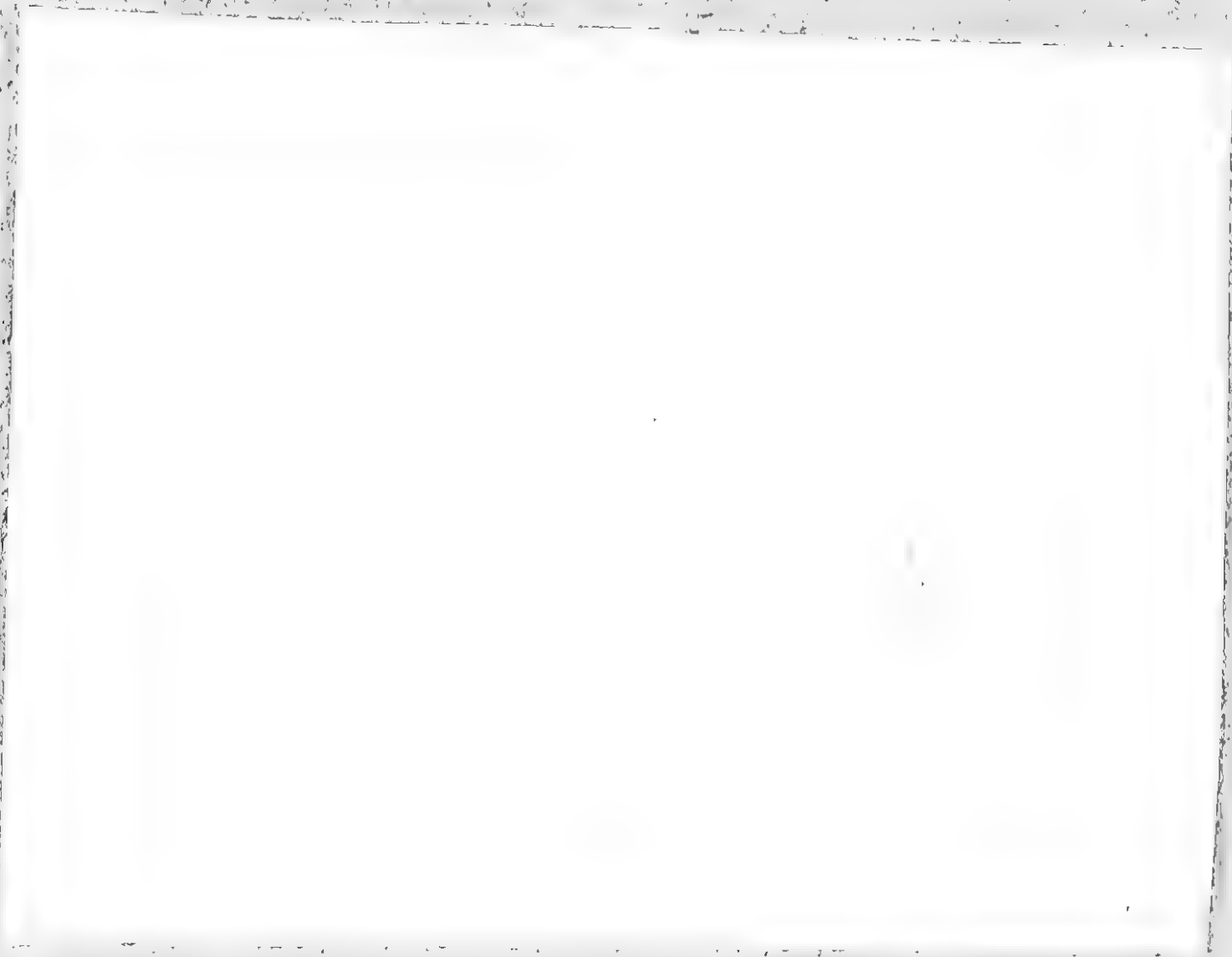
11
a very
smaller spec
like the



Chrysomela

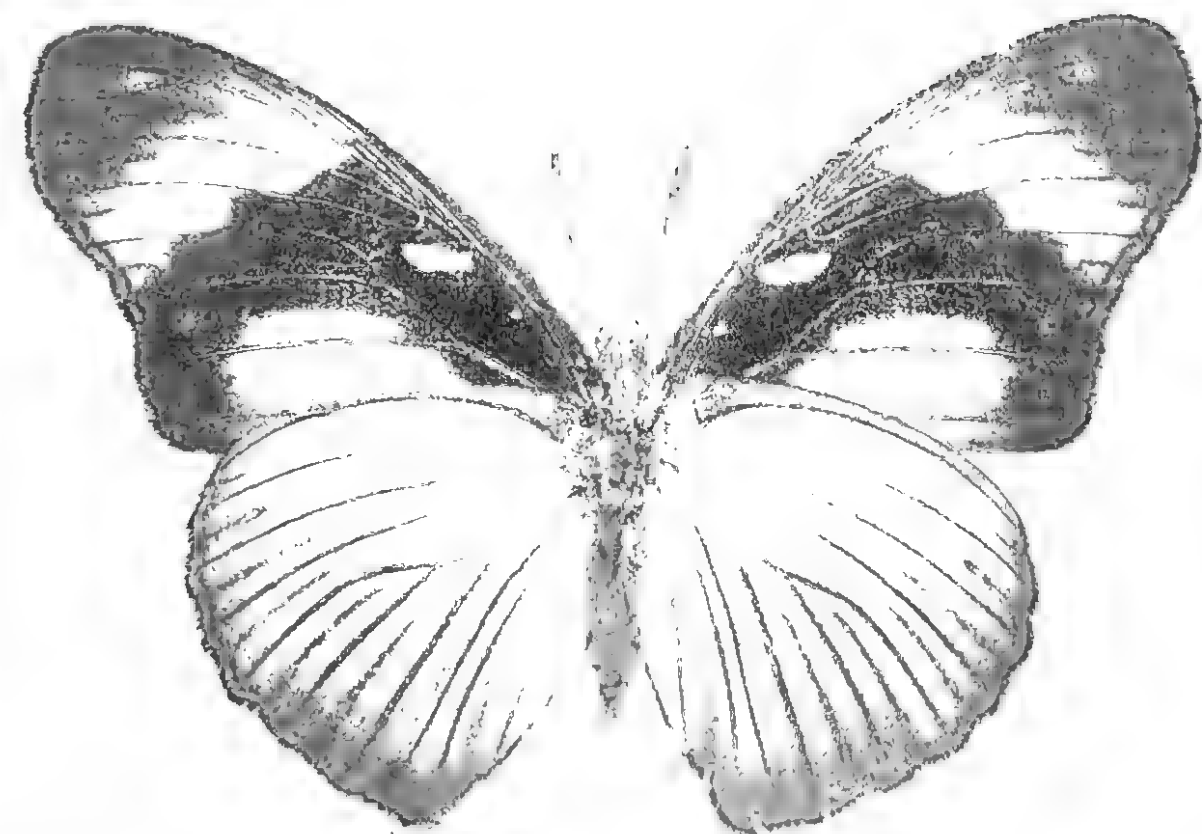


"The widows"
rare, fine sailing flight



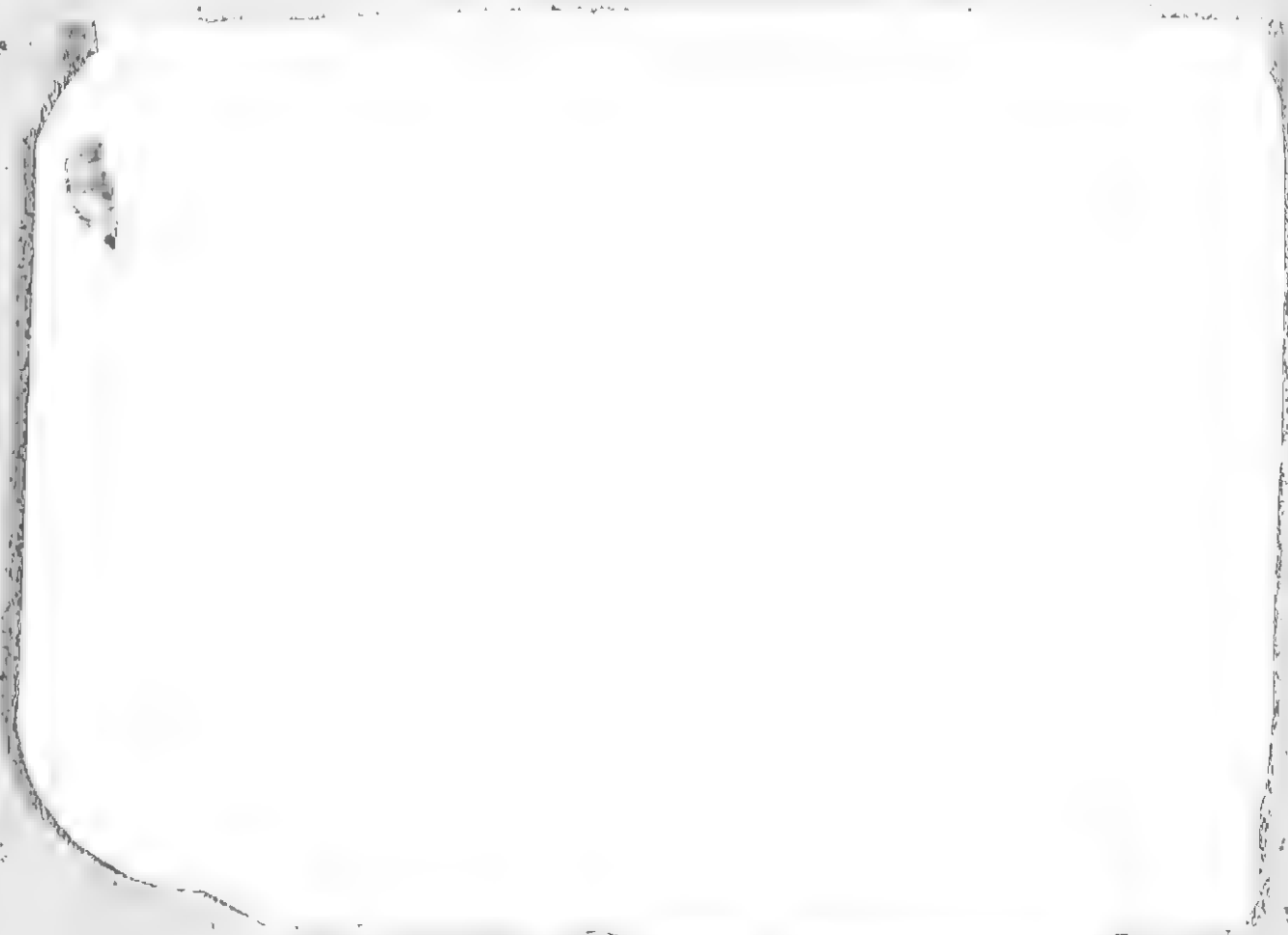


"The widows"
rare, fine sails





Very swift, entirely on trees
especially on the large trees





very swift, entirely
specially on M'Gu





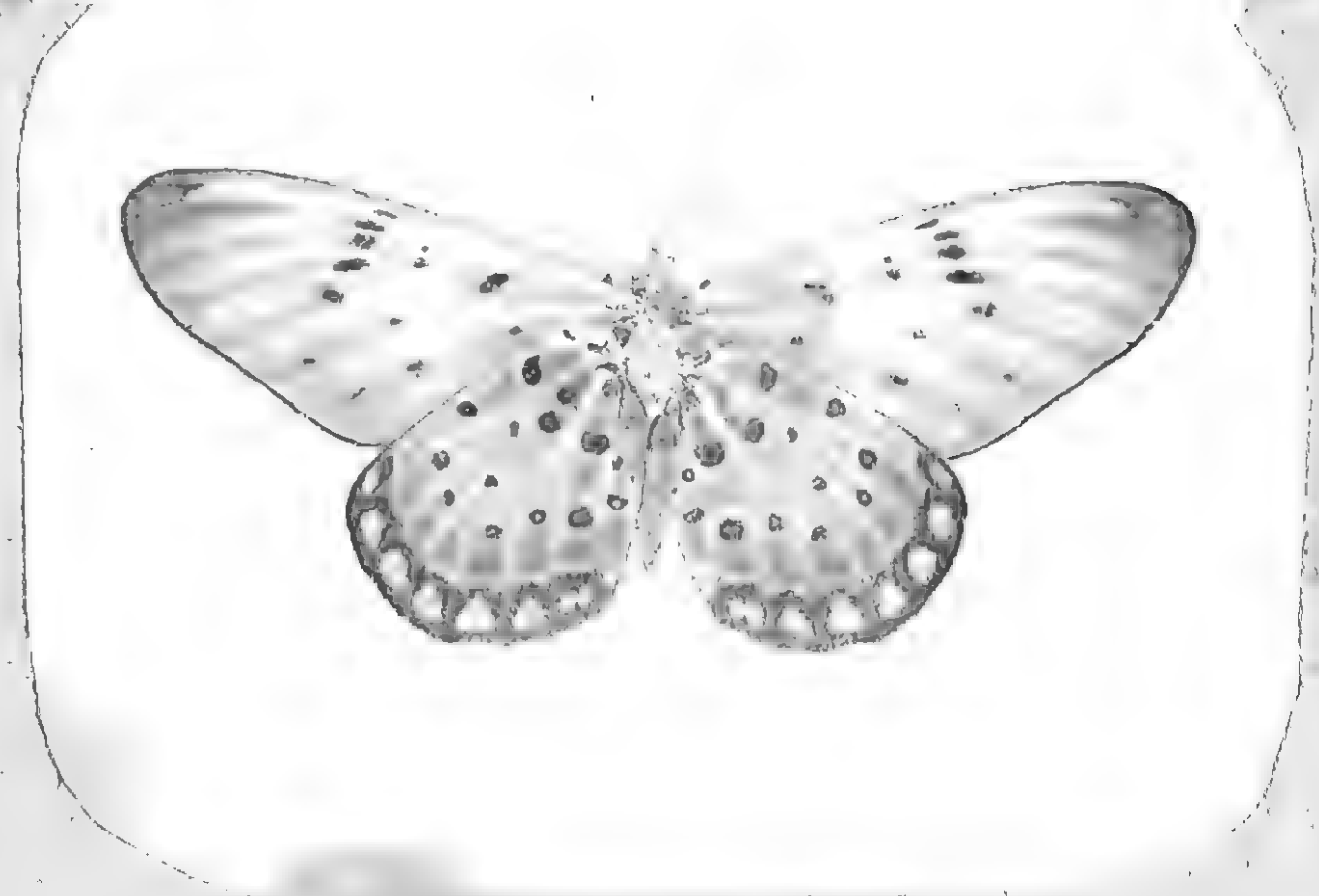
Common



Common



Common



Common

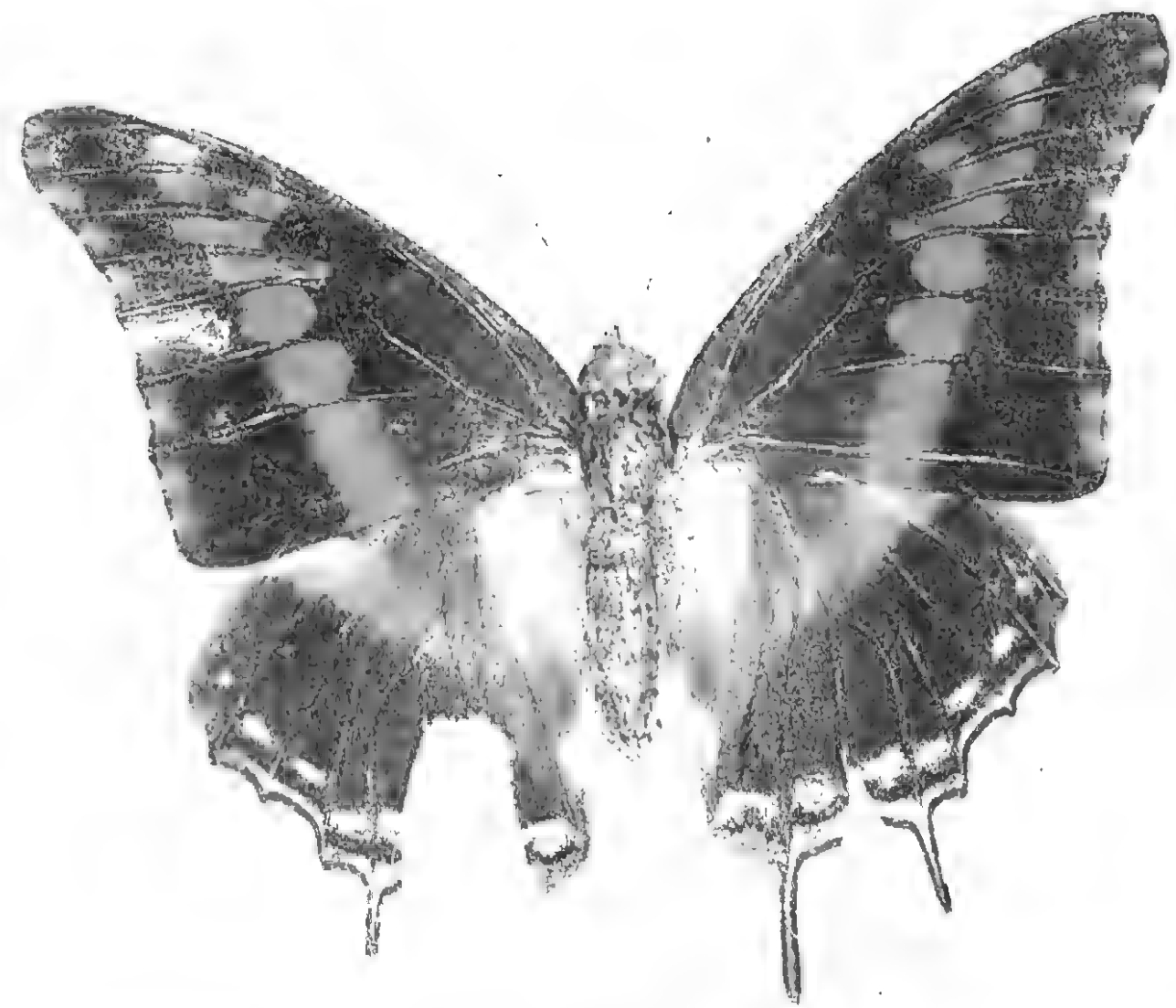


"Mark Anthony"
this forms a pair with the Cleopatra butterfly

bred by HA
enterpales same as the Cleopatra butterfly



*Utterly
miss a pa*



*bred by HA
enterfuller same as the Cleopatra butterfly*























Solifera

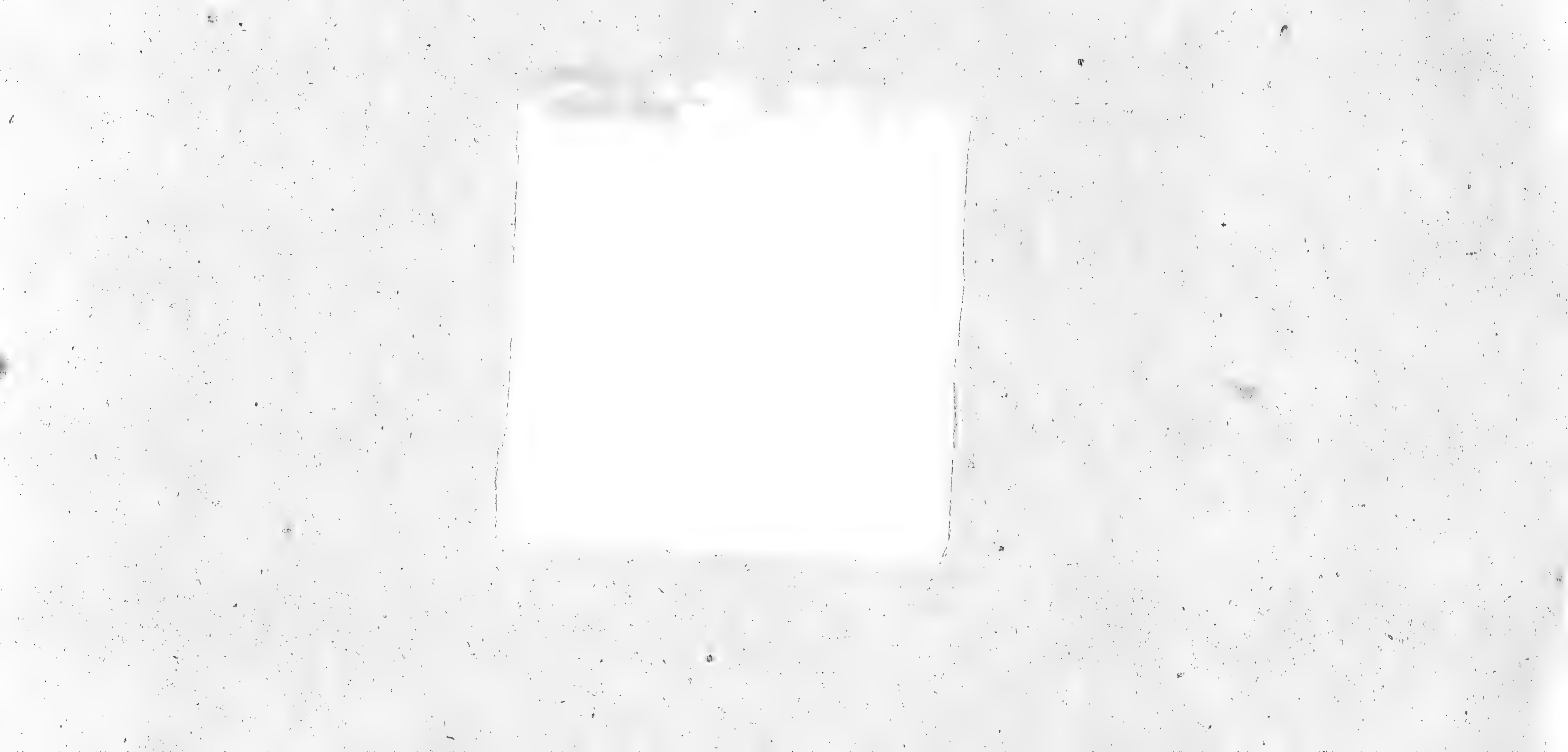
Fossil





Portrait





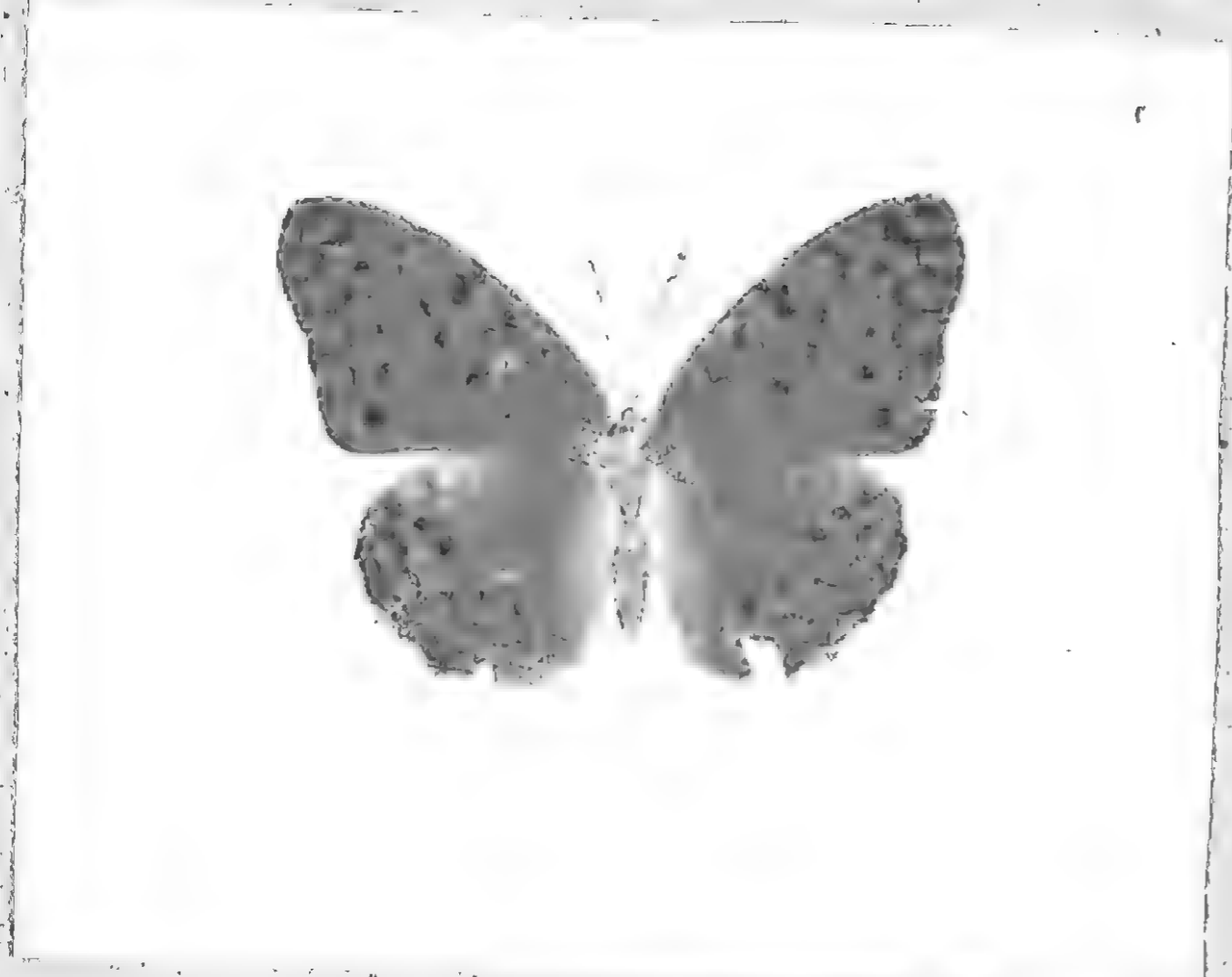






Atolla Phalacrocorax

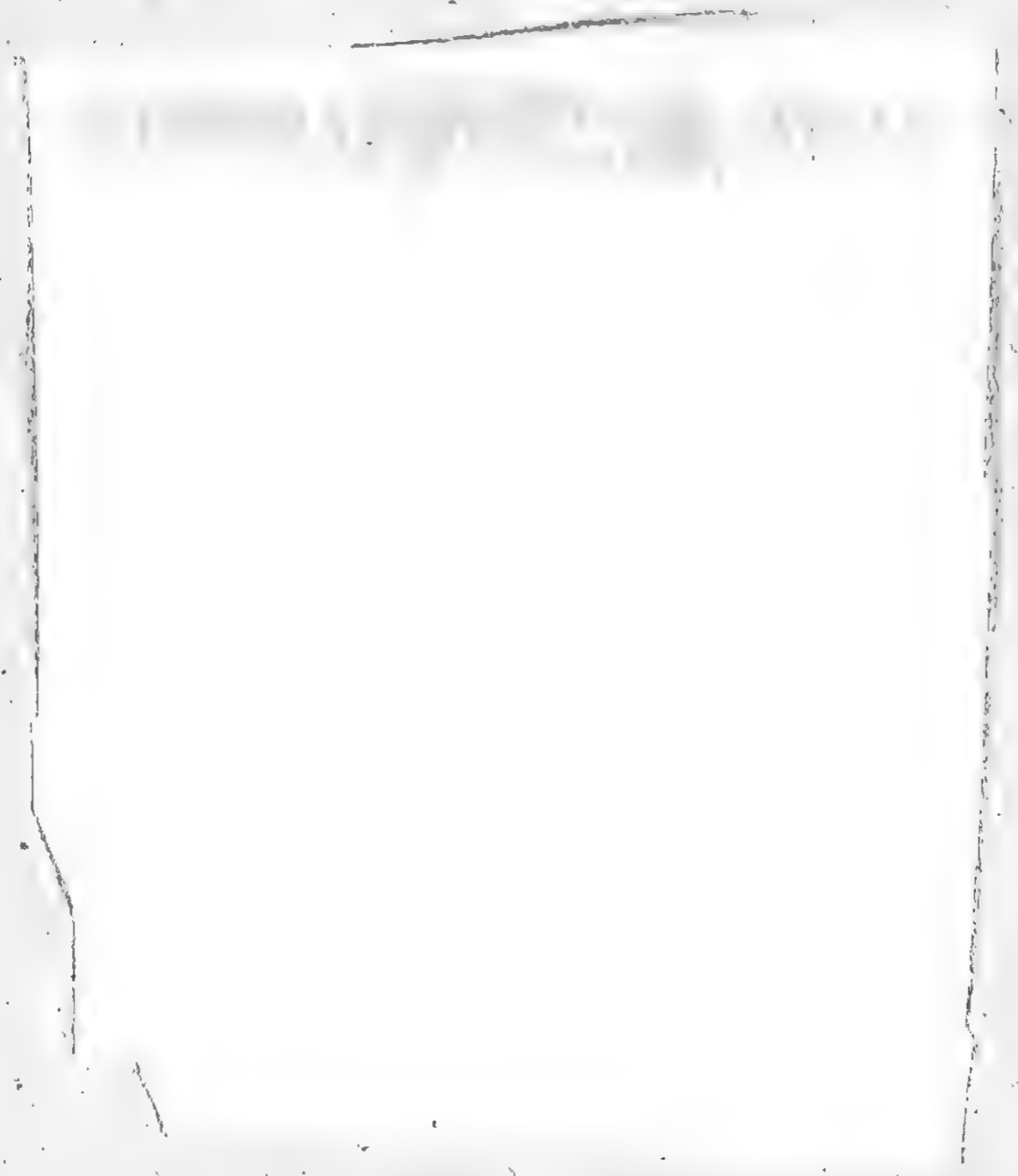




Ortalis phalaenopsis



The "Broad Arrow"



18







The Widow



The Widow



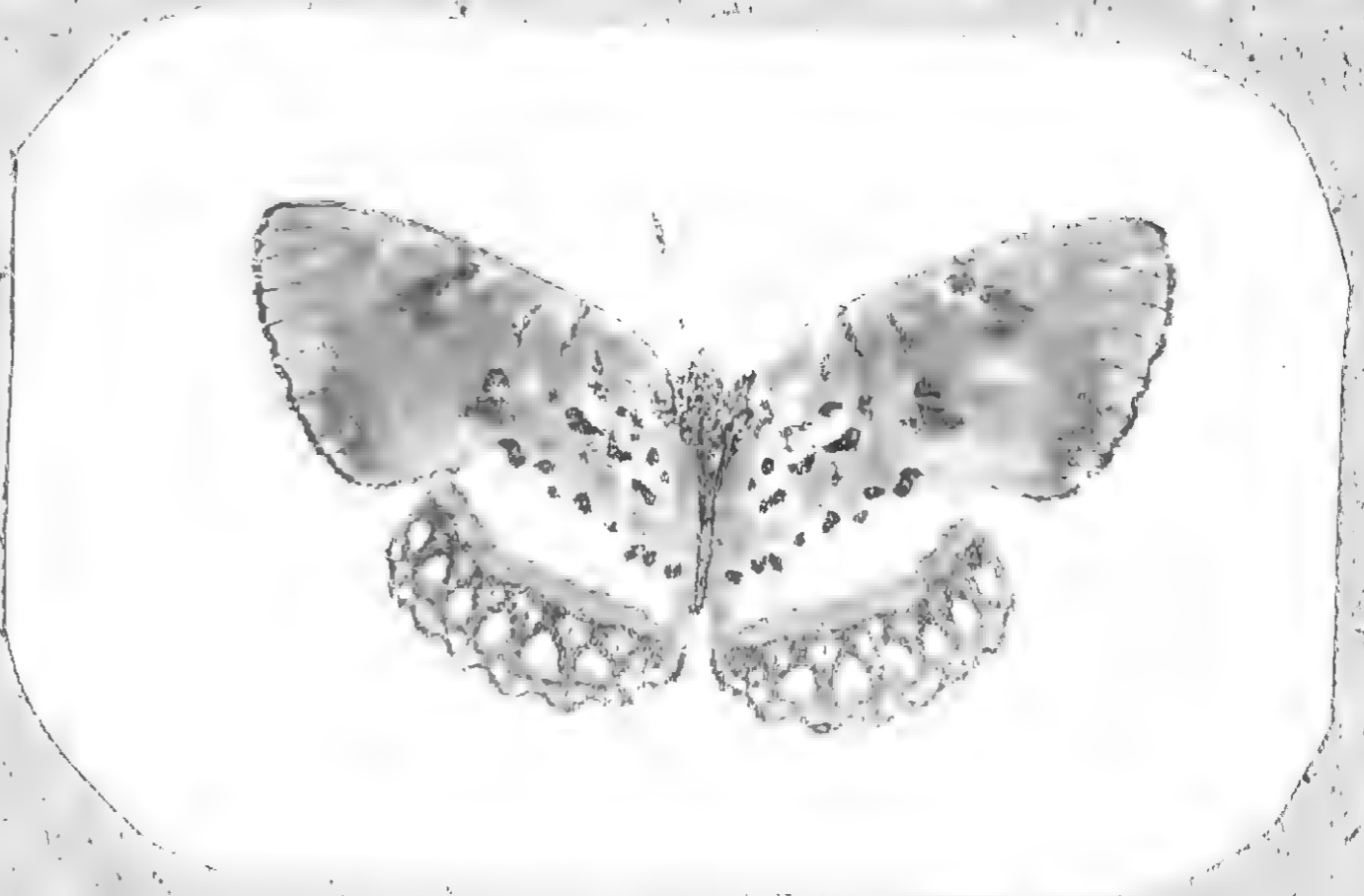
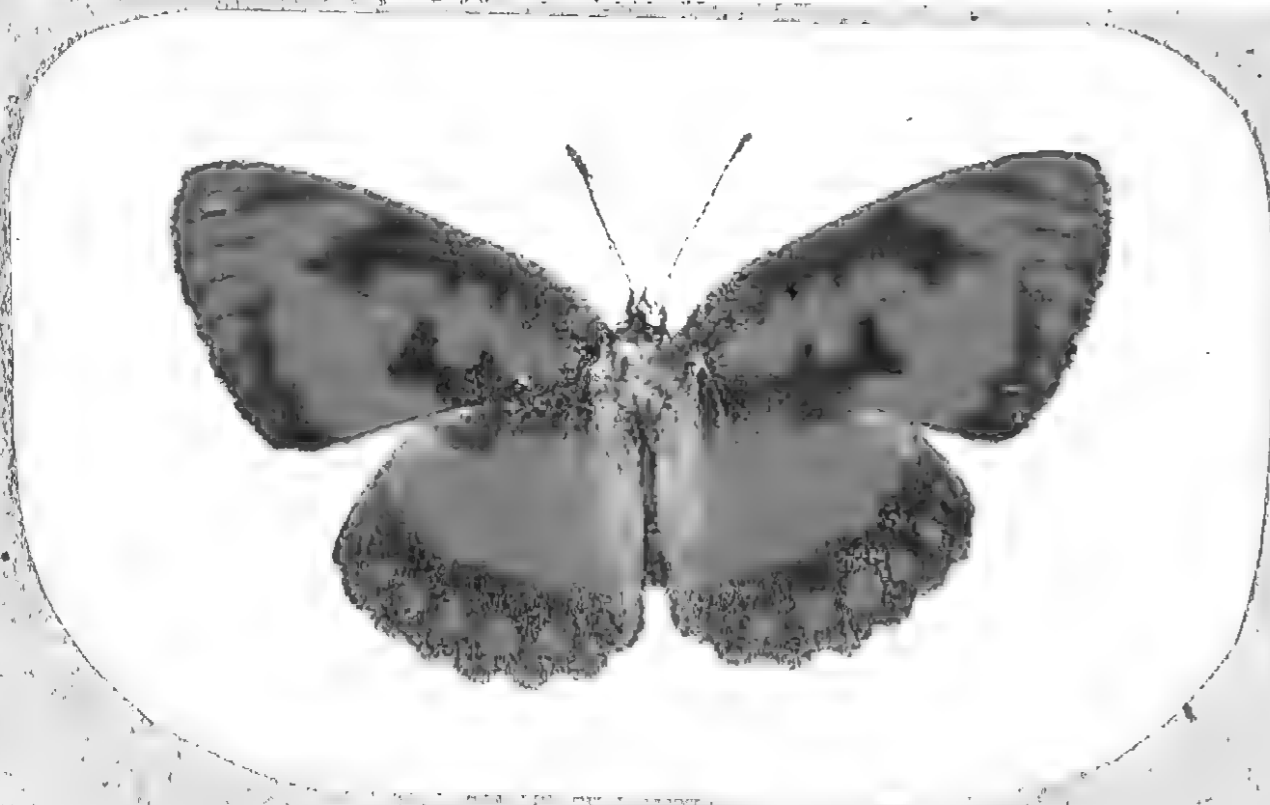


Compton

←

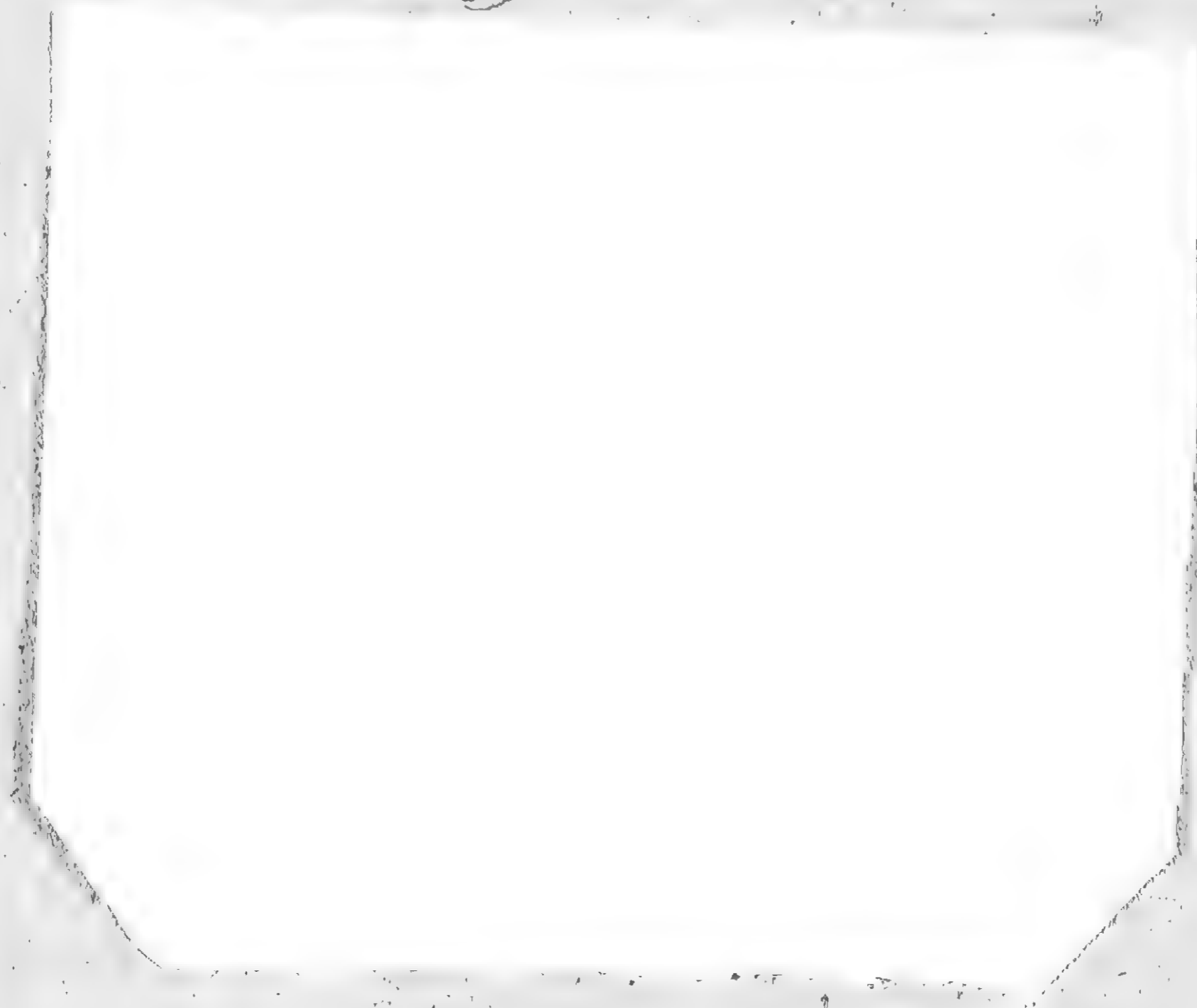


Common



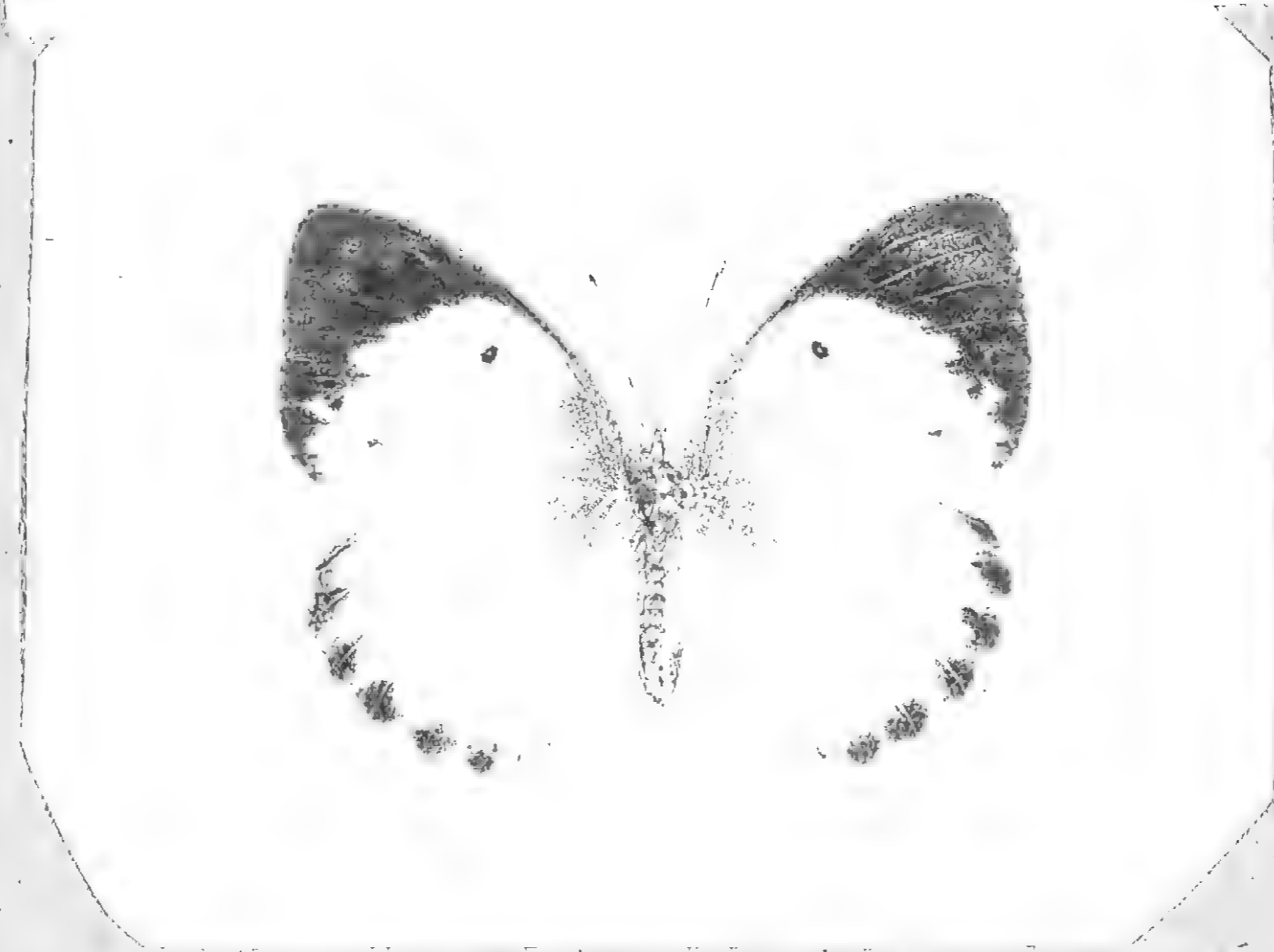


a large family of these
exceedingly beautiful



The colour on the tips should be maroon but no blue will put
so only one of the colours that compose it is represented. blue added as *each*





The colour on the tips should be mauve but no blue will put
so only one of the colours that compose it is represented. Blue added to make mauve



M. [unclear]





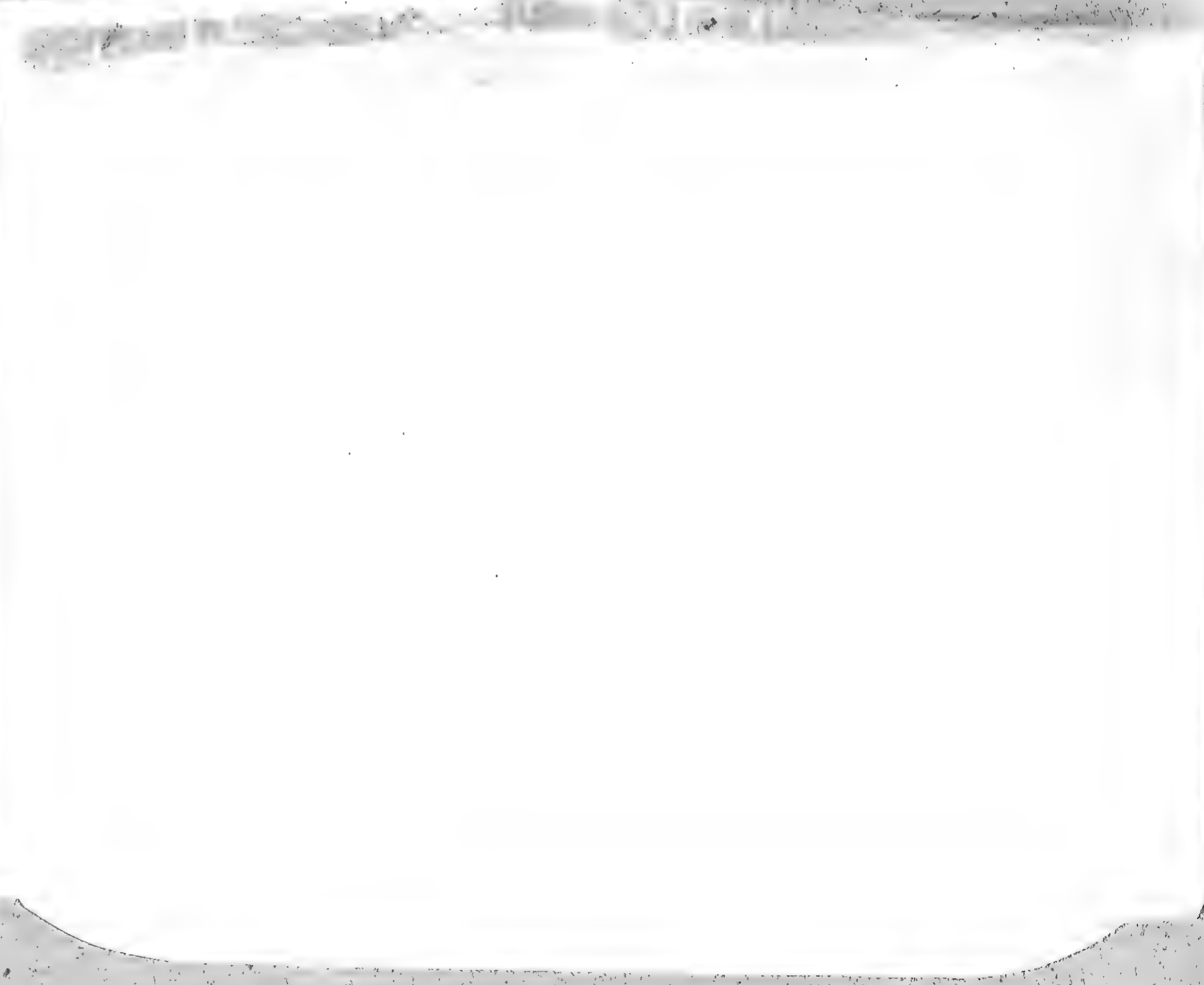






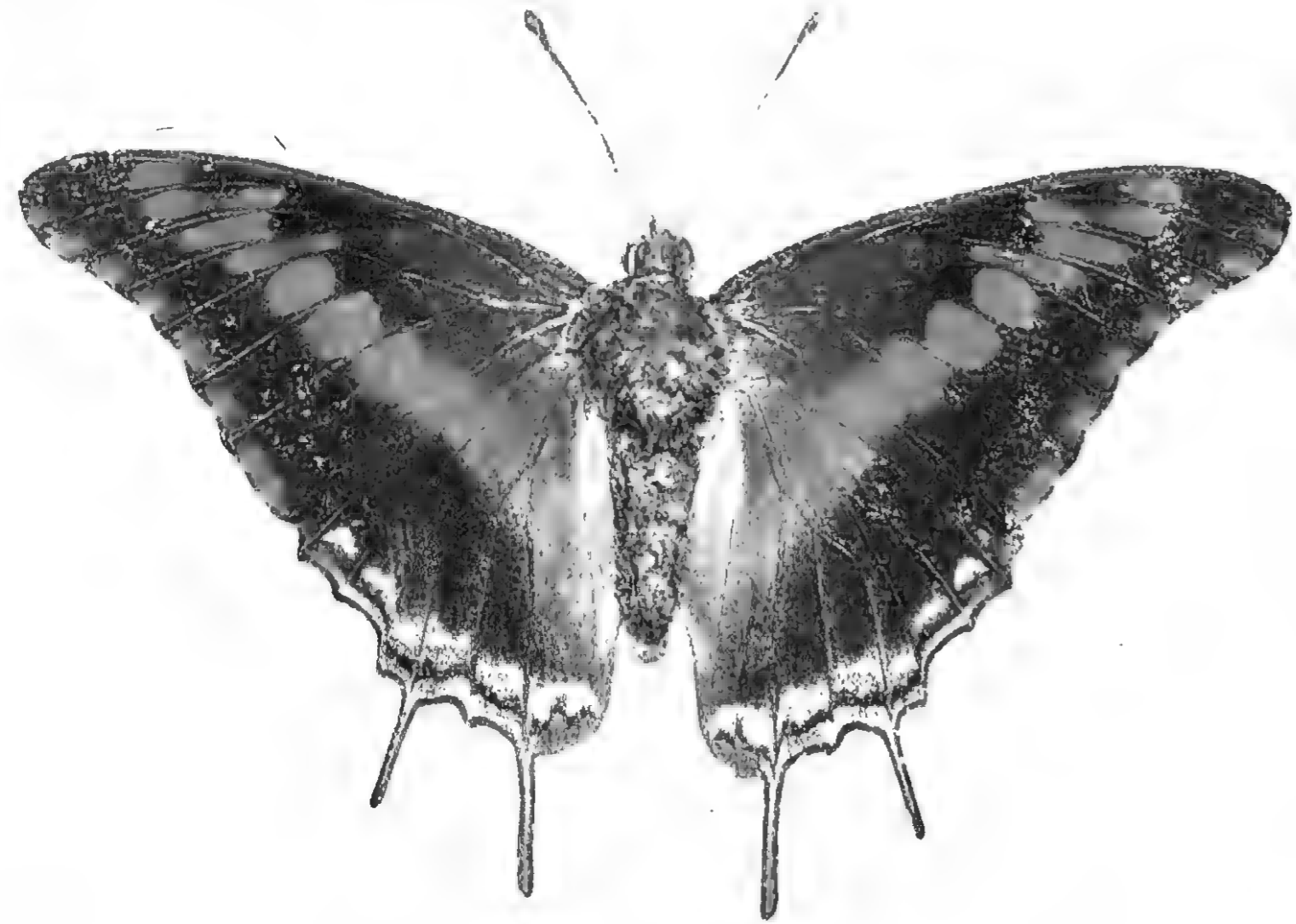
George A. ...

...





rk A





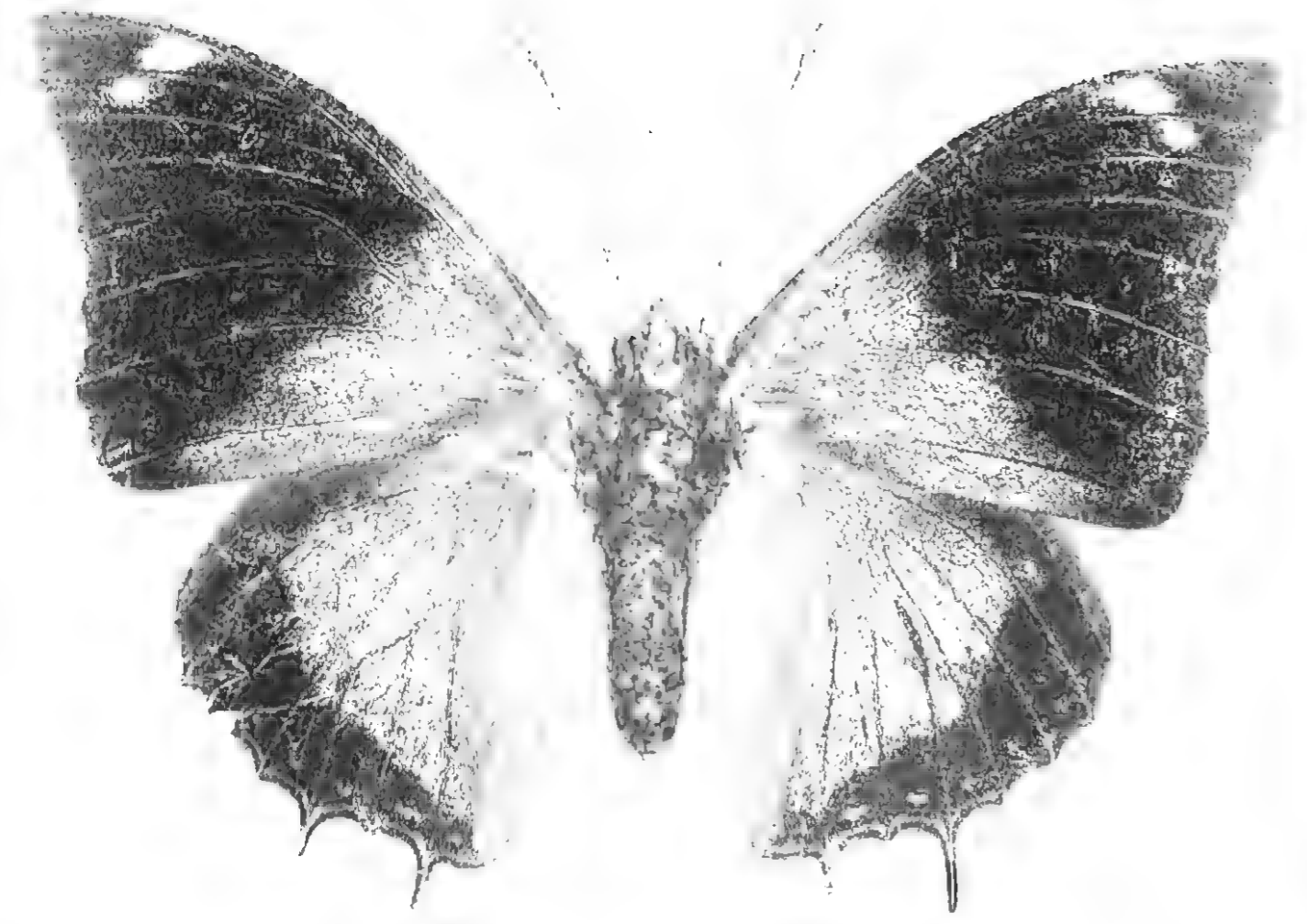
very rapid of flight the grandest of all, but the dirty white should be the





the granites

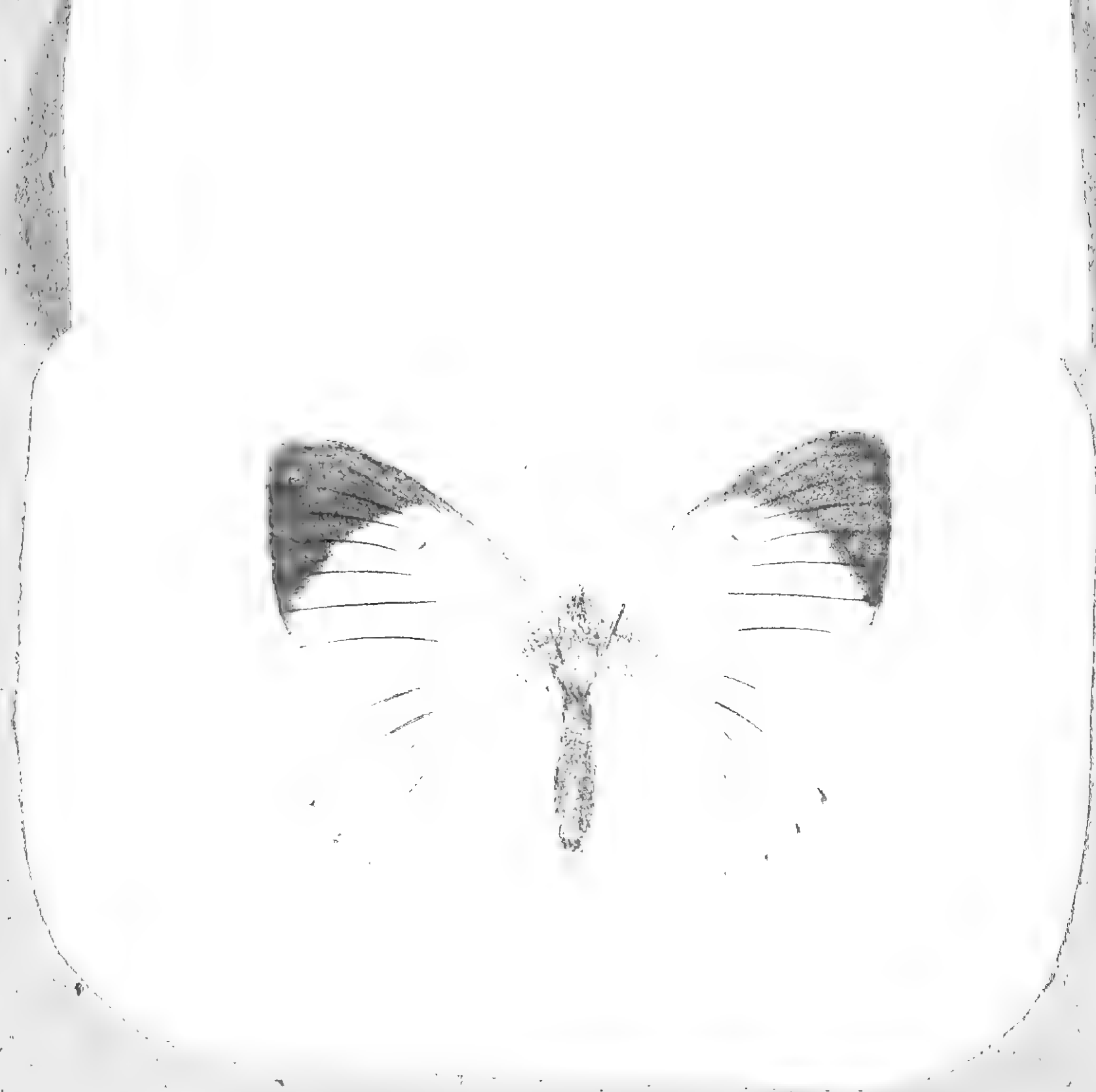
1852





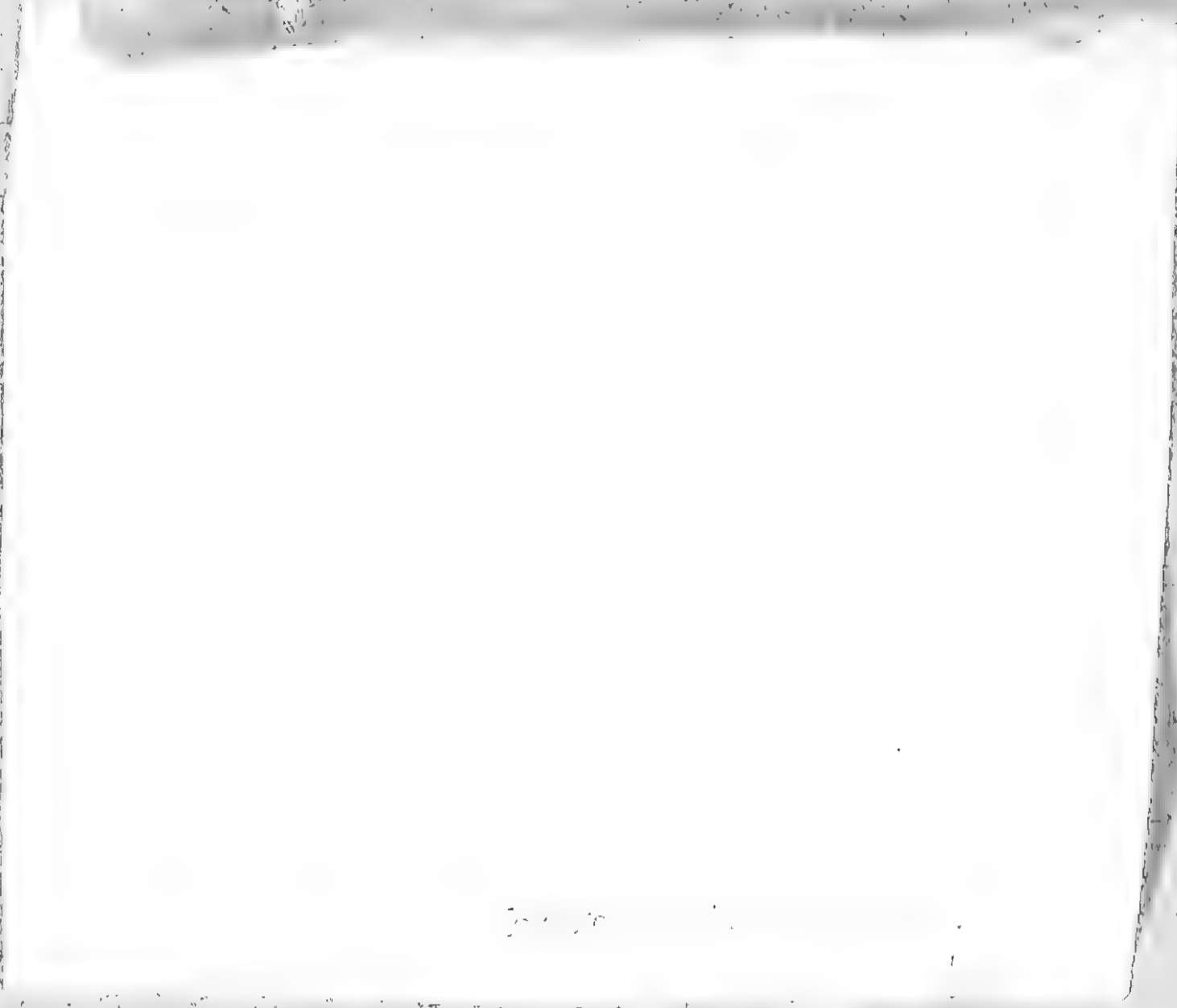








Uncommon





U. communis

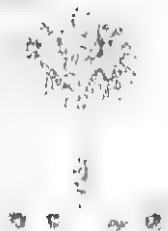
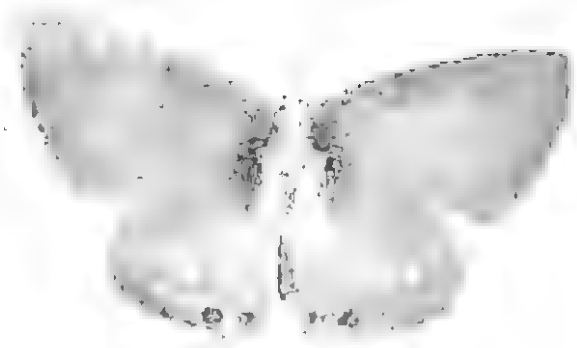




1000



Common

























very rapid, rare, always on road

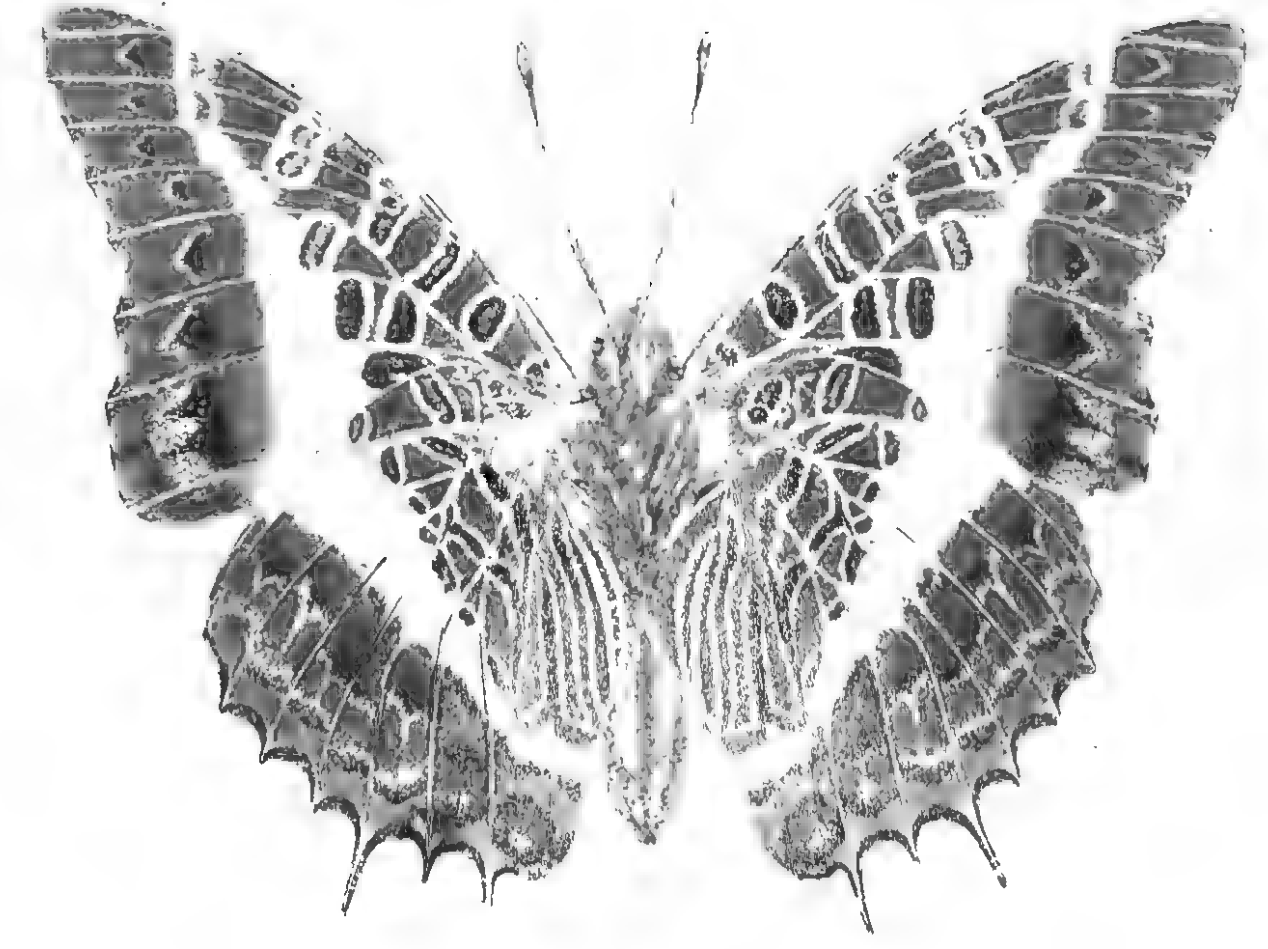


1000

p

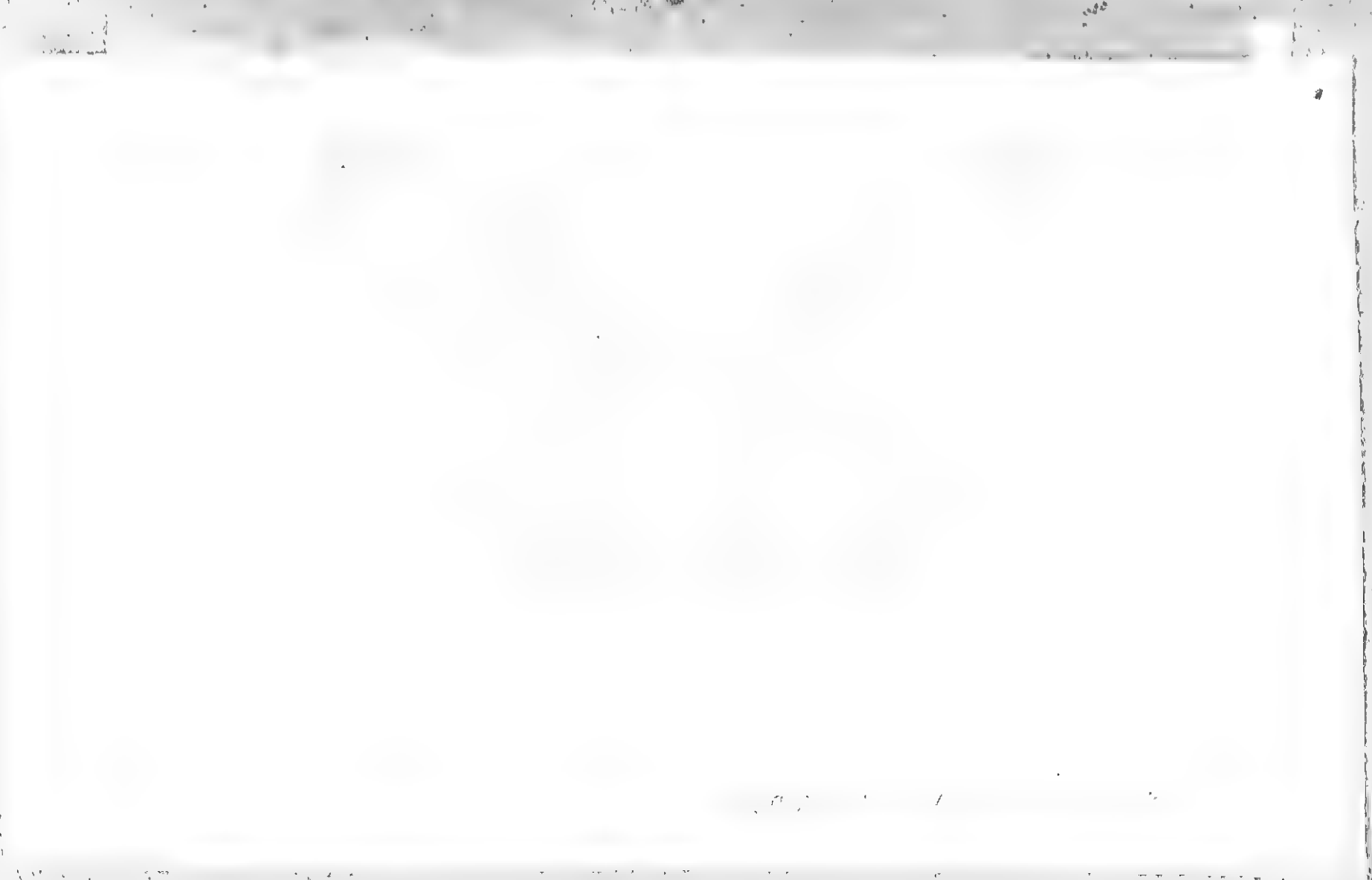


D. Mare

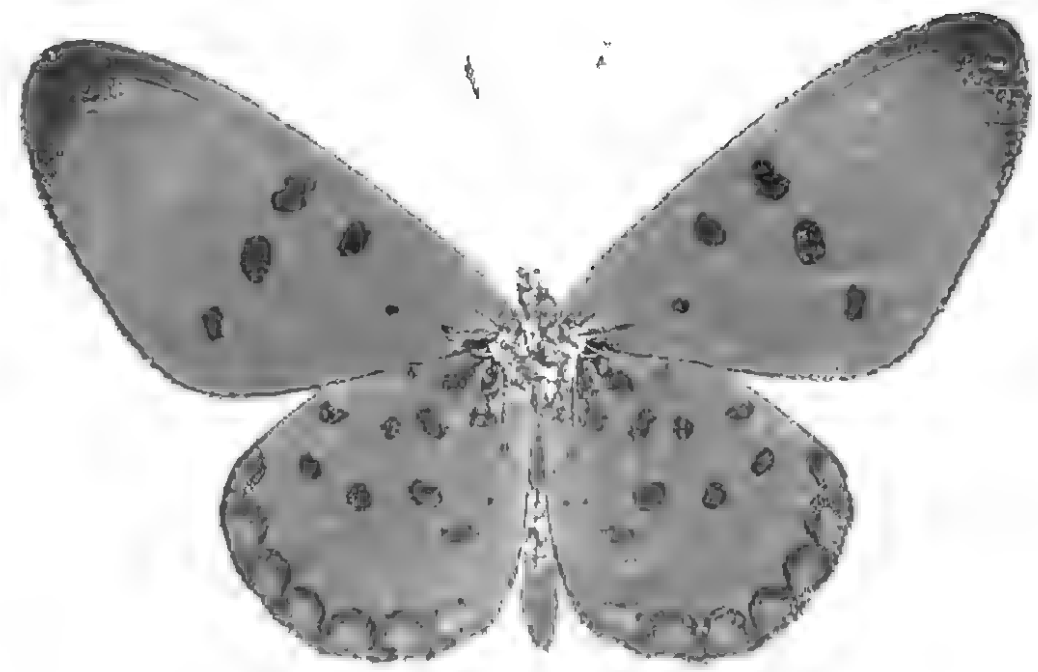


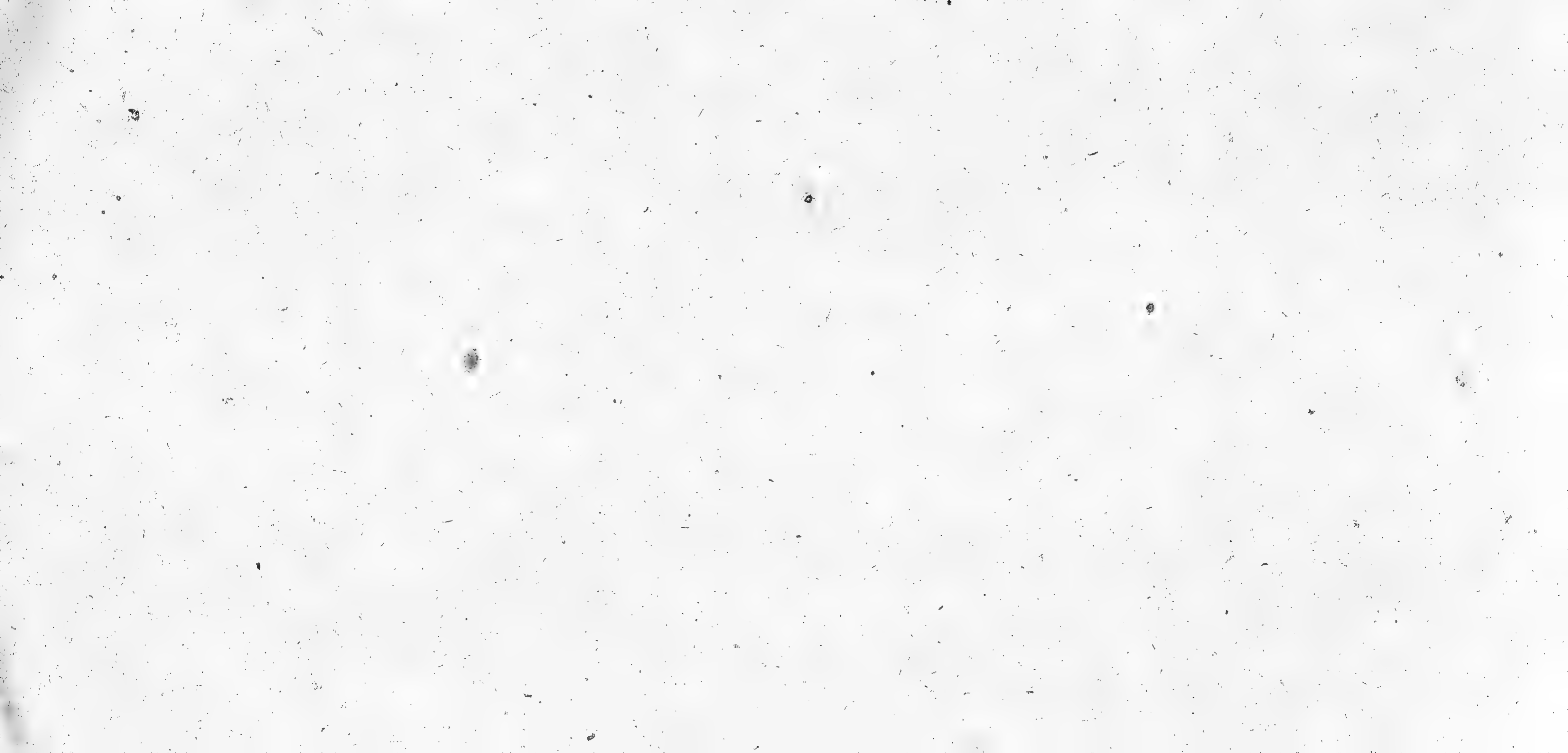
p





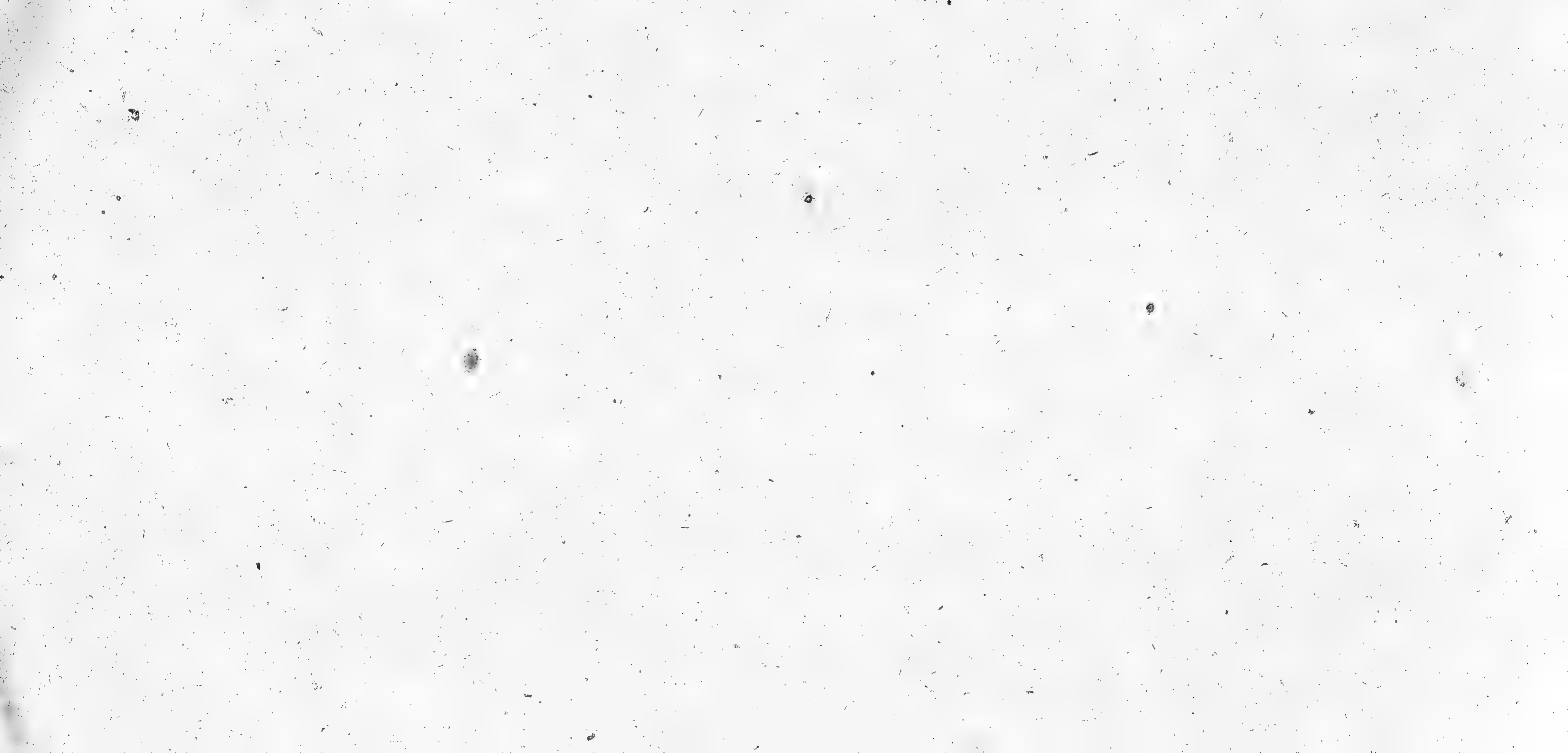






exceedingly beautiful
and rare

1811



Lycaena
maera













Mark Antony



Prionoxystus





The "fire-glow"





The fire-glow



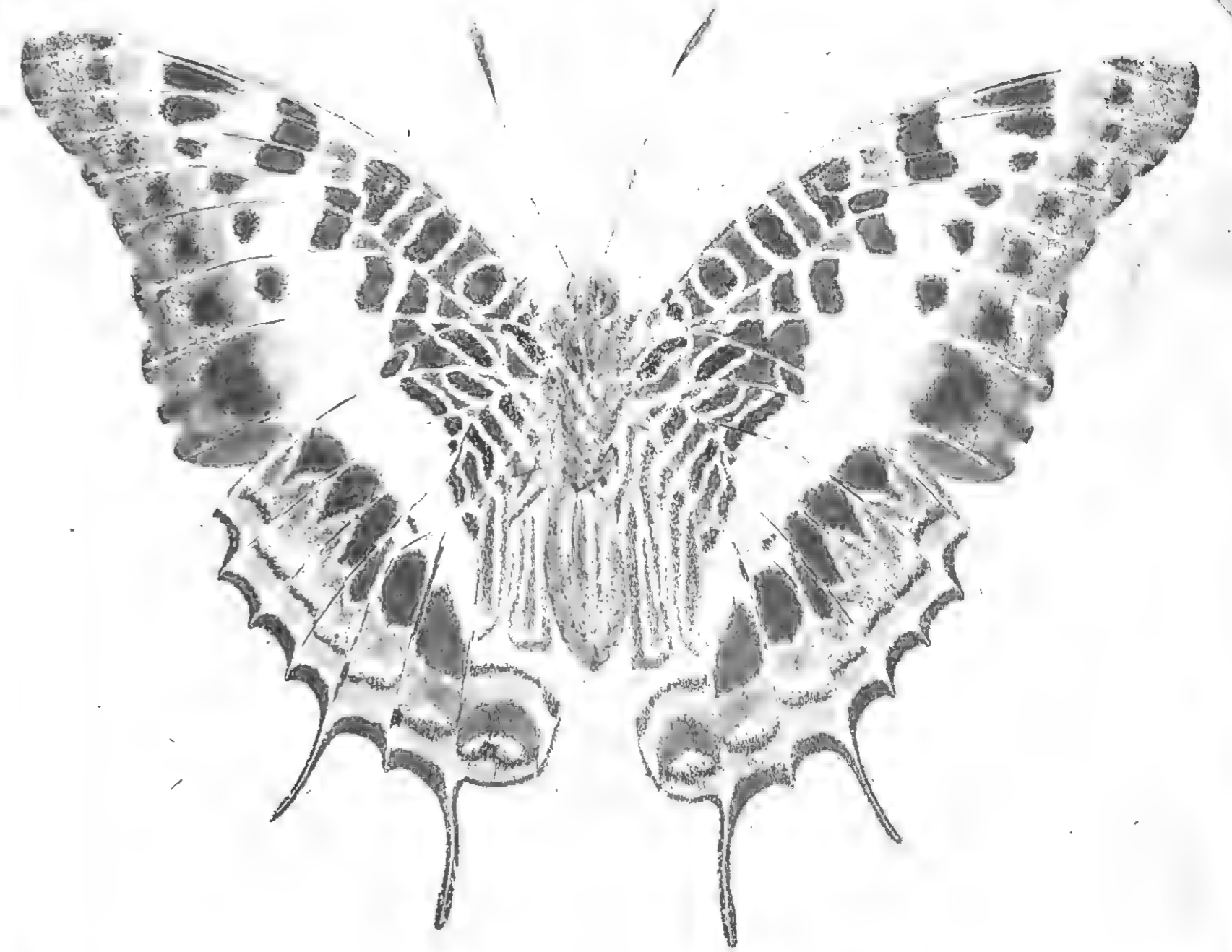


Clayton

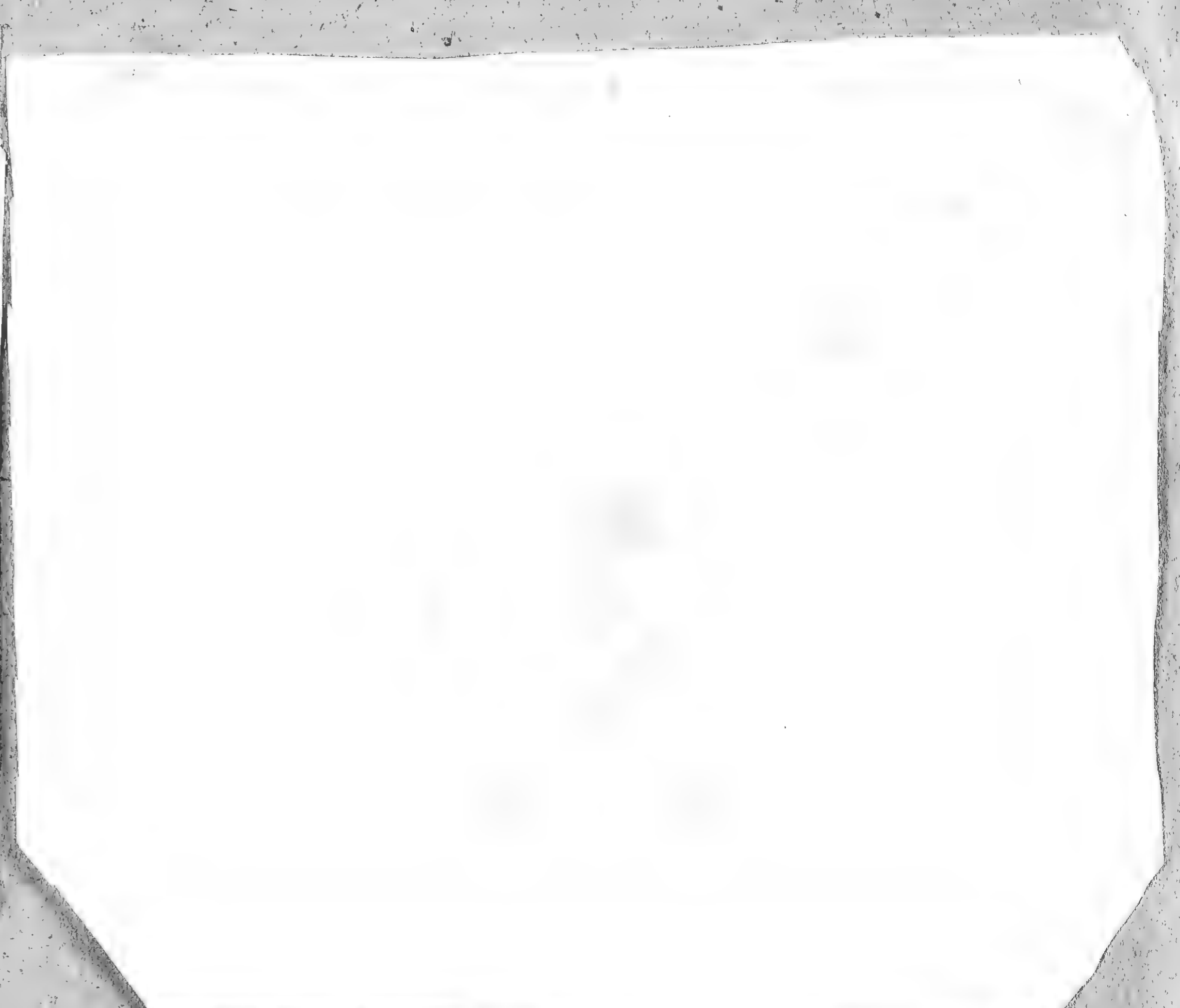
Charles W. W.



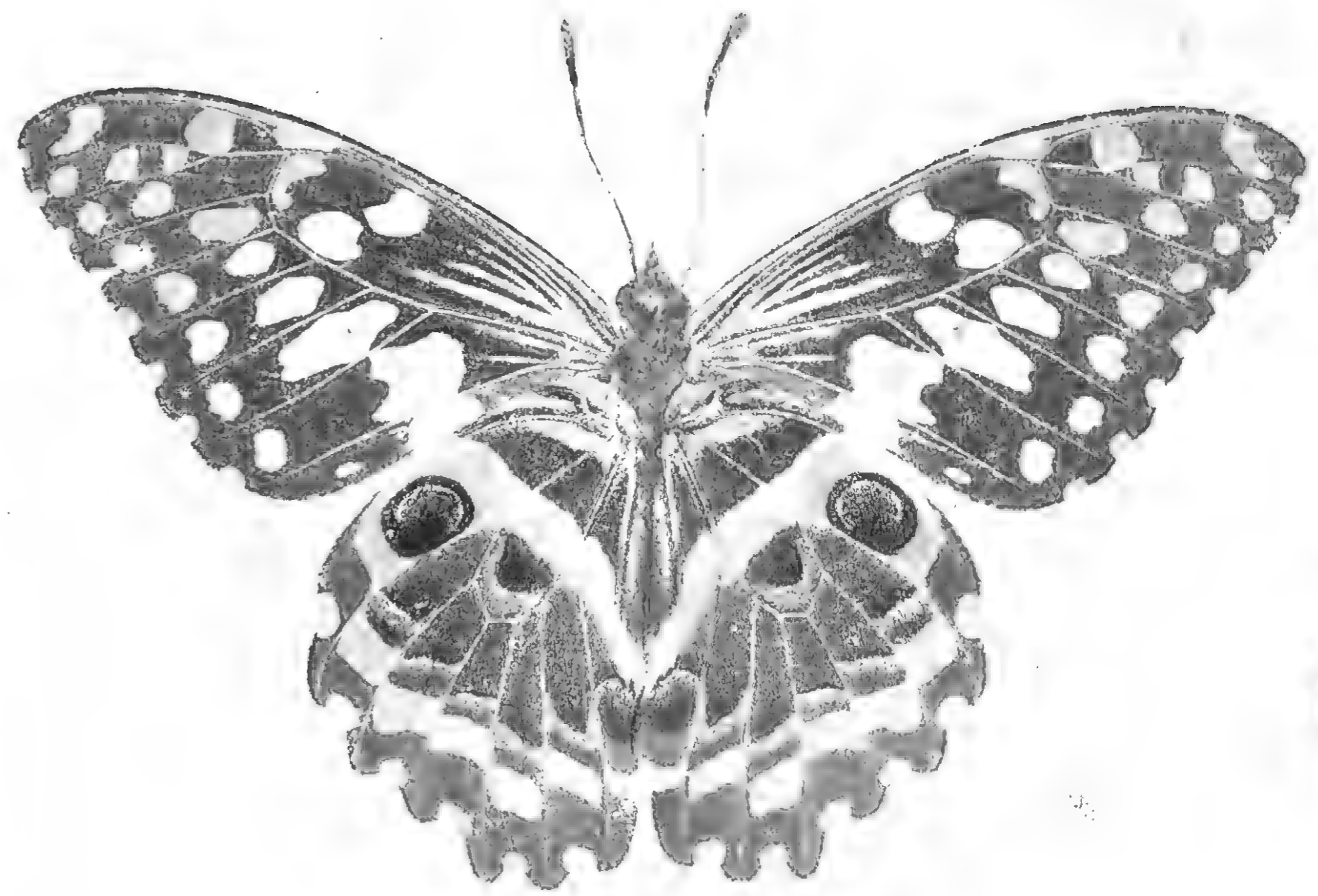
Clayton







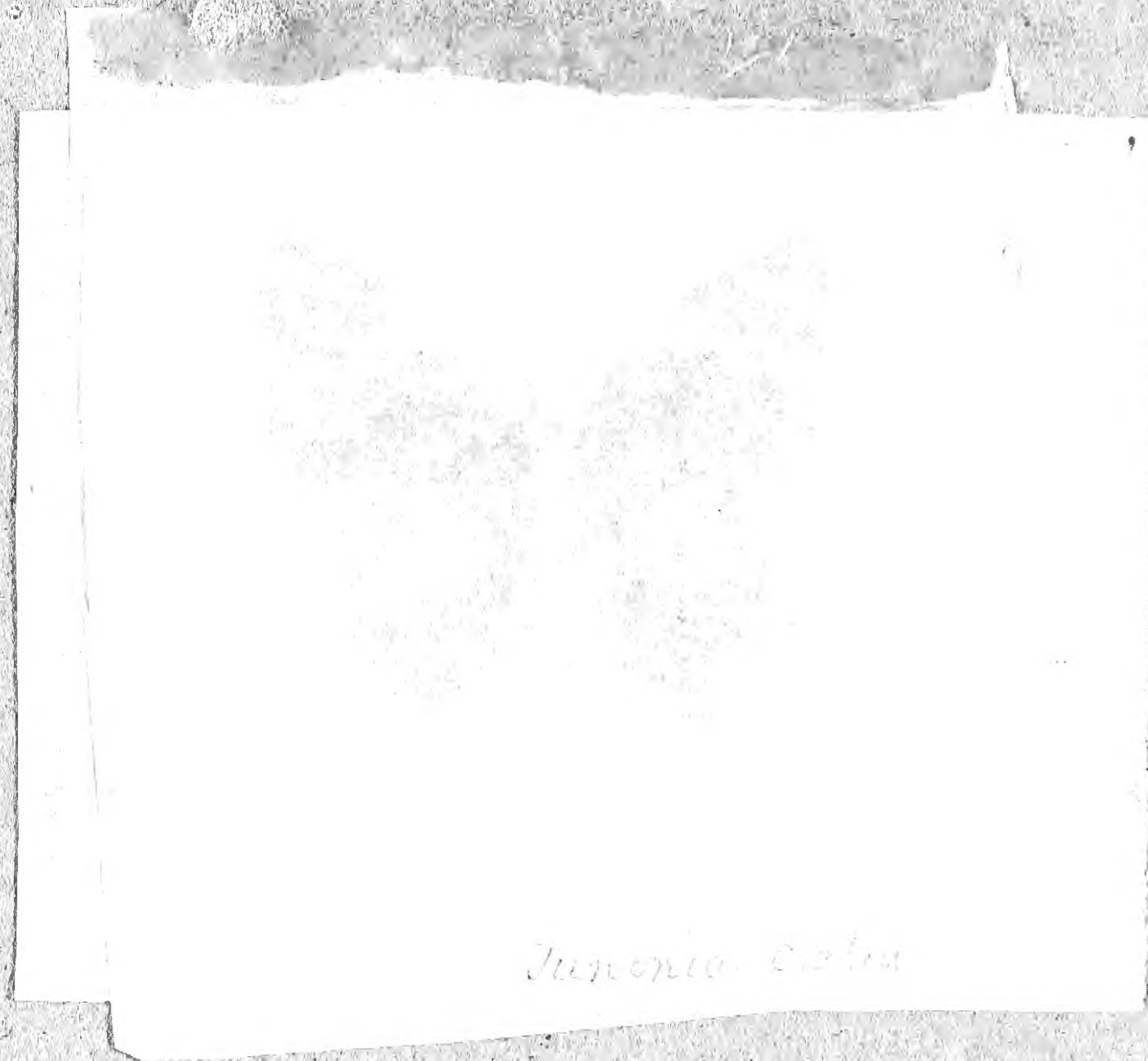






"Yvequoise"

Yvequoise
Blanca



Yvequoise Blanca



This is perhaps the most beautiful
the blue is added as the natural and dazzling blue
in the original will not print, it is a poor representation
of the perfect specimen,

"Yvequoise"



This is perhaps the most beautiful
the blue is added as the natural and dazzling blue
in the original will not print, it is a poor representation
of the perfect specimen,

