

Historic, Archive Document

Do not assume content reflects current scientific knowledge, policies, or practices.

1
P6975F
1945
INDEX

Index to 15-PLATE set of drawings of seeds

THE MORE IMPORTANT FORAGE-PLANT SEEDS AND
INCIDENTAL SEEDS COMMONLY FOUND WITH THEM

By

F. H. Hillman and Helen H. Henry

Division of Seed Investigations
Bureau of Plant Industry
United States Department of Agriculture
Washington, D. C.
Revised 1935

Reissued November 15, 1945 by
UNITED STATES DEPARTMENT OF AGRICULTURE
AGRICULTURAL RESEARCH ADMINISTRATION
BUREAU OF PLANT INDUSTRY, SOILS, AND
AGRICULTURAL ENGINEERING
Beltsville, Maryland

JAN 11 1946

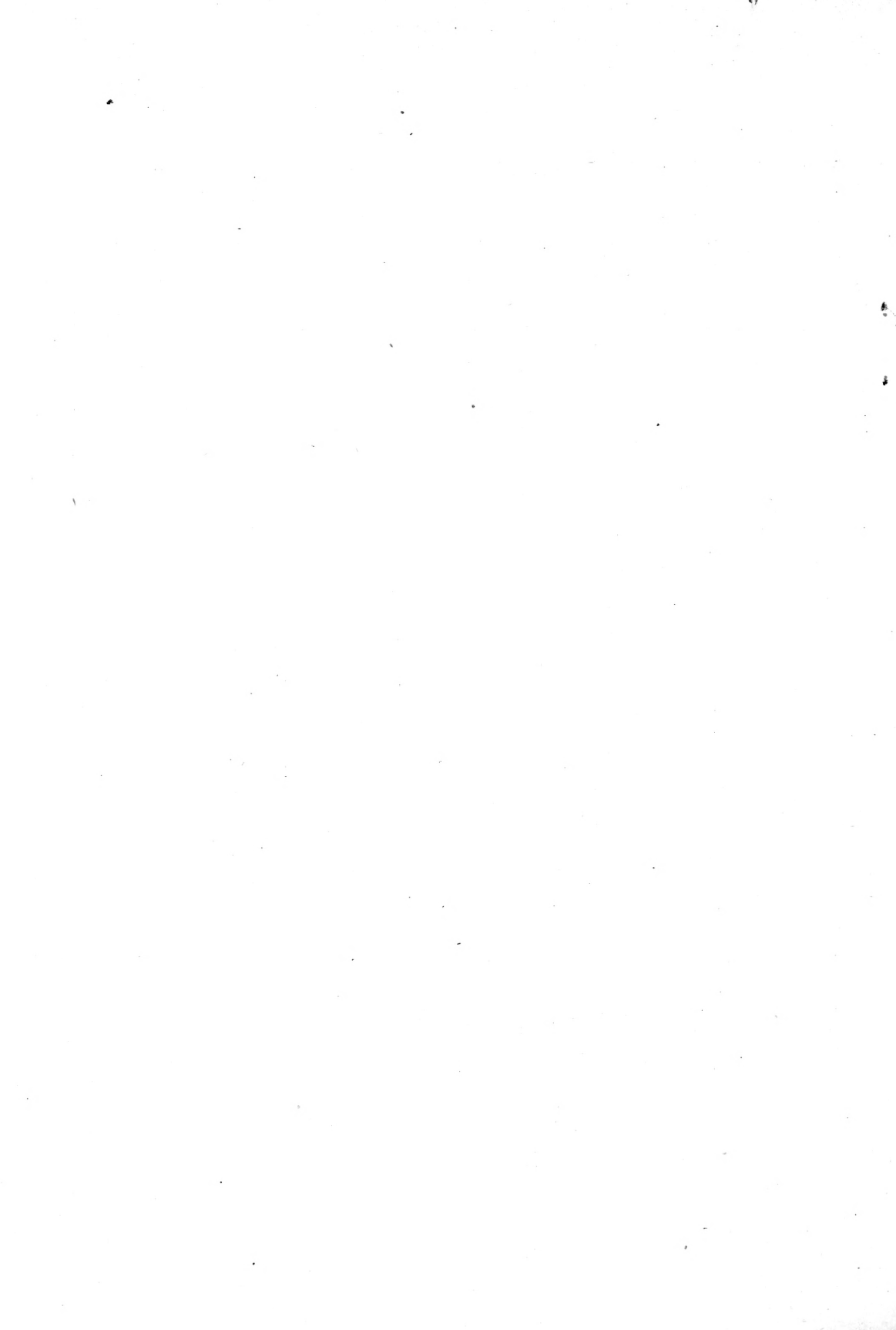
1983
1984

INDEX

The More Important Forage-Plant Seeds and
Incidental Seeds Commonly Found with Them
Revised May 1935

Poaceae	Plate No.	1-2-3	Malvaceae	Plate No.	10
Cyperaceae		4	Hypericaceae		10
Juncaceae		4	Violaceae		11
Liliaceae		4	Lythraceae		11
Urticaceae		4	Onagraceae		11
Polygonaceae		4-5	Apiaceae		11
Chenopodiaceae		5	Primulaceae		11
Amaranthaceae		5	Convolvulaceae		11
Aizoaceae		5	Boraginaceae		11-12
Caryophyllaceae		5-6	Verbenaceae		12
Ranunculaceae		6	Menthaceae		12-13
Papaveraceae		6	Solanaceae		13
Brassicaceae		6-7	Scrophulariaceae		13
Resedaceae		8	Plantaginaceae		13
Rosaceae		8	Rubiaceae		13
Fabaceae		8-9-10	Valerianaceae		14
Oxalidaceae		10	Dipsacaceae		14
Linaceae		10	Lobeliaceae		14
Geraniaceae		10	Asteraceae		14-15
Euphorbiaceae		10			

Abutilon theophrasti	Plate No.	10	Apargia nudicaulis	Plate No.	14
Acalypha virginica		10	Arabis glabra		7
Achillea millefolium		15	Arenaria serpyllifolia		6
Agropyron pauciflorum		3	Aristida dichotoma		1
Agropyron repens		3	Arnoseris minima		14
Agropyron smithii		3	Arrhenatherum elatius		2
Agrostemma githago		5	Atriplex hastata		5
Agrostis alba		2	Atriplex truncata		5
Agrostis canina		2	Avena fatua		2
Agrostis spica-venti		2	Axyris amaranthoides		5
Agrostis tenuis		2	Bassia hyssopifolia		5
Aira caryophyllea		2	Berteroa incana		7
Ajuga chamaepitys		12	Brassica arvensis		7
Alhagi pseudalhagi		10	Brassica campestris		7
Allium vineale		4	Brassica juncea		7
Alopecurus geniculatus		2	Brassica napus		7
Alopecurus myosuroides		2	Brassica nigra		7
Alopecurus pratensis		2	Brassica rapa var.		7
Alsine graminea		6	Bromus inermis		3
Alsine media		6	Bromus mollis		3
Althaea hirsuta		10	Bromus racemosus		3
Alyssum alyssoides		7	Bromus secalinus		3
Amaranthus blitoides		5	Bromus tectorum		3
Amaranthus graecizans		5	Bursa bursa-pastoris		7
Amaranthus retroflexus		5	Camelina dentata		7
Ambrosia elatior		15	Camelina microcarpa		7
Ammi visnaga		11	Camelina sativa		7
Anagallis arvensis		11	Campe barbarea		7
Anthemis arvensis		15	Campe verna		7
Anthemis cotula		15	Carduus crispus		15
Anthoxanthum aristatum		3	Carex spp.		4
Anthoxanthum odoratum		3	Cenchrus pauciflorus		1
Anthriscus sylvestris		11	Centaurea calitrapa		15
Anthyllis vulnerariae		9	Centaurea cyanus		15
Apargia autumnalis		14	Centaurea jacea		15



<i>Centaurea melitensis</i>	Plate No.	15	<i>Geum</i> sp.	Plate No.	8
<i>Centaurea picris</i>		15	<i>Glaucium corniculatum</i>		6
<i>Centaurea solstitialis</i>		15	<i>Glyceria grandis</i>		3
<i>Cerastium vulgatum</i>		6	<i>Glyceria striata</i>		3
<i>Cheirinia cheiranthoides</i>		7	<i>Grindelia squarrosa</i>		15
<i>Chenopodium album</i>		5	<i>Hedeoma pulegioides</i>		12
<i>Chenopodium berlandieri</i>		5	<i>Helianthus annuus</i>		15
<i>Chenopodium leptophyllum</i>		5	<i>Hibiscus trionum</i>		10
<i>Chenopodium murale</i>		5	<i>Hieracium aurantiacum</i>		14
<i>Chrysanthemum leucanthemum</i>		15	<i>Holcus lanatus</i>		2
<i>Cichorium intybus</i>		14	<i>Holcus mollis</i>		2
<i>Cirsium arvense</i>		15	<i>Houstonia purpurea</i>		13
<i>Cirsium lanceolatum</i>		15	<i>Hyoscyamus niger</i>		13
<i>Clinopodium acinos</i>		13	<i>Hymenophyssa pubescens</i>		6
<i>Conium maculatum</i>		11	<i>Hypericum perforatum</i>		10
<i>Conium</i> sp.		11	<i>Hypochaeris radicata</i>		14
<i>Conringia orientalis</i>		7	<i>Ipomoea purpurea</i>		11
<i>Convolvulus arvensis</i>		11	<i>Iva axillaris</i>		15
<i>Coronilla varia</i>		9	<i>Iva ciliata</i>		15
<i>Corynephorus canescens</i>		2	<i>Iva xanthifolia</i>		15
<i>Crepis capillaris</i>		14	<i>Juncus tenuis</i>		4
<i>Cuscuta epilinum</i>		11	<i>Juncoides campestre</i>		4
<i>Cuscuta epithymum</i>		11	<i>Juncoides nemorosum</i>		4
<i>Cuscuta indecora</i>		11	<i>Kickxia spuria</i>		13
<i>Cuscuta pentagona</i>		11	<i>Koellia</i> sp.		13
<i>Cuscuta planiflora</i>		11	<i>Kyllinga</i> sp.		4
<i>Cuscuta racemosa chiliana</i>		11	<i>Lactuca canadensis</i>		14
<i>Cyperus rotundus</i>		4	<i>Lactuca scariola integrata</i>		14
<i>Cynodon dactylon</i>		2	<i>Lemium amplexicaule</i>		12
<i>Cynosurus cristatus</i>		1	<i>Lappula echinata</i>		11
<i>Dactylis glomerata</i>		1	<i>Lappula occidentalis</i>		11
<i>Danthonia spicata</i>		2	<i>Lapsana communis</i>		14
<i>Daucus carota</i>		11	<i>Lathyrus aphaca</i>		9
<i>Delphinium consolida</i>		6	<i>Lathyrus hirsutus</i>		9
<i>Deschampsia caespitosa</i>		2	<i>Lathyrus tuberosus</i>		9
<i>Deschampsia flexuosa</i>		2	<i>Leontodon taraxacum</i>		14
<i>Dianthus armeria</i>		5	<i>Leonurus cardiaca</i>		12
<i>Digitaria ischaemum</i>		1	<i>Lepidium caepestre</i>		6
<i>Digitaria sanguinalis</i>		1	<i>Lepidium densiflorum</i>		6
<i>Diodia teres</i>		13	<i>Lepidium draba</i>		6
<i>Dipsacus sylvestris</i>		14	<i>Lepidium repens</i>		6
<i>Distichlis stricta</i>		2	<i>Lepidium virginicum</i>		6
<i>Dondia depressa</i>		5	<i>Lespedeza striata</i>		9
<i>Echinochloa crusgalli</i>		1	<i>Linum usitatissimum</i>		10
<i>Echinochloa crusgalli frumentacea</i>		1	<i>Linum virginianum</i>		10
<i>Echium vulgare</i>		12	<i>Lithospermum arvense</i>		12
<i>Eleocharis obtusa</i>		4	<i>Lobelia inflata</i>		14
<i>Eleocharis tenuis</i>		4	<i>Lolium multiflorum</i>		3
<i>Epilobium penicillatum</i>		11	<i>Lolium perenne</i>		3
<i>Epilobium</i> sp.		11	<i>Lolium temulentum</i>		3
<i>Eragrostis cidianensis</i>		2	<i>Lotus americanus</i>		8
<i>Erechtites hieracifolia</i>		15	<i>Lotus corniculatus</i>		8
<i>Erigeron canadensis</i>		15	<i>Ludwigia alternifolia</i>		11
<i>Erodium cicutarium</i>		10	<i>Lychnis alba</i>		5
<i>Eruca sativa</i>		7	<i>Lycopus virginicus</i>		13
<i>Erysimum officinale</i>		7	<i>Lythrum hyssopifolia</i>		11
<i>Euphorbia maculata</i>		10	<i>Madia sativa</i>		15
<i>Euphorbia preslii</i>		10	<i>Malva parviflora</i>		10
<i>Euphrasia</i> sp.		13	<i>Malva rotundifolia</i>		10
<i>Festuca elatior arundinacea</i>		3	<i>Marrubium vulgare</i>		12
<i>Festuca elatior</i>		3	<i>Matricaria inodora</i>		15
<i>Festuca myuros</i>		3	<i>Medicago arabica</i>		8
<i>Fimbristylis diphylla</i>		4	<i>Medicago hispida</i>		8
<i>Fimbristylis autumnalis</i>		4	<i>Medicago lupulina</i>		8
<i>Galeopsis ladanum</i>		12	<i>Medicago sativa</i>		8
<i>Galeopsis tetrahit</i>		12	<i>Melilotus alba</i>		9
<i>Galium aparine</i>		13	<i>Melilotus indica</i>		9
<i>Geranium carolinianum</i>		10	<i>Melilotus officinalis</i>		9
<i>Geranium columbinum</i>		10	<i>Mentha arvensis</i>		13
<i>Geranium dissectum</i>		10	<i>Moldavica parviflora</i>		12
<i>Geranium molle</i>		10	<i>Molinia caerulea</i>		2
<i>Geranium pusillum</i>		10	<i>Myosotis arvensis</i>		12



Nepeta cataria	Plate No. 12	Scrophularia marilandica	Plate No. 13
Neslia paniculata	7	Setaria italica	1
Norta altissima	7	Setaria lutescens	1
Oenothera biennis	11	Setaria viridis	1
Onobrychis viciaefolia	10	Sherardia arvensis	13
Ornithopus sativus	10	Sida spinosa	10
Oxalis stricta	10	Silene anglica	5
Panicum capillare	1	Silene antirrhina	5
Panicum dichotomiflorum	1	Silene dichotoma	5
Panicum sp.	1	Silene latifolia	5
Panicum miliaceum	1	Silene noctiflora	5
Panicum virgatum	1	Solanum carolinense	13
Papaver dubium	6	Solanum rostratum	13
Papaver rhoeas	6	Solanum nigrum	13
Papaver somniferum	6	Sonchus arvensis	14
Papaver spp.	6	Sonchus asper	14
Paspalum dilatatum	1	Sonchus oleraceus	14
Paspalum laeve	1	Sorghum halepense	1
Paspalum setaceum	1	Sorghum vulgare sudanense	1
Phleum pratense	1	Specularia perfoliata	14
Picris echioides	14	Spergula arvensis	6
Picris hieracioides	14	Spergula pentandra	6
Pisum sativum arvense	9	Sporobolus clandestinus	2
Pisum sativum	9	Sporobolus cryptandrus	2
Plantago aristata	13	Sporobolus neglectus	2
Plantago lanceolata	13	Stachys annua	12
Plantago major	13	Stachys palustris	12
Plantago rugelii	13	Swainsona salsula	10
Plantago virginica	13	Teucrium canadense	12
Poa annua	3	Thalictrum sp.	6
Poa bulbosa	3	Thlaspi arvense	7
Poa compressa	3	Torilis nodosa	11
Poa nemoralis	3	Tragopogon pratensis	14
Poa pratensis	3	Trianthema portulacastrum	5
Poa trivialis	3	Trifolium agrarium	8
Polygonum argyrocoleon	4	Trifolium angulatum	8
Polygonum aviculare	4	Trifolium arvense	8
Polygonum convolvulus	5	Trifolium dubium	8
Polygonum hydropiper	4	Trifolium hybridum	8
Polygonum lapathifolium	4	Trifolium incarnatum	8
Polygonum pensylvanicum	4	Trifolium parviflorum	8
Polygonum persicaria	5	Trifolium pratense	8
Potentilla canadensis	8	Trifolium procumbens	8
Potentilla monspeliensis	8	Trifolium repens	8
Prunella vulgaris	12	Trigonella foenum-graecum	10
Raimannia laciniata	11	Trisetum flavescens	2
Ranunculus acris	6	Urtica dioica	4
Ranunculus perviflorus	6	Vaccaria pyramidata	5
Ranunculus repens	6	Valerianella dentata	14
Ranunculus scardous	6	Valerianella eriocarpa	14
Raphanus raphanistrum	7	Valerianella locusta	14
Reseda lutea	8	Verbascum thapsus	13
Rosa sp.	8	Verbena hastata	12
Rubus sp.	8	Verbena officinalis	12
Rudbeckia hirta	15	Verbena stricta	12
Rumex acetosa	4	Verbena urticaefolia	12
Rumex acetosella	4	Veronica arvensis	13
Rumex conglomeratus	4	Veronica agrestis	13
Rumex crispus	4	Veronica peregrina	13
Rumex obtusifolius	4	Vicia angustifolia	9
Salsola pestifer	5	Vicia cracca	9
Salvia lanceaefolia	12	Vicia gracilis	9
Salvia sclarea	12	Vicia grandiflora	9
Salvia sp.	12	Vicia hirsuta	9
Salvia sylvestris	12	Vicia lutea	9
Sanguisorba minor	8	Vicia sativa	9
Sanguisorba sp.	8	Vicia sp.	9
Scabiosa arvensis	14	Vicia tetrasperma	9
Scirpus spp.	4	Vicia villosa	9
Scleranthus annuus	6	Viola tricolor	11

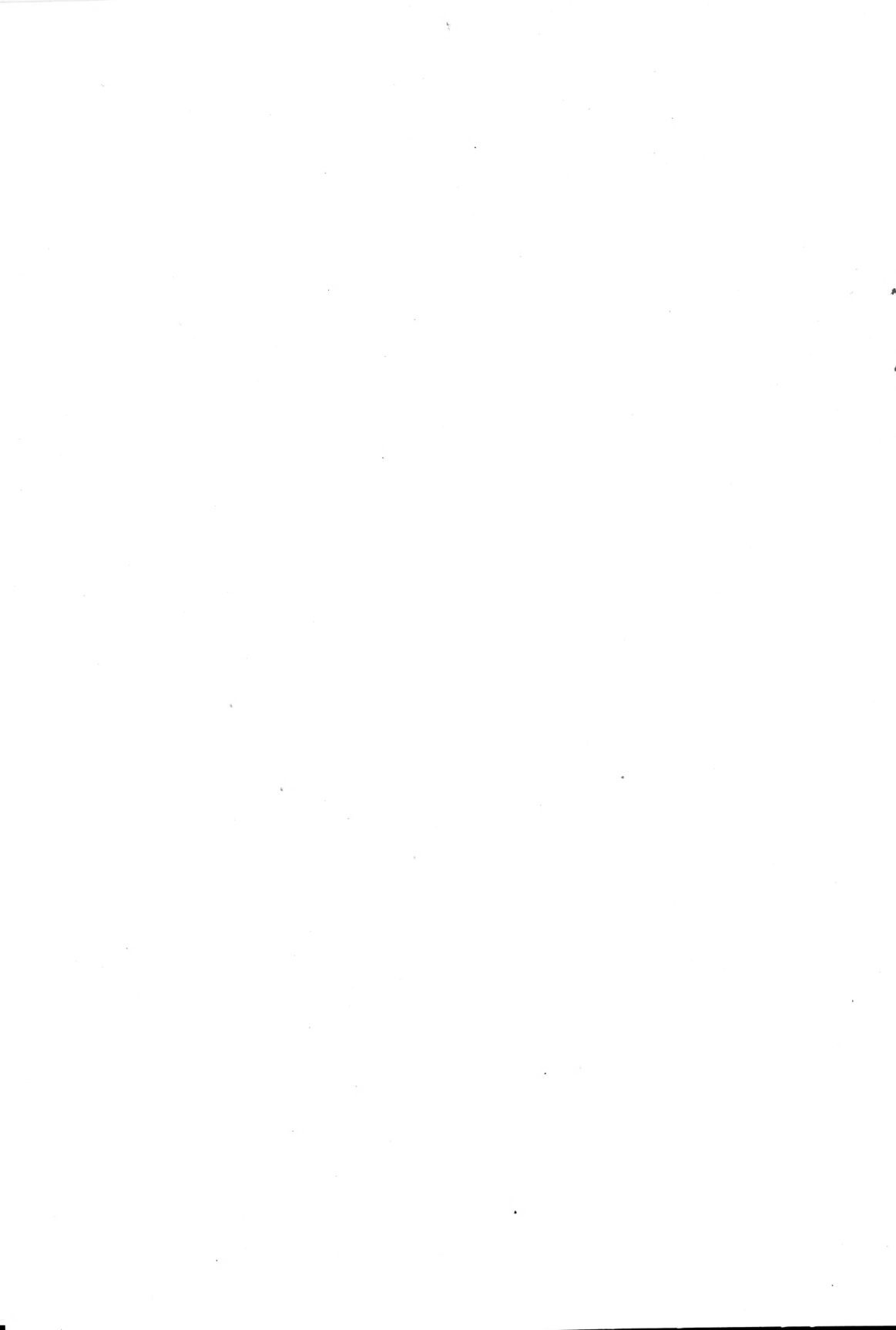


PLATE 1*

1. *Sorghum vulgare sudanense* (Piper) Hitchc. Sudan grass
Holcus sorghum sudanensis Piper
2. *Sorghum halepense* (L.) Pers. Johnson grass
Holcus halepensis L.
3. *Paspalum setaceum* Michx. Slender paspalum
4. *Paspalum laeve* Michx. Field paspalum
5. *Paspalum dilatatum* Poir. Dallis grass
6. *Digitaria sanguinalis* (L.) Scop. Crabgrass
Syntherisma sanguinalis (L.) Dulac.
7. *Digitaria ischaemum* (Schreb.) Muhl. Smooth crabgrass
Syntherisma ischaemum (Schreb.) Nash
8. *Panicum capillare* L. Witchgrass
9. *Panicum dichotomiflorum* Michx. Fall panicum
10. *Panicum miliaceum* L. Proso; broomcorn millet; hog millet
11. *Panicum virgatum* L. Switchgrass
12. *Panicum* sp. No common name
"*Panicum lanuginosum*"
13. *Echinochloa crusgalli* (L.) Beauv. Barnyard grass
14. *Echinochloa crusgalli frumentacea* (Roxb.) Wight. Japanese millet
Echinochloa frumentacea Link.
15. *Setaria lutescens* (Weig.) Hubb. Yellow bristlegrass; yellow foxtail
Chaetochloa lutescens (Weig.) Stuntz
16. *Setaria viridis* (L.) Beauv. Green bristlegrass; green foxtail
Chaetochloa viridis (L.) Scribn.
17. *Setaria italica* (L.) Beauv. var. Hungarian millet
Chaetochloa italica (L.) Scribn.
18. *Setaria italica* (L.) Beauv. var. Golden millet; common millet
Chaetochloa italica (L.) Scribn.
19. *Setaria italica* (L.) Beauv. var. German millet
Chaetochloa italica (L.) Scribn.
20. *Cenchrus pauciflorus* Benth. Field sandbur
21. *Dactylis glomerata* L. Orchard grass
22. *Cynosurus cristatus* L. Crested dogtail *Synonyms, or unapproved
names, underscored
23. *Aristida dichotoma* Michx. Poverty three-awn
24. *Phleum pratense* L. Timothy

PLATE 2*

1. *Alopecurus pratensis* L. Meadow foxtail
2. *Alopecurus geniculatus* L. Water foxtail
3. *Alopecurus myosuroides* Huds. Slender foxtail
Alopecurus agrestis L.
4. *Sporobolus cryptandrus* (Torr.) Gray Sand dropseed
5. *Sporobolus clandestinus* (Spreng.) Hitchc. Scratch dropseed
6. *Sporobolus neglectus* Nash Puff dropseed
7. *Agrostis alba* L. Redtop
8. *Agrostis tenuis* Sibth. Colonial bent; Rhode Island bent; browntop
Agrostis vulgaris With.
9. *Agrostis canina* L. Velvet bent
10. *Agrostis spica-venti* L. Windgrass
Apera spica-venti Beauv.
11. *Corynephorus canescens* (L.) Beauv. Club-awn
Weingartneria canescens (L.) Bernh.
12. *Holcus lanatus* L. Velvet grass
Notholcus lanatus (L.) Nash
13. *Holcus mollis* L. Softgrass
Notholcus mollis (L.) Hitchc.
14. *Aira caryophyllea* L. Silver hairgrass
15. *Deschampsia flexuosa* (L.) Trin. Crinkled hairgrass
16. *Deschampsia caespitosa* (L.) Beauv. Tufted hairgrass
17. *Trisetum flavescens* (L.) Beauv. Yellow trisetum
Avena flavescens L.
18. *Avena fatua* L. Wild oat
19. *Arrhenatherum elatius* (L.) Mert. & Koch Tall oatgrass
20. *Danthonia spicata* (L.) Beauv. Poverty oatgrass
21. *Cynodon dactylon* (L.) Pers. Bermuda grass
Capriola dactylon (L.) Kuntze
22. *Molinia coerulea* (L.) Moench. Lavender grass
23. *Eragrostis cilianensis* (All.) Link Stinkgrass
24. *Distichlis stricta* (Torr.) Rydb. Desert saltgrass

*Synonyms, or unapproved names, underscored

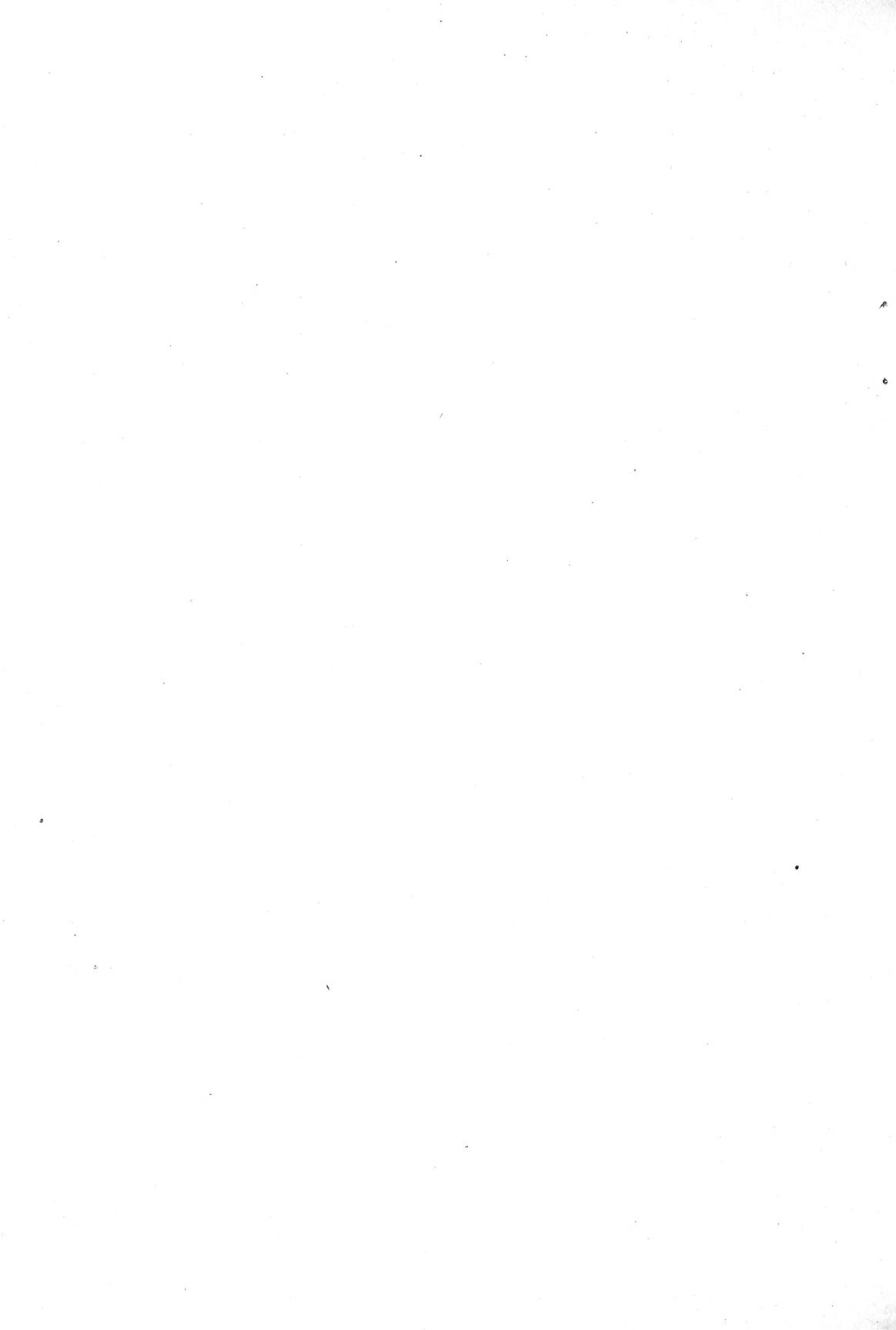


PLATE 3*

1. *Anthoxanthum odoratum* L. Sweet vernalgrass
2. *Anthoxanthum aristatum* Boiss. Annual vernalgrass
Anthoxanthum puellii Lecoq & Lamotte
3. *Poa annua* L. Annual bluegrass
4. *Poa compressa* L. Canada bluegrass
5. *Poa pratensis* L. Kentucky bluegrass
6. *Poa trivialis* L. Rough bluegrass; rough-stalked meadow grass
7. *Poa nemoralis* L. Wood bluegrass; wood meadow grass
8. *Poa bulbosa* L. Bulbous bluegrass
9. *Glyceria striata* (Lam.) Hitchc. Fowl mannagrass
Panicularia nervata (Willd.) Kuntze
10. *Glyceria grandis* S. Wats. American mannagrass
Panicularia americana (Torr.) MacM.
11. *Festuca myuros* L. Rattail fescue
12. *Festuca elatior* L. Meadow fescue
Festuca elatior pratensis (Huds.) A. Gray
13. *Festuca elatior arundinacea* (Schreb.) Wimm. Reed fescue
Festuca arundinacea Schreb.
14. *Bromus inermis* Leyss. Smooth brome; awnless brome grass
15. *Bromus tectorum* L. Downy chess
16. *Bromus mollis* L. Soft chess
"*Bromus hordeaceus*"
17. *Bromus secalinus* L. Chess; cheat
18. *Bromus racemosus* L. Smooth chess
19. *Lolium perenne* L. Perennial ryegrass; English ryegrass
20. *Lolium multiflorum* Lam. Italian ryegrass
21. *Lolium temulentum* L. Darnel
22. *Agropyron repens* (L.) Beauv. Quackgrass
23. *Agropyron pauciflorum* (Schwein.) Hitchc. Slender wheatgrass
Agropyron tenerum Vasey
24. *Agropyron smithii* Rydb. Bluestem; western wheat grass

*Synonyms, or unapproved names, underscored

PLATE 4*

1. *Cyperus rotundus* L. Nutgrass
2. *Kyllinga* sp. No common name
3. *Eleocharis tenuis* (Willd.) Schult. Slender spikerush
4. *Eleocharis obtusa* (Willd.) Schult. Blunt spikerush
5. *Fimbristylis diphylla* (Retz.) Vahl No common name
Fimbristylis laxa Vahl
6. *Fimbristylis autumnalis* (L.) Roem. & Schult. No common name
7. *Scirpus* sp. Bulrush
8. *Scirpus* sp. Bulrush
9. *Carex* spp. Sedge
10. *Juncus tenuis* Willd. Path rush
11. *Juncoides campestre* (L.) Kuntze Field woodrush
Luzula campestris (L.) DC.
12. *Juncoides nemorosum* (Pollich) Kuntze Forest woodrush
Luzula nemorosa (Pollich) E. Mey.
13. *Allium vineale* L. Wild garlic
14. *Urtica dioica* L. Big nettle; stinging nettle
15. *Rumex crispus* L. Curly dock
16. *Rumex obtusifolius* L. Bitter dock
17. *Rumex conglomeratus* Murr. Green dock
18. *Rumex acetosa* L. Garden sorrel; sour dock
19. *Rumex acetosella* L. Sheep sorrel
20. *Polygonum argyrocoleon* Steudel Silversheath knotweed
21. *Polygonum aviculare* L. Knotweed
22. *Polygonum pensylvanicum* L. Bigseed ladythumb
23. *Polygonum lapathifolium* L. Pale ladythumb
24. *Polygonum hydropiper* L. Smartweed

*Synonyms, or unapproved names, underscored

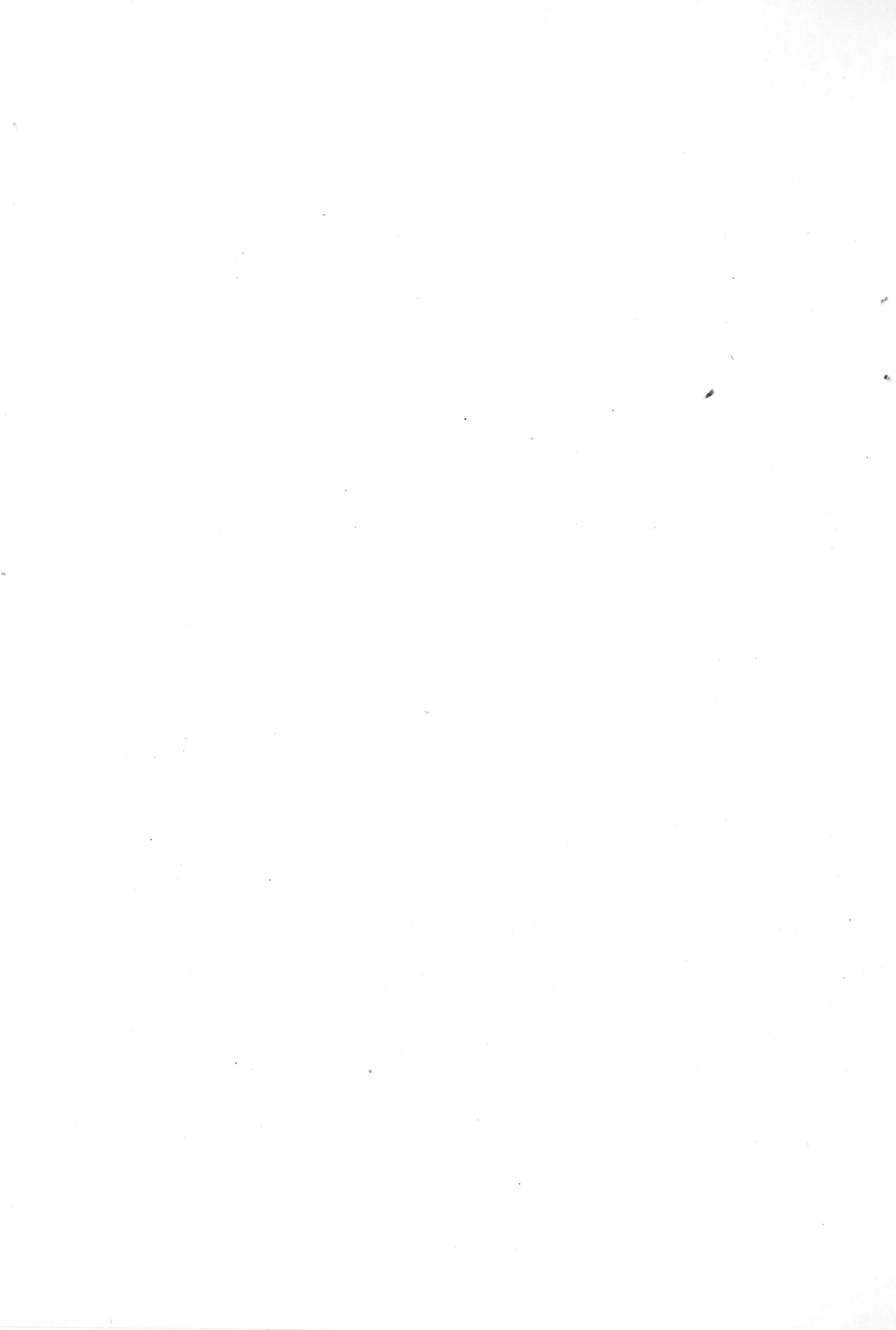


PLATE 5*

1. *Polygonum persicaria* L. Ladvsthumb
2. *Polygonum convolvulus* L. Cornbind; black bindweed
3. *Chenopodium album* L. Lambsquarters
4. *Chenopodium berlandieri* Moq. Pitseed goosefoot
5. *Chenopodium leptophyllum* Nutt. Narrowleaf goosefoot
6. *Chenopodium murale* L. Nettleleaf goosefoot
7. *Atriplex hastata* L. Fat-hen; saltbush
8. *Atriplex truncata* (Torr.) A. Gray Wedgescale orach; saltbush
9. *Dondia depressa* Seepweed
Suaeda sp.
10. *Salsola pestifer* A. Nels. Russian-thistle
11. *Axyris amaranthoides* L. Russian-pigweed
12. *Bassia hyssopifolia* (Pall.) Kuntze Fivehook bassia
13. *Amaranthus retroflexus* L. Redroot amaranth; rough pigweed
Amaranthus graecizans L. Tumble amaranth
14. *Amaranthus blitoides* S. Wats. Spreading amaranth
15. *Trianthema portulacastrum* L. Horse-purslane
16. *Agrostemma githago* L. Corncockle
17. *Silene latifolia* (Mill.) Britten & Rendle. Bladder campion
18. *Silene dichotoma* Ehrh. Clover catchfly; forked catchfly
19. *Silene antirrhina* L. Sleepy catchfly
20. *Silene noctiflora* L. Nightblooming catchfly
21. *Silene anglica* L. English catchfly
22. *Lychnis alba* Mill. Evening campion; white campion
23. *Vaccaria pyramidata* Moench Cowcockle
Saponaria vaccaria L.
24. *Dianthus armeria* L. Deptford pink

*Synonyms, or unapproved names, underscored

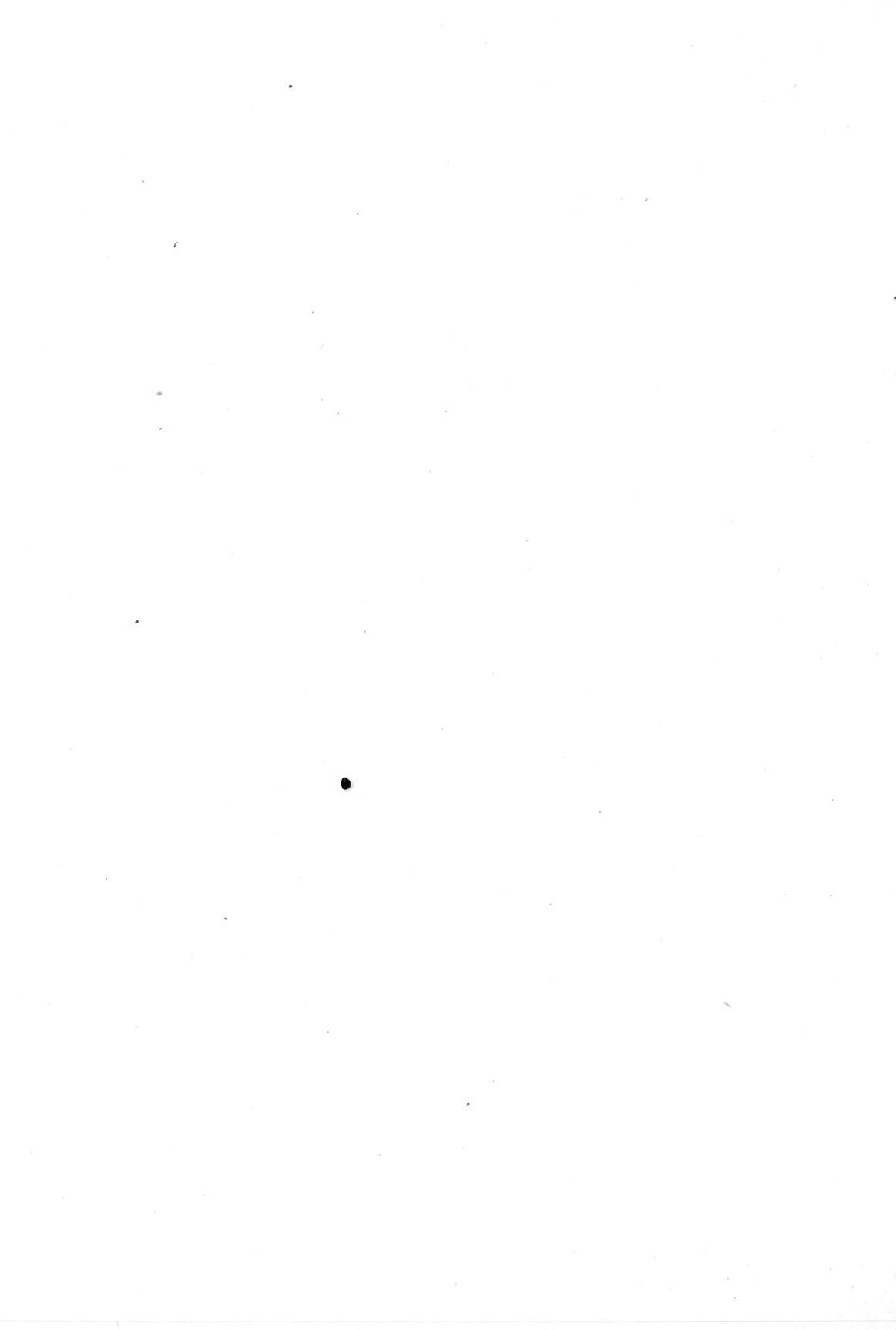


PLATE 6*

1. *Alsine media* L. Chickweed
Stellaria media (L.) Cyrill.
2. *Alsine graminea* (L.) Britton Little starwort
Stellaria graminea L.
3. *Cerastium vulgatum* L. Big mouse-ear; mouse-ear chickweed
4. *Arenaria serpyllifolia* L. Thymeleaf sandwort
5. *Spergula arvensis* L. Corn spurry
6. *Spergula pentandra* L. Wingseed spurry
7. *Scleranthus annuus* L. Knawel
8. *Delphinium consolida* L. Field larkspur
9. *Ranunculus acris* L. Tall buttercup
10. *Ranunculus repens* L. Creeping buttercup
11. *Ranunculus sardous* Crantz Wartseed buttercup
Ranunculus parvulus L.
12. *Ranunculus parviflorus* L. Sticktight crowfoot
13. *Thalictrum* sp. Meadowrue
14. *Papaver somniferum* L. Opium poppy
15. *Papaver dubium* L. Longpod poppy
Papaver rhoeas L. Corn poppy
16. *Papaver* sp. Poppy
17. *Papaver* sp. Poppy
18. *Glaucium corniculatum* (L.) Curtis Sea-poppy
19. *Lepidium virginicum* L. American peppergrass
20. *Lepidium densiflorum* Schrad. Prairie peppergrass
"*Lepidium apetalum*"
21. *Lepidium campestre* (L.) R. Br. Field peppergrass
22. *Lepidium draba* L. Perennial peppergrass; hoary cress
23. *Lepidium repens* (Schrenk) Boiss. Lens peppergrass
24. *Hymenophysa pubescens* C. A. Mey. Ballcress

*Synonyms, or unapproved names, underscored



PLATE 7*

1. *Thlaspa arvense* L. Penny-cress
2. *Norda altissima* (L.) Britton Turnip-mustard
Sisymbrium altissimum L.
3. *Erysimum officinale* L. Hedge-mustard
Sisymbrium officinale (L.) Scop.
4. *Brassica nigra* (L.) Koch Black-mustard
5. *Brassica juncea* (L.) Coss. India-mustard
6. *Brassica napus* L. Winter-rape
7. *Brassica napus* L. Oilseed-rape
8. *Brassica rapa* L. var. Turnip-rape
9. *Brassica campestris* L. Bird-rape
10. *Brassica arvensis* (L.) Kuntze Charlock
Sinapis arvensis L.
11. *Raphanus raphanistrum* L. Wild-radish
12. *Campe barbarea* (L.) W. F. Wight Bitter-wintercress
Barbarea vulgaris R. Br.
13. *Campe verna* (Mill.) Heller Early-wintercress
Barbarea verna (Mill.) Asch.
14. *Bursa bursa-pastoris* (L.) Britton Shepherds-purse
Capsella bursa-pastoris (L.) Medic.
15. *Camelina sativa* (L.) Crantz Bigseed-false-flax
16. *Camelina dentata* (Willd.) Pers. Flatseed-false-flax
17. *Camelina microcarpa* Andrz. Littleseed-false-flax
18. *Neslia paniculata* (L.) Desv. Ball-mustard
19. *Arabis glabra* (L.) Bernh. Tower-mustard
20. *Cheirinia cheiranthoides* (L.) Link Treacle-mustard
Erysimum cheiranthoides L.
21. *Alyssum alyssoides* L. Pale-alyssum
22. *Berteroa incana* (L.) DC. Hoary-alyssum
23. *Eruca sativa* Mill. Salad-rocket
24. *Conringia orientalis* (L.) Dumort. Hares-ear-mustard

*Synonyms, or unapproved names, underscored

PLATE 8*

1. *Reseda lutea* L. Base-rocket
2. *Rubus* sp. Blackberry
3. *Potentilla monspeliensis* L. Strawberryweed
4. *Potentilla canadensis* L. Oldfield cinquefoil
5. *Sanguisorba minor* Scop. Little burnet
6. *Sanguisorba* sp. Burnet
7. *Geum* sp. Avens
8. *Rosa* sp. Rose
9. *Medicago sativa* L. Alfalfa
10. *Medicago lupulina* L. Black medick; yellow trefoil
11. *Medicago hispida* Gaertn. California bur-clover
"*Medicago hispida denticulata*"
12. *Medicago arabica* (L.) Huds. Spotted bur-clover
13. *Trifolium repens* L. White clover
14. *Trifolium pratense* L. Red clover
15. *Trifolium hybridum* L. Alsike clover
16. *Trifolium parviflorum* Ehrh. Teasel clover
17. *Trifolium angulatum* Waldst. & Kit. Crooked clover
18. *Trifolium incarnatum* L. Crimson clover
19. *Trifolium arvense* L. Rabbitfoot clover
20. *Trifolium dubium* Sibth. Suckling clover
21. *Trifolium procumbens* L. Mignonette clover
22. *Trifolium agrarium* L. Hop clover
23. *Lotus corniculatus* L. Birdsfoot trefoil
24. *Lotus americanus* (Nutt.) Bisch. Deervetch
Hosackia americana (Nutt.) Piper

*Synonyms, or unapproved names, underscored



PLATE 9*

1. *Melilotus alba* Desr. White sweetclover
2. *Melilotus officinalis* (L.) Lam. Yellow sweetclover; biennial yellow sweet clover
3. *Melilotus indica* (L.) All. Sourclover; annual yellow sweet clover
4. *Anthyllis vulneraria* L. Kidneyvetch
5. *Coronilla varia* L. Crownvetch
6. *Lespedeza striata* (Thumb.) Hook. & Arn. Common lespedeza
7. *Vicia villosa* Roth Hairy vetch
8. *Vicia angustifolia* (L.) Reichard Narrowleaf vetch
9. *Vicia angustifolia* (L.) Reichard Narrowleaf vetch
10. *Vicia sativa* L. Common vetch
11. *Vicia sativa* L. Common vetch
12. *Vicia sativa* L. Pearl vetch
13. *Vicia* sp. No common name
14. *Vicia lutea* L. Yellow vetch
15. *Vicia hirsuta* (L.) S. F. Gray Tiny vetch
16. *Vicia grandiflora* Scop. No common name
17. *Vicia tetrasperma* (L.) Moench Fourseed vetch
18. *Vicia cracca* L. Bird vetch
19. *Vicia gracilis* Loisel. Slender vetch
20. *Lathyrus tuberosus* L. Groundnut pea
21. *Lathyrus hirsutus* L. Rough pea
22. *Lathyrus aphaca* L. Yellow pea
23. *Pisum sativum arvense* (L.) Poir. Field pea
Pisum arvense L.
24. *Pisum sativum* L. Garden pea

*Synonyms, or unapproved names, underscored

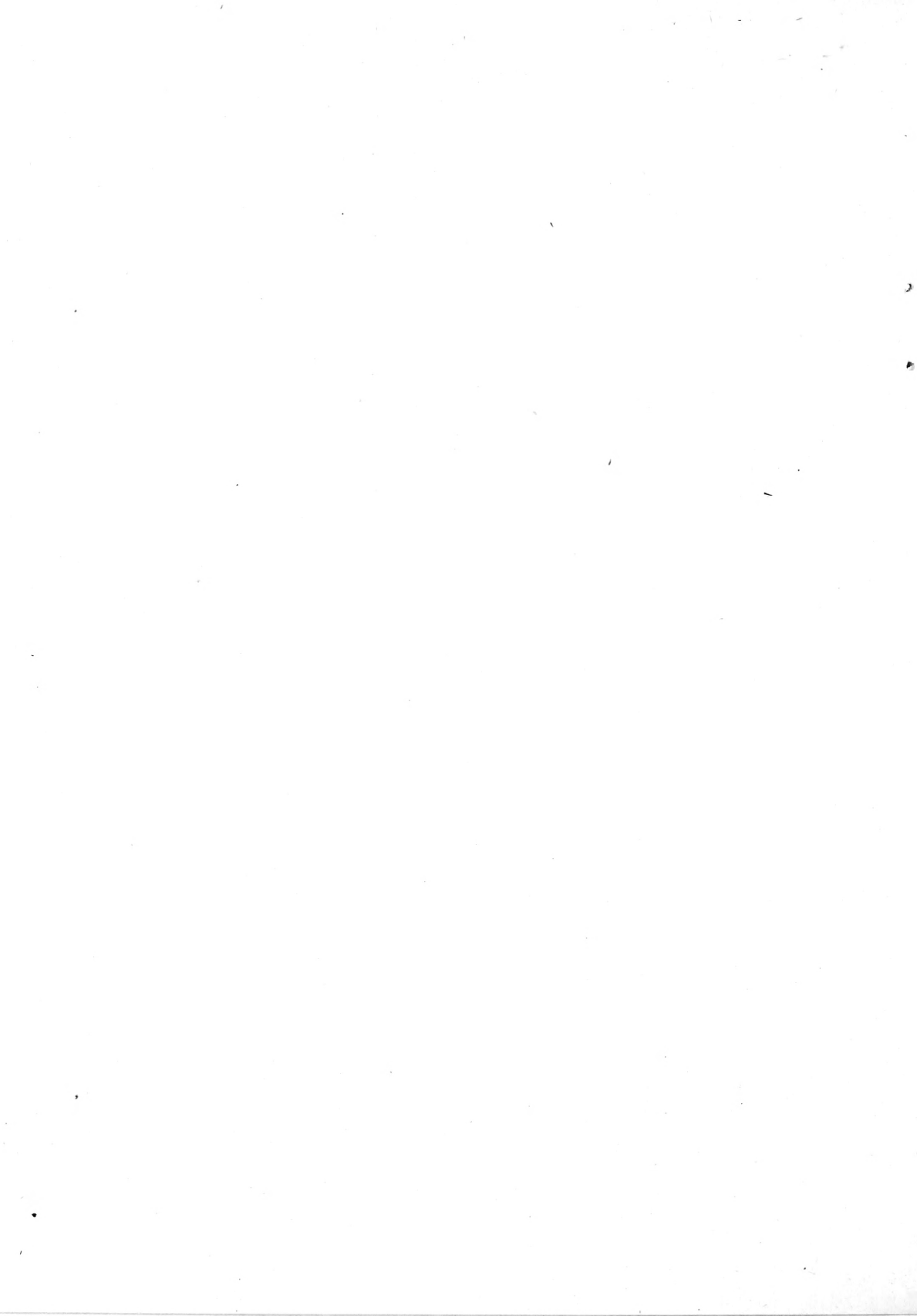


PLATE 10*

1. *Trigonella foenum-graecum* L. Fenugreek
2. *Onobrychis viciaefolia* Scop. Sainfoin
Onobrychis vulgaris Gueldenst.
3. *Ornithopus sativus* Brot. Serradella
4. *Swainsona salsula* (Pall.) Taub. No common name
5. *Alhagi pseudalhagi* (Bieb.) Desv. Camelthorn
Alhagi camelorum Fisch.
6. *Oxalis stricta* L. Yellow Oxalis
7. *Linum usitatissimum* L. Flax
8. *Linum virginianum* L. Woodland flax
Cathartolimum virginianum (L.) Reichenb.
9. *Geranium dissectum* L. Cutleaf cranesbill
10. *Geranium carolinianum* L. Carolina cranesbill
11. *Geranium columbinum* L. Longstalk cranesbill
12. *Geranium molle* L. Dovefoot cranesbill
13. *Geranium pusillum* L. Small cranesbill
14. *Erodium cicutarium* (L.) L'Her. Alfileria
15. *Acalypha virginica* L. Three-seed; three-seeded mercury
16. *Euphorbia preslii* Guss. Nodding spurge
Chamaesyce preslii (Guss.) Arth.
17. *Euphorbia maculata* L. Spotted spurge
Chamaesyce maculata (L.) Small
18. *Sida spinosa* L. Spinemallow
19. *Abutilon theophrasti* Medic. Velvetleaf
20. *Malva rotundifolia* L. Running mallow; cheeses
21. *Malva parviflora* L. Little mallow
22. *Althaea hirsuta* L. No common name
23. *Hibiscus trionum* L. Flower-of-an-hour
24. *Hypericum perforatum* L. St. Johnswort

*Synonyms, or unapproved names, underscored

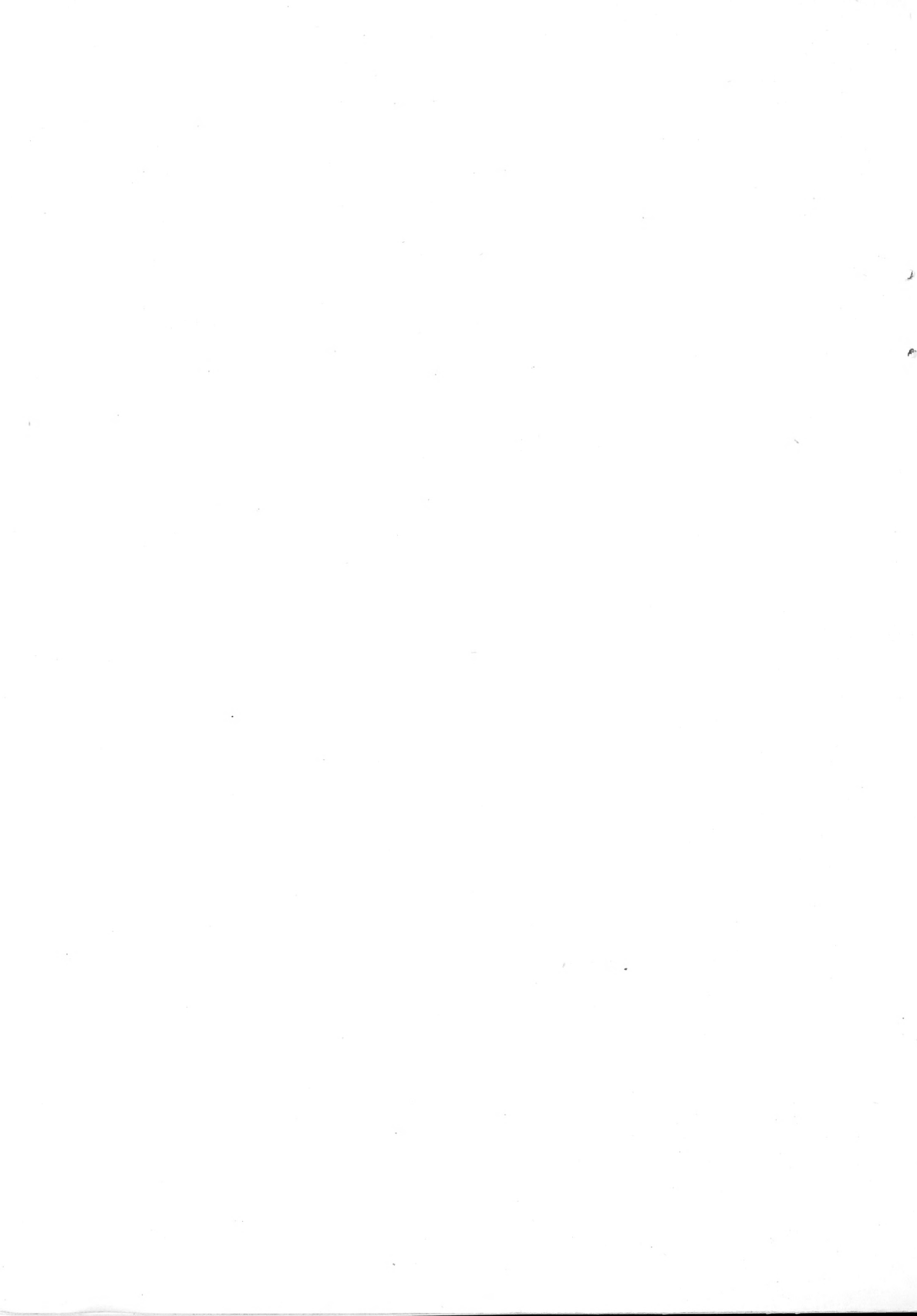


PLATE II*

1. *Viola tricolor* L. Pansy
2. *Lythrum hyssopifolia* L. Hyssop loosestrife
3. *Ludwigia alternifolia* L. Seedbox
4. *Epilobium paniculatum* Nutt. Panicle willow-weed
5. *Epilobium* sp. Willow-weed
6. *Oenothera biennis* L. Evening-primrose
7. *Raimannia laciniata* (Hill) Rose Cutleaf evening-primrose
Oenothera laciniata Hill
8. *Conium maculatum* L. Poisonhemlock
9. *Conium* sp. No common name
10. *Torilis nodosa* (L.) Gaertn. Hedgeparsley
Caucalis nodosa Scop.
11. *Daucus carota* L. Wild carrot
12. *Ammi visnaga* (L.) Lam. Toothpickplant
13. *Anthriscus sylvestris* (L.) Hoffm. Wild chervil
14. *Anagallis arvensis* L. Red pimpernel
15. *Convolvulus arvensis* L. Bindweed
16. *Ipomoea purpurea* (L.) Roth Morning-glory
17. *Cuscuta epilinum* Weihe Flax dodder
18. *Cuscuta epithymum* Murr. Clover dodder
19. *Cuscuta planiflora* Tenore Littleseed dodder
20. *Cuscuta pentagona* Engelm. Field dodder
Cuscuta arvensis Beyr.
21. *Cuscuta racemosa chiliana* Engelm. Chilean dodder
22. *Cuscuta indecora* Chois. Bigseed dodder
23. *Lappula echinata* (L.) Gilib European stickseed
24. *Lappula occidentalis* (S.Wats.) Greene Western stickseed
"*Lappula texana*"

*Synonyms, or unapproved names, underscored



PLATE 12*

1. *Myosotis arvensis* (L.) Hill Forget-me-not
2. *Lithospermum arvense* L. Field gromwell
3. *Echium vulgare* L. Blueweed
4. *Verbena officinalis* L. Vervain
5. *Verbena urticifolia* L. White vervain
6. *Verbena hastata* L. Blue vervain
7. *Verbena stricta* Vent. Hoary vervain
8. *Ajuga reptans* (L.) Schreb. Ground bugle
9. *Teucrium canadense* L. American germander
10. *Marrubium vulgare* L. White hoarhound
11. *Nepeta cataria* L. Catnip
12. *Moldavica parviflora* (Nutt.) Britton American dragonhead
Dracocephalum parviflorum Nutt.
13. *Prunella vulgaris* L. Selfheal
14. *Galeopsis tetrahit* L. Hempnettle
15. *Galeopsis ladanum* L. Red hempnettle
16. *Leonurus cardiaca* L. Motherwort
17. *Lamium amplexicaule* L. Henbit
18. *Stachys annua* L. Field betony
19. *Stachys palustris* L. Marsh betony
20. *Salvia sclarea* L. Clary
21. *Salvia lanceaefolia* Poir. Lanceleaf sage
22. *Salvia sylvestris* L. Pasture sage
23. *Salvia* sp. Sage
24. *Hedeoma pulegioides* (L.) Pers. American pennyroyal

*Synonyms, or unapproved names, underscored

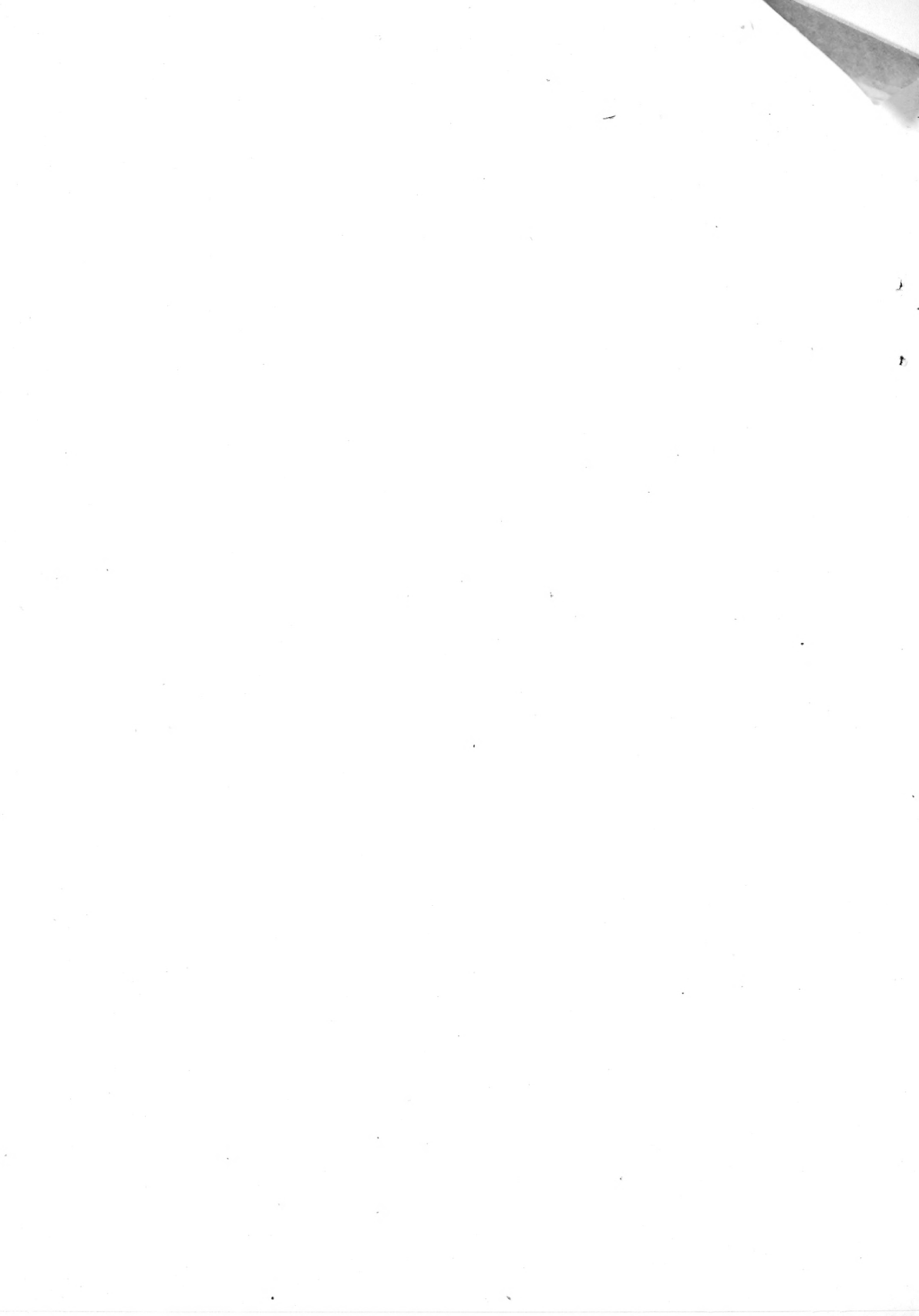


PLATE 13*

1. *Clinopodium acinos* (L.) Kuntze Basil-thyme
Satureja acinos (L.) Scheele
2. *Koellia* sp. Mountain-mint
Pycnanthemum sp.
3. *Lycopus virginicus* L. American bugleweed
4. *Mentha arvensis* L. Field mint
5. *Hyoscyamus niger* L. Henbane
6. *Solanum nigrum* L. Black nightshade
7. *Solanum carolinense* L. Horsenettle
8. *Solanum rostratum* Dunal Buffalo-bur
9. *Verbascum thapsus* L. Flannel mullein
10. *Scrophularia marilandica* L. American figwort
11. *Veronica arvensis* L. Corn speedwell
12. *Veronica peregrina* L. Purslane speedwell
13. *Veronica agrestis* L. Field speedwell
14. *Kickxia spuria* (L.) Dumort. Roundleaf toadflax
Linaria spuria (L.) Mill.
15. *Euphrasia* sp. Eyebright
16. *Plantago rugelii* Decaisne Blackseed plantain
17. *Plantago major* L. Rippleseed plantain
18. *Plantago lanceolata* L. Buckhorn plantain
19. *Plantago aristata* Michx. Bottlebrush plantain
20. *Plantago virginica* L. Paleseed plantain
21. *Houstonia purpurea* L. Field houstonia
22. *Diodia teres* Walt. Rough buttonweed
23. *Galium aparine* L. Catchweed
24. *Sherardia arvensis* L. Fieldmadder

*Synonyms, or unapproved names, underscored

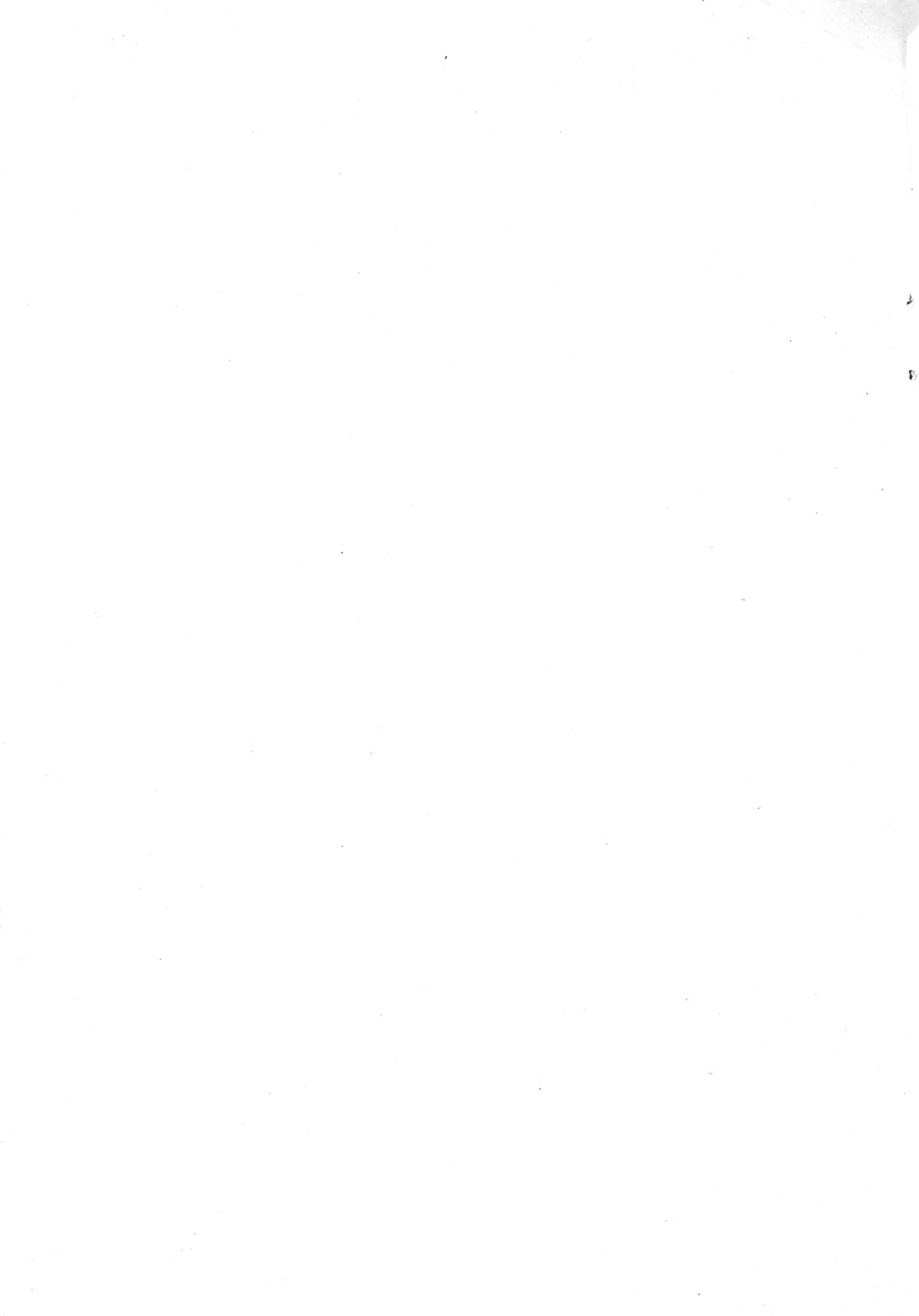


PLATE 14*

1. *Valerianella dentata* Pall. Toothed cornsalad
2. *Valerianella locusta* (L.) Betche Cornsalad
3. *Valerianella eriocarpa* Desv. Italian cornsalad
4. *Dipsacus sylvestris* L. Wild teasel
5. *Scabiosa arvensis* L. Field scabiosa
6. *Specularia perfoliata* (L.) A. DC. Venus lookingglass
7. *Lobelia inflata* L. Indian-tobacco
8. *Cichorium intybus* L. Chicory
9. *Lapsana communis* L. Nipplewort
10. *Arnoseris minima* (L.) Dumort. Lamb-succory
11. *Hypochaeris radicata* L. Spotted cats-ear
12. *Apargia autumnalis* (L.) Hoffm. Fall-dandelion
Leontodon autumnalis L.
13. *Apargia nudicaulis* (L.) Britton Rough hawkbit
Leontodon nudicaulis (L.) Banks
14. *Leontodon taraxacum* L. Dandelion
Taraxacum officinale Weber.
15. *Picris hieracioides* L. Hawkweed picris
16. *Picris echioides* L. Oxtongue
17. *Tragopogon pratensis* L. Buckbeard
18. *Sonchus asper* (L.) Hill Prickly sowthistle
19. *Sonchus oleraceus* L. Common sowthistle
20. *Sonchus arvensis* L. Perennial sowthistle
21. *Lactuca scariola integrata* Gren. & Godr. Prickly lettuce
Lactuca integrata (Gren. & Godr.) A. Nels.
22. *Lactuca canadensis* L. Tall lettuce
23. *Crepis capillaris* (L.) Wallr. Smooth hawkbeard
24. *Hieracium aurantiacum* L. Orange hawkweed

* Synonyms, or unapproved names, underscored

PLATE 15*

1. *Iva axillaris* Pursh Sumweed
2. *Iva ciliata* Willd. Rough sumpweed
3. *Iva xanthifolia* Nutt. Bigleaf sumpweed
4. *Ambrosia elatior* L. Common ragweed
Ambrosia artemisiaefolia L.
5. *Grindelia squarrosa* (Pursh) Dunal Curlycup gumweed
6. *Erigeron canadensis* L. Horseweed
7. *Rudbeckia hirta* L. Black-eyed-susan
8. *Helianthus annuus* L. Common sunflower
9. *Achillea millefolium* L. Common yarrow
10. *Anthemis cotula* L. Mayweed
11. *Anthemis arvensis* L. Field camomile
12. *Chrysanthemum leucanthemum* L. Oxeye daisy
13. *Matricaria inodora* L. False-camomile
14. *Erechtites hieracifolia* (L.) Raf. Burnweed
15. *Cirsium lanceolatum* (L.) Hill Bull thistle
Carduus lanceolatus L.
16. *Cirsium arvense* (L.) Scop. Canada thistle
Carduus arvensis (L.) Robs.
17. *Carduus crispus* L. Curly thistle
18. *Centaurea cyanus* L. Cornflower
19. *Centaurea jacea* L. Brownscale knapweed
20. *Centaurea calcitrapa* L. Star-thistle
21. *Centaurea melitensis* L. Malta star-thistle
22. *Centaurea solstitialis* L. Yellow star-thistle
23. *Centaurea picris* Pall. Russian knapweed
24. *Madia sativa* Mol. Chilean tarweed

*Synonyms, or unapproved names, underscored

