

Historic, Archive Document

Do not assume content reflects current scientific knowledge, policies, or practices.



A99.9
F76Ga

UNITED STATES
DEPARTMENT OF AGRICULTURE
LIBRARY

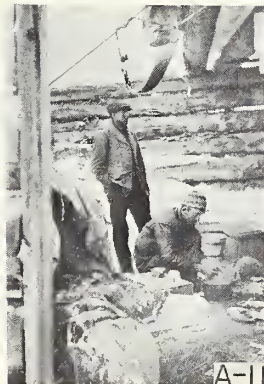
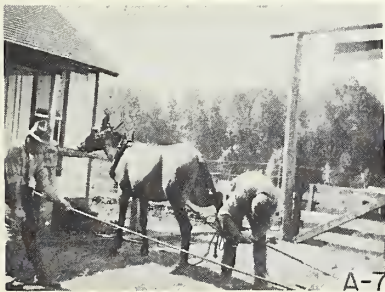


BOOK NUMBER A99.9
914279 F76Ga



GOLDEN ANNIVERSARY of the FOREST SERVICE

EARLY-DAY ACTIVITIES (Note: For Present-Day Activities, see "B" series.)



(Captions on page 4)

EDITORS AND WRITERS: You may obtain 8x10 prints of any of the pictures shown here on request to the Forest Service, U. S. Dept. of Agriculture, Washington 25, D. C.

EARLY-DAY ACTIVITIES (Continued)

- A-13 Forest Assistant W. H. B. Kent. Huachuca (now Coronado) National Forest, Arizona. 1905. (F-422214)
- A-14 Clyde Leavitt, forest assistant (right), and Bill Donovan, packer. Huachuca (now Coronado) National Forest, Arizona. 1905. (F-422212)
- A-15 Rangers Neil Poyner (right) and Oscar Mink at the Indian Springs Ranger Station. Payette National Forest, Idaho. 1923. (F-183320)
- A-16 Forest ranger watching herd of elk to determine whether they were being molested by predatory animals or poachers. Shoshone National Forest, Wyoming. 1912. (F-10734A)
- A-17 Forest Service ranger station, Aquachiquita Canyon, Lincoln National Forest, New Mexico. 1908. (F-53108)
- A-18 Interior of office tent, temporary field headquarters. Stanislaus National Forest, California. 1906. (F-50036)
- A-19 Forest officers with their pack train fording Vallecito Creek on the South Trunk trail. In the largely underdeveloped national forests, which included remote back-country areas, travel was by foot or horseback. San Juan National Forest, Colorado. 1911. (F-98286)
- A-20 Camp at mouth of Monument Creek on Belknap Meadows, where creek joins Pole Creek. Left to right: W. J. Hauley, Supervisor Hall, Asst. District Forester J. W. Nelson, Ranger Belknap, Ranger Cantlin. Bridger National Forest, Wyoming. 1914. (F-20470A)
- A-21 Winter survey crew stops for lunch at Meadow Creek. Rangers Mendenhall, Thol, and Hutchinson. Flathead National Forest, Montana. 1927. (F-223665)
- A-22 Winter travel of forest officers. White River National Forest, Colorado. 1911. (F-98220)
- A-23 Return of a fire fighter after two days and three nights of fire fighting. Ranger J. J. Westfall. Sierra National Forest, California. 1908. (F-73797)
- A-24 Candidate taking the horse-packing test, part of the forest ranger examination. Fair Grounds, Leadville, Colorado. 1907. (F-71225)

91829

EARLY-DAY ACTIVITIES (Continued)

(Note: For Present-Day Activities, see "B" series.)



A-13



A-14



A-15



A-16



A-17



A-18



A-19



A-20



A-21



A-22



A-23



A-24

EARLY-DAY ACTIVITIES

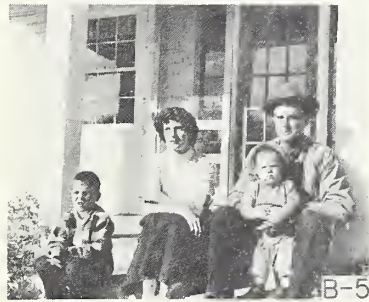
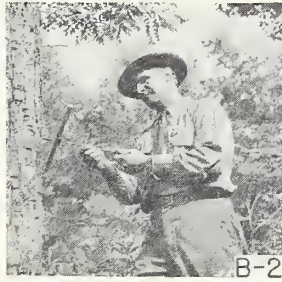
The early-day forest rangers were men born to saddle and trail, rugged cowboys, trappers, and woodsmen, who could shoe horses, throw a diamond hitch, shoot, and ride with the best in the west. They were outdoorsmen who knew intimately the language of American forests. As pioneer protectors of your forest resources, they built up a loyalty and devotion to public service that have endured through the years. Their big job was to keep your then newly created national forests free from fire, game poachers, and timber and range trespassers.

- A-1 Ranger Griffin and Forest Guard Cameron on fire patrol duty making an observation for forest fire from the top of Mount Silcox, a lookout station. Cabinet National Forest, Montana. 1909. (F-59298)
- A-2 When night overtakes the forest ranger far from his headquarters, all forest officers must be able to take care of themselves in the woods. Wasatch National Forest, Utah. 1914. (F-21043A)
- A-3 Uncle Jim Owen, early-day forest officer and cougar hunter on the Kaibab National Forest, Arizona. 1920. (F-150348)
- A-4 Typical early-day forest ranger in the Southwest. Jim Sizer, who served as ranger and assistant supervisor from 1909 to 1943. Apache National Forest, Arizona. 1910. (F-460531)
- A-5 Saddling horse preparatory to field trip. Uncompahgre National Forest, Colorado. 1915. (F-26233A)
- A-6 Forest officer packing up for a field trip. Umpqua National Forest, Oregon. 1910. (F-182895)
- A-7 All in a day's work--Ranger McFarland and Guard Allen shoeing the utility packmule, "Dynamite." Willamette National Forest, Oregon. 1921. (F-161037)
- A-8 Forest ranger with his pack animal. Uinta National Forest, Utah. 1908. (F-79048)
- A-9 Ranger at one of his favorite pastimes, rope-spinning. San Isabel National Forest, Colorado. 1912. (F-12849A)
- A-10 Forest ranger and crew in field camp on the Santa Fe National Forest, New Mexico. 1907. (F-66355)
- A-11 Forest officers camping in old roofless cabin to conceal camp from game law violators. Bridger National Forest, Wyoming. 1919. (F-45677A)
- A-12 Idlewild Ranger Station. Ranger L. E. Cooper and two forest guards off for the day's work--two to survey the area of a recent fire, one to scale logs cut on a timber sale. Arapaho National Forest, Colorado. 1908. (F-77155)



GOLDEN ANNIVERSARY of the FOREST SERVICE

PRESENT-DAY ACTIVITIES (For Early-Day Activities, see "A" series.)



(Captions on page 4)

EDITORS AND WRITERS: You may obtain 8x10 prints of any of the pictures shown here on request to the Forest Service, U. S. Dept. of Agriculture, Washington 25, D. C.

PRESENT-DAY ACTIVITIES (Continued)

- B-13 Forest Service timber sale officer Ray Johnson (center, facing camera) discussing problems of the sale with timber operators Glenn Oviatt and Cecil Wetsel (backs to camera) and John Buck, their forester. Tractor and arch skidding logs in background. Wetsel-Oviatt timber sale, Eldorado National Forest, California. 1954. (F-475163)
- B-14 Ranger S. L. Cuskelly makes an official stripnotch blaze on a tree along a trail. Dixie National Forest, Utah. 1953. (F-476142)
- B-15 Woods boss, L. Coleman (left), and timber sale officer, B. Lulburrow, looking over a pulpwood cutting operation. Osceola National Forest, Florida. 1953. (F-451427)
- B-16 Forest Service timber sale officer Bruce Wirth using a spray gun to mark a ponderosa pine for cutting on a timber sale. Eldorado National Forest, California. 1953. (F-475145)
- B-17 Forest Ranger Vaughn Hofeldt (right) showing interested visitors work of bark beetles in a section of bark from the dying ponderosa pine behind them. Thousands of tiny beetles, and their larvae, working in the cambium layer between the bark and sapwood, girdle and kill the trees. Each year insects and disease kill more trees than forest fires. Eldorado National Forest, California. 1953. (F-475197)
- B-18 Ranger William P. Duncan, Pisgah Ranger District, leaves the ranger station for business in town. Pisgah National Forest, North Carolina. (F-465153)
- B-19 Forest officer Don Cabe using calipers to measure the diameter of a yellow-poplar tree. Nantahala National Forest, North Carolina. (F-469813)
- B-20 Forest officer taking off in a helicopter to explore the boundaries of a 40-acre experimental area in the Olympic National Forest, Washington. 1952. (F-474663)
- B-21 Forest officer Gustafson leaving a plane after an inspection flight over the Plumas National Forest, California. 1945. (F-435745)
- B-22 Forest ranger and his assistant in office going over work plans on the Lake Valley Ranger District. Eldorado National Forest, California. 1953. (F-475224)
- B-23 Forest officers surveying and estimating timber preliminary to making a timber sale. Eldorado National Forest, California. 1953. (F-475136)
- B-24 Forest Service officer Alex Goedhard scaling logs at the landing. Wetsel-Oviatt sale, Eldorado National Forest, California. 1953. (F-475164)

PRESENT-DAY ACTIVITIES (Continued)

(Note: For Early-Day Activities, see "A" series.)



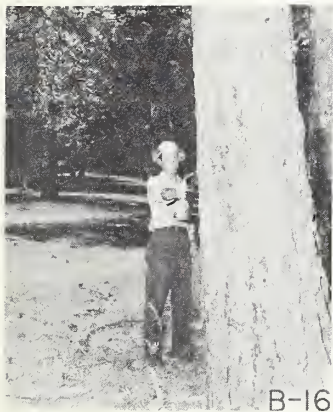
B-13



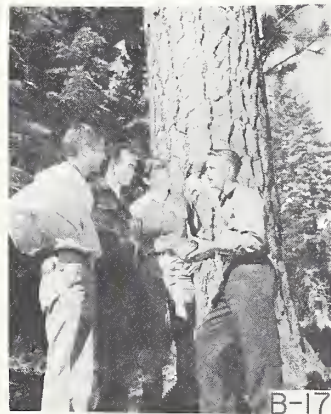
B-14



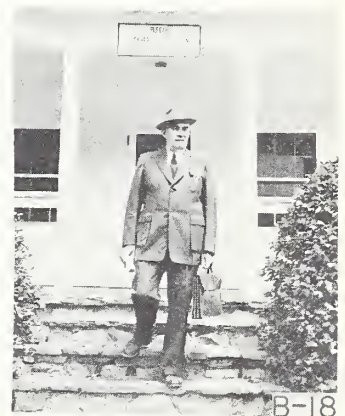
B-15



B-16



B-17



B-18



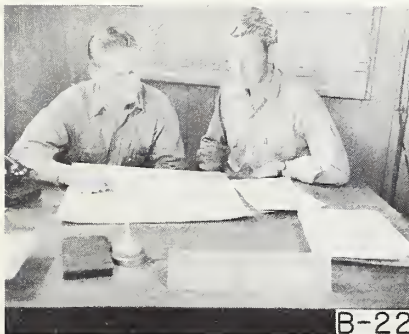
B-19



B-20



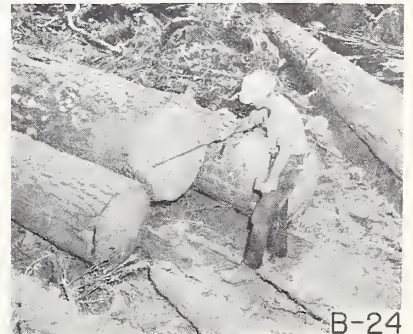
B-21



B-22



B-23



B-24

PRESENT-DAY ACTIVITIES

Your modern-day forest rangers, technically trained through college study and practical, down-to-earth experience, are specialists in managing timber, range, water, recreation, and wildlife resources. Like the early-day forest rangers, they are men who don't mind roughing it. They willingly accept the challenge of the strenuous work and the responsibility of keeping forests in their charge producing on the highest possible level. They are guardians, administrators, and developers of your national forests.

- B-1 Ranger S. L. Cuskelly, East Fork Ranger District of the Dixie National Forest, Utah. 1953. (F-476138)
- B-2 Ranger Bernard Eger examining a tree sample, obtained by using an increment borer, to determine the rate of growth of a tree on his district. George Washington National Forest, Virginia. (F-382709)
- B-3 Don Cabe uses a diameter tape to measure a yellow-poplar tree on the Nantahala National Forest, North Carolina. 1952. (F-469810)
- B-4 Ranger S. L. Cuskelly hauls down "Old Glory" at sunset at the East Fork Ranger Station, Dixie National Forest, Utah. 1953. (F-476149)
- B-5 Ranger S. L. Cuskelly and family on the ranger station steps, Panguitch, Utah. Dixie National Forest. 1954. (F-476148)
- B-6 Timber sale officer (Bruce Wirth) going over the timber sale area with a company forester (Milt Morris, Placerville Lbr. Co.). The Forest Service does not do any logging itself. The timber is sold to the highest bidder, who logs the area under a contract. Logging is supervised by the forest ranger or his timber sale assistant. Eldorado National Forest, California. 1953. (F-475143)
- B-7 Harold Turner, timber sale officer, using a paint gun to mark a large Jeffrey pine for cutting on a timber sale. Plumas National Forest, Calif. 1945. (F-437876)
- B-8 Herb Flodberg, ranger on the Libby Ranger District of the Kootenai National Forest, Montana, and John McRell, woods boss for the J. Neils Company, discussing the timber sale area map. 1952. (F-470587)
- B-9 Ranger Grant G. Williams checking an enclosure used for a grass-growing experiment on a forest range. Panguitch Lake District of the Dixie National Forest, Utah. 1953. (F-474934)
- B-10 Ranger Vaughn Hofeldt ready to unsaddle his horse after an inspection ride up the Big Meadows trail. Pickup and trailer are used to haul the horse as far as possible, to make maximum use of the ranger's time when riding or pack trips into the roadless back-country are necessary. Eldorado National Forest, California. 1953. (F-476216)
- B-11 Ranger S. L. Cuskelly packs a mule for a trip into the back-country of the Dixie National Forest, Utah. 1953. (F-476139)
- B-12 Ranger S. L. Cuskelly takes to the trail for an inspection of the forest range on the East Fork Ranger District. Dixie National Forest, Utah. (F-476141)

