

250115  
.290664  
R

ac

1958-1959 SEASON REF/RAR

# Cottage Hill Nursery

LIBRARY  
REC'D  
\* AUG 28 1958 \*  
U. S. Department of Agriculture

## WHOLESALE PRICE LIST

- AZALEAS
- CAMELLIAS
- SASANQUAS
- BROADLEAF EVERGREENS
- CONIFERS

CURRENT SERVICE RECORDS

AUG 12 1958

USDA  
NATIONAL AGRICULTURAL LIBRARY  
TEMPORARILY CLOSED

# Cottage Hill Nursery



HUNTER H. BOULO, MANAGER

4000 JAPONICA LANE, MOBILE, ALABAMA

TELEPHONE: GA 6-0872

NIGHT TELEPHONE: GR 9-5692

## **SPECIALIZING IN LINING-OUT STOCK**

We are very proud of our lining-out stock. With us, the growing of top-quality liners is a specialized business—not just a sideline. From the beginning of our nursery some ten years ago we have specialized in this field, and we now feel that we can supply you with some of the best liners to be found anywhere.

Our Dowfume MC2 fumigated beds have a high peat moss content, are all under sprinkler system, and we maintain a carefully supervised program of fertilizing and spraying. These factors combine to give you good healthy plants with wonderful fibrous root systems, strong stems and branches, and rich-green foliage.

We invite you to compare our liners with any others you may have been using.

With the high cost of transportation on finished stock, we urge you to consider the savings you will effect by growing your own—from our fine liners—either in containers or in the field.

The demand for container-grown stock is steadily increasing. Place your order with us early and be sure of having nice stock on hand for next season's sales.

**COTTAGE HILL NURSERY**

**4000 JAPONICA LANE      MOBILE, ALABAMA**

# Terms of Sale

## Conditions

We accept all orders on condition that they shall be void should injury beyond our control befall the stock. All quotations are subject to prior sale of stock. Prices listed cancel all previous quotations.

## Prices

Twenty-five or more of one variety and size at the 100 rate. We cannot accept orders for less than ten of any one variety, or size of lining-out stock.

All prices are net F.O.B. our nursery. No charge is made for packing orders for lining-out stock, whether bed-grown or potted, but packing is charged at cost on orders for container-grown stock.

## Payments

Cash with order. C.O.D. shipments will be made only when a twenty-five per cent deposit accompanies order.

## Booking Orders

Booked orders will not necessarily be binding on us unless buyer either takes delivery or confirms order with a deposit of 25% on or before January 1st.

## Claims

All claims must be made immediately upon receipt of stock. We shall be glad to adjust any mistake made by us, but in no case will our liability exceed the purchase price.

## Transportation

All prices F.O.B. Mobile. We make no charge for delivery to carrier, but our liability ceases when goods are turned over to carrier, and risks and costs of transportation belong to purchaser.

We are open for business from 7 A. M. to 4 P. M. on week days, Saturdays till noon, and no business on Sundays. You are cordially invited to visit us during our business hours.

## Broad-Leaved Evergreens

### Abelia Grandiflora

Very popular plant for hedge or mass planting, with glossy leaves and pinkish white trumpet shaped flowers borne in profusion during the summer.

|                   | Each | 10     | 100     |
|-------------------|------|--------|---------|
| 2¼" pots .....    | ---  | \$2.00 | \$15.00 |
| Gallon cans ..... | .50  |        |         |

### Aucuba Japonica Var.

Compact, rather slow growing evergreen with large shiny leaves.

|                   |     |      |       |
|-------------------|-----|------|-------|
| 2" pots .....     | --- | 2.50 | 20.00 |
| Gallon cans ..... | .50 |      |       |

### Buxus Harlandi

Dark green, narrow leaved, compact, slow grower but faster than Buxus Sempervirens, and will stand hot summers of the Gulf Coast, but is also very hardy. By far the best Boxwood for the South.

|                 |     |      |       |
|-----------------|-----|------|-------|
| 4-6" C. T. .... | --- | 1.50 | 10.00 |
| 6-8" C. T. .... | --- | 1.75 | 12.50 |
| 3" Pots .....   | --- | 2.00 | 15.00 |

### Buxus Japonica

Fairly fast-growing Box with light-colored round leaves. Grows well in full sun.

|                   |     |      |       |
|-------------------|-----|------|-------|
| 4- 6" C. T. ....  | --- | 1.25 | 8.50  |
| 6- 8" C. T. ....  | --- | 1.50 | 10.00 |
| 8-12" C. T. ....  | --- | 2.00 | 15.00 |
| 2¼" pots .....    | --- | 2.00 | 15.00 |
| Gallon cans ..... | .50 |      |       |

### Callistemon Lanceolata (Bottlebrush)

Small tree which produces mass of bright red bottle brush shaped flowers. The branches of this Bottlebrush are more weeping, and less stiff than those of the Callistemon Rigidus, and the leaves are larger.

|               |     |      |       |
|---------------|-----|------|-------|
| 3" pots ..... | --- | 2.00 | 17.50 |
|---------------|-----|------|-------|

### **Callistemon Rigidus (Bottlebrush)**

Compact bush with narrow, stiff leaves. Bright red bottlebrush shaped flowers in spring and summer.

|                   | Each | 10     | 100     |
|-------------------|------|--------|---------|
| 2¼" pots .....    | ---  | \$2.00 | \$15.00 |
| Gallon cans ..... | .50  |        |         |

### **Cleyera Japonica**

A fine evergreen shrub of wide adaptabilities. Has rather thick, glossy leaves which are brownish red when young, turning dark green at maturity. A tall upright grower, but compact, with creamy white fragrant flowers.

|                   |     |      |       |
|-------------------|-----|------|-------|
| 6- 8" C. T. ....  | --- | 1.75 | 12.50 |
| 8-12" C. T. ....  | --- | 2.00 | 15.00 |
| 12-18" C. T. .... | --- | 2.25 | 17.50 |
| 2¼" pots .....    | --- | 2.00 | 15.00 |
| Gallon cans ..... | .50 |      |       |

### **Euonymus Patens**

One of the most popular broadleaved Evergreens. Low shrub with good foliage and clusters of red berries in the winter.

|                  |     |      |       |
|------------------|-----|------|-------|
| 8-12" C. T. .... | --- | 1.75 | 12.50 |
|------------------|-----|------|-------|

### **Forsythia**

|                   |     |      |       |
|-------------------|-----|------|-------|
| 2¼" pots .....    | --- | 2.00 | 15.00 |
| Gallon cans ..... | .50 |      |       |

### **Gardenia Fortunei**

Very glossy foliage, and good grower. Profuse bloomer and hardy.

|                        |     |      |       |
|------------------------|-----|------|-------|
| 2¼" pots (8-12") ..... | --- | 1.75 | 12.50 |
| 12-18" C. T. ....      | --- | 2.00 | 15.00 |
| Gallon cans .....      | .50 |      |       |

### **Gardenia Mystery**

Well-known Cape Jasmine, with much larger and more attractive flowers than the old type.

|                       |     |      |       |
|-----------------------|-----|------|-------|
| 12-18" C. T. ....     | --- | 2.00 | 15.00 |
| Two gallon cans ..... | .75 |      |       |

### **Gardenia Radicans**

Dwarf growing, small leaved, almost creeping Cape Jasmine, with small, very fragrant flowers. 8-12", and gallon cans.

### **Gardenia Stricta Nana**

A little taller grower than the Gardenia Radicans, and has larger flowers. This Gardenia is very hardy, withstanding severe winter of Dallas, Texas, section without protection.

#### **Prices of above two Gardenias:**

|                             |        |         |
|-----------------------------|--------|---------|
| 8-12" C. T. ....            | \$1.75 | \$12.50 |
| 12-18" C. T. ....           | 2.00   | 15.00   |
| Gallon cans (Radicans)..... | .50    |         |

### **Hydrangea Hortensia**

French Hydrangea with huge spikes of blue or pink flowers, depending upon soil conditions, in early summer. They do best in partially shady locations with plenty of moisture.

|                                |      |       |
|--------------------------------|------|-------|
| 1 year, bed-grown liners ..... | 2.00 | 15.00 |
|--------------------------------|------|-------|

### **Hydrangea Paniculata Grandiflora (Hydrangea Pee Gee)**

|                |      |       |
|----------------|------|-------|
| 2¼" pots ..... | 1.75 | 12.50 |
|----------------|------|-------|

### **Ilex Cornuta Burford (Chinese Holly)**

Very attractive Holly much in demand. Highly glossy, dark green leaves, usually with only one spine at the tip of the leaves. The large red berries make this Holly very showy.

|                          |      |       |
|--------------------------|------|-------|
| 6- 8" C. T. ....         | 1.50 | 10.00 |
| 8-12" C. T. ....         | 1.75 | 12.50 |
| 12-18" C. T. ....        | 2.00 | 15.00 |
| 12-18" 2 yr. heavy ..... | 2.50 | 20.00 |
| 2¼" pots, 6- 8" .....    | 1.75 | 12.50 |
| 2¼" pots, 8-12" .....    | 2.00 | 15.00 |
| Gallon cans .....        | .50  |       |
| Two gallon cans .....    | 1.00 |       |

### **Ilex Cornuta Femina**

A very handsome Chinese holly, with large dark green leaves, with numerous spines, and dark red berries.

|               |      |       |
|---------------|------|-------|
| 3" pots ..... | 2.50 | 20.00 |
|---------------|------|-------|

**Ilex Crenata Convexa (Bullata)**

Slow, but compact grower with glossy convex leaves. Very desirable for hedge or low foundation plantings, and very hardy.

|                          | Each | 10     | 100     |
|--------------------------|------|--------|---------|
| 3" pots .....            | ---  | \$2.00 | \$15.00 |
| 6- 8" C. T. ....         | ---  | 1.75   | 12.50   |
| 8-10" C. T. ....         | ---  | 2.00   | 15.00   |
| 10-15" C. T., 2 yr. .... | ---  | 2.50   | 20.00   |
| Gallon cans .....        | .50  |        |         |

➤ **Ilex crenata Foster No. 1**

A new low-growing compact spreader. Small serrated leaves are not convex, and are more pointed than those of Ilex crenata convexa. Excellent plant where low compact specimens are needed.

|                 |     |      |       |
|-----------------|-----|------|-------|
| 6-8" C. T. .... | --- | 2.00 | 15.00 |
|-----------------|-----|------|-------|

**Ilex crenata Helleri**

Very compact low-growing Ilex, with thick, dense foliage of very small leaves.

|                          |     |      |       |
|--------------------------|-----|------|-------|
| 2 1/4" pots (6-8") ..... | --- | 2.00 | 15.00 |
| Gallon cans .....        | .50 |      |       |

**Ilex crenata Hetzi**

Fine, comparatively new variety that has attractive shiny convex leaves. A fast, but compact grower. Has all the good points of both Ilex bullata and Ilex rotundifolia.

|                  |     |      |       |
|------------------|-----|------|-------|
| 8-12" C. T. .... | --- | 2.50 | 20.00 |
| 3" pots .....    | --- | 2.50 | 20.00 |

### **Ilex Crenata Rotundifolia**

Roundish, dark green leaves of compact growth, similar to Boxwood. Will make excellent plant for medium size hedge or foundation planting.

|                            | Each | 10     | 100     |
|----------------------------|------|--------|---------|
| Well-rooted cuttings ..... | ---  | \$ .75 | \$ 5.00 |
| 6- 8" C. T. ....           | ---  | 1.50   | 10.00   |
| 8-10" C. T. ....           | ---  | 1.75   | 12.50   |
| 10-15" C. T. ....          | ---  | 2.00   | 15.00   |
| 2 year, heavy, C. T. ....  | ---  | 2.50   | 20.00   |
| 2 1/4" pots .....          | ---  | 2.00   | 15.00   |
| Gallon cans .....          | .40  |        |         |

### **Ilex Crenata Stokes (Plant Patent No. 887)**

Very good, compact, small leafed Ilex. Rather slow-growing.

|                   |     |      |       |
|-------------------|-----|------|-------|
| 2 1/4" pots ..... | --- | 2.50 | 20.00 |
|-------------------|-----|------|-------|

### **Ilex Opaca East Palatka**

Foliage light green, almost smooth. Few American hollies bear such a profusion of bright red berries as the East Palatka.

### **Ilex Opaca Femina (Berry Bearing)**

This is an outstanding variety of American Holly, which, as far as we have been able to determine, has never been offered to the trade as a named variety. We consider it very desirable, and all of our cuttings were taken from heavy berry-bearing trees.

|                                |     |      |       |
|--------------------------------|-----|------|-------|
| 6- 8" C. T. ....               | --- | 1.75 | 12.50 |
| 8-12" C. T. ....               | --- | 2.00 | 15.00 |
| 12-18" C. T. (East Palatka) .. | --- | 2.25 | 17.50 |
| 2 1/4" pots, 8-12" .....       | --- | 2.25 | 17.50 |

### **Ilex Opaca Foster**

Very handsome holly with dark shiny green leaves, small and narrow and with spines. Berries when quite young.

|                           |     |      |       |
|---------------------------|-----|------|-------|
| 2 year, heavy, C. T. .... | --- | 2.00 | 15.00 |
| 2 1/4" pots .....         | --- | 2.00 | 15.00 |



### **Ilex Vomitoria Nana (Dwarf Yaupon)**

Very compact, dense grower, that is hardier than the regular Yaupon, and it also stands drouth very well. This dwarf, low-growing Yaupon is much in demand at this time.

|                   | Each | 10     | 100     |
|-------------------|------|--------|---------|
| 2¼" pots .....    | ---  | \$2.25 | \$17.50 |
| Gallon cans ..... | .60  |        |         |

### **Ligustrum Lucidum Compactum (Wax Privet)**

Compact, fast growing shrub with glossy dark green leaves, thriving under adverse conditions. One of the most useful evergreens.

|                            |     |      |       |
|----------------------------|-----|------|-------|
| Well-rooted cuttings ..... | --- |      | 3.00  |
| 8-12" C. T. ....           | --- | 1.75 | 12.50 |
| 12-18" C. T. ....          | --- | 2.00 | 15.00 |

### **Magnolia Fuscata**

Well-known Banana Shrub of old southern gardens. Rather difficult to transplant, and we advise partial defoliation and cutting back at the time of transplanting.

|                   |     |      |       |
|-------------------|-----|------|-------|
| 6- 8" C. T. ....  | --- | 1.50 | 10.00 |
| 8-12" C. T. ....  | --- | 1.75 | 12.50 |
| Gallon cans ..... | .50 |      |       |

### **Magnolia Grandiflora (Bull Bay)**

This is generally considered the South's finest evergreen tree.

|                   |     |  |  |
|-------------------|-----|--|--|
| Gallon cans ..... | .60 |  |  |
|-------------------|-----|--|--|

### **Magnolia Soulangeana**

This is the most popular of all the Oriental Magnolias. Small tree, literally covered with large, very showy flowers of pinkish color, before leaves appear in early spring.

|                            |     |      |       |
|----------------------------|-----|------|-------|
| 12-18" C. T. (2 yr.) ..... | --- | 3.50 | 25.00 |
| 18-24" C. T. (2 yr.) ..... | --- | 4.00 | 30.00 |
| 3" pots .....              | --- | 2.50 | 20.00 |

**Magnolia Stellata**

Beautiful pinkish white flowers are produced in great profusion. Dwarf grower and very hardy.

|                   | Each | 10     | 100     |
|-------------------|------|--------|---------|
| 2 1/4" pots ..... | ---  | \$3.00 | \$25.00 |

**Mahonia Bealei**

Very broad compound leaves spread out Nandina-fashion. Clusters of yellow flowers in winter, followed by dark purplish berries. An excellent plant in a partially shaded place.

|                   |     |
|-------------------|-----|
| Gallon cans ..... | .60 |
|-------------------|-----|

**Nandina Domestica**

A very showy plant, with bright bronzy-red foliage in the winter, and large clusters of red berries. Our grading of Nandinas is by the spread of the leaves.

|               |     |      |       |
|---------------|-----|------|-------|
| 8-12" S. .... | --- | 2.00 | 15.00 |
|---------------|-----|------|-------|

**Osmanthus Fortunei**

Medium size, compact grower with dark green saw-tooth edged leaves. Small creamy, fragrant flowers in the fall. Hardy in Tennessee.

**Osmanthus Fragans (Sweet Olive)**

Compact medium size shrub with holly-like leaves. Clusters of small, creamy flowers are very fragrant. All sizes.

|                   |     |      |       |
|-------------------|-----|------|-------|
| 6- 8" C. T. ....  | --- | 1.50 | 10.00 |
| 8-12" C. T. ....  | --- | 1.75 | 12.50 |
| 12-18" C. T. .... | --- | 2.00 | 15.00 |
| 2 1/4" pots ..... | --- | 2.00 | 15.00 |
| Gallon cans ..... | .50 |      |       |

**Photinia Glabra**

New growth is vivid red. Frequent pruning keeps this plant almost constantly in high color during the growing season. Propagated from highly colored plants, by cuttings.

|                   |     |      |       |
|-------------------|-----|------|-------|
| 6- 8" C. T. ....  | --- | 1.50 | 10.00 |
| 8-12" C. T. ....  | --- | 1.75 | 12.50 |
| 12-18" C. T. .... | --- | 2.00 | 15.00 |
| Gallon cans ..... | .50 |      |       |

### **Pittosporum Tobira**

Will do well in shade or sun; in clay or sand. Very useful for foundation plantings.

|                                | Each | 10     | 100     |
|--------------------------------|------|--------|---------|
| 6- 8" C. T. ....               | ---  | \$1.50 | \$10.00 |
| 8-12" C. T. ....               | ---  | 1.75   | 12.50   |
| 12-18" C. T. ....              | ---  | 2.00   | 15.00   |
| 2¼" pots (Spring delivery) ... | ---  | 2.00   | 15.00   |

### **Pittosporum Tobira Variegata**

Pretty, variegated-leaved small plants are used extensively for dish gardens. Will do well under widely varying conditions as to shade and soil.

|                                |      |       |
|--------------------------------|------|-------|
| 2¼" pots (Spring delivery) — — | 2.00 | 15.00 |
|--------------------------------|------|-------|

### **Pyracantha Early Red**

This Pyracantha which we know as Early Red is very similar to the Graber Pyracantha, but it berries a little earlier in the season for us here. We recommend it unhesitatingly as a very fine red-berried Pyracantha. 2¼" pots and 1 & 2 gallon cans.

### **Pyracantha Crenato-Serrata Graber**

Outstandingly new, good Pyracantha, with huge clusters of scarlet berries, around Christmas time. All sizes.

### **Pyracantha Coccinea Lalandi**

Upright grower with orange colored berries. Hardy in sections of New Jersey. Potted and bed-grown liners and one gallon cans.

|                                       |      |       |
|---------------------------------------|------|-------|
| 12-18" C. T. ....                     | 2.00 | 15.00 |
| 2¼" pots, 8-12" (Spring delivery) ... | 2.25 | 17.50 |
| Gallon cans .....                     | .60  |       |
| Two gallon cans .....                 | 1.00 |       |

### **Quercus Virginiana (Live Oak)**

Well-known, handsome oak. Slow growing and long-lived.

|                   |     |
|-------------------|-----|
| Gallon cans ..... | .50 |
|-------------------|-----|

### **Viburnum Odoratissimum**

Fast growing, large shrub with roundish light green leaves. Excellent screen plants.

|                   |      |       |
|-------------------|------|-------|
| 12-18" C. T. .... | 2.00 | 15.00 |
| 2¼" pots .....    | 2.00 | 15.00 |

### **Yucca Filamentosa (Adam's Needle)**

Palm-like shrub, with stiff sword-shaped leaves, with curly threads on the leaves. Flowers nearly white, open at night.

|                   |     |
|-------------------|-----|
| Gallon cans ..... | .50 |
|-------------------|-----|

## Conifers

### **Cedrus Deodara (Indian Cedar)**

Stately tree with symmetrical spreading branches of bluish green foliage.

|                        | Each | 10     | 100     |
|------------------------|------|--------|---------|
| 6- 8" S. ....          | ---  | \$1.50 | \$10.00 |
| 8-12" S. ....          | ---  | 1.75   | 12.50   |
| 12-18" S. (2 yr.) .... | ---  | 2.00   | 15.00   |

### **Juniperus Chinensis Foemina (Sylvestris Juniper)**

Pyramidal shaped plant with light green foliage. One of the best Junipers in the lower South, but can stand cold of far North.

|                  |     |      |       |
|------------------|-----|------|-------|
| 6- 8" C. T. .... | --- | 1.75 | 12.50 |
| 8-12" C. T. .... | --- | 2.00 | 15.00 |
| 3" pots .....    | --- | 2.00 | 15.00 |

### **Juniperus Chinensis Glauca Hetzi**

Similar to Pfitzer Juniper with more bluish color and faster grower. Excellent newer Juniper, doing well in as wide a territory as the Pfitzer Juniper.

|                                  |     |      |       |
|----------------------------------|-----|------|-------|
| 6- 8" C. T. ....                 | --- | 1.75 | 12.50 |
| 8-12" C. T. (2 yr., heavy) ..... | --- | 2.00 | 15.00 |
| Gallon cans .....                | .50 |      |       |

### **Juniperus Chinensis Pfitzeriana**

This excellent plant is perfectly at home from the Gulf Coast to Canada; from the Atlantic Coast to the Pacific.

|                                  |     |      |       |
|----------------------------------|-----|------|-------|
| 6- 8" C. T. ....                 | --- | 2.25 | 17.50 |
| 8-12" C. T. (2 yr., heavy) ..... | --- | 2.50 | 20.00 |
| Gallon cans .....                | .50 |      |       |

### **Juniperus Ch. Pfitzeriana Compacta (Compact Pfitzer)**

|                          |     |      |       |
|--------------------------|-----|------|-------|
| 8-12", 2 yr. heavy ..... | --- | 2.50 | 20.00 |
|--------------------------|-----|------|-------|

### **Juniperus Chinensis Pyramidalis (Spiny Greek)**

Conical, symmetrical and compact, dark green. Excellent for formal plantings.

|                   |     |        |         |
|-------------------|-----|--------|---------|
| 6- 8" C. T. ....  | --- | \$1.75 | \$12.50 |
| 8-12" C. T. ....  | --- | 2.00   | 15.00   |
| 2 1/4" pots ..... | --- | 2.00   | 15.00   |

**Juniperus Horizontalis Plumosa (Andorra Jun.)**

Bluish green, plume-foliaged, spreading Juniper will turn into warm, purplish color during the winter months.

8-12" C. T. .... 2.00 15.00

**Podocarpus Sinensis**

Our Podocarpus are all cutting grown from berry-bearing plants, and are the very attractive narrow leaved kind.

6- 8" C. T. .... 1.50 10.00

8-12" C. T. .... 2.00 15.00

**Retinospora Ericoides**

Fast and upright grower with feathery bluish foliage.

6-8" C. T. .... 1.50 10.00

8-12" C. T. .... 1.50 10.00

## Container-Grown Stock

These are all one-gallon containers, except as noted.

|  | Price Each |
|--|------------|
| Abelia grandiflora .....                 | .50        |
| Buxus japonica .....                     | .50        |
| Callistemon rigidus (Bottlebrush) .....  | .50        |
| Camellia japonica (in variety) .....     | .75        |
| Camellia sasanqua (in variety) .....     | .60        |
| Cleyera japonica .....                   | .50        |
| Fatshedera Green .....                   | .50        |
| Hydrangea P. G. ....                     | .50        |
| Forsythia .....                          | .50        |
| Gardenia fortunei .....                  | .50        |
| Gardenia mystery (2 gal.) .....          | .75        |
| Gardenia radicans .....                  | .50        |
| Ilex cornuta Burford .....               | .50        |
| Ilex crenata convexa (bullata) .....     | .50        |
| Ilex crenata Helleri .....               | .50        |
| Ilex crenata rotundifolia .....          | .40        |
| Ilex vomitoria nana (Dwarf Yaupon) ..... | .60        |
| Magnolia fuscata .....                   | .50        |
| Magnolia fuscata (2 gal.) .....          | 1.00       |
| Magnolia grandiflora .....               | .60        |
| Mahonia bealei .....                     | .60        |
| Mimosa .....                             | .50        |
| Oak—Live Oak .....                       | .50        |
| Osmanthus fortunei .....                 | .50        |
| Osmanthus fragrans (Sweet Olive) .....   | .50        |
| Photinia glabra .....                    | .50        |
| Photinia glabra (3 gal.) .....           | 1.50       |
| Pittosporum tobira .....                 | .50        |
| Pyracantha Early Red .....               | .60        |
| Pyracantha Early Red (2 gal.) .....      | 1.00       |
| Pyracantha Graber .....                  | .60        |
| Pyracantha Graber (2 gal.) .....         | 1.00       |
| Pyracantha Lalandi .....                 | .60        |
| Yucca filamentosa .....                  | .50        |
| Cedrus deodara .....                     | .50        |
| Jun. glauca Hetzi .....                  | .50        |
| Jun. chinensis Pfitzeriana .....         | .50        |

All prices on container-grown stock are F.O.B. our nursery for the plants uncrated. Where crating is necessary, packing charge will be made at cost.

## Azalea Liners

We offer for early Spring 1959 shipment, beginning about April 1, Azalea liners that are well-branched, compact plants with heavy root systems. These have been grown in beds with a heavy peat content and have been sheared several times to make them bushy. We ship thousands of these liners each spring to many satisfied customers, and we urge you to place your order well in advance of the shipping season on these, so that we may reserve some of them for you.

### Indica Varieties

|                 |                                    |
|-----------------|------------------------------------|
| Elegans         | George L. Taber                    |
| Fielder's White | Judge Solomon<br>(Southern Charm)  |
| Fisher's Pink   |                                    |
| Formosa         | Pride of Mobile<br>Salmon (Lawsal) |

|                       |        |         |          |
|-----------------------|--------|---------|----------|
|                       | 10     | 100     | 1000     |
| 6-8" from cold frames | \$1.50 | \$11.00 | \$100.00 |

### Kurume Varieties

|                       |   |       |        |
|-----------------------|---|-------|--------|
| Christmas Cheer       | Pink Pearl                              |       |        |
| Coral Bells           | Salmon Beauty                           |       |        |
| Fashion               | Sherwood Red                            |       |        |
| Hexe                  | Snow                                    |       |        |
| Hino-crimson          | Sweetheart Supreme<br>(Pericat variety) |       |        |
| Hinodegiri            |   |       |        |
| 4-6" from cold frames | \$1.50                                  | 11.00 | 100.00 |

|                                   |               |                |
|-----------------------------------|---------------|----------------|
|                                   | 10            | 100            |
| <b>2 YEAR, TWICE TRANSPLANTED</b> | <b>\$2.50</b> | <b>\$20.00</b> |

These plants have 3-5" spread, and should have bloom buds for Spring, 1959. We have the following varieties available in these fine plants: Christmas Cheer, Coral Bells, Hino-crimson, Hinodegiri, and Snow.

There is no packing charge on our Azalea liners, or any other lining-out stock. We cannot, however, accept orders for less than ten of any one variety of the above Azalea liners.

## Rare Camellia Grafts

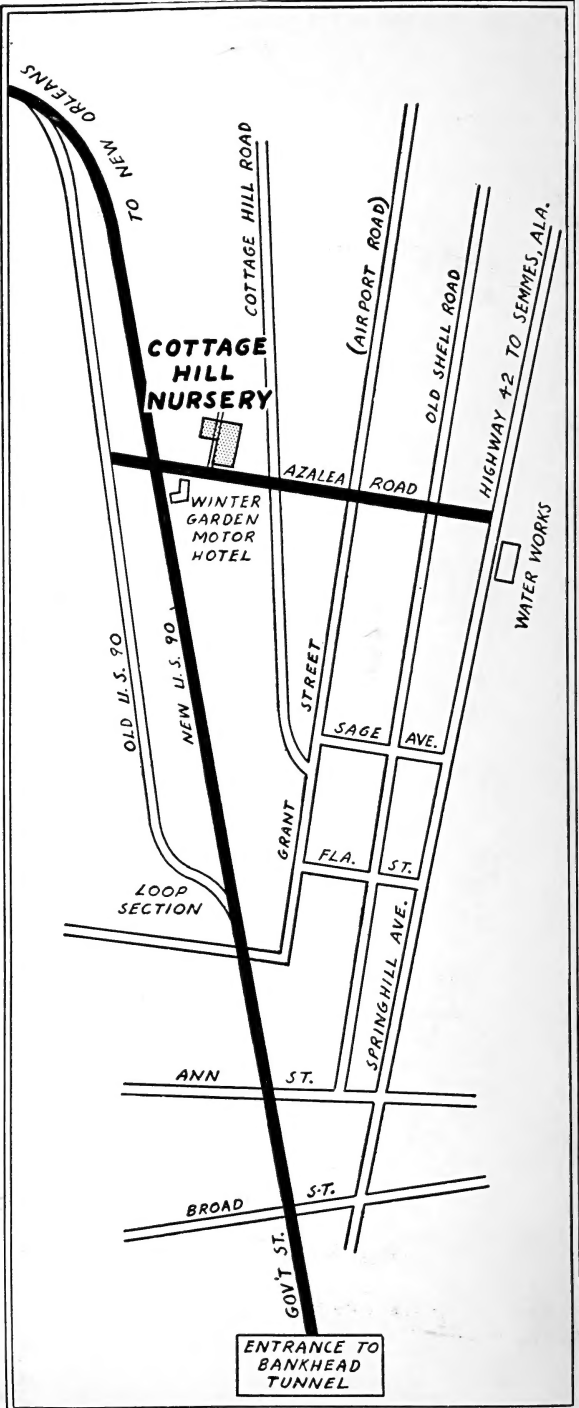
These are one-year plants in one-gallon containers, except as noted.

|   |         |
|---|---------|
| <b>Adolphe Audusson Var.</b> .....          | \$ 2.00 |
| <b>Arajishi Var.</b> .....                  | 2.00    |
| <b>Beau Harp</b> .....                      | 2.00    |
| <b>Ben Parker</b> .....                     | 3.00    |
| <b>Betty Sheffield</b> .....                | 3.00    |
| <b>Bowman's No. 81</b> .....                | 3.00    |
| <b>Bride's Bouquet</b> .....                | 3.00    |
| <b>Charlotte Bradford</b> .....             | 2.50    |
| <b>Christmas Beauty</b> .....               | 3.00    |
| <b>Clower's Red (Variegated form)</b> ..... | 2.00    |
| <b>C. M. Wilson</b> .....                   | 2.50    |
| <b>Daikagura Var.</b> .....                 | 2.00    |
| <b>Donation</b> .....                       | 2.50    |
| <b>Donation (2 yr.)</b> .....               | 3.50    |
| <b>Drama Girl</b> .....                     | 5.00    |
| <b>Dr. Gilbert Fisher (2 yr.)</b> .....     | 2.00    |
| <b>Dr. Tinsley</b> .....                    | 2.50    |
| <b>Dr. W. H. McIntosh</b> .....             | 3.00    |
| <b>Dr. W. H. McIntosh (2 yr.)</b> .....     | 4.00    |
| <b>Elizabeth LeBey</b> .....                | 3.00    |
| <b>Emily Wilson</b> .....                   | 3.00    |
| <b>Emily Wilson (2 yr.)</b> .....           | 4.00    |
| <b>Emmett Barnes</b> .....                  | 2.50    |
| <b>Emmett Barnes (2 yr.)</b> .....          | 3.00    |
| <b>Emmett Pflingstl</b> .....               | 2.00    |
| <b>Faith</b> .....                          | 3.00    |
| <b>Faith (2 yr.)</b> .....                  | 4.00    |
| <b>Frosty Morn (2 yr.)</b> .....            | 3.00    |
| <b>Hazel Herrin (2 yr.)</b> .....           | 2.50    |
| <b>Helen K (2 yr.)</b> .....                | 2.00    |
| <b>Hi Hat</b> .....                         | 2.00    |
| <b>Irene Coker</b> .....                    | 2.50    |
| <b>Irene Coker (2 yr.)</b> .....            | 3.00    |
| <b>Iwane Shibori</b> .....                  | 2.50    |
| <b>J. C. Williams</b> .....                 | 2.50    |



## Rare Camellia Grafts (Continued)

|   |               |
|---|---------------|
| <b>Jessie Katz (patented)</b> .....     | <b>\$3.00</b> |
| <b>J. J. Whitfield</b> .....            | <b>2.50</b>   |
| <b>J. J. Whitfield (2 yr.)</b> .....    | <b>3.00</b>   |
| <b>Joshua Youtz</b> .....               | <b>2.00</b>   |
| <b>J. S. Bradford (2 yr.)</b> .....     | <b>2.00</b>   |
| <b>Louisiana Purchase (2 yr.)</b> ..... | <b>2.00</b>   |
| <b>Magnoliaeflora</b> .....             | <b>2.50</b>   |
| <b>Marguerite Turner</b> .....          | <b>2.50</b>   |
| <b>Marjorie Magnificent</b> .....       | <b>2.00</b>   |
| <b>Masterpiece (2 yr.)</b> .....        | <b>2.00</b>   |
| <b>Mathotiana Supreme</b> .....         | <b>2.00</b>   |
| <b>Mathotiana Supreme (2 yr.)</b> ..... | <b>2.50</b>   |
| <b>Mary Bethea (2 yr.)</b> .....        | <b>2.50</b>   |
| <b>Mrs. D. W. Davis</b> .....           | <b>5.00</b>   |
| <b>Mrs. D. W. Davis (2 yr.)</b> .....   | <b>7.50</b>   |
| <b>Mrs. Lyman Clarke (2 yr.)</b> .....  | <b>3.00</b>   |
| <b>Nina Avery</b> .....                 | <b>2.50</b>   |
| <b>Pearl Maxwell</b> .....              | <b>2.00</b>   |
| <b>Peter Pan</b> .....                  | <b>3.00</b>   |
| <b>Pink Champagne</b> .....             | <b>2.50</b>   |
| <b>Princess Elizabeth (2 yr.)</b> ..... | <b>2.00</b>   |
| <b>Red Wings</b> .....                  | <b>3.00</b>   |
| <b>Reg Ragland</b> .....                | <b>5.00</b>   |
| <b>Ruth Royer</b> .....                 | <b>2.50</b>   |
| <b>Seventh Heaven</b> .....             | <b>3.00</b>   |
| <b>Seventh Heaven (2 yr.)</b> .....     | <b>4.00</b>   |
| <b>Spring Sonnet (2 yr.)</b> .....      | <b>2.50</b>   |
| <b>Thelma Dale (2 yr.)</b> .....        | <b>2.50</b>   |
| <b>Tick Tock</b> .....                  | <b>3.00</b>   |
| <b>Tomorrow</b> .....                   | <b>3.00</b>   |
| <b>Ville de Nantes</b> .....            | <b>2.50</b>   |
| <b>Wildwood</b> .....                   | <b>3.00</b>   |
| <b>Winifred Womack</b> .....            | <b>2.50</b>   |
| <b>Winifred Womack (2 yr.)</b> .....    | <b>3.00</b>   |
| <b>Betty Patricia (Sas.)</b> .....      | <b>3.00</b>   |



NEW ORLEANS

TO NEW ORLEANS

COTTAGE HILL ROAD

**COTTAGE HILL NURSERY**

(AIRPORT ROAD)

OLD SHELL ROAD

HIGHWAY 42 TO SEMMES, ALA.

WINTER GARDEN MOTOR HOTEL

AZALEA ROAD

WATER WORKS

OLD U.S. 90

NEW U.S. 90

GRANT STREET

SAGE AVE.

AVE.

FLA. ST.

ST.

LOOP SECTION

SPRINGHILL AVE.

ANN ST.

BROAD

S.T.

GOV'T ST.

ENTRANCE TO BANKHEAD TUNNEL