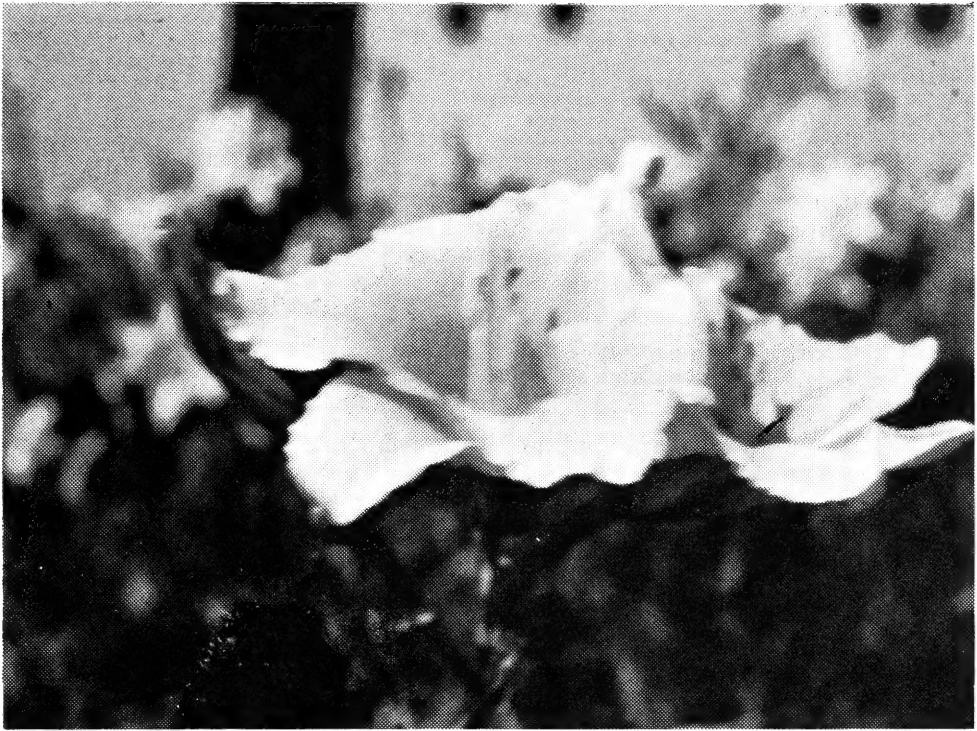


62

IR



1959

Catalog

OF

Daylilies • Iris

Oriental Poppies

Phlox • 'Mums

LIBRARY
 RECEIVED
 ★ JUN 3 1959 ★
 U. S. Department of Agriculture

Englerth Gardens

4652 Division Ave., S.

Grand Rapids 8, Mich.

Welcome to Englerth Gardens

4652 Division Avenue, S.
Grand Rapids 8, Michigan



Greetings, Fellow Gardeners —

We are on the east side of the street at 4652 Division Ave., old US-131, three miles south of Grand Rapids city limits, which is the junction of US-16 bypass and Division Ave. Coming from the south, we are four blocks north from where the four-lane highway starts. If taking the new expressway, which is being completed to the west and parallel with our street, leave it at 54th or 44th, as we are between those two streets. Division Ave. is one-half mile east of the new US-131 expressway.

We can list only a very small part of our stocks, and you are invited to come in and browse around at any time. The Daylilies give their best show through July, but we have them in bloom from iris time until freezing weather. Other interesting displays through the season are the Iris, with bright splashes of Oriental Poppies; Phlox from late June into August, and the brilliance of the Mum fields from September on.

The Englerths

Please Read Before Ordering

POSTAGE: All orders for \$3.00 or over will be sent postpaid. With orders for less than that amount please include 50c for packing and mailing. No C.O.D. orders, please, as they add much to your cost and ours.

Michigan customers please include 3% sales tax.

We send freshly dug, blooming size plants, guaranteed to be true to name. If they do not arrive in good condition, do not return them, but give them the best possible treatment, and write us at once, indicating adjustment desired. Also, if there should be any error in labeling, let us know as soon as possible.

Daylilies

(*Hemerocallis*)

A purchase of Daylilies is an investment in all-summer beauty and enjoyment. They grow and bloom just about anywhere except in deep shade. They will carry their banners of cream and gold down through your perennial border all during the spring, summer and fall seasons, or they can make a splash of red or lively pattern in front of a shrubbery or evergreen planting. There are even small ones for the rock garden.

They need time to become established, and should be left undisturbed for some time, as they do not start to give their best performance until their second or third year. Prices are for strong single divisions, and we ship in early spring or in late summer and fall.



Abbreviations used are as follows:

- E — Early; late May and early June in this locality.
- EM — Early midseason; June into July.
- M — Midseason, or July.
- ML — Late midseason; July into August.
- L — Late; August and September.
- re — Has repeat bloom.
- ext — Has extended bloom; stays open late.
- fr — Is fragrant.
- d — Dormant foliage habits.
- ev — Evergreen foliage.

ADELAIDE NIELAND. (Taylor) 40" EM-re-ev. Round blooms, ruffled segments, near Persian lilac. Delivery August on. **\$7.50**

AMHERST. (Wheeler) 36" M-re-ev. Large Purple, cream midrib. **\$2.00**

ADONIS. (Connell) 26" M-d. Intense, brilliant orange-pink; small green throat. **\$7.00**

AFTERGLOW. (Stout) 40" M-ext-d. Unusual pastel buff with raised midrib; best in partial shade. **\$0.60**

ALBION. (Wheeler) 40" M-ev. Round, recurved blooms of pale cream; even pollen is milk-white. **75¢**

ALICE (Bach) 42" M-d. Large cream-yellow, often blooming double. **\$2.50**

ANNIE OAKLEY. (Wheeler) 32" M-ev. Reverse bicolor in buff, with red-dusted sepals and red circle eye-zone. **\$2.00**

ANNIS VICTORIA RUSSELL. (Russell) 38" EM-re-ev. Huge wide-petaled golden yellow with long bloom season. **\$0.75**

APRICOT QUEEN. (Sass) 40" ML-d. Peachy-apricot, lovely and long-blooming. **\$1.50**

ARLA. (Wheeler) 48" M-fr-semi-ev. Very large, clear light canary with overlapping segments; well branched. **\$1.00**

ARTEMIS. (Norton) 36" M-semi-ev. Leathery substance; light straw yellow with very broad segments. **\$2.50**

ATHLONE. (Russell) 48" M-ext-ev. Attractive rosy tan and yellow bicolor, petals frilled. **\$1.00**

ATLAS. (Kraus) 34" M-d. Gigantic light yellow with chartreuse shadings, ruffled and creped. **\$5.00**

AUGUST ORANGE. (Stout) 36" L-ext-d. Many small, rich orange blooms, on well-branched stems; multiflora habit. **\$0.60**

Daylilies . . .

- AUTUMN PRINCE.** (Stout) 45" L-d. Many small light yellow blooms on tall, well-branched stalks. \$0.60
- AUTUMN DAFFODIL.** (Kraus) 34" L-d. Abundance of small, straw-yellow blooms; multiflora type and late. \$1.50
- BAGGETTE.** (Russell) 30" M-d. Lovely pastel bicolor; petals shaded rose, sepals pale lemon. \$1.00
- BALLET DANCER.** (Nesmith) 36" M-ev. Charming and dainty buff-pink. \$0.75
- BAYOU TECHE.** (Connell) 30" M-d. Velvety near-black, outlined in yellow. \$2.50
- BESS VESTAL.** (House) 36" EM-ev. Large, wide-petaled bright red. \$1.50
- BETSY B.** (Vestal) 36" M-re-ev. Dazzling, velvety, wide-petaled red. \$1.50
- BILLIE BURKE.** (Wheeler) 42" M-ext-ev. Large deep rose and sulphur-yellow bicolor; long-lasting blooms. \$1.50
- BLACK CHERRY.** (Douglas) 36" M-ev. Rich black-red with recurving petals and sepals. \$0.75
- BLANCHE HOOKER.** (Stout) 36" E-re-ev. Fine early red which blooms quite profusely in the fall. \$0.75
- BLACK FALCON** (Nesmith) 36" M. Large dark red. \$.75
- BLACK FRIAR** (Lester) 40" M-d-ext. Large, dark, and of graceful form. \$2.00
- BLACK MAGIC** (Douglas) 36" ML-ev. Large rounded blackish purple. \$1.20
- BLACK PRINCE** (Russell) 42" EM-re. Well-branched fine dark red, green throat. \$1.00
- BLOODROOT.** (Nesmith) 36" M-d. Brilliant scarlet self with velvety finish and small yellow throat. \$2.50
- BOBLINK.** (Wheeler) 40" M-re-ev. Purple and yellow bicolor; good branching. \$0.75
- BOLD COURTIER.** (Nesmith) 40" M-d. Broad rose petals with creamy midline; sepals soft yellow flushed rose. \$0.75
- BONNY RUFFLES.** (Nesmith) 36" M-ev. A self of chalcedony yellow, evening bloomer. \$1.50
- BOUNTIFUL.** (Cook) 30" M-ext-d. Wide-petaled lemon-yellow; a garden favorite. \$0.75
- BRACKEL.** (Wheeler) 30" M-ev. Deep mahogany brown with petal-pattern resembling brocade. \$1.00
- BRAHMS.** (Henderson) 40" ML-semi-ev. Broadly fashioned blooms of rich crimson, heavily flushed velvety purple. \$5.00
- BROCADE.** (Taylor) 36" M-ext-ev. Smooth rose-amber with darker veining and eye-zone; excellent substance. \$1.25
- BROWN-EYED SUSAN.** (E. Hill) 36" EM-d. Distinctive golden yellow with precise brown eye-zone. \$0.60
- BRIGAND.** (Nesmith) 45" ML-d. Large, full blooms of deep mahogany with cream midrib; tall, well-branched. \$1.00
- CABALLERO.** (Stout) 40" M-ev. Clear-cut brilliant bicolor of vermilion and yellow. \$0.75
- CANARI.** (Nesmith) 48" M-ext-d. Palest canary yellow; beautiful form, finest branching. \$0.75
- CANYON PURPLE.** (Nesmith) 45" LM-semi-ev. Large, full, open bloom of raspberry purple. \$2.50
- CAPRI.** (Milliken) 36" EM-re-ev. Wide, ruffled petals of pale rosy apricot. \$2.00
- CARA MIA** (Lester) 18" EM-d. Soft melon pink, green throat. Aug. deliv. \$10.00
- CARVED IVORY** (Nesmith) 30" M-d. its name is descriptive - even stamens are ivory; heavy substance. \$3.00
- CELLINI.** (Wheeler) 30" M-ev. Wide-open pansy-shaped clear light yellow; round, overlapping petals. \$1.25
- CHLOE.** (Nesmith) 38" ML-ext-d. Wide-petaled, ruffled orange-yellow, powdered with golden sepia. \$1.00
- CIBOLA.** (Hill) 34" M-d. Lovely large Spanish yellow of fine form and substance. \$2.00
- CITATION.** (Taylor) 36" M-re-ev. Glowing lacquer red that makes a fine show in the garden. Delivery August on. \$5.00
- CLASSIC.** (Kraus) 40" M-d-ext-fr. Lily-shaped light yellow with green throat. \$2.00

Daylilies . . .

- COCKADE.** (Taylor) 36" M-re-ev. Soft yellow with eye-zone when single, but is frequently double. **\$1.00**
- COEUR DE LEON.** (Connell) 34" M-ev. Huge soft golden self. **\$3.00**
- COLONEL JOE.** (Lester) 40" EM-d. Light lemon yellow, wide ruffled petals, triangular shape **\$5.00**
- COLONIAL DAME** (Milliken) 36" M-re-ext. Large ruffled apricot, rosy halo. **\$1.00**
- COLONIAL MAID** (Nesmith) 38" M-d. Pastel bicolor, salmon and cream. **\$1.50**
- COPPER COLONEL** (Sass) 40" M. Large recurved copper, green throat. **\$1.00**
- COLOR GUARD.** (Shull) 38" M-re-d. Brilliant scarlet with a long bloom season. **60¢**
- COSETTE.** (Milliken) 36" E-fr-ext-ev. Soft yellow, creped and ruffled, rosy dusting; long bloom season. **\$1.50**
- CRADLE SONG.** (Milliken) 32" EM-re-ev. Large, lovely deep yellow of excellent substance. **\$1.50**
- CRYSTAL PINK.** (Nesmith) 40" M-d. Light salmon-pink with frosty sheen and deeper eye-zone. **\$0.60**
- CYCLOPS.** (Douglas) 60" M-ev. Huge light yellow with reddish cinnamon wash, leathery substance. **\$3.00**
- DARK STAR.** (Connell) 32" M-d. Seven-inch bloom of blue-purple with green throat. **\$5.00**
- DEVON CREAM.** (Nesmith) 36" M-d. Heavy-textured wide petals of lovely light yellow. **\$1.00**
- DIADEM.** (Wheeler) 36" M-ev. Petals salmon pink with red-salmon throat-marks; frilled. **\$2.50**
- DAYSRING** (Kraus) 36" M. Narrow petals, but lovely, a new approach to pink. **\$9.00**
- DOMINION.** (Stout) 40" EM-re-d. Large round blooms of deep red, golden throat; quite dependable rebloomer. **\$0.75**
- DOROTHEA.** (Lester) 36" M-d. Large light yellow pastel bicolor, brushed lilac-heliotrope eye-zone. **\$1.00**
- DOROTHY M'DADE.** (Sass) 40" L-ext-ev. Large tubular shaped light yellow, good texture and garden value. **\$0.60**

Englerth Gardens

- DOUBLOON.** (Nesmith) 40" M-re-d. Nice large, glistening orange, with continuous blooming habit. **\$0.75**
- DR. STOUT.** (Traub) 38" M-ext-ev. Blooms of orange, burnished red; bright and gay. **\$0.60**
- DRESDEN CHINA.** (Nesmith) 40" M-ext-d. Pastel bicolor with cinnamon petals, amber sepals. **\$0.60**
- DUCHESS OF WINDSOR.** (Traub) 34" M-ext-ev. Round blooms of heavy substance, in creamy buff. **\$0.60**
- EARLIANNA.** (Betscher) 30" E-ext-ev. Fine large yellow for blooming with the iris. **\$0.75**
- EASTER MORN.** (Wheeler) 38" M-ev. Round, wide-petaled blooms of deep buff-yellow, slight halo. **\$1.00**
- EDWARD VII.** (Connell) Large, elegant gold self; 8-in. leathery blooms. **\$2.00**
- EMILY DICKINSON.** (USDA-Traub) 42" EM-ext-d. Fragrant straw-yellow; sun-resistant 5-in. blooms. **60¢**
- ERIC, JR.** (Kraus) 21" LM-d. Small, glowing Brazil red. **\$1.00**
- EVELYN CLAAR.** (Kraus) 33" EM-d. Broad petaled blooms of cool orchid pink; very highly rated. **\$1.20**
- FAIRY JEWELS.** (Nesmith) 46" L-d. Tall and well-branched late shrimp-pink. **\$2.00**
- FAIRY WINGS.** (Lester) 36" EM-d. Pale yellow with delicate tint of pink light; all segments edged tiny ruffles. Aug. del. **\$10.00**
- FAR HILLS.** (Saxton) 45" ML-d. Large beet-root purple, edged lilac; green throat. **\$7.00**
- FESTIVAL.** (Stout) 40" ML-d. Large, tall red and orange bicolor, gay and striking. **\$0.60**
- FIDDLEHEAD.** (Wheeler) 34" M-ev. Shades of burnt gold, most blooms having four fiddle-shaped petaloids. **\$2.00**
- FIREGOD.** (McDade) 40" L-d. Slightly ruffled bright canna red with long bloom season. **\$0.75**
- FIRE OPAL** (Nesmith) 38" L-d. Handsome recurved zinc orange. **\$1.00**
- FELICE** (Kraus) 40" ML-d-re. Large, non-fading pale yellow with long bloom season. **\$1.50**

Daylilies . . .

FLAMBEAU. (Kraus) 36" M-d. Flame scarlet of excellent substance. **\$1.00**

FLANDERS. (Lester) 36" M-d. Bright non-fading red with wide, overlapping petals. **\$1.50**

FLAVINA. (Fewkes) 24" E-d. Refined and dainty soft lemon yellow with rounded petals; early. **60¢**

FLUFFY RUFFLES. (Shull) 36" M-d. Intriguing and crepy ruffled pastel yellow with faint rosy halo. **\$1.00**

FOND CARESS. (Milliken) 34" EM-re-fr-ext-ev. Pale cream yellow with wide segments, open form. **\$1.00**

FRED STUNTZ. (Kraus) 36" EM-d. Glowing cardinal red, wide overlapping petals. **\$1.25**

FRIAR TUCK. (Lester) 30" EM-ext-ev. Rich, deep yellow with mahogany eye-zone and velvet finish. **\$1.00**

FULVA ROSEA. (Species) 40" ML. Beautiful, clear carmine-pink, narrow petals. **75¢**

FRANCES FAY (Fay) 28" EM-d-re-ext. Beautiful light melon-pink pastel, heavy substance and long bloom season. Stock limited, write for price.

GAIETY. (Betscher) 46" EM-ext-d. Large, wide-open light lemon yellow; nice substance. **\$0.60**

GARDEN PORTRAIT. (Bechtold) 28" M-d. Immense "spider" type of greenish citrous yellow. **\$5.00**

GAY LARK. (Connell) 46" M-ev. Very showy 6-in. flower; a rose and pink bitone. **\$6.00**

GARDEN SPRITE (Lester) M-d. Wide, ruffled petals of Afterglow color. No. 1 at Houston convention. Aug. delivery. **\$20.00**

GARNET ROBE (Milliken) 36" M-ev. Glowing garnet red. **\$.60**

GENE WILD. (Lester) 30" E-re-ev. Giant blooms, ruffled and recurved; soft peach-yellow with hint of lilac in eye-zone. **\$10.00**



Golden West

Daylilies . . .

GOLDEN MOTH. (Armistead) 40" M-ext-fr-ev. Pale yellow evening bloomer of distinctive triangular shape. \$2.00

GOLDEN TRIANGLE. (USDA-Traub) 40" M-fr-ev. Triangular-shaped yellow with fine substance. \$5.00

GOLDEN WEST. (Sass) 45" M-fr-ext-ev. Large deep yellow with grand texture and branching. \$0.60

GRANADA. (Traub) 40" M-ext-ev. Very attractive tan and brown with a long bloom season. \$0.60

GRAY DAY. (Connell) 46" M-ev. Pale blue-lavender over yellow base; 5½-in. flowers. \$2.00

GOLDEN GALLEON (Milliken) 38" EM-ev-re. Deep apricot with distinctive midrib, creped and ruffled. \$6.00

GORGIO (Shull) 36" M-ext. Yellow with good form and substance, with white midribs. \$1.50

GOLDEN GRAIN. (Nesmith) 48" M-d. Large, tall and well-branched yellow with long bloom season. 75¢

GOLDEN HOURS. (Sass) 36" M. One of the finest orange day-lilies; heavy substance. \$1.00

HAROLD PATTERSON. (McDade) 60" L-d. Pink and apricot blend, late and tall. \$0.60

Englerth Gardens

HARVEST SUNSHINE. (Saxton) 36" L-fr-d. Lovely late, ruffled blooms of sparkling sunshine yellow. \$8.00

HAZEL SANDERS. (Milliken) 36" E-ev. Soft yellow with pink wash; broad, ruffled petals. \$2.00

HEARTS AFIRE. (Connell) 36" M-d. Beautiful, outstanding and unusual carmine red. Delivery Aug. on \$6.00

HESPERUS. (Sass) 45" M-fr-ext-d. Lovely large lemon chrome. Stout award winner in 1950. \$0.75

HER MAJESTY (Nesmith) 40" L-M-d. Large, beautiful self of shell pink with creamy throat. \$9.00

HIWASSEE. (McDade) 38" L-d. Fine for the late garden; Vassar-tan and lemon-yellow pastel bicolor. \$0.60

HOWDY. (Bremkin-Armstrong) 36" M-d. Striking bicolor of lemon and orchid; very showy and popular. \$0.60

IOWA. (USDA-Traub) 36" M-d. Lovely wide-petaled light yellow. \$1.50

JACK FROST. (Lester) 36" ML-d. Large pale lemon-ice of triangular form. \$6.00

JEAN. (McDade) 40" L-d. Very bright and contrasty brick-red and orange bicolor; nice for late color. \$0.75

Daylilies - (Hemerocallis)

The Daylily is the most versatile of perennials, and can be used in all parts of your garden, for bloom all through the growing season. They can furnish shades of yellow, orange and brown with your Iris in late spring. They can be planted all through the perennial border to furnish shades of cream and gold, the sunshine colors, during the entire season. They can make bold splashes of orange, flame and shades of red against evergreens or shrubbery where you wish to make an accent point. Or you may have a garden of Daylilies by themselves, in all their lovely shades.

CULTURE: The Daylilies will grow in any good garden soil and are very drought resistant. However, they do appreciate plenty of moisture and nourishment. They will grow and bloom in partial shade, but should have sun for half a day, as too deep shade will cause weak stems and fewer blooms. They should be left undisturbed over a period of years, as they do not give their best performance until the second or third year. So they should be spaced from two to three feet apart to permit increase in size of clumps. Spread the roots out well when planting, and firm the soil down well. Well-rotted manure or compost with bone meal will be appreciated if incorporated in the soil while planting, and peat moss is also found to be beneficial.

Our prices are for blooming size plants. Daylilies will be shipped in the spring, or in late summer and fall.

Daylilies . . .

JEAN LAFITTE. (Claar) 36" EM-d. Deep velvety garnet with wide segments of fine substance. **\$1.50**

JUST MARY. (Russell) 36" ML-d. Five-inch yellow with red veining, very colorful. **60¢**

KENTUCKY CARDINAL. (Nesmith) 40" L-d. Rich cardinal red, petals, velvety; sepals smooth, tipped yellow. **\$0.75**

KILLARNEY LASS. (Nesmith) 36" M-d. Narrow-petaled geranium-pink, bordered flesh-pink. **\$1.75**

KINDLY LIGHT. (Bechtold) 30" M-d. Immense light yellow spider with a hint of green. **\$1.50**

KNIGHTHOOD. (Schroeder) 48" M-d. Smooth, rich maroon-red self; large blooms on tall stems. **\$1.00**

LADY GODIVA. (Connell) 45" M-ev. Six-inch bloom of palest lemon-cream, near white. **\$2.00**

LA FAR FALLETTE. (Connell) 32" M-d. Red-brown veining on yellow ground. **\$6.00**

LEMON LUSTRE. (Lester) 40" ML-d-fr-ext. Cool, satin-finished yellow, a fine addition to the late varieties. **\$1.50**

LILLIPUT. (Saxon) 26" M-d. Many little golden bells on wiry stems. Fine for rockery or edging. **\$1.25**

LITTLE BUDDY. (Sparkman) 8" M-d. Dwarf deep red for border or rock garden; profusion of bloom on dwarf wiry stems. **\$3.00**

LITTLE CHERUB. (Claar) 24" E-d. Clear light yellow; a distinctive foreground variety. **\$1.00**

LORD JEFF. (Wheeler) 36" M-ev. Vigorous purple and yellow bicolor of fly-away form. **\$20.00**

LOVELINESS. (Bechtold) 28" EM-d. Petals of Ta-Ming yellow with copper lustre blotch. **\$0.75**

LUXOR. (Wheeler) 36" EM-re-ey. Buff-yellow pastel, wide petals of heavy texture; opens flat. **\$2.50**

MAGNOLIA. (Christensen) 34" ML. Broad, ruffled petals of rose-pink over cream. Gives good substance to late seedlings. **\$4.00**

MAJESTIC. (Stout) 36" M-ext-ev. Large, fine deep orange of heavy texture. **75¢**

MABEL FULLER. (Kraus) 38" M-d. Velvety, sparkling cardinal red with a green throat. **\$1.50**

MADAME. (Connell) 36" M-ev. Beautiful pale yellow with touch of green; broad, recurved segments. **\$5.00**

MANITOU (Kraus) 36" EM-d. Large rosy bronze, wide petals with a tendency to double. **\$1.50**

MARIONETTE. (Lester) 36" ML-ext-d. Rich, unfading buttercup yellow with velvety mahogany band. **\$1.75**

MARSE CONNELL. (Connell) 36" EM-ev. Striking 8-in. flowers of velvety red; star-shaped yellow throat. **\$2.00**

MEDALLION. (Saxton) 30" M-d. Very wide segments, opening flat, of tangerine orange, veined lighter. **\$1.50**

MICHAEL ROBINSON. (Russell) 40" M-d. Deep rich red of velvety texture. **\$0.60**

MIDWEST MAJESTY. (Sass) 44" M-d. Large, yellow self, perfect in form and substance. **\$2.00**

MIDWEST STAR. (Sass) 40" M-ev. Large pale yellow of very attractive form and grand texture. **\$3.00**

MISS INDIANA. (Richards) 38" ML-fr-ext-d. Heavily muffled petals of gold with rust-colored V. **\$1.00**

MISSION BELLS. (Hall) 40" ML-d. Produces up to 52 large ruffled medium yellow blooms to a stalk. **\$1.00**

MME. RECAMIER. (Nesmith) 42" L-d. Tall, long-blooming late pink. **\$1.25**

MONA LISA. (Bechtold) 34" M-d. Large, tailored, recurved blooms of narcissus yellow. **\$2.00**

MONGOL. (Norton) 40" ML-d. Outstanding deep yellow; large flowers with waved edges; extra long bloom season. **\$1.00**

MONONA. (Kraus) 28" M. Large, free-blooming glistening and waxy orange. **\$1.50**

MONTE. (Russell) 36" M-d. Heavily ruffled bicolor; wide petals of rosy brown; sepals of soft light yellow. **60¢**

MOONBEAM. (Sass) 60" ML-ext-d. Pale yellow on well-branched and tall stalks. **\$0.60**

Daylilies . . .

MOONGLEAM. (Taylor) 42" EM-re-ev-fr-ext. Sunflower yellow with texture of fine porcelain. Broad segments, and greenish lights reflect from throat. **\$3.50**

MOROCCO RED. (Nesmith) 38" ML-d. Velvety dark red with very shallow orange throat. **\$0.60**

MORPHEUS. (Sass-Stump) 48" M-fr-ext-d. Large, glossy, frilled light yellow. **\$0.75**

MOUNT VERNON. (Russell) 40" M-ext-d. Bicolor with smooth brown petals, yellow sepals; Nice substance. **50¢**

MRS. B. F. BONNER. (Russell) 30" M-ext-ev. Large and lovely pale yellow with wide segments. **\$0.75**

MRS. HUGH JOHNSON. (Russell) 36" M-ext-d. Deep rich and glowing red; very popular. **\$0.75**

MRS. JOHN J. TIGERT. (Watkins) 36" M-ext-d. Prolific and brilliant Brazil red. **50¢**

MYRNA. (Saxton) 30" ML-d. Wide overlapping petals of deep rosy red, flushed magenta; a fine performer. **\$0.75**

MY VALENTINE. (Christenson) 38" ML-d. Wide-petaled, striking bright red. **\$1.50**

NARANJA. (Wheeler) 36" M-ext-ev. Large, solid, broad-petaled and lovely orange. **\$1.50**

NEYRON ROSE (Kraus) 36" M-d. Attractive bright rose pink, deeper veining. **\$5.00**

NORTH STAR. (Hall) 40" M-d. Large, palest of cream-yellow flowers of good substance. **\$2.00**

ONEITA. (Davis) 30" M-re-ev. Wide-open rose-red; repeats in some localities. **75¢**

ORANGE BEAUTY. (Sass) 40" M-fr-d. Large, broad-petaled bright orange self. **\$2.00**

ORANGE BEAUTY. (Sass) 40" M-fr-d. Large, broad-petaled bright orange self. **\$1.25**

PAINTED LADY. (Russel) 36" M-ev. Huge ruffled blooms of cinnamon over yellow with darker veins. **75¢**

PAPAGAIO. (USDA-Traub) 36" ML-d. Gay scarlet blooms on graceful stems; long bloom season. **\$1.50**

Englerth Gardens

PAPRIKA. (Wheeler) 30" M-ev. Livid crimson with greenish gold throat. **\$1.50**

PARFAIT. (Childs) 40" M-d. A different bicolor of lemon and Japan rose. **\$1.50**

PAUL IHRIG. (Wheeler) 38" M-ev. Pastel salmon with green canary throat. **\$1.00**

PERSIAN PRINCESS. (Nesmith) 40" EM-d. Unusual blackish red with an overlay of purple. **\$0.75**

PETITE. (Davis) 12" M-d. Lovely smooth clear pink dwarf self without halo. **\$3.00**

PICTURE (Lester) 38" ML-ext-d. Large, sun-proof rose-pink, fine branching. **\$5.00**

PINK CHARM. (Nesmith) 40" ML-d. Long, recurving petals of dusty rose-pink. **\$0.75**

PINK DAMASK. (Stevens) 38" M-d. Many lovely blooms of coral-rose-pink. A strong grower. **\$1.00**

PINKIE (Saxton) 16" M-d. Miniature dwarf pink with rose eye. **\$3.50**

PINK PARADISE. (Douglas) 38" M-d. Small blooms of a deliciously pink coloring. **\$2.00**

PINK PETTICOATS. (Nesmith) 44" M-d. Rolled-back ruffled petals of coral-bell pink. **\$1.75**

PINK PRELUDE. (Nesmith) 38" M-d. A lovely dawn pink of fine substance, and a wonderful parent. **\$4.00**

PINNOCHIO. (Saxton) 36" E-re-ext-d. Real miniature blooms on thin, wiry stems; buff with red halo. **\$1.00**

PIQUANTE. (Nesmith) 40" ML-d. Pretty Eugenia-rose, giving raspberry-pink garden effect. **60¢**

PORCELAIN PINK. (Nesmith) 38" ML-d. Luminous smoothly finished pink, marked with deeper pink. **\$1.00**

POTENTATE. (Nesmith) 40" M-d. Medium-sized blooms of satiny pansy purple. **\$1.00**

POWDER PUFF. (Lester) 40" M-d. Six-in. bloom of pastel yellow tinted pink, near tones of flesh-colored powder. **\$1.50**

PRECIOUS RUBY. (Connell) 36" EM-ev. The most vivid glowing red — truly ruby. **\$1.00**

Daylilies . . .

PRECIOUS TREASURE (Nesmith) 40" LM-d. Full flowers, glistening melon pink self, lightly fluted at edges. Aug. delivery. **\$15.00**

PRIMULA (Kraus) 42" EM-re-fr-ext-d. Fine large frilled and ruffled empire yellow. **\$2.00**

PRIMA DONNA. (Taylor) 36" EM-ev. Beautiful full-formed blooms of pastel peach and buff. **\$3.00**

PRINCESS. (Stout) 40" M-ext-ev. Large fragrant lemon-yellow; makes a beautiful clump. **\$0.60**

PURPLE SAGE. (Russell) 38" M-d. Deep wine-red with ruffled petals. **\$0.60**

QUEEN ESTHER. (Sass) 36" M-ext-d. Brilliant, velvety crimson with long bloom season. **\$0.75**

QUEEN OF GONZALES. (Russell) 36" E-re-ev. Huge yellow-orange, wide petals; blooms early and over a long period. **\$0.75**

QUINCY. (Taylor) 36" M-re-ev. Peach beige with green throat blending into yellow, bordered by wide band of reddish purple. Delivery Aug. on. **\$14.00**

RED DARCY. (House) 34" M-ev. Bright, unfading, glowing red with orange midrib and frill of that color around all segments. **\$2.00**

RED ROCK CANYON. (Milliken) 40" M-semi-ev. Large, rich and showy orange-red, shaded Brazil red. **\$0.75**

RED SOX. (Wayman) 38" M-d. Very brilliant red self; good grower. **\$1.00**

REINBECK. (USDA-Traub) 45" M-fr-d. Large crisp blooms of barium yellow. **\$0.60**

RELIANT. (Cook) 48" M-d. Fine large, sun-resistant medium yellow. **\$1.25**

REVOLUTE. (Sass) 40" ML-ext-fr-d. Dependable light yellow self of fine form and branching. **\$2.00**

RICHARD. (Norton) 40" L. Orangy blend with long, late bloom season. **\$0.75**

RIMFIRE. (Kildow) 35" ML-re-ext-d. Reddish overlapping petals; long bloom season. **\$1.50**

RIVIERA. (Emigholtz) 48" LM-d. Broad, fluted petals of apricot-orange. **\$0.75**

ROSA BOWER. (Richards) 36" EM-re-ext. Early rose pink with long bloom season. **\$1.00**

ROSALIND. (Stout) 38" ML-d. Smallish blooms, but very pink in coloring. **\$0.75**

ROSE GEM. (Stout) 48" M-d. Large flowers of deep rose; a light copper undertone. Good form and substance. **\$0.60**

ROYAL BEAUTY. (Taylor) 40" M-semi-ev. Recurved rose-purple on well-branched scapes. **\$0.60**

ROYAL CROWN. (Claar) 38" M-d. Bicolor of brick red with sepals yellow shaded brick-red, very wide segments. **\$1.00**

ROYAL GUEST (Douglas) 38" LM-ev. Beautiful rose purple with cool green throat. **\$1.50**

ROYAL LADY. (Wheeler) 38" ML-ev. Flaring pansy-purple petals; sepals lighter violet; intriguing form. **\$1.00**

ROYAL PURPLE. (Kraus) 36" ML-d. Glowing pansy purple; no mahogany tones. **\$5.00**

ROYAL RUBY. (Nesmith) 38" M-d. Glowing, deep ruby red. **\$0.75**

ROYALTY. (Nesmith) 38" M-d. Wide-open, broad-petaled, velvety deep maroon. **\$0.60**

RUBY SUPREME. (Wheeler) 38" M-ev. Outstanding red of antique ruby. **\$1.00**

RUSSELL ROSE BEAUTY. (Russell) 42" EM-d. Deep rose bloom with sulphur-yellow throat. **\$0.60**

SABRINA. (Wheeler) 40" M-ev. Fine magenta-plum with coppery overlay, giving brown effect. **\$0.60**

SACHEM. (Stout) 36" M-ext-fr-ev. Satisfactory rich deep red with good plant habits. **\$0.60**

SALMON SHEEN. (Taylor) 34" EM-ev. Lovely salmon pink of distinctive form, on well-branched scapes. **\$1.00**

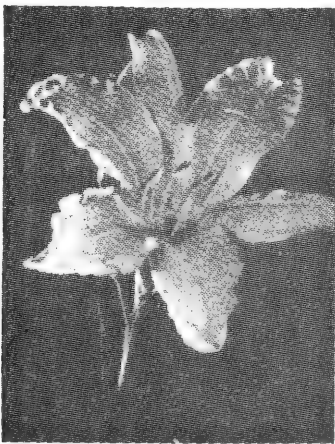
SAMARKAND. (Stevens) 30" LM-d. Large amaryllis-like blooms of capucine yellow suffused English red; green-gold throat. **\$8.00**

SAN JAUN. (Traub) 34" EM-ev. Wonderful deep red with purple over-cast, green throat. **\$1.00**

SANS SOUCI. (Connell) 40" M-ev. Six-inch real blue-lilac with a blue eye-zone. **\$8.00**

Daylilies . . .

- SANGREAL** (Sass) 30" M-d. Vivid yellow. **\$1.50**
- SARATOGA**. (Saxton) 38" ML-semi-ev. Large, waxy flowers of deep yellow and light copper. **\$1.00**
- SATURN**. (Stout) 38" EM-d. Multiflora type, bronze with pansy-faced eye-zone. **\$0.75**
- SEMINOLE CHIEF**. (Lester) 38" M-d. Fine, good-sized blooms of near cherry red. **\$0.75**
- SHOW GIRL**. (Wheeler) 40" M-ev. Wide-petaled soft rosy pink with orchid veining; needs partial shade. **\$1.50**
- SIDESHOW**. (Russell) 30" M-re-ev. Buff yellow with wide petals; late blooms often come beautifully double. **75¢**
- SKYLARK**. (Russell) 36" M-ext-d. Fine light lemon-yellow with good substance and excellent branching. **\$1.00**
- SOLEDAD**. (Kraus) 36" M-d. Massive flowers of light buttercup yellow; broad and flat with extra heavy substance. **\$6.00**
- SPENCER FULLER**. (Kraus) 40" M-d. Very large ruffled and reflexed blooms of suffused red-copper. **\$1.00**
- SPICE**. (Taylor) 36" M-re-ev. Interesting blooms of rosy tan with Waubun twist to petals. **\$1.00**
- SPLENDOR**. (Stevens) 34" ML-d. Large, wide-spread 6" full crimson red self with tiny green-yellow throat. Aug. del. **\$18.00**



- STARLIGHT**. (Nesmith) 45" EM-ev. Blooms pale, creamy yellow, heavy subtanced, ruffled. **\$0.75**
- SPRING FANTASY** (Lester) 34" E-d. Large early bicolor of lilac and light yellow. **\$1.50**

Englerth Gardens

- STEPHEN FOSTER**. (USDA-Traub) 36" M-d. Sun-resistant wide, blood-red. **\$1.00**
- SU-LIN**. (Nesmith) 36" M-d. Pale mauve and creamy yellow bicolor, best planted in partial shade. **60¢**
- SUMMER LOVE**. (Milliken) 36" M-re-ext-ev. Huge and beautiful wide-open blooms of soft yellow. **\$3.00**
- SWEETBRIAR**. (Nesmith) 40" M-d. Large deep pink with yellow throat and midlines. **\$0.75**
- TARUGA**. (Stout) 38" EM-ext-fr-ev. Large, light lemon-yellow, distinctively twisted petals; very lovely. **\$1.00**
- THE DIRECTOR**. (Russell) 30" M-d. Petals a rich wine-red; sepals a shade lighter; ruffled. **\$0.60**
- THE SULTAN**. (Nesmith) 36" M-ext-d. Sunfast blooms of dark brownish red; broad segments. **\$0.75**
- THE TEXAN**. (Russell) 40" M-ext-d. Fast-colored deep red. **\$0.60**
- TIARA** (Wheeler) 38" EM. Rusty dusting on broad frilled petals. **\$1.50**
- TINKER BELL**. (Stevens) 28" M-d. Small orange bells with long bloom season. **\$3.00**
- TOM THUMB**. (Wheeler) 12" M-d. Three-inch bright red of regular form; fine for rock gardens. **\$1.00**
- TRACERY**. (Nesmith) 40" ML-d. Full-petaled light yellow with tracery of salmon-buff; fine branching. **\$1.00**
- TYROL**. (Wheeler) 36" M-ev. Bright mandarin red and scarlet bitone. **\$1.00**
- URCHIN** (Saxton) 20" M-d. Bright, upfaced bicolored, miniature of scarlet and yellow. **\$2.00**
- VEGA**. (Wheeler) 38" M-d. Well-branched multiflora stems; flowers small, but stunning deep purple. **\$1.00**
- VERILITE**. (Connell) 38" M-ev. Pale yellow self, near white; 5½-in. flower. **\$2.00**
- VESPER**. (Nesmith) 39" ML-ext-ev. Beautiful pale yellow evening bloomer; heavy texture. **\$1.00**
- WAR PATH**. (Russell) 38" M-re-d. very rich dark red with a satiny sheen. **60¢**
- WEKIWA**. (Traub) 38" M-d. Gay, velvety red with garnet eye-zone, orange-yellow throat. **\$0.75**

Daylilies . . .

WELCOME. (McDade) 38" L-d. Deep dusty rose with golden iridescence as if sprinkled with gold dust. \$0.75

WHIMSY. (Connell) 26" M-ev. Rich peach blend; unique. \$8.00

WHEELER HALO. (Wheeler) 36" M-ev. Triangular-shaped light yellow; cinnamon halo. \$0.75

WHITE ORCHID. (Bach) 20" M-d. Pale cream flowers are large and full, of heavy texture, with faint lemon throat. Aug. del. \$6.00

WHITFIELD PALMER. (Taylor) 36" EM-re-ev. Glistening golden yellow 10-in. bloom with green throat. \$10.00

WINONA. (Cook) 36" ML-d. Large, wide-open blooms of pale buff, flush of fulvous. 60¢

YELDRIN. (Stout) 38" L-d. Multiflora type, orange-yellow with many small blooms. \$0.60

YELLOW ORCHID. (Bach) 40" M-semi-ev. Very large deep yellow with twisted petal tips giving unusual orchid shape. Aug. del. \$5.00

YELLOW RAIN. (Schlumpf) 10" M-ev. Shower of bright yellow blooms, excellent for edgings and rock gardens. \$4.00

YELLOWSTONE. (Kraus) 36" M-semi-ev-fr. Large wide-open, clear light yellow, creped and ruffled. \$1.00

ZEZETTE. (Taylor) 36" M-ev. Wide-petaled with heavy midrib; marsh rose, edged with yellow. \$1.00

Unlabeled Daylily Collection

If you are not interested in names, but do want Daylily color all through the season, we will send you a collection of 12 fine Daylilies, all different, our selection and unlabeled, postpaid, for \$3.00. If you wish, and so state, you may have these all in shades of cream and yellow for the perennial border — otherwise they will be in a wide range of colors and patterns.

BARGAIN SHELF

These are still fine lilies, but we do have to make room for newer varieties, and so — Make up your own collections from them.
50c each, any 10 for \$4.00, or 30 for \$10.00.

ADMIRABLE. 36" M-d. Buff, veined red, giving pink effect.

ALADDIN. 45" EM-re-ev. Orange-yellow, brown eye.

ALLAPATTAH. 40" M-ev. Large, dark maroon.

AMULET. 50" M-d. Strong-growing rosy pink, white midrib.

ANNA BETSCHER. 34" LM-d. Late yellow.

APRICOT. 24" E-d. Fine early yellow.

AUGUST PIONEER. 36" L-d. Multiflora, soft orange.

AUTUMN RED. 32" M-d. Velvety red.

BABY TEARS. 40" EM-ev. Gold and red bicolor.

BAGDAD. 40" EM-ev. Brown blend.

BARONET. 30" M-ev. Fulvous red.

BICOLOR. 40" M-ext-d. Red and yellow.

BERTRAND FARR. 36" M-ev. Rolled petals of rosy peach, deeper veins.

BIJOU. 40" M-d. Orange and brown.

BOUTONNIERE. 36" L-d. Multiflora, peach and yellow.

BUCKEYE. 36" EM-d. Deep yellow, dark eye.

BOLD COURTIER. 40" M-d. Petals rose; sepals soft yellow, flushed rose.

BRUNETTE. 30" E-d. Floriferous madder-brown.

CALYPSO. 38" M-d. Large yellow night bloomer.

CHENGTU. 36" L-ev. Blended red and yellow.

CHINA-ROSE. 40" M-d. Rosy pink, lighter edge.

CIRCE. 38" M-d. Small, pale yellow.

CRYSTAL PINK. 40" M-d. Light salmon pink, deeper eye-zone.

Daylilies . . .

CONSTANCE. 40" M-re-d. Large red blend.

CHESSIDA. 38" M-ev. July orange.

CROWN OF GOLD. 40" M-d. Floriferous apricot-orange.

DAUNTLESS. 32" M-ext-d. Fine wide-petaled yellow.

DELIGHT. 38" M-d. Pale yellow with pinkish ring.

DEMI-TASSE. 18" M-ev. Dwarf bicolor, red and gold.

DOLLY VARDEN. 40" M-d. Chinese coral.

DONALD WYMAN. 36" M-d. Orange, brown eye.

DOVER. 40" EM-d. Orange-yellow.

DUNCAN. 36" EM-ev. Long-petaled deep maroon.

ELAINE RUSSELL. 40" M-d. Rose-ash.

ESTMERE. 24" E-d. Graceful early yellow.

EVANGELINE. 30" EM-ev. Dark red, twisted petals.

FASCINATION. 38" M-d. Well-branched yellow with halo.

GAIETY. 46" EM-ext-d. Large, wide-open light lemon yellow.

GEO. KELSO. 50" EM-ev. Bronze and ruffled bicolor, ruffled edges.

GEORGE YELD. 40" M-ev. Apricot, rose eye.

GLORIANNA. 36" EM-ext-ev. Glistening orange, long season.

GOLDEN DREAM. 30" M-d. Clear, bright orange.

HANKOW. 40" L-ev. Late orange-yellow, scarlet eye.

HAZEL SAWYER. 36" M-ev. Laurel pink.

HIGHBOY. 60" LM-d. Very tall yellow.

HYPERION. 42" M-d. Canary yellow.

HONEY REDHEAD. 38". M-d. Velvety red, distinctive cream border.

JUDGE ORR. 30" E-ext-d. Early golden yellow, fine with iris.

JOY RUSSELL. 38" M. Floriferous medium yellow.

J. S. GAYNER. 38" M-ext-fr-d. Fine deep yellow.

Englerth Gardens

LEST YOU FORGET. 38" M-d. Bright scarlet.

LINDA. 36" ML-d. Pastel with cinnamon marking.

MARCUS. 38" M-d. Apricot-buff, dusted with gold.

MARY FLORENCE. 36" ML-d. Buff-yellow.

MARY GUENTHER. 30" M-d. Carmine-red and yellow bicolor.

MARTHA WASHINGTON. 48" M-ev. Silvery old rose.

MARY HENRY. 45" M-d. Fine light yellow.

MATADOR. 36" M-d. Wide-petaled deep red.

MIDAS. 40" EM-ext-d. Tall, glowing orange.

MIDDENFORH. 24" E-d. Early orange.

MIDWEST CAVALIER. 44" M-d. Cream, brownish eye-zone.

MIKADO. 38" EM-d. Orange, mahogany eye.

MINNIE. 36" M-d. Rich, mahogany red.

MING TOY. 20" EM-ev. Velvety dark red semi-dwarf.

MINOR. 20" E-d. Early dwarf yellow.

MOONRAY. 38" ML-d. Pale yellow, red V.

MOUNT VERNON. 40" M-ext-d. Bicolor of bronze and yellow.

MRS. JOHN J. TIGERT. 36" M-ext-d. Brilliant Brazil red.

MRS. A. H. AUSTIN. 40" M-ev. Large July gold.

MRS. W. H. WYMAN. 38" L-d. Nice late light yellow.

NEON. 30" ML-d. Vivid red and gold bicolor.

NINA WINEGAR. 36" M-d. Golden yellow spider type.

NEBRASKA. 40" ML-d. Large wide, buff-yellow.

OPHIR. 50" M-ext-d. Fine large deep yellow.

PALE MOON. 36" EM-ext-d. Pale yellow.

PATRICIA. 30" M-ext-fr-ev. Lovely pale lemon.

Daylilies . . .

PIED PIPER. 38" M-d. Ruffled, yellow and rose.

PORT. 32" M-ext-d. Small bright red.

PURPLE WATERS. 36" M-d. Deep wine-red.

QUEEN MARY. 36" M-ext-d. Floriferous apricot-yellow.

QUEEN OF MAY. 38" EM-ev. Light yellow.

RADIANT. 36" M-d. Pure orange.

REDWOOD. 50". Dark red.

ROSE OF TRALEE. 36" M-d. Small rosy pink.

ROUNDELAY. 36" LM-re-d. Orange-yellow, dark eye.

RUSSELL'S MINUET. 30" M-d. Brown and yellow bicolor.

SERENADE. 45" EM-d. Dainty pastel yellow and pink.

SOVEREIGN. 24" E-d. Early bright gold.

STALWART. 40" M-d. Strong-growing soft bronze.

STAR-GAZER. 36" M-d. Pale yellow with good substance.

STAR OF GOLD. 42" M-ev. Large light yellow.

SOUDAN. 40" EM-ext-ev. Like a golden trillium.

SUNNY WEST. 45" LM-d. Late pale yellow.

SYMPHONY. 42" EM-ext-d. Pastel yellow and rose.

TANGERINE. 20" E-d. Early tangerine-orange.

TEJAS. 30" M-d. Small fiery red.

THERON. 36" M-d. Deep red-purple, twisted petals.

VULCAN. 36" EM-ev. Dark velvety maroon.

WAU-BUN. 36" EM-re-ext-ev. Cadmium yellow, twisted petals.

WESTERN STAR. 30" M-d. Deep red.

WHITE LADY. 40" ML-ev. Pale yellow.

WINSOME. 30" E-ext-d. Light yellow. Long season.

ZOUAVE. 36" EM-re-ext-ev. Two-toned red.

DWARF IRIS

To Give Your Garden a Colorful Start

Shipped from July On.

ALINDA. 7". Early red-violet self; dark beard. \$0.50

ATROVIOLACEA. 5". Earliest red purple, white beard. \$0.40

AUREA MACULATA. 8". Yellow with olive shadings. \$0.40

BETSY PRESBY. 8". Light yellow, falls darker. \$0.40

BRONYA. 6". Brown-red self; flaring falls. \$1.00

BUZZER. 6". Light lavender-blue; pinkish overtones. \$0.40

COERULEA. 5". Early pale blue; falls a little darker. \$0.40

CYANEA. 6". Crimson-purple with white beard. \$0.40

DITTON'S PURPLE. 8". Floriferous deep purple. \$0.40

ENDYMION. 7". Dark mahogany-red self; nice shape. \$0.40

FAIRY. 6". Soft sky-blue with purple marks on falls. \$0.40

FLORIDA. 9". Clear, pale yellow. \$0.40

FRAGRANCE. 7". Blue-violet bitone; slim stems. \$0.40

GRAMINEA. 7". Clean red-purple of fine form, gold beard. \$0.40

HARBOR LIGHTS. 6". Clear light yellow. \$0.40

LIEUT. DE CHEVAGNAC. 9". Blue-purple; fall bloomer. \$0.40

LITTLE ELSA. 8". Lemon yellow bitone. \$0.50

LURIDA. 9". Slender flowers of brown-red. \$0.40

MAROCAIN. 8". Rich. deep pansy-purple; one of the best. \$0.40

MIERELLE. 9". Medium blue blend; very fragrant. \$0.40

MIST O' PINK. 8". Lavender-rose, falls darker. \$0.60

NEGUS. 9". Dark violet with white markings. \$0.40

ORANGE QUEEN. 7". Deep yellow with orange beard. \$0.40
OWAISSA. 8". Small flowers of soft, medium blue. \$0.40
PETIT AMIE. 8". Standards cream-white, falls yellow. \$0.40
PRAIRIE GEM. 8". Fine deep yellow self, nice proportions. \$0.40
REICHENBACHII. 8". Medium yellow. \$0.40
ROSE MIST. 8". Soft mauve-pink; darker falls. \$0.40

ROYAL. 7". Bright, deep blue-purple. \$0.40
SCHNEECUPPE. 8". White, falls greenish white. \$0.40
STATELLAE. 10". Ivory white, veined olive. \$0.40
TAMPA. 10". Prolific red-claret. \$0.75
TONY. 9". Rich purple-red. \$0.40
VIOLET GEM. 6". Tiny dark blue-violet. \$0.75
YLO. 7". Lemon-yellow self. \$0.40

Intermediate Iris To Bloom with Your Tulips

AUTUMN ELF. Cream and lavender bicolor, fall blooming. \$0.40
AUTUMN HAZE. Large soft lavender. \$0.40
AUTUMN KING. Two-toned lavender-blue. \$0.40
AUTUMN QUEEN. Fine white rebloomer; low-growing. \$0.40
BALROUDOUR. Odd shades of violet and olive. \$0.40
CRYSORO. Large, clear deep yellow. \$0.40
DORCAS HUTCHINSON. Pansy-violet self; fall bloomer. \$0.40
DOXA. Blend of yellow, buff and blue; heavy substance. \$0.40
ELEANOR ROOSEVELT. Deep red-purple; dependable rebloomer. \$0.40
GEORGIA. Floriferous deep orchid. \$0.40
SOUTHLAND. Deep yellow rebloomer. \$0.40
ZWANENBURG. Blend of cream, violet, olive green, maroon. \$0.40
ZUA. Low-growing blue-white, heavily crinkled and creped. \$0.50

GOLDEN BOW. Large blooms of rich chrome-yellow. \$0.40
PESHAWAR. Unusual dark blend of brown and purple. \$0.50
PINK RUFFLES. Engaging ruffled orchid, long season. \$0.50
RED ORCHID. Velvety violet-carmine self. \$0.40



Tall Bearded Iris Collection (No. 5)

Ten tall Bearded Iris, nice range of color in good varieties, our selection and unlabeled, for \$2.00.

Dwarf Iris Collection (No. 4)

Ten dwarf Iris in full range of color, our selection and unlabeled, for \$2.00.

SIBERIAN IRIS -

Ballet Dancers of the Iris Family

Miscellaneous IRIS

CRISTATA. Lovely tiny, crested sky-blue flowers; about 3 inches tall. \$0.75	SPURIA SHELFORD GIANT. Tall, with large blooms of yellow and white. \$1.00
AMELIA EARHART. 30". Deep violet-blue; flaring falls. \$0.50	TECTORUM. Lavender-blue crested blooms—the roof-garden Iris of Japan. \$0.75
BLUE CHARM. 30". Clear light blue, fairly low growing. \$0.50	PERRY'S BLUE. Clear sky-blue, white on falls. \$0.50
BLUE MOON. 36". Large, flat blooms of violet blue. \$3.00	PERRY'S PIGMY. Many small blooms, medium blue. \$0.50
CAESAR. 36". Broad-petaled, handsome blue-purple. \$0.50	RED' EMPEROR. 30". Wine-red, veined blue. \$0.75
CAESAR'S BROTHER. 36". Darkest pansy-purple, very nice. \$0.50	RED RAIDER. 32". Large, frilly deep purple blooms. \$0.50
EMPEROR. 42". Tall, deep violet. \$0.50	ROYAL HERALD. Rich purple, falls near black. \$2.00
GATINEAU. 40". Outstanding, large clear light blue. \$0.75	SKEENA. 30". Fairly low-growing, late dark blue-purple. \$0.50
GRAY PRINCE. 42". Gray-blue, on tall, graceful stems. \$0.50	SNOWCREST. 36". Sparkling snow-white of heavy texture. \$0.60
HELEN ASTOR. 30". Rosy red with white throat. \$1.00	SNOWY EGRET. 32". Fine large pure white. \$0.75
KINGFISHER BLUE. 42". Tall, graceful medium blue. \$0.50	SUMMER SKY. 32". Pale blue standards, white styles. \$0.50
LLEWELLYN. 40". Large, flaring, rich blue-purple. \$0.75	TURQUOISE CUP. 40". Tall stems; flowers like sky-blue butterflies. \$0.50
MATANE. 30". Milky white, slightly fluted. \$0.75	TYCOON. 36". Largest flowers, violet-blue; outstanding. \$1.25
MISS DULUTH. 30". Velvety blackish violet. \$0.50	VELVET GOWN. 38". Velvety blue-purple. \$1.00
MOONSPRITE. 36". Silvery mauve, overcast lilac-pink. \$0.75	WHITE DOVE. 42". Tall, graceful white, medium size. \$0.50
MORNING MAGIC. 40". Tall, early lavender-pink. \$0.50	
NORA DISTIN. 32". Dark blue; white hairline edge. \$0.50	

Shipped Fall or Spring.

Siberian Iris Collection

Ten nice varieties of Siberian Iris, our selection and unlabeled, for \$2.50.

Englerth Gardens

Oriental Poppies

To Put Pink and Red in Your Iris Planting

Shipped in August, September and
Early October.



AKSARBEN. Tall and very lovely light pink; immense blooms \$1.00

BORDER BEAUTY. New double red. \$1.00

BUCKEYE RED. Large deep red on tall stems. \$1.25

CARMEN. Dark cardinal red; late. \$1.50

CARNIVAL. Nasturtium red; dark blotch surrounded with white. \$1.50

CLARET. Fine new deep red. \$2.00

CRIMSON POMPON. Double crimson blooms. \$0.75

CURTIS GIANT SALMON PINK. Large deep salmon. \$1.00

FIELD MARSHALL VON DER GLOTZ. Very nice white. \$1.00

GLOWING ROSE. Large deep watermelon pink. \$1.00.

GLOWING EMBERS. Gay and bright orange-red. \$0.50

HELEN ELIZABETH. Heavy, crinkled petals of LaFrance pink. \$0.75

HENRI CAYEUX IMPROVED. Ashes of roses shades. \$0.75

MAY CURTIS. Large, early watermelon-rose. \$1.50

MRS. PERRY. The popular, vigorous-growing salmon pink. \$0.50

LUCKY. White with clear orange edge. \$3.00.

MULBERRY FROST. Mulberry with silvery frosted edge. \$2.50.

PEONY. Large 8-in. double pink. \$3.00

PINNACLE. White, beautifully edged scarlet. \$2.50.

PINK CHARMING. Vigorous, prolific, lovely light pink. \$0.50

RASPBERRY QUEEN. Color of a crushed black raspberry. \$1.00

ROSE BEAUTY. Medium-sized rose-pink. \$0.50

SALMON GLOW. Early double salmon-orange. \$0.50

SALOME. Large, beautiful French rose. \$1.25

SNOW QUEEN. Fine large white. \$1.00

SONATE. Clear, deep rose pink. \$1.25

SURPRISE. Giant blooms of vermilion-red. \$1.25

SWEETHEART. The purest pink in a poppy. \$1.25

SPRINGTIME. Pink with white edge. \$2.50.

SULTANA. Very large watermelon \$1.00.

Oriental Poppy Collection

Ten mixed Oriental Poppies, unlabeled. These are choice named varieties that have lost their labels. Ten for only \$2.00

Phlox

Nice Plants to Give You Blooms This Year

AIDA. 30". Very striking rich deep purple.

AFRICA. 36". The favorite deep red; good grower and bloomer.

APOLLO (World Peace). 40". Tall, graceful, late white.

ANTONIN MERCIÉ. 30". Pale lavender; best in partial shade.

BLUE BOY. 28". Large florets, near blue, with violet cast.

BRIGADIER. 36". Very brilliant orange-scarlet.

BORDER QUEEN. 26". Large florets, deep watermelon pink.

CHAS. CURTIS. 36". Brilliant scarlet; makes showy display.

CHERRY RIPE. 30". Bushy plants with loose heads of bright rose.

DAILY SKETCH. 40". Salmon pink, vivid, crimson eye.

DRESDEN CHINA. 30". Large, pale, soft pink.

ELIZABETH ARDEN. 30". Fine light rose pink, deeper eye.

FLASH. 36". Large flower-heads of rich carmine-rose.

FESTIVAL. 38". Medium-toned red-purple.

GEORGE STIPP. 36". Glowing salmon, lighter eye.

GUY MOORE. 36". Apple blossom pink and white, dainty and lovely.

HARVEST FIRE. 40". Late, tall brilliant salmon-orange.

LILLIAN. 28". Early cameo pink with slight blue eye.

MARY LOUISE. 36". Large, conical heads of pure white.

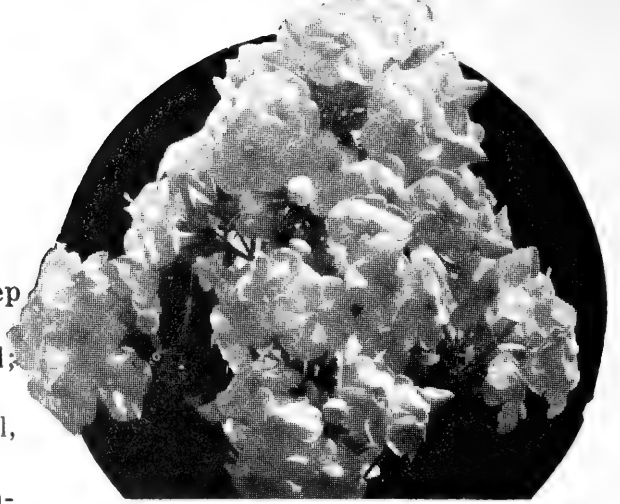
MILLY VON HOBOKEN. 40". Immense heads, bright pink, deeper eye.

MRS. JENKINS. 38". Early pure white.

ORANGE BEAUTY. 36". Outstanding brilliant orange-scarlet.

PAINTED LADY. 36". Soft pink with deeper colored eye.

P. D. WILLIAMS. 30". Soft rose pink, scarlet center.



Phlox \$0.60 each, or three of one variety for \$1.50. A dozen of one variety for \$5.50. Clumps and plants in bloom, selected at the nursery, priced according to size.

PINKETTE. 34". Large, round flowers, faintly tinted pink.

PROGRESS. 34". Light blue with deeper blue-purple eye.

REMBRANDT. 32". Fine white of large size.

ROSE SUPREME (Rosea Superba). 38". Nice light pink, deeper eye.

RUTH MAY. 28". Lovely true light pink, one of the best.

ROKOKO. 30". Large florets of light rose-pink.

ROSY BLUE. 34". Large rosy-blue florets, early.

SAN ANTONIO. 36". Carmine shaded plum-red.

SPITFIRE. 30". Brilliant orange-scarlet.

SALMON BEAUTY. 30". Large florets, soft salmon, white eye.

SALMON GLOW. 32". Robust plant; blooms deep salmon pink.

SIR JOHN FALSTAFF. 38". Extra large florets, deep salmon pink.

TENOR. 30". Deep rose red, warm scarlet glow.

WHITE ADMIRAL. 36". New mid-season pure white.

WILLIAM KESSELRING. 28". Bushy plants; deep violet, white eye.

Shipped Spring or Fall.

Phlox Collection

Ten large blooming size plants, five or more varieties in a good range of colors, unlabeled, for only \$2.00.

Garden Chrysanthemums

Chrysanthemums 50c each or 3 for \$1.25. For delivery in April, May and June only.

We have a large display of mums in the fall which may be purchased in bloom at the gardens.

ALERT. Fine, deep purple; full double long-lasting blooms.

BIRETTA. Early brilliant cardinal red.

DELIGHT. Very nice early golden yellow.

GLADWIN. Large, fluffy blooms of pinkish lavender; one of our nicest.

HOLIDAY. Brightest golden bronze, large and full.

KATHLEEN LEHMAN. Brightest orange-gold on nice, husky plants.

LADY'S CHOICE. Large blooms of truly pastel ivory coral.

MAGNIFICENT. Large, shaggy plum-red with a coppery sheen.

NEW DRIFTED SNOW. Heavy textured, fluffy 3-in white, long season. Cushion Mums —

NYE'S FAVORITE. Early fluffy pink with gold shadings; very lovely.

PATRICIA LEHMAN. Large, feathery peach-pink blooms on strong plants.

REFLECTION. New early deep rose; very bright and floriferous.

CUSHION MUMS

APRICOT GLOW. Rich apricot two-tone bronze, very early.

AUTUMN BEAUTY. Early gay, attractive red-chestnut.

BROWNIE. Compact plants, buff-orange poms with red centers.

GLACIER. Nice early pure white with large shaggy blooms.

GOLDEN MOUND. Fine early golden yellow, making round mounds for edging.

EDNA ROWLEY. Large cushions covered with lavender-pink ruby-eyed buttons.

LEMON DROPS. Compact, low mounds of light lemon yellow.

LYRIC. Fresh and lovely white daisies on upright little bushes.

MAHOGANY CUSHION. Attractive jasper red, shaded mahogany.

MIST O' PINK. Low, spreading plants, covered with pale pink blooms.

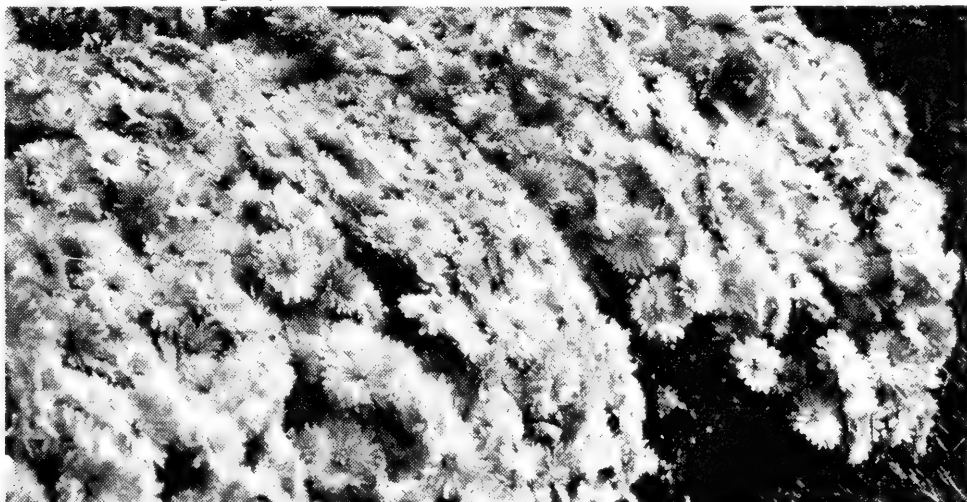
PURPLE CUSHION. Purple-red blooms on compact, medium cushions.

RED GLEAM. Many crimson-red blooms on low, spreading plants.

Chrysanthemum Collection

Thirty garden mums of 10 or more varieties, our selection and unlabeled, for only \$3.00 postpaid. State your choice, whether you would like tall varieties or low-growing types, or half of each. These are strong field divisions from our collection of over 300 varieties, the same size that we plant to give our fields a riot of color in the fall.

Ever-Popular Cushion Mums



Choice Perennials



Shasta Daisies, Wirral Supreme

We grow many perennials that can be picked up at our garden, but will list here only a few of the nicer things that "travel well," for shipping. Shipped April, May, Sept. and Oct.

ASTER HARRINGTON'S PINK. 4 ft. Fine fall-blooming perennial; blooms a soft, clear pink. 50¢ each; 3 for \$1.25

DIANTHUS ROSE CUSHION. Close, compact mounds of fine, blue-green leaves, covered in spring with fragrant, bright pink blooms on 3-in. stems. A gem for rockery or wall. \$0.50 each; 3 for \$1.25

DIANTHUS TINY RUBIES. Very similar to Rose Cushion in growth, except that the leaves are a mite greener and a little more compact, and the bright pink blooms are double, like tiny carnations. \$0.75 each; 3 for \$2.00.

ECHINOPS TAPLOW BLUE. This outstanding globe thistle makes wonderful specimen plants for the back of the summer perennial border. Deeper in color and larger globes than the ordinary echinops ritro. Nice plants for this summer bloom. \$0.60 each; 3 for \$1.60

HEUCHERA BRIZOIDES. This tall pink coral bell carries its dainty, airy-fairy blooms through most of the summer, starting in early June. Very attractive to humming birds.

\$0.50 each; 3 for \$1.25.

HOSTAS. These are all grand subjects for shady situations, and their bold foliage effects complement the narrower foliage of daylilies. We grow a number of varieties, but will list only three here —

CAERULEA. Very large, glossy green leaves, making wonderful specimen plants. Blooms on tall stalks, are very blue in color, and are lovely with pale yellow hemerocallis. \$0.75 each; 3 for \$2.00

LANCIFOLIA. Makes fast-growing clumps of narrow green leaves, and blooms freely in late summer, 18-in. stems with lilac-blue blooms. \$0.50 each; 3 for \$1.25.

UNDULATA. Rosettes of wavy green leaves, splashed with cream-white. Sprays of lavender-blue flowers in midsummer. An excellent edging plant for shade.

\$0.50 each; 3 for \$1.25

SHASTA DAISY WIRRAL SUPREME. Large double daisies with crested centers, on tall, sturdy stems. \$0.75 each; 3 for \$2.00

SEDUM MAXIMUM ATROPURPUREA. Upright growing to about 18 inches; foliage rich mahogany brown, flowers in sprays of a lighter shade. Grand for foliage color effect. \$0.50 each; 3 for \$1.25

SEDUM SPECTABILE. Makes nice clumps of handsome grey-green foliage; blooms light pink, in August. \$0.50 each; 3 for \$1.25.

SEDUM SPURIUM DRAGON'S BLOOD. A creeping sort with bright carmine-red flowers on bronzy-red foliage. 50¢ each; 3 for \$1.25.

VERONICA MINUET. 15". Silvery gray foliage, many spikes of dusty pink blooms. 75¢ each; 3 for \$2.00.

VERONICA INCANA. Silvery gray foliage, and deep blue spikes of bloom in early June. Height about 12 in., nice for rockery or edgings in sun. \$0.50 each; 3 for \$1.25

ORDER BLANK

Englerth Gardens

4652 DIVISION AVE., S. — GRAND RAPIDS 8, MICH.

PLEASE DO NOT WRITE
IN THIS SQUARE

Please Send to _____ Date _____ 19____

NAME _____

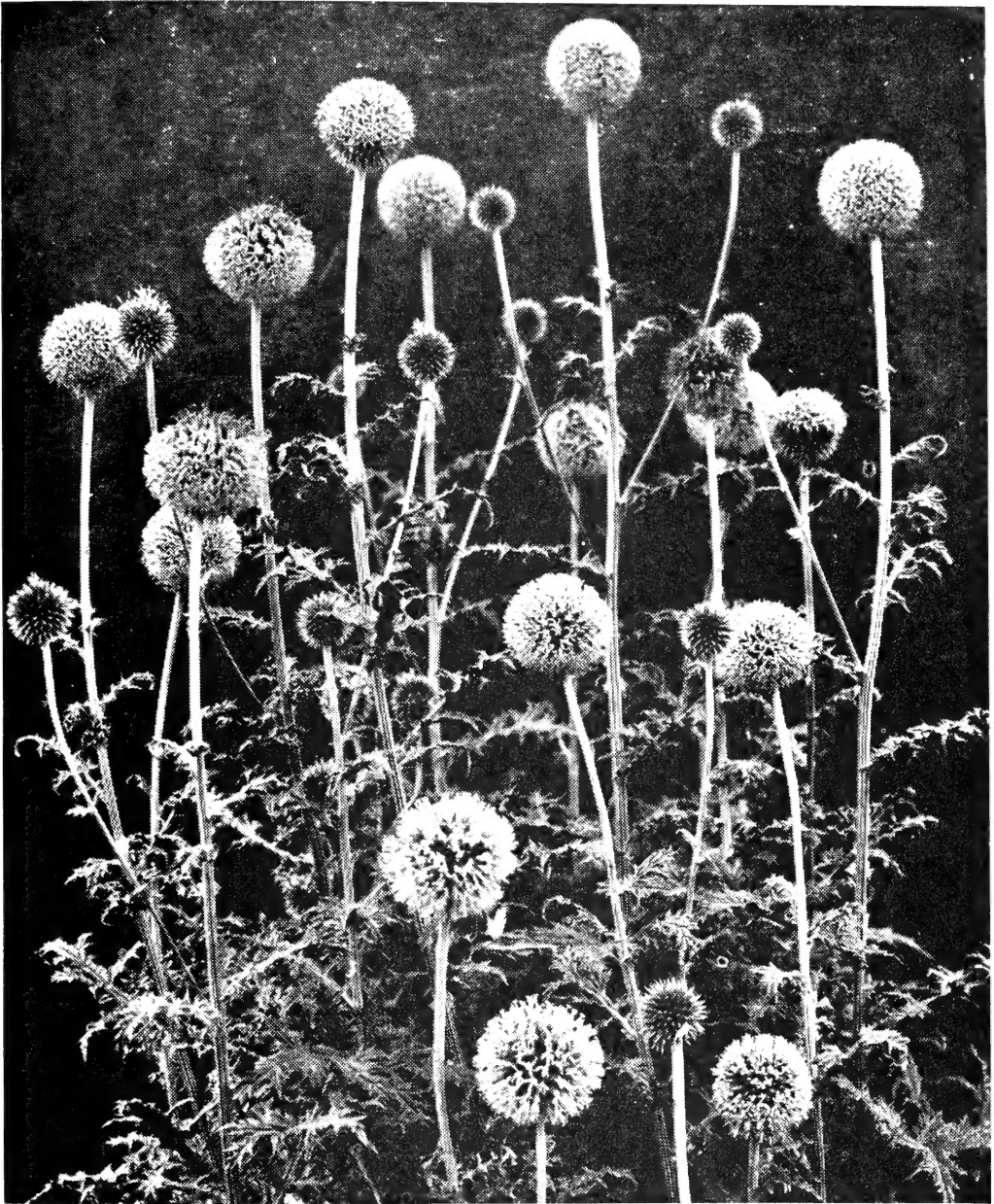
R.F.D. OR STREET No. _____

CITY _____ STATE _____

May we substitute equal or greater value for any variety that is sold out?

QUAN.	NAME OF VARIETY	AMOUNT
1		
2		
3		
4		
5		
6		
7		
8		
9		
10		
11		
12		
13		
14		
15		
16		
17		
18		
19		
20		
21		
Add 50c for postage and handling if your order amounts to less than \$5.00.		
TOTAL		

Please keep a copy of this order. All orders will be acknowledged promptly.



Echinops, **Taplow Blue**

This outstanding Globe Thistle makes wonderful specimen plants for the back of the summer Perennial border. Deeper in color and larger globes than the ordinary Echinops Ritro. Nice plants for this summer's bloom.

\$0.60 each; 3 for \$1.60

Englerth Gardens

4652 Division Ave., S.

Grand Rapids 8, Mich.



Daylilies Provide Carefree Garden Color for Years and Years

Return Postage
Guaranteed by

Englerth Gardens

4652 DIVISION AVENUE, S.
Grand Rapids 8, Mich.
Form 3547 Requested

Sec. 34.66, P. L. & R.
U. S. POSTAGE
Paid

Permit No. 204
Grand Rapids, Michigan

for

*Biogeography Division
Library, U.S. Dept. of Agriculture
Washington, D.C.*