

62

1958/59

Ra

Fine Ornamental

Foliage Plants

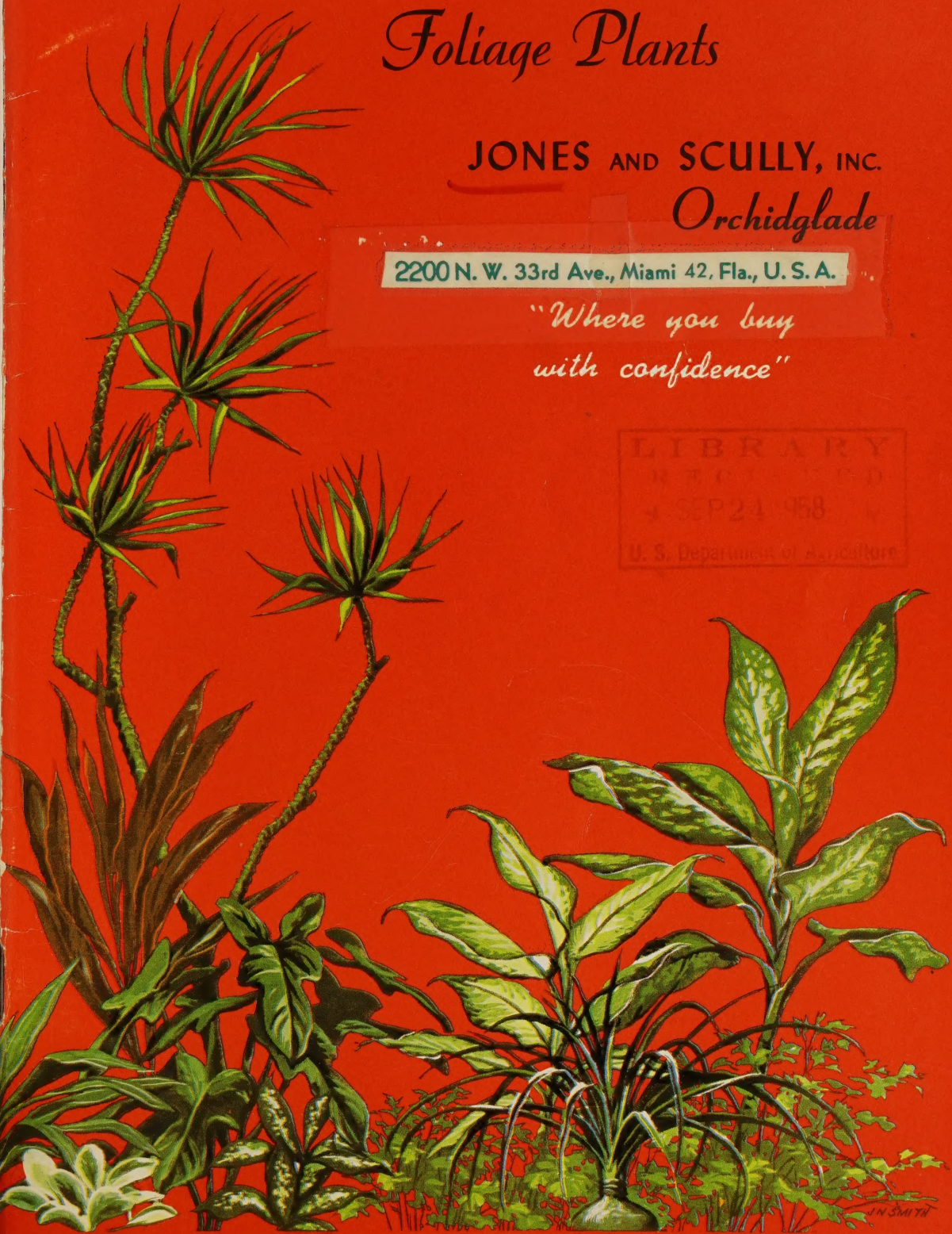
JONES AND SCULLY, INC.

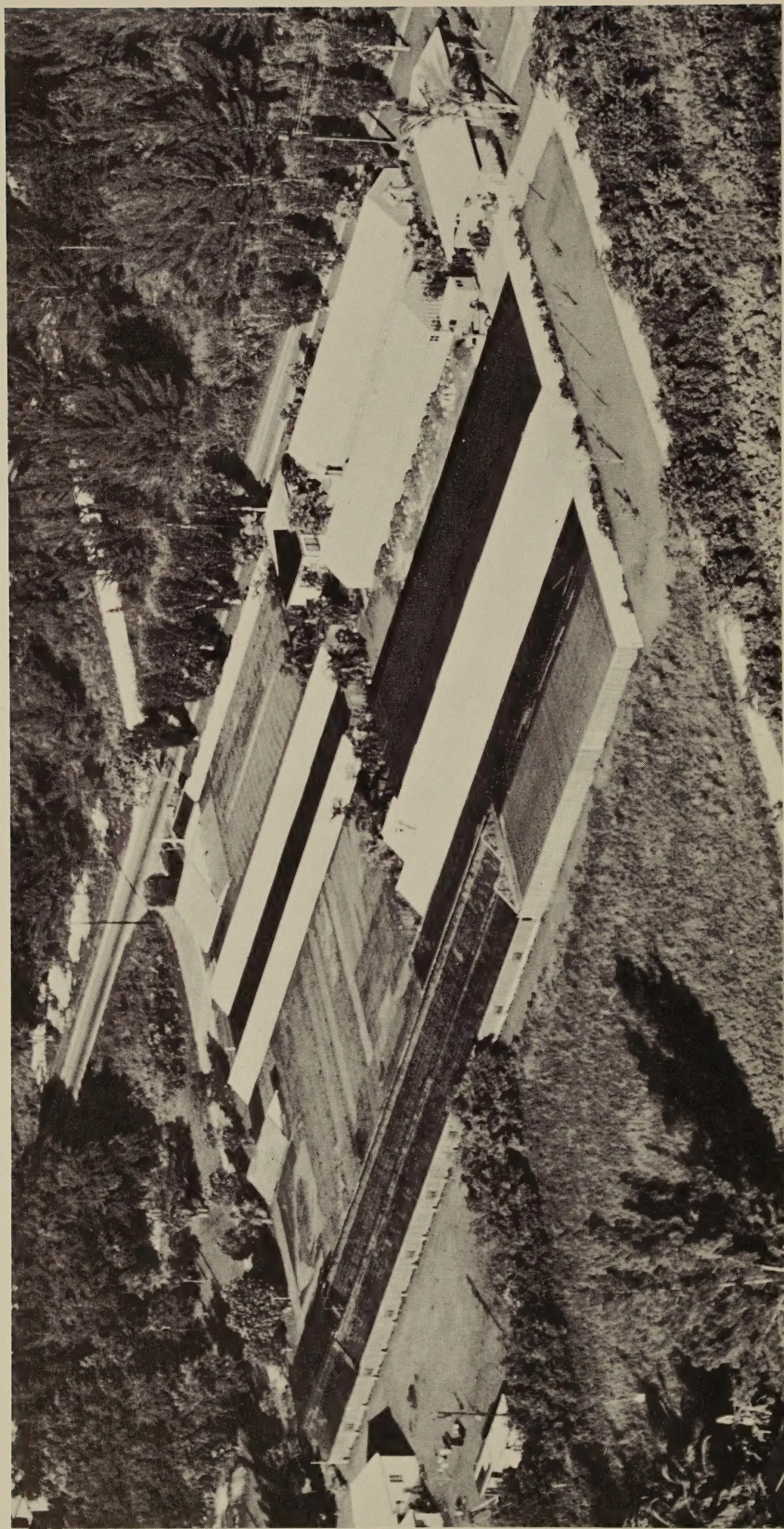
Orchidglade

2200 N. W. 33rd Ave., Miami 42, Fla., U. S. A.

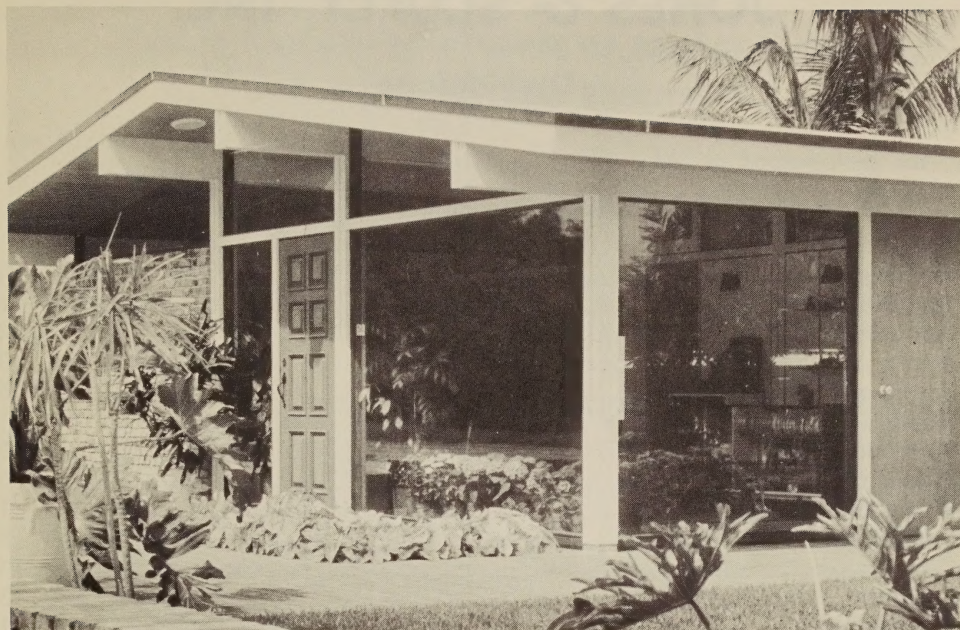
*"Where you buy
with confidence"*

LIBRARY
SEP 21 1958
U. S. Department of Agriculture





1958 AERIAL VIEW OF JONES AND SCULLY, INC.



We invite you to visit Jones & Scully. Our office and greenhouses are open Monday through Friday from 8:00 to 5:00 and until 4:00 on Saturday.

WHOLESALE FOLIAGE

1958-59 Catalog

JONES & SCULLY, INC.

2200 N. W. 33rd Avenue

Miami 42, Florida

Phone NEwton 4-8587

"Where you buy with confidence"

JONES & SCULLY, INC.

Orchidglade

TABLE OF CONTENTS

Aechmea	1
Aglaonema	2, 16
Anthericum	14
Aralia	13
Asparagus Sprengeri	5
Billbergia	1
Boxwood	13
Brassaias	3
Bromeliads	1
Chamaedorea	9
Crassula	13
Crotons	3
Cryptanthus	1
Dieffenbachia	2
Dish Gardens	12
Dracaenas	4, 10, 11, 13, 14
Ferns	4, 5
Fertilizers	18
Ficus	4
Growers supplies	18, 19, 20
Insecticides	18
Labels	21
Literature	21
Mondo Grass	14
Monstera	14
Neanthe	9, 16
Nephthytis	14
Neoregelia	1
Nolina	4
Orchids	22
Pandanus	12
Palms	9
Peperomia	15
Philodendrons	5, 6, 7, 8, 12
Pot hangers	20
Pothos	7, 12
Rubber plants	4
Sansevieria	16
Schefflera	3
Schismatoglottis	3
Spathiphyllum	3
Supplies	18, 19, 20
Violets	8

ARE YOU SELLING YOUR SHARE OF FOLIAGE PLANTS?

— A VERY PROFITABLE BUSINESS —

Millions of foliage plants are being sold each week to homemakers for interior decoration. Why not try to get your share of this profitable business?

INCREASE YOUR SALES

Tropical foliage plants have become a necessity in the modern home. Architects design homes for their use. Therefore, it is up to the Florist to supply as well as advise their customers the type of plant best suited for a particular location.

Why not plant several containers for your shop as an inspiration? You can be assured of a substantial profit from sales to your customers. For instance a floor planting in your shop, artistically arranged with tropical foliages, will create interest as well as demonstrate the proper combinations of leaf patterns.

Ornamental tropical foliage plants, grouped effectively, lend charm to a home hallway by creating an atmosphere of friendliness. Even a stair landing can become a beauty spot. Sun porches and solariums can have year 'round tropical beauty with planters providing a lush background for gracious living.

Flowering plants used in conjunction with tropical foliage plantings will create new charm and also add color to the home for Holidays and for special occasions.

Experts agree that one of the secrets of success is recognizing opportunities. Don't let this one pass you by. You have an obligation to supply your customers with their plant and flower needs, but you cannot sell the plants if you haven't them in your greenhouse or shop. We will be happy to assist you in your selections. Write us today and order as many plants as you would like, but don't let this fine opportunity for additional sales go untested.

Foreword

Each year, we offer to the Florist trade the best plants available for interior use—in homes, clubs, hotel lobbies, stores, restaurants, etc. The listing does not differ much from year to year, but when a new plant is proven satisfactory for use indoors, we are happy to add it to our list. We sell *quality* plants sturdily grown so you can offer the stock to your customers with pride and complete confidence:

It is our constant endeavor to grow plants which will create different effects for particular locations such as in picture windows, modern homes, etc. If you do not find in our list the plant which suits your particular need, perhaps we can help you with suggestions.

Your order will go forward promptly. We try to ship an order out on the same day or the day following its receipt. If you are in urgent need of your order, please advise us and we will expedite it to the best of our ability.

Orders are packed without charge except for the crating of some large specimens. We make daily shipments by air, rail, and in some cases by truck line. Unless specified, we will ship by the most economical and satisfactory method.

Robert M. Scully
Manager

BROMELIADS

AECHMEA MINIATA DISCOLOR 5" pot ----- **\$3.00**
 (foliage dark red on under side)



AECHMEA FASCIATA

One of the most beautiful of the Bromeliads.

4" pot ----- **\$2.00**
5" pot ----- **3.50**

NEOREGELIA ZONATUS

Very heavy foliage
 Excellent Plant

3" pot ----- **\$1.00**
4" pot ----- **2.00**



BILLBERGIA LEPTOPODA

Upright grower; excellent for large Dish Gardens.

3" pots ----- **\$0.75 and \$1.00**

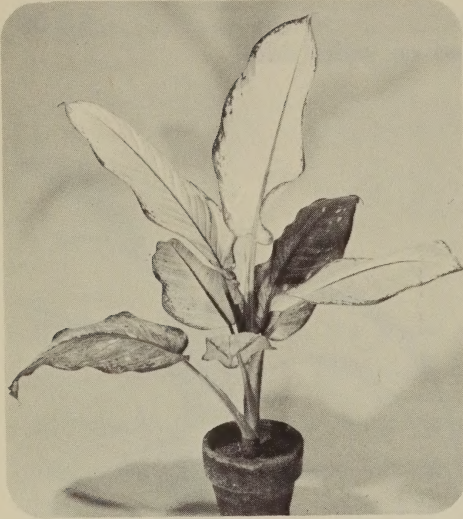


CRYPTANTHUS TRI-COLOR

One of the most colorful Bromeliads.

3" ----- \$1.00
4" ----- \$2.00

DIEFFENBACHIA — AGLAONEMA



Dieffenbachia Rudolph Roehrs



Dieffenbachia picta

<i>Dieffenbachia picta</i>	4" pot \$1.00
<i>Dieffenbachia picta</i> (specimens)	5" pot \$2.00
<i>Dieffenbachia Rudolph Roehrs</i>	4" pot \$1.00
<i>Dieffenbachia Rudolph Roehrs</i> (specimens)	5" pot \$2.00



Aglaonema commutatum
(Variegated evergreen)



Aglaonema treubi

<i>Aglaonema commutatum</i> (Heavy—2 plants)	4" pot \$1.00
<i>Aglaonema treubi</i> (Heavy—suckers freely)	4" pot \$1.25
<i>Aglaonema treubi</i>	5" pot \$2.00

SCHEFFLERAS, SCHISMATOGLOTTIS, SPATHIPHYLLUM, CROTON



SCHEFFLERA ACTINOPHYLLA

Well-known and interesting plant. Very glossy foliage.

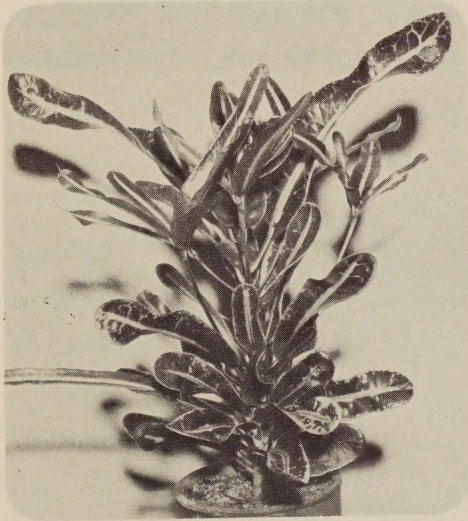
6" pot ----- \$3.00



SCHISMATOGLOTTIS

One of the finest plants for adverse conditions.

4" pot \$1.50 5" pot \$2.00



CROTON-CORKSCREW

Colorful; fine for spotting in planter boxes. Requires good light.

4" pot ----- \$1.00

5" pot ----- \$1.50



SPATHIPHYLLUM

Produces white, Anthurium-like flowers. Foliage has exceptionally good keeping qualities. Does well under adverse light conditions.

5" pot ----- \$1.50

DRACAENA — FERN — FICUS — NOLINA



Dracaena Warnecki



Maiden Hair Fern

An old favorite.

Dracaena Massangeana	4" pot	\$1.00
Dracaena Warnecki	4" pot \$1.00; 5" pot	\$1.50
Fern Maiden Hair—upright growing	4" pot	\$1.00

FICUS DECORA (Rubber Plant)

A new Ficus, introduced from Belgium, which will eventually replace all the Rubber plants for indoor culture.

NOLINA—PONY TAIL PLANT

Nolina is one of the hardiest plants we know. It is very decorative, but slow growing.

6" pot, 24"-30" tall ----	\$2.50
8" pot, 3'-4' tall ----	\$5.00
10" pot, 5'-6' tall ----	\$8.00

6" pot	\$2.50
7" pot	\$3.50



Ficus Decora



Nolina

BUYER'S GUIDE

Plants that will withstand dryness: **Tall-growing plants for placing on floor:**

Bromeliads

Nolina

Pandanus

Sansevieria

Chamaedoria erumpens

Dracaena gracilis

Ficus decora

Philodendron cordatum on poles

Philodendron Evansi

Philodendron panduriforme on poles

Philodendron pertussum on poles

Schefflera

Plants to use for color:

Aglaonema treubi

Cryptanthus tricolor

Dieffenbachia picta

Dieffenbachia Rudolph Roehrs

Dracaena Warnecki

Pandanus

Pothos Marble Queen

Sansevieria golden Hahnii

Schismatoglottis

Plants that will tolerate Air-conditioning:

Aglaonema commutatum

Aglaonema treubi

Bromeliads

Dracaena gracilis

Ficus decora

Monstera deliciosa

Pandanus Veitchii

Philodendron dubia

Philodendron hastatum

Philodendron panduriforme

Philodendron pertussum

Sansevierias

Schefflera

Schismatoglottis

Spathiphyllum

Plants for room dividers:

Aglaonema

Bromeliads

Dieffenbachias

Dracaena gracilis

Dracaena Warnecki

Ficus decora

Monstera

Neanthe bella

Nolina

Pandanus

All Philodendrons

Sansevieria

Schismatoglottis

(Cont.)

BUYER'S GUIDE (Cont.)

Plants that need some indirect light :

Dieffenbachis picta
Dieffenbachia Rudolph Roehrs
Dracaena gracilis
Dracaena Warnecki
Ficus decora
Philodendron Mandaenum
Philodendron pertussum
Pothos Marble Queen
Schefflera

Plants that will tolerate dark conditions :

Aglaonema commutatum
Aglaonema treubi
Bromeliads
Chamaedoria erumpens
Monstera deliciosa
Nolina
Neanthe bella
Pandanus Veitchii
Philodendron cordatum
Philodendron dubia
Philodendron hastatum
Philodendron panduriforme
Sansevieria
Schismatoglottis
Spathiphyllum

Plants to use in dish gardens or window culture :

Aglaonema
Aralia
Bromeliads
Boxwood
Crassula
Dieffenbachia
Dracaena godseffiana
Dracaena gracilis
Dracaena Sanderiana
Mondo grass
Neanthe bella
Pandanus Veitchii
Peperomia emerald ripple
Peperomia (green)
Peperomia Sandersi
Peperomia variegated
Philodendron cordatum
Pothos
Nephthytis
Sansevieria golden Hahnii
Sansevieria Hahnii (green)
Sansevieria silver Hahnii

PHILODENDRONS — ASPARAGUS SPRENGERI

PHILODENDRON CORDATUM

2½" pot, 3 plants per pot \$.20
 4" pot, vines 12"-15" long .50
 4" pot, vines 15"-24" long .60
 4" pot, vines 24"-36" long .75
 Nice, fully grown with 5-6 plants to a pot.



Phil. panduraeforme

2 plants per pot ____ 4" pot \$1.00
 \$75 per 100



Phil. cordatum

Philodendron dubia	-----	4" pot \$1.00; \$75 per 100
Philodendron hastatum	-----	4" pot \$1.00; \$75 per 100
Philodendron imbe	-----	4" pot \$1.00
Philodendron Mandaenum—2 plants per pot	-----	4" pot \$1.00; \$75 per 100
Philodendron pertusum (Syn. Monstera deliciosa)	-----	4" pot \$1.50
Philodendron pertusum (Syn. Monstera deliciosa)	-----	5" pot \$2.00



ASPARAGUS SPRENGERI FERN

A "tough" and "hardy" vine. Requires some direct light—can be used in full sun.
 4" pot ----- \$.75

PHILODENDRONS (Cont.)



Monstera deliciosa

MONSTERA DELICIOSA
(Syn. Philodendron pertusum)

4" pot	-----	\$1.25
5" pot	-----	2.00
6" pot	-----	3.50
7" pot	-----	5.00

Large specimens, heavily planted:

8" pot	-----	\$7.50
--------	-------	--------

Other specimens priced accordingly.

PHILODENDRON EVANSI

Large specimens in 16"-18" pots. Excellent for show rooms and areas where floor space is not at a premium.

6" pot	-----	\$ 3.50
--------	-------	---------

16"-18" pot.	---	\$15.00 - 20.00
--------------	-----	-----------------



Phil. Evansi

SPECIAL OFFER

"Best-Selling" Philodendrons

- 3—Phil. dubia
 - 3—Phil. hastatum
 - 3—Phil. Mandaenum
 - 3—Phil. panduraeforme
- A total of 12 plants for \$10.

PHILODENDRONS and POTHOS
Grown on natural Spanish Cork Bark



Phil. hastatum (on cork)

PHIL. HASTATUM (on Cork)
 2 plants, about 24" tall,
 6" pot ----- \$3.50
 3 plants, about 24" tall,
 7" pot ----- 5.00

Phil. panduraeforme (on cork) about 24"-30" tall (4 plants)---- 7" pot \$5.00
 Phil. pertusum (on cork) about 30" tall (2 plants) -----7" pot \$5.00



Phil. cordatum (on cork)

PHIL. CORDATUM (on cork)
 5" pot, about 18" tall ---\$2.00



Pothos Marble Queen (on cork)

POTHOS MARBLE QUEEN
 (on cork)
 5" pot, about 18" tall ---\$2.00
 7" pot, about 24"-30" tall 5.00

PHILODENDRONS—VIOLETS

Grown on tree fern poles, palm poles and cork bark



Phil. cordatum



Phil. pertusum (on tree fern)

Phil. cordatum, large leaf, on palm poles

3' tall, 8" pot \$5.00

4' tall, 8" pot \$6.50

5' to 6' tall, 8" pot \$10.00

Phil. panduraeforme, on palm poles

3' tall, 8" pot \$7.50

Phil. pertusum, on palm poles

4' tall, 10" pot \$12.50



Violet

In assorted colors, double and single.
We grow large quantities for delivery
in our area. We do not recommend
shipment of plants in flower.

4" pot ----- \$.75

FLOWERING PLANTS

We grow many flowering plants—such
as:

Hydrangeas

Chrysanthemums

Poinsettias

Azaleas

Yellow Callas

Lilies

Xmas Cherries

PALMS



Chamaedorea erumpens

CHAMAEDORIA ERUMPENS

One of the finest palms we know for interior decoration. Plants grow upright and with average care will give excellent results. Ideally suited for indoor culture.

Sold out for Fall-Winter 1958-59. We expect to be able to offer these again in Fall 1959.



Neanthe Bella

NEANTHE BELLA

A beautiful, hardy, dwarf palm. Excellent keeping qualities for interior.

2" pot 6"-8" ----- \$.20

3" pot 12"-15" ----- .50

4" pot 18"-24" ----- 1.50

DRACAENA GRACILIS

One of the finest and most decorative, modern type plants that we have had the pleasure of introducing to the florist trade. The unique and artistic habit of the stems lend themselves to modern interiors. This plant was introduced into this country many years ago by the Spanish at the southern-most city of the United States—Key West.

Until only recently have we had sufficient stock to offer in large sizes. Each plant grown is different in shape and we can only offer duplicates in the straight stem plants. This plant has proven itself ideal for interior decoration where light intensity is low but will also stand full sun. We know of few plants that can offer these qualities.

The photographs on these pages are only an indication of shapes and sizes.



Fig. 1

2 1/2" pot ---- \$.25
Approx. 8"-10"
4" pot ----- \$1.00
Approx. 18"
5" pot ----- \$2.00
Approx. 24"
6" pot ----- \$3.50
Approx. 36"
7" pot ----- \$5.00
Approx. 48" up



Fig. 2

Fig. 2

2 breaks or growths.
5" pot ----- \$3.50
24"-30"
6" pot ----- \$5.00
36"
7" pot ----- \$6.00
48" up



Fig. 3

Fig. 3

3 breaks or growths.
6" pot ----- \$7.50
Approx. 48"
7" pot ----- \$8.50
Approx. 60"



Fig. 4

Fig. 4
4 breaks or growths.
7" pot
\$10.00
Approx. 5 ft.



Fig. 5

Planted 3 single stems
Different heights.
8" pot—approx. 48"-60"
\$10.00



Fig. 6

8" pot
Multiple growths and heights.
\$10.00 to \$17.50



Fig. 7

7" pot—multiple growths
60" up
\$10.00 - \$12.50
8" - 9" - 10" pot—60" up
\$15.00 to \$25.00



Fig. 8

8" - 9" - 10" pots—multiple plants
\$15.00 - \$17.50 - \$20.00

DISH GARDEN PLANTS

SPECIAL

Choice collection of
DISH GARDEN PLANTS
in variety—our selection.

\$10, \$15, \$20 or \$25
assortments.

Advise your requirements



Philodendron cordatum

2½" pot (3 plants) --- \$.20



Pothos Marble Queen

2½" pot (2 plants) ----- \$.20

SPECIAL

100 DISH GARDEN PLANTS
\$18.00

(our selection)

A beautiful assortment of plants
for making up your own dishes or
planting customer's containers.

TIME SAVER

From October through the spring
months we carry a complete line
of Planted Dish Gardens for your
convenience.

\$2.00 and up



Pandanus Veitchii

3" pot 50c

DISH GARDEN PLANTS (Cont.)



Aralia (Rose Leaf)

2" pot ----- 20c
 4" pot ----- 50c



Boxwood

2" pot ----- 20c
 4" pot ----- 50c

See Special Dish Garden Offers
 (on page 12)



Crassula arborescens

2" pot ----- 15c



Dracaena Godseffiana

2" pot (2 plants) ----- 20c

DISH GARDEN PLANTS (Cont.)



Dracaena gracilis

2½" pot ----- 25c



Anthericum

3" pot ----- 35c

Mondo Grass ----- 2" pot \$.20

Cryptanthus—tricolor ----- 3" pot \$1.00



Dracaena Sanderiana

2" pot—8" - 10" tall ----- 20c

2½" - 3" pot—15" - 20" tall 35c



Nephthytis Green Gold

2" pot (2 plants) ----- 20c

DISH GARDEN PLANTS (Cont.)



Peperomia Emerald Ripple

2¼" - 2½" pot ----- 20c



Peperomia (Green)

2" pot ----- 10c

DISH GARDENS

From October through the spring months we carry a complete line of
PLANTED DISH GARDENS . . .

priced from \$2.00 up.



Peperomia Sandersi

2¼" - 2½" pot ----- 20c



Peperomia Variegated

2" pot ----- 20c

DISH GARDEN PLANTS (Cont.)



Sansevieria Hahnii (green)

2" pot ----- 15c
 2½" - 3" pot ----- 20c
 4" pot ----- 35c



Sansevieria Golden Hahnii

2½" pot ----- 35c
 3" pot ----- 50c

SANSEVIERIA SILVER HAHNII

2" pot 20c 3" pot 25c




Neanthe Bella

2" pot ----- 20c



Variegated Evergreen

2½" pot ----- 35c



Orchidglade Literature

EXOTICA, by Alfred Byrd Graf

A Pictorial Cyclopedic of Indoor Plants with 4000 illustrations—black and white and color. One of the most complete records of tropical foliage and flowering plants; also contains a listing of some of the orchid genera. A wonderful book for any horticultural library. First edition has been sold out. Second edition available early in 1959. Price about \$20.00.

CORSAGE CRAFT, by Glad Reusch and Mary Noble \$3.95

Describes all types of corsage making. Illustrated with photographs and line drawings.

BROMELIADS, by Mulford B. Foster \$1.50

Cultural handbook on Bromeliads.

HOME ORCHID GROWING, by Rebecca Tyson Northen \$6.50

An up-to-date book on the subject of orchid culture from seed to flower.

ORCHIDS AS HOUSE PLANTS, by Rebecca T. Northen \$3.50

In detail the culture and propagation of the new house plant "The Orchid".

PHILIPPINE ORCHIDS, by Reg S. Davis and Mona Lisa Steiner \$5.00

A detailed treatment of some 100 native species.

PLANTS INDOORS, by Mary Noble and J. L. Merkel \$6.95

A guide to their selection, care and use in decoration. Well illustrated, also in color.

YOU CAN GROW ORCHIDS, by Mary Noble \$1.98

A good introduction to orchid growing for the hobbyist.

ORCHID AND GROWERS SUPPLIES

FERTILIZERS

Atlas Fish Fertilizer	pt. \$1.00 qt. \$1.90 gal. \$6.25
Kapco 20-20-20	25-lb. bag \$10.15
Water soluble.	
Kapco 30-10-10	25-lb. bag \$11.65
Water soluble.	

INSECTICIDES

Dimite	8 oz. bottle \$2.00
Best known spray for Red Spiders.	
Malathion	½ pt. bottle \$1.85 pt. bottle \$2.69 qt. bottle \$4.29
Recommended for scale and other harmful insects.	
Slugit	4 oz. bottle \$1.00 8 oz. bottle \$1.50
An English preparation for killing slugs. May be used in sprayer. Retains potency for 10 days, after spraying.	

NOZZLES

400 Water breaker	\$1.50
Recommended for watering FIR BARK. Allows water to flow rapidly but decreases pressure.	
Hozon	\$2.25
A syphon for application of liquid fertilizer.	
Fogg-it	\$1.95
A brass fitting to attach to the end of hose to produce a fine mist for syringing orchid plants.	

SPRAYER

Fog-Maker

The best small hand sprayer that we know of. Available with plastic or copper container. We recommend the plastic as it is easily washed and is non-corrosive. Easy to use and gives out a very fine spray.

16 oz. size	\$6.95
32 oz. size	\$7.95



All Prices F. O. B. Miami

ORCHID AND GROWERS SUPPLIES (Contd.)

FUNGICIDE

Natriphene _____ **Package of 5 tablets \$.50**
Use one 73-grain tablet to 2½ gals. of water.

PACKING SUPPLIES

Tubes and Caps (2", 3" or 5") _____ **packed 25 per box \$1.25**
Shredded Wax Paper _____ **per lb. \$.80**

MISCELLANEOUS SUPPLIES

Shears _____ **\$2.75**
Corona Curved Shears for cutting plants or trimming osmunda.

String—green _____ **Spool—each \$.35**

Tire cord—white _____ **Cones—each \$4.50**
Durable string for tying plants.

OSMUNDA FIBER _____ **Bale \$12.00**
Hobby Bag \$2.00

We continue to purchase good quality osmunda from the men who gather it in the Everglades. We feel that quality Osmunda is necessary to grow quality plants—if this is the medium you prefer. We can ship the best grade of Florida Osmunda in lots of one or more bales.

CHARCOAL (hardwood) _____ **20-lb bag \$2.50**

LEAF GLOSS

Clean leaves on plants give them added sales appeal! Let us send with your order a bottle of *LEAF GLOSS* so that you can keep your plants looking their best. It is easily applied with a cloth—and see the difference! (Not recommended for use on palms or bromeliads).

Trial bottle _____	\$.50	Quart _____	\$1.50
Pint _____	.75	Gallon _____	3.75

ALL PRICES F. O. B. MIAMI

ORCHID AND GROWERS SUPPLIES (Contd.)

POT HANGERS

(GALVANIZED)

Fig. 1		Fig. 2
1	20c	30c
10	15c each	27c each
100	13c each	25c each
500	12c each	22c each
1M	11c each	20c each

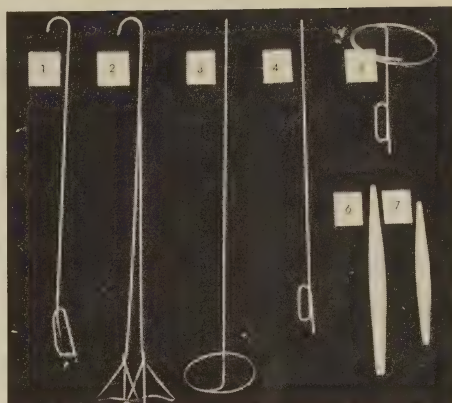


Fig. 3

STAKES FOR FIR BARK

(Galvanized Expandable
Ring Stakes)

10 stakes	\$0.80 bundle
250 stakes	0.07 each
500 stakes	0.06 each

Fig. 4

STRAIGHT CLIP-ON STAKE

(GALVANIZED)

14"	8c each	10 for 75c
19"	10c each	10 for 80c

(Fastens on side of pot)

Fig. 5

RING-STYLE CLIP-ON STAKE

(GALVANIZED)

(Ring circles leaves.)
15c each 10 for \$1.35
(Fastens on side of pot)

STRAIGHT WIRE STAKES

(GALVANIZED)

15"	-----	\$0.04 each
18"	-----	0.05 each
21"	-----	0.06 each
24"	-----	0.07 each
		(not pictured)

Fig. 6

ALUMINUM POTTING STICK

\$1.50 each

Fig. 7

ALUMINUM POTTING STICK

\$1.25 each

The pair—Figs. 6 & 7—\$2.50

POTS

We are agents in the Miami area for Orchid Pots and offer our customers a complete stock. Pots must be picked up at our nursery except in the case of loads or part loads which we can arrange to have delivered direct from the pottery.

NOTE: When ordering supplies or plants which are to be shipped via parcel post, please include with your remittance sufficient funds to cover postage. Any overage will be refunded.

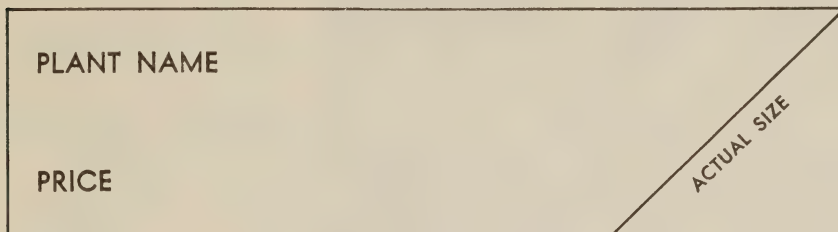
All Prices F. O. B. Miami

ORCHID AND GROWERS SUPPLIES (Contd.)

PYRALIN POT MARKERS

These heavy plastic markers are ideal for marking prices on potted plants, are indestructible, and may be marked with pencil which can be easily erased. Good for use in either greenhouse or flower shop.

LARGE SIZE



White, \$1.60 per 100; \$15.00 per 1000

Weight 7 ozs. per 100—F.O.B. Miami—include postage charges with order.

"All - Rite Pen ----- each \$.29



All-Rite Pen, Inc. Hackensack, N. J.

**When ordering pencil only
add postage .10**

prepaid , 3 for ----- \$1.00

Marking ink won't rub off labels.

Potting Material



VITA-BARK Prices as follows:

1 to 10 bags ----- \$4.95 each
11 to 25 bags ----- 4.25 each
26 to 50 bags ----- 4.00 each

VITA-BARK is packed in 2-cu.-ft., three layered paper sacks—inner layer fortified with polyethylene. Weight varies according to the size of the particles—the smaller the grade, the heavier the bag.

Since the minimum Freight Charge is based on 100#, we suggest that you order at least three bags of VITA-BARK when buying.

We are the Southeastern Distributors for VITA-BARK. QUANTITY PRICES ON REQUEST!

Orchids



Lc. Geo. Lewis, A.M.A.O.S., 1954

In addition to our fine ornamental foliage plants, we are one of the largest growers of orchids.

Our extensive collection includes:

Angraecums	Grammatophyllum
Brassavolas	Laelias
Cattleyas	Miltonias
Chysis	Oncidiums
Cycnoches	Peristerias
Cypripediums	Phalaenopsis
Dendrobiums	Phaius
Diacriums	Rodiguezias
Epidendrums	Vandas

In the case of cut orchid shipments, we can offer you attractive prices on weekly shipments and can include many of the unusual spray types.

We invite your correspondence if you are interested either in orchid plants or shipments of cut orchids.

**OUR 1958-59 ORCHID PLANT CATALOG
IS NOW AVAILABLE**

"Orchids Are Gracious Living - Wear Them"

NOTES

DISCUSSION OF CASE

1. The first step in the analysis is to identify the problem.
2. The second step is to gather the relevant information.
3. The third step is to analyze the information and identify the causes of the problem.
4. The fourth step is to develop a plan of action to solve the problem.
5. The fifth step is to implement the plan and monitor the results.
6. The sixth step is to evaluate the results and make adjustments as needed.

JONES & SCULLY, INC.

12345 Main Street

Springfield, Illinois

Telephone: 555-1234

Telex: 12345678

NOTES

CONDITIONS OF SALE

1. Orders will be filled in rotation—but promptly.
2. Prices quoted are F.O.B. Miami and subject to change without notice.
3. Unless otherwise advised, shipment will be made via Railway Express. Charges collect.
4. CLAIMS for damaged shipments must be filed immediately with the carrier by the consignee. We make every effort to pack carefully, and our responsibility ends when the shipment is accepted by the carrier.
5. Terms: Cash with order, unless credit has been previously established.
6. Non-warranty: We, Jones & Scully, Inc., give no warranty, expressed or implied as to the productiveness of any of the plants we sell, and will not be in any way responsible for the crop. Our liability in all instances is limited to the purchase price of these plants.

JONES & SCULLY, INC.

2200 N. W. 33rd Avenue

MIAMI 42, FLORIDA

*"Where you buy
with confidence"*

Wholesale Price List
1958-59

JONES AND SCULLY, INC.

2200 N. W. 33rd AVENUE
MIAMI 42, FLORIDA

