

62

Bu

Walter Marx Gardens

BORING, OREGON

FALL 1958
SPRING 1959

DAIRYFODDLS

TULIPS

POPPIES

PEONIES

LILIES

TURKS CAP LILIES
see page 7



WHAT'S NEW AT *Walter Marx Gardens*



NEW HYBRID EREMURUS at Left

We offer for the first time a grand new hybrid strain of EREMURUS, also called Foxtail Lily or Desert Candle. Great variation in size, height and colors will be noted in these hybrids. Some are similar to the Shelford Strain exhibiting many shades of yellow, buff and rose, others will resemble the much taller and larger pink and white species. Our plants should prove extra hardy as all are grown in Idaho where winter zero temperatures are not uncommon. All orders will be filled with heavy 4 year old plants which have already bloomed at least once.

CULTURE: EREMURUS is a most stately and showy perennial. Easily grown in any well drained sunny location. Being voracious feeders soil should be enriched annually with well rotted manure for maximum performance. Plants may remain undisturbed for years and will increase in spectacular beauty each season. As flower spikes average 4 to 8 feet, the EREMURUS is best used for background or accent planting.

SHIPMENT: Fall or early Spring.

Mammoth 4 yr. old dormant plants: Ea. \$2.75; 3—\$7.50; 12—\$25.00

GREEN LENTEN ROSE (Helleborus Foetidus) Below

A bold magnificent evergreen relative of the Peony that blooms any time from January to March depending on weather conditions. Visitors in our gardens are always fascinated by this Hellebore with its handsome foliage and showering cascades of apple green flowers trimmed maroon. One of the easiest to grow of its genus in any good garden soil with shade provided during summer months. An ideal subject for planting in drifts in the large shaded or wild garden. Flowers also provide exciting material for flower arrangements. Mature plants average 2 ft. in height. Color illus. on page 20.

CULTURE: Rich soil with lots of leaf mold or well rotted manure is best. Helleborus prefer shade, especially in summer, and should never be exposed to full sun in the warmer dry sections of the country. Once planted, Helleborus may remain undisturbed for years in the same manner as their relative, the peony. When old clumps are transplanted, they should be divided down to single crowns with as much of the roots intact as possible.

SHIPMENT: Spring or Fall.

Strong 2 year plants: Each \$1.00; 6 for \$5.50; 12 for \$10.00

ALSO

- 8 NEW LILIES — see next page
- 2 NEW PEONIES — see page 15
- 5 NEW ORIENTAL POPPIES — see page 22
- 40 OF THE WORLD'S FINEST RECENT
DAFFODIL INTRODUCTIONS
— see pages 27, 30

LIBRARY
RECEIVED
JUL 23 1958
U. S. Department of Agriculture



ORDER EARLY AND SAVE MONEY

10% Cash Discount Until August 1st, 1958

You may deduct 10% from any order postmarked not later than August 1, 1958, and taken from this catalog. Minimum order \$5.00.

**THIS CASH DISCOUNT DOES NOT APPLY TO
COLLECTION OFFERS**

LILIES . . . aristocrats of the garden

8 NEW INTRODUCTIONS FOR 1958

BLACK DRAGON STRAIN

Each 4.00

For many years *L. brownii* has been admired for its perfect shape and the rich contrast of the pure, icy white of the inner part of the flower with its rich purple-brown exterior. Such beauty has hitherto proved elusive, for *L. Brownii* is fickle and scarce. After many years of large-scale production of hybrid trumpet Lilies, we at last found two clones, which when intercrossed, produced seedlings of precisely *L. brownii* coloring and with tremendous vigor. Without irrigation, these Lilies attain a height of from five to seven feet and carry magnificent candelabras of perfectly formed flowers. This combination of good qualities is unequaled in any other Lily strain known to us. 6"-7" bulbs.

EMERALD STRAIN

Each 1.75

Essentially a great improvement over the Green Mountain Hybrids, this lovely strain has flowers of an almost translucent, pure, cool, emerald green of startling beauty. The very large, beautifully shaped trumpets are borne in a pyramidal inflorescence of perfect form, on long pedicels and with stout stems that do not need staking. This strain is the result of crossing two known parents and hence does not come true from random seed and cannot be duplicated unless the same two parents are used. 7"-8" bulbs.

GOLDEN WONDER

Each 3.00

The most outstanding self-colored upright-flowering Lily among all our Golden Chalice Hybrids. The flowers are well spaced, stand straight up and open widely to more than five inches in diameter. The outside of the flowers is a soft, light, golden yellow, the inside shows a few very faint maroon spots that disappear with age. The stem is stout, straight and green, clothed with spreading narrow leaves up to five inches long. GOLDEN WONDER is an excellent grower, resistant to virus and a good propagator. It stands from two and a half to three and a half feet tall and flowers for us early in June. An excellent garden plant that will be of substantial value for years to come. 5" bulbs.

SPICE

Each 5.00

A *L. candidum* hybrid of rare beauty and refinement. This is a pure white Lily, standing, when fully grown, not more than two and a half feet tall. The flowers are horizontal and are of an extremely heavy substance, with a surface that is smooth and shining. The pollen is of a warm red color and the contrast between this red and the pure white of the flower is really startling. We have only a few of the bulbs for sale this year and we believe that for best results, they should be treated like Madonna Lilies, that is harvested, shipped and planted before the other Lilies are ready.

SPOTLIGHT

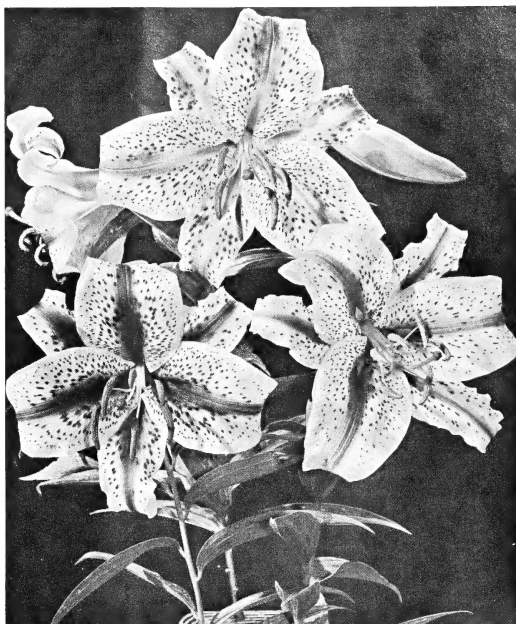
Each 3.00

Another Golden Chalice Hybrid clone of outstanding value—the most conspicuous, most distinctly spotted flower we have found in this strain in many years of hybridizing and selecting. Spotlight is as gaily freckled as a fine Dalmatian dog and makes just as happy and cheerful impression on the beholder. Again a plant which, like GOLDEN WONDER, one cannot forget after having seen it once. Height and habit are very much like Golden Wonder, flowers in June—a clone of real merit. 5" bulbs.

TABASCO

Each 3.00

This Lily is of Mid-Century type but flowers several weeks earlier. It lasts unusually long and burns less in the sun than any other dark red variety. Plants average from three to four feet in height, of which the lower 18 inches is clothed with narrow, recurved leaves. The racemose inflorescence, which is spread quite widely, carries up to 20 flowers. The flowers are large, broad-petaled and widely open, of a dark chestnut-red color, with black spots. They look especially well in the brightest of sunlight. The petals drop off as soon as they begin to fade; consequently the plant remains neat and tidy until the last flower is gone. The bulbs are of a good, firm type and easy to propagate. This Lily definitely is one that improves on better acquaintance and we feel certain that it will be one to be cherished by many a gardener, fortunate enough to obtain some of the limited stock available this year. 5" bulbs.



Auratum platyphyllum, Red Band Strain

SPECIOSUM AURATUM HYBRIDS

Each 3.95; 3 for 10.95; 12 for 37.50

Gorgeous new hybrids from the same cross that produced the now famous JILLIAN WALLACE. Color and form is greatly varied but usually intermediate in shape between the huge bowls of Auratum and the reflexed form of Speciosum Rubrum. Color ranges from snow white flowers dotted red to pure red. Blooming season is long, some flowering much earlier than JILLIAN WALLACE and others much later. With heads of 5 to 20 flowers during July, August and September this group should enjoy the greatest popularity just as soon as stock in quantity becomes available. Height average 3 to 5 feet.

AURATUM PLATYPHYLLUM, RED BAND STRAIN

Each 3.95; 3 for 10.95; 12 for 37.50

These highly colored Auratum selections are simply sensational. Visitors seeing them for the first time express words of awe and disbelief at their beauty and mammoth size. Actually they are quite similar to the pictum and rubrum forms of Auratum Platyphyllum except that considerable variation occurs in the degree of red and shades of red present in these selections. Each and every one is a beauty and sure to please every lily fancier. All habits same as Auratum Platyphyllum. Color picture on page 5.

(Lilies Continued on Page 6)

LONG BEACH 4, CALIF.

I wish to thank you for the prompt shipment of your truly lovely Lily bulbs. May I please have one of your 64 page spring catalogs, as I may wish to do more ordering soon. Thanking you again for your prompt service.

Mrs. Joseph C. Barham



LANKONGENSE see page 10

OLYMPIC,
PINK
SELECTIONS
see page 11



NEPALENSE
see page 11

Lilies...

LILY Collection

L-4-5

(Catalog value \$27.15)
for \$23.95

KENSINGTON, CONN.
*I would like to tell you that all the plants and bulbs which
I ordered from you have arrived safely and in excellent
condition. It is a pleasure to do business with you.*
Emily P. West

SUNSTAR see page 11



PAPRIKA see page 14





AURATUM PLATYPHYLLUM TRICOLOR
see page 6

NO FLOWER GARDEN IS COMPLETE
WITHOUT THE LILIES

... better than ever!



AURATUM PLATYPHYLLUM, RED BAND STRAIN
see page 3

FIESTA HYBRID, CITRONELLA STRAIN see page 10

COLLECTION L-4

- LANKONGENSE
- PINK SELECTIONS
- NEPALENSE
- SUNSTAR
- PAPRIKA

(Catalog value \$15.95)

for \$14.50

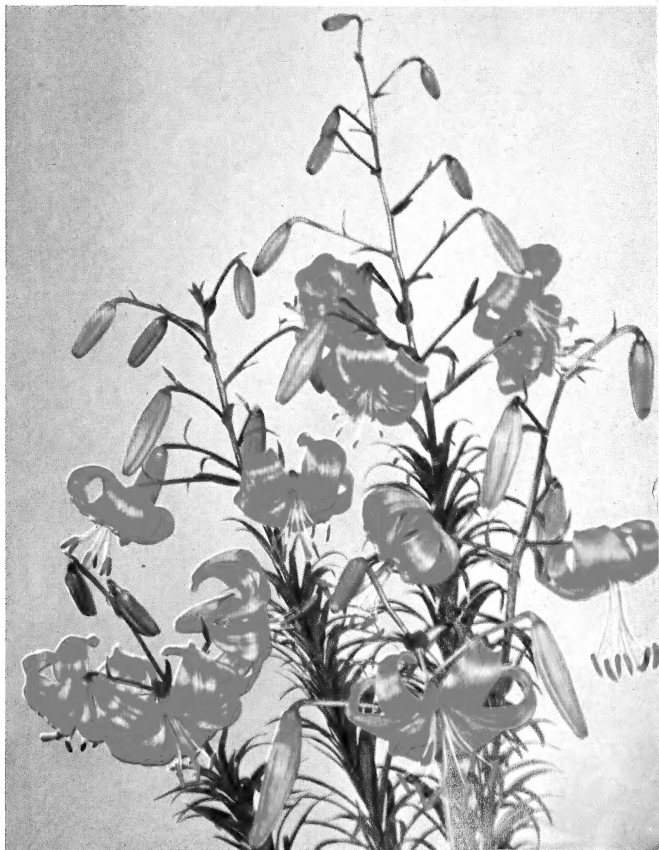
COLLECTION L-5

- NANKEEN
- CITRONELLA
- RED BAND STRAIN
- TRICOLOR

(Catalog value \$11.20)

for \$10.00

TESTACEUM, NANKEEN see page 14



hardy Lilies ...for every garden

All lilies supplied for fall delivery will be Oregon grown. These bulbs cost us more to produce than imported stock but we know you will be most pleased with their supreme performance in your garden.

No flower garden is complete without the Lilies. Because of their sheer beauty, blooming season and value also as cut flowers they are unsurpassed as perennial subjects. Those we offer here are of easiest culture and will provide flowers throughout the late spring, summer and early fall months.

CULTURE: Cultural instructions included with every lily order.



Auratum platyphyllum

AMABILE Each .75; 3 for 2.00; 12 for 7.50
Waxy grenadine red flowers, brightly speckled black, borne on slender, strong 3 foot stems. Very early, does well in full sun. Strong grower.

AMABILE LUTEUM

Each 1.00; 3 for 2.50; 12 for 9.50
Truly one of the loveliest of all yellow lilies. Identical to the type except for color which is glistening chrome yellow with black dots.

AURATUM PLATYPHYLLUM

Each 1.00; 3 for 2.75; 12 for 10.00
The giant of all Gold Banded Lilies. The illustration gives some idea of the colossal proportions that can be attained. The picture was taken of a specimen in our display garden which measured 10 feet in height and produced over 80 flowers. Such performance is perhaps phenomenal but 7 to 9 foot stems bearing 15 to 30 huge 10 inch flowers are not unusual. Color is clear white with a pale yellow midrib. The spots are fewer and much lighter than in other varieties. Our entire stock is propagated from annual seedling crops grown here and is guaranteed absolutely disease free. August-September blooming. Picture on page 13.

AURATUM PLATYPHYLLUM, RED BAND STRAIN
See New Introductions, page 3.

AURATUM PLATYPHYLLUM TRICOLOR

Each 3.50
This beautiful lily is of purest white except for the golden yellow stripe which runs the length of the petals. Light yellow spots replace the deep crimson dots which are usually found on Auratum lilies. Plants are broad-leaved and vigorous. Picture, page 5.

BELLINGHAM HYBRIDS

Strong flo'g: Each .50; 3 for 1.25; 12 for 4.00
Top size: Each .75; 3 for 2.00; 12 for 6.00
Originated by and named in honor of the late Dr. David Griffiths whose work with lilies at the U.S.D.A. experiment station at Bellingham, Washington, is well known to lily fanciers. Ideally spaced on tall slender stems the jaunty flowers are long lasting and unsurpassed for cut flower purposes. The pyramidal flower heads bearing from 10 to 20 flowers may be cut as the first buds open and will remain fresh until the entire spike is in bloom. The color range is wide from light clear yellows through oranges to bright reds. Most are spotted deep brown or maroon. For the woodland garden in dappled shade these lilies are ideal but they will also thrive in the ordinary garden, June-July. Height 5 to 6 feet. Mixed colors only.

AFTERGLOW

Each 1.50
A new free-flowering lily with huge flowers of startling rich red, heavily spotted on the inside. A real rival to the famous Sunset Lily *Pardalium giganteum* and a vigorous grower that propagates freely and soon makes a permanent clump in the garden.

SHUKSAN

Strong flo'g: Each .60; 3 for 1.75; 12 for 6.00
Top size: Each .85; 3 for 2.25; 12 for 8.50
A beautiful selected hybrid that is one of the most striking of all lilies. Color is yellow speckled with widely spaced brown spots. Vigorous and absolutely disease free. July, 6 ft.

AURELIAN HYBRIDS

Considered by many specialists as the most important of all new hybrid lily races. By successfully crossing Henryi with the trumpet lilies including centifolium, sargentiae and sulphureum an exciting new group of seedlings is now available to American gardens. The variation is complete in both form and color since the seedlings vary from straight Henryi types to almost straight trumpet lilies. The true intermediate group varies from huge, bowl shaped, white or cream flowers with yellow or apricot centers to widely flaring or slightly reflexed flowers usually yellow, orange or light apricot. The general habit and flower placement more closely resemble Henryi but all the seedlings bear much larger flowers than the species. These hybrids possess great vigor and are very hardy. As flowers fade a little in full sunshine we recommend planting where plants will receive light afternoon shade.

CORALINE (DeGraaff 1956) Each 5.00

An Aurelian Hybrid of good form and with great vigor, carrying on its five to seven foot stems flowers of a delicate, soft apricot-coral shade. The broad petals stretch out and curl informally; the stems are erect and the nice, deep green, glossy foliage offers a good contrast to the beautifully tinted flowers. This plant is one of the very best Aurelian Hybrids yet seen.

CARNIVAL (Yerex) Each 3.50; 3 for 1.00

This exciting new selection of Aurelian bicolors is very aptly named Carnival because of its variety and gaiety of the two-tone color combinations it presents. It contains practically all colors known to Aurelians from white to apricot and yellows in varied shades of gold, always with a contrasting companion hue, displaying more variety in color patterns than any other group. The form of the blossoms is between the trumpet and the Henryi type with some recurring to add to the gracious modulation of the flowers. A strain that will create great interest among lily lovers. Picture on page 9.

FORSYTHIA Each 5.00

Considered by Mr. DeGraaff to be his finest lemon yellow SUNBURST clone. Similar to but later and taller than LEMON CUP, the splendid flower heads are produced on 4 to 5 foot stems in late August. We have a few to spare this year.

HEARTS DESIRE (DeGraaff) Each 1.75; 3 for 5.00; 12 for 17.50

The typical intermediate strain with similarities of both the trumpet form and the L. Henryi shape. Flowers are essentially shallow, bowl shaped and wide flaring. Most are more or less bicolorated with orange throats that shade to cream or white at the tips. Height 4 to 5 feet. Picture on page 9.

GOLDEN CLARION (DeGraaff) Each 2.00; 3 for 5.50; 12 for 20.00

True trumpet lilies in shades of yellow ranging from clear butter-yellow down to warm cream. Stock is very scarce because of heavy demand. Picture on page 9.

IVORINE (DeGraaff 1956) Each 5.00

An Aurelian Hybrid of impeccable form and habit. The large, broadly petaled flowers are of a warm ivory-white color. The stems are stiff and the plant holds its flowers horizontally so that they face the gardener. These immense ivory blooms make an unforgettable picture in the early autumn garden. When well-grown and established, Ivorine makes large clumps with many stems from six to eight feet tall, each carrying up to 20 full-sized flowers.

LEMON CUP (DeGraaff 1956) Each 5.00

Large, true lemon-colored flowers of good form, borne on long pedicels and a five to seven foot stem will draw attention to this lovely, vigorous plant. No name or description can do justice to this grand lily, selected from among thousands of seedlings as the finest of the true lemon-yellow hybrids of L. Henryi Citrinum. This is again an Aurelian Hybrid but one that has a little different parentage, accounting for the unique color.

MOONLIGHT (Yerex 1957) Each 3.50; 3 for 10.00

A planting of these enchanting new lilies in delicate moonlight shades is as poetic as the mood of a moonlit night. The colors of the blooms are all light cream to light lemon shades of yellow with positively no orange or gold shades in the entire group. The form of the blooms is that of the Sunshine Flares, but the trumpets are semi-recurved to extremely curved, which makes them all the more attractive to behold. A most worthwhile addition to any lily collection. Picture on page 9.

SUNBURST (DeGraaff) Each 1.50; 3 for 3.95; 12 for 15.00

This group is made up of the flowers which most closely resemble L. Henryi in shape. They are much larger and more reflexed and possess unusually fine texture and substance. Color varies from cream to soft buff, straw yellow to waxy orange and some are bicolors. When established plants will grow from 5 to 8 feet and bear 5 to 25 flowers during late July and early August.

SUNSHINE FLARES (Yerex) Each 3.50; 3 for 10.00

Rarest and among the most beautiful of all Aurelian Hybrids. Clearest, brightest pure yellow selections in shades of lemon, jasmine and primrose. Absolutely no orange whatever, undesirable to some gardeners, will be found in the Sunshine Flares. Like the Superba Strain these selections were tagged when in bloom. There is very little stock and we have only a few bulbs to offer this year. Picture on page 8.

SUPERBA STRAIN (Yerex) Each 1.50; 3 for 3.95; 12 for 15.00

Carlton Yerex, originator of the Aurelian Hybrids, personally selected all of our Superba Strain Lilies from many thousands of Aurelian Hybrids he grew from controlled hand pollinated seed. The group provides fascinating forms and lovely shades. THESE ARE NOT field run seedlings. Every Superba Strain lily was tagged when in bloom for outstanding color, superior form and largest size. We can offer a limited quantity of large bulbs which will produce many blooms the first year. Picture on page 8.

BACKHOUSE HYBRIDS Each 3.00

The loveliest group of hybrid lilies that will surely delight the most discriminating gardeners. The dainty Martagon shaped flowers are generously produced on 5 to 6 foot stems in June. The colors are extremely varied including ivory, gold, pink, rose and purple shades.

BROWNII Each 3.00

Regarded by many enthusiasts as the most beautiful trumpet lily. From 2 to 4 waxy white flowers with chocolate brown anthers are borne on handsome 3 foot plants. Does best in part shade and blooms in June.

CANADENSE FLAVUM Each .60; 3 for 1.50; 12 for 5.00

The eastern Meadow Lily and beloved by all who know it. We offer the lovely yellow form with brown spots. Blooms in late June on 4 to 5 foot stems.

CERNUUM Each 1.50; 3 for 3.95; 12 for 15.00

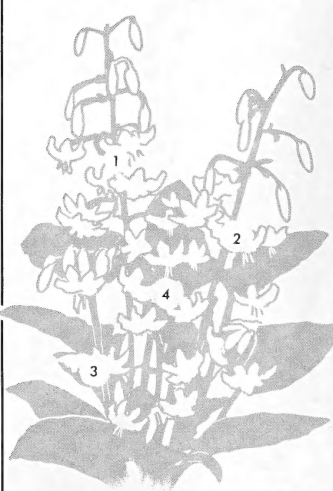
This fairy-like Korean Lily is one of the loveliest of all and might be called the pink pumilum. Color varies from pale pink to rosy lilac usually spotted with purple. The airy, sharply recurved flowers are borne on 3 foot wiry stems in late June. Does well any where and is easily grown from seeds. Very scarce.

CONCOLOR Each .85; 3 for 2.25; 12 for 7.50

A dainty lily of unique star shape and vivid scarlet color. Likes a sunny spot where it will bloom in June. Best planted in groups and grow rapidly from seeds. 2 feet.

(Lilies Continued on Page 10)

ON OUR
FRONT COVER



1. MARTAGON ALBUM, white. See page 10.
2. MARTAGON, purple. See page 10.
3. HANSONI, orange. See page 10.
4. BACKHOUSE HYBRIDS. See page 7.

ORDER YOUR LILIES NOW AND SAVE MONEY

See Discount Offer on Page 10

Lilies

*beautiful
Aurelian Hybrids*

SUPERBA STRAIN see page 7



MOONLIGHT see page 7

We offer you a most outstanding collection of choice lilies including many of the best new hybrids as well as species adapted to ordinary garden culture. No flower garden is complete without lilies. Their stately habit, enchanting beauty in the garden and in floral arrangements will provide every flower lover with maximum pleasure for many years. By proper selection a succession of colorful display is available from early summer to late autumn.

BELLINGHAM, WASH.

I want to thank you for the two extra Lilies you enclosed with my order. You are most generous and I value and appreciate them very much. They are fine Lilies and I consider them my nicest Christmas gift.

Annette Brooks

SUNSHINE FLARES see page 7





GOLDEN CLARION see page 7



HEARTS DESIRE see page 7

CULTURE

Detailed Cultural Instructions Will Be Included with Every Lily Order

Lilies, unlike most other bulbs, resent disturbance at any time and deteriorate steadily when kept out of the ground. Also, lilies possess, in addition to the cluster of fleshy scales which comprise the bulb, a system of live roots attached to the bulb base just like any other perennial. No gardener would be foolish enough to remove the roots from a perennial phlox or delphinium before planting it in the garden. Likewise the live roots attached to a lily bulb should never be removed or allowed to die before planting if maximum results are desired. With exception of some imported stocks all lily bulbs we use for filling orders will arrive with attached live roots. This advantage guarantees our customers maximum vitality at planting time so necessary to get any plant or bulb off to a good start in a new garden.

TIME OF SHIPMENT

Late October to Early April (Unless Noted Otherwise)

Most lilies may be planted in fall or early spring with equally good results. The only requirement is that the bulbs are properly cared for during the winter months. We have ideal facilities for winter storage and can supply vigorous fresh bulbs any time from October to early April. Please indicate when you prefer shipment and we'll ship as near that date as possible.

HOW WE PACK OUR LILIES

We pack all lilies in sealed moisture retentive polyethylene bags. If you cannot plant the bulbs when received, open the bags and inspect the bulbs for possible damage in transit, then replace and leave them in the bags until you can plant. Bulbs may remain in our sealed polyethylene bags for weeks with perfect safety. They will not lose one bit of their freshness or vigor.

MATHEWS, LOUISIANA

The small order of hybrid Lilies and Iris collection I got from you last Fall are abloom in all their glory and what a delightful spectacle! I never dreamed that Iris and Lilies could produce such a riot of harmonious colors. My friends and neighbors come to admire; my garden club members want to know where did I find such treasures. You will be hearing from me again and I am sure from my club members next planting season.

Mrs. Harold J. Jacobs

Order Early and Save Money

10% CASH DISCOUNT UNTIL AUGUST 1, 1958

You may deduct 10% from any order postmarked not later than August 1, 1958, and taken from this catalog. Minimum order \$5.00.

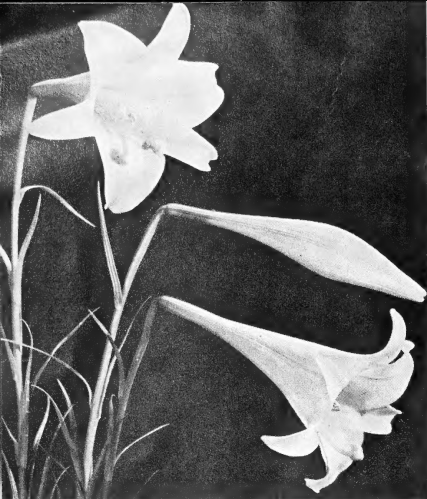
This cash discount does not apply to collection offers.

CARNIVAL see page 7



LILY Collection L-8-9

SUPERBA STRAIN	GOLDEN CLARION	(Catalog value \$15.75)
MOONLIGHT	HEARTS DESIRE	for only
SUNSHINE FLARES	CARNIVAL	\$12.95



Formosanum Pricei

LILIES — Continued

DR. ABEL Each 1.25
Dainty pendant flowers of sharply recurving form enhanced by dark green foliage and brown stems. The bloom itself is of the deepest red among the Fiesta Hybrids, densely speckled with minute black dots. Named after the late lily pioneer, Dr. Abel, it has received the Award of Merit from the Massachusetts Horticultural Society. Height 4 to 6 feet.

FIESTA HYBRIDS Each .75; 3 for 2.00; 12 for 7.50
Another distinct and gaily colored race derived from L. Willmottiae combined with related types. Extremely uniform as to flowering time and habit the exciting variations in color and form present a new group of most brilliant and multi-colored hybrids. The marvelous color range includes yellow, oranges, coppers, golds, reds and near purples. Flowers are dainty of typical Turk's cap form and are gracefully arranged on 4 to 6 foot stems. All flower in July and are indeed a wonderful addition to the garden. Absolutely hardy. Mixed colors only. Picture on page 13.

FIESTA HYBRIDS, CITRONELLA Strain Each 1.75; 3 for 5.00; 12 for 17.50
Clearest yellow selections from the Fiesta Hybrids. The lacquer like finish adds even more luster to these brilliant yellow lilies. A planting of 6 or more bulbs makes a most colorful spot in the garden and with the deep green foliage nothing more could be desired. Vigorous and easy to grow. 3 to 4 feet. June-July. Picture on page 5.

FORMOSANUM PRICEI Each .75; 3 for 2.00; 12 for 7.50
Early flowering form. One of the easiest of all lilies. The bulbs we supply are grown entirely from seedling stock and are absolutely disease free. The beautiful long trumpet flowers are purest white with pale green throats that are deliciously scented. This early dwarf form comes into bloom in July on 2 to 3 foot stems.

OXFORD, ALABAMA

My plants came "O.K." and I do appreciate my gift plant. Thanks so much.

Mrs. B. B. Walker

FORMOSANUM WILSONI Each .60; 3 for 1.25; 12 for 4.00
Tall and free flowering this white, trumpet type strain is the latest of the popular lilies to bloom. The small bulbs should be planted 5 to 6 inches deep since very heavy stem roots are developed.

GOLDEN CHALICE Each .75; 3 for 2.00; 12 for 7.50
A new strain of DeGraaff hybrids in which all the harsh oranges and glaring red shades have been eliminated. The soft enchanting color shades of golden yellow and apricot orange. In addition, improvement of shape is achieved in full flowers with wide overlapping petals. The strain is vigorous, drought resistant and suitable for dry warm parts of your garden. All are May flowering and among the first of all lilies to bloom. 2½ to 3½ feet.

GOLDEN WONDER
See New Introductions, page 3.

GREEN DRAGON Each 7.50
Introduced in 1948 and then withdrawn from the market because of the tremendous demand for bulbs, this lily is now available again. It proudly bears the finest chartreuse-colored, bowl-shaped trumpets to appear in some time.

GREEN MOUNTAIN HYBRIDS Each 1.50; 3 for 3.95; 12 for 15.00
A superior group of lilies quite distinct from the Olympic Hybrids in shape and color. The large flowers plus the green coloring of the throat and the brown shaded exterior of the petals make this an impressive group of trumpet lilies. Plant in very light shade.

HANSONI Each .75; 3 for 2.00; 12 for 7.50
Beautiful Japanese lily of exceptional substance and extreme hardiness. The reflexed pendant flowers are clear orange yellow with brown speckles. The stems appear early in spring and come into bloom in late June and July. Very resistant to mosaic and a splendid garden lily in sun and light shade. A parent of many new hybrids. Picture on page 13.

HENRYI Strong flo'g; Each .50; 3 for 1.25; 12 for 4.50
Top size: Each .60; 3 for 1.50; 12 for 6.00
A splendid robust growing lily attaining 8 feet or more in height when established and bearing 15 to 20 lovely reflexed flowers of soft orange yellow. August.

JAPONICUM (Kraemeri) Each 1.00; 3 for 2.75; 12 for 10.00
The most beautiful of all pink lilies in our opinion. The large open trumpet flowers are usually apple blossom pink but may be deeper or much lighter. Plant bears 2 to 5 blooms on 2 foot stems in June. Prefers a woodland location and acid soil.

JILLIAN WALLACE Each 5.00; 3 for 12.50; 12 for 50.00
An auratum x speciosum hybrid and the most beautiful large red lily in existence. Of an Australian origin, the large 10 inch flowers are brilliant crimson of slightly reflexed form. Very few bulbs.

LANKONGENSE Each 2.00
Sweetly scented, pendant flowers of pale rose, deepening with age and spotted purple. The trumpets are strongly recurved. A lovely, vigorous lily that seems to thrive in porous loamy soil. Picture on page 4.

LONGIFLORUM, ESTATE Top size: Each .75; 3 for 2.00; 12 for 6.00
Six to nine huge pure white trumpets on 4 to 6 foot stalks that are very attractive in special settings. Provides early spring flowers when forced in the greenhouse. July flowering in the garden.

WILSONI FLAVUM, MARLYN ROSS Each 3.00
A lovely upright-flowering lemon-yellow Lily which, when fully expanded, has a fattish cup 2½ inches high and 6½ inches wide. The flowers are sulphur with a broad orange band down the center of each petal and attractively speckled with small deep maroon dots. Stout three to four foot stems with wide dark green leaves provide a beautiful foil for a unique flower.

MARTAGON Each 1.50
The purple Turk's Cap and widely grown in England and Western Europe. Established plants attain 5 feet and bear many flowers in June and July. The color is somewhat variable but is usually pinkish purple with darker spots. A very attractive lily.

MARTAGON ALBUM Each 1.25; 3 for 3.50; 12 for 12.50
Perhaps the most charming white lily in existence. The enchanting waxed flowers of elfin grace arranged on perfectly branched stems are irresistible. Delightful in floral work and winsome in the garden the white Martagon lily will be cherished forever. Blooms in June on 4 foot stems. Easily grown in well drained sunny locations and increases rapidly when established.

ORDER EARLY AND SAVE MONEY

10% Cash Discount Until August 1st, 1958

You may deduct 10% from any order postmarked not later than August 1, 1958, and taken from this catalog. Minimum order \$5.00.

This cash discount does not apply to collection offers.

MID-CENTURY HYBRIDS

These are the interesting TIGRINUM x UMBELLATUM hybrids and perhaps Mr. deGraaff's outstanding achievement to date. Variation of plants, flowers and colors in this group is quite amazing. All are absolutely hardy anywhere and will thrive wherever the common Tiger Lily is grown. Picture page 12.

CINNABAR

Each 2.00

Deepest cinnabar red and rated as the finest of the red uprights. Distinguished by narrow pointed petals of practically solid color. One of the taller hybrids that sold out last year. 3½ feet.

CROESUS

Each 1.25

This is a tall, upright-flowering lily with large, goblet-shaped, golden-yellow flowers, nicely marked with near-black spots. Flower has great substance and lasts unusually long, both when cut and on the plant. The plant is vigorous, hardy, free-flowering and unusually resistant to pests and diseases. It flowers here early in June and in the field fully mature plants are from three to four feet tall.

DESTINY

Each 1.50; 3 for 3.95; 12 for 15.00

An open chalice-shaped lily of brilliant canary yellow with just enough large brown spots in the center to afford welcome contrast. As many as 10 superb upright flowers are carried above lustrous dark green foliage on stems three to four feet tall.

ENCHANTMENT (Plant Patent 862)

Each .60; 3 for 1.50; 12 for 6.00

Patented because Mr. deGraaff considered this his most outstanding 1949 introduction. Upright nasturtium red flowers in big heads atop tall strong stems. A lily of tremendous vigor, blazing color and phenomenal propensity for increase. Like the Tiger Lily this hybrid also bears bulbils in the axils of the leaves. Early July. 3½ feet.

FELICITY

Each 1.50

Large, cool, lemon-yellow, outward-facing flowers. This is a particularly lovely plant, free-flowering yet never crowded. The flowers have great substance; the plant is hardy, very vigorous and prolific. In our fields, without irrigation, the lily stood a full five feet tall. We believe that with a rich soil, water and some protection it can be much taller.

FIRECROWN

Each 2.00

No lily has ever borne such vividly brilliant nasturtium-red colors as this new seedling. And more than that: it is completely sun-proof, even on the hottest summer days. The upright blooms come on stems three to four feet high — a superb cut flower and an excellent propagator.

FIREFLAME

Each 1.00; 3 for 2.75; 12 for 10.00

One of the truly intermediate hybrids. Outward facing flowers of solid mahogany red with black spots. A wonderful red lily that produces 6 to 8 wide petaled flowers on 2½ foot stems. July.

HARMONY

Each .75; 3 for 2.00; 12 for 7.50

Tall early upright type with large wide petaled flowers of clear orange. Speckling is inconspicuous. Brilliant and a splendid garden lily. 3½ feet. Late June.

JOAN EVANS

Ea. .75; 3 for 2.00; 12 for 7.50

Named after the popular young Hollywood star. Large chalice shaped flowers of brightest chrome yellow. Wide overlapping petals combine to form most handsome flowers in large heads that top 4 to 5 foot stems. Most striking of all the yellow uprights. July.

PROSPERITY

Each 1.00; 3 for 2.75; 12 for 10.00

A cool lemon-yellow outward-facing flower on stems four feet tall, this beautiful lily is rapidly becoming a garden favorite. The plants make large clumps through natural division and are extremely vigorous and hardy. Picture on page 13.

SUNSTAR

Each 3.00

A descendant of the tall-growing, star flowered Hollywood Hybrids. The large upright flowers are a grenadine red, very dazzling and intense in color. Flattish star-shaped flowers are borne on slender but wiry stems, 3 to 4 feet tall. A novelty worth featuring. Picture on page 4.

TABASCO

New Introduction, see page 3.

TANGELO

Each .75; 3 for 2.00; 12 for 7.50

Luminous orange flowers that simply blaze in the garden. Most brilliant of all the Mid-Century Hybrids as their glowing flower heads appear to enclose lighted torches. Large side facing flowers on 2½ foot stems. Very early.

VALENCIA

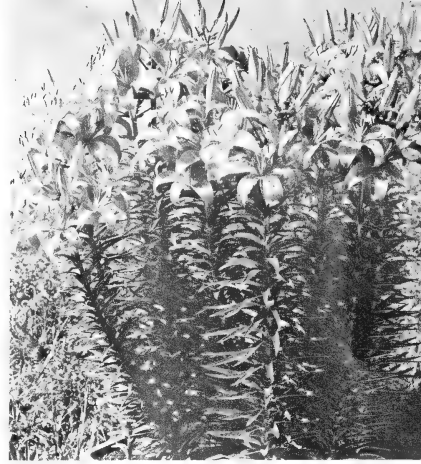
Each .60; 3 for 1.50; 12 for 6.00

Lovely orange yellow of clear color. The horizontal large flowers have light midribs of coppery gold and are speckled maroon. Three feet. July.

MID-CENTURY HYBRIDS MIXTURE

Each .60; 3 for 1.50; 12 for 6.00

A delightful mixture of these hybrids all of which obviously could not be named no matter how worthwhile they might be. All are attractive and include some unusual types that should prove valuable to the lily breeder.



Enchantment

NEPALENSE

Each 3.00

One of the rarest and most exotic lilies in our entire list. There is nothing else like it. The large green white tinted flower is funnel shaped with a wide flaring mouth and reflexed petal tips. The throat is vivid red purple. The plant grows about 2½ feet high and blooms in late June. Contrary to former beliefs this lily is hardy as it endures zero temperatures without protection. A gorgeous novelty for those who want a lily that is strikingly beautiful and different. Picture on page 4.

OLYMPIC HYBRIDS (Centifolium Hybrids)

Strong flo'g: Each .50; 3 for 1.25; 12 for 5.00

Top size: Each .60; 3 for 1.50; 12 for 6.00

For sheer beauty, massive size, and stately grandeur we offer these magnificent trumpet lilies to American gardens as the supreme strain of hardy garden lilies. Again as with other hybrids astounding variation in form and color is evident. Many are wide petaled open bowls, others recurve sharply with considerable twist to create the informal ruffled flower so appealing to many. In addition to white the color now may be yellow, light to deep pink or pale green. Exteriors also vary greatly and are usually shaded wine, brown or green. All come into flower 10 days to 3 weeks later than regale and will range from 5 to 8 feet in height. Picture on page 12.

BLACK DRAGON STRAIN

See New Introductions, page 3.

EMERALD STRAIN

See New Introductions, page 3.

OLYMPIC HYBRIDS, PINK SELECTIONS

Each 1.95; 3 for 5.50; 12 for 19.50

New and startling in their glorious shades of pink ranging from light raspberry red to soft fuchsia pink. The color extends through the entire flower and is simply exquisite. Just as hardy and vigorous as the other OLYMPIC HYBRIDS. Picture on page 4.

OLYMPIC HYBRID, SPECIAL SELECT

Ea. 1.50

For the more discriminating gardener we offer a limited number of specially selected bulbs of Olympic Hybrids. During the flowering season the choicest and finest from acres of trumpet lilies are carefully tagged. Each of these tagged plants represents the pick of several thousand flowering seedlings: large formal waxy white or light pink exteriors and slightly ruffled or twisted petals. Every bulb is of exhibition quality.

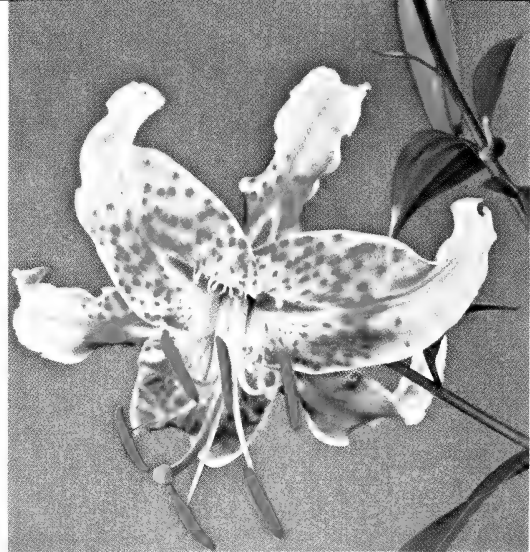
(Lilies Continued on Page 14)

IRISES - DAYLILIES - ROSES

Our annual 64 page catalog illustrates in natural colors over 100 of these popular perennials and features latest introductions. Many are exclusives available only from WALTER MARX GARDENS. Include 25c with your request if you desire this most informative catalog.



RUBELLUM see page 14



SPECIOSUM RUBRUM see page 14

**LILIES MAY BE PLANTED
BOTH IN
SPRING AND FALL**

They are available for shipping from late October to early April. Please indicate when you prefer shipments.



OLYMPIC HYBRID,
CENTIFOLIUM see page 11

**all 10
LILIES**
on these pages

MID-CENTURY HYBRIDS see page 11

PARDALINUM GIGANTEUM,
SUNSET see page 14





HANSONI see page 10



SPECIOSUM ALBUM see page 14

RUBELLUM
 L. SPEC. RUBRUM
 L. CENTIFOLIUM
 MIDCENTURY HYBRIDS
 SUNSET LILY
 L. SPEC. ALBUM
 AURATUM PLATYPHYLLUM
 PROSPERITY
 HANSONI
 FIESTA HYBRIDS

Collection L-12-13

for \$6.95

(Catalog value \$8.15)



PROSPERITY
 see page 11

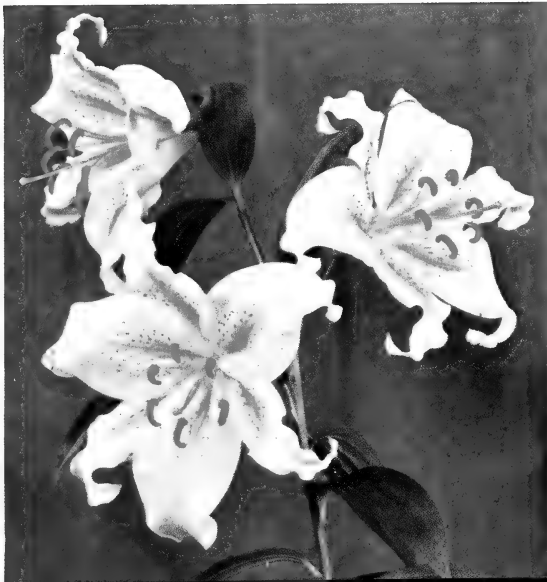
ORDER EARLY AND SAVE MONEY

**10% CASH DISCOUNT UNTIL
 AUGUST 1st, 1958**

You may deduct 10% from any order postmarked not later than August 1, 1958, and taken from this catalog. Minimum order \$5.00.

This cash discount does not apply to collection offers.

AURATUM PLATYPHYLLUM see page 6



FIESTA HYBRIDS see page 10



LILIES — Continued

PALOMINO Each 3.00

Flowers are pendant and large, recurved to form large globes, well-spaced and on pedicels in good proportion to the flower and the size of the five foot plant. The color is best described as "bige" buff, Nankeen or Testaceum-like. We displayed a few stems in a vase with dark-blue Delphinium and the result was startlingly beautiful. All visitors have been unanimous in their praise of this new lily.

PAPRIKA (Mid-Century Hybrid) Each 5.00

One of the largest and most spectacular new red lilies we saw in 1956. Up to 12 true cardinal red flowers nicely spaced on 2 to 3 foot stems. Each bloom measures at least 5 inches and faces outward. The color without, brick or orange tones, is especially fine, holds well in the hottest sun. Early June. Picture on page 4.

PARDALINUM GIGANTEUM (Sunset) Each .60; 3 for 1.75; 12 for 6.00

This lovely and colorful lily is practically fool proof. A strong vigorous plant growing up to 8 feet, bearing as many as 15 to 20 recurring flowers of glowing sunset red with a yellow base and speckled amber brown, July.

PUMILUM (Tenuifolium) Each .50; 12 for 5.00

The ever popular little Coral Lily that inaugurates the blooming season wherever garden lilies are grown. The glowing scarlet Turk's Caps are fragrant and are borne on slender stems 1½ to 2 feet. One of the easiest in ordinary garden soil and full sun. Come most readily from seed. Early June.

PUMILUM, GOLDEN GLEAM Each .50; 12 for 5.00

Bright golden orange pumilum and a splendid garden subject. Same habits as the type.

RAINBOW HYBRIDS Each .60; 3 for 1.50; 12 for 5.00

A new race of Umbellatum hybrids embracing the finest range found in this type. Lemon, orange, peach, gold, maroon and all the intermediate shades are evident here. If you have become a little tired of growing the old umbellatum and elegans varieties then renew your interest by investing in some of these new colorful hybrids.

REGALE Strong flo'g; Each .40; 3 for 1.00; 12 for 3.00

Top size: Each .50; 3 for 1.40; 12 for 5.00
No flower garden should be without this extremely hardy lily which is of easiest culture. Large, beautiful white with yellow center and exterior tinted purple or brown. Ours is a selected strain producing extra large flowers with wide petals. Largest bulbs produce 30 to 40 flowers on stems 6 to 8 feet high.

REGALE, variety "Royal Gold" Each 2.50; 3 for 6.95; 12 for 25.00

A golden-yellow, true-breeding mutation of the Regal Lily. This beautiful new variety is identical with the best L. Regale except for its true golden coloring. The flowers have a most attractive, shiny, glistening surface, which adds to its beauty.

RUBELLUM Ea. 1.00; 3 for 2.75; 12 for 10.00

Exquisite dwarf lily of delicate pink quite similar to the larger L. japonicum. Blooms in May or June on 12 inch stems. Prefer woodland soil in semi-shade. Picture on page 12.

SARGENTIAE HYBRIDS Each 1.00

Rare and beautiful lilies something like the Regale but come into bloom at least 2 weeks later. Also green throated instead of yellow with striking brown anthers and brown markings on outside of petals. The only white trumpet lily which bears stem bulbs. 6 to 9 feet. August.

SPECIOSUM

Among the most beautiful of all lilies, this species ranks high in popularity in American gardens. Artistically fashioned, the recurved frilly flowers bring glory to the late summer garden as well as ecstatic delight to the flower arrangement devotee. This lily is vigorous, quite disease resistant and very hardy. Slightly acid soil is preferred but it will tolerate many varieties of soil with no ill effects. Average height is about 4 feet. It blooms late August through September.

SPECIOSUM ALBUM Each 1.25; 3 for 3.50; 12 for 12.50

The refreshing and cool snow white Speciosum that is a classic among lilies. Blooms a little later than the pink varieties and is most impressive when planted against a background of evergreen foliage. Picture on page 13.

SPECIOSUM "Red Champion" Each .85; 3 for 2.25; 12 for 7.50

Deepest colored of the pink varieties. The foundation stock was discovered locally on the slopes of Mount Hood where it had grown undisturbed for some 40 years. Very vigorous and absolutely disease free.

SPECIOSUM RUBRUM Each .60; 3 for 1.50; 12 for 6.00

Deep carmine pink and among the most beautiful of all lilies. Artistically fashioned, the recurved frilly flowers bring glory to the late summer garden. Vigorous, quite disease resistant and hardy. Height 4 to 5 feet. August-September. Picture on page 12.

SPECIOSUM AURATUM HYBRIDS

See New Introductions, page 3.

SPICE

See New Introductions, page 3.

SPOTLIGHT See New Introductions, page 3.

SUPERBUM Each .75; 3 for 2.00; 12 for 7.50

One of the best native American lilies. The startling orange flowers, suffused yellow with red tips and maroon spots make it truly spectacular. Up to 40 large blooms on the tall 5 to 9 foot stem.

T. A. HAVEMEYER Each 5.00

The true T. A. HAVEMEYER has been nothing short of sensational in the lily world ever since its introduction. A hybrid out of L. HENRYI and L. SULPHUREUM, this exquisite lily is universally regarded as a classic among lilies. Usually described as warm ivory yellow suffused apricot with a band of green on the outside of each petal. Flowers are extra large, measuring 7 inches across and possess unusually heavy substance; petals wide and semi-recurved, altogether an ideal lily for cutting as well as garden beauty. Once established, plants grow 8 to 10 feet high and bloom very late, usually early September. Though very hardy and easy to grow with ordinary care, this lily has been scarce and rarely offered. We have 100 flowering size bulbs.

TALIENSE Each 5.00

Turkscap lily from western China. The fragrant white flowers are spotted with crimson, and have a distinctive dark purple furrow down the center of each petal. Rigid black stems, as in L. wardi, reach 3 to 5 feet blooms in August. Our first offering of this very rare lily.

TESTACEUM Ea. 2.00; 3 for 5.50; 12 for 20.00

Often called the Nankeen Lily and still one of the choicest of all garden lilies. There has never been sufficient stock to supply the demand. Plant habit is similar to L. Candidum except the flowers are pendant and recurved. The color is Nankeen yellow delicately flushed pink with red anthers. A beautiful garden subject and a wonderful cut flower always in demand by florists. Blooms in early July and prefers a sunny location in well drained sweet soil. Like L. Candidum this lily must be planted shallow. 5 feet. Picture on page 5.

TIGRINUM FLORE-PLENO Each .50; 3 for 1.25; 12 for 4.00

The double form of Splendens and the most attractive of all double lilies. Also blooms a little later than the single variety.

TIGRINUM SPLENDENS Each .50; 3 for 1.25; 12 for 4.00

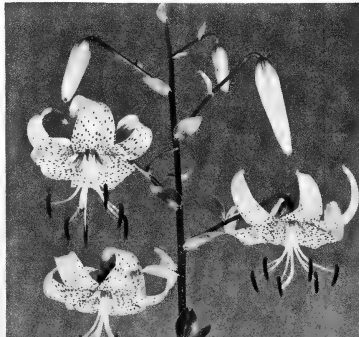
Very handsome and the largest flowering variety of the well known Tiger Lily. Deep salmon orange flowers speckled black. Hardy and easy to grow anywhere. Blooms on 6 foot stems in late August and September.

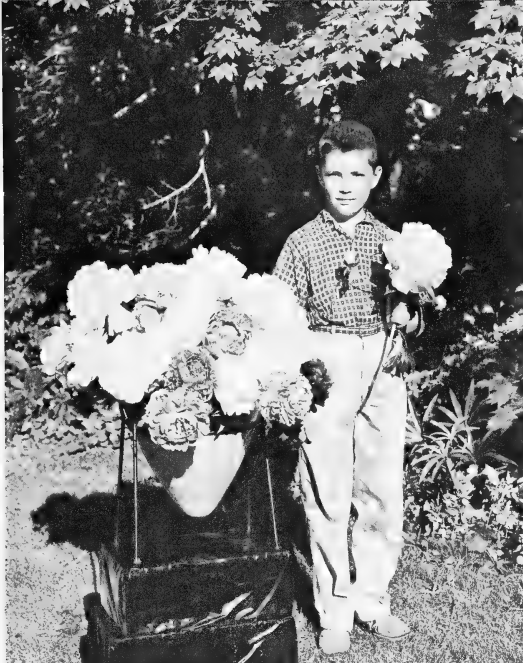


Brownii

Tigritum splendens

ST. LOUIS, MO.
Received bulbs this morning, box in good condition. Thanks.
Mrs. F. J. Nawrocki





Peonies grow big at Walter Marx Gardens. Note the size of the bloom Richard Marx is holding up for your inspection.

Those of us fortunate enough to have memories of the gardens of our childhood, will remember the Peonies well. They were simply everywhere, nearly as universal as the roses to which they have more than a fleeting resemblance. In fact, there are countries where Peonies are called Pentecost Roses, an allusion to their blooming time in late Spring.

Hybridizers have been at work armed with the latest scientific knowledge of plant cross breeding and have come up with blooms beyond the fondest dreams of flower lovers—and more and more the

Peonies for Permanence



PEONIES FOR 1958

HIGH ADVENTURE

Each 10.00

AUGUSTE DESSERT is the parent of this unusually distinctive and beautiful peony. Of high built form and an incredible amount of petalage the flowers display some striking features unmatched by any other variety we have seen. The picture illustrates this point most accurately. The color, similar to but deeper than its parent, is near rose red. Of medium size, the flowers are carried on long stiff stems well above the foliage. About 3 feet. Midseason to late.

INDIAN CHIEF

Each 5.00

Several good red single peonies are already on the market but here is an exceptional red single that merits every peony fancier's consideration. First, it is extremely late and comes into bloom after most single varieties are past. In addition it is a splendid cut flower possessing unusually long keeping qualities. Color is deep silky red slightly darker than the illustration. Habit is bushy and upright and a 3 or 4 year clump in full bloom presents a most gratifying sight. Height is 3½ to 4 feet. Picture on page 17.

old reliables are being called back into service. Peonies are more popular than ever and are enjoying a nation-wide upsurge.

True to our purpose to give you more and better plants for ever better gardens, we want to serve you also with these finest and most rewarding perennials, the Peonies. They are hardy, graceful, undemanding and will provide you with quantities of blooms; even when out of bloom their foliage is of great decorative value in any garden. You will find our list ample for thoughtful selecting to give you all colors known to Peonies as well as the longest possible blooming season.

PEONIES FOR SPRING AS WELL AS FALL PLANTING may be ordered from this catalog

LIBRARY
REC'D
JUL 23 1958
U. S. Department of Agriculture

CULTURE: For best results be sure to plant only strong, healthy roots. They may be planted in any good garden soil that has sufficient drainage, with the buds on the crown of the plant about two inches below the soil surface. The soil in the bottom of the hole you dig to plant the root in, must be tamped so that the root will not sink below that level. Plants planted in September will show the first bloom the following spring. Hence Fall planting is recommended, although Peonies may also be planted in Spring, provided you do not expect blooms that same year.

SHIPPING TIME: Fall and early Spring to April 1st.

AUGUSTE DESSERT (Dessert 1920) Each 1.25; 3 for 3.00
When somebody says "pink peony," chances are that the full-blown bloom you remember is Auguste Dessert, for over a quarter of a century the epitome of a double Peony in pink. The lighter-bordered petals change from dark to light pink as the flower ages, attractive to the last. Late midseason. Picture on page 20.

BLUSH Each 1.50; 3 for 4.00
Here is a Peony that is unusually attractive and appealing to the eye. The delicate flush coloring greatly adds to its effectiveness when used in flower arrangements. Flower medium size, held stiff and erect on wiry stems. A very lovely Peony that appeals to all. Midseason. Double.

CATHIE ANN Each 2.00; 3 for 5.00
A deep rose-pink, no stamens nor seed pods. Leaves start near the ground. A stiff stem. Bloom 15 inches above the foliage. Heavy substance, good out of cold storage. 40 inches. Late midseason. Double.

CORAL ISLE Each 1.50; 3 for 4.00
Real coral color. Makes a striking color splash. Nothing like it in the garden. A real break in Peony color that everyone admires. Late. Semi-double.

DULUTH Each 1.25; 3 for 3.00
Large rose type, pure white blooms borne on good stiff stems. A very vigorous grower with fine foliage of a deep rich green. Makes a fine landscape specimen plant, as the flowers are held high and erect under all conditions. 36 inches. Late. Double. Fragrant.

DULIS SUPERBA (Lemmon 1824) Each 1.25; 3 for 3.00
One of the real patriarchs among the darker pinks that set the norm of what a good Peony should be—a good grower, good cutflower with full, high tufted center, and of bright, rich clean color. Very fragrant. Early.

E. F. KELSEY Each 2.00; 3 for 5.00
Very large. A full white with fine, strong stems. Extra fine quality bloom. Midseason. Double.

FELIX CROUSSE (Crousse 1881) Each 1.25; 3 for 3.00
A variety, medium high, that has stood the test of time for so long that this brilliant red can be counted on to be good. Its striking silky crimson color has highlighted countless Peony plantings, and you don't want to miss it in yours. Midseason.

FESTIVA MAXIMA (Mielez 1851) Each 1.25; 3 for 3.00
The "Old Faithful" of the whites. We all have seen it many times from our childhood on, that massive white peony blossom with the sparse crimson markings. A decided salmon-golden glow seems to emanate from the center of the bloom. A flower as desirable as it is reliable. Tall. Early.

(Peonies Continued on Page 18)



Watch for this symbol
it means extra savings

Peonies for



MIXED PEONIES



STARTER COLLECTION P-16

No garden is complete without Peonies. Their large size, great beauty and delightful fragrance place them among the most desirable of all perennials. This bargain offer is made so that anyone can afford to get started with this magnificent flower this year. And remember, Peonies last a lifetime. Top quality. 3 to 5 eye field-grown plants.

4 All Different 8 All Different 12 All Different
for \$3.00 for \$5.50 for \$7.50

MRS. LIVINGSTON FARRAND see page 18

LE JOUR see page 18



King Size Color

ANY GARDEN IS HARDLY A GARDEN
WITHOUT PEONIES

ZORI see page 19



WATERLILY see page 19

FANCIER'S PEONY COLLECTION

P-16-17

MRS. LIVINGSTON FARRAND ZORI

LE JOUR INDIAN CHIEF

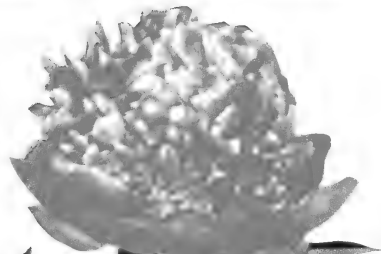
WATERLILY HIGH ADVENTURE

(Catalog value \$32.50)

6 PEONIES for \$30.00

PEONIES FOR SPRING AS
WELL AS FALL PLANTING

may be ordered
from this catalog



HIGH ADVENTURE
see page 15

INDIAN CHIEF see page 15

HUNTINGTON PARK, CALIF.

The Peonies arrived today. Million thanks for such big ones. Planted them the best I knew how. Do hope they will like Calif. and do well for me. Especially thanks for the extra one.

John C. Morrill



PEONIES — Continued

- GEORGE W. PEYTON** (Nicholls 1938) **Each 1.50; 3 for 4.00**
A flesh colored Peony of outstanding merit. We have grown this fine Peony for the past few years and have been much impressed by it. We think you will like it sufficiently well to add it to your collection. There is a pinkish blush tone in the flower that adds to its beauty; fades white with age. Medium height, double. Late midseason.
- HANS P. SASS** (H. P. Sass 1939) **Each 1.25; 3 for 3.00**
A very large, rich satin blush-white, suffused shell-pink, illuminated with an inner glow that is indescribable with words. Must be seen to fully appreciate its beauty and refinement. Late. Double.
- HARRY F. LITTLE** (Nicholls 1933) **Each 1.25; 3 for 3.00**
Very large white with a faint blush of pink in the inner petals. When at its best a faultless flower. Awarded the Gold Medal. Late. Double.
- HENRY SASS** (H. P. Sass 1939) **Each 1.25; 3 for 3.00**
Large pure white, high built, perfect form; truly magnificent. Strong stems, healthy grower, and a free dependable bloomer every year. Late midseason. Tall. Double.
- INCA** (Nicholls 1941) **Each 1.25; 3 for 3.00**
Large, bright scarlet-rose. Double row of petals. Stamens and carpels yellow. Single.
- J. C. LEGG** (Wild & Son 1950) **Each 2.00; 3 for 5.00**
Large bomb type flower with a lovely yellow cast when first open. The flower reminds one of a large Mum with every other petal in the bomb yellow in color when first open. It is a heavy bloomer and attracts considerable attention. Collar around the bomb is white. Medium height. Midseason. Double.
- KANSAS** (Bigger 1941) **Each 5.00**
Bright red held high on one of the strongest stems in the field. The foliage is clean and dark green and the plant has always been healthy. The flower is full double with a few well hidden stamens. KANSAS makes a very good show flower as well as a good cut flower. Won best award of 1950 National Peony Show. Early. Double. Tall.
- KARL ROSENFIELD** (Rosenfield 1908) **Each 1.25; 3 for 3.00**
It seems this one has all the virtues garden lovers hope for in a flower: it is a great show, garden and cut variety. The very large rose-type bloom is a good red with just a touch of blue; the outer petals waved, the center ones incurved and notched. Very striking. Late midseason.
- KELWAYS GLORIOUS** (Kelway 1909) **Each 2.00; 3 for 5.00**
No wonder this is a variety very much in demand. It's a white with surprises built in. The depth of the flower holds a diffusion of creamy tones and occasionally there will be some crimson on the center petals. A strong, rose-like fragrance enhances the bloom, carried on strong, free-flowering stems. Early midseason. Picture on page 20.
- LA LORRAINE** (Lemoine 1901) **Each 2.00; 3 for 5.00**
One of the finest whites we have for the show table or garden planting. Cream-white when first opening, with a faint touch of salmon-pink. A very fine flower of excellent form on strong stems. A very free bloomer and always ranks among the best. Midseason. Double.
- LADY KATE** (Varies 1924) **Each 1.25; 3 for 3.00**
Without a doubt one of the best late blooming varieties. The rose-type flowers are of sparkling, almost iridescent pink, and the tall, stiff stems hold them aristocratically erect, conveying the characteristics of great grace and poise. Very late.
- LADY OF THE SNOWS** (Brethour 1938) **Each 1.50; 3 for 4.00**
From Canada comes this one with tall white guards and yellow collar. A grand Peony. Stems and foliage excellent. Midseason. Double. Tall.
- LAURA KELSEY** (Kelsey 1940) **Each 1.75; 3 for 4.50**
Very large blush-white double of wonderful substance and charming petal formation. Blooms held erect by strong stems that defy wind and driving rain. Buds sharply pointed, resemble huge rose buds. A profuse bloomer without a fault.
- LE JOUR** (Shaylor 1915) Single **Each 2.00; 3 for 5.00**
For those who love the charming landscape effect of the singles, Le Jour is something special. Two rows of long, overlapping petals form the backdrop of this large white bloom while the center holds a broad ring of golden stamens around a group of reddish carpels, tipped dark and with a pink line at their base. It is a free bloomer and always stands erect. Keeps well when cut. Tall. Early. Picture on page 16.
- LILLIAN GUMM** **Each 1.25; 3 for 3.00**
A uniform apple blossom pink with more brilliant shadings at the base of the petals. The flower is large, globular in form, rose type with broad petals and a cup center. Strong stiff stems.
- LOTTIE DAWSON REA** (John L. Rea 1939) **Each 2.50**
A very trim flower of light pink with exquisite tints. Received Honorable Mention Certificate of the A.P.S. A real cut-flower variety. Midseason. Double.
- MARIETTA SISSON** (Sass 1933) **Each 1.25; 3 for 3.00**
Light pink. Large flowers on medium to tall stems. Early mid-season. Double.
- MARILLA BEAUTY** (Kelsey 1940) **Each 2.50**
Once you've seen this bloom, you know you can't do without it. It's just one of those . . . A massive yet charming blush-white, but the blush nestles more in the center radiating lighter towards the edges. Will hold its own with the Peony elite in every show. Late.
- MARTHA BULLOCH** (Brand 1907) **Each 1.50; 3 for 4.00**
No wonder this one is a constant prize winner and has been so for nearly half a century. Strong stems hold the immense 9-12 inch flowers marvelously erect. A gorgeous display of bright old-rose pink in rose-cupped form. Delightfully fragrant, too. Late mid-season.
- MISCHIEF** (Auten 1925) **Each 1.50; 3 for 4.00**
The finest late single pink; keeps exceptionally well as a cut flower. Gracefully carried. Very vigorous.
- MONS. MARTIN CAHUZAC** (Dessert 1899) **Each 2.00; 3 for 5.00**
Our most popular dark red peony. An exciting creation in maroon shades endowed with a silky black luster that makes it one of the darkest double Peonies in existence. The petals are arranged less in ball or layer form but stand up airily and crisp — one could almost say in Parrot tulip fashion. Dark green foliage and red stems add to its unusual beauty. Free-flowering, and erectly carried on strong stems. Midseason.
- MOTHER'S DAY** (Kelsey 1936) **Each 1.25; 3 for 3.00**
This is an exceptionally fine Peony and one of the best we have seen. It is impossible to view this Peony without being greatly impressed with its beauty and stateliness. Long wiry stems and clear white charmingly shaped blooms make this an ideal cut flower. Midseason. Double.
- MRS. A. M. BRAND** (Brand 1925) **Each 2.00; 3 for 5.00**
A very large pure white flower of full rose type that keeps right on winning awards year after year because of its superb form with its center composed of broad graduated petals. And it's pleasingly fragrant as well. Late.
- MRS. FRANK BEACH** (Brand 1925) **Each 2.00; 3 for 5.00**
Rather dwarf. Large. A creamy white flower which somewhat resembles JUBILEE, but has strong stems. Late. Double.
- MRS. LIVINGSTON FARRAND** (Nicholls 1935) **Each 3.00**
Don't be surprised if visitors to your home or garden walk past many another fine flower to exclaim over this one: "What's the name of this pink?" It is indeed the purest pink yet achieved in chinensis Peonies and endowed with a delightful fragrance. Even growers consider it one of the most outstanding. Late midseason. Picture on page 16.
- MYRTLE GENTRY** (Brand 1925) **Each 2.00; 3 for 5.00**
A tall, light pink variety valued highly wherever it is grown. Its perfect rose form and teasing fragrance make it quickly a favorite. The light pink color allows tints of flesh and salmon to show through the petals which turn pure clean white in age. The dark green foliage is especially attractive. Late. Picture on page 20.
- NANCY NICHOLLS** (Nicholls 1941) **Each 2.00; 3 for 5.00**
A grand white with a pink suffusion at the center of bloom that is most artistic. This is one of the new, fine Peonies. Watch for it at the shows and you will be impressed with its beauty, which is very appealing. Won best flower of the show at the 1952 National Peony Show. Late midseason. Double.
- OTTAWA** (Kelsey 1935) **Each 1.25; 3 for 3.00**
Rich pink shading lighter at base of petals. High built crown. A very good variety but little known. Excellent. Late midseason. Double.
- QUEEN OF HAMBURG** (H. P. Sass 1937) **Each 1.25; 3 for 3.00**
A very full, bright, gleaming pink. The flower is immense, yet so perfectly formed that it is not rough or ungainly. A free, dependable bloomer with healthy, heavy, dark green foliage. Midseason. Double.
- RICHARD CARVELL** (Brand 1913) **Each 1.25; 3 for 3.00**
This large globular red has recently come more and more to the fore as its qualities have become increasingly recognized. It produces full but loose fragrant blooms that hold their color well. Tall, fine cut flower. Very early.
- ROSE SHAYLOR** (Shaylor 1920) **Each 1.25; 3 for 3.00**
A pink of a different cut: The flat, pale flesh-pink flower opens hollow in the center. While the creamy center petals are strongly marked crimson, the outer petals are lighter at the edges and shade to creamy yellow at the base. Good tall stems and foliage, and free-flowering. Midseason.
- RUTH CLAY** (Kelsey 1935) **Each \$2.50**
A rich living red that is different. Watch for this variety at the shows. It is a truly outstanding red that should be in every choice collection of Peonies. No matter how many red Peonies you have, you will find RUTH CLAY different. Early midseason. Double.

SARAH BERNHARDT (Lemoine 1906) **Each 1.25; 3 for 3.00**
In naming this rose-pink Peony a half century ago, the originator wanted not only to pay tribute to a great actress but to destine his own flower to stardom. Today, Sarah Bernhardt is still a popular florist Peony; in 1950 it won a national "Popularity Queen" contest, and it is still competing against all comers on the show tables. Not a bad record. Tall. Midseason.

SHAWNEE CHIEF (Bigger 1940) **Each 1.75; 3 for 4.50**
Dark, brilliant red. An excellent cut flower. It opens well in the field and has excellent keeping qualities if placed in storage. On well-established plants you may expect from 15 to 30 flowers. In the bud this fine red resembles a rose. Midseason. Double 30 inches.

SOUVENIR DE LOUIS BIGOT (Dessert 1933) **Each 1.25; 3 for 3.00**
A good dark rose pink, rather opaque in texture, and a fine exhibition bloom. Very effective in the garden due to the very large flower heads being carried erect on strong stems. Midseason.

THE MIGHTY MO (Wild & Son 1950) **Each 1.50; 3 for 4.00**
A rather recent fully double red of rich, velvety texture that keeps well and stands up in the garden too. For those who love to see the yellow stamens, this one has plenty. It won the American Home Achievement Medal at the National Show in 1950. Midseason.

TOURANGELLE (Dessert 1910) **Each 1.25; 3 for 3.00**
One of the most delicately colored peonies ever introduced. Though it is classed as a light pink, there are hints of pale cream white with a suffusion of tan in the depth of the flower and the freshness of the inside of a seashell in the center. Very beautiful indeed. Fragrant. Midseason.

VICTORY (Thompson 1945) **Each 2.00; 3 for 5.00**
What "Peace" is for the rose lovers, "Victory" is in the peony world. Not only that their names commemorate the end of the Second World War; there is a similarity even in qualities—the blending of colors especially which, in Victory, ranges from ivory to deep blush pink in the center, changing to pure, unspotted white in the open flower. Free-blooming, healthy foliage, good stems and a remarkable substance in the petals that guarantees long lasting quality. Late midseason.

WALTER FAXON (Richardson 1904) **Each 1.25; 3 for 3.00**
Long considered one of the best pinks, described variously as shell or rose pink, but of a vivid, luminously intensity that is unique in peonies. Good medium-high stem and foliage as well as pleasingly fragrant. Midseason.

JAPANESE PEONIES

Japanese Peonies come in many colors and hues and as plants their growth is very much like the Chinensis. They are just as hardy and the stems are strong, holding the flowers perfectly erect above the foliage. You'll never see these Peonies down in the mud after rain. The blooms on the Japanese Peonies are of very artistic effects and therefore especially valued in floral arrangements. They will last as long or longer than the full double type. The open flowers are extra widely spread as if presenting their beauty to us in flat, open bowls . . . Two or more layers of broad guard petals act as a cup to the mound center. Instead of pollen-bearing stamens, the anthers and stamens are enlarged into thick, often twisted petaloids of varied coloration, often forming a dense cushion in the center of the blossoms. The flowers are produced in unbelievable quantities one must see to believe.

ELMA (Kelsey 1936) **Each 1.50; 3 for 4.00**
Pale pink changing to white. Guards very shapely, cupped and crimped. Stamines long and yellow. The striking characteristic of this variety is the cup-shaped guard petals which retain their shape until the bloom fades and the petals fall. Very early.

FUYAJO (Origin Unknown) **Each 1.50; 3 for 4.00**
This is considered one of the five best and highest rated Japanese peonies: The guard petals as well as the center petaloids are of the same dark rich mahogany red, only that the petaloids are tipped chamois. Midseason.

ISANI GIDUI (Origin Unknown) **Each 4.00**
Certainly a most striking and said to be the most beautiful white Japanese peony. Two layers of pure white petals form the outer cup, slightly recurved at the edges, which holds within its hollow the cushion-like center of rich yellow-buff stamines. Delicate in the balance of color and form. Midseason.

MIKADO (Origin Unknown) **Each 1.50; 3 for 4.00**
Truly majestic is the impact of this flower that bears the title of the Japanese emperors. It is only fitting that it is one of the best Japanese-type reds. The crimson guard petals surround a center of chamois faced with crimson. It's vibrantly alive. Midseason.

MRS. WILDER BANCROFT (Nicholls 1935) **Each 2.00; 3 for 5.00**
Very brilliant dark red with red stamines tipped with yellow. One of the best red Japs. Early. Tall.

PRAIRIE AFIRE (Brand 1932) **Each 2.00; 3 for 5.00**
This bloom offers a fascinating combination: deep pink guard petals closing around brilliant red petaloids. When a planting of this variety is in bloom and viewed from a distance, the impression of a piece of land on fire is very real indeed. Midseason.

NEW OFFICIALS HYBRID PEONIES

A sensational new race of hybrid peonies that have delighted every one. In fact, their immediate popularity has created an ever increasing demand that production has yet to satisfy. Although easily grown and vigorous, most are slow increasers so that an abundant supply is not likely in the foreseeable future. We can spare only a few of each this year. All bloom early with the well known P. OFFICIALS.

CHERRY RED **Each 7.50**
Beautiful large cherry red double flowers. Taller than OFFICIALS. One of the strongest growers and fastest increasers of this group. About 2½ to 3 feet.

DAINTY LASS (Gloscock 1935) **Each 5.00**
A daintily formed cup-shaped bloom of soft coral pink with the yellow stamines arranged narrowly in the center. A flower of very fine qualities.

GOLDEN GLOW (Gloscock 1935) **Each 10.00**
A hybrid Peony of rare charm and distinction that is outstanding in any collection of Peonies. Stock very scarce. Blooms are cup-shaped, brilliant orange-scarlet-red, enclosing a mass of pure golden stamens. Extremely heavy and sturdy stems. Foliage rather coarse, but of a beautiful, colorful green that is attractive. A real gem and one of the first to bloom in the garden. Tall.

MAHOGANY **Each 7.50**
Mammoth single flowers of deepest red set off by brilliant golden stamens. Up to 3 feet. Very few plants.

OFFICIALS (Species) **Each 2.00**
Vivid crimson; large round bloom. Very early. Double. The ever popular "Mother's Day Piney."

ZORI **Each 7.50**
A gorgeous fantastic color we call "flame pink." If you are familiar only with ordinary peonies, you have a real surprise waiting when you see this beauty unfold its dazzling color. The picture doesn't do the flower justice colorwise. Rather dwarf, not exceeding 2 feet and a splendid grower and good increaser. If you want only one peony that is both beautiful and different, order this on our recommendation. Picture on page 17.

NIPPON BEAUTY (Auten 1927) **Each 1.25; 3 for 3.00**
A top achievement in clarity and refinement of color. The rich red petals are clearly segmented, while the red in the center petaloids is set off by deep yellow. A very handsome variety. Late.

NIPPON BRILLIANT (Auten 1933) **Each 2.00; 3 for 5.00**
Our favorite red Japanese peony. Flower people are remarkably truthful about their favorites even if at times maybe carried away a bit by their enthusiasm. In this case the truth is that Nippon Brilliant is and deserves to be in the top class of the red Japanese peonies and the yellow markings in the flower make the red appear only more brilliant. Late.

WATERLILY (Marx 1957) **Each 10.00**
As the waterlilies on the dark surface of a pond seem to hold in the hollow of their bloom an image of all the summer's beauty, so this new Japanese type Peony appears to hold up to us in the white transparent chalice of its petals a reflection of sunlight so vivid, you can almost see it dance. The stamines in the bowl of the blossom, unusually arranged in something like informal dahlia fashion, are of a warm cream hue deepening to soft gold in the center, so as to give the effect of intense light emanating from the depth of the flower. The medium high bush with its handsome dark green foliage is a rugged, disease-free grower and very prolific in the production of blooms. 3 feet. Picture on page 17.

WESTERNER (Bigger 1942) **Each 5.00**
With all their oriental splendor, there is a certain balanced quality in the showiest of the Japanese peonies. In this variety, however, we have a true blending of Eastern love of color with the all-over Western idea of display. The very large guard petals form a gracefully poised pink cup filled to the brim with yellow stamines that are extremely stiff and erect. You'll love it. Midseason.



KELWAYS GLORIOUS see page 18

"KISSIN' COUSIN"
HELLEBORUS
 PAGE 22



GREEN HELLEBORUS see page 2



FESTIVA MAXIMA
 see page 15

**5 MAMMOTH FLOWERING
 PEONIES**

5 DIFFERENT COLORS

Collection P-20

- | | |
|------------------|-----------------------|
| KELWAYS GLORIOUS | MYRTLE GENTRY |
| AUGUSTE DESSERT | THE MIGHTY MO |
| FESTIVA MAXIMA | (Rich red) not illus. |

(Catalog value \$8.00) for only **\$6.95**



AUGUSTE DESSERT
 see page 15

WATERLOO, IA.

*Received my order
 last Thursday in good
 condition. Thanks
 very much for the
 extra bulbs. Catalog
 just received today.
 Thanks again.*

Mrs. Geo. E. Herman



MYRTLE GENTRY see page 18

ORIENTAL POPPIES *titans among perennials*

CHEERIO
see page 22

BETTY ANN
see page 22

BURGUNDY
see page 22

EMPERESS OF INDIA
see page 22

WATERMELON
see page 22

For sheer brilliance and gargantuan floral proportions no other perennial can match Oriental Poppies. The new shades of rose, salmon, lavender and mahogany in addition to the flaming reds and clear pinks have increased their popularity tremendously. They simply dominate any part of the garden selected for them. Planted singly or in groups they are most effective. May and June are Poppy time when the giant flowers on towering stems will be a main attraction in your garden.

MATURE COLLECTION

(Catalog value \$4.20)

Collection P-21

ALL FOUR for \$4.20

- BETTY ANN
- CHEERIO
- WATERMELON
- EMPERESS OF INDIA



PEERLESS COLLECTION

PB-21

- LAVENDER GIANT
- LUCKY
- MASTER RICHARD
- PANDORA

(Cat. value \$8.50)

for \$7.50

PINNACLE
see page 22

CLAUDE FOX
see page 22



ORIENTAL POPPIES TITANS among perennials

5 NEW BAUMGARDNER INTRODUCTIONS

ADORABLE

Each 5.00

Fully double light pink with 36 petals on well established plants. Same shade of pink as in CHEERIO, which is one of its grandparents. Inner petals are narrow with black spear shaped basal spots. Inner petals are generally whorled like a pin wheel but not always. Whorling depends on weather. Fine stiff straight stems. About 3 feet high and blooms after midseason. Blooms about 7 inches in diameter. A beautiful poppy and the finest pink double poppy we have seen to date.

DOUBLOON

Each 5.00

Fully double clear orange without any basal spots. Blooms are always fully double with about 45 wide petals. Extra strong tall grower about 3½ feet high with fine stiff, straight stems. Blooms 7 to 8 inches across and plants are very free blooming. Very early and one of the first to bloom.

CULTURE: *Poppies may be planted any time from August on throughout the fall months with good results. They do well in either full sun or part shade. Any average garden soil is satisfactory and the plants, once established, will increase in size and produce more flowers for many years. If planted in groups space them at least 2 feet apart.*

SHIPMENT: Fall, beginning about August 15th.

BETTY ANN

Each .85; 3 for 2.25

Just about the loveliest pure pink poppy. Color is beautiful La France pink without basal spots. Medium large flowers on strong stems are produced over a long period. Picture on page 21.

BURGUNDY (Baum. '56)

Each 3.00

A deep wine or maroon red poppy appearing almost purple at times. A definite advance in its class and the finest color fast dark poppy we have yet seen. Flowers last and hold their color for days even during warmest weather. Early to midseason. 3 feet. Picture on page 21.

CHEERIO

Each 1.00; 3 for 2.50

No poppy collection is complete without Cheerio. The large shell pink flowers are distinguished by glowing cherry red basal spots in place of the usual black. Picture on page 21.

CLAUDE FOX

Each .85; 3 for 2.25

The deepest red poppy we have seen. Dark crimson flowers practically cover an established clump when in full bloom. Medium size and height. Picture on page 21.

CURTIS GIANT FLAME

Each 1.00

Generally rated as the largest of all poppies. Established plants produce mammoth flowers up to 11 inches across. Flaming red flowers. Carried on heavy 4 foot stems.

CURTIS GIANT SALMON PINK

Each .85; 3 for 2.25

Considered to be the finest salmon pink variety. Large flowers on heavy 3½-ft. stems.

EMPRESS OF INDIA

Each 1.50; 3 for 3.50

The top ranking red poppy. Visitors in our garden invariably select this when searching for the best red. Color is vivid deep scarlet without a trace of orange. Picture, page 21.

GLOWING ROSE

Each 1.00; 3 for 2.50

Beautiful deep rose pink and one of the very first to bloom. Big flowers on tall heavy stems. A recent Curtis introduction.

JOHN III

Each .85; 3 for 2.25

Medium coral red flowers on dwarf stems 20 inches high. We are exceptionally fond of this low growing poppy as the plants develop into neat compact bushes that are literally covered with blooms in May or June. This dwarf never requires staking.

VALENCIA

Each 5.00

Very large clear orange without any spots or marks on it. Blooms are very large, 9 to 10 inches and petals are incurved at the tips, giving the big blooms more of a goblet shape. Plants are exceptionally tall, strong growers about 3½ feet and stems are perfect. Blooms have wax like substance and are good keepers and never burn in hot sun like older varieties of this color. Midseason.

EUREKA

Each 5.00

Exceptionally fine clear pink with perfect growing habits. Grows about 3½ feet with stiff stems and blooms very late, coming into flower when all other poppies are gone. Blooms are of good size—about 8 to 9 inches. Our choice of all light pink poppies.

PRINCE CHARMING

Each 5.00

A beautiful seedling from MASTER RICHARD which is one of its parents. Blooms are much deeper in color and are an entirely new color in poppies. Color might be described as Fuchsia rose. Flowers are very large, very free blooming and plant growth is even better than MASTER RICHARD. 3½ feet. You couldn't ask for better growing habits. Midseason.

LAVENDER GIANT (Baum. '55)

Each 1.50

A titan among giant poppies with the largest flowers of any in this color class. Flowers are pinkish lavender with just a hint of blue which fades away as the flower ages. We have measured 11 in. blooms on 4 ft. stems. Fades somewhat in hot weather. Midseason.

LAVENDER GLORY (Baum. '57)

Each 5.00

Most striking, mammoth flowers of deep lavender with large, black basal spots. In fact the overwhelming 12 inch blooms on 3½ foot stems seem to dominate all others. Absolutely color fast and does not fade in hottest weather. Add excellent growing habits with neat foliage, stiff upright stems and we have here the finest poppy of this color.

LUCKY (Baum. '57)

Each 3.00

Another bewitching bicolor but here the large, cup shaped, white flowers are edged clear orange in place of red or pink. Also the border is extremely narrow rarely exceeding ¼ inch. The big flowers come on stiff 3½ foot stems and like their ancestor, SNOWFLAME, all three exciting colors possess amazing substance and texture.

MARY JANE MILLER

Each .85; 3 for 2.25

Extra large Geranium pink with huge black basal spots. Rated by many poppy fanciers as the finest Neeley introduction. Very early and a great favorite with visitors.

MASTER RICHARD (Baum. '54)

Each 2.00

An absolute deep coral pink self near Geranium (Maerz & Paul) with no trace of orange. Immense 11 inch flowers of perfect form and unbelievable substance. Towering stems up to 5 feet.

MAY CURTIS

Each 1.50

One of the finest poppies introduced by Mr. Curtis. Quite distinct from other reds the color is glowing deep rose red. Flowers on tall stiff stems up to 4 ft. Midseason.

NORTH DAKOTA GOLD

Each .85; 3 for 2.25

Nearest approach to yellow and the best of this color. Clear orange flowers of medium size are produced in copious quantities on 2 ft. stems. Flowers appear the second year.

PANDORA (Baum. '56)

Each 2.00

Mammoth flowers of luminous salmon pink with vivid blood red basal spots. Flowers almost twice as large as Cherrio and of much brighter color. Of wonderful substance and splendid texture. The very last to bloom in the garden on tall 4 ft. stems.

PINK CORAL

Each 1.50; 3 for 4.00

The name describes this poppy well. The clear coral shade of lacquered finish without any trace of basal spots to mar the solid color presents a glorious new poppy unlike any other. Large, well formed flowers on stems of medium height.

PINNACLE (Baum. '57)

Each 5.00

Exhibited for the first time last year and it really stole the show. A SNOWFLAME descendant of unusual beauty that will surely delight the most critical poppy collector. The illustration on page 21 gives a fair idea of the enchanting white and scarlet color pattern. Large ruffled flowers borne on 3 to 3½ foot stems. Late.

RASPBERRY QUEEN

Each 1.50; 3 for 4.00

Well named, the immense blooms on tall stiff stems are the color of crushed black raspberries. Plant in partial shade as this color fades badly when exposed to the hottest sun. No variety attracted more attention here last year. Midseason.

RED CRINKLES (Curtis)

Each 1.00

New deep red of medium size and height. The heavily crimped flower intensifies the color and the petals fairly glitter. A strong grower and profuse bloomer.

ROYAL ROBE (Baum. '56)

Each 3.00

A new red poppy that is truly DIFFERENT. There are many red shades in Oriental Poppies but none quite like this brilliant rose red beauty. Poppy critics have described it as a new color. In addition the huge perfectly molded flowers are carried on straight stiff stems. Midseason to late. 3 ft.

SASS PINK

Each .85

Immense clear pink a little deeper than Betty Ann. Large black basal spots. Robust grower. Midseason.

WATERMELON

Each .85; 3 for 2.25

This lovely poppy fascinates everyone. Color is watermelon pink and is a few shades deeper than Wunderkind. The large flowers are borne in generous numbers on stiff stems. A poppy of breath-taking beauty. Picture on page 21.

WHITE QUEEN

Each 1.00; 3 for 2.50

Large white flowers with satin like finish and deep purple basal spots. Many blooms are produced on strong stems of medium height. One of the best whites.

TULIPS for Lavish Spring Color

For gaiety of color in the spring garden the tulips have no equals. Whether it be accent that is wanted or mass display, tulips serve the modest as well as the lavish designs for landscaping with color. And, in addition, the new modern hybrids are something to behold in size and height, shape of bloom and ever new stunning creations of combinations and blends of hues ranging through the spectrum in a sweeping triumph of tulip splendor.

PARROT TULIPS

The tall, gorgeous Parrots are foremost today in tulip popularity. With their gay feathering of contrasting colors, their large yet artistically modeled flowers picturesquely cut, waved and lacinated, they appeal to the fancy of us all. And they are equally stunning in bouquets.

ADMIRAL DOORMAN 3 for .75; 6 for 1.40; 12 for 2.25
A fine cherry red Parrot bloom of enormous size edged golden yellow. Strong, erect stems.

BLACK PARROT 3 for .50; 6 for .85; 12 for 1.50
A flower you'll be proud to display. Glossy black bloom on good, strong stems. Truly unique and exotic.

BLUE PARROT 3 for .65; 6 for 1.20; 12 for 1.95
Huge bluish heliotrope flowers flushed steel blue with deeply lacinated edges and large, artistic petals. Magnificent in display with yellow flowered plants. Picture on page 24.

FANTASY 3 for .60; 6 for 1.00; 12 for 1.75
The tulip that put the Parrots on the map. A gorgeous pink shaded deep velvety rose with featherings of apple green on the outside, and simply enormous in size. A real eye catcher, and free flowering too. Picture on page 24.

FARADAY 3 for .60; 6 for 1.00; 12 for 1.75
The experts call it an X-ray sport of Fantasy—a large charming white with salmon pink markings. Early. Medium high.

GADELAN 3 for .75; 6 for 1.40; 12 for 2.50
A sensational flower resembling Cattleya orchid in color and shape with a blending of blues and purple, edged white and blue-green markings. Striking also is the inside of the cup—a white center on bright violet with black anthers. Often up to 7 inches across.

IVORY PARROT Each 1.00; 3 for 2.75; 6 for 5.00
Good-sized flowers of a very outstanding shade of ivory with a yellow base and fairly heavily lacinated petals. Definitely unique.

MOORE'S FOLLY 3 for 1.50; 6 for 2.75; 12 for 5.00
One of the most sensational new Parrot tulips. The vivid orange-edged yellow combination is unrivaled by anything else. Very hardy.

ORANGE FAVORITE 3 for .60; 6 for 1.00; 12 for 1.75
For magnificence of form and brilliance of color, this is a find: deep orange shaded rose outside with featherings of apple green; inside orange scarlet with yellow base. And how it glistens! 23 inches.

PIERSON PARROT 3 for .60; 6 for 1.00; 12 for 1.75
Outstanding dark red—an exceptionally large flower with good lasting qualities carried on a good, strong stem.

PINK CHAMPION 3 for .60; 6 for 1.00; 12 for 1.75
Beautiful deep pink with white base. Large, long lasting flowers. Medium height.

TEXAS GOLD 3 for .60; 6 for 1.00; 12 for 1.75
Excellent, wide flowers of bright golden yellow, beautifully lacinated, picoté in red and feathered green. Borne on stiff 24-inch stems. Picture on page 24.

THERESE 3 for .65; 6 for 1.20; 12 for 1.95
Eight-inch flowers of bright cherry-scarlet with green markings and white base, and of exquisite design. On tall, firm stems. Picture on page 24.

EARLY TULIPS

BEL AMI 3 for 1.00; 6 for 1.75; 12 for 3.00
Extra large beautiful deep rose shading to a white base. Taller than most early varieties. Midseason.

COLEUR CARDINAL 3 for .65; 6 for 1.20; 12 for 1.95
Brilliant crimson, slightly dewed outside. Grand variety for late forcing and bedding.

GARDEN PARTY 3 for .75; 6 for 1.40; 12 for 2.25
A beautiful strong tulip of medium height. White edged glowing carmine with white base. Large flowers.

KEIZERSKROON 3 for .65; 6 for 1.20; 12 for 1.95
This most popular early tulip is surely one of the gayest and most colorful of all. Planted in groups or beds the color effect is exceedingly showy and eye catching. Large flowers on higher stems than most Single Early Varieties. Picture on page 25.

LIMOSA 3 for .75; 6 for 1.40; 12 for 2.25
Finest light yellow of the Early varieties. Quite distinct from all others. 15 inches.

PINK PERFECTION 3 for .65; 6 for 1.20; 12 for 1.95
Most exquisite white flushed pink of largest size. Extremely long lasting and still in good flower when the Darwins start blooming. 15 inches.

LILY-FLOWERING TULIPS

The delicately curved and reflexed petals of these beautiful flowers provide an elegance and charm that make them most suitable as cut flowers. They bloom at about the same time as the Cottage Tulips and delight the tulip fancier with their delicate fragrance.

CAPTAIN FRYATT 3 for .75; 6 for 1.40; 12 for 2.25
Large pointed flowers of garnet red. Blooms midseason on medium tall stems.

FIRELILY 3 for .75; 6 for 1.40; 12 for 2.25
Most brilliant scarlet red of perfect form. 24 inches.

GOLDEN DUCHESS 3 for .75; 6 for 1.40; 12 for 2.25
Long, delicately pointed flowers give this tulip an air of great refinement. The deep, golden yellow bloom is balanced prettily atop a strong 23 inch stem.

MARIETTE 3 for .75; 6 for 1.40; 12 for 2.25
Large pure rose pink fully twice as large as the earlier variety SIRENE. 28 inches.

QUEEN OF SHEBA 3 for .75; 6 for 1.40; 12 for 2.25
A large flowering tulip of glowing copper red, edged in orange. Most striking color combination and blooms ahead of the other giant lily flowered varieties.

SCARLET FLAME 3 for .75; 6 for 1.40; 12 for 2.25
Fiery red with exteriors shaded deeper red. A real eye catcher.

WHITE DUCHESS 3 for .50; 6 for .85; 12 for 1.50
A tulip with outstanding large snow white blooms, the petals elegantly fringed for a most pleasing appearance. Strong stems 25 inches in height.

WHITE ENSIGN 3 for .75; 6 for 1.40; 12 for 2.25
Charming cream white with yellow anthers. Flowers turn white with age.

PEACOCK TULIPS

Elegant decorative foliage as well as the most colorful flowers in the tulip world.

KAUFMANNIANA HYBRIDS 3 for 1.00; 6 for 1.75; 12 for 3.00
As spectacular as their name indicates, the colors being many and varied. This fine mixture is grown from Greigi x Kaufmanniana in many different forms and color patterns. Their mottled foliage and vigorous habits have made them very popular for rock gardens and borders. Available in mixed colors only. Picture, page 24.

(Tulips Continued on Page 26)

BELLEVUE, WASHINGTON

I wish to express my appreciation for the very fine manner in which you wrap and ship your plants. Everything arrived in fine shape and we look forward to these fine additions to our garden this year.

Your catalog is most interesting and makes the TV take second place for the evening entertainment as you can see by the enclosed order.

Wallace M. Hibbard

TULIPS..

THERESE
see page 23

FANTASY
see page 23

TEXAS GOLD
see page 23

BLUE PARROT
see page 23

MIXED PARROT TULIPS

BOTANICAL TULIP COLLECTION

TB-24-25

3 each of

CLUSIANA, RED EMPEROR, PEACOCK
AND PRAESTAN'S FUSILIER
all pictured here

(Catalog value \$3.35) for **\$3.00**

FOSTERIANA RED EMPEROR see page 26

GOLDEN AGE
see page 26

GEORGE S. GRAPPE
see page 26

NIPHETOS
see page 26

SCARLET
SENSATION
see page 26

PRIDE OF HAARLEM
see page 26

MIXED DARWIN TULIPS
see page 23
see page 26

KAUFMANNIANA HYBRIDS see page 23



for Spring Landscaping

UNCLE TOM
see page 26



EROS
see page 26



PRIDE OF ZWANENBURG
see page 26

KEIZERSKROON
see page 23

CLUSIANA see page 26

Collection T-24-25

48 TOP SIZE BULBS

- 12 PARROTS — 3 each of FANTASY, TEXAS GOLD, THERESE AND BLUE PARROT.
- 18 DARWINS — 3 each of GOLDEN AGE, GEO. GRAPPE, SCARLET SENSATION, PRIDE OF HAARLEM, PRIDE OF ZWANENBERG AND NIPHETOS.
- 6 DOUBLES — 3 each of EROS AND UNCLE TOM.
- 9 EARLIES — 3 each of BEL AMI, KEIZERSKROON AND PINK PERFECTION.
- 3 GIANT LILY FLOWERING — QUEEN OF SHEBA.

(Catalog value \$10.30) for

TULIP PLANTING SCENE AT WALTER MARX GARDENS

Left hand bed, front to rear: Queen of Sheba, copper red with orange trim; Rosy Wings, pink; Sweet Harmony, cream; Queen of the Night, dark purple; Golden Age, dark yellow; Mt. Erebus, white.
Right hand bed, front to rear: Pink Perfection; Bel Ami.



SPECIE TULIPS

Originally developed from wild flowering varieties, the so-called Botanical or Specie Tulips are full of surprises. They range from the most dainty forms and colors to the bold and vivid in size, form and color.

CLUSIANA (The Lady Tulip) 3 for .75; 6 for 1.40; 12 for 2.25
Outer petals cherry red, inner petals white. Blooms in April. Height 8 inches. Picture on page 25.

FOSTERIANA RED EMPEROR 3 for .60; 6 for 1.00; 12 for 1.75
It is hard to decide what is more stunning in this Specie tulip, the magnificence of its immense size or its striking, jubilant colors. The base is black bordered yellow setting off to perfection the blazing orange-vermilion-scarlet of the flower itself. Early bloomer, vigorous grower, on erect 22-inch stem. A tulip no one can overlook. Picture on page 24.

PRÆSTANS FUSILIER 3 for 1.00; 6 for 1.75; 12 for 3.00
This is not the old but an improved *Tulipa Præstans*, with intense scarlet orange flowers. Every stem carries 4 or 5 neatly arranged flowers. A most delightful variety for the rock garden or in small groups.

FOSTERIANA PRINCEPS 3 for .75; 6 for 1.40; 12 for 2.25
Orange-scarlet. Just as big as Red Emperor but just half as tall. Blooms in April. Height 10 inches.

DARWIN and COTTAGE TULIPS

Characterized by their tall, erect stems, globular flowers and bright uniform color, the Darwins are the best known of the late, long-stemmed tulips. Whether in large, formal plantings or informal groups, interplanted perhaps with low growing perennials, or used as cut flowers, they are a beautiful sight — and long lasting, too. Best about middle of May.

GEORGE S. GRAPPE (Darwin) 3 for .65; 6 for 1.20; 12 for 1.95
Deep lavender mauve. Very large flowers on tall 28 inch stems. Picture on page 24.

GOLDEN AGE (Darwin) 3 for .65; 6 for 1.20; 12 for 1.95
You can't overlook it: a perfect golden yellow bloom of intense brilliance on a stiff, tall stem. 29 inches.

MT. EREBUS (Cottage) 3 for .75; 6 for 1.40; 12 for 2.25
Finest white garden tulip of great beauty especially valued for its lasting quality. Very stately. 28 inches.

NIPHETOS (Darwin) 3 for .50; 6 for .85; 12 for 1.50
Perfection in form and color is this soft yellow, near ivory tulip. Reflexed petals add to its grace. Good erect stems and great lasting quality. Picture on page 24.

PAPAGO (Breeder) 3 for .65; 6 for 1.20; 12 for 1.95
A flamboyant late flowering tulip of poppy-red with a yellow base. One of the most attractive breeders.

PRIDE OF HAARLEM (Darwin) 3 for .50; 6 for .85; 12 for 1.50
An older variety still in heavy demand because of its large size; tall, strong stems and rich rose carmine color. Quite early. Picture on page 24.

PRIDE OF ZWANENBURG (Darwin) 3 for .50; 6 for .85; 12 for 1.50
Clings to its reputation of being one of the finest tulips yet introduced. The salmon pink flower is huge, long lasting, on tall, strong stems of fully 32 inches. Picture on page 24.

PRINCESS MARGARET ROSE (Cottage) 3 for .50; 6 for .85; 12 for 1.50
Large soft yellow with orange red border. A beautiful sport of Inglescombe yellow.

QUEEN OF THE NIGHT (Darwin) 3 for .50; 6 for .85; 12 for 1.50
Many consider it the best "black" tulip. It is definitely one of the darkest ever introduced, and creates beautiful contrasts when used with other tulips.

ROSY WINGS (Cottage) 3 for .60; 6 for 1.00; 12 for 1.75
Purest radiant pink with white base. 24 inches.

SCARLET SENSATION (Darwin) 3 for .65; 6 for 1.20; 12 for 1.95
For intensity of color this is perhaps the most brilliant of the deep scarlet red tulips. Every garden should have it. Picture on page 24.

SMILING QUEEN (Cottage) 3 for .65; 6 for 1.20; 12 for 1.95
Soft satiny pink with a glint of silver at the edges of the petals. The large pure white base heightens the lovely clear pink effect. A beauty on 30-inch stems.

SWEET HARMONY (Darwin) 3 for .75; 6 for 1.40; 12 for 2.25
If you want something different in tulips then try this enchanting variety. Color is clear lemon yellow edged ivory white. Large flower and late.



Lily Flowered Tulips

DOUBLE or PEONY FLOWERING TULIPS

Extremely showy for bedding or planting in groups in the border or among evergreens and shrubs are these massive peony-like flowers. They come in bright, rich colors and the flowers are held erect on tall strong stems.

COXA 3 for .65; 6 for 1.20; 12 for 1.95
This most colorful and unique tulip attracts everyone. The carmine red flowers display a narrow white border. 15 inches.

EROS 3 for .65; 6 for 1.20; 12 for 1.95
Large flower of clear old-rose — sure to cause considerable comment with its peony like resemblance. A very good double growing to a height of 20 inches. Picture on page 25.

GRAND NATIONAL 3 for 1.00; 6 for 1.75; 12 for 3.00
Immense fully double that opens light yellow and gradually fades to ivory white. For a most delightful garden display plant this with LILAC QUEEN. Very long lasting and truly one of the most beautiful double varieties. Taller than other doubles. 24 inches.

LILAC QUEEN 3 for .75; 6 for 1.40; 12 for 2.25
Purest light violet self and the best of this color. Blooms with GRAND NATIONAL and perfect companion planting.

MT. YACOMA 3 for .65; 6 for 1.20; 12 for 1.95
Magnificent giant double white tulip — resembles a peony in full bloom. Grows to a height of 18 inches and is very much in demand for border plantings.

MYTH 3 for .75; 6 for 1.40; 12 for 2.25
A most interesting novelty and the most intriguing blending of colors — red, pink and gold. There is no other double like it. Rather late.

ORANGE TRIUMPH 3 for .50; 6 for .85; 12 for 1.50
Brownish glowing orange with yellow margin. The color pattern is similar to but not as brilliant as that of the Parrot variety, MOORE'S FOLLY.

RED ACE 3 for 1.00; 6 for 1.75; 12 for 3.00
Without question the finest and most brilliant red double variety. The glowing velvety scarlet flowers are perfect in every way.

UNCLE TOM 3 for .65; 6 for 1.20; 12 for 1.95
Tulips of beautiful deep glowing red. A blackish sheen adds a uniquely novel shading effect. Blooms are large and fully double on strong 22-inch stems. Picture on page 25.

VAN LIMBURG STIRUM 3 for .65; 6 for 1.20; 12 for 1.95
Large crimson red, base white and yellow. Fully double, extra early and dwarf.

Daffodils... world's finest introductions

From over 250 of the most recent introductions we selected the following varieties as the cream of the crop. Every one is a champion and quite distinct from any of the others offered. We sincerely believe you will be most highly delighted with any of them. All show big improvement over the older varieties.

<p>DAFFODIL KEY</p> <p>1 Trumpet Daffodils a) yellow b) bicolor c) white d) others</p> <p>2 Large-Cupped Daffodils a) yellow, cup colored b) white, cup colored c) white, cup white d) others</p>	<p>3 Short-Cupped Daffodils a) yellow, cup colored b) white, cup colored c) white, cup white d) others</p> <p>4 Doubles</p> <p>5 Triandrus Hybrids a) large-cupped, b) short-cupped</p>
--	--

<p>6 Cyclamineus Hybrids a) large-cupped b) short-cupped</p> <p>7 Jonquilla Hybrids a) large-cupped b) short-cupped</p> <p>8 Tazetta (Bunch-flowered)</p> <p>9 Poeticus</p> <p>10 Species & wild forms</p> <p>11 All others</p>

DAFFODILS SHOULD BE PLANTED IN THE FALL

They are not available for spring planting.

ADA FINCH 1c Each .50; 3 for 1.25; 12 for 4.00

One of the earliest Daffodils to flower. The overlapping perianth of pure white and large, white trumpet with overlapping and rolled rim are carried on tall stiff stem.

ALAMEIN 2a Each 2.50; 3 for \$7.00; 12 for 25.00

Smooth, broad, flat perianth segments of clear golden yellow with slightly pointed tips. Medium sized cup is rather straight, well frilled and intense orange-red. Tall, strong-stemmed, vigorous plant.

APRIL SHOWERS 3c Each 1.00; 3 for 2.50; 12 for 10.00

This is a lovely pure white, short-cupped daffodil with a large, broad perianth and a rather flat, expanded cup that opens lemon-yellow and bleaches to pure white. The attractive, large pure white flowers, carried on long stems, give distinction to the plant.

AZALEA 2b Each 1.50; 3 for 4.00; 12 for 15.00

A late-season pink daffodil with flat and well-rounded perianth of good substance. The flared cup is a deep pink which pales as flower ages except for stronger pink coloring in the rim.

BACKHOUSE GIANT 2a Each 1.00; 3 for 2.50; 12 for 10.00

Dark yellow perianth, red trumpet as near "The Red Trumpet" as has been reached. Giant flowers with the charming form of FEBRUARY GOLD. A.M.H. 1948.

BINKIE 2d Each 1.50; 3 for 4.00; 25 for 15.00

An attractive reverse-bicolor, garden and show plant. The perianth is lemon-yellow and the large, flaring cup a pale lemon to almost pure ivory.

BROUGHSHANE 1c Each 2.50; 3 for 7.00; 12 for 25.00

The flanged and frilled trumpet of this white giant balances perfectly with the immense perianth which is 5½ inches in diameter, the outer segments being up to 2¼ inches wide. Vigorous plant with stems over two feet high.

BRUNSWICK 2b Each 1.20; 3 for 3.25; 12 for 12.00

Flower of good form, balance and proportion, well poised on a tall strong graceful stem. Well modeled, flat, clean-cut, pure white perianth of very firm texture and a perfectly balanced crown that is nicely flanged and frilled. Clear icy white in the base, gradually shading up to sharp very green lemon at brim. Extraordinary lasting power.

CALIFORNIA GOLD 2a Each 1.00; 3 for 2.50; 12 for 10.00

An outstanding yellow and red flower. The perianth is like a deep gold saucer while the cup is a well proportioned, deep, rich orange-red. Strong grower with stiff stems.

C. E. BAILEY 2b Each 1.20; 3 for 3.25; 12 for 12.00

This very late-flowering daffodil is a charming pink. The perianth is ivory-white. The cup has an ivory-yellow outside and a rich cream inside broadly rimmed with pure rose.

CHINESE WHITE 3c Each 2.50; 3 for 7.00; 12 for 25.00

A large pure white flower accented with a faint touch of green in the eye. A circular perianth 4¼ inches in diameter and a shallow fluted saucer are characteristics that make this a superb show flower.

CIRCUS CLOWN 2b Each 1.50; 3 for 4.00; 12 for 15.00

A tall, midseason, free-flowering plant with a pure white, substantial perianth that is slightly cupped forward. The cup is quite unusual in coloring and form, for it is striped white and orange and has a really double John Evelyn-type ruffle. More of a curiosity than a show-flower, it does present a gay and colorful picture in the garden.

CONCERTO 2b Each 2.50; 3 for 7.00; 12 for 25.00

A very early daffodil with large flowers. The trumpet of ivory with a flanged and ruffled mouth is backed up by a flat white perianth with pointed petals.

COVER GIRL 2b Each 2.50; 3 for 7.00; Each 25.00

A dainty little daffodil blooming very late with a cup of iridescent pink, darkest at the delicately fringed rim, and a white, slightly waved perianth.

DARING 2b Each 1.00; 3 for 2.50; 12 for 10.00

A rather small, but deeply pink daffodil that has great charm. The perianth is white with pointed, slightly cupped petals. The trumpet opens a salmon shade but turns to deep pink with an even darker edge, which is slightly lacinated and ruffled.

DUKE OF WINDSOR 2b 3 for 1.50; 6 for 2.75; 12 for 5.00

Broad, white, overlapping perianth and large, short and flaring yellow cup. We have only a small stock of this variety.

FORTUNE'S CREST 2a 3 for 1.25; 6 for 2.00; 12 for 3.75

Good yellow perianth and deepest solid red cup of any flower yet raised from Fortune.

GRAPEFRUIT 1a Each 2.00; 3 for 5.50; 12 for 20.00

A large, well proportioned daffodil with novel coloring. The flower opens a cool, uniform lemon-green, but turns to almost true ivory as it ages.

GREMLIN 2b Each 1.50; 3 for 4.00; 12 for 15.00

A late, attractive little plant with white, star shaped perianth and cylindrical, small, fluted and slightly fringed cup, opening yellow then turning to buff and finally developing an attractive, strongly rose-colored rim. Not spectacular, but a lovely garden plant.

HUNTER'S MOON 1a Each 2.50; 3 for 7.00; 12 for 25.00

A perfectly lovely trumpet arrayed in graded tints of clear, shining, luminous lemon, perhaps most intense at the outer edge of the beautifully flanged and serrated trumpet and paler at the edge of the petals. Grand flower for cutting. Vigorous and free blooming; extraordinarily durable and a most beautiful garden plant. A.M. 1943.

INDISCREET 1b Each 4.00

A midseason pink trumpet daffodil. The perianth is white, slightly waved and semi-rounded. The trumpet is a startling lingerie-pink and the rim is nicely fringed. A small plant but of remarkable intensity of color.

(Daffodils Continued on Page 30)

TOP FLIGHT DAFFODIL COLLECTION D-27

Ten of the World's Finest Daffodils offered here for just a fraction of what they would have cost only two years ago. Each one is a leader in its class, sure to stand out in any daffodil collection. Top size double nose bulbs.

APRIL SHOWERS	FORTUNE'S CREST
BINKIE	POLAR STAR
CALIFORNIA GOLD	POMONA
C. E. BAILEY	PROMISSO
DUKE OF WINDSOR	RIOTOUS

Collection Price **\$10.00**

(Catalog value \$12.15)

3 of each above collection \$25.00



See page 30 for key to
Daffodils illustrated

COLCHICUM
BORNMUELLERI
see page 31



fall blooming COLCHICUMS

Colchicum resemble extra large and vigorous Crocus, and bring a touch of spring-like beauty to the garden in late summer and fall. A display of Colchicum flowers after the first rains of fall is a very refreshing sight.

HERMISTON, OREGON

The BORNMUELLERI is growing and blooming and is really beautiful. I let it come to flower in the house—just to see what it would do—and now it is in the garden and the color is lovely. The Giant gift bulb is also very lovely, as are the smaller crocus. I am very happy with my order.

Mathilda Russell

NEW GIANT
HYBRID
COLCHICUM
see page 31



dwarf hardy CYCLAMEN

Sprightly little flowers for the partly shaded garden, very like refined miniatures of the florist's cyclamen. The pert and charming blooms, interesting foliage, curiously coiled seed stems combine in one of the most interesting personalities of the flower world.



CYCLAMEN
NEAPOLITANUM
see page 31

Colchicums Shipped During
Late Summer Months

IRIS TUBEROSA

RARE BULB IRIS

GREEN AND BLACK IRIS
(IRIS TUBEROSA)

3 for .65; 6 for 1.20; 12 for 2.00

Unusual flowers of apple green with velvety purple black blotch on fall. 6 inches. We sold more bulbs of Iris

Tuberosa than any other bulb iris last year. In fact, we didn't have nearly enough to go around.



STELLAR
DAFFODIL
MIXTURE

Collection D-28

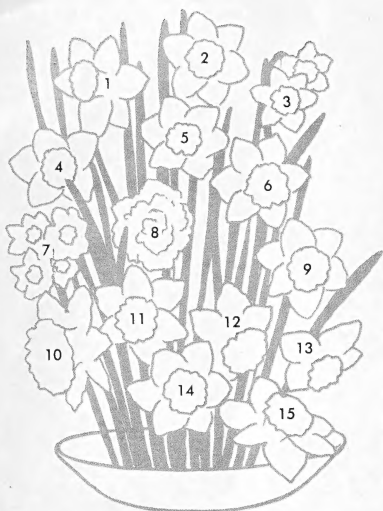
Our own special handmade mixture of all types including many of the new pink Leedsii as well as some of the delightful Triandrus Hybrids. These superior selections are not to be compared with the general run of cheap mixtures offered by the trade. For those who desire some fine daffodils but need quantity rather than a few named varieties, this is truly our biggest daffodil value.

25 BULBS
\$3.75

50 BULBS
\$6.95

100 BULBS
\$12.50

DAFFODILS SHOULD BE
PLANTED IN THE FALL
they are NOT available
for Spring Planting



See color illustration on page 28

DAFFODILS — Continued

INGLESKOMBE 4 **3 for 1.00; 6 for 1.85; 12 for 3.50**
Nice, pure yellow, fully double that might be called a yellow "The Pearl."

KANDAHAR 1a **Each 1.50; 3 for 4.00; 12 for 15.00**
A gorgeous and most striking giant trumpet of immense size, great substance, and pure, deep, solid, self-gold color; immense vase-shaped trumpet and widespread perianth; very tall and strong.

KRAKATOA 2a **Each 3.00; 3 for 7.00; 12 for 25.00**
An immense flower with broad, overlapping golden yellow perianth. The expanded cup is bright, flame orange-red. Flowers freely.

LIMERICK 3b **Each 2.50; 3 for 7.00; 12 for 25.00**
Pure white perianth, cherry red crown. A most beautiful brilliant flower, and a great improvement on Hades.

MABEL TAYLOR 2b **Each 2.50; 3 for 7.00; 12 for 25.00**
Large flowers blooming in midseason, tall, stiff stems. Cream-colored perianth and large expanded cup of soft yellow with a broad rose-pink, nicely frilled rim.

MAGIC PINK 1b **Each 5.00**
One of our very best late midseason pinks. The perianth is white, well-pointed and substantial. The trumpet is long and heavily frilled at the mouth, pink-blush throughout the trumpet with a rose band blended in at the mouth. As the flower develops an effervescent blending of pink colors lights up the interior of the trumpet. The foliage is broad and of a deep blue-green color.

MOONGLOW 1a **Each 3.00; 3 for 8.50; 12 for 30.00**
An unusually attractive sulphur-yellow trumpet daffodil. As the flower develops the trumpet turns a pale ivory except at the lacinated and ruffled rim.

MRS. WM. COPELAND 4 **3 for 1.00; 6 for 1.85; 12 for 3.50**
Clear sulphury white, nicely formed flower, petals just a shade darker. For a full double this has the best form of all. A.M.H. 1950.

NARVIK 2a **Each 1.00; 3 for 2.50; 12 for 10.00**
One of the most perfect red and yellow daffodils. Superb blooms with clean cut, clear, smooth golden yellow perianths, and frilled medium sized crowns of orange crimson. Blooms last a long time after cutting. Vigorous and prolific.

PINK DIAMOND 2b **Each 4.00**
Outstanding with its clean, gay appearance. Waved, well-rounded perianth of ivory-white. The trumpet opens a pale yellow with heavily frilled and folded broad rim of pure pink. Grows well and looks up. A fine novelty.

POLAR STAR 2b **Each 1.00; 3 for 2.50; 12 for 10.00**
A fine show daffodil and a good grower. The trumpet opens yellow but turns to white with a golden rim. The white perianth is flat and star-shaped.

POMONA 3b **Each 1.95; 3 for 5.00**
Pure white, wax-like perianth, with petals so much overlapping that they form a complete circle. Flat citron-yellow cup, flushed apricot, with small orange margin. Highly recommended.

PROMISSO 2b **Each 2.50; 3 for 7.00; 12 for 25.00**
Very tall, well proportioned, the earliest good pink daffodil to flower for us.

1. PROMISSO
2. CALIFORNIA GOLD
3. STOKES
4. KRAKATOA
5. POMONA
6. POLAR STAR
7. WINTER PRIDE
8. INGLESKOMBE
9. PINK DIAMOND
10. KANDAHAR
11. BRUNSWICK
12. ZIRCON
13. TINKER
14. BINKIE
15. WINKIE

RIOTOUS 4 **Each 1.00; 3 for 2.50; 12 for 10.00**
An early, tall and very large semi-double of good form. The darker yellow center is interspersed with petals of the sulphur-yellow perianth color. Short neck and good carriage. The foliage is wide, blue-green and erect. A fine double daffodil.

ROMAN CANDLE 2b **Each 3.00; 3 for 8.50; 12 for 30.00**
Tall, vigorous, pink daffodil with erect, blue-green foliage and white perianth. Trumpet opens apricot-pink, intensifying to a uniform rich pink, fading to a soft shell pink.

ROSEATE HUES 2b **Each 3.00; 3 for 8.50; 12 for 30.00**
Perianth light cream, yellow cup with pink frill. A.M.H. 1949. One of our favorite new daffodils.

ROUGE 2a **Each 1.00; 3 for 2.50; 12 for 10.00**
About the first "red cup" to bloom. Nicely formed, overlapping buff yellow perianth and brick red crown. Prolific grower and bloomer.

ROYAL SOVEREIGN 4 **3 for .85; 6 for 1.50; 12 for 2.50**
Valuable addition to the Twink group of semi-doubles; most graceful of all in form, and the most charming, if not the most striking, in coloring; creamy-white, interspersed with crinkled and frilled trumpet petals of primrose-yellow, shading to a pale primrose as the flower develops; a daffodil appealing to every flower lover's fancy.

STOKE 5b **3 for 1.00; 6 for 1.85; 12 for 3.50**
A lovely pale yellow N. TRIANDRUS hybrid that can best be described as a sulphur-yellow. We consider STOKE one of the finest garden daffodils; it naturalizes readily and is an exceptionally graceful flower for spring flower arrangements.

SWANSDOWN 4 **Each 3.00; 3 for 8.50; 12 for 30.00**
A most striking novelty. A very beautiful double with large milk-white flowers, with small tufts of white feathery inner petals.

SWEET TALK 2b **Each 4.00**
A tall, very late, pink daffodil. The pure white perianth is of good form and substantial; the cup is a pure white with a dark pink, crisply-fluted edge. A magnificent show flower and ideal for flower arrangements.

TINKER 2a **3 for 1.50; 6 for 2.75; 12 for 5.00**
A magnificent daffodil with deep golden perianth. The petals are overlapping and the cup long orange scarlet.

WESTERN STAR 1b **Each 4.00**
A late bi-color with exceptional keeping quality. White, flat and star-shaped perianth, nicely tinged with yellow, complements the intense golden trumpet.

WINKIE 2c **Each 2.50; 3 for 7.00; 12 for 25.00**
A tall flower with a substantial white perianth and a broad cup that is daintily ruffled at the rim. The cup opens a creamy-yellow and turns white with a strong flush of pink on the inside.

ZIRCON 2b **Each 5.00**
This is a very tall, striking novelty with a flower measuring five inches across. Pure golden yellow cup and pure white perianth.

Rock Garden Daffodils

BERYL 6b **3 for 1.00; 6 for 1.85; 12 for 3.50**
Lovely little flower; reflexing yellow perianth which fades to cream, and orange cup fading to gold.

CAMPERNELLE PLENUS 10 **3 for .50; 6 for .85; 12 for 1.50**
The tall, double Campernelle Jonquil, a very charming variety, bearing on tall, graceful stems, heads of fragrant double yellow flowers of elegant form. Height 15 inches. It makes an attractive pot and border plant, and will bear gentle forcing.

CANALICULATUS 10 **3 for .50; 6 for .85; 12 for 1.50**
Globular golden cups, white perianth, sweetly scented. Bears heads of 3 to 4 flowers. Suitable for sunny rock gardens.

FEBRUARY GOLD 6a **3 for 1.00; 6 for 1.85; 12 for 3.50**
One of the first daffodils to bloom. Lemon yellow perianth, deeper yellow trumpet.

JONQUILLA SIMPLEX 10 **3 for .50; 6 for .85; 12 for 1.50**
Clusters of numerous small, rich, yellow flowers of delicious scent. Blooms in May.

MOONSHINE 5a **3 for .85; 6 for 1.50; 12 for 2.50**
A beautiful orchid-type hybrid. Star-shaped, creamy white flowers, often 3 to a stem. Favorite for rock garden or for naturalizing in the shade.

THALIA 5a **3 for .85; 6 for 1.50; 12 for 2.50**
Beautiful pure white flowers blooming two or three per stem, 2 inches or more across. Makes beautiful cluster. Excellent for rock garden or forcing.

fall blooming COLCHICUMS

IRISES

DAYLILIES

ROSES

Our Annual 64 page catalog illustrates in natural colors over 100 of these popular perennials and features latest introductions. Many are exclusives available only from WALTER MARX GARDENS. Include 25c with your request if you desire this most informative catalog.

Commonly called autumn crocus. However, the colchicums are much larger in leaf and flower. They are lovely planted among shrubs or in the large rockery and if left alone increase into larger colonies in a few years. If you like fall color in your garden try some this year. The bulbs are **shipped during the late summer months only** and will bloom shortly after you receive them whether planted OR NOT!

CULTURE: COLCHICUMS like other bulbs become dormant during summer months and are extraordinary in that the foliage is produced in spring but the flowers do not appear until fall. Plant the bulbs about 4 inches deep in any good garden soil where they may be left alone for years if desired. Heaviest bloom is produced in full sun, though we do get fair results here in one-half to full shade. If wanted in the rock garden do not plant them too near their neighbors as the leaves take up considerable space in spring.

AUTUMNALE 3 for .60; 12 for 2.00
Rosy lilac flowers. Many produced from each bulb.

AUTUMNALE ALBUM 3 for .75; 12 for 2.50
Pure white form. Strong grower and increases rapidly.

BORNMUELLERI Each .50
Beautiful species with giant flowers. Pinkish violet and pure white centers. Picture on page 29.

New Giant Hybrids

We can offer a limited number of these huge new hybrids in loveliest shades of lilac, orchid and violet. All are named varieties but can be supplied this year in a mixture only. All are exceedingly beautiful and fully twice as large as the well known Autumnale. Picture page 29.
6 Bulbs may be ordered at the 12 rate. Each .50; 12 for 5.00

dwarf hardy CYCLAMEN

Perfect miniature cyclamen blooms in white, pink and rose will cause purest delight for years to come. When out of bloom, the beautiful heart shaped and marbled foliage makes an ideal cover. Best in shaded spots.

All Cyclamen Bulbs are flowering size or larger

SHIPMENT: Spring or Fall.

Summer and Fall Flowering

EUROPAEUM Each 1.00; 3 for 2.75; 12 for 10.00
Sweetly scented crimson-rose flowers on 5 to 6 inch stems. Will bloom from July to September. Leaves are a bright green marbled with silvery white. Originally from Central and Southern Europe, this species will add to the summer color in your garden.

NEAPOLITANUM Each 1.00; 3 for 2.75; 12 for 10.00
Hardy and very popular. May be had in pink and white forms and in several sizes. Leaves are large and attractive appearing after the blooming starts. Both white and pink forms flower on 4 to 6 inch stems. August to October. Picture on page 29.

CILICUM Each 1.00; 3 for 2.75; 12 for 10.00
Blooms September to November with light pink flowers to brighten your late autumn garden. Small, deep green leaves mottled silver on the edges.

Spring Flowering

ATKINSI Each 1.00; 3 for 2.75; 12 for 10.00
Earliest to bloom. Flowers of pale rose to pink on 4 to 6 inch stems. Leaves are deep green with marbling of silver white. January to March.

ATKINSI ALBUM Each 1.50; 3 for 4.00; 12 for 15.00
Sure to please. The white form of the early flowering strain listed above.

COUM Each 1.00; 3 for 2.75; 12 for 10.00
A rare beauty. Deep crimson-rose blooms on 4 to 6 inch stems. Deep green leaves are unmottled. February and March.

COUM ALBUM Each 1.50; 3 for 4.00; 12 for 15.00
White blooms with a red base. 4 to 6 inch stems. Deep green unmottled leaves. Supply is limited.

LIBANOTICUM Each 2.50; 3 for 6.00; 12 for 20.00
Blush-pink blooms and slightly fragrant. Large flowers not as recurved as most Cyclamen. 4 to 6 inches tall. Light green foliage mottled with silvery white. One of the rarest species. March and April.

REPANDUM Each 1.00; 3 for 2.75; 12 for 10.00
A rare and lovely species. Flowers are vivid crimson on 4 to 6 inch stems. Bright green leaves marbled with silvery white. Leaves are pointed with serrated edges. April and May.

OUR GIFT CERTIFICATE SERVICE

You may prefer to let your friends select their own plants and bulbs. For the convenience of our customers we have initiated a Gift Certificate Service. Here is how it works: Send us your remittance for the amount you wish to give. We will make out a Gift Certificate in that amount and mail it to your friend. At the same time we will send a copy of this catalog from which he may make his selection. Your name as donor will appear on the certificate.

You will receive a duplicate copy which will serve as your receipt.

If you prefer we will send the Gift Certificate directly to you and you may present it directly to the person for whom it is intended.

Please be sure to give us the following information:

The name and address of each person to whom you wish to send a Gift Certificate.

Your name and address.

The amount of each certificate.

You may send us a gift card addressed to your friend. We will enclose the Gift Certificate and mail it at once.



Order Early and Save Money

10% CASH DISCOUNT UNTIL AUGUST 1st, 1958

You may deduct 10% from any order postmarked not later than Aug. 1, 1958, and taken from this catalog. Minimum order \$5.00.

This cash discount does not apply to collection offers.

Walter Marx Gardens

BORING, OREGON

A SECTION OF OUR TULIP DISPLAY
GARDEN, EARLY APRIL 1958

