

62

Na



*Mayfair*

**NURSERIES**

WALTER A. KOLAGA, PROPRIETOR  
R D #2  
NICHOLS, NEW YORK

**1959**

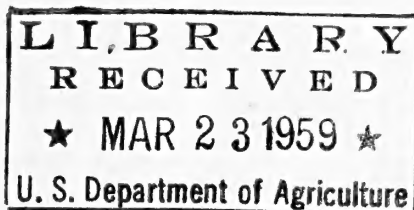
**Price List**

OF

*Dwarf Conifers*

*Heathers*

*Dwarf Shurbs*



NURSERY LOCATED AT WINDHAM, PA.

PHONE: WARREN CENTER, PA. 27 R 23

## ABOUT OUR HANDBOOK

FOR THE COMPLETE DESCRIPTION AND CULTURAL DIRECTIONS OF MOST OF THE PLANTS IN THIS PRICE LIST, PLEASE CONSULT OUR 1954 HANDBOOK OF ALPINES AND ROCK GARDEN PLANTS. In it we have attempted to give as much information as possible. This information covers complete descriptions including ultimate height and spread, color of flowers, color and texture of foliage, growing habits and some specific uses. It also gives pertinent cultural directions such as type and texture of soil, drainage requirements and exposure preferences. The date 1954 in the title does not mean it is out of date. It was used merely to differentiate from earlier editions of the Handbook. A copy of this book will be of invaluable assistance to you in planning and maintaining your rock garden. You may have one for 50c for the paper cover edition or \$1.00 for the hard cover edition.

---

## BUSINESS HOURS

Visitors are always welcome at our nursery, however we ask you to please note our business hours. We are open from 8 A.M. to 12 noon and from 1 P.M. to 5 P.M. every day except Sunday and Wednesday. We are closed all day Wednesday and close at Noon on Sunday. If you are driving to the nursery you will find us at the Brick House on the Wappasening Creek Road, midway between Windham and West Warren, Pa., 30 miles southwest of Binghamton, N. Y., 25 miles north of Towanda, Pa., 14 miles east of Sayre, Pa., 8 miles south of Nichols, New York. Windham, Pa. is shown on all Pennsylvania road maps but not listed in the directories of the maps.



## MAYFAIR NURSERIES

R D #2

NICHOLAS, NEW YORK

WALTER A. KOLAGA, PROPRIETOR

PHONE: WARREN CENTER, PA. 27 R 23

MAYFAIR NURSERIES, R. D. 2, NICHOLS, N. Y.

PLEASE SEND US DEFINITE INSTRUCTIONS IN REGARD TO SHIPPING AND SUBSTITUTIONS. IT WILL HELP US TREMENDOUSLY IN OUR EFFORT TO EXECUTE YOUR ORDERS IN THE BEST POSSIBLE MANNER AND MINIMIZE OUR OFFICE WORK WHEN WE ARE PRESSED FOR TIME DURING THE SHIPPING SEASON. PLEASE INCLUDE A FEW ALTERNATE SELECTIONS IN MAKING UP YOUR ORDER AS WE USUALLY SELL OUT OF SOME VARIETIES BEFORE THE SEASON IS OVER.

SEND ALL ORDERS WITH REMITTANCE TO:

MAYFAIR NURSERIES  
R D #2  
NICHOLS, NEW YORK

### PRICES

Throughout this list only the prices of single plants are listed. In ordering plants in quantity, please use the prices quoted below.

| Price of a Single plant | 3 plants of one variety | 6 plants of one variety | 12 plants of one variety | 24 or more plants of one variety |
|-------------------------|-------------------------|-------------------------|--------------------------|----------------------------------|
| \$1.00                  | \$2.75                  | \$ 5.00                 | \$10.00                  | .75 Each                         |
| \$1.25                  | \$3.50                  | \$ 6.50                 | \$13.00                  | .95 Each                         |
| \$1.50                  | \$4.00                  | \$ 7.50                 | \$15.00                  | \$1.10 Each                      |
| \$1.75                  | \$4.75                  | \$ 8.75                 | \$17.50                  | \$1.30 Each                      |
| \$2.00                  | \$5.50                  | \$10.00                 | \$20.00                  | \$1.50 Each                      |
| \$2.50                  | \$7.00                  | \$13.00                 | \$26.00                  | \$1.90 Each                      |
| \$3.00                  | \$8.00                  | \$15.00                 | \$30.00                  | \$2.20 Each                      |

### DWARF CONIFERS

All the dwarf trees offered here are young plants from 2 to 8 years old and do not yet represent their ultimate size or aspect. With the exception of the *Juniperus horizontalis* varieties they are all extremely dwarf and slow growing kinds that will develop into very neat and compact, exceedingly attractive conical and globose forms. All are admirably adapted to rock garden work. The *Juniperus horizontalis* varieties are faster growers that develop very quickly into lovely prostrate ground covers.

All these trees are on their own roots, grown from cuttings and are of the proper size for planting in miniature trough or sink gardens and for Bonsai work. They are all easy to grow in moderately rich, well drained garden soil that is neutral to slightly acid (pH 5-7). They all prefer full sun with the exceptions of the *Chamaecyparis* and *Cryptomeria* varieties which appreciate some light shade, especially in the afternoon when the sun is at its hottest. They are hardy to 30 degrees below zero but the *Chamaecyparis* and *Cry-*

FOR COMPLETE DESCRIPTIONS PLEASE CONSULT HANDBOOK

NURSERY LOCATED AT THE BRICK HOUSE, WINDHAM, PA.

tomerias should be protected from drying winds in exposed positions and shaded from the winter sun.

**CHAMAECYPARIS LAWSONIANA MINIMA.** A tight glope form with feathery dark green branchlets, colored blue on the under sides. 4 to 6 inches....\$1.50

**CHAMAECYPARIS OBTUSA NANA.** Broad irregular conical form with stiff, upright branches and very close growing light green branchlets. 4 to 6 inches....\$1.50

**CHAMAECYPARIS PISIFERA FILIFERA AUREA NANA.** Semi-prostrate or broad globose form with long, thin thread-like branchlets painted with golden yellow. 4 to 6 inches....\$1.50  
6 to 12 inches....\$2.50

**CHAMAECYPARIS PISIFERA SQUARROSA AUREA PYGMAEA.** A very tiny ball shaped plant with close mossy foliage colored golden yellow. 2 to 3 inches....\$1.50

**CHAMAECYPARIS PISIFERA SQUARROSA CYANO-VIRIDIS.** A moderately dwarf, dense oval shaped tree with striking light blue-green color. 4 to 6 inches....\$1.50

**CHAMAECYPARIS PISIFERA SQUARROSA MINIMA.** A very slow growing dense little ball with mossy, silvery blue foliage. 2 to 3 inches....\$1.50 4 to 5 inches....\$2.50

**CHAMAECYPARIS PISIFERA SQUARROSA NANA.** A rather rapid grower that forms a nice fluffy mound of attractive blue. It turns bronzy in fall. 4 to 6 inches....\$1.50

**CRYPTOMERIA JAPONICA NANA.** Very stiff, tiny needle leaves on stout branches in a very slow growing tight globose form. 3 to 4 inches....\$1.50

**JUNIPERUS COMMUNIS COMPRESSA.** A very tiny Irish Juniper. Fine light gray-green foliage in a slender columnar form. 4 to 6 inches....\$1.50

**JUNIPERUS HORIZONTALIS BAR HARBOR.** The best of the prostrate Junipers for ground cover work. A quick growing dense mat of attractive steel-blue throughout summer and winter. 6 to 8 inches....\$1.00

8 to 12 inches, branched and spreading....\$2.50  
**JUNIPERUS HORIZONTALIS BLUE HORIZON.** Prostrate mat of thin, tapering branchlets colored a pleasing shade of blue. A form with distinctive character. 6 to 8 inches....\$1.00

8 to 12 inches, branched and spreading....\$2.50  
**JUNIPERUS HORIZONTALIS GLOMORATA.** A dwarf with dark green color and loose procumbent mound form. 2 to 3 inches....\$1.00

**JUNIPERUS HORIZONTALIS MARCELLUS.** A prostrate mat with broad, plumey branchlets of a lovely blue green color. 6 to 8 inches....\$1.00

8 to 12 inches branched and spreading....\$2.50

**JUNIPERUS PROBUMBENS NANA.** A very dense and slow growing mat of short stiff branches and sharp spiny bluish leaves. 2 to 3 inches....\$1.50

**JUNIPERUS SQUAMATA MEYERI.** A semi-dwarf, dense irregular upright grower with bluish-white color, painted with pink and purple in winter. 6 to 8 inches....\$1.50

**JUNIPERUS SQUAMATA PROSTRATA.** A slow growing prostrate billowy mat of attractive blue-gray color throughout the year. 2 to 3 inches....\$1.50

**PICEA ABIES CLANBRASSILIANA.** A dense and slow growing spruce of light green color and broad globe form. 3 to 4 inches....\$1.50 5 to 6 inches....\$2.50

**PICEA ABIES MINIMA.** About the smallest of the spruces. A

FOR COMPLETE DESCRIPTIONS PLEASE CONSULT HANDBOOK

MAYFAIR NURSERIES, R. D. 2, NICHOLS, N. Y.

very tight ball of tiny green needles on very short twigs.

2 to 3 inches....\$1.50      4 to 5 inches....\$2.50

**PICEA ABIES MUCRONATA.** A dense conical form of bright green color. A good dwarf of moderately rapid growth.

3 to 6 inches....\$1.50

**PICEA ABIES NIDIFORMIS.** The popular Birds Nest Spruce. A broad globe form with open top and dark green color.

4 to 6 inches....\$1.50

**PICEA ABIES PROCUMBENS.** A broad spreading globe with decumbent or weeping habit and very dark green color.

4 to 6 inches....\$1.50

**PICEA ABIES PUMILA.** A compact round, slow growing form with very dark green color.

4 to 6 inches....\$1.50

**PICEA ABIES SHERWOODII.** A semi-dwarf of fairly rapid growth with irregular Japanese broad mound form. Very nice for rock garden specimen.

6 to 8 inch s....\$1.50

**PICEA GLAUCA CONICA.** The ever popular dwarf Alberta spruce. Very fine light gray-green leaves on thin branchlets in a very dense narrow conical form.

6 to 8 inches....\$2.50

**THUJA OCCIDENTALIS MINIMA.** An extremely dwarf and very slow growing tiny ball shaped Arbor-Vetae. Light green color, turning bronzy in fall.

2 to 3 inches....\$2.50

**THUJA OCCIDENTALIS NANA.** Dwarf broad conical form of dark green color and fairly rapid growth.

6 to 8 inches....\$1.50

## HEATH AND HEATHER

Undoubtedly the Heaths (*Erica*) and the Heathers (*Calluna*) and included here for the sake of convenience, *Bruckenthalia*, *Daboecia* and *Phyllodoce* are among the prettiest and most useful of dwarf flowering shrubs. They are ideal for rock garden work and for the foreground of shrub borders and foundation plantings. They are all evergreen, with attractive and interesting growth habits and a wide range of colors from purest white to shades of pink, red and purple. With a balanced collection of these plants, flowers can be had through every month of the year. They are easy to grow if they are given a light peaty, sandy acid leafmold soil. Although they all prefer full sun they will stand some light shade. In the north it is recommended that they be mulched with peatmoss or pine needles at the base of the plants and covered over with straw or evergreen boughs to prevent dehydration in the winter. They will all stand 30 degrees below zero under ideal conditions. In severely exposed positions and during years of little snow some winter damage may occur. However, if damaged plants are cut back they recover very quickly and make a fine show of themselves without any serious or permanent ill effects.

Unless specifically noted all the plants offered here are two or three years old and are from two to six or eight inches high or broad, according to variety and habit of growth. All are nice bushy little plants, ready to bloom and make a fine showing of themselves the first year.

**BRUCKENTHALIA SPICULIFOLIA.** (Balkan Spike Heath). Fine spruce-like leaves on decumbent branches forming a billowy mat. Spikes of pink flowers in June and July.

\$1.00      6 to 8 inches....\$1.75

**CALLUNA VULGARIS MAYFAIR.** A profuse flowering form of the typical Scottish Heather. A broad, bushy upright grower with lavender flowers from July to September.

\$1.00

**CALLUNA VULGARIS ALBA.** Pure white flowers from July to September on dense bushy plants of a bright, fresh green color.

\$1.00

FOR COMPLETE DESCRIPTIONS PLEASE CONSULT HANDBOOK.

NURSERY LOCATED AT THE BRICK HOUSE, WINDHAM, PA.

**CALLUNA VULGARIS COUNTY WICKLOW.** Fully double clear pink flowers from July to October on rounded bushy plants.

\$1.00

**CALLUNA VULGARIS CRISPA.** Bright, crisp green foliage on stiff upright branches forming an attractive mound. White flowers from July to September.

\$1.00

**CALLUNA VULGARIS CUPREA.** A very fast growing variety with golden foliage turning coppery in fall and winter. Long spikes of lavender flowers in July and August.

\$1.00

8 to 10 inches....\$1.75

**GALLUNA VULGARIS ELSE FRYE.** A very low, semi-prostrate plant of fresh green color producing quantities of fully double white flowers from July to October.

\$1.00

**CALLUNA VULGARIS FOXII NANA.** A tiny little tuft of dark green moss-like growth never more than 4 or 5 inches high. Short spikes of lavender flowers in July and August.

\$1.00

3 to 4 inches....\$1.75

**CALLUNA VULGARIS HIRSUTA.** An attractive mound of slender twiggy upright growth covered with fine silky hairs and purple flowers in July and August.

\$1.00

**CALLUNA VULGARIS J. H. HAMILTON.** One of the best varieties. A low, spreading plant with thick, dark green foliage and masses of double bright pink flowers from July to October.

\$1.00

**CALLUNA VULGARIS KUPHALDTI.** An interesting prostrate mat forming variety with its slender branchlets forming swirls and curls. Lavender flowers in July and August.

\$1.00

6 to 8 inches....\$1.75

**CALLUNA VULGARIS MINIMA.** A dwarf, dense ball shaped plant with mossy foliage and the new growth tinted with pink. Short spikes of lavender flowers in July and August.

\$1.00

**CALLUNA VULGARIS MRS. H. E. BEALE.** A tall, upright plant with large pale pink double flowers on spikes sometimes 24 inches long, from July to November.

\$1.00

**CALLUNA VULGARIS MRS. PAT.** One of the prettiest. A dainty little dark green cushion with the tips of the new growth a vivid bright pink. Lavender flowers in July and August.

\$1.00

**CALLUNA VULGARIS MRS. R. H. GRAY.** A prostrate ground cover variety with broad, dense mats of heavy dark green foliage and lateral spikes of lavender flowers in July and August.

\$1.00 6 to 8 inches....\$1.75

**CALLUNA VULGARIS NANA COMPACTA.** A dwarf mound forming plant with fine mossy foliage on close growing spires and short spikes of lavender flowers in July and August.

\$1.00

4 to 6 inches....\$1.75

**CALLUNA VULGARIS PLENA.** A vigorous upright grower with sturdy stems of dark green color bearing thick spikes of fully double purple flowers from July to September

\$1.00

6 to 8 inches....\$1.75

**CALLUNA VULGARIS RIGIDA.** A distinctive sort with bright, fresh green color through winter and summer. Stiff and gnarled horizontal branches and small clusters of white flowers in summer.

\$1.00

**CALLUNA VULGARIS ROSEA.** A large bush with gracefully arching branches and masses of rosey lavender flowers in July and August. A very profuse bloomer.

\$1.00

**CALLUNA VULGARIS RUBRA.** A compact rounded mound of slender twiggy growth and spikes of very dark and deep reddish purple flowers. As close to red as any heather comes.

\$1.00

FOR COMPLETE DESCRIPTIONS PLEASE CONSULT HANDBOOK

MAYFAIR NURSERIES, R. D. 2, NICHOLS, N. Y.

**CALLUNA VULGARIS SISTER ANNE.** An exquisite plant of unsurpassed charm. A prostrate grower forming thick mats of dark green foliage covered with soft downy hairs, giving it a silvery velvety appearance. Lavender flowers in short lateral sprays from July to September. \$1.00

**CALLUNA VULGARIS TIB.** A mound of upright slender branchlets and a long season of double dark red-purple flowers extending from late June to December. \$1.00

**CALLUNA VULGARIS TOMENTOSA.** A large, vigorous upright grower with thick branches clothed in silvery green foliage. Large spikes of glistening deep purple flowers in July and August. \$1.00 8 to 10 inches...\$1.75

**DABOECIA CANTABRICA.** (Irish Bell Heather). Large mounds of dark glossy green leaves and a continuous shower of large purple bells from late June till hard frost. \$1.00

**DABOECIA CANTABRICA ALBA.** Similar to the one above with light green foliage and dainty pure white bells. \$1.00

**DABOECIA CANTABRICA RUBRA.** A much more compact growing plant than the type with quantities of deep purple flowers. \$1.00

**ERICA CARNEA KING GEORGE.** A very dwarf and compact semi-prostrate plant with masses of dark rose-red flowers in March and April... Available in fall, 1959. \$1.00

**ERICA CARNEA RUBY GLOW.** A slow growing mound of dark reddish green decumbent branches covered with bright ruby red flowers in March and April—Available in fall, 1959. \$1.00

**ERICA CARNEA SNOW QUEEN.** The dwarfest of the carnea varieties and the earliest to flower. Slowly spreading mats of fresh green foliage and white flowers from early February to April—Available in fall, 1959. \$1.00

**ERICA CARNEA SPRINGWOOD.** A very fast spreading mat of dark green foliage and covered with bright pink flowers from February to April. An exceptionally good ground cover plant—Available in fall, 1959. \$1.00

**ERICA CARNEA SPRINGWOOD WHITE.** A quickly spreading ground cover as above but with light green leaves and white flowers in quantity from February to April and May. Available in fall, 1959. \$1.00

**ERICA CARNEA VIVELLI.** Beautiful dark reddish green foliage in a slowly spreading mat and bright crimson flowers in April and May. \$1.00

**ERICA CARNEA WINTER BEAUTY.** A compact, low mound forming plant with dark foliage and bright pink flowers in March and April. \$1.00

**ERICA CINERIA ATRORUBENS.** A little spreading mound of very tiny dark green leaves and tipped with bronze with bright glistening satiny red flowers from July to October. \$1.00

**ERICA CINERIA VIOLACE.** Growth habit as above but with glistening deep purple flowers. \$1.00

**ERICA DARLIENSIS.** A rounded mound of dark green leaves on sturdy stems and lovely sprays of cherry red flowers that begin to color in November and last through the winter, coming into full bloom in March and April—Available in fall, 1959. \$1.00

**ERICA TETRALIX.** Graceful mounds of thin decumbent branches covered with soft, downy gray green foliage, topped with short spikes bearing little clusters of porcelain pink urn shaped flowers from July to October. \$1.00

**ERICA TETRALIX MOLLIS.** A more upright grower with lovely

FOR COMPLETE DESCRIPTIONS PLEASE CONSULT HANDBOOK

NURSERY LOCATED AT THE BRICK HOUSE, WINDHAM, PA.

silvery gray foliage and urns of pure white from July to October.  
\$1.00

ERICA VAGANS AIBA. A rounded mound of sturdy upright growth, each stem crowned with a halo of brown anthered white flowers in July and August.  
\$1.00

ERICA VAGANS MRS. D. F. MAXWELL. Growth habit as above with large clusters of vivid bright pink flowers from July to October—Available in fall, 1959.  
\$1.00

ERICA VAGANS NANA. A very tiny ball shaped plant with green and golden foliage and clusters of white flowers in July and August—Available in fall, 1959.  
\$1.00

ERICA VAGANS ST. KEVERN. Very much like Mrs. Maxwell except that the flowers are a lovely light pink—Available in fall, 1959.  
\$1.00

ERICA WILLIAMSII. An attractive billowy, low mound of soft light green foliage and clusters of charming light pink flowers from June to October. The new growth is tinted with gold and pink.  
\$1.00

PHYLLODOCE EMPETRIFORMIS. (American Mountain Heather). Fresh green spruce-like leaves set very close together on very sturdy, stiff, upright branches; topped with little clusters of bright pink bells in late April and May.  
\$1.50

### OUTSTANDING DWARF SHRUBS

In the following list all the plants preceded by a double asterick (\*\*) are Ericaceous plants and must have a sandy peaty acid leafmold soil to succeed (pH 4-5). All the plants preceded by a single asterick (\*) are acid lovers and must have a well drained humus rich or peaty loam to succeed (pH 5-6). All others will thrive in any ordinary well drained garden soil (pH 6-8). Complete descriptions and cultural directions for these plants will be found in our Handbook.

\*\*ANDROMEDA GLAUCOPHYLLA. Little clumps of upright stems with leathery glaucous leaves topped with enchanting pink bells in April and May.  
\$1.00

\*\*ANDROMEDA POLIFOLIA. A large plant with long leathery dark green leaves and large light pink flowers in Spring.  
\$1.00  
8 to 10 inches....\$1.75

\*\*ANDROMEDA POLIFOLIA GRANDIFLORA COMPACTA. A low, spreading plant with beautiful blue-gray leathery leaves and large shell pink bells.  
\$1.00

\*\*ANDROMEDA POLIFOLIA MONTANA. Wiry stems with small leathery leaves and quantities of dainty pink bells like miniature Japanese lanterns in April and May.  
\$1.00

\*\*ANDROMEDA POLIFOLIA NANA. Very narrow dark green leaves on short wiry stems and the same enchanting pink bells as above.  
\$1.00  
6 to 8 inches....\$1.75

\*\*ARCTOSTAPHYLOS UVA-URSI. (Bearberry). Long trailing vine-like stems with small leathery leaves that form a thick, fast growing ground cover. White bells and red berries.  
\$1.00

\*BERBERIS BUXIFOLIA NANA. A compact little evergreen shrub with little dark reddish green leaves and comparatively large orange flowers.  
\$1.00

\*BERBERIS VERRUCULOSA. A spreading shrub to 3 feet high with sharp spined holly-like green leaves, glaucous beneath and yellow flowers.  
\$1.00  
4 to 6 inches....\$1.00

BUXUS MICROPHYLLA KOREANA. A hardy boxwood that develops into a broad flat topped bush about 12 inches high. Needs shade in winter.  
\$1.00

FOR COMPLETE DESCRIPTIONS PLEASE CONSULT HANDBOOK



**BUXUS MICROPHYLLA KOREANA**

for edging

*In Lots Of 10 Or More:*

|                         |     |      |
|-------------------------|-----|------|
| 2¼ inch pot plants..... | 35c | Each |
| 3 inch pot plants.....  | 65c | Each |

*In Lots Of 100 Or More:*

|                         |     |      |
|-------------------------|-----|------|
| 2¼ inch pot plants..... | 30c | Each |
| 3 inch pot plants.....  | 60c | Each |

- BUXUS MICROPHYLLA NANA COMPACTA.** An extremely dwarf box with tiny leaves in a tight little ball. \$1.50
- \*\*CASSIOPE LYCOPODIOIDES.** A tiny Arctic plant with creeping stems of scale-like leaves and elfin white bells dangling from red stems in April. Small plants....\$1.00
- \*CORNUS CANADENSIS.** Woodland creeping Dogwood. Trailing stems with whorls of dull green leaves and true dogwood flowers in April and May. \$1.00
- COTONEASTER CONGESTA.** Semi prostrate, wide spreading evergreen shrub with little white flowers in spring and large red berries in fall. \$1.00  
10 to 12 inches....\$1.75
- COTONEASTER DAMERII.** A mat forming plant with trailing stems bearing large evergreen leaves. White flowers followed by red berries in fall. \$1.00
- COTONEASTER HORIZONTALIS LITTLE GEM.** A very dwarf Rockspray. Short horizontal branches forming a compact low mound with tiny shining green leaves that turn crimson in fall. \$1.00
- COTONEASTER MICROPHYLLA THYMIFOLIA.** A mass of intricately spreading stiff stems with very tiny evergreen leaves. White flowers in spring and red berries in fall. \$1.00
- CYTISUS DECEMBENS.** A little creeping Broom with almost leafless green stems bearing quantities of bright yellow flowers in April and May. \$1.00
- CYTISUS HENRYAE.** A tall typical Broom with long switch-like stems bearing lovely pea flowers colored a delicate cream and lavender. \$1.00
- CYTISUS KEWENSIS.** Long gracefully arching, almost trailing, leafless green stems producing long sprays of exquisite cream colored flowers in May. \$1.00
- CYTISUS PRAECOX.** A dwarf Broom growing into thick mounds of dark green twigs and having pale moonlight yellow flowers in May. \$1.00
- CYTISUS PURGANS.** Identical to the one above but with bright yellow flowers. \$1.00
- CYTISUS PURPUREUS.** A spreading mass of tall arching stems with narrow clover-like leaves and masses of flowers like large purple butterflies. \$1.00
- CYTISUS SCOPARIUS BURKWOODII.** A very tall Broom to 4 feet high with long sprays of deep garnet flowers in May. \$1.00
- DAPHNE CNEORUM.** The very lovely and ever popular Garland flower. These plants have a spread from 8-12 inches and are balled and burlaped. \$3.00
- \*DRYAS DRUMMONDII.** A little creeping plant with oak-like leaves and large white flowers like wild roses, followed by fluffy seed plums. \$1.00

NURSERY LOCATED AT THE BRICK HOUSE, WINDHAM, PA.

- \***EPIGAEA REPENS.** The coveted Trailing arbutus. Pot grown plants from 4 inch pots. \$1.50
- EJONYMUS FORTUNII MINIMUS.** A small leafed, evergreen vine ground cover. 2¼ inch pots, 3 for \$1.00  
3 inch pots, 3 for \$2.00
- GENISTA GERMANICA.** A low, very spiny evergreen shrub with a mass of bright yellow flowers through May and June. \$1.00
- GENISTA PILOSA.** A lovely spreading mound of silvery green gleaming with bright yellow flowers in May and June. \$1.00
- GENISTA SAGITTALIS.** A prostrate mat of flat, strap-like stems producing upright flower stems each terminating in a cluster of yellow flowers in May. \$1.00
- HEBE DECUMBENS.** A dandy dwarf shrub with thick little gray green leaves each edged with red and short spikes of white flowers in May. \$1.00
- HEDERA COLCHICA.** A climbing heart shaped Ivy from Persia. Very thick and stiff leathery leaves on stout tenacious vines. The leaves are lightly veined and somewhat mottled, particularly in winter. \$1.00
- HEDERA HELIX CONGLOMERATA.** Small closely set crinkly, wavy leaves on thick decumbent branches, forming a low, slowly spreading mound. \$1.00
- HEDERA HELIX MINIMA.** A non-climbing semi-upright shrubby plant with tiny rigid sharp pointed evergreen leaves. \$1.00
- \***ILEX CRENATA HELLERII.** A very slow growing dwarf form of the Japanese Holly. Very tiny leaves on short rigid stems making a flat topped evergreen globe. \$1.00  
4 to 6 inches....\$1.75
- \***ILEX PERNYI.** A moderately slow growing conical shrub with very spiny typical holly leaves and large bright red berries. Small plants from 3 inch pots....\$1.00
- \***KALMIA POLIFOLIA MICROPHYLLA.** A very dwarf bog laurel with tiny leaves on sturdy upright stems and bearing whorls of large pink flowers in May. \$1.00
- \***MAHONIA NERVOSA.** A dwarf grapeholly with long slender, compound holly-like leaves and bright yellow flowers followed by bunches of blue berries. \$1.00
- \***PACHISTIMA CANBYI.** A low slowly spreading evergreen shrub with box like leaves and inconspicuous flowers used for ground cover and edging. \$1.00

**PACHISTIMA CANBYI**

for

edging and ground cover work

*In Lots Of 10 Or More:*

2¼ inch pot plants.....35c Each

3 inch pot plants.....65c Each

*In Lots Of 100 Or More:*

2¼ inch pot plants.....30c Each

3 inch pot plants.....60c Each

MAYFAIR NURSERIES, R. D. 2, NICHOLS, N. Y.

- \*\*PIERIS JAPONICA VARIEGATA.** A very dwarf and compact Lilly-of-the-Valley Bush with lovely variegated foliage.  
4 to 6 inches....\$1.50    6 to 8 inches....\$2.50
- POTENTILLA FRUTICOSA PUMILA.** A very tiny Bush Cinquefoil never more than 4 or 5 inches high with large yellow flowers over dark gray-green leaves. \$1.50
- POTENTILLA FRUTICOSA RIGIDA.** Mounds of stiff and sturdy upright branches with attractively cut foliage and clusters of bright yellow flowers from June to September. \$1.00
- POTENTILLA FRUTICOSA TENUILOBA.** Tall clumps of gracefully swaying thin branches with delicate light green tenuous foliage and light yellow flowers from June to October.  
\$1.00    10 to 12 inches....\$1.75
- POTENTILLA FRUTICOSA VIETCHII.** A broad, rounded shrub with attractive foliage and large white flowers from May to October. \$1.00    8 to 10 inches....\$1.75.
- \*\*RHODODENDRON IMPEDITUM.** A very tiny evergreen with small leaves and showy deep purple-blue flowers early in April—Small plants. \$2.00
- \*\*RHODODENDRON MYRTIFOLIUM.** A compact, rounded evergreen with dark green leathery leaves that turn purple-bronze in fall. Clear pink flowers in May—Small plants. \$1.50
- \*\*RHODODENDRON OBTUSUM JAPONICUM.** A dwarf semi-evergreen Azalea with compact almost prostrate stems and covered with lovely lavender-pink flowers in May. \$1.00
- \*\*RHODODENDRON RACEMOSUM.** A dwarf, very slow growing plant with small leathery leaves, glaucous beneath and cheery clusters of bright pink flowers in April and May. \$3.00
- \*\*RHODODENDRON RAMAPO.** An extremely hardy dwarf hybrid with small ovel leaves and large clusters of purple flowers in April and May. \$2.50
- SPIRAEA BULLATA.** A dwarf, deciduous mound of stiff, twisted stems with dark green crispy crinkly leaves and little clusters of bright pink flowers from May to frost. \$1.00
- \*\*VACINIUM CRASSIFOLIUM.** A long trailing vine-like plant with small glossy green leaves and small nodding white flowers in Spring. A good and easy ground cover. \$1.00  
bushy 6 to 8 inches....\$1.75
- \*\*VACCINIUM VITIS-IDAEA.** The European Mountain Cranberry that grows about 12 inches high with upright stems of large bright glossy green leaves, clusters of small pale pink flowers and large bright red berries in fall. \$1.00  
4 to 6 inches....\$1.75
- \*\*VACCINIUM VITIS-IDAEA MINUS.** A slow growing prostrate mat of tiny dark green leaves with clusters of pale pink flowers in spring and extremely large red berries in fall. An outstanding dwarf plant. \$1.00    3 to 4 inches....\$1.75

## DWARF FAIRY ROSES

We have assembled here what we consider a good collection of these delightful fairy roses. They are so useful in rock gardens, small formal beds and for edgings. To be fully appreciated they should be planted in quantity when they will reward the garden with a profusion of color from June to hard frost. They can also be grown indoors in a light and sunny room to add gaiety to the home all through the dreary winter months.

**BABY GOLD STAR.** Bright shining green foliage and golden yellow fully double flowers.

**BABY WHITE STAR.** Just like the one above but with lovely pure white flowers.

FOR COMPLETE DESCRIPTIONS PLEASE CONSULT HANDBOOK

NURSERY LOCATED AT THE BRICK HOUSE, WINDHAM, PA.

**JACKIE.** For the size of the plant this one produces huge flowers ranging in color from peach to cream and gold with a strong delicious fragrance.

**OAKINGTON RUBY.** Small ruby red flowers in great profusion.

**PERLA D'ALCANADA.** Fine lacey, dark reddish green foliage and clusters of tiny double red roses.

**PIXIE.** Very dainty lacey leaves and pink buds that open to very tiny pearly white flowers.

**POM-POM de Paris.** Long tapering buds that open up to perfectly formed bright pink roses.

**PREMUSIDA.** An exquisite color that defies description. Perfect roses that range in color from deep gold at the base to a deep salmon pink.

**THUMBELINA.** Tiny semi-double bright deep flowers with a captivating strong fragrance.

**TOM THUMB.** A very compact dwarf plant with masses of tiny deep red flowers.

**ALL THE ABOVE ROSE PLANTS ARE PRICER AT \$1.00 EACH**

### DWARF ERGING PLANTS

Here are some economically priced plants that are extensively used for borders and for edging walks and formal garden beds. All are evergreen and all can be sheared to any height desired.

**IBERIS LITTLE GEM.** Dense little mounds of tiny leaves topped with little clusters of white flowers in late April and May.

**IBERIS SNOWFLAKE.** Bold, dark shining green leaves and large waxy white flower clusters.

**LAVENDULA MUNSTEAD.** Mounds of long silvery gray leaves topped with spikes of lavender flowers in June and July. A lovely fragrance used for making sachet bags.

**SANTOLINA CHAMAECYPARISSUS.** Low mounds of soft, silky silvery leaves with a strong aroma when bruised.

**SANTOLINA VIRENS.** A plant similar to above with bright fresh green foliage.

**TEUCRIUM CHAMAEDRYIS.** Small bright shining green leaves in compact mounds topped with spikes of lavender flowers in June and July.

All the above edging plants are priced as follows:  
*In Lots of 100 Or More Of A Single Variety*

2 1/4 inch pot plants.....35c Each

3 inch pot plants.....55c Each

*In Lots Of 10 Or More Of A Single Variety*

2 1/4 inch pot plants.....25c Each

3 inch pot plants.....45c Each

*NO less Than 10 Of A Variety To A Lot*

### A FEW NOTEWORTHY HERBACEOUS PERENNIALS

**ALLIUM SENESCENS GLAUCUM.** Lovely swirls of twisted blue-gray leaves and clusters of pink flowers in August and September. \$1.00

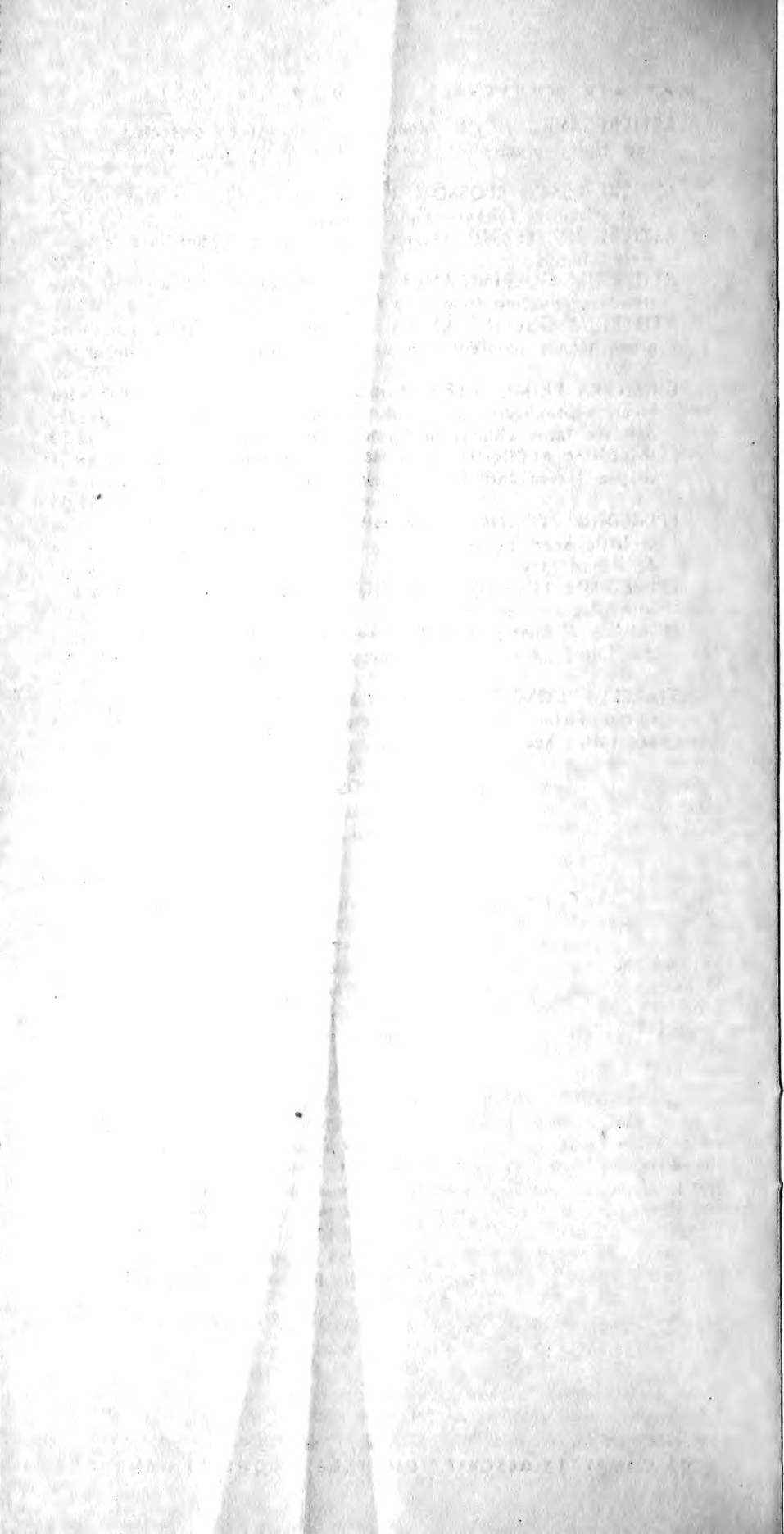
**ASTILBE CHINENSIS PUMILA.** Attractive compound ferny leaves almost flat on the ground and fluffy spikes of pink and mauve flowers in August and September. \$1.00

**ASTILBE FANAL.** Airy clumps of dark reddish ferny foliage and gorgeous plumes of deep red flowers in June and July—Field clumps. \$1.25

FOR COMPLETE DESCRIPTIONS PLEASE CONSULT HANDBOOK

MAYFAIR NURSERIES, R. D. 2, NICHOLS, N. Y.

- ASTILBE AVALANCHE.** Mounds of light green dissected foliage and fluffy plumes of purest white in summer—Field clumps. \$1.25
- ASTILBE PEACH BLOSSOM.** Heavenly peach blossom pink plumes over attractive foliage—Field clumps. \$1.25
- ASTILBE RHINELAND.** Masses of fluffy pink plumes in summer—Field clumps. \$1.25
- ATHYRIUM GOERINGIANUM.** Japanese spleenwort with delicate fronds graduating from pale to deepest green. \$2.00
- ATHYRIUM GOERINGIANUM PICTUM.** Painted Spleenwort with green fronds painted with pink and silver. Rare and beautiful. \$2.50
- DICENTRA EXIMIA ALBA.** A new pure white bleeding heart with lovely white hearts produced from early spring to late fall over delicate ferny clumps of light green foliage. \$2.50
- EPIMEDIUM ALPINUM RUBRUM.** Airy clumps of compound heart shaped leaves and delicate sprays of pink flowers in April. \$1.00
- EPIMEDIUM YOUNGIANUM NIVEUM.** Graceful delicate clumps of little heart shaped leaves and airy sprays of white flowers in April and May. \$1.00
- EPIMEDIUM YOUNGIANUM VIOLACEUM.** Similar to niveum but with lilac colored flowers. \$1.00
- PRIMULA JULIANA WANDA.** A little mat forming Primrose with low foliage and masses of deep red-purple flowers in April. \$1.00
- TIARELLA CORDIFOLIA COLLINA.** Rare and lovely pale pink spired Foam flower. Semi-evergreen non-creeping clumps of decorative heart shaped leaves. \$1.00



## TERMS AND CONDITIONS

This price list cancels all previous catalogue, lists, advertisements and special offers. Prices in this list are subject to change without notice. All the plants in this list are offered subject to prior sale and crop failures beyond our control.

**MINIMUM ORDER \$3.00.** The minimum order we can possibly handle is \$3.00. If you desire only one or two plants please remit the minimum \$3.00.

**CASH WITH ORDER.** All orders must be accompanied with remittance which may be made by check, Postal Money Order or cash when letters are registered. Under no circumstances will we be responsible for money lost in the mails. Please make checks payable to **MAYFAIR NURSERIES**. If your bank does not pay at par be sure to add a sufficient amount to cover your bank's charges. Pennsylvania residents must add 3% sales tax.

**SHIPMENT.** All orders will be shipped at the buyer's expense via Railway Express, charges collect, *unless* postal remittance is received. If parcel post shipment is desired please add the following for postage and handling: 7½% of your order for Postal Zones 1 and 2, 10% for Zones 3 and 4, 15% for Zones 5 and 6, 20% for Zone 7, and 25% for Zone 8. These lower postal rates are possible because of our new packing method with the use of aluminum foil. The minimum Railway Express rate is over \$2.00 locally, therefore it would be more economical to send small packages by Parcel Post. **IF NO POSTAL REMITTANCE IS RECEIVED WITH AN ORDER, IT WILL BE SHIPPED VIA EXPRESS-COLLECT NO MATTER HOW SMALL.**

**SUBSTITUTION.** It is impossible to maintain an adequate stock of every variety to meet the ever increasing demand for our plants. In the event we are sold out of a variety we shall send a substitute or hold the credit for a future order according to your instructions. If we receive no instructions we shall hold the credit for a future order. **PLEASE SEND US A LIST OF A FEW ALTERNATE SELECTIONS TO HELP US EXECUTE YOUR ORDERS QUICKLY.**

**GUARANTEE.** We guarantee that all plants will reach you in good condition in continental United States. There our responsibility ends. We cannot guarantee that you will be able to grow some of the difficult items contained in this list or that they will survive in the location you plant them. We believe all plants are true to name and description and all are properly labeled. If any mistakes occur, please let us know and we shall be glad to make the proper adjustments. If any plants are damaged in transit please rush us all particulars *immediately* so that we can present our claims to the forwarding company. **WE SHALL NOT BE RESPONSIBLE FOR LOSS OR DAMAGE TO ANY PLANTS BECAUSE OF STRIKES OR ACTS OF VIOLENCE.**

**PENNSYLVANIA RESIDENTS MUST ADD 3% SALES TAX**

