

62

Ra

MONROVIA NURSERY CO.



WHOLESALE CATALOG



GATEWAY TO THE WORLD'S LARGEST CONTAINER NURSERY



1958 - 1959



P. O. BOX Q • 18331 E. FOOTHILL BLVD. • AZUSA, CALIFORNIA
EDGEWOOD 4-5161



OPEN INVITATION TO YOU

Dear Customer:

We are pleased to present you with a copy of our new 1958-1959 catalog. In it you will find many new and outstanding, tried and proven varieties, which we know you'll want to add to your stock. These new varieties will add a powerful stimulant to your retail trade.

We have just completed the most modern propagation department in the industry which means we can now offer you a wider selection than ever before - even in the more difficult to propagate and rare varieties.

We cordially invite you and your family to visit our new facilities at our historic ranchos. We are just minutes north of U.S. Highway 66 and only one hours drive from the heart of Los Angeles by freeway.

We are sure you will like the way we have retained in our offices and grounds the authentic Spanish atmosphere of our historic property. Outside under huge trees is a swimming pool for your pleasure if you are a tired or weary traveler our shady porch or a stroll through our park will give you a feeling of peace and contentment.

Remember the latch string is always out and we'll be looking for you.

Sincerely,

Howard Past
Howard Past
President



1. FROST-FREE growing grounds are ideal for the many popular flowering and non-flowering varieties of exotic subtropicals.

2. CUTTINGS, carefully selected from the best parent stock, are made and flatted here by trained MN workers.





3. **ONE OF** our new mist propagation houses. Automatically controlled, maintains ideal growing conditions to produce healthy husky root systems.

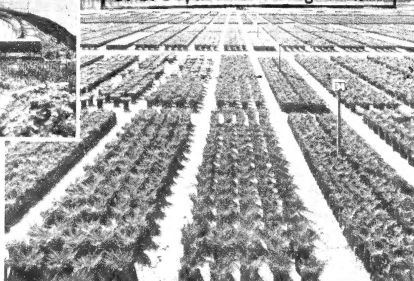
4. **MILLIONS** of new plants are scientifically grown in our new modern growing shelters where each one is individually pruned and fertilized to insure you a better start and less loss with MN pot grown liners.



5. **BED AFTER BED** of gallon size plants stretch into the distance. Soft snow water fills the reservoir in foreground.

6. **WORLD'S LARGEST** volume of five-gallon plants occupies acres at MN. Skilled growing keeps them vigorous and beautifully shaped.

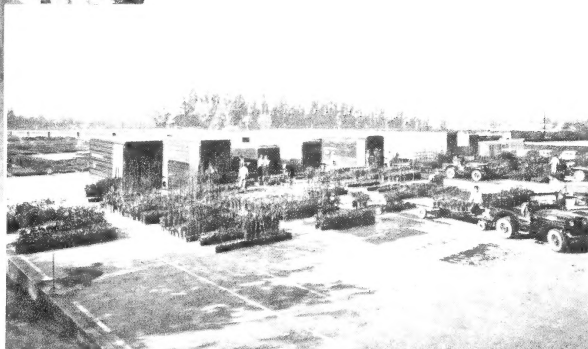
LIBRARY
RECEIVED
★ AUG 19 1958 ★
U. S. Department of Agriculture



8. **NURSERIES** near and far receive plants from this shipping dock. Careful loading insures plants arriving in top condition.



7. **SAFETY-PACKING** in light weight cartons protects your order, keeps freight costs down.



CONIFERS

2 1/4" Pot 1-Gal. 5-Gal.

ARAUCARIA bidwilli. Bunya-Bunya (8)	---	---	3.50
Pyramidal, evergreen tree with shiny sharp pointed leaves; excellent for tub and specimen planting.			
ARAUCARIA excelsa. Norfolk-Island Pine (8)	---	---	5.00
A very formal, pyramidal tree. Branches spread out in horizontal plane. Densely covered with small, bright green needles. Evergreen.			
ARAUCARIA imbricata (A. araucana). Monkey Puzzle Tree (7)	---	---	5.00
A pyramidal, evergreen tree. Interesting twisted branches covered with deep green needle-like foliage.			
CEDRUS atlantica (Seedlings). Atlas Cedar (6)20	.60	2.00
Large evergreen, wide spreading pyramidal tree. Attractive blue-green needle-like foliage. Will vary slightly in color.			
B & B 4'	5.00	B & B 5'	6.25
CEDRUS atlantica glauca (Grafts). Blue Atlas Cedar (6)	---	1.50	4.00
Taken from selected stock to insure its sparkling blue foliage and outstanding qualities. Excellent specimen tree. Grafted.			
CEDRUS deodara. California Christmas Tree (7)20	.60	2.50
Rich silvery gray-green foliage, with wide spreading branches and pyramidal shape. Will vary slightly in color and form.			
3" pot35		
B & B 3'	3.75	B & B 4'	5.00
		B & B 5'	6.25
CEDRUS libani. Cedar of Lebanon (5)20	.60	3.00
A picturesque tree of scriptural interest. Needles are blue-green and are quite stiff. Growth is pyramidal and rigid. Evergreen.			
CHAMAECYPARIS nootkatensis glauca (5)	---	---	2.50
Very attractive upright growing conifer with very compact foliage a rich steel-blue in color. Excellent subject in the landscape.			
CUPRESSUS arizonica (Seedlings). Arizona Cypress (6)15	.50	1.85
Tall, fast growing pyramidal conifer with blue-green foliage. Drought resistant; excellent for wind break.			
2-gal.	1.50		
CUPRESSUS arizonica gareei (5)	---	.95	2.50
Grafted to insure its rich, silvery blue-green foliage. Attractive branches of a distinct whipcord texture. Make this improved form of Arizona Cypress a must in your sales yard.			
2-gal.	1.95		
CUPRESSUS arizonica green. Green Arizona Cypress (6)	---	---	2.50
Very attractive Arizona Cypress with green foliage. Very compact upright column.			
CUPRESSUS arizonica pyramidalis (Cuttings). (6)20	.60	2.00
A very symmetrical compact form of Arizona Cypress having an intense silver blue-green color.			
CUPRESSUS sempervirens glauca. Blue Italian Cypress (7)20	.60	2.00
Cutting grown to insure its outstanding qualities, makes a narrow dense column having green foliage with a bluish cast.			
2-gal.	1.60		
JUNIPERUS chinensis armstrongi. Armstrong Juniper (3)20	.60	2.00
Showy semi-erect conifer with a symmetrical birdnest-like habit of growth. Attractive light green foliage.			
3" pot35	2-gal.	1.50
		5-gal. globe	3.00
B & B 15"	1.75	B & B 18"	2.00
B & B 24"	2.50	B & B 30"	3.00



JUNIPERS IN 1-GAL. CONTAINERS

1. *Juniperus virg. burki* 2. *Juniperus c. armstrongi* 3. *Juniperus c. pfitzeriani*

	2 1/4" Pot	1-Gal.	5-Gal.
JUNIPERUS chinensis Blue Vase. Texas Star Juniper (4)20	.75	2.25
Dense growing Juniper having blue foliage. Grows naturally in a vase shape. Requires very little shearing.			
2-gal.	1.75	B & B 24"	2.50
JUNIPERUS chinensis columnaris. Chinese Column Juniper (3) .25	.75	2.75	
Tall growing, erect conifer with blue-green foliage. Cuttings taken from choice stock to insure bluish compact foliage.			
2-gal.	1.75		
B & B 2'	2.75	B & B 3'	3.50
B & B 4'	4.50	B & B 5'	6.00
JUNIPERUS chinensis Columnaris Blue (3)			2.75
Columnar growing conifer with attractive blue tinted foliage. Blends well in any landscape.			
B & B 3'	3.50	B & B 4'	4.50
		B & B 5'	6.00
JUNIPERUS chinensis fortunei (3)			2.75
Excellent upright conifer with bright green awl-shaped needles, excellent for specimen plantings.			
JUNIPERUS chinensis hetzi Columnaris.			
Green Columnar Juniper (3)75	2.75
Attractive medium green Juniper, with a columnar habit of growth. Dense growing, sharp pointed needles.			
B & B 24"	2.00		



JUNIPERUS
TAMARISCIFOLIA

JUNIPERS IN 5-GALLONS
JUNIPERUS
ARMSTRONGI

JUNIPERUS
KETELEERI

JUNIPERUS
PFITZERIANA BLUE

	2 1/4" Pot	1-Gal.	5-Gal.
JUNIPERUS chinensis hetzi glauca. Hetz' Blue Juniper (3)20	.75
Spreading Juniper with a light frosty blue foliage, and compact habit of growth.			
3" pot.....	.35		
JUNIPERUS chinensis Keteleeri. Keteleeri Juniper (4)25	.75	2.75
Bright green loosely arranged foliage on ascending branches create a desirable upright shape.			
3" pot.....	.45		
B & B 3'.....	3.50	B & B 4'.....	4.50
		B & B 5'.....	6.00
JUNIPERUS chinensis maneyi (4)75	2.75
Rich looking columnar Juniper with blue-green compact foliage. Excellent for yard plantings.			
B & B 30".....	2.75		
JUNIPERUS chinensis neaboriensis (3)			2.75
Upright conical grower with very showy gray-green foliage.			
B & B 4'.....	4.50		
JUNIPERUS chinensis pfitzeriana. Pfitzer Juniper (3)18	.60	2.00
Handsome, feathery, gray-green foliage covers arching picturesque branches as it develops a showy spreading form.			
3" pot.....	.35	1-gal. Stake.....	1.00
		2-gal.....	1.50
5-gal. Pyramid.....	2.75	B & B 15".....	1.75
B & B 18".....	2.00	B & B 24".....	2.50
		B & B 30".....	3.00

2 1/4" Pot 1-Gal. 5-Gal.

JUNIPERUS chinensis pfitzeriana Blue. Blue Pfitzer (3)20 .60 2.00

We believe this strain to be superior to any Blue Pfitzer with its soft silvery-blue foliage combined with its handsome spreading form.

3" pot35 1-gal. Stake 1.00 2-gal. 1.50

5-gal. Pyramid 2.75 B & B 15" 1.75

B & B 18" 2.00 B & B 24" 2.50 B & B 30" 3.00

JUNIPERUS chinensis pfitzeriana compacta. Compact Pfitzer (3) .20 .60 2.00

Very compact dwarf type of Pfitzer's Juniper. From our experience this has proven to be the best Compact Pfitzeriana with its graceful branches being very dense; gray-green in color.

3" pot35 2-gal. 1.50

B & B 18" 2.50 B & B 24" 3.00

JUNIPERUS chinensis pfitzeriana plumosa (4) --- ---

A very appealing spreader with very showy compact green foliage.

B & B 18" 2.50

JUNIPERUS chinensis torulosa. Hollywood Twisted Juniper (4) --- ---

Very artistic growing Juniper with an appealing twisted appearance. A rich deep green in color, a must in your sales yard.

B & B 2' 3.00 B & B 3' 4.50

JUNIPERUS chinensis torulosa variegata. Variegated Hollywood Juniper (4) (3" pot)60 1.50

Similar to Juniperus torulosa except it is slower in growth and the foliage is attractively accented with a creamy yellow variegation.

2-gal. 2.50

JUNIPERUS communis ashfordi (4)20 --- ---

Columnar Juniper with grayish-green upper surface marked by broad white bands. The underside is a silvery green.

B & B 2' 2.00

JUNIPERUS communis cracovia. Polish Juniper (4)20 --- ---

Columnar, pyramid Juniper with light green foliage and a pleasing habit of growth.

B & B 24" 2.00

JUNIPERUS communis depressa Vase Shape (4)20 .60 2.00

True vase shape growth habit. New growth is silver color above and reddish-green beneath. Excellent for foundation plantings.

JUNIPERUS communis hibernica fastigiata. True Irish Juniper (6)18 .60 ---

Showy compact Juniper requiring no shearing to keep its handsome columnar shape. Fine foliage, blue-green color.

JUNIPERUS communis suecica nana. Swedish Juniper (3)18 .60 ---

Picturesque upright Juniper having blue-green foliage. Very compact and neat appearing.

JUNIPERUS conferta. Shore Juniper (5)25 .75 2.50

Prostrate and spreading, the attractive light green foliage is unaffected by sun or salt wind. Outstanding for sea shore plantings.

2-gal. 1.75

JUNIPERUS excelsa stricta. Spiny Greek Juniper (4)18 .60 ---

A columnar, semi-dwarf Juniper with sharp spiny foliage of a blue-green color.

JUNIPERUS horizontalis Bar Harbor (3)20 .75 2.50

Low spreading. Foliage in summer a soft blue, turning in winter to a deep silvery plum color.

2-gal. 2.00

	2 1/4" Pot	1-Gal.	5-Gal.
JUNIPERUS horizontalis plumosa. Andorra Juniper (3)20	.65	2.00
Snowy grayish-green in summer, turning to rich plum color with cold weather. A popular low spreader.			
B & B 15"	2.00		
JUNIPERUS horizontalis wiltoni (3)75	
Excellent Juniper for ground cover plantings. Grows lower than tamariscifolia. The showy vivid blue foliage is finely textured.			
2-gal.	2.00		
JUNIPERUS japonica San Jose. San Jose Spreading Juniper (4)20	.60	2.00
One of the best prostrate Junipers. Sage-green, compact foliage, very husky type of growth.			
B & B 24"	2.50		
JUNIPERUS occidentalis glauca. Silver Sierra Juniper (4)			4.00
A fine silvery blue form of the Sierra Juniper grafted to retain its outstanding qualities.			
JUNIPERUS pachyphlaea. Alligator Juniper (7)			2.75
Columnar shape tree, withstands hot dry areas. Very attractive silver blue foliage.			
JUNIPERUS sabina tamariscifolia. Tamarix Juniper (4)25	.75	2.50
The favorite of low spreading Junipers, very hardy and useful for ground cover. Showy blue-green foliage.			
3" pot40	2-gal.	1.75
JUNIPERUS scopulorum alba (4)			2.75
Pyramidal growth habit, foliage is a bright whitish blue in color.			
B & B 3'	3.50	B & B 4'	4.50
JUNIPERUS scopulorum Blue Bush (4)			
Intense blue foliage with an upright habit of growth.			
B & B 3'	3.50	B & B 4'	4.50
JUNIPERUS scopulorum Blue Green (4)			2.75
Very attractive upright habit of growth and rich blue-green foliage.			
B & B 3'	3.50	B & B 4'	4.50
JUNIPERUS scopulorum Blue Haven (4)25	.75	2.75
Neat pyramidal growth. This Juniper's foliage is the most blue in appearance of any we grow.			
B & B 3'	3.50		
JUNIPERUS scopulorum Blue Queen (4)			2.75
Outstanding upright Juniper with an intense silver blue coloring in the foliage.			
B & B 3'	3.50	B & B 4'	4.50
B & B 5'	6.00		
JUNIPERUS scopulorum Chandleri Silver (4)75	2.75
Showy pyramidal Juniper with rich silver-blue foliage, and an attractive habit of growth.			
B & B 4'	4.50	B & B 5'	6.00
JUNIPERUS scopulorum Colorado Green (4)25	.75	2.75
Attractive upright grower, a rich forest green in color.			
B & B 4'	4.50	B & B 5'	6.00
JUNIPERUS scopulorum columnaris sneedi (4)25	.75	2.75
Columnar form, having compact green-blue foliage.			
B & B 3'	3.50		
JUNIPERUS scopulorum Dewdrop (4)25	.75	2.75
One of the finest upright Junipers we grow. The very compact form almost appears sheared. Small silver-blue needles.			
B & B 30"	2.75		

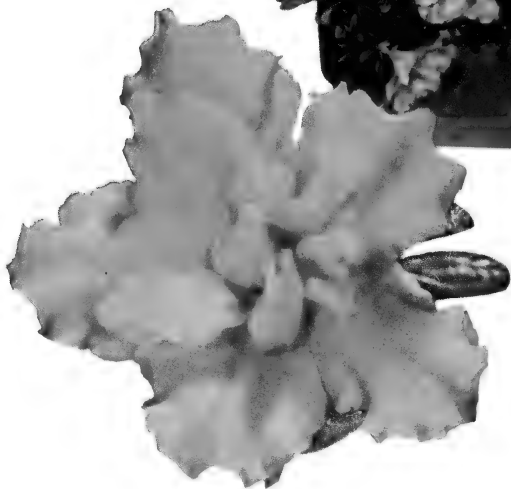
MONROVIA NURSERY COMPANY.....Azusa, California

2 1/4" Pot 1-Gal. 5-Gal.

JUNIPERUS scopulorum erecta glauca (4) (3" pot...45)25	.75	2.75
Excellent selection when an upright pyramidal Juniper is needed. Feathery, silver-blue foliage. Neat habit of growth.			
B & B 3'	3.50	B & B 4'	4.50 B & B 5' 6.00
JUNIPERUS scopulorum glauca compacta (5)75	2.75
Upright columnar Juniper with compact habit of growth and very intense gray-green color to the foliage.			
JUNIPERUS scopulorum Gray Gleam. (Patent No. 848) (4)		1.50	3.50
Slow growing symmetrical, columnar Juniper with attractive gray-blue foliage.			
JUNIPERUS scopulorum Heasleyi (Globe) (4)75	2.75
Good upright growing Juniper that is valued for its globe shape. The dense foliage is blue-green.			
B & B 4'	4.50		
JUNIPERUS scopulorum lakewood globe (4)75	2.75
Compact Juniper with a globular habit of growth. Good blue-green foliage. Blends well in any landscape.			
B & B 30"	3.50		
JUNIPERUS scopulorum Madorra (4)			2.75
Excellent upright conifer with a rich blue-green foliage.			
B & B 3'	3.50	B & B 4'	4.50
JUNIPERUS scopulorum Marshall (4)			2.75
Blue-green in color and attractive upright habit of growth.			
B & B 3'	3.50		
JUNIPERUS scopulorum Montana (5)			2.75
Attractive columnar Juniper with bright green needles.			
JUNIPERUS scopulorum North Star (4)75	2.75
Compact conical form with fine whipcord foliage of a light green in color.			
B & B 3'	3.50		
JUNIPERUS scopulorum Pathfinder (4) (3" pot...45)75	2.75
Showy pyramidal form, blue-gray cast to foliage always makes a pleasing contrast wherever used.			
JUNIPERUS scopulorum schotti (5)			2.75
Upright Juniper. Its gray-green foliage adds a pleasing contrast to any planting.			
JUNIPERUS scopulorum silver glow (4)			
Glowing foliage of intense silver-blue color, appealing upright habit of growth.			
B & B 3'	3.50		
JUNIPERUS scopulorum staver (4)25	.75	2.75
Excellent upright conifer, a rich green in color, blends well in any landscape.			
B & B 4'	4.50	B & B 5'	6.00
JUNIPERUS scopulorum steel blue (4)			2.75
Pyramidal habit of growth, showy, deep steel-blue foliage adds a pleasing contrast to any landscape.			
B & B 3'	3.50	B & B 4'	4.50 B & B 5' 6.00
JUNIPERUS scopulorum Sutherland (4)			
Rich dark green needles and pleasing upright habit of growth.			
B & B 3'	3.50		
JUNIPERUS scopulorum Table Top Blue (4)75	2.75
Neat appearing upright conifer, silver-blue color.			

	2 1/4" Pot	1-Gal.	5-Gal.
JUNIPERUS scopulorum White's Silver King. (Pat. No. 1186) (4)	1.50		3.50
Exciting dwarf spreading Juniper grows to ten inches high with a charming silver-blue color winter and summer.			
JUNIPERUS squamata meyeri (4)			2.75
A picturesque habit of growth with a captivating green, white and pinkish-red foliage. Evergreen.			
JUNIPERUS virginiana burki. Burk Red Cedar (7)25	.75	2.75
Exciting pyramidal form with dense steel-blue foliage in fall turns to tones of showy plum color.			
3" pot45		6.00
B & B 5'			
JUNIPERUS virginiana. Burki Compacta. Compact Red Cedar (2)95	2.75
Same fine qualities of the regular burki, but in a compact form.			
B & B 3'		2.75	
JUNIPERUS virginiana cupressifolia. Hillspire Juniper (2)25	.75	2.75
Very attractive, dark green foliage, and pleasing compact pyramidal form, one of the most outstanding upright conifers.			
3" pot45		3.50
B & B 4'	4.50		6.00
B & B 5'			
JUNIPERUS virginiana. Deforest Green (3)75	2.75
Pyramidal habit of growth, and intense light green coloring.			
B & B 4'	4.50		6.00
B & B 5'			
JUNIPERUS virginiana glauca. Silver Red Cedar (2)25	.75	2.75
Very hardy conifer with silver-blue foliage, pyramidal form.			
B & B 3'	3.50		4.50
B & B 4'			
JUNIPERUS virginiana hilli. Dundee Juniper (2)75	2.75
Choice upright Juniper, in summer rich gray-green foliage. In cool weather pleasing shades of purple.			
B & B 3'	3.50		4.50
B & B 4'	4.50		6.00
B & B 5'			
JUNIPERUS virginiana Manhattan Blue (4)25	.75	2.75
Compact pyramidal Juniper with dark blue-green foliage.			
B & B 4'	4.50		6.00
B & B 5'			
JUNIPERUS virginiana Nova (2)25	.75	2.75
Delightful upright Juniper with bright gray-green needles, attractive color in fall with cool weather.			
JUNIPERUS virginiana pyramidalis (2)			2.75
Pleasing upright conifer with a showy gray-green coloring.			
B & B 3'	3.50		4.50
B & B 4'			
LIBOCEDRUS decurrens. Incense-cedar (5)18	.60	2.00
A narrow columnar tree with pendulous branchlets and lustrous bright green leaves. Very symmetrical grower. California native.			
PINUS attenuata. Knob Cone Pine (7)18	.60	2.25
Picturesque pine of medium height, green needles. Withstands drought conditions well.			
PINUS canariensis. Canary Island Pine (7)18	.60	2.25
Distinctive, long, gray-green needles and graceful spreading branches. Rapid grower and tolerant to drought.			
PINUS halepensis. Aleppo Pine (7)18	.60	2.25
Rich gray-green needles and open habit of growth. Excellent for wind and dry areas.			
PINUS mugo mughus. Swiss Mt. Pine (2)20		
Dwarf growing multiple stem pine, a very attractive green coloring. Slow growing.			
PINUS pinea. Italian Stone Pine (7)18	.60	2.25
Exciting gray-green foliage. Picturesque spreading habit of growth. Withstands wind and heat well.			

	2 1/4" Pot	1-Gal.	5-Gal.
PINUS radiata. Monterey Pine (7) Fast growing pine, with bright green needles, and narrow compact round headed tree.	.18	.60	2.25
PINUS thunbergi. Japanese Black Pine (4) Showy pyramidal type of growth, blackish-gray bark and sharp bright green needles.	.18	.75	-----
PODOCARPUS —see Page 61.			
SEQUOIA gigantea. Giant Redwood (6) The "Big Tree" of the Sierras. Attractive, neat-looking blue-green foliage, forming a perfect cone as it grows. Grows slowly.	.25	---	---
3" pot.....	.45		
SEQUOIA sempervirens. Coast Redwood (7) Attractive conical tree with dark green needle-like leaves arranged in flat sprays. Rapid grower.	.20	.60	2.50
THUJA occidentalis compacta erecta (3) Upright columnar thuja with bright yellow-green foliage. Excellent grower.	.20	.60	-----
B & B 3'.....	2.25	B & B 4'.....	3.00
THUJA occidentalis pyramidalis. American Pyramidal Arborvitae (2) Attractive compact columnar Thuja with rich green foliage, well adapted for colder areas.	.18	.60	2.00
B & B 3'.....	2.50	B & B 4'.....	3.00
THUJA occidentalis Woodward Globe (2) Vigorous growing arborvitae forming a natural globe. Foliage a deep dark green. Very hardy.	.18	.60	-----
2-gal.....	1.75	B & B 15".....	2.50
THUJA orientalis aurea nana. Dwarf Golden Arborvitae. Berckman's Golden Arborvitae (5) (3" pot ...35) Most popular dwarf arborvitae. Slow growing, dense and shaped like a pointed globe. Branchlets are bright golden yellow all year around.	.20	.60	2.25
2-gal.....	1.50	B & B 24".....	2.50
		B & B 30".....	3.00
THUJA orientalis bakeri. Baker's Arborvitae (5) A compact growing pyramidal arborvitae, its radiating foliage has a rich green color.	.18	.60	2.00
THUJA orientalis beverlyensis. Beverly Hills Arborvitae (5) Slender growing conifer. On new growth golden yellow foliage, older branches green with a golden tint.	.20	.60	2.25
THUJA orientalis Blue Cone (5) Upright, pyramidal thuja with especially compact green foliage having a blue cast.	.18	.60	2.00
B & B 24".....	2.00		
THUJA orientalis Burtoni (5) Rich green lacy foliage and attractive columnar shape. Blends well in any landscape.	-----	-----	-----
B & B 4'.....	3.00		
THUJA orientalis compacta. Compact Arborvitae (5) Compact, globe-shaped conifer with bright green dense foliage.	.18	.60	2.00
B & B 24".....	2.50		
THUJA orientalis elegantissima (5) Exciting upright columnar thuja. Bronzy golden green during summer and holds its color especially well during winter.	.18	.60	2.25
B & B 4'.....	3.50		



MN'S AZALEA FIRE DANCE T.M.R.

Outstanding forcing Azalea for Christmas bloom. Masses of large double fire-red blooms literally glow against its rich deep, green foliage.



MN'S AZALEA CHRISTMAS ROSE Pat. No. 1212

Outstanding is this forcing Azalea for Christmas blooms. Long perfect rose shaped buds, opening into very large double flowers, bright rose-red in the center with deeper rose edging. Blooms stay on the plant for many days, and do not shake off. The foliage is a rich deep green.



AZALEAS

BELGIAN INDICA AZALEAS (9)

And Closely Related Hybrids

2¼" Pot	1-Gal.	2-Gal.	5" Pot	7" Pot
.18	.75	1.75	.85	1.75

You will increase your Azalea profits by selling these choice Belgian Indica Azalea varieties grown by MN. These varieties are the largest sellers and most popular because of their spectacular blooms and excellent foliage. Order MN's Belgian Indicas now for forcing, landscaping and growing-on.

VARIETIES	FORM AND COLOR OF FLOWERS	BLOOMING PERIOD
Adrian Steyaert	Double mauve	Jan.-April
Albert & Elizabeth	Double variegated red and white	Jan.-April
Albion	Semi-double white	Dec.-April
Blushing Bride	Double blush-pink	Jan.-April
Charles Encke	Semi-double pink	Dec.-March
Chimes	Semi-double dark red	Dec.-Feb.
**Christmas Rose (Pat. # 1212)	Double rose-red	Dec.-March
Dorothy Gish	Double brick-red	Dec.-March
Dr. Bergman	Semi-double variegated white, pink and rose	Jan.-March
Eric Schame	Double variegated salmon-pink and white	Dec.-March
Findeysen	Double light red	Dec.-Feb.
**Firedance (TMR)	Double fire-red	Jan.-March
Firelight	Double bright red	Jan.-March
Hexe	Hose and hose crimson-red	Jan.-March
Jean Hearrens	Double rose-pink	Jan.-April
Lentegroet	Hose and hose large crimson-red	Jan.-March
Madam Mestdag	Double variegated pink, red and white	Oct.-Dec.
Memoire de Sanders	Double bright red	Dec.-Feb.
Miss Cottage Gardens	Semi-double dark red	Dec.-March
Mme. Alfred Sanders	Double red	Dec.-March
Mme. Petrick	Double cherry-red	Oct.-Dec.
Mme. Petrick Alba	Double snow white	Oct.-Dec.
Mme. Petrick Superba	Double variegated pink and white	Oct.-Dec.
Paul Schame	Double salmon-pink	Dec.-March
Perle de Saffelaire	Double frosty white	Jan.-April
Perle de Sweynaerde	Double velvety white	Dec.-Feb.
Pink Pearl	Double apple blossom-pink	Jan.-April
Pinocchio	Double rose-pink	Jan.-March
Purity	Semi-double white	Jan.-March
*Red Wing (Pat. # 1159)	Hose and hose bright red	Oct.-Dec.
Rose Queen	Double rose-pink	Jan.-March
Sweetheart Supreme	Double blush-pink	Jan.-March
Sweet Sixteen	Double light pink	Oct.-Dec.

* AZALEA RED WING (Pat. # 1159) .15 additional on all sizes.

** See Description, Pages 10 and 11.

SOUTHERN INDICA AZALEAS (9)

Sun Azaleas

2 1/4" pot18 1-gal......75 each 5-gal.....2.75 each

Sun growing Azaleas given proper growing conditions, produce a mass of early spring color that brightens up any planting after the drabness of winter. Southern Indica Azaleas grow well planted in full sun; however, they should not be planted where they will get reflected heat. Order these MN varieties today.

VARIETIES	COLOR OF FLOWERS	BLOOMING PERIOD
Brilliant	Watermelon-red.....	Jan.-April
Coccinea	Lavender.....	Feb.-April
Duc de Rohan	Salmon-pink.....	Jan.-April
Fielder's White	Frosty-white.....	Feb.-April
Geo. L. Taber	Light orchid variegated.....	Feb.-April
Indica Alba	Pure white.....	Feb.-April
Iveryana	White with rose streaks.....	Feb.-April
Phoenicia	Lavender.....	Feb.-April
Pride of Mobile	Watermelon-pink.....	Feb.-April
Prince of Wales	Cherry-red.....	Feb.-April
Snowbird	White.....	Feb.-April
Southern Charm	Deep rose.....	Feb.-April

5-Gal. Tree-Type 3.50 Each

Brilliant	Fielder's White	George L. Taber	Southern Charm
Coccinea	Formosa	Mrs. G. B. Gerbing	White Falls (T.M.R.)

MN'S Latest; Sun Loving "Beltsville" Azaleas

PINK CHARM (T.M.R.)

Literally covers itself with mass of bright double pink flowers from February to April. Very attractive deep green foliage.

RED RIOT (T.M.R.)

Its deep dark green foliage makes a delightful setting for its blaze of bright red flowers which cover the plant from February to April.

WHITE FALLS (T.M.R.)

Glistening white flowers in profusion from February to April make a real show against its shining green foliage.

Monrovia Nursery's California Grown BELGIAN INDICA AZALEAS are the absolute finest for forcing

Here they are — America's most outstanding Azaleas and your sales will prove it! Specially peat-bed grown and carefully pruned, they are sturdy, compact, bushy plants that always develop a good bud set. Equally important, these Azaleas are priced to make you money!!

Shipped in Special Lightweight Cartons — No Packing Charge

Size		Size	
3" x 3".....	.30 each	8" x 8".....	1.35 each
4" x 6".....	.70 each	8" x 10".....	1.75 each
6" x 6".....	.85 each	10" x 10".....	2.25 each
6" x 8".....	.95 each	12" x 12".....	2.75 each

CAMELLIAS (8)

2 1/4" Pot	3" Pot	1-Gallon Unbudded	1-Gallon Budded	5-Gallon	7-Gallon	5-Gallon Espaliers
.25	.35	.95	1.10	3.00	6.00	7.50

Snow White

5-gal. 4.00 7-gal. 8.50

SASANQUA CAMELLIAS

1-gal. 1.25 5-gal. 3.50 5-gal. espalier 7.50

ALL AMERICAN CAMELLIA SELECTIONS

1956—Cinderella, Patent No. 1281 1-gal. 2.50

5-gal. 5.00

1957—Buddha, Patent No. 1215 5-gal. 7.50

1958—Sweetheart, Patent No. 1562 5-gal. 1-yr. 5.00

CAMELLIA PACKAGE

12 Varieties (1-gallon)

100 Plant Package \$85.00

C. M. Wilson
Colonel Firey
Debutante
Emperor Wilhelm
Glen 40
Grandiflora Rosea

Your
Choice

Jordan's Pride
Mathotiana
Mrs. Tingley
Nagasaki
Pope Pius IX
Purity

Minimum 10 plants of one variety

Maximum 20 plants of one variety

In the 100 plant package the cost of each plant is 85c

Each plant in this package is tagged with a "life-sized" Picture Bloom. Plants will be selected for quality entirely. We do not promise buds.

CAMELLIA PICTURE BLOOMS

Give You Year 'Round Sales and Fast Turnover

Your camellias don't have to be blooming to be fast sellers! Free MN artificial blooms (so realistic many customers think they're real at first glance) make them sell 12 months of the year. They make instant plant identification easy, too. They're in full color, water-resistant, fadeproof, last for six months or more! Each plant you purchase from the varieties marked with "*" will carry one of the picture blooms on 1, 5 and 7 gallon plants.

***Tagged with Picture Blooms.**

***ADOLPHE AUDUSSON (AUDREY HOPFER)**

Very large, semi-double, dark red, occasional flowers spotted white. Blooms mid-season.

***ALBA PLENA**

Large, formal double, white flowers. Medium sized shrub. Blooms early.

BUDDHA (Patent No. 1215)

Striking reticulata Camellia. Very large, semi-double, rose-pink flowers with erect wavy petals. Most compact growing of all reticulatas. Blooms midseason.

***C. M. WILSON (GRACE BURKHARD)**

Light pink anemone form, spreading type of growth. Blooms midseason.

***CHANDLERI ELEGANS VARIEGATED**

Large anemone form, rose-pink mottled with white. Blooms midseason.

CINDERELLA (Patent No. 1281)

Large semi-double flowers, bright rose-pink in the center with a velvety white edging. Blooms midseason.

***COLONEL FIREY (C. M. HOVEY)**

Large formal flowers, dark red in color. Blooms midseason to late.

***COVINA**

Semi-double rose-form compact grower. Rose-red flowers. Blooms midseason to late.

***DAIKAGURA VARIEGATED (KIYOSU)**

Large peony type rose-red splotted with white. Blooms early.

***DEBUTANTE (SARA C. HASTIE)**

Large, light pink, peony type. Very vigorous grower. Early bloomer.

ELEANOR HAGOOD

Medium to large formal, pale pink flowers. Blooms late.

***EMPEROR WILHELM (GIGANTEA) (MAGNOLIA KING)**

Huge semi-double to peony form. Rich red flowers marbled with white. Vigorous upright loose growth. Blooms midseason.

***ENGLISH DONCKELARI**

Very large semi-double red marbled white in varying degrees. Blooms midseason.

GENERAL DWIGHT EISENHOWER

Large, full peony to anemone form deep red. Blooms midseason.

GENERAL GEORGE PATTON

Bright pink, large double rose form. Blooms midseason to late.

***GLEN 40 (COQUETTI)**

A deep red, formal to rose form double. Blooms midseason to late.

***GRANDIFLORA ROSEA**

The largest, semi-double deep pink. Vigorous bushy growth. Blooms midseason.

***HIGH HAT**

Large, peony form blossoms of a soft shell-pink. Blooms early to midseason.

***JORDAN'S PRIDE (HERME)**

Light pink with an irregular white margin and streaked with deep pink, double peony type. Blooms midseason.

JOSHUA E. YOUTZ (WHITE DAIKAGURA)

Large peony to formal, double white flowers. Slow compact growth. Blooms early.

***KUMASAKA (LADY MARIAN)**

Double peony flowers of a bright rose-pink. Blooms midseason to late.

***LAUREL LEAF (LALLAROOK)**

Full double, large pale pink flowers, marbled with white. Blooms midseason to late.

***MAGNOLIAEFLORE (SOUTHERN)**

Medium large semi-double blush pink. Compact upright growth. Blooms midseason.

MARGARET JACK (FINDLANDIA VARIEG.)

Large fluted semi-double white streaked with crimson. Blooms early to midseason.

***MATHOTIANA (JULIA DRAYTON) (PURPLE DAWN)**

Very large, scarlet double rose form flowers to formal double. Blooms midseason.

***MRS. CHARLES COBB**

Large, dark red semi-double to loose peony form. Blooms midseason.

MRS. HOWARD ASPER (HANA-FUKI)

Soft pink, large single to semi-double. Medium rate of growth. Blooms midseason.

***MRS. TINGLEY**

Large formal, double salmon-silver pink. Very compact growth. Blooms midseason.

***NAGASAKI (LADY AUDREY BULLIER)**

Very large, semi-double, rose-pink marbled white. Blooms midseason.

PEARL MAXWELL

Large formal double flower of soft shell-pink. Blooms midseason to late.

***PINK PERFECTION (FRAU MINNA SEIDEL)**

Medium, formal double flowers of soft shell-pink. Blooms early to midseason.

***POPE PIUS IX (IMBRICATA RUBRA PLENA)**

Large, formal double, red flowers in imbricated petals. Blooms midseason.

***PURITY (NEIGE d'OREE)**

Large pure white formal flower. Blooms midseason to late.

***ROSEDALE'S BEAUTY (Trade Mark Reg.)**

This classic Camellia lends beauty to any landscape the entire year. Its great demand by Camellia lovers everywhere is due to many outstanding characteristics. Among these are its greater ability to endure extreme weather conditions, its large deep green leaves, handsomest of all Camellias, its vigorous growth and compact form, and its profusion of big double red blooms during February, March and April. Must be sold with trade marked tags attached.

SNOW WHITE

Outstanding new large, formal white camellia. Lustrous deep green foliage and vigorous, bushy upright growth combined with the "eye-catching" white blooms will make this Camellia a "top-seller" for you. Blooms midseason to late.

All American Camellia Selection 1958

SWEETHEART (Pat. #1562)—See picture and description page 18

MN'S 7-GALLON SPECIMEN CAMELLIAS

6.00 each

Alba Plena
Chandleri Elegans
C. M. Wilson
Colonel Firey

Debutante
Jordan's Pride
Mathotiana
Mrs. Tingley

Nagasaki
Pearl Maxwell
Pope Pius IX
Purity

MN'S ESPALIERED CAMELLIAS

7.50 each

Alba Plena
Chandleri Elegans
C. M. Wilson
Colonel Firey

Debutante
Emperor Wilhelm
Jordan's Pride
Mathotiana

Mrs. Charles Cobb
Nagasaki
Pope Pius IX
Mrs. Tingley

SASANQUAS (7)

1-gal.....1.25 5-gal.....3.00 5-gal. espalier.....7.50

- CLEOPATRA** Rose-pink. Semi-double to peony type. Very compact.
HANA JIMAN Large single white, tipped with pink. Vigorous, upright and compact.
HINODE-GUMO Large, single white with pink edge. Upright grower.
HIRYO Deep crimson-red. Double. Vigorous upright open growth.
JEAN MAY Large, shell-pink, double blossoms, compact upright habit.
OCEAN SPRINGS A large single white with petals edged with crimson. Bushy grower.
SHISHI GASHIRA Double bright rose. Low compact grower.
SHOWA-NO-SAKAE Semi-double to peony. Soft pink. Low compact grower.
WHITE DOVES White semi-double to loose peony form. Vigorous, spreading grower.

CROSS REFERENCE TO CAMELLIA NAMES

	LISTED IN OUR CATALOG AS:		LISTED IN OUR CATALOG AS:
C. M. Hovey.....	Colonel Firey	Kiyosu.....	Daikagura Varieg.
Candida Elegantissima.....	Nagasaki	Lady Audrey Buller.....	Nagasaki
Coquetti.....	Glen 40	Lady Marian.....	Kumasaka
Duc de Devonshire.....	Colonel Firey	Lallarook.....	Laurel Leaf
Elegans Varieg.....	Chandleri Elegans Var.	Louise Maclay.....	Grandiflora Rosea
English Donckelari.....	Donckelari (English)	Magnolia King.....	Emperor Wilhelm
Findlandia Varieg.....	Margaret Jack	Mary Bell Glennan.....	Emperor Wilhelm
Firey King.....	Coloney Firey	Mathotiana Rubra.....	Mathotiana
Frau Minna Seidel.....	Pink Perfection	Mikenjaku.....	Nagasaki
Gigantea.....	Emperor Wilhelm	Neige d'Oree.....	Purity
Grace Burkhard.....	C. M. Wilson	Prince Eugene Napoleon.....	Pope Pius IX
Hagormo.....	Magnoliaeflora	Purple Dawn.....	Mathotiana
Hana-Fuki.....	Mrs. Howard Asper	Purple Emperor.....	Mathotiana
Herme.....	Jordan's Pride	Sara C. Hastie.....	Debutante
Hidaru-Genji.....	Jordan's Pride	Shiragiku.....	Purity
Idaten-Shibori.....	Daikagura	Solaris.....	Coloney Firey
Imbricata Rubra Plena.....	Pope Pius IX	Souv. de H. Guichard.....	Jordan's Pride
Jeanne Kerr.....	Kumasaka	Usu-Otome.....	Pink Perfection
Julia Drayton.....	Mathotiana	Wm. S. Hastie.....	Mathotiana

QUANTITY DISCOUNTS

1000 Plants 10%
 500 Plants 5%

These discounts apply if the following requirements are met:

1. All plants must be of one variety.
2. All plants must be of one container size.
3. All plants must be shipped at one time.

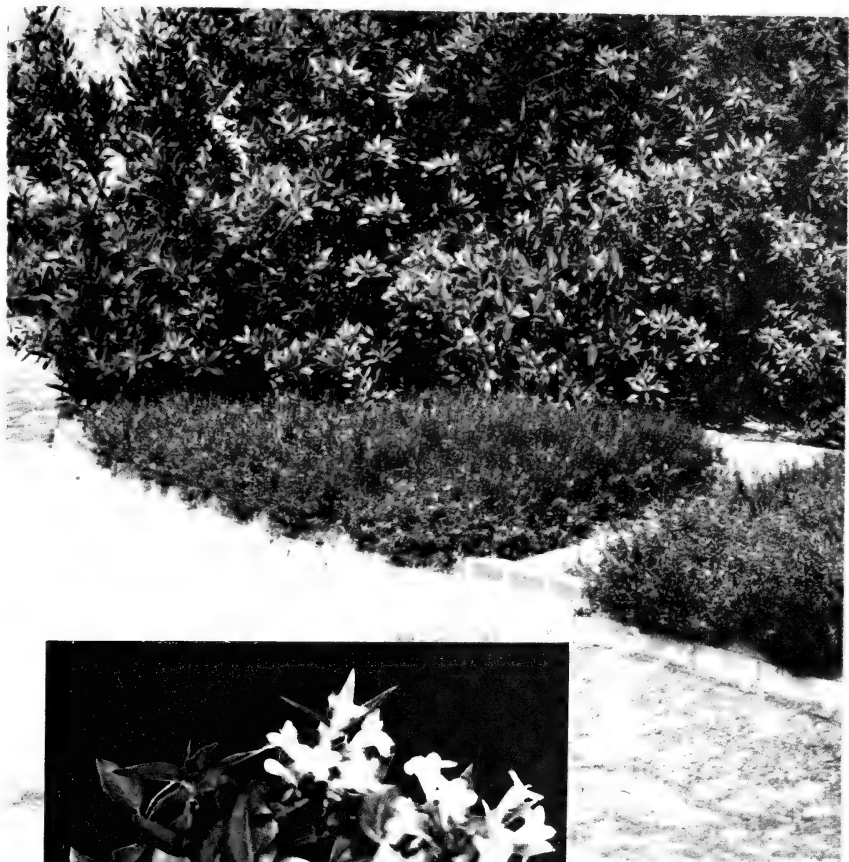


CAMELLIA SWEETHEART Patent 1562
1958-1959 All-America Camellia Selection.

A beautiful formal pink, bushy upright grower. Its glistening green foliage is a spinach green.

GENERAL ORNAMENTALS

	2¼" Pot	1-Gal.	5-Gal.
ABELIA Edward Goucher. Pink Abelia (5)15	.50	1.85
A medium-sized, graceful, compact evergreen shrub producing dainty, clear pink flowers all summer.			
ABELIA grandiflora. Glossy Abelia (5)15	.50	1.85
Graceful, evergreen, hardy shrub of medum size with fragrant white bell-shaped flowers all summer.			
ABELIA grandiflora prostrata (Patent No. 1431).			
Prostrate White Abelia (6)30	.65
2-gal.	1.75		
ABUTILON speciosum. Flowering Maple (9)18	.60
Dwarf evergreen shrub with bright orange-red bell shaped flowers borne in profusion most of the year.			
ACACIA baileyana. Fern Leaf Acacia (9)15	.60	2.25
Popular small evergreen tree with feathery blue-green foliage and clouds of light yellow fragrant flowers in spring.			
ACACIA baileyana purpurea. Purple Leaf Acacia (9)			3.00
Its picturesque purple tinted foliage makes a wonderful setting for the billows of bright yellow flowers in spring. Evergreen.			



A New Spreading Abelia
Abelia grandiflora prostrata
 PLANT PATENT NO. 1431

THE traditional loveliness of *Abelia grandiflora* in a new versatile spreading form for landscaping! Ground covers, bank plantings and low groupings are excellent uses for its striking beauty. Its spreading branches wear shiny, intensely green leaves and new growth has a delightful red tinge. Delicate white flowers decorate the shrub for the greater part of the summer appearing like a city lighted at night. It is a healthy, vigorous grower that endures a wide range of temperatures. See description page 20.

2¼" pot .30 1-gal. .65 2-gal. 1.75

	2¼" Pot	1-Gal.	5-Gal.
ACACIA cyanophylla. Blue Wattle (9)15	.60	2.25
Evergreen tree with long narrow light bluish green leaves. Produces mass of vivid golden ball-like flowers in the spring.			
ACACIA decora. Graceful Wattle (9)60	2.50
Evergreen, drought resistant, bush acacia, massed with bright yellow ball flowers in spring, light green foliage tinged with red.			
ACACIA latifolia. Bush Acacia (9)15	.50	1.85
A small evergreen tree or large bush with long green leaves; masses of yellow flowers in spring.			
ACACIA longifolia floribunda. Everblooming Acacia (9)15	.60	2.25
Small round headed evergreen tree with bright yellow, fluffy ball-like flowers most of the year. Rich green foliage.			
ACACIA melanoxylon. Blackwood Acacia (9)15	.60	2.25
Evergreen tree of pyramidal form with dense deep green foliage. Bright yellow flowers in early spring.			
ACACIA podalyriaefolia. Pearl Acacia (9)20	.60	2.25
A tall shrub with conspicuous gray branches. The fluffy globular yellow-heads of a delicate golden are produced in spring.			
ACANTHUS mollis. Bearsbreech (5)18	.50	1.85
Huge, dark green leaves, all rising from a single crown at ground level, tall spikes of whitish flowers in late spring.			
ACER macrophyllum. Big Leaf Maple (6)20	.60	2.50
Handsome large round-headed deciduous tree with very large 3-lobed leaves, pale green underneath.			
ACER oblongum (7)75	2.50
Deciduous or half evergreen tree with bright green leaves above, glaucous beneath. Well branched tree for yard planting.			
ACER palmatum. Dwarf Japanese Maple (5)18	.60	2.50
Artistic branching tree with small delicate, deeply lobed, light green leaves which turn red before dropping in fall.			
ACER palmatum atropurpureum. Red Japanese Maple (5)			
Same habit of Acer palmatum, except its leaves are deep red all year and become blood red with cool weather. Deciduous.			
2-gal.	2.75		
ACER paxi. Evergreen Maple (9)18	.60	2.25
Evergreen tree with attractive bright green, 3 lobed, serrate foliage. Fast growing.			
ACOKANTHERA speciosa. Bushmans Poison (9)		1.00	2.50
Leathery, dark green leaves tinted slightly with red, makes a large bush; small white to pale pink flowers in spring followed by round fruit.			
ACROCARPUS fraxinifolius. Pink Cedar (9)25	.75	2.50
Very attractive tree with rich green feathery leaves with a reddish cast on the new growth. Fast growing, deciduous.			
AGAPANTHUS africanus (A. umbellatus). Lily of the Nile (8)18	.50	
A showy perennial with deep blue flowers on rounded heads, raised high above the lush mass of strap-shaped leaves in the spring.			
ALBIZZIA julibrissin. Silk Tree (6)18	.60	2.25
Small deciduous tree with light green feathery foliage, quantities of pink silk-like flowers produced in summer.			

MONROVIA NURSERY COMPANY Azusa, California

2 1/4" Pot 1-Gal. 5-Gal.

ALNUS cordata. Italian Alder (5)18	.50	2.00
A strong, fast growing, medium sized symmetrical, pyramidal habit of growth. Deciduous.			
ALNUS glutinosa. Black Alder (4)18	.50	2.00
Large, fast growing deciduous pyramidal tree, has showy black-green heavily veined foliage.			
ALNUS rhombifolia. White Alder (5)18	.50	2.00
Deciduous tall growing shapely tree with dense rich green foliage.			
ALOE arborescens (9)50
Showy cactus-like shrub growing to a medium height, leaves are a dull green with spines.			
ALPINIA nutans. Shell Ginger (10)			2.50
Masses of tall, spear-like leaves; its flower buds are tinged with pink. The mottled flowers are orchid-like, yellow, white and red in color.			
ALTHAEA. Rose of Sharon (5)			
Popular shrub of the hibiscus family producing an array of many colors during the summer months. Deciduous.			
ALTHAEA alba—White18	.50
ALTHAEA coelistis—Deep Blue18	.50
ALTHAEA Collie Mullens—Lavender18	.50
ALTHAEA hamabo—White and Red18	.50
ALTHAEA Kreider Blue—Blue18	.50
ALTHAEA Pink Delight—Pink18	.50
ALTHAEA Woodbridge—Rose Pink18	.50
AMPELOPSIS quinquefolia. Virginia Creeper (4)18	
Deciduous, fast growing vine, clings to walls with its tendrils, very attractive autumn color in fall.			
AMPELOPSIS veitchi (Parthenocissus Tricuspidata). Boston Ivy (4)18	.60
Deciduous, close clinging vine, with green foliage, changing to a bright, vivid color in the fall.			
ANTHURICUM mandianum (9)50
Interesting plant with green and white leaves rising from a single crown produces long runner and bears white flowers in summer.			
ANTHURIUM crystallinum (10)75	2.50
Strikingly beautiful large heart shaped leaves, velvety green with contrasting white veins, spathe green in color approximately 6" long.			
ANTHURIUM huegeli (10)35	1.00	2.50
Very attractive rosette of leathery leaves with depressed veins. Deep dark green in color.			
ANISACANTHUS thurberi (8)18	.50
Low growing compact evergreen shrub with deep green foliage that produces clusters of bright orange tubular flowers freely.			
ANTIGONON leptopus. Coral Vine. Queen's Wreath (8)18	.60
Rapid climbing vine, produces bright pink flowers freely in summer, fast grower; deciduous.			
ARALIA chinensis. Chinese Aralia (9)20	.60	2.50
Exotic tropical appearing shrub with light green leaves with tints of red on margins and leaf veins, spines on leaf and stems; evergreen.			

EXTRA PROFITS
WITH MN ORNAMENTAL PACKAGES
SAVE AS MUCH AS \$25.00 ON
MN'S 1-GAL. 150 PLANT PACKAGE

ORNAMENTAL 1-GALLON PACKAGE

Minimum selection 25 of a variety

Maximum selection 50 of a variety

150 PLANTS 67.50

Aralia sieboldi
Buxus Japonica
Cotoneaster parneyi
Feijoa sellowiana
Gardenia Mystery
Juniperus Chin. pfitzeriana
Ligustrum Texanum

Your
Choice

Nandina domestica
Philodendron selloum
Pittosporum tobira
Pyracantha graberi (bush)
Viburnum Japonicum
Viburnum robustum
Viburnum suspensum

When you purchase this package the cost of each plant is .45 each.

Order as many packages as you want.

No further discounts. These prices are net.

SAVE AS MUCH AS \$15.00 ON
MN'S 5-GAL. 50 PLANT PACKAGE

ORNAMENTAL 5-GALLON PACKAGE

Minimum selection 10 of a variety

Maximum selection 20 of a variety

50 PLANTS 80.00

Aralia sieboldi
Callistemon lanceolatus
Cotoneaster parneyi
Feijoa sellowiana
Gardenia Mystery

Your
Choice

Ligustrum texanum
Liquidambar Styaciflua
Pittosporum tobira
Pyracantha graberi (bush)
Viburnum robustum

When you purchase this package the cost of each plant is 1.60 each.

Order as many packages as you want.

No further discounts. These prices are net.



ARBUTUS UNEDO COMPACTA. COMPACT STRAWBERRY TREE
See photo and description above

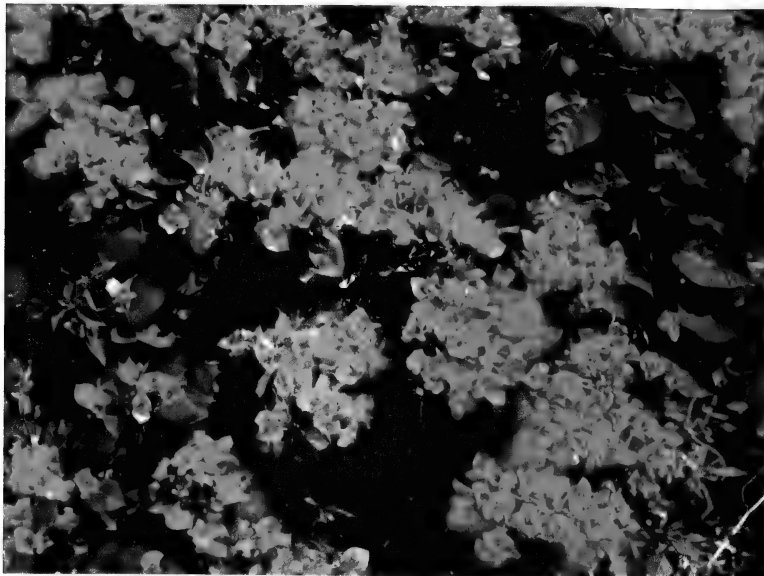
	2 1/4" Pot	1-Gal.	5-Gal.
ARBUTUS unedo compacta. Compact Strawberry Tree (7)25	.60	2.25
Very attractive deep green foliage tinted with amber. Masses of white flowers in spring followed by red strawberry-like fruit. Selected from our own stock plants in insuring its unequalled qualities.			
ARALIA elegantissima (Dizgotheca elegantissima) (9)			3.50
Exotic evergreen shrub with dull, deep green heavily serrated leaves, prefers partial shade.			
ARALIA papyrifera (tetrapanax). Rice Paper Plant (9)22	.60	2.25
Large downy evergreen leaves. It produces loose immense heads of greenish white flowers, November through January.			
ARALIA sieboldi (Fatsia Japonica) (8)15	.50	1.85
Attractive, shade loving evergreen shrub with glossy dark green leaves; prefers partial shade.			
3 per 1-gal.60		
ARBUTUS unedo. Strawberry Tree (7)18	.50	
Deep green amber-tinted foliage, bearing clusters of white flowers in spring followed by red strawberry-like fruit. Evergreen.			
ARDISIA japonica (6)20	.60	
Popular small growing evergreen shrub with bright red berries in fall; has leathery deep green leaves.			

	2 1/4" Pot	1-Gal.	5-Gal.
ARTHROPODIUM cirrhatum. Rock Lily (9)22	.75	-----
Handsome dark green foliage; produces white star-shaped flowers in racemes; grows to approximately 3 feet; prefers slight shade.			
ASTER frikarti. Wonder of Stafa (4)20	.50	-----
Perennial plant which produces violet-blue flowers during summer months; full sun or part shade.			
ASTER frikarti jungfrau (4)20	.50	-----
Fast growing perennial covered with a mass of blue-lavender flowers in summer. Foliage is a rich green in color.			
AUCUBA japonica crotonifolia (7)	-----	-----	2.75
Large leaves with a deep green margin with a bright golden yellow center. Our own selected strain to insure you only the finest. (Female.)			
AUCUBA japonica dwarf female (6)25	.75	2.50
Dwarf growing aucuba with large dark solid green leaves, literally covers itself with bright red berries. (Female.)			
AUCUBA japonica serratifolia (6)25	.75	2.50
Outstanding for its long dark green leaves with serrated edges and captivating large bright red berries. (Female.)			
AUCUBA japonica variegated female. Gold Dust Plant (6)20	.60	2.25
Small compact evergreen shrub with large glossy green leaves splashed with gold. Produces bright red berries. Shade loving.			
AUCUBA japonica variegated male (6)25	.75	2.50
Since aucubas are dioecious these plants are necessary to insure berries at a ratio of approximately 1 to 10 plants. (Male.)			
BAMBUSA golden goddess (7)	-----	.75	2.50
Delightful slender yellow canes with feathery golden green foliage; vigorous grower.			
BAMBUSA sasa pygmaea. Dwarf Bamboo (7)20	.75	-----
Dwarf growing bamboo with golden green feathery foliage, excellent for use as ground cover.			
BAMBURANTA (10)	-----	.60	2.00
Exotic tropical shrub with large green captivating foliage; prefers shade. Blends well in any tropical setting.			
3" pot30		
BAMBURANTA variegated (10)	-----	.75	-----
Same outstanding quality as green Bamburanta, but with variegated foliage.			
BAUHINIA galpani. Red Bauhinia (9)20	.60	-----
A splendid evergreen shrub producing clusters of brick-red flowers in summer.			
5-gal. espalier	6.00		
BAUHINIA purpurea. Orchid Tree (10)18	.60	2.25
Picturesque evergreen tree producing a profusion of orchid like flowers in spring.			
BEAUCARNEA recurvata (Bottle Palm) (9)	-----	.75	-----
Tree-like plant swollen at the base topped by a rosette of linear, pendulous, concave green leaves. White flowers in panicles, in late summer.			
BEAUMONTIA grandiflora. Easterlily Vine (Cutting) (10)35	.75	2.50
A fast growing evergreen vine with beautiful large dark green leaves and fragrant showy trumpet shaped white flowers. Cuttings.			
BELOPERONE tomentosa. Shrimp Plant (9)15	.50	-----
Mass of shrimp-like flowers against its deep green foliage makes this everblooming plant a must in the landscape.			

	2 1/4" Pot	1-Gal.	5-Gal.
BERBERIS Crimson Pigmy (5)25	.75
Miniature form of red leaf barberry with all the charm and delightful deep red coloring of its foliage. Deciduous.			
2-gal.	1.75		
BERBERIS juliana. Wintergreen Barberry (5)20	.60	1.85
Holly-like evergreen shrub with leathery dark green spiny-toothed foliage.			
2-gal.	1.50		
BERBERIS mentorensis. Mentor Barberry (4)18	.50	1.85
Showy, stiff upright branches with heavy, thick dark green foliage. Has an unusual ability to withstand heat and drought.			
2-gal.	1.50		
BERBERIS sargentiana (5)20	.60
Evergreen shrub of a medium height with densely clothed handsome dark green leaves.			
2-gal.	1.50	B & B 24"	2.00
BERBERIS thunbergi. Japanese Barberry (3)15	.50
Compact growing deciduous shrub with dense dark green foliage and bright red winter berries.			
BERBERIS thunbergi atropurpurea. Red Leaf Japanese Barberry (3)15	.50
Bright showy bronze-red foliage all summer, turning a deep amber with cool weather. Prefers full sun.			
2-gal.	1.50		
BERBERIS triacanthophora (5)25	.75
Graceful shrub with long spreading branches, its narrow leaves are a bright green, resistant to stem rust; spiny.			
2-gal.	1.75		
BERBERIS verruculosa (5)22	.75
Spreading evergreen shrub with cylinder-like branches and many slender spines. Dark green spiny-toothed leaves.			
2-gal.	1.75		
BETULA alba. European White Birch (2)15	.50	2.50
Graceful growing tree having white flaky bark. Deciduous.			
BIGNONIA chamberlayni. Yellow Trumpet Vine (7)18	.60	2.25
A beautiful evergreen vine with clusters of showy yellow-orange trumpet-shaped flowers in summer months.			
BIGNONIA cherere. Scarlet Trumpet Vine (10)25	.75	2.50
An evergreen vine that makes a heavy cover and produces large trumpet-shaped flowers, bright red with a yellow tube in summer.			
BIGNONIA tweediana. Catclaw Yellow Trumpet (6)20	.60	2.25
Hardy deciduous vine with slender shoots that cling to any surface. Flowers are bright yellow.			
BIGNONIA venusta. Flame Vine (10)20	.60	2.25
Brilliant trumpet-shaped golden-orange flowers hang in great masses during the winter months on this evergreen vine.			
BIGNONIA violacea. Lavender Trumpet Vine (9)20	.60	2.25
Delightful evergreen vine for sun or shade. Light lavender trumpet-like flowers are borne in spring and summer.			
BOUGAINVILLEA Barbara Karst (10)20	.60	2.25
Large brilliant red flower-bracts are borne almost continually. Plants bloom at an early age.			

MONROVIA NURSERY COMPANY Azusa, California

	2 1/4" Pot	1-Gal.	5-Gal.
BOUGAINVILLEA Betty Hendry (10)20	.60	2.25
Tints of red, yellow and purple combined, make this bougainvillea a show of beautiful color all through the summer months.			
BOUGAINVILLEA brasiliensis (B. spectabilis) (10)20	.60	2.25
An indescribable sight with its clusters of purple flower-bracts.			
BOUGAINVILLEA California Gold (10)25	.75	2.50
As its name suggests, rich golden bracts are borne profusely for many months in the year.			
BOUGAINVILLEA Convent (10)25	.60	2.25
Enormous purple bracts are produced many months of the year.			
BOUGAINVILLEA Orange King (10)20	.60	2.25
Bronzy-gold flower bracts are produced in graceful sprays during warm months. Evergreen.			
BOUGAINVILLEA Scarlett O'Hara (B. San Diego) (10)20	.60	2.25
This fast growing Bougainvillea creates a blaze of color with its bright red flower bracts on pendulous sprays.			
5-gal tree-type	3.50		
BOUGAINVILLEA Temple Fire. Red Bush Bougainvillea (10)20	.60	2.00
For the first time, traditional Bougainvillea beauty in compact, uniform bush form. Makes a striking hedge. Covered constantly with deep red flower bracts in warm weather. Excellent as tub specimens.			
2-gal.	1.50		



	2 1/4" Pot	1-Gal.	5-Gal.
BOUGAINVILLEA Texas Dawn (Trade Mark Reg.) (10)25	.75	2.25

The exotic, almost indescribable color of this sensational bougainvillea wins quick approval and sales from garden lovers. Only the delicate pink of the Texas dawn sky can begin to describe the myriad, gracefully formed Tyrian Rose bracts which the vine suspends from long, arching sprays. Must be sold with T.M.R. Tags attached.

2 1/4" Pot 1-Gal. 5-Gal.

BOUVARDIA albatross (10)**.20 .60** -----
 Low growing evergreen shrub. The snowy-white flowers are sweetly fragrant. Flowers during summer months.

BOUVARDIA Fire Chief (10)**.20 .60** -----
 This low growing evergreen shrub has clusters of bright red tubular flowers which bloom most of the year.

BRUNFELSIA calycina floribunda.
Yesterday, Today and Tomorrow (8)**.20 .50 1.85**
 Colorful spring blooming evergreen shrub with flowers opening to a deep violet and fading to light violet or white.

BRUNFELSIA calycina lindeniana (8)**1.25** -----
 Has rich deep green leaves and attractive purple flowers with a lavender-blue ring in the center with a white eye. Grafted plants.

BUDDLEIA Butterfly Bush (4)
 Showy hardy shrubs which bear exciting arrays of spectacular flowers on long spikes in summer. Deciduous.

- BUDDLEIA alternifolia** Lilac purple.**.15 .50** -----
- BUDDLEIA Charming** Deep pink.**.15 .50** -----
- BUDDLEIA Empire Blue** Blue.**.15** -----
- BUDDLEIA Fascinating** Cattleya pink.**.15 .50** -----
- BUDDLEIA Ile de France** Claret purple.**.15** -----
- BUDDLEIA Purple** Deep purple.**.15 .50** -----
- BUDDLEIA Royal Red** Royal red.**.15** -----
- BUDDLEIA White Cloud** White.**.15 .50** -----
- BUDDLEIA White Bouquet** Sparkling white.**.15** -----

BUXUS harlandi. Korean Box (4)**.15 .50** -----
 Here's a variety of boxwood that will grow where the English will not. Has compact, rounded, rich dark green foliage. Very attractive.
B & B 18"..... 2.00

BUXUS microphylla japonica. Japanese Boxwood (7)**.45 1.85**
 Evergreen, compact growing shrub with small bright green leaves. Excellent for hedges.
5-gal. Globe 2.25 5-gal. Pyramid 2.25
B & B 12" Globe 2.00 B & B 15" Globe 2.50
B & B 15" Pyramid 2.50 B & B 18" Pyramid 3.00

BUXUS rotundifolia (5)**.18 .50** -----
 Similar to Buxus japonica but with larger deep green leaves on more vigorous and erect branches.

BUXUS sempervirens. English Boxwood (5) (3" pot .35)**.18 .60** -----
 Small growing compact evergreen shrub. Splendid for small hedges and borders.

BUXUS suffruticosa. Dwarf Boxwood (5) (3" pot .35)**.20** -----
 Very attractive boxwood with very dense foliage, the leaves are small and deep green. Very compact.

CALADIUM esculentum. (Colocasia esculentia). Elephant Ear (9)**.60 1.85**
 Mammoth, bright green leaves. Prefers rich soil and partial shade.

CALLA Hercules (10)**.18 .50** -----
 Large white flowers. An improved form of the common calla lily.

CALLIANDRA guildingi. Trinidad Flame Bush (10)**.20 .60 1.85**
 Evergreen shrub with semi-lacy foliage, attractive, scarlet fluffy ball-shaped flowers which appear in summer.

CALLIANDRA inequilatera. Pink Powder Puff (10)**.25 .75 2.50**
 Very desirable tropical shrub for unusual accent planting. Bright pink stamens, shaped like huge powder puffs, contrast with graceful feathery foliage.

3" pot40 5-gal. espalier 5.00

	2 1/4" Pot	1-Gal.	5-Gal.
CALLISTEMON lanceolatus Improved. Red Bottle Brush (8)20	.50	1.85
Hardy, sun-loving, drought resistant, evergreen shrub. Produces masses of bright red flowers in summer.			
5-gal. espalier	5.00		5-gal. 5' tree-type 3.50
CALLISTEMON linearis pumila (6)22	.75	2.50
Very showy dwarf growing bottlebrush, producing large red flowers against its rich red green foliage.			
CALLISTEMON phoeniceus prostrata (8)22	.75	2.50
Low growing bottlebrush with long narrow lanceolate leaves. Flowers are a deep rich red. Excellent for bank plantings.			
CALLISTEMON pinifolius (8)22	.75	2.50
Medium sized shrub bearing red flowers with yellow stamens during the summer months. Very fine small narrow foliage.			
CALLISTEMON viminalis. Weeping Bottle Bush (8)15	.60	2.25
Tall slender shrub or small tree with slender, semi-weeping branches. Cascades of bright scarlet bottlebrush blooms in spring.			
CALLISTEMON violacea (8)22	.75	2.50
Tall, dense growing shrub with violet flower spikes. Wonderful for hedge plantings.			
CALODENDRUM capensis. Cape Chestnut Tree (9)25	.75	2.50
Medium sized stately evergreen tree, producing rose-lavender flowers in early summer. A very spectacular tree.			
CALOTHAMNUS villosus. Hairy Net Bush (9)75	2.50
Low bushy shrub with gray-green foliage. In spring deep red flowers in dense clusters along one side of the stem resembling hair brushes. Drought tolerant shrub.			
CAMPHORA officinalis. (Cinnamonum camphora) (8)18	.60	2.25
Evergreen tree with light green foliage becomes more colorful with its bronzy-red new growth. Dark gray to black trunk.			
CARISSA grandiflora. Natal Plum (10)18	.50	1.85
Lush evergreen ornamental shrub of neat growing habit almost continuously sprinkled with waxy, white flowers.			
CARISSA grandiflora fancy (10)			2.50
Breathtaking green foliage, outstanding fruiting qualities and upright growth. Is a must in your sales yard.			
CARISSA grandiflora green carpet (10)25	.75	2.00
Wonderful dense, spreading growth habit of this Carissa, makes it exceptionally good for ground cover plantings. Lush foliage.			
CARISSA grandiflora horizontalis. Natal Creeper (9)20	.60	2.00
Exceptional compactness ideally suits this prostrate shrub for ground covers. Fragrant white flowers and bright glossy foliage.			
CARISSA grandiflora tuttlei (10)20	.60	2.00
Superior compact shrub with a very dense spreading growth of rich green foliage.			
CARISSA minima (10)25	.75	-----
Exciting small plant, evergreen leaves and dwarf habit of growth adds beauty to any landscape. Small white, star-like flowers.			
CASSIA artemisioides. Feathery Cassia (9)18	.50	1.85
Small shrub with feathery, silvery gray foliage and bright yellow fragrant flowers. Good for dry sunny places.			

MONROVIA NURSERY COMPANY..... Azusa, California

2 1/4" Pot 1-Gal. 5-Gal.

CASTANOSPERMUM australe. Morton Bay Chestnut (8)	1.00	3.00	
Tall evergreen tree with light green leaves. Flowers range in color from yellow to red. Produces edible nuts.			
CATHA edulis (9)20	.60	1.85
An evergreen shrub of moderate height with showy leaves having dull undertones of red and purple.			
CEANOTHUS gloriosus (9)25	.75	
A low growing evergreen shrub with thick leathery leaves producing bright blue flowers in the spring.			
CEANOTHUS griseus horizontalis. Carmel Creeper (4)25	.75	
A low growing evergreen shrub with huge thick leathery leaves producing bright blue flowers in the spring.			
CEANOTHUS Mountain Haze. California Lilac (9)20	.75	2.25
New hybrid exceedingly versatile and capable of standing dry weather and poor soil conditions. Produces masses of blue flowers.			
CEANOTHUS Sierra Blue. California Lilac (9)20	.75	2.25
Produces brilliant blue flowers and real deep green foliage. Hybrid with outstanding flowering and growing qualities.			
CEANOTHUS thyrsiflorus repens. Creeping Blue-Blossom (7)20	.75	
Broad spreading, creeping variety with deep blue flowers. One of the best of the hardier creeping lilacs. Grows well in part shade.			
CENTAUREA cineraria. Dusty Miller (7)50	
Low growing, silvery gray foliage. Bright yellow flowers. Excellent for borders and low hedges.			
CERATONIA siliqua. Carob. St. John's Bread Tree (8)20	.60	2.25
An excellent evergreen tree of medium size. The round head of deep green foliage makes dense shade.			
CERATOSTIGMA larpentiae (C. plumbaginoides) (7)18	.50	
Low growing shrub with creeping habit of growth. For semi-shade or sun. Covers itself with rich blue flowers in summer.			
CERATOSTIGMA willmottianum. Dwarf Chinese Plumbago (7) .18	.50		
Low growing shrub with clusters of intensely blue flowers produced in the summer months.			
CERCIDIPHYLLUM japonicus. Katsura-Tree (4)60	
Deciduous tree with heart-shaped leaves a rich green in color with rust to pink edges. Attractive autumn color in fall, columnar type growth when young.			
CESTRUM parqui. Night Scented Jasmine (9)15	.50	
Dense growing shrub with light green foliage. Insignificant, light yellow flowers. Strikingly fragrant at night. Evergreen.			
CHAMAEDOREA elegans. Neanthebella Palm (9)18	1.00	
A showy dwarf palm with attractive green fronds, excellent for pots, or for creating tropical effects.			
3" pot30		
CHAMAELAUCIUM ciliatum. Geraldton Wax Flower (9)20	.60	2.00
Medium to large evergreen shrub with heather-like foliage and showy sprays of waxy, rose colored flowers in early spring.			
CHAMAEROPS excelsa. Trachycarpus fortunei.			
Windmill Palm (8)20	.75	
A small, slender fan palm with leaves forming a compact crown. Its trunk densely covered with hairy black fibers.			

	2¼" Pot	1-Gal.	5-Gal.
CHAMAEROPS humilis. Mediterranean Fan Palm (8)75		3.50
A multiple trunk fan palm forming a compact crown on the end of each trunk. Slow grower.			
CHIONANTHUS virginicus. White Fringe Tree (4)20	.60	-----
Deciduous trees, with showy bright green foliage. Produces many small white flowers in panicles in May and June.			
CHOISYA ternata. Mexican Mock Orange (7)20	.75	-----
A very fine, hardy evergreen shrub with glossy green leaves and fragrant white flowers in showy cluster.			
CHORIZEMA varium. Flame Pea Shrub (9)18	.50	-----
Low growing, evergreen shrub with dark green leaves and showy sprays of pea-shaped flowers in winter and spring.			
CISSUS capensis (Vitis capensis) (10)20	.60	2.25
Evergreen vine with deep green foliage, fast grower, covering large area.			
CISSUS hypoglauca (Vitis hypoglauca) (10)20	.60	2.25
Fast growing, evergreen vine. Glossy leaves of five leaflets. Sharp-toothed, excellent for ground covers.			
CISSUS mandianum (Vitis mandianum). Evergreen Grape (10)20	.50	2.25
Glossy, rich green leaves of three leaflets set close along the twining stems. Grows well either in shade or sun.			
1-gal. Stake60		
CISSUS voinieriana (Vitis voinieriana) (10)		1.00	2.50
One of the most exotic of evergreen vines. The large five-fingered leaves are thick and glossy. Fast vigorous grower.			
CISTUS corbariensis (C. hybrids). White Rock Rose (8)18	.50	1.85
Small free flowering evergreen shrub with soft, ivory-white petals.			
CISTUS Doris Hibberson. Pink Rock Rose (7)20	.60	1.85
Attractive, compact, evergreen shrub with delicate, clear pink flowers adapted for hot dry locations.			
CISTUS ladaniferus maculatus. Brown Eyed Rock Rose (8)20	.60	1.85
Low, spreading, evergreen shrub with deep green narrow foliage and covered with large white flowers. For dry soil and sun.			
CISTUS purpureus. Orchid Rock Rose (8)20	.60	1.85
Compact evergreen shrub with neat habit of growth. Flowers are rose-purple with yellow base and maroon spots.			

- NOTICE -

Due to a state regulation we are not allowed to ship Citrus out of our local area (Los Angeles and vicinity).

CITRUS Calamondin. Philippine Lime (9)20	.60	2.00
Dwarf shrub with light green, small leaves. Fragrant white flowers followed by round orange fruit. Excellent as tub specimens.			
CITRUS Chinotto Orange (9)25	.75	2.50
Dwarf shrub with light green leaves producing fragrant white flowers followed by small miniature oranges.			
CITRUS Eureka Lemon (9)25	.60	2.00
One of the finest lemons, cutting grown. Bears early, excellent for patio use in tubs.			

MONROVIA NURSERY COMPANY Azusa, California

	2 1/4" Pot	1-Gal.	5-Gal.
CITRUS Meyer Lemon. Dwarf Lemon (9)20	.60	2.00
A medium sized shrub with excellent foliage and fragrant flowers. Produces lemons almost the year 'round.			
5-gal. espalier	5.00		
CITRUS Rangpur Lime (9)20	.60	2.00
Dwarf growing lime with rich green foliage. Produces an abundance of orange colored limes.			
CLEMATIS Montana rubens (9)25	.75	2.25
Vigorous deciduous vine having bright green foliage with a purple cast massed with pinkish-white flowers in spring.			
CLEMATIS vitalba. Traveler's Joy (9)20	.60
Vigorous evergreen vine masses with dull white flowers July to September. Very showy rich green foliage.			
CLEMATIS viticella (9)20	.60
Showy evergreen vine with long dark green leaves. Flowers are blue, purple, or rose-purple. Summer blooming.			
CLERODENRON bungei (C. foetidum). Cashmere Bouquet (9)20	.50	1.85
Dwarf evergreen shrub. Deep green toothed leaves and fragrant clusters of rose-red ball-shaped flowers.			
CLETHRA arborea. Lily of the Valley Tree (10)20	.50	1.85
Large evergreen shrub or small tree. Large leathery deep green leaves. White flowers in long panicles in late summer.			
1-gal. Stake60		
5-gal. tree-type	2.25		
CNEORUM triccon. Spruge Olive (9)60
A small lacy leaved shrub producing deep yellow flowers in summer followed by red berries in fall. Evergreen.			
COCOS australis. Blue Cocos (7)25
Very attractive silver-blue fronds arching gracefully. Stands more frost and drought than other feather palms.			
COCCULUS laurifolius (8)20	.60	2.00
Its glistening, green leaves on graceful arching branches make this evergreen shrub highly desirable.			
COLOCASIA esculenta	See CALADIUM		
CONVOLVULUS cneorum. Silver Bush Morning Glory (7)20	.50
Dwarf compact evergreen shrub with soft silvery foliage. Masses of white flowers are produced late spring and summer.			
CONVOLVULUS mauritanicus (9)15	.50
Trailing perennial with gray-green foliage covered with inch-wide lavender-blue flowers all summer.			
COPROSMA baueri. Mirror Plant (10)15	.50	1.85
A medium sized shrub planted mostly for the extremely glossy deep green foliage.			
CORDYLINE australis. Giant Dracaena (9)20	.75
Yucca-like, long narrow, sword-shaped leaves deep green in color.			
CORDYLINE banksi green (9)75	2.50
A palm-like tree with an erect trunk having a crown of tufted blade-like leaves. Rich green in color.			
CORDYLINE banksi purpurea (9)			3.50
Deep bronze in color with long narrow sword-like leaves.			
CORDYLINE terminalis75	3.50
Multicolored leaves of every color make this Ti plant a must in your tropical planting.			

	2 1/4" Pot	1-Gal.	5-Gal.
COREOPSIS nana (6) _____	.50	-----	-----
Low growing perennial plant that is wonderful for border plantings. Bright orange daisy-like flowers cover the plants during summer and fall.			
CORREA magnifica (9) _____	.20	.60	-----
Low growing evergreen shrub with green foliage with a very attractive bronze cast, flowers are chartreuse in color.			
CORREA pulchella (C. speciosa) (9) _____	.20	.60	-----
Compact growing shrub with a spreading habit of growth. Small gray-green leaves and wide, flaring pink flowers in summer.			
CORTADERIA seloana (C. Argentea). Pampas Grass (9) _____	.20	.60	2.00
A grass with heavily serrated leaf blades. Produces handsome white plumes in fall especially suitable for warm dry climates.			
COTONEASTER adpressa praecox (5) _____	-----	-----	1.85
Vigorous grower with a semi-prostrate form of growth. Large leaves. Deciduous.			
COTONEASTER apiculata. Cranberry Cotoneaster (4) _____	.20	.50	1.85
Horizontal deciduous spreading shrub with pink flowers in spring followed by berries retained well into winter.			
2-gal. _____	1.60		
COTONEASTER cornuba (6) _____	.20	.60	2.00
Upright, evergreen shrubs with attractive lush deep green leaves. White flowers followed by red berries in fall.			
COTONEASTER decora. Necklace Cotoneaster (5) _____	.20	.50	-----
Low spreading evergreen shrub with bright red berries appearing in the fall. Showy green foliage.			
COTONEASTER divaricata (5) _____	.18	.50	1.85
A hardy upright cotoneaster with glorious autumn coloring. Red berries are retained well into winter. Deciduous.			
COTONEASTER glaucophylla. Gray-leaved Cotoneaster (6) _____	.20	.60	2.00
A semi-evergreen medium to large shrub with small gray-green leaves on graceful arching branches. Produces red winter berries.			
2-gal. _____	1.60		
COTONEASTER horizontalis. Rock Cotoneaster (5) _____	.15	.50	1.85
Low spreading semi-evergreen shrub with small round leaves, pinkish flowers in spring followed by bright red berries in fall.			
2-gal. _____	1.50		
COTONEASTER multiflora. Manyflowered Cotoneaster (5) _____	.15	.50	1.85
Strong, upright growing deciduous shrub of medium height. Very large red berries.			
COTONEASTER pannosa. Silver leaf Cotoneaster (6) _____	.15	.50	1.85
Semi-evergreen shrub with attractive silvery gray leaves. White flowers followed by bright red berries in fall and winter.			
COTONEASTER parneyi. Red Clusterberry (7) _____	.15	.50	1.85
Large growing evergreen shrub with luxuriant deep green foliage the year 'round. Brilliant red berries.			
2-gal. _____	1.50	5-gal. Standard _____	4.50
COTONEASTER wardi (5) _____	.15	.50	1.85
Distinctive orange berries among the orange-scarlet autumn foliage. Long arching branches, clothed with green foliage. Deciduous.			

	2 1/4" Pot	1-Gal.	5-Gal.
COTONEASTER zabeli. Cherry Bush Cotoneaster (5)15	.50	1.85
A popular upright shrub. Pink flowers in spring and red berries in the fall. Deciduous.			
CROTALARIA agatiflora. Canary Bird Bush (10)20	.60	1.85
Large sun loving evergreen shrub with light green foliage. Produces chartreuse flowers in late fall which resemble canary birds.			
CTENANTHE oppenheimiana (10)	---	---	2.50
Perennial shrub with large tropical appearing deep green leaves. Evergreen.			
CUPHEA hyssopifolia (9)20	.50	-----
Small evergreen shrub with tiny linear, leathery leaves. Flowers borne in summer are purplish rose in color.			
CYDONIA japonica (Chaenomeles). Flowering Quince (4)			
Small bushy, deciduous shrubs with glossy dark green foliage. Masses of "one inch" apple blossom-like flowers completely clothe the branches in winter and early spring.			
CYDONIA Charming Rose pink.....	.20	.50	-----
CYDONIA japonica Minerva Velvety red.20	.50	1.85
2-gal.	1.50		
CYDONIA japonica Texas Scarlet Fiery scarlet.....	.20	.50	1.85
2-gal.	1.50		
CYPERUS diffusus (9)60	-----
A dwarf paper reed shrub, with showy umbrella-like heads.			
DAPHNE odora marginata. Pink Daphne (8) (3" pot ...40)25	---	---
Attractive slow growing compact shrub with glossy leaves edged with ivory. The waxy pink flowers are sweetly fragrant.			
DAISY cotinifolia. Pom Pom Tree (9)20	.60	2.25
Small evergreen tree that produces beautiful fragrant pink flowers in the summer. Rich gray-green foliage.			
DAUBENTONIA tripetti. Glorypea (9)20	.60	2.25
Deciduous, pinnately compound green leaves. Mass of orange-red pea-like flowers are borne in the summer months.			
DEUTZIA gracilis (4)18	.50	-----
Graceful medium growing shrub 2 to 3 feet in height. Produces pure white flowers in spring. Deciduous.			
DIANELLA intermedia (6)20	.75	-----
Accent shrub with grass-like sheathing leaves, similar to phormium. White or blue flowers, followed by deep blue berries.			
DIOSMA pulchrum. Pink Breath of Heaven (9)18	.50	1.85
Compact growing evergreen shrub with heather-like foliage. Tiny star-shaped flowers in late winter and early spring. Pink.			
DIOSMA reevesi. White Breath of Heaven (10)18	.50	1.85
Similar to Pink Breath of Heaven with dark green heather-like foliage and star-shaped white flowers in the spring.			
DODONEA viscosus purpurea. Hopseed Bush (8)25	.75	2.50
Attractive, fast growing, evergreen plant with bright purplish-red leaves. Flowers are inconspicuous. A must in every landscape.			
DOMBEYA wallichi. Pink Ball Dombeya (9)25	.60	1.85
A large shrub with interesting foliage. Produces large lavender-pink ball-like flowers in early spring.			

MONROVIA NURSERY COMPANY.....Azusa, California

	2 1/4" Pot	1-Gal.	5-Gal.
DRACAENA draco. Dragon Tree (9)20	.60	2.50
The large tropical looking leaves are wide and rigid. This variety grows best in a dry location.			
DRACAENA indivisa. Dracaena Palm (9)18	.50	1.85
A tall narrow, palm-like plant with a central stem often forking at the crown, rich green in color.			
DRACAENA rothiana (9)	---	1.00	-----
Attractive sword-like plant rich dark green in color, excellent for tropical effect.			
DURANTA stenostachya. Brazil Skyflower (10)18	.50	-----
Medium to large shrub having arching branches with attractive light green glossy foliage and racemes of light blue flowers.			
ELAEAGNUS pungens. Silverberry (6)20	.50	1.85
A large spreading shrub covered with frosty-white shiny scales. Produces large silver-bronze berries.			
ELAEAGNUS pungens fruitlandi. Fruitland Silverberry (6)20	.50	1.85
Attractive evergreen shrub having leaves and stems covered with shiny scales which add a glistening appearance to the shrub.			
2-gal. 1.50 5-gal. espalier..... 5.00			
ELYMOS arenarius. Sealyme Grass (8)	---	.50	-----
Vigorous strong grass having a powdery blue color. Excellent for holding soil and sand.			
EQUISETUM hyemale. Horsetail Reed Grass (4)	---	.50	-----
Rush-like tropical grass. Deep green with jointed stems. Fast growing.			
ERICA John McLaren. Pink Bell Heather (9)18	.60	-----
Small compact growing shrub blooming twice a year with bell-like flowers that are a lovely shade of pink.			
ERICA melanthera rosea. Pink Scotch Heather (9)18	.60	1.85
Evergreen shrub with fine billowy masses of tiny leaves and equally numerous rosy-pink flowers, from October to February.			
ERICA melanthera rubra. Red Scotch Heather (9)18	.60	1.85
Deep rose-red flowers that bloom from October to February.			
ERIOBOTRYA bronze. Photinia Deflexa (9)	---	1.50	3.50
Outstanding, small, evergreen tree. New foliage has showy reddish-bronze color; mature leaves are dark green. Grafted.			
ERIOBOTRYA japonica. Loquat (9)15	.50	2.00
Small to medium size tree with large dark green leaves and pear-shaped yellow edible fruit. (Seedlings.)			
5-gal. espalier..... 6.00			
ERIOBOTRYA japonica. Gold Nugget (9)	---	---	2.50
Skillful grafting produces this choice plant. Noted for large, golden, delicious fruit and luxuriant, gray-green foliage.			
ERYTHEA armata. Blue Fan Palm (9)20	1.00	-----
A crown of silver-blue, almost white fronds adorn this picturesque palm. Needs very little care.			
ERYTHEA edulis. Guadalupe Palm (9)20	.75	2.50
The attractive fans are clear bright green the entire year. Stems shed readily to leave a clean trunk.			
ERYTHRINA caffra improved (10)20	.60	-----
Improved form of Erythrina caffra with larger bright red flowers.			

	2¼" Pot	1-Gal.	5-Gal.
ERYTHRINA crista-galli. Cockspun Coral Tree (10)20	.60	-----
Long spikes of pear-shaped brilliant red flowers appear all summer and fall on this semi-deciduous large shrub or small tree.			
ESCALLONIA organensis (8)18	.50	1.85
Medium size bushy growing shrub with narrow bronzy green leaves and clusters of appleblossom-like, white and pink flowers.			
ESCALLONIA rubra. Red Escallonia (8)18	.50	1.85
Medium to large evergreen shrub with deep green glossy foliage and clusters of bright red tubular flowers with spreading petals.			

EUCALYPTUS

ANGULOSA. Ridge Fruited Mallee (8)25	.75	-----
Low growing, multiple, whitish stem tree, with rather coarse thick, dark green leaves. White flowers August to December.			
BLOXSOMEI. Yellow Jacket (8)25	.75	-----
A medium sized bloodwood tree, with yellow bark, yellowish green flowers October and November.			
CLOEZIANA. Yellow Messmate (8)25	.75	-----
Medium sized tree, pale green leaves. Produces yellow flower during March and April. Has attractive brown bark.			
CAESIA. Gunguru (8)25	.75	2.50
A small glaucous tree, with smooth bark. Masses of dainty rosy pink flowers January to March.			
CALOPHYLLA. marri (8)	-----	-----	2.00
Medium sized tree, bearing white or pale pink flower. Has attractive smooth green foliage with red tinted venation.			
CINEREA. Silver Dollar Tree (8)20	.60	2.00
A small glaucous tree, with attractive rounded leaves, with stem in the center. Fast growing.			
CITRIODORA. Lemon Scented Gum (9)18	.50	2.25
Strong growing tree with picturesque smooth bark and long pointed lemon scented leaves. White flowers October to December.			
CORNUTA. Yate tree (8)20	.50	2.00
Medium sized tree with dark brown bark. Large deep green leaves, greenish yellow flowers in dense heads. January and February.			
EREMOPHILLA (8)20	.60	2.00
A multiple trunk small tree, very tolerant to drought. Yellow to pink flowers in June to September. Light green foliage. Rare.			
ERYTHRONEMA. Red Flowered Mallee (8)25	.75	-----
A small bushy tree with light gray bark, narrow pale green leaves, red flowers in May to October.			
FICIFOLIA. Scarlet Flowering Gum (10)20	.60	2.25
Medium sized tree, with reddish green foliage with a coarse texture; masses of vivid red to pink flowers cover the tree.			
GARDNERI. Gardners Mallet (8)25	.75	-----
Small growing slender tree, with bluish green foliage; bark a silver-brown, yellowish white flowers May and June. Rare.			
GLOBULUS compacta. Bushy Blue Gum (9)15	.50	1.85
Dwarf compact growing evergreen tree with rich blue-green foliage. Excellent for screen, windbreaks.			
GROSSA (8)25	.75	-----
Dwarf growing, multiple trunk eucalyptus, with large, thick strongly veined leaves. Yellow flowers September to December. Rare.			

MONROVIA NURSERY COMPANY.....Azusa, California

EUCALYPTUS (Cont'd)	2 1/4" Pot	1-Gal.	5-Gal.
GUNNI. Cider Gum (8) Medium sized tree, narrow green lance-shaped foliage; smooth green and white bark. Excellent ornamental eucalyptus.	.20	.60	-----
KRUSEANA. Kruses Mallee (8) A rare silver leaf, dwarf, multiple trunk eucalyptus, which stands dry areas very well. Flowers April to June.	.25	.75	-----
LEHMANNI. Bushy Yate (8) Small growing multiple stem eucalyptus with light attractive green foliage. Huge clusters of bottle green flowers July to Sept.	.18	.50	1.85
MEGACORNUTA (8) Medium sized tree with smooth gray-brown bark, and green foliage. Excellent for ornamental use. Bronzy green flowers.	.20	.60	-----
NUTANS. Red flowered Moort (8) A small rare multiple trunk tree, with bright crimson flowers October to November. Rich dark green leaves.	.25	.75	-----
PERRINIANA (8) Round shiny silver leaves with a stem through the center makes this medium sized eucalyptus a real show-off. Foliage good for arrangements.	.25	1.00	2.50
PLANCHONIANA. Tallow Wood (8) A medium sized tree, with deep green foliage, produces pale yellow flowers December to January.	.25	.75	-----
PLATYPUS (8) Dark green foliage and smooth light gray bark, make this small eucalyptus very useful for ornamental plantings. Rare.	.25	.75	-----
POLYANTHEMOS. Redbox Gum (8) A medium sized low branching tree with grayish blue foliage, with light red margins and veins.	.18	.50	2.25
OLDFIELDI. Oldfield Mallee (8) A multiple stem eucalyptus with reddish brown bark and green leaves. Large bright yellow flowers September to October. Rare.	.25	.75	-----
ROSTRATA. Red Gum (8) A rapid growing tree with narrow green leaves, will grow in moist places satisfactorily.	.15	.50	2.25
RUDIS. Desert Gum (8) Tall growing tree with rounded green foliage, rough brown bark; withstands desert conditions well.	.15	.50	2.25
SALIGNA. Sidney Blue Gum (8) A tall, shaft-like tree, with pale green leaves. Grows well in heavy soils.	.18	.60	2.25
SIDEROXYLON Rosea. Pink Iron Bark (9) Medium size tree with brownish red rough bark and long pointed dark green leaves. Pink flower borne in large cluster.	.15	.60	2.25
SPATHULATA (8) Lovely, very narrow-leaved, small multiple branched tree. Good in damp places, but will grow anywhere.	.18	.60	-----
STRICKLANDI. Strickland's Gum (8) Useful small ornamental tree with yellow flowers December and January. Nice green foliage and brown bark.	.25	.75	-----
TETRAGONA (8) A small tree with smooth glaucous bark and leaves. Excellent tree for yard planting. Greenish white flowers.	.25	.75	-----

MONROVIA NURSERY COMPANY Azusa, California

	2 1/4" Pot	1-Gal.	5-Gal.
EUCALYPTUS (Cont'd)			
VIMINALIS (8)15	.50	2.25
A fast growing tree with green opposite leaves. Very attractive smooth white bark.			
VIRIDIS (8)			2.25
Small growing eucalyptus, especially adapted to dry areas, bears yellow flowers November to January.			
WOODWARDI (8)25	.75	
A medium sized tree ideal for dry areas. Has very ornamental glaucous foliage. White flower in early spring.			
EUGENIA compacta (10)18	.60	2.25
This unusually compact Eugenia is exceptionally suited for formal shaping. Makes superior hedges. New foliage is a striking amber color.			
EUGENIA myrtifolia (E. paniculata australis).			
Brush Cherry (10)15	.50	2.00
Close growing evergreen shrub or small tree with dark bronzy green leaves and fluffy white flowers followed by red berries.			
EUGENIA globulus (10)			2.50
Striking amber foliage combined with globular shape give pleasing contrast to this evergreen shrub.			
EULALIA variegated (Miscanthus) (9)60	2.00
Fast growing perennial grass with green and white leaf blades. Small white tassels are produced in late summer.			
EULALIA zebrina. Zebra Grass (9)			2.00
Fast growing perennial grass with light green leaves striped with yellow along the leaf, white tassels produced in fall.			
EUONYMUS acutus (4)18	.50	1.85
A good prostrate, rapidly spreading plant with smooth, shiny dark green leaves. Foliage is a deep red during the winter. Deciduous.			
EUONYMUS alatus compacta (5)18	.60	1.85
Compact growing Euonymus with reddish green foliage; excellent fall coloration. Deciduous.			
EUONYMUS fortunei carrierei (4)18	.50	
Semi-prostrate growing shrub having heavily veined leaves of deep glistening green.			
EUONYMUS fortunei coloratus (4)18	.50	
Semi-prostrate growth. Foliage is deep green turning plum color in the fall.			
EUONYMUS fortunei erecta (4)18	.50	
Evergreen upright growing shrub having large glossy foliage.			
EUONYMUS fortunei Radicans Upright (4)18	.50	
Semi-upright in growth. Leaves become a deep red in the fall.			
2-gal.	1.50		
EUONYMUS japonicus. Green Euonymus (5)18	.50	1.85
Compact growing evergreen shrub with solid evergreen leaves.			
2-gal.	1.50		
EUONYMUS japonica alba marginata (5)18	.50	
Attractive leaves with narrow margin of white which gives a silver-like cast.			
EUONYMUS japonicus aureo-marginatus. Golden Euonymus (5)18	.50	1.85
Leaves dark green with bright gold margin.			
2-gal.	1.50	B & B 30'	2.75

	2¼" Pot	1-Gal.	5-Gal.
EUONYMUS japonicus aureo-variegatus (5)			
Gold Spot Euonymus (5)18	.50	1.85
Compact shrub having gold leaves with a dark green margin.			
2-gal.	1.50	B & B 30"	2.75
EUONYMUS japonica gigantea (5)15	.50	1.85
Large deep glossy green leaves on vigorous upright stems, fast growing, evergreen.			
2-gal.	1.45	B & B 4'	4.00
EUONYMUS japonica grandifolia (5)18	.50	1.85
Fast growing upright shrubs with large bright, deep green leaves.			
EUONYMUS japonicus microphyllus. (E. pulchellus) (5)18	.50
Very dwarf shrub with small, rich dark green leaves.			
2-gal.	1.50	B & B 18"	1.75
EUONYMUS japonicus Silver Queen (5)18	.50	1.85
Large evergreen foliage with a silver margin and green center. Very attractive.			
2-gal.	1.50	B & B 18"	2.00
EUONYMUS kewensis (5)18	.50
Vining type euonymus having small light green leaves. Excellent for ground cover plantings. Evergreen.			
EUONYMUS patens Newport. (E. kiautschovica) (4)18	.50
Compact grower. Foliage remains on the plant practically all year.			
2-gal.	1.50		
EUONYMUS radicans argentia variegata (4)18	.50
Low growing shrub with variegated leaves. White and green foliage.			
EURYA emarginata (7)20	.60	2.00
Vigorous growing shrub with thick rounded, shiny leathery leaves on horizontal branches.			
EURYA ochracea (7)25	.75	2.50
Handsome Camellia-like evergreen foliage with a beautiful reddish tint. It produces small fragrant flowers in summer followed by red berries.			
FATSHEDERA lizei. Botanical Wonder (8)15	.50	1.85
A bigeneric hybrid between Fatsia and Hedera. Semi-climbing vine with large glossy green leaves. Evergreen.			
5-gal. 1-stake	2.25	5-gal. 2-stake	2.75
5-gal. espalier	5.00		
FATSHEDERA lizei variegata (8)18	.50
Variegated form of <i>Fatsihedera lizei</i> , with white margins on the leaves. Very attractive.			
FEIJOA Pineapple Gem (8)	1.25	2.75	
Showy silvery green foliage and exotic red flowers in spring followed by large juicy pineapple-flavored fruit. Selected strain.			
FEIJOA sellowiana. Pineapple Guava (8)15	.50	1.85
Fast growing, tall, evergreen shrub with gray-green foliage and waxy-white flowers, fruit pale green, edible.			
2-gal.	1.50		

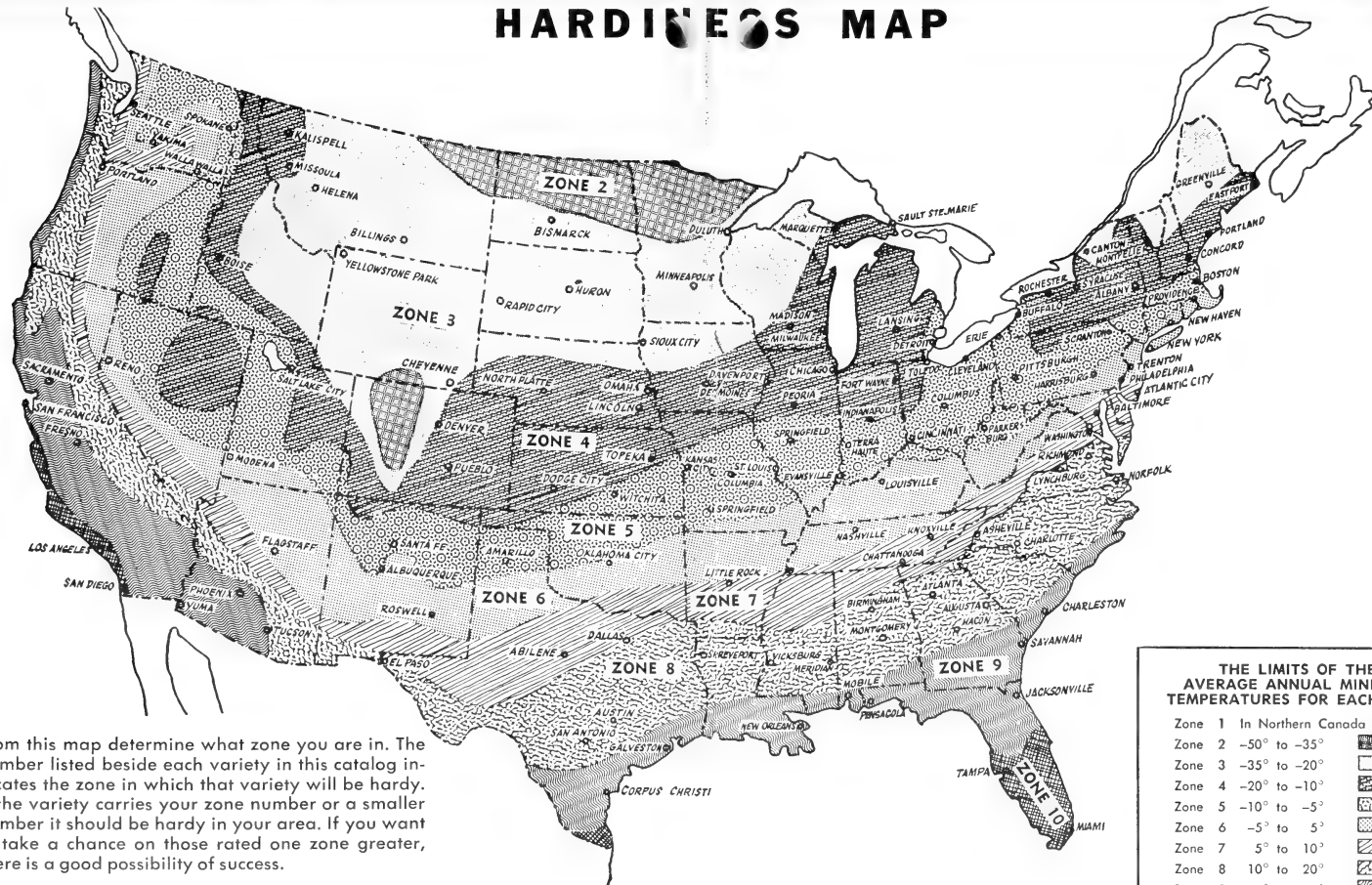
FERNS

ALSOPHILA australis. Australian Tree Fern (10)25	1.00	3.50
Beautiful, slender graceful stems with a crown of spreading light green fronds. Prefers shade, fast grower.			
3" pot45		
ASPARAGUS falcatus	1.25		
Picturesque, bright green, narrow sickle-shaped leaves, which when cut retain their fine qualities for many days. Vigorous, verdant grower. Prefers shade.			

FERNS (Cont'd)

	2 1/4" Pot	1-Gal.	5-Gal.
ASPARAGUS plumosa. Asparagus Fern (9) Vigorous growing fern with small dainty lace-like foliage. A deep green in color. Ideal for shade.	.20	.60	-----
ASPARAGUS sprengeri Small fern on long arching branches making a rich fluffy mound of green foliage. Prefers shade.	.20	.60	-----
ASPIDIUM tsus-simense (9) Showy tight growing fern with deep green heavily veined fronds. Prefers shade.	.20	.75	-----
ASPLENIUM bulbiferum. Mother Fern (10) Beautiful fern with long exotic green fronds. New fern is produced in the axil of its fronds. Prefers shade.	.20	.75	2.50
CYRTOMIUM falcatum. Holly Fern (8) Stiff, erect, dark green fronds, with coarse holly-like leaf, blend well in any landscape. Shade loving.	.20	.75	2.50
DICKSONIA anartica. New Zealand Tree Fern (10) Dark brown trunk with a crown of feathery arching fronds. A deep dark green in color, with a fine lacy texture. 3" pot......45	.25	1.00	3.50
DICKSONIA fibrosa. Golden Tree Fern (10) A vivid golden green in color, makes a showy display with its arching frond on its brown trunk. Prefers shade. 3" pot......50	.35	1.00	3.50
NEPHROLEPIS exaltata Sword Fern (8) Very fast growing fern with long sword-like green fronds. Very attractive and blends well in any garden.	-----	.50	-----
POLYPODIUM aureum. Hares-Foot Fern (9) Coarse fern with brown creeping rhizomes that resembles a rabbits foot. Fronds are a rich green in color.	-----	.75	-----
POLYSTICHUM capense. Leather Fern (8) Slow growing, with leathery dark green foliage; has a creeping rootstock. Prefers shade.	-----	.75	-----
WOODWARDIA radicans. Chain Fern (9) Perennial fern with vigorous, fast growing fronds. A rich green in color, excellent for real tropical appearance.	-----	.75	2.50
FICUS benjamina (9) Outstanding Ficus with rich green foliage with a pleasing weeping appearance. Excellent for espaliers, specimen, and many more unlimited uses.	-----	-----	2.50
FICUS decora (10) Heavy, deep glossy green leaves with a red cast beneath, red tip on new growth.	-----	-----	5.00
FICUS elastica. (Seedlings). Rubber Plant (9) Large, glossy, dark green leaves. Wonderful tropical plant for indoor or outdoor plantings. Excellent tub plant.	-----	.60	2.50
FICUS mysorensis (10) Sub-tropical tree with large deep green leaves. Has round, red fruit which is borne in pairs. Evergreen.	.20	.75	2.50
FICUS nitida. Indian Laurel (9) Very refined evergreen plant having thick, rubbery leaves. Ideal for use as a hedge planting, or small tree. 5-gal. 3'..... 2.50 5-gal. 5'..... 3.50 5-gal. espalier..... 5.00	.20	.60	-----
FICUS repens. (F. pumilla). Climbing Fig (9) Close growing, clinging evergreen vine. Leaves rounded about one inch long. For sun or partial shade, vigorous grower.	.15	.50	-----
FICUS repens minima Similar to ficus repens except more dwarf growing, and the leaves are smaller. Good dark green foliage.	.20	.60	-----

HARDINESS MAP



From this map determine what zone you are in. The number listed beside each variety in this catalog indicates the zone in which that variety will be hardy. If the variety carries your zone number or a smaller number it should be hardy in your area. If you want to take a chance on those rated one zone greater, there is a good possibility of success.

THE LIMITS OF THE AVERAGE ANNUAL MINIMUM TEMPERATURES FOR EACH ZONE

Zone 1	In Northern Canada	
Zone 2	-50° to -35°	
Zone 3	-35° to -20°	
Zone 4	-20° to -10°	
Zone 5	-10° to -5°	
Zone 6	-5° to 5°	
Zone 7	5° to 10°	
Zone 8	10° to 20°	
Zone 9	20° to 30°	
Zone 10	30° to 40°	

MINIMUM QUANTITIES

Please do not order less than the following quantities of any one variety.

- 25 in 2 1/4" lining-out stock
- 25 in 3" lining-out stock
- 10 in 1-gallon containers
- 5 in 5-gallon containers

Please keep in mind that an order to be shipped by express, parcel post, or motor freight must total \$20.00 or more. This minimum also applies to local deliveries.

QUANTITY DISCOUNTS

1000 Plants	10%
500 Plants	5%

These discounts apply if the following requirements are met:

1. All plants must be of one variety.
2. All plants must be of one container size.
3. All plants must be shipped at one time.



MONROVIA NURSERY COMPANY.....Azusa, California

	2¼" Pot	1-Gal.	5-Gal.
FORSYTHIA Lynwood Gold (4) Large yellow flowers that are produced before leaves appear in spring. Deciduous.	.18	.50	-----
FORSYTHIA Spring Glory (4) Deciduous shrub covered with brilliant yellow flowers in early spring before its deep green leaves appear.	.18	.50	-----
FRAXINUS uhdei. Shamel Ash. Evergreen Ash (9) Medium size, slender evergreen tree, excellent for street planting or as a shade tree. Leaves long and glossy green.	.18	.50	2.25
GARDENIA Mystery (8) Bushy compact growing plant with glossy green leaves. Produces large creamy-white fragrant flowers during spring and summer.	.18	.50	1.85
GARDENIA radicans (9) Very desirable miniature gardenia having glossy foliage and small white fragrant flowers. 2-gal. 1.75	.20	.60	-----
GARDENIA stricta nana (9) A hardy vigorous gardenia with attractive green foliage. Very free flowering.	---	.60	-----
GARDENIA veitchi. Everblooming Gardenia (9) Free flowering Gardenia with bright green compact foliage. Evergreen.	.18	.50	1.85
GELSEMIUM sempervirens. Carolina Jasmine (7) Evergreen twining vine. Flowers are trumpet-shaped, yellow and fragrant. Produced in profusion in summer months.	.18	.60	2.25
GENISTA racemosa. (Cytisus racemosus). Sweet Broom (8) Compact evergreen shrub producing golden-yellow pea-like flowers in late spring. Small deep green leaves.	.20	.50	1.85
GINKGO biloba. Maidenhair Tree (4) Picturesque open-growing deciduous tree with artistic fan-shaped leaves of bright green turning golden yellow in the fall. Hardy.	.18	.60	2.25
GORDONIA alataamaha. (Franklinia alataamaha) (5) Attractive deciduous tree, with bright green foliage turning to a rich scarlet with cool weather. Produces white flowers in fall.	---	---	2.75
GREVILLEA robusta. Silk Oak (9) Evergreen tree making a narrow columnar head of fern-like green leaves. Produces bright orange-yellow flowers in spring.	.18	.60	2.25
GREWIA caffra improved. Lavender Star Plant (10) Fast growing evergreen plant with light green foliage and lavender star-shaped flowers which are borne most of the year. 5-gal. Espalier 5.00	.20	.60	2.00
GRISELINIA lucida (8) Rounded evergreen shrub with neat appearing olive-green leaves. Prefers shade; bears white panicles about 6" long in summer.	.20	.60	1.85
GUAVA Red Strawberry (Psidium cattleiaum) (10) Medium size evergreen shrub bearing clusters of small, round, dark red fruits. Used in making jellies. Excellent landscape shrub.	.15	.50	1.85
GUAVA Yellow Strawberry Improved (10) This large glossy-leaved evergreen shrub bears edible strawberry-flavored fruit, blends well in any landscape.	.15	.50	1.85
GUNNERA dentata (9) An appealing moisture loving shrub which forms extensive mats, excellent subject for rock gardens and low plantings.	---	.60	-----
GUNNERA manicata (9) Tropical shrub used for bold foliage effects. Can be planted in sun or shade and must have lots of moisture.	.20	.60	2.00
HARDENBERGIA comptoniana. Vine-Lilac (10) A fast growing vine having slender lacy leaves with deep clear blue flowers in February and March. Evergreen.	.20	.60	2.25

2 1/4" Pot 1-Gal. 5-Gal.

HARPEPHYLLUM caffrum. Kafir Plum (9)			2.50
Attractive evergreen tree with black-green foliage. New growth tinted with red. Produces small dark red edible berries in fall.			
HARPULLIA arborea (10)25	.75	2.50
Beautiful tree with deep green leaves, inconspicuous flowers in spring followed by bright orange seed pods in fall. Evergreen.			
HEDERA canariensis. Algerian Ivy (9)15	.50	2.00
Dark green unusually large leathery leaves make this evergreen vine most desirable. Very vigorous grower.			
HEDERA canariensis variegata. (Variegated Algerian Ivy) (9)15	.50	2.00
Large leathery leaves, a creamy white and green. Excellent for ground cover.			
HEDERA hahni. (Hahn's Ivy) (6)15	.50
This compact growing Ivy finds much use in planter boxes because of its somewhat restricted growth habit. Deep green foliage.			
HEDERA helix. English Ivy (4)15	.50	2.00
Dark green small leathery leaves. Fast vigorous grower. 2-gal..... 1.60			
HEDERA helix arborescens (6)20	.60
We find this to be very hardy, having every appearance of Ivy in bush form. Its Ivy-like leaves twisted and contorted in an interesting manner.			
HEDYCHIUM spicata. Ginger Lily (10)60
Dwarf tropical shrub with attractively deep green foliage, bearing spikes of showy yellow flowers in midsummer.			
HELIANTHEMUM lasinathum. (Halimum lasianthum). Sun Rose (7)20	.60
Small evergreen shrub having gray-green foliage. Flowers are yellow blotched with a purple base in summer months.			
HELIANTHEMUM ocymoides. (Halimum ocymoides) (7)20	.60	
Evergreen silver foliage, low growing shrub. Large soft yellow flowers with a spot of purple at the base in summer months.			
HELICHRYSUM petiolatum. Cotton Leaf (9)20	.50	
Low growing semi-trailing evergreen shrub with a very attractive gray cotton covered appearing leaf.			
HELIOTROPIUM Black Beauty. (Heliotropium arborescens). Heliotrope (10)18	.50	
Highly fragrant, deep purple flowers most of the year. Plant has unusually dark green foliage. Evergreen.			
HIBBERTIA volubilis. Gold Guinea Vine (10)18	.60	2.25
A luxuriant evergreen vine. Large gold colored single flowers create a fascinating contrast against the deep green leaves.			

QUANTITY DISCOUNTS

1000 Plants	10%
500 Plants	5%

These discounts apply if the following requirements are met:

1. All plants must be of one variety.
2. All plants must be of one container size.
3. All plants must be shipped at one time.

HIBISCUS (10)

	2 1/4" Pot	1-Gal.	5-Gal.
AGNES GAULT18	.50	1.85
Single, bright rose-pink petals. Heavily veined with a pink and cranberry throat. Very attractive.			
5-gal. tree-type	2.75		
AMERICAN BEAUTY25	.60	2.00
Large single bright pink flowers of varying intensity with a rose-red to white throat.			
BRIDE40	.85	2.25
Large, single, crepy, ruffled petals of white blushed with pale pink, turning a frosty white in latter part of the day.			
BRILLIANT (San Diego Red)18	.50	1.85
Vivid bright red single flowers are produced profusely most of the year.			
5-gal. tree-type	2.75		
CALIFORNIA GOLD20	.60	2.00
Single flower with petals of a rich yellow-gold shading into carmine-orange in the center.			
CROWN OF BOHEMIA25	.60	2.00
Very full double petals magnificent golden yellow with deep orange-red throat. Very rich green foliage.			
FULLMOON (Trade Mark Reg.)	---	1.00	2.50
You have never really seen a yellow hibiscus until you have seen the brilliant lemon-yellow of new Hibiscus Fullmoon! Its bloom is extremely full and double, its petals wide-spread with a perfect symmetry of a full moon. Its lovely slender leaves are deep, shining green. Fullmoon blooms most of the year, an ideal shrub for foundation planting or hedges. Must be sold with T.M.R. Tags.			
HALEAKALA25	.75	2.25
Single, with ruffled petals of saffron yellow with a throat of orange red.			
KATE SESSIONS18	.50	1.85
Large single, with crepy, flat petals. Turkey red in color and dark red throat.			
5-gal. tree-type	2.75		
KAUAI18	.50	1.85
A large single bright pink, flowers very well during the winter months.			
KILAUEA25	.60	2.00
Single petals of a clear pale yellow with large glossy white throat. Very vigorous and free flowering.			
KONA18	.50	1.85
Very full double bright pink ruffled petals with a faint pink-beige border.			
MME. CHIANG KAI-SHEK18	.50	1.85
A beautiful double-blush ivory-pink with yellow undertones.			
5-gal. tree-type	2.75		
PRESIDENT. (Trade Mark Reg.)18	.50	1.85
Hibiscus President is one of the most satisfactory Hibiscus ever offered to the nursery trade. Large, single flowers—dramatic both in size and in rich, intense, red coloring, rate it an instant favorite with your customers. Of equal appeal is its vigorous, glossy compact foliage which stays attractive the entire year. Upright and tall, it makes an impressive high hedge or foundation planting. Must be sold with T.M.R. Tags attached.			

HIBISCUS (Cont'd)	2 1/4" Pot	1-Gal.	5-Gal.
RED MONARCH25	.60	2.00
Huge double rosette-shaped flowers of a deep crimson.			
ROSS ESTEY35	.85	2.25
Extremely large single flower with orange edges shading to glowing rose center. These ruffled and tufted flowers last 3 to 4 days in California. Foliage is extremely heavy and large with a glossy polished appearance.			
RUBY RED18	.50	1.85
Beautiful double bright red flowers. Leaves are a bright glistening green.			
SENSATION25	.60	2.00
This beautiful hibiscus has so many captivating colors all blended into one—apricot, gold and rust. Truly a sensation.			
5-gal. tree-type	2.75		
WHITE WINGS18	.50	1.85
Single white petals with ruby red eye in the center. Faint red vein in center of each petal.			
5-gal. tree-type	2.75		
HARDIER HIBISCUS (7)			
This variety does well in the colder areas. Even if they freeze to the ground they grow quickly the following spring and summer and provide an abundance of flowers.			
MUTABILIS RUBRA. Confederate Rose20	.50	1.85
Large single red flowers.			
SUPER CLOWN			1.00
Large single whitish pink with a red eye.			
HOYA carnosa. Wax Vine (9)25	.75
A climber with perfect waxy-white flowers. Its thick succulent-looking leaves require shade and much moisture. Evergreen.			
HOYA carnosa variegated (9)35	1.00
Same outstanding qualities as Hoya carnosa but with green and white foliage.			

HYDRANGEAS (9)

MN's fine French hybrids are sure "sell-on-sight" items.

HAMBURG	Scarlet colored flowers.18	.50	1.85
HORTENSIS (H. macrophylla) ..	Large delicate pink flowers.18	.50	1.85
MERRITT'S BEAUTY	Very striking carmine-red.18	.50	1.85
REVELATION	Bright red flowers.18	.50	1.85
TROPHEE	Brilliant, salmon-rose flowers. ..	.18	.50	1.85
WHITE	Clusters of pure white flowers. ..	.18	.50	1.85
HYDRANGAEA quercifolia. Oak Leaf Hydrangea (5)20	.60	2.00
Very attractive oak-shaped leaves adorn the multiple trunked shrub, white to light pink flower in summer. Deciduous.				
HYPERICUM hidcote (6)18	.50
The beautiful golden-yellow flowers are cup-like, and waxy, and are produced more freely than on most hypericum.				
HYPERICUM patulum henryi. Henry's Golden Cup (7)18	.50
Low, bushy growing shrub with light green foliage. Almost ever-blooming, it produces masses of bright yellow flowers.				

	2 1/4" Pot	1-Gal.	5-Gal.
HYPERICUM Sungold (Patent No. 568) (6)35	.75	-----
A shapely, dwarf shrub which bears golden-yellow flowers at the end of every shoot of the summer's new growth.			
IDESIA polycarpa (6)25	.75	2.25
Attractive deciduous tree with large rich deep green foliage, bearing fragrant yellow flowers followed by orange-red berries.			
ITEA ilicifolia. Hollyleaf Sweetspire (8)	---	---	1.85
Attractive evergreen shrubs. Their holly-like leaves are a deep shining green.			

ILEX (HOLLY)

ILEX altaclarensis wilsoni (6)25	.75	2.50
Ideal as a tree or large shrub, the spiny thick leaves and bright red berries make it one of the finest evergreen hollies. Vigorous rigid growth.			
2-gal.	1.95	5-gal. tree-type	5.00
B & B 3'	3.50	B & B 4'	4.50
		B & B 5'	6.00
ILEX aquifolium. (Seedlings). English Holly (6)18	.50	-----
Evergreen holly with deep green serrated foliage. Vigorous growth.			
ILEX aquifolium aurea marginata (6)	---	---	2.75
Attractive yellow and green leaves with a pleasing upright habit of growth.			
2-gal.	1.75		
ILEX aquifolium fertilis (6)25	.75	2.00
Vivid bright green foliage. Produces masses of berries in fall and winter because of its self-fertility.			
B & B 3'	3.00	B & B 4'	4.00
ILEX aquifolium teufel (6)	---	---	2.50
Especially neat appearing English holly with compact foliage and abundance of red berries.			
ILEX aquiperni Brilliant (5)	---	.75	2.75
Very neat long heavily serrated leaves and quantities of bright red berries make it one of the most eye-catching. Self-fertile and evergreen.			
2-gal.	2.00	B & B 30"	3.00
ILEX cornuta. (Cuttings). Chinese Holly (6)20	.60	2.00
Hardy, medium to large shrub with deep green glossy leaves. Large bright red berries in profusion.			
2-gal.	1.50		
ILEX cornuta. (Seedlings) (6)18	.50	1.85
Versatile holly, grows in sun or shade. Compact and faster grower than the cuttings.			
2-gal.	1.50	5-gal. 3'	3.50
		5-gal. 5'	7.50
ILEX cornuta burfordi. Burford Holly (6)18	.50	1.95
The most prolific bearer of large bright red berries. Leaves are deep glossy green almost without spines. Self-fertile.			
2-gal.	1.50	5-gal. 3'	3.50
		5-gal. 5'	7.50
5-gal. espalier	5.00		
ILEX cornuta rotunda (6)25	.60	2.25
A very superior compact low growing holly with dense habit of growth. Ideal for those shady areas.			
2-gal.	1.75		

1958-39

MONROVIA NURSERY COMPANY.....Azusa, California

	2 1/4" Pot	1-Gal.	5-Gal.
ILEX crenata convexa (Ilex crenata convexa bullata) (6) Compact slow growing shrub. Very glossy small rounded leaves, and very desirable habit of growth. 2-gal. 1.75 B & B 15" 2.00	.18	.60
ILEX crenata helleri (5) Dwarf growing type of holly. Excellent for hedges. Small leaves and compact type of growth.	.18	.60
ILEX crenata rotundifolia (5) Has a dense habit of growth. Excellent for shady areas. A superior compact holly. 2-gal. 1.75	.18	.60
ILEX glabra. Ink Berry (6) Strong growing upright branches. Foliage typical of crenata types. Neat appearing. Produces black berries.50	2.00
ILEX Green Island (Patent No. 817) (5) Low spreading holly, with horizontal growth. Can be planted sun or shade. Mature size 4 feet high, 10 feet wide. 2-gal. 2.00	.35	.75
ILEX latifolia (7) Excellent broadleaf holly with shallow toothed leaves. Produces bright red berries in dense clusters. Columnar habit.	2.50
ILEX opaca. (Seedlings) (5) One of the best large growing hollies. Forms a compact pyramidal or rounded head. Bright red berries in late fall.	.18
ILEX opaca East Palatka (5) Vigorous large growing holly with attractive foliage and brilliant berries produced in fall.	.20	.60	2.00
ILEX opaca Howardi (7) Glossy foliage and compact habit make it very attractive. Vigorous grower, bright red berries.	.20	.60	2.00
ILEX opaca Mrs. Sarver Cutting grown to insure its outstanding qualities of this fine holly. Produces bright red berries in late fall.	.25	.75	2.25
ILEX pedunculosa (5) An evergreen holly with showy green leaves, females produce bright red fruit. Very picturesque holly.	.25
ILEX pernyi (6) One of the finest hollies with graceful drooping branches and spiny long pointed, deep green leaves. Produces large red berries. 2-gal. 1.75	.20	.60
ILEX vomitoria Dwarf Yaupon (7) A dwarf, attractively compact form of Ilex vomitoria. Shiny slightly spined leaves and refined low growth make it so desirable in planters and ground covers. 2-gal. 1.75	.20	.60	2.25
ILEX vomitoria Pride of Texas (7) Evergreen tree or large shrub with small oval leaves and bright red berries. Usually self-fertile. 2-gal. 1.75	.20	.60	2.25
JACARANDA mimosaeifolia. Jacaranda (10) Medium-sized evergreen tree with large fern-like light green leaves. Clusters of attractive lavender-blue flowers.	.18	.60	2.25
JACOBINIA carnea (10) A small compact evergreen plant with tropical leaves. Rose-red flowers borne on long spikes in late fall.	.20	.50

MONROVIA NURSERY COMPANY.....Azusa, California

	2 1/4" Pot	1-Gal.	5-Gal.
JASMINUM floridum (6) Attractive evergreen shrub with dark green foliage. Bright yellow flowers are in profusion in spring and summer. 2-gal. 1.50	.20	.50	1.85
JASMINUM magnificum. Angel Wing Jasmine (10) Large, fragrant white windmill-like flowers. Large green leaves. Semi-vine but grown as bushes, evergreen.	.20	.60	1.85
JASMINUM polyanthemum (9) Masses of glistening white flowers adorn the rich lacy evergreen foliage most of the year. Excellent semi-vine habit of growth.	.20	.60	2.25
JASMINUM primulinum. Primrose Jasmine (9) Strong growing vine with rich green stems and leaves and bright, light yellow double flowers.	.18	.60	2.25
JASMINUM sambac Maid of Orleans (10) Evergreen shrub which produces a quantity of blossoms that are creamy-white with that exquisite Jasminum fragrance.	.20	.60	-----
KOELREUTERIA paniculata. Golden Rain Tree (5) Deciduous tree. In late summer it produces panicles of bright yellow flowers followed by attractive lantern-like seed pods.	.20	.60	2.25
LAGERSTROEMIA indica Dwarf Lavender (6) Large shrub or small tree with multiple stems covered with light lavender flowers in late summer. Deciduous.	.20	.50	1.85
LAGERSTROEMIA indica alba (6) Large snowy-white flowers usually ruffled and in dense panicles along the branches. Very showy. Deciduous. 1-gal. staked 60 5-gal. tree-type 2.25	.20	.50	1.85
LAGERSTROEMIA indica rosea. Pink Crape Myrtle (6) Masses of crepe-textured rose-pink flowers cover the entire tree in the summer. Attractive green foliage. Deciduous. 1-gal. staked 60 5-gal. tree-type 2.25	.20	.50	1.85
LAGERSTROEMIA indica rubra. Red Crape Myrtle (6) Vigorous upright habit of growth literally covered with rose-red flowers in summer. Deciduous. 1-gal. staked 60 5-gal. tree-type 2.25	.20	.50	1.85
LAGERSTROEMIA indica Watermelon Red Improved (6) Exciting masses of crinkly, bright red flower clusters cover the tree in summer. Very attractive bright green foliage. Deciduous. 1-gal. staked 60 5-gal. staked 2.25	.20	.50	1.85
LAGERSTROEMIA indica William Toovey (6) Neat compact growing habit producing a solid mass of beautiful deep red flowers in large clusters. Deciduous. 5-gal. tree-type 2.25	.20	.50	1.85
LAGERSTROEMIA reginae orchid. Queen's Crape Myrtle (9) Queen's Crape Myrtle—a very beautiful summer flowering shrub producing great spikes of light lavender flowers during the summer. Grafted.	---	1.25	2.50
LANTANA camara (9) Exceptionally dwarf and compact, these evergreen Hawaiian shrubs produce a mass of color the year around. Easy to grow.	---	---	---

2 1/4" Pot 1-Gal. 5-Gal.

LANTANA (Cont'd)

CHRISTINE	Cerise-pink,15	.45
DWARF PINK	Bright pink flowers,15	.45
DWARF WHITE	Velvety white flowers,15	.45
DWARF YELLOW	Bright Indian yellow flowers,15	.45
RADIATION	Rich orange-red flowers,15	.45

LANTANA sellowiana. Trailing Lantana (9)15 .45

Low spreading evergreen shrub with deep green leathery leaves. Covered most of the year with lavender-pink flowers.

MN'S NEW SPECTACULAR SPREADING LANTANA

LANTANA Confetti. (Patent No. 1478) (3" pot ...50)35 .75

Showers of brightly colored paper floating on to a carpet of green resembles the captivating beauty of Lantana Confetti with its graceful vigorous spreading branches massed with yellow, pink and purple flowers, most of the year.

LANTANA Cream Carpet. (Patent Pending) (3" pot ...50)35 .75

Pert, rich green leaves on spreading branches make a delightful background for the carpet of cream colored flowers which create this masterpiece, still more enhanced in beauty with a light yellow throat.

LANTANA Gold Rush Improved. (Patent No. 1211) (3" pot ...50) .35 .75

All the exquisite beauty and grace of Lantana Goldrush with added vigor and hardiness to insure you masses of bright golden yellow flowers wherever you use it. Its attractive deep forest green foliage on spreading branches add a pleasing contrast to its intense gold flowers in the landscape.

LANTANA Pink Frolic. (Patent Pending) (3" pot .50)35 .75

Bright and gay as a frolicking lamb, with its abundance of pink and yellow flowers, bright green leaves and its picturesque spreading habit of growth will add frolic and gaiety to any garden.

LANTANA Spreading Sunset. (Patent No. 1477) (3" pot ...50) .35 .75

Exciting bright green leaves on vigorous spreading branches make a delightful setting for its masses of vivid orange-red flowers, having all the charm and beauty of a true spreading sunset.

LANTANA Sunburst. (Patent Pending) (3" pot .50)35 .75

Bursts of bright yellow flowers almost continually adorn this exotic spreading Lantana. Its lovely deep green foliage also adds to this unbelievable "Sunburst" of golden yellow on spreading branches.

LAVENDULA vera. English Lavender (7)18 .50

Dwarf, compact, shrubby perennial with silvery gray foliage and fragrant lavender flowers, evergreen.

LEPTOSPERMUM keatleyi (9)20 .60

Graceful evergreen shrub. Beautiful pink flowers with purple centers during late summer and early spring.

LEPTOSPERMUM laevigatum. Australian Tea Tree (9)18

Tall growing evergreen shrub or small tree with very small rich green narrow leaves and sprays of pure white flowers.

LEPTOSPERMUM reevesi. Dwarf Australian Tea Tree (9)18

Evergreen shrub with small oval leaves and white flowers in early spring.

LEPTOSPERMUM scoparium flore pleno (9)20 .60

Double rose-pink flowers cover the entire shrub during early spring. Beautiful dark foliage, evergreen.

LEPTOSPERMUM scoparium Ruby Glow (9)20 .60

Evergreen shrub with dark purple stems and ox blood-red flowers, cover the entire plant in early spring.



HIBISCUS FULLMOON (TRADE MARK REG.)
For Description see page 44



HIBISCUS ROSS ESTEY
For Description see page 45

2 1/4" Pot 1-Gal. 5-Gal.

LEUCOPHYLLUM texanum. Texas Sage. Senisa (Cuttings) (8)20 .50 1.85
 Drought resistant evergreen shrub with silver-gray foliage, orchid-pink snapdragon-like blooms in summer months.

LIBOCEDRUS decurrens — See Conifer Section.

LIGUSTRUM ionandrum (7)18 .50
 Attractive evergreen shrub with small rich green leaves. Excellent for foundation plantings.

LIGUSTRUM japonicum. Japanese Privet (8)45 1.85
 Fast growing evergreen shrub or tree, with rich dark green foliage, very easy to grow.
5-gal. tree-type 2.75

LIGUSTRUM Iodense (5)15 .50
 Compact growing shrub with thick heavy deep green leaves, deciduous.

LIGUSTRUM Suwannee River. (Patent No. 1402) (7)95 2.25
 Outstanding hybrid evergreen ligustrum with deep lustrous green foliage. Very compact growing. Excellent for low hedges or planter boxes.

LIGUSTRUM texanum. Wax Leafed Ligustrum (7)15 .50 1.85
 Versatile evergreen shrub with deep green glossy foliage, heavy textured leaves. Stands shearing well, white flowers in spring.

- 2-gal. 1.50
- 5-gal. 2' Globe 2.50
- 5-gal. 2' Pyramid 2.50
- 5-gal. 3' Pyramid 3.00
- 5-gal. 5' Pyramid 4.00
- 5-gal. Poodle 7.50
- 5-gal. Espalier 5.00

LIGUSTRUM texanum lustre leaf (7)20 .60 2.00
 Rich dark evergreen leaves. Prefers shade and thrives extremely well. Holds its neat habit of growth and deep green color.

LIGUSTRUM texanum variegata (7)20 .60 2.00
 Excellent shrub with deep green foliage margined with gold. Very vigorous and attractive, evergreen.

LIGUSTRUM vicari (5)15 .50 1.85
 Dwarf growing hardy privet with a rich bright golden foliage, evergreen in warmer areas.
2-gal. 1.50

LIPPIA citriodora. Lemon Verbena (9)18 .50
 Medium size deciduous shrub with light green aromatic foliage and loose panicles of tiny white to pale lavender flowers.

LIQUIDAMBAR styraciflua. Sweet Gum (5)18 .50 2.00
 Tall deciduous tree with a pyramidal head of maple-shaped leaves of deep rich green. Bright autumn color in fall.

LILAC. See *Syringa* or *Ceanothus*.

LIRODENDRON tulipifera. Tulip Tree (5)18 .60 2.25
 Deciduous tree with bluish-green foliage, showy flowers of yellow-orange produced in spring.

LIRIOPE muscari exiflora (7)50
 Tufting grass-like perennial with deep green fern linear leaves. Light purple flowers on erect spikes.

LIRIOPE spicata. (Liriope graminifolia) (6)50
 A good grass-like plant good for ground covers or dish garden. Light lilac colored flowers in early summer.

MONROVIA NURSERY COMPANY..... Azusa, California

	2 1/4" Pot	1-Gal.	5-Gal.
LIRIOPE variegated (6) Attractive grass with variegated blades, has a well defined and interesting habit of growth.		.60	
LIVISTONA chinensis. Chinese Fan Palm (9) Very stout stem palm with a crown of rich green fan-shaped fronds. Has a distinctly drooping appearance. Very attractive.		.75	
LONICERA heckrottii Improved. Coral Honeysuckle (5) Climbing, twining vine with two inch oval leaves and brilliantly colored honeysuckle flowers of coral-red and yellow, deciduous.	.18	.60	2.25
LONICERA hildebrandtiana. Giant Burmese Honeysuckle (10) Large shining evergreen, leaves and clusters of giant white and yellow flowers bloom for six or seven months. Grafted.		1.00	2.50
LONICERA japonica halliana. Hall's Japanese Honeysuckle (5) Vigorous twining vine much used as a ground cover, or for covering fences. Fragrant white to yellow flowers, deciduous. 1-gal. staked.....	.15	.45	
LONICERA japonica purpurea (5) Vigorous growing vine with rich purple tinted foliage, deciduous. 1-gal. staked.....	.15	.45	1.85
LONICERA maximowiczii (6) Large growing shrub with violet-red flowers in early summer. Foliage is large and showy, deciduous.	.18	.50	
LONICERA maximowiczii Sachalinensis (5) Attractive nice deep green foliage, deciduous.	.18	.50	
LONICERA pileata yunnanensis (5) Low spreading semi-evergreen with handsome deep green foliage. Flowers are quite fragrant.	.18	.50	
LONICERA sempervirens rubra (6) Vigorous growing evergreen vine with gray-green foliage; masses of fragrant red flowers toned with yellow during the summer months.	.18	.60	
LONICERA zabeli (5) Masses of bright red flowers in spring, followed by bright red berries. Rich deep green foliage all summer. Deciduous.	.15	.50	
LOQUAT—See Eriobotrya japonica.			
LOROPETALUM chinense (7) Large growing evergreen shrub bearing white flowers with strap-shaped petals in the spring. Large rounded rich green leaves.	.22	.75	2.50
LOTUS berthelotti. Winged Pea. Parrot's Beak (10) Attractive silver-leaved shrub with pinnate thread-like leaflets. Vivid red flowers in summer months. Excellent for ground covers.	.18	.50	
LYSILOMA thornberi (9) Handsome large growing evergreen shrub with feathery foliage. Native to Arizona. Small white flowers in late fall.	.20	.60	2.25
MACLURA pomifera. Osage Orange (6) Remarkable ability to withstand poor soils, drought, wind, and extreme climates. A low branchy tree with deciduous bright green leaves.	.15		
MACADAMIA ternifolia. Queensland Nut (9) A handsome evergreen tree with a dense round head of long narrow green leaves. Nuts are borne in the fall and unbelievably rich in flavor. 4" pot.....		1.25	
	.50		



ILEX CORNUTA BURFORDI. BURFORD HOLLY
The most prolific bearer of large bright red berries,
surrounded by deep glossy green foliage

QUANTITY DISCOUNTS

1000 Plants	10%
500 Plants	5%

These discounts apply if the following requirements are met:

1. All plants must be of one variety.
2. All plants must be of one container size.
3. All plants must be shipped at one time.

	2 1/4" Pot	1-Gal.	5-Gal.
MAGNOLIA grandiflora. Southern Magnolia (7)18	.60	2.25
Medium size evergreen tree with large, deep green, glossy leaves and immense lily-like, fragrant white flowers.			
5-gal. espalier			6.50
MAGNOLIA obovata. (Magnolia hypoleuca) (5)25	.75	2.50
Large white flowers and dark green leaves glaucous underneath. Very attractive tall growing tree. Evergreen.			



**Lagerstroemia Reginae Orchid, ROYAL ORCHID Crape Myrtle,
Queen's Crape Myrtle.**

MN's Royal Orchid Crape Myrtle is spectacularly different. Summer blooms clothe hundreds of regal spikes with shimmering tones of orchid-pink. Deep green leaves, largest of any Crape Myrtle. Grows slowly to medium height, loves heat, takes temperatures as low as 20° F. Practically evergreen in coastal areas. Sells on sight as a specimen or for general landscaping!

1-gal. 1.25 5-gal. 2.50

2 1/4" Pot 1-Gal. 5-Gal.

MAGNOLIA St. Mary (7)	1.25	3.50
Small growing tree with long narrow, thick, shiny leaves. Grows pyramidal in shape. Plants bloom when young. Grafted.		
MAGNOLIA soulangeana. Saucer Magnolia (5)	1.00	3.50
Small deciduous tree producing large multi-colored exotic flowers in early spring.		
MAGNOLIA soulangeana nigra (5)	---	3.50
Showy cup-shaped flowers, a dark purple outside, and a light purple inside. Outstanding for specimen planting. Deciduous.		
MAGNOLIA stellata. (Starry-Magnolia) (5)	---	3.50
Small multiple deciduous tree with pure white fragrant blossoms in early spring.		
MAGNOLIA virginiana. Sweet Bay (5)75	---
Lustrous green foliage above, silvery beneath massed with pure white fragrant flowers May and June. Partially evergreen in warm areas.		
MAHONIA aquifolium. Oregon Grape (4)18	2.00
Evergreen shrub with deep, glossy green, holly-like foliage and clusters of yellow flowers followed by blue grape-like berries.		
B & B 15"	2.00	
B & B 18"	2.25	
B & B 24"	2.75	
MAHONIA aquifolium compacta (4) (3" pot)35	2.50
A compact type of popular Oregon Grape, an outstanding evergreen easily grown in sun or partial shade. Deep green, glossy foliage.		
2-gal.	1.75	
B & B 15"	2.50	
B & B 18"	3.00	
MAHONIA bealei. Holly Grape (5)18	2.00
Large slow growing shrub with outstanding foliage of bronzy green, bright yellow flowers in summer.		
2-gal.	1.60	
MAHONIA lomarifolia (8)75	---
Most interesting design created by the compound deep leathery green leaves of this refined evergreen shrub. Produces spectacular yellow flowers. (See photograph page 75).		
2-gal.	1.75	
MALPIGHIA coccigera (9)22	.75
Attractive shrub with small, dark green, spiny toothed leaves. Pink flowers followed by red berries. Grows best in part shade.		
MALPIGHIA glabra. Barbados Cherry (8)22	2.25
Glossy leaved large growing shrub with light pink flowers. Produces small scarlet-red berries. Excellent for hedge plantings.		
MELIANTHUS Major. Honeybush (9)75	2.50
Rich gray-blue evergreen foliage on multiple stems. Chocolate colored flowers in early spring. Excellent foliage plant.		
METROSIDEROS tomentosa. New Zealand Christmas Shrub (10)18	.60
Large shrub having large dark green leathery leaves. Dark red flowers form in dense showy heads.		
MONSTERA deliciosa (9)	1.00	---
Climbing plant with large perforated dark green leaves. Evergreen.		
MORUS alba. Fruitless Mulberry (5)20	2.25
An excellent deciduous, round headed shade tree. Large dark green leaves. Grows rapidly and likes plenty of moisture.		

	2 1/4" Pot	1-Gal.	5-Gal.
MURRAEA exotica. Orange Jessamine (9) An improved, compact growing variety. Exquisite foliage, and the fragrant, pure white flowers are borne in early summer. Evergreen.	.20	.60	1.85
MURRAEA paniculata. Orange Jessamine (9) Delightful evergreen shrub. Luxuriant, bright green leaves and waxy white flowers with intense, orange blossom fragrance.	.20	.60	1.85
MUSA ensete. Abyssinian Banana (10) An ornamental banana, ideal for tropical plantings, with its large green leaves. Fast growing. 3" pot30		.60	2.00
MYOPORUM carsoni (9) Fast growing evergreen tree with thick leathery deep green foliage. Bears small white flowers in early summer.	.18	.50
MYOPORUM tomentosum (9) A large shrub or small tree with dark green leaves. Blends well in any landscape.	.18	.50	1.85
MYRCIARIA edulis. Cherry of the Rio Grande (9) Handsome evergreen foliage. Bears brilliant scarlet edible cherry-like fruits in late summer.		.60	2.00
MYRSINE africana. African Boxwood (8) A fine, compact, evergreen shrub with small rounded reddish green leaves. Does well in sun or shade.	.18	.50	1.85
MYRTUS boetica (9) Small evergreen shrub having larger leaves than common myrtus. Cutting grown to insure true characteristics. Very attractive.		.75	2.25
MYRTUS communis. True Myrtle (8) Creamy-white flowers appear in the spring. A fast grower with small, deep, shiny, green leaves. Evergreen.	.15	.50	1.85
MYRTUS communis compacta. Dwarf Myrtle (9) A slow growing, very compact, evergreen shrub with small, glossy, green leaves.	.15	.50	1.85
MYRTUS communis variegata (9) Small, evergreen shrub with variegated leaves of white, silver and green. Very showy.	.15	.50	1.85
MYRTUS compacta variegata (9) A slow growing, very compact, evergreen shrub with small glossy green and white leaves.	.15	.50
MYRTUS minima (9) Small leaved varieties with all the charm and beauty of regular Myrtus but in miniature.	.20	.60
MYRTUS ugni. Chilean Guava (8) Small growing evergreen shrub with dark green, shining leaves. Small flowers are tinted rose, followed by purple edible fruit.	.20	.60
NANDINA domestica. Heavenly Bamboo (6) Low growing shrub to 4 feet, having much divided leaves which turn a brilliant red in autumn. 2-gal. 1.50	.15	.50	1.85
NANDINA domestica compacta (6) More dwarf and compact growing than Nandina domestica, with fine foliage, and delightful red coloring in fall. 2-gal. 1.75		.75	2.25

2 1/4" Pot 1-Gal. 5-Gal.

NERIUM OLEANDER (9)

NERIUM Cherry Ripe	Brilliant, single, rose-red flowers. .18	.50	1.85
NERIUM Compte Barthelemy	Double, bright red flowers.18	.50 1.85
NERIUM Jannoch	Large, single, bright red flowers. .18	.50	1.85
NERIUM Mrs. Roeding	Double, salmon-pink flowers.18	.50 1.85
NERIUM Pink Beauty	Largest, single, pink flowers.18	.50 1.85
NERIUM Seely Pink	Large, showy, single pink flowers..18	.50	1.85
NERIUM Sister Agnes	Pure, single white flowers.18	.50 1.85
NOLINA parryi. Dasyliirion (8)25	-----
Attractive tree-like plants with a crown of dark green leaves, small white flowers in summer. Does well in hot dry areas.			
NOLINA recurva—See Beaucarnea Recurva			
NOTHOPANAX arboreum (9)			3.50
Beautiful evergreen tree to 25 feet with lush deep green leaves. Very small white flowers.			
NYSSA sylvatica. Pepperidge (7)20	.75 2.25
Large growing deciduous tree prized for the beautiful scarlet coloring in the fall. Grows best in moist locations.			
OCHNA multiflora. Bird's-Eye Bush (9)20	.60 2.00
Evergreen shrub with long finely-toothed leaves of bronzy tint. The dark yellow flowers are followed by red fruit in late summer.			
OLEA manzanilla. Manzanilla Olive (8)20	.75 2.00
A round-headed evergreen tree with distinctive gray-green foliage. Bears choice edible fruit. Evergreen.			
5-gal. tree-type	2.50	5-gal. espalier	5.00



JASMINUM MAGNIFICUM
For Description see page 51



MAHONIA AQUIFOLIUM COMPACTA (See page 56)
with border of OSMANTHUS VARIEGATUS Foreground (See page 60)

	2 1/4" Pot	1-Gal.	5-Gal.
OLMEDIELLA betscheleriana. Costa Rican Holly (10)20	.50	1.85
Evergreen shrub or small tree having large, thick, glossy serrated leaves. Very desirable and neat in growth. Evergreen.			
1-gal. staked			
	.60		
OPHIPOGON japonicus. Lily Turf (6)15	.50	
Valuable ground cover because of its sod-forming habit. Evergreen grass with light lavender flowers in summer.			
OSMANTHUS americanus. Devil Wood (9)18	.60	2.00
A bushy shrub or tree to 40 feet with whitish bark and lustrous very large leaves. Very fragrant flowers in early spring.			
5-gal. tree-type	2.50		
OSMANTHUS delavayi (7)20	.60	1.85
Shiny green foliage on arching branches, refined growth. Fragrant white flowers in early spring.			
B & B 30"	2.50		
OSMANTHUS forresti (7)20	.60	1.85
Very attractive evergreen foliage with a holly-like leaf, a rich dark green in color. Produces white fragrant flowers in early spring.			
OSMANTHUS fragrans. Sweet Olive (9)20	.60	1.85
Evergreen shrub with dark green foliage which conceals the tiny white flowers that have a delightful fragrance.			
5-gal. espalier	5.00		

MONROVIA NURSERY COMPANY.....Azusa, California

	2 1/4" Pot	1-Gal.	5-Gal.
OSMANTHUS illicifolius variegatus. False Holly (7)30	.85	2.75
Evergreen shrub having holly-like irregularly spined leaves of leathery texture. Leaves are dark green edged with creamy-white.			
3" pot50	2-gal.	2.00
OSMANTHUS San Jose Hybrid (8)20	.50	1.85
Tall evergreen shrub or small tree with holly-like foliage. Creamy-yellow fragrant flowers produced in fall and winter.			
OSMAREA burkwoodi (8)20	.75
Showy, evergreen medium size shrub having glossy, dark green leaves. Fragrant ivory-white flowers are produced in the spring.			
2-gal.	1.75		
PACHYSANDRA terminalis. Japanese Spurge (6)25	.60
A trailing plant, forming broad mats of bright glossy green foliage. Will grow in deep shaded areas under any tree. Evergreen.			
PACHYSANDRA terminalis variegated (6)25	.60
Same fine qualities as green but is bordered with white.			
PANICUM palmifolium. Palm-Grass (8)18	.60
Attractive evergreen grass-like plant with dark green leaves. Good ornamental plant for use in both sun and shade.			
PARKINSONIA aculeata. Jerusalem Thorn (8)20	.60	2.25
A very good, small deciduous tree for hot dry places. During early summer it becomes a mass of small, bright yellow flowers.			
PASSIFLORA pfordi. Passion Vine (9)20	.60	2.25
Fast growing evergreen vine massed with large flowers; white with pinkish tints with a purple-blue crown in center in summer.			
PERSEA indica (9)	---	.75	2.50
Attractive small evergreen tree with leathery thick glossy green foliage.			
PHASEOLUS gigantea. Giant Snail Vine (10)20	.60	2.25
A vigorous evergreen vine producing masses of lavender flowers in large clusters most of the year. Vigorous.			
PHILODENDRON amurense. Cork Tree (7)20	.60	2.25
Interesting deciduous tree with cork-like bark and green pinnate leaves bears small greenish flowers in summer.			
PHILADELPHUS coronarius aureus (4)18	.50
Tall growing upright shrub with orange scented white flowers in early spring. Deciduous.			
PHILADELPHUS virginalis. Mock Orange (4)18	.50	1.85
The finest Philadelphus, having large double and semi-double, pure white flowers in early spring. Deciduous.			
PHILODENDRON bipinnatifidum (9)	---	1.25	3.75
Lush, tropical leaves on upright stems make a showy masterpiece. Long deeply lobed leaves.			
PHILODENDRON evansi (9)	---	1.25	3.75
Unmatched for lush dark green tropical foliage. Long, solid leaves, sun or shade.			
PHILODENDRON lundii (9)	---	---	3.75
Large solid leaves are broader than philodendron evansi. Does extremely well in sun or shade.			
PHILODENDRON Sao Paulo (9)	---	---	3.75
Large deep green, heavily cut leaves, with a very tropical appearance.			

MONROVIA NURSERY COMPANY.....Azusa, California

	2 1/4" Pot	1-Gal.	5-Gal.
PHILODENDRON selloum (9) A wonderful plant for that lush tropical planting, both indoors and out. The leaves are large, glossy and deeply lobed. 3" pot.....	.25	.75	3.00
PHOENIX canariensis. Ornamental Date Palm (8) Rapid growing palm that forms an immense crown of gracefully curving fronds.	.25	.60	2.50
PHOENIX reclinata (9) Graceful palm to 25 feet, with large bright green arching fronds. Multiple trunk.			3.00
PHOENIX robleni (10) Small dwarf growing palm with light green lacy fronds. Slow growing but worth waiting for.		1.50	
PHORMIUM colensoi (9) Bright, shiny green sword-like leaves rising from a single crown, very compact growing habit.	.25	.75	
PHORMIUM tenax. New Zealand Flax (9) Long stiff, sword-like leaves margined with red and orange lines. Grows well in dry locations. Evergreen.	.18	.50	1.85
PHORMIUM tenax atropurpurea. (Seedlings) (9) Long, stiff, sword-like leaves are tinted with a red-amber color. Will vary in color slightly.	.25	.60	2.50
PHORMIUM tenax atropurpurea. (Divisions) (9) Long, stiff, sword-like leaves, with a red color. Selected from our own stock plants.			3.50
PHORMIUM tenax variegatum (9) Sword-like green leaves which have a prominent creamy-white striping.			3.00
PHOTINIA arbutifolia. Toyon. California Holly (7) California native, grafted. Bears masses of brilliant red berries in summer, late fall and winter. Evergreen spreading bush or tree.		1.25	3.00
PHOTINIA serrulata. Chinese Photinia (7) Compact evergreen shrub with bronze tinted leaves. Clusters of white flowers followed by bright red berries in fall. 2-gal.....	.15	.50	1.85
PHOTINIA serrulata lineata (7) Attractive amber-yellow foliage with tints of green, produces white flowers in spring; evergreen.		.60	2.50
PHOTINIA serrulata nova (7) A very good upright evergreen shrub with large, dark green red tinted leaves, are attractive the whole year. 2-gal..... 5-gal. espalier.....	.20	.60	1.85
PISTACIA chinensis. Chinese Pistachio (7) Rapid growing deciduous tree. Ideal for ornamental plantings. In the fall there is no finer tree for intensity of foliage coloring.	.20	.60	2.25
PITTIOSPORUM eugeniodes. Tarata Pittosporum (9) Large shrub or small evergreen tree with light green foliage. Bears light yellow fragrant flowers in summer.		.50	1.85
PITTIOSPORUM tobira (8) Evergreen shrub with long shiny green leaves. Fragrant white flowers in spring.	.15	.50	1.85

MONROVIA NURSERY COMPANY..... **Azusa, California**

	2 1/4" Pot	1-Gal.	5-Gal.
PITTOSPORUM tobira variegata (9) Its foliage is a combination of light green and white variegated leaves; low grower with fragrant white flowers in spring.	.18	.50	1.85
PITTOSPORUM undulatum. Victorian Box (9) Large shrub or small tree with rich green, pointed leaves. Fragrant, creamy-white flowers followed by orange berries. Evergreen. 5-gal. tree-type15	.60	2.00
PLATANUS racemosa. California Sycamore (7) Deciduous tree usually of several picturesque trunks. Attractive maple-like foliage, rich silvery light green in color.	.18	.60	2.00
PLEROMA grandiflora. (Tibouchina elegans). Princess Flower (10) Evergreen shrub with bronzy green velvety leaves and huge colorful purple flowers all spring and summer.	.15	.50	1.85
PLUMBAGO capensis. Blue Cape Plumbago (9) Semi-climbing shrub producing clusters of blue flowers during the summer. Semi-evergreen.	.15	.50	1.85
PLUMBAGO capensis alba. White Plumbago (9) Similar in growth to Blue Plumbago but flowers are a glistening white.	---	.50	---
PODOCARPUS elongatus. Fern Pine (9) Beautiful grafted evergreen trees with long, dark, blue-green leaves that are soft and narrow. 5-gal. 3' 5-gal. 5' 5-gal. espalier	---	1.25	---
PODOCARPUS macrophylla. Yew Podocarpus (7) One of the finest, evergreen shrubs. Often trained by slight pruning to make a tall, slender column of deep green narrow leaves. 5-gal. 3' 5-gal. 5'18	.60	---
PODOCARPUS macrophylla maki (7) Grows more compact and its yew-like leaves appear more rigid than Podocarpus macrophylla. 5-gal. 3' 5-gal. 5'18	.60	---
PODOCARPUS nagi (7) The deep green yew-like leaves are wider and more rigid than other podocarpus. Vigorous erect stiff growth. Evergreen.	.25	.75	2.50
POINSETTIA Henrietta Ecke. Double Poinsettia (10) The finest of the double flowering poinsettias. Produces large heads of brilliant red flowers around Christmas time. Evergreen.	---	.50	---
POLYGALA dalmaisiana. Sweetpea Shrub (9) Evergreen shrub having small, light green leaves and producing masses of pea-like flowers in spring and summer.	.15	.50	1.85
POLYGONUM auberti. Silver Lace Vine (4) Hardy, climbing, deciduous vine having masses of tiny white to pinkish flowers in summer; deep green foliage. Fast vigorous grower.	.20	.60	2.25
POLYGONUM rubrum (4) Hardy, deciduous vine with delightful pink to red flowers in summer months. A new and unusual herbaceous shrub.	.18	.60	---
POTENTILLA farreri (4) Low-growing deciduous shrub with bright yellow flowers in early spring.	.18	.50	---
POTENTILLA fruticosa. Gold Drops (4) Small compact growing shrub producing a mass of golden buttercup-like flowers in early spring and summer. Deciduous.	.18	.50	---



PYRACANTHA ROSEDALE (TRADE MARK REG.)
For Description see page 65

MONROVIA NURSERY COMPANY.....Azusa, California

	2 1/4" Pot	1-Gal.	5-Gal.
PRUNUS caroliniana. Carolina Cherry Laurel (7)15	.50	1.85
Large shrub or a small tree with dark glossy, green foliage. White flowers followed by small, dark berries. Evergreen; modest grower.			
2-gal.	1.50	5-gal. tree-type	3.00
5-gal. 5' pyramid	2.75		
PRUNUS caroliniana compacta (7)			2.25
Same fine qualities as <i>Prunus caroliniana</i> except for its unusual compact foliage and growth.			
PRUNUS integrifolia. (P. Lyoni). Catalina Cherry (8)60	2.00	
Large, slow growing shrub or small tree with light green, glossy foliage, white flowers and purple fruit. Evergreen.			
3" pot25		
PRUNUS laurocerasus. English Laurel (6)18	.50	1.85
Evergreen, hardy, large growing shrub with heavy, rich green foliage.			
B & B 36"	2.50		
PRUNUS laurocerasus schipkaensis (7)60	1.60	
Hardy, compact growing shrub with shiny dark green leaves above, light green beneath. Unlimited uses for hedges, foundation plantings, etc.			
PRUNUS zabeliana (7)60		
Fast growing evergreen shrub with bright shiny evergreen leaves on semi-spreading branches.			
PSEUDOPANAX discolor (10)			3.50
Small evergreen tree, a rich bronze green in color, very sharp tooth margin and leaves very leathery. Excellent for tub and specimen planting.			
PSEUDOPANAX ferox (10)			3.50
Slender evergreen tree with variable thick and stiff chocolate-brown leaves, with pale brown midrib. Excellent for tub or specimen planting.			
PSEUDOPANAX lessoni (10)			3.50
Small evergreen tree with palmately compound leaves rich green in color, thick and leathery in appearance. Excellent for tub and specimen planting.			
PUNICA chico. Dwarf Carnation-flowered Pomegranate (7)18	.50	
Showy dwarf deciduous shrub with light green leaves. Masses of bright red flowers in summer.			
PUNICA granatum nana. Dwarf Pomegranate (7)15	.50	
Dwarf, compact, deciduous shrub; producing single red flowers in summer followed by fruits of ornamental value in late fall.			
PYRACANTHA coccinea lalandi Monrovia (5)18	.50	2.00
One of the hardiest pyracantha. Long arching branches with lustrous green foliage and sprays of bright orange berries in the fall and winter.			
2-gal.	1.60	1-gal. Espalier	1.25
PYRACANTHA coccinea lalandi Thornless (4)18	.50	1.85
Hardy pyracantha; generally a thornless variety. Produces orange berries in late fall and winter.			
PYRACANTHA coccinea pauciflora (4)18	.50	1.85
Evergreen, low growing pyracantha that is able to withstand extreme weather conditions.			
2-gal.	1.50		

MONROVIA NURSERY COMPANY.....Azusa, California

2 1/4" Pot 1-Gal. 5-Gal.

PYRACANTHA coccinea wyatti (4)18 .50 1.85

Very hardy variety producing clusters of orange-red berries in early fall. Has reddish tinted green foliage.

2-gal. 1.50 1-gal. Espalier 1.25

PYRACANTHA crenata-serrata graberi. Graber's Firethorn (8) .18 .50 1.85

A large vigorous growing pyracantha, outstanding for its showy white flowers, followed by bright red berries.

1-gal. 14" Pyramid65 5-gal. 4' Pyramid 2.00

1-gal. Espalier 1.25 5-gal. Espalier 5.00

PYRACANTHA Government Red (8)18 .50 1.85

Hardy red-berried variety with large evergreen leaves and bright red berries produced in early fall.

PYRACANTHA Kasan (4)18 .50

This hardy and heavy fruiting variety with its compact habit of growth and brilliant orange-scarlet berries in profusion.

PYRACANTHA Rosedale (Trade Mark Registered) (8)18 .50 1.85

Pyracantha Rosedale richly deserves its reputation as the most beautiful pyracantha. In early spring it produces long arching sprays of tiny, lacy, ivory-white flowers. In summer, dark rich green foliage goes on display. Finally, in fall and winter, it grows heavy with large berries, brightest red of any variety. Highly versatile — easily espaliered on walls, fences or trained as a flaming hedge. Must be sold with Trade Mark tags attached.

1-gal. Staked65 5-gal. 4' Pyramid 2.00

5-gal. Espalier 5.00 Box Espalier 17.50

1-gal. Espalier 1.25

PYRACANTHA Santa Cruz Prostrata (8)18 .50 1.85

Unique and delightful prostrate growing habit allows this pyracantha to be used in new ways. Produces large red berries in fall, which continue well into winter.

PYRACANTHA Victory (8)18 .50 1.85

Strong growing pyracantha producing extremely large red berries which are retained long after Christmas. It has deep green foliage.

1-gal. 14" Pyramid65 2-gal. 1.50

5-gal. 4' Pyramid 2.00 5-gal. Espalier 5.00

1-gal. Espalier 1.25

PYRACANTHA walderi prostrata (8)18 .50

Large red berries in clusters and spreading habit of growth make this prostrate pyracantha a real showpiece in the landscape.

PYRUS kawakami. Evergreen Pear (9) 1.25 2.50

May be grown as a small tree, a large shrub or very effectively espaliered. The glossy luxuriant foliage is handsome the year around. In the spring it's a mass of fragrant white flowers. Grafted.

5-gal. Palmetto Espalier 5.00

5-gal. Candelabra Espalier 6.50

QUERCUS agrifolia. California Live Oak (9)60 2.50

A round headed, spreading evergreen tree with rough black bark and dark green foliage.

3" pot25

QUERCUS borealis. Northern Red Oak (4)25 .75 2.50

A picturesque broad headed oak having a beautiful autumn color in fall. Fits well in any landscape. Deciduous.

QUERCUS ilex. Holly Oak (7)20 .60 2.50

An excellent medium sized evergreen tree with shiny finely toothed, holly-like leaves.

MONROVIA NURSERY COMPANY.....Azusa, California

	2 1/4" Pot	1-Gal.	5-Gal.
QUERCUS robur. English Oak (4)75	-----
Stout spreading tree with deep green oak-like leaves. Excellent tree for yard and specimen planting. Deciduous.			
RAPHIOLEPIS indica Apple Blossom (8)25	.65	2.50
Delightful appleblossom-like flowers adorn the exciting evergreen shrub in early spring. Foliage is rich deep green.			
RAPHIOLEPIS indica Enchantress.			
Red Indian Hawthorne. (Trade Mark Reg.) (8)			2.50
For its pure beauty, your customers will give Raphiolepis Enchantress excited praise. Flowers are large, of rich rose-red and appear in thick clusters from late winter 'till early summer. The shrub's growing habits are upright and compact and show off luxuriant, glossy green foliage to superb advantage. Hardy—grows in full sun or partial shade. Flowers deepen in color near the ocean. Must be sold with T. M. R. Tags attached.			
RAPHIOLEPIS indica Santa Barbara. (Seedlings) (8)18	.50	-----
Has showy attractive flowers ranging from light pink to deep rose; rich attractive green foliage.			
RAPHIOLEPIS indica Springtime.			
Pink Indian Hawthorne. (Trade Mark Reg.) (8)			2.50
Veteran nurserymen tell us that no other hawthorne can match the beauty of our new Springtime. January to April, its superb, leathery, evergreen foliage is literally flooded with magnificent apple-blossom pink bloom clusters. Taller, more regal than most hawthornes, it grows moderately fast. Blooms lighten in color inland. An amazingly attractive shrub and a steady seller for dependable turnover and profits. Must be sold with T. M. R. Tags attached.			
RAPHIOLEPIS ovata. Round-Leaf Raphiolepis (6)18	.50	-----
Medium to large evergreen shrub with rounded dark green leathery leaves. Produces clusters of fragrant white flowers. Hardy in sun or shade.			
REINECKIA carnea (9)60	-----
Tufting perennial with a creeping rhizome grass-like foliage, a deep dark green in color. Bears small fragrant white flowers.			
REINWARDTIA indica. (Linum flavum). Yellow Flax (10)15	.50	-----
Dwarf compact shrub with clean light green foliage. Evergreen, sun loving shrub with bright yellow flowers in summer.			
RHAMNUS alaternus. Italian Buckthorn (8)18	.60	2.25
A large evergreen shrub or small tree with appealing dark green heavy leaves. Deep blue berries appear in the fall.			
RHODODENDRON fragrantissima (7)25	.75	-----
Sensational for its very large fragrant creamy-white velvet textured flowers. Glossy green foliage covered with rusty colored hairs. 2-gal. 1.75			
RHUS lancea (9)20	.60	2.50
Small evergreen tree or large shrub, with deciduous foliage; withstands drought very well.			
RHUS lanceolata (6)60	2.25
Attractive narrow leaved shrub with dark green foliage; does extremely well in dry soil.			
RHUS virens (6)60	2.25
Evergreen Sumac with very showy pinnate leaves and pleasing habit of growth.			
RHYNCHOSPERMUM asiaticum.			
(Trachaelospermum asiaticum) (7)60	-----
Vigorous growing vine a rich green in color. Foliage is larger than jasminoides and the flowers a yellowish white, very attractive.			



RAPHIOLEPIS SPRINGTIME (TRADE MARK REG.)
For Description see page 66

MINIMUM ORDERS

Please keep in mind that an order to be shipped by express, parcel post, or motor freight must total \$20.00 or more. This minimum also applies to local deliveries.

Please do not order less than the following quantities of any one variety

25 in 2¼" lining-out stock

25 in 3" lining-out stock

10 in 1-gallon containers

5 in 5-gallon containers

2 1/4" Pot 1-Gal. 5-Gal.

RHYNCHOSPERMUM jasminoides.

(*Trachaelospermum jasminoides*). **Star Jasmine (7)** **.20 .60 1.85**
 Strong growing bush or evergreen vine with deep green leathery foliage. Produces masses of very fragrant star-shaped flowers.
1gal. Staked .65 5-gal. Staked 2.00
5-gal. Espalier 5.00

ROSA banksi Yellow (5) **.30 .75** -----
 Miniature double yellow flowers set against green foliage with light tints. Vigorous grower.

ROSA banksi White **.75** -----
 Same qualities as Banksi Yellow but with double white flowers.

ROSA Centennial Miss. (Pat. No. 1301) (5) **.35 .75** -----
 Miniature rose with semi-double pink flowers.

ROSA Cutie (Pat. No. 1302) (5) (4" pot .75) **.35 .75** -----
 Miniature rose with double red flowers. Very fragrant.

ROSA Mermaid. Mermaid Rose (5) **.20 .60** -----
 Old fashioned single rose that is excellent for growing on fences or as a ground cover. Large fragrant sunrise-yellow flowers in profusion.

ROSA Oakington Ruby (5) (4" pot .60) **.20 .60** -----
 Dwarf miniature type rose. Deep red double flowers.

ROSA Perle d'Alcanada (5) (4" pot .60) **.20 .60** -----
 Compact growing miniature rose having carmine-red blooms. Wonderfully free flowering.

ROSA Pink Cameo. (Pat. No. 1451) (5) (4" pot 1.00) **.80 1.25** -----
 Here is the first everblooming, miniature climbing rose. Deep perfect, rose-pink buds and flowers are borne throughout the year.

ROSA Pink Joy. (Pat. No. 1378) (5) (4" pot .60) **.35 .75** -----
 Miniature rose with fragrant, bright pink flowers.

ROSA Pour Toi (5) (4" pot .50) **.20 .60** -----
 Compact miniature rose that is wonderfully free flowering. Flowers are creamy-white in color.

ROSA Snow Flake (5) (4" pot .60) **.20 .60** -----
 Miniature rose bearing very double pure white flowers.

ROSMARINUS foresteri. Santa Barbara Rosemary (8) **.15 .50** -----
 Prized for its semi-prostrate habit. Evergreen foliage and attractive blue flowers. The finest Rosemary grown.

SALVIA pitcheri. Blue Salvia (7) **.15 .50** -----
 Hardy perennial with grayish green foliage. Deep blue flowers in late summer.

SANTOLINA chamaecyparissus. Lavender Cotton (8) **.50** -----
 A low expansive plant with dense gray foliage of pleasing texture producing showy buttony gold flowers on long stems. Evergreen.

SAPIUM sebiferum. Chinese Tallow Tree (7) **.18 .60 2.50**
 Attractive, deciduous tree with broad foliage, on graceful arching branches. Rich fall color from red to yellow. The waxy covering of the seed is used for making candles and soap in China.

MONROVIA NURSERY COMPANY Azusa, California

	2 1/4" Pot	1-Gal.	5-Gal.
SARCOCOCCA hookeriana (5)20	.60
Free branching evergreen shrub with deep leathery green leaves. Prefers shade, small white fragrant flowers.			
SARCOCOCCA hookeriana humilis (6)20	.60
Evergreen, compact growing shrub with dark green, short leaves and small white fragrant flowers.			
2-gal.	1.75		
SARCOCOCCA ruscifolia. Fragrant Sarcococca (6)18	.60	1.85
Evergreen shrub with shiny waxy leaves. Will thrive in dense shade. Produces small white fragrant flowers followed by dark red berries.			
SAXIFRAGA lingulata alba. White Saxifraga (8)20	.60
A small evergreen plant for shade with deep glossy green leaves. Clusters of white flowers appear in early spring.			
SAXIFRAGA rubicunda. (Bergenia cordifolia) (8)20	.50
Large glossy green leaves with pink flowers in summer. Evergreen.			
SCHEFFLERA actinophylla (10)20	.60	2.50
Very versatile evergreen shrub with glossy green foliage. Small tree or used as a tub specimen.			
SCHEFFLERA digitata (10)75	2.50
Beautiful evergreen tree to 25 feet with compound toothed leaves. Very deep green.			
SCHINUS molle. California Pepper Tree (8)18	.60	2.25
Medium sized hardy evergreen tree with graceful weeping branches and feathery foliage.			
SCHINUS terebinthifolia. Brazilian Pepper Tree (9)18	.60	2.25
Rich, evergreen foliage, combined with conformity and fast growth makes this shade tree a must for every yard. In late summer it covers itself with attractive red berries.			
SEAFORTHIA elegans. King Palm (9)		1.00	3.50
Tall slender trunk with long arching fronds of bright green leaves. One of our most elegant palms.			
3" pot40		
SOLANDRA guttata. Cup of Gold (10)20	.60	2.25
A strong evergreen vine with huge yellow flowers striped with purple in summer. Large glossy green leaves.			
SOLANUM rantonetti improved. New Blue Solanum (10)15	.50	1.85
Medium to large free blooming evergreen shrub or vine. Flowers are an inch across in deep blue with bright orange center.			
1-gal. Staked60	5-gal. Pyramid	2.00
SOLLYA heterophylla. Australian Blue Bell (9)18	.60
Trailing evergreen shrub or creeping vine. Foliage small. Has dark green leaves and small blue-bell shaped flowers in summer.			
SOPHORA secundiflora. Texas Mountain Laurel (7)20	.60	2.50
Evergreen shrub or small tree that bears violet-blue pea-shaped flowers during February to April. Very attractive.			
3" pot35		



LIQUIDAMBAR STYRACIFLUA
AND
ARALIA PAPYRIFERA
For Description see page 52



MAGNOLIA ST. MARY
For Description see page 56

MINIMUM QUANTITIES

Please do not order less than the following quantities of any one variety.

- 25 in 2 1/4" lining-out stock
- 25 in 3" lining-out stock
- 10 in 1-gallon containers
- 5 in 5-gallon containers

Please keep in mind that an order to be shipped by express, parcel post, or motor freight must total \$20.00 or more. This minimum also applies to local deliveries.

	2 1/4" Pot	1-Gal.	5-Gal.
SOPHORA tetraptera (9)75	-----
Small round leaved evergreen tree producing masses of bright yellow pea flowers in racemes during summer. Very attractive.			
SPARTIUM junceum. Yellow Spanish Broom (7)15	.50	1.85
A very erect shrub with practically leafless, quill-like green stems or branches, all year and bright yellow pea-shaped fragrant flowers.			

	2 1/4" Pot	1-Gal.	5-Gal.
SPIRAEA Anthony Waterer. Dwarf Pink Bridal Wreath (4)15	.50	-----
Dwarf deciduous shrub with compact growth and flat heads of rosy-pink flowers in summer. Full sun.			
SPIRAEA prunifolia. Shoe Button Spiraea (4)15	.50	-----
Small deciduous shrub with spreading upright habit of growth with graceful branches. Produces double white flowers in spring.			
SPIRAEA reevesiana. (S. cotoniensis). Double Bridal Wreath (4) .	.15	.50	-----
Hardy deciduous shrub with arching branches covered with clusters of double white flowers in spring.			
SPIRAEA van Houttei. Bridal Wreath (4)15	.50	-----
Hardy deciduous shrub, with a splendid display of white bloom, on graceful arching branches in summer.			
STENOCARPUS sinuatus. Firewheel Tree (10)35	1.00	2.50
Evergreen tree native to Australia. Produces bright red flowers hanging in heavy umbels. Rich green foliage.			
STRELITZIA nicolai. Bird of Paradise Tree (9)30	1.00	2.75
The flowers have realistic bird-like heads in white with blue tongues. Large banana-like leaves. Very attractive.			
3" pot50		
STRELITZIA reginae. Bird of Paradise (9)30	1.00	2.75
Produces exotic flowers of brilliant orange and bright blue resembling the crested head of a tropical bird.			
3" pot50		
5-gal. with flower			3.50
STYRAX Japonica (5)			2.50
Graceful spreading habit of growth. In summer bears numerous white fragrant flowers. Very showy rich green foliage. Deciduous.			
SYRINGA persica lacinata. Cutleaf Persian Lilac (5)15	.50	-----
Deciduous shrub with finely cut light green leaves. Fragrant bright lavender flowers in early spring.			
SYRINGA rothomagensis. (S. chinensis). Chinese Lilac (4)18	.60	-----
Large purple blossoms are borne profusely in the spring. Deciduous.			
TAMARIX hispida coolidgei. Pink Tamarix (4)18	.50	-----
Drought and heat resisting shrub with plummy light green scale-like leaves. Has billowy masses of pink flowers in summer. Evergreen.			
TECOMA capensis aurea. Yellow Cape Honeysuckle (9)20	.60	2.00
Free growing evergreen shrub or vine with showy golden yellow trumpet-shaped flowers in summer.			
TECOMA capensis. Orange Cape Honeysuckle (9)18	.60	2.00
Large evergreen shrub or vine with glossy green pinnate leaves and brilliant clusters of orange-red trumpet-shaped flowers in summer.			
5-gal. staked			2.25
TECOMA jasminoides rosea. Two-toned Trumpet Flower (9)50	-----
Delicate climbing evergreen vine with light green foliage and large clusters of light pink flowers with crimson throats.			
TERNSTROEMIA japonica (8)20	.60	2.25
Attractive shrub with leathery leaves, very lustrous, tinged with purple and creamy flowers; inconspicuous, but very fragrant in July and August.			
TEUCRIUM fruticans (7)18	.60	-----
A bushy evergreen shrub with light gray foliage and pale blue flowers throughout the year. Likes dry rocky soil, excellent filler shrub or small hedge.			

	2 1/4" Pot	1-Gal.	5-Gal.
THEVETIA nereifolia. Yellow Oleander (10)			2.50
Evergreen tree with alternate leaves. Has strikingly large yellow funnel-like flowers in summer.			
THUNBERGIA gibsoni. Orange Clock Vine (10)60	
Outstanding evergreen vine for its abundant and effective rich orange flowers produced freely in summer months.			
THUNBERGIA grandiflora. Blue Sky Vine (10)18	.60	2.25
Twining evergreen vine making a lush rapid green cover with large sky-blue trumpets with white throats in summer.			
TIPUANA tipu (7)18	.60	2.25
Rapid growing tree with very lacy foliage on spreading branches, covered with yellow flowers in June and July. Deciduous.			
TRISTANIA conferta. Brisbane Box (9)18	.60	2.25
An attractive evergreen tree with dark green leathery leaves, smooth red-brown bark produces white star-shaped flowers, tolerates heat and drought.			
TROCODENDRON aralioides (8)20
Tall growing evergreen tree having long glossy wavy toothed leaves; small white flowers in summer.			

Special Package Offers

CAMELLIAS—PAGE 14

ORNAMENTALS—PAGE 22

ULMUS parvifolia sempervirens. Evergreen Elm (7)25	.60	2.25
A fine small round headed evergreen tree, with graceful, weeping, arching branches. Deep green leaves.			
ULMUS parvifolia sempervirens Drake (7)25	.60	2.25
Rich evergreen foliage on sweeping branches which grow more upright than the regular evergreen elm; very attractive.			
VERONICA Autumn Glory. (Hebe Autumn Glory) (9)18	.50	
Very showy free flowering evergreen shrub. Compact grower with deep lavender-blue flowers in warm months.			
VERONICA andersoni. (Hebe andersoni) (9)18	.50	
Compact evergreen shrub with smooth light green leaves, and spikes of lavender-blue flowers in summer.			
VERONICA buxifolia. (Hebe buxifolia) (7)18	.50	
A fine-leaved evergreen shrub for hedge plantings.			

MONROVIA NURSERY COMPANY.....Azusa, California

	2 1/4" Pot	1-Gal.	5-Gal.
VERONICA imperialis. (Hebe speciosa) (9)18	.50	-----
Excellent evergreen shrub with thick rounded leaves with purple veins. Flowers in pointed spikes are deep wine-red.			
VERONICA menziesi. (Hebe Menziesi) (9)	-----	.60	-----
Dwarf compact evergreen shrub with small dark leaves. Produces white flowers in summer months.			
VERONICA prostrata (8)18	.60	-----
Very showy prostrate veronica with its small compact leaves on spreading branches. Deep dark green in color.			
VIBURNUM burkwoodi (5)18	.60	1.85
Hardy deciduous shrub producing large waxy-white, pink-flushed flower clusters in summer. Has a Gardenia fragrance.			
3" pot35		
VIBURNUM japonicum (8)15	.50	1.85
Compact evergreen shrub with large glossy green leaves. Produces white flowers.			
VIBURNUM mariesi (6)18	.50	-----
Heavily veined dark green leaves. Produces very showy white flowers in spring. Deciduous.			
VIBURNUM odoratissimum. Sweet Viburnum (8)18	.50	1.85
Attractive evergreen shrub. White flowers. Large thick green leaves, prefers shade.			
VIBURNUM opulus sterile. Eastern Snowball (3)18	.60	1.85
Hardy deciduous shrub, produces masses of globular clusters of pure white flowers in May and June.			
VIBURNUM rhytidophyllum. Leather leaf (5)18	.60	1.85
Evergreen shrub with deep green leathery leaves. White flowers borne in early summer followed by black fruit.			
5-gal. espalier	5.00		
VIBURNUM suspensum. Sandankwa (8)15	.50	1.85
Very showy evergreen shrub for foliage and flowers. Thrives well in sun or shade.			
VIBURNUM theiferum (5)	-----	.50	-----
Deciduous Viburnum with lush heavy, veined leaves—bears white flowers in summer.			
VIBURNUM tinus robustum (7)15	.50	1.85
Medium sized evergreen shrub with luxuriant deep green foliage. Has white flowers blushed with pink in spring.			
B & B 36"	2.00		
VIBURNUM tinus variegated. Variegated (7)18	.60	-----
Attractive green and yellow foliage makes a showy setting for its white flowers in early spring. Evergreen.			
VIBURNUM tomentosum plicatum grandiflorum (4)18	.50	2.00
Produces pure white flowers with nice rich green foliage. Very hardy. Deciduous.			
VIBURNUM wrightii (5)20	.60	-----
Very appealing with its broad coarsely toothed leaves, glistening white flowers in spring.			
VITEX macrophylla. Lilac Chaste Tree (6)18	.50	-----
A graceful deciduous shrub with long spikes of lovely pale blue flowers. Very vigorous grower.			



MAHONIA LOMARIAEFOLIA
For Description see page 56

	2 1/4" Pot	1-Gal.	5-Gal.
WASHINGTONIA robusta. Mexican Fan Palm (8)18	.60	2.50
Tall and slender fan palm with brilliant green fronds.			
WEIGELA Bristol Ruby. (Patent No. 492) (4)35	.60	2.00
Hardy deciduous shrub. Deep red flower, dark green foliage.			
WEIGELA rosea. Pink Weigela (4)15	.50
Medium sized deciduous shrub. Masses of pink flowers in spring.			
WEIGELA rosea variegata (4)15	.50
Variegated white and green foliage with profuse pink and white flower clusters.			
WEIGELA vaniceki (4)15	.50	1.85
Very hardy upright growing shrub with masses of bright red flowers. Has especially long blooming period.			
WISTERIA, Purple (5)60	2.25
Fast growing deciduous vine with bright green foliage. Produces masses of bright purple flowers in spring.			
XYLOSMA senticosa. (Myroxlon senticosum) (8)20	.50	1.85
Trailing evergreen shrub with light glossy green foliage. Many versatile uses. New growth has a reddish tint.			
5-gal. 3' pyramid	2.50	5-gal. espalier	5.00

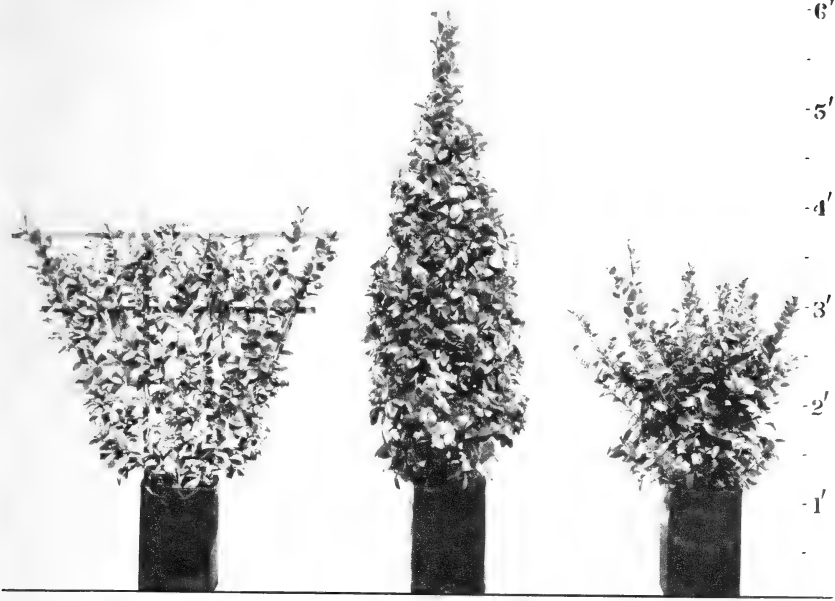
	2 1/4" Pot	1-Gal.	5-Gal.
YUCCA pendula (7)	---	---	2.50
Showy blue-green recurving leaves on a single upright stem. Adds beauty to any landscape.			
YUCCA whipplei. The Lord's Candle (7)20	---	---
California native with thick and sharply pointed narrow leaves. Bears a spike crowded with drooping waxy-white bell flowers in early summer.			
ZELKOVA serrata. Japanese Keaki Elm (5)15	.60	2.25
Attractive elm-like tree but not susceptible to elm diseases. Deciduous slender spreading tree with dense round head. Good fall coloration.			

MN CONTRACT GROWING MAKES YOUR JOB EASIER!

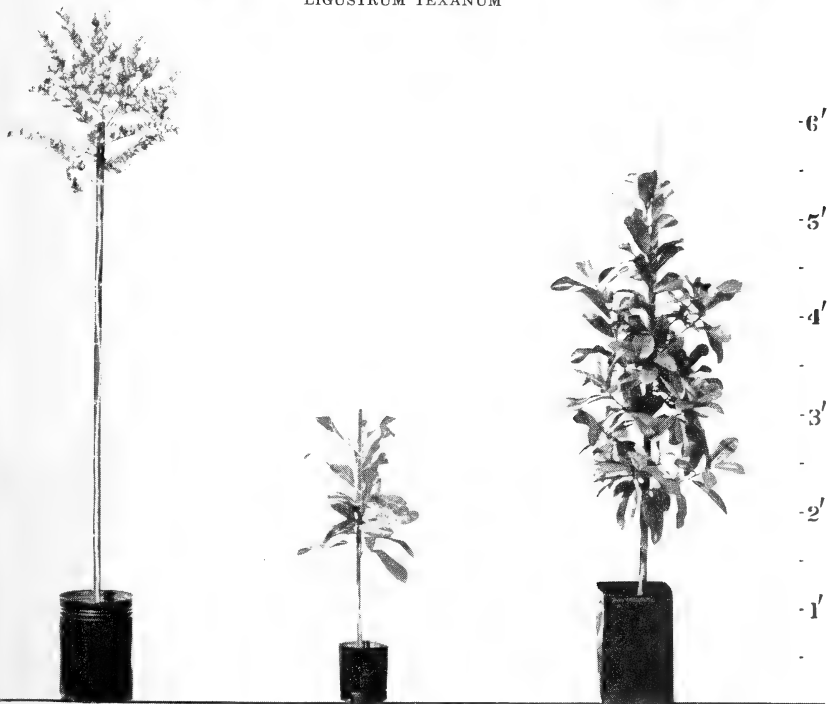
- ✓ Saves you money.
- ✓ Fills your needs in any amount.
- ✓ Gives you complete selection.
- ✓ Deliveries on time.

A combination of ideal California climate, the latest equipment and experience permit the MN propagation department to produce superior stock. To American Nurserymen this means plenty of high quality stock even in the hard-to-find and rare varieties.

***Write today for more information about
MN'S profitable contract growing and
let us fill your needs.***



LIGUSTRUM TEXANUM



ACACIA BAILEYANA

MAGNOLIA GRANDIFLORA

FUMIGATION

For the convenience of buyers in those states whose laws require fumigation of incoming plant shipments, MN operates two modern fumigatoriums. Although this operation is under the expert supervision of a full-time entomologist, MN assumes no liability for plant damage or loss due to fumigation. Actual operating costs are charged as follows:

2 1/4" pots	2¢	1-gal.	7¢	5-gal.	25¢
3" pots	4¢	2-gal.	15¢	7-gal.	40¢

SHIPPING

If you do not state your preference for method of shipping, all arrangements will be made for you with speed, safety and economy in mind.

Out-of-state shipments are made most economically by our contracted carrier motor freight service.

A full semi-truck load will consist of approximately 27,000 lbs. of plant material. A combination or split load consists of several orders each consigned to a different purchaser.

To have your order included in a combination load, a minimum order of \$250.00 is necessary, and delivery will be made as soon as enough orders are accumulated to fill a semi-truck. This minimum order of \$250.00 is required as the trucking concern under contract will make only a limited number of stops per trip. Trucking charges are a cash transaction and are due to Monrovia Nursery immediately after delivery of stock. **Do not pay the driver.**

If you are unable to meet the \$250.00 minimum order, undoubtedly a nursery in your immediate area could add to the order to make this required minimum, and have stock delivered to one nursery. A number of our customers pool their orders this way.

When ordering a truckload or a carload, beyond our free delivery area, packing, loading and bracing are free.

Approximate Weights of Plants in Following Container Sizes:

1-gallon cans.....	8 lbs. each	2 1/4" pots	3/10 lb.
2-gallon cans.....	20 lbs. each	3" pots	1/2 lb.
5-gallon cans.....	50 lbs. each	5" pots	2 lbs.
7-gallon cans.....	60 lbs. each	7" pots	3 1/4 lbs.

**IF YOUR ORDER
ARRIVES BY OUR TRUCK CARRIER SERVICE,
DELIVERY CHARGES ARE DUE AND PAYABLE
IMMEDIATELY UPON RECEIPT OF INVOICE.
PLEASE DO NOT PAY THE TRUCK DRIVER.**

PACKING

There is no charge made on packing lining-out stock (2 1/4" and 3" pot-sized plants) and Azaleas. These are shipped by Railway Express unless specified differently by you. To insure safe and economical delivery, the plants are transferred from clay pots into waxed paper pots, and securely packed in sturdy, lightweight cartons. Please remember that shipping the larger plants (1 and 5-gallon sizes) by express or public motor freight is very expensive. Not only are the transportation rates high, but it is necessary that nursery stock be packed which means a packing charge as follows:

1-gallon cans	35¢	Labor and materials for stacking flats.....	35¢
2-gallon cans	50¢	Cost of flat	25¢
5-gallon cans	\$1.00		

WHOLESALE ONLY

This list is intended for the trade only. If it should be sent by mistake to people not entitled to trade prices, we would greatly appreciate if you would notify us at once, so that our mailing list can be corrected.

F. O. B. AZUSA—All prices quoted in this catalog are F. O. B. Azusa, California.

TERMS—While our regular terms are cash, we will be pleased to make credit arrangements with established concerns. Open accounts are payable on or before the 10th of the month following date of delivery. Overdue accounts are subject to 1% monthly interest charge and sight draft. No discount will be allowed as it is our policy to maintain attractive prices consistent with high quality stock. The issuance of this catalog automatically cancels all previous quotations. It is understood that all orders accepted are subject to availability of stock at the time of delivery.

CLAIMS—Claims must be made immediately upon receipt of goods. If an error has been made by us, please notify us promptly, and we shall take pleasure in adjusting the matter. We do not guarantee plants to live. At no time will we be responsible for more than the purchase price of the stock ordered.

We carefully pack all stock, and make every effort to secure prompt and careful handling by the transportation company. However, our responsibility ceases upon delivery of stock in good condition to the transportation company.

Please file a claim at once with the transportation company, if your stock has been damaged or delayed in transit. In this connection we shall be glad to assist you in any way we can.

WE ARE A PINTO-TAG NURSERY—This means that our nursery stock can be shipped to all counties in California and released for planting without further inspection. (Tulare and Ventura counties are exceptions).

ACKNOWLEDGMENT—Your orders will be acknowledged promptly and shipments made as quickly as possible, so if your order is not acknowledged please advise us immediately. Sometimes, because of inclement weather, or the press of business, there may be a slight delay in shipping, but we assure you that this will not be more than is absolutely necessary.

Non-Warranty—The Monrovia Nursery Company gives no warranty, express or implied, as to the variety or productivity of any nursery stock it sells. Liability in all instances is limited to the purchase price. No liability is assumed by seller for delay or failure to deliver caused by wars, strikes, fires, floods, droughts, embargoes or any other contingencies beyond seller's control. If the purchaser does not accept the goods on these terms, they are to be returned.

PLANT PATENT & TRADE MARK NOTICE

The following provisions apply to all patented or trade-marked plants we sell. Any asexual reproduction or distribution, by sale, gift, or otherwise of scions, buds, or cuttings for such reproduction, without license from the patent owners, constitutes an infringement of the patent for same. Any unauthorized reproduction, sales or other distribution of reproducing propagating material of these plants prohibited by the patents or trade-marks, will subject the reproducer, seller, or distributors thereof to prosecution for infringement under the Patent and Trade-Mark Laws.

File For
Reference

THIS LIST CANCELS ALL PREVIOUS ISSUES
Prices Subject to Change Without Notice

**AUGUST 1
1958**

INDEX FOR QUICK REFERENCE

	Page		Page
Azalea Section	10	Ilex (Holly)	46
Berberis	25	Lantana	48-49
Bougainvillea Section	25-26	Liner Shipment Information	80
Buxus	27	Lonicera	53
Camellia Section	14	Map of Hardiness Zones	40-41
Camellia Package	14	Minimum Quantities	40
Citrus	30-31	Nerium	58
Conifer Section	2	Ornamental Package 1-Gallon	22
Cotoneaster	32	Ornamental Package 5-Gallon	22
Delivery Schedule	81	Packing Information	78
Euonymus	37	Podocarpus	62
Eucalyptus	35	Prunus	64
Fern Section	38	Pyracantha	64-65
Fumigation Information	78	Quantity Discounts	41
General Ornamental Section	18	Rosa	68
Hibiscus	44	Shipping Information	78
Hydrangeas	45	Viburnum	74

**MN OFFERS LOWEST LAID DOWN PRICE
ON POT GROWN LINERS**

YOU CAN NOW SAVE OVER 50% ON YOUR POT GROWN LINER SHIPMENT. STARTING AUGUST 1958, ALL ORDERS WILL BE SENT PREPAID BY MOTOR FREIGHT OR RAILWAY EXPRESS.

LOOK AT THESE TREMENDOUS SAVINGS:

West of the Mississippi including Minnesota and Louisiana:

2 1/4" Pot Delivered for Only 1¢

3" Pot Delivered for Only 2¢

East of the Mississippi:

2 1/4" Pot Delivered for Only 2¢

3" Pot Delivered for Only 4¢

**YOUR LINERS ARE PACKED IN MN SAFETY CARTONS
AT NO EXTRA CHARGE.**

METHOD OF SHIPMENT OUR OPTION

SATISFACTION GUARANTEED

DELIVERY SCHEDULE

This schedule is arranged to give you the best possible delivery service and is followed closely. However, any time you place an order for a full truckload, shipment can leave the nursery within a few days after the order is placed, regardless of the schedule. If the first of the month falls on a **Wednesday or earlier**, that week is considered the **first week** of the month as pertaining to the schedule below. Keep in mind that the minimum orders listed in the schedule are required if your stock is to be shipped by our truck or contracted carrier, however, **only an order of \$20.00 is required to have your stock shipped by express motor freight, or parcel post.**

Please—We must have your order a few days before the scheduled delivery. This not only gives us more time to select better stock, but it does insure delivery on schedule.

Area	Minimum Delivery Order	Time of Delivery
L. A. Metropolitan Area Including San Fernando, Long Beach, Santa Monica and Covina areas.	\$25.00	Weekly.
Orange County	25.00	Every Friday.
San Bernardino and Riverside Area Including Pomona, Chino and Colton areas.	25.00	Every Tuesday.
San Diego Area Including Oceanside, Escondido and Na- tional City areas.	50.00	Every Wednesday.
Santa Barbara Area Including Ventura County.	25.00	1st and 3rd Monday of each month.
Palm Springs Area Including Banning and Indio areas.	50.00	2nd and 4th Tuesday of each month. Any Tuesday when a full load is available.
Bakersfield Area Including Wasco and Lancaster areas.	50.00	1st and 3rd week of each month.
Fresno Area Including Madera, Delano and Visalia areas.	50.00	1st and 3rd week of each month.
Stockton Area Including Modesto and Merced areas.	100.00	2nd and 4th week of each month.
Sacramento Area	100.00	2nd and 4th week of each month.
Marysville Area Including Chico and Oroville areas.	150.00	2nd week of each month.
Paso Robles Area Including San Luis Obispo and Santa Ma- ria areas.	50.00	1st week of each month.
Monterey Area Including Salinas, Watsonville and Santa Cruz areas.	100.00	1st week of each month.
San Francisco Area Including Martinez, San Jose and Pitts- burg areas.	100.00	1st and 3rd week of each month.
Santa Rosa Area Including Ukiah and Napa areas.	150.00	4th week of each month.

Out-of-State Shipments—To all states. Regular scheduled deliveries are made during spring and fall by contracted carrier service (motor freight)—full loads or split loads. Minimum order—\$250.00.

We will also arrange for railroad deliveries if you prefer.

MN'S NEW SPREADING LANTANA

See Prices and Descriptions Page 49



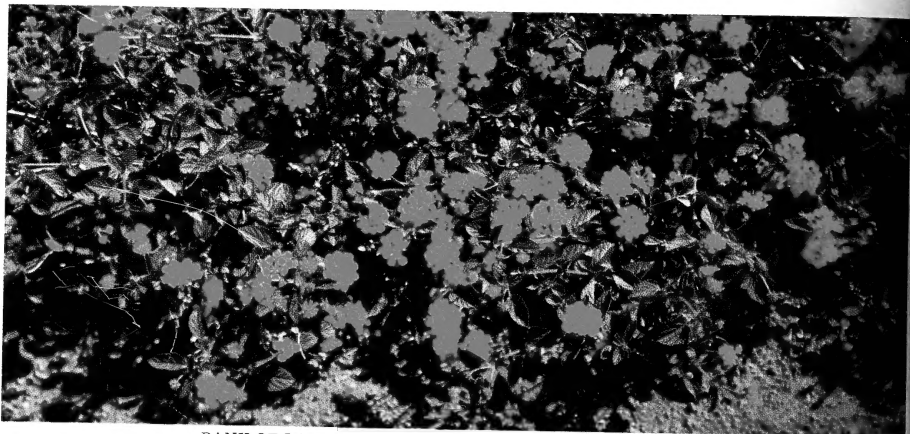
LANTANA CREAM CARPET
PATENT PENDING



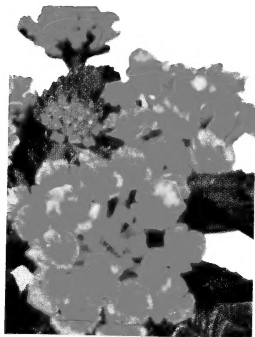
LANTANA SPREADING SUNSET
PATENT NO. 1477



LANTANA SUNBURST
PATENT PENDING



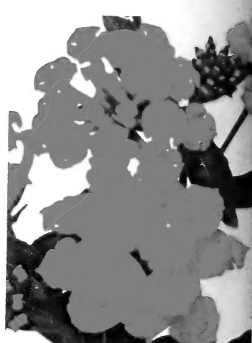
BANK OF LANTANA SPREADING SUNSET (PATENT NO. 1477)



LANTANA CONFETTI
PATENT NO. 1478



LANTANA PINK FROLIC
PATENT PENDING



LANTANA GOLDRUSH IMPROVED
PATENT NO. 1211

MONROVIA NURSERY Co.

P.O. BOX Q, AZUSA, CALIFORNIA