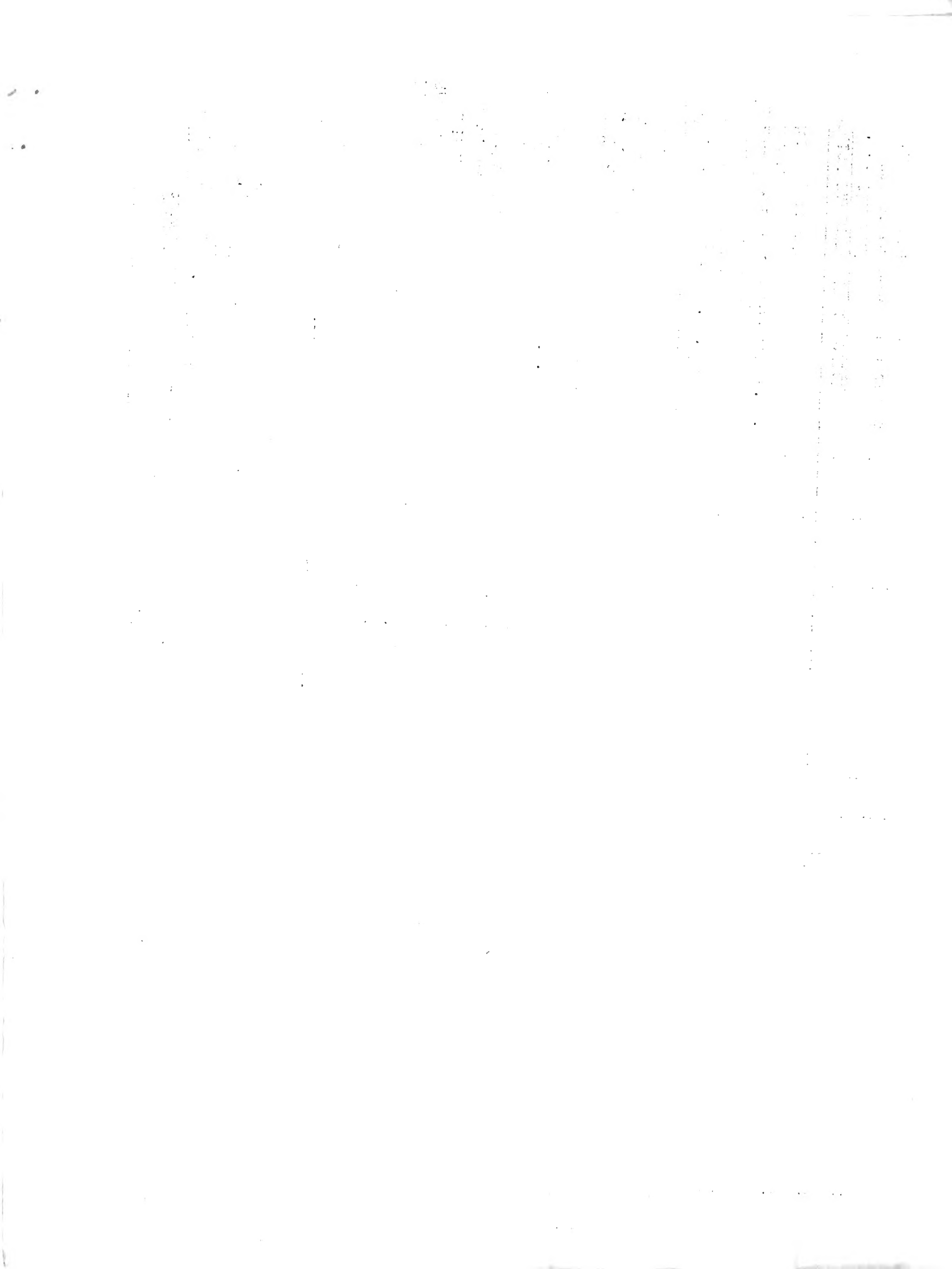


## **Historic, Archive Document**

Do not assume content reflects current scientific knowledge, policies, or practices.



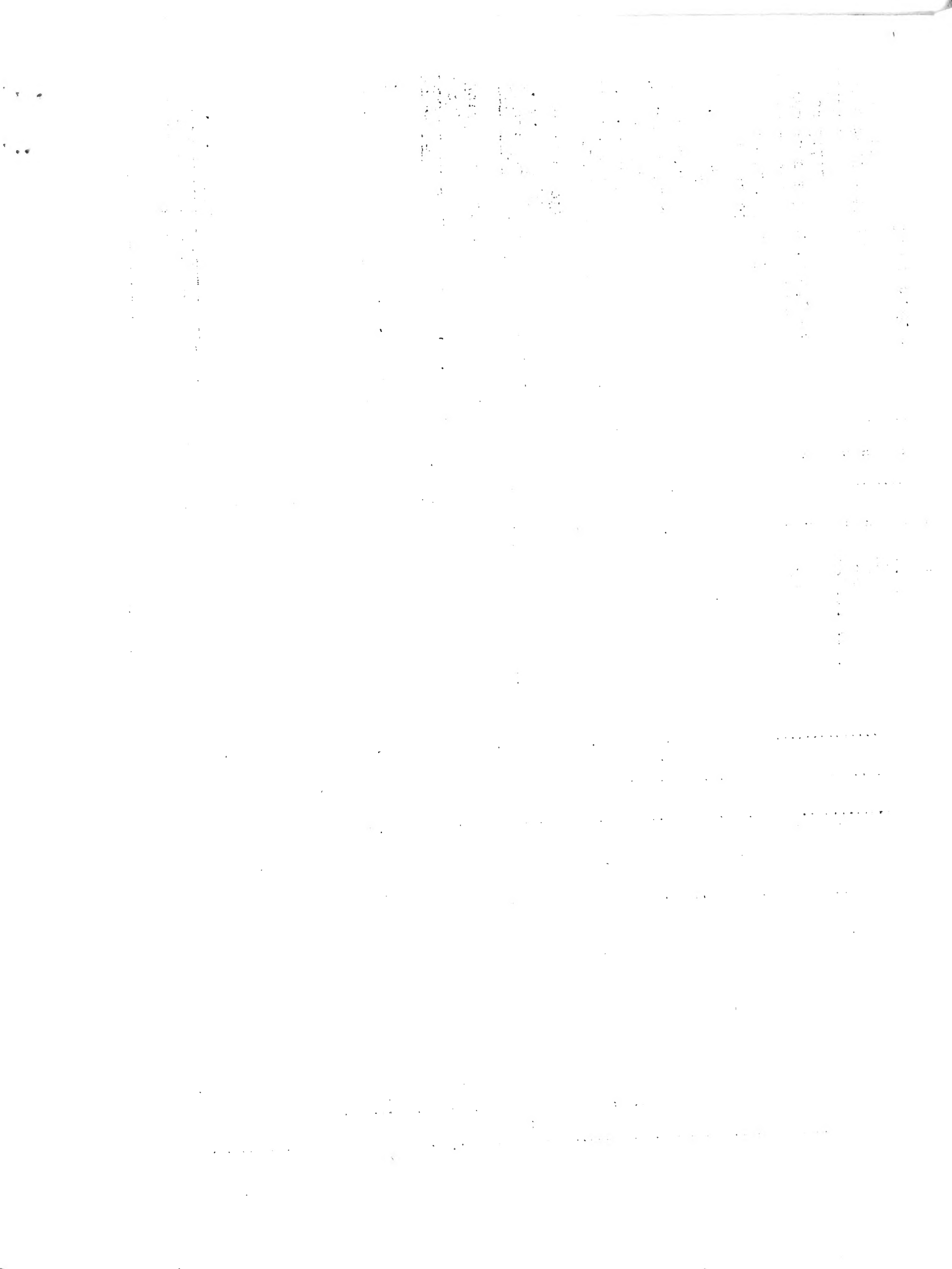






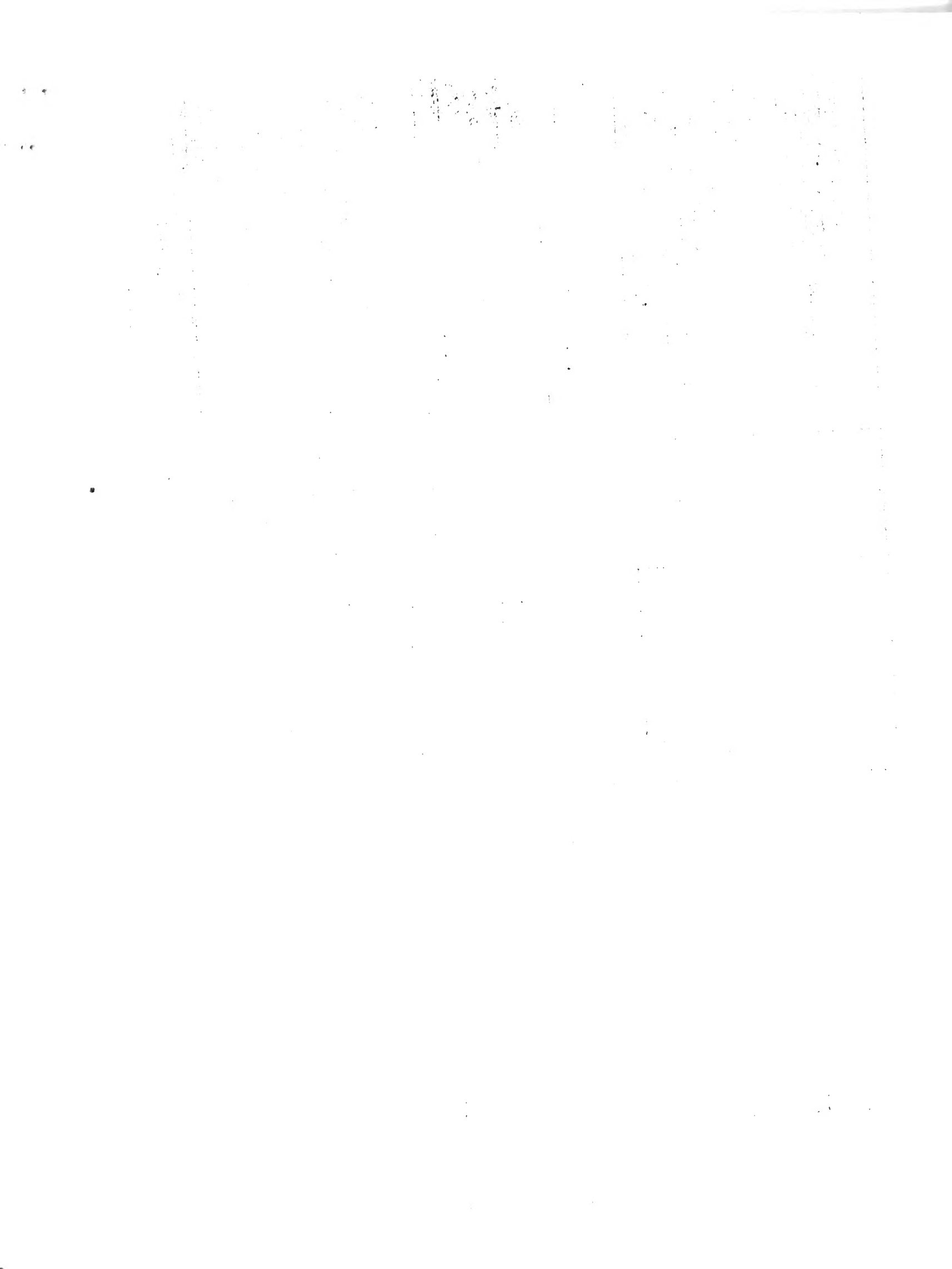
















TRUCK CROP AND GARDEN INSECT IN-GATIONS (W. H. White) continued	Chain		Syndicate Regions	Jan	Feb	Mar	Apr	May	Jun	Jul	Aug	Sept	Oct	Nov	Dec
	Nat'l	West													
Vegetable insects - continued															
Squash bug			3,6,7,10,11,12												
"			2,4,5,8												
Sweet potato weevil			6,7		20										
Tomato fruitworm			3,6,7,10,11,12			15									
"			4,5,8,9												
Turnip aphid			6,7,10,11,12		1		25								
"			3,4,5,8				5								
Vegetable weevil			6,7												
Wireworms			10,11,12			15									
"			2,5												
Berry insects															
Raspberry fruitworm			10,11				15								
"			2,3,4,5				1								
Strawberry weevil			2,4,6												
White grubs			3,6,11			15									
"			2,4,5,8												
Tobacco insects															
Budworm			3,4,6,7			15		1							
Outworms			3,6,7			1									
"			2,4,5			1									
Flea beetles (seed beds)			3,6,7					15							
"			2,4,5					15							
Mole crickets			3,6,7			1		15							
"			4					15							
<b>HORNWORMS</b>			2,3,4,5,6,7					1							
Flower insects															
Ants on flowers															
Aphids															
Bister beetles															
Glad thrips															
"															
Iris borer															

Wis.  
"  
"

25

15





