

Historic, Archive Document

Do not assume content reflects current scientific knowledge, policies, or practices.

FARQUHAR'S

LIBRARY,
U. S. Department of Agriculture,
Washington, D. C.

MIDSUMMER CATALOGUE

1908



Marshall Strawberry

SEEDS FOR SUMMER SOWING

PANSIES
CANTERBURY BELLS
FOXGLOVES
HOLLYHOCKS
LARKSPURS AND
ALL HARDY PERENNIAL
PLANTS

BULBS FOR EARLY FORCING

FERTILIZERS AND INSECTICIDES

SPRAYING PUMPS AND GARDEN TOOLS

PLANT STAKES AND OTHER GARDEN REQUISITES

RUSTIC HOUSES, ARBORS AND PERGOLAS

GREENHOUSE CONSTRUCTION HEATING AND VENTILATING APPARATUS

PLANTS

POT-GROWN STRAWBERRIES
READY JULY 1ST

ROSES, HARDY VINES and OLD-
FASHIONED FLOWERS IN
POTS FOR SUMMER
PLANTING
READY JUNE 1ST

R. & J. FARQUHAR & CO.

Seedsman and Nurserymen

6 AND 7 SOUTH MARKET STREET
BOSTON, MASS.

Telephone, Richmond 1470

STRAWBERRY PLANTS

From our Strong Pot-Grown Plants a full crop of fruit ten or eleven months after plants are set out. Plant in July or August. We have the best 24 varieties for market and home use adapted to our climate.

All the varieties offered are perfect-flowering (bisexual) except where marked P. The latter are pistillate and require a row of a perfect-flowering sort planted every 8 or 10 feet to pollenize their blossoms.



These, if planted in July and August, produce a large crop the next summer. Being grown in pots they may be shipped to a distance and planted with almost no interruption to their growth. The plants may be set in beds of three rows one foot apart and one foot distant in the rows, with a space of two and one-half feet between the outside rows of adjoining beds left for a pathway. They may also be planted in single rows three feet apart and one foot apart in the rows.

POT-GROWN PLANTS. From 2¼ in. pots, well rooted; delivery in July and August. Per 100, \$3.00; 250, \$6.50; 500, \$12.50; 1,000, \$25.00, for all varieties, except where otherwise priced.

FIRST EARLY.

Excelsior. This is decidedly the best early Strawberry and the earliest good strawberry. The fruit is of round conical form, glossy, dark red color, and of mildly acid flavor.

Fairfield. Mr. Johnson, the introducer, says he has never seen any berry nearly its equal for earliness, large size, attractive color, quality and firmness.

Success. Large, round, bright scarlet, flavor always fine.

Virginia. P. A medium sized berry of recent introduction; flavor excellent; enormous yielder. Made a record of 12,000 quarts per acre at its home in the State of Virginia.

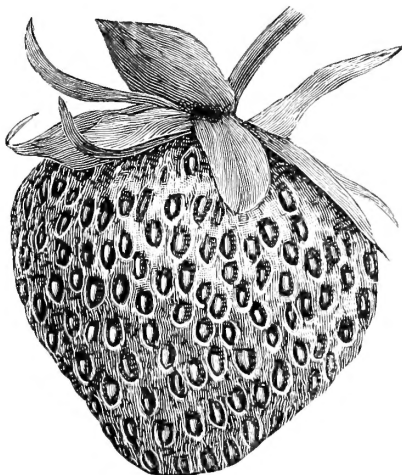
SECOND EARLY

Climax. This is an extremely popular new variety, immensely productive, the berries being slightly over medium size. Plant vigorous, healthy grower, of a peculiar shade of green that can be distinguished from other varieties. Our stock is from plants procured of the originator and is exceptionally fine.

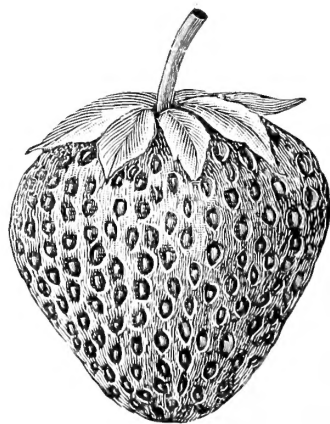
Glen Mary. Large, conical, bright red berries; firm and of fine flavor.

Sample. P. Excellent for either market or home use; prolific, large, firm, and delicious.

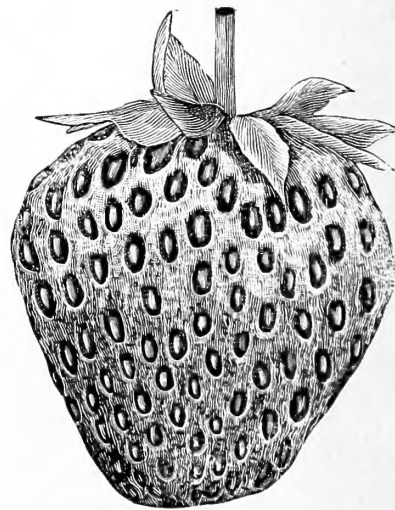
Senator Dunlap. Mr. Crawford, at the time of its introduction by him, said that he doubted if he had ever sent out a berry better than Senator Dunlap. It will keep in fair condition for several days on the vines after being ripe enough to pick. The fruit is large, rich and dark red clear to the centre, with a very rich flavor.



Excelsior



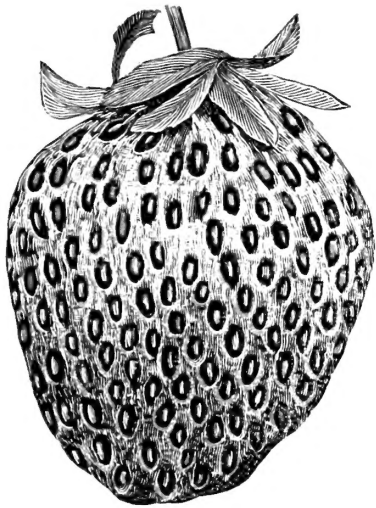
Virginia



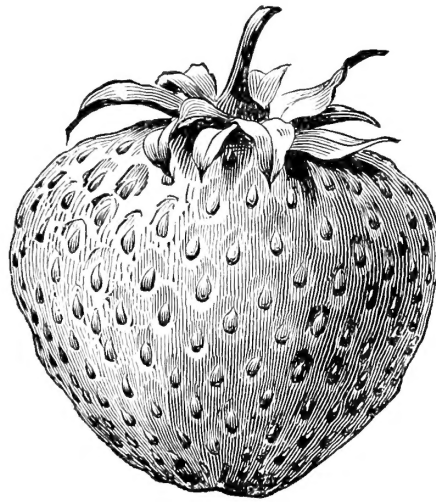
Climax

R. & J. FARQUHAR & CO. give no warranty, express or implied, as to description, quality, productiveness or any other matter of any seeds, bulbs, or plants they send out, and they will not be in any way responsible for the crop. If the purchaser does not accept the goods on these terms, they are at once to be returned.

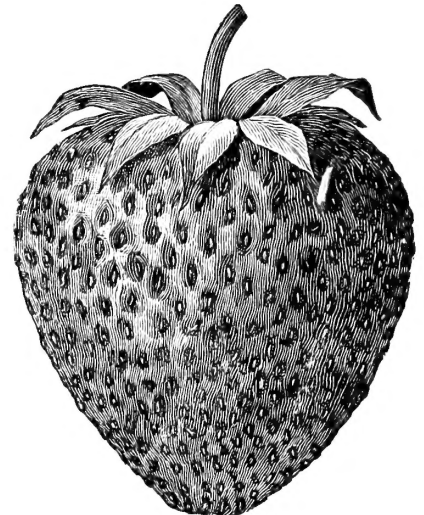
STRAWBERRIES.—Continued.



Senator Dunlap.



Gandy.



New York.

MEDIUM.

Abington. A strong growing native variety of recent introduction. The fruit is of large size, bright red in color, very solid and of excellent flavor.

Bubach. P. A well known popular variety. With large berries of a rich, bright red color; very prolific.

Big Ben. A new seedling variety of merit which in some sections of this state has become the favorite fancy market sort. The plants are of vigorous growth and very productive with large fruit of a rich crimson color. Per 100, \$4.00; \$35.00 per 1000.

Brandywine. A large heart-shaped berry, perfect in form, bright red in color, firm flesh, red to the centre, and of rich, spicy flavor. A great cropper especially on heavy soils, holds its fruit well up from the ground and generally succeeds everywhere.

Bismarck. Bismarck is a safe pollenizing strawberry, possessing all the desirable qualities of Bubach. To those familiar with the Bubach nothing further need be said, since Bubach has been a favorite berry for years. Bismarck makes a much finer growth than Bubach, and, from the fact that it beds up better, it will generally produce a larger yield per acre. Color a dull scarlet, ripens all over at once, having no green tips. The seeds are prominent, and the berries quite firm.

Mark Hanna. P. An exceedingly prolific variety ripening in midseason. The berries are of enormous size, attractive in color and of splendid quality.

Marshall. The fruit of this remarkable sort is of enormous size, of handsome, glossy, dark crimson color, and of delicious flavor. It is one of the best midseason berries, either for private use or market. It is a vigorous grower and requires good soil and high cultivation. As it does not thrive in all soils, it should not be planted extensively until its adaptability is ascertained.

Minute Man. P. Very productive, and free growing sort with large solid berries. A fine market variety.

New York. One of the best sorts for private or market gardens. The berries are large, of long conical form; dark red color, firm texture and of remarkably sweet flavor. In the market they sell at sight.

Pride of Cumberland. The plant is a vigorous grower and free from rust, and ripening about one week earlier than Gandy; it is nearly as large, equally firm, as good a color, thriving in either high or low land, but owing to the immense crops it sets, the ground should be well fertilized to ensure best results.

LATE TO VERY LATE.

Belmont. This old favorite is still considered by many to be the finest late berry. The fruit is of handsome appearance and keeps well.

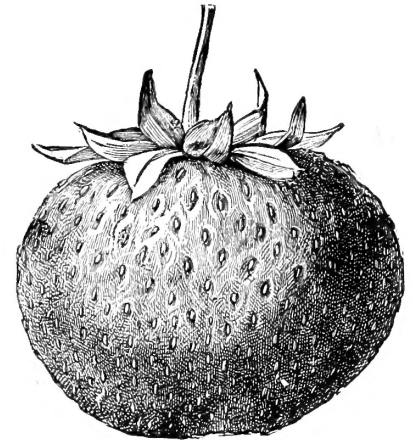
Commonwealth. This is the latest of all Strawberries; bearing large conical, deep crimson fruit, sweet and of quality equal to the well known Bubach. Not only an extra large berry, but also very productive, of deep rich color and solid. It is smooth and quite juicy. The plants are strong, not quite so rank in growth as the Marshall, and free from rust. One of the best introductions of recent years.

Gandy. This popular old variety is probably known by most berry growers. It is more largely grown than any other late variety. It is at home on black swamp land if well drained, upon medium stiff or red clay land. On sandy soils it is unproductive. All late varieties are compared by Gandy, which is the highest praise that could be given it. Large size, fine appearance, and remarkable keeping and carrying qualities.

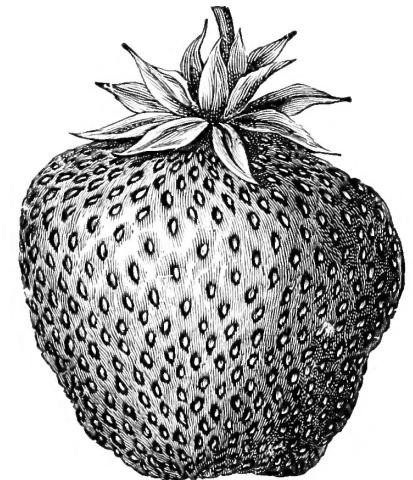
New Home. As late and large as Gandy, fruit a bright red color that does not lose its lustre and turn dark for a long time after being picked. It is a vigorous grower, and, unlike Gandy, will produce a large crop on either high or low land. The fruit is so firm and keeps so well, it does not need to be picked oftener than three times a week. Its great productiveness, uniform large size, and unsurpassed carrying and keeping qualities make it one of the most desirable on the list.

William Belt. An exceptionally fine berry. In quality it heads the list. The berries are as large, with some specimens larger than the Bubach. It is about as productive as the Bubach, and of nearly the same shape. Its color is a bright, glossy, deep red; its season nearly as late as Gandy.

Stevens' Late Champion. A new variety of the Gandy type yielding large crops of beautiful berries very late in the season. In New Jersey it is considered one of the finest sorts for late crop.

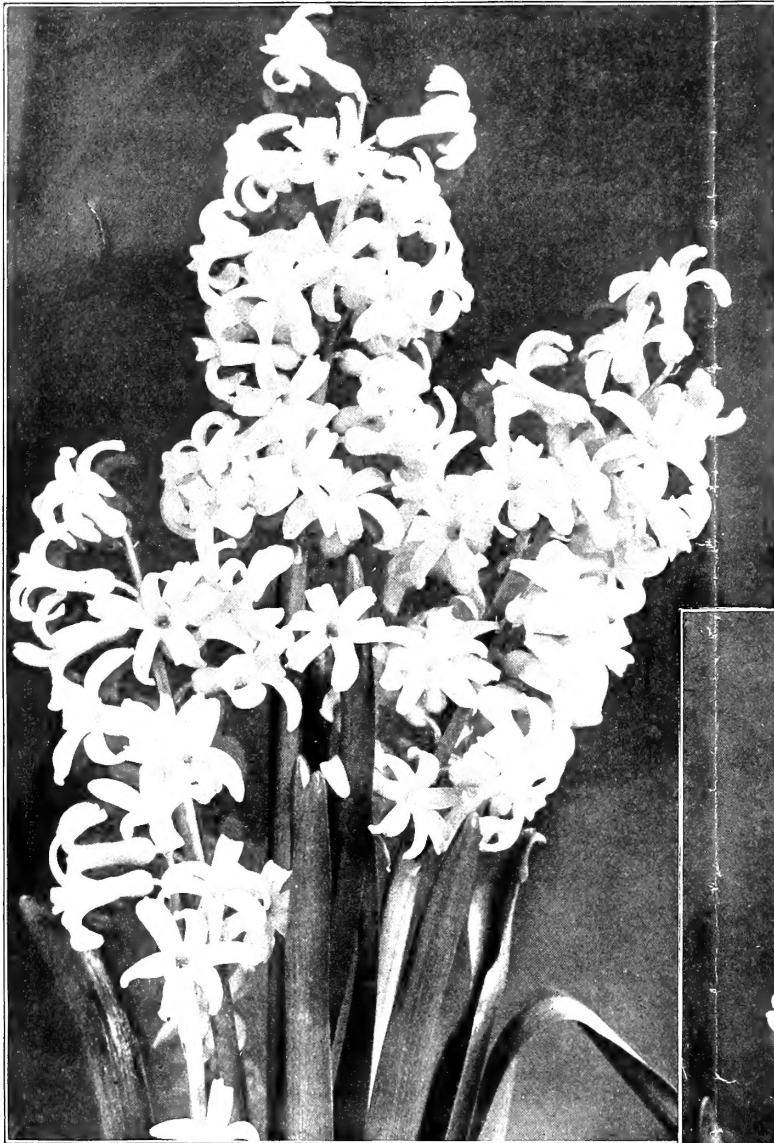


Brandywine.



William Belt.

BULBS FOR EARLY FORCING



Early White Roman Hyacinth.

EARLY ROMAN HYACINTHS.

White. Extra Large. 50c. per doz.; \$4.00 per 100; \$35.00 per 1000.

White. Mammoth. 75c. per doz.; \$5.00 per 100; \$47.00 per 1000.

Pink. 50c. per doz.; \$4.00 per 100; \$35.00 per 1000.

Light Blue. 50c. per doz.; \$4.00 per 100; \$35.00 per 1000.

White Italian or Parisian. These are about a fortnight later than the Early White Roman Hyacinths and the blossoms somewhat larger. They are very useful for forcing, being fragrant and decorative. 50c. per doz.; \$4.00 per 100; \$35.00 per 1000.

ALLIUM

Neapolitanum. Large heads of pure white flowers, very hardy; extensively forced by florists for cutting purposes. \$1.25 per 100; \$8.00 per 1000.

CALLA LILIES.

White Calla. First Size Roots. 1 3/8 to 2 inches diameter. \$1.75 per doz.; \$12.00 per 100.

White Calla. Extra Selected Roots. 1 3/8 to 2 1/2 inches diameter. \$2.50 per doz.; \$18.00 per 100.

TRUMPET NARCISSUS.

Trumpet Major, French Crown. Desirable to force for Christmas, should be potted in September. 40c. per doz.; \$2.50 per 100; \$18.00 per 1000.

POLYANTHUS NARCISSUS.

Early Large Flowering Paper White, Mammoth Bulbs.

The earliest, largest, and most vigorous form of the *Paper White*; the best of all for very early forcing; pure white. 35c. per doz.; \$2.00 per 100; \$16.00 per 1000.

Early Large Flowering Paper White. 30c. per doz.; \$1.75 per 100; \$12.00 per 1000.

Early Double Roman. White, with deep yellow cup; large flower trusses; excellent for early forcing. 25c. per doz.; \$1.50 per 100; \$12.00 per 1000.

JONQUILS.

These are easily forced, and if started early may be flowered by Christmas, or even earlier. Plant six or eight bulbs in a six-inch bulb pan, covering the crowns half an inch, and treat them in the same manner suggested for hyacinths.

Double Sweet Scented. Fine deep yellow. 30c. per doz.; \$2.00 per 100; \$18.00 per 1000.

Single Sweet Scented. Deep yellow; free blooming. 15c. per doz.; \$1.00 per 100; \$8.00 per 1000.

Campernelle. Large deep yellow flowers, excellent for cutting. 20c. per doz.; \$1.00 per 100; \$8.00 per 1000.

Rugulosus. Rich yellow; very fragrant flowers; the largest Jonquil. 25c. per doz.; \$1.50 per 100; \$12.00 per 1000.



Early Large-Flowering Paper White Polyanthus Narcissus.

LILIUM CANDIDUM

(*The Ascension or Old Fashioned English Lent Lily*)

Mammoth Northern Grown. These are grown for us in the north of France, and are the large, thick petalled variety. Pure white bell-shaped flowers, borne in erect spikes, excellent both for forcing and open garden cultivation. Bulbs from the Marseilles district have become degenerate and affected by disease. They should be avoided. Per doz., \$1.50; per 100, \$8.50; per 1000, \$80.00. *By mail*, add 5 cents each, for postage.

LILIUM HARRISII (*The Bermuda Easter Lily*)

Very choice, thoroughly ripened bulbs from the finest stock in Bermuda.

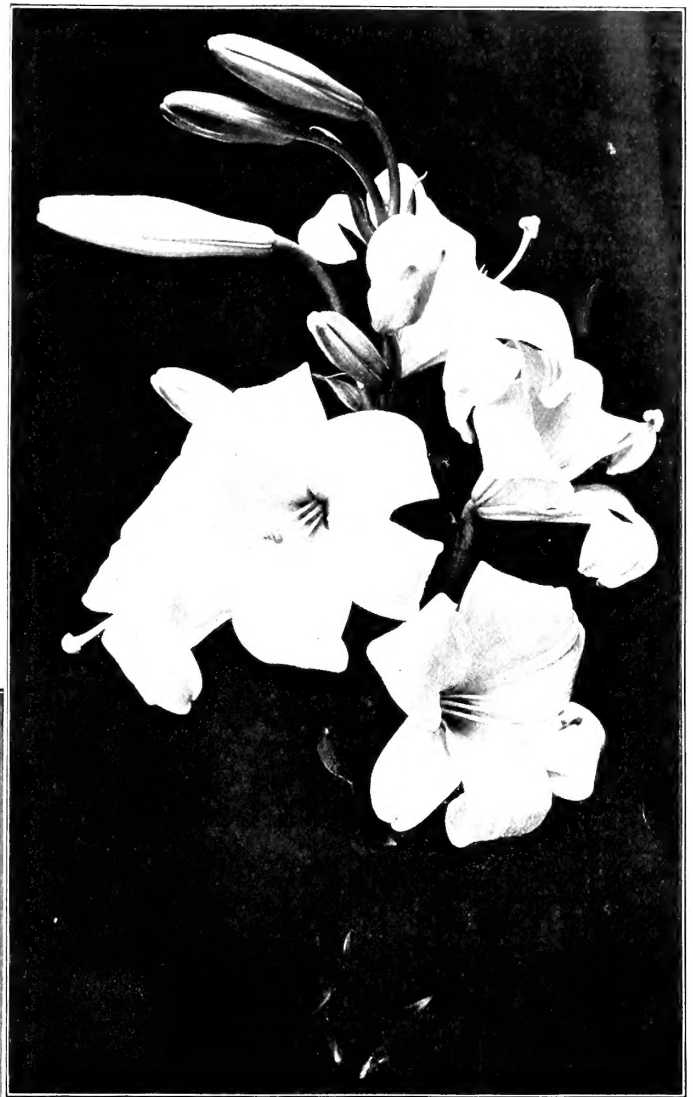
Fine Flowering Bulbs. 5 to 7 in. circ. Doz., .85; 100, \$5.50; per case of 400, \$22.00.
Extra Large Bulbs. 7 to 9 in. circ. Doz., \$1.75; 100, \$12.00; per case of 200, \$22.00.
Mammoth Size. 9 to 11 in. circ. Doz., \$3.25; 100, \$24.00.

LILIUM LONGIFLORUM (*Bermuda Grown*)

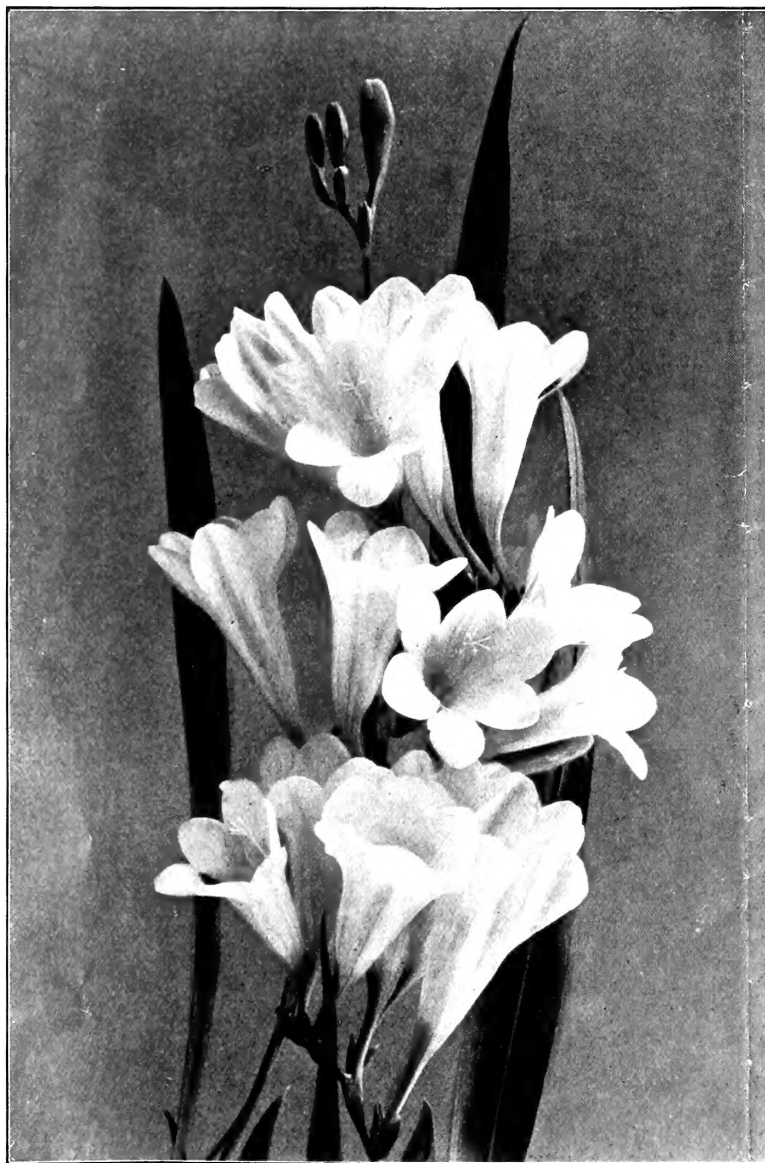
Fine Flowering Bulbs. 5 to 7 in. circ. Doz., .85; 100, \$5.50; per case of 400, \$22.00.
Extra Large Bulbs. 7 to 9 in. circ. Doz., \$1.75; 100, \$12.00; per case of 200, \$22.00.
Mammoth Size. 9 to 11 in. circ. Doz., \$3.25; 100, \$24.00.

LILIUM LONGIFLORUM (*Japan Grown*)

Giganteum. 7 to 9 in. circ. Doz., \$1.50; 100, \$10.00.
 " 9 to 10 in. circ. Doz., \$2.25; 100, \$16.00.



Lilium Candidum.



Freesia refracto alba odorata.

LILIUM LONGIFLORUM (*Japan Grown*)—*Continued.*

Formosa. An early flowering type blooming as early as the Harrisii. Bulbs ready for delivery in August.
 " 7 to 9 in. circ. Doz., \$1.50; 100, \$10.00.
 " 9 to 10 in. circ. Doz., \$2.25; 100, \$15.00.

FREESIA

Refracta Alba Odorata. Flowers pure white, with yellow throat; fragrant, and lasting for two weeks in water when cut.
Mammoth Bulbs. Doz., .40; 100, \$2.50; 1,000, \$20.00.
 Selected Extra Large Bulbs, doz., .30; 100, \$2.00; 1,000, \$16.00.
Fisher's "Purity" *Originator's stock.* A new variety producing large spray of snow white flowers of immense size.
FIRST SIZE BULBS. Doz., .75; per 100, \$5.00; per 1,000, \$45.00.
MAMMOTH BULBS. Doz., .85; per 100, \$6.50; per 1,000, \$60.00.
Leichtlini. Primrose yellow, with orange blotch on each petal. Doz., .30; 100, \$1.75; 1,000, \$14.00.

OXALIS

Lovely little bulbous plants for hanging pots and baskets. The bulbs should be planted an inch deep, six or eight in a 5-inch pot. They need a sunny situation.

Bermuda Buttercup. Flowers clear yellow; very beautiful. Per dozen, 25 cents; per 100, \$1.75.
Bermuda Buttercup, Double. Per doz., 25c.; per 100, \$1.75.
Bowei. Large rosy crimson flowers and handsome foliage. Per dozen, 25 cents; per 100, \$1.75.
Multiflora Alba. Pure white. Per dozen, 25 cents; per 100, \$1.75; per 1,000, \$14.00.

ORNITHOGALUM

Arabicum. (*Arabian Star of Bethlehem.*) An effective variety, with large heads of fragrant star-shaped flowers, white with black eye, borne on erect stems 18 inches high; excellent for forcing and winter cultivation. Per doz., 40c.; per 100, \$2.50; per 1,000, \$18.00.



PANSIES

Culture of Pansies.—Pansies thrive best in a cool, moist, but well drained soil, enriched with well rotted barnyard manure, or fine ground bone. Seeds sown in spring in a partially shaded situation will produce fine plants for autumn flowering. The finest blooms are to be obtained, however, by sowing in July or August, giving the plants protection during winter, when they will bloom profusely in the spring and summer.

Farquhar's Finest Show Strain, Mixed. This is a superb mixture of the largest and best types in an immense variety of brilliant colors.

Oz., \$12.00; ¼ oz., \$3.50; ⅛ oz. \$2.00; packet of about 250 seeds, .50

Farquhar's Finest Show Strain, Mixed.

Second size packet of about 100 seeds, .25

Farquhar's New Frame Giants. This is the finest strain known; the flowers being of perfect form and richest colors. For frame culture this variety is unexcelled, producing flowers of great size and perfection. It is equally good out of doors. Pkt., \$1.00

Special Mixture. Embracing the leading strains, all grown by Specialists in Europe, and including the finest colors and markings in endless variety. This mixture is extensively used by florists.

Oz., \$5.00; ¼ oz., \$1.50; Pkt., .25

Cassier's Giant Mixture. An excellent strain for outdoor or greenhouse cultivation. The plants are of sturdy growth, producing large round flowers, beautifully blotched. The colors are rich and varied.

Oz., \$5.00; ¼ oz., \$1.50; Pkt., .25

Bugnot's Large Blotched. Finely formed flowers of rich and brilliant colors.

¼ oz., \$2.50; Pkt., .25

Madame Perret Giant Hybrids. A new and beautiful race with giant flowers borne on long stems. The colors are mostly rich red and wine shades.

Oz., \$6.00; ⅛ oz., 1.00; Pkt., .25

Masterpiece, Mixed. *Fringed Pansy.* A large flowering type with beautifully curled or waved petals; very attractive

¼ oz., \$1.00; Pkt., .25

Fine Mixed. Many colors

Oz., \$1.00; ¼ oz., .30; Pkt., .05

PANSIES, GIANT OR TRIMARDEAU.

Emperor William. Ultramarine blue; the finest dark blue variety,

Oz., \$2.00; ¼ oz., .50; Pkt., .15

Queen of the Blues. Lavender blue,

" 2.00; " .50; " .15

Golden Gem. Pure yellow

" 3.00; " .75; " .15

Snow Queen. Pure white

" 2.25; " .60; " .15

Golden Yellow with Dark Eye

" 2.25; " .60; " .15

King of the Blacks. Coal Black

" 2.50; " .75; " .15

Lord Beaconsfield. Violet; upper petals shading

" 2.00; " .50; " .15

to white
White with Violet Eye

" 2.00; " .50; " .15

Rosy Lilac

1.25; " .25

Striped. Great variety of colors

" 2.00 " .50; " .15

Mixed. Fine assortment of colors.

" 1.50 " .40; " .10

Collection of 6 Varieties Separate, our selection

" .75

BEDDING PANSIES.

AZURE BLUE, Oz., \$1.25; Pkt., .10

KING OF THE BLACKS,

Oz., \$1.25; Pkt., .10

BRONZE, Oz., \$1.50; Pkt., .10

CARDINAL. Bright red,

Oz., \$2.50; Pkt., .10

EMPEROR FREDERICK. Deep purple edged with scarlet and yellow; centre golden bronze,

Oz., \$1.50; Pkt., .10

EMPEROR WILLIAM. Deep blue,

Oz., \$1.25; Pkt., .10

GOLDEN YELLOW. With dark eye,

Oz., \$1.25; Pkt., .10

LORD BEACONSFIELD. Violet; upper petals shading to white,

Oz., \$2.00; Pkt., .10

PURPLE. Rich deep shade,

Oz., \$1.25; Pkt., .10

PSYCHE. Velvety violet-blue, white margin, ⅛ oz., \$1.00; Pkt., .25

SILVER-EDGED. Dark purple, with white edge, Oz., \$1.25; Pkt., .10

ORCHIDÆFLORA, Mixed. A new race embracing many interesting combinations of color, not to be found in any other type of pansy; very effective,

¼ oz., \$1.00; Pkt., .25

WHITE. With dark eye,

Oz., \$1.25; Pkt., .10

PURE WHITE. Invaluable for large beds, Oz., \$1.50; Pkt., .10

CHOICE MIXTURE. In splendid variety, Oz., \$1.50; Pkt., .10

COLLECTION OF 12 VARIETIES SEPARATE, our selection, Pkt., \$1.00

COLLECTION OF 6 VARIETIES SEPARATE, our selection, Pkt., .50

TUFTED PANSIES. *Viola Cornuta.*

Elegant free-blooming plants for partially-shaded beds and borders. Pkt.

ADMIRATION. Rich dark blue, Oz., \$2.50; ¼ oz., .75; .10

BLUE PERFECTION. Mauve, yellow eye, 2.50; " .75; .10

GRANDIFLORA LUTEA.

Golden yellow flowers, beautiful, 1.25; " .35; .10

MAUVE QUEEN. Light blue 2.00; " .60; .10

PINK. A new and pleasing shade, ⅛ oz., 1.25; .15

PAPILIO. A lovely violet-lilac; very free ¼ oz., .50; .10

WHITE PERFECTION. Snowy white, Oz., 2.00; ¼ oz., .60; .10

MIXED. All colors Oz., 1.50; .10



Tufted Pansies.

FARQUHAR'S HARDY PERENNIAL FLOWER SEEDS

Mailed free at catalogue prices to any address in the United States. In ordering it is unnecessary to write the names—the numbers are sufficient. The minimum charge for seeds by weight is 10 cents. Fractions of an ounce where not quoted, will be charged at a slight advance over the ounce rates.

Hardy perennials are easily raised from seeds, they may be sown during the early summer. The simplest method is to sow them in a frame, protecting the seedlings as they appear above ground from the sun. The soil should be kept evenly moist but not saturated. Transplant the seedlings once or twice if necessary to prevent crowding.

- 5910 **ACANTHUS Latifolius.** Stately hardy plant, with large decorative leaves, and handsome, tall flower spikes. 3 feet . Oz., .50; .10
- 5915 **Mollis.** The massive leaves of this variety are supposed to have suggested the Corinthian style of architecture; flowers white. 2 feet. Oz., .50; .10
- 5920 **ACHILLEA Ageratum.** *Milfoil or Yarrow.* A most desirable variety with bright golden-yellow flowers, sweetly scented. 1½ feet . ¼ oz., .30; .10
- 5925 **Ptarmica, The Pearl.** One of the finest perennials, blooming all summer; the flowers are borne in clusters on long stems, and are of purest white. 1½ feet . ¼ oz., 1.50; .25
- ACONITUM. Monkshood.** Hardy perennials with showy spikes of hood-shaped flowers.
- 5930 **Lycotomum.** Pale yellow. 3 feet . ¼ oz., .50; .15
- 5935 **Napellus.** Large dark blue flowers. 3 feet . Oz., 1.00; ¼ oz., .30; .10
- 5945 **Pyrenaicum.** Pure yellow. 3 feet . ¼ oz., .75; .15
- 5955 **ADONIS Vernalis.** One of the best spring flowering perennials; yellow; 1 foot . Oz., .50; .05
- AGROSTEMMA.**
- 5965 **Coronaria Atrosanguinea.** *Mullein Pink.* An old-fashioned perennial with silvery-white foliage and dark crimson flowers. 2 feet . Oz., .25; .05
- 5970 **Coronaria Alba.** Similar to the preceding; with white flowers . Oz., .25; .05
- 5975 **Hybrida Walkeri.** Pink ¼ oz., 1.25; .25
- ALYSSUM.**
- 5985 **Saxatile Compactum.** *Gold Dust.* Valuable hardy perennial of spreading growth, producing masses of bright yellow flowers in spring. 9 in. Oz., .60; ¼ oz., .20; .10
- 5990 **Saxatile Silver Queen.** A new variety with lovely pale lemon-colored blossoms; flowers in great profusion, 9 inches25
- 5995 **Rostratum.** Golden-yellow ¼ oz., .50; .15
- 6015 **ANTHEMIS Tinctoria Kelwayi.** A greatly improved strain of this handsome perennial with bright yellow daisy-like flowers. 1½ feet . ¼ oz., .25; .10
- 6020 **ANTHERICUM Liliago.** *St. Bernard's Lily.* Splendid hardy perennial with elegant spikes of pure white lily-like flowers, which are fragrant and excellent for cutting. 1½ feet . ¼ oz., .25; .10
- 6025 **Liliastrum.** *St. Bruno's Lily.* A beautiful plant with narrow grass-like foliage and long spikes of bloom. The flowers are white with green spot on each petal, ¼ oz., .60; .15
- AQUILEGIA COLUMBINE. 1½ to 3 feet.**
- 6030 **Farquhar's Long-spurred Hybrids.** Our Hybrids comprise the best and brightest colors as well as many new and beautiful combinations of colors of charming and striking contrast in the same flower. The strain includes shades of blue, mauve, lavender, pink, scarlet, orange, yellow and white, of the large-flowered and long-spurred forms, Oz., 3.50; ¼ oz., 1.00; ¼ oz., .60; .25
- 6035 **Alpina.** Deep blue. 1 ft., ¼ oz., .30; .10
- 6040 **Californica hybrida.** Petals golden yellow, sepals and spurs crimson. Magnificent. 2 feet, ¼ oz., 1.00; .25
- 6045 **Canadensis.** The small scarlet and yellow native species, Oz., 1.00; ¼ oz., .30; .05
- 6050 **Chrysantha.** Pale yellow long-spurred flowers. 2 feet . Oz., 1.25; ¼ oz., .40; .10
- 6055 **Chrysantha grandiflora alba.** Beautiful pure white, long spurs ¼ oz., 1.00; .25



Aquilegia Farquhar's Long-spurred Hybrids.

- 6060 **Coerulea.** *Rocky Mountain Columbine.* Exquisite variety with pale blue and white flowers, long spurs. 3 feet . ¼ oz., 1.25; .25
- 6065 **Coerulea White.** *Rocky Mountain White Columbine.* The best long-spurred white. ¼ oz., 1.00; .20
- 6070 **Glandulosa.** Dark blue with white corolla, flowers 3 inches across. A superb sort. 2 feet.50
- 6075 **Haylodgensis.** *Cærulea hybrida.* Large-flowered hybrids with long spurs; shades of blue, white and yellow. 3 feet ¼ oz., 1.00; .20
- 6080 **Jaetschnai.** Yellow, with red spurs. 2 feet, ¼ oz., 1.00; .15
- 6090 **Olympica.** Delicate mauve with white corolla; a lovely shade. 1½ feet ¼ oz., .25; .05
- 6095 **Skinneri.** *Mexican Columbine.* Large scarlet and yellow flowers; long spur. 2 feet . ¼ oz., 1.00; .25
- 6100 **Stuarti.** Enormous dark blue long-spurred flowers with white corolla. 2 feet50
- 6105 **Truncata.** Orange-scarlet with yellow. 1½ feet, ¼ oz., .50; .10
- 6110 **Double White.** 2 feet Oz., .75; ¼ oz., .25; .05
- 6115 **Farquhar's Double Hybrids Mixed.** Our selection contains only the finest forms of the double Columbine ¼ oz., 1.25; .25
- 6120 **Single Mixed.** In great variety Oz., .50; .05
- 6125 **Collection of 10 Varieties Separate.** Our selection, 1.50

See Spring Catalogue, pages 70-80, for complete list of Perennial Seeds.

- 6130 **ARABIS ALPINA.** *Rock Cress.* Very early-flowering hardy perennial Pkt. with erect spikes of pure white flowers; valuable for edgings and rockeries. 6 to 9 inches. Oz., .60; ¼ oz., .20; .10
- 6145 **ASCLEPIAS tuberosa.** *Milkweed or Swallow Wort.* One of the finest native perennials with compact umbels of brilliant orange-red flowers. Invaluable for border or shrubby groups. 2 feet, ¼ oz., .75; .10
- 6150 **Hallii.** Flowers flesh-colored in large umbels. 3 feet20
- 6155 **ASPERULA odorata.** *Sweet Woodruff.* Pretty hardy plant thriving in partial shade; flowers white. 9 inches. Oz., .75; .10

ASTERS. *Michaelmas Daisy.*

- 6170 **Alpinus.** Purple, large yellow centre ¼ oz., .30; .10
- 6175 **Alpinus speciosus.** Purple. 2 feet ½ oz., 1.00; .25
- 6180 **Bessarabicus.** Large purple flowers. 2 feet, ¼ oz., .75; .10
- 6185 **Novae Angliae.** Violet-purple 4 feet, .15
- 6190 **Ptarmicoides.** Distinct variety with pure white flowers; useful for cutting. 1½ feet ¼ oz., .60; .10
- 6200 **Townshendi.** A free-flowering variety bearing a profusion of pinkish-lilac flowers which are much esteemed for cutting. 2 feet25
- 6205 **New Hybrids Mixed.** Many beautiful shades ¼ oz., 1.25; .25
- 6220 **BAPTISIA Australis.** *False Indigo.* A strong growing plant producing spikes of pea-shaped blue flowers. 2½ feet Oz., .50; .05
- 6225 **BOCCONIA Japonica.** *Plume Poppy.* A noble hardy perennial, with large glaucous leaves and tall flower stems with terminal panicles of white flowers. 6 to 8 feet Oz., .50; .05
- 6230 **BOLTONIA Asteroides.** One of the showiest of our native perennials closely resembling and allied to the hardy Asters; white. 6 feet25
- 6235 **BOLTONIA latisquama.** Flowers pink, slightly tinged with lavender. 5 feet25
- 6245 **CALLIRHOE verticillata.** *Poppy Mallow.* Elegant hardy Mallow of easy culture and spreading growth, with large crimson Linum-like flowers. 1½ feet Oz., 1.00; ¼ oz., .30; .10

CAMPANULA. *Bell-Flower.*

All the species of Campanula are elegant when in bloom and are worthy of being largely grown. They are chiefly hardy biennials and perennials and it is best to sow these two classes in June or July for plants to bloom the next summer.

PERENNIAL VARIETIES.

- 6250 **Carpatica.** *Carpathian Blue Bell.* Neat hardy Pkt. perennial growing in compact tufts; flowers clear blue, splendid for mixed borders. 8 in., Oz., .50; .10
- 6255 **Carpatica alba.** White Oz., .60; ¼ oz., .20; .10
C. grandiflora, see Platycodon, 7430-7440.
- 6260 **Glomerata.** *Clustered Bell-flower.* Dense clusters of violet-blue flowers. 1½ feet ¼ oz., .50; .10
- 6265 **Grandis.** *Great Bell-flower.* Large saucer-shaped violet-blue flowers. 1½ feet ¼ oz., .75; .15
- 6270 **Hostii.** A giant form of the Scotch Blue Bell. Rich blue. 1 foot25
- 6275 **Macrantha.** Purplish-blue. 2 feet. Oz., .40; .05
- 6285 **Nobilis.** Long, tubular, creamy-white flowers delicately spotted with brown-red. 2 feet25
- 6290 **Persicifolia grandiflora Blue.** One of the finest Campanulas, with large bright blue cup-shaped flowers. 2 feet ¼ oz., 1.50; .25
- 6295 **Persicifolia grandiflora White.** Erect spikes of snow white flowers ¼ oz., 1.50; .25
- 6300 **Persicifolia Mixed.** ¼ oz., 1.50; .25
- 6305 **Punctata.** Whitish spotted with red. 1½ feet25
- 6310 **Pyramidalis.** *The Chimney Campanula.* Stately hardy perennial; very handsome as a border plant or grown in pots for conservatory decoration. 4 feet Oz., .60; ¼ oz., .20; .10
- 6315 **Pyramidalis Alba.** White. Oz., .60; ¼ oz., .20; .10
- 6320 **Turbinata** ¼ oz., .25; .10

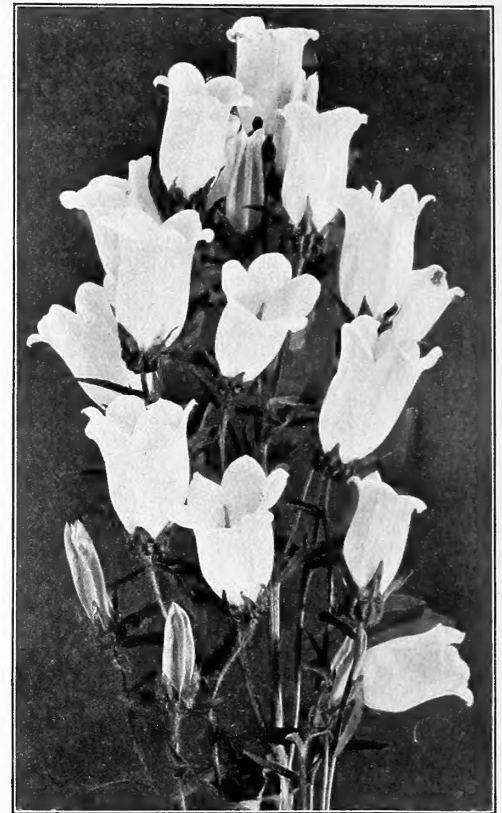
CANTERBURY BELLS. *Campanula medium.*

Showy, hardy biennials, growing in pyramidal form and bearing many large, bell-shaped flowers; very effective in mixed borders and in shrubberies. 2½ ft. Seedlings raised in June or July bloom the following summer.

- 6325 **Farquhar's Prize Mixed.** A combination of the finest colors including single, double, and cup-and-saucer varieties Oz., 1.75; ¼ oz., .50; .10

SINGLE CANTERBURY BELLS. *Campanula medium.*

- 6330 **Pink.** 6335 **Mauve.** 6340 **Blue.**
 - 6345 **White.** 6350 **Striped.** 6355 **Mixed.**
- Each of the above varieties and mixture, Oz., .40; pkt., .05



Canterbury Bells, Farquhar's Prize.

DOUBLE VARIETIES.

- 6360 **Blue.** 6365 **White** Each, Oz., 1.00; ¼ oz., .30; .10
- 6370 **Pink,** Oz., 1.50; ¼ oz., .50; pkt., .15 6375 **Mixed,** Oz., 1.00; ¼ oz., .30; .10

CUP-AND-SAUCER VARIETIES. *Campanula medium Calycanthema.*

- 6380 **Pink.** A charming color Oz., 2.00; ¼ oz., .60; .25
- 6385 **Blue.** 6390 **Mauve.** 6395 **White.** 6400 **Mixed.** Each of the above colors and mixture, except pink, Oz., 1.75; ¼ oz., .50; .15
- 6405 **COLLECTION OF 8 VARIETIES CANTERBURY BELLS SEPARATE,** our selection50
- CANDYTUFT.** Free-flowering dwarf perennials, suitable for rockwork and the edges of herbaceous borders. 6 inches.
- 6410 **Gibraltarica.** White, shaded with pink. ¼ oz., 1.00; .25
- 6415 **Sempervirens.** A very hardy variety, with glossy, deep green foliage which is evergreen; flower white Oz., 1.00; ¼ oz., .30; .10
- 6420 **Tenoreana.** Pale purple. 6 inches Oz., .30; .05

HARDY CARNATIONS.

- 6425 **Grenadin Scarlet.** Double; 2 feet ¼ oz., 1.25; .25
- 6430 **Grenadin White**25
- 6435 **Farquhar's Prize Strain Mixed.** Our Prize Strain is particularly adapted to garden planting and includes only the best types in a great variety of colors Oz., 3.00; ¼ oz., 1.00; .25
- 6440 **Fine Mixed** " 2.00; " .60; .10
- 6445 **Plumarius Cyclope Double Mixed.** A charming race of double *Pheasant-Eye* pinks. Very fragrant50
- 6450 **Plumarius Double Mixed.** ¼ oz., 1.00; .25
- 6455 **Plumarius Scoticus.** *Paisley Pink.* This race of Scotch pinks is quite as much in favor for winter forcing as for border cultivation. The flowers resemble the true Carnation and have the strongest spice fragrance50
- 6475 **CENTAUREA Babylonica.** Desirable perennial with showy yellow flowers. 3 feet ¼ oz., .25; .10

See Spring Catalogue, pages 70-80, for complete list of Perennial Seeds.

CENTAUREA.—Continued.

- 6480 **Macrocephala.** One of the finest hardy Centaureas with large thistle-like heads of golden yellow flowers; 3 feet. $\frac{1}{4}$ oz., .30; .10
 6485 **Montana.** Deep purple; very showy $\frac{1}{4}$ oz., .60; .15
COREOPSIS, or Calliopsis.

- 6530 **Grandiflora.** Bright golden yellow flowers, 3 to 4 inches in diameter, the broad petals overlapping and beautifully fringed. Oz., .50; .10
 6535 **Eldorado.** An improved form from California with flowers 4 to 5 inches across $\frac{1}{4}$ oz., 2.00; .25
 6540 **Lanceolata.** Golden yellow flowers. $\frac{1}{4}$ oz., .50; .15

DAISY.—*Bellis perennis fl. pl.*

- 6550 **Farquhar's Double White.** Pkt. Oz., 5.00; $\frac{1}{4}$ oz., 1.50; $\frac{1}{8}$ oz., .85; .15
 6555 **Farquhar's Double Pink.** Oz., 5.00; $\frac{1}{4}$ oz., 1.50; $\frac{1}{8}$ oz., .85; .15
 6560 **Farquhar's Double Mixed.** Saved from the finest double flowers. Oz., 4.00; $\frac{1}{4}$ oz., 1.25; $\frac{1}{8}$ oz., .75; .15

DELPHINIUM. *Larkspur.*

- 6565 **Farquhar's Selected Hybrids Mixed.** This strain includes the best of the new single and double varieties; the flower-spikes being large, varying in color from pearly white to lavender and from soft azure blue to rich indigo Oz., 2.50; $\frac{1}{4}$ oz., .75; .25
 6570 **Cardinale.** Bright scarlet. 3 feet. $\frac{1}{4}$ oz., 1.00; .20
 6575 **Cashmerianum.** Pale blue. 1½ feet .25

DELPHINIUM.—Continued.

- 6580 **Caucasicum.** Violet. 1½ feet $\frac{1}{4}$ oz., .35; .10
 6585 **Chinensis.** Azure blue. 1½ feet. Oz., .60; .05
 6590 **Chinensis, White** Oz., .60; .05
 6595 **Chinensis, Mixed.** Oz., .50; .05
 6600 **Elatum.** *Bcc Larkspur.* Rich blue shades, with black centres. 4 feet $\frac{1}{4}$ oz., .35; .05
 6605 **Formosum.** Splendid dark blue with white eye. 3 feet Oz., 1.00; $\frac{1}{4}$ oz., .30; .10
 6610 **Formosum Coelestinum.** Pale blue $\frac{1}{4}$ oz., 1.25; .25
 6620 **Sibiricum Hybridum.** Shades of blue; 1½ feet, $\frac{1}{8}$ oz., .40; .15
 6625 **Speciosum.** Magnificent bright blue. 3 feet .15
 6630 **Sulphureum.** *Zalil.* Tall spikes of sulphur yellow; very beautiful. 2 feet. This variety is rather tender in our climate and requires protection in winter .15
 6655 **DICTAMNUS Fraxinella.** *Dittany.* Fine hardy perennial with handsome spikes of purplish-crimson flowers. The leaves are fragrant, giving off an odor of balsam when rubbed. 3 feet Oz., .40; .05
 6660 **Fraxinella Alba.** Pure white. Oz., 1.50; $\frac{1}{4}$ oz., .50; .10

DIGITALIS. *Foxglove.*

- 6665 **Farquhar's Superb Mixed.** Includes all the finest colors in great variety Oz., .50; .10
 6670 **Gloxinaeflora Mixed.** Flowers spotted Oz., .40; .05
 6675 **Gloxinaeflora Rosea.** Delicate pink " .40; .05
 6680 **Grandiflora.** Pale yellow Oz., .40; .05



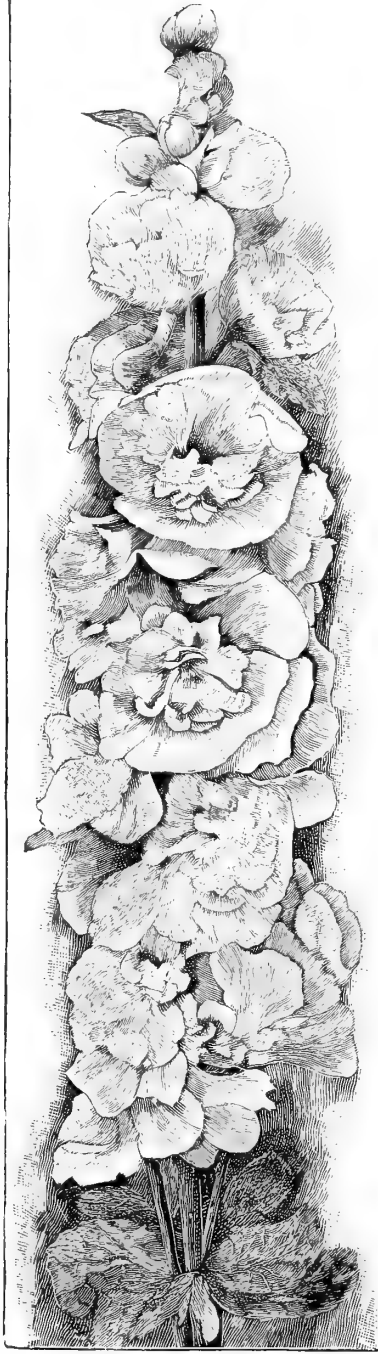
Delphinium Selected Farquhar's Hybrids.

- 6685 **DIGITALIS Ivory's Spotted.** Various colors Oz., .50; .05
 6690 **Monstrosa Mixed.** The tall spikes have a monstrous saucer-shaped terminal flower. Oz., 2.00; $\frac{1}{4}$ oz., .60; .10
 6695 **Purpurea.** Common red Foxglove Oz., .30; .05
 6700 **Purpurea Alba.** White " .40; .05
 6705 **Mixed.** Various colors " .30; .05
 6720 **ECHINOPS Exaltatus.** *Globe Thistle.* Globular heads of blue flowers. 3 feet $\frac{1}{4}$ oz., .25; .10
 6725 **Ritro.** Magnificent variety with white foliage and metallic blue, thistle-like flowers. $\frac{1}{4}$ oz., .25; .10
 6730 **EDELWEISS.** *Gnaphalium Leontopodium.* The interesting white leaved plant, so eagerly sought by tourists in the Swiss Alps, easily grown in gardens; hardy perennial. 6 inch .25
 6750 **ERIGERON Grandiflorus Elatior.** Very effective perennial with pale lilac star-shaped flowers; excellent for cutting. 1½ feet .15
 6755 **Speciosus.** Pale mauve with golden centres. 1½ ft. .10
 6760 **ERYNGIUM Amethystinum.** Ornamental plant of branching habit with round heads of metallic blue flowers which can be cut and dried for winter bouquets. 3 feet, $\frac{1}{4}$ oz., 1.00; .25
 6765 **ERYSIMUM Pulchellum.** Pale yellow flowers; desirable for spring gardening. 6 inch, $\frac{1}{4}$ oz., .25; .05
 6775 **Fraseri.** Fine perennial, producing clusters of white flowers; fine for cutting. 2 feet, $\frac{1}{4}$ oz., .30; .10
GAILLARDIA Grandiflora. *Blanket Flower.* These are handsome summer and autumn flowering plants, quite hardy and easily grown. It is advisable to mulch them with straw during winter. 3 feet,
 6785 **New Hybrids Mixed.** Yellow and red. Oz., 1.00; $\frac{1}{4}$ oz., .30; .10
 6790 **Maxima.** Pure yellow; flowers very large. Oz., 1.00; $\frac{1}{4}$ oz., .30; .10
 6795 **Superba.** Crimson and yellow " 1.00; " .30; .10
 6835 **GEUM Atrosanguineum.** Large double crimson flowers; valuable for cutting. 2 feet .20
 6840 **Coccineum.** Bright orange-scarlet; single .10



Digitalis or Foxglove.

See Spring Catalogue, pages 70-80, for complete list of Perennial Seeds.



Chater's Double Hollyhock.

HIBISCUS.—Continued.

- 6955 **Crimson Eye.** Flowers pure white with crimson centre. 4 feet, Oz., 1.00; $\frac{1}{4}$ oz., .30; .10
- 6960 **Militaris.** Large pink flowers shaded carmine. 6 feet. .10
- 6965 **Moscheutos Albus.** *White Swamp Mallow.* Native Swamp Mallows. They are excellent for moist places, but succeed in any good soil. Flowers pure white. 4 feet, Oz., .75; $\frac{1}{4}$ oz., .25; .10
- 6970 **Moscheutos Roseus.** *Pink Swamp Mallow.* Large pink flowers Oz., .75; $\frac{1}{4}$ oz., .25; .10
- 6975 **Palustris Roseus.** Pink, large, Oz., .75; .10
- HOLLYHOCK. Chater's Strain.** Holly hocks succeed best in rich, well-drained soil. They should be lightly protected during winter with pine boughs, coarse straw, or other mulch not liable to rot. Seeds sown in June or July produce fine plants for blooming the following summer. Hardy biennials. 6 to 8 feet.
- 6980 **Double Special Mixture.** A greatly improved strain of this popular plant Oz., 2.00; $\frac{1}{4}$ oz., .60; .10
- 6985 **Double Crimson.** 6990 **Double Pink.**
- 6995 **Double Salmon.** 7000 **Double Purple.**
- 7005 **Double White.** 7010 **Double Yellow.**
Each of the above colors, Oz., 2.00; $\frac{1}{4}$ oz., .60; .10
- 7015 **Collection of 12 Varieties Separate, imported** .1.00
- 7020 **Collection of 6 Varieties Separate, imported** .50

SINGLE VARIETIES.

- 7025 **White.** 7030 **Yellow.** 7035 **Salmon.**
- 7040 **Rose.** 7045 **Scarlet.** 7050 **Crimson.**
Each of the above colors. Oz., 1.00; $\frac{1}{4}$ oz., .30; .10
- 7055 **Collection of 6 Single Varieties Separate** .50
- 7060 **Single Mixed** Oz., 1.00; $\frac{1}{4}$ oz., .30; .10
- 7065 **Alleghenny Mixed.** Single and semi-double fringed flowers, Oz., 1.50; $\frac{1}{4}$ oz., .50; .10

LATHYRUS latifolius. *Perennial Pea.* Magnificent hardy perennial climbers with white, pink and crimson pea-shaped flowers in clusters. They are excellent vines for covering old stumps and fences as they bloom all summer. 6 feet.

- 7090 **White.** A charming cut flower, Oz., .75; $\frac{1}{4}$ oz., .25; .10
- 7100 **Pink Beauty.** Oz., .60; .10
- 7105 **Splendens.** Rosy-carmine in large clusters Oz., .50; .10
- 7110 **Mixed** Oz., .40; .05
- 7115 **LAVENDER.** *Lavendula vera.* Ornamental plant bearing long spikes of very fragrant blue flowers; should be extensively grown $1\frac{1}{2}$ feet Oz., .30; .05
- 7145 **LOBELIA Cardinalis.** *Cardinal Flower.* A native species, succeeding best in rather moist situations; flowers intense scarlet. 2 feet $\frac{1}{4}$ oz., 1.25; .25
- 7155 **Syphilitica.** Strong growing variety with pale-blue flowers; very effective in partially-shaded borders. 2 feet .25

LUPINS. *Lupinus.* Beautiful spring-blooming plants with long spikes of pea-shaped flowers. 2 to 3 feet.

LUPINS.—Continued.

- Pkt. 7165 **Polyphyllus, Blue** . . . Oz., .30; .05
- 7170 **White** . . . Oz., .30; .05
- 7180 **Mixed** . . . Oz., .30; .05
- 7190 **Snow Queen.** Magnificent variety with long spikes of pure white flowers. 3 to 4 feet .25
- LYCHNIS.** Profuse-blooming hardy perennials, remarkable for the brilliancy of their flowers; excellent for massing in large beds and borders.
- 7195 **Chalcedonica.** *Jerusalem Cross.* Scarlet. 2 feet . . . Oz., .30; .05
- 7200 **Chalcedonica Alba.** Flowers white Oz., .50; .05
- 7205 **Flos Cuculi.** *Cuckoo Flower or Ragged Robin.* Bright red, fringed flowers. 2 feet . . . Oz., 1.00; .10
- 7210 **Fulgens.** Brilliant scarlet. $1\frac{1}{2}$ ft. $\frac{1}{4}$ oz., 1.00; .20
- 7215 **Haageana Hybrida, Mixed.** Very large-flowered sort; colors varying from white to pink and deep red. 2 feet . . . Oz., 1.25; .15
- 7220 **Sieboldi.** Flowers cream color. 1 foot. . . . Oz., 1.50; .15
- 7225 **Viscaria splendens.** Scarlet. $1\frac{1}{2}$ feet . . . Oz., .50; .10
- 7240 **LYTHRUM roseum superbum.** *Loose Strife.* A strong-growing plant, with erect spikes of bright rose-colored flowers. 4 feet, Oz., .30; .05
- MYOSOTIS. Forget-me-not.** If sown in July or August in shaded frames fine plants will be obtained for spring blooming.
- 7280 **Alpestris Victoria.** The plants are of dwarf compact growth with long sprays of bright blue flowers, 6 inches Oz., 1.50; $\frac{1}{4}$ oz., .50; .10
- 7285 **White.** Large white flowers, Oz., 1.00; $\frac{1}{4}$ oz., .30; .10
- 7290 **Pink.** Fine bedding variety, Oz., 1.00; $\frac{1}{4}$ oz., .30; .10
- 7295 **Royal Blue.** Flowers deep indigo blue, borne on long sprays; fine for cutting, Oz., 1.25; $\frac{1}{4}$ oz., .40; .10
- 7300 **Dissitiflora.** Large-flowered variety; excellent for pot culture. Flowers rich blue, $\frac{1}{4}$ oz., 1.25; .25
- 7305 **Palustris semperflorens.** *The true Water Forget-me-not.* Large bright blue flowers; blooms from early spring until autumn, Oz., 2.50; $\frac{1}{4}$ oz., .75; .10
- 7310 **Sylvatica.** Valuable for spring bedding; flowers bright blue, Oz., 2.00; $\frac{1}{4}$ oz., .60; .10
- 7315 **Mixed.** Various shades, Oz., .75; .05
- OENOTHERA. Evening Primrose.** Beautiful hardy plants of easy cultivation, succeeding best in light soil.
- 7320 **Fraseri.** Attractive perennial with large yellow flowers. $1\frac{1}{2}$ feet, Oz., 1.50; $\frac{1}{4}$ oz., .50; .10
- 7325 **Fruticosa Major.** Golden-yellow, Oz., .75; .05
- 7330 **Lamarckiana.** Enormous yellow flowers, three to four inches in diameter; 3 feet . . . Oz., .30; .05
- PENTSTEMON.**
- 7365 **Atropurpureus.** Dark red with white throat10
- 7370 **Hybrida Mixed.** *Chelone.* The colors vary from flesh pink to deep red and violet; beautiful as cut flowers for vases. 2 feet, $\frac{1}{4}$ oz., .50; .10
- 7375 **Hybrida Torreyi.** Brilliant scarlet; 2 feet. . . . $\frac{1}{4}$ oz., .50; .10

- 6900 **GYPSOPHILA. Paniculata.** Small white flowers in light panicles; extensively used in bouquets. 2ft. Oz., .40; .05
- 6935 **HESPERIS matronalis.** *Purple. Rocket.* Spring-flowering perennial, fragrant. 3 ft. Oz., .30; .05
- 6940 **White.** Beautiful as a cut flower, Oz., .30; .05
- 6945 **Dwarf White.** Very early. 1 ft. $\frac{1}{4}$ oz., .30; .10
- HIBISCUS.** *Mallow.* Showy plants of vigorous growth with, producing large, handsome flowers. They are especially suitable for mixed beds or borders where massive effects are desired. 2 to 5 feet.

See Spring Catalogue, pages 70-80, for complete list of Perennial Seeds.

PENTSTEMON.—Continued.

7380 **Diffusus.** Violet blue flower, free bloming10
 7385 **Digitalis.** Large spikes of pure white flowers; the throat spotted with violet10
 7410 **Spectabilis.** Flowers blue and red, very beautiful . . .15
 7430 **PLATYCODON grandiflora.** *Japanese Balloon Flower.* A most desirable perennial of erect bushy growth and bearing a profusion of large bell-shaped flowers, of deep blue. 2 feet Oz., .75; .10
 7435 **Grandiflora alba.** White Oz., .75; .10
 7440 **Mariesi.** Dwarf variety of compact habit; flowers rich violet. 1 foot Oz., 1.00; .10
 7445 **POLEMONIUM coeruleum grandiflorum.** *Jacob's Ladder, or Greek Valerian.* Hardy perennial with clusters of handsome blue flowers. 2 feet Oz., .50; .10
 7450 **Grandiflorum album.** Pure white75; .10

POPPY. Papaver.

Alpine Poppy. *Papaver Alpinum.* Charming dwarf Poppies with delicate flowers including yellow, white, scarlet and pink. 1 foot.

7460 **White.**7465 **Pink.**
 7470 **Orange=yellow.**7475 **Mixed.**
 Each of the above colors and mixed15
ICELAND POPPY. *Papaver nudicaule.* This beautiful species will bloom the first season if sown early in spring. Exquisite for cutting. 1 foot.

7480 **Farquhar's Superb Mixed.** Oz., 1.25; ¼ oz., .40; .10
 7485 **Bright Yellow.** 7490 **Pure White.**
 7495 **Orange=scarlet.** 7500 **Primrose Yellow.**
 Each of the above colors ¼ oz., .50; .10
 7505 **BRACTEATUM.** Very large orange-scarlet flowers; early flowering. 2 feet Oz., .50; .10
ORIENTAL POPPY. *Papaver Orientale.* The most gorgeous of all the Poppies. 3 feet.

7510 **Oriental.** Brilliant orange-scarlet with black spots; very early Oz., 1.50; ¼ oz., .50; .10
 7515 **Hybrids.** Immense flowers, many of them larger than *Oriental*, the colors varying from bluish white to orange and deep red. 3 feet ¼ oz., .50; .10
 7520 **Blush Queen.** Large pale pink ¼ oz., .75; .15
 7525 **Parkmani.** Rich dark scarlet50; .15
 7530 **POPPY pilosum.** Tall branching sort with salmon-colored flowers of large size. 2 feet ¼ oz., .75; .15
 7535 **Collection 6 Perennial Varieties Separate**50

PRIMULA, or Primrose.

Hardy and Half-hardy Varieties.

7550 **Acaulis.** **Farquhar's Hybrids Mixed.** Improved strain with flowers of large size and containing many bright and beautiful colors . . . ¼ oz., 1.25; .25
 7555 **Yellow.** *Yellow English Primrose.* The best sort for forcing and bunching for corsage bouquets . .25

POLYANTHUS. Primula elatior.

7565 **Farquhar's Giant Fancy Mixed.** The colors range from white to deep maroon; the yellow, rose and crimson shades being particularly fine. ½ oz., 1.50; .25
 7570 **Giant White,** Pkt., .25 7575 **Giant Yellow**25
 7580 **Giant Blue,** " .50 7585 **Giant Crimson**25
 7590 **Gold-laced.** Flowers of brilliant colors with distinct yellow edges ¼ oz., 1.50; .15
 7595 **Mixed** " 1.00; .10

PYRETHRUM. Very handsome herbaceous perennials. The flowers are of brilliant colors and very lasting. 2 feet.

7620 **Atrosanguineum.** Crimson, single ¼ oz., .50; .10
 7625 **Roseum Double Hybrids Mixed.** Beautiful, aster-like flowers ranging in color from white to brilliant rose and crimson. ½ oz., 2.50; .25
 7630 **Roseum Single Hybrids Mixed.** Daisy-like flowers of brilliant colors. ¼ oz., .75; .15
 7635 **Uliginosum.** Tall late-flowering sort, with large, single white flowers. 3 feet ¼ oz., .75; .15
 7645 **RUDBECKIA Fulgida.** *Cone Flower.* An effective variety producing in autumn, masses of orange-yellow flowers. 3 feet ¼ oz., .30; .10
 7655 **Newmani.** Magnificent golden yellow flowers with maroon centre. 3 feet15
 7660 **Purpurea.** *Giant Purple Cone Flower.* A striking plant with very large reddish-purple flowers. 3 feet20

7670 **SAPONARIA Officinalis.** Suitable for herbaceous borders; reddish purple. 2 feet. Oz., .30; .05
 7675 **Ocymoides splendens.** Trailing hardy perennial with small deep red flowers Oz., .40; .05
 7685 **SCABIOSA caucasica.** Magnificent perennial with large, light blue flowers. 2 feet. . . ¼ oz., 1.00; .15
 7695 **Japonica.** A hardy variety from Japan of bushy growth; flowers lavender blue. 2 feet25
 7720 **SILENE acaulis.** *Catchfly.* Neat dwarf perennial with rosy-crimson flowers; fine rock plant. 2 inches
 7725 **Orientalis.** A robust-growing hardy plant of fine branching habit, each branch carrying large globular heads of pink flowers. 3 feet. Oz., .30; .05

SUNFLOWER.

7755 **Maximiliana.** Flowers clear yellow with several rows of large ray petals and full centre; continues in bloom late in the autumn. 6 feet . . . ¼ oz., .50; .10
 7765 **Rigidus.** Fine native variety, with rich golden yellow flowers; valuable for cutting15

SWEET WILLIAM. Dianthus Barbatus.

Single Varieties.

7770 **Farquhar's Superb Mixed.** A magnificent strain of this popular plant with very large flowers, in many attractive shades. Oz., 1.00; ¼ oz., .30; .10
 7775 **Farquhar's Pink Beauty.** A new and distinct shade of this well-known flower ¼ oz., .75; .15
 7780 **Dark Crimson.** Rich dark shade Oz., .50; .05
 7785 **White.** Excellent for cut flowers50; .05
 7790 **Giant Auricula=Eyed.** Various colors with clearly defined eyes Oz., .75; .10
 7795 **Fine Mixed**30; .05
 7800 **Double Fine Mixed** Oz., 1.25; ¼ oz., .40; .10
 7830 **TROLLIUS Europaeus.** *Globe Flower.* A large-flowered variety of the buttercup with bright yellow globular flowers. 2 feet. Oz., 1.25; ¼ oz., .40; .10
 7835 **Caucasicus Golden Globe.** Very large, deep orange-colored flowers. 2 feet. ¼ oz., 1.00; .25
 7840 **Japonicus fl. pl.** Fine globular golden-yellow flowers. 1½ feet. ¼ oz., 1.25 .25
 7845 **VALERIAN Red.** *Valeriana Rubra.* Old-fashioned perennial, adapted to wild gardens or large rockeries. 2 feet Oz., .40; .05
 7850 **White.** A white form of the preceding "40; .05

WALLFLOWER.

Single Varieties.

7915 **Blood Red.** Rich color Oz., .50; .10
 7920 **Primrose Yellow.** Fine light shade50; .10
 7925 **Mixed.** Shades of yellow and red " .40; .05

Double Varieties.

7930 **Collection of 8 Varieties Separate.** Imported75
 7935 **Double Mixed.** Splendid branching varieties. ½ oz., 1.00; .25



Papaver Orientale.

See Spring Catalogue, pages 70-80, for complete list of Perennial Seeds.

BAY TREES AND BOXWOOD TREES.

These splendid evergreens are most valuable for the decorations of halls and vestibules during winter, and they are equally useful in the garden in summer.

STANDARD BAY TREES.

The price is based according to the diameter and height of crown. Height of stem from 3 to 3½ feet.

Each.		Each
26 inches diam. of crown, \$7.50	36 inches diam. of crown, \$15.00	
30 " " " " 12.50	38-42 " " " " 20.00	

PYRAMIDAL-SHAPED BAY TREES.

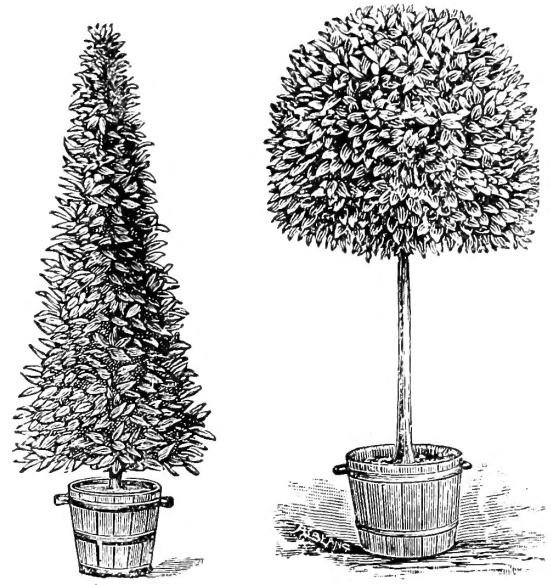
5-6 ft. high, 24 inches diam., \$10.00	7 ft. high, 32-34 inches diam., \$20.00
6 " " 30 " " 12.50	7-8 " " 36 " 25.00

BOXWOOD TREES. (*Buxus Arborea.*)

These are trained in the form of Pyramidal Bay Trees and are used for similar purposes. They have been found to survive the winter out of doors on the Massachusetts coast, with slight protection.



Begonia Gloire de Lorraine.



Pyramidal Bay Tree.

Standard Bay Tree.

Pyramidal. 3 to 3½ ft. Each, \$3.50. 3½ to 4 ft. Each, \$4.00
4 to 5 ft., \$5.00 to \$6.00 each.

Standards. 15-inch diam. Each, \$2.50. 18-inch diam. Each, \$3.50.

Notice. The measurements of the foregoing trees are approximately correct; slight variations are unavoidable.

BEGONIA GLOIRE DE LORRAINE.

Fine stock from 2½-inch pots.

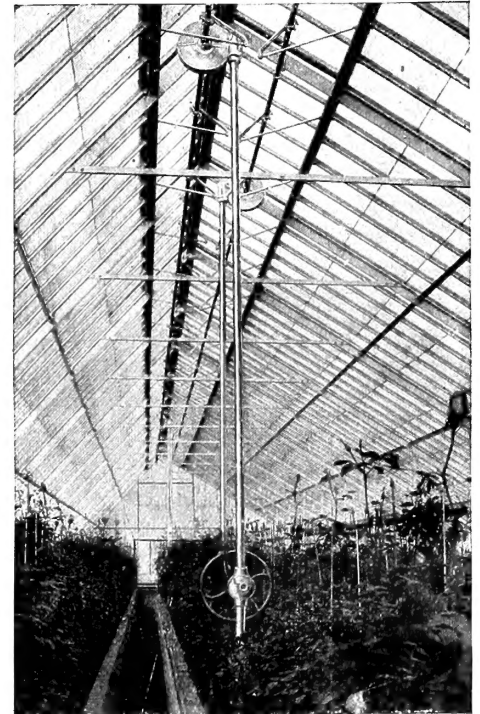
Dozen, \$2.00; per 25, \$4.00; per 50, \$7.50; per 100, \$15.00.

CYCLAMEN PLANTS.

Farquhar's Giant Strain, in white, pink and red varieties.

Plants in 5-inch pots	Dozen, \$5.00
Plants in 6-inch pots	Dozen, \$7.50

July and August delivery.



GREENHOUSE CONSTRUCTION

CONSERVATORIES, PALM HOUSES, FERNERIES,
ROSE AND CARNATION HOUSES, VIOLET HOUSES,
GRAPERIES AND FRUIT HOUSES, VEGETABLE FORCING HOUSES,
Etc., Etc.,

Designed, Erected, Heated and Ventilated
in the most approved manner by

Lord & Burnham Company

OF NEW YORK.

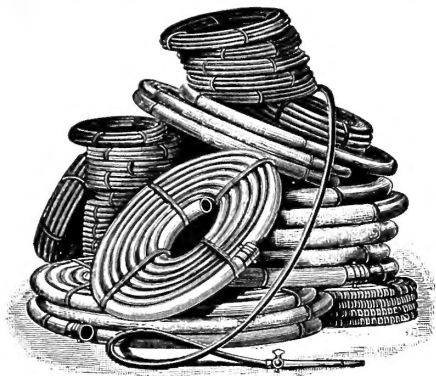
Represented by

R. & J. FARQUHAR & CO.

6 and 7 So. Market St., Boston, Mass.

From whom Information, Plans and Estimates may be obtained.

GARDEN HOSE AND LAWN SPRINKLERS.

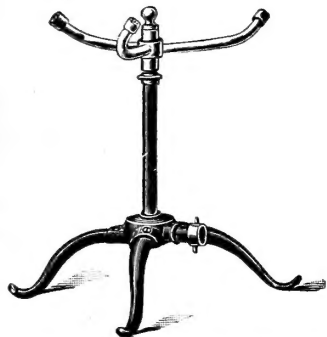


Rubber Hose. We warrant our "Reliable" and "Extra" Brands, which are sure to give satisfaction. Prices on "Reliable" and "Extra" include couplings.

R. & J. FARQUHAR & CO.'S "RELIABLE"
 ¾-inch, 3-ply, at 16c per foot; ½-inch, 3-ply, at 15c per foot.

R. & J. FARQUHAR & CO.'S "EXTRA"
 ¾-inch, 3-ply, at 14c per foot; ½-inch, 3-ply, at 12c per foot.

Cotton Hose. Rubber-lined, best quality. ¾-inch, 12c per foot; ½-inch, 11c per foot.



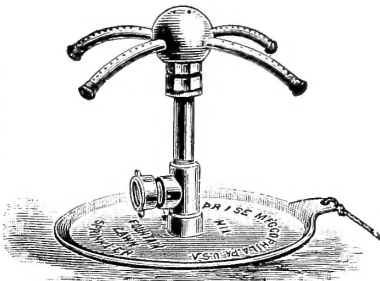
Columbia Lawn Sprinkler.

Columbia Lawn Sprinkler.
 Three-arm; \$1.25 each.

The Stearns Reversible Lawn Sprinkler. This Sprinkler is suitable for use with either high or low water pressure; the cap is reversible, and a high or low spray covering a wide area of ground may be secured by simply reversing the cap. 75c each; by mail, \$1.05.

Enterprise Lawn Sprinkler.

Each machine is furnished with a cord or rope, so that the Sprinkler may be easily moved, when running, without going near it. The water passes through a Strainer before it enters the small perforations, which are thereby prevented from filling up. The weight of the revolving parts is supported by the water. This reduces wear to a minimum. All parts of the machine are made sufficiently strong for ordinary rough usage, and are interchangeable. The machine is TINNED and NICKEL-PLATED, and is of very handsome appearance. Price, \$3.50.



Enterprise Lawn Sprinkler.

The Fountain Lawn Sprinkler. Made of heavy brass. Easily moved over the lawn without turning off the water. Price, \$1.25 each; by mail, 15c each extra.



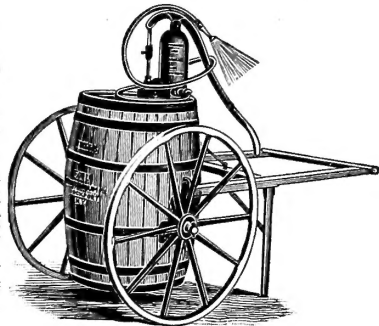
Fountain.

Cactus Lawn Sprinkler. With centre spray; indestructible, beautiful, cheap; no revolving parts; can be moved about the lawn without turning off the water. For ¾-inch hose, 85c each; by mail, \$1.15.

SPRAYING PUMPS.

Pump and Outfit "B." Empire Queen Pump, with brass screw spout, and agitator complete, also 10 feet of best 3-ply hose, Niagara spray nozzle and couplings, nicely mounted on 50-gallon barrel, the agitator carefully adjusted, the whole apparatus ready for use, price, \$15.00; additional hose, 16c per foot; 5-foot extension pipe, bamboo, brass lined, \$1.00.

The Truck and Barrel Sprayer. This machine consists of our Empire Queen Pump mounted on a barrel having a capacity of 32 gallons, together with the cart. The cart has strong iron wheels, 34 inches in diameter, and 37 inches from outside to outside of hubs with tires 3 inches wide; it has strong hardwood handles, and is a very convenient machine for use in small orchards or gardens, where it is impractical to drive a horse. Price, \$23.50.



The Aquapult Hand Force Pump. Strong and durable; not liable to get out of order. \$4.50.

Adjustable Water Barrel Truck. By a simple arrangement of the axle, the barrel can be detached at pleasure, whether full or empty. Very useful for carrying water to the garden or lawn during dry weather, for emptying cesspools, and for innumerable other purposes. Price, truck and barrel, complete; wheel, 2½-inch tire, \$10.50; without barrel, \$7.50; wheel, 3½-inch tire, \$12.75; without barrel, \$9.75. The following extra attachments can be supplied for use on the same truck when the barrel is detached, viz., Hand-cart box, \$3.25; leaf rack, \$5.50; extra barrels with trunions, \$3.00.

Power Tree Sprayers. Built to cover any requirement, at lowest prices. We invite correspondence.

GARDEN STAKES.

Square Green Painted, Tapering Stakes.

1½ ft. long,	Doz., .15	100 \$1.00	3½ ft. long,	Doz., .70	100 \$4.50
2 "	" .25	" 1.50	4 "	" .80	" 5.50
2½ "	" .30	" 2.00	5 "	" 1.10	" 7.50
3 "	" .60	" 4.00	6 "	" 1.35	" 9.00

Square Green Painted, Tapering Stakes, Extra Heavy Black Points.

4 ft. long,	Doz., 1.00	100 \$7.50	6 ft. long,	Doz., 2.00	100 \$15.00
5 "	" 1.75	" 13.00			

Round, Green Painted, Tapering Stakes, Light.

1½ ft. long,	Doz., .20	100 \$1.20	3½ ft. long,	Doz., .80	100 \$5.90
2 "	" .35	" 2.30	4 "	" 1.00	" 7.20
2½ "	" .50	" 3.50	5 "	" 1.20	" 8.50
3 "	" .65	" 4.70			

Round Green Painted Stakes, Heavy.

3 ft.,	Doz., 1.00	100 \$7.00	5 ft.,	Doz., 1.75	100 \$12.20
3½ "	" 1.10	" 8.30	6 "	" 2.00	" 14.80
4 "	" 1.35	" 9.70			

INSECTICIDES AND FUNGICIDES.

Ant Destroyer. A specially prepared powder which will destroy or drive away Black Ants from lawns, trees, plants, houses, or other infested localities. Price, ½-lb. can, .50; by mail, .60.

Arsenate of Lead. For spraying trees. A remedy for Elm Leaf Beetle, Gipsy Moth, Brown Tail Moth, etc. Price, 1-lb. tin can, .20; 5-lb. pail, .90; 10-lb. pail, \$1.80; 20-lb. pail, \$3.60; 50-lb. pail, \$8.50; 100-lb. keg, \$16.00.

Bordeaux Mixture, Concentrated. A valuable and indispensable fungicide for grape growers, ensuring larger crops and finer grades and preventing failure. Successful against black rot, mildew, and rust. Being in liquid form, it is very convenient to handle. One gallon will make 50 gallons of spraying liquid by the addition of 49 gallons of water. Price, 1-gal. patent cans, \$1.00; 1-qt. cans, .40.

Dry Bordeaux Mixture. Ready for use by simply adding water. 1-lb. box makes 5 gallons spray, .20; 5-lb. box makes 25 gallons spray, .75; 10-lb. box makes 50 gallons spray, \$1.25; 25-lb. box makes 125 gallons spray, \$3.00; 300-lb. barrel makes 1,500 gallons spray, \$27.00.

Bowker's Disparene. A remedy for elm-beetle, potato-beetle, caterpillars, and all leaf-eating insects. 2-lb. can, .60; 5-lb. can, \$1.25; 10-lb. can, \$2.25; 100-lb. keg, \$18.00.

Bug Death. This non-poisonous powder can be applied dry just as it comes from the package, or it may be mixed with water and sprayed on vines with any of the sprayers on the market, 12½ lbs. to 80 gallons water mixed thoroughly. It is death to the potato, squash, and cucumber bugs, currant and tomato worms, and many other plant-eating pests. Price, 1-lb. package, .15; 3-lb. package, .35; 5-lb. package, .50; 12½-lb. package, \$1.00; 100-lb. package, \$7.50. Dickey Shaker, .25.

Copper Solution Ammoniated. A concentrated liquid fungicide, prepared ready for immediate use on trees, vines, or vegetables affected with rot, blight, or scab. The various plant diseases to which it is applicable are: Rot of the grape, mildew of the grape, anthracnose of the grape, pear scab and leaf blight, apple scab, gooseberry mildew, cranberry scald, potato blight, tomato blight, melon blight, quince blight, black spot on the rose, mignonette disease, carnation rust. Directions: 1 quart of solution to 25 gallons of water. Per quart, \$1.00.

Fir Tree Oil, Soluble. For destroying all insects that infest plants and animals, such as mealy bug, scale, red spider, green fly, thrip, lice, fleas, etc. Directions with each package. Price, ½ pint, .50; pint, .75; quart, \$1.50; half gallon, \$2.75; gallon, \$5.00. Not mailable.

Flowers of Sulphur. Prevents and cures mildew on roses, grape-vines, etc. Apply with gun or bellows. Price, 1 lb., .10; 100 lbs., \$5.00.

Grape Dust, Hammond's. A preparation for destroying mildew on grape vines. Can also be used on plants or trees affected with mold, mildew, or rust mites, either in greenhouses or the open air. To be thoroughly effectual, it must be applied frequently by dusting, as atoms of fungi are always spreading or floating. Apply at the first appearance of trouble. Dust on a warm, dry day. Use Grape Dust for Violets, Roses, etc., in the greenhouse. Fill the house with dust and let it settle over the plants, or put one pound to a pail of water and spray it finely over everything, plants, ground, benches, etc. Spores are likely to settle anywhere about, and prevention is the best remedy. Price, 5-lb. package, .35.

Hellebore Powder, White. We furnish a pure, fresh, very effective powder. One of the best insecticides for rose slugs, currant worms, green fly, and other insects. Price, 1-lb. package, .30; ½-lb. package, .15.

Kerosene Emulsion Concentrated. Kills the pea louse, scale and all sucking insects. Ready for use by adding water, 25 to 50 parts water to 1 of Emulsion. Quart, .40; gallon, \$1.00; 5 gallons, \$4.50.

Seal Oil Soap. One of the best insecticides for general use on plants. It is especially effective on green and black flies, red spider, scale and rose thrip. Directions for use are printed on each package. Price, 1-lb. box, .25; 5-lb. box, \$1.25; in tubs, 25 lbs. and upwards, .25 per lb.

Slug Shot, Hammond's. A light, composite, impalpably fine powder, easily distributed either by Duster, Bellows, or in water by Spraying. It is thoroughly reliable in killing Currant Worms, Potato Bugs, Cabbage Worms, Lice, Slugs, etc., and is also strongly impregnated with fungicides. Price, 5 lbs., .30; 10 lbs., .60. In kegs, 125 lbs. net, or barrels, 235 to 250 lbs. each, at 4½ cents per lb.

Sulpho-Tobacco Soap. Quickly exterminates green fly, red spider, scale and other insect life on plants and flowers in and out of doors. Unsurpassed for rose bushes. For a cheap, effective, clean insecticide for amateur and professional growers this is unexcelled. 8-oz. cake, sufficient for 4 gallons prepared solution, .20; mailed, postpaid, .28.

Tobacco Extract. A powerful extract of tobacco combined with sulphur. Remarkably effective against plant lice, red spider, and insects of all kinds. Dilute one part to ten or more of water and apply with syringe or vaporizer. For insects at the root, prepare as above and apply with watering pot sufficient to reach the roots. Price, half pint, .30; pint, .50; quart, .75; gallon, \$1.50; 5 gallons, \$4.25.

Tobacco Dust. A remedy for green fly. Price, 5-lb. package, .25; 10-lb. package, .40; 100-lb., \$3.00.

Whale Oil Soap. An excellent wash for trees and plants; kills insects and their eggs. Price, in boxes, with full directions for use, 1 lb., .20; 2 lbs., .35; 5 lbs., .75; 10 lbs. \$1.25; 50 lbs., \$5.00.

"Imp" Soap Spray. The base is a soap containing vegetable poisons, particularly effective against red spider on fruits, the rhododendron fly, rose bug, and other insects. Quart, .50; gallon, \$1.50; 5 gallons, \$6.00; 10 gallons, \$10.00.

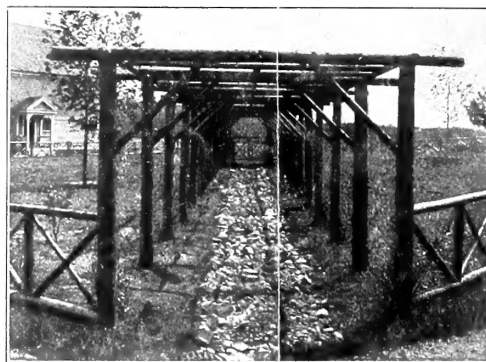
"Herbicide," or Weed Exterminator. Perfectly odorless. One single dressing done according to directions will keep gutters, paths, and roadways clear of weeds, poison ivy, grasses, mosses, dandelions, burdocks, etc., for two full years or more. It is the most effectual weed killer known, does the work at one-twentieth the cost of any other method, and is also far more convenient to use. It completely destroys all weeds wherever applied, and by its effect on the ground prevents the growth of fresh ones for two years afterwards, thus saving an immense amount of hoeing, rolling, and re-rolling. In 2-gallon kegs, sufficient to make 40 gallons of liquid, \$2.75; in 5-gallon kegs, sufficient to make 100 gallons of liquid, \$5.50; in 10-gallon kegs, sufficient to make 200 gallons of liquid, \$10.00.

Electric Worm Eradicator. Perfectly odorless. For the instantaneous extermination of worms of every sort. The worms will immediately rise to the surface of the ground or flower-bed; or will fall off the trees, fruits, or flowers, and in a few minutes will die. It will be found exceedingly effective. It is highly concentrated, one gallon being sufficient to make 120 gallons of fluid for use, by the addition of water. Full directions for use with each package. Shipped in kegs, \$4.50 each, to make 120 gallons. Also, .50 and \$1.00 bottles.

RUSTIC SUMMER HOUSES, PERGOLAS, ARBORS, ETC. (Write for particulars.)



Hexagon Summer House.



Pergola.



Pergola and Summer House.