

Historic, archived document

Do not assume content reflects current scientific knowledge, policies, or practices.



62-97

DEPARTMENT OF AGRICULTURE
DIVISION OF
AUG 5 1897
BOTANY
HERBARIUM

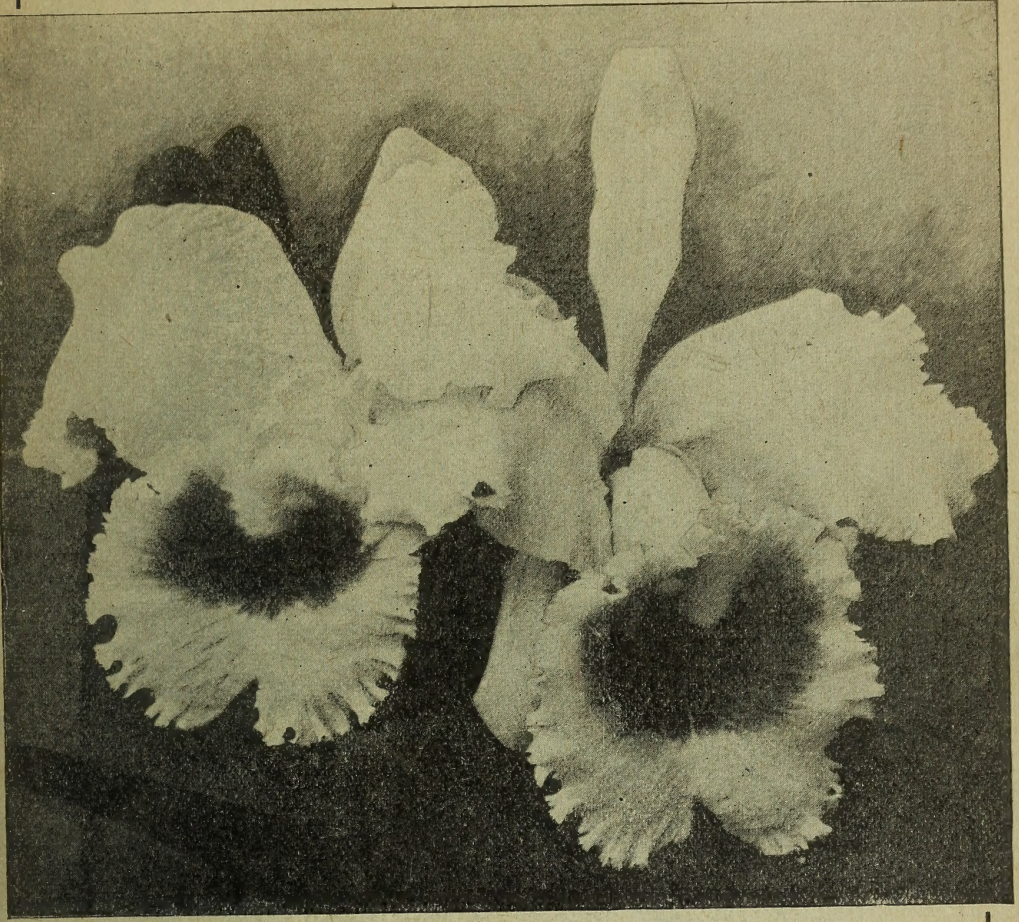
Telephone 98.

...1896...

Established 1860.

Whitnall Floral Co.

PRICE LIST OF BULBS.



How to Order Flowers.

... OFFICE, ...
438 Milwaukee Street,

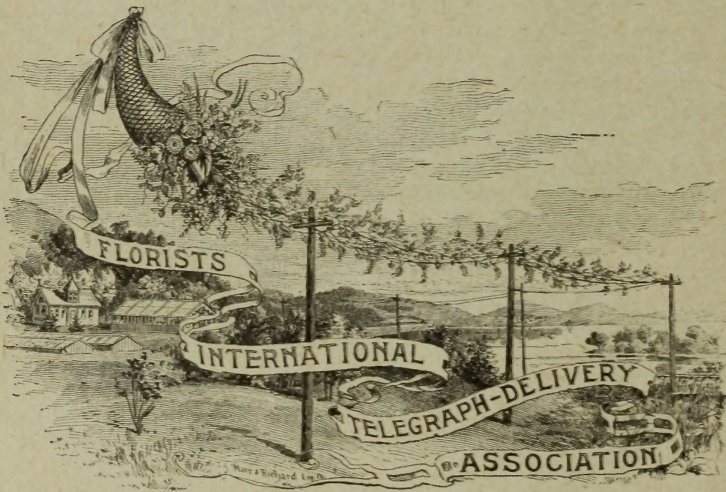
MILWAUKEE, WIS.

Whitnall Floral Co.

MILWAUKEE, WIS.

THIS CIRCULAR LIST, designed primarily for out-of-town trade, is issued as an aid in choosing and ordering Flowers. Information is here given, enabling customers distantly situated from us to order and receive flowers by express quite as advantageously as though dealing direct with us, over our counter.

WE ARE MEMBERS OF THE



This includes an arrangement made by reliable florists, enabling them to supply to each other for their customers, orders of flowers of any nature, on short notice, no matter from how great a distance the orders are sent. It does away with the uncertainties and unsatisfactory results going with the sending and delivering of flowers a long distance from your own town, and to do which you are obliged to depend on them being handled by Express and Railroad lines, the running time of whose trains, and ways of business, are unfamiliar to you.

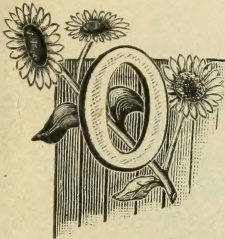
This association has scored an unqualified success. It is now represented in the leading cities of America, and is being extended to prominent European centers.

Being a member of this association, its advantages are extended to our customers.

... Choicest Fresh Flowers ...

IN DAILY SUPPLY.

ARTISTIC AND ORIGINAL ARRANGEMENTS
A LEADING SPECIALTY WITH US.



OUR newly improved and modern establishment, fully equipped, enables us to promptly fill orders of any extent, and certain, in an approved manner.

Located as we are, in a large city, great advantages are offered our customers in the large quantities and assortments of choice flowers daily available.

Our established reliability and experience in the exacting cut-flower trade, gives assurance that orders will be properly filled, and as ordered. It is conceded that we excel in the arrangement of decorations suited to special uses. Competitors may imitate, but they do not, in any strict sense, follow. The necessity of entrusting orders for fine flowers and designs only to florists of known taste and ability, is evident.

Quality is our aim, yet not made at undue cost. Buyers may rely on getting full value for their outlay each and every time.

Flowers in any form can be packed so they will travel perfectly by express, at any season of the year. We do this and make no additional charge for packing.

Unless able to decide specifically what is wanted when ordering flowers, an idea may be given of the use to which the flowers are to be put, and their cost; and by leaving their selection to us, we are almost sure to give satisfactory returns. We continually attend to many details of floral decorations thus entrusted to our hands.

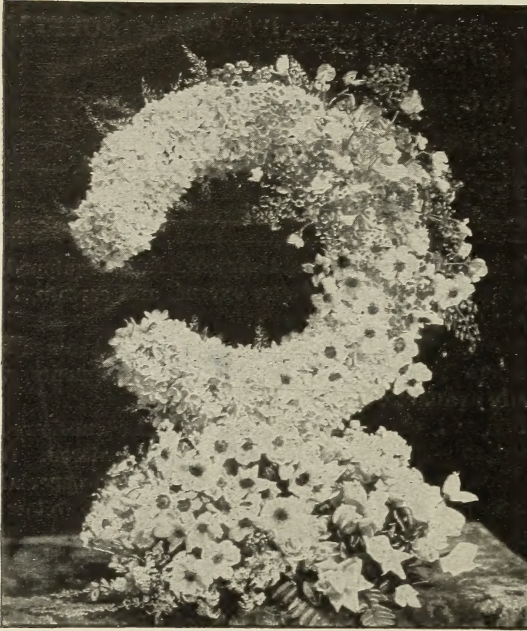
While we pride ourselves on ability to fill orders of any extent on very short notice, still we must take occasion to remark that plenty of time in which to fill especially large orders is generally advantageous to customers. By having in large orders a day or two before filling, we can often make special selections for special purposes. All orders must be handled and done in a few hours time for each occasion, in order that flowers may be fresh and lasting; therefore, preparations beforehand, which can only be made when we know ahead what is to be done, are of much importance.

It is well to send orders, especially large ones for miscellaneous work, sufficiently early to allow of a second communication being received, in case second advice seems necessary.

Correspondence solicited respecting any description of work.

LOOSE CUT FLOWERS.

This is a shape in which many lots of flowers are daily handled and shipped. Their prices are estimated by count mostly, and varying somewhat with the season. In summer, flowers do not average as choice and durable as in winter. During the mid-winter holiday season (Dec. 15 to Jan. 10), they are the dearest, being apt to cost nearly double common prices at other times.



Broken Crescent
Wreath
Standing on Base.

One of our most popular designs, rich and effective.

Style A—24 inches high,
\$8.00 to 10.00.

Code Word.....Abeam.

Style B—27 inches high,
\$10.00 to 15.00.

Code Word....Aberrant.

Style C—32 inches high,
\$15.00 to 20.00.

Code Word.....Abet

BROKEN CRESCENT WREATH ON LARGE BASE.

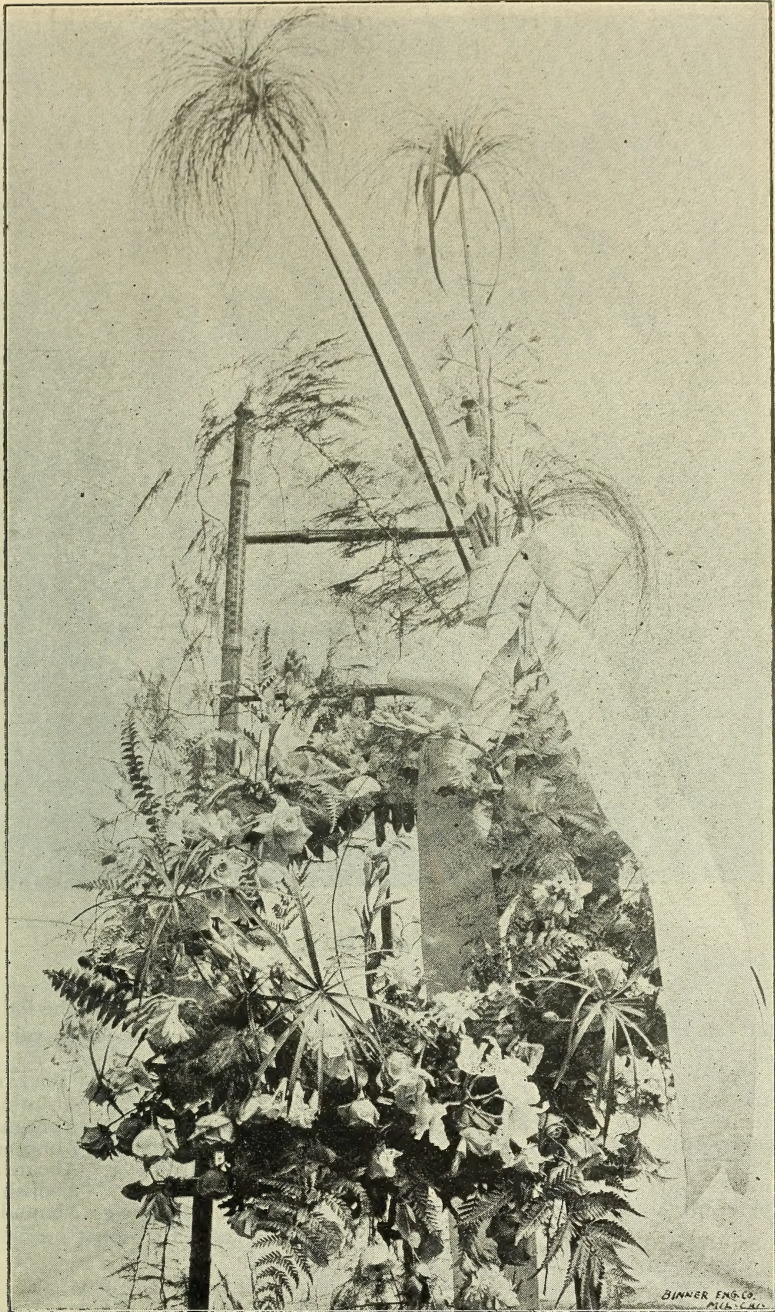
Bunch of
Bermuda
Lilies,
tied with
Ribbon.



BUNCH OF BERMUDA LILIES WITH RIBBON TIE.

This exquisite arrangement for a funeral offering, from \$2.50 to \$10.00, according to the number of blooms. The medium and popular sizes (similar to the engraving) averaging \$3.50 to \$5.00.

\$3 50.....	Code Word: Abeyance.
4 50.....	“ “ Abhor.
6 00.....	“ “ Abide.
10 00.....	“ “ Abagail.



Floral Arrangements: Wreath on Easel.

See price next page.



Floral Harp.

While our arrangements are built on forms, you will notice that the individuality of none of the flowers is lost. We make these up to order in various sizes.

	FOR HARP.	FOR LYRE.
16 inch—\$4 00 to \$5 00.....	Ability.	Ablution.
18 inch— 6 00 to 7 00.....	Abject.	Abnegate.
21 inch— 8 00 to 10 00.....	Abjugate.	Abnormal.
24 inch—11 00 to 13 00.....	Abjure.	Aboard.
27 inch—15 00 to 20 00.....	Ablaze.	Abolish.
30 inch—20 00 to 25 00.....	Abloom.	Abound.

STANDING LYRE, same size same price.

Wreath on Easel.

First Size—\$12 00 to \$15 00.....	Abrade.
Second Size— 17 00 to 20 00.....	Abreast.
Third Size— 20 00 to 25 00.....	Abridge.

Loose Cut Flowers, Smilax and Asparagus

Are often used to good effect about the funeral casket. See prices elsewhere.

Ordinary Wreath.

	Diameter Measure.	Price.
Abroach.	10 in.....	\$1 00 to 1 50
Abrupt.	12 in.....	1 50 to 2 00
Abscind.	14 in.....	2 00 to 3 00
Absence.	16 in.....	3 50 to 5 00
Absolute.	18 in.....	5 00 to 7 50

Tied Wreath of Valley Lily, and Roses, etc.

	Diameter Measure.	Price.
Absolve.	15 in.....	\$5 00 to 7 50
Academy.	18 in.....	7 50 to 10 00
Accede.	21 in.....	10 00 to 15 00
Access.	24 in.....	15 00 to 20 00

Wreath of Pansies.

	Diameter Measure.	Price.
Accident.	16 in.....	\$5 00 to 6 00
Acclaim.	18 in.....	7 00 to 8 00
Acclimate.	20 in.....	8 00 to 10 00
Accoil.	24 in.....	12 00 to 15 00

Ivy Wreath, Crescent Shaped.

	Diameter Measure.	Price.
Brat.	15 in.....	\$3 50 to 4 50
Bob.	18 in.....	4 50 to 6 00
Bodice.	21 in.....	7 50 to 10 00
Bodkin.	24 in.....	10 00 to 14 00
Bogus.	27 in.....	15 00 to 20 00

Massive Standing Cross and Base.

	Height Measure.	Price.
Boiler.	20 in.....	\$12 00 to 15 00
Bold.	23 in.....	15 00 to 20 00
Bombast.	26 in.....	20 00 to 25 00
Borax.	30 in.....	25 00 to 30 00
Border.	36 in.....	30 00 to 40 00

Ivy Cross, with Cluster of Fine Flowers.

	Length Measure.	Price.
Bordman.	18 in.....	\$3 00 to 4 00
Born.	21 in.....	4 00 to 5 00
Borough.	24 in.....	5 00 to 7 00
Borland.	27 in.....	7 00 to 9 00
Bosh.	30 in.....	10 00 to 13 00

Common Standing Cross.

	Height Measure.	Price.
Boss.	15 in.....	\$5 00 to 6 00
Botany.	18 in.....	6 00 to 8 00
Botch.	21 in.....	8 00 to 11 00
Bother.	24 in.....	11 00 to 14 00
Bottle.	27 in.....	14 00 to 18 00
Bottom.	30 in.....	20 00 to 25 00

Anchor, Flat.

Aback.	12 in.....	\$3 00 to 4 00
Abacus.	14 in.....	4 00 to 5 00
Abacot.	16 in.....	5 00 to 6 00
Abaft.	18 in.....	6 00 to 7 00
Abandon.	21 in.....	8 00 to 10 00
Abare.	24 in.....	11 00 to 15 00

Standing Anchor.

	Height Measure.	Price.
Cabin.	18 in.....	\$8 00 to 10 00
Cable.	21 in.....	11 00 to 13 00
Cackle.	24 in.....	15 00 to 18 00
Cadence.	27 in.....	18 00 to 21 00
Caddy.	30 in.....	22 00 to 25 00
Cage.	33 in.....	25 00 to 28 00



Group A G.

Floral Arrangements for Funeral Occasions.

For prices see page 5.



• • • • OUR CUT FLOWER DEPARTMENT • • • •

Is entirely separate and complete in itself. We aim to send out only the choicest of flowers and designs, at the lowest prices consistent with tasteful arrangement and care. Customers, who so desire, can have our weekly price list sent them, without charge.

Crescent Wreaths.

See Page 7.

12 inch—Cat.....	\$3 00 to 3 50
14 inch—Car.....	4 00 to 5 00
16 inch—Carboy.....	5 00 to 6 00
18 inch—Care.....	6 00 to 7 50
21 inch—Caramel.....	7 50 to 10 00
24 inch—Caret.....	10 00 to 15 00
30 inch—Caraway.....	20 00 to 25 00

Stars.

See Page 7.

8 inch—Carbine.....	\$1 50 to 2 00
10 inch—Carbon.....	2 00 to 2 50
12 inch—Carbuncle...	3 00 to 4 00
14 inch—Carcass.....	4 00 to 5 00
16 inch—Card.....	5 00 to 6 00
18 inch—Cardo.....	6 00 to 7 00
20 inch—Cardinal.....	8 00 to 10 00

Panels.

These are set on easels and are one of the most beautiful arrangements. The style of arrangement is quite variable, and the size may be, but we have made only three sizes as yet.

Small Size, about 3 feet.....	Carver.....	\$10 00 to 12 00
Second Size, about 4 feet.....	Careful.....	15 00 to 20 00
Third Size, about 5 feet.....	Careless.....	25 00 to 35 00

Sometimes, if made quite elaborate, this third size costs as high as (Carom) \$45.00 to 50.00.

The central picture on page 7 is a view in a Palm House, with a crop of Speciosum Lilies in the foreground.



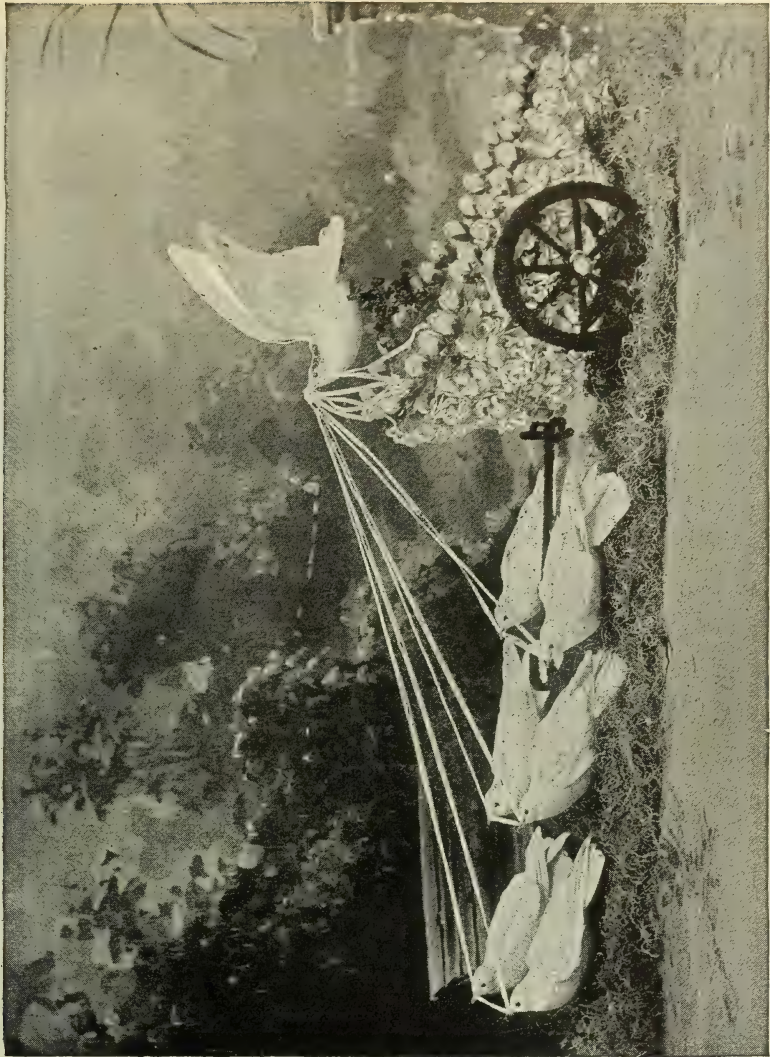
Floral Arrangements for Funeral Occasions.



Wreath of Wheat, two Cycas Leaves, Doves and Ribbon.

\$10.00 to 12.00.

Code Word.....Debt.



❁ ❁ Doves. ❁ ❁

We always have a good stock and give care in packing.

Code Word: Debtor.....Each, \$20 00
This Chariot, without Doves, (Deep).....\$8 00 to 12 00



Miscellaneous Arrangements in Floral Decorations.

MILWAUKEE, WISCONSIN.

Sheafs of Wheat. (Cargo.)

Emblem of ripened old age, \$1.00, \$1.50 and \$2.00. Larger sizes, \$2.50 and \$3.50.

Dove on Basket.

Measure, Spread of Basket.	Price.
Cartoon. 16 in.....	\$ 5 00 to 7 00
Carmine. 20 in.....	8 00 to 10 00
Carnage. 24 in.....	12 00 to 15 00

Basket alone in same sizes, furnished at \$2.00 less than above prices.

Broken Column.

Height Measure.	Price.
Daft. 16 in.....	\$ 6 00 to 8 00
Dainty. 19 in.....	8 00 to 11 00
Danger. 22 in.....	11 00 to 14 00
Deacon. 25 in.....	14 00 to 17 00
Deal. 28 in.....	18 00 to 21 00
Deaden. 31 in.....	22 00 to 25 00
Deaf. 34 in.....	25 00 to 30 00

Arch Top Gates Ajar.

Height Measure.	Price.
Carnival. 18 in.....	\$ 8 00 to 10 00
Carol. 21 in.....	12 00 to 14 00
Carp. 24 in.....	14 00 to 16 00
Carry. 27 in.....	16 00 to 18 00
Carpenter. 30 in.....	18 00 to 20 00
Carper. 33 in.....	20 00 to 25 00
Carriage. 36 in.....	25 00 to 30 00

Standing Square and Compass.

(Masonic.)

Height Measure.	Price.
Dealer. 16 in.....	\$ 6 00 to 8 00
Dean. 21 in.....	8 00 to 10 00
Deanery. 24 in.....	11 00 to 13 00
Dearborn. 27 in.....	14 00 to 17 00
Dearly. 30 in.....	17 00 to 20 00
Dearth. 33 in.....	20 00 to 15 00

Flat Shield.

Length Measure.	Price.
Carving. 15 in.....	\$ 7 00 to 8 00
Carway. 18 in.....	8 00 to 10 00
Cartridge. 21 in.....	10 90 to 12 00
Carve. 24 in.....	12 00 to 15 00

Large Roman Urn of Carnations,

Rose Garlanded.

Height Measure.	Price.
Dearness. 28 in.....	\$25 00 to 30 00
Dead. 32 in.....	30 00 to 37 50
Debate. 36 in.....	37 50 to 45 00
Debar. 40 in.....	50 00 to 60 00

Scroll Lettered.

Height Measure.	Price.
Cascade. 20 in.....	\$ 8 00 to 10 00
Cashier. 23 in.....	10 00 to 12 00
Cask. 26 in.....	12 00 to 15 00
Castle. 29 in.....	15 00 to 18 00
Cater. 32 in.....	18 00 to 21 00
Catch. 35 in.....	22 00 to 25 00

Royal Arcanum Badge Design,
Standing Moss Panel.

Adaptable, with different lettering used, to any society.

Height Measure.	Price.
Dabble. 20 in.....	\$ 8 00 to 10 00
Dace. 22 in.....	10 00 to 12 00
Dado. 24 in.....	12 00 to 15 00

Standard Shape Vase.

ALL PARTS SOLID IN FLOWERS.

General Height Measure.	Price.
Debase. 20 in.....	\$10 00 to 12 00
Debauch. 24 in.....	12 00 to 15 00
Debile. 27 in.....	15 00 to 20 00
Debility. 30 in.....	20 00 to 25 00

WHITNALL FLORAL COMPANY,

Baskets.

There being such a variety of shapes and sizes constantly changing styles, that we cannot attempt any detailed description.

	Filled with Violets.	Filled with Roses.	Filled with Bulb Flowers.	Filled with Assorted Flowers.
\$3 00.....	Glossy.....	Hear.....	Inch.....	Jabird.
4 00.....	Glue.....	Hearth.....	Ibis.....	Jackal.
5 00.....	Glucose.....	Heathen.....	Indian.....	Jack.
6 00.....	Glum.....	Heavy.....	Ideal.....	Java.
8 00.....	Glut.....	Hebe.....	Idiot.....	Jargen.
10 00.....	Glycerine.....	Hector.....	Ignorant.....	Jane.

Table Center Pieces.

These are as variable as Baskets. Prices can only be estimated after we are made acquainted with size of table, color, lights, etc.

Pretty arrangements can be made for:

\$3 00 to 5 00.....	Help.
6 00 to 8 00.....	Hem.
9 00 to 12 00.....	Helix.

Plant Decorations.

These are so extremely variable that we cannot quote prices in a catalogue of this kind, we will furnish plans and estimate of cost on application.

Windmill.

24 in. high—Heap..	\$20 00 to 24 00
36 in. high—Health..	35 00 to 40 00

Lily Valley Bouquet.

With their own foliage or Ferns and Ribbon.

Gloaning. Small.....	\$3 00 to 4 00
Glimmer. Medium....	4 00 to 5 00
Gloom. Large.....	6 00 to 8 00

Marriage Bells.

15 in.—Glove.....	\$18 00 to 10 00
18 in.—Glut.....	10 00 to 12 00
21 in.—Glorious.....	15 00 to 18 00
24 in.—Glorify.....	20 00 to 25 00

Curtains of Smilax.

These measurements must be given to suit position as there are no two wanted alike—price only on application.

Flat Bunch Roses, etc., with Ribbon Tie.

Size Varies with Number of Roses Used.

Forage.	1½ doz	\$2 00 to 3 00
Form.	2 doz	2 50 to 3 50
Forbid.	2½ doz	3 00 to 4 00
Force.	3 doz	4 00 to 5 00
Ford.	3½ doz	5 00 to 6 00
Foreign.	4 doz	6 00 to 7 50

Pillow, Lettered.

Length Measure.

Forfeit.	15 in	\$4 00 to 5 00
Forgery.	18 in	6 00 to 8 00
Forlorn.	21 in	9 00 to 11 00
Freak.	24 in	12 00 to 15 00
Fred.	27 in	15 00 to 20 00
Freedom.	30 in	20 00 to 25 00

Pair of Cycas Leaves, Roses and Ribbon Tie.

Freely.	Small Cycas		
	Leaves	\$5 00 to 6 00
Freight.	Med. Cycas		
	Leaves	7 50 to 10 00
French.	Large Cycas		
	Leaves	10 00 to 15 00

Sheaf and Callas, or Lilies, Ribbon Tie.

Sheafs 18 in. long and upwards.

Gelatine.	Small	\$3 50 to 4 00
Gender.	Medium	5 00 to 6 00
General.	Large	7 50 to 10 00

Flat Wheat Sheaf and Sickle of Flowers.

Sheafs 18 in. long and upwards.

Generation.	Small	\$4 00 to 4 50
Genial.	Medium	5 00 to 6 00
Generous.	Large	7 00 to 8 00

Flat Sheaf and Roses, etc., Ribbon Tie.

Sheafs 18 in. long and upwards.

Gentry.	Small	\$3 00 to 4 00
Genteel.	Medium	4 00 to 5 00
Glad.	Large	6 00 to 7 50
Glare.	Special large.	8 00 to 10 00

Standing Star.

Height Measure.

Gleam.	21 in	\$6 00 to 8 00
Glory.	24 in	8 00 to 10 00
Glance.	27 in	10 00 to 13 00
Glide.	30 in	14 00 to 16 00
Glazy.	33 in	17 00 to 20 00

Standing Crescent and Star.

Height Measure.

Gland.	24 in	\$8 00 to 10 00
Glass.	27 in	11 00 to 13 00
Glaymore.	30 in	14 00 to 17 00
Gleaners.	33 in	17 00 to 20 00
Glitter.	36 in	20 00 to 25 00

FOR DESIGNS SEE PAGE 13.

Society Designs,

Such as Knights of Pythias, Masonic, Odd Fellow, Royal Arcanum, etc., are a speciality with us, and always receive our careful attention.



Mischief.	15 inch.....	\$ 8 00
Misery.	18 inch.....	12 00
Missile.	21 inch.....	16 00

Odd Fellows Designs.

	3 Links.	
Nab.	18 in.....	\$4 00
Nabob.	21 in.....	6 00
Nail.	24 in.....	8 00

Square and Compass.

	G in Center.	
Nag.	12 in.....	\$4 00
Nameless.	14 in.....	5 00
Nainsook.	16 in.....	6 00
Naissant.	18 in.....	8 00

Grand Army Emblem.

Nankeen.	30 in.....	\$10 00
Nantes.	36 in.....	15 00
Napery.	52 in.....	25 00

Knights of Pythias.

Nasal.	24 in.....	\$18 00
Nascent.	30 in.....	25 00
Nashberry.	36 in.....	30 00

Odd Fellows Emblem.

	3 Links, 2 Axes.	
Natation.	30 in.....	\$20 00
Natatory.	35 in.....	25 00

Maltese Cross.

Natka.	10 in.....	\$3 00
Natroite.	12 in.....	4 00
Natural.	14 in.....	5 00
Naught.	16 in.....	7 00

Mistake.	24 inch.....	20 00
Miscall.	30 inch.....	25 00

Druggists' Mortar.

Naphtha.	18 in.....	\$12 00
----------	------------	---------

Stack of Three Guns.

Napkin.	30 in.....	\$15 00
Napus.	36 in.....	20 00

Horse Shoes.

Narcotic.	8 in.....	\$1 50
Nardine.	10 in.....	2 00
Nargie.	12 in.....	3 00
Nariform.	14 in.....	4 00
Narrate.	16 in.....	5 00
Narrative.	18 in.....	7 00
Narrow.	20 in.....	10 00
Narwhal.	24 in.....	12 00

Crowns.

Nasty.	10 in.....	\$5 00
Nastiness.	12 in.....	6 00
Nastute.	14 in.....	8 00
Natante.	16 in.....	10 00

Triangle.

Natch.	12 in.....	\$3 00
Nation.	15 in.....	4 00
National.	18 in.....	5 00
Native.	21 in.....	7 00

Bow and Arrow.

Nausa.	18 in.....	\$3 00
Naval.	24 in.....	4 00
Nave.	30 in.....	5 00
Navigate.	36 in.....	6 00

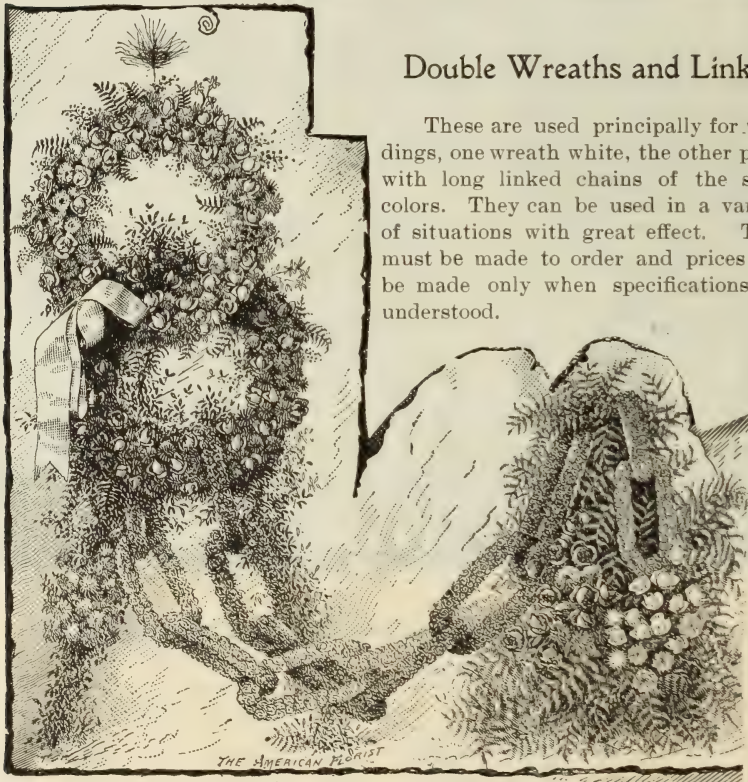
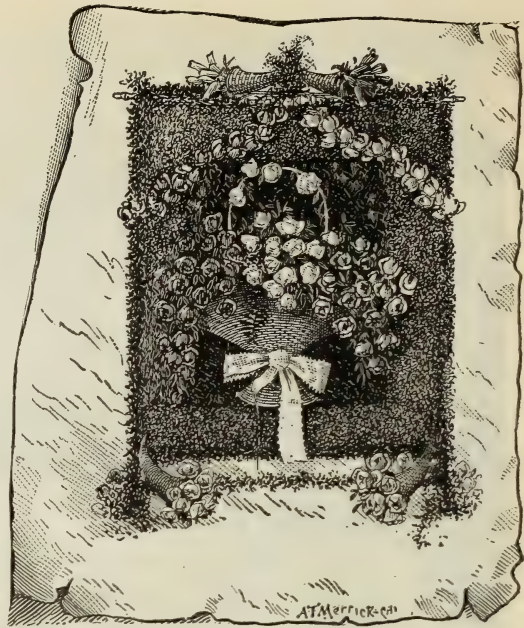


Floral Arrangements for Funeral Occasions.

Floral Screens.

These are very beautiful and effective in some situations. The use of them requires judgment. They must be useful for screening as well as an ornament. If it appears to have been made for display only the effect is vulgar.

We will quote price on application.



Double Wreaths and Links.

These are used principally for weddings, one wreath white, the other pink, with long linked chains of the same colors. They can be used in a variety of situations with great effect. They must be made to order and prices can be made only when specifications are understood.

THE AMERICAN FLORIST



Vase of Lilies.

We put up flowers suitable for filling vases, with foliage and all complete.

Flowers for Small Vase.....	Jealous.....	@ \$0 50
Flowers for Small Vase.....	Jersey.....	@ 1 00
Flowers for Medium Vase.....	Jennet.....	@ 1 50
Flowers for Medium Vase.....	Jest.....	@ 2 00
Flowers for Large Vase.....	Jerkin.....	@ 3 00
Flowers for Large Vase.....	Jet.....	@ 5 00

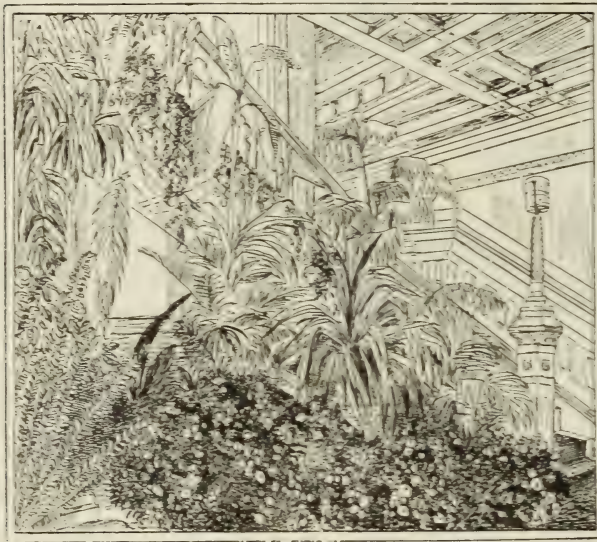


Stairway... ...Decorations.

These two small illustrations serve to give but a faint idea of the diversity one effects in the arrangement of plants. There is nothing more beautiful, but it requires very large resources of choice plants to arrange these decorations at all times suitable for all occasions. We have every facility for accommodating you in this line.

Our prices are moderate, service prompt.

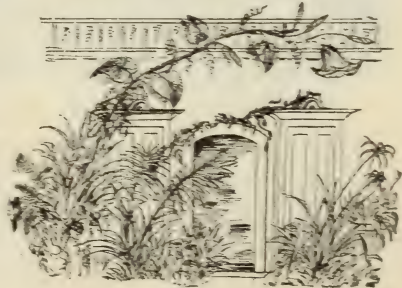
Estimates on application.



Morning Glory.

This is a novel arrangement for weddings. A large vine is made of wire work, representing a very large morning glory; this climbs out of a bank of foliage, the bud and flower suspends over the receiving position, and does nicely in place of a bell. When well made it has been greatly admired.

Price on application.



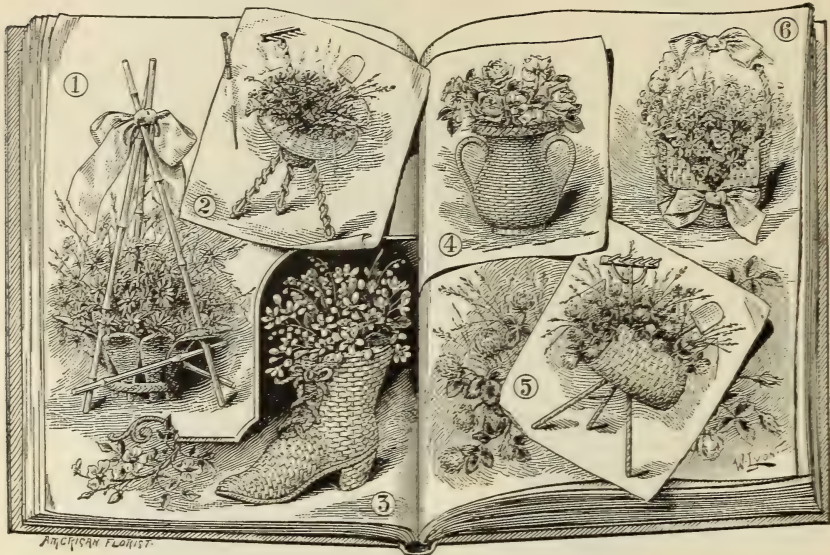


Palm Leaf Wreath.

\$8 00	Size and Quality	Liniment.
10 00	Size and Quality	Linnet.
12 00	Size and Quality	Linseed.
15 00	Size and Quality	Lizzie.

Floral Piano.

\$20 00	Size.....	Literal.
30 00	Size.....	Litigate.
40 00	Size.....	Livery.



Floral Favors.

The above cut shows several fancy baskets, which are pretty when tastefully arranged with a few suitable flowers, where sentiment is more desired than value.

Something pretty, not to exceed in value.....	\$1 00	Likely.
Something pretty, not to exceed in value.....	1 50	Limbo.
Something pretty, not to exceed in value.....	2 00	Limation.
Something pretty, not to exceed in value.....	3 00	Limbat.



Table Cover a Floral Desk.

Smaller Size.....	\$15 00	Limber.
Larger Size.....	25 00	Limit.



Basket of Roses.



AMERICAN FLORIST CO.

Most orchids are beautiful, and at the same time more expensive than other flowers. The large pink CATELEAS, shown on front page of cover, cost from 60c to \$1.00. Two or three of these, with a few ferns, are beautiful for ladies' wear. The CYPREPEDIUMS, or Lady Slippers, are also pretty, costing from \$2.50 to \$3.50 per doz. Some of the varieties are very expensive. We deliver the flowers in neatly done up packages.

\$2.00 Box of Orchids.	Mark.	\$5.00 Box of Orchids.	Margin.	\$10.00 Box of Orchids.	Might.
3.00 Box of Orchids.	Marble.	7.50 Box of Orchids.	Mason.	15.00 Box of Orchids.	Mild.
4.00 Box of Orchids.	March.			20.00 Box of Orchids.	Milk.



Shower Bouquets.

This cut of four Wedding Bouquets does not give a fair idea of the beauty which many of those we make really possess. They are commonly called "Shower Bouquets." There is considerable labor required in making them well and the flowers must be of first quality.

Each bouquet in this set is tied with one full piece (10 yds.) of narrow ribbon to match the color of the roses. To these streamers at intervals are attached, with bows of the same ribbon, roses such as compose the bouquet.

The Bride's Bunch in the center, composed of Bride Roses and Lilies of the Valley, is intended to be held in a position at right angles to the body, so that the spray falls gracefully from the hand; the ribbons of this bouquet are tied with sprays of Lilies of Valley.

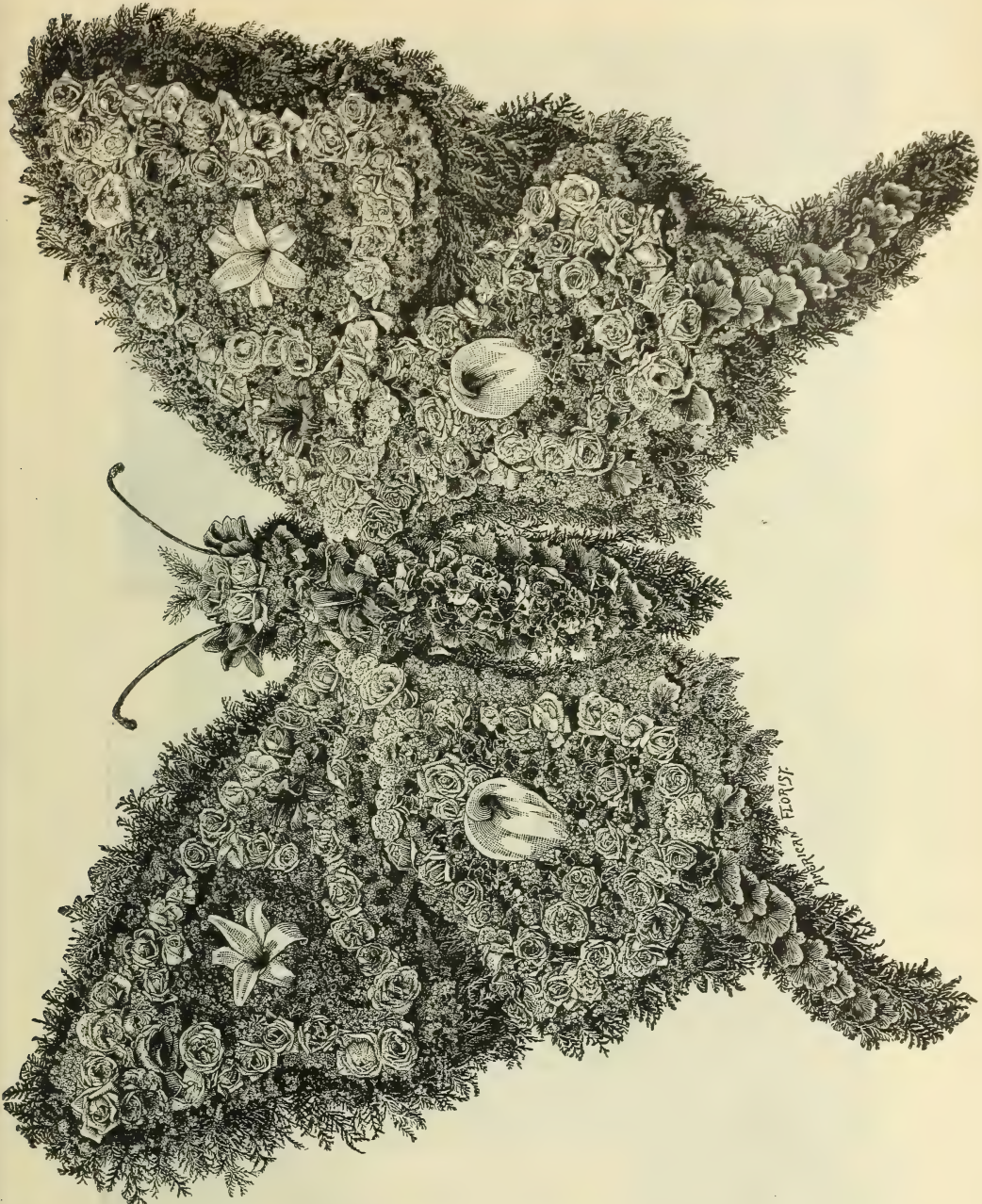
White, for \$6 00	Libale.	Pink, for \$6 00	Liberal	Yellow, for \$6 00	Lit.
White, for 8 00	Liver.	Pink, for 8 00	Lick	Yellow, for 8 00	Lice.
White, for 10 00	Libel.	Pink, for 10 00	Library.	Yellow, for 10 00	Link.



This cut will serve to give a partial idea of the way we make up bunches of flowers. They are quite popular and deservedly so, we make them in a variety of ways and of all the leading flowers, such as Pansies, Violets, Valley, Roses, Carnations, Mignonette, etc.

1 Bunch of (name flower)....\$2 00 Lisp.
 1 Bunch of (name flower).... 3 00 Linen.
 1 Bunch of (name flower).... 4 00 Lizard.
 1 Bunch of (name flower).... 5 00 Life.
 1 Bunch of (name flower).... 6 00 Lift.

1 Bunch of (name flower)..\$7 00 Linden.
 1 Bunch of (name flower).. 8 00 Ligation.
 1 Bunch of (name flower).. 9 00 Light.
 1 Bunch of (name flower)..10 00 Linstock.



FLORIST
New York, N.Y.

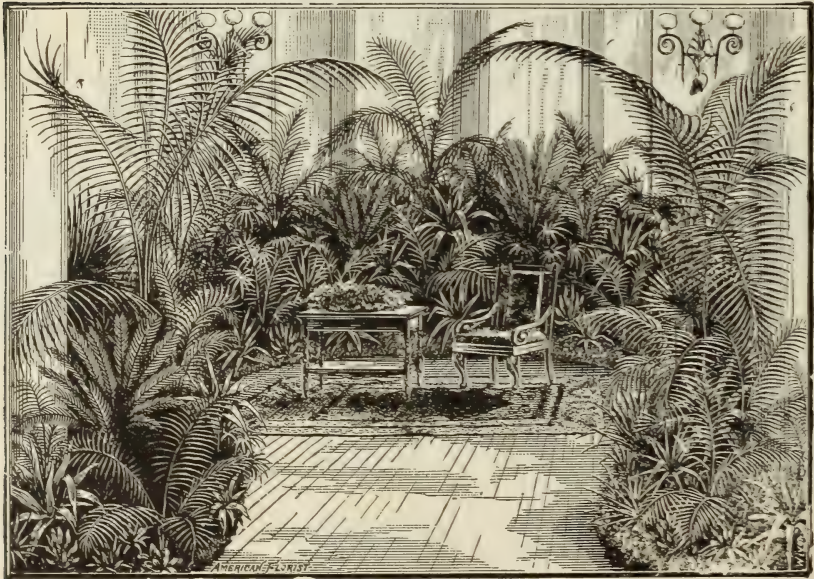
Butterfly for Easter.

\$15.00 Size..... Code Word: Line.

\$25.00 Size..... “ “ Lineal.



Wedding Decorations.



Reception.



A Crescent.

One of the prettiest arrangements we can make for the price.

10 inch	Million	\$1 50
12 inch	Miller	2 00
15 inch	Mince	3 00
18 inch	Mineral	4 00

It is quite common now for customers to have 50 cents' or \$1.00's worth of flowers delivered once, twice, or three times weekly, leaving selection to us. They do this for their own pleasure, and it is the proper way of enjoying them. Two or three pretty flowers always on your table is delightful.

Seasonable Hints.

Time when Bulbs are ready for Delivery:

- September 1**—Harrissii, Calla and Cadium Lilies, Freesias and Roman Hyacinths.
 " **25**—Hyacinths, Grape Hyacinths, Tulips, Narcissus, Chinese Sacred Lily,
 Crocusses and all of the Miscellaneous Bulbs.
October 1—Other Lilies.
 " **1**—Perennial Plants.
 " **15**—Trees, Shrubs and Vines.

In figuring how many Bulbs a certain space will take, ascertain the number of square inches and allow as follows:

1 Hyacinth to 35 square inches.	1 Lily Valley to 2 square inches
1 Tulip to 20 square inches.	1 Crocus to $\frac{2}{3}$ 2 square inches.
1 Narcissus to 20 square inches.	1 Scilla to 2 square inches.
1 Snowdrop to 1 square inch.	1 Lily to 100 square inches.

This will give you the amount of bulbs needed.

Perennial plants need an average of one square foot for a plant.

Never try to force bulbs before they are well rooted.

Lily Valley is the only bulb that should be forced without making new roots.

Plant Bulbs at proper time. Many failures are on account of too late planting.

For forcing bulbs a good soil is five-tenths good loam, two-tenths good rotted leaf soil, two-tenths good rotted cow or sheep manure and one-tenth sharp sand. This should be well mixed. Never use peat or fresh manure.

Bulbs delight in warm, well-drained soil.

COLLECTION OF

BULBS FOR HOUSE CULTURE.

Ready October 1st.

1 Single Hyacinth,	3 Poeticus Narcissus,
1 Double Hyacinth,	5 Crocusses (4 colors),
1 Ornithogalum Arabicum,	1 Anemone,
1 Single Tulip,	1 Iris,
1 Double Tulip,	3 Scillas,
1 Parrot Tulip,	3 Freesias,
2 Grape Hyacinths (white and blue),	1 Candidum Lily,
	1 Chinese Sacred Lily.

This collection of beautiful Flowering House Bulbs for 50 cents.

If ordered sent by mail add 15 cents.



CROCUS.



PARROT TULIP.



SINGLE TULIP.



CANDIDUM LILY.



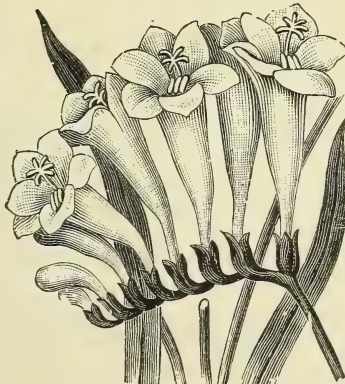
ORNITHOGALUM ARABICUM.



SCILLA.



IRIS GERMANICA.



FREESIA.



DOUBLE HYACINTH.

For Fall Planting.

✿ ✿ BULBS. ✿ ✿

HYACINTHS.

The most important of all the bulbs in cultivation is the Hyacinth. Easy of culture, flowers of which can be had from January to May, rich of perfume and a wide range of colors, makes them indispensable to every garden.

We offer all good, sound, well-ripened bulbs, that may be relied upon to produce fine blooms if properly treated. **None better can be had.**

SUPERFINE MIXTURE. This is a higher grade than is usually offered for bedding purposes. Our object in offering this grade, is to raise the standard and make the Hyacinth more popular. It is this grade which is usually used by Florists for forcing. While these are but a trifle higher in price than the lower grade, the effect produced is far superior.

(OUR SELECTIONS.)				(OUR SELECTIONS.)			
		Per 100.	Per Doz.			Per 100.	Per Doz.
Single Red Varieties	\$3 50	\$0 50	Double Red Varieties	\$3 50	\$0 50
“ Blue “	3 50	50	“ Blue “	3 50	50
“ White “	3 50	50	“ White “	3 50	50
“ Yellow “	3 50	50	“ Yellow “	3 50	50

Six bulbs sold at dozen rates, twenty-five at one hundred rates. If desired by mail, 10 cents per dozen must be sent to pay postage.

Directions for Growing Hyacinths in Pots.

Use a 5 or 6 inch pot, fill rather loosely to the brim and press the bulb down so that one-fourth of it appears above the soil, then water freely to settle the soil and place where it is cool and dark to encourage a strong development of roots before the bud starts to grow at the top. Such a situation can be made by covering up the pots with four inches of sand in a cool cellar, under the stage in a cool greenhouse, or in a sunken pit—in each case covering with sand or so as to exclude heat and frost: a strong development of roots can only be had at low temperature, say from 40 to 50 degrees, and any attempt to force them to make roots quicker by placing them in a high temperature will certainly enfeeble the flower. There is no need of water, except at the time of potting, provided the pots have been covered up as directed. They may be removed from their dark quarters in six or eight weeks, placed in a full light and watered freely.

CHOICE NAMED HYACINTHS.

Where but few bulbs are wanted for window gardening, or especially for growing in water, we recommend these selected bulbs:

Single Red and Rose.

	Each
Amy , very dark red, fine spike	\$0 06
Gigantea , pink, extra large, bluish ..	8
Lord Macaulay , extra dark rose, large bells.....	8
Maria Theresia , rose striped, fine spike	6
Norma , extra pink, large bells, early..	6
Robert Steiger , deep red, good spike..	6
Sultane Favorite , dark striped, early.	6

Single Blue.

Bleu Mourant , fine distinct color, dark	6
Chas. Dickens , extra fine bells, bright blue, fine spike	6
Czar Peter , porcelain blue, fine spike.	10
La Peyrouse , fine bells, porcelain.....	6
Orondatus , extra good spike, light....	10

Single White Hyacinths.

Alba Superbissima , pure, good spike.	6
Baron von Thuyll , compact, pure white.....	8
Grandeur a Merveille , rose white, extra	6
Grande Vidette , extra large spike, early	8
La Grandesse , pure white, large bells, extra.....	10
Madame van der Hoop , large bells, pure, extra.....	8
Mont Blanc , extra large bells, pure white.	10
Voltaire , extra pale, blushed.....	6

Single Yellow.

	Each
Fleur d'Or , pure yellow.....	\$0 06
Herman , orange yellow.....	8
La Pluie d'Or , pale yellow	6
Duc de Malakoff ,.....	8

Double Red and Rose.

Bouquet Tendre , dark red, early.....	6
Czar Nicholas , bright rose.....	8
Grootvorst , fine rose, large bells.....	8
Noble, par Merite , extra good spike, early.....	6

Double Blue.

Blokaberg , good spike, light blue.....	7
Garrick , extra large spike, dark, early	6
Pasquin , large bells, light blue.....	6

Double White.

Anna Maria , with purple center, early	8
Bouquet Royal , pure white.....	8
La Tour d'Auvergne , early, pure white, extra.....	10
La Virginite , with red center	7
Prince of Waterloo , pure, rose center	10

Double Yellow.

Goethe , sulphur yellow, good spike ...	8
William III , with red center, dark, very fine.....	10
Minerva , orange.....	8

Directions for Growing Hyacinths in Glasses.

The Bulbs should be placed in the glass as early in the season as possible, keeping them in a cool, dark cellar or similar situation until the roots have nearly reached the bottom of the glass, which requires usually from six to eight weeks time, after which the lightest and sunniest situation that can be had is the best. The water in the glasses should be changed two or three times a week and in severe weather the bulbs must be removed from the window, so as to be secure from frost. In filling the glass with water the bottom of the bulb should only touch the water. A little charcoal placed in each glass helps to keep the water pure.

Low Priced American Hyacinth Glasses.

Tye's Shape , in blue, green and amber.....	\$0 18
Ordinary Shape , blue, green and amber.....	18

IMPROVED EARLY WHITE ROMAN HYACINTHS.

This is a valuable and beautiful variety, the flowers, while smaller than those of the ordinary Dutch Hyacinth, are produced in much greater profusion—each bulb producing several very graceful spikes of bloom, and their pearly whiteness, delicious perfume, earliness and profusion of bloom, has made this variety exceedingly popular. They are so easily grown and so early, that if potted in August and September they can be brought into flower in November and December, and by a succession of plantings can be had in bloom throughout the winter. Roman Hyacinths are not hardy enough for open ground culture north of Washington. Three colors—white, rose and blue.

Price, selected bulbs, 5 cents each; 45 cents per dozen; \$3.50 per 100. (Add for postage on Roman Hyacinths at the rate of 8 cents per dozen if wanted by mail.)

GRAPE HYACINTHS.

Very pretty variety, producing flowering spikes about 6 inches high, with little round bells so arranged as to resemble a bunch of grapes. Admirable for permanent beds and edgings and partially shaded situations, where they should be planted in groups of one dozen or more, where they will soon spread, and being perfectly hardy will take care of themselves. They are very pretty when grown six in a pot in the house for winter flowering. Blue, 2 cents each; 15 cents per dozen; 75 cents per 100; \$5.00 per 1000.

EARLY TULIPS.

We want every customer to put in Tulip beds this season, and have quoted such low prices that we think few will fail to do so. Massed either in solid colors in design, or all colors mixed, they make as showy a bed as could be made with any bulb or plant.

The Duc van Tholl varieties are the earliest for forcing. (If desired by mail, add 4 cents per dozen for postage.)

All the Early Single Tulips can be used for forcing.

Single.		Per 100.			Per 100.
D	Artus , bronze red, fine flowers.....	\$1 00	D	Rosa Grisdelin , delicate rose, shaded white	\$2 25
D	Belle Alliance , (Waterloo) brilliant scarlet	1 25	D	Vermilion Brilliant , dazzling vermilion.....	3 00
M	Canary Bird , clear yellow, early, forcing variety	1 50	M	Dusan , the best dark scarlet	3 00
M	Chrysolora , large, handsome yellow	1 50		Single Varieties , mixed	75
M	Crimson King , fine scarlet.....	1 00		Double.	
D	Duc de Berlin , red and yellow	2 00	M	Couronne d'Or , yellow	3 00
D	Duc van Tholl , red and yellow	1 00	M	Imperator Rubrorum , scarlet....	2 00
D	“ “ “ rose.....	1 50	D	La Candeur , pure white.....	1 00
D	“ “ “ white.....	2 00	D	Murillo , white and pink.....	2 25
D	“ “ “ yellow.....	2 50	D	Gloria Solis , red, bordered with gold	1 00
D	Kaiser Krone , red, bordered with yellow	1 50	D	Rosalie , carmine pink, extra	2 50
M	La Reine , white, tinted rose	1 00		Double Varieties , mixed	75
M	L'Immacule , white, very early....	1 00		Parrot or Dragon Tulips.	
D	Procerpine , cherry rose, extra....	2 50		Admiral Constantinople , red.....	1 00
T	Prince Austria , fine orange red, sweet scented.....	2 50		Lutea Major , yellow	1 00
T	Moliere , purple violet.....	1 50		Markgraaf , brown, with orange ...	1 00
M	Rosa Mundi , rose and white.....	2 00		Perfecta , yellow and red.....	1 00
				All Varieties , mixed.....	75

D indicates dwarf; M medium; T tall.

NARCISSUS—DAFFODILS.

They are all excellent for cutting, lasting in water from ten to twelve days. The varieties offered below are the most popular and give by far the most satisfactory results, as compared with their cost; the flowers are showy, fragrant and lasting.

Plant among grass or under the trees where nothing else will grow, and you will have a handsome show early in the season.

(If ordered by mail, add 10 cents per dozen for postage.)

Single Varieties.				Double Varieties.	
		Per Doz.	Per 100.		
Incomparable , Perianth yellow, with orange cups, large,	\$0 20	\$1 25		Alba Plene Odorete , double, white, fragrant, good for bedding	\$0 18 \$1 00
Incomparable Stella , yellow cup, white perianth, good forcing variety	20	1 25		Trumpet Varieties.	
Poeticus , the well known poets' Narcissus, white, with yellow cups, bordered scarlet, fragrant, hardy, late	10	50		Bulbocodium , (hoop petticoat), rich golden yellow	15 1 00
Poeticus Ornatus , the same as above, only larger and earlier, good forcer	20	1 25		Horsfieldi , large yellow trumpet, pure white perianth, each, 10 cents	75 5 00
				Princeps , fine forcing variety, large yellow trumpet	30 2 00
				Trumpet Major , large yellow trumpet, early	30 2 00
				Van Sion , double yellow (Daffodils)	25 2 00

POLYANTHUS OR BUNCH-FLOWERED NARCISSUS.

The Polyanthus varieties of Narcissus are not only beautiful but deliciously sweet-scented and of the easiest culture; very free-flowering and suitable for window, garden or conservatory, continuing long in bloom. They bear tall spikes of bloom, bearing from six to twenty-four flowers each. The pure white petals and gold cups of some varieties, the yellow with deep orange of others, and the self whites and yellows, render them great favorites. Mixed varieties, 3 cents each, 25 cents per dozen.

(If desired by mail, add for postage at the rate of 12 cents per dozen.)

CHINESE SACRED OR ORIENTAL LILY.

(A VARIETY OF POLYANTHUS NARCISSUS.)

The "Shui Sin Far", or Water Fairy Flower, Joss Flower, or Flower of the Gods, etc., as it is called by the Celestials, is a variety of Narcissus, bearing in lavish profusion, chaste flowers of silvery white, with golden yellow cups; they are of exquisite beauty and entrancing perfume. It is grown by the Chinese according to their ancient custom, to herald the advent of their new year, and as a symbol of good luck. The bulbs are grown by a method known only to themselves, whereby they attain great size and vitality, ensuring luxuriant growth and immense spikes of flowers; in fact, the incredibly short time required to bring the bulbs into bloom (four to six weeks after planting), is one of the wonders of nature. "You can almost see them grow," succeeding everywhere and with everybody. They do well in pots of earth, but are more novel and beautiful grown in shallow bowls of water, with enough fancy pebbles to prevent them from toppling over when in bloom. A dozen bulbs, started at intervals, will give a succession of flowers throughout the winter.



VARIOUS TYPES OF NARCISSUS.



TRUMPET MAJOR.



DOUBLE DAFFODILS.



POETICUS.

Culture of Chinese Sacred or Oriental Lily.

As the plant is partially aquatic in its nature, plenty of water is necessary. If it be grown in soil it should be light and sandy. After the bulbs have been planted, they should be kept in the closet, or in a cool dark place for a few days to induce a growth of roots before the tops start; afterward they should be placed in a sunny window.

They succeed in any ordinary living room, yet it is necessary to keep them away from gas, as it causes the flowers to blast. By making a small incision with a knife across the top of the bulb in two or three places, from one-half to one inch from the center, it causes a fresh lot of leaves and flower stalks to start from those points. The cutting, however, must be carefully done, so as not to injure the bulb, the skin simply wants to be cut to liberate the leaves. We are importing, direct from China, bulbs of the true, large flowering variety. 10 cents each. By mail, 12 cents each.

LILIES.

(If ordered by mail, add 2 cents each for postage.)

Per 100. Each		Per 100. Each	
Auratum , (the finest Japanese variety) strong bulbs.....	\$.. \$0 10	Tenuifolium , scarlet (Siberian Lily)	25
Auratum , large size.....	12	Tigrinum , orange tiger lily.....	6 00 8
Callas , medium size.....	15	Harrisii , first size.....	4 00 5
Callas , large.....	25	Harrisii , second size.....	6 00 8
Calla , Little Gem.....	20	Harrisii , very large size.....	12 00 15
Canadense , orange, with black spots.....	10	Lily Valley , (ready in Nov.) first-class pips.....	1 50 20
Candidum , white.....	4 50	Lily Valley , Russian.....	1 60 20
Excelsum , Naukeen color, fine.....	30	Lily Valley , cold storage, ready to force at any time after Sept. 10th.....	1 75 25
Speciosum Album , purest white.....	12	Longiflorum , first size.....	4 00 5
Speciosum Rubrum , red spotted.....	12	Longiflorum , second size.....	7 00 10
Speciosum Roseum , pink spotted.....	12	Longiflorum , very large size.....	12 00 15

CROCUS.

The well known little flower is the earliest to bloom, pushing their showy flowers through as soon as the snow is off the ground. Planted in clumps or masses they are very showy. A very pleasant effect is produced by planting among the grass on the lawn, where they will produce a brightly colored carpet in early spring. They are quite hardy and increase from year to year. They flower easily in the house with the same treatment as the Hyacinth. If desired by mail, add 3 cents per dozen.

	Per doz.	Per 100		Per doz.	Per 100
White	\$0 10	\$0 40	Blue	\$0 10	\$0 40
Striped and Variegated	10	40	Large Yellow	10	40

MISCELLANEOUS BULBS.

(If desired by mail, postage must be added.)

	Per doz.	Per 100		Per doz.	Per 100
Allium Neapolitanum , white.....	\$0 25	\$1 50	Iris Germanica	\$0 25	\$2 00
Anemone Fulgens , scarlet.....	40	3 00	Iris English , (Angelica) mixed.....	25	2 00
Anemone , double varieties, mixed.....	25	1 50	Iris Spanish , (Hispanica) mixed.....	25	2 00
Anemone , single varieties, mixed.....	20	1 00	Ixas , for winter flowering.....	40
Crown Imperials , 10 cts. each.....	Jonquils , double.....	60
Freesia Refracta Alba , extra large.....	35	1 50	Jonquils , single.....	25
Freesia Refracta Alba , first quality.....	25	80	Ornithogalum Arabicum	50	3 00
Fritillaria Meleggris , mixed varieties.....	40	Oxalis , mixed varieties.....	15	1 00
Gladiolus , the Bride, for early forcing.....	25	1 50	Ranunculus , Persian, mixed.....	15	1 00
Iris Kaempferi , mixed.....	40	3 00	Ranunculus , French, mixed.....	15	1 00
			Scilli Siberica , blue.....	15	1 00
			Snow Drops , double.....	15	1 20
			Snow Drops , single.....	10	75
			Sparaxis , not hardy, mixed varieties.....	30
			Spirea Japonica , 25 cts. each.....

BRUGMANSIA ARBOREA.

(Giant Ghost Flower, Angel's Trumpet or Wedding Bell.)

It blooms at all seasons of the year, in a window or conservatory, or it can be cultivated in the garden during summer and wintered in a cellar or pit.

Double flowers (we have double only).....each, 50c



BRUGMANSIA ARBOREA.



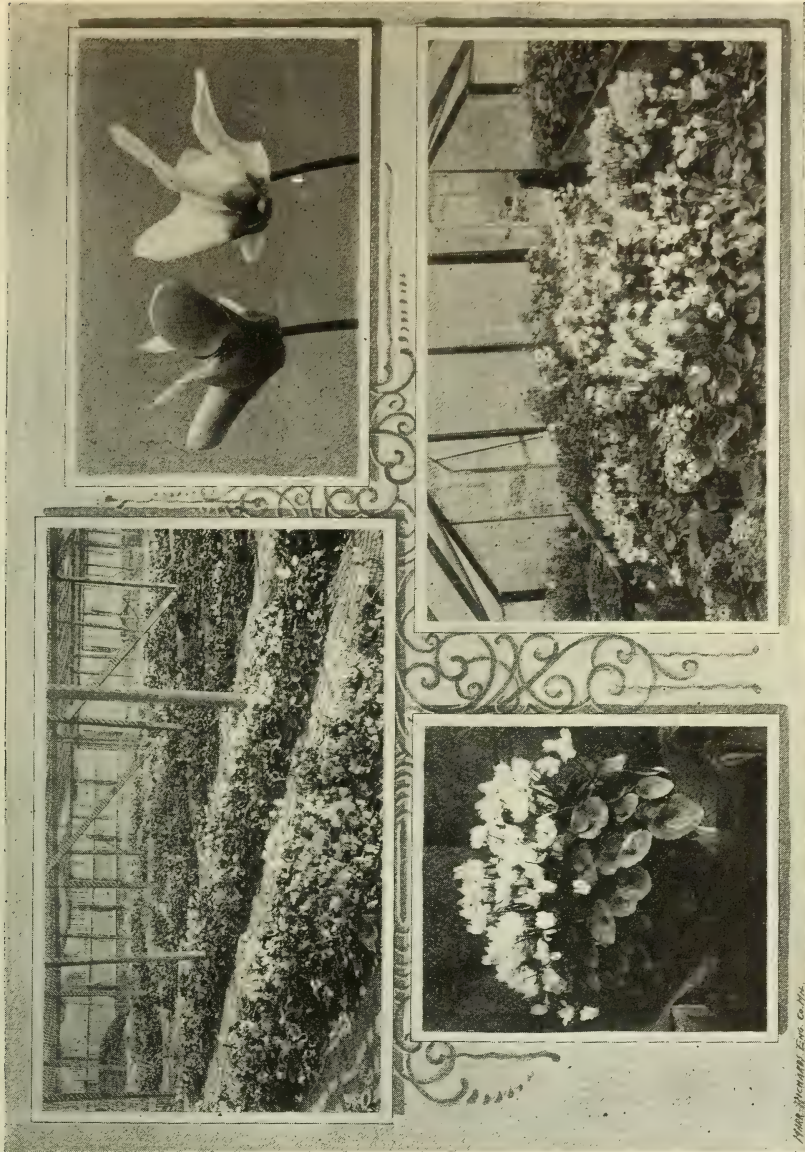
EASTER OR HARKISH LILY.



CROWN IMPERIAL.



CYPERUS.



Cyclamen.

Charming plants for house decoration, with beautiful foliage and rich colored flowers. Universal favorites for winter and spring blooming.

The Giganteum varieties have large leaves and stout flower stalks, throwing the flowers well above the foliage. Our cut represents the fields in California, where the seed is grown; the inside of a house where pot plants are cultivated; specimen flowers $\frac{1}{4}$ natural size; and a specimen plant with 140 large flowers. We shall have these plants in bloom after Nov. 1st, varying in size and price from 50c to \$3.00 each. Bulbs, for starting in September, 25 to 50c each.

HARDY PERPETUAL AND
CLIMBING

Roses.

All the Popular and Leading Varieties.

For prices and description see our Spring Catalogue. Sent on application.

HARDY CLIMBING

Vines.

Clematises, Wistarias, Ampelopses, Honeysuckles, and others.

For prices and descriptions see our Spring Catalogue. Sent on application.

HARDY PERENNIAL

Plants.

Harbaceous Paeonies, Hardy Phloxes, and others.

For prices and descriptions see our Spring Catalogue. Sent on application.

HARDY FLOWERING

Shrubs

AND ORNAMENTAL Trees.

Almond, Barberry, Currant, Forsythia, Hydrangea, Lilac, Spirea, and other Shrubs.

Beautiful Cut-Leaved and Weeping Trees, others with colored and variegated foliage and various kinds of popular ornamental and shade trees.

For prices and descriptions see our Spring Catalogue. Sent on application.



Sword Fern.



PHENIX RECLINATA.



PHENIX RUPICOLA.



KENTIA FORSTERIANA.



LATANIA BORBONICA.



FICUS ELASTICA.

Decorative Plants.

PALMS.

This section includes the grandest and most decorative plants of the entire vegetable kingdom. While in their native habitat they grow to an immense height, and live for many years; most species early take on their characteristic leaves and habit of growth, and thus are beautiful when a foot high, as well as when twenty or forty times that height. This fact makes them especially useful for all decorative purposes. Small Palms are much used for vases and jardinières in parlor, sittingroom or hall, and also for table decoration at dinner parties, etc. Many species will stand a considerable amount of exposure and rough usage, and the dust, smoke and changes of temperature of the ordinary living room do not have a deleterious effect upon them. Many varieties are sturdy enough to allow of their being placed on the lawn in summer, if the situation is not exposed to strong, cold winds. Full particulars as to size, etc., will be given on application, when not already quoted.

Areca Lutescens.

One of the most graceful palms and of moderately quick growth. It is very decorative in all its stages of development; the stems are quite yellow, the foliage is finer than any other variety, and it is the most inclined to branch, but it will not stand a cool temperature. 3 in. pots, 12 to 15 in. high, 50 cents; 6 in. pots, 20 to 24 in. high, \$3.00 and upwards.

Cocos Weddeliana.

This beautiful palm is unquestionably the most elegant and graceful in cultivation. The finely cut leaves are recurved with exquisite grace. It is admirably adapted for the centers of jardinières and fern dishes, as it retains its freshness for a long time, while for dinner table decoration it is unexcelled. Small plants, 3 inch pots, 60 cents each.

Kentia Belmoreana.

A genus of Palms allied to *Areca*, with gracefully recurved fanshaped leaves. The *Kentias* will all withstand considerable rough usage, and are generally considered the best plants for any purposes. 3 in. pots, 75 cents; 4 in. pots, 5 or 6 leaves, 12 to 15 in. high, \$1.50; 5 in pots, 5 or 6 leaves, 18 to 20 in. high, \$2.00; 6 in. pots, 6 leaves, 24 to 30 in. high, \$4.00 to \$6.00; 8 in. pots, 7 to 8 leaves, 42 in. high, \$15.00; larger ones up to \$40.00.

Kentia Forsteriana.

One of the finest of the *Kentias*, with graceful bright green foliage. 3 in. pots, 4 to 5 leaves, 12 to 15 in. high, 50 cents; 4 in. pots, 4 to 5 leaves, 15 to 18 in. high, \$1.00; 5 in. pots, 5 to 6 leaves, 20 to 30 in high, \$2.00 to \$3.00; 6 in. pots, 5 to 6 leaves, 30 to 36 in. high, \$3.50 to \$5.00; 8 in pots, 4 to 5 feet high, \$10.00 to \$15.00; larger ones up to \$30.00.

Phoenix Rupicola.

One of the most graceful among the smaller palms. Hardy. 2½ in. pots, 50 cents.



ARECA LUTESCENS.



DRACÆNA INDIVISA.



CYCUS REVOLUTA.



SWORD FERN.

PALMS—Continued.**Phoenix Reclinata.**

Beautiful reclinate foliage. A graceful and exceedingly ornamental palm. 4 in. pots, 12 in high, 50 cents; 5 in. pots, 15 to 18 in high, \$1.50; 6 in. pots, 20 to 24 in. high, \$2.00 to \$2.50.

Latania Borbonica.

The well known favorite Fan Palm; beautiful in all stages of growth. No plant is more easily grown and none more tenacious of life. Adapted to all decorative purposes, within or without doors. Appreciated by all the plant loving community. 4 in. pots, 4 to 5 leaves, each 60 cents; 5 in. pots, 4 to 5 leaves, \$1.50 to \$2.00; 7 in. pots, 6 leaves, \$3.00 to \$4.00; 8 in. pots, 7 leaves, \$5.00; 9 in. pots, \$8.00 to \$10.00; larger sizes to \$30.00.

Cycus Revoluata.

(SAGO PALM)

These are magnificent plants of noble and majestic habit and most impressive. Valuable for lawn and house use. The heavy, glossy deep green fronds resist alike gas, dust and cold. Small plants, \$1.00; larger sizes to \$35.00.

ARAUCARIA EXCELSA.

(NORFOLK ISLAND PINE.)

One of the most serviceable plants for house decoration, well adapted to house culture; attractive and graceful. Fine plants, 8 to 10 in. high, \$1.25; 18 to 20 in high, \$2.50 to \$3.00.

DRACAENA INDIVISA.

Very long graceful green foliage. Fine plants, 4 and 5 in pots, 60 cents to \$1.00; larger, \$2.00 to \$3.00.

CYPERUS ALTENIFOLIUS.

(UMBRELLA PLANT.)

This well known plant is still as popular as ever. 25, 35 and 50 cents, according to size.

SWAINSONIA GALEGIFOLIA ALBA.

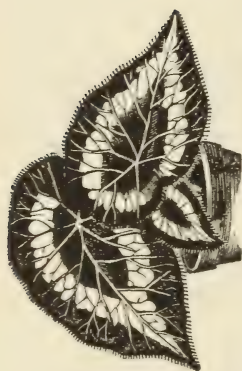
A most desirable ever-blooming plant, with pure white flowers, produced in sprays of from 12 to 20 flowers each, the individual blooms resembling a sweet pea; easy of culture, growing in almost any light position; very fragrant. Small plants, 15 cents; larger plants, \$1.50.

BEGONIAS.

We have contracted for several sets of these beautiful house plants and can promise fine specimens of *Manicata*, *Metallica*, *Semperflorens* *Rosea*, *Rubra*, *Rex*, *Rex* varieties and others. 35 cents to \$2.00, as per variety and size.



RUBRA.



REX.



METALLICA.

COPYRIGHTED BY A. B. ANK 1857



SEMPERFLORENS GIGANTIA ROSEA.



PTERIS ARGYREA.

Ferns.

No collection of plants is complete without Ferns. The selection we offer embraces the best varieties of this beautiful class of plants, whose diversity and gracefulness of foliage make them peculiarly fitted to combine with other fine plants and flowers.

The popularity of Ferns have increased wonderfully in the past few years, and they are now indispensable in all choice floral decorations, and are especially valued for ferneries for room and table decoration.

Where there is moisture and shade most of the varieties succeed well when planted out of doors; they delight in a light soil mixed with sand and peat or leaf mould; good drainage must be provided, as stagnant water is fatal to success.

We grow a large supply and can furnish the leading kinds in quantity. We keep about twenty varieties for table decoration in three-inch pots, and charge a uniform price of 20 cents for these plants, also larger plants from 50 cents to \$1.00 each.

The Sword Fern is the hardiest of all.

The Adiantums (Maiden-Hair Ferns) are the finest and most delicate foliage. We have five or six varieties of this.

The Pteris varieties (about 15 kinds) are a larger, bolder foliage, and many varieties; are variegated in white, black, brown or silver color. Several kinds make elegant specimen plants. There are many other varieties of which we carry a good assortment.



Chrysanthemums.

We have a large stock of good plants, the varieties are the very best for general culture. They are now in six to eight inch pots, looking well. We sell them during September at 50 cents, after October 1st they will advance in price.

Miscellaneous.

FERTILIZERS.

(By mail, 15 cents per pound extra)

Pure Bone Meal.—For fertilizing the lawn and flower beds, small lots, 5 cents per pound; 25 pounds, 75 cents; 50 pounds, \$1.25; 100 pounds, 2.25; 200 pounds and over at 2 cents per pound.

Peruvian Guano.—A standard fertilizer, 10 cents per pound; 5 pounds for 40 cents; 10 pounds for 70 cents; 50 pounds, \$2.75.

Albert's Highly Concentrated Horticultural Manure.—This special brand is prepared with the object of supplying the essential elements of plant nutrition (Nitrogen, Potash, and Phosphoric Acid) in the proportion in which they are removed by the class of plants for which it is recommended. It contains these elements combined with each other in a concentrated form hitherto unknown in this country, and is, of necessity, practically free from those useless matters (notably Gypsum, Hydrochloric and Sulphuric Acids, and Sand) that enter so largely into the composition of Commercial Fertilizers which have hitherto been sold in the United States.

This Manure is guaranteed to contain: Twelve per cent. Nitrogen; thirteen per cent. available Phosphoric acid; twenty-one per cent. Potash.

The so-called "High Grade" goods hitherto offered have not contained more than one-third of this amount of plant food in a given weight. The complete availability of Albert's Horticultural Manure enables the grower of plants to force and mature them as he desires.

MODES OF APPLICATION.

TO LAWNS—The extreme undesirability of using stable manure for lawns, on account of its offensive odor, and the poor results secured, makes it absolutely necessary that an artificial manure be used for this purpose. Treat the lawn two or three times during the summer with a solution of Albert's Manure at the rate of one ounce to a gallon of water, or by broadcasting at the rate of one ounce per square yard, and the results secured will be more satisfactory.

TO GARDENS, FLOWER BEDS, ETC.—Horticultural Manure at the rate of one ounce per square yard should be dug in about three inches deep at any time from April to July.

TO POT PLANTS.—Dissolve a heaped teaspoonful in one gallon of water, and water the soil (not the plant) plentifully once a week if the plant is one of rapid growth. Slow-growing plants, such as palms, should be treated only once a month. In all cases care must be taken that the solution does not come in contact with the leaves.

TO PLANTS IN HOUSES AND LIVING ROOMS.—These plants, owing to the confined surroundings which retard their growth, are able to make use of only small amounts of plant food, consequently manure in proportion of one teaspoonful to two gallons of water should be used for them and applied only once a month. This, however, does not apply to plants in greenhouses and conservatories, as these are usually kept under the best possible conditions for their fullest development.

WHEN POTTING PLANTS.—If Albert's Horticultural Manure is mixed with earth, when potting plants, in the proportion of one tablespoonful to one gallon of earth, the result will be quickly manifested in the rapidity with which the plants gain strength, and in the bright, healthy appearance of the foliage.

1 pound cans, 25 cents; 2 pound cans, 50 cents; 5 pound cans, \$1.00; 10 pounds, \$1.75; 25 pound sacks, \$3.50.

Excelsior Fertilizer.—Odorless and effective. Directions on each package. Small package, 10 cents; 3 for 25 cents.

INSECT DESTROYERS.

THESE CANNOT BE SENT BY MAIL.

Hammond's Celebrated Slug Shot.—Guaranteed to destroy all leaf-eating insects. It gives satisfaction. 5 and 10 pound packages, 5 cents per pound; 25 to 50 pounds, 4 cents per pound.

Fir-Tree Oil.—Soluble insecticide, effectually destroying all kinds of pests to which plants are subject. Equally effective on animals, and is harmless to the skin and hands when used as a wash. Full directions with each bottle. Per quart can, \$1.50; pint, \$1.00; one-half pint, 60 cents; small bottle, 25 cents.

Whale-Oil Soap.—One of the most effective and cheapest remedies to destroy slugs, worms, and other insects on trees, shrubs, garden and house plants. As a general rule, seven gallons of water to one pound of soap is used for applying to foliage. Per pound box, 25 cents; 2 pounds, 50 cents.

Tobacco Soap.—For washing and syringing plants, trees, etc., a valuable preparation. Per $\frac{1}{2}$ pound, 25 cents.

CLYCLONE POWDER GUNS.

For applying insect or other powders. Two sizes, 5 and 20 cents each.


SCOLLAY SPRINKLERS.

Two sizes. Large, \$1.00 each; smaller, 75 cents; large angle necked, \$1.00.

DIBBERS.

Steel pointed; for setting out plants or bulbs. Very useful. 50 cents each. If ordered sent by mail, 60 cents.

TROWELS.

 **American**—5 inches, 10 cents each; 6 inches, 15 cents each.
Finest Steel—6 inches, 50 cents each.

CANE STAKES.

They are the most durable of all and light in both weight and appearance. They average 6 feet long. \$1 per 100; 15 cents per dozen.

NEW PLANT TUB.

Price less than half of any other tub on the market. Those having large plants should not be without it. It supplies a long felt want for something neat, durable and cheap. It has steel wire hoops (three times as strong as the flat iron hoop) welded joints (not riveted as in common ware). These wire hoops are at intervals indented and pressed into the wood, these indentations in hoops, besides preventing them from falling under all circumstances, act also as a spring, expanding or contracting always in accord with the condition of the wood in the tub, so that bursting is impossible.

No. 1, width top 19 $\frac{1}{2}$ in., depth 14 $\frac{1}{2}$ in. . . \$1 50
No. 2, width top 17 in., depth 14 in. . . 1 25

No. 3, width top 15 in., depth 12 $\frac{1}{2}$ in. . . \$1 00
No. 4, width top 14 in., depth 12 in. . . 75

STANDARD FLOWER POTS.

These pots are all full inside measurement, height and width, which makes them at least one size larger than by the old way of measuring.

Per doz.				Per doz.			
Height and width inside, 2 in.....			\$0 12	Height and width inside, 7 in.....			\$1 00
" " " 2½ "			18	" " " 8 "			1 30
" " " 3 "			20	" " " 9 "			2 50
" " " 3½ "			25	" " " 10 "			3 00
" " " 4 "			30	" " " 12 "			5 00
" " " 5 "			40	" " " 15 "			7 00
" " " 6 "			60				

POT STANDS OR SAUCERS.

4 inches.....	per doz., \$0 25	9 inches.....	per doz., \$0 90
5 ".....	" 30	10 ".....	" 1 10
6 ".....	" 40	12 ".....	" 1 65
7 ".....	" 55	15 ".....	" 1 90
8 ".....	" 65		

SQUARE EARTHENWARE SEED PANS.

6x6 inches.....	each, \$0 25	10x10 inches.....	each, \$0 35
8x7 ".....	" 30	12x12 ".....	" 45

PAINTED POT LABELS.

4 inches.....	per 100, \$0 12; per 1000, \$1 00	6 inches.....	per 100, \$0 25; per 1000, \$1 50
5 ".....	" 20; " 1 25	8 ".....	" 35; " 3 00

WOODEN POT COVERS.

For small pots, adjustable, neat and attractive.

Each.....	\$0 10
-----------	--------

GRAFTING WAX.

The real Connecticut Yankee article; put up in ¼, ½ and 1 pound packages. It can be relied on as the best in the market.

¼ pound.....	\$0 10	5 pounds.....	\$1 50
½ ".....	20	10 ".....	2 50
1 ".....	35	Single pound, prepaid.....	50

TINFOIL.

Per pound.....	\$0 20
----------------	--------

FLORIDA MOSS.

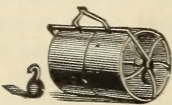
Per pound.....	\$0 25
----------------	--------

SPHAGNUM MOSS.

Per bale.....	\$2 00; per ½ bale, \$1 25; per peck, \$0 15
---------------	--



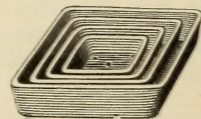
Photographic Reproduction of an Actual Experiment with Albert's Horticultural Manure.



LAWN ROLLER.



STANDARD.



SQUARE SEED PANS.

INDEX.

Prices on Floral Designs.

Baskets, Bouquets, Wedding Decorations.....	16, 18, 21,	24
Baskets, Windmills, Curtain of Smilax, Plant Decorations		12
Basket of Roses.....		19
Bunch of Bermuda Lilies.....		2
Bunch of Roses: Pillow; Cycas Leaves, Roses and Ribbon Sheaf.....		13
Bunch of Valley.....		22
Butterfly.....		23
Chariot of Doves.....		11
Crescent.....		25
Crescent Wreath on Base.....		2
Crescent Wreaths; Stars and Panels.....	8,	25
Cut Flowers.....	1,	7
Cycas Wreath.....		17
Floral Arrangements for Funeral Occasions.....	2 to	13
Floral Arrangements for Miscellaneous Occasions.....	3, 4, 12, 20,	25
Floral Favors and Floral Desk.....		18
Floral Harps.....		4
Floral Piano.....		17
Floral Screens, Double Wreaths and Links.....		14
Gates Ajar; Shields; Scrolls; Broken Column.....		9
Lily Valley Bouquets; Marriage Bells; Table Center Piece.....		12
Orchids.....		20
Palm Leaf Wreath.....		17
Shower Bouquets.....		21
Square and Compass; Royal Arcanium; Urns and Vases.....		9
Star; Standing Crescent and Star.....		13
Stairway Decorations.....		16
Vase of Lilies.....		15
Wreath on Easel.....		3
Wreaths, Crosses and Anchors.....		5
Wreath of Wheat, Cycas Leaves, Doves and Ribbon.....		10
Wedding Bouquets.....		21
Wedding and Reception Decorations.....	14, 16,	24

Bulbs.

Cyclamen.....		35
Chrysanthemum.....		44
Hyacinths.....	28,	29
Lilies and Miscellaneous Bulbs.....		33
Narcissus and Chinese Sacred Lily.....	31,	33
Tulips.....		30

Miscellaneous.

Decorations.....	14, 16,	24
Doves.....		11
Fern Plants.....	37, 40,	43
Fertilizers.....		45
Flower Pots, Pans, Etc.....		47
Insect Destroyers, Sprinklers, Plant Tubs.....		46
Palms and Decorative Plants.....	39,	41
Roses, Vines, Plants, Shrubs.....		36
Swainsonias, Begonia Plants.....	41,	42

FLOWERS.



A Bunch of Roses.

WHITNALL.