

# **Historic, Archive Document**

Do not assume content reflects current scientific knowledge, policies, or practices.



62.19

1897

Price list,

# A. W. SMITH,

## GROWER OF SPECIAL SEED.

Largest possible yield from seed furnished as well as conscientious guarding of same from other Seedsmen guaranteed.

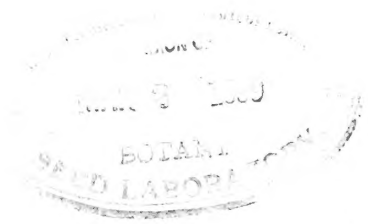
**ORIGINATOR OF**

- Henderson's Green and Gold Watermelon
- A. W. Smith's Ruby Gold Watermelon
- A. W. Smith's Rosy Cream Watermelon
- Smith's Hybrid Moonflowers
- Smith's Northern Light Moonflowers

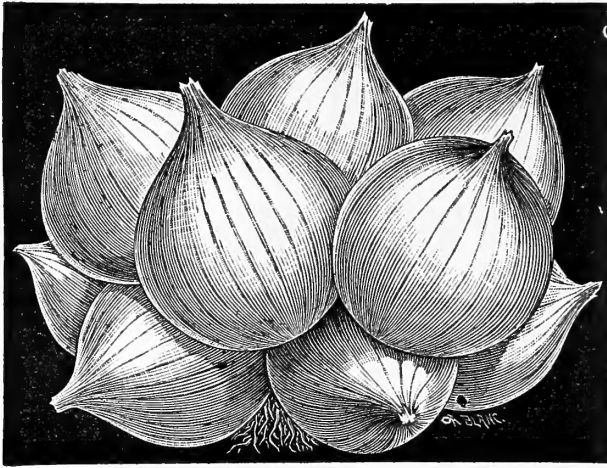
**LARGEST GROWER IN THE UNITED STATES**

**IF NOT THE WORLD. OF**  
Moon Flower, Ipomea Nocti-Flora  
Evening Glory.

*Americus, Ga.* \_\_\_\_\_ *189*\_\_\_\_\_



# White Multiplier Onion Sets.



Each set multiplies, making 10 to 30 small Onions. They are early, stand cold well, with us growing out all winter and are the only Onions that will go through our warm summers without rotting: Price of Sets

to be delivered at Depot here after August 1st, will be \$ ..... per bushel.

---



---

## DATURA CORNUCOPIA VARIEGATA

\$.....per pound.

## DATURA GOLDEN QUEEN. NEW.

\$.....per pound.

## DATURA EBONY AND GOLD. NEW.

\$.....per pound.

---



---

## IPOMEA SETOSA.

(BRAZILLIAN MORNING GLORY.) \$.....per pound.

---



---

## IPOMEA CHRYSANTHA. NEW.

Large Yellow Blooms. Seed very large.

Stock limited. Enter orders early to secure any. \_\_\_\_\_

\$.....

# Ricinus Zanzibariensis

\$..... per pound.

## RICINUS MACULATUS

\$..... per pound.

## RICINUS CINNERASCENS

\$..... per pound.

## RICINUS NIGER

\$..... per pound.

---

---

## IPOMEA PURPUREA, FLORE PLENO

(DOUBLE MORNING GLORY) \$..... per pound.

---

---

## MAMMOTH COSMOS

\$..... per pound.

---

---

## Imperial Japanese Morning Glory.

FRINGED AND RUFFLED.

The best strains.

Single - - - - - \$..... per pound.

Double - - - - - \$..... per pound.

---

---

## CENTROSEMA GRANDIFLORA

"LOOK AT ME" \$..... per pound.

# A. W. SMITH'S

## HYBRID MOONFLOWERS

....OR....

### IPOMEA NOCTIFLORA.

---

The print on the opposite page is from photograph of my Hybrid Moonflowers, originating from cross of true White-Seeded and the "Ipomea Noctileuca" brought into prominence by Messrs. Henderson & Co. as the "Moonflower." Seed from first cross have continued to be planted and fertilized by White-Seeded, until now the seeds of the Hybrids are of many varying shades; some being black, some brown, some parti-colored and some creamy white. The vines and foliage vary almost as much in color and appearance of vine proper as the seeds the foliage differing in shape, size and texture, whilst the blooms run all the sizes from five to seven inches in diameter and present four or five distinct shapes.

The Hybrids are in **full bloom 30 to 45 days** before the White-Seeded, making it a **decided acquisition** for growing far North. Parties write me from Massachusetts that they secured blooms from my Hybrids, whilst never having been able to procure blooms from White-Seeded.

The vines shown in photograph were planted April 15th, and photograph taken August 16th, when there had been only one rain, June 10-14th, until photograph was taken. This drouth accounts for lack of blooms.

The two vines on left, stopped, simply because there was no more wire to climb on.

These plants were in stiff red clay and were tramped around daily, as the path led by them, and therefore were not "forced specimens," either as to foliage, blooms or growth. Indeed, I had far handsomer vines generally in field crop.

Persons purchasing Smith Hybrid Moonflower or Ipomea may get plants producing four or five different shaped blooms and blooms from five to seven inches in diameter, a size never attained by White-Seeded. The White-Seeded I also grow extensively, and in Southern and Middle States it is a splendid thing, but it is too late North, unless started in hot-beds. Indeed, both varieties at the North should be started in hot-beds to secure full flowering and have them "**Glories**" as we term them.

The seed should be cut or scraped at the edge, running from eye to point of seed, or the point of seed cut off, soaked in luke-warm water **one night only**, and then planted in **warm, moist soil**, to secure prompt germination. Florists should ask seedsmen for A. W. Smith's Hybrid or Cross Seed and take no others.

Price of Smith's Hybrid will be \$4.50 per pound for 5 lbs. or more, and \$5 per pound for less than five pound lots.

White Seed will be \$ . . . . . per pound for five pound lots or more and \$ . . . . . per pound for less than five pounds. Both vines will grow over 50 feet and produces white blooms.

# NEW WHITE EGG PLANT

CALLED BY SOME  
+ THE PEARL +



This cut from a Photo showing plant with 13 Eggs, same being one of three crops, indicates how prolific this variety is. When you know that in all edible qualities it is infinitely superior to any other variety, being more tender and delicate than any

other you can understand that it has come to stay and that demand must increase yearly. Price \$2.50 per pound. Electro furnished with all orders for ten pounds or more of seed. For less than ten pound lots price of Electro will be \$1.50.

---

## EUPHORBIA HETEROPHYLLA

i. e. "PAINTED LEAF"

"FIRE ON MOUNTAIN"

"MEXICAN FIRE PLANT."

---

In cut the light shows Green, and the dark shows Red, as if put on with a brush.

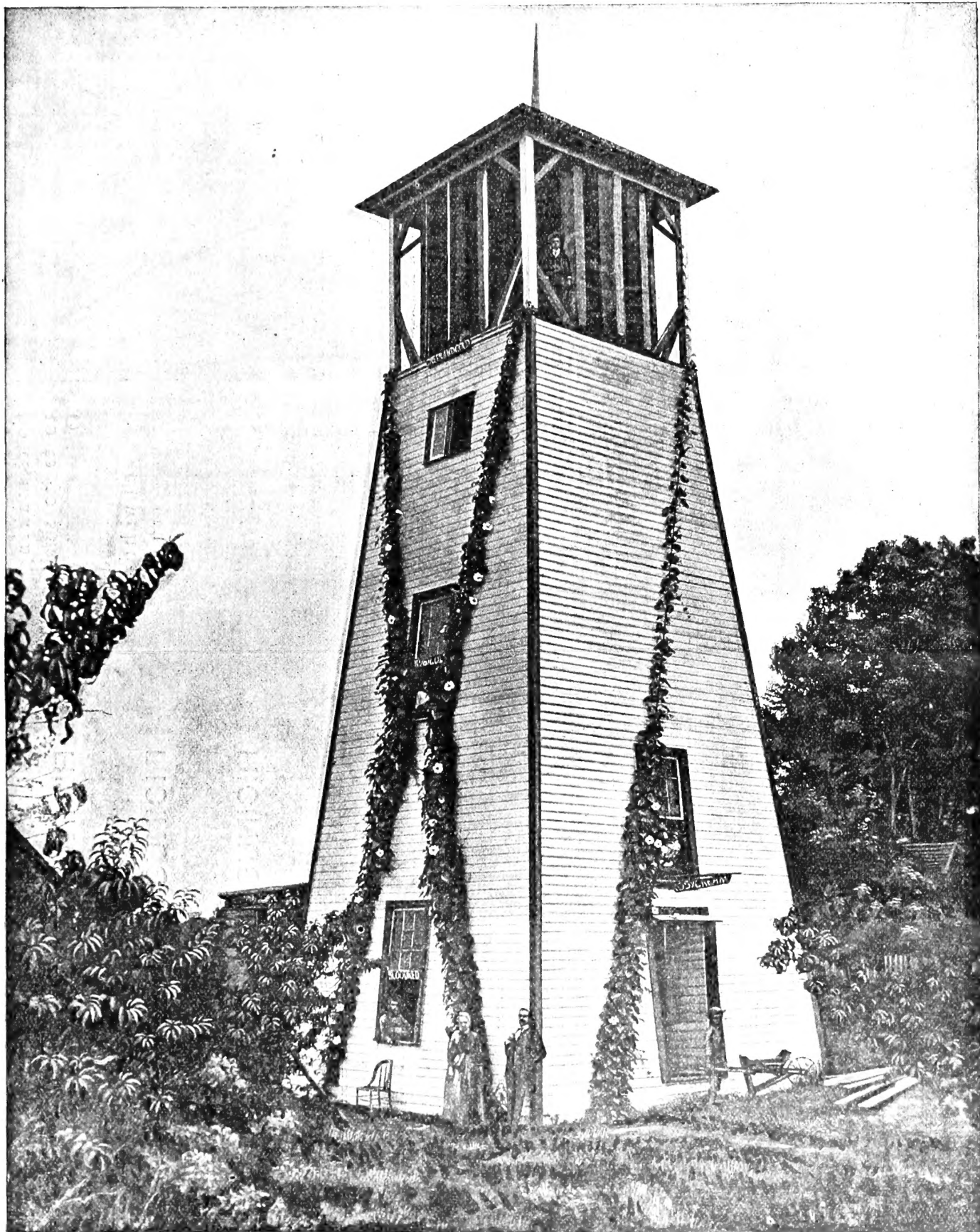
These seed about size of collard seed, to be delivered in Fall.

Price, \$.....per pound.









VIEW OF HYBRID MOONFLOWERS AS GROWN BY A. W. SMITH, AMERICUS, GA.  
Height to Base of Wheel 42 Feet, to Top of Wheel 52 Feet. Seed Planted, April 15th,  
Photograph taken August 16th.

# New Ipomea, Northern Light.

---

Cross between Smith's Hybrid and Ipomea Setosa.

---

This new plant, has blooms some two inches in diameter, of Pink Lavender color, which come earlier in the season than any of the Ipomeas which open in the evening. The foliage is large and handsome and remarkable in its drought, resisting qualities, the plant remaining green and fresh when others are yellow and withered from lack of moisture. The plants are the most rampant growers from time of germination, exceeding any other that I have grown.

The stems of the vines are covered with thousands of hooked, greenish white, projecting points, as thickly placed as the red hairy spines on Ipomea Setosa.

As a screen there is no plant which will cover more space in same time and it will grow 50 feet or more.

---

---

## New Ipomea "Hesperius."

---

Pure white and exceedingly fragrant, blooms about 6 to 8 inches in diameter, Growth of vine 30 feet. Opens about 5 p. m. and closes about 10 a. m. Seed yellowish and smaller than white seed of Moonflowers.

Supply of this very limited.      \$.....per pound.