

## **Historic, archived document**

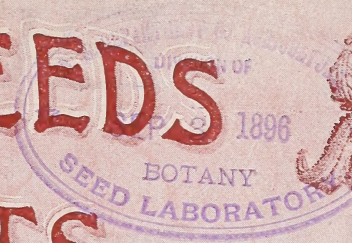
Do not assume content reflects current scientific knowledge, policies, or practices.



Pitcher & Manda.

62.57

# BULBS, SEEDS AND PLANTS



FOR

# FALL PLANTING



PITCHER AND  
MANDA  
United States Nurseries  
Short Hills, N.J.

# 1896

# BULBS.

Autumn, 1896.

## The Purpose of This Catalogue:

This, our Autumn Catalogue of Bulbs for House Culture and Bedding, we have endeavored to make especially interesting, both as to correct descriptions of varieties, and simple, comprehensive cultural directions.

We will not waste the valuable time of our customers with lengthy introductions and idle encomiums relative to ourselves and the superior quality of our stock, simply stating that the Bulbs, Seeds, and Plants offered in this catalogue are of the **first-class only**, Bulbs fully matured which will, if directions are followed, produce satisfactory results.

**When Ordering Bulbs**, etc., kindly conform with the following brief rules:

**ALL COMMUNICATIONS** should be addressed direct to the firm, and not to any of the employes. If the special attention of any man in the establishment is desired, if so stated in the letter, it will be referred to him.

**REMITTANCES** may be made either by check, express, or post-office money order, bank draft or money in registered letter. Postage stamps, preferably of the one and two cent denominations, are accepted for small amounts.

**ORDERS** are best made out on the order sheet inclosed in each catalogue. Name and address should be written plainly, and full shipping directions given if there is any preference. Where directions are not given, we send the best and cheapest way. Orders should be sent as early as possible that they may have our best attention.

### PREMIUMS.

With every order we include, free of charge, a valuable premium of Seeds or Bulbs, amounting to about 50 per cent. of order. In every instance, however, we reserve the right to make **OUR OWN SELECTION**. These premiums are not old, dead, or decayed bulbs, but the same first-class quality as sent on regular orders.

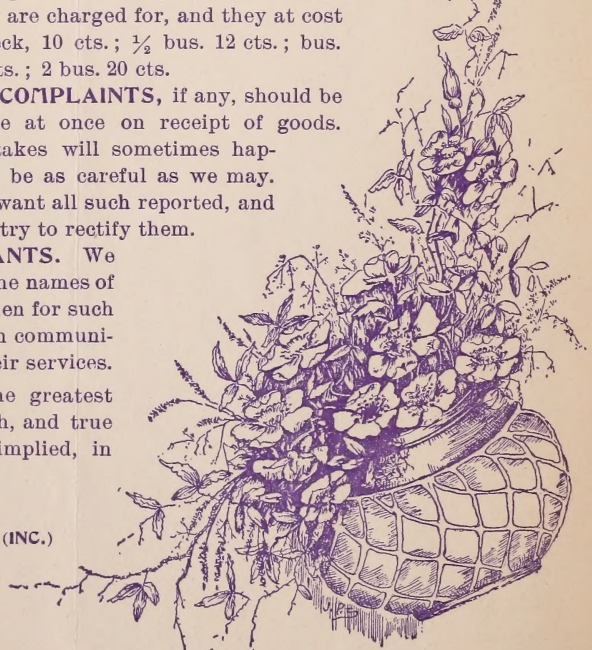
**HEAD GARDENERS AND ASSISTANTS.** We have at all times on our employment register the names of several intelligent, experienced and reliable men for such positions, and will be pleased to put them in communication with any lady or gentleman desiring their services.

**WARRANTY.** While we exercise the greatest care to have all bulbs and seeds pure, fresh, and true to name, we give no warranty, express or implied, in regard to the crop.

**PITCHER & MANDA, (INC.)**

UNITED STATES  
NURSERIES,

SHORT HILLS, NEW JERSEY.







# Collections of Bulbs for Every Purpose at Special, Reduced Prices.

We Prepay the Postage or Expressage on all these Collections.



SINGLE DUTCH HYACINTH.

## P. & M.'s "Window Garden." COLLECTION.

52 Large Bulbs in 37  
Different Varieties, by  
Express, Prepaid,  
for \$1.50.

A continuous bloom from  
Christmas to Easter. Bulb-  
ous plants in many varieties  
and colors. A beautiful  
show of rainbow colors and  
sweet perfume at a small cost.

*No Disappointment Be-  
cause of Inexperience* as  
we furnish such simple cul-  
tural directions with every  
order that any person who  
can read is bound to succeed.



SINGLE TULIP.

## "Daffydowndilly"

### Collection.

A beautiful assortment in  
many varied forms. A  
wide range of varieties  
at special low rates.

Bicolor Horsfieldii, In-  
comparabilis stella alba,  
Poeticus, Bulbocodium,  
Trumpet Major, Alba  
Plena, Odorata, Double  
Incomparable, Orange  
Phoenix, Von Sion, Double  
Roman, Paper White and  
Chinese Sacred  
Narcissus.

13 Varieties, Postpaid,

For 50 cts.



CHINESE NARCISSUS.

Following is an itemized list of the contents of  
this beautiful and unique assortment, showing the  
cost if purchased at catalogued rates and the  
great reduction we have made for the purpose of  
securing new customers.

1 Single Dutch Hyacinth, Robert Steiger, deep crimson .....	\$ .08
1 Single Dutch Hyacinth, Marie, bright blue.....	.08
1 Single Dutch Hyacinth, Alba superbissima, pure white.....	.08
1 Double Dutch Hyacinth.....	.08
1 Single Tulip, Duc van Thol, scarlet.....	.02
1 Single Tulip, Queen Victoria, white.....	.02
1 Single Tulip, Yellow Prince, yellow.....	.03
1 Double Tulip, Duc van Thol, red and yellow.....	.02
1 Double Tulip, La Candeur, white.....	.02
1 Double Tulip, Yellow Rose, yellow.....	.02
1 Narcissus, Paper White.....	.04
1 Narcissus, Double Roman.....	.05
1 Narcissus, Butter and Eggs.....	.03
1 Narcissus, Von Sion.....	.05
1 Narcissus, Incomparable Stella alba.....	.03
1 Narcissus, Poeticus ornatus.....	.03
1 Roman Hyacinth, white.....	.05
1 Roman Hyacinth, blue.....	.05
1 Roman Hyacinth, rose.....	.05
1 Roman Hyacinth, yellow.....	.10
6 Freesia refracta alba.....	.08
6 Sweet-scented Jonquils.....	.10
1 Bermuda Easter Lily.....	.10
1 Chinese Sacred Lily.....	.15
1 White Calla, or Trumpet Lily.....	.15
1 Black Calla.....	.15
1 Arabian Star of Bethlehem.....	.05
2 Crocus, white.....	.02
2 Crocus, blue.....	.02
2 Crocus, purple.....	.02
2 Crocus, striped.....	.02
2 Crocus, yellow.....	.02
1 Allium neapolitanum.....	.02
1 Bermuda Buttercup Oxalis.....	.05
1 Persian Ranunculus.....	.03
1 Anemone Fulgens.....	.03
1 Bridal Lily.....	.10

52 Bulbs in 37 Distinct Varieties, at regular rates amount to **\$2.04**

Delivered at your door,  
all charges prepaid, for

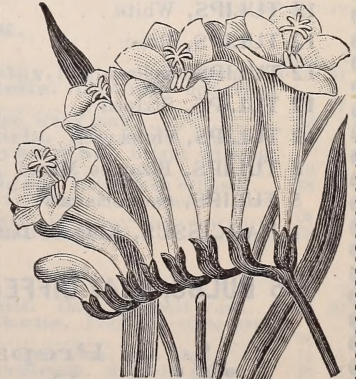
**\$1.50.**

## Banner Collection of Gorgeous Hyacinths.

RED 3 WHITE 3  
BLUE 3

9 Large, Strong Bulbs, 3  
each of 3 colors in 9 dis-  
tinct named varieties,  
including the famous  
SNOWDRIFT HYA-  
CINTH. All correctly  
labeled. Value at regu-  
lar prices, \$1.00.

Postpaid for 75 cts.



FREEZIA REFRACTA ALBA.

# P. & M.'s Cottage Collection

—OF—

## ...HARDY BULBS FOR BEDDING...

**275 Strong Bulbs prepaid by express for \$2 50,**

(VALUE AT REGULAR RATES \$5.16.)

Perfectly Hardy: Will withstand the winter in any part of this country. The Greatest and Most Elaborate Variety Ever Offered at the above Low Price.

....LESS THAN 1c. EACH AND EXPRESSAGE PREPAID AS WELL....

As will be seen from the itemized list given below, these bulbs which are of FIRST QUALITY ONLY, would cost at regular rates if bought separately, \$5.16, thereby affording the customer a saving of \$2.66, and securing a superb collection of bulbs, which will turn his garden into a bower of beauty during the spring months.

1 HYACINTH, Single Light Blue . . . . .	\$0 05	6 NARCISSUS, Incomparable Stella Alba . . . . .	\$0 13
1 HYACINTH, Single Dark Blue . . . . .	05	6 NARCISSUS, Poeticus . . . . .	07
1 HYACINTH, Single Red . . . . .	05	2 NARCISSUS, Trumpet Major . . . . .	08
1 HYACINTH, Single Rose . . . . .	05	2 NARCISSUS, Alba Plena Odorata . . . . .	04
1 HYACINTH, Single Pure White . . . . .	05	2 NARCISSUS, Double Incompar- able . . . . .	06
1 HYACINTH, Single Blush White . . . . .	05	1 NARCISSUS, Orange Phoenix . . . . .	04
1 HYACINTH, Single Yellow . . . . .	05	1 NARCISSUS, Von Sion . . . . .	05
1 HYACINTH, Double Light Blue . . . . .	05	6 JONQUILS, Campernelle . . . . .	10
1 HYACINTH, Double Dark Blue . . . . .	05	12 CROCUS, White . . . . .	10
1 HYACINTH, Double Red . . . . .	05	12 CROCUS, Yellow . . . . .	10
1 HYACINTH, Double Rose . . . . .	05	12 CROCUS, Blue . . . . .	10
1 HYACINTH, Double Pure White . . . . .	05	12 CROCUS, Purple . . . . .	10
1 HYACINTH, Double Blush White . . . . .	05	12 CROCUS, Striped . . . . .	10
1 HYACINTH, Double Yellow . . . . .	05	1 LILIUM LONGIFLORUM . . . . .	10
1 FEATHERED HYACINTH . . . . .	05	1 LILIUM CANDIDUM . . . . .	10
1 GRAPE HYACINTH, . . . . .	03	12 CHIONODOXAS . . . . .	25
12 TULIPS, Scarlet . . . . .	15	2 ERYTHRONIUM DENS CANIS . . . . .	06
12 TULIPS, White . . . . .	20	1 CROWN IMPERIAL . . . . .	10
12 TULIPS, Rose . . . . .	30	25 IRIS, mixed colors . . . . .	25
12 TULIPS, Yellow . . . . .	35	12 RANUNCULUS, mixed varieties . . . . .	20
12 TULIPS, Striped . . . . .	20	24 SCILLA SIBERICA . . . . .	30
12 TULIPS, Violet . . . . .	20	12 SNOW DROPS, mixed varieties . . . . .	15
5 TULIPS, Bizarres Mixed . . . . .	15		
5 TULIPS, Gesneriana . . . . .	15		
1 NARCISSUS, King of Daffodils . . . . .	10		

**275 BULBS, IN 47 DIFFERENT VARIETIES, COST AT REGULAR RATES \$5.16**



Prepaid by  
Express for

**\$2.50.**





# HYACINTHS.



By careful management, Hyacinths may be had in bloom from early winter to the end of May, and their handsome spikes and great variety of colors, combined with their easy culture, recommend them to every one.

**For winter blooming** they may be grown either in soil in pots, or in water. The soil best suited is a mixture of fibrous loam, manure and sand, and the bulb should be planted to only half its depth. The pots should then be buried in the soil or covered with leaves until the roots have made a good growth. Before the ground freezes solid they should be brought into a cool and dark cellar, from which they may be taken a few at a time into the warmth and light of the living room, when they will soon throw out their flower spikes.

**For culture in glasses**, it is best to choose only the single named varieties of strongest growth, to secure the best satisfaction. The water should be soft or rain water, and the bulb supported so that only its base touches the water. By putting a few pieces of charcoal in the water it will not become offensive, or it may be changed occasionally. The bulb should be kept for

about two weeks in a cool and dark room until the roots have made a start, when they can be brought into light and air.

**For open air blooming**, the bulbs should be planted in the autumn in a well-enriched, light garden soil, about 4 inches below the surface of the ground, and about 9 inches apart each way. They will require no further attention, except to cover the beds, after the ground is frozen, with a layer of leaves or evergreen boughs, and even this is unnecessary in most situations.

### Selected Named Single Hyacinths.

The named Hyacinths, especially the single varieties, are of stronger growth, and are especially recommended for pot and glass culture. **SIX SOLD AT DOZEN RATES.**

**We Prepay  
Expressage  
or  
Postage on  
Hyacinths  
at each and  
dozen  
Prices.**

### SINGLE RED AND PINK.

	Each	Doz
<b>Amy.</b> Dark crimson .....	\$0 08	\$0 90
<b>Appelius.</b> Crimson .....	10	1 15
<b>Baron van Thuyll.</b> Fine pink; compact spike .....	10	1 15
<b>Cosmos.</b> Dark rose .....	10	1 15
<b>Elisa.</b> Dark rose, spotted carmine .....	10	1 15
<b>General Pelissier.</b> Deep crimson .....	10	1 15
<b>Gertrude.</b> Rosy pink .....	15	1 40
<b>Gigantea.</b> Large truss, bright rose .....	10	1 15
<b>Jenny Lind.</b> Good spike .....	08	9)
<b>L' Ami du Cœur.</b> Dark red; fine .....	10	1 15

	Each	Doz
<b>Lord Macaulay.</b> Bright crimson-carmine .....	\$0 10	\$1 15
<b>Maria Cornelia.</b> Light rose; fine truss; early .....	20	2 00
<b>Norma.</b> Large, waxy pink .....	12	1 40
<b>Queen Victoria.</b> Deep scarlet .....	15	1 40
<b>Queen of Hyacinths.</b> Bright crimson; fine truss .....	10	1 15
<b>Robert Steiger.</b> Extra-deep crimson .....	08	90
<b>Sultan's Favorite.</b> Pink shaded; good truss .....	08	75
<b>Veronica.</b> Extra dark red .....	08	75

### SINGLE BLUE.

	Each	Doz
<b>Argus.</b> Van blue, white eye; extra .....	\$0 08	\$0 90
<b>Baron van Thuyll.</b> Deep blue; compact truss .....	08	90

	Each	Doz
<b>Bleu Mourant.</b> Dark; compact truss .....	\$0 08	\$0 90
<b>Charles Dickens.</b> Porcelain-blue; large truss .....	08	90
<b>Czar Peter.</b> Handsome; pale blue .....	12	1 40
<b>General Havelock.</b> Splendid purple .....	12	1 40
<b>General Pelissier.</b> Fine porcelain-blue .....	20	2 00
<b>Grand Lilas.</b> Azure-blue; perfect spike .....	20	2 00
<b>Grand Maitre.</b> Deep porcelain-blue .....	08	90

**REMEMBER THAT A PREMIUM ACCOMPANIES EVERY ORDER.**

All Bulbs offered in this catalogue are delivered free of extra charge at single and dozen prices.

## DUTCH HYACINTHS—Continued.

### SINGLE BLUE—Continued.

	Each	Doz
<b>King of the Blues.</b> Extra fine dark blue.....	\$0 12	\$1 40
<b>La Peyrouse.</b> Clear blue..	10	1 15
<b>Leonidas.</b> Fine, clear blue.	08	90
<b>Lord Palmerston.</b> Lilac blue; white eye.....	20	2 00
<b>Marie.</b> Large, bright blue ...	08	90
<b>Orondatus.</b> Extra large, pale blue.....	10	1 15
<b>Porcelain Sceptre.</b> Light blue.....	20	2 00
<b>Regulus.</b> Large bells .....	08	90
<b>Uncle Tom.</b> Fine blackish purple.....	10	1 15
<b>William I.</b> Purplish black.	08	90

◆◆◆◆◆  
 A Tropical  
**ORCHID**  
 is presented  
 with every  
 order  
 amounting  
 to over  
**\$5.00.**  
 ◆◆◆◆◆



*Double Hyacinths.*

### SINGLE WHITE.

	Each	Doz
<b>Alba Superbissima.</b> Pure white.....	\$0 08	\$0 90
<b>Baron van Thuyll.</b> Large, pure white.....	08	90
<b>Blanchard.</b> Pure white; fine forcer.....	15	1 40
<b>Cleopatra.</b> Broad truss, waxy white.....	15	1 40
<b>Elfride.</b> White, shaded pink.....	15	1 40
<b>Grand Vainqueur.</b> Pure white.....	10	1 15
<b>Grand Vedette.</b> Large bells.....	15	1 40
<b>Grandeur a Merveille.</b> Splendid blush....	08	90
<b>La Candeur.</b> Snow white; dwarf.....	15	1 40
<b>La Franchise.</b> Cream-white.....	10	1 15
<b>La Grandesse.</b> Purest white.....	10	1 15
<b>L'Innocence.</b> Immense spikes.....	15	1 40
<b>Madame van der Hoop.</b> Pure white.....	10	1 15
<b>Mont Blanc.</b> Fine white; superior.....	10	1 15
<b>Paix de l'Europe.</b> Pure white, drooping ing bells.....	12	1 25
<b>Queen Victoria.</b> Large truss.....	15	1 40
<b>SNOWDRIFT.</b> Pure white, large bells; compact truss. Best single white variety.....	20	2 00
<b>Voltaire.</b> Pale bluish-white; large.....	08	90

### SINGLE YELLOW.

	Each	Doz
<b>Alida Jacoba.</b> Fine citron yellow.....	\$0 10	\$1 15
<b>Herman.</b> Orange-yellow.....	10	1 15
<b>Heroine.</b> Bright citron.....	10	1 15
<b>La Citroniere.</b> Clear yellow; one the best.....	12	1 40
<b>La Pluie d'Or.</b> Pure yellow; fine bells.....	08	90
<b>William III.</b> Orange yellow ....	10	1 15

## Selected Named Double Hyacinths.

### DOUBLE RED AND PINK.

	Each	Doz
<b>Acteur.</b> Dark rose, large.....	\$0 10	\$1 15
<b>Alida Catherina.</b> Deep red, green tips.	15	1 50
<b>Bouquet Royal.</b> Pink, dark red center.	15	1 50
<b>Bouquet Tendre.</b> Dark red; large truss	08	90
<b>Czar Nicholas.</b> Rich rose.....	08	90
<b>Grootvorst.</b> Fine rose; good truss.....	08	90
<b>L'Esperance.</b> Rose, red striped.....	10	1 15
<b>Noble par Merite.</b> Splendid red.....	08	90

**A PREMIUM** With every...  
 ....Order.

	Each	Doz
<b>Panorama.</b> Dark rose; fine.....	\$0 10	\$1 15
<b>Regina Victoria.</b> Dark rose; large spike.....	08	90

Banner Collection...-OF- Gorgeous Hyacinths.

**RED**  
3  
**WHITE**  
3  
**BLUE**  
3

9 Large, Strong Bulbs, 3 each of three colors in 9 distinct  
named varieties, including the famous SNOWDRIFT  
HYACINTH. All correctly labeled. Value  
at regular prices, \$1.00.

POSTPAID FOR 75 CENTS.

## DUTCH HYACINTHS—Continued.

### DOUBLE BLUE.

	Each	Doz		Each	Doz
<b>Albion.</b> Purplish blue.....	\$0 10	\$1 15	<b>General Antinck.</b> Violet-blue; large center.....	\$0 10	\$1 15
<b>Blocksberg.</b> Porcelain-blue, striped.....	08	90	<b>Lord Wellington.</b> Blue, striped with lilac.....	10	1 15
<b>Bride of Lammermoor.</b> Good dark blue.....	10	1 15	<b>Mignon de Drijfhout.</b> Half double; very fine.....	15	1 40
<b>Crown Prince of Sweden.</b> Large spike.....	08	90	<b>Rembrandt.</b> Light blue.....	10	1 15
<b>Charles Dickens.</b> Dark blue, extra large bells.....	10	1 15	<b>Richard Steele.</b> Fine light blue.....	20	2 00
<b>Garrick.</b> Azure-blue; compact spike.....	18	90	<b>Prince of Saxe Weimar.</b> Dark; large spike.....	08	90

### DOUBLE WHITE.

	Each	Doz		Each	Doz
<b>Anna Maria.</b> Blush white, with purple eye.....	\$0 08	\$0 99	<b>La Deese.</b> Pure white, yellow eye.....	\$0 15	\$1 40
<b>Bouquet Royal.</b> Pure white, yellow center; large truss.....	08	90	<b>La Tour d'Auvergne.</b> Pure white, large.....	10	1 15
<b>Duchesse de Bedford.</b> Extra, pure white.....	08	90	<b>La Virginite.</b> White, with rosy center..	08	90
<b>Grand Vainqueur.</b> Pure white; large bells.....	10	1 15	<b>Prince of Waterloo.</b> Pure white; large	12	1 40
			<b>Violet Superbe.</b> White, violet center; late.....	20	2 00

### DOUBLE YELLOW.

	Each	Doz		Each	Doz
<b>Bouquet d'Orange.</b> Rosy orange.....	\$0 10	\$1 15	<b>Louis d'Or.</b> Dark yellow.....	\$0 10	\$1 15
<b>Goethe.</b> Sulphur-yellow; very double.....	08	90	<b>William III.</b> Very fine yellow; rose center.....	08	90
<b>Jaune Supreme.</b> Splendid pure yellow.....	08	90			

## Unnamed Hyacinths.

### MIXED SHADES FOR BEDDING.

All separate colors and mixed, much cheaper than the named varieties and recommended for outside planting. Although the spikes are not quite so large and perfect as in the named varieties, the price of these unnamed Hyacinths will recommend them for bedding or for growing for cut flowers. Ours are all selected bulbs, certain to throw an abundance of bloom.

Six sold at dozen rate, 25 at 100 rate, 250 at 1000 rate.

	Each	Doz.	100	1000
<b>Single Light Blue.....</b>	\$0 05	\$0 50	\$3 00	\$25 00
“ <b>Dark Blue.....</b>	05	50	3 00	25 00
“ <b>Red and Rose....</b>	05	50	3 00	25 00
“ <b>Dark Red.....</b>	05	50	3 00	25 00
“ <b>Pure White.....</b>	05	50	3 00	25 00
“ <b>Blush White.....</b>	05	50	3 00	25 00
“ <b>Yellow.....</b>	05	50	3 00	25 00
“ <b>All Colors Mixed.</b>	05	50	3 00	25 00
<b>Double Light Blue.....</b>	05	50	3 00	25 00
“ <b>Dark Blue.....</b>	05	50	3 00	25 00
“ <b>Red and Rose....</b>	05	50	2 00	25 00
“ <b>Dark Red.....</b>	05	50	3 00	25 00
“ <b>Pure White.....</b>	05	50	3 00	25 00
“ <b>Blush White.....</b>	05	50	3 00	25 00
“ <b>Yellow.....</b>	05	50	3 00	25 00
“ <b>All Colors Mixed</b>	05	50	3 00	25 00

**..Special Hyacinths..**

ALL VARIETIES.

- I Dutch Named Hyacinth, Red
- I “ Unnamed “ White
- I Miniature Hyacinth, Blue
- I White Roman Hyacinth
- I Blue Roman Hyacinth
- I Rose Roman Hyacinth
- I Yellow Roman Hyacinth
- I Italian Hyacinth
- I Feathered Hyacinth
- I Grape Hyacinth
- I Musk Hyacinth

POSTPAID FOR 50 Cts.

## OUR PREMIUMS

Consist not only of the best and largest bulbs, but of Beautiful Flower Seed Collections for Fall sowing, in every instance equal to or over 50 per cent. of order.

## Miniature Hyacinths.

Dwarf growing varieties, which may be planted a dozen or more in one large pot, or may be grown in water. They are very pretty and interesting, and serve especially well for cutting. As they are very cheap, they can be planted in quantity at no great expense



*Miniature Hyacinths.*

	Each	Doz.	100	1000		Each	Doz.	100	1000
<b>Red</b> .....	\$0 03	\$0 35	\$2 00	\$18 00	<b>Light Blue</b> ....	\$0 03	\$0 35	\$2 00	\$18 00
<b>Rose</b> .....	03	35	2 00	18 00	<b>Dark Blue</b> ....	03	35	2 00	18 00
<b>Pure White</b> ..	03	35	2 00	18 00	<b>All Colors</b>				
<b>Blush White</b> .	03	35	2 00	18 00	<b>Mixed</b> .....	03	35	2 00	18 00

## Early Roman Hyacinths.

These are the Hyacinths so extensively grown by florists for winter cutting. Planted in pots or boxes in August or September, kept in a dark place until rooted and then put before a sunny window, they will bloom by Christ-

mas, or may be retarded by keeping in a cool cellar and brought in in succession until March or April. The colored Romans flower about two weeks later than the white ones.

250 are supplied at the 1000 rate, 25 at the 100 rate, and 6 at the dozen rate.

	Each	Doz.	100	1000
<b>White.</b> Large selected bulbs ....	\$0 05	\$0 50	\$3 50	\$30 00
<b>Blue.</b> " " .....	05	40	2 25	20 00
<b>Light Rose.</b> " " .....	05	40	2 25	20 00
<b>Dark Rose.</b> " " .....	05	40	2 25	20 00
<b>Yellow, or Straw Colored</b>	10	1 00	6 00	

### WHITE ITALIAN HYACINTHS.

Also known as Red Skin White Romans, and are much grown by florists around Paris. They bloom about two weeks later than the ordinary White Roman Hyacinth. 5 cts. each, 50 cts. per doz., \$3.00 per 100, \$25.00 per 1000.

### FEATHERED HYACINTHS.

The flowers are feathered in a plume-like spike; in appearance distinct from all other Hyacinths. Admirable for open ground culture, being perfectly hardy, and quite vigorous. 5 cts. each, 25 cts. per doz., \$1.50 per 100.

### GRAPE HYACINTHS.

Little globular flowers in slender spikes. Admirable for naturalizing in a shady place, where they will spread rapidly, and take full care of themselves, coming up in spring with their bright blue flower spikes in profusion. The cut flowers are very pretty for decorative work. Blue, 2 cts. each, 15 cts. per doz., \$1.00 per 100; White, 3 cts. each, 25 cts. per doz., \$1.50 per 100.

### MUSK HYACINTHS.

This variety of the Hyacinth is very popular with some on account of its pungent, musky odor and pretty purple flowers. It can be grown either in the open bed or border, or in pots in the house, making a pleasing effect wherever used. 8 cts. each, 80 cts. per doz., \$6.00 per 100.



All Bulbs offered in this catalogue are delivered free of extra charge at single and dozen prices.

# TULIPS.

Tulips are of easiest culture, whether in pots in the house or in the open ground. For open air blooming, the bulbs should be planted in October or November, in a light, rich soil, 5 to 6 inches apart, and 3 to 4 inches deep. They are admirably suited for beds on the lawn; for bril-

liancy and variety of coloring in spring they are unequalled. After blooming, the bulbs may be lifted or other bedding plants, such as Geraniums, Coleus, etc., may be planted directly above them, and occupy the ground until frost. For the convenience of those selecting varieties for bedding, we state below the height to which the different varieties grow, and their comparative times of blooming. The single-flowered varieties, on the whole, give more perfect results for bedding.

For pot culture, the same soil as we recommend for Hyacinths will be found most suitable. The pots may be buried in soil or ashes until the bulbs are well rooted, when they may be brought into light and gentle heat.

Six supplied at dozen rate, 25 at 100 rate.

## SINGLE TULIPS—Finest Named Varieties.

These are the varieties which give such brilliant results in spring, when planted in masses of separate or contrasting colors. If planted after due consideration of time of blooming and height when blooming, most elegant effects may readily be attained.

	Time of Blooming	Height in inches	Each	Doz.	100		Time of Blooming	Height in inches	Each	Doz.	100
<b>Artus.</b> Brilliant scarlet.....	2nd	7	\$0 02	\$0 20	\$1 00	<b>Duc van Thol, Gold-Striped.</b> Red, striped with yellow.....	1st	6	\$0 02	\$0 20	\$1 00
<b>Brutus.</b> Orange-crimson.....	2nd	6	03	30	1 50	<b>Duc van Thol, Yellow.</b> Bright citron-yellow.....	1st	6	04	40	2 25
<b>Belle Alliance.</b> Scarlet; fragrant.....	2nd	7	03	30	1 50	<b>Duc van Thol, White.</b> Clear satiny white.....	1st	6	04	40	2 25
<b>Bizard Verdict.</b> Carmine, gold-striped.....	2nd	7	02	20	1 00	<b>Duc van Thol, Scarlet.</b> Very deep scarlet.....	1st	7	02	15	75
<b>Canary Bird.</b> Rich golden yellow, early, for forcing.....	1st	8	04	40	2 25	<b>Duc van Thol, Crimson.</b> .....	1st	7	02	15	75
<b>Crimson King.</b> Bright crimson.....	2nd	7	02	20	1 00	<b>Duchesse de Parma.</b> Orange-yellow; fine.....	2nd	9	03	25	1 25
<b>Couleur Ponceau.</b> Rosy crimson and white.....	2nd	8	02	20	1 00	<b>Eleonore.</b> Dark violet, white edge.....	2nd	8	02	15	75
<b>Cardinal's Hat.</b> Dark brown-red.....	2nd	9	02	20	1 00	<b>Globe de Rigaut.</b> White and violet.....	2nd	7	03	35	2 00
<b>Chrysolora.</b> Yellow; large forcing kind.....	2nd	9	03	30	1 75	<b>Joost van Vondel.</b> Glossy rose and white.....	2nd	8	03	30	1 75
<b>Couleur Cardinal.</b> Brilliant crimson.....	3rd	9	03	30	1 50	<b>Jagt van Delft.</b> Pure white; good form.....	2nd	8	02	20	1 00
<b>Cottage Maid.</b> Rosy pink, striped with white.....	2nd	6	04	45	2 75	<b>Keizerskroon.</b> Red, with broad yellow edge.....	2nd	9	04	30	1 75
<b>Duc van Thol, Red and Yellow.</b> .....	1st	6	02	15	75						
<b>Duc van Thol, Rose.</b> White, shading to rose.....	1st	6	03	30	1 50						

All Bulbs offered in this catalogue are delivered free of extra charge at single and dozen prices.

COPYRIGHTED 1893 BY A.B.&C.



# BULBS FREE.

Premiums amounting to 50 per cent. of order will accompany every shipment of bulbs ordered from this catalogue.

## SINGLE TULIPS—Continued.

	Time of Blooming	Height, inches	Each	Per doz.	100
<b>La Reine</b> (Queen Victoria). White, slightly rose shaded.....	2nd	6	\$0 02	\$0 20	\$1 00
<b>L'Immaculee</b> . Pure white; fine forcer.....	2nd	7	03	30	1 50
<b>Ma Plus Amiable</b> . Red and orange.....	1st	6	03	35	2 00
<b>Purple Crown</b> . Dark purplish red.....	1st	6	02	20	1 00
<b>Pottebakker, Yellow</b> . Bright canary, slightly striped.....	1st	8	04	40	2 25
<b>Pottebakker, White</b> . Good form.....	1st	8	04	40	2 25
<b>Pottebakker, Scarlet</b> . True, fine flower.....	1st	8	03	30	1 75
<b>Prosperine</b> . Salmon-pink; extra; fine form.....	2nd	10	04	45	2 75
<b>Rachel Ruisch</b> . Fine pink.....	2nd	7	04	35	2 25
<b>Rembrandt</b> . Scarlet; early; for forcing.....	1st	8	04	40	2 00
<b>Rose Grise-lin</b> . White; rose-shaded; fine for forcing.....	2nd	5	04	40	2 25
<b>Rosa Mundi</b> . Rose and white; very fine.....	2nd				
<b>Samson</b> . Fine red.....	1st	8	05	35	2 25
<b>Standard Royal</b> . Red and white-striped.....	2nd	7	02	20	1 00
<b>Thomas Moore</b> . Fine apricot-orange.....	2nd	10	15	35	2 00
<b>Van der Helst</b> . White, edged rose.....	2nd	8	03	30	2 00
<b>Verboom</b> . Scarlet.....	2nd	8	03	30	1 75
<b>Vermilion Brilliant</b> . Brilliant carmine.....	2nd	8	05	50	3 00
<b>Wouverman</b> . Dark violet; showy.....	2nd	5	02	20	1 00
<b>Yellow Prince</b> . Golden yellow.....	2nd	7	03	35	2 00



Specimen Single Tulips, Named Varieties.

# SPECIAL TULIP OFFER.

25 Distinct and Separate Varieties of Single Named Tulips (each correctly labeled), postpaid, for only 75 cts.

In this superb collection will be found the best and most gorgeous varieties of Single Tulips, which will be especially useful to the amateur on account of the large assortment of colors and types.

**25 Postpaid for 75 cts.**

All Bulbs offered in this catalogue are delivered free of extra charge at single and dozen prices.

DOUBLE TULIPS—Best Named Varieties.



Early Double Named Tulips.

**SPECIAL!**

10 Double Named  
Tulips, our selection,  
postpaid, for . . .

**30 cts.**

	Time of Blooming	Height in inches	Each	Per doz.	100
<b>Alba Maxima.</b> Pure white; very fine; new.....	1st	6	\$0 05	\$0 50	\$2 50
<b>Agnes.</b> Dwarf; very brilliant red.	3d	4	04	40	2 25
<b>Bonaparte.</b> Mauve, yellow and red.....	3d	16	02	20	1 00
<b>Cousine.</b> Dark violet.....	1st	8	02	15	75
<b>Duc van Thol.</b> Yellow and red....	1st	6	02	15	75
<b>Duke of York.</b> Carmine and white,	2d	10	02	20	1 00
<b>Gloria Solis.</b> Crimson, bordered with gold.....	1st	8	02	20	1 00
<b>Imperator Rubrorum.</b> Improved Rex; rich crimson-scarlet.....	1st	8	04	35	2 00
<b>La Candeur.</b> Pure white; very fine.....	2d	6	02	20	1 00
<b>Le Blason.</b> Rose and white.....	1st	8	04	35	2 00
<b>Lady Grandison.</b> Dwarf scarlet.....	1st	5	02	20	1 00
<b>Mariage de ma Fille.</b> Pure white, striped with rose; extra fine.....	3d	9	05	50	2 50
<b>Murillo.</b> Superb blush-white.....	2d	5	04	40	2 25
<b>Purple Crown.</b> Deep purple.....	1st	8	02	15	1 00
<b>Princess Alexandra.</b> Brown and yellow border.....	1st	6	05	30	1 50
<b>Pæony Gold.</b> Golden yellow and red.....	3d	8	04	40	2 25
<b>Pæony Red.</b> Fine deep red.....	3d	8	03	25	1 25
<b>Rosine.</b> Splendid rose.....	1st	9	04	35	2 00
<b>Rose Blanche.</b> Extra pure white.....	2d	6	03	25	1 25
<b>Rex Rubrorum.</b> Fine large scarlet.....	2d	7	03	35	2 00
<b>Salvator Rosa.</b> Dark purple-rose.....	1st	7	10	1 00	6 00
<b>Turban.</b> Violet, dark and rich.....	1st	7	05	50	2 50
<b>Tournesol.</b> Scarlet and yellow.....	1st	8	03	32	2 00
<b>Tournesol Yellow.</b> Bright and striking.....	1st	7	05	50	3 50
<b>Yellow Rose.</b> Large golden yellow.....	3d	6	02	15	1 00

Best Bulbs at Lowest Prices are offered in our Special Collections.

See pages 1 and 2.

All Bulbs offered in this catalogue are delivered free of extra charge at single and dozen prices.

## SINGLE AND DOUBLE TULIPS IN MIXTURE.

These are especially recommended for bedding in large or small masses, where economy in expenditure as well as brilliancy in effect is desirable. Our mixtures are made up of selected flowering-size bulbs, and include an abundance of bright-colored varieties, growing the same height and flowering the same time.

*Please state whether you wish Single, Double or both.*

<b>All Colors.</b> Fine mixed; superior to ordinary Mixed Tulips as sent out.....	Each	Doz.	100	1000
	\$0 10	\$0 75	\$5 00	
<b>Extra Selected Varieties Mixed.</b> Made up of the finest named sorts in mixture	\$0 02	20	1 00	8 00

COLLECTION  
.... OF ....

Late Flowering Tulips

- 1 Parrot,
- 1 Bizarre,
- 1 Byblømen,
- 1 Gesneriana,
- 1 Golden Crown.

POSTPAID FOR 10 cts.

### PARROT TULIPS.

The Parrot Tulips have very striking colors, the petals are curiously slashed, and the form, especially before the flower opens, somewhat resembles the beak of the parrot. Our mixture of Parrot Tulips contains a great variety of colors. Used principally for bedding and late flowering; can also be forced successfully.



*Parrot Tulip.*

**Fine Mixed.** Large, strong stock. Each, 4 cts.; per doz., 35 cts.; per 100, \$1.50; per 1000, \$10.00.

### LATE-FLOWERING OR SHOW TULIPS.

Like the Parrot Tulips, for outdoor cultivation, but differing from that variety by coming into bloom later and in being somewhat taller. They are quite as singular and pleasing, and are greatly grown for exhibition.

	Each	Doz.	100	1000
<b>Bizarres.</b> Finest mixed.....	\$0 03	\$0 25	\$1 00	\$8 00
<b>Byblømens.</b> Finest mixed.....	03	30	1 25	10 00
<b>Gesneriana, or Mouster Late.</b> Bright crimson, with purple eye.....	03	25	1 75	12 00
<b>Golden Crown.</b> Deep yellow, edged with red; fine for cutting, and matches well with Gesneriana in beds.....	04	30	2 00	15 00

### BOTANICAL TULIPS.

	Each	Per doz.
<b>Tulipa Clusiana.</b> White and rose.....	\$0 10	\$1 00
“ <b>cornuta.</b> Scarlet and yellow.....	10	1 00
“ <b>Florentina odorato.</b> Yellow, violet-scented.....	05	50
“ <b>Greigi.</b> Bright scarlet, yellow and black center.....	20	2 00
“ <b>Oculis-Solis.</b> Vermillion, with black eye.....	05	50
“ <b>viridiflora.</b> White and green.....	05	50

All Bulbs offered in this catalogue are delivered free of extra charge at single and dozen prices.



# NARCISSUS, OR DAFFODILS.



*Daffodils.*

## Single Narcissus.

	Each	Doz.	100
<b>Bicolor Empress.</b> Larger than the next; immense golden yellow trumpet and broad white perianth.....	\$0 25	\$2 50	
<b>Bicolor Horsfieldii.</b> (King of Daffodils). Pure white perianth; rich golden yellow trumpet; very large, and one of the finest for cut flowers....	10	1 15	\$9 00
<b>Biflorus.</b> Divisions of the perianth milk-white, crown yellow; late flowering.....	02	20	1 00
<b>Bulbocodium.</b> (Hoop Petticoat). Rich golden yellow; each bulb bearing from 6 to 12 flowers; can be forced....	05	50	3 00
<b>Emperor.</b> One of the largest and best; perianth primrose-yellow, trumpet clear golden yellow.....	25	2 50	
<b>Incomparabilis stella alba.</b> Pure white; cup golden yellow; for forcing.....	03	25	1 50
<b>Incomparabilis Sir Watkin.</b> Mammoth flowers; tube rich golden yellow, beautifully frimbriated, perianth, pale primrose-yellow, very broad. A new and gigantic variety, the flowers often measuring four inches across....	25	2 50	
<b>Obvallaris.</b> (Tenby Daffodil). Dwarf growing; bright yellow; very early and effective.....	05	40	2 50
<b>Poeticus.</b> (Pheasant's Eye, or Poet's Narcissus). Pure white, with red cup; very fragrant. \$5.00 per 1,000.....	02	15	75

Bulbs in endless variety sent free with all orders.

These bulbs are especially fine for outdoor work, and when used for this purpose should be planted in a moderately rich soil, being careful to avoid the use of fresh manure, and the earlier in the autumn they are in the ground the better. The bulbs should be set 3 or 4 inches deep, unless it is intended to plant other flowers over them in the summer, in which case it is better to plant 6 inches deep. It is advisable not to disturb the bulbs oftener than once in 3 or 4 years, when they will need thinning out; if taken up every year like Hyacinths, they do not seem to prosper.

Most of the species are amenable to forcing and millions of such varieties, as Early Paper White, Double Roman, Von Sion, etc., are cultivated every year by florists. They should be planted as instructed for Hyacinths, and kept in a cool place for 3 or 4 weeks until roots have formed, when the two first named may be forwarded in heat, though most species do better if kept moderately cool.

Six are furnished at the dozen rate, 25 at the 100 rate.

## "Daffydowdilly" Collection.

A beautiful assortment in many varied forms. A wide range of varieties at special low rates.

Bicolor Horsfieldii, Incomparabilis stella alba, Poeticus, Bulbocodium, Trumpet Major, Alba Plena Odorata, Double Incomparable, Orange Phoenix, Von Sion, Double Roman, Paper White and Chinese Sacred Narcissus.

13 Varieties, Postpaid,  
For 50 cts.



*Narcissus Poeticus (Pheasant's Eye).*



*Double Trumpet Narcissus Von Sion.*

	Each	Doz.	100
<b>Poeticus ornatus.</b> Flowers a month earlier, and is more symmetrical than the ordinary Poeticus, but of the same color and larger.....	\$0 03	\$0 20	\$1 00
<b>Princeps.</b> Perianth white, trumpet yellow; good for forcing.....	04	30	2 00
<b>Pseudo-Narcissus (Lent Lily).</b> White perianth, sulphur - yellow trumpet.....	04	30	2 00
<b>Scoticus (Garland Lily).</b> Perianth white, trumpet yellow; of the Pseudo-Narcissus type, but much finer.....	04	30	2 00
<b>Trumpet Major.</b> Much used for forcing, and the earliest; yellow; trumpet very large and flaring.....	04	30	2 00
<b>Mixed Single Sorts.</b> per 1000, \$8	03	25	1 00

### Double Narcissus.

	Each	Doz.	100
<b>Alba plena odorata (The Double White Poet's Narcissus).</b> Pure white, double, fragrant; much used by florists.....per 1000 \$7.....	\$0 02	\$0 20	\$1 00
<b>Incomparabilis (Butter - and - Eggs).</b> Double; yellow perianth and orange cup; a good forcing variety.....	03	25	1 50
<b>Orange Phoenix.</b> Double white; a very showy variety.....	04	40	2 50

**EXTRA!** The cost of our premiums is not included in the price of bulbs, but are absolutely free.

**THE BEST BULBS** may cost more . . . but—

	Each	Doz.	100
<b>Von Sion.</b> The Double Yellow Daffodil. Flowers very full; extensively used for forcing.....	\$0 05	\$0 50	\$3 25
<b>Mixed Double Sorts</b> .....			
.....per 1000, \$12.00	03	25	1 25

### Polyanthus, or Bunch-Flowering Narcissus.

(*Narcissus Tazetta.*)

The varieties of this group produce spikes of sweet-scented flowers, and are best suited for forcing or planting in pots in the house. The Double Roman and Paper White may be had in bloom by Christmas.

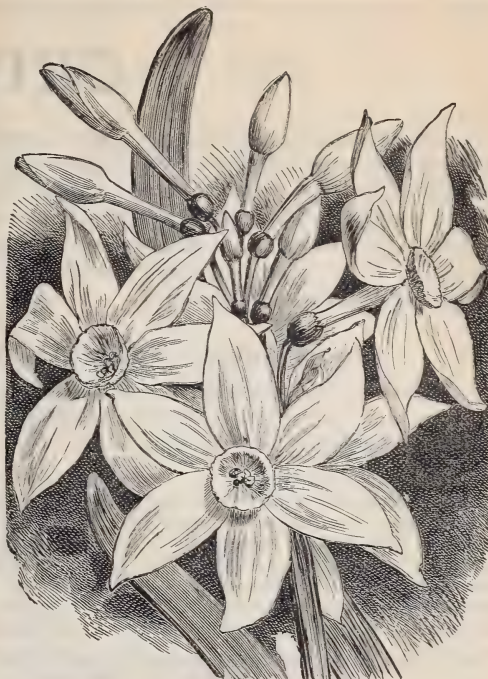
	Each	Doz.	100
<b>Bazleman Major.</b> Orange cup; white perianth; very large and fine.....	\$0 25	\$2 50	
<b>Double Roman.</b> Double white, with orange nectary. Much used for forcing and pot culture, and is one of the earliest for that purpose.....	05	45	\$1 50
<b>Gloriosus.</b> Perianth white, cup orange; very fine.....	05	60	3 00
<b>Grand Monarque.</b> Broad white perianth, yellow cup; the finest white.....	05	60	3 00
<b>Newton,</b> Free bloomer; perianth yellow, cup orange.....	15	1 25	

**NARCISSUS—Continued.**

	Each Doz.	100
<b>Paper White.</b> Pure white; free blooming. Much used for forcing, and the best of the early sorts for that purpose, as it may be had in bloom by Christmas.....	\$0 04	\$0 40 \$1 50
<b>Paper White Grandiflora.</b> An improved variety of the preceding, blooming somewhat earlier; very useful for pot-culture for amateurs.....	05	50 2 00
<b>Mixed Polyanthus Sorts</b> .....	05	50 1 75



*Chinese Sacred Narcissus.*



*Polyanthus Narcissus, Paper White Grandiflora.*

**Jonquils, or Rush-Leaved Narcissus.**

This section of the Narcissus family includes several varieties with pretty yellow flowers. They are early bloomers and hardy.

	Each Doz.	100
<b>Single Sweet-Scented.</b> Yellow, very deliciously scented; good for forcing.....	\$0 02	\$0 20 \$1 00
<b>Double Sweet-Scented.</b> Full of a clear golden yellow, and the most fragrant of the whole family; may be forced.....	05	50 3 75
<b>Campernelle.</b> Golden yellow flowers; much used for forcing.....	\$8.00 per 1000.....	02 20 1 00
<b>Special.</b> Three each of the above Jonquils, post-paid for 20 cents.		



*Campernelle Jonquils.*

**Pansy and Sweet Pea Seed**  
**Should be sown in the Fall.**  
**Low Prices on Page 26.**

**Chinese Sacred Lily, or Flower-of-the-Gods.**

This is a variety of the Polyanthus Narcissus and is known by several other names, as "Water Fairy Flower," "Joss Flower," and "Chinese New Year's Lily." They are of the easiest culture in water, and are very decorative. The bulbs should be placed in a pretty dish or bowl, with pebbles around them to keep them in position, and the vessel filled with water, which should be changed from time to time. The growth is very rapid, and 50 to 60 flowers, borne on 8 to 10 spikes, are often produced from a single bulb. The flowers are waxy white, with a yellow center, and are very sweet-scented.

**Large, Selected Bulbs,** 15 cents each, \$1.75 per dozen, \$8.00 per 100. If by express at customers' expense, 10 cents each, \$1.00 per dozen.

**All Bulbs offered in this catalogue are delivered free of extra charge at single and dozen prices.**

# CROCUS.

The Crocuses are among the earliest flowers of spring, and their bright blossoms are often covered with snow during March and early April. They will grow and flower under the most adverse conditions, and may be planted in the border, along walks, or in the grass of the lawn. For beds or borders, the Bulbs should be planted about 3 inches deep and the same distance apart, but much deeper for permanent planting. If to be sent by mail, postage will be 15 cts. per 100 extra. Dozen price includes postage.

## Choice Named Crocus.

These are all selected Bulbs, and may be depended on for shade and richness of color. They produce larger flowers than the unnamed sorts, and are more desirable for growing in pots.

**Albion.** Fine striped.

**Baron von Brunow.** Dark blue.

**Caroline Chisholm.** Pure white.

**Charles Darwin.** Fine purple.

**Cloth-of-Gold.** Brown and yellow.

**Cloth-of-Silver.** Blue, pale, striped.

**David Rizzio.** Dark purple.

**Madame Mina.** Violet and white.

**Prince Albert.** Brilliant purple.

**Queen Victoria.** White.

**King of the Blues.** Very large.

**Mont Blanc.** Finest of all whites.

**Sir Walter Scott.** Variegated.

**Yellow Giant Bulbs.** Clear golden color, 15 cts. per doz.; 75 cts. per 100; \$6 per 1000.

Any of the above varieties, except where noted, 60 cts. per 100; \$5 per 1000; 250 supplied at 1000 rate; 25 at 100 rate.

## Unnamed Crocus.

Suitable for planting in beds or borders, where they will make a beautiful show at a small cost.

**Large White.** 10 cts. per doz.; 40 cts. per 100; \$3 per 1000.

**Large Yellow.** 10 cts. per doz.; 40 cts. per 100; \$3.50 per 1000.

**Large Blue.** 10 cts. per doz.; 40 cts. per 100; \$3 per 1000.

**Large Purple.** 10 cts. per doz.; 40 cts. per 100; \$3 per 1000.

**Striped and Variegated.** 10 cts. per doz.; 40 cts. per 100; \$3 per 1000.

**All Colors Mixed.** 10 cts. per doz.; 35 cts. per 100; \$2.75 per 1000.

THE  
LARGEST  
ASSORTMENT  
EVER  
OFFERED.  
**BULBS**  
BY  
EXPRESS  
PREPAID  
AT LESS THAN  
**1**  
CENT  
EACH.

See Page 2.



COPYRIGHTED  
1833  
BY A.B.&CO.

CROCUS.

CHEAP.....  
CROCUS  
COLLECTION.

One each of the 14 named varieties mentioned on this page, also 12 each of Unnamed Crocus, White, Blue, Purple and Striped, 62 Bulbs in all.

Postpaid for 45 cts.

All Bulbs offered in this catalogue are delivered free of extra charge at single and dozen prices.

# BERMUDA EASTER LILIES.



*Bermuda Easter Lily.*

The well-known Lilies so much grown by florists for church decoration at Easter, and other purposes. Pot the bulbs in a good mixture of leaf-mould, loam and sand, with the addition of some well-decayed cow manure. In the bottom of the pots place enough broken crocks to insure good drainage, over which put a layer of clean sand. Place the Bulbs one inch

below the surface of the soil. (The *Lilium Candidum* should have only a thin sifting of soil over the top of the Bulb). After potting give a good supply of water, and bury the pots in coal ashes in a frame, or place in a cool dark cellar where neither frost nor light can touch them, watering very sparingly—just enough to keep them from drying out. When they are in good root action, bring into a room where the temperature ranges from about 50 degrees at night to 65 degrees during the day. When the flower buds form, feed the plants with weak liquid manure several times a week. Give the plants as much sunlight as possible until the buds are nearly developed, after which the flowers may be retarded, if desired, by placing in a shaded position. When fully opened keep the plants in a cool room.

## Bermuda Easter Lily.

(*Lilium Harrisii.*)

**Fine Bulbs**, 5 to 7 inches in circumference; each Bulb producing from 6 to 8 flowers, 10 cts. each; \$1.00 per doz; \$5.00 per 100.

**Large Bulbs**, 7 to 9 inches in circumference, producing from 8 to 12 flowers, 15 cts. each; \$1.25 per doz.; \$8.00 per 100.

**Extra Large Bulbs**, 9 to 11 inches in circumference, each Bulb bearing 12 to 18 flowers, 35 cts. each; \$3.50 per doz.; \$18 per 100.

**Monstrous Bulbs**, for exhibition purposes, producing magnificent spikes of flowers, 75 cts. each; \$7.50 per doz.

## Japan Easter Lily.

(*Lilium Longiflorum.*)

Very similar to *L. Harrisii*, preferred by some to that variety on account of its better growth of foliage. It is hardy with slight protection, and then blooms in June and July.

**5 to 7 inch Bulbs** produce from 6 to 8 flowers, 10 cts. each; \$1.00 per doz.; \$4.50 per 100.

**7 to 9 inch Bulbs** produce from 8 to 12 flowers, 15 cts. each; \$1.50 per doz.; \$9.00 per 100.

## Bridal, or Annunciation Lily.

(*Lilium Candidum.*)

The white Lily of the garden, and thoroughly hardy; is one of the most useful of Lilies for forcing.

**Fine Large Bulbs**, 10 cts. each; \$1.00 per doz.; \$5.00 per 100.

## PREMIUMS

Accompany every order whether at collection prices or regular rates.

## SPECIAL EASTER LILY OFFER.

### 3 VARIETIES 3



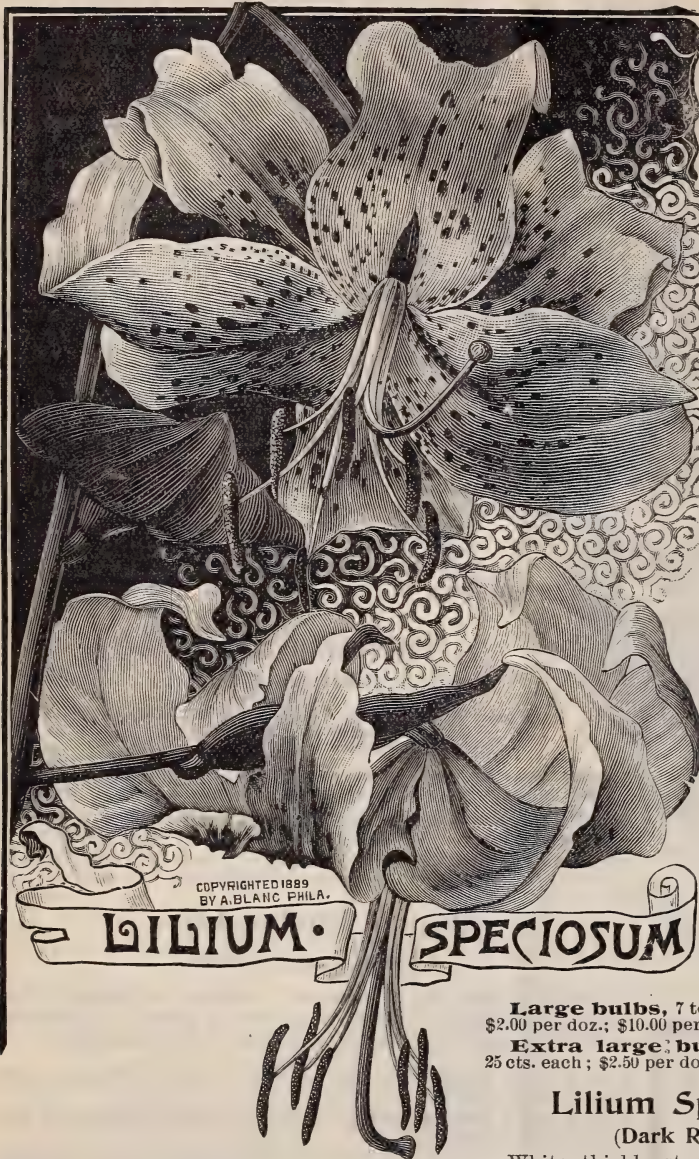
Bermuda Easter Lily,  
Japan Easter Lily,  
Annunciation Lily.



Postpaid for 25 cts.

All Bulbs offered in this catalogue are delivered free of extra charge at single and dozen prices.

# HARDY LILIES.



Lilies are easily cultivated. The ground should be carefully dug and abundantly supplied with well-rotted manure, planting the bulbs six inches deep, after which they require very little care or attention, except to occasionally stir the soil and keep free of weeds. To secure best results the bulbs should be planted in the fall.

## The Golden-Banded Lily of Japan.

(*Lilium Auratum*.)

The most gorgeous of all Lilies; requires no special treatment when planted in the open at this season of the year, and if left undisturbed is perfectly hardy, flowering each summer in greater profusion. Deliciously fragrant.

**Large bulbs**, 7 to 9 inches in circumference, will produce from 8 to 10 flowers. 15 cts. each; \$1.50 per doz.; \$8.00 per 100.

**Extra large bulbs**, 9 to 11 inches in circumference, will produce from 12 to 18 flowers. 20 cts. each; \$2.00 per doz.; \$10.00 per 100.

**Monstrous bulbs**, 11 to 13 inches in circumference, producing magnificent spikes of flowers. 25 cts. each; \$2.50 per doz.; \$15.00 per 100.

## Lilium Speciosum Album.

(Pure White Japan Lance Lily)

Large white flowers of good substance, with a greenish band running through each petal; one of the finest Lilies in cultivation.

**Large bulbs**, 7 to 9 inches in circumference. 20 cts. each; \$2.00 per doz.; \$10.00 per 100.

**Extra large bulbs**, 9 to 11 inches in circumference. 25 cts. each; \$2.50 per doz.; \$15.00 per 100.

## Lilium Speciosum Rubrum.

(Dark Red Japan Lance Lily.)

White, thickly studded with dark crimson spots; very fine. The best of the Speciosum class.

**Large bulbs**, 7 to 9 inches in circumference. 15 cts. each; \$1.50 per doz.; \$8.00 per 100. **Extra large bulbs**, 9 to 11 inches in circumference. 20 cts. each; \$2.50 per doz.; \$10 per 100.

## Lilium Tigrinum.

(Common Tiger Lily.)

Orange-red, spotted with black; an old but still standard variety. 10 cts. each; \$1.00 per doz.

**TIGRINUM SPLENDENS**. Much larger than the type, often bearing as many as 25 flowers on a stem. 15 cts. each; \$1.50 per doz.

**TIGRINUM FLORE PLENUM**. Semi-double form of Tigrinum. 15 cts. each; \$1.50 per doz.

**3 Tiger Lilies, 3 Varieties, Postpaid for 25 cts.**

## 4 HARDY LILIES

LILIAM AURATUM  
LILIAM SPECIOSUM ALBUM  
LILIAM SPECIOSUM RUBRUM  
LIL. TIGRINUM SPLENDENS

POSTPAID FOR 50cts.

All Bulbs offered in this catalogue are delivered free of extra charge at single and dozen prices.

## Amaryllis.

The Amaryllis are among the grandest bulbous plants, some species bearing from two to six immense flowers 6 to 10 inches across, on a spike 3 feet high. They succeed best potted in a mixture of leaf-mould, loam, manure and sand. After they have flowered and growth has stopped, watering should be gradually discontinued until the tops die down, when they may be put away in a dry, cool place, keeping the bulbs in the pots, as frequent disturbance of the roots is to be avoided.



*Amaryllis Johnsonii.*

	Each	Doz
<b>Belladonna</b> (Belladonna Lily). An autumn-blooming species, bearing 6 to 12 flowers, white or purplish, sweet-scented, on a scape about 2½ feet high	\$0 20	\$2 00
<b>Formosissima</b> (Jacobæan Lily). Large and showy flower of a fine, deep scarlet, on a scape 2 feet high. May be forced, grown in pots, or in water like a hyacinth, or planted in the open ground in the spring to bloom during the summer.....	20	2 00
<b>Johnsonii</b> . A dull red flower with a white stripe down each petal; one of the earliest hybrids and especially robust in growth.....	30	3 00
<b>Vallota-Purpurea</b> (Scarborough Lily). Flowers bright scarlet, 5 or 6 in a head, lasting a long time in perfection. Very useful for pot culture, or may be planted in the open ground for flowering in the summer.....	20	2 00
<b>Hybrid Seedlings</b> . Fine varieties, mixed, producing the most gorgeous flowers of brilliant colors.....	60	6 00

## Allium Neapolitanum.

Flowers white, with green stamens; borne in loose umbels on a scape about 15 inches high. The plant may be forced, and is very useful for bouquets. It is free from odor of garlic, which is a characteristic of the genus. 2 cts. each, 20 cts. per doz., \$1.25 per 100.



*Allium Neapolitanum.*

**3 GORGEOUS AMARYLLIS** | Formosissima,  
Johnsonii,  
Vallota-Purpurea,  
**POSTPAID FOR 50 CENTS.**

## Anemone.

These Anemones, though not entirely hardy in the northern states, will succeed perfectly if not planted out until spring; or, they may be wintered in a cold frame, in which case they will bloom in early spring. The roots retain their vitality in the dormant state for a year or more if kept in a dry place, making them useful for planting at any season of the year. They will thrive in any good garden soil, though a sandy loam suits best, and are partial to a position in shade a great part of the day.

**Fulgens** (Scarlet Wind-Flower). Flowers of the richest scarlet, and of a very graceful habit of growth: they may be had in bloom almost the entire year by planting the bulbs in pots and bringing in a few at a time through the winter; and if set in the open ground in the spring, they will bloom in the autumn.....

	Each	Doz.	100
<b>Blue Incomparable.</b> Double dark blue	03	30	2 50
<b>Ceres.</b> Double white; very fine	04	40	3 00
<b>Single Pure White</b>	03	30	2 00
<b>Single Scarlet Mixed</b>	02	15	1 00
<b>Double Scarlet Mixed</b>	03	25	1 50
<b>Single, all Colors, Mixed</b>	02	15	75
<b>Double</b> " " "	02	20	1 00

## Arum Dracunculus.

(Dragon-Flower.)

The great calla-like flower is a foot long, reddish brown, with black markings; the leaves are handsome, palmate, and the stem is curiously spotted. Potted in the house in a rich soil and given plenty of moisture, it will thrive. 15 cts. each; \$1 50 per doz.

**Arum sanctum** (Black Calla). See Calla Lilies

# CALLA LILIES.



White Calla.

Included under this head particularly are several species of curious plants, the type of which is the well-known White Calla Lily, any description of which is unnecessary. These are very extensively grown in green-houses, and may be had in flower at almost any season. They require a very rich soil—a mixture of good loam and cow-manure being suitable, and will live and grow from year to year, if allowed to rest awhile during the summer and are occasionally repotted to supply fresh nourishment.

## Bulbocodium Vernum.

A pretty little hardy plant, resembling the crocus, and, like it, flowering in earliest spring, and requiring the same culture. The flowers are showy, of bright violet, and precede the foliage. 5 cts. each; 30 cts. per doz.; \$2.00 per 100.



Black Calla.

**Yellow Calla** (*Richardia hastata*). Identical in appearance with the common Calla, except the flower, which is yellow, with a reddish brown throat. Each, \$1.25; per doz., \$12.00.

**3 Calla Lilies.**  
3 VARIETIES SEPARATE.  
White,  
Black,  
Spotted.  
POSTPAID FOR  
30 cts.



Spotted Calla.

**White Calla** (*Richardia Æthiopica*). (The White Trumpet Lily, or Lily-of-the-Nile.) The common and well-known variety, with pure white spathe. Our bulbs are extra large, California-grown, and sure to flower; dormant tubers. Each, 15 cts.; per doz., \$1.50.

**Black Calla** (*Arum sanctum*). Esteemed as much for its oddity as for its beauty. The flowers are blackish purple with a velvet-like surface, and have an odor somewhat resembling that of the tuberose. Succeeds under the most ordinary treatment, and is a very attractive plant. First size bulbs, each, 15 cts.; per doz., \$1.50. Extra selected bulbs, each, 25 cts.; per doz., \$2.50.

**Spotted Calla** (*Richardia albomaculata*). The leaves in this species are spotted with white, thus making an ornamental plant even when out of flower. The spathe is smaller than in the preceding, and is purplish in the throat; dormant tubers. Each, 15 cts.; per doz., \$1.50.

## "INGLESIDE HYBRIDS."

The Floral Novelty for 1897. Giant Gladiolus from the Golden State. Something Magnificent! Giants they truly are both in plant and flower. Indescribable Shades and Tints. Flowers twice as large as the older varieties.

That "Modern Eden," California, will next year send forth to the world a floral novelty which we predict will take it by storm and increase beyond measure the popularity of the Gladiolus.

It is a well-known fact that no other class of plants offers such alluring inducements to the hybridizer as is shown by the countless number of Gandavensis and Lemoine types, each it is true differing from its fellow in some distinct mark of color or form of flower; but here we have AN ASTONISHING AND ENTIRELY NEW DEPARTURE from all previous strains of these beautiful summer bloomers, heralding the advent of a race destined to eclipse even the Orchid in exquisite markings and delicate shades of color.

Words cannot describe the marvelous beauty of these gigantic flowers. The colorings and markings are simply superb running from the PUREST WHITE through DELICATE LAVENDER to the RICHEST TINTS OF CRIMSON AND SCARLET. The immense blooms, often double and generally round, are borne on branching flower spikes, sometimes five and six to each plant.

"Ingleside Hybrids" are the triumphant result of many years' systematic hybridization and selection, and will be introduced by us during the spring of 1897. Many prominent seedsmen who have seen this wonderful new race in bloom frankly admit that they surpass in size and beauty every other variety of Gladiolus extant.

Don't fail to have your name on our catalogue list for 1897 and receive copies of the beautiful paintings we have had made of "Ingleside Hybrids."

All Bulbs offered in this catalogue are delivered free of extra charge at single and dozen prices.



*Calochortus.*

## Calochortus.

(Butterfly Tulip.)

These are among the most handsome of native American bulbous plants, but are not entirely hardy in the northern states. They succeed finely if grown in a cold frame, or if 4 or 5 bulbs are planted in a pot. 5 cts. each; 40 cts. per doz.; \$3.00 per 100.

## Camassia Esculenta.

Violet-blue, in a short raceme, borne on a stout scape. Very pretty when planted in a partly sheltered situation in any good garden soil, with a top-dressing of manure once a year. 3 cts. each; 25 cts. per doz.

## Colchicum Autumnale.

The Meadow Saffron, and one of the most beautiful of autumn-flowering plants. Flowers of a fine purple color. 5 cts. each; 50 cts. per doz.; \$4.00 per 100.

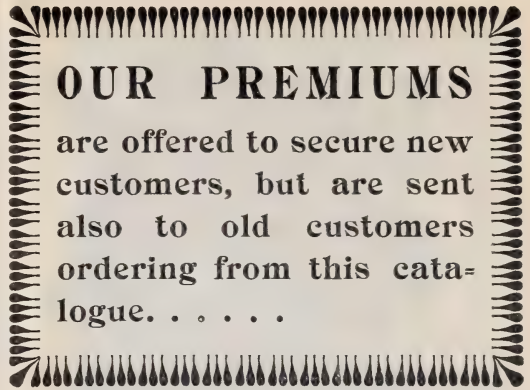
## Chionodoxa.

These flowers, natives of the mountains of Asia Minor, are of comparatively recent introduction. Being hardy, they can be planted outside in bed or border in any good soil, and their pretty blue flowers will appear in earliest spring with the Snowdrops, and will last a long time in perfection.

**Luciliae** (Glory-of-the-Snow). Flowers intense blue, shading to white in the center; 3 to 6 on a stalk, about 6 inches high. 2 cts. each; 20 cts. per dozen; \$1.00 per 100.

**Gigantea** (Giant Glory-of-the-Snow). A new and superior variety of the preceding, and in comparison what its name would denote, being at least three times as large. 3 cts. each; 25 cts. per dozen; \$1.50 per 100.

**Sardensis.** Bright, rich blue, deeper than *C. Luciliae*. 2 cts. each; 20 cts. per doz.; \$1.25 per 100.



## OUR PREMIUMS

are offered to secure new customers, but are sent also to old customers ordering from this catalogue. . . . .

## Crinum.

Allied to the Amaryllis and bears lily-like flowers in an umbel on a long stalk. Single bulbs should be planted in good-sized pots in a turfy loam, well-drained, and should be given occasional applications of liquid manure; or, they may be planted out in the spring, and lifted on the approach of frost, brought in, and kept in a cool place till the next spring.

**Americanum.** Fragrant white flowers 4 to 5 inches long, produced 3 to 6 in an umbel, on a tall stalk 50 cts. each; \$5.00 per doz.

**Kirkii.** Splendid variety, producing dark pink lily-like flowers in profusion. \$1.00 each; \$10.00 per doz.

## Dicentra Spectabilis.

(Bleeding-Heart.)

The pink and yellow drooping racemes of heart-shaped flowers are produced in great abundance, and are exceedingly useful for cutting. They may be forced and had in flower in late winter, though they will not stand exposure to strong heat. There are no finer plants for the general border, and they will succeed in any good soil. 15 cts. each, \$1.50 per doz.

*Chionodoxa Luciliae.*

All Bulbs offered in this catalogue are delivered free of extra charge at single and dozen prices.



*Cyclamen Persicum giganteum.*

## Cyclamen.

These are very free-flowering, and their graceful habit, pretty foliage and the varied colors of the flowers add to their usefulness. They thrive best in a mixture of loam, leaf-mould and sand, with good drainage, and need plenty of light and air.

**Persicum giganteum** (Persian Violet). Not hardy, but a fine plant for indoor culture. White, purple or rose, large flowered, separate colors; 25 cts. each; \$2.50 per doz. Colors mixed, 20 cts. each; \$2.00 per doz.

## Freesia Refracta alba.

These are among the prettiest of winter-flowering bulbs. The flower-stalks are about 9 inches high, and bear 6 or 8 flowers each, which are delightfully fragrant, and last many days in water after being cut. They may be forced and had from autumn till late spring, if brought in succession into the light and warmth, and will succeed best when planted about 6 bulbs in a 5-inch pot, in a compost of sandy loam, leaf mould and decayed manure. Water will not be required till growth commences, and a frame where frost is excluded will be warm enough. As soon as growth begins, they may be watered more liberally, brought into the house or cool greenhouse, and placed where they will get as much light as possible. 2 cts. each; 15 cts. per doz.; \$1.00 per 100.

**3** Easter Lilies, different varieties, postpaid, for 25 cts.

## Eranthis Hyemalis.

(Winter Aconite.)

Flowers bright yellow, in earliest spring, continuing for several weeks. Very suitable for naturalizing in the shade or in wet places, where few other plants will grow. The tubers may be taken up in the summer after the leaves fall, or may be left in the ground for several years. 3 cts. each; 25 cts. per doz.

## Erythronium.

(Dog's Tooth Violet.)

The bulbs will succeed if planted in almost any light soil, but a mixture of loam and peat is best. They should be planted in little groups about 3 inches deep.

**Dens-Canis.** The true Dog's Tooth Violet, native of Europe. Flowers purplish rose or whitish; leaves blotched with brownish purple and white. 3 cts. each; 20 cts. per doz.; \$1.50 per 100.

**Grandiflorum.** Flowers borne in a raceme of from 2 to 6, yellow cream color, with a darker base. 4 cts. each; 35 cts. per doz.; \$2.50 per 100.

## Eucharis Amazonica.

A beautiful bulbous plant from South America, suited to greenhouse cultivation. Flowers white, sweet-scented, 4 to 5 inches in diameter, in 5 to 6 flowered umbels. Should be potted in a compost of leaf-mould, loam, sand, and well-decayed manure, with good drainage. Give plenty of water and occasionally liquid manure. 15 cts. each; \$1.50 per doz.



*Freesia Refracta alba.*

(For Sparaxis and Ixias, see pages 24 and 21)

All Bulbs offered in this catalogue are delivered free of extra charge at single and dozen prices.

## Gladiolus—The Bride.

Each Per doz. 100

**Colvilli alba** (The Bride). The most extensively used for forcing by florists or for house culture. Fine spikes of pure white flowers..... \$0 02 \$0 20 \$1 00

**Colvilli.** Purple and light yellow. Fine for forcing..... 05 35 1 50

## Fritillaria Imperialis.

(Crown Imperials.)

The Fritillarias are best suited to the flower border, and when planted should not be disturbed for several years. Any good garden soil will suit them, providing it is well drained. A top-dressing of well-rotted manure on the Crown Imperials, just as they start to grow, well be beneficial.

Each Per doz.

**Aurora.** Bright red.....\$0 15 \$1 75

**Crown upon Crown.** Red; whorls of flowers one above the other..... 20 2 00

**Gold-Striped.** Flowers crimson; foliage variegated with yellow. .... 40 3 50

**Sulphureous.** Sulphur yellow, slightly striped with red..... 20 2 00

**Mixed Varieties**..... 10 1 00

## Helleborus Niger Major.

(Christmas Rose.)

Flowers waxy white, 2 or 3 inches in diameter, produced in early spring. Perfectly hardy for planting outdoors in any well-manured soil, where it will flourish, but is principally used for forcing, as the flowers may be had in perfection by Christmas. Strong clumps, 25 cts. each, \$2.50 per doz.



*Gladiolus. "The Bride."*



*Helleborus Niger.*

## Ixia.

These are showy bulbous plants from South Africa, the base of the petals usually differing in color from the tip, and the inner from the outer surface.

See illustration on page 20.

Each Per doz.

**Crateroides.** Bright crimson; very effective.....\$0 03 \$0 30

**Mixed Varieties**.....\$1.00 per 100 03 20

## Lachenalia.

Pretty greenhouse bulbous plants from the Cape of Good Hope. Most of the species flower in spring and early summer, and should be planted in the fall, several in a pot, in a mixture of light loam, leaf-mould and sand.

Each Per doz.

**Lutea.** Flowers yellow, an inch long, erect, simple raceme.....\$0 20 \$2 00

**Pendula.** Flowers deep purple, red and yellow..... 20 2 00

**Tricolor.** Bright green, red and yellow, in a long, loose raceme..... 20 2 00

### Our Best Customers say...

That our premiums are the most liberal offered by any house in the country.

**Iris.**

(Fleur de Lis.)

Nothing finer than Iris can be had for back-grounds, and they will thrive well in shady places. A large proportion of the commoner varieties do not require more than ordinary attention to produce a profusion of flowers annually. The section of Spanish Irises, comprising *Anglica*, *Hispanica*, *reticulata*, etc., succeed best in a rich, sandy soil, fully exposed to the sun. The German varieties should be planted in rich, light soil and their rhizomes, which form on top of the ground, should not be covered. The Japanese Iris (*I. Kämpferi*) will succeed in almost any position, and produce an abundance of gorgeous flowers.

	Each Doz.	100
<b>Anglica</b> (English Iris). Mixed colors..	\$0 03	\$0 30 \$1 50
<b>Hispanica</b> (Spanish Iris). Mixed colors	02	20 75
<b>Germanica</b> (German Iris). Mixed colors.....	10	1 00
<b>Germanica Named Varieties..</b>	20	2 00
<b>Kämpferi</b> (Japanese Iris). The Japanese Iris is entirely distinct from other species. The flowers are large (5 to 7 inches in diameter), and are of the brightest and most pleasing arrangements of color, from dark blue to rose, yellow, white, etc. Named varieties..	25	2 50 15 00
<b>Mixed Varieties.....</b>	20	2 00 12 00
<b>Pavonia</b> (Peacock Iris). Pure white, with a bright blue spot in each petal. Not hardy, but fine for pots. ....	05	50
<b>Reticulata</b> . Very early; violet, spotted and striped with white, yellow, and black; sweet-scented. May be forced into bloom by Christmas.....	10	1 00 8 00



*Iris.*

For Charming Effect,  
Plant our Cottage Collection of  
**SPRING FLOWERING BULBS.**  
Particulars on Page 2.

**Nerine Sarniensis.**

(Guernsey Lily.)

Beautiful greenhouse bulbous plant, with scarlet and yellow flowers, which sparkle in the sun as if sprinkled with gold-dust. They succeed best when potted in compost of loam, leaf-mould and sand, with good drainage. When the leaves die, store the plant away in a cool place, and keep the soil dry until signs of growth are again apparent. 20 cts. each; \$2.00 per dozen.

**Ornithogalum Arabicum.**

(Star of Bethlehem.)

Milky white, with black center; are produced on tall stalks, and last a long time in perfection, sweet-scented. Not perfectly hardy, but excellent for pot-culture, forcing easily. 5 cts. each; 55 cts. per dozen.



*Ornithogalum Arabicum.*

**3 CALLAS,** See **Page 18. 30c.**

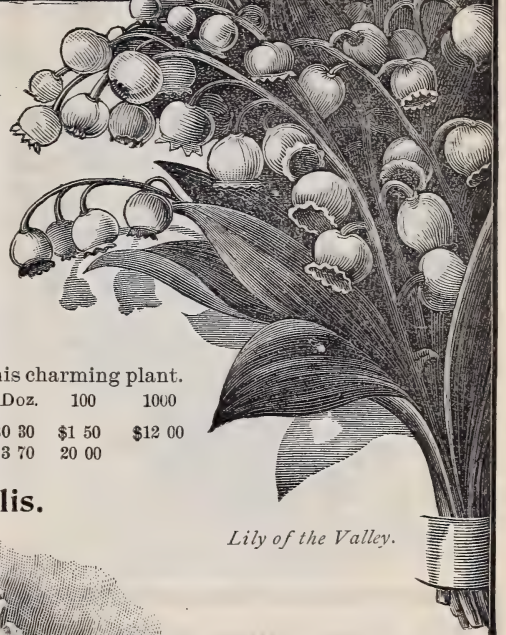
All Bulbs offered in this catalogue are delivered free of extra charge at single and dozen prices.



**Lily-of-the-Valley.**

*Ready in November.*

No description is needed of this universally admired plant, whose spikes of lovely sweet-scented, drooping white bells are everywhere known. No plant is easier of culture, and once established in the garden, it will need no further attention, except to top-dress with manure in the autumn. For quick results in outside planting, the clumps should be secured. For forcing, the single crowns or "pips" should be selected, and they may be had at any season of the year by keeping the roots in cold storage. We offer only the best German pips, grown in the sandy region around Berlin, which seems to be especially suited to the growth and perfect development of this charming plant.



*Lily of the Valley.*

	Each	Doz.	100	1000
<b>Crowns or Pips</b> , for forcing or pot culture; strong 3-year-old.....	\$0 30	\$1 50	\$12 00	
<b>Strong Clumps</b> , for planting outdoors.....	\$0 35	3 70	20 00	

If to be sent by mail add 25 cts. per 100 pips for postage.

**Bermuda Buttercup Oxalis.**



The Oxalis is perhaps as popular and as great a favorite for home and window decoration as any other plant. This it well deserves, as no plant is more simple in cultivation or gives such a lasting profusion of blossom in so short a time after planting. The Bermuda Buttercup Oxalis is not claimed to be a strictly new plant, but a great improvement over the type to which it belongs (*Oxalis cernua*); and the introducer's description which we give herewith has been endorsed by most of the leading florists who have tried it.

"This is one of the finest winter-flowering plants for pot-culture that we have ever seen; it is such a strong, luxuriant grower that one bulb will be sufficient for a 6 to 8-inch pot. The flowers are of the purest bright buttercup yellow. Well-grown plants have produced as high as seventy flower-stems at one time and over 1000 flowers in one season." 5 cts. each, 50 cts. per doz., \$3.50 per 100.

**Oxalis.**

	Each	Doz.	100	Each	Doz.	100
<b>Alba.</b> White.....	\$0 05	\$0 50	\$3 50	<b>Purpurea.</b> Purple.....	\$0 03	\$0 25 \$1 75
<b>Bowiei.</b> Large crimson.....	03	25	1 75	<b>Versicolor.</b> White inside, reddish	03	25 1 75
<b>Rosea.</b> Rose outside, paler within..	03	5	1 75	outside.....	03	20 1 50
<b>Lutea.</b> Yellow; large and fine.....	03	25	1 75	Mixed.....	03	20 1 50
<b>Lutea, fl. pl.</b> Double yellow.....	05	50	3 50			

All Bulbs offered in this catalogue are delivered free of extra charge at single and dozen prices.



*Ranunculus.*

**Fill Your Home With Beautiful Flowers.**

An abundant supply in a large and surprising variety may be had at a small cost by purchasing our "Window Garden" Collection. 37 distinct varieties (52 bulbs), by express, prepaid, for \$1.50

**Double Ranunculus.**

The flowers are good size, perfectly double, and as beautifully imbricated as a rose. For outdoor planting, a deep, well-drained soil, composed of loam, leaf-mould and decayed manure, will suit them well. They are also useful for forcing.

**Double Persian.** Camellia or rose-shaped flowers, quite double. All colors, mixed. Each, 3 cts.; per doz., 20 cts.; per 100, \$1.00.

**Double French.** Larger flowers and more vigorous growers; splendid for cut-flowers. All colors, mixed. Each, 3 cts.; per doz., 20 cts.; per 100, \$1.00.

**Double Turban.** These are hardier than the preceding, and may be planted in the autumn. The flowers are large and early, and the plants are vigorous growers. All colors, mixed. Each, 3 cts.; per doz., 20 cts.; per 100, \$1.00.

**Scilla.**

Should be planted by October, and if possible not disturbed for years. Their pretty star-shaped flowers appear with the Crocus and Snowdrop in earliest spring. *S. sibirica* may be cultivated in pots, but must not be exposed to strong heat.

	Each	Doz.	100
<b>Sibirica.</b> The slender spikes of rich blue flowers appear in earliest spring.	\$0 02	\$0 15	\$0 75
<b>Campanulata</b> (Wood Hyacinth). Blue, white and rose.....	03	25	1 50
<b>Peruviana</b> (Cuban Lily). Blue, the flowers crowded in a deltoid head, scape 6 to 12 inches high. A very striking plant, but requiring the protection of a cold-frame.....	10	1 00	
<b>Peruviana alba.</b> Like Peruviana, but with white flowers.....	25	2 25	

**Sparaxis Tricolor.**

(African Harlequin Flower.)

Flowers orange, with lighter center, borne 3 to 6 on a spike 1 to 2 feet high. 3 cts. each; 20 cts. per doz.; \$1.25 per 100.

For illustration see page 20.

**Snowdrops.**

Well-known pretty bulbous plants, whose white, bell-shaped flowers are among the earliest of spring blossoms, often appearing in March. They are hardy, and are suitable to plant with Hyacinths, their blossoms appearing before the latter are well out of the ground; or may be set on the edges of beds or along a walk.

	Each	Doz.	100
<b>Single.</b> White.....	\$0 02	\$0 15	\$1 00
<b>Double.</b> White.....	03	30	1 75
<b>Giant Snowdrops.</b> Larger than the ordinary Snowdrop, often growing a foot high; flowers white, with a greenish spot at the base of each segment..	02	15	1 00



*Single and Double Snowdrops.*

All Bulbs offered in this catalogue are delivered free of extra charge at single and dozen prices.

## "CORAL SPRAYS"

The beautiful new,  
Pure White;  
Meadow-sweet

(*Spiræa Astilboides Florabunda*.)

THIS new type of *Spiræa* is handsome and distinct, and cannot be too highly appreciated as a decorative plant for early forcing. It is dwarfer and much more graceful than *S. Japonica*, and a great improvement over the common *Spiræa Astilboides*. The flowers are produced in greatest profusion, on branching spikes terminated by elegant dense plumes of pure white, well displayed above the foliage. It is perfectly hardy, and is certain to become the leading variety for all purposes. Certificated both by the Royal Horticultural and Royal Botanical Societies of London. 25 cts. each, \$2.50 per doz.

### *Spiræa Astilboides*.

A popular florists' variety which is now very extensively grown. 20 cts. each \$2.00 per doz.

### *Spiræa Japonica Grandiflora*.

When well-grown its flowers are of a pearly white, double the size of the common *Spiræa Japonica*; close and compact in form, they give the effect of foam piled in pyramidal shape, while the dark green, fern-like leaves make a most pleasant contrast. The plant will be found very useful for table decoration, forces admirably, and being perfectly hardy will be found very suitable for borders. There can be no greater evidence of its value than the fact that it always commands double the price of the old *Spiræa Japonica* when in bloom. 25 cts. each, \$2.50 per doz., \$15.00 per 100.

### *Spiræa Japonica*.

Flowers not as large as preceding. Strong clumps, 15 cts. each, \$1.50 per doz., \$7 50 per 100.



*Spiræa Astilboides florabunda*.

## November Collection.

The following varieties mature later than most kinds of bulbs, in consequence of which we have decided to make up a valuable collection for delivery during this month including only such varieties as are then in season.

- 1 Clump of Lily-of-the-Valley,
- 12 Pips " " " " For flowering in house,
- 1 Clump of *Spiræa Japonica grandiflora*,
- 1 " *Spiræa Astilboides florabunda*
- 12 Gladiolus—The Bride,
- 1 *Dielytra Spectabile* (Bleeding Heart),
- 1 *Helleborus Niger* (Christmas Rose),

The complete collection  
forwarded by express  
prepaid for

**\$1.50.**

# SWEET PEAS.

To secure the best result Sweet Pea Seed should be sown in the late fall. Below we offer a selection of the best and newest varieties at much cheaper prices than they will be offered in the spring.

Full cultural directions will be found on each packet.

- Adonis.** Carmine.
- Alba magnifica.** Pure white.
- Blanche Burpee.** Pure white (New), 10 cts. per pkt.
- Blanche Ferry.** Pink and white; dwarf.
- Blushing Beauty.** Pink and lilac.
- Boreattan.** Maroon.
- Butterfly.** White, tinted lilac.
- Captain of the Blues.** Blue.
- Cupid.** Dwarf, white. 25 cts. pkt.



- Delight.** White and pink.
- Duchess of Edinburgh.** A fine variety, with orange-scarlet standards and rose wings.
- Extra Early Blanche Ferry.** 10 cts. pkt.
- Queen of England.** Yellowish white.
- Queen of the Isles.** Scarlet, mottled white and purple.
- Senator.** An elegant variety of most exquisite coloring; mottled and striped chocolate on a cream-white ground.
- Splendor.** Pinkish rose and crimson; a superb variety of fine form and delicate markings.
- The Queen.** Deep pink.
- Venus.** Buff and pink.
- Waverly.** Rich claret and purple.

- Fairy Queen.** White and rose.
- Indigo King.** Purple.
- Invincible Scarlet.** The best scarlet.
- Katherine Tracy.** Pink. 10 cts. pkt.

- Lemon Queen.** Large flower, with white wings and standards faintly tinted lemon.
- Mrs. Sankey.** One of the best pure whites.
- Princess Beatrice.** Rose.
- Princess of Wales.** Blue and white.

Prices, except where noted, 5 cts. per pkt.; 10 cts. per oz.; 30 cts. per 1/4 lb.

- Eckford's Hybrids.** Mixed, 5 cts. per pkt; 8 cts. per oz.; 25 cts. per 1/4 lb.; 80 cts. per lb.
- Standard Varieties.** Mixed, 5 cts. per oz.; 15 cts. per 1/4 lb.; 50 cts. per lb.

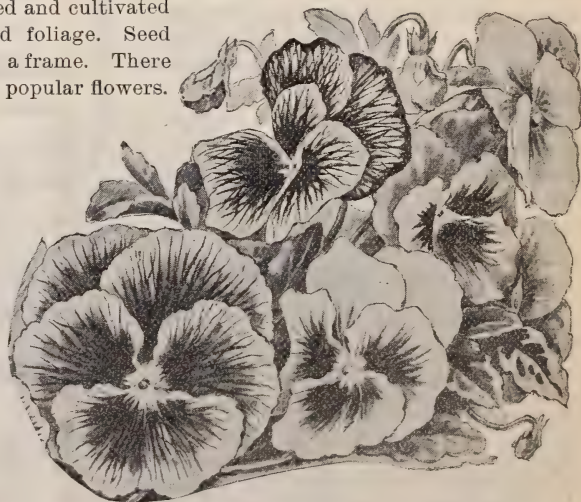
## Sweet Pea Collection.

1 packet each of every variety on this page. All kept separate. Postpaid for \$1.00.

# PANSIES.

(*Viola tricolor*; Heartsease.)

All our seed is saved from the best and most noted growers, both in Europe and America, and is unsurpassed. They should be carefully treated and cultivated in order to produce large flowers and good foliage. Seed should be sown early in autumn preferably in a frame. There is nothing finer than a bed of these showy and popular flowers.



- Black (Faust).** Very intense..... 10
- White.** With black eye; very effective.... 10
- Pure Yellow (The Gem).** Fine for borders 10
- Striped and Mottled.** Very pretty.... 10
- Bronze.** Rich color, and very effective.... 10
- Light Blue.** } Beautiful for beds and 10
- Black Blue.** } masses..... 10
- Emperor William.** Blue; the finest of 1
- the blues.....**
- Lord Beaconsfield.** Violet and white; 10
- handsomely shaded.....**
- Present Carnot.** Blotched (novelty). 25
- Snow Queen.** White, pure, no eye; 10
- satiny gloss.....**
- Gold Margined.** } Grand and effective 10
- Violet** } for beds and masses. 10
- Odier, or Five-Blotched.** Very large 25
- flowers, bright rich colors.....**
- Giant Trimardeau.** A fine strain of 25
- very large flowers.....**
- Bugnot's Superb-Blotched.** Very 5
- large flowers.....**
- Peacock.** Beautifully marked in gorgeous 25
- colors; extra fine.....**
- P. & M.'s Unsurpassed Mixture.** 50
- This cannot be excelled.....**
- Good Mixed.** A fine strain; all shades 10
- of color.....**

PANSY BLOSSOMS 16 Colors for \$2.00

All Bulbs offered in this catalogue are delivered free of extra charge at single and dozen prices.



# CHOICE STRAINS OF FLORISTS' FLOWER SEEDS.

For Summer and Fall Sowing and Winter Flowering.



*Cineraria Hybrid Grandiflora.*

the seed we offer was saved from our fine collection of named and choice seedling flowers, some of which were on exhibition at our nurseries during the past spring and called forth the admiration of all who saw them.

**Grandiflora, Grand Prize, 50 cts. per pkt.**

For other varieties and prices see page 28.

## CYCLAMEN PERSICUM GIGANTEUM.

The choice strain we offer of this grand plant is saved expressly for us from select specimens, the blooms of which often measure two inches and over in length, and are produced in great abundance. The broad petals are borne on short flower stalks well above the foliage, which is beautifully mottled.

**Seed in separate colors or mixed, 50 cts. per pkt.**

For varieties and prices see page 28.

## PANSY.

We certainly do not over-estimate our stock of Pansy seed when we say that it is impossible to procure a more select strain, as it combines all the good qualities that go to make up perfection.

**Our Unsurpassed strain, 50 cts. per pkt.**

For other varieties and prices see page 26.

**ONE PACKET EACH OF THE ABOVE FIVE VARIETIES FOR \$2.00.**

## CALCEOLARIA HYBRIDA GRANDIFLORA.

We have every confidence in offering our choice strain of *Calceolaria hybrida grandiflora*, as it is saved from the choicest of collections which in past seasons have been awarded first prizes. The flowers, which are beautiful in form and of large size, are tigered, spotted and self-colored. Any one wishing to secure a first-class strain for competition can depend on this.

**Hybrida grandiflora, 50 cts. per pkt.**

For other varieties and prices see page 28.

## CINERARIA HYBRIDA GRANDIFLORA.

Our strain of this grand florists' flower will be found faultless, both in habit of plant and form of flower, the colors of which are most brilliant and in great variety;



*Primula.*

## PRIMULA SINENSIS FIMBRIATA.

For some time past we have given great attention to selecting the best strains of this popular plant, and after repeated test with the choicest European strains, have what we believe to be the most superb in cultivation. We have made arrangements to have seed grown by the most skillful and careful growers expressly for us.

**Mixed or in separate colors, 50 cts. per pkt.**

For other varieties and prices see page 28.

All Bulbs offered in this catalogue are delivered free of extra charge at single and dozen prices.

# Seeds of Showy Flowers for Conservatory, Home and Garden.

SUITABLE FOR FALL AND WINTER SOWING.

**ALYSSUM saxatile compactum.** Hardy perennial, blooming in early spring; flowers yellow, making very showy borders or beds.... \$0 05  
**Maritimum** (Sweet Alyssum)..... 05



*Bellis perennis.*

**BELLIS perennis** (English Daisy)  
 A hardy perennial, best planted in autumn. Flowers full, double, white, pink and red.  
**Fine Mixed** ..... 10  
**Unsurpassed Fine Mixed**..... 25

**CALCEOLARIA hybrida grandiflora.** Pretty greenhouse plants, with curious slipper shaped flowers of bright colors. Seed best sown in September for winter blooming.

**Self colored Varieties Mixed,**  
 extra choice strain..... 50  
**Tigered and Mottled Varieties,** extra choice..... 50  
**Rugosa.** Shrubby; for bedding the coming summer..... 25

**CAMPANULA calycanthemum** (Canterbury-Bells). Hardy biennial, with handsome, bell-shaped flowers of white, purple and rose color. Best planted in autumn. Mixed colors.. 10

**CENTAUREA candidissima.** Half-hardy greenhouse perennial, with silvery foliage..... 25

**Clementei.** Similar to preceding, but with foliage delicately fringed and cut..... 10

**Gymnocarpa**..... 10  
**Cyanus** (Corn-Flower). Hardy annual, with bright blue flowers; excellent for cutting.... 05

**CHRYSANTHEMUM multicaule** (Paris Daisy). Hardy annual Chrysanthemum; flowers yellow..... 05  
**Inodorum flore pleno.** Double white.... 10

**CINERARIA hybrida.** Half hardy annual, which for winter flowering should be sown the preceding summer. Much raised by florists.

**Very Best Quality Mixed;** decorative for windows..... 50  
**Fine Mixed**..... 25

**COBÆA scandens.** One of the finest greenhouse or conservatory climbers, and producing a large number of purple, bell-shaped flowers... 10

**Alba.** The same, but with white flowers..... 10

**COLLINSIA bicolor.** Hardy annual, bearing purple and white flowers..... 05

**Verna.** Hardy annual, with white and blue flowers..... 05

**CYCLAMEN Persicum giganteum album.** Grand free-blooming plants, much grown by florists. Extra choice English strain. White..... 50

**ATRORUBRUM.** Dark red..... 50  
**Roseum.** Almost as dainty as an Orchid..... 50  
**Mixed Colors**..... 50

**DIANTHUS barbatus** (Sweet William). A hardy perennial with bright colored flowers in terminal clusters..... 05

**GLOXINIA.** These are among the most beautiful of greenhouse flowering plants, and bloom freely the first year from seed. Best varieties mixed. Extra choice strain..... 50

**MIGNONETTE** (Reseda). Nothing is prettier in the sitting-room in winter than a box of Mignonette in blossom. It will grow in a few weeks from seed, and will produce its sweet-scented flowers in great abundance.



*Mignonette.*

**Large Flowering**..... \$0 05

**Golden Queen.** Dense pyramidal growth; spikes of a bright golden yell'w 10

**Machel.** French. Dwarf, with spikes, sweet dark red flowers..... 10

**MYOSOTIS Alpestris** (Forget-Me-Not). A dwarf variety of the well-known hardy perennial, with pretty blue flowers in abundance..... 10

**PHLOX Drummondii.** These well-known summer bedding annuals are also much used as pot plants in the house, or for cut flowers in winter.

**Grandiflora splendens.** Mixed colors.... 10  
**Separate colors**..... each 10

**PRIMULA.** The Primulas are among the finest of flowering pot plants.

**Sinensis fimbriata** (Chinese Fringed Primrose). Bright colors. 50

**Choicest Mixed Varieties**..... 50  
**Alba.** White..... 25  
**Rubra.** Red..... 25

**Coccinea.** Scarlet..... 25  
**Cœrulea.** Blue..... 50  
**Globosa rubra.** Red..... 25

**" alba.** White..... 25  
**Kermesina splendens**..... 25

**Japonica.** Mixed colors..... 10  
**Obconica grandiflora.** A great improvement..... 25

**Vulgaris** (English Primrose). The yellow Poet's Primrose of England..... 10

**SMILAX** (Myrsiphyllum asparagoides). The well-known tender climber..... 10



*Stocks.*

**STOCKS.** If the seed is sown in the fall and wintered in a cold frame they will come into bloom early the following spring.

**Double Ten Weeks.** Large Flowering Dwarf. White, Scarlet, Blue, Sulphur Yellow, each separate..... 15

**Mixed colors**... 10

**Perfection.** White, yellow, or crimson..... each 15

**Brompton, or Winter.** White or crimson and Mixed..... each 15

**VINCA alba.** Greenhouse shrub, very free flowering; white..... 10

**Rosea.** Flowers rose-colored, white center.... 10

FOR A COMPLETE LIST OF SEEDS SEE OUR SPRING CATALOGUE.

Seeds offered by the packet or ounce are sent by mail, prepaid, at prices quoted.

All Bulbs offered in this catalogue are delivered free of extra charge at single and dozen prices.

# SHORT HILLS LAWN GRASS.

How to Make New or Improve Old Garden Lawns, Lawn Tennis and Croquet Grounds and Bowling Greens.

## LAWN GRASS SEED.

When making a new lawn or renovating an old one by sowing seed, the most important features to be considered are the texture of the soil, and location and surrounding influences. These should be studied before buying or sowing the seed, as grass varies, and its adaptability to different circumstances is as diverse as that of any other class of vegetation. This explains to a certain extent, we believe, the secret of so many failures in obtaining successful results from seed in making lawns, and convinces us of the uselessness of offering any one mixture as being suitable for all localities. To obviate this, we have concluded to offer three grades or mixtures, which cover the varied requirements.

It is necessary to sow the seed very thickly to get the most pleasing result, sowing not less than four bushels to the acre, or one quart to a piece of ground 20 by 25 feet. In early spring or fall dig the ground well, rake and level it; and after the seed is sown, which should be done on a calm dry day, rake the seed in and roll well; or, in the absence of a roller, pack the ground down well with the back of a spade or shovel.

Our seed, which will be found very clean and free from weed seeds is put up in pretty cartons containing one pint, one quart and two quarts. It weighs about 20 pounds to the bushel. Add 10 cents per quart for postage, if to be sent by mail.

**No. 1.** Suitable for exposed, dry, sandy soil, and most suitable for the southern states. Per pt., 15 cts.; per qt., 20 cts.; per two qts., 35 cts.; per pk., \$1.25; per bush., \$4.50.

**No. 2.** Suitable for medium, shady or average soil. Per pt., 15 cts.; per qt., 20 cts.; per two qts., 35 cts.; per pk., \$1.25; per bush., \$4.50.

**No. 3.** Suitable for wet or shady and clayey soil. Per pt., 15 cts.; per qt., 20 cts.; per two qts., 35 cts.; per pk., \$1.25; per bush., \$4.50.

When ordering, customers would do well to explain the situation in which they intend to sow, and describe any peculiar influences bearing upon it, that we may, if necessary, make up a special mixture suitable for their requirements.

## SEEDS FOR PASTURE AND HAY. Permanent or Temporary.

The growing demand for this kind of crop proves that the sowing of mixed pasture seed is no longer an experiment, and those who have given it a fair trial cannot speak too highly in its favor. Autumn and spring are equally desirable seasons for sowing grass seed for pasture, either permanent or temporary, and persons contemplating laying down ground to hay for pasture should write us for particulars concerning the advisability of sowing our mixture in preference to Timothy, the article most frequently used by farmers in this section. Our pasture-grass mixtures are superior to Timothy in many respects, producing a larger crop of nutritious grass; besides, they are permanent and not liable to be winter-killed.

### Permanent and Temporary Pasture-Grass Mixture.

Our mixture for the above purpose, recommended in ordinary cases for medium soil, to produce grass and clover, should be sown fifty pounds to the acre. Per bushel, \$2.25, or three bushels, sufficient to plant one acre, \$6.50.

A Superb Orchid, Native of South America,  
is presented with every order  
amounting to \$5.00 and over.

This wonderful plant is carefully packed to carry safely by express to any part of the world, and to insure safe arrival and consequently perfect success, the goods ordered from this catalogue will be packed with the valuable premium and delivered to the express office at Short Hills, from where the package will travel at purchaser's expense.



# PALMS, FERNS AND OTHER FOLIAGE PLANTS.

**M**OST plants are beautiful only when in blossom, which is a small part of the year, but there are plants which are alike attractive, decorative and beautiful in winter as well as summer. Such are the Palms, the Ferns, and the many foliage plants of all kinds.

Palms are among the noblest and most decorative of plants. While in our glass houses we cannot approach the grandeur and magnificence of specimens growing in the open air in the tropics, still we can show many fine specimens from 10 to 15 feet in height, and many species early take on their stately form, and are as beautiful when a foot high as when twenty times that height. The small specimens can be used for any purpose—for the parlor, for the hall, for table decoration, etc.—while the larger ones are the grandest and most showy plants that can be had for decorating churches, ballrooms, etc.

As beautiful and almost as easy of treatment are the Tree Ferns, with their branching, finely divided fronds, giving them an individuality equal to that of the Palms. Then there are the smaller Ferns, beautiful in color, texture and outline, and useful for all decorative purposes.

Other plants, among the hundreds cultivated in our houses for the beauty of their foliage, are the following:

**Cycads**, with spreading, coriaceous, pinnately divided fronds; grand for decorative purposes.

**Araucarias**. Beautifully symmetrical evergreen conifers from New Zealand and the islands of the South Pacific.

**Dracaenas**, in great variety, with broad green leaves, marked or banded with white or red.

**Bromeliads** (called Lobster Orchids), with thick, hard leaves with spiny edges; air-plants which, like Orchids, grow on the trees in their native homes.

**Pandanus**, or Screw Pines, with leaves arranged in spiral form.

**Nepenthes**, or Pitcher Plants, whose leaves form pitcher-like appendages, which hold water and trap insects.

We are always glad to give estimates for filling greenhouses and conservatories, and solicit correspondence from all who contemplate building new greenhouses, or making additions to their collections.

For descriptions, varieties and prices, see our General Illustrated Catalogue.



## HARDY ROSES.

Although everywhere accorded high rank, the Rose is emphatically a flower of the people, loved by all and refusing to grow in no garden where it can have the sunlight and a rich deep soil. We note with regret the advantage taken of its hold upon the people to multiply unworthy and indistinct varieties. The varieties named below, though few in number, are all of the very best quality, hardy, free-growing and free-blooming.

All pot-grown and tender Roses should be planted in the spring or summer, when all danger of spring frosts are over. The hardy varieties, if dormant, can be planted either in the fall or spring as preferred; if planted in the spring, the earlier it is done the better it is for the plant. They require a rich soil, which should be well firmed with the feet, taking care not to hurt the roots. All Roses should be moderately pruned when planted in order to obtain the best results, some varieties requiring more, others less. March is the best time for this. During the winter months it is best to give all varieties a slight protection, especially Bengal, Noisette, Tea, and most of the Bourbon classes.

- Aldred Colomb.** Carmine-crimson.  
**Anna de Diesbach.** Carmine.  
**Baron de Bonstettin.** Velvety maroon, shaded deep crimson.  
**Baroness Rothschild.** Light pink, often deepening to rose.  
**Coquette des Alpes.** Pure white.  
**Coquette des Blancches.** Snow white.  
**General Jacqueminot.** Brilliant crimson.  
**General Washington.** Bright red, shaded crimson.  
**John Hopper.** Light rose.

Strong two year old dormant plants, 50 cts. each; \$4.00 per doz.

### CLIMBING ROSES.

- Baltimore Belle.** Pale blush, almost white.  
**Crimson Rambler.** Crimson.  
**Dawson.** Deep pink.

- Magna Charta.** Rosy red.  
**Margaret Dickson.** New. White, pale flesh center.  
**Marshall P. Wilder.** Bright crimson.  
**Mme. Gabriel Luizet.** Beautiful pink.  
**Mrs. John Laing.** Delicate pink.  
**Paul Neyron.** Deep rose.  
**Prince Camille de Rohan.** Deep velvety crimson.  
**Silver Queen.** Silvery blush, shading to delicate rose.  
**Ulrich Brunner.** Cherry red.

Strong two year old dormant plants, 50c. each, \$4 per doz.

## ORCHIDS AND CYPRIPIEDIUMS.

This class of plants, the grandest in the whole vegetable kingdom, is one of our specialties. The stock of Orchids of all sorts is the finest sale collection in America, while the Cypripedium collection, numbering more than 400 varieties, ranks as the finest in the entire world. We import, through our own collectors and correspondents in all parts of the world, thousands of plants of the better varieties, most of which become established in our spacious glass houses before being sent out. We also raise a great number of hybrid seedlings in our own nurseries, having now nearly 1000 such seedlings of Cypripediums alone which have never blossomed. All the rare varieties and sports, as well as hybrids, raised in any of the horticultural establishments of Europe, are secured as soon as they are in the market.

Orchids stand preëminent to-day as the fashionable flower, especially for table decoration at dinner parties, weddings, etc., and, in fact, for any purpose where flowers are required differing from the lovely but well-known Roses and Carnations. There are certainly no finer flowers in any class than the Cattleyas and Leelias, Dendrobiums, Odontoglossums and curious Lady's-slippers.

Orchids are easy of culture, if a few cardinal directions are taken into account and followed. Most varieties, including many of the very best, will thrive in any ordinary greenhouse or conservatory where the temperature is kept at from 50 to 60 degrees throughout the year, and may be cultivated with Palms, Ferns, etc. As a guide to those just taking up the fascinating pursuit of Orchid culture, we have prepared a little pamphlet, "Orchids for Beginners," which is sent on application. In this will be found described, with simple cultural directions, the best species for the beginner, all of which may be had at moderate prices.

We make up collections, including only fine plants, at from \$1.00 to \$5.00 per plant; or, if customers desire, we will use our best judgment and experience of long years, to give them the best varieties for any conditions, or to bloom in certain seasons.

For descriptions, varieties and prices, see our General Illustrated Catalogue.



# Coming Novelties...

In our spring catalogue for this year, under this heading, we made mention of these very promising Novelties for introduction in 1897. They are

**The New White Blackberry "Iceberg,"**  
**The New Silver Variegated Roman Myrtle,**  
**Giant Gladiolus, "Ingleside Hybrids."**

Full descriptions will be found in our next catalogue, ready January 1st, 1897. Do not fail to secure a copy.

## Hardy Herbaceous Plants.

**BY THIS TERM** is meant such plants as may be set in open ground, which will thrive without protection in the winter, and whose foliage dies down to or near the ground each autumn. We have devoted much attention to this class of plants for several years, and now have a collection which comprises all the old garden favorites and our best native varieties, as well as many importations from Europe, north Asia, Japan, Australia, etc. No plants are more useful and none more ornamental. They are border plants *par excellence*, for, with proper arrangements of sorts, the border will be rich with bright colored flowers from the time the snow leaves in March until it comes again in November. They are also useful for beds, planting in rockeries, in low marshy places, by margins of lakes, etc., and throughout the summer flowers may be cut from them in great profusion. They require little care—a fairly good soil to start with, occasional enrichings, a little cultivation, perhaps, in spring, to eradicate perennial weeds, and the cutting down of the old, dead tops is all that is needed.

Among the grand flowers that have been cultivated and improved for ages, which we offer in this department, are the following:

- Pæonia**, varying in color from the most brilliant crimson through all shades of rose and pink to white, many being delicately sweet scented.
- Iris**, with flowers of varied colors—blues, reds, whites, yellows—rivaling in their delicate shadings and quaint combinations, as well as their odd shapes, the Orchid blossoms of the tropics.
- Clematis**, the best of climbers, with gorgeous flowers of scarlet, royal purple, white and all shades of salmon, mauve, etc., many being striped and barred.
- Delphinium** (Larkspur), with its spikes of blue and white; **Aquilegia** (Columbine), many new sorts, as well as the old garden favorites; **Campanula** (Bellflower), blue and white, both double and single; **Pyrethrum**, Daisy-like flowers of a hundred different styles and shades and colors; **Phlox**, old garden favorites, with improvements in freedom of flowering, habit of growth, etc.; **Primula** (Primrose), **Poppy**, **Violet**, etc., etc.

We are prepared at all times to make lists of plants suitable for any position, or to give estimates of the cost of planting grounds of any size. Correspondence with those laying out extensive places is solicited.

For descriptions, varieties and prices, see our  
 General Illustrated Catalogue.



All Bulbs offered in this catalogue are delivered free of extra charge at single and double prices.





## ...Awards of Honor...

- TO -

# PITCHER & MANDA,

- FOR -



## Plants, Seeds and Bulbs.

The superiority of the goods offered in this and other catalogues, comprising the many departments of **The United States Nurseries**, can be no better shown than by our enumerating the many trophies won at competitive exhibitions in this country and Europe, where our entries were judged side by side, with those of the leading horticulturists.

At the World's Columbian Exposition in Chicago, our exhibits received

### 25 GOLD MEDALS AND DIPLOMAS,

being the **HIGHEST AWARDS** in each of the several Departments in which we entered for competition, as shown by the following list:

Collection of Orchids.  
 Collection of Hardy Perennials,  
 Display of Bulbs.  
 Display of Seeds.  
 Collection of Flowering  
 Annuals.  
 Display of Lilies.  
 Collection of Palms.  
 Collection of Tree Ferns.  
 Collection of Araucarias.  
 Collection of Ferns,  
 Collection of Ornamental Foliage  
 Plants.  
 Collection of Bay Trees.



Display of Floral Photographs.  
 Collection of Cycads.  
 Collection of Iris.  
 Collection of Pyrethrums.  
 Collection of Rhododendrons.  
 Collection of Roses.  
 Datura cornucopia (Horn of  
 Plenty).  
 Dioon Spinulosum.  
 Macrozamia Mackenzii.  
 Encephalartos Caffra.  
 Kentia Forsteriana.  
 Canna, Madame Crozy.  
 Canna, F. L. Harris.

## OTHER HONORS RECEIVED.

### European Awards.

- 10 Medals and cups awarded by the *Royal Horticultural Society of London.*
- 5 Medals awarded by the *National Chrysanthemum Society of England.*
- 11 Medals awarded by the *Botanical Society of Ghent, Belgium.*
- 2 Medals awarded by the *Botanical Society of Berlin, Germany.*
- 4 Medals awarded at the *Chrysanthemum Show in Vienna, Austria.*
- 1 Medal awarded at the *Chrysanthemum Show in Paris, France.*
- 1 Decoration awarded at the *Chrysanthemum Show in Düsseldorf, Germany.*
- 72 Diplomas, First-Class Certificates, etc., awarded by the principal Horticultural Societies of Europe.

### American Awards.

Ten Medals, three Cups, and Jeweled Decoration awarded by the *Massachusetts Horticultural Society*, *Society of American Florists*, *New York Florists' Club*, and at other competing exhibitions in the United States; in addition to which, during the past five years, we have received from Flower Shows nearly

**FIFTEEN THOUSAND DOLLARS IN CASH.**

