

Historic, Archive Document

Do not assume content reflects current scientific knowledge, policies, or practices.

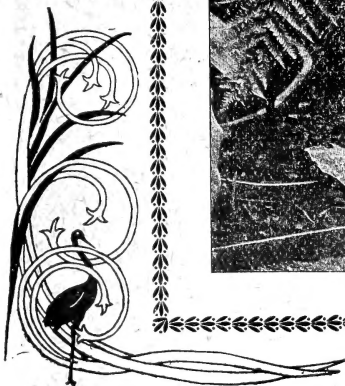
Floral...

Beauties

Spring of
1898.

OUR
MOTTO:

BEST Plants,
True to
Name, Guarant
eed to Reach
You Safely.



The Great Western Plant Co.,

SPRINGFIELD, OHIO.



ALL
KINDS
OF

Flowers

FOR THE
HOME
GARDEN.

A MATCHLESS COMBINATION

16 Choice Plants and Bulbs, { **Only 50c**
A Great Floral Magazine,



By a special arrangement with the publisher of *How to Grow Flowers*, we are enabled to make a wonderful combination offer to our customers who may wish to subscribe for this great magazine. For only 50 cents we will send the elegant collection of plants, seeds and bulbs, described below, and *How to Grow Flowers* one year. This collection comprises sixteen choice flowers, and is as follows:



SOUPERT ROSE.

ONE ELEGANT ROSE, PINK SOUPERT.—Produces flowers of various shades of pink. Colors altogether new. Hardy, and a profuse bloomer.

ONE CHRYSANTHEMUM, EDWARD HATCH.—A grand variety. Immense flowers. Color soft lemon, suffused with pink.

ONE CARNATION, JUBILEE.—The grandest red variety in existence. Color an intense scarlet. Flowers of the largest size.

ONE OTAHEITE ORANGE.—A novelty of sterling merit. Foliage and blooms are beautiful.

ONE UMBRELLA PLANT.—(*Cyperus Alternatifolius*.)

TWO BULBS NEW AND SCARCE GLADIOLI.
TWO BULBS DOUBLE DWARF TUBEROSE.

ONE TUBEROUS-ROOTED BEGONIA.

ONE CINNAMON VINE.

ONE APIOS TUBEROSA.

ONE PACKET CHOICE NASTURTIUM SEED.

ONE PACKET CHOICE PHLOX DRUMMONDII SEED.

ONE PACKET CHOICE MIXED PANSY SEED.

ONE PACKET CHOICE CHINA ASTER SEED.



DOUBLE TUBEROSE.

How to Grow Flowers

Is an elegantly illustrated, high-grade twenty-page monthly, devoted exclusively to flower culture. It tells the way to success in growing plants—what to do, how to do it, and when to do it. Plain and practical articles are contributed by the best writers. Absolutely indispensable to every person who would be successful with flowers.

Departments devoted to answers to questions and Hints for the Month are especially valuable. All illustrations are made from photographs, thus being always true to nature. In every way this journal is a complete guide to the culture of flowers. It is printed in clear type, easily read, and on the best of paper, and in convenient form.

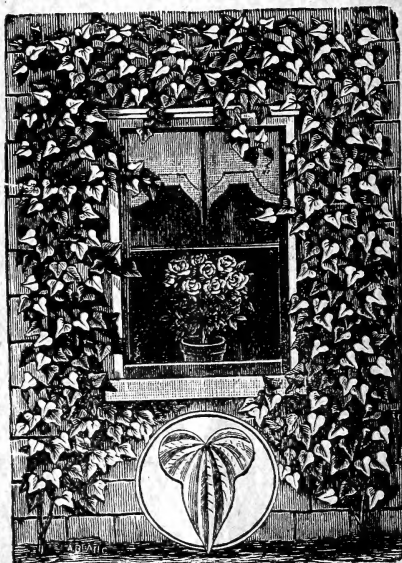
There are few persons but that love flowers. Many do not grow them, however, because of their inability to do so successfully. In nearly every case this is due to lack of experience. *How to Grow Flowers* is published to supply the wants of this class. It covers the ground fully, and is needed by every grower and lover of floral treasures. We cordially recommend this journal to all our customers.

How to Grow Flowers alone will be mailed one year to any address for only 25 cents. We are general agents for this magazine, and trust all our customers will subscribe at once.

REMEMBER,

The great collection of plants, seeds and bulbs, as described above, worth fully \$1.50 at lowest retail prices, and *HOW TO GROW FLOWERS* one year, for only 50 cents. **Order to-day.**

THE GREAT WESTERN PLANT CO.,
SPRINGFIELD, OHIO.



CINNAMON VINE.

"CHALLENGE" COLLECTION

16 ELEGANT BLOOMING PLANTS FOR \$1.00.

This collection of plants is selected so as to give a great variety of flowers, and at the same time give continuous bloom all the year. Say "Challenge" Collection in ordering. Any eight plants in this collection for 50 cents. Any four for 25 cents.

New Pure White Chrysanthemum, Invincible.—A grand exhibition variety. This is an elegant grower, heavy, stocky stems, clothed throughout in fine foliage. Height four feet. The flower is of immense size, crowded with petals which are waxy, and of great substance, incurving form that is exquisite. A most imposing bloom. Color a pearly-white, suffused and tinted with delicate rose-lilac. Nothing like it in color. A grand addition to any collection. It is also a prize winner.

New Pure White Hybrid Tea Rose, Jean de Arc.—This beautiful Rose has not only a royal name, but is a royal Rose as well. We have white Roses that have elegant buds, but when full blown are not all that is desired. Then again, we have white Roses that are elegant when full blown, but have poor buds. This Rose combines both these good qualities. It is a continuous bloomer, producing successive crops of buds and flowers in great profusion. The buds are very beautifully formed, with large petals, of the best substance, show no center when fully open. Color pure white, and when you add a rich perfume, coupled with a vigorous growth, what more could you ask? An easy winner over all competitors in its color, and we predict that more of it will be planted than all other whites combined.

Swainsonia Rosea.—The prettiest plant of any in our collection. This is the prettiest all round plant for house culture that we know of. It is of such easy culture that everybody succeeds with it. It is a rapid grower, and in a short time makes a handsome, compact bush, as it naturally grows into a shapely plant. The foliage is deep green and small. It bears its panicles six inches long, deep rose or red pea-shaped flowers in the greatest profusion, and of the sweetest fragrance. Indeed, it is as sweet in perfume as Sweet Peas. We have been cultivating it for the past two years, and it is seldom out of flower either Winter or Summer. Be sure and try it, as it will certainly please you.

New Golden-Yellow Rose, Star of Gold.—This splendid Rose is admittedly one of the brightest colored and most brilliant Roses we have, and is highly recommended for bedding and general planting, as well as for growing in pots and conservatory. The color is a rich, deep, golden-yellow, exceedingly bright and striking, and both buds and flower are large and elegantly formed, fully double, and borne on nice, long stems, which renders it especially attractive, as well as nice for cutting. It is a vigorous and healthy grower and a quick and constant bloomer, quite fragrant, a really excellent Rose in every way, and never fails to please. If you want a good, deep yellow Rose that is a good bloomer, plant Star of Gold.

Olakheite Orange, New Dwarf Orange.—This is one of the prettiest plants we grow. Every one is delighted with it. It blooms and fruits when quite small. We have seen plants in bloom and fruit when but six inches in height. Don't fail to try it, as it delights everybody.

Grand Yellow Chrysanthemum, Golden Harvest.—The grandest yellow ever offered. This fine variety swept everything before it at the New York and Philadelphia shows. In color it is a deep, bright golden, of shining texture, is very large in size, the petals are both long and broad, and channeled lengthwise. A perfect Japanese incurved of most beautiful form, very free in growth. A first-class exhibition variety.

New White Carnation, White Wings.—This beautiful Carnation is remarkable for its extremely vigorous growth, very large flowers, perfect shape, purest white. Indeed, for size and freedom of bloom, purity of color, which is immaculate, sweetness of perfume that is delicious, vigorous growth, this variety has no equal. The best white by far out of a dozen varieties we have of that color.

The Greatest of all Hibiscus, Sinensis Giganteus.—A plant for house culture during Winter or Summer, or for plunging outside during Summer. It blooms at all times of the year. The plants make a hard-wooded shrub, like an Oleander, branching freely and flowering profusely, commencing to bloom when not more than a foot high. As a specimen plant for large pots or tubs it has an equal only in the Brugmansia. Its flowers are of enormous size, often eight to ten inches across, opening flat, and of such a vivid crimson-scarlet color that they can be seen for a long distance like a flaming torch.

New Geranium, Mrs. E. G. Hill.—No one who has not seen this lovely Geranium as it is grown in the beds and borders of Northern parks can imagine the beauty that lies in a flower of that color. Of a deep, soft salmon, rather than pink, but fresh and bright, the blossoms are perfect in form, and borne well and clear above the foliage. The long beds of it seen in the Chicago parks, with their edgings of "Golden Bedder" Coleus, formed the most beautiful Geranium planting we have ever seen, and the combination is delightful. It stands the sun perfectly, and is, in our opinion, the finest double variety of any color for massing, when a delicate and artistic effect is desired.

The New Hydrangea, Monstrosa.—This is by far the best of all Hydrangeas, the flower being almost double in size of the older varieties, and its free blooming quality is unequaled by any plant we know of. The color is at first a deep, rich pink, gradually changing to almost a snow-white. Blooms have been measured fifteen inches in length by ten inches through. It is indeed an enormous and beautiful flower.

New Heliotrope, Sapphire.—For a neat, dwarf habit, profusion of bloom and richness of odor, this Heliotrope has no equal, and its vivid color of royal purple with a distinct white center gives us something entirely new in color, either for Summer decoration or Winter flowering.

New Jasmine, Maid of Orleans.—Easily grown, even small plants bearing a profusion of double, creamy-white flowers, having a delicious perfume. A plant of this lovely variety will, when in bloom, scent up a whole yard or house. It is by far the most delicious in bloom and fragrance of all Jasmynes, or indeed, for that matter, we know of no flower that emits such a delightful fragrance. It is sweeter than a Tuberose, and that is saying a good deal for it. Will thrive out of doors and bloom through the season. A magnificent plant, and will become one of the most valuable and popular pot plants when it becomes better known. It can be stored in a dry cellar in Winter. It will please you. Try a plant.

New Deep Red Carnation, Jubilee.—This is the finest Carnation that has been produced in years. It blooms both Winter and Summer. It is the best of all Carnations.

Shrubby Verbena.—This is a charming plant that is constantly in bloom. The colors range from pure white to brilliant red. It will be sure to please you. By many called Lantana.

New Pink Chrysanthemum, Glory of the Pacific.—A very large, incurved and massive flower, with petals of exquisite form, a beautiful, clear, soft peach-pink within when in perfection, and silvery-pink without; flowers of largest size, full to the center, outer petals reflexed to stem, with incurved tips, lasting quality. Unexcelled. Undoubtedly one of the best varieties of the year. Has been awarded numerous first prizes and gold medals.

The Wonderful New Rose, Pink Souper.—The Pink Souper produces flowers of various shades of pink, sometimes almost red, then again a bright pink is seen, almost identical in color with that grand old Rose, Hermosa. Then again the same bush will produce light pink flowers, suffused with lilac.



OUR "QUEEN SET" OF PRIZE-WINNING CHRYSANTHEMUMS.

Liberty.—Of beautiful form; eight inches in diameter; reflex in its earlier stages, incurving and of perfect globular shape when fully developed. Color a clear rich, deep golden yellow; habit dwarf, but robust; foliage and stem perfect. A fine keeper and shipper, combining a great combination of good qualities. Scored 98 points out of a possible 100 before the judges of the American Chrysanthemum Society.

Indiana.—This variety produces the largest blooms to be found in the family, with one or two exceptions, perhaps. It is very nearly globular in form, and has a circumference of twenty-two inches, nicely incurved, and of a clear, bright pink; outside of petals a little lighter. If it were not for its one defect, of not carrying the foliage up to the flower, we should unhesitatingly pronounce this the finest introduction of the year. Received N. C. S. certificate at Cincinnati, November 23; first prize, best pink seedling, at the Madison Square show, November 26.

Glory of the Pacific.—We predict that this fine variety will rank among pink sorts as Bergmann does among whites, which it follows by two or three days. It is of magnificent size and depth, with broad petals, which finally reflex, showing the clear pink color to excellent advantage. We were fortunate in being able to secure a large stock of this variety after finding its merits. A pink of large size and good form. This variety will delight every grower.

Invincible.—A mammoth white variety, of most robust habit and medium height, with magnificent heavy foliage close up to the bloom; petals broad, firm, and cupping to the center, which is full and solid; blooms ten to twelve inches in diameter, six to seven inches in depth, and fifteen to eighteen inches across. The largest of all whites, and the best variety in commerce. Fitly named, as it can not be surpassed in form, size or habit.

Dragon Blood.—Color blood red, petals long and curiously curled. A wonderful variety, both in color and form, both old and beautiful. A vase of these blooms will cause a sensation.

Pluto.—A fine, bold flower, globular in shape and well built; all except the center petals are reflexed and of clear, bright red, which is the predominating color of the whole flower excepting the center, which is incurved; the reverse being bright golden, gives it a very novel and pleasing effect. Best on terminal buds. Season first to fifteenth of November.

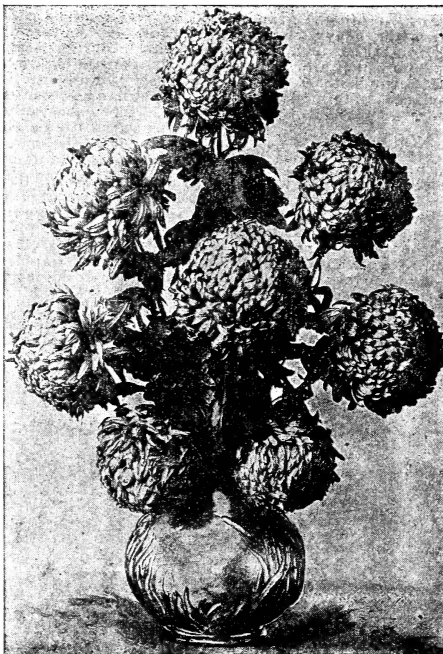
Violescent.—A magnificent variety for exhibition or commercial purposes, especially where lustrous blooms are required for Thanksgiving trade. It is of enormous proportions, building up with perpendicular sides to the height of five inches, finishing with a slightly rounding, incurved center; color white, with lower petals delicately tinged lavender. Maturing November 20. Height 5½ feet.

Golden Harvest.—One of the grandest of all Chrysanthemums for exhibition. The color is a deep golden yellow, very bright and very massive in build, as deep as wide, with crowded petals, stems very stiff, height four feet, foliage very beautiful. A grand addition to our already fine class of yellows. An ideal grower. Received twenty-five dollar premium at Indianapolis for best yellow; also certificate from N. C. S. at Philadelphia, November 10.

Abraham Lincoln.—Rich cream color. The petals are trumpet shaped, with elkshorn tips, and are arranged to form a perfect ball. One of the largest among Chrysanthemums. Totally distinct, and of the grandest build. A sensational variety. Won twelve first prizes.

Marion Cleveland.—Immense, high, round, solid bloom, with broad, massive, cupping petals. Ivory white, shading delicate lemon to center, as in Philadelphia. Habit almost as dwarf as Ivory. Stem stiff and erect, with magnificent foliage close up to the bloom. The largest early white to date, ready to market same time as Whildin, Marion Henderson, Troy, Lager and Parker.

Maud Dean.—An immense pink variety, finely incurved, petals broadly shell shaped. One of the largest flowers exhibited in Fall shows. Almost a pure self-pink. Received silver medal at Philadelphia, and awarded certificates of merit at New York and Philadelphia.



GLORY OF THE PACIFIC.

Signal Light.—Pale yellow, incurved, Japanese. Reverse of lower petals tipped red bronze; finely built flowers; as truly incurved as a Chinese; solid and perfectly double, lasting a long time. Habit very dwarf. Foliage beautiful and right up to the bloom.

Price, 8 cents each; or this wonderful set of twelve sorts, postpaid, 60 cents.

None better. None cheaper. Look carefully over our list. In ordering, say "Queen Set" of Prize-winning Chrysanthemums.

The Famous "Ostrich Plume" Set of Chrysanthemums.

Price, 10 cents each; or the seven varieties of "Ostrich Plume" Chrysanthemums for 50 cents.

Elderdown.—One of the grandest new Ostrich Plumes. Color a pure snow white, with broad, solid, incurving petals overlapping each other. A strong grower, with stiff stems. Flowers lasting unusually long after cutting.

Gold Dust.—Pure golden yellow, very plummy, very full and large, finely incurved, showing no center at all. The most brilliant yellow in the Ostrich Plume class. First season out. Will surely receive a medal at the Fall exhibition. Received honorable mention at the great Chicago show last Fall.

New Rosy Blush "Ostrich Plume," William Falconer.—The color is an exquisite shade of rosy blush, changing to a delicate flesh pink as the flowers advance in age. A description can not convey the beauty of coloring found in this new variety. The delicacy of tinting is unsurpassed in any class of flowers within our knowledge. The soft, feathery growth peculiar to the "Ostrich Plume" class is pronounced, the effect being as if a softly tinted, lace-like web or veil was thrown over the blooms, a unique and beautiful addition to its appearance. The flowers are of the largest size, and are borne on strong, vigorous stalks. The growth of the plants is all that could be desired.

Louis Behmer.—This is identical in its strange and beautiful formation with Mrs. Alpheus Hardy, but its color is an exquisite shade of silvery pink, with deep rose on the inside of the petals. It is of vigorous constitution, being one of the strongest growing varieties we have, so that it is certain to produce perfect flowers under the most ordinary cultivation.

New Yellow "Ostrich Plume," W. A. Manda.—A grand yellow, incurved, hairy variety of the "Ostrich Plume" class. The flowers are large, of a beautiful, clear golden yellow, incurved, and covered with golden yellow hairs. The plant is vigorous in growth, and the flower is borne upright on a stout stem. No collection can afford to be without this variety.

New Sweet-scented "Ostrich Plume," Miss Anna Manda.—Flowers very high and compact, perfectly double, incurved, of the purest white. The numerous petals are well furnished with long, glandular, hair-like outgrowths, giving the flower a unique appearance, far surpassing in attractiveness the celebrated Mrs. Alpheus Hardy. The plant is of strong and vigorous habit, carrying the flower erect on a stout stem. Another great recommendation of this new variety is that the flower is sweetly scented.

White "Ostrich Plume," Mrs. Alpheus Hardy.—The flowers are very large and of thick substance, perfect shape, and belong to the incurved Japanese section, while the color is the purest white. It is of immense size, broad petals and incurved, the surface being downy, like loose-piled plush. The entire flower seems frosted with glittering white. Its unique character consists in its fine, downy appearance, which is produced by the glandular hairs which cover the petals, which has been frequently described by the press as producing a fluffy effect, similar to an ostrich feather. It has received the highest honors wherever exhibited.

SPECIAL OFFER.—The twelve Queen Prize-Winning and the Seven Ostrich Plume Set of Chrysanthemums for \$1.00.

OUR "GOLD MEDAL" CHRYSANTHEMUMS.

Every Chrysanthemum on this page has won a gold medal. Indeed, some of them have won several. You can order from this list with the assurance that any one of them will be a beauty. The price we offer them at is very low, as you will see by comparing them with any flower catalogue published. Price, 6 cents each; any twelve, your selection, for 50 cents. ❀ ❀

- Ada Spaulding.**—Too well known to need description. Pink and white, of globe shape, largest size.
- Abraham Lincoln.**—Rich cream color, the petals are trumpet-shape, and are arranged to form a perfect ball. A sensational variety.
- Admiration.**—A soft, pure creamy white, each petal tipped with shell pink, petals of irregular lengths, like satin ribbon.
- A. Swanson.**—An immense bloom of the brightest red, reverse chrome yellow.
- Bean Ideal.**—A bright rose pink, without touch of lavender shadings. The form is somewhat flat, incurved shape, the outer petals horizontal, showing the bright pink, the incurving center showing a lighter shade.
- Challenge.**—A perfect globe of deep golden yellow, of immense size. Has won gold medal and over fifty first prizes.
- Eugene Dailedouze.**—This beautiful variety captivated all who saw it at the World's Fair. The cleanest and brightest of yellows.
- Exquisite.**—The petals are upright and show the bright pink shadings at their best. In color it is a deep, clear pink.
- Edward Hatch.**—Blooms of immense size, almost spherical, quite double. The color is a soft lemon, suffused with pink.
- Eva Hoyt.**—An immense double Japanese bloom, of clearest and brightest yellow, solid golden ball. A grand variety.
- Eda Prass.**—A showy Japanese variety. Inner side of petals a rich wine red, reverse of silvery pink. On first opening the petals have a peculiar manner of twisting or curling, showing the reverse color. When fully expanded they display the red shade.
- Fair Maid of Perth.**—A magnificent heavy bloom of largest size, borne on stiff erect stems, upper petals incurved to center, while the under ones reflex closely to the stem, forming a round ball of purest white, occasionally tipped rose.
- Fisher's Torch.**—A pure, deep scarlet. An entire new shade, quite flat and flat, all of one tone of color. This is something distinctly new.
- Flora Hill.**—Probably the finest white in existence. An immense double flower of great substance and depth.
- Frank Thompson.**—A fine pearly pink variety, shading to white. A fine grower, with stiff stems. Superb.
- Good Gracious.**—The color is unique, being a delicate shade of peach and pink throughout.
- Golden Wedding.**—A deep, bright golden yellow of shining texture, very large in size. A fine exhibition sort.
- Gorgeous.**—Deep golden yellow of the richest hue, of immense size. The petals are feathery, incurved and whorled. One of the finest, and no collection is complete without it. It is indeed gorgeous in its color and bearing.
- George W. Childs.**—No Chrysanthemum has created such a sensation as this. Of immense size, and of the richest deep, velvety crimson. Winner of four gold medals.
- Gettysburg.**—Another gold medal variety. Of the richest crimson, and of enormous size. A great favorite.
- Harry Balsley.**—A very chaste and beautiful cup-shaped variety of delicate shell pink.
- Harry E. Widener.**—A very fine yellow. Those desiring fine pot flowers should plant this variety extensively. It had no rival until Mrs. Craig Lippincott and E. Dailedouze came upon the scene. It is still a prize winner at all the shows.
- Interocean.**—An ivory white, very massive in build. This variety is in every prize winning collection. None better.
- Jessica.**—For general purposes as a cut flower and as a show variety, it is ahead of anything yet produced. Flowers average six inches in diameter, and when grown to a single stem, ten inches. Pure white.
- King's Daughter.**—Fine, pure snow white, center petals irregularly drooping. Stout stems, very showy, loose, pure Japanese style, flowers very large.
- Kioto.**—Very large, incurved yellow, strong, free grower, extra fine. Good for cut bloom. Does well as large specimens.
- Latest Fad.**—A mammoth bloom, with cord like petals eight inches in length. Color a rich yellow, at times mottled and splashed with bronze and crimson.
- Lillian E. Bird.**—A beauty in every respect. Of the very largest size, long, tubular petals, of perfect form, producing flowers which are twelve inches in diameter. The color is an exquisite shade of "shrimp pink" the flower, when fully open, being an immense half globe. A magnificent variety.
- Mikado.**—Exquisitely fringed flowers of crimson and gold, curved and plated, of irregular form. It is gorgeous beyond description. Will be the center of attraction wherever placed.
- Marguerite Jeffords.**—A fine flower of bright amber or chestnut color. A most rich and pleasing shade. One of the finest Chrysanthemums extant. Very lasting. Should be in every collection for exhibition.
- Miss M. E. Cowet.**—In this we have the loveliest of Chrysanthemums. The flowers are very numerous, always perfect in form and full to the center. Color the softest white, with a deep flush of pink throughout the outer half of the flower, curving over the center, sometimes tipping the inner petals.
- Marvel.**—Mrs. President Harrison's special admiration at the Indianapolis show. Very large, flat flowers of regular rosette shape, the ground color is pure waxen-white, and on this is a large irregular blotch of wine color. No two flowers similarly marked. The flowers will sometimes come a solid wine color. The contrast in color is very beautiful.
- Mrs. C. H. Wheeler.**—Very large and perfectly formed flowers. It should be in every collection. A perfect incurve, outside of petals a bright orange, lined on concave side with brilliant red. One of the very largest.
- Mrs. Craig Lippincott.**—The largest yellow in existence. Was exhibited last Fall measuring over nine inches in diameter.
- Mutual Friend.**—Very near spherical in form, almost white in color, only showing a touch of pearl pink at base of petals.
- Major Bonaffon.**—Soft, clear, primrose yellow, full in center, eight inches in diameter and nearly as deep.
- Mrs. John Wannamaker.**—A superb variety, of perfect incurved form resembling a flat ball of wood. Color pink and white, nicely blended.
- Maudie Dean.**—An immense pink variety, finely incurved, petals broadly shell shaped. One of the largest flowers exhibited in the Fall shows. Almost a pure self pink.
- Mrs. J. Lewis Childs.**—The enormous flowers are as round as a ball, and produced in abundance on long stems. The pure snowy-white color develops a tinge of pink so exquisitely faint that one almost looks for the color in the light and not the flower. Used for decoration in the evening, this feature has been much admired.
- Mrs. Winthrop Sargeant.**—Brilliant straw color, incurved, carrying its flowers on long, stiff stems. Very large, if not the largest in this line of color. A large, grand flower.
- Mrs. Langtry.**—A perfectly formed, flat flower, of unusual size and perfection. Snow white in color, with broad bands of ribbon petals. Altogether one of the very finest varieties.
- Mrs. E. G. Hill.**—The blooms are eight to ten inches in diameter. The color is a delicate lavender pink, petals incurved. The display of this variety at the World's Fair attracted all passers-by, and was admired greatly. It was the winner of twelve first prizes and gold medal.
- Mrs. Cleveland.**—A pure white variety, with long, tubular petals, flowers very large, like President Cleveland. It will be a general favorite.
- Miss Gladys Spaulding.**—One of the very best whites ever produced. A large, round, exceedingly well built flower.
- Mrs. A. Carnegie.**—A bright, deep crimson, reverse of petals a shade lighter, broad, long and flat, of leathery texture, incurving on first opening, afterwards assuming the form of a large Peony. Strong, erect, with heavy foot stalks.
- Mrs. Anthony Waterer.**—This is an immense spreading flower, which has been produced eleven inches across, the individual petals being one and a quarter inches across, at first very pale blush on the outside, which tint it loses as it matures. When fully expanded it has the appearance of a bunch of white ribbon. Invaluable for cutting.
- Marie Louise.**—Beautiful, recurved, white, with interlacing petals, outer ones reflexed closely around the stem, inner ones building up full to the center, forming a plumpy globe.
- Mrs. A. J. Draxel.**—A very early, large flowering variety, half spherical in form, petals long and arranged like rays. The color is a fine example of crimson-lake, quite double and a fine grower.
- Mrs. Jerome Jones.**—Large, cream white, incurved Japanese, sometimes showing a tinge of pink, high, round flower. One of the best Chrysanthemum flowers up to date. Indispensable for exhibition. Grand stem and foliage.
- Mrs. W. K. Vanderbilt.**—One of the finest in the entire Chrysanthemum family. A grand, large flower of the purest white. Seen in splendid shape at the Fall shows.
- Mermaid.**—Very delicate pink, perfectly incurving, broad petals, extremely delicate in color and finish. Extra good.
- Pitcher & Manda.**—Who ever heard of Chrysanthemums having two distinct colors in one flower? But that is just what Pitcher & Manda is. The outer five or six rows of petals are pure white, and of Dahlia-like form, while the center is a bright, deep yellow, the two colors being sharply defined. Won gold medal.
- Robert McInnes.**—The color is bright scarlet and gold, while it is full to the last degree, a perfect globe in form. It is quite early, being in full perfection the last week in October, and can be had earlier. Very brilliant in appearance, grand in size and form. One of the very grandest of last year's introduction. A sensational variety. Fine at all the shows.
- Sugar Loaf.**—Everybody's Chrysanthemum, being a fine grower, and perfecting numerous extra large flowers of bright yellow or bronze-yellow, inner petals incurving, outer petals reflexed.
- The Queen.**—A grand double white, of fine size and great substance, very rounded in form, incurving and full. Probably the most valuable novelty of 1895. By far the best of its style, and a prize winner wherever shown. This year has given us two of our grandest whites, Queen and Niveus, and nearly equal in merit and totally distinct.
- Vivand Morel.**—This grand variety has literally leaped into popularity. Flowers so large as to startle you. The color shades from a few rows of lavender-pearl to the richest pink.
- W. H. Lincoln.**—A rich, golden yellow, of finest form and shape. Splendid for cut flowers, and a magnificent bush plant. A No. 1 for all purposes.
- Wenonah.**—(Blushing Bride.) The base of the petals is pure white, laced with deep lavender pink. This is a variety that is much admired, and we have grown a great quantity for this year's sales. Very beautiful.

THE Great Western Plant Company's "BIG BARGAIN" COLLECTIONS OF EVER-BLOOMING ROSES.

No such bargains have ever been offered by any firm. Just to think! We mail you for the small sum of 50 cents twelve of the choicest Ever-blooming Roses. You can see just what varieties you are getting. The Roses in these "Big Bargain" collections will all bloom this Summer. Every one is a beauty. We guarantee these Roses to be as good plants as any firm in this country sells for 10 or 20 cents each. It will cost you such a small sum of money to prove this assertion that none should fall to avail themselves of such a liberal offer. Large two-year-old plants of any of these Roses, 30 cents each; four for \$1.00. Any twelve for \$2.50.

"BIG BARGAIN" Collection No. 1.

- Kaiserin Augusta Victoria.**—(New.) This is the very best pure white ever-blooming Rose that we know. Its large, handsome buds of elegant double flowers, when full blown, are a sight to see. It is a constant bloomer.
- Crimson Queen.**—(New.)—One notable peculiarity of this variety is its long, elegant buds, often two or three inches long, while the expanded flowers are of immense size. Scarlet, sometimes lined and bordered pure white.
- Baby Gold.**—The color is a beautiful amber-yellow, deepening towards the center to orange and coppery-yellow, delicately tinged and shaded with crimson, distinctly edged with carmine, long, pointed bud, extra large flower, fine form.



Bridesmaid.—(New.) By far the deepest pink Rose. It is a Rose that all can succeed with. Be sure and plant it.

Mademoiselle Franchiska Kruger.—It has the form, color and substance of those very choice and valuable varieties which only come occasionally. Color rosy-blush, shaded with salmon-yellow or buff-rose at center.

Maman Cochet.—(New.) In bud it resembles the Mermet family, being long and shapely, borne on long, stiff stems. The color is a deep, rosy-pink, the inner side of the petals being silver-rose, shaded and touched with golden-yellow.

Madame de Watterville.—The bicolor variety. Deep pink blooms, each petal broadly and plainly edged with bright red.

Corinna.—The tints of color blended in the flowers of this beautiful Rose render it so attractive and distinct from all other Tea Roses that the blooms exhibited have created quite a sensation. They may be described as of flesh color, suffused with a warm flush of tawny copper.

General B. E. Lee.—(New.) More plants of this Rose have been sold in the past five years than of any other four varieties grown. It has been accorded a warm place in Rose-lovers' hearts because it merits all the compliments that can be bestowed on it. In color it is a beautiful shade of yellow that is indescribable.

Princess Bonnie.—(New.) A lovely Rose of the richest deep crimson. A very free bloomer and extra fine.

Madame Jules Finger.—No variety surpasses it in delicate coloring. Pure snow-white, without a trace or shade of any other color. Its petals are so immaculately pure and chaste that it appears wax-like in texture.

Media.—(New.) The color is a rich, deep golden-yellow, a quick and constant bloomer, quite fragrant. If you want a good, deep yellow Rose that is a good bloomer, plant Media.

"BIG BARGAIN" Collection No. 2.

The entire Collection for only 50c.

Large two-year-old plants, 30 cents each; four for \$1.00.

The entire twelve for \$2.50. : : : : : : : :

- Henry M. Stanley.**—(New.) This grand new ever-blooming Rose, named in honor of the great African explorer, is recommended as a charming variety of unusual beauty and permanent value. The color is a rare shade of amber-rose, delicately tinged with apricot-yellow towards the center. Reverse of petals clear buff-rose. The flowers are of good substance, extra large, finely formed, very full and fragrant.
- Senator McNaughton.**—(New.) One of the most beautiful Roses grown. It will please everybody. Color pure white, blended with deep golden-yellow.
- Queen of Fragrance.**—Blooms usually come in clusters of from six to ten Roses. They are of the largest size. Color pure white, sometimes edged and tinged with a delicate shell-pink, and the fragrance is simply delicious.
- Joan of Arc.**—Pure snow-white Rose, makes good, finely-formed buds, is quite full and double. Very fragrant. It is a great Rose for bedding. Always full of flowers.
- Innocent Pirola.**—(New.) No pure white Rose we know or can compare with this variety for its lovely large buds of exquisite shape and delicious fragrance.
- Grace Darling.**—It is very free in bloom, and has the fragrance of the old June Roses. The color is a bright rosy-flesh, paler at the base of the petals, and deepening at the edge.

Child's Jewel.—(New.) A Rose that changes its color, or that has Roses of various colors on the bush at one time. We have seen bushes of this wonderful variety bearing at the same time coppery-yellow, deep rose-blush, pink, mottled yellow and apricot, light and dark crimson Roses.

Viscountess Folkestone.—(New.) One notable peculiarity of this variety is its long, elegant buds, often two or three inches long, while the expanded flowers are of immense size. Another strong point is its lovely color. It is very fragrant.

Souvenir of Wootton.—A very desirable red Rose of the richest shade. Blooms in clusters. None better.

Mrs. W. C. Whitney.—(New.) Color a rich, silvery-pink, delicately shaded with fine, rosy-blush. Very double and attractive, while its delightful perfume is perfectly entrancing.

Princess of Wales.—The color is a beautiful amber-yellow, deepening towards the center to orange or coppery-yellow, delicately tinged and shaded with crimson, distinctly edged with carmine.

Princess Sagan.—The flowers of this variety are the richest crimson of any Rose in our collection. A single bud or blossom will catch the eye at a great distance, so brilliant is the color. It is unmatched in its velvety richness. It could well be termed the "Velvet Rose."

OUR "SUNSHINE" COLLECTION OF HARDY EVER-BLOOMING ROSES.

8 HARDY EVER-BLOOMING ROSES FOR ONLY 50 CENTS.

SPECIAL OFFER—THREE SUNSHINE COLLECTIONS FOR \$1.25.

We have often been asked to name the hardiest Roses that are ever-bloomers. We have combined in this collection only such kinds as bloom freely, and that will stand zero weather. If you want Roses that are hardy enough to stand cold Winters and that bloom all Summer, you want the "Sunshine" collection.

Price, large two-year-old plants of any of these Roses, 30 cents each; or any four for \$1.00.

White La France.—This new Rose had prominence from the time of its introduction. It is identical with La France, except its color, which is almost pure white. The shading of fawn it has only enhances its beauty. A grand Rose.

Captain Christy.—The flowers are of magnificent form, very double, and stand erect in their martial bearing. Color a fresh, delicate pink, with deeper shading in the center of the flower, the whole flower possessing a bright, satiny appearance. It is a free bloomer.

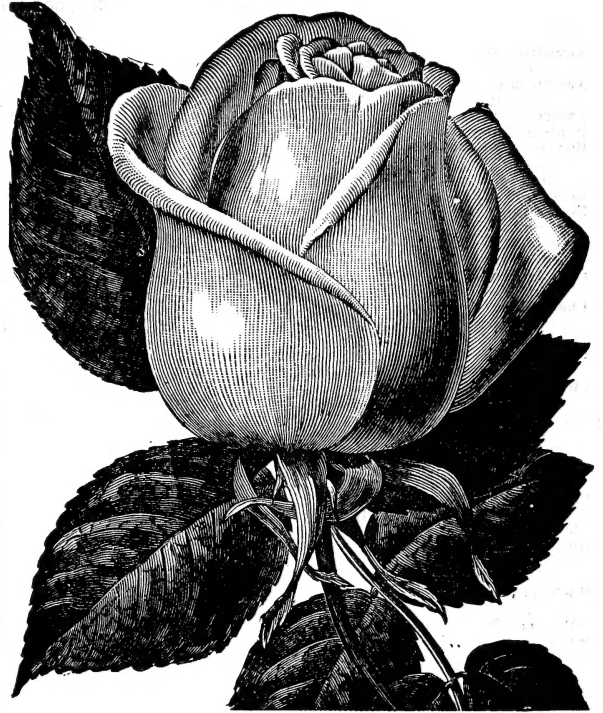
Mrs. DeGraw.—From early Summer until frost it may be depended upon to produce flowers in abundance. In color it is a rich, glossy pink, delightfully fragrant, and is such a strong, vigorous grower that it is almost impregnable against attacks of the insects which usually destroy some of our finest Roses. It is certain to be unequalled for the garden or cemetery. A royal Rose.

Madame Schwallier.—It is very free in bloom, and has the fragrance of the old June Roses. The color is a bright, rosy-flesh, paler at the base of the petals, and deepening on the edges. Apt to come in clusters, which are excellent for cutting.

Dinsmore.—It is a vigorous, healthy Rose, of dwarf, branching habit, and is simply loaded with flowers all Summer long, being even more profuse than most of the tender "ever-blooming" Roses. The flowers are large, perfectly double, and of a dazzling scarlet-crimson color, and have the rich, spicy fragrance peculiar to the best Hybrid Roses. We can recommend it as being the finest garden Rose ever offered.

Clothilde Souper.—The color is a French white, deepening to a rosy-blush in the center, exceeding in distinctness of shading the well-known Malmaison. Its greatest value lies in its compact, vigorous habit and wonderful profusion of bloom, even the smallest plants being literally covered with flowers. The form and substance of the flowers are so perfect that the hottest weather does not cause a deterioration of either, so that even in midsummer a bouquet of splendid buds and open flowers can be obtained from this fine variety. Valuable as it is for garden purposes, it is more so for pot culture, and ranks as first for blooming in the dwelling house.

Meteor.—A velvety-red ever-bloomer of the deepest glowing crimson, as fine as a Hybrid. A beautiful open Rose, a free bloomer, and a very excellent pot Rose. It has no tinge of violet or purple to mar its beauty. It is a vigorous, bushy grower, with healthy, bright foliage of the deepest green. The best rich red Rose for the garden ever introduced. Our correspondents from California say that the flower of the Meteor equals General Jacqueminot, and will produce fifty flowers to Jacqueminot's one.



Countess of Roseberry.—We have in this very charming variety probably the most beautiful Rose grown. The color is a satiny-pink in the center, and deepens on the outer petals to a bright rose. This feathery shading gives it the appearance of two distinct colors. It has completely captivated us. It is very free flowering.

IN ORDERING SAY "SUNSHINE" COLLECTION OF ROSES, AND WE WILL KNOW WHAT YOU WANT.

There are few homes that have not a loved one resting in the cemetery, and but few that would not spend fifty cents to beautify the grave of that loved one. We offer this fine set of choice white Roses for this purpose.

Six Choice Ever-Blooming Roses for Cemetery Planting.

The Queen.—(New.) This Rose is a beauty. Pure waxy-white. A most remarkable Rose. Price, 15 cents each.

Snowflake.—(New.) Always in bloom. An elegant sort. Price, 15 cents each.

Marie Van Houtte.—A most elegant Rose. White, shaded lemon-yellow. A most excellent sort. Price, 10 cents each.

Marie Guillot.—The Rose is as perfect in bud and flower as a Camellia. Pure white in color. Price, 10 cents each.

The Bride.—An elegant white Rose, and very free flowering. Price, 15 cents each.

Cornelia Cook.—Very large, pure white buds and flowers. Excellent. Price, 10 cents each.

We will furnish these six choice white Roses for 50 cents. Large two-year-old plants, 40 cents each, or the six for \$2.00. In ordering say "Cemetery Collection of Roses."

We have made a selection of the very best Roses for Winter blooming, embracing a wide range of color. We recommend this collection to all who desire to grow Roses in the house during Winter. We have seen all these Roses in bloom at Christmas time.

"CHRISTMAS" COLLECTION OF EVER-BLOOMING ROSES.

Christine de Neve.—(New.) This is a great Winter-blooming Rose, with buds and flowers of the largest size. Color richest crimson. The best of its color.

Star of Gold.—This is the best all round deep, golden-yellow Tea Rose that is grown. The buds are very large and shapely, while the flower is double to the center, and it is a deeper golden-yellow than Marechal Neil. Don't fail to try this variety.

Kaiserin Augusta Victoria.—A new pure white Rose. Very large and double. A royal Rose in every respect. A Rose we can recommend.

Bridalmaid.—The most elegant pink Rose. Very large. Buds extra fine.

Champion of the World.—It is the champion bloomer. It commences to bloom as soon as started to grow, and continues to bloom in the greatest profusion, both Winter and Summer. A rich, deep rosy-pink or flesh color.

General Robert E. Lee.—This Rose, which we introduced the past Spring, will produce more beautiful Roses in the Winter than any Rose we grow. A small bush will produce hundreds of blooms. Color orange-yellow. Very rich and beautiful. Extra fine.

Price for the collection of six choice "Christmas" blooming Roses, only 50 cents; three collections for \$1.25. Large two-year-old plants, 35 cents each, or the six for \$1.75.

THE "STAR" LIST OF
NEW AND CHOICE

EVER-BLOOMING ROSES.

FOR HOUSE CULTURE OR OUTDOOR PLANTING.

We have taken great pains to cull from this list Roses of no special value. Our customers can rely on the Roses in this list to be the best of the old and new varieties of ever-bloomers. These Roses will all bloom this Summer.

Price, 10 cents each; any six, of your own selection, for 50 cents; any fifteen for \$1.00.
Large two-year-old Roses, from this list, 30 cents each, or four for \$1.00. : : : : :

Augustine Halem.—(New.) Bright rosy-red, very sweet, large blooms. This is truly a rival of American Beauty.

American Beauty.—This is a Rose that charms everybody. Color a bright rosy-red, very sweet.

American Belle.—Richest deep scarlet. Extra.

Bridesmaid.—(New.) The loveliest of all pink Roses.

Beaute Inconstante.—(New.) A Rose that changes its color from yellow to crimson. Sometimes has Roses of five or six distinct colors at one time. Perfectly wonderful.

Beauty of Stapleford.—Bright pink and rich, rosy-crimson.

Belle Seibrecht.—(New.) The most lovely pink Rose ever introduced.

Catherine Mermet.—One of the most fashionable shades for cut flowers. Color a clear, rosy-pink, large.

Centesse de Frigneuse.—The buds are long and pointed, like Niphotos. The color is a deep, golden-yellow, large and full.

Champion of the World.—(New.) A rich, deep, rosy-pink, very free bloomer and deliciously fragrant. Hardy. Considered the finest of all Roses.

Clothilde Soupert.—The best of all pot Roses. Literally loaded with blooms, pure white, pink center. Very beautiful.

Christine de Noug.—(New.) Color a rich crimson, deeper center, large, broad petals. A most beautiful Rose.

Crown Princess Victoria.—(White Malmaison) (New.) Identical with Malmaison, except that the color is white. A Rose that none should be without. A charming variety.

Countess Anna Thun.—Color a beautiful citron-yellow, with copper and peach center. A wonderful Rose.

Cleopatra.—An extra large Rose, with long, pointed bud. Color a soft shell-pink.

Child's Jewel.—Has flowers of different colors. Lovely.

Duchess de Brabant.—This is another old-time favorite. Color a beautiful rose, tinged amber in the center. Everybody plants this variety.

Duchess of Albany.—Identical with La France, except the color is much deeper. A most charming Rose in every particular.

Devonshire.—Magnolia fragrance, creamy-white color.

Dr. Gril.—Coppery-yellow color, with tawny reflex.

Duchess of Edinburgh.—Large buds of an intense dark crimson. Very beautiful.

Etoile de Lyon.—Many claim this to be the best of deep, golden-yellow Roses. Excellent for outdoors.

Ella May.—A lovely shade of coppery-yellow.

General Robert E. Lee.—(New.) Color orange-yellow, shaded white. Very rich and beautiful. The best Rose extant. A small bush will produce hundreds of blooms.

Grace Darling.—Color porcelain-rose, shaded crimson.

Golden Gate.—(New.) Color a rich, creamy-white, beautifully tinged with golden-yellow. A very choice Rose.

Hermosa.—Beautiful pink flowers, borne in clusters.

Henry M. Stanley.—(New.) A rare shade of amber-rose, delicately tinged with apricot-yellow towards the center.

J. B. Yarrone.—(New.) Scarlet-crimson and buff color. Rich and bright.

Kaiserin Augusta Victoria.—(New.) Pure white. A superb Rose in every respect. Hardy.

Luciola.—Unequaled in its delightful coloring and size of buds. Color bright carmine-rose, shaded yellow.

Letty Coles.—Color a soft, rosy-pink, shaded with intense crimson. Of the largest size. Exquisite.

La France.—Too well known to need description. Everybody's favorite.

Leonné Osterreith.—The white Soupert. Very desirable.

Media.—(New.) A grand yellow Rose of the largest size.

Madame Scipion Corchet.—Color a soft Primrose-yellow, with rose shadings. A grand bedding Rose.

Mrs. W. C. Whitney.—(New.) Rich silvery-pink, delicately shaded with fine rosy-blush.

Madame Caroline Testout.—(New.) Color a brilliant satiny-rose, deepening to clear red, exquisitely edged with silvery-peach. A superb Rose in every respect.

Madame Eli Lambert.—A rich, creamy-white, tinted pale golden-yellow, bordered flesh. An exquisite Rose.

Madame Hoste.—Long, pointed buds, of pure white.

Madame Pierre Guillot.—The buds are large, creamy-white, bordered with bright, rich red.

Malmaison.—This is certainly one of the choicest of all Roses. The color is a beautiful, rich, creamy-flesh, shaded a clear peach, with rose center.

Madame Welche.—Color amber-yellow and crimson-rose. It is charming.

Marion Dinger.—(New.) Deep, brilliant, dark crimson. Probably the darkest and richest Tea Rose.

Madame de Watteville.—This is called the Tulip Rose. Color a rosy-blush, mildly bordered with bright crimson. Exquisitely beautiful.

Mademoiselle Francisca Kruger.—Probably the best all round bedding Rose we have. Its shadings of deep coppery-yellow stand unique and distinct.

Maman Cochet.—(New.) Don't fail to try this beautiful Rose. Color a deep rose-pink, shaded and touched with yellow. Superbly grand.

Meteor.—This Rose ranks at the head of all the dark, rich, red Roses. None better.

Mrs. Degraw.—The color is a rich, glossy pink. Hardy. A premier Rose in every respect.

Madame Schwaller.—A deep, rich pink, blooms in clusters of from five to twenty Roses. A great garden Rose.

Mademoiselle Cecil Berthod.—A deep, rich, golden-yellow. A superb variety.

Mosella.—(New.) The yellow Soupert. Nothing finer.

Niphotos.—A most elegant white Tea Rose, with enormous buds over three inches in length.

Princess of Wales.—Color a beautiful amber-yellow, deepening towards the center to orange or coppery-yellow, tinged and shaded crimson.

Perle des Jardins.—Clear golden-yellow, very rich and beautiful. Constantly grows in favor.

Papa Gontier.—Immense buds, color a rich, bright red, passing to a clear, glowing crimson. One of the best.

Princess Sagan.—A Rose of great beauty. The color is a rich velvety-crimson. Handsome and showy. The brightest of yellow Roses.

Pierre Guillot.—This superb Rose has no superior. Always in bloom. Buds and flowers of enormous size, of the richest red.

Princess Beatrice.—(New.) A coppery or ruddy yellow, distinctly edged with bright crimson. This is indeed a princess.

Polar Star.—(New.) Color a rich shade of creamy-white, shading to rosy-red and canary-yellow.

Princess Bonie.—(New.) One of the loveliest of all red Roses.

Pink Soupert.—(New.) Like Clothilde Soupert, except the color is a lovely shade of clear pink.

President Carnot.—(New.) This is a superb new Rose, combining lovely shades of fawn and pink. Extra fine.

Queen of Bedders.—The best rich, dark, velvety-crimson Rose.

Queen of Fragrance.—Blossoms in clusters of six to ten Roses. Color white, tinged with delicate shell-pink.

Queen's Scarlet.—A great bedding Rose of richest scarlet. It is an exquisite variety.

Rheingold.—Naples-yellow, shading to orange. A beautiful Rose of extraordinary color.

Red Malmaison.—Same as Malmaison, except the color is a rich, dark crimson.

Ruby Gold.—Tawny-yellow, shading to old gold, with crimson center and veins of rosy-red and pink.

Rainbow.—A beautiful pink Rose, striped crimson.

Senator McNaughton.—Pure white, with shades of deep yellow.

Summer Queen.—Bright silvery-pink, full and double. Try this for a bedding Rose.

Souvenir de Victor Hugo.—Color a lovely citron-red, with amber and fawn shading.

Sunset.—This exquisite orange-yellow variety is one of the finest Tea Roses grown. The flowers are large and double. It is deliciously fragrant.

Striped La France.—Same as La France, except the color is pink, with light stripes through it. Superb.

Snowflake.—Pure white. Most profuse bloomer of all Roses.

Souvenir of Wootton.—Rich crimson Roses in large clusters.

Souvenir de Gabriel Drevet.—Salmon-pink, with center of coppery-yellow, edged dark Rose.

Southern Belle.—Color rich crimson, edged pink. Beautiful.

Sappho.—Fawn color, shading to deep yellow, large and double.

Star of Gold.—The best all round deep golden-yellow Rose.

The Gem, or Fair Unknown.—Straw-yellow, shaded crimson.

Triumph de Pernet Pere.—Magenta-red, passing to rich crimson.

The Queen.—Beautiful long buds, the color is pure snowy-white. Exquisitely scented. Hardy.

The Bride.—This is a pure white Rose, of the largest size; buds and flowers of most perfect form. It has the fault of coming pink in dry, hot weather.

Viscountess Polkestone.—This beautiful Rose is so large and fine as to resemble a Pæony. Pure white, faintly tinted fawn. Nothing can be more beautiful.

White Perle des Jardins.—Same as Perle des Jardins, except the color is pure white.

White La France.—Same as La France, except the color, which is pure white, faintly tinted fawn. A charming Rose in every respect.

Waban.—Identical with Catherine Mermet, only it is deeper and richer in color.

White Bon Silene.—Same as Bon Silene, except the color is pure snow-white.

EVER-BLOOMING ROSES

AT PANIC PRICES.

Your selection of ten sorts from the list below for only 50 cents, or twenty-two for \$1.00.

Our Roses are all grown on their own roots, and we guarantee them true to name.

Large two-year-old plants from this list at twenty cents each. They cannot be duplicated elsewhere for this price.

This list contains the old standard sorts, many of which will never be equalled by new and expensive sorts.



Price,
7 Cents
Each.

Abbe Roustan.—Creamy-white, elegantly shaded rosy-blush.
 Adam.—Bright flesh salmon-rose, extra large and double.
 Adrienne Christophe.—A shade of apricot, citron and fawn.
 Agrippina.—Rich velvety-crimson. A grand bedder.
 Alba Rosea.—Beautiful rose-colored center, shaded blush.
 Aine Sisley.—Violet-rose, a fruity, pleasant fragrance.
 Anna Schwartz.—Beautiful crimson, free flowering variety.
 Anna Ollivier.—Lovely blush, shaded with carmine.
 Antoine Verdier.—A rich, dark carmine-pink; very free.
 Apoline.—Clear pink, dashed rosy-carmine.
 Arch Duches Isabella.—A rosy-carmine, changing to amaranth.
 Arch Duke Charles.—Brilliant crimson-scarlet, shaded violet.
 Aurora.—A pretty creamy-white, with rose-colored center.
 Beau Carmine.—Carmine-red, rich, large, pale rose and carmine.
 Bella.—Pure snow-white, long, pointed buds. Tea scented.
 Belle Fleur d'Anjou.—Silvery-rose, large and good.
 Bon Sileme.—Deep salmon-rose, illumed with carmine.
 Bougere.—Bronzed pink, tinged with lilac. Large and full.
 Canary.—Light canary-yellow, beautiful buds and flowers.
 Charles Legrad.—Chamois red, shaded darkest crimson.
 Charles Rovilli.—A lovely shade of brilliant carmine.
 Clara Sylvain.—Creamy-white, good, full form and fragrant.
 Clement Nabonnand.—Coppery-rose, tinged with crimson.
 Comtesse Alban de Villeneuve.—Rosy-peach, with yellow.
 Comtesse de Barbantine.—Color a flesh-white and sweet.
 Comtesse Riza du Parc.—Coppery-rose, tinged soft velvet.
 Coquette de Lyon.—Pale yellow; free bloomer.
 Cornelia Cook.—The old favorite white Rose. None better.
 Crimson Bedder.—Bright, fiery red, velvety. Recommended.
 David Pralle.—Lilac-rose center, rich crimson. Very sweet.
 Douglas.—Dark cherry-red, rich and velvety, large and full.
 Duchess of Edinburgh.—A lovely red rose of richest color.
 Duchess of Thuring.—Beautiful silver-rose, finely cupped.
 Dr. Reymont.—Rich velvety crimson. Extra fine.
 Emperor of Russia.—Bright scarlet, dashed with crimson.
 Enfant de Lyon.—An elegant mingling of pink and yellow.
 Ernest Metz.—Rosy carmine. A glorious Rose for the garden.
 General Tartas.—Deep mottled rose, sometimes tinged buff.
 Gloire des Bosomanes.—Brilliant crimson, with red berries.
 Henry Meynadier.—A beautiful shade of rose color. Sweet.
 Homer.—Soft, clear rose, with a salmon shade; splendid.
 Isabella Sprunt.—An old-time favorite yellow Rose.
 Jaune d'Or.—Coppery-yellow, very sweet and good.
 Jean Pernet.—Buds of light yellow, suffused with salmon.
 Jules Finger.—Bright rosy-scarlet and intense crimson.
 La Chamoise.—Nasturtium yellow. Very beautiful buds.
 Lady Warrander.—Pure white, sometimes shaded with rose.
 La Grandeur.—Lilac-rose, or soft rosy-carmine.
 La Phoenix.—A beautiful, clear scarlet. Desirable.
 La Princess Vera.—Pale flesh, changing to salmon.
 La Sylphide.—Blush, with fawn center, very large and double.
 La Tulipe.—Creamy-white, tinted with carmine, full and fragrant.

Le Partole.—Elegant buds, color pale sulphur yellow.
 Louisa de la Rive.—A flesh-white, inclining to rose center.
 Louis Philippe.—A rich, dark, velvety-crimson, free and beautiful.
 Louis Richard.—A coppery-rose, beautifully tinted with lilac.
 Lucullus.—Beautiful, dark crimson-maroon, full and fragrant.
 Madame Azalie Imbert.—Rosy-buff, with peach shadings.
 Madame Bosanquet.—Flesh, shaded deep rose, large size, sweet.
 Madame Brary.—Creamy-white, large, full, very symmetrical.
 Madame Brest.—Rosy-red, shaded to crimson, large flowers.
 Madame Camille.—Delicate rosy-flesh, changing to amaranth.
 Madame Caroline Kuster.—Bright lemon-yellow, very large.
 Madame Damaizin.—Salmon-rose color, changing to amaranth.
 Madame Dennis.—Waxy-white, center fawn and flesh, large.
 Madame de St. Joseph.—Carmine, changing to salmon or fawn.
 Madame de Vetry.—Red, shaded with salmon. Good form.
 Madame Jean Sisley.—A pure white. An elegant Rose.
 Madame Joseph Schwartz.—White, flushed pink, cupped.
 Madame Jure.—Lilac-rose, good size and substance, fragrant.
 Madame Lambert.—Rosy-bronze, changing to crimson. Extra.
 Madame Lawrence.—Butoin Rose. Two colors, pink and red.
 Madame Melaine Willermoz.—Creamy-white, with thick petals.
 Madame Margottin.—A citron-yellow, with coppery center.
 Madame Pauline Labonte.—Salmon-rose, large, full and sweet.
 Mademoiselle Rachel.—A lovely Tea Rose, pure snow-white.
 Marcelin Roda.—Pale lemon-yellow, lovely buds and flowers.
 Marechal Robert.—Pure white, tinged and shaded rosy-blush.
 Marguerite de Fenelon.—Canary-yellow, shaded ruby-red.
 Marie Duchere.—Rich, transparent salmon, with fawn center.
 Marie Guillot.—One of the very best white Roses.
 Marie Sisley.—Pale yellow, margined bright rose.
 Marie Van Houtte.—A lovely pale yellow, suffused with pink.
 Monsieur Furtado.—Yellow, well formed, very full and fragrant.
 Monthly Cabbage.—Rosy-red, globular shape and fragrant.
 Pink Daily.—Light pink flowers, produced in clusters.
 Purple China.—Rich, purplish-crimson, velvety.
 Queen of Bourbons.—Clear carmine, changing to clear rose.
 Queen's Scarlet.—Dazzling crimson-scarlet, with beautiful buds.
 Regulus.—Brilliant carmine, with purple and rose shadings.
 Rosa Nabonnand.—Imbricated, delicate rose, vivid center.
 Rubens.—White, shaded with rose, yellowish center.
 Safrano.—A bright, apricot-yellow, changing to orange and fawn.
 Sauginea.—A rich, dark, velvety-crimson. Single.
 Sombreuil.—Beautiful white, tinged with delicate rose.
 Souvenir d'Elise Yardon.—Creamy-white, shaded with pink.
 Souvenir de David.—An excellent dark crimson variety.
 Souvenir de George Sand.—Amber, veined with crimson.
 Souvenir d'un Ami.—Fine, delicate rose, shaded with salmon.
 Sulphureaux.—Sulphur yellow. Fine in bud and fragrant.
 Triomphe de Luxembourg.—Rosy-carmine on a buff ground.
 Viridiflora.—The flowers of this variety are pure green.
 White Daily.—Pure white, beautiful, long, pointed buds.
 Yellow Tea.—Pale lemon-yellow, beautiful, large, pointed buds.



FIVE GLORIOUS CLIMBING ROSES.

We here offer five of the most glorious of all Climbing Roses, each one being distinct in itself, embracing Crimson, Pink, White, Yellow and intermediate shades. Nothing like this offer has ever been made. They are all ever-bloomers, and will be sure to please you. In ordering say "Five Glorious Climbing Roses." When you possess these five Glorious Climbing Roses, you have the very best you can get anywhere in the whole world. Try them. : : : : : : : : : : :

MARY WASHINGTON.

This is no doubt the most famous Rose of the century, made so by the history with which it is associated, the original Rose-bush being planted by no less a personage than George Washington. It is a lovely Rose, and usually comes in large clusters of the purest white, and very fragrant. It will live out anywhere, as it is perfectly hardy. A perpetual bloomer. Price, 20 cents each; three for 50 cents. Large two-year-old plants, 50 cents each.

MARECHAL NEIL.

A beautiful deep sulphur-yellow, very full, very large and exceedingly fragrant. It is the finest yellow Rose in existence. It has a climbing habit, and where it is allowed to grow until it attains a large size, as it will in a few years, it yields thousands of beautiful golden-yellow flowers. Especially desirable in the South. We sell annually fifty thousand of this Rose alone. We have a grand stock of this variety. Price, first size, 10 cents each; fine plants, 25 cts. each; extra strong plants, 50 cts. each. It will pay you to buy a strong plant.

NOTE.—The Marechal Neil has weak roots until it gets well established. This is the cause of so much failure with this most desirable Rose. We have grafted plants that will be sure to live. Price, one-year-old plants, \$1.00; two-year-old plants, \$1.50; three-year-old plants, \$2.00. These are extra fine plants of this lovely Rose. By far the best you have ever seen offered, and will be sure to please and delight you. We have an excellent stock of over five thousand strong, grafted plants of Marechal Neil.

THE NEW CLIMBING ROSE... CRIMSON RAMBLER.

The plant is of very vigorous growth, making shoots from eight to ten feet during the season, rendering it a charming pillar Rose. One of the striking characteristics of this Rose is its remarkable color, which is of the brightest crimson. The flowers are produced in great pyramidal panicles or trusses, each carrying from thirty to forty blooms. It is exceedingly hardy, having successfully withstood the test in exposed situations of two very severe Winters in England. It is hardy in every latitude yet tried as far north as the lakes. As a decorative pot plant it cannot be excelled. We can recommend this novelty in the strongest manner as being a new Rose of great importance and value. *There has no Rose been introduced up to the present time that has had as much written and said about it as this famous Rose, and of course everybody will have to have one or more plants of it. It is a Rose that we can endorse every word said about it. We have an immense stock of it in perfect health, so that all who purchase of us will be pleased.* Price, 15 cents each; three plants for 40 cents. Large two-year-old plants, 50 cents each, or three for \$1.00.

WONDERFUL NEW CLIMBING ROSE... EMPRESS OF CHINA.

This is a new Climbing Rose of the greatest excellence. It was brought to this country by a gentleman from Cuba, who says it commences to bloom in May, and is loaded with its elegant blooms until December. There is no other Rose like it that will bloom for so long a time. This has been the great objection to Climbing Roses that they bloom once and then are done. Here we have a Rose that blooms continuously for over 7 months of the year. It is simply wonderful. When it first opens the flowers are a beautiful red, but soon turn to a lovely light pink, and it blooms so profusely as to almost hide the plant. Perfectly hardy, and is a vigorous grower. Don't fail to try this beautiful Rose, as it will please you. Price, 15 cents each; three for 50 cts. Large two-year-old plants, 60 cts each; or two for \$1.00.

OLGA REINE DE WURTEMBERG.

This is a splendid Rose. Should be grown where the Marechal Neil succeeds. This variety was grown in the south of France is simply indescribable. The people of the South would do well to employ this beautiful sort for covering verandas and trellises. Color rosy-pink, suffused with yellow and fawn. Price, 15 cents each. Large two-year-old plants, 50 cents each.

Special Offer.—The five Climbing Roses, costing 75 cts., sent for only 60 cts.; three sets for \$1.50. The 5 Roses in large 2-year-old plants, including a fine 1-year grafted plant of Marechal Neil, for \$2.50.



EMPRESS OF CHINA.

TEA ROSES.



In the South or California, where they stand the Winters, nothing can compare with them for beauty of bud and foliage. They are never to be forgotten when seen in full bloom, loaded with thousands of magnificent flowers. ❀ ❀ ❀

CLIMBING VARIETIES.

Large Two-year-old Plants of Climbing Tea Roses Cost 50c each, except where noted.

James Sprunt—Deep velvety crimson and very double. Price, 10 cents each.

Lamarque—Large, full flowers, borne in large clusters, pure white and double. A most beautiful Rose. Price, 10 cents each.

Gold of Ophir—(*Ophire*.) Nasturtium yellow, suffused with coppery-red. One of the most beautiful of the climbing Roses. Price, 15 cents each.

Marechal Neil—A beautiful, deep sulphur yellow. Price, first size, 10 cents each; good plants, 25 cents each; extra strong plants, 50 cents. Grafted plants, one-year-old, \$1.00; two-year-old, \$1.50; three-year-old, \$2.00.

Gloire de Dijon—Our Southern friends are unbounded in their admiration of this fine Rose, which is seen there in the fullest perfection, being hardy in their section, where it is used as a pillar Rose. It is noted for the great size of its flowers, its delicate Tea scent, and its exquisite shades of color, being a blending of amber, carmine and cream. One of the finest Roses on our list. Price, 20 cents each.

Mary Washington—(*New*.) This is no doubt the most famous Rose of the century, made so by the history with which it is associated, the original Rose bush being planted by no less a personage than George Washington. It is a lovely Rose, and usually comes in large clusters of the purest white, and very fragrant. It will live out anywhere, as it is perfectly hardy and a perpetual bloomer. Price, 20 cents each; three for 50 cents.

Fortune's Double Yellow—(*Beauty of Glazewood*.) A bronzed yellow or copper and fawn color. Price, 10 cents each.

Mario Lavelley—Habit extra vigorous, flowers large and of fine form. Color a vivid rose, shaded and lined with white. This is perhaps the most rampant and vigorous in the whole family of Roses. If you want a Rose to "get there quick," this is the one to plant. Price, 20 cents each.

Golden Chain, or Climbing Safrano—(*Reve d'Or*.) A beautiful pillar Rose, being a strong climber. Color orange yellow, or deep saffron, good size, full and sweet. Price, 15 cents each.

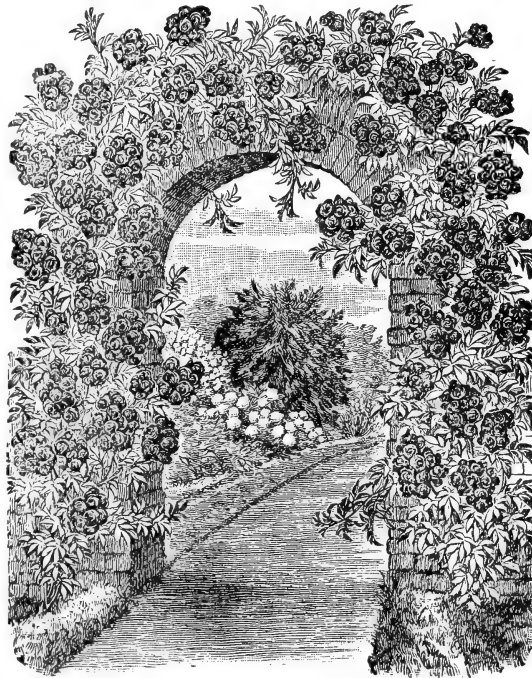
Mme. Alfred Carriere—Extra large, full flowers, very double and sweet. Color a rich, creamy-white, faintly tinged with pale yellow, exceedingly beautiful. A strong, hardy grower and free bloomer. Price, 15 cents each.

Empress of China—Probably the best of all the climbers; deep pink flowers and buds. Price, 15 cents each.

Climbing Malmaison—Same as Malmaison, but best of all the climbing sports, as it will make the longest growth of any of them. Price, 20 cents each.

Pink Rambler—(*Euphrosyne*.) Same as Crimson Rambler, only the flowers are bright pink. Price, 20 cents each.

Climbing Perle des Jardins—Same as Jardins. Color a deep golden yellow, but a rampant climber. Price, 15 cents each.



CRIMSON RAMBLER.

Estella Pradie—Has lovely pure white buds. Flowers are full and sweet. Price, 10 cents each.

Reine Marie Henrietta, or Red Flowering Gloire de Dijon—A strong, vigorous grower, flowers large, full and fine form. Color a pure cherry-red, large, full and sweet-scented. Succeeds well in the South. Price, 15c each.

Cloth of Gold, or Chromatella—A clear golden yellow large, very full and double. Highly fragrant. Much prized in the South for pillars and verandas. Price, 10 cents each.

Reine Olga de Wurtemberg—This is a splendid Rose. It should be grown where the Marechal Neil succeeds. This variety as grown in the south of France is simply indescribable. The people of the South would do well to employ this beautiful sort for covering verandas and trellises. Color rosy-crimson, suffused with yellow. Price, 15 cents each.

Climbing Devonensis—The same as Devonensis, except that it is a rampant climber. It has a magnolia fragrance. Price, 15 cents each.

White Rambler—(*Thalia*.) Same as Crimson Rambler, except the color is pure white. Price, 20 cents each.

Claire Carnot—Buff or orange yellow, peach blossom center, medium size, full and compact flowers, delightful Tea scent. Very pretty and desirable. Price, 10 cents each.

William Allen Richardson—Orange yellow, with outer petals lighter, center copper yellow. Very rich. Rapidly becoming popular. Price, 15 cents each.

Celine Forestier—Deep sulphur yellow, large, full flowers, perfectly double, a fine bloomer and good grower. One of the best of its class. Price, 15 cents each.

Waltham Queen—The flowers are large, full and sweet. The color is a rich crimson, very beautiful, and a profuse bloomer. Price, 15 cents each.

Caroline Goodrich, or Ranning General Jacqueminot—This Rose has finely formed, very double flowers, and its fragrance is most delicious. The color is the same as that of General Jacqueminot. Price, 15 cents each.

Yellow Rambler—(*Aglaia*.) Same as Crimson Rambler, except the flowers are a lovely shade of yellow. Price, 15 cents each.

Crimson Rambler—(*New*.) Price, 15 cents each; or three for 50 cents.

Climbing Niphetos—Pure white buds over three inches in length. Price, 15 cents each.

Climbing La France—Identical with La France, except that it is a vigorous climber. Satiny pink in color. Price, 15 cents each.

Climbing Meteor—Same as Meteor, but a vigorous climber. Next to Climbing Malmaison this is the most rampant of all the sports. Price, 20 cents each.

OUR "ZERO" COLLECTION OF

FOR THE SMALL
SUM OF : : : 75 CENTS.

Ten Hardy Perpetual-Blooming Roses

We have selected ten of the hardiest of all Roses, not one of them but will survive twenty-five degrees below zero, and we commend them to all who wish to plant Roses to stand the severest rigor of our coldest Northern States. They embrace all colors of the Hardy Roses. Price, 15 cents each; or the set of ten "Zero" Roses for 75 cents. Two-year-old plants, 40 cents each; or the set of ten for \$3.00

Oscar II, King of Sweden.—This is by far the richest Rose yet introduced. It is so intense in color that the exclamation on seeing it is, "Oh, that lovely black Rose!" It is very velvety in texture. A most superb Rose, and one that will always be found in the standard list of Roses, as it has come to stay.

Marchioness of Lorne.—This fine new English Hybrid Perpetual was introduced by Messrs. William Paul & Son, of London, who say: "This beautiful Rose, dedicated by special permission to her Royal Highness, the Princess Louise, Marchioness of Lorne, produces flowers of an exceedingly rich, fulgent rose color, slightly shaded in the center with vivid carmine. They are large and very sweet, full, and finely cup-shaped. Petals large and buds long and handsome. It is especially remarkable for its truly perpetual habit, every shoot being crowned with a flower bud."

Gustave Piganeau.—Flowers extra large, equaling Paul Neyron in size, double and of cup form. Color a beautiful shade of bright red and brilliant carmine. Received four medals, and was illustrated in *Journal des Roses*. This is the finest Hybrid of recent introduction. The bud is very large and full. We believe this is the very best Crimson Hybrid Rose grown.

Her Majesty.—Her Majesty originated in England, and was named in honor of the Queen. It is the largest and most beautiful Hybrid Perpetual Rose ever grown. Blooms are of immense size, remarkably beautiful form and perfectly double. Color a lovely shade of rosy-pink, passing to clear flesh, elegantly tinged and shaded with amaranth and silver-rose. Delightfully fragrant. Its immense size, perfect symmetry and exquisite coloring combine to make it the Rose of Roses. The plant is a strong, upright grower and entirely hardy.

General Jacqueminot.—A rich, velvety-crimson, changing to scarlet-crimson. A magnificent Rose, equally beautiful in the bud state or open. This is the best known of all Hybrid Perpetuals, and is without a rival in fragrance and richness of color. It is, moreover, as easy of cultivation as many of the more common varieties, and perfectly hardy.

Marshal P. Wilder.—This fine new Rose originated in this country, and was named in honor of the venerated President of the Pomological Society. It is a Rose of unusual excellence. Flowers are large, semi-globular, full and of good substance. Color a bright, scarlet-crimson, richly shaded with maroon, very fragrant and a free bloomer.

Gloire de Lyonaise.—This grand Rose is the only yellow Hybrid Perpetual we have. It cannot be called a deep yellow, but rather a pale shade of chamois or salmon-yellow, deepest at center, sometimes passing to a rich, creamy-white, finely tinted orange and fawn. The flowers have all the beauty of Tea Roses, and are large and full, and delightfully sweet. This we consider one of the very best Roses we have ever seen. It will be sure to delight you.

Paul Neyron.—Deep shining rose, very fresh and pretty. Flowers large, often measuring five inches in diameter, and it has this merit, though very large, the buds always develop fine, perfect Roses. It is, moreover, a good, strong grower, with nice, almost thornless stems, which often attain six to seven feet in a single season. We know of no Rose possessing so many good points to recommend itself as Paul Neyron. Grown by thousands in the eastern cities for its good, free-blooming qualities.

White Peony.—This Rose was sent us by one of our customers. She did not know the name for it, but called it the White Peony, from its resemblance to that beautiful flower. We have never seen anything in the Rose line like it. The flowers are satiny-white, with a delicate shell-pink tinge. It makes large spherical balls, and when seen in bloom is not soon forgotten. Very beautiful and entirely hardy.

Gloire de Margottin.—This grand new Hybrid Perpetual Rose originated in Europe, and is believed to be one of the very finest varieties of recent years. The flowers are very large and of symmetrical form, somewhat globular, very full and deliciously scented. The color is a clear, dazzling red. Certainly one of the most brilliant Roses ever seen. It is a free bloomer and vigorous grower, and is recommended for great beauty and wonderful color.

New
Memorial
Rose.

(ROSA WICHURAIANA.) This Rose is especially desirable for planting in cemeteries, as it is entirely hardy everywhere, and is a perfect sheet of bloom. All who want a beautiful Rose to place on a grave should plant this Rose. Six plants will completely cover a grave and be in bloom all the time.

It does not grow upright, but spreads on the ground like Myrtle. It is of a very rapid, prostrate habit of growth, not over eight inches in height, quickly covering the ground with a mass of very deep, glossy-green foliage. In middle June the flowers appear in bunches in profusion, and continue all Summer. Flowers are about two inches across, single, creamy-white, with showy masses of golden-yellow anthers, and intensely fragrant. For use as a cover plant on banks, ledges, or masses of rock this is unsurpassed, quickly producing the effect desired, and this with the showiest of foliage and a mass of bloom at a season when flowers are becoming scarce. Used in quantities for landscape work in parks and cemeteries, and no private place exists on the grounds of which it cannot be used to advantage. Price, 20 cents each; three for 50 cents. Large two-year-old plants, 20 cents each.

SPLENDID
PERPETUAL-FLOWERING Moss Roses.

Price of these Perpetual-Flowering
Moss Roses, 25 cents each. . . .

New Perpetual Moss Rose, Mousseline.—Extra fine, large, very full, and delightfully fragrant. Color a pure white, sometimes shaded a rosy-blush. Elegantly mossed and very beautiful. A continuous bloomer.

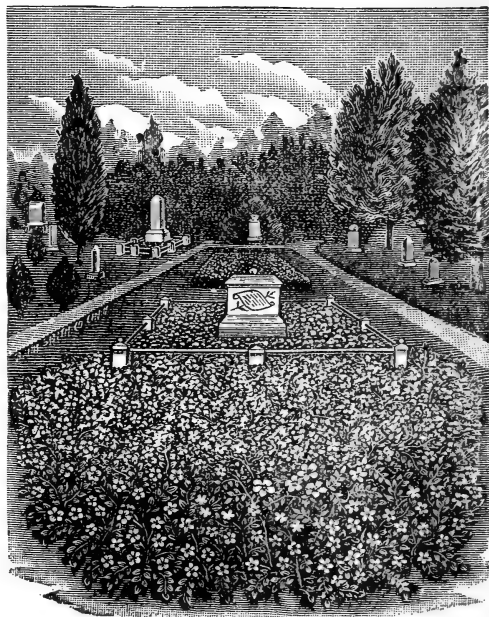
Perpetual White Moss Rose.—One of the most mossy varieties, prettiest in bud. The flowers are of medium size and borne in clusters, fragrant, but not very double. Color pure white.

Perpetual Moss Rose, Blanche Moreau.—New, and highly recommended. Flowers are produced in clusters, and are large, full and sweet. The color is pure white, and both flowers and buds have an abundance of deep green moss.

Perpetual Moss Rose, James Veitch.—One of the finest Perpetual Moss Roses. It has extra large flowers, very fragrant and full. The color is a bright carnation-red, very fine. It is a splendid Rose.

True Old English Sweetbrier Rose, **Eglantine.**

Very desirable for shrubberies and general planting. Flowers are bright pink and single, but the exquisite fragrance of the flowers, leaves and young branches in the early Spring frequently perfumes a whole neighborhood. Price, 25 cents each.



MEMORIAL ROSE IN CEMETERY.

MICROPHYLLA, **Burr Rose.**

The White Microphylla and Red Microphylla Roses are hardy, vigorous and bushy varieties, suitable for cemeteries, old walls, mounds, rock work, etc. They have small, glossy-green foliage, and are nearly evergreen in habit. Flowers are semi-double, and very sweet. Price, 10 cents each; large plants, 35 cts. each.

GENERAL COLLECTION OF

HARDY ROSES.

Price, 10 cents each; or we will send fourteen kinds from this list, your selection, for \$1.00; any six kinds for 50 cents. Large two-year-old plants, 35 cents each. X X

Abel Carriere.—Flowers are extra large, very double, full and sweet. Color a dark, rich crimson, passing to a velvety-maroon.

Alfred Colomb.—A bright carmine crimson, very large, full, and of fine globular form.

Anna Alexiff.—Color a clear, rosy-pink, changing to brilliant carmine, elegantly shaded, fragrant and beautiful.

Antoine Mouton.—The flowers are of extraordinary size and fullness, very fragrant. Color a bright, clear pink, reverse of petals silvery-rose.

Anna de Diesbach.—(*Glory of Paris*.) Brilliant crimson, shaded maroon long-pointed buds, full and sweet.

Ball of Snow.—(*Boule de Neige*.) A finely formed, pure white Rose, occasionally shows light flesh when first opening. Beautiful shell-shaped petals, evenly arranged, flowers of good size.

Baroness Rothschild.—Color a rich and lovely shade of pink, delightfully perfumed. An ideal Rose in every respect.

Countess of Roseberry.—Color satiny-pink in the center, deepening to bright crimson on the outer petals. Superb.

Captain Christy.—The color is a lovely shade of pale peach, deepening to rosy-crimson. Extra fine.

Crown Prince.—A noble Rose. Color a clear red, deepening at center to ruby-crimson.

Charles Dickens.—This we regard as a wonderful Rose. Color a rich gloss carmine, tinged with crimson. Very sweet.

Coquette des Alps.—A lovely pure white Rose. Very full and free in flower. Delicious fragrance.

Coquette de Blanches.—One of the finest white Hybrid Perpetuals. Flowers large, pure snow-white, very double, full and fragrant. A constant bloomer. One of the best.

Doctor Hogg.—Deep violet-crimson, richly shaded with maroon, shell-shaped petals, full, compact form, very double and desirable.

Duchess de Caylus.—Extra large flowers, full, perfect form, very fragrant. Color a rich cherry-red, sometimes brilliant crimson, delicately tinged with scarlet. Very fine.

Dismore.—Dazzling scarlet-crimson of the largest size. Very sweet and always in bloom. None better.

Emperor of Morocco.—This is a grand Rose, matchless in color, being a dark, velvety-maroon.

Empress of India.—This is one of the darkest of Roses. The color is an intense, rich, velvety-crimson.

Francois Levet.—A very beautiful Rose. Soft, China pink, delicately shaded carmine and blush, large, finely-formed flowers, delightfully fragrant.

Giant of Battles.—This is still esteemed as the very best rich red Rose. Very large, double, full and sweet. Excellent.

Grand Duke Nicholas.—Color a dazzling crimson. A magnificent Rose.

Glory of Cheshunt.—An elegant Rose of deepest fiery crimson.

General Jaqueminot.—A rich, velvety-crimson. A most magnificent Rose. This is the best known of all the hardy Roses, and is without a rival in fragrance and richness of color.

Gypsy.—Color a delicate shell-pink, of satiny finish, and of maroon texture. A general favorite.

General Washington.—This magnificent Rose is one of the best for general planting. Color a brilliant crimson. Very rich and beautiful. Flowers large and perfectly double.

Gloire de Margottin.—Clear, dazzling red, the most brilliant of all hardy Roses. Very fragrant. Superb.

Gloire de Lyonaise.—A pale shade of chamois or salmon-yellow, sometimes passing to creamy-white, tinted orange and fawn. A grand Rose.

Gustave Piganeau.—Color a beautiful shade of bright red and brilliant carmine. This is a charming new Rose. Buds and flowers of the largest size.

Her Majesty.—A Rose of immense size. Deep, glowing pink in color. By many claimed to be the largest Rose in cultivation.

John Hopper.—One of the most reliable and satisfactory Hybrid Perpetuals ever grown. Flowers are large, very regular and full. Color a brilliant rose, changing to a bright, glowing pink, shaded with rich scarlet. Very sweet, and a profuse bloomer.

Jean de Labaud.—Fiery crimson, shaded with black, very dark flowers, large, full and very beautifully formed.

Jules Margottin.—A bright, cherry-red, large and very double. A general favorite. One of the best Roses.

La Reine.—A beautiful, clear, bright rose, fine, full form, very fragrant. It is well named "The Queen."

Lady Emily Peel.—Very sweet, color white, sometimes tinged and shaded with blush.

Louis Van Houtte.—A rich crimson, heavily shaded with maroon, beautifully formed, double flowers.

Leopold Premier.—A dark, rich crimson. A fine, large Rose. Very full and sweet, free bloomer, very beautiful and valuable.

Lady Helen Stewart.—A bright scarlet-crimson, flowers full and rounded, highly perfumed. Very beautiful.

Madame Masson.—The flowers are large, color a deep rose or bright red, highly perfumed and tree bloomer.

Merville de Lyon.—The flowers are extra large, of cupped form. Color a pure, untinted ivory-white.

Madame Joseph Debois.—Color a pure snow-white, of the largest size. A most magnificent Rose.

Marchioness of Lorne.—A rich, fulgent Rose, color shaded with vivid crimson. Charming.

Madame Gabriel Luizet.—Clear color, rose or deep pink. One of the prettiest of all Roses.

Madame Gustave Bonnet.—Pure white, sometimes slightly tinged with rose, very double, full, sweet-scented, free bloomer.

Magna Charta.—A bright, clear pink, flushed with crimson, very sweet, flowers extra large, with fine form and very double.

Gloire de Exposition Bruxelles.—Flowers finely formed, large and perfectly double. Color a bright crimson, of velvety texture. A Rose of unusual merit.

Margaret Dickson.—A new Rose of great merit. Pure white, of immense size. Has been awarded ten first prizes.

Madame Alfred de Rougemont.—A strong, vigorous grower, begins to bloom at once, and continues until stopped by severe freezing. Pure snow-white flowers, finely tinted and clouded with pale rosy blush. Large, full and double, and borne in large clusters. Fragrant and good.

Madame Plantier.—The ironclad white cemetery Rose. This is the old standby and is unequalled where a hardy white Rose is needed. It bears thousands of beautiful snowy-white, fragrant Roses. It is as hardy as an oak.

Marie Bauman.—A bright carmine. Flowers very large and of exquisite form, free bloomer. In every way one of the finest Roses grown.

Monsieur E. Y. Teas.—A very beautiful and satisfactory Rose. Color a rich, glowing crimson, very bright and striking. Large, round flowers, of perfect form, very full and sweet. Highly recommended.

Mrs. John Laing.—Clear, bright shell pink, exquisitely shaded, very free bloomer. Everybody admires this fine Rose.

Marshall P. Wilder.—A beautiful Rose of bright cherry red color. All praise it who have tried it.

Mabel Morrison.—This is a beautiful white Rose of the largest size. Very handsome.

Mademoiselle Marie Rady.—A clear, bright red, finely penciled with rich maroon, very large, full flowers, fragrant and beautiful.

Madame Charles Wood.—A large Rose. Color deep red. Very free bloomer and very sweet. None better.

Oscar II, King of Sweden.—"Oh, what a lovely black Rose," is the exclamation of all beholders. This is by far the richest Rose yet introduced.

Olga Marix.—Pure white, delicately shaded with amber and blush, large, full flowers, very double and sweet, a free bloomer and very handsome and desirable.

Pierre Notting.—A most beautiful dark Rose. The color is a deep, rich crimson, shading to velvety maroon, very large, fine, globular form, and highly scented.

President Lincoln.—A bright red Rose of the richest hues, large, full and fragrant. Excellent.

Prince Albert.—A rich, brilliant crimson, very bright and striking, large, double and finely cupped flowers. One of the best Roses in our collection. In color a rich, dark crimson. Very hardy.

Paul Neyron.—The old time favorite, of immense size, often measuring five inches in diameter, lovely bright pink or deep rose. Very superb.

Perfection des Blanches.—A fine-formed, pure white Rose, one of the finest and most beautiful of the white Roses.

Queen of Queens.—Rich pink, with blush edges, full and of perfect form. Very fragrant.

Queen of Autumn.—It is a bright carmine at the edges of the petals, graduating into a light rose and soft primrose-yellow in the center.

Red Dragon.—Fine, bold flowers, showy and striking. Color a very brilliant crimson.

Rosy Morn.—A lovely name and a magnificent Rose. Extra large size, very double, full and deliciously sweet. Color an exquisite salmon-rose, shaded with delicate peachy-red, sometimes pale blush, suffused with soft, rosy-crimson. Extra fine plant.

Silver Queen.—Silvery-blush, shading to delicate rosy-pink. Very distinct.

Triomphe des Beaux Arts.—A metallic rose, flamed with scarlet, large, very fragrant and full. Splendid.

Thomas Mills.—Extra large, fine, cup-shaped flowers. Color a bright rosy-carmine, sometimes with fine white stripes. Fragrant and good.

Victor Verdier.—A rich, cherry-rose, shaded with carmine. A very attractive color. Flowers large and beautifully formed, very full. A beautiful Rose.

Vulcan.—A dark, rich, velvety-crimson, changing to black. Large, fragrant flowers, very double and fine.

Vick's Caprice.—A beautifully striped Rose, perfectly hardy. Color bright rose, distinctly striped deep carmine or crimson.

White Paeony.—Flowers of the largest size. Pure white.

White Baroness.—Identical with Baroness Rothschild, except the color is a pure, untinted white.

Yvry Olibo.—Flowers large and double and of excellent form. Color a velvety-black, and shaded with fiery red. A superb Rose.



BEAUTIFUL

TREE ROSES

We have these grafted with Hybrid Perpetual or hardy sorts, two colors on same tree, red and white, at \$2.00 each, or two for \$3.50. We also have them grafted with Tea or ever-blooming sorts, where they are wanted by our patrons in the South, one color to the tree, with the very finest sorts. Price, \$1.50 each, or two for \$2.50. At this price they can only be sent by express. They measure five to six feet in height.

HARDY

.....CLIMBING PRAIRIE ROSES.

THESE are Climbing Roses that are perfectly hardy everywhere, and are consequently of the greatest value. They can be readily trained to the height of from ten to thirty feet, as they grow with great vigor. They bloom the second year, and but once in a season, but are then loaded with splendid Roses, and are among the most beautiful of flowering plants. At least one of these Hardy Climbers should be found in every Rose garden north of Tennessee. The flowers are produced in large clusters. When it is desired to cover walls, unsightly buildings, etc., with Roses, none will be found to do the work so efficiently as varieties of the Prairie Roses.

Price, 10 cents each; any three for 25 cents.
Large two-year-old plants, 25 cents each.

Anna Marie.—Blush, very large clusters, has few thorns. It is an excellent variety.

Baltimore Belle.—Pale blush, variegated carmine-rose and white, very double, flowers in beautiful clusters, the whole plant appearing a perfect mass of bloom. One of the very best Climbing Roses.

Bennett's Seedling.—An Ayrshire or Scotch Rose, and a vigorous runner, flowers are white, very double and fragrant, and borne in great profusion.

Caroline Goodrich, or Running General Jacqueminot.—This new Hardy Climbing Hybrid Tea Rose has finely-formed, very double flowers, and its fragrance is most delicious. The color is the same as General Jacqueminot. It makes a growth of from twelve to fifteen feet in a season.

Dundee Rambler.—The old-fashioned Scotch Climbing Rose, entirely hardy, bears elegant, rich, red Roses of the largest size in great profusion. This we think the best of the Hardy Climbers.

Greville, or Seven Sisters.—Flowers in large clusters, and varies in color from white to crimson.

Mrs. Hovey.—This is an improved Seven Sisters, being more hardy, flowers in large clusters. It is better in every respect than Seven Sisters.

Milledgeville, or Pride of the South.—A splendid variety. Color a rich, satiny-pink, very fresh and beautiful. Fine, large, globular flowers, full, regular form, very double and sweet. A profuse bloomer and quite hardy.

Pride of Washington.—A brilliant amaranth, shaded rose center, large clusters and very double. A fine climber.

Queen of the Prairies.—Flowers very large and of peculiar globular form. A bright rosy red, changing to lighter as the flower opens. Of very strong, rapid growth.

Russell's Cottage.—Dark, velvety-crimson, very double and full, a profuse bloomer and strong grower. A very desirable Climbing Rose.

Superba.—A splendid sort. Large, very full and double, bright rosy-pink, clear and beautiful. It blooms in continuous clusters.

Tennessee Belle.—Flowers a bright, beautiful pink. It is more slender and graceful in growth than either of the other varieties.

POLYANTHA, OR Fairy Roses.

Notice.—We cordially recommend these exquisite Ever-blooming Fairy Roses. They are of shrubby, compact growth, bloom profusely all through the season; and are very desirable for bedding as well as for edging, borders, etc. They are moderately hardy, but should have a covering of leaves or litter just before Winter begins.

Price, 8 cents each; large two-year-old plants, 25 cents each.

Blanche Rebatel.—A beautiful new variety, very handsome flowers, a deep rose color, medium size, very double and fragrant, and borne in large clusters. A constant bloomer.

Eliza Chatrand.—One of the most lovely of all Roses, having lovely rose-colored flowers, elegantly penciled and touched with ruddy saffron. Very free bloomer.

Flora.—The flowers are quite large, very full and round, delightfully perfumed, and borne in immense clusters. The color is a fine ivory-white, delicately tinged with soft rosy-blush.

George Pernet.—It is continually in bloom, the flowers being quite large for this class, of a beautiful flat form. The color is a very bright rose, with touches of yellow, and passes to peach-blow, with silvery-white shadings. The prettiest of all Polyantas.

Miniature.—This is the smallest of all Roses, but perfect in form, regular, compact, fairy-like flowers, fully double and very fragrant. Flowers in wreaths and clusters almost covering the whole plant. The color is a cream-rose, flushed with a peachy-red.

Gloire de Polyantha.—A beautiful Fairy Rose. Flowers large, perfectly double and deliciously sweet. Color a fine citron-rose, elegantly flushed a pale carmine.

Mignonette.—A lovely Fairy Rose. Full, regular flowers, perfectly double and deliciously perfumed. Color a clear pink, passing to white, tinged with pale rose.

Mademoiselle Cecil Bruner.—Larger flowers than any of the others, perfectly double and delightfully fragrant. Color a rosy-pink, on a rich, creamy-white ground.

Perle d'Or.—Charming and very distinct. Color a coppery-gold, changing to fawn and salmon, flat-rayed form, very double and elegantly perfumed.

Paquette.—We consider this variety the best of all the Polyantha Roses. The flowers are pure white, about one inch in diameter, flowering in clusters of from five to fifty blooms. Very full, prettily formed, recalling blossoms of the double-flowering cherry, and fully equals the double white Primrose in profuse blooming during the Winter. This is a variety that every one is pleased with.

SPECIAL OFFER.—The set of ten Fairy Roses named for 60 cents. No discount on this offer.

THE LADY BANKS,
OR

Banksia Roses.

These are fine climbing or trailing Roses. Good for the South and Pacific coast, where the Winters are not too severe. They require two or three years' growth to bloom to perfection, and are then very beautiful. As the flowers are produced on the old growth, they should be pruned but very little, merely cutting away what is absolutely necessary. The flowers resemble a double cherry blossom, and are the size of a silver dime. They are produced in large clusters, and have a decided violet perfume. Indeed, if blindfolded you could not by the odor distinguish them from violets.

White Banksia, Alba Grandiflora.—A pure untinted white variety. Price, 15 cents each.

Yellow Banksia, Fortunel.—A very rich, golden-yellow variety. Price, 15 cents each.

The two varieties for 25 cents; large plants, 50 cents each.

Black Roses.

We have often been asked by our customers for Black Roses, and we here offer the five nearest Black Roses. They are all entirely hardy. They all have large, double flowers, and are exceedingly sweet.

Price, 15 cents each; or the set of five for 50 cents. In large two-year-old size, 50 cents each; or the five for \$2.00.

Baron de Bonstetten.—Has splendid large flowers, very double and full. The color of this Rose is a rich, dark red, passing to a deep, velvety-maroon. It is highly scented and very beautiful.

Prince Camille de Rohan.—A very dark, rich, velvety-crimson, passing to intense maroon, shaded black. Large, full flowers, looking at a little distance as if they were really black. One of the darkest Roses, and very handsome.

Souvenir de Duchere.—A superb Rose. Extra large, compact flowers, very full, double and sweet. Color a beautiful and brilliant scarlet, deepening to dark, glowing crimson. Very rich and handsome.

Antoin Quignon.—Extra large flowers, very full, compact and regular form. Color a rich violet-crimson, elegantly tinged and shaded maroon-red, a free bloomer and very sweet.

Black Prince.—A superb Hybrid perpetual Rose. A very dark blackish-red, richly shaded with violet-crimson, extra large, full flowers, delightfully perfumed, good, bushy habit. A hardy and vigorous grower and free bloomer. One of the very best dark Roses.

OUR LINCOLN PARK COLLECTION OF DOUBLE GERANIUMS



The varieties of Double Geraniums offered in this grand collection are superior to any in cultivation. In ordering say "Lincoln Park" collection of Geraniums. Price, 8 cents each. The set of fourteen "Lincoln Park" Double Geraniums for 75 cents. Any seven for 40 cents.

Sir Walter Scott.—Color beautiful vinous rose, with distinct white center. This variety produces fine individual florets, which, combined with its other good qualities, makes it a valuable Geranium. This variety supersedes Sergeant Bobillett, being a much finer Geranium.

Fire Brand.—Color dazzling flame scarlet, fine, prominent truss, flowers large and of great substance. An excellent bedder and pot plant. For planting in masses we have seen none to equal it. Another thing in its favor, it takes fewer plants from its sturdy branching habit to give effect.

Leviathan.—Enormous sized flowers, round, in the shape of rosettes. Color a bright orange-red, reverse of petals silvery. Very fine. Semi-double flowers.

Madame Hoste.—Umbels large and borne well above the foliage. Flowers of enormous size, color flesh, lined and shaded with bright salmon. One of the very finest in the collection. Shading simply exquisite.

Centaur.—The new mammoth Centaur Double Geranium is the best large-flowering double pink Geranium in cultivation. Any one seeing a specimen truss cannot fail to become enthusiastic over it, pronouncing it the largest and finest Geranium in cultivation. The new Centaur is remarkable for its stout, robust growth, and for its immense trusses of bloom.

White Swan.—In White Swan we have one of the finest double white Geraniums ever introduced, and, unlike other double white Geraniums it is suitable for bedding and flowers as profusely as the best single varieties. They are borne in large trusses and are spotless, snowy-white, retaining their pure whiteness even in the heat of Summer.

Beauty Poitevine.—Very large, semi-double flowers, borne on immense trusses. Free bloomer, either as a pot plant or as a bedder. It has no equal of the color, which is a brilliant salmon, very clear on the borders. This might well have been called "Salmon Bruant," as it is identical in every way but color.

Clara Kisker.—Large trusses of well expanded flowers of a bright scarlet, toned and flamed with a rosy salmon, and a flower of most expressive appearance, and one that will be much admired by all.

Tour Eiffel.—Color bright orange-scarlet, somewhat in the way of the variety Bruant. It is a strong, vigorous grower, making a distinct place for itself in its class. Semi-double.

Crimson Velvet.—This is the darkest and richest Geranium grown. It is very bright, dark, deep, rich velvety-maroon, very dark and rich, and at the same time very bright. An excellent bedder and pot plant. One that must find its way into every collection. Simply superb.

Gertrude.—Color of the flower a clear, bright salmon, with center and outer edges touched with white and with soft shadings of carmine, velvety in texture, and of the most beautiful semi-double form. We have measured trusses of bloom on this variety ten inches in diameter. It is simply superb. A fine bedder.

Emile de Girardin.—Of a deep soft rose rather than pink, but fresh and bright, the blossoms are perfect in form and borne well and clear above the foliage. The long beds of it seen in the Chicago parks, with their edgings of "Golden Bedder," Coleus, formed the most beautiful Geranium planting we have ever seen and the combination is delightful.

Bruant.—Color of the flower is a light vermilion red of a most pleasing shade. The flowers are absolutely perfect in shape, contour and make-up, trusses exceptionally large and borne in immense spherical balls, often measuring eight inches in diameter. It does finely in the open ground, and is perfectly reliable as a bedding Geranium of the highest merit.

Gloire de France.—Large, round florets of waxy appearance, colors carmine and white, with carmine center, each petal delicately tinged with carmine. An excellent pot variety, to which its habit is finely suited. It is one of the prettiest Geraniums we have. This is the most beautiful of all particularly colored Geraniums which appear so bewitching to the eye. The very brightest color imaginable.

“Central Park”

Collection of _____

SINGLE GERANIUMS.

This list embraces the very best Bedders, and all are equally fine for pot culture. X X X

Price,
8 cents each;
or the entire
set of
fourteen
“Central
Park”
Geraniums
for 75 cents;
any 7 for 40c.
In ordering say “Central
Park” Collection.



Souvenir de Mirande.—The greatest novelty in new Geraniums that has appeared for a number of years is undoubtedly Souvenir de Mirande. It is entirely distinct from any other variety grown, and is quite different from the usual marked varieties that have from time to time made their appearance. It has round florets, upper petals cream white, with a distinct rosy pink border, lower petals salmon rose, streaked pure lilac. A most novel color. It is extremely free-flowering, and produces fine trusses of magnificent blooms. Mr. John Thorpe says it has made a leap of a decade in its advent.

Blanche Houlas.—A grand bedding variety of much merit. The flowers are large, salmon, beautifully bordered with white. A Geranium of rare beauty.

Lansdowne.—A soft, deep scarlet, florets large and round and formed into large trusses, borne with the greatest of freedom. An ideal bedder, producing a mass of soft brilliant color, well above the foliage, which is a light, bright green.

Marguerite de Layres.—A grand single white, plants a mass of white bloom, trusses of the grandest size, florets extra large and of the purest white. The plant is robust. Grand for pots or bedding. It is by far the best single white.

Madame Alfred Mame.—A magnificent bedding variety. The trusses are of extraordinary size, the florets by actual measurement being two and one-half inches long by two inches wide, of almost Pansy form; the color is a soft sub-scarlet, lower petals shading to salmon in the center, which is deeply veined crimson. This variety has been universally admired by all who have seen it in flower. A variety that will probably never be equaled.

Mrs E. G. Hill.—A most distinct and pleasing shade of salmon, with light shading at the center. The shading at the center is variable, however. Trusses are very large and composed of an immense number of florets.

M. Noury.—A most pleasing lavender rose color, very chaste and beautiful, with distinct marking of white at center of flower. Dwarf, and so free in bloom as to literally cover the plant.

Monsieur Poinsson.—The color is bright aurora rose, shaded salmon, with a white eye. Large trusses of splendid shaped flowers.

Protee.—Flowers very large and freely produced in immense trusses. Color silvery-lilac, white shading, changing to silvery pink. A splendid sort.

Beauty of Richmond.—Intense orange scarlet, very dazzling, with large white eye, flower perfectly circular and of immense size; foliage lightly zoned. A seedling from Beauty of Kent, extremely fine.

Benjamin Schroder.—Light green foliage that is very bright in color; flower extremely large, of soft rosy pink color, like that of Mary Hill, with distinct white blotch on the upper petals, of satiny texture; petals slightly recurving.

Bill Nye.—Color peach, shading to pale salmon, flower of fine size and form; a splendid grower of nice, compact habit.

Gettysburg.—Bright crimson maroon, of beautiful shade; flower very large and of fine form. An extra beautiful dark variety.

John Good.—Truss of enormous size and quite globular in form; stems long and rigid; a grand improvement on Lady Roseberry, color being a clear salmon, lightly edged with white.

Sweet-Scented Geraniums

Price, 10 cents each; three for 25 cents.

- Skeleton-leaved.**—Leaves very finely cut, rose fragrance.
- Shrubland Pet.**—Beautiful foliage, rosy flowers.
- Oak-leaved.**—Resembling oak leaves, black center, green bordered.
- Pepper-scented.**—Fine cut foliage, pepper scent.
- Rose-scented.**—Two kinds—broad leaf and cut leaf.
- Nutmeg-scented.**—Small leaves, with nutmeg perfume.
- Balm-scented.**—Delicious balm fragrance.

Silver-Leaved Geraniums.

Price, 10 cents each. The set of four for 30 cents.

- Happy Thought.**—Light cream, almost white center, with a dark green band about the light zone, edge of leaf a bright green.
- Mountain of Snow.**—Strong grower, center of leaf bright green, broad, silvery-white margin, flowers scarlet. Good for bedding.
- Snow Storm.**—Dark green foliage, distinctly margined with white. A robust grower.
- Madame Salleroi.**—It makes a round, pretty plant, about one foot high and wide, foliage bright green, edged with pure white.

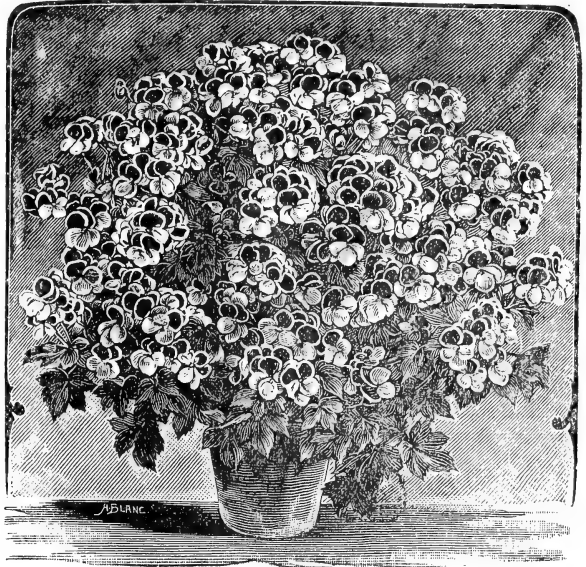
Golden Tricolor Geranium . . . Mrs. Pollock.

One of the most lovely of foliage plants. Color of leaves a bright, bronzy-red, zone belted crimson and edged golden yellow. A lovely combination. Price, 15 cents each; two for 25 cents.

Golden Bronze-leaved Geraniums.

Price, 10 cents each; three for 25 cents.

- Zulu.**—A bright yellow leaf, with almost black zone.
 - Marshal McMahon.**—Golden-yellow, zone of dark chocolate.
 - Exquisite.**—Large chocolate zone, golden-yellow center.
 - Distinction.**—The leaves are encircled with deep black.
 - Crystal Palace Gem.**—Golden-yellow margin, central disc green.
 - Bronze Bedder.**—New. Brightest and best of all. Grand.
- The set of Bronze-leaved Geraniums for 50 cents.

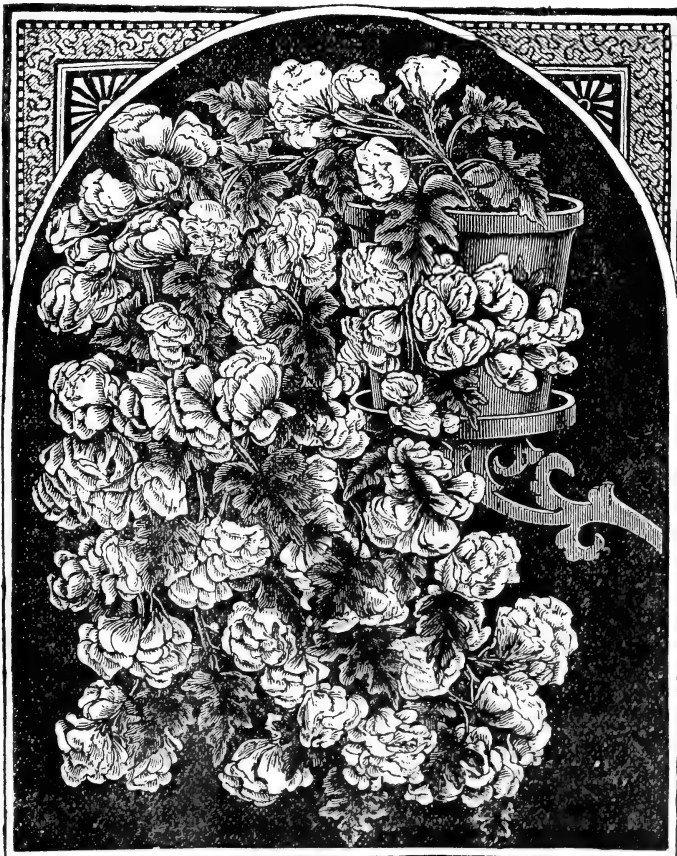


PERLARGONIUM.

Our Splendid New Ivy Geraniums.

One of our local florists who grows for the home market a house full of these new Ivy Geraniums says that he sells as many of them as all other Geraniums combined. Try them.

- The set of three New Ivy Geraniums for 25 cents.**
- New Double Ivy Geranium, Comtesse Horace de Choiseul.**—A fit companion of "Joan of Arc." Plant vigorous, leaves without zones, flowers very large, two inches across, double and imbricated, in good trusses. Color is a bright golden-salmon. Price, 10 cents each.
- New Double Ivy Geranium, Galilee.**—The trusses are of immense size, flowers very large and double, and of a most charming shade of lovely rosy-pink, varied with lilac. A magnificent variety. Price, 10 cents each.
- New Double White Ivy Geranium, Joan of Arc.**—The flowers are perfectly double, white as snow, and literally cover the plant when in full bloom. The foliage is extremely handsome, the dense glossy-green leaves making a most effective background for the great cluster of snow-white flowers. Price, 10 cents each.



JOAN OF ARC.

Delargoniums,

Or Lady Washington Geraniums.

We here offer four of the choicest new kinds of these, the most beautiful of all Geraniums. Price, 30 cents each; or the four varieties for \$1.00; any two for 50 cents. You cannot buy these charming varieties as cheaply elsewhere.

- New Ever-blooming Pelargonium, Freddie Dorrer.**—It is a perpetual-blooming variety, usually commencing to bloom in December or January, and continuing throughout the Spring and Summer. The throat and edges of the petals are pure white, each shaded toward the center with rich carmine-pink, with a glowing crimson blotch on each. We have always been unable to supply the demand, but now have a fine stock of plants to offer.
- Victor.**—The flowers are a bright cherry-red, with white at the base of each petal, the two upper petals are dark crimson-maroon. The flowers are of immense size and very freely produced.
- Madame Thibaut.**—(The New Double Pink.) The flowers are three inches in diameter, perfectly double, of the brightest pure pink, beautifully ruffled edges. Very free in bloom.
- Mrs. Robert Sandiford.**—(The New Double White.) The flowers are three inches across, of the purest snow-white, and perfectly double, and very free in bloom. You cannot imagine anything prettier.

NOVELTIES IN CANNAS!

Papa Cannas.—M. Crozy claims this variety as his finest variety to date, and it certainly is a grand addition to the already gorgeous array of reds. It is not quite three feet high. It bears immense spikes of flowers, the florets being of the grandest size and finest form. Color pure red. Very graceful in habit. Foliage light green. Produces a mass of blooms. **Price, 25 cents each.**

Austria.—The new orchid-flowered Cannas. At last we have not only a clear, beautiful yellow-flowered Cannas, but also a flower magnificent in size, fully twice as large as Madame Crozy and similar kinds. The flowers are truly gigantic in size, the three upper petals spreading fully seven inches, and the form is really semi-double. Toward the inner part the petals show fine crimson spots. All the rest of the flower is of a most beautiful, rich canary-yellow. A very strong grower, five to six feet high, with leaves with a texture like rubber. As a specimen, decorative, as well as a flowering plant for the greenhouse or private conservatory, it is the finest novelty in recent years. **Price, 25 cents each.**

Queen Charlotte.—The sensation of the year in new plants. This is indeed a queen among Cannas and the finest novelty of the season, entirely distinct from any other variety offered. Flowers are very large, with broad, rounded petals, slightly recurved. They are borne in immense heads, well above the foliage, and are most striking in color. A bright orange scarlet, deeply edged with bright canary-yellow. The plant is of dwarf habit, a sturdy, compact grower, with deep green musa-like foliage. **Price, 25 cents each.**

Italia.—The gigantic flowering Cannas. This kind produces the largest flowers which have been obtained as yet in the way of Cannas. The plant grows about four and a half to six feet high. Numerous musa-like, glaucous leaves. Above the perfect foliage, which alone would be sufficient to render the plant beautiful, emerge numerous elegant, gigantic and wonderful spikes of flowers. The latter are enormous. The outer petals are scarlet, with a very broad golden-yellow border. The inside of the blooms is scarlet and dark red. Exceedingly beautiful. **Price, 25 cents each.**

Diamond Collection of Ever-Blooming DWARF CANNAS

These are the best varieties in cultivation. Always in bloom. They are not like the old varieties of Cannas that seldom flower, but are always covered with their large, handsome trusses of bloom. Be sure and give them a trial.

CULTURE.—The soil can hardly be too rich and porous. Equal parts manure, loam and sand, with a little peat, form the best mixture. Plants must be kept in a growing temperature of sixty degrees. Liberal supplies of manure water are of great benefit. Always when growing keep well watered.

J. D. Cabos.—Strong grower, leaves lanceolate, green, strongly shaded with purple, flower stalks numerous, flowers large and round, color a rich apricot, with deeper shadings. Very striking.

Madame Crozy.—The color is a brilliant vermilion-scarlet, bordered with deep golden-yellow. The flowers are borne in great clusters, and in such profusion that they crown the plant with a blaze of glowing color.

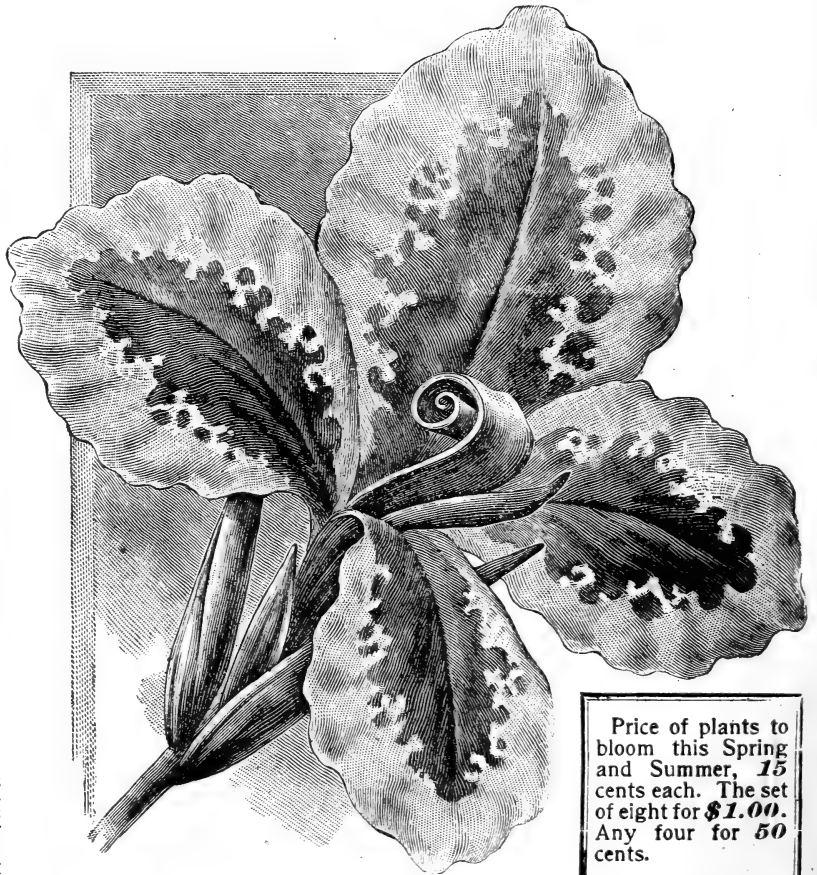
Flamingo.—Flowers four inches in diameter, with almost flat face, forming a spike of glowing crimson color. Once seen not soon to be forgotten. Very free, a plant often bearing three or four trusses at a time, and may almost be termed ever-blooming from the very beginning to the end of the season.

Alphonse Bouvier.—It is the grandest of all Cannas for outdoor bedding. It is a very luxuriant grower in good ground. It begins to bloom very early, and is one continuous mass of crimson the entire season. The tips of the shoots are surmounted by immense clusters of bright crimson flowers of the very largest size, and nothing can excel their brilliancy.

Florence Vaughn.—Conceded by all who have seen it to be the finest yellow-spotted Cannas. Flowers very large, of the most perfect form, with broad, overlapping petals, nicely rounded at the ends. Color a brilliant yellow, spotted with bright red. A strong, robust grower, and flowers very freely.

Charles Henderson.—Glowing crimson color, but of dwarf habit, growing about three feet in height, and bearing its immense, compact heads of bloom erect and well above the foliage. The form of the flowers is very fine indeed, well opened and of good substance, standing the sun well.

Egandale.—Without the least hesitation we pronounce this the best of all dark-leaved Cannas for bedding that has yet come under our notice. Flowers are of good size, and borne in



CANNA, MADAME CROZY.

Price of plants to bloom this Spring and Summer, 15 cents each. The set of eight for \$1.00. Any four for 50 cents.

compact heads, and in such profusion that a bed of them is a perfect mass of color unequalled by any other sort. The color is a deep currant-red, of a peculiar and pleasing shade, and different from any other.

Paul Marquard.—The individual flowers are large, and the flower spikes very large, each flower standing out separately by itself. The flower is as fine as the finest orchid. The color is a bright salmon, with a carmine tint.

"GEM" Collection of
NEW CARNATIONS.

Price, 10 cents each; the entire set of eight "Gem" Carnations for 60 cts; any four for 30 cts.

Sunrise.—An entirely distinct color, orange ground, striped with crimson, flowers full, double fringed, and of rich color and fragrance, unsurpassed by any variety in its profusion of bloom, and of a strong, vigorous, healthy growth, hitherto unknown in the yellow or orange colors. A variety certain to become a standard sort, as it possesses every good quality.

Secretary Blaine.—Another grand Carnation, with enormous-sized flowers, often measuring three and a half inches in diameter, and at the same time being one of the freest blooming Carnations we have ever seen. Ground color of flower the purest white, very handsomely penciled with the richest crimson.

Rose Queen.—One of the most fragrant Carnations we have seen. Color a pure, soft rose, a most continuous bloomer and distinct in color from any other sort offered. Greatly admired by all who have seen it growing here.

Grace Fardon.—This variety has been greatly admired wherever it has been seen for its desirable color, being a beautiful, pure, rich pink, flowers large size and very freely produced. Plant of grand habit and vigorous growth. It is a superb variety.

Alaska.—This beautiful white Carnation is remarkable for its extremely vigorous growth, very large flowers, perfect shape, purest white. Indeed, for size and freedom of bloom, purity of color, which is immaculate, sweetness of perfume that is delicious, vigorous growth, this variety has no equal. The best white by far out of a dozen varieties we have of that color.

Armazindy.—The "Pink of Perfection." Probably the most beautiful Carnation yet introduced, and must become very popular. Flowers are a pure satiny-white, and marked and shaded with rosy-pink, good size, perfect form, never bursts. It is the strongest and sweetest scented Carnation we know. A perfect beauty.

Anna Webb.—The color is of the darkest and most intense velvety-crimson maroon, very dark, and at the same time very bright.

Helen Keller.—A most superb Carnation, one that has created a sensation everywhere. The flowers are very finely shaped, and they often measure four and one-half inches in diameter. Flowers a pure white, with distinct markings of Carnation-red.

"FAVORITE" Collection of
MONTHLY FRAGRANT CARNATIONS.

Price, 8 cents each; the entire set of 8 "Favorite" Carnations for 60 cents; any four for 30 cents. : : : : : : : :



President Garfield.—This is by far the grandest dark Carnation ever seen, and at the same time the most abundant bloomer. Brilliant dark red, shaded with the richest maroon, fringed petals, nearly every flower being on a long stem. This variety surpasses in richness of color the most perfect Jacqueminot Roses.

Della Fox. Its color is almost indescribable. Of a rosy, orange shade, striped and flaked with carmine, never bursts its calyx, is very free and early flowering, and can always be cut with a long stem, a most desirable feature in a colored Carnation nowadays. It is very easily grown and sure to bloom.

Silver Spray.—We believe this to be the finest new or old white Carnation in cultivation. The flowers are of the purest white, with petals of great substance, making it one of the best. It will keep a long time when cut. Fragrant and very productive of bloom, and, in all, one of the best pinks for Winter blooming.

Abundance.—Flowers very large and perfect in form. Color a bright, rosy pink, with salmon shading when the flowers are fully expanded. A very healthy grower and remarkably free bloomer. Plant dwarf, growing about fourteen inches high. This we consider one of the best pink varieties ever offered, and an excellent variety for pot culture.

Fairy Princess.—This is the most beautiful Carnation we know of. The flowers are very large and perfect in shape. The color is a pure snow-white, delicately penciled with bright crimson. Elegantly fringed. A charming variety.

Field of Gold.—This is a pure yellow Carnation, of strong growth and very profuse flowering. There is no stripe at all in it, being a straight out-and-out deep, rich, golden-yellow, without any other color whatever, under any circumstances. The florets are large and double, as in Buttercup, and, taken all in all, it is the very best yellow Carnation out.

Yellow Jacket.—The color of the flower is orange, flaked, and is broadly striped with delicate carmine. Very bright and attractive. Very fragrant. It has proved one of the freest bloomers within our knowledge, single plants often carrying forty and sixty buds and blossoms at one time. One of the very best varieties.

Jubilee.—Very dwarf, and of a nice, bushy growth, forcing very long flower stems, each individual flower possessing a stem varying from three to eight inches in length. It has perfectly-formed flowers. Color a rich, bright dazzling scarlet. We unhesitatingly recommend this sort.

Tuberous-Rooted Begonias

These are among the very handsomest of our Summer blooming plants, flowering throughout the season, and as fine and varied in their colors as the Geranium family. They are splendid bedders, delighting in a light soil of woods earth, very old cow manure and sharp sand. See that the bed is in partial shade, and you will be delighted with the results. In the South, or where they cannot be planted in the shade of a house, a covering of burlap or canvas, some six or eight feet above them, merely to throw off the sun's rays, will allow them to come to absolute perfection, but they must have plenty of light and air. Do not allow them to become dry, and during hot weather they will take two waterings a day. When through flowering they can be dried off, shaken free of earth, wrapped in cotton until February or March, when they may be started again.

SINGLE.—White, Yellow, Crimson, Rose, Scarlet. Price, 20 cents each; three for 50 cents.

DOUBLE.—In the same colors. Price, 40 cents each; three for \$1.00.

Flowering Begonias.

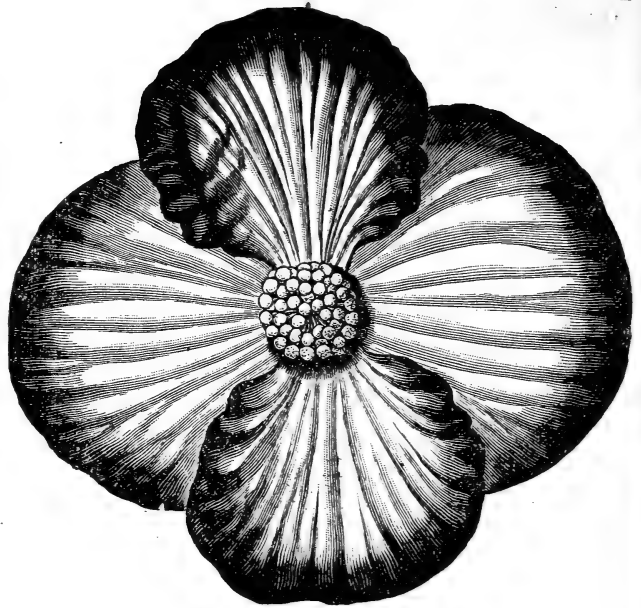
Price, 10 cents each; or the set of ten choice sorts for 75 cents. Any three for 25 cents; any six for 50 cents. Easy to flower, exquisite in coloring, and sure to please all who try them.

President Carnot.—The leaves are smooth, long, pointed and prettily blotched. The body of the leaf is a dark green, studded with bright silvery spots. Covered with handsome rosy white flowers. A splendid house Begonia, being of quick growth, and having both handsome flowers and foliage makes it very desirable.

Alba Perfecta Grandiflora.—A Begonia that has never been appreciated as it should be, as it is really elegant, and we doubt if there is a white-flowered variety that equals it. The foliage resembles Rubra in shape, but is a lighter green, while the flower panicles are much handsomer. A pure white flowering Begonia. Try it.

Argentea Guttata.—Purple-bronze leaves, oblong in shape, silvery markings, and in every way a most beautiful Begonia. White flowers in large bunches. It is splendid for house culture.

Begonia, Bruanti.—The leaves are so glossy they appear to have been triple varnished, shrubby, bearing sprays of delicate blossoms covering the whole plant.



TUBEROUS-ROOTED BEGONIA.

New Begonia, Dewdrop.—In the new Begonia Dewdrop we have the best flowering Begonia ever obtained. Its graceful flowers are produced in profusion all during the Summer and Winter. It is a dwarf, compact growing variety, the foliage is a bright, glossy green, with shell-shaped leaves and stems of light crimson. The blooms are produced in clusters of from six to eight florets, which are satiny white, with golden yellow stamens. When placed out in the sun during Summer the color changes to a delicate shade of pink, with crimson stems, making a beautiful contrast. Unlike other Begonias. It is a profuse bloomer. Eighty-seven clusters of flowers have been counted on a single plant.

Rubra.—If you can have but one Begonia, let it be a Rubra. It is so fast growing that it will in a year or two reach the top of your window, sending up heavy, stiff canes an inch in diameter, and rising beside them will grow strong, slender branches, gracefully drooping under heavy waxen leaves and pendant panicles of coral colored flowers as large as a hand. Medium-sized plants are frequently seen with more than twenty such panicles at a time. Among the individual flowers you will find three distinct forms growing side by side.

Bertha de Chateaurocher.—Next to Dewdrop this is the treest flowering Begonia we have. It blooms the year round, makes a handsome window plant with its beautiful foliage and bright, currant red flowers.

Fuchsoides Coccinea.—Elegant free blooming variety. It resembles *Hybrida Multiflora* in growth. The flowers are a bright scarlet.

McBethill.—Of the *Weltoniensis* type, with very deeply indented leaves, which are fine and small. Shrubby in growth and very free flowering, being constant the year round. A fine Summer bedding plant, if given a light soil and perfect shade. Put it among your ferns. White flowers, waxy in texture, carried in panicles.

Zebrina.—An erect-growing variety, with a beautiful profusion of pendant leaves. Besides its graceful form the leaf is distinguished by its glistening, silvery shading following the leaf, the body being a very dark, velvety green, underside plum color, vein green. Flower pure white. A beautiful variety.

CALADIUM ESCULENTUM.

One of the most beautiful and striking ornamental-foliated plants in cultivation, either for culture in large pots or tubs, or for planting out on the lawn. Will grow in any garden soil, and is of the easiest culture. When of full size it stands about five feet high, with immense leaves, often measuring four feet in length by two and a half in breadth. Smooth, of bright green color, beautifully veined and variegated with dark green. The roots should be preserved in dry sand in the cellar during Winter, out of danger from frost. Price, three sizes, 10 cents, 25 cents, and 50 cents each. The large size can only be sent by express.



FLOWERING BEGONIA.

ELEGANT JASMINES.

Jasmine Gracillimum.—Exceedingly floriferous. A flowering shoot is produced from every joint, which terminates in a dense cluster of pure white, fragrant flowers. In bloom in the greenhouse from October to February. Price, 15 cts. each.

Grandiflorum.—(Catalonian Jasmine.) From Italy. The flowers are pure white, star-shaped, of exquisite fragrance. Price, 10 cents each.

Maid of Orleans.—In this beautiful Jasmine there are combined some sterling qualities that place it a peer over existing sorts. Easy culture, fine grower, good bloomer, elegant fragrance, and double flowers of chaste and waxy-white appearance. Price, fine plants, 25 cents each. If you only have one Jasmine, let it be this one.

Poetica.—Similar to the Jasmine Grand, flowers smaller, but borne on larger spikes. Price, 10 cents each.

Jasmine, Cape.—Well known for its delicious fragrance and beauty of its flowers, which are white and double. Price, 15 cents each.

Revolutum.—A yellow-flowered Jasmine, nearly hardy and exquisitely fragrant. Price, 15 cents each.

Grand Duke of Tuscany.—This Jasmine is very easily grown, even small plants bearing a profusion of very double, cream-white flowers, having a delicious perfume. It is a magnificent plant, and will become one of the most valuable and popular pot plants when it becomes better known. It can be stored in a dry cellar in Winter. Price, 25 cents each; strong plants, 50 cents each.

Confederate Jasmine, Rhynchospermum Jaminoides.—This makes an elegant hard-wooded climber, or can be trained in bush form. It bears large bunches of pure white flowers, with the most delicious Jasmine perfume. It is known in the South, where it is hardy, as the Confederate Jasmine. It will delight all. Price, 25 cents each.



GRAND DUKE JASMINE.

Queen of Night Cactus.

Decidedly the grandest flowering plant in cultivation. Imagine a dozen flowers unfolding with the setting sun their hundreds of wax-like petals, encircled by a wreath of gold, in continual motion! Imagine such a flower three feet in circumference, perfuming the surrounding air with the most delicious fragrance known! Does it not deserve its royal title? It grows and blooms with the greatest ease, requires absolutely no care, living for months without water, increasing in value yearly. We have the genuine variety, the only one with fragrant flowers twelve to twenty inches across, and can furnish one-year-old plants. Price, by mail, 10 cents each.

Cactus, Case Knife, or Queen of Day.—This elegant Cactus is a fit companion for Queen of Night. The flowers are intense scarlet, and borne in such profusion as to literally cover the plant. The individual flowers are four to six inches in diameter. Price, 20 cents each.

Lobster Cactus.—Fine Winter bloomer, beautiful pink flowers. Blooms when quite small. Price, nice plants, 10 cents each.

Cactus, "Triangularis."—The monarch of large-flowered night-blooming Cactus. Cream-colored flowers, a rapid grower and unrivaled in beauty. Price, 30 cents each.

THE THREE FINE CACTI FOR 50 CENTS.

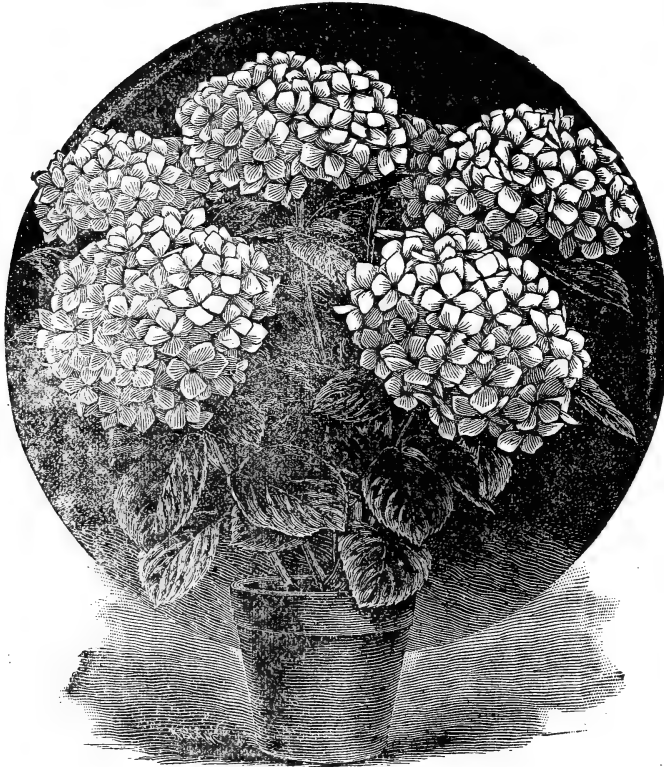
Stapelia Serpentina, or "Star Fish Cactus."—The flowers are the shape of a star fish, of a chrome-yellow color, covered with brown spots like a serpent's body, hence its name. Price, strong plants, 10 cents each.

Special Offer. THE EIGHT JASMINES FOR \$1.00.



QUEEN OF NIGHT CACTUS.

LIST OF HYDRANGEAS.



HYDRANGEA MONSTROSA.

SPECIAL OFFER.—The seven Hydrangeas, good plants, for 50 cents.

New Hydrangea, Stella Fimbriata.—This is the only double Hydrangea in existence. The individual flowers are perfectly double and resemble in shape small rosettes, a beautiful peach pink in color, very floriferous; flowers of the largest size. It is certainly a charming plant. Price, 15 cents each.

New Hydrangea, Monstrosa.—This is by far the best of all Hydrangeas, the flower being almost double in size of the older varieties, and its free blooming qualities are unequaled by any plant we know of. The color is at first a deep, rich pink, gradually changing to almost a snow-white. Blooms have been measured fifteen inches in length by ten inches through. It is indeed an enormous and beautiful flower. Price, 15 cents each.

New Japanese Hydrangea, Paniculata Grandiflora.—A new, very striking and elegant hardy flowering shrub, suitable for lawns, recently introduced from Japan. The flowers are pure white, afterwards changing to pink, and are borne in immense pyramidal trusses more than a foot long and nearly as much in diameter. It blooms in mid-Summer, and remains in bloom two or three months. It creates a great sensation wherever seen. Is scarce and difficult to obtain. The plant is of bushy and compact growth, attains a height of three to four feet. Perfectly hardy in all parts of the country. Needs no protection. Price, young plants, 20 cents each; extra strong, two-year-old plants for immediate effect, 35 cents each.

Thomas Hogg.—A pure white variety with truss of flowers measuring fifteen inches in diameter. The plants, when full grown, attain a height and width of six feet. Perfectly hardy. One of the finest plants for cemeteries. Price, 10 cents each.

Hydrangea, Optaka.—A bright, rosy pink, flowers always perfect, and lasting, when in bloom, three to four months. Try it. Price, 10 cents each.

Hortensis.—The old favorite variety. Pink flowers, changing to blue in soils containing iron. Price, 10 cents each.

New Hydrangea, Red-branched.—(*Ramis Pictus*.) A valuable addition to the list of Hydrangeas, with dark red branches that brighten to a clear crimson color as they near the flower trusses. The plant is of robust habit, and produces freely immense heads of deep, rose-colored flowers. A novelty of sterling merit that is sure to become very popular. This is by all odds the prettiest Hydrangea. Price, 10 cents each.

CHINESE MATRIMONY VINE.

Hardy everywhere. A vine which for permanent effect, and for perfect hardiness cannot be excelled. Pale purple flowers and scarlet berries are constantly appearing from early Spring till late in the Fall. Price, 15 cents each; two for 25 cents; five for 50 cents.

NOTE.—Do not confound this with the old sort.

CLEMATIS.

These are charming vines that are perfectly hardy, and are too well known to need description. Our roots are extra strong, and will give great satisfaction. Blooming this Summer if planted early.

Duchess of Edinburg.—This is, without doubt, the best of the double whites. It is very free flowering and very fragrant. Price, 50 cents each.

Jackmanii.—From four to six inches in diameter, intense violet-purple, with a rich, velvety appearance, and distinctly veined. The best. Price, 50 cents each.

Languinosa Candida.—The flowers are large, six to nine inches in diameter, almost pure white. One of the best. Price, 50 cents each.

Kermisensis Rubra.—This beautiful Clematis is much sought after, but is very scarce. The color is a bright, rosy-red, entirely distinct from any other sort. A persistent bloomer and strong grower, with large flowers. A grand variety. You should try it. Price, 50 cents each.

SPECIAL OFFER.—The four distinct kinds of Clematis for \$1.75. ✕ ✕ ✕ ✕

GENISTA CANARIENSIS. (Fountain of Gold.)

This beautiful plant well deserves the great popularity it has gained in the past two years. The drooping branches are covered with delicate, sage-green foliage, and every twig is tipped with a long raceme of exquisite, pea-shaped blossoms of a pure canary color, almost hiding the foliage, and suggesting the name "Fountain of Gold." A fine companion for "Swainsonia Alba." Price, 20 cents each.

GREVILLEA ROBUSTA. (Australian Silk Tree.)

A splendid decorative plant, much quicker growing than a Palm, and very effective, with its long, drooping, silky foliage, deeply cut, like a large, growing Fern, or a pinnated-leaved Palm. No window is complete without it. It is very easy to manage. Be sure and try it for your window. It cannot be excelled. Price, 10 cents each; three for 25 cents.

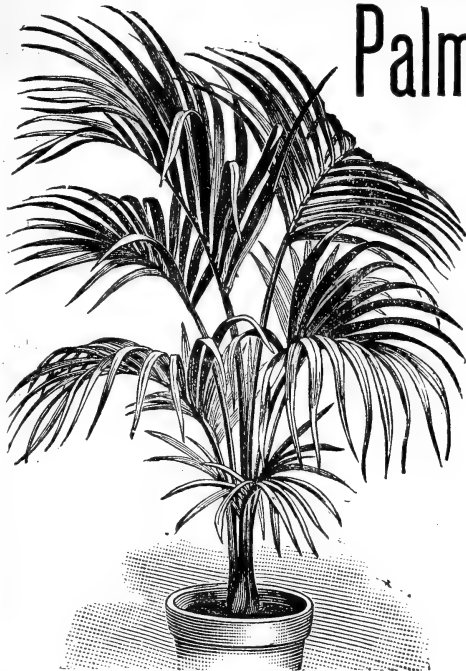


CHINESE MATRIMONY VINE.

Palms

NEW AND SCARCE GLADIOLI.

Price, 10 cents each; or the set of six for 60 cents.



ARECA LUTESCENS.

The following is a select list of rare and handsome varieties. **NOTICE**—It may be well to state here that young Palms do not resemble the illustration given, as they do not show their character leaves until the second year, so that when you get your Palm plants and see long, narrow leaves instead of the character leaves, as shown in the illustration, do not think that the wrong kind has been sent you.

A GREAT BARGAIN.—Four choice Palms, our selection, for 60c.

Areca Lutescens.—A most elegant Palm. One of the best for general decorative purposes, easily grown, useful in every stage of growth, fine color, graceful habit and pleases all. **Price, 25 cents each; fine large plants, \$1.00 to \$2.00 each.**

Washingtonia Filifera.—A beautiful Palm is one of the finest additions that can be made to any collection of plants, but the high prices of the best varieties have prevented most people from possessing one. Then, again, there are but few of the best sorts which succeed well with ordinary window culture. It is, therefore, with pleasure that we are now able to offer one of the most beautiful sorts in existence, and one that is hardy and robust enough to succeed anywhere, at a price which brings it within reach of all. All Palms of the fan-leaved sorts have, when young, leaves of a long, narrow shape, developing the round, fan-shaped ones as they grow older. Therefore, when you get your plant and see long leaves instead of round ones, do not think that a wrong sort has been sent you. **Price, 10 cents each; three for 25 cents; strong plants, 60 cents each.**

Cocos Weddelliana.—Undoubtedly the most graceful Palm yet introduced to our collection. The stem is slender, leaves long and very beautifully arched, leaflets or pinnae very fine, deep green above, white below. **Price, 60 cents each.**

Oreodoxia Begia.—(Royal Palm.) This favorite Palm is beautiful in all stages of growth. No plant is more easily grown, and none more tenacious of life, enduring the dust, the cold and heat from open windows and gas-heated air of our dwellings. The demand for this particular kind is perhaps five times that of any other. Leaves large, fan-shaped, of a cheerful green color, plant of hardy constitution, and adapted to all decorative purposes, within or without doors. **Price, 25 cents each; fine large plants, 60 cents to \$2.00 each.**

Sourforthia Elegans.—A most graceful Palm, eminently adapted for decorating greenhouse and garden. Makes a fine window plant. Leaves long, gracefully arched, dark-green, and the whole plant is perfectly smooth. **Price, 25 cents each; fine plants, \$1.00 to \$2.00 each.**

Kentia Fosteriana.—This is one of the finest pot plants imaginable, and the easiest to grow of any of the Palm family. Being almost hardy, it is not injured by slight changes in temperature, and its stiff, glossy leaves enable it to stand the dry, hot air of the living room without injury. The leaves are a deep, glossy-green, fan-shaped, split deeply into segments. This is, without exception, the most hardy of its class. Very graceful for table decoration. Scarcely equaled. **Price, 50 cents each; strong plants, \$1.00 to \$2.00 each.**

Latania Barbonica.—The well known Fan Palm. This is one of the most exquisitely graceful among Palms. Its wide-spreading, gracefully arching leaves are elegant and effective for apartment decoration. It is considered the handsomest and most valuable of all the palms. **Price, 25 cents each; fine large plants, \$1.00 to \$2.00 each.**



POT OF GLADIOLI.

La Candeur.—Large flowers of purest white, lightly striped with carmine-violet. The nearest approach to a pure white.

Romulus.—A very brilliant, glossy, dark red, large, broad, white line on lower petals, with a pure white blotch.

Rio Leopold.—Blush-rose, slightly suffused orange, and shaded currant-red, white blotch.

Isaac Buchanan.—Beautiful canary-yellow, on a splendid spike of large flowers. The best yellow.

Cleopatra.—Soft lilac, the lower petals of a darker hue, suffused violet-purple, feathered and blotched.

Charles Dickens.—Delicate rose, tinted with buff, and flamed and striped carmine-rose.

FINE NAMED GLADIOLI.

Price, 8 cents each; six for 40 cents.
The entire set of fourteen for 75 cents.

Angele.—White, showy and effective.
Barnard de Jessieu.—Violet, shaded cherry and purple, blotch on white ground.

Canarii.—A light yellow, streaked with rose on the lower petals.
Ceres.—Pure white, spotted purplish-rose.

Conde.—Light orange-red, white blotch, feathered carmine.
Le Poussin.—A light red, white blotch, beautiful.

Ida.—White ground, slightly tinted rose, flamed carmine-rose, lower petals light yellow.

Jean d'Arc.—White, tinged with rose, streaked carmine.
John Bull.—White, tinged with sulphur.

Laura.—Light orange-red, flamed carmine, white blotch.
Le Poussin.—A light red, white blotch, beautiful.

Madame Monneret.—A delicate, lovely pink, with a white stripe in the center of each petal, carmine blotch.

Marie Dumortier.—White, streaked rose, violet-purple blotch.
Stella.—White, tinged yellow and rose, flamed carmine.

Thunberg.—Light orange, shaded cherry, white blotch.

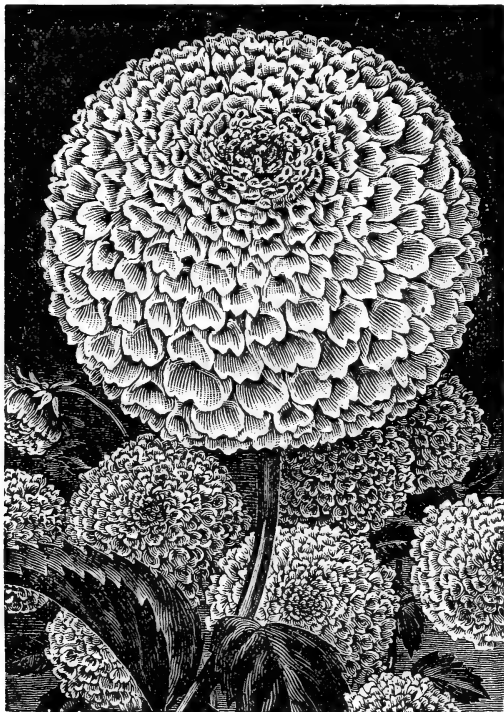
The entire set of named Gladioli, twenty sorts, including new set, for \$1.00.

PRIMULA OBCONICA.

This is a charming new plant for Winter. In fact, we know of none that is better adapted to home culture than this one. It is not susceptible to changes of temperature that most plants are subject to. It bears its delicate sprays of bloom of a delicate pink and white in the greatest profusion. It is certainly elegant. **Price, 15 cents each.**

DAHLIAS.

The set of thirteen best "Fancy Dahlias." Price, 20 cents each, except where noted; or the entire set for \$2.00.



DAHLIA, SNOWBALL.

New Dahlia, Snowball.—We take pride in offering to our patrons this pure snow-white Dahlia. A splendid bloomer and large flowers, resembling giant snowballs. Price, for strong roots, 35 cents each.

Wacht am Rhein.—Richest maroon.

Guiding Star.—Pure white and of exquisite shape.

Flora.—Deep purple, shaded lilac.

Fanny Purchase.—A fine, pure yellow.

Fascination.—A deep, rosy-lilac.

Dom Pedro.—Scarlet, tipped white.

Deutscher Turnergass.—Crimson-scarlet, edged with white.

Deutscher Goldmeteor.—A golden-yellow, with a broad, crimson margin.

Duchess de Cambridge.—Blush, tipped and edged with dark purple, fine form.

Crimson King.—A rich, glowing crimson.

Butterfly.—Orange, tipped with scarlet.

Amazement.—Yellow, striped crimson.

Hardy Perennial Phlox.

The new French varieties all carry very fine, distinct, pure colors in great trusses, many of them beautifully shaded and marked with very distinct, clear, bright eyes. They require no care but dividing and resetting every second year. Their vigorous growth and freedom of bloom make them very useful plants, while they are unexcelled in beauty. The improvement made in this beautiful class of plants is perhaps more marked than in any other section of the hardy herbaceous family. Instead of the thin flowers, which were limited to lilac and white colors, we now have gorgeous flowers, combining all the different tints of rose, carmine, red and purple, to say nothing of the pure whites and salmon, with their distinct eyes. Perfectly hardy everywhere. Price, 10 cents each; the set of seven for 60 cents. No further discount on this offer.

Triumph de Twickle.—A rosy-magenta.

Sir E. Landseer.—Brilliant, dark crimson. Large, fine flower.

Princess de Furstenburg.—White, with carmine eye.

Stansted Rival.—Rose-pink, dark, crimson rays.

Lothair.—A brilliant salmon-rose.

Flora McNab.—Pure white and free.

Phlox, Cross of Honor.—A beautiful light rose color, striped pure white. An excellent flower.

The Chinese Lantern Plant

"Physalis Francheti," or Giant Winter Cherry.

Without doubt this is decidedly the most attractive and valuable hardy ornamental plant introduced in many years. It is a novelty of sterling merit, introduced from Japan by the well-known English horticulturist, Mr. James H. Veitch, a fact alone which is sufficient guarantee of its excellence. It is a gigantic species of the showy Winter Cherry, and is of the easiest possible culture. It is of sturdy, upright habit, and grows about one and one-half feet high, is perfectly hardy, and will stand outdoors over Winter, but its beauty may be more appreciated by growing in pots or boxes outdoors. In the Spring it can be planted in the open ground. It blooms early and produces the first season a large number of balloon-like husks three to three and a half inches across. The husks first appear light green, then gradually change to bright yellow, and finally to orange-scarlet. At this period of growth they strongly resemble miniature Chinese lanterns when lighted; hence the name. The effect of the ripened husks among the bright green foliage is singularly striking. In the husks or lanterns a fruit is borne, much like a Winter Cherry or husk Tomato, except that the color is a deep ruby-red, and is in every way superior to the Winter Cherry, either for cooking, preserving or eating raw. The branches covered with husks are used with splendid effect as parlor ornaments, and for Christmas tree decorations, retaining their life-like appearance for nearly a year. They make an unusually elegant appearance when arrayed in tall vases together with dried grasses. For all ornamental purposes this is an exceedingly valuable novelty, and will give the best of satisfaction. As a Winter-blooming pot plant of great beauty it will be hard to find its equal. It has received a first-class certificate from the Royal Horticultural Society of England, also an award of merit. The leading English horticultural journals speak of it in most glowing terms. It is an elegant hardy ornamental plant, of more than ordinary worth, and should become immensely popular. To get the best effect, place several plants in a large pot, box or vase. Price, 15 cents each; two for 25 cents.

Manettia Bicolor.

The most wonderful new vine or plant that has yet been produced. It blooms in Winter as well as Summer. It is both a rapid and beautiful climber. The flowers are from an inch to an inch and a half in length, of a most intense bright scarlet, shading into flame, tipped with the deepest golden-yellow, and covered with a thick scarlet moss. The blossoms remain on the plants for weeks before falling. Has our highest commendation. Send to us and get the genuine. We can usually send them in bloom. Price, fine plants, 10 cents each.



HARDY PHLOX.

AZALEA INDICA.



AZALEA INDICA.

One of the most gorgeous blooming families, together with the showiest of all greenhouse plants. The colors of the flower vary from the purest white to the deepest crimson in untold variations. The soil should always be packed hard when transplanted. Success depends, however, on the degree of moisture in the atmosphere in which they live. We have a number of the best flowering sorts that will flower finely this coming Winter, both double and single flowered, in any color desired. The plants we offer are magnificent specimens, the finest you have ever seen, and all will bloom this year. Price, 50 cents each; fine, large plants, three years old, 75 cents each.

N. B.—Be sure and try our Azaleas. They will not disappoint you. In ordering name the color you wish. We can furnish them in the following colors: White, pink, crimson, salmon, rose-lilac, and white striped with crimson.

Sanseveria Zealanica.



SANSEVERIA ZEALANICA.

A new decorative plant of great beauty and value. A beautiful plant, splendidly adapted for the decoration of drawing rooms and halls, as it stands drouth and dust with impunity, and requires scarcely any water. The leaves grow to the length of three or four feet, and are beautifully striped crosswise, with broad, white variegations on a dark-green ground. It is a rare and beautiful plant, which should be abundantly grown for positions out of reach of sunlight, where other plants will not thrive. When you consider that it can be placed in any position in any room and do well, its great usefulness is at once apparent. It has a singular beauty for decorative purposes which other plants do not possess, and is useful both Winter and Summer. Though grown mainly for the beauty of its foliage, it is by no means an insignificant flowering plant. It blooms usually during May and June, sending up great plume-like spikes a foot or more in length. The flowers are numerous and composed of long, narrow petals, which recurve gracefully, and are of a creamy-white color. It is difficult to find a

more unique or ornamental plant than this, especially when it is in bloom. These are beauties. Price, fine plants, 10 cents each; large strong plants, 20 cents each.

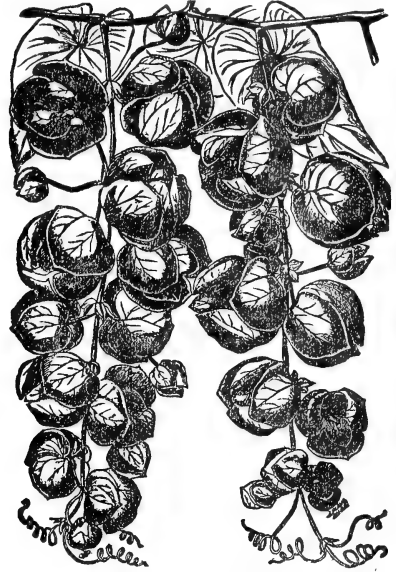
LANTANAS

Or Shrubby Verbenas.

The brilliant colors, robust growth and profuse blooming habit of the Lantana render it one of the finest bedding plants we grow. The flowers embrace all of the most delicate shades of orange, sulphur, creamy-white, etc., changing from one distinct color to another as they increase in age and development. The varieties we have give a wide range of color, and include the most distinct and profuse varieties. Price, 8 cents each; six, our selection, for 40 cents.

ANTIGONUM LEPTOPHUS,

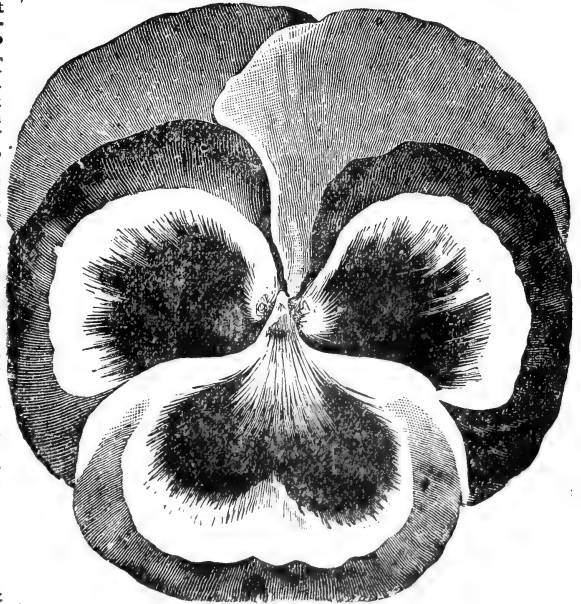
or "The Queen's Wreath."



ANTIGONUM.

A splendid climbing plant from Central Mexico, producing rose-colored flowers in racemes two feet long. The profusion of bloom is such as to give the resemblance of Roses at a distance, hence its name, *Rosa de Montana*, or Mountain Rose. Described by the discoverer as the most beautiful climber he had ever beheld. This is moderately hardy, with protection. Will live out over Winter anywhere in the South. The vines are killed to the ground by frost, but it quickly shoots up in the Spring and develops its flowers from June until frost. This is one of the most lovely vines. One of our customers in Texas says in her Fall order that every lady who saw her vine in bloom wanted one. She says no one can describe its beauty. This is, without doubt, the finest climbing vine grown. Try it. Price, 10 cents each; three for 25 cents.

EMPEROR PANSIES.



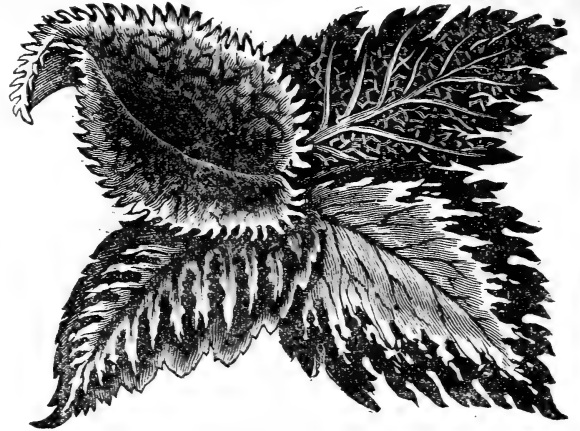
PANSY.

Our Emperor Pansies are the best the world produces. They combine the choicest large-flowered sorts, both of European and American growers. It has been our aim to make this the finest strain of this favorite flower in existence. Price, 35 cents per dozen; \$2.50 per hundred. Seed of the Emperor Pansies, 10 cents per packet.

"SUN-PROOF" COLLECTION OF BEDDING COLEUS.

Price, postpaid by mail, 5 cents each; twenty-five for \$1.00 By express, at purchaser's expense, thirty-five fine sorts for \$1.00. In large quantities for bedding in colors, \$2.50 per one hundred, by express at purchaser's expense.

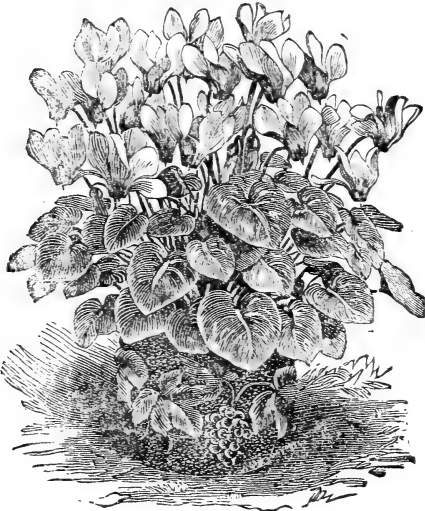
- Autumn Glow.**—Has all the beautiful tints of Autumn leaves.
- Bronze Queen.**—A deep bronze, with a fine yellow edge.
- Black Bird.**—Very dark, with reddish cast.
- Butterfly.**—A crimson-bronze, old gold and green.
- Bizarre.**—Crimson center, edged with green and gold.
- Beauty.**—A crimson-bronze, with green edge.
- Chicago Bedder.**—Green and gold. An excellent bedder.
- Dora Clapp.**—Crimson center, with bronze and green edge.
- Empress of India.**—Crimson, with a golden edge.
- Fire Brand.**—A fine bedder. Dark crimson, shaded garnet.
- Fire Crest.**—The foliage is a bright carmine-crimson shade, the edge is slightly marked with golden-yellow.
- Golden Bedder.**—Deep golden-yellow. A fine bedder.
- Golden Verschafeltii.**—This ranks first in the yellow varieties.
- Hero.**—A deep, jet black.
- Hiawatha.**—Bronze and yellow, spotted.
- Progress.**—A beautifully mottled red, green and bronze.
- Ketta Kirkpatrick.**—A bright green, with large, deep, yellow center.
- Setting Sun.**—Crimson, with brightest golden-edge.
- Verschafeltii.**—A rich, velvety-crimson. The best bedder.
- Yeddo.**—The color is a deep golden-yellow, spotted with a bright green.



CLUSTER OF COLEUS.

And thirty others of the most elegant sorts saved from ten thousand seedlings. Nothing to compare to them. If selection is left to us, we make no discrimination, because they are all new, but all go at the same price. : : :

CYCLAMEN, or PERSIAN VIOLET.



CYCLAMEN.

There is no more ornamental plant for greenhouse or parlor culture than the Cyclamen. It grows readily, blossoms freely, and remains a long time in flower. The soil should be equal parts of turfy loam, leaf mould and silver sand. Put in pots three times the diameter of the bulb, in October. Keep them in a cool, light place, watering lightly until growth begins. Then water freely and give plenty of light and air. On the approach of cold weather remove to a warmer situation, the parlor or greenhouse, but keep near the light. The whole secret of growing Cyclamens to perfection is light, air and low temperature.

Cyclamen, Persianum.—The colors are usually white, tipped at the base with rosy-purple. Price, 10 cents each.

Cyclamen, Persianum Giganteum.—This is a decided improvement over the old variety, being of more robust habit and stronger grower. Produces flowers on short, stout stems, and of immense size, often measuring, on well-grown bulbs, two inches in diameter. The foliage is also beautiful. Price, good bulbs, 20 cents each.

APIOUS TUBEROSA,

OR THE TUBEROUS-ROOTED WISTERIA,

A valuable hardy, tuberous-rooted climber, closely resembling the common Wisteria in vine and foliage, and having clusters of rich, deep purple flowers, which have a strong, delicious violet fragrance. Plant the bulb near a trellis, fence, tree, or any place where you may wish a climber. It blooms profusely. The bulbs are perfectly hardy, and should not be taken up over Winter. It is sure to give satisfaction. Price, 10 cents each; three for 25 cents.

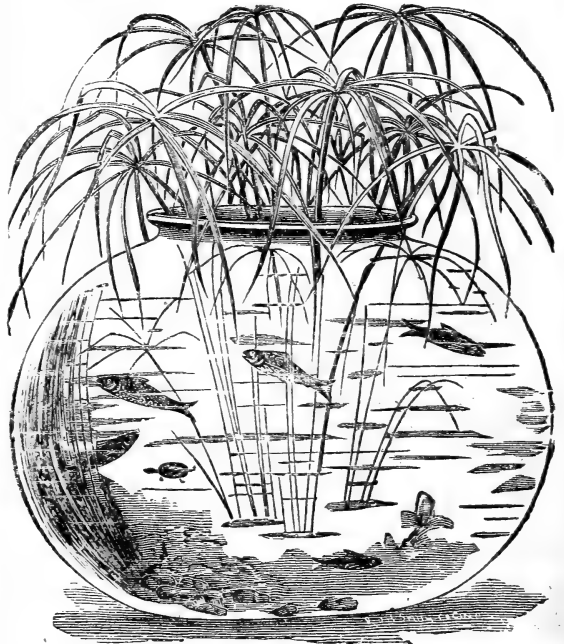
LINUM TRIGYNUM.

A Winter-blooming plant of great beauty, producing in the greatest profusion very large and very showy blooms of a bright yellow color. The plant is a complete mass of bloom for a long time during Winter, and is one of the most beautiful Winter-bloomers it is possible to have. The flowers are about the size of a Morning Glory, and no matter how small the plant is it will bloom profusely. Price, 10 cents each.

RIVINA HUMILIS.

A beautiful little plant with racemes of small, white flowers followed by scarlet berries. In bloom and fruit the entire year. One of the prettiest plants we have in our greenhouses. Very showy. Price, 10 cents each.

CYPERUS ALTERNAFOLIUS. Umbrella Plant.



CYPERUS ALTERNAFOLIUS.

This is a plant of the easiest culture, and a large specimen is as handsome as a Palm for decoration. It makes a handsome pot plant, or can be used in baskets or vases, making a charming effect. It will grow luxuriantly in water, and is, therefore, indispensable for aquariums or fountains. Try it. It is a handsome, easy-growing plant. Price, 10 cents each; three for 25 cents.

OTAHEITE ORANGE, ❧ ❧ ❧



OTAHEITE ORANGE.

This valuable and distinct variety of the Orange family is a dwarf, compact grower, with glossy, deep green foliage, which has a decided odor of the Orange trees of Florida, and is exceedingly floriferous, producing a wonderful profusion of pure white flowers of the most delicious fragrance, identical with the much sought for blooms of Southern Orange groves. Otaheite fruits immediately after flowering, bearing fruit about one-half the size of the ordinary Orange, retaining in a marked degree its sweetness. This unique Orange cannot be equalled as a Winter blooming pot plant for house culture. Requires but little sunlight, and flowers and fruits when but twelve to fifteen inches high. As a pot plant this lovely dwarf Orange is one of the most novel and beautiful that can be grown. With a couple of plants of it you can have an abundance of the far-famed delicate and fragrant Orange blossoms. We have grown a large stock of clean, vigorous plants that will bloom and fruit at once, of this beautiful Orange, and commend it to our friends as a novelty of sterling worth and merit. Price, good plants, 10 cents each; large, strong plants, to bloom and bear profusely at once, 25 to 40 cents each, according to size.

FANCY-LEAVED CALADIUMS. ❧

These plants are especially valuable for decorating conservatories, window-boxes, and as specimen plants. They are magnificent planted in beds outdoors, nothing being more showy. The brilliant cardinal-red, cream-pink, white, and various shades of green that are displayed in the veins and blotches of the leaves cannot be obtained in any other class of plants. For arranging floral baskets or table decorations they are quite as handsome as any flower. We have a fine collection of first-class, distinct, brilliantly marked varieties. Price, well-dried extra large bulbs, our selection of sorts, 35 cents each; three for \$1.00. These are the finest bulbs you ever saw of Fancy Caladiums.

HELIANTHUS (Hardy Sunflower).

This fine plant will live through our Northern Winters with protection, or can be wintered in the cellar. Height three to four feet, and bears a profusion of perfectly double, bright golden flowers, about the size and form of a nice Dahlia, for which it is sometimes mistaken. One of the really good things which should be in every garden. Price, 10 cents each.

LILY OF THE VALLEY. ❧

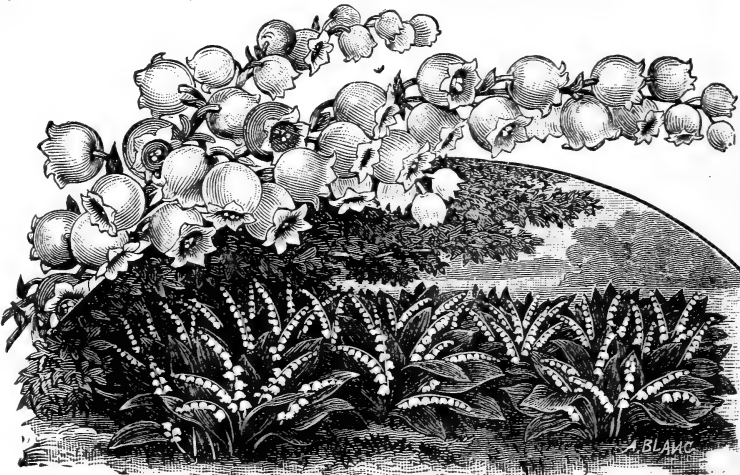
The Lily of the Valley is one of those delicate, sweet little flowers that not only easily win our love, but keep it forever. Put four or five or half a dozen of the pips or bulbs in a pot, and in about four or five weeks they will flower. In the Spring transfer them to the garden. Price, fine pips, 5 cents each; 40 cents per dozen.

PARIS DAISIES, or Marguerites. ❧ ❧



New Paris Daisy, Mad. Gailbert.—This is one of the finest new plants that has ever been introduced. Nothing can be imagined that is finer. All know the old varieties of Paris Daisies. This new variety blooms constantly and will produce ten blooms to the old variety's one. Nothing is so airy and graceful as these blossoms of large, white petals, showing a yellow disk. Price, 15 cents each; four for 50 cents.

New Paris Daisy, Etoile de Or.—The new yellow Paris Daisy, similar to the above, but a rich golden color. The two varieties go handsomely together. Price, 15 cents each; four for 50 cents. The two varieties for 25 cents.



LILY OF THE VALLEY.

Calla Lilies.

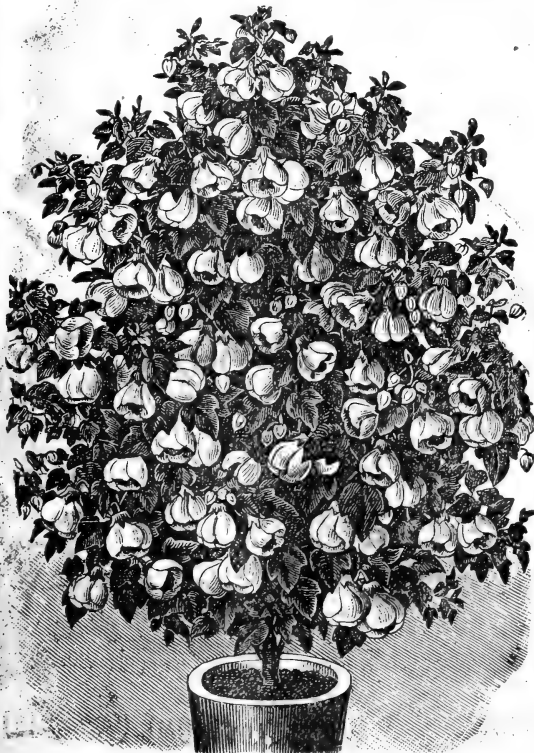
New Dwarf Ever-blooming Calla Lily.—*The most wonderful of all plants.* It is our good fortune to have come into possession of this most valuable of all Callas. The following facts will convince any one of its great superiority over the old sort. It is of dwarf habit, and does not grow tall and scraggy like the old variety, but is compact, with a great abundance of lustrous dark-green foliage. It is a true ever-bloomer, its flowers appearing in great abundance both Summer and Winter when grown in pots, or it will bloom profusely all Summer long in the open ground, and being potted in September will continue blooming without intermission all Winter. The same plant will grow and bloom for years without once ceasing, and the quantity of bloom which a good plant will produce is astonishing. It is estimated that six plants of the old sort will not produce so many flowers in the course of a year as will one plant of this new dwarf variety. A large plant is hardly ever without one or more flowers, and its dwarf, compact habit makes a much more desirable pot plant than the old variety. Its flowers are large size and snow-white in color. All in all, it is one of the most desirable plants we have ever offered. Price, buds of blooming size, 50 cents each; extra large size, 75 cents each.

The Black Calla.—The introducer says: "Its flowers are enormous, fully a foot in length. Color a clear, coal black, so intense that it really shows a brilliancy, and as may well be imagined, it is a flower of most striking oddity and beauty. The bulbs are large, and should be potted in the Fall and when growth commences set in a window. After blooming, the foliage will die down, and the bulb should be kept dry for replanting in the Fall. It is a native of the Holy Land. Treat the same as for White Calla Lily." This is a very beautiful Lily. We have flowered it extensively. It is coal black, and is a great curiosity. It is very scarce. Price of large flowering bulbs, 50 cents each.

Calla Richardia.—(*Spotted Calla*.) A plant with beautiful, spotted leaves. It flowers abundantly during the Summer months, when planted out in the open border. The flowers are shaped like those of a Calla, and are pure white, shaded with violet inside. Keep dry in Winter, and start in the Spring like a Dahia. The plant belongs to the same order as Calla Ethiopica. Price, blooming bulbs, 25 cents each.

Calla Ethiopica.—(*Egyptian Lily*.) This is the well known Egyptian Lily, or Lily of the Nile, with large, white flowers, broad foliage, and it will prosper under very adverse circumstances. If you want large Callas send to us, as we are headquarters for them. We have three sizes. Price, small plants, to bloom next Winter, 10 cents each; strong, blooming plants, 25 cents each; extra strong bulbs that will produce a dozen blooms, 50 cents each.

SPECIAL OFFER.—The four beautiful Callas strong bulbs for \$ 0



ABUTILON, SHOWER OF GOLD.

Hardy Lilies.

No class of plants capable of being cultivated out of doors possesses so many charms as the Lily. Rich and varied in color, profuse in variety, and of delicious fragrance, they are perfectly hardy and of the easiest culture, and no garden should be without a few of the best sorts.

Speciosa Rubrum.—A beautiful bright rose, spotted with a dark velvety-crimson. Price, 25 cents each; five for \$1.00.

Tigrinum Flora Plena.—Bright orange, spotted black, and very double. Price, 25 cents each; five for \$1.00.

Candidum.—The well-known hardy garden Lily. Snow-white, fragrant blossoms. One of the best, and an established favorite. Price, 20 cents each; three for 50 cents.

Harrisii.—(*The Bermuda, or Easter Lily*.) Pot and treat the same as for Hyacinths. Each bulb will give from six to twelve flowers, in many cases many more. And not content with that effort, it often throws up a second stalk bearing flowers, thus continuing its season of beauty. The flowers are fully six inches in length, of the purest white, and of the most delicious fragrance. Price, fine bulbs, 20 cents each; three for 50 cents.

Lilium Auratum.—(*Golden-rayed Queen of Lilies*.) This is the grandest Lily grown, and a never-failing delight. We take pleasure in showing it to people who have never seen it. It seldom fails to create a sensation. The perfume is exquisite—light, yet penetrating. Magnificent by daylight, but by moonlight a well-grown plant, carrying five or more blooms, is simply indescribably beautiful. It is also known as the "Gold-banded Lily from Japan." Price, 25 cents each; five for \$1.00.

ABUTILON.—Chinese Bell Flower.

Price, 8 cents each; four for 25 cents

Shower of Gold.—A beautiful dwarf-growing variety, the whole plant being covered with a profusion of beautiful golden-yellow blossoms.

Souvenir de Bonne.—New One of the most valuable novelties of recent years. Totally distinct. Strong grower. Leaves beautiful green, regularly banded with gold, flower stem eight to nine inches long, bloom very large and bright orange-red in color. A beautiful decorative plant, of fine tree shape.

Robert George.—A free and continuous bloomer. Flowers are broad, their large, overlapping petals incurved, color orange, veined with crimson.

Thompsonii Plena.—New. Perfectly double flowers that resemble in form a double Hollyhock. Color a rich, deep orange, shaded and streaked with crimson. Foliage variegated.

Splendens.—A beautiful velvet-crimson.

Scarlet Gem.—A rich, bright scarlet.

Madame Chobert.—Very dwarf grower. A clear pink shade.

Snow Storm.—Pure white flowers and bloom freely. Dwarf.

Eclipse.—This is an elegant foliage plant, and one of the prettiest we know. It is new, and the flowers, which are produced in profusion, set the plant off to good advantage.

OLEA FRAGRANS, or TEA OLIVE.

One of the most desirable flowering shrubs of Southern gardens, and also a favorite house plant in the North. Has deep green foliage similar to the Camellia. The white flowers, although small, are produced in great profusion, and emit the most pleasing fragrance. It has been well said that each individual bloom has more sweetness than the most fragrant Lily. The blooming period begins in the Fall and lasts for several months. It is of easy culture, and especially desirable as a window plant. Nice plants. Ten to fifteen inches high. Price, 40 cents each.

CHINESE PRIMROSE.

Few house plants afford better satisfaction than this. It requires to be kept cool, a north window suiting it best. Care should be taken in watering that no water gets on the buds, as it causes them to decay. In the Summer they can be turned out into a shady border. The plants we offer are fine, and the colors will please. We have them in white, pink, red, crimson, striped and blue. Price, 10 cents each.

PEPEROMIAS.

Peperomia Metallica.—The "New Bronze Leaf Peperomia." Truly a beautiful pot plant, and fine as a bracket or bay window ornament. Price, 15 cents each.

Peperomia, Maculosa.—The leaves are distinctly variegated white and green, and have the appearance of being powdered with frosted silver. Price, 15 cents each.

THE TWO PEPEROMIAS FOR 25 CENTS.

CLERODENDRON BALFOURI.

A rapid-growing climber of great beauty. It can also be trained in bush form. The flowers, which are of a bright scarlet, are encased by a bag-like calyx of pure white, the trusses, or panicles, of flowers are upwards of six inches in length, and when trained upon trellises and hanging down have a rich and elegant appearance. Continually in bloom. A very satisfactory house plant. Price, 10 cents each.

Pittisporum Tobira.



PITTISPORUM TOBIRA.

An elegant hard-wooded shrub. Hardy in the South. Makes handsome specimens, growing into a small tree in a few years. It bears small, white flowers in large bracts, or heads, which are so delicious in fragrance as to remind one of orange blossoms. Price, fine plants, 25 cents each.

Moon Flowers

The Hardy Day-Blooming Moon Flower, Ipomoea Pandurata.—This is one of the most rampant growing vines in cultivation, having a large tuberous root that is perfectly hardy in Minnesota and Canada. The flowers, which are very large, are a pure, satiny-white, with a pinkish-purple throat, shading off deeper in the tube. The flowers are usually four inches in diameter—sometimes attain a diameter of five or even six inches. They are produced in large clusters and in the greatest profusion from June to October daily. A strong plant will give more than one thousand beautiful flowers daily for months at a time, being well distributed over the plant from near the base to the top, forming usually one of the grandest floral displays ever seen in any country. The root penetrates the earth so deep that it is not seriously affected by drouth or unfavorable weather conditions. Price, 20 cents each; three for 50 cents.

Blue Moon Flower, Ipomoea Learii.—This makes a splendid companion plant to the white "Moon Flower." It is equally rapid in growth and as free blooming as the white variety, although blooming in the morning and dull days. The flowers are the most intense blue, with reddish-purple rays, and are six inches across. There is nothing of its color that exceeds in richness the flowers of *Ipomoea Learii*. Culture is the same as for the "Moon Flower." Price, 10 cents each.

The True Ever-Blooming Moon Flower, Ipomoea Grandiflora.—We have the true variety that blooms constantly. If planted out in rich ground, in a situation where it has full exposure to the sun, it will attain a height (if given a wire or string to twine on) of forty feet by October 15, blooming abundantly the entire season. It is called "Moon Flower" from its rare peculiarity of blooming best at night, although it also expands its flowers in dull days. Flowers are pure white, from five to six inches in diameter, emitting a rich, jasmine-like odor at night. The "Moon Flower" is a tender plant, but it can easily be kept in the house over Winter. It roots easily from slips, so that no attempt should be made to lift large plants. Price of the true "Moon Flower," 10 cents each; three for 25 cents.

Ipomoea Palmata.—(*Mexican Moon Flower.*) This is a tuberous rooted vine, with large palmate foliage and perennial root, that increases in size from year to year. The vine climbs to a height of 15 to 20 feet, and produces freely large clusters of rosy-pink flowers three and a half inches in diameter. Plants bloom from June until frost. The roots require protection in Winter like Dahlias. We usually keep them under the benches in the greenhouse. Price, 20 cents each.

SPECIAL OFFER.—The four Moon Flowers for 50 cts

FOUR BEAUTIFUL VIOLETS

Of all delightful perfumes that of Violets is the most delicate and pleasant, and places the modest little blue flowers among our greatest favorites. Violets grow and bloom during the dead of Winter with no trouble whatever, if given a cool situation, but will not succeed in a warm place. The following four sorts are the best of all the violets, and are all distinct in color.

Lady Hume Campbell.—This is the finest of all double blue Violets. It is simply wonderful the number of beautiful flowers it produces. In color a lovely shade of the richest intense blue. Charming contrast with the white variety. Price, 15c. each.

New Violet, California.—This beautiful single-flowered Violet has created a decided sensation. It was raised in California, where it is cultivated by the hundreds of acres for cut flowers. Buyers prefer it to all others. It is entirely hardy and of the richest dark blue; very fragrant. Price, 15c. each.

New Double White Perpetual Flowering Violet, Swanley White, or Queen of Fragrance.—Of all the white Violets this is the best, either for pot culture in the house or bedded out. In pots it grows luxuriantly, and is loaded with flowers. It is not an uncommon sight to see as many as fifty large flowers open at once, presenting a beautiful sight, their delicious perfume filling a whole room. Price, 10 cents each.

Hardy Double English Violet.—This violet is entirely hardy, perfectly double, a deep violet-purple color and most deliciously fragrant. It surpasses the well-known "Marie Louise" Violet in richness of color, being many shades darker, and far exceeds it in its delicious odor. This is one of its greatest merits. It is entirely free from disease of any kind, will grow and bloom in any garden and in any situation. Nothing is more appropriate for cemetery plots than the Hardy Double English Violet. Price, 15 cents each.

SPECIAL OFFER.

The set of four lovely Violets for only 30 cts.



Chinese Hibiscus.

ELEVEN FINE VARIETIES.

Price, 10 cents each; any three for 25 cents; or seven sorts, our selection, 50 cents. We have large plants of Hibiscus nearly ready to bloom, for 25 cents each. These are handsome plants.



CLUSTER OF HIBISCUS.

- Grandiflorus.**—Rich, glossy cut-leaved foliage, literally covering the plant with scarlet-crimson flowers.
- Collerifl.**—Flowers buff-yellow, with a crimson-scarlet base. Peculiarly handsome and double.
- Zobrinnus.**—Double, the outer petals scarlet, edged with yellow, inner petals are very irregular, curiously variegated with creamy-yellow and white.
- Versicolor.**—A variety combining in its flowers all colors of the whole family, being handsomely striped crimson, buff, rose and white. Flowers eight inches in diameter.
- Sub-Violaceous.**—Flowers of enormous size, a beautiful carmine, tinted with violet, probably the largest flower of the Hibiscus family, and an unusually free bloomer. We take great pleasure in recommending this fine plant.
- Magnificus.**—A very large flower, and of perfect form. Color a deep magenta, ends of petals touched with brown, foliage finely toothed.
- Senator Evans.**—A beautiful double flowered Hibiscus. The shape of its flower is identical with the Auriantica, and has the same purple markings at the base of the petals. The color of this variety, instead of being orange, is a bright lemon.
- Carministis Perfectus.**—Full round flowers of perfect shape, and of a rich, soft carmine rose, with a deep crimson eye. Fully six inches in diameter.
- Double Crimson.**—This grand variety has immense flowers of the richest crimson. Combined with glossy foliage renders it the best of all.
- Hibiscus Auriantica.**—Large and double, with orange-colored flowers.
- Chinese Giganteus.**—This is a plant for house culture during Winter or Summer, or for planting outside during Summer. It blooms at all times of the year. The plants branch freely and flower profusely, commencing to bloom when not more than a foot high. As a specimen plant for large pots it has an equal only in the Brugmansia. Its flowers are of enormous size, often eight to ten inches across, opening flat, and of such a vivid crimson scarlet color that they can be seen for a long distance, like a flaming torch. It is hard to find anything among flowers more strikingly showy. They can be wintered in the cellar or pit with perfect safety, and if one does not care to grow them all Winter, one should have one or two for Summer display. No plant is surer to grow and thrive under any treatment than this, and few can ever be so satisfactory.

SPECIAL OFFER.—We will send the entire set of eleven distinct kinds of Hibiscus for 75 cents.

Plumbagos

Capensis.—This produces large heads of light blue flowers. It has the most peculiar shade of blue of any flower in cultivation. Always in bloom, and an elegant bedder. Price, 10 cents each.

Capensis Flore Alba.—This is a splendid novelty. The exact counterpart of Plumbago Capensis except in color, which in this beautiful novelty is a clear white. This is one of the leading new plants of the year. Do not confound this with the old, worthless white. One of the most satisfactory bedding plants out. We recommend this highly. Price, 10 cents each.

New Pink Plumbago, Sanguinea.—The Plumbagos are very desirable plants for bedding or house culture, and are admired by all for their elegant trusses of bloom and the delicate colors of their flowers. The light blue and deep blue and white varieties are well known favorites, but with the new variety Sanguinea we have something that is entirely distinct and the prettiest of all Plumbagos. The trusses of bloom are larger than in the older varieties, often measuring ten inches in length, and of the loveliest bright pink or deep rose. Order one and be surprised. Price, 30 cents each.

Lady Larpent.—This beautiful variety of Plumbago was first popularly introduced in 1890. Since that time it has so thoroughly pleased all who have planted it, achieved such great popularity, which, coupled with our own thorough tests and observations, demonstrates that it is unquestionably the most distinct and valuable hardy herbaceous plant now in cultivation. The plants are strong, upright in habit, growing to a height of twelve to fifteen inches in compact clumps, and from the middle of July until severe frost are covered with lovely rich violet-blue colored flowers borne in close terminal heads. (We had thousands in bloom on our grounds the past season as late as October 25.) The foliage is unique, finely serrated and fringing the stems. I heartily recommend this fine variety for edging sidewalks, beds or borders, or single specimens set in mixed flower vases or beds, where they appear in lovely contrast with other flowers. Price, 10 cents each.

THE FOUR FINE PLUMBAGOS FOR 50 CENTS.

Solanum Jasminoides Grandiflorum.

A beautiful new plant which inclines to a trailing habit, but never attains a greater height than three to five feet, and can be pinched back to the bush form. Its flowers are star-shaped, like Clematis, and borne in enormous panicles or clusters, often a foot across. In color they are pure white, with a violet tinge on back of petals and on the buds. In pots it is a fine bloomer, both Summer and Winter. But it is grander for outdoor culture. When trained against the wall or on a trellis, and showing hundreds of these magnificent panicles of bloom, it cannot be described. It is a free and constant bloomer, commencing when only a foot high, and, like the Manettia, its flowers keep perfect a long time before fading. No more beautiful object can be seen than these two vines growing side by side and mingling their profusion of bloom. Price, strong plants, 10 cents each; three for 25 cents.



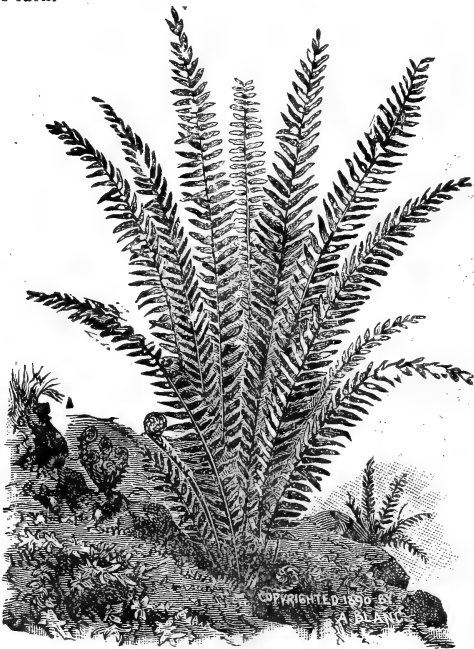
PLUMBAGO, CAPENSIS ALBA.

ROYAL PURPLE. Strobilanthes Dyerianus.



ROYAL PURPLE.

In offering this beautiful plant for the first time, we do so with great pleasure, as all who possess it have a floral beauty to be proud of. The leaves are quite tropical in size, overlaid with a rosy-purple cast, reminding one of changeable silk, the young foliage being very intense in color, while the older leaves assume a pale green, with occasional blotches of white, with a pale tint of the rose color showing. New and valuable. It is also beautiful in bloom with its *G. oxinia*-like flowers. **Price, 20 cents each.**



SWORD FERN.

BEAUTIFUL AND RARE FERNS.

Price, 20 cents each; three for 50 cents

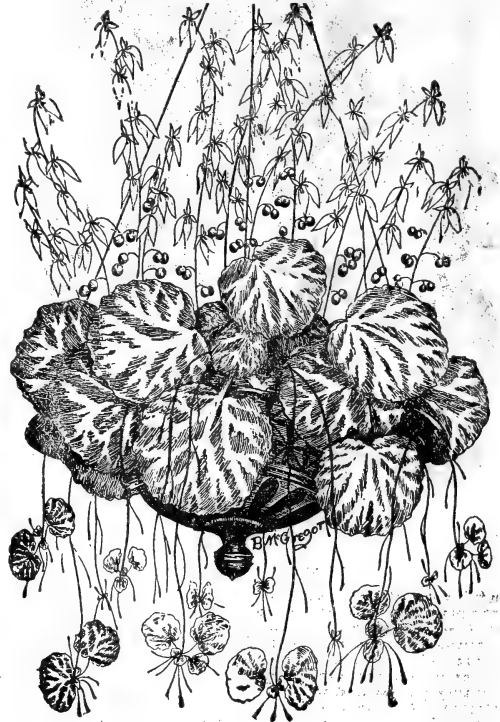
Nephrolepis Exaltatum.—(*Sword Fern*.) A really graceful Fern, multiplying very fast in throwing out vines on which grow separate plants again. It is one of the most handsome Ferns. Is lovely planted in hanging baskets or vases, or charming as a pot plant. Try it.

Pteris Tremula, or Shaking Fern.—One of the finest Ferns for house decoration, growing very rapidly and throwing up large, handsome fronds. It makes magnificent specimens. Easily grown and very popular.

Pteris Nobilis.—A grand Fern for house culture. The fronds are drooping, with a peculiar luster.

Adiantum Formosum.—(*Maiden's Hair Fern*.) Sprays of delicate green, borne on jet black stems. An elegant sort.

SAXAFRAGA SARMENTOSA.



SAXAFRAGA.

A handsome plant of low habit, leaves nearly round and striped freely with silver bands, blooms white, of great beauty, and borne in spikes nearly twelve inches high. Fine for hanging baskets, vases, etc. **Price, 10 cents each; three for 25 cents.**

CAMELLIA JAPONICA.

Leaves glossy-green, flowers of exquisite beauty and waxy texture, from pure white to crimson, in a most endless variegation. Culture is nearly related to that of the Azalea, but their success is more certain. Requires shade and moisture throughout the hot season. Time of blooming is Winter and early Spring. Requires a uniform and moderate temperature with as little artificial heat as possible. When set with flower buds great care must be taken in watering—when too dry the buds are sure to drop. We have a fine assortment of those named below.

Price, for large, strong plants, 60 cents each. Any two for \$1.00.

Alba Plena.—Double, white, very fine, the best white.

Americana.—Blush, mottled with rose.

Caleb Cope.—Clear blush-rose. One of the best.

Fimbriata.—Clear white, with the petals finely fimbriated.

Jenny Lind.—White, with pink stripes.

Lady Hume's Blush.—Flesh color. Extra fine.

Sarah Frost.—Bright crimson. Fine.

Queen of Denmark.—Salmon-rose, fine form.

CESTRUM, or NIGHT-BLOOMING JASMINE.

Parqui.—A native of Chili. An excellent garden plant, growing rapidly. Foliage long and of deep green color. Produces its richly fragrant flowers at every joint. Sweet only at night. Well adapted to house and window culture. **Price, 10 cents each.**

Laurifolium.—A handsome plant, with large, glossy foliage and pure white flowers. **Price, 10 cents each.**

THE TWO CESTRUMS FOR 15 CENTS.

HELIOTROPES. ❄ ❄ ❄ ❄

Florence Nightingale.—Light lavender. Price, 8 cents each.
 Snow Wreath.—Nearly white, large truss. Price, 8 cents each.
 Queen of Violets.—Violet-purple, large eye. Price, 8 cents each.

NEW HELIOTROPES. ❄ ❄



NEW HELIOTROPE, THE QUEEN.

Souvenir.—In bloom it is exquisite. The deep lavender color of the flower contrasts admirably with the beautiful dark-green foliage. Price, 10 cents each.

The Queen.—For a neat, dwarf habit, profusion of bloom and richness of odor this Heliotrope has no equal, and its vivid color of royal purple, with a distinct white center, gives us something entirely new in color, either for Summer decoration or Winter flowering. Price, 15 cents each.

The Virgin.—The introducer describes it as low-growing and with strong, luxuriant foliage. The flower is very large and of snowy whiteness. Price, 10 cents each.

The three New Heliotropes for 30 cents.

GLOXINIAS. ❄ ❄ ❄ ❄

These are among the most beautiful of all our Summer-blooming plants. The rosette of velvety-green leaves is surmounted with a cluster of lovely trumpet-shaped flowers as large as Gladioli blooms; the coloring is exquisite. The ground-work of many is pure white, with throats of blue, scarlet, rose, crimson or velvety-purple, while others are beautifully flecked and striped with the brightest colors, and the tubes are of the bright color, with white throat. The bulbs should be started in a warm place—greenhouse, hot-bed or sunny window. They will bloom until late in the Summer, when they should be dried off, letting the leaves die. The pots can be kept over Winter in a cellar free from frost. They are very easily grown. Give them a trial. Price, 20 cents each; three for 50 cents.

CROTONS. ❄ ❄ ❄ ❄

The Crotons are among the finest decorative foliage plants known. The leaves of all are more or less veined and margined, sometimes entirely variegated with shades of yellow, orange, and crimson. Some have long, narrow leaves, arching gracefully fountain fashion, others broad and short, oak-leaved. Some recurve very much, others are twisted, cork-screw like. Crotons love heat, sunshine and moisture. The Crotons are fast becoming one of our most beautiful bedding plants. Price, 10 cents each; three for 25 cents.

ALOYSIA CITRIODORA. Lemon Verbena. ❄

Foliage delightfully fragrant. To simply brush against it is enough to scent an entire room with its delicious odor. Planted out of doors, it grows into a fine, large clump, and it can be taken up in the Fall and wintered over in the cellar. Price, 10 cents each. three for 25 cents.

Something New and Valuable.

SWAINSONIA ELEGANS. ❄ ❄

The Prettiest Plant of any in Our Collection.

The prettiest all-round plant for house culture we know of. It is of such easy culture that everybody succeeds with it. It is a rapid grower, and in a short time makes a handsome, compact bush, as it naturally grows into a shapely plant. The foliage is deep green and small. It bears its panicles six inches long, of pure white, pea-shaped flowers in the greatest profusion, and of the sweetest fragrance. Indeed, it is as sweet in perfume as Sweet Peas. We have been cultivating it for the past two years, and it is seldom out of flower either Winter or Summer. Be sure and try it, as it will certainly please you. Price, 15 cents each; two for 25 cents.

SWAINSONIA ROSEA. ❄ ❄

Same as above, but bright red flowers. Price, 15 cents each.

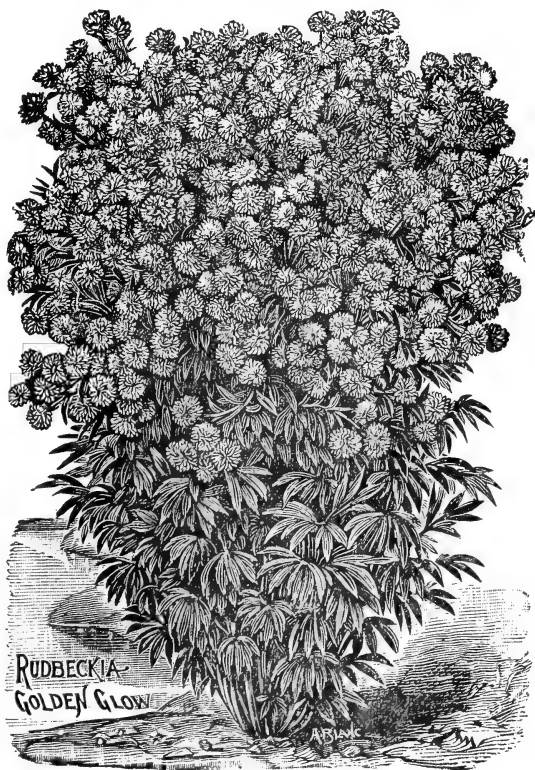
SPECIAL OFFER.—The two varieties for 20 cents.

MAMMOTH VERBENAS. ❄ ❄

Our plants are grown with care, and are very robust. New varieties are being constantly introduced and old ones discarded, so that it is difficult, and we might say useless, to offer a long list of named varieties. We offer these mammoth Verbenas in pure white, pure scarlet, striped and blue. Price, 8 cents each; four for 25 cents.

RUDBECKIA LACINIATA, fl. pl. "Golden Glow."

Offered for the first time last year. A hardy perennial plant, growing eight feet high, branching freely, and bearing by the hundreds, on long, graceful stems, exquisite double blossoms of the brightest golden color, and as large as Cactus Dahlias. The cut represents a plant in bloom, as photographed. Mr. William Falconer, the best authority on plants in this country, says of it: "When I saw the double-flowering form of Rudbeckia Laciniata in bloom in your grounds last year, I was amazed, for notwithstanding my long and intimate acquaintance with plants I had never before seen a double-flowered Rudbeckia, and I was delighted with the fullness and gorgeousness of the blossoms and their clear, bright yellow color. You gave me a plant last Spring, and it was set out in good garden ground. It grew vigorously, and threw up strong, branching flower stems six feet high, laden with sheaves of golden blossoms as large as fair Chrysanthemums, and all having an elegant, graceful appearance, without any of the stiffness in habit or blossom peculiar to sunflowers. Many eminent florists and amateurs have seen it here, and all admired it. As cut flowers the blossoms last well. In fine, I unhesitatingly regard it as the most desirable introduction among hardy perennials since we got Clematis Paniculata." It is the most effective flowering plant for August and September in cultivation. Price, 15 cents each; two for 25 cents.



RUDBECKIA
GOLDEN GLOW

JUSTICIA. Brazilian Plume-Plant.

Justicia Carneæ.—Perhaps no plants have attracted so much attention in the last two years as the Justicia, or Brazilian Plume Plant. The plant is a strong, rapid grower, and throws up long stems, on which are produced fine, plume-like pink flowers, the ends of each petal drooping in a most charming manner. When the plants are a few months old they are literally covered with their beautiful blossoms. It does equally well either for house or outdoor culture. Price, 20 cts. each.

Justicia Sanguinea.—Same as the above, except that it has red stems and flaming rose-colored blooms. Price, 15 cents each.

TUBEROSES.

Double Tuberosæ.—Its pure waxy color and delightful fragrance make it the most popular of all flowers for bouquets and baskets. Our bulbs are very fine, and we guarantee that all will bloom if properly treated. Price, 10 cents each; twenty for \$1.00; twenty-five by express for \$1.00.

Double Tuberosæ, Excelsior Pearl.—This variety is dwarfier than either of the other varieties in cultivation. Very large, pure white flowers, beautifully imbricated, delightfully fragrant, very double. Price, 15 cents each; six bulbs for 70 cents.

Double Tuberosæ, Pearl.—The value of this sort over the common variety consists in its flowers being of large size, imbricated like a Rose, and of dwarf habit, growing only from eighteen inches to two feet in height, its short growth making it desirable as a pot plant or for Winter forcing. Price, 10 cents each; fifteen for \$1.00.

SMILAX.

For using as a green with cut flowers it has no equal, its hard texture enabling it to keep for several days without wilting after being cut. It is also fine as a parlor or window plant. Price, 5 cents each; six for 25 cents.

SWEET PEA SEED.

Fifteen packets of the best named sorts of Sweet Peas for 50 cents. All different.

Wild Flower Garden

A WHOLE FLOWER GARDEN IN ONE PACKET.

To meet the wants of those who would like to have a good collection of choice flower seeds, but do not feel able to purchase so many different packets, we offer in this packet about twenty-five of the most popular and desirable varieties of annual flower seeds all mixed together. The different varieties can easily be separated when transplanted from the seed bed, where they are to bloom. Each packet will contain sufficient seeds for an ordinary flower garden. This is unquestionably the most valuable collection of mixed flower seeds ever offered. Don't fail to order a packet if you want an endless variety of flowers at a nominal price. Price, for large packets, 20 cents each; three packets for 50 cents.

SOME VALUABLE FRUITS.

THE NEW JAPANESE WINEBERRY.—We quote from the description of the introducer: "It belongs to the Raspberry family, is a strong, vigorous grower, attaining the usual height of a Raspberry, and is perfectly hardy in all positions without protection. It is, in fact, more hardy and vigorous than any Raspberry or Blackberry. It stands alike the cold of the Northern Winters and the heat of the Southern Summers, without the slightest degree of injury. Its leaves are of the darkest green outside and silvery-white underneath. The fruit is borne in large clusters, often seventy-five to one hundred berries in a bunch. These berries are, from the time of formation and bloom until they ripen, enclosed in a 'burr,' which is formed by the calyx covering them entirely. When ripe the burr opens, exhibiting a large berry of the brightest, light, glossy scarlet or cherry wine color. The flavor of the fruit is entirely unlike any other berry, being very sprightly, sweet and juicy, having no disagreeable sour, but a delicate and luscious flavor peculiar to itself and superior to other berries. It is very juicy, and makes the finest quality of wine. It commences to ripen in the early part of July, and continues in bearing for a long time. It is the most prolific berry known, the bushes being literally covered with its luscious fruit." Price, 20 cents each; three for 50 cents; twelve for \$1.50.

LUCRETIA DEWBERRY.—In this new fruit (which might be called a climbing Blackberry) we have the most delicious of all berries, and one of the most ornamental of all climbing vines. They should be trained on a trellis or tied to a stake like grape vines. In the Spring they produce great masses of large, pure white, sweet-scented flowers, which are followed by clusters of delicious fruit, larger, richer and far more prolific than Blackberries. Very juicy and sweet to the core. The fruit is borne in great quantity, and is admitted by all to be the finest of berries. When made into wine it gives a gentle stimulant, which for invalids is unequalled, the flavor of the wine being as superior as the flavor of the fruit. It is perfectly hardy and does not sucker from the roots, but is increased from the tips like Blackcap Raspberries. It will thrive in very poor soil. This valuable berry in a very few years will be everywhere planted as the finest of all small fruit. A new sort of immense size and delicious quality. Berries two and a half inches in length, and borne in great clusters. Very juicy and sweet. The most valuable small fruit produced in ten years. Price, 20 cents each, three for 50 cents; seven for \$1.00.

NEW AND WONDERFUL EVER-BEARING RASPBERRY, EARHART.—Of this wonderful new berry the introducer says: "The fruit is of large size, jet black, and good quality, the first crop ripening the last of June. About this time the first of the new canes begin to bloom, and ripen fruit until frost, producing heavy crops as late as September and October. It is a strong grower, with corrugated foliage of dark green color, and has never been known to Winter kill. Our experience with this berry has been highly pleasing. The Spring of 1887 we set out one thousand very small tip plants, which started at once into a strong growth and commenced fruiting in August, and continued until frost, producing remarkably fine berries, in enormous clusters. We were surprised to see any fruit at all the first Summer on so small plants. It is certainly a perpetual bearer, and we believe has all the good points claimed for it. It wintered in an exposed position without a cane being killed. In fact, it is the hardiest sort we know. Last season the yield of the fruit was marvellous. It commenced to ripen July 1, and bore enormously, and continued until frost. We consider it in all respects a highly

valuable sort on which too much praise cannot be bestowed. Every one speaks highly of it. The *Rural New Yorker* of October 23, 1886, speaks in glowing terms of it. It says that one cane September 1st had three hundred and eighty berries, one-third fully ripe." Price, 20 cents each; three for 50 cents; seven for \$1.00; twelve for \$1.50.

EVER-BEARING TREE OR TOSPY BLACKBERRY.—For a Blackberry it is the largest, finest flavored, most prolific, fruiting for two months, and requires no stakes. This fine novelty is surely one of the most desirable new things we ever offered, and what we say of it we speak from what we have seen and what we have tested, and not from what others say. It grows from five to seven feet high, branching freely into fine tree form, straight and erect, requiring no stakes. The berries are of enormous size, equalled only by the Erie; borne in great clusters, which commence to ripen early in July and continue into September, making its fruiting period fully two months or more. The finest Blackberries we ever ate were picked about September 1 from some of these plants which had been ripening fruit since July 8. They are exceedingly sweet, juicy and delicious, melting in the mouth without a particle of hard core. Its delicate flavor, great productiveness, enormous size, long season of bearing and perfect hardiness in the coldest part of the country, make it the most valuable of all berries for family use. Price, 20 cents each; three for 50 cents; seven for \$1.00.

THREE GRAND NEW EARLY GRAPES.

Here we offer a new white, black and red grape, which in size earliness and delicious quality are superior to most other sorts.

MOYER.—Extra early, ripening three weeks ahead of Concord, Color a deep, bright red, and sweeter than Delaware, a sort which it somewhat resembles. Perfectly hardy, having originated in Canada, very healthy, vigorous and productive. Pulp juicy and tender to the center. This grand sort cannot be too highly recommended. Price, 25 cents each.

EATON.—An enormous Grape, growing as large as Plums and in bunches weighing from one to two pounds. Color black, with a heavy blue bloom. Vine very tough, healthy and vigorous, with enormous leaves. Pulp very tender, juicy and sweet, being superior to Concord, and ripens earlier. Very hardy and enormously productive. Undoubtedly the finest as well as the largest black Grape. Price, 25 cents each.

MOORE'S DIAMOND.—The finest of all white Grapes, and ripens the last of August. Vine hardy and healthy in growth, vigorous and free from mildew. Berries large, beautiful, white tinged with yellow, and of the most delicious quality, having very few seeds, and a pulp which seems to melt in the mouth like snow. Do not fail to plant this delicious sort. Price, 25 cents each.

SPECIAL OFFER.—For only 60 cents we will send one fine vine each of above three new early Grapes.

DOLLAR COLLECTION OF GRAPE VINES.

We offer ten choice varieties of Grapes, the very best varieties, including white, black and red varieties, for the small sum of \$1.00.

Get up Club Orders

Among Your Friends and Secure

Your Own Plants Free.

Do not include Collections or Special Offers in making up your discounts, as it only applies to price per single plant or bulb.

MAIL CLUBBING RATES.

Any person sending \$2.00 select plants to value of 60c extra.
 Any person sending \$3.00 select plants to value of 85c extra.
 Any person sending \$4.00 select plants to value of \$1.25 extra.
 Any person sending \$5.00 select plants to value of \$1.50 extra.
 Any person sending \$6.00 select plants to value of \$2.50 extra.
 Any person sending \$8.00 select plants to value of \$3.00 extra.
 Any person sending \$10.00 select plants to value of \$5.00 extra.

EXPRESS CLUBBING RATES.

Any person sending \$2.00 select plants to value of \$1.25 extra.
 Any person sending \$3.00 select plants to value of \$1.50 extra.
 Any person sending \$4.00 select plants to value of \$2.00 extra.
 Any person sending \$5.00 select plants to value of \$3.00 extra.
 Any person sending \$6.00 select plants to value of \$4.00 extra.
 Any person sending \$8.00 select plants to value of \$5.00 extra.
 Any person sending \$10.00 select plants to value of \$8.00 extra.

Individual Orders allowed the same discounts as Club Orders.

Our Elegant List of Sets.

HARD TIMES PRICES. ORDER BY THE NUMBERS.

- | | PRICE. |
|---|--------|
| Set 65. Ten Ever-blooming Roses, ten distinct colors. | 50c |
| Set 66. Eight Hardy Hybrid Perpetual Roses, eight colors. | 50c |
| Set 67. Five new and rare Roses, all distinct. | 50c |
| Set 68. Three elegant varieties of Moss Roses, all different. | 50c |
| Set 69. Three Ever-blooming, one Polyantha, one Climbing, one Moss and one Hybrid Perpetual Rose. | 50c |
| Set 70. Six beautiful Roses for Winter blooming in the house. | 50c |
| Set 71. Six elegant Roses suitable for cemetery planting | 50c |
| Set 72. Ten prize-winning Chrysanthemums, all different. | 50c |
| Set 73. Ten lovely Fuchsias, each one a beauty. | 50c |
| Set 74. Ten elegant double-flowered Geraniums, all colors. | 50c |
| Set 75. Ten choice single-flowered Geraniums, each one different. | 50c |
| Set 76. Five double and five single Geraniums, all different. | 50c |
| Set 77. Six elegant Tricolor, Golden, Silver and Bronze Geraniums, all beautiful sorts. | 50c |
| Set 78. One Double, one Single, one Silver Tricolor, one Golden Tricolor, one Bronze Tricolor and one sweet-scented Geranium. | 50c |
| Set 79. Twelve magnificent Coleus, of the brightest colors. | 50c |
| Set 80. Eight lovely flowering Begonias, a grand collection. | 50c |

- | | PRICE. |
|---|--------|
| Set 81. Four beautiful kinds of Rex Begonias. | 50c |
| Set 82. Fifteen pips of the exquisite Lily of the Valley | 50c |
| Set 84. Ten Vines and plants, suitable for vases and baskets. | 50c |
| Set 85. Four choice decorative Palms, an elegant collection. | 50c |
| Set 86. Four new Dwarf, Ever-blooming French Cannas, a great bargain. | 50c |
| Set 87. Eight fragrant monthly Carnation Pinks, all colors. | 50c |
| Set 88. Eight choice Hibiscus, with their immense gorgeous-colored flowers. | 50c |
| Set 89. Six fine hardy shrubs, all entirely hardy. | 50c |
| Set 90. Eight assorted flowering plants, suitable for pot culture. Try them. | 50c |
| Set 91. Fifteen choicest large-flowered Pansy plants; will make a fine display. | 50c |
| Set 92. Twelve Pearl Tuberoses bulbs, bearing the most fragrant of flowers. | 50c |
| Set 93. Twelve beautiful flowering Gladioli bulbs. | 50c |
| Set 94. Twenty popular varieties of Flower Seed. Quite a number of our customers plant only Roses and other plants in their gardens, and neglect to use any flower seed. To induce every one to plant at least a few we make the above liberal offer of twenty varieties, embracing one packet of each, for only. | 50c |
| Set 95. Fifteen packets of Vegetable Seeds, two collections, will be ample for a complete kitchen garden for a small family. | 50c |

No two alike in the above sets. ~~XX~~ Any three sets for \$1.25. ~~XX~~ Any five sets for \$2.00.

Do not include these sets in your order when you select at mail or express clubbing rates. They are net.

BOWKER'S AMMONIATED FOOD

For Flowers.

Makes Plants Grow and Bloom Luxuriantly, and Drives Insects from the Soil. ~~XX~~ ~~XX~~ ~~XX~~

A New Odorless Fertilizer for Pot Plants.

It starts the plants at once into a healthy and vigorous growth and abundant bloom. It drives worms and other troublesome insects from the soil. It has no disagreeable odor, and is the only artificial fertilizer which can be used without danger or injury to the plants. It takes the place of liquid manure, and is just the thing that has been wanted for a long time. We have sold tens of thousands of packages of it and have yet to hear the first complaint. If your plants are doing poorly get a package and see how quickly they will be benefited. It acts like a charm. The Ammoniated Food is put up in wooden boxes, with attractive wrappers. One package, sufficient for twenty-five ordinary-sized plants for one year, for 50 cents. Sent by mail, postage prepaid, on receipt of price.

HAMMOND'S SLUG SHOT ~~XX~~ ~~XX~~

Destroys Insects Of All Kinds.



A powder destructive to insects that are injurious to house and garden plants, shrubs, trees, vines, potatoes, melons, cabbage, currants, etc. Used in all latitudes since 1880, with safety to man, beast and fowl. Put up in perforated screw top canisters, and is handy to use, merely dusting on the plant with the can. If you are troubled with insects on your Rose bushes we recommend you to try this; it does its work quickly and thoroughly.

Price, 50c per Canister. Sent by Mail, Postpaid, on Receipt of Price.

1898

ORDER SHEET OF

1898

The Great Western Plant Company,

SPRINGFIELD, OHIO.

Anything ordered on this sheet guaranteed to reach the purchaser in good growing condition.

A TRIAL ORDER IS ALL WE ASK.

Send money as we request. If lost in transit we bear it.

Name	AMOUNT ENCLOSED.
Street and No.	P. O. Order, / / \$
Post Office	Draft on New York, / / \$
County	Cash (In Registered Letter) / \$
State	P. O. Stamps (In Regist'd Letter) \$
Express Office	Cash (By Express) / / \$
How to be Sent (Mail or Express)	Express Money Order, / \$
Name of Express Co.	<small>Money sent in either of the above ways is at our risk; if you send in any other way, it is at your risk.</small>
Date of Order	

Please fill in the above blanks with your full name, address, etc., plainly written, and always state in what way Plants are to be sent. Carry out the Catalogue price of each item, and carefully add up the full amount. Use this sheet for ordering only, and please do not write letters on it. A careful observance of these directions will oblige us, and enable us to fill orders with greater accuracy and dispatch. Always sign your name the same. IF YOU WANT QUESTIONS ANSWERED INCLOSE FOUR CENTS IN STAMPS.

Number.

ARTICLES.

Dollars.

Cts

TAKE OUT AND USE IN ORDERING.
REMEMBER---No Discounts Allowed on Collections or Sets of Plants, Etc.

Number.

ARTICLES.

Dollars. Cts.

Amount brought forward.

Please write the addresses of a few of your friends who buy plants, that we may send them our Catalogue.

SUBSCRIPTION BLANK **How to — Grow Flowers.**

Price, 50 cents a year, with Premium.

25 cents a year, without Premium.

Name

Post Office

County

State

Street No. or P. O. Box

Am't enclosed, *cents.* *Premium wanted, No.*

HOW TO GROW FLOWERS is the greatest of all floral journals. Issued monthly. Beautifully printed and elegantly illustrated. Covers the entire field of successful flower culture. Tells what to do, how to do it and when to do it. All articles plain and practical. Technicalities and abstrusities are avoided. Absolutely indispensable to every grower or lover of flowers. **DO NOT FAIL TO ENCLOSE THE PRICE OF A YEAR'S SUBSCRIPTION WITH YOUR ORDER.**





Shrubs, Vines and Plants.

HARDY VARIETIES.

AZALEA MOLLIS.—The most brilliant and showy of all hardy shrubs—exceeding even the Rhododendron—and entirely hardy without protection in all situations. The bloom, which varies in color from the most intense rosy-crimson to lemon yellow, literally covers the compact, spreading plant, forming a huge bouquet, and which remain in perfection a long time in May and June. Massed, they produce an effect that is actually brilliant and dazzling. **Price, 50 cents each.**

ACHILLEAS.—New *Achillea, The Pearl.*—*The Great Cemetery Plant.* It is a hardy perennial, the top dying down to the ground every Winter. A plant will produce hundreds, and even thousands, of flowers the first Summer, but when established the second year they frequently have more than five thousand perfect flowers on a plant at the same time. It commences to bloom early in July, and is a perfect mass of beautiful flowers till frost, the same bloom keeping perfect two or three months. Its flowers are pure white, perfectly double, and produced in large sprays. For cemetery planting it is the most valuable of all flowers, as it is sure to thrive and bear its great profusion of snow-white flowers nearly the whole Summer for years and years. **Price, 15 cents each; two for 25 cents; or six for 50 cents.**

New Rose-Colored Achillea, Millefolium Rubrum.—This Achillea has large fronds or leaves of the most delicate fern-like appearance, that for foliage alone would be worthy of a place in any garden. But then it produces large clusters of flowers a deep lake rose in color, making it wonderfully attractive when placed among shrubbery or Rose beds, giving all a graceful effect. **Price, 15 cents each. The two Achilleas for 20 cents.**

AMPELOPSIS VEITCHII.—*Boston Ivy.* A beautiful, hardy climbing plant of Japanese origin. This is one of the finest climbers we know for covering walls, as it clings firmly to the smoothest surface, covering it smoothly with overlapping leaves, which form a perfect mass of foliage. The color is a fresh, deep green in Summer, changing to the brightest shade of crimson and yellow in Autumn. It is quite hardy, and becomes more popular every year. **Price, 10 cents each.**

ALTHAEA, or ROSE OF SHARON.—These are the most beautiful shrubs we have in our collection. The flowers are of large size, very double and full, of various brilliant and striking colors. They bloom freely during August and September, when scarcely any other shrub is in bloom. **Price, two kinds, Double White and Rose, 15 cents each; large plants, 50 cents each.**

CALYCANTHUS FLORIDUS.—The old-fashioned sweet-scented shrub. A very compact-growing bush, producing its highly scented flowers in Spring-time. A universal favorite. It is sometimes called "Strawberry Shrub," from its delicious odor. Flowers chocolate brown. **Price, 15 cents each; two for 25 cents.**

DICENTRA SPECTABILIS.—*Bleeding Heart.* A hardy perennial plant with rose colored flowers in great abundance. One of the best border plants. Perfectly hardy and easily cultivated. Two feet high. Flowers in April and May. **Price, 20 cents each.**

DEUTZIA.—*Crenata.* Flowers double and white. A hardy grand shrub. **Price, 10 cents each.**

HONEYSUCKLES.—*Aurea Reticulata.*—*Golden-leaved.* A variety with beautiful variegated foliage. **Price, 15 cents each.**

Chinese Evergreen.—Blooms nearly all the season, deliciously fragrant, flowers buff, yellow and white. **Price, 15 cents each.**

Hall's Japan. This is the most constant bloomer of the class, being literally covered all Summer with beautiful yellow and white flowers. **Price, 15 cents each.**

Belgian, or European Sweet-scented.—A fine, hardy grower, Flowers large and exceedingly sweet, color buff, yellow and red; a constant bloomer. The finest Honeysuckle, suitable for trellis or pillar. **Price, 20 cents each.**

Scarlet Trumpet, or Red Coral.—A rapid grower, bright red, with trumpet-shaped flowers. This is the old, well-known variety. **Price, 15 cents each.**

HYDRANGEA PANICULATA.—See page 20 for description and price.

LILACS.—Everybody knows these old favorites. We have two kinds. **Lilac Purple.**—**Price, 25 cents each; large plants, 50 cts. each.** **Lilac White.**—Very scarce, but a most elegant and chaste flower. **Price, 50 cents each; large plants, \$1.00 each.**

PEONIES.—*The Pineys of our Mothers' Gardens.* Hardy, herbaceous. They are all hardy and admirably adapted to the climate of our Northern States, growing well in almost any situation or soil, although the flowers will be finer and colors brighter if planted in deep, rich loam, well manured. We offer a splendid assortment in twelve distinct varieties. **Price, 25 cents each; five distinct kinds for \$1.00.**

PHILADELPHUS.—*Mock Orange.* Grows to a height of eight or ten feet. We have both the double and single flowered. **Price, 15 cents each; large plants, 25 cents each.**

PYRUS JAPONICA.—*Burning Bush, or Japan Quince.* A splendid lawn plant. A bright scarlet flower produced before the foliage, makes a gorgeous display. **Price, 20 cents each.**

PURPLE FRINGE.—Much admired for its long, feathery flower stalks, which give the tree the appearance of being covered with a cloud of smoke. **Price, 25 cents each.**

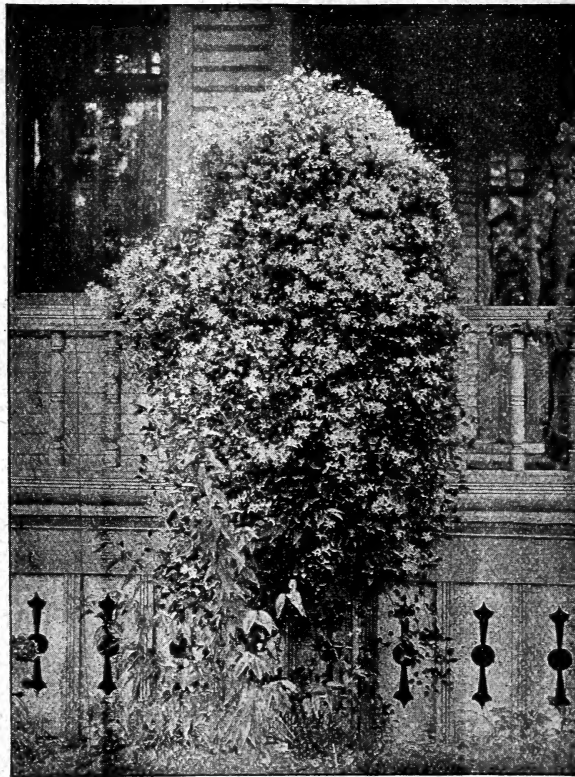
SPIREAS.—Very desirable for shrubberies or the flower garden. **Price, 15 cents each; large plants, 35 cents each.**

Ballardii.—Flowers in spikes of pink or rose color. **Price, 15 cents each.**

Prunifolia.—Flowers like double small white Daisies, known as Bridal Wreath. **Price, 15 cents each.**

Van Houtte.—Strong grower, pure white, in clusters. **Price, 15 cents each.**

VIBURNUM OPULUS.—*Snowball.* Attaining a height of eight feet. Produces its snow-white flowers in large balls, or masses, in June. **Price, 25 cents each; large plants, 40 cents each.**



HARDY CLEMATIS PANICULATA. See page 20 for description and price.

WISTERIA.—A popular hardy vine. It grows very rapidly, climbing to a height of fifty feet or more. It flowers in early Spring, in long, drooping racemes. **Price, 20 cents each; large plants, 50c each.**

WEIGELIAS.—*Rosea.*—Flowers large and rose colored, borne in such profusion that the whole plant appears a mass of lovely blooms. **Price, 20 cents each.**

Variegated-leaved.—Deep green leaves, broadly margined yellowish-white. Very striking and pretty. Flowers same as above, but of smaller growth. **Price, 20 cents each.**

Candida.—This is the very best of all the white flowered Weigelias. A strong, upright, erect grower, flowers pure white and produced in great profusion in June, and continues to bloom through the entire Summer. **Price, 20 cents each.**

WHITE DAY LILY.—*Funkia Alba.* The Funkias all make handsome, showy plants, and this is the best of its class. Beautiful, broad, ovate leaves, with large, lily-like, pure, fragrant flowers.