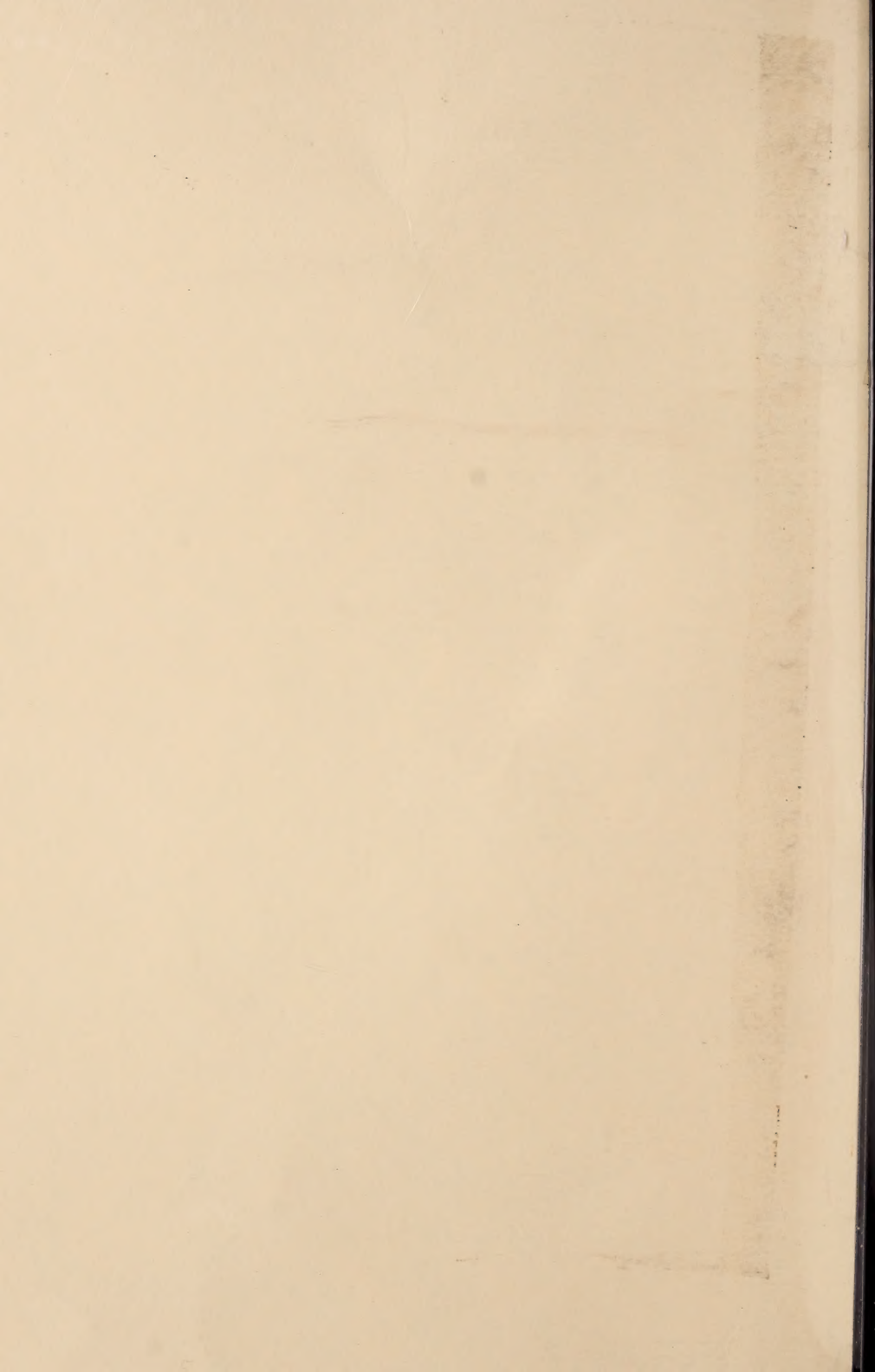


## **Historic, archived document**

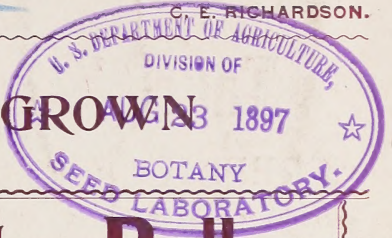
Do not assume content reflects current scientific knowledge, policies, or practices.



1896 62.35  
catalogue

O. M. RICHARDSON.

C. E. RICHARDSON.



NORTHERN GROWN

# Seeds, Plants, Bulbs,

ETC.

GROWN IN THE RUGGED CLIMATE OF THE

“PINE TREE STATE.”

EARLIEST AND BEST.

O. M. Richardson

... & Co.,

CANTON,

ME.

1896.



Copyright  
1896  
O. M. RICHARDSON

SWEET PEA IMPROVED BLANCHE FERRY.

# Take Notice Before Ordering.

---

**PREPAID.** The prices in this Catalogue include prepayment of postage by us, but where offered "by express" then it is meant that the purchaser is to pay charges.

**WARRANTY.** We fully warrant all of our seeds and plants to the extent that should they not prove true to name and exactly as represented, we will replace the order gratis.

**PROMPT DELIVERY.** If the goods are not received within a reasonable time, write us at once, giving an exact copy of order, date sent, amount of money sent, and whether sent by registered letter, money order or cash.

**ERRORS.** If stock is not as expected compare with your order of which you should always keep a duplicate, and if we are in the wrong write us at once, giving all particulars as mentioned in paragraph above, but do not complain to others until you have given us a chance, and do not return goods until you hear from us.

**REMEMBER,** sometimes in the busiest season others may have orders ahead of you, which must be filled in rotation. Order early, and if you do not want the goods sent until later, after the season becomes warmer, so state in your order, and the date you want the goods shipped.

**PLEASE DO NOT** mutilate this catalogue, but should you want another or additional order blanks write us for same.

**HOW TO PAY.** Send cash with the order, by money order, registered letter, or draft. Small bills usually go safely if securely wrapped, but should money sent unregistered fail to reach us we cannot be responsible.

**ADDRESS.** Be sure to write your full address, not forgetting the county, or if in a city, the street and number. If possible always write with ink. Should you have occasion to write us more than once, be sure to give your full address in each letter.

**LOW EXPRESS.** Most of the express companies have made a reduction of 20 per cent. on plants and seeds, and we would advise all, where it is possible, to have all plants sent by express, as we can always send larger plants than by mail and we usually put in enough extras to make up for the express charges.

**DIRECTIONS.** With each order we send a printed sheet giving directions for taking care of the plants on arrival, soil, potting and after treatment.

**DISTANCE.** We are often asked how far plants may be sent with safety. In reply we will say that we can pack so as to send safely to any point in America, and have sent orders safely as far as the Sandwich Islands.

---

## A Fine Box of Plants Free.

It has been our custom for several years to send out a free box of plants made up from the plants we happen to have left over at the end of the season, and we renew the offer this season, viz: To all who send us an order amounting to \$1.00 or over, we will send about June 15, on receipt of 25c, to pay cost of postage and packing, a fine lot of plants worth two to four times that amount.

## SEASON OF 1896.

---



ANOTHER year has past, and again we send you our modest little Catalogue. While it cannot be compared to many in gorgeous colors and exaggerated descriptions, it contains the very varieties of seeds and plants at prices within the reach of all. We fully guarantee our stock to be as good as any grown in this country, and we will fill all orders over again that do not prove satisfactory. We shall be pleased to receive an order from all who receive this Catalogue this season and will do our best to give you your money's worth.

Very truly yours,

O. M. RICHARDSON & CO.

---

### Special Offer.

To get all to try our seeds this season we give 35 cents worth free to all who order seeds in packets to the value of \$1.00.

---

### Beautiful Novelty Free.

To all who send an order from this Catalogue to the amount of 25 cents or more we give *free* a regular 20-cent packet of the new Meteor Pansy, one of the most beautiful new pansies ever introduced. Color most odd, novel and rich, being a beautiful terra cotta, and in the sunlight it changes like silk to a bright fiery reflex. Nothing like it ever before seen in pansies. Its richness of color and beauty is so prominent that it at once catches the eye in a bed of a hundred varieties,

See Grand Club Offers on Back Cover.

---

## WINDOW GARDENING,

By Otis M. Richardson.

A new book on growing Plants and Flowers in the window. It gives plain and concise directions for the cultivation of all the most popular varieties of the day. Among its contents may be mentioned the following:

PROPER SOILS FOR DIFFERENT PLANTS,  
FERTILIZERS AND METHODS OF APPLYING,  
INSECT FOES AND HOW TO DESTROY THEM,  
TEMPERATURE BEST SUITED TO DIFFERENT PLANTS,  
WHEN AND HOW TO WATER,  
POTTING AND SHIFTING, ETC., ETC.

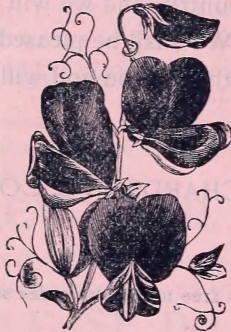
This little book is worth its weight in gold to a lover of flowers.

Price reduced to 15c. per copy, postpaid.

## SPECIALTIES IN SEEDS.

**W**E have at great pains and expense procured some new and beautiful flower seeds that cannot fail to be of great value and delight to every lover of the beautiful. Customers may select seeds to the value of \$1.25, for every dollar sent.

### Eckford's New Giant Sweet Peas.



**F**OR several years our boquet collection of sweet peas has been the most popular of any mixture of sweet peas ever offered. This year we offer a new boquet collection composed of over twenty sorts of Eckford's grand new California giant varieties. The grandest and most beautiful collection ever sold by any seedsman, every color, combination and shade are represented; the very cream of the newest, rarest and most beautiful of this justly popular flower. The following sorts among others are represented in this collection: Blanche Ferry, The Senator, Lottie Eckford, Boreatton, Isa Eckford, Eckford's Delight, Bronze Prince, Eckford's Gilt Edge Mixture, and many others. These new giant sweet peas are so far ahead

of the older kinds that after once growing them you will say that you never will again try the common varieties. We cannot describe them. You must see them in bloom to fully appreciate their great beauty.

This large collection contains about one oz. of seed, and we offer it for only 25c. per pkt. For other sweet peas see pages 20 and 21.

### Richardson's Beautiful Aster Collection.



**T**HIS collection of Asters contains all of the most beautiful varieties obtained in this country and Europe. The Reds, Blues, Crimsons, and Pure Whites are indescribably beautiful, while the other colors and markings are too numerous to mention here. This collection contains, among many others, the Diamond, Peony Flowered Perfection, Harlequin, Queen, Needle, Boquet, Chrysanthemum Flowered, Washington, etc., etc., making a rich collection.

Price for large collection, pkt. 25c.

HOOSAC FALLS, N. Y., June 21, 1884.

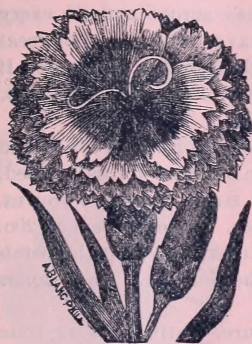
O. M. RICHARDSON & Co.:

The plants sent have been received in fine condition, for which receive many thanks. I have been buying seeds and plants for the past forty years and I do assure you that I feel that I have never before received so much value for the money expended. Enclosed find five cents. If I buy seeds another year I shall remember you.

Yours truly,

MRS. S. A. SKINNER.

## Beautiful and Rare Pink Collection.



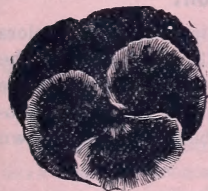
**T**HE Dianthus Pink is fast becoming one of the most popular of flowers, blooming the entire summer, continuing until frozen solid and covered with winter's snowy mantle. They live over winter and bloom as well the second summer as the first. As pot plants they are about as satisfactory as Carnations, blooming continually winter and summer and furnishing a large supply of richly colored flowers, many of which are delightfully fragrant. This collection consists of about seventeen of the finest sorts mixed together; many of the flowers are nearly three inches across, perfectly double and of all shades of red, crimson and pink, pure white and variegated, many of them having been secured in France and

Germany at considerable expense. This collection packet, only 25c.

## Superb Poppy Collection.

**P**OPPIES have been general garden favorites for many generations. They begin to bloom early in the season and make a gorgeous display for months. This collection embraces the Snowdrift, Crimson King, Carnation, Flowered, Iceland, Peony Flowered, Shirley, Cardinal, Vesuvius, Fire Dragon, Golden Gate, Mikado, The Bride, Fairy Blush, etc., etc. This large packet will plant a large bed and will be a gorgeous sight when in bloom. Price for the collection packet, 15c.

## Pansies--Their Cultivation.



**T**HE Pansy is a popular flower with both florists and amateurs, giving abundance of bloom until after severe frosts, enduring our hard winters with safety, and greeting us in the early spring with a profusion of bright blossoms. It will flower better in the middle of summer, if planted where it is somewhat shaded from the hot sun, and especially if furnished with a good supply of water, but in

almost any situation will give fine flowers in the spring and autumn. Pansy seed may be sown in the hot-bed or open ground; if sown in the spring, get in early as possible, so as to secure flowers during the early rains. Seeds sown in a cool place in June or July, and well watered until up, produce fall flowering plants. To have good flowers, the plant must be vigorous, and make a rapid growth. Young plants give the largest flowers. Old worn-out plants should be replaced. If the plants come into bloom in the heat of summer the flowers will be small at first, but as the weather becomes cooler they will increase in size and beauty. Often plants that produce flowers two and a half inches in diameter during the cool showery weather of spring, will give only the smallest possible specimens during the dry weather of summer.

Received the plants you so kindly sent. I was very much surprised and gratified. They arrived in splendid condition. Many thanks.

Yours truly,

MRS. STANLEY BILLINGS, Carlton Hill, N. J.

## Richardson's Choicest Pansy Seed.

**FAMOUS Woodbury Strain.**—Flowers three inches across and of every shade and color known in this lovely flower, petals heavy, velvety and of great substance. The best authorities who have seen this strain, pronounce it superior to any other ever sent out. Price per packet of 100 seeds, all colors, mixed, 20c.

**Royal Prize.**—A mixture of the largest flowering varieties, of both French and German Pansies. The flowers of the Royal Prize are often 3 inches across, striped, mottled, stained, etc., in the most gorgeous manner. This strain contains browns, crimsons, reds and other rare colors seldom seen among pansies. Price per packet, 20c.

**Trimandeu.**—This Pansy is the largest flowered of any variety, but the petals are thinner and do not last so well after being cut as the German. Many colors mixed. Packet, 15c.

**Imperial German.**—Flowers of heavy velvety texture, lasting a long time after being cut. The flowers are of large size and exquisite coloring. Price per packet, 15c.

**Black Giant.**—Flowers large and coal black with a small yellow eye in the center. Per packet, 15c.

**Silver Prince.**—Flowers purest snow white and exquisitely beautiful. Valuable for cemetery planting. Packet, 15c.

**Peacock.**—A first-class novelty. The side petals are of rich maroon, upper and lower petals of royal purple, shot with peacock blue and margined with terra cotta rose; extremely beautiful. Packet, 15c.

**Red Victoria.**—Of a beautiful brownish red color; a new variety and one of the most charming colors ever seen. Very rare. Packet, 20c.

## Richardson's Grand Pansy Collection.

**T**HIS collection is composed of the largest number of varieties, the rarest colors and the most striking combinations ever put together. It contains all of the above grand varieties, combined with a mixture of all of the finest sorts of the present time. Almost every plant grown from this packet of seeds will produce different colored flowers, and the pleasure derived from a bed of Pansies grown from this collection cannot be overestimated.

Price per packet of about 300 seed, 25c.



## Mammoth Verbena Collection.

**T**HE Mammoth Verbena has created a decided sensation in the last few years, and its praises have been well deserved. Our mammoth collection embraces all of the most beautiful colors under cultivation. Price, per large packet, 20c.

### SPECIAL OFFER.

The beautiful new flower seed collections if purchased separately would amount to \$1.25, but we will send one each of the six collections to any address for \$1.00.

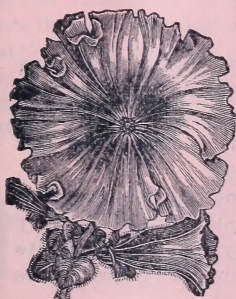


## New Giant Flowered Mignonette.

Spikes of enormous size and of charming fragrance; often grows twenty inches high. Giant Red, packet 10c; Giant White, packet 10c.

## Richardson's Superb New Double Hollyhocks.

A beautiful new strain of this stately and magnificent old garden favorite. Spikes of the largest size and flowers of the most brilliant and charming colors. Price per packet, 15c.



white. Packet 10c.

## American Giant Petunias.

Flowers four to six inches in diameter, blotched and stained in the most gorgeous and beautiful manner. The seed of the Giant Petunias is always scarce. Packet 25c.

## New Dianthus.

**Fireball.**—Color the most intense blood crimson; flowers large and double. Packet 10c.

**Snowball.**—Same as the above, but of purest snow white. Packet 10c.

## New Snowball Daisy.

Flowers as large as a silver half dollar and a perfect ball of the purest snow white. Packet 15c.

## Lobelia.--Crystal Palace.

A new variety and one of the most profuse of all flowering plants, valuable either as a garden plant or for pot culture. Flowers deep blue. Packet, 10c.

## Rainbow Plant.

One of the grandest and most beautiful of all annuals; the inner foliage is of a dark blackish bronze tipped with green; the outer foliage is of an intense flaming crimson and shining gold, while some of the leaves comprise crimson, gold, bronze and green. Packet, 10c.

## Nasturtium--"The Pearl."

New pure white. An odd and beautiful sort. Packet, 10c.

## Verbena--Mammoth Striped Italian.

Flowers striped and variegated in many beautiful ways. Colors dazzling and beautiful. Flowers of grand size and produced in large quantities. Packet, 15c.

## Candytuft--New Dwarf Hybrid.

A new species of Candytuft, of dwarf spreading habit. Flowers more numerous than the common variety, and the colors are remarkable for their great brilliancy, flesh color, rose and pure white, of many charming shades. Pkt., mixed, 10c.

### Sweet William, "New Giant."

**T**RUSSES and florets of immense size, and of the richest and most dazzling colors from purest snowy whiteness to richest blood crimson, they are perfectly hardy and will live and bloom for years, in any climate. Per pkt. 10c.

### Goditia, "New Double."

**T**HIS new variety is perfectly double; the flowers are borne in the greatest profusion, completely covering the plant and of the richest and most beautiful shade of deep carmine. A more showy or effective plant for the flower garden could hardly be imagined, Pkt. 10c.

### Beautiful New Asters.

**Q**UEEN OF THE EARLIEST.—Blooms three weeks earlier than any other variety. The plants are dwarf growth, branching freely and producing in endless quantities large very double snow-white flowers. Valuable for cemetery planting and as a cut flower for bouquets it is unequalled and indispensable. Pkt. 10c.

**Chrysanthemum, Flowered.**—Plants dwarf, growing only 9 inches high and producing 20 to 30 flowers to the plant. Flowers very double and of the very largest size, larger than any other dwarf Aster, and of many rich and exquisite colors. This is one of the most beautiful varieties and everyone who grows Asters should surely not be without this. Pkt. 10c.

### Grand New Bronze Leaved Cannas.

**T**HESE beautiful Cannas are easily grown from seed. They grow to quite a large size, and the foliage is of a rich bronze purple surmounted by large spikes of flowers ranging through many shades of yellow and red, spotted, etc. For beds on the lawn they are the ornamental of plants. The roots may be kept in the cellar like dahlias and planted out each spring. Soak the seed in warm water 24 hours before planting. Pkt. 15c.; Two pkts. 25c.

For Canna roots see page 16.

### Poppies, Japanese Pompone.

**T**HE charming new Poppies grow only about one foot high and bear endless quantities of charming small double flowers, in endless variety of beautiful colors. They are fine for bouquets, there being nothing coarse about them like the larger varieties, while in richness, diversity of coloring they are not surpassed, they are as beautiful as rose buds and are called by some Rosebud Poppies. Price 10c per pkt.

### Beautiful Flower Seed Collections.

These collections are a mixture of a large variety of each of the respective kinds, and the packets contain from two to four times as many seeds as in the ordinary 5-cent packets and a correspondingly larger variety of colors:

Collection Phlox.....	Pkt. 10c	Collection Chrysanthemum....	Pkt. 15c
“ Nasturtium.....	“ 15c	“ Balsam.....	“ 15c
“ Mignonette.....	“ 10c	“ Candytuft.....	“ 10c
“ Stock.....	“ 20c	“ Gourds.....	“ 10c

## New Dwarf Sweet Pea--Cupid.

### A Brief Description of Cupid, the Only Dwarf Sweet Pea Ever Known.

**T**HE foliage is very dark green; blossoms pure, waxy white, of unequalled substance and fully as large as "Emily Henderson." The plant does not grow over five inches high, and never more than twelve to fifteen inches in diameter. The stems are about four inches long, bearing two or three blossoms, all very near the end of the stem. It is a wonderfully free bloomer and begins to flower as early as May and continues until November. The seed is white and of usual size. A novelty it certainly is. It is the only genuine dwarf sweet pea in the world, and as a border to a row of the taller varieties it presents at once a most beautiful and charming combination, and it will at once commend itself to many owing to the fact that it can be grown in a bed massed together, requiring no supports and presenting a carpet of beauty and fragrance. Price 25 cents per packet.

## New Hibiscus--"Crimson Eye."

**F**LOWERS of mammoth size, often measuring twenty inches in circumference. The color is pure white with a large spot of deep velvety crimson in centre. It is hardy and blooms the first season. It is of the easiest culture and succeeds everywhere; making a compact bush and producing hundreds of flowers in one season. We have saved a small quantity of seed and offer it at 20c. per pkt.

## Improved Extra Blanche Ferry Sweet Pea.

(See cut on cover.)

**T**HE first to come into bloom of all sweet peas; was loaded with flowers before scarcely a bud had shown on sixty other varieties the past season, it is of dwarf bushy habit and will do well without any support. In color it is the most exquisite of sweet peas, the wings being almost pure white and the standard a deep rose pink. The flowers are well poised on the stem and make a very effective bouquet. This variety not only blooms earlier, but also holds out longer than any other known variety. The seed is of strong germinating vitality, and the plants are very hardy and vigorous and in profusion of bloom a wonder. This is also the finest of all varieties for growing under glass for winter flowers. Price per pkt. 10c.

O. M. RICHARDSON & Co.:

Dear Sirs,—The package by express came this afternoon and I thank you very much. All the things came in good order and the growing lilies are very fine. It is more than kind in you to replace the last ones and in addition send extras. You surely do not mean to come any way short of keeping up to your agreements. I shall tell my flower-loving friends that you do more than you agree to do. Of course you were in no way obliged to replace those lost in the mail and it was simply kind of you to do so.

Yours,

MRS. FARRINGTON.

Portland, Me., April 1, 1895.

O. M. RICHARDSON & Co., Canton, Me.:

Dear Sirs,—Please accept my thanks for the box of nice plants you sent me. I shall give them the best place in my garden. I want to say that all your plants which I have received are nice growers and free bloomers. I shall remember you when I want more. Yours truly,

Jersey City, N. J.

C. H. HUNTER, Purchasing Agent Central Ry. Co. of N. J.

# SPECIALTIES IN VEGETABLE SEEDS.

## Columbia Beet.

**S**MOOTH turnip rooted, deep blood red-flesh, of rich, tender quality; very early and does not become coarse and stringy. The Columbia is earlier than either Edmands or Eclipse, and really better in quality than these two first-class varieties. Price per packet, 10c; ounce, 15c.

## World Beater Cabbage.

**H**EADS of mammoth size and harder than any other large cabbage. Sure header and sure to head hard. In quality it is fine grained and tender. It is a rapid grower and altogether the finest cabbage ever introduced. J. U. V. Young, of Arroyo, Cal., raised two heads that weighed, respectively, 53½ and 49 lbs. Packet, 10c; ounce, 50c.

## Sweet Corn--"First of All."

**O**NE of the greatest introductions for years is this new sweet corn. It is the earliest known variety, by actual trial being one week earlier than Cory. Superior in quality to Cory; ears medium size and filled with large kernels to the very tip. Most of the ears are ten and twelve rowed. It is very desirable not only for family use, but valuable for market, where the earliest corn always brings the highest price. Packet, 10c; pint, 25c; quart, 45c; postpaid.

## Sweet Corn--"Burbank's Early Maine."

**T**HIS fine new early sweet corn originated in this State and is one if not the finest of the extra early sorts. It has a pure white cob and a cream white kernel; ear large and of good quality for the table. Should be grown by every one who has a garden. It will also be found profitable for market, as it is a very attractive variety. Packet, 10c; pint, 20c; quart, 35c; postpaid. By express, 10c. per quart; 75c. per peck.

## Prize Taker Onion.

**T**HE beautiful straw colored onion imported from Spain and sold on fruit stands in cities every fall; of immense size, often measuring sixteen inches in circumference. It is the handsomest onion in the world, and of mild, delicate flavor. Packet, 10c; ounce, 35c.

AMESBURY, Mass., May 3, 1895.

O. M. RICHARDSON & Co.,

The plants received this a. m., in perfect condition. If they do not live it will be no fault of yours. Many thanks for extras. I hope to add quite a number, in the fall, to my collection, and will remember you. It may be of interest to you to know that my mother (Mrs. M. M. Hatch), was much pleased with the plants I ordered for her, at the time I sent in my order. I enclose order and 45 cents.

Yours truly,

MRS. H. B. LOCKE.

### Matchless Tomato.



**O**NE of the finest of Tomatoes. Early, productive, of large size, and a good keeper. Try it. Packet, 10c.

### Tomato--Bond's Early Minnesota.

**W**ITHOUT doubt the earliest variety in cultivation. It originated in Minnesota, but has been tested in all parts of the country with astonishing results. They are a round, smooth variety of dark purplish color. They ripen evenly and never crack. Thos. H. Brinton, the best authority on tomatoes in this country and who raises over 100 varieties, says: Bond's Early Minnesota is the best early tomato I ever tried. Price per pkt. 10c.

### Pumpkin--New Calhoun.

**T**HIS new variety has given the greatest satisfaction everywhere, being of the finest quality for pies. The outside is of a creamy brown and the inside flesh a deep salmon color. The flesh is wonderfully thick and fine grained and the seed cavity very small. Any one who has grown this variety once will never use any other sort. Pkt. 10c; oz. 25c;  $\frac{1}{4}$  lb, 50c; lb. \$1.50.

### Pop Corn--Golden Tom Thumb.

**W**E have without doubt the finest strain of this corn in this country. The kernels expand when popped to a large size, and are sweet, tender and delicious in flavor. This is the earliest of all pop corn, ripening in 60 days. It is very productive, often two and three ears to the stalk. Packet, 10c; pint, 25c.

### Arroostook Early Field Bean.

**F**OR a general crop no variety compares with the Early Arroostook. It is extra early, ripening before the fall rains come, and is enormously productive, out-yielding the yellow eye two to one. It is a white bean of medium size, very attractive as a market variety and unsurpassed for baking. Packet, 10c; pint, 25c; quart, 45c.

### Quaker Pie Pumpkin.

**W**E sold enormous quantities of seed of this pumpkin last season and everybody is loud in its praises. It is pale straw color when ripe and would be taken for a squash by many. It is fine grained and rich flavored, and keeps well into the winter. Pocket, 5c; ounce, 15c.

O. M. RICHARDSON & Co.,

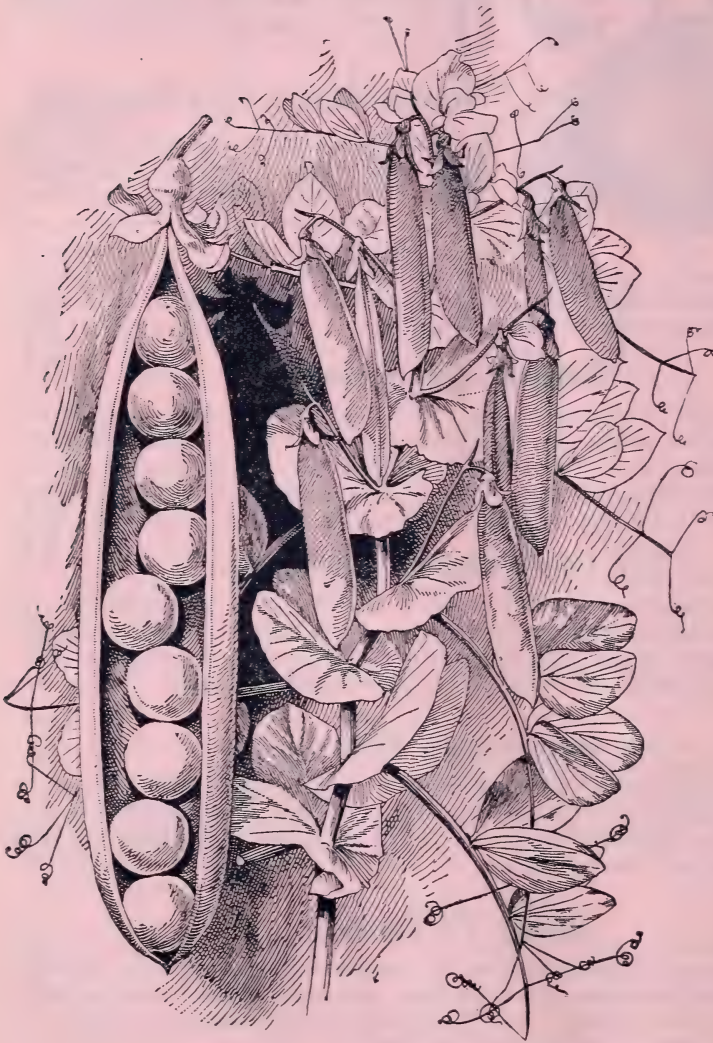
GENTLEMEN—A box of plants received from you a few days ago, was wholly unexpected, as I had already the full value of my money in seeds. Please accept my sincere thanks. The contents of the box were in perfect order and the seeds were the best I ever had.

Sincerely yours,

MRS. WM. H. PALMER.

135 Balch St., Beverly, Mass., June 17th, 1895.

## Improved Stratagem Pea.



**U**NDoubtedly the best of all the large podded varieties. The pods are of immense size and uniformly filled with very large dark green peas of the *very finest quality*. All the good qualities of the old Stratagem are highly developed and it is vastly superior to that grand old sort. Vine medium height, very stocky and bearing an abundance of the large handsome pods. One of the very finest sorts for either the home garden or for market. Seed limited. Packet, 10c; quart, 90c. By express, 35c. per quart. We guarantee our stock to be genuine.

## Cucumber--New "Japanese Climbing."

**T**HIS new variety is of fine quality for table use or for pickling, but differs from other sorts in its habit of growth. While all cucumbers are running vines, this one is so much more creeping in its habit as to easily climb poles like a Lima bean, or can be trained over trellises or fences. Pkt. 10c; oz. 40c.

## SPECIALTIES IN PLANTS.

**U**NDER this heading we offer some of the choicest flowering plants known. We do not confine ourselves to new varieties, but we have selected what we consider the very best, whether new or old. The descriptions given are exactly as the plants grew on our own grounds the past season.

### The Richmond Rose.



**T**HE most beautiful and wonderful new rose ever introduced to the flower lovers of America is the "Richmond."

It is large and full and of an exquisite shade of silvery pink with a most delightful tea fragrance. It is a most profuse bloomer, being hardly ever without flowers. The edges of the petals are beautifully crimped, giving the flower a crape-like appearance. The half-open flower cannot be surpassed in form and texture. The foliage is larger and of a darker green than any other tea rose; but its greatest and chief quality is the ease with which it may be grown; it will grow and thrive where any other rose would die; it is just as easy to grow as a geranium, and any one who has given up growing tea roses on account of their failing to thrive is *sure* to succeed with the "Richmond." It will grow luxuriantly in spite of you. The new foliage is of a rich red in color, changing to the darkest glistening olive green. If tea roses have been a failure with you in the window garden, you should try the "Richmond" and

you will be surprised and delighted at the ease with which you can grow a profusion of lovely flowers. Nice plants, 25c. each; five for \$1.

I received the plants in good order, yesterday, April 2. I am charmed with them. Many thanks. I hope I will be successful, and see them bloom this summer.

Tracy City, Tenn., April 2, 1894.

Very Respectfully,

MRS. JULIA VON BERGEN.

I wish to thank you for the generous lot of plants sent me in place of those ordered. I am much pleased with them, also with the others you sent. I have received none from any florist this year, and I have ordered from several, that were in such fine condition and such large plants.

Very truly,

MRS. H. WYMAN.

Dakland Mo., June 28, 1894.

## Abutilon Eclipse.

**THE Leopard Abutilon.**—A beautiful and odd trailing variety, the foliage being a lively green thickly spotted with bright yellow, making a most beautiful foliage plant, and add to this the fact that it is never without flowers, and you have a plant of great value. The flowers are of a light orange color and borne in great profusion, both winter and summer. For hanging baskets it cannot be surpassed, while in the garden it always attracts attention. Fine plants, 20c. each.

## Single Geranium, Perle.

The most beautiful pure white variety in the world. Petals thick and of great substance, flowers and trusses of the most beautiful shape, being perfectly round and symmetrical. The color is of the purest white, not being tinted in the least by the hottest sun. Fine plants, 20c. each.

## New Mammoth French Heliotropes.

Flowers of Gigantic Size, the Wonder of the World.

**T**HE greatest of all floral novelties yet seen. These new Heliotropes were imported by us last season. They originated in the gardens of Victor Lemoine, of Nancy, France, of whom we received our stock. It seems almost impossible for those who behold these giants in bloom to believe their eyes. The trusses average **over a foot across**, with the characteristic delicious perfume of the ordinary Heliotrope and tinged with the deepest and richest violet shade. The foliage is also of gigantic size, the leaves often measuring six inches long by four wide. A bed of these giants or even a single plant in bloom is a sight that will not soon be forgotten, the royal blooms almost hiding the plant from view and filling every breeze with their delightful fragrance. We have thousands of plants that are almost ready to bloom, that will delight all at the low price of 25 cents each; 5 for \$1; 12 for \$2. Seeds 25c. per pkt.

## New Rainbow Fuchsia.

**T**HIS new Fuchsia is among Fuchsias what Mad. Pollock and Isis are among Geraniums. The new leaves when they first appear are of a bronzy carmine tipped with pale yellow. As the leaf grows larger, attaining its full size, it changes somewhat in color, the mid rib being bright carmine, center of leaf carmine overcast with bronze and edged with delicate pink, the point of the leaf being canary yellow. The leaves forming the base of the plant near the root are colored still differently, being edged with pure white and splashed and clouded in center with light green. The stocks of the plant are all of the most brilliant shade of deep carmine, the whole plant glistening like silk, in this respect resembling the finest Begonias. The Fuchsia may well be called the "Rainbow," as it is one of the most beautiful of all plants. Every leaf seems to show different colors and markings. It also blooms freely, having flowers of a deep pink color. It is also among the freest in growth. Fine plants, 25 cents each; 5 for \$1.

I received the plants and seeds all right. Please accept thanks for extras. The plants were not wilted any at all and are growing nicely. I think your way of packing is excellent. Please accept my thanks for your promptness in sending so soon.

Yours with respect,

Bissell, Pa., March 23, 1804.

MRS. LEANNA E. LEWIS



## Richardson's New Sunset Coleus.

**T**HESE new fancy Coleus are seedlings of our own, those having the most beautiful shades and combinations being selected from thousands of plants. We have the following beautiful colors among many others: Green spotted crimson, crimson edged green, clear dark crimson, yellow edged green, pale green streaked red, green, carmine, crimson and yellow splashed; deep pink, green and crimson splashed. Price, 5 cents each or 35 cents per dozen; \$2.50 per hundred, assorted colors.

## Double Fancy Petunia, Curiosity.

This is one of the greatest novelties ever discovered. Like the Rainbow Fuchsia its colors are hard to describe. It is the most double Petunia we have ever seen, being a perfect ball. The centre of the flower is a rich purple striped with jet black; the petals are clouded in centre with brilliant carmine in a field of pure white, while the edge of the petals is of the most beautiful shade of emerald green, the whole flower being veined with darkest crimson. It is odd, striking, and beautiful beyond description. Nothing like it or even approaching it has ever before been seen among Petunias. It is also the only flower of any variety or species in the world in which green forms a part in such a beautiful combination of colors. Its effect must be seen to be appreciated. This sort is one of the strongest growers we have ever seen. Price, 25 cents each.

## The New Geranium, P. Crozy.

This new Geranium is unlike all other. It is a cross between the Ivy Geranium and the common variety. In general appearance it resembles both; the flowers are scarlet, very brilliant and veined in centre with maroon. A beautiful and interesting plant, a free grower and bloomer. 20c each; 6 for \$1.00.

## New Begonia, Bertha McGregor.

One, if not the most beautiful of all Begonias. The leaf is maple shaped, very large, of a brilliant bronze clouded with silver. When held before the light the bronze becomes a beautiful wine red in color, the whole glistening like satin. One of the freest in growth. Price, 25c each.

## Plumbago Capensis.

The beautiful blue Plumbago. Flowers of a charming light blue and borne in clusters so as to almost hide the plant. One of the most desirable of all house plants. Price, 20c each.

## Giant Cyclamen.

**T**HE Cyclamen is one of the best of fall and winter blooming plants. The foliage is very pretty, the leaves being heart-shaped and marked with silvery white. The flowers are borne on long stems high above the foliage and are produced in great numbers. We offer fine growing plants of the new Giant Cyclamen (*Cyclamen Giganthium*) at only 15c. each.

## New Heliotrope--"Picciola."

**A**NEW shade in heliotropes; flowers in large trusses and of a distinct rosy violet, almost a red, with a white centre. The plant does not have the drooping habit of ordinary varieties, but grows erect and produces its immense heads of flowers well above the foliage. An odd and beautiful variety. 20c. each.

I received your pink seeds. They produced very fine pinks indeed. I am delighted with them. Very respectfully,

Mt. Sidney, Va., Oct. 28, 1895.

SALLIE JONES,

**Solanum Aznreum.**

as to be covered with flowers the entire season. Superior to Pink Pet. and unlike it in every way. Price, 20c each.

### Description:

**T**HE Pink Pet is a perfect Carnation, flowered Petunia, the flowers being about two inches in diameter, perfectly double to the center, and of the most lovely shade of silvery pink imaginable. The plant is of dwarf habit and is a living bouquet of these deliciously fragrant flowers the whole season. This beautiful little gem has been the admiration of every visitor at our greenhouses this season. It is entirely different from any other Petunia grown.

Price, strong plants in bud or bloom, 20 cents each.

## Solanum Azureum.

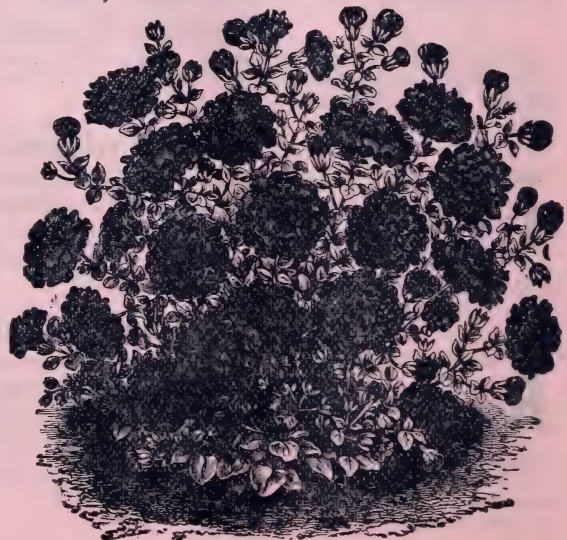
**T**HE beautiful new Solanum. One of the most rapid growing vines we have ever seen, with beautiful cut leaves and large quantities of bright blue clusters of flowers followed by clusters of red berries. One of the grandest of all climbers for either the window garden or for covering porches in summer. Price of strong plants, 20c each.

## New Petunia.

### Pink Beauty.

The most charming variety ever seen. Flowers of medium size and of the brightest shell pink in color; as double as a rose, deeply fringed and deliciously scented. A very rapid grower and so prolific in bloom

## Petunia, Pink Pet.

**Petunia Pink Pet.**

## Richardson's Mammoth Verbenas.

We have a large stock of all colors from darkest crimson to the purest white, striped, splashed and sweet-scented. The flowers are of mammoth size, often as large as a silver quarter. A bed of Verbenas is always a gorgeous sight, and we offer them so cheap that all can afford to have them. Price, 35c per doz., \$2.50 per hundred. Mixed colors.

### New White Verbena, Snowbird.

A new pure white, sweet-scented variety of the celebrated mammoth strain. When in full flower it is beautiful beyond description. It is as the fragrance of the Arbutus. For cutting for bouquets it has no equal. Price, 10c each, 75c per doz.

### Begonia, Manacata Aurea.

A new and scarce variety of the Rex habit of growth, leaves large, light green and clouded with cream white, the stems being covered with red hair. Flowers light pink. Very odd and beautiful in appearance. On account of its great scarcity the price is necessarily high. Price, 30c each.

## The Grand New Ivy Geranium,--(Souv. Chas. Turner.)

**T**HE grandest and handsomest Ivy Geranium ever produced. Florets  $2\frac{1}{2}$  inches in diameter, in trusses 6 inches across, and of a most beautiful shade of deep, bright pink, approaching scarlet in color; the upper petals feathered with maroon. Plant a strong, free grower with bright, glistening foliage. Everyone who visits our green-houses exclaims at its great beauty, which must be seen to be appreciated. This sort has been awarded numerous certificates of merit in Europe and America. Nice plants, 20c each.



Souv. Chas. Turner.

### Linum Flavum.

An interesting and pretty plant for winter blooming. Flowers about one inch in diameter, and of a beautiful shade of orange. Easily grown. Price, 15 cents each.

## Grand New Chrysanthemums.

**Golden Wedding.**—Immense flowers, round and full of the richest golden yellow color, has a very strong stem carrying its flowers erect, giving it a bold and striking appearance. This is the finest yellow chrysanthemum in existence, and was awarded the Silver Cup offered by *Garden & Forest*, for the best vase of six blooms and also the Silver Cup offered by Mrs. W. Bayard Cutting for the best

vase of 50 flowers, and first prize for the best yellow chrysanthemum at the Madison Square exhibition, at New York. The greatest recommendation ever given to any variety. Price, 20c each.

**E. G. Hill.**—Another fine sort and a most odd and beautiful color, Golden yellow shaded with bronze. This sort has also taken many prizes at exhibitions and is one of the best. Price, 20c each.

**Ivory.**—The finest of all white chrysanthemums. Flowers of immense size and of the purest ivory white. A grand bloomer and has taken many prizes. Largely grown by florists for cut flower work. Price, 15c. each.

For additional chrysanthemums see general collections of plants.

### **New Silver Geranium,--Mrs. Parker.**

The foliage of this new Geranium resembles the well-known Mount of Snow, the leaves being light green bordered with a broad band of pure white. The Mrs. Parker, however, differs from other Silver geraniums in having the most beautiful tresses of flowers, the color being a bright pink with a white centre. The flowers are double and the equal of any pink variety among the common geraniums. When you add to this its beautiful silvery foliage, we have a plant whose beauty cannot be overestimated, and as a plant for the window garden it stands almost without a rival. Price, 20c each.

### **New Rose Geranium,--Mrs. Taylor.**

Foliage somewhat resembles the common Rose geranium, but makes a handsomer plant, but its chief value over the common rose geranium is its flowers which are of the brightest scarlet, with centre of flower feathered with maroon, resembling a pelagonium. A free bloomer and a most desirable new plant. Price, 20c each.

### **Burgmansia Arborea, Giant Ghost Flower.**

**The Double Everblooming Variety.**—The most wonderful plant within our knowledge. Although not a new plant it is always exceedingly rare. The flowers are pure white, deliciously fragrant and of gigantic size, bell shaped, often measuring a foot in length by eight inches in width. A plant now growing in our green-house is nine feet high and had 83 of these mammoth blossoms open at one time this season. The plants begin blooming quite small and are scarcely ever without flowers. They can be trained in the form of a tree and when in bloom nothing can equal them in magnificence and surpassing beauty. Large stocky plants 25c each, five for \$1.00.

### **The Hardy Chinese Matrimony Vine--(Lycium Chinese)**

Is a most vigorous hardy climbing plant when trained to an arbor, fastened to a fence, attached to a tree, to the side of a house, the pillars of a piazza or in any location where hardy vigorous climber is desired. It sends out numerous side branches, so that it covers a great amount of space in a short time, and every new growth is at once covered with bright purple flowers, which are succeeded by

brilliant scarlet berries nearly an inch long, every branch being loaded with them; the contrast between the glossy, dark green foliage and shining scarlet fruit is extremely beautiful. It continues flowering and new berries are forming from late spring until frost. The berries ripen in early autumn and remain on the vine late into the winter. It will grow and thrive in any situation, either shade or bright sunlight, and will take root in any soil; in fact, nature has given it all the essentials for wide popularity. Price, 20c each.

## The Beautiful Marguerite Carnation.

The grand new perpetual blooming carnations are a new wonder in the floral world. The flowers are magnificent, very large and coming in rich, solid colors of deep crimson and black to the loveliest shades of pink; also white splashed with crimson, variegated and bizarre, and of the richest clove fragrance. The plants are strong growers and profuse bloomers. They make a grand display in the garden during summer, and if taken up in the fall will bloom all winter in the house. We have 10,000 plants of all colors mixed, having raised this large stock for the purpose of giving our customers a great bargain in them. The exceedingly low price of 50 cts. per doz. buys them, or \$4 per hundred. These are exactly the same plants as are being sold for 20c each. We want everyone to try a dozen or more of them.

## Hydrangeas.

The pot hydrangea is a plant of such prominence and beauty that we venture to offer them among our specialties.

**Otaska.**—Grand trusses of enormous size and of an exquisite shade of pink. Plant a very strong rapid grower. 15c. each.

**Thos. Hogg.**—Flowers pure white. An abundant bloomer. The standard white variety. 15c. each.

**Hortensia.**—Pink changing to blue; large trusses; an old favorite. 15c. each.

## French Cannas.

The Canna has created a decided sensation in the past few years. Their large tropical foliage with spikes of the richest colors make them unsurpassed for grand and effective beds on the lawn.

**Madame Crozy.**—Undoubtedly the grandest of all varieties. Color brilliant vermilion scarlet, bordered with deep golden yellow. The flowers are borne in great profusion, crowning the plant with a blaze of glowing color. The plant grows about four feet high, the foliage being massive and of a vivid green. Price, 25c each.

**Ehemani.**—Entirely distinct from all other Cannas. Rich green foliage. Crimson flowers produced in masses. Price, 15c each.

**Victor Hugo.**—Deep orange red flowers, foliage dark purplish crimson. Price, 20c each.

**Louis Chretien.**—Clear orange splashed with yellow. Price, 20c each.

NOTE—Cannas increase the same as dahlias and the roots may be stored in the cellar and planted from year to year.

The plants arrived in excellent condition. Thank you for the extra.

Yours sincerely,

Sherman, Vt., May 28.

MRS. GEO. E. PLUMB.

## The Peerless New Climbing Rose--"Crimson Rambler."

**T**HE most valuable rose introduced for many years. It is a rapid grower, attaining a height of 8 or 10 feet in a season. The flowers are produced in immense pyramidal clusters, measuring 9 or 10 inches in height and 7 inches across, fairly covering the plant, and making a solid mass of glowing crimson. The color does not fade, but remains strong and vivid till the flower falls. Three hundred blooms have been counted on one shoot at one time. The Crimson Rambler is a hardy garden rose and is adapted to the entire country. This grand rose has created a great sensation everywhere and is said to be worth \$25,000 to the man who found it. Price, small plants 30c. each.

## New Geranium--"Idella."

**T**HIS beautiful new variety is offered for the first time, this year. It is the most striking, and by many considered the handsomest of single geraniums. The flowers and truss are of the largest size and of a charming deep pink with a large white centre. Attracted more attention than any other sort and large prices were offered for plants at our greenhouses the past summer. We have a few nice plants at 25c. each; five for \$1.00.

## Sophospermum Scandens.

**O**NE of the handsomest of all climbing plants. It is of very rapid growth with velvety heart-shaped leaves and beautiful rose-colored flowers, greatly resembling gloxinia blooms and almost as beautiful. For a vase on the lawn or as a climber for the veranda it has no equal, and as a window climber it is equally as good. We cannot describe its charming appearance when loaded with flowers. You must see it to appreciate it. Price, nice plants 20c. each.

## New Japanese Maple-Leaved Abutilon.

"Souvenir de Bonn."

**O**F all the soft-wooded foliage plants introduced in recent years, none can equal this in distinctness and usefulness. It is a strong rival to a Japanese maple; in fact, at first glance, it might be mistaken for one. For massing in groups or in long borders, for single specimens, either in the garden or greenhouse, for any and all decorative purposes, it cannot be surpassed. It is a most striking decorative foliage plant, with beautifully variegated leaves of good size, regularly and evenly marked with white and green. Amid these leaves the gracefully drooping, orange-colored flowers are produced in great abundance, forming a clear and brilliant contrast. In habit of growth this Abutilon is tree-like—strong and upright, growing three to four feet in one season, but quite graceful. For summer bedding and greenhouse decoration in winter it is equally valuable. We have propagated this largely, as there must be an extensive demand for it, and so that it may be within the reach of all we offer it very low. Price, 30c. each, \$3.00 per doz.

# GENERAL LIST OF FLOWER SEEDS.

Our flower seeds have been selected from the finest strains possible to obtain in any country, and are tested in the greenhouse before sending out, and fully warranted in every respect to be fresh, reliable and true to name. Many are grown especially for us in climates best adapted to their proper development, and all who purchase of us may be sure of the best that the markets of the world afford.

## Aster.

The Aster is one of the most popular annuals in cultivation. To secure early flowers plant in boxes of light soil in the house and transplant to the open ground at the proper season.

**Peony fld. Perfection.**—Large double flowers of many colors. Mixed. Packet, 10c.

**German Quilled.**—An odd variety with quilled petals. Packet, 5c.

**Dwarf Bouquet.**—Grows only about six inches high and is a living bouquet of flowers. Packet, 5c.

**White Queen.**—A dwarf, pure white variety. Flowers large. One of the finest of all Asters. Packet, 10c.

**Mixed, all Colors.**—Packet, 5c

## Antirrhinum.

(Snap Dragon) Spikes of gay colored flowers. They usually survive the winter and bloom the second summer. Packet, 5c.

## Alyssum, Sweet.

Fragrant white flowers. Fine for bouquets. Packet, 5c.

## Amaranthus.

Beautiful ornamental annuals, making a fine display. Pkt. 5c.

## Ageratum.

Extremely floriferous plants, being covered with flowers the entire season.

They also make fine house plants, Packet, 5c.

## Balsam.

One of the most popular and beautiful of our garden annuals. Flowers as double as a rose and of many colors.

Mixed colors, packet, 5c.

Dwarf mixed, " 5c.

Camillia flowered, " 10c.

## Bartonia.

Beautiful large yellow flowers. Pkt 5c.

## Begonia.

Magnificent flowering plants for pot culture. The tuberous rooted begonias are becoming more popular every year. Flowers 6 to 9 inches in circumference and of many colors.

Tuberous rooted, single, packet, 15c.

" " double, " 25c.

## Calliopsis.

Showy summer annuals with large bright towers borne in great profusion all summer long. Succeeds everywhere. Elegant for garden decoration and fine for cutting. Mixed. Packet, 5c.

**Golden Wave.**—Hundreds of beautiful golden blossoms with dark centres. Packet, 5c.

## Coreopsis.

One of the most showy of the hardy perennials forming plants 2 to 3 feet high and bearing in profusion large flowers of bright golden yellow. Pkt. 10c.

**Calendula.**

The pot Marigold, remarkably profuse blooming bushy annuals, blooming till frost; fine for garden or pot culture. Mixed colors. Packet, 5c.

**Campanula.**

Hardy plants bearing large bell shaped flowers. Packet, 5c.

**Canterbury Bells.**

Hardy bi-ennial, bearing large bell shaped flowers of many beautiful shades.

Double mixed, packet, 5c.

Single " " 5c.

**Canary Bird Flower.**

A rapid growing climbing vine, beautiful for trellis work, growing 10 to 15 feet high. Produces large quantities of pretty fringed bright yellow flowers, which resemble a canary bird with expanded wings. Packet, 5c.

**Candytuft.**

Dwarf annuals blooming profusely the whole season. They are always great favorites, the plants being covered with flowers and are of the easiest culture. Mixed packet, 5c.

**Cosmos.**

The plants are literally covered in the fall with large single flowers of many shades. Grows 4 to 6 feet high. Mixed colors. Packet, 10c.

**Coleus.**

Beautiful foliage plants for bedding. Packet, 15c.

**Canna.**

Tropical looking plants growing about 4 feet high. Flowers of brilliant shades of red and yellow. Packet, 10c.

**Cockscomb.**

Fine for pots as well as bedding. Large crimson and yellow comb-like heads. Packet, 5c.

**Convolvulus.**

The well-known morning glory. Unequaled as a rapid growing climber. Packet, mixed colors, 5c.

**Chrysanthemum.**

Summer flowering plants producing large single flowers of many colors. Mixed packet, 5c.

**Carnation.**

The well-known florists pink. Mixed colors. Packet, 15c.

**Dahlia**

Too well-known to need description. Double and single. Mixed packet, 10c.

**Datura.**

Large showy flowers. Packet, 5c.

**Dianthus.**

Always a general favorite. The Dianthus Pink blooms the entire summer and autumn and is of many colors from pure white to dark crimson. Many are hardy and bloom the second season. They also make fine pot plants.

**Chinensis.**—Double, mixed. Packet, 5c.

**Heddewiggii.**—Single, mixed. Packet, 5c.

**Double White.**—Packet, 5c.

**Eastern Queen.**—Grand flowers 2 to 4 inches across, magnificently striped and stained. Single. Packet, 5c.

**Euphorbia Hetero.**

The Mexican Fire Plant. Grows two to three feet high. The leaves are at first green, but about midsummer the beautiful orange scarlet bracts appear and the surrounding leaves are blotched with vivid carmine. A very striking and beautiful plant. Packet, 10c.

**Everlastings.**

All varieties mixed. Packet, 5c.

**Forget-Me-Not.**

Thrives well in almost any soil, but prefers a damp sandy situation. Flowers blue, hardy. Packet, 5c.

**Four-O'clock.**

(Marvel of Peru.) Easy to grow as a weed, but is one of the most showy of



annuals. Planted in masses, their rich glossy leaves and profusion of bloom present a most gorgeous sight. Packet, 5c.

### Gourds.

Ornamental varieties. Mixed. Packet, 5c.

### Godetia.

Very handsome annual, growing about one foot high, bearing freely large flowers 3 to 4 inches across, of exquisite colors and shades, glistening in the sun like satin. Mixed colors. Packet, 5c.

### Grasses.

Ornamental varieties. Mixed. Packet, 5c.

### Gallardia.

Greatly admired for their fine forms and rich blending of colors. In profusion of bloom they are indeed wonderful. Packet, 5c.

### Heliotrope.

Everyone is acquainted with this favorite fragrant flower, easily grown from seed. Choice mixed. Packet, 10c.

### Helianthus.

(Sunflower.) **The Dahlia.**—Flowers double, bright yellow; a perfect golden ball. A most beautiful and desirable flower. Packet, 5c.

**Mammoth Russian.**—The tall large sort, grown largely for poultry. Packet, 5c.

### Larkspur.

Well known annuals of great beauty and noted for their rich colors. Mixed. Packet, 5c.

### Lobelia.

Forms dense masses of blue and white flowers, fine for bedding or for hanging baskets. Packet, 5c.

### Lupinus.

The deep blue Texan Lupin. Neat foliage, carpeting the ground, on which

are borne on stems six inches long lovely flowers of a deep sea-blue color and deliciously fragrant. Packet, 5c.

### Marigold.

Well known garden favorites.

**Eldorado.**—Many plants of this variety bear 75 to 100 flowers each, round and double as a dahlia and of mammoth size, 3 to 4 inches across, of several shades of yellow and orange. Packet, 5c.

**African Double.**—Mix. " 5c.

**French** " " " 5c.

### Mignonette.

A universal favorite on account of its delightfully fragrant flowers. The seed should be sown liberally in a sunny place.

Mixed, packet, 5c.

Giant, " 5c.

### Molucoa Balm.

From Syria. The stems are completely surrounded with flowers. Unlike anything else when cut or broken it emits a strong, delightful fragrance of balm. Packet, 10c.

### Mimulus.

Singularly shaped and brilliantly colored flowers, blotched and spotted in every conceivable manner. They require partial shade. Packet, 5c.

### Nasturtium.

Well-known beautiful luxuriant annual climbers, bearing gorgeous flowers in profusion.

**Tom Thumb.**—Mixed packet, 5c.

**Tall or Climbing,** " " 5c.

One oz. either of above, - 20c.

### Pansy.

Fine mixed all colors. Packet, 5c; 7 packets for 25c.; oz. \$1.00.

### Petunia.

One of the finest and most indispensable of our garden favorites.

Single mixed colors packet, 5c.

Double " " " 25c.

**Poppy.**

Poppies hold a prominent place in every garden, making a gorgeous display.

**Crimson King.**—Brilliant dark crimson flowers, double, glistening like satin. Packet, 10c.

**Snowdrift.**—Flowers large pure white and very double. Fine for bouquets being pure and double. Packet, 10c.

**Carnation Flowered.**—Small double flowers of many colors. Pkt. 5c.

**Peony Flowered.**—Flowers large double and of many shades. Pkt. 5c.

**Golden Gate.**—Flowers single. Their great variety of colors and markings which seem endless, make this one of the most popular of all varieties. Packet, 10c.

**Shirley.**—Single and of light colors, many of the petals being broadly margined. The flowers are very large and showy, and among the most beautiful of all poppies, being equalled in brilliancy only by the Tulips. Packet, 5c.

**Phlox Dummondii.**

For beds and massing nothing can surpass these beautiful annuals. They produce immense trusses of large brilliant flowers of numberless hues throughout the summer.

Mixed colors, packet, 5c.

Large flowering, mixed. Packet, 10c.

Star and Fringed, “ “ 10c.

Hardy Phlox, “ “ 10c.

**Portulacca.**

Low spreading plants with masses of brilliant flowers of various shades of red, yellow, pink, white, striped, etc.

Single, packet, 5c.

Double, “ 15c.

**Primrose.**

(Chinese.) One of the best plants for house culture, succeeding well in a cool, partly shaded window. Packet, mixed, 20c.

**Ricinus.**

(Castor Oil Bean.) Magnificent tropical foliage plants, producing a fine effect on the lawn or for the centre of flower beds. Packet, 5c.

**Sweet William.**

Hardy plants about one foot high, of extreme richness and variety of color. Very sweet scented. They make fine clumps and bloom for many years.

Single, mixed, packet, 5c.

Double, “ “ 5c.

**Stock, Ten Weeks.**

This universal favorite is too well known to need extended description. The Ten Weeks Stock has been much improved in the last few years, the flowers being of large size and extra double.

Mixed, many colors, packet, 5c.

Large flowering, packet, 10c,

“ “ pure white, packet, 10c.

**Scabiosa.**

(Mourning Bride.) A choice old garden favorite, but much improved of late years. They are of many charming colors. Very free in bloom, and fine for bouquets. Packet, 5c.

**Smilax.**

Beautiful window or greenhouse climber, largely used for decorating. Packet, 10c.

**Scarlet Runner.**

Fine for covering unsightly objects during summer, being a vine of rapid growth and rich scarlet flowers. Pkt. 5c.

**Sweet Peas.**

One, if not the most popular of flowers. Sweet Peas are one of our specialties and we have to offer a select collection of only the finest varieties.

**Eckford's, New Mixed.**—The finest strain ever produced. Flowers larger and finer than the old sorts.

Packet 10c., oz. 25c.,  $\frac{1}{4}$ lb. 80c.

**Queen of England.**—Eckford's new pure white. The finest of all white Sweet Peas. Packet 10c., oz. 30c.

**The Senator.**—Striped brown purple on creamy ground. Wings, dark purple striped white. A unique and fine variety. Packet 10c., oz. 25c.

**Boreatton.**—Rich crimson and maroon. Packet 10c., oz. 25c.

**Indigo King.**—Indigo blue. Pkt. 10c

**Miss Blanche Ferry.**—Large flowers, crimson, pink and blush white. A profuse and early bloomer, one of the finest of all varieties. Pkt. 10c., oz. 25c.

**Cardinal**—Large flowers, Cardinal crimson and scarlet. Pkt. 10c., oz. 25c.

**Queen of the Isles.**—White striped with rose and crimson. Packet 10c., oz. 25c.

**Scarlet Invincible.**—Beautiful shade of scarlet. Packet 5c., oz. 15c.

**Butterfly.**—White suffused with lavender. Packet 5c., oz. 15c.

**Pure White.**—Packet, 5c., oz. 15c.

**New Mixed.**—A fine mixture of many varieties and colors. Packet 5c., oz. 15c.,  $\frac{1}{2}$ lb. 40c., lb. \$1.25.

**Good Mixed.**—The common Sweet Peas, flowers not so large and fine as the New Mixed, however, they are largely planted. Packet, 5c., oz. 10c.,  $\frac{1}{2}$ lb. 25c., lb. 75c.

### Verbena.

For garden beds the Verbena has no rival. Blooms continually from spring to autumn. Flowers of the most brilliant colors.

**Good Quality.**—Mixed colors. Packet, 5c.

**Mammoth.**—Mixed colors. Packet, 15c.

**Pure White.**—Packet, 10c.

**Sweet Scented.**—Flowers small. Packet, 5c.

**Scarlet Defiance.**—Large, beautiful, brilliant scarlet. Packet, 10c.

### Violet.

Pure white. Packet, 10c.

### Cyprus Vine.

Delicate fern-like foliage; star-shaped flowers. An excellent vine. Packet, 5c.

### Cobea Scandens.

A rapid and beautiful climber, having dense green foliage and large purple bell-shaped flowers. Packet, 10c.

### Zinnia.

One of the easiest grown and finest of all annuals. No plant blooms more continually. The varieties we offer are far ahead of the old-fashioned sort, having been of late very much improved.

**Mammoth.**—Flowers 4 to 5 inches across, of fine form, perfectly double, foliage heavy and luxuriant and is not affected by dry or wet weather. The flowers keep perfect a long time. Packet, 10c.

**Best Double Mixed.**—Packet, 5c.

**Zebra.**—Striped, odd and beautiful. Packet, 10c.

### Salvia.

The well known and beautiful scarlet sage. Packet, 5c.

### Moonflower.

**Mixed Varieties.**—Packet, 5c.

**Bona Nox (Good Night.)**—Pkt., 5c.

**New Striped Leaved.**—Pkt., 10c.

Received my plants Friday, and I was so much pleased with them. I received every thing I ordered, and more. Thank you very much for the extras. The plants are such nice ones. A friend of mine upon seeing my nice Begonia-Compta, and being told I intended to forward another order, desired me to order one for her. Your plants will advertise themselves among my friends, and trust by another fall or spring may bring you a good many orders.

Your in haste,

MRE, ROSE L. CARTER.

March 12, 1894.

# VEGETABLE SEEDS.--STANDARD LIST.

## Asparagus.

This delicious vegetable may be easily grown from seed. Sow in drills one foot apart and when four inches high thin to about nine inches apart. Requires 3 years to come into full bearing, but is then good for 20 years cutting.

**Conover's Colossal.**--The finest variety. Packet, 5c.

## Beet.

Sow in drills about one foot apart and 2 inches deep, in light well-enriched soil.

**Early Blood Turnip.**--The standard variety. Early, of fine quality and rich blood red in color. Packet 5c., oz. 10c.,  $\frac{1}{4}$  lb. 30c., lb. \$1 00.

**Eclipse.**--A very early blood red beet of excellent quality. Packet 5c., oz. 10c.,  $\frac{1}{4}$  lb. 30c.

**Egyptian.**--Large size and of a deep crimson in color. Tops small. Packet 5c., oz. 10c.,  $\frac{1}{4}$  lb. 25c.

## Beans.

**Improved Golden Wax.**--Much better than the old golden wax, pods larger and more abundant. Rich golden yellow color, tender and melting; dwarf or bush. Packet 5c., pint 25c., quart 40c.

**Mammoth Wax.**--(Dwarf or bush) Pods frequently reach a foot in length and as thick as a man's finger, of a rich golden color, stringless, tender and delicious. Should be planted twice as far apart as the ordinary sorts, the plant attaining a very large size. Enormously productive. Packet 5c., pint 30c., quart 50c.

**Horticultural.** --(Dwarf or bush) The dwarf Horticultural is the best variety for shell beans. Pkt. 5c., pint 20c., quart 30c.

## Early Refugee.

--(Dwarf or bush. One of the earliest of all varieties and rapidly becoming a favorite sort; pods silvery green in color, free from strings, tender and melting. Packet 5c., pint 25c., quart 40c.; postpaid.

**Early Mohawk.** --(Bush.) Very early and will stand more cold than most of the bush varieties. This variety is largely grown in the Southern States for Northern markets. The pods are from five to six inches long; the seeds, when ripe, drab with purple spots. Packet 5c., pint 25c., quart 40c.

**Extra Early Red Valentine.** --One of the best either for market or family use, being very early, productive and of excellent flavor. Dwarf or bush. Packet 5c., pint 30c., quart 40c.; postpaid.

**Early Golden Cluster Wax.** --(Pole or running.) Begins to bear in July and continues until frost. The pods are of a beautiful golden yellow and freely produced. Quality of the best. Fine either string or shelled. Packet 5c., pint 35c., quart 50c.

## Brussels Sprouts.

A most delicious vegetable of the cabbage family and as easily grown. Cultivation same as for cabbages. Pkt. 10c., oz. 25c.

## Corn Salad.

One of the most highly prized and delicious of all salads. Sow early in rows one foot apart. Will be ready for the table in from six to eight weeks from sowing. Packet 5c., oz. 10c.

## Cauliflower.

Cultivation same as for cabbage.

**Early Paris.** --The standard variety. Packet, 10c.

**Cabbage.**

For early crop sow in April and transplant the early part of May, in this latitude. For late crop for winter use sow in July. Cabbages like a rich soil and frequent hoeing. To keep off the cabbage-worm cover the heads with dry earth. This is a sure remedy, and as the heads grow from the inside no injury can possibly result.

**Fotter's Improved Brunswick.**—The earliest large sort. Pkt. 5c., oz. 20c.

**All Seasons.**—Good for summer or winter. Packet 5c., oz. 20c.

**Surehead.**—Large. A fine variety. Packet 5c., oz. 25c.

**Late Flat Dutch.**—The best winter variety. Packet 5c., oz. 20c.

**Early Summer.**—Fine for early market or home use. Pkt. 5c., oz. 25c.

**Drumhead Savoy.**—Finer flavor than ordinary cabbages. Pkt. 5c., oz. 25c.

**Carrots.**

Carrots delight in a rich sandy soil. Sow in rows 15 inches apart and thin to three or four inches apart in the row.

**Improved Long Orange.**—Grows to a large size, often 12 ins. long by 3 inches through. Fine for feeding to cows, increasing the milk and imparting to the butter a richer golden color. Packet 5c., oz. 15c.,  $\frac{1}{4}$  lb. 40c., lb. \$1.00.

**Danvers.**—Grows shorter and thicker than the long orange. Also produces a great weight to the acre. Flesh solid and of a rich deep orange color. Packet 5c., oz. 15c.,  $\frac{1}{4}$  lb. 40c., lb. \$1.00.

**Celery.**

Sow early and transplant to the open ground at the proper season, in rows five feet apart and six inches apart in the row. Begin to hill up the plants in August and continue the process as the plants increase in height.

**White Plume.**—Said to be self blanching, but is much improved by banking up in the ordinary way. Pkt. 5c., oz. 30c.

**Golden Heart.**—A dwarf variety, which for crispness and rich flavor has no superior. Packet 5c., oz. 30c.

**Cucumbers.**

Do not plant until sure of settled warm weather. Plant in hills 4 or 5 feet apart each way; each hill should be prepared by mixing a shovelful of well rotted manure with the soil. As soon as danger from insects is past thin to four plants in the hill. Do not allow any to ripen on the vines as it greatly retards their bearing.

**Improved Arlington or White Spine.**—Early and productive. Pkt. 5c., oz. 10c.,  $\frac{1}{4}$  lb. 25c.

**Boston Pickling.**—The finest of all for pickling. Packet 5c., oz. 10c.,  $\frac{1}{4}$  lb., 25c.

**New Everbearing.**—Flowers and bears fruit until killed by frost. Packet 5c., oz. 10c.,  $\frac{1}{4}$  lb. 25c.

**Corn—Sugar.**

Plant after the ground has become warm and settled, in rows 4 feet apart and 18 inches apart in the row.

**Cory.**—One of the earliest varieties and of excellent quality. Packet 5c., pint 20c., quart 30c.; postpaid.

**First of All.**—See Specialties.

**Early Crosby.**—A great favorite largely used for canning. Very productive and of fine quality. Packet 5c., pint 20c., quart 30c.

**Perry Hybrid.**—A medium early variety; sweet and tender. Packet 5c., pint 20c., quart 30c.

**Early Minnesota.**—One of the best of the medium early sorts. Fine for market or family use. Packet 5c., pint 20c., quart 30c.

**Country Gentleman.**—The tenderest, richest and finest flavored of all sweet corn. Ears of good size and often 3 or 4 on a stalk. Unrivalled as a family variety. Season medium to late. Packet 5c., pint 25c., quart 40c.

#### **Corn—Pop.**

Should be planted somewhat nearer than recommended for sweet corn.

**White Rice.**—A standard variety. Early. Pkt. 5c., pint 25c., quart 40c.

**Queens Golden.**—A fine variety, popping tender and sweet. Packet 5c., pint 25c., quart 40c.

#### **Cress.**

Sow thickly and cover very lightly. A popular salad. Packet 5c., oz. 10c.

#### **Kohl Rabi.**

A vegetable between a cabbage and a turnip. Packet 5c., oz. 35c.

#### **Mustard.**

**White.**—The best variety for salad. Packet 5c., oz. 10c.

#### **Lettuce.**

For a succession sow every two weeks from April to August, in rows one foot apart and thin to one foot apart in the row.

**Hanson.**—Makes large handsome heads of fine quality. Pkt. 5c., oz. 15c.

**Boston Curled.**—Highly esteemed for earliness. Packet 5c., oz. 15c.

**Black Seeded Butter.**—Makes hard heads with few outer leaves. Tender and fine. Packet 5c., oz. 15c.

#### **Melon.--(Water.)**

Melons thrive best in a rich warm sandy soil. Plant in hills same as recommended for cucumbers, except that the hills should be six feet apart and two shovels full of old manure used in each hill.

**Vick's Early.**—One of the earliest and best for northern latitudes. Pkt. 5c., oz. 10c.

**Phinney's Early.**—Another fine early sort. Pkt. 5c., oz. 10c.

**Ice Cream.**—A delicious variety. Early. Packet 5c., oz. 10c.

**Florida Favorite.**—Attains a large size and is the best variety to grow in the middle and southern States. Pkt. 5c., oz. 10c.

#### **Melon---Musk.**

Plant same as recommended for cucumbers.

**Banquet.**—New and extra fine. In quality it has no equal; dark, rich salmon in color; easier to grow and more prolific than any other variety. Packet 5c., oz. 10c.

**Montreal Nutmeg.**—Of large size, often weighing 20 pounds, almost round in shape and of delicious quality. Packet 5c., oz. 10c.

**Miller's Cream.**—Of rich, juicy quality. Rich salmon in color. Packet 5c., oz. 10c.

#### **Mangel Wurtzel.**

**The Mammoth Prize.**—Roots of gigantic size, often weighing 10 to 25 lbs. The best and most profitable crops to raise for stock feeding. Packet 5c.,  $\frac{1}{4}$  lb. 15c., lb. 50c.

#### **Onion.**

The ground for onions should be deeply pulverized and heavily manured, and as soon as the ground can be worked sow thinly in drills one foot apart, cover with fine soil and firm down with a roller or back of the hoe; previous to planting, however, the ground should be rolled or tread firmly. Thin to 3 or 4 inches apart.

**Yellow Globe Danvers.**—This is the standard market variety. Beautiful yellow color, fine quality and a good keeper. Packet 5c., oz. 15c.,  $\frac{1}{4}$  lb. 60c., lb. \$1.75.

**Large Red Wethersfield.**—A favorite sort, large yielder and a good keeper. Packet 5c., oz. 15c.,  $\frac{1}{4}$  lb. 40c., lb. \$1.50.

**Extra Early Red.**—A fine very early sort. Packet 5c., oz. 15c.,  $\frac{1}{4}$  lb. 40c.

### Parsnip.

Sow early in drills 15 inches apart and cover one-half inch deep. Thin to 4 or 5 inches apart.

**Improved Guernsey.**—The best kind and the standard everywhere.

Packet 5c., oz. 10c.,  $\frac{1}{4}$  lb. 30c.

### Pepper.

Sow in hot bed early in April and transplant to the garden the latter part of May, in mellow soil, 18 inches apart.

**Red Chilli.**—Largely used in sauce and flavoring pickles. Strong. Pkt. 5c., oz. 25c.

**Ruby King.**—A large handsome variety of mild flavor. Pkt. 5c., oz. 25c.

### Peas.

**Champion of England.**—The best and finest in quality of all late peas. Pkt. 5c., pt. 20c., qt. 35c., pk. \$1.25.

**American Wonder.**—Very early dwarf and of the finest quality. Wrinkled. Pkt. 5c., pt. 25c., qt. 50c., pk. \$2.00.

**Alaska.**—The earliest blue pea, and largely planted for market. Pkt. 5c., pint 20c., quart 35c., peck \$1.25.

**Telephone.**—A tall wrinkled pea, very productive and of the finest quality. Pods and peas very large. Pkt. 5c., pint 20c., quart 35c., peck \$1.50.

**Bliss' Abundance.**—A second early variety, wrinkled and of excellent quality; grows three feet high. Pkt. 5c., pint 20c., quart 35c., peck \$1.50.

**Black Eye Marrowfat.**—A well known large handsome variety, and enormously productive. Pkt. 5c., pint 20c., quart 35c., peck \$1.00.

### Radish.

For succession sow at intervals, from April to August.

**French Breakfast.**—One of the quickest in growth and mild and tender, bright scarlet. Pkt. 5c., oz. 10c.  $\frac{1}{4}$  lb., 30c.

**Celestial.**—A long sort of pure white color, fine flavor. Pkt. 5c., oz. 10c.

**Earliest Carmine.**—One of the earliest and finest. Pkt. 5c., oz. 10c.,  $\frac{1}{4}$  lb., 30c.



### Squash.

Sow in hills as recommended for watermelons.

**Hubbard.**—The standard winter squash. Has no superior. Packet 5c., oz. 10c.,  $\frac{1}{4}$  lb. 30c., lb. \$1.

**American Turban.**—A fine fall variety. Packet 5c., oz. 10c.,  $\frac{1}{4}$  lb. 30c.

**Early Bush Crookneck.**—Considered the best summer squash. Packet 5c., oz. 10c.,  $\frac{1}{4}$  lb. 30c.

**Fordhook.**—Flesh of the best quality, dry and sweet; one of the best keepers and an all around first-class variety. Packet 5c., oz. 15c.,  $\frac{1}{4}$  lb. 40c., lb. \$1.

**Brazilian Sugar.**—Liked by some better than any other variety. Packet 5c., oz. 10c.

### Spinach.

Sow at intervals of two or three weeks for summer use, in rich soil.

**Long Standing.**—The standard variety. Packet 5c., oz. 10c.

### Sage.

Large leaved variety. Packet 5c., oz. 25c.

### Turnip.

Sow same as recommended for carrots.

**White Egg.**—Of globular shape, pure white and fine quality for table use. Packet 5c., oz. 10c.,  $\frac{1}{4}$  lb. 25c.

**Early Flat Dutch.**—An early well known garden variety. Packet, 5c., oz. 10c.,  $\frac{1}{4}$  lb. 25c.

**Amber Globe.**—A beautiful round yellow fleshed sort for table use. Packet 5c., oz. 10c.

**Ruta Baga, Carter's Imperial.**—The finest ruta baga on the market; is of a rich yellow color. Grows to a

large size, and has no equal for table use or for stock feeding. Packet 5c., oz. 10c.,  $\frac{1}{4}$  lb. 20c., lb. 60c.

### Tomato.

Sow early in hot bed and transplant at the proper season.

**Favorite.**—Large, smooth and red. Packet 5c.

**Cardinal.**—One of the best. Packet 5c.

**Golden Queen.**—Mammoth yellow. Packet 5c.

## Sweet Herbs.

Anise, Sweet Basil, Horehound, Lavender, Sweet Majoram, Summer Savory, Thyme, etc. Pkt. 5c.

## Agricultural Seeds.

**Oat, Golden Giant.**—The greatest yielder in the world almost 15 bushels have been grown from 2 oz of seed by W. O. Lignon, of Gloster, Miss. They grow four to five feet high with long heads. Price per 2 oz., 5c., pkt. 10c., lb 30c., bushel \$2.00.

**Field Corn, Early Mastodon.**—Early Corn, with ears of mammoth size. A big yielder and the most profitable variety for every farmer to grow. 25c., per quart by mail; 60c., per peck by express.

**Buckwheat, New Japanese.**—Far ahead of the older varieties. Taller straw and larger grain, and superior in yield. Pound, 15c., peck, 50c.

**The Greenvale Famous Lawn Grass.**—This is the finest lawn grass mixture in the world, and the kind mostly in use on the finest parks everywhere. It is quick growing, and produces a heavy velvety, plush-like sward. Per qt. 35 cts.; pk. \$1.50.

## Northern Grown Seed Potatoes.

**M**AINE grown seed potatoes are everywhere considered the best in the world, being early, vigorous and free from disease and always yielding immense crops everywhere. The climate and soil being especially adapted for producing the very finest smooth, solid tubers, which are so much superior for planting to those grown in other parts of the country that no comparison can be formed between them. All potato growers recognize the importance of changing the seed occasionally to keep their stocks from running out. If you wish the best, buy Maine Grown.

**Rural New Yorker No. 2.**—This new potato originated on the experimental grounds of *The Rural New Yorker*, and although only introduced in 1889, has already created quite a furore among potato growers. As the agricultural papers have contained so many remarkable reports, it is only necessary to say a few words descriptive of its merits. It is of very distinct and handsome appearance; the tubers are of large size, with remarkable smoothness of skin; the eyes are few, distinct, and shallow. It is of extreme whiteness, both of skin and flesh, and unexcelled table qualities. It has great vigor in growth and solidity of tuber, which enable it to resist disease to a remarkable degree. Thoroughly tested throughout America and Europe, it has proved to be one of the most valuable varieties. Per lb. 35c; 3 lbs. 90c.; postpaid, by mail. By freight or express, at expense of purchaser, per peck, 85c.; per bu. of 60 lbs. \$2.25; per bbl. of 165 lbs. \$5.00.

**The Minister Potato—New 1890.**—This is the earliest and finest of all potatoes. It originated way down in the north-east corner of the State of Maine. Unlike any other variety it does not have to be ripe to be good for cooking, for as soon as it is large enough it is fine grained, dry and delicious, and seems to be absolutely rot proof. Lb. 25c.; peck, 75c.

I received the seed which I ordered this spring, in fine condition. Was very much pleased with them to find so much seed in a packet.  
Medford, Md., May 9, 1895.

Respectfully,

ALICE ECKER.



**Early Six Weeks.**—This is one of the earliest potatoes yet introduced, two crops may be grown in one season as far north as Maine, by early planting. The tubers are above average size, round and of a pink color, of fine quality and is the best early market potato to date. Price, lb., 35c., postpaid; peck, 75c., by express.

**Great Divide.**—A new white potato, of excellent quality and an abundant yielder of large handsome tubers, free from rot and a valuable market variety. Season medium. Price, 35c. per lb.; 75c. per peck, by express.

## General List of Plants for the Window, Garden, or Conservatory.

### Abutilons.

**S**OMETIMES called Flowering Maple or Chinese Bell Flower, are among the easiest grown and most satisfactory of window plants. They are ever bloomers, being seldom without flower. Their dainty bell-shaped blossoms intermingled among the rich green maple-like foliage, gives them a charming appearance during the entire year. They seem to smile at the darkest days of our long and dreary winter. Price 10 cents each.

**A. Besson.**—Rich scarlet flowers with dark veins, leaves pointed and cut like our sugar maples.

**Pluton.**—Leaves pointed but not cut like the foregoing, color red with a purplish tinge and darker veins.

**Eclipse.**— See specialties.

**Boule de Nieve.**—A Grand Pure White, one of the best flowers for floral work, leaves of elegant maple shape and dark green in color.

**Sour de Boune.**—See specialties.

### Begonias.

**A**LWAYS pretty and interesting, they require but little sun and are therefore among the easiest plants to grow in the window garden. Beautiful in both leaf and flower, they attract admiration from every eye. They do best in a soil leaf mold and sharp sand, mixed with a little old manure and loam from the garden. Prices except where noted, 10 cents each.

**Metalica.**—Leaves rough with darker veins overspread with a peculiar metallic-like lustre, giving the plant a most beautiful and odd appearance. The plant is a strong, rank grower, making a splendid specimen in a comparatively short time. Flowers bright pink.

**Semperflorens Gigantea Rosea.**—A new variety and one of special merit. A wonderfully free bloomer, flowering profusely from October till May. It has rich tropical leaves and magnificent cardinal flowers. It will command attention wherever placed, being round and bushy in form and a true winter bloomer. It has the largest flowers of any of its species. Price 15 cents.

**Rubra.**—Though not a new variety it is still one of the best. Leaves of the darkest green. Flowers rose color, glossy and wax-like.

**Alba Picta.**—A new and odd variety perfectly distinct. It is shrubby in habit and of compact growth, having long, slender, pointed leaves of glossy green thickly spotted with silver, the spots graduating in size from the center to the margin. The branches are upright and curving. Flowers greenish white and produced in great profusion, different from all others and one of the most charming and beautiful Begonias, of recent introduction. Price 15 cents each.

**Weltoinensis.**—An old and well-known sort, very easy to grow, making fine specimens in short time. Branches bright red covered with rich, green, maple like leaves. Flowers pink and very free, giving it the appearance of a huge bouquet when in bloom.

**Compta.**—Leaves dark green, silver stripe in center. 15 cents each.

**Pres. Carnot.**—New and fine, flowers immense, rich cardinal red. 15 cents.

**Palm Begonia.**—Leaves large, light green in color, and borne on tall stalks. Beautiful and majestic in form and habit. Large clusters of pale pink flowers. Price 15 cents each.

**M. DeLessups.**—A beautiful new variety. Leaves maple shaped, dark green, crimson underneath. Flowers pure white. 20c each.

**Argentea Guttata.**—Leaves dark bronze, spotted with shining silver, of quite large size, pointed, and crimson underneath. Flowers pure white. A most beautiful variety. Price 15c each.

**Thurstonii.**—Another fine and rare sort. Leaves of rough exterior, shining metallic like lusture and of large size, stem wine color, striking and beautiful. Price 20c each.

**Vernon.**—One of the freest and best bloomers for either summer or winter. Blooms when of the smallest size and is a perfect boquet as the plant grows larger. Flowers crimson and white. Foliage of a glossy, metallic green. A perpetual bloomer, blooming all the year round, and a rank thrifty grower. One of the finest plants for bedding out as well as for pot culture. Cannot be too highly praised. Price each only 10c.

**New Begonia, Wettsteini.**—This fine Begonia is in the direct line of Rubra, so well and favorably known. The leaf is ornamental, being peculiarly indented and a lovely shaded coloring, dark marbled green, shading lighter, with a line of scarlet at edge of leaf, the flower being similar to Rubra, but lighter in color. 10c. each.

**Rex.**—A royal class of decorative house plants, thriving well in a shady place if warm; leaves of the largest size and of the richest colors and markings. Price 15c. each.

Franklin Grove, Ill., May 13, 1895.

O. M. Richardson & Co., Canton, Me.:

Gentlemen,—The Rainbow Fuchsia and Mammoth Heliotrope sent to replace those injured by previous order, arrived in fine condition and are growing nicely. Thanks.

The plants received from you have proven superior to those received from other florists this spring, and I think you may safely count us among your customers another season.

Respectfully,

G. W. GAVER.

Fort Wayne, Ind., May 18, 1895.

Gentlemen,—I received the Rose bushes and Pansy seed all right, please accept thanks for same. I shall send for some of your shrubs in the near future as I think them very reasonable in price and within the reach of all who love flowers and shrubs.

Respectfully,

MRS. ALBERT TOMKINSON.

Cochrane St., Fort Wayne, Ind.

Mr. Richardson, Dear Sir:—The June collection which you so kindly sent me, arrived Monday night, June 17th, in fine condition. I set them right out and they have not even wilted in the least except the Rainbow Fushia. I thank you very much for the beautiful present, Begonia Pres. Carnot, it is a lovely thing, I wish all could have one.

Kindly and gratefully yours.

MRS. A. E. WADSWORTH, E. Winthrop.

## Chrysanthemums--The Queen of Autumn.



down and placed in the cellar until spring.

### New Japanese Varieties.

**Lillian B. Bird.**—Splendid for cut bloom. Color pale flesh. Long tubular petals of perfect form. Claimed by some to have flowers 12 inches in diameter, but we do not make such mistakes, although the flowers are very large. Price 15 cents.

**Mrs. Richard Elliott.**—A grand yellow, form regular and very double. Price 15 cents

**Christmas Eve.**—One of the most charming and beautiful Chrysanthemums on our list. Color of the purest white, with long feathery petals; flowers about four inches across and borne in immense quantities. Everyone who grows Chrysanthemums at all, should have this variety. Price 10 cents each.

**W. H. Lincoln.**—A variety of striking beauty and magnificence. Color the most beautiful deep golden yellow, with long, twisted petals. Grand. Price 15 cents each.

**Blanch Neige.**—(See cut). Small, very double, incurved, pure white flower. Fine for corsage bouquets. 10 cents each.

**Ada Spaulding.**—Certainly one of the grandest Chrysanthemums ever introduced; took the national prize—a splendid silver cup—at the great Indianapolis Show as the best New Seeding of the year; immense globe-shaped flowers, 6 to 7 inches in diameter; large, broad petals; color, very novel and distinct, lower half of the flower being rich, deep pink, shading in upper portion to the purest pearl white. Very handsome and remarkable. 15 cents each.

**T**HOSE who have not seen these grand new sorts in bloom can form no idea of their great beauty. For autumn flowers nothing else can compare with them, coming as they do when other flowers are scarce. They are at present the most popular flower, not excepting even the rose. They should be set in the open ground during summer in a rich place and the branches nipped back to make them bushy, until the middle of August, when they should be lifted and potted, disturbing the roots as little as possible, and placed in a cool room. They should not be subjected to fire heat any more than is necessary to keep out frost. After blooming they should be cut

**Tokio.**—Large, beautiful shade of crimson. 15 cents each.

**Golden King.**—A grand new yellow, raised by W. H. Milliken. Flowers of large size and of richest buttercup yellow. Very double and a remarkable free bloomer. 15 cents each.

**Cullingsfordii.**—Large double flowers of rich dark blood crimson. 15c. each.

**Kioto.**—A fine new sort, of vigorous habit; color deep canary. 10 cents each.

**Mrs. Humphrey.**—Large, pure white, fine. 10 cents each.

**Louis Boemer.**—The pink Ostrich plume Chrysanthemum, petals covered with fine hair like an ostrich feather. Incurved, large and beautiful. 20c each.

**Cherry.**—Rich cherry red, a beautiful sort and an odd color among chrysanthemums. 15c each.

## Carnations.



**T**HE Carnation is grown and admired in every civilized country. There is a tradition relating to the origin of the Carnation as follows: The first florist was a lady and for a time she did a large and profitable business. Soon she had a rival in the shape of a man who opened business in the same city. Angered by this she killed her rival and from his blood, so the story goes, sprang the crimson Carnation. They thrive well in any soil and are perpetual bloomers. From our own experience we have selected the following as the best. Price 10 cents each.

**Anna Webb.**—Rich dark crimson in color, a good grower and very fragrant.

**Century.**—Color a most beautiful bright carmine, and one of the strongest growers in the list.

**Silver Spray.**—A new, pure white variety. Free bloomer and fragrant.

**Portia.**—Similar to Century. A well-known variety and needs no commendation.

**Fred Creighton.**—This variety has been greatly admired wherever seen for its beautiful color, being a delicate shade of pink. Flowers of largest size and very finely produced.

**Starlight.**—A charming shade of canary yellow. A fine grower, producing flowers of large size on long stems.

---

The plants came yesterday in fine condition. Am much pleased with them. They are the largest and best plants I ever purchased. Will send an order for more soon.

Logan, Maine, Apr. 17,

Respectfully,

MRS. L. A. SMART.

CLIFTON, July 14, 1895.

O. M. RICHARDSON & CO.,

Dear Sirs,—I received the plants last night in fine order and am very much pleased with them. I find you the most liberal florists I ever dealt with. Please accept many thanks. When I am in want of plants at any time you will hear from me again.

MRS. EMILY D. ARCHER

## Geraniums.



**T**HE Geranium is a native of the Cape of Good Hope, and is now propagated and distributed all over the civilized world. We have the finest collection of Geraniums in New England, and we catalogue only the best sorts. Prices 10 cents, except where noted.

**Anna Scott.**—Single. Large, perfect trusses of the most dazzling crimson.

**Baron Duranteau.**—Double. A magnificent dark crimson variety with purplish tinge.

**Bruantii.**—Color light vermillion, trusses large and carried well off the foliage. Double.

**Fire Ball.**—Double, and of the most intense fiery red.

**Gilded Gold.**—Double. Bright orange, nearest approach to yellow. Scarce. 20 cents each.

**M. L. Fages.**—A fine new sort, one of the best on our list. The flowers are semi-double; trusses are immense, the individual flowers being two and one-half inches across and the trusses six to seven inches in diameter. Color light cardinal, with white centre, the upper part of lower petals being pink with rose veinings. Extra fine, 15 cents each.

**Lady Reed.**—As a companion to *Souv. de Mirande* and the *Perle*, it is the most beautiful of single Geraniums. The flowers are bluish with a circle of white around the edge, and the truss is larger than any geranium we have ever seen, often seven inches across. The flowers do not fall to pieces soon after opening as is the case with many single geraniums, but keeps perfect long time. It is also one of the most profuse in bloom, often being so full of flowers as to hide the foliage. As a bedding geranium it is simply grand, enduring heat and frost and growing and blooming in almost any situation. It has few equals and one must see it to appreciate its beauty. Price 15 cents each.

**Queen of the Fairies.**—Double. A bi-color variety. Rich flesh colored mottled with white. Fine.

**Lorraine.**—Single, orange salmon, very free.

**M. A. Hunt.**—Double, orange salmon, with capucine and bronzy shades.

**White Swan.**—Double. Color of the purest white. Considered the finest double white Geranium. 15 cents each.

**Souv. De Mirande.**—A nice grower, with brilliant green foliage of fine texture: just the right shade of green to show the flower to the very best advantage. The body of each petal is pure satiny white, with a distinct sharply defined band of brilliant carmine running about each, and narrowing to the center. When brought indoors the carmine predominates in each petal, leaving but small, white centers. Everybody exclaims at sight of the bloom. It proves a thorough surprise, being so totally distinct from other varieties. 20 cents each.

**Crimson Velvet.**—A grand variety of the richest, deepest, shade of blood crimson, double. New and fine. 15c each.

**Minister Constans.**—Double, clear bright salmon. A novel and beautiful variety.

**Sam Sloan.**—Single, trusses enormous, often ten inches across and of rich crimson color.

**La Favorite.**—The finest double white ever produced, clear and spotless as the driven snow even in the heat of summer. 15c each.

## Fancy Leaved Geraniums.

**Silver Geranium, Mad. Salleroi.**—Leaves round and of a beautiful silvery green, edged with pure white. Seldom grows more than six inches in height. One of the finest plants known for edging flower beds. 10 cents each.

**Happy Thought.**—The improved sort. Centre of leaf white, with green edge. Flowers scarlet crimson. 10 cents each.

**Cloth of Gold.**—Foliage beautiful canary yellow. 10 cents.

**Sunset.**—A new and beautiful tri-color. Centre of leaf green surrounded with a zone of chocolate, splashed with red and edged with canary yellow. Rare and fine. 20c each.

## Scented Geraniums.

**Rose.**—The well-known Rose Geranium. Price 10 cents each.

**Fern Leaf.**—Leaves finely divided. Has the strongest and most delightful fragrance of any sort we have ever seen. 10 cents.

**Oak Leaf.**—Leaves resemble an oak, being notched and rough, centre of leaf black. Spicy fragrance. 10c each.

## Bronze Geraniums.

**Prince Bismark.**—Leaf, light yellowish green with rich chocolate zone. Flowers single and salmon in color. 10 cents each.

**Corrinne.**—Leaves yellow with narrow zone. Flowers double, large and perfect and of the most dazzling orange scarlet. Extra fine, 15 cents each.

## Ivy Geraniums.

**Horace Du Choisel.**—Flowers of grand size, petals imbricated, pale blush, bordered with white and salmon. Very free flowering. 10 cents each.

**Jeanne d' Arc.**—Flowers very large and double, and of the purest white, fine spreading habit and free flowering. Distinct and fine. 15 cents each.

**L' Elegante.**—Leaves light silvery green, edged with pure white. A most beautiful plant. 15 cents each.

**La Rosiere.**—Double. Glistening rose color; a beauty. 10 cents each.

**Souv. Chas. Turner.**—See specialties.

**Cuvier.**—Double. Rich violet rose. Centre feathered maroon. 10c each.

**Mignon.**—Pure white suffused with carmine. A charming sort. 10c each.

## Palms.

We have added this season a few of the easiest grown and handsomest of palms.

**Latania Barbonica.**—Chinese fan palm. The best variety for general cultivation. A good grower and does well in any ordinary living room. Leaves large fan-shaped, fringed and very effective and beautiful. Fine plants 30c each.

**Chamærops Excelsa.**—Another fan palm of rapid easy culture and a striking variety. 35c each.

**Filifera.**—Large elegant dark green leaves, from which hang thread-like filaments. The plant is a rapid compact grower and makes a fine pot plant.

**Kentia Balmoreana.**—Heavy deep green foliage; one of the strongest growing and most beautiful of palms. 50c each.

## Double Petunias.

**Mollie Pitcher.**—Purple and white. 10 cents each.

**Polly Porter.**—Clear purple. 10 cents each.

**Gypsy.**—Crimson and white. 10 cents each.

**Snowdrift.**—Large double, pure white, and sweet scented. 10 cents each.

For fancy sorts see specialties.

## Heliotropes.

**T**HE Heliotrope is a native of South America and is most common in Peru, and in ancient times great healing powers were erroneously ascribed to it in cases of cancer. Heliotrope delights in a light, rich soil, with plenty of root room and all of the sunlight possible.

**Albert Deleaux.**—A very rank grower, foliage variegated green and yellow. Trusses large and rich lavender in color. Very free flowering. One of the best. 10 cents each.

**Sapphire.**—Light lavender. Producing immense quantities of bloom. The finest of its color. 10 cents each.

**Snow Wreath.**—Trusses of largest size and purest snow white. Fragrance unsurpassed. 10 cents each.

## Richardson's Beautiful Passifloras.

**Emperor.**—When in bloom, this is one of the most charming and magnificent of all climbing plants. Leaves large and of the darkest green, and so thickly set on the vine as to form a perfect screen. The flowers are beautiful beyond description, being from four to five inches in diameter and of a deep azure blue color shading to pure white on the ends of the petals, under side of petals pink and white, and of delicate and pleasing fragrance. The plants begin blooming when quite small and the flowers are borne in countless numbers, a bud forming at every leaf joint. Always beautiful in the window or flower garden. 20 cents each.

**Edulis.**—Flowers small and pure white in color, followed with a fruit about the size of a goose egg, having an acid though not unpleasant flavor. The leaves are light green in color and so glossy as to appear varnished. Interesting and beautiful. 20 cents each.

**Constance Elliott.**—A most valuable novelty. Vine a rapid grower, short jointed and quite hardy. It will winter in the ground as far north as Massachusetts, with slight protection. The flowers are of medium size, ivory white in color and exquisitely fragrant. It commences to bloom when very small and the smallest plants will bloom in a very short time after planting. Grand as a pot plant for window culture, 10 cents each. One fine plant of each of these beautiful Passifloras by mail postpaid, for 40 cents.

## Lantanas.

**O**NE of the best summer-flowering tribe of plants for our climate; equally fine in dry or wet weather, sun or shade. There are few bedding plants that bloom more continuously or afford a greater variety of color than the Lantana. When grown with a single stem and trained as standards, with fine bushy tops and straight stems, besides being in bloom all summer, they present on the lawn or piazza an effect that is not surpassed by any other plant.

**Innocence.**—Pure white flowers, wonderfully free, of strong growth, best white. 10 cents each.

**Jacques Minot.**—It is impossible to imagine a more showy or gorgeous plant than a Jacques Minot Lantana in full bloom; its flowers are bright yellow when first opened and brilliant orange when fully matured, finally passing to a dark rich red as they near the fading point. No plant in our green-houses so quickly arrests the attention of visitors as this, being literally covered with flowers of three different colors as they appear at different stages, is sure to cause exclamations of surprise and admiration on all sides. It is an ever-bloomer and may be grown in the garden or on the lawn in summer, and then taken up in the fall, when it will bloom all winter in the window garden. Every one who grows plants for pleasure or profit should include this in their collection. Fine plants only 15 cents each.

**Perfection.**—New, bright pink. 10 cents each.

DES MOINES, Ia., March 21, 1894

O. M. RICHARDSON & Co., Canton, Maine,  
Gentlemen :

Last year I had some of your Marguerite Carnation plants. The Carnation being my favorite flower, I had a great amount of pleasure from your plants, for when once planted in the open ground, they grew rapidly and soon rewarded me with quantities of bloom, of varied colors and hues, all beautiful and deliciously fragrant. Amongst the dozen plants there was but one single one, but so fine, prolific and fragrant that I would not have torn it up at any price. In the fall I potted them, gave them good care in the house, and they bloomed a good deal during the winter, and at the present time have both flowers and plenty of buds in all stages of development. They were, and they are a rare treat

Believe me, Yours truly,

JOHN LORENZ.

WATERVILLE, Minn., July 30, 1894.

O. M. RICHARDSON, Canton, Maine:

*Sirs.*—I received from you a Hydrangea which is doing nicely. I wish to thank you for the extra Begonia, Vernon. In the spring I received from you some plants which are now in blossom and even exceed my expectations in beauty and color.

Yours respectfully,

INEZ PETERSON.

*Gentlemen.*—The "Surprise" collection of Plants arrived safely in splendid condition and I was very well satisfied. Yours truly, PAUL F. DELANG, 399 Cambridge St.,

Allston, Mass.



## Fuchsias.



**T**HE Fuchsia is a native of South America, and named in honor of Leonard Fuchs, a botanist. In its wild state the Fuchsia bears an abundance of purple berries which are preserved in sugar and eaten by the natives who inhabit the country to which it belongs. Fuchsias delight in a rich soil and shade from the noonday sun.

**Phenomenal.**—The giant Fuchsia the flowers of which are twice the size of any other sort in cultivation. We have actually had flowers that measured over three inches in diameter. In growth it is very robust, growing tall and strong. Color of corolla purple, sepals bright carmine. A most wonderful variety. Price 15 cents each.

**Mrs. E. G. Hill.**—This is undoubtedly the finest pure white Double Fuchsia ever produced. Raised by Victor Lemoine of France and but recently imported into this country. It resembles the Phenomenal in all save color. Flowers extra large,

full and double, and of the purest snow white, tubes and sepals bright crimson. A variety that must become a general favorite. Price 15 cents each.

**Storm King.**—(Frau Emma Topfer).—This grand new Fuchsia is as good as ever, and is what is known as the perpetual flowering Fuchsia, blooming a greater part of the year. The foliage is of a glowing green and the plant has a beautiful weeping habit. In profusion of bloom it is indeed remarkable; we have counted over two hundred buds and blossoms on a plant at one time. Tube and sepals glowing carmine, corolla white and streaked and tinted with carmine. Very large and double. Price, 10 cents each.

**Lustre.**—The freest grower we have ever seen. The rapidity with which it will grow if given a good chance is remarkable. We had a plant of Lustre in one of our green-houses that had a hundred and six full blown flowers on it at one time. Flowers single, tube and sepals white, corolla carmine. Price, 10 cents.

**Duke of Albany.**—A strong growing single variety with bright crimson tube, sepals and corolla, sepals reflexed. Price, 10 cents.

**Venus Vitrex.**—Upright in growth, tubes and sepals white, corolla dark purple. Price, 10 cents each.

**Rose of Castile.**—The improved variety. Sepals pure white, corolla violet purple. A tall rank grower and profuse bloomer. Price, 10 cents.

**Speciosa.**—Flower of large size. Tube and sepals blush, corolla bright crimson. 10 cents each.

**Purple Prince.**—A splendid double variety. Sepals scarlet, corolla a beautiful and distinct bright blue. 15 cents each.

## Ivies.

"Creeping where no life is seen,  
A rare old plant is the ivy green."

**German.**—One, if not the most rapid growing climber in the world, often growing at the rate of six inches a day, and may be trained around the room, or over pictures etc., serving as a beautiful and attractive ornamentation. 10c each.

**English.**—This is the variety with which the crumbling ruins of the Old World are covered, the variety spoken of in Dickens' celebrated poem, "The Ivy Green." It clings tenaciously to stone or wood and is a beautiful variety for parlor culture, growing around the ceiling without support. One of the prettiest wreaths we have ever seen was made entirely of the leaves of the English Ivy woven together. 10 cents each.

**Variegata.**—Foliage marked white. 15 cents each.

**Japan, or Boston Ivy.**—The most graceful and beautiful of all ivies. Perfectly hardy in the open ground as far north as Massachusetts. One side of the famous Trinity church of Boston being almost entirely covered with it. Clings tenaciously to brick, wood or stone, and the leaves overlapping each other make a perfect screen. During the summer the foliage is a deep green, but in autumn they change to the most beautiful shades of scarlet and crimson. Fine plants 20 cents each.

## Ever-Blooming or Monthly Roses.

**CULTURE**—The principal essentials in the successful cultivation of Monthly Roses in the house, is rich soil and moisture and a reasonably warm situation; with these three essentials properly applied, Roses may be grown as easy as Geraniums or Fuchsias.

**SOIL**—Take two parts of good rich loam dug from the garden, and one part old, well rotted manure; mix thoroughly together. It is best to put the plants when first received from the florist in small pots just large enough to well accommodate the roots and then change to larger pots after they get well to growing. When the plants are first potted, they should be shaded from the hot sun and watered sparingly (though not allowed to dry up), until they show signs of growth, after which they should be kept moist and never allowed to get dry, especially during the summer months. Sprinkling or rinsing of the foliage on warm, sunny days is always beneficial and serves to keep the plants healthy. The most beautiful and desirable varieties are embraced in the followins list:

**Marie Van Houtte.**—We place this at the head of our list as the most desirable Tea Rose of which we are acquainted, the Richmond only excepted. It is a strong, rank grower with an abundance of large beautifully-notched leaves, which are easily distinguished from any other variety; the flowers are of extra large size and of a delicate cream color. From the time the bud commences to open until the flower is fully expanded, words cannot describe its beauty; it has a delightful tea fragrance, and is a most profuse and constant bloomer. 15 cents each.

**The Bride.**—The buds are very large and of exquisite form, and the full flower is very double, measuring from 3½ to four inches in diameter. The color is a deli-

cate creamy white. The blooms will last in a fresh state, after being cut, longer than any other white variety. 15 cents each.

**Perle des Jardins.**—Without doubt the finest yellow Rose in cultivation. Canary or golden yellow; flowers large and beautifully formed; handsome in every stage of development, from the smallest to the open bud. No Rose of its color ever cultivated for cut flowers up to the present time is now so valuable as this. 15 cents each.

**Catherine Mermet.**—Silvery pink, large and full with a delicate tea fragrance, free grower and bloomer. Price, 15 cents each.

**Bridesmaid.**—New, large double, a free bloomer and of a rich deep pink in color. 15 cents each.

**Kaiserin Augusta Victoria.**—New, pure white, delightfully fragrant. One of the easiest roses to grow. 15 cents each.

**LaFrance.**—Hybrid tea, flowers of the largest size and with the fragrance of the old fashioned garden rose. Color silvery pink. 15 cents each.

**Monthly Cabbage.**—Also known as the hundred leaved rose, deep pink in color; blooms in clusters. A fine old variety. Stock limited. 15 cents each.

**Clothilde Soupert.**—French white, deepening to rosy blush in the centre, Its greatest value lies in its compact, vigorous habit, and wonderful profusion of bloom, even the smallest plants being literally covered with flowers. The form and substance of the flowers are so perfect that the hottest weather does not cause a deterioration of either, so that even in midsummer a bouquet of splendid buds and open flowers can be obtained from this fine variety. 15 cents each.

## Hardy Roses.

**A**RE very beautiful, and though considered entirely hardy in ordinary situations, a light covering of straw or leaves is always desirable during winter, particularly for the Hybrids, but both Moss and Hybrids will bear a good deal of hardship and neglect and yet bloom regularly in summer, and occasionally during the autumn months. The flowers are mostly of large size, very double and fragrant, and of rich, bright colors, including all shades of red, white and pink, but no yellow.

**PREPARATION OF THE GROUND.**—Roses will do well in any ordinary fertile ground, but are much improved in fragrance and beauty by rich soil, liberal manuring and good cultivation. The ground should be well spaded and pulverised to the depth of a foot or more, and enriched by digging in a good coat of stable manure or any fertilizing material that may be convenient.

**HOW TO PLANT.**—When the ground is thoroughly prepared—fine and in nice condition—wet the roots of the Roses so that the earth will adhere to them—make holes of suitable size, put in the plant slightly deeper than it was before, spread the roots out evenly in their natural position, and cover them with fine, moist earth, taking care to draw it closely around the stem, and pack firmly down with the hand. It is very important that the earth be tightly firmed down on the roots.

**WHEN TO WATER.**—If the ground is dry when planted, water thoroughly after planting, so as to soak the earth down below the roots, and if hot or windy, it may be well to shade for a few days. After this not much is required unless the weather is unusually dry. Plants will not thrive if kept too wet, and planting should never be done when the ground is muddy or soggy.

We have selected these as the finest of the hardy Hybrid Perpetuals 20 cents each.

**Mad. Plantier.**—The hardy cemetery rose thrives in any situation and requires no protection in any climate. Color pure snow white. A grand and popular variety. Should be in every garden.

**Paul Neyron.**—We recommend this grand Rose and ask special attention to it; the flowers are immense; it is probably the largest Rose grown, and one of the finest, bright, shining pink, very clear and beautiful; very double and full, finely scented; blooms the first season and all summer. No collection is complete without this magnificent variety.

**Louis Van Houtte.**—Brilliant crimson. Large, full and fragrant.

**Marie Rady.**—Clear bright red, finely pencilled with rich maroon; flowers large, full and fragrant. A beautiful sort.

**Persian Yellow.** The old fashioned hardy yellow Rose, perfectly double and rich in color with a delightful fragrance. 25 cents each.

---

The plants you sent us arrived and are doing nicely, as are all you have sent us. The plants you sent us two years ago cannot be beaten in this part of the state.

Yours truly,

Jefferson Meadows, N. H.

E. A. STEELE.

## Hardy Moss Roses.

25c. Each.

**Elizabeth Rowe.**—Extra large flowers, very double and well filled out; bright satiny pink, elegantly shaded; very fragrant and finely mossed.

**Glory of Mosses.**—A magnificent Moss Rose, extra large and perfectly double; color, deep rosy carmine, shaded purplish crimson; very mossy and fragrant; one of the finest.

**Comtess de Murinais.**—One of the best and most satisfactory pure white Moss Roses; the buds are elegantly mossed; flowers large, full and fragrant; a valuable and very beautiful variety. 30 cents each.

## Hardy Climbing Roses.

20c. Each.

**Baltimore Belle.**—Pale blush, varigated, carmine, rose and white; very double; flowers in beautiful clusters, the whole plant appearing a perfect mass of bloom; one of the very best climbing Roses.

**Gem of Prairie.**—Bright violet crimson; large double and fragrant. This is the true variety; very rare and desirable.

**Greville or Seven Sisters.**—Flowers in large clusters; varies in color from white to crimson.

**Prairie Queen.**—Clear, bright pink, sometimes with a white stripe; large, compact and globular, very double and full; blooms in clusters; one of the finest.

**Mary Washington.**—The celebrated hardy, pure white, climbing Rose, blooms in clusters.

N. B. Hardy Roses will be sent out at proper time for planting in the open ground, from April 15 to May 1st, and all orders for hardy Roses should be sent in *before that time. This is important.*

## Hardy Shrubs.

**THE HYDRANGEA GRANDIFLORA** continues to be one of the best and most handsome Hardy Ornamental Shrubs ever grown. It blooms finely the first year and gets better and grows larger with age: it grows three to four feet high, is perfectly hardy in all parts of the country, needs no protection in winter, blooms in July and August, when other flowers are scarce, and remains in bloom two or three months. The flowers are pure white, afterwards changing to pink and rich coppery red, and are borne in immense pyramidal trusses, more than a foot long and as much in diameter; the plant is of bushy and compact growth, and when laden with its great masses of bloom is exceedingly striking and attractive; it is deservedly popular, and in great demand for lawn, park and cemetery planting wherever known. 25 cents each. No special treatment is required; the Hydrangea will grow and thrive in all ordinary situations; the bush should be cut back every spring, at least one half of last season's growth, dug around and well manured. The finest flowers are borne on the new or young wood, and are largest and best when the plant has made a strong, vigorous growth.

**White Lilac.**—The rare and beautiful White Lilac is much sought after, but is very scarce. We have now ready a fine lot of strong plants, which we offer at lowest price. 20 cents.

**Mock Orange or Syringa.**—A rapid growing, medium-sized shrub, with very fragrant white flowers. 20 cents.

**Spiraea Prunifolia.**—(Bridal Wreath).—Very Beautiful; flowers pure white and perfectly double, like little daisies. Price 20 cents.

**Weigela Candida.**—New and fine; pure snow-white flowers, borne in great profusion. Good autumn bloomer. 20 cents.

**Weigela Rosea.**—This is one of the most charming shrubs in cultivation; it cannot be too highly recommended; the flowers are large and of a rosy color; they are borne in such profusion that the whole plant appears a mass of lovely bloom. 20 cents each.

**Wisteria Frutescens.**—An elegant climbing vine, hardy and vigorous, and

blooms much earlier than the other varieties; pretty violet-purple flowers, borne in large clusters and very fragrant. 20 cents.

**Evergreen Sweet-Scented Honeysuckle.**—A hardy, vigorous grower; grows nearly all the season; deliciously fragrant; flowers buff, yellow and white; very desirable for veranda and trellis work. 20 cents.

N. B.—Don't fail to try a *Hydrangea Grandiflora*, it is the finest hardy shrub in the world

**Berberis Thunbergii.**—New and handsome ornamental shrub, very desirable for lawn and garden; grows 3 to 4 feet high, regular, symmetrical form; leaves beautiful, rich green, small and perfectly shaped; flowers a delicate shade of coppery yellow, borne in great profusion, after which it is loaded with the most beautiful brilliant red berries; these remain on the bush late into the winter, giving a bright and pleasing appearance; entirely hardy. Price, 25 cents each; 3 for 60 cents.

**Viburnum Snow Ball.**—We want to call particular attention to this fine shrub; it is a strong hardy grower; covered when in bloom, with large balls of pure white flowers, really resembling balls of snow, and very pleasant for snow-balling purposes. 15 cents each, large size 20 cents.

## Richardson's Magnificent Summer Flowering Bulbs.

**S**UMMER flowering bulbs seem to supply a place which cannot be filled by anything else. They are easy to grow, and should find a place in every garden. The beautiful and deliciously fragrant tuberose and the gladiolus with its rich, varied and dazzling tints, are things we can hardly afford to get along without. And we offer them at such low prices that all can afford to have them.

## Richardson's Beautiful Lilies.

### THEIR CULTURE.

**L**ILY bulbs should be planted quite deep, say not less than six or eight inches. They do not require very rich soil like most flowers. They thrive best in a partially shaded situation and are entirely hardy, requiring no protection whatever, though perhaps in

very much exposed situations it might be advisable to give a slight covering of leaves or other litter. Lilies should be left undisturbed to increase in size and beauty from year to year. They can be planted in the spring or fall, as preferred. We offer a few which we believe to be the finest sorts only, for our climate.

**Candidum.**—The old white garden Lily. Large, pure white flowers, in clusters; blooms earlier than others, but not always the first year. 20 cents each.

**Longiflorum.**The well-known Easter Lily. A very early flowering variety with lovely pure white trumpet-shaped flowers about six inches in length. Excellent for pot culture and admirably adapted for the open garden. Nice bulbs 20 cents each.

**Auratum.**—This magnificent variety is the finest of all Lilies; a clump of it in full bloom is worth going a long way to see. The strong, straight stocks grow three to six feet in height, and are well able to bear the superb clusters of great blossoms they produce; the magnificent flowers are often a foot across. The color is pure white, exquisitely spotted with rose, and rayed and banded with golden



**Lilium Candidum.**



**Lilium Auratum.**

yellow in the most beautiful manner; maroon-tipped stamens in high contrast with the flowers. This noble Lily is certainly one of the most valuable and ornamental of flowers, and should be planted by every one. 25 cents each.

**Harrisii.**—Too much cannot be said in praise of this grand flower; its pure color and delicious fragrance are unsurpassed, and so easily grown and sure to bloom. While in great demand for winter flowering, this superb variety is almost equally valuable for general planting. North of Washington, D. C., should have protection during winter. Price, large bulbs, 20 and 25 cents each.

**IMPORTANT NOTICE**—The bulbs we offer are the **TRUE BERMUDA EASTER LILY** (*Lilium Harrisii*) specially grown by the most experienced growers in Bermuda. We call attention to this, as some dealers are sending out the ordinary Japanese Longiflorum for the Bermuda Lily.

**Double Tiger Lily.**—Immense bright orange red flowers, spotted with black. 15 cents each.

## Gladiolus.

**W**E have an unusually fine strain of mixed Gladiolus, embracing many fine colors and markings. Gladiolus should be planted about three inches deep, in good soil, when they will make a most gorgeous display the latter part of the summer.

**Fine Mixed Bulbs**, all colors, 25 cents per dozen.

**Lemoini, Hybrids**—All colors, 60 cents per dozen.

**Finest Superb**, new seedlings, 75 cents per dozen.

## Tuberous Rooted Begonias.

**T**HE tuberous rooted Begonias are among the most beautiful and desirable of all bulbous plants. As summer flowering bulbs in the garden they are not always a success unless planted in the shade, and protected from severe winds and storms. In such situation they are likely to give unbounded satisfaction. They are however, grown most commonly as pot plants either in conservatories or window or on protected verandas. As pot plants for summer blooming few bulbs except the Gloxina, which can be treated in exactly the same way, will prove so satisfactory. The bulbs can be potted in April, May or June, in good rich soil, and growth and bloom will commence almost immediately and their profusion of bloom during the summer will be surprising if they continue in a healthy condition. When the foliage dies down in September or October they should be set away in a warm, dry place to remain until planting time the following spring. Our strain of both double and single is superb, and must not be judged by ordinary bulbs. Those who plant our Begonia bulbs will be astonished at the great size and brilliancy of the flowers.

White, Yellow, Pink, Dark Crimson, single, 25 cents each; double, 50 cents each.

## Tuberoses.

**T**UBEROSES are among the most desirable of summer flowering bulbs. They should be set so that the top of the bulb will be just below or about even with the surface of the ground.

**Excelsior Pearl.**—The finest sort in the world. Perfectly double, pure white and very fragrant. Nice bulbs, only 6c each; 60c per doz,

O. M. RICHARDSON & Co.:

DEAR SIRS,—I raised some of the finest pansies last year from your seeds that were ever seen in this vicinity. An exhibit of them drew the prize at our local fair.

Respectfully yours,

MRS. J. H. WOODRUFF, Watertown, Conn.

O. M. RICHARDSON & Co.:

GENTS:—Permit me to say that the pansies which I raised from seed bought of you last year, were the finest I have ever seen grow and were so pronounced by all who saw them.

Respectfully,

W. O. CLARK, Chillicothe, Mo.

## Miscellaneous Plants and Vines.

**Ageratum.**—A pretty, rapid growing plant, either for bedding or pot culture. Flowers bright blue and produced in marvelous quantities. 10 cents each.

**Ageratum.**—New dwarf pure white; a fine thing; a plant of this and one of blue in same pot makes a beautiful ornament to any window. 10 cents each.

**Lemon Verbena.**—Foliage scented strongly with the delightful fragrance of the lemon. 10 cents each.

**Smilax.**—A beautiful delicate climbing plant used largely in floral work. 10 cents each.

**Gloxinia.**—Mixed colors; finest German imported strain. Flowering bulbs, 20 cents each.

**Jassemine.**—A graceful vine, justly celebrated for its pure white star-shaped and fragrant flowers. Nice grower and free bloomer. 15 cents each.

**Cigar Plant.**—Flowers red, tipped with white, resembling lighted cigars. 10 cents each.

**Primroses--Chinese.**—Among the most beautiful and desirable of plants for house culture. They delight in a cool, partly shaded place. Care should be taken not to give too much water. White, 10 cents; Pink, 15 cents.

**Tradescantea.**—(Wandering Jew)—A well-known trailing plant, sure to thrive under the most adverse circumstances. Green foliage, 10c. Silver, green and purple foliage, 10 cents.

**Ruella Formosa.**—A pretty window plant. Flowers bright scarlet and borne on long stems. 10 cents each.

**Feverfew.**—Too well known to need comment. Flowers about the size of a silver quarter, pure white, double and produced in endless quantity. 10 cents each.

**Heath.**—(Sage Fern)—Foliage finely cut and very fragrant. A fine basket plant. 10 cents each.

**Maderia Vine.**—One of the most rapid growing and desirable of window vines, grows from a bulb. Fine bulbs, 5 cents each.

**Wax Plant.**—Has thick, fleshy leaves, growing moderately fast and bearing umbels of beautiful flesh colored flowers, from which are exuded large drops of honey-like liquid. One of the best plants for house culture, as it stands the extremes of heat and cold better than most plants, and is not easily injured by neglect. It can be trained to climb on trellis to almost any height, and when in bloom, which continues for upwards of five months, is a most interesting plant. 10 cents each.

**Calla.**—(Lily of the Nile)—Should be in every collection. It grows freely and requires an abundance of water, and produces large, pure white blossoms during the winter and spring. The resting period during June and July can be given by turning the pots on their sides, without watering, in a shady place. Price from 10 to 30 cents.

**Cobea Scandens.**—Handsome, free-flowering, climbing plants, growing rapidly, with large, bell-shaped flowers. They are among our best summer climbers, and are excellent for training in the green-house and conservatory. 15 cents each.

**Salvia Splendens.**—One of the finest of fall blooming plants, being completely covered in autumn with long spires of dazzling scarlet flowers, remaining in bloom until cut down by frost. 10 cents each; 75 cents per doz.

**Pink Fairy Lily.**—Belongs to the Amarillis family. Has very pretty bright pink, trumpet shaped flowers. 25 cents each.

**Amarillis Johnsonii.**—A summer blooming bulb. Flowers of the most dazzling bright scarlet. 20 cents each.

**Chinese Hibiscus.**—An exceedingly showy hard wooded shrub, to be grown like an Oleander. Flowers of immense size, double, and crimson in color. 25 cents each.

**Manettia Vine.**—One of the finest of window climbing plants, being never without flowers the whole year. The plant is a very rapid grower, soon making a solid wreath around the window, of glistening green covered with masses of rich scarlet flowers tipped with yellow.

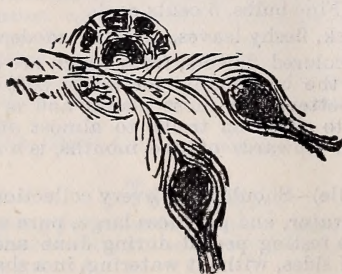
## Plants for Hanging Baskets.

**Strawberry Geranium.**—Runs like a strawberry; an old fashioned plant, and a most desirable one; it is really a species of Begonia, and one of the finest plants for hanging baskets. 10 cents each.

**Vinca Varigata.**—A most beautiful variegated vine, leaves banded with pure white, rapid in growth. 10 cents each.

**Maurandia.**—One of the most rapid of all climbers, foliage dense and green, and completely covered with masses of pink and purple flowers. 10 cents each.

**Coronilla Glancia.**—Fine delicate foliage, sprays of yellow pea-shaped blossoms; a fine winter bloomer. 10 cents each.





## Bedding Plants.

We offer here a few Annuals and other plants suitable for the flower garden. We make the prices low and no doubt they will give satisfaction.

	Per Doz.	Per 100.		Per Doz.	Per 100.
<b>Geraniums</b> —Our selection,	.75	cts. \$5.00	<b>Zinnias,</b>	.25	1.75
<b>Verbenas</b> —Mixed colors,	.35	2.50	<b>Pansies</b> —Good strain,	.35	2.50
<b>Pansies</b> —Mix'd colors, fine strain	.50	3.00	<b>Coleus</b> —Many varieties,	.50	3.50
<b>Asters</b> —Mixed colors,	.30	2.00	<b>Petunias</b> —Mixed colors,	.50	3.50
<b>Dianthus Pinks</b> —Colors,	.30	2.00	<b>Heliotropes</b> —Mixed colors,	.75	5.00

## Vegetable Plants.

**T**HESE can be easily sent by mail and always grow and give good results. They will come very handy to people who live away from green-houses and desire early vegetables.

**Tomato Plants.**—Good stocky plants about one foot high, of the following varieties: PERFECTION, CANADA VICTOR, CARDINAL, ACME, MAYFLOWER, AND GOLDEN QUEEN. Price, 40c per doz. by mail; \$2.50 per hundred by express.

**Celery Plants.**—Nice plants transplanted and cut back, of the following sorts: GOLDEN HEART, HENDERSON'S WHITE PLUME AND BOSTON MARKET. Price, 15c per doz.; 60c per hundred, postpaid.

**Cabbage Plants.**—EARLY JERSEY WAKEFIELD, FOTTLER'S BRUNSWICK, ALL SEASONS AND SUREHEAD. Price, 20 cents per dozen, postpaid; 75 cents per hundred, by express.

**Cauliflower Plants.**—SNOW BALL AND EARLY PARIS. 20 cents per dozen; \$2.00 per hundred, by mail.

**Pepper Plants.**—BELL AND SWEET MOUNTAIN. 40 cents per dozen.

**Lettuce Plants.**—TENNIS BALL AND BOSTON MARKET. 20 cents per dozen; 60 cents per hundred, postpaid.

## A Beautiful Prize to Little Girls.

To any little girl, 12 years of age or under, who will get up a club of \$2.00 or over and send us, we will, in addition to the premiums offered above, give them a packet of Woodbury's Mammoth Pansies, and to the one raising the largest Pansy from *this* packet of seeds, we will present a lovely gold watch. The flowers must be pressed and sent us by mail, between two pieces of pasteboard.

The award will be made Nov. 15th, and all specimens must be sent in before Nov. 1. The name of the lucky one will appear in our next year's catalogue. We will send a small present to all who try for the prize and do not get it.

### The Lucky One Last Year.

As this catalogue goes to press the first of November, earlier than usual this year, we are unable to give the name of the winner last year, as the contest has not been decided.

### The Winners Have Been.

Miss Dora S. Felch, Ashlot, N. H., 1892. Miss Susie R. Straw, Stowe, Vt., 1893.  
Miss Blanche Lucas, Canton, Me., 1894.

Now let all of the little girls who see this catalogue try and see who will win in 1896.

FORT WAYNE, Ind., May 18 1895.

GENTLEMEN—I received the Rose bushes and Pansy seed all right. Please accept my thanks for same. I shall send for some of your shrubs in the near future, as I think they are very reasonable in price, and within the reach of all who love flowers and shrubs.

Respectfully,

MRS. ALBERT TOMKINSON.

Cochrane Street.

# Grand Inducement to Club Raisers.

## CLUB RATES ON PLANTS.

FOR a club order of \$2 00 you may select 50 cents worth of anything here offered, to pay you for getting up the club. For \$3 00 you may select 85 cents worth extra. For \$4 00 club orders, \$1.20 extra, and 30 cents extra for each dollar sent, above \$4 00. Remember this is for CLUB ORDERS ONLY. You will readily see that by getting your neighbors to send with you and combining the orders, you can get your own plants FREE. Scarcely any trouble will be experienced in getting up a club at such low prices as we sell goods, and we will warrant everything in most cases superior to goods sold by others at double the price.

## CLUB RATES ON SEEDS.

On \$1.00 Club \$ .35 worth extra, FREE.  
" 2.00 " .75 " " "  
" 3.00 " 1.10 " " "

Should your order consist of both plants and seeds reckon up the amount the seeds come to and the amount the plants come to separately, and then you can easily tell what your premium will amount to on the whole order.

## OUR SPECIAL COLLECTIONS.

FOR those who are not particular as to varieties, we offer these special low-priced collections, enabling them to get more for their money than it would be possible in any other way. The plants are in every way equal to any sent out, and are packed and labeled just the same. We are enabled to sell cheaper in this way, as it gives us the advantage of selecting varieties of which we have the largest stock. All collections sent post-paid on receipt of price.

### Dollar Collections.

- No. 1.—15 Choice Geraniums, all different.
- No. 2.—5 Carnations, 5 Geraniums and 5 Begonias.
- No. 3.—12 Verbenas and 6 Petunias.
- No. 4.—10 Choice Everblooming Roses.
- No. 5.—5 Chrysanthemums and 6 Fuchsias.
- No. 6.—15 Choice Window Plants, all different.

### Two Dollar Collections.

**Collection A.**—2 Geraniums, 4 Chrysanthemums, 5 Begonias, 2 Fuchsias, 2 Lantanas, 2 Petunias, 2 Everblooming Roses, 5 Verbenas, 2 Heliotropes, 2 Passifloras.

**Collection B.**—4 Carnations, 1 Manettia Vine, 2 Chinese Hibiscus, 1 Brugmansia Arboræ, 2 Abutilons, 12 Verbenas, 6 Geraniums, 2 Ivies, 6 Coleus.

**Collection C.**—27 Choice Window Plants, all different, including many choice rare plants.

Also the following beautiful collections by mail prepaid at prices specified.

- 10 pkts. Flower Seeds, all different and all beautiful sorts. . . . . 30 c.
- 5 Summer flowering bulbs and 5 pkts. flower seeds. . . . . 30 c.
- 4 Passifloras, four different sorts. . . . . 50 c.
- 3 Fine new plants . . . . . 50 c.
- 10 Coleus, fine new seedlings . . . . . 50 c.
- 6 Choice Begonias, all fine sorts. . . . . 50 c.
- 6 Tuberoses, and 6 Gladiolus. . . . . 50 c.
- 4 pkts. Vegetable seeds, 4 pkts. choice Flower seeds . . . . . 25 c.
- 8 Choice Chrysanthemums, all different . . . . . 50 c.