

Historic, Archive Document

Do not assume content reflects current scientific knowledge, policies, or practices.



62.19

LIBRARY

RECEIVED

★ SEP 24 1923 ★
U. S. Department of Agriculture.

GARDEN.



VIENNA KOHL RABI.

PRESERVE THIS CATALOGUE, YOU
WILL NEED IT FOR SUMMER
AND FALL CROPS.

JANUARY 1898



SCARLET CLOVER.

SEED CATALOGUE

..... OF THE

HOWARD & WILLET DRUG CO.

(SEED DEPARTMENT,)

AUGUSTA, GEORGIA.

FORAGE.



AMBER SUGAR CANE.

WITH ALMANAC

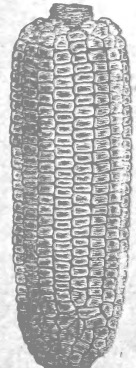
(EASTERN STANDARD TIME.)
WITH ONE PAGE SHOWING

WEATHER FORECASTS

FOR THE YEAR, THE EQUAL WE BELIEVE
OF ANY IN THE UNITED STATES.

OUR SEEDS ARE GROWN AND
SELECTED ESPECIALLY FOR THE
SOUTHERN STATES.

FIELD.



SHAW CORN.

To the Wholesale Seedsmen of the United States :

Seeds catalogued by us as "grown in Georgia" attain their best development in Georgia, and should be bought afresh here each year. We are prepared to supply the wholesale United States Seedsmen with same at lowest prices and best types. State quantity when you write.

To the Retail Seed Merchants of Georgia and South Carolina,

and Elsewhere.

If you sell seeds in papers that are sent out on commission, we urge you, for your reputation's sake and your customers' good, that you discard same. These seeds are not burnt that you return, but are sent back and forth for years till sold. The various State experimental stations have many times warned the people against these seeds as being untrue to type and faulty in germination. The different habitats of the various seeds do not allow any seedsman in the United States to grow but a small portion of his seed stock. Our seeds are grown for us by careful growers throughout the United States (not Europe), wherever the best development of the individual seed is attained. We are prepared to compete with any U. S. markets on seeds in papers or in bulk. Write us kinds you want and quantity.

OUR WARRANTY—We select our stocks with greatest care, and pay liberal prices. We feel justified in saying that all our seeds are the freshest and best to be found, but, at the same time, it must be distinctly understood that *we sell no seeds with warranty expressed or implied in any respect, and will not be in any way responsible for the crop.* If our seeds are not accepted on these terms, return them at once and we will refund money.

DIRECTIONS FOR ORDERING SEEDS—RETAIL MAIL ORDERS.

Send Cash with Order.—Seeds sent only to amount of remittance. We open no accounts. Remit in cash by express, postal order, express money order, registered letter (at your risk), or in postage stamps. *No C. O. D. orders sent unless money companies order for an amount sufficient to cover express charges both ways.*

Always state whether to ship your goods by Postage or Express, and do not forget to enclose the Postage or Express charges.

Postage (always to be prepaid by us) to any point in the United States is on 1-lb. pkg. 10c.; 2-lb. pkg. 18c.; 3-lb. pkg. 25c.; 4-lb. pkg. 35c.

By Southern Express Co. (at following rates—we must prepay) to any office of the So. Ex. Co. is on 1½ lbs. or less, pkg. 10c.; 2-lbs. 14c.; 3-lb. pkg. 18c.; 4-lb. pkg. 22c.

Distance makes no difference by above cheap, easy transportation. We can do your SEED BUSINESS for you if you are 10 miles or 1,000 miles away—it's all the same. And we will do your business as carefully for you whether you want ten cents or ten dollars worth of seed. Will be glad to mail free this catalogue to your friends if addresses are sent us.

Mailed Free of Postage to You—Garden Seeds as follows:

1st. All Seeds listed in our Catalogue as being put up in 2½c. papers at following rates: 2 papers for 5c.; 12 papers for 25c.; 50 papers for \$1.00.

2nd. All Seeds listed in our Catalogue as being put up in 5 and 10 cents packages.

3rd. All Packages Seeds up to 4 oz. quoted in our Catalogue as being put up in 1, 2, 3 or 4 ounces.

This Catalogue is divided into six parts—Garden Vegetables, Economical Plants, Forage Crops, Field Crops, Hog Crops and Grass Seeds.

The Howard & Willet Drug Co.,

(Seed Department)

AUGUST, 1911.

✦ GARDEN WORK FOR THE VARIOUS MONTHS ✦

.....AND.....

WHEN TO PLANT

.....FOR.....

✦ A PERENNIAL SOUTHERN GARDEN ✦

GARDEN WORK FOR JANUARY.—Manure and prepare the soil for the more hardy crops. Plant the early crop of English Peas, and prepare the ground for Irish Potatoes next month. Prune your vines, fruit trees, hedges, etc. Early Wakefield Cabbage may be sown. Onions and Shallots planted. Carrots, Lettuce and Turnips sown. Early market Peas.

GARDEN WORK FOR FEBRUARY.—Dress Asparagus beds; sow Artichoke and Vegetable Oyster late this month; sow Tomato, Egg Plant and Pepper under glass, in gentle heat; plant early Corn; finish pruning, transplanting vines and fruit trees. Plant Strawberries, Horse Radish, English Peas, Onions and Irish Potatoes, and Yams for slips. Sow Asparagus, Cabbage, Cauliflower, Celery, Carrots, Turnips, Radishes, Parsnips, Mustard, Spinach, Beets, Parsley, Onion Seed, Salsify and Cress.

GARDEN WORK FOR MARCH.—Continue to plant Strawberries, English Peas, Onions, Celery, Sweet Potatoes, Horse Radish, Tomatoes, Cabbage and Corn. Plant Ground Peas, Pumpkins, Okra, and a few Snap Beans. Protect blossoms of fruit trees from frost with smoke. Sow Parsnips, Radishes, Lettuce, Carrots, Parsley, Egg Plant, Vegetable Oyster and Onion Seed.

GARDEN WORK FOR APRIL.—Broccoli may be sown, and Cauliflower for late crop. Look after your Asparagus beds. Many things planted last month may now be replanted, if necessary, to secure good crops, such as Cabbage, Onions, Celery, Sweet Potatoes, Okra, Lettuce, Onion Seed, etc. Plant Water and Musk Melons, Squashes and Cucumbers, in rich, sandy soil.

GARDEN WORK FOR MAY.—Late this month transplant Celery, Winter Cabbage, Tomatoes, Sweet Potato slips, etc., but they must be well watered and protected from the hot sun. Continue to plant Corn and Snap Beans, Pumpkins, Winter Squashes, Table Peas and Cornfield Beans.

GARDEN WORK FOR JUNE.—Continue to transplant Celery, Winter Cabbage, Sweet Potato Slips, etc., protecting them from the hot sun. Prepare ground for Turnips by frequent ploughing or digging. Winter Cabbage Seeds, if shaded by day until up, may still be planted. Continue to plant Corn, Snap Beans, Cornfield Beans and Table Peas, and save all garden seeds as they ripen.

GARDEN WORK FOR JULY.—Make preparation for a Fall Garden. Continue to gather and store Onions, Shallots and Irish Potatoes. Get your ground ready for Winter Cabbage. Put in another crop of Beets, also of Ruta Baga and other Turnips. Replant Cabbage, Celery, etc.

GARDEN WORK FOR AUGUST.—Spinach, Lettuce, etc., may be sown, and Snap Beans and English Peas planted; also Melons and Cucumbers for pickling. Set out late Tomato Plants and earth up your Celery. Cauliflower, Broccoli, etc., may be set out for winter use. Continue to transplant Celery, sow Ruta Baga and other Turnips, Beets, Radishes, Onion Seed and Onion Sets.

GARDEN WORK FOR SEPTEMBER.—Spinach, Colza, Lettuce and Radishes may be sown. Strawberry beds may also be prepared and the plants set out. Sow Turnips—the Flat Dutch and the Red Top are the best—also Onion Seed and Onion Sets, Salsify, and Mustard and Cabbage for winter use. Of the latter, Early York and other early sorts may be sown to set out the first of November. Make Mushroom beds and plant the Spawn last two weeks.

GARDEN WORK FOR OCTOBER.—Red Top Turnips may be sown for winter use, but it is almost too late to bring the roots to much perfection, except on the coast. Those already planted may be cultivated and brought to a stand. Plant Strawberry beds. Let your manure heaps be looked after, and your garden tools made ready for spring work. Plant Onion Sets. Make Mushroom beds and plant Spawn first two weeks. Set out Cabbage and Lettuce. Sow Spinach and Mustard.

GARDEN WORK FOR NOVEMBER.—English Broad Beans and Early English Peas may be planted this month. Thyme, Horse Radish, etc., may be taken up and divided. Strawberry beds planted, and the ground manured and prepared for spring work. Gather and bank the Sweet Potatoes. Begin to plant and prune fruit trees. The earlier the vine is pruned after killing frosts the better. Set out Cabbage Plants. Plant Onion Sets.

GARDEN WORK FOR DECEMBER.—Either prune your trees and plants yourself, or stand by and see that it is done properly. "The time to prune," says an experienced cultivator, "is when your knife is sharp," but the best time is when the leaves are off.

GARDEN SEEDS

BEST ADAPTED TO OUR SOUTHERN STATES.

ASPARAGUS SEED.

(Culture from seed: 1 ounce for 60-foot row. Soak seed 24 hours in warm water and sow thinly in row 1 foot apart. Thin out seedlings to 4 inches in rows. Set out 1-year-old seedlings as per culture of Asparagus Roots below.)

CHARLESTON FRENCH OR PALMETTO—Rapid grower. Keeps for long while in excellent condition. Immense stalks, and since its introduction no Asparagus equals it. Packet, 5 cents; 4 ounces, 25 cents.

ASPARAGUS ROOTS.

(Culture: Prepare in Spring or Fall bed 5 feet wide, 2 feet deep, fill in manure and soil. Make 3 rows and set out roots 6 inches below surface and 12 inches in row. Every Autumn dress with manure and salt after tops are cut. Bed should last 12 years. 100 roots set bed 10 feet by 40 feet.)

CHARLESTON FRENCH, OR PALMETTO—See description above. Roots bear transportation to any part of the United States. There is no finer vegetable than Asparagus. A most profitable market crop about Augusta. 100 Roots, \$1.00; 1,000 Roots, \$6.50. We have special arrangements for large amounts.

BEANS--BUSH, SNAPS OR DWARF

For all Beans when sent by mail add for postage: 1-2 pint, 5 cents; 1 pint, 10 cents; 1 quart, 15 cents.

(Culture: Beans can be sown for succession from end of February, or sooner, till September. Bear till frost. Drop 1 bean every 2 or 3 inches in rows 18 inches apart. Cover 2 inches deep. Don't work while dew is on beans, for fear of rust. 1 quart plants 200-foot row; 1 1-4 bushels, 1 acre.)

DWARF GERMAN BLACK WAX—An old variety and a great favorite with market gardeners and others. Tender yellow waxy pods. 2 papers for 5 cents; 1 pint, 20 cents; quart, 30 cents.

BEST OF ALL—A German Bean. Long, green, glossy, fleshy pods. Enormous producer. In New Orleans this is the favorite of all shipping beans. 2 papers for 5 cents; 1 pint, 15 cents; 1 quart, 25 cents.

EXTRA EARLY RED VALENTINE—An old, well-known bean with hosts of friends. Ready for table use six weeks from planting. Round green pods. No other bean is so largely sold to Southern truckers. 2 papers, 5 cents; pint, 15 cents; quart, 25 cents.

EARLY MOHAWK SIX WEEKS—Long green flat pods. Our hardest bean. Will stand some frost. Preferred for early plantings. 2 papers, 5 cents; 1 pint, 15 cents; quart, 25 cents.

EXTRA EARLY REFUGEE OR 1000 TO 1—A 7-weeks' bean, medium to late, large vines, favorite for canning and pickling,

productive, round pod, good main crop. 1 pint, 15 cents; quart, 25 cents.

EARLY YELLOW SIX WEEKS—Hardy and very early, green pod. Resembles Mohawk save in color. A leading sort. 2 papers for 5 cents; pint, 15 cents; quart, 25 cents.

DWARF LIMA—The Beans of this variety possess same flavor as the running kind and are borne heavily from early summer until frost. Pints, 25 cents; quart, 40 cents.

BEANS—POLE.

POLE—(Culture: Plant in hills 4 feet apart each way—4 or 5 beans to hill, plant the eye down. 1 quart plants 150 hills, 1-2 bushel 1 acre.)

KENTUCKY WONDER—A splendid early variety. Vine vigorous, climbing well and exceedingly prolific up to frost. Bears pods in clusters. Green pods, round, crisp, 9 or 10 inches long. The most profitable market gardener's beans for snap bean market. Sold only in bulk. 1-2 pint, 15 cents; pint, 20 cents; quart, 30.

LARGE WHITE LIMA—Either green or dry, this is the standard table vegetable and the best shell bean known. Give it rich ground and plenty of room. 1-2 pint, 15 cents; pint, 25 cents; quart, 40 cents.

SOUTHERN PROLIFIC—Strictly a Southern bean. Stands the Southern heat. Continuous bearer until frost. Pod 7 inches long and flat; seeds dark yellow. Standard in this latitude. Favorite way to plant in South is in damp low lands, among corn, and let the vines grow up the corn stalks. 2 papers for 5 cents; pint, 20 cents; quart, 30 cents.

SMALL LIMA OR CAROLINA SEWEE—Similar in every way to large Lima, except that it is only half as large, seed and pods being smaller. Largely grown in the South and immensely popular. 1-2 pint, 15 cents; pint, 20 cents; quart 35 cents; peck, \$1.25.

TALL BLACK GERMAN WAX—Yellow pods. Bears richly flavored, stringless pods of same good quality as the Dwarf German Wax. Papers 2 for 5 cents; 1-2 pint, 15 cents; pint, 20 cents; quart, 30 cents.

BEETS.

(Culture: 1 ounce plants 100 feet; 4 pounds, 1 acre. Soak seed 12 hours before planting. Can be sown pretty much all Spring and Summer. Sow 1 inch deep in drills that are 18 inches apart, thin out afterward to 8 inches in drill.)

EARLY ECIPSE—The handsomest of the very early Beets. Globed shaped, fine dark red color. Rapid grower. Small tops. Purplish green foliage and red vines. Packets 5 cents each; 1 ounce, 10 cents; 1-4 pound, 20 cents; 1 pound, 60 cents.

EARLY DARK BLOOD TURNIP—Trifle later than Eclipse. Flesh deep blood

red. Tender, fine flavor. The most generally used family beet. 2 papers, 5 cents; 1 ounce, 10 cents; 1-4 pound, 20 cents; 1 pound, 60 cents.

EXTRA EARLY OR BASSANO—As early as Eclipse. Flesh pink with white streaks. Very juicy. Packet, 5 cents; 1 ounce, 10 cents; 1-4 pound, 20 cents; 1 pound, 60 cents.

IMPROVED LONG SMOOTH BLOOD RED—Medium late. Also often used for late Summer planting and winter use. 2 papers for 5 cents; 1 ounce, 10 cents; 1-4 pound, 20 cents; 1 pound, 60 cents.

HALF LONG BLOOD—Similar to Long Blood, but differs in size—being half Long. 2 papers for 5 cents; 1 ounce, 10 cents; 1-4 pound, 20 cents; 1 pound, 60 cents.

SILESIAN SUGAR WHITE—A sweet white beet preferred by some. 2 papers for 5 cents; 1 ounce, 10 cents; 1-4 pound, 20 cents; 1 pound, 60 cents.

BEETS FOR STOCK, OR MANGEL WURZEL.

(Culture: In Europe this is one of the necessary crops for cattle—500 to 600 bushels being grown to acre. Sow 5 pounds to acre. Sow in rows 2 feet apart. Thin to 12 inches in row.)

NORBITAN GIANT—We have tried to get in this the largest stock beet that grows. A long red variety of great size. Flesh solid; good keeper. 1 ounce, 10 cents; 1-4 pound, 15 cents, 1 pound, 40 cents; 5 pounds, \$1.50.

CABBAGES.

(Culture: 1 ounce makes 3,000 plants. 1 acre, 5 ounces. Sow in beds almost any month in the year, usually from February to November. For winter crop, sow August and September. Transplant deep, up to first leaf, in deep rich soil. Water plants well. Set out 18 inches in row. Rows 2 1-2 feet apart.)

Possibly Cabbages are the most universally grown of all the vegetables for home consumption or shipping. The most critical truckers and gardeners will find our Cabbage seed for heading qualities unexcelled.

Nearly the whole line of our cabbages are grown for us on Long Island by the two best known and most reliable cabbage seed growers in United States, Mr. Brill and Mr. Lupton. There are no better cabbage seed in the world than those we offer.

EARLY JERSEY WAKEFIELD—Early and well known favorite. Heads are conical shaped. Possibly the principal variety grown by truckers for early shipment, and by gardeners in general. We have seen quantities of this cabbage grown off Charleston of 22 pounds weight, all solid heads. 2 papers for 5 cents; 1 ounce, 20 cents; 4 ounces, 60 cents; pound, \$2.00.

IMPROVED EARLY DRUMHEAD—An intermediate kind between the cone-shaped early and the late varieties. Can be planted closely. Takes its name from its shape. 2 papers, 5 cents; 1 ounce, 20 cents; 4 ounces, 60 cents, 1 pound, \$2.

WILLET'S ALL SEASONS SURE HEADER—One of the finest for second

early or late growing. Grows quickly to a large size and heads surely. It is a true, sure, hard-header. Its name is an index of its character. 2 papers for 5 cents; 1 ounce, 20 cents; 4 ounces, 60 cents; 1 pound, \$2.00.

IMPROVED EARLY FLAT DUTCH—Not so early as the very earlier, and not so heavy as some, but very salable because of its flat shape, and very extensively planted. Weighs 10 or 12 pounds. 2 papers for 5 cents; 1 ounce, 20 cents; 4 ounces, 60 cents; 1 pound, \$2.

EARLY WINNINGSTADT—A Prussian cabbage; a standard cone shape, solid head, second early variety. 2 papers, 5 cents; 1 ounce, 20 cents; 4 ounces, 50 cents; 1 pound \$1.75.

GREEN GLAZED—Late sowing. Glossy green leaves. Not so liable to insect attacks, and especially adapted for hot climates. 2 papers, 5 cents; 1 ounce, 20 cents; 4 ounces, 60 cents; 1 pound, \$2.00.

EARLY LARGE YORK—For very early sowing. An old English variety. Heads small and slightly heart-shaped. Rather dwarf. Can be planted closely, 8 inches in row. 2 papers, 5 cents; 1 ounce, 20 cents; 4 ounces, 50 cents; 1 pound, \$1.75.

PREMIUM LATE DRUMHEAD—Sow in September. Very hardy. Withstands cold. Large round heads, though sometimes flattened on top. Well known. 2 papers, 5 cents; 1 ounce, 20 cents; 4 ounces, 60 cents; 1 pound, \$2.

MARBLEHEAD MAMMOTH—Largest of all the cabbage grown, though somewhat coarse. A late Drumhead in shape; solid; excellent keeper. 2 papers, 5 cents; 1 ounce, 20 cents; 4 ounces, 60 cents; 1 pound, \$2.

PREMIUM LATE FLAT DUTCH—The old favorite for Fall and Winter sowing. Grows low to ground. Heads large, bluish green in color, broad and flat on top. 2 papers, 5 cents; 1 ounce, 20 cents; 4 ounces 60 cents; 1 pound, \$2.

BUNCOMBE, OR N. C. WINTER—A firm, solid header. Keeps well. Favorite in North Carolina. Either a Spring or Winter cabbage, as wanted. 2 papers, 5 cents; 1 ounce, 20 cents; 4 ounces, 65 cents; 1 pound, \$2.25.

CARROT.

(Culture: One ounce per 100 feet, 3 pounds an acre. Soil must be fertile, deeply dug and light or sandy. Soak seed well. Sow in drills 10 or 12 inches apart so plants can be worked.)

CHANTENAY, STUMP ROOTED—Half long rooted. Scarlet; broad shoulders. Packets, 5 cents each; 1 ounce, 10 cents; 1-4 pound, 25 cents.

IMPROVED LONG ORANGE—Roots long and deep orange color. 2 papers for 5 cents; 1 ounce, 10 cents; 1-4 pound, 25 cents.

CARROTS—FOR STOCK—Sow 3 pounds per acre. These Roots are often 15 inches in circumference. Greatly enjoyed by stock. Gives fine color to butter.

VICTORIA—YELLOW—The largest heaviest cropping and most nutritious yellow variety in cultivation. Easily gathered, as roots grow largely above ground. 1-4 pound, 25 cents; 1 pound, 75 cents; 3 pounds, \$1.75.

CELERY.

(Culture: One ounce to 4,000 plants; 4 ounces 1 acre. Now grown here, with profit, extensively for market. Sow in May and June; also in August and September. Transplant when 6 inches high in 3 foot rows, 6 inches in row. When tall enough they should be covered up with earth to bleach.)

GIANT WHITE PASCAL—About 2 feet high. Nutty flavor. Stalks broad and crisp and stringless. Bleaches in 5 or 6 days. Packet, 5 cents; 1 ounce, 20 cents.

NEW ROSE—Very hardy. Delicious flavor, as most pink varieties are. Packet 5 cents; 1 ounce, 20 cents.

IMPROVED WHITE PLUME—Very early. White foliage. Needs but little banking. Not a winter variety. Packets, 5 cents; 1 ounce, 20 cents.

GEORGIA COLLARD.

These seed grown in Georgia. Georgia grows the collard seed for the United States; and the United States come each year to Georgia for her collard seed. We are the largest collard seed contractors in Georgia. Write us, stating quantity. Collards grow 3 to 4 feet high. Branch out widely and thickly. Leaves are cut and boiled as greens. New leaves taking place of old ones cut. Plants stand cold—leaves are more tender and sweet after frost. Every farmer's garden in Georgia grows collards. Thousands of negro garden patches grow nothing but Collards.

(Culture: An ounce will produce about 2,500 plants. Sow in spring or summer as directed for cabbage, either in beds, to transplant when large enough, or in rows where intended to stand. Three or four feet each way ought to be given the plants. 16 ounces to acre.)

GEORGIA BLUE STEM COLLARDS—The old-fashioned kind known for 100 years or more. Papers, 2 for 5 cents; 1 ounce, 10 cents; 4 ounces, 35 cents.

NED BYRD GEORGIA BLUE STEM COLLARDS—An improved strain of very highest type carefully selected for 10 years. Can not deliver any before June, 1898.

GEORGIA WHITE CABBAGE COLLARD—Whiter and more tender than Blue Stem. Introduced 8 years or more ago. Three-fourths of them bunch or head up in winter. 2 papers, 5 cents; 1 ounce, 10 cents; 4 ounces, 35 cents.

GEORGIA BUNCOMBE COLLARD—Never listed before. Supply very limited. Color is between Blue Stem and Cabbage Collard. Hardy. Heavy foliage. Their heads bunch up in winter—juicy and sweet. 1 ounce, 25 cents; 1 pound, \$2.50.

GEORGIA GREEN GLAZED COLLARDS—Never listed before. Can't deliver till June, 1898. Supply will be limited. Hardest of all collards. Insects wont touch. Leaves smooth, glossy, glazed green.

CORN.

GARDEN, SWEET TABLE—Adam's Early. Mammoth Sugar. Stowell Evergreen. All of above 2 papers for 5 cents; pint, 15 cents; quart, 25 cents; peck, \$1.00. Postage is 10 cents pint and 15 cents quart.

CUCUMBER.

(Culture, 1 ounce for 80 hills; 1 1-4 pounds 1 acre. Plant after frost 1-2 inch deep, and thereafter every two or three weeks for succession, in well-manured hills 4 feet apart. Thin to 4 plants in hill.)

LONDON LONG GREEN—Long and crisp; not many seed. Makes fine pickles. Two papers for 5 cents; 1 ounce, 10 cents; 4 ounces, 25 cents.

EARLY FRAME—2 papers for 5 cents; bulk price same as Long Green.

EARLY WHITE SPINE—2 papers, 5 cents; bulk price same as above.

EXTRA EARLY CLUSTER—2 papers, 5 cents; bulk price same as above.

NICHOL'S MEDIUM GREEN—1 ounce, 10 cents; 4 ounces, 25 cents.

NEW JAPANESE CLIMBING—Novelty. Grows 7 feet high on pole. Same price as Nichol's Medium Green.

EGG PLANT.

Culture: 1 ounce to 100-yard row; 4 ounces 1 acre. Start seed in hotbeds or boxes in February or March. Set out plants in early warm weather, 2 by 3 feet.)

NEW YORK IMPROVED PURPLE—Deep lustrous purple. Standard. Packets, 10 cents; 1 ounce, 35 cents.

PEARL WHITE—(Seed grown in Georgia). Can supply the trade. A large new creamy white, delicate flavored egg plant. Preferred above others. Packets, 10 cents; 1 ounce, 35 cents.

KALE.

(Georgia grown seed. U. S. seedmen supplied.)

(Culture: 1 ounce for 2,000 plants; 3 pounds 1 acre. For Spring and Winter greens sow from August to October in drills 2 feet apart. Thin out to 8 inches in row and cultivate as cabbages.)

DWARF GREEN CURLED—Most tender and delicate of all the cabbage family. Improved by frost. Leaves look like an immense feather. 2 papers, 5 cents; 1 ounce, 10 cents; 4 ounces, 30 cents.

KOHL RABI.

(Culture: 1 ounce for 200 feet; 1-2 pound, 1 acre. Sow in February, March, or August to October in rows 1 foot apart and thin to 10 inches between.)

EARLY WHITE VIENNA—A turnip rooted cabbage; the edible part of which is the enlarged stem or root, which must be cooked when it is about 2 1-2 to 3 inches thick; thought by some equal to cauliflower—like which it is prepared for table. Packet, 5 cents; 1 ounce, 25 cents.

LETTUCE.

(Culture: 1 ounce for 250-foot drill; 5 pounds, 1 acre. Sow in beds almost any month in year. Reset plants 8 inches apart in rows.)

DEACON CABBAGE—Large, solid head Cabbage Lettuce for summer use. 2 papers for 5 cents; 1 ounce, 15 cents; 4 ounces, 40 cents.

IMPROVED HANSON—Crisp, tender, curled variety. Stands hot sun well.

Weights 2 or 3 pounds. Papers, 2 for 5 cents; 1 ounce, 15 cents; 4 ounces, 40 cents.

SILVER BALL—Foreign variety. An all-the-year-around lettuce. Heads silvery white; solid, firm and of exquisite flavor. Papers, 2 for 5 cents; 1 ounce, 15 cents; 4 ounces, 40 cents.

MELON—CANTALOUPE.

(Georgia grown seed. U. S. seedmen supplied.)

THE NIXON—Originated in this county and drove out every other Cantaloupe for home and market use. Weighs 8 to 12 pounds. Flesh crisp and sweet. Rough skin. Good shipper. Deep ribbed; rind and flesh yellow. 1 ounce, 10 cents; 4 ounces, 35 cents; 1 pound, \$1.

NETTED NUTMEG—Shaped like a Nutmeg. Highly scented. Suits the garden especially. Long and well-known. 2 papers for 5 cents; 1 ounce, 10 cents; 4 ounces, 25 cents; 1 pound, 75 cents.

GREEN FLESHED OSAGE—This is the leading favorite shipper into Chicago. Intermediate. Coconut shape. Netted skin. Good quality. Green flesh. 1 ounce, 10 cents; 4 ounces, 25 cents; 1 pound, 75 cents.

GLASS MELON—These seed grown in Georgia. Seed trade supplied. Look precisely in all ways like a lemon. Very pretty. Vine like a cantaloupe. Crop planted and comes off like cantaloupe. Only listed by us. It is used for making preserves. Preserves are transparent, beautiful and delicious. Grows very thick on a vine. 1 ounce, 25 cents.

MUSTARD.

(Culture: 1 ounce to 100 feet. Sow in Fall, Winter or Spring in rows or shallow drills. Press earth well down. Ready for use in 5 or 6 weeks.)

SOUTHERN GIANT CURLED—(These seed grown in Georgia. U. S. seed trade supplied)—The Southern favorite. Hardy and large leaf. 2 papers for 5 cents; 1 ounce, 10 cents; 4 ounces, 25 cents.

CHINESE BROAD LEAF—Leaves broad, sometimes 12 inches long and crimped. Leaves when cooked have an agreeable flavor like Spinach. 1 ounce, 10 cents; 4 ounces, 25 cents.

OKRA.

These seed grown in Ga. We can supply U. S. seed trade. Large amounts dealt in—spots or contract.

(Culture: 1 ounce to 50-foot drill; 10 pounds acre. Sow late in Spring in drills 2 feet apart and leave one plant to every 15 inches.)

LONG GREEN—Tall stalks. Pods dark green; 2 papers, 5 cents; 1 ounce, 10 cents; 1-4 pound, 20 cents; 1 pound, 50 cents.

NEW DWARF GREEN PROLIFIC—Early and will bear until frost. 2 papers, 5 cents; 1 ounce, 10 cents; 1-4 pound, 20 cents; 1 pound, 50 cents.

NEW WHITE VELVET—Tender white pods. Pods round and smooth. Distinct variety. 2 papers, 5 cents; 1 ounce, 10 cents; 1-4 pound, 20 cents; 1 pound, 50 cents.

ONION SEED.

(Culture: 1 ounce to 100 feet; 4 pounds, 1 acre. Our seed come from Southern California. Northern seed will not mature onions in this latitude. For Onions sow in February, March, September or October in rich, sandy soil in drills 1 foot apart. Thin when up to 5 or 6 inches. Cover seed in planting 1-2 inch, or sow seed in hot bed in Winter and transplant in Spring. Grow off quickly.)

MAMMOTH SILVER KING—Italian. One of the largest; often 20 inches in circumference; 4 pounds in weight. Rapid grower; good in one season. Flattened in shape. Silver white. Packet, 10 cents; 1 ounce, 20 cents; 1 pound, \$2.00.

PRIZE TAKER OR YELLOW GLOBE SPANISH—Globe shape; rich straw color. Weight, 3 to 4 pounds. Mild; delicate; good keeper. This variety has become famous all over the world. Packet, 10 cents; 1 ounce, 20 cents; 4 ounces, 75 cents; 1 pound, \$2.25.

ONION SETS.

(Culture: 1 quart to 20-foot drill; 1 bushels to acre. Sow early in Spring or September or October 4 inches in rows 12 inches to 15 inches apart.)

We are largest dealers in Onion Sets. Merchants in Augusta's territory can get lowest wholesale quotations by writing. Retail mail orders, add 10 cents quart for postage.

DANVERS YELLOW—15 cents quart; peck, \$1.

WHITE SILVER SKIN—15 cents quart; peck, \$1.10.

WHITE MULTIPLIER—Grows like potatoes in a hill. Yield enormously productive. Mild. Quart, 20 cents; peck, \$1.25.

SHALLOTS (Multiplier)—It buttons like onions at top and multiplies at root. Used for all kinds of seasoning. Stands Winter. Sets are very tiny. Quart, 25 cents.

PARSLEY.

(Culture: 1 ounce to 150 feet. Soak seed. Sow Spring to July. Thin out in drills to 4 inches.)

CHAMPION MOSS CURLED—Bright green. Beautiful variety. Papers, 2 for 5 cents; 1 ounce, 10 cents.

PARSNIP.

(Culture: 1 ounce to 150 feet drill. 4 pounds, 1 acre. Drill in Spring in rows 18 inches apart. Thin out to 6 or 8 inches in row.)

HOLLOW CROWN OR SUGAR—Long smooth roots. The best either for table or stock feeding use. Papers, 2 for 5 cents; 1 ounce, 10 cents; 1-4 pound, 20 cents.

GARDEN PEAS.

(Culture: 1 quart for 150 feet row; 1 1-2 bushels per acre. Peas can be planted here from January to August. Sow in single or double rows, 4 feet apart, 1 inch in row.)

Our Peas are grown for us on Canada. Lakes—free from weevils and holes. We deal in them in largest quantity at wholesale. If you order sent by mail add for postage 5 cents per 1-2 pint; pint, 10 cents; quart, 15 cents. Buy Peas for home use always in bulk—not papers.

PHILADELPHIA EXTRA EARLY OR FIRST AND BEST—Perhaps the earliest Pea cultivated. Productive and well flavored. 2 papers for 5 cents; 1-2 pint, 10 cents; pint, 15 cents; quart, 25 cents; 1-2 peck, 75 cents; peck, \$1.25.

CHAMPION OF ENGLAND—Second early; wrinkled. One of the finest varieties for family use. Standard. Sow thick. 2 papers for 5 cents. Same bulk price as Philadelphia Extra Early.

YORKSHIRE HERO—Wrinkled. Extra early. An English pea. Excellent, productive and luscious. Large pea; vines spread. Sow thinly. 2 papers, 5 cents; 1-2 pint, 10 cents; pint, 15 cents; quart, 25 cents; 4 quarts, 75 cents.

LARGE WHITE MARROWFAT—Main or late crop. A large, heavy pea. Good cropper; grown everywhere. 2 papers for 5 cents; 1-2 pint, 10 cents; pint, 15 cents; quart, 20 cents; 1-2 peck, 60 cents; peck, \$1.00.

BLACK-EYED MARROWFAT—Hardy and prolific. Tall; abundant fruit. Large pea. 2 papers, 5 cents. Bulk same as White Marrowfat.

PREMIUM GEM—McLEAN'S—Early Dwarf; height, 1 foot; wrinkled pea; prime favorite. 2 papers for 5 cents. Bulk price same as Yorkshire Hero.

MAUD S.—The best, earliest market gardener's pea. Stands cold. 2 1-2 feet to 3 feet high. Vigorous. Easily gathered as it ripens uniformly. Only sold in bulk. Pint, 15 cents; quart, 25 cents; 4 quarts, 80 cents.

PEPPER.

(Culture: 1 ounce to 1,500 plants; 4 ounces, 1 acre. Plant in early Spring in hotbeds or boxes. Set out in rows 2 feet apart, 18 inches in row.)

SWEET GOLDEN DAWN OR GOLDEN BELL—Bell-shaped; mild flavor; can be eaten like an apple; golden yellow; productive. 2 papers, 5 cents; 1 ounce, 25 cents.

BULL NOSE OR SPANISH MONSTROUS—Favorite for pickling or mangoes. Rind thick and fleshy. 2 papers for 5 cents; 1 ounce, 25 cents.

LONG RED CAYENNE—Long, narrow red. Often dried and hung up on strings and used. Packet, 5 cents; 1 ounce, 25 cents.

RED CHERRY—Looks like a cherry. Used as pickles or dried as Cayenne. Packets, 5 cents; 1 ounce, 25 cents.

NEW CHINESE CELESTIAL—Chinese. Plant is beautiful and ornamental. Profuse bearer. Peppers yellow, then deep scarlet. Packets, 5 cents; ounce, 25 cents.

POTATOES.

IRISH and SWEET—See under head "Field Crops."

PUMPKIN.

(Culture: One quart to 400 hills. Plant fields in March. Generally planted here in low lands amid corn. 3 pounds for 1 acre.)

IMPROVED CASHAW—Striped Crook-neck. For pies and baking. Salmon flesh. Can be kept from one season to another. 1 ounce, 10 cents; 1-4 pound, 20 cents; 1 pound, 60 cents.

TENNESSEE SWEET POTATO PUMPKIN—Cream white; weighs 12 pounds; productive; will keep here

through the winter until early summer. A fine dish, not appreciated in South. 1 ounce, 10 cents; 1-4 pound, 20 cents; 1 pound, 60 cents.

PUMPKIN FOR FIELD.

EXPOSITION PRIZE—Magnificent Jumbo Pumpkin, the largest we know of. 1 ounce, 10 cents; 1-4 pound, 20 cents; 1 pound, 60 cents.

RAPE OR GEORGIA SALAD.

(Culture: One ounce to 150 feet; drill thick in Spring, rows 2 feet apart, or sow in August and September.) The best of Spring Greens when boiled. Thin out to 6 inch plants and cook. Afterward cut off remaining tops and use. Tops grow out again for cutting. 1 ounce, 10 cents; 1-4 pound, 20 cents.

RADISH.

(Culture: 1 ounce to 100 feet; 8 pounds to acre. Sow in drills in early Spring and to June for succession. Thin out as needed. Rows 12 inches apart. Sow in early Fall for Winter.)

LONG SCARLET SHORT TOP—2 papers, 5 cents; 1 ounce, 10 cents; 4 ounces, 25 cents; 1 pound, 65 cents.

EARLY SCARLET TURNIP—2 papers, 5 cents; 1 ounce, 10 cents; 4 ounces, 25 cents; 1 pound, 65 cents.

FRENCH BREAKFAST—Small, scarlet, olive shaped. 2 papers, 5 cents; 1 ounce, 10 cents; 4 ounces, 25 cents; 1 pound, 65 cents.

SCARLET CHARTIER WHITE TIPPED—Handsome; long scarlet; very large size; not pithy; at top scarlet, deeper down pink, then white tipped. Packet, 5 cents; 1 ounce, 10 cents; 4 ounces, 25 cents; 1 pound, 75 cents.

CHINA ROSE—WINTER SCARLET—Bright, rose color; flesh firm and piquant; fine for winter use. 2 papers for 5 cents; 1 ounce, 10 cents; 4 ounces, 25 cents; 1 pound, 75 cents.

SALSIFY, or VEGETABLE OSYTER

(Culture: 1 ounce to 60 feet. By all means grow this delicious vegetable. Sow thickly in Spring. Drill 12 inches apart. Cover seed 1 inch. When up thin out to 5 or 6 inches in row. Roots can stay in ground; good for use all Winter till Spring. Can also sow in September or October. A good market crop.)

NEW MAMMOTH SANDWICH ISLAND—The largest and the superior kind. Packets, 5 cents; 1 ounce, 15 cents; 4 ounces, 40 cents; 1 pound, \$1.25.

SPINACH.

(Culture: One ounce to 150 feet drill; ten pounds acre. For winter, sow in drills 1 inch deep, rows 9 inches apart, in September and October. Thin out by using for table. For Summer use, sow early in Spring. A good Truckers' crop all the year.)

BLOOMSDALE SAVOY CURLED LEAF—Large bright green curled leaf. Stands worst winter. Packet, 5 cents; 1 ounce, 10 cents; 4 ounces, 20 cents; 1 pound, 45 cents.

NEW ZEALAND SUMMER—Scald and soak seed in hot water. Distinct. Grows well in hot weather. Packet, 5 cents; 1 ounce, 10 cents; 4 ounces, 30 cents; 1 pound, 60 cents. In this latitude this Spinach is a perennial.

SQUASH.

(Culture: One ounce to 40 hills; 2 pounds 1 acre. Sow in hills same time as Cucumbers and Melons. Bush varieties, 3 to 4 feet apart—running kinds, 6 to 9 feet apart. Winter kinds are to be stored through Winter, used as wanted, a standard dish in North.)

EARLY WHITE BUSH SCALLOP—Early, well known by all. Ships well. A Summer dwarf. 2 papers, 5 cents; 1 ounce 10 cents; 1-4 pound, 20 cents; 1 pound, 60 cents.

SUMMER CROCKNECK—Early. Yellow fruit—Summer. Hard shell—warty excrescences. 2 papers, 5 cents; 1 ounce, 10 cents; 1-4 pound, 20 cents; 1 pound, 60 cents.

EARLY ORANGE MARROW—For Summer and Fall and Winter. An improved Boston marrow—but two weeks earlier. Delicate flavor. Skin, deep rich orange. Packet, 5 cents; 1 ounce, 10 cents; 1-4 pound, 25 cents; 1 pound, 75 cents.

MAMMOTH CHILI WINTER—Grows to an immense size. Rich orange yellow. The Jumbo of the Squash family. Has grown to 200 pounds in size. Keeps well in winter. Packet, 10 cents; 1 ounce, 15 cents; 4 ounces, 40 cents; 1 pound, \$1.25.

FORDHOOK WINTER—Fine quality; thin skins. Can be used at any stage of growth in Summer, and at maturity kept through the Winter. Valuable new variety. Packet, 5 cents; 1 ounce, 10 cents; 1-4 pound, 25 cents; 1 pound, 75 cents.

TOMATO.

(Culture: 1 ounce to 2,500 plants; 3 ounces, 1 acre. Sow in hotbeds or boxes January or February. Transplant after frost when 2 inches high in open ground. Succeeds 50 per cent. better when trained to sticks or frames. When thus trained all limbs (they appear in axil between leaf branch and stalk) must be pinched off. This method leaves the little fruit stems and the larger leaf branches. The vine will thus grow 10 feet high and fruits to the top as season advances—till frost.)

LIVINGSTON'S FAVORITE—Large; smooth; productive; good shipper. Does not crack open. 2 papers, 5 cents; 1 ounce, 20 cents; 4 ounces, 65 cents; 1 pound, \$2.

NEW EARLY ACME—Pinkish purple; heavy bearer, round, solid, medium size. Bears till frost. Thin skin. 2 papers for 5 cents; 1 ounce, 20 cents; 1-4 pound, 65 cents; 1 pound, \$2.

MIKADO OR TURNER'S HYBRID—Large—3-4 to 1 1-2 pound—smooth; solid; purplish red; peculiar foliage. 2 papers, 5 cents; 1 ounce, 20 cents; 1-4 pound, 65 cents; 1 pound, \$2.

SELECTED PARAGON—A second early; bright crimson; resembles the Acme in size and shape; bears transportation; fine canning tomato. Papers 2 for 5 cents; 1 ounce, 20 cents; 1-4 pound, 65 cents; 1 pound, \$3.

GOLDEN QUEEN—Yellow flesh; superior, distinct flavor; beautiful fruit. 2 papers, 5 cents; 1 ounce, 20 cents; 1-4 pound, 65 cents; pound, \$2.

TURNIPS.—SPRING SOWING.

To Merchants in Augusta Territory: We make large annual growing contracts in Turnip Seed. Can supply you at lowest wholesale prices.

(Culture: 1 ounce for 200-foot drill; 1 1-2 pounds 1 acre. Our seed are the best American grown. Do not sell imported seed. Sow in drills which are 14 inches apart. Thin out plants to 6 inches apart. For Fall and Winter Turnips, from July 20 to September 15.)

EARLY WHITE FLAT DUTCH—STRAP LEAF—Spring sowing. 2 papers, 5 cents; 1-4 pound, 12 cents; 1 pound, 35 cents.

EARLY PURPLE TOP—STRAP LEAF—Spring sowing. 2 papers, 5 cents; 1-4 pound, 12 cents; 1 pound, 35 cents.

TURNIPS—FALL AND WINTER USE.

PURPLE TOP GLOBE, SEVEN TOP (for Greens), **YELLOW OR AMBER GLOBE, *WHITE GLOBE, WHITE NORFOLK, WHITE COW-HORN, *YELLOW ABERDEEN, WHITE SNOW BALL.** 1-4 pound, 12 cents; 1 pound, 35 cents. All of above marked * we put up also in papers, 2 for 5 cents.

TURNIPS—RUTA BAGAS.

YELLOW IMPROVED PURPLE TOP RUTA BAGA—2 papers, 5 cents; 1-4 pound 12 cents; 1 pound, 35 cents.

WATERMELONS.

All these seed grown in Georgia. U. S. seed trade supplied. We are the largest and the very best melon shipping district in U. S. Augusta inaugurated in 1867 melon shipping business Northward. Our seed are taken from 20 pound melons and above—8 to 10 melons to 1 pound seed. We sell to the largest growers and largest seedmen in U. S.

(Culture: Dig holes 2 feet deep and fill with rich mould and manure. Plant in Spring 10 seeds to hill and thin out to 2.)

BLUE GEM OR GLOUSSIER—The coming shipping Melon in U. S. As good a shipper as Kolb Gem. Quality far better flavored and sweeter. A far better keeper. More large melons and less culls on vines. Somewhat longer and heavier than Kolb Gem. Very dark bluish green rind with small grayish stripes. Bright red flesh. Seed black. Mr. T. H. Johnson, of South Carolina, the largest melon shipper possibly in the South, says: "I ship yearly 250 cars—300,000 melons—I regard Blue Gem as good a shipper as Kolb Gem while quality of meat is far better. Will keep longer than any known melon. I gave \$25 per car more this year for them than I did for Kolb Gem." 1 ounce, 10 cents; 4 ounces, 35 cents; 1 pound, \$1.00.

"BRANCH'S GENUINE RATTLE-SNAKE"—Rattlesnake Melons originated

near Mr. Branch's. The only grower in U. S., so far as we know, who has the original and pure seed. This watermelon is the King of the Melon Market—a good shipper, and eating qualities unsurpassed. His strain of seed has been kept pure for thirty years past. It was pronounced the finest melon on exhibition at the Tennessee Centennial. Price: 1 ounce, 10 cents; 1-4 pound, 35 cents; 1-2 pound, 65 cents; 1 pound, \$1.25—all delivered in any part of United States. We are Mr. Branch's agents.

AUGUSTA ROUND WHITE—New. Earliest Melon in U. S. Matures here June 12th to 15th. All others mature about July 4th. Best and earliest home market melon known. Not a good shipper nor keeper. Short vines but heavy bearers. Plant thick. Tender rind. Flesh light red. Sweet, brittle, good flavor. Shape round. Color whitish. Melons 20 to 50 pounds. A great acquisition among melons. 1 ounce, 15 cents; 4 ounces, 50 cents; 1 pound, \$1.50.

THE JONES MELON—Rind dark; flesh bright red. Almost round in shape. Rind trifle thicker than two above melons. Sixty-five to seventy pounds frequent size for this Melon. Originated near us only a few years ago, yet it has sprung into the widest popularity, and is listed in all the United States Seed Catalogues as one of the very best. 1 ounce, 10 cents; 1-4 pound, 35 cents; 1 pound, \$1.

AUGUSTA SUGAR LOAF—A greenish white, elongated Melon with crisp red flesh, with as thin a rind as Rattlesnake. Grows to an immense size—a whole market wagon load running often to sixty pounds each. Originated around Augusta. It's a beauty to look at and a delight to eat. 1 ounce, 10 cents; 1-4 pound, 35 cents; 1 pound, \$1.

PRIDE OF GEORGIA—An exceedingly large, round, green Melon; flesh crisp and red. You will find occasionally on it small

rough, slightly scaly spots. This Melon is close kin to the Jones Melon, and is a handsome Melon inside and outside. 1 ounce, 10 cents; 1-4 pound, 35 cents; 1 pound, \$1.

KOLB GEM—Color dark green. Bright stripe. Very nearly round. Rind thick, ensuring perfect shipping qualities. Flesh medium red and firm. 50 pounds is a fair size. This is the standard universal shipping melon in U. S. Price same as Blue Gem.

ECONOMICAL PLANTS.

ORNAMENTAL CASTOR OIL BEAN—1 ounce, 10 cents; 1 pound, 65 cents.

PAPER SHELL PECANS—(Largest)—1 pound, 75 cents.

WATER GOURDS—Long handle—3 feet. Packet, 10 cents. Large Sugar Trough. Packet, 10 cents.

DISHCLOTH GOURD (*Luffa Acutangula*)—Grown in Georgia. We supply U. S. seed trade. Eat before maturity like squash. The dried interiors are sponge-like and durable—good for bath, washing, scrubbing, massaging purposes and so sold. The immense vine can be trained to wall or arbor. The negroes of the South call them Rheumatism Rags. At the Hot Springs, Ark., in the hot baths for rheumatism they are prescribed. Package, 10 cents; 1 ounce, 30 cents.

RUSSIAN SUNFLOWER SEED.

Sow until August, 5 pounds 1 acre. Great improvement over the small Sunflower. Some are 18 inches in diameter. Ornamental. Large seeds. In Russia used for oil. Known here as the best of all poultry foods—40 to 50 bushels per acre. In cities it is the parrot's food. 1-4 pound, 7 cents; 1 pound, 15 cents; 5 pounds, 50 cents.

TO UNITED STATES SEED TRADE.—In this Catalogue are the following new cultures not before listed and we advise you to also list them and keep them in stock: Georgia Buncombe Collard, Green Glazed Collard, Ned Byrd Georgia Blue Stem Collard, New Era or The Northern Cow Pea, Augusta Round White Melon, Blue Gem or Gloussier Melon, Glass Melon.

WE SUPPLY UNITED STATES SEED TRADE with the foregoing seed; also with following at first hands: All the Collard Seeds, all the Cotton Seeds, all the Cow and Field Peas, Cat Tail Millet, Chufas, Spanish Peanuts, all the Watermelon Seeds, Soja Beans, Seven Top Turnips, Okra, Curled Mustard, Southern Kale, Upland Rice, Dishcloth Gourd Seed, Nixon Cantaloupe, Sweet Potatoes, Georgia Rye, Aparagus Roots, Bermuda Grass Sets.

WARNING TO SEEDMEN.—We warn Northern and Western seedmen from selling to their Southern trade Watermelon seed grown in the States of Oklahoma and Kansas, and other Western States. Such seeds produce melons in the South with hard, white spots in the hearts. The melons do not mature. Thousands of dollars were lost by Southern growers last year from these seed.

THE HOWARD & WILLET DRUG COMPANY,
Seed Department. **AUGUSTA, GEORGIA.**

FORAGE CROPS.

The South has a world of wealth in her varied Forage Crops. Their usual culture is simply to sow in April thinly in drills—rows three feet apart—cutting the plants and feeding it when 2 or 2 1-2 feet high, and recutting as it grows out; 3 or 4 cuttings a season. Write for bushel prices—50 pounds.

PEARL OR CAT TAIL MILLET—(*Penicillaria Spicata*.)—These seed are grown in Georgia. U. S. seed trade supplied in largest amounts. No other plant makes so much forage as this. Seven cuttings can be had from one planting about Augusta in one season. Total of 3 cuttings green forage per acre at Georgia Experiment Station, 52,416 pounds. The U. S. Agricultural Bureau has increased its sale largely. Demand could not be supplied in 1897. Stools at ground. Thick foliage. Heads not eaten. 1 pound, 20 cents; 5 pounds, 1-4 acre, 75 cents.

EARLY AMBER SORGHUM—We wholesale this in large amounts in Augusta territory. Almost a Trinity plant; three most distinct cultures: 1st. Green Forage. 2d. Cutting it when ripe and saccharine and feeding it to stock, or storing it for them. 3d. Grinding it for syrup. This is the earliest Sorghum. 50 pounds to bushel. Sow 20 pounds to 1 acre. 1 pound, 10 cents; 10 pounds, 1-2 acre, 75 cents.

EARLY ORANGE SORGHUM—Yields heavier than Amber. Syrup, too, is finer flavor. Georgia Experiment Station makes total three cuttings green Forage per acre 42,018 pound. Weight and price same as Amber.

We wholesale large amounts to Augusta territory merchants of Sorghums.

WHITE KAFFIR CORN—Georgia Experiment Station, 3 cuttings total 32,034 lbs acre. It grows from four to five feet high, making a straight, upright growth. It has a stalky stem, with numerous wide leaves. The stalks keep green and are brittle and juicy, not hardening like other varieties of sorghum, making excellent fodder, either green or dried, which is highly relished by cattle, horses and mules. The seed heads form at top of each stalk, and as soon as these show the grain well, the joints next below the top send up shoots which yield the second seed heads. For the grain sow in rows three feet apart, three to five pounds of seed to the acre. For fodder, sow 1-2 bushel to 1 bushel, either broadcast or in drills. Invaluable for sowing along with cow peas, as they hold vines up. All can be cut at same time. 1 pound, 15 cents; 5 pounds, 65 cents.

RED KAFFIR CORN—This grows taller than the white; the stalks are slenderer, but more juicy and very leafy. The heads are long, slender, compact and grow erect; they measure from one to two feet. The seed is red, smaller than that of the white, and rather hard and brittle. This variety is one of the best drought resisters among all the non-saccharine sorghums. It does well on poor land and yields well. It ripens a little earlier than the white variety, and yields much heavier. It is highly recommended

by the Kansas Agricultural College, at Manhattan. Per pound, 15 cents; 5 pounds, 65 cents.

WHITE MILLO MAIZE, or BRANCHING DHOORA—Total 3 cuttings green forage at Georgia Experiment Station 51,792 pounds per acre. An immense producer of fodder. Stools largely, sometimes as many as ten to fifteen shoots from one seed; can be cut for green feed several times a season, yield of grain thirty bushels to the acre on land that will make fifteen of corn. Plant in rows four to five feet apart, dropping three to five seed eighteen inches apart in rows; plant 8 to 10 pounds seed to acre. Cultivate as corn. Price, pound, 15 cents; 5 pounds for 65 cents.

YELLOW MILLO MAIZE—This growth is tall, nine to twelve feet, stooling from the ground like the White Millo Maize, but not so much. It sends out shoots also from the joints. The seed heads grow to great size on good land, often weighing three-fourths of a pound, sometimes a full pound after being fully ripe. On account of its branching habit and tall, massive growth, this grain should be planted in 4 or 5 feet rows, and two to three feet in the drill, according to the quality of the land, two plants in a hill, three to 5 feet apart, 8 to 10 pounds per acre. Per pound, 15 cents; 5 pounds, 65 cents.

TEOSINTE (*Euchlaena Luxurians*)—Many growths per season. Mississippi Experiment Station reports 2 tons per acre green forage product. One seed makes 30 to 50 stalks. On rich land grows 15 feet high and produces a larger amount forage than any known plant; 10 per cent. saccharine. Seeds in Florida but not in Georgia. Plant in April. 5x6 feet; cultivate as corn. 1 ounce, 15 cents; 1-4 pound, 50 cents; 1 pound, \$1.50. 3 pounds, 1 acre.

DWARF ESSEX RAPE—In England and Germany this is the universally grown forage crop. Sown for pasturing lambs and sheep, and also for cows—no crop there equals it. No crop is so fattening—a lamb growing 7 or 8 pounds a month. Sow 5 pounds to 10 pounds per acre in Spring or Fall—broadcast or drill in damp lands—or drill in rich uplands. Sown in August it makes by January and February an enormous amount green food 2 or 3 feet high and branching. Thin it out in Fall when small and eat as Spinach. This is also called Georgia Rape. 1 pound, 20 cents; 5 pounds, 75 cents.

GERMAN MILLET OR GOLDEN MILLET (*Setaria Italica*)—50 pounds to bushel. Sow 50 pounds to acre. Sow broadcast after Oats in Spring on rich ground. Cut before seed harden. Grows 3 to 5 feet high. Is widely sown; for no other forage or hay can be produced so heavily or quickly as this—4 to 6 tons per acre in rich ground. 25 pounds for 1-2 to 1 acre. \$1. (Prices for large amounts vary largely each year.) German Millet only makes one cutting or crop. We wholesale it largely to Augusta territory merchants.

MISCELLANEOUS FIELD AND FARM SEEDS.

SOJA BEANS (*Soya Hispida*)—These seed grown in Georgia. We supply U. S. seed trade. Can be sown broadcast, bushel to acre, or in drills, 3 beans to hill, 18 inches in row, 3 1-2 feet rows. The beans are much eaten in Japan. Our Georgia Experiment Station places a high forage plant value upon them, high as Cow Peas. Stalk is 2 1-2 to 3 feet high. Can be cut entire or stock turned in to feed. Nutritious. 1 pound, 15 cents; peck, 90 cents; bushel (60 pounds), \$3.

J. F. Guilmartin, of Screven Co., Ga., says: "Have grown 63 bushels per acre. Large yield of forage as well as beans. Cure without trouble, 5 feet high and beans from first branch to top. More stuff on them than anything that have ever grown."

FIELD CORNS—We make a specialty of Field Corns—wholesaling them in large quantity to merchants in Augusta territory at lowest prices. 6 quarts to acre; 1 bushel, 56 pounds; unshelled, 70 pounds. Write for wholesale prices. Postage, 1 pint 10 cents; quart 15 cents.

PENNSYLVANIA YELLOW DENT CORN—Well known. Our earliest field corn. Meal can be had from it latter part July, being thus valuable to farmers. Has reputation of not being so prolific as other corn, but we never saw finer fields than about Augusta in 1897. 2 quarts, 25 cents; peck, 60 cents; bushel, \$1.75.

PENNSYLVANIA WHITE DENT CORN—Same as above—only grain is white—which some prefer. Same price as Yellow Dent.

COCKE'S PROLIFIC CORN—Originated by late General Cocke. The best Corn known in Virginia. Flinty, white, heavy. Large, tall stalks. Much fodder. Two ears. In swamps it has grown 140 bushels shelled Corn per acre. We get our seed from North Virginia. This corn stood highest test at Georgia Experiment Station. Medium early. 2 quarts, 25 cents; peck, 60 cents; bushel, \$1.75.

EARLY BUTLER—It has been our desire to get a Native Field Corn grown in Georgia, and as early as Pennsylvania grown Dent comes. The saving to the State of Georgia would be large. We've got that Corn. It is as early as Dent. We've tested it 3 years side by side. It is as productive. It is a harder Corn and not so subject to weevils. Its color is pale yellow. We do not sell less than a 2 bushel sack and ship f. o. b. Waynesboro, Ga., \$2.00 a sack.

COTTON SEEDS.

All of our cotton seed are grown in Georgia. We are in position to stock up U. S. seedmen with almost any variety and in any quantity. Highest grade. Augusta is the second largest inland cotton market in the world and the largest cotton manufacturing city in the South. Cotton 30 pounds to bushel. All cottons below except Doughty's and Sea Island are short staple cotton. We supplied the

U. S. Agricultural Department last season with the larger portion of their free cotton seed distribution. We will do so this year also. Their contract calls for Peterkin, Hawkins, Jones' Improved, Drakes, Cluster, Texas Storm Proof.

KING'S IMPROVED COTTON—Has stood highest test at Georgia Experiment Station. Only been on the market 3 or 4 years, but no other kind sold so largely in 1897. The earliest of all Cotton. Few limbs and short. Plant on heavy, good land, thicker than any other Cotton. Bolls literally cover the rather small plant. First crop comes on all at once—pretty well out by September 15th. Makes second crop—plant then growing straight up and tall. Plant erect, never falling to ground. With good early season, we've never seen a first crop so heavily fruited as some King cotton fields. In 1890 the originator made in North Carolina, 3 bales to acre—heaviest yield ever made in that State. Lint 36 to 40 per cent. 1 bushel, \$1.00; 5 bushels, \$4.00.

PETERKIN IMPROVED COTTON—This Cotton is grown about Augusta more, perhaps, by advanced farmers, than any other kind. Excellent staple. Large bolls. Small seeds. Branching, open growing and prolific. 20 per cent. of the seed slip their lint—that is are free wholly of lint and are smooth and bare. To uninitiated the seed look mixed. Yield of lint is about 40 per cent. This Cotton fruits through the whole season. A partial dry season does not largely affect crop. This is the most largely sold of all Cotton. We know no better stand by in the list and recommend it highly. 1 bushel, \$1.00; 5 bushels, \$4.00.

TRUITT'S BIG BOLL COTTON—Forty bolls to pound. Mr. Truitt is the only man in Georgia who ever made 100 bales of Cotton with two mules. Mr. Truitt received First Premium at Piedmont Exposition, 1890; Chattahoochee Valley Exposition, 1890; Augusta Exposition, 1893, 1894. South Carolina Experiment Station tests make Truitt's the best yield. Mr. Truitt lays claim to having the most prolific Cotton in the world. This is a distinctive cotton with its big seed, and its big bolls, making gathering easy. Some of the most scientific and best posted farmers in Georgia grow nothing else. 1 bushel, \$1.00; 5 bushels, \$4.00.

BANCROFT-HERLONG COTTON (Green seed)—This is known as the Green Seeded Cotton and is widely known as such. Bolls large—easily picked. This is possibly the earliest of all Cotton—coming forward early in spring and summer to maturity. Lints 37 to 40 per cent. Good staple. This Cotton created a sensation when introduced and it still retains its merits. A favorite with some very fancy growers. We have choicest seed. 1 bushel, \$1.00; 5 bushels, \$4.00.

HAWKINS' COTTON—Distributed this year by U. S. government in free seeds. Has the distinction of being possibly the tallest of all Cotton. 3 large limbs at bottom. Being a tall grower it has a long tap root which resists drouth well. Small

seed—some light gray, some green. Yields 38 to 40 per cent. An early Cotton with superior lint. Big bolls, easily gathered. Prolific. A cut before us of Hawkins' Cotton from life shows over 400 bolls well developed on one stalk. Mr. Hawkins has been steadily improving year by year this Cotton to the present—carefully selecting it each year. Our seed are direct from him and absolutely pure. 1 bushel, \$1.00; 5 bushels, \$4.00.

JONES IMPROVED COTTON—In 1870 Mr. J. F. Jones, of North Georgia, imported some seeds from Algiers, on the Mediterranean Sea. Plant had no limbs, but immense bolls were attached all over stalk. This was hybridized many years by Mr. J. with our finest Cluster Cottons. For five years the United States Agricultural Department distributed this seed, ex-Commissioner Loring going to Jones Farm to look at it. It is being distributed by U. S. government this year. The Georgia Experiment Station Bulletin 27, 1894, gives it the highest record of all for yield, receiving the Station's highest endorsement. Branches widely. Oftentimes 5 locks to boll; 1,250 pounds Seed Cotton to 500-pound bale. Fruits on limb and stalk. Large seed; strong staple; exceedingly large bolls. We are Mr. J.'s selling agents. 1 bushel, \$1.25; 5 bushels, \$5.00—f. o. b. Augusta, or \$2.00 for a 2 bushel sack f. o. b. Hogansville, Ga.

DRAKE'S CLUSTER—Distributed by U. S. in "free seeds" in 1897 and 1898. Gives the farmer early encouragement. Kuckles down to its work at once. Bushy in growth. Characterized as the Eureka Cotton for prolific bearing. Develops rapidly and therefore invariably with favorable season, makes the second or top crop. Seed only in 2 bushel sacks, \$2.00 a sack, f. o. b. Hogansville, Ga.

MAMMOTH BOLL—Most portly of all cotton. Sold at \$5.00 a bushel, and advertised largely in 1897 by Southern Cultivator. Rust proof and less effected by drouth of all varieties. Roots penetrate deep. Invariably 5 locks to boll. Extraordinary fibre. Heavy seed and heavy yield. Sold only in 2 bushel sacks, \$2.00 a sack f. o. b. Hogansville, Ga.

TEXAS STORM PROOF—Name shows character. Hardest and best poor land variety known. Distributed by U. S. government in '97 and '98 in "free seeds." Good crops with less work than any variety known. Fruits from the ground. Stands wet or dry seasons. Sold only in 2 bushel sacks, \$2.00 per sack f. o. b. Hogansville, Ga.

PEERLESS—Luxurious in growth. Limby. Bolls egg shaped with very thin hull, therefore rapid opener. Seed medium size. Gins cleaner than most other cottons. Picks easily. Favorite in Middle Georgia. Large yielder. Sold only in 2 bushel sacks, \$2.00 a sack f. o. b. Hogansville, Ga.

JEFF WELBORN'S PET, ALIAS JACKSON (ATLANTA) LIMBLESS COTTON—These Cottons are pronounced by the Georgia Experiment Station and by Mr. Welborn as being one and the identical same. We sell seed from Mr. Welborn. Few limbs and few leaves. 3 stalks can grow where one now grows. Jackson's price \$7.00 a pound; our price 35 cents a pound or 3 pounds for \$1.00. All postpaid. Unnecessary to describe further this cotton as its peculiarities have been sounded through the whole country by newspapers. Not sold by bushel.

DOUGHTY EXTRA LONG STAPLE—We list no other Long Staple but this. Mr. D. is an intensive fancy farmer near

this city, and at same time has been for twenty-five years one of Augusta's largest, most experienced Cotton Buyers for export. Has been improving this seed (originally from a Southern Experiment Station) for many years. The stalk is long-limbed and branching. Yields 400 lbs lint per acre. The staple is 1 5-8 inches long. 3 1-2 cents per pound more than middling is now being asked in this market for it. Mr. D. has bought as much Long Staple Cotton as any buyer perhaps in South. He says it is the best staple he has ever seen—certainly the best that has ever come to Augusta market. Our leading cotton factors agree with Mr. D. 11 bales cotton were made this year on 12 acres and when middling was selling here at 6 Mr. D. refused 9 1-2 for his crop. Price, 1 bushel, \$1.25; 4 bushels, \$5.50; 10 bushels, \$10.00.

SEA ISLAND COTTON—(Lawton) 42 pounds bushel. The famous Sea Island Cottons off the South Carolina, Georgia and Florida coasts are known all over the world. While planted seventy-five miles interior, seed must come annually from coast or lint is not so long. Roller gin is used, lint slipping the seed. Our seed are from large grower off Charleston, S. C. We ship from Charleston, not Augusta. Product of this Cotton in 1895 was 400 pounds lint to acre. Our grower received 35 cents pound for his 1894 crop; asked 36 cents pound for 1895 crop. 1 bushel, (42) pounds, \$1.50; 5 bushels, \$1.25.

IRISH POTATOES—10 bushels per acre. Choicest Eastern grown potatoes in large amounts. Early Rose, Goodrich, Crown Jewel, Beauty of Hebron, Peerless, etc. We do not sell less than 1 barrel. Our trade is only wholesale and to the merchants of our territory we offer only the choicest Seed Potatoes.

SWEET POTATOES—Georgia grown. Seed trade supplied. No part of America, we believe, grows the Sweet Potato to the same perfection that our County of Richmond does.

GEORGIA OR SUGAR YAM—Georgia Experiment Station says: Tubers, small; weight, 87-100 pounds; skin, yellow; flesh, bright yellow. Quality—none so good—delicate, sweet, delicious, but lightest bearer of all. Slip Jacket. Bushel, \$1.50.

VINELESS BUNCH YAMS—Vines do not run. Grow erect. Can be plowed and cultivated like corn. Grows well between corn hills. Potatoes easily gathered—bunching like Irish Potatoes. Sweet; taste like old time Spanish Potatoes. Bushel, \$1.50.

PUMPKIN YAM—Rather late. Universally grown about here. Georgia Experiment Station says: Oblong, weight 2.41 pounds. Color skin, cream pink; flesh, pumpkin red. Quality, rich sugary. Productive. Improves with keeping. Bushel, \$1.50.

COW PEAS—These seed grown in Georgia. U. S. seed trade supplied. 60 pounds to bushel. Their best habitat is about us. The South's best friend. The clover of the South. Contains more nutriment as hay than Clover or Alfalfa. Grows in poorest soil. Invaluable, whether grown for Hay, Peas or soil renovator. Georgia Experiment Station made, per acre, 25,256 pounds of green hay, or 5,000 dry. Declares them to be the best soil renovator. Recommends them for Illinois, Ohio, Indiana, and all middle States. Seed must come from South. Plant about May 10, or after grain—1 bushel. (Miller), to 1 1-2 (Whippoorwill), per acre, broadcast, and between hills, 1-2 to 1 bushel. Get prices.

UNKNOWN, OR WONDERFUL, OR BOSS, OR QUADROON—Georgia Experiment Station declares for the third time, above Peas to be identical, and declares this Pea the best combination Pea for heavy vines and stock Pea. Stands at the head. Fancy prices asked in many quarters. Erect vines. Late maturing. Pale buff color Peas.

WHIPPOORWILL OR SPECKLED—Georgia Experiment Station acre yield, 16,892 pounds vines and 25 3-10 bushels peas; old variety; tall, upright; yellow pod; brown speckled pea. The earliest of all the peas. Not much vine to it. Grown principally for the peas, of which it bears heavily. We ship many of these peas North.

NEW ERA PEA—New, limited supply. matures 2 1-2 crops here in one season. We believe it will be the coming cow pea crop of the North and West. Fine, large foliage and full of peas. It is a bluish speckled pea. We advise Northern growers to try them. A trial of this pea in Chicago this season grew a bountiful crop of vines and peas. Pea ripened in fully developed pod in September. Vines grew 16 to 18 inches in height. The seedman who made the trial says: We do not believe you will go wrong at all in recommending this Cow Pea for this section.

A friend who tested the New Era Cow Pea in Boston this season, sends in a

quantity of large, ripe, fully developed Pea Pods full of peas. He says: "I planted them April 20th, gathered crop September 15th. They grew 3 feet high, with running lateral branches of 5 to 6 feet in length—making a world of foliage. A perfect success as a Northern Cow Pea." 1 bushel, \$1.50; 5 bushels, \$6.50, f. o. b. Louisville, Ga.

Quotations given and trade supplied with **IRON, CLAY, MILLER, TORY, BLACK, WHITE BLACK-EYE PEAS, RED RIPPER.**

UPLAND PEARL OR CAROLINA RICE—Georgia grown. Seed trade supplied. 44 pounds to bushel; drill in April or March. 1 peck to acre, covering 1 1-2 inches, or drop 12 seed in hill 12 inches apart; rows 3 feet apart; plant in stiff land; damp is best; profitable crop largely grown around Augusta; best prices from us in large amounts; yield 20 to 30 bushels in upland, and 30 to 60 bushels in lowland. 1 bushel, \$1.75.

SOUTH GEORGIA RYE—KILLINGSWORTH'S—Grown in Georgia, south of this city. Plant in September or October; 1 bushel, 65 pounds, per acre for grazing—for seed, 1 peck to 1-2 bushel; grows 5 to 6 feet; can be grazed several times and then allowed to go to seed; very superior kind. Bushel, \$1.50.

HOG CROPS.

Hog growing is an absolute necessity to Southern farmers. They can compete with other portions of our country by growing the following. Just about us these crops attain their highest development. Can supply largest quantity.

JERUSALEM ARTICHOKE—Georgia grown. Widely advertised as a Hog Crop. Even in 5 feet rows, roots run from row to row and make tubers—the underground being a network of Artichokes. Tubers will stay in ground all winter and not freeze. Turn in hogs any time. If not eaten too close, crop will come up in Spring without second planting. Used also for pickles. Cut tubers like Irish potatoes, and plant after frost—1 piece every 3 feet, in 4 or 5 feet rows, 3 bushels, 1 acre. 1 bushel, \$1.50.

CHUFAS—Georgia grown seed. U. S. seed trade supplied. 44 pounds 1 bushel. Soak seeds one week. Plant 1 peck to acre. Plant 12 inches apart in rows 2 1-2 feet apart. Give two plowings and hoeings. If you get a bad stand pull out shoots from growing plants and plant and use these. Indeed, many growers bed like sweet potatoes and transplant the slips.

Chufas grow just under the surface, like all grass nuts. Invaluable for fattening hogs. Turn hogs in patch. Mature in September and lie in ground till eaten. It is the easiest thing to grow and makes more hog food to the acre even on poor sandy soil, of anything we know. Easily grows over 100 bushels to acre—which does not even have to be gathered. Very prolific, sweet and nutritious. We have tested their growth about Chicago. It thrives and matures well. 1 peck, \$1.00; 1 bushel, \$3.50.

SPANISH PEANUTS—Georgia grown seed. U. S. seed trade supplied. Grows to perfection about us. A great advance in Peanuts and much written about as a hog crop; 200 bushels per acre. Plant about one bushel to acre, March to July. Follow after oats, or plant two crops, March and July, on same ground; no pops. Plant close in sandy lime lands. The tops are good forage. Peas easily harvested, as all Peas hang to roots as plant is pulled up. Hogs can be turned in or the whole vine can be fed from the storage barn. Peck, 50 cents; 1 bushel, (24 pounds) \$1.50.

GRASSES.

Grass Seeds fluctuate a great deal in price. Write for prices in large amounts. State quantity you want or number of acres to plant.

RED CLOVER (Trifolium Pratense)—Sixty pounds to bushel. Sow broadcast in September or October, 20 pounds to the acre, or sow with any Spring grain as early as ground is suitable for plowing. Needs a stiff soil. The most widely cul-

tivated of all pasturage plants for pasturage, hay, and enricher of soil. Price, 1 pound, 15 cents; 5 pounds for 1-4 acre, 70 cents. Get bushel prices.

SCARLET OR CRIMSON CLOVER (Trifolium Incarnatum)—Sixty pounds to bushel. An annual, and the best Clover for the South. Withstands both our heat and cold. A month earlier than Red Clover, and can be sown on thinner lands,

and any lands but wet. Can be cut for green food in April or May, or for hay, or for plowing under. Stems in bloom vary from 2 to 5 feet in height and stools heavily 1 seed making oftentimes 100 blooms. It grows during Fall and Spring months. Can be sowed in growing corn after last working. Green manuring is one of its best uses also. Sow from June to December, but not with Fall grain; 20 pounds to acre. Broadcast and lightly cover. Can be pastured in December and January and still yield. 1 pound, 10 cents; 5 pounds for 1-4 acre, 45 cents.

WHITE CLOVER (*Trifolium Repens*)—Not a heavy hay producer, but invaluable in permanent pastures. Sow 12 pounds to acre in Fall or Spring. Fall is better. Price, 35 cents a pound; 3 pounds for 1-4 acre, \$1.00.

LUCERNE CLOVER OR ALFALFA (*Medicago Sativa*)—Sixty pounds to bushel. No grass fields in United States are more noted than Lucerne Farms of California or Louisiana, where its roots grow to a great depth, with 4 or 5 cuttings yearly; 8 tons hay per acre. Stools or multiplies its stems heavily, 30 or 40 stalks from 1 root. These throw out numberless intertwined branches, average growth 3 feet. Drill or broadcast 15 pounds per acre, Spring or Fall (February or March best). Cut before blooming, 4 to 6 times a season. Stand once set lasts a lifetime. Don't graze it. Rich, sandy soils best. 1 pound, 15 cents; 4 pounds for 1-4 acre, 60 cents.

BERMUDA GRASS SETS (*Cynodon Dactylon*)—We do not list the seed, as they are slow growth, expensive and uncertain. Plant 25 to 50 bushels sets per acre. About 5 pounds to bushel. Is to South what Blue Grass is to Kentucky. The best hay grass for all rich soils, wet or dry. Makes two annual cuttings, 2 to 4 tons per acre. Once established makes permanent pasture. Plant roots any time but Winter. Set out sets about 1 foot each way in prepared and smooth soil; cover lightly. We ship from a station on Georgia Railroad—1 sack to carload, 1 bushel, sacked, 20 cents; 12 bushels, sacked, \$1.50.

KENTUCKY BLUE GRASS (*Poa Pratensis*)—14 pounds to bushel. Pasture Grass, well known; sow in Fall; usually sown with other Grasses—Orchard Grass, Clovers, etc. Also used in lawns and woodlawn. Sow 2 bushels per acre. A perennial for dark soiled lowlands or lime lands. Good grazing in Fall and Winter. Gets better each year. 1 pound, 20 cents; 1 bushel, 1-2 acre, \$2.00.

TEXAS BLUE GRASS SETS—Will become as popular in the South as Blue Grass in the North. Withstands any drouth, and has very deep roots; a perennial; once established lasts always. Its growth is 2 1-2 to 4 feet for Hay. Earliest Spring Grass, and furnishes perfect green grazing all Winter. Propagates in this section only from the sets or slips, like Bermuda; does well with Bermuda—the Bermuda growing in Summer, and Texas Blue Grass giving Winter pasturage on same ground. We get \$1.50 per 1,000 for slips in small amounts. Slips can be put out with certain success from November 1 to April 1; from 10,000 to 15,000 slips per acre, as wanted, \$10 for 1000; or \$6 for 5,000 sets.

JOHNSON GRASS (*Sorghum Halepense*)—24 pounds to bushel. Known also

as Guinea and Mean's Grass. Vetch and Johnson Grass are the standard Augusta Hay Farm mixtures. Plant Johnson Grass as soon as the frost is out of the ground or August and September, 40 pounds to the acre. Cut while the head is in flower, before seed hardens, 3 to 5 cuttings per season; withstands any drouth; yields heavy crops, year after year, without re-setting. Hogs devour the roots as if they were Sweet Potatoes. Is almost ineradicable. Do not let it go to seed; it spreads if you do. Coarse, but fairly tender when cut young. Makes immense crops; very hardy. 1 pound, 15 cents, at Augusta; 10 pounds for 1-4 acre, 1.25.

HERD'S OR RED TOP (*Agrostis Alba*)—10 pounds to bushel. A good perennial, generally sown on permanent pastures, generally on moist lands. It is best when fed down close as a forage plant. Not killed by overflows; improves with age each year. Chief value is when made part of Grass Mixtures for Fall pasture. Sow in Fall or Spring, 2 bushels to acre. 1 pound, 15 cents; 10 pounds, 1-2 acre, \$1.25.

GERMAN MILLET—See under "Forage."

ORCHARD GRASS (*Dactylis Glomerata*)—14 pounds to bushel. Sow 2 bushels per acre Fall or Spring. An excellent perennial. Commences Spring growth in February, ready for hay cutting in April. Graze then till hot Summer. Early Autumn starts new set of leaves, making rich pasturage, remaining green all Fall and Winter. Mixes well with Red Top. A good woodland pasture. No better winter growth on wet or heavy clay lands. One pound, 20 cents; bushel for 1-2 acre, \$2.50.

NATIVE VETCH (*Vicia Sativa*)—60 pounds to bushel. This is the standard Hay Grass used in the widely known Hay Farms around Augusta. Some allow first crop to get about half ripe. Enough seed fall to the ground for reseeding purposes, to come up next February. The second and other crops are cut in a greener state. Grows well with Oats, to be cut into sheaves. Grows well with Bermuda and Johnson Grass. Vetch is unexcelled for Winter pasturage. One bushel to the acre will set a crop. Plant 2 or 3 bushels for Fall pasturage. Sow in August and September with Oats, or sow in Spring. Can supply 1 pound, 15 cents; 1 bushel, finest native, \$4.50 a bushel; 15 pounds for 1-4 acre, \$1.50.

HAIRY VETCH (*Vicia Villosa*)—The United States Agricultural Department says: "This is the most valuable Winter forage plant which the Department has imported for rich soil." Ex-Congressman Geo. D. Tillman, of South Carolina, says: "The best of all the hundreds of grasses tested by me. I plant in Fall, pasture from November to April 1st—by June it reseed itself; then plow under; sow peas and cut peas. Vetch is up by December. As a hay crop 2 or 3 cuttings can be had." Sow 1 bushel, 60 pounds, to acre in Spring, August or September or October. Spring sowing soon makes dense crop. Vines 5 to 10 feet long sometimes and foliage 2 or 3 feet deep. Can be made to reseed itself like ordinary Vetch, above. 1 pound, 15 cents, 1-4 acre 15 pounds for \$1.40.

LAWN AND PARK EVERGREEN GRASS—We have the best mixture we know of. 14 pounds to bushel. 1 pound seed, 35 cents; plants plat 20x30 feet.

WEATHER FORECASTS FOR AUGUSTA, GA., FOR 1898.

January.—1st to 3d, rain, cold; 4th to 7th, warm period, rain; 8th to 10th, rain or snow; 11th to 13th, fair, cold; 14th to 17th, storm period, rain; 18th to 23d, warm period, occasional rain; 22d to 25th, storm period, rain; 25th to 28th, cold, freezing; 29th to 30th, warmer, fair.

February.—1st to 3d, storm period, rain; 4th to 6th, warmer; 7th to 10th, storm period, severe rain; 11th to 13th, cold, freezing; 14th to 17th, storm period, rain; 17th to 18th, cold; 19th to 22d, warm period, rain; 22d to 24th, storm period, rain or snow; 25th to 26th, cold, freezing; 27th to 28th, warmer, rain.

March.—1st to 4th, stormy, rain; 5th to 7th, cold, freezing; 8th to 11th, fair, warmer; 12th to 14th, gales, rain; 15th to 16th, colder, fair; 17th to 18th, warmer; 18th to 21st, storm period, rain; 21st to 22d, cold; 23d to 26th, warm, rain; 26th to 29th, storm wave, rain; 30th to 31st, cooler, fair.

April.—1st to 2d, warmer; 2d to 5th, storm period, rain; 6th to 9th, cold, fair, heavy frosts; 10th to 13th, warm wave, shower; 14th to 16th, storm period, rain; 17th to 18th, cooler, fair; 19th to 23d, cold period; 23d to 24th, rain; 25th to 27th, storm period, rain; 28th to 30th, cooler, fair.

May.—1st to 4th, storm period, rain; 4th to 5th, colder; 6th to 9th, warmer and rain; 11th to 12th, colder; 13th to 14th, rain; 15th to 16th, warmer; 16th to 19th, storm period, severe rains; 20th to 22d, cooler, fair; 23d to 24th, rain; 26th to 28th, warm period, thunder storms; 29th, cooler; 30th, warm with rain.

June.—1st to 3d, showers; 4th to 6th, storm period; 7th to 8th, cooler; 9th to 12th, hot spell, in the 90s; 13th to 14th, thunder storms; 15th to 17th, warmer; 17th to 20th storm period, rain; 21st to 24th, cooler, fair; 24th to 25th, local storms; 26th to 30th, hot spell, thunder storms.

July.—1st to 2d, warm, thunder storms; 3d to 5th, storm period, rain; 6th to 8th, cooler, fair; 9th to 13th, very hot, ending with thunder storms; 14th to 15th, cooler; 16th to 17th, rain, moderately cool; 18th to 21st, severe storm period; 21st to 23d, much cooler; 24th to 25th, thunder storms; 26th to 31st, hot period, occasional thunder storms.

August.—1st to 2d, showers; 3d to 5th, storm period; 6th to 8th, cooler, fair; 9th to 10th, showers; 11th to 13th, hot, thunder storms; 14th to 15th, cooler, fair; 16th to 17th, warm, showers; 18th to 19th, slightly cooler; 21st to 25th, very hot, thunder storms; 26th to 28th, cooler; 29th to 31st, warmer, showers.

September.—1st to 3d, cooler, rains; 4th to 8th, warm period; 8th to 10th, storm period, rains; 11th to 13th, cooler, fair; 14th to 15th, warmer; 15th to 18th, storm wave; 19th to 20th, warm, rain; 21st to 23d, warm period; 22d to 25th, storm period, severe, heavy rains; 26th to 28th, cooler, hot period broken; 29th to 30th, warmer, rain.

October.—1st to 2d, warm, rain; 3d to 4th, cooler; 5th to 7th, warmer; 7th to 9th, storm period, rain; 10th to 12th, cooler; 13th to 14th, warmer; 15th to 17th, storm wave, rain; 17th to 18th, colder; 19th to 22d, warm period; 22d to 25th, severe storm period, rain; 26th to 28th, colder, frosts; 29th to 31st, warmer, rain.

November.—1st to 2d, cooler, rain; 3d to 4th, warmer, rain; 5th to 7th, warm, rain; 7th to 9th, severe storm period; 9th to 11th, cold, frosts; 12th to 13th, warmer, rain; 14th to 16th, storm wave, rain; 17th to 18th, colder; 19th to 22d, warm, rain; 23d to 25th, severe storm, rain; 27th to 28th, cold period, frosts; 29th to 30th, rain.

December.—1st to 3d, warm, rain; 4th to 6th, warm period; 7th to 9th, storm period, rain; 10th to 12th, freezing; 13th to 14th, warmer; 15th to 17th, storm wave, rain; 18th to 19th, cold; 20th to 22d, warmer; 23d to 25th, storm period, snow; 25th to 28th, cold period, freezing; 29th to 31st, warmer, rain.



Look at Your Face!

Now Read This!

..Rose Cream

Cures Chapped Face and Hands. It creates a perfect complexion—soft, velvety, pure and clear as a baby's skin. Harmless as dew. It goes in for face comfort and face healing. Toilet luxury for every woman. If you are a man, it's wonderful after shaving.



Rose Cream...



Is the formula given us many years ago by a famous French Actress who used it only. Many of Augusta's most fastidious society women, who have used all the face lotions, now use only ROSE CREAM. The most perfect face healer and softener ever known. Slightly perfumed. Not greasy. Price 25 cents.



MANUFACTURED BY

The Howard & Willet Drug Company,

AUGUSTA, GEORGIA.



"1499

MONUMENTS" (THE LATEST FAD) ONE TO

POND'S EXTRACT

COMMEMORATIVE OF ITS MANY VIRTUES.
IT HEALS AND CURES



SHUN "The Just as good" **SUBSTITUTES**
THEY ARE DANGEROUS.

POND'S EXTRACT CO. NEW YORK AND LONDON.

SIGNS OF THE ZODIAC.

It is thought by some that these Signs affect certain parts of the body at certain times of the year. The picture below represents the Signs and the parts of the body they are supposed to govern.

Aries, The Ram, *The Head and Face.*

Gemini,
The Twins,
The Arms.

Leo,
The Lion,
The Heart.

Libra,
The Balance,
The Reins.

Sagittarius,
The Archer,
The Thighs.

Aquarius,
The Waterman,
The Legs.



Taurus,
The Bull,
The Neck.

Cancer,
The Crab,
The Breast.

Virgo,
The Virgin,
The Bowels.

Scorpio,
The Scorpion,
The Secrets.

Capricornus,
The Goat,
The Knees.

Pisces, The Fishes, *The Feet.*

To KNOW WHERE THE SIGN IS.—First find the day of the month, and against it, in the column that shows the Moon's place, you will find the Sign that shows the part of the body supposed to be governed.

CHRONOLOGICAL CYCLES FOR 1898.

Dominical Letter.....	B	Solar Cycle.....	3
Lunar Cycle or Golden Number.....	18	Roman Indiction.....	11
Epoch.....	7	Julian Period.....	6611

FIXED AND MOVABLE FEASTS OF THE CHURCH FOR 1898.

Epiphany.....	January 6	Easter Sunday.....	April 10
Septuagesima Sunday.....	February 6	Low Sunday.....	April 17
Sexagesima Sunday.....	February 13	Rogation Sunday.....	May 15
Quinquagesima Sunday.....	February 20	Ascension Day.....	May 19
Ash Wednesday.....	February 23	Whit Sunday.....	May 29
Quadragesima Sunday.....	February 27	Trinity Sunday.....	June 5
Mid-Lent.....	March 20	Corpus Christi.....	June 9
Palm Sunday.....	April 3	Advent Sunday.....	November 27
Good Friday.....	April 8	Christmas Day.....	December 25

EQUINOXES AND SOLSTICES.

Spring begins.....	March 20	Autumn begins.....	September 22
Summer begins.....	June 21	Winter begins.....	December 21

If afflicted with
SORE EYES
USE
DR. ISAAC THOMPSON'S EYE WATER

In writing to ask about Prices of Seed, never forget to say how much you want. Quantity decides price.

Ask Your Merchant for
DR. MOFFETT'S Little Book of Valuable Information, FREE.

INDIAN WEED

There was a woman, as I've heard tell,
 Who was always complaining, she was never well;
 HEARKEN TO WORDS OF EXPERIENCE AND WISDOM!
 But she heard good news, in her hour of need,
 Of Moffett's wonderful INDIAN WEED.
 Regulates and Relieves all Pains and Troubles Peculiar
 to Her Sex. **TRY IT AND BE WELL AGAIN.....**

DR. MOFFETT'S
TEETHINA
 TEETHING POWDER



AIDS DIGESTION,
 REGULATES THE BOWELS,
 CURES CHOLERA-INFANTUM,
 AND MAKES TEETHING EASY.

DR. MOFFETT'S
INDIAN WEED
 FEMALE MEDICINE

GIVES ROSY CHEEKS,
 STRENGTH, HEALTH AND HAPPINESS
 TO WOMAN.

PREPARED ONLY BY
C. J. MOFFETT, M. D., St. Louis, Mo.

*TEETHINA cures them of all pain
 And gives them rosy cheeks again.*
TEETHINA Allays Irritation, Cures Eruptions and Sores, and makes Teething
Removes and Prevents Worms.

*Mothers, hearken! while I tell
 What will make your baby well—*
 Yes; give the child **DR. MOFFETT'S TEETHINA** (Teething Powder), Strengthens the Child, Cures Eruptions and Sores, and makes Teething
Easy.

TEETHINA'S the best—we all know that,
 It makes the **BABY** bright and fat.
 Baby is sick, the mother's in trouble,
 Give **TEETHINA**—it'll soon weigh double.
TEETHINA'S the best and sure to sell,
 Because it makes the baby well

*Indian Weed will be sent by Express.
 One Package Teethina Mailed for 25 Cents Post-paid by*

THE HOWARD & WILLET DRUG COMPANY,
AUGUSTA, GEORGIA.

HUBERT'S COLIC DROPS
"THE BABY'S FRIEND."
 A safe, certain and quick cure for Colic in Infants and Children.
 Improves digestion and children grow fat and plump while using it. Physicians use it, and all testify in its favor. It has no equal. Manufactured with care under my own eyes, and sold at
 Warrenton, Ga., by the undersigned; by Howard & Willet Drug Company, Augusta, Ga., and Druggists generally.
PRICE 25 CENTS **R. W. HUBERT, M. D.**

FOR CHILDREN WHILE CUTTING THEIR TEETH.
AN OLD AND WELL-TRIED REMEDY.
 For over Fifty Years **WINSLOW'S SOOTHING SYRUP** has been used by millions of mothers for their children while teething, with perfect success. It soothes the child, softens the gums, allays all pain. Cures wind colic, and is the best remedy for Diarrhoea. Sold by druggists in every part of the world. Be sure and ask for Mrs. Winslow's Soothing Syrup, and take no other kind. **25 CENTS BOTTLE.**

CHRONOLOGICAL ERAS, CYCLES, ETC., FOR 1898.

The year 1898 comprises the latter part of the 122d and the first part of the 123d year of American Independence, and corresponds to: The year 6611 of the Julian Period. The year 5658-5659 of the Jewish Era—the Jewish New Year 5659 begins at sunset on September 16th, 1898. The year 2651 since the foundation of Rome according to Varro. The year 2558 of the Japanese Era, and to the 31st year of the period entitled "Meiji." The year 1316 of the Mohammedan Era, or the Era of the Hegira, begins on the 22d day of May, 1898. The first day of January, 1898, is the 2,414,291st day since the commencement of the Julian Period.

PLANETS REGARDED AS MORNING AND EVENING STARS, 1898.

MORNING STARS.—Mercury from January 6th to March 16th, and from May 1st to June 30th, and from September 5th to October 19th, and from December 21st to end of year. Venus from beginning of year to February 15th, and from December 1st to end of year.

EVENING STARS.—Mercury from beginning of year to January 6th, and from March 16th to May 1st, and from June 30th to September 5th, and from October 19th to December 21st. Venus from February 15th to December 1st.

PLANETS BRIGHTEST OR BEST SEEN IN 1898.

Mercury, January 29th, before sunrise; April 10th, after sunset; May 28th, before sunrise; August 9th, after sunset; September 21st, before sunrise; December 8d, after sunset. Venus at greatest brilliancy October 27th, after sunset. Mars not this year. Jupiter at opposition March 25th. Saturn at opposition May 30th. Uranus at opposition May 22. Neptune at opposition December 15th.

ECLIPSES FOR THE YEAR 1898.

In the year 1898 there will be six Eclipses, three of the Sun and three of the Moon.

I. A Partial Eclipse of the Moon January 7th; visible generally in eastern portions of North America, South America, Europe, Asia and Africa. Visible in Augusta as follows:

<i>(Eastern Standard Time.)</i>		D.	H.	M.
Moon enters Penumbra	January.....	7	4	59 evening.
Moon enters Shadow	".....	7	6	48 evening.
Middle of Eclipse	".....	7	7	35 evening.
Moon leaves Shadow	".....	7	8	23 evening.
Moon leaves Penumbra	".....	7	10	11 evening.

II. A Total Eclipse of the Sun January 22d; invisible to America. Visible to Eastern Europe, the greater part of Asia and Africa, and to the northern part of the Indian Ocean—the line of totality running through the Chinese Empire, India and Eastern Africa.

III. A Partial Eclipse of the Moon July 3d; invisible to North America, but visible generally in Europe, Asia and Africa.

IV. An Annular Eclipse of the Sun July 18th; invisible to North America. Visible to the South Pacific Ocean, and the extreme southern part of South America—the line of Annulus passing through the South Pacific Ocean.

V. A Partial Eclipse of the Sun December 13th; invisible here.

VI. A Total Eclipse of the Moon December 27th; visible generally throughout North and South America, Europe, Asia and Africa. Visible in Augusta as follows:

<i>(Eastern Standard Time.)</i>		D.	H.	M.
Moon enters Penumbra	December.....	27	3	33 evening.
Moon enters Shadow	".....	27	4	48 evening.
Total Eclipse begins	".....	27	5	58 evening.
Middle of Eclipse	".....	27	6	42 evening.
Total Eclipse ends	".....	27	7	27 evening.
Moon leaves Shadow	".....	27	8	36 evening.
Moon leaves Penumbra	".....	27	9	51 evening.



If afflicted with
SORE EYES
USE **DR. ISAAC THOMPSON'S EYE WATER**



We are the Largest Wholesale

Get Prices.

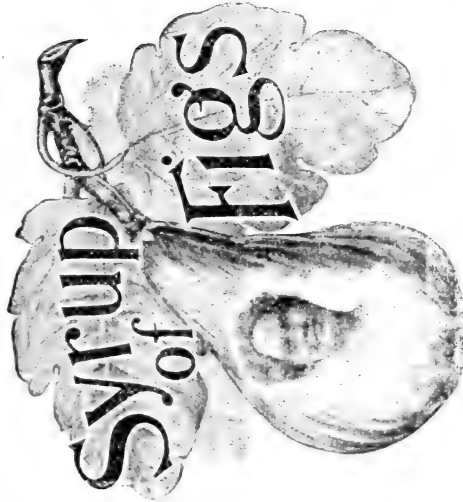
Dealers in

PAINTS, GLASS AND OILS

The Howard & Willet Drug Co.

Augusta, Georgia.

One of the greatest factors in producing a clear, clean skin, and therefore a perfect complexion, is the use of



Agreeable

preventives taken in season are much surer than belated drugs. A healthy condition of the Kidneys, Liver and Bowels is the strongest safeguard against Headaches, Racking Colds, or Fevers. Syrup of Figs is

Mild and Sure,

pleasant to the taste, and free from objectionable substances. Physicians recommend it. Millions have found it invaluable. Taken regularly in small doses, its effect will give satisfaction to the most exacting.

Manufactured by

CALIFORNIA FIG SYRUP COMPANY

"For sale by all Druggists."

H.H.D

These are not the initials of a Secret Society. They stand for

HOWARD'S

HAIR DYE.

— MANUFACTURED BY THE —

HOWARD & WILLET DRUG CO.
AUGUSTA, GA.

Why pay \$1 for some Hair Dye when you can get the same identical thing in Howard's for 25 cents, postpaid. Keep young. Keep your Hair, Whiskers and Moustache a Beautiful Black with H. H. D. Full directions on each box.

PHASES OF THE MOON.		D. M. M.		E. M. M.	
Full Moon	15	7	7	24	eve.
First Quarter	18	10	7	44	mo.
Last Moon	22	3	2	25	mo.
First Quarter	28	9	9	53	mo.

VARIOUS PHENOMENA.

Day	Event	Sun Rises	Sun Sets	Moon Rises	Moon Sets	☉'s Place	High Water
Sat.	1 Emancipation Proclamation 1863	7 34	59	1 34	34	♋	3 30
Sun	2 Gen. Wolfe born 1727.	7 24	59	0 3	29	♋	4 24
Mo.	3 Battle of Princeton 1777.	7 25	0 2	3 29	29	♋	5 14
Tu.	4 ☉ in Apogee.	7 15	0 4	4 24	24	♋	6 0
W.	5 ☉ highest.	7 15	1 5	5 18	18	♋	6 44
Th.	6 Ephphany. ☉ ♀ ♀	7 05	1 6	6 8	8	♋	7 25
Fri.	7 Millard Fillmore born 1800.	7 05	2 1	7 Rises	8	♋	8 2
Sat.	8 Battle New Orleans 1815.	7 05	2 5	8 51	51	♋	8 40
Fri.	9 Mississippi seceded 1861.	6 59	2 6	9 50	50	♋	9 18
Sun	10 Penny Post. int'd in Engl'd 1840.	6 59	3 7	10 51	51	♋	9 56
Mo.	11 Alabama seceded 1861.	6 58	3 8	11 53	53	♋	10 35
Tu.	12 John Hancock born 1737.	6 58	3 9	12 51	51	♋	11 19
W.	13 Slavery abolished in Mexico 1825	6 58	4 10	1 52	52	♋	11 19
Th.	14 ☉ ♀ ♀	6 57	4 11	2 59	59	♋	eve. 6
Fri.	15 Andrew Jackson born 1767.	6 56	5 Morn	3 59	59	♋	0 58
Sat.	16 Gibbon died 1794.	6 56	6 1	4 51	51	♋	1 55
Sun	17 Benjamin Franklin born 1706.	6 55	6 2	5 17	17	♋	3 0
Mo.	18 ☉ ♀ ♀	6 54	6 3	6 29	29	♋	4 10
Tu.	19 ☉ lowest.	6 54	7 4	7 38	38	♋	5 17
W.	20 ☉ in Perigee. ☉ ♀ ♀	6 53	8 5	8 40	40	♋	6 22
Th.	21 ☉ ♀ ♀	6 52	9 6	9 33	33	♋	7 21
Fri.	22 Byron born 1788.	6 51	10 Sets	10 33	33	♋	8 15
Sat.	23 William Pitt died 1806.	6 50	11 7	11 9	9	♋	9 5
Sun	24 Va. readmitted to Congress 1870	6 50	12 8	12 18	18	♋	9 54
Mo.	25 Burns born 1759.	6 49	13 9	1 20	20	♋	10 40
Tu.	26 Michigan admitted 1837.	6 48	14 10	2 22	22	♋	11 26
W.	27 Burr's plot 1807.	6 48	15 11	3 22	22	♋	Morn
Th.	28 Streets first lighted by gas 1807.	6 47	15 Morn	4 22	22	♋	0 11
Fri.	29 Tom Payne born 1737.	6 46	16 0	5 22	22	♋	1 0
Sat	30 First silv. dollar coin'd U.S. 1794	6 45	17 1	6 20	20	♋	1 50
Sun	31 Attack on Charleston 1863.	6 44	18 2	7 17	17	♋	2 44

PHASES OF THE MOON.		D. M. M.		E. M. M.	
Full Moon	6	1	7	24	eve.
First Quarter	13	8	7	85	eve.
Last Moon	20	2	6	41	eve.
First Quarter	28	9	2	18	mo.

VARIOUS PHENOMENA.

Day	Event	Sun Rises	Sun Sets	Moon Rises	Moon Sets	☉'s Place	High Water
Tu.	1 ☉ in Apogee. ☉ highest.	6 44	5 18	3 11	11	♋	4 34
W.	2 Lorenzo Dow died 1834.	6 43	5 19	4 4	2	♋	5 24
Th.	3 Horace Greeley born 1811.	6 41	5 19	4 50	50	♋	6 12
Fr.	4 Carlyle died 1881.	6 40	5 20	5 33	33	♋	6 57
Sat.	5 Reciprocity treaty w. Brazil 1891.	6 39	5 21	6 9	9	♋	7 38
Sun	6 Septuagesima Sunday.	6 38	5 22	7 Rises	8	♋	8 17
Mo.	7 Georgia settled 1733.	6 37	5 23	8 44	44	♋	8 57
Tu.	8 Admiral Wilkes died 1877.	6 36	5 24	9 47	47	♋	9 38
W.	9 Gen. Harrison born 1773.	6 35	5 25	10 45	45	♋	10 19
Th.	10 ☉ ♀ ♀	6 34	5 26	11 51	51	♋	11 0
Fri.	11 T. A. Edison born 1847.	6 33	5 27	12 58	58	♋	11 47
Sat.	12 First Public School 1689.	6 33	5 28	1 Morn	1	♋	eve 39
Sun	13 Sexagesima Sunday.	6 32	5 29	0 7	7	♋	1 37
Mo.	14 ☉ ♀ ♀	6 31	5 30	1 17	17	♋	2 43
Tu.	15 ☉ lowest. ☉ ♀ ♀	6 30	5 31	2 25	25	♋	3 55
W.	16 Port Donaldson taken 1862.	6 29	5 32	3 27	27	♋	5 6
Th.	17 ☉ in Perigee.	6 28	5 33	4 22	22	♋	6 9
Fri.	18 ☉ ♀ ♀	6 27	5 34	5 8	8	♋	7 6
Sat.	19 ☉ ♀ ♀	6 26	5 35	6 47	47	♋	7 57
Sun	20 Shrove Sunday.	6 25	5 36	7 4	4	♋	8 44
Mo.	21 Earthquake at Corinth 1858.	6 25	5 38	8 2	2	♋	9 28
Tu.	22 Shrove Tuesday.	6 24	5 39	9 8	8	♋	10 10
W.	23 Ash Wednesday.	6 23	5 40	9 9	9	♋	10 10
Th.	24 W. W. Corcoran died 1888.	6 22	5 41	10 7	7	♋	11 51
Fri.	25 Battle of Trenton 1776.	6 20	5 42	11 7	7	♋	11 33
Sat.	26 Victor Hugo born 1802.	6 19	5 42	12 Morn	12	♋	Morn
Sun	27 Quadragesima Sunday.	6 18	5 43	0 6	6	♋	0 16
Mo.	28 N. B. Forrest ap. Lt.-Gen. 1865.	6 18	5 44	1 1	1	♋	1 1

LIQUID GRANITE
FOR FLOORS
 DEVELOPS THE GRAIN OF THE WOOD
 MAKES A LASTING FINISH
 UNEQUALLED FOR OILCLOTH AND LINOLEUM PROLONGING THEIR LIFE AND PRESERVING THE FRESHNESS OF THE COLORS
 FOR SALE BY ALL RESPONSIBLE DEALERS IN PAINTS AND VARNISHES
 WRITE FOR DESCRIPTIVE PAMPHLET AND FINISHED SAMPLES OF WOOD
BERRY BROTHERS LTD. VARNISH M'FRS. DETROIT, MICH.

Ramon's Nerve & Bone Oil

The Most Wonderful Liniment of the Age. Nothing like it for Cuts, Burns, Bruises, Sprains, Swellings, Stiff Joints, Rheumatism, and all kindred complaints, when an external liniment is required. There is no other Liniment like it. It is as red as blood, thin as water, and Penetrates to the Nerve and Bone, thereby effecting cures when other remedies fail. Price 25 cents.

Ramon's Relief.

THE GREAT KING OF CURES for Toothache, Headache, Neuralgia, Sciatica, Rheumatism, Diarrhoea, Cramps, &c. A Sovereign Remedy for all Pain. Will positively break up a cold in one night if taken according to directions, in connection with a good dose of Ramon's Tonic Liver Pills. Price 25 cents.

RAMON'S LIVER PILLS
 AND TONIC PELLETS
 Cure Constipation and Biliousness
 Price 25 cents.
 For Sale By all Dealers.

PREPARED BY
BROWN MFG. CO., Greenville, Tennessee.

LAND'S Our most dangerous diseases come through troubles of the KIDNEY or BLADDER. None of us pay enough attention to these organs until it is too late. With Land's

KIDNEY

Cure, you can get relief from Retention of Urine, Inflammation of Bladder, Kidneys or Urinary Glands, Milk Discharges, Brick Dust Deposits, Stone in the Bladder. Price, \$1.00.....

CURE.

Manufactured by **THE HOWARD & WILLET DRUG CO.** AUGUSTA, GEORGIA

PHASES OF THE MOON.

East. Stand. Time.	D.	H.	M.
Full Moon	8	4	29 mo.
Last Quarter	15	2	48 mo.
New Moon	22	9	87 mo.
First Quarter	29	2	40 mo.

EQUATION OF TIME.

Day	1	2	3	4	5	6	7	8	9	10	11	12
☉	1	2	3	4	5	6	7	8	9	10	11	12

VARIOUS PHENOMENA.

To 4 P.M.	To 10 P.M.	Day	Month	Year
1	☉ in Apogee.	☉	highest.	
2	Spanish Jews banished	1492.		
3	Serdom abolished in Russia	1863		
4	Jackson inaugurated	1829.		
5	Boston massacre	1770.		
6	Second Sunday in Lent.			
7	Florida admitted	1844.		
8	Rise of Paris Commune	1871.		
9	☉ 21	☉		
10	Benjamin West died	1820.		
11	Tasso born	1544.		
12	Gustavus dethroned	1809.		
13	Third Sunday in Lent.			
14	☉ b ☉ in Perigee.	☉ lowest		
15	Andrew Jackson born	1767.		
16	☉ 8	☉		
17	Saint Patrick's Day.			
18	Stamp Act repealed	1766.		
19	☉ 7	☉		
20	☉ enters ♀.	Spring begins.		
21	Battle of Aboukir	1801.		
22	☉ 8	☉		
23	☉ 9	☉		
24	Queen Elizabeth died	1603.		
25	☉ 21	☉		
26	Bethoven died	1827.		
27	Fifth Sunday in Lent.			
28	☉ in Apogee.	☉ highest.		
29	Swedenborg died	1772.		
30	Crimean War ends	1856.		
31	Calhoun died	1850.		

To 4 P.M.	To 10 P.M.	Day	Month	Year	Sun Rises	Sun Sets	Moon Rises	Moon Sets	☉'s Place	☉'s Water Sayth	High	Water
H. M.	H. M.	H. M.	H. M.	H. M.	H. M.	H. M.	H. M.	H. M.	C. D.	H. M.	H. M.	H. M.
1	☉ in Apogee.	☉	highest.		6 17	5 45	1 54	2 42	♊	2	4 44	3 42
2	Spanish Jews banished	1492.			6 16	5 46	2 42	2 42	♊	3	4 42	3 42
3	Serdom abolished in Russia	1863			6 15	5 47	3 27	3 27	♊	4	4 40	4 40
4	Jackson inaugurated	1829.			6 14	5 48	4 4	4 4	♊	5	3 36	5 36
5	Boston massacre	1770.			6 13	5 49	4 4	4 4	♊	6	2 25	6 25
6	Second Sunday in Lent.				6 12	5 50	5 13	5 13	♊	7	1 15	7 15
7	Florida admitted	1844.			6 11	5 51	5 41	5 41	♊	8	37	8 37
8	Rise of Paris Commune	1871.			6 11	5 52	Rises	Rises	♊	9	18	9 18
9	☉ 21	☉			6 10	5 53	7 40	7 40	♊	9	52	9 52
10	Benjamin West died	1820.			6 9	5 54	8 49	8 49	♊	10	42	10 42
11	Tasso born	1544.			6 8	5 55	9 58	9 58	♊	10	42	10 42
12	Gustavus dethroned	1809.			6 6	7 5 56	11 8	11 8	♊	11	30	11 30
13	Third Sunday in Lent.				6 5	5 57	Morn	Morn	♊	11	30	11 30
14	☉ b ☉ in Perigee.	☉ lowest			6 4	5 58	0 17	0 17	♊	12	25	12 25
15	Andrew Jackson born	1767.			6 3	5 59	1 21	1 21	♊	12	25	12 25
16	☉ 8	☉			6 2	6 0	2 17	2 17	♊	13	20	13 20
17	Saint Patrick's Day.				6 1	6 1	3 4	3 4	♊	13	20	13 20
18	Stamp Act repealed	1766.			6 0	6 2	3 45	3 45	♊	14	15	14 15
19	☉ 7	☉			5 59	6 3	4 19	4 19	♊	14	15	14 15
20	☉ enters ♀.	Spring begins.			5 58	6 4	5 50	5 50	♊	15	10	15 10
21	Battle of Aboukir	1801.			5 57	6 5	5 18	5 18	♊	15	10	15 10
22	☉ 8	☉			5 56	6 6	Sets	Sets	♊	16	5	16 5
23	☉ 9	☉			5 55	6 7	7 52	7 52	♊	16	5	16 5
24	Queen Elizabeth died	1603.			5 54	6 8	8 52	8 52	♊	17	0	17 0
25	☉ 21	☉			5 53	6 9	9 52	9 52	♊	17	0	17 0
26	Bethoven died	1827.			5 52	6 10	10 49	10 49	♊	18	55	18 55
27	Fifth Sunday in Lent.				5 51	6 11	11 44	11 44	♊	18	55	18 55
28	☉ in Apogee.	☉ highest.			5 50	6 12	Morn	Morn	♊	19	50	19 50
29	Swedenborg died	1772.			5 49	6 13	0 35	0 35	♊	19	50	19 50
30	Crimean War ends	1856.			5 48	6 14	1 21	1 21	♊	20	45	20 45
31	Calhoun died	1850.			5 46	6 15	2 2	2 2	♊	20	45	20 45

PHASES OF THE MOON.

East. Stand. Time.	D.	H.	M.
Full Moon	6	4	20 eve.
Last Quarter	13	9	23 mo.
New Moon	20	6	21 eve.
First Quarter	28	9	5 eve.

EQUATION OF TIME.

Day	1	2	3	4	5	6	7	8	9	10	11	12
☉	1	2	3	4	5	6	7	8	9	10	11	12

VARIOUS PHENOMENA.

To 4 P.M.	To 10 P.M.	Day	Month	Year
1	Bismarck born	1815.		
2	Jefferson born	1743.		
3	Palm Sunday.			
4	W. H. Harrison died	1841.		
5	☉ 21	☉		
6	Battle of Shiloh	1862.		
7	Wordsworth born	1770.		
8	Good Friday.			
9	☉ in Perigee.			
10	Eastern Sunday.			
11	☉ lowest.			
12	Henry Clay born	1777.		
13	Straford born	1593.		
14	Impeachment trial	1868.		
15	Sun and clock together.			
16	Thiers born	1797.		
17	☉ 8 ☉. Low Sunday.			
18	Liebig died	1873.		
19	Baconsfeld died	1681.		
20	Bulwer-Clayton treaty	1850.		
21	☉ 9	☉		
22	☉ 8	☉		
23	Stephen A. Douglas born	1813.		
24	2d Sun. after Easter.	☉ highest.		
25	☉ in Apogee.			
26	J. Wilkes Booth shot	1865.		
27	Emerson died	1882.		
28	Council of Trent	1552.		
29	Great Eclipse in England	1652.		
30	Ohio admitted	1802.		

To 4 P.M.	To 10 P.M.	Day	Month	Year	Sun Rises	Sun Sets	Moon Rises	Moon Sets	☉'s Place	☉'s Water Sayth	High	Water
H. M.	H. M.	H. M.	H. M.	H. M.	H. M.	H. M.	H. M.	H. M.	C. D.	H. M.	H. M.	H. M.
1	Bismarck born	1815.			5 46	6 17	2 37	2 37	♋	3	4 48	3 48
2	Jefferson born	1743.			5 45	6 18	3 11	3 11	♋	4	5 0	4 50
3	Palm Sunday.				5 43	6 19	3 41	3 41	♋	5	4 48	5 48
4	W. H. Harrison died	1841.			5 41	6 20	4 7	4 7	♋	6	4 40	6 40
5	☉ 21	☉			5 40	6 21	4 40	4 40	♋	7	27	7 27
6	Battle of Shiloh	1862.			5 39	6 22	Rises	Rises	♋	8	11	8 11
7	Wordsworth born	1770.			5 37	6 23	7 42	7 42	♋	8	54	8 54
8	Good Friday.				5 36	6 24	8 53	8 53	♋	9	38	9 38
9	☉ in Perigee.				5 35	6 25	10 6	10 6	♋	10	25	10 25
10	Eastern Sunday.				5 33	6 26	11 13	11 13	♋	11	16	11 16
11	☉ lowest.				5 32	6 27	Morn	Morn	♋	11	16	11 16
12	Henry Clay born	1777.			5 31	6 28	0 12	0 12	♋	12	19	12 19
13	Straford born	1593.			5 31	6 29	1 3	1 3	♋	12	27	12 27
14	Impeachment trial	1868.			5 30	6 30	1 45	1 45	♋	3	35	3 35
15	Sun and clock together.				5 29	6 31	2 21	2 21	♋	4	37	4 37
16	Thiers born	1797.			5 28	6 31	2 51	2 51	♋	5	31	5 31
17	☉ 8 ☉. Low Sunday.				5 27	6 32	3 19	3 19	♋	6	22	6 22
18	Liebig died	1873.			5 26	6 33	3 52	3 52	♋	7	7	7 7
19	Baconsfeld died	1681.			5 25	6 34	4 19	4 19	♋	7	50	7 50
20	Bulwer-Clayton treaty	1850.			5 24	6 35	4 49	4 49	♋	8	30	8 30
21	☉ 9	☉			5 23	6 36	5 39	5 39	♋	9	9	9 9
22	☉ 8	☉			5 22	6 37	6 39	6 39	♋	9	9	9 9
23	Stephen A. Douglas born	1813.			5 21	6 38	7 38	7 38	♋	10	20	10 20
24	2d Sun. after Easter.	☉ highest.			5 20	6 39	10 27	10 27	♋	10	57	10 57
25	☉ in Apogee.				5 20	6 40	11 15	11 15	♋	11	34	11 34
26	J. Wilkes Booth shot	1865.			5 19	6 40	11 58	11 58	♋	11	34	11 34
27	Emerson died	1882.			5 18	6 41	Morn	Morn	♋	0	14	0 14
28	Council of Trent	1552.			5 17	6 42	0 35	0 35	♋	0	14	0 14
29	Great Eclipse in England	1652.			5 16	6 42	1 8	1 8	♋	1	54	1 54
30	Ohio admitted	1802.			5 15	6 43	1 39	1 39	♋	2	56	2 56

WHITE RABBIT EGG DYE



Many million packages of **WHITE RABBIT EGG DYE** have been used by the trade with universal satisfaction on every side and not a single complaint. The material used in making this Dye is tested and known to be the best, and specially adapted for the purpose, and being carefully prepared the **White Rabbit Egg Dye** will please every one who uses it.

The Tripod Paint Co.

MANUFACTURERS OF

Pure Ready-Mixed Paints and
the Celebrated "Piedmont
White Lead."

COMPLETE STOCK OF ARTIST MATERIALS

Write for Catalogue. ATLANTA, GA.

THE HOWARD & WILLET DRUG CO.

Agents for Paints,

Augusta, Georgia.

Louisville Varnish Company

LOUISVILLE, KY.

Manufacturers of Varnishes, Asphaltums, Japans,
Hard Oil Finish, Liquid Wood Filler,

..... also

Stainine

One Coat Makes as Good as New, Chairs, Tables,
Chamber and Parlor Sets, Floors, Hall Steps,
Brackets, Flower Pots, or Anything About
a Home that Needs Brightening.

Always Ready for Use, and No Sediment.

CHERRY, ROSEWOOD, MAHOGANY, WALNUT,
OAK AND ANTIQUE OAK.

THE HOWARD & WILLET DRUG CO.

Agents.

AUGUSTA, GA.

ESTABLISHED 1846.

MAYER & LOEWENSTEIN, Varnish Manufacturers, NEW YORK.

Their Adamant, interior finish, the best Inside;
Adamant Spar Finish, the best Outside
Varnishes made.

TRY THEM.

MOTHERS, LOOK AT THIS! PITTS' CARMINATIVE

Is an incalculable blessing to mother and child. It instantly relieves the colic of infants, a disease from which they so frequently suffer. It gives sweet rest to the sick and fretful child, strengthens and builds the weak, gives appetite and flesh to the puny, corrects nausea and drain from the bowels, cures dysentery and diarrhoea. A panacea for children. Prepared only by
Dr. W. M. Pitts,
and sold by all druggists.

THE HOWARD & WILLET DRUG CO.

Dr. Gilder's

...Liver Pills

For the Cure of

LIVER COMPLAINT, CHILLS
AND FEVER, AGUE BILIOUS-
NESS, HEARTBURN, DYSPEP-
SIA, INDIGESTION, PAINS IN
THE BACK, SIDE, ETC.....

PHASES OF THE MOON.

East Stand. Time.	P. H. M.
Full Moon	9 1 24 mo.
Last Quarter	12 4 26 eve.
New Moon	30 7 58 mo.
First Quarter	28 0 14 eve.

EQUATION OF TIME.

Day	1	2	3	4	5	6	7	8	9
1	1	2	3	4	5	6	7	8	9

VARIOUS PHENOMENA.

Day	Month	Event	Sun Rises	Sun Sets	Moon Rises	Moon Sets	Place	High Water
Sun	1	♂ ♀	5 136	45	2	4	♌	4 1
Mo.	2	Stonewall Jackson wounded 1863	5 146	46	2 2	35	♍	5 6
Tu.	3	♂ ♀	5 136	47	3	6	♎	6 4
W.	4	Grant crossed the Rapidan 1864.	5 126	48	3	37	♏	6 55
Th.	5	Bonaparte died 1821.	5 116	49	4	12	♐	7 44
Fri.	6	Battle of the Wilderness 1863.	5 106	50	Rises		♑	8 32
Sat.	7	♂ ♀	5 96	51	8	57	♒	9 21
Sun	8	♂ ♀	5 86	52	10	3	♓	10 11
Mo.	9	T. H. Benton died 1858.	5 76	52	10	58	♈	11 6
Tu.	10	President Davis captured 1865.	5 66	53	11	44	♉	eve 5
W.	11	Gen. J. E. B. Stuart died 1864.	5 56	54	Morn		♊	1 9
Th.	12	Earl of Stafford beheaded 1641.	5 46	55	0	23	♋	2 12
Fri.	13	Jamestown settled 1607.	5 36	56	1	23	♌	3 12
Sat.	14	Fahrenheit born 1686.	5 26	56	1	23	♍	4 11
Sun	15	Rogation Sunday.	5 16	58	2	22	♎	5 5
Mo.	16	♂ ♀	5 6	58	2	21	♏	6 41
W.	17	Grant sailed to Europe 1877.	5 5	58	3	22	♐	7 24
Th.	18	♂ ♀	5 5	59	3	57	♑	8 4
Fri.	19	Ascension Day.	4 596	59	Sets		♒	8 41
Sat.	20	Hawthorne died 1864.	4 597	0	8	21	♓	9 17
Sun	21	Dio Lewis died 1886.	4 487	1	9	10	♈	9 52
Mo.	22	♂ ♀	4 587	2	10	35	♉	10 27
W.	23	♂ ♀	4 577	2	10	35	♊	11 43
Th.	24	Copernicus died 1543.	4 577	3	11	8	♋	Morn
Fri.	25	Dr. Paley died 1805.	4 567	4	Morn		♌	0 27
Sat.	26	President Johnson acq. 1868.	4 567	3	11	39	♍	1 17
Sun	27	Day Gould born 1836.	4 567	4	0	8	♎	2 14
Mo.	28	Maximilian in Mexico 1864.	4 557	4	0	34	♏	3 19
W.	29	White Sunday.	4 547	5	1	5	♐	4 25
Th.	30	♂ ♀	4 547	5	1	84	♑	4 25
Fri.	31	Battle of Seven Pines 1862.						

PHASES OF THE MOON.

East Stand. Time.	D. H. M.
Full Moon	4 9 11 mo.
Last Quarter	11 1 4 mo.
New Moon	18 11 16 eve.
First Quarter	26 11 54 eve.

EQUATION OF TIME.

Day	1	2	3	4	5	6	7	8	9
1	1	2	3	4	5	6	7	8	9

VARIOUS PHENOMENA.

Day	Month	Event	Sun Rises	Sun Sets	Moon Rises	Moon Sets	Place	High Water
W.	1	Gen. Shields died 1879.	4 54	7	6	6	♈	5 27
Th.	2	Treaty of Paris 1814.	4 53	7	6	2	♉	6 25
Fri.	3	President Davis born 1808.	4 53	7	7	3	♊	7 21
Sat.	4	♂ ♀	4 53	7	7	30	♋	8 15
Sun	5	♂ ♀	4 52	7	7	Rises	9 8	
Mo.	6	Trinity Sunday. ♀ lowest.	4 52	7	8	46	♌	10 1
W.	7	Patrick Henry died 1799.	4 51	7	9	37	♍	10 56
Th.	8	Edwin Booth died 1893.	4 51	7	8	10	♎	11 52
Fri.	9	Thomas Paine died 1809.	4 51	7	8	10	♏	12 56
Sat.	10	Ford's Theatre collapsed 1893	4 51	7	9	11	♐	eve 51
Sun	11	Battle of Big Bethel 1861.	4 50	7	9	11	♑	1 48
Mo.	12	Benjamin Johnson born 1574.	4 50	7	9	Morn	2 45	
W.	13	First Sunday after Trinity.	4 50	7	0	26	♒	3 41
Th.	14	Gen. Scott born 1786.	4 50	7	10	0	♓	4 36
Fri.	15	Arkansas admitted 1836.	4 50	7	10	1	♈	5 27
Sat.	16	Richard Taylor ap. Lt-Gen 1864	4 50	7	10	1	♉	6 14
Sun	17	♂ ♀	4 50	7	11	1	♊	6 58
Mo.	18	♂ ♀	4 50	7	11	2	♋	7 39
W.	19	Richard Taylor ap. Lt-Gen 1864	4 50	7	11	3	♌	8 16
Th.	20	highest.	4 50	7	11	4	♍	8 52
Fri.	21	♂ ♀	4 49	7	11	4	♎	9 27
Sat.	22	♂ ♀	4 49	7	11	8	♏	10 30
Sun	23	2d Sun. af. Trinity. ♀ in Apogee	4 49	7	11	8	♐	10 40
Mo.	24	Santa Anna died 1876.	4 49	7	11	8	♑	11 19
W.	25	♂ enters ♄. Summer begins.	4 49	7	12	9	♒	12 3
Th.	26	Obelisk raised in New York 1881	4 50	7	12	9	♓	12 43
Fri.	27	Solferino 1859.	4 50	7	12	10	♈	11 19
Sat.	28	Saint John, Baptist.	4 50	7	11	10	♉	Morn
Sun	29	First Methodist Conference 1744	4 50	7	11	11	♊	0 1
Mo.	30	♂ ♀	4 50	7	11	11	♋	0 48
W.	31	Joe Smith killed 1844.	4 50	7	11	Morn	1 42	
Th.	28	President Madison died 1836.	4 50	7	11	0	♌	2 42
Fri.	29	Henry Clay died 1852.	4 50	7	10	0	♍	3 49
Sat.	30	♂ ♀	4 50	7	10	1	♎	4 57
Sun	31							

A Hen



Well dusted with Lambert's Death to Lice Powder will be clean and comfortable, whether sitting or standing. A nest sprinkled with this remedy will not harbor vermin. Its a disinfectant also. Chickens and Children have head lice unless something is done to prevent it.

Use Lambert's Death to Lice

Ointment and they will soon disappear. Try it for JIGGERS. Samples, by mail postpaid, 10 cents each. Book free.

D. J. LAMBERT,
MANUFACTURER,
APPENAUG, R. I.

TETTERINE

Merit
Not
Advertising
Made
Success

"GOLD DOLLAR MONUMENT."

"It is due you and a pleasure for me to recommend your TETTERINE. Truly, it is an infallible remedy and cure for Tetter. My wife has been annoyed by same for about twelve years, and after using TETTERINE for five days it disappeared entirely, to her great relief. She is ready to sing your praise, and I am prepared to contribute my gold dollar in erecting a monument to your name. Yours, etc.,
A. M. HAYWOOD, Evelyn, Ga."

TETTERINE...

IT CURES ECZEMA AND ALL SKIN DISEASES.

If you are afflicted, swap 50 cents for a box.

It will be the best trade of your life.

At all Drug Stores, or sent by mail upon receipt of 50 cents, cash or stamps.

J. T. SHUPTRINE,



SAVANNAH, GA.

Dr. ISAAC THOMPSON'S EYE WATER
Suffered with SORE EYES USE

RATS

KILL THE LAST ONE OF THEM.....



Rats' Death.

It's Sure Death!

Price, 10 cents; Postpaid, 14 cents
Manufactured by

THE HOWARD & WILLET DRUG CO., Augusta, Ga.

SLOAN'S LINIMENT

Will
Do More Good

in less time than
any other remedy
sold.

Family size 25c.
Horse sizes 50c and \$1
Sold by all druggists
and dealers



Cures
Rheumatism,
and all pain. Kills a
Spavin, Curb
or Splint.

Dr. EARL S. SLOAN
BOSTON, MASS., U. S. A.
Formerly of St. Louis, Mo.

Send for DR. SLOAN'S New Book, "Treatise on the Horse."

PHASES OF THE MOON.				EQUATION OF TIME.			
<i>East. Stand. Time.</i>	<i>P. M.</i>	<i>H. M.</i>	<i>M.</i>	<i>d</i>	<i>m</i>	<i>s</i>	<i>d</i>
Full Moon.....	3	4	12 eve.	1	58	31	2
Last Quarter.....	10	11	48 mo.	1	59	31	2
New Moon.....	18	2	47 eve.	1	59	31	2
First Quarter.....	26	8	40 mo.	1	59	31	2

VARIOUS PHENOMENA.

<i>Day</i>	<i>Event</i>	<i>Sun Rises</i>	<i>Sun Sets</i>	<i>Moon Rises</i>	<i>Moon Sets</i>	<i>Place</i>	<i>Phase</i>	<i>High Water</i>
<i>d</i>	<i>m</i>	<i>H. M.</i>	<i>H. M.</i>	<i>H. M.</i>	<i>H. M.</i>	<i>C. D.</i>	<i>H. M.</i>	
1	o h	4 507	10 3	8	8	m	7	2
2	o lowest.	4 507	10 3	8	8	m	6	4
3	34th Sun. af. Trinity.	4 507	10 3	8	8	m	8	1
4	Independence Day.	4 507	9 8	8	11	m	8	55
5	Independence of Venezuela 1811	4 517	9 8	8	52	m	9	49
6	John Huss burnt 1415.	4 517	9 9	9	24	m	10	31
7	Sheridan died 1816.	4 527	9 9	9	55	m	11	32
8	Battle of Ticonderoga 1758.	4 527	8 10	28		m	eve	23
9	Crimean War ends 1855.	4 537	8 10	56		m	1	15
10	Fifth Sunday after Trinity.	4 537	7 11	26		m	2	10
11	Hamilton shot 1804.	4 537	7 11	59		m	3	7
12	Morgan's raid 1863.	4 547	6	Morn		m	4	1
13	o o	4 547	6	0	36	m	4	55
14	Bassile captured 1789.	4 557	6 1	17		m	5	45
15	o highest.	4 567	5 2	3		m	6	30
16	o in Apogee.	4 567	5 2	53		m	7	14
17	Sixth Sunday after Trinity.	4 577	4 5	47		m	7	52
18	o eclipsed; invisible.	4 577	4 5	Sets		m	8	29
19	Battle of Winchester 1864.	4 577	3 7	45		m	9	5
20	o o	4 577	2 8	14		m	9	41
21	o o	4 587	2 8	40		m	10	18
22	Pittsburg riots 1877.	4 597	1 9	7		m	10	56
23	Gen. Burnside born 1824.	4 597	1 9	37		m	11	39
24	o 21. 7th Sun after Trinity.	5 07	0 10	5		m	Morn	
25	o Gold sold for 257 1864.	5 16	59 10	37		m	0	25
26	Earthquake at Naples 1805.	5 16	59 11	14		m	1	16
27	Golden Gate lost 1862.	5 26	58 11	58		m	2	16
28	o h	5 36	57	Morn		m	3	25
29	o lowest.	5 36	56	0	52	m	4	39
30	Penn died 1718.	5 46	56 1	54		m	5	48
31	8th Sun. af. Trinity. o in Perigee	5 56	55 3	4		m	6	61

PHASES OF THE MOON.				EQUATION OF TIME.			
<i>East. Stand. Time.</i>	<i>P. M.</i>	<i>H. M.</i>	<i>M.</i>	<i>d</i>	<i>m</i>	<i>s</i>	<i>d</i>
Full Moon.....	1	11	29 eve.	1	59	31	2
Last Quarter.....	9	1	13 mo.	1	59	31	2
New Moon.....	17	5	34 mo.	1	59	31	2
First Quarter.....	24	2	32 eve.	1	59	31	2
Full Moon.....	31	7	31 mo.	1	59	31	2

VARIOUS PHENOMENA.

<i>Day</i>	<i>Event</i>	<i>Sun Rises</i>	<i>Sun Sets</i>	<i>Moon Rises</i>	<i>Moon Sets</i>	<i>Place</i>	<i>Phase</i>	<i>High Water</i>
<i>d</i>	<i>m</i>	<i>H. M.</i>	<i>H. M.</i>	<i>H. M.</i>	<i>H. M.</i>	<i>C. D.</i>	<i>H. M.</i>	
1	Battle of the Nile 1798.	5 66	54	Rises		m	7	49
2	Plague in London 1663.	5 66	53	7	21	m	8	41
3	New Asteroid discovered 1869.	5 76	53	7	52	m	9	30
4	Shelly born 1792.	5 86	52	8	27	m	10	18
5	First cable message 1858.	5 96	52	8	67	m	11	8
6	Tennyson born 1809.	5 106	51	9	26	m	11	50
7	Ninth Sunday after Trinity.	5 116	50	9	59	m	eve	39
8	Battle of Cedar Mountain 1862.	5 116	49 10	35		m	1	30
9	Gen. Lyon killed 1861.	5 126	48 11	15		m	2	25
10	Missouri admitted 1821.	5 136	47 11	59		m	3	21
11	o o	5 146	46	Morn		m	4	17
12	o in Apogee.	5 156	45	0	49	m	4	11
13	Cortez took Mexico 1521.	5 166	44	1	41	m	5	0
14	Tenth Sunday after Trinity	5 176	43	2	35	m	6	45
15	Bonaparte born 1769.	5 186	42	3	33	m	7	36
16	Hull surrendered 1812.	5 196	41	4	30	m	8	5
17	Comet of 1682 appeared.	5 206	40	Sets		m	8	43
18	First steamboat 1807.	5 216	39	7	11	m	9	20
19	o o	5 226	38	7	43	m	9	57
20	o o	5 236	37	8	10	m	10	35
21	o o	5 236	36	8	39	m	11	18
22	Battle of Catlet's Station 1862.	5 246	35	9	15	m	Morn	
23	Com. Perry died 1820.	5 256	34	9	56	m	0	59
24	Saint Bartholomew.	5 266	33 10	45		m	1	1
25	o h	5 276	32 11	42		m	2	1
26	Capture of Fort Hatteras 1861.	5 286	31	Morn		m	3	14
27	Earthquake in Sumatra 1883.	5 296	31	0	48	m	4	28
28	12th Sun. af. Trinity. o in Perig.	5 306	30	1	58	m	5	38
29	Birgham Young died 1877.	5 316	29	3	11	m	6	36
30	Com. Semmes died 1877.	5 326	28	4	23	m	7	31
31	R. E. Lee appointed General 1861	5 336	27	Rises		m	8	20

Anti-Shake Chill and Fever Cure

GUARANTEED TO CURE.

We have never known one case of Chills and Fever which this Remedy failed to cure. Have known cases where other remedies failed to cure. No matter how obstinate and long standing is the case.

MALARIA

ANTI-SHAKE CURES.

MALARIA

In all of our Southern malarial districts, a tablespoonful taken occasionally at night will ward off Malaria, and prove, too, a valuable Tonic for the system. Take also for **Break-Bone Fever** and **LaGrippe**. If

Anti-Shake Chill and Fever Cure

Fails to cure you of Chills and Fever, the merchant from whom you bought it is authorized to pay you back Fifty Cents. You run no risk in buying **Anti-Shake**. No cure, no pay.

ANTI-SHAKE CURES CHILLS! ANTI-SHAKE CURES FEVER!
ANTI-SHAKE CURES MALARIA!

GRACEWOOD, GA., August, 1897.—“I have had chills and fever for 20 successive years on my place. I have used every remedy. I used a half bottle of *Anti-Shake Chill and Fever Cure*. It cured me at once and I have had no chills since. I've told over 100 people to buy and use it.”—Signed: KELLEY SCARBOROUGH.

Anti-Shake Cures Chills and Gives a Good Appetite. } Every Bottle of Anti-Shake Is Guaranteed to Cure.

MANUFACTURED BY

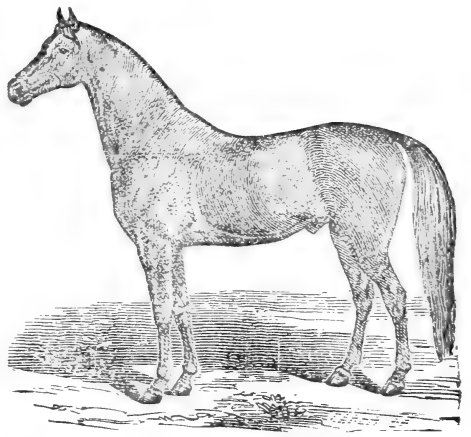
THE HOWARD & WILLET DRUG CO.

AUGUSTA, GA.

PRICE, PER BOTTLE, 50 CENTS

A Dead Loss.

That's a Horse or Mule who dies of Colic. Dead loss, \$125. Can you afford it? If not, we say honestly you will never lose an animal in your life by Horse Colic if you but use



HOLLEYMAN'S....

COMPOUND ELIXIR FOR HORSE COLIC.

50 cents, here or laid down at your nearest Southern Express Company's Office free of express to you.

It will Cure any Case of Horse Colic under the Sun.

Don't Wait Until Your Horse Dies Before You Buy a Bottle.

DR. B. B. KITCHEN, Mitchell, Ga., says: "I have used Holleyman's Elixir in Horse Colic. I recommend it as a Specific."

S. S. SANDERS & Co., Egypt, Ga., says: "Have sold it and used it, it is all it's claimed to be. Its effect is magical."

W. H. JONES, Stellaville, Ga., says: "I have been using Holleyman's Elixir one year, and saved several horses' lives. It never fails in Horse Colic."

CAPT. R. H. WALKER, Appleton, S. C., says: "*Worth Its Weight in Gold* to every farmer. I saved three horses' lives on my plantation in sixty days."

O. B. BROWN, Stellaville, Ga., says: "Cured a nice mare who was dying with Colic. The best thing of the kind I ever saw."

S. A. GRAY & Co., Waynesboro, Ga., says: "Have used Holleyman's Elixir for eight or nine years. As a preparation for Colic in Horses and Mules we believe it to be unequalled."

R. H. WOOD, Veterinary Surgeon, Johnston, S. C., says: "I used it in several severe cases. One animal had been given up to die; a part of the bottle saved the animal's life. No horse owner should be without it."

J. F. A. TUFTS, Drummer, says: "In one of my drumming trips of thirty days, I cured three dangerous cases of Colic in horses from my small sample vial holding only one ounce."

W. H. McNORRILL, M. D., Waynesboro, Ga., says: "Holleyman's Elixir is extensively used in this county for many years. I have found it to be an infallible remedy."

IT IS AN ABSOLUTE SPECIFIC FOR AGGRAVATED CASES OF CRAMP COLIC IN MAN. It is too Strong for Children.

We have crowds of testimony from Doctors, Veterinary Surgeons, Merchants and Farmers.

THE HOWARD & WILLET DRUG CO.
Manufacturers, -f- Augusta, Ga.

PHASES OF THE MOON.

<i>East. Stand. Time.</i>	D.	H.	M.
Last Quarter.....	6	9	28 mo.
New Moon.....	13	7	20 eve.
First Quarter.....	20	0	6 eve.
Full Moon.....	27	11	89 eve.

Sun Fast.

EQUATION OF TIME.	
s.	m.
18	17
16	16
16	15
14	14
13	13
12	12
11	11

VARIOUS PHENOMENA.

Day of the Month	Phenomenon	Sun Rises	Sun Sets	Moon Rises	Moon Sets	☉ Place	☉ High Water
H. M.	H. M.	H. M.	H. M.	☉ S. M. C. D.	☉ S. M. C. D.	H. M.	H. M.
Tu. 1	highest.	6 35	5 25	7 17	7 17	☾	10 11
W. 2	Eric Canal opened 1825.	6 36	5 24	8 9	8 9	☾	10 48
Th. 3	Livingstone found 1870.	6 37	5 23	9 3	9 3	☾	11 27
Fri. 4	in Apogee.	6 38	5 22	9 59	9 59	☾	eye 6
Sat. 5	of ☽	6 39	5 22	10 55	10 55	☾	0 50
Sun 6	Twenty-second Sun. after Trinity	6 40	5 21	11 52	11 52	☾	1 40
Mo. 7	Battle of Tippecanoe 1811.	6 41	5 20	Morn	Morn	☾	2 37
Tu. 8	Cleveland elected President 1892	6 42	5 19	0 50	0 50	☾	3 38
W. 9	Prince of Wales born 1841.	6 43	5 18	1 49	1 49	☾	4 41
Th. 10	Goldsmith born 1728.	6 44	5 17	2 46	2 46	☾	5 37
Fri. 11	Great Hurricane in Havana 1846	6 45	5 16	3 51	3 51	☾	6 28
Sat. 12	of ☽	6 46	5 15	4 58	4 58	☾	7 17
Sun 13	Twenty-third Sun. after Trinity.	6 47	5 14	6 8	6 8	☾	8 5
Mo. 14	of ☽	6 47	5 13	Sets	Sets	☾	8 55
W. 15	of ♀ in Perigee.	6 48	5 12	6 20	6 20	☾	9 43
Th. 16	in Perigee.	6 49	5 11	7 28	7 28	☾	10 36
Fri. 17	Suez Canal opened 1869.	6 50	5 10	8 39	8 39	☾	11 34
Th. 18	Wolsey died 1530.	6 50	5 9	9 49	9 49	☾	Morn
Fri. 19	Garfield born 1831.	6 51	5 8	10 58	10 58	☾	0 34
Sat. 20	Twenty-fourth Sun. after Trinity	6 52	5 7	Morn	Morn	☾	1 38
Sun 21	Charles Francis Adams died 1886	6 53	5 7	7 0	7 0	☾	2 39
Mo. 22	Sir Henry Havelock died 1857.	6 54	5 6	1 9	1 9	☾	3 39
W. 23	Battle of Chattanooga 1863.	6 54	5 5	2 11	2 11	☾	4 35
Th. 24	John Knox died 1572.	6 55	5 5	3 14	3 14	☾	5 30
Fri. 25	Battle of Missionary Ridge 1863	6 56	5 4	4 16	4 16	☾	6 18
Sat. 26	Cowper born 1731.	6 56	5 4	5 17	5 17	☾	7 7
Sun 27	Advent Sunday.	6 56	5 4	6 16	6 16	☾	7 47
Mo. 28	Irving died 1859.	6 56	5 3	Rises	Rises	☾	8 28
W. 29	highest.	6 56	5 3	6 6	6 6	☾	9 9
Th. 30	of ☽	6 57	5 3	6 55	6 55	☾	9 43
W. 30	Saint Andrew.	6 57	5 3	3	3	☾	9 43

PHASES OF THE MOON.

<i>East. Stand. Time.</i>	D.	H.	M.
Last Quarter.....	6	5	6 mo.
New Moon.....	13	6	48 mo.
First Quarter.....	19	10	22 eve.
Full Moon.....	27	6	89 eve.

Sun Fast.

EQUATION OF TIME.	
s.	m.
44	8
40	6
36	7
32	5
28	6
24	8
20	1
16	13
12	28
8	43
4	58

VARIOUS PHENOMENA.

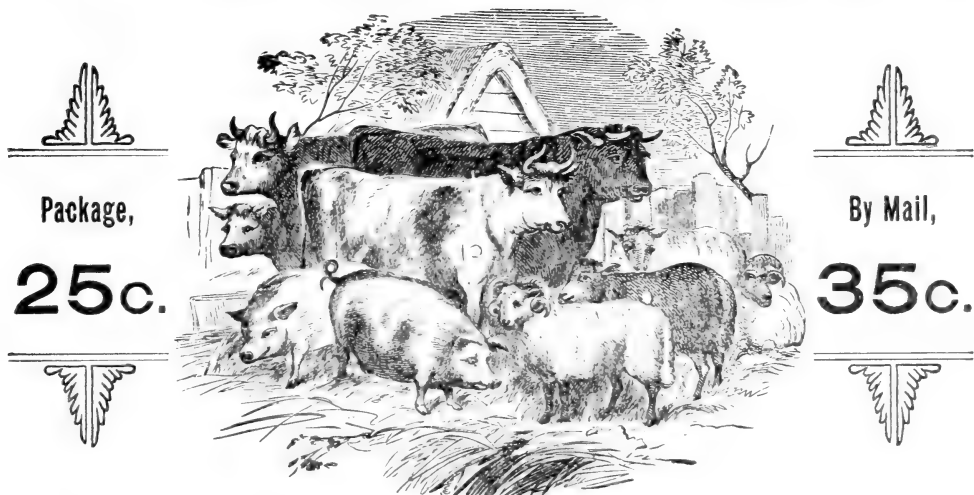
Day of the Month	Phenomenon	Sun Rises	Sun Sets	Moon Rises	Moon Sets	☉ Place	☉ High Water
H. M.	H. M.	H. M.	H. M.	☉ S. M. C. D.	☉ S. M. C. D.	H. M.	H. M.
Th. 1	of ♀	6 57	5 2	7 49	7 49	☾	10 19
Fri. 2	in Apogee.	6 58	5 2	8 46	8 46	☾	10 55
Sat. 3	of ☽	6 58	5 2	9 42	9 42	☾	11 31
Sun 4	Second Sunday in Advent.	6 58	5 1	110 38	110 38	☾	eye 13
Mo. 5	Kosuth arrives in U. S. 1851.	6 59	5 1	111 36	111 36	☾	0 56
Tu. 6	of ♀	6 59	5 1	Morn	Morn	☾	1 48
W. 7	Battle of Prairie Grove, Ark. 1862	7 0	5 0	0 32	0 32	☾	2 47
Th. 8	Vatican Council 1869.	7 0	5 0	1 31	1 31	☾	3 49
Fri. 9	John W. Forney died 1881.	7 0	5 0	2 36	2 36	☾	4 52
Sat. 10	of ☽	7 1	5 0	3 43	3 43	☾	5 54
Sun 11	Third Sunday in Advent.	7 1	5 0	4 53	4 53	☾	6 51
Mo. 12	of ♀	7 2	5 0	6 4	6 4	☾	7 46
Tu. 13	lowest.	7 2	5 0	7 7	7 7	☾	8 40
W. 14	of ☽ in Perigee.	7 2	5 0	8 16	8 16	☾	9 34
Th. 15	Battle of Nashville, Tenn., 1864.	7 2	5 0	9 31	9 31	☾	10 28
Fri. 16	Gen. A. H. Terry died 1890.	7 2	5 0	10 44	10 44	☾	11 24
Sat. 17	Milan Decree published 1807.	7 2	5 0	11 55	11 55	☾	Morn
Sun 18	Fourth Sunday in Advent.	7 2	5 0	1 4	1 4	☾	0 20
Mo. 19	Bayard Taylor died 1876.	7 2	5 0	11 4	11 4	☾	1 16
Tu. 20	South Carolina seceded 1860.	7 2	5 0	Morn	Morn	☾	2 13
W. 21	☾ enters ♋. Winter begins.	7 2	5 0	4 8	4 8	☾	3 11
Th. 22	Embargo Law passed 1807.	7 2	5 0	5 8	5 8	☾	4 4
Fri. 23	Henry W. Grady died 1889.	7 2	5 0	6 10	6 10	☾	5 9
Sat. 24	Thackeray died 1863.	7 2	5 0	7 10	7 10	☾	6 53
Sun 25	Christmas Day.	7 2	5 0	8 10	8 10	☾	7 40
Mo. 26	highest.	7 2	5 0	9 6	9 6	☾	8 24
Tu. 27	Saint John, Evangelist.	7 2	5 0	Rises	Rises	☾	8 4
W. 28	Iowa admitted 1846.	7 2	5 0	5 42	5 42	☾	8 42
Th. 29	in Apogee.	7 2	5 0	6 39	6 39	☾	9 19
Fri. 30	of ☽	7 2	5 0	7 34	7 34	☾	9 54
Sat. 31	West Virginia admitted 1862.	7 2	5 0	8 30	8 30	☾	10 28

Howard's Horse and Cattle Powders.

While other manufacturers put up their Cattle Powders in 12 ounce packages we put HOWARD'S in 16 ounce packages—thus giving our buyers the biggest package sold on the market.

Howard's Horse and Cattle Powders.

For thirty years we have sold this Powder to thousands of patrons in the South. So compounded that your Horse (except in colic case) can go a year and need no other medicine. There is no finer formula of Cattle Powders on earth than "HOWARD'S."



Package,

25c.

By Mail,

35c.

It Keeps Your Horse Sleek and Fat.

HOWARD'S HORSE AND CATTLE POWDERS are absolutely necessary for the good health of your Horses, Cows, Sheep, and all Cattle. A Tonic and an Appetizer when stock are run down in flesh.;

Purifies Stagnant Blood in Spring Time

It is to your highest interest to look after the good health of your Stock. Howard's Horse and Cattle Powders will be your greatest aid.

The S. P. C. A. is a Friend of Howard's Horse and Cattle Powders.

MANUFACTURED ONLY BY

The Howard & Willet Drug Co.
AUGUSTA, GEORGIA.

WILD CHERRY COUGH CURE.

◎ **THE BEST ON EARTH** ◎

IF YOU COUGH 



**DON'T MAKE THE MISTAKE IN
BUYING A POOR COUGH SYRUP.**

A COUGH MAY RUIN A LIFE.

YOU CAN HAVE THE BEST BY ASKING FOR

"WILD CHERRY COUGH CURE"

HAS BEEN IN GOOD REPORT FOR FORTY YEARS.

BOSTON, MASS., April 2, 1887.

I have suffered for three years with a distressing Cough, and have tried doctors and patent medicines during all this time without permanent benefit. Passing through your city of Augusta, I was led to try a bottle of WILD CHERRY COUGH CURE. I used it according to directions, and found such great relief I bought several bottles, and before I had used them all I was entirely cured. I write this without solicitation, that you may know what a valuable medicine you have.

Respectfully,

PATKICK RYAN.

THE "WILD CHERRY" IS
NATURE'S REMEDY FOR



COUGHS AND COLDS.

TRY ONE BOTTLE AND DON'T WORRY ABOUT RESULTS FOR THE
CURE WILL COME WHENEVER YOU TAKE

"WILD CHERRY COUGH CURE."

WE'VE HAD A LIFE-TIME EXPERIENCE WITH IT AND KNOW JUST
WHAT IT WILL DO. OUR PROMISE TO YOU IS

A SAFE, EASY AND QUICK CURE.

WILD CHERRY COUGH CURE IS 25c. A BOTTLE.

MANUFACTURED BY

THE HOWARD & WILLET DRUG CO.

AUGUSTA, GEORGIA.

WILD CHERRY COUGH CURE.

ARE YOU 

Tired of Scratching?

We all had the ITCH in the War, and we nearly scratched our lives away; and every scratch made matters worse, as it does now with you!

AN HONEST TALE

It would be if we only had space to tell you of the thousands and thousands of Cures made by our

Infallible Itch Ointment.

Our Word For It: IT ALWAYS CURES.

Now, trust us and use it. You'll find an easy cure. We have many doctor friends who are successfully prescribing it. Don't forget the name—INFALLIBLE ITCH OINTMENT. Price, 25 cents; postpaid, 30 cents.

MANUFACTURED BY

The Howard & Willet Drug Co.
AUGUSTA, GA.

H. & W. Toothache Drops.

How about TOOTHACHE?

Ever Have It?

Suffer Any?

Did It Hurt Real Bad?

HERE'S A REMEDY. ONLY 10 CENTS;
POSTPAID, 12 CENTS.

Manufactured by:

The Howard & Willet Drug Co., Augusta, Ga.

NOTHING SO GOOD AS THIS FOR

OLD SORES.

H. & W. Carbolic Salve

Cleanses, Heals, Disinfects.

You need it constantly on the Plantation.
Price, 25 cents, postpaid.

Manufactured by

The Howard & Willet Drug Co., Augusta, Ga.

Worms! Worms!! Worms!!!

IN CHILDREN.

The poor little children are puny and thin and weak and fretful—all because of

HORRID WORMS.

Howard's Worm Candy

Is not a bad tasting Syrup dose.

IT IS CANDY.

CHILDREN CRY FOR IT!

It Kills Worms. It Kills Worms.

It Expels Every Worm.

Big Worms. Little Worms—they all go.

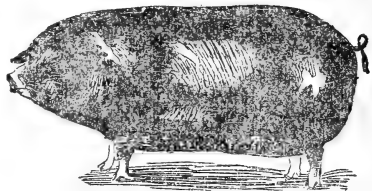
HOWARD'S WORM CANDY 25 cents, postpaid.

Manufactured only by

The Howard & Willet Drug Co.,
AUGUSTA, GEORGIA.

National Hog Cholera Cure

The Cattle Industry Department of the U. S. Agricultural Bureau has spent some millions of money in trying to find a specific for Hog Cholera. The result of this work is the formula used in our



NATIONAL Hog Cholera Cure.

JOHNSTON, S. C., March 1, 1897.
THE HOWARD & WILLET DRUG CO.,
Augusta, Ga.

Dear Sirs:—I had a drove of thirty-five hogs. I had lost seventeen of them by Hog Cholera. I commenced using your NATIONAL HOG CHOLERA CURE. One sick one was too far gone for any human skill; he died. The others got well, and through its use none of the well one took the Cholera. I consider it a powerful Remedy and an absolute Specific I recommend it widely to our farmers.

MARK TONEY.

AUGUSTA, GA., March 15, 1895.
THE HOWARD & WILLET DRUG CO.,
Augusta, Ga.

Dear Sirs:—I had drove of 200 hogs. Cholera got in among them and I lost seven. When I commenced the use of your NATIONAL HOG CHOLERA CURE, I had fifty sick ones. Several were too sick for any medicine whatever to avail. They died. All the balance got well. No new cases originated among the well ones after taking the cure. Its the best medicine I ever saw. Several other farmers have met with the same success by its use.

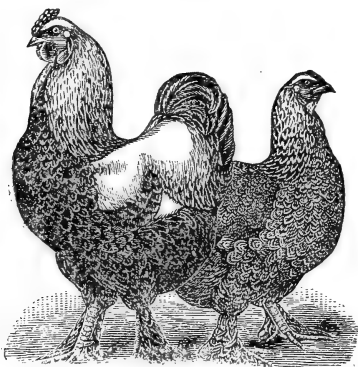
W. T. BUGG.

Put up for the trade in 10 ounce boxes. 1 pkg. 25c. Postpaid 30 cents.

THE HOWARD & WILLET DRUG CO.

AUGUSTA, GA.

Manufacturers and Wholesale Druggists.



G. C. C. C.

GEORGIA CHICKEN CHOLERA CURE

Chicken Cholera kills in thirty-six hours. Once in your flock, it goes through with the whole lot. The Remedy we offer is the best one known to modern science

IT CURES CHICKEN CHOLERA whenever they are sick, and

IT PREVENTS CHICKEN CHOLERA when the well ones come in contact with the sick ones.

IT IS A FINE CHICKEN TONIC and makes chickens healthy and makes hens lay irrespective of cholera.

Chickens and Eggs are one of the biggest money crops in all the world. Its an easy matter to sell crowds of if you will only keep G. C. C. C. on hand.

CHICKENS AND EGGS

Manufactured Only by

THE HOWARD & WILLET DRUG CO. AUGUSTA, GEORGIA.

Package, 25 Cents, Postpaid, 35 Cents.

A TINY PILL

Is Dr. Simmons' Pills.

They are the latest formula for a perfect pill, and are far better than the old-time pills that wrench and sicken and weaken you. Doubtless you have tried the old-time pill, and doubtless they made you sicker, and you felt like you had been through the battle of Manassas. The old-time big pill had 25 pills in a box. Dr. Simmons' has about 50 in a box.

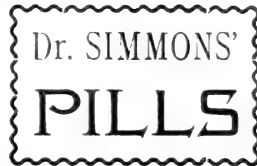
Dr. Simmons' Liver Pills

Are an Up-to-Date Modern Pill
Will Not Sicken You.
Will Not Gripé You.

EASY 

GENTLE..

In their Action.



FOR.....

COATED TONGUE,
CONSTIVENESS,
SICK HEADACHE,
BILIOUSNESS,
MALARIAL POISON.

Ask your merchant for them. If he can't supply them, remit us price and we will mail them to you. 25 cents a box.

MANUFACTURED BY

The Howard & Willet Drug Co.,

AUGUSTA, GEORGIA.

FOR THIRTY YEARS

Infallible Pile Ointment

HAS BEEN ON THE MARKET.

It has stood thousands of tests. It will stand your test too. We talk knowingly and confidently, because we DO KNOW. Take our word for it, and don't suffer longer with PILES.

HERE IS A DOCTOR'S ENDORSEMENT:

From W. H. McNORRILL, M. D., Waynesboro, Ga.

"Your INFALLIBLE PILE OINTMENT has given entire satisfaction in every case where I have used it. I have cured many cases where the hemorrhoidal protrusions were very large and troublesome, and I feared the knife would have to be used. But by persistent use of the Infallible Pile Ointment the protrusions were gradually reduced and normal conditions were restored."

Have You the Piles? Have You the Piles?

Here's a Remedy. Have You the Piles? Here's a Cure.

HERE'S A REMEDY.

"Infallible" means "Never Fail."

Price, 50 cents, postpaid.

Manufactured only by

The Howard & Willet Drug Co.,

AUGUSTA, GA.

TETTER
TETTER
TETTER
TETTER
TETTER
TETTER

RED ITCHING SPOTS!
SCALY ITCHING SPOTS!
BARBER'S ITCH!
RING WORM!
ECZEMA!

The general term is "Eczema." And four-fifths of the world at some time have it.

INFALLIBLE TETTER OINTMENT

Would cure all the world if the world would come to it. We know this to be absolutely true. Price 25 cents. Ask your merchant for it. If he can't supply it, remit us price and we will mail it to you. Manufactured by THE HOWARD & WILLET DRUG COMPANY, Augusta, Georgia.

**Drake's
MAGIC**

Liniment!

POWERFUL!
POWERFUL!
POWERFUL!

It is an Old Time Remedy. Known for 75 years.

It is a Standard Liniment in South Georgia and other parts of the South.

It is one the most Powerful Stimulating Liniments in World.

Price 50c. We are the General Selling Agents for DRAKE'S MAGIC LINIMENT.

THE HOWARD & WILLET DRUG CO., Augusta, Georgia.

**Is Your Skin Yellow?
Is Your Tongue Coated?**

YOUR LIVER IS OUT OF ORDER

In our Southern climate, where our systems so easily get full of Malaria and so often are clogged through our Livers failing to work, to every Southerner

LIVER-AID

[comes as a great boon and benefit.

LIVER-AID CONTAINS NO CALOMEL!
LIVER-AID CONTAINS NO GRIPES
LIVER-AID CONTAINS NO SICK FEELING!

Don't suffer longer with Biliousness, Constipation, Dizziness, Loss of Appetite, Dyspepsia, Heartburn and Sallow Skin!

It washes and cleanses the system FROM ALL BILE.

TAKE **Liver-Aid.**
TAKE **Liver-Aid.**
TAKE **Liver-Aid.**

A graduated Medicine Glass goes free with each bottle.

A Man
With

A Bad Liver
Is liable to Commit all the Sins of the Decalogue.

A Bad Liver
Is a Moral Monster

A Bad Liver
Is a Devil Inside of you.

Liver-Aid
Gives you A Good Liver.

Liver-Aid
Makes of you A Good Man.

Price 50c. } Manufactured only by the **HOWARD & WILLET DRUG COMPANY,** Augusta, Georgia.

LAND'S SYRUP HYPOPHOSPHITES COMPOUND.

USED FOR YEARS BY
THE AUGUSTA HOSPITALS.

To give to the Profession an article in sufficiently concentrated form, and at the same time not be so high priced as to be beyond the reach of the great mass of patients, has been our object in placing this Preparation on the market. By reference to the formula below, it will be seen that this Preparation has in ONE DRACHM the same amount of the Hypophosphites as ONE FULL OUNCE of any other Syrup Hypophosphites on the market. If physicians will think of this, we are satisfied they will see the advantage of this over any similar remedy.

FORMULA.—Each fluid drachm contains 2 grains Hypophosphite Calcium; 1 grain Hypophosphite Sodium; 1 grain Hypophosphite Potassium; $\frac{1}{4}$ grain Hypophosphite Iron; $\frac{1}{4}$ grain Hypophosphite Manganese; $\frac{1}{4}$ grain Hypophosphite Quinine; $\frac{1}{2}$ minim Fluid Ex. Nux Vomica.

AUGUSTA, GA., June 21, 1889.

I have carefully examined the formula of your SYRUP HYPOPHOSPHITES COMPOUND and am very favorably impressed with it. Indeed, I think it for certain classes of cases, the best of the kind that I have ever seen.

W. H. DOUGHTY, JR., M. D.

AUGUSTA, GA., May 22, 1889.

For two years past I have repeatedly used your SYRUP HYPOPHOSPHITES COMPOUND with most gratifying results. The fact that every article in your Preparation is a Hypophosphite, together with the further fact that the dose of Strychnia therein contained can be advantageously given to every class of sufferer to whom the Compound Syrup Hypophosphites should be administered, makes it particularly valuable. I congratulate you upon obtaining a Preparation so reliable, uniform, and so easily assimilable, and cheerfully recommend its use in Phthisis, Pulmonitis, Nervous or Wasting Diseases.

J. M. HULL, M. D.

AUGUSTA, GA., May 7, 1889.

I have used your SYRUP OF HYPOPHOSPHITES COMPOUND in a large number of cases where such remedies are indicated, in children and adults, and testify to the uniform and positive results obtained. I also find that this is less liable to fermentation, and more acceptable to delicate stomachs than any other preparations known to me.

GEO. A. WILCOX, M. D.

AUGUSTA, GA., May 6, 1889.

I consider LAND'S HYPOPHOSPHITES COMPOUND the best I have ever used, and since my first acquaintance with it I have used no other. In cases where its use is indicated, it gives me more satisfaction than any other preparation of the kind, and I have used them all.

E. C. GOODRICH, M. D.

AUGUSTA, GA., May 4, 1889.

I regard your SYRUP HYPOPHOSPHITES as one of the most elegant Pharmaceutical Preparations I have ever prescribed. One needs but to observe its chemical composition in order to feel convinced of its value in therapeutics.

J. B. MORGAN, M. D.

Price, One Bottle, \$1.00. 1-5 Pint Bottle, \$3.00.

Prepared only in the Laboratory of

THE HOWARD & WILLET DRUG COMPANY,
AUGUSTA, GEORGIA.

LAND'S BLOOD MEDICINE

QUANTITATIVE FORMULA.—Stillingia, Fringe Tree, Poke Root, Burdock, Prickly Ash, and Blue Flag. All the virtues of above extracted in a menstrum, and each dose contains 10 grains Iodide Potassium and Sodium.

WILLIAMSTON, S. C., March 8, 1892.

"LAND'S BLOOD MEDICINE" is one of the best vegetable alteratives I have ever used, and, in my opinion, is as near a specific for Chronic Rheumatism as has ever been found.

B. E. BROWN, M. D.

ELBERTON, GA., July 22, 1893.

In secondary and Tertiary Syphilis it has no equal. In those intractable cases of disordered menstruation, where there is a scrofulous diathesis, it is a superior remedy. During forty years practice I have never met with a remedy with which I was better pleased.

J. BYNUM BELL, M. D.

CARR'S STATION, GA., July 20, 1893.

I have been prescribing LAND'S BLOOD MEDICINE during the past year and have had eminently satisfactory results from every prescription.

THOS. J. JONES, M. D.

CARLTON, GA., July 21, 1893.

I have used LAND'S BLOOD MEDICINE in Chronic Rheumatism, Scrofula and Syphilis, and get better results than from any medicine I have ever used.

O. L. DEADWYLER, M. D.

PORT ROYAL, S. C., September 1, 1893.

It has given me great satisfaction in cases of Syphilis and Rheumatism of syphilitic organ, and many other blood disorders of various kinds.

MILES BERRIEN COPE, M. D.

PRINCETON, S. C., July 21, 1893.

I have been using LAND'S BLOOD MEDICINE in my practice, for those who need an alterative, and can truthfully say that I regard it one of the best preparations on the market.

G. L. MARTIN, M. D.

NOTE.—We have a book of medical testimony concerning LAND'S BLOOD MEDICINE. Let us send it to you. Besides above, it contains the names of such Doctors as:

JOHN SIMS,	W. W. PILCHER,
D. W. YOUNGBLOOD,	W. B. PATTON,
A. M. BAILEY,	B. B. KITCHENS,
R. G. WITHERSPOON,	A. B. LANIER,
C. W. PINSON,	C. D. WEST,
W. E. LINK,	A. J. HARTER,
B. S. BENTLEY,	JNO. J. WINTER,
W. T. BALLENTINE,	E. A. CASON,

And others.

WE PUT UP TWO SIZE BOTTLES AT \$1.00 AND \$2.00.

Prepared only in the Laboratory of

THE HOWARD & WILLET DRUG COMPANY,
AUGUSTA, GEORGIA.

Sick
Periodic
Neuralgic
Spinal
Nervous
Bilious

.....
HEADACHES
.....

LAND'S HEADACHE CAPSULES

CURE ALL THESE.

It's like Magic. Ten years ago this was impossible. Today curing Headaches is as easy as curing thirst or hunger.

LAND'S HEADACHE CAPSULES contain no Morphine.

LAND'S HEADACHE CAPSULES cure, by actual count, 36 out of 37 Headaches.

IT'S A STINGY MAN 

Who will allow his wife or child, or himself, to suffer all day with a headache, when 25 cents invested in Land's Headache Capsules would drive away one dozen headaches. 25 cents postpaid per box of one dozen Capsules.

—MANUFACTURED BY—

The Howard & Willet Drug Co., Augusta, Ga.

DON'T

Buy 10c. a lb. Baking Powder, which costs the maker just 2 3/4 c. lb., and made of Alum, Ammonia and Flour.

Buy a 50c. lb. Baking Powder, whose selling price was fixed 30 years ago, when the materials were 60 per cent. higher than in 1898.

**EAGLE
BAKING
POWDER.**

25 cents a Pound.

Represents the honest value of a high grade Powder made in 1898.

Take Care of Your Stomach!
Take Care of Your Pocket!

The Howard & Willet Drug Co.


AUGUSTA, GA.,

Maker of Eagle.

SWEET Delightful! **SWEET**
Delightful!

SWEET TWO NEW **SWEET**
Perfumes.

SWEET  **SWEET**
Annie Belle
Cologne

SWEET 10 cents a Bottle. **SWEET**

Belle of

SWEET **Augusta** **SWEET**
Cologne.
25 cents a bottle.

SWEET These two Colognes are **SWEET**
fit for Queens and Prin-
cesses. Ask for them for
yourself.

SWEET The Howard & Willet **SWEET**
DRUG CO.,
AUGUSTA, GEORGIA,
MAKE THEM.

SWEET Delightful! Delightful! **SWEET**

Remember the Name. Remember the Name. Remember the Name

Y.K.W. Y.K.W. Y.K.W.



IT CURES

In 3 to 5 Days,

GONORRHOEA

GLEET

STRICTURE

50c.

The only 50c. Gonorrhoea Cure on the market; but if it cost a fortune it could not cure Gonorrhoea, Gleet and Stricture more surely and completely and absolutely. It knows no such word as "FAIL."

IT'S A SELF CURE.

Syringe Free with each Bottle.

Manufactured
only by

The Howard & Willet Drug Co.,
AUGUSTA, GEORGIA.

WE ALL HAVE IT.

DIARRHOEA!

In a few hours it makes the strongest man weak as water. It comes so often to every family, and its effect is so pitiful in men, women and children. But you need never worry about Diarrhoea if you have in the house a bottle of

H. & W. Diarrhoea Cordial.

Pleasant. Absolutely efficacious in Diarrhoea, Colic, Cramps, Dysentery, etc. Price, 25c.

SEE WHAT A DOCTOR SAYS:

"Your H. & W. Diarrhoea Cordial is a real gem. It should be placed in every household. It is all that is claimed for it in the treatment of all bowel troubles. Persons suffering with indigestion of this nature will find that a few doses will produce a normal condition of the entire alimentary canal."

MANUFACTURED ONLY BY

The Howard & Willet Drug Co., Augusta, Ga.

© PLASTICO ©

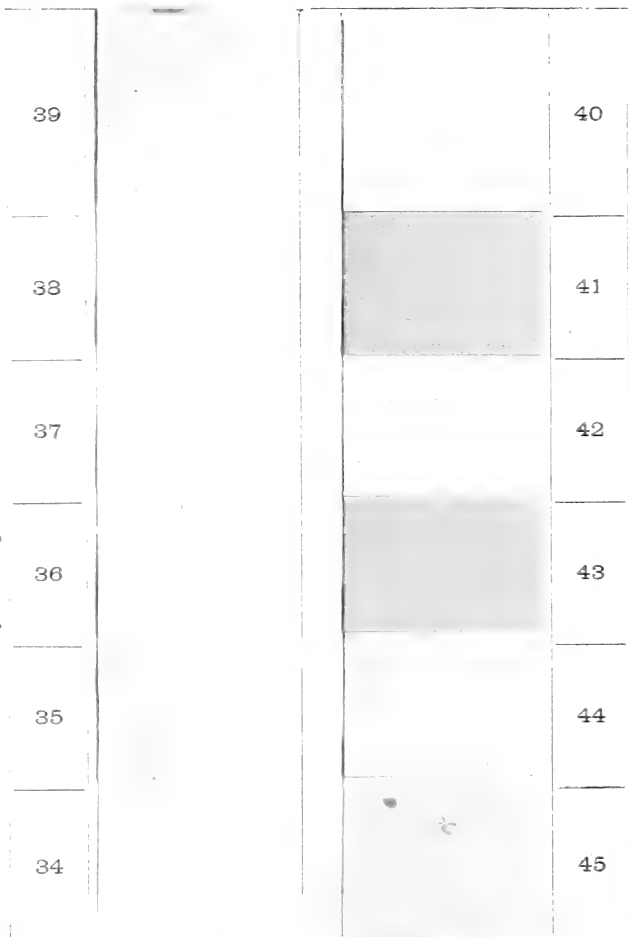
For Tinting and Whitening Walls and Ceilings.

A Dry Powder Ready for Use by Mixing in Cold Water. Can be used on Plastered Walls, Wood Ceilings, Brick or Canvas.

ANY ONE CAN BRUSH IT ON.



Best Results are Obtained by Reducing these Tints One-Half with White for most Surfaces.



NO ONE CAN RUB IT OFF.

The above samples are made by spreading the regular goods on paper with a brush, thus showing the surface produced and exact colors.

PLASTICO takes the place of paper and kalsomine wherever introduced, as it produces beautiful effects, and unlike all kalsomines, is not stuck on the wall with glue, but is in the nature of a cement that hardens with age, making a sanitary and durable wall coating.

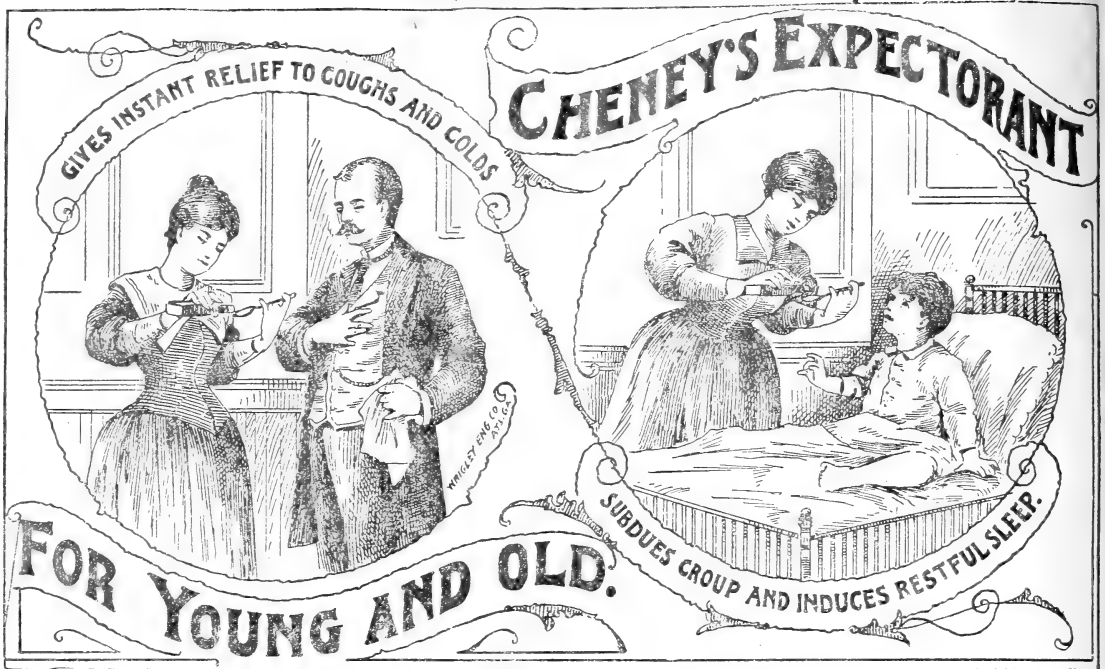
The walls of buildings infected with contagion can be disinfected and made pure and healthful by a coating of PLASTICO. Sanitarians strongly endorse its use.

For full particulars write the ANTI-KALSOMINE Co., Grand Rapids, Mich., or inquire of

The Howard & Willet Drug Co.,

AUGUSTA, GA.

CROUP SPECIFIC



FOR PEOPLE OF EVERY AGE.

Closing Out these at Cost.

As we shall discontinue handling Garden Implements and Parasite Killers, we offer our stock of them at prime cost.

Mathew's Garden Gem Seed Drill.

Manufacturer's price, \$7.00; our price, \$4.00. This has the Seed Dial, Patent Indicator with names thereon, also Improved Markers.

New Universal Double Wheel Hoe

with Cultivator, Plow and Rake. Manufacturer's price, boxed, \$7.50; our price, \$4.25. Works both sides of row or between. With its variety of attachments—a great labor saver.

Excelsior Parasite Killer.

Harmless to human and plant life. German importation. Much preferred (and cheaper) to Paris Green and London Purple and other chemicals. Apply in morning or cloudy weather with bellows on stem and leaves. Price 50 lb: lots, 6c. 1b.



THE HOWARD & WILLET DRUG CO.,

AUGUSTA, - CA.

KEEP THIS.

AT WHOLESALE.

KEEP THIS.

The Howard & Willet Drug Co. { Augusta, Ga. Dec., 1897.

List of Georgia Grown Seeds offered to the United States Seedsmen in Large Amounts

Quality the very best. These Georgia grown Seeds obtain their highest development here in Georgia. Seedsmen should come to this State each year for their supply of them. Write us about present deliveries or future contracts.

COLLARDS—

All Collards ready for delivery. Grow 4 feet high. Large leaves branch out widely and thickly, and are boiled as Greens. Stand green all winter—frost making them all the sweeter. Every farmers' garden in Georgia grows Collards. Hosts of negro gardeners in Georgia grow nothing but Collards. Georgia grows the Collard seed for United States. Georgia Blue Stem Collard, the old fashioned kind, known 100 years or more. Georgia White Cabbage Collard—Whiter and more tender than Blue Stem and preferred. Introduced some ten years or more. Three-fourths of them bunch up in winter. Bancob Collards—Never listed before. Supply very limited. Held at \$1.25 a lb. Color between above two Collards. Very hardy and very heavy foliage. Magnificent, juicy, sweet Collard. A good number head in winter. Green Glazed Collard—Can't deliver before June, 1898. Hardest of all Collards. Leaves smooth, glassy, glazed green. Of great value because the insects don't touch it.

COTTONS—30 lbs. to bushel.

Present or future delivery. This city is second largest inland cotton market in the world. We have peerless facilities for stocking United States seedsmen with all the cotton seed stocks. We name as leaders King Cotton, Peterkin, Truitt Big Boll, Hawkin, Jones Improved, Mammoth Boll, Peerless, Texas Storm Proof, Drakes' Cluster, Hancock-Hertong, Doughty's Long Staple—Augusta's best long staple Cotton. Sea Island Cotton—(Lawton) the best Sea Island Cotton from off Charleston, 44 lbs to bushel.

☞ We have just filled the United States free seed cotton seed order—800 bushels. We filled it also one year ago. We are filling orders in good amounts for foreign countries. We are United States cotton seed headquarters.

COW OR FIELD PEAS—

Winter delivery. Next to corn and cotton, the South's greatest crop. Can supply the following: Unknown or Wonderful, Whippoorwill, Clay, Tory, Iron, Miller, Black, Black Eye White. New Era Pea—New limited supply. It matures 2½ crops here in one season. We believe it will be the coming cow pea crop of the North and West. Fine, large foliage and full of peas. It is a bluish speckled pea. We advise Northern growers to try them. 1 bushel \$1.50; 5 bushels \$1.25.

MIXED COW PEAS—

Not one Georgia farmer in one hundred grows straight unmixed Peas of one type. He grows mixed peas because it is better and for this reason—if the soil or season is not favorable to one type, then it will be favorable to some of the other types. It's almost impossible for this reason to buy unmixed peas. We say this to United States seedsmen, viz: If you want the best out turn in cow peas (lay and peas) then order high grade Mixed Peas. They are cheaper too.

Cat Tail or Pearl Millet—

January delivery. This is the most abundant green forage growth in Georgia. Can be cut here seven times in one season. The U. S. Agricultural Department has created in the last few years so large a demand that supplies each year were exhausted. An old time standard product in Georgia which supplies the trade. Order now. We have, we suppose, the largest stock of Pearl Millet of any house in the United States and are shipping to all points.

CHUFAS—44 lbs. to bushel.

A great hog crop with us. We have lowest prices if ordered now. We are sure no other house in the United States has the stock of Chufas we have. Last year we could not half supply the demand. We have ten times the stock to-day that we have ever carried. Will sell cheap now for spot cash shipment.

Spanish Pea Nuts—

Fall delivery; 24 lbs. to bushel. Sweeter than Virginia. Peas hang to roots. Vines and peas can be pulled at one time and stored away, and all fed to hogs and cattle. Very popular here. We have a tremendous stock, and are filling orders in many States.

Watermelons—

We are the largest and best Melon shipping district in the United States; highest grade seed. We sell to the largest growers. Blue Gem—the coming shipping Melon of the United States. As tough as the Kolb Gem, and infinitely better. Hundreds of thousands shipped this year. Larger than Kolb Gem. Kolb Gem, Rattlesnake, Jones, Sugar Loaf, Augusta Round White—new, three weeks earlier than any known Melon. Matures June 12th to 15th.

☞ Seedmen who buy Western Melon Seed, for sending into Southern territory will surely send failure of crop along with the seed. They do not fully mature here; have white hearts. This is well established.

Soja Beans or Coffee Berry—

60 lbs to bushel; makes forage as good as cow peas. Three or four feet high. Vines cut when leaves are in the milk; are selling it largely—North. The demand has been so large this fall that we have now sold out.

7-Top Turnips—Present delivery or June contracts.

OKRA—Future contracts or present delivery. White Velvet, Dwarf White, Dwarf Green.

Curled Mustard and Southern Kale—On contract.

Ostrich Plume Mustard—

Only listed by us. New. Leaves are long, exquisitely crimped, ruffled and frilled, that move and look like beautiful crimped green ostrich plumes. Originated here. Limited amounts for sale next fall. Better eating than Curled Mustard. Pretty enough for centre table ornament. A field of it is the prettiest of all vegetables. One plant this season weighed five pounds.

Upand Rice—Winter delivery.

Dish Cloth Gourd Seed—(Luffa Acutangula) Stock exhausted.

Nixon Canteloupe—

Present delivery. The best Southern native Canteloupe by far; 8 to 9 lb; good size; ribbed yellow green flesh. Originated in this county. Our market men get 25 per cent. more for Nixon than for any other Canteloupe. The demand has been heavy for seed to date.

Sweet Potatoes—

Spring delivery. Vineless Bunch Yam, Sugar Yam, Pumpkin Yam in barrel lots only.

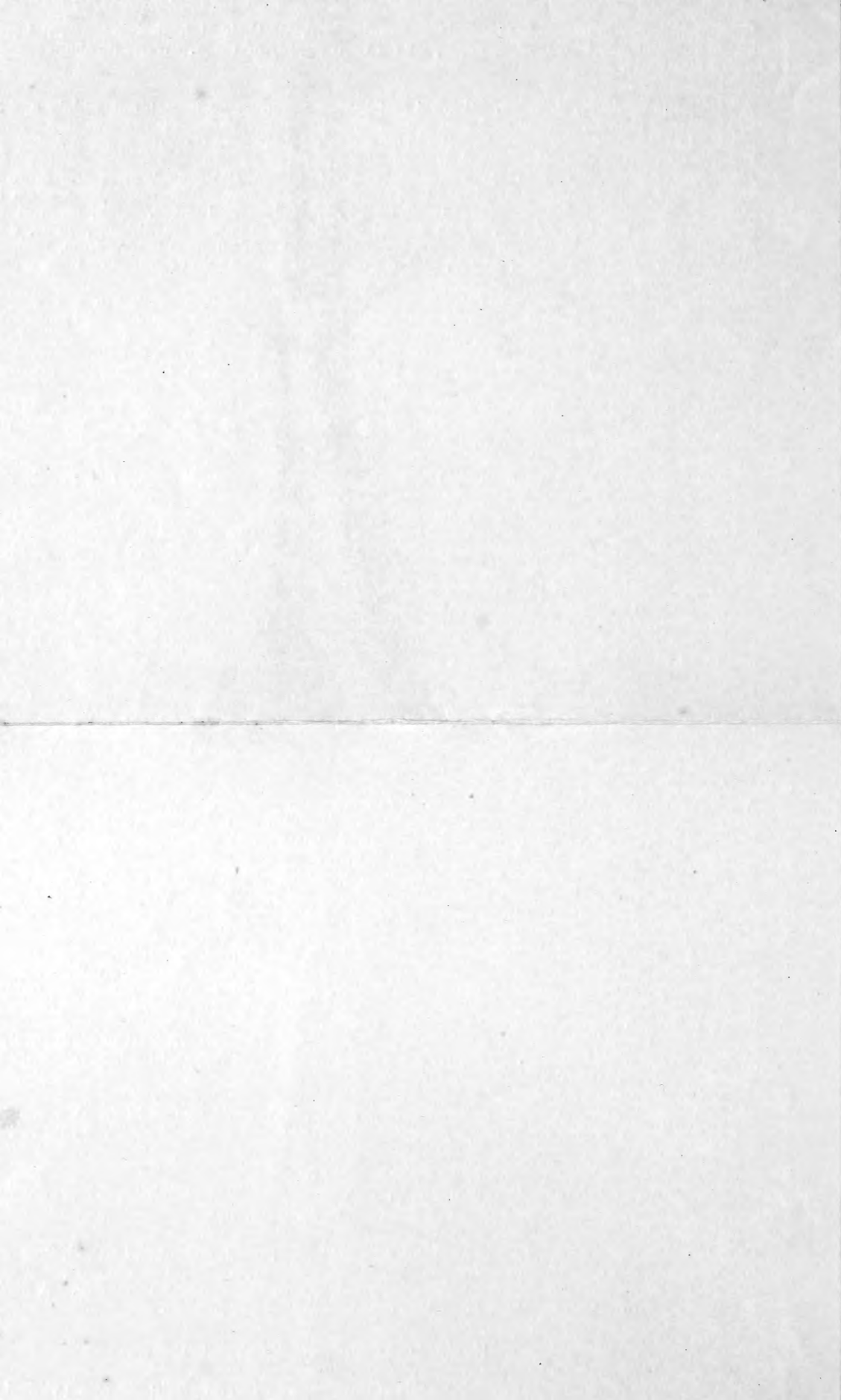
Georgia Rye.

Asparagus Roots—Present delivery—Palmetto.

Bermuda Grass Sets.

White Artichokes—Great hog crop; 5 bushel lots 85c.; 10 bushel lots 75c.

Correspondence solicited. Send for our Catalogue.



W. H. MOORE & CO.

FRANK AND CAMPBELL,
AUGUSTA, GA.

of Plows, Hoes, Farming
General Hardware in
Agents for
TOVES AND RANGES,
enameled Line, Best Made.

Columbia Bicycles.

LETE Cotton, Saw, Grist
Oil and Fertilizer . .
ALL OUTFITS.

ALSO
Saw Mill and Shingle Outfits.

Castings.

Mechanists and Factory Supplies
Pumps, Injectors, Pipe Fittings,
Pipes, Piles, Oilers, Etc.
work 150 hands.

WORKS & SUPPLY CO.,
AUGUSTA, GA.

ARRINGTON, Formerly of Rivers & Arrington.
ARRINGTON, Formerly of Arrington & Cooper.

ARRINGTON BROS. & CO.,

GROCERS

AND
Commission Merchants.

OUR SPECIALTIES . . .
Kerosene Oil and Lime.
903 Broad Street.

C. BLIGH,

IMPORTER AND DEALER OF
China, Earthenware

CHANDLIERS,

AND
PUBLISHING GOODS,

903 BROAD STREET
GEORGIA.

The Planters Loan
and Savings Bank,

707 Broad Street, Augusta, Ga.

SAVINGS & ACCOUNTS & SOLICITED.

Legal Depository for Trust-Funds.

The Accounts of Guardians, Agents, Trustees,
Administrators and Funds in Litigation are
authorized to be kept in this bank by Act
of the Legislature. Interest at 4 per
cent. compounded January and
July of each year.

Day & Tannahill . . .

. . . AUGUSTA, GA.

CARRIAGES,
HARNESS,
SADDLERY,
HARDWARE

AGENTS FOR

Studebaker Wagons.

CHAS. B. ALLEN,

831 Broad Street, Augusta, Ga.

Best Cooking AND

Heating Stoves,

TINWARE, & C.

Georgia

Chemical Works

. . . AUGUSTA, GA.

. . . Manufacturers of . . .

Standard High Grade
Fertilizers and Acid Phosphate . .

Augusta Factory Capacity, 30,000 Tons.
Pon Pon Factory Capacity, 30,000 Tons.

Total, - - - 60,000 Tons.

Superior in Quality and Excellent in
Mechanical Condition.

PROPRIETARY PREPARATIONS

MANUFACTURED BY

The Howard & Willet Drug Co. .. AUGUSTA, GEORGIA ..

Anti-Shake Chill and Fever Cure, 50c. Guarantee it to cure Chills. If it fails to cure we will refund you.

Howard's Horse and Cattle Powder, 1 lb. packages, 25 cents; postpaid, 35 cents.

Wild Cherry Cough Cure, 25 cents. The best on earth.

Infallible Itch Ointment, 25 cents; postpaid, 30 cts.

Dr. Simmons' Liver Pills (tiny pills), 25 cents, postpaid. 50 in a box.

Land's Headache Capsules (12 capsules-1 box), 25 cents, postpaid.

Holleyman's Elixir for Horse Colic, 50 cents laid down free of Express charges at your nearest So. Ex. office. A positive Specific in all cases.

Eagle Baking Powder, 1/4 pound, 10 cents; 1/2 pound, 15 cents; 1 pound, 25 cents.

Land's Syrup Hypophosphites Compound, \$1. The latest and best formula.

Land's Blood Medicine, \$1.00 and \$2.00.

H. & W. Diarrhoea Cordial, 25 cents.

Y. K. W. and Syringe, 50 cents.

Ereuthaima, \$1.00.

Howard's Worm Candy, 25 cents, postpaid.

Eureka Nerve and Bone Liniment, 25 cents.

Rose Cream, for Chapped Hands, etc., 25 cents.

Howard's Hair Dye, 25 cents, postpaid.

Drake's Magic Liniment, 50 cents.

H. & W. Essence Jamaica Ginger, 25 cents.

Double Quick Corn Cure, 10 cents; 12 cts., postpaid.

H. & W. Toothache Drops, 10 cts.; 12 cts., postpaid.

Rats' Death, 10 cents; 14 cents, postpaid.

Annie Belle Cologne, 10 cents.

Belle of Augusta Cologne, 25 cents.

Fairy Queen Cologne, 50 cents.

Georgia Chicken Cholera Cure, 25 cents; 30 cents, postpaid.

National Hog Cholera Cure, 25 cents; 30 cents postpaid.

Liver Aid, 50 cents.

Infallible Pile Ointment, 50 cents, postpaid,

Golden Eye Wash, 25 cents.

Land's Kidney Cure, \$1.00.

Hunter's Specific, \$1.00.

H. & W. Carbohc Salve, 25 cents, postpaid.

Infallible Tetter Ointment, 25 cents; 30 cents postpaid.

TELL THE TRUTH

It is unfortunate for mankind that those things upon which he most depends are often hard to procure, simply on account of the avarice and deception of those he trusts. The false impression has been created in the minds of some that SIMMONS LIVER REGULATOR is made by different members of a Simmons family. This is absolutely untrue. No one makes or can claim to make SIMMONS LIVER REGULATOR but J. H. Zeilin & Co.

The wonderful success of this popular remedy has caused many to try to imitate it, sometimes by using a part of the name, sometimes by shape, size, appearance and other deceptive means to associate themselves with its reputation, and sometimes even mentioning the name of J. H. Zeilin & Co. in advertisements, to prevent the public from forgetting the association; in fact, resorting to abuse and tricks, unbecoming and unprecedented among business men, in order to reap some of the benefit at the expense of this noted remedy. We, therefore, warn you to always ask your druggist for SIMMONS LIVER REGULATOR, and be sure that those IDENTICAL WORDS are on the package, and you will surely get SIMMONS LIVER REGULATOR, the favorite home remedy of the South for Biliousness, Malaria, Chills and Fever, Constipation, Dyspepsia, Sick Headache, and all diseases arising from a disordered liver or stomach.

Each package has on it the RED Z trade mark, seal and signature of J. H. Zeilin & Co.