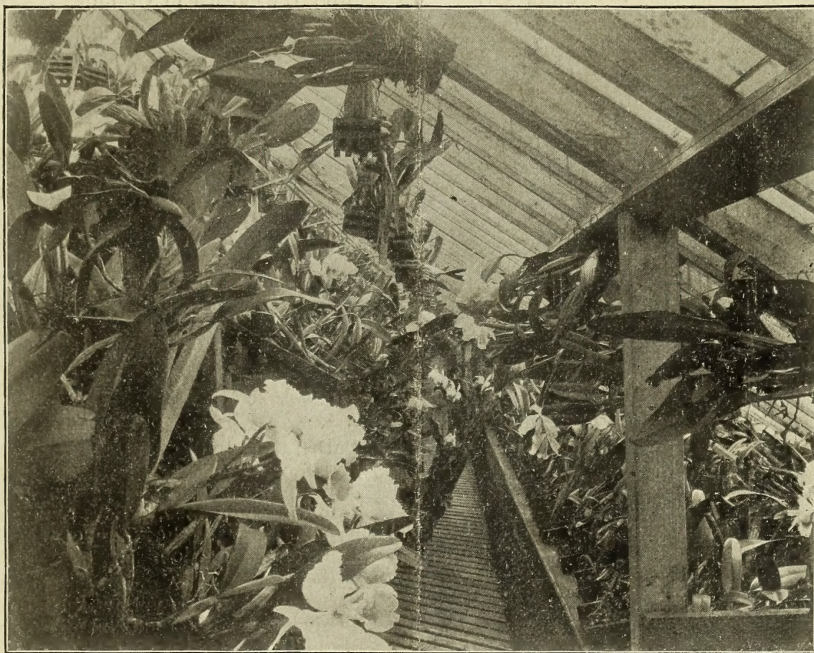


Historic, Archive Document

Do not assume content reflects current scientific knowledge, policies, or practices.

62.5 / 1898
PRICE LIST OF

..ORCHIDS..



VIEW IN ONE OF OUR CATTLEYA HOUSES

LAGER & HURRELL

ORCHID GROWERS
AND IMPORTERS

SUMMIT,

=

=

NEW JERSEY

To Our Customers.

ENTERING upon the new year of 1900, we extend to our esteemed customers our most cordial thanks for their liberal patronage during the past year, and in submitting this new price list of **Orchids** to our patrons we wish to state that we send it out with our assurance that all orders intrusted to our execution, will, as in the past, receive our most careful attention. In addition to the varieties quoted in this list we are constantly receiving fresh importations of Orchids direct from the forests of Mexico, Central and South America, and the East Indies, upon the arrival of which we will inform our customers by letters or circulars.

The rapid strides made during the last few years in the cultivation of Orchids in this country makes it impracticable to lay down **fixed** rules as to their treatment, suffice to say here they are easier to grow than any other plants that we know of, and we wish to state that we are at any time open to give our advice and our experience gratis to anyone wishing to obtain information regarding the culture of Orchids.

Being specialists and handling Orchids exclusively we are in a position to supply the very best of goods that can be obtained at the lowest possible price.

This list cancels all previous quotations. The prices are liable to fluctuations according to the market.

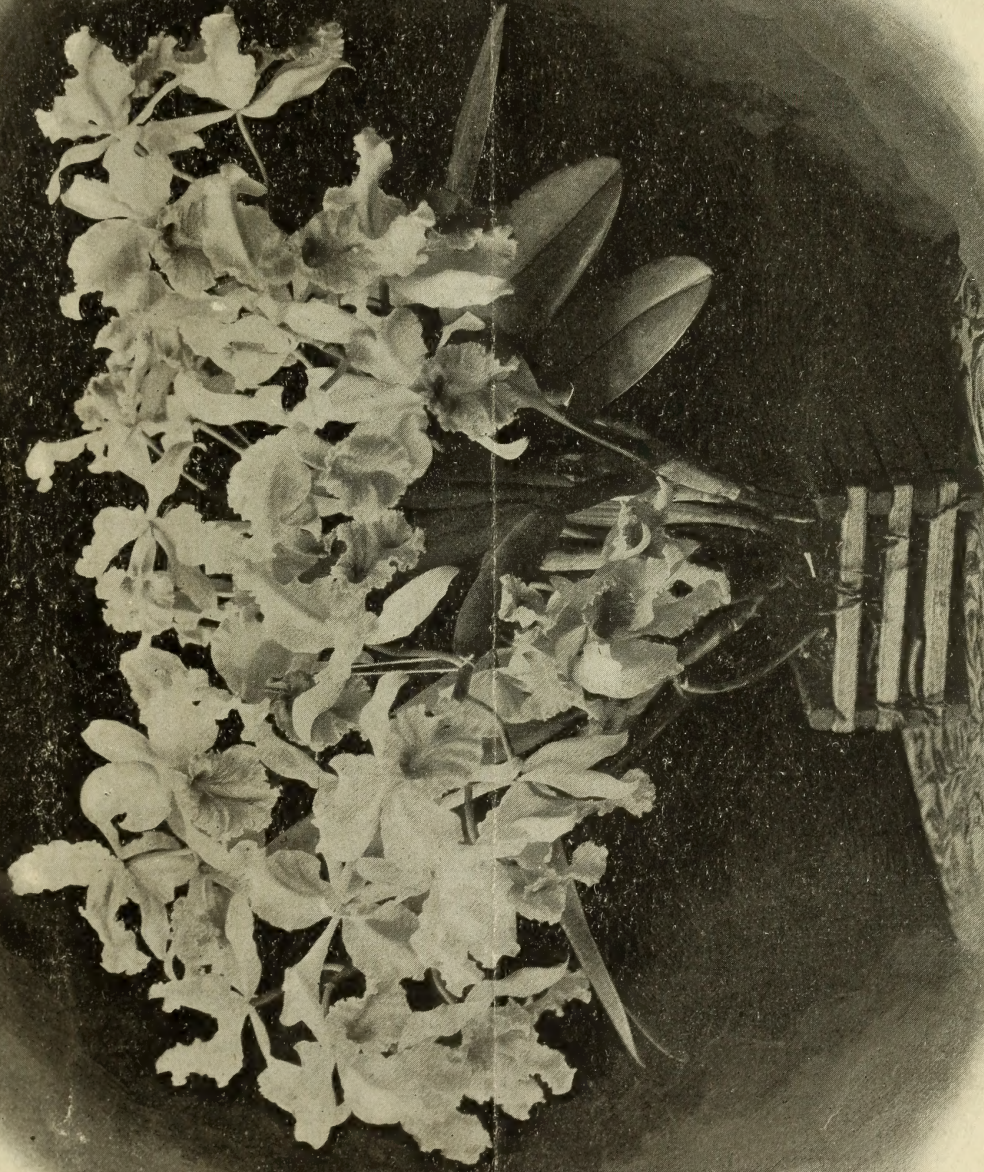
Address all communications to

LAGER & HURRELL,
ORCHID GROWERS AND IMPORTERS,
SUMMIT, N. J.



PRICE LIST OF ORCHIDS.

<i>Aerides odoratum majus</i>	Each \$2 50	<i>Cattleya</i> × <i>Claridiana</i> (C. <i>Luddemanniana</i> × C. <i>Intermedia</i> .)	Each
<i>Acineta Barkerii</i>	1 50	“ × “ var. <i>Clio</i> .	
“ <i>Humboldtii</i>	1 50	Both raised in our establishment at Summit, and flowered for the first time in May, 1899, and were illustrated on page 367 of <i>American</i> <i>Gardening</i> , Vol. 1899. They are very attractive hybrids, showing the influence of both parents. Price on application.	
<i>Anguloa Clowesii</i>	2 50	<i>Cattleya Dowiana</i> . A grand species, sepals and petals rich nankeen-yellow, lip intense purple, shaded with violet rose and marked with lines of yellow	\$5 00
“ <i>Ruckerii</i>	1 50	<i>Cattleya Eldorado</i>	5 00
“ <i>Uniflora</i>	1 50	“ <i>Exoniensis</i> (Hybrid). A rare and beau- tiful <i>Cattleya</i> . Price on application.	
<i>Brassavola Fragrans</i>	2 00	“ <i>Gaskelliana</i>	\$2 00 to 5 00
“ <i>Glauca</i>	1 00	“ <i>Gigas</i>	2 00 to 5 00
<i>Burlingtonia (Rodriguezia) fragrans</i>	2 50	“ extra fine specimens from 10 00 to “ <i>Atropurpurea</i> . Price on application.	25 00
<i>Calanthe Regnierii</i>	2 00	“ “ <i>Sanderiana</i>	\$2 00 to 5 00
“ <i>Veitchii</i>	1 50	“ “ <i>pieta</i>	10 00
“ <i>Vestita oculata</i>	1 50	“ <i>Granulosa</i>	2 00
<i>Cattleya Aclandiae</i>	3 00	“ <i>Guttata</i>	\$3 00 to 5 00
“ <i>Amethystina</i>	5 00	“ <i>Hardyana</i> . Rare and beautiful natural hybrid, between C. <i>Gigas</i> and C. <i>Chrysotoxa</i> . Price on application.	
“ <i>Amethystoglossa</i>	5 00	“ <i>Hardyana Robbiana</i> . Price on appli- cation.	
“ <i>Bicolor</i>	2 50	“ <i>Harrisoniae</i> . Fine plants, from \$2 00 to	5 00
“ <i>Bogotensis</i>	2 00	“ <i>Intermedia</i>	2 00
“ <i>Bowringeana</i>	2 50		
“ <i>Candida</i>	2 50		
“ <i>Chrysotoxa</i> . One of the most beauti- ful of all the <i>Cattleyas</i> , with yellow sepals and petals. The entire lip is velvety crimson- maroon, with numerous yellow veins radiat- ing from the centre	5 00		
Extra fine plants	\$10 00 to 15 00		
<i>Cattleya Chocoensis</i>	2 00		
“ <i>Citrina</i>	1 00 to 2 00		



SPECIMEN PLANT OF CATTLEYA BICOLOR CARRYING 33 BLOOMS

PRICE LIST OF ORCHIDS—CONTINUED.

	Each	Each
Cattleya Labiata	\$1 50 to	\$5 00
“ Leopoldi		5 00
“ Lobata	\$3 00 to	5 00
“ Loddigesii	2 00 to	5 00
“ Mendelii	2 50 to	5 00
“ “ specimens	10 00 to	20 00
“ “ very large specimens	25 00 to	50 00
“ Mossiae	1 50 to	5 00
“ Schilleriana (Regnelli)		3 00
“ Schofieldiana		5 00
“ Schroderae	\$2 50 to	5 00
Chysis aurea		\$1 50
“ Bractescens		1 00
Coelogyne Cristata		1 25
“ “ alba		5 00
“ “ Lemoiniana		4 00
“ Flaccida		2 00
“ Massangeana		2 50
Compartmentia falcata		3 00
Cymbidium Lowianum		2 00
“ Eburneum		5 00
“ Mastersii		5 00



Miltonia Roezlii.

Cattleya Skinnerii	Each	\$2 50	Dendrobium Atro-violaceum	Each	\$2 00
“ Speciosissima	\$1 50 to	3 00	“ Calceolus		2 00
“ Superba splendens	3 00 to	5 00	“ Chrysanthum		2 00
Cattleya Trianae. The most useful orchid in cultivation, flowering in midwinter, when flowers are most in demand, and remaining a long time in perfection. Of this popular Cattleya we have probably the largest and finest stock on this continent	\$1 50 to	5 00	“ Chrysotoxum		2 00
Cattleya Trianae, specimens	\$10 00 to	20 00	“ Dalhousianum	\$1 50 to	2 50
“ “ very large specimens	25 00 to	50 00	“ Formosum giganteum	1 50 to	2 50
“ “ alba. Price on application.			“ Nobile	1 50 to	2 50
“ “ Amesiana, “ “			“ Phalaenopsis Schroederianum	\$1 50 to	2 50
“ “ Summitensis “ “			“ Pierardi		1 50
“ Velutina		5 00	“ Thysiflorum	\$1 50 to	2 50
“ Warneri	\$2 50 to	5 00	“ Virginalis. Price on application.		
Chondroryncha, Sp., new, resembling C. Chester-tonii, but much finer		5 00	“ Wardianum	\$1 50 to	2 50
			“ “ album. Price on application.		
			Epidendrum Ciliare	\$1 00 to	2 00
			“ Cinnabarinum		2 50
			“ Godseffianum		2 50
			“ Macrochilum		2 50

PRICE LIST OF ORCHIDS—CONTINUED.

	Each	Each
<i>Epidendrum Obrienianum</i> (hybrid)	\$5 00	\$5 00
“ <i>Rhizophorum</i>	2 00	1 50
“ <i>Vittelinum Majus</i>	\$1 00 to 2 00	\$2 50 to 5 00
<i>Epiphronitis Veitchii</i>	10 00	1 50 to 2 50
<i>Houlletia Brocklehurstiana</i>	2 00	<i>Odontoglossum Cervantesii</i>
“ <i>Odoratissima Antioquensis</i>	1 50	“ <i>Citrosimum</i>
<i>Laelia Albida</i>	\$1 00 to 2 00	“ <i>Crispum</i>
“ <i>Anceps</i>	1 00 to 2 50	“ <i>Insleayi</i>
“ “ <i>alba</i>	3 00 to 5 00	“ <i>Luteo-purpureum</i>
“ <i>Autumnalis</i>	1 50 to 2 50	“ <i>Nebulosum</i>
“ “ <i>Atrorubens</i>	2 00 to 3 00	“ <i>Rossii Majus</i>
“ “ <i>alba</i> . Price on application.		“ <i>Wallisii</i>
“ <i>Cinnabarina</i>	\$1 50 to 3 00	<i>Oncidium Ampliatum Majus</i>
“ <i>Crispa</i>	3 00	“ <i>Carthaginense</i>
“ <i>Dayana</i>	2 00	“ <i>Cavendishianum</i>
“ <i>Digbyana</i> (<i>Brassavola</i>)	\$3 00 to 5 00	“ <i>Cebolleta</i>
“ <i>Dormaniana</i>	2 50	“ <i>Crispum</i>
“ <i>Flava</i>	2 50	“ <i>Curtum</i>
“ <i>Grandis</i> (<i>tenebrosa</i>)	5 00	“ <i>Flexuosum</i>
“ <i>Jongheana</i>	2 50	“ <i>Forbesii</i>
“ <i>Majalis</i>	1 50	“ <i>Incurvum</i>
“ “ <i>alba</i> . Price on application.		“ <i>Kramerianum</i>
“ <i>Pattinii</i>	5 00	“ <i>Ornithorhynchum</i>
“ <i>Perrinii</i>	\$3 00 to 5 00	“ <i>Papilio</i> (<i>Butterfly Orchid</i>)
“ <i>Praestans</i>	1 50	“ <i>Phymatochilum</i>
“ <i>Purpurata</i>	\$2 00 to 5 00	“ <i>Sarcodes</i>
“ <i>Superbiens</i>	2 00	“ <i>Sphacelatum</i>
<i>Lycaste Fulvescens</i>	2 50	“ <i>Tigrinum</i>
“ <i>Skinnerii</i>	1 50	“ <i>Varicosum Rogersii</i>
<i>Maxillaria picta</i>	1 50	<i>Peristeria elata</i> (<i>Dove Orchid</i>)
“ <i>tenuifolia</i>	1 50	<i>Phalaenopsis amabilis</i>
<i>Miltonia candida</i>	2 00	“ <i>Schilleriana</i>
“ <i>Clowesii</i>	2 00	<i>Pilumnea</i> , Sp.
<i>Miltonia Roezlii</i> . (See illustration on page 3.)		<i>Rodriguezia secunda</i>
This is one of the most beautiful Orchids in cultivation, and besides very useful for cutting. Unlike its ally, <i>M. Vexillaria</i> , its flowers are of a firm texture and of lasting qualities, either on the plants or cut. We have at present the largest and finest stock of this Orchid in the United States and we can confidently recommend it to amateurs or florists wishing to grow this plant for pleasure or for profit. This Orchid requires plenty of heat and moisture at all times and should never be allowed to become dry	\$2 50 to 5 00	<i>Schomburgkia undulata</i>
		“ <i>Lyonsii</i>
		<i>Sobralia leucoxantha</i>
		<i>Sophronitis grandiflora</i>
		<i>Vanda Coerulea</i>
		“ <i>Kimballiana</i>
		“ <i>suavis</i>
		“ <i>tricolor</i>
		<i>Warrea</i> , Sp., new
		<i>Zygopetalum crinitum</i>

CYPRIPEDIUMS.

Nice healthy plants, with from two to four growths.

	Each	Each
<i>Cypripedium albo purpureum</i>	\$3 00	<i>Cypripedium Boxallii</i>
“ <i>Arthurianum</i>	3 00	“ <i>Calurum</i>
“ “ <i>pulchellum striatum</i> . Price on application.		“ “ <i>Rougierii</i>
“ <i>Barbatum</i>	1 50	“ <i>Cardinale</i>
“ “ <i>superbum</i>	3 00	“ <i>Chlorops</i>
“ <i>Bartetii</i>	2 50	“ <i>Conspicuum</i>
“ <i>Bessie K. Pitcher</i> . Price on application.		“ <i>Crossianum psittacinum</i>

CYPRIPEDIUMS—CONTINUED.

	Each	Each	
Cypripedium Dominyanum	\$1 50	Cypripedium Leeaanum Masereelianum	\$5 00
“ Euryale	2 50	“ Leucorrhodum	5 00
“ Godseffianum	7 50	“ Luridum	2 50
“ Gowerianum	7 50	“ Macropterum	7 50
“ Grande	3 50	“ Mrs. Chas. Canham	2 50
“ Harrisianum	1 50	“ Nitens	2 00
“ “ Pitcherianum	2 50	“ Pavoninum	2 50
“ “ liniatum . \$2 00 to	2 50	“ Pelucidum	2 50
“ Haynaldianum	3 00	“ Roezlii	1 50
“ Insigne	1 00	“ Sallierii pictum. Price on applic'n.	
“ “ Chantinii	2 50	“ Schroederae	3 50
“ “ maximum	2 00	“ “ splendens	5 00
“ “ Summitense	10 00	“ Sedenii	1 00
“ Lanerianum	2 50	“ Tonso-Villosum	3 50
“ Lathamianum	2 50	“ Venustum	1 50
“ Lawrenceanum	1 50	“ Weedlichianum	2 50

CUT ORCHID FLOWERS

At \$5, \$10 and \$15 per box.

MATERIALS FOR ORCHID CULTURE.

We have always on hand a complete line of the above of first-class quality at following prices:

Baskets of the best seasoned cherry wood, our own make.		Per doz.	Pans, such as we use ourselves.		Per doz.
Size 4-inch		\$1 75	Size 4-inch		\$0 60
“ 5 “		1 90	“ 5 “		80
“ 6 “		2 20	“ 6 “		1 25
“ 7 “		2 45	“ 7 “		1 40
“ 8 “		2 70	“ 8 “		1 65
“ 9 “		3 00	“ 9 “		2 00
“ 10 “		3 30	“ 10 “		2 50
“ 12 “		3 75	“ 12 “		3 50
					Per Bbl.
Selected Orchid Peat		Per Bbl. \$2 75	Peat Soil, for general use		\$1 50
“ “ “ picked		4 25	Sphagnum Moss		2 75
Horn Shavings (special for Orchids) . . . per lb., 10 cts.			“ “ “ picked		4 50
			Sheep Manure (special for Orchids) . . per 100 lbs.,		\$2.00.

Correspondence solicited on anything pertaining to Orchids.

TESTIMONIALS.

NEW YORK, March 15, 1898.

MESSRS. LAGER & HURRELL:

GENTLEMEN—Your plants are in fine condition, and I congratulate you on your success. Such plants should give great satisfaction to all your customers.

Very truly, HENRY GRAVES.

MONTREAL, CANADA, Nov. 11, 1898.

MESSRS. LAGER & HURRELL, Summit, N. J.:

DEAR SIRS—The Orchids arrived promptly in excellent condition, and so careful and finely packed that they might apparently have travelled upside down without harm. I never saw so many such splendid, healthy, strong Cattleyas grown on such a small space before.

JONATHAN BROWN.

CHICAGO, ILL., DEC. 5, 1898.

GENTLEMEN—The Cattleyas Mendelii arrived in good condition, and are very satisfactory; you may send me one-half dozen more of the same quality, etc.

Yours truly, EDWARD G. UHLEIN.

SAN JOSE, CAL., JUNE 20, 1898.

GENTLEMEN—The Orchids you sent me arrived in good condition, and are very satisfactory both as to varieties and size.

Yours truly, J. N. BABB.

PITTSBURG, PA., Dec. 17, 1897.

The Cattleya Trianae arrived all safe, and I must say you treated me in good style. The plants were the best I have received, and far ahead of the stock I have lately received from other firms, etc.

Yours very truly, DAVID FRAZER.