

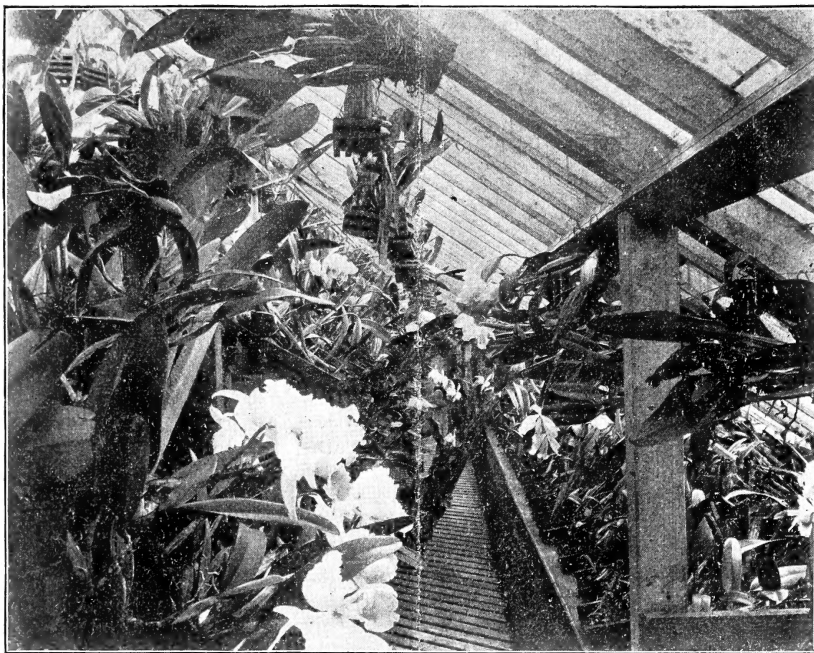
Historic, Archive Document

Do not assume content reflects current scientific knowledge, policies, or practices.

6275
1898

PRICE LIST OF

..ORCHIDS..



VIEW IN ONE OF OUR CATTLEYA HOUSES

LAGER & HURRELL

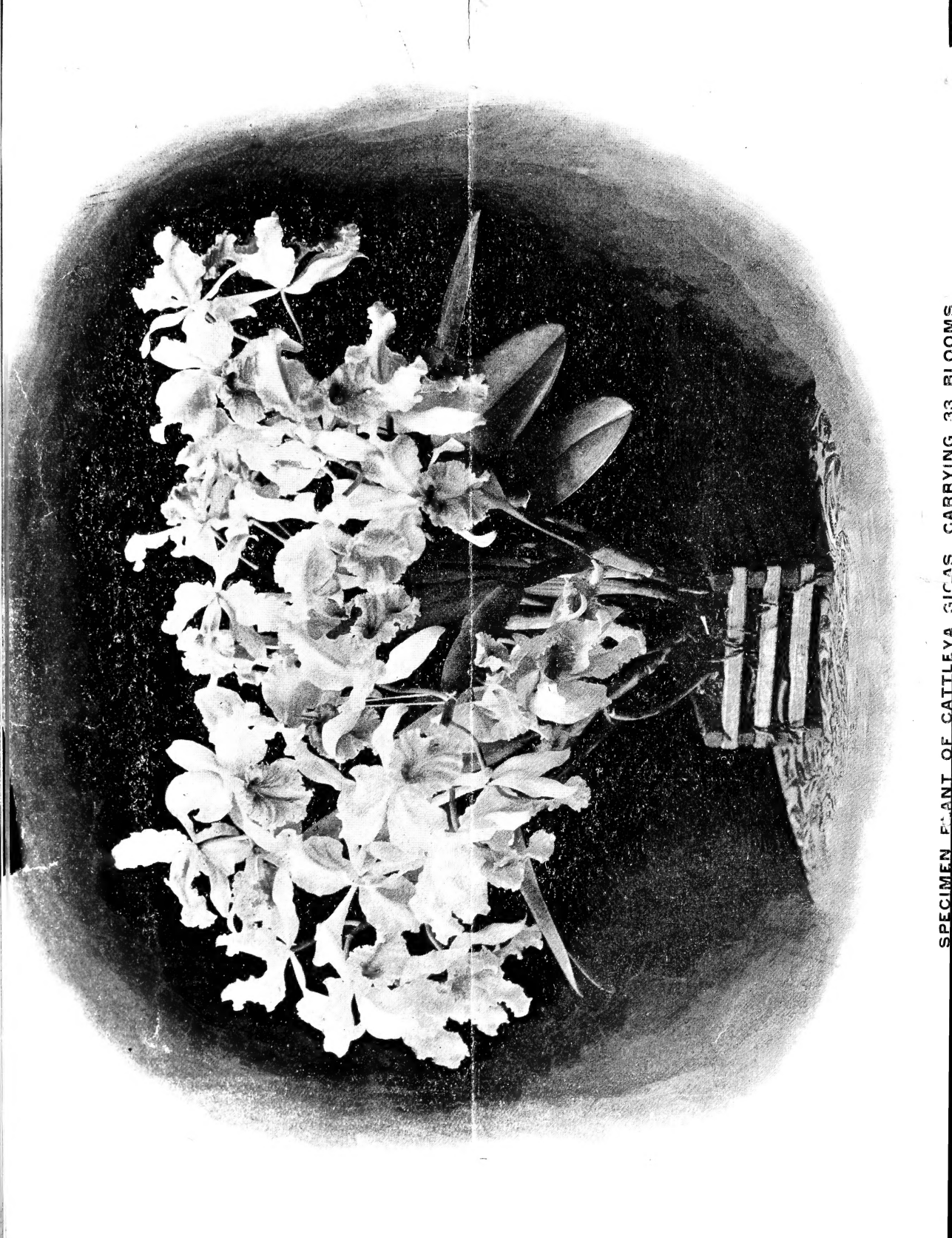
ORCHID GROWERS
AND IMPORTERS 

SUMMIT,

=

=

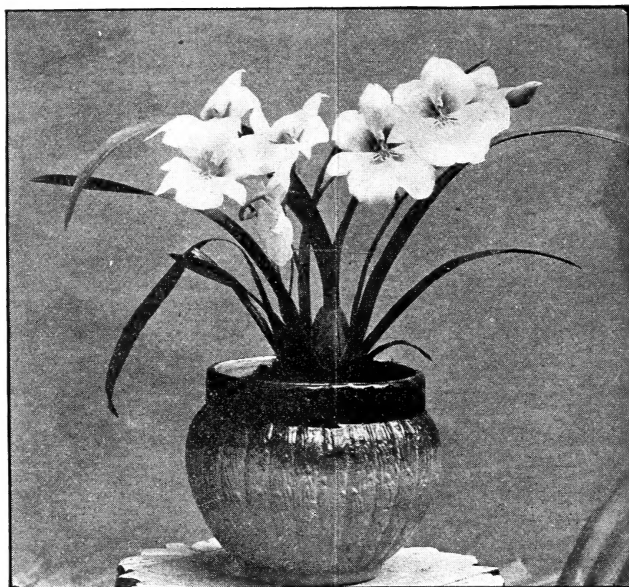
NEW JERSEY



SPECIMEN PLANT OF CATTLEVA SICAS CARRYING 33 BLOOMS

PRICE LIST OF ORCHIDS—CONTINUED.

	Each	Each
Cattleya Labiata	\$1 50 to	\$5 00
“ Leopoldi		5 00
“ Lobata	\$3 00 to	5 00
“ Loddigesii	2 00 to	5 00
“ Mendelii	2 50 to	5 00
“ “ specimens	10 00 to	20 00
“ “ very large specimens	25 00 to	50 00
“ Mossiae	1 50 to	5 00
“ Schilleriana (Regnelli)		3 00
“ Schofieldiana		5 00
“ Schroderae	\$2 50 to	5 00
Chysis aurea		\$1 50
“ Bractescens		1 00
Coelogyne Cristata		1 25
“ “ alba		5 00
“ “ Lemoiniana		4 00
“ Flaccida		2 00
“ Massangeana		2 50
Comparettia falcata		3 00
Cymbidium Lowianum		2 00
“ Eburneum		5 00
“ Mastersii		5 00



Miltonia Roezlii.

Cattleya Skinnerii	Each	\$2 50	Dendrobium Atro-violaceum	Each	\$2 00
“ Speciosissima	\$1 50 to	3 00	“ Calceolus		2 00
“ Superba splendens	3 00 to	5 00	“ Chrysanthum		2 00
Cattleya Trianae. The most useful orchid in cultivation, flowering in midwinter, when flowers are most in demand, and remaining a long time in perfection. Of this popular Cattleya we have probably the largest and finest stock on this continent	\$1 50 to	5 00	“ Chrysotoxum		2 00
Cattleya Trianae, specimens	\$10 00 to	20 00	“ Dalhousianum	\$1 50 to	2 50
“ “ very large specimens	25 00 to	50 00	“ Formosum giganteum	1 50 to	2 50
“ “ alba. Price on application.			“ Nobile	1 50 to	2 50
“ “ Amesiana, “ “			“ Phalaenopsis Schroede- rianum	\$1 50 to	2 50
“ “ Summitensis “ “			“ Pierardi		1 50
“ Velutina		5 00	“ Thyrsoforum	\$1 50 to	2 50
“ Warneri	\$2 50 to	5 00	“ Virginalis. Price on application.		
Chondroryncha, Sp., new, resembling C. Chester-tonii, but much finer		5 00	“ Wardianum	\$1 50 to	2 50
			“ “ album. Price on application.		
			Epidendrum Ciliare	\$1 00 to	2 00
			“ Cinnabarinum		2 50
			“ Godseffianum		2 50
			“ Macrochilum		2 50

PRICE LIST OF ORCHIDS—CONTINUED.

	Each	Each
Epidendrum Obrienianum (hybrid)	\$5 00	\$5 00
“ Rhizophorum	2 00	1 50
“ Vittelinum Majus	\$1 00 to 2 00	\$2 50 to 5 00
Epiphronitis Veitchii	10 00	1 50 to 2 50
Houlletia Broeklehurstiana	2 00	1 00 to 2 00
“ Odoratissima Antioquensis	1 50	1 50 to 3 00
Laelia Albida	\$1 00 to 2 00	1 50 to 3 00
“ Anceps	1 00 to 2 50	1 50 to 2 50
“ “ alba	3 00 to 5 00	1 50 to 2 50
“ Autumnalis	1 50 to 2 50	2 00 to 3 00
“ “ Atrorubens	2 00 to 3 00	Price on application.
“ “ alba. Price on application.		\$1 50 to 3 00
“ Cinnabarina	\$1 50 to 3 00	3 00
“ Crispa	3 00	2 00
“ Dayana	2 00	\$3 00 to 5 00
“ Digbyana (Brassavola)	\$3 00 to 5 00	2 50
“ Dormaniana	2 50	2 50
“ Flava	2 50	5 00
“ Grandis (tenebrosa)	5 00	2 50
“ Jongheana	2 50	1 50
“ Majalis	1 50	Price on application.
“ “ alba. Price on application.		5 00
“ Pattinii	5 00	\$3 00 to 5 00
“ Perrinii	\$3 00 to 5 00	1 50
“ Praestans	1 50	\$2 00 to 5 00
“ Purpurata	\$2 00 to 5 00	2 00
“ Superbiens	2 00	2 50
Lycaste Fulvescens	2 50	1 50
“ Skinnerii	1 50	1 50
Maxillaria pieta	1 50	2 00
“ tenuifolia	1 50	2 00
Miltonia candida	2 00	
“ Clowesii	2 00	
Miltonia Roezlii. (See illustration on page 3.)		
This is one of the most beautiful Orchids in cultivation, and besides very useful for cutting. Unlike its ally, <i>M. Vexillaria</i> , its flowers are of a firm texture and of lasting qualities, either on the plants or cut. We have at present the largest and finest stock of this Orchid in the United States and we can confidently recommend it to amateurs or florists wishing to grow this plant for pleasure or for profit. This Orchid requires plenty of heat and moisture at all times and should never be allowed to become dry		
	\$2 50 to	5 00
Miltonia Roezlii album	\$3 00 to	\$5 00
“ Spectabilis		1 50
“ “ Moreliana	\$2 50 to	5 00
“ Vexillaria	1 50 to	2 50
Odontoglossum Cervantesii	1 00 to	2 00
“ Citrosium	1 50 to	3 00
“ Crispum		1 50
“ Insleayi		1 50
“ Luteo-purpureum		1 50
“ Nebulosum	\$1 50 to	2 50
“ Rossii Majus		1 00
“ Wallisii		2 00
Oncidium Ampliatum Majus		2 50
“ Carthaginense		2 00
“ Cavendishianum		1 50
“ Cebolleta		2 50
“ Crispum		1 50
“ Curtum		2 50
“ Flexuosum		2 00
“ Forbesii		1 50
“ Incurvum	\$1 00 to	2 00
“ Kramerianum		1 50
“ Ornithorhynchum		1 25
“ Papilio (Butterfly Orchid)		1 50
“ Phymatochilum		2 50
“ Sarcodes	\$3 00 to	5 00
“ Sphacelatum		1 50
“ Tigrinum	\$1 00 to	2 50
“ Varicosum Rogersii	1 00 to	2 50
Peristeria elata (Dove Orchid)	1 00 to	2 50
Phalaenopsis amabilis		5 00
“ Schilleriana		5 00
Pilumnea, Sp.		1 50
Rodriguezia secunda		1 25
Schomburgkia undulata		1 50
“ Lyonsii		5 00
Sobralia leucoxantha		5 00
Sophronitis grandiflora	\$1 25 to	2 50
Vanda Coerulea	3 50 to	5 00
“ Kimballiana		5 00
“ suavis		5 00
“ tricolor		5 00
Warrea, Sp., new		5 00
Zygopetalum crinitum		1 50

CYPRIPEDIUMS.

Nice healthy plants, with from two to four growths.

	Each	Each
Cypripedium albo purpureum	\$3 00	\$2 00
“ Arthurianum	3 00	2 00
“ “ pulchellum striatum.	Price on application.	3 50
“ Barbatum	1 50	3 00
“ “ superbum	3 00	2 50
“ Bartetii	2 50	2 50
“ Bessie K. Pitcher. Price on application.		2 50
Cypripedium Boxallii		2 00
“ Calurum		3 50
“ “ Rougierii		3 00
“ Cardinale		2 50
“ Chlorops		2 50
“ Conspicuum		2 50
“ Crossianum psittacinum		2 50

CYPRIPEDIUMS—CONTINUED.

	Each	Each	
Cypripedium Dominyanum	\$1 50	Cypripedium Leeaanum Masereelianum	\$5 00
“ Euryale	2 50	“ Leucorrhodum	5 00
“ Godseffianum	7 50	“ Luridum	2 50
“ Gowerianum	7 50	“ Macropterum	7 50
“ Grande	3 50	“ Mrs. Chas. Canham	2 50
“ Harrisianum	1 50	“ Nitens	2 00
“ “ Pitcherianum	2 50	“ Pavoninum	2 50
“ “ liniatum . \$2 00 to	2 50	“ Pelucidum	2 50
“ Haynaldianum	3 00	“ Roezlii	1 50
“ Insigne	1 00	“ Sallierii pictum. Price on applic'n.	
“ “ Chantinii	2 50	“ Schroederae	3 50
“ “ maximum	2 00	“ “ splendens	5 00
“ “ Summitense	10 00	“ Sedenii	1 00
“ Lanerianum	2 50	“ Tonso-Villosum	3 50
“ Lathamianum	2 50	“ Venustum	1 50
“ Lawrenceanum	1 50	“ Weedlichianum	2 50

CUT ORCHID FLOWERS

At \$5, \$10 and \$15 per box.

MATERIALS FOR ORCHID CULTURE.

We have always on hand a complete line of the above of first-class quality at following prices:

Baskets of the best seasoned cherry wood, our own make.			Pans, such as we use ourselves.	
Size		Per doz.	Size	Per doz.
4-inch		\$1 75	4-inch	\$0 60
5 “		1 90	5 “	80
6 “		2 20	6 “	1 25
7 “		2 45	7 “	1 40
8 “		2 70	8 “	1 65
9 “		3 00	9 “	2 00
10 “		3 30	10 “	2 50
12 “		3 75	12 “	3 50
				Per Bbl.
Selected Orchid Peat		Per Bbl. \$2 75	Peat Soil, for general use	\$1 50
“ “ “ picked		4 25	Sphagnum Moss	2 75
Horn Shavings (special for Orchids) . . . per lb., 10 cts.			“ “ “ picked	4 50
			Sheep Manure (special for Orchids) . . per 100 lbs.,	\$2.00.

Correspondence solicited on anything pertaining to Orchids.

TESTIMONIALS.

NEW YORK, March 15, 1898.

MESSRS. LAGER & HURRELL:

GENTLEMEN—Your plants are in fine condition, and I congratulate you on your success. Such plants should give great satisfaction to all your customers.

Very truly, HENRY GRAVES.

MONTREAL, CANADA, Nov. 11, 1898.

MESSRS. LAGER & HURRELL, Summit, N. J.:

DEAR SIR—The Orchids arrived promptly in excellent condition, and so careful and finely packed that they might apparently have travelled upside down without harm. I never saw so many such splendid, healthy, strong Cattleyas grown on such a small space before.

JONATHAN BROWN.

CHICAGO, ILL., DEC. 5, 1898.

GENTLEMEN—The Cattleyas Mendelii arrived in good condition, and are very satisfactory; you may send me one-half dozen more of the same quality, etc.

Yours truly, EDWARD G. UHLEIN.

SAN JOSE, CAL., JUNE 20, 1898.

GENTLEMEN—The Orchids you sent me arrived in good condition, and are very satisfactory both as to varieties and size.

Yours truly, J. N. BABB.

PITTSBURG, PA., Dec. 17, 1897.

The Cattleya Trianae arrived all safe, and I must say you treated me in good style. The plants were the best I have received, and far ahead of the stock I have lately received from other firms, etc.

Yours very truly, DAVID FRAZER.