

## **Historic, Archive Document**

Do not assume content reflects current scientific knowledge, policies, or practices.



62.43

WHOLESALE

# .. Catalogue ..

OF

DEPARTMENT OF AGRICULTURE  
DIVISION OF

JAN 18 1898

**MAY'S** **NORTHERN GROWN SEEDS**

GOVERNMENT REPORT  
 99 <sup>29</sup>/<sub>100</sub> PER CENT PURE  
 A RECORD UNEQUALLED  
 STANDARD FOR PURITY  
 EARLIEST HARDEST AND MOST PRODUCTIVE

**L. L. MAY & Co.**  
 ST. PAUL  
 MINNESOTA

JANUARY, 1898.

Our Beautifully Illustrated Retail Catalogue, will be mailed on application. We will also take pleasure in sending you a reasonable number for distribution with your order.

## • To The Trade. •

---

**T**T affords us great pleasure to hand you our wholesale price list of Garden, Field and Flower seeds for the ensuing year, and in arriving at the prices quoted in this list, we have figured them **carefully** with a view of securing your esteemed orders. We want your business and in return will supply you with the best quality of stock at prices which are very little above the actual cost of the goods. Undoubtedly you will receive a great many lists from **different Seedsmen**, but before finally placing your orders we would ask you to peruse our list carefully. On an equal quality of stock we know that it would be decidedly advantageous to place your order with us. We wish to thank you for past kind patronage and solicit your future valued orders. Wishing you a Happy and Prosperous New Year, we remain,

Respectfully yours,

L. L. MAY & CO.,

SEED GROWERS,  
St. Paul, Minn.

---

## • Terms of Sale. •

Following are our Terms of Credit:

To our regular customers and well-known houses of established credit, all General bills of Garden Seeds are due June 1st, following shipment of order, without regard to date of purchase, except Grains, Grasses, Clover, Bird Seeds and Onion Sets which are net cash.

Unknown correspondents desiring credit, are requested to give satisfactory references.

**Discount.** One per cent per month on all payments made before June 1st.

Bills contracted after June 1st, payable Oct. 1st, and after Oct. 1st, Jan. 1st following date of purchase.

**Perishable Goods**, such as Onion Sets, Potatoes, etc., are sold and shipped only at owner's risk. For damage by delay, heat or cold in transit we will not be responsible.

**Mail.** Small orders may be sent by mail if so desired. Please add eight cents per pound and fifteen cents per quart to prices given when ordered sent this way.

**Bags, Boxes and Barrels** charged at cost.

**Shipping Directions** should accompany each order, and will be carefully observed. In absence of same we will use our best judgment as to route.

**Notice.** It must be distinctly understood that L. L. May & Co. give no warranty, express or implied, as to name, kind, description, quality, quantity, productiveness or any other matter connected with the goods they sell, and they will not be in any way responsible for the loss or failure of crop. The success of a crop is dependent upon so many contingences, as condition of soil and climate, mode of planting, etc., that we cannot warrant our seeds or hold ourselves responsible for any loss or damage arising from any failure thereof. If the purchaser does not accept the goods on these terms, they must be returned to us at once.

... GENERAL LIST OF ...

# GARDEN SEEDS

✦ ————— OF CROP 1897. ————— ✦

Perfectly fresh and all showing a high test of germination. ❀❀❀❀

A Telegraphic Cipher is attached to each article, which will enable orders to be sent by wire at a small expense. In dispatching use the word Freight, Express or Mail, to designate how to ship. For example, "Freight hundred Bisk," means ship by freight one hundred pounds Beet. May's Early Blood Turnip improved.

## ARTICHOKE.

	Tel. Cipher.	Per lb.
Large Globe.....	All	\$3.50

## ASPARAGUS.

Conover's Colossal.....	Air	\$0.11
Palmetto.....	Aim	.25
Barr's Phila. Mammoth.....	Aunt	.35

## BEANS.

GREEN PODDED, BUSH OR SNAP SHORT.

		Per bu.
Early Red Valentine.....	Bacon	\$1.75
<b>Improved Extra Early Round Pod</b>		
Valentine (sealed).....	Babel	2.00
Early Mohawk (Brown Six Weeks)....	Bag	2.00
Early Long Yellow Six Weeks.....	Bail	1.75
<b>Refugee or 1,000 to 1.....</b>	<b>Bake</b>	<b>2.25</b>
<b>Extra Early Refugee.....</b>	<b>Bazar</b>	<b>2.25</b>
Early China Red Eye.....	Ball	1.90
White Valentine.....	Ballot	2.50
<b>Best of All.....</b>	<b>Bait</b>	<b>2.25</b>
Dwarf Horticultural.....	Basket	2.00
White Kidney, Royal Dwarf.....	Barn	2.00
White Marrow.....	Bar	2.00
White Navy.....	Bark	1.25
<b>New Bush Lima (Henderson's).....</b>	<b>Back</b>	<b>2.25</b>
"    "    "    (Burpee's).....	Bald	2 50
"    "    "    (Dreer's).....	Bale	3.50

YELLOW PODDED VARIETIES.

<b>Wardwell Kidney Wax.....</b>	<b>Basin</b>	<b>2.00</b>
Golden Wax Improved.....	Bay	1.75
Detroit Wax (rust proof).....	Bluff	1.75

## BEANS.—Continued.

	Tel. Cipher	Per bu.
Golden Wax (Improved rust proof)....	Bugle	2.00
Dwarf German or Black Wax.....	Base	2.00
Improved Prolific Black Wax.....	Brier	2.75
Yosemite Mammoth Wax.....	Burn	5.50
Black-Eyed Wax.....	Banjo	2.75
Dwarf White Wax.....	Brave	3.00
Golden Eye Wax.....	Brig	3.00
Currie's Rust Proof Wax.....	Bank	2.25

## POLE OR RUNNER.

Lazy Wife Pole.....	Ban	3.50
White Crease Back.....	Bench	3.50
Lima Jersey (Extra Early).....	Beard	3.50
“ Large White (first size).....	Bean	3.00
“ “ (California).....	Bait	3.00
“ King of the Garden.....	Bed	3.50
“ Challenger.....	Bray	3.50
“ Dreer's Improved.....	Beat	4.00
“ Small or Sieva.....	Bode	3.50
Scarlet Runner.....	Beef	3.75
White Dutch Runner.....	Bedeck	4.40
Horticultural or Wren's Egg.....	Belt	3.25
Dutch Case Knife.....	Beech	3.50
Southern Prolific.....	Baron	3.50
Black Wax Pole.....	Beaver	3.75
Kentucky Wonder.....	Bush	3.50
Cut Short or Corn Hill (Speckled).....	Brown	4.00
Giant Red Wax.....	Brush	4.90
Jackson Wonder.....	Bow	4.50
Davis Kidney Wax.....	Boe	2.10
Golden Cluster.....	Beo	5.75
Grinnell's Wax.....	Bowe	2.40

## BEET.

		Per lb.
Erfurt Prize.....	Belt	\$0.50
May's Market Gardener.....	Best	.35
Lentz's Extra Early Red Turnip.....	Bet	.15
Edmand's Early Turnip.....	Blear	.14
Early Blood Turnip.....	Bill	.14
May's Early Blood Turnip Improved..	Bisk	.20
Early Bastian's Turnip.....	Bird	.14
Early Turnip (Dewing's Improved)....	Bite	.14
New Early Eclipse.....	Black	.13
Lightning.....	Blake	.50
Beet, Dirigo.....	Rel	.23
Early Bassano.....	Blade	.14
Early Egyptian Turnip.....	Blank	.14
Long Smooth Blood.....	Blast	.14
May's Long Smooth Blood Improved...	Bland	.20
Nutting's Crimson (new).....	Blaze	.25
Faust's Crimson “.....	Bleak	.15
Swiss Chard (yellow).....	Bound	.15
Swiss Chard (white).....	Boose	.15
White French Sugar.....	Blink	.09
Lane's Imperial Sugar.....	Blind	.09

**BEET.—Continued.**

	Tel. Ciper.	Per lb.
<b>May's Mammoth Long Red Mangel</b>		
Wurzel.....	Bliss	.09
<b>Norbitan's Giant Long Red Mangel</b>		
Wurzel.....	Block	.09
<b>Red Globe Mangel Wurzel.....</b>	Blood	.10
<b>Yellow Globe Mangel Wurzel.....</b>	Bloom	.09
<b>Golden Tankard Mangel Wurzel.....</b>	Blot	.11
<b>Long Red Mangel Wurzel.....</b>	Bowl	.09
<b>Sugar Beet, Vilmorins Improved Sugar.</b>	Boun	.12
" " Improved Wanzleben.....	Buon	.12

**BROCCOLI.**

<b>Large Early White.....</b>	Bob	\$1.30
<b>Purple Cape.....</b>	Bog	1.30

**BRUSSELS SPROUTS.**

<b>Dwarf Improved.....</b>	Boil	.60
----------------------------	------	-----

**CABBAGE.**

<b>May's Early Surprise.....</b>	Colt	\$1.50
<b>Minnesota's Earliest (Market garden-</b>		
ers select stock, earliest in cultivation)	Clew	1.50
<b>Extra Early Express.....</b>	Cloth	.46
<b>Early Etampes.....</b>	Climax	1.00
<b>Jersey Wakefield (good American stock)</b>	Climb	.39
<b>Extra Early Jersey Wakefield (selected).</b>	Chew	.65
<b>Early Dwarf York.....</b>	Cling	1.00
<b>Early Large York.....</b>	Clip	1.00
<b>Early Winningstadt.....</b>	Cloak	.37
<b>Early Filderkraut (true German).....</b>	Clock	1.00
<b>Early Dwarf Flat Dutch... ..</b>	Coil	.65
<b>Early Drumhead.....</b>	Chop	.65
<b>Early Ox Heart.....</b>	Clap	.75
<b>Succession.....</b>	Cloud	.65
<b>Vandergaw.....</b>	Cog	.65
<b>Sure Head.....</b>	Clove	.65
<b>Henderson's Early Summer (selected)</b>		
true stock.....	Coal	.65
<b>Stein's Drumhead.....</b>	Cable	.65
<b>All Seasons.....</b>	Coin	.65
<b>Large Late Flat Dutch (American).....</b>	Clod	.37
<b>Improved Late Flat Dutch (finest).....</b>	Cup	.65
<b>Large Late Drumhead (American).....</b>	Coat	.37
<b>Improved Late Drumhead (finest).....</b>	Cap	.65
<b>Fottler's Improved Brunswick.....</b>	Coach	.65
<b>Short Stem Drumhead.....</b>	Cock	.65
<b>Marblehead Mammoth.....</b>	Cob	.65
<b>Stonemason Drumhead.....</b>	Cook	.65
<b>Improved Drumhead Savoy (Ameri'n)..</b>	Collar	.55
<b>Red Dutch (for pickling).....</b>	Coke	.60
<b>Mammoth Red Rock.....</b>	Coy	.75
<b>May's Market Queen.....</b>	Cozy	1.50
<b>Solid South.....</b>	Cox	1.50
<b>Hundred Weight.....</b>	Coxey	1.50

**CABBAGE—Continued.**

	Tel. Ciper.	Per lb.
Acme Flat Dutch.....	Cokey	.65
Thorburn's Flat Dutch .....	Cov	.65
All Head.....	Covey	.65
Deep Head.....	Cow	.35

**CAULIFLOWER.**

	Tel. Cipher.	Per oz.
<b>May's Selected Extra Early Erfurt.....</b>	Cone	\$4.00 \$50.00
<b>Extra Early Dwarf Erfurt.....</b>	Coral	1.50 20.00
<b>Early Snowball (extra selected)...</b>	Core	1.75 25.00
Extra Early Paris.....	Cork	.45 4.50
Le Normand Short Stem.....	Cornet	.50 5.00
Algiers.....	Cost	.50 5.00
Veitche's Aut. Giant.....	Cottage	.50 5.00
Early Walcheren.....	Can	.50 5.00
Early London.....	Corset	.50 5.00
Extra Early Danish.....	Corsey	4.00 50.00

**CARROTS.**

	Tel. Cipher.	
Small French Forcing.....	College	\$0.25
<b>Half Long Scarlet (stump root).....</b>	Colony	.20
Early Scarlet Horn (forcing).....	Comb	.28
Early Half Long Danvers.....	Comfort	.27
<b>Best Long Orange.....</b>	Comic	.20
Large White Belgian (for stock).....	Confide	.18
Guerande or Ox Heart.....	Copy	.25
Yellow Belgian (for stock).....	Camp	.20
Large White Vosges.....	Copper	.23
<b>James' Intermediate.....</b>	Care	.15
<b>Half Long Chantenay.....</b>	Chain	.25
Table Queen.....	Chainey	.50

**CELERY.**

<b>White Plume (very early).....</b>	Couch	\$0 80
Crawford's Half Dwarf.....	Cough	.54
<b>Henderson's Half Dwarf.....</b>	Count	.54
Golden Heart or Golden Dwarf.....	Couple	.54
<b>American White Solid (Dwarf Kalamazoo).....</b>	Court	.20
Hartwell's Perfection.....	Coward	.54
Boston Market.....	Crash	.54
<b>Self Blanching (American).....</b>	Cream	1.30
<b>Giant Pascal.....</b>	Cracker	.54
Celeriac, or Turnip Rooted Celery.....	Crisp	.38

**CUCUMBER.**

<b>May's Peerless.....</b>	Cameo	\$0.35
<b>May's Favorite Pickling.....</b>	Call	.35
Early Russian.....	Calm	.20
<b>Imp. White Spine.....</b>	Can	.24
<b>Extra Long White Spine.....</b>	Canary	.20
Arlington White Spine.....	Camel	.20
Early Frame.....	Candy	.20



## CUCUMBER.—Continued.

	Tel. Cipher.	Per lb.
<b>Early Cluster</b> .....	Cane	.20
Green Prolific.....	Canoe	.25
Jersey Pickling.....	Captain	.20
Boston Pickling.....	Cape	.20
Tailby's Hybrid.....	Carat	.20
Nichol's Medium Green.....	Caravan	.25
<b>Improved Long Green</b> .....	Carbon	.20
<b>Long Green Turkey</b> .....	Cargo	.20
Early Shortgreen.....	Cut	.20
Chicago or Westerfield Pickling.....	Cot	.20
West India Gherkins.....	Card	.39
<b>Livingstone Evergreen</b> .....	Cadet	.20
<b>Cool and Crisp (new)</b> .....	Cow	.33
<b>White Wonder</b> ".....	Crescent	.40
<b>White Pearl</b> ".....	Corn	.20
<b>Thorburn's Everbearing</b> .....	Cor	.30
Japanese Climbing.....	Con	.39
Giant Pera.....	Cone	.40

## CORN, SWEET.

**Caution.** Sweet Corn in Bulk, even after being thoroughly cured, will often gather moisture and spoil, more particularly if it has been exposed to a low temperature. To prevent this it should be taken out of the bag as soon as received and spread in a dry place.

	Tel. Cipher.	Per Bu.
<b>Early Cory, red cob</b> .....	Carpet	\$1.20
" " white cob.....	Cent	1.10
Early Marblehead.....	Cart	1.10
<b>Early Crosby</b> .....	Case	1.15
<b>Early Minnesota</b> .....	Cash	1.00
Moore's Early Concord.....	Cask	1.25
Egyptian, or Washington Market.....	Cast	1.10
<b>Mammoth Late</b> .....	Cat	1.25
<b>Stowell's Evergreen</b> .....	Cave	1.00
Old Colony.....	Central	1.25
Triumph.....	Certain	1.40
Early Mammoth.....	Chalk	1.25
Amber Cream.....	Charm	1.35
<b>Country Gentleman</b> .....	Chase	1.25
<b>Black Mexican</b> .....	Check	1.35
Perry's Hybrid.....	Cheek	1.25
Extra Early Adams.....	Cheer	1.25
Hickox Improved (good for canning)...	Chicken	1.35
<b>Shaker's Large Early</b> .....	Chess	1.10
Early Adams or Burlington.....	Cheese	1.35
Sweet Fodder.....	Churn	1.00
Wisconsin Beauty.....	Churls	1.50
Early Windsor.....	Chund	1.50

## FIELD VARIETIES.

<b>May's Earliest of All</b> .....	Child	1.00
Early Pride of the North.....	Chip	.75
<b>Huron Dent</b> .....	Choice	1.00
<b>Improved Leaming (90 days)</b> .....	Chop	.75

## CORN, SWEET—Continued.

	Tel. Ciper.	Per bu.
Farmer's Favorite.....	Choke	.85
King of Earlies.....	Chore	.85
Longfellow.....	Chose	.80
Golden Beauty.....	Cider	.75
King Philip.....	Cigar	.85
Angel of Midnight.....	Circle	.85
Hickory King.....	Clad	.85
<b>White Cap Yellow Dent</b> .....	Claim	.85
<b>Iowa Goldmine</b> .....	Clamp	.85
White Flint.....	Cinder	.85
White Dent.....	Calk	.85
Wis. Yellow Dent.....	Cliff	.75
<b>Blunt's Prolific</b> (mammoth ensilage)..	Chirp	.85
Minnesota King.....	Chin	.85
Pride of Canada.....	Cheat	.85
Cuban Giant Ensilage.....	Chap	.85
Mastadon .....	Chat	.90

## POP.

		Per lb.
Rice Pop.....	Clasp	\$0.04
<b>Golden Queen</b> .....	Clay	.04
Mapledale.....	Clear	.04
White Pearl.....	Clerk	.04

## CHERVIL.

Curled.....	Clatter	\$0.65
-------------	---------	--------

## CHICORY.

Large Rooted.....	Cab	\$0.26
-------------------	-----	--------

## CORN SALAD.

Large Seeded, Large Leaf.....	Cabin	\$0.25
Small Seeded, Small Leaf.....	Cabinet	.25

## COLLARDS.

		Per lb.
<b>True Southern</b> .....	Cage	\$0.26
Georgia Selected.....	Clematis	.26

## CRESS.

<b>Fine Double Curled</b> .....	Cake	\$0.14
Water (true).....	Calf	2.50

## EGG PLANT.

<b>Improved New York Purple</b> (finest)...	Each	\$2.95
Early Long Purple.....	Ear	1.30
Black Pekin.....	Earl	1.30
Round Purple.....	Earley	1.95

## ENDIVE.

Green Curled German.....	Ease	\$0.34
Broad Leaved Batavian.....	Easy	.27
Early White Curled.....	East	.34
<b>Moss Curled</b> .....	Envy	.40

## KALE OR BORECOLE.

	Tel. Cipher.	Per lb.
Green Curled Scotch (tall).....	Keen	\$0.30
Dwarf German Curled.....	Keep	.30
Siberian or German Greens.....	Keg	.50
Moss Curled, Half Dwarf.....	Keel	.50
Sea Kale (fine).....	Kept	1.25

## KOHL RABI.

Early White Vienna.....	Kettle	.38
Large Green or White.....	Key	.32
Early Purple Vienna.....	Kick	.65

## LEEK.

American Flag.....	Label	\$0.42
London Flag.....	Labor	.42
Large Musselburg.....	Lack	.47

## LETTUCE.

May's Market Gardener (finest forcing) Laid		\$0.50
Early Tennis Ball, white seed.....	Lamb	.45
Early Tennis Ball, black seed.....	Lake	.33
Early Curled Simpson, white seed.....	Lame	.30
Early Curled Simpson, black seed.....	Lance	.30
Boston Curled (true).....	Land	.32
Prize Head.....	Lantern	.30
Buttercup (for forcing).....	Lard	.45
Hubbard (for forcing).....	Lamp	.45
Tom Haunock.....	Lax	.45
Hanson's .....	Lap	.30
Drumhead Cabbage.....	Lip	.28
Philadelphia Butter.....	Lisp	.45
Yellow Butter.....	Lash	.45
Deacon (forcing or outside).....	Last	.45
Paris White Cos.....	Late	.54
White Cabbage (cold frame).....	Lang	.45
All the Year Around.....	Lasso	.45
White Star (new).....	Lavender	.50
Improved New York.....	Legal	.50
Grand Rapids.....	Laurel	.39
Yellow Queen (new).....	Law	.50
Denver Market (new and fine).....	Leper	.45
Green Fringed.....	Lurid	.45
Big Boston.....	Luck	.45
American Gathering (new).....	Laugh	.45
Salamander.....	Lingo	.50
Perpetual.....	Lovell	.45

## MUSHROOM SPAWN.

		Per brick.
English, in bricks.....	Night	\$0.06

## MUSTARD.

		Per lb.
White.....	Ness	\$0.11
Brown.....	Noble	.04
Southern Giant Curled.....	Nance	.30

## MUSK MELONS.

	Tel. Cipher.	Per lb.
<b>Triumph Hybrid (new)</b> .....	Merry	\$0.25
Long Yellow Cantaloupe.....	Mayor	.20
<b>Improved Round Yellow Cantaloupe</b> ...	Meadow	.20
Bay View.....	Measure	.25
Surprise.....	Meat	.25
Princess.....	Mechanic	.25
Hackensack.....	Medal	.20
<b>Hackensack Extra Early</b> .....	Melon	.20
Montreal Nutmeg.....	Member	.20
Green Nutmeg.....	Men	.20
Green Citron.....	Mention	.25
<b>California Golden Citron</b> .....	Menagerie	.15
<b>Tip Top (new)</b> .....	Maim	.15
Acme, or Baltimore Market.....	Moat	.20
Netted Gem.....	Myth	.20
<b>Banana</b> .....	Message	.25
Skillman's Netted.....	Mock	.25
Emerald Gem.....	Molar	.20
Osage, or Miller's Cream.....	Molest	.20
<b>Delmonico</b> .....	Moral	.25
Pineapple.....	Musk	.25
<b>Minnesota Perfection (new)</b> .....	Mate	.30
White Japan.....	Ma	.20
Triumph.....	Mama	.20
<b>Texas Canon Ball</b> .....	Muss	.20
<b>Jenny Lind</b> .....	Mussy	.30

## WATER MELON.

Georgia Rattlesnake.....	Machine	.17
Black Spanish.....	Mad	.17
Christmas.....	Magic	.16
<b>Sweetheart</b> .....	Maid	.15
Pride of Georgia.....	Mail	.18
Phinney's Early.....	Main	.20
Cuban Queen.....	Major	.17
Mountain Sweet.....	Malt	.15
Mountain Sprout.....	Man	.16
<b>Ice King (May's)</b> .....	Mop	.20
Dixie.....	Minor	.16
Striped Gypsy.....	Manager	.17
Ice Cream, or Peerless.....	Mantel	.16
Kolb's Gem.....	Map	.16
<b>Imp. Kolb's Gem</b> .....	Mason	.18
Scaly Bark.....	Maple	.20
Dark Icing.....	Market	.15
Light Icing.....	Marrow	.16
<b>Seminole</b> .....	Martyr	.18
<b>Florida Favorite</b> .....	Mask	.16
<b>Jones' Jumbo</b> .....	Massive	.20
Gray Monarch.....	Mat	.20
Green and Gold.....	Matron	.20
Boss.....	Mattress	.15
Hungarian Honey.....	Numb	.18
<b>Ruby Gold</b> .....	Notion	.20

## WATER MELON.—Continued.

	Tel. Cipher.	Per lb.
Citron, Colorado, Preserving.....	Nix	.18
Citron, green seed.....	Nation	.28
“ red seed.....	Nap	.25
Safeguard.....	Nup	.30

## NASTURTIUM.

Tall Mixed.....	Nail	.40
Dwarf Mixed.....	Name	.45

## ONION SEED.

## Best American Grown Stocks.

## AMERICAN SORTS.

Extra Early Red Flat.....	Obey	.65
Southport Red Globe.....	Object	.50
Onion Red Weathersfield (our own growth)..	Oblige	.60
“ “ “	Obligation	.55
White Portugal or Silver Skin (our own growth).....	Optical	1.10
White Globe (our own growth).....	Ocean	1.10
Minnesota Yellow Globe Danvers (our own growth).....	Odd	.55
Yellow Globe Danvers.....	Odor	.45
Yellow Danvers Flat.....	Office	.65
Yellow Strasburg, or Dutch.....	Oil	.85
Extra Early White Pearl.....	Olive	1.75
Sultan (new).....	Orb	1.75
Southport Yellow Globe.....	Oblong	.90
Prize Taker.....	Order	1.25
Red Wonder.....	Ordand	1.25
May's Perfect Pickling.....	Ordake	1.25
Spanish King.....	Ordundo	1.25

## ITALIAN SORTS.

Italian Giant.....	Opaly	1.00
White Paris Pickling (very fine).....	Opal	.70
White Queen.....	Opera	.90
Giant Rocca.....	Operator	.80
Mammoth Silver King.....	Orange	1.00
White Tripoli, or El Paso.....	Oyster	.65
White Barletta (for pickling).....	Organ	.80
Red Bermuda.....	Orator	.80
Red Tripoli.....	October	.80

## OKRA.

Dwarf Green.....	Oak	.17
Long Green.....	Oar	.17
Round Pod or White Velvet.....	Ox	.17
Extra Early Dwarf (finest).....	Open	.17

## PARSNIP.

Long White Sugar.....	Odd	.12
Hollow Crown (May's Select).....	Oxide	.12
Student.....	Ode	.12
Magnum Bonum (new).....	Offend	.12

## PARSLEY.

	Tel. Cipher.	Per lb.
<b>Fern Leaved</b> (extra choice, new).....	Orphan	.40
Champion Moss Curled.....	Ostrich	.25
Plain, or single.....	Otter	.15
Hamburg, or Turnip Rooted.....	Ounce	.25
Extra Curled.....	Oath	.25

## PEPPER.

Large Sweet Mountain.....	Pillow	.60
Large Bell.....	Pipe	.55
Long Red Cayenne.....	Pirate	.55
Golden Dawn.....	Plant	.60
<b>Ruby King</b> .....	Plate	.60
Golden Queen.....	Puzzle	1.00
<b>Procopp's Giant</b> ....	Phone	1.65
<b>Mammoth Chilli</b> .....	Plug	1.00

## PEAS.

		Per Bu.
<b>May's, N. W. Premier</b> (extra selected, earliest in cultivation).....	Pacer	3.25
Alaska.....	Pack	1.75
Alaska (sealed stock).....	Prime	2.00
<b>First and Best</b> (sealed stock).....	Pomp	2.00
First and Best.....	Pad	1.75
Extra Early Dexter.....	Puncture	2.75
<b>Rural New Yorker</b> .....	Page	1.75
Extra Early Kent.....	Paint	2.00
Improved Tom Thumb (very early)....	Pair	3.00
Improved Daniel O'Rourke (finest strain).....	Palace	2.00
Philadelphia Extra Early.....	Palm	2.00
* <b>American Wonder</b> .....	Pansy	2.50
* <b>McLean's Little Gem</b> .....	Panther	2.00
* <b>Premium Gem</b> .....	Pantry	2.00
Wm. Hurst.....	Part	3.00
Sharp's Queen.....	Parts	4.00
Nott's Excelsior.....	Partie	3.15
Sunol.....	Par	3.15
Blue Beauty.....	Pauts	2.50
May's Midsummer.....	Pautly	4.50
Maud S.....	Pare	2.00

## MEDIUM EARLY SORTS.

Shropshire Hero.....	Purit	3.50
Fillbasket.....	Punken	2.50
Perfection.....	Pudkie	2.50
*Horsford's Market Garden.....	Parasol	2.25
* <b>McLean's Advancer</b> .....	Pardon	1.75
Champion of England.....	Park	1.75
* <b>Yorkshire Hero</b> .....	Parlor	2.40
*Everbearing.....	Parrot	1.50
*Abundance... ..	Parson	2.25

## PEAS—Continued.

	Tel. Cipher.	Per Bu.
LATE SORTS.		
Dwarf Sugar (edible pods).....	Paw	3.00
Tall " " " ".....	Peach	3.00
<b>Pride of the Market</b> .....	Peak	3.50
<b>*Carter's Stratagem</b> .....	Pearl	3.50
<b>*Carter's Telephone</b> .....	Pedal	3.50
Heroine.....	Peel	3.50
<b>Black Eyed Marrowfat</b> , hand picked (fine stock).....	Pencil	1.25
<b>Royal Dwarf Marrow</b> , hand picked (fine stock).....	Pica	1.35
<b>Tall White Marrowfat</b> , hand picked (fine stock).....	Parse	1.35
Imp. Stratagem.....	Pat	5.00

## FIELD VARIETIES.

Early White Canada.....	Perna Mkt.	Price
Golden Vine.....	Phiz	"
Scotch, or Blue.....	Portico	"

## PUMPKINS.

		Per lb.
<b>Connecticut Field</b> .....	Play	.08
Large Cheese.....	Plot	.20
<b>Mammoth Tours</b> .....	Plow	.33
Cushaw.....	Plug	.20
Sugar.....	Plum	.17
Nantucket Negro.....	Plural	.29
Quaker Pie.....	Pole	.20
Tennessee Sweet Potato.....	Police	.22
Red Etampes.....	Pig	.33
<b>Jonathan</b> .....	Pigeon	.20
Japanese Pie.....	Policy	.20

## RADISH.

## EARLY VARIETIES. BEST STOCK.

<b>New Forcing White Box</b> .....	Rose	.35
<b>Extra Early Scarlet Turnip</b> , white tip (forcing).....	Rush	.22
<b>Extra Early Scarlet Turnip</b> (forcing).Round		.22
" " <b>Deep Scarlet</b> (forcing).....	Ran	.27
<b>Vick's Favorite</b> .....	Road	.24
<b>May's Defiance</b> (turnip shape, best on earth).....	Root	3.00
<b>Extra Early Carmine</b> (forcing).....	Race	.20
<b>Long Scarlet Short Top</b> .....	Rack	.20
<b>Early Scarlet Turnip</b> .....	Rag	.20
<b>Scarlet Turnip</b> , white tip.....	Rail	.21
<b>Chartier Improved</b> .....	Rain	.20
<b>Early White Turnip</b> .....	Rake	.20
<b>Yellow Summer Turnip</b> .....	Ranch	.20
<b>French Breakfast</b> .....	Rank	.22
<b>Scarlet Olive Shaped</b> .....	Rare	.27
<b>Wood's Early Frame</b> .....	Raven	.20

## RADISH—Continued.

	Tel. Cipher.	Per lb.
<b>White Lady Finger</b> .....	Route	.27
<b>White Strasburg</b> .....	Rigid	.21
<b>Giant White Stuttgart</b> .....	Regular	.27
<b>Long White Vienna</b> .....	Rice	.21
<b>Early Deep Scarlet</b> .....	Robe	.27
<b>Queen of the Market</b> (new, 21 day forcing)	Robin	.40
<b>Philadelphia White Box</b> .....	Rocky	.27
<b>White Naples</b> .....	Richard	.27
<b>Golden Globe</b> .....	Roll	.27
<b>White Olive Shaped</b> .....	Rink	.21
<b>Ne Plus Ultra Scarlet</b> .....	Rip	.25
<b>Scarlet Globe</b> .....	Reel	.27
<b>Rosy Queen</b> .....	Reed	.25
<b>White Summer Turnip</b> .....	Rede	.21
<b>Extra Early Erfurt</b> .....	Ready	.40
<b>White Star</b> .....	Raid	.50
<b>Newcom</b> .....	Rade	.50

## WINTER VARIETIES.

<b>Black Spanish, long</b> .....	Rifle	\$0.21
“ “ round.....	Ring	.24
<b>Chinese Rose, winter (fine stock)</b> .....	Risk	.27
<b>California Mammoth White</b> .....	Roach	.20

## RHUBARB.

<b>Linnæus</b> .....	Ratio	\$0.60
<b>Victoria</b> .....	Rabid	.60

## SALSIFY, OR OYSTER PLANT.

<b>Long White</b> .....	Rasp	\$0.55
<b>Mammoth Sandwich Islands</b> .....	Relic	.70
<b>Scorzonera</b> .....	Ream	1.30

## SPINACH.

		Per lb.	100 lb.
<b>Curled Bloomsdale</b> .....	Rector	\$0.08	\$7.00
<b>Round Thick Leaved</b> .....	Recoil	.09	8.00
<b>Long Stanking, or Evergreen</b> .....	Russet	.08	7.00
<b>Prickly Seeded</b> .....	Rounce	.10	9.00
<b>Thick-Leaved Viroflay</b> .....	Rugged	.10	9.00
<b>Victoria</b> .....	Rugby	.15	
<b>May's Perfection Curled</b> .....	Rug	.15	

## SQUASH.

		Per lb.
<b>Early White Bush, scalloped</b> .....	Sack	\$0.20
<b>Early Yellow Bush, scalloped</b> .....	Sage	.20
<b>Summer Crook-Neck</b> .....	Sailor	.20
<b>Canada Crook-Neck</b> .....	Salmon	.20
<b>Vegetable Marrow (new)</b> .....	Salt	.18
<b>American Turban</b> .....	Sand	.30
<b>Bay State (green turban)</b> .....	Sash	.25
<b>Boston Marrow</b> .....	Saw	.21



## SQUASH—Continued.

Tel. Cipher. Per lb.

Egg Plant (new).....	Scarlet	.28
Hubbard (true stock).....	School	.22
Marblehead.....	Sail	.30
Essex Hybrid.....	Scissors	.29
Perfect Gem.....	Seal	.30
Mammoth Chili.....	Seat	.26
Butman.....	Seed	.31
Sibley.....	Shark	.18
Fordhook.....	Sop	.20
Faxon (new).....	Sole	.25

## TOMATO.

King Humbert.....	Sole	\$1.50
Earl Ruby.....	Sold	1.50
Minnesota Queen.....	Soldier	1.50
Volunteer.....	Soldiery	1.00
Wisconsin Climbing.....	Solder	1.50
Shenandoah.....	Soldierly	1.00
First of All.....	Sod	1.50
Golden Gem.....	Soap	1.50
Livingstone's Beauty.....	Shell	.80
Livingstone's Perfection.....	Ship	.70
Livingstone's Favorite.....	Shoe	.72
Dwarf (Champion).....	Shop	1.00
Acme.....	Sable	.83
Mikado.....	Saxon	1.05
Selected Trophy.....	Safe	1.03
Golden Queen.....	Sage	1.00
Yellow Cherry.....	Scoff	1.45
Red Cherry.....	Salam	1.75
Yellow Pear Shaped.....	Saline	1.45
Atlantic Prize.....	Sally	1.15
Husk Tomato, or Ground Cherry.....	Savor	1.50
Paragon.....	Scan	.78
Large Smooth Red.....	Scope	.78
New Stone.....	Shrimp	1.10
Ignotum.....	Shank	1.05
Ponderosa.....	Shugh	1.30
Optimus.....	Shine	.95
Mansfield Mammoth Tree.....	Sup 40c oz.,	5.00
Early Dwarf Tree.....	Soot	1.00
Buckeye State.....	Sold	1.15
Station.....	Sooth	1.15
Matchless.....	Suth	.90
Early Minnesota.....	Sut	2.25
Golden Gem.....	Saggy	1.00
May's First of All.....	Solid	2.00

## TURNIP.

Early White Dutch.....	Tallow	\$0.18
Purple Top White Globe.....	Tank	.18
Early Yellow Stone.....	Tape	.16
Purple Top Strap-Leaf Flat.....	Tavern	.14
Pomeranian White Globe.....	Tea	.18
Large White Norfolk.....	Team	.15

## TURNIP—Continued.

	Tel. Cipher.	Per lb.
White Egg.....	Tire	.18
Amber Globe.....	Tobacco	.16
Yellow Aberdeen (purple top).....	Tongue	.20
Robertson's Orange Jelly or Golden Ball.....	Top	.18
<b>White Flat Dutch</b> (strap leaf).....	Tree	.18
Crystal White.....	Tray	.25
Yellow Stone.....	Trait	.20
White Stone.....	Trate	.20
White Model.....	Trade	.25
Extra Early Companion.....	Treaty	.25
White Perfection.....	Trim	.25
Early Snowball.....	True	.50

## RUTA BAGA.

		Per lb.
<b>May's Improved American Purple Top</b> .....	Trunk	\$0.13
Yellow Globe, Best American.....	Trough	.13
Skirving's Purple Top.....	Trumpet	.13
<b>Carter's Hardy Swede</b> .....	Tumbler	.13
Large Sweet German.....	Turban	.15
Hurst's Monarch.....	Turn	.16
May's Elephant.....	Tube	.16
<b>Impd. American P. T.</b> .....	Tubal	.13
Large White Shamrock.....	Tub	.20
White French.....	Tubar	.20
Carter's Imperial.....	Tule	.20
Lane's Purple Top.....	Toole	.20

## TOBACCO.

<b>Havana</b> .....	Shawl	\$2.50
Connecticut Seed Leaf.....	Shears	1.00
<b>White Burley</b> .....	Ship	1.25

## HERBS.

Anise.....	Turkey	\$0.50
Balm.....	Turtle	2.15
Basil (sweet).....	Twig	.57
Borage.....	Twirl	1.05
Caraway.....	Twist	.45
Coriander.....	Tymbal	.50
Dandelion (thick leaf).....	Type	1.50
Dill.....	Ton	.31
Fennel.....	Topaz	.21
Horehound.....	Topic	1.50
Hyssop.....	Torch	1.25
Lavender.....	Tornado	.60
Marjoram.....	Toy	.60
Rosemary.....	Trace	2.50
Rue.....	Track	1.30
Sage (broad leaf).....	Trade	.70
Saffron.....	Traitor	.77
Savory, summer.....	Tribe	.39
Thyme.....	Triangle	.90
<b>Wormwood</b> .....	Troy	.90

## BIRD SEED.

Fluctuates with the Market. Present Prices are as follows:

	Per lb.	Per bu.
Best Grade Canary.....Butler	\$0.05	\$3.00
Hemp.....Bud	.05	2.50
Millet, American.....Bugle	.03	1.50
“ German.....Buff	.03	1.50
“ White French.....Bug	.04	1.75
Rape, English.....Fox	.07	
“ German.....Fog		3.50
Rough Rice.....Fry		3.50
Mixed Canary Seed, in Bulk ....Flounce	.05	3.00
Maw Seed, (Blue Poppy).....Fly	.20	
Lettuce Seed, for Birds.....Food	.25	
Sunflower Seed, for Parrots....Fool	.04	
Cuttle-Fish Bone.....Focus	.40	

## ONION SETS.

Yellow Bottom.....	2.00
Red Bottom.....	2.25
White Bottom.....	2.50
Red Top.....	2.50

The above prices are subject to market fluctuations. Write us for prices in large lots.

## ENGLISH DWARF ESSEX RAPE.

The Alabama Agricultural Experiment Station Bulletin No. 65, in report of experiments with Dwarf Essex Rape, says:

“Ground thoroughly prepared as for turnips and seed sown broadcast. Planted April 14th and ready for use in six weeks. Quality good, and good for hogs and cattle. The growth was enormous. By repeated sowings it will and did carry more hogs through our dry, hot summers than four times the amount of land planted in anything else ever grown here. Forty-nine head of hogs lived on an acre of it six weeks and did well.”

We recommend customers to try and introduce this plant among the farmers. It is undoubtedly the best and most economical crop also for sheep or cattle that can be produced, and will prove of inestimable value to every farmer who needs a forage crop for feeding during the dry spell of weather of the summer months.

Price, \$6.00 per 100 lbs.; 7 cents per lb.

## FLOWER SEEDS IN PACKETS.

	Per M.
Less than 1 M at the rate of \$20.00 per M.	
1 M.....	\$15.00
5 M to 10 M.....	8.00
10 M and upwards.....	7.50

## VEGETABLE SEEDS IN PACKETS.

	Per M.
1 M.....	\$15.00
5 M.....	9.00
10 M and upwards.....	8.00

In reference to the Price Made on Seeds in Packets on this page, we wish to state that the prices we have named are absolutely as low as good seeds in packets can be purchased for. While the make up and style of the packet has nothing whatever to do with the germination of the seeds, it has undoubtedly a large influence on the sale of them. Our packets are all new designs, handsomely gotten up, and a change so decidedly different from the average seedsmen's packet that it makes it by far the most striking and attractive packet on the market. Furthermore, the seed contained in them is of precisely the same stock as what we supply the most critical market gardener trade and will give satisfactory results beyond a doubt. A great many merchants who receive this list have had one of our seed cases of recent years, and it is probable have some few packets on hand, but for the coming season's trade will want a few of the staple varieties. In view of this we would ask you to check up your box and hope that it will be favorable to you for us to send you what you are short in our new and attractive packets at 1½ cents each, both for flowers and vegetable seeds. Also if you will favor us with size of the box you have we will furnish you with new labels for the box which will add greatly to the appearance of it.

## FIELD SEEDS.

We carry a complete line of field seeds and are in a position to quote prices on them at all times of the seasons. This class of seed is subject to market fluctuations, nevertheless we always endeavor to give our trade the favorable side of the market price.

<b>CLOVER.</b>		Lbs to Bu.	Plant to acre	Price per Bu.
Medium Red.....	60	10 lbs.		\$ 4.00
Mammoth Red.....	60	10 "		4.00
White Clover.....	60	} valuable for lawns } and pastures. }		12c per lb.
Crimson Clover.....	60	20 lbs.		3.50
Alfalfa or Lucerne.....	60	10-15 lbs.		4.00
Alsike or Swedish.....	60	10 lbs.		6.00
Sand Clover or Kidney Vetch.....	60	20 "		9.00

## GRASS SEEDS.

Timothy.....	45	20 lbs.		1.30
Blue Grass Fancy.....	14	} 2 bu. for pasture. }		1.96
" " Chaff.....	14	} 3-4 " " lawn. }		.80
" " Recl'ned seed..	14	3-4 "		1.00
Red Top Solid seed.....	14	} 1-3 bu. for pasture. }		2.25
" Recleaned.....	14	} 3-4 " " lawn. }		1.00
" Chaff.....	14	3-4 "		.70
				Per 100 lbs.
Bromus Inermus.....		35-45 lbs. to acre.		\$15.00
Meadow Fescue.....		40 " "		12.00
Sweet Vernal.....				15.00
Rhode Island Bent.....	12	1¾ bu for pasture, 23c per lb.		
Creeping Bent.....	15			.22
Meadow Foxtail.....		25 lbs. to acre.		.20
				Per bu.
Millet, German.....	48	1½ bu. to acre.		\$0.60
" Common.....	48	1½ " "		.55
Hungarian.....	48	1½ " "		.65

## LAWN GRASS.

Central Park.....	14	3-4 bu. to acre.		3.00
Terrace Sod.....	14	3-4 " "		2.50
Excelsior.....	14	3-4 " "		2.00
Good Mixture.....	14	3-4 " "		1.50

## MISCELLANEOUS SEEDS.

Kaffir Corn, red.....				85c per bu.
" " white.....				85c "
Wild Rice.....	15c per lb.			\$13.00 per 100
Wheat, May's Wonder.....				1.50 per bu.
" Red Clausen.....				1.50 "
Oats, Bonanza King.....				75c "

## NEW VEGETABLES FOR 1898.

The following list comprise the leading novelties of sterling merit of crop 1897. Kindly look them over carefully.

### THE LEADING TOMATO FOR PRIVATE GARDENERS.

#### ♣ KING HUMBERT'S TOMATO.



A most desirable European variety. Vines vigorous and extremely productive. Fruit solid, fine flavored and of best quality. Just the Tomato for private gardens.

A distinct scarlet plum shaped tomato that is of such fine flavor that it is certain to become one of the most valuable for home gardens. It is not so large as the American sorts, but the flesh is very tender and almost entirely free from the coarseness found in nearly all of our standard varieties. The seed we offer was procured by us direct from one of the leading seed specialists of Europe, and is the truest strain obtainable. For those who desire a large tomato, this will not be acceptable, and we would recommend in place of it the Grand Pacific, but for our friends who wish a small tomato of the finest quality and flavor, we suggest that they give King Humbert a trial in their garden this season.

Price per lb.....\$2.00

## MAY'S NORTHWEST PREMIER PEA.

**Ahead of All Others** for earliness and productiveness, two of the most important qualities for market gardeners. When we first introduced this Pea we were determined to perfect it so that it would take the lead of all other early peas; this we have succeeded in doing. It has been tested by market gardeners as far south as Corpus Christi, Texas, and east to New York State. Mr. Arthur H. Mowbray, of Richmond Hill, N. Y., writes us that after trying our Northwest Premier alongside of several other extra early varieties, which he obtained from leading seed houses, the Northwest Premier was the earliest by nearly ten days. It grows to a height of 20 to 30 inches; does not require staking; is an immense cropper and ripens so evenly that it can be picked clean in two pickings. The genuine stock of this variety can be procured only from us, and none is genuine except original package bears our seal. Give this Pea a trial; it will please your market gardeners, and be appreciated by amateurs.

Price per bu.....\$3.50

## MAY'S FAVORITE PICKLING.

For years we experimented with all the varieties of different cucumbers recommended for pickling purposes, testing them by the side of our "Favorite," but found none that equaled it either in yield or quality. In form it is solid and rather thick, flesh is crisp and exceedingly tender, although very firm. Taking all together it is about as near perfection for pickling purposes as a cucumber can be. We heartily recommend it to all of our friends who desire a choice pickle, and know that thousands of our patrons who purchase it each year will gladly endorse our recommendation. All we can add to this is five more words, **don't fail to try it.**

Price per lb.....\$0.40

## THE MOST PRODUCTIVE YELLOW VARIETY IMPERIAL ONION.

A marvelous German variety, which we obtained two years ago from one of the leading seed growers of Europe. Since obtaining our stock we have sent out samples to all parts of the country, and the praise it receives from the various sections lead us to believe it is the best Yellow Onion for general use ever offered. Mr. J. P. West of Merriam Park says: "It is one of the handsomest onions I have ever seen, and certain to become a great favorite with the market gardeners on account of size, its solidity and splendid quality." The color of skin is a light yellow, flesh solid and fine grained. Yields of from 800 to 1100 bushels per acre are frequently reported by those growing this splendid onion, and we believe it is by far the best of all yellow varieties for both private and market use. We earnestly urge every one who has a garden to try our Imperial this year, and the large growers who make a specialty of growing for the markets will make a mistake if they fail to give Imperial a thorough test.

Price per lb.....\$2.00

## MAY'S MARKET QUEEN CABBAGE.



The best yet introduced.

The gardener's favorite. The greatest of all varieties for medium early use. For gardeners and all growers who desire a variety to market between Early Surprise and Hundredweight we heartily recommend the Market Queen. This is strictly a market gardener's cabbage, originated by a large gardener in the East from whom we secured seed stock two years ago. It was introduced by us last season, and the many testimonials received from all sections of America determined us to push it more strongly than ever this year. The most valuable point we have found in this new variety is its certainty of forming a fine solid head even under the most trying circumstances, and it will stand the drought better than any sort we have ever seen.

Price, per lb..... \$1.50



## ALL CREAM LETTUCE.



A most desirable new cabbage lettuce, and one that will do equally as well for forcing as for summer use. It is certainly a grand variety, and for beauty of foliage, tenderness and delicacy of flavor it is unsurpassed. The heads are of good size, and the rich, creamy color of the leaves never fails to attract attention. It is a strong grower of superior quality and most beautiful appearance. The fact that it will keep crisp and tender for a long time is another valuable feature in this new lettuce. Price per lb..... \$0.70

## A TOMATO WONDER.

### Extra Early Tree Tomato.



This is the variety so extensively advertised and sold at 25c. per packet. It is certainly a splendid tomato, and worthy of a place in any garden. Many large growers prefer it to any other sort on account of its earliness and quality. Another point that particularly recommends it is the fact that it requires no support even when laden with fruit, the stiff branches holding the tomatoes far above the ground. The fruit is of medium size, good red color and excellent flavor. We have the true seed stock, and can supply it much lower than it was offered last season. F. B. Stokes, Franklin, Tenn., says: "I've tried your Extra Early Tree Tomato the last two years and it is the finest I've ever grown or seen." J. E. Saukford, Toccoa, Ga., says: "Your Extra Early Tree Tomato is simply 'great.' It holds its fruit upright without any staking." Have you ever tried it? If you haven't don't fail to do so this year.

Price per lb..... \$1.35

## EXTRA EARLY DANISH.

The earliest sure heading Cauliflower ever offered. A variety no gardener can afford to be without. We offer this year the finest strain of a Sure Heading Early Cauliflower that has ever been introduced to the gardeners of America and we challenge any one to produce a variety that will surpass it in habit of growth, earliness or certainty of heading. It may truly be called the "Surehead Cauliflower" as we learn it heads up under the most adverse circumstances when other varieties fail entirely. As may be seen by the name it is a European variety and we have procured our seed direct from one of the largest and most reliable growers in that part of the world where Cauliflower reaches the highest state of perfection. It is of dwarf, compact habit and valuable for either forcing or open ground; the heads are of good size and a beautiful snowy white. We have paid a high price for our seed and believe it is worth all we ask for it.

Price per oz..... \$4.00

## GARDEN GEM.

The finest Cucumber for slicing. As the Favorite is the best for pickling, so Garden Gem is the best of all for slicing and the handsomest cucumber for table use we have ever seen. It surpasses all other kinds for beauty, flavor and shape, being quite long, thick through, has a fine flesh and few seeds. For general crop, to come in after our great forcing variety, Early Prize, it is undoubtedly the most desirable sort that can be secured. Private and market gardeners will do well to obtain a supply of the seed this season, and we earnestly urge all our friends who have a kitchen garden to give it a place in their garden patch.

Price per lb..... \$0.50

## EARLY PRIZE.

The greatest forcing Cucumber ever offered. Extra early, a prolific bearer, a vigorous grower and of splendid shape and quality. That's exactly the description given by one who has grown it for the early markets, and it certainly needs no further testimony, as that includes about all the valuable points of an extra early forcing variety. It is a most excellent sort for either pickling or table use, and its earliness at once recommends it to all who wish an early cucumber. Give it a trial, it is certain to please you.

Price per lb..... \$0.50

## CHELTENHAM FAVORITE BEET.

The best for winter use. The finest of this kind of beets; they are long, very smooth and of the richest deep carmine color. It is a vast improvement on the Long Blood and certain to become very popular with gardeners who grow for marketing as its keeping qualities are unequalled by any other sort we are acquainted with, unless it be the Erfurt Prize. The flesh is about as near perfection as can be, for it is entirely free from the coarseness found in some of this class of vegetables. We know that it will give satisfaction with both private and market gardeners.

Price per lb..... \$0.40

## FLOWER SEEDS.

	Per oz.	Per lb.
Antirrhinum or Snapdragon, Mixed Colors.....	.20	\$2.00
Ageratum, Mexicanum, blue.....	.20	1.50
“ Lasseaux, Rose Colored Flowers.....	.60	
Ageratum, Mixed Colors.....	.15	1.25
Asters, Mixed.....	1.00	
“ Snowball, white.....	2.00	
“ Delicata, light pink.....	2.00	
“ Empress of India, dark blue.....	2.00	
Alyssum, Sweet.....	.20	1.25
Adonis, Aestivalis.....	.10	.50
Amaranthus.....	.10	.40
Agrostemma, Rose Colored.....	.15	1.25
Asperula Azurea.....	.10	.50
Abronia Umbellata.....	.20	1.25
Balloon Vine, a handsome climber.....	.10	.75
Balsams, Mixed Colors.....	.25	2.50
“ Maiden's Blush, Rose shade.....	.85	10.00
Bellis or Daisy, Mixed Varieties.....	2.00	
Cucumis, a rapid growing climber.....	.15	1.25
Calendula, Mixed.....	.10	.60
Calliopsis, Mixed.....	.10	.60
Catchfly or Silene, Mixed.....	.10	.40
Cockscomb, Mixed.....	.50	6.00
Chrysanthemum, Annual Mixed.....	.10	.60
“ Lord Beaconsfield.....	.15	1.25
Maroon and Gold.....	.20	2.00
Cypress Vine.....	.15	1.25
California Poppy or Eschscholtzia.....	.20	1.50
Centaurea Cyanus, or Emperor William's Flower.....	.15	1.00
Canterbury Bell or Campanula.....	.15	1.25
Candytuft, Mixed.....	.10	.60
“ White.....	.10	.40
Cosmos, Fine Mixed.....	.75	9.00

## FLOWER SEEDS—Continued.

	Per oz.	Per lb.
Dianthus or Pinks, Mixed.....	.30	3.50
“ Red Ruby.....	.30	3.50
“ Double Imperial, Mixed.....	.30	3.50
“ Double China, Mixed.....	.30	3.50
Eutoca Wrangeliana.....	.20	
Erysimum, Perofskianum.....	.10	.75
Four O’Clocks, Mixed.....	.20	1.50
Forget-Me-Nots or Mysotis, Mixed.....	.60	6.00
Globe Amaranth or Bach. Button.....	.15	.75
Gaillarda, Mixed.....	.15	1.00
Godetia, Rubicunda.....	.20	2.00
Glaucium, Luteum.....	.25	
Godetia, Mixed.....	.10	.75
Gypsophila Elegans.....	.10	.40
Heliotrope.....	.75	8.00
Hollyhocks, Double Mixed.....	.50	6.00
“ Double White.....	1.00	12.00
“ Rose.....	1.00	12.00
“ Yellow.....	1.25	
“ Crimson.....	1.00	12.00
Ipomea, Mixed.....	.15	1.25
Lobelia, Mixed.....	.40	4.00
“ White Gem.....	.50	
Lupinus, Mixed.....	.10	.50
Marigold, Mixed.....	.20	1.50
“ El Dorado, Orange Colored... ..	.20	1.50
Migonett, Sweet.....	.10	.40
“ Giant Crimson.....	.30	3.00
“ “ White.....	.40	4.00
Morning Glory, Tall.....10c oz.	.35	
“ “ Dwarf..... “	.35	
Mourning Bride or Scabiosa.....	.15	1.00
Nasturtium, Tall Mixed.....	.10	.40
“ Dwarf Mixed.....	.10	.60
Nigella or Love in the Mist.....	.10	.40
Nemophila, Mixed.....	.10	.50
Pansy, Finest Mixed.....	1.00	12.00
“ Snow Queen, white.....	.85	10.00
“ Sunshine, light mahogany shade.....	.85	10.00
“ Faust, black.....	.85	10.00
“ King of Yellows.....	.85	10.00
“ May’s New English Show.....	1.00	12.00
“ Cassier’s Mixed.....	4.00	
Petunia, Mixed.....	.50	6.00
“ Rose Light Pink.....	.50	6.00
“ Peerless, white.....	.40	4.00
“ Hybrida Grandiflora.....	.40	4.00
Poppy, Mixed.....	.10	.60
Phlox, Mixed.....	1.00	
Portulaca, Mixed.....	.25	2.50
Ricinus, Mixed.....	.10	.40
Sweet Peas, Ecford’s Mixed.....		.25
“ “ Mixed.....		.20
“ “ Giant California, Mixed... ..		.25

## FLOWER SEEDS—Continued.

	Per oz.	Per lb.
Sweet William.....	.10	1.00
Stocks, Choice German Mixed.....	.75	8.00
"    Crimson King.....	1.50	16.00
Salvia, Blue Beard.....	.25	2.50
"    Scarlet or Flowing Sage.....	.50	5.00
Schizanthus or Butterfly Flower.....	.15	1.00
Sweet Rocket or Hesperis.....	.10	.50
Salpiglossis.....	.30	3.00
Thuubergia.....	.25	2.50
Verbena, Mixed.....	.50	5.00
"    Harlequin, Striped Flowers...	.75	10.00
"    The Bride, pure white.....	.75	10.00
"    Fireball, light red.....	1.00	12.00
"    May's Mammoth.....	.75	9.00
Wallflower, Mixed.....	.15	1.25
Zinnias, Mixed.....	.20	2.00

## SWEET PEAS IN BULK.

Article.	Price.
<b>America.</b> Bright cardinal stripe on pure white ground; good size, open form.....	\$0.25
<b>Alice Eckford.</b> Standard rich cream, tinted pale pink. wings pure white. Small.....	.25
<b>Alba Magnifica.</b> A good white, of fair substance and medium size. White seed.....	.25
<b>Adonis.</b> Rose pink, laced with rose. Poor substance and small.....	.25
<b>Apple Blossom.</b> Standard shaded pink and rose, wings pale pink. Large grandiflora type.....	.25
<b>Aurora.</b> Standard and wings are white, flaked and striped with bright orange salmon. Immense size and grandiflora type.....	.25
<b>Black.</b> Deep maroon standards; wings deep blue. Good substance and medium size.....	.25
<b>Blanche Burpee.</b> The finest white yet introduced, being the largest and most graceful. Grandiflora type and white seed .....	.25
<b>Blanche Ferry.</b> Bright rose pink standards; wings pure white. Good substance and medium size.....	.25
<b>Blushing Beauty.</b> Very soft pale pink; graceful and inclined to be very hooded ..	.25
<b>Boreatton.</b> A rich velvety maroon, self color. Good substance and fair size.....	.25
<b>Bronze King.</b> A small variety with round standard of peculiar copper pink, with clear white wings. Rather small.....	.25

## SWEET PEAS—Continued.

Article	Price
<b>Butterfly.</b> White ground, shaded and edged with light blue. Medium size and grandiflora type.....	.25
<b>Cardinal.</b> Bright crimson scarlet, self color. Medium size.....	.25
<b>Captain Clark.</b> Standard white, shaded crimson, pencilled at base with blue; wings white, blue edged. Medium size.....	.25
<b>Captain of the Blues.</b> Purple blue standard, wings bright blue. Large grandiflora type.....	.25
<b>Captivation.</b> Rosy purple, self color; fairly large and well expanded. Small spotted brown seed.....	.30
<b>Celestial.</b> Soft bluish lavender of good size and grandiflora type. Small spotted brown seed.....	.30
<b>Coquette.</b> Standard delicate creamy primrose, tinged with pale purple and blush; wings primrose. Grandiflora type.....	.30
<b>Countess of Radnor.</b> Soft lavender self color, grandiflora type. Small spotted brown seed.....	.30
<b>Countess of Aberdeen.</b> Pale blush pink with deeper edges. Grandiflora type.....	.25
<b>Carmine Invincible.</b> Bright crimson scarlet, of good substance and medium size....	.25
<b>Crown Jewell.</b> Pale standard, tinted and veined with violet rose; wings creamy, slightly tinted with rose. Large grandiflora type.....	.25
<b>Crown Princess of Prussia.</b> Standard delicate blush pink, shading to buff; wings pale pink. Poor substance and small.....	.25
<b>Carmen Sylva.</b> Standard purplish carmine, shading brighter to edges; wings blue with shading of rose at throat. Poor substance, small.....	.25
<b>Daybreak.</b> Standard a very pretty watered red on white; wings white. Medium size.....	.25
<b>Delight.</b> Standard white, flushed with pale pink, crested carmine; wings white. Poor substance and small.....	.25
<b>Dorothy Tennant.</b> A rosy mauve self which deepens as the flowers become exposed. Large grandiflora type.....	.25
<b>Duchess of Edinburgh.</b> Standard light scarlet; wings light crimson.....	.25

## SWEET PEAS—Continued.

Article.	Price.
<b>Duchess of York.</b> Standard and wings white, delicately barred and striped with pale pink. Large open form.....	.25
<b>Duke of Clarence.</b> Rosy claret self color. Large grandiflora type.....	.25
<b>Duke of York.</b> Bright rose standard; wings primrose shaded pink. Medium size.....	.25
<b>Emily Eckford.</b> Rosy mauve, changing to an almost true blue. Large grandiflora type. Small spotted brown seed.....	.25
<b>Eliza Eckford.</b> White, shaded and flushed with rosy pink. Grandiflora type.....	.25
<b>Empress of India.</b> Rosy pink standards; white wings. Medium size.....	.25
<b>Emily Henderson.</b> A clear large white, of unusually heavy substance; very vigorous and prolific, blooming very early. White seed.....	.25
<b>Etna.</b> Dark crimson with marbled edges. Small and of poor substance.....	.25
<b>Extra Early Blanche Ferry.</b> The earliest of all varieties, being fully three weeks earlier than any other. Blossoms same as Blanche Ferry.....	.30
<b>Fairy Queen.</b> Standard white, pencilled with crimson; wings white. Poor substance and medium size.....	.25
<b>Firefly.</b> Very bright crimson scarlet. Large and of good substance.....	.30
<b>Gray Friar.</b> A light marbled mauve of peculiar effect. Large grandiflora type...	.25
<b>Gaiety.</b> White, striped and flaked with purplish pink. Grandiflora type.....	.25
<b>Her Majesty.</b> Bright rose pink, self color. Grandiflora type.....	.25
<b>Ignea.</b> Deep crimson scarlet. Medium size.	.25
<b>Imperial Blue.</b> Standard purplish blue; wings blue. Medium size.....	.....
<b>Invincible Scarlet Striped.</b> Common red and white striped. Medium size.....	.....
<b>Invincible Scarlet.</b> A red of inferior quality. Small.....	.....
<b>Indigo King.</b> Standard dark purple maroon, wings indigo blue. Medium size....	.25



## SWEET PEAS—Continued.

Article.	Price.
<b>Isa Eckford.</b> Creamy white, shaded pink; poor substance. Small.....	.25
<b>Juanita.</b> White, delicately striped with pale lavender; large grandiflora type. Small spotted brown see '.....	.25
<b>Katherine Tracy.</b> Light but brilliant vermilion rose. Very large and of delicate coloring.....	.25
<b>Lady Beaconsfield.</b> Standard salmon pink, wings primrose yellow. Good size.....	.25
<b>Lady Penzance.</b> A bright laced rose pink, with suggestion of orange. Grandiflora type.....	.25
<b>Lemon Queen.</b> Standard pale blush and lemon; wings white. Large.....	.25
<b>Light Blue and Purple.</b> Standard maroon; wings pale blue. Medium size.....	.25
<b>Little Dorrit.</b> Standard rose pink; wings white. Medium size.....	.25
<b>Lottie Eckford.</b> Standard white, shaded mauve; wings white, blue edged. Large grandiflora type.....	.25
<b>Mikado.</b> Bright rose pink, striped with white. Grandiflora type.....	.25
<b>Miss Hunt.</b> Standard pale carmine; wings laced rose. Medium size.....	.25
<b>Madame Carnot.</b> (Same as Imperial Blue).	.25
<b>Meteor.</b> Standard orange pink; wings bright pink.....	.25
<b>Monarch.</b> Standard purplish maroon; wings purplish blue. Large grandiflora type.....	.25
<b>Mrs. Eckford.</b> Delicate primrose yellow, self color. Large grandiflora type.....	.25
<b>Mrs. Joseph Chamberlain.</b> White, striped and flaked with pale rose. Very large grandiflora type.....	.25
<b>Mrs. Gladstone.</b> Pale but bright pink, of medium size.....	.25
<b>Mrs. Sankey.</b> Almost pure white; large grandiflora type. Black seed.....	

## SWEET PEAS—Continued.

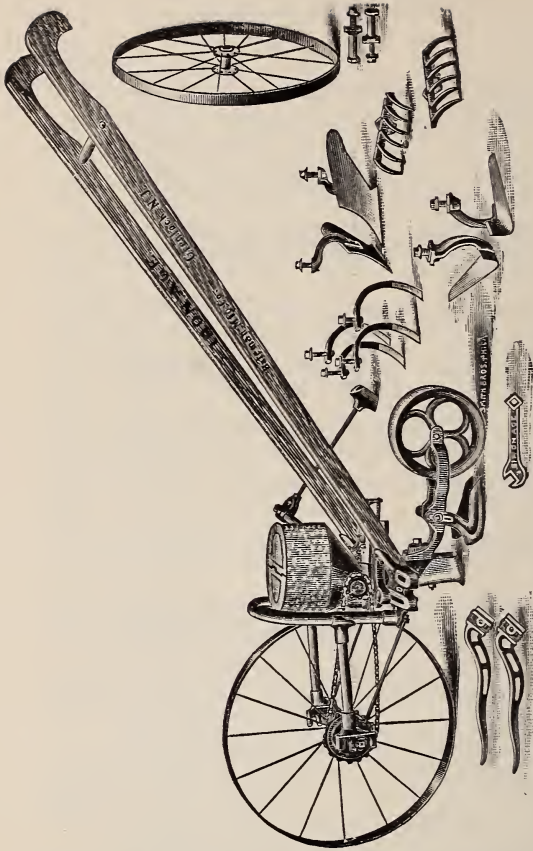
Article.	Price.
<b>Novelty.</b> Pale carmine, laced rose. Medium size.....	.25 .25
<b>Oddity.</b> Pink, edged and laced with rose; oddly curled edges. Medium size.....	.25
<b>Orange Prince.</b> Bright orange pink standard; wings pink. Small.....	.25
<b>Ovid.</b> Bright pink, laced with rose. Large grandiflora type.....	.25
<b>Painted Lady.</b> Standard light rose pink; wings white. Small.....	.25
<b>Peach Blossom.</b> Standard pink, shading to buff; wings soft pink. Large.....	.25
<b>Primrose.</b> Pale primrose yellow, self color. Medium size.....	.25
<b>Princess May.</b> Soft lavender, self color; medium size. Grandiflora type.....	.25
<b>Princess Beatrice.</b> Bright rose, flushed with pale pink. Medium size.....	.25
<b>Princess Louise.</b> (Same as Violet Queen)	.25
<b>Princess of Wales.</b> White, striped with light blue and mauve.....	.25
<b>Princess Victoria.</b> Standard bright scarlet; wings crimson. Large.....	.25
<b>Purple Prince.</b> Maroon standard; wings purple. Medium size.....	.25
<b>Purple Brown Striped.</b> White, striped with dark purple and maroon. Medium size.....	.25
<b>Queen of England.</b> White, of small size. White seed.....	.25
<b>Queen of the Isles.</b> White, striped with red and purplish crimson. Medium size..	.25
<b>Ramona.</b> Creamy white, delicately striped and flaked with soft blush. Large grandiflora type.....	.25
<b>Rising Sun.</b> Orange rose, shading to pale pink. Small.....	.25
<b>Royal Robe.</b> Bright but soft pink self color. Large grandiflora type.....	.25

## NASTURTIUMS—Continued.

Article.	Price.
<b>Senator.</b> Creamy white, striped with purplish maroon and chocolate. Large grandiflora type.....	.25
<b>Splendor.</b> Bright rose pink, self color. Large grandiflora type.....	.25
<b>Splendid Lilac.</b> Standard dull carmine; wings white edged and shaded blue. Medium size.....	.25
<b>Stanley.</b> Very deep maroon, self color; darkest of all. Large.....	.25
<b>The Queen.</b> Standard dull pink; wings light mauve. Medium size.....	.25
<b>Venus.</b> Soft salmon buff, deepening with age. Large grandiflora type.....	.25
<b>Violet Queen.</b> Standard pink; wings violet. Small.....	.25
<b>Vesuvius.</b> Standard shaded crimson; wings violet. Small.....	.25
<b>Waverly.</b> Standard rosy claret; wings blue laced rose. Large grandiflora type..	.25
<b>Mixed.</b> A good mixture, containing many of the newer sorts.....	.15
<b>Cupid.</b> The world renowned dwarf white. It grows from five to six inches high and bears a profusion of large snow white flowers.....	1.00
<b>Red Riding Hood.</b> A new California introduction, in which the standard is undeveloped having the appearance of a hood; wings rose pink.....	.30
<b>Bride of Niagara.</b> A double with rose standards and white wings.....	.30

## NASTURTIUMS.— Ounce Packets.

100 Tall Mixed, a splendid mixture of all shades.	4.00
1,000 " " " " "	37.50
100 Dwarf Mixed, a choice assortment of various colors.....	5.00
1,000 Dwarf Mixed, a choice assortment of various colors.....	47.50



## LIST OF IRON AGE GARDEN TOOLS.

We are Northwestern agents for the Iron Age Garden tools and are in a position to furnish every implement of their manufacture, also any detachments for their implements at the lowest price.

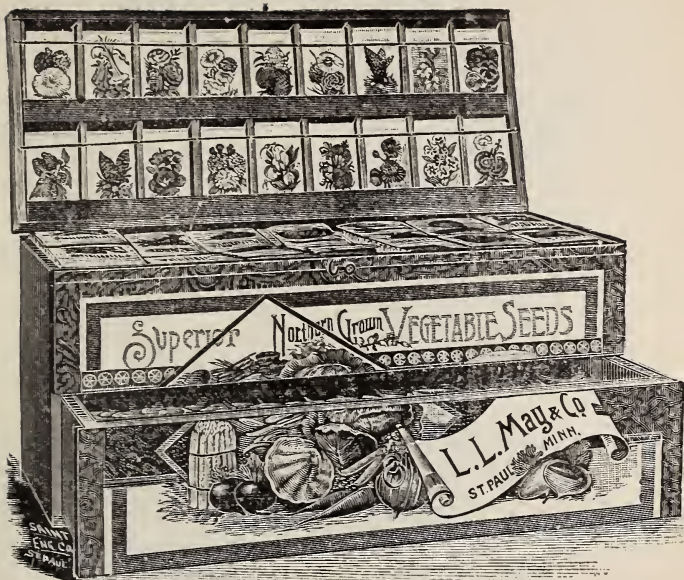
### THE "IRON AGE" CULTIVATOR, PLAIN.

Price No. 1 Plain .....	\$3.50
With plain wheel, add.....	.60
With Lever Wheel, add.....	1.10
With Lever Expander, add.....	.75

## IRON AGE GARDEN TOOLS—Continued.

	Price.
Cultivator, plain, No. 1 Plain.....	\$3.50
With plain wheels add.....	.60
" lever " " .....	1.10
" " expanded, add.....	.75
<b>Horse Hoe, plain</b> .....	4.25
" cultivator combination.....	5.00
" with plain wheels.....	.60
" lever " " .....	1.10
" " " expanded.....	.75
" " " adjustment.....	6.30
" " seven teeth (plain).....	5.60
" complete.....	6.80
Orchard Cultivator, plain.....	7.00
Horse Hoe as cultivator with Furrow closing attachment.....	60.8
Combined Harrow and Cultivator, steel diamond teeth, plain.....	4.25
With lever.....	5.00
For wheels add.....	.60
Sweep attachment.....	.75
Knife Harrow, plain.....	4.00
" with lever.....	4.75
Riding Cultivator, price.....	30.00
With spring pressure lock down.....	31.00
<b>Fixed Wheel Riding Cultivator, complete with one pair of plow shields and fallow tooth attachment, price</b> .....	28.00
<b>Pivot Wheel Cultivator</b> .....	30.00
With spring pressure lock down.....	31.00
And with gong adjusted.....	33.00
Complete with one pair of plows, shields and fallow tooth.....	
<b>Improved Robbins' Potato Planter—</b>	
With fertilizer distributor.....	65.00
Without " " " .....	55.00
Pea sower attachment.....	5.00
Leveler.....	.75
New Model Seed Drill, the best drill in America...	6.00
Double Wheel Hock, with cultivator teeth, plows and rakes.....	6.00
Combined Seed Drill and Wheel Hoe.....	9.00
<b>The Gem</b> as a double wheel hoe.....	5.00
<b>The Jewel</b> Double Wheel Hoe Cultivator and Plow Combined, price complete.....	5.25
With seed hoes only.....	3.50
<b>The Jewel, Single Wheel Hoe, Rake and Plow Combined</b> .....	4.50
<b>The Jewel, Wheel Plow</b> .....	2.25
Combined Barrel, Truck and Hand Cart.....	12.00
Truck.....	7.00
" with barrels.....	9.00
Leaf Rack.....	5.00
Brass Force Pump.....	5.00
Bateman's Hand Garden Plow.....	1.00





## All Vegetable Packets Replenished At 1½ Cents Each

In any Quantities Desired.

Another Great Advantage Over Commission Seeds.

In case you sell out of any variety or varieties during the season, same can be re-ordered from us by mail at a cost of 1½c. per packet and 8c. per pound for postage (50 or 60 packets to the pound). These will be charged to your account, payable June 1st, 1898, same time as Combination Box.

## FLOWER SEEDS.

All 5c. Pkts. furnished at 1½c. All 10c. Pkts. furnished at 3c. TRY ONE OF THESE BOXES.

## BEAUTIFUL BANNERS

Lithographed in Colors, Free With All Orders.

# "Box A" Selection.

## Flat Five Cent Papers Vegetable Seeds.

10 Beet, Early Blood Turnip.	10 Lettuce, Hanson's.
5 " Egyptian Turnip.	2 Musk Melon, Hackensack.
5 " Long Dark Blood.	2 " Green Nutmeg
1 Borecole, German.	2 Water Melon, Phinney's.
5 Cabbage, Wakefield.	5 " " Kolb's Gem.
10 " Winningstadt.	10 Onion, Wethersfield.
5 " Early Summer.	5 " White Portugal.
10 " Late Dutch.	10 " Globe Danvers.
5 " Drumhead.	1 Parsley, Double Curled.
5 Carrot, Danvers.	10 Parsnip, Hollow Crown.
5 " Long Orange.	2 Pepper, Long Red Cayenne.
5 " Short Horn.	2 " Bell or Bull Nose.
1 Cauliflower, Snowball.	20 Raddish, Scarlet Turnip.
1 Celery, White Plume.	10 " Short Top.
5 Cucumber, Green Prolific.	10 " Chartier.
5 " White Spine.	10 " French Breakfast.
5 " Early Frame.	1 " Chinese Rose.
10 " Long Green.	2 Salsify, Sandwich Island.
1 Herbs, Marjoram, sweet.	2 Spinach, Bloomsdale.
1 " Sage.	5 Squash, White Bush.
1 " Summer Savory.	5 " Hubbard.
1 " Summer Thyme.	5 Turnip, Early White Dutch
1 Kohl Rabi, Early White.	5 " White Globe.
1 Leek, American Flag.	5 Rutabaga, Skirving's.
10 Lettuce, Simpson.	10 Tomato, Acme.
5 " Market Gardener.	10 " Red Trophy.
10 " Prizehead.	10 " Volunteer.

## Flat Five Cent Papers Flower Seeds.

5 Aster, China Mixed.	5 Mignonette, Sweet.
5 Alyssum, Sweet.	5 Nasturtium, tall.
5 Balsam, all colors mixed.	10 Pansy, fine mixed.
5 Morning Glory.	5 Phlox, Drummond's.
5 Candytuft, Mixed.	5 Petunia, Hybrida.
5 " White.	5 Sweet Peas.
5 Dianthus Chinensis.	5 Verbena, Hybrida.

## Flat Ten Cent Papers Flower Seeds.

3 Asters, New Victoria.	5 Pansy, English Show.
3 Balsam, May's Camelia.	3 Petunia, Hybrida.
2 Carnation, Marguerite.	3 Poppy, Mikado.
3 Hollyhock, May's Prize.	2 Stocks, fine mixed.
2 Mignonette, May's Spiral.	4 Sweet Peas, Eckford's Mxd.

## Square Packages.

Containing ½ pints Peas, Beans and Corn, and ½ lbs. Turnip Seeds.

2 Beans, Golden Wax.....	.15	2 Peas, Champ. of Eng....	.15
2 " Dwarf Blk. Wax. .15		3 Corn, Stowell's Everg'n	.15
2 " Yellow 6 Weeks. .15		2 " Early Minnesota. .15	
2 " Imp. Red Valent. .15		1 Turnip, E. Wht. Dutch..	.25
2 Peas, American Wonder .15		2 " White Globe.....	.25
3 " First and Best.....	.15	2 Rutabaga, May's Im-	
5 " Little Gem.....	.15	proved Am. P. T.....	.25

## Summary of "Combination Box A."

300 Flat Papers Vegetable Seeds.....@	5c	\$15.00
75 " Flower Seeds.....@	5c	3.75
30 " Flower Seeds.....@	10c	3.00
25 Square Packages.....@	15c	3.75
5 " ".....@	25c	1.25
		<u>\$26.75</u>

Wholesale Price of "Combination Box A," \$10.00.

SHIPPING WEIGHT, 40 LBS.



## "Box B." Selection.

### Flat Five Cent Papers Vegetable Seeds.

10 Beet, Eclipse. 10 " Early Blood Turnip. 10 " Long Dark Blood. 5 Cabbage, Wakefield. 5 " Winningstadt. 10 " Flat Dutch. 10 " Early Summer. 10 " Late Dutch. 10 " Late Drumhead. 10 Carrot, Danvers. 10 " Stump Root. 10 " Short Horn. 4 Cauliflower, Snowball. 5 Celery, White Solid. 5 " Self Blanching. 10 Cucumber, White Spine. 10 " Early Frame. 10 " Boston Pickling. 20 " Long Green. 2 Herbs, Majoram, sweet. 2 " Sage. 2 " Summer Savory. 2 " Thyme. 2 Kohl Rabi, Early White. 15 Lettuce, Curled Simpson. 10 " Black Simpson. 10 " Tennis Ball. 15 " Prize Head. 10 " Hanson's. 5 Musk Melon, Cantaloupe. 5 " " Nutmeg.	5 Water Melon, Rattlesnake. 5 " Cuban Queen. 5 " Kolb's Gem. 10 Onion, Red Weathersfield. 10 " White Globe. 10 " Globe Danvers. 2 Parsley Curled. 5 Parsnip, White Sugar. 10 " Hollow Crown. 5 Pepper, Bell or Bull Nose. 5 Pumpkin, Large Cheese. 25 Radish, Scarlet Turnip. 20 " Short Top. 10 " Turnip, White Tip. 10 " Chartier. 10 " French Breakfast. 5 " White Strasburg. 5 " Black. Round. 2 Salsify, Long White. 2 Spinach, Bloomsdale. 5 Squash, White Bush. 10 " Hubbard 10 Turnip, Early White Dutch. 10 " White Globe. 10 " S. L. 10 Rutabaga, Skirving's 10 Tomato, Acme. 10 " Perfection. 10 " Mikado. 10 " Extra Early Red.
-------------------------------------------------------------------------------------------------------------------------------------------------------------------------------------------------------------------------------------------------------------------------------------------------------------------------------------------------------------------------------------------------------------------------------------------------------------------------------------------------------------------------------------------------------------------------------------------------------------------------------------------------------------------------------------------------------------------------------	------------------------------------------------------------------------------------------------------------------------------------------------------------------------------------------------------------------------------------------------------------------------------------------------------------------------------------------------------------------------------------------------------------------------------------------------------------------------------------------------------------------------------------------------------------------------------------------------------------------------------------------------------------------------------------------------------------------------------------

### Flat Five Cent Papers Flower Seeds.

5 Aster, China Mixed. 3 Balsam, fine mixed. 5 Morning Glory. 5 Candytuft, mixed. 5 Dianthus Chinesis. 8 Mignonette, Sweet. 5 Marigold, French. 5 Nasturtium, tall.	3 Portulacca. 5 Pansy, fine mixed. 5 Pholox, Drummond. 5 Petunia, Hybrida. 5 Sweet Peas. 5 Verbena, Hybrida. 3 Sweet William. 3 Zinnia Elegans.
-----------------------------------------------------------------------------------------------------------------------------------------------------------------------------------------	----------------------------------------------------------------------------------------------------------------------------------------------------------------------

### Flat Ten Cent Papers Flower Seeds.

3 Asters, Paony Flowered. 2 Balsam, May's Comelia. 2 Carnation, Marguerite. 3 Dianthus, Heddewegii. 2 Hollyhock, May's Prize.	4 Petunia, Grandiflora. 4 Pansy, English Show. 3 Stocks, choice mixed. 4 Sweet Peas, Eckford's 3 Verbena Hybrida.
-------------------------------------------------------------------------------------------------------------------------------------------	-------------------------------------------------------------------------------------------------------------------------------

### Square Packages.

Containing ½ pints Peas, Beans and Corn, and ½ lb. Turnip Seed.

5 Beans, Golden wax @\$0.15 5 " Dwarf Black " " .15 5 " Yellow 6 Weeks " " .15 5 " Imp. Red Valentine .15 5 Peas, American Wonder.15 5 " First and Best .15 5 " Little Gem .15	5 Peas, Champion of Eng- land @\$0.15 5 Corn, Early Minnesota.15 5 " Stowell's Evergreen.15 2 Turnip, White Dutch .25 4 " White Globe .25 4 Rutabaga, Skirving's .25
--------------------------------------------------------------------------------------------------------------------------------------------------------------------------------------------------	----------------------------------------------------------------------------------------------------------------------------------------------------------------------------------------

### Summary of "Combination Box B."

500 Flat Papers Vegetable Seeds.....	@	5c	\$25.00
75 " Flower Seeds.....	"	5c	3.75
30 " Flower Seeds.....	"	10c	3.00
50 Square Packages.....	"	15c	7.50
10 " ".....	"	25c	2.50

**\$41.75**

Wholesale Price of "Combination Box B," \$15.50.

Shipping Weight, 65 lbs.

# "Box C." Selection.

## Flat Five Cent Papers Vegetable Seeds.

<p>10 Beet, Eclipse.          10 " Early Blood Turnip.          10 " Long Dark Blood.          5 Borecole, German.          10 Cabbage, Wakefield.          10 " Winningstadt.          20 " Early Flat Dutch.          10 " Surehead.          10 " Early Summer,          15 " Late Flat Dutch.          10 " Late Drumhead.          10 Carrot, Danvers.          10 " Stump Root.          5 " Short Horn.          5 " Long Orange.          5 Cauliflower, Snowball.          5 Celeriac.          5 Celery, White Plume.          5 " White, Solid.          10 Cucumber, Long Spine.          10 " Green Prolific.          5 " Early Frame.          10 " Green Cluster.          10 " Long Green.          10 " Short Green.          4 Herb, Majoram, sweet.          3 " Sage.          4 " Summer Savory          4 " Summer Thyme.          5 Kohl Rabi, Early White.          5 Leek, American Flag.          20 Lettuce, Simpson,          10 " Black Simpson.          30 " Prize Head.          20 " Hanson's.</p>	<p>10 Lettuce, Drumhead.          5 Musk Melon, Canteloupe.          5 " Hackensack.          5 " Green Nutmeg.          10 Water Melon, Pinney's.          10 " Ice Cream.          10 " Kolb's Gem.          15 Onion, Red Wethersfield.          10 " White Portugal.          15 " Globe Danvers.          10 Parsley, Double Curled.          10 Parsnip, Long White Sugar          5 Pepper, Long, Red Cayene.          5 " Bell or Bull Nose.          5 Pumpkin, Sugar.          20 Radish, Scarlet Turnip.          20 " Short Top.          10 " Chartier.          10 " Early White Turnip          20 " French Breakfast.          10 " Strasburg.          10 " White Stuttgart.          10 " Chinese Rose.          5 Salsify, Long White.          5 Spinach, Bloomsdale.          10 Squash, White Bush.          10 " Hubbard.          10 Turnip, Early White Dutch.          20 " White Globe.          20 Rutabaga, Skirving's.          10 Tomato, Acme.          10 " Perfection.          10 " Favorite.          10 " Red Trophy.          10 " Paragon.</p>
------------------------------------------------------------------------------------------------------------------------------------------------------------------------------------------------------------------------------------------------------------------------------------------------------------------------------------------------------------------------------------------------------------------------------------------------------------------------------------------------------------------------------------------------------------------------------------------------------------------------------------------------------------------------------------------------------------------------------------------------------------------------------------------------------------------------------------------------------------------------------------------------------------------------------------------------------------------------------------------------------------------------------------------------------------------------------------------------------------------------------------------------------------------------------	-------------------------------------------------------------------------------------------------------------------------------------------------------------------------------------------------------------------------------------------------------------------------------------------------------------------------------------------------------------------------------------------------------------------------------------------------------------------------------------------------------------------------------------------------------------------------------------------------------------------------------------------------------------------------------------------------------------------------------------------------------------------------------------------------------------------------------------------------------------------------------------------------------------------------------------------------------------------------------------------------------------------------------------------------------------------------------------------------------------------------------------------------------------------------------------------------------------------------------

## Flat Five Cent Papers Flower Seeds.

<p>5 Alyssum, Sweet.          5 Aster, China Mixed.          5 Balsam, all colors mixed.          10 Morning Glory.          5 Chrysanthemum, Tricolor.          10 Candytuft, mixed.          10 " White.          10 Dianthus Chinesis.          5 Lobelia, Blue.          10 Mignonette, Sweet.</p>	<p>10 Marigold, Gold Striped.          10 Nasturtium, tall mixed.          5 " dwarf mixed.          5 Portulacca, single mixed.          10 Pansy, finest mixed.          5 Phlox, Drummond.          5 Poppy, English mixed.          10 Petunia, single mixed.          10 Sweet Peas, mixed.          5 Verbena Hybrida.</p>
--------------------------------------------------------------------------------------------------------------------------------------------------------------------------------------------------------------------------------------------------------------------------------------------------------------------------------------------	----------------------------------------------------------------------------------------------------------------------------------------------------------------------------------------------------------------------------------------------------------------------------------------------------------------------------------------------------------------------

## Flat Ten Cent Papers Flower Seeds.

<p>5 Asters, Pæony Flowered.          5 Balsam, May's Camelia.          3 Carnation, Marguerite.          3 Dianthus, Heddewegii.          3 Hollyhock, May's Prize.          5 Petunia, Hybrida.</p>	<p>6 Pansy, English Show.          3 Poppy, Mikado.          5 Stocks, German mixed.          5 Sweet Peas, Eckford's          Mixed.          5 Verbena, May's Mammoth.</p>
---------------------------------------------------------------------------------------------------------------------------------------------------------------------------------------------------------------------------	--------------------------------------------------------------------------------------------------------------------------------------------------------------------------------------------------

## Square Packages.

Containing ½ pints Peas, Beans and Corn, and ½ lbs. Turnip Seed.

<p>8 Beans, Golden Wax @ \$0.15          7 " Dwarf Black " .15          8 " Yellow 6 Weeks .15          7 " Imp. Red Valentine .15          5 Peas, American Wonder .15          5 " First and Best .15          10 " Little Gem .15</p>	<p>5 Peas, Champion of Eng. .15          5 " Marrowfat @ \$0.15          10 Corn, Early Minnesota .15          10 " Stowell's Evergreen .15          3 Turnip, White Dutch .25          4 " White Globe .25          5 Rutabaga, Am. P. T. .25</p>
------------------------------------------------------------------------------------------------------------------------------------------------------------------------------------------------------------------------------------------------------------------	----------------------------------------------------------------------------------------------------------------------------------------------------------------------------------------------------------------------------------------------------------------------------

## Summary of "Combination, Box C."

700 Flat Papers Vegetable Seeds.....	@ 5c	\$35.00
150 " Flower Seeds.....	" 5c	7.50
48 " Flower Seeds.....	" 10c	4.80
80 Square Packages.....	" 15c	12.00
12 " ".....	" 25c	3.00
		<b>\$62.30</b>

Wholesale Price of "Combination Box C," \$23.00.

Shipping Weight, 90 lbs.

# "Box D" Selection.

## Flat Five Cent Papers Vegetable Seeds.

10 Beet, Eclipse.	10 Lettuce, Drumhead.
10 " Blood Turnip.	5 Musk Melon, Cantelope.
10 " Long Blood.	5 " Hackensack.
10 Cabbage, Wakefield.	5 " Nutmeg.
10 " Winningstadt.	10 Water Melon, Phinney's.
20 " Flat Dutch.	10 " Ice Cream.
10 " Sure Head.	10 " Kolb's Gem.
10 " Summer.	15 Onion, Wethersfield.
15 " Flat Dutch.	10 " White Portugal,
20 " Filkerkraut.	15 " Globe Danvers.
5 Carrot, Danvers.	2 Parsley, Double Curled.
5 " Stump Root.	10 Parsnip, Sugar.
5 " Short Horn.	5 Pepper, Cayenne.
5 " Orange.	5 " Bell.
5 Cauliflower, Snowball.	2 Pumpkin, Sugar.
5 Celery, White Plume,	20 Radish, Scarlet Turnip.
3 " White, Solid.	20 " Long Scarlet.
10 Cucumb'r, Ex. L. Wh. Spine.	10 " Chartier.
10 " Green Prolific.	10 " White Turnip.
5 " Early Frame.	20 " French Breakfast.
10 " Green Cluster.	10 " Strasburg.
10 " Long Green.	10 " White Stuttgart.
10 " Short Green.	5 " Rose, Winter.
1 Herbs, Marjoram.	5 Salsify, Long White.
3 " Sage.	5 Spinach, Bloomsdale.
1 " Savory.	5 Squash, W. B. Scalloped.
1 " Thyme.	10 " Hubbard.
1 Kohl Rabi, Early White.	5 Turnip, Early Dutch.
1 Leek, American Flag.	5 Rutabaga, Skirving's.
20 Lettuce, E. C. Simpson.	10 Tomato, Acme.
10 " B. S. Simpson.	10 " Perfection.
30 " Prize Head.	10 " Favorite.
20 " Hanson's.	10 " Red Trophy (sel.)

## Square Packages.

Containing 1/2 pints Beans and Corn, 1/2 lbs. Turnip Seed and pints Peas.

8 Beans, Golden Wax....@ 15c	5 Peas, Champ. of Eng.@ 20c
7 " Black Wax ..... " 15c	5 " Marrowfat ..... " 20c
2 " 6 Weeks..... " 15c	10 Corn, Minnesota..... " 15c
3 " Red Valentine... " 15c	10 " Evergreen..... " 15c
5 Peas, Am. Wonder.... " 20c	3 Turnip, Early Dutch. " 25c
5 " First and Best... " 20c	4 " Pur. Top Fl't " 25c
5 " Little Gem..... " 20c	5 Rutab'ga, May's P.T. " 25c

## Summary of "Combination Box D."

600 Flat Papers Vegetable Seeds.....@	5c	\$30.00
40 Square Packages.....	15c	6.00
12 " ".....	25c	3.00
25 " ".....	20c	5.00
		<u>\$44.00</u>

Wholesale Price of "Combination Box D" \$17.50.

SHIPPING WEIGHT, 90 LBS.

## "Box E" Selection.

### Flat Five Cent Papers Vegetable Seeds.

10 Beet, Eclipse. 10 " Blood Turnip. 5 " Long Blood, 5 Cabbage, Wakefield, 15 " Winningstadt. 10 " Flat Dutch. 10 " L. Flat Dutch. 10 " Filderkraut. 10 Carrot, Danvers. 10 " Stump Root. 5 Cauliflower, Snowball. 5 Celery, White Solid. 5 " Self Blanching. 10 Cucumber, White Spine. 10 " Early Frame. 10 " Boston Pickli'g. 10 " Long Green. 1 Herbs, Marjoram. 5 " Sage. 1 " Savory. 1 " Thyme. 1 Kohl Rabi, Early White. 15 Lettuce, E. C. Simpson. 10 " B. S. Simpson 10 " Tennis Ball, W. S'd. 15 " Prize Head. 10 " Hanson's 5 Musk Melon, Canteloupe.	5 Musk Melon, G. Nutmeg. 5 Water Melon, Rattlesnake. 5 " Cuban Queen. 5 " Kolb's Gem. 10 Onion, Wethersfield. 10 " White Globe. 10 " Y. Danvers. 1 Parsley, Double Curled. 5 Parsnip, Sugar. 10 " Hollow Crown. 5 Pepper, Bell. 5 Pumpkin, Cheese. 25 Radish, Scarlet Turnip. 20 " Long Scarlet. 10 " Scarlet, Turnip. 10 " Chartier. 10 " French Breakfast. 5 " Strasburg. 5 " Spanish, Round. 5 Salsify, Long White. 2 Spinach, Bloomsdale. 3 Squash, W. B. Scalloped. 10 " Hubbard. 10 Turnip, Early Dutch. 10 Tomato, Acme. 10 " Perfection. 10 " Mikado. 5 " Early Red.
--------------------------------------------------------------------------------------------------------------------------------------------------------------------------------------------------------------------------------------------------------------------------------------------------------------------------------------------------------------------------------------------------------------------------------------------------------------------------------------------------------------------------------------------------------------------------------------------------------------------------------------------------	---------------------------------------------------------------------------------------------------------------------------------------------------------------------------------------------------------------------------------------------------------------------------------------------------------------------------------------------------------------------------------------------------------------------------------------------------------------------------------------------------------------------------------------------------------------------------------------------------------------------------------------------------------------

### Square Packages.

Containing ½ pints Beans and Corn, ½ lbs. Turnip Seed  
and pints Peas.

5 Beans, Golden Wax....@ 15c 5 " Dwarf Wax..... " 15c 2 " 6 Weeks..... " 15c 3 " Red Valentine.. " 15c 5 Peas, Am. Wonder..... " 20c 5 " First and Best... " 20c 3 " Little Gem..... " 20c	2 Peas, Champ. of Eng...@ 20c 5 Corn, Minnesota..... " 15c 5 " Evergreen..... " 15c 2 Turnip, Early Dutch... " 25c 4 " Pur. Top Flat " 25c 4 Rutabaga, Skirving's.. " 25c
--------------------------------------------------------------------------------------------------------------------------------------------------------------------------------------------------------------	------------------------------------------------------------------------------------------------------------------------------------------------------------------------------------------

### Summary of "Combination Box E."

450 Flat Papers Vegetable Seeds.....@	5c	\$22.50
25 Square Packages.....	15c	3.75
10 " ".....	25c	2.50
15 " ".....	20c	3.00
		\$31.75

**Wholesale Price of "Combination Box E" \$13.00.**

**SHIPPING WEIGHT 70 LBS.**

# \$18.00 Profit

On an Investment of Only \$8.00, and that doesn't have to be paid until June first.

## "EASEL CABINET."

Is the Handsomest Low Priced Box ever offered the dealers of America. Its contents include such sorts as we have, by years of experience, found the most saleable. The small space it occupies and the low price at which it is sold, make it especially desirable for Groceries, General Stores, Druggists, etc., who do not care to order a larger or more costly box.

### Flat Five Cent Papers Vegetable Seeds.

4 Beans, Golden Wax.	5 Water Melon, Pinney's.
4 " Dwarf Black Wax.	10 Musk " Hackensack.
4 " Red Valentine.	5 Onion, Wethersfield.
5 Beet, Early Blood Turnip.	10 " Globe Danvers.
5 " Red Egyptian.	5 Parsley, Double Curled.
5 " Long Dark Blood.	5 Parsnip, Hollow Crown.
10 Cabbage, Wakefield.	4 Peas, First and Best.
10 " Flat Dutch.	4 " Champion of England
10 " Brunswick.	3 Pepper, Bell or Bull Nose.
10 Carrot, French Forcing.	2 " Golden Dawn.
10 " Long Orange.	5 Pumpkin, Large Cheese.
5 Celery, White Plume.	17 Radish, Scarlet Turnip.
4 Corn, Early Minnesota.	15 " Short Top.
4 " Stowell's Evergreen.	15 " Scarlet White Tip.
10 Cucumber, White Spine.	5 Spinach, Long Standing.
10 " Cluster.	5 Squash, Hubbard.
10 " Long Green.	5 " Sibley.
10 Herbs, Assorted.	10 Turnip, White Globe.
15 Lettuce, Simpson.	5 Tomato, Acme.
15 " Prize Head.	5 " Beauty.
15 " Drumhead.	

### Flat Ten and Fifteen Cent Papers Vegetable Seeds.

5 Onion, Perfect Pickling .10	5 Water Melon, Ice King, .10
15 Lettuce, All Cream..... .10	10 Tomato, Ex. Ear. Tree, .15

### Flat Five Cent Paper Flower Seeds.

10 Asters, Mixed.	5 Petunia, Mixed Varieties.
5 Alyssum, Sweet.	5 Poppy, Mixed.
10 Mignonette, Sweet.	5 Phlox, Mixed.
5 Morning Glory, Tall.	10 Sweet Peas, Mixed.
10 Nasturtium, Mixed.	5 Verbenas, Mixed.
5 Pansy, Mixed.	

### Flat Ten Cent Papers Flower Seeds.

5 Dianthus, Double Imperial.	2 Pansy, King of Yellows.
5 Marigold, Eldorado.	3 Petunia, Rose Pink.
5 Pansy, Faust, Black.	2 Peerless White.
3 " Snow Queen.	

### Contents of May's "EASEL CABINET."

315 Vegetable Seed Packets.....	@ .05.....	\$15.75
10 " " " .....	@ .15.....	1.50
25 " " " .....	@ .10.....	2.50
75 Flower " " .....	@ .05.....	3.75
25 " " " .....	@ .10.....	2.50
	Retail Price, -	\$26.00

**WHOLESALE PRICE, \$8.00.**

**SHIPPING WEIGHT, 25 LBS.**

# OUR NEW REVOLVING SEED CASE . . . .

Is the most complete and Convenient Cabinet for Seeds that has ever been placed on the market for the price.

## FLAT FIVE CENT PAPERS VEGETABLE SEEDS.

10 Bean, Golden Wax.	30 Lettuce, Hanson's.
20 " Imp. Red Valentine.	6 Musk Melon, Hackensack.
20 Beet, Early Blood Turnip.	6 " Nutmeg.
20 " Dark Red Egyptian.	6 Water Melon, Phinney's.
20 " Long Dark Blood.	15 " Kolb's Gem.
15 Cabbage, Wakefield.	20 Onion, Red Wethersfield.
15 " Winningstadt.	15 " White Portugal.
15 " Flat Dutch.	25 " Globe Danvers.
15 " Summer.	15 Peas, First and Best.
15 " Late Flat Dutch.	10 " Champion of Engl'd.
15 " Drumhead.	6 Parsley, Double Curled.
15 Carrot, Half Long Danvers	20 Parsnip, Hollow Crown.
10 " Long Orange.	6 Pepper, Cayenne.
10 " Short Horn.	6 " Bell or Bull Nose.
3 Cauliflower, Snowball.	25 Radish, Scarlet Turnip.
3 Celery, White Plume.	25 " Short Top.
10 Corn, Early Minnesota.	15 " Chartier.
15 " Stowell's Evergreen.	15 " Scarlet White Tip.
15 Cucumber, Green Prolific.	25 " French Breakfast.
15 " Spine.	3 " Chinese Rose.
10 " Early Frame.	6 Salsify, Sand wich Island.
20 " Long Green.	6 Spinach, Bloomsdale.
3 Herbs, Marjoram, Sweet.	10 Squash, White Bush.
3 " Sage.	10 " Hubbard.
3 " Summer Savory.	15 Turnip, Early White Dutch
3 " Summer Thyme.	15 " White Globe.
3 Kohl Rabbi, Early White.	15 Rutabaga, Skirvings.
3 Leek, American Flag.	20 Tomato, Acme.
30 Lettuce, Er. Curled Simpson	30 " Red Trophy.
15 " Gardener.	30 " Volunteer.
30 " Prizehead.	

## FLAT TEN AND FIFTEEN CENT PAPERS VEGETABLE SEEDS.

10 Onion, Perfect Pickling.	10 Water Melon, Ice King.
15 Lettuce, All Cream.	15 Tomato, Ex. Er. Tree...15c

## FLAT FIVE CENT PAPERS FLOWER SEEDS.

10 Asters, Mixed.	5 Petunia, Mixed Varieties.
5 Alyssum, Sweet.	5 Poppy, Mixed.
10 Mignonette, Sweet.	5 Phlox, Mixed.
5 Morning Glory, Tall.	10 Sweet Peas, Mixed.
10 Nasturtiums, Mixed.	5 Verbenas, Mixed.
5 Pansy, Mixed.	

## FLAT TEN CENT PAPERS FLOWER SEEDS.

5 Dianthus, Double China.	2 Pansy, Sunshine.
3 Hollyhocks, Double Mixed.	2 " King of Yellows.
5 Marigold, Eldorado.	3 Petunia, Rose.
3 Pansy, Faust Black.	2 " Peerless White.

## SUMMARY OF "REVOLVING SEED CASE."

850 Flat Papers Vegetable Seeds.....	@ 5c	\$42.50
35 " " " " .....	" 10c	3.50
15 " " " " .....	" 15c	2.25
75 " " Flower Seeds.....	" 5c	3.75
24 " " " " .....	" 10c	2.50

Retail price..... \$54.50

Wholesale Price of Revolving "Seed Case," \$15.00.

Shipping Weight, 60 lbs.

OUR . . .

## "DEALER'S ASSORTMENT"

—OF—

# Packet and Bulk Seed.

Inquiries coming from all sections for a small general line of seeds decided us to make up the following assortment in packet and bulk, such as we have found to be most in demand and the amounts of each which are generally ordered by storekeepers that carry a small supply of seeds.

Price, \$15.00.

## Flat Five Cent Papers Vegetable Seeds.

5 Beans, Golden Wax.	10 Onion, Globe Danvers.
3 " Red Valentine.	5 Parsley, Double Curled.
15 Beet, Early Blood Turnip.	5 Parsnip, Hollow Crown.
15 " Early Egyptian.	5 Peas, First and Best.
5 Cabbage, Wakefield.	5 " Champion of England
5 " Late Flat Dutch.	4 Pumpkin, Large Cheese.
10 Carrot, Danvers.	25 Radish, Scarlet Turnip.
15 Corn, Early Minnesota.	20 " Short Top.
3 " Stowell's Evergreen.	10 " Scarlet, White Tip.
15 Cucumber, Long Green.	5 Spinach, Long Standing.
5 " Cluster.	5 Squash, White Bush.
20 Lettuce, Simpson.	5 " Hubbard.
20 " Prize Head.	10 Turnip, White Dutch.
5 Water Melon, Phinney's.	15 Tomato, Acme.
5 Musk Melon, Hackensack.	5 " Mikado.
20 Onion, Red Wethersfield.	

## List of Bulk Seeds, with Average Catalogue Prices.

4 Qts. Peas, First and Best.....	\$0.80	1 lb. Radish, Scarlet White Tip.....	.60
4 Qts. Peas, American Wonder.....	1 00	1/2 lb. Radish, Short Top.....	.30
4 Qts. Peas, Champion of England.....	1.00	2 lbs. Beet, Early Blood Turnip.....	1.00
4 Qts. Beans, Golden Wax.....	1.00	1 lb. Beet, Long Smooth Blood.....	.50
4 Qts. Beans, Refugee....	.80	2 lbs. Turnip, White Dutch.....	.90
4 " " Valentine. .80		2 lbs. Turnip, White Globe.....	1.00
8 " Corn, Early Minnesota.....	1.60	1/2 lb. Carrot, Scarlet Horn... ..	.40
8 Qts. Corn, Stowell's Evergreen .....	1.60	1/2 lb. Carrot, Half Long Danvers.....	.35
1/2 lb. Onion, White Globe	1.00	1 lb. Carrot, Yellow Belgian.....	.50
1 " " Red Wethersfield.....	1.00	3 lbs Rutabaga, Skirving's.....	1.35
1/2 lb. Onion, Globe Danvers.....	.50	3 lbs. Mangel, Long Red	1.20
1/2 lb. Lettuce, Simpson..	.50		
1/2 " " Drumhead	.45		
1 lb. Radish, Scarlet Turnip.....	.50		

## Summary of "Dealer's Assortment."

300 Flat Papers Vegetable Seeds at 5c.....	\$15.00
Bulk Seeds, as per list above.....	20.65

Retail Price.....\$35.65

Shipping Weight. about 160 lbs.

# DRUGGISTS' BOXES OF FLOWER SEEDS.

Druggists' Box No. 1 Costs \$4.50, Sells for \$12.50.

## Flat Five Cent Papers Flower Seeds.

3 Antirrhinum.	5 Dianthus or P'ks	3 Nigella.
2 Ageratum, Mex.	5 Four O'clock.	2 Nemophila.
5 Asters, Mixed.	2 Forget-me-not.	10 Pansy, Fin. M'd.
4 Alyssum, Sweet.	3 Globe Amaranth	5 Petunia, Mixed.
2 Adonis Aestiv. valis.	3 Gaillardia.	3 Poppy, Mixed.
3 Balsam, Mixed.	4 Glaucium Lu-	3 Phlox, Mixed.
4 Calendula, M'x'd.	teum.	2 Portulaca, M'd.
2 Calliopsis.	4 Godetia, Mixed.	2 Ricinus, Mixed.
2 Cockscomb, M'd.	2 Lobelia, Mixed.	10 Sweet Peas, M'd
2 Chrysanthemum.	4 Marigold, Mx'd.	4 Sweet Will am.
2 Cypress Vine.	5 Mign'ette, Swe't	2 Scarlet Sage.
3 California Poppy.	4 Morn. Glory, T.	3 Schizanthus.
5 Centaurea Cyan's	3 " " D.	3 Sweet Rocket.
1 Canterbury Bell.	3 Mourning Bride.	5 Verbena, Mixed.
2 Candytuft, Mx'd.	10 Nasturtium, T.	3 Wallflower, M'd
2 " White.	5 " D'f.	4 Zinnia, Mixed.

## Flat Ten Cent Papers Flower Seeds.

1 Aster, Delicata.	1 Daisy or Bellis.	2 Pansy, Sunshine.
1 " Snowball.	1 Hollyhock, Do'ble	1 Stocks, German
1 " Victor a M.	Mixed.	Mixed.
1 Balsam, Maiden's	2 Pansy, S. Queen.	1 Salpiglossis.
Blush.	2 " Faust.	2 Verbena, May's
2 Dianthus, Double	2 " King of	Mam. Mixed.
China.	Yellows.	

## Flat Twenty Cent Papers Flower Seeds.

These Seeds are all Mixed.

2 Asters, Goliath.	2 Pansy, Imperial.	2 Poppy, Fin. Ger.
2 Carnation, Choice	2 Petunia, Fancy.	

Druggists' Box No. 2 Costs \$6.50, Sells for \$19.75.

## Flat Five Cent Papers Flower Seeds.

5 Antirrhinum, M.	7 Dianthus or P'ks	5 Nasturtium,
4 Ageratum, Mexi-	8 4 O'clocks, Mx'd	Dwarf Mixed.
canum Blue.	4 Forget-me-not.	4 Nigella.
7 Asters, Mixed.	5 Globe Amaranth	3 Nemophila, M.
6 Alyssum, Sweet.	4 Gaillards, Mx'd.	15 Pansy, Finest M.
3 Adonis Aestiv. valis.	6 Glaucium, Lu-	7 Petunia, Mixed.
5 Balsams, Mixed.	teum.	15 Poppy, Mixed.
6 Calendula, Mixed.	7 Godetia, Mixed.	4 Phlox, Mixed.
3 Calliopsis, Mixed.	5 Lobelia, Mixed.	3 Portulaca, Mx'd
3 Cockscomb, Mx'd	6 Marigold, Mx'd,	3 Ricinus, Mixed.
3 Chrysanthemum.	10 Mign'ette, Sw't.	15 Sweet Peas, M.
3 Cypress Vine.	5 Morning Glory.	6 Sweet William.
5 California Poppy.	Tall.	3 Salvia, Scarlet.
5 Ceneaura Cy'nus	5 Morning Glory,	6 Schizanthus.
2 Canterbury Bell	Dwarf.	6 Sweet Rocket.
or Campanula.	4 Mourning Brld.	10 Verbena, Mixed.
9 Candytuft, Mx'd.	15 Nasturtium, Tall	3 Wallflower, M.
3 Candytuft, Wh.	Mixed.	4 Zinnia, Mixed.

## Flat Ten Cent Papers Flower Seeds.

1 Aster, Delicata.	2 Daisy or Bellis.	3 Pansy, Sunshine.
1 " Snowball.	2 Hollyhock, D'uble	2 Stocks, German
2 " Victoria M.	Mixed.	Mixed.
2 Balsam, Maiden's	3 Pansy, S. Queen.	2 Salpiglossis.
Blush.	2 " Faust.	4 Verbena, May's
2 Dianthus, Double	2 " King of	Mammoth.
China.	Yellows.	

## Flat Twenty Cent Papers Flower Seeds.

These Seeds are all Mixed.

3 Asters, Goliath.	4 Pansy, Imperial.	3 Poppy, German.
3 Carnation, Choice	2 Petunia, Fancy.	



# LIST OF STANDARD VARIETIES OF VEGETABLE AND FLOWER SEEDS.

## Flat Five Cent Papers Vegetable Seeds.

Pkts.		Pkts.	
.....	Beans, Golden Wax	.....	Mustard, Curled
.....	“ Dwarf Black Wax	.....	Okra, Tall
.....	“ Valentine	.....	“ Dwarf
.....	“ Refguae	.....	“ Velvet Pod
.....	Beets, Eclipse	.....	Onion, White Globe
.....	“ Blood Turnip	.....	“ Wetherfield
.....	“ Egyptian Turnip	.....	“ Globe Danvers
.....	“ Long Dark Blood	.....	“ The Sultan
.....	Collards, Georgia Selected	.....	Parsley, Double Curled
.....	“ True Southern	.....	Parsnip, Hollow Crown
.....	Cabbage, All Seasons	.....	Peas, First and Best
.....	“ Wakefield	.....	“ McLean's Advancer
.....	“ Dutch	.....	“ Champion
.....	“ Brunswick	.....	Pepper, Bell or Bull Nose
.....	Carrot, French Forcing	.....	“ Golden Dawn
.....	“ Long Orange	.....	Pumpkin, Large Cheese
.....	“ Guerande	.....	“ Sugar
.....	Cauliflower, Early Paris	.....	Radish, White Turnip
.....	Celery, White Plume	.....	“ Short Top
.....	“ Golden Heart	.....	“ White Tip
.....	“ White Solid	.....	“ Strasburg
.....	Corn, Early Minnesota	.....	“ Scarlet Turnip
.....	“ Evergreen	.....	Salsify, Long White
.....	Cucumbers, Russian	.....	Spinach, Long Standing
.....	“ White Spine	.....	Squash, Hubbard
.....	“ Cluster	.....	“ Crookneck
.....	“ Long Green	.....	“ Sibley
.....	Egg Plant, Imp. New York	.....	Turnip, Early White Dutch
.....	Lettuce, Simpson	.....	“ White Globe
.....	“ Black Simpson	.....	“ White Egg
.....	“ Prize Head	.....	Tomato, Acme
.....	Musk Melon Hackensack	.....	“ Beauty
.....	“ Osage	.....	“ Perfection
.....	Mustard, Brown	.....	Water Melon, Kolb's Gem
.....	“ White	.....	“ Phinney's

## Flat Five Cent Papers Flower Seeds.

.....	Alyssum, Sweet	.....	Nasturtium, Dwarf
.....	Asters, Mixed	.....	Pansy, Mixed
.....	Amaranthus	.....	Petunia, Mixed
.....	Calendula, Mixed	.....	Poppy, Mixed
.....	Dianthus, Mixed	.....	Phlox, Mixed
.....	Four O'clocks	.....	Portulaca, Mixed
.....	Forget-Me-Not	.....	Sweet Peas, Mixed
.....	Globe Amaranth	.....	Sweet William
.....	Marigold, Mixed	.....	Verbena, Mixed
.....	Mignonette, Sweet	.....	Wallflower, Mixed
.....	Morning Glory, Tall	.....	Zinnia, Mixed
.....	Nasturtium, Tall		

## Flat Ten and Fifteen Cent Papers Vegetable Seeds.

.....	Onion, Perfect Pickl'g	10c	.....	Water Mel'n, Ice King	10c
.....	Lettuce, All Cream	10c	.....	Tomato, Ex. Er. Tree	15c

## Flat Ten Cent Papers Flower Seeds.

.....	Aster, Delicata, pink	.....	Pansy, English Show
.....	Bellis or Daisy	.....	“ King of Yellows
.....	Dianthus, Double China	.....	Petunia, Peerless, white
.....	“ Imperial	.....	“ Rose, pink
.....	Hollyhock, Double Mixed	.....	Sweet Peas, Eckford's
.....	Marigold, Eldorado	.....	Verbena, May's Mammoth
.....	Pansy, white	.....	“ Bride, white
.....	“ Faust black	.....	“ Fireball, red

We furnish all 5c Papers at \$15.00 per thousand. All 10c Papers at \$30.00 per thousand.

**REVOLVING SEED** If you order packets from the above **CASE FREE.** list to the amount of \$15 we will send you one of our handsome Revolving Seed Cases free,

We Have . . . . .

# "Seeds to Burn"

Is the cry of some of our would be competitors who sell on the "Cremation Plan." This is awful, why its worse than "Commission Seeds," or just as bad. The old time, worn out "cremation plan" is the greatest farce in the seed business. No seed firm in the world is going to burn up their packet seed just for fun. Some one has got to pay for it, and its the honest storekeeper every time. If you have ever handled seeds on the "cremation plan" you are probably aware that each packet costs you about 2½ cents (ours 1½ cents), so you are paying dearly for the privilege of having some one come around and burn a few packets.

Every wide awake dealer has given this plan up long ago, and we mention it simply because our circular may reach some merchant who has not stopped to think what a lot of money he was presenting to the "cremation seed firm" every year—money which really belongs to the dealer.

## Our New Revolving Seed Case.

Is the Most Complete and Convenient Cabinet for Seeds that has ever been placed on the market for the price. . . . .

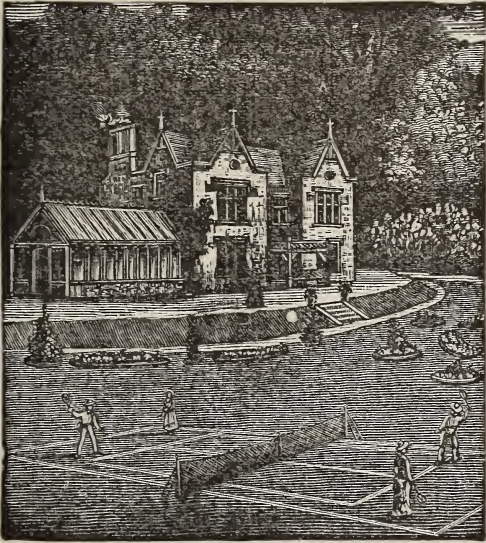
**With 1,000 Packets of Seeds.**

It Costs \$15.00                      and                      Sells for \$54.50

The advantage this has over the ordinary Seed Boxes is the fact that it keeps the packets clean, occupies a small place, is an ornament to the store and shows the packets so that customers can readily select whatever variety they desire by simply turning the case around.

**FREE.** If the following selection of 1,000 packets does not suit your trade we will allow you to select the same quantity of 5, 10 and 15 cent packets (one thousand) from the list on page 10 for \$15.00 and give you the **Revolving Case Free.**

## LAWN GRASS.



By years of experience we consider that we have succeeded in making a mixture of fancy grasses for the lawn that cannot be excelled. **Our Central Park Mixture** contains the best varieties of fancy grasses and produces a fine swarthy lawn.

Price, per bu, of 14 lbs. - - - - \$3.00

We also have other kinds which we offer as follows:

Terrace Seed, for side hills.....	\$2.50
Excelsior.....	2.00
Good Mixture.....	1.50

These kinds do not contain the amount of fancy grasses as our Central Park, but are all good mixtures and have given good satisfaction.

For the convenience of those wishing to order seed cases we have included in this book a complete selection of all seed cases we offer. You will observe upon looking them over carefully that the assortments we have made out for these boxes contain varieties which are suitable to all sections of the country, but if, upon looking them over carefully, you find the selection is not exactly what you want, we would be pleased to make any change you desire. In ordering we would ask you to kindly bear this in mind.

P. S.—You will observe through the entire price-list we have attached a telegraphic code word.

In ordering by mail please do not use it, only in cases when you order by telegraph. Kindly bear this in mind as it will save us an endless amount of work, also prevent delay in the executing of your order.



OUR

NEW REVOLVING  
SEED CASE. ❁ ❁ ❁

