

Historic, Archive Document

Do not assume content reflects current scientific knowledge, policies, or practices.

NINETEENTH ANNUAL CATALOGUE.

HUNTINGTON AND PAGE SEEDSMEN.

1899

THE SEEDS.



INDIANAPOLIS
IND.

The above is the **NEW LAW BUILDING** now being erected at our **OLD LOCATION** where our **NEW RETAIL STORE** will be after **MARCH 1st** and will be one of the finest in the U.S.

NO 134 EAST MARKET STREET.

HUNTINGTON & PAGE,

SEEDSMEN

A GAIN WE HAVE THE PLEASURE of thanking our friends and customers through our nineteenth Annual Catalogue for the most liberal patronage we have received from them during the season of 1898, and also of impressing on them that we want their orders for 1899. We will occupy our new building about March 1, which, with our immense warehouse, will make us one of the best equipped seed houses in the United States, and we shall treat you in such a way that we will continue to get your orders and have your good will and friendship. While our catalogue is small, you will find nearly every standard variety of seed listed that has merit, and you will also find them correctly described. Many of the sensational seedsmen make up descriptions and claims on their seeds that to a sensible buyer and planter must seem ridiculous. Yet these luring fake descriptions have claimed many victims. Fabulous prices are paid for misrepresented articles, and great is the disappointment after months of labor and expectations to find the highly extolled not as good or the same old sort that you already have. We have the largest market gardeners' trade in the country, and we have built up and held this trade by honestly representing our goods. If you are not a customer, we want you THIS YEAR to send us a trial order, no matter how small, and after your crop is matured we are willing to abide by your verdict. We have aimed to make our prices reasonable for the high grade seeds we offer, which are carefully tested under the supervision of a practical market gardener before being sent out, and will save the planter the vexation and loss caused from planting unreliable seeds.

Hoping to be favored with your kind orders, we are,

Very respectfully,

J. T. HUNTINGTON.
T. V. PAGE.

Huntington & Page.

PRICES in the following list include **prepayment of postage** by us on all seeds offered by the **Packet, Ounce, Quarter Pound, Pound, Pint or Quart**, unless otherwise noted. Thus you have only to send the catalogue price, and we guarantee safe delivery by mail, postage prepaid. If the seeds are to be sent by express, at the buyer's expense, deduct eight cents for a pound, eight cents for a pint, and fifteen cents for a quart.

CASH should accompany every order. We will be responsible for money sent to us by **Postoffice Order, Express, Money Order, Bank Draft** or by **Registered Letter**. Every postmaster is required to register any letter on payment of eight cents extra postage. The cost of remitting may, on all orders over \$1.00, be deducted from amount sent. **Amounts of \$1.00 or less may be sent by ordinary letter.**

POSTAGE STAMPS THE SAME AS CASH.

When notes are not obtainable, or to make proper change, we accept postage stamps the same as cash for **small amounts** (two-cent stamps preferred).

10 GOODS SENT C. O. D. Unless express charges are guaranteed.

JOIN when sent in letters should be sewed or pasted up in strong paper or cloth to prevent their breaking through the envelope, which is frequently the case when enclosed loose.

We guarantee all shipments of Seeds, Bulbs, Plants, Implements, etc., to reach the purchaser safely and in good condition.

Write Your Name and Address Plainly.

PRICES HERE GIVEN ARE ALL SUBJECT TO MARKET VARIATIONS.

ORDER EARLY. We strive to fill all orders within a day or two after they reach us, but this is frequently made impossible by a great rush of business about planting time. Do not wait until you need your seeds and bulbs before ordering. Anticipate planting time by getting your order in early.

OCCASIONALLY an order is lost in coming to us, or the goods in going to the customer. Therefore, if any who order do not hear from us in a reasonable length of time, they should send a duplicate order, naming the date on which the former one was sent, and the amount of money enclosed and in what form. This will enable us to investigate the matter and fill the duplicate order with dispatch.

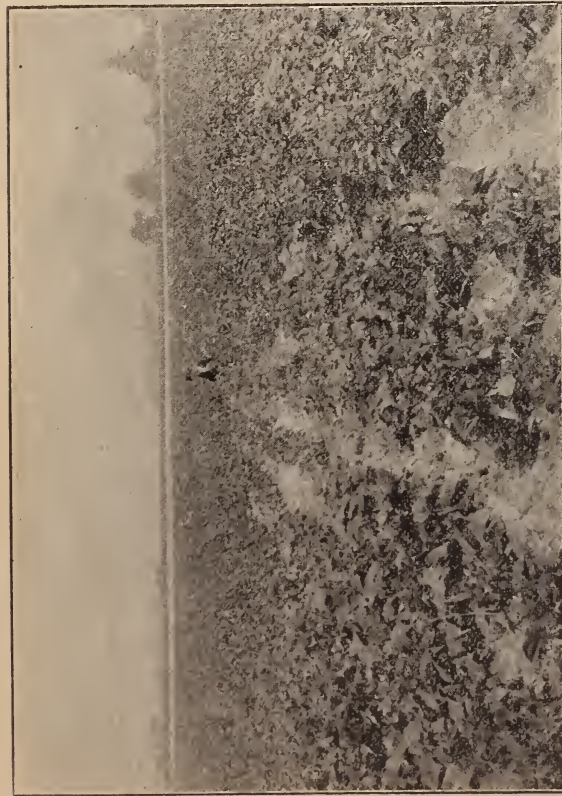
THE IMPORTANCE OF GOOD SEEDS can not be overestimated, and we are certain that after a trial all our customers will agree that our seeds are the purest and best to be had. Still, when it is considered how many are the contingencies on which the success of any crop depends, our customers will readily see that it would be sheer folly for any one to warrant them to produce a perfect crop, and while we exercise the greatest care to supply every article true to name and of the best quality, we wish it understood that we do not warrant our seeds, and that we are not in any way responsible for any loss or damage arising from any failure thereof. If the purchaser does not accept them on these terms they must be returned at once, and the money paid for same will be refunded.



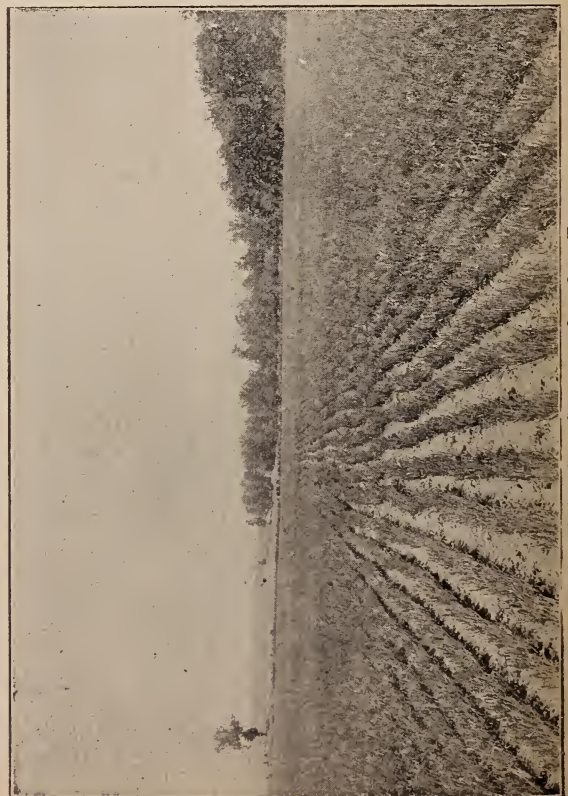
Field of Artichokes, Grown on Our Own Farm.



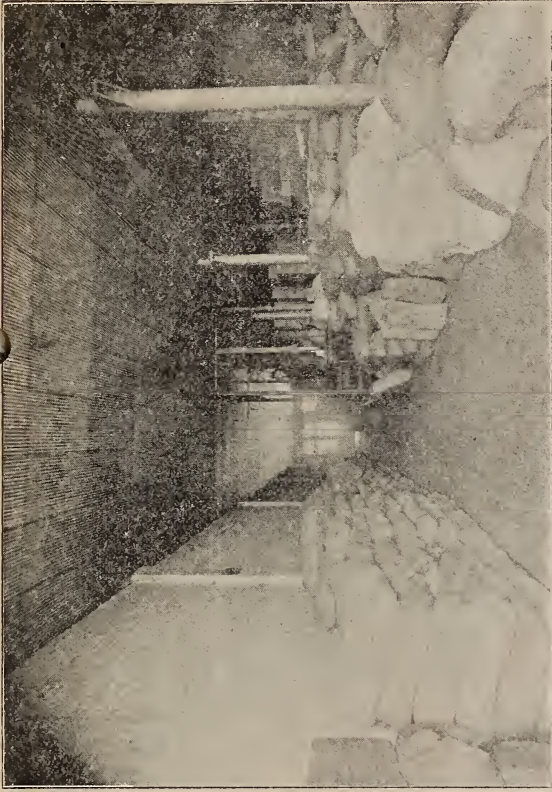
Harvesting Our Onion Sets, 500 People Employed.



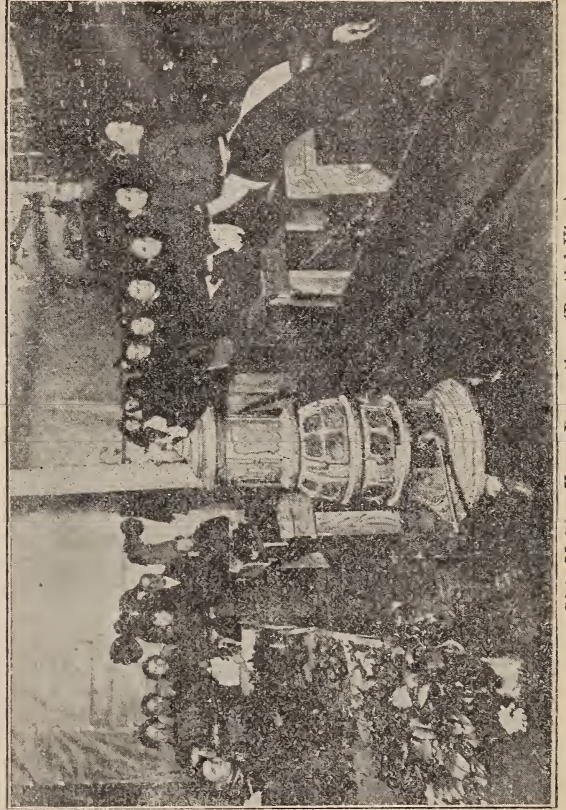
Field of Tree Beans, Grown on Our Own Farm.



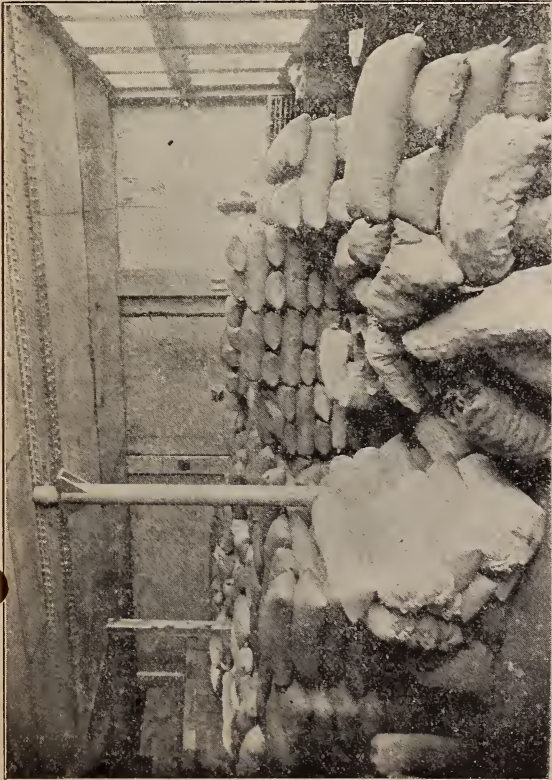
Field of Onion Sets, Grown on Our Own Farm.



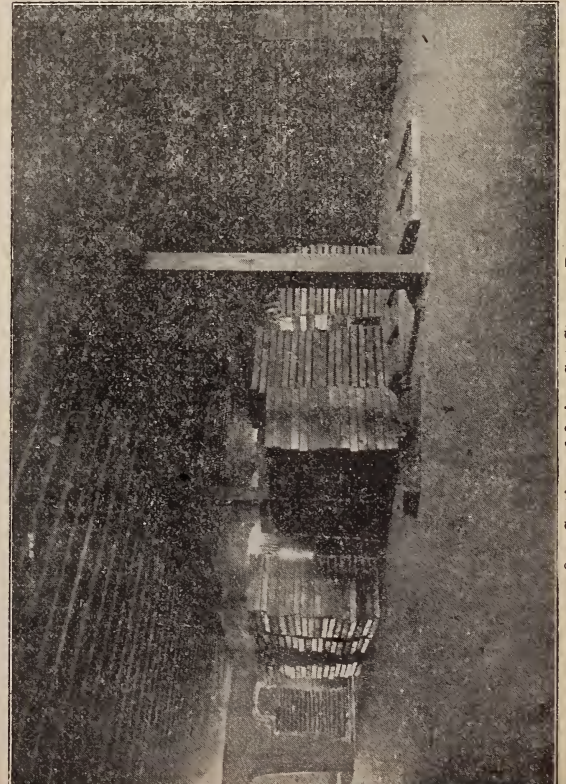
Section A, Seed Storage Room.



Girls Making Xmas Decorations (Partial View).



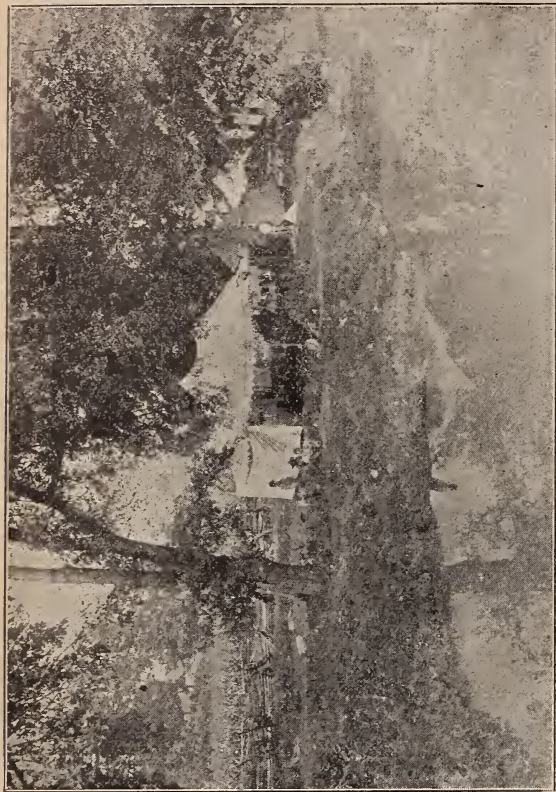
Section B, Seed Storage Room.



One Section of Onion Set Storage Room.



Our Garden Seed Exhibit, Agricultural Building, Indiana, State Fair.
Largest Ever Made by Any Seed House.



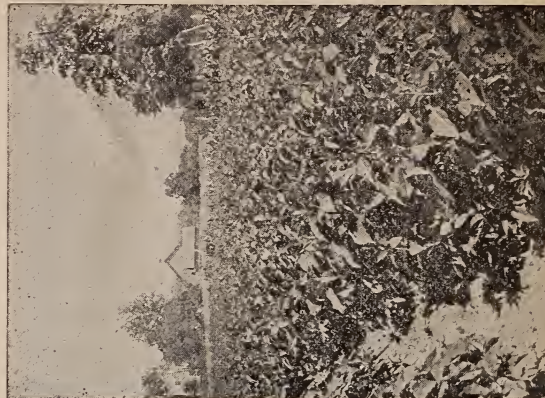
Boarding Tents for Onion Set Pickers.



Exhibit at State Fair of Potatoes, Vegetables, Garden Tools, Etc.



Residence of Foreman.



Residence of Superintendent.

VINELESS GOLD COIN PROLIFIC SWEET POTATO.



The **Gold Coins** are very similar to the Yellow Jerseys, grow the same shape and size, and almost as yellow, being a beautiful rich color. The quality is fully equal, if not superior. Out of several varieties tested, the **Gold Coins** made the largest yield, were the easiest cultivated, the earliest to mature and the greatest drouth resister of the entire number.

The **Gold Coin** does not make running vines like the ordinary sweet potato, but bunchy tops of dark green foliage. It will outyield the ordinary varieties, and makes a potato of excellent cooking and shipping qualities. The bunchy growth of its tops enables it to be cultivated easier than the vine-growing sorts. Price (postpaid), plants, per 100, 60c; by express or freight (not prepaid), 35c per 100; \$3.00 per 1,000.

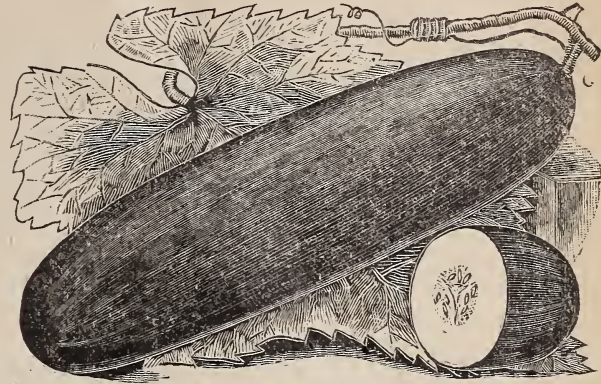
ROCKY FORD MUSKMELON.

This has become one of the most popular of small or basket melons. The fruit is oval, slightly ribbed, densely covered with coarse netting. Flesh thick, green, very sweet and high flavored. We offer an exceptionally fine stock of this sort, the fruit being wonderfully uniform in shape and quality, our seed having been saved from choicest specimens only. Price (postpaid), packet, 10c; oz., 15c; ¼ lb., 35c; 1 lb., \$1.00.



Rocky Ford Muskmelon.

NEW GREENHOUSE CUCUMBER. THE EMERALD.



For those who grow under glass, or for long distance shipping, it will prove a boon on account of holding its deep green color much longer than any of either the Yellow or White Spine sorts. In size about one-fourth longer than White Spine, but about same thickness. The skin, always a handsome green of the darkest shade, when grown under glass is not excelled for beauty in color and form, even by the English Frame varieties. It is almost entirely free from "warts and spines," so much so that it may be called **spineless**. No greenhouse grower should fail to try it. Price (postpaid), packet, 10c; 3 packets, 25c; oz., 15c.

THE "PAUL ROSE" MUSKMELON.

A decidedly new and meritorious variety that is bound to please all classes of melon producers. It is a large "Rose Gem," with deep orange flesh, secured by crossing with the Osage. It is a great producer of extra fine quality melons. The cut will give a good idea of the appearance of the melon, and should recommend it to melon growers. It is as early as the Gems and equally as good a shipper. The seed is still scarce, though we have secured some extra fine seed and are able to offer it very reasonable. Postpaid, packet, 10c; 1 oz., 20c; ¼ lb., 75c; 1 lb., \$2.50.



"Paul Rose" Muskmelon.

ALLAN'S DWARF TELEPHONE.

The Most Profitable Pea for Market Gardeners Ever Introduced.

Having for a long time realized the value of a pea with dwarf vines bearing large, handsome pods, with peas of highest quality, without the long vines of the Telephone, more dwarf than the Stratagem, and what is most important of all, regular and uniform in growth, without the tendency to sport that has caused so much annoyance and loss to those who have grown the Stratagem, we have for years been breeding up a pea that will fill the above requirements, and now offer Allan's Dwarf Telephone. Height, under high culture, 18 inches; habit, dwarf, stocky, healthy and vigorous, remarkably uniform in height, with almost no tendency to sport; very productive, plants frequently bearing from 5 to 7 pods; season, medium, from 5 to 7 days earlier than Stratagem; pods, long, frequently 5 inches in length, broad, straight, rounded or curved at the end, remarkably well filled, often containing 10 peas; color, pale green, thick, and of good lasting quality for market purposes; seed, of largest size, tender and of delicious flavor when fit for the table, light green and much shriveled and shrunken when dry. From the unusually tender and delicate texture of the pea, it does not when ripened present that handsome appearance of those sorts that have a firmer texture and tougher skin. The shriveled and damaged appearance of the ripened seed, which might condemn it, being caused by the tenderness that is of paramount importance in a first-class pea for the table. We offer this pea to our customers, as it is sure to become exceedingly popular, and confidently recommend it to the gardeners, as it will fill a long felt want.

Price, postpaid: Packet, 15c; pint, 30c; quart, 50c; peck, \$2.25; half bushel, \$4.25; bushel, \$8.00.

WHAT A FEW OF THE GARDENERS SAY WHO HAVE GROWN THEM.

ANDY HARMON, Indianapolis—They beat any pea I have ever grown. Save me 10 bu. sure for this spring.
MIKE SHANNON, Indianapolis—Never had peas to make the yield my Dwarf Telephones did. Book my order for 8 bu.
H. TEBBE, Indianapolis—Book my order for 8 bu. Dwarf Telephones. They are the finest peas I have ever raised.



ALLAN'S
DWARF TELEPHONE

HONOR BRIGHT TOMATO.

A New Bright Red Variety. Nothing Like It Ever Offered Before.

Its chief peculiarities are its solidity, long keeping qualities after being picked, and the remarkable changes of color the fruit undergoes during growing and ripening. These changes of color provide an easily learned guide to the proper time of picking for long distance shipping. For home market it is picked just as any other sort. The color of the fruit when fully ripe is a rich, bright red, but before reaching this stage it undergoes several interesting changes. First it is light green, then an attractive waxy white, then lemon, changing to a rich red. One of the most attractive and handsome varieties grown, and well adapted for home use or market, and on account of its solidity and long keeping qualities, it is especially recommended for shipping. It can be shipped in barrels, like apples, if picked in the early stage of ripening, and will keep from one to four weeks if stored in a cool place. The skin seems to be crack-proof; not a single tomato was found with a skin-crack, even after the exceedingly heavy rains during the harvest. It never rots, at least the past three seasons it has shown no inclination to rot.

The clusters bear 3 to 5 large perfect fruits, beautiful as the Paragon, and ripen evenly from the blossom end to the stem. Its season is long, and a heavier cropper hard to find.

Its table qualities are superb, the flesh when ripe being tender and melting, not hard, as one might conclude from the solidity of the uncut fruit. Those who grow it will find it a valuable acquisition, and will be surprised at its productiveness and distinctiveness from all other known sorts.

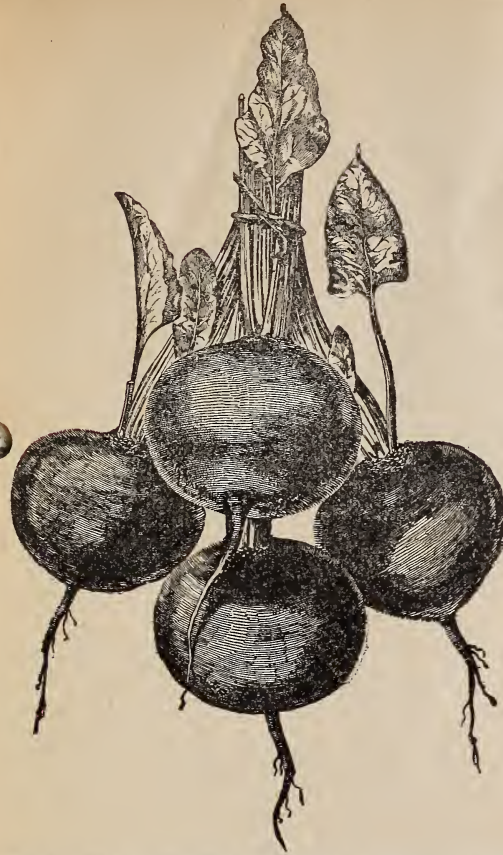
Price, postpaid: Packet, 10c; $\frac{1}{2}$ oz., 20c; oz., 35c; $\frac{1}{4}$ lb., \$1.00.



H. & P.'s EARLY DARK RED TURNIP BEET.

This variety of our own introduction is one of the very best sorts, not only for market gardeners, but for the home garden. In cultivation its small, upright-growing tops, early maturing, and the splendid shape and color of the roots, make it popular with every one who plants it. Tops small, upright-growing, so that the rows may be close together; leaf-stems and veins dark red, blade green; roots globular or ovoid, peculiarly smooth; color of skin dark blood-red, flesh bright red, zoned with a lighter shade, very crisp, tender and sweet, and remaining so for a long time. The stock which we offer will produce a crop more uniform in shape, color and quality than any other. Packet, 5c; ounce, 10c; $\frac{1}{4}$ pound, 25c; pound, 75c.

MAMMOTH WHITE CORY SWEET CORN.



As Early as the Earliest and no Extra Early Sweet Corn will Compare with it in Size.

The ears are twelve rowed, fully twice the size of the old Cory, white cobbed and covered with very large, white grains of good quality. No other sweet corn will find ready sale in a market which is supplied with Mammoth White Cory, and the gardener who wishes to get the cream of the trade should make his plantings of this splendid novelty. As a first early it is

EXTRA EARLY—Nothing Earlier.

EXTRA QUALITY—Nothing Better.

EXTRA LARGE—Nothing Larger.

Postpaid, packet, 10c; pint, 20c; quart, 40c; $\frac{1}{4}$ bushel, \$1.50.

NEW SQUASH—GOLDEN HUBBARD.



A sport from that old standard of excellence, the Hubbard; it is a perfect type of its parent, except in color, which is a bright deep orange-yellow, exceedingly showy and attractive. Flesh is deep golden-yellow, much richer color than Hubbard, fine grained, cooks very dry, and of excellent flavor. Its keeping qualities are fully equal to, while in productiveness it excels the old variety. Its superior keeping qualities, combined with its sweet, rich flavor, attractive color and shape, are bound to make it a popular fall and winter variety. Pkt., 10c; oz., 15c; $\frac{1}{4}$ lb., 35c; lb., \$1.00.



A FIELD OF ARTICHOKE ON OUR OWN FARM.

JERUSALEM AND WHITE FRENCH ARTICHOKE.

These varieties are not produced from seed, but are cultivated for their tubers, which are especially valuable for stock-feeding on account of their fattening properties; they are well adapted to any soil where corn and potatoes can be grown. They are the best hog food known (an acre in Artichokes is said to equal 500 bushels of corn in fattening hogs); a preventive of cholera and other hog diseases. Six bushels of tuber are sufficient to seed one acre; cut the same as potatoes, planting in April or May, in rows three feet apart and two feet in the rows, and cover about two inches deep. We grew at the rate of about 1,000 bushels per acre last season and have an excellent stock of Tubers to offer, of our own raising. Price, per bushel, \$1.00; six bushels, \$5.00.

ASPARAGUS.

NEW MAMMOTH. Very fine. Packet, 5c; ounce, 10c; $\frac{1}{4}$ pound, 20c; pound, 50c.

CONOVER'S COLOSSAL. Standard variety. Packet, 5c; ounce, 10c; $\frac{1}{4}$ pound, 15c; pound, 35c.

PALMETTO. Rapid growing. Packet, 5c; ounce, 10c; $\frac{1}{4}$ pound, 15c; pound, 35c.

THE NEW STRINGLESS GREEN POD.

Is ready to market **two weeks earlier** than the best stock of Improved Extra Early Red Valentines. We are sure the **Stringless Green Pod** will supply a long-felt want. It must prove of immense value, not only to the market gardener who wants to make more money, but also to the amateur who seeks a rare quality early for the home table. Price, postpaid, pint, 20c; quart, 35c; peck, \$1.75; $\frac{1}{2}$ bushel, \$3.50.



IMPROVED EARLY RED VALENTINE.

DAVIS KIDNEY WAX. A great addition to our list of wax beans, the seed being pure white, with absolutely no eye whatever. The bean for market gardeners and canners; bound to be the most popular wax bean in cultivation. Packet, 10c; pint, 20c; quart, 35c; peck, \$1.35.

BURPEE'S BUSH LIMA. True bush form of the old Large Lima Pole Bean. It grows vigorously to a height of eighteen to twenty inches, bush two to two and a half feet in diameter, yielding from fifty to one hundred and fifty fine pods, similar to those grown on the Large White Lima Pole Beans. Price, by mail, postpaid—Large packet, 10c; $\frac{1}{2}$ pint, 15c; 1 pint, 25c; quart, 40c. By express or freight, $\frac{1}{2}$ peck, \$1.00; peck, \$1.75.

DWARF OR BUSH, GREEN PODDED.

IMP. RED VALENTINE. One of the earliest round green podded beans in existence. A favorite with market gardeners. One-half bushel, \$3.50; $\frac{1}{4}$ bushel, \$1.75; quart, 40c; pint, 25c; packet, 10c.

NEW UNION WHITE VALENTINE. Round podded early bean of excellent quality, entirely stringless. One-quarter bushel, \$1.25; quart, 35c; pint, 20c; packet, 10c.

EARLY MOHAWK. Excellent variety for early planting. One-quarter bushel, \$1.25; quart, 35c; pint, 20c; packet, 10c.

LONG YELLOW SIX WEEKS. Extra early; standard market sort. Bushel, \$4.50; $\frac{1}{2}$ bushel, \$2.50; quart, 35c; pint, 20c; packet, 10c.

CALIFORNIA BRANCH, OR TREE. Best bean for field culture. Very prolific. Bushel, \$3.00; $\frac{1}{2}$ bushel, \$1.60; quart, 30c; packet, 10c.

WHITE NAVY. Standard bean for field culture. Bushel, \$2.25; $\frac{1}{2}$ bushel, \$1.25; peck, 60c; quart, 27c; packet, 7c.

LARGE WHITE MARROWFAT. Extensively grown for sale in the dry state. Bushel, \$2.50; $\frac{1}{2}$ bushel, \$1.35; peck, 65c; quart, 27c; packet, 7c.

DWARF HORTICULTURAL. Very productive and fine for early shell beans. One-half bushel, \$2.25; peck, \$1.25; quart, 35c; packet, 10c.

HENDERSON'S BUSH LIMA. Henderson's Bush Lima is enormously productive, bearing continuously throughout the summer until killed by the frost. Price, by mail, postpaid—Packet, 10c; $\frac{1}{2}$ pint, 15c; pint, 25c; quart, 40c. By express or freight, peck, \$1.35.

WAX PODDED SORTS.

GOLDEN WAX. Strong growing variety, very early and prolific. One-half bushel, \$2.50; peck, \$1.35; quart, 35c; pint, 20c; packet, 10c.

CRYSTAL WHITE WAX. Very rich flavor; stringless and productive. One-half bushel, \$2.25; peck, \$1.25; quart, 35c; pint, 20c; packet, 10c.

BLACK WAX, OR BUTTER. Largely grown by market gardeners; early and productive. One-half bushel, \$2.50; peck, \$1.35; quart, 35c; pint, 20c; packet, 10c.

WARDWELL'S KIDNEY WAX. Rust and spot proof; early and productive; fine. One-half bushel, \$2.50; peck, \$1.35; quart, 35c; pint, 20c; packet, 10c.

FLAGEOLET WAX. Unsurpassed in flavor and productivity. Peck, \$1.50; quart, 40c; pint, 20c; packet, 10c.

IVORY POD WAX. Transparent pods, early and stringless. Peck, \$1.25; quart, 35c; pint, 20c; packet, 10c.

THORBURN'S REFUGEE WAX. Earliest wax bean in cultivation; immense yielder. Peck, \$1.50; quart, 40c; pint, 20c; packet, 10c.

BEANS.

POLE OR RUNNING.

Limas Should Be Planted

With Eyes Down.

WHITE SICKLE ... POLE ...

Quite similar to Kentucky Wonder in all respects except that the dry beans are white, more slender and curved, and the pods a little more slender than those of that variety. We think this sort an improvement in earliness, productiveness and quality over the Kentucky Wonder, and it has the advantage of a white seed, and so does not discolor in cooking. It is certainly a splendid variety, and is grown with great success in the south where many think it the best pole bean in cultivation. Packet, 15c; pint, 30c; quart, 50c; 4 quarts, \$1.75; $\frac{1}{4}$ bushel, \$3.00; bushel, \$10.00.

KING OF THE GARDEN LIMA. One of the very best Pole Lima Beans in existence. The pods are six to eight inches in length, and contain five to seven beans of unusually large size. Packet, 10c; quart, 40c; peck, \$1.75.

LARGE WHITE LIMA. One of the best varieties, either green or dry, for market and private use. Packet, 10c; quart, 40c; peck, \$1.40.

DREER'S EARLY GOLDEN CLUSTER. Almost as early as the dwarf sorts. Pods are of a beautiful golden color, five to seven inches in length. Pkt., 10c; quart, 40c; peck, \$1.50.

LAZY WIFE. Very popular. As its name indicates, a handful of choice stringless pods at a single grab. May be grown either on poles or on corn. Packet, 10c; quart, 40c; peck, \$1.50.

KENTUCKY WONDER. A bean that should be in every garden. Every farmer should have a supply of these beans. Pods remarkably long, round, and pulpy. Packet, 10c; quart, 40c; peck, \$1.50.

GOLDEN ANDALUSIA BEAN. The grandest beans ever introduced. It is one of the most tender podded beans known, and can be grown on field corn as well as on poles. Packet, 10c; pint, 20c; quart, 40c; peck, \$1.50.

HORTICULTURAL OR SPECKLED CRANBERRY. A hardy and productive variety, very popular. Can be used either for snap beans or shelling. Packet, 10c; quart, 40c; peck, \$1.35.

DUTCH CASE-KNIFE. Very early and productive. Good pickler. Packet, 10c; quart, 35c; peck, \$1.25.

DREER'S EARLY GOLDEN CLUSTER WAX. Undoubtedly the earliest pole wax variety. Stringless, very tender and of delicious flavor; very profitable to grow for market. Packet, 10c; pint, 25c; quart, 45c; peck, \$1.50.

WHITE CREASEBACK POLE BEAN. Best early green podded pole bean, a good grower, and exceedingly productive. Packet, 10c; pint, 20c; quart, 40c; peck, \$1.00.

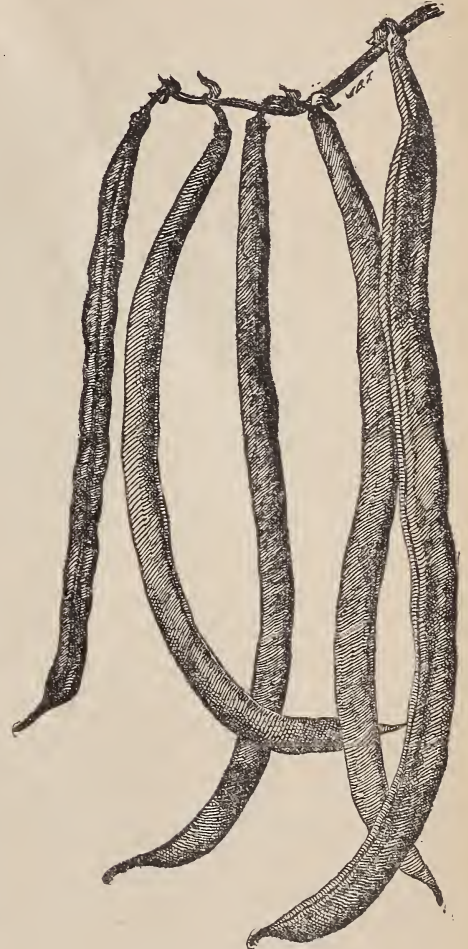
RED CUT SHORT. An excellent cornfield bean; very popular. Pods half-round, green, tender and succulent. Packet, 10c; quart, 40c; peck, \$1.50; bushel, \$3.50.

GIANT RED WAX. One of the best varieties, either for snap beans or shelled in the green state. Packet, 10c; quart, 45c; peck, \$1.75.

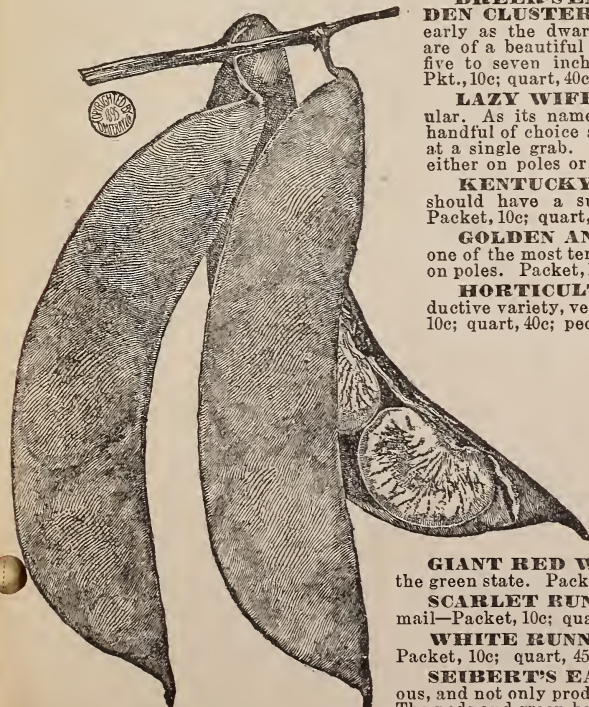
SCARLET RUNNER. Valuable both for the table and as an ornamental vine. By mail—Packet, 10c; quart, 40c.

WHITE RUNNER. Similar to above, except the flowers and seeds are pure white. Packet, 10c; quart, 45c.

SEIBERT'S EARLY LIMA BEAN. The vine is exceptionally hardy and vigorous, and not only produces pods earlier, but continues in bearing longer than any other sort. The pods and green beans are as large as those of the King of the Garden Lima and of better quality. No progressive gardener will fail to try it. Price, postpaid, 10 cents per packet; pint, 20c; quart, 40c. Express or freight, $\frac{1}{2}$ peck, \$1.00; peck, \$1.75; bushel, \$6.50.



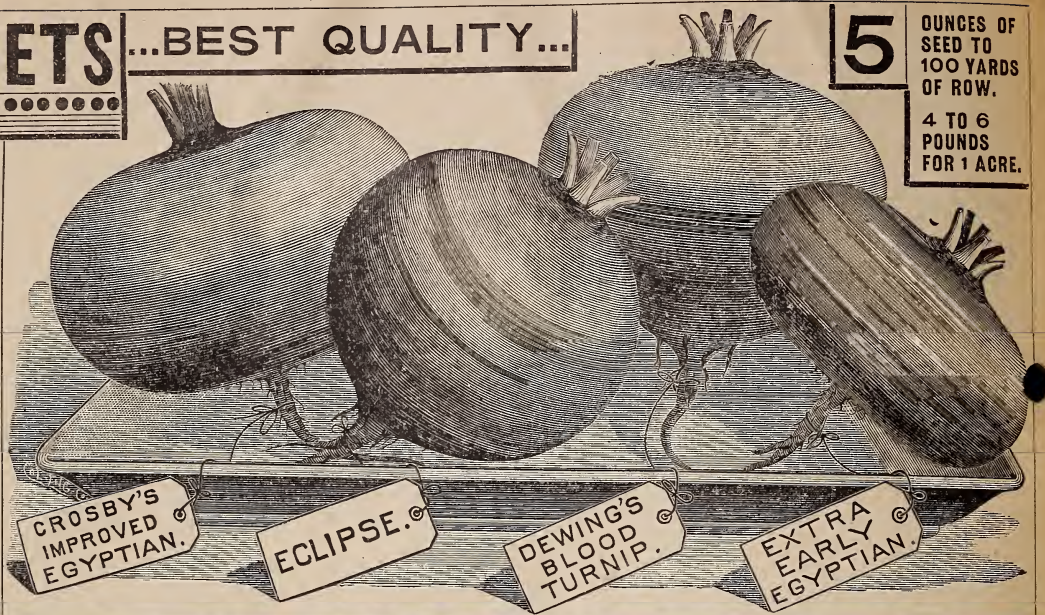
WHITE SICKLE POLE BEAN.



SEIBERT'S EARLY LIMA.

BEETS ...BEST QUALITY...

BEST SORTS



CROSBY'S IMPROVED EGYPTIAN EXTRA EARLY.

The best for market gardeners. A very superior strain of blood-red Egyptian, carefully selected for years by Mr. Crosby, a noted market gardener, whose aim was to secure a perfect forcing variety. The shape is very desirable. A rapid grower, it may be sown outside as late as July. Packet, 5c; ounce, 10c; ¼ pound, 20c; pound, 60c.

H. & P.'S EARLY DARK RED TURNIP.

(See Page 7.)

EXTRA EARLY EGYPTIAN BLOOD TURNIP. A standard sort, being from ten to twelve days earlier than the old Blood Turnip. Packet, 5c; ounce, 10c; ¼ pound, 15c; pound, 50c.

THE LENTZ BEET. An excellent new strain of Blood Turnip. Fully as early as the Egyptian. Packet, 5c; ounce, 10c; ¼ pound, 15c; pound, 50c.

ECLIPSE. A new globe-shaped variety; as early as the Egyptian, and much larger. Packet, 5c; ounce, 10c; ¼ pound, 15c; pound, 50c.

EXTRA EARLY BASSANO. A valuable market sort. Flesh white rose, encircled with bright pink; tender and sweet. Packet, 5c; ounce, 10c; ¼ pound, 15c; pound, 50c.

BASTIAN'S EARLY BLOOD TURNIP. A profitable market sort. Early as the Bassano. Packet, 5c; ounce, 10c; ¼ pound, 15c; pound, 50c.

DEWING'S IMPROVED BLOOD TURNIP. Roots deep rich red, of fine form and flavor. Packet, 5c; ounce, 10c; ¼ pound, 15c; pound, 50c.

LONG SMOOTH BLOOD RED. A well-known winter sort. Long, smooth, sweet and tender. Packet, 5c; ounce, 10c; ¼ pound, 15c; pound, 50c.

HALF LONG BLOOD RED. A desirable handsome wedge-shaped root. Packet, 5c; ounce, 10c; ¼ pound, 15c; pound, 50c.

NOTE—We wish to call attention to the superior quality of our Seed. All Seeds before being sent out are accurately tested, and in this way we are sure of giving entire satisfaction, hence our greatly increased trade.

MANGEL WURZELS.

Mammoth Long Red.

More attention should be given to the culture of root crops, for their great value to thousands of people is still yet unknown, and but few farmers are aware of the large profit there is in growing Mangel Wurzel for stock feeding. We have several tons of seed of our Mammoth Long Red, grown under special contract, that we offer as low as other dealers offer ordinary stock. Our **MAMMOTH LONG RED**, the most productive variety for feeding cattle. Ounce, 5c; one pound, 25c; six pounds (enough for one acre), \$1.45. If your order goes by freight or express, deduct 8c per pound.

Golden Tankard.

(YELLOW-FLESHED.)

A most important addition to the list of stock-feeding roots. Packet, 3c; ounce, 7c; pound, 28c.

Kinver's Yellow Globe.

Enormously productive and of superior quality; much relished by all kinds of stock. Packet, 3c; ¼ pound, 10c; pound, 30c.

Yellow Ovoid.

Intermediate between the globe and the long varieties. Packet, 3c; ¼ pound, 10c; pound, 30c.

Vilmorine's Imperial Sugar.

An improved variety, exceeding all in percentage of sugar. Packet, 3c; ounce, 6c; ¼ pound, 10c; pound, 30c.

BRUSSELS SPROUTS.

Sow in May, the same as Cauliflower, and transplant in July. **IMPROVED DWARF.** The best variety. Packet, 5c; ounce, 15c; ¼ pound, 40c.

BROCCOLI.

Nearly allied to the Cauliflower, but more hardy. **LARGE WHITE.** Resembling Cauliflower. Packet, 10c; ounce, 30c.

PURPLE CAPE. One of the hardiest sorts. Packet, 10c; ounce, 30c.

BORECOLE, OR KALE.

DWARF GERMAN GREEN. Extensively grown for winter greens. Sown broadcast or in drills one foot apart. Packet, 5c; ounce, 10c; ¼ pound, 15c; pound, 40c.

GREEN CURLED, OR SCOTCH. Dwarf, leaves bright green, beautifully curled; hardy. Packet, 5c; ounce, 10c; ¼ pound, 15c; pound, 40c.

PURPLE KALE. Similar to Scotch Kale, except in color. Packet, 5c; ounce, 10c; ¼ pound, 20c; pound, 70c.

MOSS-BACK WINTER. Leaves fine curled; hardy. Packet, 5c; ounce, 10c; ¼ pound, 15c; pound, 40c.



EARLY SUMMER.
CABBAGE.

TRUE EARLY JERSEY WAKEFIELD. A standard variety of acknowledged superiority. The heads are of medium size, conical and very compact; about 12,000 can be grown to the acre. Packet, 5c; ounce, 15c; ¼ pound, 40c; pound, \$1.50.

CHARLESTON, OR LARGE WAKEFIELD. A strain of Jersey Wakefield, in which the plant is larger and later, the head larger and not so pointed. It is very popular with many gardeners who want a larger head than the Jersey and are not so particular as to earliness. Packet, 5c; ounce, 20c; ¼ pound, 40c; pound, \$1.50.

IMPROVED EARLY SUMMER. The largest early Cabbage in existence; matures about two weeks later than Early Jersey Wakefield. Packet, 5c; ounce, 15c; ¼ pound, 40c; pound, \$1.50.

SUCCESSION. Intermediate between Early Summer and Louisville Early Drumhead. Packet, 5c; ounce, 15c; ¼ pound, 40c; pound, \$1.50.

HOLLANDER. Quite a distinct sort. Plants rather long stemmed, but compact; the leaves are very smooth but thick; the head is of medium size, round and very solid. Matures quite late and keeps well. This is one of the hardest cabbages in cultivation, and endures both frost and drouth that would destroy other sorts. Packet, 5c; ounce, 20c; ¼ pound, 75c; pound, \$2.75.

THE LUPTON. A little earlier than any one of the various strains of Flat Dutch and Drumhead, and of closer growth. The heads are particularly large in proportion to the plant, which grows strong but does not spread out much. The stalk is rather short; color, dark green. The quality is fine, and it is also one of the best keepers we have, and comes out in the spring bright and fresh. Packet, 5c; ounce, 20c; ¼ pound, 50c; pound, \$1.75.

ALL HEAD EARLY. The earliest of all large cabbages, being at least a week earlier than any of the various strains of Early Summer Cabbage. It is fully one-third larger than the Early Summer, and therefore much more profitable to the market gardener. The deep, flat heads are remarkably solid and uniform in color as well as in shape and size. Packet, 5c; ounce, 20c; ¼ pound, 40c; pound, \$1.50.

LOUISVILLE EARLY DRUMHEAD. Grown exclusively by marketmen as a summer and fall sort, following as it does close after the Improved Early Summer and of fully twice the size. Packet, 5c; ounce, 15c; ¼ pound, 50c; pound, \$1.75.

AUTUMN KING. Enormous solid heads 15 to 18 pounds, measuring 36 to 40 inches in circumference and often weighing 25 to 30 pounds. Interior is creamy white, compact and crisp. Unequaled for cooking or slicing. Flavor especially fine and is one of the best winter keepers. Price, packet, 5c; ounce, 20c; ¼ pound, 60c; pound, \$2.00.

MARKET GARDENERS' LARGE LATE FLAT DUTCH. For a large, heavy, hard, smooth-leaved, late-ripening Cabbage, no strain is superior and few equal to this. The seed is worth twice the money asked for it. Packet, 5c; ounce, 20c; ¼ pound, 50c; pound, \$1.75.

FOTTLERS' IMPROVED BRUNSWICK. An excellent second early and late variety. Packet, 5c; ounce, 15c; ¼ pound, 35c; pound, \$1.25.

PREMIUM LARGE LATE FLAT DUTCH. This strain of Flat Dutch Cabbage is superior to any of the old varieties of Flat Dutch, and is the result of several years' selection of seed stocks. Packet, 5c; ounce, 15c; ¼ pound, 40c; pound, \$1.25.

WINNINGSTADT. There is no early sort which heads with greater certainty or more solid. Packet, 5c; ounce, 15c; ¼ pound, 40c; pound, \$1.25.

SUREHEAD. Surehead, as its name indicates, never fails to make a remarkable fine head. Packet, 5c; ounce, 15c; ¼ pound, 40c; pound, \$1.35.

BRIDGEPORT LARGE LATE DRUMHEAD. Large fall and winter variety. Seldom bursts or rots; good shipping sort. Packet, 5c; ounce, 15c; ¼ pound, 40c; pound, \$1.25.

MARBLEHEAD MAMMOTH. The largest Cabbage on record, requiring to be planted about four feet apart each way. Average weight, 30 to 40 pounds each. Packet, 5c; ounce, 15c; ¼ pound, 70c; pound, \$2.00.

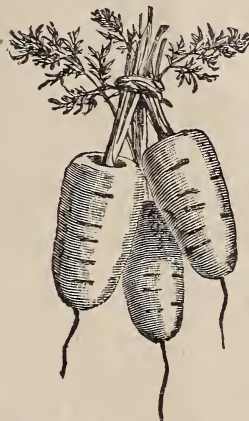
EARLY BLOOD RED. By mail, postpaid—packet, 5c; ounce, 15c; ¼ pound, 50c.

MAMMOTH ROCK RED. Red Cabbage as large as Flat Dutch, very solid and of even color. Packet, 5c; ounce, 20c; ¼ pound, 65c; pound, \$2.00.

PERFECTION DRUMHEAD SAVOY. An improved selection of the savoy Cabbage, the very best for winter use. Packet, 5c; ounce, 15c; ¼ pound, 60c.

EARLY DWARF ULM SAVOY. By mail, postpaid—Packet, 5c; ounce, 20c; ¼ pound, 65c.

CARROT.



HALF LONG STUMP ROOTED.

THE RUBICON. An entirely new and distinct American Carrot. Dark orange color. Packet, 5c; ounce, 10c; ¼ pound, 20c; pound, 60c.

LONG ORANGE IMPROVED. Roots long, smooth and of a deep orange color. Good for the table and field crops. By mail, postpaid—Packet, 5c; ounce, 10c; ¼ pound, 20c; pound, 50c.

IMPROVED DANVERS. Excellent variety, midway between Long Orange and Early Horn. Color rich orange. Packet, 5c; ounce, 10c; ¼ pound, 20c; pound, 50c.

LONG ORANGE BELGIAN GREEN TOP. Fine variety for stock; very productive. Packet, 5c; ounce, 10c; ¼ pound, 15c; pound, 50c.

GIANT WHITE BELGIAN. This variety yields larger than any other. To the milkman it is very valuable, promoting a large secretion of milk of improved quality over that from dry food. Packet, 5c; ounce, 10c; ¼ pound, 15c; pound, 40c; 5 pounds, \$1.90.

LONG ORANGE.

CHICKORY.

LARGE ROOTED MADGEBURG. By mail, postpaid—Packet, 10c; ounce, 25c; ¼ pound, 75c.

CORN SALAD.

LARGE SEEDED. By mail, postpaid—Packet, 5c; ounce, 10c; ¼ pound, 25c; pound, 75c.

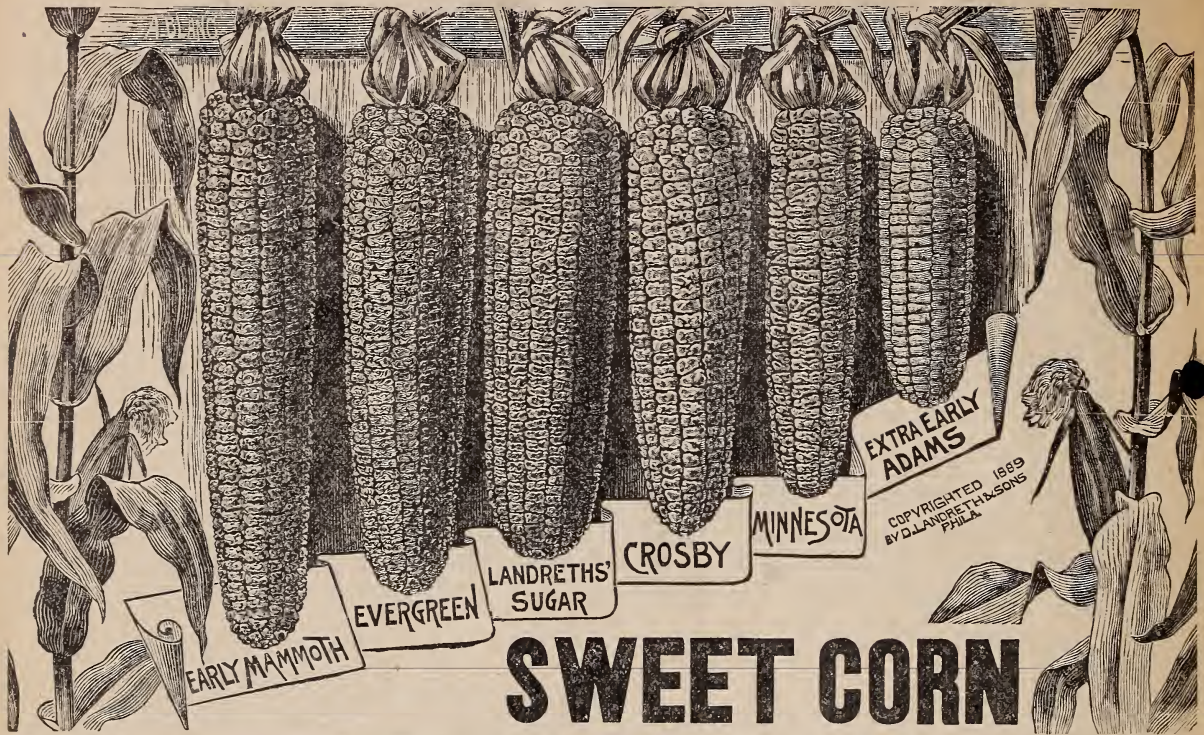
CRESS.

FINE CURLED. A standard sort. By mail, postpaid—Packet, 5c; ounce, 10c; ¼ pound, 2c; pound, 75c.

WATER. Stalks and leaves have a pleasant, pungent taste. Does pretty well in moist situations, but better on the edges of streams. By mail, postpaid—Packet, 5c; ounce, 30c; ¼ pound, 90c; pound, \$3.00.

COLLARDS.

BEST GEORGIA. By mail, postpaid—Packet, 10c; ounce, 25c; ¼ pound, 75c.



SWEET CORN

LANDRETH'S EXTRA EARLY ADAMS. Flint Corn; the earliest White Corn grown; ready for use in sixty days. Packet, 7c; quart, 25c; peck, 75c; bushel, \$2.50.

LANDRETH'S EARLY ADAMS. Similar to above; larger and later. Packet, 8c; quart, 25c; peck, 75c; bushel, \$2.50.

LANDRETH'S FIRST IN MARKET, OR IMITATION SUGAR. An excellent variety, coming into market a few days after Extra Early Adams. Ears large, well filled, and in its green state resembles a good variety of sugar corn. Very desirable for market gardeners. By mail, postpaid—Packet, 7c; quart, 30c; peck, 80c; bushel, \$3.00.

CORY SWEET. Earliest sweet corn grown; fine quality. Packet, 8c; quart, 25c; peck, 75c; bushel, \$2.50.

EARLY MINNESOTA. Desirable early sort; good quality. Packet, 7c; quart, 25c; peck, \$1.00.

EARLY FORDHOOK. Early Fordhook is the largest-eared extra early Corn, averaging in length seven inches. The grains and cob are pure white. The ears are eight rowed with small cobs and deep grains. It is of sweet and excellent flavor, so much superior to Cory that one would never think of eating Cory after once tasting this. A great objection to the Cory, which is one of the best-known standard early Corns, is its tendency to smut, while this new early variety is entirely free from smut. **It remains fit for table use longer than any other early corn known.** The stalks grow about five feet high and average two ears each. **Equals Cory in earliness.** Per packet, 10c; pint, 20c; quart, 40c; $\frac{1}{4}$ bushel, \$1.00.

KENDEL'S EARLY GIANT SWEET CORN. The ears measure eight to ten inches long and have ten to eighteen rows of grains. The majority of the ears are twelve rowed. In color the kernels are pure white, and are very sweet, tender and palatable. Kendel's Early Giant is a prolific variety, and matures its ears in from sixty to seventy-two days, depending on location and character of soil. On warm, sandy land the ears are ready in sixty days, while on heavy, clay land the period of growth is longer. The large, well filled and highly palatable ears should command a quick sale in any market where there is a demand for really choice early sweet corn, and I recommend this variety to market gardeners as well as for use on the home table. In many localities there is, commercially speaking, a high cash premium on the first really good sweet corn with large ears that can be produced. Packet, 10c; pint, 25c; quart, 40c; $\frac{1}{4}$ bushel, \$1.25.

TRIUMPH. Very productive; rich flavor; week earlier than Evergreen. Packet, 7c; quart, 25c; peck, 75c; bushel, \$2.50.

BLACK MEXICAN. One of the sweetest of all kinds. Packet, 7c; quart, 25c; peck, \$1.00.

EGYPTIAN. Ears large, fine, sweet and tender. Matures in about seventy-five days. Packet, 7c; quart, 25c; peck, 75c; bushel, \$2.50.

STOWELL'S EVERGREEN. The favorite late variety, maturing for the table in about eighty-five days. Ears long, showy, and much esteemed by the market gardeners. Packet, 5c; quart, 25c; peck, 85c; bushel, \$2.75.

LATE MAMMOTH SUGAR. Strongest growing of all the sugar corns, maturing for the table in eighty-five days. Packet, 6c; quart, 25c; peck, \$1.00.

POP CORN. GERMAN WHITE RICE. A very handsome variety. Ears short. Packet, 5c; pound, 15c. Postpaid.

PERRY'S HYBRID. Superior, large, early sweet corn, which has long been desired. A few days later than Marblehead or Minnesota; ears twice the size; kernels large, tender and sweet; habit vigorous. Packet, 6c; quart, 25c; peck, 75c; bushel, \$2.50.

CROSBY'S EARLY SUGAR. Ears generally twelve rowed; sweet and delicious. Packet, 7c; quart, 25c; peck, \$1.00.

EARLY PEE AND KAY. A superior new variety. Ears large and of fine quality. Packet, 5c; quart, 25c; peck, 75c; bushel, \$2.50.

LANDRETH'S SUGAR. Remarkably productive; two to four ears on every stalk. A few days later than the Concord or Triumph. Ears large and well filled; sweet, tender and of good appearance. By mail, postpaid—Packet, 10c; quart, 35c; peck, \$1.00.

EARLY EIGHT-ROWED SUGAR. Ripens a few days after Minnesota. Ears long. Packet, 7c; quart, 25c; peck, 75c; bushel, \$2.50.

HICKOX IMPROVED. A valuable variety for market. Excellent for canning; very sweet. Packet, 7c; quart, 25c; peck, 75c; bushel, \$2.50.

POTTER'S EXCELSIOR. Ripens soon after Moore's Concord. Ears large. Packet, 7c; quart, 25c; peck, 75c; bushel, \$2.50.

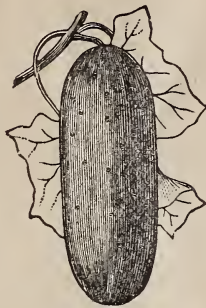
EARLY MAMMOTH. Produces ears about as large as Late Mammoth; three weeks earlier. Packet, 7c; quart, 25c; peck, 75c; bushel, \$2.50.

MOORE'S EARLY CONCORD. Ears large and well filled; early and unsurpassed for richness and delicacy of flavor. Packet, 7c; quart, 25c; peck, 75c; bushel, \$2.50.

CUCUMBERS.



EARLY WHITE SPINED.



EARLY FRAME.

EARLY FRAME. An old and popular variety of medium size; excellent for pickles. Packet, 5c; ounce, 10c; ¼ pound, 15c; pound, 50c.

IMPROVED EARLY WHITE SPINED. Extensively grown by market gardeners for forcing and general crop; very productive, crisp and tender. Packet, 5c; ounce, 10c; ¼ pound, 15c; pound, 50c.

CHICAGO, OR WESTERFIELD PICKLING. Popular with Chicago market gardeners, and extensively grown in that vicinity. Medium length, slightly pointed at each end, with very large and prominent spines; color deep green. Packet, 5c; ounce, 10c; ¼ pound, 20c; pound, 60c.

LANDRETH'S FIRST. Surpassed by few in length and slimmness of fruit. The earliest long, slim field cucumber in cultivation, maturing to slicing size for table in 50 days from germination; dark green and desirable. Very poor seeder. Packet, 5c; ounce, 15c; ¼ pound, 20c; pound, 75c.

EARLY NETTED RUSSIAN. Very hardy, small, brownish yellow, netted with white. Packet, 5c; ounce, 10c; ¼ pound, 15c; pound, 50c.

EARLY RUSSIAN. Early, small, hardy and productive. Packet, 5c; ounce, 10c; ¼ pound, 15c; pound, 50c.

EARLY GREEN CLUSTER. A much esteemed early sort, growing in clusters. Packet, 5c; ounce, 10c; ¼ pound, 15c; pound, 50c.



IMPROVED LONG GREEN. A fine long fruit of excellent quality; dark green, firm and crisp; very popular. Packet, 5c; ounce, 10c; ¼ pound, 15c; pound, 50c.

SHORT GREEN, OR GHERKIN. Similar to Early Frame; good for pickling. Packet, 5c; ounce, 10c; ¼ pound, 30c; pound, 85c.

WHITE WONDER. A distinct variety; beautiful, pearly white; splendid quality for slicing. Packet, 5c; ounce, 10c; ¼ pound, 20c; pound, 60c.

JERSEY PICKLING. Intermediate between the Long and Short Green, forming a long, slender pickle. Packet, 5c; ounce, 10c; ¼ pound, 15c; pound, 50 cents.

BOSTON PICKLING. A very productive sort, of superior quality. Packet, 5c; ounce, 10 cents; ¼ pound, 15 cents; pound, 50 cents.

EXTRA LONG WHITE SPINED. A longer variety of the preceding, and darker in color. Packet, 5c; ounce, 10c; ¼ pound, 15c; pound, 50c.

GREEN PROLIFIC PICKLING. A very short variety of the "Frame" type; an abundant bearer; highly recommended for pickles. Packet, 5c; ounce, 10c; ¼ pound, 15c; pound, 50c.

NICHOL'S MEDIUM GREEN. Excellent as a pickle sort, and is one of the best varieties for forcing. Packet, 5c; ounce, 10c; ¼ pound, 15c; pound, 50c.

THORBURN'S EVERBEARING. Vines continue to flower and produce fruit until killed by frost; small size; very early. Packet, 5c; ¼ pound, 15c; pound, 50c.

JAPANESE CLIMBING. A strong and vigorous grower, the vines attaining nearly twice the length of common varieties, soon as they become well established they begin to climb, and may be grown on fences, poles or trellises, thus saving much valuable space in small gardens or in market gardens where land is dear. The fruits are 10 to 12 inches in length, of a fine green color; the flesh is thick and firm, never bitter, and fine for pickling as well as slicing. Postpaid—Packet, 5c; ounce, 10c.

ASSORTED VARIETIES. Especially put up for home growing. Ounce, 5 cents.

CELERY.



WHITE PLUME

WHITE PLUME

WHITE PLUME CELERY. Most profitable for early market. It is almost self-blanching. In appearance it is very ornamental. Unsurpassed for fall and early winter use. Packet, 5c; ounce, 15c; ¼ pound, 50c.

GOLDEN SELF-BLANCHING. As self-blanching as White Plume. The entire plant is of an attractive yellowish-green color. Very tender, crisp and solid. Packet, 5c; ounce, 20c; ¼ pound, 65c; pound, \$2.25.

GOLDEN HEART. Of sturdy dwarf habit. Solid, and an excellent keeper; fine nutty flavor. Packet, 5c; ounce, 15c; ¼ pound, 40c; pound, \$1.35.

PINK PLUME. Stalks clear, creamy white, shaded with a beautiful delicate pink. In flavor it is sweeter than the red varieties, having a stronger "Celery" flavor, and preferred by Celery lovers wherever known. The foliage is white, serrated like the White Plume, and the plants bleach naturally. It has the long keeping qualities for which red Celeries are noticeable, and the faint tint of pink makes it wonderfully attractive for table use; has no tendency to rust, and owing to its white tops matures and blanches as early as the famous White Plume. Packet, 5c; ounce, 20c; ¼ pound, 75c.

GIANT PASCAL. Has a fine nutty flavor, and is free from any bitter taste. Packet, 5c; ounce, 15c; ¼ pound, 40c; pound, \$1.25.

KALAMAZOO BROAD-RIBBED. Very distinct and handsome in appearance, beautiful cream color throughout. Packet, 5c; ounce, 15c; ¼ pound, 40c.

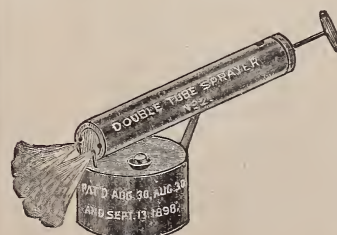
BOSTON MARKET. A remarkably fine dwarf white variety. Packet, 5c; ounce, 15c; ¼ pound, 40c; pound, \$1.25.

CRAWFORD'S HALFDWARF. Intermediate in size between the Dwarf and Large White. Packet, 5c; ounce, 15c; ¼ pound, 40c.

CELERIAC, OR TURNIP-ROOTED CELERY.

TURNIP-ROOTED. The root of this variety is turnip-shaped, tender and marrow-like. Packet, 5c; ounce, 15c; ¼ pound, 40c.

DOUBLE SPRAYER.



Works like magic; kills the bugs; saves the crops; expense of spraying almost nothing. Does rapid work and something every person who grows vegetables should have.

PRICE, POSTPAID, \$0.75.



EARLY SNOWBALL.

CAULIFLOWER. TRUE EARLY SNOWBALL. The best early Cauliflower yet known. $\frac{1}{4}$ ounce, 90c; $\frac{1}{2}$ ounce, \$1.50; ounce, \$2.50.
GILT-EDGE SNOWBALL. A larger and more robust grower than Early Snowball. A sure header. Packet, 25c; $\frac{1}{4}$ ounce, 75c; $\frac{1}{2}$ ounce, \$1.25; ounce, \$2.25.
EXTRA EARLY DWARF ERFURT. One of the best varieties in cultivation. Of dwarf habit. The best for early market and family use. By mail, postpaid—Packet, 20c; $\frac{1}{4}$ ounce, 70c; $\frac{1}{2}$ ounce, \$1.25; ounce, \$2.25.



GRAND RAPIDS LETTUCE.

LETTUCE.

GRAND RAPIDS. A splendid sort for forcing under glass, for which purpose it is largely used. Packet, 5c; ounce, 10c; $\frac{1}{4}$ pound, 25c; pound, 90c.

BLACK SEEDED SIMPSON. Leaves thin, very tender, of superior quality and of a very light green color, which prevents any wilting of the plant from being noticed; extensively grown by our market gardeners either for forcing or general crop. Packet, 5c; ounce, 10c; $\frac{1}{4}$ pound, 25c; pound, 85c.

EARLY PRIZE HEAD. The old reliable sort for summer use; heads of mammoth size, solid, tender and of superb flavor. Packet, 5c; ounce, 10c; $\frac{1}{4}$ pound, 25c; pound, 75c.

DENVER MARKET. An early variety of head lettuce, either for forcing or open ground; large solid heads of a good, light green color. Packet, 5c; ounce, 10c; $\frac{1}{4}$ pound, 25c; pound, 75c.

NEW PREMIUM CABBAGE. Large, solid head, keeping in good condition without going to seed longer than any other variety. Packet, 5c; ounce, 10c; $\frac{1}{4}$ pound, 25c; pound, 75c.

BIG BOSTON. Identical in color, shape and general appearance with the famous Boston Market Lettuce, but double the size. Packet, 5c; ounce, 10c; $\frac{1}{4}$ pound, 25c; pound, 85c.

TILTON'S WHITE STAR. (Seed White.) A distinct sort of the Black Seeded Simpson type, but grows larger and more rapidly, leaves broader, thicker, darker and less frilled at the edge. Large, loose head, blanches well and of excellent quality. Plants remain long for use before running to seed. For forcing and early planting outdoors. Packet, 5c; ounce, 10c; $\frac{1}{4}$ pound, 25c; pound, 85c.

TOMHANNOCK. Forms a beautiful plant 10 to 12 inches high by 9 to 10 inches across. Packet, 5c; ounce, 10c; $\frac{1}{4}$ pound, 20c.

CALIFORNIA ALL HEART. "No praise is too high for its merits as its superior does not exist." Packet, 5c; ounce, 10c; $\frac{1}{4}$ pound, 25c.

MAMMOTH YELLOW BUTTER. Forms very large compact heads of a rich yellow color. Packet, 5c; ounce, 10c; $\frac{1}{4}$ pound, 25c; pound, 75c.

HANSON. A superior curled heading variety of large size, often weighing from two to three pounds, sweet and crisp. Packet, 5c; ounce, 10c; $\frac{1}{4}$ pound, 20c; pound, 75c.

EARLY CURLED SIMPSON. One of the best sort for forcing. Packet, 5c; ounce, 10c; $\frac{1}{4}$ pound, 25c; pound, 75c.

SHOTWELL'S BROWN HEAD. Postpaid—Packet, 5c; ounce, 10c; $\frac{1}{4}$ pound, 20c; pound, 75c.

OAK LEAVED. Leaves shaped like the oak. Postpaid—Packet, 5c; ounce, 10c; $\frac{1}{4}$ pound, 20c; pound, 75c.

MIXED VARIETIES. All the choicest sorts mixed. Packet, 5c; ounce, 10c; $\frac{1}{4}$ pound, 15c; pound, 60c.



NEW YORK PURPLE.

KOHL-RABI.

EARLY WHITE VIENNA. Greenish white outside; flesh white and tender. Packet, 5c; ounce, 20c; $\frac{1}{4}$ pound, 60c; pound, \$2.00.



KOHL-RABI.

ENDIVE. GREEN CURLED. Very hardy; leaves dark green, tender and crisp. Packet, 5c; ounce, 10c; $\frac{1}{4}$ pound, 35c; pound, \$1.00.



LEEK. BROAD OR LONDON FLAG. (Best American.) A favorite variety with the market gardeners. Packet, 5c; ounce, 20c; $\frac{1}{4}$ pound, 50c; pound, \$1.50.

COPYRIGHTED 1889 BY JAS. HATHORNBURN & CO., N.Y.

MELONS
THE
BEST
VARIETIES



EARLY GOLDEN NETTED GEM. One of the earliest, most productive small melons grown. Fruit oblong, roughly netted; flesh green and very sweet. Packet, 5c; ounce, 10c; $\frac{1}{4}$ pound, 20c; pound 60c.

IMPROVED HACKENSACK. Without doubt the best general crop melon in cultivation. Fruit grows uniformly to large size, deeply ribbed and roughly netted; flesh green, thick and of delicious flavor. Packet, 5c; ounce, 10c; $\frac{1}{4}$ pound, 20c; pound, 60c.

SKILLMANS FINE NETTED. A small, very early standard variety of recognized merit; finely netted; flesh light green; very thick, sweet, and of excellent flavor. Packet, 5c; ounce, 10c; $\frac{1}{4}$ pound, 20c; pound, 60c.

BALTIMORE MARKET. Fruit large, oval or egg-shaped, deeply ribbed and finely netted; flesh green, very thick, and remarkably sweet and juicy; a fine shipper. Packet, 5c; ounce, 10c; $\frac{1}{4}$ pound, 20c; pound, 60c.

JENNY LIND. An early and desirable sort; fruit small, finely netted; flesh green and very sweet. Packet, 5c; ounce, 10c; $\frac{1}{4}$ pound, 20c; pound, 60c.

EXTRA EARLY ORANGE CHRISTINA. Fruit round, medium size, slightly ribbed, dark green color; flesh bright orange, very thick, sweet and juicy. Packet, 5c; ounce, 10c; $\frac{1}{4}$ pound, 20c; pound, 60c.

LARGE GREEN NUTMEG. Largely grown for market and home use; large size, ribbed and finely netted; flesh green, very sweet. Packet, 5c; ounce, 10c; $\frac{1}{4}$ pound, 20c; pound, 60c.

THE GRAND RAPIDS EARLY MARKET MUSK-MELON is a stylish and attractive melon, and is decidedly the best early market melon; large, yellow flesh, handsomely netted, good flavor and attractive; but the main points in its favor are its extreme earliness, large size and attractive appearance. Packet, 5c; ounce, 10c; $\frac{1}{4}$ pound, 20c; pound, 60c.

MONTREAL IMPROVED GREEN NUTMEG. Grows to a large size; deep ribbed, flattened at ends; flesh thick and very rich in flavor. Packet, 5c; ounce, 10c; $\frac{1}{4}$ pound, 20c; pound, 60c.

SHUMWAYS GIANT. Monstrous size, cream yellow, very early, absolutely distinct and pure, with seeds more than twice as large as other sorts; deliciously sweet and luscious, with fine, melting, thick, salmon color flesh. Packet, 5c; ounce, 10c; $\frac{1}{4}$ pound, 20c; pound, 60c.

EMERALD GEM. Medium size, nearly round; flesh a delicate light salmon color, very thick, fine grained, and of most excellent flavor. Packet, 5c; ounce, 10c; $\frac{1}{4}$ pound, 20c; pound, 60c.

BAY VIEW. Flesh a very handsome shade of green, thick, rich, sweet and juicy. An acquisition for market gardeners and shippers. Packet, 5c; ounce, 10c; $\frac{1}{4}$ pound, 20c; pound, 60c.

PINEAPPLE. Fruit of medium size, oval, slightly ribbed; flesh green, thick and highly flavored; very hardy. Packet, 5c; ounce, 10c; $\frac{1}{4}$ pound, 20c; pound, 60c.

BANANA. Great curiosity; grows on an average of two feet in length; flesh of deep salmon color, and has a peculiar and very high flavor. Packet, 5c; ounce, 10c; $\frac{1}{4}$ pound, 20c; pound, 40c.

TRUE TIP TOP. A yellow fleshed melon; very sweet in flavor; firm but not hard fleshed; edible to the very outside. Its shape varies from round to slightly oblong, covered with a handsome netting. The flesh being thick, fine grained and firm, makes it an excellent shipping melon. Packet, 5c; ounce, 10c; $\frac{1}{4}$ pound, 20c; $\frac{1}{2}$ pound, 35c; pound, 60c.

OSAGE. A favorite sort in many of the large markets; fruit large, oval, slightly ribbed, and dark green in color; flesh deep salmon, and is good within one-fourth inch of the rind. Postpaid—packet, 5c; ounce, 10c; $\frac{1}{4}$ pound, 20c; pound, 60c.



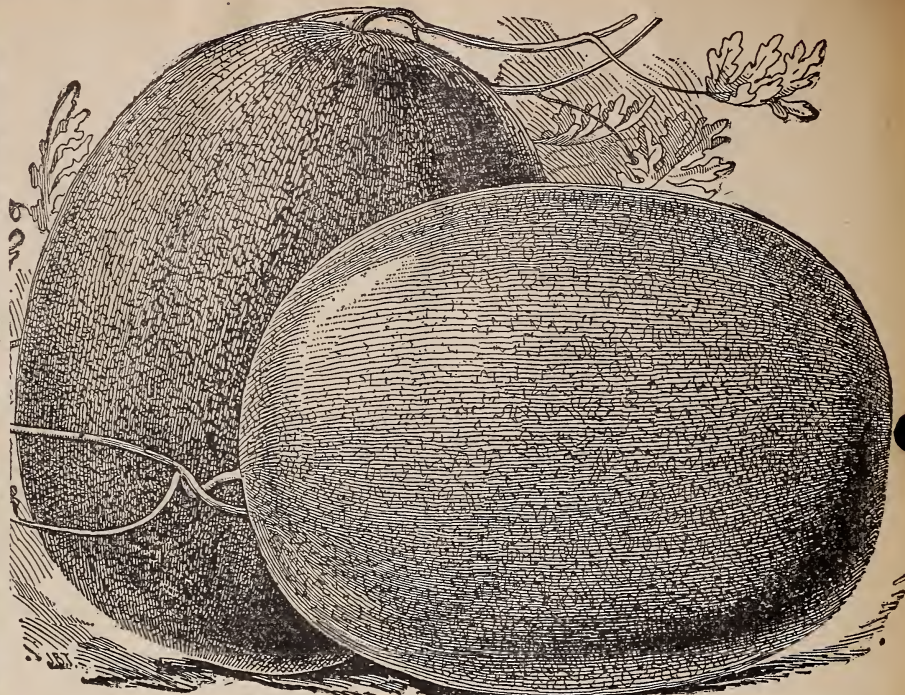
ROCKY FORD.

For Description Rocky Ford and Paul Rose, see
Specialties, Page 5.

WATER-MELONS.

INDIANA SWEETHEART

It is early, beautiful, of good quality, and a wonderfully good shipper and keeper. Vine vigorous and productive. Fruit large, oval, very heavy, uniformly mottled light and dark green. Rind thin, but firm. Flesh bright red, firm, solid, but very tender, melting and sweet. Packet, 5c; ounce, 10c; ¼ pound, 15c; pound, 45c.



INDIANA SWEETHEART.

AMERICAN QUEEN. Rind thin but tough, making it an excellent shipper. About the same shape of Hoosier King. Color light green. Flesh bright red, very sweet and juicy, and never stringy. The seed is grayish brown, and while the flesh is very tender and mealy it is always solid. The vines are rank, vigorous growers and prolific bearers. Commencing to bear early and continue until killed by frost. The melons frequently weigh 75 to 80 pounds. Packet, 5c; ounce, 10c; ¼ pound, 15c; pound, 50c.

KOLB GEM. The leading variety with all southern growers; hybrid between Georgia Rattlesnake and Sealy Bark. Form oval; rind dark green, marbled in light, very thin and tough; standing shipping longer distance than any other sort. Flesh red, sweet and melting. Packet, 3c; ounce, 5c; ¼ pound, 12c; pound, 34c.

MALMOTH IRONCLAD. This melon grows to a very large uniform size, frequently weighing 80 pounds and over, and resembling, in marking, the Cuban Queen. Flesh deep red, solid and of excellent flavor. Packet, 3c; ounce, 7c; ¼ pound, 12c; pound, 37c.

ICE CREAM, OR PEERLESS. The best melon for private gardens and for market gardeners who deliver direct to consumers. Fruit medium-sized, oval, finely mottled; rind thin, flesh bright scarlet, solid to the center. Packet, 3c; ounce, 6c; ¼ pound, 15c; pound, 35c.

VICK'S EARLY. Superior early variety; long, smooth, medium size and solid. Color dark green; flesh of deep scarlet, sweet and delicious. Packet, 3c; oz., 6c; ¼ pound, 15c; pound, 40c.

LANDRETH'S BOSS. A superb variety; oblong, dark green. Flesh deep scarlet and very rich and sweet. Packet, 3c; ounce, 7c; ¼ pound, 15c; pound, 40c.

FLORIDA FAVORITE. A hybrid of Rattlesnake and Peerless, combining the good qualities of the latter and form of the Rattlesnake. Ten days earlier than Kolb's Gem. Flesh light crimson, very sweet and delicious. Packet, 3c; ounce, 6c; ¼ pound, 15c; pound, 38c.

GRAY MONARCH. One of the largest melons grown; skin very light, mottled; flesh bright red and of excellent quality. Packet, 3c; ounce, 7c; ¼ pound, 12c; pound, 34c.

CUBAN QUEEN. A popular sort with melon growers; flesh so solid that the melons weigh much more, according to their size, than other varieties. Flesh bright red, sweet and well flavored. Packet, 3c; ounce, 6c; ¼ pound, 12c; pound, 35c.

DARK ICING. Round, solid, white seeded, dark skinned, medium in size, of delicious flavor. Packet, 3c; ounce, 6c; ¼ pound, 12c; pound, 35c.

PRIDE OF GEORGIA. Dark green, oval; a good shipper; attains a large size. Packet, 3c; oz., 6c; ¼ pound, 12c; pound, 35c.

RATTLESNAKE. Large; shape long; rind thin; flesh bright red; skin striped. Packet, 3c; ounce, 6c; ¼ pound, 12c; pound, 35c.

GREEN AND GOLD. A golden-orange fleshed valuable variety of good size (25 to 30 pounds); early; productive; rind thin, only ¼ to ½ inch thick. Flesh juicy, sweet and of delicious flavor; its rich golden color makes it desirable as an ornament for the table. Packet, 3c; ounce, 7c; ¼ pound, 15c; pound, 38c.

MOUNTAIN SWEET (or black-seeded Ice Cream). Popular melon for home use. Rind thin, dark green; flesh bright red, sweet and melting. Packet, 3c; ounce, 6c; ¼ pound, 12c; pound, 35c.

HOOSIER KING. Valuable new and distinct watermelon. Flesh beautiful rich scarlet, very solid and of a delicious sweet flavor. The rind is thin, but tough; will stand shipping and rough handling better than any other variety known. Packet, 3c; ounce, 7c; ¼ pound, 15c; pound, 45c.

RUBY GOLD. A very long melon that weighs from 40 to 50 pounds; flesh is solid, pure golden yellow, variegated with streaks and layers of bright pink. Delicious flavor. Packet, 3c; ounce, 7c; ¼ pound, 12c; pound, 38c.

SEMINOLE. A Florida melon possessing four excellent qualities—extra early, enormously productive, large and of most delicious flavor. Packet, 3c; ounce, 7c; ¼ pound, 12c; pound, 35c.

HUNGARIAN HONEY. Perfect globe shape; skin dark green; flesh deep red, stringless. Rich and sweet honey flavor. Packet, 3c; ounce, 6c; ¼ pound, 15c; pound, 45c.

JUMBO. Skin green; flesh bright red; particularly sweet, juicy and melting. Large size. Packet, 3c; ounce, 6c; ¼ pound, 13c; pound, 38c.

BLACK SPANISH. A dark green, round, good quality, and productiveness. Packet, 3c; ounce, 6c; ¼ pound, 12c; pound, 35c.

RUBY GOLD. A fine, large melon with core variegated with yellow, red and pink. Delicate flavor. Packet, 3c; ounce, 7c; ¼ pound, 15c; pound, 45c.

KENTUCKY WONDER. Red seed; attractive oblong shape; dark green with lighter stripe, and sweet. Packet, 3c; ounce, 7c; ¼ pound, 15c; pound, 40c.

NEW WHITE GEM. Medium size, bright pink, melting, crisp, juicy, deliciously sweet. Packet, 3c; oz., 7c; ¼ lb., 15c; lb., 45c.

ORANGE. Rind separates from core like an orange. Medium in size, sweet, fine quality. Packet, 4c; oz., 7c; ¼ lb., 15c; lb., 40c.

FORD HOOK. Its earliness and large size, with superior quality renders it desirable for both family and market. Packet, 3c; ounce, 7c; ¼ pound, 15c; pound, 45c.

COLORADO CITRON. Immensely prolific; flesh very firm and solid; size very large and preserving qualities the very best. Packet, 3c; ounce, 7c; ¼ pound, 15c; pound, 50c.

THE VOLGA. A Russian variety. Cultivated on the Lower Volga, near the Caspian Sea, for shipment in barrels to St. Petersburg and Moscow. Pale green flesh. Packet, 5c; ounce, 10c; ¼ pound, 15c; pound, 40c.

DIXIE. A valuable acquisition; none better ever introduced. Thin, tough rind, with bright scarlet flesh; fine flavor, sweet and delicious. Packet, 3c; ounce, 7c; ¼ pound, 15c; pound, 35c.

NEW FAVORITE. Larger than the Florida Favorite; one of the very best for market and home use. Red flesh, fine flavor. Packet, 4c; ounce, 7c; ¼ pound, 15c; pound, 35c.

STOKES'S EXTRA EARLY. Flesh deep scarlet, remarkably solid, and delicious, sugary flavor unsurpassed by any other melon. Packet, 3c; ounce, 7c; ¼ pound, 15c; pound, 40c.

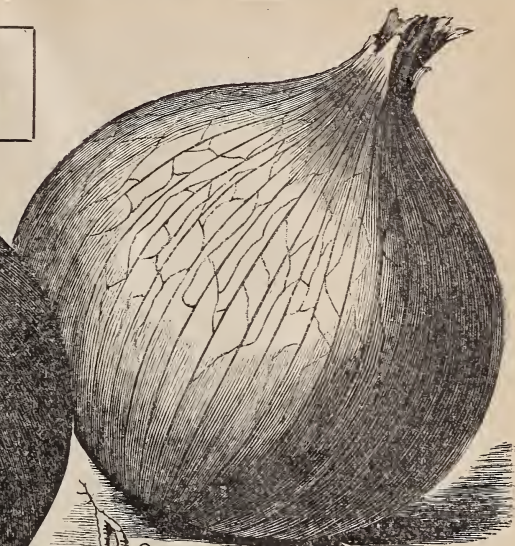
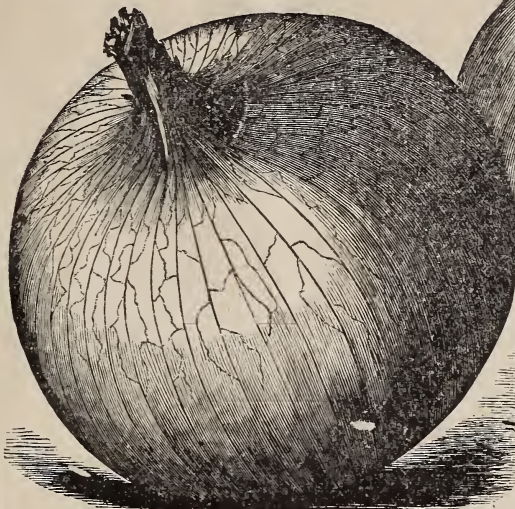
GOLDEN HONEY. Yellow fleshed, very sweet and of excellent flavor. Packet, 3c; ounce, 8c; ¼ pound, 15c; pound, 40c.

MOUNTAIN SPROUT. Packet, 3c; ounce, 6c; ¼ pound, 15c; pound, 35c.

PHINNEY'S EARLY. A valuable variety for home use and for growing north. Flesh bright scarlet, and sugary. Packet, 3c; ounce, 7c; ¼ pound, 12c; pound, 35c.

OWING to the great failure in the Onion seed crop this season prices are considerably higher than last year and we feel sure that first-class new seed can not be offered lower than the prices we quote. We are among the largest growers of Onion Sets in the country, and use several thousand pounds of seed on our own farm and realize the importance of having the very best seed it is possible to procure, and caution our customers against unreliable or old seeds that may be offered cheap. We most earnestly solicit your valued order for the coming season, knowing that you can not do better, as we are recognized headquarters on same.

ONIONS



**DANVERS
YELLOW GLOBE**

YELLOW GLOBE DANVERS. This is, in all probability, the most popular variety and more extensively grown than any other sort. It is one of the largest croppers, the best keeper, most perfect in shape, and the earliest of all the Danvers. Packet, 5c; ounce, 10c; $\frac{1}{4}$ pound, 35c; pound, \$1.25; 5 pounds, \$5.50.

EXTRA EARLY RED. Very early and productive; of mild flavor, medium size, solid and of deep red color. Packet, 5c; ounce, 10c; $\frac{1}{4}$ pound, 40c; pound, \$1.50.

SOUTHPORT YELLOW GLOBE. A very large, handsome, globular-shaped yellow variety, very productive, of mild flavor; excellent keeper. Packet, 5c; ounce, 10c; $\frac{1}{4}$ pound, 40c; pound, \$1.50.

EXTRA EARLY BLOOMSDALE PEARL. Remarkably early, pearly white, translucent; growing almost with the rapidity of a radish; flat; exceedingly large. Packet, 5c; ounce, 15c; $\frac{1}{4}$ pound, 75c; pound, \$2.50.

EXTRA LARGE RED WETHERSFIELD. This variety is grown exclusively by large growers as the most productive and profitable sort, producing from four to six hundred bushels per

acre of extra large onions the first season from seed. Our strain of this variety produces onions of extra large size; fine grained and mild flavor. Packet, 5c; ounce, 10c; $\frac{1}{4}$ pound, 35c; pound, \$1.25; 5 pounds, \$5.50.

LARGE YELLOW DUTCH, OR STRASBURG. A standard sort, grown more largely for sets than any other. Grows large, oval and somewhat variable in form. Flesh white, fine grained and mild in flavor; skin yellow. Very hardy and a good keeper. By mail, postpaid—Packet, 5c; ounce, 10c; $\frac{1}{4}$ pound, 40c; pound, \$1.40; 5 pounds, \$5.75.

SOUTHPORT RED GLOBE. (Very scarce this year.) The Onions from Southport, Conn., generally command an extra price in the New York markets, because of their beautiful shape and color. The variety is of medium size, spherical, with small neck, rich, red color, and of superior quality. Packet, 5c; ounce, 20c; $\frac{1}{4}$ pound, 75c; pound, \$2.50.

LARGE WHITE GLOBE. One of the finest Onions in cultivation, both in appearance and quality. Bulbs large, globe shaped and pure white. Packet, 5c; ounce, 15c; $\frac{1}{4}$ pound, 75c; pound, \$2.50.

WHITE PORTUGAL, OR SILVER SKIN. Ripens early, large in size, mild in flavor, excellent for winter use. Much esteemed for pickling when small, and grows a handsome, good keeping set when sown too thick to grow big onions. Packet, 5c; ounce, 15c; $\frac{1}{4}$ pound, 75c; pound, \$2.50.

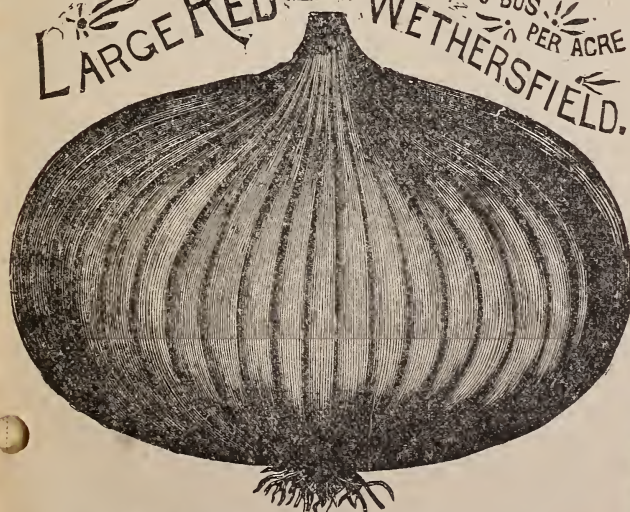
MAMMOTH PRIZETAKER ONION. A beautiful, large, light golden yellow, rapid grower; matures early; flesh is firm, mild and transparent. Good keeper and creates great wonder and demand in market. Packet, 5c; ounce, 15c; $\frac{1}{4}$ pound, 50c; pound, \$1.75.

MAMMOTH SILVER KING. The largest white variety ever introduced, and is tender, mild and early. Great size and attractive shape will place it in the front rank. They are so very mild and so pleasant to the taste they can be eaten like an apple. The skin is clear silvery white. Packet, 5c; ounce, 10c; $\frac{1}{4}$ pound, 60c; pound, \$2.00.

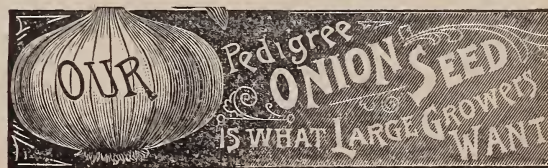
THORBURN'S EXCELSIOR WHITE PICKLING. The best sort for pickling. Bulbs of medium size and flattened. Skin pure white, flesh white, fine grained and of mild flavor. Grown extensively by our market gardeners, especially for pickling purposes. Packet, 5c; ounce, 15c; $\frac{1}{4}$ pound, 75c; pound, \$2.50.

WHITE QUEEN. A rapid-growing, silver-skinned variety, of mild flavor; early and excellent for pickling. Packet, 5c; ounce, 15c; $\frac{1}{4}$ pound, 85c; pound, \$3.00.

LARGE RED WETHERSFIELD.
400 BUS. PER ACRE



SPECIAL PRICES GIVEN TO LARGE BUYERS.
Let us figure on your wants.



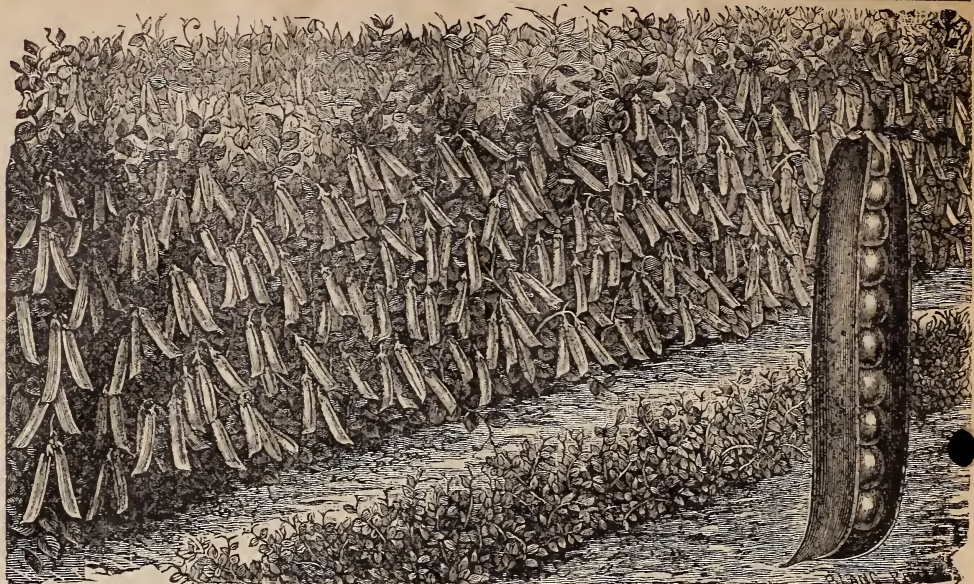
PEAS.

H. & P.'S FIRST OF ALL. Profitable for early market. A very valuable, improved strain. Exceedingly productive and pods well filled. Ready for table in 45 days. Earliest of all known sorts. Grows about 18 to 24 inches high. Bushel, \$3; 1/2 bushel, \$1.75; 1/4 bushel, 85c; 1/8 bushel, 50c; quart, 35c; pint, 20c; 1/2 pint, 10c.

LANDRETH'S EXTRA EARLY. (Sealed bags.) This variety is known the world over as one of the best Extra Early Peas in existence; ripens very evenly. Peas smooth; vines 2 to 3 feet in height and vigorous; pods well filled. By mail, postpaid—Packet, 10c; quart, 35c; peck, \$1; bushel, \$3.50.

ALASKA. One of the earliest. Height, 2 1/2 feet; pods large and well filled; peas smooth, light blue in color, and very tender; used largely by canners. Packet, 6c; quart, 32c; peck, 85c; bushel, \$3.

STRATAGEM. Vines 2 feet. Blue wrinkled marrow, of recent introduction; vines of strong growth as to need no support, and remarkably free bearing. Packet, 5c; quart, 35c; peck, \$1.50.



The above cut shows growth of H. & P.'s First of All.

CHAMPION OF ENGLAND. The standard late variety for either market or home use. Packet, 5c; quart, 23c; peck, 75c.

NOTT'S EXCELSIOR. A dwarf wrinkled pea of excellent quality, coming in between American Wonder and McLean's Little Gem. Very sweet; excellent for home use. Packet, 5c; quart, 35c; peck, \$1.25.

AMERICAN WONDER. One of the earliest dwarf wrinkled sorts; growth, about 10 inches in height, and is covered with well filled pods, often containing seven or eight tender and deliciously sweet peas. Packet, 5c; quart, 35c; peck, \$1; bushel, \$3.50.

BLISS' EVERBEARING. As indicated by its name, it is almost a perpetual bearer, blossoming and setting young pods late in the season, after furnishing the table with choice supplies for weeks. Packet, 5c; quart, 30c; peck, \$1.

PREMIUM GEM. Fine dwarf pea of the Little Gem type; pods long, dark green in color, and well filled. Packet, 7c; quart, 35c; peck, \$1; bushel, \$4.

TELEPHONE. For main crop; height, 3 feet; seeds large, green, wrinkled, enormously productive, and of the very best quality. It is a strong grower, averaging eighteen pods to the stalk. Packet, 5c; quart, 35c. By express or freight—1/4 bushel, \$1.25; bushel, \$5. See cut.

BLISS' ABUNDANCE. Vine half dwarf, bush-like in habit, and literally covered with large, full, evenly matured pods. Packet, 5c; quart, 30c. By express or freight—1/4 bushel, \$1.

MCLEAN'S LITTLE GEM. Dwarf green, wrinkled marrow; very prolific, of superior flavor, and a first early; needs no support. For family use it is one of the best. Packet, 5c; quart, 35c; peck, \$1.

PRIDE OF THE MARKET. Our stock of this variety is very fine, and largely grown by our Indianapolis market gardeners for second crop. Vines grow about two feet high, well filled with large dark green pods, which are generally borne in pairs at the top of the vines. Peas large, dark green, and slightly wrinkled. Sure to give general satisfaction. By mail, postpaid—Packet, 10c; quart, 45c. By express or freight—1/4 bushel, \$1.35; bushel, \$5.

CANADA FIELD PEAS. By express or freight—1/4 bushel, 35c; bushel, \$1.

HORSFORD'S MARKET GARDEN. One of the best second early peas; a cross between the Alpha and American Wonder. It grows from 20 to 30 inches high, always in pairs. Packet, 10c; quart, 35c; peck, \$1; bushel, \$3.75.

TELEGRAPH. Stronger growing and hardier than Telephone, and has darker colored foliage. Pods fully as large and darker, green. Packet, 10c; quart, 35c. By express or freight—1/4 bushel, \$1.25; bushel, \$4.50.

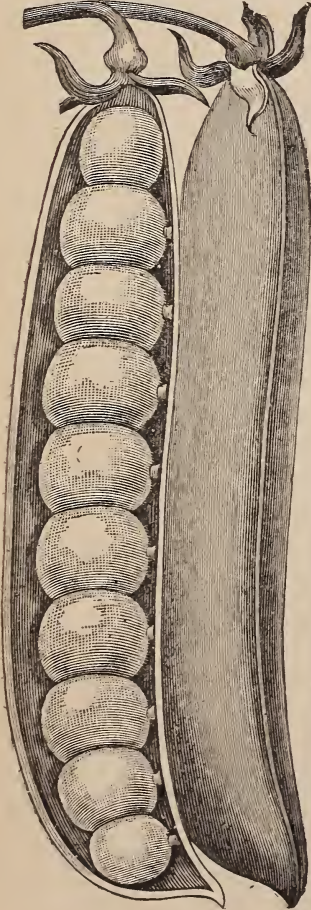
SHARPE'S QUEEN. In habit, cropping qualities, color and flavor it is the perfection of a pea for every purpose, and by successive sowings so continuous a crop can be obtained that it will be almost unnecessary to cultivate any other variety. The Queen is a blue wrinkled marrow pea, about two to two and one-half feet in height, of a sturdy branching habit. It requires to be sown thinly, as the pods are produced from the very bottom of the plant to the top. The pods are large, green, slightly curved, and so filled with peas that when opened it would appear impossible they could be contained in the pod. The peas are large, oval, deep green, and of a delicious flavor when cooked. We can not say too much in its praise, and are confident our customers will agree with us that it is one of the very best peas ever sent out. As a late pea, no other variety approaches it. Packet, 10c; pint, 25c; quart, 40c; 1/4 bushel, \$1.50; bushel, \$5.

BLACK EYED MARROWFAT. Packet, 10c; pint, 20c; quart, 30c. By express freight—1/4 bushel, 60c; bushel, \$2.

LARGE WHITE MARROWFAT. Packet, 10c; pint, 20c; quart, 30c. By express or freight—1/4 bushel, 60c; bushel, \$2.00.

TALL GRAY SUGAR. Edible pods; used in green state same as green beans. By mail, postpaid—Packet, 10c; quart, 50c.

CANADA FIELD PEAS. By express or freight—1/4 bushel, 35c; bushel, \$1.





LARGE BELL, OR BULL NOSE.

PEPPERS.

LARGE GOLDEN UPRIGHT. Produces the fruit upright on the stems, as shown in our illustration. The fruit is fully double the size of Golden Dawn, and of a beautiful golden color, tinged with bright red where exposed to the sun. Mild and well flavored. Packet, 5c; ounce, 20c; ¼ pound, 60c.

MAMMOTH BRAZILIAN SWEET UPRIGHT. Similar to the above in habit of growth. Fruit mammoth in size and of a bright red color. Try this. Packet, 5c; ounce, 20c.

RED CHERRY. Fruit round, small, of rich glossy red; exceedingly ornamental. Packet, 5c; ounce, 20c.

CAYENNE. Small pungent; the Cayenne Pepper of commerce. Packet, 5c; ounce, 20c; ¼ pound, 50c.

RED CHILI. Best for pepper-sauce; bright red, small. Packet, 5c; ounce, 20c; ¼ pound, 65c.

LARGE BELL, OR BULL NOSE. Very large, bell-shaped, mild and one of the best sorts for pickling. Flesh thick, hard and less pungent than most other sorts. Packet, 5c; ounce, 20c; ¼ pound, 60c.



RED CHILI. CAYENNE.

SWEET MOUNTAIN. Very large, long, often eight inches or more in length, by two or three in diameter; smooth. Flesh thick, sweet and mild flavored; highly esteemed for pickles. Packet, 5c; ounce, 20c; ¼ pound, 60c.

RUBY KING. The largest red or green Pepper ever grown. The fruit, when ripe, is of an exquisite ruby color, and attains a length of 4½ to 6 inches, with diameter of ¾ to 1 inch. In point of mildness and delicacy of flavor it is unequalled. The plants have a sturdy, bushy habit, and are very prolific. Packet, 5c; ounce, 20c; ¼ pound, 60c.



IMPROVED LONG HOLLOW CROWN.

PARSLEY.

DOUBLE CURLED. This variety is extensively used for garnishing. Dwarf and finely curled; tender and highly flavored. Packet, 5c; ounce, 10c; ¼ pound, 25c.

PARSNIPS.

IMPROVED LONG HOLLOW CROWN. The only variety of Parsnip that our trade, which is largely with experienced market gardeners, will have. Roots long, smooth and free from side roots; tender, sugary and well flavored. Parsnips are improved when touched by frost. Packet, 5c; ounce, 10c; ¼ pound, 15c; pound, 40c.

BLOOMSDALE, 80 DAYS. The Bloomsdale is the best-bred and handsomest Parsnip to be found; it is half-long, wedge-shaped, hollow-crowned and very broad at the shoulders, easily taken out of the ground and producing more tons to the acre than the longer and more slim varieties. Do not confound this with common stock which produces slim roots, forked and so long as to be next to impossible of extraction from the ground. Packet, 5c; oz., 10c; lb., 50c.

PUMPKIN.

Two Pounds of Seed Per Acre.

WINTER LUXURY. This new Pumpkin is the result of six years' careful selection and improvement by a veteran pumpkin grower, and is pronounced the very best Pumpkin for pies. It grows uniformly to a diameter of ten to twelve inches, and is enormously productive. In color a beautiful golden yellow. Packet, 5c; ounce, 10c; ¼ pound, 15c; pound, 40c.

NEW PIE PUMPKIN, "CALHOUN." Medium in size, extraordinarily heavy and solid, very productive and of excellent quality. The outside is a cream color. Packet, 5c; ounce, 10c; ¼ pound, 20; pound, 40c.

KING OF THE MAMMOTHS. Originated in France, where it is justly styled "King of the Mammoths." It frequently reaches the enormous weight of 200 pounds and over. Flesh and skin of a bright yellow color, fine grained and of excellent quality. Don't fail to order a package. Packet, 5c; ounce, 10c; ¼ pound, 20c; pound, 40c.

QUAKER PIE. A distinct variety of much merit. The shape is nearly oval, tapering slightly towards the ends. Color creamy white, both inside and out; flesh is sweet and rich, and an excellent keeper. Packet, 5c; ounce, 10c; ¼ pound, 15c; pound, 40c.

JAPANESE PIE. Crooknecked variety with extremely small seed cavity; nearly all solid meat; quality extra fine. Seeds distinct in appearance, being curiously sculptured in the manner of Chinese letters. Productive; ripens early; medium size; good keeper. Easily cut and dried like apples, and makes excellent pies and sauce for winter use. Packet, 5c; ounce, 10c; ¼ pound, 15c; pound, 40c.

LARGE CHEESE. One of the best for table use; flat; skin orange; flesh yellow and sweet; very productive. Packet, 5c; ounce, 10c; ¼ pound, 15c; pound, 40c.

TRUE TENNESSEE SWEET POTATO. An excellent variety for pies. Pear-shaped; medium size; flesh and skin creamy white; fine grained; very sweet and delicious; a good keeper. Packet, 5c; ounce, 10c; ¼ pound, 15c; pound, 40c.

COMMON FIELD, OR SUGAR. The common Sweet Pumpkin, grown extensively for home use and stock feeding. Packet, 5c; ¼ pound, 10c; pound, 25c. By express—Pound, 15c.

CUSHAW. Long, yellow crookneck; splendid for table use or for feeding stock; flesh yellow; fine grained and sweet. Packet, 3c; ounce, 7c; ¼ pound, 15c.

RADISHES.

WHITE "BOX." Distinct from any of the early White Turnip Radishes. Remarkably short top, rapid growth, perfect globe shape, extra fine quality, and showing no disposition whatever to become pithy with age. Desirable for forcing, owing to its very few and short leaves. The Radish for market gardeners. Give it a trial. Packet, 5c; ounce, 10c; ¼ pound, 20c; pound, 50c.

FRENCH BREAKFAST. The favorite in Paris markets; olive-shaped; red, tipped with white; crisp, tender and very attractive. Packet, 5c; ounce, 10c; ¼ pound, 20c; pound, 50c.

SCARLET TURNIP, WHITE TIPPED. A fancy French variety; scarlet, with white bottom. Packet, 5c; ounce, 10c; ¼ pound 15c; pound, 45.

EARLY SCARLET TURNIP. Round; deep scarlet; excellent for forcing and early spring sowing. Packet, 5c; ounce, 10c; ¼ pound, 15c; pound, 45c.

EARLY WHITE TURNIP. Similar to the above, being a few days later. Packet, 5c; ounce, 10c; ¼ pound, 15c; pound, 40c.

VICK'S EARLY SCARLET GLOBE. An excellent sort for forcing; small top. Bright scarlet color; very crisp and tender; stands a great amount of heat without becoming pithy. Packet, 5c; ounce, 10c; ¼ pound, 15c; pound, 45c.

LONG WHITE NAPLES. Flesh white, crisp and mild; excellent for late summer; an admirable market variety. Packet, 5c; ounce, 10c; ¼ pound, 15c; pound, 45c.

WHITE OLIVE-SHAPED. Early and of quick growth; fine, olive-shaped; skin and flesh pure and tender. Packet, 5c; ounce, 10c; ¼ pound, 15c; pound, 45c.

SCARLET OLIVE-SHAPED. Similar to above, except in color, which is a beautiful scarlet. Packet, 5c; ounce, 10c; ¼ pound, 20c; pound, 60c.

MARKET GARDENER'S EARLY LONG SCARLET. Longer than Scarlet Olive and shorter than the old Long Scarlet. An admirable long variety for forcing; fully ten days earlier than the Long Scarlet. Fine for market gardeners. Packet 5c; ounce, 10c; ¼ pound, 20c; pound, 50c.

CELESTIAL, OR CHINESE HALF-LONG STUMP. Pure white; in shape somewhat resembling a half-long stump-rooted Carrot. A quick variety; very tender and agreeable in flavor. This can be used either as a spring, summer, autumn or winter Radish. A sort of unusual merit. Packet, 5c; ounce, 10c; ¼ pound, 25c; pound, 75c.

RADISHES.



INDIANAPOLIS WHITE GLOBE.

INDIANAPOLIS WHITE GLOBE. For two seasons we have been unable to get a stock sufficient to offer on account of failure of crop. This year we have again secured an excellent stock of seed from the originator that we can offer which will be a great satisfaction to the gardeners, as this Radish is well known to the Indianapolis market gardeners. It is of very quick growth, has small top, nearly globe shape; very sweet and juicy. Grows to a large size without becoming pithy, and remains sweet and edible to the last. Sure to become a general favorite. By mail, post-paid—Packet, 5c; ounce, 10c; $\frac{1}{4}$ pound, 25c; pound, 50c. (See cut.)

WHITE STRASBURG SUMMER. Very desirable summer variety; comparatively new; skin and flesh pure white, firm and brittle; growing to a large size, and withstands severe heat. Packet, 5c; ounce, 10c; $\frac{1}{4}$ pound, 15c; pound, 50c.

LONG SCARLET SHORT TOP. Top small. Root six to nine inches; straight, smooth, growing half above ground. Skin brilliant scarlet; flesh white, crisp and delicious; very hardy and of rapid growth. The leading long variety for the market and family garden; Packet, 5c; ounce, 10c; $\frac{1}{4}$ pound, 15c; pound, 50c.

BECKERT'S IMPROVED CHARTIER. (Or Shepherd). A long and unusually large variety of recent introduction; distinct and desirable. The upper portion of the radish is bright crimson, shaded down to pink at the center; thence to the tip is a pure, waxy white. In quality and flavor, it is tender, sweet and mild, having just a faintly perceptible tinge of pungency to give it relish. It is quite free from "pithiness," even when well advanced in the season. Packet, 5c; ounce, 10c; $\frac{1}{4}$ pound, 15c; pound, 50c.

GOLDEN GLOBE. Similar in growth to Summer White except the skin is of an amber or golden color. Packet, 5c; ounce, 10c; $\frac{1}{4}$ pound, 15c; pound, 50c.

SUMMER WHITE. A perfect, globe-shaped radish of rapid growth, producing perfect specimens; crisp and tender, even in the hottest latitude. Skin and flesh pure white. A favorite with market gardeners for summer planting. Packet, 5c; ounce, 10c; $\frac{1}{4}$ pound, 15c; pound, 50c.

BARTELDES GLASS RADISH. This new radish is a fine acquisition. It is a long radish of a light pink color, white tipped, of uniform size. The flesh is transparent white, always crisp and brittle, even if grown to a large size, and mild flavored. It was named "Glass Radish" on account of the fine transparency of the flesh. Pronounced one of the finest among radishes. Packet, 5c; ounce, 10c; $\frac{1}{4}$ pound, 15c; pound, 50c.



BECKERT'S IMPROVED CHARTIER.

WOOD'S EARLY FRAME. Extensively grown by market gardeners for forcing. Similar in growth to the Long Scarlet, but about ten days earlier, and shorter. The radishes are bright scarlet, blending to white at the bottom; crisp and tender. Packet, 5c; ounce, 10c; $\frac{1}{4}$ pound, 15c; pound, 45c.

LADY FINGER. A long, clear, white radish; crisp and mild. Valuable for market. Packet, 5c; ounce, 10c; $\frac{1}{4}$ pound, 15c; pound, 50c.

GIANT WHITE STUTTGART. A very rapid grower. Flesh and skin snowy white; very crisp, mild and of the finest flavor; does not get pithy; excellent for family use. Packet, 5c; ounce, 10c; $\frac{1}{4}$ pound, 15c; pound, 50c.

LONG WHITE SPANISH. Roots long, skin white, slightly wrinkled; solid and pungent, somewhat milder than the Black Spanish. Packet, 5c; ounce, 10c; $\frac{1}{4}$ pound, 15c; pound, 50c.

NON PLUS ULTRA. By far the smallest-topped and earliest forcing radish in cultivation. Roots small, round, deep, rich red, with very crisp, tender, white flesh. This is the best variety for forcing, as it will mature in from eighteen to twenty-one days, and the tops are so small that a large number can be grown in a single bed. Packet, 5c; ounce, 10c; $\frac{1}{4}$ pound, 20c; pound, 60c.

LONG BRIGHTEST SCARLET. A new variety, having several valuable advantages, which may be summed up as follows: Extraordinary earliness, the roots being fit for use about twenty-five days after sowing; remarkably bright color, quite unique, being the most fiery scarlet in any kind of radish. It is very slightly tipped with white, and the flesh is crisp and tender. In shape it is very regular, somewhat conical, and in size it is intermediate, between the long and half long sorts. Packet, 5c; ounce, 10c; $\frac{1}{4}$ pound, 15c; pound, 50c.

SHORT TOP EARLIEST SCARLET TURNIP. (Landreth's.) This variety is planted by some of our gardeners exclusively. It is an excellent hot-bed sort. Form round; bright red skin; flesh crisp and tender; tops very short. Packet, 5c; ounce, 10c; $\frac{1}{4}$ pound, 15c; pound, 50c.

CHINESE ROSE WINTER. Bright rose color; flesh firm and piquant; excellent for winter use. Packet, 5c; ounce 10c; $\frac{1}{4}$ pound, 20c; pound, 60c.

CHINESE WHITE WINTER. Like Chinese Rose, except in color. Packet, 5c; ounce, 10c; $\frac{1}{4}$ pound, 15c; pound, 45c.

ROUND BLACK SPANISH. Similar to Long Black Spanish, differing only in shape. Packet, 5c; ounce, 10c; $\frac{1}{4}$ pound, 15c; pound, 50c.

CALIFORNIA WHITE WINTER. A giant white radish, eight to twelve inches long and from two to three inches in diameter; white, solid and of good flavor. Packet, 5c; ounce 10c; $\frac{1}{4}$ pound, 15c; pound, 50c.

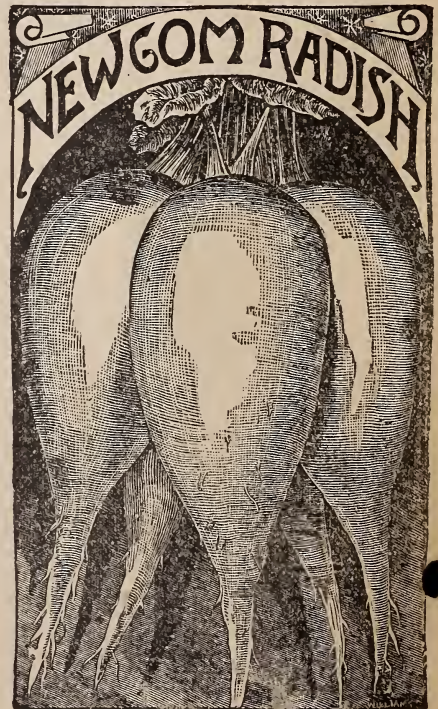
LONG BLACK SPANISH. One of the latest as well as the hardiest, and is considered an excellent sort for winter use. Roots oblong, black, of very large size and firm texture. Packet, 5c; ounce, 10c; $\frac{1}{4}$ pound, 15c; pound, 50c.

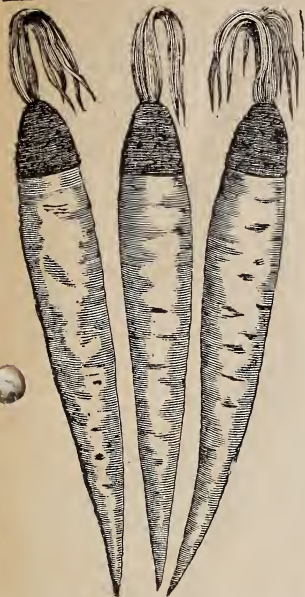
NEWCOM.

A valuable new variety, and the best early out-of-door radish. Grows exceedingly large; flesh and skin pure white, firm and brittle; small top and slow to run to seed. It will stand heat and drouth better and will stand longer without becoming pithy than any other. Packet, 5c; ounce, 10c; $\frac{1}{4}$ pound, 20c; pound, 75c.

EARLY HALF-LONG SCARLET.

Intermediate between Scarlet Olive and Long Scarlet, and is highly recommended for forcing. It makes a very quick growth, and is mild and tender. Packet, 5c; ounce, 10c; $\frac{1}{4}$ pound, 15c; pound, 50c.





SALSIFY—MAMMOTH SAND. ISLAND.



SALSIFY, or Vegetable Oyster.

MAMMOTH SANDWICH ISLAND. At least twice the size of the ordinary sort, and resembles a good-sized parsnip. Packet, 5c; ounce, 15c; ¼ pound, 50c; pound, \$1.50.

LONG WHITE FRENCH. Long, white, tapering roots; of excellent quality. Packet, 5c; ounce, 10c; ¼ pound, 25c; pound, 85c.

SPINACH.

BLOOMSDALE SAVOY LEAVED. (Landreth's Sealed Bags.) The leaves of this variety are large, succulent and much wrinkled or curled, like the Savoy Cabbage. Extensively grown by our market gardeners. Ounce, 5c; pound, 30c.

LONG STANDING. One of the best varieties for spring sowing, as it stands fully two weeks longer than any other sort before running to seed. A valuable market variety. Ounce, 5c; pound, 30c.

PRICKLY OR FALL. The hardiest variety; will stand the severest weather with slight protection. The seed is prickly; leaves oblong, pointed and of good quality. Used exclusively for fall sowing. Ounce, 5c; pound, 30.

RHUBARB.

LINNEUS. Earliest of all; very productive and highly flavored. Packet, 5c; ounce, 15c; ¼ pound, 50c.

VICTORIA. Very large, well developed stalks. Packet, 5c; ounce, 15c; ¼ pound, 50c.

SQUASHES.

THE FAXON. A new squash of excellent merit; not large, but of handsome appearance. The quality is always choice. Well worthy of a trial. Packet, 5c; ounce, 10c; pound, 50c.

PERFECT GEM. Fruit round, six to eight inches in diameter, and borne in clusters. Shell exceedingly thin, smooth, ribbed and creamy white. Flesh cream colored, dry, sweet and rich. Exceedingly desirable either as a summer or a winter variety. Packet, 5c; ounce, 10c; ¼ pound, 15c; pound, 40c.

MEDITERRANEAN. A new fall and winter squash, about same size as Hubbard, but, owing to their very thick flesh, will weigh much heavier. The outside skin is quite smooth, of a salmon color; flesh rich, yellow and very sweet. Packet, 5c; ounce, ¼ pound, 15c; pound, 40c.

ESSEX HYBRID. This variety is one of the finest grained and sweetest of the squash family. Specimens kept until June as sound and as good as when gathered in the fall. The flesh is very thick, rich colored and solid. It ripens early, and is one of the most productive varieties in cultivation. Packet, 5c; ounce, 10c; ¼ pound, 15c; pound, 40c.

IMPROVED HUBBARD. Flesh rich, deep yellow, thick, dry, of fine grain, sweet and of delicious flavor. It is an excellent keeper, and is second to none for both boiling and baking. As it hybridizes readily, it should be cultivated quite away from others of its kind. Packet, 5c; ounce, 10c; ¼ pound, 15c; pound, 45c.

BRAZILIAN SUGAR. Grows to a medium size and very productive. Outer skin a rich cream color. Flesh fine grained, sweet, sugary and fine flavored. Packet, 5c; ounce, 10c; ¼ pound, 15c; pound, 40c.

MARBLEHEAD. Similar to the Hubbard, but has a more flinty shell, which renders it a better keeper than that excellent sort. Skin light bluish-gray. Flesh light yellow. Packet, 5c; ounce, 10c; ¼ pound, 15c; pound, 40c.

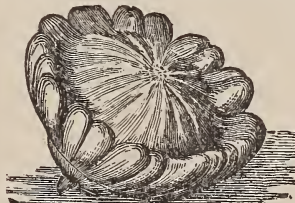
EGG PLANT OR BUSH SQUASH. Very early sort, white-fleshed; rind mottled gray, turning to a buff color. Packet, 5c; ounce, 10c; ¼ pound, 15c; pound, 40c.

WINTER CROOK-NECK. Packet, 5c; ounce, 10c; ¼ pound, 15c; pound, 40c.

MAMMOTH CHILI.

The largest of the squash family. Many specimens this season weighed over 200 pounds. Packet, 5c; ounce, 10c; ¼ pound, 20c; pound, 60c.

EARLY BUSH CROOK NECK. Flesh greenish yellow, dry and of most agreeable flavor, rendering it one of the most highly esteemed of the summer varieties.

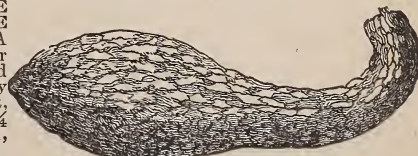


EARLY BUSH SCALLOP.

Packet, 5c; ounce, 10c; ¼ pound, 15c; pound, 40c.

EARLY WHITE BUSH SCALLOP. An early variety, having hardy, dwarf, but productive vines. Fruit, flattened, much compressed, deeply scalloped at edges. Skin white and tender. Packet, 5c; ounce, 10c; ¼ pound, 15c; pound, 40c.

PINEAPPLE OR WHITE TURBAN. A fall and winter variety. Skin and flesh creamy white. Packet, 5c; ounce, 10c; ¼ pound, 15c; pound, 40c.



EARLY ORANGE MARROW. One of the earliest of fall and winter varieties, growing as large as the Hubbard. Packet, 5c; ounce, 10c; ¼ pound, 15c; pound, 40c.

EARLY BUSH CROOKNECK.

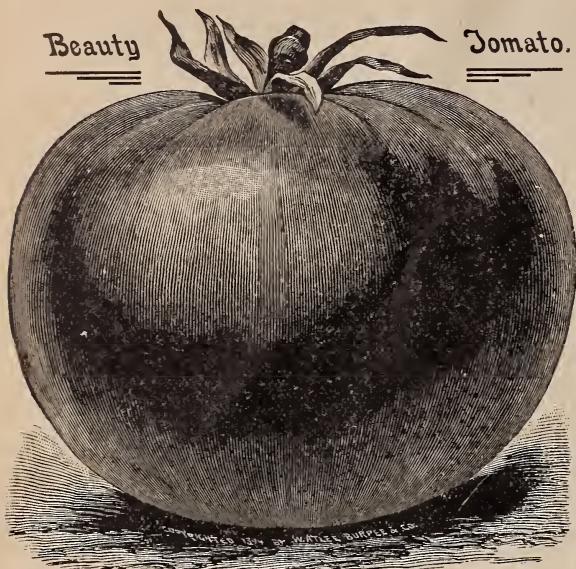
BOSTON MARROW. A fall and winter variety; prized highly by market gardeners. Flesh fine grained, sweet and tender. Packet, 5c; ounce, 10c; ¼ pound, 15c; pound, 40c.

ORDER

Early. Anticipate you wants. Better have your seeds on hand a few days before you need them than run the risk of their being delayed, for in March and April thousands of orders must be filled, and sometimes stocks become exhausted. Prices can not be lower.

Beauty

Tomato.



TOMATOES.

NEW BUCKEYE STATE. One of the largest fruited varieties ever put out. Unquestionably the heaviest cropper known. Matures with the Livingston's Stone. The color is much the same as Livingston's Beauty. Packet, 5c; ounce, 15c; ¼ pound, 50c; pound, \$1.50.

FORDHOOK FIRST. Extremely early; ready to market as soon as the rough, unshapely fruits of the old Early Richmond type. These varieties, such as Earliest of All, Early Ruby, Atlantic Prize, King of the Earlies, etc., for either market or home use, we recommend Fordhook First. Packet, 5c; ounce, 20c.

ACME. One of the most popular varieties, both with market men and consumers; round, smooth and of good size, color purplish pink; flesh solid and of good flavor. Pkt., 5c; oz., 10c; ¼ lb., 40c.

NEW DWARF ARISTOCRAT. Beautiful, rich, glossy, red fruit, much preferred in many localities to the purple or rose-colored varieties. It will be found especially desirable for forcing under glass and growing outside for early market purposes. Packet, 5c; ounce, 20c; ¼ pound, 60c.

LIVINGSTON'S BEAUTY. Medium size; purple in color; ripens evenly without cracking, and is free from rot. A valuable sort for market gardeners. Packet, 5c; ounce, 15c; ¼ pound, 40c; pound, \$1.50.

LIVINGSTON'S PERFECTION. One of the best sorts; large and early; smooth; bright red; thick meat; ripens uniformly and bears abundantly until frost. Packet, 5c; ounce, 15c; ¼ pound, 40c; pound, \$1.50.

NEW STONE. An excellent new red; grows to very large size, form round, perfectly smooth, and of bright red color; ripens evenly to the stem without cracking, and is free from hard core. Packet, 5c; ounce, 15c; ¼ pound, 45c; pound, \$1.50.

LIVINGSTON'S FAVORITE. One of the most perfect shaped tomatoes grown; very smooth; color dark red; ripens evenly and early. Packet, 5c; ounce, 15c; ¼ pound, 40c; pound, \$1.50.

GOLDEN QUEEN. A fine yellow sort. In size, shape and productiveness it is not surpassed; beautiful yellow color; very fine for slicing and preserving. Pkt., 5c; oz., 12c; ¼ lb., 40c; lb., \$1.25.

PONDEROSA. Large and solid, but with some percentage of misshapen fruits and a tendency to show some green about the stem end when ripening; the largest variety we know of. Packet, 5c; ounce, 25c.

THE MIKADO. (True.) Large, early tomato; solid and of good quality; color purplish red. Packet, 5c; oz., 15c; ¼ lb., 35c.

RED PEACH. The most delicious and handsome tomato ever introduced; resembling a peach very closely. The color is of deep rose and orange amber, beautifully blended and covered with a delicate bloom of furze like a peach. This novelty is worthy a place in every garden. Packet, 5c; ounce, 15c.

THE ATLANTIC PRIZE. A most valuable extra early variety. Packet, 5c; ounce, 15c; ¼ pound, 35c.

DWARF CHAMPION. This new variety is entirely distinct in habit of growth and foliage from any other. The plant grows stiff and upright; in form and color of fruit it resembles the Acme. Packet, 5c; ounce, 15c; ¼ pound, 40c; pound, \$1.50.

POTATO LEAF. An extra large early sort similar to the Mikado. Packet, 5c; ounce, 15c; ¼ pound, 35c; pound, \$1.25.

YELLOW PEACH. Identical to the above except in color, which is bright orange. Packet, 5c; ounce, 25c.

PLUM-SHAPED YELLOW. For pickles and preserves; fruit plum-shaped, of lemon color and smooth skin. Packet, 5c; ounce, 25c.

PEAR-SHAPED RED. Used for pickling and preserves; pear-shaped; skin smooth and bright red color. Pkt., 5c; oz., 25c.

RED CHERRY. Similar to the above, except in form of fruit, which is round. Packet, 5c; ounce, 25c.

STRAWBERRY. Known by some as Ground Cherry; good for preserves. Packet, 5c; ounce, 30c.

SWEDE OR RUTA-BAGAS.

WHITE SWEET. Superior for table or stock; flesh firm, white and solid; large size; sweet flavor. Packet, 3c; ounce, 6c; ¼ pound, 15c; pound, 40c.

IMPERIAL PURPLE-TOP. (White-fleshed.) One of the finest purple-top varieties in cultivation. Packet, 3c; ounce, 6c; ¼ pound, 15c; pound, 40c.

IMPERIAL PURPLE-TOP. (Yellow-fleshed.) The leading market sort, and largely grown for stock. Packet, 3c; ounce, 6c; ¼ pound, 15c; pound, 40c.



EARLY PURPLE-TOP STRAP LEAF

TUNRIPS.

EARLY PURPLE-TOP STRAP LEAF. Tops small; bulbs mostly above ground, of medium size and flat; flesh white, sugary and well flavored; early, hardy and prolific. The leading American variety. Packet, 3c; ounce, 6c; ¼ pound, 15c; pound, 40c.

EARLY PURPLE-TOP WHITE GLOBE. Of large size, rapid growth and handsome appearance; an excellent keeper and fine market variety. Packet, 5c; ounce, 6c; ¼ pound, 15c; pound, 40c.

EARLY WHITE FLAT DUTCH. A popular market variety; skin clear white; excellent quality. Packet, 3c; ounce, 6c; ¼ pound, 15c; pound, 40c.

EARLY YELLOW DUTCH. Similar to the above, except in color; sweet and tender. Packet, 3c; ounce, 6c; ¼ pound, 15c; pound, 40c.

EXTRA EARLY MILAN. The earliest and best purple-top turnip in cultivation; fully two weeks earlier than the Purple-top Strap Leaf. Bright purple-top; flat; medium size; flesh white and of choice quality. Packet, 3c; ounce, 6c; ¼ pound, 15c; pound, 40c.

SOUTHERN SNOW WHITE GLOBE. One of the best for general crop; pure white; large size and solid. Packet, 3c; ounce, 6c; ¼ pound, 15c; pound, 40c.

LONG WHITE, OR COW HORN. Grows rapidly; root shaped like a carrot, about half of which is formed above ground; white, fine grained and sweet; valuable table sort. Packet, 3c; ounce, 6c; ¼ pound, 15c; pound, 40c.

LARGE WHITE NORFOLK. Standard sort for field culture; extensively grown all over the world for stock feeding; globe-shaped and sweet. Packet, 3c; ounce, 6c; ¼ pound, 15c; pound, 40c.

YELLOW ABERDEEN. Medium size, round form; flesh pale yellow, tender and sugary. Packet, 3c; ounce, 6c; ¼ pound, 15c; pound, 40c.

MIXED VARIETIES. Excellent for home gardens. Packet, 3c; ounce, 6c; ¼ pound, 15c; pound, 40c.

GOLDEN BALL. Rapid grower; not of large size, but firm, hard and of excellent flavor; keeps well; superior as a table variety. Packet, 3c; ounce, 6c; ¼ pound, 15c; pound, 40c.

WHITE EGG. An egg-shaped variety; large, firm, fine grained and pure white; mild and sweet; desirable for table use. Packet, 3c; ounce, 6c; ¼ pound, 15c; pound, 40c.

POMERANEAN WHITE GLOBE. One of the most productive kinds; frequently grows to twelve pounds in weight; perfect globe shape; skin white and smooth. Packet, 3c; ounce, 6c; ¼ pound, 15c; pound, 40c.

TOBACCO.

IMPORTED HAVANA, FLORIDA, KENTUCKY, VIRGINIA SEED LEAF, YELLOW PRIOR. Packet, 5c; ounce, 20c.



SEVEN EARED FODDER.

Seed Corn.

DUNGAN'S WHITE PROLIFIC.

Every corn grower should have it. Dungan's White Prolific matures in about 105 to 110 days; is one of the largest white corns grown; has a very deep grain, small cob, and every cob pure white. One of the greatest yielders known, fully half the stalks producing two to three large, well-developed ears; makes a large foliage and will stand a drouth to much greater degree than any other variety. It is no uncommon thing for Dungan's White Prolific to yield 100 bushels per acre. By mail, postpaid—1 pound, 15c. By express or freight, not prepaid—Peck, 35c; $\frac{1}{2}$ bushel, 60c; 1 bushel, \$1.00.

GOLDEN KING. The largest early yellow corn grown. It is a cross of the Lancaster Yellow, Leaming and Golden Beauty, all excellent varieties, and it partakes of the good qualities of all. The ears grow from 10 to 14 inches in length, and from 7 to 9 inches in circumference, and has from 20 to 22 rows, averaging from 1,000 to 1,200 grains to the ear. It matures in about 100 days; has a very large, deep, uniform grain and a beautifully shaped ear, being a little bit tapering. Postpaid—Pound, 15c; 3 pounds, 35c. Express or freight— $\frac{1}{4}$ bushel, 40c; $\frac{1}{2}$ bushel, 60c; bushel, \$1.00.

EXTRA EARLY HURON DENT. This extra early Dent Corn is of quick, strong growth, with good sized stalks and ears; bright orange color, with small red cob, and long, deep grain; well grained over both ends of cob. It is, in fact, the most valuable extra early corn ever introduced. By express or freight—Peck, 40c; bushel, \$1.00.

RILEY'S FAVORITE. A bright yellow corn, uniform in shape, medium in size, having a very small, uniformly red cob, grains deep and fills well. As a feeding corn it is unsurpassed. Matures in about 100 days. Peck, 35c; bushel \$1.00.

IMPROVED LEAMING. Very early and not a hard, flinty corn; very sweet and nutritious, large and handsome, with large, deep orange colored grains. Adapted to a greater variety of soils than most other varieties. Peck, 35c; bushel, \$1.00.

PRIDE OF THE NORTH. A very early Dent yellow variety, ripening with the Flint sorts, and can be successfully grown farther north than any other variety of Dent corn. Peck, 40c; bushel, \$1.00.

RED COB ENSILAGE. A southern type of large white corn with red, strong, leafy stalks and short joints; a general favorite. Peck, 35c; bushel, 90c. Special prices in large quantities.

B AND W WHITE COB. Thousands of earloads of this has been used for ensilage and fodder purposes; a cheap and good food for feeding to stock of all kinds. Peck, 25c; bushel, 90c. Write for prices in larger quantities.

SEVEN EARED FODDER. As an ensilage or fodder corn, for which purpose we recommend it, it certainly supplies to the farmer a long felt want. It is the most prolific ear producer in existence, and aside from its giving four to seven ears to the stalk, which are nearly the size of the Pride of the North, it is early to mature and surpasses everything for big foliage. Grows twelve to fifteen feet high, stalks very short jointed, and has a wonderful growth of leaves. Has a very tender flesh, which is sweet, sugary and juicy. Will mature in most any latitude, and produce double the amount per acre of green fodder and nourishment over common corn. Its merits are such that warrant every one in giving it a fair trial. Many very fine specimen stalks have been sent us this season, showing its enormous growth of foliage and ears, and, so far as we have learned, it has given the greatest of satisfaction wherever tried. The price is low, and we hope to see every one give it a trial. Price by mail, postpaid—Pound, 25c; 5 pounds, \$1.00. By express or freight, not prepaid— $\frac{1}{4}$ bushel, 50c; $\frac{1}{2}$ bushel, 75c; bushel, \$1.00.

FARM SEEDS.

WE DEVOTE careful attention to the selection of our Farm Seeds. The large trade we have had in this line for years has gained for us a national reputation. We do not quote the prices on Clover and Grass Seeds, as they are subject to market variation. The lowest market prices will be furnished on application, but purchasers may depend on having them at the lowest price ruling from store the day of shipment. Bags furnished at cost to us. **If you have never sent us an order for Farm Seeds, send us a trial order. We will save you money and guarantee satisfaction.**

TIMOTHY. Decidedly the best grass for hay, making a large return on strong rich clay land, though somewhat coarse and hard, especially if allowed to ripen its seed; yet, if cut while in blossom or directly after, it is relished by all kinds of stock, especially so by horses. Samples and price free on application.

KENTUCKY BLUE GRASS. This is the best pasturage, succeeding well on hill lands, and producing the most nourishing food for cattle, retaining its quality to a late period in winter, and further south affording abundant food throughout the winter. It forms the finest and closest lawns; for this purpose an extra quantity of seed should be used—say four bushels per acre. If sown for pasture, twenty pounds may be sufficient. Sow early in the spring or during the month of October. Weight, 14 pounds per bushel. Special prices on application.

ORCHARD GRASS. A rough, coarse, perennial grass, extremely hardy, and of all grasses the most widely known, growing in almost every country on the globe. It is one of the earliest to start in the spring, and furnishes an abundance of pasture the entire season. It is valuable sown with other grasses for pasture, and makes excellent hay when mixed with clover in the spring, at the rate of 1½ or 2 bushels per acre. Write for prices.

ENGLISH BLUE GRASS. A perennial grass from two to four feet high, with flat, broad leaves. This is one of the standard European grasses, and cattle are very fond of it, both green and dry. It needs rich ground, and succeeds well on prairie soil, and is an excellent pasture grass to take the place of wild grasses, as it yields a large amount of early and late feed. It also makes excellent hay, and is certainly worthy of more general cultivation; 24 pounds per bushel. Special prices on application.

CLOVER.

MAMMOTH, OR ENGLISH CLOVER. A very tall, rank growing clover, rather too coarse to be used as hay, but excellent to plow under as a fertilizer. It ripens about two weeks later than the common Red Clover, producing seed from the flowers of the first crop. Price, about the same as Red Clover.

WHITE DUTCH, OR BEE CLOVER. An excellent pasture grass, forming, in conjunction with the Kentucky Blue Grass, the finest and most nutritious food for sheep and cows. Its flowers are also a favorite resort for the honey bee. It succeeds on all rich, clayey lands, if not too wet. It takes six to eight pounds for an acre. Weight, sixty pounds to the bushel; 40c per pound.

ALSYKE CLOVER. A Swedish variety; very hardy; does not leave in winter or spring. This clover is becoming very popular, being very fine as a bee plant, and for hay it is the best of the clover family. Being of a fine growth, stock eat it up clean, and having none of the fine fuzz of the common clover, it can be fed to horses without injury to them. Prices furnished on application.

RED, OR JUNE CLOVER. This is the Common, or Red Clover, the seed of which is the Clover Seed of commerce, and is the most important and valuable of the clover family for general use. By its judicious use, land that has been exhausted by continued planting of grain can be brought back to fertility. Write us for prices.

ALFALFA, OR LUCERNE CLOVER. Valuable as a forage plant, for light, deep, dry soils, the roots penetrating so deep that it stands severe drouth without injury. Lasts for years when once established, and is fine to plow under as a fertilizer. The favorite clover of the Pacific States, yielding from four to five immense crops annually. Prices on application.

RED TOP GRASS. This perennial native grass produces, rather late in the season, a reddish purple or a greenish panicle of flowers. Thrives best on low land, where it cuts a good crop. Suitable for pastures on low ground. Sow in September or early spring; 1½ bushels per acre. Write for prices.

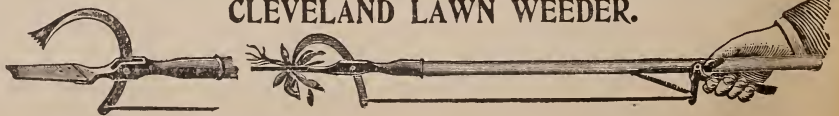
ITALIAN RYE GRASS. This variety is similar to the English Rye Grass. It is very nutritious and valuable for pastures, especially for early sheep feeding. Excellent for lawns. Sow forty pounds to the acre. Write for prices.

PERENNIAL RYE GRASS. A very valuable variety for permanent pasture; very nutritious and stock are very fond of it. Succeeds well on almost any kind of soil, but is particularly adapted to moderately moist or irrigated lands. Sow 1½ to 2 bushels per acre, in the spring. Write for prices.

This little device gets at the root of the evil and removes it bodily. The curved edge of blade enters and loosens the soil; pressure on the lever then causes the toothed jaw to grasp the plant, and a slight pull suffices to dislodge same without disturbing the surrounding sod. Greatest invention of the age for removing plantain. Its use is a recreation and diversion, making work seem like play. Everybody should have one. **Price, 50 cents.**

YOU NEEDN'T BREAK YOUR BACK WITH A

CLEVELAND LAWN WEEDER.



The only practical device on the market.

DWARF ESSEX RAPE.

A forage plant of great merit, easily grown in any part of the United States on any land that will raise turnips or corn, and will furnish abundant supplies of succulent, rich, nutritious pasture at a season when it is most needed. Is of great value for sheep and lambs, and when turned in on it, to use a common expression, "they soon weigh like lead." It is also of value for pasturing cattle. One acre of rape is sufficient to pasture ten to fifteen lambs on for two and one-half months. It is often sown broadcast, about five pounds to the acre, but will yield much better if drilled about two pounds to the acre, in rows twenty-two inches apart and cultivated until plants are too large. Seed may be sown in May, but we do not advise sowing until June or July. It can, however, be sown with grain in the spring, and it is said to not interfere with the grain crop. The Dwarf Essex Rape is unequaled as a pasture for sheep in the autumn, and as fattening food is without a rival in cheapness. It will keep a long time in early winter if cut and put in heaps like shocks of hay. Large packet, 5c; pound, 25c. By express, 5 pounds or more, at 15c per pound; 25 pounds, \$3.00; 100 pounds, \$10.00.

BROOM CORN.

TENNESSEE EVERGREEN. We are headquarters for this seed and have the best variety in cultivation, and the kind universally grown. Early and productive; brush fine and green. Packet, 5c; pound, 20c, by mail, postpaid; bushel, about \$1.00. Write for market price before buying.

JOHNSON GRASS. A perennial rapid grower; long cane-like roots; the leaf, stock and panicle of this grass resemble those of the sugar cane. It grows on any land where corn will grow, and, like corn, will bear heavy manuring, yielding richly in rich ground; one and one-half bushels will sow an acre. Weight, twenty-five pounds per bushel. Special prices on application.

SWEET VERNAL GRASS. This grass yields but a moderate percentage of herbage. It is remarkable for giving out a pleasant, sweet smell during the process of drying. Sow twenty-five to thirty pounds to the acre. Weight, ten pounds per bushel. Write for prices.

TALL MEADOW OAT GRASS. This produces an abundant supply of foliage, and is valuable for pasture on account of its early and luxuriant growth. It is recommended for hay, and shoots up very quick after being cut, and produces a thick crop of aftermath, which also makes it valuable as a soiling crop. Sow from thirty to forty pounds to the acre. Weight, twelve pounds to the bushel. Write for prices.

SUGAR CANE.

We have a large and carefully selected stock of both Amber and Orange. As we get our seed direct from the grower, we know it to be reliable, and growers will do well to order their seed direct from us. Write for special prices.

EARLY AMBER. The best variety; ripens early and is very productive. We bought our stock from a grower who guarantees it pure. Our customers will find this a great advantage. Pound, postpaid, 15c; bushel, \$1.00.

EARLY ORANGE. About two weeks later than amber, and makes a lighter colored molasses; very productive. Pound, postpaid, 15c; bushel, \$1.00.

KAFIR CORN.

For a forage plant it is destined to become a valuable acquisition in all sections of the country adapted to dry stuff, for the grain and forage. On very thin and worn lands it yields paying crops, even in dry seasons, in which common Indian corn has utterly failed on the same lands. The whole stalk, as well as the blades, cures into excellent fodder, and in all stages of its growth is available for green food; 100 pounds, \$2.50.

NOTE.—Should any of our customers want a permanent pasture mixture, we can supply it, and ask them to give us a description of the soil they wish to sow and we will tell them which mixture is best adapted for their use.

ASTERS.



- ASTERS. Truffaut's Paony Perfection—**
- | | |
|------------------------|-------------------------------|
| Crimson.....Packet, 5c | Dark Blood Red.....Packet, 5c |
| Dark Blue..... " 5c | Light Blue..... " 5c |
| Mixed..... " 5c | |
- Victoria—**
- | | |
|----------------------|-----------------------------|
| White.....Packet, 5c | Dark Scarlet.....Packet, 5c |
| Light Blue..... " 5c | Mixed..... " 5c |
- Comet—**
- | | |
|------------------------|--|
| Snow White..Packet, 5c | |
|------------------------|--|
- Samples—**
- | | |
|-----------------------|----------------------------|
| White.....Packet, 10c | Shell Pink.....Packet, 10c |
| Lavender..... 10c | Vick's Branching... 10c |

AMARANTHUS. Plants growing especially for their foliage, in late summer or early fall; the glowing effect of their rich foliage is scarcely equaled by any similar class of plants.

Tricolor. (Joseph Coat.) Leaves, red, yellow and green, 3 ft. T. A. 5c.

Abyssinus. Splendid as solitary plants on the lawns; color, dark red, 3 ft. H. A. 5c.

Caudatus. (Love Lies Dreaming.) Blood-root, drooping, 3 ft. T. A. 5c.

Salicifolius. (Fountain Plant.) Gracefully drooping, willow-shaped leaves, brilliantly banded and tipped with orange, carmine and bronze. T. A. 10c.

Splendens. The finest of its class; leaves of the most brilliant colors. Plants grow upright; the inner foliage is of a dark blackish bronze, tipped with green; outer foliage bright scarlet and gold; very showy and distinct. T. A. 10c.

ANTIRRHINUM. (Snapdragon.) For summer flower beds and borders these half hardy perennials are very showy, and flower from seed the first season. They grow 2 to 3 feet high, and are masses of flowers. (See cut.)

Tall Mixed Colors. H. P. 5c.

Choice Striped Varieties, Mixed. 5c.

Tom Thumb Varieties, Mixed. Growing only 1 foot high. 5c.

AQUILEGIA—COLUMBINE. The Aquilegia is the old and well known Columbine, of almost every conceivable color, and singular variations of form.

Chrysantha. (Golden Spurred.) A strong grower, forming many plants 3 feet high, producing all summer an abundance of bright golden-yellow flowers. H. P. 10c.

Cerulea. Flowers are very large, violet blue, and inner petals pure white, 2 ft. H. P. 10c.

Choice Double Varieties, Mixed. All the rare and choice colors. H. P. 5c.

Choice Single Varieties, Mixed. H. P. 5c.

Glandulosa, 5c. Skinneri, 5c.

Asperula Odorata ("Sweet Woodruff.") Very pretty dwarf hardy plant, much esteemed for its delightful odor, which, when wilted, is much like new mown hay, and when kept among clothes imparts an agreeable perfume to them; flowers white; H. P. 5c.

Abutilon, Mixed. ("Flowering Maple.") Large bell-like flowers, red, white, rose, orange, etc., richly veined; strong growers, flowering continually; suitable for house in winter and garden in summer, 2 to 4 ft. P. 10c.

Acroclitium. Free summer flowering plants for garden decoration; the flowers dry as "everlastings" for winter bouquets, 1 ft. H. A. **Album**, double pure white, 5c, **Roseum**, bright rose, 5c. **Choice Mixed Colors**, 5c.

AGERATUM. A Mexican flower, of a brush-like appearance, desirable in the garden, and prized for bouquet making. It is well to start the seed under glass, and transplant. The Ageratums are pleasant house plants.

Mexicanum. Lavender blue, 18 in. H. H. A. 5c.

Mexicanum Album. Creamy white, 18 in. H. H. A. 5c.

Little Dorrit. Beautiful azure blue; excellent for bedding. H. H. A. 5c.

Imperial Dwarf Blue. Excellent for ribbon borders, 6 in. H. H. A. 5c.

Imperial Dwarf White. Similar to above, except in color. H. H. A. 5c.

Agrostemma, Mixed ("Rose Champion," "Flos Jovis"), etc. Showy flowers of various colors borne freely, fine for beds, 1 to 2 ft. Mixed, 5c.

ALONSOA, MASK FLOWER. The Alonsoa is a tender or half-hardy annual. The flowers are small, but of remarkably brilliant colors. H. H. A.

ALYSSUM. Free flowering, pretty little plants for beds, edgings or rock-work, or winter blooming; the annual variety blooms all summer.

Alyssum, Sweet (A. Benthami Maritimum). Flowers in white clusters, 6 in. A.; packet, 5c.

Benthami Compactum (Tom Thumb). Of true dwarf compact growth; excellent for borders; white. A.; packet, 5c.

Little Gem. Of dwarf, compact habit, 3 to 5 inches in height, each plant covering a circle of 15 to 30 inches in diameter. It begins to bloom when quite small, and the plants are a solid mass of white from spring till late in autumn. A.; packet, 5c.

Saxatile Compactum. Showy golden-yellow flowers; hardy perennial, blooms the first season, 1 ft. 5c.

BALSAM.

Double Improved Camelia Flowered. The Camelia Flowered Balsams are undoubtedly the most perfect in form and largest in flower of any known variety. They are used almost exclusively by florists. Our illustration gives a true likeness of a well-developed flower. H. H. A.

White.....Packet, 10c	Pink.....Packet, 10c
Lemon..... " 10c	Scarlet..... " 10c
Choice Mixed..... " 10c	Dwarf Double Mix'd " 10c

Rose-flowered. Very large flowered, doubly and perfectly formed flowers; finest colors mixed. H. H. A. 5c.

Solferina. Flowers double, beautifully striped and streaked with lilac and scarlet. H. H. A. 5c.

Victoria. Satin white, spotted with scarlet. H. H. A. 5c.

Carnation Striped. Very showy and attractive, but are not quite so double as the Camelia flowers. Choice colors mixed. H. H. A. 5c.

BELLIS, or DOUBLE DAISY.

The poet's favorite; very popular flowers.

Longfellow. This variety comes true from seed. It is of unusual size and has very double dark rose flowers. H. A. 10c.

Snowball. A large and very double pure white Daisy of the Longfellow type. The flowers are borne on long stems and are excellent for cutting. H. A. 10c.

White. Double flowers; valuable for florists; 3 inches. H. A. 5c.

Mixed. All the choicest colors. H. A. 5c.

BRACHYCOME. (Swan River Daisy).

For edgings; should be started in hot bed.

Iberidifolia. Mixed. Light blue and white; 6 inches. H. H. A. 5c.

Alba. The flowers are star-shaped, white; very pretty. H. H. A. 5c.

BALLOON VINE. (Love-in-a-Puff.)

A rapid growing plant; succeeds best in a light soil and warm situation; flowers white. H. H. A. 5 feet.

Cardiospermum Halicacabum. 5c.

CANDYTUFT.

Dwarf annuals, flowering profusely throughout the whole season; great favorites for beds, edgings, pots and borders; the plants are very fairly covered with blossoms, and of the easiest culture; 12 inches high.

NEW LARGE FLOWERING ROSE. A magnificent Candytuft bearing immense umbels of exquisite rosy flesh-colored flowers so abundantly as to hide the plant. Packet, 10c.

EMPRESS. A beautiful pure white variety, bearing candelabra-shaped branches, each producing a large truss of flowers, presenting a perfect pyramid of bloom throughout the summer. 10c.

White Rocket, Pkt., 5c.
Mixed Colors, Pkt., 5c.

Purple, Packet, 5c.
Crimson, Packet, 5c.
White Fragrant, Packet, 5c.

CANDYTUFT, HARDY. Handsome, compact growing, hardy perennial plants, admirably adapted for permanent front rows of borders or for low clumps or beds; very valuable for early decoration.

SEMPERVIRENS. White, 1 foot. Packet, 10c.

DIANTHUS OR PINKS—

Single Crimson Bell, Packet, 5c.
Double White Japan, Packet, 5c.
Single Little Gem or the Bride, Pkt., 5c.
Single Fringed, Packet, 5c.

Single Snowflake, Packet, 5c.
China Mixed, Packet, 5c.
Single Eastern Queen, Packet, 5c.
Double Mixed Japan, Packet, 5c.

GIBRALTICA. Showy, large-growing, red, rose and white. 1 to 2 feet. Packet, 10c.

FLOWER SEEDS.

We import our flower seeds direct each season, hence you can depend on them being fresh. We have a large trade in flower seeds, and you will be pleased if you give them a trial.



DIANTHUS OR PINKS.

CENTRANTHUS, MIXED. Bushy garden annual, with large heads of red, pink or white flowers, 1 ft. H. A. Packet, 5c.

CINERARIA, Hybrida or Flowering Varieties. Magnificent and indispensable flowering plants for spring decoration for the conservatory or window garden. The flowers measure 2 to 3 inches across, are of white, blue, violet and crimson shades, covering the plant with a sheet of bloom.

Double Large Flowering, Mixed. Packet, 25c.

Clarkia. Charming annuals for flower beds of rose, white, red, purple, etc.

Single, Mixed. Many sorts, 1 to 2 feet. Packet, 5c.

Double, Mixed. Including many sorts. 1 to 2 feet. Packet, 5c.

COBAEA SCANDENS. Elegant, rapid-growing climbers, attaining a height of 20 to 30 feet. Can be grown in the garden in summer, or in the greenhouse or conservatory in winter. Their luxuriance renders them particularly desirable for covering arbors, walls, etc., flowers large and bell-shaped.

Scandens. Purplish lilac. T. A. 10c.

Alba. White. T. A. 10c.

Coix Lachrymae. ("Job's Tears.") A perennial succeeding as an annual. H. P. 5c.

CYPRESS VINE. (*Ipomoea Quamoclit.*) Very handsome climber, heart-shaped leaved, foliage light and graceful; flowers brilliant, excellent for trellises, walls, etc.

White and Crimson. Each, 5c.

Mixed. All the choicest colors. 5c.

CONVOLVULUS. One of the most free-flowering and rapid-growing vines in cultivation, thriving in almost any situation; the beauty and delicacy of their brilliant colors are unsurpassed. H. A. 15 feet.

Major. All colors, mixed. (Morning Glory.) 5c.

COSMOS. The plants grow 4 to 6 feet high, and are literally covered in the autumn with large single dahlia-like flowers, ranging through shades of rose, purple, white, etc.; splendid for cutting purposes. Feathery foliage, annual.

Large Flowering. Crimson. Packet, 10c.

Large Flowering. White Pearl. Beautiful snow white. Packet, 10c.

Large Flowering. Pink. Packet, 10c.

Large Flowering. Mixed colors. Packet, 10c.

CUCUMIS FLEXUOSUS. ("Snake Cucumber.") Rapid-growing annual climber, with curious fruits 3 feet long, which, when allowed to fully ripen, can be kept as curiosities. 6 feet. H. A. Packet, 5c.

CARNATION. Carnations are general favorites for their delicious fragrance and richness of colors. The seed we offer has been imported from the best sources in Europe, and will produce many splendid novelties in double and semi-double flowers. Protect during the winter. H. H. P. 1½ feet.

The Marguerite class of Carnations is exceedingly popular on account of its commencing to bloom in the summer from early spring-sown seed and the profusion of bloom which continues until frost. All colors, mixed, 10c.

Dwarf Vienna. The best garden sort, which produces a large percentage of double, sweet-scented flowers, in the largest variety of colors. With a large protection of straw they will stand through the winter. 10c.

Extra Choice Mixed. Seed saved from a choice collection of flowers, and will produce splendid varieties. 10c.

CUPHEA—Cigar Plant. Bears curious blossoms, somewhat resembling a lighted cigar. Pretty for bedding purposes and for house culture; very ornamental. 1 foot. H. H. A.

Purpurea. Mixed, 5c.

Platycentra. Bright scarlet. 10c.

Roezli. Of pyramidal habit, vermilion and orange. 10c.

CALCEOLARIA.

An ornamental plant, producing a mass of beautiful pocket-like flowers early in the spring.

Hybrida Grandiflora. Tall, mixed. Large flowering, robust, very beautiful; all colors, 20 in. 25c.

Centranthus. Choice mixed colors. 5c.

Coleus. Finest hybrida mixed. 15c.

CALENDULA, Pot Marigold.

A very showy free-flowering genus of plants producing a very pretty effect in beds or mixed borders, and growing freely in almost any soil. Hardy annuals.

Meteor. One of the very choicest of the Pot Marigolds, very double, the petals having a creamy center, edged with orange-yellow. H. A. 5c.

Officialis. Pot Marigold. H. A. 5c.

Pongel fl. pl. Pure white, 1 foot high. H. A. 5c.

Prince of Orange. Deep orange color, making a brilliant appearance. H. A. 10c.

Suffruticosa. Grows in tufts 20 to 24 inches in height; the flowers are produced on long, thin flower stalks, are of a bright yellow color, and expand progressively, the terminal ones opening first. They flower abundantly and are of easy cultivation. H. A. 10c.

Double Large Flowered. Flowers of considerable size and very double. The outer forets are slightly imbricated, while those of the center are in-curved. Dark orange-red. H. A. 10c.

CAMPANULA. (Canterbury Bell.)

Well known, beautiful, hardy, herbaceous perennials, bearing a great profusion of attractive bloom, thriving best in light, rich soil; some of the varieties flower the first season if planted early.

Pyramidalis, Mixed. A grand sort, "Bell Flower." Colors blue or white. Plants grow about four feet high of elegant pyramidal form, bearing thousands of exquisite bell-shaped flowers. 5c.

Media, Single, White. (Canterbury Bell.) Beautiful, large, bell-shaped flowers; effective for border, 2½ ft. H. B. 5c.

Media, Double, White. Flowers double, pure white, 2½ ft. H. B. 5c.

Media, Double, Blue. Light blue in color, 2½ ft. H. A. 5c.

Cup and Saucer. (*Media Calycanthera.*) This is one of the finest varieties of Campanula, producing plants with white and blue flowers resembling cup and saucer. Mixed, 10c.

Calycanthera. (Pink Cup and Saucer.) This new type is very effective; the calyx is of same color as the corolla. H. B. 10c.

Mixed. Single and double. Each, 5c.

CENTAUREA.

Fine for ribbon borders and edgings of beds. The "Victoria" is a fine miniature corn-bottle; very fine foliage.

Gymnocarpa. (Dusty Miller.) White; 1 foot; 10c.

Cyanus. (Corn-flower.) Blue, 1½ ft. H. A. 5c.
Emperor William. Blue; H. A.; 5c.
Victoria Dwarf Compact. Blue; H. A.; ¾ ft.; 10c.
Cacalia, Mixed. ("Fassel Flower," "Flora's Paint Brush," etc.) Very pretty summer-flowering garden plant; prized for cutting. 1½ feet. H. A. 5c.

CELOSIA, or Cockscomb.

President Thiers. Finest of all Cockscombs. Height, 18 to 24 inches. H. H. A. 10c.
New Giant Empress. Combs are very large, bright purple; foliage dark, very pretty. H. H. A. 5c.
Acme Mixture, Dwarf Varieties. All the choicest dwarf varieties mixed. H. A. A. 5c.
Calandrinia Grandiflora. Very beautiful dwarf-growing annual for the flower garden. In the sunshine the large rose-colored flowers expand into a perfect blaze of beauty, 1 ft. H. A. 5c.
EUPHORBIA. ("Snow on the Mountain.") A showy border plant, with foliage veined and margined with white; a native of the Western States; very attractive. 5c.
GAILLORDIA GRANDIFLORA. Exceedingly beautiful annuals, making very showy plants, one to two feet high, for the flower garden.
amblyodon. Rich blood-red. 5c.
randiflora. Mixed varieties. 5c.
Lorenzianna, or Double Flowering. Large round heads, composed of thirty to fifty flowers of orange, claret, amaranth, sulphur, etc. 5c.
Single Flowered Varieties. Mixed. 5c.
Glauceum Luteum. ("Horned Poppy.") Silver leaved, hardy perennial plants with remarkably bright yellow flowers produced in great abundance all summer; very effective border plant, 1 to 2 ft. H. P. 5c.
GLOBE AMARANTH. ("Bachelor's Buttons") and the "Amaranth" of the poets. They are annuals, forming bushy plants about two feet high, and bearing sometimes several hundred flowers of purple, white, striped, etc. Very ornamental as summer-blooming plants, and indispensable as "Everlastings."
Alba. 5c.
Dwarf Red. (Nana Compacta Rubra.) 5c.
GOSETIA. A very attractive hardy annual; profuse flowering plants, growing in any garden soil. All colors, 1 ft. 5c.
Duchess of Albany. Glossy satin white, produced in great profusion, 12 in. 5c.
Bijou. Flowers splendid white, with a dark rose spot; not over six inches high, forming carpet-like bushes of twelve inches and over in diameter, bearing 200 to 300 flowers to a plant. 5c.
Lady Satin Rose. Unequaled for brilliancy and richness of color. The flowers, which are produced in remarkable abundance, are of a brilliant deep rose pink, the surface shining like satin. 5c.
The Brice. White, with crimson center. 5c.
Fairy Queen. A charming variety, with large pure white flower, bordered with satin rose and beautifully spotted with carmine. 10c.
White Pearl. 5c.
Mixed. All the above varieties. 5c.

GOURDS.

Very desirable for covering old fences, stumps, arbors, etc. T. A., 15 to 20 ft.

Large Ornamental Sorts.

Packet, 5c.

Sugar Thought.	Nest Egg.	Dipper.
Bottle.	Orange.	Mixed.
Hercules Club.		

GLOXINIA.

Most charming greenhouse plants, of dwarf habit. T. P., 1 foot.
LARGE FLOWERING. Choice mixed. Packet, 20c.
SCARLET DEFIANCE. Glowing crimson-scarlet, frilled edges. Packet, 25c.
EMPEROR FREDERICK. Vivid scarlet, with clear white band. Packet, 20c.

HELIANTHUS (Dahlia Sunflower).

OSCAR WILDE. Single, bright golden yellow, while the center of the flower is black; 4 feet. 5c.
NANUS. Flowers very double, 5 to 7 inches in diameter, and of a golden color; 2½ feet. 5c.
GLOBOSUS FISTULOSUS. Flowers very large, globular and double, of rich saffron color; 6 feet. 5c.
SILVER-LEAVED. Flowers numerous, single, with black center. The plant is covered with a dense, silky-white felt, hence name; 6 feet. 5c.
MINIATURE. Flowers single, bright yellow, with dark center. Plants are dwarf and bushy, very free blooming, with small, fine foliage. 5c.

HELIPTERUM SANFORDI.

A very desirable "everlasting." Pretty annual, producing large clusters of yellow flowers; 1 foot. H. A. 5c.

HOLLYHOCKS.

DOUBLE WHITE. Extra strain of perfectly double, pure white flowers. 5c.
FINE DOUBLE MIXED. From choicest named sorts. 5c. (See cut.)
DELPHINUM (Larkspur). Popular annuals for summer garden decoration; the splendid flowers are of varied colors and are born on long spikes.
Dwarf Rocket. Double, mixed colors, 1 ft. H. A. 5c.
Tall Rocket. Double, mixed colors, 1½ ft. H. A. 5c.
DIGITALIS. ("Foxglove," "Witches' Finger.") Hardy plants of the easiest culture; long spikes of large showy flowers, ranging through shade of purple, white, rose, yellow; some beautifully spotted, 3 to 5 ft.
Mixed Colors. 5c.
Maculata Superba. ("Ivory.") Spotted varieties, mixed. 5c.
Monstrosa. Mixed. Long spike of many flowers, surmounted with one enormous flower; novel and beautiful. 5c.
Purpurea Alba. H. P. 5c.
DOLICHOS. The Egyptian or Hyacinth Bean; annual climbing plants of rapid growth, bearing large clusters of showy flowers, 10 ft.
Mixed Colors. H. A. 5c.
ESCHSCHOLTZIA. ("California Poppy.") A very showy class of hardy summer annuals, of different shades of yellow and creamy white; a little difficult to transplant. About a foot high. Set about ten inches apart.
Mandarin. The inner side of the petals is of a rich crimson, and the exterior orange-crimson; a beautiful variety, and should be largely grown. H. A. 5c.
Californica Alba. Produces a large double white flower of great beauty. H. A. 5c.
Rose Cardinal. Pretty, deep carmine flowers, which remain in bloom for a long time. H. A. 5c.
Mixed. All the choicest colors. 5c.
ECHINOCYSTIS LOBATA. ("Climbing Wild Cucumber.") A rapid, luxuriant-growing climber, very useful for quick effects, 30 to 50 ft. H. A. 10.

HUMULUS JAPONICUS.

("Japan Hop.")

Rapid summer climber, in three or four weeks' time attaining a height of 20 to 30 feet, resembling the common hop, but, being an annual, attains full perfection the first season. H. A. 5c.
JAPONICUS, fol. var. ("Leopard-leaved Hop.") A strikingly beautiful variety of the above; the leaves of rich green are blotched with white and gray. H. A. 10c.

ICE PLANT.

(MESEMBRYANTHEMUM.) Pretty summer trailing annual for vases and rock-work, leaves covered with ice-like drops; ½ foot. H. A. 5c.

IMPATIENS.

(Zanzibar or Sultan's Balsam.)

Most beautiful and useful flowering plant, producing waxy bright flowers almost continually, winter and summer; tender perennial, 1 foot.
SULTAN. Rose colored. 10c.

IPOMOEAS.

The Moon Flower, Dawn Flower, etc.

Rapid-growing summer climbers, among our prettiest for covering trellises, pillars, etc. Most rapid and luxuriant for warm, sunny situations in the garden during the summer. Large, beautiful flowers.
GRANDIFLORA ALBA MEXICANA. (The Moon Flower or evening glory.) One of the grandest summer climbers grown, bearing immense pure white fragrant flowers in great profusion, opening in the evening and remaining open until noon the following day, and if cloudy, all day. 10c.
COCCINEA. (Star Ipomoea.) Scarlet flowers. 5c.
BONA NOX. (Evening Glory.) Violet flowers, large and fragrant, especially in the evening. 5c.

LANTANA.

Fine mixed; rapid growing, constant blooming perennial plants for pot culture in the winter or garden decoration in the summer; clusters of orange, white, pink, etc.; 1 to 3 feet. 5c.

LOBELIA.

ERINUS, EMPEROR WILLIAM. A very compact variety, with fine sky-blue flowers. 10c.
CRYSTAL PALACE. (Compact.) Deep blue, dark foliage; the best bedding sort; grows only six inches high. 10c.
SPECIOSA. Dark blue; best for hanging-baskets. 5c.
ALBA. White flowers; pretty. 5c.
WHITE GEM. Best white sort for ribbon and carpet bedding. 5c.
ROYAL PURPLE. This variety differs from the Crystal Palace only in color, which is a rich shade of violet purple, showing no trace of blue. 5c.
CARDINALS. (Cardinal Flower.) A hardy perennial native variety, with spikes of brilliant scarlet flowers, blooming the first season if sown early; a fine border plant; 3 feet. 5c.

MIGNONETTE.

A well-known, fragrant, hardy annual.

GABRIELLE. Very pretty sort, bearing large spikes of red flowers. 10c.

SWEET SCENTED. (*Odonata*.) The old variety, with small spikes; 1 foot. 5 cents.

GRANDIFLORA AMELIORATA. Plants pyramidal; flowers large and distinct, having stamens of a reddish tint; 15 in. 5c.

PARSON'S WHITE. Large spikes, pure white and very fragrant; 1 foot. 5c.

HYBRID SPIRAL. Of dwarf, branching habit, with spikes from 8 to 10 inches long; very fragrant; excellent for market purposes. 5c.

NANA COMPACTA. A dwarf robust variety; 10 inches high and 18 inches in diameter, covered with large spikes of reddish tinted flowers. 10c.

"MACHET." Well adapted for pot culture; perfectly free from seed. Dwarf, pyramidal in growth, bearing many flower stalks. 5c. (See cut.)

MARIGOLD.

(**TAGETES.**) Half-hardy annuals,

ELDORADO. The flowers are 3 to 4 inches in diameter, perfectly imbricated and extremely double. The colors run through all shades of yellow, from the very light primrose to the deepest orange. 10c.

LARGE AFRICAN. Tall, double, orange, brown and yellow, mixed; 2 feet. 5c; per ounce, 40c.

DWARF FRENCH. Fine colors, mixed; very double. 1 foot. 5c; per ounce, 50c.

GOLD STRIPED. Deep brownish red, striped golden yellow. 10c.

MARTYNA FRAGRANS.

Fine summer-blooming garden plants, with large crimson Gloxinia-like flowers, followed by curiously horned fruits. $\frac{1}{2}$ foot. H. A. 5c. **Mixed Colors**, 5c.

MARVEL OF PERU.

(**MIRABILIS, OR FOUR O'CLOCKS.**) Beautiful summer-blooming annuals of bushy habit, 2 feet high, each plant bearing throughout the summer hundreds of large flowers of white, yellow, crimson, striped. **Mixed Colors**, 5c.

MAURANDIA.

Beautiful, rapid, slender-growing plants, blooming profusely until late in the autumn; also fine for the conservatory or greenhouse; if desired for the house, take up before the approach of frost. H. H. P. Flowers the first season if sown early. 10 feet. **Crimson**, 10c. **White**, 10c. **Mixed**, 10c.

BARCLAYANA.

Handsome flowering vine for summer. 10c.

ALBIFLORA TRUE. 10c.

MIMOSA PUDICA.

(**"SENSITIVE PLANT."**) Curious annual; the leaves instantly close up when touched. A neat plant for either pot culture or garden. 2 feet, 5c.

MIMULUS.

(**MONKEY FLOWER.**) Showy, profuse, flowering plants, comprising numerous varieties, with white, sulphur and yellow grounds, spotted with crimson, scarlet and pink; fine for the greenhouse, or moist, shady, situations. H. H. P. Bloom the first year from seed if sown early. 1 foot.

TIGRINUS. The finest tigered and spotted varieties, rivaling the *Calceolaria* in its brightness. **Mixed colors**. 5c.

TIGRINUS FLORE PLENO. Double varieties, splendid mixture. 10c.

MOSCHATUS. (Musk Plant.) Fine for hanging-baskets, etc.; small yellow flowers; fragrant foliage. 6 inches, 5c.

PRINCE BISMARK. Flowers an inch or more across, of dark rich crimson, and borne continually during the summer. 10c.

NEW EMPEROR. The flowers are of the "Hose in Hose" style, of great size, and of remarkably rich and varied colors. 10c.

MINA LOBATA.

Rapid and luxuriant annual summer climber. Blooms very young. 15 to 20 feet. H. A.; 5c.

MOMORDICA.

(**"BALSAM APPLE."**) Luxuriant annual climbers, with large leaves, making dense shade. The flowers are followed by ornamental, large fruits of orange or copper color, which burst and expose an interior of red, which is highly effective. 15 to 20 feet.

BALSAMINA. ("Balsam Apple.") Orange fruits. 5c.

CHARANTIA. ("Balsam Pear.") Coppery scarlet colored fruits. H. A. 5c.

MYOSTIS, OR FORGET-ME-NOT.

The popular "Forget-me-nots." Bushy plants, 6 to 12 inches high, bearing clusters of lovely small flowers.

DWARF ALPINE. Compact plants, 4 to 6 inches high; flowering profusely; mixed colors. 5c.

PALUSTRIS. Large flowering, dark blue. 1 foot. 5c.

ALPESTRIS—Blue, 1 foot, 5c. **White**, 1 foot, 5c. **Rose**, 1 foot, 5c. **Mixed**, 5c.

VICTORIA—Blue. Plants round, 5 to 7 inches high, and 16 to 18 inches in circumference; perfectly covered with large umbrells of flowers of azure blue, remaining in bloom a long time. (See cut.) 5c.

VICTORIA—Rose. A new rose-colored variety of the above. 10c.

NEMOPHILA.

(**LOVE GROVE.**) Neat, compact habit, blooming freely all summer if planted in a rather cool, shaded place, and in not too rich a soil. H. A.; 1 foot. **Mixed**, all varieties and colors. 5c.

NICOTIANA AFFINIS.

COLOSSEA. A. 15c.

NIEREMBERGIA.

GRACILIS. Plant very branching, spreading; fine for pots or border. 5c.

NIGELLA HISPANICA.

Pretty annual, known as "Love in a Mist," "Devil in a Bush." 5c.

NOLANA.

MIXED. Trailing plants, with Morning-glory-like flowers, very effective for vases, rockwork, or low beds. 5c.

GENOTHERA.

FINE MIXED. ("Evening Primroses" or "Sun Drops.") Large showy flowers of various colors; hardy annual; 1 to 2 feet. 5c.

TARAXACIFOLIA. ("Chilian Evening Primroses.") Saucer-shaped flowers, measure 6 inches in circumference. **White**, changing to rose later in the day; 10c. **Golden**.—Bright golden yellow, 10c.

NASTURTIUMS.**TOM THUMB OR BEDDING.**

	Oz.	Pkt.
ROSE	10	5
LUTEUM. Light yellow, no blotches	10	5
CRYSTAL PALACE GEN. Sulphur, spotted maroon	10	5
KING OF TOM THUMBS. Crimson	10	5
SPOTTED. Deep orange, crimson blotches	10	5
PEARL. White	10	5
RUBY KING. Light ruby red	10	5
BEAUTY. Light scarlet splashed canary	10	5
KING THEODORE. Dark scarlet maroon, dark foliage	10	5
EMPRESS OF INDIA. Brilliant crimson, dark foliage, very effective	10	5
LADY BIRD. Orange yellow, red spots	10	5
GOLDEN KING OF TOM THUMBS. Grand flowers, 3 inches across; deep golden yellow, maroon blotches	10	5
MIXED TOM THUMBS. Many sorts	10	5

TALL OR CLIMBING VARIETIES.

	Oz.	Pkt.
DUNNET'S ORANGE. Rich golden orange, garnet blotches	10	5
SCHILLINGI. Pure bright yellow, maroon blotches ..	20	5
MIXED COLORS	10	5

THE PANSY.

Is a popular flower with both florists and amateurs, giving abundance of bloom until after severe frosts, enduring our hard winters with safety, and greeting us in the early springtime with a profusion of bright blossoms. H. P. 6 inches high.

EXTRA CHOICE MIXED. Our mixture is made from named varieties, which have been carefully selected as to color, size of flower, etc. 5c.

PHLOX.**LARGE FLOWERING PHLOX.**

An improved strain with very large, perfectly round flowers, the petals overlapping each other.

LARGE FLOWERING. Very fine. **Mixed**; all varieties. 5c.

DWARF OR NANA COMPACTA PHLOX.

These form little round, compact bushes about 6 inches high, thickly studded with flowers; splendid for bed and pot culture.

HARDY PHLOX.

Magnificent hardy flowering plants, growing into strong bushes from 2 to 3 feet high, bearing immense heads of large waxy flowers of lovely shades of color.

DECUSSATA. Fine mixed varieties. H. P. 10c.

PETUNIA.

Few, if any, plants are more deservedly popular for bedding purposes, greenhouses or window culture. They produce showy flowers in profusion. Although perennial, they flower in a few weeks' time from the seed.

DOUBLE PETUNIAS.

DOUBLE LARGE FLOWERING. **Mixed**. 15c.

SINGLE LARGE FLOWERING.

LARGE SINGLE FRINGED. **Mixed**. 15c.
LARGE FLOWERING SINGLE. **Mixed**. All sorts; striped, blotched, veined, fringed, etc. 15c.

POLYANTHUS.

Showy, early spring free flowering plants; fine for either pot or out-door culture. H. P. 9 inches.

MIXED. Choice single varieties. 10c.

SWEET PEA LIST.

I. & P.'s Fine Mixed. Postpaid	lb., 30c;	oz., 5c
Adonis. Carmine rose	10c	5c
Apple Blossom. Rosy pink, with white wings	10c	5c
Butterfly. White ground, delicately edged with lavender	10c	5c
Black Invincible. Very dark	10c	5c
Boreatton. Deep rich maroon, finest dark color	10c	5c
Blushing Beauty. Rich, soft, fleshy-rose, expanded form, very fine	10c	5c
Captain of the Blues. Bright purple and pale blue	10c	5c
Cardinal. Crimson and scarlet	10c	5c
Carmine Invincible. Rich crimson, carmine, scarlet wings	10c	5c
Duchesse of Edinburgh. Orange scarlet, wings rosy crimson	10c	5c
Duke of York. Bright rosy pink, with primrose tint	10c	5c
Empress of India. Rosy pink, standard, white wings	10c	5c
Emily Henderson. A valuable new white variety, very fine	10c	5c
Firefly. Intense brilliant carmine scarlet	10c	5c
Gay Queen. White, flushed and feathered with pink	10c	5c
Gayety. White, striped and flaked with rosy lilac	10c	5c
Ice Majesty. Deep rosy crimson, of satin gloss	10c	5c
Isa Eckford. Creamy white and rosy pink	10c	5c
Imperial Blue. Fine blue	10c	5c
Jonarch. Bronze, crimson and blue	10c	5c
Liss Hunt. Pale carmine standard and wings soft pink	10c	5c
Mrs. Eckford. White, delicately shaded with primrose	10c	5c
Liss Blanche Ferry. Pink and white	10c	5c
Mrs. Gladstone. Delicate soft pink, rosy blush wings	10c	5c
Mrs. Sankey. White, with a delicate tinge of shell pink	10c	5c
Lemon Queen. Blush white, tinted with lemon	10c	5c
Mellie Jaynes. White and light pink	10c	5c
Mild. Rosy pink, with darker rose margins	10c	5c
Orange Prince. Bright orange pink flushed with scarlet	10c	5c
Primrose. Pale primrose yellow	10c	5c
Princess Beatrice. Rich carmine rose	10c	5c
Purple Prince. Purple	10c	5c
Sainted Lady. Rosy crimson and blush white	10c	5c
Scarlet Invincible. Intense scarlet	10c	5c
Striped Invincible	10c	5c
Senator. Chocolate creamy white	10c	5c
Scarlet Striped	10c	5c
Stanley. Deep maroon	10c	5c
The Queen. Pink, shaded with heliotrope	10c	5c
Violet Queen. Pink, wings lilac	10c	5c
Vesuvius. Violet spotted	10c	5c
White. Pure white	10c	5c
Vaverly. Pale blue and rosy claret	10c	5c
American Bell. Rose and white, purplish carmine spots	10c	5c
Victor. Bright orange salmon, wings pink	10c	5c
Waverly. Orange rose standards, the wings delicate mauve, lightly margined with rose; very bright	10c	5c
Catharine Tracy. Perfect form and delicate pink color	10c	5c
Upid. White	10c	5c
Double. Very fine, mixed	10c	5c

POPPY.

SINGLE VARIETIES.

Peacock. Very pretty. 5c.	Shirley. Mixed colors. 10c.
Mephisto. Dark scarlet, with velvety jet black blotches. 10c.	

DOUBLE VARIETIES.

Double Carnation Flowered. For dazzling richness and variety of colors the flowers are unequalled.
Double Peony-Flowered, Mixed. Splendid large double flowers of all colors. 5c.
Double White. Large very double flowers, pure white. 10c.
Double Scarlet. Flowers bright scarlet and very double. 10c.

PORTULACA.

Single Mixed. Packet, 5c.
DOUBLE VARIETIES. These make perfectly gorgeous masses of color.
Yellow Striped Crimson. Packet, 10c. Scarlet. Pkt., 10c.
Rose Striped Carmine. " 10c. Sulphur. " 10c.
White. " 10c. Rose. " 10c.
Large Flowering, Double Mixed. Packet, 10c.

PYRETHRUM.

Single Large Flowering Hybrids, Mixed. Packet, 5c.
Double Large Flowering Hybrids, Mixed. Packet, 10c.
ROSEUM. ("Persian Insect Powder Plant.") Rose colored; 4 feet. Packet, 10c.
AUREUM. Yellow foliage; ¾ foot. Packet, 5c.
SELAGINOIDES. Handsome, fern-like foliage; ½ foot. Packet, 10c.

RHODANTHE MACULATA.

Mild. 5c.
RICINUS. (Castor Oil Plant.)
Large, luxuriant, rapid-growing foliage annuals, with palm-like leaves.
CAMBODGIENSIS. Leaves of a bronzy maroon, with large d veins; stems ebony black. Packet, 10c.
BORBONIENSIS. 15 feet. Immense foliage. Packet, 5c.
GIBSONII. 6 feet. Dark purplish red foliage and stems. Packet, 5c.
OBERLINII. 8 feet. Light red foliage. Packet, 5c.
COMUNIS. Green foliage. 6 feet. Packet, 5c.
PURPURUS. Fine foliage. Packet, 5c.
FINEST MIXED. Packet, 5c.

SALPIGLOSSIS. (Painted Tube Tongue.)

LARGE FLOWERING MIXED. Packet, 5c.
SALVIA. (Flowering Sage.)
COCCINEA LACTEA. Pure white. Height, 2 feet. Pkt., 5c.
PATENS. Bright blue. Packet, 10c.
SPLENDENS. (Scarlet Sage.) Scarlet. Packet, 10c.
REMERIANA. Crimson dwarf. 1 foot. Packet, 5c.

SCABIOSA. (Sweet Scabious.)

The "Mourning Bride." Very free bloomers.
MIXED DWARF DOUBLE. 1 foot. Packet, 5c.

SNOW BALL.

White. Very double. Packet, 5c.
STOCK—TEN WEEKS. (Gilly Flower.)
LARGE FLOWERING MIXED. Giant Perfection, Brompton or Winter Snowflake. Packet, 5c.

SILENE. (Catch Fly.)

MIXED. Red, white and rose. Packet, 5c.
ANNERIA ALBA ROSEA. Packet, 5c.
PONDULA COMPACTA, DOUBLE MIXED. Packet, 5c.

VERBENA HYBRIDA.

Black Blue with White Eye. 5c.
Candidissima. With large trusses of flowers of the purest white, 10c.
Coccinea. Scarlet, very fine and showy. 5c.
Defiance. Scarlet, very brilliant; excellent for bedding. 5c.
Fol. Aureis. (Cloth of Gold.) New, yellow-leaved, finest mixed. 10c.
Striata. Italian Carnation-like striped; saved from a rich collection. 10c.
Mammoth. New, large flowered. 10c.

SWEET SULTAN.

Mixed. Purple, white, etc. ¾ foot. 5c.
Yellow. Much prized for summer bouquets; very fragrant. 1½ feet. 5c.

TAGETIS SIGNATA PUMILA.

Very effective for low beds. 1 foot. Mixed colors. 5c.
THUNBERGIA (Black-Eyed Susan) ALATA.
Splendid for trailing over trellises, fences, etc.; buff, white, orange, etc. 4 to 6 feet high. 5c.

ZINNIA ELEGANS (Double).

Fine bedding and border plants, blooming abundantly.
New Dwarf. Finest mixed; splendid novelty. 10c.
Giant. Mixed. (Grandiflora Robusta Plenissima.) 5c.
Giant. Cream-colored (albida). 5c.
Lilliput. Smallest flowered; extra fine mixed. 5c.
Pompon-Flowered. (Darwinii fl. pl.) Mixed. 5c.
New Tom Thumb. (Benary.) Finest mixed. 10c.

VINCA.

A genus of ornamental, free flowering, greenhouse perennials.
Rosea. Rose. 5c.
Rosea Alba. White, red eye. 5c.
Rosea Nova Species. Pure white. 5c.
Fine Mixed. The above named varieties. 5c.

VIOLA ODORATA. (Sweet Violet.)

Of great beauty and fragrance. The seed is slow to germinate. Blue. 10c.
--

WALL FLOWER.

Exquisitely fragrant long spikes of single or double flowers. H. P. 5c.
Double German Splendid. Mixed. 5c.
Double German Large Flowering. Tall. Mixed. 10c.
Double German Dwarf. Mixed. 5c.

TORENIA.

Beautiful plants for vases, baskets, etc.
Fourieri. Porecelain blue and rich violet; throat bright yellow; very free flowering. 10c.
Bailloni. Deep yellow and maroon. 10c.
White Wings. Unusually attractive, pure white, with flush of rose at throat. 10c.

TUBEROSES.

DWARF PEARL. A universal favorite; very easily grown, and the most popular of all flowers for buttonhole bouquets during August and September. Medium bulbs, 25c per doz.; large bulbs, 35c per doz., by mail postpaid. Special price in 100 and 1,000 lots.

GLADIOLUS.

Our grand mixture of choice varieties, postpaid, per doz., 25c. Special prices on large orders.

CALADIUM ESCULENTUM. (Elephant Ears.)

LARGE BULBS. From ¾ to 4 inches in diameter, 20c; by mail, postpaid, 35c.
--

MADERIA VINE.

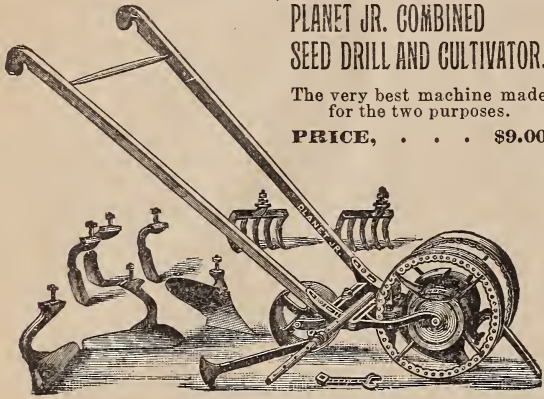
Half-hardy; tuberous-rooted climber of rapid growth, with thick, glossy, light green leaves. Price, postpaid, 5c each; 30c per doz.

CINNAMON VINE.

Sending forth a delicious cinnamon odor, renders it one of the most beautiful of climbing vines. Price, postpaid, 5c each; 30c per doz.

We are Agents for Central Indiana for the PLANET JR. GARDEN TOOLS FOR 1899.

We will gladly send a fully illustrated "Planet Jr." catalogue to any one who desires it, and can supply promptly anything ordered. "Planet Jr." goods are standard machines; the best on the market. Great improvements have been made for 1899.
NOTE.—At the price we quote the Planet Jr. tools we will deliver them free to your own station.



**PLANET JR. COMBINED
SEED DRILL AND CULTIVATOR.**
The very best machine made for the two purposes.
PRICE, . . . \$9.00

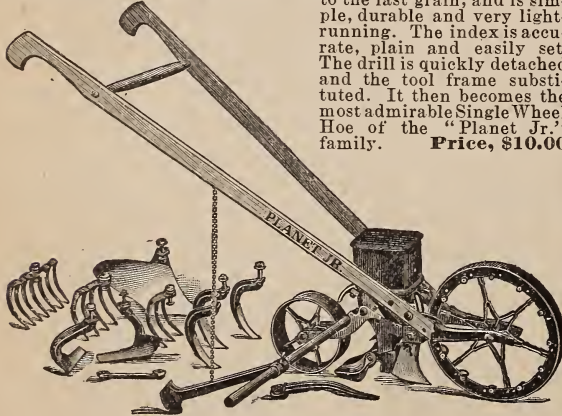


**PLANET JR. NO. 3
HILL DROPPING SEED DRILL**
Price, \$9.00.

This drill will sow in a continuous row or in hills.
Wheels, 13 inches high, force feed; easily and quickly changed from hills to drill work.

The PLANET JR. No. 4 Combined Hill Dropping Seeder and Single Wheel Hoe, Cultivator, Rake and Plow.

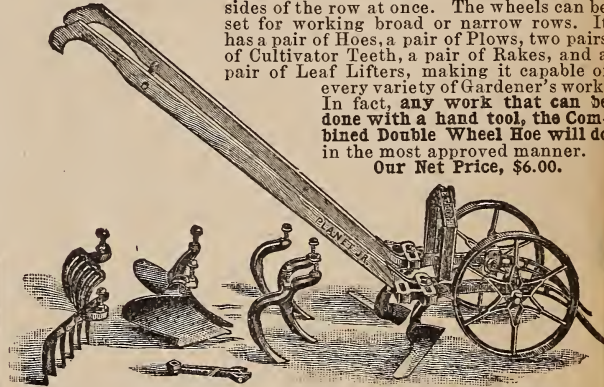
This is exactly the same style of seeder that has proven such a marvelous success in the No. 5 "Planet Jr." Hill Dropper. It is smaller in capacity, though still of good size, holding two quarts. It drops in hills at 4, 6, 9, 12, 18 and 36 inches apart and in drills any thickness, handling the smallest paper of seed perfectly and to the last grain, and is simple, durable and very light-running. The index is accurate, plain and easily set. The drill is quickly detached and the tool frame substituted. It then becomes the most admirable Single Wheel Hoe of the "Planet Jr." family. **Price, \$10.00**



First Offered in 1897.

PLANET JR. DOUBLE WHEEL HOE AND CULTIVATOR.

Has the invaluable feature of tending both sides of the row at once. The wheels can be set for working broad or narrow rows. It has a pair of Hoes, a pair of Plows, two pairs of Cultivator Teeth, a pair of Rakes, and a pair of Leaf Lifters, making it capable of every variety of Gardener's work. In fact, any work that can be done with a hand tool, the Combined Double Wheel Hoe will do in the most approved manner.
Our Net Price, \$6.00.



PLANET JR. No. 11 DOUBLE WHEEL HOE, CULTIVATOR, RAKE AND PLOW.

The frame is malleable, with a quick change device by which change of teeth or their position can be made in a few seconds without removing the nuts. The frame can be set at three different heights, is high, made of stiff steel, keeping the tool rigid; with it one can work crops until at least twenty inches high.

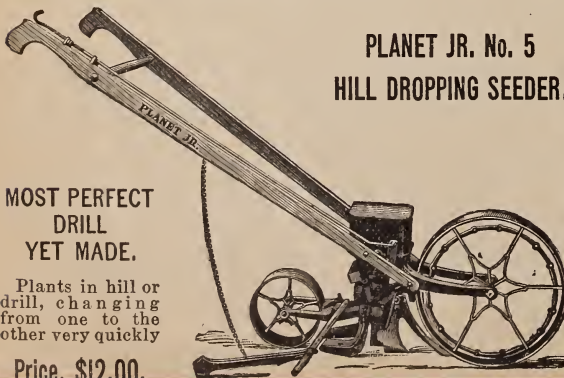
Price, complete \$8.00
" less Rakes and one pair of Hoes, 6.00
" one pair of 6-inch Hoes only . . . 4.00

PLANET JR. No. 5 HILL DROPPING SEEDER.

**MOST PERFECT
DRILL
YET MADE.**

Plants in hill or drill, changing from one to the other very quickly

Price, \$12.00.

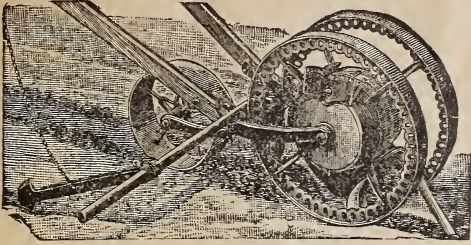


THE "FIREFLY" SINGLE WHEEL HOE.



This popular tool is exactly the same as the "Planet Jr." Single Wheel Hoe, excepting that it does not have the rakes or leaf lifter. The attachments are a pair of hoes that can be set to work to or from the row, a set of three reversible cultivator teeth, and a large garden plow. The whole tool is light and strong and capable of standing hard usage for years. **Price, \$3.75**

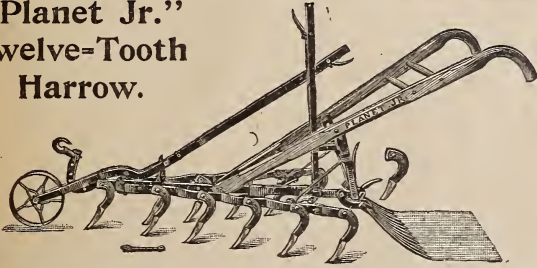
PLANET JR., GARDEN TOOLS—Continued.



The "Planet Jr." No. 2 Drill.

It has an adjustable opening plow. No hoeing attachments. The drill can readily be kept in a straight line and sows with ease and accuracy any and all vegetable and flower seeds, covering them just the depth required. The cleaner in front of the plow prevents trash from collecting on the plow. Holds $2\frac{1}{2}$ quarts. \$6.50, boxed.

"Planet Jr." Twelve-Tooth Harrow.

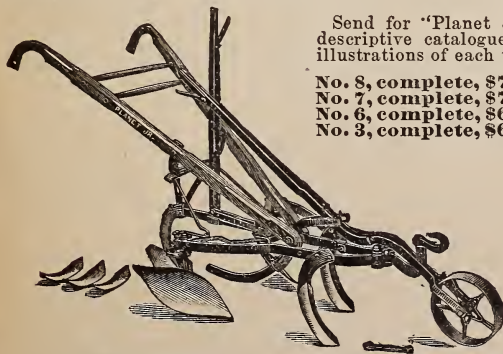


This comparatively new tool has rapidly grown into favor with market gardeners and strawberry growers. It is carefully made and finished, has a high frame, and the chisel-shape teeth cut an inch wide each, and may be worn down three inches before that width is lessened or the teeth worn out; even then they are cheaply replaced. It may be set with teeth trailing by simply changing one bolt in each tooth. The foot lever pulverizer is a capital addition for preparing ground for the seed drill or for plant setting. Hand levers regulate both width and depth while in motion; it contracts to 12 inches, and may be further reduced in width by taking off the outside teeth; it expands to 32 inches. It cultivates deep without throwing earth upon the plants, and the smooth, round-throated teeth turn strawberry runners without injuring them.

Price, plain, \$5.00. With wheel, \$6.25. Complete, \$7.50.

The "Planet Jr." Horse Hoes.

No gardener should be without one of the following. No other cultivating machine is so widely known.



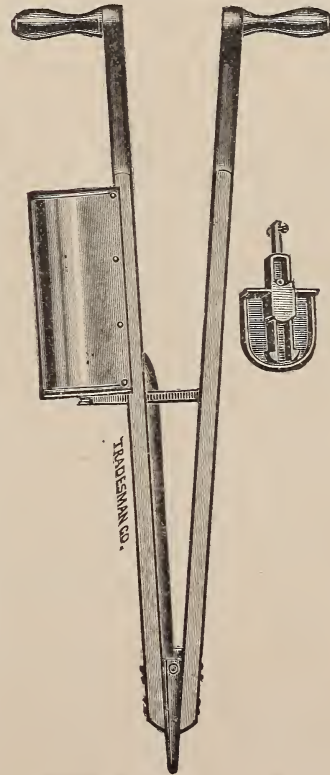
Send for "Planet Jr." descriptive catalogue for illustrations of each tool.

- No. 8, complete, \$7.50
- No. 7, complete, \$7.00
- No. 6, complete, \$6.75
- No. 3, complete, \$6.25



The "Planet Jr." Single Wheel Hoe.

Combines extreme lightness and strength. It has one pair of hoes, three cultivator teeth, two rakes and a plow. \$4.50.

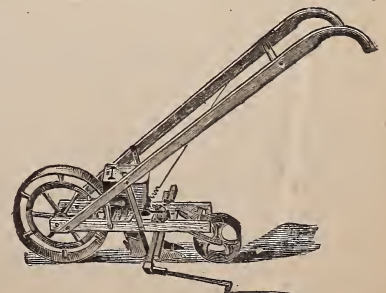


Hand Corn Planter.

This is undoubtedly the best hand corn planter in existence. It is so arranged as to drop any number of grains in a hill wanted, and will be found the greatest labor saver and money maker to the farmer yet introduced. Indispensable for replanting. Don't fail to order one. We make a special price to our customers of only \$1.00.

Add a Drill to your order. Saves seed, time and labor, and we deliver them to your own station at prices quoted.

New Model Seed Drill.



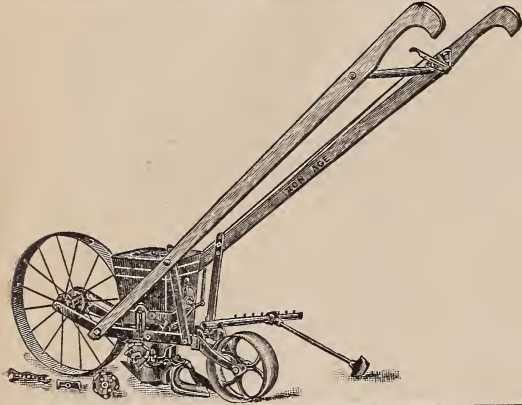
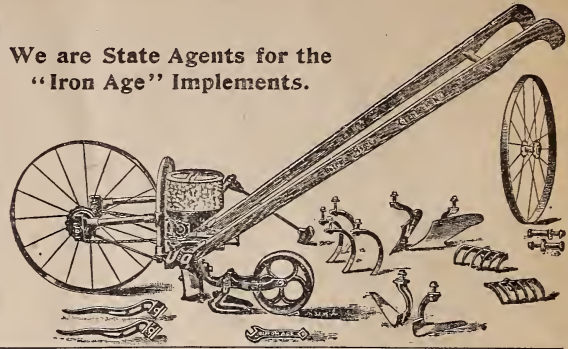
One of the best and cheapest drills in the market. Drills of similar construction are usually provided with a series of holes of varying sizes through which the seed is passed, which of course do not always give an opening of the exact size required. The operator is usually told, in substance, that "if one hole don't suit, try another." This adjustment in the Model is accomplished in a very simple and effective manner by use of a slide with a pear-shaped opening passing under the bottom of seed reservoir, which is provided with a perforation of similar shape, in a reversed position. This slide can be instantly adjusted to size indicated by index, or to a hair's breadth variation between, a vital point in a perfect seed drill. This index or indicator is plain, convenient and reliable. It is placed in open sight, immediately under the eye of the operator, and can be quickly adjusted to the slightest variation desired. As the names of the principal seeds are plainly shown on the index itself, it is not necessary to refer to any table of reference. The flow of seed can be instantly stopped by a swinging cut-off, conveniently operated by a cord or ring on the handles. The main wheel is of larger size and of unusual width, preventing its sinking into soft earth. The opening plow is steel and adjustable in depth. Each drill crated and carefully packed for shipment. Price, \$5.50.

THE "IRON AGE" COMBINED SEED DRILL AND WHEEL HOE.

After two years' experience in the sale of the "Iron Age" combined Seed Drill and Wheel Hoe, we can not speak of it too highly. It is equally as good as a seed drill or a wheel hoe. The high wheel and light frame makes it run exceedingly easy. The arch being capable of straddling a crop twenty inches high, permits cultivating with this tool longer than is possible with any other wheel hoe. The opening plow is adjustable in depth and also reversible, one end being wide for onion seed, and the other narrow for placing the seed in a close, straight line. The Combined Drill includes all of the attachments shown in the cut, and we claim that any one buying it possesses at once the most complete and perfect tool possible. It is a whole tool house of itself. It plows, levels, furrows, sows, covers, rakes, cultivates, hoes and hills, and does each and every operation in the most satisfactory manner.

PRICE, COMPLETE, \$9.00.

We are State Agents for the "Iron Age" Implements.



THE "IRON AGE" HILL AND DRILL SEEDER.

We offer this Hill and Drill Seeder to the public after a most thorough study and careful experiments in the field. Never have we introduced a tool which has met with such universal satisfaction, even from the most severe critics. We have embodied in our hill and drill seeder a number of new principles which make it far superior to any other seed drill yet introduced by us or others. The hopper is low, therefore the delivery of the seed is close to the ground, thus making possible accurate spacing. The capacity of this hopper is four quarts, thus holding more seed than any other seed drill or hill hopper. Market gardeners and sugar beet growers will find this tool particularly well suited to their needs.

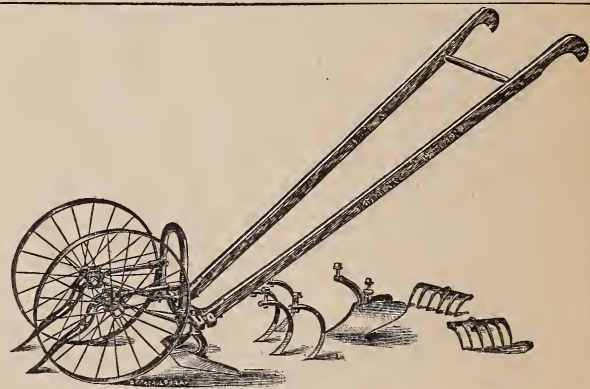
PRICE, \$10.00.

THE "IRON AGE" DOUBLE WHEEL HOE.

WITH CULTIVATOR TEETH, PLOWS AND RAKES.

Without their aid it would be an almost impossible task to keep the market supplied with such immense quantities of row-grown vegetables. They have done away with the back-breaking and time-killing methods of the olden time, one man performing in a more thorough manner, and with greater ease to himself, the labor of several men. Packed weight, 40 pounds.

PRICE, COMPLETE, \$6.00
PRICE, PLAIN (with side hoes only), 3.50



"IRON AGE" COMBINED HARROW AND CULTIVATOR. STEEL DIAMOND TEETH.

A tool that has, since its introduction, seemed to go "right to the spot" among farmers over the whole land. As plainly shown in cut, the teeth are diamond shaped, with a small steel cultivator tooth forged on one end. With its four changes, easily made, we believe it to be unique, as well as practical. For very close work every other tooth can be quickly removed. In common with all good things, this tool has numerous inferior imitations, but for solid quality, design or finish, is not approached by them.

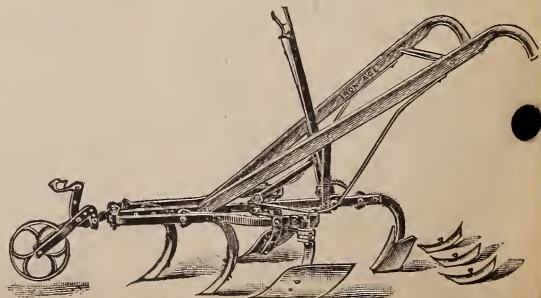
PRICE (like cut), \$5.00.

No. 6 "IRON AGE" HORSE HOE.

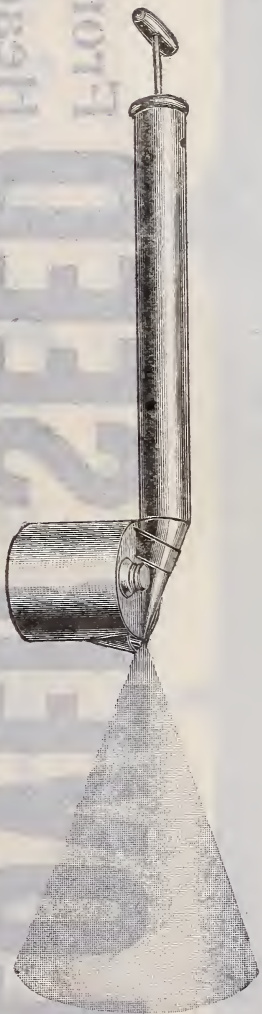
Is equipped with plain expander bars, held in place by our new wheel clamp, or our well-known steel stirrup clamp.

It is needless to say that in this shape it is by far the most rigid, and consequently the most durable, form of the Horse Hoe, for rough knocks in the hands of careless or inexperienced laborers.

PRICE, \$5.25.



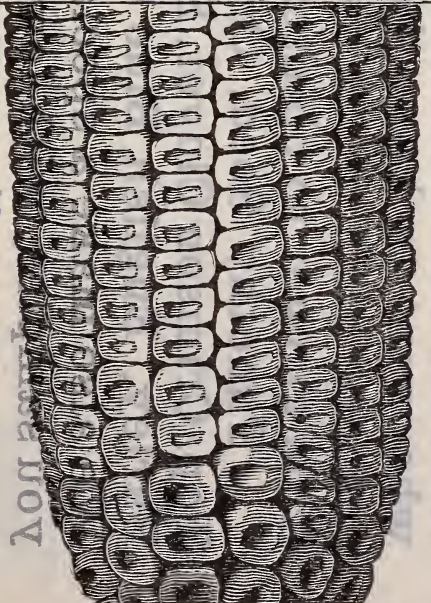
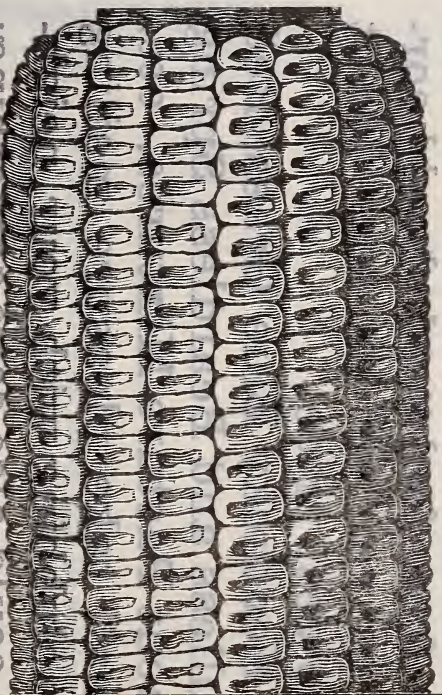
SEND FOR COMPLETE CATALOGUE "IRON AGE" TOOLS.



AGENTS WANTED

To sell our IMPROVED PERFECTION SPRAYER in every State, County and Township. They are the very ideal of perfection. Good hustling agents make \$5,000 to \$20,000 per day selling them. This will be the bonanza year to make the money. Their usefulness is just becoming known. By commencing early several hundred dollars can be made in one season. Write us at once for terms and territory. If you are not in a position to take hold of it yourself, hand this to some one in your neighborhood who wants to make some money. Our Improved Perfection Sprayer can be used in so many different ways to advantage on the farm that it is almost indispensable, and they make the cost of spraying a mere trifle. **WRITE NOW WHILE THIS IS FRESH IN YOUR MIND.**

KING



CORN

FARMING A FAILURE

Good Seed Corn will be scarce this season, but we have made seed corn a staple for years. We have saved several thousand bushels of Dungan's White Prolifer and Golden King, both of our own introduction and two of the best producing corns on earth. Now at the price we offer them, can you afford to take the risk of planting your own corn? For ten dollars you can plant fifty acres. Just think! Cheaper than you could select your own seed! At a cost of fifteen to twenty cents per acre no one can afford to miss planting these corns. They have been grown from Maine to California, and with them failure is unknown. At the price we offer them, we expect an immense trade, hence advise early orders. Price, bags free, \$1.00 per bushel.

October 12, 1898: Huntington & Page—Your Dungan corn has all the good qualities desired in a white corn. It requires rich land. Then it comes to perfection. It is the most beautiful of all white corns. Some grains are three-fourths of an inch long. Some ears have 1,300 grains. The ears are very long, some 13 inches, few under 10 inches. 70 ears weigh 122½ pounds. It has the prettiest shaped ear of any corn in the world and is snowy white. The whitest of all corns. It is without a fault.

The Golden King. The largest yellow corn grown. It matures in 100 days. Ears grow from 10 to 14 inches in length and 8 to 9 inches around, 20 to 22 rows, slightly tapering. Ears average from 1,000 to 1,200 grains. A large, deep, uniform grain. This corn will speak for itself. 1896 it was planted May 30 and was cribbed October 1. 1897 it was planted May 4 and was put in the shock September 1, yielding 70 bushels per acre. This corn will yield from 70 to 100 bushels per acre on good soil.

WITHOUT IT

Yours fraternally,
JOHN WAGGONER, Lincoln County, Kentucky.

C. MONTGOMERY, Marion County, Indiana.

Get CLOVER SEED

From....
Headquarters

We are right in the center of the Largest Clover Producing District in the country, and have several thousand bushels of the very choicest seed, free from all foreign seed, and farmers who want to keep their farms free from foul seed should correspond with us, as by dealing with us you get the seed direct from grower to planter at the very lowest price.

Timothy Seed, Orchard Grass, Kentucky Blue Grass, Red Top, Crimson Clover, Spring Rye, Hulless and Beardless Spring Barley, English Blue Grass Permanent Pasture Mixtures, etc. We also make a specialty of and shall take pleasure mailing you samples, with lowest prices; by clubbing with your neighbors and sending us your order you could also save something; hoping to hear from you soon, we are, very respectfully,

HUNTINGTON & PAGE,
INDIANAPOLIS, IND.

FROM
HUNTINGTON & PAGE,

FOR FULL INSTRUCTIONS ABOUT ORDERING, SEE PAGE 1 OF SEED ANNUAL.

INDIANAPOLIS, INDIANA.

BE SURE TO FILL IN THESE BLANKS.

NAME

POST-OFFICE

COUNTY

STATE

EXPRESS OR FREIGHT OFFICE

AMOUNT ENCLOSED.

POSTAL MONEY ORDER, \$

EXPRESS MONEY ORDER,

DRAFT, - - -

CURRENCY, - - -

COIN, - - - -

POSTAGE STAMPS, -

TOTAL, - \$

DATE,

NOTICE.

WE PAY THE POSTAGE ON ALL PACKETS, QUARTER POUNDS, POUNDS, PINTS AND QUARTS AT PRICES QUOTED IN CATALOGUE.

189

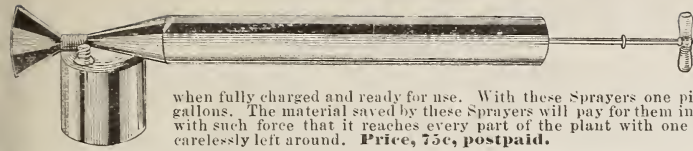
FOR YOUR CONVENIENCE WE LIST GARDEN TOOLS AND WILL DELIVER TO YOUR STATION ANY ONE OF THE FOLLOWING AT PRICES QUOTED. ADD ONE TO YOUR SEED ORDER.

Check Here What Tool You Want.		Price.	Carry Out Amount of Tool You Want.
No. 1.	Planet, Jr., Combined Drill Wheel Hoe, Cultivator, Rake and Plow	\$9.00	
" 2.	" " Seed Drill	6.50	
" 3.	" " Hill and Drill Seeder	9.00	
" 4.	" " Combined Hill and Drill Seeder, Hoe, Cultivator, Rake and Plow	10.00	
" 4.	" " " " " " " (only)	7.00	
" 5.	" " Hill and Drill Seeder	12.00	
" 20.	" " Fertilizer, Pea and Bean Drill	12.00	
" 21.	" " Combined Hill and Drill Seeder and Fertilizer Drill	16.00	
" 10.	" " Double Wheel Hoe, Cultivator, Rake and Plow (see cut)	6.00	
" 11.	" " " " " " " " " " "	8.00	
" 12.	" " " " " (see cut)	6.00	
" 13.	" " " " " (Hoes only), (see cut)	4.00	
" 15.	" " Single Wheel Hoe, Cultivator, Rake and Plow (see cut)	6.00	
" 16.	" " " " " (see cut)	5.00	
" 17.	" " " " " (see cut)	4.00	
" 18.	" " " " " (Hoes only), (see cut)	3.00	
" 4.	" " Horse Hoe and Cultivator, with Wheel, \$6.00; without Wheel	5.25	
" 7.	" " " " with Wheel	7.50	
" 8.	" " " " and Cultivator, with Wheel	8.00	
" 9.	" " " " " " " "	7.00	
" 4.	" " Plain Cultivator, with Wheel, \$4.50; without Wheel	3.75	
" 9.	" " " " " " " \$5.50; " "	4.75	
	" " 12 Tooth Harrow, complete, \$8.00; with Wheel, \$6.65; plain	5.40	
	Iron Age Hill and Drill Seeder	10.00	
" "	" " Wheel Hoe and Seed Drill, complete, \$6.00; plain	3.50	
" "	" " Combined Seed Drill and Wheel Hoe	9.00	
" "	" " Single Wheel Hoe, Cultivator, Rake and Plow, complete, \$4.50; plain	2.75	
" "	" " Wheel Plow	2.25	
" "	" " New Model Seed Drill	7.00	
" "	" " Gem of Garden Wheel Hoe, complete, \$4.00; plain	2.75	
" "	" " The Jewel Double Wheel Hoe, Cultivator and Plow combined	5.00	
" "	" " No. 6. Horse Hoe and Cultivator, complete, \$8.25; without Furrow Closing attachment	7.00	
" "	" " " 7. " " " " " " \$8.75; without Furrow Closing attachment	7.50	
" "	" " " 1. " " " " " plain	3.60	
" "	" " Combined Harrow and Cultivator, Steel Diamond Teeth	5.45	
" "	" " No. 5. Orchard Cultivator	7.00	

THE ABOVE LIST OF TOOLS ARE THE LEADING ONES ON THE MARKET. YOU SHOULD INCLUDE ONE OR MORE IN YOUR ORDER.

PLACE YOUR ORDER FOR SEEDS ON THE BACK OF THIS SHEET.

SPRAYERS.



when fully charged and ready for use. With these Sprayers one pint of preparation will do the work of twelve gallons. The material saved by these Sprayers will pay for them in a very short time. The poisons are sent out with such force that it reaches every part of the plant with one movement, and can not poison stock even if carelessly left around. **Price, 75c, postpaid.**

We have several different patterns of Sprayers this year, and make the price so that every person can own one. We have the simplest, cheapest and lightest Sprayers on the market. Distribute powder as well as liquid. Weigh only two to three pounds.

POULTRY.

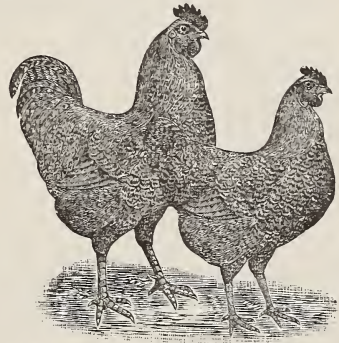
The eggs we offer are from as fine birds as there are in America. We guarantee all our eggs fresh and true to name, and also guarantee them to arrive in destination in good order and not broken. We ship to any State or Territory by **express only**. After receiving the eggs do not put them immediately under a hen, but allow them to remain quietly for twenty-four hours.

BROWN AND WHITE LEGHORNS.



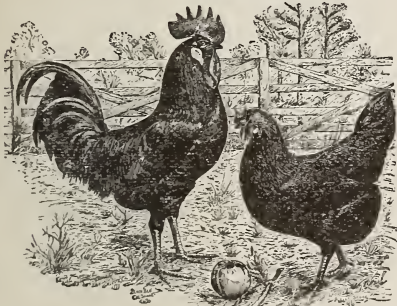
These are the most industrious and diligent foragers known, and are, moreover, the very best breed where eggs are desired; in fact, their strongest point is their laying qualities, no other breed yet introduced being equal to them in this respect. Their feathering is delicate, rich and distinct. No more pleasing sight in fowls can be desired. Brown Leghorns have long been a favorite breed with us; we are exceedingly careful in their mating. A setting of 15 egg, \$1.00.

BARRED PLYMOUTH ROCKS.



The greatest general purpose fowl in America. More kept by farmers than all other breeds combined. They are good layers, good mothers, good foragers, and one of the best table fowls in existence, being ready for use in ten to twelve weeks. A setting of 15 eggs, \$1.00.

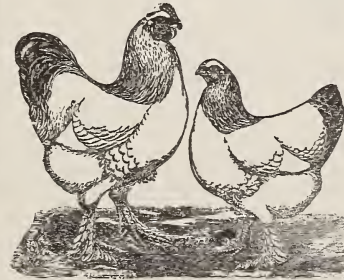
BLACK MINORCAS.



Their plumage is pure black, large bright red comb and wattle, white ear lobes, legs of a dark slate color, being very handsome in appearance. They are the largest non-setting breed in existence, being fully one-third larger than the Leghorn, and equal to them as egg producers. Their eggs weigh from six to eight ounces more to the dozen than those of any other breed.

Any one wishing to secure a profitable fowl can do so by purchasing a setting of eggs from our prize-winning fowls of the Pierce and Northup strain. Setting of 15 eggs, \$1.00.

LIGHT BRAHMAS.

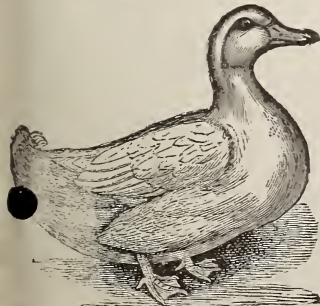


The Light Brahmas are the largest and one of the hardiest fowls in the poultry list, and are to-day an honor to all who have made their development a specialty. They are favorites with fanciers and farmers alike, are well adapted for all purposes, as winter layers are excellent, and are early setters. They bring high prices to those who raise them, either for market or show. They are well contented in a small yard, and are easily raised. A setting of 15 eggs, \$1.00.

LANGSHANS.

They are nearly as large as Brahmas, yet the pullets lay exceedingly early; in fact, some claim they lay as early as Leghorns; nor is this all, for they lay steadily after they once begin. For crossing purposes they impress themselves very strongly, and make a good cross with any breed. In plumage, carriage and form they are simply magnificent. The plumage is of a brilliant black, heightened by a greenish cast, which adds a polish and brilliancy unsurpassed. They are good setters and excellent mothers. A setting of 15 eggs, \$1.00.

IMPERIAL PEKIN DUCKS.



PEKIN DUCK.

The Pekin Duck is the business duck of the age. No other duck approaches the Pekins in marketable value. No other class of fowl is so easily bred. Pekin Ducks have met with wonderful demand in the last few years, and there does not seem to be any prospect of this demand abating. Ducks are far easier to raise than chickens. They do not have lice, roup or cholera, and wet weather that would be destructive to chickens is bread and meat to ducks. They really seem to thrive best in damp, rainy weather. Nor does cold weather affect them. If taken zero weather to drive them into their houses at night. The mortality in young ducks does not reach five per cent., and it is a rare thing for an adult duck to sicken and die. A setting of 13 eggs, \$1.00.

Tested Seeds.

HUNTINGTON & PAGE SEEDSMEN.

LARGEST TRADE WITH
Market Gardeners
OF ANY SEED HOUSE IN THE WEST.

OUR
MOTTO
BEST
SEEDS
AT
LOWEST
PRICES.



ONCE A
CUSTOMER
ALWAYS
A
CUSTOMER
RIGHT
TREATMENT
GUARANTEED.

OUR MAMMOTH SEED WAREHOUSE
225 & 227 East Maryland St.
ON TRACKS OF BIG FOUR RAILWAY.

With our new warehouse and increased facilities we can give better accommodations than ever to our thousands of customers, and in addition to our immense stock of Garden and Farm Seeds we have added a complete line of Agricultural Implements, Farm Wagons, Etc., which we will take pleasure in showing you. *********

STATE AGENTS
FOR THE
CELEBRATED PLANET, J.R.
GARDEN DRILLS & CULTIVATORS

INDIANAPOLIS INDIANA.

STATE AGENTS
FOR
THE BATEMAN MFG. CO.
IRON AGE GARDEN
DRILL, CULTIVATOR & C.