

Historic, Archive Document

Do not assume content reflects current scientific knowledge, policies, or practices.

62,09

SUNSET Seed and Plant Co's

JAMES SPROULE, MANAGER



1898 Catalogue and Price List of

Trees

Ornamental and Fruit

Plants

Ornamental and Small Fruit

Palms

All varieties

Roses

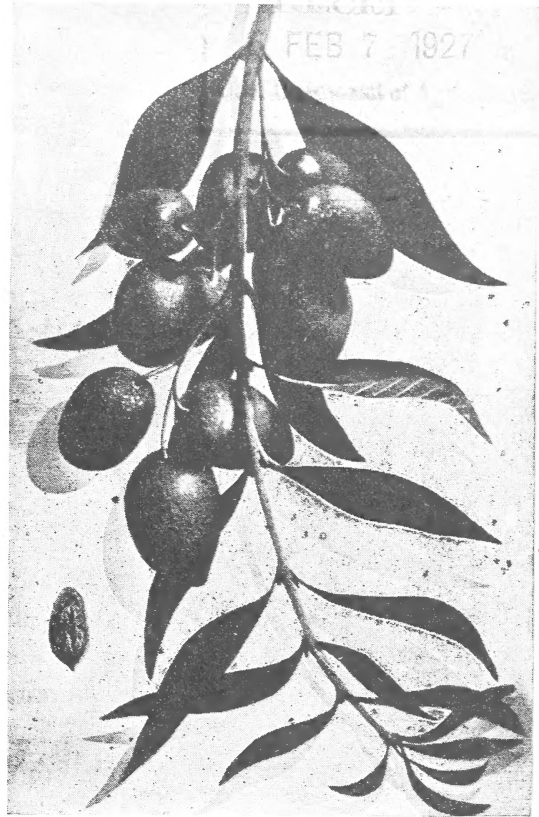
Newest and best kinds

Carnations

In fine assortment

Pelargoniums

(Lady Washington Geraniums)



NEVADILLO BLANCO OLIVE.

PLEASE NOTE that our Seed Catalogue is published separately. If you wish to purchase Sunset Selected Seeds that grow and are true to name, please send for our Seed Book, FREE

SUNSET SEED AND PLANT CO.

SEEDS AND ALL GARDEN SUPPLIES

33 MARKET ST.

SAN FRANCISCO



Telephone
Number
Main 5811



JAMES SPROULE, Manager

The Sunset Seed and Plant Co. will remove to a four-story warehouse, located at 33 Market Street. This will give them the finest seed warehouse on the Pacific Coast.

*American Florist,
Chicago, June 26, 1897.*

The Sunset Seed and Plant Co. will remove business July 1st to the four-story warehouse, 33 Market Street, near the Overland Ferry Depot. This, it is said, will give them the finest seed warehouse west of the Rockies.

*Florists' Exchange,
New York, July 3, 1897.*

The Sunset Seed and Plant Co. has removed to more commodious quarters, 33 Market Street, this city. In its announcement, this concern cleverly says: "Our seeds grow and our business grows; hence this 're-potting,' to give room for our roots."

*California Fruit Grower,
San Francisco, July 7, 1897.*

The well-known Sunset Seed and Plant Co. has recently made a progressive step in transplanting its offices, salesroom, and general stock of seeds, plants, etc., to new and larger quarters at 33 Market Street, south side, and one block up town from the ferry landing. This change of situation grows out of an expanding business, which could no longer be accommodated in the old quarters, and it is of special advantage in that it brings the business of the Sunset Seed and Plant Co. to a location more easily accessible to country patrons than the former situation. In congratulating the Sunset Seed and Plant Co. upon a change in all ways advantageous, it gives the RURAL PRESS great pleasure to bear witness to the courtesy, intelligence, and spirit of genuineness in which its business is uniformly conducted.

*Pacific Rural Press,
San Francisco, August 7, 1897.*

Worth reading

ON account of the dry, cold season which we are now experiencing, planting in California has been delayed. We advise all those who intended to plant not to be discouraged, for statistics of past periods of a like nature indicate that bountiful rains will follow the cold spell.

We have on hand a fair supply of all leading kinds of fruit trees, berry bushes, etc., but we would advise intending planters to send us their lists and orders at once. **We stand ready to make specially low quotations to those anticipating heavy plantings.**

Prices quoted are at our store in San Francisco. **We will charge for packing sufficient to cover actual cost of same.**

In your order please state whether substituting will be permitted, as, when no instructions on this point are given we shall feel at liberty to substitute similar but as good sorts.

Our terms are strictly cash.

February 1st, 1898.

SUNSET SEED AND PLANT CO.

SEEDS AND ALL GARDEN SUPPLIES

33 MARKET STREET

SAN FRANCISCO, - - CALIFORNIA

A WEEPING CATALPA

(*Catalpa Bungei*)

Those wishing a beautiful weeping or drooping tree cannot find anything that will please them so well as this. It is, *par excellence*, the finest of its class.

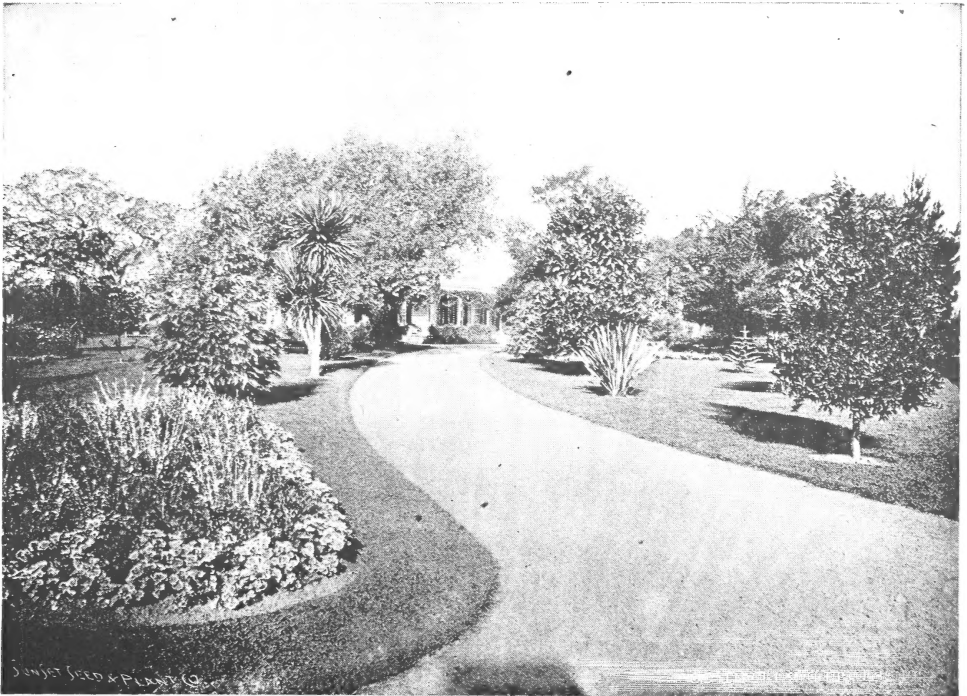
For lawn adornment it is unequaled; the leaves are large; heart-shaped, and of a beautiful green shade; the flowers are white and come in clusters, appearing for a long period. The tree sheds its leaves in winter, but even then it is not unsightly.

Price, 5 to 6 feet high (three old heads), \$1.00 each.

Desirable Hardy Evergreen Trees and Shrubs

Acacias

Good for sidewalk planting and beautifying of gardens; never attaining great size; of fairly rapid growth. Acacias bloom in early spring. The flowers of nearly all the varieties are some shade of yellow, and delightfully fragrant. **All pot-grown plants.**



Acacia dealbata. Flowers lemon-yellow; very free bloomer; foliage feathery, dark green on top, whitish underneath. 3 to 4 feet, 50 cents each.

Acacia longissima floribunda. Flowers bright yellow, produced in great quantities; leaves long and narrow. 3 to 4 feet, 35 cents each.

Acacia lophantha. Flowers white; foliage feathery; thrives in the most desolate places. 3 to 4 feet, 40 cents each.

Acacia melanoxylon. Flowers yellow; leaves olive-leaf shape. One of the most extensively planted varieties in this State. 4 to 6 feet, 50 cents each; 6 to 8 feet, \$1 each.

Acacia mollissima. Flowers canary-yellow; foliage feathery. 3 to 4 feet, 50 cents each.

Araucarias

Araucaria Bidwelli. This tree attains very large size, but is mediumly slow in growth. It sends up one straight leader from which grow horizontal branches, at regular distances, clothed with sharp spines, lightish green in color. Highly ornamental; pot grown. 1½ to 2 feet, \$2 each.

Araucaria excelsa (Norfolk Island Pine). Grows somewhat like the preceding; the foliage is not so prickly, nor is the tree as hardy. Much used for house decoration; pot grown. 1½ to 2 feet, \$3.00 each; 2 to 3 feet, \$4.00 each.

Araucaria imbricata (Monkey Puzzle). Well known; of stately growth, horizontal prickly branches, dark green in color; balled. 15 to 18 inches, \$3.00 each; 1½ to 2 feet, \$4.00 each.

Arbutus Unedo (Strawberry Tree)

This bears deliciously flavored fruit, resembling in shape and color the fruit of the strawberry; pot grown. 3 to 4 feet, 75 cents each.

Aucubas

Aucuba japonica (Gold Dust Tree). So called as the large, glossy leaves are marked with yellow spots; of shrubby growth; balled. 2 to 3 feet, 75 cents each.

Aucuba viridis latifolia. Similar to preceding, except that leaves are not spotted yellow; pot grown. 2 to 3 feet, 75 cents each.

Azaleas

Evergreen shrubs of great value when in bloom, either for decoration or bouquets. The flowers (both single and double), which are borne freely, include every color and every shade of color; pot grown. 1½ feet, \$1.50 each.

Berberries

Berberry, aquifolia. Highly ornamental shrub; leaves large purplish green, shining and prickly; flowers yellow, succeeded by bluish berries; boxed. 2 to 3 feet, \$1.50 each.

Blue Gum. See Eucalyptus.

Box, Dwarf

This is the plant used so much for edgings; open ground. 8 to 12 inches, 25 cents each, \$1.50 per 10.

California Bay or Laurel

Known also as California Sassafras. The tree attains very large dimensions, but is of slow growth. The leaves emit a strong fragrance; balled. 2 to 3 feet, 50 cents each.

California Big Tree

Balled. 2 to 3 feet, \$2.00 each.

California Nutmeg

This tree produces seeds resembling in shape a nutmeg; the spines are sharp, and dark green in color; of slow growth; pot grown. 10 inches, \$1.00 each.

Camellia Japonica

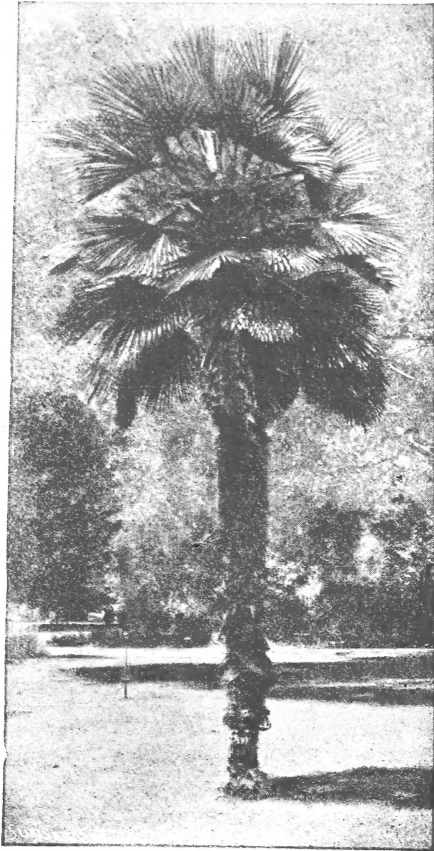
Known to many as "Japonicas." The leaves are stiff, and dark green in color. The flowers are shaped like a rose, but without fragrance, and are of a wax-like appearance; they bloom early in spring. Japanese varieties, double white, double pink, double red; pot grown. 1½ to 2 feet, 75 cents each.

Camphor Tree

Bright, shining green foliage; its young growth a most beautiful shade of tawny red. From this tree camphor is obtained by distillation; pot grown. 2 to 3 feet, 50 cents each.

Casuarina

This is a rapid-growing Australian tree, peculiarly adapted for planting on the seashore, and in alkaline soils; in appearance like a pine; pot grown. 2 to 3 feet, 40 cents each.



CHAMÆROPS EXCELSA (JAPAN FAN PALM).
(See under head of Palms.)

Cedar, Indian or Deodar

The handsomest of this class. It attains large size, and is of fairly rapid growth. The needles are sea-green in color, and the branches are pendulous; balled. 4 to 6 feet, \$5.00 each.

Choisya Ternata (Mexican Orange Flower)

A shrub with beautiful glossy foliage; flowers deliciously fragrant; blooms in early spring; balled. 1 to 1½ feet, 50 cents each.

Cypress

Cypress, Italian. Tall, tapering, conical; much used for working into designs; balled. 2 to 3 feet, 35 cents each; 3 to 4 feet, 50 cents each.

Cypress, Lawson. A desirable California variety; branches drooping, feathery and slender; color sea green; balled. 2 feet, 50 cents each.

Cypress, Monterey. Our well-known native variety; extensively planted for windbreaks and hedges; pot grown 2 to 2½ feet, 25 cents each, \$2.00 per 10; transplanted in boxes; 1 to 1½ feet, \$2.50 per 100.

Daphnes

This shrub has dark, glossy green leaves; they produce in early spring small sweet-smelling flowers; a great favorite; balled.

White Flowering. 2 to 2½ feet, \$2.00 each.

Pink Flowering. 2 to 2½ feet, \$2.00 each.

Diosma (Breath of Heaven)

This sweet-smelling little shrub is a general favorite; it produces small white flowers, which, as well as the foliage, are deliciously fragrant; pot grown. 1 to 1½ feet, 30 cents each.

Eucalyptus, or Gum Tree

Is known to all; of rapid growth.

Eucalyptus ficifolia. Flowers scarlet; leaves thick, leathery in appearance. In most localities in California it needs protection until old enough to withstand frost; pot grown, 2 feet, 50 cents each.

Eucalyptus globulus (Blue Gum). Transplanted in boxes, 1 to 1½ feet, \$2.50 per 100; pot grown, 1½ to 2 feet, 20 cents each, \$1.50 per 10; pot grown, 4 to 5 feet, 35 cents each, \$2.50 per 10.

Eucalyptus robusta. A strong, tall-growing, hardy variety; pot grown, 3 to 4 feet, 30 cents each, \$2.50 per 10.

Eucalyptus rostrata (Red Gum), pot grown, 3 to 4 feet, 30 cents each, \$2.50 per 10.

Euonymus, Golden

A medium sized growing shrub, having beautiful golden-yellow foliage, no flowers. Excellent hedges can be made from this variety; balled, 2 to 3 feet, 35 cents each, \$3.00 per 10.

Fabiana Imbricata

A very pretty *heath-like* shrub of erect growth, producing pure white, tube-shaped flowers in wonderful profusion; pot grown, 1 to 1½ feet, 30 cents each.

Grevillea Robusta

A magnificent tree for decorative purposes, grown either as a pot plant or in the open; it has orange-colored flowers, and the foliage is fern-like; pot grown, 3 to 4 feet, 50 cents each; boxed, 8 to 9 feet, \$1.50 each.

Holly, English

Prickly, dark green foliage, covered during winter months with red berries; balled, 1½ to 2 feet, \$1.00 each.

Laurel, English

Highly ornamental shrub, never attaining very large growth; they grow dense and fairly rapidly. They produce long panicles of white flowers, which add greatly to their beauty; balled, 3 to 4 feet, 50 cents each.

Laurustinus

The well-known handsome winter flowering shrub; the flowers come in bunches, and are pink, gradually changing to pure white, well adapted for hedges; pot grown, 1 foot, 15 cents each, \$1.00 per 10; balled, 1½ to 2 feet, 25 cents each.

Libocedrus Decurrens (Yellow or Incense Cedar)

A noble native of our Golden State, somewhat resembling in growth the famous "Big Tree"; balled, 2 to 3 feet, \$1.00 each.

Ligustrum Japonicum (Japan Privet)

Foliage dark and glossy; flowers white, succeeded by purplish blue berries. Excellent for hedges, or for lawn or avenue planting; balled, 4 to 5 feet, 60 cents each.

Loquat, Common

Leaves large, crumpled, glossy olive-green; produces sweet, delicious fruit, ripening in early spring; balled, 3 to 4 feet, 50 cents each.

Magnolia Grandiflora

Pot grown, 1½ to 2 feet, 50 cents each; 3 to 4 feet, 75 cents each.

Myrtle, Common

An old-fashioned, sweet-smelling, small-growing shrub; balled, 2 feet, 35 cents each.

Oak, Cork

The cork of commerce is obtained from this tree; highly ornamental; balled, 2 to 3 feet, 75 cents each.

Oleander

Very free flowering shrubs; we offer the double white and double pink; pot grown, 1½ to 2 feet, 50 cents each.

Pepper Tree

The well-known shade tree of our streets; it grows very rapidly; the foliage is feathery, drooping and glossy. The large clusters of red berries add greatly to its beauty; pot grown, 4 to 5 feet, 50 cents each; boxed, 6 to 8 feet, \$1.25 each.

Pine, Monterey

Transplanted in boxes (of 100 each), 10 to 12 inches, \$4.00 per 100; balled, 2 to 3 feet, 60 cents each, \$5.00 per 10.

Pittosporum Nigricans

Leaves wavy, shining light green color; growth upright and conical; excellent hedge plant; pot grown, 1 to 1½ feet, 30 cents each.

Redwood

Pot grown, 1½ ft., 35c each; balled, 4 to 5 feet, \$1.00 each.

Sequoia

See California Big Tree and Redwood.

Spruce

A very desirable class of elegant, upright-growing trees. As single specimens, much admired, and for large plantings, unequalled.

Norway.—Balled, 3 to 4 feet, 75 cents each; 4 to 5 feet, \$1.00 each.

White.—Balled, 3 to 4 feet, \$1.00 each; 4 to 5 feet, \$1.50 each.

Swainsonia

Acacia-like foliage, produces flowers (which are pea-flower shaped) in wonderful profusion, and for a very long time. Pot grown, white and pink, 25 cents each.



KENTIA FOSTERIANA.
(See under head of Palms.)

Veronica Andersonii

Flowers bluish purple, spike-shaped, very abundant for a long period. Unsurpassed for bleak or exposed situations. Balled, 2 feet, 50 cents each. We also offer a variegated-leaved variety of the preceding, same size and price.

Yew, Irish

Deep blackish green foliage; very erect growth. Much used in cemetery planting. Balled, 4 to 6 feet, \$3.00 each.

Native California Trees

For description and price, see preceding pages.

California Big Tree
California Bay or Laurel
California Nutmeg
Cypress, Lawson

Cypress, Monterey
Libocedrus decurrens (Yellow or Incense Cedar.)
Pine, Monterey.
Redwood

Desirable Deciduous Trees and Shrubs

Most of these being well known, and as our space is limited in this catalogue, we omit description. All are from open ground.

Almond, Double Red and Double White, 4 to 5 feet, 50 cents each.

Beech, European, 5 to 6 feet, 75 cents each.

Beech, Purple Leaved, 4 to 6 feet, \$1.50 each.

Birch, European, White, 4 to 6 feet, 50 cents each.

Birch, Purple Leaved, 4 to 6 feet, 50 cents each.

Blackberry, Large Double Flowering White, 2 to 3 feet, 50 cents each.

Broom, Spanish, 4 to 5 feet, 50 cents each.

Broom, Scotch, 2 to 3 feet, 30 cents each.

Butternut, 3 to 4 feet, 35 cents each.

Calycanthus floridus, 3 feet, 50 cents each.

Catalpa Bungei (Umbrella Catalpa), 6 feet, 75 cents each.

Catalpa Speciosa, 8 to 10 feet, 50 cents each.

Coral Plant, 40 cents each.

Deutzia, assorted, 4 to 5 feet, 35 cents each.

Elm, Cork Bark, 6 to 8 feet, 40 cents each; 8 to 10 feet, 50 cents each.

Elm, English or French, 8 to 10 feet, 50 cents each.

Elm, Huntingdon, 8 to 10 feet, 50 cents each.

Hawthorn, Double White, 4 to 6 feet, 50 cents each.

Hawthorn, Paul's Double Scarlet, 4 to 6 feet, 50 cents each; 6 to 8 feet, 75 cents each.

Hawthorn, Single Scarlet, 4 to 6 feet, 50 cents each.

Hawthorn, Single White, 4 to 6 feet, 35 cents each.

Horse Chestnut, White Flowering, 4 to 6 feet, 50 cents each.

Hydrangea, Large Panicked, White Flowered, 1½ to 2 feet, 25 cents each; 2 to 3 feet, 35 cents each.

Laburnum, Golden Chain, 4 to 6 feet, 35 cents each.

Lemon Verbena, 2 to 3 feet, 35 cents each.

Lilac, Persian, 4 to 6 feet, 40 cents each.

Lilac, Purple, 3 to 4 feet, 25 cents each; 4 to 6 feet, 35 cents each.

Lilac, White, 3 to 4 feet, 40 cents each.

Linden, American, 8 to 10 feet, 75 cents each.

Linden, European, 8 to 10 feet, 60 cents each.

Locust, Thornless, 8 to 10 feet, 50 cents each.

Locust, Pink Flowering, 8 to 10 feet, 50 cents each.

Locust, Rose Flowering, 4 to 6 feet, 50 cents each.

Maiden Hair Tree, 4 to 6 feet, 50 cents each.

Maple, Silver, 8 to 10 feet, 40 cents each.

Maple, Weir's Cut Leaved, 4 to 6 feet, 50 cents each.

Mock Orange, or Springa, 3 to 4 feet, 35 cents each.

Mountain Ash, European (Rowan Tree), 6 to 8 feet, 50 cents each.

Paulownia Imperialis, 6 to 8 feet, 50 cents each.

Peach, Flowering, Double White and Double Red, 4 to 6 feet, 50 cents each.

Plum, Purple Leaved, 5 to 6 feet, 40 cents each.

Poplar, Carolina, 6 to 8 feet, 30 cents each; \$2.50 per 10.

Poplar, Lombardy, 6 to 8 feet, 30 cents each; \$2.50 per 10.

Privet, Common; excellent for hedges; 4 to 5 feet, 10 cents each; 75 cents per 10; \$6.00 per 100.

Quince, Japan Flowering, Scarlet and White, 4 to 6 feet, 50 cents each.

Rhus Cotinus, (Smoke Tree), 5 to 7 feet, 50 cents each.

Snowball, 3 to 4 feet, 50 cents each.

Spiraea, Double White, 4 to 5 feet, 25 cents each.

Sycamore, European, 8 to 10 feet, 50 cents each.

Taxodium distichum (Deciduous Cypress), 4 to 5 feet, 50 cents each.

Texas Umbrella Tree, 4 to 5 feet, 50 cents each; 5 to 6 feet, 60 cents each; 6 to 7 feet, 70 cents each.

Walnut, American Black, 6 to 8 feet, 35 cents each.

Willow, Golden, 3 to 4 feet, 25 cents each.

Weigelia, Rose Colored and White, 3 to 4 feet, 40 cents each.

Xanthoceras Sorbifolia, 4 to 6 feet, 75 cents each.

Deciduous Weeping Trees

Elm, Camperdown, 6 to 8 feet, \$1.00 each.

Laburnum, 6 to 8 feet, \$1.50 each.

Mountain Ash, 4 to 5 feet, 75 cents each.

Mulberry, Tea's, 6 to 8 feet, \$1.50 each.

Willow, Common, 6 to 8 feet, 35 cents each.

Willow, New American, 5 to 6 feet, \$1.00 each.

Willow, Ring Leaved, 8 to 10 feet, 50 cents each.

Desirable Vines and Climbers

Akebia quinata, pot grown, 40 cents each.
Ampelopsis quinquefolia (Virginia Creeper), pot grown, strong, 35 cents each.
Ampelopsis Veitchii (Boston or Japan Ivy), pot grown, strong, 25 cents each.
Bignonia grandiflora (Trumpet Vine), open ground, 35 cents each.
Clematis. Good assortment. Pot grown. 75 cents each.
Clianthus puniceus. Pot grown. 25 cents each.
Honeysuckle, Belgian and Japan, open ground, 25 cents each.
Ivy, English, pot grown, 50 cents each.
Ivy, Variegated, pot grown, 25, 35 and 50 cents each.
Jasmine, Catalonian, pot grown, 50 cents each.
Jasmine, Nudiflorum, open ground, 35 cents each.

Jasmine, Poeticum, open ground, 35 cents each.
Ladeira Vine, open ground, 10 cents each.
Mandevilla Suaveolens (Chili Jasmine). Very sweet, pure white flowers, pot grown, 35 and 50 cents each.
Passion Vine, Blue, Flesh colored and White flowered, pot grown, 25 cents each.
Plumbago Capensis, Flowers lavender colored, pot grown, 35 cents each.
Roses, see Rose List.
Solanum jasminoides (Potato Vine), pot grown, 25 cents each.
Wistaria.—These beautiful Japanese climbers we recommend for general planting. The long, grape-like clusters of flowers, sometimes 1½ to 2 feet long, borne very profusely, appear in early spring, and are truly a grand sight. The following sorts, Double Purple, Single Purple and Single White, open ground, 50 cents each

Dracænas, Bamboos, Etc.

Agave, American, the well-known Century Plant, pot grown, 25 and 50 cents each.
Agave, variegated, pot grown, 50 cents each.
Arundo donax, variegated, open ground, 50 and 75 cents each.

Bamboo

Falcata, balled, 4 to 6 feet, \$1.00 each.
Metake, balled, 4 to 6 feet, 75 cents each.
Viridis Striata, balled, 4 to 6 feet, \$1.00 each.
Dasyliirion longifolium, balled, \$1.00 and \$1.50 each.

Dracænas

Australis, balled, 5 to 6 feet, \$1.50 each.
Fosterii, balled, 3 to 4 feet, \$1.50 each.
Indivisa, pot grown, 2 feet, 50 cents each.

Pampas Grass

Large clumps, 50 cents each

Phormium (New Zealand Flax)

6-inch pots, 50 cents each.

Yucca

Baccata, balled, 1 to 1½ feet, 50 cents each.
Whipplei, balled, 1 to 1½ feet, 50 cents each

Palms

Areca Baueri (House Palm), 5-inch pots, 75 cents each.
California Fan Palm (Hardy Palm), 1½ to 2 feet, 50 cents each; 2 to 3 feet, \$1.00 each; 3 to 4 feet, \$1.50 each; 4 to 5 feet, \$2.00 each; all balled.

Chamærops (Hardy Palms)

Chamærops Excelsa, Japan Fan Palm, 4-inch pots, 25 cts. each (by mail for 30 cts. each, postage paid by us); balled, 2 to 3½ feet, 50 cts each.
Chamærops Humilis, dwarf-growing variety, very fine, balled, 1 foot, \$1.00 each; 1½ feet, \$1.50 each.
Chamærops Nepalensis, superb sort, of stiff habit, pot grown, 1½ feet, 75 cents each.
Corypha Australis (House Palm), 4 inch pots, 50 cents each.
Cycas Revoluta (Sago Palm). We have a fine lot of these from \$1.50 to \$5.00 each.
Date Palm, see Phoenix.

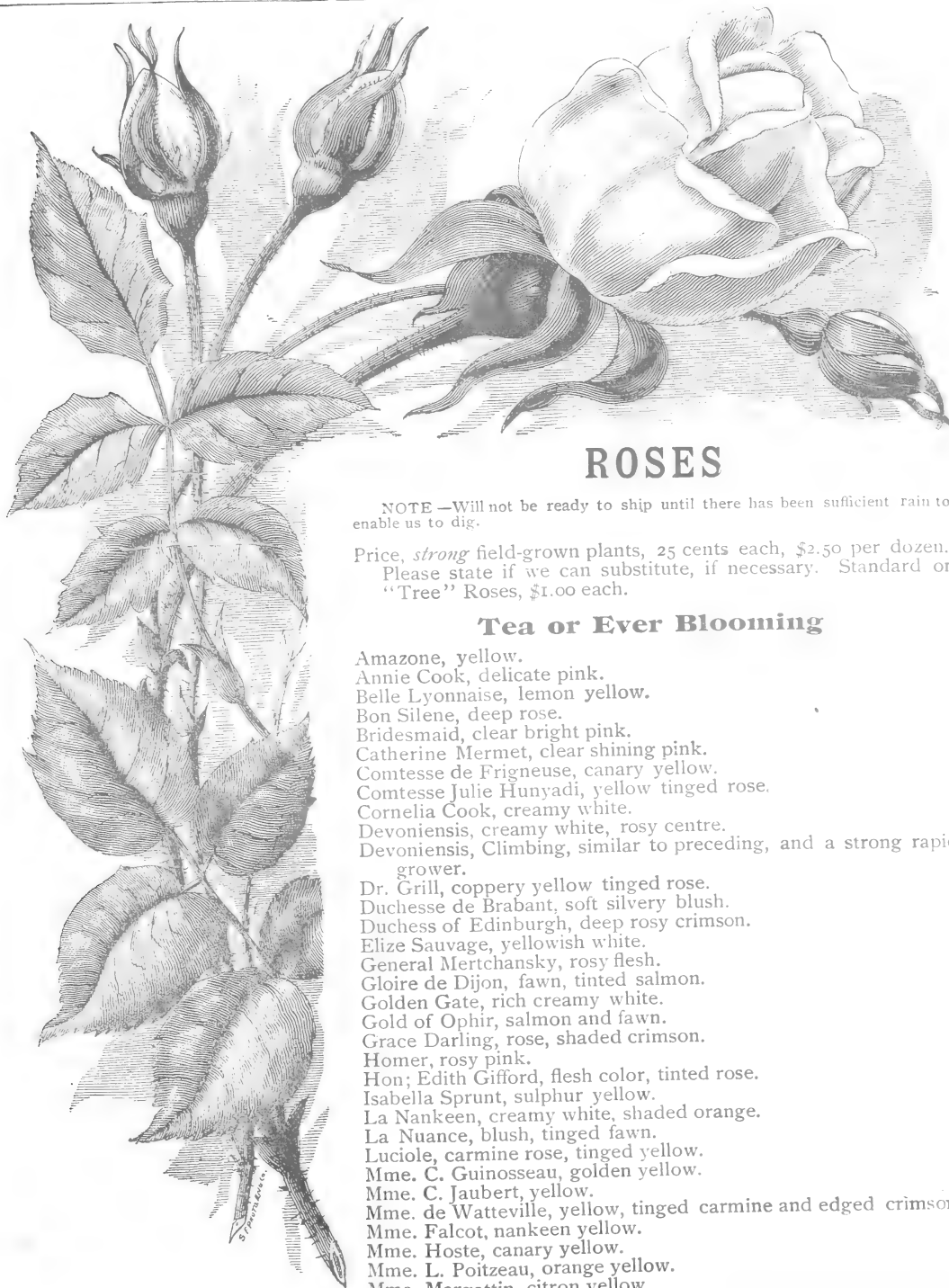
Erythea edulis (Guadaloupe Island Palm), (Hardy Palm.) The finest of the fan-leaved shaped variety, 6-inch pots, \$1.00 each; balled, 2 feet, \$1.00 each.

Kentia (House Palm)

Favorite for house culture; well furnished with gracefully recurved feather-shaped leaves.
Kentia Belmoreana, 3-inch pots, 40 cents each; 5-inch pots, \$1.00 each.
Kentia Fosteriana, 3-inch pots, 40 cents each.
Latania Borbonica (House Palm), 5-inch pots, \$1.00 each.
Phoenix Canariensis (Hardy Date Palm), 3-inch pots, 20 cents each; 4-inch pots, 25 cents each; balled, 2 to 3 feet, \$2.00 each.
Pritchardia. See California Fan Palm.
Sago Palm, see Cycas.
Washingtonia Sonoræ (Hardy Palm), balled, 2 to 3 feet, \$1.50 each.

Insect Powder Distributor, or Dry Powder Sprayer

The application of Paris Green and other poisons, mixed either in water or plaster, is laborious and expensive, and often unsatisfactory on account of uneven distribution, being in many places put on so strong that injury to the plant follows. By the use of this Insect Powder Distributor, this difficulty is overcome as the insecticide is distributed so evenly and so effectively that it is hardly perceptible on the plants. A man walking at an easy gait can, with this distributor, easily do an acre in thirty or forty minutes. Full directions for use on each machine. Knowing that it is a good thing, to introduce it we will send it, PREPAID TO ANY ADDRESS FOR \$5, and if unsatisfactory it may be returned, and money will be refunded, less cost of returning.



SUNSET ROSE

ROSES

NOTE—Will not be ready to ship until there has been sufficient rain to enable us to dig.

Price, *strong* field-grown plants, 25 cents each, \$2.50 per dozen. Please state if we can substitute, if necessary. Standard or "Tree" Roses, \$1.00 each.

Tea or Ever Blooming

- Amazone, yellow.
 Annie Cook, delicate pink.
 Belle Lyonnaise, lemon yellow.
 Bon Silene, deep rose.
 Bridesmaid, clear bright pink.
 Catherine Mermet, clear shining pink.
 Comtesse de Frigneuse, canary yellow.
 Comtesse Julie Hunyadi, yellow tinged rose.
 Cornelia Cook, creamy white.
 Devoniensis, creamy white, rosy centre.
 Devoniensis, Climbing, similar to preceding, and a strong rapid grower.
 Dr. Grill, coppery yellow tinged rose.
 Duchesse de Brabant, soft silvery blush.
 Duchess of Edinburgh, deep rosy crimson.
 Elize Sauvage, yellowish white.
 General Mertchansky, rosy flesh.
 Gloire de Dijon, fawn, tinted salmon.
 Golden Gate, rich creamy white.
 Gold of Ophir, salmon and fawn.
 Grace Darling, rose, shaded crimson.
 Homer, rosy pink.
 Hon; Edith Gifford, flesh color, tinted rose.
 Isabella Sprunt, sulphur yellow.
 La Nankeen, creamy white, shaded orange.
 La Nuance, blush, tinged fawn.
 Luciole, carmine rose, tinged yellow.
 Mme. C. Guinosseau, golden yellow.
 Mme. C. Jaubert, yellow.
 Mme. de Watteville, yellow, tinged carmine and edged crimson.
 Mme. Falcot, nankeen yellow.
 Mme. Hoste, canary yellow.
 Mme. L. Poitzeau, orange yellow.
 Mme. Margottin, citron yellow.
 Mme. Pauline Labonte, salmon rose.
 Niphetos, pure white.
 Niphetos, Climbing, a climbing sort of the preceding.
 Papa Gontier, brilliant carmine.
 Perle des Jardins, deep yellow.
 Perle des Jardins, Climbing, a climbing sort of the preceding.

- Mme. Welch, pale yellow, orange centre.
 Marie Guillot, white, tinged yellow.
 Marie Lambert, pale flesh.
 Marie Van Houtte, white, tinged yellow, bordered rose.
 Mrs. Jessie Fremont, white.
 Narcisse, lemon yellow, tinted rose.

TEA OR EVER-BLOOMING ROSES—Continued

President, rosy crimson.
 Rainbow, pink, splashed crimson.
 Reine Marie Henriette, clear cherry red, good climber.
 Safrano, buff, shaded yellow.
 Shirley Hibbard, nankeen yellow.
 Souvenir de Lady Ashburton, rich coppery red.
 Souvenir d' Espagne, coppery yellow, shaded rose.
 Souvenir de Wootton, red; one of the best red teas.

Souvenir d'un Ami, clear rose.
 Sunset, rich golden yellow.
 The Bride, ivory white.
 The Queen, pure white.
 Triomphe de Luxembourg, buff rose.
 Valle de Chamonix, coppery yellow, shaded rosy blush.
 Waban, bright pink.
 White Bon Silene, creamy white.
 W. F. Bennett, brilliant crimson.

Hybrid Tea Roses

Augustine Guinosseau (White LaFrance), white, with faint rose tint.
 Cheshunt Hybrid, red, shaded violet, good climber.
 Duchess of Albany (Red La France), deep pink.
 La France, silvery pink.
 Mme. A. Veysset (Striped La France), striped and shaded white.
 Mme. Caroline Testout, brilliant satiny rose.
 Meteor, rich velvety crimson.
 Mrs. W. C. Whitney, clear deep pink.
 Reine Olga de Wurtemberg, brilliant scarlet red.
 White Lady, creamy white.

Hybrid Perpetual Roses

Do not bloom so continuously as the two foregoing classes, but are superior in color and fragrance.

Alfred Colomb, carmine crimson.
 American Beauty, brilliant pink, shaded carmine.
 Anna Alexieff, superb rosy pink.
 Anna de Diesbach, brilliant pink.
 Baroness Rothschild, light rose, shaded pink.
 Black Prince, dark crimson, shaded black.
 Captain Christy, delicate flesh color, rosy centre.
 Captain Christy, Climbing, a climbing sort of the preceding.
 Cardinal Patrizzi, dark velvety crimson.
 Dinsmore, deep crimson.
 Duke of Edinburgh, vermilion.
 Earl Dufferin, rich crimson, shaded maroon.
 Empereur de Maroc, rich, deep velvety maroon.
 Empress of India, dark brownish crimson.
 General Jacqueminot, brilliant crimson.
 Gloire de Margottin, dazzling red.
 Gloire Lyonnaise, creamy white, yellowish centre.
 Glory of Waltham, brilliant crimson, fiery red centre.
 Lady Helen Stewart, bright crimson.
 Mabel Morrison, flesh color, changing to white.
 Mme. Alfred Carriere, rich, creamy white.
 Mme. Gabriel Luizet, glistening pink.
 Marchioness of Lorne, rose, carmine centre.
 Margaret Dickson, white, pale flesh centre.
 Marshall P. Wilder, cherry carmine.
 Mrs. John Laing, perhaps one of the loveliest pink roses ever introduced.

Paul Neyron, deep rose.
 Prince Camille de Rohan, deep velvety crimson.
 Senator Vaisse, carmine crimson.
 Ulrich Bruner, cherry red.
 Vick's Caprice, satiny pink, striped and splashed white and carmine.
 Xavier Olibo, scarlet, shaded black.

Moss Roses.

Captain John Ingraham, dark velvety purple.
 Glory of Mosses, pale rose.

James Veitch, violet, shaded crimson.
 White Bath, white.

Noisette or Champney Roses.

All strong growers, thus making excellent climbers.

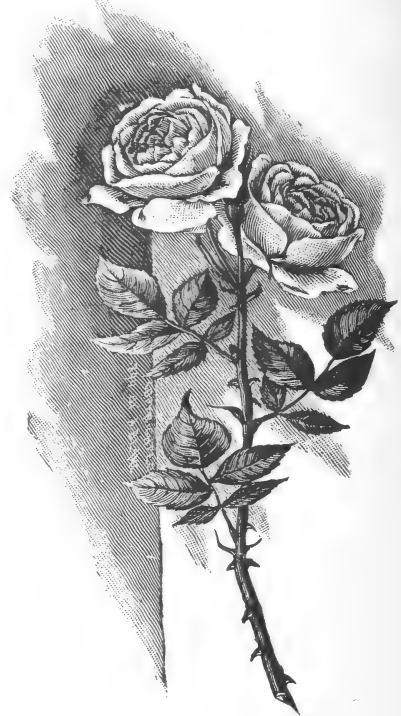
Aimee Vibert, pure white.
 Celine Forestier, pale yellow.
 Claire Carnot, saffron yellow.
 Cloth of Gold, deep yellow.
 Lamarque, pure white.

L'Ideal, coppery rose; most unique.
 Marechal Niel, deep golden yellow.
 Reeve d'Or, buff yellow.
 W. A. Richardson, orange yellow.

Bourbon Roses.

Bertha Clavel, creamy white, rose centre; continuous bloomers.
 Hermosa, bright rose.

Hermosa, Climbing.
 Mrs. Bosanquet, pale flesh color.
 Souvenir de la Malmaison, flesh color.



AUGUSTINE GUINOSSEAU.

Polyantha Roses, or Baby Roses.

Of dwarf habit, flowers small and in clusters.

Annie Marie de Montravel, pure white.
Clothilde Soupert, pinkish amber.
Crimson Rambler, bright crimson.

Etoile d'Or, pale yellow, centre rich red.
M'lle Cecile Bruner, salmon pink.
Perle d'Or, nankeen yellow.

Austrian Roses.

The duration of bloom is short; colors most unique.

Austrian Copper, yellow and red flowers on same bush.

Harrison's Yellow, golden yellow.
Persian Yellow, bright yellow.

Banksia Roses.

These bloom during spring months only; are strong, rapid growers.

Banksia, white.
Banksia, yellow.

Beauty of Glazenwood (San Rafael Rose), yellowish orange, bronze tinge.

Japan, or Rugosa Roses.

Remarkable for their dense, dark green foliage, and the purity of color of the flowers.

Rugosa alba, single white.

Rugosa alba plena, double white.

Rugosa rubra, deep rose, tinged violet.

Miscellaneous Roses.

Agrippina (Bengal), rich dark crimson.
Cherokee, Single, white.
Coupe d'Hebe (Bengal), beautiful rose color.
James Sprunt (Bengal), rich crimson.
Musk Fringed, white.

Provence, rose color.
Rosa Mundi (Gallica), white, striped with pink.
Sweet Brier, foliage sweetly scented.
Wichuriana, or Memorial Rose, pure white.

Climbing Roses.

For the convenience of our patrons we here enumerate, together, all the climbing roses: the description of each will be found in their respective classes.

[NOTE.—H. P. means Hybrid Perpetual.]

Banksia, white (*Banksia*).
" yellow "
Beauty of Glazenwood (*Banksia*).
Celine Forestier (*Noisette*).
Captain Christy, Climbing (*H. P.*)
Cherokee, Single (*Miscellaneous*).
Cheshunt Hybrid (*H. T.*)
Claire Carnot (*Noisette*).
Cloth of Gold "
Crimson Rambler (*Polyantha*).
Devoniensis, Climbing (*Tea*).
Gloire de Dijon "
Gloire de Margottin (*H. P.*)

Glory of Cheshunt (*H. P.*)
Glory of Waltham "
Hermosa, Climbing (*Bourbon*).
James Sprunt (*Miscellaneous*).
Lamarque (*Noisette*).
L'Idéal "
Marechal Niel "
Niphetos, Climbing (*Tea*).
Perle des Jardins, Climbing (*Tea*).
Reine Marie Henriette "
Reeve d'Or (*Noisette*).
W. A. Richardson (*Noisette*).
Wichuriana (*Miscellaneous*).

VEGETABLE PLANTS AND ROOTS

Cabbage Plants.—All Seasons, Early York, Jersey Wakefield, Late Flat Dutch. 50 cents per 100; \$4.00 per 1000.

Cauliflower Plants.—Ready in March. Early Dwarf Erfurt, Early Snowball, Late Algiers. 75 cents per 100; \$5.00 per 1000.

Egg Plants.—Ready in April. Improved New York Purple. 60 cents per dozen; \$4.00 per 100.

Tomato Plants.—Acme, Livingston's Beauty, Trophy. 30 cents per dozen; \$1.25 per 100; \$8.00 per 1000.

Pepper Plants.—Sweet Mountain. 35 cents per dozen; \$2.00 per 100.

Sweet Potato Plants.—Yellow Carolina. 50 cents per 100; \$5.00 per 1000.

Rhubarb.—Early Strawberry. 10 cents each; \$1.00 per dozen; \$6.00 per 100.

Hop Roots.—20 cents per dozen; \$1.25 per 100.

The above prices are at our store, and forwarding charges must be paid by purchaser.

Fruits, Nuts and Berries



Apples

Bismarck (New).—Price, 4 to 6 feet, 75 cents each. Bears fruit on two-year-old grafts. Finest quality, finest color; dwarf and extremely prolific. Most suitable apple for a hot climate, yet the hardiest known. Introduced from New Zealand.

Price of the following varieties, 4 to 6 feet, 25 cents each; \$2.00 per 10.

Summer Varieties.—American Summer Pearmain, Early Harvest, Gravenstein, Red Astrachan, Sweet June.

Autumn Varieties.—Alexander, Fall Pippin, Golden Russet, Hoover, King of Tompkins Co., Red Bietigheimer, Rhode Island Greening.

Winter Varieties.—Arkansas Black, Baldwin, Esopus Spitzenberg, Lawver, Northern Spy, Smith's Cider, Sweet Cider, White Winter Pearmain, Winesap, Yellow Bellflower, Yellow Newton Pippin.

Crab Apples.—Hyslop, Red Siberian, Transcendant, Yellow Siberian.

Pears

Price, on pear root, 4 to 6 feet, 25 cents each; \$2.00 per 10.

Summer Varieties.—Bartlett, Beurre Giffard, Clapp's, Favorite, Jargonelle, Lawson or Comet, Madeline.

Autumn Varieties.—Beurre, Bosc, Beurre Clairgeau, Beurre d'Anjou, Beurre Diel, Beurre Hardy, Dana's Hovey, Idaho, Kieffer's Hybrid, Seckel.

Winter Varieties.—Easter Beurre, Forelle or Trout, Glout Morceau, P. Barry, Winter Nelis.

Pear on Quince Root.—Price, 3 to 5 feet, 25 cents each; \$2.00 per 10: Bartlett, Beurre Diel, Easter Beurre, P. Barry, Seckel, Winter Nelis.

Cherries

Lambert (New), 4 to 5 feet, 35 cents each. A regular and heavy bearer, of large size and good quality; the color is a deep rich red, flesh firm, flavor unsurpassed. Ripens two weeks later than Napoleon Bigarreau.

Price of the following varieties, 4 to 6 feet, 25 cents each; \$2.00 per 10: Bing, Black Tartarian, California Advance, Centennial, Early Purple Guigne, English Morello, Governor Wood, Great Bigarreau, Lewelling, May Duke, Napoleon Bigarreau (Royal Ann), Olivet.

Plums

Wickson and Tennant (New).—Price, 4 to 6 feet, 35 cents each.

Price of the following varieties on Myrobolan root, 4 to 6 feet, 25 cents each; \$2.00 per 10: Bradshaw, Burbank, Cherry Plum, Clyman, Damson, Duane's Purple, Early Golden Drop, Greengage, Imperial Gage, Kelsey Japan, Peach Plum, Quackenboss, Royal Hative, Simon, Satsuma, Washington, Yellow Egg.

Prunes

Giant (New).—Price, 4 to 6 feet, 35 cents each; \$3.00 per 10. Each fruit averages 1½ to 2 ounces in weight, is very sweet and fine in texture. The flesh is honey yellow, the skin dark crimson upon a yellow ground. Tree a strong grower and immense croper.

Imperiale Epineuse (thorny).—Price, 3 to 5 feet, on Myrobolan root, 35 cents each; \$3.00 per 10. Undoubtedly the finest Prune of the regular drying class yet introduced in this State. It is large and uniform in size, very sweet and of high flavor; the skin is thin and of a reddish purple when green; when dried, coal black. It is from this variety the dried prune coming to this country in fancy packages, labeled, "Imperiale" is made. As a fresh fruit it cannot be surpassed. The tree is a regular and heavy bearer, and is a strong, stocky, rapid grower.

Price of the following varieties on Myrobolan root, 4 to 6 feet, 25 cents each; \$2.00 per 10: Bulgarian, German, Golden, French, Robe de Sargent, Silver, Tragedy.

Peaches

Triumph (New).—Price, 4 to 6 feet, 35 cents each; \$3.00 per 10. Earliest *Yellow* freestone known, ripens same time as Alexander (a white peach). The fruit is large, small pit, skin yellow, nearly covered with red, dark crimson in the sun; flesh light yellow, and of excellent flavor. The tree blooms late, and is a sure and abundant bearer.

Price of the following varieties, 4 to 6 feet, 25 cents each; \$2.00 per 10. (Ripening nearly in order named.)

Freestone Varieties.—Briggs' May, Alexander, Governor Garland, Yellow St. John, Imperial, Hale's Early, Strawberry, Foster, Early Crawford, Mary's Choice, Morris White, Wheatland, Newhall, Late Crawford, Muir, Susquehanna, Picquet's Late, Salway.

Clingstone Varieties.—Tuscan, Blood, Chinese, Lemon, Sellers, Golden, Runyon's Orange, Nichol's Orange, McKeivitt's, California, Heath, Phillips', McDevitt's, Henrietta.

Apricots

Price on peach root, 4 to 5 feet, 25 cents each; \$2.00 per 10. Blenheim, Early Moorpark, Hemskirk, Large Early Montgamet, Luizet, Moorpark, Newcastle, Peach, Royal, Spark's Mammoth, St. Ambroise. The following varieties we can supply on Myrobolan root: Blenheim, Hemskirk, Moorpark, Royal.

Nectarines

Price, 4 to 6 feet, 25 cents each; \$2.00 per 10. Advance, Boston, Early Newington, Golden, Humboldt, Lord Napier, New White, Victoria.

Quinces

Price, 4 to 5 feet, 25 cents each; \$2.00 per 10. Apple or Orange, Champion, Portugal, Rea's Mammoth.

Figs

Price, 4 to 5 feet, 50 cents each. Brunswick, California Black, Early Violet, Monaco Bianco, Ronde Noir, San Pedro, White Ischia, White Smyrna, White Adriatic.

Almonds

Price, 4 to 6 feet, 25 cents each, \$2.00 per 10. Commercial, Drake's Seedling, I. X. L., Languedoc, La Prima, Lewelling, Ne Plus Ultra, Nonpareil, Paper Shell, Sultana.

Chestnuts

American Sweet, 3 to 4 feet, 50 cents each. Italian or Spanish, 4 to 6 feet, 40 cents each; Japan Mammoth, *grafted*, 3 to 4 feet, 50 cents each.

The following grafted sorts, 4 to 6 feet, 50 cents each: Early Maron, Maron de Lyon, Maron Combale, Noir Hative, Numbo.

Filberts

Price, 4 to 6 feet, 50 cents each. Cosford Nut, Dwarf Prolific, Macrocarpa, Nottingham Prolific, Prolific Cob, Purple-Leaved.

Pecan

Price, 4 to 6 feet, 50 cents each.

Pistachio Nut

Price, 3 to 4 feet, 50 cents each.

Walnuts

American Black, 6 to 8 feet, 35 cents each.

California Black, 6 to 8 feet, 35 cents each.

English, 4 to 6 feet, 35 cents each.

Praparturien, 4 to 6 feet, 50 cents each.

Santa Barbara Soft Shell, 4 to 6 feet, 30 cents each.

The following varieties, grafted on English, 4 to 6 feet, 50 cents each: A. Bijou, Chaberte, Franquette, Vourey.

Oranges and Lemons

Oranges. Price, balled, 4 to 5 feet, \$1.50 each.

Joppa, Maltese Blood, Mandarin, Med, Sweet, Valencia Late, Washington Navel.

Lemons. Price, balled, 4 to 5 feet, \$1.50 each. Eureka, Lisbon, Villa Franca.

Pomelos (Grape Fruit)

Price, balled, 3 to 5 feet, \$1.50 each.

Limes

Mexican, pot grown, 1 foot, 35 cents each.

Persimmons

Japanese, grafted, 3 to 4 feet, 35 cents each.

Pomegranates

Price, 3 to 4 feet, 35 cents each. Sweet Fruited and Subacid.

Carob

Price, 3-inch pots, 1 foot, \$1.00 each.

Hovenia Dulcis

Price, 4 to 6 feet, 50 cents each

Loquats

Large Fruited, balled, 3 to 4 feet, 75 cents each. Seedlings, balled, 3 to 4 feet, 50 cents each.

Medlar

Nottingham, 50 cents each.

Mulberries

Downing's Everbearing, 4 to 6 feet, 50 cents each. Lick's American, 4 to 6 feet, 75 cents each. Persian, 3 to 5 feet, 75 cents each

Olives

Price, 4 to 6 feet, 50 cents each, \$4.00 per 10. Columella, Macrocarpa, Manzanillo, Mission, Nevadillo Blanco, Polymorpha, Oblonga, Regalis, Rubra, Uvaria.

Grape Vines

Foreign Varieties. Price, 20 cents each, \$1.00 per 10. Black Ferrara, Black Morocco, California or Mission, Cornichon, Flame Tokay, Muscat of Alexandria, Muscat Hamburg, Rose of Peru, Sultana, Thompson's Seedless, White Sweetwater, Zante, Zinfandel.

American Varieties. Price, 25 cents each. Catawba, Concord, Delaware, Isabella, Moore's Early, Pocklington, The Pierce, Worden, Wyoming Red.

SMALL FRUITS

Currants

Price, 1 year, 10 cents each, 75 cents per 10. Black Grape, Cherry, Fay's Prolific, Gondoin Red, White Dutch, White Grape.

Gooseberries

Berkeley, 1 year, 15 cents each; \$1.00 per 10.
 Champion, 1 " 15 " " \$1.00 " 10.
 Downing, 1 " 20 " " \$1.50 " 10.
 Houghton, 1 " 20 " " \$1.50 " 10.

Blackberries

Price, 10 cents each; 50 cents per 10. Crandall's Early, Early Harvest, Evergreen, Kittatiny, Lawton, Wilson Junior.

Dewberry (Lucretia)

15 cents each, \$1.00 per 10.

Parties desiring larger lots than quoted above, will please state quantity required. We will then make special prices.

While we aim to have all our fruit trees true to name, and hold ourselves ready, on proper proof, to replace, free of charge, all stock that may prove untrue to label, or to refund amount originally paid by the customer, it is mutually understood and agreed between the purchaser and ourselves that our guarantee of genuineness shall not make us liable for any sum greater than that originally paid us for such stock as may prove untrue.

Raspberries

Red Varieties. Price, 10 cents each; 50 cents per 10. Cuthbert, Hansell, Herstine, Marlboro, Thompson's Early.

Yellow Varieties. Price, 15 cents each; \$1.00 per 10. Carolina, Golden Queen, Yellow Antwerp.

Black Cap Varieties. Price, 15 cents each; \$1.00 per 10. Gregg, Mammoth Cluster, Ohio.

The Logan Berry

(Blackberry Raspberry).

Price, 30 cents each; 35 cents each if by mail.

Japan Wineberry

Price, 20 cents each; if by mail, 25 cents each.

Strawberries

Price, 50 cents per 10; \$2.00 per 100. Captain Jack, Longworth's Prolific, Parker Earle, Saunders, Sharpless, Wm. Parry, Wilson's Albany.

DISTANCES FOR PLANTING

Standard Apples 20 to 25 ft. apart each way
 Standard Pears 20 to 25 " " " "
 Strong-growing Cherries . 20 to 25 " " " "
 Duke and Morello Cherries 18 to 20 " " " "
 Standard Plums and Prunes 18 to 20 " " " "
 Peaches and Nectarines . 18 to 20 " " " "

Apricots 25 to 30 ft. apart each way
 Grapes 7 to 10 " " " "
 Currants and Gooseberries 4 by 6.
 Raspberries and Blackberries . . . 3 to 4 by 5 to 7.
 Strawberries for field culture . . . 1 to 1 1/2 by 4 to 5.
 Strawberries for garden culture . . . 1 to 2 ft. apart.

NUMBER OF TREES OR PLANTS ON AN ACRE AT GIVEN DISTANCES APART

DISTANCE APART EACH WAY.	NUMBER OF PLANTS	
	Square Method.	Equilateral Triangle Method.
1 foot	43,560	50,300
2 feet	10,890	12,575
3 "	4,840	5,889
4 "	2,722	3,130
5 "	1,742	2,011
6 "	1,210	1,397
7 "	807	928
8 "	680	785
9 "	537	620
10 "	435	502
12 "	302	348

DISTANCE APART EACH WAY.	NUMBER OF PLANTS	
	Square Method.	Equilateral Triangle Method.
14 feet	222	256
15 "	193	222
16 "	170	195
18 "	134	154
20 "	109	125
22 "	90	104
24 "	75	86
25 "	69	79
30 "	48	55
35 "	35	40
40 "	27	31

RULE—Square Method.—Multiply the distance in feet between the rows by the distance the plants are apart in the rows, and the product will be the number of square feet for each plant or hill, which, divided into the number of feet in an acre (43,560), will give the number of plants or trees to the acre.

RULE—Equilateral Triangle Method.—Divide the number required to the acre "square method" by the decimal .866. The result will be the number of plants required to the acre by this method.

SUPPLEMENTARY LIST



EVERGREEN TREES AND SHRUBS

AZARA MICROPHYLLA

Unsurpassed for beauty; leaves are small and glossy; flowers orange colored and produced in profusion; pot-grown, 1 to 1½ feet. 50 cents each.

ARAUCARIA

Araucaria Imbricata.—Balled, 12 to 15 inches. \$1.00 each.

Araucaria Excelsa.—Pot-grown, 1½ feet. \$1.25 each.

ESCALLONIA SANGUINEA

Dark green leaves; flowers red; a most desirable shrub for bleak situations; pot-grown, 1 to 1½ feet. 50 cents each.

EUCALYPTUS

Eucalyptus Citriodora.—Lemon-scented gum; pot-grown, 8 to 10 inches. 25 cents each.

Eucalyptus Rudis.—A native of Western Australia, and said to be a great resister of drought. The leaves on young trees are almost round, afterwards becoming long and of lanceolate shape. The flowers are creamy-white, borne nearly all year. It is rapid and symmetrical in growth, the bark does not peel off, nor are the branches broken by the severest wind storms. It is very hardy, and as an avenue tree is unsurpassed; pot-grown, 3 to 4 feet. 35 cents each; \$3.00 per 10.

EUGENIA

Eugenia Australis.—Of beautiful habit, producing small flowers in great profusion; pot-grown, 1½ feet. 50 cents each

Eugenia Ugni.—A very choice and pretty variety, bearing edible purple berries; pot-grown, 1 foot. 50 cents each.

FICUS AUSTRALIS

One of the Rubber Trees, hardy in some localities; pot-grown, 2 to 2½ feet. \$1.00 each.

HAKEA

An odd shrub, or small tree, from Australia; leaves stiff and sharp; pot-grown, 1 foot. 35 cents each.

LAURIS NOBILIS (Sweet Bay)

Pot-grown, 1½ feet. 40 cents each.

MAGNOLIA EXONIENSIS

Commences bearing much younger than *Grandiflora*; pot-grown, 2 to 3½ feet. \$1.00 each.

NANDINA DOMESTICA

A Japanese shrub of some beauty; flowers appearing in panicles, succeeded by small red or white berries; pot-grown, 1½ feet. 50 cents each.

PIMELLEA DECUSATA

A very satisfactory shrub to plant; the foliage is small and placed oddly on the branches; flowers are pink and feathery, borne for a very long period; pot-grown, 2 feet. 75 cents each.

PITTIOSPORUM EUGENOIDES

Leaves small and round, stems black; makes a most desirable hedge; pot-grown, 2 to 2½ feet. 35 cents each.

RAPHIOLEPIS OVATA (Indian Hawthorn)

Leaves glossy and leathery; bears sweet-smelling white flowers in clusters. It is spreading in habit, growing close to the ground; pot-grown, 1 foot. 35 cents each.

REDWOOD

Pot-grown, 1 foot. 25 cents each; \$2.00 per 10; \$15.00 per 100.

SCIADOPITYS VERTICILLA (Japan Umbrella Pine)

Pot-grown, 2 feet. \$1.00 each.

SPRUCE—DOUGLAS

Native of California. The foliage emits a pleasant odor; pot-grown, 1½ feet. 75 cents each.

THUJOPSIS DOLOBRATA (Axe-Leaved Arbor Vitæ)

Pot-grown, 1½ feet. \$1.00 each.

VINES AND CLIMBERS



THE EFFECT OF CLIMBERS.

Asparagus plumosus.—5-inch pots, 50 cents each; 4-inch pots, 35 cents each.

Asparagus Sprengerii.—A most valuable variety for hanging baskets; grows very easily and quickly. Of recent introduction; pot-grown. 30 cents each.

Bignonia radicans.—Pot-grown, 2 to 3 feet. 50 cents each.

Bignonia venusta.—Flowers orange colored, produced in great masses; not perfectly hardy. This is the climber you see growing in the dome of the conservatory at Golden Gate Park; pot-grown, 50 cents each.

Clematis.—We offer a fine assortment of these favorite climbers. They were raised from seed and embrace a charming variety of color. We cannot take the space to state color, but purchasers may rest assured they will not be disappointed. None of the flowers measure less than 9 inches in circumference; strong field-grown plants. 50 cents each.

ROSES

THREE NEW ROSES

Price, 35 cents each, or \$1.00 for the three—one of each.

Madame Cadeau Ramey (Hybrid Tea).—This beautiful Rose is flesh color in the center, while the outside of the petals is bright carmine. It is globular, large, and beautifully formed.

Muriel Graham (Tea).—The latest addition to the *Catherine Mermel* family, being a sport from that fine variety; identical with it in everything save color, which is a creamy white, suffused with delicate pink; a color between *Bride* and *Catherine Mermel*.

Souvenir d'August Metral (Hybrid Tea).—A very beautiful Red Rose, shading to crimson; the flower is large and finely formed; very sweet. A strong grower.

NEW HYBRID TRAILING ROSES

Price, 30 each, or \$1.00 for the set—one of each.

The habit of these new Roses is the same as the *Rosa Wichuriana*, or *Memorial Rose*. The growth is creeping, and, therefore, can be used to cover ground, stems of trees, pillars, trellises, or any other purpose desired, including pot culture. They are the hardiest Rose we know of, and will stand any climate or exposure, and will thrive in the poorest soil or a gravel bank. The foliage is finely cut, thick, of a leathery substance, bright green, shining as if varnished, not subject to mildew or any insect, but keeps its full beauty until almost Christmas. The flowers are produced in the greatest profusion, so that a two or three-year-old plant will produce several thousand most exquisite flowers, which are deliciously fragrant, and last a long time in perfection.

Triumph.—This grand Rose is of free growth, luxuriant foliage, and produces large clusters of double pure white flowers, beautifully imbricated, and well formed, two inches in diameter and sweetly scented.

Universal Favorite.—This is the most vigorous plant of the set. The long-branching shoots are covered with dense, bright green foliage. The double flowers are over two inches in diameter, and of a beautiful rose color, similar to the *Bridesmaid*, and deliciously fragrant. A grand variety for any purpose.

South Orange Perfection.—This is a gem, growing freely, close to the ground, and having multitudes of the most perfectly formed double flowers, about one and a half inches in diameter, soft blush pink at the tips, changing to white. It lasts a long time in perfection.

Pink Roamer.—This is without question a hybrid between the *Sweet Brier*, and carries these characteristics in bloom, while the growth, which is very rampant, and the luxurious foliage, partake more of the *Wichuriana*. The single flowers, which are produced in close heads, are nearly two inches in diameter, bright rich pink, with almost a white center, which lightens up the orange-red stamens, producing an effect which, combined with fragrance, makes it one of the most valuable Roses in cultivation.

Taking them together, the set of the four above varieties should be in every garden, and we are sure they will prove more valuable than the celebrated *Crimson Rambler*, as it is of a much more vigorous growth. Some shoots made last season from 15 to 20 feet in length, and, therefore, must be considered a marvel amongst Roses.



ROSA WICHURIANA ON AN ARCH.

ROSA WICHURIANA

THE MEMORIAL ROSE

This Rose, like the preceding, creeps along the ground like an Ivy, growing 10 feet in one season, and forming a dense mat of dark green lustrous foliage. The flowers are produced in lavish profusion, in clusters. They are single, pure white, with a golden disc five to six inches in circumference. Price, 2½-inch pots, 20 cents each.

LORD PENZANCE'S SWEET BRIERS

These have already attained a world-wide reputation. Like their parent, Sweet Brier, their foliage and flowers are deliciously fragrant; of vigorous habit. Price, 2½-inch pots, 25 cents each, or 80 cents for the set—one of each.

Amy Robsart.—Deep rose.

Annie of Geierstein.—Dark crimson.

Flora McIvor.—Pure white.

Lady Penzance.—Fawn, shading to Austrian copper.

Climbing Meteor.—A grand new velvety crimson; perpetual-flowering Climbing Rose. Price, 2½-inch pots, 25 cents each.

Climbing Wootton.—A climbing variety of this fine Red Rose that is bound to be popular. It is a very strong and rapid grower, throwing up long, thick canes, and bearing large clusters of true *Woottons*. Price, 2½-inch pots, 25 cents each.

TWO NEW RAMBLERS

OF THE TRUE "CRIMSON RAMBLER" TYPE.

GRAND CLIMBERS

Aglaia.—Yellow Rambler.

Euprosyne.—Pink Rambler.

Price, 25 cents each, or 40 cents for the two.

Crimson Rambler.—Of remarkably vigorous growth, making shoots from 8 to 10 feet high in one season. Flowers of brightest crimson, and produced in great pyramidal panicles, each having 30 to 40 blooms. Does not bloom the first year, but commences the second. Price, 2½-inch pots, 20 cents each.

Souvenir de President Carnot (Hybrid Tea).—The finest Rose offered for many years; the combination of colors—pink and white tints—is the loveliest we have ever seen; the beauty of form cannot be surpassed; it is a strong, free grower, with handsome foliage. Price, 2½-inch pots, 25 cents each.

The following 12 Roses (from 2½-inch pots) we offer for \$1.35 per dozen, one of each, or 15 cents each:—

Augustine Guinosseau.—Delicate pink.

Bride.—Ivory white.

Bridesmaid.—Beautiful pink. } Buds long

Belle Siebrecht.—Self, pink. } and

Duchess of Albany.—Deep pink. } pointed.

Meteor.—Glowing crimson.

Mme. de Walteville.—"Tulip Rose."

Mme. Cusin.—Rosy purple.

Mrs. W. C. Whitney.—Deep, clear pink.

Perle des Jardins.—Golden yellow.

Senator McNaughton.—White Perle des Jardins.

Sunset.—Rich golden amber.

N. B.—The above are strong, well-established, and much superior to those grown in the East, and offered at a lower rate. If any of the above Roses are desired to be sent by mail, please add 3 cents each extra for postage.

LIST OF TREE OR STANDARD ROSES

Following is a list of such varieties of Roses which we offer in Standard or Tree form—that is, they are budded on stocks from 3 to 4 feet from ground. The descriptions of each will be found on pages 9 and 10 of this Catalogue. Price, \$1.00 each:—

HYBRID PERPETUAL ROSES

Anna de Diesbach.

Black Prince.

Captain Christy.

Cardinal Patrizzi.

Duke of Edinburgh.

Empereur de Maroc.

Empress of India.

General Jacqueminot.

Gloire de Margottin.

Mabel Morrison.

Mme. Alfred Carriere.

Mme. Gabriel Luizet.

Marchioness of Lorne.

Margaret Dickson.

Mrs. John Laing.

Paul Neyron.

Prince Camille de Rohan.

Ulrich Bruner.

TEA, OR EVER-BLOOMING

Amazone.	Duchess of Edinburgh.	Mme. Hoste.	Shirley Hibbard.
Annie Cook.	Elize Sauvage.	Mme. Margottin.	Souvenir d' Espagne.
Belle Lyonnaise.	Gloire de Dijon.	Mme. Pauline Labonte.	Souvenir de Wootton.
Bon Silene.	Gold of Ophir.	Mme. Welch.	Souvenir d'un Ami.
Brid esmaid.	Grace Darling.	Marie Lambert.	Sunset.
Catherine Mermet.	Homer.	Narcisse.	The Bride.
Comtesse de Frigneuse.	Hon. Edith Gifford.	Niphetos.	The Queen.
Comtesse Julie Hunyadi.	La Nuance.	Papa Gontier.	Triomphe de Luxembourg.
Cornelia Cook.	Luciole.	Perle des Jardins.	Waban.
Devoniensis.	Mme. C. Guinosseau.	President.	White Bon Silene.
Dr. Grill.	Mme. C. Jaubert.	Rainbow.	
Duchesse de Brabant.	Mme. Falcot.	Safrano.	

CHAMPNEY ROSES

Aimee Vibert.	Cloth of Gold.	L'Ideal.	Reeve d'Or.
Celine Forestier.	Lamarque.	Marechal Niel.	W. A. Richardson.
Claire Carnot.			



PELARGONIUMS

(OR LADY WASHINGTON GERANIUMS)

Three Novelties of 1898

Price, 50 cents each, or \$1.20 for the three.

BEAUTY OF CALIFORNIA

A sport from the grand dark variety, *Captain Rakes*; produces magnificent trusses of large flowers with extra long flower spikes; brilliant carmine; upper petals feathered carmine; excellent bloomer.

ELEGANTA

Very large trusses of extra large white flowers delicately shaded blush; upper petals blotched dark maroon; of great substance.

EMPRESS OF MOROCCO

Very dark, almost black; petals fringed, very large and full.

The following sorts, of recent introduction, we can supply from 2½-inch pots, 25 cents each; \$2.50 per dozen; 4-inch pots, 35 cents each; \$4.00 per dozen. (2½-inch pot plants not available after March 15th.)

Blue Mabel.—Identical with the well-known *Mabel*, except color, which is of a rich plum shade.

Charmer.—That grand variety, *Inocente*, has been much admired, on account of its size, fimbriated petals, and silky texture; in *Charmer*, we have a variety that is a counterpart of *Inocente*, but of a charming shade of bluish pink, with upper petals very lightly feathered carmine.

Carmen.—Flowers extra large; white, shaded deep flesh; upper petals blotched deep carmine, surrounded by fiery crimson; lower petals feathered crimson; edge of all the petals white.

Countess.—Very large flowers, of a distinct shade of cerise-salmon; large white throat; petals distinctly edged white, upper petals splashed maroon.

Duke of Fife.—A regal variety in the way of *Mme. Thiebaud*, but with much deeper colored flowers, and of a fuller appearance.

Empress of Russia.—Ground color very light lavender, with almost white center, and shading to white at edge of petals; each petal with blotch of dark maroon, surrounded by crimson-purple.

F. S. Brush.—Flowers delicate shade of lavender-pink; upper petals are grandly blotched and lower petals feathered with velvety maroon; the flowers are beautifully fringed and undulated.

Inocente.—Of purest white, extraordinarily large; petals beautifully fimbriated.

John H. Sievers.—Immense trusses of extra large flowers, of a most brilliant shade of salmon-scarlet; the two upper petals blotched dark crimson, light center.

Katie IIs.—The nearest approach to a double Pelargonium; camelia-like, double white flowers; of good substance.

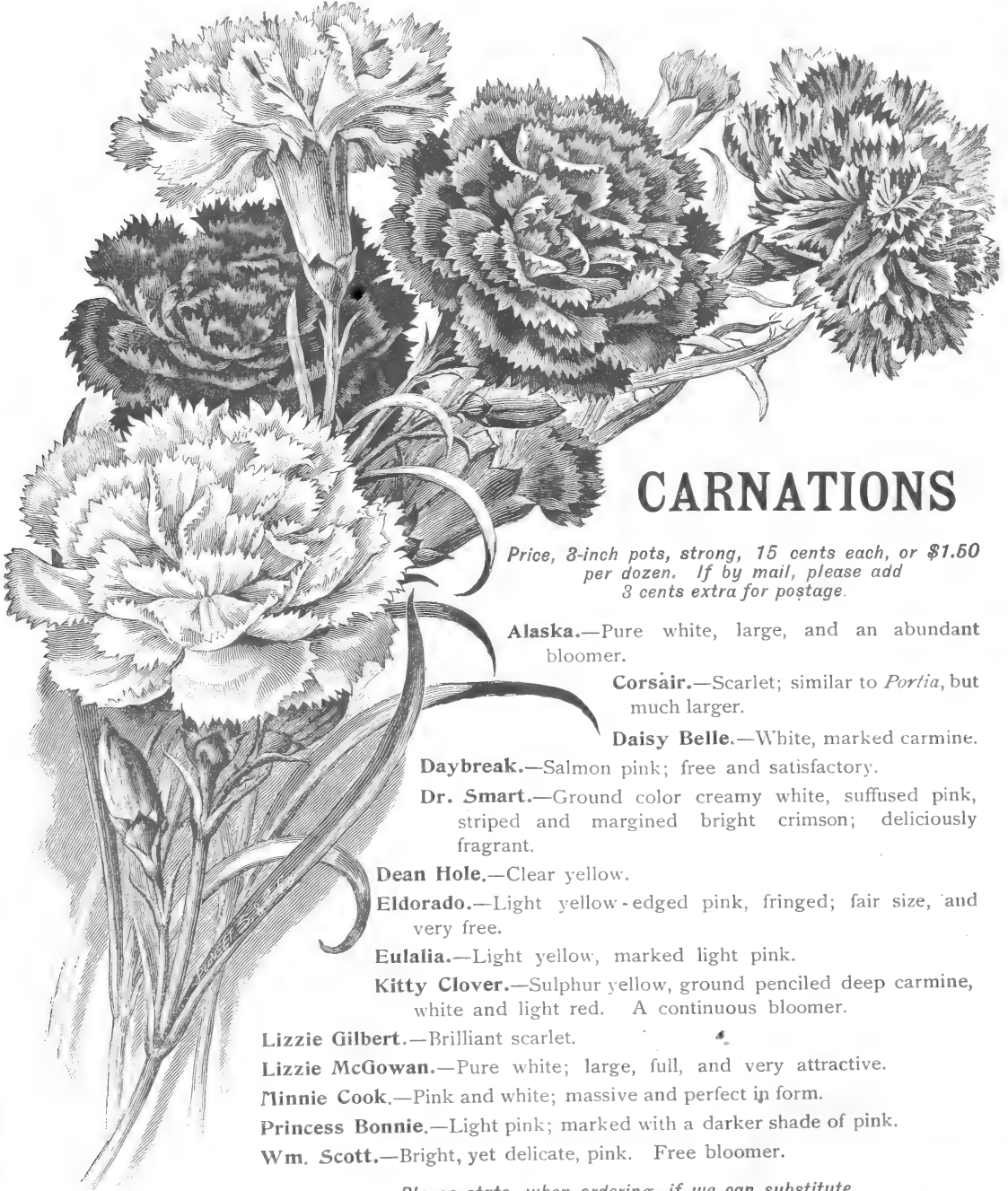
Leonora.—Extra large flowers, good shape, and nicely fimbriated; salmon, shaded pink, grandly blotched crimson-red; lower petals lightly feathered same shade.

Linda.—A remarkably free-blooming sort, producing large trusses of elegantly fringed flowers; beautiful orange-red in color; upper petals feathered carmine.

Mrs. Hollingsworth.—This variety is very attractive; deep rose ground, feathered red on upper petals; large trusses, deeply fringed and crisped flowers.

PELARGONIUMS—Continued

- Mrs. S. P. Hart.**—Immense trusses of extraordinary size, composed of silky, pure white flowers; upper petals grandly feathered carmine; beautifully fringed and fimbriated.
- Mrs. H. J. Jones.**—Immense trusses of extra large flowers of rounded form; color, a beautiful shade of cerise red; upper petals grandly feathered dark crimson.
- Purity.**—Pure glistening white; of rounded form; a grand sort in every way.
- Radiant.**—Brilliant crimson, lightly feathered with darker shade on lower petals; upper petals heavily blotched black.
- Ruth.**—Flesh-pink, shaded light violet; upper petals blotched rosy carmine; edge of petals white, also center of flower.
- Violet.**—Clear, purple ground, of a very rich shade; upper petals grandly blotched dark violet.



CARNATIONS

Price, 3-inch pots, strong, 15 cents each, or \$1.50 per dozen. If by mail, please add 3 cents extra for postage.

Alaska.—Pure white, large, and an abundant bloomer.

Corsair.—Scarlet; similar to *Portia*, but much larger.

Daisy Belle.—White, marked carmine.

Daybreak.—Salmon pink; free and satisfactory.

Dr. Smart.—Ground color creamy white, suffused pink, striped and margined bright crimson; deliciously fragrant.

Dean Hole.—Clear yellow.

Eldorado.—Light yellow-edged pink, fringed; fair size, and very free.

Eulalia.—Light yellow, marked light pink.

Kitty Clover.—Sulphur yellow, ground penciled deep carmine, white and light red. A continuous bloomer.

Lizzie Gilbert.—Brilliant scarlet.

Lizzie McGowan.—Pure white; large, full, and very attractive.

Minnie Cook.—Pink and white; massive and perfect in form.

Princess Bonnie.—Light pink; marked with a darker shade of pink.

Wm. Scott.—Bright, yet delicate, pink. Free bloomer.

Please state, when ordering, if we can substitute.

CHRYSANTHEMUMS

BEST NOVELTIES OF 1897

Price, 25 cents each; \$2.50 per dozen. Ready March 1st.

Barrington.—Bright maroon, silver markings; high built, with grand, broad petals.

Casco.—Bright garnet; an incurved Japanese sort, of large size, free in growth and bloom. One of the best for outdoor culture.

Chito.—A very fine variegated sort, of largest size; yellow ground, with red stripes, changing to a bronzy appearance.

Defender.—Dark crimson; slightly reflexed; of immense size and great substance.

Eureka.—Porcelain-white. In this we have all that can be desired in a Chrysanthemum.

Evangeline.—Pure white; very large. Good for any purpose.

Golden Trophy.—Golden - yellow; incurved; of beautiful form; very early, and of dwarf habit.

J. H. Woodford.—Shell-pink; globular in shape, with heavy, closely incurved petals; early, and good for commercial or private purposes.

Mrs. H. Meek.—White; of immense size and great substance; the petals are broad, incurved, and form a perfect globe.

Mrs. R. D. Douglas.—Bright yellow; very large, incurved, and of perfect form.

Sandstone.—Upper surface bright yellow, shading to red at base. A beautiful combination of color.

Western King.—Pure white; incurved; a few of the petals slightly reflexed; of great value.

Price of the following good sorts (among which are some of the novelties of 1896), 15 cents each; \$1.25 per dozen. Ready March 1st.

As our space is limited, we content ourselves with simply giving colors. The varieties we offer are all of the very best.

Buff Globe.—Chrome-yellow, shaded buff.

Corea.—Deep bronze-yellow, shaded buff.

Etoile de Lyon.—Lilac-pink; reflexed.

F. P. Domoto.—Deep cherry-pink; very early.

Golden Globe.—Rich buff-yellow, shaded amber.

Eugene Dailedouze.—Rich, bright yellow.

Iora.—Light pink; petals tubular and whorled.

Improved Louis Boehmer.—Deep rose; of immense size.

Kiota.—Golden-yellow; incurved.

Major Bonaffon.—Clear yellow; incurved.

Marshal Oyama.—Glistening white. A grand variety.

Mayflower.—A grand bold-white.

Millbrook.—Bronzy salmon, shaded red.



Monarch Ostrich Plume.—Chrome-yellow, shaded buff and amber. One of the hairy varieties.

Mrs. Craig Lippincott.—Rich yellow; immense size.

Mutual Friend.—Pure snow-white.

Oakland.—Terra-cotta.

Pride of Japan.—Beautiful deep pink; dwarf in habit.

Robert M. Gray.—Terra-cotta. Another fine hairy or ostrich-plume sort.

Sunrise.—Inside petals terra-cotta; reverse, old gold.

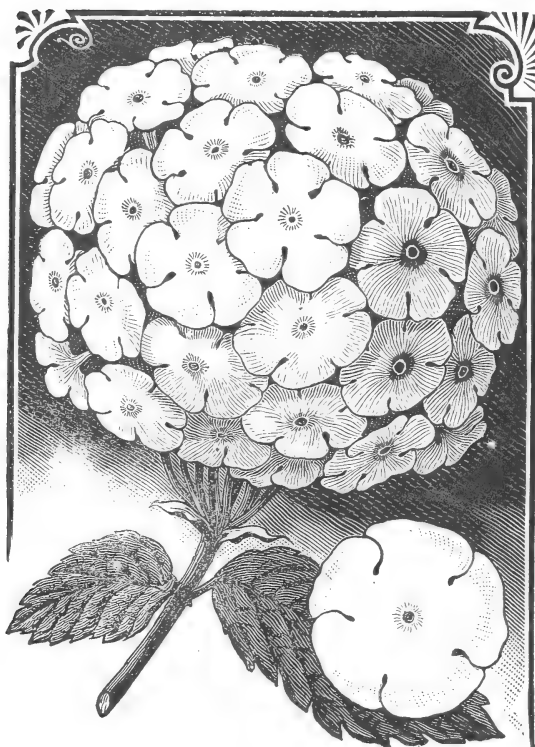
The Queen.—One of the grandest whites.

Vivian Morel.—Deep pink; very early.

Vernal Beauty.—A beautiful combination of salmon-yellow and buff.

White Swan.—Pure white. Elegant.

MISCELLANEOUS PLANTS



VERBENAS.

- Geranium, Mrs. Pollok.**—This belongs to Bronze or "Horseshoe" variety. 3-inch pots. 25 cents each.
- Heliotrope, Light and Dark Shades.**—20 cents each; \$2.00 per dozen.
- Hibiscus.**—We grow a few kinds of this nice plant. 50 cents each.
- Marguerites, Semi-Double and Single Yellow.**—15 cents each; \$1.50 per dozen.
- Mesembryanthemum (Ice Plant).**—Can supply about five varieties (but not in large quantities). They thrive and bloom when very little water is supplied. 10 cents each; 75 cents per dozen.
- Pansy.**—Have an excellent strain of those to offer. 50 cents per dozen; \$3.50 per 100.
- Polygala Dalmatiana.**—A perpetual-blooming, medium-sized shrub; the color of flowers is purplish. 30 cents each.
- Primrose, Chinese.**—25 cents each.
- Salvia Splendens.**—Produces scarlet flowers in lavish profusion till frost kills them. 15 cents each; \$1.50 per dozen.
- Streptosolen Jamesonii.**—A strikingly beautiful shrub of a trailing habit; it is covered all year round with large trusses of flowers, passing from deep orange to rich scarlet. Hardy only in protected places. 35 cents each.
- Umbrella Plants.**—35 and 50 cents each.
- Verbenas.**—We have a fine lot of those deservedly popular bedding plants to offer in the following colors: white, purple, and scarlet. Pot-grown plants; strong. 15 cents each; \$1.50 per dozen; \$10.00 per 100.

- Abutilons.**—Good assortment. 15 cents each.
- Achyranthes.**—Another bedding plant; the foliage is dark red. 75 cents per dozen; \$5.00 per 100.
- Ageratum, Blue.**—Good for bedding; 3-inch pots. 15 cents each; \$1.50 per dozen.
- Alternanthera.**—Indispensable for carpet bedding; we offer the Yellow and Red sorts. 60 cents per dozen; \$4.00 per 100.
- Alyssum, Sweet, Variegated.**—2½-inch pots. 10 cents each; \$1.00 per dozen.
- Aspidistra lurida.**—A desirable house plant; of easy culture. 60 cents to \$1.00 each.
- Asters.**—Assorted colors. 10 cents each; 75 cents a dozen.
- Banana, Abyssinian.**—2 to 3 feet. \$1.00 each.
- Cineraria.**—Fine strain; 6-inch pots. 40 cents each.
- Coleus.**—Used for bedding, or as house plants. Very showy. 4-inch pots. 20 cents each.
- Cytisus racemosus.**—Produces beautiful yellow flowers in great profusion and for a long period; 5-inch pots. 40 cents each.
- Daisies.**—50 cents per dozen; \$3.00 per 100.
- Echeverias (Hen and Chicken).**—50 cents per dozen.
- Fuchsia.**—Good assortment. 25 and 35 cents each.
- Geraniums.**—Double and single; all colors. 3-inch pots. 20 cents each; \$2.00 per dozen.
- Geranium, Ivy-Leaved.**—3-inch pots. 20 cents each; \$2.00 per dozen.
- Geranium, Madame Saleroii.**—Much in demand for carpet bedding. 10 cents each; 75 cents per dozen.

VIOLETS

- Admiral Avellan.**—A French variety, with entirely distinct bright reddish flowers; different from anything yet introduced. The flowers, which are produced very freely, are of large size and fragrant.
- Luxonne.**—Also of French origin, and is, without doubt, the finest single Violet grown. It is of a beautiful rich, but soft, violet-purple color, with strong, stout stems. Very fragrant.
- Princess of Wales.**—A most beautiful sort, producing immensely large flowers, of a beautiful violet-purple. Intensely fragrant.

Price of the three above new kinds, 15 cents each, or \$1.25 per dozen.

Marie Louise.—Double purple.

Russian.—Single blue.

Swanley White.—Double white.

The California.—Single blue.

Price of those older sorts, 10 cents each, or 75 cents per dozen.

Novelties in the Berry Line

THE CORAL BERRY

This is the most unique and remarkable berry ever introduced; it is a distinct type of fruit, differing widely from any variety of berry now cultivated at the present day. The Coral Berry is a bush of a very vigorous and stout habit of growth, with large spreading tops, and attaining a height of from 4 to 6 feet. The foliage is very handsome, finely cut, and of a beautiful silver color. The fruit, which is produced in the greatest abundance, is inclosed in a burr or husk, until it starts to ripen, when the burr opens and exposes the berry; it is of good size, and when fully ripe is of an intense, fiery crimson color; this berry is most deliciously flavored, being of a rich, acid flavor, and spiced with a delightful aroma entirely different from any other berry. The fruit is used for all purposes that Strawberries are used for. 35 cents each.

Parker Earle Jr. Strawberry

This is the most remarkable new Strawberry of the season; it is a seedling of the old Parker Earle, and resembles its famous parent in many respects; however, it is much earlier than the old Parker Earle, and the fruit all averages larger, and the plant is also much more thrifty, and produces a vast number of runners, while the old Parker Earle is a poor plant-maker in most places. The fruit of the Parker Earle Jr. is about perfection in size, color, yield, and quality; the color is a bright dazzling red, with golden seeds, while the flavor is rich, sugary, and spicy, to an intense degree. The ripe berries are also



PARKER EARLE JR. STRAWBERRY.

quite highly perfumed with a high flavor; it is very solid, a good shipper, and home berry; blossom perfect. 60 cents per dozen; \$3.50 per 100.

THE MAGOON STRAWBERRY

An Oregon seedling of surpassing merit; established plants are wonderfully prolific; the berries are of the largest size, a very showy and brilliant red color; flavor very sweet and rich; these berries are wonderful shippers. The Magoon is a perfect flowering sort. Price, 75 cents per 12; \$4.00 per 100.

Some other Good, Newer Sorts of Strawberry Plants

50 cents per 12; \$2.00 per 100.

Australian Crimson.—One of the best for a warm climate; bears for a long season; very early, productive, and large.

Brandywine.—This is a marvelous variety in the warmer sections of California; very productive, and without a fault; bloom perfect.

Greenville.—A queen among Strawberries; succeeds everywhere.

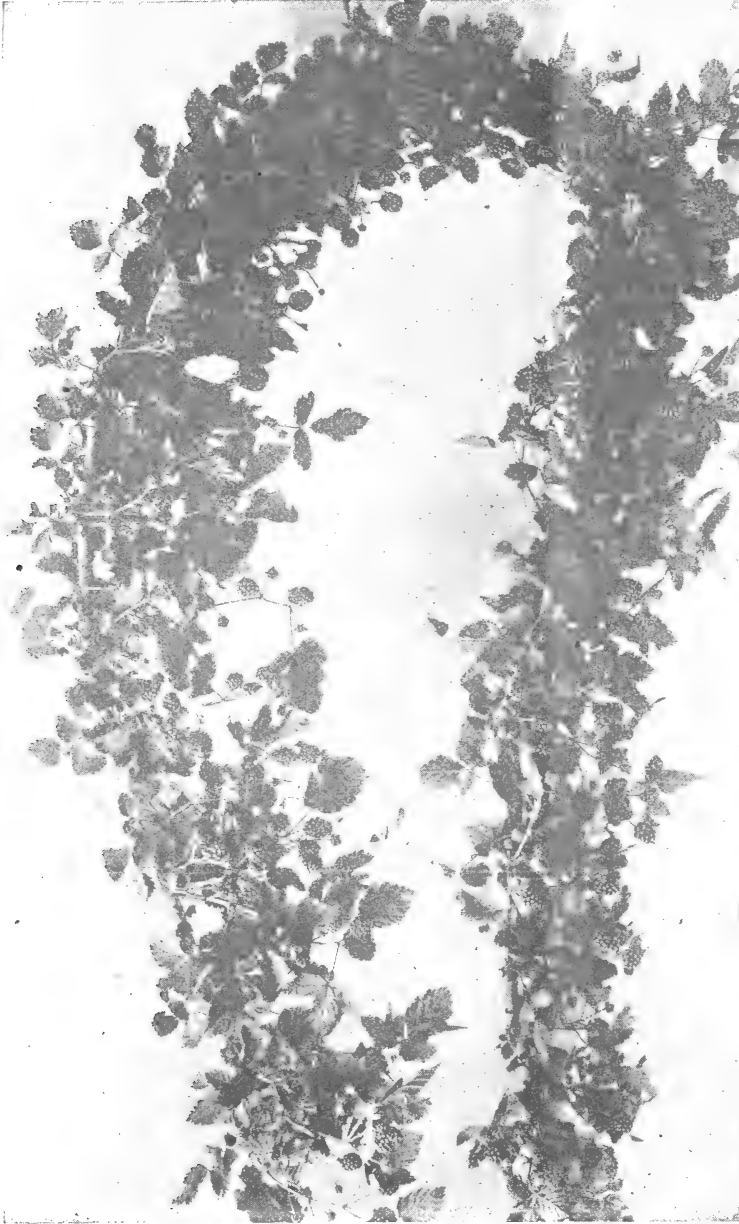
Haverland.—Berries long and conical in shape, and just lay in piles around the plant; the flavor is simply grand; immense bearer.

Marshall.—Fruit very large; most brilliant red in color; flavor equal to the wild Strawberry; productive; berry very fine.

Mexican (Arizona Everbearing).—Fruit enormous in size, cherry-red in color; tremendous cropper.

RASPBERRY-DEWBERRY

Queen of the Pacific



RASPBERRY-DEWBERRY.

ascending the Himalayas to 10,000 feet. 20 cents each; \$2.00 per dozen, by mail, postpaid.

We have secured a limited supply of seed of the above, and if sown in a hot-bed in February will give good plants in May. Price per packet, 30 cents.

An omission was made in our preliminary Catalogue, of **Orange, Lemon, and Pomelo**. We can offer these, taken up with bare roots, at the following prices: 4 to 5 feet high, 50 cents each, or \$40.00 per 100.

Orange.—Washington Navel, Mediterranean Sweet.

Lemon.—Eureka, Lisbon, Villa Franca.

Pomelo (Grape Fruit).—Florida Seedling, Mooshes Triumph, Pernambuco, Seedless.

This new and unique berry seems destined to become one of our most useful fruits. Vine is much like the Dewberry, but the fruit partakes of the character of both the Raspberry and Dewberry. The berry is quite as large as the Dewberry, of a reddish-black color. It is of a most deliciously sweet and high flavor, of the Loganberry type, but sweeter and better in flavor, and ripens earlier—begins with Strawberries—and can be used for every purpose that the Raspberry is put to. A rapid grower and heavy bearer; 300 large berries have been counted upon a single cane 5 feet long. This new and choice fruit will command high prices on account of its early ripening season, its great beauty, and delicate, wild flavor. 30 cents each.

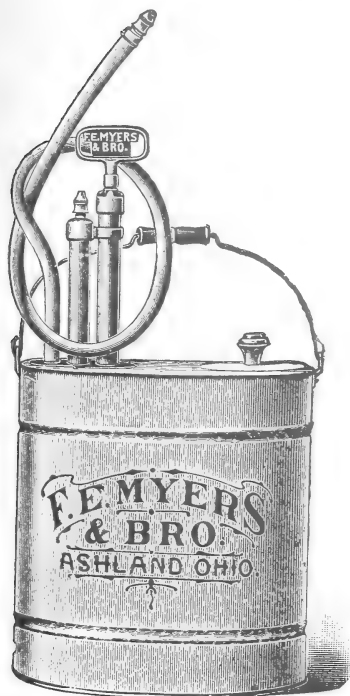
Strawberry-Raspberry

This is called the novelty of novelties, a strange and beautiful shrub or bush, with the foliage of a *Spiraea Japonica*, and bearing huge fruits like a Strawberry, of a rosy-red color, and most deliciously flavored. The bush grows after the manner of a Raspberry, and commences to bloom when only a few inches high, as soon as set out, and continues to ripen fruit until late in the fall.

This fruit is considered a great acquisition to the list of small fruits, and is destined to become a standard market berry, as it can be utilized for every purpose that Strawberries or Blackberries are used.

The plant is quite hardy, and will, no doubt, succeed in every part of the United States, and a great sale is predicted for this new fruit this season. A native of tropical and sub-tropical Africa, Asia, and Australia,

SPRAY YOUR FRUIT TREES



GALVANIZED TANK AND B. B. PUMP. and is also a very handy outfit for washing windows or buggies, for fire purposes or general use about the house, it being a'ways ready.

The tank is made of the best quality galvanized iron, holding 5 gallons, thus enabling the user to carry a greater amount of liquid than is possible in an ordinary pail. The pump is our regular Brass Bucket Spray Pump, and is so arranged that it can be removed instantly when desired to be used without the tank.

Price, with agitator and 4 feet hose and graduating Vermorel fine, coarse spray and solid stream nozzle \$6.75. Weight, 12 pounds.

Brass Bucket Spray Pump

In this we offer a Brass Bucket Spray Pump with more real advantages than are contained in any other make of spray pump now on the market.

It has all the advantages of the ordinary barrel pump and bucket pump combined, and is sold at a moderate price. Has one-half more air chamber than any other make of bucket pump. Is made of brass, with ball valves; handle and foot-rest are malleable iron.

The work is all done on the down stroke of the handle, and it can be operated with one-third the power required for any other old style bucket spray pump.

It is no experiment. It has been thoroughly tested, and is an excellent seller.

When used as a barrel pump, detach the foot-rest and attach pump to top of barrel.

Price, with agitator and 4 feet of hose and graduating Vermorel fine, coarse spray and solid stream nozzle, \$5.00. Weight, 10 pounds.

The value and necessity of spraying cannot be too strongly advocated by us. The "up-to-date" orchardist knows this, and acts accordingly. We do not need to appeal to him, but, rather, to the orchardist who does *not* spray. To obtain the best results he should spray. Poor, wormy fruit cannot be "given away." Good, clean fruit will always command high prices, even in these hard times.

Knowing the needs of the California orchardist, we have laid in a large stock of the latest improved Pumps (complete Catalogue of which will be mailed on application), a few of which we have depicted in this list.

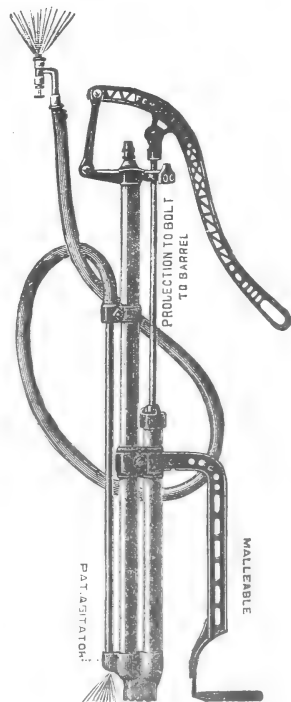
Spray, Spray your Plants—
Spring, Summer, — Perpetually
SUNSET SEED & PLANT CO.

33 Market Street

Headquarters for Sprayers SAN FRANCISCO

Galvanized Tank and B. B. Pump

There has long been a demand for an outfit to take the place of the Knapsack Sprayer, and, as a substitute, we offer the Myers Galvanized Tank and B. B. Pump, combined. It not only fills the place, but makes a very convenient outfit for all kinds of spraying,

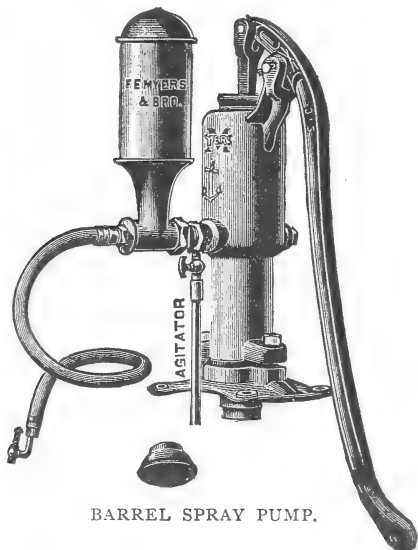


BRASS BUCKET SPRAY PUMP.

The Myers Barrel Spray Pump

This Pump has Brass Cylinders, Brass Buckets, Brass Valves, and Brass Valve Seats

The usefulness of this Pump is not limited to the spraying purposes only, as described, but it is constructed with base adapted to be fastened on sinks and platforms, so it can be used for a house force pump, in cisterns, shallow wells, or at any place where a neat, powerful force pump is required.



BARREL SPRAY PUMP.

A SUGGESTION.—After spraying, take Pump apart, wash all parts thoroughly in clean water, then oil cylinders and saturate the leathers in oil.

Price, \$8.00. Weight, 50 pounds.

"THE SUCCESS"

The cut on this page represents a new and very useful Pump for use in gardens, vineyards, greenhouses, orchards, and for washing windows and buggies, and for spraying poultry houses. The working parts are all brass, and bucket foot-rest is made of malleable iron.

Nothing could be simpler and more durable than this Pump. It has large air chamber space, and is double-acting, throwing an absolutely *continuous stream*, either *solid* or in *fine spray*.

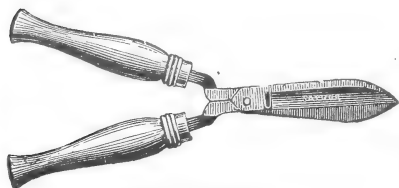
The end of hose connecting to "Success" Pump is coiled with brass spring wire, to prevent kinks in the hose, adding largely to its durability.

This Pump is rightly named, and as a leader for general use it cannot be beaten. "Nothing succeeds like **Success**."

Price, \$3.50. Weight, 6 pounds.



(Showing position of foot-rest and manner of placing Pump in bucket.)



HEDGE SHEARS.

SHEARS, PRUNING.—Solid steel. (Postage, 10 cents each, extra.) 8-in., 90 cents; 9-in., \$1.00.

SHEARS, HEDGE.—8-in. blade, \$1.50; 9-in., \$1.75; 10-in., \$2.00. (With notch to cut 1/2-in. branches, 25 cents extra.)

SHEARS, GRASS.—For trimming small plots, or where mower fails to reach. (Postage, 15 cents extra.) 75 cents each.

WHITEWASHING

These Pumps have proven themselves a decided success for whitewashing, and are worth more than their cost for this purpose in whitewashing factories, cellars, fences, chicken houses, etc., and can be utilized to great advantage in places which could not be covered by the brush at all. The high pressure put on the fluid causes it to penetrate all the unevenness and crevices in the surface, covering same uniformly.

Use Bordeaux nozzle

DIRECTIONS FOR PRIMING BARREL SPRAY PUMPS

See that the suction pipe is screwed in tight with tongs or wrench. Ordinarily, the Pump will prime itself by simply working the handle rapidly. If the leathers become dry, it will be necessary to remove the nozzle and pour water into the cylinder through the hose, so as to moisten them.

By a little care and attention this Pump will last a great many years.

The Myers Hydraulic Spray Pump

The Myers Hydraulic Spray Pump is constructed with unusual capacity to meet the demands for a spray pump capable of doing a large amount of work in an effectual and satisfactory manner. It is provided with an air chamber having a capacity of nearly 10 gallons, fitted with valves and fixtures strong enough to resist any pressure that may be put upon it.

THE PUMP

The pump proper is made of brass, has a solid plunger, with long lever; is equipped with the latest improved suction and retaining valves, which have large openings and allow free passage of the liquid. These valves can be readily taken out by removing the two bolts marked "CC," without disarranging any other parts of the pump. A common wrench is all that is required to dismantle the pump entire. This construction is the most simple, and will be readily understood by the operator.

The liquid is discharged into the air chamber from the bottom, passes through a specially constructed device, which causes the liquid to pass in with a circular motion, which makes an agitator that always keeps the liquid stirred.

The air chamber is 36 inches long, from the top of which is suspended a $\frac{3}{4}$ -inch tube, reaching within $\frac{1}{2}$ inch of the bottom, and is connected with the discharge at the top, thus taking the liquid from the bottom of the air chamber. This arrangement allows the pump to be drained of all

liquid. The air chamber is provided with two discharge valves, "B," of

Jenkins pattern, arranged so that one or both of the sprays can be used at a time.

The discharge valves are fitted with hose nipples and female ends of $\frac{1}{2}$ -inch brass hose coupling. The entire arrangement of the pump and air chamber is assembled on one base plate in such a manner that it may be subjected to extreme hard usage in charging the air chamber with heavy pressure, without impairing any of its working parts.

The base plate is large, and is provided with holes for fastening down the pump.

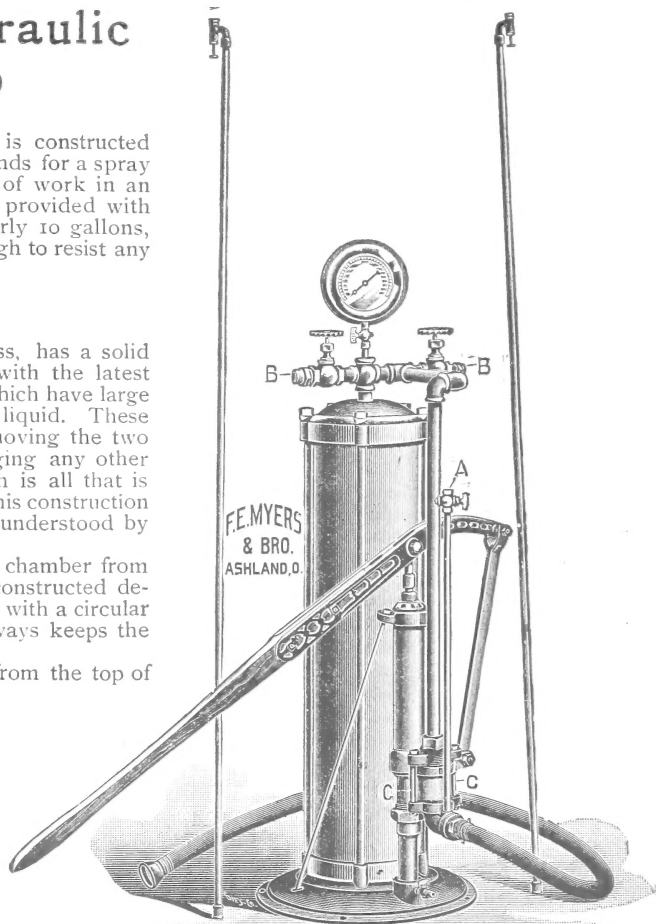
When the operator desires to obtain more air pressure when using the pump, he opens the cock "A," which, by rapid working of the lever, supplies additional air and gives more pressure. This is more desirable in draining the pump. The pump is also provided with a brass shut-off drip-cock, which drains the cylinder complete.

Price List.—The Hydraulic Spray Pump, equipped with 6 feet of suction hose, two Vermorel nozzles, two pipe extensions with cut-off valves, all complete ready for operation, except discharge hose. Price, \$32.50; for pressure gauge, add to list \$5.00. Weight, 165 pounds.

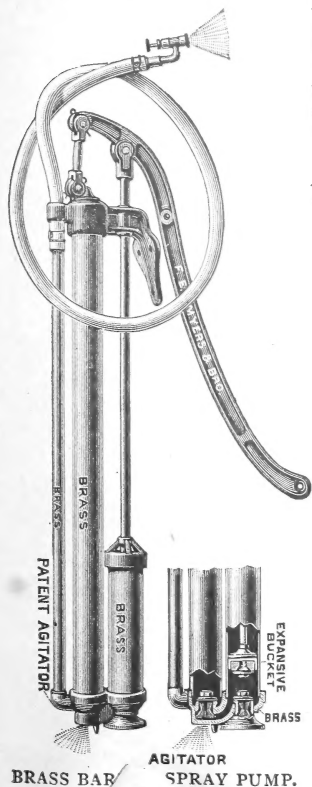
The Myers Improved Brass Barrel Spray Pump

All Working Parts Submerged in Liquid, hence no Priming Necessary

Improved Barrel Spray Pump, complete, with 5 feet of $\frac{1}{2}$ -inch 3-ply discharge hose and Myers graduating Vermorel nozzle. Price, \$9.00. Weight, 15 pounds.



HYDRAULIC SPRAY PUMP.



Graduating Spray Nozzle

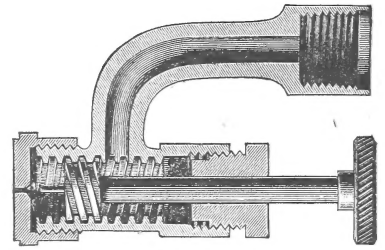
All fruit growers contend that the nozzle is the most important part of the spraying outfit. It must be arranged to throw a mist, and not drops. It is also a fact that more harm is done by using *Sprinkling Nozzles* than if no spraying was done at all. By putting on too much material you damage the foliage.

The best results are obtained by covering the *entire surface* and with *just as little in one place as possible*.

To do this, we advise the use of the **nozzles** shown herewith.

The **Graduating Spray Nozzle** is constructed on the general plan of the regular Vermorel nozzle, with the improvement that the spray can be graduated from a fine mist up to a solid spray, carrying the stream a much greater distance, or can be shut off entirely. This is accomplished by adjusting the screw plunger shown in the sectional view, by means of thumb nut. The degorger is operated by the screw plunger instead of spring.

We recommend this nozzle for general use. Nozzle fitted for 3/4-inch hose. Price, each, \$1.10.

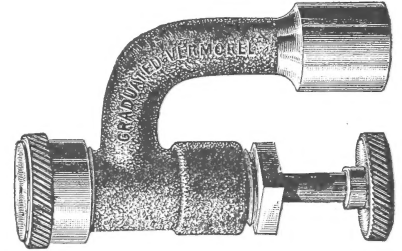


MYERS GRADUATING SPRAY NOZZLE

The "Bordeaux" Spray Nozzle

The "Bordeaux" Nozzle is one of the simplest and best spraying nozzles on the market. It throws a fine fan-shaped spray, and is readily degorged by turning the cock handle. It will also throw a solid stream, or it may be shut off altogether. It can be used with any of our Spray Pumps.

Price, for both 1/4-inch and 1/2-inch hose, \$1.25.



INSECT POWDER DISTRIBUTOR

Or, Dry Powder Sprayer

(Weight of Machine, 6 lbs.)

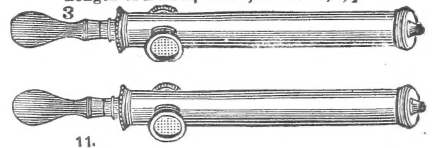


The application of Paris green and other poisons, mixed in water or plaster, is both laborious and expensive, and often unsatisfactory on account of uneven distribution, being in many places put on so strong that injury to the plant follows. By the use of this Insect Powder Distributor, however, this difficulty is overcome, as the insecticide is distributed so evenly and so effectively that it is hardly perceptible on the plants. The best time to apply is in the early morning, when moisture is on the leaves. A man walking at an easy pace can, with this distributor, do an acre in thirty or forty minutes. Full directions for use on each machine. Price, prepaid to any address in the United States, \$5.00.

Syringes, Solid Brass

- No. H, 18 in. long, 1 spray rose \$2.25
- No. 3, 18 in. long, 1 stream and 2 spray roses 5.50
- No. 4, 18 in. long, 1 stream and 2 spray roses 6.00
- No. 5, 18 in. long, 1 stream and 2 spray roses 6.00
- No. 10, 18 in. long, 1 coarse, 1 fine spray, and 1 stream-rose, with patent valves 5.00
- No. 11, same as No. 10, without valves 4.50

Length of Barrel, 18 in.; diameter, 1 1/4.



"Planet Jr." Labor-Saving Garden Tools

"Planet Jr." Double-Wheel Hoe, Cultivator, Rake and Plow.—Indispensable to gardeners and farmers who grow roots for stock or vegetables for market. By the use of this machine five times the usual acreage of hoed crops can be planted without fear of being caught in their cultivation. The "Planet Jr." Double-wheel Hoe will straddle plants 18 inches high, and finish rows from 6 to 18 inches apart at one passage. Price, complete, \$8.00.

Firefly Single-Wheel Hoe.—This favorite tool is similar in construction to the "Planet Jr." single-wheel hoe, and the attachments made for the one can be used on the other. It will hoe one or both sides of the row, either away from the plants or towards them. All the attachments are of steel, hardened in oil, tempered and polished. Price \$4.00.

Our special "Planet Jr." Catalogue, fully illustrating and describing the various machines, will be mailed free on application.

Sunset Sweet Pea Achievements

1897 INTRODUCTIONS



GOLDEN GLEAM

NOW OFFERED FOR SALE FOR THE FIRST TIME

In introducing this superb novelty last year, we accorded it foremost rank in its color-class. All then said in its praise has been amply verified the past season by people who have grown it. GOLDEN GLEAM received FIRST PRIZE at the Hampden County (Massachusetts) Horticultural Society's meeting in August last, and was placed well up in their official selection of the Twelve Best Varieties out of the long list of fine Sweet Peas now before the public.

We repeat last season's description: Ideal grandiflora type, unsurpassed in grace, of pronounced primrose tint, a near approach to true yellow.

Price, 10 cents per packet; 25 cents per ounce; 75 cents for 4 ounces.

RED RIDING-HOOD

Of Special Interest to the Children

Through its wide introduction last season, RED RIDING-HOOD has become well and favorably known. Its unique form and pleasing color attract universal attention. Its name has been pronounced most appropriate, and, like the child's story to which applied, this striking flower, too, has become the children's favorite; in fact, so much so, that we have named it "The Children's Sweet Pea."

Your Red Riding-hood is a remarkable new departure, entirely distinct.

W. ATLEE BURPEE,
(Of W. Atlee Burpee & Co.,
the Philadelphia Seedsmen.)

To give all our young friends an opportunity to become acquainted with this floral pet, we offer a FREE TRIAL PACKET to each child who will send us a list of ten names of garden owners who sow seeds. The full names and addresses

should be given, so that we may send them our handsome Catalogue of All Garden Supplies. All those children who avail themselves of our RED RIDING-HOOD Offer we would be pleased to hear from as to their experience in growing this favorite flower, the best of which letters we may publish next season, so that other children may learn of the pleasures to be derived from growing a row of Sunset Sweet Peas.

Following is a description of RED RIDING-HOOD: Most striking departure in form of flower. When fully developed, the standards and wings are a pleasing rose-pink, shading to blush white at the calyx; the keel, which is almost completely enveloped, is nearly pure white. The standard is so formed that it resembles a quaint little red hood, inclosing the more delicately tinted wings, which

I have made four exhibits this summer and at each have given your novelty, Red Riding-hood, a prominent place. IT NOT ONLY HAS THE MERIT OF BEING UNIQUE, BUT IT HAS THE LONG STEMS, THRIFTY HABIT, AND ABUNDANT FLORESCENCE OF THE FINEST SWEET PEAS. May it lead to other introductions that shall signalize your work on the most popular of all flowers.

(Rev.) W. T. HUTCHINS,

(The eminent Sweet Pea Authority of Springfield, Mass.)

peep out like a diminutive face from under its red hood. Its fragrance is unusually sweet. It is a very robust grower, and therefore easy to take care of. In plenitude and continuity of bloom it excels other varieties.

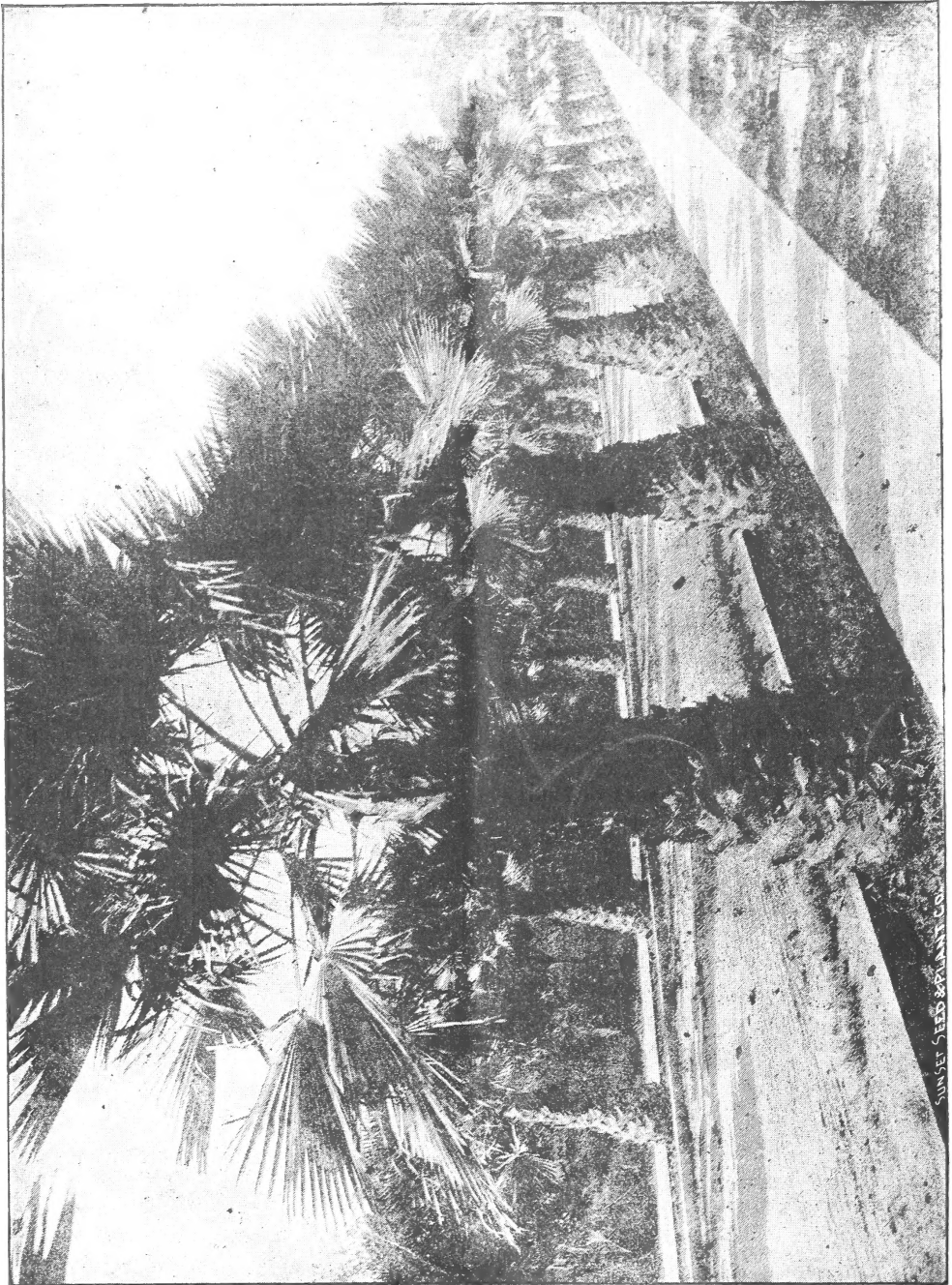
Price, 10 cents per packet; 25 cents per ounce; 75 cents for 4 ounces.

Of Eckford's 1896 Set, we now offer COUNTESS OF ABERDEEN for the first time, stock of this variety hitherto offered by other seedsmen being untrue to name, making this the first opportunity given the public to secure the true kind. This variety is a very pale pink, edged with delicate rose; of good size and form; an attractive departure in its markings.

Price, 10 cents per packet; 3 packets for 25 cents; 6 packets for 40 cents.

Please excuse absence of Index—this picture takes its place .

We have a large stock of this serviceable Palm



AVENUE OF CALIFORNIA FAN PALMS (*Pritchardia filifera*)

Please note that this Plant Catalogue consists of two parts ❀❀ one, a reprint of Plant Department in our Preliminary Catalogue ❀❀ the other, a Supplement to the Preliminary. **You will oblige by noting both.**

Sunset Seed & Plant Co. ALL GARDEN SUPPLIES and with deeper rose than the