

Historic, Archive Document

Do not assume content reflects current scientific knowledge, policies, or practices.

62,17
...1899...

Sup.

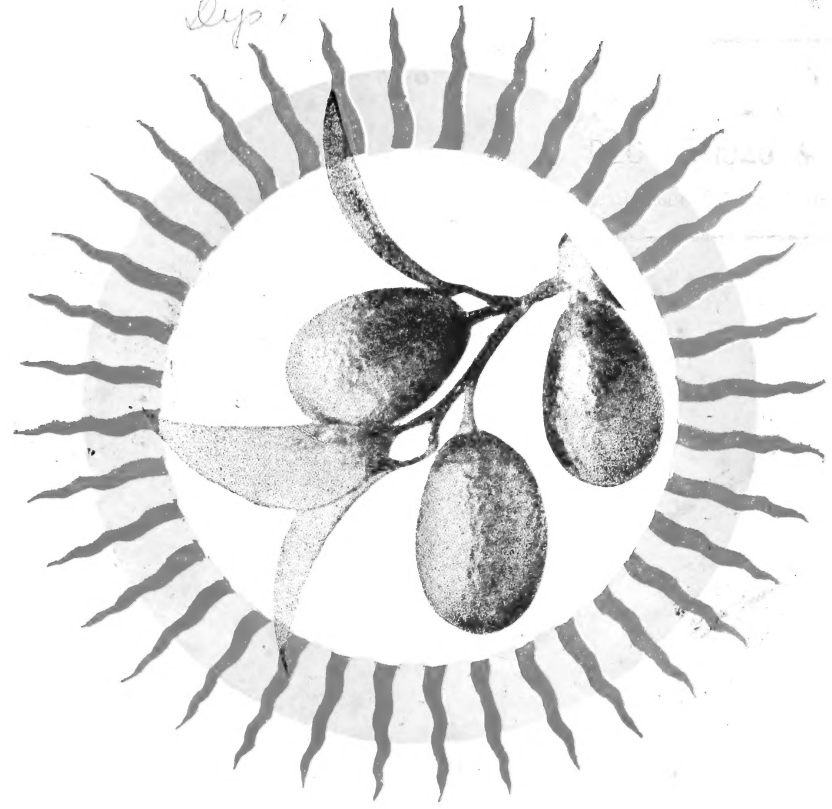
SUPPLEMENT....

TO
**What to
...Plant**

AND
**How to
Plant It**

Or Catalogue
of...

**Pomona
Nurseries.**



Griffing Bros. Co.,
Proprietors,
Macclenny, Fla.
Baker County.

TO OUR MANY FRIENDS AND PATRONS :

IN PRESENTING this Supplement to our 1898 Catalogue "What to Plant and How to Plant It" we desire to thank our friends and patrons for their many expressions of confidence, both in us and in the trees and plants we furnish, as expressed by the ever increasing patronage of old customers, together with the many orders from new ones that we now have booked for the shipping season of 1898-99.

It is with pride, and yet with regret, that we are compelled to state that owing to the large number of orders received previous to this date, our stock of trees unsold is too limited to warrant the publication of a large and extensive catalogue, preferring to give our patrons the benefit of what we can save in this line rather than to satisfy large printers bills. We still have on hand a good many of our 1898 catalogues which are strictly up to date and is pronounced by our patrons as being the handsomest, most complete and instructive Nursery Catalogue received. These can be furnished to all applicants.

We are proud of the growing popularity of our trees and the success we have met with in furnishing the tree planting public a strictly first-class tree at a reasonable price, but regret that we have not a sufficiently large stock to meet the demand of our ever increasing trade.

We do not wish you to understand from this that we will not be able to fill your orders for your wants in our line this season, as we still have unsold a large number of all the most popular and leading varieties of fruit trees and plants adapted to the Southern states. However, all who desire trees and plants in our line we would ask to place their orders early, for before the season is far advanced, our supply of many of the most desirable varieties will be exhausted.

Our prices will remain the same as for the past two seasons, except for Citrus trees and Roses which you will find in our Supplement, we not desiring to take advantage of our limited stock and the growing demand for our trees to raise our prices. Our aim is, "as it always has been," to furnish the best trees for the least money,

Again thanking our patrons for their most kind and liberal patronage and soliciting a continuance of same, we beg to remain
Yours truly,

THE GRIFFING BROS. CO., Macclenny, Florida.

Our Catalogue for 1900 will be out early next season, and we expect to spare no pains to make it a credit to the opening of a new century.

What we Grow...

AND

...How we Grow It.

====

For several years past we have had the largest stock of Fruit Trees, etc., that have ever been grown by any firm in the lower South, and each year has increased our stock nearly double to what it was the previous season, but notwithstanding this great increase in our production of trees we have not been able to keep pace with our rapidly increasing trade.



Planting Cuttings.

Grafting Roses in Midwinter.

We are now making preparations to grow an enormous stock of trees the coming season and hope to be able to supply the demand, having purchased over 400 bushels of peach seed for propagating purposes and are making like preparations in other lines.

All our trees and plants are grown, dug and packed under the personal supervision

If you have mislaid our

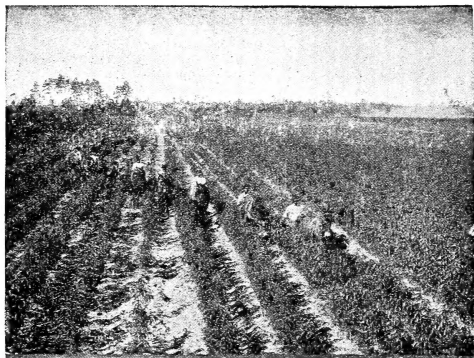
1898 CATALOGUE

send for another copy. It is complete and fully up to date. The Illustrations are original, interesting and instructive.

of a member of our Company and the greatest care is given to every detail of the work. The planting is done in a thorough and systematic manner during the early part of the winter, particular attention being given to the selection of land suitable for the various kinds of trees. Grafting is done during mid-winter while the trees and stocks are in a perfectly dormant condition and the operation is performed by thoroughly experienced men so as to insure a perfect union. The cultivation, budding and trimming of the trees occupy our time from early spring until the trees are fully grown and ready for digging. The digging and packing is given personal attention and all trees and plants are care-



A Block of Trees Ready for Digging.



Summer Cultivation.

fully shaded and kept well moistened until put in neat boxes or bales ready for shipment. This season we have made many improvements in our packing facilities, having nearly doubled the amount of packing house room.

 ...EXPERIMENTAL...

We have not been content to conduct our experimental work only at Macclenny, but have at a great expense, established experimental yards at over twenty places throughout the State, distributed from the northern portion to the Southern extremity.

We test our trees and plants and save our customers thousands of dollars. See illustration in experimental yard at Miami, Fla., page 8.

Summary of our Stock now Unsold.



Digging Trees with Tree Digger.

Order Early and secure just what you desire in both varieties and size of trees.

Our supply of many popular sorts will be exhausted before the season closes.

Mulberries. A large stock of extra fine trees. Trees very large this season.

Quinces. Supply almost entirely exhausted.

Pomegranates. Large stock on hand.

Loquats. A large supply now unsold.

Nut Bearing Trees. Supply limited on all varieties except in small sizes.

Peaches. Stock of trees somewhat limited on account of severe drouth in spring. Demand very heavy, we now having orders booked for over 100,000 trees. Good stock for retail trade at present but the supply of many of the best varieties will probably be exhausted before the shipping season closes.

Plums. A large and fine stock. Supply of some of the best varieties limited, owing to early orders.

Persimmons. Stock very fine and complete, trees extra large and well rooted.

Pears. Supply of trees unsold somewhat limited on some of the leading varieties. If you want Pears order early.

Apples. A large stock of fine trees one and two year old sizes.

Figs. A large stock of choice trees.

Grapes. A good supply of trellace varieties. Supply of Muscadines or Arbor Grapes somewhat limited.

Citrus Fruits. See pages 11 and 12 of Supplement.

Ornamentals. Stock is quite complete and have a good supply.

Roses. See pages 7, 8, 9 and 10 of Supplement.

Our Trees and Plants Under Test.

The thousands of trees shipped by us into all parts of the South during the past ten years is the best advertisement to our business we have, and many of our new patrons have been influenced to purchase their trees and plants of us from seeing the success their neighbors are having from planting our trees. If you want trees, and those that will give you satisfaction, note the accompanying illustrations from photographs taken in orchards and grounds in which our trees and plants were used, also the following extracts from letters from some of the largest fruit growers and most prominent horticulturists in the South.



A Five Year Old Peach Tree in T. K. Godley's Orchard, Waldo, Fla. (Trees purchased from us).



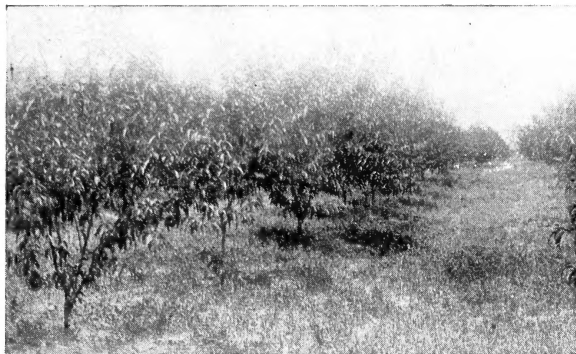
The growth of my trees have been marvelous. A more thrifty farm cannot be found in the coast country of Texas. The Mascotte peach planted seven months ago are immense in proportion both as to height and circumference.

Arcadia, Tex.

E. C. Haygood.



There are thousands to be made in Fruit Culture if the right varieties are planted and you get trees adapted to your soil.
Griffing's trees have been tested and found good. Why experiment with others when you can get theirs just as cheap or cheaper.



A Two Year Old Orchard at Dunsmore, Fla., owned by Wm. Macklin.
(Trees purchased from us.)

I have had twenty-eight years experience in peach growing in Tennessee, Georgia and Florida, and I consider this section of Florida the most profitable place to grow Peaches in the United States. I planted 100 each Waldo and Angel peach trees in 1894; in 1895 I sold enough peaches to pay for the trees and all expenses of cultivation to that date. In June 1896 I sold \$450 worth of peaches from 180 trees, twenty having been killed by fire, making \$2.50 per tree for the second year.

Lakeland, Fla. F. P. Henderson.

The trees secured from you the past three years, Pear, Peach, Plum, etc., are now bearing and have given excellent satisfaction, the growth has been marvelous, and I have yet to hear of the loss of a single tree.

Joseph Aikin,
Hitchcock, Tex.



If you are wise you will profit by others experience. Thousands of people have planted Griffing's trees and made money on them. You can do as well or better. Follow our instructions and you will succeed. We bear the cost of experimenting, our customers reap the benefits.



Trees 18 months from planting in Hamilton Scott's Orchard, Chipley, Fla.
(Trees purchased from us.)

I was wise enough to see that the deficit in my income caused by the freeze must be replaced in some way, and as I had found my few peach trees very remunerative I at once increased my acreage. The first cost of an orchard is comparatively small, peach trees are easily grown and cared for and give quick returns. Most of my peach trees are young, but I look forward to greater net returns per acre from my peaches than I ever had from oranges. The trees purchased from you have made the finest and most rapid growth of any that have been planted on my place, and I take pleasure in calling my friends attention to the fact that yours are the best and cheapest trees in the market.

Jaffery, Fla.

G. F. Healy.



The 3000 trees purchased of you have all been planted in my orchard at this place, and have proven most satisfactory in the production of fruit and vigor of trees.

Wm. Macklin.

Dinsmore, Fla.



..THIS IS NOT OUR CATALOGUE..

It is only a supplement to our 1898 Edition. Copies of 1898 Catalogue will be mailed free upon application.



18 Months Old Elberta Peach Tree, at Chipley, Fla.
(Tree purchased from us.)

..ROSES..

Many of the large rose growers of the South claim that some of the most desirable Roses are of no value unless budded or worked on a strong growing stock, such as Manetti and Madam Plantier, and that all varieties are better when grown upon these stocks. The great objection to this class of stock has always been that strong sprouts almost invariably came from below the buds, and unless the plants were watched continually, the sprouts would over-run the bud. We have succeeded in finding a method by which the rose can be successfully grafted, below the ground. In our method of grafting, the union of the scion and stock is so far below the ground that there is no danger of the stocks ever sprouting.

We offer this season a very complete line of Roses in both the one and two year sizes, and in comparing prices remember that the only stock we offer is the grafts which are far superior to the buds or to those grown on their own roots.



Hyakume Persimmon in our grounds, 2 years from planting.

PRICES OF ROSES:

One year old field grown plants.....	Each, 25c.....	Per 10, \$2.00.....	Per 100, \$15.00
Two year old field grown plants.....	“ 35c.....	“ “ 3.00.....	“ “ 25.00

A discount of 10 per cent. will be allowed from the above prices where the selection of the varieties is left to us.

Varieties in Stock.

We have a good stock of all the following varieties of Roses of which good descriptions will be found in our 1898 Descriptive Catalogue.

Able Carriere.
Aline Sisley,
Anna de Diesbach.

Archduke Charles,
Bon Seline,
Banksia,

Baron Prevost,
Bengal Nabonnard,
Blanche Moreau.

Glory of Mosses,
Giant of Battles,
Gen. Jacqueminot.

Clothilde Suppert,
Clement Massier,
Captain Christy,
Caroline Testout,
Charles Lefebvre,
Cheshunt Hybrid,
Christine de Noue,
Cecil Brunner,
Crimson Rambler,
Climbing Devoniensis,
Duchesse de Brabant,
Dr. Sewell,
Deuil de Col. Denfort.
Etoile de Lyon,
Estelle Pradel,
Francois Levet,
Glorie des Polyantha,

John Hopper,
Jules Margottin,
Jeanne Drivon,
La France,
La Riene.
La Marque,
Louis Philippe.
Lou's Richard,
Mad. Alfred Carriere.
Mad. Charles Wood,
Mad. Francisca Kruger.
Mad. Gabriel Lu'zet.
Mad. Plantier.
Madam Camille,
Mad. George Bruant,
McCartney.
Mrs. de Graw.



Bidwells Early Peach Trees 18 months from Planting
in our Experimental Yard at Miami, Fla.

Marie Von Houte,
Marie Lambert,
Madam Lombard,
Mrs. John Laing,
Mad. Jean Sisley,
Mad. Joseph Schwartz,
Mad. Schwaller,
Max Singer,
Mad. Welche.
Marechal Niel,
Marshal P. Wilder,

Mignonette,
Magna Charta,
Pearl des Jardins,
Papa Gontier,
Pride of Regate,
Prairie Queen,
Peonia,
Reve d'Or, Climbing,
Reine Olga de Wurtemberg
Seven Sisters,
Safrano,

Salet Moss,
Snow Flake,
Solfaterre,
Theresa Stravius,

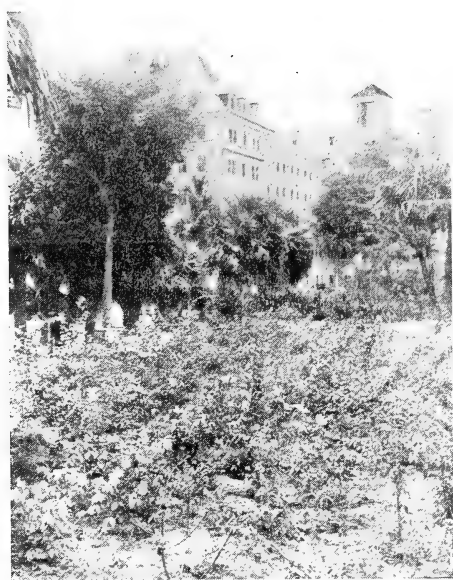
Vicks Caprice,
White La France,
Washington,
Zelia Pradel.

In addition to the foregoing list we have added the following new and popular varieties to our already very complete list:

Chromatella. (Cloth of Gold) (Cl. T.) Clear bright yellow; good form and substance; large, very full and double; very sweet; a constant and profuse bloomer; much prized in the South as a pillar or veranda Rose.

Glorie de Dijon. (Cl. T.) A combination of rose, salmon and yellow; a very large double Rose, very full and globular; universally popular; a vigorous grower and admirably adapted for southern planting.

James Sprunt. (Cl. Beng.) Deep cherry-red flowers, very full, double and sweet. The most satisfactory of the dark red ever-blooming varieties in this section. The cut flowers keep for a remarkably long time in perfect condition. It is a moderate climber, makes a good pillar Rose, and while not as profuse as some, the exceptionally brilliant and beautiful flowers are to be found at all seasons.



View in Grounds of Hotel Royal Poinciana, West Palm Beach, Fla., showing Roses and plants furnished by us,



Results from planting Griffing's trees. Any one can raise fine fruit if Griffing's trees are planted and their instructions followed.

Mrs. de Graw. (T.) Glossy pink, very fragrant and a continuous bloomer; perfectly hardy and a very desirable rose for southern planting. Resembles Appoline but more prolific.

Mme. Louis Henry. (M.) A pale-yellow Rose, very fragrant; a free bloomer, and a very desirable variety.

 * Large numbers of our choice grafted Roses are annually
 * planted in the grounds of the large hotels throughout the state.
 * Experience has taught the gardeners that they produce larger
 * and finer flowers than roses on their own roots. Remember
 * all our Roses are **grafted**. See illustrations on pages 9 and 11.
 *

Reine Marie Henriette. (Cl. T.) Cherry-red, a pure shade; large, double, somewhat fragrant. A beautiful Rose.

Maurice Rouvier. (T.) An extremely large and double Rose; very tender, light pink shading to red; free bloomer.

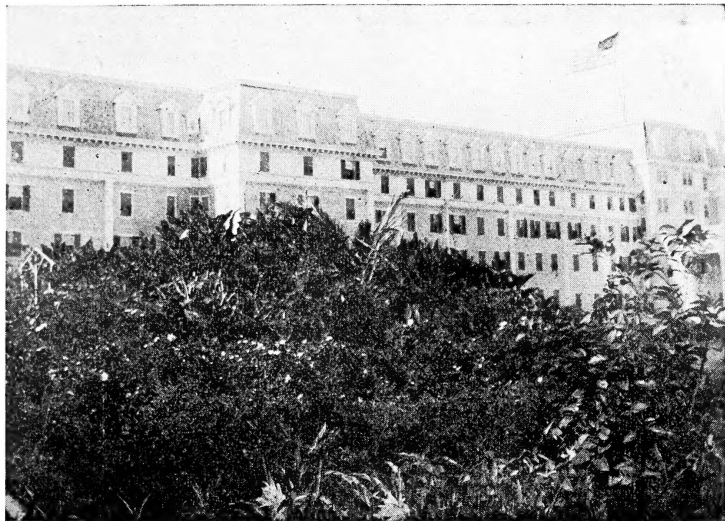
Vicomtesse de Wautier. (T.) Beautiful Rose, colored petals on the under side and shading to golden yellow on the inside.

White Duchesse. (T.) Creamy white, resembling the Duchesse de Brabant except in color. The buds and opening flowers are very beautiful and keep for a long time after cutting; it is strong and vigorous, and blooms profusely the year round. One of the best for this region of the South.

Waltham Queen. (H. R.) Cherry-red, flowers very large, well shaped and fragrant; bush a moderately good grower and a very desirable variety for planting in this State.



...ORANGES AND OTHER CITRUS FRUITS...



View in Grounds of Hotel Royal Palm, Miami, Fla.,
showing Roses and Plants furnished by us.

Since the great freeze of 1895 there has been a radical change in the method of growing and trimming orange groves. The long bodies for orange trees are a thing of the past, and in traveling through the orange growing sections you universally see the trees headed low and the branches sweeping the ground.

This radical change in the manner of training orange trees has created a demand for a nursery tree headed near the ground, and we now have a very complete assortment of these desirable trees. See illustrations on page 12 of this supplement. The trees grown in this manner are very heavy and stocky, and if the same trees had been stake trained they would have made good 4 to 5 foot trees. We also have a complete assortment of the standard stake trained trees as shown in the illustration on the inside of the back cover.

PRICES OF CITRUS TREES.

Oranges, Lemons and Grape Fruit, all Standard Varieties.

Trees on three, four and five year old stocks. All leading varieties on either Sweet, Sour or Citrus Trifoliata stocks.

	Each	Per 10	Per 100
1½ to 2 ft. Headed low like No. 1 illustration35	\$3.00	\$25.00
2 to 3 ft. Headed low like No. 2 illustration40	3.50	30.00
1½ to 2 ft. Straight trees, no branches30	2.50	20.00
2 to 3 ft. Stake trained like No. 3 illustration35	3.00	25.00
3 to 4 ft. Stake trained, like No. 4 illustration40	3.50	30.00
4 to 5 ft. Stake trained, like No. 5 illustration50	4.50	35.00

Prices of Kumquats.

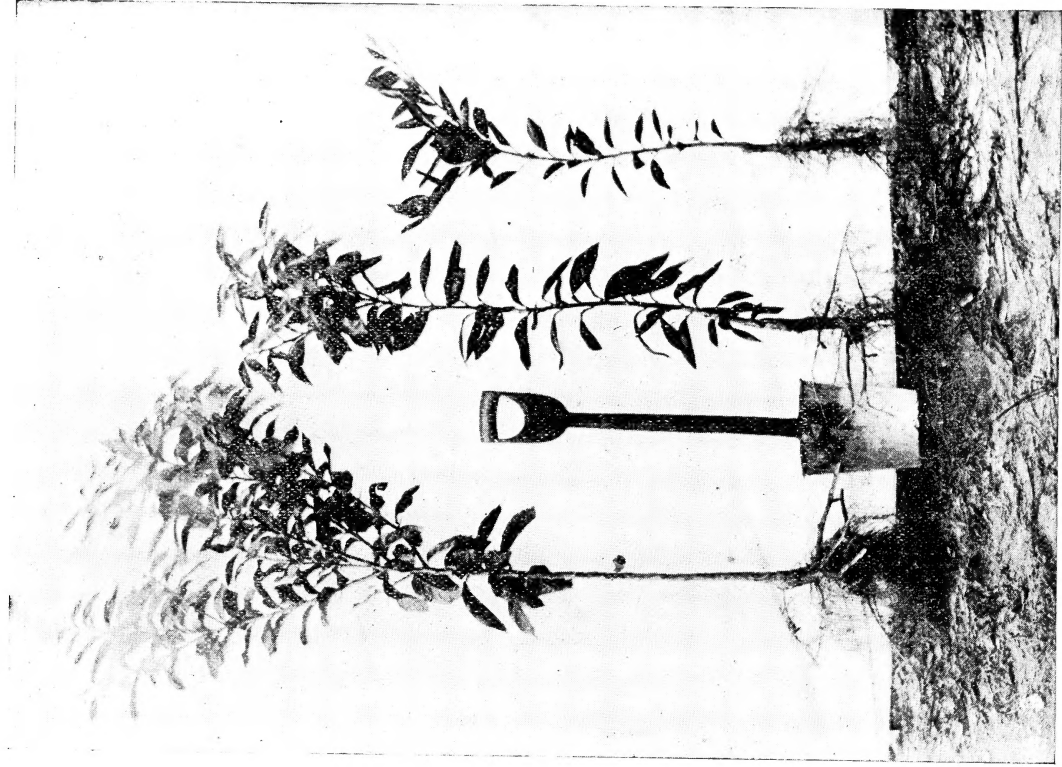
One year old buds, branched low, 40 cts. each, \$3.50 per 10.



No. 2

Orange Trees Headed Low.

No. 1

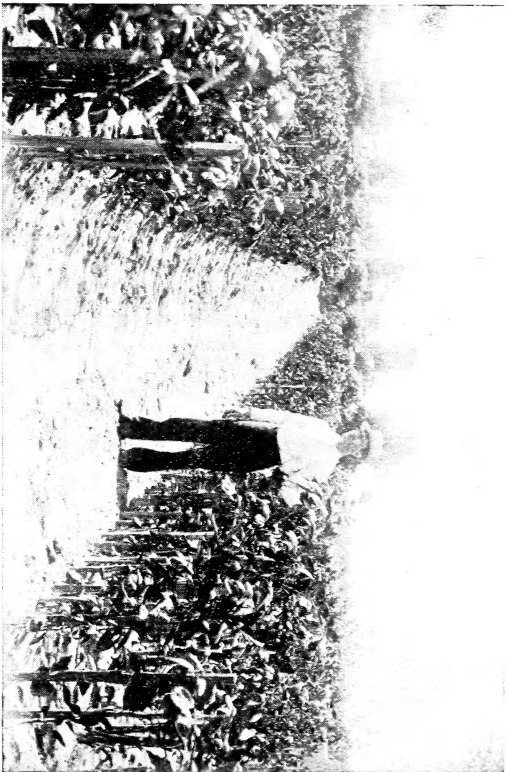


No. 5

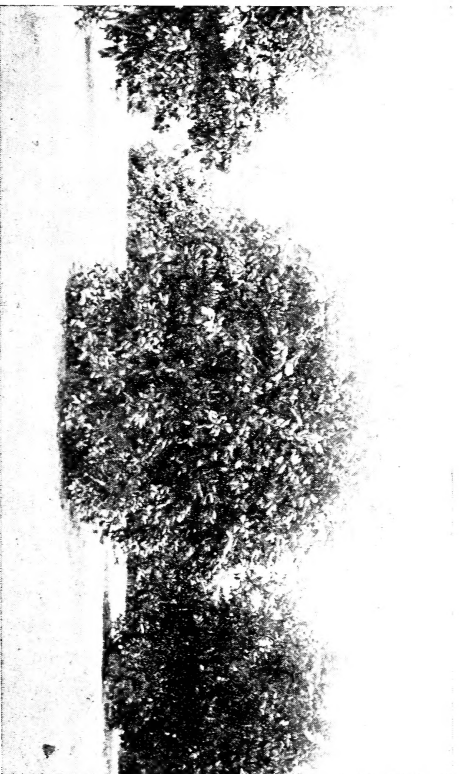
No. 4.

No. 3.

Orange Trees, Stake Trained and Branched.



A Glimpse of our Satsuma Orange Nursery, showing Stake Trained Trees.



The New and Ideal Orange Grove, Headed Low.