

Historic, Archive Document

Do not assume content reflects current scientific knowledge, policies, or practices.



62-73
Established 1828—Seventy three Years
Incorporated 1895

JANUARY, 1901

BUIST'S

Wholesale Price List of Seeds

FOR
Market Gardeners or Truckers

PERFECTION OF QUALITY with us is of the First Importance.
THE COST OF ITS PRODUCTION is always a Secondary Consideration.

::
Awarded
Grand
Prize
Medal
For
Purity,
And
Diploma
Of
Honor
For
Superior
Quality



::
There
Is
Profit
In
GARDENING
If
You
Sow
BUIST'S
Seeds

The most serious as well as the most unprofitable investment for the market gardener is the sowing of spurious seeds.

Over Thirty Million Dollars worth of Garden Seeds are annually sold in this country, one-half of which are worthless either from old age or spurious stocks.

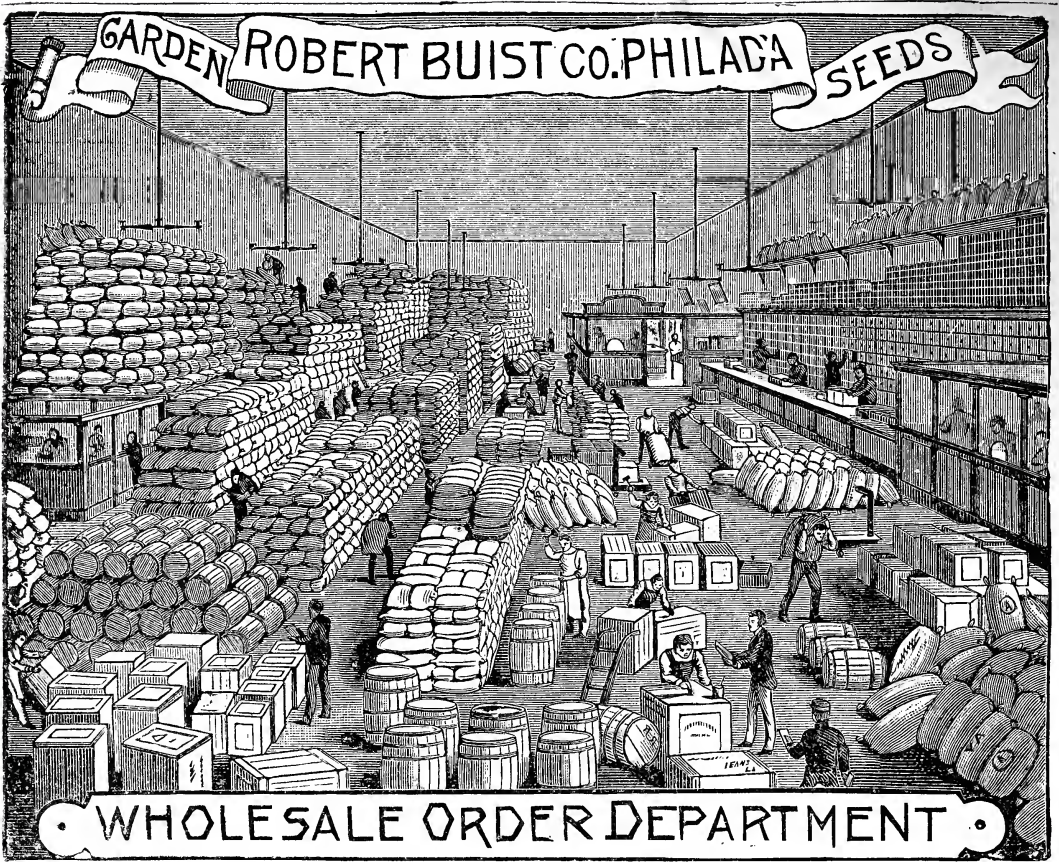
SEED FARMS: ROSEDALE, WATERFORD AND MORRISVILLE

Robert Buist Company

SEED GROWERS

STORES, 922 AND 924 MARKET STREET, Next to Post Office

Philadelphia, Pa.

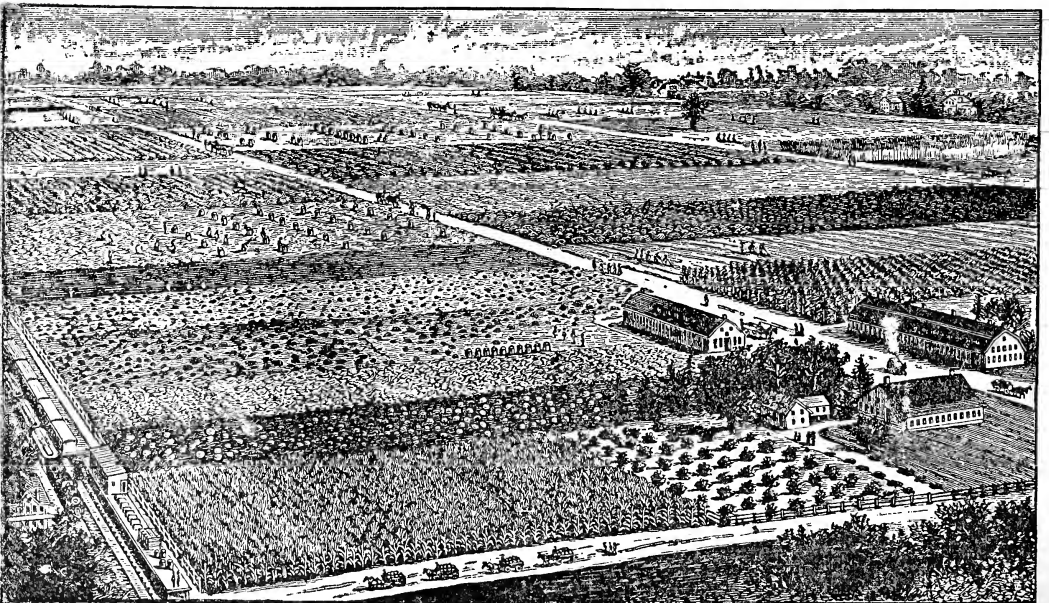


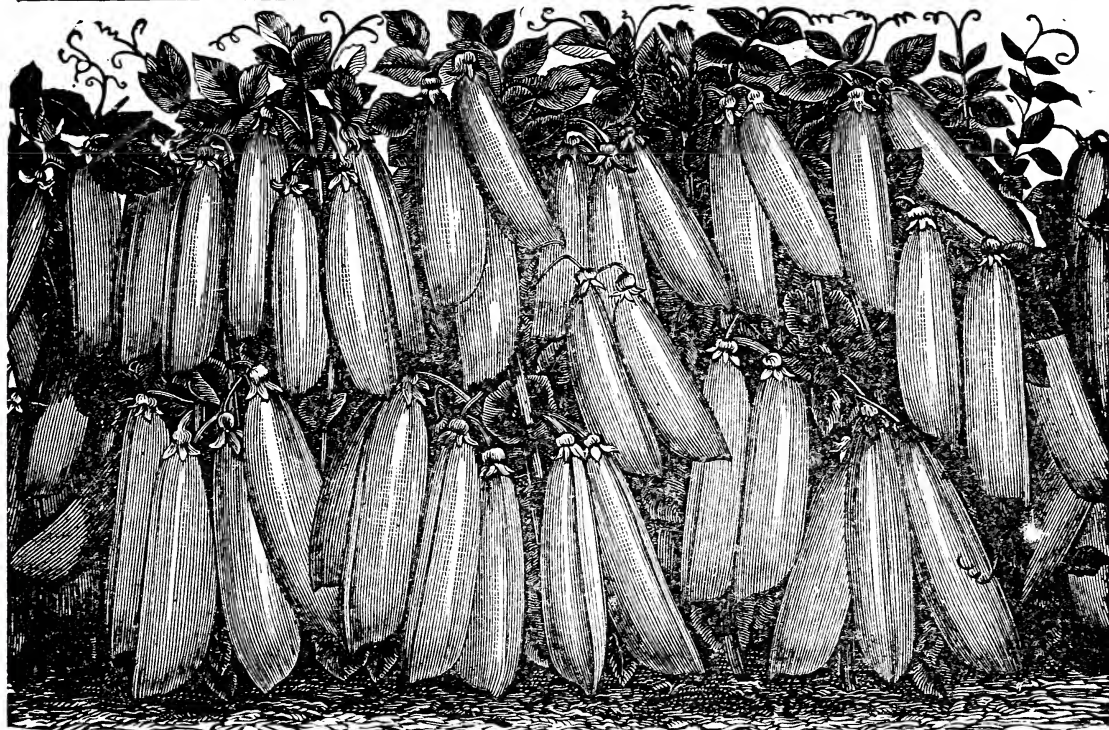
This is the 73rd Year for Buist's Garden Seeds.

PHILADELPHIA, January 1, 1901.

This Wholesale Catalogue is published exclusively for our Market Garden Trade, who requires seeds in much larger quantities than those who grow for their own requirements; the latter are referred to Buist's Garden Guide for 1901 a very useful and valuable publication, which gives a monthly calendar of operations for the garden and other useful information for the Amateur. Our specialty is the growing of seeds from selected seed stock, the great importance of following this system for the production of choice vegetables is familiar to all gardeners; if the vegetables from which seeds are grown are inferior or impure, so will the product be.

Robert Buist Company





Buist's Early Morning Star Pea.

THE EARLIEST PEA IN THE WORLD.

The Most Profitable Market Variety, Ready to Pick in 42 to 45 Days.

WE are the introducers of this CELEBRATED VARIETY, and put them up in Green Muslin Sacks of $\frac{1}{4}$, $\frac{1}{2}$, and 1 bushel, and *Each Sack is fastened with our Lead Seal with the name of Buist stamped on it.* Seed of this variety offered in any other way is Spurious stock.


WE SELL OVER 10,000 BUSHELS ANNUALLY.

Where EARLINESS, productiveness, large-sized pods and sweetness of flavor are desired, this is the variety to grow ; it may be truly called the BLOODED STOCK of EXTRA EARLIES, and stands at the head of the list for the above fine qualities ; in a favorable season they will be ready for market in 42 days, and the entire crop can be taken off in two pickings.

To the market gardener, earliness is of the greatest importance, as even a few days frequently makes a great difference in price, often a depreciation of from \$2.00 to \$4 00 per barrel ; the inexperienced find this out when too late ; therefore the EARLIEST is WHAT IS REQUIRED, and the EARLY MORNING STAR is THAT variety. **Sow them, you will make no mistake. We Annually grow 500 Acres of them.** It was introduced by us in '87 and sold that year two thousand bushels, and each year the demand for them has annually increased ; they have been the first Peas shipped North from the great pea growing districts of Florida, Louisiana, Mississippi and North Carolina, since '88 which can be readily attested to by the growers in those sections, and in New Jersey and Long Island where thousands of acres of them are annually grown, they have attained the same reputation for both earliness and productiveness. Their growth ranges from two to two and a half feet, in accordance with the season, they are entirely free from runners and never require sticking ; it is an easy variety to pick as almost a handful can be grasped at a time.

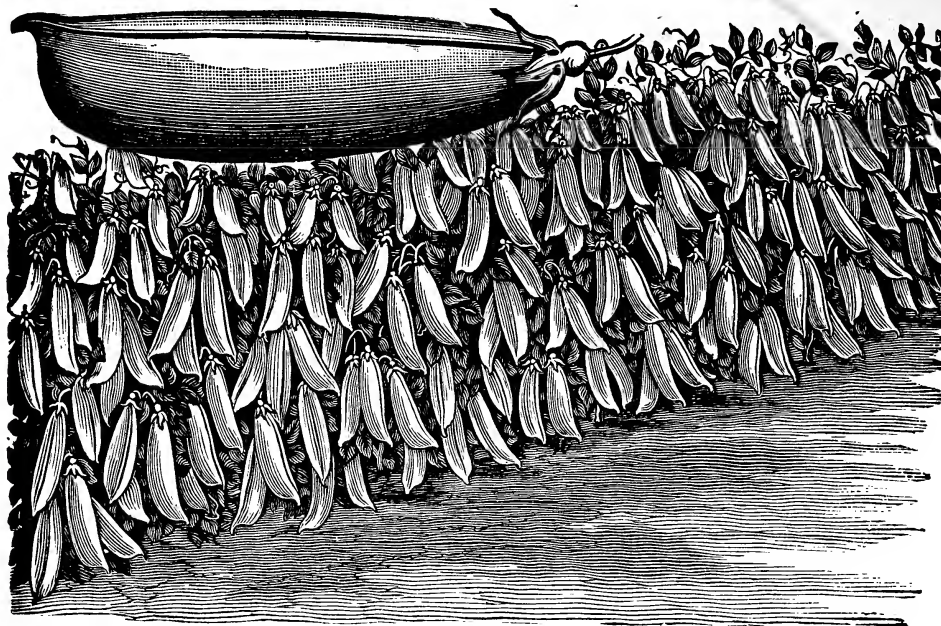
PLEASE OBSERVE that the true stock of the MORNING STAR can only be had through our house or from the Merchants who handle our Seeds.

We insert this caution from the fact that a variety sold the past season by a Philadelphia firm under this name, proved to be nothing but an ordinary variety full of runners and ten days later than the genuine stock ; its great popularity has caused a great demand for them.

Therefore in purchasing be sure you get them in our Green Muslin Sacks which are lead sealed by us, you will then be certain of securing the correct stock.  Those offered under this name in any other way are spurious.

PRICES.

<table style="width: 100%; border-collapse: collapse;"> <tr> <td style="width: 10px;">$\frac{1}{4}$</td> <td style="width: 10px;">Bushel.....</td> <td style="width: 10px;">\$1.00</td> </tr> <tr> <td>$\frac{1}{2}$</td> <td>"</td> <td>1.50</td> </tr> <tr> <td>$\frac{3}{4}$</td> <td>"</td> <td>2.50</td> </tr> <tr> <td>1</td> <td>"</td> <td>4.75</td> </tr> </table>	$\frac{1}{4}$	Bushel.....	\$1.00	$\frac{1}{2}$	"	1.50	$\frac{3}{4}$	"	2.50	1	"	4.75	<table style="width: 100%; border-collapse: collapse;"> <tr> <td style="width: 10px;">5</td> <td style="width: 10px;">Bushels at</td> <td style="width: 10px;">\$4.50</td> </tr> <tr> <td>10</td> <td>"</td> <td>4.25</td> </tr> <tr> <td>25</td> <td>"</td> <td>4.00</td> </tr> <tr> <td>50</td> <td>"</td> <td>3.75</td> </tr> </table>	5	Bushels at	\$4.50	10	"	4.25	25	"	4.00	50	"	3.75
$\frac{1}{4}$	Bushel.....	\$1.00																							
$\frac{1}{2}$	"	1.50																							
$\frac{3}{4}$	"	2.50																							
1	"	4.75																							
5	Bushels at	\$4.50																							
10	"	4.25																							
25	"	4.00																							
50	"	3.75																							



Buist's Premier Extra Early Pea.

The Earliest, Most Productive and most Profitable Variety for Market
 (Excepting the Celebrated Buist's Morning Star.)

Before the introduction of the famous Morning Star, this was the earliest and most profitable variety known; and to-day requires no comment from us to recommend it, as it is grown more largely by the market gardeners of this country than any other brand of Extra Earlys, excepting the Buist's Morning Star. Its productiveness, earliness, evenness of ripening and great delicacy of flavor are its great features; these combined requisites makes it very profitable to grow for either market or private use; it is a week earlier than what is called "The First and Best" and of a much finer bred variety; producing pods of large size and entirely free from runners; it ripens uniformly and the entire crop can be taken off in two pickings. It is also one of the very best varieties for canning purposes. It is sold only under our seal.

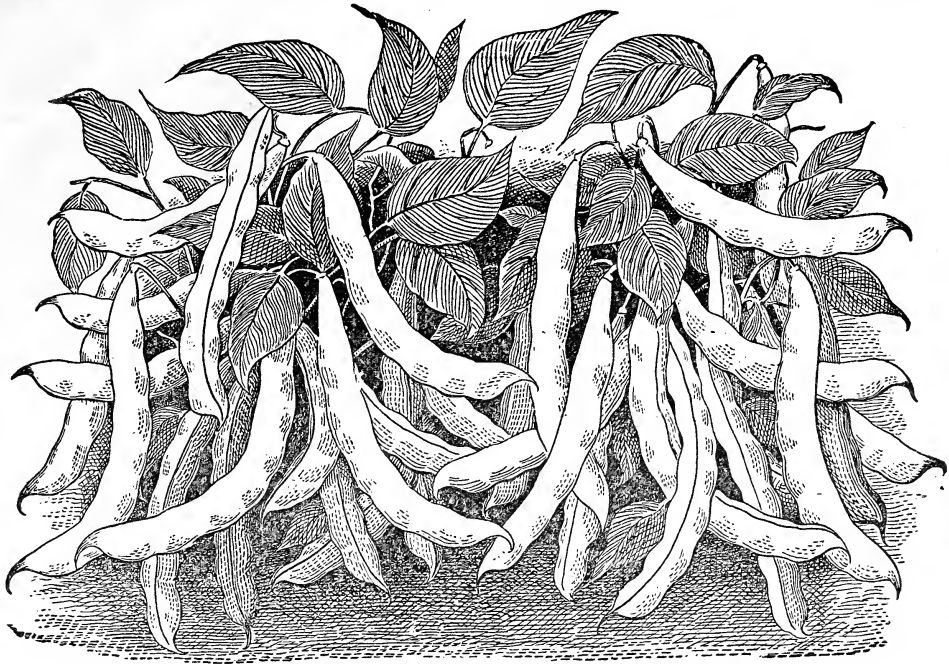
Prices.

$\frac{1}{8}$ Bushel.....	\$0.75	5 Bushels at	\$3.90
$\frac{1}{4}$ "	1.25	10 "	3.80
$\frac{1}{2}$ "	2.25	25 "	3.75
1 "	4.00	50 "	3.50

Other Varieties of Extra Early Peas.

	$\frac{1}{4}$ bu.	1 bu.	5 bu. at		$\frac{1}{4}$ bu.	1 bu.	5 bu. at
First of All.....	\$1.00	\$3.75	\$3.50	Philadelphia Extra Early....	\$1.00	\$3.75	\$3.50
Extra Early Market.....	1.00	3.75	3.50	Alaska Extra Early.....	1.25	4.00	3.75
First and Best Extra Early..	1.00	3.75	3.50	Dandy Extra Early.....	1.00	3.75	3.50
Maud S. Extra Early.....	1.00	3.75	3.50	Eureka Extra Early.....	1.00	3.75	3.50

Earliest and Most Productive.



Almost Entirely Stringless.

BUIST'S

Lightning Early Valentine Beans.

THE BEST EARLY MARKET VARIETY.

(10 to 12 days earlier than any other Valentine.)
(Sold only in our Sealed Sacks.)

This recently introduced variety which has become famous in all the Bean-growing sections of our country, is well named, as it is lightning in ripening in comparison with any other stock of this popular Bean. The pods are large and round, is very productive, and when young entirely stringless. It cannot be recommended too highly to the market gardener, as he derives his greatest profit from the earliest crops, and this surpasses all other stocks of Valentines in both earliness and productiveness. It is sold only in our sealed packages and lead-sealed sacks.

Price— $\frac{1}{4}$ bushel, \$1.75 ; $\frac{1}{2}$ bushel, \$3 00; 1 bushel, \$5.50; 5 bushels, at \$5.25;
10 bushels, at \$5.00.

Improved Early Valentine Beans.

Price— $\frac{1}{4}$ bushel, \$1.25; $\frac{1}{2}$ bushel, \$2.25; 1 bushel, \$4.50; 5 bushels at \$4.25; 10 bushels at \$4.00.

	$\frac{1}{4}$ bus.	1 bus.	5 bus. at	10 bus. at
Early Mohawk Six Weeks	\$1.25	\$4 50	\$4.25	\$4.00
Early Yellow Six Weeks	1.25	4.50	4.25	4.00
Refugee or 1000 to 1	1.50	5.00	4.75	4.50
Extra Early Refugee	1.50	5 00	4.75	4.50
Best of All.....	1.50	5.00	4.75	4.50
Stringless Green Pod	1.75	6.00	5.75	5.50
Shippers Favorite	1.50	5.50	5.25	5.00

Entirely Stringless.

Not Liabile to Rust.



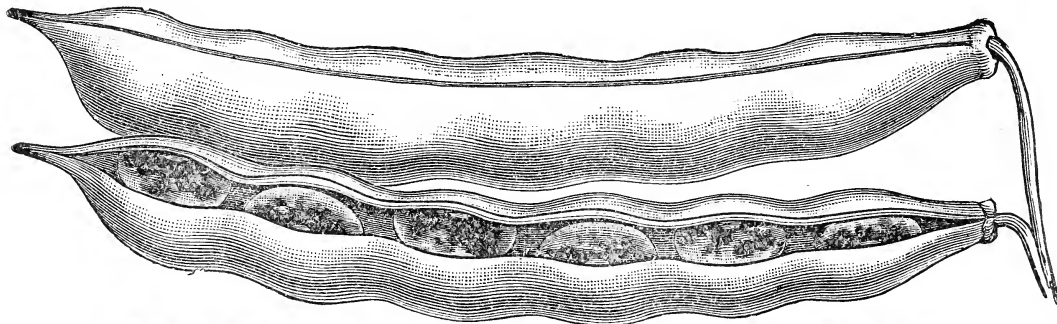
Crosscup West. ENG Co.

The Best Market Variety.

DWARF BUTTER WAX BEAN, BISMARCK.

THE CREAM OF ALL THE WAX VARIETIES. (RUST-PROOF.)

This celebrated variety, which we introduced a few years since, is one of the most attractive and famous varieties of Wax Beans known in Germany; its great beauty, and extraordinary length of pods, attracted our attention in the markets of Berlin in '87; we found them in quality so far superior to any variety of the Wax that we had ever tasted that we secured sufficient for seed purposes for that year, and have since then grown them very extensively; they cannot be recommended too highly to all lovers of the Butter Bean. They are very early, the pods of which are produced in great profusion, and will average six inches in length, are almost transparent, exceedingly brittle and of very delicate flavor; the bean when dry is of a beautiful blueish black color and of a kidney shape. Price, $\frac{1}{4}$ bushel, \$1.50; $\frac{1}{2}$ bushel, \$3.00; 1 bushel, \$5.50.



DWARF SPECKLED KIDNEY WAX BEAN.

We regard this bean as one of the very best of the Wax varieties, even surpassing the famous Dwarf Golden or Cream Wax in both quality and productiveness, and is a grand market sort; the plants become literally loaded with long beautiful waxy colored pods, which are entirely stringless, and of a rich luscious flavor, it is also quite as early as the earliest stock of Valentines. The pods are very long, broad and flat, and are exceedingly brittle; beans, when dry, are white, with two shades of reddish purple, more or less visible, of a distinct kidney shape. We cannot recommend it too highly for either market or family use. Price, $\frac{1}{4}$ bushel, \$1.75; 1 bushel, \$6.00; 5 bushels, at \$5.75; 10 bushels at \$5.50.

	$\frac{1}{4}$ bus.	1 bus.	5 bus. at
Currie's Rust-Proof Dwarf Wax.....	\$1.50	\$5.50	\$5.25
Improved Rust-Proof Golden Wax.....	1.50	5.50	5.25
Improved Dwarf Prolific German or Black Wax.....	1.50	5.50	5.25
Dwarf Golden Wax.....	1.50	5.50	5.25
Dwarf Scarlet or Crimson Wax Flageolet.....	1.60	5.75	5.50
Dwarf German or Black Wax.....	1.50	5.50	5.25

BUIST'S PERFECTION EARLY WHITE SPINE CUCUMBER.

THE MARKET GARDENERS first and most important consideration in growing Cucumbers for market is to obtain the choicest seed stock for planting. Most of the crops grown are very much mixed and of inferior quality. Buist's Perfection is regarded by growers as the finest and purest stock known. It is not only the earliest, but it produces cucumbers of the finest form and most salable size for shipping purposes. It was introduced by us a few years since, and is already being grown by the most extensive cucumber cultivators in this country. We annually grow especially for seed, over 150 acres; it is

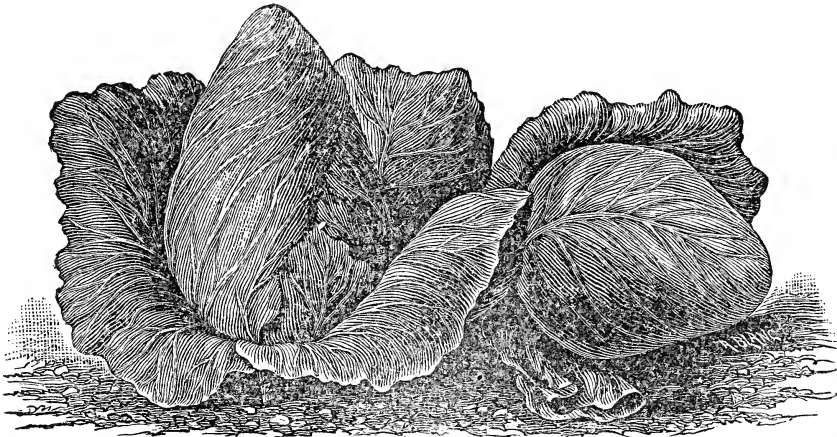
The Earliest, Finest Formed and most salable variety to grow for shipping.



THE GREAT MARKET GARDEN VARIETY

which is put up in our Sealed $\frac{1}{4}$, $\frac{1}{2}$ and 1 pound Cartoons only; we sell it no other way. It has become the most popular and salable stock of White Spine Cucumber Seed in this country. Seed sold for this variety in any other way than in our Sealed Cartoons is SPURIOUS. Price, $\frac{1}{4}$ lb., 30 cts.; per lb., \$1.00; 5 lbs. at 90 cts.; 10 lbs., 75 cts., 25 lbs. at 65 cts. per lb.

THE MOST PROFITABLE.



EARLY MARKET VARIETY.

EARLY JERSEY WAKEFIELD CABBAGE.

(BUIST'S SELECTED STRAIN. Its Great Features are Its Size and Earliness.)

Each year this variety is becoming more popular and demand greater. It has not been very long since its growth was confined almost exclusively to the market gardeners of New Jersey, but it has gradually disseminated into other sections, and now is well known and highly appreciated by all the leading market gardeners of this country. We regard it as one of the best and most profitable early varieties, for either market or private gardens, it is always sure to form fine solid heads, and is the largest heading of the early varieties; the strain of seed which we offer is regarded by the most extensive cabbage growers as the best in this country. Price, oz. 25 cts.; $\frac{1}{4}$ lb. 75 cts.; lb. \$2.75; 5 lbs. at \$2.50.

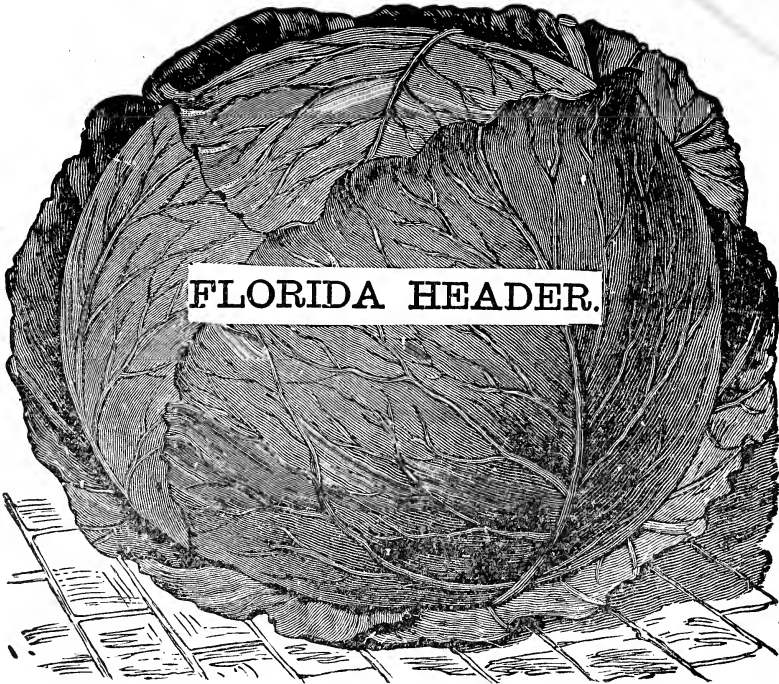
THE CHARLESTON, OR LARGE JERSEY WAKEFIELD CABBAGE.

This famous variety differs only from the Early Jersey Wakefield in its earliness and size of its heads, which are twice as large and only a week later. As a second early market variety it is very valuable and unsurpassed. Price per oz. 25 cts.; 4 oz. 65 cts.; lb. \$2.25; 5 lb. at \$2.00.

HENDERSON'S EARLY-SUMMER CABBAGE.

This is also a very popular and profitable variety for the market gardener, as its heading season is between the Large Jersey Wakefield and Early Drumhead, producing heads of double the size of the former and almost equal to the latter, frequently weighing from 12 to 20 pounds each; of round, flattened form, very compact and solid and of excellent quality. Its leaves turns into heads almost as soon as formed, which permits of close planting. Price per oz., 20 cts.; 4 oz., 60 cts.; 1 lb., \$1.85; 5 lbs. at \$1.75.

This Variety is put up and sold
only under our seal.



and can only be obtained from
our house.

BUIST'S Celebrated Florida Header Cabbage.

THE GREAT CABBAGE FOR FLORIDA AND LOUISIANA.

This variety which we introduced, requires no further endorsement by us as it has become famous not only in Florida and Louisiana, but throughout the entire country, and has taken the front rank for its certainty of heading and fine market qualities; we have not yet been able to grow sufficient seed to supply the great demand for it; in Florida, Louisiana and other extreme sections of the South, where so much trouble and disappointment frequently occurs in heading cabbage, it has proved a universal favorite, and growers in those sections appear to be wild in its praise and recommendations, and state they have never had any variety to equal it, scarcely a single failure can be found in whole fields, and the heads average from 15 to 30 pounds each; we therefore named it the FLORIDA HEADER. It is now being grown by almost every Cabbage grower in the South. In the Western States which are more favorable for the growth and heading of Cabbage than the South, it has proved equally as successful, and forms heads of a much larger size; it is much earlier than the Drumhead or Flat Dutch, and on account of its not being so rank in growth can be planted much closer together, therefore producing more heads to the acre. As a variety for market, shipping or private gardens it has no equal.

☞ This seed is put up and sold only under our Seal, and can be obtained only from our House.

Price, oz. 25 cts.; $\frac{1}{4}$ lb., 85 cts.; 1 lb., \$2.75; 2 lbs., at \$2.50.

HENDERSONS SUCCESSION CABBAGE.

This is one of the most valuable varieties ever introduced and one that has become very popular with all market gardeners'—in fact no gardener can afford to be without it, whether he grows for market or for private use. It is a second early variety following the Early Summer in heading, but forming heads of a much larger size and of a greater uniformity. On Long Island where we annually grow over one hundred and fifty acres in cabbage seed this variety has attracted great attention, as it shows the very finest breeding. In whole fields almost every head appears to be moulded from the same model. It can be grown successfully either as an early, medium or a late crop, and under any circumstances it is not liable to shoot to seed until after it forms its fine solid

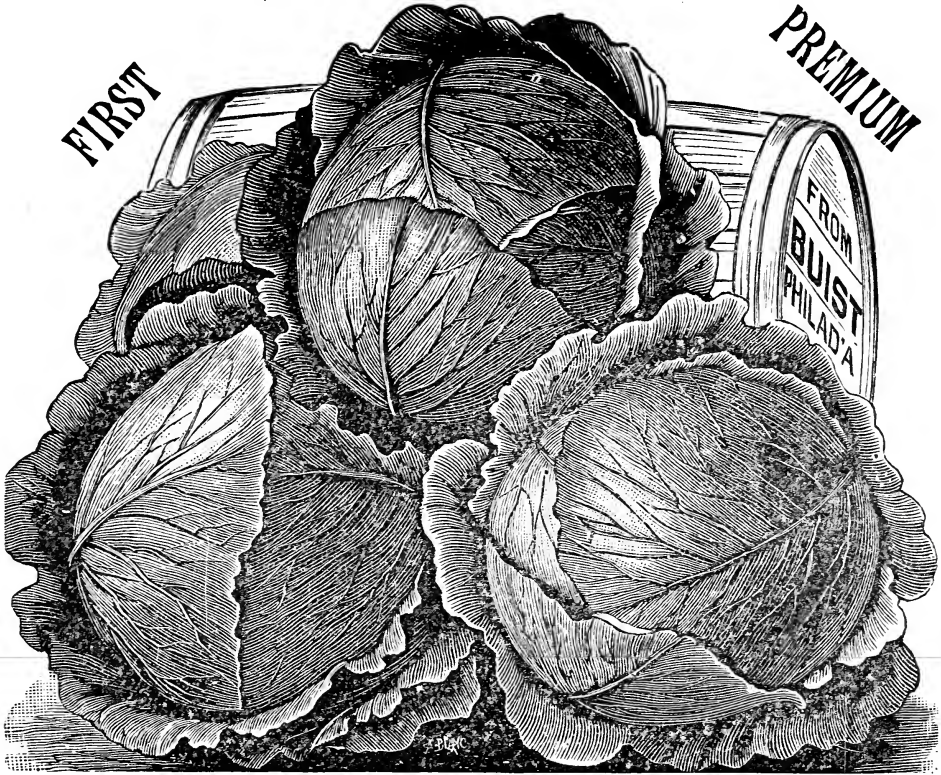
Price, per oz., 20 c's.; 4 oz., 60 cts.; 1 lb., \$1.00; 5 lbs., at \$1.85.

THE GREAT CABBAGE

FIRST

PREMIUM

FOR ALL SECTIONS.



Buist's Improved Drumhead Cabbage, (SEALED.)

THE GREAT PRIZE MEDAL STOCK.

AWARDED 22 PREMIUMS IN ONE YEAR.

Will produce Large Solid Heads in any country and in any soil. The richer the soil, the finer the heads.

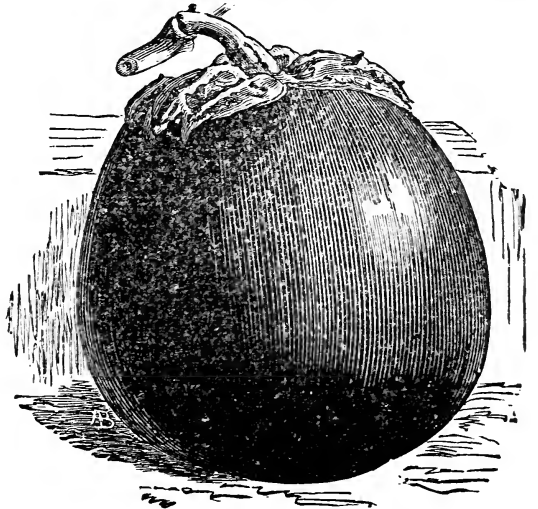
When it is generally admitted that the product of over one-half of the cabbage seed sold in this country never heads, and that which even grows is of very inferior quality, there is no wonder that a variety which heads as sure as the sun rises has become so celebrated throughout the entire country—this variety is known as **BUIST'S IMPROVED DRUMHEAD**, as illustrated above. For over 25 years we have been the most extensive growers of Cabbage Seed in this country, and during that time we have made the selections and improvement of our Seed a special study; each year the finest heads from our growing crops are selected and planted out especially to seed the following season, the centre seed stocks of which are only allowed to produce seed. This continued improvement, for so long a period, has produced a stock of Drumhead Cabbage that has no equal for its compact growth, short stem, and for its large and beautiful heads; letters are annually received from every section of our country speaking its praise. In the Eastern and Western States the heads will attain from 25 to 60 pounds, and in the South from 15 to 30 pounds each. Seed sown in April will head in July and August; sown in May will head in October. Per oz., 30 cts.; $\frac{1}{4}$ lb., \$1.00; lb., \$3.00; 2 lbs., at \$2.75.

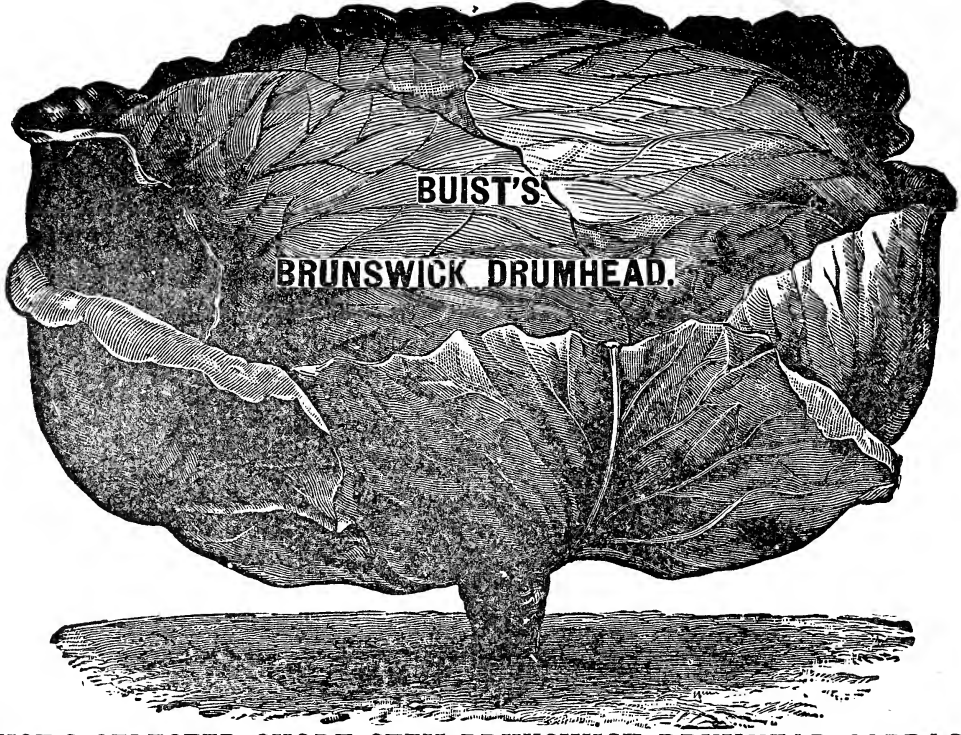
Buist's Improved Large Thornless Purple Egg Plant.

This is an improvement in earliness, productiveness and size of fruit over the ordinary large purple variety, or what is known as the **New York Purple**; it is of a very dark rich color and of beautiful form. It is also the most salable and attractive variety for market and the most profitable to grow because more productive. We annually grow 25 acres of this variety especially for seed. Per oz. 35 cts.; $\frac{1}{4}$ lb., \$1.00; lb., \$3.75; 2 lbs., at \$3.50.

NEW YORK IMPROVED PURPLE.

This is grown very largely by the market gardeners of New York; it is of a large oval shape, with smooth stems, quite productive and of good size. Per oz., 30 cts.; $\frac{1}{4}$ lb., 90 cts; lb., \$3.00.





BUIST'S SELECTED SHORT-STEM BRUNSWICK DRUMHEAD CABBAGE.

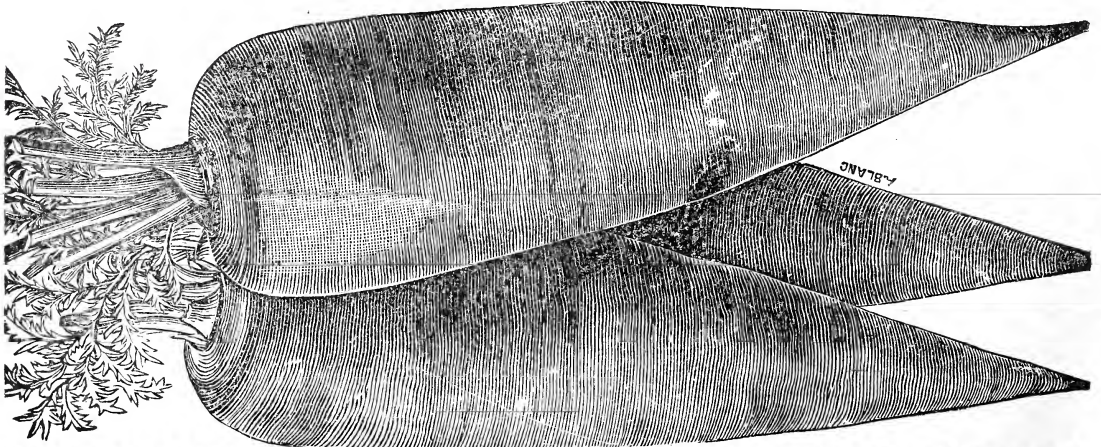
(The Seed of this Variety is Sold only under our Seal.)

☞ The Great Demand for it requires us to protect Ourselves and Customers in this manner. Seed offered in any other way is Spurious.

The true Short-Stem Brunswick Drumhead Cabbage has been for many years a general favorite with the market gardeners and cabbage growers located in Louisiana, Florida and other tropical sections of this country, not only for its being especially adapted to their climate and great certainty in heading, but also for the size and superior quality of the cabbage; but, unfortunately, a very large percentage of the seed sent out and sold under the name of Brunswick is either spurious stock or so much mixed with other varieties as to be almost valueless to the gardener; for this reason we have introduced what is known as the

BUIST'S SELECTED SHORT-STEM BRUNSWICK DRUMHEAD.

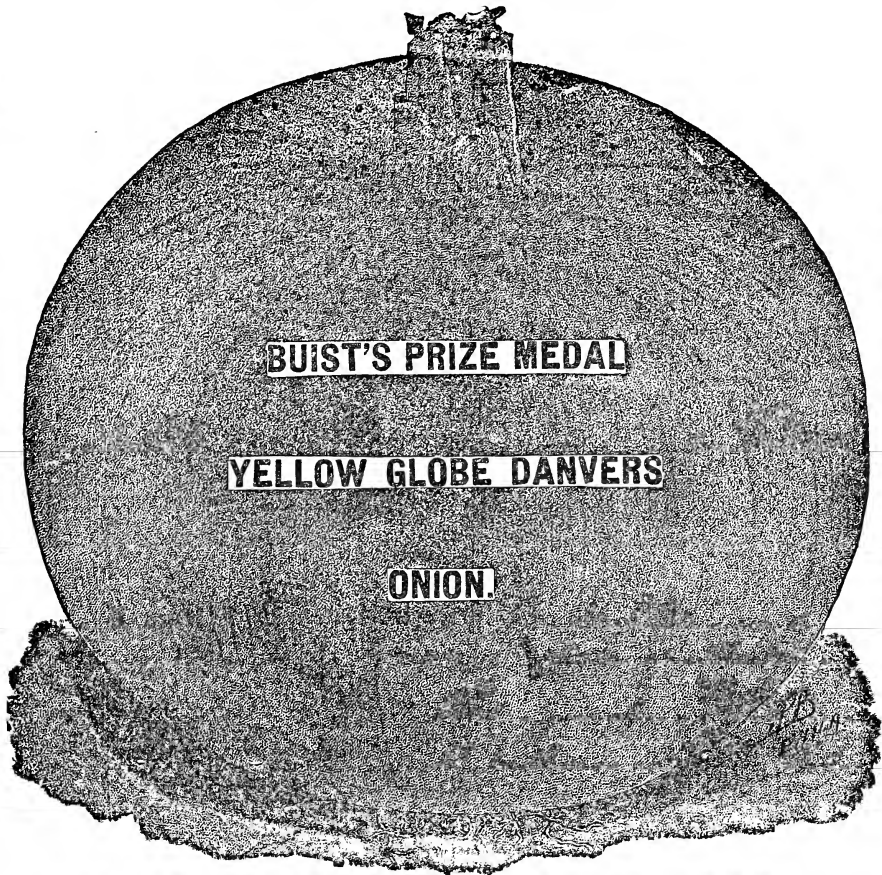
For the past few years we have paid special attention to the improvement and selection of this valuable variety and the seed which we offer will be found superior to any in the world; it is perfection in growth, habit, and in the formation of its heads, which are much larger, more compact and closer grain than the old Brunswick; market gardeners who have grown this stock pronounce it the finest they have ever had. It is put up and sold only in our sealed packets, ounces, quarters, halves and pounds, and can only be had from our house or from the merchants who handle our seeds. Per oz., 25 cts.; 4 oz., 75 cts.; 1 lb. \$2.75; 5 lbs. at \$2.50.



BUIST'S HALF-LONG OR SCARLET INTERMEDIATE CARROT. (Pointed-Root.)

This is undoubtedly the best and most salable variety for market, it is very productive, producing large and handsome roots of perfect form, and of a beautiful orange red color. Per oz., 10 cts.; ¼ lb., 25 cts.; 1 lb., 70 cts.; 5 lbs. at 65 cts.

BUIST'S PEDIGREE

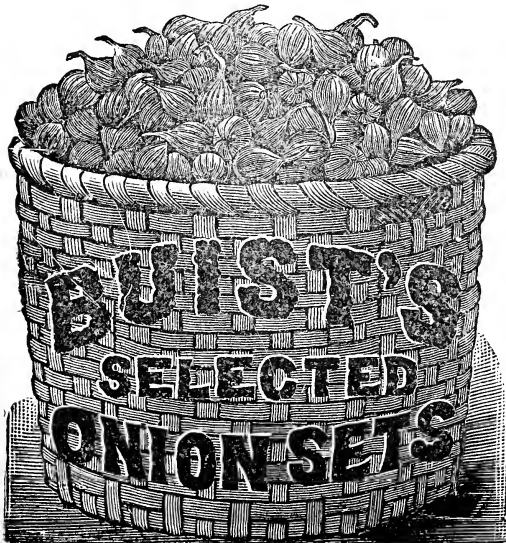


ONION SEED

BUIST'S PEDIGREE ONION SEEDS.

We are very extensive growers of Onion Seed, making it one of the specialties of our House. The stock from which we grow our seed, is our old Pedigree stock, famous throughout the country for its purity and fine quality. We make an annual selection of the bulbs from which we grow our supplies; this always insures to our customers seed of the greatest purity and strongest growth.

	¼ lb.	Per lb.	5 lbs. at	10 lbs. at	25 lbs. at
Buist's Yellow Globe Danvers.....	\$0.35	\$1.25	\$1.10	\$1.00	\$0.90
Yellow Flat Danvers.....	.30	1.15	1.00	.90	.80
Yellow Strasburg.....	.35	1.25	1.10	1.00	.90
Large Red Wethersfield.....	.35	1.25	1.10	1.00	.90
White or Silver Skin.....	.65	2.25	2.15	2.10	2.00
Southport Red Globe.....	.40	1.40	1.30	1.20	1.10
Southport Yellow Globe.....	.40	1.40	1.30	1.20	1.10
Southport White Globe.....	.60	2.25	2.15	2.00	1.90



BUIST'S

Selected Onion Sets

Our Onion sets are very bright and handsome samples, and of small size, which are the best, for planting. They are far superior to Western, or Southern-grown sets, as they are always large in size and spongy, sprouting earlier and shooting to seed before forming large onions.

YELLOW ONION SETS.

Per qt., 15c.; pk., \$1.00; bus., \$2.75; 5 bus. at \$2.50.

DARK RED ONION SETS.

Per qt., 15c.; pk., \$1.00; bus., \$3.00; 5 bus. at \$2.75.

WHITE ONION SETS.

Per qt., 20c.; pk., \$1.25; bus., \$3.75; 5 bus. at \$3.50.

Market Gardeners' Wholesale Price List.

☛ Remittances by Post Office Orders or drafts must accompany all orders. Sacks, barrels and boxes used in packing are charged at cost. Shipping directions must be distinctly written.

☛ Heavy seeds should be sent by freight and light seeds by express or mail. If ordered by mail, 8 cents per pound, or 16 cents per quart on Peas, Beans and Corn must be added to the price of the seeds.

PEAS.				YELLOW-PODDED VARIETIES			
	Per 4 Qts.	Per Peck.	Per Bush.		Per Qts.	Per Peck.	Per Bush.
(See pages 3 and 4 for quotations on large quantities.)				Dwarf German or Black Wax..			
Buist's Premier Extra Early.....	\$0 75	\$1 25	\$4 00	Dwarf German or Black Wax (Buist's Selected Stock).....	1 00	1 50	5 50
Buist's Early Morning Star, (in Sealed Bags only). This is the Earliest and Best Variety....	1 00	1 50	4 75	Imp'd Dwarf Prolific Black Wax	1 00	1 50	5 50
Buist's First and Best.....	65	1 00	3 75	Dwarf Golden, or Cream Wax..	1 00	1 50	5 50
Alaska	75	1 25	4 00	Dwarf Golden, or Cream Wax (Improved Rust Proof).....	1 00	1 50	5 50
Maud S.	75	1 00	3 75	Dwarf Butter Wax, Bismarck..	1 00	1 50	5 50
First of All.	75	1 00	3 75	Dwarf Speckled Kidney Wax...	1 00	1 75	6 00
Philadelphia Extra Early.....	65	1 00	3 75	Curry's Rust Proof Wax.....	1 00	1 50	5 50
Canada Extra Early.....	60	1 00	3 50	Dwarf White Wax.....	1 00	1 50	5 50
Early American Wonder.....	1 00	1 40	5 00	Crystal White Wax.....	1 00	1 50	5 50
Early Premium Gem.....	75	1 25	4 50	Ivory Pod Wax.....	1 00	1 50	5 50
McLean's Little Gem.....	75	1 25	4 50	Black-Eyed Wax.....	1 00	1 50	5 50
Early Tom Thumb.....	1 00	1 50	5 00	Golden-Eyed Wax.....	1 00	1 50	5 50
Early Dan O'Rourke.....	50	90	3 00	Crimson Flageolet Wax.....	1 00	1 60	5 75
Improved Early Dan O'Rourke	60	90	3 50	Yosemite Dwarf Wax.....	1 25	2 00	7 50
Early Washington.....	50	90	3 00	BEANS. (Pole or Runners.)			
Early Frame.....	50	90	3 00	Large White Lima.....	1 00	1 65	6 00
Early May.....	50	90	3 00	Large White Lima, Extra Size	1 25	2 00	7 00
Early Kent.....	50	90	3 00	Salem Mammoth Lima.....	1 25	2 00	7 00
Horsford's Market Garden.....	65	1 25	4 50	Dreer's Improved Lima.....	1 25	2 00	7 00
Blue Beauty.....	75	1 25	4 50	Carolina or Sewee.	1 00	1 75	6 00
The Heroine.....	85	1 35	5 00	Extra Early Jersey Lima.....	1 25	2 00	7 00
Shropshire Hero.....	85	1 35	4 50	King of the Garden Lima.....	1 25	2 00	7 00
Duke of Albany.....	1 00	1 35	5 00	Ford's Mammoth Lima.....	1 25	2 00	7 00
Forty Fold.....	65	1 00	3 75	Kentucky Wonder.....	1 25	2 00	7 00
Laxton's Evolution.....	1 00	1 35	4 50	German, or Black Wax Pole.....	1 00	1 75	6 50
Kentish Invicta.....	65	85	3 25	Early Golden Cluster Wax.....	1 40	2 00	7 00
Eugenie.....	80	1 25	5 00	Southern Prolific.....	1 00	1 50	5 00
Champion of England.....	65	1 00	3 75	Fat Horse, South'n Crease Back	1 00	1 75	6 50
Yorkshire Hero.....	75	1 25	4 25	Horticultural, or Wren's Egg...	1 00	1 50	5 50
Telephone.....	75	1 25	4 25	Scarlet Runners.....	1 00	1 75	6 00
Stratagem.....	85	1 25	4 50	Dutch Case Knife.....	1 00	1 50	5 50
Pride of the Market.....	85	1 50	5 50	ARTICHOKE.			
McLean's Advancer.....	65	1 15	4 00	Green Globe.....	30	85	3 00
Dwarf Blue Imperial.....	60	90	3 25	ASPARAGUS.			
Black-Eyed Marrowfat.....	50	75	2 50	Large Purple Top.....	10	15	40
Large White Marrowfat.....	50	75	2 50	Conover's Colossal.....	10	15	40
Dwarf White Sugar Marrow....	60	80	2 50	The Palmetto.....	10	20	60
Dwarf Sugar (Purple Blossom..)	1 00	1 75	6 50	ASPARAGUS ROOTS.			
Melting Sugar.....	1 00	1 75	6 50	Conover's Colossal Per 100, \$0 75			
BEANS.				Per 1000, \$6 00.....			
GREEN-PODDED VARIETIES.				Barr's Mammoth Per 100, \$0 85			
(Bush or Snap-Short.)				Per 1000, \$6 50.....			
(See pages 5 and 6, for quotations on large quantities.)				BEET (Turnip-Rooted)			
Imp'd Red Speckled Valentine	90	1 25	4 50	We sell 10 lbs. of Beet of any one variety at 10 cts. per lb, less than quoted.			
Buist's Lightning Valentine.....	1 00	1 50	5 50	Extra Early Turnip, or Bassano	10	15	40
Early Mohawk, Six Weeks.....	75	1 25	4 50	Early Red Turnip.....	10	15	40
Early Long Yellow, Six Weeks	75	1 25	4 50	Early Dark Blood Turnip.....	10	15	40
Stringless Green Pod.....	1 00	1 75	6 00	Dewing's Early Red Turnip.....	10	15	40
Best of All (Buist's Selected)...	85	1 50	5 50	Philadelphia Early Red Turnip	10	15	40
Shippers' Favorite.....	85	1 50	5 50	Buist's Extra Early Red Turnip	15	35	1 00
Ex. Early R'nd Podd'd Refugee	85	1 50	5 00	Bastian's Early Red Turnip....	10	15	40
Early Refugee or Th'sand to One	85	1 50	5 00	Lentz's Early Red Turnip.....	10	15	40
Early China Red Eye.....	85	1 25	4 00	Early Egyptian Red Turnip....	10	15	40
Henderson's Bush Lima.....	1 00	1 75	6 00				
Burpee's Bush Lima.....	1 25	2 00	7 90				
Thorburn's Bush Lima.....	1 25	2 00	7 00				
White Marrow.....	75	1 00	3 50				
White Kidney.....	75	1 00	3 50				
White Navy.....	75	1 00	3 50				

BEET.—Continued.

	Per oz.	Per ¼ lb.	Per lb.
Early Egyptian Red Turnip (Buist's Stock).....	10	20	65
Early Eclipse Red Turnip.....	10	15	50
Early Othello Blood Turnip.....	10	30	1 00
Edmand's Blood Turnip.....	10	15	40
Shull's Model Blood Turnip.....	15	30	1 00
Swiss Chard.....	10	15	40

BEET (Long Varieties).

Long Blood Red.....	10	15	40
Buist's Long Blood.....	15	25	75
Bastian's Half-Long Blood.....	10	15	40

BEET (Stock Feeding).

White French Sugar.....	10	15	30
Lane's Imperial Sugar.....	10	15	35
Long Red Mangel.....	10	15	30
Orange Globe Mangel.....	10	15	30
Champion Mammoth Long Red Mangel.....	10	15	30
Champion Yellow Globe Mangel.....	10	15	30
Buist's Mammoth Long Red ".....	10	15	35
Buist's Golden Globe Mangel.....	10	15	35
Golden Tankard Mangel.....	10	15	30
Chirk Castle Long Red Mangel.....	15	20	65

BORECOLE (See Kale).

Dwarf German Greens.....	10	20	65
Extra Dwarf Curled.....	15	40	1 25

BRUSSELS SPROUTS.....	15	50	1 75
------------------------------	----	----	------

CABBAGE.

We sell 5 lbs. of any one variety of Cabbage at 25 cts. per lb. less than quoted.

Early Jersey Wakefield (sel'd).....	25	75	2 75
Charleston Jersey Wakefield.....	25	75	2 75
Buist's Early Dwarf York.....	20	50	1 75
Buist's Early Large York.....	20	50	1 75
Buist's Earliest.....	20	50	1 75
Extra Early Express.....	20	50	1 75
Earliest Etamps.....	20	50	1 75
Henderson's Early Summer.....	20	60	1 85
Henderson's Succession.....	25	60	2 00
Early French Oxheart.....	20	60	1 75
Early Bullock Heart.....	20	60	1 75
Early French Winnigstadt.....	20	50	1 75
Early Prussian Winnigstadt.....	25	65	2 25
Premium Large Late Drumhead.....	20	50	1 75
Premium Late Flat Dutch.....	20	50	1 75
Improved Late Drumhead.....	20	70	2 00
Improved Late Flat Dutch.....	20	70	2 00
Buist's Imp'd Late Drumhead (Sealed. Prize Medal Stock)	30	1 00	3 00
Buist's Imp'd Late Flat Dutch (Sealed. Prize Medal Stock)	30	1 00	3 00
Thorburn's Late Flat Dutch (Market Gardn's Private St'k).....	25	75	2 75
Buist's Florida Header (Sealed).....	25	65	2 25
Buist's Short-Stem Brunswick Drumhead.....	25	75	2 75
Buist's Early Flat Dutch (Sealed, Prize Medal Stock)	30	1 00	3 00
Buist's Early Drumhead (Sealed, Prize Medal Stock)	30	1 00	3 00
Stein's Early Flat Dutch.....	25	75	2 50
Louisville Drumhead.....	20	50	1 75
Burpee's All Head Early.....	25	65	2 25
Large Surehead.....	20	50	1 75
New Orleans Flat Dutch.....	25	60	2 00
Improved Early Flat Dutch.....	20	70	2 00
Improved Early Drumhead.....	20	70	2 00

CABBAGE—Continued.

	Per oz.	Per ¼ lb.	Per lb.
Fotter's Brunswick Drumhead.....	\$ 20	\$ 50	\$ 1 75
The Vandergaw.....	20	60	1 75
All Seasons.....	20	60	1 75
Marblehead Mammoth.....	20	50	1 75
Stone Mason Drumhead.....	20	50	1 75
Green Glazed.....	20	50	1 75
Blood Red Dutch (for pickling).....	20	60	2 00
North Carolina Buncombe.....	20	50	1 50

CABBAGE, SAVOY.

Green Curled Savoy.....	20	50	1 75
American Curled Savoy.....	20	50	1 75
Green Globe Savoy.....	20	50	1 75
Large Drumhead Savoy.....	20	50	1 75
Perfection Drumhead Savoy.....	20	50	1 75

CARROT.

Early French Forcing.....	10	25	75
Early Scarlet Horn.....	10	20	65
Early Oxheart, or Guerande.....	10	20	65
Early Half Long Scarlet (point-ed root).....	10	25	70
Danver's Half-Long Scarlet.....	10	20	60
Buist's Imp'd Half-Long Scarlet.....	10	25	70
Early Half-Long Luc.....	10	20	65
Half-Long Scarlet Chantenay.....	10	20	65
Half-Long Scarlet Chantenay.....	10	20	65
Half-Long Scarlet Nantes.....	10	20	65
Saint Vallery Intermediate.....	10	20	65
Long Orange.....	10	20	50
Buist's Improved Long Orange.....	10	25	80

CAULIFLOWER.

Early London.....	50	1 50	5 50
Extra Early Paris.....	60	2 00	7 00
Half Early Paris.....	60	2 00	7 00
Early Walcheren.....	50	1 50	6 00
Veitch's Autumn Giant.....	50	1 50	6 00
LeNormand Short Stem.....	60	2 00	6 50
Extra Early Dwarf Erfurt.....	2 50	8 00	25 00
Early Large Erfurt.....	1 50	5 00	18 00
Early Snowball.....	2 50	8 00	25 00
Mount Blanc.....	2 50	8 00	25 00

CELERY.

Large White Solid.....	20	50	1 75
Buist's Large White Solid.....	25	75	2 50
Golden Dwarf.....	20	60	2 00
Golden Self-Blanching.....	35	1 00	3 50
Giant Pascal.....	25	60	2 00
Half Dwarf.....	20	60	2 00
Sandringham Dwarf White.....	20	60	2 00
Incomparable Dwarf White.....	20	60	2 00
Boston Market.....	20	60	2 00
Perfection Heartwell.....	20	60	2 00
White Plume.....	25	70	2 25
Buist's Golden Market.....	35	75	2 50
Rose, or Pink.....	20	60	2 00
Celeriac, Turnip Rooted Celery.....	15	50	1 50

COLLARDS.

Common Southern.....	15	25	75
Georgia (selected).....	15	30	90
Southern Blue Stem.....	15	30	90
Southern Creole.....	15	30	90
Carolina.....	15	30	90

CORN SALAD.....	10	20	50
------------------------	-----------	-----------	-----------

CORN.

	Per 4 Qts.	Per Peck.	Per Bush.
GARDEN VARIETIES.			
Extra Early Cory.....	60	85	2 75

CORN—Continued.

	Per 4 Qts.	Per Peck	Per Bush.
Crosby's Extra Early.....	\$ 60	\$ 85	\$2 75
Early Minnesota.....	60	85	2 75
New England Eight-row.....	60	85	2 75
Early Narragansett.....	60	85	2 75
Early Marblehead.....	60	85	2 75
Early Egyptian.....	60	85	2 75
Early Mammoth.....	60	85	2 75
Late Mammoth.....	60	85	2 75
Ne Plus Ultra (Shoe-Peg).....	60	85	2 75
Country Gentleman.....	60	85	2 75
Stabler's Extra Early.....	60	85	2 75
Stowell's Evergreen Sugar.....	60	85	2 75
Stabler's Pedigree.....	60	85	2 75
Perry's Hybrid.....	60	85	2 75
Improved Ruby.....	60	85	2 75
Potter's Excelsior, or Squantum	60	85	2 75
Hickok's Improved.....	60	85	2 75
Adam's Extra Early.....	50	75	2 50
Adam's Early.....	50	75	2 50

FIELD VARIETIES.

	Per 4 Qts.	Per Peck	Per Bush.
Buist's Im'd Early Golden Dent	30	50	1 50
Early Golden Dent.....	25	40	1 40
Buist's Prize Medal Southern Snow Flake.....	40	50	1 75
Buist's Large White Flint.....	30	40	1 40
Early Yellow Canada.....	30	40	1 40
Early Pennsylvania Eight-row.	30	40	1 40
Improved Early Leaming.....	30	40	1 40
Golden Beauty.....	30	40	1 40
White Hickory King.....	40	50	1 60
Improved Large Mary'd White	30	40	1 50
Champion White Pearl.....	30	40	1 50
Blount's White Prolific.....	30	40	1 50
Mammoth Eared Gourd Seed...	30	40	1 50
Chester County Gourd Seed....	30	40	1 50
Cloud's Early Dent Gourd Seed	30	40	1 50

GRESS, Pepper Grass.

	Per Oz.	Per ¼ lb.	Per lb.
Curled.....	\$ 10	\$ 20	\$ 40
Water.....	30	1 00	3 50

CUCUMBER.

We sell 10 lbs. of any one variety of
Cucumber at 10 cts. per lb. less
than quoted.

	Per Oz.	Per ¼ lb.	Per lb.
Improved Early White Spine...	10	20	50
Buist's Perfection Early White Spine (Sealed).....	15	30	1 00
Evergreen White Spine.....	10	20	50
Peerless White Spine.....	10	20	50
Hill's Forcing White Spine.....	10	20	50
Early Frame.....	10	20	50
Nichol's Medium Green.....	10	20	50
Early Cluster.....	10	20	50
Early Russian.....	10	20	50
Early Short Green.....	10	20	50
Long Green.....	10	20	60
London Long Green.....	10	20	60
Long Green Turkey.....	10	25	80
Buist's Long Green.....	15	40	1 00
Chicago Pickle.....	10	20	50
Boston Pickling.....	10	20	50
Giant Pera.....	15	20	50
Thorburn's Everbearing.....	15	20	50
Jersey Pickle.....	10	20	50
Long Prickly.....	10	20	50
Green Prolific Pickle.....	10	20	50
Gherkin, or Burr.....	15	25	80

EGG PLANT.

	Per Oz.	Per ¼ lb.	Per lb.
Large New York Purple.....	35	80	3 00
Buist's Improved Large Thorn- less Purple (largest and finest fruit, and best market variety)	50	1 25	4 50

ENDIVE.

	Per Oz.	Per ¼ lb.	Per lb.
Green Curled.....	\$ 20	\$ 50	\$1 50
White Curled.....	20	50	1 50
Broad-leaved.....	20	50	1 50

KALE.

	Per Oz.	Per ¼ lb.	Per lb.
Green Curled Scotch.....	10	20	65
Dwarf German Greens.....	10	20	65
Dwarf Curled Erfurt.....	15	30	1 00
Siberian Curled.....	10	20	50
Norfolk Curled.....	10	20	65
Curled Intermediate.....	15	25	80
Curled Mosbach.....	15	30	1 00
Dwarf Curled Berlin.....	15	40	1 25
Spring Kale, or Rape.....	05	10	20

KOHL RABI.

	Per Oz.	Per ¼ lb.	Per lb.
Long Green or White.....	15	40	1 40
Early Short-le'd White Vienna	25	60	2 00
Early Purple Vienna.....	25	50	1 75
Early Erfurt (Short Leaved)....	25	60	2 00
New Queen.....	30	80	2 50

LEEK.

	Per Oz.	Per ¼ lb.	Per lb.
London Flag (American).....	15	30	1 00
Buist's Mammoth.....	20	60	1 75
Large Musselburgh.....	20	50	1 40
Large Carentan.....	20	50	1 40
Large Rouen.....	20	50	1 40

LETTUCE.

	Per Oz.	Per ¼ lb.	Per lb.
Buist's Perfec'n White Forcing	25	65	1 75
Early White Butter, or Cabbage	15	25	90
Early Prize head.....	15	25	90
Early Curled Silesia.....	15	25	90
Early Curled Simpson.....	15	25	90
Curled Simpson Black Seeded..	15	25	90
Philadelphia Market.....	20	40	1 25
Improved Early Hanson.....	15	30	1 00
Early Tennisball.....	15	30	1 00
Early Tennisball (Bl'k Seeded)	15	30	1 00
The Arlington Tennisball.....	15	30	1 04
Big Boston.....	20	35	1 25
Early Boston Market.....	15	30	1 00
Early Speckled Dutch Butter...	15	30	1 00
Large Passion Black Seeded....	15	30	1 00
Improved Royal Cabbage.....	15	30	1 00
White Royal Summer Cabbage	15	30	1 00
Henderson's New York Cabbage	20	40	1 25
Large Yellow Market.....	25	50	1 75
Drumhead Cabbage.....	15	25	90
Deacon.....	15	30	1 00
Oak-Leaved.....	15	30	1 00
Perpignan, or Early Summer...	15	30	1 00
India Curled.....	15	30	1 00
Trocadero.....	20	35	1 00
White Paris Cos.....	15	30	1 00
Salamander.....	15	30	1 00
Denver Market.....	15	35	1 00
Stubborn Head.....	20	40	1 25

MELON (Cantel'pe or Musk)

	Per Oz.	Per ¼ lb.	Per lb.
Extra Early Hackensack.....	10	20	60
Hackensack, or Turk's Cap.....	10	20	60
Netted Green Citron.....	10	20	60
Skillman's Netted Citron.....	10	20	60
Netted Nutmeg.....	10	20	60
Champion Market.....	10	20	60
Acme, or Baltimore.....	10	20	60
Pine Apple.....	10	20	60
Early Jenny Lind.....	10	20	60
Golden Jenny or Netted Gem..	10	20	60
Long Island Beauty.....	10	20	60
Rocky Ford.....	10	20	60

MELON.—Continued.

	Per Oz.	Per ¼ lb.	Per lb.
Banquet	10	25	75
Delmonico	10	20	60
Chicago Market	10	20	60
Princess	10	25	75
Montreal Market	10	20	60
New Orleans Market, or Creole	15	40	1 25
Washington Market	15	40	1 25
Emerald Gem	10	20	60
Osage, or Miller's Cream	10	20	60

MELON (Water).

The Dixie	10	20	50
The Jones	10	20	50
Mountain Sweet	10	20	50
Kolb Gem	10	15	40
Kolb Gem (selected)	10	20	50
Improved Gypsy	10	20	50
Girardeau's Premium Triumph	10	25	75
Georgia Rattlesnake (selected)	10	20	50
Jordan's Gray Monarch	10	20	60
Jackson	10	20	60
Florida Favorite	10	20	50
Mammoth Iron-Clad	10	20	50
Ice Cream (White Seeded)	10	20	50
Ice Cream (Gray Seeded)	10	20	50
Light Icing, or Ice Rind	10	20	50
Dark Icing	10	20	50
Cuban Queen	10	20	50
Peerless	10	20	50
Green and Gold	10	20	50
Phinney's Early	10	20	50
Orange Water	10	25	75
Pride of Georgia	10	20	50
Green Preserving Citron	10	20	50
Seminole	10	20	50

MUSTARD (for Growing).

Mammoth Southern Curled	10	20	60
Southern Creole	10	20	60
White London	5	10	25
Black or Brown	5	10	25

MUSHROOM SPAWN.

English, in double bricks, imported.
 Price 15 cts. each; 12 bricks, \$1.50;
 100 pounds..... \$7 00
 50 "..... 3 50
 25 "..... 2 00

NASTURTIUM, or Indian Cress

Tall Yellow (for Pickling)	15	25	80
Tall Flowering	20	30	1 00
Dwarf Tom Thumb (mixed)	20	30	1 00

OKRA, or GOMBO.

Buist's Dwarf Prolific	10	20	50
Tall, or Long Green	10	20	50
Perkin's Mammoth Podded	10	20	50
White Velvet	10	20	50
Southern White	10	20	50

ONION.

For 5, 10 and 25 lb. lots, see page 11.

Buist's Yellow Globe Danvers	15	35	1 25
Australian Brown	20	40	1 40
Yellow Strasburg	15	35	1 25
Large Red Wethersfield	15	35	1 25
Extra Early Red	15	35	1 25
White or Silver Skin	25	65	2 25
Southport Yellow Globe	20	40	1 40
Southport Red Globe	20	40	1 40
Southport White Globe	25	60	2 25

ONION SETS.—See page 11

ONION (Italian Varieties).

	Per Oz.	Per ¼ lb.	Per lb.
Giant Red Tripoli	20	40	1 50
Giant White Tripoli	20	40	1 50
Giant Red Bermuda	20	70	2 00
Giant White Bermuda	20	75	2 25
Improved Red Bermuda	20	70	2 00
Mammoth White King	20	50	1 75
Giant Yellow Rocca	15	40	1 50
White Queen	20	60	2 00
White Pearl	20	60	2 00
Silver White Etna	20	60	2 00
Early White Barletta	20	60	2 00
Mammoth Red Victoria	20	40	1 40
Yellow Prize Taker	20	40	1 65

PARSLEY.

Double Curled (dark green)	10	20	60
Buist's Garnishing	15	25	85
Extra Dark Moss Curled	10	20	65
Emerald Green Curled	10	25	85
Champion Moss Curled	10	20	65
Myatt's Garnishing	10	20	60
Plain or Single	10	15	50

PARSNIP.

Sugar, or Hollow Crown	10	15	50
Student	10	15	50

PEPPER.

Bell, or Bull Nose	20	50	1 75
Large Sweet	20	50	1 75
Golden Dawn	20	60	2 00
Ruby King	20	60	2 00
Long Red Cayenne	25	60	2 00
Red Cherry	25	60	2 00
Celestial	25	60	2 00

PUMPKIN.

Casnow Crook-neck	10	20	50
Large Cheese	10	20	50
Tennessee Sweet Potato	10	20	60
Jonathan	10	20	60
Dunkard	10	20	60
Quaker Pie	10	25	75
Nantucket	10	25	75
Mammoth King	20	40	1 25
Mammoth Etamps	15	30	1 00
Connecticut Field	5	15	30

RADISH.

We sell 10 lbs. and over of any one variety of Radish at 10 cts. per lb. less than quoted.

Buist's Sel'd Early Long Scarlet	15	20	65
Market Gardeners' Long Scarlet	15	20	65
Early Long Scarlet (Short-Top)	10	20	50
Long Brightest Scarlet (W. T.)	10	20	65
Early Scarlet Turnip	10	20	50
Buist's Earliest Scarlet Button	10	20	65
Prussian Early Scarlet Globe	15	25	90
Earliest Erfurt Scarlet Turnip	10	20	65
Early Scarlet Turnip (W. T.)	10	20	50
Early Scarlet French Breakfast	10	20	50
Early Scarlet Olive-Shaped	10	20	50
French Half-Long Scarlet	10	20	50
Ne Plus Ultra Scarlet Turnip	10	20	65
Light'g Scarlet Forcing Turnip	10	20	65
Beckert's Chartier	10	20	50
Wood's Early Frame	10	20	50
Extra Early White Turnip	10	20	50
Early White Turnip	10	20	50
Early White Box	10	20	50
Early Scarlet Globe	10	20	60

RADISH—Continued.

	Per Oz.	Per ¼ lb.	Per lb.
White Summer Turnip.....	10	20	50
Buist's Golden Summer Turnip	10	20	50
Buist's White Summer Turnip	10	20	50
White Summer Strasburg.....	10	20	50
Black Spanish (Winter).....	10	20	50
Chinese Rose (Winter).....	10	25	50
Long White Vienna.....	10	25	50
Buist's New Long White.....	10	25	75

RHUBARB.

Victoria.....	15	40	1 50
Mammoth.....	15	40	1 50
Rhubarb Roots, per doz., \$1.00; per 100, \$7.00.			

SALSIFY, or Oyster Plant.

French Imported.....	15	30	1 00
American-Grown Seed.....	15	30	1 00
Mammoth White.....	15	40	1 25
Buist's Mammoth.....	20	60	1 75
Sandwich Island.....	15	40	1 25

SPINACH.

10 lbs at 25 cts. ; 25 lbs. at 20 cts.; 100 lbs. at 18 cts.

Buist's Perfection Curled.....	10	12	30
American Curled Savoy.....	10	12	30
Bloomsdale Curled (selected)...	10	12	30
Round Savoy (Imported).....	10	12	30
Round Savoy (American).....	10	12	30
Broad-Leaved Flanders (Imp'd)	10	12	30
Broad-Leaved Flanders (Amer.)	10	12	30
Long Standing.....	10	12	30
Prickly Seeded.....	10	12	30

SQUASH.

Early White Bush, or Patty-Pan	10	20	50
Early Yellow Bush.....	10	20	50
Yellow Summer Crook-Neck.....	10	20	50
Mammoth White Bush.....	10	20	50
Giant Yellow Sum'r Cr'k-Neck	10	20	50
Boston Marrow.....	10	20	50
Buist's Improved Marrow.....	15	30	80
Hubbard.....	10	20	60
Marblehead.....	10	20	50
Perfect Gem.....	10	20	50
Golden Custard Bush.....	10	20	50
Fordhook.....	10	25	75
Pike's Peak.....	10	20	50
London Vegetable Marrow.....	15	30	80
Orange Marrow.....	10	20	50
Mammoth Chili.....	15	30	80

TOMATO.

We sell 10 lbs. of any one variety at 25 cts. per lb. less than quoted.

	Per Oz.	Per ¼ lb.	Per lb.
Buist's Beauty.....	25	80	2 75
Buist's Belle.....	40	1 00	3 50
Buist's Majestic (Pkt's 25 cts.)			
Livingston's Perfection.....	20	50	1 75
Livingston's Favorite.....	20	50	1 75
Livingston's Beauty.....	20	50	1 75
Livingston's Stone.....	20	60	2 00
Early Acme.....	20	50	1 75
Buist's Selected Early Acme..	20	60	2 00
Paragon.....	20	50	1 75
Buist's Selected Paragon.....	25	60	2 00
Trophy.....	20	50	1 75
Buist's Selected Trophy.....	25	60	2 00
Early Smooth Red.....	20	50	1 75
Turner's Hybrid, or Mikado...	20	60	2 00
Essex Hybrid.....	20	60	2 00
Dwarf Champion.....	20	65	2 25
Peach.....	25	65	2 25
Tree Tomato.....	35	80	2 75
Golden Trophy.....	20	75	2 25
Large Yellow.....	20	75	2 25
Red Pear-Shaped.....	20	75	2 25
Yellow Plum-Shaped.....	25	75	2 25

TURNIP (White Varieties).

	Per lb.	5 lb. lots Per lb.	10 lb. lots Per lb.
Red, or Purple Top (Strap-L.)	40	35	30
Early White Flat Dutch (Strap-Leaved).....	40	35	30
Early Red Top Globe.....	40	35	30
Buist's Mammoth Purple Top Globe.....	50	45	40
Large White Globe.....	40	35	30
Large White Norfolk.....	40	35	30
Pomeranian White Globe.....	40	35	30
Early White Egg.....	50	45	40
Large Cow Horn.....	50	45	40
Large White Hanover.....	50	45	40
Sweet German.....	50	45	40
Seven Top (for Turnip Greens)..	40	35	30

TURNIP (Yellow Varieties).

Purple Top Yellow Aberdeen...	40	35	30
Yellow Stone.....	40	35	30
Golden Ball.....	50	45	40
Amber Globe.....	40	35	30
Yellow Globe.....	40	35	30

RUTA BAGA or SWEDE.

Purple Top Yellow Ruta Baga..	50	45	40
Buist's Imp' Yellow Ruta Baga	60	55	50
Sutton's Champion Swede.....	50	45	40
Long Island Ruta Baga.....	60	55	50
Carter's Elephant Swede.....	60	55	50

BUIST'S SELECTED SEED POTATOES.

The Buist Brand of Seed Potatoes has an established reputation throughout the country for their Great Purity, Fine Quality and Productiveness. They are packed in large barrels containing 2¾ bushels (165 lbs).

They are grown in Vermont, Nova Scotia and Prince Edward's Island especially for seed, and are of an entirely different quality from the stocks generally sold, which are frequently mixed varieties of a very inferior grade, with the names branded on the barrels to suit the order. For a list of varieties see our Garden Guide.

PRICE: Per Barrel, \$3.25; 10 Barrels at \$3.15; 25 Barrels at \$3.00.

STORES:

922 and 924 Market St.
Next to Post Office.

Robert Buist Company,

SEED GROWERS,

Seed Farms:

Rosedale, Waterford and Morrisville.

PHILADELPHIA.