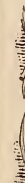


Historic, Archive Document

Do not assume content reflects current scientific knowledge, policies, or practices.



ESTABLISHED 1885.

6201

WECKESSER'S

ANNUAL

CATALOGUE

1899

SEEDS,
PLANTS
ETC.



CHRISTIAN WECKESSER
→ MARSHALLVILLE, O. ←
—AND—
NIAGARA FALLS, N. Y.



Announcement for 1899!

OUR headquarters are again located on the old farm, where the writer was born and brought up, and started in the seed and plant business. With our arrangements here, and by continuing to send out an inexpensive catalog, we are able to supply a choice quality of seeds and plants at a lower price than some who send out a gaudy and expensive catalog, and have high city taxes and insurance to pay.

Our removal from Sanborn, N. Y., near Niagara Falls, to our "old stand" here, was made desirable and necessary, for a number of reasons. Our place there is nearly all occupied with fruit, while here we have the range of a large farm to grow much of the stock we offer.

We have no great prizes to offer, and everything is described in a plain, practical manner. Because prices are low is no indication of inferior quality in the seeds. We believe they are as good as care and perfect conditions of growth and development can produce, and such as we use in our own market garden trade.

If you want merely a collection of seeds for a family garden our collections on another sheet will give you a bargain, and we call especial attention to our condensed price list on page 12 and 13, which is made up of the best varieties in cultivation.

MARSHALLVILLE, OHIO, FEB. 1, 1899.

CHRISTIAN WECKESSER.

LIBERAL PREMIUMS ON SEEDS IN PACKETS As an inducement to our customers to get their neighbors and friends to club with them in sending their orders, we will allow each purchaser of seeds in packets to select **25c. worth extra for every \$1.00 sent us.** Bear in mind that this discount applies only to seeds in packets, and not to seeds by weight and measure, nor any collections we offer. Our packets contain nearly double the quantity of seeds than many others put up, and prices by weight and measure are low; if we would put up half the quantity of seeds in our packets, and charge more for them, we might give greater premiums, but we think our customers approve our plan. With a \$2.00 order, duties may also be included as above.

READ BEFORE ORDERING. Give your full address every time you write, and write it plain. Keep a copy of your order. If any mistake is made by us let us know at once so we can correct it. We guarantee mail orders to reach their destination in good order; but when we ship by freight or express our responsibility ceases when we deliver goods to the carriers in good order. State how you want goods shipped, and give the name of your express office and Company if you order by express. We can ship by American, Adams, and Wells Fargo, Express Companies, and where these are accessible it is better to send them direct and avoid extra charges in transferring from one company to another.

Sending Money. Dollar bills may be safely sent as a rule, if properly enclosed, but we are not responsible for any loss unless sent by Postoffice or Express Money Order, N. Y. Bank Draft, or Registered Letter. Postage stamps taken for small amounts.

Where we are Located. Our main office and greenhouse is on the farm just north of Marshallville, on the C. A. & C. R. R. Most of our seed orders are filled here, but some of the strawberry and other small fruit plants will have to go from our Sanborn farm. We will consult the wishes of patrons, however, as much as possible. We carry a small stock of seeds at Sanborn, and local customers can receive what they wish, there, or leave their orders and we will forward the goods so they can get them there.

ADDRESS ALL TELEGRAMS TO MARSHALLVILLE, OHIO.

HOW TO MAKE THE GARDEN PAY.

This is the best book on gardening generally that is published, and no gardener should be without it. It is complete in all its details, interesting and practical throughout. By T. GREINER. We cannot offer it for less than \$2, but we will send it free of charge with a general order to the amount of \$12. Or if your order amounts to \$3, you can have the book by adding \$1.

MY HANDICRIFTS GARDEN.

A most useful little book for those who want to get the best results from a city or village lot, and anyone having a larger place. Price 25c. Sent free with an order for seeds to the amount of \$1.75.

THE NEW ONION CULTURE.

This terse little volume from the pen of our neighbor, T. Greiner, gives every detail of the new method of growing onions. It is interesting and practical, and should be read by all who grow them even in a small way. Price 50c. Free with any order for goods amounting to \$4.00 or over.

AMERICAN GARDENING.

Cover the whole field of garden subjects, fruits, vegetables and flowers, and we regard it as the best paper of its kind published. It is now issued weekly, and the subscription price is only \$1.00. When you send us an order of the amount of \$2.50 you can have this paper by adding 60c.

THE MARKET GARDEN.

An indispensable monthly paper for all who grow garden crops for sale, and the only paper of its kind published. No one who wants to keep posted on the best methods can afford to be without it. The price is 50c a year. In sending an order of \$1.75 add 25c. and we will have it sent you 1 yr.

THE FARM JOURNAL.

A useful and widely read little paper. Even those who think they cannot afford a higher priced, paper seem to take the Farm Journal, anyway, 1 price, 50c. a year. To an order for \$1. worth, add 15c. and you can have the paper one year.

SOME SPECIALTIES FOR 1899.

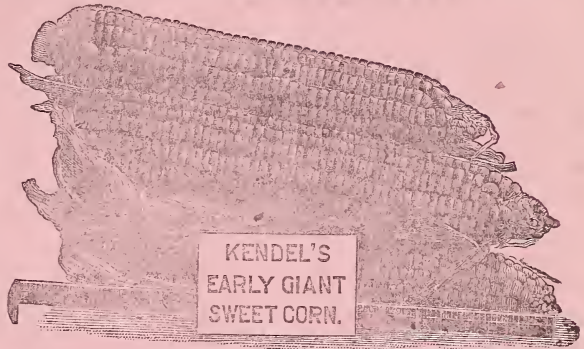
Kendal's Early Giant Sweet Corn.

This was planted by the side of the Early Maine, with the result that it was just as early as the Maine, and the ears much larger, mostly 12 rows of pure white kernels, and better quality than other extra varieties, and free of smut. Pkt. 5c.; pt. 1c.; qt. 18

EARLY SPRING CABBAGE

A fine early flat head cabbage as early as the Wakefield. Of the early spring crop, but more desirable because the first early flat head always brings a good price. They are also larger than the Early Wakefield and not so much inclined to bolt, if not cut immediately when ripe.

Pkt. 5c.; oz. 25c.; lb. \$2.50



Bear Paw Pop Corn.

A very fine strain of White Rice with the ears flattened at the ends and filled to the tips; of the finest quality. Pkt. 5c.; pt. 12c.

The Emerald Cucumber.

A distinct variety holding its emerald green color till nearly ripe. It is smooth, nearly destitute of spines, bristly, handsome and fine for growing under glass and open air. Pkt. 5c.; oz. 10c. lb. \$1.00

Honor Bright Tomato.

A peculiar new tomato because of the change of color which the fruit undergoes, from a light green to a waxy white and finally to a bright red. It has long keeping qualities which makes it valuable for shipping. Pkt. 5c.; oz. 20c.



THE EMERALD.

Improved Trophy Tomato.

This, by careful breeding and selection from the old Trophy, has qualities in color, size and solidity, that are unsurpassed, and for quality as a canning tomato it is the best we ever tried. It has rich red color, solid flesh, free of core, and does not crack. Pkt. 5c.; oz. 15c.; lb. \$1.50.

Fordhook Fancy Tomato.

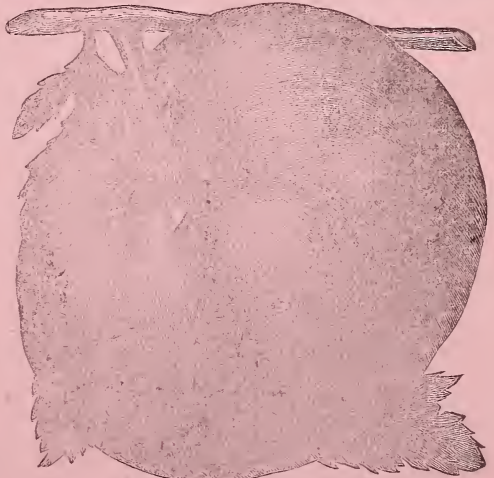
A cross between Dwarf Champion and Potato leaf. Seems to be an embodiment of the good points in both varieties and some not possessed by either. Smooth, fine colored fruit, produced early and abundantly. The plants present a strikingly handsome appearance. Pkt. 5c.; oz. 75c.

Evans Triumph Celery.

This is a superb late celery. A better keeper than most any of the other we have tried. The stalks are large, solid, crisp and put like in flavor, and it is worthy of the first place as a late celery. Pkt. 5c.; oz. 25c.

Solid Emperor Cabbag

A strain of the Danish Cabbage with a trifle larger and flatter heads than the average Danish cabbage. Pkt. 5c.; oz. 20c.; lb. \$2.50.



HONOR BRIGHT TOMATO.

Choice Seed Potatoes for 1899.

Burpee's Extra Early. This is about as satisfactory an extra early potato as we have ever grown. It is creamy white, shaded with pink, oblong, smooth, fine-grained, fine table quality, and always yields well. Burpee sells this at \$2.25 per bushel. We offer it by mail, postpaid at 20c. per lb.; 3 lbs for 50c. By express or freight, peck, 50c.; bu. \$1.50; bbl. \$3.50

Early Thoro'bred. This was introduced by Maule as the very earliest, and a heavy yielder. We do not find it earlier than Burpee's but it is a heavy yielder, and in good soil will produce an enormous crop of fine looking tubers, and of fine quality, too. Of a thick oblong shape, light-brown, with a shade of rosy-pink about the eyes. By mail, 1 lb. 20c.; 3 lbs. 50c. By express or freight, peck 35c.; bu. \$1.25 barrel of 3 bushels, \$3.00.

New Queen. This is a second early potato but little later than the earliest and will out-yield them. It is largely grown for a main crop potato, looks fine, being nearly white, good shape and appearance, and brings a good price in the markets. By mail, one lb. 20c.; 3 lbs. 50c. By ex. or freight, peck, 35c.; bu. \$1.25; bbl. \$3.

New Thorburn. A white, extra early potato of the finest shape, appearance and quality, and a good yielder for an extra early variety. By mail, 1 lb. 20c.; 3 lbs. 50c. By express or freight, 1 pk. 50c.; bu. \$1.50, bbl. \$3.50.

Uncle Sam. One of the best main crop potatoes out. It is an enormous yielder, and the tubers are oval, with a white russet skin, shallow eyes, handsome appearance, and good quality. By mail, lb. 20c.; 3 lbs. 50c. By express or freight, pk. 40c.; bu. \$1.25; bbl. \$3.00.

Carman No. 3. An improvement in yield and quality on the Rural New Yorker No. 2, which it resembles in shape and appearance, but is a strong grower, and a few days later. A remarkable potato, and one of the leading market varieties. By mail, lb. 20c.; 3 lbs. 50c. By ex. or freight, peck 40c.; bu. \$1.25; bbl. \$3.

American Wonder. A great yielder of good sized potatoes, attractive and one of the most profitable and satisfactory for market and home use. By mail, 1 lb. 20c.; 3 lbs. 50c. By ex. or freight, pk. 40c.; bu. \$1.25; bbl. \$3.

New White Peachblow. An embodiment of the good qualities of the once popular old peachblow, with a white skin. A great yielder of fine large tubers. By mail, lb. 20c. By freight or ex., pk. 35c.; bu. \$1.00; bbl. \$2.75.

The above are all first-class potatoes of our own growing, now stored in our cellar on the farm at Marshallville, Ohio, from which place they will be shipped as soon as danger of frost is past. We can supply them only as long as our stock lasts. We have a few bbls. 2nds at $\frac{1}{2}$ price.

A BARGAIN OFFER. Some of our customers may want a barrel of the above assorted, so as to get a start of all. To accommodate those we will put up a barrel containing as near as our stock will allow, an equal quantity of each of the above, all kept separate and labeled, for only **\$3.50**. Two bbls. **\$6.50**. Four bbls. **\$12.00**. Get your neighbors to take some.

VEGETABLE PLANTS.

We make a specialty of greenhouse, cold-frame and open air vegetable plants. We can ship them safely, by Express or Mail, to quite distant points. Notice our low prices on the fine quality of plants, Being practical market gardeners we know how to grow and ship the best quality of plants. Postage must always be added to the price if by mail. Unless it is stated it will be 5c. a doz. 20c per 100

CABBAGE.

Our early cabbage is ready to set out by the latter part of March and early April. From that time on we have a stock of most all the varieties that we catalog, to the end of the planting season. When we ship them they are carefully taken up and packed lightly. Price of plants during March and April, 8c. per doz., 35c. per 100; \$3.00 per M. Plants grown in open ground, 20c. per 100, \$1.00 per M.

CAULIFLOWER.

We have mostly Early Snowball and Erfurt. Price 12c. per doz. 50c. per 100, for early plants. Open ground plants, 40c. per 100, \$3. per M.

CELERY.

We keep in stock mostly White Plume for early, later Self Blanching, Golden Heart and others. Prices, 35c. per 100, \$2.50 per M. Extra strong plants, 45c. per 100, \$3.50 per M.

PEPPER, LETTUCE, SWEET POTATO.

Price, 8c. a dozen, 35c. per hundred, \$3.00 per M.

ONION.

Quite a trade has sprung up in onion plants, lately, and we are trying to meet it, though we have hardly had enough to go around heretofore. The only varieties we have are Prizetaker and Extra Early Pearl. We have had good success shipping these plants to very distant points. Price, 15c. per 100, \$1. per M. Postage 7c. per 100, 50c. per M. In larger lots, 5 M for \$3.50; 10 M \$6.00.

TOMATO.

Good stocky plants of Fordhook First, Early Ruby, Beauty and others will be ready about May 20th. Local customers get these in boxes, generally 100 plants in a box, and return the boxes.

Prices will be 10c. per doz., 50c. per 100, \$5.00 per M. Good plants, not grown with as much room, \$2. to \$3. per M

EGG PLANT.

Extra strong plants about May 10th to June 1st at 25c. per doz. \$1.50 per hundred, and \$12.00 per M.

STRAWBERRY PLANTS.

We have a fine lot of strawberry plants this season, as described below, most of them on our Sanborn farm, from which place they will be shipped as early as the season for digging will permit. Those marked (P) are pistillate and need every third or fourth row of a staminate variety, to fertilize them perfectly. If wanted by mail, add 4c. a dozen and 25c. per 100, postage.

Brandywine. A large, rather late berry, very firm, and uniform in size and shape, stand shipping well, look attractive, and have high flavor, though rather acid. There are scarcely

more quarts per acre than many of the new varieties. and it will thrive and do well where others die. Doz. 15c.; 100 30c.; 1000, \$2.00.

Warfield. (P) Of the Crescent type. A great grower and bearer, but if the plants are too closely matted the berries will be small. It is of the best quality canned. Dozen, 20c.; 100, 30c.; 1000, 2.50.

Greenville. (P) A berry quite like the Bubach but firmer. A good grower and great bearer. One of the best berries out. Doz. 20c.; 100 40c.; 1000 \$3.50.

Marshall. A fine berry but not profitable under ordinary or poor cultivation. It makes very large plants and must have high culture. Berries are firm, very attractive and good. Doz. 20c.; 100, 40c.; 1000, \$3.50.

Wm. Belt. A very large, late berry, often misshapen, but monstrous size. A good grower and profitable berry. Dozen, 20c.; 100, 40c.

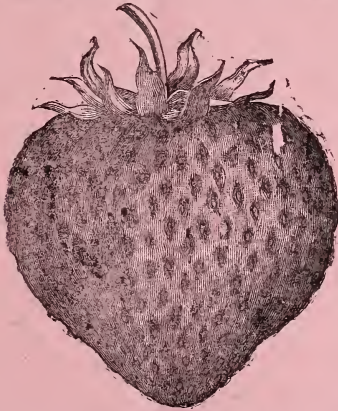
Cyclone. Of the Crescent type, but earlier and larger berry; a great bearer. Dozen, 20c.; 100, 40c.

Cumberland. A reliable old standby. Does best on clay soil, produces large berries nearly every one just like the other; fine quality. Dozen, 20c.; 100, 35c.

Parker Earle. The greatest bearer of all, needs high culture, and rich soil with plenty of moisture to carry its immense load of berries to perfection. Dozen, 25c.; 100, 40c.

Erie. The best late berry on the place so far as we have tried it. Extra quality. lots of berries, and latest of all. Dozen, 25c.; 100, 50c.

Timbrell. A very late berry, very productive and fine quality. A fine berry for home use, but not attractive enough for market. Dozen, 20c.; 100, 35c.



any small berries, and while it does not bear as heavily as some, the berries are all so large and fine that it commands a higher price than others. Dozen, 20c.; 100, 35c.; 1000, \$3.00.

Haverland. (P) A wonderful bearer. Its mass of berries are borne on long stout stems that push out on all sides. Its earliness and great productiveness make it very profitable. It stands drouth better than any other variety, but it is rather soft to ship. Dozen, 20c.; 100, 35c.; 1000, \$3.00.

Dayton. A splendid variety to fertilize the Haverland. Not quite so productive, but the berries average larger. It resembles Haverland in looks and will pick well with that variety. Dozen, 20c.; 100, 35c.; 1000, \$3.00.

Crescent. (P) An old standby for productiveness and vigorous growth. Early, but berries are not large, still it yields as a rule,

A BARGAIN OFFER. We have a block of all fine varieties that have run together, which include most all the varieties offered above, besides many new ones that we have not offered, such as Carrie, Margaret, Michigan, McKinley, Anne Kennedy, Bubach, etc. Where one does not intend to sell plants they are just as good as though they were separate. In fact this mixing up insures the most perfect fertilization and finest berries. Just the thing to plant for a family supply of berries. There are no poor ones in the lot. For an even \$1.00 we will send you by mail, postpaid, 200 of these plants; or, for \$1.00 we will send by express, 500 plants, you paying express charges. Your order should be in early if you wish them, as late in the season we tear up with the cultivator what are left between the rows.



THE "CUMBERLAND" COMPARED WITH WILSON BLACKBERRY.

The New Cumberland Raspberry. (THE "BUSINESS BLACK CAP.")

We have taken pains to inquire closely about this new berry and could discover only praise for it from practical growers. The Rural New Yorker, that excellent authority, has this to say about it; "Berries large, black, with scarcely any bloom; drupelets small, quality excellent; about the size of Gregg, firm, and of better quality. Among the earliest to ripen; beautiful glossy black berries. Plants very prolific, 10 to 14 berries to a cluster. The plants stood the winter uninjured." J. M. Kerr, Denton, Md., says, "This Cumberland is really a marvel. Fifteen-sixteenth of an inch in diameter was the size of as large a berry as I saw; and they were all large."

Price, 2¢ cents each; \$1 00 per dozen; \$8 00 per 100.

CAMPBELL'S EARLY GRAPE.

This is a new black grape, claimed to be as early as Moore's Early; of good size and exceptional shipping qualities; clusters and berries large, of a glossy black, pulp sweet and juicy; free of foxiness, seed small, few, and part readily from the pulp. The vine vigorous and hardy, and fills the requirements of an early market grape. - At the Chautauqua Horticultural society this was awarded 96 points out of a possible 100, much the highest ever gained by a seedling exhibited before the society.

Price, 1 yr No. 1 75 ea.; 2 yr. No. 1 \$1.00 each.

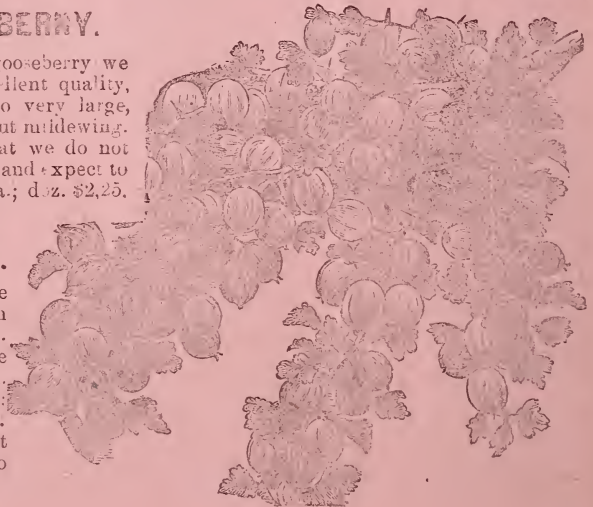
COLUMBUS GOOSEBERRY.

This is the largest and finest gooseberry we have ever seen. It is hardy, excellent quality, and we were surprised to find it so very large, and to have it stand so well without maldewing. We have seen so much of this that we do not look for much of anything better, and expect to plant it largely. Price 25c. ea.; doz. \$2.25.

**NORWAY SPRUCE
EVERGREENS.**

We have a nice block of these that we must remove, and offer them at a bargain, to close them out. They are nice, trees, and just the thing for wind-breaks. 10 to 12 in. 8c.; \$5.00 per 100; 18 in. 10c.; \$7.00 per 100; 2 ft. 15c.; \$9 00 100.

These are easy to make grow, but the roots must never be exposed to air and wind, or they will die.



Our Special List of Vegetables, Etc

Keeney's Rustless Wax Bean.

This is a bush bean, but throws out short tendrils on which additional pods are formed. The pods are meaty, well-filled, thick, flat when young, and semi-round later; of rich yellow color and fine quality. Pkt. 5c.; pt. 12c.; qt. 20c.; pk. \$1.10; bu. \$4.00.

Thorburn's Refugee Wax.

An immense yielder of long round golden yellow pods, and about the earliest bean out. Pkt. 5c.; pt. 12c.; qt. 20c. pk. \$1.00.

Wardell's Kidney Wax.

This is the best wax bean to grow for market, without exception. It will stand most cold when planted, the pods are large and showy and do not soon become tough and stringy.

Pkt. 5c.; pt. 12c.; qt. 20c.; pk. 1.50

California Wax Pole.

A fleshy, tender yellow wax pole bean that we call the best bean of its season that we have ever eaten.

Pkt. 7c.; pt. 30c.; qt. 50c.

Powell's Prolific.

We call this the most productive pole bean in existence. It is quite late, and the greatest grower we have ever seen. Fine quality, and the nicest thing for pickling.

Pkt. 7c.; pt. 40c.



THE THREE POPULAR BUSH LIMA BEANS.

HENDERSON'S BUSH.

This is the earliest Lima, and though small, it is profitable because it is such an immense bearer. It is of good quality, and ought to be grown by everybody.

Pkt. 5c.; pt. 10c.; qt. 18c.

BURPEE'S BUSH.

This is a true large Lima, growing in a dwarfish bush, but needs a rich, warm soil, and produces a large, crop of delicious beans that always bring a good price.

Pkt. 5c.; pt. 15c.; qt. 25c.

DREER'S BUSH.

This is the very best quality of all the Lima beans we have ever tasted. It is a short thick bean, crowded in the pods, and ripens up some earlier than Burpee's.

Pkt. 5c.; pt. 15c.; qt. 25c.

We send a packet of each of the above three Lima Beans for only 12 cts.

New Surprise Beet.

This is the earliest beet we have. It is not so dark red but large, and of good shape and appearance, and sells well. Pkt. 3c.; oz. 8c.; lb. 60c

Detroit Dark Red.

An early, round, very dark red beet, with a small, upright growing top. A very fine table or market beet; Pkt. 3c.; oz. 8c.; lb. 60c.

Crosby's Egyptian.

Carefully selected from the original Egyptian. While just as early, it is better in form and quality and is largely grown by market gardeners.

Pkt. 3c.; oz. 8c.; lb. 45c.

Half Dwarf Brussel Sprouts.

One of the most delicious vegetables, and this is one of the best varieties, bearing handsome solid sprouts. Pkt. 5c.; oz. 18c.

CABBAGE.

Early Jersey Wakefield.

The most reliable first early cabbage we have ever grown. Its peaked heads are always solid and fine quality.

Pkt. 4c.; oz. 20c.; lb. \$2.00.

Henderson's Early Summer.

The earliest, and most satisfactory; flat headed variety, a little later than Wakefield, and if very early generally brings good prices.

Pkt. 3c.; oz. 15c.; $\frac{1}{4}$ lb. 50c.; lb. \$1.80

Henderson's Succession.

As a general crop cabbage this is about as satisfactory as anything we know of. It is large, solid, not inclined to burst, and scarcely any of the plants fail to make good marketable heads. If planted early it comes close after Early Summer, and planted in June and July is a good late variety.

Pkt. 4c.; oz. 18c.; $\frac{1}{4}$ lb. 50c.; lb. \$1.80

The Holland or Ball Head Cabbage.

This is a remarkably hard, heavy, cabbage. It is not as large as some of the domestic varieties, but can be planted closer, and brings more per ton. The demand has been great for it, and it will continue to be largely planted. It is a remarkable keeper. We have been careful to obtain a supply of seed this season that we have reason to believe is pure and can be depended to produce a heavy crop. It has been offered under different names, but if the stock is true it is identical.

Pkt. 5c.; oz. 25c.; lb. \$2.50.

The VANDERGAW.

For a late domestic cabbage this is about as satisfactory as anything we have ever tried. The heads are large, flat, and not inclined to burst.

Pkt. 3c.; oz. 18c.; lb. \$1.80.

EARLY SNOWBALL CAULIFLOWER.

We have made a specialty of growing fine Cauliflower for market, and find a true strain of Early Snowball about as reliable as any. The influence of season, soil and cultivation has much

to do with growing fine Cauliflower, yet with poor soil it will be almost impossible to produce a good crop, and we are careful to furnish first class seed. The Snowball is early, solid and heavy, and adapted for both early and late crop. Pkt. 10c.; $\frac{1}{4}$ oz. 75c.; oz. \$2.

Chantenay Carrot.

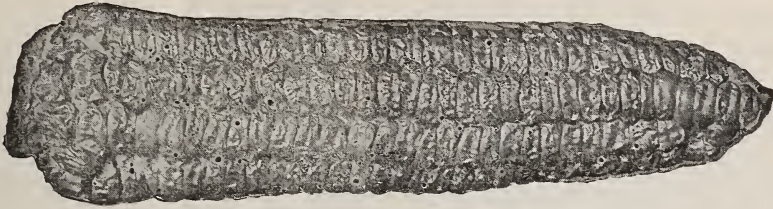
As good a carrot as we have ever grown. They are half-long, good size, and easy to dig. A nice looking carrot and good quality. Pkt. 3c.; oz. 7c.

New Jersey Egg Plant.

The best Egg Plant we have tried. They always produce a satisfactory crop and everyone ought to grow a few for home supply. Large, purple, and very few spines. Have good strong plants to set out when settled warm weather comes.

Pkt. 5c.; oz. 25c.



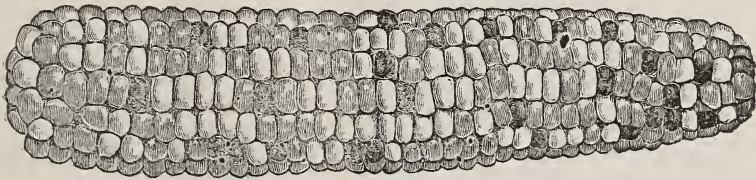
**BLACK'S EARLY.**

A pure white sweet corn as early as Cory, but with a larger ear, and entirely free from the red shade shown in the Cory, Marblehead and others. Pkt. 5c.; pt. 7c.; qt. 12c.; pk. .75c.

EARLY EVERGREEN.

This is a selection for earliness from Stowell's Evergreen, which it resembles, but is a week or ten days earlier. It has a white cob, and is one of our most profitable varieties when we can get it into market early. It always sells well because it is better quality than others of its season.

Pkt. 5c.; pt. 8c.; qt. 15c.; pk. 1.00; bu. \$3.50.

**VARIEGATED POP CORN.**

This has different colored kernels on the same ear, and is very attractive, and a good popper. It yields well and ripens early.

Pkt. 5c.; pt. 15c.; qt. 30c.

PERLE LE GRANDE CELERY.

A strong, thrifty, grower, blanches up nicely, and presents a strikingly handsome appearance when trimmed ready for market, and has a rich nutty flavor. Its full golden heart seems to blanch up more quickly than some of the older varieties.

Pkt. 6c.; oz. 30c.; ¼ lb. \$1.00.

White Plume.

A popular early celery. It is not as good in quality as the Perle Le Grand, but for an early celery it stands without an equal. It always shows some green plants amongst it that will not blanch so well. The proportion of green plants should be very small however.

Pkt. 3c.; oz. 20c.; lb. \$2 00.

LIVINGSTON'S EVERGREEN CUCUMBER.

This is the best cucumber for pickles we have ever grown. Our experience is that it is twice as productive as White Spine, and the cucumbers sell well, being of good shape and color.

Pkt. 5c.; oz. 8c.; lb. 40c.

WHITE WONDER.

A large white cucumber for slicing. Very productive and good quality. Pkt. 3c.; oz. 6c.

THORBURN'S EVERBEARING.

A new variety that begins to bear early and continues until late. Fine for pickles, and borne profusely.

Pkt. 5c.; oz. 8c.; ¼ lb. 25c.



PERLE LE GRANDE.

NEW SENSATION LETTUCE

This is the finest lettuce we have ever grown. It is very attractive, the leaves being beautifully crimped and blistered, like spinach, and the quality the very finest of any we have ever grown.

Pkt. 5c.; oz. 20c.; lb. 2.50.

Denver Market.

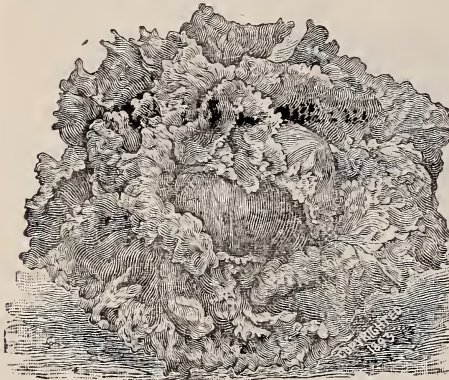
A fine curled lettuce of good quality. The heads are oblong, and the leaves crumpled like avoy cabbage.

Pkt. 3c.; oz. 8c.; lb. 80c.

New Iceberg.

Large, crimped and curly leaves, of a bright green, slightly tinged with red, always perfect in quality, standing a long time without going to seed, and heads exceedingly hard.

Pkt. 4c.; oz. 10c.; lb. \$1.00.



ICEBERG.

**Emerald Gem Musk Melon.**

This is the best in quality of all the melons we have ever grown. They are early, grow on soil not naturally well adapted to melon growing, and when customers once get them they always want them. They are small, and we market them in 8 and 10 pound baskets. As they produce the crop near the root they can be planted close.

Pkt. 3c.; oz. 6c.; lb. 45c.

Osage or Miller's Cream

This is a medium sized oblong melon, with firmer flesh than the Emerald Gem, and of very good quality. It is a very popular melon, and many hotels mention it by name on their bill of fare. It is of a greenish color outside, and beautiful thick yellow flesh inside.

Pkt. 3c.; oz. 6c.; lb. 45c.

Jersey Belle Musk Melon.

This is the most satisfactory large early green-fleshed melon. The cut shows the shape and appearance very accurately, and more than all, the quality is good, and it bears heavy, but prefers a light or sandy soil. Nearly as early as Jenny Lind.

Pkt. 5c.; oz. 8c.; lb. 50c.

The Tip Top.

This is a large melon of uniform good quality that is giving good satisfaction. It is the best large melon we have ever grown. The flesh is red, thick, and of high quality, and the outside appearance of a cream color, with a light netting.

Pkt. 4c.; oz. 8c.; lb. 50c.

Green Curled Endive.

The best fall and winter salad. Very hardy, with beautiful, cut and curled dark green leaves which blanch to a snowy whiteness when tied up. Very crisp and tender.

Pkt. 5c.; oz. 15c.



JERSEY BELLE.

FORDHOOK EARLY WATER MELON.

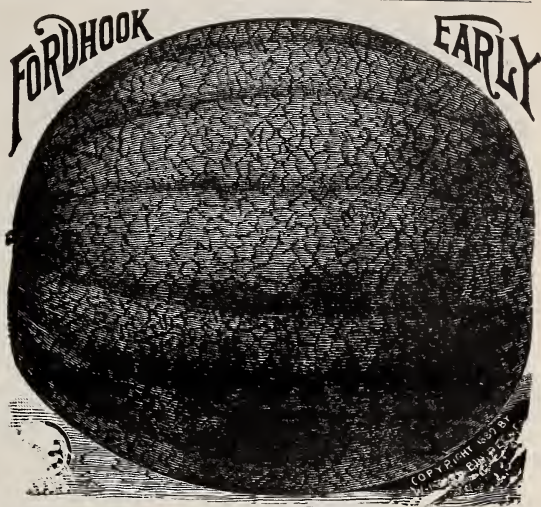
Claimed to be the first early, good flavored melon that is of largest size, and to average 35 lbs. each, a size seldom attained by other extra early melon.
Pkt. 5c oz. 10c.; $\frac{1}{2}$ lb. 30.

Red Vaclause Water Melon.

An elongated egg-shaped water melon that has been very early with us, and of good size. More than all, the bright crimson flesh is about the best quality of any melon we have tried. The rind is very thin, but tough, dark green, beautifully threaded with a still darker green. Pkt. 5c.; oz 10c.; $\frac{1}{2}$ lb 20.

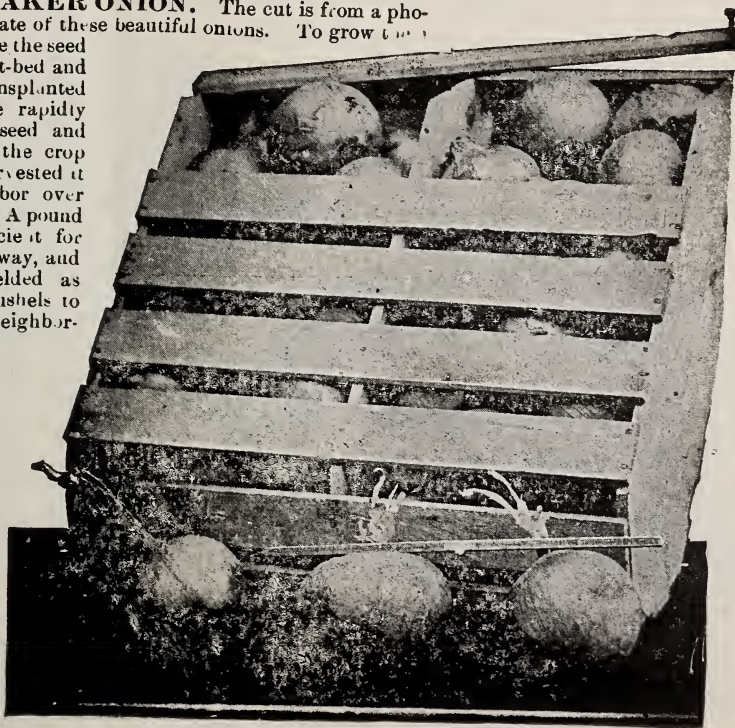
Duke Jones Water Melon.

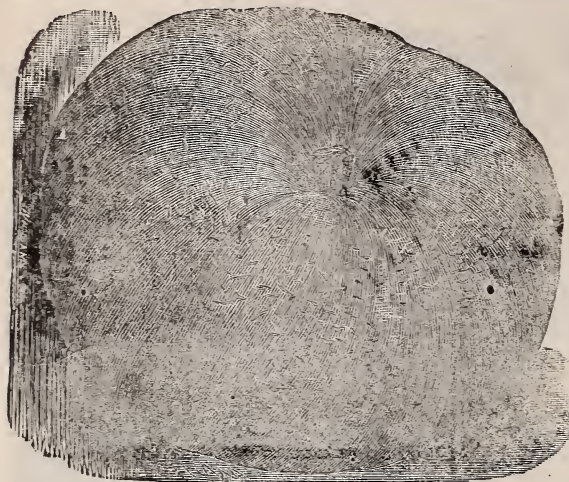
A new melon from the south, claimed to be the largest, the most prolific, and very early. 800 melons averaging 43 pounds each, said to have been gathered from two thirds of an acre. A large grower of melons urges us to catalogue this variety, as he says he picked ripe melons from it just 61 days after planting the seed, and says furthermore there is no melon its equal in delicious flavor. Pkt. 5c. oz. 10c.; $\frac{1}{2}$ lb. 30



PRIZE-TAKER ONION. The cut is from a photograph of a crate of these beautiful onions. To grow them

is sown in a hot-bed and the plants transplanted which can be rapidly done, saving seed and weeding, and the crop can also be harvested it a saving of labor over the old method. A pound of seed is sufficient for $\frac{1}{4}$ acre in this way, and they have yielded as high as 2000 bushels to the acre, in our neighborhood. They are very mild, and command a high price, as they greatly resemble imported Spanish Onions and often sell at \$1.00 or more a bushel, especially if got into market early. Pkt. 5c ounce, 15c.; lb \$1.50. Plants for sale in season \$1. per M 500 for \$3 50 10,00, \$5.00.





KING OF MAMMOTH PUMPKIN.

ALASKA PEA.

For first early we sow and sell more of this than all other early kinds put together. They are not only as early as any, but are very productive, and the pods of good size. We have tried ever so many kinds claimed to be earlier, but we always fall back on this.

Pkt. 5c.; pt. 10c.; qt. 18c.; pk. 75c.; bu. \$2.75.

Telephone Pea.

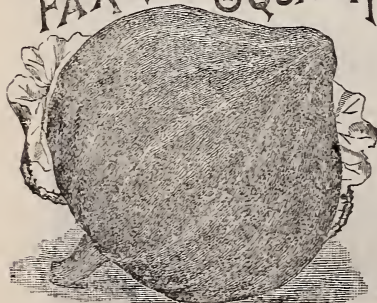
This is an extra large second early pea that has paid us about the best of any we have tried. They are extra sweet, and on account of their large size are easy to pick. They bear well, and can be picked at one or two pickings at most, and always bring a good price.

Pkt. 5c.; pt. 10c.; qt. 18c.; pk. \$1.10; bu. \$4.00

Melting Sugar.

An edible podded variety that can be used in same way as a wax bean. It grows five feet tall, and bears a profusion of large flat pods, very brittle and tender.

Pkt. 7c.; pt. 15c.; qt. 25c.

THE FAXON SQUASH

COPYRIGHT, 1893, BY N. B. FAXON CO.

King of Mammoth Pumpkin.

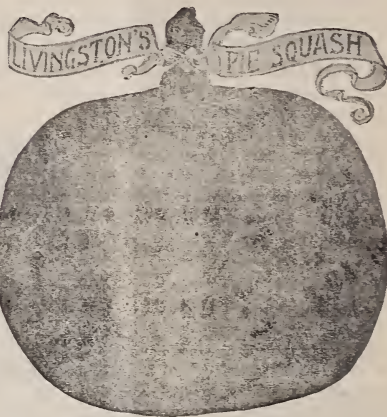
The very largest pumpkin grown, slightly ribbed at the ends, grows to an enormous size, often three feet in diameter. Skin salmon colored, flesh bright yellow, fine grained and good. Pkt. 5c.; oz. 10c.; lb 75c.

Calhoun Pie Pumpkin.

A cream-brown colored pumpkin, with deep salmon yellow flesh, making pies of fine quality and good color. A very "fixed" variety. Small seed cavity. Pkt. 4c.; oz. 8c.; lb. 50c.

Livingston's Pie Squash.

This new squash is sweet, very fine grained and unexcelled for pies. The skin is russet and of a dark orange color very attractive. Flesh thick, fine. Pkt. 5c.; oz. 8c. lb. 75c.

**The Faxon Squash.**

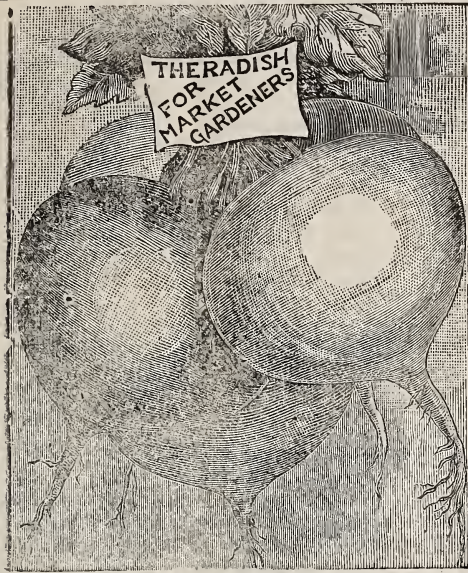
A good table squash, very dry and sweet, and a good keeper, bearing wonderfully, but producing squashes of many colors and not very uniform in shape. This variability in marking seems to be a fixed characteristic of the variety. The quality is so exceptionally fine that even the Hubbard does not come up to it in this respect.

Pkt. 4c.; oz. 6c.; lb 40c.

Cincinnati Market Radish.

This is of the Wood's Early Frame type, and is considered one of the hand-somest long red radishes in cultivation. The Miller Fruit and Vegetable Co. of Columbus O., say, "Some weeks our sales run as high as 1000 dozen bunches of this radish. We have furnished the most fastidious trade in this city. Its season is the year round, always salable, none other is wanted when it is on hand."

Pkt. 5c.; oz. 10c.; 1/2 lb. 30c.



LARGE WHITE GLOBE.

Early Scarlet Globe Radish.

One of the best forcing radishes. It begins to form a bulb almost as soon as the second leaves are out, and grows very rapidly. Very attractive and crisp.

Pkt. 5c.; oz. 10c.; lb. 75c.

Large White Globe.

Is largely grown for market in the summer. It is pearly white, crisp and solid. (See cut.)

Pkt. 4c.; oz. 8c.; lb. 50c.

Chartier.

A smooth, long red radish, of good size and always good quality. A popular variety.

Pkt. 3c.; oz. 6c.; lb. 40c.

Hubbard Squash.

There is nothing on the market today to supercede this old standby. Many new varieties are claimed to be better, but by and by they drop out, and the Hubbard continues to be the standard.

Pkt. 3c.; oz. 6c.; lb. 50c.

Sibley Squash.

Much like the Hubbard, but thick at the stem end. We think it is sweeter than Hubbard.

Pkt. 4c.; oz. 6c.; lb. 40c.

FORDHOOK SQUASH.

An excellent little squash for home use but of no reputation as a market variety. They are yellow inside and outside, and are best simply sliced and boiled, skin and all, and even when only half grown they are better than the summer squashes.

Pkt. 5c.; oz. 7c.; lb. 50c.

NEW IMPERIAL TOMATO.

The originator says he has grown 7000 bushels of ripe fruit of the finest quality from 4500 plants, and that there is not another tomato on the market that will produce as many so fine tomatoes as this. We have grown it the past season, and it is about the best tomato for this market that we have. Its claims for extra earliness are not sustained, but for a main crop tomato it has the color, shape, solidity, good looks and great bearing qualities to give it the foremost rank. Pkt. 5c.; oz. 25c.; lb. \$3.00

Fordhook First Tomato.

This is a real nice tomato but is not as early as has been claimed. It is perfectly smooth, and solid, ripens up evenly all over, and it bears well. It resembles Beauty, but does not average so large.

Pkt. 5c.; oz. 20c.

Early Ruby.

When properly handled this is the most profitable early tomato. It is of an open, spreading habit, and ripens up its whole crop very early.

Pkt. 4c.; oz. 20c.



"FORDHOOK FIRST."

General List of Select Seeds.

The following gives a complete list of what we consider the best varieties. If wanted by mail, always add 8c. per lb., and 15c. a quart for peas and beans, and 10c. a quart for corn. Half bushel at bushel prices. Peck prices 10c. more than $\frac{1}{4}$ of bushel price. Half lb. at lb prices.

Asparagus.	lb.	oz.	pkt
Conover's Colossal,	\$.25	6	3
Palmetto,	.50	8	4
Elmira,	.75	10	5

Asparagus Roots.	1000	100	12
Conover's Colossal 2 yr.	4.00	45	10
Palmetto, 2 yr.	5.00	60	20

Beans, Dwarf.	bu.	qt.	pt.
Earliest Red Valentine,	6.00	25	15
Thor. Refugee Wax,	4.00	20	12
Keeney's Rustless Wax	4.00	20	12
Yosemite Wax,	8.00	30	18
Improved Black Wax,	5.00	20	12
Golden Wax,	3.50	18	10
Wardell's Kidney Wax,	5.00	20	12
Large White Kidney,	2.25	15	8
White Wonder,	2.00	12	7
Henderson's Bush Lima,	5.00	18	10
Burpee's Bush Lima,	6.00	25	15
Dreer's Bush Lima,	6.00	25	15

These are all 5 cts. a packet.

Beans, Pole.			
Golden Cluster,	5.00	20	12
Lazy Wife's,	6.50	25	15
Jersey Early Lima,	5.50	25	15

Beets.	lb.	oz.	pkt
New Surprise,	.75	8	3
Eclipse,	.36	6	3
Croby's Egyptian	.50	8	3
Detroit Dark Red,	.60	8	3
Columbian,	.50	8	4
Long Blood Red,	.36	6	3
Early Blood Turnip,	.36	6	3

Mangles.			
Golden Tankard,	.24	5	2
Yellow Globe,	.24	5	2
Imperial Sugar,	.24	5	2
Giant Long Red,	.25	5	2

Cabbage.			
Early Jersey Wakefield,	1.75	20	4
Charleston Wakefield,	2.00	20	5
Hend. Early Summer,	1.80	15	3
All Head Early,	1.80	20	5
Early Winningsstadt,	1.50	15	3
Henderson's Succession,	1.80	18	4
Holland or Ball Head,	2.50	25	5
Fottler's Brunswick,	1.75	15	3
Vandergaw,	1.80	18	3
Prem. Flat Dutch,	1.50	15	3
Drumhead Savoy,		20	4
Red Stonehead,	2.50	25	5

Cauliflower.	oz.	1/2 oz.	pkt
Early Perfection,	2.00	75	10
Early Snowball,	2.00	75	10
Earliest Dwarf Erfurt,	2.00	75	10

Carrots.	lb.	oz.	pkt
Oxheart,	\$.50	7	3
Chantenay,	.50	7	3
Danver's Orange,	.45	6	3
Large White Belgian,	.40	5	2

Celery.			
Perle Le Grand,	3.00	30	6
White Plume,	2.00	20	3
Golden S.B anching,	2.50	25	4
Giant Pascal,	1.50	18	3
Boston Market,	1.40	18	3
Golden Heart,	1.40	18	3

Sweet Corn.	bu.	qt.	pt.
Core Early,	3.50	15	8
Black's Early,	2.50	12	7
Extra Early Vermont,	3.50	15	8
Early Champion,	2.00	10	6
Country Gentleman,	3.50	15	8
Early Evergreen,	3.50	15	8
Stowell's Evergreen,	3.00	15	8
Mammoth Sugar,	3.50	12	7

All 5c. a packet.

Pop Corn.			
White Rice,	3.00	15	8
Variogated,		20	12

Cucumber.	lb.	oz.	pkt
Early Frame,	.40	6	3
Improved White Spine,	.35	6	3
Long Green,	.40	6	3
Livingston's Evergreen,	.40	8	5
Torburn's Everbearing,	.50	8	5
Medium Green,	.40	6	3
Cool and Crisp,	.45	7	4
White Wonder,	.50	6	3

Endive.			
Green Curle l,	1.25	15	5

Egg Plant			
N. J. Imp'd Purple,	3.50	25	5

Leek.			
American Flag,	1.00	15	5

Lettuce.			
Grand Rapids,	.80	8	3
New Sensation,	2.50	20	5
Iceberg,	1.20	10	4
Denver Market,	.80	8	3
Salamander,	1.00	8	3
New York,	1.00	8	3
Hanson,	.80	7	3

Kohl Rabi.			
White Vienna,	1.25	15	5

Musk Melons.			
Emerald Gem,	.45	6	3
Tip Top,	.50	8	4

	lb.	oz.	pkt
Grand Rapids.	.45	8	3
Osage or Miller's Cream,	.45	6	3
Jersey Belle,	.50	8	5
Acme,	.45	6	3
Banquet,	.45	8	4
Shunway's Giant,	.45	8	3
Peach or Mango,	.60	10	5
Water Melon.			
Fordhook Early,	.60	10	5
Hungarian Honey,	.60	10	5
Sweetheart,	.40	7	3
Mammoth Ironclad,	.35	7	3
Kolb Gem,	.35	7	3
Seminole,	.40	7	3
Peerless,	.45	8	3
Stoke's Extra Early,	.70	10	5
Colorado Preserving,	.40	8	3
Onions.			
Danver's Globe,	1.10	10	3
" Round Yellow,	1.00	10	3
Southport Red Globe,	2.25	20	5
" White "	2.25	20	5
Prizetaker,	1.50	15	5
White Pearl,	2.00	20	5
Red Wethersfield,	1.10	10	8
White Barletta,	2.00	15	5
Farsnips.			
Guernsey Hollow Crown,	.30	5	3
Parsley.			
Double Curled,	.50	8	4
Peas.			
	bu.	qt.	pt.
Alaska,	\$2.75	16	9
Philada. Ex. Early,	2.80	14	8
American Wonder,	4.25	18	10
McLean's Gem,	3.25	16	9
H'sfd's Market Garden,	3.50	16	9
Telephone,	4.00	18	10
Stratagem,	4.50	20	12
Marrowfats,	1.80	10	6
Pepper.			
	lb.	oz.	pkt
Ruby King,	2.00	20	4
Bull Nose,	1.75	15	3
Golden Dawn,	1.75	15	3
Red Cayenne,	1.75	15	3

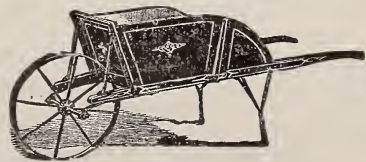
All 5c. a pkt.

	lb.	oz.	pkt
Pumpkin.			
Early Sugar,	.40	8	3
Nantucket,	.45	8	3
King of Mammoth,	.75	10	5
Calhoun,	.50	8	4
Radish.			
White Tip'd Scarlet Ball,	.60	8	4
Early Scarlet Globe,	.75	10	5
Early Scarlet Turnip,	.40	6	3
Scarlet Olive-shape,	.40	6	3
Cincinnati Market,	.60	10	5
Large White Globe,	.50	8	4
Long White Vienna,	.45	7	3
Chartier,	.40	6	3
Chinese Rose Winter,	.60	10	4
Salsify.			
Mammoth Sandwich Is.,	.80	10	5
Squash.			
Summer Crookneck	.45	6	3
Giant Summer Crookneck,	.50	8	4
Early Orange Marrow,	.45	8	4
Boston Marrow,	.35	6	3
Hubbard,	.50	6	3
Sibley,	.40	6	3
Livingston's Pie,	.75	8	5
Fordhook,	.50	7	4
Faxon,	.40	6	3
Spinach.			
Long Standing,	.20	5	3
Bloomsdale,	.20	5	3
Tomato.			
Early Ruby,	2.50	20	4
New Imperial,	3.00	25	5
Fordhook,	2.25	20	4
Beauty,	1.80	18	3
Ignotum,	1.80	18	3
Matchless,	2.00	18	3
Dwarf Champion,	2.00	18	3
Turnip.			
White Egg,	.35	6	3
White Globe,	.35	6	3
Purple Top Strap Leaf,	.32	6	3
Breadstone,	.32	6	3
Purple Top Ruta Baga,	.32	6	3

they are coming up. 5 lbs. 3c. per lb.; 10 lbs. 2 1/2 c. per lb.; 25 lbs. 2c. per lb. 100 lb. \$1.75.

Daisy Wheelbarrow.

The strongest and lightest barrow for gardeners and for general use. Has steel wheel axle



and springs. Springs have adjustable bearings Carries 500 lb. Price, \$4.00; larger size, \$4.50.

Slug Shot.

This is a powder poisonous to insects, either killing them or driving them away. It has been on the market over nine years and a vast quantity has been sold; and so far as known, no injury has come to man, beast, or fowl, by handling it, inhaling its dust, or using fruits and vegetables on which it was used. For the destruction of the striped bug, black fleas, and the green cabbage worm, we know of nothing so effectual.

Price per lb. 7c.; 5 lb. pkg., 30c.; 10 lb. 50c

Tobacco Dust.

One of the best and cheapest insecticides. Sprinkle over and around lettuce plants in green-house, and melon and other vines just as

FLOWER SEEDS.

- Amaranthus, DWARF.**—Dirk, drooping flower spikes; makes a fine bed planted in a circle with the tall in center. Pkt. 5c.
- Amaranthus, TALL.**— Pkt. 5c.
- Aster, DOUBLE MIXED.**—A fine mixture of the choicest of these popular annuals. A variety of colors and forms. Pkt. 5c.
- Aster, QUEEN OF SPRING, WHITE.** One of the earliest, and sells well bunched. Most of these were sold by our commission florist at \$1. per 100 the past season. Pkt. 10c.; $\frac{1}{4}$ oz. 1.50
- Aster, PLEONY PERFECTION.** In three choice colors. One of the best selling asters. Pkt. 5c.; oz. 3.00.
- Balsam, DOUBLE MIXED.**—(Defiance strain) We had trouble in getting good stock of these, as they are inclined to become single, but we think we now have choice stock. Pkt. 5c.
- Beet, ORANAMENTAL CHILIAN.**—Has large leaves that color very beautifully. Pkt. 5c.
- Candytuft, MIXED.**—One of the most useful border annuals. Pkt. 5c.
- Catchfly, MIXED.**— Pkt. 5c.
- China Pink, DIANTHUS, DOUBLE MIXED.** Few flowers can equal these in beauty and profusion of bloom. Pkt. 5c.; oz. 50c.
- Calliopsis, MIXED.**—Requires little care and thrives in any garden. Pkt. 5c.
- Chrysanthemum, ANNUAL.**—These are distinct from the Perennial varieties, and have beautiful flowers. Pkt. 5c.
- Cockscomb, NEW JAPAN.**—The combs are delicately cut. A novelty. Pkt. 5c.
- Dahlia, DOUBLE MIXED.**—Comparatively few are aware that the Dahlia can be grown so easily from seed, and that it flowers so beautifully the first season, that the buying of bulbs is a needless expense. Pkt. 5c.
- Four O'Clock, (MARVEL OF PERU) MIXED.**—As easily grown as a weed, with a profusion and diversity of bloom. Pkt. 5c.
- Gypsophil'a.**—A mass of tiny white star-shaped flowers. Pkt. 5c.
- Helichrysum.**—Popular everlastings with globular flowers. Choice stock. Pkt. 5c.
- Hollyhock, DOUBLE MIXED.**—Tall and noble looking plants. Must be sown in the house early to bloom the first season. Pkt. 5c.
- Larkspur, MIXED.** Of easy culture. Pkt. 5c.
- Marigold, DOUBLE MIXED.**—A well known annual. Choice varieties. Pkt. 5c.
- Mignonette, MIXED.**—A universal favorite on account of its fragrance. Pkt. 5c.; oz. 20c.
- Morning Glory.**—The most popular climber in cultivation. Pkt. 5c.; oz. 12c.
- Nasturtium, MIXED.**—When planted in poor soil it flowers profusely. Pkt. 5c.; oz. 15c.
- Evening Star, WHITE.**—This has been recently introduced. It grows about two feet tall and bears an abundance of large white flowers. It is fine for a house plant. Pkt. 5c.
- Nigella, (LOVE IN A MIST).**—Showy old garden favorites. Pkt. 5c.
- Pansy, FINE MIXTURE.**—Everywhere popular for the brilliance and beauty of its flowers and the long season of bloom. Pkt. 5c.
- Petunia, SPOTTED MIXED.**—Particularly showy in beds or masses. Pkt. 5c.
- Phlox, DRUMMONDII AND STAR MIXED.**—Popular and well-known annuals, thriving everywhere. Pkt. 5c.
- Poppy, DOUBLE MIXED.**—Choice kinds, very fine. Pkt. 5c.
- Poppy, SINGLE.**— Pkt. 5c.
- Poppy, SHIRLEY.**—Very beautiful and showy on account of its many colors. Pkt. 5c.
- Portulacca, SINGLE MIXED.**—Carpets the ground with a brilliant and beautiful bloom. Pkt. 5c.
- Portulacca, DOUBLE MIXED.**—It is always difficult to have them all double, as they soon become single. They are very shy of seeding but we think our seed will give a good percent of double flowers. Pkt. 5c.
- Sweet Alyssum.**—Small, white, and very fragrant flowers produced all summer. Pkt. 5c.
- Sweet Peas, FINE MIXTURE.**—Very beautiful free blooming climbers. One of the most popular flowers. Pkt. 5c.; oz. 10c.; lb. 80c.
- Sweet Peas, QUEEN OF ENGLAND.** Large, pure white, sells well as a cut flower. We get 4 to 10 cts. a bunch for them. Pkt. 5, oz. 25c.
- Sweet Peas, PAINTED LADY.** Rose-colored flowers, produced abundantly and sell well. Pkt. 5c.; oz. 10c.; lb 75c.
- Sweet William.**—A favorite of old-fashioned gardens. Pkt. 5c.
- Scabiosa, MIXED.**—Effective in beds or borders; good for cutting. Pkt. 5c.
- Stock, TEN WEEKS.**—Desirable for potting or the garden. Very fine, Pkt. 5c.
- Verbena, MIXED.**—Produces a mass of bloom until killed by hard frost. The plants must be started in a hotbed or in a box in the house. Pkt. 5c.
- Verbena, PURE WHITE.** Pkt. 5c.
- Zinnia, DOUBLE MIXED.**—One of the most showy plants, and so easy of cultivation that it will always be popular. Pkt. 5c.

Mixed Flower Seeds.—A collection of over 100 varieties and kinds, embracing many that are rare and beautiful. Pkt. 10c.; 3 for 25c.



MAMMOTH VERBENA.

CROZY'S NEW DWARF CANNAS.

These new Dwarf Ever-blooming, Large-flowering French Cannas bloom freely the first year from seed. They are much less expensive and more beautiful for bedding than Geraniums, while even single specimens are most attractive in the garden. The roots can be kept in the cellar over winter, and each clump will give six to eight good roots for planting out the following spring. The mixed seed we offer has been saved from the finest varieties of all colors Pkt. 7c.; 4pkts, 25c.

DWARF NASTURTIUMS.

One of the finest sights on our place this year was a bed of these nasturtiums of a great variety of colors. We believe we offer one of the finest mixtures that can be had. Pkt. 10c.; oz. 30c.

LEMON QUEEN MARIGOLD.

We present the Lemon Queen as the most perfect type of large flowered African Marigold in cultivation. The plants are of good circular form, quite dwarf, and very compact in growth, while they bear in profusion fine, globular flowers of a clear light lemon color. Pkt. 10c.; 3 pkt. 25c.

NEW DOUBLE SUNFLOWER.

We have never seen any single or double sunflowers nearly as fine as this. It grows five feet tall, branches out freely, and in August and September bursts forth a profusion of beautiful golden flowers. It has been carefully perfected by selection, and is as easily grown as a common sunflower. Pkt. 10c. 3 for 25c.

GLADIOLUS.

Our mixed Gladiolus embrace a magnificent variety of colors. The spikes of bloom, richness and brilliancy of color are out of all proportion to the trifling cost. 25c. per dozen; 100, \$2.00

MAMMOTH VERBENA.

A strain of truly magnificent trusses of flowers of unusual size and a wide range of colors. The blossoms are often as large as a quarter dollar. The colors are varied, and of all desirable markings. Pkt. 15c.; 2, 25c.

DEFIANCE PETUNIA.

The largest and finest petunia we have ever seen. It embraces all colors, and the flowers are beautifully fringed and delicately veined. The leaves are large and heavy, of a rich dark green, making a fine background from which the profusion of flowers stand out in bold relief. Pkt. 25c ; 3 pkts. 50c.

THE CINNAMON VINE.

This beautiful climber emits from its flowers a delightful Cinnamon odor. It dies down each autumn, but grows up rapidly in the spring, covering an arbor or trellis early in the season. It has beautiful bright-green foliage, and clusters of delicate white flowers. The vines produce bulbets, by which it is propagated, and the tubers are very fine eating and grow to a large size. A correspondent says: "I have an arbor through my garden entirely covered with them. The perfume is too sweet for description, and passes by note it a distance up and down the road. I have them around windows, porches, and over the garden wall."

We send three tubers postpaid for 25c. 15 for \$1. and 40 for \$2.00.

LARGE LEAVED COLEUS.

A superb strain with large, curled and serrated foliage, of rich and brilliant colors and markings. The plants are vigorous and healthy, growing in a short time to a large size. Pkt. 10c.

Emily Henderson Sweet Pea.

The finest white sweet pea we have ever grown. As white as the driven snow. The flowers are large and perfect, and the stems are stiff and long, and so boldly support the flowers that they seem to look one squarely in the face. Pkt. 6c.; oz. 10c

Marguerite Carnation.

These are easily grown, and if the seed is started early they will bloom in the fall, and if potted and pinched back they bloom freely in the winter. They are very fragrant and the range of colors and markings is simply wonderful. Pkt. 6c.

Golden Gate Poppies.

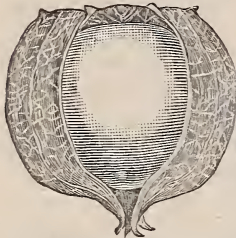
Brilliant in every conceivable combination of colors, striped, blotched and bordered, in single and semi-double. A fine sight. Pkt. 5c.

MISCELLANEOUS.**MAMMOTH RUSSIAN SUNFLOWER.**

A superior variety, and an excellent egg-producing food for poultry. They fatten well on it, and it has a healthful and strengthening effect on them. Pkt 5c.; pt 20c.; qt 35c.

STRAWBERRY TOMATO

[Ground-cherry]



This distinct husk tomato is of a handsome golden color, the size of large cherries, enormously productive, and will keep till midwinter. They have a strawberry flavor, and are unequalled for canning, for pies, preserves, etc., and are indispensable where fruit is scarce or likely to fail. The

plants should be started in a hot-bed, and transplanted like tomatoes. Select seed, packet 5c

**CHUFAS.**

These closely resemble a cocoanut and others in richness and sweetness of flavor. They are much grown at the South for fattening poultry, swine, etc. They succeed perfectly here, yielding immensely, and are considered a rich and healthful food. The principal feature against their culture is, the difficulty to harvest them advantageously; but if harvested at the proper time, they can be shaken into a sieve, and readily separated from the adhering soil. Pkt. 5c.; pt. 30c.; qt. 50c.

NEST EGG GOURD.

This is a rapid climber, quickly covering unsightly objects with a mass of foliage, and later dotted with excellent white nest-eggs, which neither freeze nor crack. They should be planted far away from other vines, as they mix very readily, and even then some overgrown ones will be found, which make excellent pots for starting tomato or other plants. Our seed is from select specimens grown distant from other vines. Packet 5c.

DISHCLOTH GOURD.

This derives its name from the peculiar lining of its fruit, which is of a spongy tough and durable texture. Good for dishcloths, bath-sponges. Pkt. 5c.

DIPPER GOURD.

They make dippers of various size which will last for years. If the vines grow on a trellis, the handles will be straight; otherwise curved. Pkt. 5c.

**SUGAR TROUGH GOURD.**

These Gourds are very useful for many household purposes, such as buckets, baskets, nest-boxes, soap and salt dishes, and for storing the winter's lard. They grow to hold four to 10 gallons each, having a thick, hard shell, very light, but durable, having been kept in use as long as ten years. Pkt. 10c.

ORNAMENTAL GOURD.

These are nicely striped, and have handles. They are nice play things for the children. Pkt. 10c.

POTATO SEED.

This is a choice strain, that will produce a variety of kinds, some of which are likely to prove valuable. It includes carefully hybridized seed, from several growers. Pkt. 10c.

GARDEN DOCK.

This distinct and valuable variety grows to a gigantic size, is rich, tender, fine-flavored, and the earliest of greens—about two weeks earlier than asparagus, and some consider it superior to that popular vegetable. Packet, 5c.

HERBS. (All 5c. a pkt.; 7 pkts. 25c.)

Anise,	Lavender,	Summer Savory.
Caraway,	Horehound,	Sweet Basil,
Dill,	Sage,	Thyme

STACHYS, OR CRONES.

These are remarkably productive when planted in rich soil, but the tubers do not grow over two inches long, and are rather late for the far north, but the quality is generally considered good, when fried or boiled, like potatoes. They are snow-white, and very curious. Doz. tubers, 20c.; 100, 50c.

Mixed Seeds.

The following are choice kinds, all grown separately and mixed, and embrace a great variety, often interesting, and also contain varieties that have not been offered in the catalogue.

Price 5c. per pkt., or the whole collection for 20c.	
Mixed Lettuce.	Mixed Water Melon.
Radish.	Cucumber.
Tomato.	Beet.
Musk Melon.	

Curiosities.

Some of these are useful besides being curious, odd, and interesting.

Price 5c. per pkt., or the whole collection for 20c.

Strawberry Spinach.
Ram's Horn Bean.
Cuba Asparagus Bean.
Red Currant Tomato.
Snake Cucumber.
Animated Oats.

Sacaline.

Much has been said about this, and its value has probably been overestimated, as a forage plant. We offer it for what it may be worth. Pkt. 5c.

Lathyrus Sylvestris.

This makes a slow growth at first, but when once established makes a rapid and wonderful growth, the roots penetrating deep, and it is a good forage plant. Pkt. 5c.; oz. 40c.; ¼ lb. \$1.00.

Amber Cane.

The popular variety of Sugar Cane Postage 10c. per quart. Pkt. 15c.; qt. 25c.

CHEAP ENOUGH.

‘THE MARKET GARDEN’

A monthly, 20 page Illustrated Magazine, is the only Special Organ of Market Gardeners in the United States. Subscription price, 50 cts. per year. Agents wanted.

Vick's Illustrated Monthly Magazine, is published at Rochester, N. Y., at 50 c s. per year.

“Vegetables for the Home Garden,” is a valuable book for all who make gardens. 125 pages; 75 cuts.

We want names of gardeners and farmers to whom to send sample copies. Stamps taken as cash. Mention this catalogue.

Address **THE MARKET GARDEN CO., Minneapolis, Minn.**

For Twelve (12) Cents,
and a few names we send **The Market Garden** six (6) months to any address.

For Twenty (20) Cents,
and ten (10) names, we send **The Market Garden** 6 mos., and **Vick's Magazine** 6 mos.

For Thirty (30) Cents,
and ten (10) names, we send **Market Garden** 6 mos., 6 back numbers of same, **Vick's Magazine** 6 mos., and **Vegetables for the Home Garden.**

For Half-a-Dollar.
and 15 or 20 names, we send **Vegetables for the Home Garden**, postpaid, **Both Magazines** a full year, and 6 back numbers of **Market Garden.**

SEND at ONCE.

BEEKEEPERS!

Send for any and all of the following, which will be sent free, provided you mention that you saw the advertisement in Weckesser's catalog:

Sample copy of

GLEANINGS IN BEE CULTURE.

a semi-monthly journal on Bees, Honey, & Home Interests

FACTS ABOUT BEES.

A 64 page circular brimful of information on the subject of honey production and management of bees, etc.

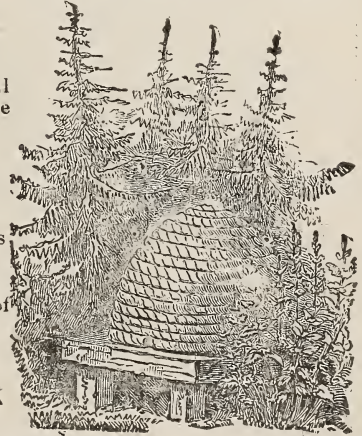
—A CATALOGUE OF—

BEESKEEPERS' SUPPLIES

The finest and most complete ever issued.

Handling Farm Produce. A little pamphlet of interest to farmers' and producers of vegetable crops. Address your requests to

→**THE A. I. ROOT CO., MEDINA, OHIO.**←



BOOKS ON GARDENING,

Horticulture, And All Farm Topics; Also All The Leading Publications Devoted to Agriculture, Stock Raising, Poultry and Miscellaneous Rural Industries, Supplied at Special Prices with

THE MARKET GARDEN Published monthly at 50 cents per year.

Send for estimates on what you need.

THE MARKET GARDEN CO., Minneapolis Minn.

Poultry Breeders.

Who wish to exchange good stock at cash prices for advertising in one of the brightest mediums going to all parts of the country, should write for further information, stating what they have to sell, and address, **P. O. Box 1000,**

Minneapolis, Minn.

GRAPE VINES.

NOTICE.—Prices quoted are for 1 yr. No. 1 vines, unless otherwise noted. Price of 2 yr. No. 1 will be $\frac{1}{2}$ more. Our vines are grown in the open ground, and are strong, healthy and well rooted. Postage on vines, 20 cents per 10 and 4 cents each on single vines, additional to prices annexed.

GREEN MOUNTAIN. This is, as far as we know the most profitable, as well as by far the earliest white grape in cultivation. It ripens about Aug. 25th in this section. The quality is really fine for so early a grape, and it is healthy, hardy and a good grower, and bears a good crop. It is the most promising early grape we know, and it will no doubt be largely planted for early market. We are confident if it does as well at other places as it does here, none of our customers will be disappointed in it. Price, 1 yr. vines 28c. each, 10, \$2.50

MOORE'S DIAMOND. This is of Concord parent age but is a white grape that promises to take the lead in that line, surpassing Niagara in appearance, and better in quality. Berries and bunch large. The vine is a strong grower, with healthy foliage, and is a very abundant bearer.

Price, 12c.; 10, 90c.; 100, \$7.50.

NIAGARA. This is remarkably vigorous and productive, as well as healthy and hardy, and for many sections is no doubt the best white grape grown. 7c. each; 45c. per 10, 100, \$3.00,

BRIGHTON. A fine, large, dark-red grape; a strong grower with healthy foliage, and is productive and of excellent quality. It ripens early, and is, in all fairly good grape-growing localities, one of the most profitable and satisfactory grapes for garden and vineyard planting. 12c., 10, 75c.; 100, \$6.

MOORE'S EARLY. A popular early black grape. Large, good quality. 12c. each, 10 75c. hundred, \$6

WORDEN. This may be called an improved Concord. It is a week to ten days earlier and is as hardy, healthy, and productive, and by some considered of better quality. We think it is preferable to Concord, and it is decidedly so where Concord does not always ripen perfectly. 9c.; 10, 60c. 100, \$4.50

CONCORD. Popular, well-known, succeeding everywhere, and abundantly producing fruit of good quality. Each, 6c.; 10, 30c. 100, \$2.40.

Five of a kind, at the rate per ten. Ten not less than three of a kind, at the same rate.

RASPBERRY-PLANTS.



THE COLUMBIAN. A new variety that seems to be a cross between Gregg and Culbert, and seems to be unlike any other raspberry now in cultivation, in some respects. It propagates from tips only, never suckers, is entirely hardy, fruit very large, often an inch in diameter, color dark red, seeds small, berries adhering firmly to the stem, and has a distinct flavor. It holds its form well when canned, and is of a richer flavor than any other variety. It is a wonderfully vigorous grower, and the berries grow on separate stems two to four inches long, and do not crumble in picking. It bears shipping well, and last, but not least, is a wonderful bearer, said to have yielded 8000 quarts to the acre. Price, dozen, 50c.; hundred, \$3 00

BLACKBERRY PLANTS.

Postage, 8c. per dozen; 50c. per 100 additional.

SNYDER. An early variety and the standard for hardiness; very productive. Doz, 50c, 100, \$1.50

Taylor's Prolific. This is a reliable hardy sort, sweet, larger than Snyder, marvelously productive, weighing low its strong canes with the burden of fruit. Doz, 50c.; 100, \$1.50.

GOOSEBERRIES.

DOWNING. The largest American variety. It is whitish green, and good quality, 10c. each, 85c. 10

PALMER. This although comparatively new has become the standard Early Black Cap. The canes are of iron clad hardness. Strong and vigorous bearing heavily. The fruit is very early and fine quality. Doz. 40c. per 100, \$1.00; M \$8.

GREGG. The leading late blackcap, and a popular market sort. Largest of all, and good quality. Doz. 35c.; 100 \$1.; M \$8.

OHIO. Our second early, and a good one. Hardy and productive, and the leading sort for evaporation. Doz. 35c.; 100, \$1.00; 1000, \$7.

CULBERT. Decidedly the best red raspberry in general cultivation, and the leading market sort. It is hardy, large, firm, and of good quality, and so much more productive than any other variety that it is about the only red raspberry that is extensively grown for market. Doz. 30c.; 100, \$1.; \$7.50 per M

SHAFFER. This variety is propagated by tips, like blackcaps, but is such a rank upright grower that it is hard to propagate, and therefore the price is higher. It is decidedly the most productive raspberry in general cultivation. It is unrivaled for family use, and one of the best for canning. The berries are of a dull purplish color, but luscious and sprightly flavor. It succeeds best in light, sandy soil, but does well anywhere except on low wet soil. Doz. 40c.; 100, \$1.50 \$10. per M.

Postage 8c. per dozen, 50c. per 100 additional.

HOUGHTON. This is rather small, but very productive, and healthy; pale red berries. 10c. 75c. per 10.

CURRANT BUSHES.

Prices are for 1 yr. old bushes. Postage, 6c. each; 50c. per hundred.

FAY'S PROLIFIC. The nearest approach to perfection in currants. 16c. each; Doz, \$1.00 100 \$4.00.

VERSAILLES. The best and most popular of the older kinds. As large as Cherry currant, and more productive. Doz. 60c.; 100 \$3.

Lee's Prolific.—Best black. Doz. 60c.; 100, \$3.50.