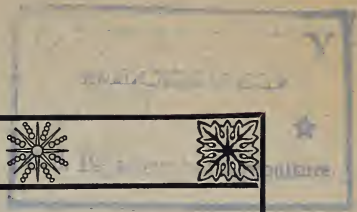


Historic, Archive Document

Do not assume content reflects current scientific knowledge, policies, or practices.

6287

SEED LABORATORY



1900

11085

CATALOGUE OF

Greenhouse

and

Bedding Plants,

Flower and Vegetable

Seeds.

FROM
GEORGE H. MASS,
WOODSTOCK,
VT.



IN SUBMITTING this catalogue for 1900 we take the opportunity of thanking our numerous friends and customers for their generous patronage, and assure them that we shall do our utmost to merit a continuance of the same. From those who have not favored us with their orders, we would respectfully solicit a trial. Orders, however small, will have prompt and careful attention.

ORDER EARLY. In order to secure prompt delivery, it is important that all orders be sent in as early as possible; as there is a liability of some delay in filling orders received during the height of the busy season. All seeds offered in this catalogue which are not grown by us have been secured from the most reliable growers, and have been carefully tested as to their germination.

FREE BY MAIL. Flower and vegetable seeds in packets and ounces will be forwarded free by mail at prices quoted in this catalogue. Add 8 cts. per pound on seeds, and 15 cts. per quart on peas and beans, and 10 cts. per quart on corn, to cover postage if to be sent by mail.

Discount on Seeds in Packets and Ounces.

For \$0.25	you may select seeds to the amount of	\$0.35
" .50	" " " " " "	.65
" 1.00	" " " " " "	1.30
" 2.00	" " " " " "	2.65
" 3.00	" " " " " "	3.75
" 4.00	" " " " " "	5.00
" 5.00	" " " " " "	6.50

This offer is for seeds in packets and ounces only, and will be sent post paid; cash to accompany the order.

PLANTS. We are equally careful in our shipments of plants. All plants offered by us are carefully grown, strong and healthy, and are certain to prove satisfactory. We make no charge for packing, boxing, &c., and pack as lightly as possible, so as to reduce cost of carriage. Have your plants sent by express, as larger plants can be sent, and we will send enough plants, gratis, of our own selection to cover the express charges.

PLANTS BY MAIL. Small plants purchased from this catalogue and ordered to be sent by mail will be sent post paid.

REMITTANCES may be made at our risk by bank draft, post office money order, or registered letter. Orders from parties unknown to us will be sent C. O. D., unless accompanied by remittance or satisfactory reference.

ADDRESS, ETC. Persons ordering seeds or plants by mail are requested to be particular to write their own name, also the name of their town, post office and state, plainly and not to omit either, as serious delays are occasioned by such omissions.

GEORGE H. MASS, WOODSTOCK, VT.

Long distance Telephone connected with office and Greenhouses.

Novelties & Specialties in Plants.

ABUTILON SAVITZII.

A new and beautiful sort; a decided improvement upon the variety Souvenir de Bonn. The variegation being better defined, the white border on the foliage being much wider and the habit of the plant dwarfer. A very decorative plant. Each, 15c

ABUTILON, ROBERT GEORGE. A free bloomer; color orange, veined with crimson. Each, 10c

ABUTILON, ENFANTA EULALIE. Of dwarf growth, color, a delicate satiny pink. Each, 10c

ABUTILON, SCARLET GEM. Color, a rich bright scarlet. Each, 10c

ARANCARIA EXCELSA.

(Norfolk Island Pine.)

The most popular of all tender evergreens. With deep green feathery foliage in whorls, rising one above the other at regular distances. It is easily grown in the house and is highly ornamental; 15 to 18 inches high. Each, \$ 1.50

ASPARAGUS SPRENGERI.

A very desirable new species, especially useful to grow as a pot plant for decorative purposes or for planting in hanging baskets. It will make an excellent house plant and it withstands a dry atmosphere. Each, 15c to 25c

ACALYPHA SANDERI.

A new and most striking, flowering, ornamental plant, of strong free growth, with large dark green leaves, from each axil of which, one to two feet long, and nearly one inch thick, rope like spikes of velvety crimson flowers are gracefully suspended. The plant blossoms throughout the whole year and is as easily grown as the coleus, requiring a warm temperature to develop its full beauty. Each, 25c

AGERATUM.

—PRINCESS PAULINE. A very distinct; compact, dwarf variety, not exceeding 8 inches in height. The body of the flower is white, the stamens being of a light sky blue, which gives the flower a pretty variegated appearance. Each, 10c

NEW BEGONIAS.

—MARGUERITE. A seedling from the famous Metallica, which it resembles in foliage and bloom but a better grower.

—M. DE LESSEPS. The finest pot variety up to date. Large, deep-notched leaves, immense trusses of white flowers of large size.

—ZEBRINA. Beautiful, strong grower, with zebra-striped leaves. Very silvery. Each, 15c

CRYPTOMERIA JAPONICA, OR JAPAN CEDAR.

This evergreen is considered as handsome and more graceful than the Arancaria Excelsa. It is easily grown, and makes fine specimens in pots for house decoration. Each, 30c

NEPHROLEPIS EXALTATA, BOSTONIENSIS, OR BOSTON SWORD FERN.

This fern is a variation from the ordinary Sword Fern. It originated in the vicinity of Boston, and has for several years been in popular favor; a graceful drooping fern, the fronds of which frequently obtain a length of 4 feet. It makes an excellent plant to grow as a single specimen for table or vase. Good plants, 25c Strong plants, 50c.

NEW DOUBLE IVY-LEAVED GERANIUMS.

—GEN. CHAMPIONNET. A handsome scarlet variety.

—KATE WILSON. Double white, a fine variety. Each, 15c., 2 for 25c; doz. \$1.50

CHOICE DOUBLE GERANIUMS.

—ALPHONSE RICAUD. Bright scarlet, large florets, and trusses.

—JAMES MURKLAND. Bright rose centre, margined white.

—MME. JAULIN. Delicate peach pink.

—MME. BARNEY. Deep pure pink; free flowering.

—MARQUIS DE MOUTMORT. Brilliant carmine purple, a novel and striking shade.

—S. A. NUTT. Very rich dark crimson. Each, 15c., doz. \$ 1.50

CHOICE SINGLE GERANIUMS.

—BENJ. SCHROEDER. Beautiful clear rose pink, with white eye.

—CHAUCER. A beautiful clear bright shade of cerise; very large flowers.

—H. DAUTHENAY. Deep apricot salmon.

—JACQUERIE. Large florets and trusses; color, rich magenta.

—MRS. E. G. HILL. Beautiful salmon, fine large round flower.

—MARS. Of dwarf compact habit, very free flowering; flowers light salmon. Each, 15c; doz. \$1.50

PELARGONIUMS.

—CHAMPION. Delicate blush, carmine blotched on lower petals, upper petals blotched maroon and red.

—DOROTHY. Soft rosy salmon, with dark maroon blotches on upper petals; very fine.

—MME. THIBAUT. Color white and richly blotched with rose.

—MRS. ROBERT SANDIFORD. Color pure white, flowers very large, with finely ruffled edges, giving the appearance of being double. Very free flowering.

—MARQUISE OF SALISBURY. A bright colored variety with rich dark spots. and very large flowers. Each, 25c

"PANSY" GERANIUMS.

—BRIDEGROOM. Lavender pink, with dark blotches.

—BRIDESMAID. A pretty variety; upper petals maroon, lower ones clear white.

—THE BRIDE. Large flowers; upper petals bright carmine, lower ones blush. Each, 20c

DOUBLE PETUNIAS.

—EDNA. Deep violet crimson, mixed with white, clear white on the edges.

—FANTASY. Double white, irregularly splashed with violet; fringed large flower.

—PATRIOT. Deep reddish purple, with white marking; large flower deeply fringed.

—TRIUMPH. A fine variety, fringed, clear white, with a beautiful shade of violet in the center.

—SHASTA. White, with shades of deep purple and deep gray at base.

—SEAFOAM. Pure white. Each, 15c., doz. \$ 1.50

TWO NEW RUSSELIAS.

The Russelias are useful basket or vase plants, of graceful drooping habit, producing freely tubular rich-colored flowers.

—LEMOINEI MULTIFLORA. Very free flowering; color, a magnificent coral red.

—LEMOINEI ELEGANTISSIMA. Very graceful; flowers, bright soft red. Each, 15c., doz. \$ 1.50

Novelties and Specialties in Flower Seeds.



—**COSMOS, NEW EARLY FLOWERING.** Seeds of this variety may be sown in the open ground in May and will bloom in August and will continue until late in Fall; the flowers are large, well formed, and their keeping qualities are excellent. Colors range from pure white through shades of pink and red. The plants are more dwarf than the other varieties, forming a compact bush about four feet high. Pkt. 5c

ALLEGHENY HOLLYHOCKS.

—**MAMMOTH FRINGED.** The flowers of this new variety are so different from the old type, that but for the similar habit of the plant it would not be taken for a Hollyhock. They are from 4 to 6 inches in diameter, running from semi-double to double, finely fringed and curled. The colors are shell pink, rose and ruby red, a shade or two deeper at the center and exquisitely tinted towards the edge. Pkt. 15c

IMPERIAL JAPANESE OR EMPEROR MORNING GLORY.

Of strong, rapid growth, seed can be sown in open ground when the weather has become warm and settled. Foliage of varied form and handsome markings. Flowers of large size, of good substance and remain open the greater part of the day. In colors of white, different shades of pink, red, blue, purple, bronze, brown, ash gray, &c. Mixed varieties. Pkt. 5c

NEW CLIMBING NASTURTIUM.

—**MAD. GUNTHER'S HYBRIDS.** For richness and variety of colors these new Hybrids have no equals among Nasturtiums. There are shades of rose, salmon, bright red, pale yellow, either as self colors or spotted and striped. The foliage is mostly dark and contrasts very effectively with the rich colors. They are climbers and free and continuous bloomers. Pkt. 5c

ASTERS.

- SAMPLE'S BRANCHING.** Plants of a branching habit; flowers of perfect form, 4 to 6 inches across; borne on long stems; colors, pure white, shell pink, lavender, blue, mixed colors. Each, pkt. 10c
- VICK'S WHITE BRANCHING.** Flowers large, 4 inches across, pure white, borne on long stems. Its flowering period is later than all other Asters, coming in at a time when all others are scarce. Pkt. 10c
- NEW GIANT COMET ASTER.** A new strain of Comet Asters; quite distinct in size and shape from the old type; flowers of immense size, with long, wavy and twisted petals, resembling some of the finest Japanese Chrysanthemums; flowers are produced in abundance and borne on long stems. Colors, pure white, lavender, bright rose, mixed. Each, pkt. 10c

ASTER QUEEN OF THE EARLIES.

Plants dwarf and very branching; blooming very freely, very double flowers, borne on long stems, the earliest of all by nearly three weeks. Mixed colors and white; each, pkt. 10c

BROWALLIA, SPECIOSA MAJOR.

Handsome annual forming bushy plants one foot high, individual flowers are fully 1 inch across of indigo blue. Pkt. 15c

CARNATIONS.

- GIANT MARGUERITE.** Blooming in four months from sowing seed, continuing in profusion until checked by frost, or may be potted for winter blooming. Flowers very double, and in great variety of colors. Finest mixed, pkt. 10c
- NEW DWARF GIANT MARGUERITE.** Like the preceding, flowers large and very double, blooming very freely; growing about 15 inches high, flowers always erect. Finest mixed, pkt. 10c

NEW PETUNIAS

LARGE FLOWERING. A California strain; flowers of enormous dimension; fringed and of many beautiful colors. Pkt. 25c

SALPIGLOSSIS, EMPEROR.

A new type having only one strong main stem, about 30 inches high, which is well furnished with large flowers of various colors, all of which are intricately veined with yellow. Pkt. 10c

GENERAL LIST OF STANDARD

VEGETABLE SEEDS



ASPARAGUS.

CULTURE.—To have success with Asparagus, a rich soil is required, the ground should be well trenched and thoroughly enriched with rotted manure, bone and ashes. The roots should be set early in the Spring in rows 18 inches apart, and 1 foot apart in the rows, cover 4 inches with earth. Cutting may be done the following Spring, but sparingly. Cut down the tops in Autumn, when ripened, and give a good dressing of manure and coarse salt and fork it into the ground early in the Spring.

Asparagus Roots.

CONOVER'S COLOSSAL. 2 year old roots, \$1 per 100. 50 roots at 100 rate.

PALMETTO. 2 year old roots, \$1 per 100. 50 roots at 100 rate.

BEANS, Dwarf or Bush.

CULTURE.—Sow in succession from April to beginning of August, in drills 2 ft. apart, cover 2 inches deep. Thin plants to a distance of 3 or 4 inches.

Add 15 cts. per quart if sent by mail, 8 cts. per pint.

Green-Podded Varieties.

EXTRA EARLY RED VALENTINE. The earliest variety; very productive, pods fleshy and tender. Per pt. 10c., qt. 25c., pk., \$1.50.

DWARF HORTICULTURAL. A bush variety of the well-known horticultural Pole Bean. Per pt. 10c., qt. 25c. pk. \$1.50.

EXTRA EARLY REFUGEE. Very productive, medium bush sort and largely grown for pickling. Per pt. 10c., qt. 25c. pk. \$1.50.

Dwarf Lima Varieties.

BURPEE'S BUSH LIMA. This is a perfect bush form of the LARGE LIMA BEAN. Bushes grow from 18 to 20 inches high, robust and always erect. Per pt. 20c., qt. 35c.

HENDERSON'S BUSH LIMA. A bush form of the Sevia Lima. Very productive and earlier than the Burpee's but a smaller bean. Per pkt. 10c., pt. 20c., qt. 35c.

Wax-Podded Varieties.

IMPROVED GOLDEN WAX, EARLY. Pods are golden yellow, tender and fleshy. Per pt. 15c., qt. 25c.

FLAGEOLET WAX. One of the best wax sorts, early, very productive, with pods one-third longer than any other variety of Wax Beans. Per pt. 15c., qt. 30c.

WARDWELL'S DWARF KIDNEY WAX. Extra Early, purely wax pods, long, flat and remarkably free from rust. Per pt. 15c., qt. 30c.

BLACK WAX, Very tender and of best quality. Per. pkt. 10c. qt. 25c.

DAVIS' KIDNEY WAX BEAN. A dwarf, white seeded, wax podded bean; of vigorous growth and great productiveness, pods tender and delicious when cooked, and when beans are too much matured can be used shelled. 1-2pt. 10c., pt. 15c., qt. 30c.

Pole or Running Beans.

CULTURE.—Plant in May in hills four ft. apart each way, setting a strong pole in the center of each hill.

DUTCH CASE KNIFE. Pods long and flat; used as snap or shelled beans. Per 1-2 pt. 10c., pt. 15c., qt. 30c.

HORTICULTURAL OR SPECKLED CRANBERRY. An old and well known snap and shell bean. Per 1-2 pt. 10c., pt. 15c. qt. 30c.

BLACK GERMAN WAX. Yellow pods; one of the best for snap. Per 1-2 pt. 10c., pt. 15c., qt. 30c.

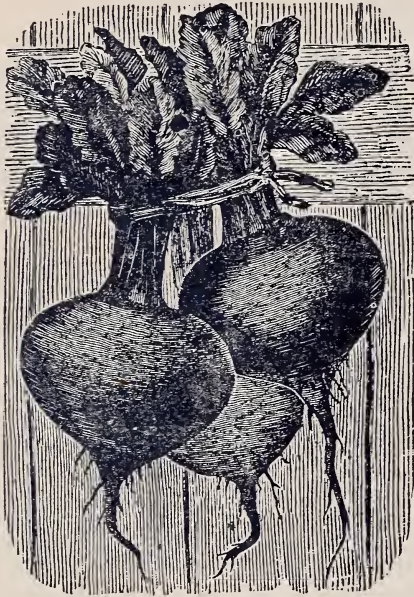
IMPROVED LARGE WHITE LIMA. Generally grown of all Limas. Per 1-2 pt. 10c., pt. 20c., qt. 40c.

SCARLET RUNNER. Flowers bright scarlet, very ornamental also used as string beans and shelled. Per 1-2 pt. 10c., pt. 20c., qt. 30c.

WHITE DUTCH RUNNER. Similar to the Scarlet Runner, flowers and beans being white. Per 1-2 pt. 10c., pt. 20c., qt. 30c.

BEETS.

CULTURE. Sow seed in early Spring and for succession, at intervals, until the first of July. Sow in drills a foot and a half apart and thin the plants to about six inches apart in the rows.



- EXTRA EARLY DARK EGYPTIAN.** Tops small, turnip shaped, dark blood red. Per pkt. 5c., oz. 10c., 1-4 lb. 15c., 1 lb. 50c.
- NEW ECLIPSE.** Larger than Egyptian, flesh dark red, one of the best for private use; globular shape. Per pkt. 5c., oz. 10c., 1-4 lb. 15c., 1 lb. 50c.
- EDMAND'S BLOOD TURNIP.** Deep red and very regular in shape; of good market size. Per pkt. 5c., oz. 10c., 1-4 lb. 15c., 1 lb. 50c.
- DEWING'S BLOOD TURNIP.** Roots of fine flavor, blood red; a good market sort. Per pkt. 5c., oz. 10c., 1-4 lb. 15c. 1 lb. 50c.
- BASTIAN'S BLOOD TURNIP.** A second early light colored, turnip shaped beet. Per pkt. 5c., oz. 10c., 1-4 lb. 15c., 1 lb. 50c.
- SWISS CHARD.** Per pkt. 5c., oz. 10c., 1-4 lb. 15c., 1 lb. 50c.

Mangel Wurzel and Sugar Beets, for Feeding Stock.

- GOLDEN TANKARD MANGEL WURZEL.** Per 1-4 lb. 10c 1 lb. 30c.
- CARTER'S MAMMOTH LONG RED MANGEL.** Producing roots of large size and of excellent quality. Per 1-4 lb. 10c., 1 lb. 25c.
- GOLDEN YELLOW MAMMOTH MANGEL.** Per 1-4 lb. 10c., 1 lb. 30c.
- VILMORIN'S IMPROVED WHITE SUGAR.** Per 1-4 lb. 10c., 1 lb. 30c.

BRUSSELLS SPROUTS

A variety of Cabbage having the stem covered with small closely crowded heads. Excellent for the table.
DWARF IMPROVED. Of fine quality, sprouts compact. Pkt. 10c., oz. 15c.

CABBAGE.

CULTURE.—Sow the seed for early varieties in March, in hot beds or any other suitable place. For late varieties, sow seed in open ground, the first week in May. Cabbage requires a rich, well drained soil. Early varieties may be set in rows two feet apart, and 18 inches apart in the rows. The late and large varieties three feet each way.

- EARLY JERSEY WAKEFIELD.** The best early cabbage, heads good size, solid, pyramidal in shape. Pkt. 5c., oz. 20c.; 1-4 lb. 75c.
- EARLY OXHEART.** A favorite market variety. Pkt. 5c., oz. 20c.
- EARLY SUMMER.** About ten days later than the Jersey Wakefield, but heads twice the size of that variety. Best early medium cabbage in the market. Pkt. 5c., oz. 20c., 1-4 lb. 75c.
- EARLY WINNINGSTEAD.** One of the best for general use; very solid; coming in about two weeks later than the early varieties. Pkt. 5c., oz. 15c., 1-4 lb. 55c.
- ALL SEASONS.** One of the finest for second early or late; of large size and sure to head. Pkt. 5c., oz. 20c., 1-4 lb 75c.
- PREMIUM FLAT DUTCH.** (Selected) Best of all the late cabbages; large solid head, of good flavor and keeping qualities. Pkt. 5c., oz. 20c., 1-4 lb. 75c.
- DWARF ULM—SAVOY.** The best early Savoy, producing heads of superior flavor. Pkt. 5c., oz. 20c., 1-4 lb. 75c.
- RED DUTCH.** Used mostly for pickling. Pkt. 5c., oz. 20c., 1-4 lb. 75c.

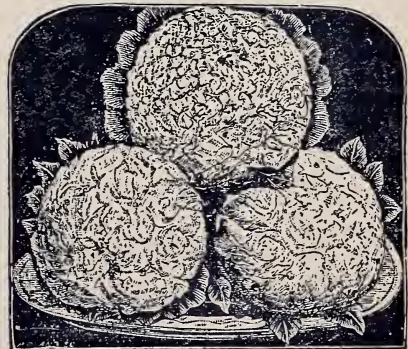
CARROT.

CULTURE.—Sow for succession from early Spring to first of July, in rows 15 inches apart, and thinning the plants to about 4 or 5 inches apart in the rows.

- EARLY FRENCH FORCING.** The earliest variety, one largely grown for forcing purposes; roots small and of an orange red color. Pkt. 5c., oz. 15c., 1-4 lb. 40c.
- EARLY SCARLET HORN.** For early crop; roots of medium size. Pkt. 5c., oz. 10c., 1-4 lb. 25c.
- GUERANDE.** Half long, stump rooted. Pkt. 5c., oz. 10c., 1-4 lb. 30c.
- DANVERS HALF LONG.** Roots even, bright orange, of good texture and fine flavor. Pkt. 5c., oz., 10c., 1-4 lb. 25c.
- IMPROVED LONG ORANGE.** One of the most desirable for either garden or field culture. It grows to large size, fair specimens averaging 12 inches in length and 3 inches in diameter at the top. Pkt. 5c. oz. 10c., 1-4 lb. 25c.

CAULIFLOWER.

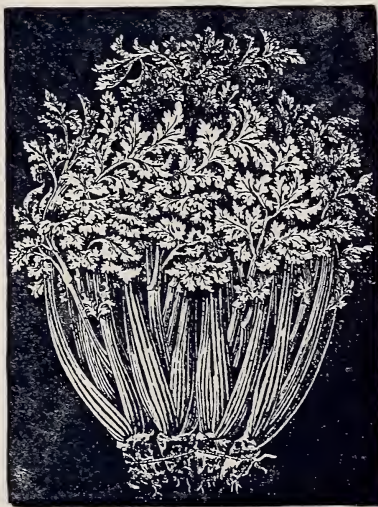
CULTURE.—About the same as for Cabbage, but the soil should be more heavily manured.



- EXTRA EARLY DWARF ERFURT.** Plants dwarf and compact, and seldom fail to form good sized heads; good for forcing, and equally valuable in the open ground. Pkt. 15c., oz. \$2.50.
- EARLY SNOWBALL.** Best of all Cauliflowers, earlier than any other variety, more dwarf in habit, head as large and more sure than any other variety of forming a head in bad season. Pkt. 15c oz. \$2.50.
- EXTRA EARLY PARIS.** Not desirable for forcing, but valuable for outdoor culture. Pkt. 5c., oz. 80c.

CELERY.

CULTURE.— Sow the seed in hotbeds or boxes in March, and when large enough to handle transplant to cold frame. In July transplant to open ground in rows or shallow trenches three feet apart, and about six inches apart in rows. Cultivate well and earth up carefully to blanch the stems. Labor can be saved in bleaching by placing boards 10 or 12 inches wide on each side of the plants.



IMPROVED WHITE PLUME. Best early Celery, self bleaching; stalks and leaves are naturally white, and do not require earthing up like other varieties; tie the stalks together and draw a little earth about the plant which will be sufficient. Pkt. 5c., oz. 25c.

GOLDEN SELF BLANCHING. In appearance resembling the White Plume except in color, which is a bright yellow. Pkt. 5c., oz. 35c.

NEW ROSE. Fine flavor; solid and crisp; a good keeper. Pkt. 5c., oz. 30c.

BOSTON MARKET. Dwarf branching; fine flavor, crisp and tender. Pkt. 5c., oz. 20c.

GIANT PASCAL. Of fine nutty flavor; stalks broad, thick and crisp. It bleaches very quickly after earthing up. A valuable variety for second early use. Pkt. 10c., oz. 25c.

Celeriac or Turnip Rooted Celery.

GIANT PRAGUE. The best variety. Pkt. 5c., oz. 30c.

CORN.

Sweet or Sugar.

CULTURE.— Sweet Corn does best in warm, dry highly enriched soil; plant seed in hills three feet apart each way, and in succession in intervals of two weeks, from the middle of May to the first of July.

Add ten cents per quart if sent by mail.

EXTRA EARLY WHITE CORY. The earliest of Sweet Corn; ears large and of good flavor. Pkt. 5c., pt. 10c., qt. 20c., pk. 90c.

CROSBY'S EARLY. A very good variety; ears medium, very productive and excellent quality. Pkt. 5c., pt. 10c., qt. 20c., pk. 90c.

COUNTRY GENTLEMEN. The sweetest and most tender of all sweet corn; kernels deeply set, pearly white and irregularly crowded together. Pkt. 5c., pt. 10c., qt. 20c., pk. \$ 1.

BLACK MEXICAN. Very sweet and of superior flavor, kernels black. Pkt. 5c., pt. 10c., qt. 20c., pk. \$1.

STOWELL'S EVERGREEN. Late variety, of excellent quality, remaining longer in the green state than any other. Pkt. 5c., pt. 10c., qt. 20c., pk. 70c.

EARLY MINNESOTA. Quite early, of excellent quality. Pkt. 5c., pt. 10c., qt. 20c., pk. 85c.

SQUANTUM. One of the sweetest varieties, and largely used for market and canning. It is a general favorite and very productive. Pkt. 5c., pt. 10c., qt. 20c., pk. 90c.

WHITE RICE POP CORN. One of the best varieties of pop corn, early. Lb. 10c.

WHITE PEARL POP CORN. Smooth grained ears. Lb. 10c.

CRESS OR PEPPER-GRASS.

A well known pungent salad. Must be sown in succession as it quickly runs to seed.

EXTRA CURLED. Oz. 5c., 1-4 lb. 15c.

CUCUMBERS.

CULTURE.— For very early crop, plant seeds in small pots in the house. For general crop, sow about the middle of May, and in succession until the first of July, in hills four feet apart each way; when well advanced pull out, leaving four plants. A sandy loam suits best, and a shovelful of well rotted manure should be thoroughly mixed in each hill before planting.

IMPROVED EARLY WHITE SPINE. A favorite market variety, of medium size, deep green and of fine flavor.

Pkt. 5c., oz. 10c., 1-4 lb. 25c., 1 lb. 70c.

PEERLESS WHITE SPINE. For early market use; fine, perfect form and very productive.

Pkt. 5c., oz. 10c., 1-4 lb. 25c., 1 lb. 70c.

EARLY CLUSTER. A most esteemed early sort, growing in clusters; very productive.

Pkt. 5c., oz. 10c., 1-4 lb. 25c., 1 lb. 70c.

BOSTON PICKLING. Grown around Boston by market gardeners for pickling more than any other variety.

Pkt. 5c., oz. 10c., 1-4 lb. 25c., 1 lb. 70c.

LONG GREEN. Long fruit of excellent quality; dark green; firm and crisp.

Pkt. 5c., oz. 10c., 1-4 lb. 20c., 1 lb. 70c.

DANDELION.

CULTURE.— Seed should be sown in drills 18 inches apart, and half an inch deep. The leaves are best for salad when blanched, which can be done by partially shading the rows with boards.

IMPROVED BROAD LEAVED. The best sort.

Pkt. 10c., oz. 40c.

EGG PLANT.

CULTURE.— Seed should be sown in hotbed in early Spring. Care must be taken to protect the plants from cold. Set plants out in open ground in June, in rows three feet apart and two feet apart in the rows.

IMPROVED NEW YORK. Purple. A leading market variety; fruit large and of good quality.

Pkt. 5c., oz. 30c.

BLACK PEKIN EARLY. Fruit jet black; round in form.

Pkt. 10c., oz. 40c.

ENDIVE.

CULTURE.—Sow seed in May or June in drills; thin the plants to about 8 inches, and when the leaves are about 8 inches long tie together at the top to blanch the inner leaves.

GREEN CURLED. Leaves dark green, tender and crisp.
Pkt. 5c., oz. 15c

KOHL-RABI.

CULTURE.—Same as turnip; the thickened stem above ground is cooked and used like the turnip.

EARLY WHITE VIENNA. Flesh white and tender; must be used when young, as it becomes stringy with age.
Pkt. 5c., oz. 20c

LEEK.

CULTURE.—Sow the seed in early Spring, in rows a foot apart, and thin the plants six inches apart in the rows.

LARGE AMERICAN FLAG. This is the best variety; grows to good size and very uniform.
Pkt. 5c., oz. 25c

LETTUCE.

CULTURE.—To raise good lettuce, a rich soil and an abundant supply of manure is necessary; sow seed in hotbeds in March, to be set out in open ground when the weather permits. For succession, sow in open ground in early Spring at intervals of two weeks till the first of August. Plants should be set a foot apart each way.

BLACK SEEDED SIMPSON. Forms a compact mass of curly leaves; properly speaking it does not head, but is one of the best for family use; early, crisp and tender.
Pkt. 5c., oz. 10c

BIG BOSTON. Heads large, very compact and crisp; light green.
Pkt. 5c., oz. 20c

BOSTON MARKET. Largely grown around Boston for market under glass and in open ground.
Pkt. 5c., oz. 15c

NEW YORK. Very large, solid and sure header. Pkt. 5c., oz. 20

HANSON'S. Exclusively grown by market gardeners, and is almost sure of making large heads of good quality.
Pkt. 5c., oz. 15c

MIGNONETTE. This variety is very hardy and long standing, excellent even for midsummer. The outer leaves are richly colored with russet-red and bronze-green, the hearts light cream color.
Pkt. 5c., oz. 20c

LARGE WHITE SUMMER CABBAGE. Excellent for Summer; heads of good size. A fine market variety. Pkt. 5c., oz. 15c

PARSLEY.

CULTURE.—Sow in very early Spring, previously soaking the seed for several hours in warm water, in rows about a foot apart; thin out plants to 3 or 4 inches apart in the rows; for Winter use, protect by a cold frame.

CHAMPION MOSS CURLED. A very beautiful crimped and curled variety.
Pkt. 5c., oz. 10c., 1-4 lb. 30c

FERN LEAVED. Fine for table decoration.
Pkt. 5c., oz. 20c., 1-4 lb. 30c

EXTRA DOUBLE CURLED. A dwarf variety, beautifully curled; excellent for garnishing.
Pkt. 5c., oz. 10c., 1-4 lb. 30c

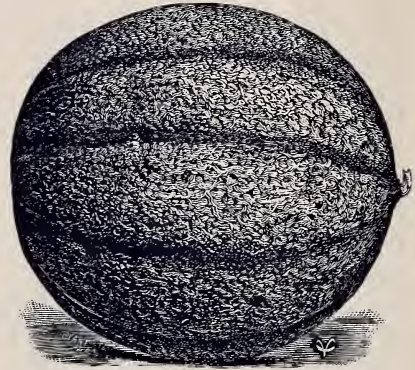
MUSTARD.

CULTURE. Sow thickly in early Spring, in shallow drills. Used for salad, cut when about two inches high.

WHITE LONDON. Leaves used for salad; grows very rapidly.
Oz. 5c., 1-4 lb. 15c

MELON—Musk

CULTURE.—Sow seed about the middle of May in hills about six feet apart each way, when large enough, thin out to four in a hill; pinch off the leading shoots and if the fruit is thinned out those that remain will be sure to ripen. Before planting, the soil should be thoroughly enriched by well rotted manure.



PAUL ROSE.

PAUL ROSE. This new Melon is a cross of the Osage with the Netted Gem, and combines the sweetness of the former with the fine netting of the Gem. The flesh is very thick, firm and beautiful; of a distinct, rosy salmon color, and extremely small seed cavity.
Pkt. 5c., oz. 10c

COSMOPOLITAN. One of the most distinct and uniformly handsome melons ever introduced. The hardy vine is wonderfully productive of globular fruits, which are densely covered with gray netting. Very sweet, melting and high flavored, unsurpassed in quality and perfection of form.
Pkt. 5c., oz. 10c

NEW EARLY HACKENSACK. Deeply netted and ribbed: green flesh, fine flavor and very productive.
Pkt. 5c., oz. 10c

NUTMEG. Fruit nutmeg shaped, flesh greenish yellow, rich and sugary.
Pkt. 5c., oz. 10c

SKILLMAN'S NETTED. Fruit roundish oval, flesh deep green, sweet and richly perfumed; an early and delicious variety.
Pkt. 5c., oz. 10c

LARGE YELLOW CANTELOPE. Flesh reddish orange.
Pkt. 5c., oz. 20c

EMERALD GEM. Extra early, very prolific, entirely distinct and the most delicious in flavor. Flesh of a suffused salmon color and ripens thoroughly to the extreme green edge.
Pkt. 5c., oz. 10c

WHITE JAPAN. Inside flesh very thick, fine light color, rich delicious musky flavor, very early. Be sure and try it.
Pkt. 5c., oz. 10c

OKRA OR GUMBO.

CULTURE. Sow seed in the first of June in drills, 2 inches deep, the rows from 2 to 3 feet apart and thin to 12 inches apart in rows. The long pods when young are used in soups and stews.

WHITE VELVET. Pods are round and smooth; very tender; the best variety grown.
Pkt. 5c., oz. 10c., 1-4 lb. 25c

WATERMELON.

CULTURE.—Same as Musk Melon, except that the hills should be eight feet apart each way.

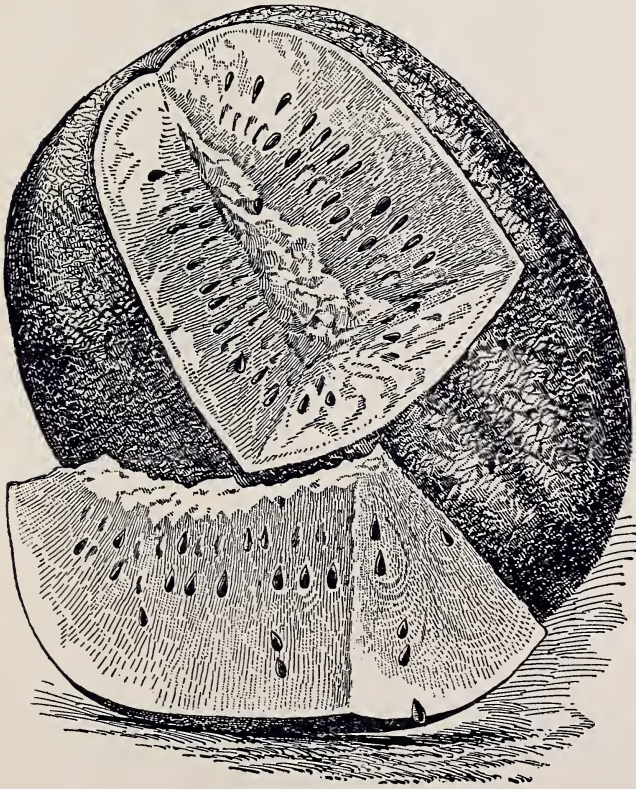
SWEET HEART. Early, uniformly large and handsome. Vine vigorous and productive, ripening its fruit early. Fruit large, oval, very heavy, uniformly mottled light and very light green. Rind thin but firm. Flesh bright red, firm, solid but very tender, melting and sweet. Fruit remains in condition for use longer than any other sort. Seeds gray. Pkt. 5c., oz. 10c

MOUNTAIN SWEET. Fruit oblong; dark green, rind thin, flesh red, solid and sweet. Pkt. 5c., oz. 10c

BLACK SPANISH. Round, dark green, flesh red; early. Pkt. 5c., oz. 10c

PHINNEY'S EARLY OVAL. Very early and sweet, good variety for home growing. Pkt. 5c., oz. 10c

CITRON. Fruit almost round; used in making preserves; seed red. Pkt. 5c., oz. 10c



SWEETHEART WATERMELON.

ONION.

CULTURE.—The Onion thrives best in a rather deep, rich loam soil, and unlike most vegetables succeeds well when cultivated on the same ground successive years. The seed should be sown in early Spring in drills a foot apart, and when the plants are well up they should be thinned to 3 or 4 inches apart in the rows; thorough cultivation through the Summer is necessary. One ounce for 100 feet of drill; 5 or 6 lbs. in drills for an acre.

YELLOW GLOBE DANVERS. The most profitable variety to grow; a good keeper and a standard sort. Pkt. 5c., oz. 15c., 1-4 lb. 40c.

ONION.

WHITE OR SILVER SKIN. One of the leading sorts of white flat onion; an excellent keeper and good yielder; largely grown for pickling. Pkt. 5c., oz. 20c., 1-4 lb. 60c

LARGE RED WEATHERSFIELD. A favorite sort for general crop; a large yielder and good keeper. Pkt. 5c., oz. 15c., 1-4 lb. 40c

SOUTHPORT YELLOW GLOBE. Nearly round; of mild flavor; a good keeper; one of the best. Pkt. 5c., oz. 15c., 1-4 lb. 50c

ADRIATIC BARLETTA. Largely used for pickling; early, small, pure white; flesh firm and mild in flavor; a very quick grower. Pkt. 5c., oz. 20c., 1-4 lb. 75c

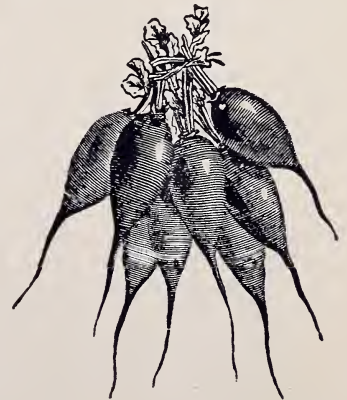
ONION SETS.

WHITE SETS, Qt. 30c., pk. \$ 2.00

YELLOW SETS., Qt. 25c., pk. \$ 1.50

RADISH.

CULTURE.—The seed should be sown as early in Spring as the ground can be worked, and in succession every two weeks, in rows about a foot apart. Radishes, to be good, must be grown quickly.



FRENCH BREAKFAST. A variety of quick growth, mild, crisp and tender; good for forcing. Pkt. 5c., oz. 10c

EARLY SCARLET TURNIP. Bright scarlet, crisp and of mild, delicate flavor; one of the best for the private garden. Pkt. 5c., oz. 10c

LONG SCARLET SHORT TOP. A variety largely grown for market. Pkt. 5c., oz. 10c

PEAS.

CULTURE.—To secure early peas, plant the seed in light rich soil, and in a warm sheltered situation as early in Spring as possible; in rows 2 or 3 feet apart, or for the later and tall varieties, in double rows 6 or 8 inches apart, between which is placed the trellis or brush. Sow in succession at intervals until the first of June. One quart will sow 75 feet of drill.

Add 15c. per quart if sent by mail.

Extra Early and Early Varieties.

AMERICAN WONDER. One of the earliest dwarf wrinkled peas in cultivation; of the finest quality; height, 12 inches.

1-2 pt. 10c., pt. 15c., qt. 25c., pk. \$ 1.50

PREMIUM GEM. Pods long and of a dark green color, an improvement on Little Gem. Very early and productive; height, 15 inches.

1-2 pt. 10c., pt. 15c., qt. 25c., pk. \$ 1.25

LAXTON'S ALPHA. One of the earliest wrinkled peas; of fine quality; pods large and well filled; height, 3 feet.

1-2 pt. 10c., pt. 15c., qt. 25c., pk. \$ 1.25

ALASKA. A smooth, blue, extra early variety; a most desirable pea for market gardeners; height, 2 feet.

1-2 pt. 10c., pt. 15c., qt. 25c., pk. \$ 1.25

CHELSEA. Grows about 15 inches high; of compact, short jointed habit, requiring no bushing. Pods are longer than other early dwarf varieties and well filled with peas of a rich, sugary, marrow-like flavor.

Pkt. 10c., pt. 15c., qt. 25c., pk. \$ 1.50

NOTT'S EXCELSIOR. A dwarf, extra early, wrinkled variety, one of the best recent introductions. Vines are large and more vigorous than the American Wonder and very prolific; pods well filled with peas and quality superior to the extra early varieties; height one foot.

1-2 pt. 10c., pt. 15c., qt. 25c., pk. \$ 1.75

Medium or Second Early.

MCLEAN'S ADVANCER. Attains the height of 2 1-2 feet; a green-wrinkled variety of fine flavor.

1-2 pt. 10c., pt. 15c., qt. 25c., pk. \$ 1.25

HEROINE. A medium early, green wrinkled pea; grows about 2 1-2 feet high and is literally covered with its long pods; the quality of this pea is perfection; of a rich marrow-like flavor.

1-2 pt. 10c., pt. 15c., qt. 25c., pk. \$ 1.25

DWARF CHAMPION. Height, about 3 feet; peas very large, of rich flavor, wrinkled; very profitable to grow.

1-2 pt. 10c., pt. 15c., qt. 25c., pk. \$ 1.50

SHROPSHIRE HERO. Very robust grower with long handsome pods; 3 feet.

Pkt. 10c., pt. 15c., qt. 25c., pk. \$ 1.25

Later or Main Crop.

CHAMPION OF ENGLAND. This is yet one of the best of the late fall varieties; peas are wrinkled and of largest size, and of excellent quality; height, 4 feet.

1-2 pt. 10c., pt. 15c., qt. 25c., pk. \$ 1

YORKSHIRE HERO. A large podded, delicious marrow pea; of branching habit and prolific bearer; height 2 1-2 feet.

1-2 pt. 10c., pt. 15c., qt. 25c., pk. \$ 1.25

TELEPHONE. A good main crop sort for the family garden; wrinkled; pods and peas large and of good flavor; height 4 1-2 feet.

1-2 pt. 10c., pt. 15c., qt. 25c., pk. \$ 1.50

PARSNIPS.

CULTURE.—Sow as early in the Spring as the weather will permit, in drills 15 inches apart, covering one-half inch deep. When well up, thin out to 5 or 6 inches apart in the rows. Parsnips are improved by freezing.

HOLLOW CROWN. Best for general use.

Pkt. 5c., oz. 10c., 1-4 lb. 20c

LONG SMOOTH. A fine flavored variety.

Pkt. 5c., oz. 10c., 1-4 lb. 20c

MAGNUM BONUM. A good variety; smooth, tender quality.

Pkt. 5c., oz. 10c., 1-4 lb. 20c

RHUBARB.

CULTURE.—Sow early in Spring, in drills a foot apart; thin out to about 8 inches apart in the rows; when well advanced transplant the following Spring in deep rich soil 3 feet apart each way; may also be propagated by dividing the roots of old plants, either in the Fall or Spring.

VICTORIA. Very large; good variety.

Pkt. 5c., oz. 20c

PEPPERS.

CULTURE.—Sow seed in hotbed, in March or early April and transplant to open ground when all danger of frost is past, in rows 2 feet apart and 18 inches apart in the rows.

RUBY KING. Fruit 4 to 6 inches long, bright red, very mild in flavor; one of the best in general use.

Pkt. 5c., oz. 25c

LARGE BELL OR BULL NOSE. Large and of mild flavor, much used for pickling.

Pkt. 5c., oz. 25c

GOLDEN DAWN. Shape and size like the Large Bell; of mild flavor; color yellow.

Pkt. 5c., oz. 25c

LONG RED CAYENNE. Very pungent.

Pkt. 5c., oz. 25c

CHILI. Very small and prolific; used for making pepper sauce, very pungent.

Pkt. 5c., oz. 25c

PUMPKIN.

CULTURE.—Usually planted in fields of corn; sow in early Spring in hills 8 to 10 feet apart each way.

LARGE CHEESE. A flat pumpkin; best of all for pies and table use.

Pkt. 5c., oz. 10c., 1-4 lb. 20c., 1 lb. 50c

LARGE TOURS OR MAMMOTH. Grown to an immense size; often weighing over 100 lbs.; flesh of a salmon color.

Pkt. 5c., oz. 10c., 1-4 lb. 35c., 1 lb. \$ 1

CONNECTICUT FIELD. Largely grown for feeding stock.

Pkt. 5c., oz. 10c., 1 lb. 30c

SMALL SUGAR. Generally grown for table use.

Pkt. 5c., oz. 10c., 1-4 lb. 20c

SALSIFY OR VEGETABLE

OYSTER.

CULTURE.—Sow early in the Spring in drills 15 inches apart; cover the seed an inch, and when the plants are strong enough thin to 6 inches apart.

MAMMOTH SANDWICH ISLAND. An improved variety, superior in size and equal in flavor to the older sorts.

Pkt. 10c., oz. 15c., 1-4 lb. 35c



SUMMER CROOK NECK SQUASH.

SPINACH.

Culture.—Sow in early Spring, in rows 15 inches apart; at intervals of two weeks, until the first of July. For early cutting in Spring, seed may be sown in August and September, and should be covered with straw during Winter.

THICK LEAVED. Producing large, thick leaves and standing a long time before running to seed.

Pkt. 5c., oz. 10c., 1-4 lb. 15c., 1 lb. 35c

LONG STANDING. Dark green; the longest standing before running to seed.

Pkt. 5c., oz. 10c., 1-4 lb., 15c., 1 lb 35c

LARGE ROUND LEAVED VIROFLAY. A newer sort, with very large, thick leaves.

Pkt. 5c., oz. 10c., 1-4 lb. 15c., 1 lb. 35c

TURNIP.

CULTURE.—For Summer use, sow seed in early Spring, in drills 15 inches apart, and thin out to 6 inches apart in the rows. For succession, sow at intervals of two weeks until the end of August.

RED TOP STRAP LEAF. Quick grower and of mild flavor; one of the best for early use; flesh white.

Pkt. 5c., oz. 10c., 1-4 lb. 20c

WHITE EGG. Shape nearly oval; flesh firm and fine grained; flavor of the very best, mild and sweet.

Pkt. 5c., oz. 10c., 1-4 lb. 20c

YELLOW GLOBE. One of the best varieties for general crop, keeps well until late in the Spring; of large size.

Pkt. 5c., oz. 10c., 1-4 lb. 20c., 1 lb. 50c

YELLOW ABERDEEN. Hardy and productive; a good keeper; globe shape and of good quality.

Pkt. 5c., oz. 10c., 1-4 lb. 20c., 1 lb. 50c

EXTRA EARLY PURPLE TOP MILAN. Very early; flat in shape and of excellent quality.

Pkt. 5c., oz. 10c

SQUASH.

CULTURE.—The same as for melons. The bush sorts may be planted 4 feet apart; the running sorts, 8 to 10 feet apart.

EARLY YELLOW SUMMER CROOKNECK. A bush sort; of fine flavor, and considered the best Summer squash.

Pkt. 5c., oz. 10c

GOLDEN CUSTARD BUSH. Very productive; scalloped, of large size and good quality; bright orange; bush sort.

Pkt. 5c., oz. 10c., 1-4 lb. 20c

BOSTON MARROW. For early Autumn or late Summer; color bright orange; flesh dry and of good flavor.

Pkt. 5c., oz. 10c., 1-4 lb. 20c

HUBBARD. The best Winter sort, and a good keeper; skin dark green; flesh dry and of good flavor.

Pkt. 5c., oz. 10c., 1-4 lb. 20c

MARBLEHEAD. An excellent variety, resembling the Hubbard, but lighter in color.

Pkt. 5c., oz. 10c., 1-4 lb. 20c

ESSEX HYBRID. Flesh dry, sweet and thick, and of a bright orange color, also of good keeping quality.

Pkt. 5c., oz. 10c., 1-4 lb. 20c

MAMMOTH CHILI. The largest of all squashes; good for exhibition purposes.

Pkt. 5c., oz. 10c

Ruta-Baga or Swedish Turnip.

Largely grown for feeding stock, good also for table use.

IMPROVED AMERICAN PURPLE TOP. Flesh yellow, solid and good, the best of the Ruta-Bagas.

Pkt. 5c., oz. 10c., 1-4 lb. 20c., 1 lb. 50c

SKIRVING'S PURPLE TOP. Excellent; a good keeper.

Pkt. 5c., oz. 10c., 1-4 lb. 20c., 1 lb. 50c

SWEET GERMAN. Flesh a pure white; solid; mild and well flavored; the best for table use.

Pkt. 5c., oz. 10c., 1-4 lb. 20c., 1 lb, 50c

TOMATO.

CULTURE.—Sow in hotbed or box in the house; transplant when about 2 or 3 inches high into boxes or small pots; transplant a second time to larger pots, which will make them strong and branched. Set out in open ground the first of June.



TOMATO.

DWARF CHAMPION. Distinct in its habits; early and prolific; fruit medium size and bright scarlet; solid and with few seeds.

Pkt. 5c., oz. 20c

PERFECTION. Very early and productive; fruit of good size, smooth and solid; color, bright scarlet.

Pkt. 5c., oz. 20c

ACME. Early; of medium size; smooth; very solid and productive.

Pkt. 5c., oz. 20c

FAVORITE. Large; of perfect shape; very smooth; dark red; solid.

Pkt. 5c., oz. 20c

PONDEROSA. Of large size; dark red and solid; shape irregular; medium early.

Pkt. 10c., oz. 25c

BEAUTY. One of the best for family or market use; medium size; very solid and smooth; a good yielder.

Pkt. 5c., oz. 20c

GOLDEN QUEEN. Has all the good qualities of the best red varieties; color is a golden yellow.

Pkt. 5c., oz. 25c

YELLOW PLUM. Used for pickling and preserving.

Pkt. 5c., oz. 20c

NEW STONE. A large, very smooth, bright scarlet tomato; ripening evenly to the stem without cracking. Flesh firm, solid and of excellent quality. Good for shipping.

Pkt. 5c., oz. 20c

ATLANTIC PRIZE. An extra early and very productive variety valuable to market growers.

Pkt. 5c., oz. 20c

EXTRA EARLY ADVANCE. Fruit large, bright red and very solid; one of the earliest tomatoes grown.

Pkt. 5c., oz. 20c

VOLUNTEER. Color, bright red; solid and of handsome shape.

Pkt. 5c., oz. 20c

SEEDLINGS.

READY IN MAY.

ASTERS, in various colors.	Doz. 25c., 100, \$2.00
BALSAMS, in various colors.	Doz. 25c
CALENDULAS,	" 25c
CASTOR OIL BEANS, from pots.	10c. each, doz. \$1.00
COSMOS, Early flowering.	Doz. 25c
DAISIES, English.	" 50c
CARNATIONS, Marguerite.	8c. each, doz. 75c
LOBELIAS, blue, fine for baskets and beds.	8c. " " 75c
MARIGOLDS, Pride of the garden.	" 25c
MARIGOLDS, Double French.	" 25c
MYOSOTIS, (Forget-me-not).	8c. " " 75c
NASTURTIUMS, Dwarf; from pots.	5c. " " 40c
NASTURTIUMS, Tall; from pots.	5c. " " 40c
PANSIES, large flowering, mixed.	Doz. 30c., 100, \$2.50
PHLOX DRUMMONDI, in various colors.	Doz. 25c
TEN-WEEKS STOCKS, in various colors.	" 25c
ZINNIAS, in various colors.	" 25c

Vegetable Plants

CABBAGE PLANTS.

Early Summer, Jersey Wakefield, and Winnigstadt, ready April 1st.

Per 100, 65c

Cabbage Plants — Late.

Per 100, 35c

CAULIFLOWERS.

Snowball, ready April 1st,

Per doz. 20c., 100, \$1

Cauliflowers — Late,

Per doz. 12c., 100, 75c

CELERY PLANTS.

(TRANSPLANTED.)

White Plume, Gold Self-Blanching, ready in June.

Per 100, 75c

Boston Market, New Rose, Golden Dwarf, Etc., ready in July.

Per 100, 65c.

LETTUCE PLANTS.

Best varieties, ready in early Spring.

Per doz. 10c., 100, 50c

PEPPER PLANTS.

Ready May 15th.

Per doz. 20c

TOMATO PLANTS.

Pot grown. of best kinds; ready May 15th.

Per doz. 50c

Larger size, 5 inch pot.

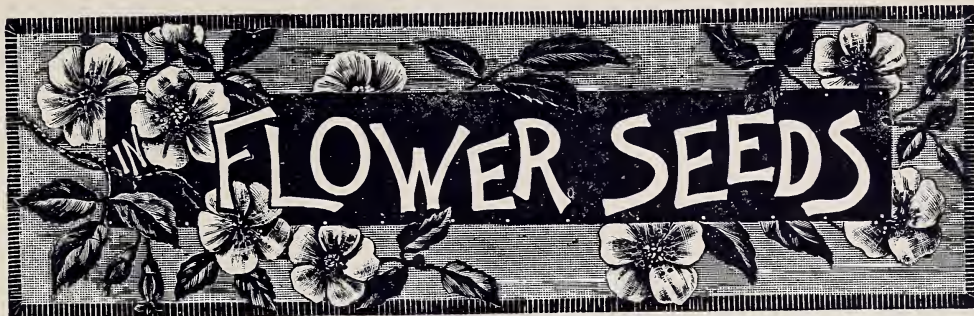
Per doz. \$1.00

Makes Flowers Flourish.
Flowers are like people. Their health depends upon their food. It must be *nourishing*, but not too rich. The only chemically correct flower food for house plants is

Walker's Excelsior Brand.
It has no odor whatever, and can be used dry or dissolved in water for sprinkling. Use it and your flowers will flourish and their health will last. Small size (feeds 25 plants 6 months), 25c; large size (enough for a year), 50c. Sent prepaid anywhere. With each package we send FREE the book, by Eben E. Rexford, Editor of the Ladies Home Journal, "The Window Garden, How to Make it a Success."



General List of Choice



The following list contains a selection of the best and most popular Annual, Biennial and Perennial Flowers. Flower Seeds in Packets are sent free by mail at Catalogue prices.

EXPLANATION OF THE FOLLOWING ABBREVIATIONS.

- H. A. — HARDY ANNUAL. Flowering and lasting one season, and can be sown in open borders.
 H. H. A. — HALF HARDY ANNUAL. Lasting one season and requiring to be sown under protection.
 B. — BIENNIAL. Lasting two years and generally flowering the second year.
 H. P. — HARDY PERENNIAL.
 G. P. — GREENHOUSE PLANT.

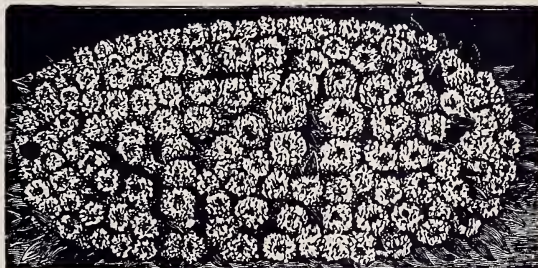
- | | |
|---|---------|
| AGERATUM, H. H. A. light blue. | Pkt. 5c |
| Imperial Dwarf, blue, 6 inch. | " 5c |
| Imperial Dwarf, white, 9 inch. | " 5c |
| ALYSSUM, SWEET, H. A. flowers white; valuable for beds and edgings, 8 inches. | " 5c |
| Little Gem (New,) very dwarf; pure white; very free flowering. | " 5c |
| AQUILEGIA, H. P. (Columbine,) single mixed. | " 5c |
| Double mixed. | " 5c |

BALSAMS.

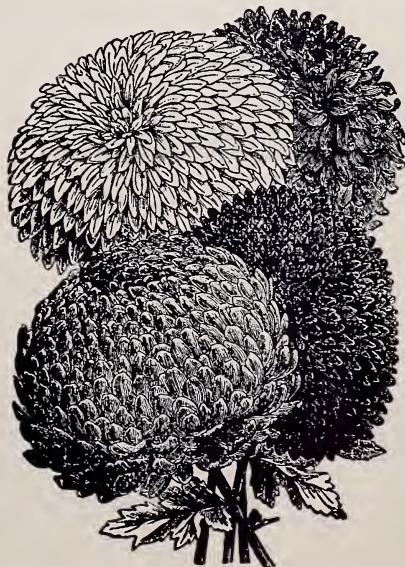
- | | |
|--|------|
| DOUBLE, H. H. A. 1 1-2 feet. Choice, double mixed. | " 5c |
| SCARLET, PINK, STRIPED AND SPOTTED, WHITE. | " 5c |
| Each, | " 5c |
| DOUBLE CAMELLIA FLOWERED, Finest mixed. | " 5c |

ASTERS. H. H. A.

- | | |
|--|----------------|
| PERFECTION. Truffaut's improved paeony-flowers; finest mixed; height two feet. | Pkt. 10c |
| In separate colors: WHITE, CRIMSON PURPLE, AZURE BLUE, CARMINE, BRILLIANT ROSE. | Each, pkt. 10c |
| VICTORIA, height, 1 1-2 feet. Finest mixed. | " 10c |
| In separate colors: CRIMSON, PEACH BLOSSOM PINK, PURPLE, SKY BLUE, SCARLET, WHITE. | Each, pkt. 10c |
| MIGNON, height, 15 inches. Mixed colors. | " 10c |
| In separate colors: BRIGHT BLUE, CARMINE RED, PEACH BLOSSOM PINK, SNOW WHITE. | Each, pkt. 10c |
| COMET, GIANT, Mixed colors. | " 10c |
| In separate colors: CARMINE, LIGHT BLUE, PINK, WHITE. | Each, pkt. 10c |
| LATE FLOWERING, branching; mixed. | " 10c |
| In separate colors: WHITE, PINK AND PURPLE. | " 10c |
| BETTERIDGE'S QUILLED, 2 feet. Mixed colors. | " 5c |
| SNOWBALL, height, 1 1-2 feet. Pure white. | " 10c |
| DWARF PYRAMIDAL BOUQUET, height, 1 foot. Mixed colors. | Pkt. 10c |
| DWARF CHRYSANTHEMUM FLOWERED. Mixed. | Pkt. 10c |



DWARF SWEET ALYSSUM.



- BEGONIA. Tuberous rooted, G. P. single mixed. Pkt. 15c
Vernon. A fine variety for bedding. " 10c
- BELLIS PERENNIS, H. P. (Double Daisy); double white;
Longfellow, large double pink; double mixed, all colors.
Each, pkt. 10c
- CALENDULA, H. A. 1 foot. Prince of Orange, large double
yellow. Pkt. 5c
Meteor. double yellow, striped orange. " 5c
- CALLIOPSIS, or Coreopsis, H. P. mixed. " 5c
Dwarf, fine for bedding; 1 foot. Mixed. " 5c
- CANDYTUFT, H. A. 1 foot, Empress, white. " 5c
White Rocket. " 5c
Mixed colors. " 5c
- CANTERBURY BELLS, H. P. 2 feet. Single mixed; rose,
blue and white. Pkt. 5c
Double mixed; rose, blue and white. Each, " 5c
- CARNATIONS, H. H. P. Finest double mixed. " 15c
Marguerite, fine mixed colors; flowers in four months from day
of sowing. Pkt. 10c
- CELOSIA, or Cockscomb, H. H. A. (plumosa), of branching
habit; crimson color. Pkt. 5c
- CENTAUREA, Cyanus, H. A. (Bachelor Button), blue. " 5c
Double. " 5c
- CHRYSANTHEMUM, H. A. (Painted Daisy), Burrigeantum,
white, crimson and yellow. Pkt. 5c
Single varieties, mixed. " 5c
Double, yellow and white; height, 1 foot. " 5c
- CINERARIA, Hybrida, G. P. or flowering varieties; large flower-
ing, mixed. Pkt. 35c
- COBÆA SCANDENS, H. H. P. Well known climbers; blue.
Pkt. 10c
White. " 15c
- COLEUS, G. P. Richly colored foliage plant; fine hybrid mixed.
Pkt. 15c
- CONVOLVULUS, Major, H. A. (Morning Glory), mixed colors;
height, 20 feet. Pkt. 5c
Minor (Morning Glory, dwarf), mixed colors; 1 foot. " 5c
- COSMOS HYBRIDUS, H. A. 4 to 6 feet. Large flowering,
mixed. Pkt. 5c
- CYCLAMEN, Persicum, G. P. Finest mixed. " 10c
Giganteum, mixed. " 25c
- CYPRESS VINE, H. A. 10 feet. Pretty trailing vine, mixed.
Pkt. 5c
- DAHLIA, H. H. P. 4 to 6 feet. Choice double mixed. " 10c
Single mixed, many colors. " 10c
- DATURA, H. H. A. 3 feet. Double golden, very fragrant.
Pkt. 5c
Fastuosa Fl. Pl., mixed, fine double varieties. " 5c
- DELPHINIUM (Hardy Larkspur), formosum, blue, white cen-
tre; 3 feet. Pkt. 5c
Grandiflorum Fl. Pl. H. P. very double, large light blue flowers.
Pkt. 15c
Finest mixed, single varieties. " 5c
- DIANTHUS, Chinensis Fl. Pl. (Double China or Indian Pink),
1 foot. Mixed colors. Pkt. 5c
Hedewigii Fl. Pl. (Double Japan Pink), mixed colors. " 5c
Laciniatus Fl. Pl. Large double fringed flowers, mixed colors.
Pkt. 5c
Double Snowflake, white; large double fringed flowers. " 10c
Fireball, dwarf; double, scarlet. " 5c
- ESCHSCHOLTZIA, H. A. (California Poppies); Californica,
yellow. Pkt. 5c
Mandarin, large and bright scarlet flowers. " 5c
Finest Mixed. " 5c
- GILLIARDIA, Grandiflora. H. A. Mixed. " 5c
Lorenziana or double flowering. " 5c
- GODETIA, H. A. Finest mixed, all colors, " 5c
- GOURDS, Ornamental, H. H. A. in separate varieties: Sponge
or Dish Rag; White Nest Egg; Dipper Shaped, Hercules Club;
Serpent's Gourd. Each per pkt. 5c
Mixed. " 5c
- HIBISCUS, H. A. (Marshmallow); Africanus, yellow and brown;
2 feet. Pkt. 5c
Californicus, white and carmine. " 10c
- HOLLYHOCK, H. P. Double white; double yellow; double
deep rose; double red; double maroon. Pkt. 10c
Double mixed. " 10c
Collection of six separate colors, 50 cents



HOLLYHOCK.

- IMPOMEA NOCTIFLORA, H. H. A. (Moonflower). Pkt. 10c
- LARKSPUR, H. A. Dwarf Rocket, double, mixed colors; one
foot. Pkt. 5c
Tall Rocket, double, mixed colors; two feet. " 5c
- LOBELIA ERINUS, H. A. White and blue. " 5c
Double blue. " 5c
Mixed varieties. " 5c
- MARIGOLD African, H. A. Double mixed; yellow and orange
shades. Pkt. 5c
El Dorado, large flowers, very double; yellow and orange
shades; 3 feet. Pkt. 5c
Double French, mixed; yellow, brown and crimson colors; 1
foot. Pkt. 5c
Pride of the garden, immense flowers, very double, 8 to 10
inches in circumference; color deep golden yellow; 15 to 18 inches
high. Pkt. 10c
- MARVEL OF PERU, H. H. A. (Four o'clocks) mixed colors.
Pkt. 5c
- MAURANDYA, Annual climber, 6 to 8 feet. Suitable for vases;
mixed. Pkt. 10c
- MIGNONETTE, H. A. Large flowering; the common sweet
Mignonette. Oz. 15c., pkt. 5c
Miles' Hybrid Spiral; spikes 8 to 12 inches long. Flowers
white and very fragrant. Pkt. 5c
Machet, large spikes; red flowers. " 10c

MIMULUS. Pkt. 10c
 Moschatus (Musk Plant), foliage emits a strong musk perfume. Pkt. 10c

MYOSOTIS Palustris, H. P. (Forget-me-not) dark blue flowers, 6 to 12 inches. Pkt. 10c
 Alpestris, blue and white; 1 foot. Each, " 5c

NASTURTIUM, Tom Thumb, or dwarf varieties. Pkt. 5c
 Coccinea, bright scarlet. " 5c
 Crystal Palace Gem, yellow, spotted maroon. " 5c
 King of Tom Thumbs, crimson. " 5c
 Rose. " 5c
 King Theodore, dark scarlet maroon. " 5c
 Golden King of Tom Thumbs, yellow. " 5c
 Mixed Tom Thumbs. Oz. 15c; " 5c
 Tall or climbing varieties, 6 to 10 feet. Rose. " 5c
 Coccinea, bright orange scarlet. " 5c
 King Theodore, dark crimson. " 5c
 Atropurpureum, dark velvety crimson. " 5c
 Schillingi, lemon yellow, with maroon blotches. " 5c
 Pearl, white. " 5c
 Finest mixed, many colors. Oz. 15c; " 5c

NICOTIANA AFFINIS, H. H. A. 3 feet. Species of tobacco flowers white and fragrant. Pkt. 5c

PANSY, H. H. A. Giant Trimardeau; a fine strain of very large flowers; mixed colors. Pkt. 10c
 Black or Faust. " 10c
 Emperor William, finest of the blues. " 5c
 Snow Queen, white. " 10c
 Gold margined. " 5c
 Bronze. " 5c
 Yellow. " 10c
 Azure blue. " 5c
 Mahogany. " 5c
 Beaconsfield, violet and white. " 5c
 Fire Dragon, fiery orange and bronze. " 5c
 Striped. " 5c
 Mixed, from the above sorts. " 5c

SUPERIOR STRAIN OF LARGE FLOWERING PANSIES. Pkt. 10c
 Large white, with a purple eye. " 10c
 Large white. " 10c
 Large yellow. " 10c
 Large Victoria, red shades. " 10c
 Large black. " 10c
 Large finest mixed. " 10c

PETUNIA, H. H. A., 1 1-2 feet. Fine mixed single varieties. Pkt. 5c
 Large flowering, fringed; superb strain single. " 25c

PHLOX Drummondii, H. A., 1 foot. Large flowering; in separate colors: White, scarlet, rose, yellow, striped, deep purple, crimson with white eye. Each, pkt. 10c
 Mixed of above colors. Pkt. 10c
 Collection of six colors. " 50c
 Star of Quedinburg, star shaped; mixed colors. " 10c
 Drummondii, Double mixed. " 10c

POPPY, H. A., 2 to 3 feet. Mephisto, single. " 5c
 Empress of China, large flower; satiny white, edged single. Pkt. 5c
 Flag of Truce, satiny white; single. " 5c
 Danebrog, scarlet, with white cross in centre; single. " 5c
 Shirley, semi-double, beautiful colors, mixed. " 5c
 Mikado, double carnation-flowered; large double flowers, pure white, edged with scarlet. Pkt. 5c
 Fairy Blush, large double fringed flowers; white, edged with rose. Pkt. 5c
 Carnation-flowered, mixed; many colors. " 5c
 Paony-flowered, mixed; many colors. " 5c
 French ranunculus-flowered, double; mixed. " 5c
 Iceland, 1 foot. Hardy mixed colors; single. " 10c

PRIMULA OBRONICA, Large flowering. " 10c

PRIMULA SINENSIS, G. P. (Chinese Primrose). Large flowering, fringed, mixed. Pkt. 25c
 Double, mixed; fringed. " 50c

PORTULACA, H. A., 6 inches; large double flowering, mixed. Pkt. 5c

RICINUS Zanzibariensis; a distinct class of these handsome ornamental plants which surpass in size and beauty all the varieties hitherto known. The plants attain great dimensions, presenting a splendid aspect with their gigantic leaves; mixed seeds which include light and dark green, brown and brownish purple leaves. Pkt. 5c
 Borboniensis, H. H. A. (Castor Oil Plant), 10 feet. Immense foliage of violet color. Pkt. 5c
 Sanguineus, deep red foliage, 8 feet. " 5c
 Mixed varieties. " 5c

SALVIA SPLENDENS, H. H. P. (Scarlet Sage), 3 feet. " 5c

SMILAX, G. P. climber; excellent for decoration. " 10c

STOCKS (Gillyflowers), dwarf; large flowering, double, Ten Weeks; in separate colors: White, canary, yellow, sky blue, blood red, violet, bright rose. Each, pkt. 10c
 Double mixed, large flowers " 10c

SUNFLOWER, H. A. Helianthus macrophyllus giganteus, yellow; 6 feet. Pkt. 5c
 Giant Russian, flowers 18 to 20 inches across. " 5c
 Globosus fistulosus, very double, 6 feet. " 5c

SWEET PEAS.

A SELECTION OF NEW AND BEST STANDARD VARIETIES.

AMERICAN SEEDLINGS. This mixture contains many new colors and flowers of extra large size and finest form. Pkt. 5c., oz. 8c., 1-4 lb. 20c

BLACK KNIGHT. New, Deep Maroon. Extra large. Pkt. 5c., oz. 10c

BLANCHE BURPEE. Pure white, large beautiful shaped flower. Pkt. 5c., oz. 8c., 1-4 lb. 20c

BLANCHE FERRY. Pink and white, similar to the well known Painted Lady. Pkt. 5c., oz. 8c., 1-4 lb. 20c

CAPTAIN OF THE BLUES. Bright purple and pale blue. Pkt. 5c., oz. 8c

CELESTIAL. Delicate Lavender. " 5c., " 10c

CHANCELLOR. New, large flower, bright orange pink. Pkt. 5c., oz. 10c

COQUETTE. Primrose, tinged blush. " 5c., " 8c

COUNTESS OF POWIS. New, Orange suffused with light purple. Pkt. 5c., oz. 10c

DOROTHY TENNANT. Large flower, deep rosy mauve. Pkt. 5c., oz. 8c

EMILY ECKFORD. Porcelain-blue, suffused with reddish mauve. Pkt. 5c., oz. 8c

EMILY HENDERSON. Pure white, large flower. Pkt. 5c., oz. 8c., 1-4 lb. 20c

FIREFLY. Rich brilliant scarlet. Pkt. 5c., oz. 8c

GORGEOUS. New, large flower rich orange salmon. Pkt. 5c., oz. 10c

KATHERINE TRACY. Soft pink, large flower. Pkt. 5c., oz. 8c., 1-4 lb. 25c

LOVELY. Dark pink with rose wings. " 5c., " 8c

MARS. Bright fiery crimson. " 5c., " 8c

MRS. ECKFORD. Primrose yellow, fine. " 5c., " 8c

MRS. SANKEY. Very large, pure white. " 5c., " 8c

PAINTED LADY. Pink and white. Pkt. 5c., oz. 8c., 1-4 lb. 20c

PRIMA DONNA. Light blush pink. " 5c., " 8c., 1-4 " 25c

PRINCESS OF WALES. White striped lavender and mauve. Pkt. 5c., oz. 8c

QUEEN VICTORIA. Yellow shaded with purple. Pkt. 5c., oz. 8c., 1-4 lb. 25c

STANLEY. Deep maroon large and fine form. Pkt. 5c., oz. 8c., 1-4 lb. 25c

VENUS. Salmon buff shaded rosy pink. Pkt. 5c., oz. 8c., 1-4 lb. 25c

BEST large flowering mixed. Oz. 5c., 1-4 lb. 15c., lb. 50c

DWARF SWEET PEAS. Growing not over 6 or 7 inches high. Pkt. 5c., oz. 15c

PINK CUPID. Pink and white. " 5c., " 15c

WHITE CUPID. Pure white. " 5c., " 15c

6 pkts. of named varieties postage paid. 25c
 12 " " " " " " 50c
 24 " " " " " " \$ 1.00

SWEET WILLIAM, H. P. Single mixed. Pkt. 5c
 Double mixed. " 5c

SWEET SULTAN. Mixed. " 5c
 Yellow, popular cutflower. " 5c

VERBENA, H. H. P. Mammoth, or large flowering. Scarlet, striped, purple, white, pink, and auricula eyed. Each, pkt. 5c
 Mammoth or large flowering. Mixed. " 5c

VIOLA ODORATA, H. P. (English Sweet Violet). " 10c

ZINNIA, H. H. A. Double dwarf; white, orange and canary. Each, 5c
 Dwarf, double, mixed colors. Pkt. 5c

General Collection Greenhouse and Bedding Plants



We make the following discount on plants :

Those sending \$1.00 can select to the amount of		\$1.15
“ 2.00 “ “ “		2.30
“ 3.00 “ “ “		3.50
“ 4.00 “ “ “		4.65
“ 5.00 “ “ “		6.00

ABUTILON.

(Flowering Maple.)

A general favorite, of easy culture and continuity of bloom throughout Summer and Winter months. Flowers bell shaped.

BOULE DE NEIGE, fine, pure white.

FRASERII, dazzling crimson.

GOLDEN BELLS, yellow.

THOMPSONII FL. PL., foliage variegated; double flowers.

ECLIPSE, a splendid variegated variety; especially suited for baskets and vases. Marbled green yellow.

MARY MILLER, pink.

SOUVENIR DE BONN. Beautiful variegated leaves, marked white and green; flowers of orange color.

CALYPSO, white; dwarf. Each, 10c., doz. \$1

ACALYPHA MACAFEANA.

Beautiful variegated foliage.

Each, 10c

ACHYRANTHES.

Colored foliage plants; valuable for vases and baskets or ribbon beds.

ASSORTED. Each, 8c., doz. 75c., 100, \$5.00

AGAPANTHUS.

UMBELLATUS (blue Lily of the Nile); blooms in large umbels; flowers a shade of light blue. Each, 25c

AGAVE AMERICANA VAR.

(Century Plant.)

15c. to \$1.00

AGERATUM.

Flowering through the Summer and Winter months; good for bedding.

BLANCHE, white, 9 inches high.

COPE'S GEM, blue, 6 inches high.

MEXICANUM, light blue, 15 inches high.

Each, 8c., doz. 50c.; 100, \$4.00

ALLAMANDA WARDLEYANA.

A very showy greenhouse climber, bearing large and beautiful golden yellow flowers. Each, 25c

ALTERNANTHERA.

Dwarf growing, variegated foliage plants; excellent for bedding.

AUREA NANA, yellow, fine for carpet bedding.

PARONYCHOIDES MAJOR, brilliant red.

VERSICOLOR, light rose and crimson.

Each, 8c., doz. 50c., 100, \$4.00

AMARYLLIS.

VITTATA HYBRIDS.

Each, 25c

ANTHERICUM VITTATUM VAR.

A beautiful greenhouse or conservatory plant, with recurved and graceful foliage; leaves are dark green, marked with broad strands of a creamy white color; small, white, star-shaped flowers, on long stems; very ornamental as a specimen or basket plant.

Each, 15c to 50c

ANTHURIUM.

SCHERZERIANUM, dwarf growing; flowers a brilliant scarlet. Each, \$1

CRYSTALLINUM, beautiful foliage plant. Each, \$1 to \$2

MAGNIFICUM, beautiful foliage plant. “ \$1 to \$2

WAROQUEANUM, beautiful foliage plant. Each, \$3

ASPARAGUS PLUMOSUS NANUS.

Leaves a bright green, gracefully arched; used in place of smilax for green, remaining fresh a long time after it is cut.

Each, 15c. and 25c

TENUISSIMUS, handsome climbing plant for the window.

Each, 15c

ARDISIA CRENULALA.

Dark evergreen foliage, with clusters of brilliant red berries.

Each, 15c

ASPIDISTRA LURIDA.

A beautiful window or conservatory plant, of easy culture.

Each, 25c

LURIDA VARIEGATA, a variety of the above; leaves variegated with creamy white stripes.

Each, 25c

AZALEA INDICA.

Beautiful plants for greenhouse or parlor, flowering profusely during the winter and spring months.

DOUBLE FLOWERING.

- A. BORSIG, pure white.
- APOLLO, blood red, semi-double.
- BERNARD ANDREA ALBA, very fine, pure white.
- DEUTSCHE PERLE, pure white, flowers of good form; good for forcing.
- DOCTEUR DE MOOR, deep rose, with violet reflections.
- FRANCOIS DE VOS, clear red.
- EMPRESS OF INDIA, rose, edged with white.
- MME. C. VAN LANGENHOVE, clear white, striped and stained with red.
- NIOBE, pure white, of good substance and form.
- RAPHAEL, pure white.
- SIMON MARDNER, large flower, intense rose.
- VERVAENEANN, a magnificent variety; color, a beautiful rose, deeply edged with white: large flowers.

SINGLE FLOWERING.

- COMTE DE CHAMBORD, bright pink, edged with creamy white.
- ROI D'HOLLANDE, blood red, with dark spots.
- SIGSMOND RUCKER, rose, striped with white.
- VERSICOLOR, fine white variety, striped and stained with deep red.
- MME. DE GREVY, salmon color, edged white.

Each, 75c. to \$ 2

BEGONIA.

Varieties flowering through the summer and winter months.

- ALBA PICTA.
 - ARGENTEA GUTTATA, leaves dark chocolate, flowers white.
 - FLORIBUNDA ROSEA, graceful habit, flowers pink.
 - HAAGEANA. Of strong erect growth, the foliage is of a large size, of a metallic green above and red below, flowers of a large size, creamy white; shaded pink. It makes a good pot plant.
- Each, 15c
- INCARNATA, flowers, rose.
 - MANICATA AUREA VAR, large green leaves spotted with yellow and white.
 - MAXII. This Begonia was raised in this establishment, and awarded medal at the World's Fair. It is of free growth, foliage of a rich metallic green above and red underneath. The flowers are of a bright pink color, and are borne in immensely large pendent panicles.
- Each, 10c. and 25c
- METALLICA, crimson and maroon, foliage of a metallic lustre; flowers pink.
 - NIGRICANS, leaves of a dark metallic color.
 - RUBRA, bright scarlet flowers.
 - SEMPERFLORENS GIGANTEA, bright green foliage, flowers bright scarlet.
 - THURSTONII. A distinct and pretty variety, with foliage of a bright metallic green above and bright red below. The flowers are rich pink, well above the foliage.
- Each, 10c
- VERNON, bright green leaves, flowers, white and pink.
- Each, 10c., doz. \$ 1

Begonia Rex.

Valuable for their grand and varied marked leaves; of the many varieties of this fine species we enumerate a few of the best.



- ADOLPH POLLOCK, metallic and deep gray.
- ANNIE DORNER. A nice bushy grower, finely notched leaves, deeply pointed. The coloring is very rich, the dark centre and edge bright velvety in texture, enclosing a silky, dark, pointed zone.
- COUNTESS LOUISE D'ERDODY, leaves dark silvery, of a metallic lustre, base of the leaf growing in a spiral like way.
- DUC DE BRABANT, centre dark, edges light green.
- ECLIPSE. A strong, healthy growing variety; deep bronzy green, palmate centre, with broad glistening silvery zone, encircled by a band of deep green, edge deep bronze.
- FRANCIS GEORGE. Beautiful palmate foliage, five to seven lobed, ground color, glistening silvery white, with dark bronze green centre, edge deep bronze.
- KAISER WILHELM, light green, spotted deep green.
- LOUIS CLOSSON, bright metallic color.
- MADAME LIEBOLD, zinc colored with green spots.
- PRESIDENT CABNOT, metallic green, blotched silver.
- QUADRICOLOR, silvery, dark center and light green.
- VOI LACTEE, silvery, with green ribs.

Each, 15c. to 25c., doz. \$ 1.50 to \$ 2.50

Begonias, Tuberous.

- Very popular plants for beds, or as pot plants for house or conservatory. The bulbs can be planted in small pots, in April or May, in good rich soil, and when well started transplant to larger pots. If wanted for garden or bedding, plant in a partial shade, and protect from winds and severe storms. Preserve bulbs in a warm dry cellar during winter.
 - IN SEPARATE COLORS, single flowering; bright scarlet, deep crimson, pure white, rich pink, bright yellow and orange salmon.
- Dry bulbs, 8c. each; doz, 75c
- DOUBLE VARIETIES. Scarlet, rose, white and yellow.
- Dry bulbs, 15c. each; doz. \$ 1.50

CALLA ETHIOPICA.

(Lily of the Nile.)

- LARGE FLOWER, pure white. Each, 15c. to 30c
- LITTLE GEM, very dwarf, rarely exceeds 12 inches in height; flowers about half the size of the common variety. Each, 15c

CALADIUMS, FANCY.

- Handsome foliage plants, useful for summer and fall decorations. In varieties. Each, 30c

Caladium Esculentum.

(Elephant's Ear.)

BULBOUS, ornamental large leaved plants, used for groups on lawns, requiring a moist rich soil. Each, 25c., doz. \$2.50
Smaller sizes. " 15c., " 1.50

EVER-BLOOMING FRENCH CANNAS.

(Standard Sorts.)

ALMIRAL AVELLAN. One of the best of the dark leaved varieties. The flowers are of good size, color, rich orange scarlet, overlaid with salmon. Four to five feet.
ALPHONSE BOUVIER, flowers of a deep rich crimson.
AMI PICHON. Flowers very large, color of a bright crimson; symmetrical growth. 4 feet.
CHAS. HENDERSON. Flowers of large size, color crimson; centre of flower marked with golden penciling. Three and one-half feet.
COMTE DE BUCHARD. Rich golden yellow spotted with bright red. Very large flowers. Four feet.
EGANDALE. A most excellent variety with bronzy foliage and soft, currant red flowers, which are thrown well above the foliage. One of the best of its type. 4 feet.
EXPLORATEUR CRAMPBELL. Flowers of good size, borne in large heads and thrown well above the foliage. Color of a bright orange crimson with darker markings. 4 feet.
FLORENCE VAUGHAN, flowers deep yellow, mottled rich crimson.
GEN. MIRIBEL. Color a peculiar shade of apricot, tinted salmon. Very distinct. 4 feet.
MILE BERAT. The nearest approach to a pink, a first-class bedder. 4 feet.
MADAME CROZY, grows from 2 to 3 feet in height green foliage, flowers large, of a brilliant scarlet with a narrow yellow border.
MAURICE MUSSY, flowers a rich scarlet, of large size.
METEOR. Color, orange scarlet; good size and very free flowering. Three and one-half feet.
NEUVESEL. It is of a soft pleasing shade of carmine; of good size and excellent habit. Foliage, dark green with bronzy markings; of strong vigorous growth. Very effective. Four and one-half feet.
PAPA. A fine red with large flowers and truss, three and one-half feet.
PAUL MARQUANT, flowers bright crimson, of large size.
PRESIDENT McKINLEY. Color brilliant crimson with bright scarlet shading. Truss large, compact, of good shape and held well above the foliage, and are produced freely and evenly. Plant is dwarf 3 feet; foliage deep green with marked chocolate margin.
QUEEN CHARLOTTE, flowers of a brilliant orange scarlet, with a distinct golden belt round each flower.
SECRETAIRE CHABANNE. Large flowers of very rich salmon, a shade entirely distinct from any other sort; 4 feet high, and one of the freest-flowering varieties.

Each, 10c., doz. \$1

CANNAS.

Austria and Italia.

These are an entirely new race of cannas and altogether distinct from anything introduced heretofore. They have been very appropriately called "Orchid Flowered Cannas."

ITALIA is of a bright orange scarlet with a very broad golden yellow border. The flowers which are produced on massive stems, about 16 inches long, are set well above the foliage; foliage large and heavy. Each, 15c

AUSTRIA is a counterpart of Italia in every way except in the color of its flowers, which are of a pure canary yellow, with but few traces of small reddish brown spots in the centre of the two inside petals. Each, 15c

CAREX JAPONICA VARIEGATA.

A new ornamental Japanese grass which is extremely useful as a house plant, of easy growth, standing the dry atmosphere of heated rooms with impunity, and at the same time hardy if planted out in the garden in Summer. 15c. each, 4 for 50c

CARNATIONS.

ALASKA, pure white.
BUTTERCUP, yellow, large flowers.
BON TON. Bright warm scarlet, large deep fringed flowers.
DAYBREAK, a very delicate shade of pink, large full flowers long stem, very fragrant.
EVELINA. A beautiful, free flowering, white.
FLORA HILL. Large pure white flowers, long stems, and moderately stiff; very free flowering.
F. MANGOLD, deep rich crimson.
JUBILEE. Color, intense scarlet, flowers large, quite full and well built.
LIZZIE MCGOWAN, a splendid white variety, free bloomer.
LOUISA PORSCH, yellow, a shade lighter than Buttercup, streaked with carmine.
MME. FISHER, pure white.
MME. DIAS ALBERTINI, free blooming, delicate pink.
MRS. G. M. BRADT. Clear white, heavily edged and striped scarlet; very large flowers.
PORTIA, brilliant scarlet.
PURITAN, white, large, very full and of good substance.
TRIUMPH. Color, pure pink, flowers of the largest size, a strong, heavy grower.
THOS. CARTLEDGE, carmine pink.
WM. SCOTT, a deep pink.
WHITE CLOUD. White, habit same as Daybreak, but taller, stronger more vigorous, and much freer bloomer.

Each, 10c., doz. \$1

CENTAUREA.

GYMNOCARPA, downy, white foliage, useful for bedding, vases and baskets. Each, 10c., doz. 75c

CESTRUM PARQUIL.

This is a well-known and highly-prized plant, blooming nearly all the year round. Foliage long and of deep green color, producing its richly fragrant flowers at every joint. Sweet only at night. It is also adapted to house culture. 15c

CISSUS DILCOLOR.

A beautiful climber, with marked and crimson foliage.

Each, 25c

CLERODENDRON

(Balfourii)

A beautiful greenhouse climber, with bright scarlet flowers and calyx creamy white. Very free flowering. Each 15c

COBÆA SCANDENS.

A rapid growing vine with large, bell shaped flowers; will grow over 20 feet in one season. Each, 10c; per doz. \$1

Cocolaba Platyclada.

Fine for baskets.

Each, 10c

CHRYSANTHEMUMS.

- From our large collection we enumerate a few of the best only.
- ALICE F. CAREY. A beautiful light shade of pink.
- FRANK HARDY. Incurved, pure white; very large.
- GEORGE W. CHILDS. Crimson, flowers massive, of immense size.
- GOLDEN WEDDING. Rich golden yellow, very large.
- IVORY. Pure white, large and early.
- JOHN SHRIMPTON. Bright crimson scarlet.
- LIBERTY. Best late yellow.
- LOUIS BOEHMER. Best pink, ostrich plume.
- MAUD DEAN. Incurved large petals, pink.
- MARION HENDERSON. Best early yellow.
- MAJOR BONNAFFON. Incurved, clear yellow, of perfect form.
- MISS G. VANDERBILT. Pearl white, with lemon shaded centre.
- MRS. E. G. HILL. Early, pearly pink, large.
- MAYFLOWER. Large, incurved white.
- MRS. JEROME JONES. One of the best whites, broad incurved petals.
- MUTUAL FRIEND. Reflexed pure white, of fine form.
- NIVEUS. Snow white, very large.
- PHILADELPHIA. Of globular form; white tinged with lemon yellow.
- PINK IVORY. Beautiful shell pink.
- R. G. CAREY. A very beautiful globular incurved white, late.
- THE QUEEN. Grand double white, very large.
- WM. H. CHADWICK. Waxy white, tinted rose.
- VIVIAND MOREL. Light rose, extra fine flowers.

Each, 10c., doz. \$ 1.00

COLEUS.

(Best Bedding Varieties.)

- The best of all of our ornamental foliage plants for Summer bedding; very effective for edging large beds, or massing by themselves. Our collection embraces all the standard and well tried varieties, as well as the leading and distinct novelties of recent introduction, of which we name a few below.
- BUTTERCUP, yellow, good for bedding,
- CHICAGO BEDDER, red.
- FIREBRAND, a fine bedder, dark crimson.
- FIRECREST, bright crimson, with yellow edge.
- GOLDEN VERSCHAFFELTII, fine yellow foliage.
- NONESUCH, crimson, edged yellow.
- VERSCHAFFELTII, dark crimson, best for bedding.
- VICK'S GEM, dark crimson, edged green, beautiful foliage.

Each, 8c., doz. 75c., 100, \$5.00

NEW COLEUS.

- ADMIRATION. Magenta and rose, overlaid chocolate, fringed edges, tipped gold.
- CONTRAST. Pale yellow, with black border.
- DANTE. Velvet-crimson, fringed edges, which are gold lined.
- ELECTRIC LIGHT. Snowy-white, fringed green border.
- Does not show its beauty till bedded out.
- CLIMAX. Red, chocolate and green; colors overlap each other.
- COMBINATION. Yellow, red, green and gold. Fine.
- MASCOT. Simply grand. Maple leaf, center of richest scarlet, surrounded by a deep chocolate, green and gold lace, worked edge.

NEW COLEUS CONTINUED.

- MONARCH. Perfection in the Coleus family. Pale chocolate, with an edge that resembles the finest "Kensington stitch" worked with gold thread.
- RAINBOW. Red leaf, with yellow center, bordered and fringed with gold.
- MINNIE GOOD. Another Coleus that does not reveal its beauty till planted in the sun. It is a big improvement on the old variety, "Progress," showing rose, lavender, cream, green and brown in exquisite contrasts.
- SUNSET. Pale olive, crimson and chocolate, nicely blended.
- VELVET MANTLE. Deep rose and chocolate, pale olive, border nicely blended.

Each, 10c., doz. 75c

CONVOLVULUS MAURITANICUS.

Blue flowering vine; for baskets and vases.

Each, 10c

CROTONS.

Beautiful ornamental foliage plants. In variety.

Each, 25c

CUPHEA PLATYCENTRA.

(Cigar Plant.)

Bright red flowers, tipped white.

Price, 10c

CUPHEA HILFILLDIANA.

It has purple flowers.

Price, 10c

CURCULIGO RECURVATA.

Palm like foliage.
VARIEGATED.

Each, 15c to 50c
" 15c to 50c

CYPERUS ALTERNIFOLIUS.

(Umbrella Palm.)

Each, 10c to 25c

CYCLAMEN PERSICUM GIGANTEUM.

Bulbous plants; succeeds well in the house, flowers of good substance, lasting a long time in bloom. Colors ranging from white to pink and crimson.

Each, 25c



CYCLAMEN

DAHLIA.

TWELVE BEST LARGE FLOWERING, SHOW AND FANCY VARIETIES.

- CLIENT. Bright glowing crimson.
 GEO. RAWLINGS. Dark velvety maroon.
 JAS. STEPHENS. Bright orange scarlet.
 JOHN WALKER. Finest pure white, absolutely perfect in form.
 LOTTIE ECKFORD. White spotted and striped pink and crimson. Very pretty.
 MISS CANNELL. White tipped rosy pink, fine flower.
 MISS MAY LOMAS. Pure white, delicately suffused with soft rosy lavender. A most unusual shade.
 MRS. GLADSTONE. Exquisite shell-pink. One of the finest.
 MRS. STANCOMBE. A pleasing fancy sort. Straw suffused amber striped red, mottled and tipped blush white.
 PSYCHE. Pale primrose, tinted and shaded rose. Very free.
 QUEEN OF YELLOWS. The best yellow.
 S. B. PENNYBAKER. Silvery white, inner petals tinged pink, outer petals heavily tipped rosy red.

Each, 15c., doz. \$ 1.50

Grand Cactus Varieties.

- COUNTESS OF PEMBROKE. Pure, delicate rosy lavender.
 EMPRESS OF INDIA. Deep rich maroon; fine.
 LEMON GIANT. Pure lemon yellow, large and free.
 MRS. HAWKINS. Rich sulphur yellow.
 NYMPHÆA. Clear, distinct shrimp pink, shading slightly darker towards the outer petals; its color and form have suggested the name Water-Lily Dahlia.
 PEBLE. The finest white yet introduced; a perfect gem; fine cut flowerer.

Each, 15c., doz. \$ 1.50

Choice Double Pomponé Varieties.

- CATHERINE. The best pure yellow; fine.
 DAYBREAK. Soft pink, like Daybreak Carnation.
 KLEINE DOMITEA. Orange buff, always in flower.
 RED PIPER. Deep glowing red; very fine.
 SNOW-CLAD. Unquestionably the finest white.
 VIVID. Bright crimson scarlet.

Each, 15c., doz. \$ 1.50

PARIS DAISIES, OR MARGUERITES.

- CARL PÖHLMAN. (Marguerites.) The new yellow ever-blooming Paris Daisy. Similar to Madame Gaillbert, but a rich, golden color. The two varieties go handsomely together. This variety is always in bloom. 10c
 NEW PARIS DAISY, MADAME FARFAILLON. A beautiful plant for edging flower beds. Bright silvery-green foliage, with white flowers. Very dwarf grower. 10c each
 NEW PARIS DAISY, MADAME GAILBERT. (Marguerites.) This is one of the finest new plants that has ever been introduced. Nothing can be imagined that is finer. All know the old varieties of Paris Daises, how beautiful and much sought after for decorations of all kinds. This new variety blooms constantly, and will produce ten blooms to the other variety's one, of large, white petals, showing a yellow disc.

Each, 10c., 3 for 25c

DRACÆNA.

- FRAGRANS, leaves deep green. Each, 50c
 INDIVISA, long foliage, green, graceful. " 40c
 TERMINALIS, leaves brownish green, with red variegations. Each, 25c

EPIPHYLLUM, OR LOBSTER CACTUS.

A wonderfully free bloomer, frequently blooming three or four times during the year. Of drooping, weeping habit, the flowers are bright and beautiful. It is of the easiest culture, and will bloom for everybody, and we can recommend it as being very handsome. 25c

FERNS.

Very desirable plants for house or conservatory. Those offered below are among the best.

- ADIANTUM. (Maiden Hair) Bellum, a beautiful variety, with crested fronds about 4 inches long. Each, 15c
 —CONCINNUM. Light green, recurved. " 15c
 —CUNEATUM. The well known maiden hair. " 15c
 —FARLEYENSE. This is the handsomest of all the maiden hair varieties. Each, 15c
 —FORMOSUM. A tall growing variety; makes handsome specimen plants. Each, 25c
 —GRACILLIMUM. Very graceful maiden hair. " 25c
 —LATHOMI. One of the most beautiful Adiantums. " 25c
 —RHODOPHYLLUM. Very handsome and easy to grow. Each, 15c
 ALSOPHILA AUSTRALIS. Australian tree fern, a rapid growing species. Each, 25c
 ASPLENIUM NIDUS AVIS. (Bird's Nest Fern.) " 50c
 CRYPTOMIUM FALCATUM. (Holly Fern.) A most desirable fern for house culture; of deep green foliage. Each, 15c
 DAVALLIA STRICTA. An elegant fern; beautiful shade of green. Each, 25c
 DICTYOGRAMMA JAPONICA. A strong growing fern, with large, dark green fronds. Each, 25c
 LASTREA OPACA. Dark green triangular foliage. " 15c
 MICROLEPIA CRISTATA. Beautiful decorative fern. " 25c
 NEPHROLEPIS. Davallioides Furcans, a beautiful crested variety with arching fronds. Each, 25c
 —DUFFII. Producing numerous crested fronds. " 20c
 —EXALTATA (Sword Fern.) " 15c

EXALTATA BOSTONIENSIS, OR BOSTON SWORD FERN.

- This fern is a variation from the ordinary Sword Fern, a graceful drooping fern; the fronds of which frequently obtain a length of four feet. It makes an excellent plant to grow as a single specimen. Each, 15c. Good plants, 25c. Strong plants, 50c.
 NEPHROLEPIS CORDATA COMPACTA. Fronds of a dark green color, of upright growth, with just sufficient arch to make them graceful; a good fern for house culture. 15c. to 25c. each
 PLATYCERIUM ALCICORNE (Stag's Horn Fern), thriving best on a block of wood. Each, 50c
 POLYPODIUM ANREUM. Large foliage of a distinct blush color. Each, 25c
 POLYSTICHUM AUGULARE PROLIFERA. A desirable fern for house cultivation. Each, 15c
 PTERIS ADIANTOIDES. Useful for fern dish. " 15c
 " ARGYREA. Large foliage with a broad band of white through the centre. Each, 15c
 PTERIS OWARDI. " 15c
 " PALMATA. Deep green foliage. " 15c
 " SERRULATA. Useful for fern dishes. " 10c
 " CRISTALA. A pretty crested fern. " 15c
 SELAGINELLA EMILLEANA. " 15c
 " WILDENOWII. " 15c
 " WALLICHII. " 15c

FARFUGIUM GRANDE.

(Leopard Plant.)

Beautiful ornamental foliage plant, for home culture; the leaves from 8 to 10 inches in diameter, of dark green color with bright yellow spots. Each, 25c

FEVERFEW.

LITTLE GEM, dwarf; flowers white, large and perfect form; double. Each, 10c

FICUS ELASTICA.

(India Rubber Plant.)

Each, 85c. to \$1.00.

FICUS REPENS, a trailing variety with small foliage. Each, 15c

FUCHSIAS.**Double Varieties.**

JOSEPH ROZAINÉ, dark plum color; very free flowering.

JUPITER. Sepals red, corolla violet blue, of enormous size.

MME. CARNOT. Very free flowering; flowers of very large size, tube and sepals deep coral red; corolla white veined and suffused carmine.

MOLESWORTH. Corolla white, sepals crimson. Similar to Storm King but of freer growth. A fine variety, large and double.

MADAME VANDER STRASS. A popular, free-flowering, double white variety.

NEW DOUBLE FUCHSIA, BON VONEOIR. Fine double white, giant bloom.

NEW DOUBLE FUCHSIA, GLOIRE DE MARCHI. The grandest double white in existence. Fine grower and free bloomer.

PERLE VON BRUNN, flowers large; corolla pure white; sepals dark red; free flowering.

PHENOMINAL. Large, double, purple corolla, tube and sepals crimson.

ROSAIN'S PATRIE. A strong growing, branching plant, with double white flowers produced in profusion.

STORM KING, corolla pure white; large and free flowering.

WHITE PHENOMINAL. Corolla pure white. Each, 10c., doz. 75c

Single Varieties.

ARABELLA. Deep pink and pure white.

BLACK PRINCE, corolla and sepals carmine; free flowering.

EARL OF BEACONSFIELD. Vigorous grower, tube and sepals light rosy carmine; corolla deep carmine; free flowering.

ROSE OF CASTILE, corolla violet; sepals white; very free flowering.

SPECIOSA, corolla orange scarlet; sepals white.

Each, 10c., doz. 75c

Genista Canariensis.

Flowers golden; blooming profusely during the winter.

Each, 10c. to 25c

GERANIUMS.**Double Varieties.**

ANNA HOSTE, dark maroon scarlet.

BEAUTE POITEVINE, salmon.

BRUANTII, semi-double, fine scarlet bedder.

COMTESSE DE HARCOURT. Double Bruant, flowers fine white, produced in large trusses, vigorous habit.

EARL GRANVILLE, dark pink, fine.

E. LEGUERE. Semi-double, deep salmon, with distinct white eye, semi-dwarf, compact, vigorous grower, large trusses, a free bloomer.

GEN. GRANT. Orange scarlet, good bedder.

LA FAVORITE. Snow white, compact, vigorous habit and free flowering.

MME. BUCHNER. Snow white, strong vigorous grower, extra large trusses, produced freely, held well above the foliage.

MME. CHAS. DABOUCHE. Bright rose very large trusses and free flowering.

M. LOUIS FAGES. Orange scarlet, semi-double.

MONTESQUIU, rosy mauve.

M. A. PIOLA. Semi-double, vermilion red, vigorous grower, broad, distinctly zoned foliage.

SWANLEY-WHITE.

THEA, bluish white; centre a bright salmon.

Each, 10c., doz. \$1. Bedding varieties, \$7 per 100

Single Varieties.

DAYBREAK, delicate pink.

GEN. GRANT, scarlet, good bedder.

GETTYSBURGH. Deep carmine, with scarlet and maroon shading, large well filled truss, plant semi-dwarf.

JOHN BRIGHT, deep red, fine.

JULES FERRY, brilliant carmine crimson.

LADY REED, light salmon.

MME. CH. MOLIN. Delicate salmon pink, shading to white, semi-dwarf, compact grower, truss very large; very free.

M. DE LAYRE, white.

MME. DE LA ROUX. Clear, bright salmon, large trusses borne well above the foliage.

MADONNA. Color soft shade of pale pink, with distinct white eye.

METEOR. Bright scarlet; very free.

MRS. GORDON. Beautiful pink.

MRS. J. M. GAAR. Snow white, large trusses, produced in great profusion, dwarf.

QUEEN OLGA, pink; large flower.

SAM SLOAN, deep scarlet; good bedder.

VAN DAEL, light salmon; very good.

Each, 10c., doz. \$1. Bedding varieties, \$7 per 100

Golden and Bronze Geraniums.

CLOTH OF GOLD, leaves golden.

HAPPY THOUGHT, green; centre of leaf white.

MARSHAL MCMAHON, deep yellow with broad chocolate zone.

MRS. POLLOCK, margin golden; dark zone.

Each, 10c

Silver Leaved Geraniums.

MME. SALLEROI, leaves green, edged white; dwarf, good for ribbon beds or borders. Each, 10c., 100, \$6

MOUNTAIN OF SNOW, green leaf with silver edge.

Each, 10c., doz. \$1

Scented Geraniums.

Dr. Livingston, Rose Variegated, Pennyroyal, Skeleton Leaved, Citron, Rose, Nutmeg, Prince Albert, Mrs. Taylor.

Each, 10c

Double Flowering Ivy Geraniums.

Good house plants, for baskets or vases; they can be grown to droop or climb.

EDEN MARCHII, beautiful salmon pink.

HORACE CHOISEUL, rich cherry pink.

JEANNE D'ARC, pure white; free flowering.

M. DUBOIS, rose pink.

RAPHAEL, salmon pink.

SOUVENIR DE CHAS. TURNER, large trusses; deep pink.

Each, 10c., doz. \$ 1

GLADIUS.

Various shades of Light and White.	Doz. 35c
" " Pink.	" 40c
" " Red and Scarlet.	" 30c
" " Yellow.	" 40c
" " Variegated.	" 35c

GLECHOMA HEDERACEA VAR.

Useful for hanging baskets. Each, 10c.



GLOXINIA.

Bulbous. Handsome pot plants, Summer blooming; flowers 2 inches long by 2 inches in diameter. Colors: Crimson, Rose, Scarlet, White, etc., and many beautifully speckled. Grow in light rich soil and protect from the sun. Mixed colors.

Each, 15c., doz. \$ 1.50

GREVILLEA ROBUSTA.

(Silk Oak.)

Fine decorative plant.

Each, 15c

HELIOTROPE.

CHIEFTAIN, purple.

PERUVIANUM, light purple.

SNOW WREATH, white.

Each, 10c., doz. \$ 1

CHINESE HIBISCUS.

Large-growing tropical shrubs with very glossy foliage. The plants under the hottest sun produce enormous flowers in great numbers, and make noble specimens. Can be grown in tubs and kept for years. Blossoms average five to six inches in diameter and are gorgeously colored.

HIBISCUS, AURIANTICA. Large and double, with orange-colored flowers.

COLLERII. Flowers buff-yellow, with a crimson-scarlet base. Peculiarly handsome.

MINIATUS, SEMI-PLENUS. Semi-double, flowers of a brilliant vermilion-scarlet, petals waved and recurved, and very handsome.

ZEBRINUS. Double, the outer petals scarlet, edged with yellow, inner petals are very irregular, curiously variegated with creamy yellow-white.

Each, 20c., doz. \$ 2

HOLLYHOCK, DOUBLE.

CHARTER'S, white, rose, yellow, salmon, black and scarlet.

Each, 15c., doz. \$ 1.50

HOYA CARNOSA.

(Wax Plant.)

Each, 10c

HYDRANGEA.

HORTENSIS, the well known variety; pink flowers, changing to blue in soils containing iron. Each, 10c. to 50c

OTAKSA, rosy carmine flowers; flowering when quite small.

Each, 10c. to 50c

RANIS PICTIS. (Red Branched.) One of the finest varieties, with dark red branches, that brighten as they near the flower trusses. Plant of robust habit and produces freely immense heads of deep rose colored flowers. 15c

THOMAS HOGG, dwarf grower; white flowers.

Each, 10c. to 50c

IMANTOPHYLLUM MINIATUM.

Attractive greenhouse plant; flower of a bright orange color.

Each, 50c

IMPABIENS SULBANII.

Each, 10c

IPOMŒA GRANDIFLORA.

(Moonflower.)

Flowers white. Nightblooming.

Each, 10c

IPOMŒA LEARII.

(Dawn Flower.)

Flowers purple.

Each, 10c

IVY.

ENGLISH.

Each, 10c

CERMAN, of rapid growth; useful for hanging baskets. " 10c

JASMINUM GRANDIFLORUM.

Climbing plant; pure white, very fragrant. Each, 25c

JUSTICIA VELUTINA.

A beautiful free flowering variety, with pretty pink heads of flowers which are produced in the greatest profusion at all seasons; begins to bloom when quite small. Each, 45c

THE WEEPING LANTANA.

This plant has a most graceful, drooping habit, grows very rapidly and blooms continually Summer and Winter, producing large clusters of flowers of the most delicate lilac or rosy-pink, foliage a beautiful dark green. Each, 10c., doz. \$ 1

LANTANA.

One of the best Summer flowering plants: Adolph Hvas, Raphael, Snowball, California, Splendens, Magnum, Victoria. Each, 10c., doz. 85c

LEMON VERBENA.

Each, 10c

LINUM TRIGYNUM.

An early Winter flowering plant, producing in profusion, brilliant orange flowers. Each, 10c to 25c

LOBELIA,

For hanging baskets or ribbon beds. Colors, BLUE and WHITE. Each, 10c

MADEIRA OR MIGNONETTE VINE.

A very rapid running vine, excellent for covering outhouses or trellises; small, feathery like, fragrant flowers in the Fall. Dry roots, each, 6c; roots started in pots, each, 10c.

MAHERNIA ODORATA.

Flowers yellow, bell shaped, sweet scented; flowering in Winter. Each, 10c

MANETTIA BICOLOR.

A very pretty, rapid growing, twining plant, producing tubular flowers over an inch in length, the plant covered with them during the entire season. Color bright red, tipped with yellow; 6 to 8 feet. Each, 10c

MANETTIA CORDIFOLIA.

Showy and attractive Summer vine, and entirely distinct from the preceding one; of rapid growth, producing a profusion of scarlet crimson tubular flowers, 1 1-2 inches long. Each, 10c

MARANTA ZEBRINA.

Beautiful foliage plant. leaves light green, barred with purple. Each, 50c

MAURANDYA.

Graceful and free flowering climber: white and blue flowers, 8 feet. Each, 10c

MUSA CAVENDISHII.

(Dwarf Banana.) Each, 75c. to \$ 1

MYRSIPHYLLUM ASPARAGOIDES.

(Smilax.)

A well known vine, easily grown if trained to strings or stakes. Each, 10c., doz. \$ 1

ORANGE OTAHEITE.

The best of the oranges for house culture; dwarf; bushy habit; blooms freely when quite small. Each, 25c

ORANGE MANDARIN, dwarf; bushy habit and heavy bearer. Each, 50c. to \$ 2

OLEANDERS.

DOUBLE PINK.

DOUBLE WHITE. (Lilian Henderson.)

DOUBLE YELLOW. 25c

ORCHIDS.

We shall be pleased to furnish prices, on special lists, when desired, from our extensive collection. We will supply good flowering plants, our selection, at the following prices: 6 orchids in 6 varieties, \$ 4.50; 12 orchids in 12 varieties, \$ 9

PALMS.

Valuable plants for house or conservatory; indispensable for decorating purposes.

ARECA LUTESCENS, green glossy foliage, with golden yellow stems. Each, 50c. to \$ 5

KENTIA BELMOREANA, strong growing, with deep green foliage. Each, 50c. to \$ 10

CHAMEROPS EXCELSA, a handsome fan palm. Each, 50c. to \$ 2

KENTIA FORSTERIANA, beautiful palm, graceful, bright green foliage. Each, 50c. to \$ 10

LATANIA BORBONICA, Chinese fan palm, the most desirable for general cultivation. Each, 40c. to \$ 15

PHENIX RUPICOLA. Each, \$ 3

RHAPIS FLABELLIFORMIS. Each, 50c. to \$ 1.50

SEAFORTHIA ELEGANS, of graceful habit and rapid and easy growth. Each, 50c

CYCAS REVOLUTA (Sago Palm.) " \$ 3

PANDANUS.

(Screw Pine.)

Very ornamental foliage plant for indoor decoration. VETICII, leaves striped with broad bands of creamy white. 50c. to \$ 1

PELARGONIUMS, SHOW.

The Pelargonium is one of the most beautiful plants and should be more extensively grown; they are of easy culture, and in their various exquisite tints and colors, present what few other plants possess.

CORNET, rose with maroon blotches.

DR. MASTERS, dark maroon, margined crimson.

GENERAL TAYLOR, deep rose, blotched maroon.

L'AVENIR, rose, streaked with white.

LUCY MORTON, white, with purple blotches.

MABEL, bright rose, blotched blackest maroon.

MAGPIE, white, with distinct dark purple spots on each petal.

QUEEN OF WHITES, with dark purple blotches.

THE BRIDE, white, blotched dark maroon.

VICTOR, deep rose, blotched dark maroon.

Each, 10c., six for 50c

PEPEROMIA MACULOSA.

Dwarf growing, ornamental foliage plant for the window, thick fleshy leaves of green color, veined with silvery white. Each, 10c

PLUMBAGO CAPENSIS.

Light blue, very free flowering. ALBA, same as above except in color, which is white. Each, 20c

PRIMROSE.—Chinese.

SINGLE. Each, 10c. and 25c
DOUBLE. " 15c. " 25c

ROSES.—Tea or Ever-blooming.

- BON SILENE, bright brilliant carmine.
 CATHERINE MERMET, delicate rosy pink; buds large, long and pointed.
 DUCHESSE DE BRABANT, soft rosy flesh tint; good bedding variety.
 MME. HOSTE, creamy white.
 P. GONTIER, dark carmine crimson; good bedder.
 PERLE DES JARDINS, rich yellow; of large size and perfect form.
 SAFRANO, saffron yellow; beautiful in the bud.
 SOUVENIR D'UN AMI, fine delicate rose, full and double.
 SUNSET, of a rich shade of saffron and orange.
 THE BRIDE, pure white; long buds, full and double.
 THE BRIDESMAID, of a richer and darker shade than Catherine Mermet.
 THE QUEEN, a pure white sport of Souvenir d'Un Ami.
 And other varieties. Each, 10c., doz. \$ 1

Roses, Hybrid Tea.

- AMERICAN BEAUTY, rich carmine crimson.
 BELLE SIERBRECHT. Large buds of beautiful form, rich shell pink. Plant is of free growth and very free flowering.
 KAISERIN AUGUSTA VICTORIA. Of a large size, creamy white, strong grower.
 LA FRANCE, beautiful peach pink, changing to deep rose.
 MME. C. TESTOUT. Clear satin rose, flowers full, of globular form.
 METEOR, dark velvety crimson, a constant profuse bloomer.
 SOUVENIR DE PRESIDENT CARNOT. A strong, clean, healthy grower, with handsome green foliage and large, beautifully shaped buds; color a delicate, rosy flesh, shaded a trifle deeper at the centre; very profuse bloomer.
 SOUVENIR DE WOOTTON, beautiful shade of crimson, very fragrant, a most prolific bloomer. Each, 10c., doz. \$ 1

Polyantha Roses.

- CLOTHILDE SOUPERT. The best of this class; fine for pot or outdoor planting. Color pearly white, with centre of soft pink.
 MOSELLA. Canary yellow; of large size, an exceedingly free flowering, perpetual rose. Each, 10c., doz. \$ 1

Hybrid Perpetual Roses, Hardy.

- In this list are offered some of the best of this class.
 ALFRED COLOMB. Carmine crimson.
 ANNA DE DIESBACH. Clear, bright carmine, full and fragrant.
 BARONESS ROTHSCHILD. Rich satiny pink.
 BOULE DE NEIGE. Pure white, petals of great substance, medium size, fine form, good habit and very free.
 COQUETTE DES ALPES. White, tinged blush.
 EUGENE FURST. Velvety crimson, very large flowers, with broad massive petals, quite double.
 GEN. JACQUEMOT. Brilliant scarlet crimson.
 GEN. WASHINGTON. An old garden favorite; red, shaded crimson and carmine; large, full and flat.
 JOHN HOPPER. Bright rose, carmine centre, large.
 LOUIS VAN HOUTTE. Dark velvety crimson, of good form.
 MABEL MORRISON. Pure white; large, massive, perfectly formed flowers.
 MAGNA CHARTA. Bright pink.
 MARIE BAUMAN. Crimson vermilion, suffused carmine; large, full, of exquisite form and color; very fragrant.
 MARY DICKSON. White, with pale flesh centre; extra large flowers, of fine substance, strong vigorous growth.
 MME. G. LUIZET. Pale satiny pink, an attractive sort.
 MRS. JOHN LAING. Rich satiny pink, delicious fragrance; blooms constantly.
 PAUL NEYRON. Very large dark rose.
 PERSIAN YELLOW. Hardy yellow rose; best of its color.
 PRINCE C. DE ROHAN. Dark crimson maroon, almost black.
 URICH BRUNNER. Bright cerise red; flowers, large and full. Each, 25c., doz. \$ 2.50

ROSA RUGOSA.

The lovely Ramanas or Rugosa Roses form sturdy bushes 3 to 5 feet in height, covered with handsome, glossy green foliage and clusters of beautiful single flowers which emit a delightful odor. They bloom nearly the whole Summer, and are covered during Autumn and Winter with red seed pods.

RUGOSA. Fine glossy crimson.

RUGOSA ALBA. Pure white.

Strong plants, 30c. each, doz. \$ 3

Hardy Climbing Roses.

CRIMSON RAMBLER. Of rapid vigorous growth, making shoots, 8 to 10 feet in height, in a single season. The flowers are produced in numerous clusters, and fairly cover the plant. Color, brilliant crimson.

YELLOW RAMBLER. A very vigorous grower; flowers produced in large clusters; perfectly double and very fragrant. Color, a decided yellow.

WHITE RAMBLER. Similar to the Yellow Rambler in every way except color, which is pure white.

PINK RAMBLER. In habit similar to White and Yellow Ramblers except in color, which is a pure rose color.

Large plants, 50c., small plants, 10c

BALTIMORE BELLE. Blush, flowers in clusters. Each, 40c

GREVILLEA, OR SEVEN SISTERS. Flowers in clusters, opening a light rose color, changing to pure white. Each, 40c

ROSA WICHURIANA. (The Single White Memorial, or Japanese Trailing Rose.) This is a new and distinct class of trailing Rose, making a perfect carpet with its creeping habit. It is very useful for permanent planting in cemetery plots, or on slopes or rockeries, as it is entirely hardy, and produces its charming white flowers in the greatest profusion during the entire Summer. 15c.

SALVIA.

SPLENDINS. Scarlet Sage.

PATENS. Deep blue.

Each, 10c., doz. \$ 1

SANSEVIERA ZEYLANICA.

An elegant variegated plant well adapted for house culture.

Each, 30c

STOBILANTHES DYERIAEES. Beautiful metallic purple and pink foliage. A good plant for either bedding out or pot culture. 10c

SWAINSONIA GALEGIFOLIA ALBA.

Ever blooming plant, with pure white, pea shaped flowers, producing sprays from 12 to 20 flowers each. 10c

SWAINSONIA GALEGIFOLIA ROSEA. The same as the above Alba except the color which is a beautiful rose. 10c

TUBE ROSES.

EXCELSIOR PEARL. Extra large bulbs.

3 for 10c., doz. 25c

VERBENAS.

Of these useful bedding plants, we offer distinct varieties. They are all of the large flowering type; the colors range through all the different shades of scarlet, purple, crimson, pink, blue and white.

Each, 5c., doz. 50c., 100, \$ 4

VINCA, Periwinkle.

Very good for vases.

MAJOR. Green leaves.

MAJOR VARIEGATA. Leaves green, margined white; blue flowers. Each, 10c., doz. \$ 1

VIOLET.

ENGLISH. Single blue.

MARIE LOUISE. Double light purple.

SWANLEY WHITE. Double white.

CALIFORNIA. A large new single purple variety; fragrant. Small plants 10c. each; \$ 1 per doz.; large plants in autumn. 20c. each.

LUXONNE. Similar to the California Flowers appear larger than that variety, as the petals open out flat; flowers continuously from early September till May; of rich violet purple color, with strong stems; very fragrant. 10c

HARDY HERBACEOUS PERENNIALS.

- ACHILLEA THE PEARL. Flowers borne in the greatest profusion the entire Summer on strong, erect stems of the purest white. Each, 15c., doz. \$ 1.50
- MILEFOLIUM ROSEUM. Finely cut deep green foliage; flowers pink in dense heads. Well worth growing, both as a border plant and for cutting. Each, 15c., doz. \$ 1.50

ACONITUM NAPELLUS.

(Monkshood, or Helmet Flower.)

Invaluable for planting under trees or in shady positions. succeeding better there than almost anything else. Large dark blue flowers. Each, 15c., doz. \$ 1.50

—EGOPODIUM, (Bishop's Weed.)

—PODAGRARIA VARIEGATA. A rapid-growing plant, thriving in any soil; makes a fine border for a bed of shrubs or for covering waste or barren spots. Each, 10c., doz. \$ 1.00

ANEMONE JAPONICA RUBRA. " 15c., " \$ 1.50

" " ALBA. " 15c., " \$ 1.50

AQUILEGIA, (Columbine) assorted. " 10c., " \$ 1.00

ASTILBE JAPONICA, white; plume like spikes of flowers. Each, 20c

ANTHEMIS. (Hardy Golden Marguerite.)

These hardy Marguerites are among the most satisfactory summer-flowering perennials, succeeding in the poorest soil and blooming continuously during the entire summer.

—TINCTORIA. Of dense bushy habit, with large golden yellow flowers.

KELWAYII. Similar to the above, but with deeper yellow flowers. Each, 15c., doz. \$ 1.50

ARABIS ALPINA, suitable for rockwork. Each, 10c

CLEMATIS.

The varieties listed below form erect bushes 2 to 3 feet high, and are admirably adapted for planting in the border.

—DAVIDIANA. A most desirable variety, with fresh bright green foliage and tubular bell-shaped flowers of deep lavender blue, deliciously fragrant. Each, 15c., doz. \$ 1.50

—RECTA. Another fine variety of shrubby habit, growing about 3 feet high, with handsome pure white flowers in very large showy clusters, very effective. Each, 25c., doz. \$ 2.50

DELPHINIUM FORMOSUM. (Hardy Larkspur). This is certainly one of the handsomest and most satisfactory of all the hardy herbaceous plants and should be planted extensively, even in the smallest garden; its long spikes of bright blue flowers are produced continually from June until frost. Each, 20c., doz. \$ 2

DICTAMNUS FRAXINELLA. (Gas Plant.) A very showy border perennial, forming a bush about 2 1/2 feet in height, having fragrant foliage and spikes of curious red flowers, giving off during hot weather a fragrant volatile oil, which explodes when a match is applied to it. Each, 15c., doz. \$ 1.50

DICTAMNUS FRAXINELLA ALBA. Identical with the above except in color, which is pure white. Each, 15c., doz. \$ 1.50

DIELYTRA SPECTABILIS. (Bleeding Heart.) Adapted for outdoor planting, doing splendidly in semi-shaded positions. It bears long racemes of graceful heart-shaped pink flowers. Each, 15c., doz. \$ 1.50

HARDY ASTERS. (Michaelmas Daisies, or Star-worts.)

These are among the showiest of our late-flowering hardy plants, giving a wealth of bloom at a season when most other hardy flowers are past.

- LADY TREVYLAN. A fine pure white.
- NOVAE ANGLIAE. Large bluish purple.
- " " RUBRA. Bright rose-colored flowers.
- PURPURIMUS. Rich purple, very free.
- SNOW FLAKE. A compact growing, very late, white flowering variety.

BELLIS PERENNIS, (English Daisy,) various colors. Each, 5c., doz. 50c

BOLTONIA ASTEROIDES. A beautiful native plant, growing 4 to 5 feet high, producing white Aster-like flowers during the entire Summer; one of the most effective perennials and worthy extended cultivation. Each, 15c., doz. \$ 1.50

BOLTONIA LATISQUAMA. A pretty pink flowering sort: very desirable. Each, 15c., doz. \$ 1.50

BOCCONIA CORDATA. A noble, hardy perennial, beautiful in foliage and flower, and admirably adapted for planting in the shrubby borders, centre of beds, and in bold groups in almost any position. Each, 15c

CANTERBURY BELLS, various colors. Each, 10c., doz. \$ 1

CERASTIUM TOMENTOSUM, bright silvery foliage; white flowers. Each, 10c

CHAMOMILE, (True.) Each, 10c., doz. \$ 1

CALTHA PALUSTRIS (Marsh Marigold). Large bright yellow flowers, produced early in Spring. Each, 15c., doz. \$ 1.50

CALTHA PALUSTRIS FL. PL. The double-flowering Marsh Marigold, very pretty. Each, 25c., doz. \$ 2.50

CARYOPTERIS MASTACANTHUS (Blue Spiræa). A handsome hardy perennial plant recently introduced from China. It is of a vigorous growth, producing flowers in great profusion the whole length of its branches, even young plants in small pots flowering freely. The color is a rich lavender or sky blue. A valuable plant either for bedding or pot culture, blooming continuously from midsummer until cut by frost in the Fall. Each, 15c., doz. \$ 1.50

CHRYSANTHEMUMS.

(Marguerites.)

These summer-flowering Chrysanthemums, or Marguerites, are becoming general favorites, and deservedly so. They are free-growing perennials, not exceeding 2 1/2 feet in height, forming large bushes which are covered with bloom the entire summer; the flowers are large, pure white and of great substance, lasting a week or more when cut; they continue in bloom all summer and are perfectly hardy.

—MAXIMUM TRIUMPH. Flowers 4 inches in diameter with broad heavy overlapping petals.

—FILIFORMIS. With long narrow thread-like petals, a most effective large white flower. Each, 15c., doz. \$ 1.50

FUNKIA. (Plantain Lily.)

—CERULEA. Blue, broad green leaves.

—ALBA. Pure white, lily-shaped, fragrant flowers; borne in large clusters.

—VARIEGATA. Green and white foliage, with purple flowers. Each, 15c., doz. \$ 1.50

GYPSOPHILA PANICULATA. (Baby's Breath.) A beautiful old-fashioned perennial, possessing a grace not found in any other perennial, and attracting the eye of everyone. When in bloom it forms a symmetrical mass 2 to 3 feet in height, and as much through, of minute pure white flowers, forming a beautiful gauze-like appearance. For cutting purposes it is exquisite, especially in combination with high-colored flowers.

Each, 15c., doz. \$ 1.50

HELIANTHUS. (Hardy Sunflowers)

—**MULTIFLORUS FL. PL.** (Double Hardy Sunflower). One of the most useful perennial plants in cultivation. It is perfectly hardy and produces its large double Dahlia-like golden-yellow flowers in great profusion the entire summer and fall.

—**RIGIDUS.** One of the most desirable of our native varieties, beginning to bloom early in July and continuing until late fall; flowers single, golden-yellow, with dark centre.

Each, 15c., doz. \$ 1.50
HEMEROCALLIS FLAVA (Yellow Day Lily.) A most useful and desirable herbaceous plant, producing its large golden-yellow flowers during July and August in the greatest profusion; the plants grow about 3 feet high. Each, 15c., doz. \$ 1.50

HEUCHERA SANGUINEA. A most desirable perennial, of dwarf, compact branching growth and robust constitution, growing about 2 feet high. The flowers are produced in loose, graceful spikes and come in the greatest profusion. In color it varies from light coral-red to crimson, and when seen in full perfection dazzles the eye with its brilliancy. Each, 20c., doz. \$ 2

HEUCHERA ALBA. A white flowered form of the above, possessing all the desirable good points of the type. Each, 35c

GERMAN IRIS. (Iris Germanica)

These are neat, robust, hardy, herbaceous, early-blooming plants, with large ornamental flowers of rich and elegantly blended colors, exquisitely striped with dark violet, purple or bronzed lines, upon a lighter ground. They thrive best in low situations, and can be planted in marshy places or interspersed with low growing sedges on the margins of fish ponds. Assorted, each, 15c., doz. \$ 1.50

JAPANESE IRIS.

These magnificent Iris are among the most beautiful of our Summer-flowering plants. They commence blooming about the middle of June and continue in bloom for five or six weeks. Many of these flowers measure from 10 to 12 inches in diameter, and rival the Orchids in their rich colorings and markings. While the Iris succeeds in almost any soil, and under any conditions, they delight in a rich, deep, wet position, and should be abundantly supplied with manure and water.

Named varieties. Each, 25c., doz. \$ 2.50
 Choice mixed varieties. Each, 15c., doz. \$ 1.50

PÆONIA, (Pæony.) Herbaceous, assorted. Each, 25c., doz. \$ 2.50

HARDY GARDEN PINKS.

Dwarf, hardy pinks, bearing double flowers of rich colors and possessed of the true clove scent; they winter better if protected.

—**HER MAJESTY.** The flowers of this fine variety are of a large size and of the purest white, very fragrant, and borne profusely on stout, erect stems.

—**JULIETTE.** White, laced crimson.

—**LAURA WILMER.** White, purplish-maroon centre.

—**SNOW (Mrs. Simkins.)** Large, pure white, very fragrant.

—**SOUVENIR DE SALLE.** Soft rosy pink.

—**STANISLAUS.** Violet rose, deep crimson centre. Each, 15c., the set of 6 for 75c

PAPAVER, (Poppy.) NUDICALE, (Iceland Poppy.) Each, 10c

—**ORIENTALE, flowers orange scarlet.** " 15c

PHLOX SUBULATA, (Moss Pink.) Each, 10c., doz. \$ 1

—**HYBRIDA, assorted, early and late flowering.** Each, 15c., doz. \$ 1.50

PYRETHRUM HYBRIDUM, assorted. Each, 20c

SPIRÆA FILIPENDULA FL. PL., (Double Dropwort.) Each, 20c

—**PALMATA, large heads of crimson flowers.** " 15c

—**ULMARIA FL. PL., (Double Meadow Sweet) double white flowers.** Each, 15c

RANUNCULUS (Double Buttercup.)

—**ACRIS FLORA PLENA.** A pretty double-flowering form of the bright golden yellow Buttercup. Each, 10c., doz. \$ 1

RUDBECKIA (Cone-flower.)

—**"GOLDEN GLOW."** A plant that should find a place in every garden. It is of fine habit and vigorous growth, attaining a height of from 4 to 6 feet, and begins to flower early in the season, and continues until late in the fall. The flowers are produced in enormous quantities on long stems, and as a cut flower for vases, etc., it has no equal. Each, 15c

TROLLIUS (Globe Flower.)

—**EUROPÆUS.** Produces bright yellow globular flowers from early spring until late in fall. Each, 25c

LILIUM AURATUM, (Golden Banded Lily of Japan.) Each, 15c

—**LANCIFOLIUM ALBUM,** " 20c

— " **RUBRUM,** " 15c

HARDY SHRUBS.

ALMOND. Double-flowered. Each, 35c

BERBERIS THUNBERGII, handsome foliage, and solitary flowers; low growing, one of the best shrubs. Each, 25c

—**VULGARIS,** upright bush, and fragrant flowers, fruit deep red. Each, 25c

—**VULGARIS, VAR. PURPUREA,** purple leaved. " 25c

CHIONANTHUS VIRGINICA, (Fringe Tree) foliage, dark green, glossy and pure white feathery flowers. Each, 50c

DEUTZIA, CRENATA, double-flowering. Each, 35c

" **PRIDE OF ROCHESTER.** " 30c

EXOCHORDA GRANDIFLORA, pure white starry flowers. Each, 25c

HYDRANGEA PANICULATA GRANDIFLORA, flowering in August and September. Each, 25, 50 and 75c

LONICERA TARTARICA, (Bush Honeysuckle), white and pink varieties. Each, 25c

PHILADELPHUS, (Syringa or Mock Orange), CORONARIUS, pure white flower, fragrant. Each, 25c

—**GORDONIANUS,** flowers large, white, and produced late. Each, 25c

PYRUS, JAPONICA. Each, 25c

SPIRÆA, (Meadow Sweet,) PRUNIFOLIA FL. PL., (Bridal Wreath) double pure white flowers on the entire length of the smaller twigs. Each, 25c

—**OPULIFOLIA AUREA,** splendid golden leaved variety. Each, 35c

—**VAN HOUTTEI,** foliage rich glossy green; flowers pure white, in dense clusters along the whole length of the branches; one of the finest ornamental shrubs. Each, 25c

—**DOUGLASI.** A beautiful variety bearing spikes of beautiful rose-colored flowers. Fine for massing in shrubberies. Each, 25c

—**THUNBERGII.** Of dwarf habit and graceful form; flowers small, white, appearing early in spring. Fine for cemeteries. Each, 25c

SYMPHORICARPUS RACEMOSUS, (Snowberry.) Each, 25c

SYRINGA, (Lilac) Vulgaris, (common lilac) fragrant purple flowers in large clusters; one of the best. Each, 25c

—**VULGARIS ALBA, (common white lilac.)** " 25c

VIBURNUM PLICATUM, (Japan Snowball,) very ornamental shrub, with olive green plicated foliage; flowers white. Each, 30c, to 50c

VIBURNUM OPULUS STERILIS. (Common Snowball.) Large, white, globular flowers. One of the most valuable shrubs offered. Each, 25c

HEDGE PLANTS, EVERGREENS.

NORWAY SPRUCE, 2 feet. Doz. \$ 2.00

ARBOR VITAL, 2 to 3 feet. " \$ 2.00

HEMLOCK, 2 feet. " \$ 2.50

CLIMBING PLANTS.

AMPELOPSIS VEITCHII. Boston Ivy or Japan Ivy. Each, 25c

" **QUINQUEFOLIA.** Common woodbine or Virginia creeper. Each, 20c

BIGNONIA RADICAUS. Trumpet flower. " 25c

CLEMATIS HENRYII. A pure large flowering variety. Each, 40c

" **JACKMANII.** Color, dark rich purple. " 40c

" **DUCHESS OF EDINBURGH.** Double flower, white. Each, 40c

CLEMATIS PANICULATA. Strong, rapid grower; flowers white and fragrant. Each, 20c

CELASTRUS SCANDENS. (Bitter Sweet.) Each, 25c

LYCIUM CHINENSE. (Chinese Matrimony Vine.) 25c

LONICERA BELGICA. Monthly fragrant Honeysuckle. Each, 35c

