

Historic, Archive Document

Do not assume content reflects current scientific knowledge, policies, or practices.

62.97

SPRING 1900.

U. S. DEPT. OF AGRICULTURE

ANNUAL CATALOGUE

U. S. DEPT. OF AGRICULTURE

OF NORTHERN GROWN

SEED POTATOES AND PLANTS.

(Samen Kartoffeln und Pflanzen.)
Frühling 1900.



GREEN BAY TRIUMPH, See Page 5.

J. M. SMITH'S SONS,
GREEN BAY, WISCONSIN.

Rates in Cents Per 100 Lbs. Potatoes in Barrels L. C. L. From Green Bay, Wis., to

C. & N. W. C. M. & St. P. Ry.

Milwaukee, Wis.	\$24	\$16
Sheboygan, Wis.	21	
Janesville, Wis.	29	29
Ashland, Wis.	44	23
Hudson, Wis.	40	
Detroit, Mich.	19	19
Jackson, Mich.	19	34
Kalamazoo, Mich.	19	32½
Chicago, Ill.	29	29
E. St. Louis, Ill.	42	26
Freeport, Ill.	29	20
Springfield, Ill.	42	25
Cairo, Ill.	52	33
Dubuque, Ia.	45	22
Council Bluffs, Ia.	45	32
Minneapolis, Minn.	40	25
Morehead, Minn.	85	60
Columbus, Ohio	23	37
Cincinnati, Ohio	24	36
Warren, Ohio	23	38
Logansport, Indiana	40	32
Columbus, Ind.	43	35
New Albany, Ind.	44	36
Bismarck, N. D.	124	97
Yankton, S. D.	51	37
Kansas City, Mo.	45	32
Carthage, Mo.	66	46½
Topeka, Kas.	64	47
Wellington, Kas.	93½	72½
Wallace, Kas.	117	92
Lincoln, Neb.	49	36
North Platte, Neb.	110	87
Denver, Colo.	125	97
Santa Fe, N. M.	188	1.67
Choctaw, Tex.	121	1.10
Houston, Tex.	121	1.10
Pittsburgh, Pa.	24	40
Louisville, Ky.	44	37
Wheeling, W. V.	24	40
Nashville, Tenn.	53	51
Jackson Miss.	75	67
New Orleans, La.	67	65
Tallahassee, Fla.	1.29	1.27
Montgomery, Ala.	79	77
Atlanta, Ga.	84	82
Savannah, Ga.	84	82
Raleigh, N. C.	79	71
Richmond, Va.	32	48
Baltimore, Md.	32	48
N. Y. City	35	51
Boston, Mass.	39	55
Portland, Me.	39	55
Salt Lake, Utah	2.15	1.75
San Francisco	2.20	1.90
Salem, Ore.	2.60	2.00
Olympia, Wash.	2.20	1.90
Little Rock, Ark.		65
Oklahoma, O. T.		84

Rates are in cents per 100 lbs. Subject to change without notice.

SPRING 1900.



CATALOGUE

AND PRICE LIST OF

SEED POTATOES

AND PLANTS

GROWN BY

J. M. SMITH'S SONS,

GREEN BAY, WIS.



Originators of the GREEN BAY TRIUMPH,
Earliest Potato Known to Us,



ESTABLISHED 1865.

REORGANIZED 1894.



HOWARD J. SMITH, Business Manager.

IRVING C. SMITH, Gardener.

(Siehe Seite 3.)

TO OUR FRIENDS, OLD AND NEW, GREETING.

THOUGH our seed [potato trade for '99 was, as we predicted, the best by far in the history of our business, we still look for another substantial increase in 1900.

WE HAVE A LARGER STOCK, our knowledge of the requirements of the trade is broader, and we have a long established reputation for square dealing to sustain.

TO YOU, the patrons whose co-operation has made our past success possible, we extend thanks; and from you, as well as from all others into whose hands this catalogue may fall, we solicit a share of the coming season's trade.

OUR LOCATION. 200 miles north of Chicago; 250 miles north of New York; 150 miles north of Detroit; 100 miles north of Milwaukee; 50 miles north of LaCrosse. Whatever virtue there may be in "Northern grown potatoes," should be found in ours.

OUR STOCK is O. K. In vigor it is fully up to that of last year, and we exercise extreme care to prevent mixing.

OUR ILLUSTRATIONS. We present half tone cuts, reproduced from photographs taken on our own place. We endeavor to keep both illustrations and descriptions **TRUE TO THE FACTS.**

YOU CAN SAVE MONEY BY CLUBBING. For instance if you and your neighbor each want $\frac{1}{2}$ bushel of a given variety, send the price quoted for one bushel. The above applies to all club orders, large or small. Each person's order will be carefully packed and marked with the variety and the purchaser's name, and all shipped together to one address as ordered.

WE WILL CHOOSE VARIETIES for you when requested; but be sure to tell us what kind of soil you have, and how you expect to dispose of the crop.

WE DO NOT SUBSTITUTE. On late spring orders better make a second choice as we are likely to be short on some varieties. Money cheerfully returned whenever we are unable to furnish satisfactory varieties.

SECOND SIZE STOCK is generally sold out first. In such cases we fill second size orders with the same value of first size. We reserve this privilege, **UNLESS YOU SPECIFY OTHERWISE WHEN YOU ORDER.**

DIRECTIONS FOR ORDERING. READ CAREFULLY.

Order early, before we are sold short on certain varieties.

Use order sheet, and fill blanks carefully. Extra order sheets mailed free on application.

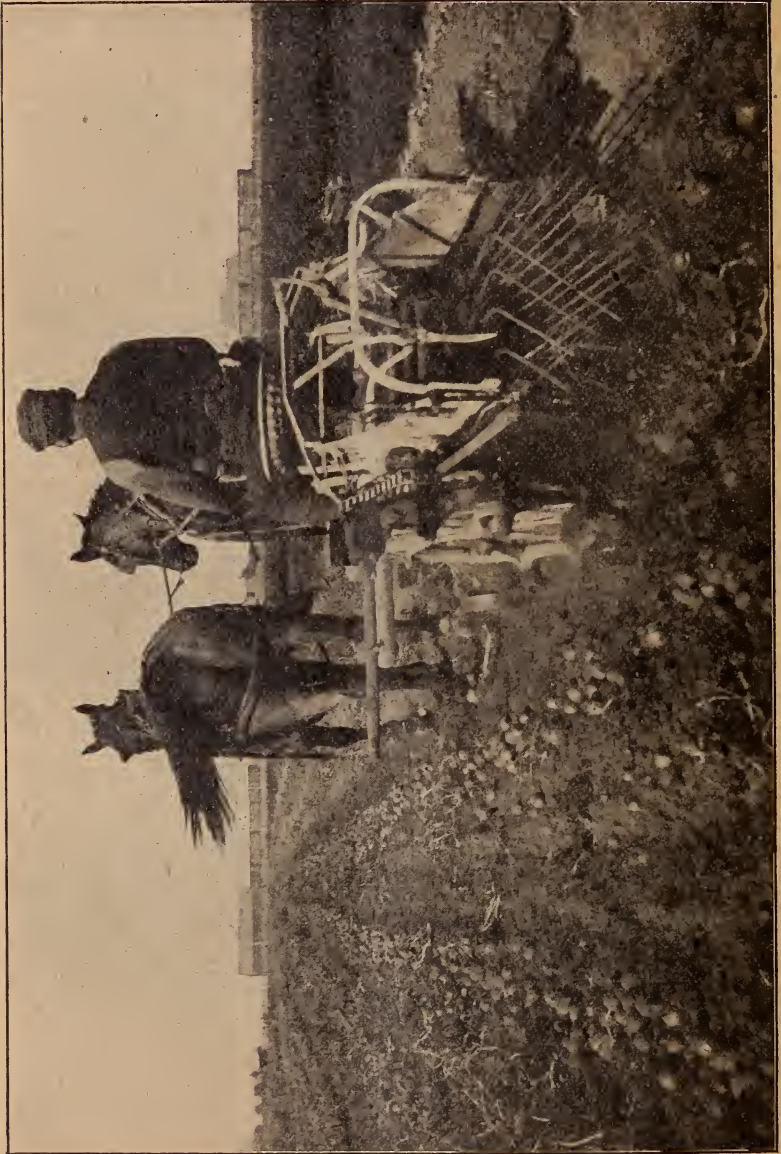
OUR TERMS ARE CASH, WITH ORDER OR BEFORE SHIPMENT. Money may be sent by any of the usual methods. Local checks not taken, except **MINUS EXCHANGE.**

All orders acknowledged as soon as received, and goods shipped as early as weather will permit. We begin shipping southern orders about March 15th.

All inquiries promptly answered.

An unsere Deutschen Kunden.

Wir lesen und schreiben deutsch und können deutsche Briefe beantworten. In der festen Ueberzeugung, Befriedigung geben zu können, bitten wir um eine Bestellung.



GREEN BAY TRIUMPH.

On the opposite page is cut showing one of our Hoover Diggers harvesting Green Bay Triumph. (Snap shot taken while machine was in action.)

We offered this **NEW EXTRA EARLY WHITE** variety for the first time last season, and were very much pleased with its reception. Indeed, we had to turn trade away in order to hold any for planting, and before the potatoes were dug last fall, inquiries began coming in for quantities ranging from one peck to the "entire crop." From these and other points to be mentioned, we are sure we are right in placing the **GREEN BAY TRIUMPH** at the head of the Extra Early varieties.

IN EARLINESS THE GREEN BAY LEADS, NOT FOLLOWS. We have planted it side by side with the Bliss T., which is the earliest potato before the public heretofore, and the Green Bay was plainly ahead. Tubers begin forming when the tops are not one-quarter grown.

The cut on front cover is from a photograph of specimens weighing about one-half pound each and gives a very good idea of the form, which is about as near perfection as could be desired.

The white russet skin usually shows just the least tinge of pink about the eyes, while the russet on the surface protects from bruising, so that in appearance there is a very high degree of perfection attained.

THE FOLIAGE IS LUXURIANT and bright, being of a lighter shade than the Bliss Triumph or most of the other varieties. In regard to blight, it holds its own very well with the other Extra Earlys, which as all growers know, are more subject to blight than the late sorts. The fact that we got over 200 bushels per acre on the field shown in the cut on page 4, is sufficient proof that the blight was not severe. The cut shows the Hoover at work and the very clean manner in which the potatoes are left on the ground by the machine, with no extra care or attention. In the distance is a train on the switch put in for the benefit of shippers in our part of town.

The Green Bay Triumph is a sport from the Bliss T. originating on our own grounds, so a word in regard to its stability of color may not be amiss. In our crop last fall we found only a very few, not over half a peck in all, that had sported back to the red; and indeed it is very likely that a tuber of Bliss T. may have gotten cut in with the Green Bay, as we were planting both on the same day. In conclusion, we wish to say that we are firmly convinced that our new potato is a money maker

and for that reason we have introduced it. That our friends may share with us in this we urge them to try the **GREEN BAY TRIUMPH.**

PRICE: By mail post-paid, 1 lb. 40c. 3 lbs. \$1.00,
 By freight or express not prepaid: 1 lb. 30c. 4 lbs.
 \$1.00. 10 lbs. \$2.00. 1 pk. \$2.50. ½ bu. \$3.50.
 1 bu. \$5.50. 3 bu. \$15.00.

THE TRIUMPH GROUP.

We present to you this year the Green Bay Triumph, the old original Red or Bliss T., the Pride of the South, and Salzer's Earliest. The well known fact, that it is next to impossible to link the highest quality with extreme earliness comes to the front here as in most extra early garden vegetables. Therefore in none of this group do we get the high quality of the Hebron, or other of the fine table varieties.

This group is best suited for first early to dig green and sell before the later sorts come into market; just as is done with Cory Corn and First of All Peas and many other varieties of garden vegetables.

In this place the Southern gardeners grow large quantities of them for the northern trade.

PRIDE OF THE SOUTH.

In general appearance and habit of growth the Pride is so much like the Bliss T., that any further description is hardly necessary, except that the color is light pink instead of red. Sometimes the tubers present a clouded appearance. The tubers are nearly round, medium size and smooth. They are somewhat spreading in the hill.

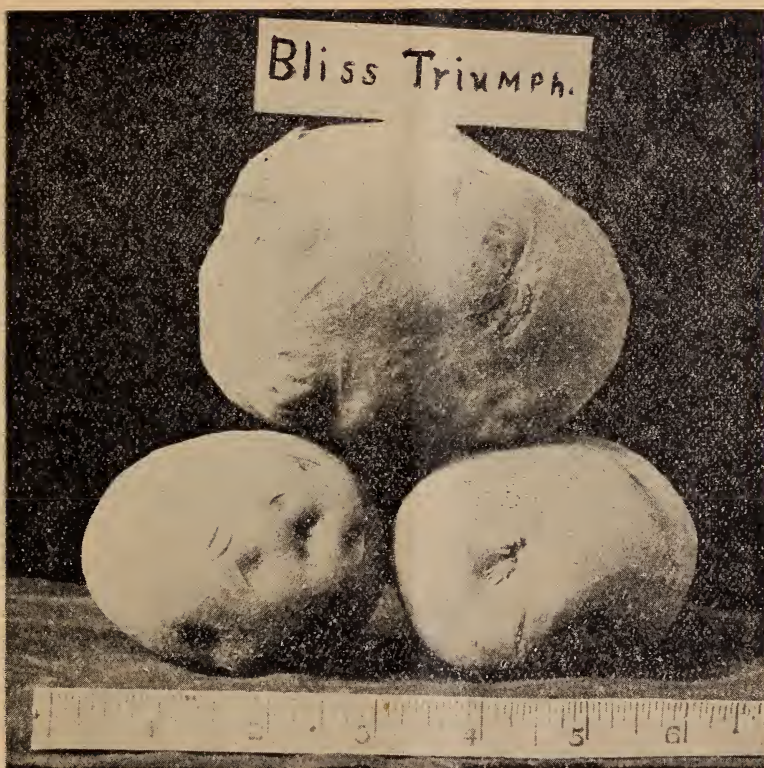
PRICE: Pk. 40c. ½ bu. 65c. bu. \$1.00. 4 bu. \$3.50.
 10 bu. \$7.50. 25 bu. \$18.00.

SECOND SIZE: Bu. 70c. 4 bu. \$2.50.

SALZER'S EARLIEST.

Seeing this advertised quite strongly last spring we got a small quantity for trial and are unable to see wherein it differs from the Bliss T., except that the tubers are not so large. This may be owing to poor seed, (it was nothing extra) or there may be some difference in the potatoes; though with our limited trial we are unable to see any.

PRICE: Pk. 40c. ½ bu. 65c. bu, \$1.00. 4 bu. \$3.50.
 10 bu. \$8.00.



BLISS TRIUMPH, Extra Early.

This is the original of its group, and has held sway with but little opposition until within the last few years.

The color is a bright red when dug, changing to a duller hue as the season advances.

In habit of growth the Bliss is strong and vigorous with broad heavy leaves somewhat wrinkled and a shade darker than the Green Bay. The tubers are inclined to spread in the hill, but may be dug with the Hoover by lowering the shovel an extra notch.

This is the potato that comes into our market from the south when we are just planting up here.

PRICE: Pk. 40c. $\frac{1}{2}$ bu. 65c. bu. \$1.00. 4 bu. \$3.50.

10 bu. \$8.00. 25 bu. \$19.00.

SECOND SIZE: Bu. 70c. 4 bu. \$2.50. 10 bu. \$6.00.



EARLY OHIO, Extra Early.

This is the original of the Ohios and has been standard for many years. The cut is an excellent one of tubers weighing about nine ounces each. The pimply skin is a distinctive mark of the Ohio group.

As to demand, we sell two or three times as many E. O. as of all the other members of the group put together.

It is a most excellent potato for early or main crop. Keeps perfectly.

PRICE: Pk. 40c. $\frac{1}{2}$ bu. 60c. bu. 90c. 4 bu. \$3.50.

10 bu. \$8.00, 25 bu. \$19.00.

SECOND SIZE: Bu. 75c. 4 bu. \$2.50. 10 bu. \$5.50.

OHIO GROUP.

In this group there is an example of what might seem to be a multiplication of varieties to no purpose; but when we consider that by this continual work of improvement there is now before the public better strains of the Ohio type than formerly we see the object of it all.

We have at present in this group the old Early Ohio, Ohio Jr., Early Market, Acme, and Six Weeks.

In consideration of the fact that all of the above named members of this most excellent group sell on the markets of the country for Early Ohio, and are so much alike in general appearance that no one can sort them out when mixed (the chief difference being a slight variation in form or vigor or earliness) we think what ought to be done, and ere long will be, is for each seed potato grower to come out plainly and squarely with the very best strain obtainable under the name of Early Ohio. Let each one put his own name to it if he chooses and call his Old's Imp. Early O. or Vaughan's E. O. but let us not longer carry so many names to different strains of the same group. We hope all Seed Potato men into whose hands this may fall will consider this point for another season's use.

For the present we will make as clear as possible the different types and let it go at that.

The tops are small and upright, the tubes close in the hill and near the surface. Color is a brownish pink, becoming more dull later in the season. The Ohios are most excellent keepers. All of the types do best on a sandy loam.

EARLY MARKET, Extra Early.

In form, the E. M. is the longest of the group, though a perfect type of the family. In earliness it is about with the Jr., and in size perhaps a trifle larger than the E. O. which it closely resembles.

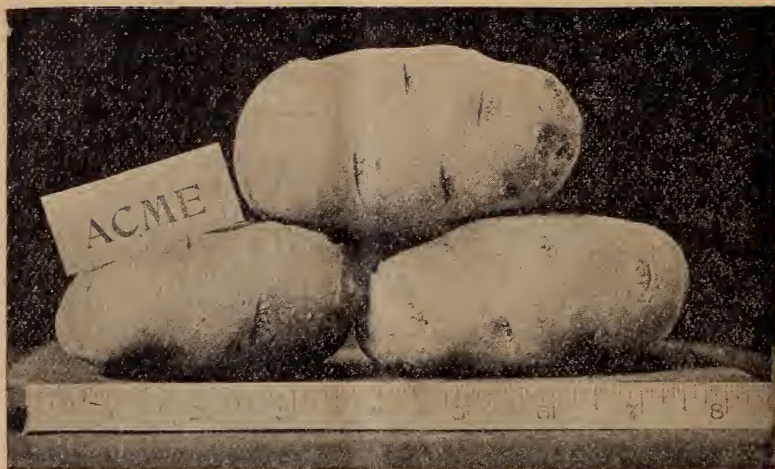
Quality is excellent. Tubers are smooth and little inclined to be prongy.

PRICE: Pk. 40c. $\frac{1}{2}$ bu. 60c. bu. 90c. 4 bu. \$3.50.
10 bu. \$8.00. SECOND SIZE: Bu. 75c. 3 bu. \$2.00.

SIX WEEKS, Extra Early.

This has not shown up quite so well as the other members of the group. With us it is not so large as the Junior or Acme and seems to be a little inclined to roughness. In earliness it is not quite what its name might indicate, but it is a close second to the preceding.

PRICE: Pk. 40c. $\frac{1}{2}$ bu. 60c. bu. 90c. 4 bu. \$3.50.
10 bu. \$8.00.
SECOND SIZE: Bu. 80c. 3 bu. \$2.00.



Medium Size Acme Grown on Heavy Soil.

ACME—Extra Early.

We consider the Acme one of the very best of the group. It is with the Junior in earliness while in size it is fully up to, or a little ahead.

It is claimed by the introducer to be at the very top in earliness, size form, and productiveness. We have grown the Acme for several year, and it is certainly a very fine potato.

PRICE: Pk. 40c. $\frac{1}{2}$ bu. 60c. bu. \$1.00. 4 bu. \$3.50.

10 bu. \$8.50. 25 bu. \$19.00.

SECOND SIZE: Bu. 80c. 4 bu. \$3.00.

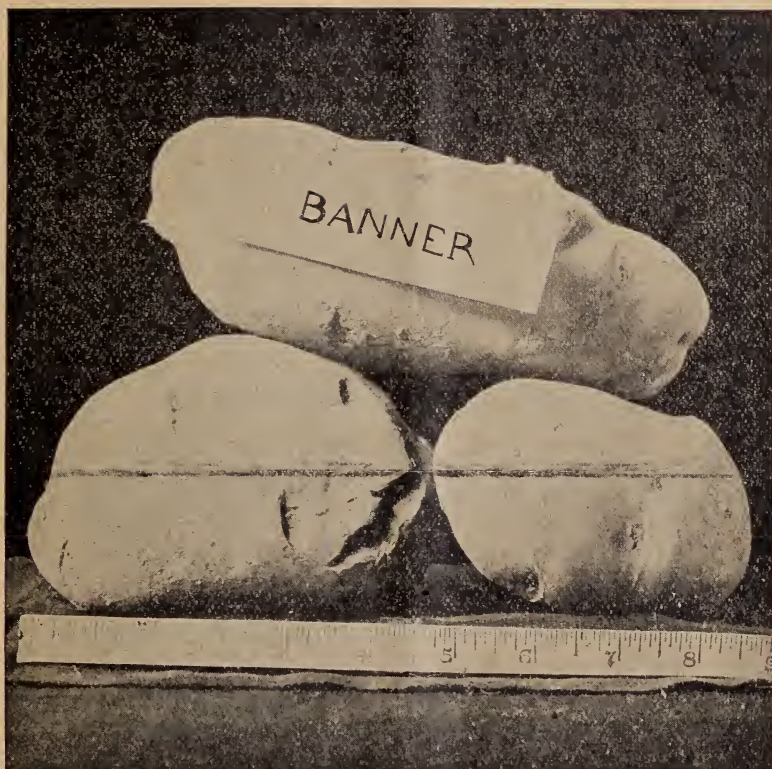
OHIO JR.—Extra Early.

This fine type of the Ohio is a little longer and earlier than its Senior and has given us in most cases a little heavier yield. The eyes are on the surface and usually more numerous than on the Ohio. In form it is not quite so plump as the Ohio, but is a true type with the same small bushy tops and close growing habit, producing but very few un-saleable tubers.

PRICE: Pk. 40c. $\frac{1}{2}$ bu. 60c. bu. 90c. 4 bu. \$3.50.

10 bu. \$8.00. 25 bu. \$19.00.

SECOND SIZE: Bu. 75c. 4 bu. \$2.50.



BANNER—Grown on Heavy Soil.

“The above cut shows a medium size typical form, and two larger tubers not so perfect in form.

“We consider this the best of the late potatoes. The Banner has habitually given us the heaviest crop of any sort on our grounds since we have grown it. No one who grows late potatoes should be without the Banner. It is an excellent keeper, and a good seller. In spring it will take the trade without half trying.

“In habit of growth it is strong and vigorous with spreading tops. The tubers are somewhat spreading too, but not enough to be a serious

drawback. The Banner does well in nearly any soil and is not easily destroyed by blight. We consider this ahead of the Rural in productive-ness and size, and urge our friends who have not had it, to try the Banner for a late, heavy crop, long keeping potato."

The above paragraph from our '99 catalogue is just what we believe after another year of work with Banner. In our orders last spring about every second one contained the Banner, and of our contract growers nearly all of them are anxious to get Banner to grow because they are so sure to produce a big crop.

PRICE: Pk. 35c. $\frac{1}{2}$ bu. 60c. bu. 80c. 4 bu. \$3.00,
10 bu. \$7.00. 25 bu. \$16.00,

SECOND SIZE: Bu. 60c. 4 bu, \$2.25. 10 bu. \$5.00.

RURAL NEW YORKER.

Here we have another of the old standard sorts, quoted in the market reports among the large late white varieties.

The cut of the Banner will illustrate the Rural very well too. In form and habit of growth anything that is true of the Banner is true of the Rural with very little change. The Rural is not quite so large and is a little more spreading in the hill. Were you to mix the Rural, Banner and Sir Walter it would be impossible to sort them.

In yield the Rural follows the Banner very closely. When grown on very rich soil they are inclined to grow somewhat rough and uneven with the eyes set somewhat below the surface,

PRICE: Pk. 35c. $\frac{1}{2}$ bu. 60c. bu. 80c. 4 bu. \$3.00,
10 bu. \$7.00. 25 bu. \$16.00.

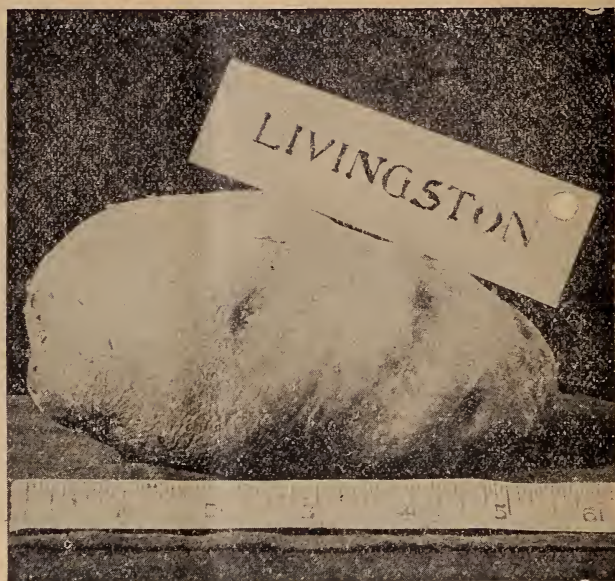
SECOND SIZE: Bu. 60c. 4 bu, \$2.25. 10 bu. \$5.00.

CARMAN NO. 3.

We have dropped this variety on account of its irregularity of form. We referred to this point last season and it has given us so much annoyance on that account that, after planting fine even formed stock last spring and getting a lot of any and all shapes, we dumped them into the bin of culls. To those who would plant Carman we recommend Banner.

NOTICE.

We do not substitute except that on orders for second size we will substitute same value of first size when seconds are gone unless otherwise instructed.



THE LIVINGSTON is a sport from the Seneca Beauty. The color is white clouded with streaks of bright pink and pink eyes. The cut gives a good idea of form. In yield it is well up, though perhaps not quite equal to the Banner. In habit of growth, the Livingston is medium close in hill, with large tops.

The potatoes in pile or bin present a very fine appearance.

PRICE: pk. 40c. $\frac{1}{2}$ bu. 60c. bu. 90c. 4 bu. \$3.25.
 10 bu. \$8.00. 25 bu. \$19.00.

SECOND SIZE: bu. 75c. 4 bu. \$2.75. 10 bu. \$6.00.

FREEMAN.

For home use this is a very fine variety. It is perfectly smooth, pure white, medium size and of most excellent quality. It is especially desirable as a spring potato, as it keeps longer than most high grade table stock. Sometimes it sets rather too freely in the hill which tends to make too many small tubers. Medium season.

Has blighted badly with us lately. Have only a few.

PRICE: pk. 40c. $\frac{1}{2}$ bu. 60c. bu. \$1.00. 4 bu. \$3.50.
 SECOND SIZE: bu. 80c. 3 bu. \$2.25.



POLARIS—Early.

For an early long white potato, especially for home use, we recommend our patrons to try the Polaris. The cut gives a very good idea of its general appearance. It is of good size, first-class quality, and follows the Ohio in earliness. Does best on loam soil. Not a late keeper. Have only a few this season.

PRICE: Pk. 40c. $\frac{1}{2}$ bu. 60c. bu. \$1.00. 4 bu. \$3.50.

SECOND SIZE: Bu. 80c. 3 bu. \$2.25.

BURBANK.

This is the old standard long white potato. It is medium season, smooth, good size and very handsome on the markets. The Burbank usually brings more on the open market in the fall than any other variety. Of course any smooth, long, white, goes for Burbank in the trade bulletins. It thrives best on sandy soil. Very fine for baking.

PRICE: Pk. 40c. $\frac{1}{2}$ bu. 60c. bu. 90c. 4 bu. \$3.25.
10 bu. \$7.00.

SECOND SIZE: Bu. 75c. 4 bu. \$2.50.

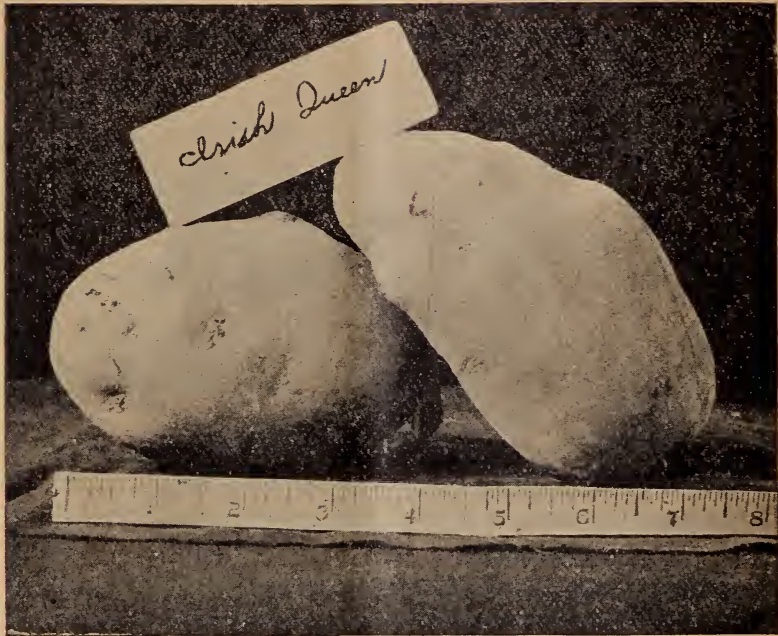
WORLD'S FAIR.

This is very similar to the Freeman in general appearance, though a little larger and more inclined to the round in form. The introducer claims for the World's Fair that it is the "best general purpose potato now on the market." It is of excellent quality, a perfect keeper, always smooth, and ripens about with Freeman.

Has blighted badly with us lately. Stock limited.

PRICE: Pk. 40c. $\frac{1}{2}$ bu. 60c. bu. 90c. 4 bu. \$3.50.
10 bu. \$8.00.

SECOND SIZE: Bu. 75c. 4 bu. \$2.50.



IRISH QUEEN (Medium Season.)

This potato is of the Late Hebron order, ripening about with the Burbank and Carman. In habit of growth it is more like the Banner and Rural, having heavy woody tops and growing a little spreading in the hill.

The color is a creamy white clouded with a purplish pink, especially on the seed end. The cut gives a good idea of the form. It seems to be somewhat inclined to grow long, rather than the short oval, very smooth, sleek appearance. The eyes are perfectly flat on the surface.

In our trial grounds it has compared very favorably with the heavy yielders, though not up to the top. In keeping qualities it is excellent.

PRICE: Pk. 40c. $\frac{1}{2}$ bu. 60c. bu. 90. 4 bu. \$3.25.

10 bu. \$7.00. 25 bu. \$16.00.

SECOND SIZE: Bu. 75c. 4 bu. \$2.50.

HEBRON—Early.

This variety is so well known as to hardly need any description, will do well on almost any soil and under any conditions where a crop of any kind of potatoes can be produced. It is a long oval; color white, clouded with pink. Excellent quality. Not so late a keeper as the Ohios. Good yielder and close growing in hill.

PRICE: Pk. 40c. $\frac{1}{2}$ bu. 60c. bu. 90c. 4 bu. \$3.25.

10 bu. \$7.00. 25 bu. \$17.00.

SECOND SIZE: Bu. 70c. 4 bu. \$2.50. 10 bu. \$5.50.

EARLY ROSE.

We hardly know what to say or do about this old standard. We have a good many calls for it, but conditions have gotten to where nearly any long oval or long potato, in color anywhere from a light copper red to nearly white will sell for Early Rose. There have been so many varieties of this type introduced that it is very difficult to get the old type and style.

We have bought several times thinking to improve our stock but have not always succeeded. We now have a strain that is clean and smooth, but varying in color, as it was grown on two different soils.

PRICE: Pk. 40c. $\frac{1}{2}$ bu. 60c. bu. 90c. 4 bu. \$3.25.
 10 bu. \$7.50. 25 bu. \$17.00.

SECOND SIZE: Bu. 75c. 4 bu. \$2.50. 10 bu. \$6.00. 25 bu.
 \$12.50.

MAULE'S EARLY THOROUGHbred.

The Rose type is clearly apparent in this variety. In general appearance it very much resembles the Rose, while in habit of growth the two are so nearly alike as to make further description unnecessary. It is a good yielder and of good quality, but not a late keeper. Stock limited.

PRICE: Pk. 40c. $\frac{1}{2}$ bu. 60c. bu. 80c. 4 bu. \$3.00.
 10 bu. \$7.00.

SECOND SIZE: Bu. 60c. 4 bu. \$2.00.

MAULE'S COMMERCIAL.

We got a few of these last spring to see what they would do, and find them to be late, ripening but little earlier than the large late varieties.

The color is rose, with a little brighter color in the eyes, which are on the surface of the medium size tubers, while on the larger ones, the eyes are somewhat depressed. The tops are heavy and long.

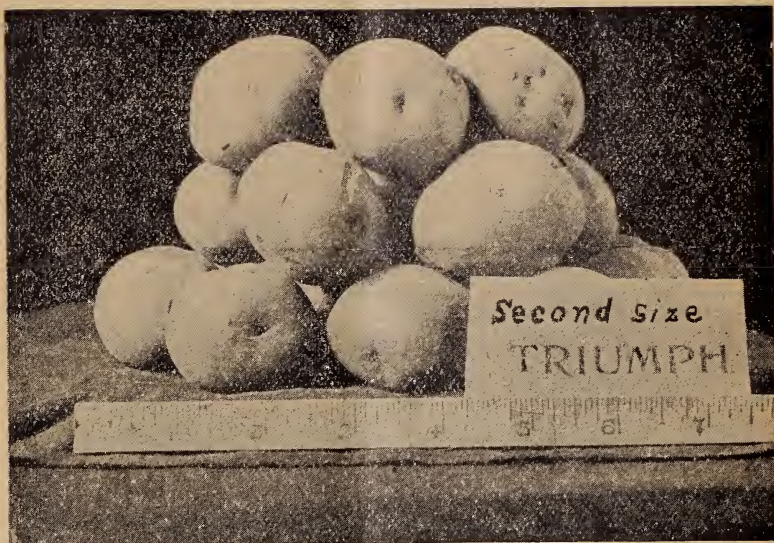
That which attracted our attention most is the very remarkable likeness of the Commercial to the Maggie Murphy, which we had growing only a few yards distant. Have only a few.

PRICE: Pk. 40c. $\frac{1}{2}$ bu. 60c. bu. \$1.00. 3 bu. \$2.75.

MAGGIE MURPHY.

See description of Commercial.

PRICE: Pk. 40c. $\frac{1}{2}$ bu. 60c. bu. \$1.00. 3 bu. \$2.75.



SECOND SIZE POTATOES.

We have put in a cut of a plate of "second size" potatoes, not to show the form but the size, which one may plainly see by comparing the tubers with the tape line.

Now just a little about planting second size stock. We have planted second size several times and have sometimes been able to see no difference in the crop and sometimes there has appeared to be a slight difference in favor of the large tubers. Many growers prefer the seconds because it costs less for seed, claiming they are equally good. We think this may be true when applied to a single crop, provided the second size seed was grown from large tubers. To continue planting the small tubers over and again from the same stock we think would be disastrous.

For this reason we plant only choice large tubers to grow seed stock, (except it be in some special case) desiring to give all possible strength to the crop produced.

Bear this in mind when ordering. The second size potatoes offered are

the few small tubers one always gets in any crop; not small because poor stock was planted.

☞ When second size stock is sold out, which is usually before the No. 1, we will fill orders with the same value of No. 1.

STOCK NOT OF OUR OWN GROWING.

During the spring we sometimes run short of standard varieties, and are compelled to buy from our neighbors. The stock is usually smooth and clean, and of good size; but we find it difficult to buy **absolutely pure** seed.

All such potatoes are run over screens and carefully sorted, and then sent out for just what they are. With a thorough knowledge of varieties and a rigid system of sorting, we secure very satisfactory results.

The varieties most commonly grown about Green Bay are Rose, Hebron, Rural, and E. Ohio. These we can generally buy, (if we run short) at the market price for fancy table stock. Usually we can sell such stock after sorting, at prices somewhat lower than our catalogue rates for selected seed stock, though not always so.

SMALL POTATOES FOR PLANTING WHOLE.

We have some calls for small potatoes to plant without cutting, so we have saved a limited quantity this season. In size they are just under our regular second size stock. In varieties we have several of the standard sorts, such as Ohio and Banner. They are clean, smooth tubers, though we can not, at the price asked for them, spend the time to sort with such exactness as we do our regular high grade stock.

We do not recommend these in a general way, but know that a great many such potatoes are planted every year, and give satisfactory results where the crop is sold on the open market.

We offer them at the one price of 40 cts. per bushel. No order for less than 3 bushels accepted.

POTATO EYES BY MAIL.

For **One Dollar** we will send by mail postpaid **Fifty Good Strong Eyes**. The buyer may make his own selection, from any number of the varieties quoted up to ten, excepting Green Bay Triumph. Each kind carefully packed and labeled.

These eyes will produce good crops and enable our customers residing at a great distance to get a start with valuable new or standard varieties at a trifling expense.



A typical well developed 2 year old Holland bush.

CURRANTS.

We have the Long Bunch Holland and Prince Albert varieties as our standard. In answer to the question which variety of currants is best? an old and experienced grower of our acquaintance replied: "Prince Albert, next for dollars, Holland."

The wood is very hard so does not start very easily from slips. Very likely this fact may be one reason why we seldom see them quoted.

Set currant bushes as early in spring as possible, or when leaves are falling in September. As regards crop: When our original plot, of about

400 bushes were in their prime, we harvested a crop of fourteen (14) quarts per bush. We have hoped to get $\frac{1}{2}$ bushel per bush but have not yet succeeded.

LONG BUNCH HOLLAND—Red.

This kind grows from five to six feet high, while canes two inches in diameter at the butt are not uncommon where the bushes are allowed to grow to their full size; and if set six feet apart (as most of ours are) they will overlap considerably.

The fruit is borne in long clusters (as the name indicates) and is of good size and a bright red color. The skin is tough, which makes it a good shipper and a long keeper. The bushes begin bearing when about four years old.

Price for fine large bushes, each 10c, per doz. 60 cents; \$4 per 100.

PRINCE ALBERT—Red.

This is not so large a bush as the Holland but a little larger berry. The bush grows about four feet high and has many small twigs. It is also later to leaf out in the spring, making it very easy to distinguish the two varieties.

The fruit is borne on a shorter and more compact bunch than the Holland, with the same tough skin, but a little lighter color, and always brings the "top of the market."

Price for fine select bushes, each 10c, per doz. 60c, per 100, \$4.00.

LEE'S PROLIFIC—Black.

We have a few of these. They are recommended to us as the best variety of black now in market. They start very readily from slips.

One year old canes of any of the forgoing (will cut two to three good slips) 25 canes 40 cts., 100 canes \$1.00, 1000 canes \$7.50.

RHUBARB—Pie Plant.

Set plants as early in the spring as the weather will permit, and allow the plants to grow one season without "pulling."

MAMMOTH GREEN.

This is very large and of green color. The stalks grow eighteen to twenty-four inches long and many of them weigh over a pound each after the leaf has been cut off. We have a lot of very fine large plants.

PRICE; Fancy large plants each 10c. Per doz. 75c. Per 100 \$4.50.

MEDIUM SIZE, healthy plants, per doz. 50c.

GIANT RED.

This comes under several different names, Linnaeus, St. Martins and Victoria. We have all three and in digging roots for market, take those which seem to be the strongest and best.

PRICE: Fancy large plants, each 10c. Per doz. 50c. Per 100 \$3.50.

STRAWBERRIES.

We grow strawberries for fruit and not for plants, so we have only a limited stock of plants to spare at any one time. In growing for fruit we do not wish the plants too close together, so they are larger than where one grows them very thickly on the ground. We strive to have what plants we sell of the very best grade, that is, strictly fancy, consequently we are not in the \$2 per 1000 business. We usually have from 15 to 20 varieties on our place, most of which are in the experimental stage. For our standard at present, we are using the Warfield, fertilized with Beder Wood.

PRICE: Beder Wood—Fine plants, per 100 75c. Per 1000 \$6.50.

Warfield—Liable to be slightly mixed with Wood, fine plants, per 100 75c. Per 1000 \$6.00. Warfield plants are always small.

Wm. Belt—per doz. 25c. Per 100 \$1.50.

Prices are for choice plants carefully packed and shipped by express not prepaid.

**Our Jersey Cattle Are All Right!**

On January 27th we sold one of the unregistered Jersey heifers referred to on p. 23 for 75 dollars, without the calf. This was just after her first calf, and the cow was sold for a family cow, not a breeder.

We have others which we think equally valuable, age considered.

Read Page 23 Carefully.

BE SURE You Order Some of Our
Extra Early **GREEN BAY TRIUMPH.**

SEE PAGE 5.

JERSEY CATTLE.

We have at present three very fine Jersey bulls, registered as follows: Prestige Wayside, No. 46744, A. J. C. Club; Dick of St. Lambert, No. 7063, A. J. H. Book; Chain Boy, No. 51720, A. J. C. Club. All three are especially fine individuals and are doing much to improve the butter stock in this vicinity. We have had Prestige since he was a yearling, and as he will be four years old next month (February) we have used him about as long as we can profitably on our own herd. We offer him and Dick feeling positive that either of them would prove a money maker to the purchaser. We have yet to see a heifer calf by Prestige that does not show a well developed udder at the age of three or four months. One of his heifers was awarded a special premium at our County Fair, on account of having given milk for three months before her first calf. The writer (H. J.) took the trouble to drive nearly fifty miles in order to see her just after calving. It was just as her owner had represented at the time of the Fair, and while he had, no doubt, injured the heifer by milking her before calving, the fact that she did milk so early is strongly indicative of the intense dairy strains in her sire.

We have only a small herd of registered females, which we will not enumerate in detail. We have six or eight pure bred young females unregistered, several of which are with calf by Prestige. They are all solid fawn color, except a little white on one or two.

We shall be glad to give detailed description with prices on application.

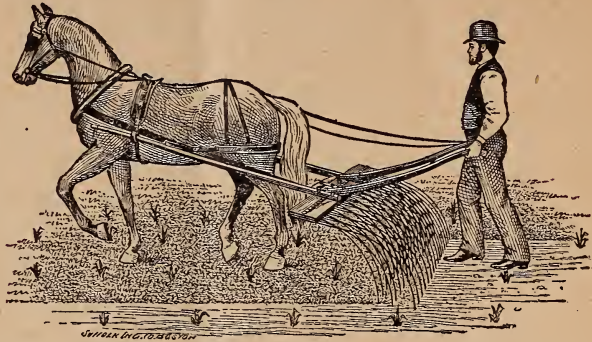
POLAND CHINA SWINE.

We have several boars farrowed last spring, ages from eight to nine months, which we will sell at very reasonable prices. Also several boars farrowed in November, if any one wants a little fellow. These are pure bred, though we have none of them registered. We have two pedigreed boars at the head of our herd, and have never used anything else.

To the class of trade we have been selling to heretofore, it has been of no use to register our young stock, so we have never done it. We have some very fine individuals. The last time we killed one of our overgrown sires he weighed over 750 pounds, at the age of 2½ years.

While we have no famous show animals to offer, we might mention the fact that we took **all** the first premiums offered on P. C. Boars at our County Fair, and it was not because there was no competition either. We have a few pure bred gilts, in farrow to our Jumbo, which we will sell reasonably. Write us stating your wants and we will give details in particular.

THE Z.
BREED
WEEDER,
No. 4.



WITH THE BREED WEEDER,

**YOU can raise Larger Crops with Less Labor than with
 out it. It is the best made and best working Weeder
 now on the market. Thousands in use in all crops. The
 Onion Weeder is a Great Success.**

With a No. 8, one man and horse can work 10 to 15 acres in a day, according to the length of the rows.

The time to use a weeder is when the weeds have just sprouted or are beginning to show on the surface.

THE NO. 8 IS FOR ONIONS,

beets, carrots and other small seed crops, such as are usually planted with the garden seeder. It is just the thing for all such crops and saves a large part of the hand weeding usually done on such crops.

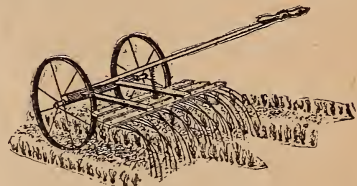
We use two No. 4 and two No. 8 on our place and would not be without them if we had to buy new every year.

You can not afford to be without them.

Full descriptive circular and prices mailed on application.

Weeder will be shipped from Green Bay or direct from eastern factory,

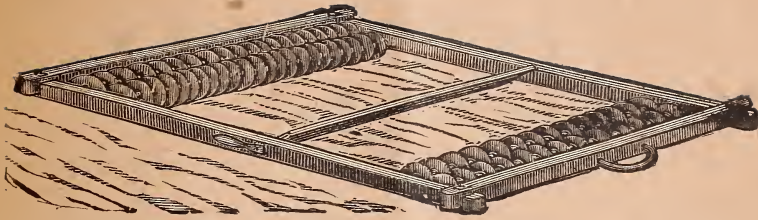
Write early for circulars and prices to



No. 8 HAND WEEDER.

J. M. SMITH'S SONS.

GREEN BAY, WIS.



C. A. Meeker's Patent Smoothing Harrow.

The frame is square, 6 ft 8 in. by 6 ft. 1 in. with four sets of rollers, having 58 disks, 8 in. in diameter on them.

On the two forward rollers the disks are 6 inches apart, and on the two rear rollers 3 inches apart. The disks on each set of rollers work between each other.

The board in the center is set at an angle, is adjusted up and down, and acts as a leveler.

The disks grind all lumps so fine that seed must come up, and mashes small stones below the surface better than any field roller; it levels the ground at the same time, which a field roller does not do.

List Price - **\$25.00** **Discount** %

ONION SEED DRILL.

Sows 2 rows at a time, 12 or 14 inches apart, marking, sowing and covering by same operation.

List Price - **\$10.00** **Discount** %

ONION SEED.

The only Onion Seed sown in this section is the Southport Red, White or Yellow Globe. This not in name only, but in quality and shape. Great care is taken to select the best shape and color to set for seed. Often not over four quarts in a barrel of onions from a good crop are selected as good enough for seed. The result is that the Southport Globe Onion is known to every seedsman in the country by its superiority over every other known variety; but many seeds are sold as such in the market that do not grow Southport Globe. It is therefore very important to know what seed you sow.

Our onion seed has all been tested by our State Agricultural Experiment Station. You can rely on obtaining just what you order. We have a limited quantity only, therefore order early.

Will quote price to any one desiring onion seed.

We are also Manufacturers of

**Hand-Wheel Hoes, Double Onion Seed Drills,
Weeders, Etc.**

C. O. JELLIFF & CO.,

Send for Catalogue.

SOUTHPORT, CONN.

.. HOOVER POTATO DIGGER ..

Used by TERRY, CHAMBERLAIN, L. L. OLDS, L. L. MAY & CO.,
GRANT, J. M. SMITH'S SONS, CURRIER,

And 400 other progressive farmers in Wisconsin and 1000 other good farmers in the west.

THE ONLY DIGGER
Receiving the Highest Award
GOLD MEDAL
at Omaha Exposition.

**IT IS
SENT
ON
TRIAL**



**WE HAVE A
SPECIAL
MACHINE**

**FOR
STONY,
HILLY
GROUND**



HOOVER, PROUT & CO., - - - AVERY, OHIO.
Send for Circulars and Mention This Catalogue.

