

Historic, Archive Document

Do not assume content reflects current scientific knowledge, policies, or practices.

62.11

Taber

ST. MARY,

U. S. Department of Agriculture,
Washington, D. C.



Glen St. Mary Nurseries

G. L. Taber - Proprietor

GLEN ST. MARY — FLORIDA

1901

catalogue

1901

Glen St. Mary Nurseries

G. L. TABER, *Proprietor*

GLEN ST. MARY, FLORIDA



1. 2. 3. Oranges in Nursery
 4. Pomelos in Nursery

*M. F. G.
 Harrisburg, Pa.*

From photographs taken October 1, 1900; for particulars see page 7

Introduction



NINETEEN years ago the Glen St. Mary Nurseries were established, and since that time—always under the same management—have sold many millions of trees and plants.

It is a matter of congratulation that complaints have been few and expressions of satisfaction numerous.

Our descriptions of varieties are plain and concise, with no overdrawn pictures allowed to overshadow the text. Besides the descriptive part of the Catalogue there will be found a few remarks **To Customers**, and our usual comprehensive **Price-List**.

Although trees for the South and Southwest are made a specialty, yet our list of varieties is not limited to the requirements of these sections alone. We raise trees adapted to many sections of the United States, and our products go also to many foreign countries.

The best varieties for a given section, and the healthiest and most vigorous specimens of those varieties—that is the great desideratum.

It is our business to furnish such trees. It has been our business for years. We appreciate your patronage if already a customer; or bespeak it if you are a tree-planter or thinking of becoming one.

ORANGES

WE HAVE for some years been steadily increasing our supply of Orange trees, and now place them where, from their importance, they naturally belong — at the very beginning of our Catalogue. The select varieties that we offer are budded principally upon Sour Orange and *Citrus trifoliata* stocks. The Satsuma, however, we grow only upon Sweet Orange and *C. trifoliata*. When no mention is made of stock wanted, we shall ship trees grown upon stock we believe to be best adapted to the section from which the order comes, the *C. trifoliata* stock being more particularly recommended for cold sections than for those comparatively free from frost.

TIME OF RIPENING will vary more or less with different conditions of soil, season, etc. The varieties listed may, however, be arranged with approximate correctness as follows: *Very Early*—Boone's Early, Early Oblong, Satsuma, Sweet Seville. *Early*—Centennial, Enterprise Seedless, Nonpareil, Parson Brown. *Medium*—Du Roi Blood, Homosassa, Jaffa, Madam Vinous, Magnum Bonum, Majorca, Maltese Blood, Mandarin, Old Vini, Pineapple, Ruby, St. Michael's Blood, Tangerine, Washington Navel. *Late*—Maltese Oval, Mediterranean Sweet, Paper Rind. *Very Late*—Bessie, Brazilian, Hart's Late, Joppa Late, King, Valencia Late. Blood markings do not appear till late in the season. Some varieties possess the quality of hanging on the tree and improving in quality for some time after they first become marketable, and are good shippers late in season, as well as during the time indicated above.

BESSIE. Medium-sized; skin thin, but tough and firm; juicy and fine-flavored. One of the most profitable of the late sorts. Holds in perfection until May. Tree vigorous and productive.

BOONE'S EARLY. Medium size; skin thin; pulp tender, with very little "rag," and few seeds. Quality excellent. Very early.

BRAZILIAN. A variety as yet comparatively little known by Florida Orange-growers, but highly recommended for vigor and productiveness. Fruit of very fine quality, and hangs upon the tree without deterioration until midsummer.

CENTENNIAL. This variety ripens early, but hangs on the tree well, and is of fine quality late in the season. The tree is a vigorous grower and prolific bearer.

DU ROI BLOOD. Very similar to, if not identical with, Ruby and, therefore, a very fine Blood Orange. Tree vigorous and nearly thornless.

EARLY OBLONG. Medium size, oblong; a good keeper and shipper; sweetens with the first very early kinds. Tree a good grower and bearer.

ENTERPRISE SEEDLESS (*Starke Seedless*). Size medium; fine quality; seedless or nearly so. Tree vigorous and productive. Early.

HART'S LATE. Of medium size, round or slightly oval; smooth; very solid and heavy, the flesh being very firm; flavor, when ripe, brisk and racy; peel of lightish cast; few seeds. The tree is a very strong, spreading and vigorous grower, prolific; the foliage is distinct, having few thorns. The fruit ripens in April, and hangs on the tree in good condition until midsummer. One of the best late varieties.

HOMOSSASSA. Size about medium, round, somewhat flattened; very heavy; color bright; skin very smooth, thin, tough and dense; pulp fine, sweet and juicy; flavor full, vinous and

sprightly; membranes covering segments of pulp thin and small in quantity; keeps and carries well. Quality best. Tree vigorous and prolific.

JAFFA. Medium; peel thin; pulp melting, scarcely any fiber; juicy, rich and of exquisite flavor. In quality unsurpassed, being one of the four or five varieties which head the list in all competitions. The fruit remains on the tree in prime condition for a long period. The tree is a strong, upright grower of distinct habit, practically thornless, and fruits young and heavily.

JOPPA LATE. This variety was originated by Mr. A. B. Chapman, of San Gabriel, Cal., from seed obtained in Joppa, Palestine. An extremely late Orange—said to be even later than Hart's Late. Tree upright, vigorous grower and thornless. Fruit medium to large, oblong, with thin rind; few or no seeds; pulp juicy and sweet.

KING. Very large, flattened, and with loosely adhering rind and segments, like all the Mandarin varieties; color orange-red; skin rough, but general appearance fine; its high and peculiar aromatic flavor is very agreeable; it has few seeds; flesh deep red-orange, juicy, meaty; inner lining of rind and membranes bright buff. Quality very best. Tree upright, strong grower, quite thorny; foliage dark and rich. March, April and May; keeps in good condition even later.

MADAM VINOUS. One of the best of the numerous good varieties from the Indian river section of Florida. Ripens midseason.

MAGNUM BONUM. Size large to very large, flattened; color light, clear orange; skin smooth and glossy; color of flesh light; grain very fine, tender and melting; fruit very heavy and juicy; excellent shipper; quality best. Tree prolific and vigorous.

MAJORCA. Medium size, round; rich, juicy and sweet; equals Jaffa in quality, its characteristics being similar to that variety. It is a good keeper and shipper. Tree a strong, bushy grower, very robust; foliage very distinct, nearly thornless; a fine bearer.

MALTESE BLOOD. Fruit medium in size, round or slightly oblong; skin very smooth, thin and tough; very juicy, sweet and sprightly;

good in December, but better in April; good shipper. Tree prolific and vigorous, practically thornless; foliage distinct.

MALTESE OVAL (*Garey Med. Sweet*). Fruit medium to large; quality good; ripens medium to late. Tree vigorous and prolific.

MANDARIN. Medium size, flattened; deep yellow; skin thin; segments loosely adherent; flesh dark orange-yellow, spicy and aromatic. Although largely superseded in Florida by King, Satsuma and Tangerine which, like Mandarin, belong to *Citrus nobilis* type, yet in southern Louisiana the Mandarin is still adhered to as one of the most profitable sorts.

MEDITERRANEAN SWEET (Sanford's). One of the best and most profitable Oranges originated from Gen. Sanford's importations. Tree a good grower, and bears young.

NONPAREIL. Size medium to slightly larger, somewhat flattened; grain fine; pulp melting and tender; juice subacid and vinous; quality best. Tree vigorous and prolific. One of the most desirable of the earlier varieties.

OLD VINI (*Beach No. 4*). Size medium, slightly flattened; color dark orange; pulp melting; juice subacid and of a remarkably pleasant, sprightly quality.

PAPER RIND (St. Michael). Fruit medium size, round; skin thin; quality excellent; very productive. Tree a vigorous grower.

PARSON BROWN. Size medium, round or slightly oblong; peel smooth, texture fine; quality good. Keeps and ships well. By many considered the best of the early varieties. It begins to ripen in October.

PINEAPPLE. An excellent variety, introduced some years ago, and in great favor in the Orange lake region of Florida. When grown in that section the fruit possesses a particularly fine pineapple flavor. Tree a very strong, upright grower; prolific. Fruit medium size; thin peel; heavy, juicy.

RUBY. Medium-sized, nearly round; skin thin but very tough; pulp melting, rich, juicy and of exquisite flavor; quality unsurpassed. As the fruit ripens it usually becomes streaked or mottled with blood-red; often the entire pulp gets ruby-red,

showing through the peel in a reddish blush on the outside. One of the best of the Blood Oranges. The tree is vigorous, nearly thornless, and a regular bearer. We esteem this one of the most valuable varieties for general planting, and recommend it without qualification.

ST. MICHAEL'S BLOOD. One of the best of the Blood Oranges. Fruit medium size, almost round, with thin but tough skin; pulp juicy, melting, rich and of exquisite flavor, being unsurpassed in quality. Usually the fruit becomes mottled or streaked with blood-red as it ripens, the color of the pulp often a beautiful rich ruby-red, showing through the peel in a reddish blush. The tree is a regular bearer, vigorous and nearly thornless.

SATSUMA (Synonyms, *Oonshiu*, *Kii Seedless*). This variety was brought to Florida from Japan some years ago by General Van Valkenburg, a former resident of that country. In Japan it is called "Oonshiu," and it has been designated by some subsequent importers as "Kii Seedless." When first introduced, at the suggestion of Mrs. Van Valkenburg, it was called Satsuma, after one of the chief cities of the Island Kingdom; it is now generally known in market and pomology by this name. Although generally classed with the ordinary sweet Orange (*Citrus aurantium dulcis*), Oranges of the Mandarin type (*C. aurantium nobilis*), to which the Satsuma belongs, are quite distinct. The fruit is characterized by flattened shape, loosely adhering rind, and easily separated segments; fruit and foliage highly and peculiarly aromatic. The trees are somewhat smaller than other Oranges, and of unique habit. They are often, and not inappropriately, called Japanese Oranges by propagators; they are the favorite Oranges in Japan, which has given us some of our best varieties. The Satsuma is of medium size, flattened; the color is not red, like the King and Tangerine, but a deeper yellow than the Mandarin; rind and segments part freely; flesh fine-grained, tender, juicy, sweet and delicious; entirely seedless. Ripens in September, October and November. Brings a high price in the early market. Tree thornless, and bears young. This is undoubtedly the hardiest known variety of edible

Oranges, and this fact, taken in connection with its early ripening and fine quality, makes it an exceedingly valuable sort. We are growing it largely in our own Orange groves at Glen St. Mary, in northern Florida, and are probably the largest propagators of this variety in America. We can furnish the Satsuma both on sweet stock and *Citrus trifoliata*, but do not grow it on sour stock. It succeeds much better on sweet stock than on sour, while on the entirely hardy *Citrus trifoliata* the inherent hardiness of the Satsuma is still further enhanced. We nearly always have this variety in fruit in the nursery rows and can furnish trees of bearing size.

SWEET SEVILLE (Sanford's). Small to medium, round; a good keeper and shipper; sweetens first of the early kinds; one of the best of the early varieties. Tree vigorous and prolific. Possesses same characteristics as Early Oblong; is of rather better quality, and yields usually a third more fruit.

TANGERINE (Dancy's). One of the well-known "kid glove Oranges;" belongs to the Mandarin family. Fruit flat, small to medium; skin separates freely from the flesh; juicy, aromatic and rich, of a deep red color. December, January and February. The tree is a particularly good grower and prolific.

VALENCIA LATE. A very late and very prolific variety of fine quality. Season May and June, but fruit will hang on trees till August or September. Fruit of good size, somewhat flattened; juicy and tender.

WASHINGTON NAVEL. Like other Navels, bears a peculiar umbilical formation on the summit or blossom end of the fruit; this protuberance is not as prominent as in some varieties of Navel Orange. The fruit is large to very large, somewhat oval; flesh meaty, tender, sweet and high-flavored; an exceptionally luscious fruit, without perceptible membranes or fiber in its interior make-up. Ranks first in quality. For its superior prolificness, the "Washington" is preferred to other Navel varieties in most localities where these are largely grown. Trees of this variety, when budded upon *C. trifoliata* stock, have fruited freely with us in the nursery rows.

POMELO (GRAPE FRUIT)

This fruit has of late years assumed great commercial importance, and the steady demand and high prices that have prevailed for it are incentives to increased planting. While there are a great many varieties grown which have achieved more or less of a local reputation, we believe the varieties herein listed to be unsurpassed in the desired requisites; viz., thinness of peel, juiciness, delicacy of structure, and absence of bitterness.

DUNCAN. A strong grower and regular and prolific bearer, of full medium size (46 to 54 to the box) and of most excellent quality. The originator of this variety, A. L. Duncan, the formerly well-known horticulturist, Dunedin, Fla., says of it: "I do not know how either tree or fruit could be improved."

MARSH SEEDLESS. This is one of the most popular varieties, and nearly seedless—generally three to six to a fruit. Size large; form roundish, slightly necked at base; surface moder-

ately smooth; color lemon-yellow; heavy; rind thin; very juicy, and of excellent quality. February and March.

TRIUMPH. Medium; peel smooth, clear, thin and fine-grained; less "rag" than in most Grape Fruits, and fewer seeds; very heavy, juicy and well flavored. There is no bitter in the juice, flesh or membranes surrounding the cells and dividing the segments, and very little in the white inner lining of the peel. Tree bears young, and is very prolific. One of the best of the improved varieties.

LEMONS

While commercial Lemon-culture is necessarily confined to the more southern regions of the "Citrus Belt," and exceptionally favorable locations farther north in the same belt, it is altogether likely that upon the hardy, dormant-in-winter *Trifoliata* stock it can be successfully grown, at least in an amateur way, and for home use, throughout a much wider range.

VILLA FRANCHA. Medium size; rind smooth, thin and sweet; juicy; acid very strong and of fine quality; tree has but few thorns, and is a vigorous grower and very productive. Fruit a good shipper. Imported by General Sanford; considered one of the very best; has taken first rank in many competitive exhibits.

KUMQUAT

This unique and curious member of the Citrus family, commonly called Kumquat in this country, is a native of Japan, where it is known as *Kin-Kan*, which means Gold Orange; Kumquat is Chinese for the same meaning. In Japan it is exclusively grown upon *Trifoliata* stock. On this stock, in open-ground culture, it is a large bush or small tree, sometimes attaining a height of 12 feet. It bears in great profusion a small and very handsome deep yellow fruit. The whole fruit, rind and all, is eaten, and people become very fond of them. The sweet rind and agreeably

acid pulp make a piquant combination, relished by most palates. Preserved in sugar or crystallized, the Kumquat, wherever it is known, is deservedly very popular.

AS AN ORNAMENTAL.—The trees bear as soon as they have wood enough to hold fruit. Diminutive trees in pots are loaded with flowers and fruit every year. The small but exquisitely beautiful fruit hangs on the unique and handsome ever-green trees all winter. While in ordinary open-ground culture the trees grow large enough to yield several boxes of fruit, they are easily restricted to dwarf size. These little trees, with compact head, beautiful foliage and abundant flowers and fruit, are very popular for room decoration. As a window plant at the North, for pot culture, as well as for gardens and grounds in the orange region, the Kumquat is one of our handsomest and most valuable ornamentals.

THE KUMQUAT AS A MARKET FRUIT.—Kumquats, which have appeared in our markets to a limited extent during the past few years, have met ready sale at enormously high prices, bringing from \$10 to \$15 per box. At present the supply is entirely inadequate to the increasing demand.

VARIETIES.—There are two varieties, *Nagami* and *Marumi*. The *Nagami* is about an inch and a-half long by an inch in diameter; deep orange-yellow; the delicate peel is sweet, spicy; pulp tender, agreeably acid. Tree handsome; branches slender, without thorns; leaf small, narrow, oval, almost lanceolate; very productive. The *Marumi* differs only in size and shape of fruit—it is round, and about one inch in diameter.

IN OUR NURSERIES we have both of these varieties fruiting heavily, and deem them so valuable that we have alternate rows marked "don't dig." In other words, we deem it more profitable to retain sufficient of these to transform the nursery into an orchard than to sell them out clean.

CITRUS TRIFOLIATA

(*Citrus trifoliata*, *Limonium trifoliatum*; *Ægle sepiaria* and *Citrus triptera* of botanists)

Unlike most of our cultivated Citrus fruits, this is not a hybrid, sport or derived sort, but a primitive, wild species, reproducing itself practically without variation from the seed. It is a native of Japan, where it grows wild, and has long been used as a stock for cultivated varieties of the Orange. It is deciduous, has dark, glossy green trifoliate leaves, and is thickly studded with stout thorns. It bears young (in 4 to 6 years from the seed), the fruit being inedible. Its habit of growth is peculiar, being very angular and distinct. IT IS ENTIRELY HARDY throughout the Lower South, being unaffected by such frosts and freezes as occur in this region. Specimens, entirely unprotected, have stood the winters uninjured for years as far north as Washington.

INCREASES HARDINESS.—The Trifoliata stops growing early in the fall, is entirely dormant in winter, and starts late in spring. Varieties of Orange and Citrus fruits worked upon it will stand more cold than upon other stocks; however we explain the fact, the fact remains, demonstrated by experience. THE USE OF THIS STOCK WILL CERTAINLY REDUCE THE FROST RISK in the northern edge and exposed locations of the Orange Belt proper, and upon it the hardy Satsuma can be successfully grown in many places north of the present range of Orange-production.

RIPENS THE FRUIT EARLY.—Experience thus far seems to indicate that the habit of this stock to harden up early in the season hastens ripening, an important item in localities where early frosts are apt to injure the fruit. Again, early ripening means good prices. The first price in the Orange market is a high price.

VARIETIES BUDDED ON IT BEAR YOUNG.—All varieties budded on this stock come into bearing at a very early age. At the present time (October, 1900) we have 24 varieties of Oranges, Pomelos and Kumquats, budded on this stock, fruiting in the NURSERY ROWS. There are many boxes of fruit on the nursery trees. The frontispiece shows some of these trees loaded with fruit, as photographed on October 1, 1900—less than twenty months after one of the most severe freezes ever known in Florida.

MAKES GOOD-SIZED TREES.—The fact that this stock has been considerably used for the propagation of small Orange trees for house culture, and for grounds at the North, where the trees must be removed indoors in winter (for which it is especially well adapted), has led to the impression that varieties worked upon it were necessarily very much dwarfed. This is erroneous; in open-ground culture Oranges upon Trifoliata stock are not dwarfs in this diminutive sense, but make good, sizable trees. In previous Catalogues we have given reports from various sections of the Gulf region upon the size attained by different varieties of Oranges upon Trifoliata stock, showing that Satsuma and other varieties of the Mandarin class, varying in age from 5 to 9 years, ranged in height and spread from 8 to 12 feet, while other varieties, at 7 years, were 15 feet high.

FOR ORNAMENTAL PURPOSES.—The ease with which it can be confined within small compass, and trained into almost any shape, makes it exceptionally valuable as an ornamental. While it is bare of leaves in winter, its vivid green stems and unique and peculiar outline give it a very striking appearance. Its large white flowers are followed by a showy fruit, which hangs, golden yellow, on the tree through the winter.

AS A HEDGE PLANT.—The vigor of the Trifoliata, its hardiness, resistant qualities, stout thorns, and the ease with which it is confined in a small space, make it an ideal hedge plant. It forms an impenetrable barrier to man and beast, and with proper care can be made rabbit-proof. It is unquestionably the best hedge plant for the Lower South.

PEACHES

WE HAVE for many years made the growing of Peach trees a prominent feature of our nursery business. While there are a few varieties that can be successfully planted over a more or less widely extended area, most of the varieties are limited in their range of adaptability; hence the large number of varieties propagated.

There are several different classes or types of Peaches, as follows: *Persian*, which includes a large number of varieties most commonly grown in the North, and comparatively few of which are adapted to Florida or the Gulf coast country. *Northern Chinese*, which includes Elberta and many other fine varieties adapted to most of the country generally spoken of as the "Cotton Belt," but with Northern Florida as about the southern limit of adaptability. *Spanish*, which includes many native varieties that have originated in Florida and the Gulf coast country, and which are for the most part fine Peaches, but better adapted to the latitude of North Florida than to that of South Florida. *Honey*, which includes the parent Honey and numerous varieties that have originated from it; the range of best adaptability being from half way down the state of Florida northward to middle Georgia, and similar latitudes farther west to the Mexican border. *Peen-to*, which includes the original tomato-shaped Peen-to as well as the regular peach-shaped varieties that have originated from it; best adapted to Southern Florida and similar semi-tropical latitudes. *Oriental Bloods*, which include the Red Ceylon, adapted to the same range as the Peen-to type; and the Japan Dwarf Blood, adapted to the same range of territory as the Honey type.

During the past 18 years we have tested, in our own orchards, a very large number of Peaches, including the most prominent varieties of all the different types above named. We have also originated and introduced several valuable sorts. As a result of our experimentation in this direction we are now able to offer select lists of Peaches of varieties adapted to southern sections, as well as other lists of varieties adapted farther north. Our Peach trees are all grown on Peach stock; there is no better stock for the Peach than the Peach.

LISTS TO AID SELECTION

In assigning varieties to districts of wide area, there will be local exceptions, and absolute accuracy cannot be expected; but the following lists, compiled after many years of somewhat extensive planting, experimenting, research and observation will, we are confident, prove helpful as an approximate guide to selection.

SUCCESSION OF RIPENING.—The terms "very early," "early," "midseason," and "late," in the list below (as indicated to the right of each variety by the abbreviations "VE," "E," "M," "L"), indicate the comparative ripening time of the variety.

EXPLANATION OF LIST.—The varieties best adapted and most valuable for market in a particular section are printed in black capitals, thus: “ANGEL.” Varieties next in order of merit are printed in black-face lower-case type, thus: “Climax.” Other varieties recommended are printed in plain lower-case type, thus: “Countess.”

LIST A.—PEACHES FOR SOUTH FLORIDA

ANGEL,	E.	Gibbons' October,	L.	PEEN-TO,	VE.
BIDWELL'S EARLY,	VE.	Honey,	E.	Powers' September,	L.
BIDWELL'S LATE,	E.	IMPERIAL,	E.	Red Ceylon,	VE.
Cabler's Indian,	M.	Japan Dwarf Blood,	VE.	Reeves' Mammoth,	M.
Climax,	E.	JEWEL,	VE.	Sangmel,	E.
Colon,	E.	La Magnifique,	L.	SUBER,	VE.
Countess,	M.	La Reine,	M.	Taber,	E.
DOROTHY N.,	M.	MAGGIE,	VE.	Triana,	E.
Ferdinand,	E.	Mascotte,	VE.	Victor,	VE.
Florida Crawford,	M.	Oviedo,	E.	Victoria,	L.
Florida Gem,	E.			WALDO,	VE.

LIST B.—PEACHES FOR EASTERN NORTH FLORIDA

Admiral Dewey,	VE.	FLORIDA GEM,	E.	OVIEDO,	E.
ANGEL,	E.	Frances,	M.	Pallas,	E.
BIDWELL'S LATE,	E.	Gibbons' October,	L.	Peen-to,	VE.
Cabler's Indian,	M.	HONEY,	E.	Powers' September,	L.
Climax,	E.	IMPERIAL,	E.	Reeves' Mammoth,	L.
Colon,	E.	Japan Dwarf Blood,	VE.	Sangmel,	E.
Countess,	M.	JEWEL,	VE.	TABER,	E.
Dorothy N.,	M.	La Magnifique,	L.	Thurber,	M.
Estella,	L.	La Reine,	M.	Triana,	VE.
Everbearing,	E. to L.	Mascotte,	VE.	Victor,	E.
Ferdinand,	E.	Onderdonk,	M.	Victoria,	L.
Florida Crawford,	M.			WALDO,	VE.

LIST C.—PEACHES FOR WEST FLORIDA AND LOWER GEORGIA,
ALABAMA AND MISSISSIPPI

Admiral Dewey,	VE.	Early Rivers,	E.	Heath Cling,	L.
ALEXANDER,	VE.	ELBERTA,	M.	Henrietta,	L.
Amelia,	M.	Emma,	M.	Honey,	E.
Angel,	E.	ESTELLA,	L.	IMPERIAL,	E.
Beauty's Blush,	E.	Everbearing,	E. to L.	Japan Dwarf Blood,	VE.
Belle of Georgia,	M.	Ferdinand,	E.	JESSIE KERR,	VE.
CABLER'S INDIAN,	M.	Fleitas,	E.	Jewel,	VE.
Carman,	E.	Florida Crawford,	M.	La Magnifique,	L.
Chinese Cling,	M.	Florida Gem,	E.	La Reine,	M.
CLIMAX,	E.	Frances,	M.	Lemon Cling,	M.
Colon,	E.	GENERAL LEE,	M.	Mamie Ross,	E.
COUNTRESS,	M.	Gibbons' October,	L.	Matthews' Beauty,	L.
Crawford's Early,	E.	Greensboro,	VE.	Mountain Rose,	E.
Crawford's Late,	M.	Hale's Early,	E.	Onderdonk,	M.

LIST C.—PEACHES FOR WEST FLORIDA AND LOWER GEORGIA, ETC., continued

OVIEDO,	E.	SNEED,	VE.	TRIUMPH,	VE.
Pallas,	E.	Taber,	E.	Victor,	VE.
Powers' September,	L.	THURBER,	M.	VICTORIA,	L.
Reeves' Mammoth,	M.	Triana,	E.	Waddell,	E.
Sangmel,	E.			Waldo.	VE.

LIST D.—PEACHES FOR COASTWISE TEXAS AND LOUISIANA

Admiral Dewey,	VE.	Everbearing,	E. to L.	Mamie Ross,	E.
ALEXANDER,	VE.	Ferdinand,	E.	Matthews' Beauty,	M.
Amelia,	M.	Fleitas,	E.	Mountain Rose,	E.
Angel,	E.	Florida Crawford,	M.	ONDERDONK,	M.
Beauty's Blush,	E.	FLORIDA GEM,	E.	OVIEDO,	E.
Belle of Georgia,	M.	Frances,	M.	PALLAS,	E.
Bidwell's Late,	E.	GENERAL LEE,	M.	Powers' September,	L.
CABLER'S INDIAN,	M.	Gibbons' October,	L.	Reeves' Mammoth,	M.
Carman,	E.	Greensboro,	VE.	Salway,	L.
Chinese Cling,	M.	Hale's Early,	E.	Sangmel,	E.
CLIMAX,	E.	Heath Cling,	L.	SNEED,	VE.
Colon,	E.	Henrietta,	L.	TABER,	E.
Countess,	M.	Honey,	E.	Thurber,	M.
Crawford's Early,	E.	IMPERIAL,	E.	Triana,	E.
Crawford's Late,	M.	Japan Dwarf Blood,	VE.	TRIUMPH,	VE.
Early Rivers,	E.	JESSIE KERR,	VE.	VICTOR,	VE.
ELBERTA,	M.	Jewel,	VE.	Victoria,	L.
Emma,	M.	La Magnifique,	L.	Waddell,	E.
Estella,	L.	La Reine,	M.	Waldo.	VE.
		Lemon Cling,	M.		

LIST E.—PEACHES FOR OTHER SECTIONS OF THE UNITED STATES

Adapted to most of the Peach sections of the country outside of the regions previously listed.

Admiral Dewey,	VE.	Emma,	M.	Lemon Cling,	M.
ALEXANDER,	VE.	Estella,	L.	Mamie Ross,	E.
Amelia,	M.	Everbearing,	E. to L.	Matthews' Beauty,	M.
Beauty's Blush,	E.	Ferdinand,	E.	MOUNTAIN ROSE,	E.
Belle of Georgia,	M.	Fleitas,	E.	Onderdonk,	M.
Cabler's Indian,	M.	Florida Gem,	E.	Oviedo,	E.
Carman,	E.	Frances,	M.	Pallas,	E.
Chinese Cling,	M.	GENERAL LEE,	M.	Powers' September,	L.
Climax,	E.	Gibbons' October,	L.	SNEED,	VE.
Colon,	E.	GREENSBORO,	VE.	Taber,	E.
Countess,	M.	Hale's Early,	E.	Thurber,	M.
CRAWFORD'S EARLY,	E.	HEATH CLING,	L.	Triana,	E.
CRAWFORD'S LATE,	M.	Henrietta,	L.	TRIUMPH,	VE.
Delaware,	E.	Holderbaum,	M.	Victor,	VE.
Early Rivers,	E.	Imperial,	E.	Victoria,	L.
ELBERTA,	M.	JESSIE KERR,	VE.	Waddell.	E.

VARIETIES DESCRIBED

For adaptability to any given section, consult lists printed on pages 9 and 10.

The abbreviations in parentheses below, following the names of varieties, indicate the race to which they belong. Thus, (Sp.) means that the variety belongs to the Spanish race; (Per.), to the Persian race; (N. C.), Northern Chinese; (Hon.), Honey; (P.-to.), Peen-to; (O. B.), Oriental Bloods. The dates given for the usual time of ripening are based on Northern Florida.

ADMIRAL DEWEY. (Per.) A new variety that is attracting considerable attention. Fruit of good size; skin deep orange-yellow, with crimson cheek; flesh clear yellow to the stone, juicy, melting, vinous; quality very good. June 1 to 10.

ALEXANDER. (Per.) Large; highly colored; flesh greenish white, juicy, vinous, of fair quality; cling. One of the earliest of the Persian type. About June 1.

AMELIA. (Per.) Very large, roundish oblong; suture large and deep, extending nearly around; skin pale, whitish yellow, shaded and marbled with crimson; flesh white, vinous, sweet, juicy and melting; free. July 1 to 10.

ANGEL. (P.-to.) Large, roundish, slightly pointed; skin yellow, highly washed with red; exceedingly handsome; the flesh is white, melting, juicy, mild subacid, of exquisite flavor, and entirely devoid of the bitter almond or noyau flavor characteristic of the parent Peen-to and most of its seedlings; the fruit is a perfect freestone. Ripens June 20 to 30. The trees come into bearing while very young, and are exceedingly prolific. Blooms a month later than Peen-to, thus obviating danger from frosts in many sections. Very valuable.

BEAUTY'S BLUSH. (N. C.) A new variety, said to be a cross between Chinese Cling and Tillotson. Fruit large, high-colored, melting and delicious. Ripens June 15 to 30.

BELLE OF GEORGIA. (N. C.) Very large; skin white, with red cheek; flesh white, firm and of excellent flavor; fruit uniformly large and showy; free. Rapid grower, prolific. July 1 to 15.

BIDWELL'S EARLY. (P.-to.) A seedling of the Peen-to. Shape roundish oblong, with short, recurved point; size medium; skin creamy

white, washed with carmine; flesh fine-grained, melting, juicy and sweet, with slight noyau flavor; clingstone. Matures about the same time as Peen-to, but continues during a longer period.

BIDWELL'S LATE. (P.-to.) A seedling of Peen-to, originated at Orlando, Fla., and the best of the "Bidwell" varieties. Shape nearly round; size large; color yellowish white; flesh fine-grained, sweet and juicy; clingstone. Matures about three weeks later than Peen-to. Quality excellent. This has proved a sure bearer farther north in Florida than most other varieties of the same origin.

CABLER'S INDIAN. (Sp.) Medium size; skin mottled in shades of deep purple; flesh purple, with deeper purple veins; rich, subacid; cling; very fine. July 15 to 25. Of Texas origin, and decided Indian type.

CARMAN. (N. C.) Of large size, resembling Elberta in shape; skin creamy white or pale yellow, with deep blush; flesh tender and of fine flavor, juicy; freestone. Prolific bearer and profitable market variety. June 10 to 20.

CHINESE CLING. (N. C.) Very large, globular; skin yellowish white, sometimes washed with red; flesh white, red at the stone, rich, vinous, excellent. Ripens July 5 to 15.

CLIMAX. (Hon.) A seedling of the Honey, possessing many of the characteristics of its parent, but larger, and about 10 days later. Vigorous grower and heavy bearer; fruit of good appearance; size medium, round, slightly oblong, with recurved point; color pale yellow, washed with red; flesh yellowish white, fine-grained, melting, sweet and sprightly; quality excellent; freestone. June 25 to July 5.

COLON. (Hon.) Large, roundish oblong; skin white, overspread with red; flesh white, streaked with red, sometimes almost solid red, very juicy, subacid, high-flavored, delicious; freestone. June 15 to 25. Remarkable among Honey derivatives for its snap and tone. Tree a good grower and prolific. Introduced by ourselves in 1893-94.

COUNTESS. (Sp.) Large to very large, nearly round; skin white; flesh white, tender, melting, juicy, vinous; excellent; free. Tree a very strong grower. Ripens July 15 to 20.

CRAWFORD'S EARLY. (Per.) Large; yellow, red cheek; flesh yellow, juicy and rich; free. End of June. This well-known, reliable Peach has for years been largely planted throughout the central and northern Peach-growing sections of the United States, in many of which it is a leading market variety.

CRAWFORD'S LATE. (Per.) Large; skin yellow, with red cheek; flesh yellow, fine quality; free. Last of July. An old and very popular variety for marketing or canning.

DELAWARE. (Per.) A new variety originated in the state for which it is named. Said to be a very fine, large, early variety, with bright red skin and white flesh; freestone. June 5 to 10.

DOROTHY N. (P.-to.) This new variety, originated in Lake county, Fla., is a seedling of Angel, and is a remarkably handsome Peach of large size, fine quality and a perfect freestone; shape nearly round; flesh yellow, rich, subacid, of very fine flavor. Ripens July 5 to 15. The tree is a heavy bearer. We have no hesitancy in recommending this variety as a valuable acquisition to South Florida planters.

EARLY RIVERS. (Per.) Large to very large; skin pale greenish white and very thin; flesh subacid, very vinous and juicy, with delicate flavor; free. Very prolific. June 10 to 20. Well suited to near-by markets.

ELBERTA. (N. C.) Very large; yellow, with red cheek; flesh yellow, juicy and high-flavored; free. July 5 to 20. Supposed seedling of Chinese Cling. One of the finest and most valuable varieties, and one that is perhaps more largely planted than any other one variety in America. Succeeds

in West Florida and throughout a wide range of territory northward, but not in South Florida.

EMMA. (N. C.) Very large; yellow, with red cheek; flesh yellow, firm, juicy; best quality. Follows Elberta, ripening July 20 to 30. Excellent market sort.

ESTELLA. (Sp.) Almost round, very large; skin yellow, or greenish yellow, with full red cheek; flesh yellow; freestone. Tree vigorous and very productive. Ripens September 1 to 10, just at a time when there is no other fruit in market. Originated in West Florida.

EVERBEARING. (Sp.) The introducer of this valuable new variety, Mr. P. J. Berckmans, describes it as follows:

"This is one of the most remarkable of Peaches, as it combines many desirable qualities which make it of great value for family use. The first ripening begins about July 1, and successive crops are produced until the beginning of September. Fruit in all stages of development—ripe and half-grown—may be seen on the tree at the same time.

"The fruit is creamy white, mottled and striped with light purple and with pink veins; oblong in shape, and tapering to the apex; flesh white, with red veins near the skin, very juicy, vinous, and of excellent flavor; quality very good to best; freestone of the Indian type.

"The first ripening averages 3½ inches long by 3 inches broad. The size of the fruit of the second and following crops diminishes gradually, until that of the last ripening is about 2 inches in diameter. A supply of fruit may, therefore, be secured from the same tree for nearly three months in succession.

"We do not recommend the Everbearing Peach for commercial orchards, but for family use or small gardens, where there is room for only a few trees, its value is unquestionable. We offer it with confidence, as we have known the original tree for the past five years, and have gathered fruit from it in various stages of development. In some parts of the country where the commercial Peach-growers have had continuous crop failures, the Everbearing is being considered very seriously for orchard planting. Two-year-old trees in our test

orchards produced a fair crop of fruit during July and August, 1898, the quality being pronounced as unusually good by the Assistant Pomologist of the United States Department of Agriculture, who saw the fruit here."

FERDINAND. (Hon.) Large, smooth, roundish oblong, somewhat pointed; skin white, over-spread with red; flesh white, veined with red, meaty, rich and delicious; cling. June 25 to July 5.

FLEITAS (*Yellow St. John*). (Per.) Large, roundish; orange-yellow, with deep red cheek; juicy, sweet and high-flavored; flesh yellow; free. Ripens with early Tillotson, and lasts longer.

FLORIDA CRAWFORD. (Sp.) Large, roundish oblong; suture distinct, but shallow; skin yellow, red cheek; flesh yellow, juicy, melting, of rich, vinous flavor; quality best; free. July 15 to 25.

FLORIDA GEM. (Hon.) A Honey seedling of large size; roundish oblong, pointed; highly colored; flesh sweet, rich, juicy, red at the stone; very fine; free. July 1 to 10. A valuable variety.

FRANCES. (N. C.) This new variety is described as being one of the handsomest Peaches grown, being a beautiful shade of yellow, covered almost entirely with brilliant red. It is of about the same size as Elberta, average specimens measuring 9 inches in circumference. Flesh firm and of fine quality; freestone. Ripens just after Elberta. Highly recommended by *Texas Farm and Ranch*, which says that it has not seen anything its superior in its season.

GENERAL LEE. (N. C.) Very large; skin creamy white, shaded with red; flesh juicy and highly flavored; quality best; cling. July 5 to 15. A good market variety.

GIBBONS' OCTOBER. (Sp.) A medium to large freestone, in quality unexcelled by any extremely late Peach that ripens this far South. September 25 to October 15. A native seedling. Tree vigorous and handsome.

GREENSBORO. (Per.) Originated in North Carolina, and is being quite extensively planted in the Central South. Of good size, nearly round; skin highly colored, bright red over yellow; flesh white, very juicy, and of fine quality. Ripens about June 1. A promising market variety.

HALE'S EARLY. (Per.) Medium to large; skin greenish white, nearly covered with dark red; flesh white, melting, juicy and good; free. June 5 to 20.

HEATH CLING. (Per.) Large, oblong; skin creamy white, washed with red; flesh juicy, vinous and well-flavored; red near the stone. Aug. 25.

HENRIETTA (*Levy's Late*). (Per.) Large; nearly covered with bright crimson; hardy, productive; a sure bearer; a magnificent yellow cling.

HOLDERBAUM. (Per.) A new variety originated in the mountains of Pennsylvania, and recommended for its large size, beauty, quality, and extreme hardiness. Color light cream-yellow, washed with red on the sunny side; flesh yellow; freestone. Ripens July 15 to 30.

HONEY. (Hon.) Medium size, oval, compressed, with deep suture on one side, extending more than half way around, and terminating in a sharp, peculiar, recurved point; skin whitish yellow, washed and marbled with red in the sun; flesh creamy white, fine, juicy, melting, with peculiar honeyed, rich, sweet flavor; quality excellent; free. June 5 to 20.

IMPERIAL. (Hon.) Very large, roundish oblong; skin greenish yellow, washed with red; flesh white, sweet, juicy, of excellent flavor and good tone; quality best; free. June 25 to July 5. Originated by ourselves. Has given very gratifying results throughout a large range of territory. The largest and handsomest of several hundred Honey seedlings.

JAPAN DWARF BLOOD. (O. B.) A blood freestone of good size and appearance and fair quality. Ripens earlier than Alexander. A dwarf-growing, stocky tree. A comparatively recent introduction. It has fruited well in localities of West Florida and Southern Louisiana.

JESSIE KERR. (Per.) A freestone, larger and earlier than Alexander, which it resembles in tree and fruit. Preferred to the latter by many orchardists. Adapted to the same sections as Alexander.

JEWEL. (P.-to.) Description of fruit same as Waldo, of which it is a seedling. The fruit ripens, however, ten days to two weeks earlier than Waldo. A Peach as good as Waldo, as vigorous as

Waldo, as late-blooming as Waldo, and ripening its fruit ahead of Waldo, is certainly a desideratum in the Peach culture of Eastern and Peninsular Florida. Tree of somewhat willowy growth; very vigorous. We have received flattering comments on this variety from Florida to coastwise Texas.

LA MAGNIFIQUE. (Sp.) Large, roundish oblong; skin yellowish white, washed with red; flesh firm, yellowish white, rich, sprightly, vinous, subacid; quality best; cling. August 1 to 10.

LA REINE. (Sp.) Large, round, slightly oblong; skin yellowish white, washed with deep red; flesh white, very red at the stone, firm, juicy, rich, delicious; cling. July 20 to 25. A native variety of strong growth, and very prolific.

LEMON CLING. (Per.) Large, oblong, with swollen point, like the lemon; skin yellow, with dark, brownish red cheek; flesh yellow, firm, slightly red at the stone, with rich, sprightly subacid flavor. One of the most beautiful yellow-fleshed clings. Last of July.

MAGGIE. (P.-to.) Size medium, roundish oblong; skin yellowish white, washed with carmine; flesh fine-grained, sweet, juicy and melting; sub-cling. Ripens about with the Peen-to. Very much like Bidwell's Early in appearance, time of ripening, and other qualities.

MAMIE ROSS. (N. C.) A seedling of the Chinese Cling, which it much resembles. Fruit almost as large as the Chinese Cling; white, nearly covered with delicate carmine; flesh white, juicy and of good quality. A regular and very prolific bearer. June 15. Popular throughout a wide region in Texas, where it is esteemed the finest early cling.

MASCOTTE. (P.-to.) About the size and shape of Waldo. Flesh white, with reddish streaks; subacid, good flavor; freestone. Ripens about June 10.

MATTHEWS' BEAUTY. (N. C.) This variety promises to be an acquisition for all sections where the Elberta succeeds. It is supposed to be a cross between Elberta and Smock. The fruit is of large size, shaped similar to Elberta, but a little longer; skin golden yellow, streaked with

red; flesh firm, yellow and of excellent flavor. Ripens two to three weeks later than Elberta.

MOUNTAIN ROSE. (Per.) Large, nearly round; skin white, washed with carmine; flesh white, tinged with pink, rich, juicy, subacid; quality excellent; free. June 5 to 15.

ONDERDONK. (Sp.) Large; skin and flesh yellow; very juicy and sweet; free. Last of July. Originated in Texas. Possesses a valuable combination of quality, appearance and productiveness. A good mid-season variety.

OVIEDO. (Hon.) Medium to large, roundish oblong, with short, recurved point; highly colored; flesh light, streaked with red; very firm, ripening evenly from skin to pit; rich, good flavor; free. Early in July. Seedling of Honey. Desirable.

PALLAS. (Hon.) Good size, nearly round; deep red, dotted with salmon, and tipped with light yellow at the base and apex; flesh white, fine-grained, melting, with a rich, vinous aroma; quality excellent; free. June 20 to 30. Seedling of Honey.

PEEN-TO. (P.-to.) A very curiously formed Peach, resembling in shape a small, flat turnip, both ends being flattened, and the pit also partaking of the same shape. The color of the Peach is a greenish white, beautifully washed with red in the sun, and when allowed to thoroughly ripen on the tree, the fruit changes from its shade of light green to a most delicate, waxen yellow. Flesh pale yellow, sweet, rich, juicy and of fine flavor, sometimes possessing a slight noyau tang, which is barely perceptible, however, when the trees are liberally fertilized and highly cultivated; cling; stone remarkably small. Ripens in this locality from May 20 to June 1. A favorite with many South Florida orchardists. This variety, together with the seedlings that have originated from it, are the most tropical in character of all the varieties listed.

POWERS' SEPTEMBER. (Sp.) Fruit of good size and of excellent quality, flesh white; free. September 1 to 15. The tree is a good grower. A native variety, of value on account of its lateness.

PURPLE-LEAVED. (Sp.) Not recommended for its fruit, but desirable as an ornamental on account of its handsome purple foliage. (For further description see Ornamentals.)

RED CEYLON. (O. B.) A good-sized fruit of dull green color; flesh blood-red to the stone, from which it separates freely. It is not first-class to eat 'out of hand, as it is too acid for most tastes, but it is a most excellent fruit for cooking, being possessed of a peculiar flavor when cooked, suggesting prunelles. Ripens in June. This Peach is as unique in its way as the Peen-to, and of an even more semi-tropical character. Tree a heavy and annual bearer in South Florida.

REEVES' MAMMOTH. (Sp.) Originated in Orange county, Florida. A remarkably large, fine, productive freestone. Early in August.

SANGMEL. (Hon.) Large, roundish oblong, pointed; skin white, overspread with red; flesh white, streaked with red, firm, juicy, sweet and high-flavored; cling. June 20 to 30.

SNEED. (N. C.) The earliest Peach known, averaging 8 to 10 days earlier than Alexander. Fruit of medium size, somewhat oval in shape; color creamy white, with rich red blush on sunny side; ripens evenly to the pit; flesh white, very free and juicy; semi-cling. Of fine quality and not subject to rot, as are so many others of the early varieties. A seedling of the Chinese Cling, it has the vigor of its parent in tree growth and fruit buds.

SUBER. (P.-to.) The attention of South Florida Peach planters is especially called to this variety, offered to the public for the first time in 1896-97. Suber is a seedling of the Peen-to, originated at Lake Helen, in southern Volusia county. It has been quite extensively grown for shipment by the growers of Lake Helen, by whom it is highly esteemed. Its description is not materially different from Bidwell's Early, except that it is larger, firmer, and a little more acid than the latter. The tree is a vigorous grower and satisfactory bearer, and the fruit brings a high price in market.

TABER. (Hon.) Large, roundish oblong, pointed; skin white, overspread with red; flesh

white, streaked with red, firm, very juicy, rich, subacid; of fine quality; cling. June 15 to 25. A seedling of Honey, and one of the best of the numerous varieties that we have originated.

THURBER. (N. C.) Large to very large; skin white, with light crimson mottlings; flesh juicy, vinous and of delicate aroma; texture exceedingly fine; free. Middle of July. Resembles Chinese Cling in size and color. One of the best of its class.

TRIANA. (Hon.) Large, roundish oblong, slightly pointed; skin white, overspread with red; flesh white, with red markings, rich, juicy, very sweet and of remarkably fine flavor; freestone. Ripens June 25 to July 5. We consider this variety, originated and introduced by ourselves several years ago, as one of the very best of the numerous good varieties that have originated from the Honey.

TRIUMPH. (Per.) Ripens with Alexander, blooms late. The tree makes a very strong growth, bears young, and yields abundantly. The fruit is of large size, with very small pit. Skin yellow, nearly covered with red, dark crimson in the sun. Flesh bright yellow, free when fully ripe, and of excellent flavor.

VICTOR. (N. C. and Sp.) In 1897 this extraordinarily early new variety ripened its whole crop of fruit between May 8 and 16, on the originator's grounds, in Smith county, Texas. Fruit medium to large, of pleasant subacid flavor; semi-cling. The tree is a vigorous, compact grower, and a heavy annual bearer. The originator claims that it is uniformly ten days earlier than Sneed, which makes it undoubtedly the earliest variety in existence. Well worthy of trial in the South.

VICTORIA. (Sp.) Very large; nearly round; skin yellow; flesh yellow, juicy, sweet and of excellent flavor; free. August 5 to 10. One of the best varieties of native origin, well worthy of a place in every southern Peach orchard.

WADDELL. (N. C.) Fruit medium to large, oblong; skin rich creamy white, nearly covered with red; flesh white, firm, rich and sweet; freestone. Very prolific. Ripens June 1 to 10.

WALDO. (P.-to.) Medium size; roundish oblong; skin highly colored, varying from light salmon to dark red on side next the sun; flesh yellowish white, red at the stone, juicy, melting, sweet; of good quality; free. Ripens with the Peen-to. A seedling of Peen-to, supposed to be crossed with Honey.

Waldo is not only a free and regular bearer, but it is also a high-colored, attractive fruit. The quality of the fruit is far superior to the Alexander and other early Peaches of parallel and higher latitudes and, being a freestone, is preferred in market. In flavor it has the good qualities of the Peen-to varieties, without a trace of the bitter tang many of the latter are apt to have under ordinary conditions. This valuable Peach is not restricted to this district in its adaptability; it

stands with the first and best of the very early sorts southward throughout the state and, in the Gulf coast section of Texas and Lower Louisiana, gives promise of being one of the most valuable varieties.

ANGEL SEEDLINGS

We have annually more or less call for Peach seedlings, and to supply this demand have this year grown some trees from selected Angel seed. In ordering, please designate them as "Angel Seedlings" in order to distinguish them from the budded trees of Angel. While we do not recommend seedlings for extensive planting, as there is no knowing what quality of fruit they may produce, yet, to those who have time and inclination, they offer an inviting field for experiment in the possibility of originating valuable new varieties.

PLUMS

IT HAS now been about sixteen years since the Kelsey, the first representative of the Japan type of Plums, was introduced into this country. Since then numerous other varieties have been introduced from Japan, and still others originated in this country, until now we have a list that comprises some of the most valuable Plums in existence, many of which are adapted to both the North and the South. With the exception of Wild Goose, which belongs to the Southern Chickasaw type, and *Prunus Pissardii*, which comes from Persia, all the varieties listed are either pure or cross-bred Japanese Plums. As a rule they are of large size and possess the desirable quality of keeping in fine condition for some time after being picked, thus making them valuable for shipping. When selection is left to us we will send varieties best adapted to the section from which the order comes. For South Florida and other similar semi-tropical latitudes, the Excelsior, originated by ourselves some years ago, is, by all odds, the best adapted.

ABUNDANCE. Medium to large; round, with pointed apex; skin greenish yellow ground, overlaid with dull purplish carmine; flesh light, greenish yellow, juicy and sweet, with a touch of subacid and slight apricot flavor; pit small; cling; quality best. Strong-growing, upright, prolific.

This is one of the most popular and profitable early sorts in the Plum-growing sections of the North and over a wide area in the Lower South.

AMERICA. (New.) One of Luther Burbank's recent introductions. Fruit described as very large, glossy coral red; flesh light yellow, moderately firm; best quality. Ripens two weeks before Burbank and is a splendid keeper.

APPLE. (New.) Recently introduced by Mr. Burbank and described as follows: fruit striped and mottled like Imperial Gage until nearly ripe, when it turns a deep reddish purple. The rich,

high-flavored, sweet or subacid flesh is rather firm, pale red, with markings of pink; nearly freestone.

BABCOCK. (*Botankio.*) Fruit large, round, conical; skin yellow, overlaid rather thickly with purplish red and blue bloom; flesh deep orange, solid, sugary, subacid, good flavor and quality; cling. Tree vigorous and prolific.

BARTLETT. (New.) We obtained grafting wood of this variety last spring, from Mr. Burbank, at \$1 per foot. He describes it as follows: "Bartlett is the king for flavor; it out-Bartletts the Bartlett pear in exquisitely perfumed flesh; bears when two years old."

BERCKMANS. Large, round, slightly oblong, sometimes verging to heart-shaped; skin yellow, overspread with bright red and light purplish bloom; flesh yellow and of good flavor; cling. Fruit an exceptionally good keeper. Tree vigorous, productive and a reliable bearer.

BURBANK. The fruit is usually from 5 to 5½ inches in circumference, varying less in size than the other Japanese Plums; it is nearly globular; clear cherry-red, sometimes showing yellow dots, or even marbled, with a thin lilac bloom; flesh deep yellow, firm and meaty, rich and sugary, with a peculiar and very agreeable flavor; cling. Tree unusually vigorous, with strong, upright shoots and large, rather broad leaves. This variety is justly one of the most popular, in both the North and South, of all the Japanese Plums.

CHABOT. Fruit large, about 2 inches in diameter, oblong-conical; skin pink-red, with many very fine gold dots; flesh yellow, very solid, rather acid, quality very good; cling.

CHALCO. (New.) Described by the originator, Mr. Burbank, as large, flat like a tomato; color deep reddish purple; flesh very sweet, firm, exceedingly fragrant. The fruit, which ripens just before Burbank, is nearly stemless and grows very thickly on the branches like kernels on a large ear of corn. Said to be a superior shipping Plum.

CHASE (*Yellow Japan*). Fruit large, round, verging to heart-shaped; under-color yellow, overlaid with dull red and showing many golden dots, finally becoming dull red all over; bloom thick; flesh yellow, firm, rather juicy, sweet and

good. A very excellent Plum. Tree is strong, upright, spreading and productive. Middle of July.

CLIMAX. (New.) Recently introduced by Mr. Luther Burbank, who makes the sweeping statement for this variety that "it is by far the largest and best of all early Plums."

DORIS. Of medium size; flesh juicy, sweet and of good quality. Tree very vigorous. A promising variety.

EXCELSIOR. This variety, originated by ourselves in 1887 and first offered to the public in the winter of 1891-92, is worthy of extended notice. It originated from Kelsey seed, but shows decided evidence of being crossed with some variety of the Chickasaw type. The tree is a remarkably rapid, strong grower and bears annually and abundantly. Fruit medium to large, 1½ inches in diameter, nearly round, no suture, color deep solid wine-red, with heavy light bluish bloom; stem short, skin firm and without astringency; flesh firm, yellowish, with reddish color near the pit; quality fine; clingstone. The earliest Plum to ripen in Florida; about June 1. Very handsome and a fine shipper.

After many years of experimenting with numerous varieties of Plums, we do not hesitate to say that the Excelsior is the most satisfactory of any for planting throughout the length and breadth of Florida and throughout the Gulf coast country westward to the Rio Grande river. It is, in fact, adapted to all the southern states, and good results have been obtained from it as far north as Delaware. Even farther north, in Vermont, it is highly spoken of by Prof. Waugh, of the Vermont Experiment Station, than whom there is no better posted Plum specialist in America. While adapted to this extreme range of latitude, we particularly recommend it for the extreme South, as it is in the semi-tropical climates that a lesser number of fine varieties are adapted.

HALE. Handsome, large, round-cordate; orange, thinly overlaid with mottled red, so as to have a yellowish red appearance or, in well-colored specimens, deep cherry-red with yellow specks; flesh yellow, soft and juicy (yet a good keeper), with a very delicious slightly acid peach flavor; skin somewhat sour; cling. Very late. Tree a remarkably strong grower.

KELSEY. Fruit very large, from 7 to 9 inches in circumference, heart-shaped, long-pointed, usually somewhat lop-sided, with deep, furrow-like suture; skin greenish yellow, sometimes over-spread with bright red, with a lovely blue bloom; very showy; flesh light yellow, firm, meaty, and of pleasant flavor; quality excellent; free. Bears heavily, coming in young.

MIKADO. A new Japanese variety, recently introduced from Louisiana and said to be very large and fine. We have not fruited it yet.

NORMAND. Fruit medium to large, obtusely conical, with heart-like base and short stem; skin clear, golden yellow; flesh firm and meaty, yellow, of high quality. Trees symmetrical; prolific.

OGON. Fruit medium to large, round or slightly flattened, suture prominent; skin bright yellow, with a light, creamy bloom, giving the fruit a whitish appearance; flesh thick and very meaty, but not juicy; firm and long-keeping; good, but not of the best quality; free.

PERSIAN PURPLE-LEAVED (*Prunus Pissardi*). Fruit medium to large, round, and crimson inside and out; quality good, possessing a very decided cherry flavor. June. Retains its vivid purple foliage in full intensity of color throughout the hottest summers and until midwinter. The tree is a good grower, and is chiefly planted as an ornamental, being decidedly the most desirable of the purple-leaved trees.

RED JUNE (*Red Nagate*). Fruit medium to large, cordate and very prominently elongated at the apex; suture deep, generally lop-sided; deep vermilion-red all over, with a handsome bloom, very showy; flesh light yellow or whitish, firm and moderately juicy, not stringy, slightly subacid

to sweetish, of good, pleasant quality; cling to half-cling; pit small. Trees vigorous, productive.

SATSUMA. Fruit medium to large, broadly conical, with a blunt, short point, suture very deep; skin very dark and dull red all over, firm; very juicy; quality good; free. Flesh firm and solid. It is excellent for preserving. It succeeds in many sections, but its range of best adaptability is farther north than Florida.

SHIRO. (New.) Recommended highly by the originator, Mr. Luther Burbank, as a large white Plum, which he predicts will be extensively grown. We paid Mr. Burbank 50 cents per foot for grafting wood of this variety.

WHITE KELSEY. The introducer of this variety says of it: "Same as the common Kelsey in shape and size; pale, creamy color (almost white) when ripe. Does not rot before maturity, as the common Kelsey is apt to do, and ripens earlier and blooms later than the latter; delicious in flavor." Not yet fruited by us.

WICKSON. A remarkably handsome and very large, deep maroon-red Plum of the Kelsey type. Long-cordate or oblong-pointed; flesh firm, deep amber-yellow, clinging to the small pit. There is apt to be a hollow space about the pit. Of first quality. An excellent keeper. A cross of Burbank with Kelsey, Burbank furnishing the seed.

WILD GOOSE. Fruit large, oblong; skin bright red; flesh juicy, sweet; quality excellent; cling. June. Tree vigorous and productive.

YEDDO. A variety recently introduced, and said to be much like White Kelsey, but of a deeper yellow color, and 10 days later to ripen. Recommended by the introducer as a very attractive and fine-flavored Plum. We have not yet fruited it.

PEARS

THE four varieties of Pears best adapted for the Lower South are Le Conte, Kieffer, Smith and Garber. Before these varieties were disseminated, but few Pears were grown in the Gulf region, and these with indifferent success. Since the introduction of the above-named varieties, Pear-culture has become an extensive industry here. In Lower Georgia and West Florida, in coastwise Texas, and in the

intervening strip along the Gulf, thousands of acres have been planted in Pear orchards and hundreds of acres are now in profitable bearing. All the Pear trees we offer are grown upon Le Conte and Japan Pear stocks, which are, by all odds, the best stocks for southern planting.

GARBER. Fruit resembles the Kieffer in size, appearance and quality, but the tree is of more open growth. Comes in ahead of the Kieffer. A seedling of the Chinese Sand Pear.

KIEFFER. Fruit large to very large; color yellow, with bright vermilion cheek, very handsome; flesh very juicy, brittle, a little coarse, but of good quality. September and October. The trees should not be allowed to overbear while young, which they are inclined to do; extremely prolific, and very valuable. Supposed cross between the Chinese Sand and the Bartlett.

LE CONTE. Large to very large, pyriform in shape; skin smooth, pale yellow; when properly handled the quality is good. Early in July. The tree is a remarkably vigorous grower, with luxu-

riant foliage; extremely prolific and an annual bearer. It seems to adapt itself more readily than any other variety to radically different conditions of soil and climate. In sections of the South where few other Pears are satisfactory, the Le Conte seems to have found its home. Supposed cross between the Chinese Sand and some cultivated variety.

SMITH (*Smith's Hybrid*). Uniformly large and perfect, very smooth and handsome; similar in form and color to the Le Conte; melting and juicy, with smooth, creamy texture; quality very good when properly ripened. Ripens with or just ahead of the Le Conte. An early, annual and prolific bearer, and exceedingly profitable. Tree equals the Le Conte in luxuriant growth.

JAPAN PERSIMMONS

THE JAPAN PERSIMMON is no longer on trial, but has been proved to be thoroughly adapted to the cotton belt, and especially well adapted to the coast region. Grafted on our native Persimmon, it seems perfectly at home. The tree is vigorous, prolific, and has few enemies. Some of the varieties ripen in August, some in November, and others intermediate between these dates. It requires some experience to determine when the fruit has reached the proper stage to be marketed, and this varies with the different varieties. Some of the varieties have dark flesh, others light flesh, still others a mixture of the two. The light and dark flesh differ radically in texture and consistency, as well as appearance, and when found in the same fruit are never blended, but always distinct. The dark flesh is never astringent; the light flesh is astringent until it softens. The dark-fleshed fruit is crisp and meaty, like an apple, and is edible before it matures. Some of the entirely dark-fleshed kinds improve as they soften. The light-fleshed kinds, and those with mixed light and dark flesh, are very delicious when they reach the custard-like consistency of full ripeness. In some the astringency disappears as the fruit begins to soften; in others it persists until the fruit is fully ripe. Seeds accompany the dark flesh. Light-fleshed kinds are seedless. Those with mixed flesh have seeds in proportion to the quantity of dark flesh.

We have for several years devoted a great deal of study to this fruit, and have fruited a great many different varieties. The descriptions of the following varieties, which include the best, were made by ourselves, and mostly from the fruit in hand:

COSTATA. Medium size, conical, pointed, somewhat four-sided; diameter $2\frac{1}{8}$ inches longitudinally and $2\frac{3}{8}$ inches transversely; skin salmon yellow; flesh light yellow, dark flesh and seeds occurring seldom; astringent until ripe, then very fine; one of the latest to ripen; a good keeper. Tree distinct; a rapid, upright grower; foliage luxuriant; the most ornamental of all the varieties mentioned.

HACHIYA. Very large, oblong, conical, with short point; very showy; diameter $3\frac{3}{4}$ inches longitudinally and $3\frac{1}{4}$ inches transversely; skin dark, bright red, with occasional dark spots or blotches and rings at the apex; flesh deep yellow, sometimes having occasional dark streaks, with seed. Astringent until ripe, then very fine. The largest and handsomest of all. Tree vigorous and shapely; bears fairly well, but is not as prolific as some of the other varieties.

HYAKUME. Large to very large, varying from roundish oblong to roundish oblate, but always somewhat flattened at both ends; generally slightly depressed at the point opposite the stem; diameter $2\frac{3}{4}$ inches longitudinally and $3\frac{1}{8}$ inches transversely; skin light buffish yellow, nearly always marked with rings and veins at the apex; flesh dark brown, sweet, crisp and meaty, not astringent; good while still hard; a good keeper; one of the best market sorts. Tree of good growth and a free bearer.

OKAME. Large, roundish oblate, with well-defined quarter marks, point not depressed; diameter $2\frac{3}{8}$ inches longitudinally and $3\frac{1}{8}$ inches transversely; skin orange-yellow, changing to brilliant carmine, with delicate bloom and waxy, translucent appearance; the most beautiful of all; light, clear flesh when ripe, with light brown center around the seeds, of which it has several; loses its astringency as soon as it begins to ripen; quality fine. Tree vigorous and good bearer.

TABER'S NO. 23. Medium, oblate, flat or depressed point; diameter $1\frac{1}{8}$ inches longitudinally and $2\frac{3}{8}$ inches transversely; skin rather dark red,

with peculiar stipple marks; flesh dark brown, sweet and free from astringency; seedy; good. Prolific.

TABER'S NO. 129. Medium, roundish, flattened at base; has a small but well-defined point at the apex; diameter about $2\frac{1}{2}$ inches both ways; skin dark yellow-red, with peculiar roughened surface, somewhat resembling alligator leather in appearance and markings, except that the marks are usually very small and uniform; flesh light brown, crisp, sweet, meaty, free from astringency; excellent; a good keeper and shipper. Tree vigorous, prolific, and a regular bearer.

TANE-NASHI. Large to very large, roundish conical, pointed, very smooth and symmetrical; diameter $3\frac{1}{4}$ inches longitudinally and $3\frac{3}{8}$ inches transversely; skin light yellow, changing to bright red at full maturity; flesh yellow and seedless; quality very fine; perhaps the most highly esteemed of the light-fleshed kinds. Tree is vigorous and bears well, though not as prolific as some.

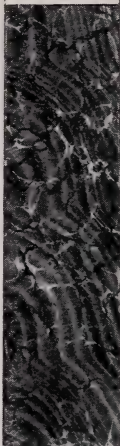
TRIUMPH. Medium; tomato-shaped; skin yellow; flesh yellow; generally has a few seeds; very productive; quality of the best. Ripens from September till November.

TSURU. Large, slender, pointed; longest in proportion to its size of all; diameter $3\frac{3}{8}$ inches longitudinally and $2\frac{3}{8}$ inches transversely; skin bright red; flesh orange-yellow, some dark flesh around the very few seeds; astringent until fully ripe, then the quality is good. The latest of all to ripen. Tree vigorous and a good bearer.

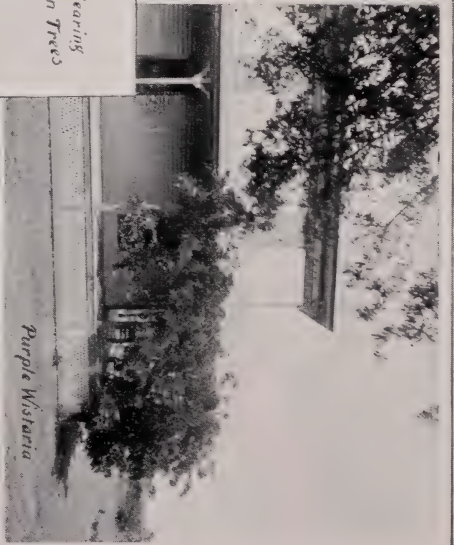
YEDDO-ICHI. Large, oblate; diameter $2\frac{1}{2}$ inches longitudinally and 3 inches transversely; very smooth and regular in outline, with dented appearing surface and slight depression at end opposite the stem; skin darker red than most varieties, with heavy bloom; flesh very dark brown, verging toward purplish; sweet, rich, crisp; in quality one of the best. The fruit is good to eat when still hard. The tree is a heavy bearer and exceedingly thrifty.



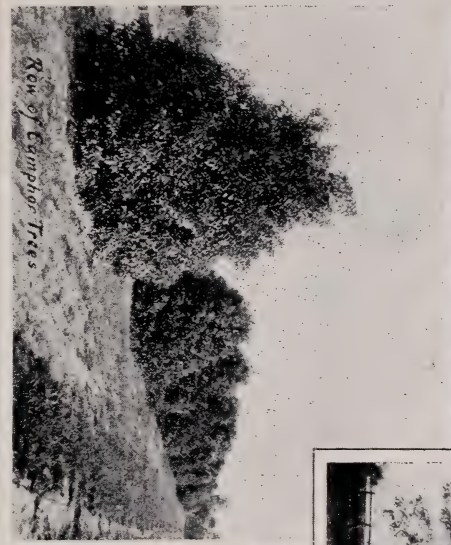
Pine Trees



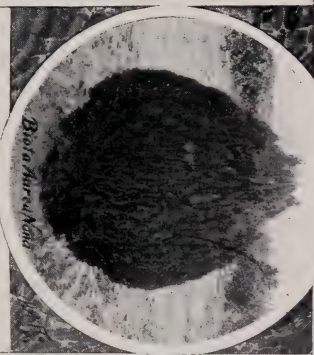
*Large Bearing
Pecan Trees*



Purple Wistaria



Row of Cypress Trees



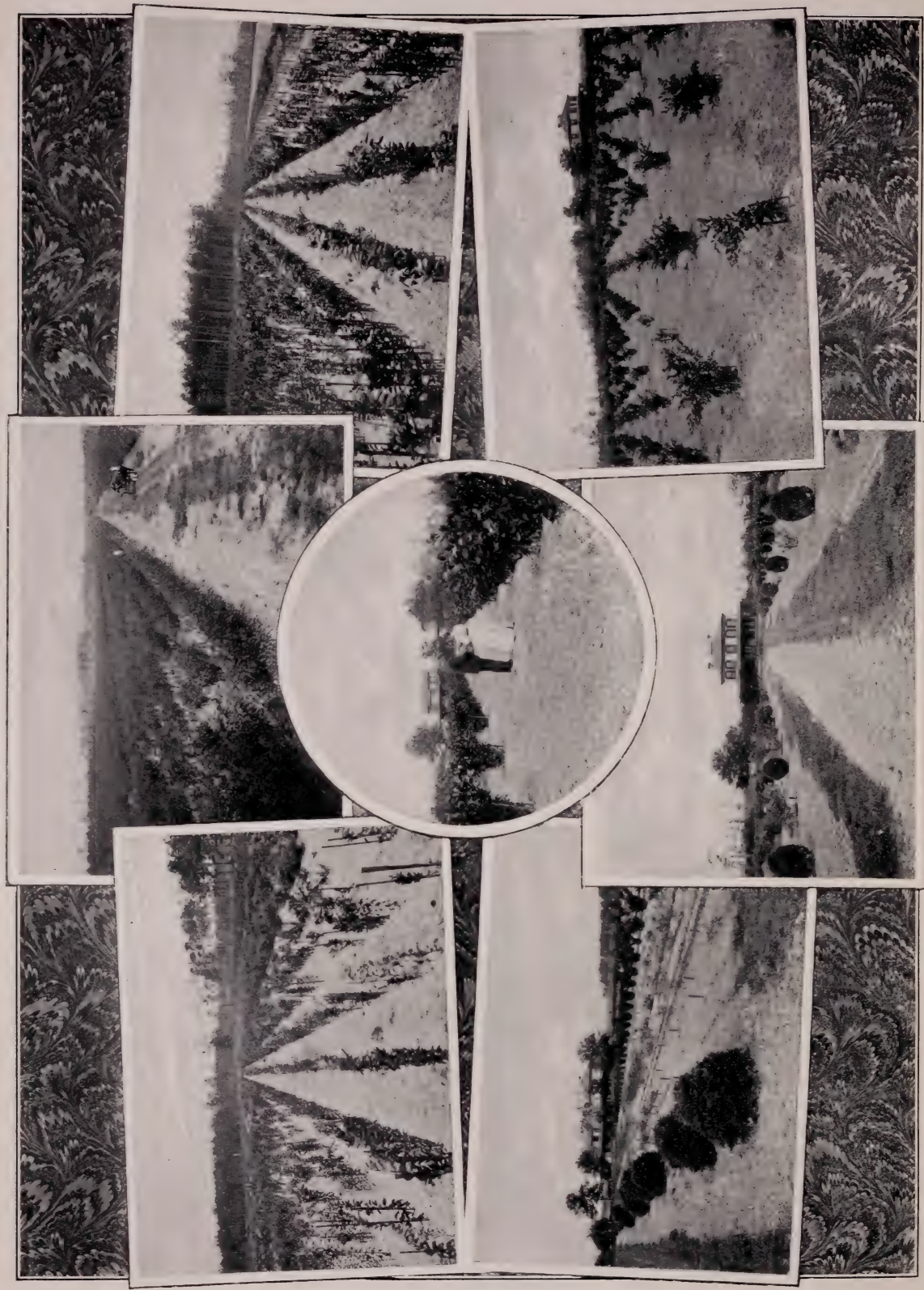
Brown Mulch



Small Spruce

Nursery

A Few Specialties—Glen St. Mary Nurseries



Glimpses—Glen St. Mary Nurseries

YEMON. Large, flat, tomato-shaped, somewhat four-sided; diameter $2\frac{1}{4}$ inches longitudinally and $3\frac{1}{4}$ inches transversely; skin light yellow, changing to dull red, mottled with orange-yellow; distinct in color; flesh deep, dull red, brown around the seeds, of which there are usually a few; some specimens are entirely light-fleshed and seedless; there is no astringency after the fruit begins to soften; quality fine; one of the best. In

form some of the fruits have the corrugations converging to the depressed apex, as it is usually figured, but most do not. Tree vigorous and prolific.

ZENGI. The smallest of all; round or roundish oblate; diameter $1\frac{1}{4}$ inches longitudinally and $2\frac{1}{4}$ inches transversely; skin yellowish red; flesh very dark, quality good; seedy; edible when still hard; one of the earliest to ripen. Vigorous, prolific.

APRICOTS

This fruit, which has met with so much success in California, is not recommended for extensive planting in the Lower South. There are, however, a few varieties, listed below, that do fairly well and which are best adapted of any of the numerous sorts for this section.

BUNGO (*Bungoume*). One of the best of the Japanese Apricots, bearing a golden yellow fruit of good size and fair quality. Tree of remarkably strong growth.

HUBBARD. Imported by ex-Governor Hubbard, of Texas, while minister to Japan. One of the largest and best in cultivation there. Has succeeded in southern Louisiana and other sections of the Gulf coast region. A large, bright yellow, well-flavored fruit.

ROYAL. This variety is held in the highest esteem in California, both for shipping in a fresh state and for drying. Fruit large, oval; color of skin dull yellow, tinged with red on the sunny side; flesh pale orange color, firm, juicy, rich and vinous; freestone. Ripens in July. One of the

best for cultivation in all sections where the Apricot thrives.

SANTA FÉ. Originated on the shore of Lake Santa Fé, Alachua county, Florida. The original tree has borne good crops annually for several years, while the common kinds, grown in the same vicinity, failed to fruit. It generally blooms late enough in the spring to escape danger from frosts, and yet matures its fruit very early in the season—the last of May or early June. Fruit medium in size, round, somewhat flattened; yellow, with reddish brown dots; flesh whitish yellow; freestone; quality best. Tree extremely strong grower, of open habit. Of the many varieties of Apricots which we have tested at Glen St. Mary, the Santa Fé has given the best results.

APPLES

While the Gulf region is not recommended for extensive Apple orchards for commercial purposes, yet in localities, particularly in its upper edge, some varieties are successfully grown. Our list embraces those which succeed best farthest South. For Florida and similar latitudes the Jennings is the best adapted.

BEN DAVIS. Medium to large; roundish, truncated conical; yellowish, overspread, striped and splashed with two shades of red; subacid, of fair quality. A late ripener and good keeper. Widely planted; popular.

EARLY HARVEST. Medium to large; yellow, juicy, tender, of fine flavor. A well-known and popular variety. Ripens in June.

JENNINGS (*Jennings' Florida*). Large; oblate; color green; flesh white, subacid, juicy and

good; a fine cooking apple, and also to eat out of hand. Ripens in July. Tree handsome, of vigorous growth, and open, spreading habit; a heavy annual bearer. Succeeds very well here.

RED ASTRACHAN. Large; crimson, with heavy bloom; flesh crisp, acid and juicy. Ripens in June. Tree vigorous and bears very young.

RED JUNE. Medium, conical; deep red; juicy; very productive. A beautiful and thrifty tree. June 20 to July 15.

SHOCKLEY. Medium; roundish conical; yellow, with crimson cheek; crisp, juicy, sweet, vinous, good; late; good keeper. Tree vigorous, productive; bears young.

FIGS

Figs do well almost everywhere in Florida and many other southern states. They require but little cultivation, and this should always be shallow, as the roots run very near the surface. No family in the South should be without at least a few trees of this delicious fruit.

BLACK HAVANA. Medium size, fair quality.

BLACK ISCHIA. Size medium; color bluish black; quality good.

BLUE GENOA. Medium; bluish black; good.

BRUNSWICK. Very large; color violet; quality excellent; very reliable.

CELESTIAL. Medium to small, very sweet, and of the best quality; color pale violet; a vigorous grower, and productive; one of the hardiest sorts, and is reliable farther north than the others.

GREEN ISCHIA. Green, with crimson pulp; very good and prolific.

QUINCES

Although we do not recommend this fruit for commercial planting in the Lower South, yet in a small way, for home use, it is desirable and succeeds in many localities.

APPLE. Large, roundish; skin golden yellow; flesh cooks tender.

CHAMPION. Fruit large and fine; tree vigorous and a good bearer.

CHINESE. The extreme size of this variety makes it really an extraordinary fruit; specimens

weighing two to three pounds each are not uncommon. Oblong; flesh rather coarse in texture. Fruits readily in many sections of the Lower South.

MEECH. A vigorous grower; fruit large; lively orange color; of great beauty; its cooking qualities are unsurpassed.

POMEGRANATES

The Pomegranate is quite hardy throughout the Gulf states; it is a large shrub or small tree, very graceful in form and foliage, producing a profusion of strikingly brilliant and lovely scarlet flowers; it bears young, is prolific, and the fruit possesses a fresh crispness, delicacy and sprightliness of flavor much esteemed by all who know it. It should be more generally planted.

PURPLE-SEEDED. Large; rind thin; juice cells surrounding the seeds (the edible portion of the fruit) dark ruby or wine color; sprightly, vinous, and of the best quality; superior to any other variety in cultivation, so far as we know.

MULBERRIES

Mulberries form an economic food for swine and poultry, though for this purpose their real value is not yet fully appreciated. The more acid varieties are much esteemed by some for the table. Many vineyardists and orchardists plant Mulberries to toll the birds, which leave other fruits for the Mulberries, which they prefer.

DOWNING. A subacid berry of good quality; strong, upright grower, with beautiful foliage; valuable as a shade tree, as well as for its fruit.

HICKS. Fruit sweet; tree grows rapidly and bears young; very productive; should be grown by every farmer who keeps swine or poultry, this variety being of special value for this purpose; continues in bearing four months of the year.

STUBBS. A form of the native red Mulberry, discovered in Laurens county, Georgia, 20 years ago. Large, black, vinous; excellent; very pro-

lific. The fruit, which is from 1½ to 2 inches long, is greatly superior to that produced by any of the cultivated varieties, and lasts nearly two months. Tree vigorous and handsome, with broad, healthy-looking foliage.

MULTICAULIS (*Morus multicaulis*). The Silk Worm Tree. A very vigorous tree, extensively used for purposes of propagation, for shade and for feeding silk worms.

WHITE (*Morus alba*). Large and very sweet; rapid grower, a very productive and handsome tree.

LOQUAT

(*Eriobotrya Japonica*, *Japanese Medlar*, Biwa of the Japanese)

This fruit has been very commonly called "Japan Plum" in the South. It is not a plum, however, and bears no relation to that fruit. The tree is hardy throughout a wide region of the South, and is one of the most beautiful of broad-leaved evergreens. The leaves are large, dark green, rough and crimped; the young wood woolly; the shoots short and thick and the branches crooked. It is a compact grower, and forms a dense and well-rounded head. It blooms in the fall, the spikes of white flowers being followed by a delicious fruit, which ripens in March and April. The fruit is about the size of the Wild Goose plum, oblong, bright yellow, subacid, and of very agreeable flavor. A good many trees are in bearing in Florida and in some parts of Louisiana and Texas, where it is found in market, and is much esteemed in season. It is not only eaten out of hand, but is much used in cooking, the flavor suggesting cherries, and makes an exquisite jelly. While the tree is hardy quite far north, it is not a success as a fruit where the winters are severe, as this is its fruiting season. It yields occasional crops as far north as Jacksonville and Tallahassee, however, and is frequently seen in the New Orleans market. In South Florida it bears regularly and abundantly, and its range, as a fruit crop, is about coextensive with the orange. It is grown from seed. We consider this fruit worthy of being more extensively planted. Every orchard or garden plot in the extreme South should contain at least a few trees of this unique and desirable fruit.

GRAPES

IN OUR test-vineyards we have fruited a great many different varieties, the best of which are given below ; the list embracing those which have given most satisfactory results in this and other sections of Florida and the Gulf coast country.

Varieties that are described as belonging to the Muscadine type should be planted 15 to 25 feet apart each way and trained on arbors. They do not require pruning. The other varieties should be planted 8 to 10 feet apart each way and trained on trellises. They require annual pruning in mid-winter, when the vines are entirely dormant.

BRIGHTON. Highly extolled by nearly every one who has grown it; a most excellent Grape, and has succeeded admirably here. Bunches medium; berries large and reddish, skin thin; a very desirable table variety.

CHAMPION. One of the earliest of American Grapes, and on that account has brought good prices in near-by markets, but it is too tender for long shipment. Bunches medium; berries medium, round, blue-black; quality fair; vine healthy and vigorous.

CONCORD. An old favorite, valuable for home use and near-by markets; too tender to transport a long distance. A heavy bearer; adapts itself to all sorts of training; apt to ripen unevenly in this latitude. Bunches and berries very large, blue-black, with bloom; flesh sweet, pulpy, tender, good; vigorous. Ripens in July.

DELAWARE. Held in high estimation wherever grown; succeeds well here. A moderate grower when young, but very hardy and vigorous when fully established. Bunches small to medium; berries small, skin red or pink, and very thin; sweet, juicy, vinous; quality best. July. Listed by the State Horticultural Society as one of the best market Grapes that can be grown in Florida.

DIAMOND. A white Grape of handsome appearance, equal or superior to Niagara in quality, and 10 days earlier than that variety. It is prolific, and very thrifty and vigorous. Seems well suited for culture in the South, both for home use and market; it has succeeded finely in South Florida.

EDEN. Belongs to the Muscadine type. A seedling of the Scuppernong, originated by Dr. Samuel Hape, of Georgia, who says of it: "Its distinctive features are: Early bearing, fine quality, enormous productiveness, growing in clusters, freedom from rot or disease, and adaptability to either table or wine purposes." Berry black, with delicate Thomas flavor.

FLOWERS. Bunches composed of 15 to 20 large, purplish black berries; sweet, vinous. August and September. Quality good. One of the best known and most largely planted varieties of the Muscadine type.

IVES. Generally considered one of the most valuable early varieties for market. One of the hardiest; strong grower; very productive; stands shipping well; bunch large; berries large, black, pulpy, sweet, of good quality. A popular wine Grape. June. The quality of this Grape is much better when grown in the South than it is in the North. We deem it one of the most valuable.

JAMES. Belongs to the Muscadine type. Berry of large size and good quality; black. Vine very prolific. Commences to ripen about the first of August, and continues until frost. Allen Warren & Co., of North Carolina say: "We exhibited this Grape at the State Exposition, with many other fine varieties, but there was not a Grape on exhibition to equal the James. It has taken the premium wherever exhibited. We gathered 3½ lbs. per square yard on the average last season (1895), and as much as 11 lbs. to the square yard in the thickest places. Berries very large; many measuring 1¼ inches in diameter."

John Robinson, Commissioner of Agriculture for North Carolina, says: "I regard the James Grape as decidedly the best of the Scuppernong family, for the following reasons: They keep much better, are sweeter and richer in flavor, grow in large bunches, and can be shipped without damage."

Our two-year-old vines of this variety have fruited heavily in the nursery rows this season. The grapes are large and of fine quality. We consider it very valuable.

MEISCH. Belongs to the Muscadine type. A variety that is now attracting considerable attention. The vine is very vigorous and prolific. Berries black, medium to large in size; sweet. Ripens in August.

MOORE'S EARLY. Similar to Concord in size and shape, but an improvement on that variety in quality and in time of ripening, which is earlier.

NIAGARA. Bunch and berry large; greenish yellow; flesh sweet; quality good. Its large size and fine appearance, together with its good quality and earliness, have given it much popularity;

vigorous and prolific. One of the best varieties for East and South Florida.

SALEM (Rogers' No. 53). Bunch large, compact; berry very large, round, coppery red; flesh tender, juicy; in quality one of the best. Ripens with Concord. Vine healthy, vigorous, productive. One of the best of Rogers' Grapes; succeeds well here.

SCUPPERNONG. Belongs to the Muscadine type. Bunches composed of 8 or 10 very large berries, bronze-colored when fully ripe; flesh pulpy, sweet, with peculiar, agreeable musky flavor; quality excellent. August and September.

THOMAS. Belongs to the Muscadine type, and one of the best of its class. Bunches seldom exceed 8 or 10 berries; color reddish purple; pulp sweet, tender, sprightly. August and September.

WILDER (Rogers' No. 4). Bunch large, compact, shouldered; berry large, round, black; flesh tender, juicy, sweet. Ripens about with Concord. Vine vigorous, hardy, good bearer. Regarded as one of the best black Grapes; on account of size and beauty very valuable for market.

PECANS

The Pecan grows finely all through the South, some of the oldest and most profitable groves being in the Gulf region of the Lower South. This is one of the few nuts especially well adapted to the peninsula of Florida. Seedlings come into bearing in 8 to 10 years, after which they yield abundantly. Grafted or budded trees commence bearing sooner and, if the right kinds are planted, are, of course, more valuable. Trees of all ordinary nursery sizes can be transplanted with safety. Late fall and early winter are the best seasons for transplanting. The absurd claim that cutting the tap-root in transplanting the small tree injures its subsequent bearing qualities is abundantly refuted by the many thousands of transplanted trees now bearing heavily.

SEEDLING PECANS. The seedlings that we offer are grown from nuts that are very large, thin-shelled, and of fine quality. At the time when only seedlings were offered these nuts were known as Paper Shell and Turner.

GRAFTED PECANS. We this season offer a limited number of grafted and budded trees of the three largest, finest and best known varieties; viz., **Frotscher, Stuart and Pride of the Coast**, all true to name and thrifty.

WALNUTS

English Walnuts are not grown in the Lower South to the extent they are farther north and on the Pacific slope, and, generally speaking, are not considered as reliable here as there. The recently introduced Japan Walnut has, however, fruited abundantly in many sections throughout Florida and the Gulf coast region, and seems to be thoroughly adapted to our climate.

ENGLISH. The well-known Madeira Nut of the shops. In regions where it is adapted, a fine, lofty tree, with a spreading head, bearing crops of excellent nuts enclosed, like our native Black Walnut, in a simple husk. Our trees are grown from seed, the thinnest-shelled nuts to be had being secured for this purpose.

JAPAN. Produces in abundance nuts considerably larger than the common Hickory Nut, which are borne in clusters of 15 to 20. The shell is thicker than the shell of the English Walnut,

which in a general way it resembles, but is not as thick as that of the Black Walnut. The meat is sweet, of good quality, and can be removed entire. The tree grows rapidly, and attains a very large size, with a magnificent spreading top. The leaves are of immense size, of a charming shade of green, and very handsome. We have fruited this variety on our grounds for several years past, and are annually more and more impressed with the value of the tree, both for its nuts and as an ornamental.

CHESTNUTS

The common American Chestnut of the North does not succeed well this far South. The Japan Chestnuts have, however, been fruited in Florida and the Lower South for a number of years, and may be set down as the only Chestnuts that thrive here.

JAPAN MAMMOTH. Bears bright-colored, clean-looking, sweet nuts of good flavor and large size; the burs sometimes contain as many as five large nuts. The tree is similar in habit and growth to the Spanish Chestnut, and makes a very handsome tree. Many of the trees bloom in the nursery the second or third year from the seed, and we have seen them fairly loaded with nuts at four years old.

ALMONDS

We do not recommend this nut for extensive planting in this section of country, as Almonds are not certain bearers this far South. We raise a few trees of them, however, which are mostly in demand for garden planting, and for filling out collections. The kinds we offer are amongst the finest grown; viz., **SULTANA** and **PRINCESS**. The soft-shelled Almonds of commerce consist principally of these two varieties.

ROSES

IN THE WAY of ornamentals, one naturally thinks of the Rose first. The ease with which it can be grown in the South, its long-continued season of bloom—if proper kinds are selected—and its gracious adaptability to various situations make it easily the “queen of flowers.”

In filling orders for Roses, when not instructed to the contrary, we reserve the privilege of substituting. It is a difficult matter to select from a descriptive list a collection of Roses which will subsequently prove satisfactory, unless one has some experimental knowledge of the merits and adaptabilities of the different varieties as grown in this part of the country. When desired to do so, we shall be glad to place our knowledge on the subject at the disposal of our patrons in making selections for them, and we would suggest that in most instances the best results can be obtained in this way.

Roses belong to several different types or classes, and the class to which each variety belongs is inserted in parentheses, to the right of the variety. The majority of the varieties we offer are grafted on stronger growing stocks, Madam Plantier being largely used for this purpose. Only the most vigorous varieties are grown on their own roots.

AGRIPPINA. (Bengal.) Rich, velvety crimson, beautiful bud; for bedding it is unsurpassed. Few Roses so rich in color.

ALPHONSE SOUPERT. (Hybrid Remontant.) Large, very handsome and showy; bright rose color.

ANNE DE DIESBACH. (Hybrid Perpetual.) The color is a most lovely brilliant carmine; long pointed buds, and large, finely formed, compact, slightly cupped flowers. Very full and double, and delightfully sweet. A vigorous grower and a fine bloomer; one of the really good Roses.

ANTOINE MOUTON. (Hybrid Perpetual.) A vigorous grower and early bloomer, bearing flowers of extraordinary size and fullness, which are very fragrant. Bright, clear pink, reverse of petals silvery rose.

APOLLINE. (Bourbon.) Color clear pink, dashed with rosy crimson; edges and reverse of petals silvery rose. The best of all Bourbons for open air.

ARCHDUKE CHARLES. (Bengal.) Brilliant crimson-scarlet, often marbled with lighter shades. A good grower and very satisfactory variety.

BESSIE JOHNSON. (Hybrid Perpetual.) Beautiful blush color, highly scented; distinct.

BLANCHE DE MEUR. (Hybrid Perpetual.) Light flesh color, changing to white.

BON SILENE. (Tea.) Deep salmon-rose, illumined with carmine; highly scented. Valuable for its buds, which are large and of fine form and color. Very strong and robust in this section, and bears profusely the year round. An old favorite.

BOUGERE. (Tea.) Extra large, very double and full; exceedingly sweet tea scent; color bronze-rose or violet-crimson, delicately shaded with lilac. Vigorous and a profuse and constant bloomer. An old Rose, but one of the most desirable.

CAPTAIN CHRISTY. (Hybrid Tea.) Extra large, flat flowers, very full and regular; the color

is a lovely shade of pale peach, deepening toward the center to rosy crimson. Vigorous; a free and perpetual bloomer; one of the best in our gardens.

CECILE BRUNNER. (Polyantha.) Salmon-pink, with deep salmon center; an admirable Rose.

CHARLES LEFEBVRE. (Hybrid Perpetual.) Reddish crimson, sometimes with a shade of purple; very velvety and rich. Continues to bloom throughout the year; one of the most satisfactory of its class in this section.

CHESHUNT HYBRID. (Hybrid Tea.) Extra fine, large flowers, very double, full and of perfect form; delightfully fragrant; color ruby-crimson, passing to rich maroon; a strong grower.

CHROMATELLA (*Cloth of Gold*). (Climbing Noisette.) Clear, bright yellow; good form and substance; large, very full and double; very sweet; a constant and profuse bloomer; much prized in the South as a pillar or veranda Rose.

CLOTHILDE SOUPERT. (Polyantha.) This lovely Rose resembles the Tea Roses so closely that it is called a Tea Polyantha. The flowers are borne in clusters, and are of large, round, flat form, with beautifully imbricated petals; perfectly full and double, and deliciously sweet; color beautiful pinkish amber or pale, creamy yellow, delicately flushed with silvery rose, sometimes ivory-white, exquisitely tinted with pale salmon, and sometimes both red and white flowers are produced on the same plant. It is a particularly handsome Rose, and has always been greatly admired. The bush is a vigorous and compact grower and a continuous and remarkably profuse bloomer.

COMTESSE EVA STARHEMBERG. (Tea.) Yellow, buff and yellow center, edged rose.

COQUETTE DES ALPES. (Hybrid Noisette.) Medium-sized white flowers tinged with bluish.

COQUETTE DES BLANCHES. (Hybrid Noisette.) Delicate white or flesh-colored flowers of medium size.

CRIMSON RAMBLER. (Polyantha.) This novelty of the Polyantha class came originally from Japan. The flowers are produced in great

pyramidal panicles or trusses, each carrying from 30 to 40 blooms, the individual flower measuring about 1 to 1½ inches in diameter. The foliage is bright green and glossy, and contrasts finely with the bright crimson of the flowers. It is said to be exceedingly hardy, having successfully withstood the test, in exposed situations, of two very severe winters in England.

DEVONIENSIS. (Climbing Tea.) On account of its whiteness and sweetness, often called the Magnolia Rose; creamy white, delicately flushed in the center with pink; possesses an exquisite and distinct fragrance. This is one of the most magnificent of Roses in this region; an exceptionally strong grower and vigorous climber, and bears profusely and constantly flowers of large size and great beauty.

DINSMORE. (Hybrid Perpetual.) Flowers large and perfectly double; color rich crimson-scarlet, very showy and handsome, and delightfully fragrant.

DOUGLASS. (Bengal.) Dark cherry-red; very handsome in bud.

DUCHESS DE BRABANT. (Tea.) Exquisite shell-pink, tinged at the edges with carmine. The buds and opening flowers are very beautiful. The flowers hold their form and color for a long time after being cut. In coloring it is unsurpassed, perhaps unequaled, by any pink Rose. It is strong and vigorous, and blooms profusely the year round. One of the best for this region of the South.

DUKE OF EDINBURGH. (Hybrid Perpetual.) Dark, velvety maroon; medium size, full, regular form; very handsome and fragrant.

ELISE BOELLE. (Hybrid Noisette.) White, delicately tinged with pink; medium size, full, beautiful, circular form; very sweet. A lovely Rose, and bush a vigorous grower.

EMPRESS OF CHINA. A new free-flowering climbing Rose of Chinese origin. The plant is a strong, healthy grower, making a fine specimen in a very short time, and produces its medium-sized flowers in profusion. Climber. Color soft red, changing to light pink when fully open, covering the bush with a mass of color.

ESTELLE PRADEL. (Noisette.) Lovely, pure white buds, flowers medium size, full and sweet; profuse bloomer. A favorite climbing Rose in the South.

ETOILE DE LYON. (Tea.) Beautiful chrome-yellow, deepening to pure golden yellow at the center; the flowers are very large, very double and full, and delicately fragrant. Unequaled among the yellow Roses in this region, except by *Marchal Niel*, which it much resembles. In the North it is styled a rival of *Perle des Jardins*, but is much larger and more satisfactory than the latter here. A vigorous, lusty bush; blooms profusely at all seasons. One of the best.

GLOIRE LYONNAISE. The only yellow Hybrid Perpetual; it cannot be called deep yellow, but rather a pale shade of chamois or salmon-yellow, deepest at center, and sometimes passing to rich, creamy white, finely tinted with orange and fawn; the flowers have all the beauty of Tea Roses, and are large and full, and delightfully sweet.

GREVILLE, or SEVEN SISTERS. (Multi-flora.) Medium-sized flowers, varying in color from white to crimson, and borne in immense clusters in great profusion. In season the vine is a mass of pink and white. A vigorous climber of rampant growth, like the *Banksias* and *Woodland Margaret*, and speedily covers an unsightly object with a mass of green.

HEINRICH SCHULTHEIS. (Tea.) Large, good form and very full; color pinkish rose, sweet-scented; free-blooming.

HERMAJESTY. (Hybrid Perpetual.) Flowers of immense size, remarkably beautiful form and perfectly double; the color is a lovely shade of rosy pink, passing to clear flesh, elegantly tinged and shaded with amaranth and silver rose; delightfully fragrant; the plant is a strong, upright grower.

HERMOSA. (Bourbon.) An excellent Rose; blooms in fine clusters; large, very double and fragrant; color beautiful, clear rose; a constant bloomer.

ISABELLA SPRUNT. (Tea.) Bright canary-yellow; large, beautiful buds.

JAMES SPRUNT. (Climbing Bengal.) Deep cherry-red flowers, very full, double and sweet. The most satisfactory of the dark red Everblooming varieties in this section. The cut flowers keep for a remarkably long time in perfect condition. It is a moderate climber, makes a good pillar Rose, and while not as profuse as some, the exceptionally brilliant and beautiful flowers are to be found at all seasons.

JOHN HOPPER. (Hybrid Perpetual.) Bright rose, with carmine center; large and full. A stout, strong grower and free bloomer. Bears a succession of flowers extending through the season, and is one of the best of the Hybrid Perpetuals in this region.

JULES FINGER. (Tea.) Bright, rosy scarlet, shaded with crimson; large and full.

JULES JURGENSEN. (Climbing Bengal.) Large, full, finely formed flowers of a magenta-rose color. In habit and characteristics the vine resembles *James Sprunt*. One of the best here.

JULES MARGOTTIN. (Hybrid Perpetual.) Bright cherry-red; large, well-formed, fragrant flowers; a splendid old variety.

LAMARQUE. (Climbing Noisette.) White, with sulphur center. Constant bloomer.

LA REINE. (Hybrid Perpetual.) Beautiful clear bright rose; very large, of fine, full form; very fragrant. One of the best Hybrid Perpetuals in this section.

LOUIS PHILIPPE. (Bengal.) Rich, velvety crimson. While not as valuable for bouquets as some varieties, as the petals soon drop after the flowers are cut, it is the most showy and satisfactory dark red Rose we have for gardens and grounds. It makes a large, vigorous bush, and there is scarcely a time during the entire year when it is not covered with bright red flowers. There are always flowers, and nearly always quantities of them.

LOUIS RICHARD. (Tea.) Coppery rose, the center sometimes deep red. Very handsome.

MAD. ALFRED CARRIERE. (Hybrid Noisette.) Pearly white, with slight pink tint in the center. In our own gardens one of the most

satisfactory, being an unusually strong grower and constant bloomer. The flowers are of good size and handsome.

MAD. BRAVY. (Tea.) Creamy white, large, full, of symmetrical form and great fragrance.

MAD. CAMILLE. (Tea.) Large, very double and full; rosy flesh, changing to salmon-rose.

MAD. CAROLINE KUSTER. (Noisette.) Pale yellow, often mottled with rose. An excellent free-blooming sort.

MAD. DE VATRY. (Tea.) Red, shaded with salmon. A choice Rose of bright color and good form in bud and flower.

MAD. JEAN SISLEY. (Bengal.) A free-growing, free-flowering Rose of merit. This is a fine Rose for bedding. It is full and double, and pure white.

MAD. JOSEPH SCHWARTZ. (Tea.) Large, globular flowers, very full and sweet; color pure white, the edges of petals tinged with carmine. The flowers have the exquisiteness and delicacy of its parent, Duchesse de Brabant. One of the most satisfactory here.

MAD. LAMBARD. (Tea.) Large and full flowers, varying from rosy salmon to rosy flesh.

MAD. PHILEMON COCHET. (Tea.) Color rose, shaded with salmon and suffused with a lighter shade. Vigorous.

MAD. PLANTIER. (Hybrid China.) Pure white, above medium size, full flat form. A spring bloomer; very strong and vigorous. More valuable as a stock upon which to bud other varieties than for its own flowers.

MAD. SADIE CARNOT. (Tea.) Cherry-red; a very good variety.

MAD. SCIPION COCHET. (Tea.) Rosy yellow; large and double; margins of petals wavy; beautiful glossy foliage; free flowering.

MAD. WELCHE. (Tea.) Pale yellow, with coppery yellow center; large and full; distinct.

MAGNA CHARTA. (Hybrid China.) Bright, clear pink, flushed with violet-crimson; very sweet; flowers extra large, fine form, double and

full. A spring bloomer. Makes a large, vigorous bush, and, while it blooms but once a year, the size, beauty and number of its flowers make it well worth growing. Well adapted here.

MARECHAL NIEL. (Climbing Noisette.) Deep yellow; very large, very full, globular form; delightfully fragrant; the finest of all yellow Roses. In the North this Rose is of delicate constitution, and requires careful treatment to get good results. Here it is at home; a strong, vigorous grower, producing freely its magnificent flowers at all seasons in great abundance. It should have the first place in every collection.

MARIE DUCHER. (Tea.) Rich salmon-yellow, with fawn center; large size, very full, somewhat flat; very double and sweet. A strong-growing, free-blooming sort, of excellent habit.

MARIE LAMBERT. (Tea.) Pure white; a seedling from Mad. Bravy, and even more vigorous; has been called the White Hermosa, which it resembles in form and freedom of bloom.

MARIE VAN HOUTTE. (Tea.) Pale yellow, the edges of petals often lined with rose.

MARSHALL P. WILDER. (Hybrid Perpetual.) Flowers very large, perfectly double, and of good substance; color bright cherry-red, shading to crimson. Plant a clean, healthy grower.

MIGNONETTE. (Polyantha.) Large clusters of perfectly formed miniature Roses; pink, changing to white.

MRS. GEORGE PAUL. (Bourbon.) Large open flower, like a camellia, with very bold, thick petals, perfectly arranged; blush-white, with rosy peach shading; very distinct.

PERFECTION DES BLANCHES. (Hybrid Noisette.) Pure white flowers, full and double, very fine; a constant bloomer. One of the best of its class, which includes Coquette des Alpes, Coquette des Blancches, and Perle des Blancches.

PERLE D'OR. (Polyantha.) Nankeen-yellow flowers, in large clusters. A small-growing sort, but the buds are remarkably handsome.

PRESIDENT LINCOLN. (Hybrid Perpetual.) Vermilion-red, tinged with crimson. A strong grower, producing large flowers.

PRIDE OF REIGATE. (Hybrid Perpetual.) Crimson, handsomely striped with white, sometimes half crimson and half white. A perpetual bloomer.

PRINCE ALBERT. (Hybrid Perpetual.) Beautiful bright crimson; very large, full and fine.

PRINCE CAMILLE DE ROHAN. (Hybrid Perpetual.) Very deep velvety crimson; large, moderately full; habit somewhat spreading. A good Rose of splendid color.

PRINCESS LOUISE VICTORIA. (Hybrid Perpetual.) Salmon-pink, medium size; fine globular form. A splendid climbing Rose.

QUEEN. (Tea.) A grand, globular white Rose of the most queenly, rounded form, borne on large stems; a free grower and free bloomer. A sport from Souvenir d'un Ami.

QUEENS SCARLET. (Bengal.) Rich crimson, changing to light scarlet. Very free flowering.

REV. J. B. M. CAMM. (Hybrid Perpetual.) Carmine-rose, a fine enduring shade; large size, semi-globular form; one of the most fragrant and free-blooming. A superb Rose.

SAFRANO. (Tea.) A delicate and beautiful tint of salmon and apricot-yellow, which is always bright and clear, and does not fade or shade off into dull and undesirable tints, as is the case with so many kinds. One of the most exquisitely colored of Roses, and exceedingly beautiful in the bud. In this latitude it makes a vigorous, strong bush, and bears an abundance of flowers at all seasons. One of the best.

SYLPHIDE. (Tea.) Blush, with fawn center; large and double. Very handsome in bud.

TENNESSEE BELLE. (Prairie.) Graceful and slender in growth; bright pink flowers in clusters; very handsome.

WHITE PERLE DES JARDINS. (Tea.) Pure ivory-white, with a delicate tea fragrance. Quite distinct from Bride or any other white Rose.

WOODLAND MARGARET. (Climbing Noisette.) Medium-sized pure white flowers, which are produced in the greatest profusion, sometimes tinged with blush. A constant bloomer and vigorous climber. A rapid wood-maker; desirable in the Lower South.

MISCELLANEOUS ORNAMENTALS

ALTHÆAS. These are among our most desirable flowering shrubs, and merit extensive cultivation, as they produce beautiful flowers in great profusion during a long period. The flowers come on the new growth, and they continue to bloom as long as new wood is being made.

Meehani. Double, pure white, with red throat; very free and fine.

Rubra. Double red; large, full and free-flowering.

ARBOR-VITÆ, or BIOTA. These beautiful evergreens can be utilized in many ways, and are always satisfactory. Desirable for lining avenues or planted as individual specimens. Very ornamental.

BIOTA aurea (Golden). Of rather compact growth, with lightish yellow or golden foliage. Very desirable. Is planted largely over the entire South.

Aurea nana. A new variety which is attaining great popularity. Of rather dwarf habit, with exceedingly compact, well-rounded heads. A perfect gem for gardens or grounds where trees of only shrub-like dimensions are wanted.

Compacta. Of very compact growth, as its name indicates; heads somewhat conical in shape; foliage dark green. One of the most satisfactory varieties.

Orientalis (Chinese). Of rather upright growth; heads not as dense as some of the other sorts, but makes a handsome tree, and is, perhaps, the most rapid grower of any of the Biotas.

BIOTA Rosedale. This handsome variety, recently originated in Southern Texas, is now attracting a great deal of attention throughout the South. It is of very compact growth and forms a symmetrical, well-rounded head. The foliage is of a dark bluish green cast that makes it unique and distinctive in appearance. Very desirable.

CAMPHOR TREE (*Cinnamomum Camphora*). A broad-leaved evergreen, yielding the camphor gum of commerce. Is perfectly well adapted to this region, grows vigorously, makes a large tree, and is exceedingly handsome. Hardy throughout Florida and most of the Gulf states. Makes an excellent wind-break. Leaves and berries are very aromatic. It is a rank grower, and thrives in soil of but ordinary fertility. Considerable attention has recently been drawn to the possibilities of camphor production for profit in the Lower South, and the trees are now much in demand for this purpose.

CAPE JESSAMINE (*Gardenia florida*). A well known evergreen shrub, having very handsome foliage, and producing in profusion large, fragrant white flowers from May to September. Hardy throughout the Lower South and as far north as Virginia.

CRAPE MYRTLE (*Lagerstræmia Indica*.) Too much cannot be said in favor of the delicate-flowered Lagerstræmias; universal favorites in the South, and deservedly so. Deciduous shrubs, hardy in the southern states, and producing throughout the summer great clusters of delicately fringed flowers. In Florida and the South the Crape Myrtle takes the place of the lilac, so common at the North. Makes the most charming flowering hedge known. A success with everyone.

Purple. A grand sort, producing immense quantities of bloom of a rich purple color.

Scarlet. A very dark shaded variety; in our opinion the very best of all. A gorgeous plant.

White. This is quite scarce, and very lovely. A most desirable sort.

CUPRESSUS pyramidalis. There are many varieties of Cypress which are well adapted to the South, but this is one of the most desirable. It is a very handsome evergreen, with a radical departure from the type. The tree grows very fast and assumes a beautifully erect and shaft-like form.

HONEYSUCKLE. This fine, strong-growing climber keeps green throughout the year, and will quickly hide any old fence or unsightly object with its rank growth; flowers very fragrant, of a bright pink, changing to pale pink.

KUMQUAT (*Citrus Japonica*). A small tree or large bush, bearing in great abundance a beautiful edible fruit the size of a pigeon's egg. Evergreen; remarkably handsome. (See description and full account on pages 5-6.)

LOQUAT (*Eriobotrya Japonica*). A beautiful, medium-sized, broad-leaved evergreen tree. The thick, leathery, lanceolate leaves are a pleasing shade of blue-green, covered with brownish down on the under surface. Equals *Ficus elastica* as a decorative plant. (See full description, on page 23.)

MAGNOLIA grandiflora. The well-known "Magnolia" of our native forests. The most magnificent of our broad-leaved evergreens. The trees bloom when quite small. The flowers are very large, pure waxy white, and of the most delicious fragrance. All of our plants are nursery-grown, have been once transplanted and are finely rooted.

MYRTLE-LEAVED ORANGE. A handsome dwarf evergreen tree, bearing in large clusters a flat fruit looking like a small Mandarin orange. Foliage dark, glossy green, and the graceful, upright branches are thickly studded with small leaves. Form and habit different from any other Citrus, and very striking.

PERSIAN PLUM (*Prunus Pissardii*). Has remarkably handsome purple foliage, which retains its deep color through the warmest weather, and the leaves remain on the trees until midwinter. This most beautiful of purple-leaved trees bears a very handsome, crimson fruit of fair quality, ripening in June.

POMEGRANATE. This hardy shrub, which is easily grown throughout the Gulf states, is very graceful in form and foliage, and its brilliant scarlet flowers are very ornamental. (See full description, on page 22.)

PRIVET (*Ligustrum*). The Privets are among the most valuable hedge plants for the South. They can easily be kept trimmed in any desired form.

Amoor River. Small, light green leaves; ever-green; flowers white. One of the best for hedges.

Golden. Leaves margined white and yellow. One of the best variegated shrubs for hedges or single specimens.

PURPLE-LEAVED PEACH. A strong-growing Peach with remarkably handsome purple foliage; desirable as an ornamental.

RETINOSPORA plumosa. One of the most valued of all the Retinosporas or Japan Cy-

presses. A rapid-growing variety with exquisite, plume-like foliage and slender branches. Very handsome.

SPIRÆA Billardii. A very desirable shrub of medium or dwarf growth, producing a great profusion of flowers in spikes; color white; almost a perpetual bloomer.

TEXAS UMBRELLA TREE. A sub-variety of the China Tree; of remarkably fast growth; very symmetrical, resembling an umbrella in shape. One of the handsomest deciduous trees; cannot be surpassed as a shade tree.

WISTARIA, Purple. A magnificent climber. We have one of these shading our front piazza that has been planted fifteen years, and has annually increased in dimensions until it requires frequent pruning to keep it within bounds. It is handsome at all times, and magnificent when in bloom, making a beautiful drapery of flowers.

NUMBER OF TREES OR PLANTS TO THE ACRE

Distance apart, feet	No. of trees	Distance apart, feet	No. of trees	Distance apart, feet	No. of trees
1 by 1	43,560	10 by 10	435	19 by 19	120
2 by 2	10,890	11 by 11	360	20 by 20	108
3 by 3	4,840	12 by 12	302	25 by 25	69
4 by 4	2,722	13 by 13	257	30 by 30	48
5 by 5	1,742	14 by 14	222	35 by 35	35
6 by 6	1,210	15 by 15	193	40 by 40	27
7 by 7	888	16 by 16	170	45 by 45	21
8 by 8	680	17 by 17	150	50 by 50	17
9 by 9	537	18 by 18	134	60 by 60	12

PROPER DISTANCES FOR PLANTING

Peaches and Apples	18 to 20 feet each way	Oranges, General Varieties.	30 to 35 feet each way
Plums and Apricots	15 to 18 feet each way	Kumquats	10 to 12 feet each way
Pears, Le Conte	30 to 35 feet each way	Grapes	8 to 10 feet each way
Pears, General Varieties	20 to 25 feet each way	Grapes, Muscadine type	18 to 25 feet each way
Japan Persimmons	15 to 20 feet each way	Figs and Quinces	12 to 15 feet each way
Oranges, Satsuma	18 to 20 feet each way	Pecans	40 to 60 feet each way

BOOKS

Thomas' "American Fruit Culturist" is a valuable book. Price, by mail, \$2.50. The Annual Reports of the Florida State Horticultural Society contain information needed by all planters of subtropical fruits. Price, \$1 for latest issue.

HINTS TO PLANTERS

The land for an orchard should be dry, or at least of such a character as will drain readily, and not hold water on or near the surface for any length of time. If it seems to be rather wet, it can, in many cases, be made suitable for fruit trees by throwing it up into ridges with a plow, and setting the tree on these ridges with the dead (or water) furrows running between the rows of trees in the same general direction that the land slopes.

Never let the roots of trees be exposed to the sun. Always keep them covered with damp straw, moss or wet blanket when planting.

Most kinds of trees should be well trimmed back before planting. It pays to plant carefully. Do not set trees too deep—particularly Oranges.

Heel trees in if not ready to plant. Select a shady place and water well.

Before setting out Citrus trees—Oranges, Pomelos, Lemons and Kumquats—trim back the tops well and then trim the foliage by cutting off two-thirds to three-quarters of *each leaf*. This reduces the rapid evaporation of sap, that is always going on through the foliage, and makes success in transplanting much more certain.

In watering, remember that one thorough drenching is worth a dozen small applications.

Banking up Oranges with fine earth in the fall is a great protection against cold. This also helps to hold newly planted trees against force of wind. Mounds should be removed in the spring.

Examine Peach trees in orchard frequently near the ground for borers. Dig them out with a sharp-pointed knife.

When Peach trees get into bearing they are apt to set too much fruit. Practice a rigid system of thinning. Commence this when the fruit is size of a marble and continue, at intervals, until fruit is half grown; always removing stung or imperfect specimens. At the final thinning reduce fruit to 3 or 4 inches apart. A heavily loaded Peach tree will produce as much fruit—by measure—if three-quarters of the original number set are thinned out; and the value of the fruit on the tree that is thinned will be double that on the unthinned one.

If curculio are troublesome, jar Peach and Plum trees in early morning, frequently, after fruit has set, and catch insects in a hopper prepared for the purpose.

In more northern sections—and at rare intervals in the southern—trees get chilled in the boxes owing to severe change of weather while en route. If any signs of ice should appear in the packing material bury the trees and packing material in earth and leave several days or until the frost is thoroughly drawn out.

Never plow under rank grass, peas, beggar-weed or other green growth in midsummer. Orchards should be well cultivated, the first part of the season at least, but if ground is lacking in humus, cow-peas, beggar-weed or grass can be allowed to grow in late summer and fall, to be turned under in winter. Cow-peas, however, should never be allowed in a Peach orchard.

For quick results, apply a pound per tree of high-grade commercial fertilizer, thoroughly mixed with earth, at time of planting. Make a second application of equal amount during the spring, and another in summer; combine this with frequent cultivation. At the end of the season compare your vigorous, healthy trees with the half-starved, stunted specimens of your neighbor who has allowed his to shift for themselves.

TO CUSTOMERS

The information, suggestions and conditions that appear under this head will be found of interest to purchasers, and form a basis for intelligent ordering. We respectfully request a careful perusal:

Location.—The Glen St. Mary Nurseries are one mile southwest of Glen St. Mary, Baker county, Florida, a station on the Seaboard Air Line Railway, thirty miles west of Jacksonville.

Invitation to Visitors.—We take pleasure in showing our stock to persons wishing to purchase and, if notified in time, will meet visitors at the station on arrival.

Purchasers who cannot inspect the stock can rely upon all orders and correspondence receiving prompt and careful attention. We make every possible endeavor to give satisfaction to each customer.

No Agents.—*We employ no agents, and no one is authorized to represent us, or to sell stock for us. We hold ourselves responsible only for trees purchased direct from the nurseries.*

Club Orders.—It sometimes happens that several people wish to club together and have one of their number order for all. Such orders are treated with due liberality.

Quality of Stock.—Our soil and natural conditions are exceptionally favorable to the growth of fine stock, which receives painstaking care, and is marked, graded and packed under a system which secures accuracy. *Our reputation has been built upon the high standard of quality in the stock sent out, and patrons can depend upon receiving vigorous, healthy, well-grown, well-rooted specimens, true to name, and free from all injurious insects and fungous diseases.*

Packing.—The stock is boxed or baled, whichever best meets the requirements of the shipment, and is packed in the best possible manner. We have shipped trees to Auckland, New Zealand—three-quarters of the way around the globe, and three months in transit—and every tree lived. Shipments are annually made to the most distant parts of the United States, Mexico, Central America and the West Indies, and almost invariably arrive in good condition.

No charge for packing will be made on orders amounting to \$2 or more, figured at catalogue rates. We do not care to accept orders amounting to less than \$2.

Prices.—We cannot sacrifice the quality of our products to compete with inferior stock; we believe discriminating purchasers will agree that our prices are reasonable for high-class stock. Value as well as price should be considered in purchasing trees. An inferior tree is dear at any price. Well-developed root and top, vigor, stamina and productiveness are essential, and depend upon proper conditions and methods of propagation and growth in nursery. Tree-planting for profit involves years of outlay, care and waiting. No planter can afford to handicap him-

self by beginning with inferior specimens, or with trees as to which there is the least doubt about the varieties proving true to label.

Applying Prices.—Five, fifty and five hundred trees of one class at ten, hundred and thousand rates, respectively, purchaser's selection from varieties of one fruit having a common price. For instance, fifty or more peaches, in one or more varieties, would come at the hundred rate, and five hundred or more at the thousand rate. The foregoing does not apply to badly assorted orders, or to long lists made up of a few each of many varieties.

Terms Cash with order, if for immediate shipment. Orders accompanied by a request that the trees be held for some weeks or months after the shipping season opens should also be accompanied by full payment. On orders booked in advance of the shipping season 25 per cent down, with the balance due when the shipping season opens.

Freight Prepaid at Our Expense.—*All orders amounting to \$5 or over, which are accompanied by remittance in full, figured at prices named in this Catalogue, we will ship by Prepaid Freight, at our expense, to all points in the following states; viz., Florida, Georgia, Alabama, Mississippi, Louisiana and Texas. To points outside of the above-named territory we will, on cash in advance orders of \$5 or upward, either prepay the freight or allow our customers 10 per cent of the amount of the bill to apply on freight charges, at our discretion.* Prepayment of transportation charges applies only to shipments forwarded by freight, or such shipments as will go by express as cheaply as by freight. All shipments are forwarded by freight, unless the nature of the order requires that it go by express, or purchaser requests express shipment, in which case goods will be forwarded collect, purchaser paying charges at his end of the line. In such cases the amount that freight would have come to, if shipment had been forwarded by prepaid freight, will be returned to purchaser.

Time of Shipment.—Unless instructed otherwise, orders received during the shipping season will be forwarded as soon after their receipt as possible, and orders booked in advance will be shipped as soon as may be after the shipping season opens.

The Shipping Season.—Our shipping season begins in November and continues until March. Our trees and plants are nearly all open-ground grown, and during the months above named are, generally speaking, in the most dormant condition, and therefore in the best condition for transplanting. Oranges and Pomelos can, however, be transplanted earlier in the fall; also during the rainy season of midsummer.

C. O. D. Shipments.—Trees ordered sent C. O. D. (collect on delivery) must be accompanied by one-half of the amount of the bill.

Shipping by Mail.—In ordering trees or plants for shipment by mail, add 15 per cent to the list price on the smallest size given, to cover cost of packing and postage. We cannot guarantee trees to come up to size specified in list, as only very small specimens can be sent in this way.

Extra Fine Specimens.—We have nearly always on hand a limited number of extra size trees that are not in sufficient quantity to quote in regular price-list. Anything we have in extreme sizes will be quoted upon specific inquiry as to kinds wanted.

Remittances.—To secure safety and prompt acceptance, remittances should be made by Bank Draft, Express or Post Office Money Order, Registered Letter or prepaid Express.

IN WRITING ORDERS, *buyers will oblige us and facilitate prompt execution by using the Order Sheet to be found in this Catalogue. Whether this is done or not, the following information should be given fully and in detail: Post office address in full, including county and state. Point of destination, if different from post office address. If post office and shipping address are the same, state this fact. Name route by which goods should be shipped, if there is any preference, and they will be marked and billed according to instructions. State whether shipment by freight or express is desired.*

Order Early.—Too much stress cannot be laid upon the importance of ordering early. Large stocks in certain varieties are sometimes entirely booked before the shipping season *opens*, and before the shipping season *closes* numerous varieties run short. By ordering early, customers secure just such sizes and varieties as they want.

Selecting Varieties suited to locality is of the first importance, and can often be more advantageously done by ourselves than by purchasers. We are always glad to aid our customers in their selections, when so desired, and will, upon request, cheerfully furnish additional information in regard to the adaptability or desirability of particular varieties.

Substitution of Varieties.—We desire to follow our customers' wishes in this respect, and have found that they generally wish us to substitute, to the best of our judgment, in case any varieties ordered are exhausted. We, therefore, substitute, unless instructed to the contrary, but never until the varieties ordered are exhausted; and in all cases cheerfully refund the money instead of substituting, if so requested.

Proper Labeling.—Everything sent out is plainly marked with best quality of *printed labels attached with brass wire.*

We Guarantee all stock sent out to be well rooted, well grown, true to name, properly packed, and shipped according to instructions.

Limit of Liability.—Our liability under the above guarantee is limited in amount to the original price received.

Transportation at Purchaser's Risk.—Our responsibility ceases upon delivery in good order to forwarding companies; claims for loss or damage in transit should be made upon the latter. We will, however, start a tracer for delayed shipments, if notified, and use every means at our command to secure prompt delivery, or recovery in case of damage or loss.

Claims.—If, by any possibility, errors should occur, they will be promptly rectified, if claim is made within ten days after the receipt of the goods.

PRICE-LIST

Before ordering, read remarks "To Customers" on pages 35 to 37.

Purchasers will oblige us by using the Order Sheet, to be found in this Catalogue.

CONDITIONS UNDER WHICH WE PREPAY FREIGHT. For full particulars in relation to this see page 36.

VARIETIES AND SIZES

	Each	Per 10	100	1,000
ORANGES —On Sour, Sweet and Trifoliata stock.—Bessie, Boone's Early, Brazilian, Centennial, Du Roi Blood, Early Oblong, Enterprise Seedless, Hart's Late, Homosassa, Jaffa, Joppa Late, King, Madam Vinous, Magnum Bonum, Majorca, Maltese Blood, Maltese Oval, Mandarin, Mediterranean Sweet, Nonpareil, Old Vini, Paper Rind, Parson Brown, Pineapple, Ruby, St. Michael's Blood, Sweet Seville, Tangerine, Valencia Late, Washington Navel.				
Buds, 2 to 3 feet, stake-trained, straight stems	\$0 35	\$3 00	\$25 00	\$230 00
Buds, 3 to 4 feet, stake-trained, partly branched	40	3 50	30 00	280 00
Buds, 4 to 5 feet, stake-trained, mostly branched	50	4 50	40 00	380 00
Buds, low branched and stocky	50	4 50	40 00	380 00
Buds, 5 to 7 feet, stake-trained, branched	65	6 00	50 00	
SATSUMA ORANGE —On Trifoliata and Sweet stock—				
Buds, 2 to 3 feet, stake-trained, straight stems	35	3 00	25 00	230 00
Buds, 3 to 4 feet, stake-trained, partly branched	40	3 50	30 00	280 00
Buds, 4 to 5 feet, stake-trained, mostly branched	50	4 50	40 00	380 00
Buds, 2 years, low branched and stocky	50	4 50	40 00	380 00
Buds, 3 years, low branched, extra fine, commencing to bear	80	7 50	65 00	
POMELOS (Grape Fruit) —On Sour, Sweet and Trifoliata stock.—Duncan, Marsh Seedless, Triumph.				
Buds, 2 to 3 feet, stake-trained, straight stems	35	3 00	25 00	230 00
Buds, 3 to 4 feet, stake-trained, partly branched	40	3 50	30 00	280 00
Buds, 4 to 5 feet, stake-trained, mostly branched	50	4 50	40 00	380 00
Buds, low branched and stocky	50	4 50	40 00	380 00
Buds, 5 to 7 feet, stake-trained, branched	65	6 00	50 00	
LEMONS —On Sour and Trifoliata stock.—Villa Franca.				
Buds, 2 to 3 feet, stake-trained, straight stems	35	3 00	25 00	230 00
Buds, 3 to 4 feet, stake-trained, partly branched	40	3 50	30 00	280 00
Buds, 4 to 5 feet, stake-trained, mostly branched	50	4 50	40 00	380 00
Buds, low branched and stocky	50	4 50	40 00	380 00
Buds, 5 to 7 feet, stake-trained, branched	65	6 00	50 00	
KUMQUATS —On Trifoliata and Sweet stock.—Nagami (oblong), Marumi (round).				
2-year stocks, 1-year buds, about 1 foot, stocky	35	3 00	25 00	
3-year stocks, 1-year buds, about 1½ to 2 feet, stocky	40	3 50	30 00	
4-year stocks, 2-year buds, about 2 to 3 feet, stocky	50	4 50	40 00	
5-year stocks, 3-year buds, 3 to 4 feet, very fine, bearing size	1 00	8 00		
CITRUS TRIFOLIATA —Seedlings.				
1-year, 8 to 12 inches	15	1 00	4 00	15 00
1-year, extra size, 1 to 2 feet	20	1 50	6 00	25 00
2-year, 2 to 4 feet	25	2 00	10 00	
3-year, 4 to 6 feet	35	3 00	20 00	

	Each	Per 10	100	1,000
PEACHES —On Peach stock.—Alexander, Amelia, Angel, Beauty's Blush, Belle of Georgia, Bidwell's Early, Bidwell's Late, Cabler's Indian, Carman, Chinese Cling, Climax, Colon, Countess, Crawford's Early, Crawford's Late, Delaware, Early Rivers, Elberta, Emma, Estella, Ferdinand, Fleitas, Florida Crawford, Florida Gem, General Lee, Gibbons' October, Greensboro, Hale's Early, Heath Cling, Henrietta, Holderbaum, Honey, Imperial, Japan Dwarf Blood, Jessie Kerr, Jewel, La Magnifique, La Reine, Lemon Cling, Maggie, Mamie Ross, Mascotte, Matthews' Beauty, Mountain Rose, Onderdonk, Oviedo, Pallas, Peen-to, Powers' September, Red Ceylon, Reeves' Mammoth, Sangmel, Sneed, Suber, Taber, Thurber, Triana, Triumph, Victoria, Waddell, Waldo. Can also furnish Angel seedlings.				
1-year, small size, 2 to 3 feet	\$0 12	\$1 00	\$7 00	\$50 00
1-year, medium size, 3 to 4 feet	15	1 20	9 00	70 00
1-year, standard size, 4 to 6 feet	20	1 50	10 00	80 00
1-year, extra size, 6 feet up	25	2 00	15 00	110 00
PEACHES —New.—Admiral Dewey, Dorothy N., Everbearing, Frances, Victor.				
1-year, small size, 2 to 3 feet	20	1 50	12 00	
1-year, medium size, 3 to 4 feet	25	2 00	15 00	
1-year, standard size, 4 to 6 feet	30	2 50	20 00	
PLUMS —On Marianna stock.—Abundance, Babcock, Berckmans, Burbank, Chabot, Chase, Excelsior, Hale, Kelsey, Mikado, Normand, Ogon, Persian Purple-Leaved, Red June, Satsuma, White Kelsey, Wickson, Wild Goose, Yeddo.				
1-year, small size, 2 to 3 feet	12	1 00	8 00	60 00
1-year, medium size, 3 to 4 feet	15	1 30	10 00	80 00
1-year, standard size, 4 to 6 feet	20	1 60	12 00	100 00
1-year, extra size, 6 feet up	25	2 00	16 00	120 00
2-year, extra heavy	35	3 00	25 00	
PLUMS —New.—America, Apple, Chalco and Doris, June buds 1 to 3 feet				
	25	2 00		
Bartlett, Climax and Shiro, June buds 1 to 3 feet	50	4 00		
PEARS —On Le Conte or Japan Pear stock.—Garber, Kieffer, Le Conte, Smith.				
1-year, small size, 2 to 3 feet	12	1 00	8 00	60 00
1-year, medium size, 3 to 4 feet	15	1 30	10 00	80 00
1-year, standard size, 4 to 6 feet	20	1 60	12 00	100 00
1-year, extra size, 6 feet up	25	2 00	16 00	120 00
2-year, branched	35	3 00	25 00	200 00
3-year, well branched	50	4 50	40 00	
JAPAN PERSIMMONS —On native Persimmon stock.—Costata, Hachiya, Hyakume, Okame, Taber's No. 23, Taber's No. 129, Tane-nashi, Triumph, Tsuru, Yeddo-ichi, Yemon, Zengi.				
1-year, medium size, 2 to 3 feet	25	2 00	15 00	120 00
1-year, standard size, 3 to 4 feet	30	2 50	20 00	170 00
1-year, extra size, 4 to 5 feet	35	3 00	25 00	220 00
2-year, branched	40	3 50	30 00	
3-year, well branched	50	4 50	40 00	
APRICOTS —On Plum stock.—Bungo, Hubbard, Royal, Santa Fé.				
1-year, small size, 2 to 3 feet	15	1 20	10 00	
1-year, medium size, 3 to 4 feet	20	1 50	12 00	
1-year, standard size, 4 to 6 feet	25	2 00	15 00	

Glen St. Mary Nurseries

PRICE-LIST

	Each	Per 10	100
APPLES —On Apple stock.—Ben Davis, Early Harvest, Jennings, Red Astrachan, Red June, Shockley.			
1-year, small size, 2 to 3 feet	\$0 15	\$1 20	\$10 00
1-year, medium size, 3 to 4 feet	20	1 50	12 00
1-year, standard size, 4 to 6 feet	25	2 00	15 00
2-year, 6 to 8 feet	30	2 50	20 00
FIGS —On own roots.—Black Havana, Black Ischia, Blue Genoa, Brunswick, Celestial, Green Ischia.			
Medium size, 1 to 2 feet	20	1 50	13 00
Standard size, 2 to 3 feet	25	2 00	18 00
Extra size, 3 to 5 feet	35	3 00	
QUINCES —On Quince stock.—Apple, Champion, Chinese, Meech.			
2 to 4 feet	25	2 00	18 00
POMEGRANATES —On own roots.—Purple-seeded.			
2 to 4 feet	25	2 00	18 00
MULBERRIES —On Mulberry stock.—Downing, Hicks, Stubbs, White, and Morus Multicaulis.			
1-year, small size, 2 to 3 feet	15	1 20	10 00
1-year, medium size, 3 to 4 feet	20	1 50	12 00
1-year, standard size, 4 to 6 feet	25	2 00	16 00
1-year, extra size, 6 feet up	30	2 50	20 00
LOQUATS —From seed.			
8 to 12 inches	30	2 50	20 00
GRAPES —From cuttings.—Brighton, Champion, Concord, Delaware, Diamond, Ives, Moore's Early, Niagara, Salem, Wilder.			
1-year, extra large	15	1 20	9 00
GRAPES —Muscadine type.—From layers.—Flowers, Scuppernong, Thomas.			
1-year	15	1 20	9 00
2-year	20	1 60	12 00
GRAPES —Muscadine type.—Special varieties.—Eden, James, Meisch.			
1-year layers	25	2 00	15 00
2-years, transplanted	30	2 50	20 00
PECANS —Seedlings, from thin-shelled selected nuts.			
1-year, 6 inches to 1 foot	15	1 30	10 00
1-year, 1 to 2 feet	20	1 50	12 00
2-years, 2 to 3 feet	30	2 50	18 00
PECANS —Budded or Grafted—Frotscher, Pride of the Coast, Stuart.			
1 to 2 feet	1 00	10 00	
2 to 3 feet	1 25	12 50	
3 to 4 feet	1 50	15 00	
WALNUTS —From selected seed—English, Japan.			
2-year, 2 to 3 feet	30	2 50	20 00
2-year, 3 to 4 feet	40	3 50	30 00
CHESTNUTS —From selected seed.—Japan Mammoth.			
1½ to 2 feet	35	3 00	25 00
ALMONDS —On Peach stock.—Princess, Sultana.			
1-year, 2 to 3 feet	15	1 20	10 00
1-year, 3 to 4 feet	20	1 50	12 00
1-year, 4 to 6 feet	25	2 00	15 00

Each Per 10 100

ROSES—Varieties that succeed best grafted, we graft; varieties that succeed best on own roots, we grow on own roots.—Agrippina, Alphonse Soupert, Anne de Diesbach, Antoine Mouton, Apolline, Archduke Charles, Bessie Johnson, Blanche de Meur, Bon Silene, Bougere, Captain Christy, Cecile Brunner, Charles Lefebvre, Cheshunt Hybrid, Chromatella, Clothilde Soupert, Comtesse Eva Starhemberg, Coquette des Alpes, Coquette des Blanches, Crimson Rambler, Devoniensis, Dinsmore, Douglass, Duchess de Brabant, Duke of Edinburgh, Elise Boelle, Empress of China, Estelle Pradel, Etoile de Lyon, Gloire Lyonnaise, Greville, Heinrich Schultheis, Her Majesty, Hermosa, Isabella Sprunt, James Sprunt, John Hopper, Jules Finger, Jules Jurgensen, Jules Margottin, Lamarque, La Reine, Louis Philippe, Louis Richard, Mad. Alfred Carriere, Mad. Bravy, Mad. Camille, Mad. Caroline Kuster, Mad. de Vetry, Mad. Jean Sisley, Mad. Joseph Schwartz, Mad. Lambert, Mad. Philemon Cochet, Mad. Plantier, Mad. Sadie Carnot, Mad. Scipion Cochet, Mad. Welche, Magna Charta, Marechal Niel, Marie Ducher, Marie Lambert, Marie Van Houtte, Marshall P. Wilder, Mignonette, Mrs. Geo. Paul, Perfection des Blanches, Perle d'Or, President Lincoln, Pride of Reigate, Prince Albert, Prince Camille de Rohan, Princess Louise Victoria, Queen, Queen's Scarlet, Rev. J. B. M. Camm, Safrano, Sylphide, Tennessee Belle, White Perle des Jardins, Woodland Margaret.

1-year, strong, open-ground-grown	\$0 25	\$2 00	\$15 00
2-year, large, strong, open-ground-grown	35	3 00	25 00
3-year, extra heavy	50	4 50	

ALTHAEA—Meehani, Rubra.

2 to 4 feet	25	2 00	
-----------------------	----	------	--

ARBOR-VITAE.

Biota aurea (Golden), 1 to 2 feet	25	2 00	
Biota aurea nana, 8 to 12 inches	35	3 00	
Biota compacta, 1 to 2 feet	25	2 00	
Biota orientalis, 3 to 4 feet	40	3 50	
Biota Rosedale, 1 to 2 feet	40	3 50	

CAMPHOR TREE.

1 to 2 feet	20	1 50	12 00
2 to 3 feet	25	2 00	18 00
3 to 5 feet	40	3 50	

CAPE JESSAMINE.

2 to 3 feet	25	2 00	
3 to 4 feet	35	3 00	

CRAPE MYRTLE—Purple, Scarlet, White.

2 to 3 feet	25	2 00	
3 to 5 feet	35	3 00	

CUPRESSUS pyramidalis.

1 to 2 feet	25	2 00	
-----------------------	----	------	--

HONEYSUCKLE—Everblooming.

1 to 2 feet	25	2 00	
-----------------------	----	------	--

MAGNOLIA grandiflora.

1 to 2 feet	25	2 00	
-----------------------	----	------	--

MYRTLE-LEAVED ORANGE (Ornamental only).

3 to 4 feet	40	3 50	
4 to 5 feet	50	4 50	

	Each	Per 10	100
PURPLE-LEAVED PEACH (Ornamental).			
3 to 4 feet	\$0 25	\$2 00	
4 to 6 feet	30	2 50	
PRIVET —Amoor River, Golden.			
1 to 3 feet	20	1 50	\$10 00
4 to 6 feet	30	2 50	
RETINOSPORA plumosa.			
1 to 2 feet	25	2 00	
SPIRAEA —White.			
2 to 3 feet	25	2 00	
TEXAS UMBRELLA TREE.			
2 to 3 feet	20	1 50	10 00
3 to 4 feet	25	2 00	15 00
4 to 6 feet	40	3 00	25 00
WISTARIA —Purple.			
2 to 3 feet	25	2 00	

EXTRA-SIZED TREES

Our trees are graded up well and run larger than those generally sent out by other nurserymen, for corresponding sizes. In addition to regular size listed we can also furnish specimens of both Fruit and Ornamental trees in extra large sizes, which we will quote upon application.

Address all orders and remittances to

G. L. TABER

GLEN ST. MARY, FLORIDA

Telegraphic address, MACCLENNY, FLA.

INDEX

	Page		Page		Page
Almonds	26	Freight Prepaid	36	Pears	18, 19
Althæas	31	Grapes	24, 25	Pecans	25
Apples	21, 22	Hints to Planters	34	Plums	16-18
Apricots	21	Honeysuckle	32	Pomelos	5
Arbor-vitæ	31, 32	Introduction	1	Pomegranates	22, 33
Books	33	Japan Persimmons	19-21	Prepayment of Freight	36
Camphor	32	Kumquats	5, 6, 32	Price-List	38-42
Cape Jessamine	32	Lemons	5	Privets	33
Chestnuts	26	Loquats	23, 32	Quinces	22
Citrus trifoliata	6, 7	Magnolia	32	Retinospora	33
Crape Myrtle	32	Mulberries	23	Roses	27-31
Cupressus	32	Myrtle-Leaved Orange	32	Spiræa	33
Cypress	32	Miscellaneous Ornamentals.	31-33	Texas Umbrella Tree	33
Distances to Plant	33	Number of trees to the acre	33	To Customers	35-37
Eriobotrya	23	Oranges	2-4	Walnuts	26
Figs	22	Peaches	8-16	Wistaria	33

The Florida State Horticultural Society.

G. L. TABER, President,
Glen St. Mary, Fla.

STEPHEN POWERS, Secretary,
Jacksonville, Fla.

This Society organized twelve years ago by a few of Florida's progressive Horticulturists, has attained a membership of about 360, and its annual meetings are occasions of exceptional interest and instruction to all growers of fruits and minor staples.

That this Society—while laboring primarily in the interest of Florida and a Subtropical Horticulture—has, to some extent, outgrown local environments is evinced by the fact that in its present membership eighteen different States of the Union are represented, as well as five foreign countries.

This membership includes many men of wide reputation in scientific and practical Horticulture—men whose life-work is in touch with the advancement of the Horticultural interests of a nation.

The Society is one in which theory and theorists are accounted entirely secondary, and where actually demonstrated practical results are sought for and obtained; and a valuable record of them and of the Society's deliberations, papers, discussions and conclusions becomes the property of each member through the medium of the

ANNUALLY PUBLISHED HORTICULTURAL REPORT.

Annual Membership fee, including copy of report, is \$1.00. Remit to the Secretary—see address above.

(OVER)

