

Historic, Archive Document

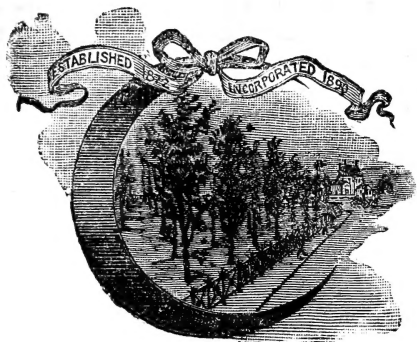
Do not assume content reflects current scientific knowledge, policies, or practices.

62,73

LIBRARY
RECEIVED
★ JUL 24 1923 ★
U. S. Department of Agriculture.

SEMI-ANNUAL TRADE LIST

Glenwood Nurseries



Autumn, 1901

The Wm. H. Moon Co.

MORRISVILLE

BUCKS COUNTY, PENNSYLVANIA

Telegraph Office and Long Distance Telephone
No. 419

TRENTON, NEW JERSEY

PHILADELPHIA OFFICE

702 Stephen Girard
Building

21 South Twelfth
Street.

Notice to Purchasers.

We invite the attention of Nurserymen, Florists and Dealers to our Wholesale Trade-List for the Autumn of 1901. **These prices are for the Trade only**, and supersede all previous quotations.

TERMS.—Cash with order, or satisfactory references from those with whom we have not had previous business dealings.

REMITTANCES.—Remittances can be made by draft, registered letter or post-office money order, or we will forward by express, with bill to be paid, with cost of collection, on delivery.

LOCATION.—The Glenwood Nurseries are situated near Morrisville, Bucks County, Pa., one mile from Trenton, N. J., thirty miles from Philadelphia and sixty miles from New York. Trains leave Broad Street Station, Philadelphia, and Cortlandt and Desbrosses Street Ferries, New York, almost hourly for Trenton, N. J. There are trains quite frequently from Reading Terminal Station, Philadelphia, and Liberty Street Ferry, New York, to Trenton, N. J. Yardley, Morrisville and Trenton Trolley passes our Nurseries every forty minutes each way; take trolley at Calhoun Street Bridge, Trenton, N. J., Yardley or Morrisville, Pa.

An invitation to visit our Nurseries is cordially extended to the Trade generally.

SHIPPING FACILITIES.—The Pennsylvania, Baltimore and Ohio and Philadelphia and Reading Railroads offer equal conveniences for shipping from Trenton, N. J., from which point all our shipments are made. We can forward west, via Pennsylvania Railroad, with through freight rates, without change of cars; north, via Lehigh Valley Railroad and Erie Dispatch; and south and east, by rail or steamship lines from Philadelphia or New York. We can obtain very liberal freight rates, as there is considerable competition from this point.

Purchasers are requested to name the mode of conveyance by which they desire their shipments made, *otherwise we will forward to the best of our judgment. After delivering to the forwarders, all articles are entirely at the risk of the purchaser; should any loss or delay occur, the forwarder alone must be held accountable and responsible.*

CLAIMS.—All claims for errors must be made upon receipt of stock. We desire to be informed at once of any errors that may occur, in order to rectify the same without delay.

THE WM. H. MOON CO.,
Morrisville, Bucks County, Pa.

JAMES M. MOON, PRESIDENT.

HENRY W. COMFORT, VICE PRES.

WM. H. MOON, SEC. AND TREAS.

PHILADELPHIA OFFICE:

702 Stephen Girard Building, 21 South Twelfth St.

Ornamental Department.

Deciduous Trees.

The following trees have been frequently transplanted, are well furnished with fine fibrous roots, and are in a vigorous, thrifty condition. Caliber will be given when requested.

ALDER (Alnus)—		
European (<i>A. glutinosa</i>), 6 to 8 ft	\$ 2 00	\$ 15 00
“ “ “ 8 to 10 ft.....	3 00	25 00
“ “ “ 10 to 12 ft.....	5 00	40 00
“ “ “ 12 to 14 ft.....	7 50	60 00
Speckled (<i>A. incana</i>), 5 to 6 ft	2 00	15 00
“ “ “ 8 to 10 ft	3 00	25 00
“ “ “ 10 to 12 ft.....	5 00	40 00
“ “ “ 12 to 14 ft.....	7 50	
ARALIA—		
Spinosa, 2 to 3 ft.....	2 00	
ASH (Fraxinus)—		
American White (<i>F. alba</i>), 4 to 6 ft...	1 50	10 00
“ “ “ 6 to 8 ft...	2 00	18 00
“ “ “ 10 to 12 ft...	7 50	
“ “ “ 12 to 14 ft...	15 00	
English (<i>F. excelsior</i>), 6 to 8 ft.....	2 00	14 00
“ “ “ 8 to 10 ft.....	3 00	20 00
“ “ “ 10 to 12 ft.....	4 00	30 00
“ “ “ 12 to 14 ft	15 00	
Flowering (<i>F. ornus</i>), 6 to 8 ft	3 00	
“ “ “ 8 to 10 ft.....	5 00	
“ “ “ 10 to 12 ft.....	7 50	
Elder-Leaved or Black (<i>F. sambuci-</i> <i>folia</i>), 10 to 12 ft.....	7 50	65 00
Elder-Leaved or Black (<i>F. sambuci-</i> <i>folia</i>), 12 to 14 ft.....	15 00	125 00
BEECH (Fagus)—		
American (<i>F. Ferruginea</i>), 2 to 4 ft.....	5 00	
European (<i>F. sylvatica</i>), 4 to 5 ft.....	5 00	40 00
“ “ “ 5 to 6 ft.....	6 00	50 00
“ “ “ 6 to 7 ft.....	7 50	
Tricolor, 2 to 3 ft.....	9 00	
Purple-Leaved (<i>F. atropurpurea</i>), 5 to 6 ft.....	6 00	50 00
Purple-Leaved (<i>F. atropurpurea</i>), 6 to 8 ft.....	10 00	90 00
Purple-Leaved (<i>F. atropurpurea</i>), 8 to 10 ft.....	15 00	125 00
Cut-Leaved (<i>F. laciniata</i>), grafted, 3 to 4 ft.....	10 00	

All our shade trees have been frequently transplanted.

	₹ 10	₹ 100
BIRCH (Betula)—		
Cut-Leaved. See Weeping Trees, p. 8.		
Canoe (Papyacea), 4 to 6 ft.....	\$2 00	\$16 00
Black (Nigra), 3 to 5 ft.....	2 00	16 00
Pyramidal (Pyramidalis), 4 to 6 ft...	4 00	35 00
Purple-Leaved (Purpurea), 4 to 5 ft.,	4 00	
Yellow (<i>B. lutea</i>), 3 to 5 ft.....	2 00	16 00
“ “ 6 to 8 ft.....	4 00	30 00
“ “ 8 to 10 ft.....	7 50	
Sweet (<i>B. lenta</i>), 4 to 6 ft.....	2 00	15 00
White (<i>B. alba</i>), 4 to 6 ft.....	2 00	16 00
“ “ 6 to 8 ft.....	3 00	25 00
BUTTONWOOD. See <i>Platanus orientalis</i> , page 7.		
CATALPA—		
Bignoides, 6 to 8 ft.....	2 50	20 00
Bungei, grafted, 6 to 8 ft., 2-year heads...	10 00	
Speciosa, 5 to 6 ft.....	1 75	12 00
“ 6 to 8 ft.....	2 50	20 00
CHERRY (Cerasus)—		
American Bird (<i>C. Serotina</i>), 6 to 8 ft...	2 50	20 00
“ “ “ 8 to 10 ft...	3 50	30 00
CYPRESS (Taxodium)—		
Deciduous (<i>T. Distichum</i>), 3 to 4 ft.....	2 00	16 00
“ “ 4 to 6 ft.....	4 00	
DOGWOOD. See <i>Cornus</i> , in Shrubs, page 16.		
ELM (Ulmus)—		
American (<i>U. Americana</i>), 6 to 8 ft... 2 50	20 00	
“ “ 8 to 10 ft... 3 50	30 00	
“ “ 10 to 12 ft... 4 00	35 00	
“ “ 12 to 14 ft... 10 00	75 00	
Broad-Leaved (<i>U. latifolia</i>), 10 to 12 ft.,	4 00	35 00
“ “ 12 to 14 ft.,	9 00	75 00
GINKO (Salisburia)—		
Japan (<i>S. adiantifolia</i>), 4 to 5 ft.....	3 00	20 00
“ “ 5 to 7 ft.....	4 00	30 00
“ “ 7 ft.....	6 00	50 00
GLEDITSCHIA—		
Triacanthos, 2 to 3 ft.....	1 50	12 00
“ 3 to 5 ft.....	2 50	20 00
GUM (Liquidambar)—		
Sweet (<i>L. styraciflua</i>), 3 to 4 ft.....	2 50	20 00
HOP TREE (<i>Ptelea trifoliata</i>), 2 to 3 ft.....		
“ “ 3 to 4 ft.....	1 00	8 00
“ “ 4 to 6 ft.....	1 50	12 00
Golden (<i>P. trifoliata aurea</i>), 2 to 3 ft.....	2 00	15 00
“ “ “ 3 to 4 ft.....	2 50	20 00
“ “ “ 4 to 5 ft.....	3 00	25 00

All our shade trees have been frequently transplanted.

HORNBEAN (Carpinus)—		
	⌘ 10	⌘ 100
European (<i>C. betula</i>), 2 to 3 ft.....	\$3 50	\$25 00
“ “ 3 to 5 ft.....	5 00	40 00
HORSE CHESTNUT (Æsculus)—		
Red-Flowering (<i>Æ. rubicunda</i>)—		
2 to 3 ft.....	2 50	
White-Flowering (<i>Æ. hippocastanum</i>)—		
4 to 6 ft.....	2 50	20 00
6 to 8 ft.....	3 00	25 00
KENTUCKY COFFEE TREE (Gymnocladus)—		
Canadensis, 2 to 3 ft.....	1 00	8 00
“ 3 to 4 ft.....	1 50	12 00
KÆLREUTERIA—		
Paniculata, 2 to 3 ft.....	1 50	12 00
“ 4 to 6 ft.....	3 00	
LARCH (Larix)—		
European (<i>L. Europœa</i>), 4 to 5 ft.....	3 00	20 00
“ “ 5 to 6 ft.....	5 00	40 00
LINDEN (Tilia)—		
American (<i>T. Americana</i>), 6 to 8 ft.....	3 50	25 00
“ “ 8 to 10 ft.....	4 00	35 00
“ “ 10 to 12 ft.....	7 50	
“ “ 12 to 14 ft.....	15 00	
Broad-Leaved (<i>T. platyphylla</i>), 8 to 10 ft.....	4 00	35 00
Broad-Leaved (<i>T. platyphylla</i>), 10 to 12 ft.....	7 50	60 00
European (<i>T. Europœa</i>), 4 to 6 ft.....	2 00	
“ “ 6 to 8 ft.....	3 00	
Silver-Leaved (<i>T. Argentea</i>), 8 to 10 ft..	10 00	
MAGNOLIA—		
Cucumber Tree (<i>M. acuminata</i>), 5 to 6 ft..	3 00	
Glaucæ (<i>M. glauca</i>), 2 to 4 ft.....	7 50	
Soulangæana, 2 to 3 ft.....	7 50	
“ 3 to 5 ft.....	9 00	
Tripetala, 4 to 6 ft.....	3 00	
“ 6 to 8 ft.....	4 00	
MAPLE (Acer)—		
Ash-Leaved (<i>A. Negundo</i>), 4 to 6 ft.....	1 50	12 00
“ “ “ 6 to 8 ft.....	2 00	18 00
“ “ “ 8 to 10 ft.....	2 50	20 00
“ “ “ 10 to 12 ft.....	6 00	50 00
Cork-Barked (<i>A. campestris</i>), 6 to 8 ft..	3 50	25 00
“ “ “ 8 to 10 ft..	5 00	

All our shade trees have been frequently transplanted.

MAPLE (<i>Acer</i>)—	₹ 10	₹ 100	₹ 1,000
Norway (<i>A. platanoides</i>), 6 to 8 ft.....	\$2 00	\$18 00	\$160 00
Norway (<i>A. platanoides</i>), 8 to 10 ft.....	3 50	30 00	275 00
Norway (<i>A. platanoides</i>), 10 to 12 ft.....	5 00	40 00	300 00
Red (<i>A. colchicum rubrum</i>), 4 to 6 ft.....	3 00		
Red (<i>A. colchicum rubrum</i>), 6 to 8 ft.....	5 00		
Red (<i>A. colchicum rubrum</i>), 8 to 10 ft.....	7 50		
Scarlet (<i>A. rubrum</i>), 3 to 4 ft...	3 00	25 00	
“ “ 4 to 6 ft...	4 00	35 00	
Silver-Leaved (<i>A. dasycarpum</i>), 8 to 10 ft...	1 50	10 00	90 00
Silver-Leaved (<i>A. dasycarpum</i>), 10 to 12 ft.....	1 80	12 00	115 00
Silver-Leaved (<i>A. dasycarpum</i>), 12 to 14 ft.....	3 50	18 00	175 00
Silver-Leaved (<i>A. dasycarpum</i>), 14 to 16 ft.....	5 00	40 00	
Sugar (<i>A. saccharinum</i>), 6 to 8 ft.....	2 00	16 00	150 00
Sugar (<i>A. saccharinum</i>), 8 to 10 ft.....	3 00	20 00	175 00
Sugar (<i>A. saccharinum</i>), 10 to 12 ft.....	4 00	25 00	200 00
Sugar (<i>A. saccharinum</i>), 12 to 14 ft.....	5 00	35 00	300 00
Sugar (<i>A. saccharinum</i>), 14 to 16 ft.....	5 00	40 00	
.Larger and heavier grades at special quotations.			
Sycamore (<i>A. pseudo-platanus</i>), 4 to 6 ft.....	1 50	12 00	
Sycamore (<i>A. pseudo-platanus</i>), 6 to 8 ft.....	2 50	20 00	
Sycamore (<i>A. pseudo-platanus</i>), 8 to 10 ft.....	4 00	30 00	
Sycamore (<i>A. pseudo-platanus</i>), 10 to 12 ft.....	5 00	45 00	
Sycamore (<i>A. pseudo-platanus</i>), 12 to 14 ft.....	10 00		
Wier's Cut-Leaved (<i>A. Wierii laciniatum</i>), 8 to 10 ft...	4 00		
Tataricum Ginnala—			
1 to 2 ft.....	1 25	10 00	
2 to 3 ft.....	1 50	12 00	
6 to 7 ft.....	4 00	35 00	
Reitenbach's, 6 to 8 ft.....	6 00		
Schwedlerii, 7 to 9 ft.....	6 00		

All our shade trees have been frequently transplanted.

MOUNTAIN ASH (<i>Sorbus aucuparia</i>)—	Ⓕ 10	Ⓕ 100	
3 to 4 ft.....	\$1 00	\$8 00	
4 to 5 ft.....	1 50	12 00	
6 to 8 ft.....	2 50		
Oak-Leaved, 6 to 8 ft.....	4 00		
OAK (<i>Quercus</i>)—	Ⓕ 10	Ⓕ 100	Ⓕ 1,000
Chestnut (<i>Q. Prinos</i>), 4 to 5 ft...	\$6 00	\$50 00	
“ “ 5 to 7 ft...	7 50	70 00	
English (<i>Q. robur</i>), 6 to 8 ft....	4 00	30 00	
“ “ 8 to 10 ft....	5 00	40 00	
“ “ 10 to 12 ft....	6 00	50 00	
“ “ 12 to 14 ft....	10 00		
Golden (<i>Q. robur pedunculata</i> , var. <i>concordia</i>), 3 to 4 ft.....	9 00		
Pin (<i>Q. palustris</i>), 4 to 6 ft.....	4 00	30 00	\$275 00
“ “ 6 to 7 ft.....	6 00	50 00	400 00
“ “ 7 to 8 ft.....	7 00	60 00	500 00
“ “ 9 to 10 ft.....	10 00	80 00	750 00
“ “ 10 to 11 ft., low branched	25 00		
Mossy Cup (<i>Q. Macropurpa</i>),			
4 to 6 ft	4 00	35 00	
6 to 8 ft	7 50	60 00	
Red (<i>Q. rubra</i>), 4 to 5 ft.....	5 00	40 00	
“ “ 5 to 6 ft.....	7 50		
Scarlet (<i>Q. coccinea</i>), 4 to 5 ft....	5 00	40 00	
“ “ 5 to 6 ft....	7 50		
Turkey (<i>Q. cerres</i>), 4 to 6 ft.....	2 50	20 00	
“ “ 6 to 8 ft.....	3 50	30 00	
White (<i>Q. Alba</i>), 3 to 5 ft.....	5 00	45 00	350 00
Willow-Leaved (<i>Q. Phellos</i>),			
4 to 6 ft	7 50	60 00	

PLATANUS

Orientalis (Oriental Plane).

Very fine—

5 to 6 ft.....	2 00	16 00	150 00
6 to 8 ft.....	2 50	20 00	190 00
8 to 10 ft.....	3 50	25 00	225 00
10 to 12 ft	4 00	35 00	325 00

POPLAR (*Populus*)—

Carolina (<i>P. angulata</i>), 6 to 8 ft.....	Ⓕ 10	Ⓕ 100
“ “ 8 to 10 ft.....	\$1 50	\$12 00
“ “ 10 to 12 ft.....	2 00	15 00
“ “ 12 to 15 ft.....	2 50	20 00
“ “ 12 to 15 ft.....	4 00	30 00
Golden (<i>P. Van Gertii Aurea</i>), 4 to 6 ft.,	3 00	
Silver White (<i>P. Nivea Argentea</i>),		
7 to 9 ft.....	3 00	20 00
Lombardy , 6 to 8 ft.....	1 50	10 00
“ 8 to 10 ft.....	2 00	15 00
“ 12 to 15 ft.....	4 50	30 00

All our shade trees have been frequently transplanted.

	Ⓕ 10	Ⓕ 100
TULIP TREE (<i>Liriodendron tulipifera</i>),		
4 to 6 ft.....	\$3 00	\$25 00
6 to 8 ft.....	5 00	40 00
YELLOWWOOD (<i>Virgilia lutea</i>),		
1 to 2 ft.....	2 00	15 00
3 to 5 ft.....	7 50	
WILLOW (<i>Salix</i>)—		
Common Weeping. See Weeping Trees.		
Golden-Barked (<i>S. alba vitellina</i>), 4 to 6 ft.....	2 50	20 00
Golden-Barked (<i>S. alba vitellina</i>), 6 to 8 ft.....	3 50	30 00
Laurel-Leaved (<i>S. Pentandra</i>), 4 to 6 ft.....	2 00	16 00
Rosemary-Leaved (<i>S. rosmarinifolia</i>), 3 to 5 ft., on own roots.....	2 00	16 00
Rosemary-Leaved, 5 to 7 ft., grafted..	4 00	30 00
Royal Silver-Leaved (<i>S. regalis</i>)—		
2 to 4 ft.....	1 25	10 00
WALNUTS. See Nuts, Fruit Department.		

Weeping Trees.

	Ⓕ 10	Ⓕ 100
ASH (<i>Fraxinus pendula</i>).....	\$6 00	
BEECH (<i>Fagus pendula</i>), 3 to 4 ft.....	10 00	
BIRCH (<i>Betula</i>)—		
Cut-Leaved (<i>B. laciniata pendula</i>), 6 to 8 ft.....	7 50	
Young's Weeping, 4 to 5 ft.....	7 50	
Elegans, 2 to 4 ft.....	5 00	
ELM —Camperdown.....	5 00	
“ “ 3-year heads, very strong.....	9 00	
LINDEN (<i>Tilia pendula</i>), 5 to 6 ft.....	7 50	
MOUNTAIN ASH (<i>Sorbus aucuparia pendula</i>).....	7 50	
MULBERRY (<i>Morus pendula</i>), 4 to 6 ft... extra heavy, 3 years.....	6 00	
MULBERRY (<i>Morus pendula</i>), 5 to 7 ft., extra heavy, 3 years.....	9 00	
WILLOW (<i>Salix</i>)—		
Kimarnock (<i>S. caprea pendula</i>), well headed, 5 to 6 ft.....	3 50	\$25 00
New American (<i>S. purpurea pendula</i>), well headed, 6 to 7 ft.....	5 00	35 00
Common Weeping (<i>S. Babylonica</i>)—		
4 to 5 ft.....	2 00	16 00
6 to 8 ft.....	3 00	25 00
8 to 10 ft.....	4 00	35 00

All our shade trees have been frequently transplanted.

Hedging, Desiduous.

	\$ 100	\$ 1,000
ALTHEAS , in variety, 2 to 3 ft.....	\$8 00	\$75 00
“ “ “ 4 to 5 ft.....	20 00	150 00

BERBERIS—

Thunbergii, 1 to 1½ ft.....	8 00	75 00
“ 2 to 3 ft.....	15 00	125 00

LIGUSTRUM—

Ovalirolium (California Privet)—

1 year, 1 to 1½ ft., well branched.....	2 00	15 00
1 year, 1½ to 2 ft., well branched.....	3 00	20 00
2 years, 2 to 2½ ft., bushy.....	5 00	35 00
2 years, 2½ to 3 ft., very bushy.....	6 00	45 00

All our 2-year Privet were transplanted last spring and cut back. They are now very bushy and fine.

OSAGE ORANGE. Very fine—

1 year.....per 10,000, \$30...	1 00	4 00
2 years.....per 10,000, \$40...	1 50	5 00

RHAMNUS—

Catharticus (Buckthorn), 3 to 4 ft.....	8 00	75 00
---	------	-------

Hedging, Evergreen.

ARBORVITÆ—

	\$ 10	\$ 100
American, 1½ to 2 ft.....	\$1 00	\$8 00
“ 2 to 3 ft.....	2 00	15 00
“ 3 to 4 ft.....	3 50	25 00
Compacta, Dwarf, 9 to 12 in.....	1 00	8 00
“ “ 18 to 24 in.....	5 00	40 00

SPRUCE—

	\$ 10	\$ 100	\$ 1,000
Norway, 1 to 1½ ft., bushy.....	\$1 00	\$8 00	\$75 00

Evergreen Trees.

Our collection of Choice Evergreens of small and medium size is very large. Great care is taken to shear, move and root-prune them in order that they may transplant successfully. They have been frequently trimmed, and are of fine, symmetrical shape.

ARBORVITÆ (Thuya)—

	\$ 10	\$ 100
American (<i>T. occidentalis</i>), 1½ to 2 ft.....	\$1 00	\$8 00
“ “ 2 to 3 ft.....	2 00	15 00
“ “ 3 to 4 ft.....	3 50	25 00

ARBORVITÆ (<i>Thuja</i>)—		₹ 10	₹ 100
Dwarf American (<i>T. compacta</i>), 6 to 9 in.....		\$0 60	\$5 00
Dwarf American (<i>T. compacta</i>), 9 to 12 in.....		1 00	8 00
Dwarf American (<i>T. compacta</i>), 12 to 18 in.....		2 50	20 00
Dwarf American (<i>T. compacta</i>), 1½ to 2 ft.....		5 00	40 00
Dwarf American (<i>T. compacta</i>), 2 to 3 ft.....		9 00	75 00
Elegantissima, 1½ to 2 ft.....		4 00	35 00
Heath-Leaved (<i>T. ericoides</i>), 9 to 12 in..		75	5 00
“ “ “ 12 to 18 in..		2 50	
George Peabody (<i>T. Peabody</i>)—			
6 to 9 in.....		2 50	
9 to 12 in.....		3 50	
1 to 2 ft.....		5 00	
Globe (<i>T. globosa</i>), 6 to 9 in.....		1 00	7 00
“ “ 12 to 15 in.....		2 50	20 00
“ “ 1 to 2 ft., bushy....		3 50	30 00
“ “ 2 to 3 ft.....		10 00	
Hovey's Golden (<i>T. Hoveyii</i>), 9 to 12 in.		1 00	8 00
“ “ “ 12 to 18 in.		2 00	15 00
“ “ “ 1½ to 2 ft..		4 00	35 00
“ “ “ 2 to 3 ft..		7 50	
Orientalis Aurea, 1 to 1½ ft.....		3 50	30 00
Orientalis Semper Aurea, 1 to 1½ ft.		5 00	40 00
Pyramidal (<i>T. Pyramidalis</i>), 6 to 12 in..		1 00	8 00
“ “ “ 1 to 2 ft..		3 00	20 00
“ “ “ 2 to 3 ft..		4 00	35 00
Siberian (<i>T. Wareana</i>), 1 to 1½ ft., fine...		2 50	
Tom Thumb, 9 to 12 in.....		1 00	8 00
“ “ 12 to 18 in.....		1 50	12 00
Vervæneana, 9 to 15 in.....		1 00	8 00
“ 1½ to 2 ft.....		3 50	30 00
Weeping (<i>T. Japonica filiformis pendula</i>), 18 to 24 in., bushy, grafted		7 50	
CEPHALOTAXUS—			
Drupacea, 2 to 3 ft.....		10 00	
Fortunei, 2 to 3 ft.....		10 00	
FIR, SILVER (<i>Abies</i>)—			
Balsam (<i>A. Balsamea</i>), 1 to 1½ ft.....		1 25	10 00
Concolor (<i>A. Concolor</i>), 1 to 2 ft.....		10 00	
“ “ 2 to 3 ft., \$3 each.			
“ “ 3 to 4 ft., \$4 and \$5 each.			

FIR, SILVER (*Abies*)—

Nordmann's (<i>A. Nordmanniana</i>)—	Ⓕ 10	Ⓕ 100
1 to 2 ft.....	\$7 50	\$60 00
2 to 3 ft.....	20 00	150 00
3 to 4 ft., \$3 to \$4 each.		
Pectinata (European Silver), 1 to 1½ ft...	1 25	10 00
“ “ 3 to 4 ft...	5 00	40 00
“ “ 4 to 5 ft...	7 50	60 00

HEMLOCK (*Tsuga Canadensis*)—

	Ⓕ 10	Ⓕ 100	Ⓕ 1,000
1 to 2 ft.....	\$3 00	\$25 00	\$225 00
2 to 2½ ft.....	5 00	40 00	
2½ to 3 ft., sheared and bushy..	10 00	90 00	800 00
3 to 3½ ft., “ “ ..	12 50	110 00	

Spruce (*Picea*)—

Colorado Blue (*P. pungens*)—

1 to 2 ft.....	8 00	75 00
----------------	------	-------

Colorado Blue—Selected blue,
1 to 2 ft., according to color and
form, \$1.50 to \$2 each.

Colorado Blue—Selected blue,
2 to 3 ft., according to color and
form, \$3 to \$4 each.

Colorado Blue—Selected blue,
3 to 4 ft., according to color and
form, \$4 to \$5 each.

Gloriosum, 3 to 4 ft..... 15 00

Oriental (*P. orientalis*), 1 to 2 ft., 15 00

“ “ 2 to 3 ft., 25 00

Weeping (*P. inverta*), 2 to 3 ft... 20 00

“ “ 3 to 4 ft.. 30 00

	Ⓕ 10	Ⓕ 100
Norway (<i>P. excelsa</i>), 1 to 1½ ft.....	\$1 00	\$8 00

“ “ 3 to 4 ft..... 4 00

“ “ 4 to 5 ft 6 00

“ “ 5 to 7 ft 9 00

White (<i>P. alba</i>), 1 to 1½ ft.....	1 25	8 00
--	------	------

JAPAN CYPRESS (*Retinospora*)—

Filifera (*R. filifera*), 1½ to 2 ft..... 5 00

“ “ 2 to 3 ft..... 10 00

Plume-Like (*R. plumosa*), 1 to 2 ft 3 50 25 00

**Plume-Like (*R. plumosa*), 2 to 3 ft.,
sheared** 10 00 75 00

**Plume-Like (*R. plumosa*), 3 to 4 ft., very
bushy, sheared.....** 15 00 125 00

**Plume-Like (*R. plumosa*), 5 to 6 ft., very
bushy, sheared.....** 25 00 200 00

	₤ 10	₤ 100
JAPAN CYPRESS (<i>Retinospora</i>)—		
Golden (<i>R. p. aurea</i>), 9 to 12 in.....	\$2 50	\$15 00
“ 1 to 2 ft., very bushy, sheared.....	7 50	60 00
“ 2 to 3 ft., very bushy, sheared.....	15 00	125 00
“ 3 to 4 ft., very bushy, sheared.....	25 00	200 00
Obtusa, 1 to 1½ ft.....	4 00	
“ 3 to 4 ft.....	15 00	
“ nana, 6 to 9 in.....	6 00	
“ “ 1 to 2 ft.....	20 00	
Silver (<i>R. squarrosa</i>), 9 to 12 in.....	1 50	15 00
“ “ 1½ to 2 ft., sheared..	7 50	60 00
“ “ 2 to 3 ft., sheared...	15 00	125 00
JUNIPER (<i>Juniperus</i>)—		
Aurea, 9 to 12 in.....	3 00	20 00
“ 12 to 18 in., broad and bushy.....	5 00	40 00
Irish (<i>J. Hibernica</i>), 6 to 12 in.....	75	5 00
“ “ 1 to 2 ft.....	1 00	8 00
“ “ 2 to 2½ ft.....	1 50	10 00
Pyramidal (<i>J. pyramidalis</i>), 1 to 2 ft.....	1 00	
“ “ 2 to 3 ft.....	2 50	
Prostrata (<i>J. prostrata</i>), 1 to 1½ ft.....	2 50	
Swedish (<i>J. Suecica</i>), 6 to 12 in.....	1 00	8 00
“ “ 1 to 1½ ft.....	2 50	20 00
PINE (<i>Pinus</i>)—		
Austrian (<i>P. Austriaca</i>), 1 to 2 ft.....	1 50	10 00
Austrian (<i>P. Austriaca</i>), 4 to 5 ft., sheared.....	15 00	125 00
Dwarf (<i>P. Mugho</i>), 1 to 1½ ft., light.....	3 00	25 00
“ “ 1 to 2 ft., bushy.....	7 50	60 00
“ “ 2 to 3 ft., perfect specimens, \$2 to \$3 each.		
Excelsa, 2 to 3 ft.....	6 00	50 00
“ 3 to 4 ft.....	15 00	125 00
“ 4 to 6 ft.....	25 00	200 00
Scotch (<i>P. sylvestris</i>), 1½ to 2 ft.....	1 50	12 00
“ “ 2 to 2½ ft., bushy....	3 50	25 00
White (<i>P. strobus</i>), 1 to 2 ft.....	1 00	8 00
“ “ 2 to 3 ft.....	5 00	45 00
“ “ 3 to 4 ft.....	8 00	75 00
“ “ 4 to 5 ft.....	15 00	
Dwarf, White (<i>P. strobus nanus</i>), 1 to 2 ft., grafted, very bushy specimens.	15 00	
THUYOPSIS—		
Borealis, 9 to 12 in.....	4 00	
YEW (<i>Taxus</i>)—		
Adpressa, 1 to 2 ft.....	8 00	
English (<i>T. baccata erecta</i>), 1 to 2 ft.....	7 50	
“ “ “ 2 to 3 ft.....	20 00	
“ “ “ 3 to 4 ft.....	40 00	

YEW (Taxus)—

	\$ 10
Irish (<i>T. Hibernica</i>), 1 to 2 ft.....	\$7 50
Pyramidal (<i>T. pyramidalis</i>), 1 to 2 ft....	7 50
Variegated (<i>T. variegata</i>), 6 to 12 in.....	5 00

Evergreens of larger sizes than quoted herein can be furnished of most varieties, prices of which will be given on application.

Evergreen Shrubs.

AZALEA—

	\$ 10	\$ 100
<i>Amœna</i> , from 3-in. pots, nice bushy plants	\$2 00	\$15 00
<i>Amœna</i> , 6 to 10 in., very bushy, from open ground.....	3 50	30 00
<i>Amœna</i> , 10 to 12 in., very bushy.....	5 00	40 00

BOX (Buxus)—

	\$ 10	\$ 100	\$ 1,000
<i>Arborescens</i> , 9 to 15 in.....	\$1 00	\$8 00	
“ 1 to 1½ ft., bushy..	1 50	10 00	
“ 1½ to 2 ft., bushy..	2 50	20 00	
<i>Macrophylla rotundifolia</i> , 12 to 18 in.....	1 50	10 00	
<i>Suffruticosa</i> , box edging, 2 years, 4 to 6 in.....	50	4 00	\$35 00
<i>Variegata</i> , 9 to 12 in.....	1 25	10 00	

COTONEASTER—

	\$ 10	\$ 100
<i>Buxifolia</i> , 1 to 2 ft., very bushy.....	\$1 50	\$12 00

CRATAEGUS PYRACANTHA—

9 to 15 in.....	1 75	15 00
-----------------	------	-------

EUONYMUS—

<i>Variegated Trailing (E. radicans variegata)</i> , 1 year.....	75	5 00
<i>Variegated Trailing</i> , 2 years.....	1 00	8 00
“ “ 3 years.....	1 25	10 00
<i>Green Trailing (E. radicans viridis)</i> , 2 years.....	1 00	7 00
<i>Green Trailing (E. radicans viridis)</i> , 3 years.....	1 25	10 00
<i>Green Upright (E. Japonica)</i> , 1 to 2 ft,	1 00	8 00
“ “ “ 2 to 3 ft.,	2 00	16 00
<i>Green Upright (E. Japonica)</i> , 3 to 4 ft., very bushy.....	3 00	25 00
<i>Variegated (E. Japonica argentic variegata)</i> , 12 to 18 in.....	1 25	10 00
<i>Variegated (E. Japonica argentic variegata)</i> , 18 to 24 in.....	2 00	16 00
<i>Golden (E. aurea)</i> , 6 to 12 in.....	1 50	12 00
“ “ 1 to 2 ft.....	2 50	20 00

HARDY ORANGE (Limonia trifoliata)—

3 to 4 ft.....	1 75	15 00
----------------	------	-------

HOLLY (Ilex)—

<i>Aquifolia</i> , 9 to 12 in.....	1 50	12 00
“ 1 to 2 ft.....	2 50	20 00
“ 2 to 3 ft.....	5 00	
<i>American (I. opaca)</i> , 2 to 3 ft.....	7 50	

KALMIA—		Ⓕ 10	Ⓕ 100
Broad-Leaved (<i>K. latifolia</i>), 15 to 18 in.,		\$6 00	
Narrow-Leaved (<i>Angustifolia</i>), 1½ to 2½ ft.....		4 00	
MAHONIA—			
Aquifolia, 9 to 12 in.....		1 00	\$6 00
“ 1 to 1½ ft.....		2 00	15 00
Japonica, 1 to 2 ft.....		5 00	40 00
“ 2 to 3 ft.....		6 00	50 00
RHODODENDRONS—			
Named varieties, 15 to 18 in.....		9 00	
“ “ 18 to 22 in.....		12 00	
“ “ 24 to 30 in.....		15 00	
“ “ 30 to 36 in.....		20 00	
YUCCA—			
Filamentosa, 2 years, transplanted.....		75	5 00
“ 3 years, transplanted.....		1 00	6 00
“ 4 years, twice transplanted		2 50	20 00
“ Large clumps, 4 and 5 yrs..		5 00	

Flowering Shrubs, Deciduous.

We offer an immense stock of Deciduous Flowering Shrubs of large, medium and small sizes. All have been carefully grown and cultivated. The larger grades have been trimmed into symmetrical shape and are unsurpassed for decorative planting. All transplanted unless otherwise noted.

Larger and heavier shrubs than those quoted can be furnished of most varieties. Prices on application.

ACACIA—		Ⓕ 10	Ⓕ 100
Julibrissin, 4 to 5 ft.....		\$3 00	
ALMOND—			
Double White, 2 to 3 ft.....		1 25	
“ Red, 2 to 3 ft.....		1 25	
AMELANCHIER—			
Botryapium, 2 to 3 ft.....		1 50	\$12 00
“ 3 to 4 ft.....		2 00	15 00
“ 4 to 5 ft.....		2 50	
Vulgaris, 3 to 4 ft.....		2 00	
“ 4 to 6 ft.....		2 50	
AMORPHA—			
Fruticosa (Indigo Bush), 1 to 2 ft.....		1 00	5 00
“ “ “ 2 to 3 ft.....		1 25	8 00
“ “ “ 3 to 4 ft.....		1 50	12 00
“ “ “ 4 to 6 ft.....		2 50	20 00
ANDROMEDA—			
Marianna, 1 to 2 ft.....		1 75	15 00

ALTHEA—		Ⓕ 10	Ⓕ 100
Variegated-Leaved, 1 to 2 ft.....		\$1 25	\$10 00
“ “ 2 to 3 ft.....		1 75	15 00
“ “ 3 to 4 ft.....		2 00	18 00
Double, Tall-Growing, Named Varieties—			
1 to 2 ft.....		75	6 00
2 to 3 ft.....		1 25	10 00
3 to 4 ft., bushy.....		1 75	14 00
4 to 5 ft., “		2 50	18 00
5 to 6 ft., “		3 50	25 00
6 to 8 ft., “		5 00	35 00
List of Varieties—			
Alba plena, Amplissima, Ardens, Boule de feu, Carnea plena, Comte de Haimont, Duchess de Brabant, Double Rouge, Elegantissima plena, Grandiflora superba, Joan of Arc, Lady Stanley, Leopoldi plena, Pæoniflora plena, Van Houti, Bicolor, White, Purple, Red.			
Totus Alba Simplex—			
Pure White, Distinct, Single, 1 to 2 ft....		1 00	8 00
“ “ “ “ 3 to 4 ft....		2 50	
AZALEA—			
Mollis, 15 to 18 in.....		4 00	35 00
“ 20 to 30 in., strong clumps.....		6 00	50 00
Pontica, 15 to 18 in.....		6 00	50 00
Amœna. See Evergreen Shrubs, p. 13.			
BACCHARIS—			
Halimifolia, 1 to 2 ft.....		1 00	8 00
“ 2 to 3 ft.....		1 50	12 00
“ 3 to 4 ft.....		2 00	16 00
BERBERIS—			
Purpurea, 12 to 18 in.....		75	5 00
“ 18 to 24 in.....		1 00	8 00
“ 2 to 3 ft.....		1 25	10 00
Thunbergii, 1 to 1½ ft.....		1 00	8 00
“ 1½ to 2 ft.....		1 25	10 00
“ 2 to 3 ft., bushy.....		2 00	15 00
“ 2 to 3 ft., very large and bushy		2 50	20 00
Vulgaris, 1 to 2 ft.....		75	5 00
“ 2 to 3 ft.....		1 25	10 00
CALLICARPA—			
Purpurea, 2 to 4 ft		1 00	8 00
CALYCANTHUS (Sweet Shrub)—			
Floridus, 1 to 2 ft.....		75	5 00
“ 2 to 3 ft		1 00	8 00
“ 3 to 4 ft.....		1 50	12 00
“ 4 to 5 ft.....		2 00	16 00
Caragana Arboreus, 1 to 2 ft.....		1 00	8 00
Caryopteris Mastacantha, 1 to 2 ft.,		1 25	10 00

	Ⓕ 10	Ⓕ 100
CERCIS (Judas Tree)—		
American (Canadensis), 2 to 4 ft....	\$2 50	\$20 00
“ “ 4 to 5 ft....	4 00	30 00
Japan, 1 to 2 ft.....	3 50	
“ 2 to 3 ft.....	5 00	
CHIONANTHUS—		
Virginica, 1 to 2 ft.....	1 00	8 00
“ 2 to 3 ft.....	1 50	12 00
“ 4 to 6 ft.....	3 50	
CLETHRA—		
Alnifolia, 1½ to 2 ft.....	1 25	10 00
COLUTEA—		
Arborescens, 2 to 3 ft.....	1 00	8 00
“ 3 to 4 ft.....	1 50	
CORNUS (Dogwood)—		
Alternifolia, 3 to 5 ft.....	1 50	12 00
Floridus, 2 to 3 ft.....	1 75	15 00
“ 3 to 4 ft.....	2 50	20 00
“ 4 to 5 ft.....	4 00	
Siberian, Red-Twigged, 2 to 3 ft.....	1 00	6 00
“ “ 3 to 4 ft.....	1 00	8 00
Sanguinea, 2 to 3 ft.....	1 00	8 00
“ 3 to 4 ft.....	1 75	15 00
Sericea, 3 to 4 ft.....	1 00	8 00
“ 4 to 5 ft.....	1 25	10 00
Stolinifera aurea, 1 to 2 ft.....	2 00	16 00
CORYLUS—		
Avellana (Filbert), 4 to 5 ft., bushy.....	1 75	15 00
“ “ 5 to 6 ft.....	2 50	20 00
“ “ 6 to 8 ft.....	3 50	
“ purpurea, 1 to 2 ft.....	2 50	20 00
CORCHORUS. See Kerria, p. 18.		
COTONEASTER—		
Simonsii, 2 to 3 ft., bushy.....	1 25	10 00
“ 3 to 4 ft.....	1 50	12 00
CYDONIA—		
Japonica, Pyrus, 2 to 3 ft.....	1 25	10 00
CYTISSUS LABURNUM— 1 to 2 ft....	1 00	8 00
“ “ 2 to 3 ft....	1 25	10 00
“ “ 3 to 4 ft....	1 50	
DEUTZIA—		
Crenata flore alba plena, 2 to 3 ft... 1 00 8 00		
“ “ “ “ 4 to 5 ft... 2 00 16 00		
“ “ plena, 2 to 3 ft..... 1 00 8 00		
“ “ “ 3 to 4 ft..... 1 25 10 00		
“ “ “ 4 to 6 ft..... 2 00 16 00		
“ “ “ 6 to 7 ft..... 3 00 25 00		
Candidissima, 1 to 2 ft..... 1 00 8 00		
“ 2 to 3 ft..... 1 25 10 00		
“ 4 to 6 ft..... 2 50 20 00		

DEUTZIA—	₹ 10	₹ 100
Fortunei, 2 to 3 ft.....	\$1 00	\$8 00
“ 3 to 4 ft.....	1 50	12 00
Gracilis, 9 to 12 in.....	60	5 00
“ 12 to 18 in.....	75	6 00
“ 18 to 24 in.....	1 00	8 00
Lemoinii, 1 to 2 ft.....	1 50	12 00
Pride of Rochester, 2 to 3 ft.....	1 25	10 00
“ “ 3 to 4 ft.....	1 50	12 00
“ “ 4 to 6 ft.....	2 00	18 00
Scabra, 2 to 3 ft.....	1 50	12 00
“ 4 to 6 ft.....	2 50	20 00
Watereri, 2 to 3 ft.....	1 25	10 00
“ 3 to 4 ft.....	1 50	12 00
“ 4 to 5 ft.....	2 50	20 00
Watsonii, 2 to 3 ft.....	1 25	10 00
“ 3 to 4 ft.....	1 50	12 00
Wellsii, 2 to 3 ft.....	1 25	10 00
“ 3 to 4 ft.....	1 50	12 00
“ 4 to 6 ft.....	2 50	20 00
DIERVILLA—		
Lutea, 2 to 3 ft.....	1 25	
“ 3 to 4 ft.....	1 75	15 00
ELÆAGNUS—		
Longipes, 2 to 3 ft.....	2 00	
“ 3 to 4 ft.....	4 00	
EUONYMUS—		
European, 3 to 4 ft.....	1 25	10 00
“ 4 to 6 ft.....	1 75	15 00
“ 6 to 7 ft.....	2 50	20 00
Nana, dwarf, 9 to 15 in.....	1 25	10 00
“ “ 3 to 4 ft., very bushy.....	5 00	
Radicans argentea variegata. See Evergreen Shrubs, p. 13.		
EXOCHORDA—		
Grandiflora, 1 to 2 ft.....	1 00	8 00
“ 2 to 3 ft.....	1 25	10 00
“ 3 to 4 ft.....	1 50	12 00
FORSYTHIA—		
Fortunei, 1 to 2 ft.....	75	6 00
“ 2 to 3 ft.....	1 00	8 00
“ 3 to 4 ft.....	1 50	12 00
Suspensa, 1 to 2 ft.....	1 00	8 00
“ 2 to 3 ft.....	1 25	10 00
“ 3 to 4 ft.....	1 50	12 00
Viridissima, 1 to 2 ft.....	75	6 00
“ 2 to 3 ft.....	1 00	8 00
“ 3 to 4 ft.....	1 50	12 00
“ 4 to 5 ft., very bushy.....	2 50	20 00
Intermedia, 2 to 3 ft.....	1 00	8 00
“ 3 to 4 ft.....	1 25	10 00
“ 4 to 5 ft.....	2 50	20 00

HALESIA—			
Tetraptera, 1 to 2 ft.....	¥10	¥100	
	\$1 00		
HAMAMELIS VIRGINICA—			
1 to 1½ ft.....	1 25		\$10 00
2 to 3 ft.....	1 50		12 00
HYPERICUM—			
Aureum, 1½ to 2½ ft.....	1 00		8 00
Kalmianum, 1½ to 2½ ft.....	1 00		8 00
Moserianum, 1 ft.....	1 00		8 00
HYDRANGEA—			
Paniculata grandiflora, 1 to 2 ft.....	¥10	¥100	¥1,000
	\$1 00	\$6 00	\$50 00
Paniculata grandiflora, 2 to 2½ ft.....	1 25	8 00	75 00
Paniculata grandiflora, 2½ to 3 ft.....	1 50	10 00	90 00
Paniculata grandiflora, 3 to 4 ft.....	2 00	15 00	125 00
Paniculata grandiflora, 3½ to 4½ ft., extra heavy and fine.....	2 50	20 00	
Pekinensis, 3 to 5 ft.....	2 50		
Quercifolia, 2 to 3 ft.....	5 00	35 00	
KERRIA—			
Japonica simplex, 1 to 2 ft.....	¥10	¥100.	
	\$0 75	\$5 00	
“ “ 3 to 4 ft.....	1 00	8 00	
“ variegata, 6 to 12 in.....	75	5 00	
“ “ 1 to 2 ft.....	1 00	8 00	
“ flora plena, 1 to 2 ft.....	75	5 00	
“ “ “ 3 to 5 ft.....	1 00	8 00	
LAURUS BENZOINE—			
2 to 3 ft.....		2 00	
LIGUSTRUM (Privet)—			
California, 1 to 1½ ft., 1 year....	¥10	¥100	¥1,000
	\$0 50	\$2 00	\$15 00
“ 1½ to 2 ft., 1 year....	60	3 00	20 00
“ 2 to 2½ ft., 2 years...	75	5 00	35 00
“ 2½ to 3 ft., 2 years...	1 00	6 00	45 00
California, tree-shaped, 5 to 7 ft,	10 00		
All 2-year Privet were transplanted last spring and cut back, and are now very bushy and fine.			
Amurensis, 1 to 2 ft.....	50	3 00	
“ 2 to 3 ft.....	75	5 00	
“ 3 to 4 ft.....	1 00	8 00	
Ibota, 1 to 2 ft.....	75	5 00	
“ 2 to 3 ft.....	1 00	8 00	
“ 3 to 4 ft.....	1 50	10 00	
Media, dwarf variety, 1½ to 2½ ft.,	1 00	5 00	
“ “ 3 to 4 ft.,	1 25	8 00	
Sinensis, 3 to 4 ft.....	75	5 00	
“ 4 to 5 ft.....	1 00	8 00	

LILAC (<i>Syringa</i>)—		Ⓕ 10	Ⓕ 100
Alba, White, 1 to 2 ft.	\$1 00	\$8 00
“ “ 2 to 3 ft.	1 25	10 00
Japonica (Tree Lilac), 1 to 2 ft.	1 50	
“ “ “ 2 to 3 ft.	2 00	
“ “ “ 3 to 4 ft.	3 50	
Josikea, 1 to 2 ft.	1 00	8 00
“ 4 to 6 ft.	5 00	
Persian, White, 2 to 4 ft.	1 50	
Rothomagensis, 3 to 4 ft.	1 25	10 00
“ alba, 3 to 4 ft.	1 25	
“ “ 4 to 5 ft.	1 50	12 00
Rubra de Marly, 1 to 2 ft.	1 00	8 00
“ “ 2 to 3 ft.	1 25	10 00
“ “ 3 to 4 ft.	1 75	15 00
Vulgaris, 2 to 3 ft.	1 25	10 00
“ 3 to 4 ft.	1 75	15 00
Named French Sorts, 1 to 2 ft.	1 25	10 00
“ “ “ 2 to 3 ft.	1 75	15 00
LONICERA (Honeysuckle)—			
Fragrantissima (Upright), 1 to 2 ft.	1 00	7 00
“ “ 2 to 3 ft.	1 25	10 00
“ “ 3 to 4 ft.	1 75	15 00
“ “ 4 to 5 ft.	2 50	20 00
Morrowii, 1½ to 3 ft.	1 25	10 00
“ 3 to 5 ft.	1 75	15 00
Tatarica alba, 1 to 2 ft.	1 00	7 00
“ “ 2 to 3 ft.	1 25	10 00
“ rubra, 1 to 2 ft.	1 00	7 00
“ “ 2 to 3 ft.	1 25	10 00
Xylostium (English Fly)—			
2 to 3 ft.	1 25	10 00
3 to 4 ft.	1 75	15 00
MAGNOLIA—			
Purpurea, 2 to 3 ft.	2 50	20 00
“ 3 to 4 ft.	4 00	
Glauca, 2 to 4 ft.	7 50	
Soulangiana. See Trees, p. 5.			
Tripetala. See Trees, p. 5.			
PÆONIA ARBOREA (Tree Peony),		7 50	
PHILADELPHUS—			
Aurea, 1 to 2 ft.	1 75	15 00
Cordifolius, 2 to 3 ft.	1 00	8 00
“ 3 to 4 ft.	1 25	10 00
“ 4 to 6 ft.	2 50	
Coronarius, 1 to 2 ft.	1 00	7 00
“ 2 to 2½ ft.	1 50	
Deutzæflora plena, dwarf, 1 to 2 ft.	1 25	

PHILADELPHUS—

	₹ 10	₹ 100
Grandiflora, 1 to 2 ft.....	\$1 00	\$6 00
“ 2 to 3 ft.....	1 25	10 00
“ 3 to 4 ft.....	1 75	15 00
“ 4 to 5 ft.....	2 50	20 00
Inodorus, 3 to 4 ft.....	1 50	12 00
“ 4 to 5 ft.....	2 50	20 00
Kettlerii, 1 to 2 ft.....	1 00	
“ 2 to 3 ft.....	1 50	12 00
Nepalensis, 1 to 1½ ft.....	1 00	8 00
“ 3 to 4 ft.....	1 75	15 00
Nivalis, 2 to 3 ft.....	1 50	12 00
“ 4 to 5 ft.....	2 50	20 00
Souvenir de Billardii, 1 to 2 ft.....	1 25	
“ “ “ 4 to 5 ft.....	2 50	

PRUNUS—

Pissardii, 2 to 3 ft.....	1 25	10 00
“ 3 to 4 ft.....	2 00	16 00
“ 4 to 5 ft.....	3 00	20 00
Triloba, 2 to 3 ft.....	2 50	20 00

RHAMNUS (Buckthorn)—

Catharticus, 3 to 4 ft.....	1 00	8 00
“ 4 to 5 ft.....	1 50	12 00

RHODOTYPUS—

Kerrioides, 1 to 2 ft.....	1 00	8 00
----------------------------	------	------

RHUS—

Cotinus (Purple Fringe), 1 to 2 ft.....	50	4 00
“ “ “ 2 to 3 ft.....	1 00	7 00
“ “ “ 3 to 4 ft.....	1 75	15 00
Glabra Laciniata, 2 to 3 ft.....	2 00	

RIBES—

Aurea (Yellow-Flowering Currant), 1 to 2 ft.....	1 50	
Sanguinea, 1 to 2 ft.....	1 50	
Gordons, 2 to 3 ft.....	1 75	

ROSA—

Blanda, 3 years, transplanted.....	1 25	10 00
Carolina, 3 years, 2 to 3 ft.....	1 50	
Lucida, 3 years, strong.....	1 50	12 00
Multiflora Japonica, 2 years, 2 to 4 ft.,	1 00	8 00
“ “ 3 years, 4 to 5 ft., bushy.....	1 25	10 00
Nitida, 3 years, strong.....	1 25	10 00
Rugosa, 2 years, 1 to 2 ft.....	1 25	10 00
“ 3 years, 3 to 4 ft.....	2 50	20 00

Our shrubs have all been transplanted.

RUBUS—	Ⓕ 10	Ⓕ 100
Odoratus (Flowering Raspberry), 2 to 3 ft.,	\$1 00	\$8 00
SAMBUCUS—		
Aurea (Golden Elder), 1 to 2 ft.....	1 25	10 00
“ “ “ 2 to 3 ft.....	1 50	12 00
“ “ “ 3 to 4 ft.....	1 75	16 00
Lasciniata, 2 to 3 ft.....	1 25	
SPIREAS—		
In variety, 2 to 3 ft., according to character and variety.....	1 00	8 00
In variety, 3 to 4 ft.....	1 25	10 00
Varieties—Argentea, Arguta, Billardii, Callosa alba, Callosa rosea, Douglassi rosea, Billardii alba, Prunifolia, Reevesii, Salicifolia alba, Salicifolia rosea, Tomen- tosa, Van Houttei.		
Bumalda, 9 to 15 in.....	1 00	7 00
“ 15 to 18 in.....	1 25	10 00
Anthony Waterer, 9 to 12 in., fine...	1 00	
“ “ 1 to 1½ ft., bushy..	1 50	12 00
“ “ 1½ to 2 ft.....	1 75	15 00
Collosa superba, 1 to 2 ft.....	1 25	8 00
Opulifolia, 1 to 2 ft.....	75	6 00
“ 2 to 3 ft.....	1 00	8 00
“ 3 to 4 ft.....	1 25	10 00
“ 4 to 5 ft.....	2 00	16 00
“ aurea, 1 to 2 ft.....	1 00	8 00
“ “ 2 to 3 ft.....	1 25	10 00
“ “ 3 to 5 ft.....	1 75	15 00
“ “ 5 to 6 ft.....	2 50	20 00
Thunbergii, 1 to 2 ft.....	1 00	8 00
“ 2 to 3 ft.....	1 50	12 00
SOPHORA—		
Japonica, 2 to 3 ft.....	1 50	10 00
“ 3 to 4 ft.....	1 75	15 00
STAPHYLEA COLCHICA—		
3 to 5 ft.....	1 50	12 00
STEPHANAUDRA FLEXUOSA—		
1 to 1½ ft.....	1 00	8 00
2 to 3 ft.....	1 25	10 00
STYRAX—		
Japonica, 1 to 2 ft.....	1 25	10 00
“ 2 to 3 ft.....	1 50	12 00
“ 3 to 4 ft.....	2 50	20 00
SYMPHORICARPUS—		
Racemosa (White Snowberry), 2 to 3 ft.,	1 25	10 00
“ “ “ 3 to 4 ft.,	1 50	12 00

SYMPHORICARPUS—

	₹ 10	₹ 100
Rubra (Red Snowberry), 2 to 3 ft.....	\$1 25	\$10 00
Variegata (Variegated-Leaved Snow- berry), 2 to 3 ft.....	1 25	10 00

TAMARIX—

Africana, 2 to 3 ft.....	1 00	8 00
“ 3 to 5 ft.....	1 50	12 00
Gallica, 3 to 5 ft.....	1 50	12 00
Germanica, 1 to 2 ft.....	1 00	8 00
“ 3 to 4 ft.....	1 50	12 00
Indica, 1 to 2 ft.....	1 00	8 00
“ 2 to 3 ft.....	1 25	10 00
“ 3 to 5 ft.....	1 50	12 00
Tetandra Purpurea, 3 to 4 ft.....	1 50	12 00

VIBURNUM—

Lantana, 1½ to 2 ft.....	1 00	8 00
“ 2 to 3 ft.....	1 50	12 00
“ 3 to 4 ft.....	1 75	15 00
Opulus Sterilis (Snowball), 2 to 3 ft....	1 00	8 00
“ “ “ 3 to 4 ft....	1 75	15 00
Opulus (Cranberry Tree), 1 to 1½ ft.....	1 00	8 00
“ “ “ 2 to 3 ft.....	1 25	10 00
“ “ “ 3 to 4 ft.....	1 75	
“ “ “ 5 to 6 ft.....	2 25	
Plicatum (Japan Snowball), 1 to 2 ft.....	1 25	10 00
“ “ “ 2 to 3 ft.....	2 00	16 00
“ “ “ 3 to 4 ft.....	3 00	25 00
Tomentosum, 1 to 2 ft.	1 50	12 00
“ 2 to 4 ft., large clumps...	4 00	

WEIGELA—

Leading varieties as named, 1 to 2 ft.....	1 00	6 00
“ “ “ 2 to 3 ft.....	1 25	8 00
“ “ “ 3 to 4 ft.....	1 50	12 00
“ “ “ 4 to 6 ft.....	2 50	20 00

Amabilis, Candida, Desboisii, Rosea,
Hortensis Rubra, Isoline, Symondsii,
Variegata, Lavalley, Van Houttei, Stelz-
nerii.

All our shrubs have been frequently transplanted.

Climbers.**ACTINIDIA—**

	₹ 10	₹ 100
Arguta, 1 year.....	\$1 00	\$8 00
“ 2 years, very strong.....	1 50	12 00
“ 3 years, “ “.....	2 00	15 00
Polygamma, 4 years.....	2 00	

AKEBIA—

Quinata, 2 years.....	75	5 00
“ 3 years.....	1 00	6 00

AMPELOPSIS—		Ⓕ 10	Ⓕ 100	Ⓕ 1,000
Engelmannii, 1 year.....		\$1 00	\$6 00	
“ 2 years		1 25	8 00	
“ 3 years.....		1 50	10 00	
Variegated-Leaved (<i>A. varie-</i> <i>gata</i>), 2 years.....		1 00	6 00	
Variegated-Leaved (<i>A. varie-</i> <i>gata</i>), 3 years		1 25	8 00	
Japan (<i>A. Veitchii</i>), 1 year, pot grown		75	6 00	\$50 00
Japan (<i>A. Veitchii</i>), 2 years, pot grown		1 00	8 00	75 00
Quinquefolia (Virginia Creeper), 1 year.....		75	5 00	
Quinquefolia (Virginia Creeper), 2 years.....		1 00	7 00	
Quinquefolia (Virginia Creeper), 3 years.....		1 25	8 00	
BIGNONIA—			Ⓕ 10	Ⓕ 100
Radicans (Trumpet Creeper), 1 year....		\$0 75	\$6 00	
“ “ “ 2 years....		1 00	8 00	
“ “ “ 3 years....		1 50	10 00	
Grandiflora, 2 years.....		2 50	20 00	
CINNAMON VINE.....		50	4 00	
CLEMATIS—Best large flower- ing sorts.		Ⓕ 10	Ⓕ 100	Ⓕ 1,000
Baron Veillard, Duchess Edinburg, Gen'l Grant, Graveolens, Henryii, Jackmanii, Madam Edou- ard Andre, Ramona.....		\$4 00	\$30 00	
Paniculata, from 3-in. pots.....		75	5 00	\$35 00
“ from 4-in pots.....		1 00	6 00	50 00
Paniculata, 2 years, from open ground.....		1 25	7 00	60 00
Paniculata, 3 years, strong, from open ground.....		1 50	9 00	75 00
CELASTRUS—				
Scandens, 2 years.....		1 00	8 00	
HONEYSUCKLE (Lonicera)—				
Brachypoda, strong.....		1 00	6 00	
Golden-Leaved (<i>L. aurea reti-</i> <i>culata</i>), 1 year.....		1 00	6 00	
Golden-Leaved (<i>L. aurea reti-</i> <i>culata</i>), 2 years.....		1 00	8 00	
Evergreen (<i>L. sinensis</i>), 1 year...		75	6 00	
Evergreen (<i>L. sinensis</i>), 2 years		1 00	7 00	65 00

	₹ 10	₹ 100	₹ 1,000
HONEYSUCKLE (Lonicera)—			
Halleana, 1 year, strong.....	\$0 75	\$5 00	\$40 00
“ 2 and 3 years, very strong.....	1 00	6 00	50 00
Scarlet Trumpet, 1 year.....	1 75	12 60	
“ “ 2 years.....	2 00	15 00	
IVY IRISH, 1 year.....	1 00	6 00	50 00
“ “ 2 years.....	1 25	10 00	75 00
English, 1 year.....	1 00	6 00	50 00
JASMINUM—			
		₹ 10	₹ 100
Nudiflorum, 1 to 2 ft.....	\$1 00		\$7 00
“ 2 to 3 ft.....	1 50		10 00
Officinalis, 1 to 2 ft.....	1 00		8 00
LYCIUM—			
Chinese (Matrimony Vine), 1½ to 2 feet..		75	6 00
PERIPLOCA—			
Græca (Silk Vine) 3 years.....	1 25		10 00
ROSES—			
	₹ 10	₹ 100	₹ 1,000
Baltimore Belle, 1 year.....	\$1 50	\$10 00	
Prairie Queen, 1 year.....	1 00	8 00	
“ “ 2 years.....	1 25	10 00	
Crimson Rambler, 1 year, strong, from open ground.....	1 00	8 00	\$75 00
Crimson Rambler, 2 years, strong, from open ground.....	1 50	12 00	
Manda's Triumph, 2 years....	1 00	8 00	
Pink Roamer, 2 and 3 years...	1 00	8 00	
Setigera, 2 years.....	1 25	10 00	
South Orange Perfection, 2 and 3 years.....	1 00	8 00	
Universal Favorite, 2 and 3 years.....	1 00	8 00	
Wichuraiana, 1 year.....	75	6 00	45 00
“ 2 and 3 years...	1 00	7 00	60 00
WISTARIA—			
		₹ 10	₹ 100
Magnifica, 2 and 3 years, strong.....	\$2 00		\$15 00
Sinensis, 2 years, strong.....	2 50		20 00
“ 3 years, 2 to 3 feet.....	3 00		25 00
“ alba, 1 year, grafts, 6 to 12 in..	1 75		12 00
“ “ 2 years, strong.....	2 50		20 00
“ “ 3 years, 2 to 3 ft.....	3 00		25 00
Frutescens, 3 years, transplanted.....	1 75		15 00
Multijuga, 2-year grafts, strong.....	2 00		20 00
“ 3 years, 2 to 3 ft.....	3 00		25 00

Eulalias, Pampas Grass, Etc.

	₹ 10	₹ 100	₹ 1,000
ARUNDA—			
Donax variegata.....	\$3 50	\$25 00	

EULALIA—	Ⓕ 10	Ⓕ 100	Ⓕ 1,000
Variegated Striata, divided			
clumps.....	\$0 75	\$4 00	\$30 00
Gracillima, divided clumps.....	1 00	8 00	60 00
PAMPAS GRASS, strong			
clumps.....	2 50	20 00	

Hibiscus, Crimson Eye (Marshmallow).

Strong transplanted plants, \$1.25 per 10, \$10 per 100.

Vincas.

Minor, two years, strong, 50c. per 10, \$3 per 100, \$20 per 1,000.

Iris.

	Ⓕ 10	Ⓕ 100
German, named varieties.....	\$0 75	\$5 00
Japanese Kaempferi, good assortment.....	1 00	8 00

Fruit Department.

NOTE.—In filling orders at the prices annexed, we will consult the wishes of customers as far as practicable in the selection of varieties.

PEARS—	Ⓕ 10	Ⓕ 100
Standard leading popular varieties, assorted,		
$\frac{5}{8}$ to $\frac{3}{4}$ in. in diameter, 5 to 6 ft.....	\$2 50	\$20 00
Standard, $\frac{3}{4}$ to $\frac{7}{8}$ in. in diameter, 5 to 7 ft...	3 00	25 00
Dwarf, leading popular varieties, 2 and 3		
years, $3\frac{1}{2}$ to 5 ft.....	2 00	15 00

CHERRIES—		
Hearts and Bigarreaus, leading va-		
rieties, 2 years, 5 to 7 ft.....	4 00	30 00
Dukes and Morellos, standard, $4\frac{1}{2}$ to 7		
ft., 2 years.....	4 50	30 00

APRICOTS AND NECTARINES—		
Leading varieties	2 50	20 00
Russian, in variety, 4 to 5 ft.....	2 50	20 00

	Ⓕ 10	Ⓕ 100	
PEACHES—			
First class, 4 to 6 ft.....	\$1 50	\$8 00	
PLUMS— On plum stock, 4 to 6 ft.....	3 00	25 00	
QUINCES—			
Orange, 2 to 3 ft.....	1 50	12 00	
“ 3 to 4 ft., extra.....	2 50	20 00	
Champion, 2 years, very fine, branched, 3½ to 4 ft.....	2 50	20 00	
Meech's Prolific, 2 years, first class, 3 to 4 ft.....	2 50	20 00	
MULBERRY—			
Downing, 3 to 4 ft.....	1 50	10 00	
“ 4 to 6 ft.....	2 00	15 00	
“ 6 to 7 ft.....	4 50		
New American, 4 to 6 ft.....	2 00		
CHESTNUTS—	Ⓕ 10	Ⓕ 100	Ⓕ1,000
American, 1 to 2 ft., 2 years.....	\$1 00	\$5 00	\$40 00
“ 2 to 3 ft., 2 years.....	1 25	10 00	75 00
“ 3 to 4 ft.	1 75	15 00	
Spanish, 2 to 3 ft., 2 years.....	1 25	10 00	
Numbo, grafted, 2 to 4 ft.....	10 00	80 00	
Japan, grafted, 3 to 4 ft.....	10 00	80 00	
“ “ 4 to 6 ft.....	12 50	100 00	
Paragon, 3 to 4 ft., grafted.....	10 00	80 00	
Dwarf (<i>Chinquapin</i>), 2 to 3 ft... 2 50			
FILBERTS—	Ⓕ 10	Ⓕ 100	
English, 4 to 5 ft.....	\$1 75	\$15 00	
“ 5 to 6 ft., bushy.....	2 50	20 00	
“ 6 to 8 ft., bushy.....	4 00		
HICKORY—			
Shellbark, 2 to 3 ft.....	4 00	35 00	
WALNUTS—			
Black, 4 to 6 ft.....	2 50		
White, 6 to 8 ft.....	3 00		
English, 1 to 2 ft.....	1 00	8 00	
“ 2 to 3 ft.....	1 50	12 00	

Grape Vines.

Our vines are strong, well-rooted and fine, and give excellent satisfaction. Special quotations on assorted lists of several varieties, twenty-five or more of a kind, or by the thousand. All 2 years No. 1.

	Ⓕ 10	Ⓕ 100
Agawam, Clinton.....	\$1 00	\$6 00
Brighton	1 25	10 00
Champion, Catawba.....	1 00	6 00
Concord	1 00	6 00
Diana, Delaware	1 25	10 00
Duchess	1 50	12 00
Empire State, Wyoming Red.....	1 25	10 00
Hartford Prolific, Iona.....	1 00	8 00
Isabella, Salem, Martha.....	1 00	8 00
Jefferson.....	1 50	14 00
Lady.....	1 25	10 00
Lady Washington.....	3 00	25 00
Moore's Diamond, Moore's Early.....	1 50	10 00
Niagara, Pocklington.....	1 25	8 00
Telegraph, Vergennes.....	1 25	10 00
Wilder, Worden.....	1 25	8 00

Esulent Roots.

ASPARAGUS (all strong, fine, 2-year roots, except noted)—

	Ⓕ 100	Ⓕ 1,000
Barr's Mammoth.....	\$0 75	\$3 00
Conover's Colossal.....	75	3 00
Columbian White.....	1 00	3 50
Donald's Elmira.....	1 00	3 50
Palmetto, 1 year, strong.....	75	3 00

RHUBARB—

Myatt's Linnæus.....	6 00	45 00
----------------------	------	-------

Small Fruits.

RASPBERRIES—

	Ⓕ 10	Ⓕ 100	Ⓕ 1,000
Golden Queen.....	\$0 75	\$2 50	\$18 00
Cuthbert and Souhegan.....	50	2 00	15 00
Gregg.....	50	2 00	18 00
Japan Wineberry.....	50	3 00	

BLACKBERRIES—

Erie.....	75	2 50
Kittatinny.....	75	2 50
Rathbun	1 00	5 00
Snyder.....	75	2 50
Wilson's Early.....	75	2 50
Wilson's Junior.....	75	2 50

All strong, root-cutting plants.

	Ⓕ 10	Ⓕ 100
DEWBERRY (Lucretia)	\$0 75	\$2 50

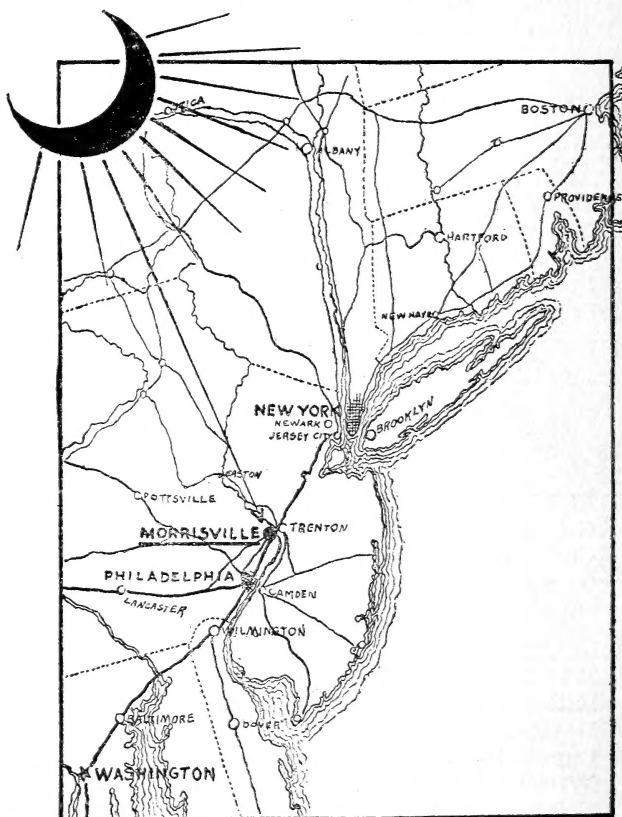
GOOSEBERRIES—

	per 10	per 100
Houghton, 2 years.....	\$1 00	\$4 00
Downing's, 2 years, very fine.....	1 00	4 00
Industry, 2 and 3 years, strong.....	1 50	12 00
Josselyn.....	2 00	12 00

CURRANTS—

	per 10	per 100	per 1,000
Cherry, La Versailles, White Grape, Victoria, and Red Dutch, 2 years, first-class.....	\$0 75	\$4 00	\$35 00
Black Naples.....	75	4 00	35 00
Lee's Prolific.....	1 00	5 00	40 00
Fay's Prolific, 1 year.....	50	4 00	30 00
“ “ 2 years, extra fine..	1 00	5 00	40 00

LOCATION OF OUR NURSERIES.



THE GLENWOOD NURSERIES

are at Morrisville, Pennsylvania, opposite Trenton, N. J.,
60 miles from New York, 30 miles from Phila.

Trenton, Morrisville and Yardley Trolley Cars pass Nursery,
leaving either point every forty minutes.