

Historic, Archive Document

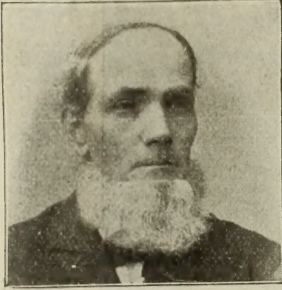
Do not assume content reflects current scientific knowledge, policies, or practices.

62123

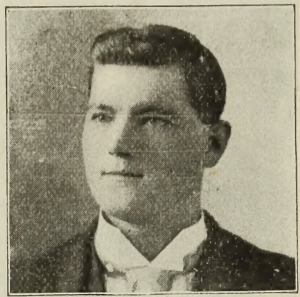
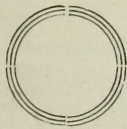
LIBRARY
RECEIVED
U. S. Department of Agriculture

Season of 1901.

Catalogue of Seed Corn



JAMES RILEY.



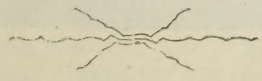
MARLEY RILEY.

Including Other

Grain Announcements

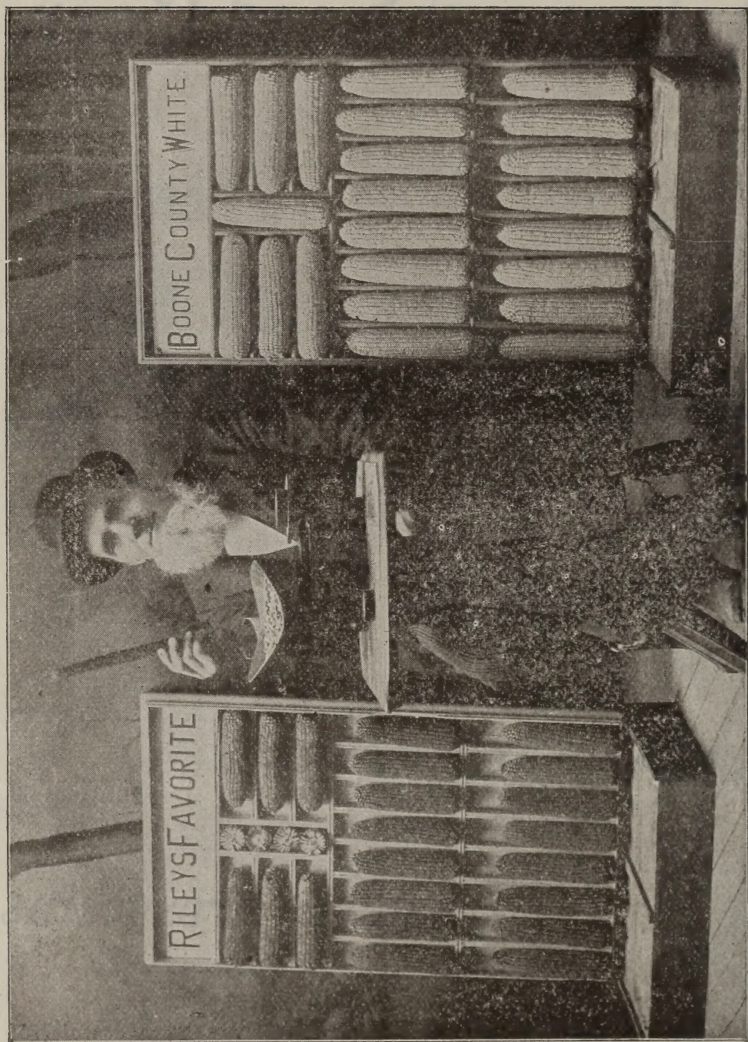
And

Berkshire Prospectus



James Riley & Son, } Thorntown, Boone Co., Indiana.
[MARLEY RILEY.]

THORNTOWN ENTERPRISE PRINT.



This corn was exhibited at the World's Fair. It scored the highest of any corn on exhibition. On the scales will be seen the shell corn from one ear of Riley's Favorite. The ear before being shelled weighed 18 ounces. After it was shelled the cob I hold in my hand weighed $1\frac{1}{4}$ ounces, and the shell corn on the scales $14\frac{2}{3}$ ounces. I have a Medal and Special Diploma from the World's Fair, awarding me the highest merit,

Seed Catalogue.

Season of 1901.

RILEY'S FAVORITE.

Riley's Favorite Pedigreed Field Corn. The peculiar merit, point or excellence, that we claim for it, is its superior feeding quality, and the great amount of shell corn to the cob. Father originated this corn seventeen years ago by hybridizing the Golden Yellow, a very large late corn, with Sibley's Pride of the North, a very deep grain early corn. Since that time each year we have improved it by the following method. We select a plot containing one-half an acre, entirely away from any other corn, supplying the soil with all the necessary fertility, to perfectly develop the corn, then give thorough cultivation, and as soon as the tassel begins to appear, we go through the plot and remove all the barren and diseased stalks of any kind, thus leaving nothing but the most perfect and healthy stalks. This gives us a pedigreed corn, as we know every grain on the ear is fertilized by a healthy, productive tassel. In selecting

the seed to plant the plot, we have avoided extremes either way, but have selected as our typical or standard ear, one of medium size and from a stalk of medium height, making the special point to select as small a cob as possible, and as perfectly grained out over tip and butt. The cob of this corn is so small that it dries out quickly in the fall and leaves the germ perfect and sweet. A large cobbled corn contains so much moisture, that when bulked in the crib in the fall it sours the germ and destroys, in a measure, its feeding quality. The germ is the most nutritious part of the grain. The cob of Riley's Favorite is so small that it quickly dries out and leaves the germ sound and sweet. We have prepared and fire dried a large amount of this corn for sale this spring. Method of fire drying is this: We have a large dry house built expressly for drying seed corn. We select our corn early, before any freeze in the fall, then thoroughly dry it, use natural gas, then keep it perfectly dry. This holds the powers of the germ till spring and when it is planted it will germinate under very unfavorable circumstances, and will grow off like a healthy vigorous calf or pig, and be a foundation for a good crop. It is never safe to depend on air dried corn for seed; the corn may be perfectly dry in the fall and then fail to grow in the spring. The winters in the corn belt are so changeable, a few weeks of extreme cold weather is followed by a thaw out, and everything is damp and air full of moisture. The germ of corn being porous, absorbs moisture. Then another cold wave comes suddenly, before the moisture is again evaporated. The result is the germ is either partially or wholly destroyed, and its powers are so weakened that it will not grow only under favorable circumstances. When first planting fails to grow it is crippled for that season, but with fire dried corn nothing to risk. The large number of premiums it has taken at the leading fairs of the United States, proves it to be a superior corn. It took first premium for the Yellow Dent at the Prairie Farmers' Great Corn Show at Chicago in 1885, where it had 150 entries brought from 15 different states to compete against. It again took second premium for Yellow Dent at the Prairie Farmers' Great Corn Show at Chicago in 1886, the largest show ever held in any country. It also took the highest award for yellow corn at the World's Fair, Chicago.

Price, per peck, **60** cents; half bushel, **\$1.00**; one bushel, **\$1.50**; two bushels, **\$2.50**; four to ten bushels, **\$1.25** per bushel; twelve to twenty-five bushels, **\$1.10** per bushel; twenty-five to fifty bushels, **\$1.00** per bushel. Sacks **15** cents each. OUR TERMS are cash with order, large or small. Money may be sent by postoffice money order, express money order, registered letter, express or New York draft. Amounts less than ONE DOLLAR may be sent in stamps. No seed sent C. O. D. Please give full shipping instructions whether by Express or Freight. Where no instructions we will use our own judgment as to the best way to ship. For all amounts over one bushel, sacks, **15** cents; one bushel and under, sacks FREE. Samples, **10** cents; sample ear of either kind, **20** cents, by mail; sample ear of all kinds, by express, not prepaid, **50** cents. When ordering write your name, postoffice, county and state plainly.

LARGE IMPROVED LEAMING.

This is a beautiful yellow corn, and immensely yieldly. It has been grown and improved for several years by one of the best farmers in Champaign County, Ill. It has been grown in comparative tests with fifty or more varieties at Illinois Experiment Station for several years and has outyielded any other variety, except Boone County White. It has a typical stock, being thick and strong at the base and tapering short with ear close to the ground and joints short, giving a great amount of fodder. The cob is medium in size and uniformly red; the grain is deep and a beautiful bright yellow and extremely solid and heavy. It weighs shelled 60 pounds per stroke bushel. It has outyielded any other corn in this neighborhood. It is medium early. Our stock of corn this year is as good as we ever saw. It was selected early and thoroughly fire dried and we are keeping it dry. Will guarantee it to grow strong and vigorous. Prices and terms same as for Riley's Favorite.

BOONE COUNTY WHITE.

This is the best white corn we ever grew. We have been improving it twenty-one years. It is a pure, white corn, all white cobs, grains deep, thick and meaty, well filled out over butt and tip of ear, ears long and uniform from butt to tip, stalk of medium height, thick and strong, seldom ever blows down, is remarkably yieldly. We have several times raised 100 bushels per acre of it. It is regarded here by millers to be the best bred corn in the country. We have bred it so carefully for so many years that there are very few nubbins, unless it is planted too thick in the hill. If planted properly it will nearly all be large ears, no chaffy corn. It has never been beaten in Indiana. It took first premium at the Prairie Farmers' Great Corn Show, Chicago, in 1885. It also took second premium at the Farmers' Great Corn Show in 1886, having to compete with fifteen states, including Kansas and southern states, where large corn can be grown. It also took highest awards at the World's Fair, and took highest award at the corn show at Indiana State Fair in 1900. Ten acres of Boone County White last year yielded 1080 bushels. For six years the Boone County White has outyielded all other kinds at the Illinois experiment station, in 1896 it yielded 107 bushels per acre. In 1897 it yielded 100 bushels per acre. We won first premium on Boone County White at the Indiana State Fair last season. It is medium early and is especially adapted to rich, black land. We have fire dried a large amount of corn this year. Prices and terms same as for Riley's Favorite.

DUNGAN'S WHITE PROLIFIC.

This is a remarkably fine, large, white corn. It has been improved and brought into its present high standard by W. S. Dungan, of Franklin, Johnson county, Indiana. Mr. Dungan has improved this corn by a careful system of scientific culture. It is a medium early variety and exceedingly prolific, often yielding 100 bushels per acre, a good season, on good land. It took first premium at the Indiana State Fair five years. It is perfectly pure white, all white cobs. Price and terms same as for Riley's Favorite.

THE MICHIGAN WONDER OATS.

This is the best oats we ever grew and is especially well adapted to grinding for pig feed, as the hull is very thin and the oats are extremely heavy. When the hot sun struck our oats two years ago in Boone County, the Michigan Wonder Oats made a wonderful yield and weighed 42 pounds per stroke bushel. We obtained our seed from Mr. Harry Hammond, of Decatur, Mich., and as he was the originator we give his description of it. "In the Michigan Wonder Oat, introduced by me in 1895, I offer without a single exception, the heaviest yielding, finest quality and earliest white oat ever offered the American farmer. It is a decided acquisition to the Oat family, and will soon prove itself to be the most popular White Oat in America. I think Michigan Wonder is the heaviest oat grown in America, it weighing 40 to 45 pounds per bushel. My entire crop of Michigan Wonder, last year, when threshed, weighed 43 pounds per bushel, machine measure. When cleaned, as I clean my seed oats for shipping, they weigh 50 pounds per bushel. The straw is of medium length, growing very strong. Michigan Wonder Oats have never been known to lodge, the straw being so stiff that it will stand almost any storm. The hull is very thin, making them most desirable for feeding and milling purposes. I think it is the earliest oat I have ever grown. Sown April 15, they were harvested early in July, long before the heavy rains that so greatly damaged the oat crop."

PRICE:—By mail, post paid: One pound, **20** cents; three pounds, **40** cents. By express or freight: Peck, **30** cents; one bushel, **75** cents; five bushels, **\$3.00**; ten bushels, **\$6.00**; twenty-five bushels or more, at **50** cents per bushel. Oat bags FREE.

Special Notice.

We have built another Large Dry House, especially for White Corn. No yellow corn is kept in this house. We have **2,000** bushels of the best Boone County White that we ever grew; grown on a farm where no yellow corn was planted. Then in our Old Dry House **2,000** bushels of Riley's Favorite and **1,000** of Large Improved Leaming. This is the finest lot of Yellow Corn we ever grew. It was grown on a farm where no white corn was planted, every precaution taken to prevent mixture; but notwithstanding all this care, our corn is not absolutely pure, as we find it impossible to make it so. It is pure enough, however, for all practical purposes. Sometimes in hauling manure, there may be a few grains of corn, other than the kind you desire to plant in the field, where the manure is spread, and some of the grains germinate, grow among the corn desired as volunteers, and one white grain will mix the yellow for twenty or more feet around. Of course we throw out all mixed ears we find, but it is impossible to get all, so that perhaps one grain in 1,000 may be tinged with yellow. Last year demonstrated more than ever the reliability and superiority of Fire Dried Corn. We did not hear of a single instance where Fire Dried failed to grow.

JAMES RILEY & Son, Thorntown, Ind.

(MARLEY RILEY.)

Special Notice.

Father has devoted the best part of his life for the improvement of corn. He was the originator of the Boone County White and Riley's Favorite, and has by careful selection and scientific breeding, brought it to its present high standard of excellence and great popularity. They are now two of the most popular varieties of corn in existence. My father has left the seed corn business in my hands and I will endeavor to push it forward to the best of my ability. I have assisted him in the business all my life and have been a full partner with him for the past year. I have had a great deal of experience in the business. I have purchased the farm formerly owned by my father containing the dry houses and are well equipped for handling seed corn. The corn we have to offer this season is the best corn we ever had. It is thoroughly fire dried and we fully guarantee it to grow and give satisfaction. I want to thank our many old customers for their past patronage and ask for a continuance of the same.

Respectfully,

Marley Riley.



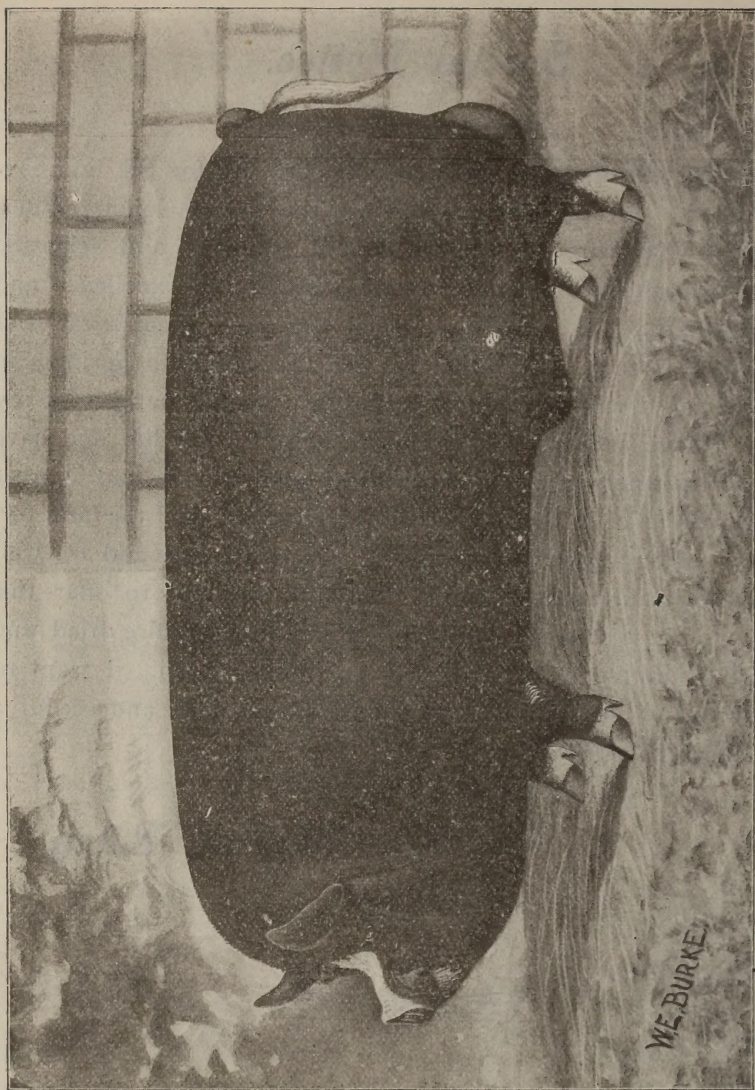
Chickens.

Light Brahmas, Barred Plymouth Rocks, and Brown Leghorns. Three of the best kind of chickens for the farmer. Eggs in season. **\$1.25** for **15**, or **\$2.00** for **30**. Price of Cockerels, **\$1.00** to **\$2.00** each.

James Riley & Son,

(MARLEY RILEY.)

Thorntown, Boone County, Ind.



STARLIGHT, 47728, HEAD OF OUR HERD.

Our main specialty is the BERKSHIRE HOG. Our father bred Berkshires for 34 years, and devoted the best part of his life for the improvement of the breed. We have assisted him in the business ever since we were old enough to carry a swill pail. We have retained all the best animals in the herd and will endeavor to push the business forward to the best of our ability. We have on hand now some of the best fall pigs we have ever raised. They are sired by Starlight 47728, Premier King and King Malvy and out of such sows as Princess Ulalah 46585, Ruth 47960, Lady Lee 43842, Ella Lee 46581, Mattie Lee and others just as good. We have also bred a number of sows for early spring farrow, such as Snell's Highlight XV, Beautiful Star, Rosa M., Baron Lady III, Princess R. IV., Daisy Lee, Lady Starlight and many others including those named above as having fall litters. We are booking orders for SPRING PIGS and we think we can furnish our customers something good from such a grand lot of sows. Our herd is headed by the great boar, STARLIGHT, assisted by Royal St. Nick, one of the most promising we have ever owned. We think he will make the best show boar we ever had in our herd, and he surely will breed right, for he is built right. He was bred by N. H. Gentry, Sadalia, Mo. We do not think STARLIGHT needs any introduction. He is well known by breeders all over the United States. We consider him the best breeding boar we ever owned.

OUR BERKSHIRE FIRM IS

JAMES RILEY'S SONS, MARLEY RILEY,
HOWARD RILEY.