

Historic, Archive Document

Do not assume content reflects current scientific knowledge, policies, or practices.

62.57

LIBRARY
RECEIVED
★ ★
U. S. Department of Agriculture.

--- FALL 1901 ---

ILLUSTRATED · DESCRIPTIVE · CATALOGUE ·

VILLAGE NURSERIES

Jos. H. Black, Son & Co.
PROPRIETORS

HIGHTSTOWN, NEW JERSEY.

Guarantee and Condition of Sale.

While we exercise the greatest care to have all trees, shrubs and plants sold by us true to name and free from disease, and hold ourselves prepared to replace, on proper proof, all that may prove to be otherwise, we do not give any warranty, expressed or implied, with respect to them; and all such goods are sold upon the express condition and understanding that in case any of them prove to be untrue to name, unhealthy or otherwise defective, we shall not be held responsible for a greater amount than the original price of the goods.

ADVICE TO CORRESPONDENTS.

Remit by Money Order on Hightstown, N. J., Registered Letter, Draft, or Express Money Order.

Address all letters, JOS. H. BLACK, SON & CO., HIGHTSTOWN, N. J.

Directions for Ordering.—Write your name and address plainly, never omitting to give Post Office address, County and State. No matter how often you write follow the above directions. Always state distinctly the size and grade of stock ordered, as per the grades given in this Catalogue. We cannot change the grades from those given. **Be sure to give directions how to ship, whether by Mail, Express or Freight.** When these conditions are not complied with, we will use our own judgement and ship the way we think best. Keep a correct copy of the order so that when the stock arrives you will know exactly whether you get what you have ordered.

Prices in this Catalogue do away with all previous quotations. The prices are for the quantities named, but half-dozen, fifty and five hundred will be supplied at dozen, hundred and thousand rates, respectively. In ordering small fruits, single plants of a variety cannot be supplied at dozen rates. Payments invariably in advance. Goods sent by express C. O. D., only when one-half of the amount is sent with order.

Packing.—All goods are packed free. Notwithstanding this fact, we use the utmost care and pack according to the distance and to our customers' best interest. Everything is labeled.

Shipping.—We deliver all goods free at Freight and Express office at Hightstown, after that they are out of our control and we are not responsible for them. State plainly to what points goods should be sent.

Claims.—All claims must be made immediately upon receipt of goods, at which time they will be carefully considered and adjusted.

Substitution.—Where no instructions in this respect accompany the order, we shall feel at liberty to substitute other varieties as nearly similar as possible. If the selection of varieties is left entirely to us, we shall send only such kinds as are acknowledged to give general satisfaction.

Shipping Season.—Our packing season commences in the Fall at 15th of October, and lasts as long as safe to ship, and in the Spring about March 1st, and continues until about the 15th of May.

How Far do we Ship?—We can and have shipped to all parts of the United States, Canada and Europe. Having shipped plants in good condition to Australia and New Zealand, we feel assured that we can ship to all parts of the World.

Trees and Plants by Mail.—We make a specialty of filling Mail orders, and we call your attention to the prices given in this Catalogue on goods sent by Mail to any part of the Country. **Positively we cannot send any stock by Mail unless it is so quoted in Catalogue.**

Trees by Express or Freight.—The weight of trees and plants varies with sizes and varieties. When packed their average weight will be about as follows: Apple, Pear, Plum, Cherry, and Peach trees, first-class, 150 lbs. per 100; second-class, 100 lbs. per 100; Grapes, Currants, and Gooseberries, 2 yrs., 30 lbs. per 100; Blackberries and Red Raspberries, 10 lbs. per 100; Black Raspberries, 5 lbs. per 100; Strawberries, 30 lbs. per 1,000.

Acknowledging Orders.—We acknowledge all orders when received, and if you do not hear from us after a reasonable length of time, please duplicate your order, stating how much money you sent, and how it was sent, and then, being sure to sign your name, giving Post Office, County and State every time you write.

New Pedigree Seedling Strawberries

The best strawberries yet introduced.
Ready for shipment October 10th.

For full description see pages 3 to 11 of last spring's catalogue.

Prices of Pedigree Strawberries :
50c. per dozen. \$1.00 per 100.

List of Pedigree Strawberries.

- Joe—Late, very large and prolific.
- *Carrie Silvers—Mid-season to very late.
- *Stella—Late.
- *Reba—Mid-season to late.
- Robbie—Very late and beautiful.
- *Nettie—Very late and large.

General List of Strawberries.

As the plants are still growing we *positively* cannot ship them before November 1st, except at the following prices for all varieties on general list.

50c. per dozen. \$1.00 per 100.

Price after November 1st on all kinds are 35c. per dozen. Hundred prices are given below.

NOTE--The varieties marked by an asterisk (*) are Imperfect Flowering Varieties and need another variety beside them to fertilize their blossom.

LIST OF VARIETIES. Per 100.

Beder Wood	\$0 50
Brandywine	50
*Bubach No. 5.....	50
Champion of England	50
Chas. Downing.....	50
Clyde.....	50
*Crescent Seedling	40
Excelsior.....	50
Enhance	50
Gandy	50
Glen Mary	60
Gladstone (New).....	50
*Greenville.....	50
*Haverland	50
Johnsons Early.....	50
Lady Thompson	50
Lovett's	50
Marshall	60
Meek's Early.....	50
Michel's Early	50
Nick Ohmer	50
Nina (New)	1 00
Ocean City	50
Pride of Cumberland.....	50
Sharpless.....	50
Success (New Early).....	50
Tennessee Prolific	50

*Warfield.....	40
Wm. Belt.....	50
Wilson	50

Strawberry-Raspberries.

Ready to ship at any time.

Price, 10c. each; 50c. per dozen; \$1.00 per 100.

Japan Wineberries.

Not ready for shipment before Nov. 1st.

Price, 10c. each; 50c. per dozen; \$1.00 per 100.

Raspberries.

Not ready for shipment before Nov. 1st.

Prices by freight or express.

Prices on 1000 lots on application.

LIST OF VARIETIES.	Per doz.	Per 100.
Miller Red (Suckers)	\$0.40	\$1.00
Columbian (Tips).....	50	1.50
Progress (Tips)	40	1.00
Kansas (Tips)	40	1.00
Golden Queen (Suckers).....	50	1.25
Marlboro (Suckers)	50	1.00
Brandywine (Suckers).....	50	1.00
Turner (Suckers)	40	1.00
Souhegan (Tips).....	40	1.00
Cuthbert (Suckers).....	40	1.00
Cumberland (Tips) <i>new</i>	75	2.00

Currants.

Ready for shipment at any time.

Varieties.

Filler, White Grape, Red Dutch, North Star, Cherry, La Versailles, Victoria, Fays Prolific and Black Champion.

Prices, by freight or express.

Prices on 1000 lots on application.

	Per Doz.	Per 100
1 year	\$0 50	\$2 00
2 year	75	3 50

Gooseberries.

Ready for shipment at any time.

Prices by freight or express.

Prices on 1000 lots on application.

List of Varieties	Per doz.	Per 100
Houghton 2 year	\$0 60	\$2 50
Downing, 2 year No. 1.	75	4 00

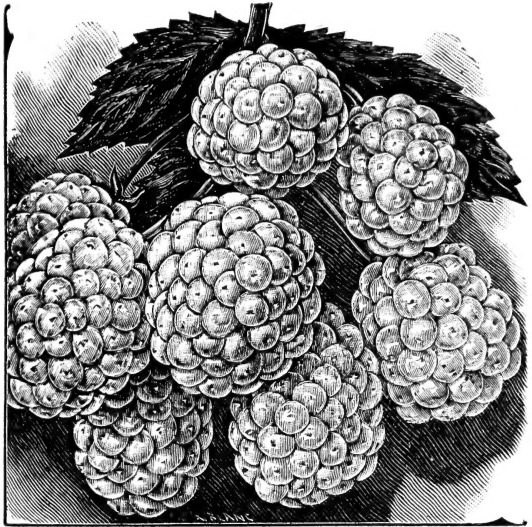
Blackberries.

Iceberg.—"The well-known Lawton is, when ripened, unsurpassed, and very generally known as the most productive market berry. One of the great grandparents of "Iceberg" was Lawton. The first generation of seedlings, when crossed with Crystal White, was all black; the second, also, though varying much in other respects; but the third produced this wonderful plant, bearing the snowiest white berries ever seen."

"Very little attention was paid to the cross-bred descendants until this berry was discovered among its black relatives, with the canes bending in various directions with their load of delicious, transparent white berries."

"Clusters larger than those of Lawton, berries large, early, sweet, tender and melting throughout, though as firm as Lawton is when ripe."

Prices.—By mail, postpaid, 50c. per dozen; \$1.25 per 100. By freight or express 50c. per dozen; \$1.00 per 100.



Iceberg.

General List.

Ready for shipment after October 15th.

Prices by freight or express.

LIST OF VARIETIES.	Per doz.	Per 100.
Early Harvest.....	30	1.00
Erie	\$0.40	\$1.00
Eldorado	50	1.50
Kittatinny	40	1.00
Lawton	40	1.00
Lucretia Dewberry	40	1.00
Minnewaska.....	40	1.25
Ohmer.....	50	1.25
Rathburn	75	2.00
Snyder.....	40	1.00
Taylor	40	1.00
Wilson Early	40	1.00
Wilson Junior.....	40	1.00
Wachusett Thornless	30	1.00

Grapes.

Ready for shipment at any time.

Eaton, Green Mountain and Ulster Prolific.

Prices, by freight or express.

	Each	Per doz.
1 year	\$ 20	\$2 00
2 year	25	2 50

Agawam, Bacchus, Brighton, Catawba, Concord, Delaware, Moore's Early, Diamond, Niagara, Pocklington, Wyoming Red, Salem, Wilder and Worden.

	Each	Per doz.
1 year	\$0 10	\$0 75
2 year	15	1 50

Fruit Trees.

General Information Regarding Fruit Trees.

Transplanting.—The proper season for transplanting fruit trees is during the months of October, November and December, in the Autumn; and February, March and April, in the Spring; or at any time after the cessation of growth in Autumn until they commence budding in the Spring. When the ground is prepared, dig the holes sufficiently large to admit the roots, giving them their natural positions as near as practicable. Use the surface soil for filling in, having it first well pulverized. Avoid deep planting, for it is decidedly injurious to the tree, and when excessive may cause its death, or a weak and feeble growth.

Care of Trees That are Dry or Frozen When Received,

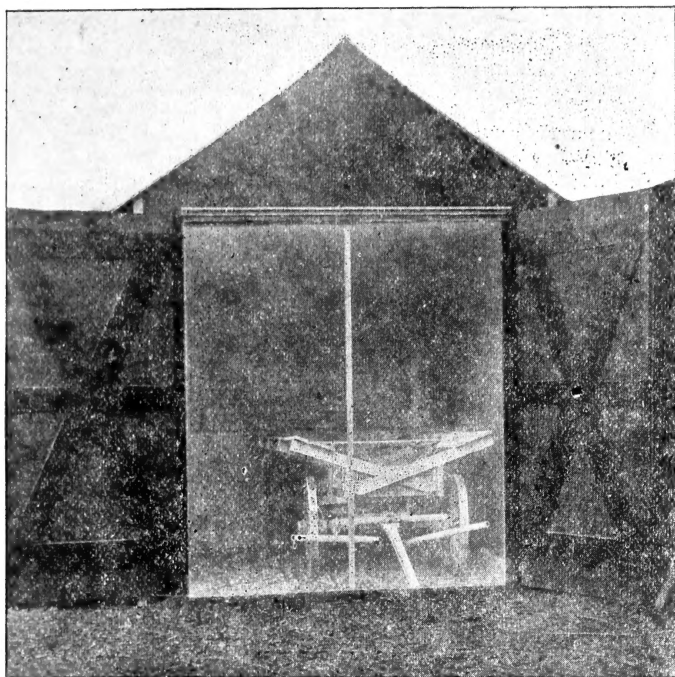
It sometimes happens that the trees are received when in a frosted state; but if they are properly managed they will not be injured by it. Let the package be put unopened, in a cellar, or some such place, cool, but free from frost, until it is entirely thawed, when it can be unpacked, and either planted or placed in a trench until convenient to plant. If they should come to hand late in the Spring, and appear much dried, plunge the bundle or box into a pool of water, there to remain twenty-four hours, or more if very much wilted. After which it should be unpacked, and the roots and half the stems should be buried in soil made quite wet by watering; there let them remain until the bark expands to its natural fullness, when they may be taken up and planted as before directed.

Pruning When Planting.—However carefully trees may be taken up, they will lose a portion of their roots, and if the whole top is allowed to remain the demand will be so great upon the roots that, in many cases, it will prove fatal to the tree. If the tree has lost the greater portion of its roots, a severe shortening in of the branches will be necessary; if only a small portion of the roots have been cut off, more moderate pruning will be sufficient.

Care of the Young Trees.—Grass should not be allowed to grow about young plants or trees. The ground should be cultivated thoroughly. If the ground is poor it should be enriched with surface applications of manure. Pruning should be varied according to the condition of the tree and the purpose of the planter. It should be done regularly every spring, before the buds swell any. In this way the removal of large branches will be avoided.

Guarantee and Condition of Sale.

While we exercise the greatest care to have all trees, shrubs and plants sold by us true to name and free from disease, and hold ourselves prepared to replace, on proper proof, all that may prove to be otherwise, we do not give any warranty, expressed or implied, with respect to them; and all such goods are sold upon the express condition and understanding that in case any of them prove to be untrue to name, unhealthy or otherwise defective, we shall not be held responsible for a greater amount than the original price of the goods.



CAUTION.—Protect yourself from San Jose Scale.

Before purchasing nursery stock no matter from whom nor whence it comes nor how many entomologists certificates accompany it, demand a positive assurance that it has been fumigated properly with Hydro-Cyanic Acid Gas.

We present herewith a cut representing our Fumigating House, the largest private one in the country. In it, every tree, or plant, that is susceptible to the San Jose Scale that we send out or receive is fumigated. We have spared no expense in making our fumigating house as nearly air tight as possible, nor do we spare expense in the matter of full charges nor for the full length of time. We built the house on the recommendation of Prof. John B. Smith, Entomologist of New Jersey. He stated that some nurseries were sending out scale unknown to themselves and that our safe guard was to fumigate everything that we bought.

Prof. Smith, our entomologist, than whom there are none better, says that the certificates all have to be qualified with the statement "apparently free from Scale, etc.," and that as an entomologist cannot examine every tree separately, the surest and only safe way to buy trees is to have them fumigated with Hydro-Cyanic Acid Gas.

We advise the same.

It costs you nothing extra, and as it is a sure death to all insect life it not only kills all San Jose Scale, but destroys Woolley and Black Aphis as well.

Apples.

New Apple—BISMARCK.

The most remarkable apple ever introduced one year grafts frequently produce fruit, and two-year trees seldom fail. A two-year single-stem tree about eighteen inches high ripened a fine specimen on our grounds. Originated in New Zealand; has been tested in nearly every apple-growing country, and promises to succeed wherever apples can be grown, proving healthy, hardy, productive, and without a rival in its early fruiting quality. Tree of short, stocky growth, thick, healthy foliage; fruit large, handsome, yellow, shaded red; flesh tender, pleasant, sub-acid; good for dessert, superior for cooking; will keep well into winter.

	Each	Per dozen
Price.—1 year	\$0 10	\$1 00
2 years	15	1 50

Price of General List of Apple Trees.

	Each	Per Dozen	Per 100
Extra 5 to 7 feet	\$0 25	\$2 50	\$15 00
First-class, 4 to 6 feet	20	2 00	10 00
1 year, 2 feet and up	15	1 00	6 00

Summer Varieties.

Varieties marked (*) we have in 1 year only.

Early Strawberry.—Medium; roundish, red.

***Fanny.**—Medium size, brilliant red. Flesh snowy white, tender, crisp, juicy, mild, sub-acid, early bearer.

Early Harvest.—Medium size, pale yellow; early, mild, excellent sub-acid.

Golden Sweet.—Large; pale yellow; sweet and good.

Gravenstein.—Large, bright yellow, roundish, splashed with red and orange.

Red Astrachan.—Large, nearly covered with crimson, acid, very early.

Summer Pearmain.—Medium, oblong, red, flesh yellow, rich, juicy, tender and pleasant.

Sweet Bough.—Large, pale yellow, sweet.

Summer Rambo.—Large, striped with red on the sunny side, sub-acid, good.

Yellow Transparent.—Medium, yellow, smooth, waxen surface.

***Summer Rose.**—Medium, round, striped and splashed with red, tender and delicious.

***Williams Early Red.**—Large, oblong, red, rich and excellent.

Hagloe.—Large, striped with red, flesh tender, juicy, sub-acid.

***Nyack Pippin.**—(Summer Pippin). yellow with blush, best quality.

***Starr.**—Very large, pale green, early, pleasant sub-acid.

Autumn Varieties.

Fameuse (Snow apple.)—Medium, crimson, flesh snow white, excellent quality.

Duchess of Oldenburg.—Medium to large, yellow, striped with red.

Fall Pippin.—Very large, yellow, tender and best quality.

Maidens Blush.—Medium to large, roundish, clear yellow with pink cheek.

Ohio Nonpareil.—Fruit is enormous in size, one-half of each specimen bright, glossy red, and the other half an intense scarlet. The flesh is a rich yellow and of a sprightly sub-acid flavor, fully equaling the Hubbardston Non-Such. The tree is an early and heavy bearer as well as a strong grower.

Jefferis.—Medium, red, flesh tender and delicious.

***Haas.**—Large, dull red, flesh white, tender and juicy,

***Jersey Sweet.**—Medium, striped red, tender, juicy and sweet.

Wealthy.—Medium red, quality good, early bearer.

***Lorraine Sweet.**—Very large, yellow, very tender, sweet and melting.

Twenty Ounce.—Very large, striped and splashed with red, good.

***Pound Sweet.**—Large, greenish yellow, juicy, sweet and tender.

Winter Varieties.

American Golden Russet (*Sheep Nose*)—Medium, yellowish russet, a remarkably high flavored, juicy variety.

***Arkansas Beauty.**—Large, crimson, fine grained and good quality, a beautiful apple.

***Beach** (*Renamed Apple of Commerce*).—Large red, juicy and fine, remarkable cropper.

Baldwin.—Large, roundish, dark red, fine flavor, sub-acid, crisp and juicy.

Ben Davis.—Large, bright red, flesh white. Our best and most profitable winter market apple.

Fallowater.—Very large, greenish yellow, flesh fine grained, mild, sub-acid.

Grimes Golden.—Medium size, yellow, highest quality, rich, tender.

Gano (*Renamed Black Ben Davis*).—Large, bright red, fine grained, tender, sub-acid, excellent bearer.

Hubbardston Non-Such.—Large, roundish, yellow striped and splashed with red, very rich.

***Ingram.**—Medium, round, bright red, pleasant flavor, very late keeper.

***Jackson.**—Medium, dark red, solid flesh, a good keeper and shipper.

Jonathan.—Medium, deep red, tender, juicy and rich, one of the best apples for family and market.

***Kansas.**—Large, very deep handsome red, good quality, a very promising new variety.

King of Thompkins Co.—Very large and fine, red striped, sub-acid.

Langford Seedling.—Large, yellow, red striped, good keeper, excellent quality

***Lily of Kent.**—Medium, yellow, very solid and a long keeper.

***Lady Sweet.**—Large, round, red, sweet and sprightly.

Floores Sweet.—Medium, dark red, sweet and tender, a good keeper.

Monmouth Pippin (Red Cheek Pippin).—Large, greenish yellow, beautiful red cheek, crisp and fine flavor.

Missouri Pippin.—Medium, striped and splashed with red, crisp and juicy.

Mammoth Black Twig (Paragon).—Fruit large, roundish, color dark red, flesh firm, yellow, crisp. It is a very late keeper.

Mann.—Medium to large, deep yellow, juicy, mild, pleasant, sub-acid.

Newtown Pippin.—Very juicy, crisp and highly delicious flavor.

Northern Spy.—Large, striped with dark crimson.

Nero.—Medium, red, good and regular bearer, good keeper.

***North Western Greening.**—Medium, yellow, rich, extra good keeper.

Oliver (*Renamed Senator*).—Large, red, juicy, sprightly, high quality.

Pennocks Red (Pelican).—Large, roundish, deep red, good keeper.

Paradise Sweet.—Large, yellow, excellent.

Roxbury Russet.—The largest russet, extra quality.

Rome Beauty.—Large, yellow, shaded with bright red, a very profitable and satisfactory variety.

Rhode Island Greening.—Large, greenish yellow, tender, juicy.

Roman Stem.—Medium, yellow, tender, crisp, rich and best quality.

***Seek-no-Further.**—Medium, striped with red, slightly russeted, tender, rich and excellent.

***Shackleford.**—Large, oblong, striped and splashed with red, good keeper.

***Springdale.**—Large, red, good quality, very firm and late keeper.

Smith Cider (Salisbury).—Large, skin yellow, changing to red, flesh tender, juicy crisp, fair flavor.

Spitzenberg (Esopus).—Large, red with gray specks, flesh firm, rich and spicy.

Stark.—Large, striped with red, flesh yellowish and moderately juicy.

Sutton Beauty.—Medium, shaded, mottled and obscurely striped with crimson, flesh crisp, tender, juicy.

Smokehouse.—Large, shaded with bright red, firm, juicy and crisp.

Stayman Winesap.—A seedling from the well-known Winesap, but is superior to its parent in size, color, flavor and keeping qualities.

Talman Sweet.—Yellow, firm, rich and very sweet.

Winter Banana.—Golden yellow, with slight blush, excellent flavor.

Winter Rambo.—Medium, streaked yellow and red, tender, juicy.

Wine Sap.—Medium, deep red, firm, crisp, fine quality, good keeper,

***Winter Maidens Blush** (Greenville).—Large, round, yellow with red cheek, crisp, juicy and good,

Wolf River.—Large, striped and splashed with red, juicy, pleasant spicy flavor.

York Imperial. (Johnson's Fine Winter).—Medium to large, yellow, shaded red, firm, juicy, sub-acid. An excellent shipping apple.

VanDeman, in the *Rural New Yorker* of Oct. 14, 1899, says of York Imperial: "In Central and Southern Pennsylvania it is considered the very best Winter Apple and if I were intending to make an orchard for Winter market in Northern Pennsylvania or Western New York I would use York Imperial very largely.

Yellow Bellflower.—Large, yellow, rich, crisp, juicy, sprightly acid flavor.

Crab Apples.

Prices on Crab Apples same as standard sorts.

Yellow Siberian. (Golden Beauty).—Color bright golden yellow.

Martha.—The ground is a bright yellow nearly overspread with bright red.

Transcendent.—Large, roundish, rich crimson, white bloom, flesh crisp.

Hyslop.—Large, produced in clusters, roundish, dark, rich red.

***Florence.**—Medium, oblong, striped red and yellow, very beautiful, one of the best crabs.

***Orange.**—Medium, yellow, crisp, juicy, pleasant, good yielder.

Pears.

Prices of all Pear Trees, Except Keiffers.

	Each.	Per Doz.	Per 100.
OTHER VARIETIES—Extra, 3 yrs., $\frac{3}{4}$ in. Caliper	\$0 25	\$2 50	\$20 00
First-class, 2 and 3 yrs., 5 to 6 ft.	20	2 00	15 00
DWARFS—2 and 3 yrs., first-class in kinds marked (*)	20	2 00	10 00

Prices on Keiffer Pear.

	Each.	Per Doz.	Per 100.
KEIFFER—XX, $\frac{7}{8}$ to 1 inch	\$0 25	\$2 50	\$
" Extra, $\frac{3}{4}$ inch	25	2 50	17 50
" 5 to 6 ft. $\frac{5}{8}$ inch	20	2 00	12 00
" 3 to 5 ft.	15	1 50	10 00
" 1 year	10	1 00	6 00

Summer Pears.

Wilder.—Medium, bellshaped, pale yellow, with deep shading of brownish carmine, fine grained, tender, sprightly.

***Bartlett.**—Large, yellow, flesh white, exceedingly fine grained and buttery.

Le Conte.—Of remarkable vigor and beauty of growth. The fruit is bell-shaped, of a rich creamy yellow, very smooth and fine looking, and ships well.

***Mannings Elizabeth.**—Small, yellow, with bright red cheek, very showy, sweet and sprightly.

Doyenne d'Ete.—Small, nearly round, yellow, with red cheek, a good juicy, sweet pear.

***Clapps Favorite.**—Very large, yellowish green to full yellow, marbled with dull red, vinous, melting and rich.

Autumn Pears.

***Beurre d'Anjou.**—Large, greenish, sprinkled with russet, flesh melting, with a high, rich, vinous, excellent flavor, very productive, succeeds well as a dwarf.

Belle Lucrative.—A fine large pear, yellowish green, slightly russeted, melting and delicious.

Flemish Beauty.—Large, pale yellow, much russeted, rich, melting, vigorous.

Howell.—Large, light waxen yellow, handsome, rich, sweet, melting, aromatic flavor.

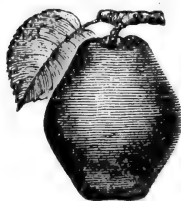
***Duchesse de Angouleme.**—Very large, dull greenish yellow, streaked and spotted with russet, flesh white, buttery

and very juicy, with a rich and very excellent flavor; on young standard trees the fruit is variable, but as a dwarf it is always fine. The large size and fine appearance of this fruit makes it a general favorite.

Seckel.—Small, rich, yellowish; one of the best and highly flavored pears known.

***Beurre Clairgeau.**—Large, yellow, shaded with orange and crimson, covered with russet dots, flesh yellow, juicy.

Sheldon.—Large, russet, juicy and excellent, one of the best varieties, a fine grower and productive.



Keiffer.—Fruit large to very large, affecting the ovoid or egg shape; skin yellow, with a bright vermilion cheek; flesh brittle, very juicy, with a marked musky aroma; quality good. Tree very vigorous and very prolific. As a Fall Pear there is no variety as yet disseminated which has given such profitable returns, and the wonderful fertility of the trees is surprising. Many of our trees planted four years since have yielded as high as three bushels of perfect fruit.

It is unfortunate that the real merits of this fruit have been underestimated, from the haste with which it is hurried to market in an immature condition, and often before it has attained proper size. When allowed to hang upon the trees until the beginning of October, and then carefully ripened in a cool, dark room, there are few Pears which are more attractive, and in point of quality it combines extreme juiciness, with a sprightly sub-acid flavor, it is then an excellent dessert fruit.

Winter Pears.

✓ **Lawrence.**—Medium, yellow, covered with brown dots, flesh white with a very rich aromatic flavor.

Vicar.—Large, long; not always good

quality, but desirable for its productiveness.

Danas Hovey.—Medium to small, rich cinnamon russet, melting, juicy, with a honeyed sweetness.

Peaches.

New Varieties.

Iron Mountain.—While this is not, strictly speaking, a new peach yet it has never been properly advertised, and therefore its remarkable qualities are but little known outside of a very limited section. It originated in Sussex County, N. J., and was grown there as their most profitable peach.

An enterprising grower seeing great promise in it decided to plant a large orchard and contracted with us to grow several thousand June Buds and we planted some in our trial orchards, and have grown it in limited numbers in the nursery, but not knowing what it would do away from its home we did not recommend it until fruited last year. A few of our customers had tried them in a small way in widely scattered sections and although last year we had anticipated a demand by budding heavily of it, we found ourselves all sold out nearly a year ahead of delivery. We have also contracted to grow several thousand June Buds and we have on hand several thousand more but we can offer nothing except June Buds.

Mr. Wm. Morrell, of Hazlet, N. J., planted 200 small June Brds in spring of 1897 and picked 500 or 600 baskets of the finest peaches ever grown in that section of the country. This has created a demand in that section of the country from all who saw it or heard Mr. Morrell speak of it. Other smaller planters all over the country have had equal success, hence the demand for the trees.

DESCRIPTION.—Size enormous, shape oblong or egg shape, color pure white, sometimes having a slight blush. It is a perfect freestone and has as good quality as any white peach we have ever grown. Season September 20th to October 10th, according to season and soil.

While our stock is large we fear it will not supply half our spring trade. Those sending cash this fall with order can have trees reserved for them until spring. Others are offering other kinds as Iron Mt. but few can give the true.

Prices.—(Good only as long as they last).—June Buds, by mail, postpaid, 15c. each; \$1.50 per dozen; \$5.00 per 100.

Success. (R.)—This variety was discovered by us among some seedlings grown from seed sent us from California. It is earlier than Mt. Rose by ten days and it is considered by all who have seen it fruiting to be a much more profitable peach than that variety. After seeing it in fruit several of our customers asked us to June Bud some for them, and we have a limited number to offer of June Buds only. Try a tree or so of them and you will find them all we claim.

Size large, skin white, nearly covered with deep red, making it very attractive, flesh firm, creamy white, red at the stone. Like Champion it is almost a perfect freestone but not always perfectly so. Ripening 10 days before Mt. Rose or Champion, makes it a very profitable peach for market.

Tree an exceptionally vigorous grower with a broad dark green leaf, a very distinct variety.

Price.—By mail, postpaid, 25c. each.

Admiral Dewey. (Y).—Is described as follows: “‘Admiral Dewey,’ marks as great an advance in early peaches as did the Triumph, and while that variety is proving even better than ever claimed for it. Admiral Dewey possesses many important points of superiority. It is a perfect freestone; ripens with the Triumph, flesh is yellow, of uniform color and texture to the pit. Has better form and brighter color on the surface, is equally hardy and productive. The tree is a strong symmetrical grower, and as near perfect as we can obtain in a single variety.”

Price.—June Buds, by mail, postpaid, 15c. each; \$1.50 per dozen.

Victor.—The originator describes it as the earliest peach known, ripening ten days earlier than the Sneed. The tree is a very vigorous compact grower, and regular and immense bearer. The fruit is of a very pleasant sub-acid flavor, equals the Alexander in size, ripening thoroughly and is a semi-cling. A seedling of the Chinese Cling crossed with Spanish blood, bordering on the Indian type. Ripened its whole crop of fruit in 1897 between May 8th and 16th on the originator's grounds in Smith County, Texas. **Price.**—June Buds, by mail, postpaid, 15c. each ; \$1.50 per dozen.

Klondike. (As described.)—"Large size, white skin with brilliant red cheek, white flesh, sweet, juicy, delicious flavor, free from bitterness, perfectly free, bright red at stone and free from fiber. Time of ripening, October 10th, when no other late peach can compete with it in size, quality or appearance.

Price.—June Buds, by mail, postpaid, 15c. each ; \$1.50 per dozen.

Eureka.—Early, semi-cling, seedling of Chinese Cling. Medium size, oblong, cream white with red blush, tender and juicy when fully ripe, delicious flavor. Ripens at place of origin, in Louisiana, June 15th.

Price.—June Buds, by mail, postpaid, 15c. each ; \$1.50 per dozen.

Delaware.—A seedling of Mountain Rose, but much earlier. Of large size and fine appearance, with a delicately flushed skin, shaded with red. Flesh is white, and of a rich flavor and juicy ; a perfect freestone and very productive. A better shipper than Mountain Rose, handling quite as well as Troth, than which, however, it is much larger and of more attractive coloring, as well as earlier. It comes in just when a good shipping peach is needed.

Price.—June Buds, by mail, postpaid, 15c. each ; \$1.50 per dozen.

Waddell.—Another new early peach, originating in Georgia. It is of medium to large size, oblong in shape, creamy white, with bright blush, flesh firm, white, and very sweet and rich when ripe. One notable thing is the long-keeping quality of Waddell, and also its exceptional capacity for shipping. Half cling.

Price.—By mail, postpaid, 15c. each ; \$1.50 per dozen.

New Prolific.—A yellow freestone, ripening between Crawford Early and Late, from Michigan. **Price.**—By mail, postpaid, 10c. each ; \$1.00 per dozen.

Emma.—Described by the originator as being very large, yellow with light crimson cheek ; flesh yellow, fine grained, very juicy, quality among the best, a freestone. In maturity it follows immediately after Elberta. Where this peach has been shipped to the market it has always commanded an extra price over the other varieties. It is better in quality than Elberta.

Price.—1 year old trees, 15c. each ; \$1.50 per dozen, by freight or express only.

McIntosh.—Of large size, creamy white flesh, highly colored, freestone, ripens to the stone, of good quality. The tree is a strong grower, heavy bearer, require thinning fruit. It is the best peach that ripens between Triumph and Elberta.

	Each.	Per Doz.
Price. —By mail, postpaid,	\$0 10	\$1 50
1 year trees, first-class	15	1 50
" Second-class	10	1 00

Miss Lolo.—Large size, white satin skin with bright red cheek, flesh white, quality best, of very early varieties, almost freestone when fully ripe and a most beautiful peach, ripening just before Early Rivers.

	Each.	Per Doz.
Price. —June Buds by mail,	\$0 10	\$1 00
1 year trees first-class	15	1 50
" Second-class	10	1 00

Everbearing. (R.)—The introducer, P. J. Berckmans, of whom we bought our stock of this peach, says of it: "It is one of the most remarkable of peaches, as it combines many desirable qualities which makes it of great value for family use. The first peaches ripen about with Mt. Rose and peaches continue to ripen during the entire season, the last ones with Smock. The trees contain ripe and green peaches during this entire season, and as they bloom during so long a period there is sure to be a crop on them every year. Fruit is a creamy white, mottled and striped, oblong in shape. Flesh white and red veins near the skin. Very juicy and of excellent flavor, quality very good to the best, freestone. The first ripening of peaches are medium to large, while the later fruit is smaller."

	Each.	Per dozen.
3½ to 5 feet	\$0 15	\$1 50
3 to 4 feet	15	1 25
2 to 3 feet	10	1 00
June Buds by mail	10	1 00

Summer Snow. (W.)—One of the best peaches for canning. A snow white cling, *clear white to the pit.* Prices same as Everbearing.

General List of Peaches.

	Each.	Per Doz.	Per 100.	Per 1000.
Prices. —4 to 6 feet, extra	\$0 15	\$1 25	\$5 50	\$50 00
3½ to 5 feet, First Class	12	1 00	5 00	45 00
3 to 4 feet, Medium	10	75	4 00	35 00
2 to 3 feet, Branched	10	75	3 50	30 00
By mail, postpaid, June Buds	10	1 00		

We arrange our list of peach trees as nearly in order of ripening as possible, and we think it very nearly correct. Every district has its peculiar climate and soil; under these peculiarities all varieties of peaches vary more or less, becoming in some cases hardly recognizable.

Varieties marked (Y.) are Yellow Fleshed, those mark (W.) are White Fleshed and white all through, while those marked (R.) have red mixed with the white. These are sometimes called White Peaches. Mt. Rose, Stump and Mixon are a sample of this kind of peach. *Varieties not otherwise described are Freestones.*

Sneed (R.)—Medium size, somewhat oval in shape; color creamy white, with rich red blush on sunny side; ripens even to the pit.

Japan Dwarf Blood. (Blood Red.)—It is a dwarf-growing and very stocky variety. A little tree, one year planted, matured twenty-four fine specimens. The blooming season is later than other varieties, making it almost free from the danger of damage by the late spring frosts. Fruit is as large as Alexander. Color is a beautiful red, really having the appearance of blood red. The flesh is rich, juicy and most excellent quality, and much the same color as outside.

Triumph. (Y.)—Large with small pit, skin yellow, nearly covered with red, flesh bright yellow, not thoroughly free.

Alexander. (R.)—Medium, skin greenish white, nearly covered with red. Half cling.

Amsden. (R.)—Medium, skin greenish white, nearly covered with purple. Half-cling.

Troths. (R.)—Small, red, flesh white, rich and excellent.

Husteds Early Michigan. (R.)—Large, roundish, beautiful red cheek, flesh light cream color.

Mountain Rose. (R.)—Very profitable for market, large, roundish, skin white, nearly covered with a rich red, flesh white slightly stained at the stone, juicy, sweet.

Large Early York. (R.)—Large, white and red, juicy, rich and excellent, identical with Honest John.

St. John. (Y.)—Large round, orange yellow, with deep red cheek, flesh yellow, juicy.

Greensboro. (W.)—Medium, oval, creamy white, with rich red blush, almost freestone.

Early Rivers. (W.)—Large, color creamy white, with a delicate pink cheek. Half-cling.

Southern Early. (W.)—Creamy white, with bright red blush, of excellent flavor. Half-cling.

Champion. (R.)—Very large, rich creamy white, with red cheek, flesh white, sweet, delicious.

Foster. (Y.)—Large, skin deep orange red, flesh yellow, very rich and juicy.

Reeds Early Golden. (Y.)—An improvement upon Crawford's Early, with which it ripens, but is much larger and handsomer.

Orange Free. (Y.)—The finest of all peaches for family garden. The trees are good growers, of low and willowy habit, and are very hardy. Medium, round, flesh yellow, with a yellow skin mottled all over with a beautiful shade of red. In quality it is second to none, being not only the sweetest of all peaches, but having the best flavor possible for a peach to possess.

Crawford Early. (Y.)—Large, oblong, skin yellow, with fine red cheek; flesh, yellow, juicy, sweet and excellent.

Barnard's Early. (Y.)—Medium, skin yellow, cheek purplish red, flesh yellow, juicy, sweet and rich.

Old Mixon. (R.)—Is a fine, large, productive variety, succeeding well in all localities, and well deserving of the high favor in which it is held as an orchard variety; skin yellowish white, with a deep red cheek; flesh white, but red at the stone; tender, rich, excellent.

Wheatland. (Y.)—Extra large, beautiful golden yellow with a crimson cheek; of best quality.

Moore's Favorite. (R.)—Similar to Old Mixon Free, said to be a trifle larger.

Reeves Favorite. (Y.)—Large, skin yellow, with a fine red cheek; flesh yellow, red at stone, juicy, melting.

Hances Golden. (Y.)—Almost round, very beautiful yellow, with rich crimson cheek and of highest quality.

Stump. (R.)—Large, white with bright red cheek, juicy and of high quality; very productive and profitable. A most popular peach, it should be in all collections.

Holderbaum. (R.)—Color light cream with a beautiful red cheek, firm, fine quality.

Fitzgerald. (W.)—Flesh rich, deep golden yellow, certainly a very fine peach.

Thurber. (R.)—Large, skin white, with light crimson flesh, juicy.

Mixon Cling. (R.)—Fruit large, round, flesh pale white, cling.

Jacques Rareripe. (Y.)—Large, round, dark yellow, shaded with red; flesh yellow, juicy.

Crosby. (Y.)—Medium, roundish in form, slightly flattened, bright orange yellow.

Captain Ede. (Y.)—New variety from Illinois, of growing popularity. Size large, yellow. Tree vigorous grower and productive.

Susquehanna. (Y.)—Yellow flesh, with beautiful red cheek, sweet and juicy.

Elberta. (Y.)—Large, yellow, with red cheek, juicy and high flavor, flesh yellow.

Ameliaberta. (Y.)—A cross between Amelia and Elberta, as large as Elberta, high color.

Crawford Late. (Y.)—Large, yellow, with a red cheek; flesh deep yellow, juicy and melting.

Matthews Beauty. (Y.)—Large, late yellow. A new peach of much merit.

Globe. (Y.)—Very large, yellow, firm and excellent.

Lemon Cling. (Y.)—Is one of the largest and most beautiful of all the yellow-fleshed clings.

Late Admirable. (R.)—Large, skin pale green, with pale red cheek; flesh white, red at stone.

Wards Late. (R.)—Large, white, with red cheek; rich, sprightly and luscious.

Beers Late. (Y.)--A seedling of Crawford Late, with which it ripens and differs only in being a more regular and abundant bearer.

Connecticut. (Y.)--Fruit large, round, deep yellow with red cheek; rich, sweet and high-flavored.

Tyhurst. (Y.)--Round, skin and flesh clear lemon yellow, with no red on the skin or at the pit.

Kalamazoo. (Y.)—Golden yellow, with crimson cheek, flesh yellow, small pit.

Chairs Choice. (Y.)—Very beautiful, large size, deep yellow with red cheek, flesh firm and of best quality.

Hills Chili. (Jenny Lind.) (Y.)—Medium, dull yellow, tree very hardy, a good bearer.

Foxes Seedling. (R.)—A very valuable Peach, ripening at a time that makes it desirable, large, fine quality, white flesh, beautiful red cheek.

Gold Drop. (Y.)—Large golden yellow, with red cheek; flesh yellow, juicy, rich and very good.

Stephens Rareripe. (R.)—Large, white shaded and mottled red, flesh white, juicy, vinous and of high quality. Hardy, a heavy and regular bearer.

Late Rose. (R.)—Large, nearly identical in shape and color to the well known Mountain Rose. It ripens about the same time as Beers Smock.

Beers Smock. (Y.)—Fruit medium to large, skin light orange yellow mottled with red, Excellent as a late market sort.

Ellison. (Y.)—A beautiful yellow flesh peach.

Fords Late. (W.)—Large, skin beautiful white, flesh white, very sweet, solid and fine in texture, trees very vigorous and unusually productive.

Lemon Free. (Y.)—Color a pale lemon when ripe.

Lorentz. (Y.)—Seedling of Smock, resembling it in growth of tree, but said to be larger, later and of better quality.

Gearys Hold-on. (Y.)—Large, late, yellow, freestone, almost identical with Smock.

Lovetts White. (W.)—Season very late, color pure white.

Salway. (Y.)—Large, yellow mottled with a red cheek; a valuable late variety.

Late Heath Cling. (W.)—Large, white with faint blush. Cling.

Keyport White. (W.)—Medium, skin pure white, white flesh.

Brays Rareripe. (R.)—Large, oblong, white flesh, fine grained, with beautiful red cheek.

Emperor. (Y.)—Large, yellow fleshed, skin beautiful yellow, red cheek.

Lord Palmerston. (Y.)—Cling, large, beautiful creamy white with a blush cheek, rich flavor and firm.

General Lee. (W.)—Cling, medium, oblong, creamy white with red cheek, quality best.

Indian Blood. (R.)—Cling, large, deep claret, with deep red veins, downy, flesh deep red.

Steadley. (W.)—Medium, round, juicy, melting, sweet.

Bilyeus Late. (R.)—Large, white with red cheek.

Japan Plums.

These will be ready to ship after November 1st.

Prices on Japan Plums Budded on Plum stock.

	Each.	Per Doz.	Per 100.
First Class	\$0 25	\$2 50	\$15 00
Medium 4 to 5 feet	20	2 00	12 00
Light, 3 to 4 feet	15	1 50	8 00
June Buds on Peach by mail	10	1 00	

Varieties--Abundance, Willard, Wickson, Georgeson, Red June, Burbank, Baileys Japan, Normand, Ogon, Chabot, Satsuma Blood, and Hale.

New Japan Plums.

Prices.--June Buds, by mail postpaid \$0 15 \$1 50
 1 year, by freight or express 25 2 50

Burbank's Latest and Best Productions,

Climax. (As described by Luther Burbank). --- "Fruit heart shaped, as large as Wickson and more highly colored, so fragrant that a whole house is perfumed with a single fruit; delicious as could be desired or imagined, and, above all, it ripens here July 12th, before any other good plum, and nearly a month before Wickson.

"Tree extremely vigorous, rather upright growth with strong branches, prominent buds and very large leaves, the picture of hearty vigor."

Sultan (As described by Mr. Burbank) "This huge, oval, deep purplish crimson fruit is generally thought by those who have tested it to be the very best or one of the best plums produced.

"The flesh is remarkably firm and solid, fragrant sub-acid or sweet, dark crimson, beautifully clouded and shaded with light pink, salmon and light yellow.

"Remarkable for the great proportion of flesh compared with diminutive seed. The tree grows very rapidly. Exceedingly productive; ripening here a week before Burbank, a great keeper."

Bartlett.-- "The fruit is oval, yellow, mostly overspread with crimson, turning to deep crimson when fully ripe, with flakes and dots of yellow.

"Light salmon colored flesh, rather firm, yet juicy. Seed medium size, long, flat, semi-free. Ripens just before the Burbank."

Shiro. (As described by Luther Burbank).---"The fruit, which is produced in the utmost profusion, is medium to large, very uniform in size, clear light yellow, with an almost imperceptible thin white bloom; and so transparent that the pit can be seen through the flesh, which is firm yet juicy, rich, pleasant sub-acid, clingstone; ripens two weeks before the Burbank.

October Purple.---The introducer says of it: "The fruit is round in form, color a reddish purple, a little darker than the Bradshaw; flesh yellow, stone small, and in quality superb. The tree is a strong, erect grower, forming a nice, shapely head. Its season of ripening is about a month later than the Abundance or Burbank, or from the middle to the last of September.

Apple.---"Named because of its close resemblance to an apple in general appearance, form, color and rare keeping qualities. Fruit averages about 2½ inches in diameter, striped and mottled until nearly ripe when it turns to a deep reddish purple. The rich, high flavored sub-acid flesh is rather firm, pale red; nearly free-stone. Ripens soon after Burbank; sometimes keeps a month in good condition. Tree is a fine strong grower."

America.---"From seed of the native plum, 'Robinson,' crossed with the Japan plum, 'Botan,' combining the quality and size of the Japanese with the hardiness of our native. Fruit is larger than the average Japan. Color glossy coral red, flesh light yellow, moderately firm, of excellent quality, ripens two to three weeks before Burbank, is splendid keeper."

Chalco.---"Tree a tremendous grower and unsurpassed in productiveness, hardy. Fruit ripens just before Burbank; is large, flat, deep reddish purple; flesh yellow, very sweet, rather firm, exceedingly fragrant, seed small. Like the Apricot Plum the fruit is almost stemless and completely surrounds the older branches. A superior shipping sort"

EUROPEAN PLUMS

Ready for shipment after October 20th.

	Each.	Per doz.	Per 100.
First Class.....	\$0.20	\$2.00	\$15.00

Varieties---Bradshaw, German Prune, Green Gage, Imperial Gage, Lombard, Moores Arctic, Grand Duke, Niagara, Reine Claude, Saratoga, Shippers Pride, Spaulding, and Yellow Egg.

CHERRIES.

Ready for shipment after October 20th.

Mercer. (New)

Price of Mercer:

	Each.	Per doz.
2 year light	\$0.50	\$5.00
1 year.....	40	4.00

Cherries are very scarce and are advancing rapidly in price. These prices on them are good only as long as our stock lasts:

Prices on general list of Cherries:

	Each.	Per doz.
2 year	\$0.50	\$5.00
1 year	35	3.50

Varieties

Dukes and Morello:

Dyehouse, English Morello, Early Richmond, Large Montmorency, May Duke, Olivet, and Wragg.

Hearts and Bigarreau.

Centennial, Black Tartarian, Coes Transparent, Gov. Wood, Yellow Spanish, Napoleon Bigarreau, Windsor and Rockport Bigarreau.

APRICOTS.

Ready for shipment after October 20th.

Price of Apricots:

	Each.	Per doz.
First Class, 3 to 5 feet.....	\$0.25	\$2.50

Varieties.

Harris Handy, Moorpark, Roman, Alexander, Alexis, and J. L. Budd.

QUINCES.

Ready for shipment at any time.

Prices of Quinces:

	Each.	Per doz.	Per 100.
First Class, 4 to 5 feet	\$0.20	\$2.00	
Medium, 3 to 4 feet.....	15	1.50	
Light, 2 to 3 feet	10	1.00	\$6.00

Varieties.

Orange, Champion and Meeches.

MULBERRIES.

Ready for shipment after November 1st.

	Each.	Per Doz.
Large trees, 5 feet and over	\$0.25	\$2.50

Varieties.

Downing, Everbearing and New American.

AMERICAN PERSIMMONS.

Ready for shipment at any time.

	Each.	Per Doz.	Per 100
18 to 24 inches	\$0.10	\$0.75	\$2.00

NUT TREES.

Ready for shipment after November 1st.

Prices on Japan Giant and Japan Mammoth Chestnuts:

	Each.	Per doz.	Per 100.
2 to 3 feet	\$0.15	\$1.25	\$8.00
1 year, by mail postpaid....	10	1.00	

	Each.	Per doz.	Per 100.
Paragon chestnut 2 year....	\$0.15	\$1.50	\$8.00
American chestnut 2 year	10	1.00	4.00
" By mail, postpaid	10	1.00	
Shelbark Hickory, 4 to 6 in.	10	1.00	
" By mail, postpaid	10	1.00	
Japan Walnut, 1 year	10	1.00	
" By mail, postpaid	10	1.00	
English Walnut, 12 to 18 in	25		
Black Walnut, 3 to 4 feet....	25		
Pecans, 3 to 4 feet	25		
Eidgely Chestnut, 2 years	15	1.50	
" By mail, postpaid	15	1.50	

ASPARAGUS

Prices of Donald's Elmira, Barr's Mammoth and Palmetto:

	Per 100.	Per 1000.
2-year old.....	\$0.75	\$4.00
1-year old	60	3.00

Early Argenteuil.—A French variety of Mammoth size which has proved a money maker wherever tried. It is also a very early variety and a great yielder.

	Per 100.	Per 1000.
1 year old.....	\$1.00	\$6.00

RHUBARB**Myatt**

	Each	Per doz.	Per 100.
Light single or divided root		\$0.75	\$2.50
Clumps		\$0.25	2.00

HOP ROOTS

Price, 10c. each; 75c. per dozen.

SAGE.**Holts Mammoth.**

Price, by freight or express.
10c. each; 40c. per dozen; \$1.50 per 100.
By mail, postpaid, 10c. each; 75c. per dozen.

ORNAMENTAL STOCK.**California Privet.**

2 year extra well branched, \$3.00 per 100.
18 to 24 inches, branched, \$2.00 per 100.
12 to 18 inches, \$1.50 per 100.
Osage Orange 1 year 50c. per 100; \$2.50 per 1000.

Evergreens.

Norway Spruce, 18 to 24 in. 15c. each; \$1.50 per dozen; \$6.00 per 100.

American Arbor Vitae, 2 feet, 15c. each, \$1.50 per dozen.

Hemlock Spruce, 2 to 3 feet, 25c. each, \$2.50 per dozen.

Retinospora Plumosa and Plumosa Aurea, 2 ft. 30c. each.

Retinospora Squarrosa, 2 to 3 feet, 75c. each.
Irish Junipers, 3 feet, 20cts. each, \$2.00 per doz.
 " 2 feet and up at 15c. each; \$1.50 per dozen; \$6.00 per 100.

Rambler Roses.

White, Yellow, Pink and Crimson, 20c. each, 75c. for the four.

Hydrangea Paniculata.

2-year, twice transplanted, 15c. each; \$1.50 per dozen.

Yuccas.

Fine 2-year plants 10c. each, \$1.00 per dozen.
Rudbeckia Golden Glow, 5c. each; 50c. per doz.

Climbing Vines.

Ampelopsis Veitchii, 2-year strong, 15c. each; \$1.00 per dozen.

Wisteria Purple, 2 years, 25c. each, \$2.50 per doz.
1 year, 10c. each; \$1.00 per dozen; \$5.00 per 100.

Notice.

All claims for defective stock must be made at once upon receipt of the same.

It is mutually understood and agreed to between the purchaser and ourselves, that our guarantee shall in no case make us liable for a sum greater than originally received for that particular stock.

Address all communications to

JOS. H. BLACK, SON & CO.,

HIGHTSTOWN, N. J.

Lock Drawer No. 53.

Proprietors.

Joseph H. Black. Walter C. Black. Elias S. Black.

**New Jersey State Board
of Agriculture,
Office of the State Entomologist.**

No. 10, 1901. New Brunswick, N. J., September 16, 1901.

This is to Certify, That I have this 16th day of September, 1901, inspected the general nursery stock growing on the Village Nurseries, Jos. H. Black, Son & Co., Proprietors, at Hightstown, in Mercer County, New Jersey, and have found the same apparently free from San Jose Scale and other dangerously injurious insect pests ; also, that the examined stock seemed healthy.

I further Certify, That the nursery has a properly constructed house 12x13x20 feet for fumigating with hydrocyanic acid gas, upon which I have marked the quantity of cyanide of potassium required for an effective charge.

This Certificate expires June 1st, 1902, and covers only stock actually on the nurseries when examined.

JOHN B. SMITH,
State Entomologist.

“Pedigree.”

New Seedling Strawberries

are just what we say they are.

You will notice what the RURAL NEW YORKER says about them.

The half-tone cuts used were made by RURAL NEW YORKER from photographs of *fruit specimens grown on their own grounds.*

We quote from RURAL NEW YORKER because, we consider it the most *reliable Agricultural and Horticultural paper published in the United States.* It publishes its honest opinions *without fear or favor* and therefore is the most valuable paper for the farmers or fruit growers because *its reports may be depended upon.*



New Japan Plums,

**Climax, Sultan, Shiro, Bartlett, October, Purple,
Apple, American and Chalco,**

come to us highly recommended by Luther Burbank, of Santa Rosa, California, who originated them and the descriptions given are his.