

Historic, Archive Document

Do not assume content reflects current scientific knowledge, policies, or practices.

63101
1902 Catalogue 1902

LIBRARY
RECEIVED
NOV 24 1913
Department of Agriculture
OF



High
Grade

..BULBS..

Plants, Garden and
Poultry Supplies &

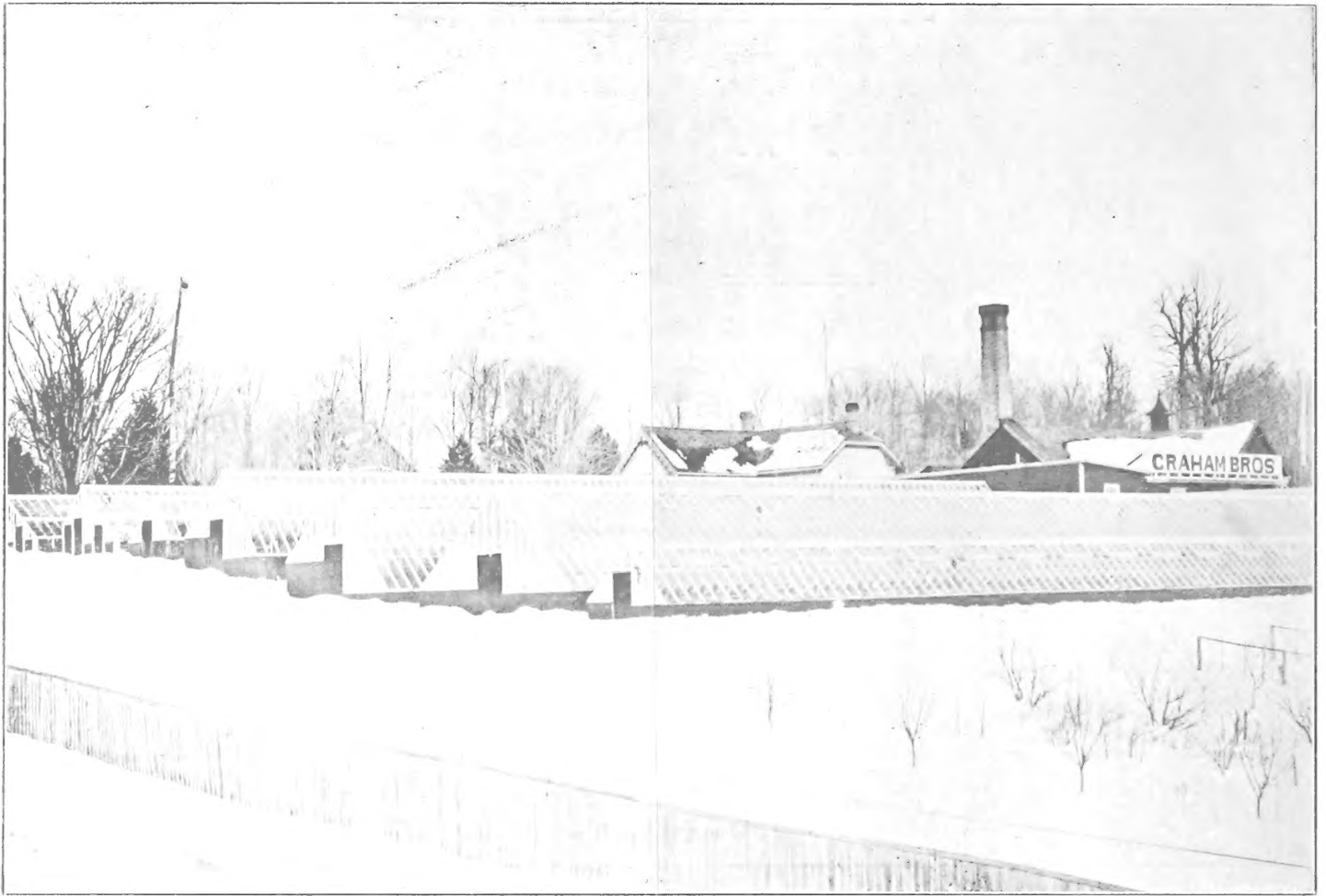
GRAHAM BROS.

SEEDSMEN AND FLORISTS

29 Sparks Street - OTTAWA, ONT.

Sunnyside Greenhouses: Linden Avenue

The Rolla L. Crain Co., Limited, Printers



GRAHAM BROS.

SEEDSMEN AND FLORISTS


29 Sparks Street


WHOLESALE AND RETAIL

OTTAWA, ONT.

 Sunnyside Greenhouses: Linden Avenue

OTTAWA, September 1st, 1902.

 IN presenting our SEVENTH ANNUAL BULB CATALOGUE we take the opportunity of thanking our many customers for past favors. Our Bulb Trade last season was a large one, and we are confident that the interest in Bulb Culture is steadily increasing, and deservedly so. We have therefore imported still larger quantities this season of the very **Highest Grades** procurable; the same grades as we plant ourselves in our own business, and we have put the prices as low as warrantable for **first quality stock**. We therefore confidently solicit an increase of trade, and would ask growers who have not dealt with us to give us a trial order.

 We prepay Carriage charges on all Bulbs catalogued at dozen rates and under. Plants and other articles expressed at Customers' charges, except where noted.

Dealers, Florists and Growers of large quantities will please write us for Special Prices.
Seed Catalogue issued 15th January.



VIEW OF STORE, 29 SPARKS ST.

HOW TO GROW BULBS

Flowering Bulbs are the easiest cared for of all flowers and are **absolutely sure to bloom**. This statement is true regarding Bulbs generally. Florists seldom if ever fail in flowering all sorts of bulbs to perfection. Oh! but the amateur will say—because they are grown in greenhouses—that is the reason Florists succeed so admirably. Greenhouses have nothing to do with the main point. Bulbs can be grown perfectly in any private house where the air is not entirely vitiated with superfluous heat and coal gas.

The bulbs enumerated in this catalogue (particularly the Dutch and French) may—for the purposes of the amateur—be divided into three classes, viz.:—1. **Those best adapted for house culture.** 2. **Those best adapted for the garden,** and 3. A combination class—**Those adapted for either the former modes.** The first named class may again be divided into early and late blooming bulbs. The former being available at or before Christmas. And the latter for the middle of January until April or May. For Christmas blooming, only Early Roman Hyacinths, Paper White Narcissus and Chinese Sacred Lily should be planted. For general house culture the foregoing, together with the various Hyacinths, Polyanthus Narcissus and Daffodils, may be successfully grown. While large numbers of Tulips are grown by florists for winter flowers, the average amateur will find them difficult to manage.

For house culture pans are more effective than pots. A 5-inch pan holding one Dutch Hyacinth. A 6-inch pan holding five Roman or Miniature Dutch Hyacinths, and for Narcissus larger pans should be used.

When planting use any **light,** moderately rich soil (avoiding all manure that is not thoroughly decomposed). We can supply a Special Compost at 25c. per bushel. Fill the pots or pans loosely almost to the top, press the bulbs into the soil so that only about one quarter will show above the surface, strike the pot sharply to settle the soil, water thoroughly, and place away in a **cool dark situation.** The ideal situation is outside (their native soil) covered with sufficient leaves or other material to prevent severe freezing. But as in winter they are somewhat difficult to get at if treated thus, the next best place is a **cool cellar.** The bulbs being covered with **three or four inches of leaves, sawdust or sand to exclude the air and retain moisture.**

Examine them occasionally to see that they do not become dry, and keep them there for two or three months (the later the better) before bringing them into the light. As the leaves and flowers develop do not stint the water. Keep them cool even then, and they will help to cheer the winter's gloom wonderfully. Freesias and Easter Lilies do not require to be started in the dark.

Hyacinths Grown in Glasses

For glass culture the Highest Grade bulbs only should be used. Clean out your glasses thoroughly. If easily procured put in each glass a small nodule of charcoal (we will not attempt to explain why this should be done). Do not worry about the charcoal, however, for the bulbs will grow without it. Fill the glasses nearly full with soft water, and place the bulb **so that its base nearly touches the water.** The glasses may then be placed in a box in a cool, dark cellar, and covered with leaves as before mentioned. Look at them now and again, and replenish the water if it is offensive, keeping it up to the same level, but **not in direct contact with the bulbs** or the latter may rot. Leave your glasses in this position for two months or more, bringing them into the light to flower as they are wanted.

Bulbs Grown Outside

Hyacinths, Tulips of all kinds, Crocus, and many varieties of Daffodils, are perfectly hardy out-doors. For outside culture (the Tulip being pre-eminently the most popular), plant thickly and deeply—six inches apart and six inches deep—except Crocus and other small bulbs, which should be planted at less depth—early as possible in October. Cover with a few inches of litter the end of November. Remove same first thing in spring, and nature will do the rest.



CORONATION COLLECTION

... OF ...

HIGH GRADE FLOWERING BULBS

FOR the benefit of those who are at a loss in selecting suitable bulbs for House and Outdoor Culture, we offer the following collections of what, in our own experience, we consider the most satisfactory varieties.

On the receipt of \$1.00, we will mail either collection to any address in Canada.

Collection for House Culture

- 6 EARLY ROMAN HYACINTHS
- 3 CHOICE NAMED HYACINTHS
- 6 PAN HYACINTHS in Two Colors
- 6 PAPER WHITE NARCISSUS
- 6 MAMMOTH FREESIAS
- 6 BEST FORCING TULIPS
- 6 TRUMPET MAJOR NARCISSUS

Collection for Outdoor Culture

- 25 DOUBLE MIXED TULIPS
- 25 SINGLE MIXED TULIPS
- 50 CROCUS GIANT FLOWERING
- 25 SCILLA COMPANULATA
- 25 DOUBLE PARROT TULIPS
- 25 NARCISSUS POETICUS ORNATUS

The above Bulbs must not be confounded with the low grade cheap bulbs generally sent out in collections.

Ours are Strictly First-Class

EXTRA CHOICE AND RARE HYACINTHS

FIRST SIZE BULBS, EXTRA QUALITY

	SINGLE	Each, cts.
Garibaldi, rich carmine		15
Moreno, rose, gigantic flower		15
Alba Maxima, early, waxy white		20
L'Innocence, large truss, pure white		20
Mina, handsome flower, clear white		15
Snowball, pure white, handsome flower		20
Capt. Boyton, very early, dark blue		20
Grand Lilas, handsome flower, dark blue		25
Lord Byron, large bells, large truss, blue		20
Queen of the Blues, grand flower		20
King of the Yellows, extra fine yellow		20
Yellow Hammer, bright, golden yellow		20
	DOUBLE	
Koh-i-noor, semi-double, rose		15
Milton, splendid flower, red		20
Miss Nightingale, pure white, large truss		15
Boquet Orange, good flower, orange		15



Early Roman Hyacinths



The earliest of all Hyacinths. This season we have discarded all colors except the White, having found all other Hyacinths of this class—Pink, Blue, Yellow and Italian Hyacinths unsatisfactory.

Roman Hyacinths should be planted as early as possible; from 3 to 6 bulbs in a pot make a good display.

Per 100. Per doz. Each.

Early White French Romans, 13 to 15 centim. . . \$2.50 40c 4c

Roman Hyacinths are the only Hyacinths that will bloom satisfactorily for Christmas.

High Grade Mixed Hyacinths

Suitable for fall planting outside for early spring bloom. These Hyacinths will also be found to be fairly satisfactory for potting.

SINGLE

	Per 100.	Per doz. Cts.	Each. Cts.
Red and Rose Shades	\$3 00	40	5
White and Cream Shades	3 00	40	5
Blue Shades	3 00	40	5
Yellow Shades	3 00	40	5

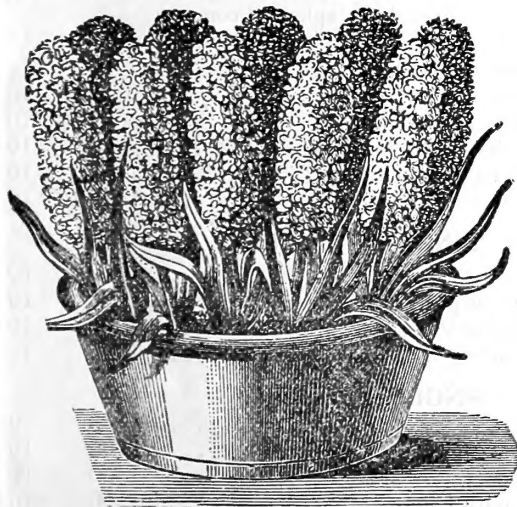
DOUBLE

Red	3 00	40	5
Rose	3 00	40	5
White	3 50	40	5
Blue	3 00	40	5
Yellow	3 50	40	5

In all Classes of...

HYACINTHS AND TULIPS

we will sell 25 Bulbs at the 100 rates



A PAN OF MINIATURE HYACINTHS

Miniature, or Pan Hyacinths

Sometimes called Dutch Roman Hyacinths. They are not Roman Hyacinths, however, but the regular Dutch Hyacinth—same as the preceding class except that the bulbs are smaller. They are an exceedingly attractive and useful class of Hyacinths, giving splendid results, when from 6 to 12 bulbs of one variety are planted in a pan.

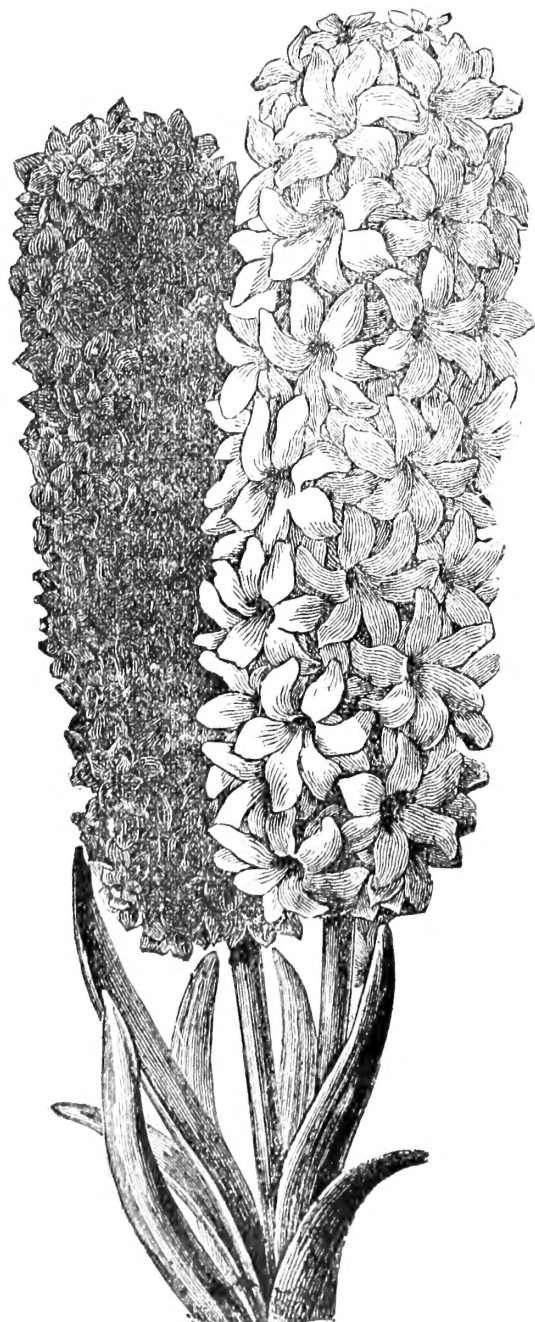
	Per 100.	Per doz. Cts.	Each. Cts.
Gigantea , light pink	\$2 25	30	3
Charles Dickens , pink	2 25	30	3
Baron Von Thuyll , white	2 50	35	3
Blondin , blue	2 25	30	3
Baron Von Thuyll , pink	2 25	30	3
Gen Pellissier , red	2 25	30	3
Queen of the Blues , blue	2 50	35	4
Lord Macaulay , rose	2 25	30	3
La Grandesse , white	2 50	35	4
Mixture of above	2 25	30	

One of the very best Odorless Fertilizers
for all House Plants is

**Albert's Concentrated
Horticultural Manure**

15c. per lb. In Lots of 10 Lbs., \$1.00

Apply $\frac{1}{2}$ oz. to gallon water



SPIKES OF SINGLE HYACINTHS.

Choice Named Hyacinths

Suitable for Growing in Glasses with Water or Forcing
in Pots

Price of the following, your own selection, \$6.50 per 100
25 Bulbs at 100 rates

SINGLE RED AND PINK VARIETIES

	Per Doz.	Each
Amy, bright red, compact spike, beautiful	\$0 90	10
Baron, Van Thuyll, very early light rose	0 90	10
Chas. Dickens, pretty rose	1 00	10
Gen. Pellissier, fine red	1 00	10
Gertrude, rosy pink, large compact truss very fine	1 00	10
Gigantea, delicate rose, large spike, splendid	1 00	10
Grand Vainqueur, bright rose, large handsome spike, beautiful	1 00	10
L'Adorable, beautiful soft red	1 00	10
Norma, delicate waxy pink, large bells, magnificent spike, early	1 25	12
Robert Steiger, bright crimson, large compact spike	1 00	10
Roi des Belges, extra fine, dark rose	1 25	15
Rosea Maxima, bright rose	1 00	10
Unica Spectabilis, pretty rose	1 00	10

SINGLE WHITE AND BLUSH VARIETIES

Alba Superbissima, pure white, fine shape, compact spike	1 25	15
Baron Van Thuyll, pure white, early	1 00	10
Grandeur a Merveille, blush white	1 00	10
La Candeur, pure white	1 00	10
La Franchise, white, choice flower	1 00	10
La Grandesse, pure white, extra fine	1 50	15
La Vestale, good flower, pure white	1 00	10
Madame Van der Hoop, large truss	1 00	10
Voltaire, blush white	1 00	10
Queen Victoria, handsome flower, pure white	1 25	15

SINGLE BLUE AND PORCELAIN VARIETIES

Blondin, fine flower, tinged purple	1 00	10
Charles Dickens, dark lilac, splendid	1 00	10
Czar Peter, light porcelain, shaded lilac, grand spike	1 25	15
Grand Maitre, deep porcelain blue, large truss and bulb	1 25	15
King of the Blues, rich dark blue, splendid compact truss	1 25	15
La Peyrouse, clear porcelain blue	1 00	10
Marie, fine dark blue	0 90	10
Pieneman, large bells, good spike	1 00	10
Regulus, porcelain blue, large loose bells	1 00	10
William I, velvety dark blue	1 00	10
William III, black, fine spike, early	1 00	10

SINGLE VIOLET

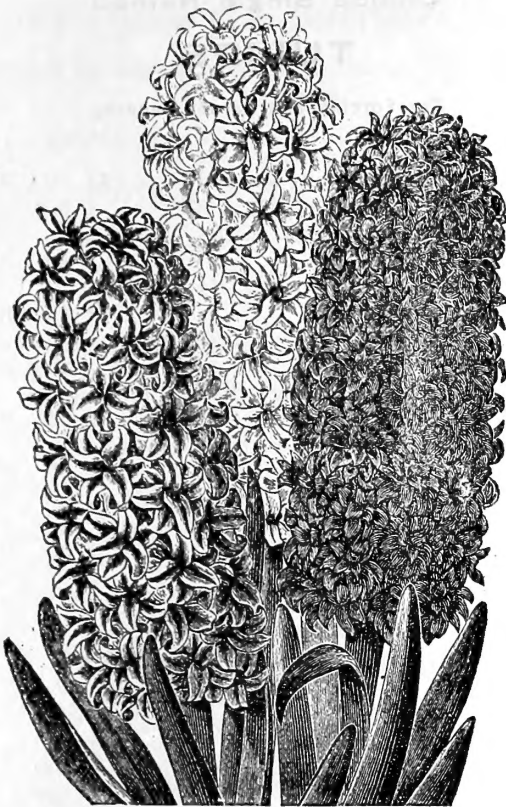
Hayden, large flower, bluish violet	1 00	10
Lord Mayo, brownish purple, white centre	1 00	10
L'Unique, dark violet, very early	1 00	10
Sir Wm. Mansfield, violet, very fine	1 25	15

SINGLE YELLOW

Herman, orange	1 00	10
Sonora, large yellow, good truss	1 00	10
La Citronniere, lemon yellow	1 00	10
L'Or de Australie, pure yellow	1 00	10
William III, orange buff	0 90	08

Choice Named Hyacinths

Price of the following, your own selection, \$6.50 per hundred.



SPIKES OF DOUBLE HYACINTHS

Double Red and Pink Varieties

	Per doz.	Each Cts.
Bouquet Tendre, or Waterloo, deep red, fine spike, early.....	\$1 00	10
Gladstone, fine spike, rose colour.....	1 00	10
Grootvorst, blush pink.....	1 00	10
Prins Van Orange, light reddish orange.....	1 00	10
Regina Victoria, fine salmon rose, good truss.....	1 00	10
Sir Walter Scott, rose, violet spotted.....	1 00	10

Double White and Blush

Bouquet Royal, pure white, fine spike.....	1 00	10
Flevo, fine pure white.....	1 00	10
La Virginite, fine waxy white, large bells, good truss..	0 90	08
Lord Castlereagh, white, with purple centre.....	1 00	10
Ne Plus Ultra, large white flower with black centre..	0 90	08
Prince of Waterloo, white with blush eye, large bells, extra fine.....	1 00	15

Double Blue and Porcelain

Blocksberg, bright marbled blue, large spike, extra fine.....	1 00	10
Garrick, dark blue, large bells, extra.....	1 00	10

	Per doz.	Each Cts.
General Antink, light blue, large truss....	\$1 25	12
Prince Albert, splendid black blue.....	1 25	15
Pasquin, light blue, dark spotted.....	1 00	10
Rembrandt, large truss.....	1 00	10

Double Yellow

Gotho, waxy cream, large bells.....	1 25	12
Sunflower, magnificent spike.....	1 00	10
Louis d'Or, rose centre.....	1 00	10
William III, large and early.....	1 00	10

Grape Hyacinths

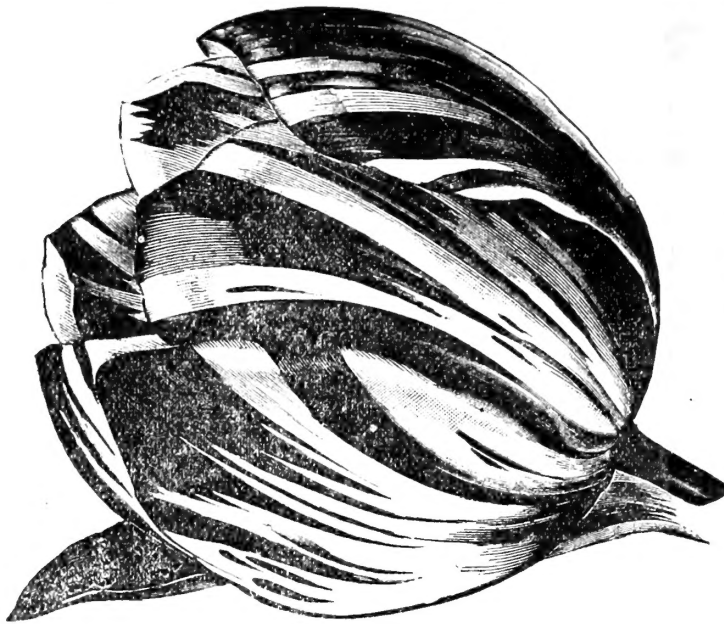
(*Muscari Botryoides*).

Fine for outdoor culture for edging borders; they make a fine succession to crocus and are a very interesting genus.

	Per 100.	Per doz. Cts.
Blue.....	\$1 00	15
White.....	1 50	20



GRAPE HYACINTHS.



BIZARD TULIP

Per 100 Per doz.
Cts.

Keiserskroon, medium, deep crimson, with broad orange margin, extra fine	\$1 50	30
La Reine, white, faintly tinted rose. One of the best forcing tulips.	1 50	30
L'Immaculee, medium, pure white, yellow base.	1 50	30
Moucheron, red, robust variety.	1 50	30
Pottebakker, pure white.	1 50	40
Princess Marianne, large flower, white, shaded with bluish	1 00	30
Proserpine, medium, violet, extra fine flower.	3 00	50
Rachel Ruysch, beautiful cherry red.	1 30	30
Rosamundi Huyckman, rose bordered crimson.	1 25	25
Rose Gris de lin, rose shade, white, extra fine flower	1 75	35
Standard Silver, pink and white.	1 50	30
Thomas Moore, beautiful orange.	1 50	30
Vermillion Brilliant, medium, fine for forcing or bedding	3 00	50
Yellow Prince, medium, bright yellow, one of the very best yellow bedding tulips.	1 25	30
Vesuvius, brilliant scarlet	2 00	40
Wouwerman, dark violet.	1 25	25

Double Early Named Tulips

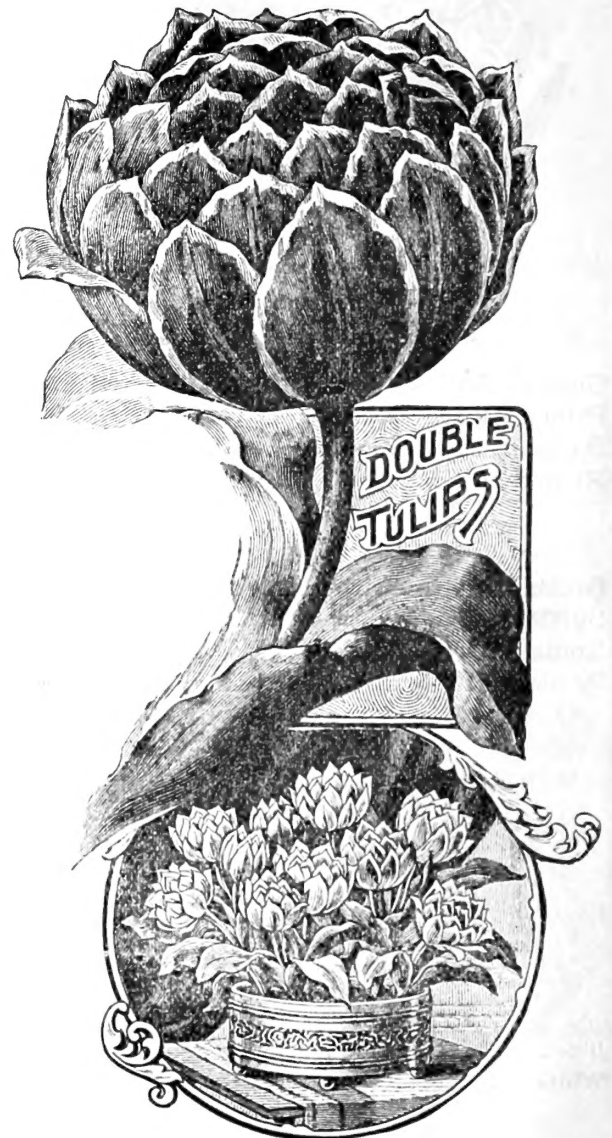
For Forcing and Carpet Bedding

Alba Maxima, fine double white, 8 in.	1 75	35
Blanc borde pourpre, violet and white, dwarf.	1 25	30
Count of Leicester, orange and yellow, feathered, 7 in.	1 25	25
Duc Van Tholl, red and yellow, fine forcer, 7 in.	1 00	20
Imperator Rubrorum, splendid bright scarlet, yellow base, 9 in.	2 00	35
La Candeur, pure white, very large flower, good forcer, 8 in.	1 00	30
Le Blason, delicate rose, shaded and striped with white, 9 in.	1 50	30
Murillo, bluish white, shaded rose, magnificent flower	2 40	40
Rose Blanche, pure white, splendid flower	1 25	30
Salvator Rosa, rosy, striped white, splendid for forcing	3 50	50
Tournesoll, splendid tulip, orange scarlet with broad yellow tips and base.	2 25	40
Yellow Rose, bright yellow	1 00	25

**Choice Single Named
TULIPS**

For Forcing and Carpet Bedding

	Per 100	Per doz. Cts.
Arms of Leyden, white and red	\$1 50	30
Artus, dwarf, bright scarlet.	1 00	25
Belle Alliance, brilliant scarlet, yellow base, medium.	1 50	30
Canary Bird, golden yellow, good forcer, medium.	1 50	30
Chrysolora, pure yellow, large flower, medium.	1 25	30
Couleur Cardinal, orange, distinct, fine flower.	1 50	30
Duchess of Parma, orange scarlet, distinct, fine flower.	1 50	25
Duc Van Tholl, early scarlet.	1 00	25
Joost Van den Vondel, dark violet, shaded white.	1 50	30



Early Mixed Tulips



PARROT TULIPS

... THOMPSON'S ...

JADOO LIQUID

This will not only be found useful for plants grown in Jadoo Fibre,
but will also be found good for plants in earth

PER BOTTLE, 25c.

TULIPS are universal favorites for garden decoration, and they are deservedly so. Nothing gives a residence a gayer appearance than a fine display of tulips on the lawn.

	Per 100	Per doz. Cts.
Choice Single, Mixed, extra fine.....	\$1 00	25
Single White Varieties, mixed	1 25	30
Single Red Varieties, mixed	1 25	30
Single Pink Varieties, mixed	1 25	30
Single Yellow Varieties, mixed	1 25	30
Choice Double, all colors, mixed	1 25	30

Late Tulips

Double Late Tulips, extra fine, mixed, bloom about middle of May...	1 00	25
Double Late, Paeony, gold, red and gold striped	1 30	30
Double Late Marriage de ma Fille, striped white.....	1 50	35
By-blooms, mixed.....	1 00	25
Bizard Tulips, beautiful flowers of perfect shape,		

having yellow ground color feathered and striped with crimson, purple and white.....	1 00	25
Parrot or Dragon Tulips, late flowering Tulips with immense attractive flowers of wonderful form and brilliant shades.....	0 90	20
Darwin Tulips. This beautiful genus of Tulips belong to the late flowering class. Magnificent colors, shaded.....	2 00	40
Botanical Tulip, Macrospila, brilliant red, sweet scented.....	1 25	30
Botanical Tulip, Golden Crown.....	1 25	30
Botanical Tulip, Gesneriana, scarlet, with blue centre.....	1 40	35

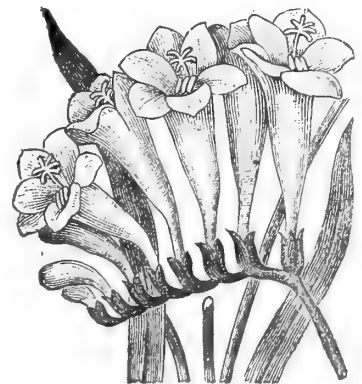
Freesia

Refracta Alba

OR AFRICAN LILY OF THE VALLEY

A bulb of very easy growth indoors, and one of the most beautiful and delicately perfumed little flowers in cultivation.

Mammoth Bulbs.....Per 100, \$1.00; doz., 20c.



Chinese Sacred Lily

Our stock of Chinese Lilies are the
Genuine Article, Chinese Grown

BULBS bloom in six or eight weeks after planting, throwing up several flower stalks thickly studded with bloom, white with yellow centre, and very fragrant. Grown in shallow bowls containing water and pebbles, or grown in earth in pots.

Price for first size bulbs : Per dozen, \$1.00 ; each, 10c. ; 3 bulbs for 25c.

Polyanthus=Narcissus

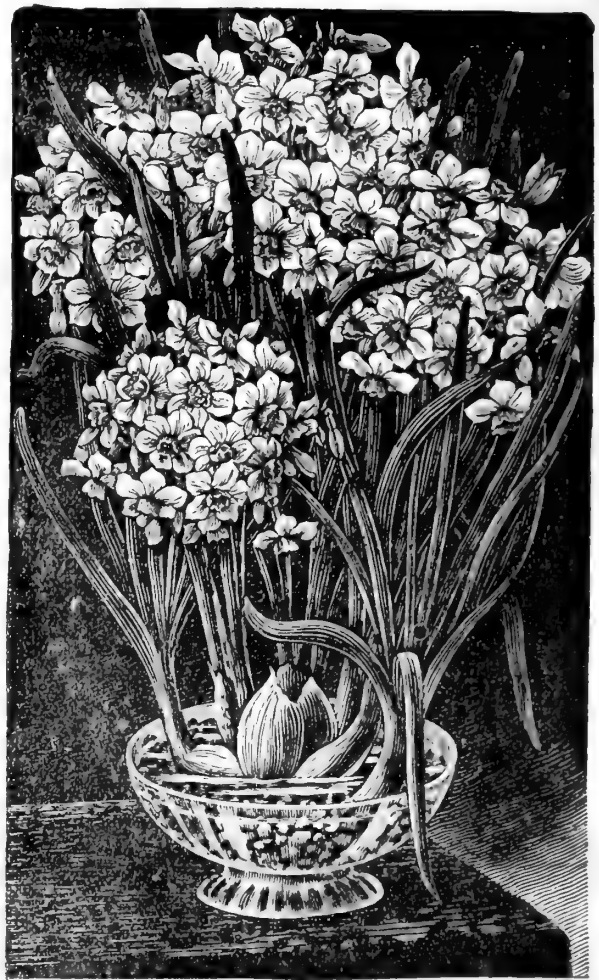
Or Bunch Flowered Daffodils

Paper White Grandiflora, pure white flowers, grown in beautiful clusters, and delightfully fragrant. This is one of the easiest grown and most satisfactory bloomers for house culture. Never fails to give a profusion of charming blooms. Plant 6 bulbs in 7 or 8 in. pot. Each, 3c. ; per 100, \$1.25 ; per doz., 30c.

Grand Soleil d'Or, rich yellow with orange cup. Each, 5c. ; per 100, \$2.50 ; per doz., 40c.

Grand Monarque, large white flowers with yellow cup. Can be successfully grown in water like Chinese Sacred Lily. Each, 5c. ; per 100, \$2.50 ; per doz., 50c.

Queen of the Netherlands, pure white, beautiful narcissus. Per 100, \$2.50 ; per doz., 40c.



Crocus

"Following with contrasted glow,
Snowdrop white and cold as snow,
Crocus, now of orange brightness,
Now of Lily's virgin whiteness."

	Per 100 Cts.	Per doz. Cts.
Albion, purple.....	60	10
Baron Von Brunow, dark blue.....	60	10
Madame Mina, striped..	60	10
Queen Victoria, white...	60	10
Cloth of Gold, yellow, black spotted.....	50	10
Giant Flowering Vari- eties in splendid mixture	40	10

Double Narcissus or Daffodils

Albo Pleno Odorato—Double white Gardenia Flowered Daffodil, exquisitely scented. Per doz., 30c.

Incomparable—(Butter and Eggs), yellow and orange. Fine forcing variety. Per doz., 35c.

Orange Phoenix—Double white flower with orange nectary. Per doz., 40c.

Silver Phoenix—Silvery white. The largest double daffodil. Per doz., 50c.

Van Sion—(The famous "Old Double Daffodil"). Rich golden flowers. The best forcing variety. Dutch grown, extra size (double noses). This grade of Van Sion will give two flowers to each bulb. Per 100, \$2.50; per doz., 40c.



Single Daffodils

INCOMPARABILIS VARIETIES

	Per 100	Doz., cts.
Barri Conspicuus —Sulphur yellow	\$1 00	20
Cynosure —Eucharis flowered, primrose perianth, orange cup	1 00	20
Sir Watkin —Giant Chalice Flower, rich yellow with dark cup	2 50	50
Stella (albus) —White star shaped flowers with yellow cups	1 00	25
Duchess of Brabant —Pure white, fine flower	1 25	30
Typus —Beautiful yellow flower	1 00	25
Figaro —Cup orange yellow, perianth yellow	1 00	25

TRUMPET VARIETIES

Emperor —One of the finest daffodils in cultivation; rich yellow, first size bulbs	5 50	\$1 00
Golden Spur —Very robust in habit, good for forcing	5 00	80
Henry Irving —A magnificent golden yellow flower, with a beautiful frilled trumpet	5 00	80
Horsfieldi —The "Queen of the Daffodils." Flowers pure white with rich yellow trumpet	5 00	80
Trumpet Major —Deep golden yellow flowers. Fine forcing variety and perfectly hardy	1 00	30
Trumpet Princeps —Very early. Large yellow trumpet, perianth sulphur	1 25	35
Van Sion —A rich golden yellow, fine forcer	1 30	35

POETICUS VARIETIES

Poeticus (the Poet's Narcissus) —Perfectly hardy, pure white flower with orange cup edged with crimson	0 60	15
Poeticus Ornatus —An improved variety of the "Poet's Narcissus." Very early, perfectly hardy. Large pure white flowers with saffron cup	1 25	25
Burbidgei —Early, Poeticus type	1 00	20
Biflorus —White, yellow cup, Poeticus type	1 00	20

Easter Lily

(Lilium Harrish)

THIS is the best and most floriferous lily for winter blooming, and is one of the most profitable flowers that can be grown by florists. Excellent for pot culture.

True Bermuda Grown Bulbs

	Per 100	Per doz.	Each, cts.
Bulbs 7 to 9 in. in circumference.....	\$11 00	\$1 50	15
Bulbs 9 to 11 in. in circumference, extra.....	22 00	3 00	30

Lilium Candidum

Or St. Joseph's Lily

Extra large bulbs.....	5 00	0 75	08
------------------------	------	------	----

White Calla Lily

	Per doz.	Each, cts.
Dormant roots, 1st size.....	1 50	15
Plants from 4-in. pots.....	25

Lilium Longiflorum

(Delivery in October)

Single Crown Japanese Bulbs, of more stocky habit than Harrisii, and later in blooming, but a lily of fine substance, 7 to 9 in. Per 100, \$5.00.....	1 00	10
---	------	----

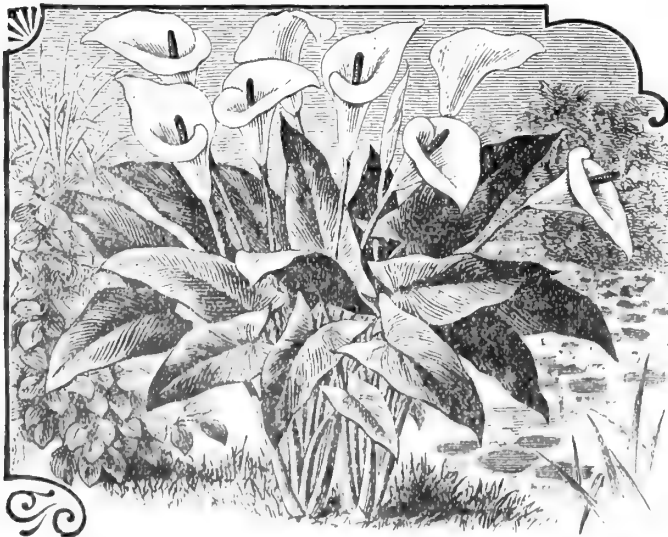


LILIAM HARRISH

Lilium Speciosum

(Delivery in November)

	Per doz.	Each, cts.
Speciosum Album—Very popular variety, blooms in August, pure white....	\$1 50	20
Speciosum Roseum—White, shaded and spotted with rose.....	1 00	15
Speciosum Rubrum—White, shaded with dark rose and spotted red.....	1 00	14
Auratum—Golden Lily of Japan (Japanese bulbs).....	1 75	20



AURUM OR CALLA LILY

MISCELLANEOUS BULBS

Allium Neapolitanum —Pure snow white, blooms in immense trusses. Very valuable for forcing and immense for cutting	Per doz. \$0 25
Anemone, Double —Mixed colors	20
" Single —Mixed colors	20
Chinodoxa Lucillæ (Glory of the Snow)—One of the most lovely spring bulbous plants ever introduced, producing spikes of azure blue flowers, with pure white centres.....	20
Crown Imperial Lily (<i>Fritillaria Imperialis</i>)—A well known, hardy and stately early spring blossoming plant, with clusters of beautiful pendant bell-shaped flowers surmounted with a tuft of green leaves. Choice mixed colors.....	1 00
Hyacinthus Belgicus —Blue.....	20
" " —White.....	25
Gladiolus Colvilli (The Bride)—The earliest of all Gladioli and fine for forcing.....	25
Iris Hispanica —Mixed.....	20
Iris Kämpferi —We have a magnificent collection of this gorgeous variety.....	1 50
Ixia —A beautiful half-hardy plant, but fine for house or window culture. Mixture of 25 splendid new sorts.....	15
Jonquils, double —Rich yellow, sweet scented.....	25
" single —	15
" Odorus Rugilosus —Sweet scented, improved Campernelli. Per 100, \$1.00	20
Lily of the Valley (<i>Convallari Majalis</i>)—This plant is a general favorite, and is one of the most highly prized of our early spring flowers. Ready in October. Extra large pips for forcing. Per 100, \$2.00; 25 pips, 50c.....	Per doz. 40



ALLIUM

Ornithogalum Arabicum (Star of Bethlehem)—A very attractive white, star-shaped little flower with black centre and aromatic fragrance. Quite hardy out-doors, and forces easily..... 40

Oxalis Grand Duchess

This magnificent new class of Oxalis are of dwarf, sturdy habit, and have flowers of from 2½ to 3 inches across. Extremely free flowering. Bloom from November till June.

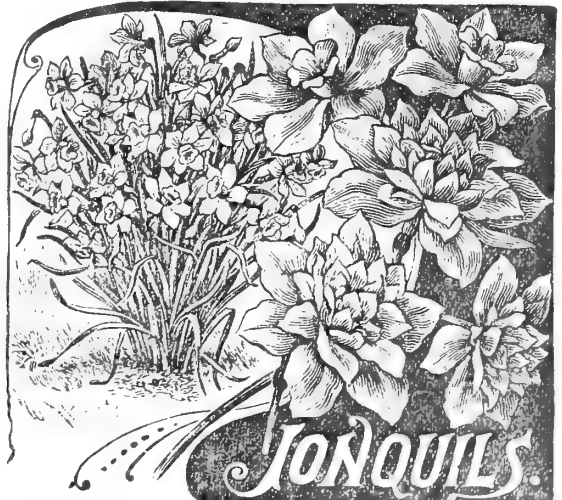
Oxalis Grand Duchess, Alba	50
" " Rosea	40
" " Lavender	40

NIKOTEEN PUNK
APHIS IT BURNS

MADE BY SCABCURA
DIP. CO.
ST. LOUIS, CHICAGO.

The most convenient way of applying an insecticide ever yet devised. No pans required—No heating of irons—No trouble—Cannot injure the most sensitive of blooms. Very effective. *Box of 12 Rolls 60¢*

Oxalis (Bermuda Buttercup)—A fine plant for winter flowering, very strong grower. The flowers are bright, buttercup yellow.....	25
Oxalis —Superb varieties in mixtures. A very pretty bulbous plant, specially adapted for winter flowering in pots, hanging baskets, vases, etc	15
Pæonies —We offer a splendid assortment of Japanese pæonies. Set of 10, \$2 50.....	25
Scilla Siberica —One of the most charming and earliest spring flowering bulbs, producing masses of the most intense blue flowers. Per 100, \$1.50	25
Scilla Campanulata —Blue and white varieties. This is a very pretty variety of the Scilla and perfectly hardy. Per 100, \$1.00	25
Snowdrop (Elwes Giant)—This fine variety is about three times the size of the ordinary snowdrop, and is slightly scented. Per 100, \$1.50	25
Spiræa —W. E. Gladstone, new. Ready in October.....	2 50
Spiræa —New large flowering. A valuable variety, dwarfer in habit and blooming longer and more profusely than the old sort.....	1 50
Sparaxis —Of about the same habit as the Ixia. Fine mixed colors	15



JONQUILS

Decorative Plants

FOR CONSERVATORY AND HOUSE CULTURE



AZALEA

plants, \$2.00 ; extra size, \$3.00 each.

Begonias—Including Rex in variety, Metallica, Thurstoni, De Lesseps, Incarnata, Vernon, Alba Picta, &c. Small plants, 10c. each ; fine plants for table or window decoration, 25c. to 50c. each.

Chrysanthemums—Nice stocky plants of the varieties most suitable for pot culture (season of blooming from middle of October to end of November). 6 and 7-in. pots, 50c. and 75c. each.

Cyperus Alternifolius (Umbrella plant)—An ornamental grass, graceful and hardy, needs plenty of water. 30c. each ; larger size, 50c. each.

Cyclamens—These beautiful plants give a wealth of rich bloom during the winter. 25c. to 50c. each.

Dracæna Indivisa (Fountain plant)—Fine, hardy and graceful plant for house culture. 25c. to 50c. each.

Ferns—Our stock of house ferns this season is large, varied and in fine condition. We offer only those varieties that are most suitable for house culture, including Adiantum Cuneatum, Adiantum Pub-scens, Cyrtomium, Nephrolepis Bostoniensis (Boston Fern),

Nephrolepis Exaltata, Nephrolepis Cordata Compacta (Sword Fern), Polystichum Angulare, Pteris Cretica, Pteris Ouvrardi, Pteris Tremula, Pteris Magnifica, Aspidiums, etc. Plants, 10c., 15c., 25c. and 50c. each.

Ferns in Pans—These are constantly growing in popularity for table and window decoration. We can supply pans of mixed ferns prettily arranged at 40c., 50c. and 75c. each.

Primulas—There is probably no blooming plant grown that will give so much pleasure for so long a season, with so little care and expense, as a Primula. Our stock this season, from high grade seed, is very promising. Price, 25c. each.

Primula Obconica—A profuse blooming primrose bearing on long spikes 10 to 15 flowers ; white, shading to blue. 25c. each.

Rubber Plants (Ficus Elastica)—One of the finest plants for parlor decoration. Its thick leathery leaves enable it to stand excessive heat and dryness, while their imposing size and deep glossy green always present a cheerful and effective appearance. Price, plants 10 to 12 in. high, 50c. each ; 15 to 18 in. high, 75c. each ; plants 2 to 2½ ft. high, \$1.50.

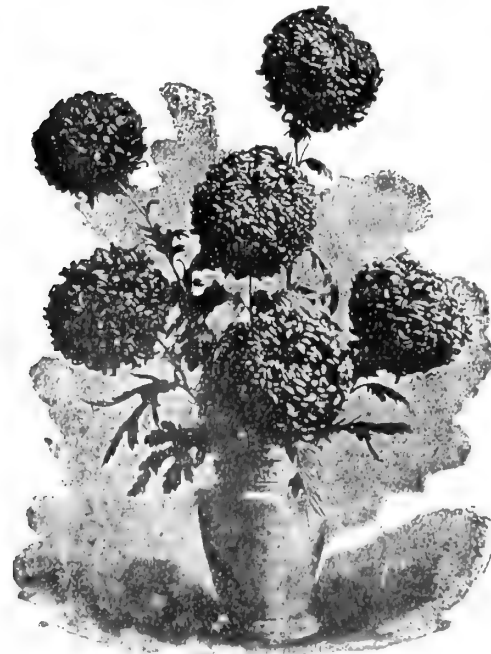
Otaheite Orange—A perfect dwarf orange, set with fruit, 40c. each.

Pandanus Utilis (Screw Pine)—Large plants of these are very handsome. Price, 50c. each.

Pandanus Veitchii—A finer and variegated form. \$2.00 each.



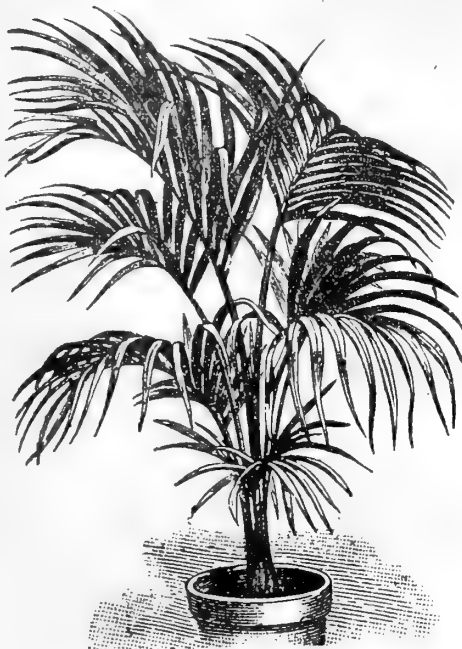
CYPERUS ALTERNIFOLEJS



CHRYSANTHEMUMS



ASPARAGUS PLUMOSUS



KENTIA FOSTERIANA



LATANIA BORBONICA

PALMS

Palms have become an almost indispensable feature in all decorations, whether for apartments, conservatories or window gardening. We have this season, a larger and better stock than ever before. The varieties we offer are selected as being the best adapted to general cultivation in house or conservatory.



Cycus Revoluta—Sago Palm, of graceful spreading habit, the glossy leaves being very hardy. Price, \$2.00 and \$3.00 each.

Cocos Weddelliana—This beautiful Palm is unquestionably the most graceful in cultivation. It is admirably adapted for centres of jardinières, and for dinner table decoration it cannot be excelled. Price, 50c., 75c. and \$1.00 each.

Kentia Belmoreana—This, and the following, are undoubtedly the most satisfactory and most effective for house culture. They are more capable of standing ill usage than any other class. Price, \$5.00, \$3.50, \$2.00, \$1.25 and 50c. each.

Kentia Fosteriana—A more vigorous grower than the preceding variety, plants the same price averaging about one-quarter larger than it, otherwise the appearance is almost identical. Price, \$5.00, \$3.00, \$2.00, \$1.25, 50c. and 25c. each.

Latania Borbonica—This is the typical Palm, and has, perhaps, in the past been more largely used than any other. Its large deeply-divided, fan-shaped leaves are very attractive, while the plant is extremely hardy. Price, \$5.00, \$3.50, \$2.50, \$1.50 and 75c. each.

Phoenix Reclinata—A large growing, graceful Palm of easy cultivation, large specimens being especially effective. Price, \$6.50, \$3.00, and \$1.50 each.

Corypha Australis—An excellent palm of robust habit; fan-shaped leaves. Price, \$2.00 each.

JAPANESE OR MIKADO FERN BALLS

PRICE 50c. Each.

DIRECTIONS FOR STARTING—Place ball in water for 15 minutes and then suspend in any desired position; repeat every two days until growth is started, after which sprinkle occasionally as required. The Fern Ball may be allowed to dry up at any time and set away, and started again by watering as before.

Horticultural Sundries, Etc.

STANDARD FLOWER POTS



	Per doz.	Per 100
2 in.....	\$0 10	\$0 50
2½ in.....	0 12	0 60
3 ".....	0 15	0 75
4 ".....	0 20	1 40
5 ".....	0 35	2 00
6 ".....	0 60	3 50
7 ".....	0 80	5 50
8 ".....	1 50	
9 in.....	2 00	
10 ".....	3 00	
12 " each, 50c.....	5 00	

Saucers
of all
sizes
extra

Prices for Large Quantities on Application

HYACINTH GLASSES

Old Pattern, \$1.25 per doz., 2 for 25c.

Tye Pattern, 1.50 " 2 " 25c.

Eclipse Pattern, new, \$3.00 per doz.,
30c. each.



Tokio Bowls for
Chinese Lillies, 50c.,
65c. and 75c.



Standard Fern or Bulb Pan

5 in., 30c. per doz. ; 6 in., 55c. per doz. ; 7 in., 75c. per doz. ; 8 in., \$1.25 per doz. ; 10 in., \$2.50 per doz.



Earthenware Fern Stands

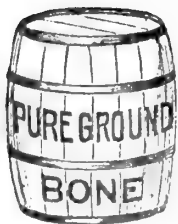
Beautifully decorated, made specially for above Pans, each, 5 in., \$1.00 ; 6 in., \$1.25 ; 7 in., \$1.50 ; 8 in., \$1.75.

ALSO A COMPLETE STOCK OF

Pedestals and Pots, Jardinieres, Art Pots, Vases, Etc.



Fertilizers



Albert's Concentrated Horticultural Manure—Soluble in water. One of the best stimulants for flowering plants. Per lb., 15c. ; 10 lbs. for \$1.00.

Bone Meal—A valuable well known fertilizer. 100 lbs., \$2.25 ; 5 lbs., 15c.

Dominion Flower Fertilizer—An efficient stimulant for all plants and flowers. Per 2-lb. pkt., 25c.

Clay's Fertilizer—This valuable English manure is specially recommended to those who grow flowers and wish to bring them to the highest perfection. Pkts. 25c. and 50c.

Compost—Specially prepared soil for potting plants. Per bush., 25c.

Odorless Lawn Dressing—An efficient high class fertilizer for lawns. Per 100, \$2.75.

Jadoo Liquid—A fine fertilizer for all plants. Bottle, 25c.

Persicatic Plant Food—A good fertilizer and a preventative of worms in pots. Pkt., 25c.

Flower City Odorless Lawn Dressing—Good to enrich the lawn, and inoffensive. 25-lb. bag, 75c. ; pkt., 60c.

Lawn Dressing (Tankage)—A mixture of blood and bone. A first-class fertilizer for the garden. Per lb., 3c. ; per 100 lbs., \$2.00.

Nitrate of Soda—Lb., 5c. ; 100 lbs., \$3.50.

Muriate of Potash—An excellent fertilizer for chrysanthemums, geraniums, fuschias, &c. Per lb., 5c. ; 100 lbs., \$3.50.

Insect Destroyers

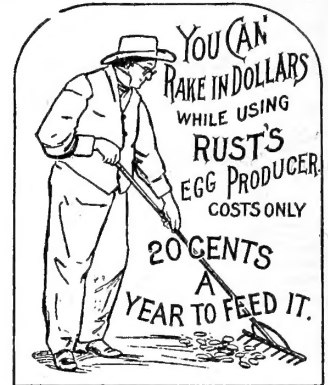


- Aphis Punk**—Easily applied and sure death to plant pests. Per roll, 10c.; box of 12 rolls, 65c.
- Nikoteen** — Remedy against Aphis, Red Spider, Thrip, Plant Louse, Mealy Bug and other insects. Per Pint, \$2.00.
- Pyrethrum Powder**—Oz., 5c. ; lb., 50c.
- Paris Green**—Per lb., 25c.
- Copper Sulphate**—Per lb., 10c. ; 10 lbs., 90c.
- White Hellebore**—Per lb., 25c.
- Pure Flour of Sulphur**—Per lb., 10c. ; 10 lbs., 50c.

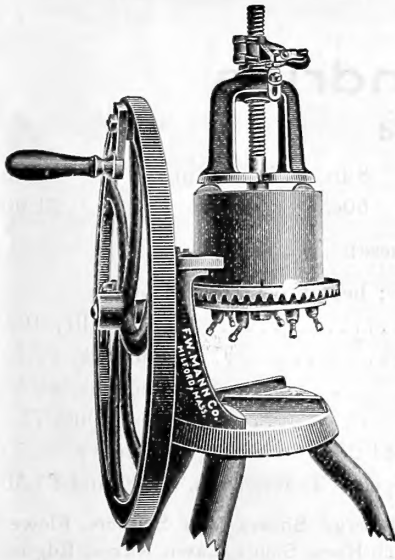
- Fir Tree Oil**—One of the most efficient insecticides. Price, ½ pints, 50c. ; pints, 75c. ; quarts, \$1.40.
- Lemon Oil**—A most effective insecticide for the destruction of Mealy Bug, Red Spider, Aphis &c. ½ pint, 50c., pint 80c.
- Gishurst's Compound**—An old and reliable insecticide. Boxes, 50c. and \$1.25 each.
- Whale Oil Soap**—A safe and reliable remedy. Dissolve 1 lb. to 4 gals. of water. Lb., 20c.

Poultry Supplies

Clover Meal, per 100 lbs.....	\$ 2 25
Mica Crystal Grit, per 100 lbs.....	1 00
Crushed Oyster Shells, per 100 lbs.....	1 00
Blood Meal, per 100, \$4.00; lb.....	5
Superior Meat Meal, per 100, \$3.00; lb.....	4
Rust's Egg Producer, per pkt. \$3.50, \$1.50, \$1.00, 50c. and.....	25
Rust's Haven's Climax , \$1.00, 50c. and.....	25
Pratt's Poultry Food, per pkt., \$2.50, \$1.25, 75c. and.....	30
Spratt's Crissel Poultry Food, 100 lbs., \$4.50, lb.....	5
Lee's Louse Killer, per gallon, \$1.00; quart.....	40
Conkey's Roup Cure, per bottle.....	50
Rust's Roup Pills, pkt.....	25
Sulphated Carbo Louse Killer, pkt.....	15
Persiac Poultry Powder.....	25
Granulated Bone, per 100, \$2.25; lb.....	3
Millet for chicks.....	3
Poultry Labels, per dozen.....	30
Bone Mill, Mann's No. 2 B, mounted, improved style, 6 knives.....	16 00
“ “ No. 2 B, unmounted “ 6 “.....	13 50



Harmer's Perpetual Poultry Register



MANN'S BONE MILL

CONTAINS sixteen pages neatly ruled and printed forms, 8 x 11 in., embracing a simple system for keeping all poultry accounts and records accurately and easily. It provides a form for every purpose imaginable in connection with poultry keeping

Bird Seeds, Etc.

Graham's Standard Bird Seed Mixture , 3 lbs.....	Cts. 20
Canary, Hemp, Millet..... 3 lbs., 20c. ; per 100, Market Price	
Russian Sunflower , lb., 10c. ; 3 lbs.....	25
Maw, per lb.....	25
Cuttle Fish Bone, per lb., 60c. ; oz.....	5
Lettuce Seed, oz.....	5
Bird Gravel, per pkt., 10c. ; small pkt.....	5
Mite Destroyer, per pkt.....	10
Bird Treat, per pkt.....	5
Mocking Bird Food , per lb.....	40
Brock's Book on Birds	25

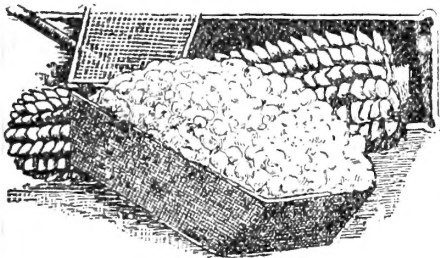
Florists' Sundries

- Ribbon Letters 2c. each
- Boston Scrip Letters in words Father, Mother, Brother, Sister, At Rest, Baby, Our, My, etc. . . . Price each letter, 7c.
- Silkalene, for tying Smilax, bouquets, etc., in 2-oz. spools \$1.75 per lb.; 25c. per spool
- Tin Foil 15c. per lb.
- Violet Foil, Pink and Green Foil 50c. per lb.
- Wire Designs in shapes and sizes Prices on application
- Toothpicks 10c. per box; 3 boxes 25c.
- Bouquet Papers
- Florists' Jasper Flower Vases Each 12c., 15c., 25c., 45c., 75c.

Mushroom Spawn

OF HIGHEST QUALITY

Fresh English Mushroom Spawn—Fall importation Per brick, 15c.; per dozen, \$1.00; per 100, \$7.50
 When ordered to be sent by post, per brick, 20c.



White Rice Pop Corn Nutritious and Wholesome, per lb., 10c.; 3 lbs., 25c.

Seeds for Flavoring and Pickles

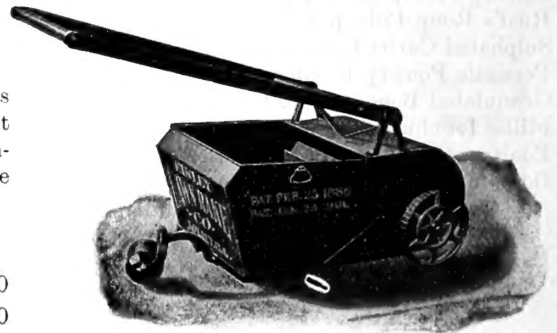
- Celery Seed Per oz., 5c.; per lb., 40c.
- White Mustard Per oz., 3c.; per lb., 30c.

FINLEY ROTARY LAWN RAKE

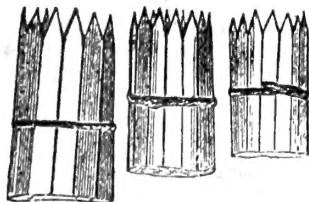
THE Finley Rotary Lawn Rake is simple and strong. The parts are of the best materials; the teeth in the blades are of best quality spring steel, strongly riveted, and are practically indestructible. The Rake is steel throughout, with the exception of the push bars, which are of wood. Every part is riveted where possible.

TWO SIZES

- PRICES**
- 20-inch \$15.00
 - 14-inch 13.00



Horticultural Sundries



Pot Labels, Painted

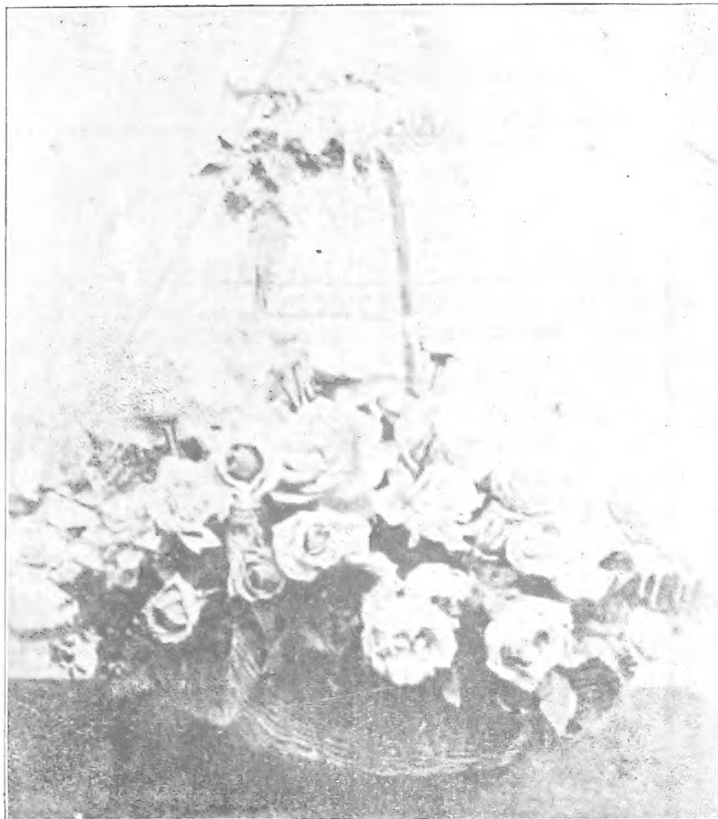
- | | | | | | | |
|---------------|-------|-------|-------|-------|--------|--------|
| 3½ in. | 4 in. | 5 in. | 6 in. | 8 in. | 10 in. | 12 in. |
| Per 100, 12c. | 15c. | 20c. | 25c. | 50c. | 75c. | \$1.00 |

Bamboo Stakes (Chinese)

Light, per 100, \$1.00; medium, per 100, \$1.25; heavy, per 100, \$1.50

- Raffia for Tying Per lb., 40c.
- Wimbledon Peat Per sack, \$2.75
- Orchid Peat Per sack, \$3.50
- Glazing Points Per 1,000, 75c.
- Pruning Shears, with wheel spring; the best Secateur on the market. 7-in. \$1; 8-in. \$1.25; 9-in. \$1.50; 9-in. heavy, \$1.75
- Syringes (Coopers' Patent), heavy brass 16-in. \$4.50; 18-in. \$5.00; Special Brass, 18-in. \$2.30 and \$1.50

Also a full stock of Pruning and Budding Knives, Pruning Gloves, Border, Glass and Verge Shears, Vine Scissors, Flower Gathering Scissors, Sickles, Tree Pruners, English Spades, Digging and Border Forks, Dutch Hoes, Spuds, Lawn Rakes, Edging Knives, Thermometers, Etc., Etc.



Graham Bros.

SEEDSMEN AND FLORISTS

Sunnyside Greenhouses: Linden Avenue
OTTAWA, ONT.

Store Phone 573

Greenhouse Phone 566

Floral Work

We make a specialty of Floral Work, and we have excellent facilities for the execution of orders in a satisfactory and artistic manner.

Wreaths, Anchors, Crosses, Stars, at \$2.00, \$5.00, \$8.00 and \$10.00 each.

Pillows, Columns, &c., at \$5.00, \$8.00, \$10.00 and \$15.00 each.

Baskets of Flowers for Presentation, at \$2.00, \$3.00, \$5.00, \$8.00, \$10.00, \$15.00 and \$25.00.

Wedding Bouquets from \$2.00 to \$8.00.

Cut Flowers at market prices.

CUT FLOWERS	FLORAL TRIBUTES
Wedding Bouquets	Wreaths
Corsage Bouquets	Anchors
Baskets of Flowers	Pillows
Floral Designs	Crosses
Etc., Etc.	Columns
Promptly put up and carefully packed for Express at all seasons	Crescent Wreaths
	Stars
	and other Floral arrangements



Write, Telegraph or Telephone your orders in these lines, simply mentioning the Design and Price, and we will promptly ship and guarantee satisfaction.

GRAHAM BROS.

LAWN GRASS, GOLF MIXTURE and
LAWN DRESSING



Central Farm LAWN GRASS MIXTURE, lb., 20c. ; per post, 25c.
GOLF MIXTURE, for putting greens, lb., 20c. ; per 100 lbs., \$18.00
ODORLESS LAWN DRESSING. Every lawn should receive a
dressing of this high grade fertilizer in the autumn

Lb., 3c. ; 100 lbs., \$2.75