

## **Historic, Archive Document**

Do not assume content reflects current scientific knowledge, policies, or practices.



62.39

U.S. DEPARTMENT OF AGRICULTURE  
LIBRARY,  
Washington, D. C.

1840-1902

# OLD COLONY NURSERIES

T. R. WATSON

PLYMOUTH, MASSACHUSETTS

No. 79.

# PRICE LIST

Of Hardy Ornamental Trees, Hardy Flowering Shrubs, Evergreens, Roses, Bulbs, Herbaceous Plants, Fruits, Etc., for Parks, Cemeteries, Gardens and all Public and Private Grounds.

1840.

T. R. WATSON.

1902.

OLD COLONY NURSERIES, PLYMOUTH, MASS., U. S. A.

HOME OR FOREIGN ORDERS FILLED WITH THE UTMOST CARE AND PROMPTNESS.

DEAR SIR:—I have the pleasure of handing you my Price-List of Trees, Shrubs, Plants, etc. Plants packed for Europe with great care. I give you the benefit of the lowest prices and hope to have your orders in full.

To persons about to ornament their grounds, I shall be happy to show the extensive plantations here, agreeably laid out in the modern style, covering fifty acres, containing many thousands of the leading hardy Ornamental Trees, Shrubs, Evergreens, Fruits, etc. My plantations, now more than fifty years old, are perhaps the most extensive in New England. The Nurseries are seven hours from New York, ninety minutes from Boston.

Particular attention is called to the large number of native American plants in this list; unless noted "collected," they are nursery grown. The Herbaceous Plants are field grown; i. e., they are large specimens, not pieces grown in pots and frames.

Correspondence is solicited with persons who contemplate planting in large quantities. On orders with satisfactory references, six to twelve months in advance of the shipment of stock, very considerable reduction can be made on prices by the hundred and thousand. Plants will also be grown to order at special rates when large numbers are wanted and sufficient advance notice is given.

Please remit by check or P. O. order.

Autumn delivery begins September 15, and spring delivery begins March 20 to April 6. If you receive more than one list, please distribute to your friends. I will send lists to any address you may send me.

Yours very respectfully,

T. R. WATSON, Successor to B. M. Watson.

**AGENTS** wanted. Terms made known on application.

**ERRORS** that may occur in filling orders should be reported to me at once, and immediate correction will be made.

**PACKING** will be charged at cost.

From the following lists 6 will be sent at the dozen rate, 25 at the hundred rate.

Deciduous Trees and Shrubs.

	EACH.	DOZ.	100.		EACH.	DOZ.	100.
ACER campestre, English Maple... 4 ft.	\$0.25	\$2.50		ÆSCULUS Hippocastanum, Horse-			
— colchicum rubrum..... 4 to 5 ft.	.25	2.50		Chestnut, white..... 1 to 2 ft.	\$.10	\$1.00	\$6.00
— dasycarpum, Silver Maple. .8 to 9 ft.	.25	2.50		— — — — — ..... 3 to 4 ft.	.25	2.50	15.00
— — Weir's Cut-leaved Maple,.....				— — — — — ..... 5 to 6 ft.	.50	5.00	
6 to 7 ft.	.50	5.00		— — var. flora plena alba, double			
— Monspessulanum..... 3 to 4 ft.	.25	2.50		white .....	.50	5.00	
— palmatum, var. atrosanguineum Jap-				— macrostachya, Dwarf Pavia.....	.35	3.50	
anese Maple, dark red leaf.....	.50	5.00		— rubicunda, Scarlet Horse-Chestnut.	.50	5.00	
— Pennsylvanicum, striped bark.....				ALDER, black. See Ilex.			
4 to 5 ft.	.25	2.50		ALNUS glutinosa, English Alder.....	.25	2.50	15.00
— platanoides, Norway Maple.... 1ft.		.50	\$3.00	ALMOND, double flowering rose and white.			
— — — — — ..... 2 to 3 ft.	.15	1.50	10.00	See Prunus.....	0.35	3.50	
— — — — — ..... 5 to 6 ft.	.25	2.50	15.00	ALTHÆA. See Hibiscus.			
— — — — — ..... 9 to 10 ft.	.35	3.50		AMELANCHIER Canadensis, Shadbush	.25	2.50	15.00
— — — — — ..... 12 to 15 ft.	1.00	10.00	15.00 ea.	AMORPHA fruticosa, Indigo Shrub..	.15	1.50	10.00
— — var. Reitenbachii, purple leaf.....				AMPELOPSIS. See Vines.			
5 to 6 ft.	.50	5.00		ANDROMEDA arborea.....	.25	2.50	
— — — Schwedleri, dark purple leaf				— — large, with ball.....	1.00		
5 to 6 ft.	.50	5.00		— Mariana .....	.25	2.50	
— Pseudo-Platanus, Sycamore or				See also Evergreens.			
Scotch Maple..... 8 to 9 ft.	.35	3.50		APPLE, flowering. See Pyrus.			
— — — var. purpurea..... 3 to 4 ft.	.15	1.50		ARALIA Chinensis.....	.50	5.00	
— — — — — ..... 5 to 6 ft.	.25	2.50		— spinosa, Hercules' Club.....	.35	3.50	
— — — — — ..... 7 to 8 ft.	.45	4.50		These are very distinguished small trees with beautiful			
— rubrum, Scarlet Maple... 5 to 6 ft.	.25	2.50		heads of creamy white flowers. Rare.			
— — — — — ..... 7 to 8 ft.	.50	5.00		ASH. See Fraxinus.			
— saccharinum, Sugar or Rock Maple,				— Mountain. See Pyrus.			
4 to 5 ft.	.25	2.50		AZALEA arborescens, white, tinted....	.35	3.50	
— — — — — ..... 8 to 9 ft.	.35	3.50		— calendulacea, orange.....	.25	2.50	
— spicatum..... 4 to 5 ft.	.50	5.00		— mollis, rich orange and red.....	.25	2.50	15.00
— Tataricum var. Ginnala... 2 to 3 ft.	.15	1.50	10.00	— — with buds.....	.35	3.50	25.00
— — — — — ..... 4 to 5 ft.	.25	2.50	15.00	— — extra large, full of buds.....	.50	5.00	
				— nudiflora, with buds, rosy red.....	.25	2.50	15.00
				— pontica, bright yellow, fine.....	.25	2.50	15.00
				— — Ghent hybrids, ten named vari-			
				eties .....	.60	7.00	

The superb maple, Acer Tataricum Ginnala, is the most showy of all the autumn maples, with its deeply incised foliage of the most brilliant scarlet. It is much earlier to turn than any other maple. Extra. Fine in masses.

	EACH.	DOZ.	100.
AZALEA Vaseyi, new, delicate rose.....	\$.50	\$5.00	
— viscosum, with buds, pure white.....	.25	2.50	\$15.00

Azalea mollis, from Japan, is perfectly hardy and is one of the finest plants of recent introduction. The flowers are a rich orange, others are brilliant red, very large and abundant. This is now largely planted and should be in every garden.

BACCHARIS halimifolia, late bloomer	.25	2.50	15.00
BAYBERRY. See Myrica.			
BEACH PLUM. See Prunus.			
BEECH. See Fagus.			
BERBERIS Thunbergii, Japanese Barberry.....8 to 12 in.		.75	6.00
— — — — .....1 to 1½ ft.	.15	1.50	10.00
— vulgaris, Common Barberry.....1½ to 2 ft.	.10	.75	4.00
— — — — .....2½ to 3½ ft.	.15	1.25	7.50
— vulgaris, var. purpurea. Purple-leaved Barberry 1½ to 2 ft. ....	.10	.75	4.00
— — — — — .....2½ to 3 ft.	.15	1.50	10.00
BETULA alba, Scotch Weeping Birch, 3 to 4 ft.	.15	1.50	10.00
— — — — — .....6 to 8 ft.	.25	2.50	15.00
— — var. laciniata, Cut-leaved Weeping Birch.....	.50	5.00	
— lenta, Black Birch.....3 to 4 ft.	.15	1.50	10.00
— lutea, Yellow Birch.....3 to 4 ft.	.15	1.50	10.00
— nigra.....2 to 3 ft.	.15	1.50	
— papyrifera, Canoe Birch....3 to 4 ft.	.15	1.50	10.00
— populifolia, Gray Birch....3 to 4 ft.	.15	1.50	10.00

These are charming trees of rapid growth for masses in large plantations. The Scotch weeping birch is Wordsworth's Lady of the Woods, and is one of the most beautiful of trees.

BLUEBERRY. See Vaccinium.

	EACH.	DOZ.	100.
BOHEMIAN OLIVE. See Elæagnus.			
BROOM. See Cytisus.			
BUCKTHORN. See Rhamnus.			
CALYCANTHUS floridus, Sweet-scented shrub.....	\$.15	\$1.50	\$10.00
CARAGANA arborescens, Siberian Pea Tree .....	.15	1.50	10.00
— frutescens, Siberian Pea Tree.....	.15	1.50	10.00
CARPINUS betulus, European Hornbeam,.....1 to 2 ft.	.10	1.50	6.00
— — — — .....3 to 4 ft.	.25	2.50	15.00
CARYA alba, Shagbark.....	.35	3.50	
— amara .....	.25	2.50	
— microcarpa .....	.25	2.50	
— porcina, Pignut, collected.....	.25	2.50	
— tomentosa, Mocker nut.....	.25	2.50	
CASTANEA pumila, Chinquapin.....	.25	2.50	
— sativa, var. Americana, American Chestnut.....4 to 5 ft.	.25	2.50	20.00
CATALPA Kæmpferi.....6 to 9 ft.	.25	2.50	
— speciosa.....6 to 7 ft.	.25	2.50	15.00
CEANOTHUS Americanus, New Jersey Tea.....	.25	2.50	15.00
CELASTRUS. See Vines.			
CELTIS occidentalis, Hackberry.....4 to 5 ft.	.25	2.50	15.00
— — — — .....8 to 9 ft.	.50		
CEPHALANTHUS occidentalis, Button Bush.....	.25	2.50	15.00
CERCIDIPHYLLUM Japonicum.....	.50	5.00	
CERCIS Canadensis, Judas Tree.....	.25	2.50	15.00
CHERRY. See Prunus.			
CHESTNUT. See Castanea.			
CHIONANTHUS Virginica, White Fringe.....1 ft.	0.15	1.50	10.00
— — — — .....2 to 3 ft.	.35	3.50	
CHOKEBERRY. See Pyrus.			

	EACH.	DOZ.	100.
CLADRASTIS tinctoria, Yellow Wood, 4 to 5 ft.	\$.50	\$5.00	
CLEMATIS. See Vines.			
CLETHRA acuminata.....	.35	3.50	
— alnifolia fragrant shrub, Sweet Pep- perbush.....	.15	1.50	\$10.00
COLUTEA arborescens.....	.25	2.50	
CORCHORUS. See Kerria.			
CORNUS alternifolia.....	.25	2.50	
— florida, Flowering Dogwood.....	.25	2.50	
— — rubra, Red Flowering Dogwood	.50	5.00	
— Mas, Cornelian Cherry.....	.25	2.50	
— paniculata.....	.25	2.50	
— sanguinea.....3 to 4 ft.	.15	1.50	10.00
— sericea, bright red bark....3 to 4 ft.	.15	1.50	10.00
— stolonifera, Red Osier....3 to 4 ft.	.15	1.50	10.00
— — var. elegantissima, variegated...	.35	3.50	
— — — Siberica.....3 to 4 ft.	.25	2.50	15.00
The last five have crimson bark, showy in winter.			
CORYLUS Avellana, English Filbert.. 4 to 5 ft.	.25	2.50	15.00
— Cosford, Nottingham, and Prolific	.25	2.50	15.00
COTONEASTER Simonsii, brilliant scarlet berries.....	.25	2.50	15.00
CRANBERRY, Tree. See Viburnum.			
CRATÆGUS Crus-galli.....	.15	1.50	10.00
— Oxycantha, Hawthorn, single white	.10	1.00	6.00
— — — .....4 to 5 ft.	.15	1.50	10.00
— — — scarlet.....4 to 5 ft.	.50	4.00	
— — — double pink.....4 to 5 ft.	.50	4.00	
— — — red.....4 to 5 ft.	.50	4.00	
— — — white.....3 to 4 ft.	.50	4.00	
CURRENT. See Ribes.			
CYPRESS Deciduous. See Taxodium.			
CYTISUS capitatus.....	.15	1.50	10.00
— scoparius, Scotch Broom.....	.15	1.50	10.00
DAPHNE Mezereum, vars. rubra and alba.....	.50	5.00	

	EACH.	DOZ.	100.
DESMODIUM penduliflorum, late bloomer, pretty red and purple pea-shaped flowers.....	\$.25	\$2.50	
DEUTIZIA gracilis.....	.15	1.50	\$10.00
— — strong.....	.25	2.50	15.00
— parviflora.....	.25	2.50	
— scabra (crenata).....	.15	1.50	10.00
— scabra, double rose.....	.15	1.50	10.00
— — — white.....	.15	1.50	10.00
— — Fortune's new white.....	.15	1.50	10.00
— — Pride of Rochester.....	.25	2.50	
— — Wellsii.....	.25	2.50	
These are all first-class shrubs, blooming profusely, and should be in every garden. Strong plants.			
DIERVILLA florida (Weigela rosea) sorts.....	.25	2.50	15.00
— — var. Abel Carriere.....	.35	3.50	
— — — amabilis.....	.25	2.50	
— — — variegata.....	.35	3.50	
— — — Watson's.....	.25	2.50	
— — — white.....	.35	3.50	
— sessilifolia.....	.25	2.50	
DIRCA palustris, Leather-wood.....	.25	2.50	
DOGWOOD. Scarlet and Flowering. See Cornus.			
ELÆAGNUS hortensis, Bohemian Olive.....	.25	2.50	15.00
— longipes, fine fruit, edible.....	.25	2.50	15.00
ELDERBERRY. See Sambucus.			
ELM. See ULMUS.			
EUONYMUS Americanus.....	.15	2.50	
— Europæus, Burning-bush.....	.15	1.50	10.00
— — — .....4 to 5 ft.	.25	2.50	
— Japonicus, var. radicans evergreen..	.25	2.50	15.00
EXOCHORDA Alberti.....	.75		
— grandiflora.....2 ft.	.25	2.50	15.00
FAGUS ferruginea, American Beech.. 2 to 3 ft.	.25	2.50	15.00
— sylvatica, European Beech, 3 to 4 ft.	.25	2.50	15.00

	EACH.	DOZ.	100.		EACH.	DOZ.	100.
FAGUS sylvatica, European Beech, 5 to 6 ft.	\$.35	\$3.50		GLEDITSCHIA triacanthos, Three- thorned Acacia . . . . .	4 to 5 ft.	\$.10	\$1.00 \$5.00
— — var. Fern-leaved. . . . .	1.00			GYMNOCLADUS Canadensis, Ken- tucky Coffee-tree. . . . .	4 to 5 ft.	.25	2.50
— — — Purple Beech, grafted. . . . .				HACKBERRY. See Celtis.			
5 to 6 ft.	1.00	10.00		HALESIA tetraptera, Silver Bell. . . . .		.50	5.00
— — — — — seedlings, good color, almost equal to grafted trees, fine in masses and for hedges. . . . .				HAMAMELIS Virginiana, Witch-hazel 3 to 4 ft.		.25	2.50
3 to 4 ft.	.25	2.50	\$15.00	HAWTHORN. See Cratægus.			
— — — — — . . . . .	.50	5.00		HAZEL. See Corylus.			
— — — — — Weeping Beech. . . . .	1.00			HIBISCUS Syriacus, Althæa, double named sorts. . . . .		.15	1.50 10.00
FILBERT. See Corylus.				— — — single named sorts. . . . .		.15	1.50 10.00
FORSYTHIA Fortuni. This is the dark yellow Forsythia so well known in the vicinity of Boston. . . . .	.25	2.50		— — — unnamed sorts in variety. . . . .		.10	1.00 8.00
— intermedia, new. . . . .	.25	2.50	15.00	— — — variegated foliage. . . . .		.15	1.50 10.00
— suspensa or weeping. . . . .	.15	1.50	10.00	The above are all small plants; larger plants . . . . .		.50	5.00
— viridissima . . . . .	.15	1.50	10.00	HICKORY. See Carya.			
These are all fine shrubs of the first rank. F. suspensa is the finest of all shrubs for masses. A mass here is forty feet in diameter. Showy.				HIPPOPHÆ rhamnoides, Sea-Buck- thorn . . . . .		.25	2.50 15.00
FRAXINUS. Americana, White Ash. . . . .	0.25	2.50		HONEY LOCUST. See Gleditscia.			
6 to 8 ft.				HONEYSUCKLE. See Lonicera.			
— — — — — . . . . .	.35	3.50		HOP-TREE. See Ptelea.			
— excelsior, European Ash. . . . .	.15	1.50	10.00	HORNBEAM. See Carpinus.			
— — var. pendula, Weeping Ash. . . . .				HORSE-CHESTNUT. See Æsculus.			
6 to 8 ft.	2.00			HYDRANGEA paniculata. . . . .		.25	2.50 15.00
— ornus, Flowering Ash. . . . .	.25	2.50	15.00	— — var. grandiflora. . . . .		.25	2.50 15.00
— pubescens. . . . .	.25	2.50		— vestita . . . . .		.35	3.50
FRINGE-TREE. See Chioanthus.				These are now much planted and are very showy. All should be in every garden.			
GENISTA tinctoria, Woad-waxen, the true Salem or Beverly Broom, is very showy and largely used in masses . . . . .	.10	1.00	6.00	HYPERICUM aureum, large yellow flowers . . . . .		.50	5.00
GINKGO biloba (Salisburia), very fine plants. . . . .	.50	5.00		— prolificum . . . . .		.25	2.50
GLEDITSCHIA triacanthos, Three- thorned Acacia (Honey Locust) 1½ to 2 ft.		.50	3.00	ILEX verticillata, Black Alder. . . . .		0.25	2.50 15.00
				INDIAN CURRANT. See Symphoricarpus.			
				JAPANESE PEAR. See Pyrus.			
				JUDAS TREE. See Cercis.			
				JUGLANS cinerea, Butternut. . . . .		.35	3.50
				— nigra, Black Walnut. . . . .		.35	3.50



JASMINIUM nudiflorum..... EACH. DOZ. 100.  
 \$.25 \$2.50

In Plymouth this plant has been frequently covered with bright yellow flowers in December and January, in the open ground.

KERRIA Japonica (Corchorus), yellow .15 1.50 \$10.00  
 — — double yellow..... .15 1.50 10.00  
 — — variegated ..... .25 2.50 15.00  
 KCELREUTERIA paniculata..5 to 6 ft. .25 2.50  
 LABURNUM vulgare.....5 to 6 ft. .50  
 LARIX Europæa, Scotch Larch...2 ft. .15 1.50 10.00  
 — — — .....3 ft. .20 2.00 15.00  
 LESPEDEZA bicolor..... .25 2.50  
 — Sieboldi, Desmodium penduliflorum .25 2.50  
 LIGUSTRUM Ibotia, New Japanese  
 Privet.....2 to 3 ft. .20 2.50 15.00  
 — Japonicum, Californian Privet.....  
 1½ to 2 ft. .75 4.00  
 — — — .....2 to 3 ft. .15 1.00 6.00  
 Sometimes called L. ovalifolium.

I have a large stock of this fine and useful plant; it is well fitted for hedges and screens, or for planting in masses. The plant is almost evergreen; the bright glossy leaves remaining on the bush well into November, the autumnal coloring, a rich metallic purple, being particularly fine.

— media, small..... .25 2.50  
 — vulgare, Common Privet or Prim..  
 1½ to 2 ft. .50 3.00  
 — — — .....2 to 3 ft. .75 5.00

A fine shrub, well fitted for a nurse tree or for hedges.

LILAC. See Syringa.  
 LINDEN. See Tilia.  
 LINDERA Benzoin, Spice-Bush..... .25 2.50

LIQUIDAMBAR Styraciflua, Sweet  
 Gum ..... EACH. DOZ. 100.  
 \$.35 \$3.50  
 LIRIODENDRON Tulipifera, Tulip  
 Tree.....5 to 6 ft. .50 5.00  
 — — — .....2 to 3 ft. .25 2.50  
 LOCUST. See Robinia.  
 LOMBARDY POPLAR. See Populus.  
 LONICERA Alberti..... .25 2.50  
 — alba virginalis..... .25 2.50  
 — Bella alvida..... .25 2.50  
 — — atrorosea ..... .25 2.50  
 — — candida ..... .15 1.50 \$10.00  
 — — rosea ..... .25 2.50  
 — chrysantha ..... .25 2.50  
 — fragrantissima ..... .25 2.50  
 — fructu cœrulea..... .25 2.50  
 — Korolkowi ..... .25 2.50  
 — Morrowii ..... .25 2.50  
 — Regliana ..... .25 2.50  
 — Ruprectiana ..... .25 2.50  
 — Tatarica, pink or white..... .15 1.50

The above are the best varieties of the Tree or Tartarian Honeysuckles. For running Honeysuckles see Vines.

MAGNOLIA acuminata.....5 to 7 ft. .50 5.00  
 — glauca ..... .50 5.00  
 — Lenné ..... 1.00 10.00  
 — purpurea ..... .50 5.00  
 — Soulangeana ..... 1.00 10.00  
 — speciosa ..... 1.00 10.00  
 — stellata (Halliana)..... 1.00 10.00  
 — Umbrella (tripetala).....5 to 6 ft. .50 5.00

MAPLE. See Acer.  
 MOUNTAIN ASH. See Pyrus.  
 — LAUREL. See Evergreens.  
 MYRICA asplenifolia, Sweet-Fern..... .15 1.50 10.00  
 — — — larger plants..... .25 2.50 2 00

Sweet-fern (Comptonia), now much used in masses for

the park, cemetery and private grounds, very fragrant, especially good for sandy banks.

	EACH.	DOZ.	100.
MYRICA cerifera, Bayberry.....	\$.25	\$2.50	\$15.00
— — — larger plants.....	.35	3.50	20.00

Bayberry, now largely used in landscape gardening, sub-evergreen, covered with berries, which, with the handsome foliage, are very fragrant.

NEGUNDO aceroides, Box Elder.....			
8 to 10 ft. ....	.25	2.50	
NEVIUSIA Alabamensis.....	.25	2.50	
NYSSA sylvatica, Tupelo.....	.50	5.00	
OAK. See Quercus.			
PÆONIA Moutan, Tree Peony. See			
page 23 .....	.75		
PAVIA. See Æsculus.			
PHILADELPHUS coronarius, Mock			
Orange, Syringa.....	.15	1.50	10.00
— — var. aureus, golden-leaved.....	.25	2.50	
— — — speciosissimus .....	.25	2.50	
— — — hybrid sorts; dianthæflorus,			
Lemoinei, myrtifolius, nivalis,			
primulæfolius, and Zeyheri.....	.25	2.50	
— grandiflorus, fine late bloomer .....	.25	2.50	
— inodorus .....	.25	2.50	
— microphyllus .....	.25	2.50	
— Seedlings, mixed.....	.15	1.50	10.00

These Syringas are very desirable plants to use in masses. I grow them in large quantities, and special prices will be given by the thousand.

PHYSOCARPUS opulifolia.....	.15	1.50	10.00
— — var. aurea (Spiræa), golden-			
leaved .....	.15	1.50	10.00
PLATANUS orientalis, Oriental Plane			
Tree,.....	.25	2.50	
POPULUS alba, Abele.....	.25	2.50	15.00

	EACH.	DOZ.	100.
POPULUS balsamifera, var. candicans,			
Balm of Gilead.....	.15	\$1.50	\$10.00
— laurifolia (Certinensis).....	.25	2.50	
— monilifera, Carolina Poplar.....			
8 to 9 ft. ....	.25	2.50	
— nigra, European Poplar.....	.25	2.50	
— — var. Italica, Lombardy Poplar			
3 to 4 ft. ....	.10	1.00	6.00
— — — — — .....	.15	1.50	10.00
— — — — — .....	.25	2.50	15.00
— Simoni.....	.15	1.50	10.00
PRIVET or PRIM. See Ligustrum.			
PRUNUS Americana.....	.50		
— avium fl. pl., Double Flowering			
Cherry .....	.50	5.00	
— — — — Waterer's Double.....	1.00		
— cerasifera, Myrobalan Plum.....	.10	1.00	5.00
— — — — .....	.25	2.50	
— — var. Pissardi, Purple-leaved			
Plum.....	.35	3.50	
— Davidiana .....	1.50		
— Japonica, Double Flowering Al-			
mond, rose or white.....	.35	3.50	
— maritima, Beach Plum.....	.25	2.50	15.00
A showy shrub, effective in early spring with its large			
masses of white flowers.			
PRUNUS pendula, Weeping Plum....	1.00		
— Pseudo-Cerasus, Japanese Cherry,			
with pinkish white flowers....	1.00		
— serotina, Rum Cherry, collected..		1.50	10.00
— triloba fl. pl., double Japanese Plum	.35	3.50	
PTELEA trifoliata, Hop Tree.....	.25	2.50	
— — var. aurea.....	.35	3.50	
PTEROSTYRAX hispida.....	.50	5.00	
PYRUS Americana, American Mount-			
ain Ash.....	.35		
— Aucuparia, European Mountain Ash			
5 to 6 ft. ....	.25	2.50	

	EACH.	DOZ.	100.
PYRUS Americana var. Weeping Mountain Ash.....	\$1.50		
— arbutifolia, red fruited.....	.25	\$2.50	
— — var. melanocarpa, Chokeberry...	.25	2.50	
— baccata .....	.50	5.00	
— betulæfolia .....	.75		
— coronaria .....	.50	5.00	
— floribunda, Japanese Flowering Apple .....	.50	5.00	
— — var. atrosanguinea.....	.50	5.00	
— — — Parkmani .....	.50	5.00	
A semi-double variety of the above, with deep red flowers. Extra fine.			
— Japonica, Japan Pear or Quince, mixed sorts.....	.15	1.50	\$10.00
— — var. Maulei, dull red and pink..	.25	2.50	
— — — umbilicata rosea.....	.25	2.50	15.00
— sambucifolia, Elder-leaved Mountain Ash .....	.25	2.50	
— spectabilis fl. albo pl.....	.50	5.00	
— — fl. roseo pl.....	.50	5.00	
— Toringo .....	.50	5.00	
QUERCUS cerris, Turkish Oak.....			
4 to 5 ft.	.25	2.50	
— coccinea, Scarlet Oak.....1 ft.	.15	1.50	10.00
— palustris, Pin Oak.....2 to 3 ft	.15	1.50	10.00
— — — .....5 to 6 ft.	.35	3.50	
— Robur, English Oak.....	.35	3.50	
— rubra, Red Oak.....3 to 4 ft.	.25	2.50	15.00
Quercus palustris or Pin Oak is one of the most ornamental of all the American Oaks, with its weeping habit when old, and its fine glossy foliage.			
RHAMNUS cathartica, Buckthorn....			
1 to 1½ft.	.50	2.50	
— — — .....2 to 3 ft.	.75	5.00	
RHODODENDRON Rhodora, Emerson's Rhodora .....	.25	2.50	
— See Evergreen Shrubs.			

	EACH.	DOZ.	100.
RHODOTYPUS kerriodes, white flowers, fine foliage.....	\$.25	\$2.50	\$15.00
RHUS Canadensis (aromatica).....	.25	2.50	
— copallina, Dwarf Sumac .....	.15	1.50	10.00
— Cotinus, Smoke Tree.....	.35	3.50	
— glabra .....	.25	2.50	
— — var. laciniata, Cut-leaved Sumac	.25	2.50	15.00
— semilata var. Osbeckii.....	.50		
— typhina, Stag-horn Sumac. 1 to 2 ft.	.15	1.50	10.00
— — — .....3 to 4 ft.	.25	2.50	15.00
RIBES aureum, Missouri Currant.....	.15	1.50	
— Gordonianum .....	.25	2.50	
ROBINIA hispida, Rose Acacia.....	.25	2.50	
ROSA blanda.....	.15	1.50	
— Carolina .....	.25	2.50	
— Canina, Dog Rose.....	.15	1.50	10.00
— lucida, common Wild Rose.....	.15	1.50	10.00
This is our native wild rose, much used in landscape gardening.			
— multiflora .....	.25	1.50	10.00
This is one of our best acquisitions from Japan, and should be in every garden. Makes handsome masses. It is a most profuse and showy bloomer, with splendid scarlet berries at Christmas, in great profusion.			
— nitida .....	.25	2.50	
— rubiginosa, Sweet Brier, see page 19	.15	1.50	10.00
— rugosa, Crimson.....	.25	2.50	
— — var. alba, white.....	.25	2.50	
— — — Comte d'Espresmesnil, double	.25	2.50	
— — — Madame George Bruant, semi-double, white.....	.25	2.50	
— — seedlings, red and white.....	.25	2.50	10.00
The above new Japanese roses are very choice. Beautiful foliage			

and flowers. They bloom in the autumn also. Foliage never affected by the rose bug.

	EACH.	DOZ.	100.
ROSA setigera, single Prairie Rose, a late bloomer .....	\$.25	\$2.50	
— spinosissima, Scotch Rose .....	.25	2.50	
— Wichuraiana, Memorial rose.....	.25	2.50	
— Wichuraiana, a new and beautiful Japanese trailing rose, with charming glossy foliage and abundant white flowers. One of the very best things of modern introduction.			
— Wichuraiana hybrids. See page 20.			
ROSES, Garden Sorts.			
Climbing Roses:			
Baltimore Belle.....	.25	2.50	
Crimson Rambler.....	.25	2.50	
Queen of Prairie.....	.25	2.50	
Yellow Rambler Aglaia.....	.25	2.50	
Hybrid Perpetual Roses. See page 23 .....	.25	2.50	\$20.00
Fine collection of the leading varieties.			
Madame Plantier, the best white rose .....	.25	2.50	
Moss Roses, good collection.....	.25	2.50	
Harrison Yellow.....	.25	2.50	
Persian Yellow.....	.25	2.50	
RUBUS odoratus, Flowering Raspberry .....	.15	1.50	10.00
SALIX alba, White Willow. 3 to 5 ft. ....	.15	1.50	10.00
— — var. argentea, silver leaves.....			
3 to 5 ft.	.15	1.50	10.00
— — — vitellina, golden-twigged Willow.....	.15	1.50	10.00
— — — a variety from the Ardens			
3 to 5 ft.	.15	1.50	10.00

	EACH.	DOZ.	100.
SALIX alba, vitellina var. Russian, the best golden Willow.....	.15	\$1.50	\$10.00
— Babylonica, Napoleon Weeping Willow.....	.15	1.50	10.00
— — var. Wisconsin Weeping Willow, hardier.....	.15	1.50	10.00
— myrtifolia .....	.25	2.50	
Shrub-like. Fine foliage and very beautiful when the “pussies” are out.			
— pentandra (laurifolia), Laurel-leaved Willow.....	.15	1.50	10.00
— rosmarinifolia.....	.15	1.50	10.00
— Solomon’s Palm, an exceptionally fine Willow with reddish bark and very large “pussies”.....			
3 to 5 ft.	.15	1.50	10.00
Larger plants of the above Willows offered at.....	.25	2.50	15.00
SAMBUCUS Canadensis, Elderberry... ..	.15	1.50	10.00
— — var. aurea, fine golden foliage..	.25	2.50	15.00
— racemosa (pubens), with red fruit..	.25	2.50	
SASSAFRAS officinale, small plants... ..	.25	2.50	
— — .....	.50		
SHAD-BUSH. See Amelanchier.			
SILVER-BELL TREE. See Halesia.			
SMOKE TREE. See Rhus Cotinus.			
SNOWBALL. See Viburnum.			
SPIRÆA, Anthony Waterer.....	0.25	2.50	
— arguta multiflora.....	.25	2.50	
— Billardii .....	.25	2.50	
— Bumalda .....	.25	2.50	
— Cantoniensis fl. pl. (Reevesiana)...	.25	2.50	
— discolor, var. ariaefolia.....	.50		
— Japonica (callosa), Fortune’s, red..	.25	2.50	15.00
— opulifolia. See Physocarpus.....	.15	1.50	10.00
— prunifolia fl. pl.....	.25	2.50	15.00
— Thunbergii .....	.15	1.50	10.00

	EACH.	DOZ.	100.
SPIRÆA, tomentosa .....	\$.25	\$2.50	
— Van Houttei .....	.25	2.50	
The last is very desirable, as it is in full bloom on Decoration day.			
STAPHYLEA Colchica (Bumalda) ...	.25	2.50	
STEPHANANDRA flexuosa .....	.25	2.50	
STYRAX Japonica .....	.50	5.00	
SUMAC. See Rhus.			
SWEET-FERN. See Myrica.			
SYMPHORICARPUS racemosus, common Snowberry .....	.15	1.50	\$10.00
— vulgaris, Indian Currant.....	.15	1.50	10.00
SYRINGA, Lilacs. See also Philadelphus.			
— Chinensis .....	.25	2.50	
— Emodi, small plants.....	.25	2.50	
— Japonica, small tree, flowers white..	.50	5.00	
New Jap. Lilac, perfectly hardy, covered with large spikes of small flowers in late June. One of the best of modern introductions.			
— Josikæa, dark purple, an interesting plant .....	.25	2.50	
— Pekinensis .....	.50	5.00	
— Persica, purple, Persian Lilac .....	.25	2.50	
— — var. alba, white.....	.25	2.50	
— — — laciniata, cut-leaved.....	.25	2.50	
— — — saugeana .....	.25	2.50	
— — — alba .....	.25	2.50	
— pubescens, small plants.....	.50	5.00	
— villosa .....	.50	5.00	
— vulgaris, common Lilac, Rubra de Marly .....	.15	1.50	10.00
— — var. alba, common white lilac....	.15	1.50	10.00
— — Named varieties of late introduction:			
Alba grandiflora.			
Alexandre von Humboldt (double).			
Aphonse Lavalley (double).			

Bertha Dammann.  
 Charles X.  
 Lemoinei flore pleno (double).  
 Marie Legraye  
 Mathieu de Dombasle (double).  
 Maxime Cornu (double).  
 President Carnot (double).  
 Senateur Volland (double).  
 Souvenir de L. Spath.  
 Virginite (double).

	EACH.	DOZ.	100.
The above, fine grafted plants, 2 yrs...	.25	2.50	20.00
This is a carefully selected collection of the new lilacs which have attracted so much attention in the Arnold Arboretum for several years. All are fine and worthy of introduction. Medium sized, thrifty, grafted plants are offered.			
TAMARIX Gallica.....	\$.25	\$2.50	\$10.00
TARTARIAN HONEYSUCKLE. See Lonicera.			
TAXODIUM distichum, Southern Cypress .....	.50	5.00	
THREE-THORNED ACACIA. See Gleditschia.			
TILIA argentea..... 4 to 5 ft.	.25	2.50	
— Europæa, European Linden.....			
3 to 4 ft.	.15	1.50	10.00
— — — — — 5 to 6 ft.	.25	2.50	
— platyphyllos, broad-leaved Linden, 3 ft.	.50	5.00	
TULIP TREE. See Liriodendron.			
ULMUS Americana, American Elm, 5 to 6 ft.	.25	2.50	15.00
— — — — — 9 to 10 ft.	.35	3.50	30.00
— campestris, English Elm.. 2 to 3 ft.	.10	1.00	6.00
— — — — — 8 to 10 ft.	.35	3.50	
VACCINIUM Pennsylvanicum, collected .....	.15	1.50	10.00
— vacillans, Blueberry, collected.....	.15	1.50	10.00

	EACH.	DOZ.	100.
VIBURNUM acerifolium.....	\$.25	\$2.50	
— cassinoides, Withe-rod.....	.25	2.50	
— dentatum .....	.25	2.50	
— dilatatum .....	.50		
— Lantana .....	.15	1.50	\$10.00
— lentago .....	.25	2.50	
— opulus, Tree Cranberry.....	.25	2.50	12.00
— — var. nana, dwarf Snowball.....	.25	2.50	
— — — sterilis, common Snowball.....	.25	2.50	15.00
— plicatum, Japan Snowball.....	.50	5.00	
— prunifolium .....	.25	2.50	
— pubescens .....	.50	5.00	
— tomentosum .....	.50	5.00	

Viburnum opulus, high-bush cranberry, known also as V. oxycoccus, is one of our finest hardy shrubs, a most profuse bloomer, followed by brilliant scarlet berries in autumn and early winter. Extra. Fine in masses.

EACH. DOZ. 100.

VIRGILIA. See Cladrastis.

WEIGELA. See Diervilla.

WILLOW. See Salix.

XANTHOCERAS sorbifolia..... \$ .50 \$5.00

XANTHORHIZA apiifolia..... .25 2.50

YUCCA filamentosa, evergreen, small.. .15 1.50 \$10.00

— — — large .....

.25 2.50 15.00  
A stylish and ornamental plant. Very telling on the top of a terrace or wall.

I will furnish 100 Ornamental Shrubs, my own choice, fine sorts, for \$15. 1000 for \$100.

I will furnish 100 Ornamental Trees, my own choice, fine sorts, for \$30. 1000 for \$250.

### Hardy Evergreens. Shrubs.

	EACH.	DOZ.	100.
ANDROMEDA polifolia .....	\$0.50	\$5.00	
ARCTOSTAPHYLOS Uva-Ursi, Bear- berry, trailing vine from 2½ in. pots .....	.25	2.50	\$20.00
BAMBUSA Metake (Arundinaria), hardy Bamboo.....	.25	2.50	15.00
BERBERIS aquifolium, Holly-leaved Mahonia .....	.25	2.50	15.00
BUXUS sempervirens, Dwarf Box..i ft.	.25	2.50	15.00
— — var. arborescens, Tree Box.....	.25	2.50	15.00
CASSANDRA calyculata (Andromeda)	.25	2.50	15.00
COTONEASTER Simonsii, hardiest sort .....	.25	2.50	
EPIGÆA repens, Mayflower, collected..	.25	2.50	15.00

	EACH.	DOZ.	100.
EUONYMUS Japonicus, var. radicans...	\$0.25	\$2.50	\$15.00
— — — variegata .....	.25	2.50	
ILEX glabra, Ink-berry, collected.....	.25	2.50	15.00
— opaca, Holly, small plants.....	.25	2.50	
KALMIA angustifolia, narrow-leaved Laurel .....	.25	2.50	
— latifolia, Mountain Laurel, Calico Bush .....	.50	5.00	
LEUCOTHOE Catesbæi (Andromeda)	.50	5.00	
— racemosa, deciduous.....	.25	2.50	
RHODODENDRON Catawbiense, small .....	.50	5.00	40.00
— hybrid sorts, fine varieties. See p. 23.			
— maximum, small.....	.50	5.00	40.00
VINCA, Periwinkle, fine sorts.....	.15	1.50	6.00
YUCCA filamentosa.....	.25	2.50	15.00

Conifers.

	EACH.	DOZ.	100.		EACH.	DOZ.	100.
ABIES. See also Picea.				PICEA pungens, Blue Colorado Spruce			
— balsamea, Balsam Fir. .... 1 to 2 ft.	\$0.25	\$2.50	\$15.00	(Parrayana), green form. . . 1 ft.	\$.25	\$2.50	
— Canadensis. See Tsuga, Hemlock.				— — selected blue. Each. ....	2.00	to 3.00	
— Cilicica . . . . . 1 to 2 ft.	.25	2.50		PINUS, Austriaca, Austrian Pine. ....			
— concolor. . . . . 1 to 2 ft.	1.00	10.00		1 to 1½ ft.	.10	1.00	\$12.00
— Fraseri . . . . . 1 to 2 ft.	.25	2.50		— — . . . . . 2 ft.	.25	2.50	
— Nordmanniana . . . . . 10 in.	.25	2.50	20.00	— Banksiana. . . . . 1 to 2 ft.	.25	2.50	
— — . . . . . 1 to 1½ ft.	.50	4.00		— Massoniana (Thunbergia). 1 to 2 ft.	.25	2.50	
ABIES pectinata, European Silver Fir,				— Mugho, Dwarf Mountain Pine,			
1 ft.	\$0.25	\$2.50	\$20.00	small . . . . .	1.50	8.00	
ARBOR VITÆ. See Thuya.				— Mugho Dwarf Mountain Pine. ....			
CHAMÆCYPARIS pisifera (Retinos-				1 ft.	.25	2.50	15.00
pora) . . . . .	.25	2.50		— rigida, Pitch Pine . . . . . 1 to 1½ ft.	.15	1.50	10.00
— — var. aurea. . . . .	.25	2.50		— Strobis, White Pine . . . . . 8 to 10 in.	.10	1.00	8.00
— — plumosa . . . . .	.25	2.50		— — — . . . . . 12 to 18 in.	.15	1.50	12.00
— — var. aurea. . . . .	.25	2.50		— sylvestris, Scotch Pine . . 10 to 12 in.		1.50	10.00
— squarrosa . . . . .	.25	2.50		— — — . . . . . 2 to 3 ft.	.25	2.50	15.00
HEMLOCK. See Tsuga.				PSEUDOTSUGA Douglassi, Douglas			
JUNIPERUS communis, common Creep-				Fir, Colorado form. . . 1 to 1½ ft.	.25	2.50	15.00
ing Juniper. . . . . 1 ft. dia.	.35	3.50		RETINOSPORA. See Chamæcyparis.			
— — var. Hibernica, Irish Juniper. . .				TAXODIUM. See Deciduous Trees			
2 to 3 ft.	.50	5.00		and Shrubs.			
— Sabina, var. procumbens, creeping,				TAXUS baccata, English Yew, re-			
small plants. . . . .	.25	2.50	\$15.00	quires protection. . . . . 1 to 2 ft.	.25	2.50	15.00
— — — — — . . . . . 1 ft. dia.	.35	3.50		— — var. variegata. . . . .	.25	2.50	15.00
— Virginiana, Red Cedar or Savin,				— cuspidata, Jap. Yew, perfectly hardy,			
1 to 1½ ft.	.15	1.50	10.00	very small plants . . . . .	.25	2.50	
— — — — — . . . . . 3 to 4 ft.	.35	3.50		THUYA occidentalis, Am. Arbor Vitæ:			
LARIX. See Deciduous Trees and Shrubs.				— — — — — . . . . . 2 ft.	.25	2.50	15.00
PICEA. See also Abies.				— — — — — . . . . . 3 to 4 ft.	.35	3.50	25.00
— alba, White Spruce. . . . . 10 in.	.15	1.50	10.00	— — — Hoveyi, dense and dwarf. . . . .	.50		
— — — . . . . . 1 to 1½ ft.	.25	2.50	15.00	— — — lutea, golden. . . . .	.35	3.50	
— Englemanii . . . . . 1 to 2 ft.	.25	2.50		— — — Siberian (Wareana). . . . .			
— excelsa, Norway Spruce. . 12 to 15 in.	10	1.00	8.00	12 to 18 in.	.25	2.50	15.00
— — — . . . . . 2 to 3 ft.	.25	2.50	15.00	TSUGA Canadensis, Hemlock. . . . . 8 in.	.10	1.00	8.00
— nigra, Black or Red Spruce. . . 2 ft.	.25	2.50		— — — . . . . . 18 to 24 in.	.25	2.50	15.00

## Hardy Vines and Climbers.

	EACH.	DOZ.	100.		EACH.	DOZ.	100.
ACTINIDIA arguta (polygama).....	\$0.50			Evergreen Japanese Honeysuckle,			
AKEBIA quinata, fine Japanese runner .....	.20	\$2.00	\$12.00	white flowers in early summer,			
AMPELOPSIS quinquefolia, Virginia Creeper or Woodbine.....	.15	1.50	10.00	an excellent plant for shady			
— Veitchii, Boston Ivy.....	.25	2.50	15.00	positions, or as an undergrowth			
APIOS tuberosa, ground nut.....	.15	1.50	10.00	for shrubs.			
ARISTOLOCHIA Siphon, Dutchman's Pipe .....	.35	3.50	25.00		EACH.	DOZ.	100.
BIGNONIA radicans (Tecoma), Trumpet Creeper .....	.15	1.50	10.00	LONICERA Japonica var. flexuosa.....	\$ .15	\$1.50	\$10.00
CELASTRUS scandens (Roxbury Wax-work) .....	.25	2.50	15.00	The old-fashioned Japanese Honey-			
CLEMATIS coccinea .....	.50	5.00		suckle blooming in early summer,			
— crispa .....	.50	5.00		white flowers marked with			
— Flammula .....	.20	2.50		red. Dark red foliage.			
— Jackmani, large purple flowers.....	.50	5.00		— — — Halliana, Hall's Japanese per-			
CLEMATIS paniculata, Japanese, strong vine, white flowers.....	.25	2.50	20.00	petual Honeysuckle.....	.15	1.50	10.00
— Virginiana, white, strong grower...	.15	1.50	12.00	— — — extra strong .....	.25	2.50	15.00
— Vitalba, white.....	.25	2.50		This is a fine sort so much used at Newport, and was			
— Viticella, blue flowers of medium size .....	.25	2.50		sent out by this establishment for the first time more than			
For named varieties see page 24.				twenty-five years ago. This still takes the lead of all			
EUONYMUS Japonicus, var. radicans, Evergreen .....	.25	2.50	15.00	Honeysuckles. The leaves are nearly evergreen. The			
HEDERA helix, English Ivy .....	.25	2.50		abundant white flowers, turning yellow when they fade,			
HYDRANGEA scandens, useful to cover walls and tree trunks .....	.50	5.00		last all summer, from July till heavy frost.			
IPOMÆA pandurata, a hardy, perennial morning glory.....	.25	2.50		— — — — variegated, golden veined			
LONICERA Japonica (L. brachypoda, confusa), Japanese Honeysuckle.	.15	1.50	10.00	leaves .....	.15	1.50	10.00
LONICERA Japonica (L. brachypoda, confusa), Japanese Honeysuckle, extra strong.....	.25	2.50	15.00	LONICERA Periclymenum (Belgica)			
				the Dutch Monthly Honeysuckle,	\$0.25	\$2.50	
				— sempervirens, the Scarlet Trumpet..	.25	2.50	
				— — var. Fuchsoides.....	.50		
				— Sulivantii (flava), the Yellow			
				Trumpet .....	.25	2.50	
				LYSIUM vulgare, Matrimony Vine....	.25	2.50	
				MENISPERMUM Canadense, Moon-			
				seed .....	.25	2.50	\$15.00
				PERIPLOCA Græca, Virginia silk, fine			
				foliage .....	.15	1.50	10.00
				ROSES Climbing. See Rosa, fine sorts,	.25	2.50	15.00
				VINCA minor, or running myrtle, blue,	.15	1.50	6.00



	EACH.	DOZ.	100.		EACH.	DOZ.	100.
VINCA double blue, fine.....	\$.15	\$1.50	\$6.00	WISTARIA Chinensis var. Parkmanii			
— purple .....	.25	2.50	10.00	double .....	\$.35	\$3.50	
— white .....	.15	1.50	6.00	— frutescens, American blue .....	.25	2.50	\$15.00
— in mixed colors, fine .....	.15	1.50	6.00	— multijuga, clusters 3 ft. long. superb,			
WISTARIA Chinensis, blue .....	.25	2.50	15.00	blue, .....	.50	5.00	
— — white .....	.35	3.50		— — var. alba. white, rare.....	.75	6.00	

**Plants for Hedges and Boundary Lines.**

I have a very large and well grown stock of the hardiest and most approved hedge plants. I offer this season a splendid stock of California Privet in various sizes, now in great demand for hedging. I have also common Barberry, and purple-leaved Barberry, and the new Berberis Thunbergii from Japan, with its brilliant scarlet berries and rich crimson foliage in autumn; also the best evergreens in variety, such as Arbor Vitæ, Norway Spruce, Red Cedar, Hemlock, etc. The pure white Deutzia gracilis makes a first-class dwarf hedge. I have it in several sizes. I have fine plants of Japanese Quince, Hornbeam, English Beech, Honey Locust, Lilacs, pure white and Rubra de Marly, and the lovely new Japan rose, Rosa multiflora, a most profuse bloomer with great bunches of crimson berries for Christmas, also Sweet Briers. My stock of Buckthorns is very large and fine. The best vines and climbers for running over stone walls, fences, and other unsightly objects are the Ampelopsis (sorts), Bignonia radicans, Celastrus scandens, Clematis, Honeysuckle, Periploca, running Roses, and Wistaria in several colors.

	DOZ.	100.		DOZ.	100.
BEECH, English .....	\$2.50	\$15.00	EVERGREENS, Arbor Vitæ, Siberian .....	1 ft.	\$1.50 \$10.00
BERBERIS Thunbergii, Japan Barberry.....	.8 to 12 in.	.75 6.00	— Box, dwarf .....		1.50 10.00
— — — — .....	1 to 1½ ft.	1.50 10.00	— Hemlock .....	8 in.	1.00 8.00
— vulgaris, common Barberry .....	1½ to 2 ft.	.75 4.00	— — .....	12 in.	2.00 12.00
— — — — .....	2½ to 3½ ft.	1.25 7.50	— Pine, White.....	8 to 10 in.	1.00 8.00
— — var. purpurea, purple-leaved Barberry .....	1½ to 2 ft.	.75 4.00	— — .....	12 to 18 in.	1.50 12.00
— — — — .....	2½ to 3 ft.	1.50 10.00	— Red Cedar.....	1 to 1½ ft.	1.50 10.00
BUCKTHORN .....	1 to 1½ ft.	\$0.50 \$2.50	— Spruce, Norway.....	12 to 15 in.	1.00 8.00
— .....	2 to 3 ft.	.75 5.00	— — .....	2 to 3 ft.	2.50 15.00
DEUTZIA gracilis .....		1.50 10.00	HONEY LOCUST, Three-thorned Acacia .....	1½ to 2 ft.	.50 3.00
— — .....		2.50 15.00	HORNBEAM, English.....	1 to 2 ft.	\$1.00 \$6.00
EVERGREENS, American Arbor Vitæ,			JAPANESE QUINCE or Pear.....	2 to 3 ft.	1.50 10.00
2 ft.	2.50	15.00	LILAC, white.....		1.50 10.00
— — — — .....	3 ft.	3.50 25.00	— Rubra de Marly, common purple...		1.50 10.00
			PRIVET, Californian.....	1½ to 2 ft.	.75 4.00

	DOZ.	100.		DOZ.	100.
PRIVET, Californian . . . . .	2 to 3 ft.	\$1.00	\$6.00	ROSE, new Japan, Rosa multiflora . . . . .	\$1.50 \$10.00
— or Prim, common . . . . .	2 to 3 ft.	.75	5.00	SPIRÆA, Thunbergii . . . . .	1.50 10.00
— — — . . . . .	5 to 6 ft.	1.50	10.00	— Van Houttei . . . . .	2.50 15.00

**Fruit Trees, Grapes, Small Fruits, Asparagus and Rhubarb.**

APPLES . . . . .	¾ in dia., 5 to 7 ft.	EACH.	DOZ.	PLUMS . . . . .	5 to 7 ft.	EACH	DOZ.
		\$ .30				\$ .30	
SUMMER.	WINTER.			Bradshaw,	Lombard,		
Early Harvest,	Baldwin,			Coe's Golden Drop,	Washington,		
Red Astrachan,	Ben Davis,			German Prune,	Yellow Egg,		
Tetofsky.	Fameuse,			Green Gage,	Wild Goose.		
	Hubbardston,			PLUMS, JAPANESE . . . . .	5 to 6 ft.	.30	
AUTUMN.	Northern Spy,			Abundance, yellow,	Red June,		
Gravenstein,	Rhode Island Greening,			Burbank, yellow,	Wickson, red.		
Maiden's Blush,	Russet, Golden,			Chabot, red			
Porter.	Russet, Roxbury,			QUINCE . . . . .	4 ft.	.25	
	Talman Sweeting.			Champion,	Orange.		
PEARS . . . . .	5 to 7 ft.	.40		GRAPES . . . . .	2 yrs.	.15	\$1.40
SUMMER.	AUTUMN.			Concord, black,	Agawam, red,		
Beurre Giffard,	Bartlett,			Hartford, black,	Brighton, red,		
Osband's Summer.	Beurre Bosc,			Moore's Early, black,	Delaware, red,		
	Clapp's Favorite,			Wilder, black,	Salem, red,		
WINTER.	Duchess of Angouleme, dwa			Niagara, white,	Perkins, white.		
Beurre d'Anjou,	Louis Bonne de Jersey,			BLACKBERRIES . . . . .	\$0.50	\$3.00	
Lawrence.	Seckel,			Early Wilson,	Snyder,		
	Sheldon.			Lucretia (Dewberry),	Turner.		
CHERRIES . . . . .	5 to 7 ft.	.30		Kittatiny,			
Black Eagle,	Napoleon,			CURRENTS . . . . .	\$0.05	.50	3.00
Black Heart,	Early Richmond,			Black Naples,	Versailles, red.		
Black Tartarian,	May Duke,			Cherry, red,	White Grape,		
Coe's Transparent,	Yellow Spanish.			Fay's Prolific,			
PEACHES . . . . .	4 to 5 ft.	\$0.15	\$1.40	GOOSEBERRIES, Downing . . . . .	\$0.10	\$1.00	
Champion,	Mountain Rose,			— Industry . . . . .	.20	2.00	
Crawford's Early,	Old Mixon Free,						
Crawford's Late,	Stump of the World,						
Crosby,	Wheatland,						
Foster,	Elberta.						

	EACH.	DOZ.	100.		EACH.	DOZ.	100.
RASPBERRIES .....	\$.05	\$1.50	\$3.00	STRAWBERRIES .....	\$.10	\$1.50	\$3.00
Cuthbert, .....				Marshall, .....			
Blackcap, .....				ASPARAGUS, Conover's Colossal.....	.50	2.00	
Golden Queen, .....				RHUBARB, Linnæus.....	.15	1.50	10.00
Turner, .....							

For Fruit Trees wanted in quantities, prices will be given on application.

### Decorative Perennial Herbaceous Plants.

These plants are all hardy and produce an immediate effect, as they bloom the first year they are planted. They should be planted in the autumn, which is the best time for planting herbaceous plants, and should be covered with a forkful of dung to protect them from being thrown out by the frost. They may be planted in the spring, also, with great success. I offer the following choice collections of my own selection, in the very finest and most useful sorts. This class of plants is fast taking the place of bedding plants, as they do not have to be renewed every year.

- Collection of 12 choice sorts, all different, named, \$2.50
- Collection of 50 choice sorts, 3 of a kind, named, \$ 5.00
- Collection of 24 choice sorts, all different, named, 4.50
- Collection of 100 choice sorts, 3 of a kind, named, 10.00

I will furnish 1000 plants, comprising a most extensive and valuable collection of hardy and ornamental perennial plants of my own selection, for \$100; 500, \$50.

	EACH.	DOZ.	100.		EACH.	DOZ.	100.
ACHILLEA ptarmica, double white, for cut flowers.....	\$0.15	\$1.50	\$8.00	ANTHEMIS tinctoria, Chamomile....	\$.15	\$1.50	
— serrata, The Pearl, fine, new, double white, for cut flowers, extra....	.25	2.50	10.00	ANTHERICUM liliastrum, St. Bruno lily .....	.25	2.50	
AGROSTEMMA coronaria.....	.15	1.50	10.00	APIOS. See Vines.			
— Flos Jovis.....	.25	2.50		AQUILEGIA Canadensis, Wild Columbine .....	\$.15	\$1.50	\$10.00
ALTHÆA rosea, Hollyhock, Chater's best strain, choice colors, extra fine, double .....	.15	1.50	10.00	— chrysantha, columbine, the best yellow .....	.15	1.50	10.00
ALYSSUM saxatile, Gold Dust.....	.15	1.50		— — Hybrids .....	.15	1.50	10.00
ANEMONE, Japonica rosea elegans....	.25	2.50		— cœrulea, fine blue.....	.15	1.50	10.00
— — d'Argent.....	.25	2.50		— — Hybrids .....	.15	1.50	10.00
— — Honorine Joubert, white.....	.25	2.50		— glandulosa .....	.15	1.50	10.00
— — pink .....	.25	2.50		— fine mixed Columbines.....	.15	1.50	10.00
— — Pennsylvanicum .....	.15	1.50		These Columbines are all very choice, and among the most showy plants of the garden.			
ANTENNARIA margaritacea (Anaphalis) .....	.15	1.50		ARABIS alpina, very early, white.....	.15	1.50	
				ARMERIA, Thrift .....	.15	1.50	

	EACH.	DOZ.	100.
ARUNDINARIA Japonica (Bambusa Metake), fine dwarf bamboo, hardy .....	\$.25	\$2.50	\$15.00
ASCLEPIAS tuberosa, Butterfly Weed, good plants that have already bloomed .....	.10	1.00	4.00
— strong plants, fine .....	.15	1.50	10.00
<p>This is one of our finest native herbaceous plants, blooming all summer. Its rich orange flowers are very showy. It is much used now in large masses for cemeteries, parks, and all public and private grounds. It is one of the most effective plants in landscape gardening.</p>			
ASTER Novæ-Angliæ, Aster, Starwort, or Michaelmas daisy, purple flowers .....	.15	1.50	10.00
— — — var. rosea, pink flowers.....	.15	1.50	10.00
— other native species mixed.....	.15	1.50	10.00
<p>These are among the finest of late blooming flowers.</p>			
ASTILBE (Spiræa) Japonica.....	.15	1.50	10.00
— — — compacta multiflora.....	.25	2.50	15.00
<p>These are much used for forcing.</p>			
AUBRIETIA deltoidea.....	.25	2.50	
BAPTISIA australis.....	.25	2.50	15.00
BOCCONIA Japonica.....	.15	1.50	
CAMPANULA Carpatica, blue or white .....	.25	2.50	
— medium, Canterbury Bells, double and single sorts in variety.....	.15	1.50	10.00
CASSIA, Marylandica .....	.25	1.50	
CHRYSANTHEMUM, choicest hardy sorts .....	.15	1.50	10.00

I have a fine stock in twenty-two named varieties of the hardiest and most beautiful Chrysanthemums for the open ground.

	EACH.	DOZ.	100.
CLEMATIS Davidiana, blue, new, shrubby .....	\$.35	\$3.50	
— recta, white shrubby.....	.25	2.50	
<p>For running sorts see Vines.</p>			
<p>COLUMBINE. See Aquilegia.</p>			
CONVALLARIA majalis, Lily of the Valley, nice clumps, in quantity for \$30 per 1000 .....	.10	1.00	\$4.00
— — with rose colored flowers, clumps,	.25	2.50	15.00
— — beautifully striped leaves, clumps	.25	2.50	15.00
<p>The Lily of the Valley is grown here on a large scale, and I can furnish very fine plants of each variety in large quantities, in clumps. They are not prepared for forcing. The other two sorts are excellent, and should be in all gardens.</p>			
COREOPSIS grandiflora.....	.15	1.50	10.00
— lanceolata .....	.15	1.50	10.00
DELPHINIUM elatum, Hybrid Larkspur .....	.15	1.50	10.00
— grandiflorum (Chinense), Chinese Larkspur .....	.15	1.50	10.00
DIANTHUS barbatus, Sweet Williams, double and single varieties.....	.15	1.50	10.00
DICENTRA spectabilis (Dielytra), Bleeding Heart.....	.15	1.50	10.00
DICTAMNUS (Fraxinella), albus, white .....	.25	2.50	
— — var. rubra, red.....	.25	2.50	
DIGITALIS purpurea, Foxglove, in variety .....	.10	1.00	\$6.00
EPIMEDIUM, good sorts.....	.25	2.50	
ERIANTHUS Ravennæ, beautiful pampas-like grass with purple plumes, 6 ft.	.25	2.50	

	EACH.	DOZ.	100.
ERIGERON speciosum .....	\$.25	\$2.50	
EULALIA Japonica, var. variegata, tall striped .....	.25	2.50	
— Zebrina, with variegated horizontal bands .....	.25	2.50	
EUPATORIUM ageratoides.....	.25	2.50	
FERNS, choice hardy sorts .....	\$.25	\$2.50	\$15.00
Cemetery lots with the whole surface planted with ferns are very pleasing. I send the best sort for this purpose for \$10 per 100.			
FORGET-ME-NOT. See Myosotis.			
FOXGLOVE. See Digitalis.			
FUNKIA grandiflora, white flowers....	.25	2.50	
— lancefolia, lilac flowers.....	.25	2.50	
— ovata, bluish-lilac flowers.....	.25	2.50	
— — var. marginata .....	.25	2.50	
— Sieboldiana with large glaucous leaves .....	.25	2.50	
— subcordata, Day lily, pure white flowers blooming in August...	.15	1.50	10.00
These showy Plantain lilies I offer in a fine assortment of the best varieties .....			
	.15	1.50	
GAILLARDIA grandiflora, very showy	.15	1.50	10.00
GERANIUM sanguineum, var. Lancastriense, a very beautiful English variety, bright magenta .....	.15	1.50	10.00
GILLENIA trifoliata (Spiræa).....	.25	2.50	
GYPSOPHILA paniculata, very delicate, and beautiful with cut flowers..	.25	2.50	
HELENIUM autumnale.....	.25	2.50	
HELIANTHUS grandiflorus, single...	.25	2.50	
— Maximiliani .....	.25	2.50	
— multiflorus plenus.....	.25	2.50	
HEMEROCALLIS Dumortieri, orange yellow .....	.10	1.00	6.00
— flava, lemon-yellow .....	.10	1.00	6.00

	EACH.	DOZ.	100.
HEMEROCALLIS fulva, tawny brown (\$35 per 1000), for covering embankments or rough or unsightly spots, very useful .....	\$.10	\$7.75	\$4.00
— — var. fl. pl., Double tawny brown	.15	1.50	10.00
— Thunbergii, lemon-yellow like H. flava, but later .....	.25	2.50	
HIBISCUS Moscheutos, Marsh Mallow	.15	1.50	10.00
Very choice plants for masses, blooming for a long period in mid-summer.			
HIERACIUM aurantiacum, rich orange,	\$.015	\$1.50	\$10.00
HOLLYHOCK. See Althæa.			
IBERIS sempervirens, Hardy Candytuft, pure white .....	.25	2.50	
IRIS cristata, dwarf, beautiful.....	.15	1.50	10.00
— Germanica, in great variety.....	.15	1.50	10.00
These beautiful hardy garden Iris are among the most desirable plants for the border. The sorts here offered are very varied.			
— Japan or Kæmpfer's .....	.15	1.50	10.00
— 12 superb sorts, named colors.....		2.00	
I have one of the finest collections possible of this celebrated Iris. The gorgeous flowers are often compared to orchids, and are decidedly the most showy of all the products of the garden. They vary much in color. All are hardy.			
IRIS pseudacorus, yellow, fine.....	.25	2.50	
— Siberian, lovely .....	.25	2.50	
— versicolor .....	.15	1.50	10.00
LARKSPUR. See Delphinium.			
LATHYRUS latifolius, rose. Hardy Perennial Pea.....	.15	1.50	10.00
— — white .....	.15	1.50	10.00
LIATRIS pycnostachya, Kansas Gay Feather .....	.25	2.50	15.00
— scariosa .....	.10	1.00	6.00

L. scariosa is very effective planted in masses.

	EACH.	DOZ.	100.
LILIUM auratum, Golden-Banded Lily	\$.15	\$1.50	
— candidum, Ascension Lily.....	.10	1.00	
— speciosum album, Japanese Lily ...	.15	1.50	
— roseum .....	.15	1.50	
— tigrinum, Tiger Lily .....	.10	1.00	
— umbellatum, orange-red .....	.10	1.00	
LILY OF THE VALLEY. See Convallaria.			
LOBELIA cardinalis, Cardinal Flower, intense red. This fine perennial is of easy cultivation in gardens, where it blooms all summer. It is much used now for its brilliant landscape effect. Plants that will bloom the first year...	.10	1.00	\$4.00
— — stronger plants that will bloom the first year .....	.15	1.50	10.00
— Syphilitica, blue .....	.25	2.50	
LUPINUS polyphyllus, Perennial Lupine .....	.15	1.50	10.00
LYCHNIS chalcedonia, London Pride.	.15	1.50	
LYSIMACHIA clethroides, fine, from Japan .....	.15	1.50	10.00
LYSIMACHIA nummularia, Moneywort, pretty for vases.....	.10	1.00	6.00
MALLOWS. See Hibiscus.			
MERTENSIA Virginica, Lung-wort...	.15	1.50	10.00
MITCHELLA repens, Partridge Berry	.15	1.50	10.00
MONARDA didyma.....	.15	1.50	
MYOSOTIS palustris, Forget-me-nots, sorts .....	.15	1.50	10.00
GENOTHERA, Evening Primrose, sorts,	.15	1.50	10.00
OROBUS vernus.....	.25	2.50	
— — rose .....	.25	2.50	
PANSIES, in very choice sorts.....	.10	.50	3.00
PAPAVER bracteatum.....	.15	1.50	10.00
— involucreatum maximum.....	.15	1.50	10.00
— orientale (large oriental poppy)....	.15	1.50	10.00

The above are the great Asiatic poppies, perfectly hardy, producing immense deep blood red and crimson flowers, with various markings. They are among the most showy flowers known and should be in every garden. Very fine in masses in public grounds.

	EACH.	DOZ.	100.
PAPAVER nudicaule, the Iceland Poppy, choice .....	\$.15	\$1.50	\$10.00
PARDANTHUS sinensis, Blackberry Lily .....	.25	2.50	15.00
PENTSTEMON, fine mixed sorts.....	.15	1.50	
PEONIES. See page 18.			
— named varieties.....	.25	2.50	20.00
— mixed, unnamed.....		1.50	10.00
PHALARIS arundinacea variegata.....	.10	1.00	6.00
PHLOX, hybrids, a good collection....	.25	2.50	
I offer this year twenty-four named varieties of the best Phlox recently introduced.			
PLATYCODON grandiflora, blue.....	.15	1.50	10.00
— — blue and white striped.....	.15	1.50	10.00
— — white .....	.15	1.50	10.00
— — mixed sorts.....	.10	1.00	6.00
— — var. Mariesii.....	.25	2.50	
POLYANTHUS. See Primula.			
POLYGONATUM multiflorum, Solomon's Seal.....	.25	2.50	
POLYGONUM amplexicaule, Mountain Fleece .....	.15	1.50	
— cuspidatum (Sieboldii), a very rapid growing plant for covering rough places.....	.10	1.00	6.00
PRIMULA officinalis (Polyanthus), fine gold laced varieties.....	.15	1.50	10.00
PYRETHRUM hybrid sorts, colored Daisies, a good collection of single varieties.....	.25	2.50	15.00
— uliginosum, the Great Ox Eye Daisy, white.....	.15	1.50	10.00
PYROLA rotundifolia, very nice evergreen .....	.15	1.50	10.00

	EACH.	DOZ.	100.
RUDBECKIA laciniata .....	\$.15	\$1.50	
— — Golden Glow.....	.15	1.50	
— maxima .....	.15	1.50	
RUDBECKIA speciosa .....	.15	1.50	\$10.00
SABBATIA chloroides .....	.10	1.00	6.00
This beautiful plant is now largely planted on the borders of brooks, lakes and moist meadows. It is one of the most charming of our native flowers, blooming all summer, rich rose, showy.			
SANGUINARIA canadensis, Blood-root .....	.15	1.50	
SOLIDAGO, golden rods, fine sorts....	.15	1.00	6.00
SPIRÆA, Aruncus, Goat's Beard, white .....	.15	1.50	
— Filipendula, white.....	.15	1.50	10.00
— — var. fl. pl., double white.....	.15	1.50	
— Japonica. See Astilbe.			
— palmata, rosy crimson.....	.15	1.50	
— — var. elegans, white.....	.15	1.50	
— Ulmaria, double white.....	.25	2.50	
— — variegata picta.....	.25	2.50	
SWEET WILLIAMS. See Dianthus.			
THERMOPSIS Caroliniana, excellent.	.25	2.50	

	EACH.	DOZ.	100.
THYMUS Serpyllum, var. aurea, Golden Thyme .....	\$.15	\$1.50	
VERNONIA Novaboracensis, Ironweed	.25	2.50	
VINCA. See Vines, sorts .....	.15	1.50	\$6.00
VIOLA cornuta in colors.....	.15	1.50	10.00
— cucullata, white and blue.....	.15	1.50	
— odorata, English blue.....	.15	1.50	10.00
— — — white .....	.15	1.50	10.00
— — Schönbrunn .....	.15	1.50	10.00
— pedata .....	.15	1.50	10.00

These violets are all perfectly hardy. Viola cucullata, rich blue, is very much esteemed abroad for its fine effect in plantations, forming great clumps and blooming profusely. The English violets are very sweet and should be in every garden. Schönbrunn is very fragrant and was a great favorite of Unser Fritz, and was named from his palace and grounds in Germany, where it originated.

Schönbrunn and English white are very useful to plant freely on the borders of avenues, etc., and will perfume your whole estate.

WAHLENBERGIA. See Platycodon.

I will furnish 1000 herbaceous plants of my own choice, fine sorts, for \$100.

### Tender Bulbs.

To be kept in the cellar in winter like dahlias.

AMARYLLIS, or fairy lily .....	\$.10	\$1.00	\$6.00	GLADIOLUS, white, mixed .....	\$.35	\$2.25
CANNA, new sorts.....	.25	2.20	15.00	— striped, mixed.....	.40	2.50
DAHLIAS, finest single, superior sorts	.15	1.50	10.00	— yellow, mixed.....	.50	3.00
GLADIOLUS, scarlet, mixed.....	.25	1.50		— choice, mixed.....	.25	1.50
— pink, mixed.....	.30	2.00				

### Peonies—New Chinese and Japanese Herbaceous.

Well established plants from the open ground.

I have a very large and complete collection of this gorgeous flower. Of these I offer the following assortments at very low rates. They consist of the most celebrated sorts known, and include many that are yet very rare. This is now the most fashionable of all showy, hardy garden plants, both here and in Europe.

These fine Japanese and Chinese Peonies are well known to be the most showy flowers in cultivation, and are particularly adapted to our climate. They are entirely hardy and bloom a long time. They are accordingly very much used now for large masses in cemeteries, parks and pleasure grounds; and may be followed by Lemoine's beautiful new French Gladiolus, the stiff foliage helping to support the spikes of the gladiolus. Gladioli should be planted among the peonies in May.

Plants are twenty-five cents each, your choice. 12, all different, named sorts, my choice, \$2.50. 25, all different, named sorts, my choice, \$5.00. 50 all different, named sorts, my choice, \$10.00. For cheaper plants, unnamed, see below.

Plants are divided of these named varieties. They will have from one to three eyes. When planted in the fall about 80 per cent. bloom the following year.

- |  |   |
|--|---|
| ALEXANDER MECHIN. Dark crimson with yellow stamens.                  | MME. FURTADO. Deep violet rose, center bright salmon.       |
| BUYCKII. Brilliant rose with salmon center, full double.             | MARECHAL VAILLANT. Very large full double, deep pink.       |
| CAMILLE CALOT. Very dark rich rose, one color.                       | MARQUISE DE LA TOURETTE. Brilliant purple wine.             |
| CHARLES DE BELLME. Brilliant violet purple.                          | NE PLUS ULTRA. Fine, full double, rosy pink.                |
| COMTE DE NEIPPERG. Bright amaranth carmine.                          | PAGANINI. Brilliant rose, salmon center.                    |
| DELACHII. Rich deep amaranth, full double.                           | POTTSI PLENA. Dark red.                                     |
| EDOUARD ANDRE. Dark crimson with yellow stamens.                     | PURPUREA SUPERBA. Large, dark red.                          |
| EDULES SUPERBA. Full double large pink.                              | SOUVENIR D'AUGUSTE MIELLEZ. Rich violet purple, cup-shaped. |
| FAUST. Light.  | SOUVENIR DE PORTEAU. Flesh color and light yellow.          |
| FESTIVA MAXIMA. Large white, center flecked with red, 50 cents each. | SUPERBISSIMA. Full double, pink shading to white.           |
| FRANCOIS FIRST. Pink, center salmon flecked with red, free bloomer.  | VICTORIE MODESTE. Rich pink, center pink and white.         |
| LOUIS VAN HOUTTE. Crimson, extra good bloomer.                       | VIRGINIE. Large, delicate blush suffused with pink.         |
| LUCRECE. Rosy peach, center rosy white.                              | WASHINGTON. Bright red, center light salmon red.            |
| MME. CHENEY. Pink shaded to white, extra large.                      |   |
| MME. BERNARD. Soft rose, large full double.                          |   |

**I have also a splendid collection of first class mixed varieties, including all the old favorites, at the following low prices:—A collection of 12 fine plants, without names, \$1.50. A collection of 25 fine plants, without names, \$3.00. A collection of 50 fine plants, without names, \$5.00. A collection of 100 fine plants, without names, \$10.00.**

### **Pæonia Officinalis.**

These Peonies are very desirable, as they bloom a week or ten days earlier than the preceding sorts. Jacqueminot is double, the others are single. Price: 25 cents each; \$2.50 per dozen.

ALEXANDER VON HUMBOLDT, light pink.      BLANDA, rose.



DECORA ELATION, dark rose.  
 DECORA PALLASII, shade of rose.

JACQUEMINOT, double, color of Jacqueminot rose.  
 (Officinale Rubra.)

### Tree Peonies.

**Tree Peonies** are shrubby sorts from China and Japan which do not die down in the autumn, but make hardy bushes of considerable size, bearing immense flowers of great beauty. Very showy. In ten choice varieties. Nice two year old grafts. Price: 75 cents each; \$7.50 per dozen.

**HYBRID PERPETUAL ROSES.** I offer this season a fine stock of Hybrid Perpetual Roses. They are well established plants, field-grown, grafted low. I have more than twenty of the leading sorts, all good growers and giving a pleasing variety in color of the flowers. They should be closely pruned and planted deep in well enriched soil early in the season. Prices: 25 cents each; \$2.50 per dozen; \$20.00 per 100.

ABEL CARRIERE, velvety crimson.  
 ALFRED COLOMB, brilliant carmine.  
 AMERICAN BEAUTY, red.  
 BR. DE BONSTETTE, rich velvety maroon.  
 BARON DE ROTHSCHILD, light rose.  
 CAPTAIN CHRIS'Y, delicate rose.  
 CELINE FORESTIER, yellow.  
 COQUETTE DES ALPES, white.  
 FISHER HOLMES, dark red.  
 GEN. JACQUEMINOT, brilliant red.  
 GEN. WASHINGTON, crimson.  
 GLOIRE LYONAISE, yellow.

JOHN HOPPER, bright rose.  
 JULES MAGOTTIN, glossy pink.  
 LA FRANCE, silvery rose.  
 MAGNA CHARTA, pink.  
 MME. GABRIL LUIZET, soft rose.  
 MARSHAL P. WILDER, carmine red.  
 MRS. JOHN LAING, soft rose.  
 MONSIEUR BONCENNE, dark red.  
 PAUL NEYRON, dark rose.  
 PERSIAN YELLOW, yellow.  
 P. C. DE ROHAN, deep velvety crimson.  
 ULRICH BRUNNER, cherry red.

**HYBRID SWEET BRIARS.** The Lord Penzance Hybrids are very fragrant, beautiful, single hybrids of the common Eglantine or Sweet Briar, *Rosa rubiginosa*. Prices: 25 cents each; \$2.50 per dozen.

AMY ROBSART.  
 ANNE OF GEIERSTEIN.  
 BRENDA.  
 CATHERINE SEYTON.

EDITH BELLENDEN.  
 FLORA McIVOR.  
 LORD PENZANCE.

LUCY BERTRAM.  
 MEG MERRILES.  
 ROSE BRADWARDINE.

For other varieties of roses see page 9.

**RHODODENDRONS.** I have a good collection of the best and hardiest Rhododendrons, hybrids of *R. Catawbiense*. These are among our best and most satisfactory plants. To insure good success they must be heavily watered during July and August, giving a much greater quantity of water at one time than is usually given grass or bedding plants. In December they should receive a mulching of leaves a foot or more in depth, and a covering of pine boughs, which should not be removed until after the middle of April, when all danger from the high spring winds is past. These cultural directions should be followed also for Azalea, Kalmia, etc. My stock contains the hardiest varieties only, which have been fully tested in Eastern Massachusetts; we offer ten or a dozen sorts only.

Best named sorts, stocky plants..18 to 24 in.	\$1.25	\$12.00	R. maximum seedlings.....	\$.50 to \$1.00 ea.
— — — larger plants.....	1.50	17.00		
— — — fine selected.....	2.00	20.00		
Seedlings.....18 to 24 in.	\$1.00	\$10.00		

The price of a Rhododendron is the best description of the plant.

**SMALL CONIFERS.** I wish to call special attention to our collection of rare and desirable Conifers. I offer at very low prices plants, from ten to twenty inches high, well grown in light, sandy soil, and well furnished with fibrous roots. I believe that these small plants will give better results than plants of larger size, while the first cost, including transportation, is very much less. For kinds and prices see Hardy Evergreens, Conifers, page 10.

**LILACS.** I wish to call special attention to my stock of Lilacs, see page 11. I offer not only a good many different species, but also a fine collection of varieties of the common and Persian Lilac; all of these will be found very desirable.

**AZALEA MOLLIS AND GHENT.** My stock this year of these two Azaleas, and also other species offered on page 3, is particularly fine. All are well set with buds. These are not freshly imported plants, but those which have grown several years in my nurseries.

**GINKGO TREES.** I have a limited number of this rare and charming tree, from three to four feet high, and well grown, at reasonable prices; they are recommendable in every way.

**AMERICAN ASHES.** I have a good stock of *Fraxinus Americana* and *F. pubescens*, well grown and thrifty. They make sturdy trees and are quick growers; for sizes and prices see page 6.

**FLOWERING APPLES.** My collection of the genus *Pyrus* is quite complete. In addition to the well known and desirable sorts listed on page 8, I also offer a limited number of *P. coronaria* and *P. Toringo*, two year grafts, from 3 to 4 feet high, at 50 cents each.

**ACER PALMATUM (POLYMORPHUM), JAPANESE MAPLES.** We offer the following selected varieties of these, the most beautiful of all the Maples. The plants are small, thrifty, pot grown stock. Prices: 50 cents each; \$5.00 per dozen.

*Acer palmatum.*

*Acer palmatum atropurpureum.*

*Acer palmatum purpureum.*

*Acer palmatum atropurpureum*, on own roots 12 to 15 inches. Price: 50 cents each; \$5.00 per dozen.

**LARGE FLOWERED CLEMATIS.** These are exceptional strong Holland grown plants. Two or three shoots and from 6 to 7 feet. Stock of these limited. Prices: 50 cents each; \$5.00 per dozen.

GEM, blue.

HENRYI, white.

MME. LECOULTRE, white.

GIPSY QUEEN, purple.

JACKMANI, purple blue.

STANDISHI, blue.

### Wichuraiana Hybrids.

MANDA'S TRIUMPH, double white.

SOUTH ORANGE PERFECTION, blush.

PINK ROAMER, pink with white center.

UNIVERSAL FAVORITE, rose, semi-double.

Prices: 25 cents each; \$2.50 per dozen.

62.39 U.S. DEPARTMENT OF AGRICULTURE LIBRARY  
CANCELS ALL PREVIOUS LISTS.

FALL 1902 TRADE LIST.

Perennial Herbaceous Department

1840 Old Colony Nursery 1902

E. W. Watson, 2d

Plymouth, Massachusetts.

Prices of this list net, and subject to stock not being sold.

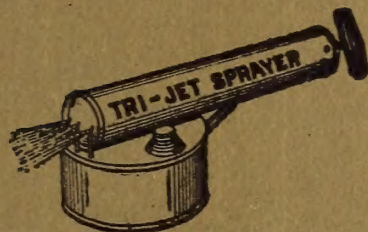
Five at the rate for 10. Fifty at the rate for 100.

TERMS.—Cash with order or satisfactory reference, except where parties are known. Bills of regular customers become due June 1st for Spring shipments; January 1st for Fall shipments. Packing: boxes from 10 cents to 50 cents; bales from 50 cents to \$1.00; cases 2x2x4 ft., \$1.00; 2x2x6 ft., \$1.25; 2x2x8 ft., \$1.50; larger cases from \$1.75 to \$3.00

100	<i>Achillea serrata</i> , The Pearl	.	.	.	.75	6.00
300	<i>Agrostemma coronaria</i>	.	.	.	.60	5.00
500	<i>Anthemis tinctoria</i>	.	.	.	.50	4.00
500	<i>Aquilegia</i> , Columbines, in variety	.	.	.	1.00	8.00
100	<i>Arabis Alpina</i>	.	.	.	1.00	8.00
100	<i>Arundinaria Japonica</i> (Bambosa Metake)	.	.	.	.75	6.00
500	<i>Aselepias Tuberosa</i> , strong plants	.	.	.	.60	5.00
2000	" " 2 yr.	.	.	.	.40	3.00
2000	" " 1 yr.	.	.	.	.25	2.00
500	<i>Aster Novae-Angliae</i> , <i>purpurea</i> .	.	.	.	.60	5.00
500	" " var. <i>rosea</i>	.	.	.	.60	5.00
500	<i>Astilbe Japonica</i> , clumps	.	.	.	.50	4.00
100	<i>Baptissia australis</i>	.	.	.	.75	6.00
100	<i>Bocconia Japonica</i>	.	.	.	.75	6.00
1000	<i>Campanula medium</i> , <i>Canterbury Bellis</i> , in named colors	.	.	.	1.00	8.00
500	" " <i>Calacanthema</i> , in named colors	.	.	.	1.00	8.00
500	<i>Coreopsis grandiflora</i>	.	.	.	.40	3.00
500	<i>Delphinium elatum</i> , Hybrid Larkspur	.	.	.	1.00	8.00
1000	" <i>grandiflorum</i> , Chinese Larkspur, white or blue	.	.	.	.75	6.00
5000	<i>Dianthus barbatus</i> , Swt. Williams	.	.	.	1.00	8.00
1000	<i>Digitalis purpurea</i> in variety, Foxglove	.	.	.	1.00	8.00
500	<i>Funkia lancifolia</i>	.	.	.	1.00	8.00
200	" <i>ovata</i>	.	.	.	1.00	8.00
100	" <i>marginata</i>	.	.	.	1.00	8.00

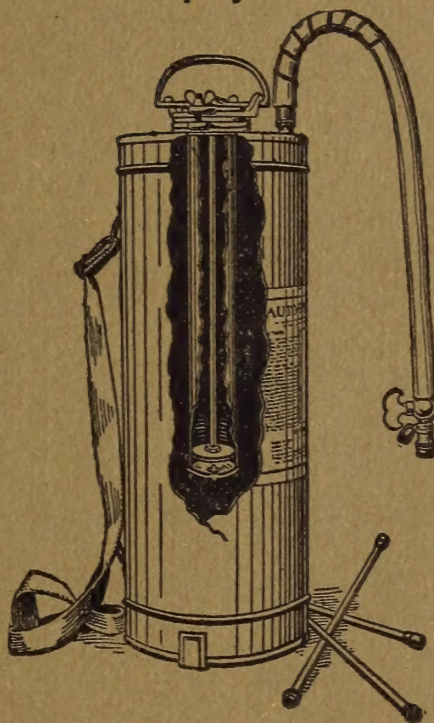
1000	<i>Gaillardia grandiflora</i>	.	.	.	.	.	.	.40	3.00
500	<i>Gypsophila paniculata</i>	.	.	.	.	.	.	1.00	8.00
200	“ <i>glauca</i>	.	.	.	.	.	.	1.00	8.00
500	<i>Helenium autumnale</i>	.	.	.	.	.	.	.60	5.00
500	<i>Helianthus Maximilianus</i>	.	.	.	.	.	.	.60	5.00
1000	<i>Hemerocallis flava</i> , single plants, clumps at same rate	.	.	.	.	.	.	.40	3.00
5000	“ <i>fulva</i> , “	“	“	“	“	“	“	.40	3.00
500	<i>Hibiscus Moscheutos</i> , Marsh Mallow, 2 yr.	.	.	.	.	.	.	.60	5.00
200	<i>Iberis Gibraltarica</i>	.	.	.	.	.	.	1.00	8.00
200	“ <i>sempervirens</i>	.	.	.	.	.	.	1.00	8.00
200	“ <i>Ternoneana</i>	.	.	.	.	.	.	1.00	8.00
500	<i>Iris Germanica</i> , colors separate, not named, fine plants	.	.	.	.	.	.	.75	6.00
500	“ <i>Japan or Kaempfer's</i> , colors separate, not named, fine plants	.	.	.	.	.	.	.75	6.00
500	<i>Lathyrus latifolius</i> , rose, strong	.	.	.	.	.	.	.75	6.00
100	“ “ <i>white</i> , “	.	.	.	.	.	.	1.00	8.00
500	<i>Liatrix scariosa</i>	.	.	.	.	.	.	.50	4.00
200	<i>Lupinus polyphilus</i> , mixed	.	.	.	.	.	.	.75	6.00
2000	<i>Lysimachia clethroides</i>	.	.	.	.	.	.	.40	3.00
500	“ <i>nummularia</i>	.	.	.	.	.	.	.50	4.00
2000	<i>Mitchella repens</i> , fine sod, collected	.	.	.	.	.	.	.60	5.00
200	<i>Myosotis palustris</i>	.	.	.	.	.	.	1.00	8.00
1000	<i>Oenothera</i> , Lamark's, Evening Primrose	.	.	.	.	.	.	.75	6.00
500	<i>Phlox paniculata</i> ( <i>P. decussata</i> ) hybrids, best named varieties	.	.	.	.	.	.	1.25	10.00
500	<i>Polygonum amplexicaule</i>	.	.	.	.	.	.	.75	6.00
500	“ <i>cuspidatum</i>	.	.	.	.	.	.	.75	6.00
200	<i>Primula officinale</i> ( <i>Polygonanthus</i> ) in fine variety	.	.	.	.	.	.	1.00	8.00
	<i>Pyrethrum hybridum</i> sorts	.	.	.	.	.	.	1.00	
	“ <i>uliginosum</i>	.	.	.	.	.	.	1.00	
200	<i>Rudbeckia laciniata</i>	.	.	.	.	.	.	.75	6.00
500	“ <i>Golden Glow</i>	.	.	.	.	.	.	.60	5.00
500	“ <i>maxima</i>	.	.	.	.	.	.	.60	5.00
500	“ <i>speciosa</i>	.	.	.	.	.	.	.60	5.00
1000	<i>Solidago</i> , fine sorts, Golden Rod	.	.	.	.	.	.	.50	4.00
500	<i>Spiraea Filipendula</i>	.	.	.	.	.	.	.50	4.00
100	“ <i>palmata rosea</i>	.	.	.	.	.	.	1.00	8.00
100	“ “ <i>var. elegans</i> , white	.	.	.	.	.	.	1.00	8.00
100	“ <i>Ulmaria</i> , dble. white	.	.	.	.	.	.	1.00	8.00

## The "New Era Sprayer."



Auto-Spray No. 1. Galvanized Steel Tank,	\$5.00
Auto-Spray No. 1. Brass Tank,	6.50
Auto-Spray No. 2 Brass Tank with agitator, (no barrel)	12.00
Auto-Spray No. 2. Brass Tank with agitator (with barrel.)	14.00
Auto-Spray No. 3. Galvanized steel Tank,	2.00
Auto-Spray No. 3. Brass Tank,	3.00
New Era Galvanized Reservoir,	.75

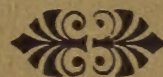
## Auto-Spray No. 1.

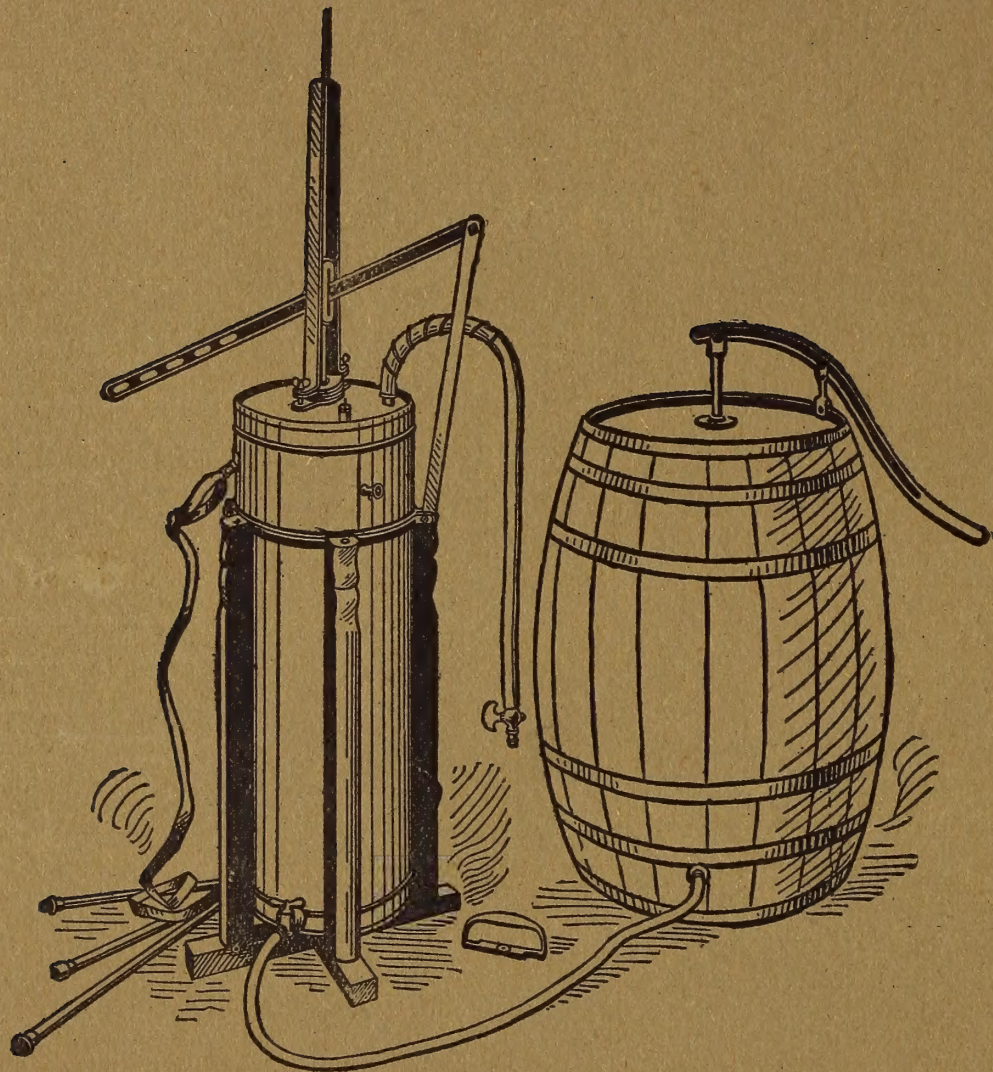


## EXTRAS.

Extension Pipes, 2 feet lengths, Galvanized Steel, Brass ends,	\$ .30
Extension Pipes, 2 feet lengths, solid brass,	.35
Elbow connection, solid brass	.35
Safety Valve, solid brass,	.25
Auto-Spray Torch,	1.00
Bicycle Pump Fitting,	.25
Anti-Fire (one charge for Auto-Spray No. 1 or No. 2)	.75
Vermorel Nozzle	1.00
Bordeaux Nozzle,	1.00

See also back cover.





AUTO SPRAY NO. 2.  
See inside cover.