

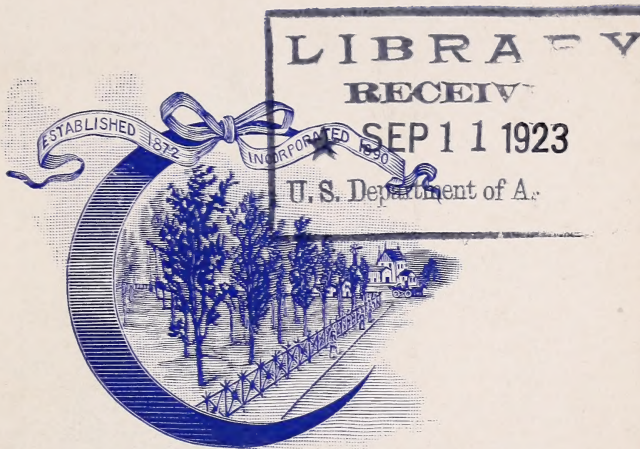
Historic, Archive Document

Do not assume content reflects current scientific knowledge, policies, or practices.

62.73

SEMI-ANNUAL TRADE-LIST

*Glenwood
Nurseries*



SPRING, 1902

The Wm. H. Moon Co.

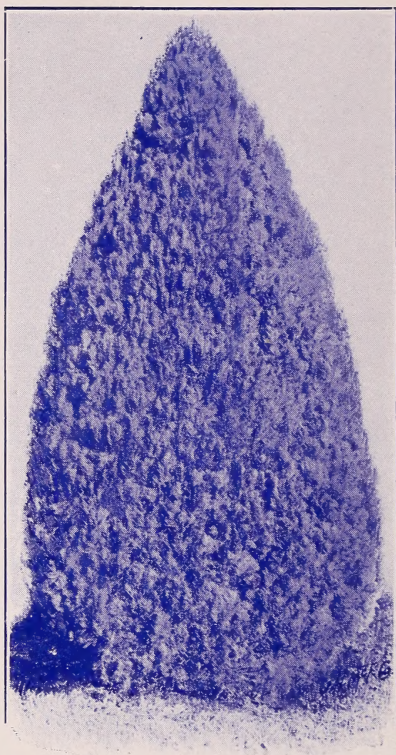
MORRISVILLE

BUCKS COUNTY, PENNSYLVANIA

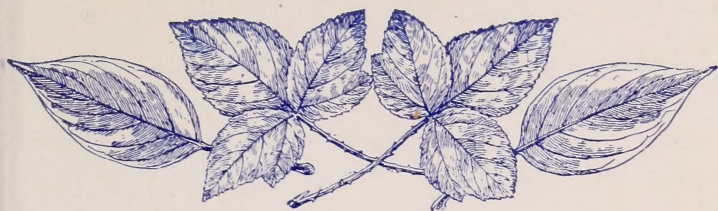
TELEGRAPH OFFICE AND LONG DISTANCE TELEPHONE, NO. 419
TRENTON, NEW JERSEY

PHILADELPHIA OFFICE

702 Stephen Girard Building, 21 South Twelfth Street



ARBORVITÆ.



Notice to Purchasers

We invite the attention of Nurserymen, Florists and Dealers to our Wholesale Trade-List for the Spring of 1902. **These prices are for the Trade only**, and supersede all previous quotations.

TERMS.—Cash with order, or satisfactory references from those with whom we have not had previous business dealings.

REMITTANCES.—Remittances can be made by draft, registered letter or post office money order, or we will forward by express, with bill to be paid, with cost of collection, on delivery.

LOCATION.—The Glenwood Nurseries are situated near Morrisville, Bucks County, Pa., one mile from Trenton, N. J., thirty miles from Philadelphia and sixty miles from New York. Trains leave Broad Street Station, Philadelphia, and Cortlandt and Desbrosses Street Ferries, New York, almost hourly for Trenton, N. J. There are trains quite frequently from Reading Terminal Station, Philadelphia, and Liberty Street Ferry, New York, to Trenton, N. J. Yardley, Morrisville and Trenton trolley passes our Nurseries every hour each way; take trolley at Calhoun Street Bridge, Trenton, N. J., 30 minutes after the hour, Yardley on the hour.

An invitation to visit our Nurseries is cordially extended to the Trade generally.

SHIPPING FACILITIES.—The Pennsylvania, Baltimore and Ohio and Philadelphia and Reading Railroads offer equal conveniences for shipping from Trenton, N. J., from which point all our shipments are made. We can forward west, via Pennsylvania Railroad, with through freight rates, without change of cars; north, via Lehigh

Valley Railroad and Erie Dispatch; and south and east, by rail or steamship lines from Philadelphia or New York. We can obtain very liberal freight rates, as there is considerable competition from this point.

Purchasers are requested to name the mode of conveyance by which they desire their shipments made, *otherwise we will forward to the best of our judgment. After delivering to the forwarders, all articles are entirely at the risk of the purchaser; should any loss or delay occur, the forwarder alone must be held accountable and responsible.*

CLAIMS.—All claims for errors must be made upon receipt of stock. We desire to be informed at once of any errors that may occur, in order to rectify the same without delay. Address always

THE WM. H. MOON CO.

Bucks County

MORRISVILLE, PA.

JAMES M. MOON, Pres.

HENRY W. COMFORT,

Vice-Pres.

WM. H. MOON,

Sec. and Treas.

PHILADELPHIA OFFICE:

702 Stephen Girard Building, 21 South Twelfth Street



SCHWEDLER'S MAPLE. (See page 8.)

Ornamental Department

DECIDUOUS TREES

The following trees have been frequently transplanted, are well furnished with fine fibrous roots, and are in a vigorous, thrifty condition. Caliber will be given when requested.

	Per 10	100
ALDER (<i>Alnus</i>)—		
European (<i>A. glutinosa</i>). 6 to 8 ft.....	\$2 00	\$15 00
8 to 10 ft.	3 00	25 00
10 to 12 ft.	5 00	40 00
12 to 14 ft.	7 50	60 00
Speckled (<i>A. incana</i>). 5 to 6 ft.....	2 00	15 00
8 to 10 ft.	3 00	25 00
10 to 12 ft.	5 00	40 00
12 to 14 ft.	7 50	
ARALIA spinosa . 2 to 3 ft.....	2 00	15 00
ASH (<i>Fraxinus</i>)—		
American White (<i>F. alba</i>). 4 to 6 ft.	1 50	10 00
6 to 8 ft.	2 00	18 00
10 to 12 ft.	7 50	
12 to 14 ft.	12 50	
English (<i>F. excelsior</i>). 6 to 8 ft.....	2 00	14 00
8 to 10 ft.	3 00	20 00
10 to 12 ft.	4 00	30 00
12 to 14 ft.	12 50	
Flowering (<i>F. ornus</i>). 6 to 8 ft.	3 00	
8 to 10 ft.	5 00	
10 to 12 ft.	7 50	
Elder-Leaved, or Black (<i>F. sambucifolia</i>) ...		
8 to 10 ft.	3 00	25 00
10 to 12 ft.	7 50	65 00
12 to 14 ft.	12 50	110 00
BEECH (<i>Fagus</i>)—		
American (<i>F. Ferruginea</i>). 2 to 4 ft.....	5 00	40 00
European (<i>F. sylvatica</i>). 4 to 5 ft.....	5 00	40 00
5 to 6 ft.	6 00	50 00
Tricolor . 2 to 3 ft.....	9 00	
Purple-Leaved (<i>F. atropurpurea</i>). 5 to 6 ft..	6 00	50 00
6 to 8 ft.	10 00	90 00
8 to 10 ft.	15 00	125 00
Cut-Leaved (<i>F. laciniata</i>). Grafted, 3 to 4 ft.	15 00	
BIRCH (<i>Betula</i>)—		
Cut-Leaved . See Weeping Trees, page 11.		
Canoe (<i>B. papyracea</i>). 4 to 6 ft.....	2 00	16 00
Black (<i>B. nigra</i>). 3 to 5 ft.....	2 00	16 00
Pyramidal (<i>B. pyramidalis</i>). 4 to 6 ft.....	4 00	

BIRCH (<i>Betula</i>)—	Per 10 ₂	100
Purple-Leaved (<i>B. purpurea</i>). 4 to 5½ft.....	\$4 00	
Yellow (<i>B. lutea</i>). 3 to 5 ft.....	2 00	\$16 00
6 to 8 ft.	4 00	
8 to 10 ft.....	7 50	
Sweet (<i>B. lenta</i>). 3 to 5 ft.....	2 00	
White (<i>B. alba</i>). 4 to 6 ft.....	2 00	16 00
6 to 8 ft.	3 00	
BUTTONWOOD. See Plane, Oriental, p. 9.		
CATALPA		
Bignonioides. 6 to 8 ft.	2 50	20 00
Bungei. Grafted, 6 to 8 ft., 2-year heads	10 00	
Speciosa. 5 to 6 ft.....	1 75	12 00
6 to 8 ft.....	2 50	20 00
CHERRY (<i>Cerasus</i>)—		
American Bird (<i>C. Serotina</i>). 6 to 8 ft.....	2 50	20 00
8 to 10 ft.....	3 50	30 00
CYPRESS (<i>Taxodium</i>)—		
Deciduous (<i>T. distichum</i>). 3 to 4 ft.	2 50	
4 to 6 ft.	4 00	
DOGWOOD. See Cornus, in Shrubs, page 19.		
ELM (<i>Ulmus</i>)—		
American (<i>U. Americana</i>). 6 to 8 ft.....	2 50	20 00
8 to 10 ft.	3 50	30 00
10 to 12 ft.	4 00	35 00
12 to 14 ft.	10 00	75 00
Broad-Leaved (<i>U. latifolia</i>). 10 to 12 ft.	4 00	35 00
12 to 14 ft.	9 00	75 00
GINGKO (<i>Salisburia</i>)—		
Japan (<i>S. adiantifolia</i>). 4 to 5 ft.	3 00	20 00
5 to 7 ft.	4 00	30 00
7 ft.....	6 00	50 00
GLEDITSCHIA <i>Triacanthos</i>—		
2 to 3 ft.	1 50	12 00
3 to 5 ft.	2 50	20 00
GUM (<i>Liquidambar</i>)—		
Sweet (<i>L. styraciflua</i>). 3 to 4 ft.	2 50	20 00
HOP TREE (<i>Ptelea trifoliata</i>). 2 to 3 ft.....		
3 to 4 ft.	75	5 00
3 to 4 ft.	1 00	8 00
4 to 6 ft.	1 50	12 00
Golden (<i>P. trifoliata aurea</i>). 2 to 3 ft.....	2 00	15 00
3 to 4 ft.	2 50	20 00
4 to 5 ft.	3 00	
HORNBEAM (<i>Carpinus</i>)—		
European (<i>C. betula</i>). 2 to 3 ft.....	3 50	30 00
3 to 5 ft.	5 00	40 00
HORSE-CHESTNUT (<i>Æsculus</i>)—		
White-Flowering (<i>Æ. hippocastanum</i>).		
4 to 6 ft.	2 50	20 00
6 to 8 ft.	3 00	25 00

Glenwood Nurseries, Morrisville, Pa. 7

KENTUCKY COFFEE TREE (<i>Gymnocladus</i> Per 10 100			
<i>Canadensis</i>). 2 to 3 ft.....	\$1 00	\$8 00	
3 to 4 ft.	1 50	12 00	
KÆLREUTERIA paniculata—			
2 to 3 ft.	1 50	12 00	
4 to 6 ft.	3 00		
LARCH (<i>Larix</i>)—			
European (<i>L. Europæa</i>). 5 to 6 ft.....	5 00		
LINDEN (<i>Tilia</i>)—			
American (<i>T. Americana</i>). 6 to 8 ft.....	3 50	30 00	
8 to 10 ft.	5 00	40 00	
10 to 12 ft.	7 50		
12 to 14 ft.	15 00		
Broad-Leaved (<i>T. platyphylla</i>). 8 to 10 ft... 5 00			
10 to 12 ft.	10 00		
European (<i>T. Europæa</i>). 4 to 6 ft..... 2 00			
6 to 8 ft.	3 00		
Silver-Leaved (<i>T. argentea</i>). 8 to 10 ft. 10 00			
MAGNOLIA—			
Cucumber Tree (<i>M. acuminata</i>). 5 to 6 ft... 3 00			
Glauca (<i>M. glauca</i>). 2 to 4 ft..... 7 50			
Kobus . 4 to 6 ft..... 15 00			
Soulangiana . 2 to 3 ft..... 10 00			
3 to 4 ft.	12 50		
Tripetala . 4 to 6 ft. 3 00			
6 to 8 ft.	4 00		
MAPLE (<i>Acer</i>)—			
	Per 10	100	1,000
Ash-Leaved (<i>A. Negundo</i>). 4 to 6 ft. \$1 50	\$12 00		
6 to 8 ft.	2 00	18 00	
8 to 10 ft.	2 50	20 00	
10 to 12 ft.	6 00	50 00	
Cork-Barked (<i>A. campestris</i>).....			
6 to 8 ft.	3 50	25 00	
8 to 10 ft.	5 00		
Norway (<i>A. platanioides</i>). 6 to 8 ft. 2 00	18 00	\$160 00	
8 to 10 ft.	3 50	30 00	275 00
10 to 12 ft.	5 00	40 00	300 00
Red (<i>A. colchicum rubrum</i>). 4 to 6 ft. 3 00			
6 to 8 ft.	5 00		
8 to 10 ft.	7 50		
Scarlet (<i>A. rubrum</i>). 3 to 4 ft..... 3 00	25 00		
4 to 5 ft.	4 00	35 00	
Silver-Leaved (<i>A. dasycarpum</i>).....			
8 to 10 ft.	1 50	10 00	90 00
10 to 12 ft.	1 80	12 00	115 00
12 to 14 ft.	3 50	20 00	
14 to 16 ft.	5 00	40 00	
Sugar (<i>A. saccharinum</i>). 6 to 8 ft.. 2 00	16 00	150 00	
8 to 10 ft.	3 00	20 00	175 00
10 to 12 ft.	4 00	25 00	200 00
12 to 14 ft.	5 00	35 00	300 00
14 to 16 ft.	5 00	40 00	

Larger and heavier grades at special quotations.

MAPLE (Acer)—

	Per 10	100
Sycamore (<i>A. pseudo-platanus</i>). 4 to 6 ft....	\$1 50	\$12 00
6 to 8 ft.....	2 50	20 00
8 to 10 ft.....	4 00	30 00
10 to 12 ft.....	5 00	45 00
12 to 14 ft.....	10 00	
Wier's Cut-Leaved (<i>A. Wierii exciniatum</i>)—		
8 to 10 ft.....	4 00	
Tataricum Ginnala . 2 to 3 ft.....	1 50	12 00
6 to 7 ft.....	4 00	
Reitenbach's . 6 to 8 ft.....	6 00	
Schwedlerii . 8 to 10 ft.....	7 50	



NORWAY MAPLE. (See page 7.)

MOUNTAIN ASH (*Sorbus aucuparia*)—

	Per 10	100
3 to 4 ft.....	\$1 00	\$8 00
4 to 5 ft.....	2 50	20 00
6 to 8 ft.....	4 00	
Oak-Leaved . 6 to 8 ft.....	4 00	

OAK (Quercus)—

Chestnut (<i>Q. Prinos</i>). 4 to 5 ft.....	6 00	50 00
5 to 7 ft.....	7 50	70 00
English (<i>Q. Robur</i>). 6 to 8 ft.....	4 00	30 00
8 to 10 ft.....	5 00	40 00
10 to 12 ft.....	6 00	50 00
12 to 14 ft.....	10 00	



PIN OAK.

OAK (<i>Quercus</i>)—	Per 10	100	1,000
Pin (<i>Q. palustris</i>). 4 to 6 ft.....	\$4 00	\$30 00	\$275 00
6 to 7 ft.	6 00	50 00	400 00
7 to 8 ft.	7 00	60 00	500 00
9 to 10 ft.	10 00	80 00	750 00
10 to 11 ft., low branched.....	25 00		
Mossy Cup (<i>Q. macrocarpa</i>).			
4 to 6 ft.	4 00	35 00	
6 to 8 ft.	7 50	60 00	
Red (<i>Q. rubra</i>). 4 to 5 ft.....	5 00	40 00	
5 to 6 ft.	7 50		
Scarlet (<i>Q. coccinea</i>). 4 to 5 ft.....	5 00	40 00	
5 to 6 ft.	7 50		
Turkey (<i>Q. Cerris</i>). 4 to 6 ft.....	2 50	20 00	
6 to 8 ft.	3 50	30 00	
White (<i>Q. alba</i> .) 3 to 5 ft.....	5 00	45 00	400 00
Willow-Leaved (<i>Q. phellos</i>).			
4 to 6 ft.....	7 50	60 00	
PLANE (<i>Platanus</i>)—			
Oriental (<i>P. orientalis</i>). Very fine—			
5 to 6 ft.	2 00	16 00	150 00
6 to 8 ft.	2 50	20 00	190 00
8 to 10 ft.....	3 50	25 00	225 00
10 to 12 ft.....	4 00	35 00	325 00
POPLAR (<i>Populus</i>)—	Per 10	100	
Carolina (<i>P. angulata</i>). 6 to 8 ft.	\$1 50	\$12 00	
8 to 10 ft.....	2 00	15 00	
10 to 12 ft.....	2 50	20 00	
12 to 15 ft.....	4 00	30 00	

POPLAR (Populus)—	Per 10	100
Golden (<i>P. Van Geertii aurea</i>). 4 to 6 ft.....	\$3 00	
Silver White (<i>P. Nova argentea</i>). 7 to 9 ft...	3 00	\$20 00
Lombardy . 6 to 8 ft.....	1 50	10 00
8 to 10 ft.....	2 00	15 00
12 to 15 ft.....	4 50	30 00
TULIP TREE (<i>Liriodendron Tulipifera</i>)—		
4 to 6 ft.	3 00	25 00
6 to 8 ft.	5 00	40 00
YELLOW-WOOD (<i>Virgilia lutea</i>)—		
1 to 2 ft.	2 00	15 00
3 to 5 ft.	7 50	
WILLOW (Salix)—		
Common Weeping . See Weeping Trees.		
Golden-Barked (<i>S. alba vitellina</i>). 4 to 6 ft..	2 50	20 00
6 to 8 ft.	3 50	
Laurel-Leaved (<i>S. Pentandra</i>). 4 to 6 ft....	2 00	16 00
Rosemary-Leaved (<i>S. rosmarinifolia</i>)—		
3 to 5 ft., on own roots	2 00	16 00
5 to 7 ft., grafted.....	4 00	30 00
Royal Silver-Leaved (<i>S. regalis</i>)—		
2 to 4 ft.	1 25	10 00
WALNUTS. See Nuts, Fruit Department.		



ORIENTAL PLANE TREE. (See page 9.)

WEEPING TREES

	Per 10	100
ASH (<i>Fraxinus pendula</i>)	\$6 00	
BEECH (<i>Fagus pendula</i> .) 3 to 4 ft.....	10 00	
BIRCH (<i>Betula</i>)—		
Cut-Leaved (<i>B. laciniata pendula</i>). 6 to 8 ft..	10 00	
Young's Weeping. 4 to 5 ft.....	7 50	
Elegans. 2 to 4 ft.....	5 00	
ELM, Camperdown	5 00	
3-year heads, very strong.....	9 00	
LINDEN (<i>Tilia pendula</i>). 5 to 6 ft.....	7 50	
MOUNTAIN ASH (<i>Sorbus aucuparia pendula</i>). 7 50		
MULBERRY (<i>Morus pendula</i>). 4 to 6 ft.....	6 00	
5 to 7 ft., extra heavy, 3 years.....	9 00	
WILLOW (<i>Salix</i>)—		
Kilmarnock (<i>S. caprea pendula</i>). Well headed,		
5 to 6 ft.	3 50	\$25 00
New American (<i>S. purpurea pendula</i>). Well		
headed, 6 to 7 ft.....	5 00	35 00
Common Weeping (<i>S. Babylonica</i>)—		
4 to 5 ft.	2 00	16 00
6 to 8 ft.	3 00	25 00
8 to 10 ft.	4 00	35 00

HEDGING, DECIDUOUS

	Per 100	1,000
ALTHEAS, in varlety. 2 to 3 ft.....	\$8 00	\$75 00
4 to 5 ft.	20 00	150 00
BERBERIS Thunbergil. 1 to 1½ ft.....	8 00	75 00
2 to 3 ft.	15 00	125 00
PRIVET, California (<i>Ligustrum ovalifolium</i>)—		
1 year, 1 to 1½ ft., well branched.....	2 50	18 00
1 year, 1½ to 2 ft., well branched.....	3 00	20 00
2 years, 2 to 2½ ft., bushy	5 00	40 00
2 years, 3 to 4 ft., very bushy.....	8 00	75 00
Our 2-year Privets were cut back last spring		
and are now bushy and fine.		
OSAGE ORANGE. Very fine—		
1 year	per 10,000, \$30..	1 00 4 00
2 years	per 10,000, \$45..	1 50 5 00
RHAMNUS Catharticus (Buckthorn). 3 to 4 ft.	8 00	75 00

HEDGING, EVERGREEN

	Per 10	100
ARBORVITÆ—		
American. 1½ to 2 ft.....	\$1 00	\$8 00
2 to 3 ft.	2 00	15 00
3 to 4 ft.	4 00	35 00
Compacta, Dwarf. 9 to 12 in.	1 00	8 00
18 to 24 in.....	5 00	40 00
SPRUCE, Norway—		
1 to 1½ ft., bushy.....	per 1,000, \$75..	1 00 8 00



GOLDEN ARBORVITÆ'S AT GLENWOOD.

Thuja orientalis aurea and *T. orientalis semper aurea*.

EVERGREEN TREES

Our collection of Choice Evergreens of small and medium size is very large. Great care is taken to shear, move and root-prune them in order that they may transplant successfully. They have been frequently trimmed, and are of fine, symmetrical shape.

ARBORVITÆ (*Thuja*)—

	Per 10	100
American (<i>T. occidentalis</i>). 1½ to 2 ft.....	\$1 00	\$8 00
2 to 3 ft.	2 00	15 00
3 to 4 ft.	4 00	35 00
Dwarf American (<i>T. compacta</i>). 6 to 9 in... ..	60	5 00
9 to 12 in.....	1 00	8 00
12 to 18 in.....	2 50	20 00
1½ to 2 ft.	5 00	40 00
2 to 3 ft.	9 00	75 00
Elegantissima . 1½ to 2 ft.....	5 00	45 00
Heath-Leaved (<i>T. ericoides</i>). 9 to 12 in.....	75	5 00
12 to 18 in.....	2 50	
George Peabody (<i>T. Peabody</i>). 6 to 9 in. ...	2 50	
9 to 12 in.....	3 50	
1 to 2 ft.	5 00	
Globe (<i>T. globosa</i>). 6 to 9 in.....	1 00	7 00
12 to 15 in.....	2 50	20 00
1 to 2 ft., bushy.....	3 50	30 00
2 to 3 ft.	10 00	
Hovey's Golden (<i>T. Hoveyi</i>). 9 to 12 in.. ...	1 00	8 00
12 to 18 in.....	2 00	15 00
1½ to 2 ft.....	4 00	35 00
2 to 3 ft.	7 50	
Orientalis aurea . 1 to 1½ ft.....	3 50	30 00
Orientalis semper aurea . 1 to 1½ ft.....	5 00	45 00
Pyramidal (<i>T. pyramidalis</i>). 6 to 12 in.....	1 00	8 00
1 to 2 ft.	3 00	20 00
2 to 3 ft.	4 00	35 00
Siberian (<i>T. Wareana</i>). 1 to 1½ ft., fine....	3 50	

Glenwood Nurseries, Morrisville, Pa. 13

ARBORVITÆ (Thuya)—		Per 10	100
Tom Thumb.	9 to 12 in.....	\$1 00	\$8 00
	12 to 18 in.....	1 50	12 00
Vervæneana.	9 to 15 in.....	1 00	8 00
	1½ to 2 ft.....	3 50	30 00
Weeping	<i>(T. Japonica filiformis pendula).</i>		
	18 to 24 in., bushy, grafted.....	7 50	
CEPHALOTAXUS			
Drupacea.	2 to 3 ft.....	10 00	
Fortunei.	2 to 3 ft.....	10 00	
FIR, SILVER (Abies)—			
Balsam	<i>(A. Balsamea).</i> 1 to 1½ ft.....	1 25	10 00
Concolor	<i>(A. concolor).</i> 1 to 2 ft.....	10 00	
	2 to 3 ft.....	\$3 each..	
	3 to 4 ft.....	\$4 and \$5 each..	
Nordmann's	<i>(A. Nordmanniana)—</i>		
	1 to 2 ft.....	7 50	60 00
	2 to 3 ft.....	20 00	150 00
	3 to 4 ft., \$3 to \$4 each.		
European	<i>(A. pectinata).</i> 1 to 1½ ft.....	1 25	10 00
	3 to 4 ft.....	5 00	40 00
	4 to 5 ft.....	7 50	60 00
HEMLOCK (Tsuga Canadensis)—		Per 10	100
	1 to 2 ft.....	\$3 00	\$25 00
	2 to 2½ ft.....	5 00	40 00
	2½ to 3 ft., sheared and bushy.	10 00	90 00
	3 to 3½ ft., sheared and bushy.	12 50	110 00
SPRUCE (Picea)—			
Colorado Blue		Per 10	100
	<i>(P. pungens)—</i>		
	1 to 2 ft.....	\$8 00	\$75 00
	Selected Blue, 1 to 2 ft., according to color and form, \$1.50 to \$2 each.		
	Selected Blue, 2 to 3 ft., according to color and form, \$3 to \$4 each.		
	Koster's Blue, 3 to 4 ft., according to size and form, \$4 to \$8 each.		
Gloriosum.	3 to 4 ft.....	15 00	
Oriental	<i>(P. orientalis).</i> 1 to 2 ft.....	15 00	
	2 to 3 ft.....	25 00	
Weeping	<i>(P. inverta).</i> 2 to 3 ft.....	20 00	
	3 to 4 ft.....	30 00	
Norway	<i>(P. excelsa).</i> 1 to 1½ ft.....	1 00	8 00
	3 to 4 ft.....	5 00	
	4 to 5 ft.....	8 00	
	5 to 7 ft.....	12 50	
White	<i>(P. alba).</i> 1 to 1½ ft.....	1 25	8 00
JAPAN CYPRESS (Retinospora)—			
Fillfera	<i>(R. filifera).</i> 1½ to 2 ft.....	5 00	
	2 to 3 ft.....	10 00	
Plume-Like	<i>(R. plumosa).</i> 1 to 2 ft.....	3 50	25 00
	2 to 3 ft., sheared.....	10 00	75 00
	3 to 4 ft., very bushy, sheared.....	15 00	125 00
	5 to 6 ft., very bushy, sheared.....	25 00	200 00



GOLDEN RETINOSPORA AT GLENWOOD.

JAPAN CYPRESS (Retinospora)—		Per 10	100
Golden (<i>R. p. aurea</i>). 9 to 12 in.....		\$2 50	\$15 00
1 to 2 ft., very bushy, sheared.....		7 50	60 00
2 to 3 ft., very bushy, sheared.....		15 00	125 00
3 to 4 ft., very bushy, sheared.....		25 00	200 00
Obtusa . 1 to 1½ ft.....		4 00	
3 to 4 ft.		15 00	
Obtusa nana . 6 to 9 in.....		6 00	
1 to 2 ft.		20 00	
Silver (<i>R. squarrosa</i>). 9 to 12 in.		1 50	15 00
1½ to 2 ft., sheared		7 50	60 00
2 to 3 ft., sheared.....		15 00	125 00
JUNIPER (Juniperus)—			
Aurea . 9 to 12 in.....		3 00	20 00
12 to 18 in., broad and bushy.....		5 00	40 00
Irish (<i>J. Hibernica</i>). 6 to 12 in.....		75	5 00
1 to 2 ft.		1 00	8 00
2 to 2½ ft.		1 50	10 00
Pyramidal (<i>J. pyramidalis</i>). 1 to 2 ft.....		1 00	
2 to 3 ft.		2 50	
Prostrata (<i>J. prostrata</i>). 1 to 1½ ft.		2 50	
Swedish (<i>J. suecica</i>). 6 to 12 in.....		1 00	8 00
1 to 1½ ft.		2 50	20 00
PINE (Pinus)—			
Austrian (<i>P. Austriaca</i>). 1 to 2 ft.		1 50	10 00
4 to 5 ft., sheared.....		15 00	125 00
Dwarf (<i>P. Mugho</i>). 1 to 1½ ft., light		3 00	25 00
1 to 2 ft., bushy.....		7 50	60 00
2 to 3 ft. Perfect specimens, \$2 to \$3 each.			
Excelsa . 2 to 3 ft.		6 00	50 00
3 to 4 ft.		15 00	125 00
4 to 6 ft.		25 00	200 00
Scotch (<i>P. sylvestris</i>). 1½ to 2 ft.....		1 50	12 00
2 to 2½ ft., bushy.....		3 50	25 00

PINE (Pinus) —	Per 10	100
White (<i>P. strobus</i>). 1 to 2 ft.....	\$1 00	\$8 00
2 to 3 ft.	5 00	45 00
3 to 4 ft.	8 00	75 00
4 to 5 ft.	15 00	
Dwarf, White (<i>P. strobus nanus</i>). 1 to 2 ft., grafted, very bushy specimens.....	15 00	

THUYOPSIS (Borealls). 9 to 12 in..... 4 00

YEW (Taxus)—

Adpressa . 1 to 2 ft.	8 00
English (<i>T. baccata erecta</i>). 1 to 2 ft.....	7 50
2 to 3 ft.	20 00
3 to 4 ft.	40 00
Irish (<i>T. Hibernica</i>). 1 to 2 ft.....	7 50
Pyramidal (<i>T. pyramidalis</i>). 1 to 1½ ft.	7 50
Variegated (<i>T. variegata</i>). 6 to 12 in.....	5 00

Evergreens of larger sizes than quoted herein can be furnished of most varieties, prices of which will be given on application.

EVERGREEN SHRUBS

AZALEA Amœna —	Per 10	100
From 3-in. pots, nice bushy plants.....	\$2 00	\$15 00
6 to 10 in., very bushy, from open ground.	3 50	30 00
10 to 12 in., very bushy.....	5 00	40 00

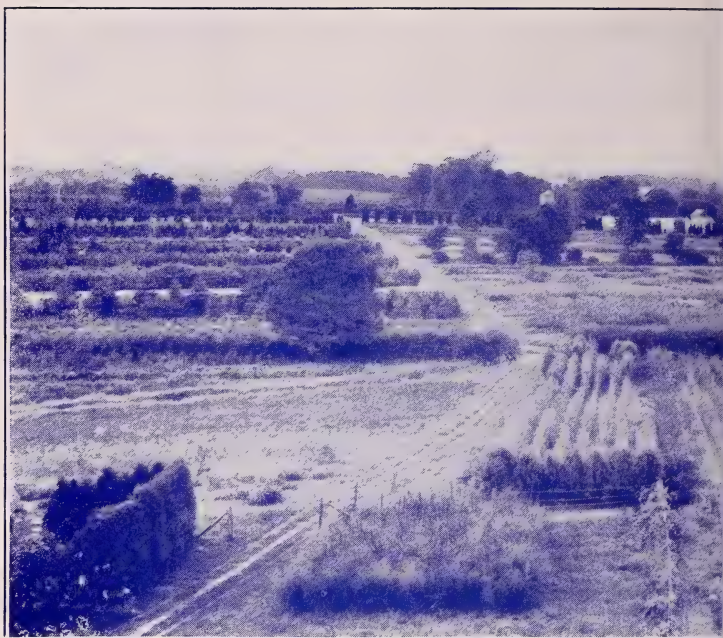
BOX (Buxus) —	Per 10	100	1,000
Arborescens . 6 to 12 in.....	\$0 75	\$5 00	\$40 00
9 to 15 in.....	1 00	8 00	
1 to 1½ ft., bushy.....	1 50	10 00	
1½ to 2 ft., bushy.....	2 50	20 00	
Macrophylla rotundifolia . 12 to 18 in.	1 50	10 00	
Suffruticosa . Box edging, 2 years, 4 to 6 in.....	50	4 00	35 00
Variegata . 15 to 18 in.	3 00	25 00	

COTONEASTER Buxifolia . 1 to 2 ft., very bushy.....	Per 10	100
	\$1 50	\$12 00

CRATÆGUS pyracantha. 9 to 15 in..... 1 75 15 00

EUONYMUS—

Variegated Trailing (<i>E. radicans variegata</i>).		
1 year	75	5 00
2 years	1 00	8 00
3 years	1 25	10 00
Green Trailing (<i>E. radicans viridis</i>). 2 years.	1 00	7 00
3 years.....	1 25	10 00
Green Upright (<i>E. Japonica</i>). 1 to 2 ft.	1 00	8 00
2 to 3 ft.	2 00	
3 to 4 ft., very bushy.....	3 00	
Variegated (<i>E. Japonica argentea variegata</i>).		
12 to 18 in.....	1 25	10 00
18 to 24 in.....	2 00	16 00
Golden (<i>E. aurea</i>). 6 to 12 in.....	1 50	12 00
1 to 2 ft.....	2 50	20 00



VIEW AT GLENWOOD NURSERIES,

HARDY ORANGE (<i>Limonia trifoliata</i>)—	Per 10	100
3 to 4 ft.	\$1 75	\$15 00
HOLLY (<i>Ilex</i>)—		
Aquifolia. 9 to 12 in.	1 50	12 00
1 to 2 ft.	2 50	20 00
2 to 3 ft.	5 00	
American (<i>I. opaca</i>). 2 to 3 ft.	7 50	
KALMIA —		
Broad-Leaved (<i>K. latifolia</i>). 15 to 18 in.	6 00	
Narrow-Leaved (<i>K. angustifolia</i>). 1½ to 2½ ft.	4 00	
MAHONIA		
Aquifolia. 9 to 12 in.	1 00	6 00
1 to 1½ ft.	2 00	15 00
Japonica. 1 to 2 ft.	5 00	40 00
2 to 3 ft.	6 00	50 00
RHODODENDRONS —		
Named Varieties (with buds). 15 to 18 in.	9 00	
18 to 22 in.	12 00	
24 to 30 in.	15 00	
30 to 36 in.	25 00	
YUCCA filamentosa —		
2 years, transplanted.	75	5 00
3 years, transplanted.	1 00	6 00
4 years, twice transplanted.	2 50	20 00
Large clumps, 4 and 5 years.	5 00	



SHOWING A PORTION OF THE PLANTING.

FLOWERING SHRUBS, DECIDUOUS

We offer an immense stock of Deciduous Flowering Shrubs of large, medium and small sizes. All have been carefully grown and cultivated. The larger grades have been trimmed into symmetrical shape and are unsurpassed for decorative planting.

Larger and heavier shrubs than those quoted can be furnished of most varieties. Prices on application.

	Per 10	100
ACACIA Julibrissin. 4 to 5 ft.	\$3 00	
ALMOND —		
Double White. 2 to 3 ft.	1 25	
Double Red. 2 to 3 ft.	1 25	
ALTHEA—		
Variegated-Leaved. 1 to 2 ft.	1 25	\$10 00
2 to 3 ft.	1 75	15 00
3 to 4 ft.	2 00	
Double, Tall-growing, named varieties—		
1 to 2 ft.	75	6 00
2 to 3 ft.	1 25	10 00
3 to 4 ft., bushy	1 75	14 00
4 to 5 ft., bushy	2 50	18 00
5 to 6 ft., bushy	3 50	25 00
6 to 8 ft., bushy	5 00	35 00
List of Varieties— Alba plena, Amplissima, Ardens, Boule de feu, Carnea plena, Comte de Haimont, Duchesse de Brabant, Double Rouge, Elegantissima plena, Grandiflora superba, Joan of Arc, Lady Stanley, Leopoldi plena, Pæoniflora plena, Van Houttei, Bicolor, White, Purple, Red.		

	Per 10	100
ALTHEA Totus alba Simplex. Pure white, distinct, single. 1 to 2 ft.....	\$1 00	\$8 00
2 to 3 ft.	2 00	
AMELANCHIER		
Botryapium. 2 to 3 ft.....	1 50	12 00
3 to 4 ft.....	2 00	15 00
4 to 5 ft.....	2 50	
Vulgaris. 3 to 4 ft.	2 00	
4 to 6 ft.....	2 50	
AMORPHA fruticosa (Indigo Bush)—		
1 to 2 ft.....	1 00	5 00
2 to 3 ft.....	1 25	8 00
3 to 4 ft.....	1 50	12 00
4 to 6 ft.....	2 50	20 00
ANDROMEDA Marianna. 1 to 2 ft.....	1 75	15 00
AZALEA		
Mollis. 15 to 18 in.	4 00	35 00
20 to 30 in., strong clumps	6 00	50 00
Pontica. 15 to 18 in.....	6 00	50 00
Amœna. See Evergreen Shrubs, page 15.		
BACCHARIS halimifolia —		
1 to 2 ft.	1 00	8 00
2 to 3 ft.	1 50	12 00
3 to 4 ft.	2 00	16 00
BERBERIS		
Purpurea. 9 to 15 in.....	75	5 00
18 to 24 in.....	1 00	8 00
2 to 3 ft.	1 25	10 00
Thunbergii. 1 to 1½ ft.	1 00	8 00
1½ to 2 ft.....	1 25	10 00
2 to 3 ft., bushy.....	2 00	15 00
2 to 3 ft., very large and bushy.....	2 50	20 00
Vulgaris. 1 to 1½ ft.	75	5 00
2 to 3 ft.	1 25	10 00
CALLICARPA purpurea. 2 to 4 ft.	1 00	8 00
CALYCANTHUS Floridus (Sweet Shrub)—		
1 to 2 ft.....	75	5 00
2 to 3 ft.	1 00	8 00
3 to 4 ft.	1 50	
4 to 5 ft.	2 00	16 00
CARAGANA arborescens. 1 to 2 ft.....	1 00	8 00
CARYOPTERIS Mastacantha. 1 to 2 ft.	1 25	10 00
CERCIS (Judas Tree)—		
American (<i>C. Canadensis</i>). 2 to 4 ft.....	2 50	20 00
4 to 5 ft.....	4 00	30 00
Japan. 1 to 2 ft.....	3 50	
2 to 3 ft.....	5 00	
CHIONANTHUS Virginica. 1 to 2 ft.....	1 00	8 00
2 to 3 ft.....	1 50	12 00
4 to 6 ft.....	3 50	

	Per 10	100
CLETHRA <i>alnifolia</i> . 1½ to 2 ft.	\$1 25	\$10 00
COLUTEA <i>arborescens</i> . 2 to 3 ft.	1 00	
3 to 4 ft.	1 50	
CORNUS (Dogwood) —		
Alternifolia . 3 to 5 ft.	1 50	12 00
Floridus . 2 to 3 ft.	1 75	15 00
3 to 4 ft.	2 50	20 00
4 to 5 ft.	4 00	
Siberian, Red-Twigged . 2 to 3 ft.	75	6 00
3 to 4 ft.	1 00	8 00
Sanguinea . 2 to 3 ft.	1 00	8 00
3 to 4 ft.	1 75	15 00
Sericea . 3 to 4 ft.	1 00	8 00
4 to 5 ft.	1 25	10 00
Stolonifera aurea . 1 to 2 ft.	2 00	16 00
CORYLUS		
Avellana (Filbert). 4 to 5 ft., bushy.	1 75	15 00
5 to 6 ft.	2 50	20 00
6 to 8 ft.	3 50	
Avellana purpurea . 1 to 2 ft.	2 50	20 00
CORCHORUS . See <i>Kerria</i> , page 21.		
COTONEASTER <i>Simonsil</i> . 2 to 3 ft., bushy.	1 25	10 00
3 to 4 ft.	1 50	12 00
CYDONIA <i>Japonica</i> (<i>Pyrus</i>). 2 to 3 ft.	1 25	10 00
CYTISUS <i>laburnum</i> . 1 to 2 ft.	1 00	8 00
2 to 3 ft.	1 25	10 00
3 to 4 ft.	1 50	
DEUTZIA		
Crenata flore alba plena . 2 to 3 ft.	1 00	8 00
4 to 5 ft.	2 00	16 00
Crenata plena . 2 to 3 ft.	1 00	8 00
3 to 4 ft.	1 25	10 00
4 to 6 ft.	2 00	16 00
6 to 7 ft.	3 00	25 00
Candidissima . 1 to 2 ft.	1 00	8 00
2 to 3 ft.	1 25	10 00
4 to 6 ft.	2 50	20 00
Fortunei . 2 to 3 ft.	1 00	8 00
3 to 4 ft.	1 50	12 00
Gracilis . 9 to 12 in.	60	5 00
12 to 18 in.	75	6 00
18 to 24 in.	1 00	8 00
Lemoinei . 1 to 2 ft.	1 50	12 00
Pride of Rochester . 2 to 3 ft.	1 25	10 00
3 to 4 ft.	1 50	12 00
4 to 6 ft.	2 00	18 00
Scabra . 2 to 3 ft.	1 50	12 00
4 to 6 ft.	2 50	20 00
Watereri . 2 to 3 ft.	1 25	10 00
3 to 4 ft.	1 50	12 00
4 to 5 ft.	2 50	20 00

DEUTZIA		Per 10	100
Watsonii. 2 to 3 ft.....		\$1 25	\$10 00
3 to 4 ft.		1 50	12 00
Wellsei. 2 to 3 ft.....		1 25	10 00
3 to 4 ft.		1 50	12 00
4 to 6 ft.		2 50	20 00
DIERVILLA lutea. 2 to 3 ft.....		1 25	
3 to 4 ft.		1 75	15 00
ELÆAGNUS longipes. 2 to 3 ft.		2 00	
3 to 4 ft.		4 00	
EUONYMUS, European. 3 to 4 ft.....		1 25	10 00
4 to 6 ft.		1 75	15 00
6 to 7 ft.		2 50	20 00
Nana. Dwarf. 9 to 15 in.		1 25	10 00
2 to 3 ft., very bushy.....		5 00	
Radicans argentea variegata. See Evergreen Shrubs, page 15.			
EXOCHORDA grandiflora. 1 to 2 ft.		1 00	8 00
2 to 3 ft.		1 25	10 00
3 to 4 ft.		1 50	12 00
FORSYTHIA Fortunei. 1 to 2 ft.....		75	6 00
2 to 3 ft.		1 00	8 00
3 to 4 ft.		1 50	12 00
Suspensa. 1 to 2 ft.		1 00	8 00
2 to 3 ft.		1 25	10 00
3 to 4 ft.		1 50	12 00
Viridissima. 1 to 2 ft.....		75	6 00
2 to 3 ft.		1 00	8 00
3 to 4 ft.		1 50	12 00
4 to 5 ft., very bushy.....		2 50	20 00
Intermedia. 2 to 3 ft.....		1 00	8 00
3 to 4 ft.		1 25	10 00
4 to 5 ft.		2 50	
HALESIA tetraptera. 1 to 2 ft.....		1 00	
HAMAMELIS Virginica. 1 to 1½ ft.....		1 25	10 00
2 to 3 ft.....		1 50	12 00
HYPERICUM			
Aureum. 1½ to 2½ ft.....		1 00	8 00
Kalmianum. 1½ to 2½ ft.....		1 00	8 00
Moserianum. 1 ft.....		1 00	8 00
HYDRANGEA			
Paniculata grandiflora. 1 to 2 ft....	10	100	1,000
2 to 2½ ft.....	\$1 00	\$6 00	\$50 00
2½ to 3 ft.....	1 25	8 00	75 00
3 to 4 ft.....	1 50	10 00	90 00
3½ to 4½ ft., extra heavy and fine..	2 00	15 00	125 00
Pekinensis. 3 to 5 ft.....	2 50		
Quercifolia. 2 to 3 ft.....	5 00		

KERRIA Japonica	Per 10	100
Simplex. 1 to 2 ft.....	\$0 75	\$5 00
3 to 4 ft.....	1 00	8 00
Variegata. 6 to 12 in.....	75	5 00
1 to 2 ft.....	1 00	8 00
Flora plena. 1 to 2 ft.....	75	5 00
3 to 5 ft.....	1 00	8 00

LAURUS Benzoin. 2 to 3 ft..... 2 00

LIGUSTRUM (Privet)—	Per 10	100	1,000
California. 1 to 1½ ft., 1 year.....	\$0 50	\$2 50	\$18 00
1½ to 2 ft., 1 year.....	60	3 00	20 00
2 to 2½ ft., 2 years.....	75	5 00	40 00
3 to 4 ft., 2 years.....	1 00	8 00	75 00
Tree-shaped, 5 to 7 ft.	10 00		

All 2-year Privets were cut back last spring and are now bushy and fine.

	Per 10	100
Amurensis. 1 to 2 ft.....	\$0 50	\$3 00
2 to 3 ft.....	75	5 00
3 to 4 ft.....	1 00	8 00
Ibota. 1 to 2 ft.....	75	5 00
2 to 3 ft.....	1 00	8 00
3 to 4 ft.....	1 50	10 00
Media. Dwarf variety, 1½ to 2½ ft.....	1 00	5 00
3 to 4 ft.....	1 25	8 00
Sinensis. 3 to 4 ft.	75	5 00
4 to 5 ft.....	1 00	8 00

LILAC (Syringa)—

Alba. White. 1 to 2 ft.....	1 00	8 00
2 to 3 ft.	1 25	10 00
Japonica (Tree Lilac). 1 to 2 ft.	1 50	
2 to 3 ft.	2 00	
3 to 4 ft.	3 50	



HYDRANGEA PANICULATA GRANDIFLORA. (See opposite page.)



PERSIAN LILAC.

LILAC (Syringa)—

	Per 10	100
Josikea. 1 to 2 ft.	\$1 00	\$8 00
Persian. White. 2 to 4 ft.	1 50	
Rothomagensis. 3 to 4 ft.	1 25	10 00
Rothomagensis alba. 3 to 4 ft.	1 25	
4 to 5 ft.	1 50	12 00
Rubra de Marly. 1 to 2 ft.	1 00	8 00
2 to 3 ft.	1 25	10 00
3 to 4 ft.	1 75	15 00
Vulgaris. 2 to 3 ft.	1 25	10 00
3 to 4 ft.	1 75	15 00
Named French Sorts. 1 to 2 ft.	1 25	10 00
2 to 3 ft.	1 75	15 00

LONICERA (Honeysuckle)—

Fragrantissima (Upright). 1 to 2 ft.	1 00	7 00
2 to 3 ft.	1 25	10 00
3 to 4 ft.	1 75	15 00
4 to 5 ft.	2 50	20 00
Morrowii. 1½ to 3 ft.	1 25	10 00
3 to 5 ft.	1 75	15 00
Tatarica alba. 1 to 2 ft.	1 00	7 00
2 to 3 ft.	1 25	10 00
Tatarica rubra. 1 to 2 ft.	1 00	7 00
2 to 3 ft.	1 25	10 00
Xylostium (English Fly). 2 to 3 ft.	1 25	10 00
3 to 4 ft.	1 75	15 00

	Per 10	100
MAGNOLIA		
Purpurea. 2 to 3 ft.....	\$2 50	\$20 00
3 to 4 ft.	4 00	
Glauca. 2 to 4 ft.....	7 50	
Soulangeana. See Trees, page 5.		
Tripetala. See Trees, page 5.		
PÆONIA arborea (Tree Peony).....	7 50	
PHILADELPHUS		
Aurea. 1 to 2 ft.....	1 75	15 00
Cordifolius. 2 to 3 ft.....	1 00	8 00
3 to 4 ft.	1 25	10 00
4 to 6 ft.	2 50	
Coronarius. 1 to 2 ft.....	1 00	7 00
2 to 2½ ft.	1 50	
Deutzæflora plena. Dwarf. 1 to 2 ft.....	1 25	
Grandiflora. 1 to 2 ft.....	1 00	6 00
2 to 3 ft.....	1 25	10 00
3 to 4 ft.....	1 75	15 00
4 to 5 ft.....	2 50	20 00
Inodorus. 3 to 4 ft.....	1 50	12 00
4 to 5 ft.....	2 50	20 00
Kettlerii. 1 to 2 ft.	1 00	
2 to 3 ft.....	1 50	12 00
Nepalensis. 1 to 1½ ft.....	1 00	8 00
3 to 4 ft.....	1 75	15 00
Nivalis. 2 to 3 ft.....	1 50	12 00
4 to 5 ft.....	2 50	20 00
Souvenir de Billardli. 1 to 2 ft.	1 25	
4 to 5 ft.....	2 50	
PRUNUS		
Pissardii. 2 to 3 ft.....	1 25	10 00
3 to 4 ft.....	2 00	16 00
4 to 5 ft.....	3 00	20 00
Triloba. 2 to 3 ft.	2 50	
RHAMNUS Catharticus (Buckthorn)—		
3 to 4 ft.....	1 00	8 00
4 to 5 ft.....	1 50	12 00
RHODOTYPUS Kerrioides. 1 to 2 ft.....	1 00	8 00
RHUS		
Cotinus (Purple Fringe). 1 to 2 ft.	50	4 00
2 to 3 ft.	1 00	7 00
3 to 4 ft.....	1 75	15 00
Glabra laciniata. 2 to 3 ft.....	2 00	
RIBES		
Aurea (Yellow-Flowering Currant). 1 to 2 ft..	1 50	
Sanguinea. 1 to 2 ft.....	1 50	
Gordon's. 2 to 3 ft.	1 75	
ROSA		
Blanda. 3 years, transplanted	1 25	10 00
Carolina. 3 years, 2 to 3 ft.....	1 50	
Lucida. 3 years, strong.....	1 50	12 00
Multiflora Japonica. 2 years, 2 to 4 ft.....	1 00	8 00
3 years, 4½ to 5 ft., bushy	1 25	10 00

ROSA	Per 10	100
Nitida. 3 years, strong	\$1 25	\$10 00
Rugosa. 2 years, 1 to 2 ft.....	1 25	10 00
3 years, 3 to 4 ft.....	2 50	20 00
RUBUS odoratus (Flowering Raspberry)—		
2 to 3 ft.	1 00	8 00
SAMBUCUS		
Aurea (Golden Elder). 1 to 2 ft.....	1 25	10 00
2 to 3 ft.	1 50	12 00
3 to 4 ft.	1 75	16 00
Laciniata. 2 to 3 ft.....	1 25	
SPIREAS—		
In variety. 2 to 3 ft., according to character and variety	1 00	8 00
In variety. 3 to 4 ft.	1 25	10 00
Varieties. —Argentea, Arguta, Billardii, Callosa alba, Callosa rosea, Douglassi rosea, Billardii alba, Prunifolia, Reevesii, Salicifolia alba, Salicifolia rosea, Tomentosa, Van Houttei.		
Bumalda. 9 to 15 in.	1 00	7 00
15 to 18 in.....	1 25	10 00
Anthony Waterer. 9 to 12 in., fine.....	1 00	
1 to 1½ ft., bushy.....	1 50	12 00
1½ to 2 ft.	1 75	15 00
Callosa superba. 1 to 2 ft.	1 25	8 00
Opulifolia. 1 to 2 ft.....	75	6 00
2 to 3 ft.	1 00	8 00
3 to 4 ft.	1 25	10 00
4 to 5 ft.	2 00	16 00
Opullifolia aurea. 1 to 2 ft.....	1 00	8 00
2 to 3 ft.	1 25	10 00
3 to 5 ft.	1 75	15 00
5 to 6 ft.	2 50	20 00
Thunbergii. 1 to 2 ft.	1 00	8 00
2 to 3 ft.	1 50	12 00
SOPHORA Japonica—		
2 to 3 ft.	1 50	10 00
3 to 4 ft.	1 75	
STAPHYLEA Colchica. 3 to 5 ft.....	1 50	12 00
STEPHANANDRA flexuosa—		
1 to 1½ ft.	1 00	8 00
2 to 3 ft.	1 25	10 00
STYRAX Japonica—		
1 to 2 ft.	1 25	10 00
2 to 3 ft.	1 50	12 00
3 to 4 ft.	2 50	20 00
SYMPHORICARPUS racemosa (White Snowberry). 2 to 3 ft.....		
3 to 4 ft.	1 50	12 00
Rubra (Red Snowberry). 2 to 3 ft.....	1 25	10 00
Variegata (Variegated-Leaved Snowberry). 2 to 3 ft.....	1 25	10 00

TAMARIX

	Per 10	100
Africana. 2 to 3 ft.....	\$1 00	\$8 00
3 to 5 ft.....	1 50	12 00
Gallica. 3 to 5 ft.....	1 50	12 00
Germanica. 1 to 2 ft.....	1 00	8 00
3 to 4 ft.....	1 50	12 00
Indica. 1 to 2 ft.....	1 00	8 00
2 to 3 ft.....	1 25	10 00
3 to 5 ft.....	1 50	12 00
Tetandra purpurea. 3 to 4 ft.....	1 50	12 00

VIBURNUM

Lantana. 1½ to 2 ft.....	1 00	8 00
2 to 3 ft.....	1 50	12 00
3 to 4 ft.....	1 75	15 00
Opulus Sterilis (Snowball). 2 to 3 ft.....	1 00	8 00
3 to 4 ft.....	1 75	15 00
Opulus (Cranberry Tree). 1 to 1½ ft.....	1 00	8 00
2 to 3 ft.....	1 25	10 00
3 to 4 ft.....	1 75	
5 to 6 ft.....	2 25	
Plicatum (Japan Snowball). 1 to 2 ft.....	1 25	10 00
2 to 3 ft.....	2 00	
3 to 4 ft.....	3 00	
Tomentosum. 1 to 2 ft.....	1 50	12 00
2 to 4 ft., large clumps.....	4 00	

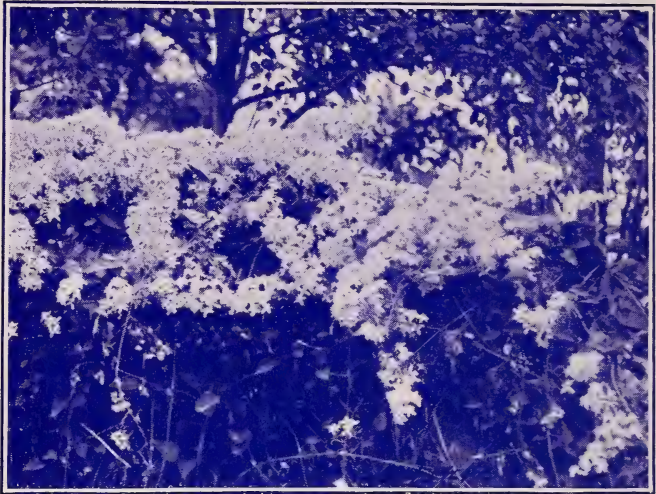
WEIGELA. Leading varieties as named.

1 to 2 ft.....	1 00	6 00
2 to 3 ft.....	1 25	8 00
3 to 4 ft.....	1 50	12 00
4 to 6 ft.....	2 50	20 00

Varieties. — Amabilis, Candida, Desboisii, Rosea, Hortensis, Rubra Isoline, Symondsii, Variegata, Lavellei, Van Houttei, Stelznerii.



WEIGELA VARIEGATA AT GLENWOOD.



CLEMATIS PANICULATA.

CLIMBERS

	Per 10	100	
ACTINIDIA arguta. 1 year.....	\$1 00	\$8 00	
2 years, very strong.....	1 50	12 00	
3 years, very strong.....	2 00	15 00	
AKEBIA Quinata. 2 years.....	75	5 00	
3 years.....	1 00	6 00	
AMPELOPSIS	Per 10	100	1,000
Engelmannii. 1 year.....	\$1 00	\$6 00	
2 years.....	1 25	8 00	
3 years.....	1 50	10 00	
Variegated-Leaved (<i>A. variegata</i>).			
2 years.....	1 00	6 00	
3 years.....	1 25	8 00	
Japan (<i>A. Veitchii</i>).			
1 year, pot grown	75	6 00	\$50 00
2 years, pot grown	1 00	8 00	75 00
Quinquefolia (Virginia Creeper).			
1 year.....	75	5 00	
2 years.....	1 00	7 00	
3 years.....	1 25	8 00	
BIGNONIA			
Radicans (Trumpet Creeper).			
1 year.....	75	6 00	
2 years.....	1 00	8 00	
3 years.....	1 50	10 00	
Grandiflora. 2 years	2 50	20 00	
CINNAMON VINE	50	4 00	
CLEMATIS —			
Best Large-Flowering Sorts	4 00	30 00	
Varieties. —Baron Veillard, Duchess of Edinburgh, General Grant, Gypsy Queen, Henryii, Jackmanni, Miss Bate-man, Ramona, Rubra Grandiflora.			

Glenwood Nurseries, Morrisville, Pa. 27

CLEMATIS paniculata —	Per 10	100	1,000
From 3-in. pots	\$0 75	\$5 00	\$35 00
From 4-in. pots	1 00	6 00	50 00
2 years, from open ground.....	1 25	7 00	60 00
3 years, strong, from open ground.	1 50	9 00	75 00
CELASTRUS scandens. 2 years.....	1 00	8 00	
HONEYSUCKLE (Lonicera) —			
Brachypoda. Strong	1 00	6 00	50 00
Golden-Leaved (L. aurea reticulata).			
1 year.....	1 00	6 00	
2 years.....	1 00	8 00	
Evergreen (L. sinensis). 1 year.....	75	6 00	
2 years.....	1 00	7 00	
Halleanna. 1 year, strong.....	75	5 00	
3 years, very strong.....	1 00	7 00	
Scarlet Trumpet. 1 year.....	1 75	12 00	
2 years.....	2 00	15 00	
IVY —			
Irish. From 4-inch pots	2 00	12 00	
2 years.....	1 25	9 00	75 00
English. From 4-inch pots.....	2 00	12 00	
JASMINUM			
Nudiflorum. 1 to 2 ft.	1 00	7 00	
2 to 3 ft.	1 50	10 00	
Officinalls. 1 to 1½ ft.....	1 00	8 00	
LYCIUM Chinense (Matrimony Vine).			
1½ to 2 ft.	75	6 00	
PERIPLOCA Græca (Silk Vine)—			
3 years.....	1 25	10 00	
ROSES —			
Baltimore Belle. 1 year.....	1 50	10 00	
Prairie Queen. 1 year.....	1 00	8 00	
2 years.....	1 25	10 00	
Crimson Rambler. 1 year, strong,			
from open ground.....	1 50	10 00	
Manda's Triumph. 2 years	1 00	8 00	
Pink Roamer. 2 to 3 years.....	1 00	8 00	
Setigera. 2 years.....	1 25	10 00	
South Orange Perfection. 2 and 3 yrs.	1 00	8 00	
Universal Favorite. 2 and 3 years....	1 00	8 00	
Wichuraiana. 1 year.....	75	6 00	50 00
2 and 3 years.....	1 00	7 00	60 00
WISTARIA	Per 10	100	
Magnifica. 2 and 3 years, strong.....	\$2 00	\$15 00	
Sinensis. 2 years, strong.....	2 50	20 00	
3 years, 2 to 3 ft.....	3 00	25 00	
Sinensis alba. 1 year, grafts, 6 to 12 in.....	1 75	12 00	
2 years, strong.....	2 50	20 00	
3 years, 2 to 3 ft.....	3 00	25 00	
Frutescens. 3 years, transplanted.....	1 75	15 00	
Multijuga. 2 years, grafts, strong.....	2 50	20 00	
3 years, 2 to 3 ft.....	3 00	25 00	



EULALIA STRIATA.

EULALIAS, PAMPAS GRASSES, ETC.

	Per 10	100	1,000
ARUNDA Donax variegata	\$3 50	\$25 00	
EULALIA—			
Variegated Striata. Divided clumps.	75	4 00	30 00
Gracillima. Divided clumps.....	1 00	8 00	60 00
PAMPAS GRASS. Strong clumps....	2 50	20 00	

HIBISCUS

Crimson Eye (Marshmallow). Strong, transplanted plants	1 25	10 00	
--	------	-------	--

VINCAS

Minor. 2 years, strong.....	50	3 00	20 00
------------------------------------	----	------	-------

IRIS

German, named varieties.....	75	5 00	
Japanese (<i>I. Kæmpferi</i>). Good assort- ment	1 00	8 00	

Fruit Department

NOTE.—In filling orders at the prices annexed, we will consult the wishes of customers as far as practicable in the selection of varieties.

PEARS—	Per 10	100	
Standard , leading popular varieties, assorted.			
$\frac{5}{8}$ to $\frac{3}{4}$ in. in diameter, 5 to 6 ft.....	\$2 50	\$20 00	
$\frac{3}{4}$ to $\frac{7}{8}$ in. in diameter, 5 to 7 ft.....	3 00	25 00	
Dwarf , leading popular varieties, 2 and 3 years.			
$3\frac{1}{2}$ to 5 ft.	2 00	15 00	
CHERRIES—			
Hearts and Bigarreaus , leading varieties, 2 years, 5 to 7 ft.....	4 00	35 00	
Dukes and Morellos , standard.....			
$4\frac{1}{2}$ to 6 ft., 2 years.....	4 00	35 00	
APRICOTS and NECTARINES—			
Leading varieties	2 50	20 00	
Russian, in variety. 4 to 5 ft.....	2 50	20 00	
PEACHES. First-class, 4 to 6 ft.....	1 50	8 00	
PLUMS. On plum stock, 4 to 6 ft.....	3 00	25 00	
QUINCES—			
Orange. 2 to 3 ft.....	1 50	12 00	
3 to 4 ft., extra.....	2 50	20 00	
Champion. 2 years, very fine, branched, $3\frac{1}{2}$ to 4 ft.....	2 50	20 00	
Meech's Prolific. 2 years, first class, 3 to 4 ft.	2 50	20 00	
MULBERRY—			
Downing. 3 to 4 ft.....	1 50	10 00	
4 to 6 ft.....	2 00	15 00	
6 to 7 ft.....	4 00		
New American. 4 to 6 ft.....	2 00		
CHESTNUTS—	Per 10	100	1,000
American. 1 to 2 ft., 2 years.....	\$1 00	\$5 00	40 00
2 to 3 ft., 2 years.....	1 25	10 00	75 00
3 to 4 ft.....	1 75	15 00	
Numbo. Grafted, 2 to 4 ft.....	10 00	80 00	
Japan. Grafted, 3 to 4 ft.....	10 00	80 00	
4 to 6 ft.	12 50	100 00	
Paragon. 3 to 4 ft., grafted	10 00	80 00	
Dwarf (Chinquapin). 2 to 3 ft	2 50		
	Per 10	100	
FILBERTS, English. 4 to 5 ft.....	\$1 75	\$15 00	
5 to 6 ft., bushy.....	2 50	20 00	
6 to 8 ft., bushy.....	4 00		
HICKORY, Shellbark. 2 to 3 ft.....	4 00	35 00	
WALNUTS—			
Black. 4 to 6 ft.....	2 50		
White. 6 to 8 ft.....	3 00		
English. 1 to 2 ft.....	1 00	8 00	
2 to 3 ft.....	1 50	12 00	

GRAPE-VINES

Our vines are strong, well rooted and fine, and give excellent satisfaction. Special quotations on assorted lists of several varieties, twenty-five or more of a kind, or by the thousand. All 2 years No. 1.

	Per 10	100
Agawam, Clinton	\$1 00	\$6 00
Brighton	1 25	10 00
Champion, Catawba	1 00	6 00
Concord	1 00	6 00
Diana, Delaware	1 25	10 00
Duchess	1 50	12 00
Empire State, Wyoming Red	1 25	10 00
Hartford Prolific, Iona	1 00	8 00
Isabella, Salem, Martha	1 00	8 00
Jefferson	1 50	14 00
Lady	1 25	10 00
Lady Washington	3 00	25 00
Moore's Diamond, Moore's Early	1 50	10 00
Niagara, Pocklington	1 25	8 00
Telegraph, Vergennes	1 25	10 00
Wilder, Worden	1 25	8 00

SMALL FRUITS

RASPBERRIES—	Per 10	100
Golden Queen	\$0 75	\$3 50
Cuthbert and Souhegan	50	3 00
Gregg	50	3 00
Japan Wineberry	50	3 00

BLACKBERRIES—		
Erie	75	3 00
Kittatinny	75	3 00
Rathbun	1 00	5 00
Snyder	75	3 00
Wilson's Early	75	3 00
Wilson's Junior	75	3 00

All strong, root-cutting plants.

DEWBERRY, Lucretia	75
---------------------------------	----

GOOSEBERRIES—		
Houghton. 2 years	1 00	4 00
Downing's. 2 years, very fine	1 00	4 00
Industry. 2 and 3 years, strong	1 50	12 00
Josselyn	2 00	12 00

CURRENTS—	Per 10	100	1,000
Cherry, La Versailles, White Grape, Victoria, and Red Dutch. 2 years, first-class	\$0 75	\$4 00	\$35 00
Black Naples	75	4 00	35 00
Lee's Prolific	1 00	5 00	40 00
Fay's Prolific. 1 year	50	4 00	30 00
2 years, extra fine.....	1 00	5 00	40 00

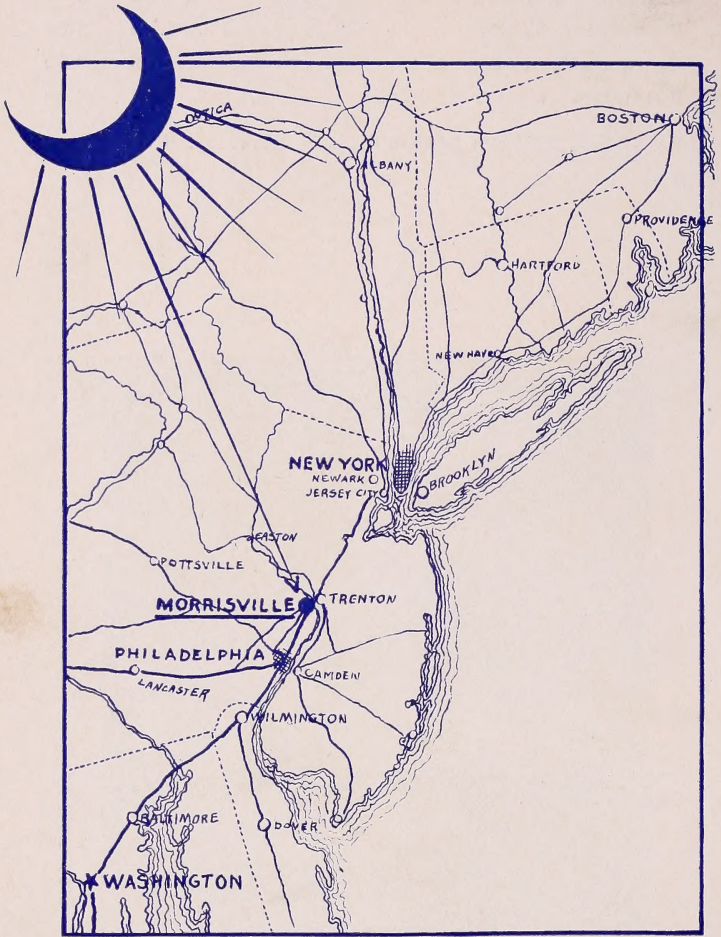
ESCULENT ROOTS

ASPARAGUS (all strong, fine, 2-year roots, except noted)—		Per 100	1,000
Barr's Mammoth		\$0 75	\$3 00
Conover's Colossal		75	3 00
Columbian White		1 00	3 50
Donald's Elmira		1 00	3 50
Palmetto. 1 year, strong		75	3 00
RHUBARB, Myatt's Linnæus		6 00	45 00



IRIS KÆMPFERI. (See page 28.)

LOCATION OF GLENWOOD NURSERIES



The Glenwood Nurseries

are at Morrisville, Pennsylvania, opposite Trenton, N. J., 60 miles from New York, 30 miles from Philadelphia.

Trenton, Morrisville and Yardley trolley cars pass Nursery every hour each way, leaving Yardley on the hour and Calhoun Street Bridge, Trenton, 30 minutes after the hour.