

## **Historic, Archive Document**

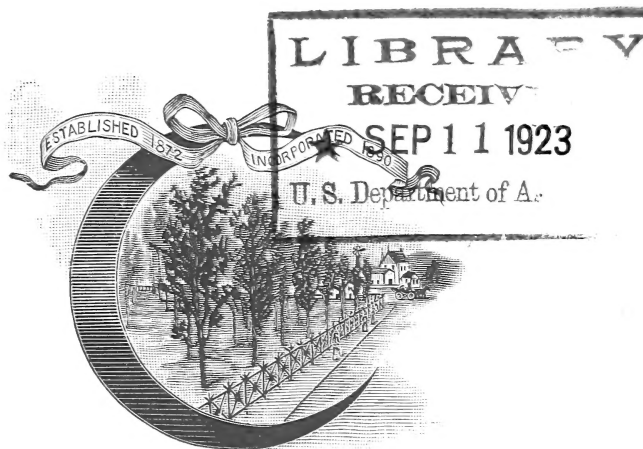
Do not assume content reflects current scientific knowledge, policies, or practices.



62,73

# SEMI-ANNUAL TRADE-LIST

## *Glenwood Nurseries*



*SPRING, 1902*

# The Wm. H. Moon Co.

MORRISVILLE

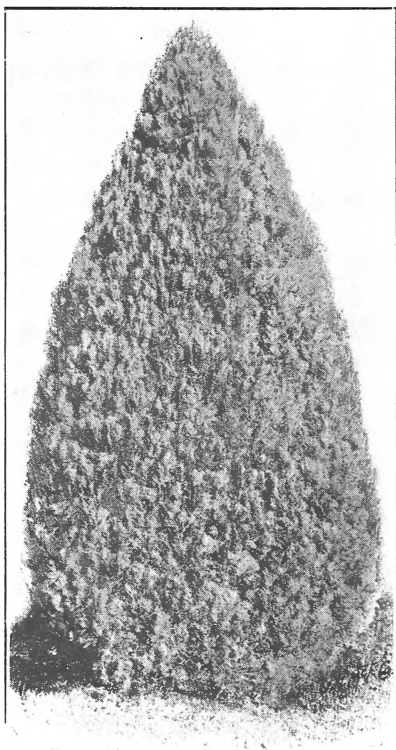
BUCKS COUNTY, PENNSYLVANIA

TELEGRAPH OFFICE AND LONG DISTANCE TELEPHONE, No. 419  
TRENTON, NEW JERSEY

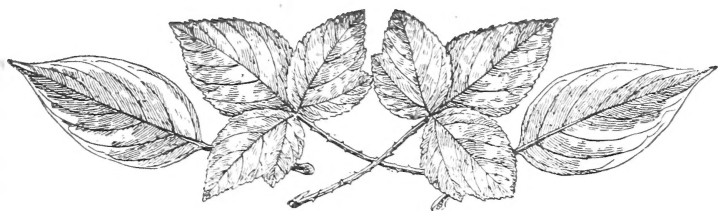
---

PHILADELPHIA OFFICE

702 Stephen Girard Building, 21 South Twelfth Street



ARBORVITÆ.



## Notice to Purchasers

We invite the attention of Nurserymen, Florists and Dealers to our Wholesale Trade-List for the Spring of 1902. **These prices are for the Trade only**, and supersede all previous quotations.

**TERMS.**—Cash with order, or satisfactory references from those with whom we have not had previous business dealings.

**REMITTANCES.**—Remittances can be made by draft, registered letter or post office money order, or we will forward by express, with bill to be paid, with cost of collection, on delivery.

**LOCATION.**—The Glenwood Nurseries are situated near Morrisville, Bucks County, Pa., one mile from Trenton, N. J., thirty miles from Philadelphia and sixty miles from New York. Trains leave Broad Street Station, Philadelphia, and Cortlandt and Desbrosses Street Ferries, New York, almost hourly for Trenton, N. J. There are trains quite frequently from Reading Terminal Station, Philadelphia, and Liberty Street Ferry, New York, to Trenton, N. J. Yardley, Morrisville and Trenton trolley passes our Nurseries every hour each way; take trolley at Calhoun Street Bridge, Trenton, N. J., 30 minutes after the hour, Yardley on the hour.

**An invitation to visit our Nurseries is cordially extended to the Trade generally.**

**SHIPPING FACILITIES.**—The Pennsylvania, Baltimore and Ohio and Philadelphia and Reading Railroads offer equal conveniences for shipping from Trenton, N. J., from which point all our shipments are made. We can forward west, via Pennsylvania Railroad, with through freight rates, without change of cars; north, via Lehigh

Valley Railroad and Erie Dispatch; and south and east, by rail or steamship lines from Philadelphia or New York. We can obtain very liberal freight rates, as there is considerable competition from this point.

Purchasers are requested to name the mode of conveyance by which they desire their shipments made, *otherwise we will forward to the best of our judgment. After delivering to the forwarders, all articles are entirely at the risk of the purchaser; should any loss or delay occur, the forwarder alone must be held accountable and responsible.*

**CLAIMS.**—All claims for errors must be made upon receipt of stock. We desire to be informed at once of any errors that may occur, in order to rectify the same without delay. Address always

## THE WM. H. MOON CO.

Bucks County

MORRISVILLE, PA.

JAMES M. MOON, Pres.

HENRY W. COMFORT,

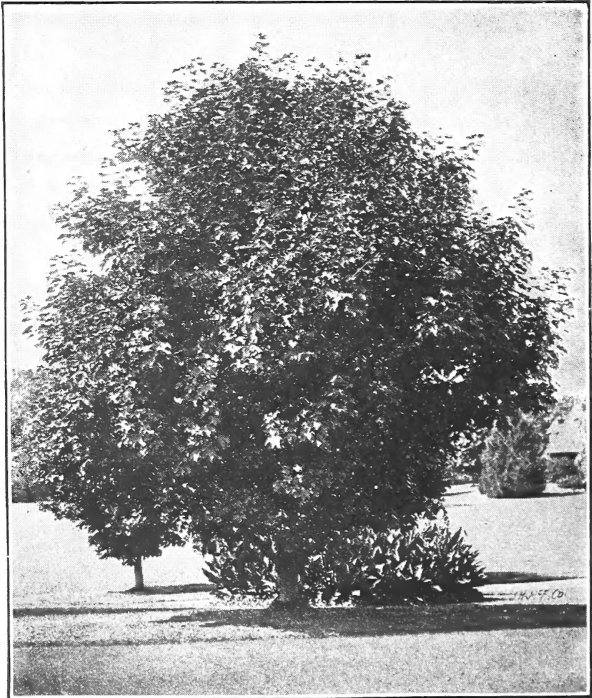
Vice-Pres.

WM. H. MOON,

Sec. and Treas.

PHILADELPHIA OFFICE:

702 Stephen Girard Building, 21 South Twelfth Street



SCHWEDLER'S MAPLE. (See page 8.)

# Ornamental Department

## DECIDUOUS TREES

The following trees have been frequently transplanted, are well furnished with fine fibrous roots, and are in a vigorous, thrifty condition. Caliber will be given when requested.

<b>ALDER (Alnus)</b> —	Per 10	100
<b>European</b> ( <i>A. glutinosa</i> ). 6 to 8 ft.....	\$2 00	\$15 00
8 to 10 ft. ....	3 00	25 00
10 to 12 ft. ....	5 00	40 00
12 to 14 ft. ....	7 50	60 00
<b>Speckled</b> ( <i>A. incana</i> ). 5 to 6 ft.....	2 00	15 00
8 to 10 ft. ....	3 00	25 00
10 to 12 ft. ....	5 00	40 00
12 to 14 ft. ....	7 50	
<b>ARALIA spinosa</b> . 2 to 3 ft.....	2 00	15 00
<b>ASH (Fraxinus)</b> —		
<b>American White</b> ( <i>F. alba</i> ). 4 to 6 ft. ....	1 50	10 00
6 to 8 ft. ....	2 00	18 00
10 to 12 ft. ....	7 50	
12 to 14 ft. ....	12 50	
<b>English</b> ( <i>F. excelsior</i> ). 6 to 8 ft.....	2 00	14 00
8 to 10 ft. ....	3 00	20 00
10 to 12 ft. ....	4 00	30 00
12 to 14 ft. ....	12 50	
<b>Flowering</b> ( <i>F. ornus</i> ). 6 to 8 ft. ....	3 00	
8 to 10 ft. ....	5 00	
10 to 12 ft. ....	7 50	
<b>Elder-Leaved, or Black</b> ( <i>F. sambucifolia</i> ) ...		
8 to 10 ft. ....	3 00	25 00
10 to 12 ft. ....	7 50	65 00
12 to 14 ft. ....	12 50	110 00
<b>BEECH (Fagus)</b> —		
<b>American</b> ( <i>F. Ferruginea</i> ). 2 to 4 ft.....	5 00	40 00
<b>European</b> ( <i>F. sylvatica</i> ). 4 to 5 ft.....	5 00	40 00
5 to 6 ft. ....	6 00	50 00
<b>Tricolor</b> . 2 to 3 ft.....	9 00	
<b>Purple-Leaved</b> ( <i>F. atropurpurea</i> ). 5 to 6 ft..	6 00	50 00
6 to 8 ft. ....	10 00	90 00
8 to 10 ft. ....	15 00	125 00
<b>Cut-Leaved</b> ( <i>F. laciniata</i> ). Grafted, 3 to 4 ft.	15 00	
<b>BIRCH (Betula)</b> —		
<b>Cut-Leaved</b> . See Weeping Trees, page 11.		
<b>Canoe</b> ( <i>B. papyracea</i> ). 4 to 6 ft.....	2 00	16 00
<b>Black</b> ( <i>B. nigra</i> ). 3 to 5 ft.....	2 00	16 00
<b>Pyramidal</b> ( <i>B. pyramidalis</i> ). 4 to 6 ft.....	4 00	

<b>BIRCH (<i>Betula</i>)—</b>	Per 10 <sup>1</sup>	100
<b>Purple-Leaved (<i>B. purpurea</i>).</b> 4 to 5½ ft. ....	\$4 00	
<b>Yellow (<i>B. lutea</i>).</b> 3 to 5 ft. ....	2 00	\$16 00
6 to 8 ft. ....	4 00	
8 to 10 ft. ....	7 50	
<b>Sweet (<i>B. lenta</i>).</b> 3 to 5 ft. ....	2 00	
<b>White (<i>B. alba</i>).</b> 4 to 6 ft. ....	2 00	16 00
6 to 8 ft. ....	3 00	
<b>BUTTONWOOD.</b> See Plane, Oriental, p. 9.		
<b>CATALPA</b>		
<b>Bignonioides.</b> 6 to 8 ft. ....	2 50	20 00
<b>Bungei.</b> Grafted, 6 to 8 ft., 2-year heads ....	10 00	
<b>Speciosa.</b> 5 to 6 ft. ....	1 75	12 00
6 to 8 ft. ....	2 50	20 00
<b>CHERRY (<i>Cerasus</i>)—</b>		
<b>American Bird (<i>C. Serotina</i>).</b> 6 to 8 ft. ....	2 50	20 00
8 to 10 ft. ....	3 50	30 00
<b>CYPRESS (<i>Taxodium</i>)—</b>		
<b>Deciduous (<i>T. distichum</i>).</b> 3 to 4 ft. ....	2 50	
4 to 6 ft. ....	4 00	
<b>DOGWOOD.</b> See Cornus, in Shrubs, page 19.		
<b>ELM (<i>Ulmus</i>)—</b>		
<b>American (<i>U. Americana</i>).</b> 6 to 8 ft. ....	2 50	20 00
8 to 10 ft. ....	3 50	30 00
10 to 12 ft. ....	4 00	35 00
12 to 14 ft. ....	10 00	75 00
<b>Broad-Leaved (<i>U. latifolia</i>).</b> 10 to 12 ft. ....	4 00	35 00
12 to 14 ft. ....	9 00	75 00
<b>GINGKO (<i>Salisburia</i>)—</b>		
<b>Japan (<i>S. adiantifolia</i>).</b> 4 to 5 ft. ....	3 00	20 00
5 to 7 ft. ....	4 00	30 00
7 ft. ....	6 00	50 00
<b>GLEDITSCHIA <i>Triacanthos</i>—</b>		
2 to 3 ft. ....	1 50	12 00
3 to 5 ft. ....	2 50	20 00
<b>GUM (<i>Liquidambar</i>)—</b>		
<b>Sweet (<i>L. styraciflua</i>).</b> 3 to 4 ft. ....	2 50	20 00
<b>HOP TREE (<i>Ptelea trifoliata</i>).</b> 2 to 3 ft. ....	75	5 00
3 to 4 ft. ....	1 00	8 00
4 to 6 ft. ....	1 50	12 00
<b>Golden (<i>P. trifoliata aurea</i>).</b> 2 to 3 ft. ....	2 00	15 00
3 to 4 ft. ....	2 50	20 00
4 to 5 ft. ....	3 00	
<b>HORNBEAM (<i>Carpinus</i>)—</b>		
<b>European (<i>C. betula</i>).</b> 2 to 3 ft. ....	3 50	30 00
3 to 5 ft. ....	5 00	40 00
<b>HORSE-CHESTNUT (<i>Æsculus</i>)—</b>		
<b>White-Flowering (<i>Æ. hippocastanum</i>).</b> ....		
4 to 6 ft. ....	2 50	20 00
6 to 8 ft. ....	3 00	25 00



Glenwood Nurseries, Morrisville, Pa. 7

<b>KENTUCKY COFFEE TREE</b> ( <i>Gymnocladus</i> Per 10	100
<i>Canadensis</i> ). 2 to 3 ft.....	\$1 00 \$8 00
3 to 4 ft. ....	1 50 12 00

**KÖELREUTERIA paniculata—**

2 to 3 ft. ....	1 50 12 00
4 to 6 ft. ....	3 00

**LARCH (Larix)—**

<b>European</b> ( <i>L. Europæa</i> ). 5 to 6 ft.....	5 00
---	------

**LINDEN (Tilia)—**

<b>American</b> ( <i>T. Americana</i> ). 6 to 8 ft.....	3 50 30 00
8 to 10 ft. ....	5 00 40 00
10 to 12 ft. ....	7 50
12 to 14 ft. ....	15 00
<b>Broad-Leaved</b> ( <i>T. platyphylla</i> ). 8 to 10 ft... 5 00	
10 to 12 ft. ....	10 00
<b>European</b> ( <i>T. Europæa</i> ). 4 to 6 ft.....	2 00
6 to 8 ft. ....	3 00
<b>Silver-Leaved</b> ( <i>T. argentea</i> ). 8 to 10 ft. ....	10 00

**MAGNOLIA—**

<b>Cucumber Tree</b> ( <i>M. acuminata</i> ). 5 to 6 ft... 3 00	
<b>Glauca</b> ( <i>M. glauca</i> ). 2 to 4 ft.....	7 50
<b>Kobus</b> . 4 to 6 ft.....	15 00
<b>Soulangiana</b> . 2 to 3 ft.....	10 00
3 to 4 ft. ....	12 50
<b>Tripetala</b> . 4 to 6 ft. ....	3 00
6 to 8 ft. ....	4 00

**MAPLE (Acer)—**

	Per 10	100	1,000
<b>Ash-Leaved</b> ( <i>A. Negundo</i> ). 4 to 6 ft. ....	\$1 50	\$12 00	
6 to 8 ft. ....	2 00	18 00	
8 to 10 ft. ....	2 50	20 00	
10 to 12 ft. ....	6 00	50 00	
<b>Cork-Barked</b> ( <i>A. campestris</i> ).....			
6 to 8 ft. ....	3 50	25 00	
8 to 10 ft. ....	5 00		
<b>Norway</b> ( <i>A. platanioides</i> ). 6 to 8 ft. ....	2 00	18 00	\$160 00
8 to 10 ft. ....	3 50	30 00	275 00
10 to 12 ft. ....	5 00	40 00	300 00
<b>Red</b> ( <i>A. colchicum rubrum</i> ). 4 to 6 ft. ....	3 00		
6 to 8 ft. ....	5 00		
8 to 10 ft. ....	7 50		
<b>Scarlet</b> ( <i>A. rubrum</i> ). 3 to 4 ft.....	3 00	25 00	
4 to 5 ft. ....	4 00	35 00	
<b>Silver-Leaved</b> ( <i>A. dasycarpum</i> ).....			
8 to 10 ft. ....	1 50	10 00	90 00
10 to 12 ft. ....	1 80	12 00	115 00
12 to 14 ft. ....	3 50	20 00	
14 to 16 ft. ....	5 00	40 00	
<b>Sugar</b> ( <i>A. saccharinum</i> ). 6 to 8 ft..	2 00	16 00	150 00
8 to 10 ft. ....	3 00	20 00	175 00
10 to 12 ft. ....	4 00	25 00	200 00
12 to 14 ft. ....	5 00	35 00	300 00
14 to 16 ft. ....	5 00	40 00	

Larger and heavier grades at special quotations.

**MAPLE (Acer)—**

	Per 10	100
<b>Sycamore</b> ( <i>A. pseudo-platanus</i> ). 4 to 6 ft....	\$1 50	\$12 00
6 to 8 ft.....	2 50	20 00
8 to 10 ft.....	4 00	30 00
10 to 12 ft.....	5 00	45 00
12 to 14 ft.....	10 00	
<b>Wier's Cut-Leaved</b> ( <i>A. Wierii exciniatum</i> )—		
8 to 10 ft.....	4 00	
<b>Tataricum Ginnala</b> . 2 to 3 ft.....	1 50	12 00
6 to 7 ft.....	4 00	
<b>Reitenbach's</b> . 6 to 8 ft.....	6 00	
<b>Schwedlerii</b> . 8 to 10 ft.....	7 50	



NORWAY MAPLE. (See page 7.)

**MOUNTAIN ASH** (*Sorbus aucuparia*)—

	Per 10	100
3 to 4 ft.....	\$1 00	\$8 00
4 to 5 ft.....	2 50	20 00
6 to 8 ft.....	4 00	
<b>Oak-Leaved</b> . 6 to 8 ft.....	4 00	

**OAK (Quercus)—**

<b>Chestnut</b> ( <i>Q. Prinos</i> ). 4 to 5 ft.....	6 00	50 00
5 to 7 ft.....	7 50	70 00
<b>English</b> ( <i>Q. Robur</i> ). 6 to 8 ft.....	4 00	30 00
8 to 10 ft.....	5 00	40 00
10 to 12 ft.....	6 00	50 00
12 to 14 ft.....	10 00	



PIN OAK.

OAK ( <i>Quercus</i> )—	Per 10	100	1,000
<b>Pin</b> ( <i>Q. palustris</i> ). 4 to 6 ft.....	\$4 00	\$30 00	\$275 00
6 to 7 ft.....	6 00	50 00	400 00
7 to 8 ft.....	7 00	60 00	500 00
9 to 10 ft.....	10 00	80 00	750 00
10 to 11 ft., low branched.....	25 00		
<b>Mossy Cup</b> ( <i>Q. macrocarpa</i> ).			
4 to 6 ft.....	4 00	35 00	
6 to 8 ft.....	7 50	60 00	
<b>Red</b> ( <i>Q. rubra</i> ). 4 to 5 ft.....	5 00	40 00	
5 to 6 ft.....	7 50		
<b>Scarlet</b> ( <i>Q. coccinea</i> ). 4 to 5 ft.....	5 00	40 00	
5 to 6 ft.....	7 50		
<b>Turkey</b> ( <i>Q. Cerris</i> ). 4 to 6 ft.....	2 50	20 00	
6 to 8 ft.....	3 50	30 00	
<b>White</b> ( <i>Q. alba</i> ). 3 to 5 ft.....	5 00	45 00	400 00
<b>Willow-Leaved</b> ( <i>Q. phellos</i> ).			
4 to 6 ft.....	7 50	60 00	
<b>PLANE</b> ( <i>Platanus</i> )—			
<b>Oriental</b> ( <i>P. orientalis</i> ). Very fine—			
5 to 6 ft.....	2 00	16 00	150 00
6 to 8 ft.....	2 50	20 00	190 00
8 to 10 ft.....	3 50	25 00	225 00
10 to 12 ft.....	4 00	35 00	325 00
<b>POPLAR</b> ( <i>Populus</i> )—			
	Per 10	100	
<b>Carolina</b> ( <i>P. angulata</i> ). 6 to 8 ft.....	\$1 50	\$12 00	
8 to 10 ft.....	2 00	15 00	
10 to 12 ft.....	2 50	20 00	
12 to 15 ft.....	4 00	30 00	

<b>POPLAR (Populus)—</b>	Per 10	100
<b>Golden</b> ( <i>P. Van Geertii aurea</i> ). 4 to 6 ft.....	\$3 00	
<b>Silver White</b> ( <i>P. Nova argentea</i> ). 7 to 9 ft...	3 00	\$20 00
<b>Lombardy</b> . 6 to 8 ft.....	1 50	10 00
8 to 10 ft.....	2 00	15 00
12 to 15 ft.....	4 50	30 00
<b>TULIP TREE</b> ( <i>Liriodendron Tulipifera</i> )—		
4 to 6 ft. ....	3 00	25 00
6 to 8 ft. ....	5 00	40 00
<b>YELLOW-WOOD</b> ( <i>Virgilia lutea</i> )—		
1 to 2 ft. ....	2 00	15 00
3 to 5 ft. ....	7 50	
<b>WILLOW (Salix)—</b>		
<b>Common Weeping</b> . See Weeping Trees.		
<b>Golden-Barked</b> ( <i>S. alba vitellina</i> ). 4 to 6 ft..	2 50	20 00
6 to 8 ft. ....	3 50	
<b>Laurel-Leaved</b> ( <i>S. Pentandra</i> ). 4 to 6 ft....	2 00	16 00
<b>Rosemary-Leaved</b> ( <i>S. rosmarinifolia</i> )—		
3 to 5 ft., on own roots .....	2 00	16 00
5 to 7 ft., grafted.....	4 00	30 00
<b>Royal Silver-Leaved</b> ( <i>S. regalis</i> )—		
2 to 4 ft. ....	1 25	10 00
<b>WALNUTS.</b> See Nuts, Fruit Department.		



ORIENTAL PLANE TREE. (See page 9.)

## WEEPING TREES

	Per 10	100
<b>ASH</b> ( <i>Fraxinus pendula</i> ) .....	\$6 00	
<b>BEECH</b> ( <i>Fagus pendula</i> .) 3 to 4 ft.....	10 00	
<b>BIRCH</b> ( <i>Betula</i> )—		
<b>Cut-Leaved</b> ( <i>B. laciniata pendula</i> ). 6 to 8 ft..	10 00	
<b>Young's Weeping.</b> 4 to 5 ft.....	7 50	
<b>Elegans.</b> 2 to 4 ft.....	5 00	
<b>ELM, Camperdown</b> .....	5 00	
3-year heads, very strong.....	9 00	
<b>LINDEN</b> ( <i>Tilia pendula</i> ). 5 to 6 ft.....	7 50	
<b>MOUNTAIN ASH</b> ( <i>Sorbus aucuparia pendula</i> ). 7 50		
<b>MULBERRY</b> ( <i>Morus pendula</i> ). 4 to 6 ft.....	6 00	
5 to 7 ft., extra heavy, 3 years.....	9 00	
<b>WILLOW</b> ( <i>Salix</i> )—		
<b>Kilmarnock</b> ( <i>S. caprea pendula</i> ). Well headed, 5 to 6 ft. ....	3 50	\$25 00
<b>New American</b> ( <i>S. purpurea pendula</i> ). Well headed, 6 to 7 ft.....	5 00	35 00
<b>Common Weeping</b> ( <i>S. Babylonica</i> )—		
4 to 5 ft. ....	2 00	16 00
6 to 8 ft. ....	3 00	25 00
8 to 10 ft. ....	4 00	35 00

## HEDGING, DECIDUOUS

	Per 100	1,000
<b>ALTHEAS, in varlety.</b> 2 to 3 ft.....	\$8 00	\$75 00
4 to 5 ft. ....	20 00	150 00
<b>BERBERIS Thunbergii.</b> 1 to 1½ ft.....	8 00	75 00
2 to 3 ft. ....	15 00	125 00
<b>PRIVET, California</b> ( <i>Ligustrum ovalifolium</i> )—		
1 year, 1 to 1½ ft., well branched.....	2 50	18 00
1 year, 1½ to 2 ft., well branched.....	3 00	20 00
2 years, 2 to 2½ ft., bushy .....	5 00	40 00
2 years, 3 to 4 ft., very bushy.....	8 00	75 00
Our 2-year Privets were cut back last spring and are now bushy and fine.		
<b>OSAGE ORANGE.</b> Very fine—		
1 year .....	per 10,000, \$30..	1 00    4 00
2 years .....	per 10,000, \$45..	1 50    5 00
<b>RHAMNUS Catharticus</b> (Buckthorn). 3 to 4 ft.	8 00	75 00

## HEDGING, EVERGREEN

	Per 10	100
<b>ARBORVITÆ—</b>		
<b>American.</b> 1½ to 2 ft.....	\$1 00	\$8 00
2 to 3 ft. ....	2 00	15 00
3 to 4 ft. ....	4 00	35 00
<b>Compacta, Dwarf.</b> 9 to 12 in. ....	1 00	8 00
18 to 24 in.....	5 00	40 00
<b>SPRUCE, Norway—</b>		
1 to 1½ ft., bushy.....	per 1,000, \$75..	1 00    8 00



GOLDEN ARBORVITÆ'S AT GLENWOOD.

*Thuja orientalis aurea* and *T. orientalis semper aurea*.

## EVERGREEN TREES

Our collection of Choice Evergreens of small and medium size is very large. Great care is taken to shear, move and root-prune them in order that they may transplant successfully. They have been frequently trimmed, and are of fine, symmetrical shape.

### ARBORVITÆ (*Thuja*)—

	Per 10	100
<b>American</b> ( <i>T. occidentalis</i> ). 1½ to 2 ft.....	\$1 00	\$8 00
2 to 3 ft. ....	2 00	15 00
3 to 4 ft. ....	4 00	35 00
<b>Dwarf American</b> ( <i>T. compacta</i> ). 6 to 9 in... ..	60	5 00
9 to 12 in.....	1 00	8 00
12 to 18 in.....	2 50	20 00
1½ to 2 ft. ....	5 00	40 00
2 to 3 ft. ....	9 00	75 00
<b>Elegantissima</b> . 1½ to 2 ft.....	5 00	45 00
<b>Heath-Leaved</b> ( <i>T. ericoides</i> ). 9 to 12 in.....	75	5 00
12 to 18 in.....	2 50	
<b>George Peabody</b> ( <i>T. Peabody</i> ). 6 to 9 in. ...	2 50	
9 to 12 in.....	3 50	
1 to 2 ft. ....	5 00	
<b>Globe</b> ( <i>T. globosa</i> ). 6 to 9 in.....	1 00	7 00
12 to 15 in.....	2 50	20 00
1 to 2 ft., bushy.....	3 50	30 00
2 to 3 ft. ....	10 00	
<b>Hovey's Golden</b> ( <i>T. Hoveyi</i> ). 9 to 12 in.. ...	1 00	8 00
12 to 18 in.....	2 00	15 00
1½ to 2 ft.....	4 00	35 00
2 to 3 ft. ....	7 50	
<b>Orientalis aurea</b> . 1 to 1½ ft.....	3 50	30 00
<b>Orientalis semper aurea</b> . 1 to 1½ ft.....	5 00	45 00
<b>Pyramidal</b> ( <i>T. pyramidalis</i> ). 6 to 12 in.....	1 00	8 00
1 to 2 ft. ....	3 00	20 00
2 to 3 ft. ....	4 00	35 00
<b>Siberian</b> ( <i>T. Wareana</i> ). 1 to 1½ ft., fine....	3 50	

# Glenwood Nurseries, Morrisville, Pa. 13

<b>ARBORVITÆ (Thuya)—</b>		Per 10	100
<b>Tom Thumb.</b>	9 to 12 in.....	\$1 00	\$8 00
	12 to 18 in.....	1 50	12 00
<b>Vervæneana.</b>	9 to 15 in.....	1 00	8 00
	1½ to 2 ft.....	3 50	30 00
<b>Weeping</b>	<i>(T. Japonica filiformis pendula).</i>		
	18 to 24 in., bushy, grafted.....	7 50	
<b>CEPHALOTAXUS</b>			
<b>Drupacea.</b>	2 to 3 ft.....	10 00	
<b>Fortunei.</b>	2 to 3 ft.....	10 00	
<b>FIR, SILVER (Abies)—</b>			
<b>Balsam</b>	<i>(A. Balsamea).</i> 1 to 1½ ft.....	1 25	10 00
<b>Concolor</b>	<i>(A. concolor).</i> 1 to 2 ft.....	10 00	
	2 to 3 ft.....	\$3 each..	
	3 to 4 ft.....	\$4 and \$5 each..	
<b>Nordmann's</b>	<i>(A. Nordmanniana)—</i>		
	1 to 2 ft.....	7 50	60 00
	2 to 3 ft.....	20 00	150 00
	3 to 4 ft., \$3 to \$4 each.		
<b>European</b>	<i>(A. pectinata).</i> 1 to 1½ ft.....	1 25	10 00
	3 to 4 ft.....	5 00	40 00
	4 to 5 ft.....	7 50	60 00
<b>HEMLOCK (Tsuga Canadensis)—</b>		Per 10	100
	1 to 2 ft.....	\$3 00	\$25 00
	2 to 2½ ft.....	5 00	40 00
	2½ to 3 ft., sheared and bushy.	10 00	90 00
	3 to 3½ ft., sheared and bushy.	12 50	110 00
<b>SPRUCE (Picea)—</b>			
<b>Colorado Blue</b>	<i>(P. pungens)—</i>		
	1 to 2 ft.....	\$8 00	\$75 00
	Selected Blue, 1 to 2 ft., according to color and form, \$1.50 to \$2 each.		
	Selected Blue, 2 to 3 ft., according to color and form, \$3 to \$4 each.		
	Koster's Blue, 3 to 4 ft., according to size and form, \$4 to \$8 each.		
<b>Gloriosum.</b>	3 to 4 ft.....	15 00	
<b>Oriental</b>	<i>(P. orientalis).</i> 1 to 2 ft.....	15 00	
	2 to 3 ft.....	25 00	
<b>Weeping</b>	<i>(P. inverta).</i> 2 to 3 ft.....	20 00	
	3 to 4 ft.....	30 00	
<b>Norway</b>	<i>(P. excelsa).</i> 1 to 1½ ft.....	1 00	8 00
	3 to 4 ft.....	5 00	
	4 to 5 ft.....	8 00	
	5 to 7 ft.....	12 50	
<b>White</b>	<i>(P. alba).</i> 1 to 1½ ft.....	1 25	8 00
<b>JAPAN CYPRESS (Retinospora)—</b>			
<b>Fillifera</b>	<i>(R. filifera).</i> 1½ to 2 ft.....	5 00	
	2 to 3 ft.....	10 00	
<b>Plume-Like</b>	<i>(R. plumosa).</i> 1 to 2 ft.....	3 50	25 00
	2 to 3 ft., sheared.....	10 00	75 00
	3 to 4 ft., very bushy, sheared.....	15 00	125 00
	5 to 6 ft., very bushy, sheared.....	25 00	200 00



GOLDEN RETINOSPORA AT GLENWOOD.

<b>JAPAN CYPRESS (<i>Retinospora</i>)—</b>		Per 10	100
<b>Golden</b> ( <i>R. p. aurea</i> ). 9 to 12 in.....		\$2 50	\$15 00
1 to 2 ft., very bushy, sheared.....		7 50	60 00
2 to 3 ft., very bushy, sheared.....		15 00	125 00
3 to 4 ft., very bushy, sheared.....		25 00	200 00
<b>Obtusa</b> . 1 to 1½ ft.....		4 00	
3 to 4 ft. ....		15 00	
<b>Obtusa nana</b> . 6 to 9 in.....		6 00	
1 to 2 ft. ....		20 00	
<b>Silver</b> ( <i>R. squarrosa</i> ). 9 to 12 in. ....		1 50	15 00
1½ to 2 ft., sheared .....		7 50	60 00
2 to 3 ft., sheared.....		15 00	125 00
<b>JUNIPER (<i>Juniperus</i>)—</b>			
<b>Aurea</b> . 9 to 12 in.....		3 00	20 00
12 to 18 in., broad and bushy.....		5 00	40 00
<b>Irish</b> ( <i>J. Hibernica</i> ). 6 to 12 in.....		75	5 00
1 to 2 ft. ....		1 00	8 00
2 to 2½ ft. ....		1 50	10 00
<b>Pyramidal</b> ( <i>J. pyramidalis</i> ). 1 to 2 ft.....		1 00	
2 to 3 ft. ....		2 50	
<b>Prostrata</b> ( <i>J. prostrata</i> ). 1 to 1½ ft. ....		2 50	
<b>Swedish</b> ( <i>J. suecica</i> ). 6 to 12 in.....		1 00	8 00
1 to 1½ ft. ....		2 50	20 00
<b>PINE (<i>Pinus</i>)—</b>			
<b>Austrian</b> ( <i>P. Austriaca</i> ). 1 to 2 ft. ....		1 50	10 00
4 to 5 ft., sheared.....		15 00	125 00
<b>Dwarf</b> ( <i>P. Mugho</i> ). 1 to 1½ ft., light .....		3 00	25 00
1 to 2 ft., bushy.....		7 50	60 00
2 to 3 ft. Perfect specimens, \$2 to \$3 each.			
<b>Excelsa</b> . 2 to 3 ft. ....		6 00	50 00
3 to 4 ft. ....		15 00	125 00
4 to 6 ft. ....		25 00	200 00
<b>Scotch</b> ( <i>P. sylvestris</i> ). 1½ to 2 ft.....		1 50	12 00
2 to 2½ ft., bushy.....		3 50	25 00



## Glenwood Nurseries, Morrisville, Pa. 15

<b>PINE (Pinus)—</b>	Per 10	100
<b>White</b> ( <i>P. strobus</i> ). 1 to 2 ft.....	\$1 00	\$8 00
2 to 3 ft. ....	5 00	45 00
3 to 4 ft. ....	8 00	75 00
4 to 5 ft. ....	15 00	
<b>Dwarf, White</b> ( <i>P. strobus nanus</i> ). 1 to 2 ft., grafted, very bushy specimens.....	15 00	

**THUYOPSIS (Borealls)**. 9 to 12 in..... 4 00

**YEW (Taxus)—**

<b>Addressa</b> . 1 to 2 ft. ....	8 00
<b>English</b> ( <i>T. baccata erecta</i> ). 1 to 2 ft.....	7 50
2 to 3 ft. ....	20 00
3 to 4 ft. ....	40 00
<b>Irish</b> ( <i>T. Hibernica</i> ). 1 to 2 ft.....	7 50
<b>Pyramidal</b> ( <i>T. pyramidalis</i> ). 1 to 1½ ft. ....	7 50
<b>Variegated</b> ( <i>T. variegata</i> ). 6 to 12 in.....	5 00

Evergreens of larger sizes than quoted herein  
can be furnished of most varieties, prices of  
which will be given on application.

## EVERGREEN SHRUBS

<b>AZALEA Amœna —</b>	Per 10	100
From 3-in. pots, nice bushy plants.....	\$2 00	\$15 00
6 to 10 in., very bushy, from open ground.	3 50	30 00
10 to 12 in., very bushy.....	5 00	40 00

<b>BOX (Buxus)—</b>	Per 10	100	1,000
<b>Arborescens</b> . 6 to 12 in.....	\$0 75	\$5 00	\$40 00
9 to 15 in.....	1 00	8 00	
1 to 1½ ft., bushy.....	1 50	10 00	
1½ to 2 ft., bushy.....	2 50	20 00	
<b>Macrophylla rotundifolia</b> . 12 to 18 in.	1 50	10 00	
<b>Suffruticosa</b> . Box edging, 2 years, 4 to 6 in.....	50	4 00	35 00
<b>Variegata</b> . 15 to 18 in. ....	3 00	25 00	

<b>COTONEASTER Buxifolia</b> . 1 to 2 ft., very bushy.....	Per 10	100	\$1 50	\$12 00
---	--------	-----	--------	---------

**CRATÆGUS pyracantha**. 9 to 15 in..... 1 75 15 00

**EUONYMUS—**

<b>Variegated Trailing</b> ( <i>E. radicans variegata</i> ).			
1 year .....	75	5 00	
2 years .....	1 00	8 00	
3 years .....	1 25	10 00	
<b>Green Trailing</b> ( <i>E. radicans viridis</i> ). 2 years.	1 00	7 00	
3 years.....	1 25	10 00	
<b>Green Upright</b> ( <i>E. Japonica</i> ). 1 to 2 ft. ....	1 00	8 00	
2 to 3 ft. ....	2 00		
3 to 4 ft., very bushy.....	3 00		
<b>Variegated</b> ( <i>E. Japonica argentea variegata</i> ).			
12 to 18 in.....	1 25	10 00	
18 to 24 in.....	2 00	16 00	
<b>Golden</b> ( <i>E. aurea</i> ). 6 to 12 in.....	1 50	12 00	
1 to 2 ft.....	2 50	20 00	



VIEW AT GLENWOOD NURSERIES,

<b>HARDY ORANGE</b> ( <i>Limonia trifoliata</i> )—	Per 10	100
3 to 4 ft. ....	\$1 75	\$15 00
<b>HOLLY</b> ( <i>Ilex</i> )—		
<b>Aquifolia.</b> 9 to 12 in. ....	1 50	12 00
1 to 2 ft. ....	2 50	20 00
2 to 3 ft. ....	5 00	
<b>American</b> ( <i>I. opaca</i> ). 2 to 3 ft. ....	7 50	
<b>KALMIA</b> —		
<b>Broad-Leaved</b> ( <i>K. latifolia</i> ). 15 to 18 in. ....	6 00	
<b>Narrow-Leaved</b> ( <i>K. angustifolia</i> ). 1½ to 2½ ft. ....	4 00	
<b>MAHONIA</b>		
<b>Aquifolia.</b> 9 to 12 in. ....	1 00	6 00
1 to 1½ ft. ....	2 00	15 00
<b>Japonica.</b> 1 to 2 ft. ....	5 00	40 00
2 to 3 ft. ....	6 00	50 00
<b>RHODODENDRONS</b> —		
<b>Named Varieties</b> (with buds). 15 to 18 in. ....	9 00	
18 to 22 in. ....	12 00	
24 to 30 in. ....	15 00	
30 to 36 in. ....	25 00	
<b>YUCCA filamentosa</b> —		
2 years, transplanted. ....	75	5 00
3 years, transplanted. ....	1 00	6 00
4 years, twice transplanted. ....	2 50	20 00
Large clumps, 4 and 5 years. ....	5 00	



SHOWING A PORTION OF THE PLANTING.

## FLOWERING SHRUBS, DECIDUOUS

We offer an immense stock of Deciduous Flowering Shrubs of large, medium and small sizes. All have been carefully grown and cultivated. The larger grades have been trimmed into symmetrical shape and are unsurpassed for decorative planting.

Larger and heavier shrubs than those quoted can be furnished of most varieties. Prices on application.

	Per 10	100
<b>ACACIA Julibrissin.</b> 4 to 5 ft. . . . .	\$3 00	
<b>ALMOND —</b>		
<b>Double White.</b> 2 to 3 ft. . . . .	1 25	
<b>Double Red.</b> 2 to 3 ft. . . . .	1 25	
<b>ALTHEA—</b>		
<b>Variegated-Leaved.</b> 1 to 2 ft. . . . .	1 25	\$10 00
2 to 3 ft. . . . .	1 75	15 00
3 to 4 ft. . . . .	2 00	
<b>Double, Tall-growing, named varieties—</b>		
1 to 2 ft. . . . .	75	6 00
2 to 3 ft. . . . .	1 25	10 00
3 to 4 ft., bushy . . . . .	1 75	14 00
4 to 5 ft., bushy . . . . .	2 50	18 00
5 to 6 ft., bushy . . . . .	3 50	25 00
6 to 8 ft., bushy . . . . .	5 00	35 00
<b>List of Varieties—</b> Alba plena, Amplissima, Ardens, Boule de feu, Carnea plena, Comte de Haimont, Duchesse de Brabant, Double Rouge, Elegantissima plena, Grandiflora superba, Joan of Arc, Lady Stanley, Leopoldi plena, Pæoniflora plena, Van Houttei, Bicolor, White, Purple, Red.		

	Per 10	100
<b>ALTHEA Totus alba Simplex.</b> Pure white, distinct, single. 1 to 2 ft.....	\$1 00	\$8 00
2 to 3 ft. ....	2 00	
<b>AMELANCHIER</b>		
<b>Botryapium.</b> 2 to 3 ft.....	1 50	12 00
3 to 4 ft.....	2 00	15 00
4 to 5 ft.....	2 50	
<b>Vulgaris.</b> 3 to 4 ft. ....	2 00	
4 to 6 ft.....	2 50	
<b>AMORPHA fruticosa</b> (Indigo Bush)—		
1 to 2 ft.....	1 00	5 00
2 to 3 ft.....	1 25	8 00
3 to 4 ft.....	1 50	12 00
4 to 6 ft.....	2 50	20 00
<b>ANDROMEDA Marianna.</b> 1 to 2 ft.....	1 75	15 00
<b>AZALEA</b>		
<b>Mollis.</b> 15 to 18 in. ....	4 00	35 00
20 to 30 in., strong clumps .....	6 00	50 00
<b>Pontica.</b> 15 to 18 in.....	6 00	50 00
<b>Amaena.</b> See Evergreen Shrubs, page 15.		
<b>BACCHARIS halimifolia</b> —		
1 to 2 ft. ....	1 00	8 00
2 to 3 ft. ....	1 50	12 00
3 to 4 ft. ....	2 00	16 00
<b>BERBERIS</b>		
<b>Purpurea.</b> 9 to 15 in.....	75	5 00
18 to 24 in.....	1 00	8 00
2 to 3 ft. ....	1 25	10 00
<b>Thunbergii.</b> 1 to 1½ ft. ....	1 00	8 00
1½ to 2 ft.....	1 25	10 00
2 to 3 ft., bushy.....	2 00	15 00
2 to 3 ft., very large and bushy.....	2 50	20 00
<b>Vulgaris.</b> 1 to 1½ ft. ....	75	5 00
2 to 3 ft. ....	1 25	10 00
<b>CALLICARPA purpurea.</b> 2 to 4 ft.....	1 00	8 00
<b>CALYCANTHUS Floridus</b> (Sweet Shrub)—		
1 to 2 ft.....	75	5 00
2 to 3 ft. ....	1 00	8 00
3 to 4 ft. ....	1 50	
4 to 5 ft. ....	2 00	16 00
<b>CARAGANA arborescens.</b> 1 to 2 ft.....	1 00	8 00
<b>CARYOPTERIS Mastacantha.</b> 1 to 2 ft. ....	1 25	10 00
<b>CERCIS</b> (Judas Tree)—		
<b>American</b> ( <i>C. Canadensis</i> ). 2 to 4 ft.....	2 50	20 00
4 to 5 ft.....	4 00	30 00
<b>Japan.</b> 1 to 2 ft.....	3 50	
2 to 3 ft.....	5 00	
<b>CHIONANTHUS Virginia.</b> 1 to 2 ft.....	1 00	8 00
2 to 3 ft.....	1 50	12 00
4 to 6 ft.....	3 50	

# Glenwood Nurseries, Morrisville, Pa. 19

	Per 10	100
<b>CLETHRA</b> <i>alnifolia</i> . 1½ to 2 ft. ....	\$1 25	\$10 00
<b>COLUTEA</b> <i>arborescens</i> . 2 to 3 ft. ....	1 00	
3 to 4 ft. ....	1 50	
<b>CORNUS</b> (Dogwood) —		
<b>Alternifolia</b> . 3 to 5 ft. ....	1 50	12 00
<b>Floridus</b> . 2 to 3 ft. ....	1 75	15 00
3 to 4 ft. ....	2 50	20 00
4 to 5 ft. ....	4 00	
<b>Siberian, Red-Twigged</b> . 2 to 3 ft. ....	75	6 00
3 to 4 ft. ....	1 00	8 00
<b>Sanguinea</b> . 2 to 3 ft. ....	1 00	8 00
3 to 4 ft. ....	1 75	15 00
<b>Sericea</b> . 3 to 4 ft. ....	1 00	8 00
4 to 5 ft. ....	1 25	10 00
<b>Stolonifera aurea</b> . 1 to 2 ft. ....	2 00	16 00
<b>CORYLUS</b>		
<b>Avellana</b> (Filbert). 4 to 5 ft., bushy. ....	1 75	15 00
5 to 6 ft. ....	2 50	20 00
6 to 8 ft. ....	3 50	
<b>Avellana purpurea</b> . 1 to 2 ft. ....	2 50	20 00
<b>CORCHORUS</b> . See <i>Kerria</i> , page 21.		
<b>COTONEASTER</b> <i>Simonsii</i> . 2 to 3 ft., bushy. ....	1 25	10 00
3 to 4 ft. ....	1 50	12 00
<b>CYDONIA</b> <i>Japonica</i> ( <i>Pyrus</i> ). 2 to 3 ft. ....	1 25	10 00
<b>CYTISUS</b> <i>laburnum</i> . 1 to 2 ft. ....	1 00	8 00
2 to 3 ft. ....	1 25	10 00
3 to 4 ft. ....	1 50	
<b>DEUTZIA</b>		
<b>Crenata flore alba plena</b> . 2 to 3 ft. ....	1 00	8 00
4 to 5 ft. ....	2 00	16 00
<b>Crenata plena</b> . 2 to 3 ft. ....	1 00	8 00
3 to 4 ft. ....	1 25	10 00
4 to 6 ft. ....	2 00	16 00
6 to 7 ft. ....	3 00	25 00
<b>Candidissima</b> . 1 to 2 ft. ....	1 00	8 00
2 to 3 ft. ....	1 25	10 00
4 to 6 ft. ....	2 50	20 00
<b>Fortunei</b> . 2 to 3 ft. ....	1 00	8 00
3 to 4 ft. ....	1 50	12 00
<b>Gracilis</b> . 9 to 12 in. ....	60	5 00
12 to 18 in. ....	75	6 00
18 to 24 in. ....	1 00	8 00
<b>Lemoinei</b> . 1 to 2 ft. ....	1 50	12 00
<b>Pride of Rochester</b> . 2 to 3 ft. ....	1 25	10 00
3 to 4 ft. ....	1 50	12 00
4 to 6 ft. ....	2 00	18 00
<b>Scabra</b> . 2 to 3 ft. ....	1 50	12 00
4 to 6 ft. ....	2 50	20 00
<b>Watereri</b> . 2 to 3 ft. ....	1 25	10 00
3 to 4 ft. ....	1 50	12 00
4 to 5 ft. ....	2 50	20 00

<b>DEUTZIA</b>		Per 10	100
<b>Watsonii.</b>	2 to 3 ft.....	\$1 25	\$10 00
	3 to 4 ft.....	1 50	12 00
<b>Wellsei.</b>	2 to 3 ft.....	1 25	10 00
	3 to 4 ft.....	1 50	12 00
	4 to 6 ft.....	2 50	20 00
<b>DIERVILLA lutea.</b>	2 to 3 ft.....	1 25	
	3 to 4 ft.....	1 75	15 00
<b>ELÆAGNUS longipes.</b>	2 to 3 ft.....	2 00	
	3 to 4 ft.....	4 00	
<b>EUONYMUS, European.</b>	3 to 4 ft.....	1 25	10 00
	4 to 6 ft.....	1 75	15 00
	6 to 7 ft.....	2 50	20 00
<b>Nana.</b>	Dwarf. 9 to 15 in.....	1 25	10 00
	2 to 3 ft., very bushy.....	5 00	
<b>Radicans argentea variegata.</b>	See Evergreen Shrubs, page 15.		
<b>EXOCHORDA grandiflora.</b>	1 to 2 ft.....	1 00	8 00
	2 to 3 ft.....	1 25	10 00
	3 to 4 ft.....	1 50	12 00
<b>FORSYTHIA Fortunei.</b>	1 to 2 ft.....	75	6 00
	2 to 3 ft.....	1 00	8 00
	3 to 4 ft.....	1 50	12 00
<b>Suspensa.</b>	1 to 2 ft.....	1 00	8 00
	2 to 3 ft.....	1 25	10 00
	3 to 4 ft.....	1 50	12 00
<b>Vividissima.</b>	1 to 2 ft.....	75	6 00
	2 to 3 ft.....	1 00	8 00
	3 to 4 ft.....	1 50	12 00
	4 to 5 ft., very bushy.....	2 50	20 00
<b>Intermedia.</b>	2 to 3 ft.....	1 00	8 00
	3 to 4 ft.....	1 25	10 00
	4 to 5 ft.....	2 50	
<b>HALESIA tetraptera.</b>	1 to 2 ft.....	1 00	
<b>HAMAMELIS Virginica.</b>	1 to 1½ ft.....	1 25	10 00
	2 to 3 ft.....	1 50	12 00
<b>HYPERICUM</b>			
<b>Aureum.</b>	1½ to 2½ ft.....	1 00	8 00
<b>Kalmianum.</b>	1½ to 2½ ft.....	1 00	8 00
<b>Moserianum.</b>	1 ft.....	1 00	8 00
<b>HYDRANGEA</b>			
<b>Paniculata grandiflora.</b>	1 to 2 ft....	\$1 00	\$6 00 \$50 00
	2 to 2½ ft.....	1 25	8 00 75 00
	2½ to 3 ft.....	1 50	10 00 90 00
	3 to 4 ft.....	2 00	15 00 125 00
	3½ to 4½ ft., extra heavy and fine..	2 50	20 00
<b>Pekinensis.</b>	3 to 5 ft.....	2 50	
<b>Quercifolia.</b>	2 to 3 ft.....	5 00	

<b>KERRIA Japonica</b>	Per 10	100
<b>Simplex.</b> 1 to 2 ft.....	\$0 75	\$5 00
3 to 4 ft.....	1 00	8 00
<b>Variegata.</b> 6 to 12 in.....	75	5 00
1 to 2 ft.....	1 00	8 00
<b>Flora plena.</b> 1 to 2 ft.....	75	5 00
3 to 5 ft.....	1 00	8 00

**LAURUS Benzoin.** 2 to 3 ft..... 2 00

<b>LIGUSTRUM (Privet)—</b>	Per 10	100	1,000
<b>California.</b> 1 to 1½ ft., 1 year.....	\$0 50	\$2 50	\$18 00
1½ to 2 ft., 1 year.....	60	3 00	20 00
2 to 2½ ft., 2 years.....	75	5 00	40 00
3 to 4 ft., 2 years.....	1 00	8 00	75 00
Tree-shaped, 5 to 7 ft. ....	10 00		

All 2-year Privets were cut back last spring and are now bushy and fine.

	Per 10	100
<b>Amurensis.</b> 1 to 2 ft.....	\$0 50	\$3 00
2 to 3 ft.....	75	5 00
3 to 4 ft.....	1 00	8 00
<b>Ibota.</b> 1 to 2 ft.....	75	5 00
2 to 3 ft.....	1 00	8 00
3 to 4 ft.....	1 50	10 00
<b>Media.</b> Dwarf variety, 1½ to 2½ ft.....	1 00	5 00
3 to 4 ft.....	1 25	8 00
<b>Sinensis.</b> 3 to 4 ft. ....	75	5 00
4 to 5 ft.....	1 00	8 00

**LILAC (Syringa)—**

<b>Alba.</b> White. 1 to 2 ft.....	1 00	8 00
2 to 3 ft. ....	1 25	10 00
<b>Japonica (Tree Lilac).</b> 1 to 2 ft. ....	1 50	
2 to 3 ft. ....	2 00	
3 to 4 ft. ....	3 50	



HYDRANGEA PANICULATA GRANDIFLORA. (See opposite page.)



PERSIAN LILAC.

<b>LILAC (Syringa)—</b>		Per 10	100
<b>Josikea.</b>	1 to 2 ft. ....	\$1 00	\$8 00
<b>Persian.</b>	White. 2 to 4 ft. ....	1 50	
<b>Rothomagensis.</b>	3 to 4 ft. ....	1 25	10 00
<b>Rothomagensis alba.</b>	3 to 4 ft. ....	1 25	
	4 to 5 ft. ....	1 50	12 00
<b>Rubra de Marly.</b>	1 to 2 ft. ....	1 00	8 00
	2 to 3 ft. ....	1 25	10 00
	3 to 4 ft. ....	1 75	15 00
<b>Vulgaris.</b>	2 to 3 ft. ....	1 25	10 00
	3 to 4 ft. ....	1 75	15 00
<b>Named French Sorts.</b>	1 to 2 ft. ....	1 25	10 00
	2 to 3 ft. ....	1 75	15 00
<b>LONICERA (Honeysuckle)—</b>			
<b>Fragrantissima (Upright).</b>	1 to 2 ft. ....	1 00	7 00
	2 to 3 ft. ....	1 25	10 00
	3 to 4 ft. ....	1 75	15 00
	4 to 5 ft. ....	2 50	20 00
<b>Morrowii.</b>	1½ to 3 ft. ....	1 25	10 00
	3 to 5 ft. ....	1 75	15 00
<b>Tatarica alba.</b>	1 to 2 ft. ....	1 00	7 00
	2 to 3 ft. ....	1 25	10 00
<b>Tatarica rubra.</b>	1 to 2 ft. ....	1 00	7 00
	2 to 3 ft. ....	1 25	10 00
<b>Xylostium (English Fly).</b>	2 to 3 ft. ....	1 25	10 00
	3 to 4 ft. ....	1 75	15 00



<b>MAGNOLIA</b>		Per 10	100
<b>Purpurea.</b>	2 to 3 ft.....	\$2 50	\$20 00
	3 to 4 ft.....	4 00	
<b>Glauca.</b>	2 to 4 ft.....	7 50	
<b>Soulangeana.</b>	See Trees, page 5.		
<b>Tripetala.</b>	See Trees, page 5.		
<b>PÆONIA arborea</b> (Tree Peony).....		7 50	
<b>PHILADELPHUS</b>			
<b>Aurea.</b>	1 to 2 ft.....	1 75	15 00
<b>Cordifolius.</b>	2 to 3 ft.....	1 00	8 00
	3 to 4 ft.....	1 25	10 00
	4 to 6 ft.....	2 50	
<b>Coronarius.</b>	1 to 2 ft.....	1 00	7 00
	2 to 2½ ft.....	1 50	
<b>Deutzæflora plena.</b>	Dwarf. 1 to 2 ft.....	1 25	
<b>Grandiflora.</b>	1 to 2 ft.....	1 00	6 00
	2 to 3 ft.....	1 25	10 00
	3 to 4 ft.....	1 75	15 00
	4 to 5 ft.....	2 50	20 00
<b>Inodorus.</b>	3 to 4 ft.....	1 50	12 00
	4 to 5 ft.....	2 50	20 00
<b>Kettlerii.</b>	1 to 2 ft.....	1 00	
	2 to 3 ft.....	1 50	12 00
<b>Nepalensis.</b>	1 to 1½ ft.....	1 00	8 00
	3 to 4 ft.....	1 75	15 00
<b>Nivalis.</b>	2 to 3 ft.....	1 50	12 00
	4 to 5 ft.....	2 50	20 00
<b>Souvenir de Billardii.</b>	1 to 2 ft.....	1 25	
	4 to 5 ft.....	2 50	
<b>PRUNUS</b>			
<b>Pissardii.</b>	2 to 3 ft.....	1 25	10 00
	3 to 4 ft.....	2 00	16 00
	4 to 5 ft.....	3 00	20 00
<b>Triloba.</b>	2 to 3 ft.....	2 50	
<b>RHAMNUS Catharticus</b> (Buckthorn)—			
	3 to 4 ft.....	1 00	8 00
	4 to 5 ft.....	1 50	12 00
<b>RHODOTYPUS Kerrioides.</b>	1 to 2 ft.....	1 00	8 00
<b>RHUS</b>			
<b>Cotinus</b> (Purple Fringe).	1 to 2 ft.....	50	4 00
	2 to 3 ft.....	1 00	7 00
	3 to 4 ft.....	1 75	15 00
<b>Glabra laciniata.</b>	2 to 3 ft.....	2 00	
<b>RIBES</b>			
<b>Aurea</b> (Yellow-Flowering Currant).	1 to 2 ft..	1 50	
<b>Sanguinea.</b>	1 to 2 ft.....	1 50	
<b>Gordon's.</b>	2 to 3 ft.....	1 75	
<b>ROSA</b>			
<b>Blanda.</b>	3 years, transplanted.....	1 25	10 00
<b>Carolina.</b>	3 years, 2 to 3 ft.....	1 50	
<b>Lucida.</b>	3 years, strong.....	1 50	12 00
<b>Multiflora Japonica.</b>	2 years, 2 to 4 ft.....	1 00	8 00
	3 years, 4 to 5 ft., bushy.....	1 25	10 00

<b>ROSA</b>	Per 10	100
<b>Nitida.</b> 3 years, strong .....	\$1 25	\$10 00
<b>Rugosa.</b> 2 years, 1 to 2 ft.....	1 25	10 00
3 years, 3 to 4 ft.....	2 50	20 00
<b>RUBUS odoratus</b> (Flowering Raspberry)—		
2 to 3 ft. ....	1 00	8 00
<b>SAMBUCUS</b>		
<b>Aurea</b> (Golden Elder). 1 to 2 ft.....	1 25	10 00
2 to 3 ft. ....	1 50	12 00
3 to 4 ft. ....	1 75	16 00
<b>Laciniata.</b> 2 to 3 ft.....	1 25	
<b>SPIREAS—</b>		
<b>In varlety.</b> 2 to 3 ft., according to character and variety .....	1 00	8 00
<b>In variety.</b> 3 to 4 ft. ....	1 25	10 00
<b>Varieties.</b> —Argentea, Arguta, Billardii, Callosa alba, Callosa rosea, Douglassi rosea, Billardii alba, Prunifolia, Reevesii, Salicifolia alba, Salicifolia rosea, Tomentosa, Van Houttei.		
<b>Bumalda.</b> 9 to 15 in. ....	1 00	7 00
15 to 18 in.....	1 25	10 00
<b>Anthony Waterer.</b> 9 to 12 in., fine.....	1 00	
1 to 1½ ft., bushy.....	1 50	12 00
1½ to 2 ft. ....	1 75	15 00
<b>Callosa superba.</b> 1 to 2 ft. ....	1 25	8 00
<b>Opulifolia.</b> 1 to 2 ft.....	75	6 00
2 to 3 ft. ....	1 00	8 00
3 to 4 ft. ....	1 25	10 00
4 to 5 ft. ....	2 00	16 00
<b>Opullifolia aurea.</b> 1 to 2 ft.....	1 00	8 00
2 to 3 ft. ....	1 25	10 00
3 to 5 ft. ....	1 75	15 00
5 to 6 ft. ....	2 50	20 00
<b>Thunbergii.</b> 1 to 2 ft. ....	1 00	8 00
2 to 3 ft. ....	1 50	12 00
<b>SOPHORA Japonica—</b>		
2 to 3 ft. ....	1 50	10 00
3 to 4 ft. ....	1 75	
<b>STAPHYLEA Colchica.</b> 3 to 5 ft.....	1 50	12 00
<b>STEPHANANDRA flexuosa—</b>		
1 to 1½ ft. ....	1 00	8 00
2 to 3 ft. ....	1 25	10 00
<b>STYRAX Japonica—</b>		
1 to 2 ft. ....	1 25	10 00
2 to 3 ft. ....	1 50	12 00
3 to 4 ft. ....	2 50	20 00
<b>SYMPHORICARPUS racemosa</b> (White Snowberry). 2 to 3 ft.....		
3 to 4 ft. ....	1 50	12 00
<b>Rubra</b> (Red Snowberry). 2 to 3 ft.....	1 25	10 00
<b>Variegata</b> (Variegated-Leaved Snowberry). 2 to 3 ft.....	1 25	10 00

<b>TAMARIX</b>	Per 10	100
<b>Africana.</b> 2 to 3 ft.....	\$1 00	\$8 00
3 to 5 ft.....	1 50	12 00
<b>Gallica.</b> 3 to 5 ft.....	1 50	12 00
<b>Germanica.</b> 1 to 2 ft.....	1 00	8 00
3 to 4 ft.....	1 50	12 00
<b>Indica.</b> 1 to 2 ft.....	1 00	8 00
2 to 3 ft.....	1 25	10 00
3 to 5 ft.....	1 50	12 00
<b>Tetandra purpurea.</b> 3 to 4 ft.....	1 50	12 00

**VIBURNUM**

<b>Lantana.</b> 1½ to 2 ft.....	1 00	8 00
2 to 3 ft.....	1 50	12 00
3 to 4 ft.....	1 75	15 00
<b>Opulus Sterilis</b> (Snowball). 2 to 3 ft.....	1 00	8 00
3 to 4 ft.....	1 75	15 00
<b>Opulus</b> (Cranberry Tree). 1 to 1½ ft.....	1 00	8 00
2 to 3 ft.....	1 25	10 00
3 to 4 ft.....	1 75	
5 to 6 ft.....	2 25	
<b>Plicatum</b> (Japan Snowball). 1 to 2 ft.....	1 25	10 00
2 to 3 ft.....	2 00	
3 to 4 ft.....	3 00	
<b>Tomentosum.</b> 1 to 2 ft.....	1 50	12 00
2 to 4 ft., large clumps.....	4 00	

**WEIGELA.** Leading varieties as named.

1 to 2 ft.....	1 00	6 00
2 to 3 ft.....	1 25	8 00
3 to 4 ft.....	1 50	12 00
4 to 6 ft.....	2 50	20 00

**Varieties.** — Amabilis, Candida, Desboisii, Rosea, Hortensis, Rubra Isoline, Symondsii, Variegata, Lavellei, Van Houttei, Stelznerii.



WEIGELA VARIEGATA AT GLENWOOD.



CLEMATIS PANICULATA.

CLIMBERS

	Per 10	100	
<b>ACTINIDIA arguta.</b> 1 year.....	\$1 00	\$8 00	
2 years, very strong.....	1 50	12 00	
3 years, very strong.....	2 00	15 00	
<b>AKEBIA Quinata.</b> 2 years.....	75	5 00	
3 years.....	1 00	6 00	
<b>AMPELOPSIS</b>	Per 10	100	1,000
<b>Engelmannii.</b> 1 year.....	\$1 00	\$6 00	
2 years.....	1 25	8 00	
3 years.....	1 50	10 00	
<b>Variegated-Leaved</b> ( <i>A. variegata</i> ).			
2 years.....	1 00	6 00	
3 years.....	1 25	8 00	
<b>Japan</b> ( <i>A. Veitchii</i> ).			
1 year, pot grown .....	75	6 00	\$50 00
2 years, pot grown .....	1 00	8 00	75 00
<b>Quinquefolia</b> (Virginia Creeper).			
1 year.....	75	5 00	
2 years.....	1 00	7 00	
3 years.....	1 25	8 00	
<b>BIGNONIA</b>			
<b>Radicans</b> (Trumpet Creeper).			
1 year.....	75	6 00	
2 years.....	1 00	8 00	
3 years.....	1 50	10 00	
<b>Grandiflora.</b> 2 years .....	2 50	20 00	
<b>CINNAMON VINE</b> .....	50	4 00	
<b>CLEMATIS —</b>			
<b>Best Large-Flowering Sorts</b> .....	4 00	30 00	
<b>Varieties.</b> —Baron Veillard, Duchess of Edinburgh, General Grant, Gypsy Queen, Henryii, Jackmanni, Miss Bate-man, Ramona, Rubra Grandiflora.			

<b>CLEMATIS paniculata</b> —	Per 10	100	1,000
From 3-in. pots .....	\$0 75	\$5 00	\$35 00
From 4-in. pots .....	1 00	6 00	50 00
2 years, from open ground.....	1 25	7 00	60 00
3 years, strong, from open ground.	1 50	9 00	75 00
<b>CELASTRUS scandens.</b> 2 years.....	1 00	8 00	
<b>HONEYSUCKLE (Lonicera)</b> —			
<b>Brachypoda.</b> Strong .....	1 00	6 00	50 00
<b>Golden-Leaved (L. aurea reticulata).</b>			
1 year.....	1 00	6 00	
2 years.....	1 00	8 00	
<b>Evergreen (L. sinensis).</b> 1 year.....	75	6 00	
2 years.....	1 00	7 00	
<b>Halleanna.</b> 1 year, strong.....	75	5 00	
3 years, very strong.....	1 00	7 00	
<b>Scarlet Trumpet.</b> 1 year.....	1 75	12 00	
2 years.....	2 00	15 00	
<b>IVY</b> —			
<b>Irish.</b> From 4-inch pots .....	2 00	12 00	
2 years.....	1 25	9 00	75 00
<b>English.</b> From 4-inch pots.....	2 00	12 00	
<b>JASMINUM</b>			
<b>Nudiflorum.</b> 1 to 2 ft. ....	1 00	7 00	
2 to 3 ft. ....	1 50	10 00	
<b>Officinalls.</b> 1 to 1½ ft.....	1 00	8 00	
<b>LYCIUM Chinense (Matrimony Vine).</b>			
1½ to 2 ft. ....	75	6 00	
<b>PERIPLOCA Græca (Silk Vine)</b> —			
3 years.....	1 25	10 00	
<b>ROSES</b> —			
<b>Baltimore Belle.</b> 1 year.....	1 50	10 00	
<b>Prairie Queen.</b> 1 year.....	1 00	8 00	
2 years.....	1 25	10 00	
<b>Crimson Rambler.</b> 1 year, strong, from open ground.....	1 50	10 00	
<b>Manda's Triumph.</b> 2 years .....	1 00	8 00	
<b>Pink Roamer.</b> 2 to 3 years.....	1 00	8 00	
<b>Setigera.</b> 2 years.....	1 25	10 00	
<b>South Orange Perfection.</b> 2 and 3 yrs.	1 00	8 00	
<b>Universal Favorite.</b> 2 and 3 years....	1 00	8 00	
<b>Wichuraiana.</b> 1 year.....	75	6 00	50 00
2 and 3 years.....	1 00	7 00	60 00
<b>WISTARIA</b>	Per 10	100	
<b>Magnifica.</b> 2 and 3 years, strong.....	\$2 00	\$15 00	
<b>Sinensis.</b> 2 years, strong.....	2 50	20 00	
3 years, 2 to 3 ft.....	3 00	25 00	
<b>Sinensis alba.</b> 1 year, grafts, 6 to 12 in.....	1 75	12 00	
2 years, strong.....	2 50	20 00	
3 years, 2 to 3 ft.....	3 00	25 00	
<b>Frutescens.</b> 3 years, transplanted.....	1 75	15 00	
<b>Multijuga.</b> 2 years, grafts, strong.....	2 50	20 00	
3 years, 2 to 3 ft.....	3 00	25 00	



EULALIA STRIATA.

## EULALIAS, PAMPAS GRASSES, ETC.

	Per 10	100	1,000
<b>ARUNDA</b> <i>Donax variegata</i> .....	\$3 50	\$25 00	
<b>EULALIA—</b>			
<b>Variegated Striata.</b> Divided clumps.	75	4 00	30 00
<b>Gracillima.</b> Divided clumps.....	1 00	8 00	60 00
<b>PAMPAS GRASS.</b> Strong clumps....	2 50	20 00	

## HIBISCUS

<b>Crimson Eye</b> (Marshmallow). Strong, transplanted plants .....	1 25	10 00	
--	------	-------	--

## VINCAS

<b>Minor.</b> 2 years, strong.....	50	3 00	20 00
------------------------------------	----	------	-------

## IRIS

<b>German,</b> named varieties.....	75	5 00	
<b>Japanese</b> ( <i>I. Kæmpferi</i> ). Good assort- ment .....	1 00	8 00	

# Fruit Department

NOTE.—In filling orders at the prices annexed, we will consult the wishes of customers as far as practicable in the selection of varieties.

<b>PEARS—</b>	Per 10	100	
<b>Standard</b> , leading popular varieties, assorted.			
$\frac{5}{8}$ to $\frac{3}{4}$ in. in diameter, 5 to 6 ft.....	\$2 50	\$20 00	
$\frac{3}{4}$ to $\frac{7}{8}$ in. in diameter, 5 to 7 ft.....	3 00	25 00	
<b>Dwarf</b> , leading popular varieties, 2 and 3 years.			
$3\frac{1}{2}$ to 5 ft. ....	2 00	15 00	
<b>CHERRIES—</b>			
<b>Hearts and Bigarreaus</b> , leading varieties, 2 years, 5 to 7 ft.....	4 00	35 00	
<b>Dukes and Morellos</b> , standard.....			
$4\frac{1}{2}$ to 6 ft., 2 years.....	4 00	35 00	
<b>APRICOTS and NECTARINES—</b>			
<b>Leading varieties</b> .....	2 50	20 00	
<b>Russian, in variety.</b> 4 to 5 ft.....	2 50	20 00	
<b>PEACHES.</b> First-class, 4 to 6 ft.....	1 50	8 00	
<b>PLUMS.</b> On plum stock, 4 to 6 ft.....	3 00	25 00	
<b>QUINCES—</b>			
<b>Orange.</b> 2 to 3 ft.....	1 50	12 00	
3 to 4 ft., extra.....	2 50	20 00	
<b>Champion.</b> 2 years, very fine, branched, $3\frac{1}{2}$ to 4 ft.....	2 50	20 00	
<b>Meech's Prolific.</b> 2 years, first class, 3 to 4 ft.	2 50	20 00	
<b>MULBERRY—</b>			
<b>Downing.</b> 3 to 4 ft.....	1 50	10 00	
4 to 6 ft.....	2 00	15 00	
6 to 7 ft.....	4 00		
<b>New American.</b> 4 to 6 ft.....	2 00		
<b>CHESTNUTS—</b>	Per 10	100	1,000
<b>American.</b> 1 to 2 ft., 2 years.....	\$1 00	\$5 00	40 00
2 to 3 ft., 2 years.....	1 25	10 00	75 00
3 to 4 ft.....	1 75	15 00	
<b>Numbo.</b> Grafted, 2 to 4 ft.....	10 00	80 00	
<b>Japan.</b> Grafted, 3 to 4 ft.....	10 00	80 00	
4 to 6 ft. ....	12 50	100 00	
<b>Paragon.</b> 3 to 4 ft., grafted .....	10 00	80 00	
<b>Dwarf (Chinquapin).</b> 2 to 3 ft .....	2 50		
	Per 10	100	
<b>FILBERTS, English.</b> 4 to 5 ft.....	\$1 75	\$15 00	
5 to 6 ft., bushy.....	2 50	20 00	
6 to 8 ft., bushy.....	4 00		
<b>HICKORY, Shellbark.</b> 2 to 3 ft.....	4 00	35 00	
<b>WALNUTS—</b>			
<b>Black.</b> 4 to 6 ft.....	2 50		
<b>White.</b> 6 to 8 ft.....	3 00		
<b>English.</b> 1 to 2 ft.....	1 00	8 00	
2 to 3 ft.....	1 50	12 00	

## GRAPE-VINES

Our vines are strong, well rooted and fine, and give excellent satisfaction. Special quotations on assorted lists of several varieties, twenty-five or more of a kind, or by the thousand. All 2 years No. 1.

	Per 10	100
<b>Agawam, Clinton</b> .....	\$1 00	\$6 00
<b>Brighton</b> .....	1 25	10 00
<b>Champion, Catawba</b> .....	1 00	6 00
<b>Concord</b> .....	1 00	6 00
<b>Diana, Delaware</b> .....	1 25	10 00
<b>Duchess</b> .....	1 50	12 00
<b>Empire State, Wyoming Red</b> .....	1 25	10 00
<b>Hartford Prolific, Iona</b> .....	1 00	8 00
<b>Isabella, Salem, Martha</b> .....	1 00	8 00
<b>Jefferson</b> .....	1 50	14 00
<b>Lady</b> .....	1 25	10 00
<b>Lady Washington</b> .....	3 00	25 00
<b>Moore's Diamond, Moore's Early</b> .....	1 50	10 00
<b>Niagara, Pocklington</b> .....	1 25	8 00
<b>Telegraph, Vergennes</b> .....	1 25	10 00
<b>Wilder, Worden</b> .....	1 25	8 00

## SMALL FRUITS

<b>RASPBERRIES—</b>	Per 10	100
<b>Golden Queen</b> .....	\$0 75	\$3 50
<b>Cuthbert and Souhegan</b> .....	50	3 00
<b>Gregg</b> .....	50	3 00
<b>Japan Wineberry</b> .....	50	3 00

<b>BLACKBERRIES—</b>		
<b>Erie</b> .....	75	3 00
<b>Kittatinny</b> .....	75	3 00
<b>Rathbun</b> .....	1 00	5 00
<b>Snyder</b> .....	75	3 00
<b>Wilson's Early</b> .....	75	3 00
<b>Wilson's Junior</b> .....	75	3 00

All strong, root-cutting plants.

<b>DEWBERRY, Lucretia</b> .....	75
---------------------------------	----

<b>GOOSEBERRIES —</b>		
<b>Houghton. 2 years</b> .....	1 00	4 00
<b>Downing's. 2 years, very fine</b> .....	1 00	4 00
<b>Industry. 2 and 3 years, strong</b> .....	1 50	12 00
<b>Josselyn</b> .....	2 00	12 00

<b>CURRENTS —</b>	Per 10	100	1,000
<b>Cherry, La Versailles, White Grape, Victoria, and Red Dutch. 2 years, first-class</b> .....	\$0 75	\$4 00	\$35 00
<b>Black Naples</b> .....	75	4 00	35 00
<b>Lee's Prolific</b> .....	1 00	5 00	40 00
<b>Fay's Prolific. 1 year</b> .....	50	4 00	30 00
2 years, extra fine.....	1 00	5 00	40 00



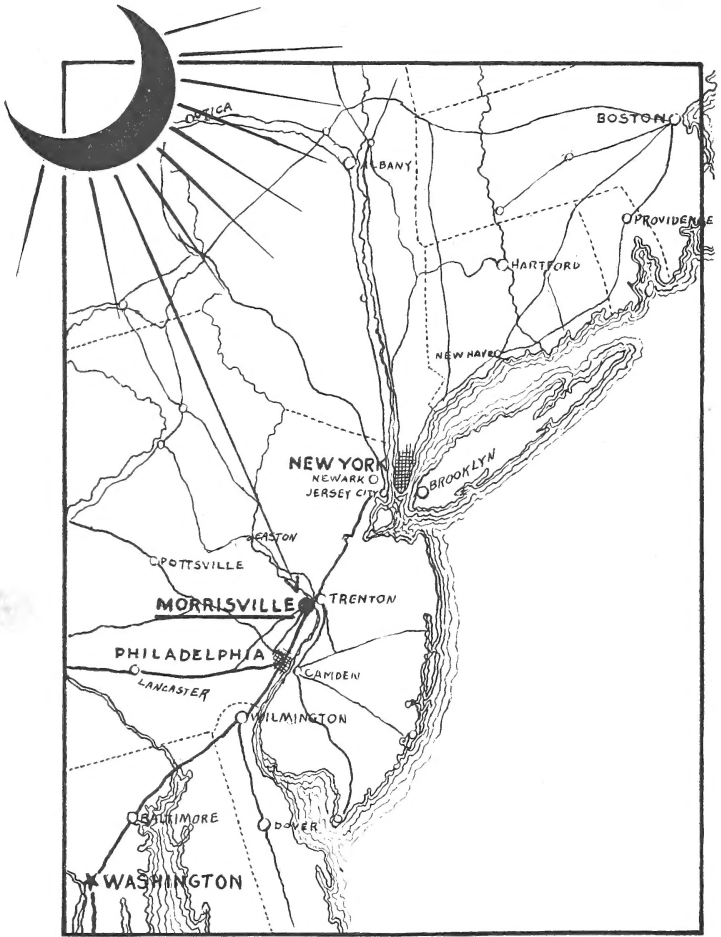
## ESCULENT ROOTS

<b>ASPARAGUS</b> (all strong, fine, 2-year roots, except noted)—		Per 100	1,000
<b>Barr's Mammoth</b> .....		\$0 75	\$3 00
<b>Conover's Colossal</b> .....		75	3 00
<b>Columbian White</b> .....		1 00	3 50
<b>Donald's Elmira</b> .....		1 00	3 50
<b>Palmetto. 1 year, strong</b> .....		75	3 00
<b>RHUBARB, Myatt's Linnæus</b> .....		6 00	45 00



IRIS KÆMPFERI. (See page 28.)

# LOCATION OF GLENWOOD NURSERIES



## The Glenwood Nurseries

are at Morrisville, Pennsylvania, opposite Trenton, N. J., 60 miles from New York, 30 miles from Philadelphia.

Trenton, Morrisville and Yardley trolley cars pass Nursery every hour each way, leaving Yardley on the hour and Calhoun Street Bridge, Trenton, 30 minutes after the hour.