

Historic, Archive Document

Do not assume content reflects current scientific knowledge, policies, or practices.

A No 6 7 1/2

Descriptive List of Peas & Beans

Established 1856

Incorporated 1892

STANDARD and CHOICE
VARIETIES GROWN BY

The

John H Allan
Seed Company

Main Business Office

Three Mile Bay, N. Y.

To which all American
correspondence should
be addressed ☞ ☞ ☞

Western Branch

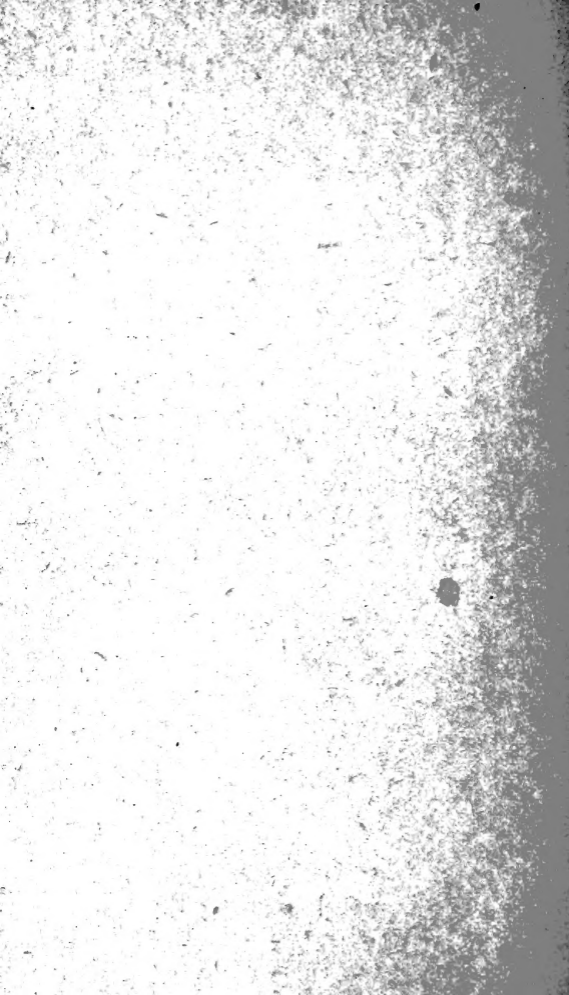
STURGEON BAY, WISCONSIN

Canadian Branch

PICTON, ONTARIO

where all foreign corres-
pondence should be ad-
dressed ☞ ☞ ☞ ☞

: : 1903. : :





Our Method of Doing Business.



We grow peas and beans on contract for the legitimate seed trade. Planting only sufficient seed to produce quantities contracted for, we have in ordinary seasons no surplus to be placed on the market to compete with the stocks of our customers. In case of partial failure of crops we divide our entire product above seed stock reserve, pro rata, among our patrons. By adhering to this practice we respectfully claim a degree of consideration greater than that accorded those houses that are contract growers, jobbers and retailers.

We do nothing to bring our name prominently before the consumer unless so requested by the purchaser, which we gladly do in every instance.

A number stenciled on the bag denotes the variety. Should any customer wish their goods tagged and labelled or marked in any other manner we do so and only withhold our name from general use on bags and labels that we may not seem to introduce ourselves instead of our customers to their trade.

Guaranteeing delivery: This we cannot do, but we guarantee to plant sufficient seed to protect all contracts under ordinary favorable conditions. To guarantee delivery in any instance, in case of short crops, or loss from fire or other causes could only be fulfilled by having a reserve of old seed to draw from, to depend on supplying by purchase of such seed as might be on the market, or by taking the proportion of crop belonging to other customers not guaranteed. We are confident that careful consideration will convince our patrons that this is the only practice that can be maintained with justice to all parties.

While we exercise great care to have all Peas and Beans pure and reliable, it is understood between ourselves and the purchaser of any of our Peas and Beans, that we give no warranty, express or implied, as to description, quality, productiveness or any other matter, and will not be responsible for the crop. If the purchaser does not accept the goods on these terms, they are at once to be returned.

Facilities for Doing Business.

Nearly fifty years' experience and careful study devoted exclusively to the culture and handling of Peas and Beans gives us a breadth of knowledge possessed by but few, and each member of our firm devoting his entire time and undivided attention to the detail of our business gives us unusual facilities for the careful execution of our work.

LOCATION.

One of the most serious problems that confronts the Pea Grower during recent years is to find localities having the proper soil with all the other surrounding conditions necessary to the successful growth and development of seed peas, as some sections, which were a few years ago the most desirable, are now worthless for that purpose, since peas constantly demand fresh soil for their most perfect development and the havoc wrought by the Pea Weevil has completely destroyed the industry in some sections that are altogether desirable in other ways.

Our location at Sturgeon Bay, in the northeastern part of Wisconsin, situated between Lake Michigan and Green Bay, has the best of natural advantages and has proved itself to be one of the most desirable in the United States.

IN CANADA

In Prince Edward and adjoining counties bordering on Lake Ontario, with the country north and west from there bordering the chain of small lakes lying to the eastward from Georgian Bay are to be found a combination of soil, location and climate that is unsurpassed.

FIELDS AND TRIAL GROUNDS.

Our trial grounds contain standard sorts and novelties produced in various parts of the world, the comparison of which is always of interest, and we always welcome our customers during the proper season to inspect our stocks while growing in the field.

HARDINESS AND VITALITY.

European buyers will find our stocks of stronger vitality than those produced in the Old Country and while the hot, bright sun during the time of ripening often prevents securing the deep green color prized abroad, and while our Peas are sometimes bleached and whitened, their high vitality makes them fully as desirable to the party planting them.

OLD VARIETIES DISCARDED.

The trade is continually looking for better things. Sorts that in their day did good service are now replaced by more perfect and improved types: Philadelphia Extra Early, Caractacus, Daniel O'Rourke being replaced by the earlier and more perfect types, Allan's Sunol, Maud S. and Dexter. Kentish Invicta by Alaska. Alpha by Eclipse and Surprise and so on through the list.

Allan's Sunol, Gradus, Surprise, Nott's Excelsior, Allan's Dwarf Telephone, Allan's Improved Telephone, Allan's Improved Telegraph, and last but best of all, Allan's Admiral Dewey.

EXTRA EARLY PEAS.

While the growing of a few sorts of Peas that are fixed in habit with no special requirement regarding earliness or uniformity is a fairly simple matter that can be readily conducted with a moderate degree of success, to develop and maintain a strain of extra earlies that shall always stand at the head of the list requires years of careful study and application with the most thorough and painstaking care, and having for nearly fifty years given much study to the growth and improvement of this class we take pride in calling attention to the three strains, Sunol, Maud S., and Early Dexter, which have respectively maintained their place at the head of the list of first early Peas in earliness, productiveness, uniformity in growth and ripening, great vigor and vitality, with ability to withstand cold and frost.

✓ ALLAN'S SUNOL.—Introduced in 1893, the result of many years' careful propagation by Mr. Allan according to a system entirely his own: for earliness, productiveness, uniformity and purity without a rival. Vines vigorous, sometimes throwing laterals from the base of the stalk bearing four to seven pods, of good size and shape, containing five to six Peas of good flavor. Seed light cream color, slightly dented and pitted; height, 2½ ft.

ALLAN'S MAUD S.—An improvement on Early Dexter; from which it was obtained by hybridization and careful selection by Mr. Allan's special method of culture, possessing an extraordinary degree of vitality, having matured a full crop in some sections where severe frosts had ruined other sorts, thus proving extremely valuable for market gardeners in the Southern States who plant for early market at a season when frosts frequently occur after growth has begun. Undoubtedly the most popular first early Pea for market gardeners yet introduced. Seed round, light cream color, slightly dented; height two and one-half feet, bearing abundantly, large straight pods filled with Peas of superior flavor.

ALLAN'S EARLY DEXTER.—The standard extra early Pea for ordinary use. Early, productive, hardy and vigorous, in general use by market gardeners throughout America for the past twenty years, having proved to be very conservative and reliable in its habits. Long, large, full pods, a general favorite; height $2\frac{1}{2}$ feet; seed round, light cream color.

RURAL NEW YORKER.—An extra early of great productiveness and vigor of growth; height $2\frac{1}{2}$ to 3 feet; seed round, light cream color.

FIRST & BEST.—A fairly productive extra early, not quite so robust and vigorous as Rural New Yorker, nor so uniform in growth, but quite popular in some localities. Height $2\frac{1}{2}$ feet; seed round, light cream color.

ALASKA.—The finest blue seeded extra early Pea known to the trade. The dark green color of the pods renders it very desirable for transporting long distances, there-

fore proving a popular sort with canners and gardeners sending pods to distant markets. Very early, uniform in growth, almost entirely free from sports or runners. First-class in every respect. Seed round, blue slightly pitted. Height 2½ feet.

○ EARLIEST OF ALL.—Almost identical with Alaska, and while fully as early it is more inclined to sport. This is known in some foreign localities by the name of Express. Seed and habit same as Alaska.

○ ECLIPSE.—The name "Eclipse" is frequently applied to the Alaska Pea in Great Britain and France.

EXTRA EARLY PEAS.

WRINKLED VARIETIES.

During the past few years much care has been expended to produce a Pea which shall not only be as early as any but at the same time having the tender quality and delicious flavor of the wrinkled varieties. Laxton's Alpha, while perfect in quality, was not as early as some. This has been overcome in the new Peas, Surprise and Eclipse, which are not only as early as any, but have the delicious flavor of wrinkled varieties, while in Gradus we have the unlooked for result of a large wrinkled Pea, with pods like Telephone, ripening with Extra Earlies.

○ GRADUS.—The most attractive novelty of recent years, large, handsome pods resembling Telephone in size and shape, well filled with large Peas, ripening with the earliest, is certain to be eagerly sought. Ripening very quickly the pods must be picked as soon as fit for the table. Habit vigorous, very

quick to germinate and push to maturity; foliage large, pale green in color; pods long, straight, slightly rounded at the point, seed large, wrinkled, cream color tinged with green. Height, three feet.

SURPRISE.—Introduced in 1897 by James J. H. Gregory and seems worthy of his high opinion of its merits. Resembling in vine, size and shape of the pod, and ripening with Maud S. and Alaska, having the tender quality and delicate flavor of Alpha and other first-class wrinkled sorts, is sure to be in great demand as soon as generally distributed and its merits thoroughly known. Seed small, green, wrinkled. Height two feet.

ECLIPSE.—Sometimes known as Cleveland's Eclipse. If not identical with Surprise, so closely resembling it that a different description cannot be given.

LAXTON'S ALPHA.—An old and highly prized sort particularly for the tender and luscious quality of the peas, which for delicacy of flavor are unsurpassed. While showing a strong tendency to sport and causing much dissatisfaction on that account, we have secured at great expense a limited quantity of selected seed stock which we can recommend with greatest confidence. Second early, seed small, light green, wrinkled. Height three feet.

THOMAS LAXTON.—Resembling Gradus very closely in habit and rapidity of growth, earliness and luxuriance of foliage, large pods of elegant shape filled with large peas, tender and of fine flavor. While the pod of Gradus is rounded or curved at the point, the pod of Thomas Laxton has a blunt point of the Ne Plus Ultra type, and like all peas with this type of pod, it is a good filler; pods

filled with peas clear to the end, and consequently a better yielder than a pea with pods rounded at the end. Season early, ripening with the earliest; pods large, long, straight, blunt at the point, seed large, wrinkled, cream color tinged with green. Height three feet.

DWARF EARLY PEAS.

✓ **NOTT'S EXCELSIOR.**—Resembling in habit Carter's Premium Gem, but more dwarf and uniform in growth, height midway between American Wonder and Premium Gem. Being more uniform, productive and earlier than either, it is far more desirable, as the Peas possess the same tender quality and delicate flavor, while the pods are larger and better filled. This Pea well deserves the extensive sale which it now has, which is certain to greatly increase. Seed green, wrinkled, square at the ends like American Wonder. Height twelve inches.

✓ **SUTTON'S EXCELSIOR.**—Since the introduction of Nott's Excelsior, which is today probably the most popular dwarf wrinkled sort in America, we have seen no pea that is so great an advance in this class as Sutton's Excelsior. Same habit of growth as Nott's Excelsior, bearing very large, long, broad pods, filled with large peas, tender and of most delicious flavor. Its great merit lies in the fact that in this we have an early dwarf wrinkled Pea, in the front rank for earliness with much larger, handsomer pods than any other dwarf early wrinkled Pea yet introduced. It takes the place in this class, so acceptably filled by Stratagem and Telephone in later sorts and by Gradus in the extra early class and is bound to be in great demand when fully known. Pods long, broad, straight, seed very pale green, wrinkled. Height twelve inches.

AMERICAN WONDER.—Vigorous, productive, with dark, luxuriant foliage having the peculiar habit of producing the leaves on one side of the stalk, responding generously to high culture, very desirable and popular for private gardens. Seed green, wrinkled. Height ten inches.

TOM THUMB.—An improvement on Beck's Gem, an old and well known sort, being more dwarf in habit and more desirable for garden culture. Early and prolific, although the Peas are of good quality for the table; seed small; round, white. Height ten inches.

M'LEAN'S BLUE PETER.—Hardy, uniform, robust and fairly productive, pods broad, slightly flattened, borne at the top of the vines. Peas of good flavor. Seed round, blue, slightly flattened, dented. Height ten inches.

✓ **WILLIAM HURST.**—Quite popular in England as it surely will be in America when thoroughly known. Resembling somewhat American Wonder in habit, but more straggling and uneven in growth, more hardy and vigorous and more productive, bearing in profusion long, curved, handsome pods well filled with Peas of fine flavor. Seed light green, wrinkled. Height 12 inches.

✓ **CARTER'S PREMIUM GEM.**—Probably no Pea of this class has been more universally and deservedly popular in America. Hardy, prolific, uniform in habit of growth, pods borne singly on both sides of the stalks beginning near the ground, peas of the finest flavor. About a week later than American Wonder; seed green, wrinkled. Height fourteen inches.

✓ M'LEAN'S LITTLE GEM.—Similar to Premium Gem but more straggling in growth, pods not so well filled, seed light green, wrinkled. Height eighteen inches.

○ ENGLISH WONDER.—A dwarf second early variety, vigorous and uniform in growth, bearing in profusion, slightly curved pods, broader and larger than American Wonder, well filled with Peas of extra good flavor. Week to ten days later than American Wonder, a most desirable dwarf wrinkled sort to follow after Excelsior and American Wonder, much more productive than either, fully their equal for the table and which we confidently recommend; seed light green, wrinkled and often squared at the ends. Height, twelve inches.

Half Dwarf Medium and Late Sorts.

✓ ALLAN'S DWARF TELEPHONE.—Having for a long time realized the value of a Pea with dwarf vines bearing large handsome pods with peas of highest quality without the long vines of the Telephone, more dwarf than the Stratagem, and what is most important of all, regular and uniform in growth, without the tendency to sport that has caused so much annoyance and loss to those who have grown the Stratagem, we have for years been breeding up a Pea that will fill the above requirements and now offer under the name of Allan's Dwarf Telephone. This Pea was obtained during the season of 1888, being the result of a cross of Stratagem on Telephone in the hands of one of the most careful and successful propagators in the United States. Being brought to our notice soon after its production we watched it with greatest interest until it came into our possession when

very small in quantity and finally, when less than ten bushels, we purchased all there was of this Pea. Height: under high culture eighteen inches. Habit: dwarf, stocky, healthy and vigorous, remarkably uniform in height with almost no tendency to sport, very productive, plants frequently bearing from five to seven pods. Season: medium, from five to seven days earlier than Strata-gem. Pods; long, frequently five inches in length, broad, straight, rounded or curved at the end, remarkably well filled, often containing ten Peas; color, pale green, thick and of good lasting quality for market purposes. Seed of largest size, tender and of delicious flavor when fit for the table, light green and much shrivelled and shrunken when dry. From the unusually tender and delicate texture of the Pea, it does not when ripened present that handsome appearance of those sorts that have a firmer texture and tougher skin. The shrivelled and damaged appearance of the ripened seed which might condemn it, is caused by the tenderness that is of paramount importance in a first-class pea for the table. Our expectations regarding the demand for this pea, have been more than realized and we have been obliged to turn away many large orders.

✓ **M'LEAN'S ADVANCER.**—A great favorite and largely used by market gardeners, as the large handsome well filled pods containing Peas of finest quality for table use, and being borne at the top of the stalk, are easily gathered; very vigorous in growth; height two feet; seed green, very much wrinkled, about one week later than Premium Gem. Our strain is remarkably pure and desirable. Very popular in some sections with canners.

U HORSFORD'S MARKET GARDEN.—Resembling in habit of growth Premium Gem, one-third longer, ten days later. Pods produced in pairs in great profusion but not so well filled with Peas as either Gems or Advancers. Much used by canners to succeed Advancers. Height twenty inches; seed green, wrinkled.

ABUNDANCE.—Vigorous in growth, producing pods in great abundance, hence its name; well filled with Peas of fair quality quite similar in appearance to Market Garden. Height twenty inches; seed green, wrinkled.

HEROINE.—Introduced by Messrs. Peter Henderson & Co., of New York, and in every way worthy the great popularity it has already attained. Elegant habit of growth, luxuriant foliage, pods remarkably long and handsome, slightly curved, well filled with large luscious Peas of fine flavor, a gem of the first water, apparently as good as Stratagem for all purposes, while far superior to that variety in habit, as it is remarkably true and fixed in its habits of growth. Height two feet, seed green and very much wrinkled.

○ CARTER'S STRATAGEM.—Vigorous habit, luxuriant foliage; with good culture a heavy cropper, height two feet, seed large, green, wrinkled. A great favorite not only in private gardens, but with market gardeners also, as the large handsome pods, combined with the excellent quality of the Peas, make it one of the most desirable sorts heretofore known, when a pure stock can be obtained, but the tendency to sport is so strong that the annoyance and discouragement caused thereby have nearly counterbalanced its good qualities. We have for a number of

years, at great expense, been working up a stock, which we think is equal to any strain of improved Stratagems on the market, although the inherent tendency to sport will continually develop; seed green very large, much wrinkled. Height twenty inches.

✓ **PRINCE OF WALES.**—A long known standard and popular sort particularly in England. Hardy, vigorous and upright in habit, pods produced abundantly in pairs near the top of the vine. Flavor of Peas of first quality, which is true of nearly all white wrinkled varieties. Height $2\frac{1}{2}$ feet; seed light cream color, wrinkled, flattened.

✓ **CARTER'S DAISY.**—A most excellent variety producing large, long, handsome pods well filled with large tender Peas of fine flavor. Height eighteen inches, seed light green wrinkled, very similar to Allan's dwarf Telephone.

✓ **CARTER'S PRIDE OF THE MARKET.**—Habit of growth and general appearance both of vine and pod closely resemble Stratagem, only deeper green in color and quality of Peas not so fine. While we think our stock of this Pea will compare favorably with any offered, it can but be a source of disappointment to both seller and grower on account of strong tendency to sport, and uncertain productiveness, and to the consumer on account of the poor quality and flavor of the Peas when cooked, and is sure to go out of use as soon as better sorts already introduced are generally known; seed blue, slightly dented. Height eighteen inches.

EVERBEARING.—Vigorous and branching in habit of growth, season late, pods of fair size, Peas large and of good quality. Height two feet; seed green, wrinkled, flattened.

YORKSHIRE HERO.—As thoroughly well known probably as any variety, and justly prized for its genuine worth. Hardy, productive, upright in growth, broad, short pods borne near the top of the stalk. Pea large and of good quality. Season late. Height $2\frac{1}{2}$ feet; seed large, green, wrinkled, flattened.

SHROPSHIRE HERO.—A recent introduction and a great improvement on Yorkshire Hero, bearing in greater abundance large, handsome pods, much longer and better filled with Peas which are fully as fine in flavor, rendering it more desirable, and we can recommend this Pea as a most valuable acquisition, and soon as it is more generally known our customers endorse our opinion. Height $2\frac{1}{2}$ feet; seed green, very much wrinkled.

DR. M'LEAN.—An old and much esteemed sort throughout the United Kingdom, being of branching, vigorous habit, bearing in abundance near the top of the vine, broad pods of medium length containing Peas of good flavor. Height $2\frac{1}{2}$ feet, seed green, wrinkled.

SHARPE'S QUEEN.—One of the most desirable of the late varieties that have been recently introduced, coming in after the Heroine is gone. Of vigorous branching habit it needs to be sown thinly. Pods long, slightly

curved, well filled with large Peas of most delicious flavor. Its beauty, productiveness, and fine quality combined are sure to make it exceedingly popular wherever used. Height 2½ feet, seed large, dark green, wrinkled.

JUNO.—Robust vigorous vine, two feet high, pods straight of medium size, frequently borne in pairs, well filled, with deep green, large Peas of fine flavor. This Pea and Sharpe's Queen, both of recent English origin, are of first-class merit possessing the rich flavor with the deep green color so much prized, seed green, tinged with straw color. Height twenty inches to two feet.

✓ FILLBASKET.—Hardy, prolific, upright and branching in habit, dark green foliage and pods well filled with medium sized Peas. Season medium, and when generally known in the United States, the demand will be extensive from those who require a moderate priced productive Pea for main crop, with abundance of well-shaped pods, well-filled. Peas of fair quality. Height 2½ feet; seed small, round, green.

✓ DWARF BLUE IMPERIAL.—An old and well known sort. While producing large Peas of fair quality its place has been largely filled by wrinkled varieties which are sweeter and more tender. Height thirty inches, seed smooth, blue, somewhat flattened.

(. HARRISON'S GLORY.—Resembling Blue Imperial in appearance and habit of growth, but more uniform and undoubtedly an improvement on that well known sort, seed pale blue, smooth, flattened. Height thirty inches.

Tall Growing, Medium and Late Sorts.

✓ ALLAN'S ADMIRAL DEWEY.—During the season of 1894 while watching the growth of a small sample of a new and most desirable Pea sent us from Carlisle, England, we found a few vines entirely different from the main crop, and entirely distinct from any pea we had ever seen. These few vines were carefully removed, and succeeding crops have shown them to be remarkably uniform and distinct. This is without exception the largest podded pea of which we have any knowledge, and when to this is added heavy cropping and highest quality it can readily be seen that it stands at the head of its class. Height three and one-half feet, foliage, vine and pod rich dark green, remarkably healthy and vigorous, producing in abundance pods of largest size, frequently six inches in length, beautifully shaped, well filled with peas of largest size, tender and first class flavor, seed green, wrinkled. Undoubtedly the best of all the class of long vine, large podded peas. Height 3½ feet, seed large, green, wrinkled.

✓ ALLAN'S IMPROVED TELEPHONE.—A great improvement on Carter's Telephone, having larger, longer pods, well filled with large peas of equal quality and flavor. Its greatest comparative merit consists in the fact that while Carter's Telephone has strong tendency to sport, and a true stock is not easy to find, Allan's Improved Telephone is remarkably constant and true. Height three feet, seed large, green, wrinkled.

○ ADMIRAL.—Season medium, bearing in great profusion, pods about the size and shape of Maud S., but more closely packed with peas of excellent flavor. The small size and fine flavor of the pea, coupled with its

great productiveness will undoubtedly cause it to be a desirable sort for canners as well as market gardeners. Height 3 to 3½ feet; seed small, cream colored, wrinkled.

FRENCH CANNER.—A popular and desirable sort for canners. Strong growing, hardy and productive, long, round, slightly curved pods, closely packed with small peas of good flavor. Season medium late. Height 3½ feet; seed very small, round, white.

SCIMITER CANNER.—Vigorous, hardy and prolific, bearing broad curved pods near the top of the vine, the pods curved in reverse manner to that usually seen, being in shape of a scimiter, hence the name. Seed smooth, round, medium size, light cream color, quality good and a desirable sort.

AMERICAN CHAMPION.—A large podded tall growing pea of high quality resembling the Telephone. Height 3½ feet; seed light green, wrinkled.

DUKE OF YORK.—A great advance by way of earliness in that class to which Telephone and Duke of Albany belong. Being a week or ten days earlier, and of much dwarfier habit, having the same large handsome pods and superior quality and flavor of the peas, it is by far the most valuable and desirable of its class, barring its strong tendency to sport, but on account of its strong and untamable tendency to sport we do not recommend its use. Height 2½ feet; seed light green, wrinkled.

CARTER'S TELEPHONE.—Vines and leaves large and coarse, large, light green pods nearly straight, produced singly, well filled with large tender peas, sweet, and of

fairly good flavor. The fine appearance of the pods with the acceptable quality of the peas have made it deservedly popular, the only drawback being its tendency to sport which adds largely to the cost of cultivation. Height $3\frac{1}{2}$ feet; seed light green, very much wrinkled.

✓ **DUKE OF ALBANY.**—Resembling Telephone in appearance but far more desirable in every way. Vine more dwarf, while the pods are larger and produced in greater abundance, which combined make it a most desirable acquisition. This pea still shows a strong tendency to sport but we are hopeful that thorough roguing will tend to eradicate it. Height $2\frac{1}{2}$ to 3 feet; seed light green, very much wrinkled.

○ **CULVERWELL'S TELEGRAPH.**—Resembling in all respects as to vine, leaf and pod the Telephone, except that they are a deeper shade of green, and more hardy and productive. Peas of indifferent quality. A favorite with market gardeners on account of the fine appearance of the pods when in the basket. Height $3\frac{1}{2}$ feet; dark green, round, dented.

✓ **ALLAN'S IMPROVED TELEGRAPH.**—Quite similar to Culverwell's Telegraph, pods a little broader, seed beautiful green, but slightly dented. Height $3\frac{1}{2}$ feet. Its great merit consists in its uniformity of habit, being a great improvement over Culverwell's Telegraph in this respect.

✓ **LONG ISLAND MAMMOTH.**—Very popular with market gardeners in some sections who want a large handsome pod of deep green color, carrying well, with peas of indifferent quality. Height 3 feet; season medium, seed dark green, dented.

CHAMPION OF ENGLAND.—An old and favorite sort with all those who are fond of a large, tender, sweet, luscious pea, hardy and rampant in growth, producing a fair amount of large, broad pods containing five to seven peas. Height 4 feet; seed light green, very much wrinkled.

FORTY FOLD.—An improved Champion of England. Not quite so rampant in growth, with pods larger, longer and better filled. Height $3\frac{1}{2}$ feet; seed light green, very much wrinkled.

BRITISH QUEEN.—One of the oldest and best known sorts, but on account of its rampant growth best adapted for heavy, rather stiff soil. Pods borne near the top of the vine, hardy and on proper soil fairly productive. Height 5 to 6 feet; seed large, cream color, wrinkled.

NE PLUS ULTRA.—One of the oldest standard sorts. Much prized in England on account of the deep green color and rich flavor of the peas when cooked. On account of the length of vine it is not so popular in the United States. Pods medium length, broad, straight, blunt at the point. Height 5 feet; seed large, pale green tinged with cream color, wrinkled.

DWARF WHITE MARROWFAT.—Hardy, strong and vigorous, broad, thick, leathery pods, borne near the top of the vine containing four to five large peas of good substance and flavor, but not so sweet as wrinkled sorts; for many years used in immense quantities by canners, but now largely replaced by sorts producing smaller sized peas more sugary and of finer flavor. Seed large, round, white, slightly oval; height $3\frac{1}{2}$ feet.

6 BLACK EYE MARROWFAT. — While growing resembling closely the preceding, but the matured seed having distinct black eye.

4 IMPROVED SUGAR MARROW.—Entirely distinct from the old and well-known White Marrowfat, and far more desirable in every way. Pods much longer and of most beautiful shape, well filled with peas of the true Marrow flavor, while the smaller size makes them far more desirable for canning, and a far better cropper. Height $3\frac{1}{2}$ to 4 feet; seed small, white, slightly pitted or dented. A most desirable and valuable addition to this class.

Cannus Flavor?

Glow.

BEANS.

From the quality of stock we have sent out we can safely say that for color, size and perfection of sample as well as purity no finer goods are produced on this continent. And far superior in hardiness, vitality, and long keeping quality to those produced in districts farther south.

We grow only standard sorts of early maturing habit, that can be grown to perfection in this climate.

Wax Beans.

✓ **ALLAN'S IMPERIAL WAX.**—One of the finest wax beans now before the public, and is the result of several years' careful culture. Pods long, broad and straight; of beautiful waxy color with fine texture and flavor. Vigorous, upright growth, pods borne well up from the ground, season medium early. We have in this the large, handsome pod so much admired in the flageolet class, combined with a vine that is vigorous and healthy, showing with us no sign of rust. Pods should be picked when young and tender, as they quickly grow tough by remaining too long on the vines. Seed white splashed with chocolate brown, differing in marking from Golden Wax or any other variety.

✓ **NEW WHITE SEEDED STRINGLESS ROUND POD WAX.**—A new departure in white seeded wax beans, early, dwarf, bearing in great profusion round white waxy pods of first-class quality almost entirely stringless at all stages of growth and so far as we have yet known it, rust proof. A most desirable and promising variety.

DAVIS WAX.—Introduced by D. M. Ferry & Co. Long, straight, white wax-like pods borne in great profusion, and when gathered while young are tender and of good quality. Seed white, kidney shaped.

CURRIE'S RUST PROOF.—Years' observation and experience only confirms our previous high opinion of its merits and it justly belongs at the head of the list for earliness, productiveness, freedom from blight or rust, and all around good points. Pods long, flat, tender and fine quality, seed larger than Black Wax, purplish or brownish black.

KEENEY'S RUSTLESS GOLD WAX.—A strong growing variety throwing out tendrils or runners, setting the first pods early, near the base of the stalk while pushing out buds at the top of the vine—thus producing great numbers of pods maturing in succession over a long period, almost entirely free from rust, pods flat, yellow, of good quality. Seed somewhat similar to Golden Wax.

GRENELL'S IMPROVED GOLD WAX.—Early, prolific, pods not so long as the well-known Gold Wax and not turning to a golden wax color quite so young, but borne in greater profusion. Pods nearly straight, flat. Seed smaller than the old stock Gold Wax, but similarly marked, only the white portion is larger and more distinct.

GOLDEN WAX.—Old strain. Early, productive, pods flat, straight, golden in color, tender, of fine quality. In localities not liable to rust it is preferred by some to Grenell's Improved strain as the pods are larger and longer.

GOLDEN EYE WAX.—Early, remarkably strong, vigorous and productive. Vines and

leaves large and coarse. Pods long, straight, flat, of fine appearance but coarse in texture and poor in quality. Seed white, blotched with yellow.

KIDNEY WAX.—Early and productive if on suitable soil but very susceptible to blight if all surroundings are not favorable; upright in growth, pods long, broad, flat, and of good quality. Seed kidney shaped, blotched and splashed with purplish brown on the under side.

ROUND PODDED KIDNEY WAX.—A great improvement over Wardwell's Kidney Wax as it has a true round pod of fully as good quality, while the flat pod of Kidney Wax has always been an objection. If it proves to be more hardy and vigorous it will be a most desirable sort.

DWARF BLACK WAX, CHALLENGE STRAIN.—Early, remarkably productive. Pods round, curved, meaty and remarkably tender and delicate in flavor. For quality it is unsurpassed by any of the newer sorts. Seed small, glossy, black.

PROLIFIC BLACK WAX.—Vines medium, vigorous and healthy, pods round, thick, meaty, of waxy white color and good quality, seed small oblong, black. A great improvement on the original type of black wax.

PENCIL POD BLACK WAX.—Here we have a black wax with small round long pod of most delicious quality. Later than Challenge, more spreading in habit and very productive. An excellent strain.

REFUGEE WAX.—Early, prolific, round, tender, waxy, pods approaching Black Wax in quality, seed resembling Extra Early Refugee, from which it sported.

DETROIT WAX.—Early, hardy and bearing in great profusion, long, flat pods of fine waxy color, but of only fair quality.

VALENTINE WAX.—A selection from Red Valentine being the same round meaty pods but of a beautiful waxen color. A most excellent sort, very productive.

Green Podded Varieties.

HOPKINS' IMPROVED VALENTINE.—Hardy and vigorous, upright in growth, pods being held well up from the ground, early and remarkably uniform in ripening, making it very desirable for market gardeners as a large proportion of the pods can be secured at one gathering. Pods round thick and solid, tender and of fine flavor. We find this to be the earliest of any strain we have ever tested, and more uniform in habit and ripening, with almost entire absence of flat pods, and we offer it to the most critical trade with entire confidence.

RED VALENTINE.—Similar to the preceding but not quite so uniform in growth.

BURPEE'S STRINGLESS GREEN POD.—We have in this variety a bean that is early; bearing thick, meaty, straight green pods, crisp, tender and stringless. Sure to have large sale as soon as distributed.

LONGFELLOW.—A recent introduction, very vigorous in growth, bearing in great profusion extra long pods, solid and of good substance.

JOHNSON & STOKES GIANT PODDED VALENTINE.—Robust in habit, bearing in great profusion long large pods of only fair quality.

WARREN BUSH.—Vigorous and upright in growth, producing broad, flat pods that are tender and of good flavor. Highly prized wherever introduced and we recommend it. Seed large, oval, thick, purplish brown.

LOW'S CHAMPION.—Upright in growth, bearing broad, straight pods of good quality.

EARLY MOHAWK.—One of the oldest and best known sorts. Hardest of any, even resisting a slight degree of frost successfully, leaves and vine large, coarse and straggling, early and very prolific. Pods long, nearly straight, broad and flat, of medium quality.

LONG YELLOW SIX WEEKS.—Early, upright in growth, having in profusion long, flat pods, of fair quality if gathered when young.

BOUNTIFUL.—A most desirable green podded bean. One of the earliest, bearing in great profusion handsome pods of good quality and flavor and stringless. It could well be called a stringless Six Weeks.

EXTRA EARLY OR IMPROVED REFUGEE.—This is a great improvement on the old and well-known Refugee as it is a long way earlier, being fit to pick nearly as early as Six Weeks. More dwarf and compact in growth, while the pods are round, solid and tender of the most excellent quality when cooked for table use or for canning or pickling.

LATE REFUGEE.—The old and well-known variety which we have listed as Late Refugee in distinction from Extra Early Ref-

ugee. Vines large spreading, bearing quite late abundance of long cylindrical, whitish green pods, tender and much prized for canning and pickling. Seed long, slender, drab, splashed with purple.

DWARF HORTICULTURAL.—Used as a shell bean and for this purpose, this and its companion, Horticultural Pole, are the finest in general use and long a favorite with all those who use a shelled bean in the green state. Straggling habit of growth, inclined to throw out tendrils or runners, pods beautifully blotched and streaked with carmine.

GODDARD OR BOSTON FAVORITE.—Resembling Horticultural in habit of growth and coloring of pod except that the vine is coarser and ranker in growth with larger pods and is used for the same purpose.

CHINA RED EYE.—One of the oldest and best known of the green podded varieties. Early, hardy, productive, pods straight, flat, and when picked young, of good quality.

BEST OF ALL.—Of vigorous branching habit, on suitable soils very prolific, long, half round, showy pods, green, sometimes dashed with red, a profitable and popular sort throughout the south. Season medium. Seed cream color, splashed and streaked with dull red.

CANADIAN WONDER.—A sort having most extended use in Great Britain, stocky and upright in growth, foliage large, dark green and healthy, producing abundance of long, broad, flat green pods. Seed large, slightly flattened, deep glossy crimson.

EARLY WARWICK.—One of the earliest sorts we have ever tested, dwarf and uniform in habit, pods flat, and of good quality when picked young. Seed deep crimson splashed with lighter color. Remarkably early and prolific.

Pole Beans.

HORTICULTURAL POLE.—A pole or running variety of the Horticultural bean, seed similarly marked but slightly rounded or oval in shape.

WORCESTER, HAMPDEN OR CARMINE PODDED POLE.—A selection and improvement on Horticultural pole producing larger pods beautifully splashed with carmine, and larger seed of good flavor and tender, very strong in growth with decided tendency to sport.

HORTICULTURAL LIMA.—A cross between the two beans bearing its name combining in a degree the good points of each of its parents when cooked, and distancing all other pole beans in point of earliness, ripening with the dwarf varieties. Of unquestionable merit, and we do not hesitate to recommend it, as the beans when cooked are of such fine quality as to establish their reputation wherever introduced.

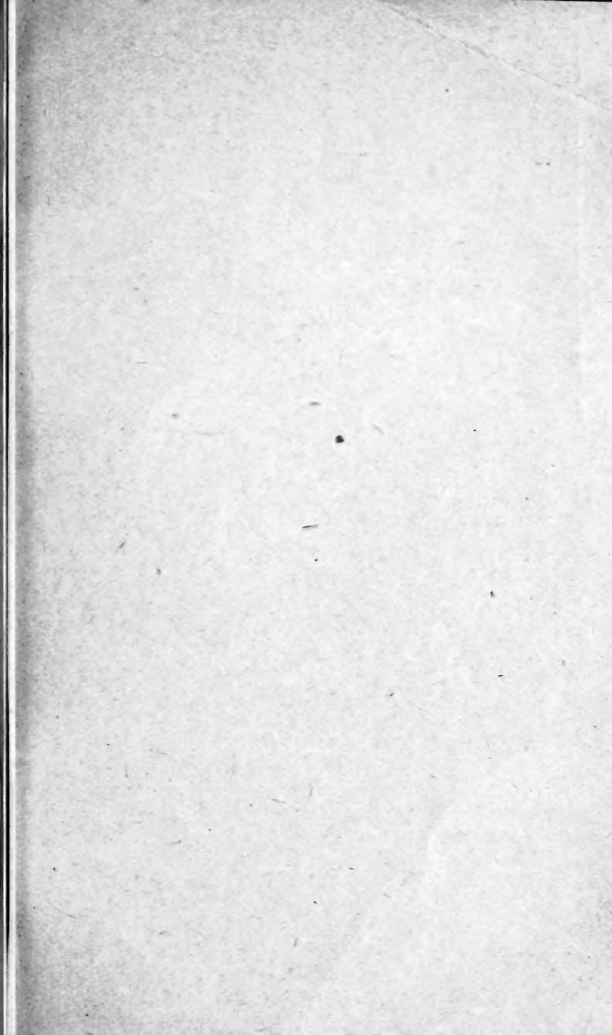
KENTUCKY WONDER OR OLD HOMESTEAD.—One of the earliest pole beans, bearing in clusters great quantities of light green pods, large, tender and good flavor, seed medium size, light chocolate with darker eyes.

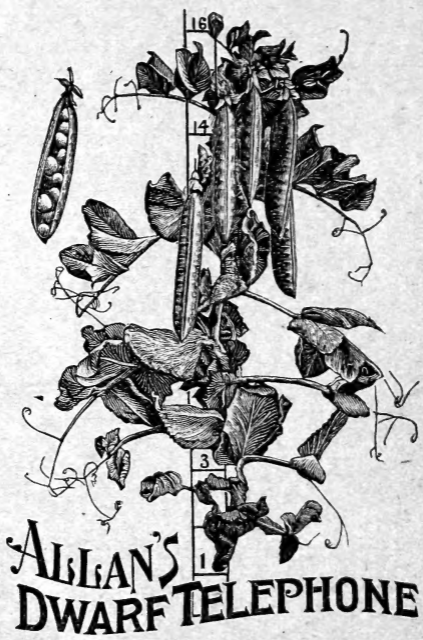
SCARLET RUNNER.—The old and ever popular flowering bean. Rampant in growth forming a most delightful covering for trellis or screen, with clean healthy foliage and bright scarlet blossoms, bearing tough leathery pods containing seeds of immense size of rich flavor when cooked.

WHITE RUNNER.—Similar in every way to Scarlet Runner except in color of blossom and seed which are white.









ALLAN'S
DWARF TELEPHONE