

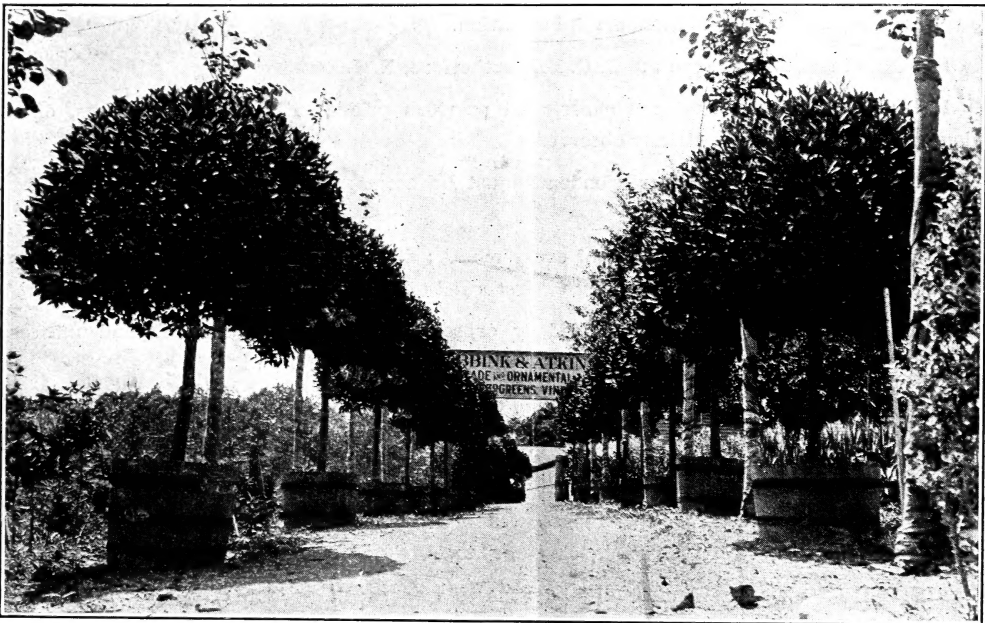
Historic, Archive Document

Do not assume content reflects current scientific knowledge, policies, or practices.

B. & A. SPECIALTIES

SPRING, 1903

HARDY RHODODENDRONS AND AZALEAS; ROSES, H. P., TEA AND OTHER KINDS; BOXWOOD, EVERGREENS AND CONIFERS; HARDY FLOWERING SHRUBS; SHADE AND FRUIT TREES; HERBACEOUS PLANTS AND ORNAMENTAL GRASSES; HARDY VINES AND CLIMBERS; SPRING, SUMMER AND AUTUMN FLOWERING BULBS; CALIFORNIA PRIVET; BAY TREES, PALMS, FERNS AND OTHER DECORATIVE STOCK. :: :: :: :: ::



Entrance to Nurseries

Wholesale Catalogue

BOBBINK & ATKINS

Importers, Wholesale Florists and Nurserymen

TELEPHONE CALL, 70 RUTHERFORD
NURSERIES, CARLTON HILL, N. J.

RUTHERFORD, N. J.

INTRODUCTION



We take pleasure in presenting to you our Catalogue for the Spring of 1903, and thank our friends and patrons for their generous support and complimentary letters received during past season.

Our range of greenhouses and storehouses now covers 100,000 square feet, and our nurseries 60 acres of land, which will materially assist us in giving the needs of our patrons better attention than ever. It is our constant aim to furnish the best of all kinds of horticultural stock our European connections enables us to supply, thus giving our patrons the benefit of our travels and life-long experience.

We solicit your patronage, knowing fully well we can supply the class of stock you need to make your business a success.

If there is anything you want, not enumerated in this Catalogue, kindly send us your order and same will be filled at the lowest market price.

We have extensive office facilities to meet the demands of our increasing business, enabling us to give your correspondence prompt and careful attention.

PRICES in this Catalogue are F. O. B., Rutherford, N. J.

IMPORTANT—This Catalogue cancels all previous prices, either in special lists, offers or catalogues. This rule will be strictly observed.

ORDERS from unknown correspondents must be accompanied by remittances or satisfactory references.

TERMS—Accounts rendered first of every month; a cash discount of 3 per cent. allowed on all orders accompanied by cash. *Six per cent. interest will be charged after 60 days.*

REQUEST your orders to be shipped by express. It will save you trouble and unnecessary delay. We will not be responsible for goods shipped by freight,

All errors and omissions in the execution of orders will be satisfactorily adjusted if we are notified immediately upon the receipt of goods.

PACKING will be charged at cost on all Nursery Stock. This rule will be strictly observed.

We warrant our stock to be as represented in this Catalogue, but do not guarantee crops or assume any responsibility after the goods leave our hands.

VISITORS—Our nurseries are always open to visitors; inspection of our stock will convince you we are filling our orders with the finest class of stock grown. We will be pleased to have any one interested in gardening visit our nurseries, situated at East Rutherford, N. J., where we have on hand quantities of stock of our own growing, in addition to a line of the different stocks in season from the firms which we represent, this facilitating inspection and the prompt execution of orders.

Trusting to again hear from you and your friends, promising our best efforts to give satisfaction,

Yours respectfully,

BOBBINK & ATKINS,

RUTHERFORD, N. J.

REPRESENTATIVES OF THE FOLLOWING EUROPEAN HOUSES:

The HORTICULTURAL CO.,
Boskoop, Holland.

Wholesale Growers of
H. P. Roses, Rhododen-
drons, Clematis, Hardy
Azaleas, etc.

Place Import Orders now
for Nursery Stock.

WRITE FOR CATALOGUE.

JULES GAUCHAULT & TURBAT,
Orleans, France.

Wholesale Grower of
French Seedlings and
Stocks. Order now Small
Nursery Stock.

WRITE FOR CATALOGUE.

SYNDICATE OF BELGIUM GROWERS,
Ghent, Belgium.

Azaleas, Ficus Cuttings,
Palms, Araucarias, Bay
Trees. Place Import Orders
now for Palms and Ficus.

ASK FOR CATALOGUE.

VICTOR LEMOINE,
Nancy, France.

Novelties a Specialty.

Place Import Orders now
for Novelties.

ASK FOR CATALOGUE.

NOVELTIES AND SPECIALTIES

IN GARDEN, GREENHOUSE AND DECORATIVE PLANTS

TESTED NOVELTIES—On account of the ever increasing demand for “something new” and entirely different to existing kinds and varieties, we have made a very complete search for beautiful, new and useful plants, and have added to our general lists many rare and old plants, enumerating them in the classes to which they belong.

We draw your attention to the beautiful new **Barberton Daisy**. This is such an exquisite novelty that, on account of its beauty, we again list it with introductions of this year.

Campanula Persicifolia Moerheimi is also a useful acquisition to summer plants for cut flowers.

Incarvillea Delavayi has proved to be one of the most satisfactory hardy plants ever introduced. We mention these, knowing their exquisite beauty and usefulness. All other Novelties are equally meritorious.

ASTILBE LEMOINEI GERBE D'ARGENT.

One of the most striking and useful of this class of plants, having long stringy spikes of graceful silvery white flowers. This is a great improvement over all existing varieties. Ea. 25c., doz. \$2.50.

CLEMATIS—Integrifolia Durandi.

(Herbaceous Species.)

The most beautiful acquisition to this class of hardy plants, and being a hybrid between the herbaceous and large-flowering type Jackmanni, it still remains herbaceous and at the same time a vine. The color of the flower is a striking indigo blue, form of flower being peculiar and very graceful; only a few plants in existence. Ea. 50c., doz. \$5.00.

HEMEROCALLIS (Day Lily)—Aurantiaca Major.

A new Japanese variety of vigorous habit and very free-flowering, with large sweet-scented, trumpet-shaped flowers, which, on well-established plants, measure 5 inches across; the color is deep orange; blooms in June. Ea. 35c., doz. \$3.50.

SPIRAEA PLUMOSA ALBA (Novelty).

Is the best thing in Herbaceous Spiræas ever put on the market. Doz. \$2.00, 100 \$15.00.

VIBURNUM MACROCEPHALUM.

Is a great improvement over the now popular *Viburnum Plicatum*. It is identical in habit of growth and other characteristics, and will do well in almost any position or locality. The truss of flower is fully four times larger than in any other variety. Strong bushes. Ea. \$1.00, doz. \$9.00.

CHAMAEPUCE ARGENTEA GRANDIFLORA.

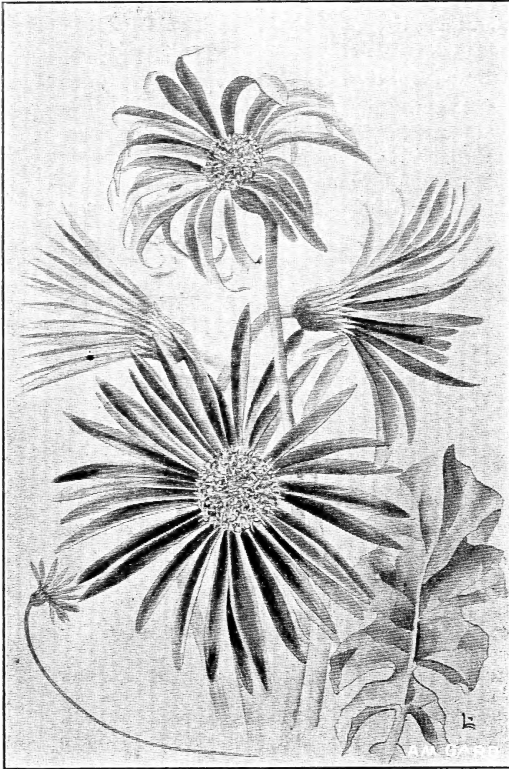
This is the most striking and ornamental “Thistle” ever introduced, growing 6 feet high, and making a beautiful tropical effect. Ea. 35c., doz. \$3.00.

GERBERA JAMESONI (The Barberton Daisy).

This beautiful South African plant has attracted the attention of lovers of plants all over the floricultural world. It is deserving of this attention on account of its distinct, exquisite, brilliant scarlet flowers. Its grace and beauty will continue to win the admiration of all true lovers of plants who are so fortunate as to see it in bloom. It is an ever-green herbaceous plant, with peculiar cut leaves. The flowers are erect on a long, strong stem, and are frequently 4 inches across. The plant can be lifted from the open ground in the fall, placed in pots, and will continue to bloom the entire winter. Ea. 20c., doz. \$2.00, 100 \$15.00.

ILEX (Holly).

I. crenata (Japanese Holly). This is a rapid grower, forms a dense, compact bush which can be clipped into shape like boxwood. It is perfectly hardy, thriving in light soil, but preferring a cool situation. The small, deep green, glabrous, lanceolate leaves retain their color through the most trying winter. Ea. 50c., doz., \$5.00, 100, \$40.00.



Gerbera Jamesoni—The Barberton Daisy.

INCARVILLEA DELAVAYI.

One of the best hardy plants introduced from China, bearing racemes of delicate rose-pink and red-brown gloxinia-like flowers.

This beautiful hardy plant has been one of the attractions of our nurseries this season, being continually a profusion of bloom. It is, in addition to being a hardy outdoor plant, a splendid pot plant, and should sell well. Strong clumps, doz. \$2.00, 100 \$15.00.

HYDRANGEA HOR- TENSIA MARIESII.

This is, without doubt, the finest introduction ever made. It is so remarkable that one wonders why such an exquisite variety was not originated before. The sterile flowers are 3 inches in diameter and of a charming delicate pink, slightly suffused with a tint of mauve. It is certainly an entirely new form and will take the place of all existing kinds for pot culture and decorative purposes. 4-inch pots, ea. 25c., doz. \$2.50.



Incarvillea Delavayi.

DEUTZIA CORYMBIFLORA.

This is the first time this highly interesting shrub has been offered in this country. It has long, thin, graceful branches, clothed with large rich dark green leaves. It blooms in May, producing immense corymbs of snowy white flowers in terminal bouquets. Occasionally it blooms again in August and September. It is no doubt the most useful and beautiful of all Deutzias. Ea. 35c., doz. \$3.50.

PRIVET (*Ibota Nana Compacta*).

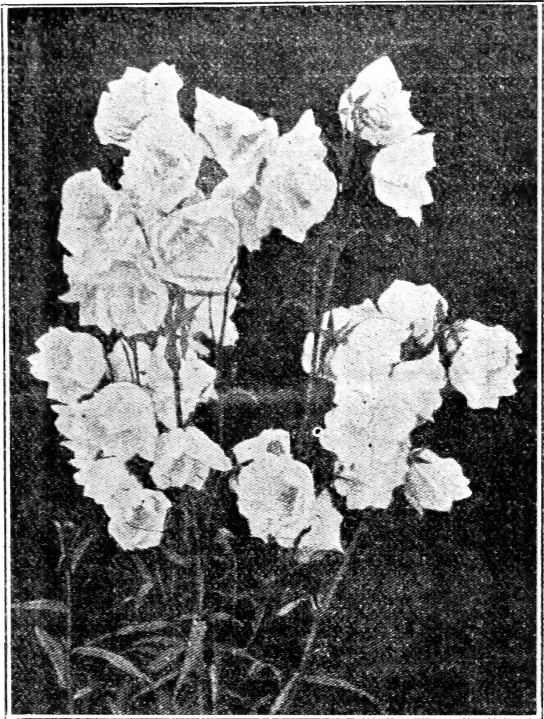
This originated in our nurseries. It is of a remarkably compact, graceful habit, with rich green foliage. It is almost evergreen. For an individual shrub it cannot be surpassed for gracefulness and beauty. 2-in. pots, doz. \$1.00, 100 \$8.00. Large specimens, \$2.00 to \$5.00 each.

CAMPANULA PERSICIFOLIA MOERHEIMI.

This splendid new Campanula was raised some years ago and was offered last season for the first time; it is one of the best hardy perennials introduced of late years.

This is evidently a thoroughly good plant, a semi-double form of the peach-leaved Bell-flower, and as white as driven snow. The flowers are large and produced freely on the spike. Useful for cutting.

The plant grows more compact than the other persicifolia varieties and the stems are quite covered with very large flowers of the purest white, which have a diameter of $2\frac{1}{2}$ to $3\frac{1}{2}$ inches and are double and semi-double. The flowers are not bell-shaped like other Campanulas, but resemble a double white Camellia. Ea. 25c., doz. \$2.50.



Campanula Persicifolia Moerheimi.

NEW ROSE CLIMBING CLOTHILDE SOUPERT.

This is a climbing form of that grand variety, Clothilde Soupert. The flowers and foliage are identical, differing in that the growth is a rampant climber, as free in bloom as its parent. Each 50c., doz. \$5.00.

SAMBUCUS RACEMOSA PLUMOSUS AUREA. (Golden-feathered Elder.)

A distinct variety of the Golden Elder, with deeply cut or lacinated bright golden yellow foliage, that stands the full sun with impunity, and is perfectly hardy. A grand addition to our list of shrubs. Young plants, each 35c., doz. \$3.50.

NEW WICHURAIANA ROSE (The B. & A. Double Pink Memorial Rose.)

There is nothing in roses introduced in recent years that has proved such an innovation or so valuable as the Japanese trailing Rosa Wichuriana or the Memorial rose. This variety is a seedling from Wichuriana, carrying with it all its beautiful characteristics in every respect, with the exception of the flowers, which are very double, 2 to $2\frac{1}{2}$ inches in diameter, and are of the brightest and most cheerful rosy pink. Its fragrance is delightful, being distinct from that of any other rose. Strong field-grown plants. Each 35c., doz. \$3.00 100 \$20.00. 2-inch pots, doz. \$1.50, 100 \$12.00.

NEW ROSE SOLEIL D'OR (Golden Sun).

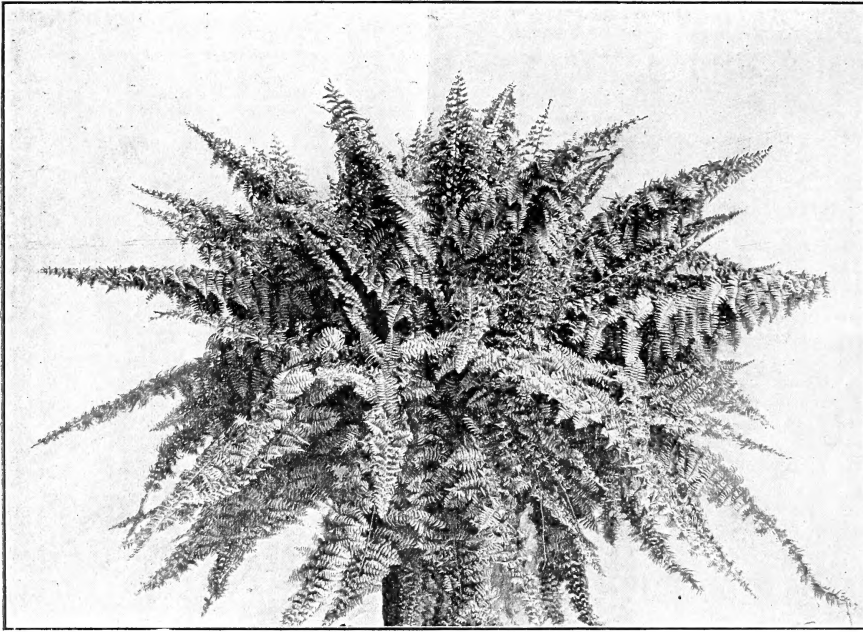
One of the newer varieties from France. Fine large globular flowers, and rich colored, medium-sized leaves. The color of the flower, deep yellow, shaded with orange and nasturtium red. Each 50c., doz. \$5.00.

New Hybrid Tea Rose, Balduin or Helen Gould.

An excellent bedding variety, with large full flowers of fine form, of bright glowing carmine; the buds long and pointed, and as sweet as a June rose; a free and continuous bloomer. Each 25c, \$2.50, 100 \$20.00.

ROSA RUGOSA ALBA FL. PL.

This is a new double-flowering white Rosa Rugosa, identical to the type, only having attractive double white flowers, which are particularly useful for floral work. Each 50c., doz. \$5.00.



Nephrolepis Piersoni—The New Boston Fern.

New Boston Fern Nephrolepis Piersoni.

This is no doubt the most important addition to the list of decorative ferns since the Boston Fern first attracted attention. Price, 2½-in. pot plants for Spring delivery: Per 12, 75c. each; 50, 60c. each; per 100, 50c. each.

NEW ABUTILON (Pink Beauty).

This splendid new Abutilon is without exception the most beautiful of all the Abutilons. As a bedding plant its value and beauty are unsurpassed. It is of dwarf habit, foliage large, dark green, and color of flower a pretty shell-pink. It is larger than any other variety. It is a very profuse bloomer, the flowers standing up well above the foliage.

Several large specimens were covered with a profusion of blooms at Christmas, one plant having 150 flowers. It is no doubt one of the most valuable and attractive plants for Christmas trade. Price 2½ in. pot plants, each 50c., doz. \$5.00.

ROOTED CARNATION CUTTINGS.

	Per 100	Per 1000		Per 100	Per 1000		Per 100	Per 1000
Prosperity . . .	\$6 00	\$45 00	Gaiety	\$6 00	\$40 00	White Cloud . . .	\$3 00	\$35 00
Fair Play . . .	6 00	40 00	Estelle	4 00	35 00	Daybreak	3 00	25 00
Lawson	4 00	35 00	Floriana	4 00	35 00	Placeo	3 00	25 00
Golden Beauty .	6 00	40 00	Bradt	4 00	35 00	Eldorada	3 00	25 00
Harry Fenn . .	6 00	40 00	Queen Louise .	3 00	35 00	Genevieve Lord .	3 00	25 00
Cressbrook . . .	5 00	45 00	Lorna	3 00	35 00			

Spring, Summer and Autumn Flowering Bulbs and Roots

AMARYLLIS.

Johnsonii	ea. 20c.	per doz.,	\$2 00
Belladonna Major		per doz.,	1 00
Formosissima		per 100,	3 00
Empress varieties	ea. 50c.,	per doz.,	5 00

APIOS TUBEROSA.

A good hardy climber, resembling the common Wistaria in vine and foliage, having clusters of large, bright purple flowers. Doz. 35c., 100 \$2.00.

ANEMONE.

		Per 100	Per 1000
Single White, The Bride		\$0 60	\$5 00
“ Scarlet		60	5 00
“ Mixed		50	4 50
Double Scarlet		1 00	9 00
“ Mixed		70	6 50

BEGONIAS.

Tuberous Rooted Varieties.

Our strain of Tuberous Rooted Begonias cannot be surpassed. The bulbs we offer are well ripened, good size, and first-class in every respect.



Begonia, tuberous rooted.

Single varieties, in separate colors, crimson, scarlet, white, rose, yellow and orange. Doz. 50c., 100 \$3.00, 1000 \$25.00.

Single varieties, in choice mixture. Doz. 45c., 100 \$2.50, 1000 \$22.00.

Double varieties, in separate colors, scarlet, rose, white, and yellow. Doz. 75c., 100 \$5.00, 1000 \$40.00.

Double varieties, in choice mixture. Doz. 65c., 100 \$4.00, 1000 \$35.00.

CALADIUM ESCULENTUM.

		Per Doz.	Per 100
First size, 10 to 12 in. circ.		\$1 00	\$7 50
Second “ 8 “ 10 “ “		75	5 50
Third “ 6 “ 8 “ “		40	3 50

Write us for special prices on lots of 1000 and over.

CALADIUM, FANCY-LEAVED.

Fancy-leaved Caladiums have in recent years grown rapidly in popular favor, not only for the decoration of the Conservatory, greenhouse and window boxes, but nearly all of the varieties succeed admirably if planted out-of-doors in partly shaded, sheltered borders, in well-enriched soil; while for exhibition plants during the summer and fall months nothing can equal their beauty. Doz. \$1.25, 100 \$9.00.

CALLA MACULATUM.

(Spotted Calla.)

Per 100 \$3.00, per 1000 \$25.00.

GOLDEN YELLOW CALLA.

(Richardia Elliottiana.)

Entirely distinct and unlike all others forms of yellow Callas; it has the same habit of growth as the ordinary white variety, with flowers of same size and shape, but of a rich, clear, lustrous golden yellow color; the foliage is dark green, with a number of translucent creamy white spots, which add much to its beauty. Ea. 50c., doz. \$5.00.

CINNAMON VINE.

Bulblets, per doz. 45c., per 100 \$3.00.

CANNAS.

Below we give a list of the principal varieties of this indispensable plant. We have revised our list of Cannas this season. All inferior varieties have been rejected, and those now offered may be considered the best of their respective type or color.

Special quotations on lots of 5000 or more.

	Per 100	Per 1000
Africa , best dark-leaved variety, orange-red flower	\$7 00	
Allemania , yellow orchid-flowered kind	3 50	\$25 00
Alsace , sulphur-white	5 00	
Asia , orchid-flowered, yellow	6 00	
Alphonse Bouvier , crimson flower, green foliage	4 00	30 00
Austria , canary-yellow, orchard type	3 00	20 00
Beaute de Poitevine , crimson flower	4 50	35 00
Black Beauty , beautiful bronze variety	12 00	

CANNAS—Continued.

	Per 100	Per 1000
Burbank , bright yellow, orchard type	\$3 50	\$25 00
Chas. Henderson , crimson	2 00	15 00
Chevalier Besson , yellow spotted & red	5 00	40 00
Comte de Bouchard , spotted red, yellow petals	5 00	40 00
Crimson Bedder , crimson	4 50	35 00
Egandale , bronze foliage, red	5 00	40 00
Florence Vaughan , yellow spotted red	5 00	40 00

	Per 100	Per 1000
Mme. Montefiore , yellow spotted red	3 00	20 00
Mde. Berat , pink, very fine	5 00	40 00
Papa , rich orange red, large flowers	5 00	40 00
Paul Marquant , orange red	3 50	25 00
Philadelphia , red	6 00	
Queen Charlotte , gilt edges, scarlet	4 50	35 00
Robusta , the old fashioned variety	3 00	20 00
Rose Unique	5 00	40 00
Secretary Chebanne , salmon	5 00	
Souv. d' Antoine Crozy , gilt edged scarlet	6 00	50 00
Mixed Cannas , includes a fine selection of varieties	2 00	12 50



Canna.

	Per 100	Per 1000
Gloriosa , one of the best orange-scarlet	7 00	
Golden Bedder	4 00	
G. St. Hillaire , bronze foliage, red	4 50	35 00
Italia , yellow blotched scarlet	3 50	25 00
J. T. Lovett	4 50	35 00
La France	5 00	40 00
Laforcade	4 00	30 00
Leonard Vaughan , dark-leaved variety	7 00	55 00
Madame Crozy	5 00	40 00
Martha Washington , deep pink	5 00	

DAHLIAS.

We offer a large assortment of the best varieties in all the colorings, and of the different strains. Space will not allow us to enumerate all the varieties here, as our list contains over 500 varieties. We would advise prospective buyers to write us for list of varieties wanted and prices before placing their order elsewhere. Fine mixed varieties, strong field-grown. Doz. \$1.25, 100 \$8.00.

Cactus.

2½-in. pots, each 20c., doz. \$2.00, 100 \$15.00. This list comprises a collection of the finest varieties introduced in Europe within the last few years.



Cactus Dahlias.

DAHLIA—Continued.

- Hohenzollen**, apricot.
Cycle, dark red.
Mrs. Montefiore, scarlet crimson.
John H. Roach, sulphur-yellow.
Lorelei, white.
Josephine.
Cinderella, purple red.
Mrs. A. Perat, pure white.
Delicata, peach.
Gloriosa, light red.
Aurora, salmon and orange.
Bridesmaid, soft clear red.
Jane Heyenbouth, white, with rose center.
Cannell's Rival, dark crimson.
Unvergleichliche, purple red, larger flowers.
Norfolk Hero, light red.
August C. Hare.
King Fisher.
Major Haskins.
Miss Mary Jones.
Standard Bearer, fine red.
Jersey, flesh color.
Mary Hillier, orange-red.
Laverstock Beauty, vermilion.
Island Queen, mauve color.
Ruby, beautiful red.
Mary Service, rosy heliotrope.
Sylvia, silver lilac.
Alfred Vasey, pale red.
E. P. Greening, purple, with crimson.
Primrose d'Ame.
Arachne.
Jean du Pericord.
Capstan, brick red.
Valkyrie.
Beatrice, soft rose.
Leopold Seymour, rose, with yellow center.

DIELYTRA SPECTABILIS.
(Bleeding Heart.)

Fine for forcing. Splendid pot plant. Strong clumps for forcing, per 100 \$5.00, 1000 \$45.00.

GLADIOLUS.

All are strictly first size, selected bulbs. Our collection includes many of the choicest-named kinds at only a fraction of the cost of named varieties.

	Per 100	Per 1000
Brenchleyensis vermilion-scarlet.	\$1 00	\$8 00
Colvillei alba (The Bride) pure white	50	4 50
Colvillei rubra , red	50	4 50
Groff's Hybrids , finest mixed.	2 75	
Isaac Buchanan , " yellow	3 50	
May , white striped pink	2 50	
Lemoine's Hybrids . Very beautiful, remarkable for fine colorings and markings and distinctive form; extra fine sorts. Doz. 35c., 100 \$2.50, 1000 \$20.00		
Pink Shades . Doz. 35c., 100 \$2.00, 1000 \$15.00.		
Scarlet and Crimson . Extra choice. Doz. 30c., 100 \$1.00, 1000 \$8.00.		
White and Light . Doz. 35c., 100 \$2.25, 1000 \$20.00.		
Yellow . Doz. 50c., 100 \$3.00, 1000 \$25.00.		

Extra Superior Mixed. This is a mixture of the very best varieties, and contains an elegant assortment, light colors predominating. Doz. 30c.; 100 \$1.75, 10 0 \$15.00.
American Hybrids. An extra choice mixture of good sorts. Doz. 20c., 100 \$1.25, 1000 \$10.00.

GLOXINIAS.

The strain of Gloxinias we offer here is the finest in existence. Bulbs are well matured. They are of the crassifolia type of foliage and are all erect flowering.

White, blue, violet, spotted, scarlet, red, white edge.



Dicentra (Dielytra) Spectabilis.

	Per 100	Per 1000
First size bulbs, above colors, separate	\$3 50	\$30 00
First size bulbs, above colors, mixed	3 00	25 00
Second size bulbs, above colors, separate	2 50	22 50
Second size bulbs, above colors, mixed	2 25	22 00
Write us for special quotations on lots of 5000 and over.		

HARDY JAPAN LILIES.

	Per 100	Per 1000
Auratum , 8 to 9 in.	\$5 00	\$45 00
" 9 " 11 "	7 50	65 00
Rubrum or Roseum , 8 to 9 in.	5 50	45 00
" " 9 " 11 in.	7 00	65 00
Album , 8 to 9 in.	5 50	50 00
" 9 to 11 "	7 00	60 00
Melpomene , 7 to 9 in.	6 50	60 00
" 9 " 10 "	9 50	80 00

HYACINTHUS CANDICANS.

White Summer Hyacinths. Flower stems grow 4 to 5 feet high, fine for cut flowers. Per 100 \$1.50, 1000 \$12.00.

ISMENE CALATHINA.

Very large, pure white Amaryllis-like flowers. Strong bulbs. Doz. \$1.50.

LILY OF THE VALLEY.

Field-grown, two and three years old, strong flowering pips. We have hundreds of thousands of these for sale, in splendid condition. They are fine for outdoor planting. We would strongly advise all florists to plant out several thousand of these for late spring flowers. Per 1000 \$5.00, 10,000 \$45.00.

LILY OF THE VALLEY CLUMPS.

Extra strong. Per 100 \$18.00.

MADEIRA VINE.

Strong tubers. Per 100 \$1.50, 1000 \$11.00.

MONTBRETIA.

	Per doz.	Per 100
Crocsmiaeflora	\$0 15	\$1 00
Etoile de Feu	25	1 75
Gerbe d'Or	25	1 75
Pottsii Grandiflora	25	1 75
Rayon d'Or	25	1 75
Transcendant	25	1 75
Tigridia	25	1 75
Mixed varieties	20	1 50

OXALIS.

	Per doz.	Per 100	Per 1000
Pink	\$0 10	\$0 30	\$2 75
White	10	30	2 75
Red	10	30	2 75

RANUNCULUS.

	Per 100	Per 1000
French Mixed	\$0 25	\$2 25
Persian "	25	2 25
Turban "	50	4 50

TIGRIDIA.

	Per doz.	Per 100
Conchiflora	\$0 30	\$2 00
Grandiflora Alba	30	2 00
Pavonia Grandiflora	30	2 00

TUBEROSES.

Double Excelsior Pearl, selected bulbs, 4 to 6 in. circ. Per 100 \$1.00, 1000 \$10.00. Second size bulbs, 3 to 4 in. circ., per 100 60c., 1000 \$5.00.

DECORATIVE PLANTS

PALMS

We received the past Spring and Fall the largest and finest consignment ever brought to this country. It consisted of thousands of plants in sizes from 2 feet to 12 feet high. We invite you to inspect this stock.

KENTIA BELMOREANA

Inch pots	No. of Leaves	Height	Per doz.	Per 100	Per 1000
2	2 to 3	6 ins.	\$1 00	\$6 50	\$50 00
2½	3 to 4	8 "	1 50	12 00	100 00
3	4 to 5	10 to 12 "	3 00	25 00	
4	5 to 6	15 "	4 50	35 00	
5	5 to 6	18 "	7 50	60 00	
5½	5 to 6	22 "	9 00	75 00	
			Each	Per doz.	
6	6	24 "	1 25	15 00	
6	6 to 7	26 to 28 "	1 50	18 00	
6	6 to 7	28 to 30 "	2 00	24 00	
7	6 to 7	30 to 36 "	3 50	36 00	
7	7 to 8	36 to 40 "	4 50	50 00	
8	7 to 8	40 to 45 "	5 50	60 00	
5½-in. pots,	3 plants	in pot	1 00	10 00	

12-in. tubs, bushy specimens, each, \$10.00, \$12.00 and \$15.00. Larger specimens, prices on application.



Kentia Belmoreana.

PALMS—Continued.

KENTIA FORSTERIANA

Inch pots	No. of Leaves	Height	Per doz.	Per 100
2½	3	8 ins.	\$1 50	\$12 00
3	3 to 4	12 "	2 50	20 00
4	4 to 5	15 "	4 50	35 00
5	5	15 to 18 "	6 00	50 00
5½	5	18 to 20 "	7 50	60 00
6	5	20 to 24 "	9 00	75 00
			Each	Per doz.
6	5 to 6	24 to 28 "	1 00	10 00
6	5 to 6	28 to 30 "	1 25	15 00
6	6	30 to 32 "	1 50	18 00
6	6 to 7	32 to 36 "	2 50	24 00
7	6 to 7	36 to 42 "	3 50	36 00
8	6 to 7	42 to 48 "	4 00	45 00
8	6 to 7	48 to 60 "	5 00	60 00
7-in.	4 plants in pot		4 00	45 00

LATANIA BORBONICA

Inch pots	No of Leaves	Height	Per doz.
5	4 to 5	15 ins.	\$5 00
6	5 to 6	18 "	9 00
6	5 to 6	24 "	12 00
7	6 to 7	30 "	18 00
8	7 to 8	36 "	36 00

PHOENIX CANARIENSIS

We have a very fine lot of these, good for decorating or for retail sales, from \$5.00 to \$20.00 each.

COCOS WEDDELIANA

Fine for filling Fern Dishes, Jardinieres, or for decorative purposes where a graceful plant is required.

	Per doz.	Per 100
2¼-in. pots, 4 to 5 ins. high.	\$2 00	\$15 00
3-in. pots, 8 to 10 ins. high.	3 00	25 00
5-in. pots, 12 to 18 ins. high.	1 50	each

CYCAS REVOLUTA

(Sago Palm.)

	Each
Small plants	\$0 50
Plants with stems, 4 to 6 ins. high, 7 to 8 leaves, 15 to 18 ins. long.	1 50
Plants with stems, 6 ins. high, 10 to 12 leaves, 18 to 20 ins. long.	3 00
Plants with stems, 8 ins. high, 12 to 15 leaves, 20 to 24 ins. long.	5 00
Specimen plants	7 50



Made Up Kentia Forsteriana.

MADE UP SPECIMENS

We have a very handsome lot of made up specimens, both K. Belmoreana and Fosteriana; will be pleased to give list on application. They are particularly fine for decorative purposes.

12-in. tubs, made up bushy plants, 5 to 8 feet, each, \$10.00, \$12.00, \$15.00.
16-in. tubs, 8 to 10 feet, each, \$20.00 to \$35.00.

ARECA LUTESCENS.

Fine, clean, well-grown plants.

	Per doz.	Per 100
5-in. pots, 3 plants in pot, 18 in.	\$7 50	\$50 00
6-in. pots, 3 plants in pot, 24 ins.	10 00	75 00



Araucaria Excelsa.

We are large importers of Palms, Araucarias, Bay Trees, etc., and would advise customers who desire to import to write us for import price.

ARAUCARIA EXCELSA

We have a large stock of small and medium-sized plants in exceptionally fine condition.

	Each
5-in. pots, 10 to 12 ins. high.....	\$0 75
5 in. pots, 12 to 14 ins. high.....	1 00
6-in. pots, 14 to 16 ins. high.....	1 25

ARAUCARIA EXCELSA GLAUCA

6-in. pots, 10 ins. high, each, 75c.
Specimen plants, each, \$2.00 to \$3.00.

**ARAUCARIA ROBUSTA
COMPACTA**

6-in. pots, 10 ins. high, each, \$1.00.
Specimen plants, each, \$2.00 to \$3.00.

AUCUBA JAPONICA

A useful decorative plant either for out-door planting in Summer, or cool room in Winter.

	Per doz.
Bushy plants, 12 ins. high.....	\$ 3 00
Bushy plants, 15 to 18 ins. high.....	6 00
Bushy plants, 18 to 20 ins. high.....	9 00
Extra fine specimens, \$3.00 to \$5.00 each.	

**ASPIDISTRA LURIDA VARIE-
GATA**

A beautiful plant, with large lance-shaped leaves, finely variegated with clear cream-colored stripes. An elegant window or conservatory plant of the easiest culture. Price, fine large plants from 6-in. pots, each \$1.25; 7-in. pots, each \$1.50.

ASPIDISTRA LURIDA (Green)

6-in. pots, each, \$1.00; 7-in. pots, each, \$1.25.

ASPARAGUS SPRENGERI

This variety is more popular this season than ever.

2-in. pots, per doz., 75c.; per 100, \$5.00.
3-in. pots, per doz., \$1.00; per 100, \$7.00.

ASPARAGUS PLUMOSUS NANUS

A variety for cutting either in strings or small pieces. We offer a fine lot of thrifty plants.

2-in. pots, per doz., 75c.; per 100, \$6.00; per 1,000, \$50.00; 3-in. pots, per doz., \$1.00; per 100, \$8.00; per 1,000, \$70.00.

BOSTON FERNS

Ready for 2-in. pots, per 100, \$4.00; per 1,000, \$35.00; ready for 3-in. pots, per 100, \$6.00; ready for 4-in. pots, per 100, \$12.00.

4-in. pots, pot grown.....	Per 100 \$15 00
5-in. pots, pot grown.....	" 25 00
6-in. pots, pot grown.....	" 40 00
7-in. pots, pot grown.....	Per doz. 15 00
8-in. pots, pot grown.....	" 25 00

Extra large specimens, each \$3.00 to \$5.00

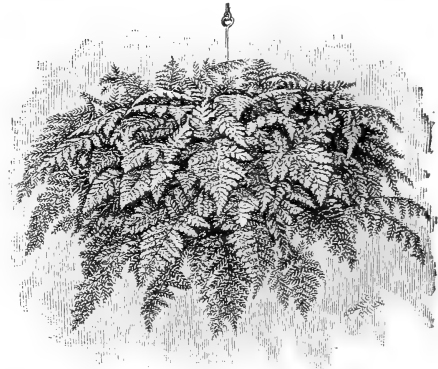
Now is the time to write us for catalogue of import stock for Spring, such as Palms, Bay Trees, Araucarias, Ficus Elastica, etc.

EUONYMUS JAPONICUS

This is an erect growing evergreen variety. Strong plants, 2 ft. high, each, 50c.; per doz., \$3.00; per 100, \$20.00.

	Per 100
Euonymus Radicans arborescens variegata , 6-in. pots.....	\$50 00
variegata, field-grown	10 00
8-in. pots, pyramidal in form, each \$2.50 to \$7.50. Very bright and handsome for decorating.	

FERN BALLS



Fern Balls (Davallia Bullata).

The popular Japanese Fern Ball, dormant, per doz., \$4.50; per 100, \$30.00. Started, in fine condition, each, 50c.; per doz., \$5.00; per 100, \$40.00.

Special prices on case lots containing 250 balls—December delivery.

IMPORT FICUS ELASTICA

(Rubber Plant)

The importation of small Ficus for growing on has been a specialty with us for a number of years. Delivery about April 1. Place your order now. Per 100, \$20.00; case containing 250 plants, \$40.00; per 1,000, \$150.00. These prices are f. o. b. New York.

FICUS ELASTICA

(Rubber Plant)

	Per doz.	Per 100
4-in. pots, now ready.....	\$3 50	\$25 00
5-in. pots	6 00	45 00
6-in. pots	7 50	60 00

FICUS REPENS

A well-known small-leaved variety, of trailing or creeping habit. 3-in. pots, per doz., \$1.25; per 100, \$10.00.

FERNS IN FLATS

For several years past we have made a specialty of growing small ferns in flats. Our collection consists of the best commercial varieties. This is the most advantageous way of securing stock of ferns at little cost. Each flat contains 100 little clumps which can be divided. Price, per flat, \$2.00; twelve flats, \$20.00. Write us for special price on lots of from 50 to 100 flats.

POINSETTIA PULCHERIMA

This is the plant which produces the large clusters of red leaves or flowers which are seen in all the flower stores at Christmas. We offer fine plants from 4-in. pots, each, 30c.; per doz., \$3.00; from 3-in. pots, each, 20c.; per doz., \$2.00; 2¼-in. pots, each, 15c.; per doz., \$1.50; per 100, \$10.00.

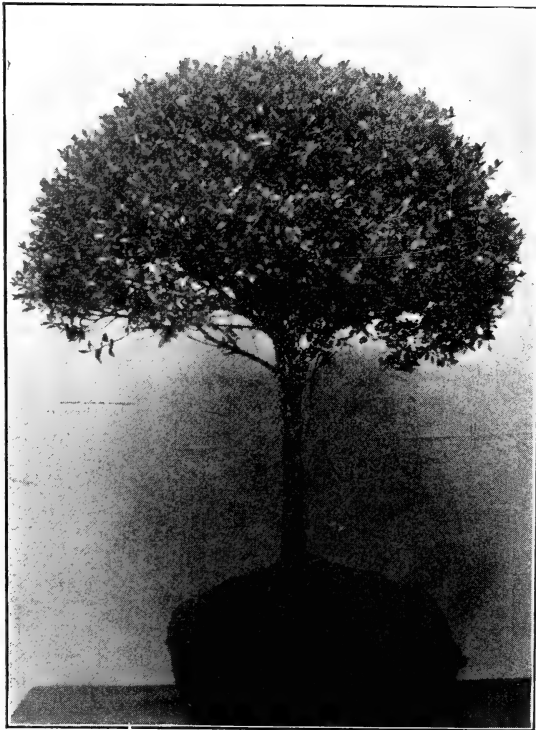
PRIMULA OBCONICA

A favorite pot plant for house and conservatory culture on account of its wonderful blooming qualities, flowering nearly all the year through. Per doz., \$1.00; per 100, \$6.00.

GARDENIA VEITCHII

The only perpetual Winter flowering Gardenia. 2½-in. pots, per 100, \$10.00; 4-in. pots, per 100, \$25.00.

Specimen plants, \$9.00, \$12.00 and \$15.00 per doz.



Standard Boxwood.

BOXWOOD

If you want Boxwood, don't fail to call and see us. We are the largest importers and growers in America. Come to headquarters and get our special prices on any quantity, and look at the stock.

PYRAMIDS

Each		Each	
5 ft.	\$4 00	2½ ft.	\$1 50
4 ft.	3 50	2 ft.	1 00
3½ ft.	2 50	18-24 ins.	75
3 ft.	2 00	15-18 ins.	50

Pyramids, 5 to 6 ft. high, nicely shaped, per pair, \$10.00 to \$15.00. Special prices on larger sizes.



Pyramid Boxwood.

STANDARDS

	Each
3 ft. diam., fine specimens.....	\$7 50
2½ ft. diam., fine specimens.....	4 50
2 ft. diam., fine specimens.....	3 00
18-20 ins. diam., fine specimens.....	2 00
15-18 ins. diam., fine specimens.....	1 50
Buxus, round shape (perfectly round), 2 ft.	2 50
for hedging, 8 ins....per 1,000,	\$25 00
for hedging, 10 ins., variegated, per 1,000	30 00

We have just received a few fine specimen Standard Shape Boxwood from Europe. These are without an exception the finest specimens

BOXWOOD—Continued.

of Boxwood ever seen in this country. The heads of same measure 8 feet in diameter. Price, each, \$125.00; per pair, \$200.00.

CLIPPED BOXWOOD

We have a fine collection in a variety of forms. Will be pleased to have prospective buyers call and inspect the stock. See illustrations. Prices on application.

EVERGREENS, CONIFERS and BOXWOOD

In Tubs for Decorating. Summer Planting

We have in tubs a large variety of handsome specimens which can be used for decorating or late planting; they are well established and little risk will be taken if planted at any time.

Ask for list with prices.

REMEMBER we are the largest importers and growers of Roses, Rhododendrons, Bay Trees, Clematis, Boxwood, etc., etc., in America. Call and inspect our stock.

SPECIMEN EVERGREENS—We have many hundreds of all the finest hardy kinds, such as Blue Spruce, Yews and Conifers. Also a large variety of other specimen ornamental shrubs. Ask for Special List.

JAPAN MAPLES

We have a fine lot of Japan Maples in various colored foliage.

Fine plants, each, 50c., 75c., \$1.00, \$1.50, \$2.00, \$3.00.

These we offer for pot culture, as they have become very popular in large cities for forcing purposes, being very brilliant and attractive for this purpose.

CLIPPED BOXWOOD

The illustration below is of our exhibit of Clipped Boxwood and Yews, made at Madison Square Garden Horticultural Exhibition last November. It was an honor to us to make this display, the first ever made on the Continent of America.



Our Exhibit of Clipped Boxwood, New York Flower Show, Last Fall.

BAY TREES

Laurus Nobilis

Of these we have a large stock on hand at all times in all the different sizes, both standard and pyramid shape.

Pyramidal-Shaped

5½ ft. high, 24 ins. in diameter at base, tapering to a point.....	\$7 50
7 ft. high, 30 ins. in diameter at base, tapering to a point.....	10 00
8 ft. high, 36 ins. in diameter at base, tapering to a point.....	12 50
8 ft. high, 40 ins. in diameter at base, tapering to a point.....	15 00
9 ft. high, 45 ins. in diameter at base, tapering to a point.....	20 00
10 ft. high, 50 ins. in diameter at base, tapering to a point.....	30 00
Extra specimens—prices on application.	

Standard or Tree-Shaped

	Each
Stems 45 ins. high, crowns 24 ins. in diam.	\$6 00
Stems 45 ins. high, crowns 30 ins. in diam.	7 50
Stems 45 ins. high, crowns 35 ins. in diam.	10 00
Stems 45 ins. high, crowns 40 ins. in diam.	12 50
Stems 45 ins. high, crowns 45 ins. in diam.	15 00
Stems 45 ins. high, crowns 50 ins. in diam.	20 00
Ask for special list of other sizes.	

OTAHEITE ORANGE

The best of the Oranges for house culture. It is of dwarf, bushy habit, and bears a profusion of fragrant flowers and fruit. We carry a larger stock in several sizes, 75c., \$1.00, \$1.50 and \$2.00 each. Special price on quantities.

CAMELLIA JAPONICA

We have a fine lot of these in 6-in. pots; nice plants 18 to 22 inches high, in the best varieties, \$6.00 per doz.; \$50.00 per 100.



Collection of Bay Trees at Our Nurseries.

ROSES

We are the largest importers and growers of Roses in America, and can bid upon orders of any size. Call and inspect the stock.

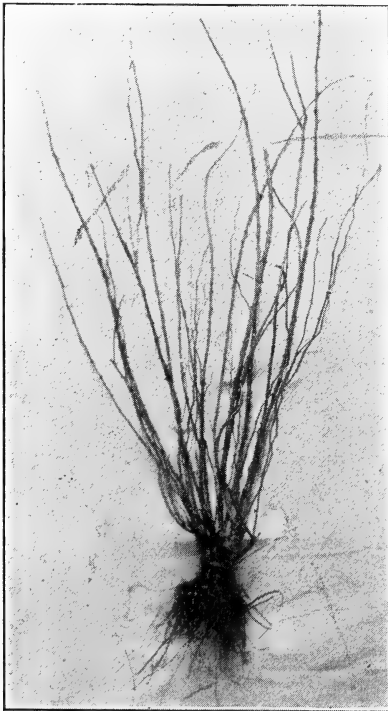
We have a long list of varieties, selected with a view to suit all customers who want the best. They will bear the most rigid scrutiny from the most critical rosarian. Our collection contains only the finest and best sorts in cultivation.

Special prices in lots of 5,000, 10,000 and 25,000.

Price, per 100, \$10.00; per 500, \$47.50; per 1000, \$90.00.

VARIETIES

Abel Carriere, brilliant purplish crimson, vigorous.
Alfred Colomb, bright crimson, splendid, robust grower.
Augustine Guinoseau, White La France.
Baron Bonstetten, dark crimson.
Baronne de Maynard, white.
Baron Haussman, carmine. Belle Siebrecht, pink.
Bessie Johnson, blush white.
Ball of Snow, pure white, excellent variety.
Captain Christy, delicate rose.
Caroline Testout, pinkish rose.
Celine Forestier, yellow.
Cheshunt hybrids, light rose.
Coquette des Alpes, white.
Countess Cahen d'Anvers, large delicate pink, one of the best.
Charles Lamb, bright cherry rose.



Bunch of H. P. Roses.

Countess Julius Schulberg, dark red.
Countess of Oxford, carmine.
Dr. Lindley, carmine.
Duke of Teck, vivid scarlet.
Duke de Montplaisir.
Eclair, brilliant red.
Elizabeth Tignerou, pink.
Fuerst Bismarck, orange yellow.
Fisher Holmes, lively crimson, a very valuable sort.
Francois Machellon, rich rose.
General Jacqueminot, glowing scarlet crimson, superb flower.
General Washington, red shaded crimson, large and full.
Gloire de Dijon, salmon, large.
Gloire de Margottin, red, full, perfect form.
Gloire de Lyonnaise, white, slightly tinged with yellow.
Gustave Regis, very desirable.
Grace Darling, bright pink.
Harrison yellow.
Jean Liabaud, bright deep crimson maroon.
John Veitch.
Jules Margottin, brilliant glossy pink, superb.
John Hopper, rose crimson, fine center.
La France, bright rose.
Louis Odier.
Louis von Houtte, reddish scarlet.
Mme. Gabrielle Luizet, beautiful satiny pink.
Mme. Victor Verdier, light rose.
Mme. Georges Bruant, white.
Mme. Berard.
Mme. Alfred de Rougemont, white, shaded rose.
Mme. La Charme, white, large, full flower.
Margaret Dickson, pure white, extra fine.
Marshall P. Wilder, cherry rose, mingled with carmine.
Mme. Plantier, white, large and full.
Marie Baumann, carmine.
Magna Charta, bright pink, suffused with carmine, grand variety.
Miss Paul.
Mrs. John Laing, soft pink, beautiful flower.
Mrs. R. G. Sharman Crawford, rosy pink, fine.
Monsieur Boncenne, deep crimson.
Olga Marix.
Paul's Early Blush, light silvery rose.
Paul Neyron, dark rose, fine, extra large floker.
Pæonia, light red.
Prince Camille de Rohan, fiery red.
Prince Humbert, scarlet.
Perle des Blanches, white, pale center.
Persian Yellow, bright yellow, well formed.
Pius IX., beautiful shade of red.
Princess de Bearn, bright red.

ROSES (Varieties)—Continued.

Princess Louise Victoria, blush white.
Reine Marie Henriette.
Rosieriste Jacobs.
Souvenir de Baron Rothschild.
Ulrich Brunner, red cerise, very large.
Victor Hugo.
Victor Verdier, bright rose.
W. A. Richardson, orange.
White Baroness.

SPECIAL.—In placing orders, please state if you will allow us to duplicate in case of kinds you need being sold out.

THE B. & A. DOUBLE PINK MEMORIAL ROSE

See Novelties.

EVERBLOOMING OR MONTHLY ROSES

We have thousands of these roses growing in our nurseries. The following are good for pot culture and outdoor planting for cut flowers:

Maman Cochet (pink), Maman Cochet (white), Hermosa, Clothilde Soupert, Pink Soupert, Agrippina, Marie Van Houtte, Pres. Carnot, and many others.

We especially recommend the Maman Cochet Roses, both the pink and white. Our stock of these is exceptionally fine. Price of any of the above, strong field grown, per 100, \$12; per 500, \$55; per 1,000, \$100.

CRIMSON RAMBLERS

	Per 100
Strong plants, No. 1.....	\$10 00
Strong plants, No. 2.....	12 00
Strong plants, No. 3.....	15 00
Selected XXX, No. 4.....	20 00
Yellow Rambler	12 50
White Rambler	12 50
Pink Rambler	12 50

ROSA RUGOSA

Standards	\$10 00	\$75 00
Bush, red and white.....	1 50	10 00

CLIMBING ROSES

In the following sorts and many others:

	Per 100
Belle de Baltimore, blush white.....	\$15 00
Mme. Hardy, white.....	15 00
Prairie Belle, red.....	15 00

Write us for special prices on lots of 1,000 or more.

MOSS ROSES

In the following sorts:

Blanche Moreau, white, beautiful.....	\$12 00
Crested Moss, red	12 00
Chapeau de Napoleon, red.....	12 00
Dr. Berthier, brilliant cherry red.....	15 00
Glory of Mosses, carmine rose.....	12 00
Madame William Paul, clear rosy.....	12 00
Madame Moreau, red vermillion.....	15 00
Salet, vivid rosy	12 00

LORD PENZANCE'S HYBRID SWEET BRIARS

Anne of Gierstein. Dark crimson, good grower.
Brenda. Maiden's blush or peach, dainty in color and shade; the contrast and effect of the bright golden anthers add a peculiar charm to this variety.

Lady Penzance. Beautiful soft tint of copper with a peculiar metallic lustre; the base of each petal is a bright yellow, which, showing through the clear golden anthers, forms a halo round them; very free flowering, with a delicious perfume from foliage and flower.

Lord Penzance. Soft shade of fawn or ecru, passing to a lovely lemon yellow in the centre, sometimes toned with a most delicate pink; very sweet scented.

Meg Merrilies. Gorgeous crimson, very fine flowering; seeds abundantly; robust habit, large foliage.

Lucie Ashton. White, beautifully bordered with Rose.

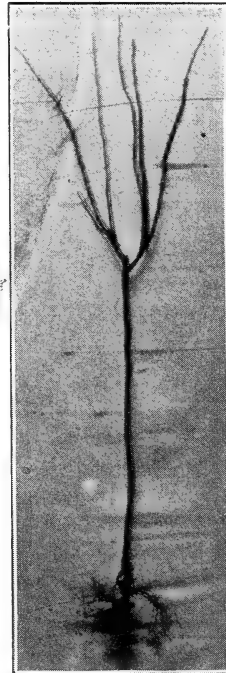
Amy Bobsart. Fine large carmine flower.

Rosy Bradwardine. Distinct large flower, delicate pink.

Flora McIvor. Violet Rose flower, very fine. Strong two-year-old plants of all the above varieties, \$2 per doz.; \$15 per 100.

STANDARD OR TREE ROSES

We have at last overcome the trouble of the frost killing the stems, and now graft on Rosa rugosa and cinnamomea stocks. We have several thousand of these on hand in the finest and most popular varieties.



Standard or Tree Roses.

STANDARD ROSES—Continued.

2½-3 feet stem, in the best varieties.

	Per doz.	Per 100
Standard Crimson Rambler, in tree form	\$4 50	\$35 00
Standard Roses, in all varieties	5 00	37 50

HYBRID WICHURAIANA ROSES

Evergreen Gem. Yellow, changing to white; double.

Gardenia. Creamy white; double.

Pink Roamer. Rich bright pink; single.

South Orange Perfection. Blush pink, changing to white.

Triumph. White; double.

Universal Favorite. Soft light pink; double.

Strong, field-grown plants, per doz., \$1.25; per 100, \$10.

ROSA MULTIFLORA JAPONICA

This beautiful Japanese rose has now become so popular on account of its usefulness that every landscape gardener and florist are using it for outdoor planting.

One year old plants, per 100, \$4; per 1,000, \$35. Special prices on large quantities.

ROSA HERMOSA

We have this in large quantity and fine condition this year. Best pink bedder, the freest and most perpetual bloomer in existence. Only hard freezing in late Autumn draws its flowering season to a close. Still grown by thousands as a market pot plant. Strong. \$10 per 100.

Hardy Herbaceous Plants

BURBANK'S LATEST AND LARGEST FLORAL WONDER SHASTA DAISIES

Chrysanthemum Leucanthemum Hybridum.

They can be grown out-of-doors by everybody where it is not cold enough to kill oak trees, are perennial, blooming better and more abundantly each season. They bloom for several months. The flowers are extremely large and graceful, averaging about a foot—often

more—in circumference, with three or more rows of petals of the purest glistening whiteness, on single, strong, stiff, wiry stems, nearly two feet in length. This peculiar grace and remarkable whiteness cannot, of course, be shown on paper.

"Shasta" is only the first of the new type, some of which were for the first time exhibited in the window of a prominent florist. Crowds of people visited the establishment to inquire about the latest floral wonder. The blooms when cut remain perfectly fresh and in good condition for two weeks or more. Think, if you can, what other flower possesses all the above qualities, \$1.25 per doz.; \$10 per 100.



Shasta Daisies.

IRIS KAEMPFERI

We have secured in Japan an entirely new and unique collection of *Iris Kämpferi*. It comprises 50 of the newest novelties originated by the Japanese. Price of collection, \$10.00. We will be pleased to call upon prospective buyers of these collections of Japanese plants, and will show exact reproductions in paintings by Japanese artists. Fine varieties, named, field-grown clumps, per doz., \$1.50; per 100, \$12.00.

HARDY HERBACEOUS CHRYSANTHEMUM MAXIMA

Is of recent introduction, producing large white flowers on long stems; one of the best for cut flowers. Highly recommended to florists who have cut-flower trade. Price, 2½-inch, per 100, \$12.00.

HARDY HERBACEOUS PLANTS—Continued.

PAEONIAS
TREE PEONIES

We have received from Japan a very handsome collection of these, consisting of 50 varieties. Strong, each, \$1.00; per doz., \$10.00. Fine, large specimens, each, \$3.00 to \$5.00.

PAEONIA OFFICINALIS ATRO-RUBRA FL. PL.

This is the darkest variety ever introduced of this early flowering type. It is a rich dark crimson. Strong flowering roots, each, 25c.; per dozen, \$2.50.

	Per 100	Per 1000
CHINENSIS , collection of white and named varieties..	\$18 00	
CHINENSIS , white.....	12 00	\$100 00
rose	10 00	85 00
mixed colors	8 00	75 00
OFFICINALIS , white	20 00	175 00
rose	12 00	100 00
crimson	8 00	75 00
atropurpurea (new)	20 00	
TENUIFOLIA FL. PL.	18 00	160 00

We have in addition to the above a large collection of named varieties. We can make up collections of 25 or 50 named kinds at 35 cents each.

	Per doz.	Per 100
Achillea filipendula	\$1 00	\$8 00
"The Pearl"	75	6 00
ægyptiaca	1 00	8 00
mongolica	75	6 00
millefolium roseum	75	6 00
Aconitum autumnale	1 25	10 00
barbatum	1 25	10 00
napellus	1 25	10 00
japonica	1 25	10 00
Acorus calamus variegatus	1 15	10 00
Actæa spicata	1 00	8 00
Adonis pyrenaica	1 50	12 00
vernalis	1 00	8 00
Agrostemma coronaria	75	6 00
Ajuga genevensis	1 00	8 00
reptans	75	6 00
rubra	1 00	8 00
Alstromeria aurantiaca	1 25	10 00
Althæa (Hollyhocks) . Double..	1 00	10 00
Single	75	8 00
Allegheny. Double	1 25	10 00
Alyssum saxatile Comp.	75	6 00
Amsonia Tabernaemontana	1 00	8 00
Salicifolia	1 25	10 00
Anemone jap. alba	1 00	8 00
Coupe d'Argent	1 25	10 00
Elegans	1 00	8 00
Lady Ardilaun	1 25	10 00
Honorine Joubert	1 25	10 00
Queen Charlotte	1 25	10 00
Rubra	1 25	10 00
Angulosa	1 50	12 00
Sylvestris	1 25	10 00
pulsatilla	1 50	12 00
nemorosa fl. pl.	1 50	12 00
Whirlwind	1 00	8 00

	Per doz.	Per 100
Anthemis Kelweyi	75	6 00
Anthericum liliastrum major	75	6 00
Aquilegia alpina	75	6 00
canadensis	75	6 00
chrysantha	1 00	8 00
vulgaris	75	6 00
Arabis alpina fl. pl.	1 50	12 00
Alpine	75	6 00
Asclepias tuberosa	75	6 00
incarnata	1 00	8 00
Asters (Hardy) . Michaelmas		
Daisies, 20 finest var... ..	1 00	8 00
Baptisia australis	1 00	8 00
Bocconia cordata	1 00	8 00
Boltonia asteroides	1 00	8 00
incisa	1 25	10 00
Campanula carpathica	1 00	8 00
carpathica alba	1 25	10 00
grandiflora	1 00	8 00
alba	1 25	10 00
persicifolia	75	6 00
pyramidalis	1 00	8 00
alba	2 00	
Centaurea babylonica	2 50	
ruthenica	1 00	8 00
Cerastium tomentosum	1 00	8 00
Chrysanthemums . (Hardy Pom- pons.) We have a collec- tion of 50 varieties, all the very finest of recent and old introductions	75	6 00
Maximum	1 00	8 00
Filiformis	1 00	8 00
Triumph	1 00	8 00
Clematis coccinea	1 25	10 00
crispa	1 00	8 00
Davidiana	1 00	8 00
recta	1 00	8 00
Convallaria . Lily of the Valley. Strong field-grown clumps. ..	2 50	18 00
Coreopsis lanceolata	75	6 00
grandiflora	1 00	8 00
senifolia	75	6 00
Delphinium hybridum . Kelway varieties	2 00	15 00
chinensis	1 00	8 00
formosum	1 25	1 00
Dianthus . Hardy Pinks. barbatus (Sweet William)... ..	1 00	8 00
Annie Bolling	1 00	8 00
Gertrude	75	6 00
Her Majesty	75	5 00
Laura Wilmar	75	6 00
Mrs. Sinkins	75	6 00
We have many other varieties		
Dicentra . (Bleeding Heart.) Spec- tablis	75	5 00
eximia	1 00	8 00
Dictamnus fraxinella	1 50	
alba	1 50	
Digitalis gloxinoides . Foxglove. caucasicum	1 00	8 00
Doronicum austriacum	1 00	8 00
caucasicum	1 25	10 00
plantagineum excelsum	1 50	12 00
Clusii	1 50	12 00
Echinacea purpurea	1 25	10 00

HARDY HERBACEOUS PLANTS—Continued.

	Per doz.	Per 100		Per doz.	Per 100
Erigeron aurantiacus	1 50	12 00	German Iris. 25 named varieties	1 25	8 00
speciosus	1 00	8 00	Lathyrus latifolius	75	6 00
Eryngium, alpinum	2 50	20 00	albus	75	6 00
amethystinum	2 50	15 00	Liatis spicata	75	6 00
planum	2 00	15 00	Pycnostachya	1 00	8 00
giganteum	2 50	20 00	Linum austriacum	1 00	8 00
Eupatorium ageratoides	1 50	12 00	Lobelia cardinalis	1 50	10 00
grandiflorum	1 50	12 00	firefly	1 50	12 06
Euphorbia corollata	1 25	10 00	Lychnis chalcedonica	1 00	8 00
Funkia, cucullata	1 25	10 00	Haageana	75	6 00
coerulea	75	6 00	viscaria splendens, fl. pl.	1 00	8 00
grandiflora alba	2 50	15 00	Lythrum roseum superbum	75	6 00
glauca	1 50	10 00	Megasea (Saxifraga) cordifolia		
japonica gig	1 50	10 00	purpurea	75	6 00
alba	2 00	15 00	Monarda didyama	1 00	8 00
liliflora alba	1 50	12 00	alba	1 00	8 00
maculata alba	1 50	12 00	rosea	1 00	8 00
minor alba	1 00	8 00	Myosotis (Forget-me-not) palustris	1 00	8 00
ovata aurea	1 00	8 00	Nepeta, glechoma	75	8 00
striata	2 00	15 00	hederacea, var.	75	6 00
Sieboldiana	1 50	12 00	Oenothera Fraseri	1 00	8 00
spathulata fol. var.	1 50	12 00	Youngii	1 00	8 00
subcordata grandiflora	1 50	12 00	Paonias—See another column.		
undulata medio variegata.			Papaver orientale. Strong clumps	1 25	10 00
Best for pots	1 00	8 00	Named varieties	2 00	15 00
univittata	1 25	10 00	Passiflora incarnata	2 00	15 00
Gaillardia grandiflora	75	6 00	Pentstemon barbatus Torreyi	1 00	8 00
Geranium sanguineum	1 00	8 00	Phlox subulata	75	5 00
album	2 00		alba	75	5 00
Geum coccineum	1 00	8 00	Perennial. We can supply 25 of the finest named varieties. Ask for list.	1 00	8 00
fl. pl.	1 25	10 00	Plumbago Larpentæ	1 25	10 00
astrosanguineum, fl. pl.	1 25	10 00	Primula Auricula. Mix	1 50	12 00
Heldreichi	1 00	8 00	japonica	1 00	8 00
Gypsophila paniculata	75	6 00	Sieboldii	1 25	
Helenium autumnale superba	1 00	8 00	Named varieties	1 50	
Bolanderi	1 00	8 00	acaulis alba, fl.	1 50	
grandicephalum striatum	75	6 00	lilacina, fl.	1 50	
Helianthus doronicoides	1 00	8 00	sulphurea plena	2 00	
decapetalus multiflorus	1 00	8 00	vulgaris	1 00	8 00
Maximiliani	75	6 00	Pyrethrum roseum grandiflorum.		
mollis	75	6 00	Single	1 00	8 00
grandiflora	75	6 00	Double	2 00	15 00
strumosis	75	6 00	uliginosum	75	6 00
Heliopsis Pitcheriana	75	6 00	Ranunculus aconitifolius	1 50	12 00
laevis	1 00	8 00	in variety	1 00	8 00
scabra major	75	6 00	Rudbeckia laciniata (Golden Glow)	75	6 00
Helleborus niger major, Christmas Rose	1 00	8 00	Newmanni	75	6 00
Hemerocallis, aurantiaca major.			maxima	75	6 00
New. 35c. each	4 00		hirsuta	75	6 00
Dumortieri	75	6 00	purpurea	1 00	8 00
flava	75	6 00	Saxifraga acanthifolia rosea	1 50	12 00
fulva, fl. pl.	75	6 00	Geum ovalifolia	1 50	12 00
kwanso, fl. pl.	75	6 00	granulata, fl. pl.	1 50	12 00
Middendorffiana	75	6 00	Cotyledon pyramidalis	1 25	10 00
Heuchera sanguinea	1 50	10 00	peltata	1 50	12 00
alba	1 50	10 00	Scabiosa caucasica	1 25	10 00
Hibiscus militaris	75	9 00	alba	1 50	12 00
Crimson Eye	75	9 00	gigantea	1 50	12 00
Iberis sempervirens	1 00	8 00	Sedum spectabile	75	6 00
Garrexiana	75	6 00	alba	75	6 00
gibraltarica	75	6 00			
Inula ensifolia	1 25	10 00			
Iris Kämpferi Named	1 50	12 00			
Japanese Iris. Choice mixed varieties	1 25	10 00			

HARDY HERBACEOUS PLANTS—Continued.

	Per doz.	Per 100		Per doz.	Per 100
Sempervivum (House Leek). In variety	1 00	8 00	Tritoma Pfitzeri	1 50	10 00
Silphium perfoliatum	75	6 00	Uvaria grandiflora	1 00	8 00
Statice latifolia	1 00	8 00	Trollius caucasicus (Orange Globe)	2 50	
tatarica	1 00	8 00	europæus	1 00	8 00
Spiræa aruncus	1 00	8 00	Veronica longifolia subsessilis	1 50	12 00
filipendula fl. pl.	75	6 00	Vinca minor (Periwinkle.) Strong clumps	75	6 00
japonica aurea reticulata....	1 50	12 00	Violets odorata	75	6 00
japonica	75	6 00	Belle de Chatenay	1 50	12 00
palmata	75	6 00	Californica	1 00	8 00
alba	1 00	8 00	Lady Campbell	1 00	8 00
elegans	75	6 00	La France	1 00	8 00
ulmaria fl. pl.	1 00	8 00	Marie Louise	1 00	8 00
Stachys lanata	75	5 00	Violets Princess of Wales.....	1 00	8 00
Stokesia cyanea	1 25	10 00	Yucca filamentosa. Strong plants	1 25	10 00

The above collection of Hardy Herbaceous plants is only a portion of the large list of varieties we have in our nurseries. We issue a special Catalogue of Hardy Perennial Plants. Will be pleased to mail same to intending purchasers of this stock.

GRASSES

	Per doz.	Per 100		Per doz.	Per 100
Erianthus Ravennæ. Ravenna Grass. The foliage forms grand tropical clumps from which arise numerous stems of plummy flowers 10 to 12 ft. high. Very showy in Autumn. Very effective for individual clump or lawn.	2 50		Arundo donax (Great Reed Grass). A magnificent variety, growing to the height of 15 ft.	1 00	8 00
Eulalia japonica. Foliage bright green all Summer.....	1 00	8 00	donax variegata. A beautiful variegated form; foliage creamy white and green..	1 50	12 00
japonica variegata. Beautifully longitudinally variegated	1 00	8 00	Phalaris arundinacea variegata (Variegated Ribbon Grass or Gardener Garters.) An excellent grass for bordering large beds	1 00	8 00
zebrina. Very striking, with leaves banded transversely with pale yellow	75	6 00	Bamboos. We have a fine collection of these now popular plants. Prices on application.		-
gracilima univittata. The most graceful of all.....	75	6 00	Bamboos in tubs, ask for prices.		

HEDGE SHRUBS

CALIFORNIA PRIVET

	Per 100	Per 1000
12 to 15 inches.....	\$2 00	\$15 00
15 to 20 inches.....	2 50	20 00
20 to 24 inches.....	3 00	25 00
2 to 3 feet	4 00	30 00
3 to 4 feet	5 00	45 00

Bushy specimen plants in shrub form, per 100, \$15.00 and \$25.00. Ball-shaped, each 75c.; per doz., \$6.00.

Write us for prices on large quantities.

CALIFORNIA PRIVET STANDARDS

We have a fine lot of these, with fine symmetrical heads, 3 ft. in diameter; height of plant, about 5 ft. Price, per pair, \$10.00. California Privet, Ball Shape. Perfect specimens, per doz., \$6.00, \$9.00 and \$12.00.

CHINESE PRIVET

	Per 100
Ligustrum Ibota, 1 year old.....	\$6 00
2 years old, 3 to 4 ft.....	15 00
ovalifolium robusta , 3 ft.	30 00
aurea, 3 ft.	40 00
aureum elegans, 3 ft.	35 00
argenteum pictis, 3 ft.	40 00

LIGUSTRUM IBOTA COMPACTA
(New Privet)

This fine new Privet is a great improvement on the old Ibota. It is a dense, rapid grower, very compact, and is especially fine for growing into standards. Equally fine for hedging on account of its denseness. Soft wood, Summer cutting, 2½-in. pots.

Per 100, \$6.00; per 1,000, \$50.00.

For novelties and description of Hardy Plants See our Special Herbaceous Plant Catalogue.

HARDY VINES AND CLIMBERS

	Per doz.	Per 100
<i>Akebia quinata</i> . Strong plants, 2 years old	\$1 50	\$10 00
<i>Ampelopsis Veitchii</i> (Boston Ivy). Extra strong, field-grown	2 00	12 00
Started plants, 3-in. pots....		8 00
<i>muralis</i>		10 00
<i>quinquefolia</i>		10 00
<i>heterophylla</i> , fol. var		12 00
<i>Aristolochia siphon</i> (Dutchman's Pipe). Strong plants, 2 and 3 years old	4 00	35 00
<i>Bignonia radicans</i> , strong	1 25	10 00
<i>grandiflora</i> , strong	2 50	20 00
Clematis . Large flowering varieties: Jackmanni, Duke of Edinburgh, Henryi, Ramona, Baron Veillard, Gipsy Queen, Sieboldi, Miss Bateman, Lawsonii, etc., 2 years old, field-grown..	4 00	30 00
3 years old, field-grown....	5 00	45 00
C. Paniculata . Extra heavy, selected		10 00
First size		8 00
2 years old		6 00
English Ivy . Our stock of these very fine, extra heavy plants, 5-in. pots	2 50	20 00
Strong, first size, 4½-in. pots	2 00	15 00
Strong, field-grown, first size.		8 00
Strong, field-grown, good size		
Specimens, very bushy, 6 ft. high, 8-in. pots. Each, \$2 00	20 00	
<i>Jasminum nudiflorum</i>	1 50	
<i>officinale alba</i>	1 50	
<i>Lathyrus latifolius</i>	1 25	10 00
<i>albus</i>	1 50	12 00
<i>Lonicera</i> (Honeysuckle). Belgita, brachypoda aurea, coccinea, Halleana, semperflorens, sempervirens, sinensis, and others.		10 00
<i>Passiflora incarnata</i>	2 00	
<i>Periploca græca</i>	3 00	20 00
<i>Vinca minor</i> (Myrtle). Strong, field-grown		7 00
<i>Wistaria chinensis</i>	2 00	18 00
extra strong	3 50	
<i>alba</i>	4 00	30 00

AMPELOPODIS JAPONICA VERSICOLOR

This is identical with *A. Veitchii*, only that it is exquisitely variegated, being of many bright, brilliant colors, perfectly hardy. Strong plants, each, 25c.; per doz., \$2.50.

AZALEA AMOENA

The most popular evergreen flowering shrub in existence. We have the finest stock in the country. 35c., 50c., 75c., \$1 to \$20 each.

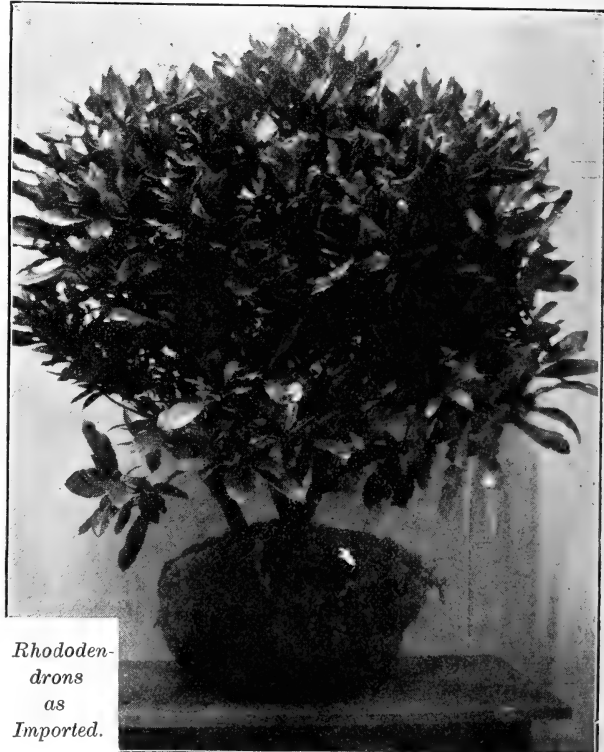
AZALEAS—Hardy

For Forcing and Outdoor Planting.

	Per doz	Per 100
<i>Azalea Mollis</i> . These are used extensively in Europe for early forcing and outdoor planting, and are great favorites on account of their varied and brilliant coloring. We offer a fine lot of very bushy plants, 12 to 15 inches high, well covered with buds	\$3 50	\$25 00
15 to 18 ins. bushy plants, well budded	5 00	40 00
<i>Azalea Mollis</i> (standard). Fine plants, 3 to 4 feet high, well budded, 75c. to \$1.00 each.		
<i>Azalea Mollis Chinensis</i> . An improved form, colors being more varied and striking, new, 15 to 18 ins., bushy, budded.....	6 50	50 00
<i>Azalea Pontica</i> (Ghent). This is probably the most attractive of all hardy kinds.		
12 to 15 ins., well budded...	4 50	35 00
15 to 18 ins., well budded...	6 50	50 00

RHODODENDRONS

Our collections consist entirely of Hardy English, Parson's Hybrids, and Catawbiense Grandiflora varieties, and choice forcing kinds. The Rhododendron as a forcing plant for



Rhododendrons
as
Imported.

RHODODENDRONS—Continued.

Easter is becoming more popular every year. Such desirable varieties as Ponticum, Roseum Prince Camille de Rohan (Rosy Pink) and Cunningham White can easily be forced into flower in three to four weeks from the time they are brought into a warm house.

The \$1.00, \$1.50 and \$2.00 sizes of the above varieties are extra fine, being large compact plants, well budded and clean foliage. We have many other desirable forcing varieties in addition to the above, but we recommend these as being especially fine for that purpose. Every Florist should have a few in bloom at Easter with other stock.

	Per doz.	Per 100
12 to 15, bushy plants.....	\$6 00	\$50 00
15 to 18, bushy plants.....	7 50	65 00
18 to 24, bushy plants.....	10 00	75 00
24, bushy plants.....	15 00	100 00
30, bushy plants.....	20 00	150 00
Large plants	24 00	175 00

Extra specimens, each, \$3.00 to \$10.00.

Ask for prices on **Rhododendron Maxima** for outdoor planting. Thousands on hand. Can quote on car lots.

Call and inspect our stock, or write us for a list of hardy and forcing varieties.

KALMIA LATIFOLIA

Mountain Laurel. beautiful Spring flowering shrub. all sizes, from 20c. to \$1.00 each.

	Per 10	Per 100
Mahonia Aquifolia	\$2 00	\$18 00
Japonica	2 00	18 00
Osmanthus Aquifolius	3 50	

DAPHNE CNEORUM

Choice dwarf flowering shrub. Several thousands fine plants on hand. Each, 35c.; per 10, \$3; per 100, \$20.

ILEX (HOLLY)

	Each.	Per 10
Aquifolium (English Holly).....	\$1 00	\$8 50
Opaca (American Holly).....	75	7 00
Crenata (Japanese Holly).....	75	5 00



Ilex Crenata.

ANDROMEDA

Fine for planting in shady places.

	Per 10
Floribunda	\$4 50
Japonica	4 50

DECIDUOUS FLOWERING SHRUBS

	Per 10	Per 100
Althæa. Double red, white, pink, variegated, 2 to 3 ft.....	\$1 50	\$12 00
Double, 2-year-old plants, 1 to 3 ft.....	1 00	8 00
Amygdalus. Double white, pink flowering Almond, 3 ft....	2 50	20 00
Amelanchier botryapium. Very fine shrub, 5 to 7 ft.....	4 00	35 00
Aralia pentaphylla, 3 to 4 ft....	2 50	20 00
spinosa	2 50	
Azalea Amœna. The most popular evergreen hardy flowering shrub in existence. We have the finest stock in the country. Each, 35c., 50c., 75c., \$1.00 to \$2.00.		
Andromeda Catesbæi. Fine for planting in shady places. Per 10, \$1.00; per 100, \$8.50.		
A. floribunda. Each, 75c. to \$1.50.		
A. japonica. Each, 50c. to \$1.50.		

	Per 10	Per 100
Berberis dulcis nana, 15 to 18-in., bushy	\$2 50	
Lyoni, 15 to 18-in.	2 50	
Thunbergii, 15 to 18-in....	1 50	\$12 00
Large specimen plants..	2 50	20 00
purpurea. Purple-leaved ...	1 25	10 00
Calycanthus floridus. Strawberry shrub	1 50	12 00
Caryopteris mastacanthus. Blue spiral, 10 to 12-in.....	1 00	8 00
Mastacanthus, 2 to 3 ft....	2 00	15 00
Catalpa Bungei. Dwarf, large foliage	2 50	20 00
Cercis japonica. Judas tree.....	2 00	20 00
Chionanthus virginica. White fringe, 3 ft.	1 50	12 00
Citrus trifoliatum or Linonium trifoliatum. Hardy Orange. One of the most attractive shrubs for a hedge.....	1 00	8 00

DECIDUOUS FLOWERING SHRUBS—Continued.

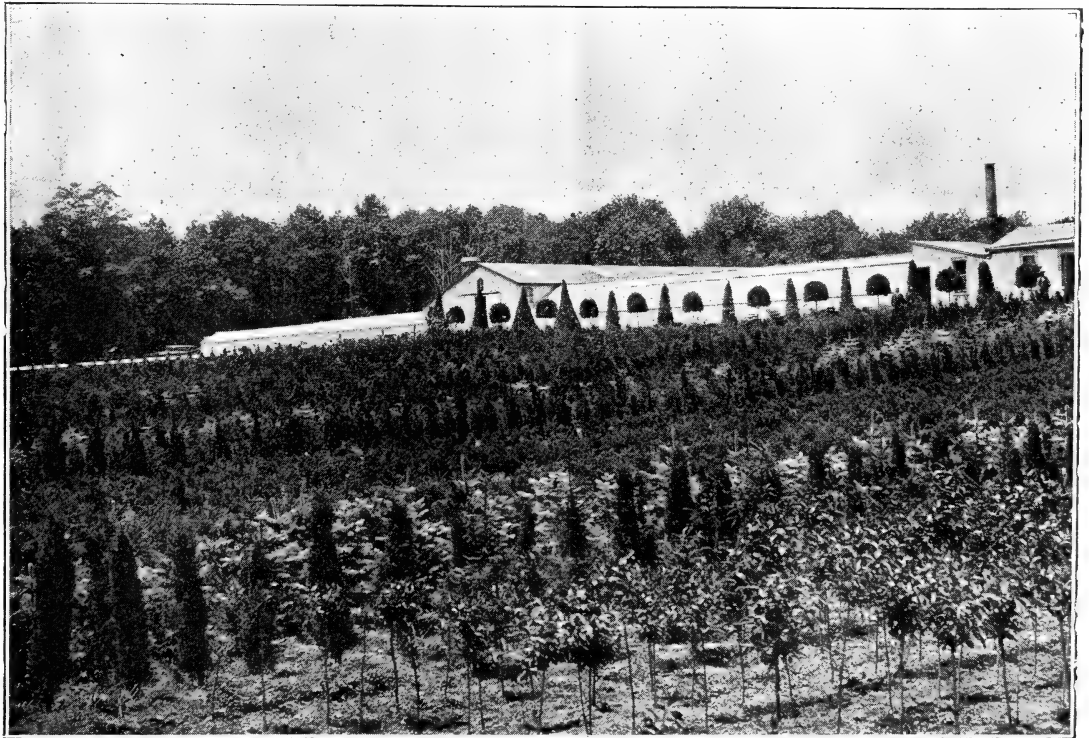
	Per 10	Per 100		Per 10	Per 100
<i>Clethra alnifolia</i> . 2 to 3 ft.	1 25	10 00	<i>Hydrangea hortensis nivea</i> . Very fine	1 50	
<i>Corchorus japonica</i> fl. ple. (Kerria)	1 25	10 00	Otaksa	1 50	12 00
fl. alba	1 25	10 00	<i>paniculata grandiflora</i> , 2 to 3 ft.	1 00	9 00
variegata	1 25	10 00	3 to 4 ft. Extra heavy... ..	1 50	12 00
<i>Cornus sanguinea</i> , 2 to 3 ft.	1 25	10 00	<i>radiata</i>	1 50	
<i>sibirica</i> , 2 to 3 ft.	1 25	8 00	Thos. Hogg	1 50	
<i>elegantissima</i> , 18 to 24-in.	1 50	12 00	<i>cyanoclada</i>	1 25	
variegata	1 50	12 00	<i>Mariesi Novelty</i> , 4-in. pots... ..	2 00	
Gouchaulti. New	2 00	18 00	<i>Hypericum</i> (<i>Colchium calycinum</i>) ..	1 25	
Spathie. New	2 50	20 00	<i>Moserianum</i> . Beautiful dwarf yellow flowering shrub. Per 10, \$1.25; per 100, \$10.00.		
<i>Cotoneaster Simonsii</i> . Red berried	2 50		<i>Kalmia latifolia</i> . Mountain Laurel, beautiful Spring flowering shrub. All sizes, from 20c. to \$1.00 each.		
<i>Cratægus coccinea</i> . Scarlet Hawthorn, 2 ft.	1 25	12 00		Per 10	Per 100
<i>coccinea</i> , 4 to 5 ft.	3 50	25 00	<i>Koelreuteria paniculata</i>	\$1 50	
fl. alba plena. White flowering, 4 to 5 ft.	5 00		<i>Philadelphus grandiflorus</i> . Mock Orange	1 25	\$10 00
Paul's scarlet. Double red flowering	5 00		<i>emoinei</i> . New variety	2 00	
<i>Cratægus oxyacantha</i> . English Hawthorn. Fine for hedges. White flowered	75	6 50	<i>Prunus triloba</i>	1 50	
<i>Cratægus pyracantha Lelandei</i> . The evergreen thorn, producing in the Fall beautiful orange red berries, which make these shrubs most decorative through Winter.	1 50	12 00	Pissardi. Purple-leaved, 2 to 3 ft.	1 25	12 00
<i>Cytisus Laburnum</i> . Golden chain, 4 to 5 ft.	3 50		Pissardi. Purple-leaved, 2 to 3 ft.	1 25	12 00
<i>Daphne Cneorum</i> . Choice dwarf flowering shrub. Several thousand fine plants on hand. Each, 35c.; per 10, \$3.00; per 100, \$20.00.			Specimen pyramid grown bushes	4 00	
<i>Deutzia Corymbiflora</i> (Novelty). This is the first time this has been offered in this country. Is entirely different from all others, having long, graceful branches, covered with corymbs of snowy white flowers, and large, rich dark green leaves. Price, 2½-in. pots, each, 25c.; per doz., \$2.00; per 100, \$15.00. Field grown, each, 35c.; per doz., \$3.00.			<i>Pyrus japonica</i> . Japanese flowering quince. 3 ft.	1 50	12 00
	Per 10	Per 100	4 ft. Extra fine.	2 50	20 00
<i>Deutzia candidissima</i> . 1 to 2 ft.	\$1 25		Our stock of Japanese flowering quince is very fine, and is of the very best double scarlet variety.		
<i>gracilis</i>	1 00	\$8 00	<i>Rhus Cotinus</i> . Smoke or Mist Bush	1 50	12 00
<i>Lemoninei</i>	1 25	10 00	<i>Ribes, sanguineum, aureum, alpinum</i>	1 25	10 00
<i>parviflora</i> . New	2 00		<i>Sambucus aurea</i> . Golden Elder. 3 ft.	1 25	10 00
<i>crenata</i> fl. pl.	1 25	10 00	3 to 4 ft. Strong.	2 00	15 00
Watereri. New	1 50	12 00	<i>racemosa</i> . Red berried. 4 to 5 ft.	3 00	25 00
Pride of Rochester.	1 25		Very ornamental, producing red berries in large clusters. We have extra large plants. <i>racemosa plumosa lacinate</i> . New	2 00	
<i>Elæagnus longipes</i> . Very ornamental	2 00		<i>racemosa plumosa aurea</i> . New Golden Elder. One of the best novelties out. Keeps the golden foliage all through the Summer. Each, 50c.	4 50	
<i>edulis</i>	1 50	12 00	<i>Spiræa Anthony Waterer</i> . Deep pink. 12 to 18 in.	1 25	10 00
<i>Exochorda grandiflora</i> . 2 to 3 ft.	1 50		2 to 3 ft.	2 00	15 00
<i>Forsythia intermedia</i>	1 50		Thunbergi. 2 to 3 ft.	1 25	10 00
<i>suspensa</i>	1 25		<i>aurea</i> . 2 to 3 ft.	1 25	10 00
Fortunei	1 25		Van Houttei. 2 to 3 ft.	1 25	10 00
<i>viridissima</i> . The Golden Bell. 3 ft.	1 25	12 00			
Young plants, 1 to 2 ft.	50	5 00			
<i>Halesia tetraptera</i> . Silver Bell Tree ..	2 00	20 00			
<i>Hedysarum multijugum</i> . New.	2 50				

DECIDUOUS FLOWERING SHRUBS—Continued.

	Per 10	Per 100		Per 10	Per 100
<i>Symphoricarpus racemosus</i> . White snowberry	I 25	10 00	<i>Viburnum lantana</i> . Heavy stock, 4 ft.	I 50	12 00
<i>Syringa</i> (Lilac). Single and double varieties. 2 to 3 ft.	I 50	12 00	dentatum	I 50	12 00
We can supply young plants, 2-year-old stock, in more than 25 double and single flowering varieties, at \$15.00 to \$30.00 per 100.			manus	I 25	10 00
<i>Tamarix africana</i> , gallica, indica, germanica vera	I 50	12 00	<i>Opulus sterile</i>	I 25	10 00
			plicatum. Japanese snowball.	I 75	15 00
			<i>Weigelia</i> , Red, pink, white silver, gold, variegated	I 50	12 00
			<i>Eva Rathe</i> . New (dart shaped). Each, 40c.	2 50	
			<i>Looymansi aurea</i> . New. Each, 40c.	2 50	

STANDARD FLOWERING SHRUBS

	Per 10	Per 100		Per 10	Per 100
<i>Azalea mollis</i>	\$10 00		<i>Deutzia crenata</i>	\$3 00	
<i>Althæa</i> , in variety	3 50		<i>Amygdalus pumila</i>	3 00	
<i>Prunus triloba</i>	3 50		<i>Cerasus sinensis</i> , double fl. cherry.	9 00	
<i>Hydrangea paniculata grandiflora</i>	3 00		<i>Prunus pissardi</i>	4 00	
<i>Syringa Emodi</i> (Lilac)	5 00		economica, new	9 00	
<i>Syringa</i> , Blue and White (Lilac)	5 50		<i>Viburnum opulus</i>	3 00	
<i>Wistaria chinensis</i>	6 00		plicatum	5 00	



Collection of Evergreens and Bay Trees.

CONIFERS AND EVERGREENS

We call special attention to our collection of Evergreens. We have hundreds of varieties not enumerated in this list. All our Conifers are several times transplanted and set out with a good ball of earth. They are sure to grow. Our prices are very low considering the quality of stock. Cheap Evergreens are dear in the end, and we are convinced that our stock will give satisfaction. See General Catalogue for complete list of varieties.

	Each.	Per 10
ABIES, amabilis , 2½ to 3 ft.	\$3 50	
Abies, balsamea, 3 to 3½ ft. . .	1 50	
Abies, canadensis. Hemlock, 2½ to 3 ft.	1 00	\$9 00
Abies, canadensis. Hemlock, 3 to 4 ft.	1 25	12 00
Abies, concolor, 3 to 3½ ft. . .	1 50	
Abies, concolor, violacea, 3½ to 4 ft.	3 50	
Abies, magnifica glauca, 3½ ft.	3 50	
Abies, nobilis glauca, 2 1-3 ft.	2 00	
Abies, nobilis, glauca, 3 ft. . .	3 00	
Abies, nobilis glauca, 4 ft. . .	5 00	
Abies, Nordmanniana, 1 ft. . .	50	4 00
Abies, Nordmanniana, 2 to 2½ ft.	1 50	
Abies, Nordmanniana, 2½ to 3 ft.	2 50	
Abies, Nordmanniana, 4 ft. . .	3 50	
Abies, picea excelsa, 2½ to 3 ft.	30	2 50
Abies, picea excelsa, 3 to 4 ft.	35	3 00
Abies, picea Alcockiana, 3 ft.	1 50	
Abies, picea compacta, 2½ ft.	1 50	
Abies, pungens, 3 to 4 ft. . .	2 00	
Abies, glauca Kosteri. Blue Spruce. Grafted. 8 to 10 ins., 2-year grafts.	50	4 00
1 ft.	75	6 50
1½ ft.	1 00	9 00
TRUE BLUE } 1½ to 2 ft.	1 50	
2 ft.	2 00	
SPRUCE. } 2 to 2¼ ft.	2 50	
3 ft.	3 50	
3 to 3½ ft.	4 50	

Large plants from \$4 to \$20 each.

CUPRESSUS Lawsoniana , 2 to 3 ft.	75	
Cupressus Lawsoniana, 3 to 4 ft.	1 00	
Cupressus Lawsoniana, alu- mi, 2½ to 3 ft.	2 00	
JUNIPERUS hibernica , 1 ft. . . .	15	1 00
Juniperus hibernica, 2 ft. . . .	35	3 00
In different varieties, 2 to 2½ ft.	1 25	10 00
PINUS austriaca . Austrian Pine, 2 ft.	35	3 00
2 to 3 ft.	50	4 00
cembra, 2 ft.	1 50	12 00
Strobis, 2 to 3 ft.	40	3 50

	Each.	Per 10
RETINOSPORA plumosa , 1½ to 2 ft.	35	3 00
Retinospora plumosa, 2 to 3 ft.	60	5 00
Retinospora plumosa, 3 to 4 ft.	1 25	10 00
Retinospora plumosa, 4 ft. . .	4 50	35 00
Retinospora plumosa aurea, 1½ to 2 ft.	35	3 00
Retinospora plumosa aurea, 2 to 3 ft.	75	6 50
Retinospora plumosa aurea, 3 ft.	2 25	15 00
Retinospora plumosa aurea, 4 ft.	4 50	35 00
Retinospora pisifera aurea, 2 to 3 ft.	1 00	9 00



Blue Spruce—*Picea Pungens Glauca.*

CONIFERS AND EVERGREENS—Continued.

	Each	Per 10
Retinospora pisifera aurea, 3 to 4 ft.	2 00	18 00
Retinospora pisifera aurea, 4 to 5 ft.	3 50	30 00
TAXUS baccata. English Yew, 2 to 3 ft.	2 00	15 00
Taxus baccata. English Yew, 3 to 4 ft.	3 50	25 00
Taxus hibernica, 1½ ft.	50	4 50
Taxus hibernica, 2 to 3 ft.	1 25	10 00
Taxus hibernica, 3 ft.	2 50	20 00
Taxus hibernica, fol. variegated, 2 ft.	1 50	12 50
Taxus hibernica, fol. variegated, 3 ft.	3 00	25 00
THUYA occidentalis, 1½ to 2 ft.	30	2 00
Thuya occidentalis, 2 to 3 ft.	50	4 00
Thuya occidentalis, 3 to 4 ft.	65	6 00
Thuya sibirica, 18 to 24 ft.	30	2 50

EVERGREENS AT THE PAN-AMERICAN

The accompanying illustration shows a certificate and the Bobbink & Atkins display of evergreens at the Pan-American Exposition. One picture shows, to the left, what was known as the Elmwood entrance, where the greatest number of people entered the grounds. It was impossible to get the whole of the exhibit into one view, as many fine specimen box trees and bays extended along the lawn, both to the right and left. Everything excepting the sweet bays is planted out; we have not lost a single plant. The exhibit consisted of standard and pyramid sweet bays, a large number of finely trimmed box, taxus, blue spruce, and a large assortment of the choicest evergreens. This collection arrived at Buffalo about May 15, occupying one entire car, but I think it is rather unusual in handling so many evergreens that not one should have turned out a loss. —William Scott, in The Florists' Exchange.

We have a great quantity of Evergreens in tubs in all sizes and in many varieties. Ask for list with prices.

Don't fail to visit our Nurseries and inspect this stock.

PAN-AMERICAN EXPOSITION
BUFFALO · NEW YORK · A.D. 1901

The Directors, on the recommendation of the Superior Jury, confer their award

A SILVER MEDAL

on *Bobbink & Atkins,*
for *Shrubs.*

John A. Williams President
Edwin Fleming Secretary

Mary S. Putchett Superintendent of Awards

Director General

FRUIT DEPARTMENT

	Per 10	Per 100		Per 10	Per 100
Apples, Crab. 6 to 8 ft., XX grade	\$6 00	\$45 00	Nuts, Chestnuts, American, 4 to 6 ft.	\$4 50	
1st grade	4 00	35 00	Japan, 3 to 5 ft.	5 00	
medium, 5 to 6 ft.	2 00	18 00	Spanish, 3 to 5 ft.	4 50	
Bismarck dwarf, 4 to 5 ft.	4 00		Filberts, 2 to 4 ft.	3 50	
Pears, extra, 6 to 8 ft.	6 00		Walnuts, English, 2 to 3 ft.	4 50	
1st grade, 5 to 7 ft.	4 00	35 00	Japan, 3 to 5 ft.	4 50	
medium, 5 to 7 ft.	2 00	18 00	Hickory, Shellbark, 2 to 3 ft.	6 00	
dwarf, extra, 3 to 4 ft.	3 50	30 00	Grapes, Concord, Moore's Early, Champion, Diamond, Catawba, Hartford, Niagara, Brighton, Pocklington, Wyoming, Delaware	1 00	8 00
Cherries, extra, 6 to 8 ft.	7 50		Early Campbell	2 00	15 00
1st grade, 5 to 7 ft.	4 50		Currants, Cherry, Versailles, White Grape, Lee's Black, Fay's Prolific, etc.	75	6 00
Rocky Mountain dwarf, 2 to 3 ft.	2 00		Gooseberries, Downing, Houghton	75	6 00
Plums, Japan, extra, 6 to 8 ft.	5 00		Industry	1 50	12 00
1st grade	3 50		Raspberries, Cuthbert, Miller's Red	50	4 00
general variety, extra, 6 to 8 ft.	5 00		Superlative, etc.	1 00	8 00
medium, 6 to 8 ft.	4 00		Strawberries, all varieties		2 00
Peaches, extra, 5 to 7 ft.	2 50	18 00	Asparagus, Con. Colossal, per 100, \$1.00; per 1000, \$6.00.		
1st grade, 5 to 6 ft.	1 50	12 00	Rhubarb	1 00	
medium	1 00	9 00			
Quinces, extra	4 00				
1st grade	2 50				
Apricots, extra, 4 to 5 ft.	4 00				
1st grade, 3 to 5 ft.	2 50				
Nectarines, 1st grade, 4 to 6 ft.	3 50				
Mulberries, Downing, Russian	4 00				
Blackberries, Wilson's, Erie, Lawton, Rathbun	50	4 00			

ORNAMENTAL TREES

	Per 10	Per 100		Per 10	Per 100
Acer dasycarpum, Silver Maple, 1½ in., 10 ft.	\$3 50	\$30 00	saccharinum, Sugar Maple, 1½ to 1¾ in., 12 ft.	5 00	
1½ to 2 in., 12 ft.	4 50	40 00	1¾ to 2 in., 12 ft.	8 00	75 00
dasycarpum, 2 to 2½ in., Weir's cut-leaved, 1 in., 10 ft.	7 50	65 00	2 in., 12 to 14 ft.	12 50	100 00
pulverulentum, 8 to 10 ft.	4 50	40 00	2 to 2½ in.	20 00	175 00
platanoides, Norway Maple, 1 in., 8 to 10 ft.	3 50	30 00	Specimen trees, \$2.50 to \$13.50 each.		
Acer platanoides—			Æsculus, hippocastanum. Horse-chestnut, 1¼ to 1½ in., 7 to 8 ft.	3 50	
1½ to 2 in.	\$5 00	\$45 00	2 to 2½ in., 8 to 10 ft.	10 00	
2 to 2½ in.	10 00	90 00	2½ in. up to 10 ft.	20 00	
Schwedleri, 1 in., 8 to 10 ft.	5 00	45 00	fl. albo pleno, double white flower, 8 ft.	7 50	
dark purple-leaved maple, 1½ to 2 in., 10 to 12 ft., fine	15 00		fl. albo pleno, 10 to 12 ft.	15 00	
Reitenbachi, 1 in., 8 to 10 ft.	5 00	45 00	rubicunda, red flowering Horse-chestnut, 10 to 12 ft.	20 00	
pseudo-platanus, dark purple-leaved maple, 2½ to 3 in., 10 to 15 ft.	25 00		specimen trees, 12 ft.	30 00	
Leopoldi, beautiful, 8 to 10 ft.	10 00		Betula (Birch) alba, 8 to 10 ft.	4 00	
purpurea, purple-leaved, 8 to 10 ft.	10 00		laciniata. Cut-leaved Birch, 6 to 8 ft.	4 00	
			purpurea. Black Birch, 5 ft., grafted	10 00	
			Castanea vesca alba marginata, beautiful silver variegated leaved Spanish Chestnut.	6 00	

ORNAMENTAL TREES—Continued.

	Per 10	Per 100		Per 10	Per 100
Catalpa Bungei , grafted, 2 to 3 heads	20 00		Quercus palustris . Pin Oak. 7 to 8 ft.	8 00	
speciosa. 8 ft.	4 50		8 to 10 ft.	10 00	
10 ft.	7 50		aurea. Golden Oak. 3 to 4 ft.	5 00	
Cercidiphyllum japonicum . 5 to 7 ft.	9 00		4 to 5 ft.	7 50	
7 to 8 ft.	12 00		tinctoria. Purple or Black Oak. 4 to 5 ft.	7 50	
Cytisus Laburnum . 4 to 5 ft.	4 50		coccinea (the true variety). Scarlet. 4 to 5 ft.	7 50	
5 to 7 ft.	7 50		Salisburia adiantifolia (Ginkgo). 6 to 7 ft.	10 00	
Vossi. New. 5 ft.	6 00		Sorbus americana . Am. Ash. 7 to 8 ft.	3 00	
Fagus Purpurea . Rivers' Purple Beech. 4 ft.	2 50	20 00	aurea lutescens, silver-leaved. 6 to 7 ft. Very fine	5 00	
latifolia. 8 to 9 ft.	18 00		aurea. Golden Ash. 5 to 6 ft.	4 00	
tricolor. Very fine. 4 to 5 ft.	12 50		8 to 9 ft.	10 00	
asplenifolia. Fern-leaved. 5 to 6 ft.	6 00		Tilia americana . 7 to 8 ft.	3 50	
Fraxinus americana . Am. White Ash. 8 to 10 ft.	5 00		8 to 9 ft.	6 00	
Liriodendron tulipifera . 8 to 10 ft.	5 00		Europea. 7 to 8 ft.	4 00	
Paulownia imperialis . Empress Tree. 4 to 5 ft.	3 50		8 to 10 ft.	10 00	
Platanus orientalis . Oriental Plane. 5 to 7 ft.	3 50	30 00	platyphylla. 8 to 10 ft. Very fine trees	15 00	
8 to 10 ft.	6 00		Ulmus americana . American Elm. 8 to 9 ft.	4 00	
10 to 12 ft.	10 00		aurea. 7 to 8 ft.	7 60	
Ptelea trifoliata aurea . Golden Hop tree. Each, \$1.00			campestris. Specimen trees. 15 ft. Each, \$3.00	25 00	
Pyrus . Double-flowering apples in variety. 5 to 6 ft.	5 00		plumosa. 8 to 9 ft.	4 00	
Populus alba . Silver Poplar. 8 to 9 ft.	7 50		montana superba. 8 to 9 ft.	4 00	
canadensis aurea. Gold Poplar. 8 to 9 ft.	10 00		Louis Van Houttei. 8 to 10 ft. Very fine golden variety	10 00	
monilifera. Caroline Poplar. 8 to 9 ft.	6 00	30 00	purpurea. Black Elm. 8 to 9 ft.	5 00	
monilifera. 10 to 12 ft.	7 50		Dampieri, golden-leaved. 7 to 8 ft.	7 50	
12 to 14 ft. Specimen tree	10 00				

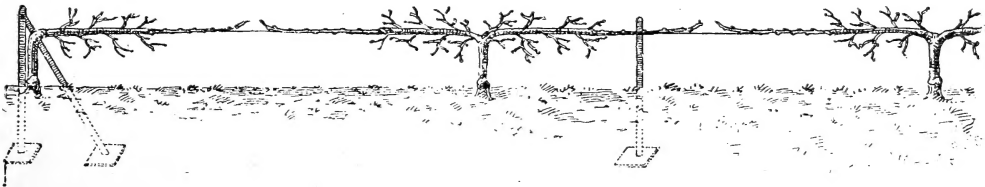
NOTE.—For nursery stock, packing will be charged at cost.

For novelties and description of Hardy Plants see our Special Herbaceous Plant Catalogue.

TRAINED FRUIT TREES

We have a large quantity and variety of these trees. It is needless to inform our patrons that trained trees are fast coming into favor in this country, and it will, in our opinion, only be a few years when all kinds of trained trees will be planted in every garden, either large or small.

We have published an illustrated pamphlet of trained trees and same will be mailed on application.



Cordon.

Our General Catalogues

While we have made this Catalogue for Florists and Nurserymen who are especially interested in this class of stock, we have, in addition, issued our General Catalogues as in previous years, which will be found replete with Hardy Herbaceous Plants, Evergreens and Conifers, of which we are large growers and importers; notable among them are Colorado Blue Spruce, Cedrus Atlantica glauca, Yews, Pinus, Junipers, and many others of equal grace and beauty.

In ornamental trees we carry a large stock of Golden, Black and Red Oaks, Purple and Weeping Beech, Golden Elm and Mountain Ash, Golden and Silver Poplars, and other fancy ornamental trees which would materially add to the beauty of the landscape when planted amongst a general variety of trees.

Flowering and Evergreen Shrubs have been given a place in this Catalogue; this they richly deserve, as no garden is complete and beautiful without them, including Rhododendrons, Azaleas Amœna, Mollis and Ghent; also Lilacs, Spiræas, Mountain Laurel, and others too numerous to mention here.

Summer-flowering Bulbs have not been overlooked, Japan Lilies, Cactus, Dahlias, Cannas, Gladiolus, Gloxinias and Begonias being very conspicuous in our list.

Bay Trees and Boxwood in standard and pyramidal form, and clipped Boxwood in all shapes are in our storehouses.

Fruit Trees both in ordinary stock and trained trees, which have for many years been so popular in Europe, are also listed.

We will take pleasure in mailing these Catalogues free to prospective buyers.

BOBBINK & ATKINS.

INVITATION

We shall be pleased to have anybody interested in Horticulture visit our Establishment, which is situated at Carlton Hill, N. J. We have on hand at all times many interesting Plants, Shrubs, Trees and other stock. Our storehouses and greenhouses cover a superficial space of 100,000 square feet, and at this season the stock we have in them is worth traveling any distance to see. In addition to this, our large Nursery is always worth seeing.

Yours truly,

BOBBINK & ATKINS.

Place Your Import Orders Now

We are the largest importers of Ornamental Florist and Nursery Stock in America, and have our representatives in all parts of the world. We will be pleased to give letters of introduction to any of our growers or representatives in foreign countries, and upon request we will have our representative meet prospective purchasers in any city, who will take pleasure in showing them all horticultural points of interest.



This illustration represents a collection of Specimen Azaleas, imported by us last Fall, many of them measuring 5 to 7 feet in diameter.

We will be pleased to communicate with parties wishing to purchase specimen plants of any kind. We import—direct from Africa, Australia, Belgium, Bermuda, Canada, Central America, East Indies, France, Great Britain, Germany, Holland, Italy, Japan, Mexico, New Zealand, South America, and West Indies—Ornamental Nursery Stock, Plants, Seeds and Bulbs. If interested, write us, and we will notify you when importations arrive, in order that you can inspect the stock.

ASK FOR IMPORT CATALOGUES

“Rutherford Park” Lawn Grass Seed

To obtain a beautiful lawn, one which is pleasing to the eye and a joy to the owner, you must be very particular in the selection of your grass seed. We recommend to you our **“RUTHERFORD PARK” MIXTURE**, which we have found very satisfactory in our landscape gardening work, and which has given great satisfaction wherever used. We are the originators of this brand, wishing to have our own seed, on which we knew we could depend.

A great deal of your success with a beautiful lawn depends on the proper preparation of the soil. This should be done by draining, if necessary, and digging or plowing to the depth of 6 to 12 inches, according to the nature of the soil, applying at the same time a liberal quantity of well decomposed manure. Before sowing, the ground should be perfectly cleaned, made level, and evenly raked. The seed should be sown on a calm day, at the rate of 4 to 5 bushels to the acre. The ground should then be rolled, and, as soon as the grass has attained the height of 2 to 3 inches, rolled again. Frequent mowing and rolling are indispensable to maintain the turf in good order.

Our **“RUTHERFORD PARK” MIXTURE** will make a close, thick turf in a very few weeks. It roots deeply, enabling it to withstand severe droughts; consequently maintaining its beautiful rich green color the entire season. The **“RUTHERFORD PARK”** is no doubt the Cheapest Lawn Grass Seed offered; not particularly on account of the price, but more from a point of quality and quantity of seed to the bushel, which contains 21 pounds of the finest kinds and varieties of grasses used for lawn purposes. We believe this mixture to be among the best now on the market, and would ask our customers to carefully consider this before placing their orders.

We will supply any quantity our customers may desire to meet the needs of the ground on which it is to be sown.

THE QUANTITY REQUIRED for making new lawns is 4 to 5 bushels to the acre; for renovating old lawns, 1 to 2 bushels. For a new plot, 15 x 25 ft., or 375 sq. ft., two quarts is required, and one quart for renovating old lawn of same dimensions. **Bush., \$4.50.**

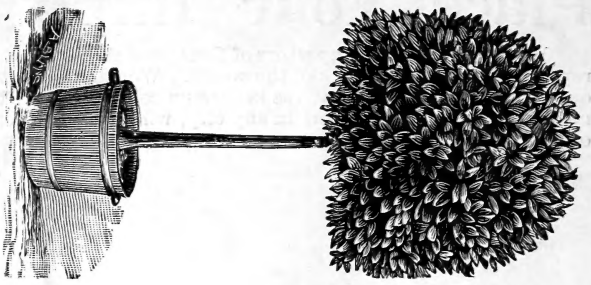


BOBBINK & ATKINS

Wholesale Importers

Growers, Florists and Nurserymen

RUTHERFORD, N. J.



*A. J. Dutcher
in charge of Pure seed investigation,
Division of Botany,
Washington, D. C.*

**Shrubs, Trees, Evergreens, Plants,
Bulbs, Palms, Ferns, Orchids and other
stock**

**Not enumerated in this
list can be supplied at
the lowest market cost**

WE will be pleased to have anyone desirous of purchasing this stock submit their lists of wants for our lowest prices, or we will call upon you by request and submit estimates.

We are always in the market for large Palms and stock of all kinds, and will be pleased to hear from collectors and raisers of new varieties of Plants, Orchids, Seeds, Bulbs, etc., with a view of purchasing or exchanging same.

CORRESPONDENCE INVITED

VISITORS

can reach us by taking the Christopher or Barclay Street Ferry from New York, connecting with the electric cars in Hoboken. Cars pass by our nursery at East Rutherford (Carlton Hill). Take Erie R. R., W. 23d or Chambers Street Ferry, New York, to

Rutherford, N. J.