

Historic, Archive Document

Do not assume content reflects current scientific knowledge, policies, or practices.

Wlt 6219

JANUARY, 1902.

SEED CATALOGUE

—OF—

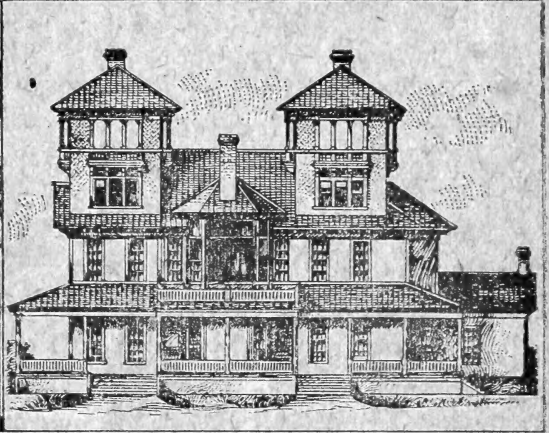
N. L. WILLET DRUG CO.

ALSO SEED JOBBERS

AUGUSTA, - - GEORGIA.



ELI WHITNEY
Invented Cotton Gin 1792, at Augusta, Ga.



NEW ELI WHITNEY CLUB HOUSE,
Augusta, Ga.

ALMANAC

EASTERN STANDARD TIME

EDITED BY

AUGUSTA DRUG CO.

(STRICTLY WHOLESALE.)

AUGUSTA, - GEORGIA.

—WITH—

WEATHER FORECASTS

FOR THE YEAR, THE EQUAL, WE BELIEVE,
OF ANY IN THE UNITED STATES.

SPECIALTIES

FOR

GENERAL MERCHANT STORES.

GARDEN SEED IN PAPERS. Beans, Peas, Cabbage, Collards, Dent Corn, Turnips, Watermelons, Cantaloupes, Onion Sets, Second Crop Irish Potatoes, Sorghum, Cat Tail Millet, German Millet, Native Georgia Rye, Purple Straw Wheat, Barley, Chufas, Cow Peas, Spanish Peanuts, Mammoth Peanuts, Native Rust Proof Oats, Appler Oats, Burt Oats, Cotton, Upland Rice, Clovers, Vetches, Bermuda Grass Seed, Velvet Beans, Arctic Grass.

This Seed Catalogue is issued by our

Seed Department.

OUR SEEDS ARE GROWN ON CONTRACT ESPECIALLY FOR US AND ARE ESPECIALLY ADAPTED FOR THE SOUTHERN STATES.

SPECIALTIES

FOR

U. S. WHOLESALE SEED TRADE.

GEORGIA GROWN SEEDS. Collards, Cottons, Cow or Field Peas, Black-eye Peas, Yellow-eye White Peas, Southern Giant Curled Mustard, Ostrich Plume Mustard, Okra, Watermelons, Nixon Cantaloupe, Mexican June Corn, Seven-Top Turnips, Cat-Tail or Pearl Millet, Spanish Peanuts, Big Peanuts, Upland Rice, White Multiplier Onion Sets, Yellow Multiplying Shallots, Burt Oats, Appler Oats, Chufas, Velvet Beans, Giant Beggar Weed, Japan Clover, Georgia Rye, Johnson Grass, Bermuda Grass, Carpet Grass, Teosinte, Resoue Grass, Amber and Orange Cane, Kaffir Corn, Sweet Potatoes, Asparagus Roots, Beardless Barley, Frost King Turnips, Second Crop Irish Potatoes.

TO THE WHOLESALE SEEDMEN OF THE UNITED STATES:

Seeds catalogued by us as "grown in Georgia" attain their best development in Georgia, and should be bought afresh here each year. We are prepared to stock the wholesale United States Seedmen with same at lowest prices and the best types. State quantity when you write.

TO THE RETAIL SEED MERCHANTS

of Georgia and South Carolina, and elsewhere. If you sell seeds in papers that are sent out on commission, we urge you for your reputation's sake and your customers' good, that you discard same. The seed are not burnt that you return, but are sent back and forth for years till sold. The various State experimental stations have many times warned the people against these seed as being untrue to type and faulty in germination. The different habitats of the various seeds do not allow any seedman in the United States to grow but a small portion of this seed stock. Our seed are grown for us by careful growers throughout the United States (not Europe,) wherever the best development of the individual seed is attained. We are prepared to compete with any United States markets on seeds in paper or in bulk.

**WRITE US THE KIND
YOU WANT AND QUANTITY**

OUR WARRANTY.

We select our stocks with greatest care, and pay liberal prices. We feel justified in saying that all our seeds are the freshest and best to be found, but, at the same time, it must be distinctly understood that we sell no seeds with warranty expressed or implied in any respect, and will not be in any way responsible for the crop. If our seed are not accepted on these terms, return them at once and we will refund money.

DIRECTIONS FOR ORDERING SEEDS.

RETAIL MAIL ORDERS.—Send Cash With Orders.—Seeds sent only to amount of remittance. We open no accounts. Remit in cash by express money order, registered letter (at your risk) or in postage stamps. No C. O. D. orders sent unless money accompanies order for an amount sufficient to cover express charges both ways. Always state whether to ship your goods by postage or express, and do not forget to enclose the postage or express charges.

POSTAGE AND EXPRESS.

POSTAGE (always to be prepaid by us) to any point in the United States or Cuba or Porto Rico is on a 1-lb package, 10c; 2-lb package, 18c; 3-lb package, 25c; 4-lb package, 35c. By SOUTHERN EXPRESS COMPANY at following rates (we must prepay) to any office of the Southern Express Company in United States, on 1½-lb or less package, 10c; 2-lb package, 14c; 3-lb package, 18c; 4-lb package 26c.

DISTANCE

makes no difference by above cheap, easy transportation. We can do your SEED BUSINESS for you if you are 10 miles or 1000 miles away—it's all the same. And we will do your business as carefully for you whether you want 10 cents or ten dollars worth of seed. Will be glad to mail free this catalogue to your friends if addresses are sent us.

MAILED FREE OF POSTAGE TO YOU.

GARDEN SEEDS as follows:—1st. All seeds listed in our catalogue as being put up in 2½c. papers at following rates: 2 papers for 5c; 12 papers for 25c; 50 papers for \$1.00. 2nd. All seeds listed in our catalogue as being but in 5 and 10 cents packets. 3d. All packages seeds up to four ounces quoted in our catalogue as being put in 1, 2, 3 or 4 ounces.

This catalogue is divided into six parts—Garden Vegetables, Forage and Hog Crops, Field Crops, and Grass Seeds.

N. L. WILLET DRUG CO.

Seed Department.

AUGUSTA, GA.

N. L. WILLET DRUG CO., Augusta, Ga.,

—OFFER—

Insecticides, Animal Remedies, Etc.

The Agricultural Department, Washington, D. C., will mail you on application pamphlet on the use of Insecticides. We offer materials as follows:

Bordeaux Mixture.—Dry. Materials 8 lbs. (for 50 gallons of water) for 75c.

Paris Green.—1 lb. 25c, 10 lbs. at 18c a lb. Usually add equal parts lime. Formula, 4 oz. Paris Green, 4 oz. Lime and 50 gallons water; or teaspoonful each to one bucket of water.

Liquid Lice Killer.—Lice on Animals, Mites in House, spray weekly roost and nest. 1 Gallon 75c, can extra 10c.

Carbon, Bi Sulphide. (Liquid) 1 lb. 35c. Saves 1 ton seed.

Train or Fish Oil.—Drives away flies, gnats, etc. Smear on animal at point of attack. Some mix $\frac{1}{2}$ kerosene. Per gallon 50c. 1 gallon can 10c extra.

Resin Wash.—Dry. Batch weighs 14 lbs. for 50 gallons of water, 75c.

Flour Sulphur.—Dry. 1 lb. 10c, 5 lbs. for 35c.

Whale Oil Soap.—1 lb. 10c, 25 lbs. at 8c lb., 50 lbs. at 7c. Lice and delicate larvae 1 lb. to 6 gallons of water; San Jose Scale 1 lb. to 1 gallon of water.

Chloride Lime.—1 lb. tin 15c., 10 lbs. at 12c a lb.

Sun Sanitary Fluid.—Ideal Germicide Disinfectant, Deodorizer, Antiseptic, Purifier. Non-Poisonous. Agreeable, Refreshing Odor. Dilute 1 part to 50 or 100 of water as per directions. 1 Pint bottles 20c, 1 Quart bottles 35c, 1 Gallon can \$1.00, Bulk 75c, cans extra.

Formalin.—Prevents Smut in Wheat and Oats. Soak oats, etc., 2 hours and dry and plant, or plant wet, in water containing 1 pint of Formalin to 50 gallons of water. 1 Pint Formalin 75c.

Ga. Chicken Cholera Cure.—Cures Cholera. Post paid 30c, 1 dozen \$2.00 delivered.

National Hog Cholera Cure.—Formula United States Government. Post paid 30c, 1 dozen \$2.00 delivered.

Holleyman's Compound Elixir.—For Horse Colic. Never Fails. 1 bottle 50c, 1 dozen \$4.00 delivered.

Flea Exterminator.—Gray Powder. 1 lb. 25c.

NOTE: We can furnish at low figures Belgian Hares and Fancy Fowls and Fancy Dogs of all kinds.

GARDEN SEEDS

BEST ADAPTED TO OUR SOUTHERN STATES.

Ga. Asparagus.

✓ **GIANT ARGENTEUIL; PALMETTO; FRENCH SEED.** 1 pound, 40 cents; 5 pounds, 30 cents pound.

✓ **CHARLESTON FRENCH, OR PALMETTO ROOTS.**—Roots bear transportation to any part of United States. Shipments made February and March.

(Culture.—Prepare in spring or fall, bed five feet wide, two feet deep, fill in manure and soil. Make three rows and set out roots six inches below surface and twelve inches in row. Every autumn dress with manure and salt after tops are cut. Bed should last twelve years. 100 roots set bed ten feet by forty feet.)

There is no finer vegetable than Asparagus. A most profitable market crop about Augusta. 100 roots, \$1.00; 1,000 roots, \$4.00; 5,000 to 10,000 at \$3.00 per 1,000. We have special arrangements for large amounts.

✓ **GIANT ARGENTEUIL ASPARAGUS.**—Several growers off Charleston, S. C., had a monopoly of this Asparagus for three or four years and have been getting high prices for products as compared with Palmetto. This Asparagus sold in New York in 1900 at \$6 to \$24 per dozen bunches. It is more prolific, longer lived, nearly double Palmetto's size. The finest Asparagus today in the United States. One week earlier than Palmetto. Roots, \$4.00 in 1,000 lots and \$3 in 5,000 lots.

Beans—Bush, Snap or Dwarf.

For all Beans when sent by mail, add for postage; Half-pint, 5 cents; pint, 10 cents; quart, 15 cents.

(Culture.—Beans can be sown for succession from end of February, or sooner, until September. Bear till frost. Drop several beans every two or three inches, in rows thirty inches apart. Cover two inches deep. Don't work

while dew is on beans for fear of rust. One quart sows a 100 feet row, 1 1-4 bushels, one acre.)

✓ **IMPROVED ROUND POD EXTRA EARLY RED VALENTINE.**—This is one of the best; earlier than the old Early Red Valentine. The vine is dwarf, the pods are smooth, round, stringless and very thickly set, remaining green and tender a long time after they are fit to pull. Vines very uniform, making little or no top growth, and producing enormously. Two papers for 5 cents; pint, 15 cents; quart, 25 cents; peck, \$1.65.

✓ **BURPEE'S STRINGLESS GREEN POD.**—Of all green podded bush beans this variety is decidedly the Earliest and Best; it is the only stringless green pod bush bean in cultivation, and surpasses all others in crisp and tender flavor. The straight, long, green, thick pods are all absolutely stringless and of a beautiful fleshy appearance. Packs, 10 cents; pint, 20 cents; quart, 30 cents; peck, \$1.75.

✓ **EARLY YELLOW SIX WEEKS.**—Hardy and very early; green pod; resembles Mohawk save in color; a leading sort. Papers, 2 for 5 cents; pints, 15 cents; quart, 25 cents; peck, \$1.50.

✓ **EARLY MOHAWK SIX WEEKS.**—Our hardest bean; will stand some frost. Preferred for early planting. Long, green, flat pods. Papers, 2 for 5 cents; pints, 15 cents; quart, 25 cents; peck \$1.50.

✓ **DWARF GERMAN BLACK WAX.**—An old variety, and a great favorite with market gardeners and others. Tender, yellow wax pods. Papers, 2 for 5 cents; pint, 20 cents; quart, 35 cents; peck, \$1.75.

✓ **EXTRA EARLY REFUGEE OR 1,000 TO 1.**—A 7-weeks' bean, medium to late, large vines, favorite for canning

and pickling, productive, round pod, good main crop. 1 pint, 15 cents; quart, 25 cents.

✓ **HENDERSON BUSH LIMA**.—The best Bush Lima. Pint, 25 cents; quart, 40 cents.

Beans—Pole.

(Culture.—Plant in hills four feet apart each way, four or five beans to a hill; plant the eye down. One quart plants 150 hills; half bushel, one acre.) Sow Pole Beans later than Dwarf and leave three plants to hill. Dwarf Beans ready for table 1 1-2 to 2 months. Lima 3 months; Pole, 3 2-3 months.)

✓ **LARGE WHITE LIMA**.—Either green or dry this is the standard table vegetable, and the best shell bean known. Give it rich ground and plenty of room. Half-pint, 15 cents; pint, 25 cents; quart, 40 cents.

✓ **SOUTHERN PROLIFIC**.—Strictly a Southern bean. Stands the Southern heat. Continues bearer until frost. Pods seven inches long and flat; seeds dark yellow. Standard in this latitude. Favorite way to plant in the South is in damp low lands, among corn, and let the vines grow up the corn stalks. Papers, 2 for 5 cents; pint, 20 cents; quart, 30 cents.

✓ **SMALL LIMA OR CAROLINA SEWEE**.—Similar in every way to Large Lima, except that it is only half as large, seeds and pods being smaller. Largely grown in the South, and is immensely popular. Half-pint, 15 cents; pint, 20 cents; quart, 35 cents.

✓ **TALL BLACK GERMAN WAX**.—Yellow pods. Bears richly flavored, stringless pods of the same good quality as Dwarf German Wax. Papers, 2 for 5 cents; pint, 20 cents; quart, 30 cents.

✓ **OLD HOMESTEAD, OR IMPROVED KENTUCKY WONDER**.—This is the earliest of all the green podded Pole Beans. Enormously productive, bearing its pods in clusters. The pods are long, crisp, tender and bright green in color. A very prolific variety, and one of the best in our list. Pkt. 10 cents; pint, 20 cents; quart, 30 cents.

Beets.

(Culture.—One ounce plants 100 feet; four pounds, one acre. Soak seed twelve hours before planting. Can be sown

pretty much all spring and summer. Sow one inch deep, in drills eighteen inches apart, thin out to eight inches in drill.)

✓ **EARLY ECLIPSE**.—The handsomest of the very early beets. Globe shaped, fine dark red color, rapid grower, small tops, purplish green foliage and red veins. Papers, 5 cents; ounce, 10 cents; 4 ounces, 15 cents; pound, 40 cents.

✓ **EARLY DARK BLOOD TURNIP**.—Trifle later than Eclipse. Flesh deep blood red, tender and fine flavored. The most generally used family beet. Papers, 2 for 5 cents; ounce, 10 cents; 4 ounces, 15 cents; pound, 40 cents.

✓ **EXTRA EARLY OR BASSANO**.—As early as Eclipse. Flesh pink with white streaks. Very juicy. Packet, 5 cents; ounce, 10 cents; 4 ounces, 15 cents; pound, 40 cents.

✓ **IMPROVED LONG SMOOTH BLOOD RED**.—Medium late. Often used for late summer planting and winter use. Papers, 2 for 5 cents; ounce, 10 cents; 4 ounces, 15 cents; pound, 40 cents.

✓ **HALF LONG BLOOD RED**.—Similar to Long Blood, but differs in size—being half long. Papers, 2 for 5 cents; ounce, 10 cents; 4 ounces, 15 cents; pound, 40 cents.

✓ **SILESIAN SUGAR WHITE**.—A sweet white beet, preferred by some. Papers, 2 for 5 cents; ounce, 10 cents; 4 ounces, 15 cents; pound, 40 cents.

Beets for Stock or Mangel Wurzel.

(Culture.—In Europe this is one of the necessary crops for cattle—500 to 600 bushels being grown to an acre. Sow five pounds to acre. Sow in rows two feet apart and thin out to twelve inches in row.)

✓ **NORBITAN GIANT**.—We have tried to get in this, the largest stock beet that grows. A long red variety of great size. Flesh solid; a good keeper. Ounce, 10 cents; 4 ounces, 15 cents; pound, 40 cents; 5 pounds, \$1.50.

Cabbages.

Possibly cabbages are the most universally grown of all vegetables for home consumption or shipping. The most critical truckers and gardeners will find our cabbage seed for heading qualities unexcelled.

The whole line of our cabbages are grown for us on Long Island by the best known and most reliable cabbage seed growers in the United States. There are no better cabbage seed in the world than those we offer.

(Culture—One ounce makes 2,000 plants or 150 feet row; five ounces will plant an acre. Sow in beds almost any month in the year, usually from February to November. For winter crop sow in August and September, early varieties. For late cabbage sow late sorts March, April and May, for June, July and August settings. Transplant deep, up to first leaf, in deep rich soil, and water plants well. Set out two to three feet in row; row thirty inches apart. Ready for use in 100 to 160 days.



EARLY JERSEY WAKEFIELD—Early and a well known favorite. Heads are conical shaped. Possibly the principal variety that is grown by truckers for early shipment, and by gardeners in general. Quantities of this cabbage grow off Charleston of twenty-two pounds weight, all solid heads. Papers, 2 for 5 cents; ounce, 15 cents; 4 ounces, 50 cents; pound, \$1.50.

GEORGIA TRUCKER—(Early.) For market gardener or planter; one of the best; large size; handsome color; fine flavor; does not run to seed; largely used by South Carolina sea coast shippers. 1 ounce, 15 cents; 4 ounces, 50 cents; 1 pound, \$1.50.

HENDERSON SUCCESSION—Second early. Valuable horticultural contribution; safe for the amateur to plant, as it does equally well at all seasons; no matter when planted. 1 ounce, 15 cents; 4 ounces, 50 cents; 1 pound, \$1.50.

IMPROVED EARLY DRUMHEAD—An intermediate kind between the cone shaped early and late varieties. Can be planted closely. Takes its name from its shape. Papers, 2 for 5 cents; ounce, 15 cents; 4 ounces, 50 cents; pound, \$1.50.

WILLET'S ALL-SEASONS SURE HEADER—One of the finest for second early or for late growing. Grows quickly to a large size and heads surely. It is a true, sure, hard-header. Its name is an index of its character. Papers, 2 for 5 cents; ounce, 15 cents; 4 ounces, 50 cents; pound, \$1.50.

IMPROVED EARLY FLAT DUTCH—Not so early as the very earlier, and not so heavy as some, but very salable because of its flat shape; very extensively planted. Weighs from ten to twelve pounds. Papers, 2 for 5 cents; ounce, 15 cents; 4 ounces, 50 cents; pound, \$1.50.

BUNCOMBE, OR N. C. WINTER—A firm, solid header and keeps well. A favorite in North Carolina. Either a spring or winter cabbage. Papers, 2 for 5 cents; ounce, 15 cents; 4 ounces, 50 cents; pound, \$1.50.

EARLY WINNINGSTADT—A Prussian cabbage; a standard cone shaped, solid head, second early variety. Papers, 2 for 5 cents; ounce, 15 cents; 4 ounces, 50 cents; pound, \$1.50.

GREEN GLAZED—For late sowing. Glossy green leaves. Not so liable to insect attacks, and especially adapted for hot climates. Papers, 2 for 5 cents; ounce, 15 cents; 4 ounces, 55 cents; pound, \$2.00.

EARLY LARGE YORK—For very early sowing. An old English variety. Heads small and slightly heart shaped; rather dwarf. Can be planted closely—eight inches in row. Papers, 2 for 5 cents; ounce, 15 cents; 4 ounces, 50 cents; pound, \$1.50.

PREMIUM LATE DRUMHEAD—Sow in September. Very hardy and withstands cold. Large round heads, though sometimes flattened on top. Well known. Papers, 2 for 5 cents; ounce, 15 cents; 4 ounces, 50 cents; pound, \$1.50.

PREMIUM LATE FLAT DUTCH—The old favorite for fall and winter sowing. Grows low to ground; heads large, bluish green in color; broad and flat on top. Papers, 2 for 5 cents; ounce, 15 cents; 4 ounces, 50 cents; pound \$1.50.

Early Cabbage Plants.

We offer only in large amounts and direct from our grower on Sea Islands, near Charleston, (who grows 160 acres

in cabbages.) Cabbage plants of Charleston Wakefield, (large type.) Extra E. Wakefield, Winningstadt, Early Spring, Early Trucker, Succession. Delivery, December, January, February and March. \$1.50 per 1,000 in 1,000 to 5,000 lots; \$1.25 in 5,000 to 10,000 lots. All to be shipped direct from grower by express.

Carrots.

(Culture.—One ounce will plant a 100 feet row; three pounds an acre. Soil must be fertile, deeply dug and light or sandy. Soak seed well. Sow in drills. Press soil down. Thin to four inches so plants can be worked. Can be used in 70 to 120 days.)

✓IMPROVED LONG ORANGE—Roots long and deep orange color. Papers, 2 for 5 cents; ounce, 10 cents; 4 ounces, 20 cents; pound, 50 cents.

Carrots For Stock.

(Culture.—Sow three pounds to the acre. These roots are often fifteen inches in circumference. Greatly enjoyed by stock and gives fine color to butter.)

✓VICTORIA, YELLOW—The largest, heaviest cropping and most nutritious yellow variety in cultivation. Easily gathered as the roots grow largely above the ground. 4 ounces, 15 cents; pound, 40 cents; 5 pounds, \$1.75.

Celery.

(Culture.—One ounce makes 4,000 plants, 100 feet drill. Four ounces to an acre. Grown here with profit extensively for market. Sow in April, May and June, also in August and September. Transplant when six inches high in three feet rows, six inches in row. When tall enough they should be covered with earth to bleach. Ready for use in 140 to 175 days.)

✓IMPROVED WHITE PLUME—Very early. White foliage. Needs but little banking. Not a winter variety. Packets, 5 cents; ounce, 20 cents.

Georgia Collards.

[Georgia grown seed. United States seedmen supplied.]

Georgia grows the Collard seed for the United States; and the United States come each year to Georgia for her Collard seed. We are the largest Collard

seed contractors in the South. Write us, stating quantity. Collards grow three to four feet high. Branch out widely and thickly. Leaves are cut and boiled as greens. New leaves taking place of old ones cut. Plants stand cold—leaves are more tender and sweet after frost. Every farmer's garden in Georgia grows Collards. Thousands of the negro garden patches grow nothing but Collards.

(Culture.—An ounce will produce about 2,000 plants, 150 feet row. Sow in spring or summer as directed for cabbage, either in beds, to transplant when large enough, or in rows where intended to stand. Several feet each way ought to be given the plants. Sixteen ounces to the acre.)

✓GEORGIA BLUE STEM COLLARD—The old-fashioned kind, known for a hundred years or more. The type of these have become run down and mixed. We have had our stock grown for us from an improved type. Papers, 2 for 5 cents; ounce, 10 cents; 4 ounces, 35 cents; pound, 90 cents.

✓GEORGIA WHITE CABBAGE COLLARD—Whiter and more tender than the Blue Stem. Introduced nine years or more ago. Three-fourths of them bunch or head up in winter. Paper, 2 for 5 cents; ounce, 10 cents; 4 ounces, 35 cents; pound, 90 cents.

Corn—Table and Sugar.

Plant March and April or later for succession, through July. 1 quart, 200 hills; 3-4 to 1 peck per acre.

✓GARDEN, SWEET TABLE—Adams' Early Mammoth Sugar, Stowell Ever green. All of above papers, 2 for 5 cents; pint, 15 cents; quart, 25 cents; peck, \$1.00. Postage is 10 cents pint, and 15 cents quart.

Cucumbers.

(Culture.—One ounce for eighty hills, 11-4 pounds, one acre. Plant after frost half-inch deep, and thereafter every two or three weeks for succession, in well manured hills, six feet apart. Thin to four plants in hill. Ready for use in 50 to 75 days.

—EXTRA-EARLY LONG GREEN—Very early, of attractive form and size, very prolific, and especially valuable for market gardeners because of these

qualities. Particularly good for pickling. Papers, 2 for 5 cents; ounce, 10 cents; 4 ounces, 25c.

EARLY FRAME OR SHORT GREEN—Excellent for table and pickling. Fruit straight, handsome, smaller at each end, bright green; flesh tender; crisp; makes fine pickles. Papers, 2 for 5 cents; bulk price same as Long Green.

IMPROVED EARLY WHITE SPINE—A well known standard variety. One of the best for the table; tender, crisp, uniform, straight, dark green with few white spines. Papers, 2 for 5 cents; bulk price same as Long Green.

Egg Plant.

The Egg Plant is peculiarly well adapted to our Southern climate, and should be in every garden. It makes a most delicious dish.

(Culture.—One ounce to 100-yard row; four ounces to one acre of 3,000 to 4,000 plants. Start seed in hotbeds or boxes in February or March. Set out plants early in warm weather, in rows two by three feet apart.)

NEW YORK IMPROVED PURPLE—Deep lustrous purple. Standard. Packet, 10 cents; ounce, about 1,000 plants, 25 cents.

PEARL WHITE—(Seed grown and originated in Georgia.) Can supply the trade. A large, new, creamy white, delicately flavored Egg Plant. Preferred above the others. Packet, 10 cents; ounce, 25 cents.

Kale.

(Culture.—One ounce for 2,000 plants; three pounds to one acre. For winter greens sow from August to October, in drills two feet apart. Thin out to eight inches in row, and cultivate as cabbage.)

DWARF GREEN CURLED—Most tender and delicate of all the cabbage family. Improved by frost. The leaves look like an immense feather. Papers, 2 for 5 cents; ounce, 10 cents; 4 ounces, 30 cents.

Lettuce.

(Culture.—One ounce for 200-foot drill; 1,500 plants. Sow in beds almost any month in the year. Reset plants ten inches apart in rows. Force to rapid growth if wanted tender; two crops from one season under glass or frame.)

DEACON CABBAGE—Has large, solid head. Cabbage Lettuce for summer use. Papers, 2 for 5 cents; ounce, 15 cents; 4 ounces, 40 cents.

BIG BOSTON—Among the Southern truckers this is more largely grown than any other for shipping. Preferred on account of its great size and solidity. Packet, 5 cents; ounce, 15 cents; 1-4 pound, 40 cents.

Melon—Cantaloupe.

(Culture.—Make hills 4 by 6 ft.; plant one dozen seed to each hill after frost. Thin to four plants. Pinch back vines. One ounce seed for 50 hills; two pounds for one acre. Ripe in 100 days. Sandy loam best.)

The NIXON—Georgia grown seed. United States seedmen supplied. Originated in this county, and drove out every other cantaloupe for home and market use. Weighs eight to twelve pounds. Flesh crisp and sweet. Rough skin. Good shipper. Deep ribbed; rind and flesh yellow. Ounce, 10 cents; 4 ounces, 25 cents; pound, 75 cents.

ROCKYFORD CANTALOUPE—The most famous melon today in the United States. We get our seed grown for us at Rockyford, Colorado, where we have largest contracts. Melon is small, sweet and can be eaten to the rind. Distinctive flavor; prolific. 1 ounce, 10 cents, 4 ounces, 25 cents, 1 pound, 75 cents. Special prices to heavy growers.

NETTED NUTMEG—Shaped like a nutmeg. Highly scented. Long and well known. Papers, 2 for 5 cents; ounce, 10 cents; 4 ounces, 25 cents; pound, 75 cents.

Mustard.

(Georgia grown seed. United States seedmen supplied.)

(Culture.—One ounce to 100 feet. Sow in fall, winter or spring, in rows or shallow drills. Press earth well down. Ready for use in 5 or 6 weeks. 1 ounce, 100 feet; 3 to 5 pounds an acre.)

OSTRICH PLUME MUSTARD—(Seed grown in Georgia. United States seedmen supplied.) Most beautiful mustard extant. Originated in Augusta, Ga. It is being introduced by us to seed trade of United States. Many of them are putting in novelty lists. Plumes are tender, very long and finely

crimped. Pretty as an ornamental plant. Look like ostrich plumes. Plant large—often 5 or 6 pounds. The most perfect mustard. Sold only in bulk. Ounce, 10 cents; 4 ounces, 30 cents; pound, 75 cents.

✓ **SOUTHERN GIANT CURLED**—(These seed grown in Georgia. United States seed trade supplied.) Hard and large leaf. Papers, 2 for 5 cents; ounce, 10 cents; 4 ounces, 25 cents; pound, 60 cents.

Ga. Okra.

These seed are grown in Georgia. We can supply the United States seed trade. Large amounts dealt in—spot or contract.

(Culture.—One ounce to fifty-foot drill; ten pounds to one acre. Sow late in spring in drills two feet apart, and leave one plant to every fifteen inches. Cover one inch deep. Use in 90 days.)

✓ **LONG GREEN**—Pods are dark green and stalks tall. Papers, 2 for 5 cents; 2 ounces, 10 cents; 4 ounces, 15 cents; pound, 40 cents.

✓ **NEW DWARF GREEN PROLIFIC**—Early and will bear till frost. Papers, 5 cents; 2 ounces, 10 cents; 4 ounces, 15 cents; pound 40 cents.

✓ **NEW WHITE VELVET**—Tender white pods. Pods round and smooth. A distinct variety. Papers, 2 for 5 cents; 2 ounces, 10 cents; 4 ounces, 15 cents; pound, 40 cents.

Onion Seed.

Farmers' Bulletin No. 39, Agricultural Department, Washington, D. C., will give culture in detail.

(Culture.—One ounce to 100-foot row; four pounds to the acre. For onions sow in February, March, September or October in rich sandy soil, in drills one to three feet apart. Thin when up to five or six inches. Cover seed half-inch in planting, or sow in hotbeds in winter, and transplant in spring. They grow off quickly. Ready in 100 to 110 days.

✓ **MAMMOTH SILVER KING**—Italian. One of the largest; often twenty inches in circumference and four pounds in weight. Flattened in shape and is silver white. Packet, 10 cents; ounce, 20 cents; 4 ounces, 60 cents; pound, \$1.50.

AUSTRALIAN BROWN—Deep rich

brown; egg shaped. These dug in spring and kept in sheds will keep in summer and not rot. A most valuable onion for the South, where onions once dug rot so early. 1 ounce, 15 cents; 4 ounces, 50 cents, 1 pound, \$1.25.

BERMUDA VARIETIES—They are of a mild and delicate flavor and keep longer than any foreign variety. Like the Italian varieties, it produces full-grown onions from seed the same season. In the South seed sown in August or September will produce fine, large onions for market in early spring. Red Bermuda; packet, 10 cents; ounce, 20 cents; 1-4 pound, 65 cents; pound, \$1.75. White Bermuda, packet, 10 cents; ounce, 20 cents; 1-4 pound, 65 cents; pound, \$1.75.

- **WHITE PEARL ONION**—Earliest of all. Pearly white, waxy and transparent. Form flat and broad, flavor very mild. Rapid growth and fine quality. 1 ounce, 20 cents; 1 pound, \$2.50.

Onion Sets—(32 Lbs. 1 bushel)

We are the largest dealers in Onion Sets. Merchants in Augusta's territory can get the lowest wholesale quotations by writing. On retail mail orders, add 10 cents quart for postage.

(Culture.—One quart to 40 feet drill; 8 to 10 bushels to acre. Sow early in spring or September or October, four inches in row, 1-2 inch deep—rows twelve to fifteen inches apart.

WHITE SILVER SKIN—Quart, 15 cents; peck, 90 cents.

DANVERS YELLOW—Quart, 15 cents; peck, 85 cents.

WHITE MULTIPLIER—(Grown in Georgia. We are heavy contract dealers. The United States seed trade supplied.) Grown like potatoes in a hill. Yield enormously; productive. Mild. Quart, 15 cents; peck, 85 cents.

YELLOW MULTIPLYING SHALLOT—(Grown in Georgia. The United States seed trade supplied.—Plant in September or October. By March or April each Shallot has grown into a bunch of forty to sixty Shallots. The tops and bottoms together are eaten. When tops die down in May or June, dig and store in dry place. Use as seasoning during the summer. Plant remainder in fall. Quart, 15 cents; peck, 75 cents.

PEARL ONIONS—Delicate. Come off earliest of all. Ready for market in January. Not good keepers. 1 quart, 25 cents; 5 quarts, \$1.00.

Parsley.

(Culture.—One ounce to 100 feet. Soak seed. Sow in spring to fall. Thin out in drills to four inches apart.)

✓ **CHAMPION MOSS CURLED**—Bright green. Beautiful variety. Papers, 2 for 5 cents; ounce, 10 cents.

Parsnip.

(Culture.—One ounce to 150-foot drill, four pounds to the acre. Drill in spring in rows eighteen inches apart. Thin out to six or eight inches in row.)

✓ **HOLLOW CROWN OR SUGAR**—Roots long and smooth. The best either for table or stock feeding use. Papers, 2 for 5 cents; ounce, 10 cents; 4 ounces, 20 cents; 1 pound, 50c.

Garden Peas.

Our peas are grown for us on the Canada lakes—free from weevils and holes. We deal in them in large quantities at wholesale. If you order sent by mail, add for postage, 5 cents per half pint; pint, 10 cents; quart, 15 cents. Buy Peas for home use always in bulk—not papers.

(Culture.—One quart to 150 feet row; 1 1-2 bushels per acre. Peas can be planted here from January to August. Sow in single or double rows, 4 feet apart and 2 inches in row. Ready for use in 50 to 90 days.)

✓ **FIRST AND BEST, OR PHILADELPHIA EXTRA EARLY**—Perhaps the earliest Pea cultivated. Productive and well flavored. Papers, 2 for 5 cents; 1-2, pint, 10 cents; pint, 15 cents; quart, 25 cents; 1-2 peck, 75 cents; peck, \$1.25.

ADMIRAL.—Vines about four feet high, comparatively slender, little branched. Pods usually borne in pairs and in great abundance; they are about two and one-half inches long, thick, curved, bright green, carrying six to nine closely crowded peas of the very best quality and color. We know of no pea which remains palatable longer after it becomes large enough to use. Dry pea much wrinkled, medium sized, cream color. This variety ripens fairly early. Pint, 15 cents; quart, 25 cents; 4 quarts, 60 cents; peck, 90 cents.

✓ **MAUDE S. EXTRA EARLY**—Has gained a reputation for its extreme earliness, productiveness and fine flavor. A vigorous grower, vines about 2 1-2 feet high, loaded with fine large and well-filled pods. Has been for years a prime favorite among Augusta truckers. Pint, 15 cents; quart, 25 cents; 1-2 peck, 75 cents; peck, \$1.25.

✓ **CHAMPION OF ENGLAND**—Second early; wrinkled. One of the finest varieties for family use. Standard. Sow thick. Papers, 2 for 5 cents. Same bulk price as Philadelphia. Extra Early.

✓ **LARGE WHITE MARROWFAT**—Main or late crop. A large, heavy pea. A good cropper; grown everywhere. Papers, 2 for 5 cents; 1-2 pint, 10 cents; pint, 15 cents; quart, 20 cents; 1-2 peck, 60 cents; peck, \$1.00.

✓ **BLACK-EYED MARROWFAT**—Tall, hard and prolific. Abundant fruit. Large Pea. Papers, 2 for 5 cents; bulk price same as White Marrowfat.

✓ **MCLEAN'S PREMIUM GEM**—Early dwarf, one foot high; wrinkled Pea; prime favorite. Papers, 2 for 5 cents; pint, 20 cents, quart, 30 cents; 1-2 peck, 85 cents; peck, \$1.50.

Pepper.

(Culture.—One ounce to 1,500 plants; four ounces to the acre. Plant in early spring in hotbeds or boxes. Set out in rows two feet apart and eighteen inches in row.)

✓ **SWEET GOLDEN DAWN OR GOLDEN BELL**—Bell shaped; mild flavor; can be eaten like an apple; golden yellow; very productive. Papers, 2 for 5 cents; ounce, 25 cents; 1-4 pound, 65 cents.

✓ **BULL-NOSE OR SPANISH MONSTROUS**—A favorite for pickling or for mangoes. Rind thick and fleshy. Papers, 2 for 5 cents; ounce, 25 cents; 4 ounces, 65 cents.

Potatoes.

IRISH AND SWEET—See under head "Field Crops."

Radish.

(Culture.—One ounce to 100 feet; three pounds to acre. Sow in drills in early spring and to June for succession. Thin out as needed. Row 12 inches apart. Sow also in early fall or winter.)

✓ **LONG SCARLET SHORT TOP**—Two papers, 5 cents; ounce, 10 cents; 4 ounces, 15 cents; pound, 45 cents.

✓ **EARLY SCARLET TURNIP**—Two papers, 5 cents; ounce, 10 cents; 4 ounces, 15 cents; pound, 45 cents.

✓ **FRENCH BREAKFAST**—Small scarlet, olive shaped. Two papers, 5 cents; ounce, 10 cents; 4 ounces, 15 cents; pound, 45 cents.

✓ **ROSE CHINA**—Best fall and winter. 1-4 pound, 15 cents; 1 pound, 45 cents; peck, \$1.50.

Rape or Georgia Salad.

(Culture.—One ounce to 150 feet; drill thick in spring, rows two feet apart; or sow in August and September and October.)

The best of fall or spring greens when boiled. Thin out to six inch plants and cook. Afterward cut off remaining tops and use. Tops grow out again for cutting. When sown in fall greens may be cut in about six weeks. 2 ounces, 10 cents; 8 ounces, 20 cents; 1 pound 40 cents.

Salsify or Vegetable Oyster.

Sow in early spring on light, rich soil in drills fourteen inches apart and thin the plants to six inches in the row. The roots will be ready for use in October, and will sustain no injury by being left in the ground during the winter. Sow also in September and October. 1 ounce for 75 feet row. Ready for use in 140 days.

✓ **SANDWICH ISLAND MAMMOTH**.—This new Salsify grows fully twice the size of the old sort, and is superior in quality. Packet, 5 cents; ounce, 10 cents; 1-4 pound, 30 cents; pound, \$1.00.

Spinach.

(Culture.—One ounce to 150 feet drill; ten pounds to acre. For winter sow in drills one inch deep, rows nine inches apart. In September and October thin out by using for table. For summer use sow in spring. A good crop all the year. Ready for use in 35 days.)

✓ **BLOOMSDALE SAVOY CURLED LEAF**—Large, bright green curled leaf; stands worst winter. Packet, 5 cents; ounce, 10 cents; 4 ounces, 15 cents; pound, 40 cents.

Squash.

(Culture.—One ounce to twenty-five hills; four pounds to one acre. Sow in hills same time as cucumbers and melons. Bush varieties, three to four feet apart; running kind six to nine feet apart.)

✓ **EARLY WHITE BUSH SCALLOP**—Early, well known by all. Ships well. A summer dwarf. Papers, 2 for 5 cents; ounce, 10 cents; 4 ounces, 20 cents; pound, 45 cents.

✓ **SUMMER CROOKNECK**—Early. Fruit yellow. Hard shell, warty excrescences. Papers, 2 for 5 cents; ounce, 10 cents; 4 ounces, 20 cents; pound, 45 cents.

Tomato.

(Culture.—One ounce to 2,500 plants; three ounces, one acre. Sow in hot-beds or boxes January or February. Transplant 3 to 3 1-2 feet apart after frost, when two inches high in open ground. Succeeds fifty per cent. better when trained to sticks or frames. When thus trained all limbs (they appear in axil between leaf branch and stalk) must be pinched off. This method leaves the little fruit stems and the larger leaf branches. The vine will thus grow ten feet high and fruits to the top as season advances—till frost.)

✓ **LIVINGSTON'S FAVORITE**—Large, smooth, productive; good shipper. Does not crack open. Papers, 2 for 5 cents; ounce 15 cents; 4 ounces, 50 cents; pound, \$1.60.

✓ **NEW EARLY ACME**—Pinkish purple; heavy bearer; round, solid, medium size. Bears till frost. Thin skin. Papers, 2 for 5 cents; ounce, 15 cents; 4 ounces, 50 cents; pound, \$1.60.

✓ **IMPROVED TROPHY**—We offer our Improved Trophy as a sort whose large, strong growing, vigorous and productive vine, very large, very solid, smooth fine flavored and beautiful, deep, rich red fruit will satisfy the most exacting. Same price as Acme.

✓ **SELECTED PARAGON**—A second early; bright crimson, resembles the Acme in size and shape; bears transportation; fine canning tomato. Papers, 2 for 5 cents; ounce, 15 cents; 4 ounces, 50 cents; pound, \$1.60.

✓ **GOLDEN QUEEN**—Yellow flesh; superior, distinct flavor; beautiful fruit.

Papers, 2 for 5 cents; ounce, 15 cents; 4 ounces, 50 cents; pound, \$1.75.

Turnips—Spring Sowing.

To Merchants in Augusta Territory:

We make large annual growing contracts in Turnip Seed. Can supply you at lowest wholesale prices.

Our seed are the best American grown.

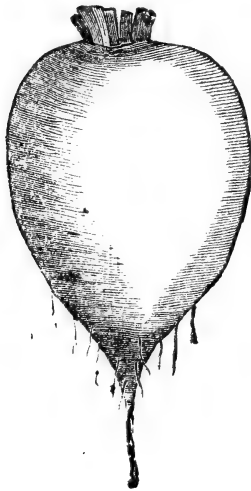
(Culture—One ounce for 200-foot drill; 1 1-2 pounds, one acre. Sow in drills which are twenty-four inches apart. For fall and winter turnips, from July 20 to September 15. (Thin to 6 inches.)

✓ **EARLY WHITE FLAT DUTCH**—Strap leaf.—Spring sowing. Papers 2 for 5 cents; 4 ounces, 10 cents, postpaid, 12 cents; pound, 35 cents.

✓ **EARLY PURPLE TOP**—Strap leaf. Spring sowing. Papers, 2 for 5 cents; 4 ounces, 10 cents, postpaid 12 cents; pound, 35 cents.

Turnips—Fall and Winter Use.

Turnips marked * are put up in 2 1-2 cent papers and in 1-4 pound packages; and these and all other turnips are sold in bulk.



✓ **GEORGIA FROST KING**—The coming turnip for the South. Not winter killed. Large white turnip that is excellent, lasting through winter and till late in spring when other turnips are pithy. This turnip is both large and tender and finely flavored. Superior foliage to other white turnips. It also provides foliage or greens as luxuriant and branching as Seven Top. It is a

hybrid turnip that fits Southern wants exactly. We are largest contractors in South and are introducing this turnip to all United States seedmen. Package, 5 cents; 1 ounce, 10 cents, postpaid, 12 cents; 1 pound, 30 cents.

✓ **NATIVE GEORGIA TURNIP**—(Seed grown in Georgia. United States seed trade supplied.)—This is an old fashioned turnip. It is white fleshed, and as big in size as the Ruta Baga and as hard as the Ruta Baga. Turnips remaining unused put out large new spreading tops in January or February, which are eaten as spring greens. These make a bitter pot liquor which is highly prized by some. Packet, 5 cents; 4 ounces, 10 cents, postpaid, 12 cents; 1 pound, 30 cents.

✓ **SEVEN TOPS**—(Seed grown in Georgia. United States seed trade supplied.)—Named because of the habit of stooling or branching into seven tops. Makes a great amount of greens or salad. Do not make big roots. We are Southern headquarters for Seven Tops. Price same as Native Georgia.

✓ **YELLOW IMPROVED PURPLE TOP RUTA BAGA**—Of fine strain. 4 ounces, 10 cents, postpaid, 12 cents; 1 pound, 35 cents.

✓ **SWEET GERMAN**—Large white permanent winter keeper. Very sweet and very superior. Southern grown seed. Same price as Ruta Baga.

✓ **LARGE EARLY RED TOP GLOBE**; ✓ **LARGE WHITE NORFOLK, OR GLOBE**; ✓ **POMEREANEAN WHITE GLOBE**; ✓ **LARGE COW HORN**; ✓ **WHITE EGG**; ✓ **YELLOW ABERDEEN**; ✓ **YELLOW OR AMBER GLOBE**. All, 4 ounces, 10 cents, postpaid, 12 cents; 1 pound, 40 cents.

Watermelons.

All these seed grown in Georgia. United States seed trade supplied. We are in the largest and the very best melon shipping district in the United States. Augusta inaugurated in 1867 melon shipping business Northward. Our seed are taken from twenty pound melons and above—eight to ten melons to one pound of seed. We sell to the largest growers and largest seedmen in United States. Northern and western seed not good here.

(Culture.—Dig holes ten to twelve feet each way, two feet deep and fill with rich mould and manure. Plant in

spring ten seeds to hill and thin out to two; 2 pounds to an acre; 1 ounce for thirty hills.

✓ **BLUE GEM OR GLOSSIER, OR BLACK BOULDER**—The shipping melon of United States. As good a shipping melon as Kolb Gem. Quality far better flavor and sweeter. A far better keeper. More large melons and less culls on vines. Somewhat longer and heavier than Kolb Gem. Very dark bluish green rind with small grayish stripes. Bright red flesh. Seed black. The largest melon shipper possibly in the South, says: "I ship yearly two hundred and fifty cars—three hundred thousand melons. I regard Blue Gem as good a shipper as Kolb Gem, while quality of meat is far better. Will keep longer than any known melon. I gave twenty-five dollars per car more this year for them than I did for Kolb Gem." Ounce, 10 cents; 4 ounces, 20 cents; pound, 60 cents.

✓ **GENUINE AUGUSTA RATTLE-SNAKE**—This Melon seems to deteriorate the second year when grown elsewhere than in this county. The genuine seed should be had each year from this county. This was the original melon shipped North in 1867, which so whetted the Northern appetite for watermelon. Is an elongated green striped melon. Good size. Seed white with black ears. Fresh, crisp and excellent. A choice home melon. Ships with careful packing. Ounce, 10 cents; 4 ounces, 25 cents; pound, 75 cents. Ours are highest types of seed.

✓ **AUGUSTA ROUND WHITE**—New. Earliest melon in United States. Matures here June 12th to 15th. All others mature about July 4th. Best and earliest home market melon known. Not a good shipper. Short vines, but heavy bearers. Plant thick. Tender rind. Flesh light red, sweet, brittle, good flavor. Shape round. Color whitish. Melons twenty to fifty pounds. A great acquisition among melons. Bears on vines continuously during seasons. This melon is grown here exclusively by all our market men for the early market. Only listed by us. Ounce, 10 cents; 4 ounces, 25 cents; pound, 75 cents.

✓ **THE JONES MELON**—Rind dark; flesh bright red. Almost round in shape. Rind trifle thicker than two above melons. Sixty-five to seventy pounds frequent size for this melon. Originated near us only a few years ago, yet it has sprung into the widest popularity, and

is listed in all the United States seed catalogues as one of the very best. Ounce, 10 cents; 4 ounces, 25 cents; pound 75 cents.

✓ **AUGUSTA SUGAR LOAF**—A greenish white, elongated melon with crisp red flesh, with as thin a rind as Rattlesnake. Grows to an immense size—a whole market wagon load running often to sixty pounds each. Originated around Augusta. It's a beauty to look at and a delight to eat. Ounce, 10 cents; 4 ounces, 25 cents; pound, 75 cents.

✓ **PRIDE OF GEORGIA**—An exceedingly large, round, green melon; flesh crisp and red. You will find occasionally on it small rough, slightly scaly spots. This melon is close kin to the Jones melon, and is a handsome melon inside and outside. Ounce, 10 cents; 4 ounces, 25 cents; pound, 75 cents.

✓ **KOLB GEM**—Color a dark green, bright stripe; very nearly round; rind thick, insuring perfect shipping qualities; flesh of a medium red and firm. Thirty pounds is a fair size. This is the standard universal shipping melon in the United States. Ounce, 10 cents; 4 ounces, 25 cents; pound, 75 cents.

✓ **EDEN MELON**—This melon by some shippers is thought to be as good or better than Blue Gem, far better than Kolb Gem. This melon has such a tremendous sale that we have had a large amount grown for us of high grade seed and can supply all demands. Price same as Blue Gem.

✓ **CAROLINA BRADFORD**—This melon is a favorite above all others in the section of South Carolina where it has been grown. The melons grow to a large size, rind dark green with darker stripe; flesh red, and remarkably tender and sweet. It is an excellent melon for home use. Ounce 10 cents. 1-4 pound 25 cents; 1 pound, 75 cents.

Warning to Seedmen.

We warn Northern and Western seed men from selling to their Southern trade Watermelon seed grown in the States of Oklahoma and Kansas, and other Western States. Such seed produces melons in the South with hard, white spots in the hearts. The melons do not mature. Thousands of dollars were lost by Southern growers from these seed. Augusta seed better than Florida.

RUBBER TREE SEED—No other hot house or house plant tree so beautiful or so quick growing. Package, 10 cents.

FORAGE AND HOG CROPS.

The South has a world of wealth in her varied Forage Crops. Their usual culture is simply to sow in April thinly in drills—rows three feet apart—cutting the plants and feeding it when two or two and a half feet high, and recutting it as it grows out; three or four cuttings a season.

EARLY AMBER SORGHUM—(Fifty pounds to bushel)—We wholesale this in large amounts in Augusta territory. We handle Sorghum in car lots and all Southern grown. We wholesale few things in our house in larger quantities than the Sorghum. Almost a Trinity plant; three most distinct cultures. First: Green forage. Second: Cutting it when ripe and saccharine and feeding it to stock, or for storing it for them. Third: Grinding it for syrup. This is the earliest sorghum. Sorghum is not appreciated in Georgia as it is in the West, and in Texas and Tennessee. We have had trouble in getting pure amber seed. This year we have a splendid reliable grower. Do well sown with cow peas broadcast, or can be broadcast alone. Sow twenty pounds to one acre, if in drills, for forage, and 1 bushel broadcast per acre; 10 pound drills for syrup. The growing of sorghum all through the South and West is increasing largely each year. One pound, 10 cents; 10 pounds for 50 cents.

EARLY ORANGE SORGHUM—Yields heavier than Amber, syrup, too, is finer flavor. Georgia Experiment Station makes total three cuttings green forage per acre, 42,018 pounds. This type of Sorghum is a good bit larger than Amber and where prime earliness is not considered it is the better cane. Our trade is very heavy on both types. Same price as Amber.

PEARL OR CAT-TAIL MILLET—(*Pennisetum Spicatum*)—These seed grown in Georgia. The United States seedmen supplied in largest amounts. We are largest dealers. No other plant



makes so much forage as this. Seven cuttings can be had from one planting about Augusta in one season. Total of three cuttings green forage per acre at Georgia Experiment Station, 52,416 pounds. Stools at ground. Thick foliage. Heads not eaten. This is by far the most popular of all the green eaten millets. One pound, 15 cents; 5 pounds, at 14 cents; 10 pounds, at 13 cents; 100 pounds, at 11 cents.

Cat-tail Millet is not saccharine. Not sold by bushel.

GEORGIA NATIVE (Augusta, Ga.) RYE—(*Secale Cereale*)—Seed trade supplied. 56 pounds to bushel. We have had for years a heavy merchant trade, even into other States, for this rye. We shall grow this year a very large crop of the highest type. This rye stools heavily. Can be grazed several times, and then allowed to go to seed. If cut and fed green, it has made ten tons green food in five months per acre; Rye grown in Tennessee, Virginia, Middle or Western States is cheaper. But it runs on the ground, and is slow growing, and is no good here. It is a different type of rye. Plant in September or October and to December one bushel per acre. Bushel, \$1.50.

GEORGIA BEARDED BARLEY—(*Hordeum Sativum*)—48 pounds bushel. Sow 1 1-2 bushels to acre. Best in fall though can be sown in spring. Excellent fall, winter and spring pasture. Continuously grazed. Dense foliage and strong and nutritious food. Yields largely of grain. Can be cut for grain two weeks earlier than wheat. 1 peck, 40 cents; 1 bushel, \$1.35; sack, \$1.25 bushel. Sow only Georgia grown seed.

GEORGIA BEARDLESS BARLEY—(48 pounds bushel.)—United States seed trade supplied. Sow later than Bearded, say in December, or in spring in March. Ripens in June or before. A new magnificent type. Makes fine grazing and a big yield of seed. 45 bushels or more per acre. Frost proof. Ripens earlier than bearded, and is taller, larger and stiffer. Being beardless is easily handled and can be fed to stock same as oats. Is six rowed; hull remains tight; long head. Same price as Bearded.

CHUFAS—Georgia grown seed. United States seed trade supplied. Forty-four pounds bushel. Plant one peck to acre. Soak seed several days. Plant twelve inches apart in rows two and a half feet apart. Give two plowings and hoeings. If you get a bad stand pull out shoots from growing plants and plant and use these. Grow just under the surface, like all grass nuts. Invaluable for fattening hogs. Turn hogs in patch. Mature in September and lie in ground till eaten. Peck, \$1.25

SPANISH PEANUTS—(26 pounds to bushel)—Georgia grown seed. United States seed trade supplied. Much written about as a hog crop. Two hundred bushels per acre. Plant about two bushels to acre, March to July. Follow after oats, or plant two crops, March and July, on same ground; no pops. Plant close in sandy lime lands. The tops are good forage. Peas easily harvested, as all peas hang to roots as plant is pulled up. Hogs can be turned in, or the whole vine can be fed from the storage barn. A high Georgia farming authority says that we could revolutionize our agriculture if in the corn row between the stalks we would plant a hill of cow peas, and in the middle furrow a row of Spanish peanuts. Bushel, \$1.50; five bushels, at \$1.25. Used also for parching.

MAMMOTH PEANUTS—We are large contractors and book orders for all peanuts in many cases six months in advance of crop. This is the usual big peanut and is much bigger than Spanish. Same price and weight as Spanish.

TEOSINTE—(*Euchlaena Mexicana*)—United States wholesale seed trade supplied). Many growths per season. Mississippi Experiment Station reports twenty-two tons per acre green forage product. One seed makes thirty to fifty stalks or stools. On rich land grows fifteen feet high, and produces a larger amount forage than any known plant; 10 per cent. saccharine. Seeds only in extreme South. Plant in April, 5x6 feet; cultivate as corn. One ounce, 10 cents; 1-4 pound, 25 cents; 1 pound, 90 cents. Two pounds, one acre.

It takes 85 degrees heat to germinate Teosinte. We are largest dealers.

GERMAN MILLET—Choice Tennessee grown. (Variety of *Chaetochloa*

Italica). Western or Northern grown seed no good here. The true German Millet, when properly grown and handled, makes an enormous yield of most nutritious feed, and that without impoverishing the soil to any great extent. To get these results, however, German Millet must be sown thickly, about one bushel per acre, and the crop cut while it is in bloom, before the seed hardens in the head. Sow when the weather gets warm in May, or any time during summer until end of July. Two crops can be seeded and grown during the summer on the same land. Good hay combination with cow peas, one peck Millet, 1 1-2 bushels peas. \$2.00 1 bushel. Price varies. Get price in sack lots or more.



TEOSINTE.

VELVET BEAN—(*Mucuna Utilis*)—(Seeds only in extreme South. United States seed trade supplied.) Great mulch crop in orange and peach orchards. A powerful soil enricher on poor soil. Frost killed vines or dry hay relished by all cattle. Yield good mulch grain when cut for hay as bottom leaves fall or ripen only. For replenishing worn out land large growers say it largely excels cow peas. Vines form a mass three to four feet high, and run twenty feet or more. Plant spring or early summer, three feet by five feet,

several beans to hill; one peck and a half to acre; cultivate like cow peas in every way. We are the largest contractors of Velvet Beans in the South; sold good amounts last year to Louisiana for green soiling for sugar cane fields. One quart, 15 cents, postage extra, 15 cents; 1 peck, \$1.00; 1 bushel, f. o. b. Augusta, \$2.50.

BEGGAR WEED—(*Desmodium Tortuosum*)—Legume. Grows four to eight feet high. Abundant leafage. Sow 10 pounds per acre. Barely cover. Drill or broadcast seed or sow in June rains on top ground in corn rows at last cultivation. Can cut several times or pasture late summer and fall. Cut for hay at blooming time with mower. Yields four to six tons fine hay. Reseeds itself. Easily eradicated. Is in way of no crop. In worn pine land it has no superior. One pound, 35 cents; 6 pounds for \$1.60; 10 pounds for \$2.60.

DWARF ESSEX RAPE—In England and Germany this is the universally grown forage crop. Sown for pasturing lambs and sheep, and also for cows—no crop equals it. No crop is so fattening—a lamb growing seven or eight pounds a month. Sow five pounds to ten pounds per acre in spring or fall—broadcast or drill in damp lands—or drill in rich uplands. Sown in August it makes in two months an enormous amount green food two or three feet

high and branching. Thin it out in fall when small and eat as spinach. One pound, 20 cents; 5 pounds, 75 cents.

This is deserving of largest growing for green cattle food in winter when Rye is almost only thing to be had. Can be grazed or cut several times. Never cold killed. One pound, 15 cents; 5 pounds, 65 cents; 10 pounds, \$1.00.

JERUSALEM ARTICHOKE—Georgia grown. Widely advertised as a hog crop. Even in five feet rows roots run from row to row and make tubers—the underground being a network of artichokes. Tubers will stay in ground all winter and not freeze. Turn in hogs at any time. If not eaten too close crop will come up in spring without second planting. Used also for pickles. Cut tubers like Irish potatoes, and plant after frost—one piece every three feet, in four or five feet rows. Three bushels, one acre. Get prices

RUSSIAN SUNFLOWER SEED—Sow until August, five pounds to one acre. Great improvement over the small sunflower. Some are eighteen inches in diameter. Ornamental. Large seeds. In Russia used for oil. Known here as the best of all poultry foods—forty to fifty bushels per acre. In cities it is the parrot's food. We keep this seed in large quantities. Two ounces, 5 cents; 1-2 pound, 10 cents; pound, 15 cents; 5 pounds, 50 cents.

MISCELLANEOUS FIELD AND FARM SEEDS

FIELD CORNS—We make a specialty of Field Corns—wholesaling them in large quantities to merchants in Augusta territory at lowest prices. Six quarts to acre; bushel, 56 pounds; unshelled, 70 pounds. Write for wholesale prices Postage, pint, 10 cents; quart, 15 cents

PENNSYLVANIA YELLOW DENT CORN—We do an immense business in Dent corns with Augusta territory merchants. Well known. Our earliest field corn. Meal can be had from it latter part July, being thus valuable to farmers.

The sowing of Dent corn increases each year. Its earliness makes it invaluable. It loses earliness if native seed are sown Buy fresh seed each year.

We have all of our corn seeds grown for us in extreme northern part of Virginia—just the proper latitude. We believe in size of grains, etc., we sell the best Dent corn in the South. One quart, 15 cents; 2 quarts for 25 cents; peck, 60 cents; bushel, \$1.75

PENNSYLVANIA WHITE DENT CORN—Same as above, only grain is white—which some prefer. Same price as Yellow Dent. Many plant this for early garden use. Grown for us in largest amounts in Northern Virginia. We lay great store by the superiority of this North Virginia corn as sent out by us. For early farm corn nothing takes the place of Dent corns. They come on for the farmer in the nick of time.

COCKE'S PROLIFIC CORN—Originated by late General Cocke. The best corn known in Virginia. Flinty, white, heavy. Large, tall stalks. Much fodder. Two ears. In swamps it has grown 140 bushels shelled corn per acre. We get our seed from North Virginia. This corn stood highest test at Georgia Experiment Station for several years, and also other Southern State Experimental Stations. This corn has given great satisfaction here for several years. Medium early. One quart, 15 cents; 2 quarts, 25 cents; peck, 60 cents; bushel, \$1.75.

MEXICAN JUNE CORN—(Georgia grown.) (United States seed trade supplied.)—Do not plant before June 1st to 15th. Grows ten to fifteen feet high. Full eared. Large blades. Fine ears. white corn. Makes finest late roasting

variety and in any quantity. Highest grade. Augusta is the second largest inland cotton market in the world, and the largest cotton manufacturing city in the South. Cotton thirty pounds to bushel. We have supplied the United States Agricultural Department for five or six seasons for their free cotton seed distribution. We shipped to Southern Europe the largest cotton shipment for seed purposes ever made. We export to all portions of the world cotton seed.

Culture for the Cotton Plant.

Plow up ground, leaving it fairly level, then through your land run parallel furrows about three and a half feet apart and put fertilizer in this furrow. Then throw upon this furrow two other furrows from both sides—making thus



ears. No other corn can be planted so late as this. No other corn grows so tall and makes such an amount of late forage. Does not make any ears till September. Give it time. Its great value is that you can have roasting ears in September and October and till frost, which no other corn gives. Don't pull till December. Corn till then does not harden on stalks—keeps green and soft. Several ears to stalk. Remaining stalks give fine green forage for cattle. We are largest contractors in Georgia. Quart, 25 cents; peck, 75 cents; bushel, \$2.50.

Cotton.

All of our cotton seed are grown in Georgia. We are in position to stock up United States seedmen with almost any

a raised bed of four furrows. Then in the middle of this bed usually about twenty inches wide, open a shallow furrow about three inches deep and in this drill thinly, cotton seed, or preferably drop in furrow four or five seed every three feet apart. Cover this with a board on foot or hell of plow, leaving seed about one and a half inches under ground. Seed are usually planted in Georgia in April and May. When seed have come up, thin them out to one plant to the hill. Cultivate about every three weeks, using hoes immediately about the plants, and sweep-plows between rows, to keep down the weeds.

PETERKIN IMPROVED COTTON—(Short Staple)—This cotton is grown about Augusta more, perhaps, than any

other kind. Excellent staple. Small seeds. Branching, open growing and prolific. Twenty per cent. of the seed slip their lint—that is, are free wholly of lint, and are smooth and bare. To uninitiated the seed look mixed. Yield of lint is about 40 per cent. This cotton fruits the whole season. A partial dry season does not largely affect the crop. Distributed by United States government in free seeds many years. This is the most largely sold of all cotton. We know no better stand-by in the list and recommend it highly. One bushel, \$1.25; five bushels, \$5.00.

HAWKINS COTTON—(Short Staple)—Distributed many years by United States government in free seeds. Three large limbs at bottom. Being a tall grower it has a long tap root, which resists drouth well. Small seed—some light gray, some green. Yields 33 to 40 per cent. An early cotton with superior lint. Big bolls, gathered easily. Prolific. A cut before us of Hawkins' Cotton from life shows over 400 bolls well developed on one stalk. Mr. Hawkins has been steadily improving year by year this cotton to the present—carefully selecting it each year. Our seed are absolutely pure. Bushel, \$1.25; five bushels, \$5.00.

KING'S IMPROVED COTTON.—(Short Staple)—Has stood highest test at Georgia Experimental Station. The earliest of all cotton. Few limbs and short. Plant on heavy, good land, thicker than any other cotton. Bolls literally cover the rather small plant. First crop comes on all at once—pretty well out by September 15th. Makes second crop—plant then growing straight up and tall. Plant erect. No other cotton so successfully can be planted late and after oats and wheat. The Sea Island planters plant it largely after their truck Irish potato crop is gathered. No other cotton on account of its earliness is so sure of a top crop in fall. In 1890 the originator made in North Carolina three bales to the acre—heaviest yield ever made in that State. Lint 36 to 40 per cent. Bushel, \$1.25; five bushels, \$5.

TRUITT'S BIG BOLL COTTON—(Short Staple)—Forty bolls to pound. This is a distinctive cotton with its big seed, and its big bolls, making gathering easy. Some of the most scientific and best posted farmers in Georgia grow nothing else. Bushel, \$1.25; five bushels, \$5.00.

JACKSON'S LIMBLESS COTTON—Widely advertised and controlled several years by syndicates. Almost limbless. We have highest grade seed. Bushel, \$1.25; five bushels, \$5.00.

RUSSELL'S BIG BOLL—(Short Staple)—The South has been wild on this new big boll cotton for past two years. Practically no other big boll was sold. We received car loads of orders for Texas and elsewhere we could not fill—and could not fill all home orders. It seems a high type of the Big Boll, Has lead in the Experimental Stations. Originated in Alabama. United States government distributed it in 1901. We have fine seed for this year. One bushel, \$1.25; 5 bushels, \$5.00.

DOUGHTY'S EXCELSIOR COTTON—A tall, erect, limbless cotton. Fields of this average six feet—many talks ten feet. Stalk with 100 or more bolls. Plant wide apart. A cotton of most remarkable appearance. One bushel, \$1.25; 5 bushels for \$5.00.

DOUGHTY'S EXTRA LONG STAPLE—The stalk is long limbed and branching. Yields 400 pounds lint per acre. The staple is one and five-eighths inches long. Three and one-half cents per pound more than middling was obtained in 1899 in this market for it. Our leading cotton factors agree that this is best long staple that comes to Augusta. United States Agricultural Department has distributed it. Eleven bales of cotton were made this year on twelve acres. Price, bushel, \$1.25; five bushels, \$5.50; ten bushels, \$10.00.

ALLEN'S SILK LONG STAPLE—A long used high grade long staple. The most silky cotton known, perhaps.

COOK'S SILK LONG STAPLE—We sell a large amount of this long staple also. Exported in '99 a large amount to foreign countries. Same price as Doughty's and Allen's.

SIM'S LONG STAPLE—Same price as Doughty's.

SEA ISLAND COTTON—Forty-two pounds bushel. The famous Sea Island Cottons off the South Carolina, Georgia and Florida coasts are known all over the world. While planted seventy-five miles interior, yet seed must come annually from coast or lint is not so long. Roller gin is used, lint slipping the seed. Product of this cotton of ours in 1900 was 20 350-pound bales on 25 acres. Tall bush. Yield about 30 pounds lint

for 100 pounds of seed. Lint from our seed fetched in 1900 (fall) 30 cents per pound. 1 bushel, \$1.50, (42 pounds); 5 bushels, at \$1.25 per bushel. Get special price on big amounts.

Oats.

APPLER OATS—The finest Oat according to Experimental Station, Georgia, in the South. Rust proof. Hardier than Texas. Heavy, 37 pounds to bushel often. Matures about ten days earlier than native rust proof and week or ten days later than Burt. Exceedingly prolific. Can be harvested about last week in May. Georgia Experimental Station say they could have sold 10,000 bushels in '99 at 75 cents if they had had them. Get price. State amount wanted.

IMPROVED RUST PROOF OATS—These are Augusta's best Native Rust Proof. These oats have been selected and improved three or four years. They stand far more cold than the imported Texas oats, and are far heavier. These oats weigh 30 per cent. more than Texas Rust Proof. Our friends must remember that it takes as much chaff for a little as a big grain, and in Texas oats they are buying mostly chaff and beard. We are heavy wholesale dealers in these oats. Get price. State quantity.

BURT OATS—These are practically the only spring oats—far safer and better than other oats sown in spring. And when oats are winter killed these oats are invaluable. The Burt oat is also a good oat sown in fall. Two or more weeks earlier than Native Rust Proof. Our seed grown here for us from Georgia Experimental Station seed stock. We are large dealers in these oats.

TURF OR GRAZING OATS—(32 pounds)—Do not resemble oats till they head. Look like rye, and look, too, like Orchard grass. No cold whatever seems to kill them. They can be grazed, and afterward will grow off and head out like rye. These oats are popular, and widely used further North. We've sold them for three or four years, and our growers have been greatly pleased with them. Get prices.

TEXAS SEED OATS—The usual feed Texas oats sold by growers are oftentimes full of cheat, Johnson grass, rye, Texas sunflower, and what not. We try to get in these the best seed to be had. Sold only in good round lots.

Potatoes.

IRISH POTATOES—Ten bushels per acre. We do not sell less than one barrel.

We do an immense business to the merchant trade of this territory.

We sell choicest **MAINE POTATOES**, and also **SECOND CROP SOUTHERN GROWN**. Our Experimental Stations rather prefer the second crop Southern grown to Maine potatoes.

MAINE POTATOES—New York sells to the wholesale grocery trade of the South a large amount of so-called Eastern Potatoes that come from the West and through the lakes. These make big tops but not two potatoes to the hill. These are sold cheap. We handle only the genuine Maine (direct in car lots) potatoes. Parties wanting the cheaper potatoes will kindly get them from the grocers and we beg that they will not quote them as against our genuine Maine potato—ried and sold by us for 10 years. We keep Early Rose, Triumph, Beauty of Hebron and Goodrich.

SECOND CROP IRISH POTATOES—All Southern Experiment Stations have declared these in every way equal, probably superior, to Maine potatoes. Our grower is the largest and most scientific grower we know. Our merchant trade in these yearly is very heavy.

A good paying crop of potatoes can be had here—sown in August 1. Be sure that the eyes are well sprouted when you plant. If they are not the seed sometimes rot before sprouting. To know this universally would be \$100,000 to Georgia.

We keep of second crop, Early Rose, Red Triumph, White Triumph.

SWEET POTATOES—Georgia grown. Seed, trade supplied. No part of America, we believe, grows the sweet potato to the same perfection that Richmond county does.

VINELESS BUNCH YAMS—Vines do not run. Grow erect. Can be plowed and cultivated like corn. Grows well between corn hills. Potatoes easily gathered. Bunching like Irish potatoes. Sweet; taste like old time Spanish potatoes. The coming potato for use. Bushel, \$1.75.

PUMPKIN YAM—Rather late. Universally grown about here. Georgia Experiment Station says: Oblong, weight 2.41 pounds. Color skin, cream pink; flesh, pumpkin red. Quality, rich, sugary. Productive. Improves with keeping. Bushel, \$1.75.

SUGAR YAMS—Not productive (about 100 bushels per acre). Not large; but the finest, sweetest, sweet potato known. Bushel, \$1.75.

COW PEAS—These seed grown in Georgia. United States seed trade supplied. Sixty pounds to bushel. Their best habitat is about us. The South's best friend. The clover of the South. Contains more nutriment as hay than clover or alfalfa. Grows in poorest soil. Invaluable, whether grown for hay, peas or soil renovator. Georgia Experiment Station made, per acre, 25,256 pounds of green hay, or 5,000 dry. Declares them to be the soil's best renovator. Recommends them for Illinois, Ohio, Indiana and all Middle States. Seed must come from South. Plant about May 10—or after grain—one bushel to one-half acre, broadcast. And between hills, one-half to one bushel. Get prices. Northern seedmen must not expect a rough seed like these, sold at close figures and low, to be as clean and free from chaff as are garden peas.

UNKNOWN, OR WONDERFUL, OR BOSS, OR QUADROON—The best combination pea for heavy vines and stock pea. Stands at the head. Erect vines. Late maturing. Pale buff color peas.

WHIPPORWILL OR SPECKLED—Georgia Experiment Station acre yield, 1,682 pounds vines and 25 3-10 bushels peas; old variety; tall, upright; yellow pod; brown speckled pea. The earliest of all peas. Not much vine to it. Grown principally for the peas, of which it bears heavily. We ship many of these peas North.

BLACK-EYE WHITES; YELLOW EYE WHITES—Quotations given and trade supplied with IRON, CLAY, MILLER, TORY, BLACK, LITTLE LADY, CROWDER.

MIXED COW PEAS—Not one Georgia farmer in one hundred grows straight unmixed peas of one type. He grows mixed peas because it is better,

and for this reason—if the soil or season is not favorable to one type, then it will be favorable to some of the other types. It is almost impossible for this reason to buy straight unmixed peas. We say this to United States seedmen, viz: If you want the best out turn in peas (hay and peas) then order high grade mixed peas. They are cheaper, too.

UPLAND PEARL, OR CAROLINA RICE—(Georgia grown seed. Trade supplied)—Forty-four pounds to bushel; drill in April or March. One peck to acre, covering one and a half inches, or drop twelve seed in hill twelve inches apart; rows three feet apart; plant in stiff land; damp is best; profitable crop; largely grown around Augusta; best prices from us in large amounts; yield twenty to thirty bushels in upland and thirty to sixty bushels in lowland. Bushel, \$1.75.

PURPLE STRAW AMBER WHEAT—(Sixty pounds)—After experimenting with twenty varieties of wheats, we find for Georgia this is the best. This wheat is free from cockle and cheat. This wheat by expensive machinery is smutted. Bluestone is not necessary; and by no means must this wheat be soaked in bluestone.

We sell tremendous amounts of wheat and our stock can be relied on for this section. Get prices.

This wheat is grown for us especially by largest wheat grower in North Georgia. It is far better than any Virginia or Tennessee wheat—proven so for 10 years. If you have thin land never use your own seed but get new seed each year. This wheat sold in largest amounts by us.

BEARDLESS FULCASTER—Fine wheat. Largely sown too to be cut as oats. A fine hay product.

WILLET'S FIELD PUMPKINS—Three pounds to acre. We are large contractors. It is strange that so few farmers plant pumpkins. So easily kept all winter for the table or for cattle, and so easily grown, it seems an absolute pity that pumpkin growing should so fall into disfavor. One pound 35 cents; 3 pounds for 75 cents.

PAPER SHELL PECANS—Largest. Pound, 75 cents.

GRASSES FOR THE SOUTH.

Grass seeds fluctuate a great deal in price. Write for prices in large amounts. State quantity if you want a number of acres to plant. We are not bound by catalogue prices.

JOHNSON GRASS—(Sorghum Halepense)—Twenty-four pounds to bushel. Known also as Guinea and Mean's grass. Vetch and Johnson Grass are the standard Augusta Hay Farm mixtures. Plant Johnson Grass as soon as the frost is out of the ground or August and September and October, 40 pounds to the acre. Cut before the head is in flower. Three to five cuttings per season; withstands any drouth; yields heavy crops, year after year, without resetting. Hogs devour the roots as if they were sweet potatoes. Is almost ineradicable. Do not let it go to seed; it spreads if you do. Coarse but fairly tender when cut young. Makes immense crops; very hardy. Augusta is a large grower of this grass. We supply wholesale trade. One pound, 15 cents at Augusta; ten pounds, for one-quarter acre, \$1.00; one bushel, \$2.00; five to ten bushels, \$1.75.

AUGUSTA VETCH—(Vicia Sativa)—Sixty pounds to bushel. This is the standard hay grass used in the widely known hay farms around Augusta. Some allow first crop to get about half ripe. Enough seed fall to the ground for reseeded purposes to come up next February. The second and other crops cut in a greener state. Grows well with oats, to be cut into sheaves. Grows well with Bermuda and Johnson Grass. Vetch is unexcelled for winter pasturage. One bushel to the acre will set a crop. Plant two bushels for fall pasturage. Sow in August and September with oats or sow in spring. One pound, 15 cents. Prices subject to change.

HAIRY VETCH—(Vicia Villosa)—Sixty pounds to bushel. Sow one to one and a half bushels per acre. Alone, in middle August to middle October, or in March, April and May. Better if sown with three-fourths bushel oats, rye or wheat to hold vines up. Rich land. Two cuttings can be had in spring; withstands winter's cold. Fall sowing makes good hay for January and

April or May; stock taken off, plants mature and reseeded for next year or can be cut. Excellent for a hay. Yields two to four tons hay. Grows waist high, branches in all directions and when in flower is a magnificent sight. Five or six pounds per acre in oats yield well. One pound, 15 cents. Get prices.

LUCERNE CLOVER OR ALFALFA—(Medicago Sativa)—Sixty pounds to bushel. No grass fields in United States are more noted than Lucerne farms of California or Louisiana, where its roots grow to a great depth, with four or five cuttings yearly; eight tons hay per acre. Stools or multiplies its stems heavily, thirty or forty stalks from one root. These throw out numberless intertwined branches, average growth three feet. Drill or broadcast fifteen pounds per acre. Spring or fall (February or March best.) Cut before blooming four to six times a season. Stand once set lasts a lifetime. Don't graze it. Rich, sandy soils best. One pound, 20 cents; 15 pounds for \$2.00; 60 pounds for \$7.25.

GEORGIA BUR CLOVER—(Medicago Denticulata)—Ten pounds bushel. Georgia Grown. We supply United States trade. Plant two or more bushels per acre. Sow July to October 1. Smoothly harrow land and cover only 1-4 inch in depth. Sprouts with fall rains and matures about May 20. If cut or grazed maturity is June 10. When seed ripen plant land in corn or cotton, etc. Furnishing immense grazing for cattle, sheep and hogs in winter. Makes fine hay. Poor clay land planted in Bur Clover will increase fertility yearly. One planting lasts a life time. Have known sixty-five sheep to be kept solely on four acres thirty days and clover gained on them. One pound, 25 cents; 1 bushel, \$1.85; 2 bushels, at \$1.75; 10 bushels at \$1.50.

BERMUDA GRASS SEED—(Cynodon Dactylon)—United States seed trade supplied. We offer reliable and very cheap Bermuda seed. Three to five pounds mixed well with fine sand should set an acre. Cut three or four times—three or four tons acre. Sun lov-

ing grass. Fine sand and soil binder. Best of all grasses for summer pastures. Once planted lasts forever. Finest hay. Grows well even on sandy soil. Plant in spring or summer when ground continues moist. One pound, \$1.00; 5 pounds at 80 cents.

JAPAN CLOVER—(*Lespedeza Striata*)—(Southern seeds. United States seed trade supplied)—Twenty-five lbs. to bushel. Sow twenty-five pounds per acre. Grows anywhere, and is tenacious in any soil, and lasts always. It is well known now in the South. Scatter a few pounds seed in fall or spring in permanent pastures. Soon covers the ground, and is eaten greedily by stock till frost. In some soils it grows twenty inches high; is mowed; two tons to acre. Growth starts in early spring. Ready for grazing from June to frost. Rich soil grows thirty inches. Summer forage. Appears in May. Plant in spring or fall with rye and oats. One pound, 25 cents; 10 pounds \$1.80; 1 bushel for \$2.50.

GEORGIA SCHRADER'S OR RESCUE GRASS—(*Bromus Unioides*)—Fourteen pounds one bushel. Sow twenty-five pounds per acre in fall to Christmas. Known also as Arctic Grass and Australian Oats. Annual, but if grazed or mowed cleanly roots last three years or more. Best growth in October and November. Ripens seed in May. On thin lands twelve to fifteen inches high, rich damp land, three feet high. Grows out quickly after being grazed from November to May. Cut for hay in February, then again in April. Let third crop grow—it will make enough seed to stock field next year. Can be sown till Christmas for seed, or any time till April for spring pasture.

HERD'S OR RED TOP—(*Agrostis Vulgaris*)—Ten pounds to bushel. A good perennial, generally sown on permanent pastures, generally on moist lands. It is best when fed close down as a forage plant. Not killed by overflows. Improves with age each year. Chief value is when made part of grass mixtures for fall pastures. Sow in fall or spring, three bushels to acre. One pound, 10 cents; ten pounds, half acre, 75 cents.

RED CLOVER—(*Trifolium Pratense*)—Sixty pounds to bushel. Sow broadcast in spring, September or October, fifteen pounds to the acre, or sow with any spring grain as early as ground is suitable for plowing. Needs a stiff soil. The

most widely cultivated of all pasturage plants for pasturage, hay, and enricher of soil. Price, one pound, 15 cents; 5 pounds, for one-quarter acre, 70 cents; 1 bushel, \$7.50.

SCARLET OR CRIMSON CLOVER—(*Trifolium Incarnatum*)—Sixty pounds to bushel. An annual. Withstands both our heat and cold. A month earlier than red clover, and can be sown on thinner lands not wet. Can be cut for green food in April or May, or for hay, or for plowing under. Stems in bloom vary from two to five feet in height, and stools heavily, one seed making oft-times one hundred blooms. It grows during winter and spring months. Sow August, September or October, fifteen pounds to acre. Broadcast. Can be pastured in December and January, and still yield. Is sown about here usually with oats. Do not plow under. Sow on top of ground, and lightly harrow it in. One pound, 10 cents; 15 pounds for \$1.50; 1 bushel, \$5.00.

WHITE CLOVER—(*Trifolium Repens*)—Not a heavy hay producer, but invaluable in permanent pastures. Sow twelve pounds to acre in fall or spring. Fall is better. Price, 30 cents a pound; 3 pounds, for one-quarter acre, for 75 cents.

KENTUCKY BLUE GRASS—(*Poa pratensis*)—Fourteen pounds to bushel. Pasture grass, well known; sow in fall; usually sown with other grasses—Orchard grass, Clover, etc. Also used in lawns and woodlawn. Sow two bushels per acre. A perennial for dark solled low-lands or lime lands. Good grazing in fall and winter. Gets better each year. One pound, 20 cents; 1 bushel, for one-half acre, \$1.50. Fancy quality.

GEORGIA "TEXAS BLUE GRASS"—(*Poa Arachnifer*)—Perennial. Transplant sets or roots from November to April, by running off rows twenty-four inches apart and drop sets twelve inches in rows. Can be pushed into soil with an inch-wide stick. Live easily. Cultivate first year with wide sweep. After this it takes care of itself. Makes fine pastures for November and May. Do not too closely graze crop in summer. Grows two to three feet high and thick; makes good cutting in spring. Makes good lawn and for terraces nothing superior. We get \$1.00 for 1,000 sets; \$8.00 for 10,000; 5 to 10,000 sets an acre.

LAWN AND PARK EVERGREEN GRASS—We have the best mixture we know of. So compounded with seven or eight grasses that it ensures green grass all the year. Our mixture has succeeded here when others failed. Fourteen pounds to bushel. One pound of seed, 35 cents; plants plat 20x30 feet; 10 pounds for \$2.50.

ORCHARD GRASS—(*Dactylis Glomerata*)—Fourteen pounds to bushel. Sow two bushels to acre, fall or spring. An excellent perennial. Commence spring growth in February, ready for hay cutting in April. Graze then till hot summer. Early autumn starts new set of leaves, making rich pasturage, remaining green all fall and winter. Mixes well with Red Top. A good woodland pasture. No better winter growth on wet or heavy clay lands. One pound, 20 cents; bushel, for half acre, \$1.75.

PASPALUM PLATYCAULE, OR CARPET GRASS—United States seed

trade supplied. Grows tenaciously in any sandy soil. Green all the year. Spreads like Bermuda; takes joint every few inches. The blades are wide, giving fine foliage. Grows five or six inches. Best of all grazing grasses. One parent stalk in fifteen months would spread several feet in circumference. Two quarts of seed mixed with sand for sowing should set an acre. Plant in spring or early fall. Cattle cannot uproot it. A highly interesting and valuable plant for pasturage. Big tufts. Pound, 60 cents. Seed small.

NOTE:—To all fancy seed growers of any seed in farm, forage and garden. Write us what you have and amount and price. We are helping on the new Southern industry of seed growing.

LAWN AND FLOWER FERTILIZER—The best made. Only in 50 pound sacks, at \$1.00 per sack. We have special formula for truckers.

DR. GILDER'S LIVER PILLS

are so constructed that they do FOUR things:

- They Act on the Liver.**
- They Act on the Upper Bowels.**
- They Act on the Lower Bowels.**
- They Act Upon the Kidneys.**

NOTE—Other pills do only a part of above. Gilder's do not gripe.

No Southern made pill is so popular as Gilder's.

It was born in the South Thirty years ago. It was raised in the south.

It has always been made in the South.

It has cured more Southern Liver troubles than any other pill.

Southerners should use them.

Let Northern pills cure Northern people.

For the Cure of Liver Complaint, Billiousness, Heartburn, Dyspepsia, Indigestion, Pains in Back, Side, Etc.

Directions for Using.—If your Liver is not acting properly, and you feel dull and drowsy and headachy, three pills at night will clear the system of vitiated bile, and make you feel like a new person.

If you have a pain in the side or back, it probably arises from a torpid Liver. Stir it to action by taking a dose of these LIVER PILLS.


If your bowels are constipated, two pills at bed time will set you all right. If your food does not digest, take two or three pills twice a week at bed time, until three or four doses have been taken, and you will feel yourself entirely relieved of these disagreeable symptoms.

If your complexion is sallow and your eyes discolored, a full dose of these pills will impart a roseate hue to your cheeks, and give your eyes the brilliancy of perfect health.

DR. GILDER'S LIVER PILLS
25 cents per Box Postpaid.

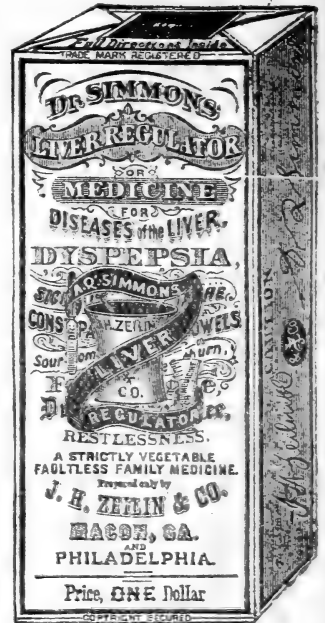
AUGUSTA DRUG CO.,
Augusta, Ga., make Gilder's.

THE GENUINE.

Every package of Simmons Liver Regulator is like the accompanying fac simile. 

On the front of each package is the red Z, on the side the seal and signature of J. H. Zeilin & Co., in red.

BEWARE OF FRAUDS.



Do Not Accept any Substitutes or Imitations.

If you are not well and want Simmons Liver Regulator, as you value your health be not persuaded to take anything else. No imitation, counterfeit or substitute is the same. You know that Simmons Liver Regulator is what you want, and if a druggist tries to sell you something else you may be sure it is because he makes more money on it, and not because he is considering your health. The druggist knows as well as you that nothing is equal to Simmons Liver Regulator and that no other preparation is the same. It is made only by J. H. Zeilin & Co. No one else knows how to make it.

"I send you a package of counterfeit Simmons Liver Regulator. It is called a trial package and they said it would cost me nothing—it nearly cost me my life."—John Griffin, Cassville, Ark.

"I have always used Simmons Liver Regulator and always found it to do what is claimed for it. The last bottle and two packages did me no good and were worse than nothing. I see that they are not put up by J. H. Zeilin & Co., and are not genuine. Send me some from honest hands (with Red Z and Zeilin & Co.'s signature on the wrapper.) The fictitious stuff sold will injure some one badly."—Benj. T. Rich, Fernandina, Fla.

"I have taken Simmons Liver Regulator and from experience can speak of it in the highest terms. There is a deleterious article sold here for the genuine Simmons Liver Regulator."—P. B. Cusack, Brinkley, Ark.

WRIGHT'S INDIAN VEGETABLE PILLS.

These Preparations are all WRIGHT,

Having been sold in the market by our predecessors for over fifty years, and so are
"TRIED AND TRUE"

Wright's Indian Vegetable Pills, for blood impurity, fevers, billiousness, etc.

Wright's Indian Vegetable Syrup, for blood impurity, fevers, billiousness, etc.

McMunn's Elixir of Opium, for sleeplessness, nervous irritation, etc.

Peery's Dead Shot Vermifuge, for worms in the human body.

Clove Anodyne Toothache Drops, give immediate relief.

Roman Eye Balsam, for weak and inflamed eyes and eyelids.

Leidy's Sarsaparilla Blood Pills, for the liver and blood.

Manufactured only by

Wright's Indian Vegetable Pill Co.

372 Pearl Street,

NEW YORK.

WEATHER FORECASTS FOR 1902.

WEATHER FORECASTS FOR JANUARY.—1st to 2d, damp, cloudy; 3rd to 4th, heavy rains; 5th, foggy; 6th, clearing; 7th to 8th, low temperature; 9th to 10th, very cold; 11th to 12th, moderating; 13th to 14th, clear; 15th unsettled; 16th to 17th, high winds; 18th to 20th, blustery; 21st to 22d, cold, backward weather; 23d to 24th, rough; 25th to 26th, freezing; 27th to 28th, stormy; 29th to 31st, blustery, squalls.

WEATHER FORECASTS FOR FEBRUARY.—1st, milder; 2d to 4th, cloudy, soft, showers; 5th to 6th, clearing, colder; 7th to 10th, very cold, windy; 11th to 12th, stormy, blustery; 13th to 14th, damp, foggy, gloomy weather prevailing; 15th to 16th, unsettled, variable; 17th to 18th, moderating, clouds; 19th to 20th, warm, floods; 21st to 22d, unsettled weather; 23d to 24th, thunder storms; 25th to 26th, clear and colder; 27th to 28th, freezing weather.

WEATHER FORECASTS FOR MARCH.—1st to 3rd, blustery, March-like; 4th to 5th, cold, raw winds; 6th to 7th, moderating; 8th to 10th, pleasant, genial weather; 11th to 12th, clouding; 13th to 14th, damp, foggy; 15th to 16th, showery, stormy; 17th to 19th, gales; 20th to 21st, unsettled, variable; 22d to 23d, colder; 24th to 25th, frosty, very cold; 26th to 28th, heavy rains, thunder and lightning; 29th to 31st, fine, clear, warm weather prevailing.

WEATHER FORECASTS FOR APRIL.—1st to 2nd, strong gales; 3d to 4th, thunder, with heavy rains; 5th to 6th, cloudy; 7th to 9th, general rains; 10th to 12th, warming up; 13th to 14th, summer-like weather; 15th to 16th, cooler; 17th to 20th, very cold; 21st to 22d, cloudy, showery; 23d to 24th, threatening weather; 25th to 26th, thunder storms; 27th to 28th, mild, genial; 29th to 30th, fine growing season.

WEATHER FORECASTS FOR MAY.—1st to 2d, cooler; 3d to 4th, damp, foggy; 5th to 6th, thunder storms; 7th to 9th, destructive rain and hail; 10th to 12th, cool, backward weather; 13th to 14th, unsettled, variable; 15th to 17th, stormy; 18th to 20th, heavy rains, tornadoes; 21st to 22d, cool; 23d to 24th, fair and cool; 25th to 26th, fine, seasonable; 27th to 29th, warming up; 30th to 31st, high temperature.

WEATHER FORECASTS FOR JUNE.—1st to 3d, hot, sultry, droughty; 4th to 5th, general fall of temperature; 6th to 7th, cool and pleasant; 8th to 9th, warmer; 10th to 12th, hot, sultry; 13th to 14th, thunder storms; 15th to 16th, cool; 17th to 19th, fine, seasonable; 20th to 21st, cloudy; 22d to 23d, damp, drizzly; 24th to 25th, general rains; 26th to 28th, heavy thunder storms; 29th to 30th, clear, seasonable.

WEATHER FORECASTS FOR JULY.—1st to 2d, cool; 3d to 4th, fine, pleasant; 5th to 6th, warm, storms; 7th to 8th, destructive hail and wind storms; 9th to 10th, changeable; 11th to 12th, very warm; 13th to 15th, oppressive heat; 16th to 17th, continued sultriness; 18th to 20th, generally fair and mild; 21st to 22d, seasonable for cotton and corn; 23d to 24th, local rains; 25th to 27th, thunder storms; 28th to 29th, heavy fogs; 30th to 31st, damp, unsettled.

WEATHER FORECASTS FOR AUGUST.—1st to 3rd, mild period, cool; 4th to 5th, warmer; 6th to 7th, dry and hot; 8th to 9th, local storms; 10th to 12th, clouds, foggy; 13th to 14th, sultry; 15th to 16th, very hot; 17th to 18th, high temperature general; 19th to 20th, severe thunder and lightning; 21st to 23d, unsettled conditions. 23d to 24th, variable; 25th to 27th, cool wave, fair; 28th, warmer; 29th to 31st, cloudy, damp, local rains.

WEATHER FORECASTS FOR SEPTEMBER.—1st to 2d, high winds and bluster; 3d to 4th, local thunder storms; 5th to 6th, mild; 7th to 9th, fine, genial weather; 10th to 12th, rising temperature; 13th to 14th, hot and dry; 15th to 17th, droughty; 18th to 20th, changeable; 21st to 23d, damp, foggy; 24th to 26th, storm wave; 26th to 27th, heavy thunder and lightning; 28th, cooler; 29th to 30th, low temperature.

WEATHER FORECASTS FOR OCTOBER.—1st to 2d, local rains; 3d to 4th, rough and stormy; 5th to 6th, damp and foggy; 7th to 8th, changeable, variable; 9th to 10th, blustery; 11th to 12th, warmer; 13th to 14th, rising temperature general; 15th to 17th, very warm; 18th to 19th, cloudy, foggy; 20th to 22d, misty, disagreeable; 23rd to 24th, cool, pleasant; 25th to 26th, cool and dry; 27th to 28th, variable; 29th to 31st, local rains, threatening.

WEATHER FORECASTS FOR NOVEMBER.—1st to 2d, severe storms; 3d to 4th, high winds; 5th, mild; 6th to 7th, fine, genial weather; 8th to 10th, high temperatures; 11th to 12th, stormy; 13th to 14th, cloudy, gloomy; 15th to 16th, changeable, threatening; 17th to 19th, stormy; 20th to 23d, high winds and rains; 24th to 25th, cold; 26th to 27th, blustery November weather; 28th to 30th, pleasant weather conditions prevailing generally.

WEATHER FORECASTS FOR DECEMBER.—1st to 3d, fine, genial weather; 4th to 5th, changing; 6th to 7th, cold; 8th to 10th, blustery, low temperature; 11th to 12th, stormy; 13th to 15th, heavy rainfall; 16th to 17th, cool; 18th to 20th, cold, freezing weather; 21st to 22d, mild; 23d to 25th, foggy, cloudy and misty; 26th to 27th, unsettled, rain; 28th to 29th, cloudy; 30th to 31st, damp, gloomy.

LIVER TONIC

Cascarets

CANDY CATHARTIC

BEST FOR THE BOWELS

10c, 25c, 50c. ALL DRUGGISTS

NEVER SOLD IN BULK

CURE all bowel troubles, appendicitis, biliousness, bad breath, bad blood, wind on the stomach, bloated bowels, foul mouth, headache, indigestion, pimples, pains after eating, liver trouble, sallow complexion and dizziness. When your bowels don't move regularly you are getting sick. Constipation kills more people than all other diseases together. It is a starter for the chronic ailments and long years of suffering that come afterwards. No matter what ails you, start taking **CASCARETS** to-day, for you will never get well and be well at the same time until you put your bowels right. Take our advice: start with **CASCARETS** to-day, under an absolute guarantee to cure or money refunded.

GUARANTEED TO CURE: Five years ago the first box of **CASCARETS** was sold. Now it is over six million boxes a year, greater than any similar medicine in the world. This is absolute proof of great merit, and our best testimonial. We have faith and sell **CASCARETS** absolutely guaranteed to cure or money refunded. Go buy to-day, two 50c boxes, give them a fair, honest trial, as per simple directions, and if you are not satisfied, after using one 50c box, return the unused 50c box and the empty box to us by mail, or the druggist from whom you purchased it, and get your money back for both boxes. Take our advice—no matter what ails you—start to-day. Health will quickly follow and you will bless the day you first started the use of **CASCARETS**. Book free by mail. Address: **STERLING REMEDY COMPANY, NEW YORK or CHICAGO.**

495

Syrup of Figs

DELIGHTFUL LIQUID LAXATIVE

TO GET ITS BENEFICIAL EFFECTS BUY THE GENUINE

MANUFACTURED BY **CALIFORNIA FIG SYRUP CO.**

SAN FRANCISCO, CAL. LOUISVILLE, KY. NEW YORK, N.Y. U.S.A.

FOR SALE BY ALL DRUGGISTS. PRICE, 50¢ PER BOTTLE. LONDON, ENG.

BORACINE 25c.

THE BABY'S POWDER AND FOR PRICKLY HEAT.

We've had a life-time experience with it and know just what it will do.
Wild Cherry Cough Cure,

ANATOMY OF MAN'S BODY,
AS SAID TO BE GOVERNED BY THE TWELVE SIGNS.

Aries—Head and Face.

Pisces—Feet.

TO KNOW WHERE THE SIGN IS.—First, find the day of the month, and against it, in the column that shows the Moon's place; you will find the Sign that shows the part of the body supposed to be governed.

CHRONOLOGICAL CYCLES.

Emblematic Letter,	E	Solar Cycle,	7
Epact (Moon's Age, 1st Jan.),	21	Roman Indiction,	15
Golden Number,	3	Julian Period,	6615

FIXED AND MOVABLE FEASTS OF THE CHURCH.

Septuagesima Sunday,	Jan. 26	Easter Sunday,	Mar. 30
Sexagesima Sunday,	Feb. 2	Easter Monday,	Mar. 31
Shrove Sunday,	Feb. 9	Low Sunday,	Apr. 6
Ash Wednesday,	Feb. 12	Regation Sunday,	May 4
First Sunday in Lent,	Feb. 16	Holy Thursday,	May 8
St. Patrick's Day,	Mar. 17	Whit Sunday,	May 18
Palm Sunday,	Mar. 23	Trinity Sunday,	May 25
Lamb's Day,	Mar. 25	Advent Sunday,	Nov. 30
Good Friday,	Mar. 28		

ROSE CREAM
 Lips. Cures at once Chapped Hands and Face and
 Makes Rough Skin Smooth.

Y. K. W. It Cures

**GONORRHOEA,
GLEET,
STRICTURE,
in 2 to 5 Days.**

50c

NECESSARY MEDICINE.

That Family which has a Bottle of Graybeard on the Mantel, a Box Each of
 Graybeard Pills and Graybeard Ointment in the Medicine Chest is
 Fortified Against Most Diseases to which Flesh is Heir.

It Cures Dyspepsia.—If you have dyspepsia, that weak, nauseated feeling, heart-burn, fainting, dizzy, loss appetite, take Graybeard. There is not, we believe, or ever will be, invented anything to equal Graybeard in relieving and curing dyspepsia. It tones up your system, makes you eat, and, best of all, makes you digest what you eat.

It Cures Rheumatism.—If you have rheumatism, that aching and pain in the knees, back or shoulders, take Graybeard. It is especially prepared for this ailment. Graybeard cures it. It drives out the acid in your blood which causes Rheumatism. It makes new blood and thus crushes out the disease. We have never known a remedy like Graybeard for rheumatism. One that so completely and effectually destroys the ailment.

It Cures Cancer.—If you have a cancer take Graybeard. Get it as quick as you can and take it as long as you can. It will cure you. Don't get impatient. Don't be in a hurry. Graybeard is your meat and bread for cancer. It is the only remedy that we have ever heard of that will cure cancer.

It Cures Catarrh.—If you have catarrh, that coughing, that spitting, that blowing, the nose, that bad foul breath, take Graybeard. It is the grandest remedy on earth for catarrh. There was a little girl once who was rendered deaf by catarrh. Graybeard cured her sound and well.

It Cures Eczema.—If you are afflicted with eczema or itch take Graybeard. Take nothing else. Nothing else is necessary. Graybeard is able to drive this filthy disease from your blood. It will do it speedily. It will do it quicker than anything else, and its work will be permanent.

Price, \$1.00 per bottle; 6 for \$5.00. Ask your druggist for our Graybeard. If he hasn't it send us \$4.50 by registered mail and we will send you six bottles.

RESPESS DRUG CO.,
 Savannah, Ga.

Our "Peerless" Brand Varnishes

—ARE UNEQUALLED FOR—

DRYING, BRILLIANCY, DURABILITY,

PEERLESS FLOOR FINISH,

PEERLESS HARD OIL,

PEERLESS EXTERIOR,

PEERLESS INTERIOR,

No. 1 COACH VARNISH.

VERY LITTLE PRICES.

"USAPERFECT" DRIER OIL.

A Perfect combination of Linseed Oil, Turpentine and Drier. For the painter, farmer and home builder it has no equal. Costs much less than Linseed.

ATLANTIC DRIER & VARNISH CO.,

PHILADELPHIA, PA.

Dr. Gilder's Liver Pills, 25 CENTS, POSTPAID.

Land's Headache Capsules Cure, by actual count, 36 out of 37 Headaches. 25c. postpaid, per box of 1 dozen Capsules.

EQUINOXES AND SOLSTICES.

Vernal Equinox (Springs begins), March 21st.
 Summer Solstice (Summer begins), June 22d.
 Autumnal Equinox (Autumn begins), September 23d.
 Winter Solstice (Winter begins), December 22d.

CHRONOLOGICAL ERAS, CYCLES, ETC.

The year 1902 comprises the latter part of the 126th and the beginning of the 127th year of American Independence, and corresponds to the year 6615 of the Julian Period; the year 5662-5663 of the Jewish Era (the Jewish New Year 5663 begins at sunset on October 1, 1902); the year 2655 since the foundation of Rome, according to Varro; the year 2562 of the Japanese Era, and the 35th year of the period entitled "Meiji." The year 1320 of the Mohammedan Era, or the Era of the Hegira, begins on the 10th day of April, 1902. The first day of January, 1902, is the 2,415,751st day since the commencement of the Julian Period.

MORNING AND EVENING STARS FOR 1902.

The Planet Venus is Evening Star until February 14th; then Morning Star until November 28th, after which date she is Evening Star to the end of the year.

The Planet Mars will be Evening Star until March 29th, then Morning Star the rest of the year.

The Planet Jupiter is Evening Star until January 15th; then Morning Star until August 5th; then Evening Star the balance of the year.

The Planet Saturn begins as Evening Star and continues as such until January 9th; then Morning Star until July 17th, and then Evening Star to the end of the year.

ECLIPSES FOR 1902.

In the year 1902 there will be five eclipses, three of the Sun and two of the Moon.

I. A partial eclipse of the Sun April 8th; invisible here.

II. A total eclipse of the Moon April 22d; not visible here, but the beginning visible throughout Asia and eastern portions of Africa and Europe; the ending visible throughout Asia, Europe and Africa.

III. A partial eclipse of the Sun May 7th; invisible here; visible to New Zealand and South Pacific Ocean.

IV. A total eclipse of the Moon October 16th and 17th; visible here as follows:

EASTERN STANDARD TIME.

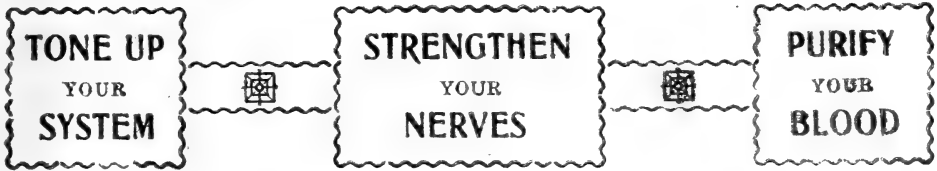
Moon enters shadow 16d. 11h. 17m. P. M.; middle of eclipse 17d. 1h. 3m. A. M.; total eclipse begins 17d. 0h. 19m. A. M.; total eclipse ends 17d. 1h. 48m. A. M.; Moon leaves shadow 17d. 2h. 50m. A. M. For Central time, deduct one hour.

V. A partial eclipse of the Sun October 30th; invisible here; visible to the greater part of Europe and nearly all of Asia.

WHITE OIL LINIMENT. White as Snow, Clean as Cream. Strong as Sampson.

H. H. P. Hill's Hepatic Panacea  FOR THE LIVER.

 Powder.



BY TAKING _____

YAGER'S COMPOUND
EXTRACT
SARSAPARILLA
WITH CELERY.

✦ THE GREATEST OF BLOOD MEDICINES ✦

50c.—SOLD BY ALL DEALERS AND DRUGGISTS—**50c.**

HONEY-TOLU The Peoples
Cough Cure.

Have you tried it? If not, do so.

It is the surest, quickest and the best of cures.

25c.—SOLD BY ALL DEALERS AND DRUGGISTS—**25c.**

Yager's

CREAM CHLOROFORM

Liniment

Take no other as a

SUBSTITUTE.

CURES Pain.

CURES Rheumatism.

CURES Inflammation.

CURES Swellings.

CURES Everything a Liniment
can cure.

Costs at the Store 25c.

Blood ^{AND} Skin Diseases

CURED BY

B. B. B.

CURES WHEN ALL ELSE FAILS

Ulcers, Eating Sores, Cancer, Scrofula, Itching Skin, Scabs and Scales of Eczema, Aches and Pains in bones, back or joints, Syphilitic Blood Poison, Rotten Gums and Chronic Rheumatism, and all obstinate, deep seated Blood troubles, are quickly cured by taking a few large bottles of Botanic Blood Balm (B. B. B.) We challenge the world for a case of Blood Disease that Botanic Blood Balm will not cure. The cures are permanent and not a patching up. Is your Blood Thin? Skin Pale? All Run Down? As tired in the morning as when you went to bed? Pimples? Boils? Swollen Glands or Joints? Catarrh? Putrid Breath? Eruptions? Sores in Mouth or Throat? If so, your Blood is Bad. Blood Balm will make the Blood Pure and Rich, Heal every Sore, Stop the Aches and Pains, Build up the broken down body, and invigorate the old and weak. Botanic Blood Balm the only perfect Blood Purifier made. Sold at Drug Stores, \$1.00 per large bottle, including complete directions. Trial treatment free by addressing

BLOOD BALM CO., Atlanta, Ga.

Don't hesitate, but write at once describing troubles, and free personal medical advice given. Blood Balm (B. B. B.) Cures when all else fails. Thoroughly tested for 30 years.

Over 3,000 Voluntary Testimonials of Cures by Using B. B. B.

For sale by AUGUSTA DRUG CO., Augusta, Ga.



RECOMMENDED BY PHYSICIANS & SURGEONS

POND'S EXTRACT

SIXTY YEARS A HOUSEHOLD REMEDY

For Burns, Cuts, Sprains
and Bruises.

CAUTION! Avoid dangerous, irritating witch hazel preparations, represented to be "the same as" *Pond's Extract*, which easily sour and generally contain "wood alcohol," a deadly poison. Insist upon *genuine Pond's Extract*, sold only in sealed bottles, buff wrappers.

JUST OUT Animal Book in colors, with original drawings and rhymes by Palmer Cox, sent for 2c. stamp. **POND'S EXTRACT CO., 76-5th Ave., N. Y.**

1st Month. JANUARY. 1902.

PHASES OF THE MOON.

Eastern Stand. Time. D. H. M.		EQUATION OF TIME.						
Last Quarter.....	1 11 8 mo.	2	3	4	5	6	7	8
New Moon.....	9 4 15 eve.	9	10	11	12	13	14	15
First Quarter.....	17 1 38 mo.	17	18	19	20	21	22	23
Full Moon.....	23 7 6 eve.	23	24	25	26	27	28	29
Last Quarter.....	31 8 9 mo	31	1	2	3	4	5	6

VARIOUS PHENOMENA.

Day	Mo	Sun	Moon	Place	South.
W	Th	F	S	C. D.	H. M.
Rises	Sets	Rises	Sets		
1 we	Odell inaug. Gov. N. Y., '01.	7	6	4 54	5 43
2 th	δ ♄ ⊙. [in London, 1901.	7	6	4 54	6 26
3 fri	Earl Roberts rec'd royally	7	5	4 54	7 10
4 sat	Roberts in charge army, '01	7	5	4 55	7 55
5 su	2d Sunday after Christmas.	7	5	4 55	8 41
6 mo	Epiphany. [died, 1890.	7	4	4 56	9 29
7 tue	Ex-Empress Augusta, Ger.	7	4	4 56	10 17
8 we	δ ♄ ⊙. δ ♃ ⊙.	7	4	4 56	11 6
9 th	Prussian Diet opened, 1901.	7	3	4 57	11 56
10 fri	δ ♃ ⊙. δ ♄ ⊙.	7	3	4 57	eve. 45
11 sat	δ ♄ ⊙.	7	3	4 58	1 33
12 su	1st Sunday aft. Epiphany.	7	2	4 58	2 21
13 mo	δ ♄ ⊙. [Manchuria, 1901.	7	2	4 59	3 8
14 tue	Russian troops sent to	7	1	4 59	3 56
15 we	δ ♃ ⊙. Harbor bill, 1901.	7	0	5 0	4 45
16 th	House passes the river and	6	59	5 1	5 35
17 fri	Prussian bicentenary, 1901	6	59	5 2	6 29
18 sat	Bat. Venterburg, S. A., '01.	6	58	5 2	7 24
19 su	2d Sunday aft. Epiphany.	6	57	5 3	8 23
20 mo	John Ruskin died, 1900.	6	56	5 4	9 23
21 tue	Prof. Elsha Gray d., 1901.	6	55	5 4	10 23
22 we	Queen Victoria died, 1901.	6	54	5 5	11 22
23 th	J. W. Bailey elec. Sena'r, '01	6	53	5 6	morn.
24 fri	Pr. Wales procd King, '01.	6	53	5 7	0 19
25 sat	Baron Rothschild d., 1901.	6	52	5 8	1 12
26 su	Septuagesima Sunday.	6	52	5 8	2 2
27 mo	Langley's machine flies, '98	6	51	5 9	3 49
28 tue	Ho. p. bill cod. pos. laws, '01	6	50	5 10	3 35
29 we	Naval dem. at Rio, 1898.	6	49	5 11	4 20
30 th	Hague Court Arb. org., '01.	6	48	5 11	5 5
31 fri	Free-sl. beaten House, '98.	6	48	5 12	6 50

TAKE GILDER'S LIVER PILLS. 25 Cents.

2d Month. FEBRUARY. 1902.

PHASES OF THE MOON.

Eastern Stand. Time. D. H. M.		EQUATION OF TIME.						
New Moon.....	8 8 21 mo.	9	10	11	12	13	14	15
First Quarter.....	15 9 37 mo.	15	16	17	18	19	20	21
Full Moon.....	22 8 3 mo.	22	23	24	25	26	27	28

VARIOUS PHENOMENA.

Day	Mo	Sun	Moon	Place	South.
W	Th	F	S	C. D.	H. M.
Rises	Sets	Rises	Sets		
1 sat	15,000 tr. ord. mus. out, '99.	6	47	5 13	6 36
2 su	Sexagesima Sunday.	6	46	5 14	7 22
3 mo	House pass. in. appro. bill.	6	45	5 15	8 10
4 tu	Jno. Marshall day ob., '01.	6	44	5 16	8 59
5 we	C. Nation wrecks sal'b, '01.	6	43	5 17	9 48
6 th	δ ♃ ⊙. δ ♃ ⊙. [mar, '01.	6	42	5 18	10 38
7 fri	Q. Wilhelmina and Henry	6	41	5 19	11 27
8 sat	Agnaldo asked a tr. '99.	6	40	5 19	eve. 16
9 su	Quinquagesima Sunday.	6	39	5 20	1 4
10 mo	Victoria married, 1840.	6	38	5 22	1 53
11 tu	Shrove Tuesday.	6	37	5 23	2 42
12 we	Ash Wedn'y. [laagers, '00.	6	36	5 24	3 33
13 th	Gen. French cap'd 5 Boer	6	35	5 25	4 26
14 fri	δ ♄ ⊙. list, died, 1901	6	34	5 26	5 20
15 sat	Maurice Thompson, nove-	6	33	5 27	6 17
16 su	Quadragesima Sunday.	6	32	5 28	7 15
17 mo	Sir Francis Cook died, '01.	6	31	5 29	8 13
18 tu	δ ♄ ⊙.	6	30	5 30	9 11
19 we	Boers evac. Colenso, 1900.	6	29	5 31	10 6
20 th	Battle Ocean Pond, 1864.	6	28	5 32	11 0
21 fri	Ex-U. S. Sen. White d., '01.	6	27	5 33	11 51
22 sat	Str. Mo de Janeiro s'ks, '01	6	26	5 34	morn.
23 su	2d Sunday in Lent.	6	26	5 34	0 39
24 mo	Fulton died, 1815.	6	25	5 35	1 26
25 tu	Sand storm Hungary, '96.	6	24	5 36	2 12
26 we	Bat. Middleburg, S. Af., '01	6	23	5 37	3 6
27 th	Ex-Chi Hsin & HsuChing, '01	6	22	5 38	3 43
28 fri	Dundonnald ent. J. V's h, '00	6	21	5 39	4 29

Lombard Iron Works and Supply Co.

AUGUSTA,
GA.

Foundry, Machine,
Boiler and
Bridge Works



**Cast Every Day
Capacity for 300 hands**

Atlas and Erie Engines,
Ashworth Cards, Korting and Leader Injectors
Turbine Water Wheels, Etc.

Builders and Dealers

..In..

Engines, Boilers, Steel
Bridges, Roofs, Tanks,
Towers and Building
Construction. * * * * *

Complete Cotton, Saw,
Grist, Oil, Fertilizer,
Gin, Press, Cane and * *
Shingle Mill Outfits. * *

Building, Bridge, Fac-
tory, Furnace and Rail-
road Castings. * * * * *

Railroad, Mill, Machi-
nists' and Factory Sup-
plies. * * * * * * * * *

Belting, Packing, In-
jectors, Fittings, Saws,
Files, Oilers, Etc. * * *

Shafting, Pulleys, Hang-
ers and Boxes, Mill Sup-
plies and Tools. * * * *

Georgia Chemical Works,

AUGUSTA, GA.

—MANUFACTURERS OF—

**HIGH GRADE FERTILIZERS AND
ACID PHOSPHATES.**

CAPACITY:

AUGUSTA FACTORY,	- - - - -	TONS.
PON PON FACTORY,	- - - - -	35,000
		35,000
TOTAL,	- - - - -	70,000

Equal to 700,000 Bags for Each Season.

Quality Best, Mechanical Condition Excellent, Analysis Guaranteed.

Every Bag Full Weight, 200 Pounds.

1902.

APRIL.

4th Month.

EQUATION OF TIME.

58	59	1	2	3	4	5	6	7	8	9	10	11	12	13	14	15	16	17	18	19	20	21	22	23	24	25	26	27	28	29	30	31
58	59	1	2	3	4	5	6	7	8	9	10	11	12	13	14	15	16	17	18	19	20	21	22	23	24	25	26	27	28	29	30	31

Sun Slow

Day	Week	Eastern Stand. Time.	D. H. M.
1	1	Last Quarter	1 1 24 mo.
2	2	New Moon	8 8 50 mo.
3	3	First Quarter	15 0 26 mo.
4	4	Full Moon	22 1 1 eve.
5	5	Last Quarter	29 2 5 1/3 eve.

VARIOUS PHENOMENA.

Day of Week	Sun Rises	Sun Sets	Moon Rises	Moon Sets	Place	South
1 tue	5 48	6 12	1 2	1 2	T. L. Johnson elect. mayor	6 19
2 we	5 47	6 13	1 45	1 45	[Cleveland, 1901.	7 7
3 th	5 46	6 14	2 24	2 24	[1901.	7 55
4 fri	5 45	6 15	3 2	3 2	Gen. Geo. T. Anderson d.,	8 43
5 sat	5 44	6 16	3 37	3 37	Gen. Geo. T. Anderson d.,	9 32
6 su	5 43	6 17	4 14	4 14	Low Sunday.	10 22
7 mo	5 42	6 18	4 55	4 55	Low Sunday.	11 13
8 tue	5 41	6 19	sets.	sets.	sets.	eve. 7
9 we	5 40	6 20	7 56	7 56	Bat Pietersburg, S. af., '01.	1 3
10 th	5 39	6 21	9 4	9 4	Botha ren. peace neg'n, '01	2 1
11 fri	5 38	6 22	10 10	10 10	Civil war began, 1861.	3 1
12 sat	5 37	6 23	11 12	11 12	Cannon (Mormon) d., '01.	4 1
13 su	5 36	6 24	morn	morn	2d Sunday after Easter.	5 0
14 mo	5 35	6 24	0 7	0 7	Opium pen. in Korea, '01.	5 57
15 tue	5 34	6 26	0 57	0 57	Kitchener rep. Br. suc., '01	6 51
16 we	5 33	6 27	1 43	1 43	Emp'r ref. ret. Peking, '01.	7 42
17 th	5 32	6 28	2 21	2 21	Tur. dec. war on Greece, '97	8 30
18 fri	5 31	6 29	2 56	2 56	Burns died, 1821.	9 16
19 sat	5 30	6 30	3 29	3 29	Con. dec. Cuba ind., '98.	10 2
20 su	5 29	6 31	4 6	4 6	3d Sunday after Easter.	10 47
21 mo	5 28	6 32	4 39	4 39	War with Spain begun, '98.	11 32
22 tue	5 27	6 33	rises.	rises.	Oklahoma opened, 1889.	morn.
23 we	5 26	6 34	7 37	7 37	Step'n A. Douglas b., 1813.	0 17
24 th	5 25	6 35	8 31	8 31	1st paper pub. U.S., 1704.	1 3
25 fri	5 24	6 36	9 23	9 23	Arlington Heights cap., '61	1 50
26 sat	5 23	6 37	10 12	10 12	Wilkes Booth shot, 1865.	2 38
27 su	5 22	6 38	10 58	10 58	4th Sunday after Easter.	3 25
28 mo	5 21	6 39	11 40	11 40	sets.	4 13
29 tue	5 20	6 40	morn.	morn.	sets.	5 0
30 we	5 19	6 41	0 21	0 21	[Indies, 1898.	5 48
31 mo	5 19	6 41	0 21	0 21	Cervera's fleet sails for W.	5 48

TAKE GILDER'S LIVER PILLS. 25 Cents.

1902.

MARCH.

3d Month.

EQUATION OF TIME.

7	8	9	10	11	12	13	14	15	16	17	18	19	20	21	22	23	24	25	26	27	28	29	30	31
7	8	9	10	11	12	13	14	15	16	17	18	19	20	21	22	23	24	25	26	27	28	29	30	31

Sun Slow

Day	Week	Eastern Stand. Time.	D. H. M.
1	1	Last Quarter	2 5 39 mo.
2	2	New Moon	9 9 50 mo.
3	3	First Quarter	16 5 13 eve.
4	4	Full Moon	23 10 21 eve.

VARIOUS PHENOMENA.

Day of Week	Sun Rises	Sun Sets	Moon Rises	Moon Sets	Place	South
1 sat	6 20	5 40	morn.	morn.	Anti-Amer. riots in Sp. '96	5 15
2 su	6 19	5 41	0 48	0 48	3d Sunday in Lent.	6 3
3 mo	6 18	5 42	1 38	1 38	Com. Dewey made Ad. '99.	6 51
4 tu	6 17	5 42	2 25	2 25	Mckinley inau, 2d tr., '01.	7 39
5 we	6 16	5 44	3 10	3 10	sets.	8 28
6 th	6 15	5 45	3 52	3 52	sets.	9 17
7 fri	6 14	5 46	4 31	4 31	sets.	10 6
8 sat	6 13	5 47	5 8	5 8	sets.	10 55
9 su	6 12	5 48	5 43	5 43	sets.	11 44
10 mo	6 11	5 49	sets.	sets.	sets.	eve. 35
11 tu	6 10	5 50	7 59	7 59	Gomez impeached, 1899.	1 26
12 we	6 9	5 51	9 7	9 7	Civil gov. est Luzon, '01.	2 20
13 th	6 8	5 52	10 13	10 13	Negro burned in Tex, '01	3 15
14 fri	6 7	5 53	11 18	11 18	Carnegie's gift. to St. L. '01.	4 12
15 sat	6 6	5 54	morn.	morn.	Trps. withd. fr. Pekin, '01.	5 10
16 su	6 5	5 55	0 20	0 20	5th Sunday in Lent.	6 8
17 mo	6 4	5 56	1 18	1 18	St. Patrick.	7 6
18 tu	6 3	5 57	2 12	2 12	Stud. riot St. Peters'g, '01.	8 1
19 we	6 2	5 58	2 59	2 59	Maine ct. inq. fia. wk., '98	8 51
20 th	6 1	5 59	3 42	3 42	Dr. W. F. Channing d., 1901.	9 44
21 fri	6 0	6 0	4 20	4 20	Cent. Y. Spring begins.	10 33
22 sat	5 59	6 1	4 55	4 55	Boers cap. supply tr., '01.	11 19
23 su	5 58	6 2	rises.	rises.	Palm Sunday.	morn.
24 mo	5 57	6 3	6 57	6 57	Plot ag't Czar disc'd, '01	0 5
25 tu	5 56	6 4	7 55	7 55	Battle nr. Vrybeid, S. Af., '01	0 51
26 we	5 55	6 5	8 51	8 51	Malinta cap. by Amer, '99	1 33
27 th	5 54	6 6	9 46	9 46	Death Gen. Joubert rep. '00	2 22
28 fri	5 53	6 7	10 39	10 39	Good Friday.	3 9
29 sat	5 52	6 8	11 29	11 29	sets.	3 56
30 su	5 51	6 9	morn	morn	sets.	4 43
31 mo	5 50	6 10	0 17	0 17	Easter Sunday. [Spruit, '00	5 31
	5 50	6 10	0 17	0 17	Brit. convoy cap. at Korn	5 31

"PITTS' CARMINATIVE

— Saved My Baby's Life. —

JOHNSTON STATION, GA., September 16, 1898.

LAMAR & RANKIN DRUG CO., Atlanta, Georgia.

GENTLEMEN:—I cannot recommend your Pitts' Carminative too strongly, as I owe my baby's life to it. She had Cholera Infantum when five months old and I could get no relief until I began using Pitts' Carminative. The fever left when I had given her but two bottles and she had fattened so she did not look like the same child. I advise all mothers who have sickly or delicate children to give this remedy a trial.

Respectfully,

MRS. LIZZY MURRAY.

It Saved Her Baby—
Will Save Yours.

TRY IT.

Dr. Salter's Eye Lotion

For Sore and Inflamed

Eyes has no equal.

It will cure any case of Sore Eyes in a very short time, 24 to 48 hours. It does not pain the eyes when applied, therefore it is the best EYE LOTION made for children. Granulated lids, weakness of the eyes, redness of the eyes it has no equal. Ask for

SALTER'S EYE LOTION,

and accept no other, for there are none "just as good." All dealers sell it.

25 cents per bottle.

Manufactured at the Reform Dispensary, 68 S. Broad St., Atlanta, Ga.

Everybody Praises Dr. Tichenor's Antiseptic.

Senioia, Ga., July 19, 1898.—This is to tell the public that I have successfully used Dr. Tichenor's Antiseptic in the treatment of lacerated wounds and to say that I do not want anything better as an antiseptic in surgery. I sell a great deal of it and find that it gives perfect satisfaction and when well known will sell itself.—JAS. T. EDWARDS, M. D.

Milner, Ga., Sept. 15, '99.—I cordially recommend Dr. Tichenor's Antiseptic, having used it in my family for stomach and bowel troubles and also for external injuries.—ROBT. T. MARTYN, Pastor M. E. Church.

Powder Springs, Ga., Dec. 14, 1897.—Having used Dr. Tichenor's Antiseptic in a case of gastro-enteritis with better results than from anything I have ever tried, I can conscientiously recommend it to the profession and the public.—W. M. KEMP, M. D.

Social Circle, Ga., May 7, 1897.—The best medicine I ever used for colic in man or beast is Dr. Tichenor's Antiseptic. Have used it for wounds, burns and various cases of inflammation with most gratifying results. Have just cured a case of thunderwood poison with it. It is a clean, pleasant liquid, and a very valuable household medicine.—JOE W. HOLLIS.

Resaca, Ga., Nov. 20, 1899.—I used Dr. Tichenor's Antiseptic on a child that had fallen into the fire and its head severely burned. It relieved the pain and the burn healed rapidly without any ulceration.—J. E. PRITCHARD, M. D.

Covington, Ga., March 23, 1898.—I saw a horse cured of a severe case of colic with Dr. Tichenor's Antiseptic within 30 minutes.—G. S. SMITH.

For sale by Druggists and Dealers at 50c.

Cod Liver Oil

IS ALWAYS SURE

but it is unusually nasty; we correct that; we remove the bad taste and leave the assurance in strong nerves, rich blood, a good appetite, fat flesh and good health.

ASK FOR

WAMPOLE'S

TASTELESS PREPARATION OF COD LIVER OIL for Coughs, Colds, Consumption and all wasting diseases.

WAMPOLE'S MILK FOOD

Babies Like It.

When the Mother's Milk gives out it makes the only Substitute. There is no Colic in it. Just Malted Barley, Beef, Wheat and Milk.

MADE IN A MINUTE WITH WARM OR COLD WATER



HENRY K. WAMPOLE & CO.

Manufacturing Pharmacists,

For Sale by all Druggists. PHILADELPHIA, PENN.

PHYSICIANS' SPECIALTIES OR FOR HOME USE.

Ereuthaima.

A Peerless Tonic — Alterative, Non-Irritant. Can be given where Iodide Potash and Cod Liver Oil can not be tolerated. In use by leading Augusta Physicians.

COMPONENT PARTS: 1 Pint Elixir contains 32 grs. Calc. Iod., Calc. Brom. 1 Pint Elixir contains 300 grs. Soda Hypophos., Pot. Hypophos., Mang. Ti Hypophos., Strych. Hypophos., Iron Hypophos.

ALTERATIVE PARTS: Soda Iod.; F. E. Hydras.; E. E. Sarsa.; F. E. Stillin. For all low anaemic conditions of the blood, nothing is equal to this preparation. Absolutely nothing equals it after Grippe.

\$1.00 BOTTLE.

Augusta Drug Co., Augusta, Ga.

Land's Blood Syrup.

We believe this to be the very strongest Blood Medicine on the market to-day. In Chronic Rheumatism, Scrofula, Secondary Syphilis and Catarrh, Doctors will get better results than from anything else. We have a little book for you of Medical Testimonials of it.

QUANTATIVE FORMULA: Stillingia, Fringe Tree, Poke-Root, Burdock, Prickly Ash and Blue Flag. Each dose, besides above, contains 10 grs. Iodide, Potassium and Sodium.

BOTTLE \$1.00

Augusta Drug Co., Augusta, Ga.

Land's Syrup Hypophosphites Compound.

Used for years by Augusta Hospitals; used and commended by such Augusta Physicians as W. H. Doughty Jr., M. D.; J. M. Hull, M. D.; Geo. A. Wilcox, M. D.; J. B. Morgan, M. D.; E. C. Goodrich, M. D., and many others. This preparation has in one dram the same amount of Hypophosphites as one full ounce of any other Syrup Hypophosphites on the market.

FORMULA: 1 Fluid dram contains 2 grains Hypo. Calcium; 1 gr. Hypo. Sodium; 1 gr. Hypo. Potassium; $\frac{1}{4}$ gr. Hypo. Iron; $\frac{1}{4}$ gr. Hypo. Manganese; $\frac{1}{4}$ gr. Hypo. Quinine; $\frac{1}{2}$ minim Fl. Ex. Nox. Vom.

BOTTLE \$1.00.

Augusta Drug Co., Augusta, Ga.

Willet's Wine of Cod Liver Oil.

(TASTELESS.)

Contains the active principles to be found in one quarter of its volume of pure Cod Liver Oil, with all fatty matters removed. Does not disturb digestion. Can be used where Cod Liver Oil is rejected. An original formula, wholly unlike that which is in general use. Can be compounded with Carbolic Acid, Creosote, Syrup Hypophosphites, Pepsin, Ess. Pancreas.

\$1.00 BOTTLE.

Augusta Drug Co., Augusta, Ga.

5th Month. MAY. 1902.

PHASES OF THE MOON.

Eastern Stand. Time. D. H. M.	7 5 45 eve.
New Moon	14 8 40 mo.
First Quarter	22 5 46 mo.
Full Moon	30 7 0 mo.
Last Quarter	30 7 0 mo.

Sun Fast.

D.	M.
1	2

EQUATION OF TIME.

95	94	93	92	91	90	89	88	87	86	85	84	83	82	81	80	79	78	77	76	75	74	73	72	71	70	69	68	67	66	65	64	63	62	61	60	59	58	57	56	55	54	53	52	51	50	49	48	47	46	45	44	43	42	41	40	39	38	37	36	35	34	33	32	31	30	29	28	27	26	25	24	23	22	21	20	19	18	17	16	15	14	13	12	11	10	9	8	7	6	5	4	3	2	1
----	----	----	----	----	----	----	----	----	----	----	----	----	----	----	----	----	----	----	----	----	----	----	----	----	----	----	----	----	----	----	----	----	----	----	----	----	----	----	----	----	----	----	----	----	----	----	----	----	----	----	----	----	----	----	----	----	----	----	----	----	----	----	----	----	----	----	----	----	----	----	----	----	----	----	----	----	----	----	----	----	----	----	----	----	----	---	---	---	---	---	---	---	---	---

VARIOUS PHENOMENA.

Day	Month	Year	Event
1	th	1900	Wiley d., 1900.
2	fri	1900	Ex-U. S. Sen. Whitman T. Sen. pass. ar. app. bill, '00.
3	sat	1900	Reignation Sunday.
4	su	1900	Bat. Kooldam, S. Af., '00.
5	mo	1900	Bat. Roberts cr. Vet river, 1900.
6	tu	1900	Ascension Day. [1898.
7	we	1900	Ascension Day. [1898.
8	th	1900	At. Olenegros & Cardenas.
9	fri	1900	Brit. cross Zand river, 1900.
10	sat	1900	Sunday after Ascension.
11	su	1900	Bat. Making, S. Af., 1900.
12	mo	1900	Last fight Civil War, 1865.
13	tu	1900	Jaadestown settled, 1607.
14	we	1900	Sen. Clark (Mon.) res., '00.
15	th	1900	Maefeking relieved, 1900.
16	fri	1900	Napoleon Emperor, 1804.
17	sat	1900	Whit Sunday. [har., '98.
18	su	1900	Cervera's flt ent. Santiago
19	mo	1900	Hawthorne died, 1854.
20	tu	1900	Edward Bellamy d., 1898.
21	we	1900	Victor Hugo died, 1885.
22	th	1900	2d charter to Va., 1609.
23	fri	1900	Trinity Sunday.
24	sat	1900	Car Nicholas crowned, '96.
25	su	1900	6 h D.
26	mo	1900	6 h D.
27	tu	1900	6 h D.
28	we	1900	6 h D.
29	th	1900	Corpus Christi.
30	fri	1900	Brit. ent. Johannesb'g, '00.
31	sat	1900	N. J. Dem. ref ins. Bryan, '00.

TAKE GILDER'S LIVER PILLS. 25 Cents.

6th Month. JUNE. 1902.

PHASES OF THE MOON.

Eastern Stand. Time. D. H. M.	6 1 11 mo.
New Moon	12 6 54 eve.
First Quarter	20 9 17 eve.
Full Moon	28 4 52 eve.
Last Quarter	28 4 52 eve.

Sun Fast.

D.	M.
1	2

EQUATION OF TIME.

1	2	3	4	5	6	7	8	9	10	11	12	13	14	15	16	17	18	19	20	21	22	23	24	25	26	27	28	29	30	31	32	33	34	35	36	37	38	39	40	41	42	43	44	45	46	47	48	49	50	51	52	53	54	55	56	57	58	59	60	61	62	63	64	65	66	67	68	69	70	71	72	73	74	75	76	77	78	79	80	81	82	83	84	85	86	87	88	89	90	91	92	93	94	95	96	97	98	99	100
---	---	---	---	---	---	---	---	---	----	----	----	----	----	----	----	----	----	----	----	----	----	----	----	----	----	----	----	----	----	----	----	----	----	----	----	----	----	----	----	----	----	----	----	----	----	----	----	----	----	----	----	----	----	----	----	----	----	----	----	----	----	----	----	----	----	----	----	----	----	----	----	----	----	----	----	----	----	----	----	----	----	----	----	----	----	----	----	----	----	----	----	----	----	----	----	----	----	----	-----

VARIOUS PHENOMENA.

Day	Month	Year	Event
1	su	1900	1st Sunday after Trinity.
2	mo	1900	Dreyfus am. bill pass., '00.
3	tu	1900	6 h D.
4	we	1900	6 h D.
5	th	1900	N. Y. Dem. in. for Bryan, '00.
6	fri	1900	N. & S. Dak. in. for Bryan, '00.
7	sat	1900	6 h D.
8	su	1900	2d Sunday after Trinity.
9	mo	1900	Dickens died, 1870.
10	tu	1900	War rev. bill passed, 1898.
11	we	1900	Butler for Almond, S. N. C. '00.
12	th	1900	Eng't mt Guantanamo, '98.
13	fri	1900	Ohio Dem. in. for Bryan, '00.
14	sat	1900	Bishop Wilmer, Ala., d., '00.
15	su	1900	3d Sunday after Trinity.
16	mo	1900	Mur. Bar. von Ketteler, '00.
17	tu	1900	Boxers beg. sg. Tientsin, '00.
18	we	1900	U. S. tr. ord. Man. to Chi., '00.
19	th	1900	Rep. Nat. Con. Phila., '00.
20	fri	1900	Shafterlands Dalquie, '98.
21	sat	1900	McKinley renomin'd, '00.
22	su	1900	Cent. 50. Summer begins.
23	mo	1900	6 h D.
24	tu	1900	6 h D.
25	we	1900	U. S. troops occupy Sevilla.
26	th	1900	Cannara's slt. Port Said, '98.
27	fri	1900	3d expedi'n for Manila, '98.
28	sat	1900	Vicksburg bombarded, '62.
29	su	1900	5th Sunday after Trinity.
30	mo	1900	Guineau hung, 1882.

If afflicted with sore eyes, use Thompson's Eye Water

COUGHS, COLDS, CROUP,

Yield Quickly before the Curative Properties of

CHENEY'S EXPECTORANT.

No preparation of a similar nature acts so pleasantly or naturally, or with such universal results. It allays inflammation and conquers whooping cough in the prattling infant with the same dispatch as it eradicates a deep-seated cold in the grand-parent.



THE KING OF COUGH SYRUPS.
For Sale by all Druggists

H. H. P.

A LIVER MEDICINE KNOWN FOR FORTY YEARS AS

Hill's Hepatic Panacea

The best known and most comprehensive Liver Medicine made in the South.

The old style "H. H. P." liquid, per bottle, 50c.

Also new style "H. H. P." dry powder, large package, post paid 25c.

N. L. WILLET DRUG CO.

RETAIL ORDERS.

AUGUSTA DRUG CO.

WHOLESALE ORDERS.

ANIMAL REMEDIES.

RED ALBUMEN—Largely advertised "to make hens lay," especially in winter. Sold in bulk 40c lb. Put two teaspoonfuls in quart of hens' food twice a day.

HOLLEYMAN'S COMPOUND ELIXIR—(For Horse Colic.) For 40 years the standard. A specific in all cases. Bottle 50c.

HOWARD'S HORSE AND CATTLE POWDERS—Full 16 oz., other H. and C. Powders hold only 10 and 12 oz. Made for over 30 years. Package 25c. Post paid 35c.

GA. CHICKEN CHOLERA CURE—Package 25c.

NATIONAL HOG CHOLERA CURE—Package 25c.

RAT'S DEATH—Poison. Post paid 10c.

N. L. WILLET DRUG CO.

Retail Orders.

AUGUSTA DRUG CO.

Wholesale Orders.

HUMAN ACHE SPECIFICS.

PRICKLY HEAT—Boracine (Post Paid 30c).....	25c
CONSTIPATION—Gilder's Liver Pills	25c
TORPID LIVER—"H H P" Liquid	50c
TORPID LIVER—"H H P" Powder	25c
TEETHING—Curative Teething Powder.....	25c
CHILLS—Anti-Shake	50c
HEAD—Land's Head Ache Capsules, Dozen	25c
DIARRHOEA—Our Diarrhoea Cordial	25c
ITCH—Infallible Itch Ointment	25c
TETTER—Infallible Tetter Ointment	25c
ITCHING PILES—Certain Itching Piles Remedy.....	25c
WORMS—Howard's Worm Candy	25c
SORE EYES—Golden Eye Wash.....	25c
ASTHMA—North's Asthma Cure	25c
RHEUMATISM—Paxton Rheumatic Remedy.....	\$1.00
COUGH—Wild Cherry Cough Cure	25c
CHAPPED LIPS—Rose Cream	25c

N. L. Willet Drug Co.

RETAIL ORDERS.

Augusta Drug Co.

WHOLESALE ORDERS.

1902.

JULY.

7th Month.

PHASES OF THE MOON.		EQUATION OF TIME.											
<i>Eastern Stand. Time.</i> D. H. M.		9	10	11	12	1	2	3	4	5	6	7	8
Day	Week	5	4	3	2	1	1	2	3	4	5	6	7
1	tu	5	4	3	2	1	1	2	3	4	5	6	7
2	we	5	4	3	2	1	1	2	3	4	5	6	7
3	th	5	4	3	2	1	1	2	3	4	5	6	7
4	fr	5	4	3	2	1	1	2	3	4	5	6	7
5	sa	5	4	3	2	1	1	2	3	4	5	6	7
6	su	5	4	3	2	1	1	2	3	4	5	6	7
7	mo	5	4	3	2	1	1	2	3	4	5	6	7
8	tu	5	4	3	2	1	1	2	3	4	5	6	7
9	we	5	4	3	2	1	1	2	3	4	5	6	7
10	th	5	4	3	2	1	1	2	3	4	5	6	7
11	fr	5	4	3	2	1	1	2	3	4	5	6	7
12	sa	5	4	3	2	1	1	2	3	4	5	6	7
13	su	5	4	3	2	1	1	2	3	4	5	6	7
14	mo	5	4	3	2	1	1	2	3	4	5	6	7
15	tu	5	4	3	2	1	1	2	3	4	5	6	7
16	we	5	4	3	2	1	1	2	3	4	5	6	7
17	th	5	4	3	2	1	1	2	3	4	5	6	7
18	fr	5	4	3	2	1	1	2	3	4	5	6	7
19	sa	5	4	3	2	1	1	2	3	4	5	6	7
20	su	5	4	3	2	1	1	2	3	4	5	6	7
21	mo	5	4	3	2	1	1	2	3	4	5	6	7
22	tu	5	4	3	2	1	1	2	3	4	5	6	7
23	we	5	4	3	2	1	1	2	3	4	5	6	7
24	th	5	4	3	2	1	1	2	3	4	5	6	7
25	fr	5	4	3	2	1	1	2	3	4	5	6	7
26	sa	5	4	3	2	1	1	2	3	4	5	6	7
27	su	5	4	3	2	1	1	2	3	4	5	6	7
28	mo	5	4	3	2	1	1	2	3	4	5	6	7
29	tu	5	4	3	2	1	1	2	3	4	5	6	7
30	we	5	4	3	2	1	1	2	3	4	5	6	7
31	th	5	4	3	2	1	1	2	3	4	5	6	7

TAKE GILDER'S LIVER PILLS. 25 Cents

1902.

AUGUST.

8th Month.

PHASES OF THE MOON.		EQUATION OF TIME.											
<i>Eastern Stand. Time.</i> D. H. M.		9	10	11	12	1	2	3	4	5	6	7	8
Day	Week	5	4	3	2	1	1	2	3	4	5	6	7
1	fr	5	4	3	2	1	1	2	3	4	5	6	7
2	sa	5	4	3	2	1	1	2	3	4	5	6	7
3	su	5	4	3	2	1	1	2	3	4	5	6	7
4	mo	5	4	3	2	1	1	2	3	4	5	6	7
5	tu	5	4	3	2	1	1	2	3	4	5	6	7
6	we	5	4	3	2	1	1	2	3	4	5	6	7
7	th	5	4	3	2	1	1	2	3	4	5	6	7
8	fr	5	4	3	2	1	1	2	3	4	5	6	7
9	sa	5	4	3	2	1	1	2	3	4	5	6	7
10	su	5	4	3	2	1	1	2	3	4	5	6	7
11	mo	5	4	3	2	1	1	2	3	4	5	6	7
12	tu	5	4	3	2	1	1	2	3	4	5	6	7
13	we	5	4	3	2	1	1	2	3	4	5	6	7
14	th	5	4	3	2	1	1	2	3	4	5	6	7
15	fr	5	4	3	2	1	1	2	3	4	5	6	7
16	sa	5	4	3	2	1	1	2	3	4	5	6	7
17	su	5	4	3	2	1	1	2	3	4	5	6	7
18	mo	5	4	3	2	1	1	2	3	4	5	6	7
19	tu	5	4	3	2	1	1	2	3	4	5	6	7
20	we	5	4	3	2	1	1	2	3	4	5	6	7
21	th	5	4	3	2	1	1	2	3	4	5	6	7
22	fr	5	4	3	2	1	1	2	3	4	5	6	7
23	sa	5	4	3	2	1	1	2	3	4	5	6	7
24	su	5	4	3	2	1	1	2	3	4	5	6	7
25	mo	5	4	3	2	1	1	2	3	4	5	6	7
26	tu	5	4	3	2	1	1	2	3	4	5	6	7
27	we	5	4	3	2	1	1	2	3	4	5	6	7
28	th	5	4	3	2	1	1	2	3	4	5	6	7
29	fr	5	4	3	2	1	1	2	3	4	5	6	7
30	sa	5	4	3	2	1	1	2	3	4	5	6	7
31	su	5	4	3	2	1	1	2	3	4	5	6	7

If afflicted with sore eyes, use Thompson's Eye Water

HILTON'S Life for the Liver and Kidneys.

"A thorough curative agent in all cases of Dyspepsia, Indigestion, Constipation, Biliousness Brights' Disease, Dropsy, Gravel, Rheumatism and all disorders arising from a diseased condition of the liver, kidneys and urinary organs."

From American Journal of Health of New York City.

25c., 50c and \$1.00 Bottles.

SOLD BY

LIFE MEDICINE COMPANY,
SPARTANBURG, S. C.

KILL

The germs which cause and produce disease, sickness and death with the greatest and only germ killer on the market,

GUARDIAN ANGEL REMEDY,

the original Swamp Angel Medicine. \$5 Treatment for Consumption; \$3 Treatment for Rheumatism; \$1 Treatment for Catarrh and the Blood.

GUARDIAN ANGEL REMEDY CO.

Baltimore, Md.

WHOLESALE

EE-M Smoking Tobacco and Catarrh Cure,

Also EE-M Compound without Tobacco.

This remedy is no Fake but will do absolutely what is claimed for it. It is warranted to cure any case of Catarrh or money refunded.

Also cures Asthma, Bronchitis, Sore Throat and is the only remedy known that will cure Hay Fever.

It is a pleasant smoke and will satisfy the users of ordinary tobacco and at the same time absolutely cure the complaints for which it is recommended. One case—one month's treatment of the compound mailed postpaid to any address in the United States for One Dollar. In ordering state whether the Medicated Tobacco is desired or the Compound without Tobacco.

EE-M COMPANY.

57 South Broad St. Atlanta, Ga.

DODGE'S

C. C. C. C.

Certain Chicken Cholera Cure.

■ The only specific for Chicken Cholera, and in all domestic fowls, yet discovered. It will arrest the disease in 15 minutes. One package sufficient for 50 adult fowls as a preventive, or for 25 sick ones.

R. P. DODGE, ATLANTA, GA.

References given on application. Sold by all Wholesale and Retail Druggists. Price 25c. per package; sent by mail, 30c.

Mothers!

Mothers!!

Mothers!!!

DON'T FAIL TO PROCURE

MRS. WINSLOW'S

SOOTHING SYRUP

For Your Children While Cutting Teeth.

It Soothes the Child, Softens the Gums, Allays all Pain, Cures Wind Colic and is the Best Remedy for Diarrhoea.

TWENTY-FIVE CENTS A BOTTLE

"OUR FAVORITE" Gold Enamel.

(Washable)

An Enamel which goes on any surface, brilliant and smooth as Gold Leaf. Can be washed and don't rub off.

Price, Regular Size, \$1.50 per dozen.

Also made in Aluminum Silver at same price.

JAPANESE GOLD PAINT.

The best and most brilliant ready mixed gilding on the market. Favorably known throughout the country.

Price, Regular Size, \$1.50 per dozen.

Handled by Druggists Everywhere.

Manufactured by

GERSTENDORFER BROTHERS,

43 Park Place,

New York City.

For Sale by

N. L. WILLET DRUG COMPANY,

Augusta, Ga.

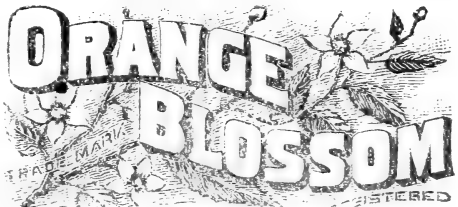
Notice! To Avoid Counterfeits

"Orange Blossom" boxes are all wrapped in a handsome and intricate label made by the Western Bank Note Company.

BEWARE OF FRAUDULENT IMITATIONS.

THE FAMOUS SPECIFIC

ORANGE BLOSSOM



Is a positive cure for the following diseases: Inflammation, Congestion and Falling of the Womb. Anteversion, Retroversion and Prolapsus, Dropsy of Womb, Ulceration, Polypus, Tumors, Leucorrhœa, Profuse and Difficult Menstruation, Ovarian Tumors, Fibroid Tumors, Inflammation and Congestion of the Ovaries, Cancers in their Earlier Stages, Laceration of Cervix (due to childbirth) Radically Cured.

Prepared by J. A. MCGILL, M. D., & CO.,

3 and 4 Hubbard Court, CHICAGO, ILL.

Notice:—To all retail druggists handling Orange Blossom we furnish (all charges prepaid) free samples and Orange Blossom circulars bearing the druggist's business card. Write.

WHITTEMORE'S POLISHES.

THE WORLD'S STANDARD.

The Oldest and Largest Manufacturers of Shoe Polishes in the World.



"GILT EDGE" Oil Shoe Dressing.

The only Ladies' Shoe Dressing that positively contains oil. Softens and preserves. Imparts a beautiful finish. Once used always used. Largest quantity. Finest quality.

Price per doz. \$2.00.

"DANDY" COMBINATION

For cleansing and polishing all high grade russet, tan or yellow colored leather. Excellent for Russet "Vici Kid."

Large size, per doz. \$2.00.

"STAR" COMBINATION.

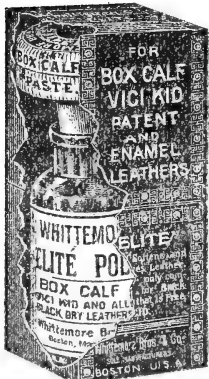
10c size, per doz. 75c.



"ELITE" COMBINATION.

The ONLY first-class article for "BOX CALF," KID, "VICI KID," and All Black, Chrome Tanned Leathers. The ONLY Polish endorsed by the manufacturers of "Box Calf" Leather. Contains oil and positively nourishes and preserves leather and makes it wear longer.

Large size, per doz. \$2.00.



"BABY ELITE" COMBINATION.

10c size, per doz. 85c.

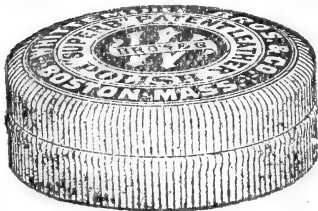
"SUPERB" POLISHING PASTE.

For giving Patent Leather Shoes a quick, brilliant and waterproof lustre without injury to the leather.

Large size, per doz. 75c.

Medium size, in blue tin boxes.

Per doz. 42c.



"DANDY" POLISHING PASTE.

For polishing all articles made from Russet, Tan or Yellow Leather. In our large size decorated tin boxes. Per doz. 75c. Medium size in red tin boxes, per doz. 42c.

"CHAMPION" FRICTION POLISH.

A Black Liquid Polish in 6-oz. bottles for Box Calf, Vici Kid, Patent and Enamelled Leather, works without paste and polishes with a brush or cloth. A polishing cloth in every carton. Price per doz. \$2. CHAMPION, J.R., (10c. size) per doz. 85c.

"BOSTON" Waterproof Polish (liquid for men's and boys' shoes)	per gross	\$ 24.00
"NOBBY" Brown Combination (Chocolate)	"	24.00
"JRWEL" Brown Combination	"	9.00
"Nobby" Brown Paste	"	9.00
Drab Box Brown Paste	"	5.00
"Box Calf" Pastes	"	\$9.00, 5.00
"Peerless" Oxblood Combination	"	24.00
"Midget" Oxblood Combination	"	9.00
Oxblood Pastes	"	\$9.00, 5.00
French Gloss (in cartons, for ladies' black shoes)	"	9.00
Royal Gloss, 4 oz. (for ladies' black shoes)	"	8.00



Berry Brothers Toy Wagon in use—A scene from life.
 Copy of above picture and full particulars mailed free for the asking.
BERRY BROTHERS, LIMITED,
VARNISH MANUFACTURERS,
Detroit, Mich.
 BALTIMORE BRANCH—No. 22 E. Lombard St.

PAIN-I-CURE.

A WONDERFUL

Household Medicine.

Cures Neuralgia, Rheumatic, Nervous or Spasmodic Pains, Toothache, Headache, Backache, Sprains, Bruises, Lameness, Cramp Colic, Diarrhoea, Dysentery, Stings of Insects, Swellings of all kinds, Stiff Neck, Soreness, Sore Throat, Sick Stomach or Sea-sickness. Cases of Bad Coughs, Colds or Pheumonia, it affords

❖ QUICK RELIEF. ❖

NO CURE. _____ NO PAY.

—Manufactured by—

The Walker Company,

SAVANNAH, GA.

AUGUSTA DRUG CO.

Augusta, Ga.

Wholesale Agents.

The greatest of all Animal Renovators and Sanatives is

FOUTZ'S

Celebrated Horse and Cattle Powders.

It will cure Colds, Chronic Cough, Distemper, Influenza, Heaves, Hide-bound, Flatulency and prevent all Stomach and Bowel trouble. It relieves Kidney disease, and improves the circulation. It cures Cholera in Hogs, increases the quantity of cream in cows. One dose restores lost appetite. It Vitalizes and Conditions all weak and diseased animals.

Remember Foutz's Horse and Cattle Powder is a Pure, Powerful and Perfect Veterinary MEDICINE.

Be sure you get my Powders. For sale by dealers; but can be had of me if not courteously supplied.

1 Package 25c. 5 Packages \$1.00

David E. Foutz, Prop. & Mfr.

Baltimore, Md.

GROVE'S TASTELESS CHILL TONIC

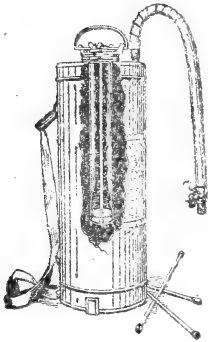
Has Stood the Test for 20 Years. One

Million Six Hundred Thousand Bottles

Were Sold Last Year.

THE "ZIP" SPRAY PUMP.

Self-Operating or Automatic Sprayer.



THE CLIMAX OF ALL SPRAYERS; combines every conceivable point of excellence, including economy, durability, low price and ease in carrying and operating.

THE WORD "ZIP" IS OUR TRADE MARK, and is used to designate our Automatic Machines, which are the only automatic compressed air machines built on mechanical and scientific lines by skilled labor.

THEY ARE FULLY PROTECTED BY PATENTS and are made in our own Factory, equipped with the latest machinery, and under our own supervision.

WHAT THE "ZIP" WILL DO. A few strokes in air chamber will compress enough air to discharge the entire contents and make a continuous spray for nine minutes. This means that the "Zip" can be charged in fifteen seconds, when it will work uninterruptedly long enough to spray a quarter acre of potatoes.

"ZIP" SPRAYER, Galvanized Steel Tank.....	\$4.50
"ZIP" SPRAYER, Brass Tank.....	6.00
Extension Pipes, two feet lengths, Galvanized.....	.30
Extension Pipes, two feet lengths, Brass.....	.35

—MANUFACTURED BY—

E. C. BROWN & CO.

SENT ON APPROVAL to Responsible Parties.
WRITE for Further Information.

Rochester, N. Y.

CASTORIA

for Infants and Children.

The Kind You Have Always Bought has borne the signature of Chas. H. Fletcher, and has been made under his personal supervision for over 30 years. Allow no one to deceive you in this. Counterfeits, Imitations and "Just-as-good" are but Experiments, and endanger the health of Children—Experience against Experiment.

The Kind You Have Always Bought
Bears the Signature of

In Use For Over 30 Years.

THE CENTAUR COMPANY, 77 MURRAY STREET, NEW YORK CITY.

SPRAY BORDEAUX



YOUR FRUIT

WITH THE "INCOMPARABLE"
BORDEAUX NOZZLE

used on "World's Best" Spraying Outfits.
Cut shows our patent **KEROSENE BUCKET SPRAYER**
Makes Emulsion while Pumping.

MADE ONLY BY
THE DEMING CO., SALEM, OHIO.
Twelve varieties of Sprayers. "PUMPS" OF ALL
SIZES. Write us for our Warrant Agents,
Hendon & Hubbell, Chicago, Ill.
Catalogue and Formulas Mailed FREE.



The Quakers Are Honest People



The Quaker Herb Tonic is not only a blood purifier, but a Blood maker for Pale, Weak and Debilitated people who have not strength nor blood. It acts as a tonic, it regulates digestion, cures dyspepsia and lends strength and tone to the nervous system.

It is a medicine for weak women. It is a purely vegetable medicine, and can be taken by the most delicate. Kidney disease, Rheumatism and all diseases of the Blood, Stomach and Nerves soon succumb to its wonderful effect on the human system. Thousands of people in Georgia recommend it. Price \$1.00.

QUAKER PAIN BALM is the medicine that the Quaker Doctor made all of his quick cures with. It's a new and wonderful medicine for Neuralgia, Toothache, Backache, Rheumatism, Sprains, Pain in Bowels; in fact, all pain can be relieved by it. Price 25c and 50c.

QUAKER WHITE WONDER SOAP, a medicated soap for the skin, scalp and complexion. Price 10c a cake

QUAKER HEALING SALVE, a vegetable ointment for the cure of tetter, eczema and eruptions of the skin. Price 10c a box.

FOR SALE BY ALL DRUGGISTS.
F. A. DILLINGHAM, Proprietor, Cincinnati.

Enamel Finish

for interior woodwork, furniture, metal beds, beds, bath tubs, radiators, etc. is popular because it is artistic, durable, costs no more than ordinary finishes, and is easily applied.

in white, ivory, delicate tints or rich colors

The use of
Neal's Enamels
THE GENUINE

means a real enamel surface, non-absorbent, easy to keep clean and the best for sanitary reasons. A few cents with buy enough to try. You can apply it yourself.

MADE BY Acme White Lead & Color Works, DETROIT.

FOR SALE BY
N. L. WILLET DRUG CO.
AUGUSTA, GA.

Up-To-Date Druggists

ALL HANDLE AMERICA'S
GREATEST LIVER
REGULATOR

PLANTERS

**NUBIAN
TEA**

\$7.50 PER DOZEN

(MAMMOTH SIZE.)

Profit to Dealers 140 per cent.

Write for special proposition to druggists. Send for Almanacs, Blue Books and advertising cards.

SPENCER MEDICINE CO.,

Chattanooga, Tenn.

Trade supplied by

AUGUSTA DRUG CO.



Stempel Fire Extinguisher Has no Equal

Acknowledged by prominent Fire Chiefs and other authorities to be the **SIMPLEST** but most **POWERFUL** Fire Extinguisher on earth.

WE CHALLENGE THE WORLD.

Adopted by the U. S. Government and the largest Railway Systems in the world. Protect your dwellings and places of business. Constructed of solid copper and brass, will last a life time. Send for a list of endorsements from your section.

Stempel Fire Extinguisher Mfg. Co.
ST. LOUIS, MO.

Seely's High Grade Perfumes!

- Per lb.
- Daffodil, - \$3 00
- Le Trefle, - 6 00
- Moss Rose, 6 00
- Japonza, - 4 00
- Carnation
- Pink, - 3 50
- Other standard odors, 3 50



ARE TRADE MAKERS...

SOLD BY

Augusta Drug Co.

TAKE YOUR CHOICE.

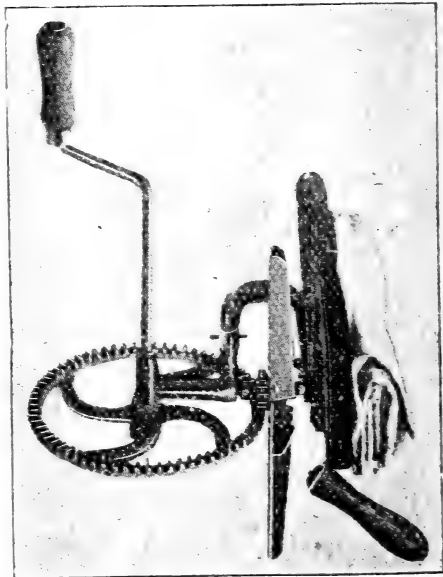
Just take your choice. An attack of Fever, with Quinine as the treatment, means a week or ten days lost from Business.

It means ten days of unhappiness for you and ten days of hard work and anxiety for those who love you. If you are a rich man, your time is worth much to your estate. If you are a poor man, your time is worth much more to your family. The rich man might better afford to suffer a loss of \$100.00 a day, as a result from enforced absence from business, than the poor man can lose the value of his labor. Johnson's Tonic has two cardinal points that should immediately commend it to every thinking man in this country.

First of all, it is harmless. Absolutely harmless. Harmless under all circumstances.

Second, it is quick; it acts at once. In 30 minutes after its administration, it enters the blood and begins to undo the mischief caused by Malaria. It is the one great medicine that never disappoints. Now, take your choice. Lie in bed for days, or maybe weeks, and poison your digestion with Quinine, and arise finally with all the life and vim taken out of you, or use Johnson's Tonic and be restored at once to perfect health. No loss of vital force. No loss of flesh. No waste of precious time. Take your choice.

A. B. GIRARDEAU, Savannah, Ga.



Christen's Seed Sower.

Broadcasts evenly Rye, Wheat, Oats, &c.
COMPLETE, \$1.00.

N. L. Willet Drug Co. Augusta, Ga.

All who suffer from a hacking cough or any trouble with the throat and lungs will find relief by using

BROWN'S BRONCHIAL TROCHES

A safe and simple remedy, long held in the highest esteem by clergymen, singers and public speakers generally.

Of great service in relieving hoarseness, dryness of throat and difficult breathing.

Sold only in boxes. Avoid imitations.

John I. Brown & Son, Prop'rs.
Boston, Mass.

9th Month. SEPTEMBER. 1902.

PHASES OF THE MOON.		EQUATION OF TIME.	
Eastern Stand. Time.	D. H. M.	S.	M.
New Moon	2 0 19 mo.	15	17
First Quarter	9 5 15 eve.	14	16
Full Moon	17 1 23 eve.	13	15
Last Quarter	24 11 31 mo.	12	14

Day M.	Of Week	Sun		Moon		Place South.	H. M.
		Rises	Sets.	Rises	Sets.		
1 mo	1	5 38	6 21	4 51	Q	11 23	23
2 tu	2	5 39	6 21	sets.	Q	eve. 18	18
3 we	3	5 40	6 20	7 13	Q	7	7
4 th	4	5 41	6 19	7 48	Q	1 55	1
5 fri	5	5 42	6 18	8 22	Q	2 42	2
6 sat	6	5 43	6 17	9 0	Q	3 29	3
7 su	7	5 44	6 16	9 39	Q	4 16	4
8 tu	8	5 45	6 15	10 21	Q	5 51	5
9 we	9	5 46	6 14	11 6	Q	6 39	6
10 th	10	5 47	6 13	11 54	Q	7 26	7
11 fr	11	5 48	6 12	morn.	Q	8 14	8
12 sa	12	5 49	6 11	0 44	Q	9 1	9
13 su	13	5 50	6 10	1 38	Q	9 48	9
14 tu	14	5 51	6 9	2 33	Q	10 35	10
15 we	15	5 52	6 8	3 31	Q	11 23	11
16 th	16	5 53	6 7	4 31	Q	morn.	12
17 fr	17	5 54	6 6	rises.	Q	0 11	1
18 sa	18	5 55	6 5	6 36	Q	1 1	1
19 su	19	5 56	6 4	7 14	Q	1 53	1
20 tu	20	5 57	6 3	7 46	Q	2 47	2
21 we	21	5 58	6 2	8 43	Q	3 43	3
22 th	22	5 59	6 1	9 35	Q	4 41	4
23 fr	23	6 0	6 0	10 30	Q	5 39	5
24 sa	24	6 1	5 59	11 30	Q	6 37	6
25 su	25	6 2	5 58	morn	Q	7 33	7
26 tu	26	6 3	5 57	0 31	Q	8 27	8
27 we	27	6 4	5 56	1 34	Q	9 19	9
28 th	28	6 5	5 55	2 38	Q	10 10	10
29 fr	29	6 6	5 54	3 43	Q	10 59	10
30 sa	30	6 7	5 53	4 45	Q		11

VARIOUS PHENOMENA.	
1 mo	Labor Day.
2 tu	Great fire in London, 1666.
3 we	6 & 8 D.
4 th	Rev. Erasmus Miles Charvat
5 fri	A. Sewall, of Maine, d., '700
6 sat	Q. Wilhelmina crowned, '98
7 su	15th Sunday after Trinity.
8 tu	Galveston des. by hur., '00
9 we	U. S. Peace Com. app., '98
10 th	Coll. Inness N. Palmer d., '00
11 fr	Pres. Kruger arr. Lourenço
12 sa	6 & 7 D. [Marques, 1900
13 su	Lawton mon. del'ed, '60.
14 tu	16th Sunday after Trinity.
15 we	Chinese fl'd, 15,000 lost, '98
16 th	Moscow burned, 1812.
17 fr	Peace Com. sail'd Paris, '98
18 sa	Miss Winnie Davis d., '98
19 su	Dr. Hunter McTear d., '00
20 tu	Gen. J. A. McClelland, '00
21 we	17th Sunday after Trinity.
22 th	Emp. China abdicates, '98.
23 fr	Emp. Autumn begins
24 sa	Anti war dem. Traf'rsq, '99
25 su	Eth'q ke shocks Alaska, '98
26 tu	Fanny Davenport died, '98
27 we	6 & 7 D.
28 th	18th Sunday after Trinity.
29 fr	Hurricane at Savannah '96
30 sa	6 & 9 D.

TAKE GILDER'S LIVER PILLS. 25 Cents.

PHASES OF THE MOON.		EQUATION OF TIME.	
Eastern Stand. Time.	D. H. M.	S.	M.
New Moon	1 0 9 eve.	19	21
First Quarter	9 0 21 eve.	18	20
Full Moon	17 1 1 mo.	17	19
Last Quarter	23 5 58 eve.	16	18
New Moon	31 3 14 mo.	15	17

Day M.	Of Week	Sun		Moon		Place South.	H. M.
		Rises	Sets.	Rises	Sets.		
1 we	1	6 9	5 51	5 42	Q	11 46	16
2 th	2	6 10	5 50	sets.	Q	eve. 34	15
3 fri	3	6 11	5 49	6 56	Q	1 21	14
4 sat	4	6 12	5 48	7 34	Q	2 8	13
5 su	5	6 13	5 47	8 16	Q	2 56	12
6 mo	6	6 14	5 46	9 0	Q	3 44	11
7 tu	7	6 15	5 45	9 46	Q	4 31	10
8 we	8	6 16	5 44	10 36	Q	5 19	9
9 th	9	6 17	5 43	11 28	Q	6 6	8
10 fr	10	6 18	5 42	morn.	Q	6 53	7
11 sa	11	6 19	5 41	0 22	Q	7 39	6
12 su	12	6 20	5 40	1 18	Q	8 26	5
13 tu	13	6 21	5 39	2 16	Q	9 13	4
14 we	14	6 22	5 38	3 16	Q	10 1	3
15 th	15	6 23	5 37	4 15	Q	10 50	2
16 fr	16	6 24	5 36	5 16	Q	11 42	1
17 sa	17	6 25	5 35	rises.	Q	morn.	0
18 su	18	6 26	5 34	6 37	Q	0 37	0
19 tu	19	6 27	5 33	7 29	Q	1 34	0
20 we	20	6 28	5 32	8 23	Q	2 33	0
21 th	21	6 29	5 31	9 23	Q	3 32	0
22 fr	22	6 30	5 30	10 26	Q	4 31	0
23 sa	23	6 31	5 30	11 28	Q	5 29	0
24 su	24	6 32	5 29	morn.	Q	6 24	0
25 tu	25	6 33	5 28	0 31	Q	7 16	0
26 we	26	6 34	5 26	1 33	Q	8 6	0
27 th	27	6 35	5 25	2 35	Q	8 54	0
28 fr	28	6 36	5 24	3 33	Q	9 41	0
29 sa	29	6 37	5 23	4 31	Q	10 28	0
30 su	30	6 38	5 22	5 31	Q	11 15	0
31 fr	31	6 39	5 21	sets.	Q	2	0

VARIOUS PHENOMENA.	
1 we	Two-cent postage, 1883.
2 th	Bacon's rebellion, 1676.
3 fri	6 & 8 D. [1898.
4 sat	Battles'p Illinois launched
5 su	19th Sunday after Trinity.
6 mo	Senorita Cisneros esc, '97.
7 tu	Elgar A. Poe died, 1849.
8 we	Lib. bell rec. in Atlanta, '98
9 th	Chicago fire, 1871.
10 fr	6 & 7 D.
11 sa	6 & 7 D.
12 su	20th Sunday after Trinity.
13 tu	Chas. U. Jones, Fla., d., '97
14 we	Dean Richmond sinks, '93.
15 th	Hemmesy murd., N. O., '90
16 fr	\$3,000,000 fire Windsor, N.S.
17 sa	W. L. Wilson d., '00. [197
18 su	Am. take pos. J. Rico, '98
19 tu	21st Sunday after Trinity.
20 we	Boerarr. at Br. Glencoe '99.
21 th	Spanish Caban't resigns, '00
22 fr	Nana Sahib captured, '74.
23 sa	Allies oc. Pas-ting-fu, 1900.
24 su	Dr. Moses C. White d., '00.
25 tu	Battle Bulaklava, 1854.
26 we	22d Sunday after Trinity.
27 th	Peace Jubilee at Phila., '98
28 fr	Prof Max Muller d., 1900.
29 sa	6 & 9 D.
30 su	6 & 9 D.
31 fr	Anti-tax riots in Rouma.

10th Month. OCTOBER. 1902.

ARE YOUR KIDNEYS SOUND?

LISTEN TO THE TESTIMONY OF ONE WITH
***** EXPERIENCE. *****

I suffered for several years with a stomach trouble. For a long time I could not ascertain what the true nature of my malady was. One doctor would pronounce it "catarrh of the bladder," another "Bright's disease" and still another "indigestion." I was persuaded to buy a bottle of Stuart's Gin and Buchu. The effect, was seen in a few days. My appetite returned; I began to take on flesh and after the third bottle the pains disappeared and I have not felt them since. It beats the doctors — JNO. H. SIMS, Knoxville, Tenn.

Write for Literature.

STUART GIN AND BUCHU CO.,

ATLANTA, GA.

Anti-Shake Chill and Fever Cure

GUARANTEED TO CURE,

We have never known one case of Chills and Fever which this Remedy failed to cure. Have known cases where other remedies failed to cure. No matter how obstinate and long standing is the case.

MALARIA ANTI-SHAKE CURES. MALARIA

In all of our Southern malarial districts, a tablespoonful taken occasionally at night will ward off Malaria, and prove, too, a valuable Tonic for the system. Take also for Break-Bone Fever and LaGrippe. If

Anti-Shake Chill and Fever Cure

Fails to cure you of Chills and Fever, the merchant from whom you bought it is authorized to pay you back Fifty Cents. You run no risk in buying Anti-Shake. No cure, no pay. 50c bottle.

AUGUSTA DRUG CO., Augusta, Ga.

Curative Teething Powders.

A scientific formula combining the best allopathic and homeopathic agent. No morphine or injurious opiate in this.

At teething time the baby needs a theething powder to regulate bowels and digestion. It is absolutely necessary.

None so harmless and good as Curative. 25c post paid.

AUGUSTA DRUG CO., Augusta, Ga.

TAYLOR CHEROKEE REMEDY

—:OF:—

Sweet Gum and Mullein

CURES

COUGHS, COLDS,
 WHOOPING COUGH,
 INFLUENZA,
 LaGRIPPE and
 CONSUMPTION.

CURES CONSUMPTION.

CHARLES HARRIS, Little Rock, Ark.: "I have been using your Sweet Gum and Mullein for about six months and it cured me of consumption."

W. W. DRAPEE, a prominent wholesale shoe merchant of Atlanta: "I take special pleasure in commending your preparation, Sweet Gum and Mullein, as one of the best I ever used in cases of colds, coughs, bronchial and lung troubles. I have used it for years in my family and have always derived immediate benefit from it. It is one of the best medicines on the market for what you recommend it."

BORACINE.

*Exquisitely
Perfumed*

THE BABY'S POWDER FOR PRICKLY HEAT.

WARNING. Never use TALCUM POWDER of any kind. It is simply a ground stone; injures by filling up the skin's pores. It is never absorbed by the system.—Not Medical.

THE BABY !

Every baby that comes into the world must be washed and powdered several times a day. Boracine was made for babies. It cures redness and irritation. It cures the baby's Prickly Heat. It keeps down bumps and pimples, makes baby's skin white and smooth like velvet. It makes baby as sweet as carnations or white roses.

YOUR BABY NEEDS BORACINE.

NOT A PERFECT BABY OR HAPPY HOME WITHOUT IT.

PRICKLY HEAT. Big grown-ups, youths, little tots—all have prickly heat. Search the world and you would not find so perfect a remedy as is Boracine. Exquisitely soothing and helpful. Use it freely. Harmless.

AUGUSTA DRUG CO., MFRS.,

Package 25c., post paid 30c.

AUGUSTA, GEORGIA.

12th Month. DECEMBER. 1902.

PHASES OF THE MOON.		EQUATION OF TIME	
<i>Eastern Stand. Time.</i>	<i>D. H. M.</i>		
First Quarter.....	8 1 26 mo.	11	1
Full Moon.....	14 10 47 eve.	17	13
Last Quarter.....	21 3 0 eve.	23	19
New Moon.....	29 4 25 eve.	30	26

Day of Week	Sun Rises		Sun Sets		Moon Rises & Sets		Moon Place		Moon South.
	H.	M.	H.	M.	H.	M.	C. D.	H. M.	
1 mo	7	2	4	58	6	23	11	8	1
2 tu	7	2	4	58	8	5	1	1 55	1
3 we	7	3	4	57	8	5	1	2 42	1
4 th	7	4	4	56	8	58	13	3 28	2
5 fri	7	4	4	56	9	52	13	4 13	3
6 sat	7	5	4	55	10	48	13	4 57	4
7 su	7	5	4	55	11	46	13	5 42	4
8 mo	7	5	4	55	morn.		13	6 28	5
9 tue	7	5	4	55	0 42		13	7 15	5
10 we	7	6	4	54	1 41		13	8 5	5
11 th	7	6	4	54	2 44		13	8 58	5
12 fri	7	6	4	54	3 49		13	9 55	5
13 sat	7	6	4	54	4 56		13	10 56	5
14 su	7	6	4	54	6 3		13	11 59	5
15 mo	7	6	4	54	rises.		13	morn.	5
16 tue	7	7	4	53	7 0		13	1 2	5
17 we	7	7	4	53	8 8		13	2 3	5
18 th	7	7	4	53	9 14		13	3 2	5
19 fri	7	7	4	53	10 20		13	3 57	5
20 sat	7	7	4	53	11 23		13	4 48	5
21 su	7	7	4	53	morn.		13	5 37	5
22 mo	7	7	4	53	0 19		13	6 24	5
23 tue	7	7	4	53	1 18		13	7 11	5
24 we	7	7	4	53	2 17		13	7 57	5
25 th	7	7	4	53	3 12		13	8 43	5
26 fri	7	7	4	53	4 7		13	9 30	5
27 sat	7	7	4	53	4 59		13	10 17	5
28 su	7	7	4	53	5 49		13	11 4	5
29 mo	7	7	4	53	6 3.		13	11 52	5
30 tue	7	6	4	52	sets.		13	eve. 39	5
31 we	7	6	4	52	6 52		13	1 25	5

VARIOUS PHENOMENA.

1 mo Diaz inaug. Pres. Mex., '00
 2 tu John Brown hung, 1859.
 3 we G. D. [baker's bread, '96
 4 th 500 Milwaukee's pois'd by
 5 fri G. D.
 6 sat Pres. Jeff. Davis d., 1889.
 7 su 2d Sunday in Advent.
 8 mo Eli Whitney b., 1765.
 9 tue Ex-Sen. Irby, of S. C., d., '00
 10 we Peace tr'y signed Paris, '98
 11 th Gen. Garcia d. in Wash '98.
 12 fri G. & C. [Liesberg, 1900.
 13 sat British defeated at Maga-
 14 su 3d Sunday in Advent.
 15 mo Sen. Calvin Brice d., '98
 16 tue Gen. A. H. Terry d., 1890
 17 we Ferd. de Rothschild d., '98
 18 th Humphrey Davy d., 1779
 19 fri Bayard Taylor died, 1876.
 20 sat South Carolina seceded, '60
 21 su 4th Sunday in Advent.
 22 mo O. ent. 13. Winter begins.
 23 tue Henry Grady died, 1889.
 24 we Confed. em. bill pass. '95.
 25 th Christmas Day.
 26 fri St. Stephen
 27 sat St. John Evangelist.
 28 su 1st Sunday aft. Christmas
 29 mo Agnaldo forms cab't, '95
 30 tue G. & D. G. & D.
 31 we West Virginia adm'd, '62.

TAKE GILDER'S LIVER PILLS. 25 Cents.

11th Month. NOVEMBER. 1902.

PHASES OF THE MOON.		EQUATION OF TIME	
<i>Eastern Stand. Time.</i>	<i>D. H. M.</i>		
First Quarter.....	8 7 30 mo.	17	13
Full Moon.....	15 0 6 eve.	23	19
Last Quarter.....	22 2 47 mo.	30	26
New Moon.....	29 9 4 eve.	6	2

Day of Week	Sun Rises		Sun Sets		Moon Rises & Sets		Moon Place		Moon South.
	H.	M.	H.	M.	H.	M.	C. D.	H. M.	
1 sat	6	40	5	20	6	11	17	13	0 49
2 su	6	41	5	19	6	54	18	13	1 37
3 mo	6	42	5	18	7	40	18	13	2 25
4 tu	6	43	5	17	8	28	19	13	3 12
5 we	6	44	5	16	9	19	19	13	3 59
6 th	6	45	5	15	10	12	19	13	4 46
7 fri	6	46	5	14	11	6	19	13	5 32
8 sat	6	47	5	13	morn.		19	13	6 17
9 su	6	48	5	12	0 1		19	13	7 3
10 mo	6	49	5	11	1 0		19	13	7 49
11 tu	6	50	5	10	1 59		19	13	8 37
12 we	6	50	5	9	2 56		19	13	9 27
13 th	6	51	5	9	4 0		19	13	10 20
14 fri	6	52	5	8	5 6		19	13	11 17
15 sat	6	52	5	8	rises.		19	13	morn.
16 su	6	53	5	7	6 11		19	13	0 16
17 mo	6	53	5	7	7 11		19	13	1 18
18 tu	6	54	5	6	8 14		19	13	2 20
19 we	6	54	5	6	9 19		19	13	3 20
20 th	6	55	5	5	10 23		19	13	4 18
21 fri	6	56	5	5	11 27		19	13	5 12
22 sat	6	57	5	5	morn.		19	13	6 4
23 su	6	57	5	5	0 30		19	13	6 53
24 mo	6	58	5	5	1 28		19	13	7 40
25 tu	6	58	5	5	2 25		19	13	8 26
26 we	6	59	5	5	3 23		19	13	9 12
27 th	7	0	5	5	4 21		19	13	9 58
28 fri	7	0	5	5	5 17		19	13	10 45
29 sat	7	1	4	59	6 11		19	13	11 32
30 su	7	1	4	59	sets.		19	13	eve. 20

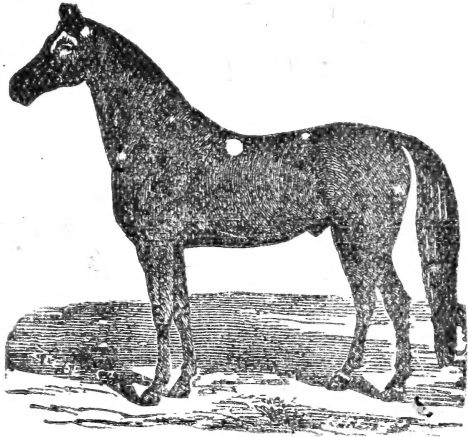
VARIOUS PHENOMENA.

1 sat All Saints Day.
 2 su 23d Sunday after Trinity.
 3 mo Sound-money par. N. Y., '00
 4 tu Eugene Field, poet, d., '95.
 5 we Cuban Constit'l Con. org.
 6 th G. D. [Havana, '00.
 7 fri G. D.
 8 sat Bat. Bothaville, S. Af., '00
 9 su 24th Sunday aft. Trin. ['00
 10 mo Rus'n cap. ars. Yang'Tsun
 11 tu Sir Henry Bessemer d., '98
 12 we Paris Exposit'n closed, '00.
 13 th Oregon ar. Rio de Jan., '98
 14 fri Chas. Carroll d., '32. ['95
 15 sat Mass. Christians Harpoot.
 16 su 25th Sunday aft. Trin. ['99
 17 mo DeLessepmon ded. P. Said
 18 tu Aetna eruption, 1832.
 19 we R.-Ad. R. N. Stembeld., '00
 20 th Christian mass. at Van, '95
 21 fri Vice-Pres. Hobart d., 1899
 22 sat Ger. flag r'd gr. wall Chi., '00
 23 su 26th Sunday after Trinity.
 24 mo Pres. Kruger arr. Paris, '00
 25 tu Bat. Missionary Ridge, '63.
 26 we Cowper born, 1731.
 27 th Sen. Davis, Minn., d., '00.
 28 fri G. & C.
 29 sat G. & D. G. & D.
 30 su Advent Sunday.

If afflicted with sore eyes, use Thompson's Eye Water

A DEAD LOSS

That's a Horse or Mule who dies of Colic. Dead loss \$125. Can you afford it? If not, we say honestly you will never lose an animal in your life by Horse Colic if you but use . . .



HOLLEYMAN'S COMPOUND ELIXIR

50 CENTS here or laid down at your nearest Southern Express Company's Office, free of express to you.

... For Horse Colic..

It will cure any Case of Horse Colic under the Sun.

Don't wait until Your Horse Dies before you buy a bottle.

CAPT. JAS. M. SMITH, of Smithsonia, the largest farmer in Georgia, writes us: "I consider Holleyman's Elixir a splendid medicine for Horses and Mules—the best I have ever tried. Every owner of a horse or mule might save money by constantly keeping on hand this Elixir."

DR. B. B. KITCHEN, Mitchell, Ga. says: "I have used Holleyman's Elixir in Horse Colic. I recommend it as a Specific."

S. S. SANDERS & Co., Egypt, Ga. say: "Have sold it and used it, it is all it's claimed to be. It's effect is magical."

W. H. JONES, Stellaville, Ga., says: "I have been using Holleyman's Elixir one year, and saved several horses' lives. It never fails in Horse Colic."

Capt. R. H. WALKER, Appleton, S. C., says: "Worth it's Weight in Gold to every farmer. I saved three horses' lives on my plantation in sixty days."

O. B. BROWN, Stellaville, Ga., says: "Cured a nice mare that was dying with Colic. The best thing of the kind I ever saw."

S. A. GRAY & Co., Waynesboro, Ga., say: "Have used Holleyman's Elixir for eight or nine years. As a preparation for Colic in Horses and Mules we believe it to be unequalled."

R. H. WOOD, Veterinary Surgeon, Johnston, S. C., says: "I used it in several severe cases. One animal had been given up to die; a part of a bottle saved the animal's life. No horse owner should be without it."

J. F. A. TUFTS, Drummer, says: "In one of my drumming trips of thirty days, I cured three dangerous cases of Colic in Horses from my small sample vial holding only one ounce."

W. H. McNORRIL, M. D., Waynesboro, Ga., says: "Holleyman's Elixir is extensively used in this county. For many years I have found it to be an infallible remedy."

W. H. F. RAST & Bro., Swansea, S. C., say: "Holleyman's Compound Elixir is the best medicine of its kind and has given better satisfaction than anything we have ever sold."

We have crowds of testimony from Doctors, Veterinary Surgeons, Merchants and Farmers.

AUGUSTA DRUG CO.

Manufacturers

AUGUSTA, GA.

Standard Home and Farm Remedies

IN EVERY DAY USE.

Howard's Horse & Cattle Powders

It Keeps Your Horse Slick and Fat.
 A Tonic and an Appetizer.
 When Stock are Run Down in flesh.
 Purifies Stagnant Blood in Spring Time
 Price, 25c; postpaid 35c.

WILD CHERRY COUGH CURE

We've had a life-time experience
 with it and know just what it
 will do. Our promise to you

IS A SAFE, EASY and QUICK CURE

Wild Cherry Cough
 Cure is 25c a bottle.

LAND'S HEADACHE CAPSULES

*Sick
Periodic
Neuralgia
Spinal
Nervous*

LAND'S HEADACHE CAPSULES
 Contain no Morphine.

LAND'S HEADACHE CAPSULES
 Cure, by actual count, 36 out of 37
 Headaches 25c postpaid, per box of
 one dozen Capsules.

WHITE OIL LINIMENT

White as Snow, Clean as
 Cream, Strong as Sampson
 in Stimulating Effect.

White Oil Liniment is 25 Cents a Bottle.

We also Manufacture

DRAKE'S MAGIC LINIMENT 50c

Known for 100 years as the most wonderful
 Liniment known for man or beast.

Manufactured only by

N. L. WILLET DRUG CO.
 AUGUSTA, GA.

Y. K. W.

IT CURES **GONORRHEA
GLEET
STRICTURE** 50c

IN TWO TO FIVE DAYS

Golden Eye Wash

Cures Sore Eyes, 25 cents.

Infalible Itch Ointment

Cures Itch immediately. 25 cts.
 • postpaid, 30 cents.

Infalible Tetter Ointment.

Cures Tetter and Eczema, 25 cts.
 postpaid, 30 cents.

Rose Cream

Cures at once Chapped Hands and
 Face and Lips, 25c.

Howard's Worm Candy

Drives Worms out immediately;
 postpaid, 25c

Paxton's Rheumatic Cure

Most perfect Rheumatism cure
 known, 75c cents.

Eagle Baking Powder

A high grade, perfect Baking
 Powder. Half pound can 25 cts.

Georgia Chicken Cholera Cure

Cures Chicken Cholera. 25 cents;
 postpaid 30 cents.

National Hog Cholera Cure

The formula of the U. S. Govern-
 ment, 25 cents; postpaid, 30 cents.

ALL MANUFACTURED BY

AUGUSTA DRUG CO.

AUGUSTA, GA.

J. A. MULLARKY.

D. P. SULLIVAN.

DRY GOODS

Everything that goes to make a first class Dry Goods store, in Quality, Style and Value.

FAMOUS IN HOUSEFURNISHING

Linens, Domestic, Dress Goods, Summer Wash Goods, Hosiery, Gloves and

MEN'S FURNISHINGS

We court comparison in prices.

Fill all orders promptly. Write for samples.

MULLARKY & SULLIVAN,

820 Broad Street.

AUGUSTA, GA.

YOUNGBLOOD LUMBER CO.

Manufacturers (High Grade)

Doors, Blinds, Glazed Sash, Mantels, Etc.

Mill Work of all Kinds in Ga. Yellow Pine.

Flooring, Ceiling, Siding, Finishing, Moulding, Etc. Car Sills, Bridge, Railroad and special bills to order.

Office and Mill North Augusta, S. C.

—: THE:—

Planters Loan & Savings Bank

707 Broad St., Augusta, Ga.

SAVINGS ACCOUNTS SOLICITED. LEGAL DEPOSITORY FOR TRUST FUNDS.

The Accounts of Guardians, Agents, Trustees, Administrators and Funds in Litigation are authorized to be kept in this bank by act of the legislature. Interest at 4 per cent. compounded January and July of each year.

4 Per Cent. Interest Paid on Deposits.

Clarence E. Clark,

AUGUSTA, GEORGIA.

Buy, Sell and Rent City and Country REAL ESTATE.

With eighteen years experience, have successfully negotiated loans on REAL ESTATE. Can net 5, 6 and 7 per cent.

Correspondence invited.

HENRY S. JONES, ATTORNEY AT LAW.

830 Broad St., AUGUSTA, GA.

Refers to N. L. Willet Drug Co. and Planters Loan & Savings Bank.

JNO. F. COONEY & CO.,

WHOLESALE

FRUITS AND PRODUCE.

General Commission Merchants.

Large Handlers of Peas and Country Produce.

919 Broad St., AUGUSTA, GA.

Long Distance Phone.

Pratt & Lambert's Hard Oil Finish.

Pratt & Lambert's Varnishes.

These world-wide known goods are of the highest quality. In them you get the highest value and excellence without a fancy price. Specify them in your paint orders.

N. L. WILLET DRUG CO.

AUGUSTA, GA.

SEE THEM.

Use Kitchel's Liniment For Man or Beast

The best Liniment on the market for Fast Horses, Wheelmen and all Athletes.

FREE—"Kitchel's Hints on How to Condition Fast Horses," or "Kitchel's Hints on How to Condition Wheelmen and Athletes," sent free to any address. Write,

S. B. KITCHEL, Coldwater, Mich.

Kitchel's Liniment cures Rheumatism, Lameness, Stiff Joints, Cuts, Lamé Back, Salt-rheum, Sprains, Bruises, Wounds, all Eruptions of the Skin, etc., etc.

Bad Colds

ARE QUICKLY CURED BY

Chamberlain's Cough Remedy

It acts on nature's plan, loosens the cough, relieves the lungs and opens the secretions, effecting a permanent cure.

It counteracts any tendency of a cold to result in pneumonia.

It is pleasant to take, both adults and children like it.

For sale by AUGUSTIA DRUG CO.

PROPRIETARY PREPARATIONS

Manufactured by
AUGUSTA DRUG CO., Inc.
 **AUGUSTA, GA.**

Boracine, Babies' Powder and for Prickly Heat, postpaid.....	25	Sun Sanitary Fluid, pt. 20c; qt. 35c; 1 gal. \$1.00; bulk 75c gal.	
Dr. Gilder's Liver Pills, postpaid.....	25	Certain Itching Pile Remedy.....	25
Land's Blood Syrup, (the strongest Blood Medicine known), bottle.....	1 00	Howard's Worm Candy, postpaid.....	25
Land's Syrup Hypophosphite (best formula known).....	1 00	Rose Cream (cures chapped hands, makes skin soft).....	25
Holleyman's Elixir for Horse Colic (a positive specific in all cases).....	50	Annie Belle Cologne (choice).....	10
Howard's Horse and Cattle Powders (full pound packages, 25c) postpaid.....	35	Belle of Augusta Cologne (choice).....	25
Wild Cherry Cough Cure (best on earth).....	25	Drake's Magic Liniment.....	50
Anti-Shake Chill and Fever Cure (guaranteed to cure chills. If it fails we refund you).....	50	Howard's Hair Dye, postpaid.....	25
Land's Headache Capsules (12 capsules in each box) per box, postpaid.....	25	Infalible Itch Ointment (it cures Itch) 25 cents, postpaid.....	30
Howard & Willet's Diarrhoea Cordial (K. W. with Syringe (external for Gonorrhoea).....	50	Infalible Tetter Ointment (it cures Tetter and Mezema), 25 cents; postpaid.....	30
White Oil Liniment (for strong external application).....	25	Hunter's Specific (a sure old English remedy for Gonorrhoea; take internal).....	50
North's Asthma Cure (an effective remedy).....	25	Infalible Pile Ointment; postpaid.....	50
Ereuthaima, (meaning "good blood." A new alternative, and also a tonic, largely used by Augusta doctors. Does not disturb even delicate digestion).....	1 00	Golden Eye Wash (cures Sore Eyes).....	25
Paxton Rheumatic Remedy.....	75	Land's Kidney Cure (none better).....	1 00
H. H. P., a Liver Medicine (dry) postpaid.....	25	Howard & Willet's Carbolie Salve, for old sores; postpaid.....	25
H. H. P., best liquid Liver medicine known.....	50	H. & W's Essence Jamaica Ginger.....	25
Willet's Wine Cod Liver Oil; tasteless.....	1 00	Georgia Chicken Cholera Cure, 25 cents; postpaid.....	30
		National Hog Cholera Cure, 25c; post'd.....	30
		Double Quick Corn Cure 10c; postpaid.....	12
		Howard & Willet's Toothache Drops 10c; postpaid.....	12
		Rats Death (sure poison) 10c; postpaid.....	12
		Eagle Baking Powder, high grade, pound.....	25
		Universal Tooth Powder.....	25
		Curative Teething Powder, postpaid, package.....	25

ONCE USED, ALWAYS WANTED.

THOUSANDS
RECOMMEND

John R. Dickey's Old Reliable Eye Water

Why? Because it Cures Sore Eyes or Granulated Lids. It strengthens Weak Eyes. Don't burn or hurt. Children like to have it applied because it feels good. Look out for imitations. The genuine is always enclosed in a Red Folding Box.

By Mail 25 Cents.

DICKEY DRUG CO.

BRISTOL, TENN.