

Historic, Archive Document

Do not assume content reflects current scientific knowledge, policies, or practices.



MYER & SON

Bridgeville
Nurseries.

BRIDGEVILLE · DELAWARE

A Fruit-Growers' Catalogue
of Fruit Trees for Profit



STRAWBERRIES, RASPBERRIES

AND OTHER SMALL FRUITS

CHESTNUT, WALNUT AND OTHER NUT TREES



BUSINESS POINTS

THE honorable reputation of the Bridgeville Nurseries is as dear to us to-day as it has ever been during the generation of time in which we have been building it up. That reputation rests on fair dealing and the intelligent handling of our business, and it is our desire to add to it by supplying stock of all kinds which is absolutely first-class in every particular.

1. **AS WE ARE EXTENSIVE FRUIT-GROWERS** as well as Nurserymen, our selections are made on a different basis from those of the average nurseryman, who is merely a tree-grower. We grow and **fruit**, and our judgment of varieties is based on actual field-trials. We tell you the truth as we know it, and offer trees and plants of just the character we like to plant ourselves.

2. **NO AGENTS.**—Please notice that we have no agents to call upon you and solicit your orders. This book is our sole solicitor. If you feel disposed to favor us with an order for trees, you will please turn to our order sheet, attached hereto, fill it out and mail it to us. We believe our stock and our business methods will commend themselves to you.

3. **THIS LIST abrogates previous quotations, except on orders already booked.**

4. **PRICES.**—Special prices can often be made on larger lots than quoted, and on car-loads, but **in no case will special quotations include free packing.**

5. **FREE PACKING.**—We bear all cost of packing—boxes, bales, moss, etc. All our stock is scientifically and carefully packed, and may be safely sent to any part of the world.

6. **SHIPPING SEASON** in fall begins October 1, and extends until the ground is frozen—often until mid-December. In spring we begin digging about March 1, and continue shipping until growth starts.

7. **ESTIMATES.**—During the busy season making estimates consumes too much time. This Catalogue is priced for the purpose of saving time; order from it.

8. **FREIGHT OR EXPRESS.**—As a rule, shipments of over 25 pounds should go by freight. It is unnecessarily wasteful to express strong, vigorous, dormant nursery stock. Even Strawberry plants, with our packing, go safely by freight from October 15 until May 1.

9. **Our guarantee is accepted** by railroads, and prepayment of freight is not required. The weight of stock packed will be about as follows per 100: Extra Apple, Pear, Plum, Cherry and Peach trees, 150 to 200 lbs.; first-class, 100 lbs.; medium, 75 lbs., etc.

10. **MAILING nursery stock is entirely wrong**, but to oblige far distant customers, who cannot be reached by railroad or express, packages of small articles, not less in amount than \$2, will be sent by mail, postpaid, as follows: Fruit Trees, Nuts, etc., small size, 3 cts. per tree additional. Grape Vines, Gooseberry, Currant, 1 year, 2 cts. each additional. Raspberry, Dewberry, Blackberry, 10 cts. per 10 additional. Strawberry, 20 cts. per 100 additional. Ornamental Trees, Roses, etc., are too large to mail.

11. **RATES on trees only (not plants).**—For 10 and under 25, at the 10 rate; for 25 and under 300 at the 100 rate; for 300 or more, at the 1,000 rate—if not less than 10 of a variety; broken lots of not less than 10, at the single rate. Orders will be filled so long as we have the stock unsold, but in all cases are subject to previous sales. If you have sent us an order, and do not receive a reply within a reasonable time, write again. We acknowledge all orders, stating the amount found enclosed.

12. **YOUR CHOICE** of sorts always, but if you so request, we will make selections, using our best judgment. When orders cannot be filled to the letter, we exercise our judgment as to sending as nearly similar sorts as possible, or another size of the variety wanted.

13. **SHIPPING INSTRUCTIONS** please give explicitly. When no particular directions are given, we exercise our judgment; but in no case do we assume responsibility for safe delivery and condition of stock, accidents or delays in transportation. When loss or delay occurs, claims should be immediately made upon carriers.

14. **TERMS—CASH**, or satisfactory security. We require at least one-fourth the price of the stock with order, the balance to be paid on delivery, except where the customers are well known to us or are favorably rated by the mercantile agencies. In such cases we will, with pleasure, give 20 to 30 days' credit; also, on bankable note or on your banker's guarantee.

On small orders it is better to send full amount always; better to send too much than not enough, as this often saves delay and correspondence. Any excess we return.

On larger orders remit about one-fourth the amount, and the balance we C. O. D. either by freight or express. But to C. O. D. by express is a needless expense, for we can now ship by freight "to Shipper's Order," and you pay the balance when receiving the stock, with no extra cost, usually, except price of bank draft or express money order for returning amount.

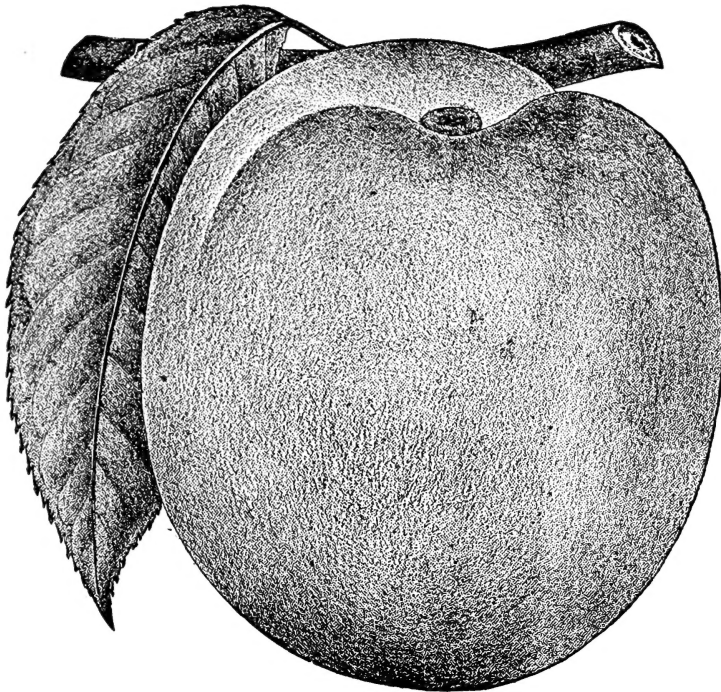
15. **GUARANTEE.**—We use the utmost care to prevent mistakes, but we sell our stock with the express understanding that should a mistake occur, and any prove untrue to label, we will, upon proper proof, refund the money paid or refill the order free, but are not to be liable for any sum greater than originally received for said stock.

16. **NO INSECTS OR DISEASES.**—See Certificate of Inspection, on 3d page of cover.

17. **FUMIGATING.**—We always fumigate our stock with hydrocyanic acid gas before shipping, so that assurance of freedom from disease of any kind is made doubly sure. We kept the State law before it was made obligatory.

Address

MYER & SON, Bridgeville, Delaware.



CARMAN PEACH. (See page 4.)

MYER & SON, BRIDGEVILLE NURSERIES, BRIDGEVILLE, DELAWARE.

PEACH TREES.

The experience of a generation in growing fruit trees puts us in a position to know how to produce the finest, most vigorous stock that can be grown, and that will grow and bear fruit true to name when we send it out.

The Peach requires a well-drained soil. A warm, sandy or gravelly loam is proper, and should be fertilized and kept in cultivation. Ashes, potash and bone are excellent fertilizers. Cut to a naked cane and top when planting; trim off all bruised or broken roots cleanly with a sharp knife. The previous year's wood should be shortened-in to keep the head vigorous and in good shape.

The following list embraces a number of new sorts of promise. In this connection, it is well to state that many of the so-called extra-early Peaches prove to be very similar in character and unreliable for profit; we present, however, several new early Peaches which are very promising.

We offer, in addition to the usual 1-year-old trees, a list of June-budded trees. These are smaller, of course, but in some localities succeed better than August-budded trees. We advise planters to try the June buds; they are the finest we ever saw, and cannot fail to give satisfaction.

PRICES OF PEACH TREES:

Standard varieties, August-budded, except where otherwise noted.

	Each	100	1,000
4 to 5 feet, first-class, 1 year from bud.....	\$0 10	\$6 00	\$50 00
3 to 4 feet, medium, 1 year from bud	08	5 00	40 00
2 to 3 feet, third-class, 1 year from bud.....	06	4 00	30 00
1 to 2 feet, 1 year from bud.....	04	3 00	20 00

Everbearing, Dewey, Matthews' Beauty, Elberta, Carman, Connett's Early and Belle of Georgia are 2 cents each higher.

Prices of June-budded trees:

	Each	100	1,000
First-class.....	\$0 10	\$4 00	\$30 00
Second-class.....	08	3 00	20 00

Varieties of 100 each will be furnished at 1,000 rates. Varieties of 25 each or more at 100 rates. Less than 25 at single rates. (See list of varieties on page 5.)

.. General..

List of Peaches.

Alphabetically Named.

Beer's Smock. Deep yellow, red cheek; medium size; late.

Belle. Large and bright colored; flesh white, luscious.

Bequett Free. See below.

Brandywine. Yellow freestone; large, showy. September.

Captain Ede. See below.

Carman. See below.

Chair's Choice. Large, late, yellow freestone.

Champion. The earliest good shipping freestone; large; white flesh.

Chinese Cling. Large; creamy white, with blush; midseason.

Connett's Southern Early. Large, creamy white, with blush; white flesh, small seed; tree vigorous and productive.

Crawford's Early. Large; yellow, with red cheek; freestone.

Crawford's Late. Similar to preceding, but later; vigorous, profitable, showy.

ELBERTA. Valuable yellow freestone market sort; exceedingly productive and popular.

EMMA. A seedling of Elberta, ripening just after it. Medium; yellow; freestone.

Family Favorite. A large and brightly colored freestone of good quality, ripening in mid-season.

Fitzgerald. A new Canadian variety. Extra large; yellow; of Early Crawford type; hardy in tree and bud; early.

Foster. Large yellow freestone.

Fox's Seedling. Fine sure-cropping freestone; white-fleshed; good market sort.

Henrietta. Bright yellow; large; fine keeper.

Heath Cling. Large, oval; white-fleshed, firm, sweet. Sept.

Moore's Favorite. Much like Oldmixon; a little later.

Matthews' Beauty. Large, late yellow. A new Peach of much merit. Originated in the famous Peach belt of Georgia.

Mountain Rose. Flesh white, sweet, juicy; large; freestone. August.

Oldmixon Free. Superior old sort; white, with sun blush. August and September.

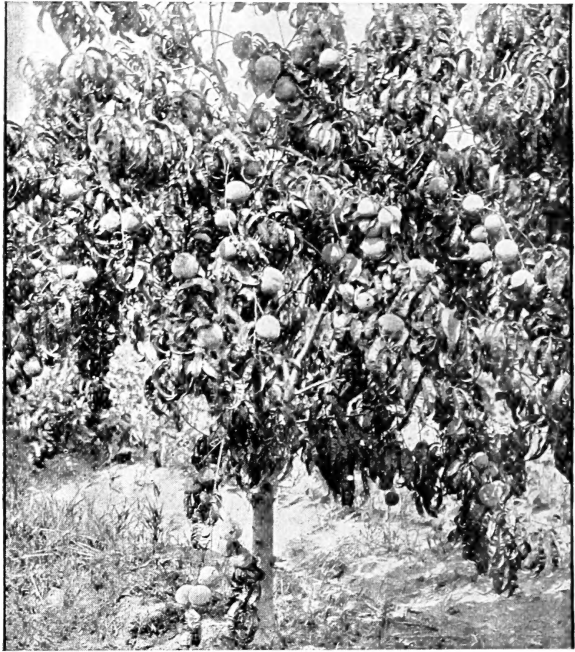
Princess Late Rareripe. A high-flavored white freestone; bright marbled skin.

Prize. Large yellow freestone; late.

Reeves' Favorite. Rich colored and fine flavored; large; shy bearer. August.

Salway. Very late; yellow; of fine flavor.

Sneed. An extra early Peach of large size; white, with red blush; flesh greenish-white, fine-grained, adhering slightly to the stone. Said to ripen before Alexander.



GREENSBORO. This new Peach is much larger and earlier than Alexander, and is nearly freestone. It is pale, with carmine blush, and is of attractive appearance. The flesh is white, and of exceedingly good flavor; it is vastly superior to Alexander, as well as larger and earlier. The trees are vigorous and bear abundantly.

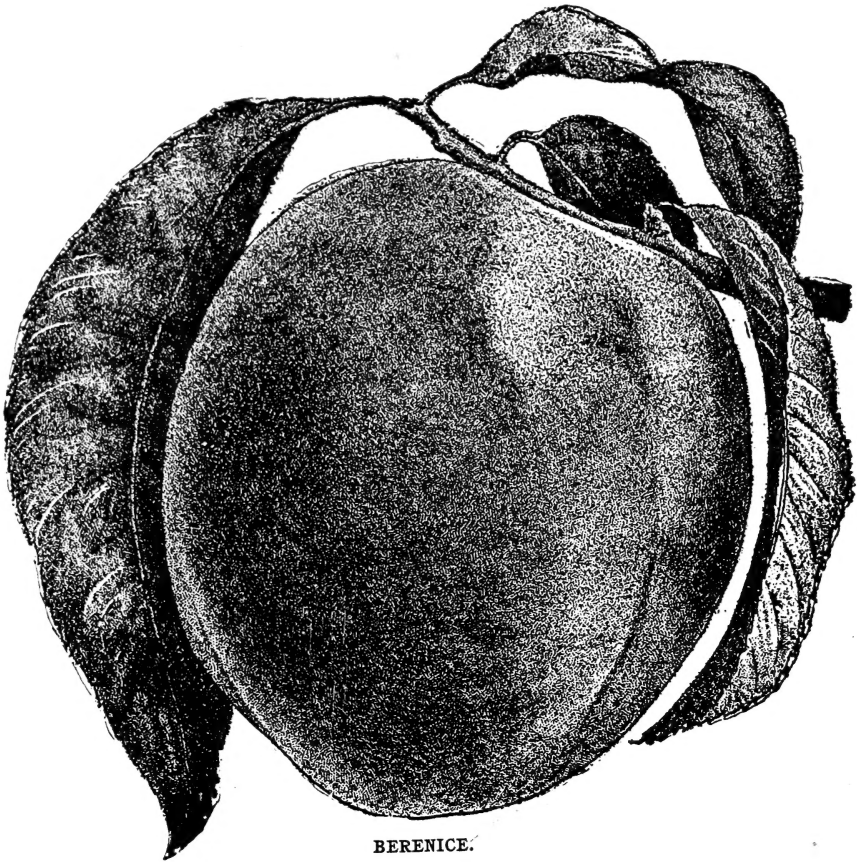
CAPTAIN EDE. The introducer says of it: "The Captain Ede was originated in southern Illinois. Among the leading fruit-growers it is considered the best orchard Peach, being a beautiful, very large, yellow freestone, covered slightly with a delicate carmine on one side. It ripens about with Crawford's Early, one week before the Elberta. The tree is a fine, upright grower, bearing bountiful crops; it should be thinned in order to get the best specimens. It is very hardy, both in bud and bloom. It is remarkable for its freedom from rot and its good shipping qualities."

BEQUETT FREE. Large; skin greenish white, blushed and marbled with red; free. Flesh white, and of fine quality. It is a certain and heavy bearer, and the fruit is all large. Its season is just after Oldmixon, but as a market Peach it is superior.

CARMAN. A new, hardy, rot-proof Peach, ripening at the same time as Early Rivers, yet almost as large and fine as Elberta itself; large, roundish, with pale yellow skin, red blush on sunny side; white flesh, tender and melting; rich, sweet, and of superior flavor; by far the finest of any Peach ripening ahead of Mountain Rose. It is a great thing to have a Peach so early which is yet of such elegant quality. Carman is also a notable shipper—it carries well for long distances. J. H. Hale, the shrewd Connecticut and Georgia peach-grower, has planted very heavily of this new sort, which originated in Texas. (See illustration on page 3.)

ADMIRAL DEWEY. A new extra-early Peach, offered by the originator of the Triumph, and by him patriotically named after the naval hero. He describes it as a yellow freestone of uniform color throughout as to the flesh; the skin is of a rich yellow, with crimson cheek. The tree is of strong and symmetrical growth. Fruit of Admiral Dewey was sent to many horticultural authorities in 1898, and elicited warm commendation from such men as T. V. Munson, of Texas; P. J. Berkmans of Georgia; S. B. Brackett, U. S. Pomologist, and others. It is evidently worthy of trial.

Forty car-loads of Peaches were shipped from Bridgeville in one day during the fruiting season last year, and much of the fruit was grown on trees bought from us. We have been long enough in business to be sure of the trees we sell.



BERENICE.

GENERAL LIST OF PEACHES—
Continued.

Stump the World. Large; flesh white, rich, juicy; a productive freestone, successful over a large area.

Thurber. Medium to large; white-fleshed, delicious freestone; good bearer July.

Townsend. A trifle larger and later than Crawford's Late; profitable

Triumph. Very early; yellow.

Waddell. See description opposite.

Wheatland. Valuable; large; late, yellow freestone; a Pennsylvania Peach of good quality.

Yellow St. John. One of the most beautiful and profitable early yellow freestones.

WADDELL. Another new early Peach, originating in Georgia, and commended especially by Mr. Hale, who has planted it largely. It is of medium to large size, oblong in shape; creamy-white, with bright blush; flesh firm, white, and very sweet and rich when ripe; freestone. One notable thing is the long-keeping quality of Waddell, and also its exceptional capacity for shipping. There is no doubt as to the value of this new Peach.

BERENICE. "A superb late yellow Peach, said to be a seedling of Elberta, and as it just follows that variety in ripening, I have planted it very extensively in orchard, for we all know that Elberta, grand as it is, has been largely over-planted, and markets are sure to be flooded during Elberta season; while a fine yellow Peach, coming after Elberta is out the way, should command double price. I am sure it is in every way superior to Late Crawford or any of its class. For a large, beautiful, red and yellow Peach, plant Berenice."

ORIOLE. Large; yellow, rich, buttery. Middle of August. A yellow-fleshed Chinese Cling. 25 cents.

HILEY. Ripens with Tillotson, but is of larger size, and very highly colored. Of good quality and a fine shipping variety. 25 cents each.

JUNE-BUDDED TREES IN LARGE LOTS.

The following varieties ONLY:

	Each	100	1,000
First-class.....	\$0 10	\$4 00	\$30 00
Medium.....	08	3 00	20 00

Varieties of 100 each at 1,000 rate. Of 25 each or more at 100 rate. Less than 25 at single rates.

- | | | | |
|--------------------------|----------------------------------|-----------------------|--------------------------|
| Belle of Georgia, | Champion, | Elberta, | Prize, |
| Carman, | Connett's Southern Early, | Greensboro, | Reeves' Favorite, |
| Chair's Choice, | Crawford's Late, | Mountain Rose, | Waddell. |

Berenice and Hiley June buds, \$10.00 per 100; Elberta, all over 10 per cent. of order, 2 cents extra.

PLUMS.

The Plum is one of our most healthful and useful fruits, and when carefully and judiciously cultivated, one of the most profitable also. The curculio is its chief enemy, but if it is combated with skill its ravages can be reduced to a minimum. As soon as the blossoms are fallen, spread two sheets under a tree, and with a hammer strike a hard blow on the stub of a limb sawed off for that purpose. Kill the insects which drop on the sheet. Collect all the fallen fruit and feed to swine, or burn. Keep this up every morning before sunrise for two weeks, and you will get a good crop of fruit.

The new Japan Plums are enormously productive, and combine many desirable qualities.

PRICES OF PLUM TREES ON PLUM STOCK.

European varieties, first-class, 25 cents each, \$2.75 per dozen, \$20 per 100.

Japan and Native Varieties, except where noted.

	Each	Doz.	100
Sophie, Wickson, Red June, on Plum, 1 year, No. 1.....	\$0 35	\$3 00	\$20 00
Hale, 1 year, No. 1.....	35	3 00	25 00
Spaulding, No. 1, mail or express.....	35	3 00	20 00
Abundance, 1-2 feet by mail, or 4-6 feet by express.....	25	2 50	15 00
Satsuma, 1-2 feet by mail, or 4-6 feet by express.....	25	2 50	15 00
Burbank, 1-2 feet by mail, or 4-6 feet by express.....	25	2 50	15 00
Willard, 1-2 feet by mail, or 4-6 feet by express.....	25	2 50	15 00
Native Plums.....	25	2 50	15 00
Lincoln.....	35	3 00	20 00

BEST JAPAN AND NATIVE PLUMS.

ABUNDANCE. Very early and heavy fruiting; amber color, with white blooms; highly perfumed and flavored. Curculio-proof. August.

BURBANK. Crimson-purple; rich and handsome; tree hardy and productive.

HALE. Large, golden-yellow, with red cheek; flesh yellow, very rich and juicy. Pronounced by Prof. Bailey "the best in quality of all Japan Plums." Tree of tremendous vigor and luxuriance; ripens its fruit late; superb shipper.

LINCOLN. Fruits large, weighing from 2 to 4 ounces; quality very superior; extra productive, hardy; early.

RED JUNE. The earliest large-fruited market Plum. Red, with yellow, solid flesh; good bearer and keeper. A splendid fruit. June.



RED JUNE.

SATSUMA. Dark red; flesh purple, sweet, delicious, firm; stone small. One of the best Plums from Japan. A fine keeper and shipper, and especially good for preserving.

SPAULDING. Noted for size and shipping qualities. Tree strong-growing, sure, heavy cropping. Curculio-proof.

WICKSON. A Burbank seedling of great merit. Fruit very large, white, changing to deep carmine; flesh extremely rich, firm, fine; pit small; will keep and ship extra well.

WILLARD (No. 2 Botan). A week earlier than Abundance; large; fine-flavored; immensely productive.

SUMMER APPLES.

Carolina Red June (Red June) Medium size, deep red; flesh white, tender, juicy, sub-acid; tree an abundant bearer.

Early Harvest. Medium size, pale yellow; sub-acid flavor; productive.

Early Strawberry. A pretty Apple of medium size; creamy-yellow, streaked crimson; productive.

Fanny. Handsome, slightly conical fruit of deep, rich crimson; tender, juicy, sub-acid. Keeps well and is of splendid quality.

Gravenstein. Very large, handsomely striped; of best quality; tree strong and rapid growing.

Large Sweet Bough. A large, beautiful light yellow Apple; flesh rich, juicy, solid.

Red Astrachan. Rather large; deep crimson, handsome; pleasantly acid. Profitable market sort.

Summer Pearmain. Flesh yellowish, tender, juicy, rich; skin light green, with red cheek.

Williams' Favorite. A handsome dessert Apple; large, oblong, fine flavored; bears heavily.

Yellow Transparent. Valuable as the earliest market variety; medium to large; light yellow.

CHOICE FALL APPLES.

Duchess of Oldenburg. A beautiful Apple of good size and quality; red-striped. Early Sept.

Fallowater. Very large; golden-green, with red cheek; productive market sort.

Yellow Bellflower. Large, beautiful and delightful fruits, of distinct shape; yellow, tinged red; crisp, juicy, aromatic; free in growth and bearing. Nov. to April.

Fall Pippin. Of fine size and delicious quality. Skin yellow; tree vigorous. October to December.

Grimes' Golden. A bright yellow Apple, of fair size and excellent flavor, which grows and bears well in all sections. January to April.

APPLES.

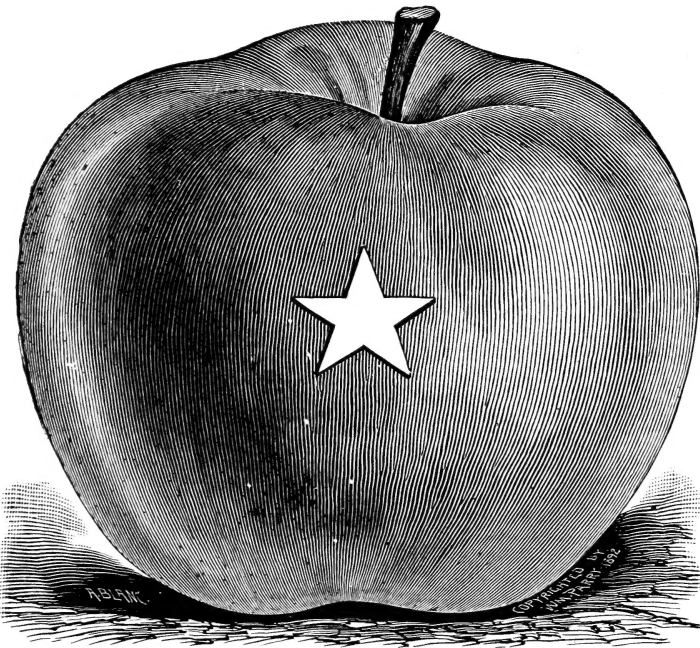
20 cts. each, \$2 per doz., \$15 per 100; medium, 15 cts. each, \$1.50 per doz., \$10 per 100, except where otherwise noted. Have a large stock of these, vigorous, smooth and well rooted.

BLACK TWIG. One of the most profitable Apples for market grown. It resembles in every way the Wine-sap, except that it is from one-third to one-half larger. The trees are also the same in habit of growth, color of bark and foliage, but Black Twig is the stronger grower, and makes a handsome tree in the nursery and orchard.

STAYMAN WINESAP. After several years' fruiting, we have no hesitation in saying that this is the finest "all-round" winter Apple that has come under our notice. The fruit is large, covered with lively red, in alternating stripes of two shades. It is a seedling from the old and well-known Winesap, but is superior to its parent in size, color, flavor and keeping qualities. The tree is more vigorous in growth, too, but very much like the parent in its drooping habit. In these times, when quality is important in dessert Apples, such a fruit as this becomes doubly valuable. Here are beauty and quality combined; and an orchard of Stayman Winesap will be a good insurance against the poor-house, if decently treated. 25 cts. each.

STARR. The best of Summer Apples. The very best summer Apple for general culture. The tree is a good grower, comes to fruiting young, and produces annually abundant crops. Fruit is very large, 11 to 12 inches around; showy, being pale green; frequently with handsome blush on sunny side; very early, being marketable first week in July, and will continue in good condition until September. It is an excellent shipper for so early an Apple, having carried to California in good condition. Pleasant sub-acid; a very superior cooking and very good eating Apple. 2-yrs., 50c. each.

See page 6 for other Summer Apples.



STARR APPLE.

Winter Apples.

Baldwin. A standard Apple of fine quality; none better for general crop in most localities.

Ben Davis. Large; red-striped; sub-acid, good. Very popular west and south.

Lankford Seedling. Large; red; quality good; long-keeping; tree productive.

Lawver (Delaware Winter). Fine, dark red fruit of pleasant, sub-acid flavor; keeps long; tree robust, productive.

Rome Beauty. Large; round-ish, conical; red-striped; of delightful quality.

Smith's Cider. Early and sure-cropping; fruit of good size; light green, striped red.

Smokehouse. Medium to large; yellow, shaded rich red; rich, juicy; tree productive.

Stark. Much esteemed as a late-keeping, fine market sort. Fruit large, yellow, striped red; quality fine; good bearer.

Winesap. Oblong, dark red fruit of medium size; flesh yellow, crisp, juicy; keeps late, bears well; excellent quality.

York Imperial (Johnson's Fine Winter). Yellow flesh, highly flavored, keeps late; tree strong and heavy bearer; fruit shaded with red; a popular market Apple in the east.

QUINCES.

The distinct flavor and solidity of the Quince make it of especial value for canning, preserving, jellies, etc. The grower, whether on a large or small scale, will do well to give some space and attention to the Quince.

MEECH. Strong grower, enormously productive, and comes into bearing very young. Of fine form and color, rich fragrance, flavor and large size. Unsurpassed for cooking.

CHAMPION. Very hardy and prolific, bearing when very young, often at two and three years old in nursery rows. Fruit very large, showy, handsome; flesh rich yellow; tender, cooks free from lumps.

ORANGE. The well-known popular sort; large, golden yellow; fine quality.

REA'S MAMMOTH. Seedling of Orange Quince; the tree is a strong grower; the fruit is large and handsome.

PRICES:

First-class trees, 25 cts. each, \$2.50 per doz., \$20 per 100; medium, 20 cts. each, \$2 per doz., \$15 per 100.

PEARS.

The Pear, like most other fruits worth having, requires attention and skill in cultivation; much more, in fact, than the apple. Summer Pears should be gathered about ten days before they are ripe, and autumn Pears at least two weeks before. Winter varieties may be let hang, if they will, till the leaves fall.

Standards should be placed 20 feet apart each way, 108 trees to the acre, with dwarfs set each way between them. The ground should be thoroughly cultivated until they come to bearing. Vegetables, potatoes, or vine crops can be grown to advantage among them for a few years.

PRICES OF PEAR TREES:

	Each	Doz.	100
STANDARD —Extra, 2 to 3 years, express or freight.....	\$0 30	\$3 00	\$15 00
First-class, 2 years, “	25	2 50	12 00
Medium, 2 years, “	20	2 00	9 00
DWARF —First-class, 2 to 3 years.....	20	1 80	10 00
Medium.....	15	1 50	8 00
NEWER VARIETIES—			
Koonce, Idaho, Vermont) First-class	25	2 50	20 00
Beauty, Wilder's Early,) Medium	20	2 00	15 00
Lawson,			

PRICES OF KIEFFER PEAR TREES:

	Each	Doz.	100
Extra, 6 to 7 feet, ¾ inch and up.....	\$0 40	\$3 50	\$25 00
First-class, 5 to 6 feet, ¾ to ¾ inch.....	30	3 00	20 00
Medium, 4 to 5 feet, ½ to ¾ inch.....	25	2 00	15 00
Small, 3 to 4 feet.....	20	1 50	10 00

The New LYERLIE PEAR. A new Pear with a most excellent parentage; it is a seedling of the solid old favorite, Bartlett, and originated as a chance seedling in Illinois. It has been bearing thirteen years, and the original tree of Lyerlie has missed but one crop, and that because of a late spring frost.

The Lyerlie is described as of medium to large size, smooth and handsome, and nearly the shape of Bartlett; the flesh is rich, spicy, and of high quality, with little core and few seeds. The ripening season is very early—six weeks before Bartlett, a time which insures a most profitable market. The tree is a good grower, and seems especially resistant to the dreaded blight; it has been free from the scourge where Bartlett was destroyed. It is also productive; the fruit ships well and does not rot at the core.

It would appear that Lyerlie is well worth a trial from its general qualities and because of its especially early ripening season. Price for 1-year trees, 3 to 4 feet, \$1.50 each; 2-year trees, \$2 each.



KOONCE PEAR.

Leading Varieties:

BARTLETT. Fruit large; yellow, with red blush; juicy, buttery; grows fast; bears well.

BEURRE D'ANJOU. Of good size and rich flavor; golden green; productive.

CLAPP. Large, handsome fruit, marbled with dull red; flesh melting, delicious; vigorous, valuable.

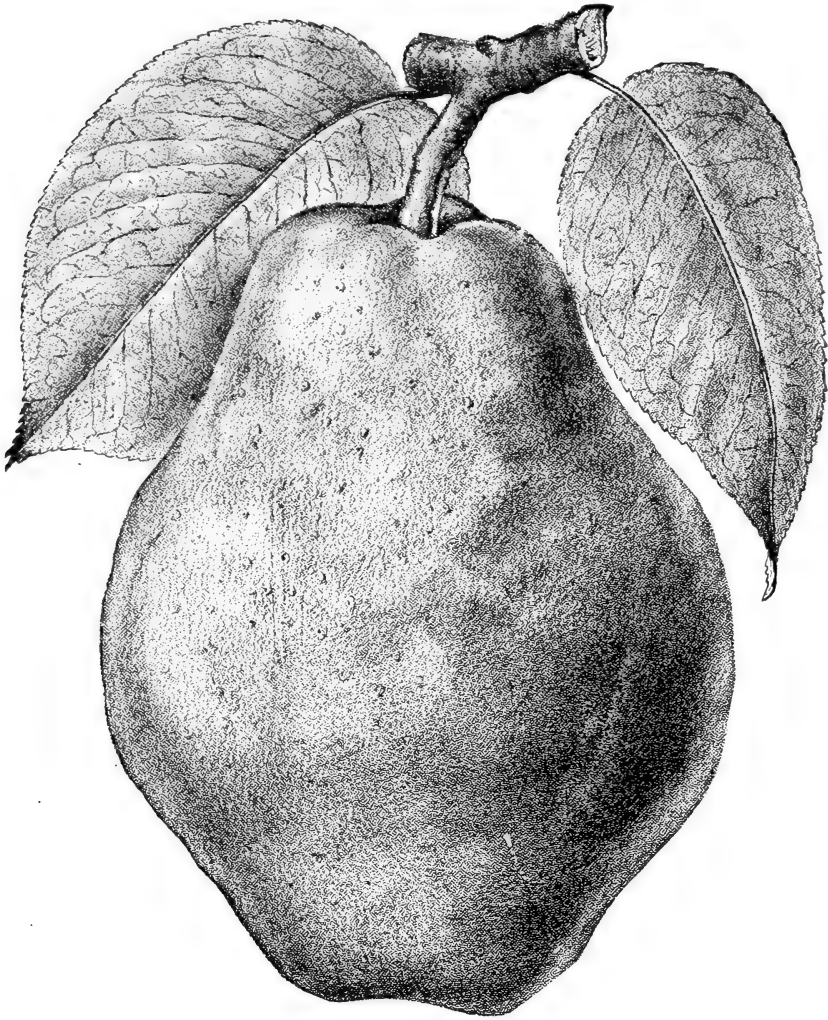
GARBER HYBRID. Noted for vigor, freedom from blight, and heavy crops. Fruit large, round, smooth, waxen yellow; fine for canning.

HOWELL. Yellow fruits of good size and flavor; sure to grow and bear well.

IDAHO. Tree upright and vigorous in habit; very productive of fruit of largest size; form roundish or ovate; flavor pleasant, equal to Bartlett; flesh entirely free from gritty texture; core exceedingly small, and often without seeds; later than Bartlett, and a good shipper.

KOONCE. A valuable, very early Pear; is of striking beauty and excellent quality. Tree very vigorous, free from blight, upright; fruit medium to large; skin yellow, one side covered with bright red; ripens two weeks earlier than Harvest Belle, does not rot at the core, and is of delicious quality.

KIEFFER. Fruits large, golden yellow, with red cheek; most excellent for canning. Tree vigorous, blight proof, enormously productive; a solid reliance for a crop, and only becomes a greater favorite as the years pass.



PEARS—Continued.

LAWRENCE. Canary yellow fruit of medium size; sweet and melting; late keeping; growth good; bears full and annually.

LE CONTE. Of fair quality and fine size; smooth, handsome, bright green; a very profitable Pear for canning, evaporating or shipping.

SECKEL. A delicious little russet Pear, renowned for its rich juiciness; tree slow in growth; free from blight.

SHELDON. Another excellent russet Pear of good size; melting, juicy, with a brisk, vinous, excellent flavor; tree vigorous; heavy bearer.

VERMONT BEAUTY. Very hardy, vigorous, free from leaf-blight, and an annual and abundant bearer. In quality the fruit resembles the Seckel. It is full medium size, yellow, with red blush; flesh melting, rich, juicy, aromatic. Ripens with and after the Seckel, though much larger and more attractive.

WILDER EARLY. A good growing, good keeping, good shipping, superior flavored, very early handsome Pear. It holds its foliage well, and thus far has been free from blight or other disease. Medium size, handsome, of high quality; solid, and does not rot at the core.

CHERRY TREES.

Selected varieties, sour and sweet; first-class, \$25 per 100; second-class, \$18 per 100.

HARDY GRAPES.

GOOD NEW GRAPES.

CAMPBELL'S EARLY. A strong, vigorous, hardy vine, with thick, mildew-resisting foliage, bearing large, compact clusters of large berries; black, with light purple bloom; skin thin, but very tenacious; flesh firm but tender, parting easily from its few and small seeds.

Flavor rich, sweet, slightly vinous. Its season is very early, from August 15 to 30, and its keeping qualities are remarkable, the berries having hung upon the vines sound and perfect for six weeks or more after ripening, with no tendency to fall off or shell from the stem. 1-yr vines, 50c each; \$5 per doz.; 2-yr vines, 75c each; \$7.50 per doz.

GREEN MOUNTAIN. A very fine, early white Grape. Vine very strong, healthy grower and very productive. Clusters of medium size and often shouldered; berries larger than Delaware; skin thin and quality fine; pulp tender, sweet and free from foxiness. Vines are hardy and vigorous as Concord, and free from rot and mildew. 1-yr. vines, 20c each; \$2 per doz.; 2-yr. vines, 30c each; \$3 per doz.

EARLY OHIO. Claimed by introducers to be "the earliest black Grape known; ripens ten days to two weeks before Moore's Early; bunches large, compact and shouldered; berry medium, covered with a heavy bloom, of good quality; adheres firmly to the stem; leaves very large, thick and leathery; perfectly healthy; fully as hardy as Concord; a vigorous grower, and very productive." 1-yr. vines, 25c each; \$2.50 per doz.; 2-yr. vines, 35c. ea.; \$3.50 per doz.

Standard Grape Vines.

The capitals within parenthesis denote the season of ripening, the small letters the color.



Agawam, (M., r.)

Brighton, (M., r.)

Campbell's Early, (E., b.)

Catawba, (L., r.)

Champion, (E., b.)

Concord, (M., b.)

Delaware, (M., r.)

Duchess, (M., w.)

Early Victor, (E., b.)

Empire State, (E., w.)

Green Mountain, (E., w.)

Highland, (L., b.)

Jefferson, (L., r.)

Lady, (E., w.)

Lady Washington, (L., w.)

Moore's Diamond, (M., w.)

Moore's Early, (E., b.)

Moyer, (E., r.)

Niagara, (M., w.)

Salem, (M., r.)

Ulster, (M., r.)

Wilder, (M., b.)

Woodruff, (E., r.)

Worden, (E., b.)

Prices for any of these varieties save the varieties specially priced above: 1-yr vines, by mail, 20c each; \$2 per doz.; 2-yr vines, by mail, 25c each; \$2.50 per doz.

STRAWBERRIES.

This, the most popular of the small fruits, is of tremendous importance with us. Bridgeville is in the very heart of one of the greatest Strawberry-growing regions of the United States, and from our station are shipped, in the fruiting season, many car-loads daily. Being ourselves largely engaged in berry-growing, and in the midst of thousands of acres devoted to this luscious fruit, we are certainly in exceptionally good circumstances for judging varieties; indeed, it is of the utmost importance to us to know which varieties will produce the most and largest berries of the best qualities. Our production and sale of plants run to millions annually, and we thoroughly understand the Strawberry "points." Further, we are in a position to obtain the experience and see the production of the largest growers. **We know about Strawberries;** we are not easily "fooled," and we tell our customers just what we believe and practice. Each year we drop from the list all varieties not up to a high standard, and our list is free from "chaff."

We have in stock a very large and varied assortment of the best Strawberry plants to be had anywhere. They are all strong, vigorous stock, in first-class condition, and bound to give satisfaction to those who plant them.

Specialties in Strawberries.

These are varieties which our extended experience leads us to especially commend to our friends. In every case we have planted largely for ourselves—we "take our own medicine." See prices at end of list.

MARIE is one of a lot of seedlings grown in 1892 from seed of Crescent, fertilized with Cumberland. Talk about **ancestry** and **pedigree**: when you can get a berry that will make as many bushels as the old Crescent, and as large as Cumberland, with good solid color, then you are approaching the ideal in the Strawberry. Such are claims we make for Marie, and Marie covered for us every claim made this season, 1902.

UNCLE JIM (OR DORNAN.) Plant is large and healthy, with abundant foliage. Berries large, very uniform, handsome and attractive. Perfect blossom.

LYON. A new variety from Mr. Cone, the noted strawberry specialist of Wisconsin. It ranks almost perfect in the five points of vigor; productiveness, size, quality and firmness. Imperfect blossom.

MINUTE MAN. Plant is strong and hardy; seems suited to almost any kind of soil. Fruit is dark glossy crimson color, on strong fruit stems. Very large and quality equal to the Marshall. Imperfect bloom.

HAWAII. From seed of Haverland, fertilized with Parker Earle. Stronger grower than Haverland; in shape of fruit it combines the best of both parents; in color it is a very bright glossy crimson, and red all through. Very attractive looking, productive and good shipper. Perfect blossom.

PORTO RICO. Another seedling of the Haverland and Parker Earle, and an improvement on Parker Earle in several respects. It does not set more berries than it can mature, as the Earle often does. It is a better grower, making more runners; berries large and handsome. Imperfect bloom.

LESTER LOVETT. Introduced last year by J. T. Lovett, of New Jersey, the introducer of the Gandy, who says of it: "The Lester Lovett possesses all the valuable properties of the Gandy, with added lateness; it is wonderfully prolific and of superior quality. Its season is ten days later than Gandy and all other varieties in cultivation, and continues to yield large fine fruit for two weeks after the last berries of Gandy have ripened. The berries are globular, or slightly conical, uniformly very large and perfect in shape, continuing large to close of season. Color, brilliant.

AUTO. A new Delaware berry, for which distinctness, large size and fine quality are claimed by reliable introducers. It produced at the rate of over 8,000 quarts per acre last spring, bearing a fine crop right through dry weather when other sorts were short. The plant is said to be of unusual vigor and to carry its fruit well up from the ground. A special claim is made as to its unusually high quality, and it is remarkable as a productive, perfect-flowering sort.

MILLER. The veteran grower, Matthew Crawford, says: "I consider that the Miller is either the best variety in existence or one of the best. It has fruited here twice, and it has not a single weakness that I have discovered. The plant is as large as that of Nick Ohmer or Marshall, perfectly healthy, has a perfect blossom, and continues to blossom until after some of the fruit ripens. It sends out an abundance of strong runners, is wonderfully productive, and ripens every berry under favorable conditions." The fruit is very large, roundish conical in form, and of a bright, glossy red color. It ripens all over, light red at first, getting darker until fully ripe. The coloring extends but a short distance from the surface, the flesh being cream or light salmon. The quality is so good that no person is likely to find fault with it.

MRS. MARK HANNA.

A Giant Among Large Berries. Tremendous Yields. All Berries Perfect Shape.

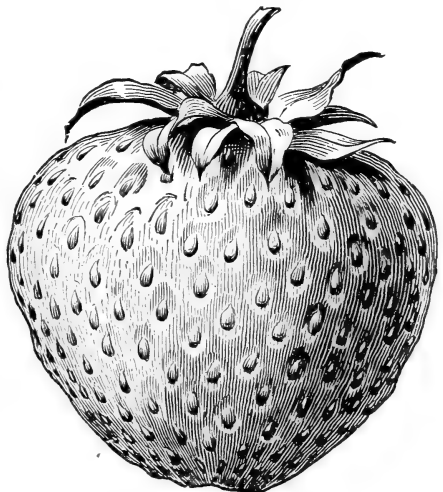
TESTIMONIALS.

Myer & Son, Bridgeville, Del.
Gentlemen: Nursery stock came to hand all O.K. A splendid lot of trees. Plum trees most too large, but if they grow it is all the better.
Yours truly, SOL. SCHLAUCH.

P. S.—You may rest assured of getting my orders in the future if I am in need of anything in the line of fruit.
S. S.

Messrs. Meyer & Son: Bartow, Fla.
Dear Sirs: Your plants received to-day and in fine condition. The plants are doing better than thought for. Your plants are the best I have seen.
Respectfully, G. L. DUDLEY.

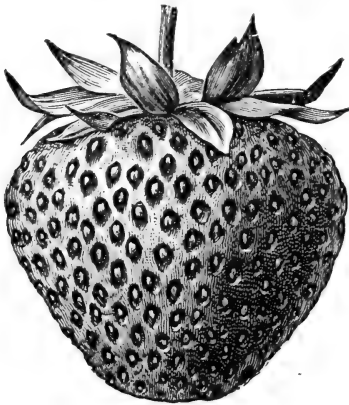
Ash Brook, N. J.
Dear Sirs: Berries received in fine condition, and very satisfactory.
Yours truly,
J. E. GOODMAN & SON.



MRS. MARK HANNA.

STRAWBERRIES—Continued.

KANSAS. (Imperfect.) Mr. Allen says: "Its drought-resisting qualities are superb. Its fruit is together with its own strong Strawberry flavor, will make it, when it becomes better known, perhaps the most popular Strawberry for canning ever yet produced. Time of ripening, late. It is productive of fine, medium to large berries that make a very handsome showing in the package, and always attract the best buyers.



TAMA JIM.

HERO. (Perfect.) "The fruit is large, well formed, of dark red color, and shows the color through and through. It is of most excellent flavor, not only tasting delicious while eating, but leaving such a pleasant after-effect that makes one feel like wanting more." This new variety was originated in Arkansas. The fruit is solid and will stand long shipment.

TAMA JIM. (Perfect.) Originated in Iowa. Plant larger than Parker Earle; makes runners more freely. Blossom perfect, with heavy pollen; fruit very large, heart-shaped, bright red color and delicious flavor. It promises to be a world-beater.

MONITOR. This berry, a product of southwest Missouri, originated as a chance seedling on a plot that formerly contained Crescent, Captain Jack and Cumberland. It has all the productiveness of the most productive Crescent, the beautiful, vigorous foliage of the Captain Jack, and is very much larger and more firm than the Cumberland. It is a fine plant-maker. The bloom is perfect and one of the richest in pollen.

STRAWBERRY PRICES FOR SPRING ONLY.

Prices for Fall on application.

Our plants are strong, well rooted, clean; they are carefully dug and carefully packed. The prices below do not cover cost of mailing or expressing.

	Per 100	1000		Per 100	1000		Per 100	1000
Aroma.....	(S) \$0 50	\$3 00	Hero.....	(S) \$1 00	\$5 00	Pennell.....	(S) \$1 00	\$5 00
Aug. Luther.....	(S) 50	2 00	Hawaii.....	(S) 1 00	5 00	Pocomoke.....	(S) 50	2 00
Auto.....	(S) 1 00	5 00	Johnson's Early.....	(S) 50	2 00	Porto Rico.....	(P) 1 00	5 00
Bismarck.....	(S) 50	2 00	Kansas.....	(P) 50	2 50	Pride of Cumb'd.....	(S) 50	2 00
Brandwine.....	(S) 50	2 00	Klondyke.....	(S) 1 00	5 00	Rough Rider.....	(S) 1 00	5 00
Bubach.....	(P) 50	2 00	Lady Jane.....	(S) 50	2 00	Sample.....	(P) 50	2 25
Clyde.....	(S) 50	2 50	Lady Thompson.....	(S) 50	2 00	Seaford.....	(P) 50	2 25
Climax.....	(S) 5 00		Leroy.....	(P) 1 00	5 00	Senator Dunlap.....	(S) 50	2 00
Crescent.....	(P) 50	1 50	Lyon.....	(P) 1 00	5 00	Sharpless.....	(S) 50	2 00
Cyclone.....	(S) 50	2 00	Lester Lovett.....	(S) 1 00	5 00	Starr.....	(S) 50	2 00
Downing's Bride.....	(P) 1 00	5 00	Margaret.....	(S) 50	2 00	Sunshine.....	(P) 50	2 50
Dewey.....	(S) 1 00	5 00	Marie.....	(P) 50	3 00	Superior.....	(S) 50	2 50
Duff's.....	(S) 50	2 00	Minute Man.....	(P) 1 00	5 00	Tama Jim.....	(S) 1 00	5 00
Earliest.....	(S) 50	1 50	Midnight.....	(S) 1 00	5 00	Texas.....	(S) 1 00	5 00
Empress.....	(S) 50	2 00	Mark Hanna.....	10 00		Tennessee.....	(S) 50	2 00
Excelsior.....	(S) 50	2 00	Mrs. Mark Hanna.....	10 00		Tilghman.....	(S) 1 00	5 00
Gandy.....	(S) 50	2 00	Miller.....	(S) 1 00	3 00	Uncle Sam.....	(P) 1 00	5 00
Gibson.....	(S) 50	2 00	Monitor.....	(S) 1 00	3 00	Uncle Jim.....	(S) 1 00	5 00
Glen Mary.....	(S) 50	2 50	New York.....	(S) 50	2 50	Wm. Belt.....	(S) 50	2 00
Haverland.....	(P) 50	2 00	Nick Ohmer.....	(S) 50	2 50	Yant.....	(S) 1 00	5 00
			Palmer's Early.....	(S) 50	2 00			

In the above list we have a great many new and promising varieties not described, and we have about come to the conclusion that our customers would be just as well, if not better, satisfied if Strawberries were not described at all, for this reason: they differ so much in change of location and soil, that a variety that is extra fine for one locality is entirely worthless in another; and our advice to you is to simply test the new sorts that you do not know, by planting 50 to 100 plants of a kind on your own land; then, when you find the good ones, you will have the plants of your own to set. It would be no use to try to pick out only one or two sorts for this purpose, for you might pick those that would not suit your soil, but take say six to ten varieties, and you will be likely to get three to five good ones. Even if only one is better than anything you already have, you will be well paid for the whole investment; for besides what you want, your neighbors will want them if you have something good, and you can sell enough plants to them to pay for all you invested in the test lot.

Ivory P. O., Howard County, Md.

Dear Sirs: The trees and plants arrived safe and in first class order. Many thanks for the extras. It was only a small order, but I will give you a much larger one in the fall. All my neighbors who saw them were very much pleased with the trees, and also the price I paid. One of them, who had a catalogue, came over to see me to-day, and told me not to send you another order without his, too. Another neighbor, who had also gotten your catalogue, said to me on Monday last that he did not know there was a man in existence who sent out such trees for so small a price. He has been paying agents 25 cts. apiece for trees that were no better. He volunteered to send an order with me for fall planting. Wishing you all the success imaginable, I remain,

Your friend and well-wisher,

EDWARD H. CROSS.

RASPBERRIES.

Red Raspberries are a very important crop with us, and we keep keenly awake to the introductions in that line. Our stock of plants is fine, and we recommend them to all berry growers.

BRILLIANT RED RASPBERRY. (See illustration on front cover.) As is well known, we introduced the valuable and popular Miller Red Raspberry some years ago. Just after it came out we saw the **Brilliant**, and have been watching and trying it ever since. It is now offered, though, like Miller, it has been carefully tried and earned already much commendation among market growers.

Brilliant is brilliant, both in color and habit; for one of its great merits is its trick of ripening up its crop fast—much faster than Miller. You get clean pickings of brilliant and glossy red berries, large in size, good in quality, and most attractive in color. There is nothing dull about **Brilliant**—it shines! Its color is toward that of the Japanese Wineberry, and in a long experience we have never seen a Raspberry with such a handsome gloss. "Handsome is as handsome does;" and **Brilliant** is truly handsome, for it "does" 2 to 4 cents a quart more than other Raspberries.

The canes are surely hardy, for they came through the terrible winter of 1898-1899 unharmed, though Miller could not stand the 15° to 20° below zero which tried the Delaware fruits. The wood is stocky, short-jointed, and the handsome canes are loaded with fruit, which ripens evenly and rapidly, ships in fine order, gets to market in all its brilliancy, and sends good returns to the grower, who usually needs just such help. **Brilliant** is in limited supply for this year, and the price of good plants is 25 cents each, \$1.50 per dozen, \$10 per 100.



CUMBERLAND.

KING. The earliest Red Raspberry on record. It is the early Red Raspberry that makes the big money—they often sell for 25 cents per quart. It is thus described by H. E. Van Deman, the well known pomologist: "Round, medium size; light crimson color; moderately firm and of excellent quality." A seedling of Thompson, and ripens about the same time, but larger and more productive." [Note that Thompson has for years stood as the earliest of Raspberries, red or black.]

CARDINAL. This wonderful berry is a surprise in the fullness of its merits—its great growth, extreme hardiness, and the exceeding productiveness of its choice red, rich, pure flavored berries. Cardinal is claimed to grow ten feet high, and bears in proportion. Leading horticulturists who have seen this berry say that it is one of the wonders of the century, so far exceeding all others as to put it entirely beyond comparison.

HAYMAKER. A purple cap, not so dark as Columbian or Shaffer, and much larger and firmer than either of those varieties; never crumbles, and stands up well in shipping. Sample crates have been shipped to distant points with entire satisfaction. It is a berry to grow for either home use or market. The originator has found it the *most profitable berry* ever raised for market, and has never yet been able to supply the local demand.

OTHER GOOD RASPBERRIES.

MILLER RED. This variety far exceeded its own fair promises, and is now well known as one of most delicious and profitable Raspberries upon the market. Berry is as large as Cuthbert, round, and bright red; very firm; flavor rich. Very early, fruitful and hardy.

Myer & Son, Bridgeville, Del.

Forest Glen, Ulster Co., N. Y.

Dear Sirs:—Stock has arrived in good condition; greatly pleased with it. Thanks for the same.

ISAAC TELLERDAY.

RASPBERRIES—Continued.

COLUMBIAN. Fruit very large, often an inch in diameter, somewhat conical; color dark red, bordering on purple. Seeds small, imbedded in a rich, juicy pulp; flavor distinct. Plants of enormous size; very productive.

* **LOUDON.** Seems to hold a place in the very front rank of Red Raspberries. Large, solid, good color; ships well; plants hardy and productive. Ripens over a long season.

CUMBERLAND. Undoubtedly the best of the blackcaps. Of great size, good quality, firm and handsome; plants vigorous and hardy, productive and free from disease. This new berry is gaining friends constantly.

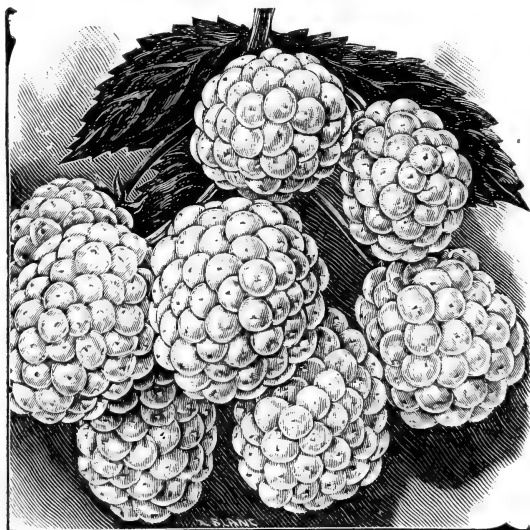
PRICES OF RASPBERRIES.

REDS	By mail		Exp. 1,000	Exp. 1,000	CAPS	By mail		Exp. 1,000	Exp. 1,000
	Doz.	100				Doz.	100		
Columbian.....each 10 cents...	\$0 50	\$2 00	\$15 00		Gregg.....	\$0 40	\$1 00	\$7 00	
Cuthbert.....	40	1 00	8 00		Palmer.....	50	1 50	7 00	
Loudon.....each 10 cents...	50	2 00	15 00		Cumberland.....each 25 cents...	1 00	2 50		
Miller.....	40	1 00	5 00		Haymaker.....each 25 cents...	2 00	5 00		
Miller, small plants.....	25	50	3 00		Cardinal.....each 25 cents...	2 00	5 00		
King.....each 10 cents...	1 00	3 00							
Brilliant.....each 25 cents...	1 50	10 00							

BLACKBERRIES.

THE NEW "ICEBERG." Here is an anomalous specialty—a white Blackberry that is really good! It was originated by Luther Burbank, as the result of careful crossing, and is a descendant of Lawton as the strongest parent. The fruit, which is translucent amber, showing the seeds through the pulp, is of the most delicious quality, retaining that richness characteristic of a fully-ripe Lawton.

The appearance of the plant, loaded with the exquisite fruit, is most pleasing; but more pleasing is the showing for market. Iceberg is productive, and the beautiful fruit ships perfectly. A shipment this season to Providence, R. I., attracted much attention, even though the fruit, through inadvertence, was shipped in an over-ripe condition. The receiver wrote us that the berries "would have brought 20 cents per quart, quick, if in good order." It is a novelty we can most heartily recommend to our friends. Price, 10 cents each, \$1 per doz., \$5 per 100.



THE NEW "ICEBERG."

LUCRETIA (Dewberry). This is an unusually early, large and handsome berry, of exceptionally delightful flavor. The plant is extremely hardy and very fruitful; of trailing habit.

MAXWELL EARLY. Very large, sweet, rich and luscious; no core whatever; very productive; ripens before Strawberries are gone, or at the same time with Lucretia Dewberry and Early Harvest Blackberry, and is three times as large as the latter. The bush is a low, strong, stocky grower, free from dust, double blossom, or other disease.

MERSEREAU. This variety was originated in Western New York, where the mercury falls below zero each winter. It has been well tested and found to be perfectly hardy. It makes very large canes, is very productive, of large size, delicious quality, hangs on the bushes till fully ripe, does not turn red in the baskets, has an unusually long season.

Prof. L. H. Bailey says: "It is one of the most promising varieties I know."

R. M. Kellogg, president of the Michigan State Horticultural Society, says: "It is beyond all question the king of Blackberries for commercial purposes."

PRICES OF BLACKBERRIES.

	By mail	Exp.	Exp.
	Doz.	100	1,000
Mersereau	\$1 00	\$4 00	
Iceberg.....	1 00	5 00	\$40 00
Early Harvest (sen- line).....	30	1 00	5 00
Eldorado, No. 1, strong suckers.....	50	2 00	10 00
Eldorado, No. 2.....	40	1 00	8 00
Maxwell, No. 1, plants.....	50	1 50	10 00
Maxwell, No. 2, suckers.....	40	1 00	7 00
Lucretia Dewberry, tips.....	50	1 00	5 00
Premo, tips.....	1 00	3 00	20 00
" transplants.....	1 50	5 00	30 00

47-Dewberry Plants will be sent by mail at the dozen rates free of postage; at the 100 rates if 25 cents for 50 plants, and 40 cents for 100 plants, be added to the price.

CURRENTS.

CULTURE.—They should be planted in good deep soil, in a cool location, and manured very heavily. Keep them thinned out. Currant-worms can be destroyed with hellebore. For use, dissolve 1 ounce in 3 gallons of water, and apply with a syringe or small sprinkling can.

RED CROSS. Claimed to be twice as large as Victoria, to yield twice as well as Cherry.

BLACK NAPLES. The best black Currant.

CHERRY. Popular, large red market sort.

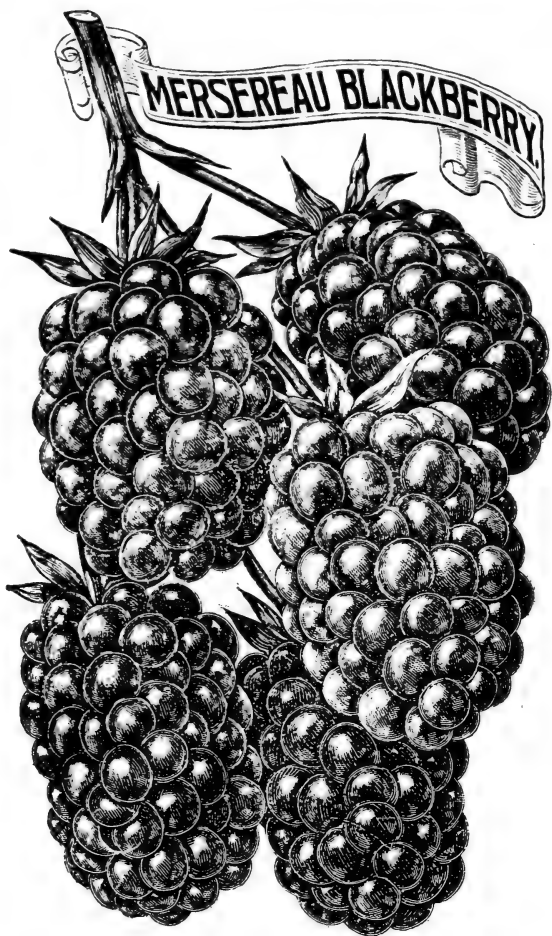
FAY'S PROLIFIC. Larger than Cherry.

NORTH STAR. Fruit large, sweet, rich, firm.

RED DUTCH. An old, well-known variety.

VERSAILLES. Large, bright red-crimson.

WHITE GRAPE. The best white Currant; large and productive; of excellent quality.



MERSEREAU BLACKBERRY. (See opposite page.)

Note.—Add 20 cents per dozen if to be sent by mail, as bushes are very large.

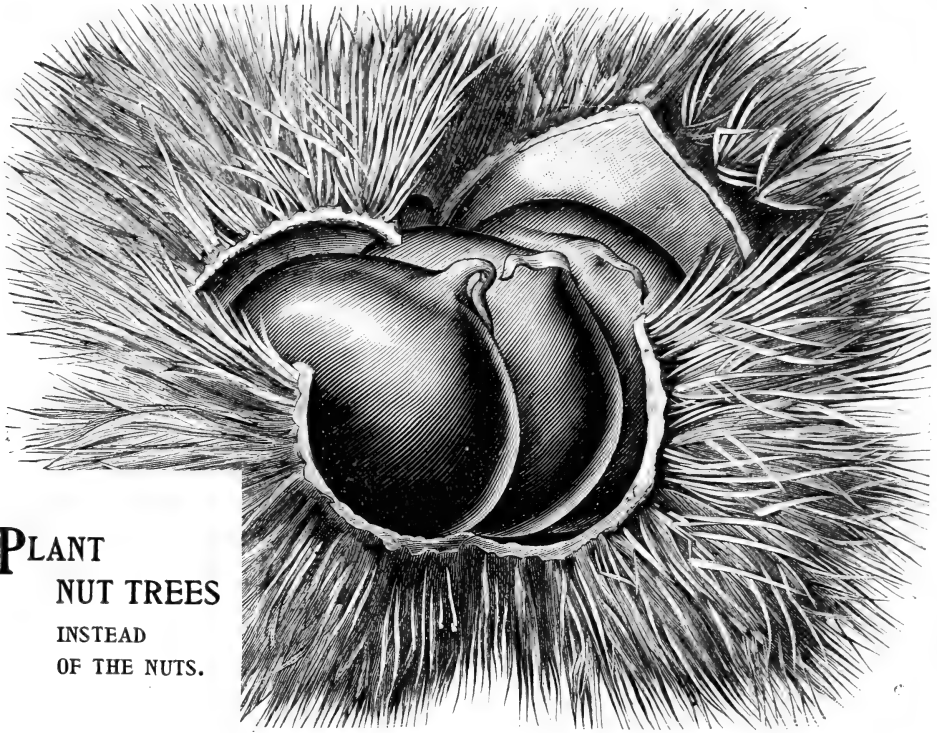
PRICES OF CURRENTS.

	One year—		Two years—		
	Mail	Exp.	Mail	Mail	Exp.
	Doz.	100	Each	Doz.	100
Cherry and Versailles. Large red.....	\$0 50	\$2 50		\$0 75	\$3 50
White Grape. White, handsome; good.....	50	2 50		75	3 00
Red Dutch. Very prolific.....	50	2 50		75	3 00
Black Naples. Good for jelly.....	50	2 00		50	2 50
Fay's Prolific. Red.....each, 10 cts...	1 00	4 00	\$0 25	1 00	5 00
North Star. Red.....each, 10 cts...	1 00	5 00	35	1 50	6 00
Red Cross. Red.....each, 15 cts...	1 50		20	2 00	

GOOSEBERRIES.

Culture same as for Currants.

	One year—		Two years—		
	Mail	Mail	Mail	Mail	Exp.
	Each	Doz.	Each	Doz.	Doz.
Chautauqua. Large, white.....	\$0 40	\$4 00	\$0 60	\$5 00	
Columbus. Very large, productive.....	25	2 00	35	3 50	
Downing. Good size; rich quality.....		1 00		1 50	
Houghton. The old standby.....		75		1 00	
Pearl. Hardy, large and good.....	25	2 00	35	3 00	



**PLANT
NUT TREES
INSTEAD
OF THE NUTS.**

NUTS AND NUT TREES.

The nut-bearing trees, when grown in nurseries, are well supplied with fibrous roots, and can be transplanted as safely as an apple tree. We therefore advise our customers to plant the trees, if they can be had, and save three or four years' time. Nut culture is twenty times as profitable as farm crops, and no more work or risk.

CHESTNUTS.

JAPAN MAMMOTH. Distinct from the European varieties, being hardier, and the nuts are of a superior flavor and sweetness. It often bears in the nursery rows, trees 3 to 4 feet high being heavily laden with nuts of enormous size, which mature very early and without frost.

RIDGELY. Very large nuts of good quality; tree very productive.

SPANISH. A handsome tree of rapid growth, yielding large nuts of good quality.

NUMBO. Very hardy and productive; bears young. Nuts large and of good quality.

PARAGON. Hardy; productive; large and of excellent quality.

PRICES:	Each	Doz.	100
Japan Mammoth, 1 year, 1 to 2 feet, mail or express.....	\$0 25	\$2 50	\$15 00
“ “ 2 year, 2 to 3 feet, express.....	35	3 50	25 00
Spanish, 1 year, 1 to 2 feet, mail or express.....	25	2 50	15 00
“ 2 year, 1 to 3 feet, express.....	30	3 00	20 00
“ 4 to 5 year, 5 to 6 feet, express.....	50	5 00	
Numbo, Paragon, Comfort, Ridgely, 1 year, 1 to 2 feet.....	50	5 00	
“ “ “ “ 2 year, 3 to 4 feet.....	75	7 50	



The Premo Dewberry

A new extra-early Blackberry of the Lucretia type. It is very large, jet-black, firm and good, and ripens its crop very fast. . . .

IT IS with the greatest confidence and satisfaction that we introduce the **PREMO DEWBERRY**, which, we believe, will bring more wealth to fruit-growers and dealers, and more satisfaction to consumers of Blackberries throughout the United States than any Blackberry has yet done.

For many years we have been looking for a **large, early, productive Blackberry** of the Wilson type. The Lucretia, when it came, was the nearest to our ideal, but now we have in **PREMO** a prize still nearer to the perfect berry we are looking for, and as far ahead of Lucretia as Lucretia is of the Wilson. Just as Lucretia has taken the place of the latter, so **PREMO** must inevitably take the place of Lucretia and Early Harvest.

We have tested **PREMO** in every way before venturing upon its introduction, and we are upheld in our estimate of its great value by all fruit-growers who have seen it in bearing.

This **PREMO** was found growing in a Lucretia patch, where its early ripening attracted instant attention. It closely resembled Lucretia in fruit, but all the berries on the vine were about ripe just as Lucretia was beginning to ripen a few scattering fruits. All Blackberry growers know how much more money this means to them. If the entire crop of Lucretia could be picked at the first or second pick-

ing, what a great difference it would make in the grower's bank account! Now, you can do this by planting **PREMO**, and you can do still more—for you can pick many berries before you can any of the Lucretia, and can finish at the second picking. You are then out of the glut which there is certain to be in our eastern markets in the next few years, as soon as the large acreage of Lucretia recently planted comes into bearing.

Those who plant **PREMO** now will be ahead of the procession and reap a rich reward. For ourselves, we can say that we intend to plant at least twenty-five acres of this berry for fruiting, as fast as we can spare the land and plants, which we hope will be the coming spring.

Please note that **PREMO** has an imperfect blossom, so that every third or fourth row must be planted with Lucretia in order to fertilize the flowers.

Three Reasons why **PREMO DEWBERRY** is Superior to Lucretia.

- 1st. **PREMO** is 7 to 10 days earlier, ripening up the crop so fast that it is about all gone at the second picking of Lucretia.
- 2d. **PREMO** is as large as Lucretia, and of jet-black color, but of better quality and much firmer.
- 3d. **PREMO** has foliage of a darker green and more healthy looking than Lucretia's, and not inclined to burn when hot suns come, as the latter sometimes does.

PRICE—Transplants, 25 cts. each, \$1.50 per doz., \$5 per 100, \$30 per 1000.

Tips, 15 cts. each, \$1.25 per doz., \$3 per 100, \$20 per 1000.

LIBERAL DISCOUNT TO THE TRADE.

What Others Think.

J. F. Wroten says: "Being a fruit-grower and desiring to grow only the best improved varieties, I have carefully watched the new Dewberry **PREMO** every two or three days throughout the season, and am now satisfied that it is the best of the Blackberry family to plant for profit. I shall plant largely the coming spring."

E. J. Hull, a noted grower, writes: "The **PREMO** Dewberries were received during the warm spell last week. Berries were large and look as if they would sell well. The weather was against all berries—98° in the shade."

Franklin Davis Nursery Co. writes: "The basket of **PREMO** Dewberries was received yesterday in good condition. We have examined the fruit carefully, and believe it will be a valuable addition to the list of Dewberries."

We could give any amount of testimonials on this berry if space would permit. Apply for **PREMO** and for other up-to-date fruit trees and plants to

MYER & SON,

Bridgeville Nurseries,

Bridgeville, Delaware.

STATE OF DELAWARE.

STATE BOARD OF AGRICULTURE.

CERTIFICATE OF NURSERY INSPECTION.

Dover, Delaware, Sept. 10, 1902.

To Whom it may Concern:

This certifies that I have this day examined the nursery stock and premises of the Bridgeville Nurseries, of Messrs. Myer & Son, at Bridgeville, Sussex County, Delaware, and that said nursery stock is apparently free from crown gall, peach yellows, peach rosette, the San José scale, and all other plant diseases and insects of a seriously dangerous nature.

This certificate may be revoked by the State Board of Agriculture for cause, and it is invalid after August 31, 1903, and does not include nursery stock not grown on the above-named premises unless such stock is covered by Certificate of a State or Government officer and accepted by the State Board of Agriculture.

WESLEY WEBB, Inspector.

We hereby certify that the nursery stock in this package has been fumigated in conformity with the rules of the State Board of Agriculture.

MYER & SON, Proprietors.

SURPLUS LIST—JAN. 1st, 1903.

SURPLUS PEACH TREES,

One year old and June Buds, including the following varieties, smooth, healthy and correct, all grown with care on our own grounds.

	5 to 6 feet	4 to 5 feet	3 to 4 feet	2 to 3 feet	1 to 2 feet		5 to 6 feet	4 to 5 feet	3 to 4 feet	2 to 3 feet	1 to 2 feet
Admiral Dewey	48	17	Heath Cling	35
Beers' Smock	47	...	74	27	125	Henrietta	51	13	60	35	
Berenice	19	...	30	Hiley	28	57	133	57	
Bequett Free	16	144	Mamie Ross	...	27	123	48	
Bell of Georgia	29	Mathews' Beauty	80	
Capt. Ede	92	31	82	Mountain Rose	420	130	73	...	
Connett's Stn. E'y	900	60	250	Old Mixon	66	...	157	26	
Champion	109	Oriole	51	13	
Carman	...	61	16	...	16	Prize	25	79	
Chinese Cling	47	Reeves' Favorite	25	...	400	...	
Crawford's Early	370	220	Salway	4	28	
Crawford's Late	125	Sneed	36	16	20	27	
Everbearing	15	...	33	19	20	St. John's	34	...	65	17	
Emma	...	30	84	Stump the World	65	
Fitzgerald	145	9	76	Walker's	...	25	...	25	
Family Favorite	196	6	18	Waddell	14	...	240	250	
Foster	205	200	...	Elberta	.625, 5 to 6 ft. 10c; 70, 4 to 5 ft. 10c; 75, 1 to 2 ft. 5c.				
Fox Seedling	125	30	225	200	...						
Greensboro	22	35	...						

JUNE BUDDED.

Bell of Georgia	325 No. 1, 5c; 900, 6 to 10 inches, 3c; 335, 3 to 6 inches, 2c.
Elberta	2500, 8 inches, 5c.
Carman	900, 4 to 8 inches, 3c.
Connett's Early	1200, 12 to 18 inches, 3c.
Berenice	.610, 8 to 15 inches, 10.
Hiley	900, 12 to 18 inches, 5c.
Waddell	1000, 12 to 18 inches, 4c.
Greensboro	390, 8 to 12 inches, 3c.

PEARS.

93 Garber—2-year, 4 to 5 feet.	15 Garber, 6 to 7 feet.
195 Le Conte—1-year, 4 to 5 feet.	480 Le Conte—2-year, 4 to 5 feet, ½ up.
120 Le Conte—2-year, ¾ up.	175 Kieffer, 6 to 8 feet; 35, 7 to 9 feet.

APPLES.

100 Black Twig, 3-year, 6 to 8 feet...10c.	100 Stayman's Winesap, 5 to 6 feet...15c
--	--

MISCELLANEOUS.

3,900 Eldorado B. B. Suckers, No. 1	\$10.00 per M.
5,000 " " " No. 2	5.00 "
5,500 Iceberg " " No. 1	20.00 "
2,300 " " " No. 2	10.00 "
3,500 " Root Cutting, heavy	25.00 "
5,000 Maxwell Suckers	8.00 "
10,000 Early Harvest Suckers	5.00 "
500 Wilson, Jr. Transplants	10.00 "
1,000 Mersereau Root Cutting	
2,000 Rathbun " "	4.00 per 100
10,000 Lucretia Tips	
50,000 Premo Tips	
5,000 " Transplants, fine, 1-year	
5,000 " " heavy, 2-year	
10,000 Miller Raspberry Suckers	
3,000 Loudon " "	
3,000 Cuthbert " "	
2,000 Brilliant " "	5.00 per 100
1,000 Haymaker Raspberry Tips	3.00 "
3,000 Cardinal " "	3.00 "
300 American Sweet Chestnut, 5 to 7 feet	20.00 "

Strawberry Plants, as fine as ever grown, by the thousand or million, and other stock not mentioned here, will be found in the catalogue; also stock not priced on this sheet is priced in catalogue. You see we are sold close on Peaches, Apples and Pears, owing to the great demand the past fall.

WE WILL SELL AT A GREAT SACRIFICE, whole or one-half interest in Orange Nursery at Bartow, Polk Co., Fla. Situated in town limits of Bartow, ¼ mile from depot, and just the right kind of land to grow nursery stock on, consisting of ten acres. There is now growing on the same 2,000 Budded Orange Trees, 1 year old, 5,000 Sour Orange Seedlings, 10,000 Trifoliata Seedlings, and 35,000 Sweet Orange Seedlings, making 50,000 seedlings, all soon ready for budding.

Our reason for offering to dispose of it a sacrifice, is that our nursery in Delaware requires our entire attention, and we find we cannot operate both successfully unless we have a partner to take charge of this one, and for any one wishing to invest this is a great opportunity and a bargain that cannot be had often. Any one wishing to invest write for price to

MYER & SON, Bridgeville, Delaware.



BRIDGEVILLE NURSERIES,
MYER & SON,
BRIDGEVILLE, ——— DELAWARE.



THE • PREMO • DEWBERRY

A new extra-early Blackberry of the Lucretia type. It is very large, jet black, firm and good, and ripens its crop very fast. Every grower of Blackberries should give this a trial. See circular inside.