

Historic, Archive Document

Do not assume content reflects current scientific knowledge, policies, or practices.



67
Hort Office

6273
... FALL SEASON 1903 ...

U.S. DEPARTMENT OF AGRICULTURE
LIBRARY
Washington, D. C.

Wholesale Catalogue

**Ornamental Trees
Shrubs, Vines and
Herbaceous Plants**

THOMAS MEEHAN & SONS, Inc.
WHOLESALE DEPARTMENT
Dreshertown, Montgomery Co., Penna.



GYMNOCLADUS CANADENSIS (KENTUCKY COFFEE)

SEE PAGE 8

J. FRANKLIN MEEHAN, Pres't
S. MENDELSON MEEHAN, Vice-Pres't
THOMAS E. MEEHAN, Sec. & Treas.

Founded 1854 by THOMAS MEEHAN
Incorporated 1902
CAPITAL STOCK, \$100,000.00
300 ACRES

Thomas Meehan & Sons, Inc.

Nurserymen and Tree Seedsmen

Wholesale Department

Dreshertown, Montgomery Co., Pa.

Wholesale Trade List, Fall 1903

[COPY OF CERTIFICATE]

THE COMMONWEALTH OF PENNSYLVANIA

DEPARTMENT OF AGRICULTURE

Certificate of Inspection of Nursery Stock No. 298.

This is to certify that the stock in the nursery of THOMAS MEEHAN & SONS, INC., of Dreshertown, County of Montgomery, State of Pennsylvania, was duly examined in compliance with the provisions of the Act of Legislature of Pennsylvania, approved the 10th day of June, A. D., 1901, and it was found to be apparently free from San Jose Scale and other dangerously injurious insect pest or pests.

This Certificate expires July 31, 1904.

Dated Harrisburg, Pa., August 11, 1903.

A. B. Critchfield,

Secretary of Agriculture.

GEO. C. BUTZ, Inspector.

SPECIAL NOTICE

Our nurseries have been carefully inspected and no trace of scale or other injurious insects found. For the benefit of customers, however, who wish stock fumigated, we have erected a fumigating house, and when requested to do so will fumigate shipments before packing.

This will be done, however, entirely at the risk of purchaser.

Long Distance Telephone, 26 Ft. Washington, Pa.

Telegraph Office, Ambler, Pa.

Adams Express and Freight Office, Dresher, Montg. Co., Pa.

This Catalogue takes the place of all previous issues

Important! Please Read!

CUSTOMERS are requested to state the mode of conveyance by which they desire their trees forwarded. When no route is named we forward to the best of our judgment; but in no case do we assume any responsibility after the goods are shipped, unless for our own mistakes.

TERMS CASH, on or before delivery to express or railroad agents, unless by special arrangement.

TWO HUNDRED AND FIFTY, twenty-five and five will be furnished at the thousand, hundred and ten rates respectively.

PACKING CHARGED EXTRA, but only sufficient to cover cost of time and material.

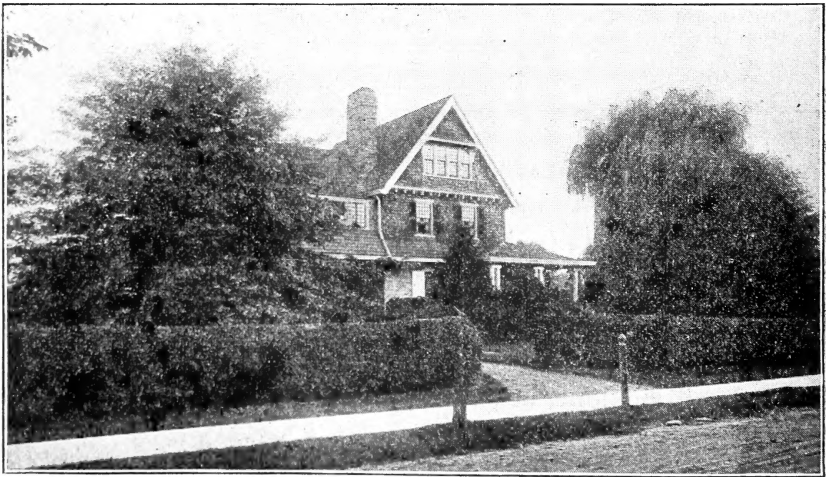
Post-Office Orders payable at Dreshertown, Montgomery Co., Pa.

Telegraph Office, Ambler, Pa.

OUR DESCRIPTIVE CATALOGUE is complete and will be sent to all applicants.

VISITORS are always welcome and should take train at the Reading Terminal, 12th and Market Streets, Philadelphia, for **Camp Hill Station**, or at Broad Street Station, Pennsylvania R. R., for **Fort Hill Station**. Be sure that the train you take stops at these stations.

NOTICE.—It is necessary that you should **Telephone** us (26 Fort Washington) in advance of your coming, so that we can send a carriage to the station for you. Our office is $2\frac{1}{2}$ miles from either station.



PIN OAK

PRIVET HEDGE

Tree and Shrub Seeds.

We issue a special catalogue of these. It will be mailed on application.

DECIDUOUS TREES.

"Trans." signifies the stock has been once or more transplanted.
 "Seed." that it is still in Seedling Beds.

		Per 10	Per 100	Per 1000
Acer	campestre, English Cork Maple, heavy	3 to 5 ft. trans.	\$3 50	
"	"	colchicum rubrum 1 ft. trans.	1 00	
"	"	" 6 ft. trans.	3 50	
"	dasycarpum, Silver Maple,	1 to 2 ft. seed.	35	\$ 0 50 \$ 4 00
"	"	" 4 to 6 ft. trans.	1 25	10 00 90 00
"	"	" 6 to 8 ft. trans.	1 50	12 00 100 00
"	"	" 8 to 10 ft. trans.	1 75	15 00 125 00
"	"	" 10 to 12 ft. trans.	3 00	25 00
"	"	" 3 to 4 in. diam., 15 to 18 ft. trans.	30 00	300 00

✂ The 15 to 18 ft. trees are extra selected specimens, transplanted and set wide apart in rows, permitting the heads to develop into fine, shapely trees. They have perfectly straight stems, and an abundance of strong, fibrous roots. This is exceptionally fine stock for use where selected and well-developed trees are required for immediate effect.

"	Weir's Cut-leaf,	6 to 7 ft. trans.	3 50	32 00	
"	Negundo, Ash-leaved Maple. Box Elder,	1 to 2 ft. seed.	25	50	3 50
"	"	" 3 to 5 ft. seed.	35	65	5 00
"	"	" 6 to 8 ft. trans.	1 50	12 00	100 00
"	"	" 8 to 10 ft. trans.	2 00	15 00	125 00
"	"	" 10 to 12 ft. trans.	2 50	18 00	150 00
"	"	" 12 to 14 ft. trans.	3 00	25 00	

✂ We have a very large stock of **Ash-leaved Maples.** They are fine trees, too.

"	platanoides, Norway Maple,	4 to 5 ft. trans.	1 75	15 00	125 00
"	"	5 to 6 ft. trans.	2 00	18 00	150 00
"	"	7 to 9 ft. trans.	3 00	25 00	
"	"	10 to 12 ft. trans.	4 00		
"	"	2 to 2½ in. diam. 12 to 14 ft. trans.	6 50		
"	"	3 to 3½ in. dia. 12 to 15 ft. trans. spec.	30 00		

✂ The 12 to 15 ft., 3 to 3½ in. specimen trees were recently transplanted and set in rows 6 by 8 feet apart. They have well-developed heads, perfectly straight trunks and are heavily rooted. They are especially desirable where selected specimen trees are required for immediate effect.

"	Schwedlerii, Purple-leaved Norway	7 to 9 ft. trans.	4 00	35 00	
"	"	10 to 12 ft. trans.	5 00	40 00	
"	pseudo-platanus, Sycamore Maple,	10 to 15 in. seed.	35	65	5 00
"	"	4 to 5 ft. trans.	1 25	10 00	90 00
"	"	5 to 6 ft. trans.	1 50	12 00	100 00
"	rubrum, Red or Scarlet Maple,	8 to 12 in. seed.	35	1 00	8 00
"	"	5 to 6 ft. trans.	2 50	20 00	
"	"	6 to 8 ft. trans.	3 50	30 00	

		Per 10	Per 100	Per 1000
Acer saccharinum, Sugar or Rock Maple,	12 to 18 in. seed.	\$ 35	\$1 25	\$10 00
" " " " " "	2 to 2½ ft. seed.	40	2 25	20 00
" " " " " "	4 to 6 ft. trans.	1 75	15 00	
" " " " " "	8 to 10 ft. trans.	2 50	20 00	
" " " " " "	1¼ to 1½ in. calliper	3 00		
" " " " " "	1½ to 1¾ in., 12 to 14 ft.	3 50	35 00	
" " " " " "	1¾ to 2 in., 12 to 14 ft.	5 00	50 00	
" " " " " "	2 to 2½ in., 14 to 16 ft.	10 00	100 00	

There are no finer trees of Sugar Maples in the country than those we offer. They are well rooted, of good shape, and have straight, healthy trunks.

" " nigrum, Black Sugar Maple,	6 to 8 ft. trans.	1 75	15 00	
" " " " " "	10 to 12 ft. trans.	3 50		
" spicatum, Mountain Maple,	3 to 4 ft. trans.	2 50		
" " " " " "	4 to 6 ft. trans.	3 50		
" Tataricum, Tartarian,	2½ to 3 ft. trans.	2 50		
" " Ginnale,	18 to 24 in. seed.	35	2 50	
" " " " " "	2 to 3 ft. trans.	1 75	15 00	125 00
" " " " " "	3 to 4 ft. trans.	2 00	18 00	150 00

The Acer Ginnale is a good dwarf bushy variety; excellent for massing. Leaves beautiful color in fall.

JAPANESE MAPLES.

Note that some of our Japanese Maples are pot-grown. This makes transplanting almost certain of success. They can be shipped in the summer if required. We grow all our own Japanese Maples, and they are very much more healthy and superior to imported plants. The latter are nearly always sickly, ill-shaped and poorly rooted.

Acer Japonicum aureum, Golden-leaved,	1 to 2 ft. from pots	\$15 00		
" polymorphum, Green-leaved,	3 ft. trans.	12 50		
" " " " " "	4 to 5 ft. bushy	30 00		
" " atropurpureum, Blood-leaved,	8 to 12 in. trans.	10 00		
" " " " " "	12 to 15 in. trans.	12 50		
" " ampelopsilobum,	5 ft heavy trans.	30 00		
" " cristatum, Fern-leaved,	18 to 24 in. from pots	12 50		
" " dissectum atropurpureum,	18 to 24 in. from pots	12 50		
	Purple Cut-leaf			
" " " " " "	3 to 4 ft. spec. from tubs	25 00		
" " reticulatum,	18 to 24 in. from pots	12 50		
Aesculus glabra, Ohio Buckeye.	4 to 5 in. seed.	35	1 50	10 00
" " " " " "	5 to 6 ft.	2 50		
" hippocastaneum, Eu. Horse-Chestnut,	6 in. seed	25	75	6 00
" " " " " "	1 to 2 ft. trans.	1 00	8 00	
" " " " " "	2½ to 3 ft.	1 50	12 00	
" " " " " "	4 ft.	2 50		
Ailanthus glandulosa,	2 to 4 ft. seed.	25	50	3 00
" " " " " "	4 ft.	1 00	7 00	
" " female,	3 to 5 ft. trans.	2 00		
" " " " " "	12 to 14 ft. trans.	10 00		
Acacia Julibrissin (Albizzia)	8 to 10 in. seed	50	3 00	
Alnus glutinosa, European Alder,	3 to 4 ft. seed.	35	2 00	
" incana,	4 to 6 ft. trans.	1 25	10 00	
" " " " " "	6 to 8 ft. trans.	1 75	15 00	
" " " " " "	8 to 10 ft. trans.	2 00	18 00	
" " " " " "	1½ to 1¾ in. calliper	3 00	25 00	
" serrulata	3 to 4 ft. trans.	1 75	15 00	
Amelanchier (see shrubs, page 13).				
Amygdalus Persica, Double White Peach,	4 to 5 ft.	2 50		
" " " " " Pink "	4 to 5 ft.	2 50		
" " " " " Red "	4 to 5 ft.	2 50		

Andromeda. (See page 13.)

Per 10 Per 100 Per 1000

Aralia. (See shrubs, page 13.)

Betula alba, European White Birch,	18 to 24 in. trans.	\$1 00		
" " " "	2 to 2½ ft. trans.	1 25		
" " " "	5 to 6 ft. trans.	1 75	\$15 00	
" " " "	6 to 7 ft. trans.	2 00	18 00	\$125 00
" " " "	7 to 8 ft. trans.	2 25	20 00	150 00
" " " "	9 to 10 ft. trans.	3 00	25 00	200 00
" " " "	10 to 12 ft. trans.	3 50		
" " Youngii, Young's Weeping,	4 ft. trans.	4 00		
" " purpurea, Purple-leaved,	1½ to 2½ ft. trans.	3 00		
" lenta, Sweet Birch,	18 to 24 in. trans.	1 25	10 00	
" " " "	5 to 6 ft. trans.	3 00	25 00	
" lutea, Yellow Birch,	5 to 6 ft. trans.	2 50		
" " " "	9 to 10 ft. trans.	3 00		
" " " "	12 to 13 ft. trans.	3 50		
" papyracea, Paper Birch,	3 to 4 ft. trans.	2 00	18 00	
" rubra (nigra) Red or Water Birch,	5 to 6 in. seed.	35	1 50	8 00
" " " "	12 to 18 in. seed.	40	1 60	10 00
" " " "	3 ft. trans.	1 50	12 00	
" " " "	6 to 9 ft. trans.	2 50	20 00	
" " " "	" heavy, 10 to 15 ft.	4 00		
" " " "	" 3½ in. diam. 15 to 18 ft. tr.	7 50		

Our Birches are very fine, low-branched and symmetrical shape. The European White Birches are especially good and the prices are low.

Broussonetia papyrifera, Paper Mulberry,	2 to 3 ft. trans.	85		
" Kaempferia, Japanese	5 ft. trans.	1 50		
Carpinus Americanus, Am. Hornbeam,	1 to 2 ft. trans.	1 25	10 00	80 00
" " " "	2 to 3 ft. trans.	1 50	12 00	
" " " "	3 to 4 ft. trans.	2 00	18 00	
" Betulus, Eu. Hornbeam,	2 to 2½ ft. trans.	1 25	10 00	
" " " "	3 to 4 ft. trans.	1 75	15 00	
Carya alba, Shellbark Hickory,	6 in. seed.	35	1 50	10 00
" amara, Bitternut,	10 to 12 in. seed.	35	1 00	8 00
" " " "	4 to 5 ft.	1 00		
" microcarpa,	4 to 5 ft.	1 00		
" olivæformis, Pecan,	8 to 12 in. seed.	35	1 50	12 00
" " " "	4 in. seed.	25	1 00	
" " " "	2 to 2½ ft. seed.	85	5 00	
" porcina, Pignut,	18 to 24 in. seed.	50		
" sulcata, Western Shellbark,	3 to 4 ft.	1 00		
" tomentosa,	6 in. seed.	25		
" " "	18 to 24 in. seed.	35		
Castanea Americana, Am. Chestnut,	4 to 5 ft. trans.	1 75	15 00	125 00
" pumila, Chinquapin,	12 to 15 in. trans.	1 50		
" " " "	3 ft. trans.	2 50		
" vesca, Spanish Chestnut,	6 to 7 ft.	3 00		
Catalpa bignonioides, Eastern Catalpa,	3 ft. seed.	35	75	6 00
" " " "	6 to 7 ft. trans.	1 50		
" aurea, Golden-leaved,	3 ft. trans.	1 50		
" Bungeii, standards,	1 year heads	6 00		
" " nana, Dwarf Catalpa,	12 to 15 in. trans.	1 75	15 00	

The Catalpa Bungeii nana is grafted at the ground instead of on 6 feet stems as is usual with the standard form. This makes a round, bushy form, very attractive and useful for planting where a low, round, formal bush is required.

" Kämpferi, Japanese,	7 to 8 ft. trans.	2 00		
" " " "	10 to 12 ft. trans.	3 00		

		Per 10	Per 100	Per 1000
Catalpa speciosa, Western Catalpa,	8 to 12 in. seed.	\$ 25	\$ 50	\$3 00
" " " "	12 to 24 in. seed.	35	60	3 50
" " " "	3 to 5 ft. trans.	1 25	10 00	90 00
" " " "	5 to 6 ft. trans.	1 50	13 00	
" " " "	10 to 12 ft. trans.	2 00	18 00	150 00
" " " "	12 to 14 ft. trans.	3 00		
" Tea's Hybrid,	8 to 12 in. seed.	25	50	4 00
Celtis occidentalis, Nettle, or Hackberry,	12 to 18 in. seed.	35	1 00	
" " " "	3 to 4 ft. trans.	1 75	15 00	
" " " "	6 to 9 ft. trans.	2 50	20 00	
" pumila, Dwarf Nettle,	2 to 3 ft. seed.	50		
" " " "	5 to 6 ft.	1 00		
" sinensis, Chinese,	2 to 2½ ft. seed	1 00		
Cerasus avium alba plena, double white,	3 to 4 ft. trans.	2 00		
" " " "	4 to 5 ft. trans.	2 50		
" " " "	5 to 6 ft. trans.	3 00		
" ranunculæflora,	3 to 4 ft. trans.	1 80	17 00	
" " " "	4 to 5 ft. trans.	2 00		
☞ This is the best double white flowering cherry.				
" Sieboldi rubra plena, double pink	4 to 5 ft. trans.	2 50		
" " " "	5 to 6 ft. trans.	3 00		
" Sinensis fl. pla., Chinese double white	3 to 4 ft. trans.	2 00	18 00	
" " " "	4 to 5 ft. trans.	2 50		
" " " "	5 to 6 ft. trans.	3 00		
" rosea pendula, weeping flower'g cherry,	6 ft. 1 year head	5 00		
" " " "	2 year head	7 50		
" Pennsylvanicum,	18 to 24 in. seed.	35	2 00	
" pumila, Sand Cherry,	12 to 18 in.	75	5 00	
" Padus, Eu. Bird Cherry,	18 to 24 in. trans.	75	5 00	
" serotina, Am. Bird Cherry,	4 to 5 ft. trans.	1 25	10 00	
" " " "	5 to 6 ft. trans.	1 50	12 00	100 00
" " " "	3 to 4 ft. seed.	50	3 00	
" Virginiana	8 to 12 in. seed.	35	2 00	
" " " "	3 to 4 ft. trans.	1 50		
Cercis Canadensis, Judas or Red Bud,	2 to 3 ft. seed.	50	3 00	20 00
" " " "	1 to 2 ft. trans.	1 00	8 00	60 00
" " " "	2 to 3 ft. trans.	1 50	12 00	100 00
" " " "	3 to 4 ft. trans.	1 75	15 00	125 00
" " " "	4 to 5 ft. trans.	2 50	20 00	150 00
" " " "	4 to 6 ft. hvy. trans.	3 00	25 00	
" Japonica, Japanese Judas,	2 to 2½ ft. trans.	1 25	10 00	80 00
" " " "	2½ to 3½ ft. heavy	2 00		

☞ We believe we have the largest stock of both the American and Japanese Judas in the country. All transplanted plants are bushy; the larger sizes are especially heavy.

Cladastris tinctoria, Yellow Wood,	5 to 6 ft. trans.	4 00		
Cornus florida, White Florida Dogwood,	18 to 24 in. trans.	1 25	10 00	
" " " "	2 to 2½ ft. trans.	1 50	12 00	
" " " "	2½ to 3 ft. trans.	2 00	18 00	
" " " "	3 to 4 ft. trans.	3 00	25 00	
" " " "	4 to 5 ft. trans.	3 50	30 00	
" " " "	5 to 6 ft. trans.	4 00		
" " " "	6 to 7 ft. tr. spec.	15 00		

☞ The specimen Dogwoods are extra fine, heavy plants, they have been several times transplanted and set wide apart in nursery rows so as to allow ample room to develop. The other sizes offered are also very bushy and well-rooted. We have a large stock of all grades.

" florida pendula, Weeping Dogwood,	3 to 3½ ft. trans.	3 50	30 00	
" " rubra, Red-flowering "	2 to 3 ft. trans.	3 50		

		Per 10	Per 100	Per 1000
Crataegus. (See Shrubs page 15.)				
Cytissus Laburnum, Laburnum,	2 to 3 ft. trans.	\$1 00	\$8 00	
" "	4 to 5 ft. trans.	1 25	10 00	
" "	5 to 7 ft. trans.	1 75	15 00	
Dimorpanthus Mandshurica (Aralia.)	1 to 1 ft. trans.	1 25	10 00	
" "	3 to 4 ft. trans.	1 75		
Diospyrus Virginiana, Am. Persimmon,	6 to 8 in. seed.	25	1 00	\$8 00
" "	18 to 24 in. seed.	35	1 50	
" "	3 to 4 ft. trans.	1 50	12 00	100 00
" "	5 to 6 ft. trans.	2 00	15 00	
" "	6 to 7 ft. trans.	2 50		
Fagus ferruginea, American Beech,	2 to 3 ft. trans.	3 50	30 00	
" "	4 to 5 ft. trans.	4 00	35 00	
" "	5 to 6 ft. trans.	5 00		
" "	6 to 7 ft. trans.	7 50		
These American Beech are good, bushy plants.				
" sylvatica, European Beech,	1½ to 2½ ft. trans.	1 00	8 00	70 00
" "	3 to 4 ft. tr. bushy	2 00	18 00	150 00
" "	4 to 5 ft. tr. heavy	3 00	25 00	200 00
" "	6 to 7 ft. tr. heavy	4 00	35 00	
The European Beech are very bushy.				
" heterophylla, Cut-leaved,	1 ft. trans.	1 50		
" pendula, Weeping Beech,	1 ft. trans.	1 50	12 00	
" "	4 to 5 ft. trans.	5 00		
" "	5 to 6 ft. trans.	6 00		
" "	6 to 8 ft. trans.	7 50		
" Rivers' Blood-leaf,	1½ ft. trans.	1 50	12 00	
" "	4 to 5 ft. trans.	5 00		
Fraxinus Americana, Am. White Ash,	12 to 18 in. seed.	25	75	5 00
" "	3 to 4 ft. trans.	1 25	10 00	80 00
" "	5 to 7 ft. trans.	1 50	12 00	100 00
" "	7 to 8 ft. trans.	1 75	15 00	
" "	8 to 10 ft. trans.	2 50	20 00	
" "	12 to 14 ft. trans.	3 00	25 00	
" "	12 ft. specimens	30 00		
The 12 ft. trees offered are fine, well-shaped specimens. They were set out in rows 6 by 8 ft. apart, and were transplanted several times. They are about 2 in. in caliper, branched about 6 ft. from the ground.				
" Excelsior, English Ash,	8 to 10 ft. trans.	2 50	20 00	
" "	10 to 12 ft. trans.	3 00		
" "	12 to 15 ft. trans.	3 50		
" aurea, Golden Bark,	3 to 4 ft. trans.	2 50		
" "	6 to 8 ft. trans.	3 50		
" aucubæfolia, Spotted-leaved,	3 to 5 ft. trans.	2 50		
" "	6 ft. trans.	3 50		
" "	10 to 12 ft. trans.	4 00		
" heterophylla, Cut-l'v'd Ash,	7 to 8 ft.	3 50		
" Ornus, Flowering Ash,	8 to 12 in. seed	35	2 00	
" "	6 ft. trans.	2 50	20 00	
" "	7 to 8 ft. trans.	3 00	25 00	
" "	9 ft. trans.	3 50		
The Flowering Ash is a very attractive small-sized tree.				
" platycarpa,	2 to 2½ ft. seed	35	1 00	8 00
" pubescens,	8 to 12 in. seed	35	1 00	
" quadrangulata, Blue Ash,	6 in. seed	35	1 00	
" "	4 to 5 ft. trans.	1 75	15 00	
" "	5 to 6 ft. trans.	2 00	18 00	
" "	7 to 8 ft. trans.	3 00	25 00	
" "	9 ft. trans.	3 50		

		Per 10	Per 100	Per 1000
Fraxinus viridis, Green Ash,	5 to 6 in. seed.	\$ 35	\$ 75	\$6 00
" " " "	4 to 5 ft. seed.	75	5 00	
" " " "	4 ft. trans.	1 25	10 00	80 00
" " " "	8 to 10 ft. trans.	2 50	20 00	
Cleditschia triacanthos, Honey Locust,	5 to 6 ft. trans.	1 50		
Cymnocladus Canadensis, Ky. Coffee,	6 to 12 in. seed.	35	1 00	6 00
" " " "	18 to 24 in. seed.	50	1 50	8 00
" " " "	4 to 5 ft. trans.	2 00	15 00	125 00
" " " "	5 to 7 ft. trans.	2 50	20 00	
" " " "	8 to 10 ft. trans.	3 50		

One of the best ornamental trees for Park or Cemetery planting.

Juglans cineria, Butternut,	2 to 3 ft. seed.	35		
" " " "	4 to 5 ft. trans.	1 75	15 00	
" nigra, Black Walnut,	1 to 2 ft. seed.	35	2 00	
" " " "	3 to 4 ft. seed.	50	3 00	
Koelreuteria paniculata, Varnish Tree,	2 to 3 ft. seed.	35	2 50	12 00
" " " "	6 ft. trans.	5 00		
Larix Europæa, European Larch,	2 to 2½ ft. trans.	1 25	10 00	
" " " "	10 to 12 ft. trans.	3 50		
" Leptolepis,	8 to 10 in. seed.	75		
Laurus Benzoin, Spice Bush,	1½ to 2½ ft. trans.	1 25	10 00	
" " " "	1 ft. trans.	85	8 00	75 00
" " " "	4 to 6 ft. specimen	10 00		

The 4 to 6 ft. plants are large, bushy specimens, several times transplanted and set sufficiently wide in the rows to allow each plant to develop into a specimen. These are extra fine large, bushy shrubs for immediate effect.

Laurus Sassafras, Sassafras,	2½ to 3 ft. trans.	2 50		
" " " "	3 to 4 ft. trans.	3 50		
Liquidambar styraciflua, Sweet Gum,	6 to 10 in. seed.	35	2 00	12 00
" " " "	3 to 4 ft. trans.	2 00	18 00	
" " " "	4 to 5 ft. trans.	2 50	20 00	
" " " "	5 to 6 ft. trans.	3 50	30 00	

It is not generally known that Liquidambar when grown from seeds collected in the South is not hardy here in the North. Our stock is produced from large trees growing on our grounds and is perfectly hardy.

Liriodendron tulipifera, Tulip Tree,	3 to 4 ft. trans.	2 00	18 00	
" " " "	4 to 6 ft. trans.	2 50	20 00	
Maclura aurantiaca, Osage Orange,	18 to 24 in. trans. 2 yr.	35	75	4 00
Magnolia glauca, Swamp White,	18 to 24 in. trans.	3 50	30 00	
" Lennei, with ball,	5 to 6 ft.	12 50		
" macrophylla,	2 to 3 ft. trans.	2 50		
" tripetela, Umbrella Tree,	8 to 12 in. seed.	35	2 00	
" " " "	6 to 8 ft. trans.	3 50		
" Kobus,	18 to 24 in. seed.	75	5 00	
" " " "	1 to 2 ft. trans.	2 50		
" stellata (Halleana), with ball,	2 ft. trans.	12 50		
" " " "	2½ to 3 ft. trans.	17 50		
" Soulangeana, Chinese Pink,	2 to 3 ft. trans.	4 00		
" " " "	3 to 4 ft. trans.	5 00		
Morus alba, White Mulberry,	12 to 18 in. seed.	35	1 00	6 00
" " " "	2½ to 3 ft. seed.	50	2 00	10 00
" " " "	5 to 6 ft. trans.	1 50	12 00	
" " " "	6 to 7 ft. trans.	1 75	15 00	
" Tartarica, Russian Mulberry,	3 to 3½ ft. seed.	50	2 00	12 00
" " " "	3 to 4 ft. trans.	1 25	10 00	80 00
" " " "	5 to 6 ft. trans.	1 50	12 00	100 00
" Hick's Ever-bearing,	6 to 7 ft. trans.	3 50		
Ostrya Virginica, Iron-wood,	3 to 5 ft. trans.	3 50		
Negundo aceroides,—See Acer Negundo, page 3,				

		Per 10	Per 100	Per 1000
Paulownia imperialis, Empress Tree,	4 to 5 ft. trans.	\$2 50	\$20 00	
Phellodendron amurense,	3 to 5 ft. trans.	3 00	25 00	
Photinia villosa,	1 to 2 ft. trans.	75	6 00	\$50 00
" "	2 to 2½ ft. trans.	1 00	9 00	80 00

☞ The Photinia is really a large-sized shrub attaining a maximum height of 15 to 20 feet. It has rich coral berries in the fall and the foliage turns a brilliant yellow, red and crimson. Valuable for general mass planting.

Planeri Kiaki,	3 to 5 ft. trans.	2 50		
Platanus occidentalis, Am. Buttonwood,	6 to 8 ft. trans.	2 50		
" " " "	8 to 10 ft. trans.	3 50		
" " " "	10 to 12 ft. trans.	4 00		
" orientalis, Eu. Sycamore or Plane,	4 to 6 ft. trans.	3 00	25 00	
" " " "	6 to 8 ft. trans.	3 50	30 00	
" " " "	8 to 10 ft. trans.	4 00	35 00	
Populus alba, Silver Poplar,	6 to 8 ft. trans.	2 00	18 00	
" " " "	10 ft. trans.	3 00		
" Bolleana, Pyramidal Silver Poplar,	5 to 6 ft. trans.	2 50	20 00	
" " " "	18 to 24 in. trans.	1 25	10 00	
" " " "	6 to 9 ft. trans.	3 50	30 00	
" fastigiata, Lombardy Poplar,	5 to 6 ft. trans.	2 00	18 00	
" monilifera, Carolina Poplar,	5 to 6 ft. trans.	1 25	10 00	
" " " "	4 to 5 ft. trans.	1 00	8 00	
" " " "	6 to 7 ft. trans.	1 50	12 00	
" " " "	12 to 15 ft. trans.	3 50	30 00	
" Van Geerti, Golden-leaved Poplar,	3 to 3½ ft. trans.	2 50		
" tremuloides pendula, weeping,	6 to 7 ft. trans.	4 00		
Prunus Pissardi, Purple-leaved Plum,	2 to 3 ft. trans.	1 00		
" " " "	4 to 5 ft. trans.	1 50		
Ptelea trifoliata, Hop Tree,	6 to 8 in. seed.	35	1 00	8 00
" " " "	3 to 4 ft. seed.	50	2 00	12 00
" " " "	3 to 4 ft. trans.	1 25	10 00	
" " " "	5 to 6 ft. trans.	1 50	12 00	100 00
" " aurea, Golden Hop,	2 to 3 ft. trans.	1 50	12 00	
" " " "	3 to 4 ft. trans.	2 00	15 00	
Pyrus aucuparia, Mountain Ash,	3 to 4 ft. trans.	1 25	10 00	
" " " "	8 ft. trans.	2 50		
" baccata, Native Apple,	2 to 3 ft. trans.	85	7 00	50 00
" " " "	3 to 4 ft. trans.	1 00	8 00	
" Bechtel's Double Flowering,	1½ to 2 ft. trans.	2 00		
" " " "	2 to 3 ft. trans.	2 50		
" " " "	3 to 4 ft. trans.	3 00		
" coronaria, Sweet Scented Crab,	2 to 3 ft. trans.	1 75		
" " " "	3 to 4 ft. trans.	3 00		
" " " "	4 to 5 ft. trans.	3 50		
" flexilis (Scarlet Fruit)	2 to 4 ft. trans.	2 50		
" Toringo (Yellow Fruit)	2 to 3 ft. trans.	1 50		
" " " "	3 to 4 ft. trans.	2 00		
" " " "	4 to 5 ft. trans.	2 50		
" " " "	5 to 6 ft. trans.	3 00		
" Parkmanni (Halliana),	2 to 3 ft. trans.	3 50		
Quercus alba, White Oak,	3 to 4 ft. trans.	5 00	40 00	
" " " "	4 to 5 ft. trans.	6 50	60 00	
" " " "	4 to 8 in. seed.	35	2 00	12 00
" Bannisteri, Scrub Oak,	5 to 6 ft. trans.	5 00		
" bicolor, Swamp White Oak,	8 to 10 ft. trans.	7 50		
" " " "	heavy, 10 to 15 ft. trans.	12 50		
" cerris, Turkey Oak,	10 to 15 in. seed.	35	2 00	
" " " "	3 to 4 ft. trans.	4 00	30 00	
" " " "	5 to 7 ft. trans.	5 00		
" " " "	9 to 10 ft. trans.	10 00		

		Per 10	Per 100	Per 1000
Quercus coccinea, Scarlet Oak,	6 to 8 in. seed.	\$ 35	\$2 00	\$15 00
" " " "	10 to 18 in. seed.	40	3 00	20 00
" " " "	3 to 4 ft. trans.	3 50	30 00	
" " " "	4 to 5 ft. trans.	5 00	40 00	
" " " "	8 to 10 ft. trans.	10 00		
" " " "	10 to 12 ft. trans.	12 50	100 00	

45 The 10 to 12 feet Scarlet Oaks are fine trees for street or avenue planting.

" imbricaria, Laurel-leaved Oak,	5 to 7 ft. trans.	10 00		
" lyrata, Lyre-leaved Oak,	6 to 7 ft. seed.	3 50		
" macrocarpa, Mossy Cup or Burr Oak,	4 to 5 ft. trans.	5 00	40 00	
" " " "	5 to 8 ft. trans.	6 00	50 00	
" " " "	8 to 9 ft. trans.	10 00		
" palustris, Pin Oak,	8 to 12 in. seed.	35	2 00	10 00
" " " "	1½ to 2½ ft. seed.	40	2 50	15 00
" " " "	2 to 3 ft. seed.	50	3 00	20 00
" " " "	3 to 4 ft. trans.	3 00	25 00	200 00
" " " "	4 to 5 ft. trans.	3 50	30 00	250 00
" " " "	5 to 6 ft. trans.	4 00	35 00	300 00
" " " "	6 to 7 ft. trans.	4 50	40 00	350 00
" " " "	7 to 8 ft. trans.	6 50	50 00	400 00
" " " "	8 to 10 ft. trans.	7 50	60 00	500 00
" " " "	10 to 12 ft. trans.	10 00	90 00	800 00
" " " "	12 to 14 ft. trans.	12 50	100 00	
" " " "	12 to 14 ft. trans.	20 00		

46 We have the largest stock of Pin Oaks in the country. Indeed, we are headquarters for all Oaks. The larger-sized trees are especially adapted for street and avenue planting. See illustration of an avenue of Pin Oaks, page 12.

" palustri-imbricaria,	10 to 12 in. seed.	85	6 00	
" Phellos, Willow Oak,	2½ to 3 ft. trans.	3 00	25 00	
" " " "	3 to 4 ft. trans.	4 00	35 00	
" " " "	4 to 5 ft. trans.	5 00	40 00	300 00
" " " "	5 to 6 ft. trans.	6 00	50 00	
" " " "	6 to 7 ft. trans.	7 50	60 00	
" " " "	8 to 10 ft. trans.	12 50		

47 A fine tree and quite uncommon in the North.

" Pinus, Rock Chestnut Oak,	4 to 8 in. seed.	35	2 00	10 00
" " " "	2½ to 3 ft. trans.	2 50	20 00	
" " " "	4 to 5 ft. trans.	5 00	40 00	350 00
" robur, English Oak,	8 to 10 in. seed.	35	1 50	10 00
" " " "	1 to 2 ft. seed.	50	2 00	12 00
" " " "	2 to 3 ft. trans.	2 00	15 00	
" " " "	4 to 5 ft. trans.	5 00	40 00	
" " " "	8 to 10 ft. trans.	6 50		
" rubra, Red Oak,	6 to 15 in. seed.	35	2 00	15 00
" " " "	4 to 5 ft. trans.	5 00	40 00	
" " " "	5 to 6 ft. trans.	6 00	50 00	
" " " "	6 to 8 ft. trans.	7 50	60 00	500 00
" " " "	10 to 12 ft. trans.	10 00		
" " " "	12 to 14 ft. trans.	17 50		
" tinctoria, Black Oak,	8 in. seed.	25	1 50	8 00
" " " "	10 to 18 in. seed.	35	2 00	10 00
" " " "	1 to 2 ft. seed.	50	2 50	12 00
" " " "	2 to 3 ft. trans.	3 00	25 00	
" " " "	3 to 4 ft. trans.	3 50	30 00	
" " " "	5 to 6 ft. trans.	6 00	50 00	
" " " "	8 to 9 ft. trans.	7 50		
" Texana,	3 to 4 ft. trans.	4 00		
" " " "	5 to 6 ft. trans.	7 50		
" obtusiloba, Post Oak	5 to 6 ft. trans.	6 00		
" " " "	6 to 8 ft. trans.	7 50		

		Per 10	Per 100	Per 1000
Robinia	<i>hispida rosea</i> , Pink Locust ,	2 ft. trans.	\$1 50	\$12 00
"	<i>pseud-acacia</i> , Yellow Locust ,	2 yr. seed. 3 to 5 ft.	35	1 00
Salisburia	<i>adiantifolia</i> , Cingko, Maiden Hair ,	6 to 10 in. seed.	35	1 50
"	"	4 to 5 ft. trans.	2 50	20 00
"	"	5 to 6 ft. trans.	3 00	25 00
"	"	6 to 7 ft. trans.	4 00	30 00
"	"	8 to 9 ft. trans.	5 00	40 00
<p>It is not generally known that the leaves of the <i>Salisburia</i> are never attacked by worms or other insects. Also, that it will grow in the heart of cities where very few trees will thrive.</p>				
Salix	<i>aurea pendula</i> , Weeping Golden-barked ,	5 to 7 ft. trans.	1 50	12 00
"	"	6 to 8 ft. trans.	1 75	15 00
"	"	7 to 9 ft. trans.	2 00	18 00
"	<i>Babylonica</i> , Weeping Willow ,	5 to 6 ft. trans.	1 75	15 00
"	<i>caprea</i> , Pussy Willow ,	6 to 7 ft. trans.	1 50	12 00
"	<i>Japonica</i> ,	4 ft. trans.	1 50	
"	<i>pentandra</i> , Laurel-leaved	1 to 2 ft. 1 year	35	1 25
"	"	3 to 4 ft. trans.	85	7 00
"	"	4 to 5 ft. trans.	1 25	10 00
"	"	5 to 6 ft. trans.	1 75	15 00
"	<i>regalis (alba)</i> , White-leaved	5 ft. trans.	1 75	
"	"	6 to 8 ft. trans.	2 00	18 00
"	<i>Britzensis</i> , Red-barked	5 to 6 ft. trans.	1 75	15 00
"	"	6 to 8 ft. trans.	2 00	18 00
Sophora	<i>Japonica</i> ,	5 to 6 in. seed.	35	2 00
"	"	12 to 15 in. trans.	1 50	12 00
Sorbus.	<i>Mt. Ash</i> ,—See <i>Pyrus</i> , page 9.			
Styrax	<i>Japonica</i> ,	bushy,	3 to 4 ft. trans.	2 50
Taxodium	<i>districhium</i> , Deciduous Cypress ,	5 to 6 in. seed.	35	2 00
"	"	8 to 12 in. seed.	40	2 50
"	"	3 ft. trans.	2 50	
Tilia	<i>Americana</i> ,	American Linden ,	3 to 4 ft. trans.	1 50
"	"	"	5 to 6 ft. trans.	2 00
"	<i>Europæa</i> , European Linden ,	6 to 8 ft. trans.	2 50	
"	<i>plataphylla</i> , Eu. Broad-leaved Linden ,	5 to 7 ft. trans.	2 50	20 00
"	"	8 ft. trans.	3 50	30 00
Ulmus	<i>Americana</i> ,	American Elm ,	1 to 2 ft. seed.	35
"	"	"	1½ to 2½ ft. seed.	40
"	"	"	2 to 3 ft. seed.	50
"	"	"	5 to 6 ft. trans.	1 50
"	"	"	7 to 8 ft. trans.	1 75
"	"	"	8 to 10 ft. trans.	2 00
"	"	"	10 to 12 ft. trans.	3 00
"	<i>campestris</i> , English ,	2 to 3 ft. trans.	1 50	12 00
"	"	5 to 6 ft. trans.	2 50	
"	"	6 to 7 ft. trans.	3 00	
"	<i>crassifolia</i> ,	18 to 24 in. trans.	1 50	12 00
"	<i>Huntingdon</i> ,	8 ft. trans.	3 50	
"	<i>latifolia</i> , Scotch	2 to 3 ft. trans.	1 25	
"	<i>purpurea</i> , Purple-leaved	6 to 7 ft. trans.	3 50	
"	<i>racemosa</i> , Cork	3 to 4 ft. trans.	2 00	15 00
Zanthoxylon	<i>piperitum</i> , Prickly Ash ,	5 to 6 in. seed.	50	3 00
"	"	2 to 3 ft. trans.	2 50	20 00

The Nursery Book

A Complete Guide to the Propagation of Trees, Shrubs, Evergreens, etc.

BY PROF. H. L. BAILEY

A standard work of reference simply essential to every nurseryman. Reprinted for the sixth time. It is thoroughly practical and describes fully and clearly the processes of budding, grafting, seed-sowing, etc., as well as many other important items of nursery work, with convenient indexes, etc.

The Nursery List (an alphabetical catalogue of about 1,500 plants, with directions for their multiplication) is especially valuable.

Sixth Edition, \$1.00. 365 pages. 162 Illustrations



AVENUE OF PIN OAKS IN FAIRMOUNT PARK, PHILADELPHIA, PLANTED IN 1876.
THIS IS CONSIDERED ONE OF THE FINEST AVENUES IN THE PARK.

DECIDUOUS SHRUBS.

“Trans.” indicates that the plant has been once or more transplanted.
 “Seed.” that it is still in seedling beds, not transplanted.

		Per 10	Per 100	Per 1000
Alnus serrulata,	extra heavy, 3 to 4 ft. trans.	\$1 75	\$15 00	
Amelanchier alnifolia nana, Dwf. Juneberry,	12 to 18 in. trans.	1 25	10 00	
“ “ “ “ “	2 ft. trans.	1 50	12 00	
“ botryapium, Juneberry,	12 to 18 in. trans.	1 25	10 00	
“ rotundifolia, “	18 in. trans. bushy	1 50	12 00	
“ vulgaris, “	2 to 2½ ft. trans.	1 25	10 00	
“ “ “ “	3 to 4 ft. trans.	1 75	15 00	
Amorpha canescens, Indigo Shrub,	5 to 6 in. seed.	25	75	\$6 00
“ “ “ “	12 to 18 in. trans.	1 00	8 00	
“ “ “ “	2 to 2½ ft. trans.	1 50	12 00	

☞ One of the best small-sized Shrubs for late summer flowering.

“ fruticosa,	18 to 24 in. seed.	35	1 50	8 00
Amygdalus nana, double white Almond,	2 to 3 ft. trans.	1 50		
“ “ double pink “	2 to 3 ft. trans.	1 50		
Andromeda calyculata	6 to 10 in. trans.	1 75	15 00	
“ Catesbaei,	1 ft. trans.	1 75	15 00	
“ Mariana,	8 to 15 in. trans.	1 50	12 00	
“ nitida,	10 to 18 in. trans.	1 75	15 00	
“ polifolia,	12 to 18 in. trans.	1 75	15 00	
Aralia Japonica,	18 to 24 in. trans.	1 75	15 00	
“ “	2 to 3 ft. trans.	2 00	18 00	
“ pentaphylla,	18 to 24 in. trans.	1 25	10 00	
“ “	2 to 3 ft. trans.	1 50	12 00	
“ spinosa, Hercules Club,	1 to 2 ft. trans.	1 00	8 00	
“ “ “ “	3 to 4 ft. trans.	1 50	12 00	
“ “ “ “	4 to 5 ft. trans.	1 75		

☞ The Aralias are especially useful for massing and the character of the foliage creates a tropical effect. The large heads of yellowish-white flowers in August are quite conspicuous.

Aronia. See *Pyrus arbutifolia*, page 18.

Azalea amena, **Evergreen Azalea,** 10 in. bushy from pots 4 00 35 00

☞ We call especial attention to our large stock of *Azalea amena*, one of the finest small-sized evergreen shrubs in cultivation. It does not transplant very freely when dug from the open ground, hence we grow ours all in pots, and when shipping them they are packed so that the ball is not broken. This is a distinct advantage to the planter.

“ arborescens,	12 to 15 in. trans. heavy	2 50		
“ calendulacea (lutea),	8 to 12 in. trans.	1 75		
“ Mollis, red and yellow mixed, clumps,	1 ft. trans.	3 00	25 00	
“ “ “ “ “	15 to 18 in. trans.	4 00	35 00	
“ “ “ “ “	2 to 2½ ft. trans.	12 50		
“ Pontica (Chent),	15 to 18 in. trans.	4 00	35 00	
“ “ “ “	18 to 24 in. trans.	12 50		
“ Vaseyii (Rhododendron),	8 to 12 in. trans.	2 00		

☞ Our Azaleas are all bushy clumps, transplanted last spring, and are well set with flower buds. The heights given do not give an adequate idea of the bushiness of the plants.

		Per 10	Per 100	Per 1000
Baccharis halimifolia,	1 ft. seed,	\$ 35	\$ 1 00	\$ 7 00
" "	2 to 2½ ft. trans.	1 00	8 00	
" "	2½ to 3 ft. trans.	1 50	12 00	
" "	3 to 4 ft. trans.	1 75		
Berberis purpurea, Purple Barberry,	18 to 24 in. trans.	90		
" Thunbergii, Japanese Barberry,	15 to 18 in. trans.	1 50	12 00	
" vulgaris, Green Barberry,	6 to 10 in. seed.	25	75	6 00
" " " "	10 to 15 in. seed.	35	1 00	7 00
" " " "	2 to 3 ft. trans.	1 00		
Buddleia curviflora,	2 ft. trans.	1 25	10 00	
" intermedia,	18 to 24 in. trans.	1 25	10 00	
Callicarpa Japonica,	18 to 24 in. trans.	1 25		
" purpurea,	2½ to 3 ft. trans.	1 00		
Calycanthus floridus, Sweet Shrub,	18 to 24 in. seed.	35	1 25	
" " " "	6 to 12 in. seed.	25	1 00	
" " " "	18 to 24 in. trans.	90	8 00	
" " " "	2 to 3 ft. trans.	1 25	10 00	
Caragana arborescens, Siberian Pea,	8 to 12 in. seed.	35	1 00	
" " " "	2 to 3 ft. trans.	1 50	12 00	100 00
" " " "	3 to 4 ft. trans.	1 75	15 00	

☞ A fine, hardy shrub for planting in Canada and the Northwest.

Carpinus Americanus, American Hornbeam.	1 to 2 ft. trans.	1 25	10 00	80 00
" " " "	2 to 3 ft. trans.	1 50	12 00	
" " " "	3 to 4 ft. trans.	2 00	18 00	
" Betulus, European Hornbeam,	2 to 2½ ft. trans.	1 25	10 00	
" " " "	3 to 4 ft. trans.	1 75	15 00	
Caryopteris Mastacanthos,	12 to 18 in. trans.	1 25	10 00	
Cassia Marylandica,	1 yr. seed.	25	75	5 00
" " " "	3 yr. seed.	75	5 00	
Ceanothus Americanus, New Jersey Tea,	12 to 15 in. trans.	1 00	8 00	
" " " "	18 to 24 in. trans.	1 25	10 00	
" " " "	2 to 3 ft. trans.	1 50	12 00	
Cephalanthus occidentalis, Button-bush,	5 to 6 in. seed.	35	1 00	7 00
" " " "	2 to 3 ft. trans.	1 00	8 00	
" " " "	3 to 4 ft. trans.	1 25	10 00	

☞ Especially good for planting in swamps or low ground. It will thrive even when water stands around the roots.

Cercis Canadensis, Red Bud or Judas,	2 to 3 ft. seed.	50	3 00	20 00
" " " "	1 to 2 ft. trans.	1 00	8 00	50 00
" " " "	2 to 3 ft. trans.	1 50	12 00	100 00
" " " "	3 to 4 ft. trans.	1 75	15 00	125 00
" " " "	4 to 5 ft. trans.	2 50	20 00	150 00
" " " "	4 to 6 ft., hvy., trans.	3 00	25 00	
" Japonica, Japanese	2 to 2½ ft. trans.	1 25	10 00	80 00
Chionanthus Virginica, White Fringe,	6 to 8 in. seed.	25	1 25	10 00
" " " "	12 to 18 in. trans.	85	7 00	60 00
" " " "	18 to 24 in. trans.	1 00	8 00	
" " " "	2 to 3 ft. trans.	1 50	12 00	
" " " "	3 to 4 ft. trans.	1 75	15 00	
" " " "	5 to 6 ft. trans. specimens	10 00		

☞ These are all bushy plants.

Clethra alnifolia, Sweet Pepper Bush,	1½ to 2 ft. trans.	1 00	8 00	
" " " "	2 to 2½ ft. trans.	1 25	10 00	
Colutea arborescens,	4 to 5 ft. trans.	1 00		
Corchorus Japonica (Kerria), Single,	2 to 3 ft. trans.	1 00	9 00	80 00
" " variegata	15 to 18 in. trans.	1 00	9 00	
Cornus alba, Red twigged Dogwood,	1 to 2 ft. trans.	8 00	7 00	60 00
" " " "	2½ to 3 ft. trans.	1 00	8 00	
" " " "	3 ft. trans.	1 25	10 00	
" " " "	3 to 3¾ ft. trans.	1 50	12 00	

		Per 10	Per 100	Per 1000
Cornus alternifolia, Blue Dogwood,	2 to 3 ft. trans.	\$1 00	\$8 00	
" " "	3 to 4 ft. trans.	1 25		
" " "	8 to 10 in. seed.	35	1 00	\$7 00
" circinata,	2 to 3 ft. trans.	1 25	11 00	
" florida, White-flowered Dogwood,	18 to 24 in. trans.	1 25	10 00	
" " "	2 to 2½ ft. trans.	1 50	12 00	
" " "	2½ to 3 ft. trans.	2 00	18 00	
" " "	3 to 4 ft. trans.	3 00	25 00	
" " "	4 to 5 ft. trans.	3 50	30 00	
" " "	5 to 6 ft. trans.	4 00		
" " "	6 to 7 ft. trans. spec.	15 00		
" pendula Weeping Dogwood,	3 to 3½ ft. trans.	3 50	30 00	
" rubra, Red-flowered Dogwood,	2 to 3 ft. trans.	3 50		
" glabrata,	2½ to 3 ft. trans.	1 25		
" Mas. Cornelian Cherry,	18 to 24 in. seed.	35	1 00	7 00
" " "	18 to 24 in. trans.	90	8 00	70 00
" " "	2½ to 3 ft. trans.	1 00	9 00	
" " "	3 to 4 ft. trans.	1 25	10 00	
" " "	4 to 5 ft. trans.	1 50		
A good large-growing shrub for mass planting.				
" paniculata,	12 to 18 in. trans.	1 25		
" sanguinea, English Dogwood,	8 to 12 in. trans.	60	5 00	
" " "	2 to 2½ ft. trans.	1 00	8 00	
" " "	3 to 4 ft. trans.	1 50	12 00	
" sericea, Silky	3 to 4 ft. trans.	1 00	8 00	
" " "	4 to 5 ft. trans.	1 25	10 00	
" " "	5 to 6 ft. trans.	1 50	12 00	
" stolonifera lutea, Yellow-barked,	12 to 18 in. trans.	75	6 00	
Cotoneaster Simondsii,	15 to 18 in. trans.	85	7 00	
" Wheelerii,	8 to 12 in. trans.	75	6 00	
Corylus Americana, American Hazel,	1 to 2½ ft. seed.	35		
" " "	2½ to 3 ft. trans.	1 25		
" avellana, European Hazel, heavy,	3 to 4 ft. trans.	1 25	10 00	
" " heavy,	5 to 6 ft. trans.	1 50	12 00	
" purpurea, Purple-leaved Filbert,	12 to 18 in. trans.	1 50		
" " "	18 in. bushy, trans.	2 00	18 00	
Crataegus coccinea, White Thorn,	8 to 12 in. seed.	35	2 00	15 00
" " "	18 to 24 in. seed.	40	2 50	20 00
" " "	2 to 2½ ft. seed.	50	3 00	25 00
" " "	2 to 3 ft. trans.	1 25	10 00	
" " "	3 to 4 ft. trans.	1 50	12 00	
" " "	4 to 5 ft. trans.	2 50	20 00	150 00
" " "	5 to 6 ft. trans.	3 50	30 00	
" cordata, Washington Thorn,	3 to 4 ft. trans.	3 00	25 00	
" " "	4 to 5 ft. trans.	3 50	30 00	
" " "	5 to 6 ft. trans.	4 00		
" " "	6 to 7 ft. trans.	5 00		
" crus-galli, Cockspur Thorn,	8 to 10 in. seed.	35	2 00	15 00
" " "	18 to 24 in. seed.	40	2 50	20 00
" " "	8 to 10 ft. trans.	85	7 00	60 00
" " "	2 to 3 ft. trans.	1 25	10 00	85 00
" " "	3 to 4 ft. trans.	1 50	12 00	100 00
" " "	4 to 5 ft. trans.	2 50	20 00	150 00
" " "	5 to 6 ft. trans.	3 50	30 00	
" " "	7 ft. trans.	4 00		
" oxycantha, English Hawthorn,	1 to 2 ft. trans.	75	6 00	50 00
" " "	2½ to 3 ft. trans.	1 00	8 00	70 00
" " "	3 to 4 ft. trans.	1 25	10 00	90 00
" " "	5 ft. trans.	1 50	12 00	

We have the largest stock of native Crataegus in the country. They are all good, bushy plants—excepting the seedlings—and, having been recently transplanted, they are well rooted.

		Per 10	Per 100	Per 1000
Cytissus	Laburnum, Laburnum,	2 to 3 ft. trans.	\$1 00	\$8 00
"	"	4 to 5 ft. trans.	1 25	10 00
"	"	5 to 7 ft. trans.	1 75	15 00
Daphne	Mezereum, White,	15 to 18 in. trans.	1 25	10 00
Deutzia	candidissima, White,	2 ft. trans.	85	7 50
"	"	3 to 4 ft. trans., heavy	1 00	9 00
"	"	4 to 5 ft. trans.	1 25	10 00
"	"	plena, Double White,	3 ft., heavy, trans.	1 00
"	crenata, Single White,	heavy, 3 to 4 ft.	1 25	10 00
"	"	Double White,	3 to 4 ft. trans.	1 00
"	"	"	4 to 5 ft. trans.	1 25
"	"	Double Pink,	12 to 18 in. trans.	85
"	"	"	2 to 3 ft. trans.	1 00
"	"	"	3 ft. trans., heavy	1 25
"	"	heavy, 4 to 5 ft. trans.	1 50	
"	Fortunii, White,	2 to 2½ ft. trans.	85	7 50
"	"	2 to 3 ft. trans.	1 00	8 00
"	"	"	3 ft. trans., bushy	1 25
"	gracilis, White,	bushy, 10 to 12 in. trans.	85	7 00
"	"	"	12 to 15 in. trans.	90
"	Lemoinei, White,	12 to 18 in. trans.	85	7 00
"	"	2 ft. trans.	1 50	10 00
"	"	compacta,	12 to 18 in. trans.	85
"	Pride of Rochester, Double Pink,	18 in. trans.	85	7 50
"	"	"	3 to 3½ ft. trans.	1 00
"	scabra, Single White,	2 to 3 in. trans.	85	7 50
"	"	heavy, 3 to 4 ft. trans.	1 25	10 00
"	Sieboldii,	3 to 4 ft. trans.	1 25	
"	Wateri, Single White,	3 to 4 ft. trans.	1 25	
"	"	4 to 5 ft. bushy	1 50	12 00
"	Wellsii,	3 to 4 ft. bushy	1 25	
Diervilla	trifida,	18 to 24 in. trans.	1 25	10 00
Dimorphanthus	Mandshurica (Aralia),	1 to 2 ft. trans.	1 75	15 00
"	"	3 to 4 ft. trans.	2 00	
Elæagnus	angustifolia (true),	2 to 2½ ft. trans.	1 25	10 00
"	longipes,	10 to 15 in. seed.	50	3 00
"	"	12 to 18 in. trans.	1 50	12 00
"	parvifolius, Silver Thorn,	10 to 12 in. seed.	35	2 00
"	"	heavy, 2 to 3 ft. trans.	1 25	10 00
"	"	extra heavy, 3 ft. trans.	1 50	12 00
"	umbellatus, female,	2 to 2½ ft. trans.	1 25	10 00
"	"	3 to 4 ft. trans.	1 50	
Euonymus	Americanus, Am. Burning Bush,	6 to 8 in. trans.	50	4 00
"	"	2 to 3 ft. trans.	1 25	10 00
"	alatus,	3 in. seed.	40	3 00
"	Europeus, Eu. Burning Bush	6 to 8 in. seed.	25	2 00
"	"	12 to 18 in. seed.	35	2 50
"	"	2 to 2½ ft. seed.	50	3 00
"	"	18 to 24 in. trans.	1 00	8 00
"	Sieboldianus, Evergreen,	10 to 15 in. trans.	1 50	12 00
Exochordia	grandiflora, Pearl Bush,	1½ to 2 ft. trans.	1 25	
"	"	2 to 3 ft. trans.	1 50	
Forsythea	Fortunii, Golden Bell,	2 to 2½ ft. trans.	85	7 00
"	"	3 to 4 ft. trans.	90	8 00
"	"	4 to 5 ft. trans.	1 50	12 00
"	suspensa,	2½ to 3 ft. trans.	90	8 00
"	viridissima,	12 to 18 in. trans.	75	6 00
"	"	2½ ft. trans.	85	7 00
"	"	3 to 4 ft. trans.	1 25	10 00
"	variegata,	3 ft. trans.	1 25	

		Per 10	Per 100	Per 1000
Halesia diptera,	2 to 3 ft.	\$1 00	\$8 00	
“ “	3 to 10 in. seed.	50	3 00	
“ tetraptera, Silver Bell,	heavy, 3 to 4 ft. trans.	1 25	10 00	
“ “ “ “	heavy, 4 to 5 ft. trans.	1 50	12 00	\$100 00
Hamamelis Virginica, Wych-hazel,	6 in. seed.	35	2 00	12 00
“ “ “ “	1 to 2 ft. trans.	1 25	11 00	100 00
Hibiscus, Double White, Althæa,	18 in. trans.	75	6 00	
“ “ “ “	2 to 3 ft. trans.	85	7 00	
“ “ Red, “	18 in. trans.	75	6 00	
“ “ “ “	2 ft. trans.	85		
“ “ Lilac,	18 in. trans.	75	6 00	
“ totus albus, Single White,	12 to 18 in. trans.	85		
“ Single Pink,	18 to 24 in. trans.	75		
“ “ “ “	12 to 18 in. trans.	50		
“ “ Lilac, “	18 to 24 in. trans.	75	6 00	
“ Red, “	18 in. trans.	75	6 00	
“ variegata,	12 to 18 in. trans.	85	7 00	
Hippophæa rhamnoides, Sea Buckthorn,	1 ft. trans.	75	6 00	
“ “ “ “	18 to 24 in. trans.	1 00	8 00	
Hydrangea arborescens,	12 to 18 in. seed.	60	5 00	
“ “	2 ft. trans.	85		
“ “	3 ft.	1 00		
“ Hortensia,	8 to 10 in. trans.	3 50		
“ Japonica,	6 to 8 in. bushy, trans.	3 50		
“ Otaksa,	8 to 12 in. bushy	3 50		
“ paniculata, single,	18 to 24 in. trans.	90	8 00	
“ “	2½ to 3 ft. trans.	1 50	12 00	
“ paniculata grandiflora,	1 ft. trans.	65	6 00	50 00
“ “ “	1½ to 2 ft. trans.	85	7 00	
“ “ “	2 to 2½ ft. trans.	90	8 00	
“ “ “	3 to 4 ft. hvy. trans.	1 50	15 00	
“ quercifolia,	1 ft. bushy, trans.	3 50		
“ radiata,	2 to 3 ft. trans.	1 25	10 00	
Hypericum aureum, St. John's Wort,	12 to 18 in. trans.	90	8 00	
“ “	18 to 24 in. trans.	1 00	9 00	
“ densiflorum,	1 to 2 ft. trans.	1 00	8 00	
“ “	18 to 24 in. trans.	1 25	10 00	
“ Moserianum,	15 in. trans.	1 25	10 00	
“ patulum,	18 to 24 in. trans.	1 50		
“ prolificum,	2½ to 3 ft. trans.	1 50	12 00	
Ilex decidua,	6 to 12 in. trans.	1 00	8 00	
“ monticola,	12 to 18 in. trans.	1 50	12 00	
Kerria ,—See Corchorus, page 15.				
Laurus Benzoin,—See Lindera, page 18.				
“ Sassafrass,—See Sassafrass, page 8.				
Leiophyllum buxifolium,	12 to 15 in. trans.	1 75	15 00	
Leucothœ Catesbæi,	1 ft. trans.	1 75	15 00	

LIGUSTRUM OVALIFOLIUM (California Privet).

As usual, we have a very large stock of this valuable hedge plant. Our 1 to 2 feet 1 year plants have one, two and three stems per plant; the 2 to 2½ feet run 3 to 5 stems per plant; the sizes above these are all very bushy, and the entire stock is well rooted. Our sales of Privet increase each year. Sales last year aggregated 200,000 plants. We are recognized as headquarters for this plant. See prices, page 18.

Ligustrum Ibota (True)	18 to 24 in. trans.	75	6 00
“ “ “	2 to 2½ ft. trans.	1 00	8 00
“ “ “	3 to 4 ft. trans.	1 25	10 00
“ “ “	4 ft. trans.	1 50	

		Per 10	Per 100	Per 1000
Ligustrum ovalifolium, California Privet,	1 to 2 ft. 1 year	\$ 35	\$2 00	\$15 00
" " " "	2 year, 2 to 2½ ft. trans.	50	3 00	20 00
" " " "	2½ ft. heavy, trans.	65	4 00	30 00
" " " "	2½ to 3 ft. trans.	75	5 00	40 00
" " " "	3 ft. trans., heavy	85	6 00	50 00
" " " "	heavy, 3 to 3½ ft. trans.	90	7 00	60 00
" Regelianum,	12 to 18 in. trans.	75	6 00	
" vulgare, Common Privet,	1 to 2 ft.	35	2 00	15 00
Lindera Benzoin, Spice Bush,	1 ft. trans.	85	8 00	75 00
" " " "	1½ to 2½ ft. trans.	1 25	10 00	
" " " "	4 to 6 ft. spec.	10 00		
Lonicera bella candida, Bush Honeysuckle	4 ft. trans.	1 50		
" fragrantissima, "	18 to 24 in. trans.	75	6 00	
" " " "	2 to 2½ ft. trans.	1 00	8 00	70 00
" Morrowii, "	2 to 3 ft. trans.	1 25	10 00	
" " " "	3 to 4 ft. trans.	1 50	12 00	
" Ruprechtiana, "	heavy, 3 to 4 ft. trans.	1 50		
" tartarica red-berried, "	18 in. trans.	85	7 00	
" " white-berried, "	2 ft. trans.	85	7 00	
" " " "	3 to 3½ ft. trans.	1 00	8 00	
" " grandiflora, pink flowered	18 to 24 in. trans.	85	7 00	60 00
" " " "	2 to 2½ ft. trans.	1 00	8 00	70 00
" " " "	12 to 18 in. seed.	1 00	8 00	
Paliurus aculeatus,	12 to 15 in. trans.	1 00		
Philadelphus aureus, Colden-leaved,	18 in. trans.	85	7 00	
" flora plena, double white,	18 to 24 in. trans.	85	7 00	60 00
" coronarius, Mock Orange,	2 to 3 ft. trans.	1 00	8 00	70 00
" grandiflorus, Large flowered,	3 to 4 ft. trans.	1 25	10 00	
" " " "	12 to 15 in. trans.	75	6 00	
" " erecta	18 to 24 in. trans.	75	6 00	
" nanus, Dwarf Mock Orange,	18 in. trans.	85	7 00	
" Zyherii,	18 to 24 in. trans.	85	7 00	
Photinia villosa	1 to 2 ft. trans.	75	6 00	50 00
" " " "	2 to 2½ ft. trans.	1 00	9 00	80 00
Potentilla fruticosa, Shrubby Cinquefoil,	1½ to 2½ ft. trans.	1 00		
Prinos glaber, Ink-berry,	8 to 15 in. trans.	2 50		
Prunus Americana, Beach Plum,	18 to 24 in. seed.	85	7 00	
" " " "	4 to 5 ft. trans.	1 25	10 00	
" Pissardi, Purple-leaved Plum,	2 to 3 ft. trans.	1 00		
" " " "	4 to 5 ft. trans.	1 50		
" triloba, Double Flowering Plum,	3 to 3½ ft. trans.	1 25		
" pumila,	2 to 3 ft. trans.	1 25		
Ptelea trifoliata, Hop Tree,	3 to 4 ft. seed.	50	2 00	12 00
" " " "	6 to 8 in. seed.	35	1 00	8 00
" " " "	3 to 4 ft. trans.	1 25	10 00	
" " " "	5 to 6 ft. trans.	1 50	12 00	100 00
" " aurea, Golden Hop,	2 to 3 ft. trans.	1 50	12 00	
" " " "	3 to 4 ft. trans.	2 00	15 00	
Pyrus arbutifolia (Aronia) Choke-berry,	2 to 2½ ft. heavy bushy,	1 25	10 00	
" " " "	3 to 4 ft. bushy,	1 50	12 00	
☞ This is very fine, bushy stock.				
" Japonica, red, Japanese Quince,	12 to 18 in. trans.	75	6 00	50 00
Rhamnus catharticus, Common Buckthorn,	18 to 24 in. seed.	25	1 00	8 00
" " " "	1 to 2 ft. trans.	50	4 00	30 00
" " " "	2½ to 3 ft.	75	6 00	
" " " "	4 to 5 ft. trans.	85	7 00	
" " " "	5 to 6 ft. trans.	1 00	8 00	
" crenulata,	2 to 3 ft.	90	8 00	
" frangula,	4 to 5 ft. trans.	90	8 00	
Rhodora canadensis,	12 to 15 in. trans.	5 00		

		Per 10	Per 100	Per 1000
Rhodotypus kerrioides,	6 to 10 in. seed.	\$ 35	\$1 00	\$ 8 00
" "	12 to 18 in. seed.	40	2 00	10 00
" "	18 to 24 in. seed.	50	3 00	15 00
" "	2½ to 3 ft. trans.	1 00	8 00	70 00
" "	heavy, 3 to 4 ft. trans.	1 25	10 00	
Rhus aromatica, Sweet Sumach,	1 to 2 ft. trans.	1 25	10 00	90 00
" " " " "	2 to 3 ft. trans.	1 50	12 00	
" " " " "	3 to 3½ ft. trans.	1 75	15 00	
" copallina, Shining Sumach,	12 to 18 in. trans.	1 25	10 00	
" " " " "	2 to 2½ ft. trans.	1 50	12 00	
" " " " "	2½ to 3 ft. trans.	1 75	15 00	
Note our large stock of Rhus copallina. They are fine plants.				
" cotinus, Mist or Smoke Tree,	1 to 2 ft. trans.	65	5 00	
" " " " "	3 to 4 ft. trans.	1 00	8 00	
" " " " "	4 to 5 ft. trans.	1 25	10 00	
" " " " "	5 to 7 ft. trans.	1 50	12 00	
" glabra, Smooth Sumach,	1 to 2 ft. trans.	85	7 00	
" " laciniata, Cut-leaved Sumach,	12 to 15 in. trans.	1 25	10 00	
" typhina, Stag's Horn Sumach,	2½ to 3 ft. trans.	75	6 00	
" " " " "	5 to 6 ft. trans.	85	7 00	
" " laciniata,	1 ft. trans.	2 60		
" " " " "	2 to 3 ft. trans.	2 50		
Ribes aureum, Yellow Flowering Currant,	2 to 2½ ft. trans.	85	7 00	65 00
" " " " "	2½ ft. trans.	90	8 00	
" " " " "	3 ft. trans.	1 25	10 00	
" Cynosbati,	2 to 2½ ft. trans.	1 25		
" floridum, Missouri Black Currant,	3 to 4 ft. trans.	1 25		
" Gordonianum, Pink-flowering "	3 ft. trans.	90	8 00	
" sanguineum, Red-flowering "	2 ft. trans.	1 25	10 00	
Robinia hispida, Rosa Acacia, Pink,	2 ft. trans.	1 50	12 00	
Rosa blanda,	12 to 18 in. seed.	35	2 00	12 00
" " " " "	12 to 18 in. trans.	85	7 00	
" Carolina,	12 to 18 in. seed.	35	2 00	12 00
" " " " "	3 to 4 ft. seed.	50	3 00	
" " " " "	18 to 24 in. trans.	85	7 00	
" lucida alba,	1 ft. trans.	2 00		
" multiflora Japonica,	6 to 10 in. seed.	35	2 00	12 00
" " " " "	18 to 24 in. seed.	40	2 50	20 00
" " " " "	18 to 24 in. trans.	90	8 00	70 00
" " " " "	3 to 4 ft. trans.	1 25	10 00	
" rubiginosa Sweet Brier,	12 to 15 in. trans.	90	8 00	
" rugosa, Pink,	8 to 12 in. seed.	35	2 00	12 00
" " " " "	18 to 24 in. seed.	40	3 00	15 00
" " " " "	12 to 18 in. trans.	1 00	8 00	70 00
" " " " "	bushy, 2 to 3 ft. trans.	1 25	10 00	
" " alba, White,	12 to 18 in. trans.	1 00	9 00	
" setigera, Prairie Rose,	10 to 18 in. seed.	35	2 00	12 00
" " " " "	3 ft. seed.	40	2 50	20 00
" " " " "	18 to 24 in. trans.	90	8 00	70 00
" " " " "	4 to 5 ft. trans.	1 25	10 00	
All our Roses are transplanted, bushy plants. These native Roses are excellent for mass planting, and by mixing the sorts a continuous flowering effect can be produced.				
Rubus odoratus, Flowering Raspberry,	18 to 24 in. trans.	85		
" " " " "	2 to 2½ ft. trans.	1 00		
" vitifolius,	3 ft. trans.	1 25		
" " " " "	3 to 4 ft. trans.	1 00	9 00	
Sambucus aurea, Golden Elder,	12 to 18 in.	50	4 00	30 00
" Canadensis, Elderberry,	3 to 4 ft. trans.	85	7 00	60 00
" " " " "	4 to 6 ft. trans.	1 00	8 00	

		Per 10	Per 100	Per 1000
Sambucus nigra, European Elderberry,	3 to 5 ft. trans.	\$ 90	\$ 8 00	
" " " "	6 to 7 ft. trans.	1 25	10 00	
" " laciniata, Cut-leaved,	1½ to 2½ ft. trans.	90	8 00	
" " " "	3 ft. trans.	1 00	9 00	
" racemosa, Red-berrled Elder,	2 to 3 ft. trans.	90	8 00	
" " " "	3 to 4 ft. trans.	1 00	9 00	
Sophora Japonica,	12 to 15 in. trans.	1 50	12 00	
" " " "	5 to 6 in. seed.	35	2 00	
Sassafras officinale, Sassafras,	2½ to 3 ft. trans.	2 50		
" " " "	3 to 4 ft. trans.	3 50		
Spiræa Anthony Waterer, Pink, dwarf,	8 to 12 in. trans.	1 00	8 00	
" " " "	15 to 18 in. trans.	1 50	12 00	
" arguta, White,	18 in. trans.	90	8 00	
" " " "	2 to 2½ ft. trans.	1 25	10 00	
" Billardi, Pink,	2 to 2½ ft. trans.	85	7 00	
" " " "	2½ to 3 ft. trans.	90	8 00	
" " " "	3 ft. trans.	1 00	9 00	
" " " "	heavy, 3½ to 4 ft. trans.	1 25	10 00	
" Bumalda,	6 to 8 in. trans.	85	7 00	
" " " "	heavy, 2 to 2½ ft. trans.	1 00	9 00	
" callosa, Pink,	1 ft. trans.	75	6 00	
" " " "	heavy, 3 ft. trans.	90	8 00	
" " " "	heavy, 3 to 3½ ft. trans.	1 00	9 00	
" " alba, Dwarf, White,	6 in. trans.	75	6 00	
" " " "	1 ft. trans. heavy,	90	8 00	
" " superba,	2 to 2½ ft. heavy,	90	8 00	
" " " "	1 ft. trans.	75	6 00	
" carpinæfolia, White,	3 to 4 ft. heavy,	1 00	8 00	
" " " "	4 ft. heavy,	1 25	10 00	
" Douglasi rosea,	12 to 15 in. trans.	75	6 00	
" " " "	heavy, 2 to 3 ft. trans.	90	8 00	
" opulifolia, White,	2½ to 3 ft.	85	7 00	
" " " "	heavy, 4 to 5 ft.	1 25		
" " aurea, Golden-leaved,	4 to 5 ft. trans.	1 00	8 00	
" paniculata rosea, Pink,	15 to 18 in. trans.	75	6 00	
" Reevesii, Single White,	12 to 18 in. trans.	75	6 00	
" " " "	2 ft. trans.	85	7 00	\$80 00
" " " "	3 ft. trans.	90	8 00	
" Regeliana, Deep-pink,	3 to 4 ft. trans.	1 00		
" salicifolia, White,	3 ft. trans.	90	8 00	
" sorbifolia, White,	18 to 24 in. trans.	90	8 00	
" " " "	2 to 2½ ft. trans.	1 25	10 00	
" Thunbergii, White,	1 ft. trans.	75	6 00	
" " " "	heavy, 18 to 24 in. trans.	90	8 00	
" " " "	2½ to 3 ft. trans.	1 25	10 00	
" tomentosa, Pink,	18 to 24 in. trans.	75	6 00	
" " " "	2½ ft. trans.	90	8 00	
" Van Houttei, White,	2 to 2½ ft. trans.	90	8 00	70 00
" " " "	2 to 3 ft. trans.	90	8 00	
" " " "	3 ft. trans.	1 50	12 00	100 00
Our Spiræa Van Houttei are good, bushy plants.				
Stephanandra flexuosa,	2½ to 3 ft. trans.	1 25	10 00	
" " " "	3 to 3½ ft. trans.	1 50	12 00	
Staphylea colchica,	8 to 12 in. trans.	1 25		
" trifoliata,	4 to 5 in. seed.	35	2 00	
" " " "	12 to 18 in. seed.	40	3 00	
" " " "	3 to 4 ft.	1 00		
Styrax Japonica,	bushy, 3 to 4 ft. trans.	2 50		
Symphoricarpus racemosus, White Snow'y,	1 to 2 ft. trans.	75	6 00	50 00
" " " "	2½ ft. trans.	90	8 00	70 00
" " " "	3 to 4 ft. trans.	1 50	12 00	

		Per 10	Per 100	Per 1000
Symphoricarpus vulgaris, Red Currant,	12 to 18 in. trans.	\$ 75	\$ 6 50	
" " " "	2 ft. trans.	85	7 00	\$60 00
" " " "	2 to 3 ft. trans.	90	8 00	
" " " "	3 ft. trans., heavy,	1 25	10 00	
Syringa Persica, Persian Lilac,	12 to 18 in. trans.	85	7 00	
" " " "	18 to 24 in. trans.	90	8 00	
" " alba, White Persian,	2 to 2½ ft. trans.	1 25	10 00	
" " Rothomagensis, Red Persian,	12 to 18 in. trans.	85	7 00	
" " " "	18 to 24 in. trans.	90	8 00	
" Josikæ,	8 in. trans.	90	8 00	
" vulgaris, Common Purple Lilac,	1 to 2 ft. trans.	75	6 00	50 00
" " " "	2 to 3 ft. trans.	1 00	8 00	
" " " "	3 to 4 ft. trans.	1 50	12 00	
" " alba, Common White Lilac,	12 to 15 in. trans.	85	7 00	
" " " "	18 to 24 ft. trans.	90	8 00	
" " " "	2 to 2½ ft. trans.	1 00	9 00	
" " " "	3 ft. trans.	1 50		
" alba grandiflora, Single White,	8 to 15 in. trans.	90		
" Frau Dammann, "	2 to 2½ ft. trans.	2 50		
" Emily Lemoine, Double Rosy Lilac,	6 to 10 in. trans.	90		
" Ludwig Spaeth, Purplish Red,	6 to 10 in. trans.	90		
" " " "	2 ft. trans.	2 50		
" Prest. Grevy, Double Blue,	6 to 12 in. trans.	90		
" " " "	2 ft. trans.	2 50		
" Senator Volland, Single Rosy Red,	2 to 3 ft. trans.	2 50		
" Belle de Nancy, Double Rose,	8 to 15 in. trans.	90		
" " " "	3 ft. trans.	2 50		
" Mme. Abel Chatney, Double White,	10 to 15 in. trans.	90		
" " " "	2 to 2½ ft. trans.	2 50		
" Chas. X, Reddish Purple,	6 to 10 in. trans.	90		
" Mme. Legraye, Single White,	6 to 12 in. trans.	90		
" Mme. Lemoine, Double White,	8 to 12 in. trans.	90		
Tamarix Africana,	2 to 2½ ft.	85	7 00	
" " "	4 ft. trans.	1 00	9 00	
" gallica,	2 to 3 ft. trans.	85	7 00	
" " "	3 to 4 ft. trans.	1 00	9 00	
" Indica,	2 to 3 ft. trans.	85	7 00	
" " "	3 to 5 ft. trans.	1 00	9 00	
" Japonica plunosa,	2 to 2½ ft. trans.	85	7 00	
" " "	2½ to 3 ft. trans.	1 00	9 00	
" Odessana,	3 ft. trans.	1 25		
" tetrandra purpurea,	2 to 3 ft. trans.	1 00	9 00	
Viburnum cassinoides,	1 ft trans.	1 25	10 00	
" " "	1½ to 2 ft. trans.	1 75	15 00	
" dentatum,	12 to 18 in. trans.	1 25	10 00	
" " heavy specimens,	4 to 6 ft. trans.	4 00		
" Japonicum (Sieboldianum),	1 to 1½ ft. trans.	1 50	12 00	
" " "	18 to 24 in. trans.	1 75	15 00	
" " "	2 to 2½ ft. trans.	2 00	18 00	
" " "	3 to 3½ ft. trans.	3 00		
" lantana, Hobble Bush,	10 to 18 in. trans.	75	6 00	50 00
" " " "	2 to 3 ft. trans.	1 00	9 00	
" " " "	3 to 4 ft. trans.	1 50	12 00	
" " " "	4 to 6 ft. trans.	1 50		
These are bushy plants.				
" lentago, Hobble Bush,	8 to 12 in. trans.	1 25	10 00	
" " " "	1 to 2 ft. trans.	1 75	15 00	
" Molle,	18 to 24 in. seed.	35	2 50	20 00
" " "	18 to 24 in. trans.	1 50	12 00	
" " "	2 to 2½ ft. trans.	1 75		

		Per 10	Per 100	Per 1000
Viburnum nudum,	2 to 3 ft. trans.	\$1 75	\$15 00	
“ opulus sterilis, Common Snowball,	12 to 18 in. trans.	85	7 00	\$80 00
“ oxycoccos (opulus) High Bush Cranberry,	8 to 12 in. trans.	75	6 00	50 00
“ “ “ “ “	18 to 24 in. trans.	85		
“ “ “ “ “	2 to 2½ ft. trans.	1 00		
“ opulus nanus, Dwarf,	8 to 10 in. trans.	90	8 00	
“ plicatum, Japanese Snowball (True),	12 to 18 in. trans.	1 25	10 00	90 00
“ “ “ “ “	2 to 2½ ft. trans.	1 50	15 00	
“ “ “ “ “	3 ft. trans.	1 75		
“ prunifolium Sheep-berry,	2 to 3 ft. trans.	1 50	12 00	
“ Sieboldianum. (See Japonicum).				
“ tomentosum,	12 to 18 in. trans.	1 00	9 00	80 00
“ “	2½ to 3 ft. trans.	1 50	12 00	
“ “	3 to 3½ ft. trans.	1 75	15 00	
Vitex Agnus castus, Blue,	5 to 6 in. seed.	35	2 00	
“ “ “	18 to 2 in.	1 00		
“ Incisa,	5 to 6 in. seed.	35	2 00	
Weigela amabilis, Light Pink,	3 to 3½ ft. trans.	1 60	9 00	
“ “ “ heavy,	4 to 5 ft. trans.	1 25	10 00	
“ arborea versicolor, Light Pink, heavy,	4 to 5 ft. trans.	1 25	10 00	
“ candida, White,	2½ to 3 ft. trans.	1 00	9 00	
“ Desboisii, Dark Pink,	1 ft. trans.	85		
“ Eva Rathke, Red,	2 to 2½ ft. trans.	1 25	10 00	
“ Groenewegenii, Pink,	heavy, 4 to 5 ft. trans.	1 25		
“ nana variegata,	18 in. trans.	1 00	9 00	
“ “ “ heavy,	3 ft. trans.	1 25	11 00	
“ rosea, Rose,	2 to 2½ ft. trans.	1 00	9 00	
“ “ “ heavy,	2 to 3 ft. trans.	1 25	11 00	
Zanthorhiza apiifolia,	8 to 15 in. trans.	1 50	12 00	
Zanthoxylon piperitum,	2 to 3 ft. trans.	2 50	20 00	

EVERGREENS.

All of our evergreens have been once or more transplanted. The larger sizes several times, and the choice varieties we move in a period not exceeding two years. These choice varieties are all dug with a ball of earth and the ball sewed in a mat. This makes transplanting almost an assured success. Our evergreens should not be confused with the low-priced plants frequently offered. We move them constantly in order to secure a good root growth, and they are less liable to loss when shipped.

		Per 10	Per 100	Per 1000
Abies Canadensis. See Tsuga Canadensis,	page 24			
“ excelsa, Norway Spruce,	12 to 15 in. trans.	\$ 1 25	\$10 00	
“ “ “	2½ to 3 ft. trans.	2 50		
“ “ inverta, Weeping Spruce,	2 to 2½ ft. trans.	12 50		
“ “ pyramidalis, Pyramidal Spruce,	4 to 5 ft. trans.	15 00		
“ “ Wale's Weeping,	2 to 2½ ft. trans.	12 50		
“ “ “	4 to 5 ft. trans.	20 00		
“ Douglassi, Douglas Spruce,	2 to 2½ ft. trans.	7 50		
“ “ “	2½ to 3 ft. trans.	12 50		
“ nigra Doumetti,	18 in. trans.	10 00		
Andromeda calyculata,	6 to 10 in. trans.	1 75	15 00	
“ Catesbaei,	1 ft. trans.	1 75	15 00	
“ polifolia,	12 to 18 in. trans.	1 75	15 00	
Azalea amœna, bushy, from pots,	10 in.	4 00	35 00	
Biota orientalis, Chinese Arbor Vitæ,	6 to 8 in. seed.	35	2 00	12 00
“ “ “ “	12 to 18 in. trans.	1 50		
“ “ “ “	2 to 3 ft. trans.	2 50		
“ elegantissima, Rollinson's Golden,	6 to 12 in. trans.	1 25		
“ “ “ “	2½ to 3 ft. trans.	3 50		
Buxus arborescens, Tree Box, heavy,	2½ to 3 ft. trans.	6 00		
“ “ “ “	10 to 12 in. trans.	2 50		
“ “ “ “	18 to 24 in. trans.	5 00		

		Per 10	Per 100	Per 1000
Buxus arborescens (pyramids),	3 to 3½ ft. trans.	\$1 75	\$150 00	
“ Handsworthii,	3 to 3½ ft. trans.	17 50		
“ Japonica aurea, Golden , pyramids,	3 to 4 ft. trans.	20 00		
“ sempervirens, for edging ,	8 in., bushy,	2 00	18 00	
“ suffruticosa, Box edging ,	3 to 5 in. trans.	50	5 00	\$50 00
Calluna vulgaris, Heath ,	From 5-in. pots,	3 00	25 00	
Cedrus Atlantica glauca, Mt. Atlas Cedar ,	2½ ft., 6-in. pots,	15 00		
Cupressus Lawsoniana, Lawson's Cypress ,	12 to 18 in. trans.	2 00	15 00	
“ “ Allumi, Blue Cypress ,	2 ft. trans.	10 00		
Daphne cneorum,	6 in., from pots	3 00	25 00	
Erica carnea, a beautiful pink Heath ,	4 in., clumps	2 50	20 00	
“ stricta,	From 5-in. pots	3 00	25 00	
“ vagans capitata, Scotch Heath ,	From 5-in. pots	3 00	25 00	
Euonymus Siebodiana,	10 to 15 in. trans.	1 50	12 00	
Ilex opaca, American Holly ,	6 to 12 in. trans.	2 50	20 00	
“ monticola,	12 to 18 in. trans.	1 50	12 00	
Juniperus communis alpina, Low Juniper ,	12 to 15 in., broad	2 50	20 00	
“ “ “ “ “ “	2 to 3 ft., broad	3 50	25 00	
“ “ aurea, Douglas' Golden ,	12 to 18 in., broad	4 00	35 00	
“ Hibernica, Irish Juniper ,	2 to 2½ ft. trans.	2 50	20 00	
“ Japonica aurea, Golden ,	2 ft. trans.	10 00		
“ communis prostrata,	10 to 18 in., broad	2 50	20 00	
“ “ “ “ “ “	18 to 24 in., broad	3 00	25 00	
“ Virginiana, Upright form, Red Cedar ,	2 to 3 ft. trans.	2 50	20 00	
“ suecica compacta,	8 to 12 in. trans.	2 00	15 00	
“ Waukegan, trailing,	1 ft., broad	2 50		
“ “ “ “ “ “	18 to 24 in., broad	3 00	25 00	
Kalmia angustifolia,	18 to 24 in., clumps	7 50	65 00	
“ latifolia, Laurel ,	15 in., bushy	7 50		
Leiophyllum buxifolium,	12 to 15 in. trans.	1 75	15 00	
Leucothoe Catesbaei,	1 ft. trans.	1 75	15 00	
Mahonia aquifolia,	10 to 12 in. trans.	75	6 00	50 00
“ Japonica,	10 to 15 in. trans.	85	7 00	
Picea Balsamea, Balsam Fir ,	1 ft. trans.	1 25	10 00	
“ concolor,	2 to 3 ft. trans.	17 50		
“ Englemanni,	18 to 24 in. trans.	1 50		
“ pectinata, European Silver Fir ,	1 ft. trans.	1 25	10 00	
“ Nordmanniana, Nordmann's Fir ,	1 ft. trans., heavy	5 00	40 00	
“ “ “ “ “ “	2 ft. trans.	7 50	60 00	
“ pungens glauca, Col. Blue Spruce ,	2 to 2½ ft. trans.	15 00		
“ “ Kosteriana glauca, Extra Blue ,	18 in. trans.	25 00		
Pinus Austriaca, Austrian Pine ,	12 to 15 in. trans.	1 00	8 00	
“ “ “ “ “ “	18 in. trans.	1 25	10 00	
“ cembra, Swiss Stone Pine ,	6 to 8 in. trans.	5 00		
“ “ “ “ “ “	18 to 24 in. trans.	10 00		
“ excelsa, Himalayan Pine ,	2 to 2½ ft. trans.	7 50		
“ Massoniana,	3 to 4 ft. trans.	10 00		
“ strobus, White Pine ,	2 ft. trans.	2 50	20 00	
“ sylvestris, Scotch Pine ,	1 ft. trans.	1 00	8 00	
“ “ “ “ “ “	2 ft. trans.	1 75	15 00	
Retinispora obtusa,	4 to 5 ft. trans.	12 50		
“ “ compacta, Dwarf,	10 to 12 in. trans.	3 00		
“ pisifera,	3 to 4 ft. trans.	12 50		
“ “ “ “ “ “	5 to 6 ft. trans.	17 50		
The 5 to 6 feet plants are beautiful specimens.				
“ pisifera aurea, Golden,	2 to 2½ ft. trans.	12 50		
“ plumosa,	18 to 24 in. trans.	3 00		
“ “ aurea, Golden,	18 to 24 in. trans.	3 00		
Rhododendron punctatum,	1 ft. trans.	1 75	15 00	
“ Hybrids, assorted colors,	2 ft.	13 50		
“ “ “ “ “ heavy specimens, 2½ ft.		25 00		

		Per 10	Per 100	Per 1000
Rhododendron	Hybrids, assorted colors, hvy. sp.,	3 ft.	\$30 00	
"	"	3 1/2 ft.	40 00	
Taxus	baccata pendula, Weeping Yew,	2 to 2 1/2 ft. trans.	12 50	
"	"	2 1/2 to 3 ft. trans.	15 00	
"	cuspidata, Japanese Yew,	1 ft., broad	12 50	
"	Hibernica, Irish Yew,	2 to 2 1/2 ft. trans.	12 50	
"	"	2 1/2 to 3 ft. trans.	15 00	
"	"	heavy, 3 ft., trans.	25 00	
"	"	aurea, Golden Yew,	15 to 24 in. trans.	12 50
"	"	"	2 ft. trans.	15 00
"	"	heavy, 2 1/2 to 3 ft. trans.	25 00	
"	"	variegata,	18 to 24 in. trans.	12 50
Thuja	occidentalis, American Arbor-Vitæ,	6 to 12 in. trans.	85	\$6 00 \$ 50 00
"	"	with ball,	3 to 4 ft. trans.	10 00 75 00
"	"	"	4 to 5 ft. trans.	12 50 100 00
"	"	"	5 to 6 ft. trans.	15 00 125 00
"	pyramidalis, Pyramidal,	18 to 24 in. trans.	1 75	15 00 125 00
"	"	2 to 2 1/2 ft. trans.	2 50	20 00
"	"	with ball,	3 to 4 ft. trans.	10 00 75 00
"	"	"	4 to 5 ft. trans.	12 50 100 00
"	"	"	5 to 6 ft. trans.	15 00 125 00



Specimen Rhododendron. Large bushy plants, transplanted last spring. Each plant dug with a ball.

These **Pyramidal** **Arbor-Vitæ** are extra fine plants, several times sheared and transplanted. They would be dug with a ball and the ball sewed in burlap, insuring success in transplanting. If customers do not care to have them with a ball, they will be supplied at 10c. per tree less than prices quoted, but this will not be done unless expressly stated in the order.

Thuja	occidentalis	Hoveyii, Globe,	heavy,	12 to 15 in. trans.	2 50	
"	"	Geo. Peabody, Golden,	"	6 to 10 in. trans.	2 00	
"	"	"	"	3 1/2 to 4 ft. trans.	12 50	
"	"	Meehanii, Golden-tipped,	"	6 to 10 in. trans.	2 00	
"	"	spiralis,	"	6 to 8 in. trans.	1 75	15 00
"	"	Vervæneana, Golden variegated,	"	2 1/2 ft. trans.	10 00	
"	"	"	"	3 to 3 1/2 ft. trans.	12 50	
"	"	Victoria, Silver-tipped.	"	3 to 4 ft. trans.	12 50	
Tsuga	canadensis,	Hemlock Spruce,		12 to 18 in. trans.	2 50	20 00
Yucca	angustifolia,			2 yr., seedlings	35	2 00
"	"			3 yr., seedlings	40	3 00
"	filamentosa,			1 yr., seedlings	25	1 00
"	"			2 yr., seedlings	35	2 00
"	"			4 yr., transplanted	90	7 00
"	"			5 yr., transplanted	1 25	10 00

VINES AND CLIMBERS.

		Per 10	Per 100	Per 1000
Actinidia arguta,	18 to 24 in. trans.	\$1 50		
" "	from 5 in. pots	2 50	\$25 00	
Akebia quinata,	1 ft. trans.	75		
" "	from 5 in. pots	2 50	25 00	
" "	from 6 in. pots	3 50	35 00	
Ampelopsis Englemanni,	1 to 2 ft. trans.	85		
" Veitchii, Japan. or Boston Ivy,	1 year seed.	25	1 25	\$10 00
" "	3 year trans. strong	1 25	10 00	
" Virginica (Quinquefolia), Vir. Creeper,	1 year seed.	25	1 25	10 00
Aristolochia Siphon, Dutchman's Pipe,	6 in. pots	3 50		
Bignonia capreolata, Everg'n Trumpet Vine,	from 5 in. pots	3 50		
" radicans, Trumpet Creeper,	1 year seed.	35	2 00	12 00
" "	12 to 18 in.	50	4 00	30 00
" "	2 ft.	75	6 50	55 00
Celastris articulatus, Jap. Staff Vine,	8 to 12 in.	85	7 00	
" "	3 ft. trans.	1 25	10 00	
" scandens, Stiff Vine,	1 year	65	5 00	
" "	1 to 2 ft.	85	7 00	
Clematis paniculata,	2 years	65	5 00	40 00
" "	3 years	75	6 00	50 00
" "	5 in. pots	2 50	25 00	
" "	7 in. pots	3 50	35 00	
" Virginiana, Virgin's Bower,	1 year	85	7 00	
" "	2 years	1 00	8 00	
" Hybrids, assorted, as follows,	2 years	2 50	22 00	
Duchess of Edinburg, double White.	Henryii, White.			
Gen'l Grant,	Jackmanni, purple,			
Lanuginosa candida, White.	Mme. Edward Andre, Red.			
Mme. Baron Villard.				
Decumaria barbara,	4 in. pots	2 50		
Dioscorea batatas, Chinese Yam,	3 in. pots	1 50		
Euonymus radicans, Green-leaved,	6 to 8 in.	1 00	8 00	
Hedera Helix, English Ivy,	5 in. pots	2 50	25 00	
Jasminum , Yellow Jasmine,	4 in. pots	2 50		
" Carolina,	5 in. pots	3 50		
" officinale,	5 in. pots	3 50		
Lonicera Belgica, Belgian Honeysuckle,	12 to 18 in.	90		
" brachypoda, Evergreen "	5 in. pots	2 50		
" " aurea reticulata, Golden-l'd,	18 in. trans.	90	8 00	70 00
" " " "	5 in. pots	2 50		
" Halleana, Hall's Honeysuckle,	2 ft. trans.	90	8 00	
" Japonica, Japanese "	18 to 24 in. trans.	90	8 00	
" sinensis purpurea, Chinese "	2 ft. trans.	90		
Lycium chinensis, Matrimony Vine,	3 to 4 ft. heavy,	85	7 00	
Menispermum canadensis, Moon Seed,	12 to 18 in.	85	7 00	
Passiflora incarnata, Passion Vine,	4 in pots	2 50	20 00	
Vitis aestivalis, Wild Grape,	12 to 18 in.	50	4 00	
" cordifolia, "	1 year	25	1 50	10 00
" heterophylla variegata,	1 year	35	2 00	12 00
" labrusca, Wild Grape,	12 to 18 in.	50	4 00	
Wistaria frutescens, American Glycine,	18 to 24 in.	50	4 00	
" " " "	2 to 3 ft.	75		
" " " "	5 in. pots	2 50		
" magnifica,	12 to 18 in.	50	4 00	30 00
" " " "	5 in. pots	2 50		
" sinensis, Chinese Blue Wistaria,	6 to 12 in.	35	2 00	12 00
" " " "	18 in.	65	5 00	
" " " White "	5 in. pots	2 50	25 00	

HARDY HERBACEOUS PERENNIALS. HARDY GRASSES AND FERNS.

	Per 10	Per 100
Achillea millefolium roseum, deep rose, July and August,	\$0 80	\$6 00
" Ptarmica plena, pure white, double, July,	75	6 00
" taygetea, canary yellow, summer,	1 00	8 00
" tomentosa, golden yellow, July,	75	5 00
Agrostemma coronaria, crimson, June,	90	8 00
Ajuga genevensis, blue, May,	75	6 00
" reptans, "	75	6 00
Alyssum argenteum, yellow, May,	80	7 00
" saxatile compactum, golden yellow, May,	75	6 00
Amsonia salicifolia, pale blue, June,	80	7 00
Anemone Japonica alba, white, fall, 3 in. pots	75	6 00
" " elegans, fall, 4 in. pots	80	7 00
" " rosea, rose, fall, 3 in. pots	1 00	8 00
" " rubra, red, fall, 3 in. pots	80	7 00
" " Whirlwind, white, semi-double, fall, 3 in. pots	80	7 00
" Virginiana, white, July,	70	6 00
Anthemis tinctoria, yellow, July,	70	6 00
" " pallida, white, July,	80	7 00
Anthericum liliastrum, white, summer,	70	6 00
Aquilegia Chrysantha, yellow, June,	70	6 00
" flabellata nana alba, large white, June,	1 00	10 00
" vulgaris, blue and purple, June,	70	6 00
" " alba fl. pl., double, June,	1 00	9 00
Armeria alpina, deep rose, May,	70	6 00
" maritima, pink, dwarf, May,	70	6 00
Artemisia pontica, silver foliage,	50	4 00
Aster alpina, bright purple, June and July,	1 00	8 00
" " alba, white, July,	2 00	15 00
" " superba, bright purple, June and July,	1 50	12 00
" amethystinus, large pale blue, September,	80	7 00
" longiflorus "Lady Trevellyn," white, September,	80	7 00
" Novæ Angliæ, pink, September and October,	70	6 00
" Novi Belgi "Purity," light blue, September,	80	6 00
" " "Robert Parker," lavender, September,	80	6 00
" " "Top Sawyer," lavender, September,	80	6 00
" " "White Queen," white, September, 3 in. pots	90	7 00
" oblongifolius, lavender blue, September and October,	60	5 00
" pyramidalis hybridus, lavender, September,	60	5 00
" Tataricus, light purple, late fall,	75	7 00
" Tradescanti, white, October,	60	5 00
" turbinalis, mauve, October, 3 in. pots	1 00	9 00
Begonia Evansiana, handsome foliage,	1 00	9 00
Belamcanda chinensis, red orange, June to September,	75	6 00
Bellis perennis, pink, April, May,	50	4 00
" " white, "	50	4 00
Betonica officinalis, pinkish purple, July,	1 00	8 00
Bocconia cordata, buff, June to August,	1 00	8 00
Boltonia glastifolia, white, August and September,	75	6 00
" latisquama, pale pink, August and September,	90	7 00
Brunella grandiflora, purple, summer,	75	6 00
Campanula carpatica alba, white, summer,	1 00	8 00
" glomerata, blue, summer,	1 00	8 00
" latifolia macrantha, blue, July,	75	6 00
" pyramidalis, summer, 3 in. pots	1 00	8 00
" " white, summer, 3 in. pots	1 00	8 00

	Per 100	Per 1000
Centaurea macrocephala , yellow, July,	\$0 80	\$6 00
" <i>nigra variegata</i> , golden yellow, variegated foliage,	80	6 00
Chelone Lyoni, rosy purple, August and September,	80	6 00
Chrysanthemums , assorted varieties, fall, 4 in. pots	1 50	12 00
Chrysanthemum nipponicum , white, September and October,	1 00	8 00
Clematis Davidiana, blue, August and September,	1 00	8 00
" <i>recta</i> , white, June,	1 00	9 00
Convallaria majalis (Lily of the Valley), white,	40	3 00
Coreopsis lanceolata grandiflora , golden yellow, summer,	60	5 00
" <i>rosea</i> , rose, September and October,	50	4 00
" <i>senifolia</i> , yellow, July and August,	60	5 00
Delphinium chirensse , Chinese Larkspur, blue and white, June to August,	1 00	9 00
" " <i>album</i> , white, June to August,	1 25	10 00
" <i>elatum</i> , blue and purple, June to August,	1 00	8 00
" <i>formosum</i> , indigo blue, June to August,	1 00	8 00
Dianthus plumarius , single, Scotch pink, May and June,	1 00	8 00
" " <i>"Her Majesty"</i> , double white, " "	1 00	8 00
" " <i>"Lord Lyon"</i> , deep pink, " "	1 00	8 00
" " <i>"May"</i> , pink, fringed petals, " "	1 00	8 00
" <i>variabilis</i> , white, maroon marked, " "	1 00	8 00
Digitalis grandiflorus , yellow, June to July,	90	8 00
" <i>monstrosa</i> ,	75	6 00
" <i>purpurea</i> ,	75	6 00
Doronicum plantagineum excelsum , yellow, April and May,	1 00	9 00
Echinacea purpurea , pink, July,	1 25	10 00
Eranthis hyemalis , yellow, March and April,	2 00	15 00
Erigeron aurantiaca , 2 in. pots	1 00	8 00
" <i>speciosus</i> , lavender, summer,	80	6 00
Eryngium planum , bright blue, June,	80	6 00
Eupatorium celestinum , deep blue, September, 4 in. pots	1 00	8 00
Euphorbia corollata , white, July and August,	1 00	8 00
Funkia Fortunii , pale blue, July,	80	7 00
" <i>Japonica</i> , pure white, September,	1 00	8 00
" <i>lanceifolia</i> , blue, August,	75	6 00
" <i>ovata</i> , lilac, August,	1 00	8 00
Caillardia grandiflora , newest hybrids, gold and brown, summer,	75	6 00
" " <i>superba</i> , gold and brown, summer,	75	6 00
Ceranium sanguineum , deep rose, June to September,	1 00	7 00
Gnaphalium Leontopodium , "Edelweiss," silvery foliage and flowers,	1 00	9 00
Cypsophila paniculata , white, July and August,	1 00	8 00
Helenium autumnale superbum , clear yellow, August,	80	6 00
" <i>Bigelovii</i> , yellow, August,	1 00	9 00
" <i>grandicephalum striatum</i> , yellow, striped with brown, August,	75	6 00
" <i>Hoopesii</i> , orange yellow, June,	1 75	11 00
Helianthus decapetalus multiflorus plenus , double yellow, summer,	1 00	9 00
" " <i>anemonaeflora</i> , yellow, July,	1 50	12 00
" <i>doronocoides</i> , yellow, July and August,	75	6 00
" <i>giganteus</i> , yellow, August to September,	75	6 00
" <i>grosse-serratus</i> , yellow, September,	75	6 00
" <i>laetiflorus</i> , yellow, August to September,	75	6 00
" <i>Maximilliana</i> , yellow, fall,	1 00	8 00
" <i>mollis</i> , yellow, August,	60	5 00
" <i>orgyalis</i> , yellow, September and October,	75	6 00
" <i>rigidus</i> , "Miss Mellish," Sept. and Oct., yellow brown centre,	75	6 00
Heliopsis Pitcheriana , orange, mid-summer,	80	7 00
Hemerocallis flava , lemon yellow, June,	80	6 00
" <i>fulva</i> , bronze, August,	75	6 00
" " <i>fl. pl. "Kwanso"</i> , double, August,	80	6 00
" <i>graminea</i> , yellow, summer,	80	7 00
" <i>rutilans</i> , orange, summer,	1 00	8 00
" <i>Thurbergii</i> , lemon yellow, July and August,	1 00	8 00

		Per 10	Per 100
Heuchera	<i>sanguinea</i> , crimson, June and July,	4 in. pots	\$1 00 \$8 00
Hibiscus	<i>moscheutos</i> , white, August,	2 yr. strong	1 00 9 00
Hieracium	<i>stolonifera</i> , yellow, June,		40 3 00
Hollyhocks ,	Allegheny,		1 20 8 00
"	Double, apple blossom,		1 50 10 00
"	" carmine,		1 20 8 00
"	" chamois on violet ground,		1 20 8 00
"	" light amaranth,		1 20 8 00
"	" pale sulphur yellow,		1 50 10 00
"	" rose,		1 25 8 00
"	" white,		1 25 8 00
"	" yellow on violet ground,		1 50 10 00
"	Single, mixed,		1 00 8 00
Iberis	<i>semperforens superbum</i> , large white flowering, spring,		1 00 8 00
"	<i>sempervirens</i> , evergreen, spring,		80 6 00
"	<i>Tenoreana</i> , spring,		1 00 8 00
Iris	<i>Cengialti</i> , deep lavender,		80 6 00
"	<i>cuprea</i> , copper color, May,		80 6 00
"	<i>Florentina</i> , white, May,		60 4 00
"	<i>Germanica</i> , assorted, named, May and June,		60 4 00
"	<i>graminea</i> , blue, May,		60 5 00
"	<i>lavigata</i> (Kämpferi), mixed, July,		80 6 00
"	" " assorted, named, July,		1 50 12 00
"	<i>pallida Dalmatica</i> , light blue, June,		1 25 8 00
"	<i>spectabilis</i> , blue, June,		1 00 8 00
"	<i>pseud-acorus</i> , yellow, June,		80 5 00
"	<i>pumila</i> , rich blue, early spring,		60 5 00
"	<i>Sibirica</i> , blue, June,		60 5 00
"	" white, June,		60 5 00
"	" <i>Oriente</i> , indigo blue, June,		75 5 00
"	<i>stenophylla</i> , blue, June,		1 00 7 00
"	<i>tectorum</i> , lavender, May,		1 25 9 00
Lamium	<i>purpureum variegatum</i> , pink, May,		50 4 00
Lathyrus	<i>grandiflorus</i> , pink, summer,		1 50
Lavendula	<i>vera</i> , lavender, July,	2 in. pots	70 6 00
Liatrus	<i>scariosa</i> , purple, September,		70 6 00
Lilium	<i>tigrinum splendens</i> , Tiger Lily, orange, spotted black, August,		60 5 00
Linum	<i>perenne</i> , azure blue and white flowers, June,	2 in. pots	50 4 00
Lobelia	<i>cardinalis</i> , bright red, August,	4 in. pots	75 5 00
Lotus	<i>corniculatus</i> , yellow, summer and fall,		75 6 00
Lychnis	<i>chalcedonica</i> , scarlet, July,		1 00 8 00
"	<i>flos-Jovis</i> , scarlet, May,		75 6 00
"	<i>viscaria splendens</i> , red, July,		50 4 00
Lysimachis	<i>clethroides</i> , white, July to September,		75 5 00
"	<i>verticillata</i> , white, July,		75 5 00
"	<i>vulgaris</i> , yellow, August,		75 5 00
Lythrum	<i>roseum superbum</i> , rose, August and September,		1 00 7 00
Monarda	<i>didyma</i> , bright scarlet, " " " "		1 00 7 00
"	<i>splendens</i> , " " " "		1 25 8 00
"	<i>purpurea</i> , purple, August,		1 00 9 00
Montebretia	<i>crocosmiflora</i> ,		50 4 00
Oenothera	<i>Missouriensis</i> , lemon yellow, summer,		1 25 8 00
"	<i>speciosa</i> , large white, June and July,		1 00 7 00
"	<i>Youngi</i> , pale yellow,		1 00 7 00
Opuntia	<i>Rafinesquii</i> , yellow,		60 5 00
"	" <i>Greenii</i> , yellow,		60 5 00
Pachysandra	<i>terminalis</i> , evergreen,		75 5 00
Paeonia	<i>officinalis</i> , early crimson,		2 50 20 00
"	" <i>alba</i> , early white,		2 50 20 00
"	" <i>rosea</i> , flesh pink,		2 50 20 00
"	<i>sinensis</i> , assorted, named,		2 00 15 00

		Per 10	Per 100
Papaver nudicaule , white,	3 in. pots	\$1 00	\$8 00
“ “ yellow, summer,	3 in. pots	1 00	6 00
“ “ orange, “	3 in. pots	1 00	6 00
“ Orientale, shades of scarlet, June,		1 00	8 00
Passiflora incarnata , light blue, August and September,	4 in. pots	2 50	20 00
Pentstemon diffusus , blue, June,		1 00	8 00
“ Digitalis, white, July and August,		1 00	8 00
Phlox amœna , pink, May,	3 in. pots	80	6 00
“ decussata, assorted varieties named, summer,		80	7 00
“ subulata alba, moss pink, white, May,		70	5 00
“ “ rosea, rose, May,		70	5 00
“ “ Sadie, lavender, May,		80	5 00
Physostegia denticulata , lilac white, July and August,		70	6 00
“ Virginica, lilac, July and August,		1 00	8 00
Platycodon grandiflora , blue, July and August,		1 00	7 00
“ “ fl. pl., July and August,		1 25	8 00
“ Mariesii, blue, dwarf, July and August,		1 00	7 00
Plumbago Larpentæ , bright blue, August to October,	3 in. pots	1 00	6 00
Polemonium reptans , blue, May,		80	6 00
“ Richardsonii, blue, May,		80	6 00
Potentilla hybrida , yellow and red, June,		1 50	12 00
Polygonum cuspidatum , white, August,		1 00	6 00
Primula veris elatior cœrulea, blue and purple, May,	4 in. pots	1 50	12 00
“ suaveolens, yellow, May,	4 in. pots	1 00	7 00
Pyrethrum roseum , shades of pink and red, May and June,		1 00	6 00
“ uliginosum, white, July and August,		1 00	7 00
Ranunculus acris fl. pl., yellow, May and June,		70	5 00
Rudbeckia fulgida , golden yellow, July and August,		70	6 00
“ “ Golden Glow,” yellow, August and September,		70	4 00
“ maxima, yellow and brown, July and August,		1 00	6 00
Ruta graveolens , yellow, summer,		1 00	8 00
Salvia argentea , silvery foliage,	4 in. pots	1 00	8 00
Santolina incana , silvery foliage,		60	4 00
Saponaria officinalis fl. pl., pinkish white, August and September,		60	4 00
Saxifraga crassifolia , pink, early spring,		60	4 00
Scabiosa caucasica , blue, June,		1 00	8 00
Sedum album , white, August and September,		75	5 00
“ Hispanicum, pinkish, August,		1 00	8 00
“ hybridum, pink, August and September,		80	6 00
“ purpureum, dark red foliage,		1 00	7 00
“ sexangulare, Love-entangle, yellow, July and August,		60	4 00
“ spectabile, pink, August and September,		1 00	8 00
“ Telephium, pink, August and September,		1 00	8 00
Sempervivum ruthenicum , pink, July,		30	2 00
“ tectorum, House-leek,		30	2 00
“ Verloti,		30	2 00
Sidalcea malvæflora , pink, June and July,		1 00	8 00
Spiræa Filipendula fl. pl., cream white flowers, May and June,		80	6 00
“ multiflora compacta, white, May and June,		1 00	8 00
“ ulmaria alba plena, double white, June and July,		1 00	6 00
Stachys lanata , pink flowers, July,		75	5 00
Statice latifolia , lavender, August,		1 00	6 00
Stokesia cyanea , purple, July to September,		1 00	8 00
Thalictrum aquilegifolium roseum, rose, June,		1 00	6 00
Thermopsis Caroliniana , yellow, May and June,		70	5 00
Thymus serpyllum , Thyme,		75	6 00
Tradescantia Virginica , alba, white, summer,		1 00	8 00
Tritoma uvaria Tuckii,	2 in. pots	1 00	8 00
“ Pätzerii coral, July to frost,		1 00	8 00

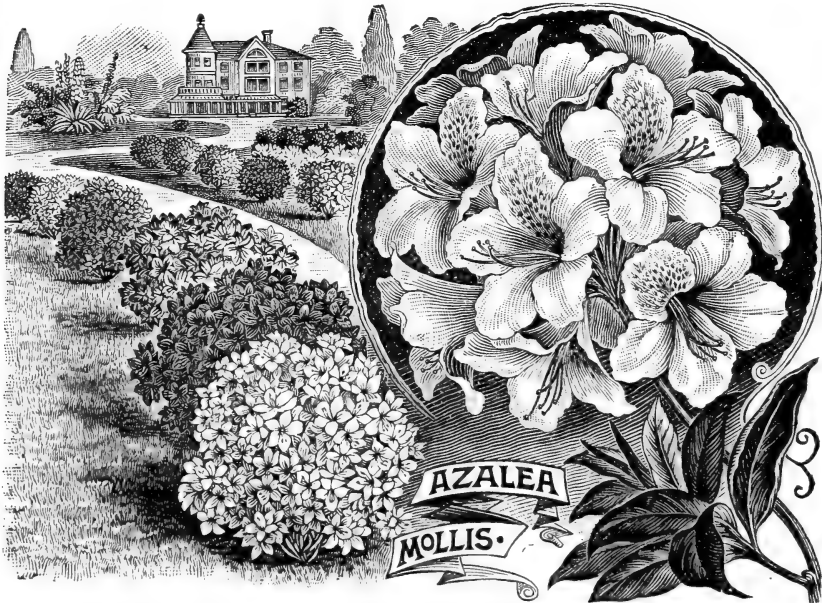
		Per 10	Per 100
Veronica	candida, silvery foliage, blue flowers, June and July,	\$1 50	\$12 00
"	circæoides, blue, June,	1 00	8 00
"	Hendersonii, blue, August,	1 00	8 00
"	montana, blue, June and July,	1 00	8 00
"	spicata nana, blue, June and July,	80	6 00
Viola	Californian, blue, spring, 3 in pots	1 00	8 00

HARDY FERNS.

Adiantum	pedatum,	75	5 00
Aspidium	acrostichoides,	75	5 00
"	marginale,	75	5 00
"	spinulosum,	75	5 00
"	Thelyptera,	75	5 00
Onoclea	sensibilis,	75	5 00
"	Struthocopteris,	75	5 00
Osmunda	cinnamomea,	1 00	8 00
"	Claytoniana,	1 00	8 00
"	regalis,	1 00	8 00
Polypodium	hexagonopterum,	75	5 00
"	vulgare,	75	5 00
Pteris	aquilina,	75	5 00

HARDY GRASSES.

Calamagrostis	stricta variegata,	80	6 00
Erianthus	ravenna, 5 in. pots	1 00	8 00
Eulalia	Japonica,	1 50	10 00
"	gracillima,	1 50	12 00
"	" variegata,	2 00	15 00
"	zebrina,	1 50	12 00



Our stock of Azalea Mollis and Pontica is very large and fine. The plants were all transplanted last spring and will now dig with a ball. They are very bushy plants and, being well set with flower buds, they will make a very effective planting. The price indicates the bushiness of the plant as well as the height.

The Mollis are mostly in shades of red and yellow, but the Ponticas are in all colors. For sizes and prices see page 13.

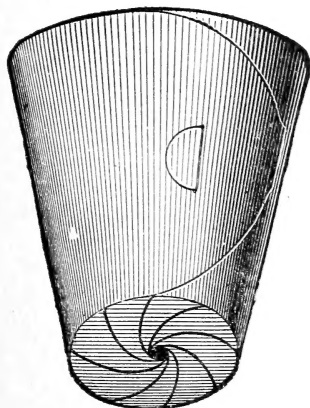
The Best Nursery Spade



D Handle, Double Strap, Reinforced Nursery Spade. Weight. 9¼ lbs.

We have experimented with a number of different makes of nursery spades, but find this to be the strongest, best and most durable on the market. We have been using this spade for a number of years and it will stand more hard work than any other make. It is strapped full length of handle both back and front, and half way up it has double straps, strengthening it in what would otherwise be its weakest parts.

Price, \$1.75 each; \$20.00 per dozen.



Neponset Flower Pots

UNBREAKABLE, LIGHT, ECONOMICAL

Plants and Cuttings packed for shipment in our Neponset Flower Pots have a better protection than when wrapped in papers.

A great saving in freight is made over clay pots, weighing only one-tenth as much and no breakage. Made from the celebrated Neponset paper, which is absolutely waterproof. They are so constructed as to give ample drainage and allow plenty of air to the roots of the plant.

Send for sample and prices on seven different sizes, and compare with clay pots.

Size	Per 100	Per 1000	Per 1000 pots	Weight	Per 100	Per 1000	Per 1000 pots	Weight
2¼	\$0 25	\$2 20	20	pounds	4	\$0 80	\$6 90	38
2½	30	2 40	23	"	5	1 20	10 35	56
3	45	3 90	33	"	6	1 65	14 55	74
3½	60	5 15	44	"				

Read "The National Nurseryman,"

The Official Journal of the American Association of Nurserymen.

A monthly Trade Publication devoted exclusively to the interests of the Growers and Dealers in Nursery Stock. For ten years it has recorded the news of the Trade exclusively.

Newspapers, magazines and periodicals of many kinds come to the business man's desk, but life is short and time is money. The journal that starts right in at the first page and deals directly and exclusively to the last page with the NURSERY BUSINESS is the one that richly repays the reading.

Ten years ago nurserymen were dependent upon agricultural and a few horticultural publications for an occasional mention of a nursery item of news. Now they have their own trade journal thoroughly covering the field. Information in a single issue *has often proved of greater value than a year's subscription.*

Subscription price, \$1.00 per year.

The National Nurseryman Publishing Company, Incorporated,

205 Cox Building, Rochester, N. Y.

FRUIT STOCKS *and* SEEDS

The supply of both fruit stocks and seeds is exceedingly short this year, and we advise our customers to **place early orders** for what they will require. Packing charges additional.

Conditions.—All offers and acceptances of orders are subject to our receiving the full quantity for which we have placed orders with our growers and collectors. Failing to get these amounts, we reserve the right to reduce proportionately all orders that have been booked.

Guarantee.—While we try to procure the very best seeds on the market we give no guarantee, either expressed or implied. Samples will always be furnished when applied for. If the seeds are not accepted on these terms, we must be notified at once. If they are kept it will be taken as proof that they are satisfactory.

All claims must be made upon receipt of goods.

FRUIT SEEDS

Peach Seed for November and December delivery, our option.

Peach, Western Natural.—\$1.25 per bu.; 50 bu. or more at \$1.15 per bu.

Plum, Myrobolan.—40c. per lb.; \$10.00 per bu.; 3 bu. at \$9.00 per bu.; 5 bu. at \$8.50 per bu.

Cherry, Mazzard.—20c. per lb.; \$7.00 per bu.; 3 bu. at \$6.00 per bu.; 5 bu., \$5.25 per bu.

“ **Mahaleb.**—All sold; supply exhausted.

Apple, French Crab.—All sold; supply exhausted.

Pear, French.—Prices on application.

“ **Kieffer.**—\$2.25 per lb.; 25 lbs. at \$2.00 per lb.; 50 lbs., \$1.75 per lb.; 100 lbs., \$1.60 per lb.

Quince.—\$1.50 per lb.; 5 lbs., \$1.25 per lb.; 10 lbs. at \$1.00 per lb.

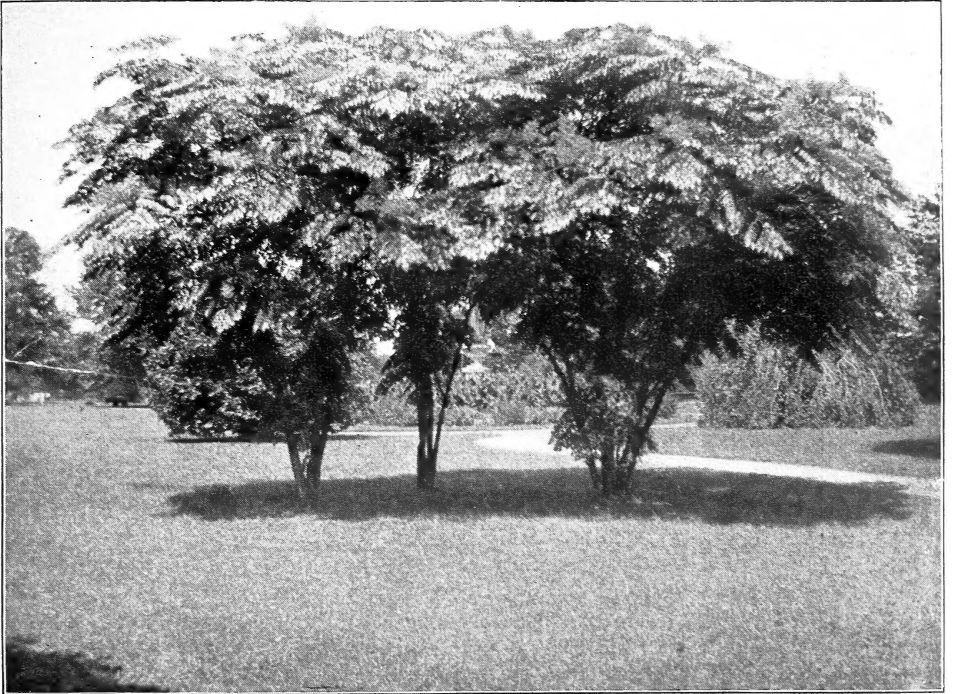
FRUIT STOCKS

	Per 100	Per 1000	Per 1000 in 10,000 lots
Apple, French, extra size.....	1.25	\$10.00	
“ French, 1st class.....	1.00	8.50	
“ Paradise.....	1.50	13.00	
Cherry, Mazzard, extra size.....	1.50	13.00	\$12.50
“ Mazzard, 1st class.....	1.25	10.00	
“ Mahaleb, 1st class.....	1.25	10.50	
Plum, Myrobolan, extra size.....	1.25	11.75	11.25
“ Myrobolan No. 1.....	1.25	10.00	9.00
“ Myrobolan No. 2.....	.85	7.00	6.50
“ Marianna, $\frac{3}{16}$ to $\frac{5}{16}$75	6.00	5.50
Pear, Kieffer, $\frac{1}{4}$ in. and up.....	.65	5.00	4.50
“ Kieffer, $\frac{2}{16}$ to $\frac{3}{16}$50	4.00	3.50
“ Kieffer, 3rd class.....	.35	2.00	1.50
“ French, extra size.....	1.25	11.50	11.00
“ French, 1st class.....	1.00	8.35	7.85
“ French, 2nd class.....	.65	4.50	4.00
Quince, extra size.....	1.25	11.50	11.00
“ 1st class.....	1.00	7.50	7.00
Manetti Rose, extra size.....	1.25	10.50	10.00

Thomas Meehan & Sons, Inc.

WHOLESALE DEPARTMENT

Dreshertown, Montg. Co., Pa.



ARALIA SPINOSA (HERCULES CLUB)

SEE PAGE 13

Fall Season
... 1903 ...



A YOUNG SPECIMEN PIN OAK

SEE PAGE 10

Thomas Meehan & Sons, Inc.
WHOLESALE DEPARTMENT
Dreshertown, Montgomery Co., Pa.