

## **Historic, Archive Document**

Do not assume content reflects current scientific knowledge, policies, or practices.



213 6267

LIBRARY  
RECEIVED  
OCT 31 1923  
U.S. Department of Agriculture

SEMI-ANNUAL TRADE

LIST of the  
U.S. Department of Agriculture

# Painesville Nurseries

PAINESVILLE, LAKE COUNTY, OHIO

## No. 4

## FOR NURSERYMEN AND DEALERS ONLY

## SPRING

—OF—

## 1903

Use the Nurserymen's telegraphic code in telegraphing. Copies will be furnished customers on application. : : : : : :

## The Storrs & Harrison Co.

PROPRIETORS



In Our Office  
Telephone No. 80

Grounds and Office: Two Miles East of City on the North Ridge Road.

## NOTICE TO CUSTOMERS.

**W**E WOULD SAY to those unacquainted with our establishment that this is the 49th year of our Nursery. We have over one thousand acres devoted to the business, about three-fifths covered with Nursery Stock, and 44 Green and Propagating Houses with a most complete assortment of Fruit and Ornamental Trees, Shrubs, Vines, Roses, Greenhouse Plants, etc. The largest and best equipped cold storage cellars and packing houses give us unsurpassed facilities for the prompt and accurate filling of orders. We solicit correspondence and personal inspection of our stock, confident that it will compare favorably with the best.

---

## THE PACKING SEASON.

**I**N THE SPRING we usually commence digging from the 20th of March to the 1st of April, and continue into May; and in the fall from the 1st of October, continuing until cold weather sets in. A large stock and nearly full assortment of everything but largest Ornamentals and Evergreens stored in frost proof cellars, which are connected by switch direct with main line L. S. & M. S. R. R., from which shipments can be made at any time.

## TERMS OF SALE.

1st. The articles in this list will be furnished to nurserymen at prices named, without regard to size of order, except in cases of long lists of selected varieties, when such discount will be made from the retail prices as the character of the order will justify. Dealers' orders for stock in assortment must amount to \$50 or more to entitle them to the lowest rates quoted.

2d. We reserve the right to select the varieties, but will give the purchaser his choice as far as is consistent with our stock. In ordering, please state whether or not substituting will be permitted in case we should be short of any sort wanted.

3d. When dealers bill upon our grounds we heel in their entire stock by itself, and furnish free the necessary help, labels and tying material for billing up. Positively no stock will be allowed to be brought on our grounds for billing up from other growers, unless in case of stock wanted that we cannot supply, in which case written permission must be obtained from us. After deliveries are billed up help will be furnished free by us to pack in the boxes and mark for their destination, but the owner must superintend all, and assume all responsibility for any errors that may occur. No extra charge for delivering packages at Express Office or Railway Stations. No stock will be counted back from the heeling-in grounds unless error is made by us. Boxes and packages charged as follows: 8 to 9½ feet long, 30x30 inches, \$2.50; 28x28 inches, \$2.25; 24x24 inches, \$2.00; 20x20 inches, \$1.50; 16x16 inches, \$1.25; 12x12 inches, 75c.; 12 feet boxes 50c. extra. Bales, 25c. to \$2.00, according to size. A charge to cover cost of labor and packing material will be made for all cars packed in bulk. Burlaps for wrapping the roots of evergreens, etc., ten cents per yard. All bales and boxes packed for shipping at billing-up sheds, or on any part of our grounds, will be subject to the same charges as if put up by us at the packing house. We cannot use second-hand boxes, will allow nothing for them; empties returned will not be accepted but left at station subject to shipper's order.

4th. The terms of payment must invariably be cash before shipment, less five per cent., or satisfactory note payable at some bank for full amount of bill, unless with established nurserymen, when, if unknown to us, a satisfactory reference will be required before shipment.

5th. Those ordering will please give plain and explicit directions as to the route and manner in which goods are to be forwarded, as our responsibility ends on delivering at Railway Station or Express Office.

6th. While we exercise the greatest diligence and care to have all our trees, etc., true to label, and hold ourselves in readiness, on proper proof, to replace all trees, etc., that may prove untrue to label, free of charge, or refund the amount paid, it is mutually understood and agreed to, between the purchaser and ourselves, that our guarantee of genuineness shall in no case make us liable for any sum greater than that originally received for said trees, etc., that prove untrue.

## CATALOGUES.

The following catalogues will be sent to applicants free:

No. 1.—Descriptive Catalogue of Fruit and Ornamental Trees.

No. 2.—Descriptive Catalogue of Greenhouse and Bedding Plants, Flower and Vegetable Seeds, Trees, Shrubs, Vines, Small Fruits, etc.

No. 3.—Issued in Autumn, includes Bulbs, Winter Flowering Plants, Trees, Grapevines, Small Fruits, etc.

No. 4.—Trade List—(this one).

**THE STORRS & HARRISON CO.**

**Painesville, Ohio.**

# FRUIT DEPARTMENT.

Five per cent. off for cash with orders. No discount allowed unless cash reaches us before shipment. For prices of boxes and bales, see page 3.

	Code Word.	Per 10	Per 100	Per 1000
<b>APPLES.</b>				
STANDARD—5 to 7 feet.....	Fair			\$120 00
“ 4 to 5 feet.....	Fairly			100 00
DUCHESS OLDENBURG, FAMEUSE, GANO, WOLF RIVER, WEALTHY and YELLOW TRANSPARENT—5 to 7 feet.....	Fulgent		\$13 00	
“ 4 to 5 feet.....	Filter		11 00	
BISMARCK and BANANA—5 to 7 feet.....	Frock		15 00	
“ “ “ 4 to 5 feet.....	Feudal		12 00	
CRAB APPLES—5 to 7 feet.....	Fairy		13 00	
“ 4 to 5 feet.....	Fairer		11 00	
DWARF APPLES.....	Fairest			120 00
<b>PEARS.</b>				
STANDARD—5 to 7 feet.....	Faith			140 00
“ 5 to 6 feet.....	Faithful			120 00
BARTLETT—5 to 7 feet.....	Fright	20 00		
“ 4 to 5 feet.....	Frighten	16 00		
ROSSNEY, SECKLE and WORDEN-SECKLE—5 to 7 feet.....	Frightened			160 00
“ “ “ 4 to 5 feet.....	Fixed			140 00
KIEFFERS— $\frac{3}{4}$ inch and up.....	Fade			120 00
“ $\frac{5}{8}$ to $\frac{3}{4}$ inch.....	Factor			100 00
DWARF— $\frac{3}{4}$ inch and up.....	Fast			80 00
“ $\frac{5}{8}$ to $\frac{3}{4}$ inch.....	Fasten			60 00
“ $\frac{1}{2}$ to $\frac{5}{8}$ inch.....	Fastened			50 00
ROSSNEY— $\frac{3}{4}$ in. and up.....	False	12 00		
WORDEN-SECKLE— $\frac{5}{8}$ to $\frac{3}{4}$ in.....	Fact	10 00		
“ $\frac{1}{2}$ to $\frac{5}{8}$ in.....	Fable	8 00		
<b>PEACHES.</b>				
4 to 5 feet.....	Father			75 00
3 to 4 feet.....	Fathom			60 00
2 to 3 feet.....	Fawn			50 00
BANNER—4 to 6 feet.....	Falcon	10 00		
“ 3 to 4 feet.....	Factory	8 00		
“ 2 to 3 feet.....	Frog	6 00		
ELBERTA—2 to 3 feet.....	Fidget		7 00	
<b>APRICOTS.</b>				
5 to 7 feet.....	Farm	\$1 50		
4 to 5 feet.....	Farmer	1 20		
<b>NECTARINES.</b>				
BOSTON and DOWNTON—4 to 5 feet.....	Fade		15 00	
“ “ 3 to 4 feet.....	Fulcrum		12 00	
<b>CHERRIES.</b>				
SWEET—2 years, 5 to 7 feet.....	Fickle		26 00	
“ “ 4 to 5 feet.....	Fiction		23 00	
“ ALLEN—5 to 7 feet.....	Fawn		30 00	
“ “ 4 to 5 feet.....	Fawned		25 00	
“ DIKEMAN—1 year.....	Fix		25 00	
SOUR—First-class.....	Field			200 00
“ Medium.....	Fielding			180 00
ROCKY MOUNTAIN IMPROVED DWARF—4 to 6 feet, top worked—.....	Fifed		25 00	
“ “ “ “ 2 to 3 feet.....	Fight		12 00	
“ “ “ “ $1\frac{1}{2}$ to 2 feet.....	Fiat		10 00	
<b>PLUMS.</b>				
EUROPEAN AND JAPAN ON PLUM STOCKS—5 to 7 feet.....	Fence			220 00
“ “ “ 4 to 5 feet.....	Fencing			200 00
JAPAN—1 year.....	Fixture	14 00		
CLIMAX, CHALCO and SHIRO—5 to 7 feet.....	Fudge	28 00		
“ and SULTON—1 year.....	Flag	20 00		
<b>ON PEACH STOCK.</b>				
NATIVE—5 to 7 feet.....	Fit		15 00	
“ 4 to 5 feet.....	Fitted		12 00	
BARTLETT, CLIMAX, SULTAN and SHIRO—5 to 7 feet.....	Forge	20 00		
BARTLETT—4 to 5 feet.....	Forger	15 00		
PISSARDI—3 to 4 feet.....	Finger	15 00		

**QUINCES.**

	Code Word.	Per 10	Per 100	Per 1000
ANGER'S—4 to 5 feet.....	Frugal		\$15 00	
“ 3 to 4 feet.....	Frayed		12 00	
CHAMPION—4 to 5 feet.....	Finn	\$2 20		
“ 3 to 4 feet.....	Furbish		18 00	
ORANGE—3 to 4 feet.....	Fillip		20 00	
BORGEAT—1 year.....	Filch		18 00	
MEECH'S—3 to 4 feet.....	Forgery		18 00	
REAS—4 to 5 feet.....	Fibre		22 00	
“ 3 to 4 feet.....	Foam		20 00	

**MULBERRIES.**

NEW AMERICAN—5 to 7 feet.....	File		25 00	
“ “ 4 to 5 feet.....	Fishing		20 00	
DOWNING—4 to 5 feet.....	Fossil	2 50		
NEW AMERICAN and DOWNING—3 to 4 feet.....	Flutter		12 00	
“ “ “ 2 to 3 feet.....	Fox		10 00	
RUSSIAN—8 to 10 feet.....	Foe		20 00	
“ 6 to 8 feet.....	Fowl		15 00	
“ 4 to 6 feet.....	Fodder		12 00	
WHITE AND BLACK ENGLISH—3 to 4 feet.....	Filly		12 00	
RUSSIAN, WHITE and BLACK ENGLISH—8 to 12 inches.....	Friar			\$6 00
“ “ “ 6 to 8 inches.....	Flagged			4 00

**NUTS.**

ALMONDS—Hard shell, 4 to 5 feet.....	Gaiting		15 00	
“ Soft shell “.....	Gabbing		15 00	
BUTTERNUTS—3 to 4 feet.....	Gaggart	1 50		
“ 2 to 3 feet.....	Gab		12 00	
“ 8 to 12 inch.....	Gaily		1 20	
CHESTNUT—American Sweet, 10 to 12 feet.....	Gainer	3 50		
“ “ “ 8 to 10 feet.....	Gape		25 00	
“ “ “ 6 to 8 feet.....	Gaiter			180 00
“ “ “ 5 to 6 feet.....	Gag			150 00
“ “ “ 4 to 5 feet.....	Gage			120 00
“ “ “ 3 to 4 feet.....	Gain			100 00
“ “ “ 2 to 3 feet.....	Gale			75 00
“ “ “ 8 to 12 inches.....	Gauge			12 00
“ Spanish, 3 to 4 feet.....	Gate	2 00		
“ “ 2 to 3 feet.....	Giant	1 50		
“ Japan or Giant, 2 to 3 feet.....	Garb		25 00	
“ “ “ 1½ to 2 feet.....	Ginger		15 00	
“ “ “ 8 to 12 inches.....	Gift			50 00
“ “ “ 12 to 15 inches.....	Gallery			60 00
“ Ridgeley, 3 to 4 feet, grafted.....	Gap		20 00	
“ “ 4 to 6 feet “.....	Gala		25 00	
“ “ 6 to 8 feet “.....	Gaul		30 00	
“ “ 8 to 10 feet “.....	Girl		45 00	
“ “ 10 to 12 feet “.....	Gimp		60 00	
“ Alpha, Ey. Reliance, Hannum, and Scott's, 3 to 4 feet.....	Galley		60 00	
“ Alpha, Ey. Reliance, Hannum, Parry's Giant, and Scott's, 4 to 6 feet.....	Gimbal		75 00	
“ Paragon and Numbo, 3 to 4 feet.....	Gaggle		50 00	
“ “ “ 4 to 6 feet.....	Gasp		60 00	
FILBERTS—English and American, 3 to 4 feet.....	Gaback	2 00		
HICKORY—Shell Bark, 5 to 6 feet.....	Glare	4 00		
“ “ “ 4 to 5 feet.....	Galaxy		35 00	
“ “ “ 3 to 4 feet.....	Gawk		25 00	
“ “ “ 2 to 3 feet.....	Gay		20 00	
“ “ “ 1½ to 2 feet.....	Gaze		15 00	
“ “ “ 6 to 8 inches.....	Gem		3 00	
PECANS—12 to 18 inches.....	Glee		10 00	
“ 8 to 12 inches.....	Glen		5 00	
WALNUTS—Japan Sieboldi, 4 to 6 feet.....	Glibb		30 00	
“ “ “ 3 to 4 feet.....	Gilt		22 00	
“ “ “ 2 to 3 feet.....	Gill		15 00	
“ “ “ 12 to 15 inch.....	Gad		6 00	
“ “ “ 8 to 12 inch.....	Gin		5 00	

**NUTS.—CONTINUED.**

	Code Word.	Per 10	Per 100	Per 1000
WALNUTS—Japan, Max Cordiformis, 3 to 4 inch caliper.....	Giggle	\$7 50	.....	.....
“ “ “ “ 4 to 6 feet.....	Glide	3 00	.....	.....
“ “ “ “ 3 to 4 feet.....	Gliding	.....	\$20 00	.....
“ “ “ “ 2 to 3 feet.....	Gild	.....	15 00	.....
“ “ “ “ 8 to 12 inch.....	Girth	.....	5 00	.....
“ English, 1½ to 2 feet.....	Girder	1 50	.....	.....
“ Black, 4 to 6 feet.....	Gland	2 00	.....	.....
“ “ 3 to 4 feet.....	Gleaning	.....	15 00	.....
“ “ 2 to 3 feet.....	Glean	.....	10 00	.....
“ “ 12 to 15 inch.....	Glade	.....	.....	\$10 00
“ “ 8 to 12 inch.....	Glass	.....	.....	8 00

**PERSIMMONS.**

AMERICAN—6 to 8 feet.....	Gun	2 50	.....	.....
“ 4 to 6 feet.....	Gull	.....	15 00	.....
“ 3 to 4 feet.....	Gold	.....	12 00	.....
“ 2 to 3 feet.....	Grouse	.....	10 00	.....

**GRAPE VINES.**

AGAWAM—1 year.....	Hack	.....	.....	35 00
“ 2 years.....	Haft	.....	.....	55 00
BRIGHTON—1 year.....	Hair	.....	4 00	.....
“ 2 years.....	Hall	.....	5 00	.....
CAMPBELL'S EARLY—1 year.....	Hackle	.....	7 00	.....
“ “ 2 years.....	Haunt	.....	9 00	.....
CATAWBA—1 year.....	Halo	.....	.....	30 00
“ 2 years.....	Hank	.....	.....	50 00
CONCORD—1 year.....	Halt	.....	.....	25 00
“ 2 years.....	Halter	.....	.....	35 00
COLUMBIAN—2 years.....	Habit	1 50	.....	.....
CHAMPION—1 year.....	Hackney	.....	.....	25 00
“ 2 years.....	Hammock	.....	.....	35 00
DELAWARE—1 year.....	Happy	.....	.....	35 00
“ 2 years.....	Harbor	.....	.....	55 00
DIAMOND—1 year.....	Heron	.....	.....	25 00
“ 2 years.....	Hew	.....	.....	40 00
EATON—1 year.....	Hare	.....	7 00	.....
“ 2 years.....	Haggle	.....	9 00	.....
EARLY OHIO—1 year.....	Hark	.....	.....	60 00
“ “ 2 years.....	Hamper	.....	9 00	.....
ELVIRA—1 year.....	Halibut	.....	3 00	.....
“ 2 years.....	Hawk	.....	3 50	.....
EMPIRE STATE—1 year.....	Havoc	.....	4 00	.....
GREEN MOUNTAIN—1 year.....	Harp	1 25	.....	.....
IVES' SEEDLING—1 year.....	Haze	.....	3 00	.....
“ “ 2 years.....	Head	.....	.....	35 00
MARTHA—1 year.....	Herd	.....	3 00	.....
“ 2 years.....	Hero	.....	4 00	.....
MOORE'S EARLY—1 year.....	Hip	.....	.....	30 00
“ “ 2 years.....	Hiss	.....	.....	45 00
McPIKE—1 year.....	Hide	.....	18 00	.....
“ 2 years.....	Hill	.....	22 00	.....
NIAGARA—1 year.....	Hit	.....	.....	30 00
“ 2 years.....	Hitch	.....	.....	50 00
POCKLINGTON—1 year.....	Hive	.....	.....	30 00
“ 2 years.....	Hoe	.....	.....	50 00
VERGENNES—1 year.....	Horse	.....	3 50	.....
WORDEN—1 year.....	Hot	.....	.....	30 00
“ 2 years.....	Hound	.....	.....	40 00
WYOMING—1 year.....	Hump	.....	4 00	.....
“ 2 years.....	Hunt	.....	5 00	.....
WOODRUFF—1 year.....	Hulk	.....	5 00	.....
“ 2 years.....	Hamlet	.....	8 00	.....

**JUNEBERRY.**

IMPROVED DWARF—1½ to 2 feet.....	Loud	.....	10 00	.....
“ “ 2 to 3 feet.....	Lancer	1 25	.....	.....



	Code Word.	Per 10	Per 100	Per 1000
<b>BUFFALO BERRY.</b>				
1½ to 2 feet.....	Laud	\$1 25		
4 to 6 feet.....	Lauk	2 50		
<b>CURRENTS.</b>				
BLACK CHAMPION—1 year.....	Lacteal		\$5 00	
“ “ 2 years.....	Lace		6 00	
COMET—2 years.....	Lack	3 50		
CHERRY—1 year.....	Lad			\$35 00
“ 2 years.....	Ladder			45 00
FAY'S PROLIFIC—1 year.....	Lag			40 00
“ “ 2 years.....	Lagon			50 00
LA VERSAILLES—1 year.....	Lake			30 00
“ “ 2 years.....	Lama			40 00
NORTH STAR—2 years.....	Lading		4 00	
PRINCE ALBERT—1 year.....	Labor		3 50	
“ “ 2 years.....	Landman		4 50	
RED DUTCH—1 year.....	Lamb			30 00
“ 2 years.....	Lame			40 00
VICTORIA—1 year.....	Lamp			30 00
“ 2 years.....	Lance			40 00
WILDER—1 year.....	Lappett		4 00	
“ 2 years.....	Lax			50 00
<b>GOOSEBERRIES.</b>				
CHAUTAUQUA—1 year.....	Lilt	1 50		
“ 2 years.....	Limb	2 00		
COLUMBUS—1 year.....	Lead			60 00
CROWN BOB—2 years.....	Leach		9 00	
DOWNING—1 year.....	Latin			40 00
“ 2 years.....	Lean			50 00
HOUGHTON—1 year.....	Lap			35 00
“ 2 years.....	Lathe			45 00
INDUSTRY—2 years.....	Law			80 00
LANCASHIRE LAD—2 years.....	Lacking		9 00	
SMITH'S IMPROVED—1 year.....	Laver			40 00
“ “ 2 years.....	Lashed			50 00
WHITE SMITH—2 years.....	Latch		9 00	
PEARL—2 years.....	Launch		6 00	
KEEPSAKE—2 years.....	Loyal		10 00	
JOSSLYN—(Red Jacket), 1 year.....	Lanyard			50 00
“ “ 2 years.....	Lawn			70 00
<b>RASPBERRIES.</b>				
KANSAS, BLACK DIAMOND, GREGG, PALMER'S, MARLBORO, KING, EUREKA, CUTHBERT and MILLER'S.....				8 00
SHAFFER'S, WINEBERRY and COLUMBIAN.....				12 00
CUMBERLAND.....	Ledge			15 00
HAYMAKER.....	Larboard			25 00
CUMBERLAND—TRANSPLANTS.....	Leer			17 00
<b>BLACKBERRIES.</b>				
SNYDER.....	Leaven			12 00
ANCIENT BRITON, EY. HARVEST, KITTITINNY, WILSON'S, ERIE and TAYLOR'S.....				15 00
ELDORADO.....	Loaf			18 00
OHMER.....	Lackey			15 00
RATHBUN.....	Laxity			30 00
<b>DEWBERRIES.</b>				
LOGAN—(Raspberry-Blackberry).....	Levity		5 00	
LUCRETIA.....	Lid			10 00
<b>STRAWBERRIES.</b>				
BUBACHS, MARSHALL, GLEN MARY, CLYDE, HAVERLAND, JESSIE, WARFIELD, WM. BELT, SAMPLE, BRANDYWINE, BISMARCK, CRESCENT, NICK OHMER, GANDY, MICHEL'S EY. McKINLEY and ROUGH RIDER.....				3 00
MILLER'S, PALMER'S and SENATOR DUNLAP.....				4 00

<b>ASPARAGUS.</b>		Code Word.	Per 10	Per 100	Per 1000
CONOVER'S COLOSSAL AND PALMETTO, 2 years.....	Lineal				\$6 00
COLUMBIAN MAMMOTH WHITE—2 years .....	Libel				7 00
GIANT ARGENTEUIL—2 years .....	Levee				7 00
<b>RHUBARB.</b>					
LINNÆUS .....	Life			\$3 00	
QUEEN .....	Liquid			4 00	

Will be pleased to quote special prices on Grape Vines and Small Fruits in quantities, to be shipped in bulk, on receipt of list stating varieties and numbers desired.

## ORNAMENTAL DEPARTMENT.

Five per cent. off for cash with order. No discount allowed unless cash reaches us before shipment.

<b>DECIDUOUS TREES.</b>		Code Word.	Per 10	Per 100	Per 1000
<b>AILANTHUS</b> —6 to 8 feet.....	Malac			\$20 00	
“ 8 to 10 feet.....	Magilt			25 00	
“ 10 to 12 feet.....	Magnate	\$4 00			
“ 2 to 3 inches.....	Madden	7 50			
“ 4 to 6 inches.....	Motto	15 00			
<b>AMELANCHIER BOTRYAPIUM</b> —1½ to 2 feet.....	Manager			12 00	
“ “ 2 to 3 feet.....	Mormon			15 00	
“ “ 3 to 4 feet.....	Morrow	2 00			
<b>ARALIA JAPONICA</b> —4 to 6 feet.....	Macad	3 00			
“ “ 6 to 8 feet.....	Morsel	4 00			
“ “ 8 to 10 feet.....	Mound	5 00			
“ <b>SPINOSA</b> —4 to 6 feet.....	Marilla	3 50			
“ “ 6 to 8 feet.....	Mainsail	4 00			
“ “ 8 to 10 feet.....	Maintop	6 00			
“ <b>MAXIMOWICZI</b> —6 to 8 feet.....	Motley	7 50			
<b>ALDER</b> —Imperial Cut-leaved, 4 to 6 feet.....	Magic	4 00			
“ “ “ 6 to 8 feet.....	Mould	6 00			
“ “ “ 2½ to 3 inches.....	Moulder	12 50			
“ European, 6 to 8 feet.....	Maraba	1 50			
“ “ 8 to 10 feet.....	Madonna	2 00			
“ “ 10 to 12 feet.....	Magalia	3 00			
“ “ 1¾ to 2 inches.....	Macon	4 50			
“ “ 2 to 2½ inches.....	Mourner	6 00			
“ “ 2½ to 3 inches.....	Muffler	7 50			
“ “ 3 to 4 inches.....	Mizzen	8 50			
“ “ 4 to 6 inches.....	Miter	10 00			
<b>ASH</b> —White, 6 to 8 feet.....	Magnetic			15 00	
“ “ 8 to 10 feet.....	Mahila			20 00	
“ “ 10 to 12 feet.....	Meadow			25 00	
“ “ 1¾ to 2 inches.....	Mow	5 00			
“ “ 2 to 3 inches.....	Mitigant	7 50			
“ “ 3 to 4 inches.....	Moat	10 00			
“ European, 6 to 8 feet.....	Miahen			15 00	
“ “ 8 to 10 feet.....	Miami			20 00	
“ “ 10 to 12 feet.....	Mildew			25 00	
“ “ 1¾ to 2 inches.....	Michie	5 00			
“ “ 2 to 2½ inches.....	Mediator	6 00			
“ “ 2½ to 3 inches.....	Mower	7 50			
“ “ 3 to 4 inches.....	Maypole	10 00			
“ “ 4 to 5 inches.....	Mazy	12 50			
“ <b>Green</b> , 6 to 8 feet.....	Magoon			20 00	
“ “ 8 to 10 feet.....	Madrid	3 00			
“ “ 10 to 12 feet.....	Mortent	3 50			
“ <b>Flowering</b> , 6 to 8 feet.....	Mahwab	2 50			
“ “ 8 to 10 feet.....	Morris	3 00			
“ “ 10 to 12 feet.....	Megal	3 50			

<b>DECIDUOUS TREES—CONTINUED.</b>		Code Word.	Per 10	Per 100	Per 1000
<b>BALM OF GILEAD</b> —6 to 8 feet.....		Michigan		\$15 00	
“ “ 8 to 10 feet.....		Midas		20 00	
“ “ 10 to 12 feet.....		Midland		25 00	
“ “ 12 to 15 feet.....		Menace	\$3 00		
“ “ 2 to 2½ inches.....		Midvale	4 00		
“ “ 2½ to 3 inches.....		Melody	6 00		
<b>BIRCH</b> —European White, 6 to 8 feet.....		Mifflin	4 00		
“ “ “ 8 to 10 feet.....		Mikadup	6 00		
“ “ “ 10 to 12 feet.....		Milasa	7 50		
“ “ “ 2 to 3 inch caliper.....		Mingo	10 00		
“ “ “ 3 to 4 inch caliper.....		Minot	12 50		
“ “ “ 4 to 5 inch caliper.....		Migrate	17 50		
“ Canoe, 6 to 8 feet.....		Molar		40 00	
“ “ 8 to 10 feet.....		Menial		50 00	
“ “ 10 to 12 feet.....		Midsea	7 50		
“ “ 2 to 3 inches.....		Mittimus	10 00		
“ “ 3 to 4 inches.....		Missal	12 50		
“ Maximowiczi, 6 to 8 feet.....		Memento	10 00		
“ “ 8 to 10 feet.....		Memoir	12 50		
“ Purple-leaved, 2 to 3 feet.....		Model	5 00		
“ Red, 6 to 8 feet.....		Manifold		30 00	
“ “ 8 to 10 feet.....		Mocco		40 00	
“ “ 10 to 12 feet.....		Modest		50 00	
“ Yellow, 6 to 8 feet.....		Midday	4 00		
“ “ 8 to 10 feet.....		Midship	5 00		
“ “ 10 to 12 feet.....		Modish	6 00		
<b>BEECH</b> —Purple leaved, 2 to 3 feet.....		Mouse	4 00		
“ “ “ 6 to 8 feet.....		Mynatt	6 50		
“ “ “ 8 to 10 feet.....		Muskogee	8 00		
“ “ “ River's Grafted, 2 to 3 feet.....		Myra	5 00		
“ “ “ “ “ 3 to 4 feet.....		Myoma	6 50		
“ “ “ “ “ 6 to 8 feet.....		Myrna	10 00		
“ “ “ “ “ 8 to 10 feet.....		Myre	12 50		
“ Tricolor, 2 to 3 feet.....		Mumbler	6 50		
“ “ 3 to 4 feet.....		Magnetism	8 50		
“ Fern-leaved, 2 to 3 feet.....		Myron	6 00		
“ “ 4 to 5 feet.....		Mopole	8 50		
“ European, 3 to 4 feet.....		Milo	2 50		
“ “ 4 to 6 feet.....		Midrib	3 00		
“ “ 6 to 8 feet.....		Nab	4 00		
“ “ 8 to 10 feet.....		Muller	6 00		
<b>BIRD CHERRY</b> —6 to 8 feet.....		Nectar	4 00		
<b>CATALPA</b> —Speciosa, 6 to 8 feet.....		Nadeau		15 00	
“ “ 8 to 10 feet.....		Nanna		20 00	
“ “ 10 to 12 feet.....		Nannet		30 00	
“ Teas, Japan, 8 to 10 feet.....		Nailion	2 50		
“ “ 10 to 12 feet.....		Nick	3 50		
“ “ 2 to 3 inches.....		Neighbor	6 00		
“ “ 3 to 4 inches.....		Notify	8 50		
“ Speciosa and Teas, 18 to 24 inch.....		Nebular		\$5 00	
“ “ 12 to 18 inch.....		Naiad		3 50	
“ “ 8 to 12 inch.....		Nowadays		3 00	
“ Bungei, Grafted, 6 to 8 feet.....		Name	40 00		
“ “ 8 to 10 feet.....		Nargold	50 00		
“ “ 4 to 5 feet.....		Null	3 00		
“ Golden-leaf and Silver-leaf, 4 to 6 feet.....		Nowhere	2 50		
“ “ “ 6 to 8 feet.....		Nankeen	3 00		
“ “ “ 8 to 10 feet.....		Napmack	4 00		
<b>CHERRY</b> —Large Double-flowered, 3 to 4 feet.....		Naola	2 50		
“ “ “ 4 to 5 feet.....		Nibbler	3 00		
“ “ “ 5 to 7 feet.....		Novel	3 50		
“ Rhexii fl. pl., 2 to 3 feet.....		Novelist	3 00		
“ Japan Flowering, grafted, 4 to 6 feet.....		November	4 00		
“ “ “ 6 to 8 feet.....		Nullify	5 00		
<b>CORNUS FLORIDA</b> —White-flowered, 2 to 3 feet.....		Naomi	2 00		
“ “ “ 3 to 4 feet.....		Nap	2 50		
“ “ “ 4 to 5 feet.....		Nabb	3 50		

<b>DECIDUOUS TREES—CONTINUED</b>		Code Word.	Per 10	Per 100	Per 1000
<b>CORNUS FLORIDA</b> —Red-flowered, 2 to 3 feet .....		Nabob	\$4 00		
“ “ “ 3 to 4 feet .....		Nadir	5 00		
<b>CORNUS MASCULA</b> —3 to 4 feet.....		Nash		\$10 00	
“ “ 4 to 6 feet.....		Napkin		13 00	
<b>CRAB APPLE</b> —Bechtel's, Double-flowered, 1½ to 2 feet.....		Nettle		15 00	
“ “ “ 2½ to 3 feet.....		Narrate		18 00	
“ “ “ 3 to 3½ feet.....		Narrator		25 00	
“ “ Parkmanni, ½ to 2 feet .....		Nahma	2 50		
“ “ “ 3 to 4 feet .....		Nardo	3 50		
“ “ “ 4 to 5 feet .....		Number	4 00		
“ “ Medwitzkiana, 3 to 4 feet .....		Nina	3 00		
“ “ “ 4 to 5 feet .....		Noble	4 00		
“ “ Chinese Dbl. Rose, 4 to 5 feet.....		Nolan	3 00		
“ “ “ “ White, 3 to 4 feet.....		Nardin	2 50		
“ “ “ “ 4 to 5 feet.....		Novelty	3 00		
<b>CYPRESS</b> —Deciduous, 6 to 8 feet.....		Navy	5 00		
“ “ 8 to 10 feet.....		Naborton	6 00		
<b>EUONYMUS</b> —European (Strawberry Tree), 3 to 4 feet.....		Naron	1 50		
“ “ “ 4 to 6 feet.....		Nahant	2 00		
“ “ “ 6 to 8 feet.....		Nalls	3 00		
<b>ELM</b> —American White or Weeping and Scotch, 6 to 8 feet.....		Nain			\$180 00
“ “ “ “ 8 to 10 feet..		Nacoma			200 00
“ “ “ “ 10 to 12 feet..		Namsos			300 00
“ “ “ “ 1¾ to 2 in.....		Nadua			500 00
“ “ “ “ 2 to 2½ inch.		Nicario		65 00	
“ “ “ “ 2½ to 3 inch ..		Numb		100 00	
“ Scotch, 3 to 4 inch .....		Nymph	15 00		
“ 4 to 5 inch .....		Numerate	25 00		
“ Dovcei, 6 to 8 feet.....		Noisy	3 50		
“ “ 8 to 10 feet .....		Nomad	4 00		
“ “ 10 to 12 feet .....		Notion	5 00		
“ “ 1¾ to 2 inch .....		Naval	6 50		
“ English, 6 to 8 feet.....		Nail		25 00	
“ “ 8 to 10 feet.....		Nailed		30 00	
“ “ 10 to 12 feet.....		Nailing	5 00		
“ “ 1¾ to 2 inch.....		Nickel	7 50		
“ “ 2 to 2½ inch.....		Nun	8 50		
“ Golden, Grafted, 4 to 6 feet .....		Noddy	5 00		
“ “ 6 to 8 feet .....		Niche	7 00		
“ Huntingdon and Purple-leaf, 8 to 10 feet.....		Nunnery		35 00	
“ “ “ 10 to 12 feet.....		Notary		40 00	
“ “ “ 1¾ to 2 inch.....		Newel		65 00	
“ “ “ 2 to 2½ inch .....		Nimbus	10 00		
“ “ “ 2½ to 3 inch.....		Nimble	12 50		
“ “ “ 3 to 4 inch.....		Nuptial	20 00		
“ Pyramidal, 6 to 8 feet .....		Neptune	5 00		
“ “ 8 to 10 feet.....		Nursery	6 50		
“ Red or Slippery, 6 to 8 feet.....		Niceton		20 00	
“ “ “ 8 to 10 feet.....		Niles		25 00	
“ “ “ 10 to 12 feet.....		Nantic		30 00	
“ “ “ 1¾ to 2 inch.....		Noah		40 00	
“ “ “ 2 to 2½ inch.....		Nora		60 00	
“ “ “ 2½ to 3 inch.....		Noodle	10 00		
“ “ “ 3 to 4 inch.....		New	20 00		
“ “ “ 4 to 5 inch.....		Newer	25 00		
<b>HACKBERRY</b> —3 to 4 feet.....		Plummet		15 00	
“ 4 to 6 feet.....		Plumblin	2 00		
“ 6 to 8 feet.....		Piety	3 00		
<b>HONEY LOCUST</b> —4 to 6 feet.....		Peru		15 00	
“ “ 6 to 8 feet.....		Ponden	2 00		
“ “ 8 to 10 feet.....		Ponding	3 00		
“ “ Thornless, 4 to 6 feet.....		Poniard	2 00		
“ “ “ 6 to 8 feet.....		Poning	3 00		
“ “ “ 8 to 10 feet.....		Pondolt	4 00		
“ “ “ 2 to 3 inch .....		Plumber	6 00		

<b>DECIDUOUS TREES—CONTINUED.</b>		<b>Code Word.</b>	<b>Per 10</b>	<b>Per 100</b>	<b>Per 1000</b>
<b>HORSE CHESTNUT</b> —White flowering, 5 to 6 feet.....		Pablo		\$25 00	
“ “ “ “ 6 to 8 feet.....		Pacolet		30 00	
“ “ “ “ 8 to 10 feet.....		Paste		40 00	
“ “ “ “ 10 to 12 feet.....		Poleax		50 00	
“ “ Double White flowering, 4 to 6 feet.....		Parmesa		30 00	
“ “ “ “ 6 to 8 feet.....		Paces	\$3 50		
“ “ “ “ 8 to 10 feet.....		Pontiff	6 00		
“ “ Red-flowering, 6 to 8 feet.....		Polemic	7 50		
“ “ Dwarf, 2 to 3 feet.....		Passa	2 50		
“ “ “ 3 to 4 feet.....		Polacco	3 00		
<b>IRONWOOD</b> —3 to 4 feet.....		Pascup	2 00		
“ 4 to 6 feet.....		Plural	3 00		
<b>JUDAS TREE</b> —3 to 4 feet.....		Prairie		20 00	
“ “ 4 to 6 feet.....		Parable	3 00		
“ “ Japan, 1½ to 2 feet.....		Piazza	1 50		
“ “ “ 2 to 3 feet.....		Pluralist	2 00		
<b>KOELREUTERIA</b> —Paniculata, 3 to 4 feet.....		Petulant		12 00	
“ “ “ 4 to 6 feet.....		Purify		15 00	
<b>KENTUCKY COFFEE TREE</b> —4 to 6 feet.....		Pain		20 00	
“ “ “ 6 to 8 feet.....		Padlock	2 50		
“ “ “ 8 to 10 feet.....		Polecat	4 00		
<b>LINDEN</b> —European, 6 to 8 feet.....		Pagosa		\$180 00	
“ “ 8 to 10 feet.....		Palace		250 00	
“ “ 10 to 12 feet.....		Pasture		350 00	
“ “ 1¾ to 2 inches.....		Palfrey		40 00	
“ “ 2 to 2½ inches.....		Pandost		60 00	
“ “ 3 to 4 inches.....		Paloma	12 50		
“ “ 4 to 5 inches.....		Polestar	17 50		
“ American, 2 to 2½ inches.....		Padua		60 00	
“ “ 2½ to 3 inches.....		Paltor		80 00	
“ “ 3 to 4 inches.....		Policy		100 00	
“ “ 4 to 5 inches.....		Polisher	17 50		
“ American White, (Heterophylla), 8 to 10 feet.....		Palisade		30 00	
“ “ “ “ 10 to 12 feet.....		Packstaff	4 00		
“ “ “ “ 2 to 2½ inch.....		Pasha		60 00	
“ “ “ “ 2½ to 3 inch.....		Pyre		75 00	
“ “ “ “ 3 to 4 inch.....		Polka	12 50		
“ Silver or White Leaf, 6 to 8 feet.....		Pale	3 00		
“ “ “ “ 8 to 10 feet.....		Palter	4 00		
“ “ “ “ 10 to 12 feet.....		Pluto	5 00		
“ “ “ “ 2 to 2½ inch.....		Platonic	7 50		
“ “ “ “ 2½ to 3 inch.....		Polltax	10 00		
“ “ “ “ 3 to 4 inch.....		Poloding	15 00		
“ “ “ “ 4 to 6 inch.....		Pollard	20 00		
“ Gold Twig, 6 to 8 feet.....		Plumage		25 00	
“ “ 8 to 10 feet.....		Plumore		35 00	
“ “ 2 to 2½ inch.....		Polonaise	7 50		
<b>LABURNUM</b> —Scotch, 3 to 4 feet.....		Palermo		12 00	
“ “ 4 to 6 feet.....		Painter		15 00	
“ “ 6 to 8 feet.....		Pyramid	2 50		
<b>LARCH</b> —European, 3 to 4 feet.....		Palate		15 00	
“ “ 4 to 6 feet.....		Paumart		20 00	
“ “ 6 to 8 feet.....		Pneumatic	2 50		
“ “ 8 to 10 feet.....		Palo	4 00		
<b>LIQUID AMBER</b> —4 to 6 feet.....		Pleasure	2 50		
“ “ 6 to 8 feet.....		Poltrain	3 50		
<b>MAPLE</b> —Ash Leaved (Box Elder), 6 to 8 feet.....		Pankey		120 00	
“ “ “ 8 to 10 feet.....		Passaic		150 00	
“ “ “ 10 to 12 feet.....		Polygram		200 00	
“ “ “ 1¾ to 2 inch.....		Polynom	4 00		
“ “ “ 2 to 2½ inch.....		Polymp	5 00		
“ Cork-barked, 4 to 6 feet.....		Polysyl	4 00		
“ Colchicum Rubrum, 5 to 7 feet.....		Pantaco	2 50		
“ Norway, 8 to 10 feet.....		Paola		40 00	
“ “ 10 to 12 feet.....		Pampa		50 00	
“ “ 1¾ to 2 inch.....		Polytech		65 00	

<b>DECIDUOUS TREES—CONTINUED.</b>		Code Word.	Per 10	Per 100	Per 1000
<b>MAPLE—Norway,</b>	2 to 2½ inch.....	Pagoda		100 00	
"	" 2½ to 3 inch.....	Peep		125 00	
"	" 3 to 4 inch.....	Peaked		175 00	
"	" 4 to 5 inch.....	Packet	\$25 00		
"	Red or Scarlet, 4 to 6 feet.....	Pedant	2 50		
"	" " 6 to 8 feet.....	Pecaton	3 50		
"	" " 8 to 10 feet.....	Poca	5 00		
"	Rock or Sugar, 8 to 10 feet.....	Pancina			\$300 00
"	" " 10 to 12 feet.....	Panther			350 00
"	" " 1¾ to 2 inch.....	Polythirst		50 00	
"	" " 2 to 2½ inch.....	Pleasure	10 00		
"	Reitenbachi, 4 to 6 feet.....	Parish	4 50		
"	" " 6 to 8 feet.....	Poach	6 00		
"	" " 8 to 10 feet.....	Prude	7 50		
"	Schwedleri, 4 to 6 feet.....	Peak	4 00		
"	" " 6 to 8 feet.....	Pecos	5 00		
"	Silver, 6 to 8 feet.....	Pants			120 00
"	" " 8 to 10 feet.....	Panthon			100 00
"	" " 10 to 12 feet.....	Pantego			250 00
"	" " 12 to 15 feet.....	Paradup		40 00	
"	" " 1¾ to 2 inch.....	Pledger		50 00	
"	" " 3 to 4 inch.....	Pardo	12 50		
"	" " 4 to 6 inch.....	Pledget	17 50		
"	Sycamore, 6 to 8 feet.....	Peale	2 50		
"	" " 8 to 10 feet.....	Pelcel	3 50		
"	" " 2 to 3 inch.....	Pleding	7 50		
"	" " Purple-leaved, 6 to 8 feet.....	Pebble		35 00	
"	" " " 8 to 10 feet.....	Pannock	5 00		
"	Tartarian, 4 to 6 feet.....	Puffing	4 00		
"	" " 3 to 4 feet.....	Pastor	3 00		
"	" " Ginnala, 3 to 5 feet.....	Pamlin	3 00		
"	Wier's Cut-leaved, 6 to 8 feet.....	Pestel		25 00	
"	" " 8 to 10 feet.....	Pelring		30 00	
"	" " " 10 to 12 feet.....	Pero	4 00		
"	" " " 2½ to 3 inch.....	Panoply	8 50		
<b>MAGNOLIA—Acuminata,</b>	3 to 4 feet.....	Phexol	3 00		
"	" " 4 to 6 feet.....	Perry	3 50		
"	" " 2 to 3 inch.....	Pigeon	10 00		
"	" " 3 to 4 inch.....	Pang	12 50		
"	Soulangiana, 1½ to 2 feet.....	Petard	5 00		
"	" " 2 to 3 feet.....	Pilot	6 00		
"	" " 3 to 4 feet.....	Pilgrim	7 50		
"	Conspicua, Purpurea and Speciosa, 2 to 3 feet.....	Pinion	7 50		
"	" " " 3 to 4 feet.....	Perplex	8 50		
"	Tripetela, 2 to 3 feet.....	Pickens	3 50		
"	" " 3 to 4 feet.....	Parley	4 00		
<b>MOUNTAIN ASH—European,</b>	4 to 6 feet.....	Petral	1 60		
"	" " 6 to 8 feet.....	Plenary	2 00		
"	" " 8 to 10 feet.....	Pocaset	2 50		
"	" " 10 to 12 feet.....	Pennant	3 00		
"	" " 1¾ to 2 inch.....	Pompano	4 00		
"	" " 2 to 2½ inch.....	Paralta	6 00		
"	" " 2½ to 3 inch.....	Paneton	7 50		
"	" " Oak Leaved, 4 to 6 feet.....	Pocotor		18 00	
"	" " " 6 to 8 feet.....	Pochina		22 00	
<b>OAK—English,</b>	4 to 6 feet.....	Poland		30 00	
"	" " 6 to 8 feet.....	Polish		35 00	
"	" " 8 to 10 feet.....	Polaris		40 00	
"	" " 10 to 12 feet.....	Politic		60 00	
"	" " 1¾ to 2 inch.....	Piebald		75 00	
"	" " 2 to 3 inch.....	Polar	12 50		
"	" " 3 to 4 inch.....	Flow	20 00		
"	Black or Yellow, Chestnut and Swampwhite, 4 to 6 ft.....	Porridge		30 00	
"	" " " 6 to 8 ft.....	Pontal		40 00	
"	" " " 8 to 10 ft.....	Please		50 00	
"	" " " 10 to 12 ft.....	Pleasing	7 50		

DECIDUOUS TREES—CONTINUED.		Code Word.	Per 10	Per 100	Per 1000
OAK—Burr or Mossy-cup and Red,	4 to 6 feet.....	Poltroon		\$30 00	
"	" " " " 6 to 8 feet.....	Pondag		35 00	
"	" " " " 8 to 10 feet.....	Polinta		45 00	
"	" " " " 10 to 12 feet.....	Postern		60 00	
"	" " " " 1¾ to 2 inch.....	Porcupine	\$ 8 50		
"	" " " " 2 to 2½ inch.....	Pomace	12 50		
"	Golden, 4 to 6 feet.....	Portley	7 00		
"	Pin, 4 to 6 feet.....	Pomp		30 00	
"	" " 6 to 8 feet.....	Pontoon		40 00	
"	" " 8 to 10 feet.....	Ponert		60 00	
"	" " 10 to 12 feet.....	Plowing		85 00	
"	" " 1¾ to 2 inch.....	Plentoke		100 00	
"	" " 2 to 2½ inch.....	Plethora		150 00	
"	" " 2½ to 3 inch.....	Pleura	20 00		
"	Pyramidal, 6 to 8 feet.....	Pollex	6 00		
"	" " 8 to 10 feet.....	Plowboy	7 50		
"	" " 2 to 3 inch.....	Pod	17 50		
"	" " 3 to 4 inch.....	Pleurisy	25 00		
"	Scarlet, 4 to 6 feet.....	Porison	5 00		
"	" " 6 to 8 feet.....	Popery	7 00		
"	White, 4 to 6 feet.....	Postfix	4 50		
"	" " 6 to 8 feet.....	Pompous	6 00		
"	" " 8 to 10 feet.....	Plod	7 50		
"	" " 10 to 12 feet.....	Plexus	10 00		
"	" " 2 to 3 inches.....	Placab	17 50		
"	Turkey, 4 to 6 feet.....	Plodding	4 00		
"	" " 6 to 8 feet.....	Pond	5 00		
OAKS—From Nursery Seed Rows, 3 year, well branched and rooted:—Burr, black and red, 4 to 6 feet.....	Poeville			12 00	
" " " " 3 to 4 feet.....	Placa			10 00	
" " " " 2 to 3 feet.....	Ponca			8 00	
" " " " 1½ to 2 feet.....	Ponesy			6 00	
Pin, 8 to 12 inch.....	Pronax			6 00	
POPLAR—Aurea (Golden), 6 to 8 feet.....	Pomona			15 00	
" " " " 8 to 10 feet.....	Pompei			18 00	
" " " " 10 to 12 feet.....	Pompton	2 50			
" " " " 2 to 3 inch.....	Prolix	4 50			
"	Silver, (Bolleana), 6 to 8 feet.....	Portico	3 00		
"	" " 8 to 10 feet.....	Pontu	4 00		
"	Carolina, 6 to 8 feet.....	Potsdam		11 00	
"	" " 8 to 10 feet.....	Potwin		14 00	
"	" " 10 to 12 feet.....	Pontus		18 00	
"	" " 12 to 15 feet.....	Polett		22 00	
"	" " 2 to 2½ inch.....	Prion		40 00	
"	Lombardy 6 to 8 feet.....	Ponlan		10 00	
"	" " 8 to 10 feet.....	Poy		\$120 00	
"	" " 10 to 12 feet.....	Powl		150 00	
"	" " 12 to 15 feet.....	Powcan		200 00	
"	" " 2 to 2½ inch.....	Pope		35 00	
PAULOWNIA IMPERIALIS—4 to 6 feet.....	Placate	3 50			
PEACH—Red and White Flowering.....	Pacify			15 00	
PTELIA TRIFOLIATA—(Hop Tree), 4 to 6 feet.....	Prescott			12 00	
" " " " 6 to 8 feet.....	Precious			15 00	
" " " " 8 to 10 feet.....	Propel	2 50			
"	Golden leaved, 2 to 3 feet.....	Prout		12 00	
"	" " " " 3 to 4 feet.....	Polliwog		15 00	
"	" " " " 4 to 6 feet.....	Placidly		20 00	
RUSSIAN OLIVE—2 to 3 feet.....	Poker			12 00	
" " " 3 to 4 feet.....	Postillion			15 00	
" " " 4 to 6 feet.....	Pillage			20 00	
ROSE ACACIA—Flowering Locust, 3 to 4 feet, grafted.....	Prentiss			20 00	
" " " " 4 to 6 feet, grafted.....	Prance			25 00	
"	Neo Mexicana, 3 to 4 feet, grafted.....	Plentiful	3 00		
"	" " 4 to 6 feet, grafted.....	Polka	3 50		
"	Pendufolia Purpurea, 4 to 6 feet, grafted.....	Police	3 50		
"	" " 6 to 8 feet, grafted.....	Plenty	5 00		

**DECIDUOUS TREES—CONTINUED.**

	Code Word.	Per 10	Per 100	Per 1000
<b>SALISBURIA</b> —Maiden Hair Tree, 6 to 8 feet.....	Preble			\$250 00
“ “ “ “ 8 to 10 feet.....	Prison			300 00
“ “ “ “ 10 to 12 feet.....	Pratt		\$35 00	
<b>SYCAMORE</b> —European and American, 6 to 8 feet.....	Preserve			250 00
“ “ “ “ 8 to 10 feet.....	Preston			350 00
“ “ “ “ 10 to 12 feet.....	Pretext			450 00
“ “ “ “ 1¾ to 2 inch.....	Potency		60 00	
<b>TULIP TREE</b> —4 to 6 feet.....	Princip	\$ 2 50		
“ 6 to 8 feet.....	Prince	3 00		
“ 8 to 10 feet.....	Priam	4 50		
<b>THORN</b> —Flowering, Double White, Pink and Paul's Scarlet, 3 to 4 feet.....	Prigg		20 00	
“ “ “ “ “ 4 to 5 feet.....	Priggish	2 50		
“ Crus-Galli, 3 to 5 feet.....	Pilotage	2 50		
<b>VIRGELIA LUTEA</b> —2 to 3 feet.....	Pinker	2 00		
“ 3 to 4 feet.....	Prink	3 00		
“ 4 to 6 feet.....	Purser	4 00		
“ 6 to 10 feet.....	Plug	5 00		
<b>WILLOW</b> —Laurel-leaved and Gold-bark, 6 to 8 feet.....	Prospect			120 00
“ “ “ “ 8 to 10 feet.....	Profess			150 00
“ “ “ “ 10 to 12 feet.....	Problem			200 00
“ Gold-Bark, 2 to 2½ inches.....	Privacy		40 00	
“ “ 2½ to 3 inches.....	Protem	6 00		
“ Cardinalis and Wentworth, 6 to 8 feet.....	Paulding		12 00	
“ “ “ “ 8 to 10 feet.....	Pontag		15 00	
“ “ “ “ 10 to 12 feet.....	Prefix		20 00	
“ “ “ “ 2 to 2½ inch.....	Pleak		40 00	
“ Canescens, 6 to 8 feet.....	Probe		15 00	
“ “ 8 to 10 feet.....	Polk		20 00	
“ “ 10 to 12 feet.....	Punk	2 50		
“ Curley-leaf and Japan Golden, 5 to 6 feet.....	Preside	1 50		
“ “ “ “ 6 to 8 feet.....	Picking	2 00		
“ Rosemary.....	Pluck	2 50		

**WEeping DECIDUOUS TREES.**

<b>ASH</b> —Gold Bark.....	Pettis	5 00		
“ European.....	Potter	5 00		
<b>BIRCH</b> —Cut-leaved, 4 to 5 feet.....	Phelps	6 00		
“ “ 6 to 8 feet.....	Placer	7 50		
“ Young's, 3 to 4 feet.....	Pinal	5 00		
“ “ 4 to 6 feet.....	Portage	7 00		
“ Elegans Pendula, 3 to 4 feet.....	Pledge	5 00		
<b>BEECH</b> —Pendula, 4 to 6 feet.....	Poser	6 00		
“ “ 6 to 10 feet.....	Pocomoke	8 50		
“ “ 10 to 12 feet.....	Pomifer	10 00		
<b>CHERRY</b> —Japan, Weeping, 6 to 8 feet, grafted.....	Poplit	5 00		
<b>ELM</b> —Fulva Pendula, 1 and 2 year heads.....	Putnam	3 50		
“ Camperdown, 1 year heads.....	Pistol		40 00	
“ “ “ 2 year heads.....	Pulque	5 00		
<b>LINDEN</b> —White Leaf, 5 to 6 feet.....	Pinch		30 00	
“ “ “ 6 to 8 feet.....	Pung		40 00	
“ “ “ 8 to 10 feet.....	Purse		50 00	
“ “ “ 2 to 3 inch.....	Puzzle	7 50		
“ “ “ 3 to 4 inch.....	Portress	12 50		
<b>MULBERRY TEAS</b> .....	Pillow	5 00		
<b>MOUNTAIN ASH</b> .....	Pique	5 00		
<b>POPLAR</b> —Grandidentata Pendula.....	Pilton	4 00		
<b>WILLOW</b> —Kilmarnock, 2 year.....	Pupil		25 00	
“ New American.....	Perplex	2 50		
“ Wisconsin, 5 to 6 feet.....	Physic		12 00	
“ “ 6 to 8 feet.....	Pewter		15 00	
“ “ 8 to 10 feet.....	Petral		22 00	
“ “ 10 to 12 feet.....	Pecary		30 00	
“ “ 2 to 3 inches.....	Pussy	5 00		
“ Babylonica, 6 to 8 feet.....	Pilsen	2 00		



<b>WEeping DECIDUOUS TREES</b> —CONTINUED.		Code	Per 10	Per 100	Per 1000
		Word.			
<b>WILLOW</b> —	Babylonica, 8 to 10 feet .....	Punt	\$3 00		
“	“ 10 to 12 feet ....	Polyhed	3 50		
“	“ 2 to 2½ inch .....	Polygon	6 00		
“	Thurlow, 6 to 8 feet.....	Profuse		\$20 00	
“	“ 8 to 10 feet.....	Project		25 00	
“	“ 10 to 12 feet.....	Prosaic		30 00	
“	“ 12 to 15 feet.....	Plad	4 50		
“	“ 2 to 2½ inch.....	Proverb	6 00		
“	“ 2½ to 3 inch.....	Placid	7 00		
“	“ 3 to 4 inch.....	Pointer	8 50		
<b>DECIDUOUS SHRUBS.</b>					
<b>AZALEA MOLLIS</b> —	15 to 18 inches, unnamed .....	Ratio		40 00	
“	“ 12 to 15 inches, “ .....	Rover		30 00	
“	<b>GHE</b> NT—15 to 18 inches, named varieties .....	Rayden	4 50		
<b>AMORPHA FRUTICOSA</b> —	2 to 3 feet.....	Ravage		10 00	
<b>ALTHEAS</b> —	Named colors, 2 to 3 feet.....	Rainbow		10 00	
“	“ “ 3 to 4 feet .....	Refugio		12 00	
“	Variegated-leaved, 2 to 3 feet.....	Romney		15 00	
<b>ALMONDS</b> —	Double-flowering, Pink and White.....	Riley		15 00	
<b>BERBERRY</b> —	Purple-leaved, 18 to 24 inches.....	Rockland		8 00	
“	“ 2 to 2½ feet.....	Rachit		10 00	
“	Common, 2 to 2½ feet.....	Regrip		8 00	
“	“ 18 to 24 inches.....	Rye		6 00	
“	Thunbergii, 12 to 15 inches.....	Rasp		6 00	
“	“ 18 to 24 inches .....	Roberts		8 00	
<b>BUCKTHORN</b> —	3 to 4 feet.....	Raft		8 00	
<b>COLUTEA ARBORESCENS</b> —	3 to 4 feet.....	Rabin	1 20		
<b>CLETHRA ALNIFOLIA</b> —	2 to 3 feet.....	Rabid		10 00	
<b>CORNUS SIBERICA</b> —	3 to 4 feet.....	Rapier		10 00	
“	<b>PANICULATA AND STOLONIFERA</b> —3 to 4 feet.....	Recast		8 00	
“	“ “ 4 to 6 feet .....	Raysop		10 00	
“	<b>SPÆTHII AUREA</b> —2 to 3 feet.....	Rehand	2 50		
<b>CORCORUS, JAPONICA</b> —	fl. pl., 2 to 3 feet .....	Rinehart		10 00	
<b>CALYCANTHUS</b> —	2 to 3 feet.....	Roone		10 00	
<b>CURRENTS AUREA and GORDONI</b> .....		Robison	1 20		
<b>DEUTZIA</b> —	Crenata, fl. pl., 3 to 4 feet.....	Rolette		8 00	
“	Crenate-leaved (Crenata) 3 to 4 feet.....	Roop		8 00	
“	Candidissima, 3 to 4 feet.....	Rouff		8 00	
“	Wateri, 3 to 4 feet.....	Rowan		8 00	
“	Gracilis, 12 to 15 inches.....	Rash		8 00	
“	Lemoinei, 18 to 24 inches.....	Ridges		10 00	
“	Parviflora, 2 to 3 feet .....	Rado	1 25		
“	in variety, 2 to 3 feet.....	Radial		7 00	
<b>EXOCHORDIA GRANDIFLORA</b> —	3 to 4 feet.....	Rutland		10 00	
<b>ELDER</b> —	Golden-leaved, 3 to 4 feet.....	Rhone		10 00	
“	Variegata, 3 to 4 feet.....	Roe		10 00	
<b>ELEAGNUS LONGIPES</b> —	1½ to 2 feet.....	Rib		12 00	
<b>FORSYTHIA</b> —	Suspensa and Fortunii, 2 to 3 feet .....	Rialto		10 00	
“	Viridissima, 2 to 3 feet.....	Rampage		8 00	
“	“ 3 to 4 feet.....	Rad		10 00	
<b>FRINGE</b> —	Purple, 4 to 5 feet.....	Raccoon		15 00	
“	“ 3 to 4 feet.....	Richford		12 00	
“	White, 2 to 3 feet.....	Riddle	2 00		
<b>HYDRANGEA</b> —	Paniculata Grandiflora, 18 to 24 inches.....	Read		\$70 00	
“	“ “ 2 to 3 feet.....	Roca		100 00	
“	“ “ Tree shape, 3 to 4 feet.....	Rebel		20 00	
<b>HONEYSUCKLE</b> —	Red and White Tartarian, 3 to 4 feet.....	Rock		10 00	
“	“ “ “ 2 to 3 feet.....	Ringgold		8 00	
“	Morrowii, 3 to 4 feet.....	Ragler		12 00	
“	Fragantissima, 2 to 3 feet.....	Ratline	1 50		
“	Grandiflora Rubra, 3 to 4 feet .....	Raif		12 00	
“	Virginalis Alba, 2 to 3 feet.....	Rag		12 00	
<b>LILAC</b> —	Purple and White, 3 to 4 feet.....	Rabbit		120 00	
“	“ 2 to 3 feet.....	Rawlins		100 00	
“	Chas. 10th, 2 to 3 feet.....	Rant		15 00	
“	Persian, Purple, 2 to 3 feet.....	Russell		15 00	

	Code Word.	Per 10	Per 100	Per 1000
<b>DECIDUOUS SHRUBS—CONTINUED.</b>				
LILAC—New Double, in 8 varieties, 3 to 4 feet.....	Reflex		\$20 00	
“ “ “ in 8 varieties, 2 to 3 feet.....	Rial		15 00	
LAURUS BENZONI—3 to 4 feet.....	Recital	\$1 50		
PYRUS JAPONICA—Scarlet, 18 to 24 inches.....	Ritchie		8 00	
“ “ “ 15 to 18 inches.....	Rabble		5 00	
PRUNUS PISSARDI—3 to 4 feet.....	Race		15 00	
“ TRILOBA (Double-flowering Plum) 3 to 4 feet.....	Racer	1 50		
PRIVET CALIFORNIA—18 to 24 inches.....	Rago		\$30 00	
“ “ 24 to 30 inches.....	Racola		40 00	
Common, 18 to 24 inches.....	Ragman		30 00	
PTELIA TRIFOLIATA (Hop Tree), 4 to 6 feet.....	Rasper		12 00	
“ “ Golden-leaved, 2 to 3 feet.....	Ray		12 00	
“ “ “ 3 to 4 feet.....	Relic		15 00	
RHAMNUS CARTHARTICUS—3 to 4 feet.....	Rebus		10 00	
RHODOTYPUS KERROIDES—2 to 3 feet.....	Redeem		10 00	
RHUS—Laciniata, 2 to 3 feet.....	Reach		15 00	
“ Virginica and Glabra, 4 to 6 feet.....	Roman	1 25		
“ “ “ 6 to 8 feet.....	Ramify	1 60		
“ “ “ 8 to 12 feet.....	Rector	2 00		
“ Typhena and Osbecki, 6 to 8 feet.....	Reform	1 75		
SPIREAS (in varieties)—2 to 3 feet.....	Rafter		8 00	
“ Anthony Waterer, 18 inch.....	Rack		12 00	
“ Aurea, 2 to 3 feet.....	Raizon	1 25		
“ Bumalda, 2 to 3 feet.....	Rugged		10 00	
“ Thunbergii, 1½ to 2 feet.....	Regrist		10 00	
“ Van Houtte, 2 to 3 feet.....	Reinder		100 00	
SOPHORA JAPONICA—1½ to 2 feet.....	Ramoose	1 50		
SNOWBERRY—Red and White, 2 to 3 feet.....	Realm		8 00	
SYRINGA (Philadelphus or Mock Orange)—3 var., 3 to 4 feet.....	Rake		8 00	
“ Double Flowering, 2 to 3 feet.....	Rally		10 00	
“ Lemoni Erecta, 2 to 3 feet.....	Rayden		12 00	
TAMARIX—Africana, Indica, Gallica and Tetandra, 3 to 4 feet.....	Recoil		8 00	
VIBURNUM STERILIS (Snowball)—3 to 4 feet.....	Rail		15 00	
“ “ 2 to 3 feet.....	Recast		12 00	
“ OPULUS—(High Bush Cranberry), 2 feet.....	Rain		10 00	
“ LANTANA—3 to 4 feet.....	Rand		10 00	
“ PPLICATUM—2 to 3 feet.....	Rella		20 00	
WEIGELA (in variety), 2 to 3 feet.....	Ramage		10 00	
“ fol. variegata, 2 to 3 feet.....	Ramble		10 00	
XANTHOCERAS SORBIFOLIA—18 inches.....	Relish		20 00	
<b>CLIMBING SHRUBS.</b>				
AMPELOPSIS VEITCHII—Strong plants, field grown.....	Ranch		10 00	
“ “ 2nd size, field grown.....	Rancid		7 00	
“ Quinefolia (American Ivy) 2 year.....	Random		7 00	
ARISTOLOCHIA SIPHO (Dutchman's Pipe).....	Raven		25 00	
AKEBIA QUINATA.....	Record		10 00	
BIGNONIA RADICANS.....	Range		8 00	
CLEMATIS, Coccinea.....	Rank		12 00	
“ Paniculata, 2 years, strong.....	Ravage		8 00	
“ Jackmani, and other large flowering sorts,.....	Rattan		18 00	
“ “ “ “ “ strong, 3 yr.....	Recess		22 00	
HONEYSUCKLES—Aurea Reticulata, Halliana and Chinese Twining.....	Ranny		8 00	
HONEYSUCKLE—Semperflorens.....	Rust	1 50		
MATRIMONY VINE.....	Rodent		8 00	
PERIPLOCA GRÆCA (Silkvine).....	Rural		10 00	
WISTERIA MAGNIFICA—1 year.....	Rare		60 00	
“ “ 2 years.....	Rarely		80 00	
“ Sinensis, 2 years.....	Romish		15 00	
“ Multijuga, 2 years.....	Robust		15 00	
<b>EVERGREENS.</b>				
Transplanted nursery grown.				
ARBOR VITÆ—American, 8 to 12 inches.....	Saginaw			25 00
“ “ 15 to 18 inches.....	Saline		7 00	
“ “ 1½ to 2 feet.....	Sampson		11 00	

<b>EVERGREENS—CONTINUED.</b>		Code Word.	Per 10	Per 100	Per 1000
<b>ARBOR VITÆ</b> —American, 2 to 3 feet.....		Saratoga	.....	\$14 00	.....
“ “ 3 to 4 feet.....		Sampo	.....	.....	\$150 00
“ “ 4 to 6 feet.....		Sarpy	.....	.....	200 00
“ Compacta, 12 to 15 inches.....		Scull	.....	12 00	.....
“ “ 15 to 18 inches.....		Sapwood	\$1 50	.....	.....
“ “ 18 to 24 inches.....		Saber	2 00	.....	.....
“ Elegantißima, 12 to 15 inches.....		Savant	2 00	.....	.....
“ “ 15 to 18 inches.....		Sprite	3 00	.....	.....
“ “ 18 to 24 inches.....		Surate	4 00	.....	.....
“ Elwangeriana, 15 to 18 inches.....		Sable	2 00	.....	.....
“ “ 18 to 24 inches.....		Sabine	2 50	.....	.....
“ Ericoides, 12 to 15 inches.....		Saccos	.....	10 00	.....
“ “ 15 to 18 inches.....		Scott	.....	15 00	.....
“ “ 18 to 24 inches.....		Saunders	.....	20 00	.....
“ “ 2 to 3 feet.....		Sacker	3 00	.....	.....
“ Globosa, 12 to 15 inches.....		Sagum	.....	12 00	.....
“ “ 15 to 18 inches.....		Sevier	.....	15 00	.....
“ “ 18 to 24 inches.....		Shekel	.....	20 00	.....
“ Golden (Oriental) 15 to 18 inches.....		Sadly	2 50	.....	.....
“ “ 18 to 24 inches.....		Sable	3 50	.....	.....
“ “ 2 to 3 feet.....		Sadness	5 00	.....	.....
“ Hovey’s Golden, 15 to 18 inches.....		Sheyenne	1 50	.....	.....
“ “ 1½ to 2 feet.....		Shelf	1 80	.....	.....
“ “ 2 to 3 feet.....		Shelby	.....	20 00	.....
“ “ 3 to 4 feet.....		Shasta	.....	25 00	.....
“ “ 4 to 5 feet.....		Shell	.....	30 00	.....
“ Japonica Filiformis, 15 to 18 inches.....		Spink	3 00	.....	.....
“ “ 18 to 24 inches.....		Spinet	4 00	.....	.....
“ “ 2 to 3 feet.....		Spinner	5 00	.....	.....
“ Lutea, 12 to 15 inches.....		Splicer	4 00	.....	.....
“ “ 15 to 18 inches.....		Splicing	5 00	.....	.....
“ Pyramidalis, 18 to 24 inches.....		Sonant	1 50	.....	.....
“ “ 3 to 4 feet.....		Sonoma	.....	20 00	.....
“ Pumila, 18 to 24 inches.....		Sperry	2 50	.....	.....
“ Semper Aurea, 18 to 24 inches.....		Spongy	3 50	.....	.....
“ “ 2 to 3 feet.....		Spoon	5 00	.....	.....
“ Tom Thumb, 12 to 15 inches.....		Steele	.....	12 00	.....
“ “ 15 to 18 inches.....		Simpson	.....	15 00	.....
“ “ 18 to 24 inches.....		Sterile	.....	18 00	.....
“ “ 2 to 3 feet.....		Sabot	2 50	.....	.....
“ Vervæanna, 3 to 4 feet.....		Spurn	3 50	.....	.....
“ “ 4 to 5 feet.....		Saging	4 00	.....	.....
“ Warreana Aurea, 2 to 3 feet.....		Satisfy	4 00	.....	.....
<b>CUPRESSUS</b> —Erecta Viridis, 18 to 24 inches.....		Sulky	2 50	.....	.....
“ Lawsoniana, 15 to 18 inches.....		Scuffle	.....	20 00	.....
“ “ 18 to 24 inches.....		Stew	.....	25 00	.....
“ “ 2 to 3 feet.....		Searay	.....	30 00	.....
“ Nutkensis, 15 to 18 inches.....		Sackbut	3 00	.....	.....
“ “ 18 to 24 inches.....		Saddler	4 00	.....	.....
<b>FIR</b> —Silver, American Balsam, 15 to 18 inches.....		Sussex	.....	15 00	.....
“ “ “ 2 to 3 feet.....		Survey	.....	25 00	.....
“ “ “ 3 to 4 feet.....		Surprise	.....	30 00	.....
“ Cephalonica, 18 to 24 inches.....		Step	6 00	.....	.....
“ Concolor, 15 to 18 inches.....		Suitor	.....	40 00	.....
“ “ 1½ to 2 feet.....		Spokane	.....	50 00	.....
“ “ 2 to 3 feet.....		Saceade	.....	60 00	.....
“ “ 3 to 4 feet.....		Sealwise	8 50	.....	.....
“ “ Variegata, 18 to 24 inches.....		Surrey	5 00	.....	.....
“ “ 2 to 2½ feet.....		Sampy	7 50	.....	.....
“ “ Violaacea, 12 to 18 inches.....		Swift	4 00	.....	.....
“ “ “ 18 to 24 inches.....		Suffolk	5 00	.....	.....
“ “ “ 2½ to 3 feet.....		Suspect	6 00	.....	.....
“ European White, 1½ to 2 feet.....		Stokes	2 00	.....	.....
“ “ “ 2 to 3 feet.....		Stewart	2 50	.....	.....
“ “ “ 3 to 4 feet.....		Scuffler	3 50	.....	.....

<b>EVERGREENS—CONTINUED.</b>		Code Word.	Per 10	Per 100	Per 1000
<b>FIR</b> —Nordmaniana, 15 to 18 inches.....		Saba		\$40 00	
“ “ 1½ to 2 feet.....		Satine		50 00	
“ “ 2 to 3 feet.....		Sealer		60 00	
“ “ 3 to 4 feet.....		Sassaby		75 00	
<b>JUNIPER</b> —English, ½ to 2 feet.....		Sealegs	\$2 50		
“ Golden, 15 to 18 inches.....		Search	3 00		
“ “ 18 to 24 inches.....		Suspend	4 00		
“ Elegantiissima, 18 to 24 inches.....		Saltant	3 50		
“ Excelsa, 1½ to 2 feet.....		Sag		15 00	
“ “ 2 to 3 feet.....		Sailor		18 00	
“ “ 3 to 4 feet.....		Sake		20 00	
“ “ 4 to 5 feet.....		Sculler		25 00	
“ Irish, 15 to 18 inches.....		Shale			\$100 00
“ “ 1½ to 2 feet.....		Shako			150 00
“ “ 2 to 3 feet.....		Saddle			180 00
“ “ 3 to 4 feet.....		Seaport			200 00
“ Japan, 18 to 24 inches.....		Seesaw		40 00	
“ “ 2 to 3 feet.....		Scout		60 00	
“ Neboriensis, 18 to 24 inches.....		Scorpion		25 00	
“ “ 2 to 3 feet.....		Saltier		35 00	
“ Savin, 15 to 18 inches.....		Sculpin		15 00	
“ “ 18 to 24 inches.....		Searoom		20 00	
“ “ 2 to 3 feet.....		Seating		25 00	
“ Siberica Aurea, 18 to 24 inches.....		Shaven	5 00		
“ “ Variegata, 18 to 24 inches.....		Shawl	5 00		
“ “ 2 to 3 feet.....		Shear	6 00		
“ Suecica Nana, 15 to 18 inches.....		Salt		12 00	
“ “ 18 to 24 inches.....		Salm		15 00	
“ “ 2 to 3 feet.....		Salad	2 50		
“ “ 3 to 4 feet.....		Sculptor	3 00		
“ Swedish, 1½ to 2 feet.....		Saga	1 50		
“ “ 2 to 3 feet.....		Sage	2 00		
“ “ 3 to 4 feet.....		Shannon	2 50		
“ Virginia (Red Cedar), 1½ to 2 feet.....		Surgical		15 00	
“ “ 2 to 3 feet.....		Salute		20 00	
“ “ 3 to 4 feet.....		Salic		25 00	
“ “ 4 to 5 feet.....		Scupper		30 00	
“ “ Glauca, 18 to 24 inches.....		Scare	4 00		
“ “ 2 to 3 feet.....		Seignor	6 00		
“ “ 3 to 3½ feet.....		Scutcheon	7 50		
<b>PINE</b> —Austrian, 1½ to 2 feet.....		Sop		15 00	
“ “ 2 to 3 feet.....		Soppy		20 00	
“ “ 3 to 4 feet.....		Scepter		25 00	
“ “ 4 to 5 feet.....		Sawmill		35 00	
“ Mugho Dwarf, 12 to 15 inches.....		Scarf		20 00	
“ Ponderosa, 2 to 3 feet.....		Surly	4 00		
“ “ 3 to 4 feet.....		Safe	5 00		
“ “ 4 to 5 feet.....		Sachel	6 00		
“ Scotch, 15 to 18 inches.....		Saffron		12 00	
“ “ 18 to 24 inches.....		Sate	2 00		
“ White, 1½ to 2 feet.....		Sandal	1 50		
“ “ 2 to 3 feet.....		Swim	2 50		
“ “ 3 to 4 feet.....		Swag	3 00		
<b>RETINOSPORA</b> —Argentea, 12 to 15 inches.....		Scope	2 50		
“ “ 15 to 18 inches.....		Salver	3 00		
“ Gracilis Aurea, 1½ to 2 feet.....		Sapil	3 50		
“ “ 2 to 3 feet.....		Saxon	4 00		
“ Plumosus Aurea, 15 to 18 inches.....		Scarlet		15 00	
“ “ 18 to 24 inches.....		Starter		20 00	
“ “ 2 to 3 feet.....		Scene		30 00	
“ “ 3 to 4 feet.....		Swing		40 00	
“ “ 4 to 5 feet.....		Swain		60 00	
<b>SPRUCE</b> —Alcocquiana, 15 to 18 inches.....		Switch	4 00		
“ “ 18 to 24 inches.....		Seward	5 00		
“ Black, 18 to 24 inches.....		Sane	2 50		
“ “ 2 to 3 feet.....		Sambur	3 00		
“ “ 3 to 4 feet.....		Samoaan	3 50		

<b>EVERGREENS—CONTINUED.</b>		Code Word.	Per 10	Per 100	Per 1000
SPRUCE—Colorado,	15 to 18 inches.....	Seashore		\$15 00	
"	" 18 to 24 inches.....	Seabreeze		20 00	
"	" 2 to 3 feet.....	School		25 00	
"	" 3 to 4 feet.....	Scatter		40 00	
"	" Selected Blue, 15 to 18 inches.....	Saucer		50 00	
"	" " 18 to 24 inches.....	Seal		70 00	
"	" " 2 to 3 feet.....	Scandel		85 00	
"	" " 3 to 4 feet.....	Scalper		100 00	
"	" 15 to 18 inches, grafted.....	Seadog	\$15 00		
"	" 18 to 24 inches, grafted.....	Sawyer	20 00		
"	Douglass, 1½ to 2 feet.....	Scurvy		25 00	
"	" 2 to 3 feet.....	Scrubby		30 00	
"	" 3 to 4 feet.....	Scall		35 00	
"	Engelmanni, 15 to 18 inches.....	Scutiform	6 00		
"	" 2 to 3 feet.....	Scant	10 00		
"	Hemlock, 15 to 18 inches.....	Screen		20 00	
"	" 18 to 24 inches.....	Sauce		25 00	
"	" 3 to 4 feet.....	Scheme		35 00	
"	Norway, 12 to 15 inches.....	Scuttle		4 00	
"	" 15 to 18 inches.....	Scythe		6 00	
"	" 1½ to 2 feet.....	Scramble			\$100 00
"	" 2 to 3 feet.....	Scrap			150 00
"	" 3 to 4 feet.....	Scrapper			200 00
"	" 4 to 5 feet.....	Scrawl		30 00	
"	" Weeping, 15 to 18 inches.....	Satwin	6 00		
"	" " 18 to 24 inches.....	Sedate	7 50		
"	" " 2 to 3 feet.....	Selvage	10 00		
"	Polita, 15 to 18 inches.....	Scald	5 00		
"	White, 15 to 18 inches.....	Scrutch		12 00	
"	" 1½ to 2 feet.....	Scrip		15 00	
"	" 2 to 3 feet.....	Scrub		20 00	
YEW—Adpressus Stricta,	12 to 15 inches.....	Satyr	4 00		
"	Baccata, 15 to 18 inches.....	Search	3 00		
"	" 18 to 24 inches.....	Scream	3 50		
"	Canadissima Variegata, 12 to 15 inches.....	Seam	3 50		
"	Elegantissima and Erecta, 12 to 15 inches.....	Savanna	4 00		
<b>EVERGREEN SHRUBS.</b>					
BOX TREE—	12 to 15 inches.....	Selvage	1 50		
BOX DWARF.....		Seek			35 00
HOLLEY—American,	12 to 15 inches.....	Sanilac	3 00		
"	" 15 to 18 inches.....	Sprinkle	3 50		
MAHONIA AQUIFOLIA—	15 to 18 inches.....	Sear		12 00	
"	" 18 to 24 inches.....	Setter	1 80		
"	" 2 to 3 feet.....	Sensible		20 00	
RHODODENDRONS—	Choice Grafted Sorts, best hardy varieties, with bright, clean foliage, well set with flower buds:				
"	18 inches.....	Sword		75 00	
"	24 inches.....	Sunter		100 00	
"	Catawbiense Seedlings, 15 to 18 inches, heavily set with flower buds.....	Surface		50 00	
"	Catawbiense Seedlings, 18 to 24 inches, heavily set with flower buds.....	Skull		60 00	
<b>HEDGE PLANTS.</b>					
HONEY LOCUST—	8 to 12 inches.....	Slump			4 00
OSAGE ORANGE—	1 year, strong..	Sailpin			1 50
"	2 year, strong.....	Shallot			2 00
PRIVET OVALIFOLIUM—	12 to 15 inches.....	Sermon			15 00
"	" 15 to 18 inches.....	Swain			20 00
PYRUS JAPONICA—	Japan Quince, 12 to 15 inches.....	Serpent			30 00
BERBERRY—	Thunbergii, 10 to 12 inches.....	Smart			20 00
"	" 12 to 15 inches.....	Smear			25 00

For Evergreen Hedge Plants, see sizes and prices, pages 16 to 19.

**HERBACEOUS PAEONIES.**

	Per 10	Per 100	Per 1000
A fine collection in 20 varieties.....	Shale	\$10 00	
White.....	Seba	12 00	

**TREE PAEONIES.**

<b>BANKSII</b> .....	Shallow	\$3 00	
----------------------	---------	--------	--

**ROSES.**

The Rose is one of our specialties.

<b>HYBRID PERPETUAL</b> —Fine assortment.....	Shade		\$120 00
<b>MOSS and PERPETUAL MOSS</b> .....	Shader	13 00	
<b>CLIMBING</b> —Balt. Belle, Anna Marie, Seven Sisters, Prairie Queen, Tenn. Belle.....	Shadow	7 50	
<b>CRIMSON RAMBLER</b> .....	Shampoo		120 00
<b>YELLOW RAMBLER</b> .....	Supple	10 00	
<b>WHITE RAMBLER</b> .....	Surtout	10 00	
<b>PSYCHE</b> .....	Sagon	15 00	
<b>EMPRESS OF CHINA</b> .....	Sharp	8 00	
<b>MULTIFLORA ALBA</b> —(Japonica).....	Seclude	8 00	
<b>SETIGERA</b> —(Michigan Rose).....	Sultan	5 00	
<b>DAWSON</b> .....	Sapa	8 00	
<b>WICHURIANA</b> —Japanese Creeping.....	Shank	7 00	
<b>WICHURIANA HYBRID</b> —Universal Favorite, Pink Roamer, Manda's Triumph, South Orange Perfection, Evergreen Gem, Gardenia and Jersey Beauty.....	Sutler	7 00	
<b>SWEET BRIER</b> .....	Supper	8 00	
<b>YELLOW, PERSIAN and HARRISON'S</b> .....	Shaded	13 00	
<b>RUGOSA RUBRA</b> .....	Shamrock	8 00	
<b>RUGOSA ALBA</b> .....	Spout	12 00	
<b>HYBRID RUGOSA</b> —Mad. Geo. Bruant, Agnes Emily Carmen, and Belle Poitevine.....	Supine	12 00	
<b>CAROLINIANA and LUCIDA</b> .....		5 00	
<b>BOURBON, Noisette, China and Tea, 4-inch pots</b> .....	Shadeless	10 00	
<b>MARECHAL NEIL</b> —4 and 5 inch pots.....	Shadowy	20 00	
<b>TREE OR STANDARD</b> .....	Shady	35 00	

**HARDY BORDER PLANTS.**

<b>ANEMONE JAPONICA, ALBA, RUBRA AND WHIRLWIND</b> .....	Team	8 00	
“ Queen Charlotte.....	Tableg	10 00	
<b>ASTILBE JAPONICA</b> .....	Teller	8 00	
<b>ASCLEPIAS TUBEROSA</b> .....	Temper	6 00	
<b>ACHILLEA, THE PEARL</b> .....	Tamo	6 00	
<b>AQUILEGIA, CERULEA AND CHRYSANTHEA</b> .....	Tempered	8 00	
<b>BOLTONIA ASTEROIDES</b> .....	Taos	8 00	
<b>COREOPSIS LANCEOLATA</b> .....	Templer	8 00	
<b>CAMPANULA</b> —In variety.....	Tempter	8 00	
<b>DICTAMNUS</b> .....	Tempted	8 00	
<b>DELPHINUM</b> —Formosum.....	Temple	8 00	
<b>DORONICUM PLANTAGINEUM</b> .....	Triplet	6 00	
<b>DICENTRA SPECTABILIS</b> .....	Tatter	8 00	
<b>EULALIE</b> —Univitata, Zebrina and Variegata.....	Tenant	6 00	
<b>FUNKIA ALBA</b> .....	Tender	8 00	
“ <b>VARIEGATA</b> .....	Tempt	10 00	
<b>GAILLARDIA GRANDIFLORA</b> .....	Tendril	8 00	
<b>HIBISCUS CRIMSON EYE</b> .....	Tenor	6 00	
<b>HEMEROCALLIS KWAMSO, fl. pl.</b> —(Double Orange Lily).....	Tent	8 00	
“ <b>DUMORTIERI</b> .....	Tepid	7 00	
<b>HOLLYHOCKS</b> .....	Terrace	8 00	
<b>HELIANTHUS LAETIFLORUS AND MULTIFLORUS PLENUS</b> .....	Terrapin	8 00	
<b>HELIANTHUS SOLEIL D'OR</b> .....	Tedium	8 00	
“ <b>MAXIMILLIANA</b> .....	Taopi	10 00	
<b>HYACINTHUS CANDICANS</b> .....	Talpo	4 00	
<b>HYPERICUM MOSERIANUM</b> .....	Talent	8 00	

**HARDY BORDER PLANTS—CONTINUED.**

	Code Word.	Per 10	Per 100	Per 1000
IRIS, GERMAN .....	Tenter		\$4 00	
" KAEMPFERII .....	Terrier		8 00	
LYCHNIS, CHALCEDONICA .....	Telico		6 00	
" VISCARIA SPLENDENS .....	Tevis		6 00	
MONARDI DIDYMA .....	Tell		8 00	
PLUMBAGO LARPENTAE .....	Teck		8 00	
PINKS—Hardy Garden .....	Terror		8 00	
PHLOX SUBULATA—(Moss Pink) .....	Test		6 00	
" PERENNIAL—Choice Collection .....	Tested		8 00	
PLATYCODON GRANDIFLORUM .....	Testing		6 00	
PAPAVER NUDICAULE—(Iceland Poppy) .....	Tetter		8 00	
" BRACTEATA .....	Tether		10 00	
RUDBECKIA—Golden Glow .....	Turkey		5 00	
" Sub Tomentosa .....	Take		8 00	
SPIREA PALMATA .....	Tetragon		10 00	
TRITOMA UVARIA .....	Time		8 00	
YUCCA FILAMENTOSA—Strong .....	Textile		10 00	

**BULBS AND TUBERS.**

BEGONIAS—Tuberous rooted, single, named colors .....	Tabby		5 00	
" " " double, named color .....	Table		7 00	
CALADIUM ESCULENTUM—7½ to 9 inches circumference .....	Tablet		8 00	
" " 6 to 7½ " " .....	Tabor		5 00	
CANNAS—Dwarf French, in fine assortment .....	Tappet		6 00	
DAHLIAS .....	Talent		10 00	
GLOXINIAS—Choice strain .....	Tally		6 00	
GLADIOLUS—Mixed sorts, very fine .....	Tallow		\$15 00	
" Named varieties .....	Tame		5 00	
HYACINTHUS CANDICANS—Strong bulbs .....	Tamely		4 00	
LILIUM—Auratum (Gold Band) .....	Tamper		8 00	
" Batemani .....	Tambour		10 00	
" Speciosum Rubrum .....	Tandem		8 00	
" " Album .....	Tang		10 00	
" Tigrinum, fl. pl. ....	Tank		6 00	
TUBEROSES—Pearl, first size, flowering bulbs .....	Tar			12 00

**GREENHOUSE PLANTS, ETC.**

The plants offered in this list are grown in 2 and 2½ inch pots, except noted.

	Per 10	Per 100	Per 1000
ARAUCARIA EXCELSA—10 to 12 inches high, 75c each.			
" " 12 to 16 inches high, \$1.00 each.			
AZALEA CHINENSE—10 to 12 inch crowns .....		\$40 00	
" " 12 to 14 " " .....		50 00	
ACHYRANTHES—In variety .....		4 00	
ABUTILON—In variety .....		6 00	
ASPARAGUS—Plumosus Nanus .....		8 00	
" Sprengeri .....		8 00	
BEGONIAS—Blooming, in 10 varieties .....		6 00	
" Rex, in splendid assortment .....		8 00	
CARNATIONS—Best winter blooming varieties .....		6 00	
COLEUS—In variety .....		4 00	
CAMELLIA JAPONICA—18 to 20 inches high .....	\$3 50		
CROTONS—Eight varieties .....		8 00	
CHRYSANTHEMUMS—In fifty choice varieties .....		5 00	
EPIPHYLLIUM MAKOYIANUM—(Lobster Claw Cactus), 15 inches .....	3 50		
FERNS—In variety .....		6 00	
FERN BALLS .....		35 00	
BOSTON FERNS—4 inch pot plants .....		15 00	
" " 5 inch pot plants .....		25 00	
" " 6 inch pot plants .....	5 00		
FICUS ELASTICA—(Rubber Plant) 4 inch pots .....		25 00	
" " " 6 inch pots .....		50 00	
FUCHSIAS—In Variety .....		5 00	
GERANIUMS—Double and single .....		5 00	
" Scented .....		5 00	
" Ivy-leaved .....		5 00	

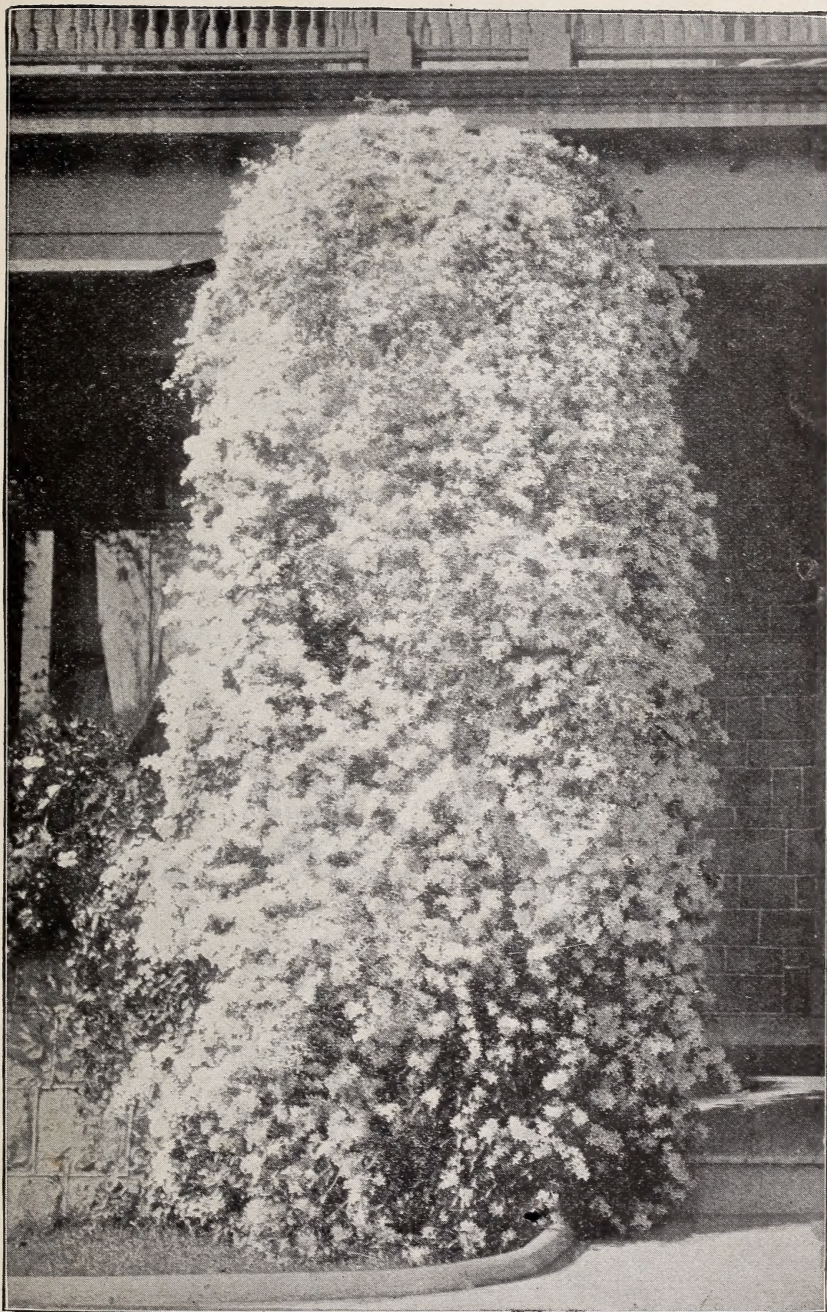
**GREENHOUSE PLANTS, ETC.—CONTINUED.**

	Per 10	Per 100	Per 1000
<b>HELIOTROPE</b> .....		\$5 00	
<b>HIBISCUS</b> —In variety.....		6 00	
<b>HYDRANGEA</b> —Thomas Hogg, Otaska and Hortensis.....		6 00	
“ “ “ “ 4 inch pots .....		10 00	
<b>LEMON</b> —American Wonder, 4 inch pots.....		15 00	
“ “ “ “ 5 inch pots, 15 to 18 inches high .....		30 00	
<b>LANTANAS</b> —In variety.....		4 00	
<b>MOONFLOWER</b> .....		5 00	
<b>OTAHEITE ORANGE</b> —3-inch pots.....		10 00	
“ “ “ “ 5-inch pots, 12 to 15 inches high.....		30 00	
<b>PALM</b> —Areca Lutescens, 3-inch pots.....		10 00	
“ “ “ “ 4-inch pots .....		25 00	
“ “ “ “ 6-inch pots .....	7 00		
“ Latania Borbonica, 3-inch pots.....		10 00	
“ “ “ “ 4-inch pot, 3 to 4 character leaves.....	2 50		
“ “ “ “ 6-inch pot, 5 to 6 leaves.....	7 50		
“ “ “ “ 8-inch pot.....	15 00		
<b>KENTIA BALMOREANA</b> —12 to 15 inches high.....		35 00	
“ “ “ “ 18 to 20 inches high .....		60 00	
“ “ “ “ 20 to 24 inches high.....	7 50		
“ “ “ “ 24 to 28 inches high .....	15 00		
“ Forstoriana, 24 to 26 inches high.....		75 00	
“ “ “ “ 26 to 28 inches high.....	10 00		
“ “ “ “ 30 to 36 inches high.....	20 00		
<b>CYCAS REVOLUTA</b> —(Sago Palm), 8 to 10 leaves.....		10 00	
“ “ “ “ 10 to 12 leaves .....		15 00	
<b>ROSES</b> —Tea, Noisette, Bengal and Bourbon.....		5 00	
“ “ “ “ 4-inch pot plant.....		10 00	
“ Climbing, in variety .....		5 00	
“ Hybrid Perpetual.....		6 00	
<b>VIOLETS</b> —3 varieties.....		6 00	



**Cumberland**—The largest of all Black-caps. A healthy, vigorous grower, throwing up stout, stocky, well branched canes that produce immense crops of magnificent berries. Fruit very large, firm, quality about same as Gregg, keeps and ships as well as any of the Blacks. The most profitable market variety.





CLEMATIS PANICULATA.

(New Sweet-Scented Japan Clematis.)

No introduction of recent years has met with such ready sale and given so perfect satisfaction wherever planted. It grows and thrives anywhere and is a very rapid grower and profuse bloomer. The flowers are pure white, borne in large clusters, converting the plant into a perfect mass of white. Its extreme hardiness, bright green foliage and delightfully fragrant flowers serve to make this one of the finest hardy climbing plants in cultivation.

(DUPLICATE COPY.)

**STATE BOARD OF AGRICULTURE, State of Ohio, Dept. of Agriculture.**  
(Organized 1846.)

W. W. MILLER, Secretary.

J. W. FLEMING, Asst. Secretary.

Division of Nursery and Orchard Inspection, A. F. BURGESS, Chief Inspector.

No. 86.

**CERTIFICATE OF NURSERY INSPECTION**

COLUMBUS, OHIO, August 14, 1902.

THIS IS TO CERTIFY that the growing Nursery Stock and Premises of THE STORRS & HARRISON CO., situated near Painesville, Lake County, Ohio, have been inspected by authority of an Act passed by the General Assembly of the State of Ohio, May 10th, 1902, and that no indications have been found of the presence of San Jose Scale, Black Knot, Peach Yellows, or other dangerously injurious insects or plant diseases on such stock or premises.

*This Certificate is void after September 15th, 1903.*

A. F. BURGESS, Chief Inspector.