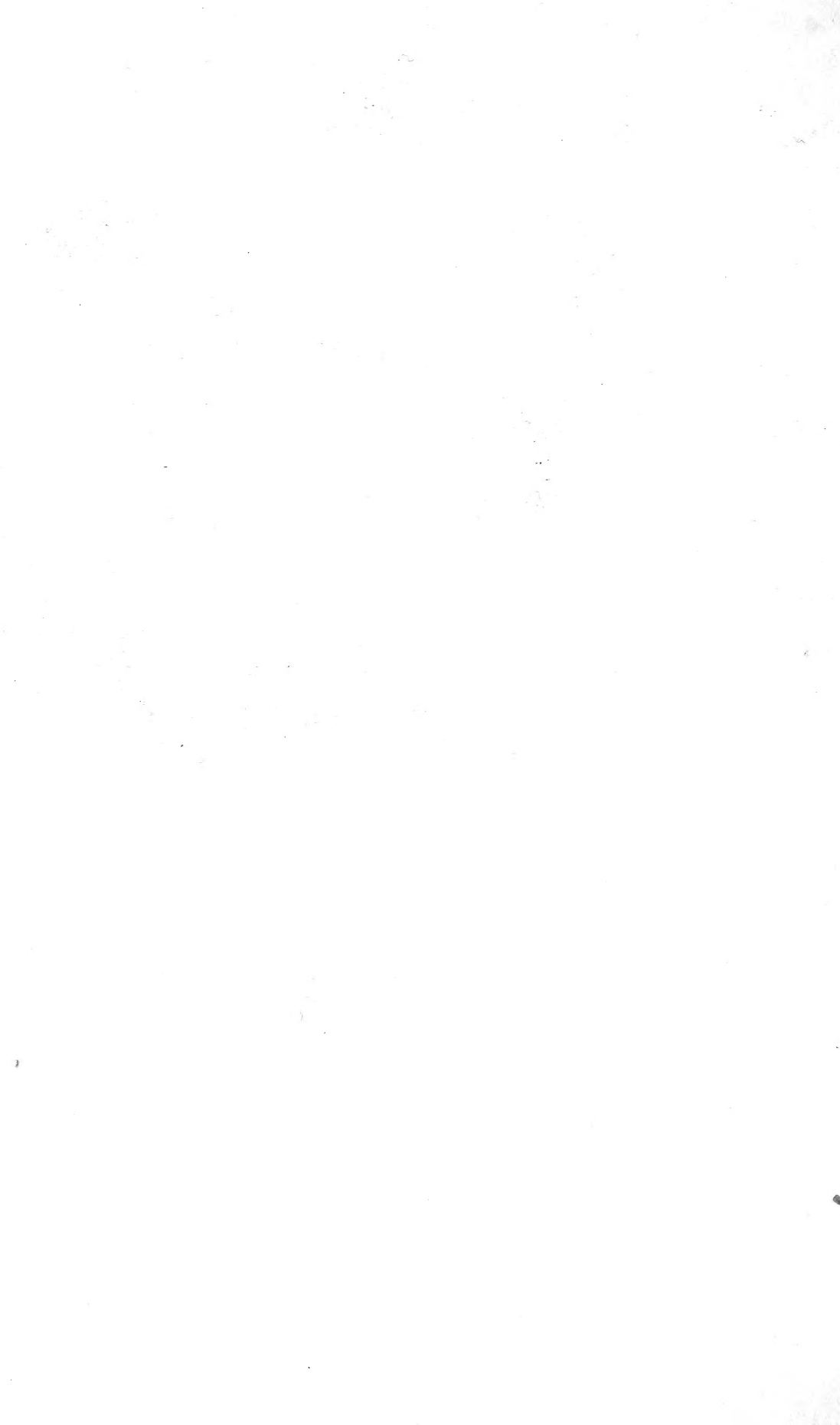


Historic, Archive Document

Do not assume content reflects current scientific knowledge, policies, or practices.



GOLD MEDAL
AWARDED
WOOD'S SEEDS



PARIS
EXPOSITION
1900

WOOD'S SEEDS BEST FOR THE SOUTH

GENERAL WHOLESALE PRICE-LIST OF
WOOD'S SEEDS
FOR THE GARDEN AND FARM

SPRING OF 1903

T. W. WOOD & SONS
SEED GROWERS AND MERCHANTS

RICHMOND, VIRGINIA

OFFICE AND STORE

1323 East Main Street

BRANCH STORES

Corner Sixth and Marshall Sts.
1707 East Franklin Street

WAREHOUSES AND SHIPPING-ROOMS

8, 10, 12 and 13 South Fourteenth St.

SEED FARMS

Chester, Hollybrook and Oakland

A NEW DEPARTURE FOR 1903.

WOOD'S SEEDS

WILL BE SUPPLIED TO MERCHANTS IN HANDSOME COLORED LITHOGRAPHED PACKETS. THIS WITH THE HIGH QUALITY AND LARGE QUANTITY OF SEEDS WHICH WE PUT INTO OUR PACKETS WILL MAKE THEM MORE POPULAR AND SALABLE THAN EVER.

WOOD'S PACKET SEEDS

PAY MUCH LARGER PROFITS THAN COMMISSION SEEDS, AND ARE UNQUESTIONABLY THE BEST FOR THE SOUTH

(The printed order sheet accompanying this wholesale price-list indicates the varieties of seeds we can supply in lithographed packets.)

PROFIT IN WOOD'S SEEDS!—Wood's seeds in packets make you a profit of 150 per cent. on your investment—much more than it is possible to make on commission seeds, besides giving your customers **more seeds and better seeds**. Wood's packets are put up from the **freshest seeds**, so that even if you have a few left over, they are, excepting Parsnip and Sweet Corn, good for the following season, so that besides a large profit, there is practically no risk or loss in handling **Wood's Seeds**.

Per 100 packets,	\$2.00
Per 500 packets,	9.00
Per 1,000 packets,	17.00
In 3,000 lots and over,	15.00 per 1,000 packets.

This applies to all varieties which retail at 5c. per packet. Higher priced varieties will be charged at 50 per cent. off retail catalogue prices.

WOOD'S PACKET SEEDS ARE EXTRA LARGE AND WELL FILLED, usually containing two or three times as much as the commission and paper seeds usually sold to merchants for retailing. The packets which we supply to our merchants are the same as we supply to our retail trade. Our aim is quality and quantity, and satisfaction to the merchant and his customers alike. Customers can make up their own assortments to suit their trade; or, if they will state the number of packets they desire, we will make up an assortment which in our judgment will be suitable for their sections or neighborhoods.

WOOD'S PACKET SEEDS IN DISPLAY CABINETS. For full particulars, see next page.

Terms of payment: June 1st, or one per cent. per month discount for cash if paid before that time.

WOOD'S SEEDS,

PUT UP IN HANDSOME LITHOGRAPHED PACKETS,
tain More Seeds than any other Packets Sold



Wood's Packet Seeds in Display Cabinets.

ASSORTMENT No. 1.—Wholesale price, \$4.00; including cabinet, \$5.00.

Contains 200 large packets, well assorted, all to retail at 5c.; or, if you prefer, make up your own assortment.

200 packets retail at 5c.,	\$10.00
Handsome display cabinet at cost,	1.00

\$11.00

Cost to merchant, including cabinet,	5.00
--	------

NET PROFIT ON \$5.00 INVESTMENT, \$6.00*

ASSORTMENT No. 2.—Wholesale price, \$9.00; including cabinet, \$10.25.

Contains 500 large packets, either your selection or ours, as you prefer.

500 packets, retail at 5c.,	\$25.00
Handsome display cabinet at cost,	1.25

Cost to merchant, including cabinet,	\$10.25
--	---------

NET PROFIT ON \$10.25 INVESTMENT, \$16.00

Should you have a display cabinet, we will ship in packing case, without extra charge, and will also send fresh lithographs, also catalogues, should you desire them.

MAKE UP YOUR OWN ASSORTMENTS.

You can make up your own assortments if you so desire. Printed order sheet, containing list of all varieties, accompanies this price list, and we will supply extra order sheets upon request.

TERMS OF PAYMENT: June 1st, or a discount of 1 per cent. per month if paid before that time.

HANDSOME SHOW-CARDS AND DESCRIPTIVE CATALOGUES FREE WITH ALL ORDERS.

General Information, Terms, Etc.

Garden Seeds.—General orders for Vegetable and Flower Seeds, placed between January 1st and June 1st, to approved customers, are due June 1st, or a cash discount of one per cent. per month will be allowed if paid before that date. Turnip and other Garden Seeds ordered after June 1st, are due November 1st.

Special Orders.—Special orders for Beans, Peas, Bird Seeds, Poultry Supplies and Fertilizers are net 60 days. Two per cent. off for cash in 10 days.

Field Seeds.—Grass and Clover Seeds, Seed Grain, Seed Potatoes, Onion Sets, and all Field Seeds, are net cash, and are due on receipt of goods.

We make no charge for packing or cartage, and prices include bags for Grain and Grass Seeds, except when cotton sacks are required; these hold $2\frac{1}{2}$ bushels, and are charged at 15c. each. Cotton sacks for Beans, Peas and Sweet Corn are also charged. Packages for Onion Sets are charged extra.

Ordering by Telegraph, see **CODE** on page 17.

WOOD'S SEEDS are selected and grown with special reference to their adaptability to Southern soil and climate, and give most excellent and satisfactory results. Our trade is increasing very rapidly, and merchants handling our seeds are increasing their trade every year, as they find our seeds much more popular and salable than seeds from other sections. We carry all seeds required for the farm and garden, and merchants can effect considerable saving in time and freight rates by placing their orders with us.

About Warranting Seeds.—While we exercise care to have all Seeds pure and reliable, we give no warranty, express or implied, as to description, quality, productiveness, or any other matter connected with the goods we send out, and will not be in any way responsible for the crop. Every order for articles named in this price-list will be executed on these conditions only.

December, 1902.

T. W. WOOD & SONS.

DISCOUNTS to MERCHANTS FROM RETAIL CATALOGUE PRICES.

Many merchants get orders for seeds which they do not carry in stock. For orders of this class we make the following discounts from our retail catalogue prices:

- On seeds at packet price, 50 per cent. discount;
- On seeds at ounce price, 40 per cent. discount;
- On seeds by the quart, pint or quarter-pound, 20 per cent. discount;
- On vegetable seeds in larger quantities, 15 per cent. discount;
- On fruit trees, 10 per cent. discount.

The above discounts do not include premiums, postage, etc., mentioned in our retail catalogue. When seeds at the above rates are ordered to be sent by mail, postage will be added to the invoice.

BEANS, PEAS AND CORN IN ONE-THIRD PINT PACKAGES.

Our regular size packages of Beans, Peas and Corn are put up at the same rate as other seeds, \$2.00 per 100 packets. We also put up larger size packages of Peas, Beans and Corn (one-third pints) to retail at 10 cents each, for which we charge at wholesale 5 cents per package.

ABOUT COMMISSION SEEDS.

We do not send out seeds on commission. Merchants will find it much more profitable and satisfactory to handle our seeds than commission seeds. The profits are not only larger, but the seeds will give much more satisfaction to your customers, and so aid you in building up a better trade in seeds.

To Give an Idea of the Difference in Profits:

500 packets of **Wood's Seeds** cost \$9.00; retail out for \$25.00. The same quantity of seed on a commission of 40 per cent.—the usual commission allowed—cost \$15.00, leaving a difference in favor of handling **Wood's Seeds** of \$6.00 (or a total of \$16.00 profit on a \$9.00 investment); and you could, if necessary, throw away 100 papers of our seeds, pay for the whole 500, and still make more money than you would on 500 handled on commission.

Wood's Seeds are put up from the best and freshest seeds, and with the possible exception of Parsnip and Sweet Corn, are good for sale the following season, even if you have a few left over. So you see that the advantage of handling **Wood's Seeds** is not only that you give your customers better satisfaction, but that you make considerably more money, and build up a larger and more remunerative trade in seeds.

T. W. WOOD & SONS'

WHOLESALE PRICE-LIST OF

VEGETABLE SEEDS

FOR DEALERS ONLY.

The prices given in this list we expect will hold throughout the coming season, still we reserve the right to change prices without notice whenever conditions demand. This will not be done unless necessary.

Full descriptions of all varieties are given in our Annual Descriptive Catalogue, which is issued January 1st.

Lithographed Show-Cards and Descriptive Catalogues furnished with all general orders free of cost.

TERMS: To approved customers, terms on general orders for Vegetable seeds June 1st, or a discount of 1 per cent. per month if paid before that time. Terms on special orders for Beans and Peas are sixty days. Potatoes, Onion Sets and Field Seeds are net cash.

ASPARAGUS.

We are headquarters for Asparagus Seed. Our stocks are entirely free from the disease prevalent in New Jersey and other Northern States.

	Code Word.	10 lbs. and over.	Per lb.
Giant Argenteuil,	Assoy,40	.45
Conover's Colossal,	Aspen,22	.25
Barr's Mammoth,	Ascetic,25	.30
Palmetto,	Assurge,25	.30

Asparagus Roots.

	Per 1,000.	Per 100.
Conover's Colossal, two years old,	\$3.50	.50
Palmetto, two years old,	4.00	.65

ARTICHOKE.

	Code Word.	10 lbs. and over.	Per lb.
Large Globe,	Abaddon,	\$2.00	\$2.25
Jerusalem (Tubers),	Abatis,	5 bus. & over. 1.00	Per bus. 1.10

BEANS OR SNAPS—Green Podded Varieties.

Write for special prices on large lots, stating quantity wanted.

	Code Word.	10 bus. and over.	Per bus.
Wood's Earliest Red Valentine,	Baneful,	\$3.25	\$3.50
Burpee's Stringless Green Pod,	Bached,	3.25	3.50
Early Mohawk, or Brown Six Weeks, ..	Backling,	3.00	3.25
Early Yellow Six Weeks,	Bade,	3.25	3.50
Extra Early Refugee,	Baleful,	3.50	3.75
Giant Stringless Green Pod,	Baste,	3.50	3.75
Wood's Earliest Hardest,	Bearish,	3.50	3.75
Refugee, or One Thousand to One, ...	Barrack,	3.00	3.25
Best of All,	Baby,	3.50	3.75
Longfellow Green Podded,	Bestorp,	4.75	5.00
Wood's Bacon Beans,	Baldor,	qt. .25	pk. 1.50

BEANS—Wax Varieties.

	Code Word.	10 bus. and over.	Per bus.
Golden Eye Wax,	Beryme,	\$4.75	\$5.00
Dwarf Golden Wax,	Beseem,	5.50	5.75
Currie's Rust Proof,	Believe,	5.00	5.25
Wardwell's Kidney Wax,	Bicorn,	5.75	6.00
Dwarf Black Wax,	Bepraise,	5.25	5.50
Davis' Kidney Wax,	Baldpate,	5.25	5.50
New Round Podded Kidney Wax,	Belore,	6.25	6.50
Jones' Stringless White Wax,	Bestrake,	5.50	5.75

BEANS—Bush Lima Varieties.

	Code Word.	10 bus. and over.	Per bus
Wood's Prolific Bush Lima,	Binnar,		
Burpee's Bush Lima,	Billow,	5.75	6.00

Pole or Corn Field Varieties.

Small Lima, or Sieva (Butter Beans),	Battle,	\$5.75	\$6.00
Large White Lima,	Botarge,	5.00	5.25
Wood's Improved Pole Lima (Butter Beans),	Bank,	6.25	6.50
Ford's Mammoth Podded Lima,	Bosheit,	5.75	6.00
Southern Prolific,	Bony,	4.50	4.75
Fat Horse, or Southern Crease Back,	Bonas,	5.00	5.25
Red Speckled Cutshort or Cornfield,	Bonmot,	4.25	4.50
Old Homestead, or Kentucky Wonder,	Bolter,	5.75	6.00
October or Horticultural Pole,	Boaster,	4.75	5.00
Scarlet Runners,	Bonton,	qt. .25	peck, 1.50
		10 lbs. & over.	Per lb.
BROCCOLI. White Cape,	Butteris,	2.00	2.25
BRUSSELLS SPROUTS. Perfection,	Bycamp,	1.00	1.10

BEEETS.

	Code Word.	10 lbs. and over.	Per lb.
Bastian's Early Turnip,	Brabback,20	.25
Extra Early Bassano, or Sugar,	Brabating,20	.22
Wood's Crimson Globe,	Babberg,45	.50
Extra Early Eclipse,	Brail,30	.35
Detroit Dark Red,	Brackish,30	.35
Egyptian Blood Turnip,	Brained,25	.30
Crosby's Egyptian,	Bracelet,30	.35
Dirigo,	Braggot,30	.35
Excelsior, or Columbia,	Bramack,30	.35
Improved Early Blood Turnip,	Braggard,25	.30
Edmand's Blood Turnip,	Brain,25	.30
Long Smooth Blood,	Branch,22	.25

SUGAR BEETS AND MANGELS.

Mammoth Prize Norbiton Giant,	Brigade,12	.15
Yellow Globe,	Brood,12	.15
Golden Tankard,	Brevier,12	.15
Silesian, or Sugar,	Brousson,12	.15

CABBAGE—Best American Grown Seed.

Early York,	Cathoe,80	.90
Large Early York,	Chamade,80	.90
Wood's Extra Early,	Choler,	1.50	1.60
Wood's Selected Early Jersey Wakefield,	Chaffen,	1.25	1.40
Large, or Charleston Jersey Wakefield,	Carbine,	1.25	1.40
Alpha (new),	Calthea,	1.50	1.60
Winningstadt,	Castel,90	1.00
Solid South,	Chelly,	1.40	1.50
All Head,	Caravas,	1.25	1.40
Danish Ballhead,	Carcass,	1.40	1.50
Henderson's Early Summer,	Centime,	1.10	1.25
Henderson's Succession,	Cento,	1.20	1.40
Early Drumhead,	Carpen,	1.00	1.10
Early Flat Dutch,	Carrom,	1.00	1.10
Vandergaw,	Chirog,	1.10	1.25
Surehead,	Chintz,	1.10	1.25
All Seasons,	Capture,	1.00	1.25
Wood's Prize Head Late Flat Dutch, ..	Chame,	1.10	1.20
Large Late Flat Dutch,	Chandler,80	.90
Buncombe, or North Carolina Winter, ..	Chump,	1.10	1.20
Large Late Drumhead,	Chancel,80	.90
Green Glazed,	Censure,90	1.00
American Drumhead Savoy,	Caramel,	1.00	1.10
Red Dutch,	Cherub,90	1.00

CABBAGE PLANTS. Early varieties, 25c. per hundred; \$2.00 per 1,000.
Late varieties, 20c. per hundred; \$1.75 per 1,000.

CARROT.

	Code Word.	10 lbs. and over,	Per lb.
Early Scarlet Horn,	Clamber,40	.45
Half Long Scarlet (stump rooted), ...	Clouse,40	.45
Wood's Scarlet Intermediate,	Cloud,55	.60
Oxheart, or Guerande,	Cloan,45	.50
Half Long Danvers,	Classic,45	.50
Improved Long Orange,	Cleave,40	.45
Large White Belgian,	Clew,22	.25

CAULIFLOWER.

		Per oz.	Per lb.
Wood's Earliest Snowball,	Cider,	\$1.75	\$17.00
Extra Early Dwarf Erfurt,	Cicaffle,	1.50	15.00
Veitch's Autumn Giant,	Cideone,25	2.50

CELERY.

		10 lbs. and over.	Per lb.
Golden Self-Blanching,	Comely,	\$2.25	\$2.50
Golden Heart, or Golden Dwarf,	Coigne,70	.75
Rose Ribbed Self-Blanching,	Comet,	2.25	2.50
Crawford's Half Dwarf,	Cockney,70	.75
Giant Pascal,	Cohort,70	.75
Perfection Hartwell,	Commerce,	1.00	1.25
Improved White Plume,	Compound,	1.10	1.25
Pink Plume,	College,	1.25	1.50
Large White Solid,	Coif,70	.75
Celeryac, Large Smooth Prague,	Cochal,90	1.00
Celery Seed for flavoring,	Cogmate,12	.15

Celery Plants.—30c. per 100; \$2.75 per 1,000.

COLLARDS.

True Georgia (selected),	Condole,40	.45
North Carolina Short Stem,	Condig,55	.60

CORN.

	Code Word.	Doz. ears.	Per 100 ears.	10 bush. and over.	Per bush.
Truckers' Favorite,	Contoge,25	\$1.75	\$2.00	\$2.25
Early Adams,	Confan,25	1.60	2.00	2.25
Extra Early Adams,	Confect,25	1.75	2.25	2.50
Gentry Early Market,	Connipe,25	1.65	1.50	1.60
Rarripe, or Long White Flint,	Contouse,20	1.50	1.50	1.60
Extra Early Cory,	Confirm,	3.00	3.25
Premo,	Connope,	4.00	4.50
Country Gentleman,	Conflict,	3.75	4.00
Crosby's Early Sweet,	Confluent,	3.00	3.25
Black Mexican,	Conference,	3.25	3.50
Triumph Sweet,	Cooperage,	2.75	3.00
Egyptian Sweet,	Conical,30	2.25	3.00	3.25
Stowell's Evergreen,	Cooler,30	2.25	3.00	3.25
Early Mammoth Sugar,	Constitution,	3.25	3.50
Late Mammoth Sugar,	Constrain, .	.30	2.25	3.50	3.75

FIELD CORNS. See page 16.

Pop Corn.

		Doz. ears.	Qt.	Peck, shelled
Queen's Golden,	Craxing,15	.20	\$1.25
Maple Dale Prolific,	Crater,15	.20	1.25
Rice,	Crawbale,15	.20	1.25
Popcorn for popping,	Cruxade,18	1.00

Corn Salad.

Large Seeded,	Conducive,25	.30
---------------------	------------------	-----	-----

Cress.

Water,	Curator,	\$2.00	\$2.25
Triple Curled,	Curable,18	.22

CUCUMBER.

	Code Word.	10 lbs. and over.	Per lb.
Improved Early White Spine,	Crone,	\$1.50	\$1.60
Improved Long Green,	Croon,	1.50	1.60
New Model,	Crummer,	1.60	1.75
Siberian,	Crumpt,	1.25	1.30
Green Prolific,	Croaket,	1.50	1.60
Emerald,	Crime,	1.50	1.60
Westerfield's Chicago Pickling,	Crushing,	1.25	1.30
Thorburn's Everbearing,	Criminal,	1.20	1.30
Gherkin, or Burr, for pickles,	Critical,	1.40	1.50
Zwaim,	Cruke,	2.00	2.25
Japanese Climbing,	Cross,	2.25	2.50

EGG PLANT.

New York Improved Purple,	Eclipsing,	\$1.90	\$2.00
Florida High Bush,	Earland,	2.50	2.75

EGG PLANTS. 90c. per 100.

ENDIVE. Green Curled,	Emblaze,65	.70
------------------------------------	----------------	-----	-----

HORSE RADISH ROOTS. Large roots, 15c. per doz.; 50c. per 100.

KALE, or BORECOLE.

Thousand Headed,	Bunkot,30	.35
Early Curled Siberian,	Bumble,28	.30
Dwarf Green Curled Scotch or Norfolk,	Bummer,40	.45
Spring, or Smooth,	Burghot,08	.10

Kohl Rabi.

Early White Vienna,	Kalpie,	\$1.25	\$1.50
---------------------------	---------------	--------	--------

Leek.

Large Flag,	Labor,60	.65
-------------------	--------------	-----	-----

LETTUCE.

Trianon Cos,	Logman,50	.55
Big Boston,	Lanchup,60	.65
Wood's Cabbage,	Lyark,90	1.00
Deacon,	Latchet,45	.50
Dutch Butterhead,	Landack,50	.55
Hanson,	Legums,40	.45
Brown Dutch,	Lanking,50	.55
White Seeded Tennisball, or Boston Market,	Luthern,45	.50
Black Seeded Tennisball,	Lodgment,45	.50
California Cream Butter,	Lapstone,45	.50
Early Curled Simpson,	Laxity,40	.45

LETTUCE PLANTS, 20c. per 100; \$1.75 per 1,000.

CANTALOUPE, or MUSK MELON.

Extra Early Hackensack,	Malster,80	.85
Wood's Netted Gem, superior strain,	Mandat,75	.80
Extra Early Hanover,	Malture,75	.80
Rocky Ford Netted Gem,	Marlit,65	.70
Paul Rose,	Menard,70	.75
Wood's Perfection,	Memute,75	.80
Skillman's Netted Nutmeg,	Megrin,60	.65
Large Green Citron,	Manger,60	.65
Champion Market, or Starn's Favorite,	Maihem,80	.85
Jenny Lind,	Marker,65	.70
Osage, or Miller Cream,	Meadow,65	.70
Emerald Gem,	Mallard,	1.30	1.40
Baltimore, or Acme,	Madecoy,65	.70
Large Hackensack, or Turk's Cap,	Manor,65	.70
Montreal Market,	Matross,90	1.00
Glass,	Mambo,60	.65

WATERMELON.

Our seed is all Southern grown, and produces much superior melons to those from Northern and Western grown seed.

	Code Word.	10 lbs. and over.	Per lb.
Improved Georgia Rattlesnake,	Midrib,65	.70
Eden,	Mentrip,40	.45
Carolina Bradford,	Merden,40	.45
Joe Johnson,	Misby,30	.35
Jackson (True),	Mirrump,45	.50
Jordan's Gray Monarch, or Light Icing,	Misery,30	.35
Kleckley's Sweet,	Milport,50	.55
Harris' Earliest,	Miliken,65	.70
Dixie,	Metrop,28	.30
Duke Jones,	Mildop,25	.30
Blue Gem,	Milow,25	.30
Girardeau's Triumph,	Mentric,35	.40
Girardeau's New Favorite,	Midway,30	.35
Jones,	Miscreant,30	.35
Florida Favorite,	Midday,35	.40
Pride of Georgia,	Momentous,25	.30
Kolb Gem,	Mission,22	.25
Peerless, or Ice Cream,	Modish,30	.35
Dark Icing,	Methodic,30	.35
Mountain Sweet,	Mocker,22	.25

MUSTARD.

Southern Giant Curled,	Motto,30	.35
Ostrich Plume,	Muldin,35	.40
White,	Mound,10	.15
Black,	Mogan,10	.15
Mustard Seed for pickling,	Morton,07	.08

Nasturtium, or Indian Cress.

Dwarf Mixed,	Nadir,30	.35
Tall Mixed,	Nector,25	.30

Okra, or Gumbo.

Perkins' Mammoth Podded,	Obeah,22	.25
White Velvet,	Oblate,20	.22
Improved Dwarf Prolific, or Density, ..	Oary,20	.22
Tall,	Obese,20	.22

ONION.

Yellow Globe Danvers,	Outig,75	.80
Large Red Weathersfield,	Ordinance,80	.85
Australian Brown,	Ouvig,65	.70
White Bermuda, Genuine Teneriffe Seed,	Ovapor,	1.60	1.75
Red Bermuda, Genuine Teneriffe Seed, ..	Orphokule,	1.50	1.60
Extra Early Red,	Ocular,80	.85
Silver Skin,	Ouchest,	1.35	1.50
Mammoth Silver King ,	Orpherate,	1.25	1.40
Extra Early White Pearl,	Octave,	1.40	1.50
Prize Taker, or Spanish King ,	Oppose,85	.90
White Queen,	Oveck,	1.40	1.50
Copper King, or Mammoth Pompeii, ..	Orpheck,90	1.00
Louisiana, or Creole,	Obolus,	1.00	1.10

SEED POTATOES. We are the largest dealers in SEED POTATOES in the South, and can always supply them to best advantage. Our stocks are unequalled in quality and productiveness. See page 14 of Wholesale Price List for full information.

EARLY CO., GA., Feb. 15, 1902.—Your Seeds are giving great satisfaction, and we are having a trade beyond our expectations. CITY PHARMACY.

OTSEGO CO., N. Y.—You send the largest packets of seed we have ever had. We shall like to deal with you again. W. H. HARRIS.

ONION SETS—Prices Variable.

Onion Set packages are charged extra. Barrels 20 cts. each; onion crates, holding one bushel, 10 cents each; half-bushel hamper baskets, 12 cents each; one bushel hamper basket, 15 cents each. These hampers are very useful, and always come in handy. They can also be used to display Onion Sets, or other goods, to advantage in your store.

	Code Word.	Per bus. 32 lbs.
Yellow Danvers,	Owapen,	\$1.10
Silver Skin,	Owacoke,	2.00
White Potato, or Multiplier,	Owaben,	2.50
Yellow Potato, small size,	Owakup,	2.75
Yellow Potato, medium size,	Owacot,	2.25

Parsley.

		10 lbs. and over.	Per lb.
Champion Moss Curled,	Pacify,25	.30
Plain or Single,	Paleness,20	.25

Parsnip.

Wood's Improved Sugar,	Pamery,25	.30
Sugar, or Hollow Crown,	Pampury,18	.25

PEAS.

	Code Word.	Per bus. in 10 bus. lots and over.	Per bus.
Wood's Lightning Excelsior (sealed stock),	Pergot,	\$4.50	\$4.75
Alaska (sealed stock),	Perian,	4.00	4.25
Philadelphia Extra Early,	Penalty,	4.40	4.65
Early May,	Partaker,	4.40	4.65
Canada Extra Early,	Parity,	4.40	4.65
First and Best,	Pasturage,	4.40	4.65
Pedigree Extra Early ,	Pergid,	5.25	5.50
Tom Thumb,	Perfidy,	4.50	4.75
Claudit,	Pergom,	6.25	6.50
Allan's Dwarf Telephone,	Permit,	5.75	6.00
Gradus, or Prosperity,	Permeate,	10.00
Eclipse, or Surprise,	Parting,	5.75	6.00
American Wonder,	Pantaloon,	6.50	6.75
Nott's Excelsior,	Pellet,	6.50	6.75
Wood's Acme,	Perform,	6.25	6.50
Wood's Mammoth Luscious Sugar,	Perfusive,	qt. 40	...
McLean's Little Gem,	Pediment,	6.00	6.25
McLean's Advancer,	Pedestal,	4.00	4.25
Telephone,	Perfidious,	5.00	5.25
Stratagem,	Percolate,	4.75	5.00
Bliss' Everbearing,	Papa,	3.75	4.00
Yorkshire Hero,	Pergolt,	3.50	3.75
Champion of England,	Parent,	3.25	3.50
Large White Marrowfat,	Perforce,	2.40	2.50
Blackeye Marrowfat,	Pantomime,	2.40	2.50

Pepper.

Ruby King,	Pianist,	\$1.30	\$1.40
Bell, or Bull Nose,	Petrell,	1.00	1.10
Long Red Cayenne,	Phalynx,	1.20	1.30
Tabasco,	Pickrell,	4.00	4.25
Red Cluster,	Physical,	1.60	1.75
Mammoth Golden Queen,	Phenix,	1.50	1.60
Spanish Mammoth, or Mountain,	Picket,	1.10	1.20
Procopp's Giant,	Photograph,	1.40	1.50
Coral Gem Bouquet,	Perspire,	2.25	2.50

PUMPKIN.

Cashaw, or Crookneck,	Polysyl,35	.40
Large Cheese,	Pondal,25	.30
Virginia Mammoth ,	Posole,60	.65
King of the Mammoths, or Pot Iron,	Pondag,	1.00	1.10
Connecticut, or Cornfield,	Polymp,22	.25

RADISH.

	Code Word.	10 lbs. and over.	Per lb.
Turnip-Shaped Varieties.			
Extra Early Scarlet, or Cardinal Globe, Ratooner,30	.35
Early White Tipped Scarlet,	Regara,25	.30
Early Red or Scarlet Turnip,	Ransack,22	.25
Early White Turnip,	Regent,22	.25
Mixed Turnip Radishes,	Rebec,22	.25
Golden Globe Summer,	Rayming,25	.30
Olive-Shaped Varieties.			
Extra Early Scarlet Olive-Shaped,	Ratteen,25	.30
French Breakfast,	Rayful,28	.30
Yellow Olive-Shaped,	Recant,30	.35
Long Varieties,			
Long White Naples,	Reanal,22	.25
Brightest Long Scarlet,	Raffle,22	.25
Wood's Early Frame,	Regrate,22	.25
Chartier Long Scarlet,	Regant,25	.30
Mixed Long Radishes,	Rebete,22	.25
Winter Varieties.			
Rose China Winter,	Reckless,25	.30
Long Black Spanish,	Reality,25	.28
Long White Spanish,	Refresh,25	.28
Chinese or Celestial,	Ragman,40	.45

RAPE.

Dwarf Essex,	Regrite,07	.09
--------------------	----------------	-----	-----

Rhubarb.

Linnaeus,	Reindeer,70	.75
Rhubarb Roots, 10 cents each; 75 cents per dozen.			

SALSIFY.

Mammoth Sandwich Island,	Sacker,75	.80
--------------------------------	---------------	-----	-----

SQUASH, or CYMLING.

Wood's Earliest Prolific,	Scouting,55	.60
Early White Bush, or Patty Pan Cym- ling,	Sedate,45	.50
Golden Summer Crookneck,	Secant,50	.55
Wood's Everbearing,	Selden,50	.55
Giant Summer Crookneck,	Sciopic,45	.50
Mammoth White Bush,	Seutcheon,45	.50
Boston Marrow,	Saver,55	.60
Hubbard,	Seoundrel,70	.75

Spinach.

Thick-Leaved Round,	Satiric,09	.15
Norfolk Savoy, or Bloomsdale,	Sanscrit,09	.15
Long Standing,	Sandal,09	.15

TOMATO.

Early Acme,	Tapan,	\$1.40	\$1.50
Paragon,	Terror,	1.40	1.50
Perfection,	Testaning,	1.40	1.50
Beauty,	Target,	1.40	1.50
Favorite,	Teeter,	1.40	1.50
Spark's Earliana,	Tentave,	5.50	5.75
Wood's First Early,	Teebee,	2.60	2.75
Success,	Tertip,	2.25	2.50
Imperial,	Tart,	1.40	1.50
Crimson Cushion,	Tattle,	2.40	2.50
Ponderosa,	Testudo,	2.60	2.75
Matchless,	Termagant,	2.00	2.25
Stone,	Thesis,	1.40	1.50
Improved Trophy,	Theocracy,	1.50	1.60
Dwarf Champion,	Taurus,	2.25	2.50
Golden Queen, or Yellow Trophy,	Thralldom,	1.40	1.50
Yellow Plum,	Thrace,	1.40	1.50

TURNIP.

	Code Word.	10 lbs. and over.	Per lb.
Early Red, or Purple Top Strapleaved, Thrush,22	.25
White Flat Dutch Strapleaved,	Thumper,	.25	.30
Mammoth Red Top Globe,	Titan,	.25	.30
Wood's Improved Red Top Globe,	Tooler,	.30	.35
Early Strapleaved White Globe,	Tonteng,	.20	.25
Extra Early Purple Top Milan,	Tibieg,	.35	.40
Extra Early White Milan,	Torpedo,	.55	.60
White Jersey Navet,	Tigress,	.22	.25
White Egg,	Token,	.35	.40
White Sweet German,	Traction,	.22	.25
Large White Norfolk,	Timely,	.20	.22
Southern Snow White Globe,	Toasting,	.20	.22
Pomeranian White Globe,	Tinkole,	.22	.25
Large White Hanover,	Tonger,	.20	.22
Large White Cowhorn,	Toilsome,	.30	.35
Yellow Aberdeen,	Tooling,	.22	.25
Amber, or Yellow Globe,	Thrice,	.25	.30
Golden Ball,	Tidiness,	.22	.25
Southern Prize,	Toadle,	.20	.22
Seven Top,	Titmouse,	.18	.20

RUTA BAGA, or SWEDE.

Purple Top Yellow,	Tourist,	.18	.20
Wood's Improved American Purple Top			
Yellow,	Trancole,	.22	.25
Breadstone,	Topknot,	.30	.35
Large White, or Russian,	Traduce,	.20	.22

TOBACCO.—See Catalogue for Varieties and Descriptions.

	5 lbs. and over.	Per lb
Standard varieties. (See Descriptive Catalogue),	\$1.25	\$1.40
Select varieties. (See Descriptive Catalogue),	1.75	2.00
Cigar varieties—Vuelta de Abajo,	3.50	3.75
Choice Havana,	1.50	1.60
Comstock Spanish,	2.75	3.00
Sumatra,	3.00	3.25
Connecticut Seed Leaf,	1.25	1.40

WOOD'S GARDEN SEEDS

BEST FOR THE SUNNY SOUTH.

Read what our customers say about the superiority of Wood's Seeds.

The following are extracts from customers' letters:

CLAIBORNE CO., TENN.—Your seed produced the finest cabbage grown in this part of the country for many years. Mrs. MARY ANNOINE.

MADISON CO., VA.—Your packages are fuller and seeds superior in quality to any others sold in this section. Miss M. D. GOODALL.

AMHERST CO., VA.—Your seeds are superior in growth and production to Northern-grown seed. JOHN M. WATTS.

FREDERICKSBURG, VA.—We find that you can be depended on to sell exactly what you represent. M. B. ROWE.

HORRY CO., S. C.—Your seed has certainly given satisfaction in this section, and we wish to handle a full line of your seeds next year. THE KLONDYKE MFG. CO.

ISLE OF WIGHT CO., VA.—The Wood's Prize Head Late Flat Dutch Cabbage is by far the best late cabbage I have ever planted. R. L. BERGEN.

FULTON CO., GA.—The perfect quality of the fruit grown from your tomato seed proved them to be first-class. Our tomatoes were the best on the Atlanta market, and commanded the highest prices. F. J. MERRIAM.

ALAMANANCE CO., N. C.—Wood's Prize Head Late Flat Dutch is the finest cabbage for winter I have ever grown. Mrs. ALFRED ISELEY.

FLOWER SEEDS

IN BEAUTIFUL LITHOGRAPHED PACKETS.

COLLECTION No. 1. A splendid collection of 100 packets of popular flowers to retail at 5c. each. Wholesale price, including show-box, \$2.00.

COLLECTION No. 2. A choice assortment of popular sorts, including a few varieties to retail at 10c. Retailers for \$10.00. Wholesale price, including show-box, \$4.00.

Flower Seeds retailing at more than 5c. per packet will be charged at 50 per cent. discount from retail prices.

Flower Seeds in Bulk. We carry a full line. If not quoted below, write for prices.

Flower Seeds in Bulk.

	Oz.	Lb.		Oz.	Lb.
Aster , German Quilled,25	\$2.50	Morning Glory , Mixed,06	.30
Ageratum , Mexicanum,15	1.50	" " Brazilian,25	2.50
Alyssum , Sweet,15	1.25	" " Jap. Imperial,15	1.50
Ampelopsis , Veitchii,15	1.25	Nasturtium , Dwarf Mixed,05	.35
Balsam , Double Camellia Fl'd,35	3.50	" Tall Mixed,05	.30
Calendula , Meteor,10	.50	" Chameleon,10	1.25
" Prince of Orange,10	.50	" Other sorts,06	.60
Calliopsis , Mixed,10	.60	Pansy , Large Flower'g, Mixed,40	4.00
Candytuft , Mixed,10	.50	Petunia , Single, Mixed,30	3.00
Canna , Tall,10	.60	Phlox Drummondii , Mixed,30	3.50
Carnation , Mixed,40	4.00	" Grandiflora Mixed,40	4.50
Centaurea , Cyanus,10	.75	Poppy , Carnation Flowered,10	.50
Cosmos , Mixed,15	1.00	" Peony Flowered,10	.50
Cypress Vine ,15	1.25	Portulaca , Single, Mixed,20	2.00
Dianthus , Chinese Pink,15	1.75	Ricinus , Mixed,05	.30
" Japan Pink,40	4.00	Salvia , Splendens,	1.00	12.00
Dolichos , Mixed,10	.40	Smilax ,30	3.00
Forget-Me-Not , Alpestris,35	3.50	Stocks , Dwarf German, Mixed,65	6.00
Gaillardia , Mixed,10	.75	Sunflower , Double California,10	.75
Gourds , Mixed,10	1.00	Sweet William , Single, Mixed,15	.80
Heliotrope , Mixed,75	7.00	" D'ble, Mixed,30	3.00
Hollyhock , Mixed,50	5.00	Verbena , Mixed Colors,40	4.00
Marigold , African, Mixed,15	1.25	" Mammoth,80	8.50
" Eldorado,20	2.00	Violet , Mixed Colors,80	8.00
" French D'ble Dw'f,15	1.25	Wallflower , Single, Mixed,10	1.25
Marvel of Peru ,10	.40	Zinnia , Double, Mixed,20	2.00
Mignonette , Sweet,06	.40	" Grandiflora,30	3.00
Moonflower , Ipomea Hybrida,50	5.00	Mixed Flower Seeds ,05	.50
" Ipomea Grandiflora Alba,50	5.00			

SWEET PEAS. For list of named sorts, see Descriptive Catalogue. Price, oz. 5c.; ¼ lb. 10c.; lb. 30c.

Wood's Special Mixed. Oz. 5c.; ¼ lb. 10c.; lb. 35c.

Mixed Sweet Peas. Lb. 25c.

Cupid Mixture. Oz. 5c.; ¼ lb. 15c.; lb. 50c.

Bush Sweet Peas. Oz. 5c.; ¼ lb. 15c.; lb. 50c.

Summer Flowering Bulbs.

	Per doz.	Per 100.
CANNAS. Named Sorts.		
See Annual Catalogue for varieties and descriptions,	\$.85	\$6.00
Mixed Sorts. All colors,65	4.75
CALADIUMS. (Elephant's Ears),		
Extra large bulbs,	1.25	...
First size bulbs,85	...
Fancy Leaved,	1.75	...
DAHLIAS. Named Sorts.		
See Annual Catalogue for varieties and descriptions,	1.00	7.50
Mixed Sorts,75	5.50

	Per doz.	Per 100.
GLADIOLUS. Scarlet and		
red,20	\$1.25
White and light,25	1.75
Pink shades,20	1.25
Striped and variegated,25	1.75
Yellow,35	2.50
Choice mixed colors,15	.75
Extra large mixed,20	1.00
MADEIRA VINES,25	1.50
TUBEROSES. Excelsior Pearl. Large,		
15c. per doz.; \$1.00 per 100; \$6.00		
1,000. Second size, 10c. per doz.;		
80c. per 100; \$3.50 per 1,000.		
Albino. Branching single variety,		
30c. per doz.; \$2.00 per 100.		
Variegated Leaved. 30c. per doz.;		
\$2.00 per 100.		

INSECTICIDES AND FUNGICIDES.

- Bordeaux Mixture.** 85c. per gallon.
Hammond's Slug Shot. 5-lb. pkgs. 20c.; barrels of 235 lbs., in bulk, 3½c. lb.
Paris Green. Write for prices, stating quantity and sizes desired.
Whale Oil Soap. 15c. per lb. Special prices on large lots.
Kerosene Emulsion. 5-lb. packages, 60c.
Thymo-Cresol. 4-oz. pkgs. \$2.00 per doz.; 8-oz. pkgs. \$3.25 per doz.; qt. 50c.; 2 qts. 80c.
Lemon Oil Insecticide. ½-pint, 20c.; pint, 35c.; qt. 60c.
Tobacco Dust. 15 lbs. 20c.; 40 lbs. 35c.; 100 lbs. 80c.; 1,000 lbs. \$7.00.

SPRAYERS AND DUSTERS.

- Copper Knapsack Sprayer.** \$8.50 each.
The Compressed Air Sprayer. \$2.00.
Fountain Knapsack Sprayer. \$2.50 each.
Barrel Sprayers. Prices on application.
Little Giant Duster. \$4.25 each.
Bellow's Duster. 80c. each.
 Complete Sprayer Catalogue mailed free upon application.

POULTRY SUPPLIES.

- Wood's Practical Rations.** Per 100-lb. bag, \$2.25; 50-lb. bag, \$1.20; trial package, 15-lbs., 40c.
Rust's Egg Producer. 1-lb. pkgs., \$2.00 per doz.; 2½-lb. pkgs., \$4.00 per doz.; 6-lb. pkgs., \$8.00 per doz.
Rust's Climax Condition Powder. Per doz. pkgs., \$2.00; 2-lb. pkgs., \$4.00 per doz.; 5-lb. pkgs., \$8.00 per doz.
Rust's Roup Pills. \$2.00 per doz. boxes.
Crushed or Granulated Bone. 25 lbs., 70c.; 100 lbs., \$2.40.
Fine Bone Meal. 25 lbs., 75c.; 100 lbs., \$2.25.
Bone and Meat Meal. 5 lbs., 15c.; 25 lbs., 75c.; 100 lbs., \$2.50.
Mica Crystal Grit. 5 lbs., 12c.; 25 lbs., 30c.; 50 lbs., 45c.; 100 lbs., 80c.
Crushed Oyster Shells. 100 lbs., 60c.; 500 lbs., \$2.75.

Other Poultry Supplies, 10 per cent. discount from Retail Catalogue prices.

SUNDRY ARTICLES.

- Cahoon Broadcast Hand Seeders.** Does splendid work. \$2.50 each; \$27.00 doz.
Premier Broadcast Seeders. Each, \$1.00. A good seller.
Flower Pots and Saucers. 10 per cent. off retail list prices.
Iron Age Garden Tools. 15 per cent. off retail prices.
Planet, Jr., Garden Tools. 15 per cent. off retail list prices.
Flower Plant Food. \$2.00 per dozen.

SEED BAGS.

We handle these in immense quantities, and can offer them as low as the same grade can be purchased anywhere. Quality and sizes same as we use for our own retail trade.

	Per 100.	Per 1,000.
One-ounce packets, 2⅞ x 4⅜ inches,1075
Two-ounce packets, 3¾ x 5¼ inches,15 \$1.00

Printing name and address, 60 cents per 1,000 extra. We do not print less than one thousand lots.

Wood's Evergreen Lawn Grass Seed.

The Best of all Lawn Mixtures for Making a Fine, Velvety, Green Lawn.

The Best of all Lawn Mixtures for Making a Fine, Velvety, Green Lawn.

Wholesale price in cartoon boxes: Quart boxes, \$1.80 per doz.; retail price, 25c. each.

In bulk: In 10-lbs. and over, 17c. per lb.; in 100-lb. lots and over, 16c. lb.

Wood's Permanent Lawn Grass.

Specially prepared to withstand our hot, dry summers. Composed of more robust grasses than the Evergreen, and better adapted to lawns which are used for grazing. 10-lb. lots and over, 16c. per lb.; in 100-lb. lots and over, 15c. per lb.

Wood's High Grade Farm Seeds.

Terms on all Field Seeds are NET CASH on Receipt of Goods.

Prices Fluctuate. Those given below are the Prices Ruling when this Catalogue is printed.

To keep our Merchant Customers who deal in Field Seeds posted, we issue Price-Lists, giving Current Prices, which we mail Monthly or Semi-Monthly, as issued.

GRASS SEEDS. *No charge for Burlap bags. Cotton bags 15c. extra.*

	No. of lbs. to the bush.	Telegraph Code Word.	Per bus. in 5 bus. lots and over.	Per bush.
Timothy—Prime,	45	Whamade,	\$1.90	\$1.95
Choice,	45	Whalice,	2.00	2.05
Trade-Mark Brand,	45	Whaler,	2.10	2.15
Red Top, or Herds—Prime, in chaff,	10	Weltic,	.22	.25
				Per lb. in 100 lots & over.
Fancy Clean Seed (choice grade),		Wensure,	.08	.07½
Fancy Clean Seed, Trade- Mark Brand,		Wensurt,	.09	.08½
			Per bus. in 5 bus. lots and over.	Per bus.
Orchard Grass—Prime,	14	Wauter,	\$1.65	\$1.70
Choice,	14	Wauser,	1.75	1.80
Trade-Mark Brand,	14	Wauset,	1.85	1.90
Kentucky Blue—Fancy,	14	Wastel,	1.25	1.30
Trade-Mark Brand,	14	Wassock,	1.40	1.45
Tall Meadow Oat—Choice, ..	11	Wester,	1.75	1.80
Trade-Mark Brand (choice), ..	11	Westret,	1.85	1.90
Johnson Grass,	24	Wassep,	1.55	1.60
Trade-Mark,	24	Wasson,	1.65	1.70
Meadow Fescue, or Randall, Trade-Mark Brand,	14	Watspalt,	1.05	1.15
Poa Compressa,	14		1.15	1.20
Perennial Rye, Trade-Mark Brand,	14	Wavike,	.85	.90
Italian Rye, Trade-Mark Brand,	14	Waslik,	.95	1.00
			Per lb.	Per 100lbs.
Fine-Leaved Fescue,		Wawel,	.22	\$25.00
Crested Dogstail,		Warrag,	.30	26.00
Wood Meadow,		Whare,	.38	35.00
Bermuda,		Warol,	.45	40.00
Hard Fescue,		Wascas,	.15	12.50
Sheep Fescue,		Wentime,	.15	12.50
Red Fescue,		Weiling,	.15	12.50
Hungarian, or Awnless Brome,		Warouse,	.15	11.00
Meadow Foxtail,		Waudal,	.28	25.00
Creeping Bent,		Warpen,	.18	16.00
Rough Stalked Meadow,		Wentig,	.25	23.00
Paspalum Dilatatum,		Wharden,	.90	80.00

CLOVER SEEDS. *Cotton bags for Clover, 15c. each extra.*

	No. of lbs. to the bush.	Telegraph Code Word.	Per bus. in 5 bus. lots and over.	Per bus.
Red—Good,	60	Waramel,	\$6.10	\$6.15
Prime,	60	Wapuc,	6.25	6.30
Choice,	60	Waptor,	6.45	6.50
Trade-Mark Brand,	60	Waptrum,	6.65	6.70
Mammoth or Sapling—Prime, ..	60	Warapaam,	6.35	6.40
Choice,	60	Warapace,	6.55	6.60
Trade-Mark Brand,	60	Warapet,	6.75	6.80
Lucerne, or Alfalfa, Trade- Mark Brand,	60	Warble,	7.50	7.80
Alsike, or Swedish, Trade- Mark Brand,	60	Waravit,	9.00	9.25
Crimson, Trade-Mark Brand, ..	60	Warbest,	2.60	2.70
White Blooming Crimson, ...	60	Warbite,	4.80	5.00
			Per lb.	Per 100 lbs.
White—Choice,	60	Wardak,	.20	22.00
“ Trade-Mark,	60	Warder,	.25	23.00
Japan (“Lespedeza striata”), ..	25	Ward,	.20	18.00

Wood's Selected Seed Potatoes.

Seed Potatoes are one of our leading specialties. We have in stock thousands of barrels of the best Maine-grown and Virginia Second Crop seed. All our seed potatoes are put up in full-sized, double-head barrels or in barrel sacks 165 pounds each.

MAINE AND NORTHERN GROWN.

EARLY AND EXTRA EARLY VARIETIES.

	Code Word.	Per bbl.	Sack 165 lbs.
Houlton Early Rose,	Pitsaw,	\$3.25	\$3.00
Beauty of Hebron,	Piquant,	2.50	2.25
Northern Early Rose,	Piquancy,	2.50	2.25
Early Harvest,	Pincrop,	3.25	3.00
Bovee,	Pillor,	3.25	3.00
Junior Pride,	Placavar,	3.40	...
Wood's Earliest,	Pleance,	3.10	...
Early Ohio,	Pinnacle,	2.90	2.65
Thoroughbred,	Plumbob,	2.75	2.50
Triumph, or Red Bliss,	Pigmy,	3.00	2.75
White Bliss, or Pride of the South,	Pleason,	2.80
Extra Early White Rose,	Pila,	3.75	...

MEDIUM AND LATE VARIETIES.

		Per bbl.	Sack 165 lbs.
Richmond Belle,	Plentoke,	2.85	...
Carman No. 3,	Pacoma,	3.00	2.75
Green Mountain,	Pitern,	2.85	2.60
Peerless,	Pleader,	2.50	2.25
Burbank,	Pilgrim,	2.50	2.25
Rural New Yorker, No. 2,	Pleurisy,	2.50	2.25

VIRGINIA SECOND CROP POTATOES.

Our Second Crop Seed Potatoes are grown in Eastern Virginia. It has long been recognized that Eastern-grown Virginia Second Crop Seed are vastly superior in quality and productiveness to those grown in other districts. In fact, potatoes offered from Tennessee and other points as "Second Crop" are frequently not Second Crop at all, but are really the late crop potatoes. These are very much inferior, for seed, to the genuine Second Crop Potatoes. Full information about these Potatoes will be found on page 6 of our Descriptive Catalogue.

	Code Word.	Per bbl.	Sack 165 lbs.
Early Rose,	Pliade,	\$2.50	\$2.30
Crown Jewel,	Pliading,	2.50	2.30
Bliss' Triumph,	Pliancy,	2.65	...
Wood's Earliest,	Plianth,	3.00	...
Bovee,	Pliat,	2.60	2.40
Thoroughbred,	Pliaren,	2.60	2.40
Polaris,	Pliaset,	2.50	2.30
White Bliss,	Pliason,	2.90	...
New Queen,	Plias,	2.60	...

WOOD'S CELEBRATED GRASS SEED MIXTURES.

ADAPTED TO DIFFERENT SOILS AND SITUATIONS.

	Code Word.	Per 100 lbs.
No. 1, For good, light soil,	Whimper,	\$13.00
No. 2, For good loam soil,	Whinay,	13.00
No. 3, For heavy loam or clay,	Whire,	13.00
No. 4, For moist bottom land,	Whisp,	13.00
No. 5, For wet bottom land,	Whistle,	13.00
Nos. 6 to 9 are the best for hay, but can be grazed.		
No. 6, For good, light soil,	Whester,	13.00
No. 7, For good loam soil,	Wherow,	13.00
No. 8, For heavy loam or clay,	Whenan,	13.00
No. 9, For moist bottom land,	Whebra,	12.00
No. 10, For good, loam soil, shaded with trees,	Wheny,	13.00

SEED CORN—White Field Varieties.

Prices include new grain bags.

	Code Word.	Per bush.
Cocke's Prolific,	Corrode,	\$1.00
Hickory King,	Cosmic,	1.10
Blount's Prolific,	Copulate,	1.00
Improved Southern Snowflake,	Coption,	1.25
Gentry Early Market,	Copnate,	1.25
Virginia White Dent,	Corpusele,90
Virginia Ensilage,	Correlate,85
Mosby's Prolific,	Corsica,	1.40
Majestic,	Coplon,	1.20
Holt's Strawberry,	Corbery,	1.10

Yellow Field Varieties—*Prices include new bags.*

Eureka,	Cornel,	\$1.60
Improved Golden Dent, selected,	Corymb,	1.10
Improved Leaming,	Costal,	1.00
Virginia Yellow Dent,	Costoke,90
Clark's Mastodon,	Cornice,	1.10
New White Cap Yellow Dent,	Cormant,	1.10
Golden Dent,	Corrick,	1.00
Golden Beauty,		1.10

SEED OATS—Selected and Recleaned.

Prices include bags and free delivery on cars here. Prices variable. Will quote lowest current prices any time on application.

	Code Word.	Per bus. in 50 bus. lots.	Per bus.
White Spring, choice, bagged and f.o.b.,	Womad,47	.50
White Spring, Trade-Mark Brand,	Womark,52	.55
Black Spring, choice,	Womale,47	.50
Black Spring, Trade-Mark Brand,	Womalt,52	.55
Red Rust Proof, choice,	Womme,50	.52
Red Rust Proof, Trade-Mark Brand,	Womlet,55	.58
Virginia Winter or Turf Oats, Prime,	Wommack,60	.62
Virginia Winter or Turf Oats, choice,	Wommo,65	.68
Virginia Winter or Turf Oats, Trade-Mark Brand,	Wommos,70	.72
Iowa Silver Mine,	Wobley,60	.65
Garton Tartar King,	Womat,	1.10	1.15
Burt or Ninety Day Oats,	Woker,75	.80
RYE. —Bagged and f. o. b., bu. of 56 lbs.,	Wompart,70	.72
BARLEY. —Bagged and f. o. b., bu. of 48 lbs.,	Wollate,83	.85

MISCELLANEOUS SEEDS.

	Code Word.	
Beggar Weed —Giant, per lb.,	Walt,28
Chufas, or Earth Almonds , per bu.,	Wince,	\$3.00
Cotton Seed , all varieties, 15c. per bushel less than catalogue prices.		
Buckwheat —Japanese, per bu.,	Wollop,	1.10
Silver Hull, per bu.,	Wolly,	1.00
Millet —German, choice, per bu.,	Wharry,	1.00
German, Trade-Mark,	Wharcum,	1.10
Hungarian, per bu.,	Whaser,	1.00
Pearl, or Cat Tail, per lb., 6c.; 100 lbs., \$5.50.		
Broom Corn —Evergreen, per bu.,	Whristian,	1.60
Castor Beans , per lb.,	Whug,30
Beans —Soja, per bu.,	Bask,	1.20
Navy, per bu.,	Bauble,	2.60
Velvet, per bu.,	Boydon,	1.75
Cow Peas —Wonderful, per bu.,	Perfuse,	1.35
Black, per bu., bags included,	Pantops,	1.40
Whippoorwill,	Patron,	1.50
Clay,	Patrick,	1.20
Taylor, or Granite,	Patillo,	1.50
Mixed,	Patoster,	1.10
Iron,	Pama,	2.75
Large Blackeye, per bu.,	Patrol,	1.90
Extra Early Blackeye, per bu.,	Pant,	2.50

MISCELLANEOUS SEEDS—Continued.

Cow Peas —New Era,	Patty,	2.40
Red Ripper,	Parrer,	1.50
Gallivant,	Patill,	2.50
Canada Field Peas , per bu.,	Parson,	1.65
Peanuts —Virginia, bushel of 22 lbs.,	Pandove,	1.30
Spanish, per bushel of 30 lbs.,	Pandote,	1.80
Flax Seed —Clean, per bu.,	Whuff,	1.75
Rape —Dwarf Essex, lb., 6c.; 100 lbs.,	Regrite,	5.00
Sorghum —Early Amber, per bu.,	Woam,	1.35
Early Orange, per bu.,	Woab,	1.35
Sunflower —Mammoth Russian, per lb.,	Whough,	1.25
Kaffir Corn , per bu. (50 lbs.),	Wochal,	1.35
Vetch , per lb.,	Wogent,50
Vetch —English Winter, per 100 lbs.,	Wogrem,	5.00
Sand, or Hairy, per 100 lbs.,	Woglista,	8.00

FERTILIZERS.

Standard Vegetable,	Per ton.	\$21.00
Standard Potato,		22.00
Standard Corn,		14.00
Standard Grain and Grass,		17.50
Listers' Standard Bone Superphosphate ,		25.00
Mapes' Vegetable Manure,		39.00
Mapes' Complete Manure, "A" Brand,		33.00
Mapes' Economical Potato Manure,		33.00
Mapes' Tobacco Manure,		34.00
Wood's Lawn Enricher,		40.00
Wood's Pure Animal Bone , a splendid article of bone meal,		26.00
Land Plaster,		6.25

ORDERING BY TELEGRAPH.

In order to reduce the expense of ordering Seeds by telegraph, we have embodied the telegraphic code-word to each variety, and below we give the code-word for any quantity. Always write the code-word for the quantity before the word for the Seeds. Thus, "Freight Quapode Pergot, Quanomia Chaffen, Chame," would mean, "Ship by first freight ten bushels of Wood's Lightning Excelsior Peas, and two pounds each of Wood's Selected Jersey Wakefield and Wood's Prize Head Late Flat Dutch Cabbages."

AMOUNT	POUNDS.	BUSHEL.	BAGS.
$\frac{1}{4}$,	Quanoint.	Quaphony.	Quarbus.
$\frac{1}{2}$,	Quanoka.	Quaphote.	Quarbut.
$\frac{3}{4}$,	Quanold.	Quapiary.	Quarcade.
1,	Quanolis.	Quapices.	Quarcane.
2,	Quanomia.	Quapist.	Quarch.
3,	Quanomy.	Quapitz.	Quarchod.
4,	Quanon.	Quapium.	Quarchil.
5,	Quanopsy.	Quaplin.	Quarchly.
6,	Quanotta.	Quaplome.	Quarchon.
7,	Quanoura.	Quapocan.	Quaretic.
8,	Quanow.	Quapoco.	Quarcus.
9,	Quanrobe.	Quapodal.	Quardea.
10,	Quanrush.	Quapode.	Quardent.
15,	Quanta.	Quapolus.	Quarread.
20,	Quantic.	Quapozen.	Quarends.
25,	Quanocus.	Quappeal.	Quargent.
30,	Quaoler.	Quappian.	Quargosy.
40,	Quaostos.	Quaptate.	Quarilic.
50,	Quapepsy.	Quarado.	Quarmear.
60,	Quaspan.	Quadit.	Qubagley.
75,	Quaston.	Quaverse.	Qubalcom.
100,	Quatrium.	Quaxil.	Qubanyan.
125,	Quatrick.	Quaxilam.	Qubant.
150,	Quatress.	Quaxiled.	Qubanter.
200,	Quatrous.	Quaxilla.	Qubarano.
300,	Quattar.	Quazange.	Qubarbed.
400,	Quattain.	Quaxium.	Qubarb.
500,	Quattask.	Qubaal.	Qubarcus.

Use this code for TELEGRAMS ONLY—NOT for mail orders.

WOOD, STUBBS & CO., Seedsmen.

Special Prices to the Wholesale Trade.

Prices subject to Market Changes and Unsold. No charge for cartage.

Louisville, Ky., Jan. 31, 1903.

ONION SETS.

	Bushel 32 lbs.	10 bus.	100 bus.
Prices for immediate or February 15th shipment as desired. Wire for prices in carlots.	Choice Yellow,	\$0 60	\$0.55
	Choice White,	1 35	1.30
	Yellow Potato,	1.60	1.50
	Samples on request.		
	Bags (5 bus.) 8c, barrels 25c extra.		

FIELD SEEDS.

A few specialties only. Complete Price List on request.

GRASS SEEDS, Etc.

	Per 100 lbs.
Ky. Blue, best fancy	\$8.45
" ex. clean, . .	2.50
Bermuda Grass, new,	40.00
Red Top, best chaff,	1.25
Johnson Grass	7.00
Pearl Millet	6.00
Japan Clover	19.00
Sunflower, Russian,	1.40
Pumpkin, Ky. Field .	10.00

SEED GRAIN.

	Per bus.
Winter Turf Oats . .	\$0.55
SEED CORN. Select Stock	
Adams Early, fine . .	1.75
Dreadnaught, fine . .	1.75
So'th'rn White Ensil.	.70
Red Cob White Dent.	.70
Southern " " "	.70
Austins Col. Yel. " "	.80
Imp'd Golden " "	.80

TOBACCO SEED.

Fine Stocks. **The following sorts at \$1.10 per lb.:** Big Oronoko, Yellow Oronoko, White Stem, Long Leaf Gooch, Yellow Pryor, Blue Pryor, Sweet Oronoko, One Sucker, Broad Leaf Gooch, Mo. Broad Leaf, Connecticut Seed Leaf, and Penn. Seed Leaf.

The following sorts at \$1.50 per lb.: White Burley (fine), Red Burley (fine), Imp'd Yellow Oronoko, Imp'd Yellow Pryor, Tennessee Red, Kentucky Yellow, and Big Havana.

The following sorts at \$2.50 per lb.: Vuelta d'Abajo, Sumatra, Choice Havana, Brazilian, Cuban Seed Leaf, Comstock Spanish and Zimmer's Spanish

CONTRACTS

FOR 1903.

Subject to cash conditions. Full pro-rata deliveries guaranteed.

We are growing, at reasonable prices the following: **Garden Seeds.** Dwarf Curled Siberian Kale, Henderson's and Wood's Prolific Bush Lima Beans, Yellow Danvers and Silver Skin Onion Seed. Qualities first-class. Ask for prices if interested.

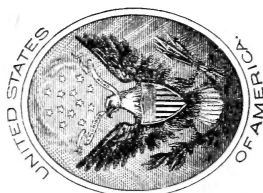
Field Seeds. Delivery Summer and Fall 1903.

Winter Turf Oats. 50,000 bushels.

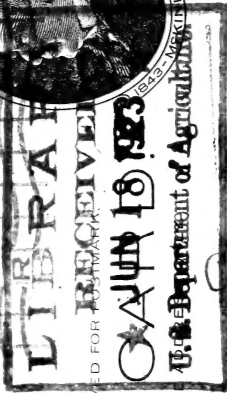
Seed Wheat. Gold Coin, Harvest King, Fulcaster Fultzo Mediterranean, Fultz, Poole.

Robinson's and American Seed Trade Association Codes.

62.31



THE SPACE ABOVE IS RESERVED FOR THE
POSTAL
THE SPACE BELOW IS FOR THE



E. O. Gault,
San Diego,
Calif

VIRGINIA SECOND CROP SEED POTATOES

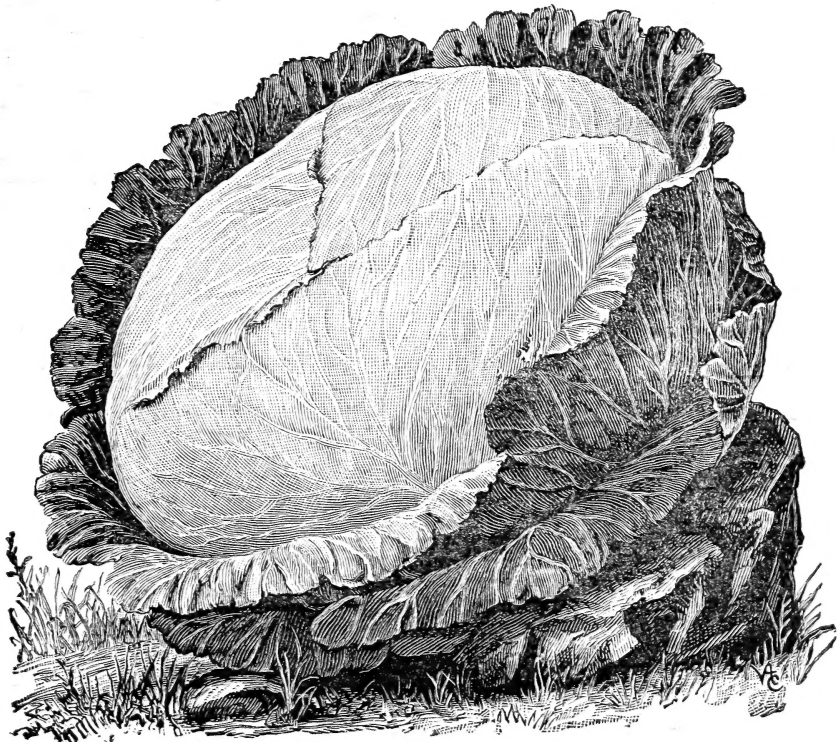
We have in our Warehouses a large stock of these potatoes, personally selected in the fields, from the very best crops grown in this section, and the quality and productiveness of the stock is unsurpassed.

We have the following kinds in stock :

WOOD'S EARLIEST, RED BLISS TRIUMPH, THOROUGH-BRED, EARLY ROSE, WHITE BLISS, or PRIDE OF SOUTH, CROWN JEWEL, POLARIS, or PURITAN, NEW QUEEN.

Virginia-grown Second Crop Seed Potatoes are unquestionably superior to those grown in other sections, being entirely free from scab, smoother and much better quality than the second crop seed grown farther South. The Virginia seed too is the **true second crop seed**, and not as is frequently offered from other sections, early varieties of the previous years growing planted late.

Wherever planted, our Virginia Second Crop Seed Potatoes have unquestionably proved their superiority over Maine and Northern-grown Seed, both in earliness and productiveness, and while hitherto their use has been principally confined to large truckers and gardeners throughout the South, they are now being quite generally used in sections where they have been tried throughout the North. We believe they are designed to supersede very largely both Maine and Northern-grown Seed all along the Atlantic coast. (See page 14 for prices.)



Wood's Prize Head Late Flat Dutch Cabbage

is unquestionably the largest yielding and surest cropping of late Fall and Winter Cabbage for the South. Wholesale price: per lb. \$1.25. In 10 lb. lots and over, \$1.10 per lb.

FINE BIRD SEEDS.

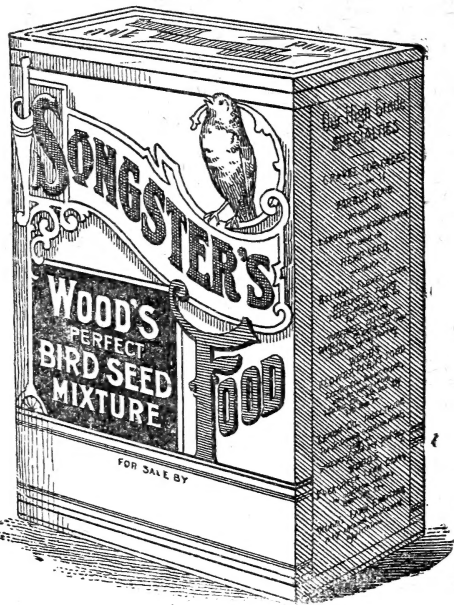
We offer Bird Seeds either in bulk or put up in handsome lithographed 1-lb. boxes. Cases contain two dozen, four dozen, and one hundred packages.

In four dozen lots and over, when requested, name and address printed on package without extra charge. No charge for cases.

WOOD'S SONGSTER'S FOOD.

A PERFECT BIRD SEED MIXTURE.

We put this up of the best and cleanest seeds in proportions to form a mixture that will satisfy the most critical trade. It is composed of Recleaned Canary, Hemp (in separate package), Imported Rape, and Cuttle-fish, and is of unexcelled quality. The cartoons are of specially tasty designs, and make a handsome shelf package. Full directions for the care of birds on each package.



Cuttle-fish bone in each package.

Per doz. 1-lb. packages,85
Cases of 2-doz. packages,	1.60
Cases of 4 doz. packages,	3.10
Cases of 100 packages,	6.00

RECLEANED MIXED BIRD SEED.

Composed of Recleaned Canary, Hemp, Rape, and French Millet in proportions to make a first-class article, and put up in attractive lithographed cartoons.

Per dozen 1-lb. packages,80
Cases of 2 dozen packages,	\$1.50
Cases of 4 dozen packages,	2.90
Cases of 100 packages,	5.50

BIRD SEEDS IN BULK.

	per lb.,	25 lbs.	100 lbs.
Recleaned Mixed Bird Seed,	5c.	4¾c.
Canary, Recleaned,	6c.	5¾c.
Hemp,	5c.	4½c.
Millet, French,	3½c.	3c.
Rape,	5c.	4½c.
		10 lbs.	25 lbs.
Sunflower Seed, for parrots,	5c.	4½c.
Cuttle-fish Bone, best quality,	35c.	30c.

T. W. WOOD & SONS, Seed Growers and Merchants, RICHMOND, VA.

OFFICE AND STORE, 1323 EAST MAIN STREET.

WAREHOUSE, 8, 10, 12, and 13 SOUTH FOURTEENTH STREET.

SEED FARMS: CHESTER, HOLLYBROOK and OAKLANDS.

LARGEST SEED HOUSE IN THE SOUTH.